

SCIENTIFIC REPORTS

OPEN

Corrigendum: Apoptotic effect of novel Schiff Based $\text{CdCl}_2(\text{C}_{14}\text{H}_{21}\text{N}_3\text{O}_2)$ complex is mediated via activation of the mitochondrial pathway in colon cancer cells

Maryam Hajrezaie, Mohammadjavad Paydar, Chung Yeng Looi, Soheil Zorofchian Moghadamtousi, Pouya Hassandarvish, Muhammad Saleh Salga, Hamed Karimian, Keivan Shams, Maryam Zahedifard, Nazia Abdul Majid, Hapipah Mohd Ali & Mahmood Ameen Abdulla

Scientific Reports 5:9097; doi: 10.1038/srep09097; published online 13 March 2015; updated on 05 June 2017

In this Article the images presented in Figure 2a are duplicated from Figure 4a in Reference 47. These errors are due to accidental mislabelling of data files and the figure, which resulted in an incorrect figure being mistakenly included in the paper.

The correct Figure 2a appears below as Figure 1.

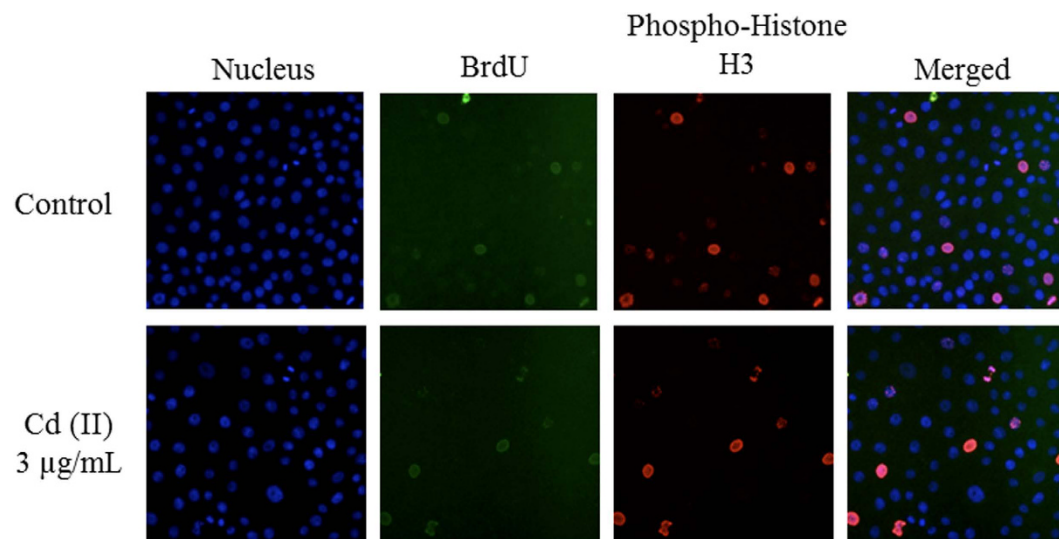



Figure 1.

 This work is licensed under a Creative Commons Attribution 4.0 International License. The images or other third party material in this article are included in the article's Creative Commons license, unless indicated otherwise in the credit line; if the material is not included under the Creative Commons license, users will need to obtain permission from the license holder to reproduce the material. To view a copy of this license, visit <http://creativecommons.org/licenses/by/4.0/>

© The Author(s) 2017