

Application of the CALIOP layer product to evaluate the vertical distribution of aerosols estimated by global models: AeroCom phase I results

Brigitte Koffi,¹ Michael Schulz,^{1,2} Francois-Marie Bréon,¹ Jan Griesfeller,^{1,2} David Winker,³ Yves Balkanski,¹ Susanne Bauer,⁴ Terje Berntsen,^{5,6} Mian Chin,⁷ William D. Collins,⁸ Frank Dentener,⁹ Thomas Diehl,^{7,10} Richard Easter,¹¹ Steven Ghan,¹¹ Paul Ginoux,¹² Sunling Gong,¹³ Larry W. Horowitz,¹² Trond Iversen,^{2,14} Alf Kirkevåg,² Dorothy Koch,¹⁵ Maarten Krol,^{16,17} Gunnar Myhre,⁶ Philip Stier,¹⁸ and Toshihiko Takemura¹⁹

Received 9 September 2011; revised 10 April 2012; accepted 11 April 2012; published 19 May 2012.

[1] The CALIOP (Cloud-Aerosol Lidar with Orthogonal Polarization) layer product is used for a multimodel evaluation of the vertical distribution of aerosols. Annual and seasonal aerosol extinction profiles are analyzed over 13 sub-continental regions representative of industrial, dust, and biomass burning pollution, from CALIOP 2007–2009 observations and from AeroCom (Aerosol Comparisons between Observations and Models) 2000 simulations. An extinction mean height diagnostic (Z_{α}) is defined to quantitatively assess the models' performance. It is calculated over the 0–6 km and 0–10 km altitude ranges by weighting the altitude of each 100 m altitude layer by its aerosol extinction coefficient. The mean extinction profiles derived from CALIOP layer products provide consistent regional and seasonal specificities and a low inter-annual variability. While the outputs from most models are significantly correlated with the observed Z_{α} climatologies, some do better than others, and 2 of the 12 models perform particularly well in all seasons. Over industrial and maritime regions, most models show higher Z_{α} than observed by CALIOP, whereas over the African and Chinese dust source regions, Z_{α} is underestimated during Northern Hemisphere Spring and Summer. The positive model bias in Z_{α} is mainly due to an overestimate of the extinction above 6 km. Potential CALIOP and model limitations, and methodological factors that might contribute to the differences are discussed.

Citation: Koffi, B., et al. (2012), Application of the CALIOP layer product to evaluate the vertical distribution of aerosols estimated by global models: AeroCom phase I results, *J. Geophys. Res.*, 117, D10201, doi:10.1029/2011JD016858.

1. Introduction

[2] The variability of aerosol particle loading, both in space and time, makes it difficult to quantify the current

impact of aerosols on the Earth radiative forcing and climate. Several studies [e.g., Kinne *et al.*, 2006; Schulz *et al.*, 2006; Textor *et al.*, 2006, 2007; Koch *et al.*, 2009; Prospero *et al.*,

¹Laboratoire des Sciences du Climat et de l'Environnement, Gif-sur-Yvette, France.

²Norwegian Meteorological Institute, Oslo, Norway.

³Atmospheric Sciences, NASA Langley Research Center, Hampton, Virginia, USA.

⁴NASA GISS, Columbia University, New York, New York, USA.

⁵Department of Geosciences, University of Oslo, Oslo, Norway.

⁶Center for International Climate and Environmental Research-Oslo, Oslo, Norway.

⁷NASA Goddard Space Flight Center, Greenbelt, Maryland, USA.

⁸Lawrence Berkeley National Laboratory, Berkeley, California, USA.

Corresponding author: B. Koffi, Laboratoire des Sciences du Climat et de l'Environnement, L'Orme des Merisiers Bat. 712, Point courrier 132, F-91191 Gif-sur-Yvette, France. (brigitte.koffi@lscce.ipsl.fr)

Copyright 2012 by the American Geophysical Union.
0148-0227/12/2011JD016858

⁹European Commission, Joint Research Centre, Ispra, Italy.

¹⁰Universities Space Research Association, Columbia, Maryland, USA.

¹¹Atmospheric Sciences and Global Change Division, Pacific Northwest National Laboratory, Richland, Washington, USA.

¹²Geophysical Fluid Dynamics Laboratory, NOAA, Princeton, New Jersey, USA.

¹³Air Quality Research Division, Environment Canada, Toronto, Ontario, Canada.

¹⁴Department of Geosciences, University of Oslo, Oslo, Norway.

¹⁵Climate and Environmental Sciences Division, U.S. Department of Energy, Washington, D. C., USA.

¹⁶Meteorology and Air Quality, Wageningen University, Utrecht, Netherlands.

¹⁷Institute for Marine and Atmospheric Research Utrecht, University of Utrecht, Utrecht, Netherlands.

¹⁸Department of Physics, University of Oxford, Oxford, UK.

¹⁹Research Institute for Applied Mechanics, Kyushu University, Fukuoka, Japan.

2010; Huneus et al., 2011] conducted within the AeroCom (Aerosol Comparisons between Observations and Models; Schulz et al. [2006]) project show a large diversity in burdens and spatial distribution of the simulated aerosol species. These differences reveal large uncertainties in simulated aerosol processes (transport, removal, chemistry and microphysics) and, to a lesser extent, in the spatial and temporal distributions of (precursor) emissions [Textor et al., 2007]. The vertical distribution of tropospheric aerosol is of particular importance because it is a combined signature of atmospheric transport patterns, residence times in the atmosphere (i.e., removal), and the efficiency of vertical exchange.

[3] The vertical distribution of aerosol particles plays a crucial role in aerosol-cloud interaction and in the radiation balance of the Earth atmosphere [e.g., Stier et al., 2007; Langmann et al., 2009]. While passive space-borne observations such as the MODerate resolution Imaging Spectroradiometer (MODIS) [Remer et al., 2005; Levy et al., 2007] and the Multiangle Imaging Spectroradiometer (MISR) [Kahn et al., 2005] have been used to evaluate the two-dimensional (2D) distribution of atmospheric particles (MODIS, MISR), or plume heights (MISR) [e.g., Tosca et al., 2011], the vertical distribution could not be evaluated systematically over the globe until the launch of active space-borne sensors. Since 2006, the Cloud-Aerosol Lidar with Orthogonal Polarization (CALIOP) lidar instrument on board the CALIPSO (Cloud-Aerosol Lidar and Infrared Pathfinder Satellite Observations) satellite has profiled the vertical distribution of aerosols and optically thin clouds, as well as their optical and physical properties, with unprecedented coverage and spatial resolution [Winker et al., 2009]. It has continuously acquired, with near global coverage, attenuated backscatter data at 532 nm and 1064 nm, including linear depolarization information at the shorter wavelength channel. This unique continuous and global aerosol profiling allows assessments of model simulations of the aerosol vertical distribution on global and multiannual scales.

[4] A first comparison of CALIOP aerosol measurements with global model simulations was performed by Yu et al. [2010]. The authors compared extinction coefficient profiles (km^{-1}) simulated by the GOCART model [Ginoux et al., 2004; Chin et al., 2009] to mean extinction profiles derived from CALIOP measurements under clear sky conditions over 13 sub-continental regions from June 2006 to November 2007. Using Version 2.01 of the CALIOP Level 2 Layer 5 km product, their results show that GOCART reproduces higher aerosol extinction heights in major dust and smoke regions compared to industrial pollution source regions. They also highlighted differences with CALIOP observations, including a larger simulated extinction coefficient in dust regions, and a lower altitude and extinction coefficient of the simulated aerosol at midlatitudes downwind of pollution sources. The authors point out the need to conduct similar comparisons between CALIOP observations and other models, by using an improved version of the CALIOP retrieval algorithms. In fact, the version (v2.01) used by Yu et al. [2010], as well as many other studies over the past four years, have shown large uncertainties and errors [Kacenelenbogen et al., 2011, and references therein].

[5] This study represents an extension of Yu et al. [2010]. The CALIOP Level 2 Layer v3.01 product, over the 2007–2009 period, is used to evaluate the performance of 12

global atmospheric models simulating the mean aerosol particle vertical distribution at sub-continental scales. This current version of CALIOP data was produced from improved retrieval algorithms for cloud and aerosol optical depths [e.g., Hu et al., 2009; Liu et al., 2010; Vaughan et al., 2010; Kacenelenbogen et al., 2011]. While validation is ongoing, initial studies [e.g., Wu et al., 2011] indicate an enhanced reliability in measuring aerosol particle vertical distributions. We also use MODIS to evaluate CALIOP and model tropospheric AOD (Aerosol Optical Depth). The 2007 to 2009 CALIOP-derived vertical aerosol profiles and MODIS AOD are compared to the twelve models simulations performed for the year 2000 in the AeroCom Phase I exercise, intended to support the 4th IPCC assessment report. While the AeroCom Phase II simulations [Schulz et al., 2009] cover the CALIOP observation period, their output was not available at the time of this analysis.

[6] Even though the AeroCom I simulations were conducted for a different period of time and, to some extent, are outdated, as the models have improved and evolved since AeroCom I, it is nevertheless interesting to evaluate their vertical aerosol particle distribution, as many other properties have been widely documented, evaluated, and analyzed in previous studies [e.g., Kinne et al., 2006; Schulz et al., 2006; Textor et al., 2006, 2007; Koch et al., 2009; Prospero et al., 2010; Huneus et al., 2011]. Therefore, this study provides complementary information for the discussion of model simulated aerosol properties. It further serves the aerosol modeling community identifying to what extent and in what manner the models improved between the two AeroCom phases with respect to their reproduction of the aerosol particle vertical distribution.

[7] Model simulations evaluated for 2000 using the 2007–2009 CALIOP measurements likely suffer from emission and meteorological differences between the modeled and observed years. Our presumption is that the three-year CALIOP observations do provide, in a climatological sense, a consistent and robust depiction of the typical aerosol particle vertical distribution at sub-continental and seasonal scales. This is tested in this study through the assessment of the representativeness of CALIOP coverage over the selected regions and studied years, based on a comparison of CALIOP and MODIS-derived AOD, analysis of the inter-annual variability of the CALIOP-derived extinction profiles over the 3-yr period, and through sensitivity analysis where the model data is sampled on CALIOP overpasses. CALIOP and MODIS satellite observations as well as the AeroCom models and simulations are presented in Section 2. Methodology and results are discussed in Sections 3 and 4, respectively. In Section 5, we provide some insights for possible model and observations related factors contributing to the reported model versus observation differences. Major findings are summarized in Section 6.

2. Brief Description of Satellite Observations and AeroCom Models

2.1. Space-Borne Lidar CALIOP Onboard CALIPSO Satellite

[8] The CALIOP Level 2 Layer 5 km product was used to evaluate the performance of the AeroCom models in simulating mean particle vertical distributions over selected sub-

continental regions. As part of the “A-train” multisatellite constellation, CALIPSO follows a 705 km sun-synchronous polar orbit, with an equator-crossing time of about 1:30 P.M., local solar time [Stephens *et al.*, 2002]. The orbit repeats the same ground track every 16 days. Using two 532 nm receiver channels and a channel measuring the total 1064 nm return signal, the CALIOP lidar has been continuously acquiring high resolution (up to 30 m vertically and 333 m horizontally), attenuated backscatter data at both wavelengths since June 2006. Attenuated backscatter represents the range-corrected calibrated lidar signal, obtained after the subtraction of calibration terms [Winker *et al.*, 2007; Hunt *et al.*, 2009].

[9] The CALIOP Level 2 Layer 5-km product is derived from the CALIOP attenuated backscatter Level 1 product [Winker *et al.*, 2009; Vaughan *et al.*, 2010; and references therein]. The algorithm system for the Level 2 products (i) detects cloud and aerosol layers in the backscattered signal, (ii) determines which of these layers are cloud or aerosol features, (iii) estimates aerosol lidar ratio, and (iv) retrieves profiles of aerosol extinction coefficients, which are then integrated to derive estimates of AOD at 532 nm and 1064 nm. Cloud versus aerosol discrimination (ii) is performed using an adaptive threshold based on the magnitude and spectral variation of the lidar backscatter at both wavelengths. Its uncertainty is assessed through a Cloud-Aerosol-Discrimination (CAD) score ranging from -100 (most likely to be aerosols) to $+100$ (most likely to be clouds) [Liu *et al.*, 2004, 2009; Vaughan *et al.*, 2004, 2005]. The aerosol lidar ratios (iii) are estimated via an empirical determination of aerosol type using a model-based scheme that includes six aerosol types: polluted continental, biomass burning, desert dust, polluted dust, clean continental and marine [Omar *et al.*, 2009]. The detection scheme uses an adaptive multi-profile averaging scheme that identifies coherent features in consecutive profiles, within windows from 5, up to 80 km, along the CALIOP tracks.

[10] This study is based on the CALIOP Layer Product version 3.01. The data set used here to evaluate the AeroCom simulations for the year 2000 covers the time period from January 2007 to December 2009. The CALIOP version 2.01 data were also processed, but for the year 2007 only, to evaluate the impact of the data version. The AOD, the bottom and top above sea level altitudes, and the CAD information of all individual aerosol and cloud layers are used to calculate mean aerosol vertical extinction profiles over the selected regions, as described in Section 3. Only the 532 nm channel and only the nighttime observations are used because these data show a better signal-to-noise than the 1064 nm and/or the daytime observations [Chazette *et al.*, 2010; Wu *et al.*, 2011].

2.2. Space-Borne Radiometer MODIS Onboard Aqua Satellite

[11] While the goal of this study is not to evaluate total column AOD of the models, it is important to check if the nighttime measurements of the CALIOP lidar, with their small footprint, ensure a representative image of the mean aerosol distribution over the studied sub-continental regions. For this objective, and in addition to the sensitivity study described in Section 3, a comparison was made using the AOD derived from the CALIOP Layer product to MODIS AOD measurements. The MODIS instrument, on board the

NASA Earth Observing System (EOS) Aqua satellite, is a passive radiometer part of the A-Train, and data are available over the 2005–2009 period. MODIS AOD are retrieved over the oceans in 7 different spectral bands (from the visible to the near infrared) and in 3 bands over land. To increase signal to noise, the standard retrieval algorithm is applied to a spatial average of pixels, leading to a resolution of the AOD product of 10×10 km. Despite uncertainties in the MODIS AOD retrieval algorithm [e.g., Kaufman and Tanré, 1998; Chu *et al.*, 2002; Remer *et al.*, 2005], and the fact that Quality Assurance screening has produced more accurate data sets [Zhang *et al.*, 2008], the operational MODIS AOD is commonly acknowledged as a reliable global product of aerosol optical depth [Bréon *et al.*, 2011]. Exceptions occur over bright land surfaces, like deserts, where the operational algorithm fails at retrieving valid AODs. The Collection 5 Level-3 atmosphere global product (MYD08_M3), which is used in this study, contains monthly 1×1 degree grid average values of aerosol optical properties (among other atmospheric parameters). Over desert areas, where the operational MODIS algorithm fails at retrieving valid AOD, the deep blue product (“Deep Blue AOD at 550 nm”) is used. Note that MODIS aerosol observations are performed during the daytime, whereas we use nighttime CALIOP data in our study. Nonetheless, comparing 2007 mean annual AOD calculated over the thirteen regions from CALIOP 24h data with the one computed from CALIOP nighttime observations does not show major differences (less than 10% for 11 regions, and $\sim 20\%$ for the 2 other regions).

2.3. AeroCom Simulations

[12] The AeroCom project documents differences of aerosol component modules of global models and assembles data sets for aerosol model evaluations. In order to facilitate model inter-comparisons and comparisons to measurement data, AeroCom requests modelers to follow a common data-protocol and provide detailed model outputs. This paper presents the first part of our study that details the Experiment A simulations [Kinne *et al.*, 2006, Textor *et al.*, 2006, 2007] of AeroCom phase I, in which the models used their own standard emissions for the year 2000 (“AeroCom A” hereafter). It focused on five aerosol components: dust (DU), sea salt (SS), sulfate (SO_4), black carbon (BC), and particulate organic matter (POM), and on the sum of these components. Models have shown to best agree on the emission mass fluxes of “anthropogenic” compared with “natural” matter [Textor *et al.*, 2006]. Results from Textor *et al.* [2006] show that differences in natural SS and DU aerosols are due to differences in the simulation of the size spectra, in the parameterizations of source strength as a function of wind speed (and soil properties for dust aerosol), and in the atmospheric dynamical fields (wind, temperature, precipitation, clouds, etc.). Emissions of anthropogenic SO_4 , BC and POM species show better agreement, due to the common use of few and usually similar emission inventories. Nonetheless, these inventories have been improved for some species or emission types by individual modelers, and their mix in each model varies [Kinne *et al.*, 2006].

[13] Twelve AeroCom models (see Table 1 for model description and references) providing 3D AOD output information at the 550 nm, close to the CALIOP spectral wavelength (532 nm), are considered. The difference in

Table 1. AeroCom Models and A (ID) and B (ID_B) Experiments Considered in This Study

Experiment Identification	Model	Type	Operating Organization	Lon Resolution (deg)	Lat Resolution (deg)	Vertical Levels (Below 10km)	References for Aerosol Module
ARQM & ARQM_B	GCM/CAM	GCM	Met. Serv. of Canada	2.8	2.8	32 (22)	Zhang [2001]; Gong <i>et al.</i> [2003]
GISS & GISS_B	Model E	GCM	GISS	4.0	5.0	20 (9)	Koch <i>et al.</i> [1999, 2006]; Koch [2001]; Bauer and Koch [2005]; Cahmur <i>et al.</i> [2006]; Koch and Hansen [2005]; Miller <i>et al.</i> [2006]
GOCART	GOCART 3.1b	CTM	GSFC	2.0	2.5	30 (17)	Chin <i>et al.</i> [2000, 2002, 2004, 2009]; Gimoux <i>et al.</i> [2001, 2004]
SPRINTARS & SPRINTARS_B	SPRINTARS	GCM	Kyushu University	1.1	1.1	20 (11)	Takemura <i>et al.</i> [2000, 2002, 2005]
LSCE & LSCE_B	LMDz-INCA	GCM	LSCE	3.8	2.5	19 (11)	Clauquin <i>et al.</i> [1998, 1999]; Guelle <i>et al.</i> [1998a, 1998b, 2000]; Balkanski <i>et al.</i> [2003]; Bauer <i>et al.</i> [2004]; Schulz <i>et al.</i> [2006]
MATCH & MATCH_B	MATCH 4.2	CTM	NCAR	1.9	1.9	28 (17)	Barth <i>et al.</i> [2000]; Rasch <i>et al.</i> [2000, 2001]
MOZGN & MOZGN_B	MOZART 2.5	CTM	GFDL	1.9	1.9	28 (17)	Horowitz <i>et al.</i> [2003]; Tie <i>et al.</i> [2001, 2005]
ECHAM_HAM	ECHAM5.2 HAM1.5	GCM	MPI-Met	1.8	1.8	31 (20)	Sier <i>et al.</i> [2005, 2006]
PNNL	MIRAGE 2	GCM	PNNL	2.5	2.0	24 (16)	Easter <i>et al.</i> [2004]; Ghan and Easter [2006, 2007]
TM5_B	TM5	CTM	Utrecht	4.0	6.0	25 (14)	Krol <i>et al.</i> [2005]; de Meij <i>et al.</i> [2006]
UIO_CTM & UIO_CTM_B	CTM 2	CTM	UIO	2.8	2.8	40 (29)	Griini <i>et al.</i> [2002, 2005]; Myhre <i>et al.</i> [2007]; Berglen <i>et al.</i> [2004]; Bernsten <i>et al.</i> [2006]
UIO_GCM & UIO_GCM_B	CCM-Oslo (based on CCM3.2)	GCM	UIO	2.8	2.8	18 (11)	Iversen and Seland [2002, 2003]; Kirkevåg and Iversen [2002]; Kirkevåg <i>et al.</i> [2005]

AOD between the two wavelengths is expected to be small, i.e., between 2% and 4% for typical Angstrom exponents of 0.5 to 1 [Kittaka *et al.*, 2011]. The models are either Chemical Transport Models (CTMs), or General Circulation Models (GCMs). In CTMs, the meteorology is prescribed either from climate model simulations or from analyzed weather observation systems. In GCMs, the aerosol transport is simulated online. Results from five CTMs (GOCART, MATCH, MOZGN, TM5, and UIO-CTM) and seven GCMs (ARQM, GISS, SPRINTARS, LSCE, ECHAM-HAM, PNNL and UIO-GCM) are reported. Note that the SPRINTARS and/or the ECHAM-HAM models can be found under the name ‘KYU’ and ‘MPI-HAM’ in earlier AeroCom papers [e.g., Kinne *et al.*, 2006; Schulz *et al.*, 2006; Textor *et al.*, 2006, 2007; Koch *et al.*, 2009]. Ten models simulated the year 2000 specifically using (different) meteorological analysis data sets (‘2000’ experiments), whereas two models without nudging capability (UIO-GCM, and ARQM) provided climatological averages from 5 years of simulation, using identical emissions each year (noted ‘9999’ or ‘climatic’ hereafter). For the TM5 model, which did not participate to AeroCom A, outputs from Experiment B (“AeroCom B” hereafter), using Dentener *et al.* [2006] unified 2000 emission data set are reported. Note also that in this Phase I of AeroCom, only fully prognostic SO₄, BC, and POM aerosol particles are subject to transport and removal in the UIO-GCM model, whereas the major part of the dry sea-salt and mineral dust concentrations are prescribed [Kirkevåg *et al.*, 2005]. For additional information on the models, see Textor *et al.* [2006].

3. Data Analysis

[14] Annual and seasonal aerosol mean extinction profiles from CALIOP observations (at 532 nm) and the model simulations (at 550 nm) are calculated from January 2007 to December 2009, over 13 sub-continental regions representative of industrial, dust and biomass burning pollution (Figure 1). These regions are the same as the ones defined by Yu *et al.* [2010], except that we split (and extended) their so-called ‘SAF’ African biomass burning region [25°S–15°N; 0°E–45°E], into a ‘CAF’ Central [0°–15°N; 18°W–60°E] and a ‘SAF’ Southern [25°S–0°S; 0°E–45°E] African regions, in order to account for the different biomass burning periods, i.e., November to February and June to October, respectively [e.g., Lioussse *et al.*, 2010].

3.1. Satellite Data Processing

3.1.1. MODIS-Derived Aerosol Optical Depths

[15] MODIS-derived mean AOD were calculated over the studied regions and the 2007–2009 period, by combining the standard AOD product from MODIS (“Optical Depth over Land and Ocean”) with the deep blue product (“Deep Blue AOD at 550 nm”) that provides information over desert areas. We averaged the $1 \times 1^\circ$ monthly AOD estimates that fall into the regions. As we are interested in evaluating the overall CALIOP potential with respect to regional averages in AOD, no dating or spatial coincidence with CALIOP overpasses is considered here.

3.1.2. CALIOP Absolute and Normalized Aerosol Extinction Profiles

[16] CALIOP Layer Product Version 3.01 data are used to derive a climatology of the aerosol vertical distribution in the

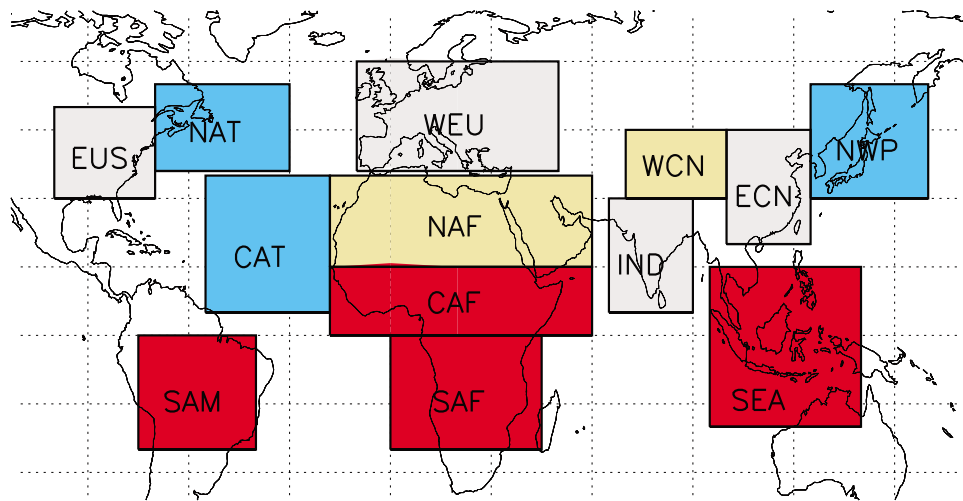


Figure 1. Location of the studied regions. These regions have been selected because of the dominance of marine aerosols (blue), industrial (gray), dust (yellow) and biomass burning (red) aerosols. Adapted from Yu *et al.* [2010].

troposphere (0–10 km), over the 2007–2009 period. CALIOP Version 2.01 data have been processed in an identical manner but for the year 2007 only. Among the parameters, we use the top and base of the aerosol and cloud layers, and the AOD and Cloud Aerosol Discrimination score of the aerosol layers. In order to include only well-defined aerosol layers (see Section 2.1 for definitions) and avoid cloud contamination, two aerosol data screenings are applied to the CALIOP 5-km aerosol layer product, following Yu *et al.* [2010]: The first screening excludes the aerosol layers that have low CAD scores (i.e., between -50 and 0). In the CALIOP algorithms, the initial lidar ratio is selected based on a set of predefined aerosol types. The second screening method excludes cases where this initial lidar ratio has been adjusted which usually occurs for complex features and induces instabilities in the algorithm and larger uncertainties in the retrieved extinction. Although this happens rarely [Kittaka *et al.*, 2011], these retrievals generally lead to anomalously high AOD [Omar *et al.*, 2009; Winker *et al.*, 2009; Young and Vaughan, 2009].

[17] Yu *et al.* [2010] only concerned CALIOP nighttime observations in cloud-free conditions. All nighttime data are considered here in order to ensure a higher representativeness of the regional climatology. Cloud-free (or clear-sky) conditions are identified by the total absence of cloud layers in a given column. Since CALIOP may see through optically thin clouds, the computation of the hereafter so-called *all sky* profiles requires the application of a vertical cloud mask to exclude below cloud areas that correspond to parts of the profile where aerosols cannot be detected by the lidar. This information is provided by the CALIOP 5-km Cloud Layer product. The *all sky* profiles are then calculated by averaging the aerosol extinction in the atmospheric layers. For each shot, altitudes below cloud and aerosol features that completely attenuate the backscatter signal (identified from the ‘Layer Opacity Flag’) are not factored into the averaging. Over land, levels that are below the surface elevation at the lidar footprint are also ignored. Elsewhere, at levels where the CALIPSO product reports neither cloud nor aerosol layers, representing clear air, an extinction value of zero is assigned.

[18] In the CALIOP Layer product v2.01, the base altitudes of optically thick aerosol layers are sometimes biased high due to lidar signal attenuation or signal perturbations. This causes an underestimate in the aerosol extinction at low levels. Version 3.01 includes a base-extension algorithm for such cases. Despite the improvements in the CALIOP Layer product, and in particular the above mentioned algorithm, an unrealistically low mean extinction was found at the surface level over the selected regions (see auxiliary material Figure S1).¹ This can be at least partly explained by the CALIPSO algorithm that sets the aerosol layer base 90 m above the surface, in order to limit the contamination of the measured signal by the surface return. To reduce this anomaly, we apply our own further correction: the lowest aerosol layer is assumed to extend to the surface whenever its height above the surface is less than 10% of the layer depth. This correction removes unrealistic low aerosol extinction at the surface over all but one region (auxiliary material Figure S1). Each well-defined aerosol layer and aerosol-free layer is then split in 100 m height segments to allow for averaging over complex layer structures along the CALIOP path. Mean annual and seasonal vertical profiles are next calculated over the 0–10 km altitude range, by averaging the screened 5 km layer product over each region, using 100 m vertical resolution. The resulting CALIOP all sky extinction profiles, as well as the impact of our CALIOP data processing (screening, cloud masking) are discussed in Section 4.1.

[19] Finally, “normalized” profiles were also calculated from the original extinction profiles (also called “absolute” profiles) by normalizing the total AOD over the 10 first kilometers to the same common value ($\text{AOD}_{0-10 \text{ km}} = 1$). This normalization provides profiles that better superimpose on each other, and therefore allows easier comparing the typical shape of the simulated and observed vertical distributions.

3.1.3. CALIOP Mean Extinction Height

Diagnostic (Z_a)

[20] We quantitatively assess the ability of the different models in reproducing the aerosol mean vertical distribution

¹Auxiliary materials are available in the HTML. doi:10.1029/2011JD016858.

over each region and season through the calculation of a mean extinction height diagnostic (Z_α), as follows:

$$Z_\alpha = \frac{\sum_{i=1}^n b_{\text{ext},i} \cdot Z_i}{\sum_{i=1}^n b_{\text{ext},i}} \quad (1)$$

with $b_{\text{ext},i}$ the aerosol extinction coefficient (km^{-1}) at level i , and Z_i altitude (km) of level i . This is applied between the first and last 100 m altitude layer.

[21] Z_α diagnostic provides a useful and simple measure to gauge the performance of the models in the different regions. It is applied in a first step over the first 10 km and, in a second step, over the first 6 km, i.e., where most of the aerosol load is concentrated. It is important to notice that Z_α does not allow identifying combinations of positive and negative biases of different super-imposed air masses and their compensative effects. This limits its usefulness in the case of complex and non-continuous multimodal vertical profiles, such as the ones that are obtained at seasonal time scales over some regions, as further discussed in the results and discussion sections.

3.2. Model Simulations Output Processing

[22] The GCM and CTM mean aerosol profiles were calculated from the monthly 3D AOD model results, averaged for each model vertical level, from all the model grid cells within the studied sub-continental region. The altitudes of the 3D model levels are calculated from the 3D pressure, assuming a hydrostatic flow. While this monthly regional averaging does not allow the spatial and temporal match between the model cells and CALIOP overpasses, it provides a complete image of the simulated climatology of the tropospheric aerosol distribution over a given region.

[23] In order to check if the extinction profiles averaged from the spatio/temporal limited coverage CALIOP data can be compared to regional model averages, we made a preliminary sensitivity study by calculating LMDz-INCA ($3.8^\circ \times 2.5^\circ$ horizontal resolution) and SPRINTARS ($1.1^\circ \times 1.1^\circ$ horizontal resolution) extinction profiles, using a temporal (daily) and spatial (grid cell) model-data collocation from the original model grid and a CALIOP 1×1 degree grid. Since no daily model output was available after 2006 at the time of our study, the 2006 simulation outputs of AeroCom II exercise [Schulz *et al.*, 2009] were sampled versus 2007 CALIPSO overpasses. Very little change is found in the simulated vertical aerosol profiles when sub-sampling the model grid cells versus a regional average (auxiliary material Figure S2), indicating that the CALIOP coverage is adequate to evaluate the mean aerosol climatology as simulated by the models on seasonal time scale, over sub-continental areas.

[24] The highest impact of subsampling on the annual profile is obtained in Western China and Eastern Europe regions, for LMDz-INCA and SPRINTARS models, respectively. On a seasonal scale, the highest impact of subsampling is calculated over the Western China region for both models, and during DJF (+26% on Z_α) and JJA (−9% on Z_α) seasons, respectively. In fact, more than 81% of the grid cells inside each studied region are covered by at least one CALIOP overpass. These statistics together with the

large samples and small model inter-daily variability of the aerosol vertical distribution explain why the model-data collocation sampling has only a slight impact on the mean simulated profile.

[25] Similar to CALIOP data processing, mean “normalized” profiles, AOD and extinction height (Z_α) were calculated over the first 6 km and 10 km altitude ranges. The model profiles presented here are plotted at the original model vertical resolution. The Z_α diagnostic is then calculated as for CALIOP-derived profiles (equation (1)), by first applying a linear interpolation of the extinction every 100 m.

4. Results

[26] In a first section (Section 4.1), we analyze the mean AOD and aerosol extinction profiles calculated for the different regions from CALIOP Layer Product Version 3. The effects of data processing and screenings and differences with CALIOP Version 2 derived profiles are first discussed. The consistency of the aerosol vertical distributions with current knowledge on aerosol emissions, transports and distributions is then analyzed. The simulated vertical distributions are presented and compared to CALIOP-derived ones in Section 4.2. Both annual and seasonal distributions are analyzed. Note that the South East Asian (SEA) region includes a large fraction of marine area and is therefore less representative of biomass burning emissions than the CAF, SAM and SAF regions. Moreover, it might be more significantly affected by an ocean versus land bias in the application of the CALIOP extinction to backscatter ratios (see the discussion section). For these reasons, as well as for plotting convenience, both the annual and seasonal SEA profiles are provided in the auxiliary material (Figure S3), but are discussed all the same hereafter.

4.1. CALIOP Extinction Profiles

[27] As an example, Figure 2 depicts the number of CALIOP 2007 observations and the resulting mean annual aerosol extinction profiles calculated over the Western Europe region [36°N – 60°N ; 10°W – 50°E]. The impact of the aerosol data screenings and the cloud masking are shown. The number of observations in cloud-free columns decreases close to sea level, because of orography. Depending on the region, clear-sky data account for 40% to 60% of the all sky screened data, except in North Africa, NAF, (76%) and over the North Atlantic, NAT, (36%). Interestingly and unexpectedly, also for the other regions cloud free and all sky extinction profiles resemble each other both in magnitude and shape, and only slightly lower (by up to 13%) mean annual Z_α , are obtained in clear sky conditions (see auxiliary material Figure S1). This result indicates that the climatology of the mean aerosol vertical extinction distribution is not significantly affected by the presence of clouds. While the aerosol-cloud interaction processes are likely important, this finding might result from efficient mixing between cloudy and cloud-free areas, from compensating effects (such as larger humidification effects in cloudy regions compensating for lower aerosol concentrations), or from a biased cloudy sky average (i.e., below-cloud scavenging of the aerosol being probably only important for clouds that are optically too thick for CALIOP retrieval).

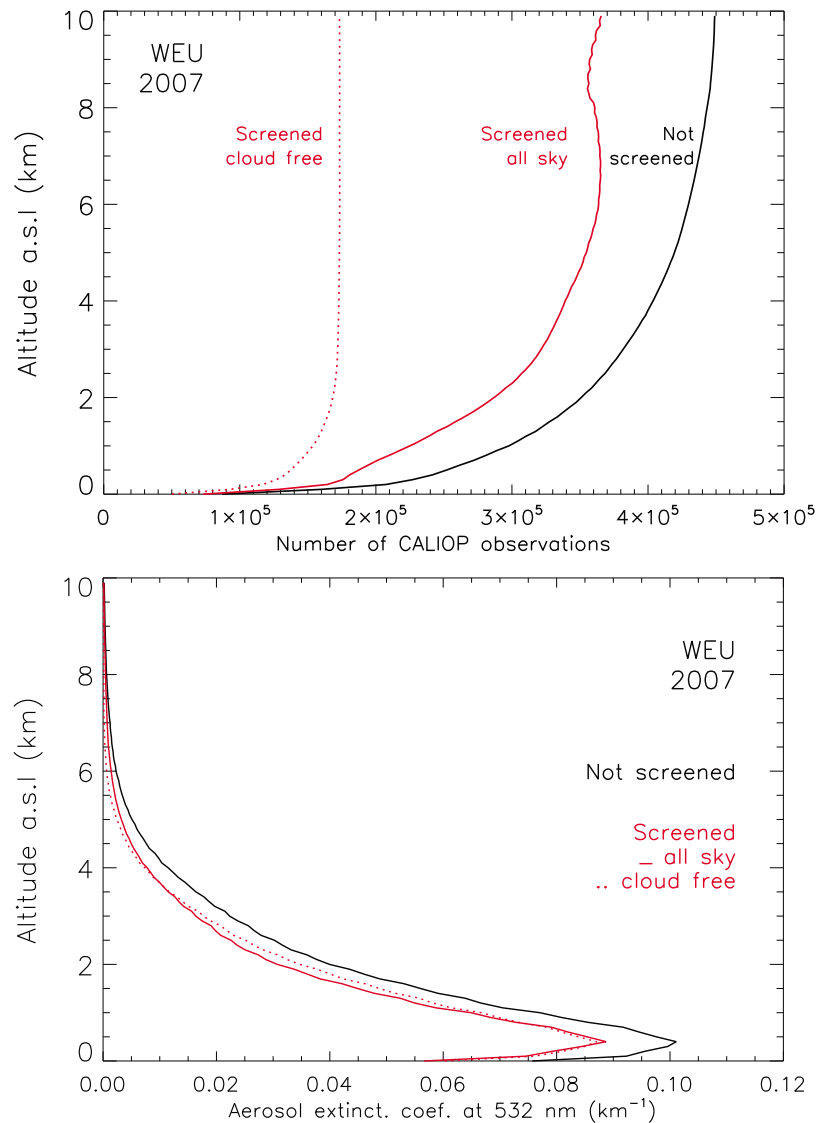


Figure 2. (top) Number of observations used in averaging and (bottom) mean vertical profile of aerosol extinction for the full year of 2007 over the West European region (36°N–60°N; 10°W–50°E).

Table 2a. CALIOP (AOD_C) and MODIS (AOD_M) Mean Aerosol Optical Depth for the 0–10 km Altitude Range and the Year 2007: Individual Regions^a

Region	AOD_M	$AOD_{C_v2.01}$	$AOD_{C_v3.01}$	$AOD_{C_v2.01}$ Bias	$AOD_{C_v3.01}$ Bias	$Z_{\alpha_C_v2.01}$	$Z_{\alpha_C_v3.01}$
NAT	0.14	0.07	0.09	–0.07	–0.05	1.45	1.34
CAT	0.22	0.19	0.22	–0.03	0.00	1.46	1.47
NWP	0.20	0.11	0.13	–0.09	–0.07	1.80	1.71
EUS	0.12	0.12	0.15	0.00	0.03	1.62	1.58
WEU	0.13	0.14	0.17	0.01	0.04	1.58	1.47
IND	0.37	0.33	0.34	–0.04	–0.03	1.53	1.58
ECN	0.43	0.29	0.37	–0.14	–0.06	1.59	1.59
SAM	0.21	0.16	0.25	–0.05	0.04	1.79	1.69
CAF	0.35	0.31	0.36	–0.04	0.01	2.07	1.95
SAF	0.22	0.17	0.20	–0.05	–0.02	1.85	1.81
SEA	0.15	0.10	0.11	–0.05	–0.04	1.23	1.36
NAF	0.31	0.25	0.28	–0.06	–0.03	2.00	1.96
WCN	0.25	0.27	0.35	0.02	0.10	1.85	1.85

^aBoth CALIOP version 2.01 (v2.01) and 3.01 (v3.01) are reported and compared to MODIS, with the version with the best agreement highlighted in bold.

Table 2b. CALIOP Versus MODIS Mean Aerosol Optical Depth for the 0–10 km Altitude Range and the Year 2007: All Regions^a

	AOD _{C_v2..01}	AOD _{C_v3..01}
r	0.905	0.884
Bias	−0.046	0.007
RMSE	0.061	0.046

^aBoth CALIOP version 2.01 (v2.01) and 3.01 (v3.01) are reported and compared to MODIS, with the version with the best agreement highlighted in bold.

[28] Significant differences are obtained between CALIOP Versions 2.01 and 3.01 profiles, especially below 2 km altitude (auxiliary material Figure S1). Annually, the CALIOP version 3 data lead to more monotonic distributions in the Planetary Boundary Layer (PBL) and low troposphere, with aerosol extinction values increasing almost down to the surface. This result reflects the enhanced performance of the new version of the CALIOP processing algorithm to retrieve low-lying aerosol layers, especially in the regions of South America and Central Africa.

[29] CALIOP Version 2.01 AOD, retrieved by columnar integration of extinction profiles, shows a negative bias compared to MODIS for 10 out of the 13 regions, reaching up to 45% and 50% for the NWP and NAT regions, respectively. With Version 3.01, the AOD is increased over

all regions, leading to a reduction of the absolute bias for all but three regions (Tables 2a and 2b). The bias between CALIOP and MODIS AODs is often less than 25%. A significant correlation is obtained between CALIOP and MODIS-derived seasonal AODs, using the 13 regions as independent data points (Figure 3). These results, together with our sensitivity analysis in Section 3.2, indicate that the spatial and temporal coverage of CALIOP measurements and their version 3 products do provide a consistent and representative signal of the mean regional and seasonal aerosol load and distribution at these scales. Nonetheless, significant CALIOP versus MODIS AOD discrepancies are still obtained e.g., for the WCN West China dust region (DJF bias = +128% and SON bias = +74%), and the NAT (MAM bias = −44%) and NWP and (JJA bias = −54%) maritime regions. Such discrepancies, related both to MODIS (e.g., limited accuracy over deserts) and CALIOP (e.g., estimated lidar ratios, sparse sample) limitations, should be kept in mind for the analysis (Section 4.2) and discussion (Section 5) of the model results.

[30] The CALIOP annual “absolute” and “normalized” extinction profiles (mean and standard deviation from profiles of 2007, 2008 and 2009) are shown in Figures 4 and 5, respectively (auxiliary material Figure S3 contains SEA region results). The mean annual profiles are characterized by a decrease of the extinction coefficient magnitude (α) from the surface to about 5 km. Different typical shapes are observed according to the type of the region (source/

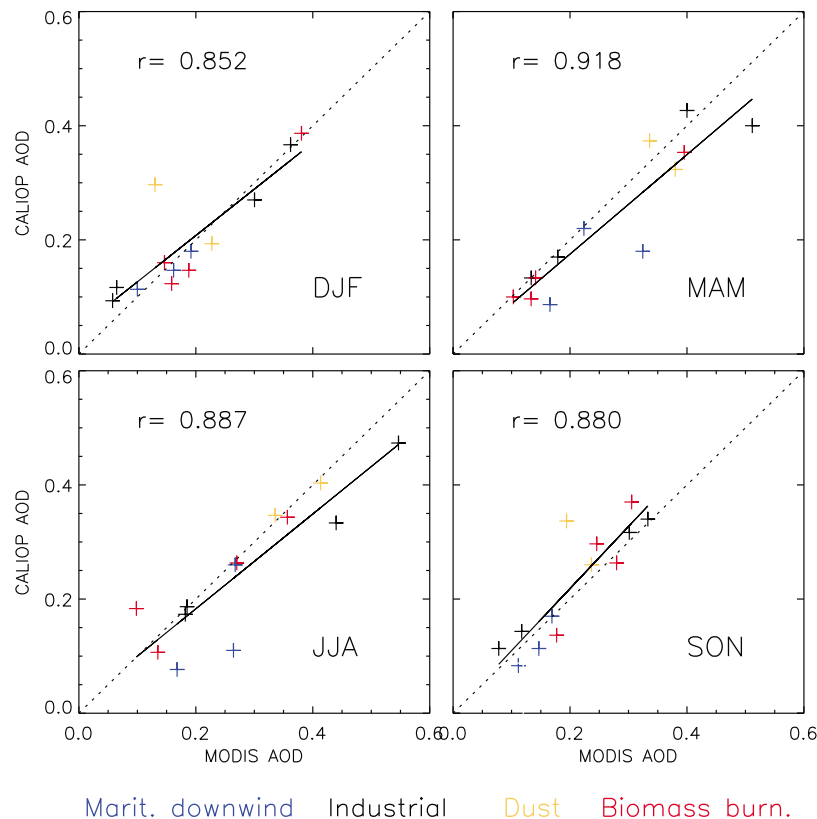


Figure 3. CALIOP version 3.01 (0–10 km altitude range) versus MODIS 2007–2009 mean seasonal AOD, over the 13 selected regions and the four seasons. All the correlation coefficients are significant ($p < 0.01$).

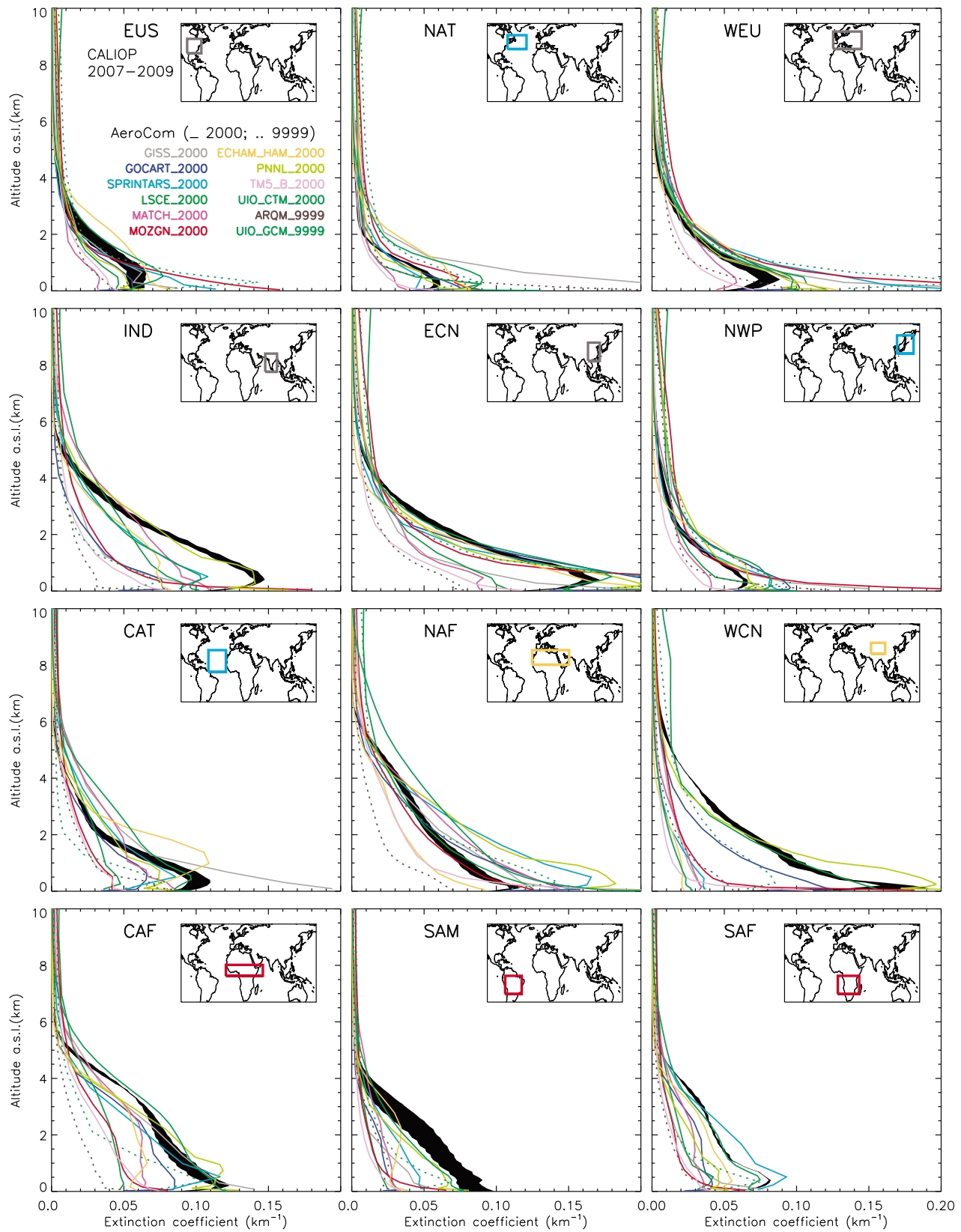


Figure 4. AeroCom I (12 models) and CALIOP mean annual extinction coefficient (km^{-1}) profiles profiles (at 550 and 532 nm, respectively). The 2007 to 2009 range (mean \pm std) is shown for CALIOP (black). The 2000 and climatic (9999) modeled profiles are shown in continuous and dashed lines, respectively. See Figure 1 for the definition of the regions and Table 1 for the definition of the models and experiments. Results for the SEA region are given in auxiliary material (Figure S3).

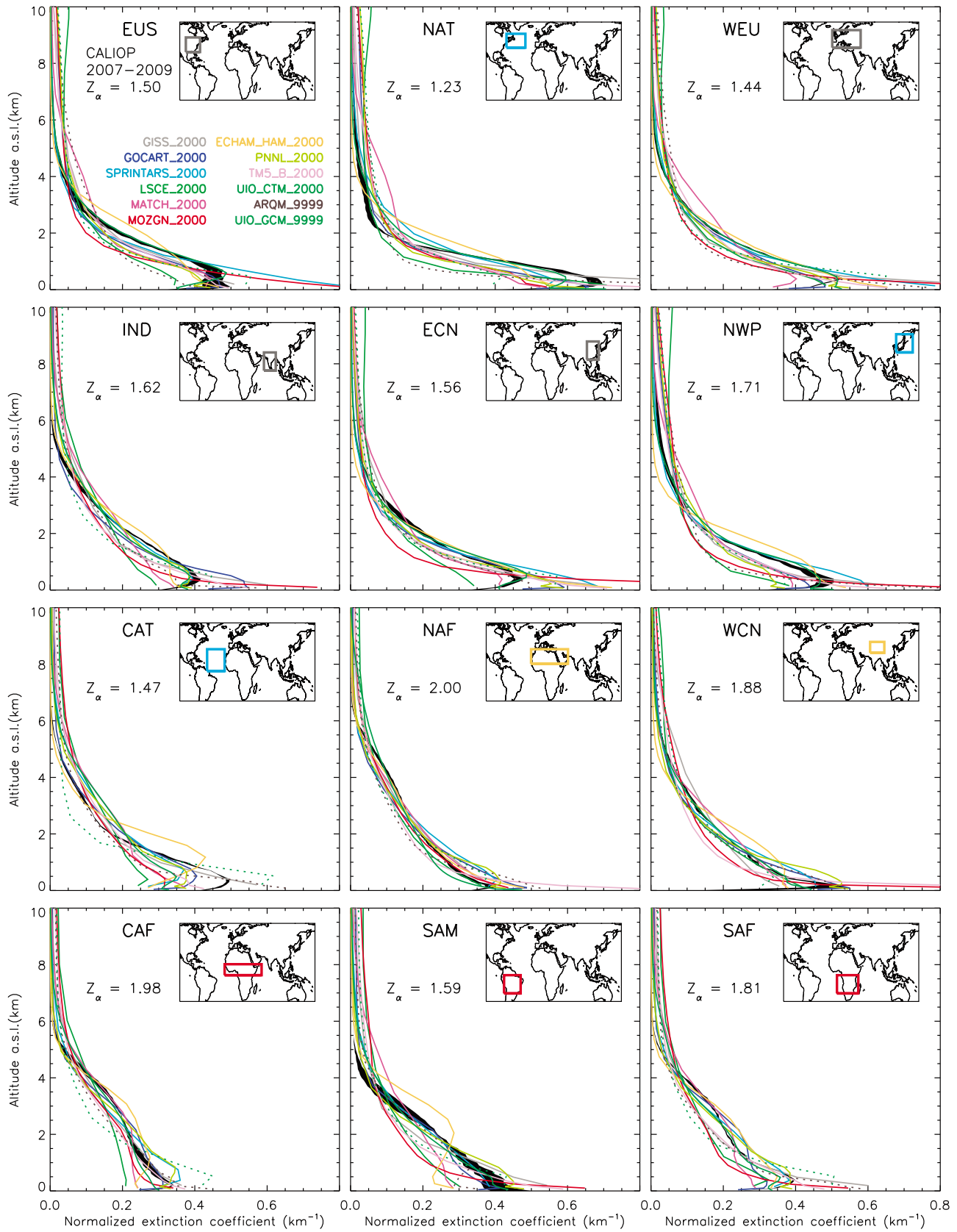


Figure 5. Same as Figure 4 annual profiles but “normalized” to a common AOD value, as explained in section 3.1.2. The CALIOP mean aerosol extinction heights (Z_α) are also reported.

downwind) and main aerosol type (maritime, industrial, dust, biomass burning). Quasi exponential and more linear annual mean vertical shapes are retrieved over industrial/maritime and over dust regions, respectively, whereas a convex mean profile is obtained over the African and South American biomass burning regions. A relatively low inter-annual variability, both in magnitude (Figure 4) and in shape (Figure 5) of the vertical extinction distribution is generally observed over the 3-yr period, except over the Eastern U.S. industrial (EUS) and over the South American biomass burning (SAM) source regions. In these regions, the standard deviation reaches up to 30% (at 2.8 km altitude) and 43% (at 4.0 km altitude) of the annual mean extinction, respectively.

[31] Higher CALIOP derived Z_{α} diagnostics are generally obtained in dust and biomass burning regions than in industrial source regions (Figure 5). This can be partly explained by the fact that the dust and, to a less extent, smoke aerosols are more prone to vertical transport up to mid and high tropospheric levels than industrial aerosols, which are found near or in the boundary layer [e.g., Kim *et al.*, 2006]. This is particularly true in the African and South American tropical regions, where higher reaching convection leads to an enhanced upward transport of aerosol emissions compared to midlatitude regions [e.g., Andreae *et al.*, 2001; Vernier *et al.*, 2011].

[32] Seasonal “normalized” aerosol extinction profiles and Z_{α} diagnostics (auxiliary material Figures S3 and S4) generally show low 2007–2009 inter-annual variability, except in the EUS, SAM and WCN regions. In EUS and SAM regions, standard deviations up to 51% (at 4.9 km altitude) and 64% (at 3.7 km altitude), are obtained during the season with the highest aerosol pollution (JJA and SON, respectively), eventually indicating higher variability due to wild fires [e.g., Langmann *et al.*, 2009]. The particularly high inter-annual variability observed for the WCN region during the DJF season (Figure 6a), could be due both to its reduced size and to the high variability of the processes (wind gusts and cold pockets) responsible for the uplift of the dust particles. Our understanding of the climatology of the CALIOP-derived seasonal aerosol vertical distributions and mean extinction heights is further discussed hereafter.

4.1.1. EUS, WEU and NAT Source and Downwind Regions of Industrial Pollution

[33] Consistent with reported in situ observations [e.g., Cozic *et al.*, 2008; Chazette *et al.*, 2010; Veeffkind *et al.*, 2011], the atmospheric aerosol extinction is low or medium ($\alpha < 0.1 \text{ km}^{-1}$ on annual average at the surface) in the midlatitude regions investigated, with a maximum in magnitude and altitude during the Northern Hemisphere (NH) spring/summer and summer seasons, respectively. The anti-cyclonic weather conditions that prevail in summer often lead to enhanced photo-oxidation of sulphate and accumulation of pollution [e.g., Goldstein *et al.*, 2009], as well as higher PBL height and higher thermally driven vertical transport from the boundary layer to the free troposphere [Matthias *et al.*, 2004]. Other factors are invoked to explain the summer maxima in magnitude and altitude in Southern Europe countries, such as local/regional meteorology (coastal re-circulations), and Saharan dust transport above the PBL [Sicard *et al.*, 2011]. In the North Atlantic (NAT) region, downwind the Eastern United-States, a major fraction of the aerosol load is confined in the PBL (annual

$Z_{\alpha} = 1.2 \text{ km}$). However, the fraction of the aerosol extinction above the PBL is significantly increased during NH spring (Figure 6b) and summer (Figure 6c), which can be attributed to time pollution outflows from the Eastern United-States to the Atlantic [e.g., Fischer-Bruns *et al.*, 2010], eventually merging with effluents from western North America [e.g., Li *et al.*, 2005].

4.1.2. IND, ECN, WCN and NWP Asian Industrial and Dust Regions

[34] In Eastern China (ECN), Western China (WCN) and Indian (IND) regions, the highest Z_{α} is observed during the spring season, MAM (Figure 6b). This presumably reflects the impact of dust storms which occur annually in Asia, but are much more frequent in the NH spring, when high surface winds occur and when the soil is relatively dry [e.g., Qian *et al.*, 2002; Huang *et al.*, 2010; Wang *et al.*, 2010]. Previous studies on the Eastern China region [see Li *et al.*, 2011, and references inside] clearly find a spring wind-blown dust transport into the free troposphere from the Taklamakan (Western China) and Gobi (Mongolia) deserts. In the northern part of this region, the dust layers during this season mix with pollution, which originates from local emissions [Wang *et al.*, 2010]. In India, anthropogenic pollution (notably biomass combustion) also significantly contributes to the aerosol load during NH spring [e.g., Dey and Di Girolamo, 2010]. Downwind to China, the NWP region exhibits a low surface aerosol extinction (maximum of 0.08 km^{-1} in NH winter) and a pronounced seasonal variability of the mean extinction height. Consistent with previous lidar observations [e.g., Shimizu *et al.*, 2004; Kim *et al.*, 2007; Hayasaka *et al.*, 2007; Nakajima *et al.*, 2007; Yu *et al.*, 2008; Chen *et al.*, 2009], higher extinction heights are obtained during spring ($Z_{\alpha} = 2.2 \text{ km}$) and summer ($Z_{\alpha} = 1.8 \text{ km}$) than during the autumn and winter ($Z_{\alpha} < 1.4 \text{ km}$) seasons. This reflects the downwind transport of dust [Tsay, 2009; Liu *et al.*, 2010; Logan *et al.*, 2010] and industrial (summer) pollution in the free troposphere from China down to the Pacific, with lower altitude for the industrial than dust pollution transport [Shimizu *et al.*, 2004].

4.1.3. NAF, CAF and CAT North African and Downwind Regions

[35] The Saharan and Sahel regions contribute at least 50% to the global mass of dust emissions [e.g., Washington *et al.*, 2003]. Both sandstorm activity and vertical mixing are at their maximum over the early NH spring-to-fall period, during which easterly winds prevail throughout levels reaching up to 6 km in summer [e.g., Schütz, 1977; Hsu *et al.*, 1999; Washington *et al.*, 2003]. This seasonality in observing dust at higher levels is depicted in the CALIOP measurements from the NAF region, with JJA Z_{α} being twice that of DJF (Figures 6c and 6a, respectively). The advection of the Saharan desert mineral aerosol to the Atlantic in the layer between 2 and 5 km during NH summer is also clearly observed in Figure 6c (CAT region). Wong *et al.* [2009] have suggested that this distinct dry and warm Saharan Air Layer is found over the cooler, more-humid surface air, stabilized by the strong temperature inversion which suppresses vertical exchange. The maximum of extinction during NH winter found within the marine PBL of the CAT region (auxiliary material Table S1) might reflect sea salt and an additional and lower layer transport of dust from the Sahel [Chiapello *et al.*, 1995]. Similarly to the CAT

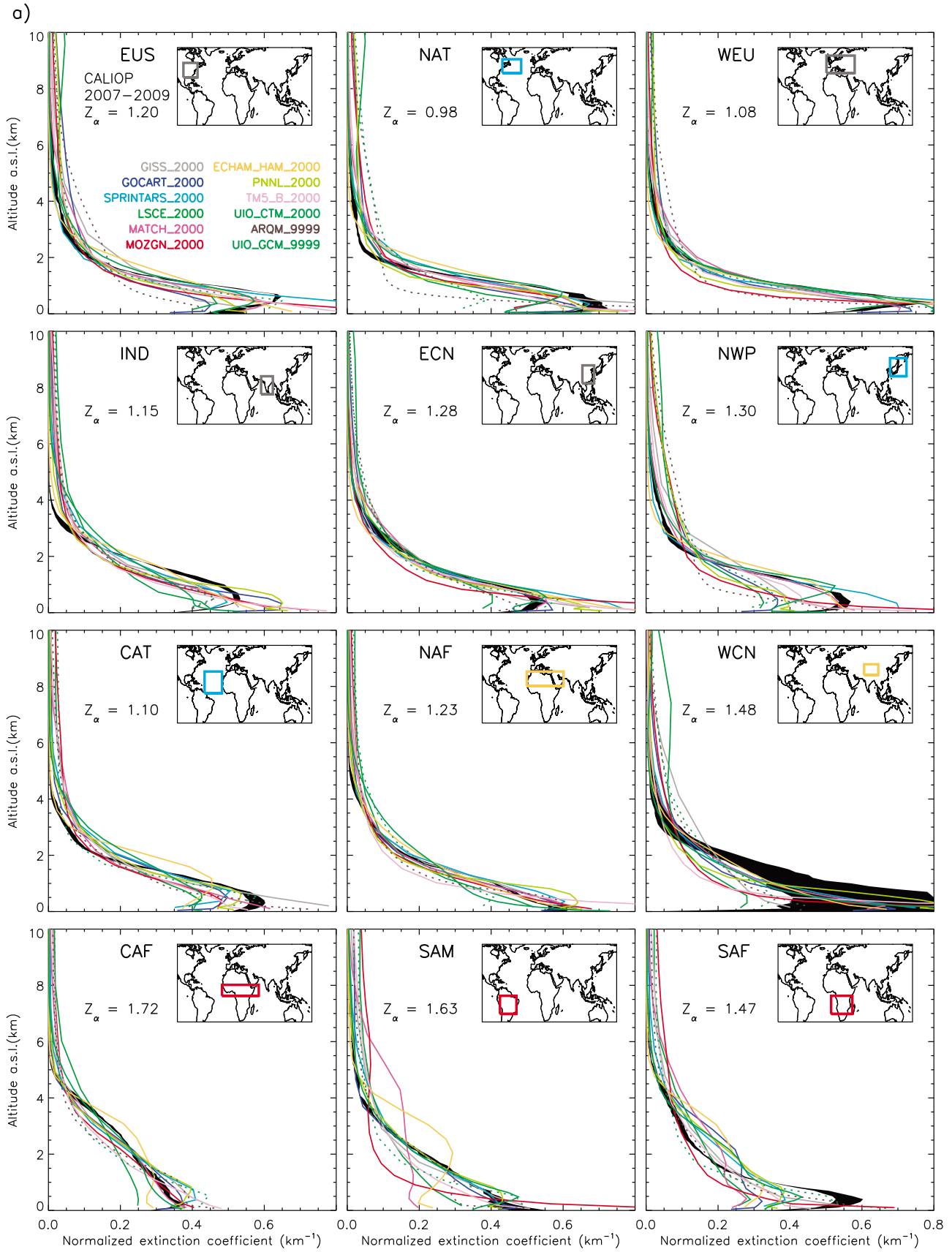


Figure 6. Same as Figure 5 but for the (a) DJF, (b) MAM, (c) JJA and (d) SON seasons. Results for the SEA region are given in auxiliary material (Figure S3).

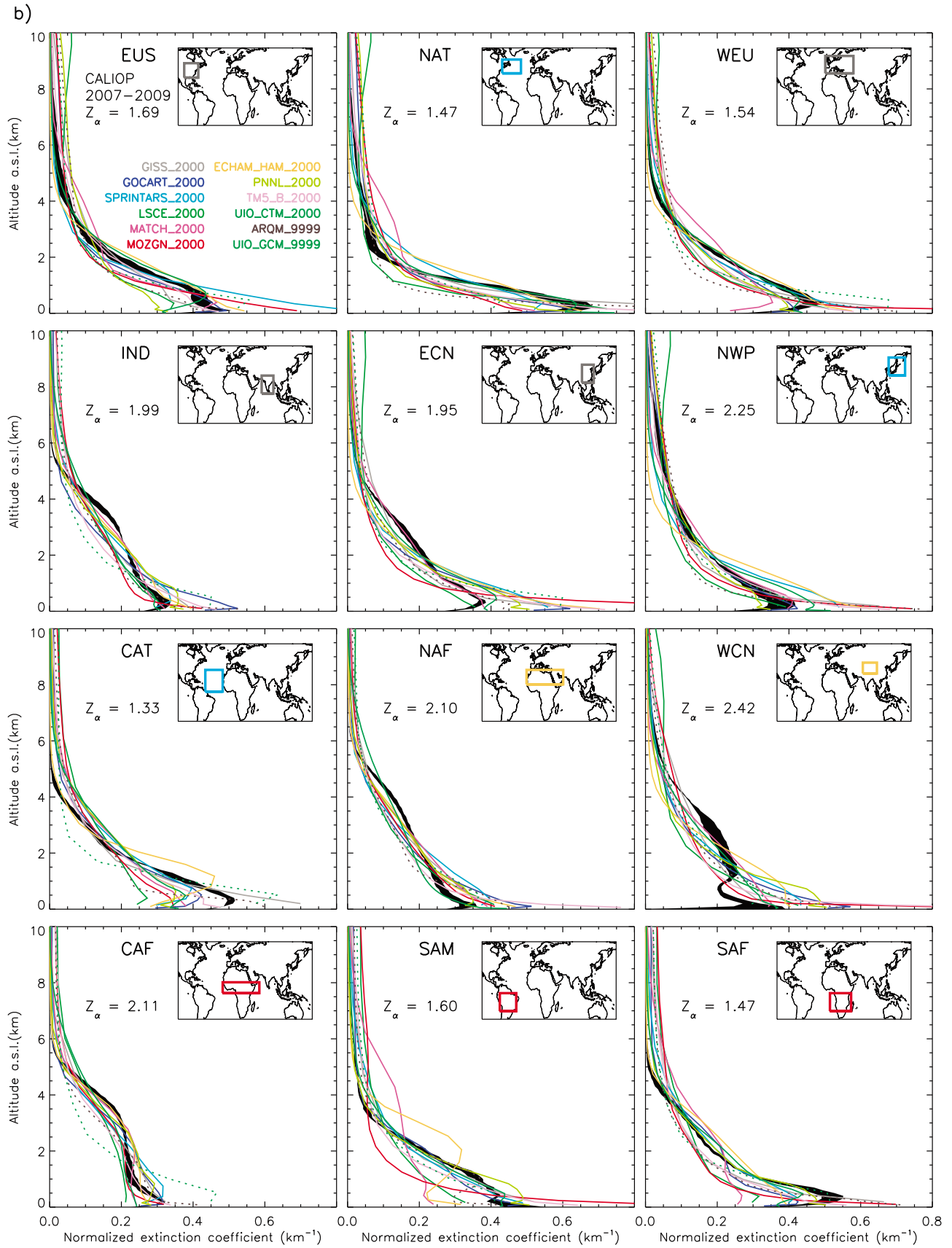


Figure 6. (continued)

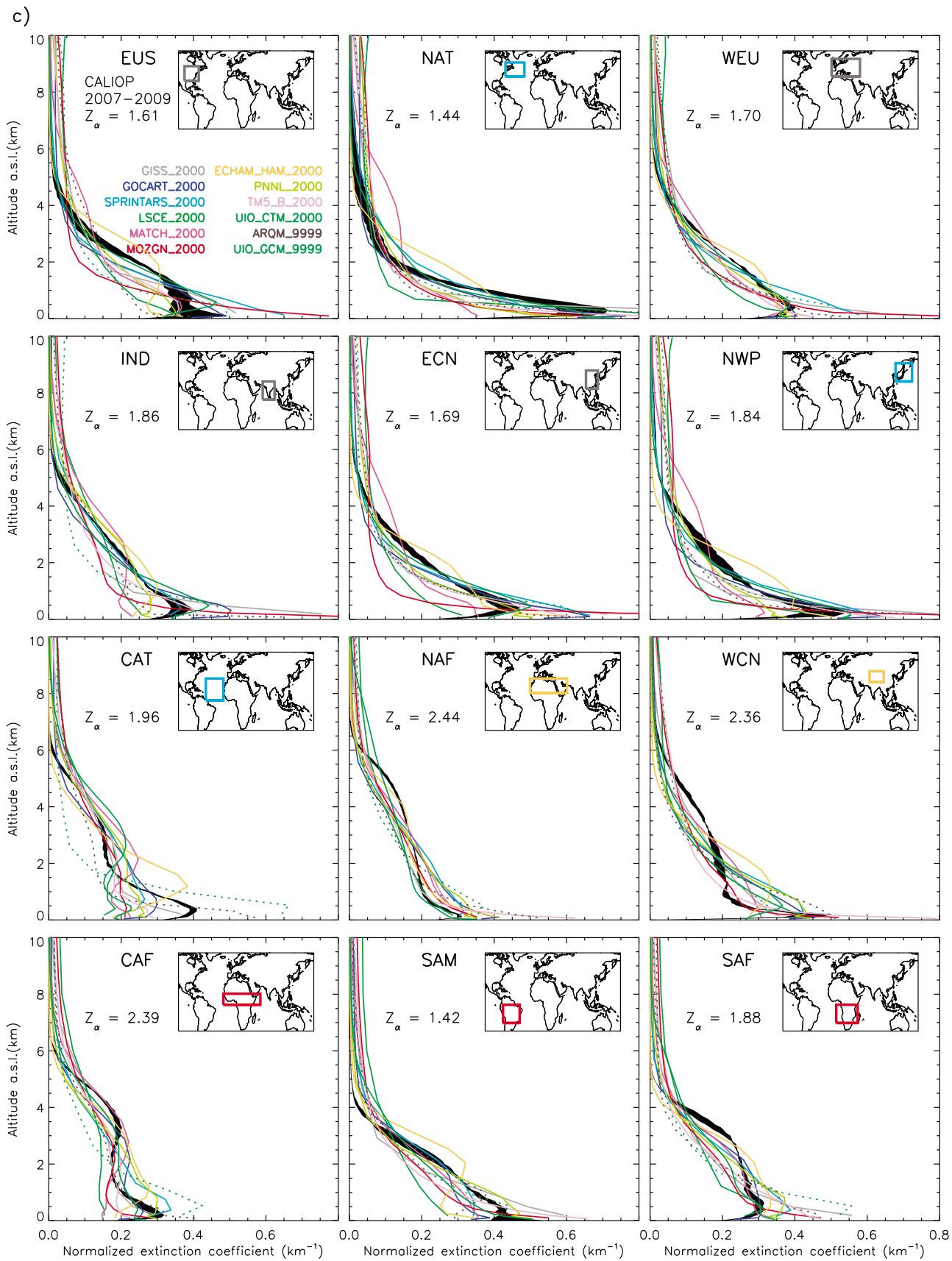


Figure 6. (continued)

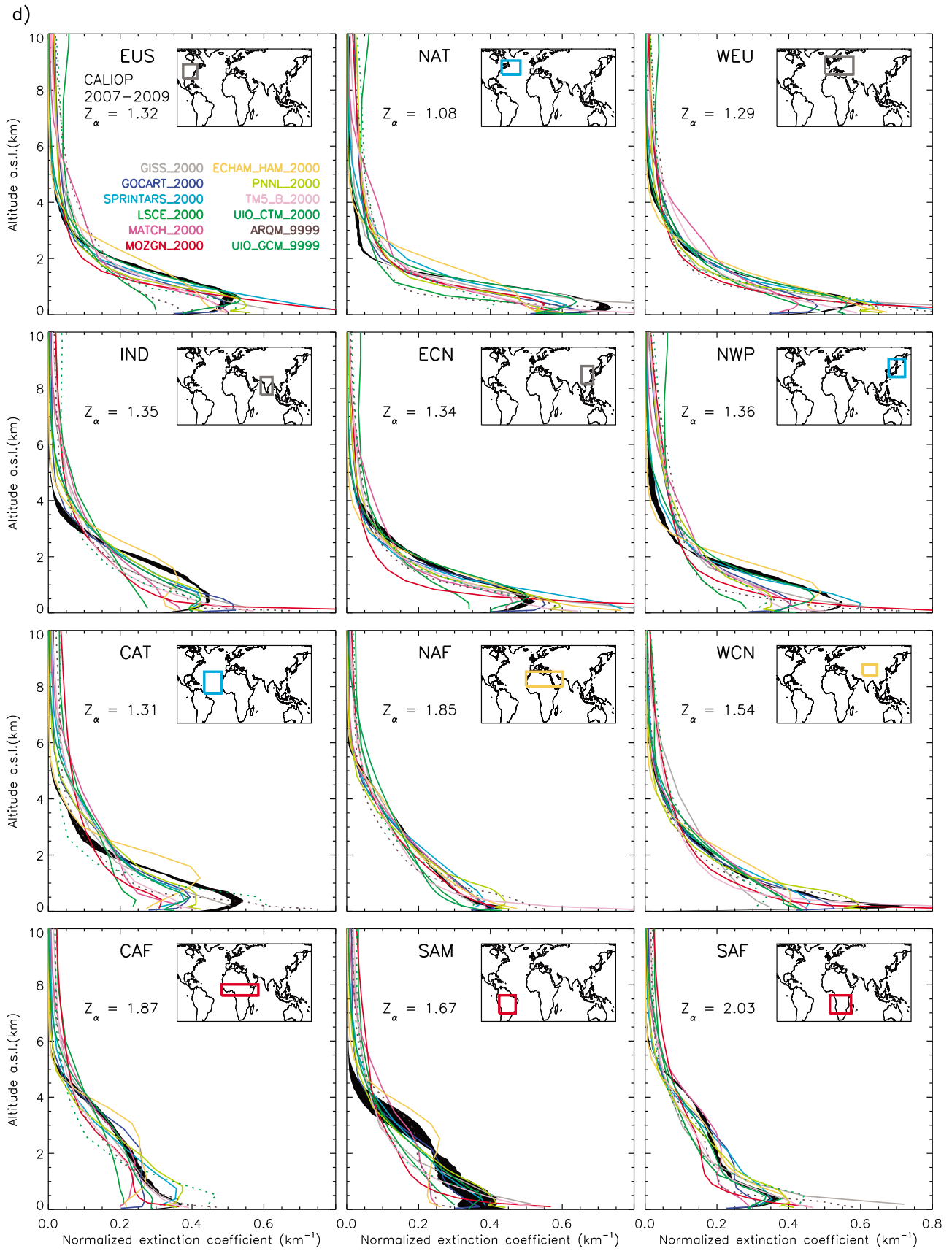


Figure 6. (continued)

region, the seasonality of aerosol particle extinction in the CAF region shows a JJA Z_{α} maximum, as well as bimodal vertical distribution, with a second (more pronounced) peak around 3.5 km of altitude (Figure 6c). In this region and season, both the long-range transport of mineral dust from the Sahara and Sahel regions [e.g., Crumeyrolle, 2008; Crumeyrolle et al., 2011; Reeves et al., 2010] and the cross-hemispheric transport of biomass burning products from South Africa [e.g., Real et al., 2010] contribute to the aerosol load in the free troposphere. During the last months of the fire season, from January to March [Lioussse et al., 2010], the large local and/or regional pollution by fire products is found in still elevated altitudes ($Z_{\alpha} = 2.1$ km) but relatively lower than in NH summer ($Z_{\alpha} = 2.4$ km).

4.1.4. SAM, SAF, and SEA Southern Hemisphere Biomass Burning Regions

[36] A convex character of the extinction profiles is obtained from March to November in the tropical savannah and forest biomass burning regions of South Africa (SAF) and America (SAM) that is more pronounced during the peak biomass burning season (Figure 6d). It reflects the contamination of the troposphere by the injection at high altitude of the fires' products. In fact, deep convection locally induced by the large vegetation fires, i.e., the so-called pyro-convection, can transport the emissions up to the upper troposphere and lower stratosphere [e.g., Chen et al., 2009; Yu et al., 2008; Gonzi and Palmer, 2010]. Another potential factor contributing to aerosol at high altitudes is the formation of secondary inorganic and organic aerosol from the biomass burning gaseous products, during plume aging [e.g., Reid et al., 2005]. An autumn maximum, but a lower seasonal variability are calculated for the Z_{α} diagnostic in the SEA region (auxiliary material Figure S3) compared to the other biomass burning regions. This region includes a larger fraction of marine area and experiences higher industrial aerosol emissions, which decrease the mean annual height of aerosol vertical distribution [e.g., Kaufman et al., 2002; Dentener et al., 2006].

[37] In summary, the main annual and seasonal regional patterns of CALIOP profiles are consistent with previous observations and knowledge about aerosol emissions and transport seasonal patterns. Most of the discrepancies highlighted by previous studies [Yu et al., 2010; Kacenelenbogen et al., 2011] compared to MODIS and ground lidar measurements are no more apparent in this updated version of CALIOP Layer product. Therefore, it offers a robust benchmark data set to be used as a reference for the evaluation of the global models in reproducing the vertical distribution of the tropospheric aerosol.

4.2. Comparison of Simulated and Observed Extinction Profiles

[38] The purpose of this section is to evaluate the ability of twelve global aerosol models to simulate the vertical distribution of the aerosol. In this first part that focuses on the AeroCom I simulations (see section 2.3 for description of the experiments), the mean absolute extinction profiles and the resulting AOD are therefore only briefly discussed (Section 4.2.1). The performance of the models (see Table 1 for description of the models and references) is then qualitatively and quantitatively evaluated from the comparison of

the CALIOP and model derived “normalized” extinction profiles and Z_{α} diagnostics (defined in section 4.2.2).

4.2.1. Mean Vertical Extinction Profiles and AOD Diagnostic

[39] Figure 4 shows qualitatively that most of the models reproduce the observed variation in mean annual extinction regionally, with an increase from marine areas (e.g., NWP, NAT), to regions dominated by industrial, biomass burning, and dust (e.g., NAF, WCN) aerosols. As a result, significant regression coefficients ($p > 95\%$) are obtained for 9 out of the 12 models when comparing simulated and MODIS AOD (Figure 7). However, for a given region a large inter-model range in mean annual extinction profiles is generally obtained that exceeds the standard deviation from the CALIOP profiles from 2007, 2008 and 2009. The extinction is underestimated over segments (IND, ECN, WCN, SAF), and over the whole (SAM) 0–4 km altitude range, by the twelve models, which causes an AOD underestimate by all but two (PNNL and UIO_CTM) models.

[40] At the seasonal scale (auxiliary material Table S1) negative biases in these same regions are also obtained for all, 11, 10 and 9 models, for the MAM, SON, DJF and JJA seasons, respectively. The ranking of the models is shown to strongly vary from one season to the other. But, six of them (PNNL, LSCE, MATCH, UIO_CTM, ECHAM-HAM, GOCART) perform better than the others (i.e., being among the three with lowest RMSD and/or highest correlation coefficients, for at least two out of the four seasons). A model AOD lower than the MODIS derived AOD was also reported for the GOCART model and the year 2000 over these selected regions by Yu et al. [2010]. Note, however, that different time periods, being potentially responsible for different emissions and transport patterns, are investigated in our study for simulations (2000 or climatic mean) and observations (2006–2009), which might also be responsible for some of the observed biases. Further MODIS AOD data analysis and model simulations, beyond the scope of this study, would be required to assess the impact of natural AOD inter-annual variability on the AeroCom phase I model performance in simulating the aerosol distributions over the CALIOP observation period.

4.2.2. Mean Normalized Vertical Extinction Profiles and Z_{α} Diagnostic

[41] “Normalized” extinction profiles allow for a qualitative assessment of agreements between model and CALIOP retrieved shape (including the vertical amplitude) of the aerosol profiles. Respective Z_{α} diagnostics allow for quantitative evaluation.

[42] Annually (Figure 5), a different picture is obtained compared to the absolute profiles (Figure 4). Whereas a particularly large inter-model range of extinction magnitude is simulated in the NAF and WCN dust regions, and in the IND industrial region, most of the models reproduce the shape of the vertical distribution over these regions. The models also replicate the exponential shape of the profile in WEU and ECN industrial regions. But, three of them (MATCH, MOZGN and LSCE) fail to reproduce the slope of the extinction decrease with altitude. The LSCE model also fails in the other industrial (EUS) and downwind regions (NAT, NWP) of the northern hemisphere, where it simulates an increase in extinction with altitude above 6 km not observed by CALIOP. Discrepancies between the observed and simulated shapes of the annual

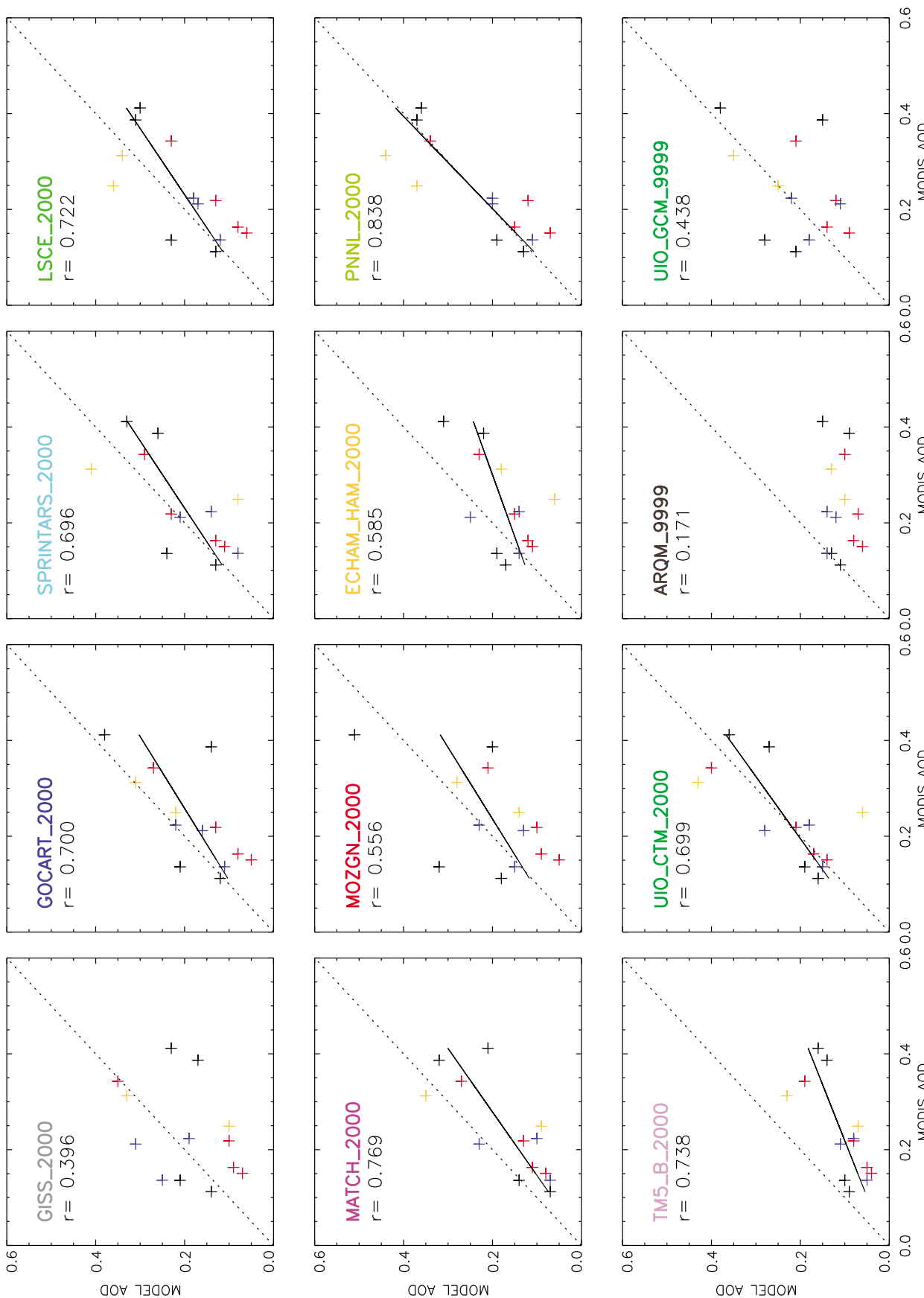


Figure 7. AeroCom I (2000, '9999') versus MODIS (2007–2009) mean annual AOD over the 13 selected regions. Only significant ($r > 0.553$ for $p = 0.05$) regression lines are plotted.

aerosol extinction profile are found for the NAT (e.g., MATCH, LSCE, ECHAM_HAM models), NWP (e.g., MATCH, LSCE, ECHAM_HAM, MOZGN, ARQM), and CAT (e.g., ECHAM_HAM) downwind of maritime regions. In the SAF and SAM biomass burning regions, less than half of the models reproduce the pronounced convex character of the mean annual profile. Large discrepancies are also obtained in the PBL of the CAF biomass burning region, where the shape of the profile in the free troposphere is however better simulated than in the SAF and SAM regions.

[43] Performance capacity to reproduce the annual mean extinction height Z_α across the thirteen regions strongly depends on the model (Figure 8a). While many models show a similar range in observed Z_α , only three of them (GISS, ECHAM_HAM, UIO_CTM) capture the inter-regional variation and provide statistically significant correlations. Moreover, a general Z_α over-estimation (up to +1 km) is obtained for all but one model (Table 3a). The largest over-estimations are obtained by models having the coarsest vertical resolution (namely the LMDZ-INCA and UIO_GCM models), which suggests that numerical diffusion may contribute to the unrealistically large aerosol load at high altitude in these models [e.g., Jacob *et al.*, 1997]. This positive bias could also be related to the parameterization of convective transport and scavenging, e.g., to the fact that some AeroCom models simulate too little scavenging and thus too much transport into the upper troposphere as suggested also by Schwarz *et al.* [2010]. For the UIO_GCM model, some of this bias might be due to inherent biases in the prescribed background aerosol. The positive bias in Z_α can also be due to a low bias in the CALIOP measurement at high altitude with respect to the real world aerosol distribution due to both the detection limit of the lidar and to its data processing. Additional data would be required to test the above assumptions on the model-CALIOP bias as further discussed in Section 5. To free ourselves from these discrepancies at high altitude, and thus better evaluate the models in the altitude range where most of the aerosol load is concentrated, we re-calculated the simulated and observed Z_α diagnostic over the 0–6 km altitude range only (Figure 8b and Table 3b). The agreement between Z_α from all the studied models and CALIOP is significantly improved, i.e., the RMSE in model mean is reduced by about 60%. Significant positive biases (>100 m) are now only obtained for two models (LSCE and MATCH), whereas half of them show significant correlations with CALIOP-derived Z_α across regions.

[44] The seasonal Z_α model mean bias and inter-model range in this bias over the 0–6 km altitude range are compared to CALIOP observations in Figure 9. It depicts an over-estimation of Z_α for most regions in NH winter (11 out of 13 regions) and autumn (9 regions), whereas a less systematic mean bias is seen in spring and summer (regional bias –21% to +21% and –22% to +30% respectively). During these seasons, models tend to underestimate the mean aerosol height over the ECN, NAF, WCN, and CAF regions, while only in spring over the IND and NWP regions and in summer in the SAF region.

[45] The quantitative Z_α diagnostic allows revisiting the comparison of the dust above Northern Africa and in Central Atlantic in NH summer (section 4.1.3). Despite a general Z_α negative bias over the NAF region, simulated Z_α is too high

over the CAT region for most of the models. This may be due to missing aerosol extinction in the maritime boundary layer in CAT, which induces an overall over-estimation of Z_α , despite an under-estimation of the altitude of Saharan air layer in the mid troposphere (Figure 6c). This example illustrates the limitations of the use of mean diagnostics and the associated risk of compensating effects, as further discussed in Section 5.2.

[46] The lowest inter-model ranges in Z_α bias is found for the NAF (MAM: 23% and JJA: 23%) and WCN (MAM: 31% and JJA: 23%) dust regions, followed by the Indian IND (MAM: 28%), and the Central African CAF (MAM: 37%) regions. High inter-model ranges and high biases are obtained over the Eastern U.S. (EUS) and the downwind North Atlantic (NAT) regions in all seasons. A high inter-model range (121%) is also simulated for the WCN region during the DJF months (i.e., for the region and season that show the highest 2007–2009 CALIOP-derived Z_α inter-annual range, Figure 6a). The difficulty that models and observations encounter to resolve and sample sub-grid scale processes (e.g., wind gusts) and their variability over this relatively small region might partly explain this.

[47] Individual model performance simulating the seasonality of the aerosol particle vertical distribution over the thirteen regions is briefly discussed hereafter by looking at the season with the highest mean extinction height Z_α (auxiliary material Figure S4): All twelve models reproduce CALIOP Z_α maximum in NH summer for the North African dust region, and ten of them show high dust layers over the Atlantic Ocean. Due to the prescribed sea-salt and dust background aerosol in UIO_GCM, this model displays a quite weak seasonal variability in both the NAF and CAT regions. The high Z_α obtained, both in JJA and MAM seasons, over the Western China is also well captured by all but two (ARQM and LSCE) models. Ten models also reproduce a summer maximum over Western Europe, whereas two of them (GOCART and SPRINTARS) simulate a maximum in Z_α during NH spring. Fewer models agree with the observed seasonality in Z_α over the other industrial regions, i.e., in the Eastern U.S. (9 models), Eastern China (6 models) and India (5 models). Consistently, only nine and five models agree with the observed seasonality in the North Atlantic and the North West Pacific downwind regions, respectively. Over the SAF and SAM biomass burning regions, most of the models (i.e., nine and eight, respectively) simulate the observed Z_α peak in the SON season, whereas only five of them do so over the SEA region (auxiliary material Figure S3). While the ranking of the models is shown to strongly depend on the region and season, two of them (GISS and UIO_CTM) show a better ability to reproduce the typical aerosol height (i.e., by reproducing the observed Z_α seasonal peak over each studied region).

5. Discussion

[48] Our study reveals that several models simulate a higher mean extinction height of the aerosol than observed over many regions, notably over the Atlantic and Pacific maritime regions downwind of the continents, whereas over the African and Chinese dust source regions, Z_α is underestimated during the spring and summer seasons. This latter negative bias could be due to the fact that phenomena such

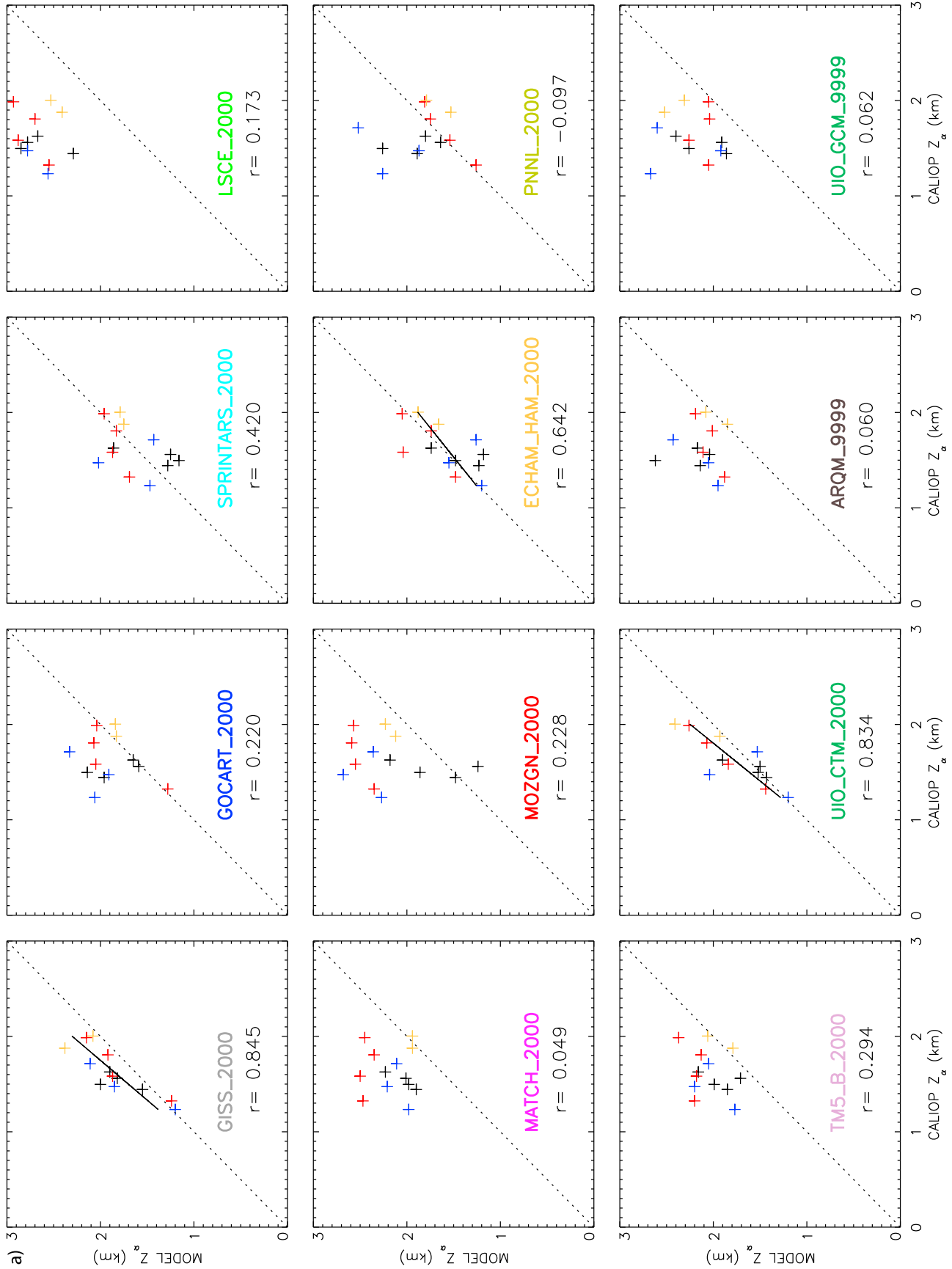


Figure 8. AeroCom I versus CALIOP (2007–2009) mean annual extinction height Z_{α} (km) over the 13 selected regions, and over the (a) 0–10 km and (b) 0–6 km altitude ranges Only significant ($r > 0.553$ for $p = 0.05$) regression lines are plotted.

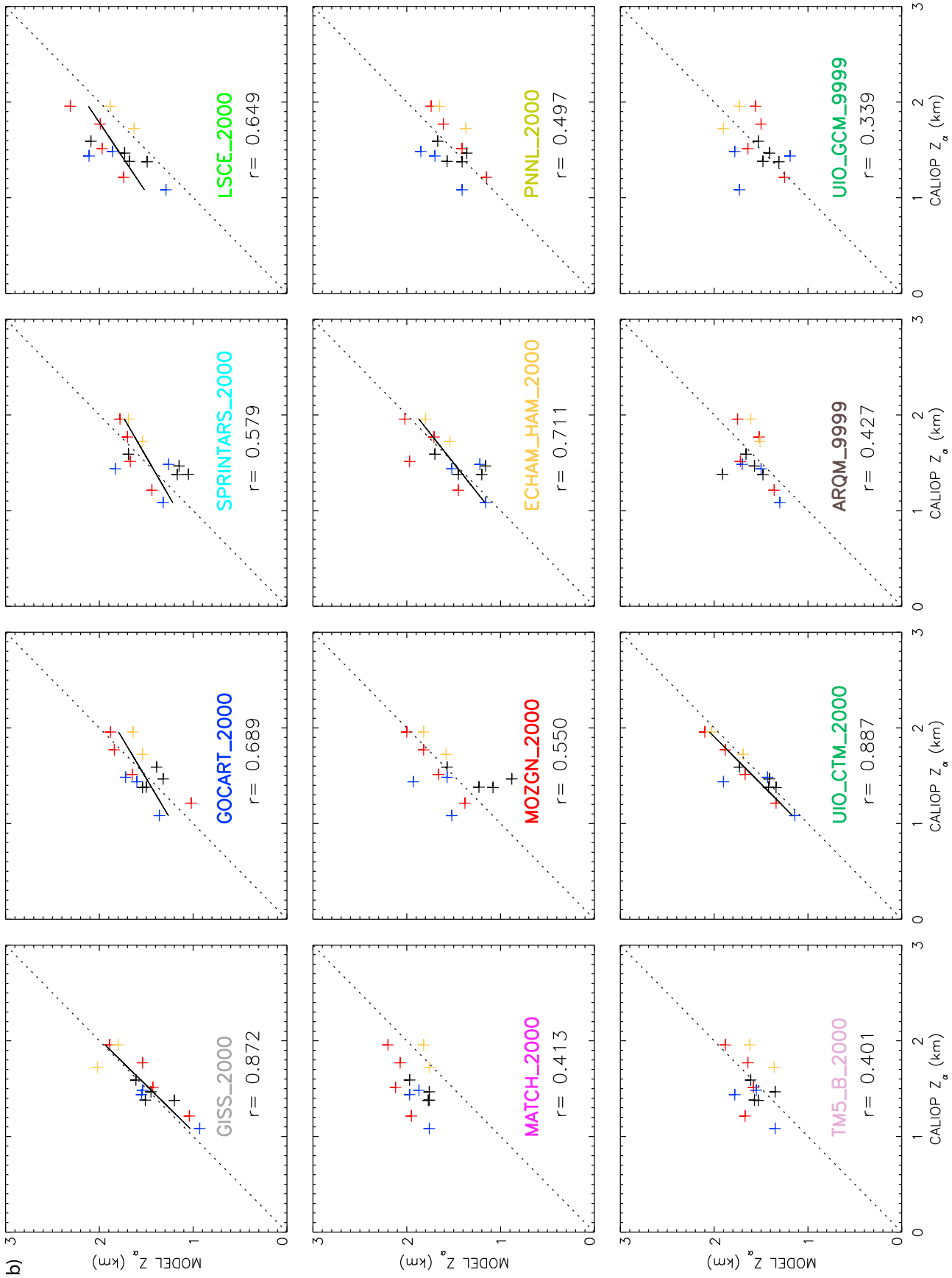


Figure 8. (continued)

Table 3a. Observed (CALIOP v3.01) and Simulated (AeroCom) Mean Annual Z_{α} (km) Over the 13 Selected Regions, for the 0–10 km Altitude Range^a

	Z_{α} Mean	Bias	RMSE	r
CALIOP	1.62			
GISS_2000	1.85	+0.23	0.29	0.845
GOCART_2000	1.90	+0.28	0.42	0.220
SPRINTARS_2000	1.64	+0.02	0.28	0.420
LSCE_2000	2.71	+1.08	1.12	0.173
MATCH_2000	2.16	+0.53	0.62	0.049
MOZGN_2000	2.19	+0.57	0.71	0.228
ECHAM_HAM_2000	1.58	-0.05	0.23	0.642
PNNL_2000	1.84	+0.21	0.47	-0.097
TM5_B_2000	2.04	+0.42	0.50	0.273
UIO_CTM_2000	1.77	+0.15	0.25	0.834
ARQM_9999	2.12	+0.49	0.58	0.060
UIO_GCM_9999	2.22	+0.59	0.68	0.062
Model mean	2.00	+0.38	0.42	0.602

^aCorresponding biases, RMSE and r correlation coefficients are reported. Significant correlations ($p > 95\%$) are highlighted in bold.

as cold pools (so-called *wakes*) and wind gusts that play an important role in the upward propagation of dust particles in these regions are not captured in the models [e.g., *Grandpeix and Lafore*, 2010]. The positive bias was shown to be due to a large extent to an over-estimation of aerosol extinction above 6 km altitude. Among possible causes, we suggest too effective vertical mixing (e.g., due to the convection scheme and/or due to a low vertical resolution of the model), or too little removal of aerosol and precursor gases especially in the lower troposphere, which would induce a too long aerosol life time and subsequent too large upward and long-range transports.

[49] Such model limitations have been reported in previous studies. *Textor et al.* [2006] show that large differences exist among the AeroCom models for aerosol dispersal, both in the vertical and in the horizontal direction, with higher diversities horizontally than vertically, and for SS and DU aerosols than for the other species. While differences in aerosol composition, and thus in extinction, among models [e.g., *Kinne et al.*, 2006], or simply inherent biases in the prescribed background aerosols for given models (e.g., for UIO-GCM) might impact the results, *Textor et al.* [2007] identify the differences in the simulated transport and removal processes as the major cause for the inter-model variability in the global aerosol 2D distribution. These conclusions are further corroborated with the CALIOP profile product we have developed and applied here. Following *Textor et al.* [2007], we compare our results from the AeroCom A experiment (in which models used their own emission data sets), with AeroCom B simulations (in which models used *Dentener et al.* [2006] emissions for the year 2000). Although we do not explore the full range of emission uncertainty with this comparison, we find that the simulated Z_{α} is generally also only slightly modified by the use of harmonized emissions and injection heights (auxiliary material Figure S4). Thus, there are important inter-model differences in the simulated processes (transport, removal, chemistry and microphysics).

[50] More recently, *Schwarz et al.* [2010] show with new aircraft measurements that refractory particles (interpreted as black carbon) are generally over-estimated in altitude of remote regions by most of the AeroCom models, and

suggested insufficient removal by convective precipitation to be responsible. Over the Atlantic and Pacific oceans, downwind of the continents, surface dust concentrations were shown to be under-estimated by most of AeroCom I models [*Huneus et al.*, 2011], which is consistent with our results showing a significant positive Z_{α} bias in these regions. Such is the case for the *Zhang et al.* [2011] study that revealed the NAAPS global aerosol mass transport model having a negative AOD bias and a positive bias in mean extinction height over both land and maritime AERONET sites in the June–July 2007 period. The authors show that assimilating CALIOP-derived aerosol extinction profiles, together with two-dimensional MODIS and MISR AOD in the model improves the simulation of both aerosol features by redistributing further aerosol mass into the model boundary layer.

[51] In addition to the models uncertainties, some of the discrepancies highlighted in the present study could be due to inherent limitations and uncertainties in the CALIOP measurements and aerosol retrieval. The CALIOP lidar has a detection limit to diffuse aerosol, particularly in the free troposphere or at high latitudes [e.g., *Winker et al.*, 2009]. The detection limit at night for the 5 km CALIOP Layer product is estimated to be between 0.010 to 0.015 km^{-1} [*D. Winker, personal communication*, August 2011]. In our study, atmospheric layers with no detected aerosol are assumed to have zero aerosol extinction. Previous studies based on the LITE (Lidar-In-SpaceTechnology Experiment) and on SAGE (Stratospheric Aerosol and Gas Experiment) global satellite data sets [*Kent et al.*, 1993, 1998] show aerosol background extinctions mainly ranging between 0.001 and 0.005 km^{-1} on average in the upper troposphere (from 6 km to the tropopause) of the Southern Hemisphere. In order to test the impact of an eventual presence of background aerosol below the detection limit, we conducted a sensitivity test by assuming 0.001 km^{-1} and 0.005 km^{-1} extinction over atmospheric layers where no aerosol layer was detected by the CALIOP retrieval algorithm. The results indicate that, as expected, prescribing a background extinction of 0.001 km^{-1} reduces the positive Z_{α} biases over the 0–10 km altitude range, notably for the NAT and NWP

Table 3b. Observed (CALIOP v3.01) and Simulated (AeroCom) Mean Annual Z_{α} (km) Over the 13 Selected Regions, for the 0–6 km Altitude Range^a

	Z_{α} Mean	Bias	RMSE	r
CALIOP	1.54			
GISS_2000	1.50	-0.03	0.15	0.872
GOCART_2000	1.54	0.00	0.19	0.689
SPRINTARS_2000	1.48	-0.05	0.24	0.579
LSCE_2000	1.83	+0.29	0.37	0.649
MATCH_2000	1.91	+0.37	0.44	0.413
MOZGN_2000	1.54	+0.01	0.28	0.550
ECHAM_HAM_2000	1.53	-0.00	0.21	0.711
PNNL_2000	1.53	-0.00	0.23	0.497
TM5_B_2000	1.45	-0.09	0.29	0.453
UIO_CTM_2000	1.62	+0.09	0.16	0.887
ARQM_9999	1.58	+0.05	0.24	0.427
UIO_GCM_9999	1.54	+0.01	0.27	0.339
Model mean	1.60	+0.06	0.16	0.829

^aCorresponding biases, RMSE and r correlation coefficients are reported. Significant correlations ($p > 95\%$) are highlighted in bold.

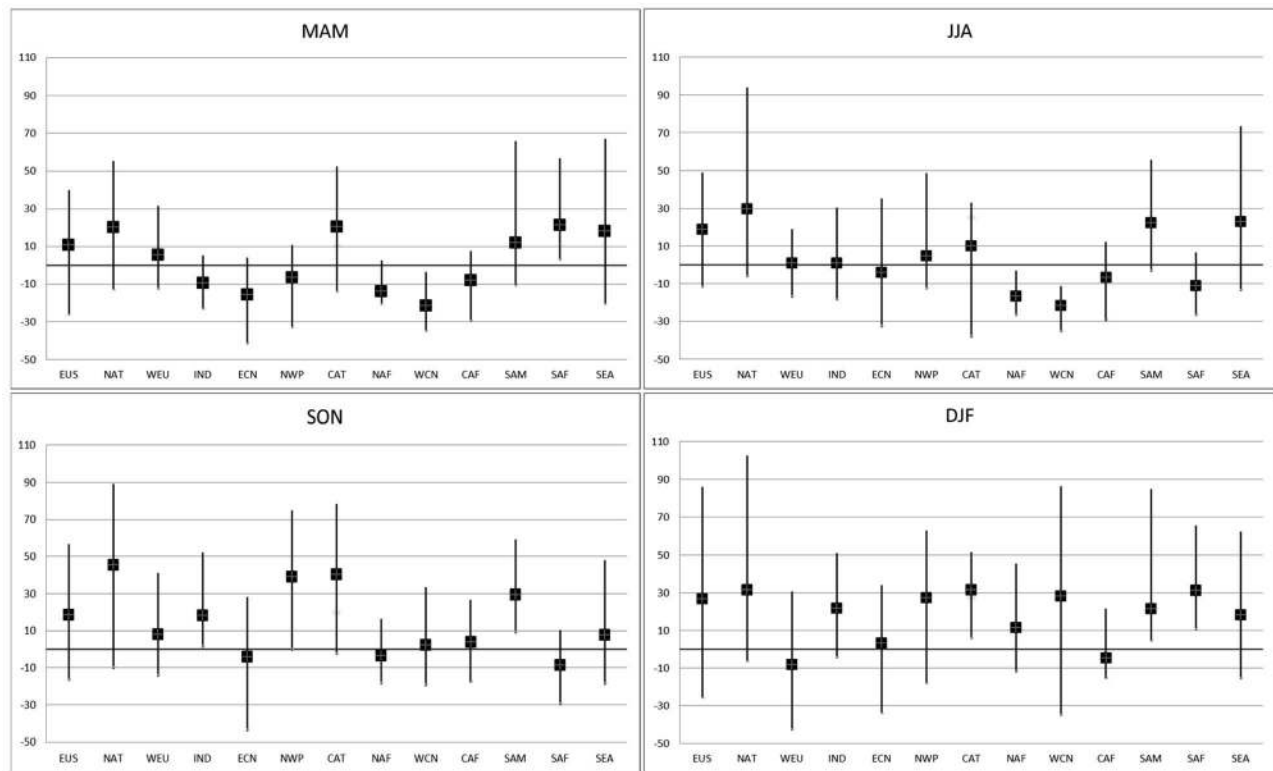


Figure 9. Z_{α} all-models-average seasonal bias (in % of CALIOP Z_{α}) over the selected regions and the 0–6 km altitude range for the AeroCom I experiment. The inter-model range of the model bias (%) is shown in black vertical line. Results for the individual models are provided in auxiliary material (Figure S4).

maritime regions, and for the SEA region, leading to a 47% decrease in the mean model bias over the 13 regions (i.e., from +0.38 km to +0.20 km). However, it also reduces the performance of several models, and notably the three models that showed the best agreement when no correction was introduced (namely, GISS, ECHAM_HAM and UIO_CTM), which then provide larger Z_{α} (negative) biases, and less correlation with observations. In the case of the 0.005 km^{-1} extinction threshold, no more significant correlation with CALIOP but a general negative bias is obtained for all but one (LSCE) model.

[52] Further analyses (e.g., based on the SAGE global 2D distributions of the aerosol background extinctions), as well as more detailed information on the CALIOP detection limit, resulting from both the measurement and the aerosol layer retrieval algorithm, are needed to better characterize and constrain model error in different low polluted environments/altitudes. Excluding the regions with no detected aerosols (e.g., with a CALIOP simulator) would create a different regional average vertical profile and would not allow for the type of comparison presented here. Models would need to reproduce the exact three-dimensional location of the aerosol plumes, which is even more difficult and would introduce more error in the lower troposphere; that part of the column that we attempted to characterize with the current methodology. Important discrepancies have been also highlighted at seasonal scale between CALIOP and MODIS derived optical depths, in the three WCN, NAT and NWP regions, with the highest differences obtained for the smallest region, WCN. This suggests the need for further

analyses to better assess the representativeness of CALIOP measurements when going to relatively small temporal and spatial scales.

[53] Methodological factors also limit the assessment of the uncertainties on the simulated aerosol vertical distribution. The fact that we use different time periods (i.e., different emissions and transport patterns) for simulations (2000 or climatic mean) and CALIOP measurements (2006–2009) could be responsible for some of the differences that cannot be assessed in the present study. The effect of removing daytime data has been evaluated for the year 2007. Similar aerosol vertical distributions and relatively small Z_{α} differences (<10% for 9 regions, and <17% for the 4 other ones) are obtained between CALIOP 24h and CALIOP nighttime mean annual profiles. While additional analysis would be necessary to further assess the impact of the nighttime screening, it could therefore only partly explain the model biases, which reach from 27% to 116% of CALIOP annual Z_{α} , according to the model. CALIOP AOD retrievals have been seen to exhibit regional biases with respect to MODIS, and biases of opposite sign in adjacent land and ocean regions sometimes occur [e.g., *Kitaka et al.*, 2011]. While there is no fundamental problem with combining land and ocean regions into an average, this might introduce a bias in any comparison. While the characteristic height of extinction, Z_{α} , established for each region provides a useful and simple measure to evaluate the performance of the models, it does not allow capturing complex multilayer patterns, as well as identifying related combinations of positive and negative biases and their compensative effects.

This is notably the case for multimodal vertical distributions such as the ones observed from our mean extinction profiles over the Atlantic Ocean and Northern Africa in NH summer. A further quantitative evaluation step could be to assess not only the mean altitude, but also the altitudes and magnitudes of the different modes in the profile, if several exist. Our approach based on seasonal and sub-continental averaging does not permit assessing either the models or the ability of CALIOP to reproduce the intraregional diversity of the vertical aerosol distribution (e.g., the significant differences that exist within Europe [Guibert *et al.*, 2005]). Depending on the CALIOP sampling, this might introduce significant uncertainties that have to be further estimated.

[54] The methodology described in the present study to build a CALIOP product, which is compatible with model outputs, is currently being applied to the evaluation of the AeroCom phase II simulations in preparation of the AR5. The latter employ updated model versions (with respect to atmospheric dynamics, physics, and aerosols), and adequately cover the CALIOP 2007–2009 measurement period. A global monthly gridded ($1^\circ \times 1^\circ$) 3D CALIOP database was built that will allow a better assessment of the models' uncertainties and discussion of potential limitations of the CALIOP data. The data set also discriminates between total and dust aerosol, which will provide additional constraints in the assessment of the size-resolved aerosol simulation.

6. Summary and Conclusions

[55] The CALIOP Layer Product 3.01 nighttime data at 532 nm were used to evaluate the aerosol vertical distribution simulated by twelve global aerosol models over thirteen sub-continental regions representative of industrial, dust and biomass burning pollution, or located downwind from continental source regions. In a first step, the reliability of the CALIOP-derived mean extinction profiles has been evaluated through various analyses. Based on current knowledge, the CALIOP spatial and temporal coverage was shown to provide a representative signal of the aerosol vertical extinction at seasonal and sub-continental scales and our processing to produce a robust benchmark data set for the evaluation of the global models in reproducing its climatology. Observed and simulated annual and seasonal average aerosol extinction profiles were then compared over the selected regions. To quantitatively assess the performance of the models, the simulated AOD and mean extinction height Z_α were calculated and compared to MODIS and CALIOP respective diagnostics, based on linear regressions, biases, and RMSD statistical analyses.

[56] While a large inter-model range of the simulated AOD is obtained over most regions, a lower than satellite retrieved AOD is simulated by all models, especially over regions with large aerosol load. The vertical shape of normalized model profiles compares better with CALIOP, indicating that the vertical aerosol dispersion at least in the lower troposphere up to 6 km is captured well by most of the models. On the other hand, the accuracy of the shape of the profile highly depends on the model, the season and the region. From the characteristic extinction height Z_α , established for each region and season over the 0–10 km altitude range, several models reproduce the inter-regional diversity, with a Z_α increase from marine and industrial to dust and

biomass burning regions. In many regions however, notably over the Atlantic and Pacific downwind maritime regions, most of them simulate a higher mean aerosol height than observed, due to a higher fraction of the aerosol extinction above 6 km altitude. Among possible causal factors are too effective vertical mixing (due for instance to a low model vertical resolution and/or to strong vertical transport by the convection scheme), too little removal in the lower troposphere that would induce a too long aerosol life time, and/or simply biases in the prescribed background aerosol (for UIO-GCM). An under-estimation of the aerosol extinction in the upper part of the troposphere by the CALIOP retrieval algorithm could also contribute to such discrepancies.

[57] Our study provides a documentation of the performance of the individual models as a function of the season and the region as well as a comparison of CALIOP version 2.01 and version 3.01 aerosol profiles that will be helpful to the different modeling teams in revisiting results of previous studies (e.g., AeroCom studies and studies based on the CALIOP Layer Product version 2), and in further understanding the factors responsible for the models' biases. It will also further serve to assess, in a forthcoming paper, the impact of the models' improvements on the quality of the simulated aerosol vertical distribution, from the evaluation of the AeroCom II simulations currently being analyzed in the preparation of the AR5.

[58] **Acknowledgments.** The authors would like to thank the three reviewers for their valuable comments and suggestions that allowed significantly improving the quality of the manuscript. We thank the ICARE Data and Services Center for providing access to the CALIOP CNES/NASA data used in this study and for providing computing access and support. We also would like to thank Stefan Kinne (MPIM, Germany) and Christiane Textor (previously at LSCE, France) for their important contribution to the development and the maintenance of the AeroCom tool and website (http://aerocom.met.no/cgi-bin/aerocom/lidar_annualrs.pl). We are grateful to Øyvind Seland, who was a central developer of the UIO-GCM model. We also acknowledge Cecilia Garrec for the English revision and her general comments on the text. This work was supported by the French space agency CNES (Centre National des Etudes Spatiales) and by the Infrastructure for the European Network for Earth System Modeling (IS-ENES) European Union project (agreement 228203). S. Ghan and R. Easter were funded by the U.S. Department of Energy, Office of Science, Scientific Discovery through Advanced Computing (SciDAC) program. The Pacific Northwest National Laboratory is operated for DOE by Battelle Memorial Institute under contract DE-AC06-76RLO 1830.

References

- Andreae, M. O., et al. (2001), Transport of biomass burning smoke to the upper troposphere by deep convection in the equatorial region, *Geophys. Res. Lett.*, 28, 951–954, doi:10.1029/2000GL012391.
- Balkanski, Y. J., M. Schulz, T. Claquin, C. Moulin, and P. Ginoux (2003), Global emissions of mineral aerosol: Formulation and validation using satellite imagery, in *Emission of Atmospheric Trace Compounds*, edited by C. Granier, P. Artaxo, and C. E. Reeves, pp. 253–282, Kluwer Acad., Norwell, Mass.
- Barth, M. C., P. J. Rasch, J. T. Kiehl, C. M. Benkovitz, and S. E. Schwartz (2000), Sulfur chemistry in the NCAR CCM: Description, evaluation, features and sensitivity to aqueous chemistry, *J. Geophys. Res.*, 106, 20,311–20,322.
- Bauer, S. E., and D. Koch (2005), Impact of heterogeneous sulfate formation at mineral dust surfaces on aerosol loads and radiative forcing in the Goddard Institute for Space Studies general circulation model, *J. Geophys. Res.*, 110, D17202, doi:10.1029/2005JD005870.
- Bauer, S. E., Y. Balkanski, M. Schulz, D. A. Hauglustaine, and F. Dentener (2004), Global modeling of heterogeneous chemistry on mineral aerosol surfaces: Influence on tropospheric ozone chemistry and comparison to observations, *J. Geophys. Res.*, 109, D02304, doi:10.1029/2003JD003868.
- Berglen, T. F., T. K. Berntsen, I. S. A. Isaksen, and J. K. Sundet (2004), A global model of the coupled sulfur/oxidant chemistry in the

- troposphere: The sulfur cycle, *J. Geophys. Res.*, *109*, D19310, doi:10.1029/2003JD003948.
- Berntsen, T., J. Fuglestedt, G. Myhre, F. Stordal, and T. F. Berglen (2006), Abatement of greenhouse gases: Does location matter?, *Clim. Change*, *74*, 377–411, doi:10.1007/s10584-006-0433-4.
- Bréon, F.-M., A. Vermeulen, and J. Desclotres (2011), An evaluation of satellite aerosol products against sunphotometer measurements, *Remote Sens. Environ.*, *115*, 3102–3111, doi:10.1016/j.rse.2011.06.017.
- Cakmur, R. V., R. L. Miller, J. Perlwitz, D. Koch, I. V. Geogdzhayev, P. Ginoux, I. Tegen, and C. S. Zender (2006), Constraining the global dust emission and load by minimizing the difference between the model and observations, *J. Geophys. Res.*, *111*, D06207, doi:10.1029/2005JD005791.
- Chazette, P., J.-C. Raut, F. Dulac, S. Berthier, S.-W. Kim, P. Royer, J. Sanak, S. Loac̄, and H. Grigaut-Desbrosses (2010), Simultaneous observations of lower tropospheric continental aerosols with a ground-based, an airborne, and the spaceborne CALIOP lidar system, *J. Geophys. Res.*, *115*, D00H31, doi:10.1029/2009JD012341.
- Chen, L., G.-Y. Shi, L.-Z. Zhong, and S.-C. Tan (2009), Assessment of dust aerosol optical depth and shortwave radiative forcing over the northwest Pacific Ocean in spring based on satellite observations, *Atmos. Oceanic Sci. Lett.*, *2*(4), 224–229.
- Chiappello, I., G. Bergametti, L. Gomes, B. Chatenet, F. Dulac, J. Pimenta, and E. Santos Soares (1995), An additional low layer transport of Sahelian and Saharan dust over the north-eastern tropical Atlantic, *Geophys. Res. Lett.*, *22*, 3191–3194, doi:10.1029/95GL03313.
- Chin, M., R. B. Rood, S. J. Lin, J. F. Muller, and A. M. Thompson (2000), Atmospheric sulphur cycle simulated in the global model GOCART: Model description and global properties, *J. Geophys. Res.*, *105*(D20), 24,671–24,687, doi:10.1029/2000JD900384.
- Chin, M., P. Ginoux, S. Kinne, O. Torres, B. N. Holben, B. N. Duncan, R. V. Martin, J. A. Logan, A. Higurashi, and T. Nakajima (2002), Tropospheric aerosol optical thickness from the GOCART model and comparisons with satellite and Sun photometer measurements, *J. Atmos. Sci.*, *59*, 461–483, doi:10.1175/1520-0469(2002)059<0461:TAOTFT>2.0.CO;2.
- Chin, M., A. Chu, R. Levy, L. Remer, Y. Kaufman, B. Holben, T. Eck, P. Ginoux, and Q. Gao (2004), Aerosol distribution in the Northern Hemisphere during ACE-Asia: Results from global model, satellite observations, and Sun photometer measurements, *J. Geophys. Res.*, *109*, D23S90, doi:10.1029/2004JD004829.
- Chin, M., T. Diehl, O. Dubovik, T. F. Eck, B. N. Holben, A. Sinyuk, and D. G. Streets (2009), Light absorption by pollution, dust, and biomass burning aerosols: A global model study and evaluation with AERONET measurements, *Ann. Geophys.*, *27*, 3439–3464, doi:10.5194/angeo-27-3439-2009.
- Chu, D. A., Y. J. Kaufman, C. Ichoku, L. A. Remer, D. Tanré, and B. N. Holben (2002), Validation of MODIS aerosol optical depth retrieval over land, *Geophys. Res. Lett.*, *29*(12), 8007, doi:10.1029/2001GL013205.
- Claquin, T., M. Schulz, Y. Balkanski, and O. Boucher (1998), The influence of mineral aerosol properties and column distribution on solar and infrared forcing by dust, *Tellus, Ser. B*, *50*, 491–505, doi:10.1034/j.1600-0889.1998.t01-2-00007.x.
- Claquin, T., M. Schulz, and Y. Balkanski (1999), Modeling the mineralogy of atmospheric dust, *J. Geophys. Res.*, *104*, 22,243–22,256, doi:10.1029/1999JD900416.
- Cozic, J., et al. (2008), Chemical composition of free tropospheric aerosol for PM1 and coarse mode at the high alpine site Jungfraujoch, *Atmos. Chem. Phys.*, *8*, 407–423, doi:10.5194/acp-8-407-2008.
- Crumeyroille, S. (2008), Impact des systèmes convectifs sur les propriétés hygroscopiques des aérosols: Analyse de deux cas d'étude durant la campagne AMMA, thèse de doctorat, Univ. Paul Sabatier, Toulouse, France.
- Crumeyroille, S., P. Tulet, L. Gomes, L. Garcia-Carreras, C. Flamant, D. J. Parker, A. Matsuki, P. Formenti, and A. Schwarzenboeck (2011), Transport of dust particles from the Bodélé region to the monsoon layer—AMMA case study of the 9–14 June 2006 period, *Atmos. Chem. Phys.*, *11*, 479–494, doi:10.5194/acp-11-479-2011.
- de Meij, A., M. Krol, F. Dentener, E. Vignati, C. Cuvelier, and P. Thunis (2006), The sensitivity of aerosol in Europe to two different emission inventories and temporal distribution of emissions, *Atmos. Chem. Phys.*, *6*, 4287–4309, doi:10.5194/acp-6-4287-2006.
- Dentener, F., et al. (2006), Emissions of primary aerosol and precursor gases for the years 2000 and 1750 prescribed data-sets for AeroCom, *Atmos. Chem. Phys.*, *6*, 4321–4344, doi:10.5194/acp-6-4321-2006.
- Dey, S., and L. Di Girolamo (2010), A climatology of aerosol optical and microphysical properties over the Indian subcontinent from 9 years (2000–2008) of Multiangle Imaging Spectroradiometer (MISR) data, *J. Geophys. Res.*, *115*, D15204, doi:10.1029/2009JD013395.
- Easter, R. C., S. J. Ghan, Y. Zhang, R. D. Saylor, E. G. Chapman, N. S. Laulainen, H. Abdul-Razzak, L. R. Leung, X. Bian, and R. A. Zaveri (2004), MIRAGE: Model description and evaluation of aerosols and trace gases, *J. Geophys. Res.*, *109*, D20210, doi:10.1029/2004JD004571.
- Fischer-Bruns, I., J. Feichter, S. Kloster, and A. Schneidereit (2010), How present aerosol pollution from North America impacts North Atlantic climate, *Tellus, Ser. A*, *62*, 579–589, doi:10.1111/j.1600-0870.2010.00446.x.
- Ghan, S. J., and R. C. Easter (2006), Impact of cloud-borne aerosol representation on aerosol direct and indirect effects, *Atmos. Chem. Phys.*, *6*, 4163–4174, doi:10.5194/acp-6-4163-2006.
- Ghan, S. J., and R. C. Easter (2007), Corrigendum to “Impact of cloud-borne aerosol representation on aerosol direct and indirect effects” published in *Atmos. Chem. Phys.*, *6*, 4163–4174, 2006, *Atmos. Chem. Phys.*, *7*, 293–294, doi:10.5194/acp-7-293-2007.
- Ginoux, P., M. Chin, I. Tegen, J. Prospero, B. Holben, O. Dubovik, and S.-J. Lin (2001), Sources and global distributions of dust aerosols simulated with the GOCART model, *J. Geophys. Res.*, *106*, 20,255–20,273, doi:10.1029/2000JD000053.
- Ginoux, P., J. Prospero, O. Torres, and M. Chin (2004), Long-term simulation of dust distribution with the GOCART model: Correlation with the North Atlantic Oscillation, *Environ. Model. Softw.*, *19*, 113–128, doi:10.1016/S1364-8152(03)00114-2.
- Goldstein, A. H., C. D. Koven, C. L. Heald, and I. Y. Fung (2009), Biogenic carbon and anthropogenic pollutants combine to form a cooling haze over the southeastern United States, *Proc. Natl. Acad. Sci. U. S. A.*, *106*, 8835–8840, doi:10.1073/pnas.0904128106.
- Gong, S. L., et al. (2003), Canadian Aerosol Module: A size-segregated simulation of atmospheric aerosol processes for climate and air quality models: 1. Module development, *J. Geophys. Res.*, *108*(D1), 4007, doi:10.1029/2001JD002002.
- Gonzi, S., and P. I. Palmer (2010), Vertical transport of surface fire emissions observed from space, *J. Geophys. Res.*, *115*, D02306, doi:10.1029/2009JD012053.
- Grandpeix, J. Y., and J.-P. Lafore (2010), A density current parameterization coupled with Emanuel's convection scheme. Part I: The models, *J. Atmos. Sci.*, *67*, 881–897, doi:10.1175/2009JAS3044.1.
- Grini, A., G. Myhre, J. K. Sundet, and I. S. A. Isaksen (2002), Modeling the annual cycle of sea salt in the global 3D model Oslo CTM2: Concentrations, fluxes, and radiative impact, *J. Clim.*, *15*(13), 1717–1730, doi:10.1175/1520-0442(2002)015<1717:MTACOS>2.0.CO;2.
- Grini, A., G. Myhre, C. S. Zender, and I. S. A. Isaksen (2005), Model simulations of dust sources and transport in the global atmosphere: Effects of soil erodibility and wind speed variability, *J. Geophys. Res.*, *110*, D02205, doi:10.1029/2004JD005037.
- Guelle, W., Y. J. Balkanski, J. E. Dibb, M. Schulz, and F. Dulac (1998a), Wet deposition in a global size-dependent aerosol transport model: 2. Influence of the scavenging scheme on ²¹⁰Pb vertical profiles, surface concentrations, and deposition, *J. Geophys. Res.*, *103*, 28,875–28,891, doi:10.1029/98JD01826.
- Guelle, W., Y. J. Balkanski, M. Schulz, F. Dulac, and P. Monfray (1998b), Wet deposition in a global size-dependent aerosol transport model: 1. Comparison of a 1 year ²¹⁰Pb simulation with ground measurements, *J. Geophys. Res.*, *103*, 11,429–11,445, doi:10.1029/97JD03680.
- Guelle, W., Y. J. Balkanski, M. Schulz, B. Marticorena, G. Bergametti, C. Moulin, R. Arimoto, and K. D. Perry (2000), Modeling the atmospheric distribution of mineral aerosol: Comparison with ground measurements and satellite observations for yearly and synoptic timescales over the North Atlantic, *J. Geophys. Res.*, *105*, 1997–2012, doi:10.1029/1999JD901084.
- Guibert, S., V. Matthias, M. Schulz, J. Bösenberg, R. Eixmann, I. Mattis, G. Pappalardo, M. R. Perrone, N. Spinelli, and G. Vaughan (2005), The vertical distribution of aerosol over Europe—Synthesis of one year of EARLINET aerosol lidar measurements and aerosol transport modeling with LMDzT-INCA, *Atmos. Environ.*, *39*, 2933–2943, doi:10.1016/j.atmosenv.2004.12.046.
- Hayasaka, T., S. Satake, A. Shimizu, N. Sugimoto, I. Matsui, K. Aoki, and Y. Muraji (2007), The vertical distribution and optical properties of aerosols observed over Japan during ABC-EAREX2005, *J. Geophys. Res.*, *112*, D22S35, doi:10.1029/2006JD008086.
- Horowitz, L. W., et al. (2003), A global simulation of tropospheric ozone and related tracers: Description and evaluation of MOZART, version 2, *J. Geophys. Res.*, *108*(D24), 4784, doi:10.1029/2002JD002853.
- Hsu, N. C., J. R. Herman, O. Torres, B. N. Holben, D. Tanre, T. F. Eck, A. Smirnov, B. Chatenet, and F. Lavenue (1999), Comparisons of the TOMS aerosol index with Sun photometer aerosol optical thickness: Results and applications, *J. Geophys. Res.*, *104*(D6), 6269–6279, doi:10.1029/1998JD200086.
- Hu, Y., et al. (2009), CALIPSO/CALIOP cloud phase discrimination algorithm, *J. Atmos. Oceanic Technol.*, *26*, 2293–2309, doi:10.1175/2009JTECHA1280.1.

- Huang, Z., J. Huang, J. Bi, G. Wang, W. Wang, Q. Fu, Z. Li, S.-C. Tsay, and J. Shi (2010), Dust aerosol vertical structure measurements using three MPL lidars during 2008 China-U.S. joint dust field experiment, *J. Geophys. Res.*, *115*, D00K15, doi:10.1029/2009JD013273.
- Huneceus, N., et al. (2011), Global dust model intercomparison in AeroCom phase I, *Atmos. Chem. Phys.*, *11*, 7781–7816, doi:10.5194/acp-11-7781-2011.
- Hunt, W. H., D. M. Winker, M. A. Vaughan, K. A. Powell, P. L. Lucker, and C. Weimer (2009), CALIPSO lidar description and performance assessment, *J. Atmos. Oceanic Technol.*, *26*, 1214–1228, doi:10.1175/2009JTECHA1223.1.
- Iversen, T., and Ø. Seland (2002), A scheme for process-tagged SO₄ and BC aerosols in NCAR CCM3: Validation and sensitivity to cloud processes, *J. Geophys. Res.*, *107*(D24), 4751, doi:10.1029/2001JD000885.
- Iversen, T., and Ø. Seland (2003), Correction to “A scheme for process tagged SO₄ and BC aerosols in NCAR-CCM3: Validation and sensitivity to cloud processes,” *J. Geophys. Res.*, *108*(D16), 4502, doi:10.1029/2003JD003840.
- Jacob, D. J., et al. (1997), Evaluation and intercomparison of global atmospheric transport models using ²²²Rn and other short-lived tracers, *J. Geophys. Res.*, *102*(D5), 5953–5970, doi:10.1029/96JD02955.
- Kacenenbogen, M., M. A. Vaughan, J. Redemann, R. M. Hoff, R. R. Rogers, R. A. Ferrare, P. B. Russell, C. A. Hostetler, J. W. Hair, and B. N. Holben (2011), An accuracy assessment of the CALIOP/CALIPSO version 2/version 3 daytime aerosol extinction product based on a detailed multi-sensor, multi-platform case study, *Atmos. Chem. Phys.*, *11*, 3981–4000, doi:10.5194/acp-11-3981-2011.
- Kahn, R. A., B. J. Gaitley, J. V. Martonchik, D. J. Diner, K. A. Crean, and B. Holben (2005), Multiangle Imaging Spectroradiometer (MISR) global aerosol optical depth validation based on 2 years of coincident Aerosol Robotic Network (AERONET) observations, *J. Geophys. Res.*, *110*, D10S04, doi:10.1029/2004JD004706.
- Kaufman, Y. J., and D. Tanré (1998), Algorithm for remote sensing of tropospheric aerosols from MODIS, *MOD04/MYD04*, 87 pp., NASA Goddard Space Flight Cent., Greenbelt, Md. [Available at http://modis.gsfc.nasa.gov/data/atbd/atbd_mod02.pdf].
- Kaufman, Y. J., D. Tanré, and O. Boucher (2002), A satellite view of aerosols in the climate system, *Nature*, *419*, 215–223, doi:10.1038/nature01091.
- Kent, G. S., D. M. Winker, M. T. Osborn, and K. M. Skeens (1993), A model for the separation of cloud and aerosol in SAGE II occultation data, *J. Geophys. Res.*, *98*(D11), 20,725–20,735, doi:10.1029/93JD00340.
- Kent, G. S., C. R. Trepte, K. M. Skeens, and D. M. Winker (1998), LITE and SAGE II measurements of aerosols in the southern hemisphere upper troposphere, *J. Geophys. Res.*, *103*(D15), 19,111–19,127, doi:10.1029/98JD00364.
- Kim, M. K., W. K. M. Lau, M. Chin, K. M. Kim, Y. C. Sud, and G. K. Walker (2006), Atmospheric teleconnection over Eurasia induced by aerosol radiative forcing during boreal spring, *J. Clim.*, *19*, 4700–4718, doi:10.1175/JCLI3871.1.
- Kim, S.-W., S.-C. Yoon, J. Kim, and S.-Y. Kim (2007), Seasonal and monthly variations of columnar aerosol optical properties over east Asia determined from multi-year MODIS, LIDAR and AERONET Sun/sky radiometer measurements, *Atmos. Environ.*, *41*, 1634–1651, doi:10.1016/j.atmosenv.2006.10.044.
- Kinne, S., et al. (2006), An AeroCom initial assessment—Optical properties in aerosol component modules of global models, *Atmos. Chem. Phys.*, *6*, 1815–1834, <http://www.atmos-chem-phys.net/6/1815/2006/>.
- Kirkevåg, A., and T. Iversen (2002), Global direct radiative forcing by process-parameterized aerosol optical properties, *J. Geophys. Res.*, *107*(D20), 4433, doi:10.1029/2001JD000886.
- Kirkevåg, A., T. Iversen, Ø. Seland, and J. E. Kristjánsson (2005), Revised schemes for optical parameters and cloud condensation nuclei in CCM-Oslo, *Inst. Rep. Ser. 128*, Sect. for Meteorol. and Oceanogr., Dep. of Geosci., Univ. of Oslo, Oslo, Norway.
- Kittaka, C., D. M. Winker, M. A. Vaughan, A. Omar, and L. A. Remer (2011), Intercomparison of column aerosol optical depths from CALIPSO and MODIS-Aqua, *Atmos. Meas. Tech.*, *4*, 131–141, doi:10.5194/amt-4-131-2011.
- Koch, D. (2001), Transport and direct radiative forcing of carbonaceous and sulfate aerosols in the GISS GCM, *J. Geophys. Res.*, *106*, 20,311–20,322, doi:10.1029/2001JD900038.
- Koch, D., and J. Hansen (2005), Distant origins of Arctic black carbon: A GISS ModelE experiment, *J. Geophys. Res.*, *110*, D04204, doi:10.1029/2004JD005296.
- Koch, D., D. Jacob, I. Tegen, D. Rind, and M. Chin (1999), Tropospheric sulfur simulation and sulfate direct radiative forcing in the Goddard Institute for Space Studies general circulation model, *J. Geophys. Res.*, *104*(D19), 23,799–23,822, doi:10.1029/1999JD900248.
- Koch, D., G. A. Schmidt, and C. Field (2006), Sulfur, sea salt and radionuclide aerosols in GISS ModelE, *J. Geophys. Res.*, *111*, D06206, doi:10.1029/2004JD005550.
- Koch, D., et al. (2009), Evaluation of black carbon estimations in global aerosol models, *Atmos. Chem. Phys.*, *9*, 9001–9026, doi:10.5194/acp-9-9001-2009.
- Krol, M., S. Houweling, B. Bregman, M. van den Broek, A. Segers, P. van Velthoven, W. Peters, F. Dentener, and P. Bergamaschi (2005), The two-way nested global chemistry-transport zoom model TM5: Algorithm and applications, *Atmos. Chem. Phys.*, *5*, 417–432, doi:10.5194/acp-5-417-2005.
- Langmann, B., B. Duncan, C. Textor, J. Trentmann, and G. R. van der Werf (2009), Vegetation fire emissions and their impact on air pollution and climate, *Atmos. Environ.*, *43*, 107–116, doi:10.1016/j.atmosenv.2008.09.047.
- Levy, R. C., L. A. Remer, S. Mattoo, E. F. Vermote, and Y. J. Kaufman (2007), Second-generation operational algorithm: Retrieval of aerosol properties over land from inversion of Moderate Resolution Imaging Spectroradiometer spectral reflectance, *J. Geophys. Res.*, *112*, D13211, doi:10.1029/2006JD007811.
- Li, Q., D. J. Jacob, R. Park, Y. Wang, C. L. Heald, R. Hudman, R. M. Yantosca, R. V. Martin, and M. Evans (2005), North American pollution outflow and the trapping of convectively lifted pollution by upper-level anticyclone, *J. Geophys. Res.*, *110*, D10301, doi:10.1029/2004JD005039.
- Li, Z., et al. (2011), East Asian Studies of Tropospheric Aerosols and their Impact on Regional Climate (EAST-AIRC): An overview, *J. Geophys. Res.*, *116*, D00K34, doi:10.1029/2010JD015257.
- Lioussé, C., et al. (2010), Updated African biomass burning emission inventories in the framework of the AMMA-IDAF program, with an evaluation of combustion aerosols, *Atmos. Chem. Phys.*, *10*, 9631–9646, doi:10.5194/acp-10-9631-2010.
- Liu, Z., M. Vaughan, D. Winker, C. A. Hostetler, L. R. Poole, D. L. Hlavka, W. D. Hart, and M. J. McGill (2004), Use of probability distribution functions for discriminating between cloud and aerosol in lidar backscatter data, *J. Geophys. Res.*, *109*, D15202, doi:10.1029/2004JD004732.
- Liu, Z., M. A. Vaughan, D. M. Winker, C. Kittaka, R. E. Kuehn, B. J. Getzewich, C. R. Trepte, and C. A. Hostetler (2009), The CALIPSO lidar cloud and aerosol discrimination: Version 2 algorithm and initial assessment of performance, *J. Atmos. Oceanic Technol.*, *26*, 1198–1213, doi:10.1175/2009JTECHA1229.1.
- Liu, Z., R. Kuehn, M. Vaughan, D. Winker, A. Omar, K. Powell, C. Trepte, Y. Hu, and C. Hostetler (2010), The CALIPSO cloud and aerosol discrimination: Version 3 algorithm and test results, paper presented at 25th International Laser Radar Conference, Int. Assoc. of Meteorol. and Atmos. Phys., St. Petersburg, Russia.
- Logan, T., B. Xi, X. Dong, R. Obrecht, Z. Li, and M. Cribb (2010), A study of Asian dust plumes using satellite, surface, and aircraft measurements during the INTEX-B field experiment, *J. Geophys. Res.*, *115*, D00K25, doi:10.1029/2010JD014134.
- Matthias, V., et al. (2004), Vertical aerosol distribution over Europe: Statistical analysis of Raman lidar data from 10 European aerosol research lidar network (EARLINET) stations, *J. Geophys. Res.*, *109*, D18201, doi:10.1029/2004JD004638.
- Miller, R. L., R. V. Cakmur, J. Perlwitz, D. Koch, G. A. Schmidt, I. V. Geogdzhayev, P. Ginoux, C. Prigent, and I. Tegen (2006), Mineral dust aerosols in the NASA Goddard Institute for Space Sciences ModelE atmospheric general circulation model, *J. Geophys. Res.*, *111*, D06208, doi:10.1029/2005JD005796.
- Myhre, G., et al. (2007), Comparison of the radiative properties and direct radiative effect of aerosols from a global aerosol model and remote sensing data over ocean, *Tellus, Ser. B*, *59*, 115–129, doi:10.1111/j.1600-0889.2006.00226.x.
- Nakajima, T., et al. (2007), Overview of the Atmospheric Brown Cloud East Asian Regional Experiment 2005 and a study of the aerosol direct radiative forcing in East Asia, *J. Geophys. Res.*, *112*, D24S91, doi:10.1029/2007JD009009.
- Omar, A., et al. (2009), The CALIPSO automated aerosol classification and lidar ratio selection algorithm, *J. Atmos. Oceanic Technol.*, *26*, 1994–2014, doi:10.1175/2009JTECHA1231.1.
- Prospero, J. M., W. M. Landing, and M. Schulz (2010), African dust deposition to Florida: Temporal and spatial variability and comparison to models, *J. Geophys. Res.*, *115*, D13304, doi:10.1029/2009JD012773.
- Qian, W., L. Quan, and S. Shi (2002), Variations of the dust storm in China and its climatic control, *J. Clim.*, *15*, 1216–1229, doi:10.1175/1520-0442(2002)015<1216:VOTDSI>2.0.CO;2.
- Rasch, P. J., et al. (2000), A comparison of scavenging and deposition processes in global models: Results from the WCRP Cambridge Workshop of 1995, *Tellus, Ser. B*, *52*, 1025–1056, doi:10.1034/j.1600-0889.2000.00980.x.

- Rasch, P. J., W. D. Collins, and B. E. Eaton (2001), Understanding the INDOEX aerosol distributions with an aerosol assimilation, *J. Geophys. Res.*, *106*, 7337–7355, doi:10.1029/2000JD900508.
- Real, E., et al. (2010), Cross-hemispheric transport of central African biomass burning pollutants: Implications for downwind ozone production, *Atmos. Chem. Phys.*, *10*, 3027–3046, doi:10.5194/acp-10-3027-2010.
- Reeves, C. E., et al. (2010), Chemical and aerosol characterisation of the troposphere over West Africa during the monsoon period as part of AMMA, *Atmos. Chem. Phys.*, *10*, 7575–7601, doi:10.5194/acp-10-7575-2010.
- Reid, J. S., R. Koppmann, T. F. Eck, and D. P. Eleuterio (2005), A review of biomass burning emissions part II: Intensive physical properties of biomass burning particles, *Atmos. Chem. Phys.*, *5*, 799–825, doi:10.5194/acp-5-799-2005.
- Remer, L. A., et al. (2005), The MODIS aerosol algorithm, products, and validation, *J. Atmos. Sci.*, *62*, 947–973, doi:10.1175/JAS3385.1.
- Schulz, M., et al. (2006), Radiative forcing by aerosols as derived from the AeroCom present-day and pre-industrial simulations, *Atmos. Chem. Phys.*, *6*, 5225–5246, doi:10.5194/acp-6-5225-2006.
- Schulz, M., M. Chin, and S. Kinne (2009), The Aerosol Model Comparison Project, AeroCom, Phase II: Clearing up diversity, *IGAC Newsl.*, *41*, 2–11.
- Schütz, L. (1977), Saharan dust transport over the North Atlantic Ocean—Model calculations and measurements, in *Scope 14: Saharan Dust: Mobilisation, Transport, Deposition*, edited by C. Moralls, pp. 267–277, John Wiley, Hoboken, N. J.
- Schwarz, J. P., J. R. Spackman, R. S. Gao, L. A. Watts, P. Stier, M. Schulz, S. M. Davis, S. C. Wofsy, and D. W. Fahey (2010), Global-scale black carbon profiles observed in the remote atmosphere and compared to models, *Geophys. Res. Lett.*, *37*, L18812, doi:10.1029/2010GL044372.
- Shimizu, A., N. Sugimoto, I. Matsui, K. Arao, I. Uno, T. Murayama, N. Kagawa, K. Aoki, A. Uchiyama, and A. Yamazaki (2004), Continuous observations of Asian dust and other aerosols by polarization lidars in China and Japan during ACE-Asia, *J. Geophys. Res.*, *109*, D19S17, doi:10.1029/2002JD003253.
- Sicard, M., F. Rocadenbosch, M. N. M. Reba, A. Comerón, S. Tomás, D. García-Vizcaino, O. Batet, R. Barrios, D. Kumar, and J. M. Baldasano (2011), Seasonal variability of aerosol optical properties observed by means of a Raman lidar at an EARLINET site over northeastern Spain, *Atmos. Chem. Phys.*, *11*, 175–190, doi:10.5194/acp-11-175-2011.
- Stephens, G. L., et al. (2002), The CloudSat mission and the A-Train: A new dimension of space-based observations of clouds and precipitation, *Bull. Am. Meteorol. Soc.*, *83*, 1771–1790, doi:10.1175/BAMS-83-12-1771.
- Stier, P., et al. (2005), The aerosol-climate model ECHAM5-HAM, *Atmos. Chem. Phys.*, *5*, 1125–1156, doi:10.5194/acp-5-1125-2005.
- Stier, P., J. Feichter, S. Kloster, E. Vignati, and J. Wilson (2006), Emission-induced nonlinearities in the global aerosol system: Results from the ECHAM5-HAM aerosol-climate model, *J. Clim.*, *19*, 3845–3862, doi:10.1175/JCLI3772.1.
- Stier, P., J. H. Seinfeld, S. Kinne, and O. Boucher (2007), Aerosol absorption and radiative forcing, *Atmos. Chem. Phys.*, *7*, 5237–5261, doi:10.5194/acp-7-5237-2007.
- Takemura, T., H. Okamoto, Y. Maruyama, A. Numaguti, A. Higurashi, and T. Nakajima (2000), Global three-dimensional simulation of aerosol optical thickness distribution of various origins, *J. Geophys. Res.*, *105*, 17,853–17,873, doi:10.1029/2000JD900265.
- Takemura, T., T. Nakajima, O. Dubovik, B. N. Holben, and S. Kinne (2002), Single-scattering albedo and radiative forcing of various aerosol species with a global three-dimensional model, *J. Clim.*, *15*, 333–352, doi:10.1175/1520-0442(2002)015<0333:SSAARF>2.0.CO;2.
- Takemura, T., T. Nozawa, S. Emori, T. Y. Nakajima, and T. Nakajima (2005), Simulation of climate response to aerosol direct and indirect effects with aerosol transport-radiation model, *J. Geophys. Res.*, *110*, D02202, doi:10.1029/2004JD005029.
- Textor, C., et al. (2006), Analysis and quantification of the diversities of aerosol life cycles within AeroCom, *Atmos. Chem. Phys.*, *6*, 1777–1813, doi:10.5194/acp-6-1777-2006.
- Textor, C., et al. (2007), The effect of harmonized emissions on aerosol properties in global models—An AeroCom experiment, *Atmos. Chem. Phys.*, *7*, 4489–4501, doi:10.5194/acp-7-4489-2007.
- Tie, X., G. Brasseur, L. Emmons, L. Horowitz, and D. Kinnison (2001), Effects of aerosols on tropospheric oxidants: A global model study, *J. Geophys. Res.*, *106*, 22,931–22,964, doi:10.1029/2001JD900206.
- Tie, X. X., S. Madronich, S. Walters, D. P. Edwards, P. Ginoux, N. Mahowald, R. Y. Zhang, C. Lou, and G. Brasseur (2005), Assessment of the global impact of aerosols on tropospheric oxidants, *J. Geophys. Res.*, *110*, D03204, doi:10.1029/2004JD005359.
- Tosca, M. G., J. T. Randerson, C. S. Zender, D. L. Nelson, D. J. Diner, and J. A. Logan (2011), Dynamics of fire plumes and smoke clouds associated with peat and deforestation fires in Indonesia, *J. Geophys. Res.*, *116*, D08207, doi:10.1029/2010JD015148.
- Tsay, S.-C. (2009), Outbreaks of Asian dust storms: An overview from satellite and surface perspectives, in *Recent Progress in Atmospheric Sciences: Applications to the Asia Pacific Region*, edited by K. N. Liou and M.-D. Chou, pp. 373–401, World Sci., Singapore, doi:10.1142/9789812818911_0018.
- Vaughan, M., S. Young, D. Winker, K. Powell, A. Omar, Z. Liu, Y. Hu, and C. Hostetler (2004), Fully automated analysis of space-based lidar data: An overview of the CALIPSO retrieval algorithms and data products, *Proc. SPIE Int. Soc. Opt. Eng.*, *5575*, 16–30.
- Vaughan, M., D. Winker, and K. Powell (2005), CALIOP algorithm theoretical basis document, part 2: Feature detection and layer properties algorithms, *PC-SCT-202.01*, NASA Langley Res. Cent., Hampton, Va. [Available at http://www-calipso.larc.nasa.gov/resources/project_documentation.php.]
- Vaughan, M., et al. (2010), Strategies for Improved CALIPSO Aerosol Optical Depth Estimates, paper presented at 25th International Laser Radar Conference, Int. Assoc. of Meteorol. and Atmos. Phys., St. Petersburg, Russia.
- Veefkind, J. P., K. F. Boersma, J. Wang, T. P. Kurosu, N. Krotkov, K. Chance, and P. F. Levelt (2011), Global satellite analysis of the relation between aerosols and short-lived trace gases, *Atmos. Chem. Phys.*, *11*, 1255–1267, doi:10.5194/acp-11-1255-2011.
- Vernier, J.-P., J.-P. Pommereau, L. W. Thomason, J. Pelon, A. Garnier, T. Deshler, J. Jumelet, and J. K. Nielsen (2011), Overshooting of clean tropospheric air in the tropical lower stratosphere as seen by the CALIPSO lidar, *Atmos. Chem. Phys.*, *11*, 9683–9696, doi:10.5194/acp-11-9683-2011.
- Wang, X., J. Huang, R. Zhang, B. Chen, and J. Bi (2010), Surface measurements of aerosol properties over northwest China during ARM China, 2008 deployment, *J. Geophys. Res.*, *115*, D00K27, doi:10.1029/2009JD013467.
- Washington, R., M. Todd, N. J. Middleton, and A. S. Goudie (2003), Dust-storm source areas determined by the Total Ozone Monitoring Spectrometer and surface observations, *Ann. Assoc. Am. Geogr.*, *93*(2), 297–313.
- Winker, D. M., W. H. Hunt, and M. J. McGill (2007), Initial performance assessment of CALIOP, *Geophys. Res. Lett.*, *34*, L19803, doi:10.1029/2007GL030135.
- Winker, D. M., M. A. Vaughan, A. Omar, Y. Hu, K. A. Powell, Z. Liu, W. H. Hunt, and S. A. Young (2009), Overview of the CALIPSO mission and CALIOP data processing algorithms, *J. Atmos. Oceanic Technol.*, *26*, 2310–2323, doi:10.1175/2009JTECHA1281.1.
- Wong, S., A. E. Dessler, N. M. Mahowald, P. Yang, and Q. Feng (2009), Maintenance of lower tropospheric temperature inversion in the Saharan air layer by dust and dry anomaly, *J. Clim.*, *22*, 5149–5162, doi:10.1175/2009JCLI2847.1.
- Wu, D. L., J. H. Chae, A. Lambert, and F. F. Zhang (2011), Characteristics of CALIOP attenuated backscatter noise: Implication for cloud/aerosol detection, *Atmos. Chem. Phys.*, *11*, 2641–2654, doi:10.5194/acp-11-2641-2011.
- Young, S. A., and M. A. Vaughan (2009), The retrieval of profiles of particulate extinction from Cloud Aerosol Lidar Infrared Pathfinder Satellite Observations (CALIPSO) data: Algorithm description, *J. Atmos. Oceanic Technol.*, *26*, 1105–1119, doi:10.1175/2008JTECHA1221.1.
- Yu, H., L. A. Remer, M. Chin, H. Bian, R. G. Kleidman, and T. Diehl (2008), A satellite-based assessment of transpacific transport of pollution aerosol, *J. Geophys. Res.*, *113*, D14S12, doi:10.1029/2007JD009349.
- Yu, H., M. Chin, D. M. Winker, A. H. Omar, Z. Liu, C. Kittaka, and T. Diehl (2010), Global view of aerosol vertical distributions from CALIPSO lidar measurements and GOCART simulations: Regional and seasonal variations, *J. Geophys. Res.*, *115*, D00H30, doi:10.1029/2009JD013364.
- Zhang, J., J. S. Reid, D. Westphal, N. Baker, and E. Hyer (2008), A system for operational aerosol optical depth data assimilation over global oceans, *J. Geophys. Res.*, *113*, D10208, doi:10.1029/2007JD009065.
- Zhang, J., J. R. Campbell, J. S. Reid, D. L. Westphal, N. L. Baker, W. F. Campbell, and E. J. Hyer (2011), Evaluating the impact of assimilating CALIOP-derived aerosol extinction profiles on a global mass transport model, *Geophys. Res. Lett.*, *38*, L14801, doi:10.1029/2011GL047737.
- Zhang, X. Y. (2001), Source distributions, emission, transport, deposition of Asian dust and loess accumulation (in Chinese), *Quat. Sci.*, *21*(1), 29–40.