

## *Arcobacter defluvii* sp. nov., isolated from sewage samples

Luis Collado,<sup>1,2</sup> Arturo Levican,<sup>1</sup> Jessica Perez<sup>1</sup> and Maria José Figueras<sup>1</sup>

### Correspondence

Maria José Figueras  
mariajose.figueras@urv.cat

<sup>1</sup>Unitat de Microbiologia, Departament de Ciències Mèdiques Bàsiques, Facultat de Medicina i Ciències de la Salut. IISPV. Universitat Rovira i Virgili, Reus, Spain

<sup>2</sup>Institute of Microbiology, Faculty of Sciences, Universidad Austral de Chile, Valdivia, Chile

A study employing a polyphasic taxonomic approach was undertaken to clarify the position of 12 isolates recovered from sewage samples. These isolates were recognized as a potential novel species because a new and specific pattern was produced with the 16S rRNA-RFLP *Arcobacter* identification method. The sequences of the 16S rRNA gene not only supported the classification of these novel strains as members of the genus *Arcobacter*, but also showed that they formed a separate phylogenetic line. Strain SW28-11<sup>T</sup>, chosen as the representative of these strains, showed 16S rRNA gene sequence similarity of 95.6% with the closest related species *Arcobacter nitrofigilis*. The phylogenetic position of the novel strains was further confirmed by analysis of the housekeeping genes *hsp60*, *rpoB* and, for the first time, *gyrB*. The latter proved to be an excellent additional gene for establishing the phylogeny of this genus. These data, together with phenotypic characterization, revealed that this group of isolates represent a novel species of the genus *Arcobacter*. The name *Arcobacter defluvii* sp. nov., is proposed, with the type strain SW28-11<sup>T</sup> (=CECT 7697<sup>T</sup>=LMG 25694<sup>T</sup>).

The genus *Arcobacter* is an unusual taxon within the class *Epsilonproteobacteria* in that it contains both pathogenic and free-living species that are found in a wide range of environments (Debruyne *et al.*, 2008). At the time of writing, this genus comprises ten recognized species: *Arcobacter butzleri*, *Arcobacter cryaerophilus* (with two subgroups 1A and 1B), *Arcobacter skirrowii*, *Arcobacter nitrofigilis* (Vandamme *et al.*, 1992), *Arcobacter cibarius* (Houf *et al.*, 2005), *Arcobacter halophilus* (Donachie *et al.*, 2005), and the recently described species *Arcobacter mytili* (Collado *et al.*, 2009a), *Arcobacter thereius* (Houf *et al.*, 2009), *Arcobacter marinus* (Kim *et al.*, 2010) and *Arcobacter trophiarum* (De Smet *et al.*, 2011). Another novel species, *A. molluscorum* has been described recently (Figueras *et al.*, 2011). A *Candidatus* taxon, ‘*Candidatus Arcobacter sulfidicus*’ has also been described (Wirsen *et al.*, 2002; Debruyne *et al.*, 2008).

The species *A. butzleri*, *A. cryaerophilus* and *A. skirrowii* are associated with gastrointestinal disease and

bacteraemia in humans and with reproduction disorders, mastitis and gastric ulcers in farm animals (Ho *et al.*, 2006). The latter two species can also be recovered from the faeces of healthy livestock (van Driessche *et al.*, 2003; Vandamme *et al.*, 2005). *A. thereius* was isolated from samples from porcine abortions, but the role of this species in pathogenicity is still unknown (Houf *et al.*, 2009). The other species of the genus have not so far been directly related to animal or human diseases (Ho *et al.*, 2006).

In relation to transmission routes, it has been demonstrated that *A. butzleri*, *A. cryaerophilus* and *A. skirrowii* are very prevalent in meat products and shellfish (Collado *et al.*, 2009b) and in faecally polluted environmental waters, sewage and sludge (Collado *et al.*, 2008). A high genetic diversity of these species has been found in river water with different degrees of sewage pollution (Collado *et al.*, 2010) and in wastewater samples (González *et al.*, 2010).

In a survey carried out in Catalonia (north-east Spain), a group of isolates recovered from sewage samples was studied using a polyphasic taxonomic approach, including genotyping by enterobacterial repetitive intergenic consensus PCR (ERIC-PCR), phylogenetic analysis of the 16S rRNA, *hsp60*, *rpoB* and *gyrB* gene sequences and phenotypic characterization. Based on the results obtained, it is proposed that this group of isolates represent a novel species of the genus *Arcobacter*.

**Abbreviations:** DDH, DNA–DNA hybridization; ERIC-PCR, enterobacterial repetitive intergenic consensus PCR; IW, inflow; PS1, primary sedimentation tanks; SBT, secondary biological treatment; SS2, secondary sedimentation tanks; TTC, 2,3,5 tetrazolium chloride; WWTP, wastewater treatment plant.

The GenBank/EMBL/DDBJ accession numbers for the 16S rRNA, *hsp60*, *rpoB* and *gyrB* genes of strain SW28-11<sup>T</sup> are HQ115595, FR682128, HQ121499 and HQ121502, respectively.

Supplementary figures are available with the online version of this paper.

Twelve isolates were recovered from the wastewater treatment plant (WWTP) in the town of Reus (north-east Spain) in April 2009. Sewage samples were taken from the inflow to the treatment plant (IW) and during treatment at the primary sedimentation tanks (PS1), the secondary biological treatment (SBT), the secondary sedimentation tanks (SS2) and from the outflow of treated water (with secondary treatment) from the WWTP. The isolation methodology was the same as previously described by Collado *et al.* (2008), although this time the samples were analysed in parallel by both direct plating and after enrichment. The origin of these isolates and their specific isolation after direct plating or enrichment are detailed in Supplementary Table S1 (available in IJSEM Online). The 12 new isolates were recovered from all points except from the outflow treated water of the WWTP and showed the colony morphology typical of members of the genus *Arcobacter* on sheep blood agar, i.e. small, translucent colourless or beige to off-white. All isolates appeared as Gram-negative, slightly curved rods under examination with a light microscope. These isolates were further recognized as belonging to the genus *Arcobacter* by their capacity to grow under aerobic conditions and at 30 °C, their inability to use carbohydrates and their production of oxidase. Additionally, this group of isolates was suspected to belong to a potential novel species because they showed a new and common restriction pattern that was different from those seen for the other species of the genus according to the 16S rRNA-RFLP *Arcobacter* identification method (Figueras *et al.*, 2008) (see Supplementary Fig. S1).

To avoid studying duplicates of the same strain, all isolates were genotyped by ERIC-PCR using primers and conditions as described previously (Houf *et al.*, 2002). DNA patterns that differed by one or more DNA fragments were considered to be different genotypes (Houf *et al.*, 2002; Collado *et al.*, 2010). Gel images were saved as TIFF files, normalized with the GeneRuler 100nt Plus Ladder (Fermentas) and further analysed by Bionumerics software, version 6.1 (Applied Maths). A dendrogram was constructed using the Jaccard similarity coefficient with a band-matching tolerance of 2 % and the cluster analysis of similarity matrices was calculated with the unweighted pair group method with arithmetic mean (UPGMA). This typing method generated different patterns for the eight new isolates (see Supplementary Fig. S2 in IJSEM Online). Three coincident genotypes were indistinctly found in isolates recovered from different sampling points (IW, PS1, SBT and SS2) of the WWTP. Strains belonging to the same genotype, strains SW28-9 and SW29-4 or strains SW28-10, SW29-3 and SW30-1, were recovered using the two isolation procedures described (see Supplementary Table S1). A molecular and phenotypic characterization was performed following the proposals for the minimal standards for describing novel species of the family *Campylobacteraceae* (Ursing *et al.*, 1994).

In order to establish the taxonomic position of the new isolates, the 16S rRNA and *rpoB* genes were sequenced for

strains SW28-7, SW28-11<sup>T</sup> and SW30-2 (chosen as representatives of the group) as described by Collado *et al.* (2009a). For sequencing the *hsp60* gene, the conditions were as described by Debruyne *et al.* (2010). In the present study, the taxonomic value of the *gyrB* gene (encoding the B subunit of DNA gyrase) was also assessed as a complementary phylogenetic and identification marker for the genus *Arcobacter*. For the primer design of the *gyrB* gene, a preliminary sequence (1100 bp) for all type strains of the genus *Arcobacter* was obtained with the degenerate primers UP1 and UP2r as described by Yamamoto & Harayama (1995). On the basis of these sequences, the primers *gyrB*-Arc-7F (5'-GTTTAYCAYTT-TGAAGGTGG-3') and *gyrB*-Arc-14R (5'-CTAGATTTT-TCAACATTTAAAAT-3') were designed, which enabled the amplification of a 722 bp fragment from the *gyrB* gene of species of the genus *Arcobacter*. These primers were also used for sequencing. Both the design of the primers and the sequencing were performed by the Molecular Diagnostics Center, Orihuela, Spain. The specific PCR amplifications for the *gyrB* gene were conducted after extracting the DNA from a single colony with the InstaGene Matrix (Bio-Rad Laboratories) following the manufacturer's instructions in a 50 µl reaction mix containing 1 µl genomic DNA, 0.2 µM of each dNTP, 0.2 µM of each primer, 2 mM MgCl<sub>2</sub>, 1 U *Taq* DNA polymerase (Invitrogen) and the buffer supplied with the enzyme. PCR conditions applied were 3 min at 94 °C followed by 35 cycles of 15 s at 94 °C, 30 s at 50 °C and 45 s at 72 °C, followed by 5 min at 72 °C. The PCR product was sequenced using a BigDye Terminator v3.1 Cycle Sequencing kit (Applied Biosystems) with an ABI PRISM 3100-Avant Genetic Analyzer (Applied Biosystems), according to the manufacturer's instructions. Phylogenetic analyses were performed after multiple alignments of sequences by CLUSTAL W (Thompson *et al.*, 1994), using MEGA software version 4 (Tamura *et al.*, 2007), with Kimura's two-parameter model (Kimura, 1980) and clustering with the neighbour-joining method (Saitou & Nei, 1987). The percentage nucleotide substitutions for a continuous stretch of 665 bp, corresponding to approximately 29 % of the coding region (672–1342 bp according to *Escherichia coli* numbering) was calculated from the *gyrB* gene sequences obtained. The sequences of all genes (16S rRNA, *rpoB*, *hsp60* and *gyrB*) of two representative strains for each species, either determined in previous studies or sequenced in the present study, were included in the phylogenetic analysis. For *A. trophiarum*, apart from the type and a reference strain (LMG 25534<sup>T</sup> and LMG 25535), an additional identified isolate, FE2 (=CECT 7650), was evaluated on the basis of its 99.8 % similarity for the 16S rRNA gene (M. J. Figueras, L. Collado, A. Levican & H. Fernández, unpublished results).

The 16S rRNA gene sequences obtained for the new strains (SW28-7, SW28-11<sup>T</sup> and SW30-2) were compared with public databases using the EzTaxon tool (Chun *et al.*, 2007). The 16S rRNA gene sequence of strain SW28-11<sup>T</sup>

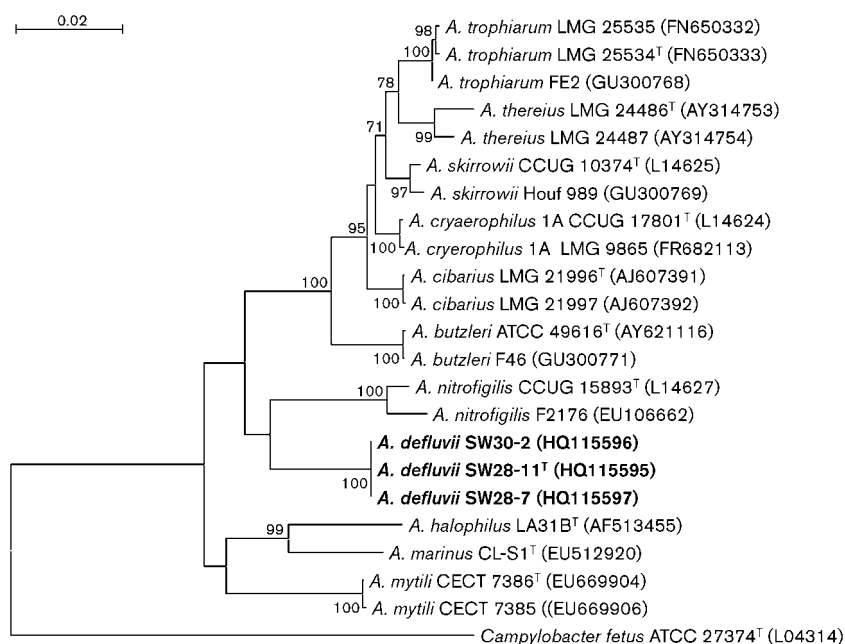
showed similarity values of between 93.8 and 95.6 % with the sequences of the type strains of all species, including *A. marinus* (Kim *et al.*, 2010), *A. trophiarum* (De Smet *et al.*, 2011) and *A. molluscorum* (Figueras *et al.*, 2011). The highest value (95.6 %) was obtained with the type strain of *A. nitrofigilis*, which is the type species of the genus. The 16S rRNA gene similarity between strain SW28-11<sup>T</sup> and the other strains (SW28-7 and SW30-2) was >99.7 %, confirming that they belonged to the same species. The phylogenetic tree constructed using 16S rRNA gene sequences (Fig. 1) showed these sewage strains as an independent phylogenetic line within the genus *Arcobacter* clustering with *A. nitrofigilis* with a low bootstrap value of 53 % (data not shown).

The tree constructed using the *gyrB* gene sequence data was useful in delineating all recognized species of the genus *Arcobacter* and the new strains as independent phylogenetic lines (Supplementary Fig. S3), in agreement with the phylogenies derived from the 16S rRNA (Fig. 1), *hsp60* (Supplementary Fig. S4) and *rpoB* genes (Supplementary Fig. S5). Furthermore the inter-species rate of nucleotide substitutions for the *gyrB* gene was over 9.5 %, while the intra-species variation (on the basis of two strains of each species investigated) ranged from 0.2 to 8.6 % and was comparable to the values previously described for the *rpoB* gene for members of the genus *Arcobacter* (Collado *et al.*, 2009a). This indicated that the *gyrB* is an excellent additional gene for inferring the phylogeny of members of the genus *Arcobacter*. The phylogenetic trees constructed with the concatenated sequences of the *hsp60*, *rpoB* and *gyrB* genes also revealed that the novel strains belonged to a new phylogenetic line within this genus, reinforcing their phylogenetic position close to the group of environmental

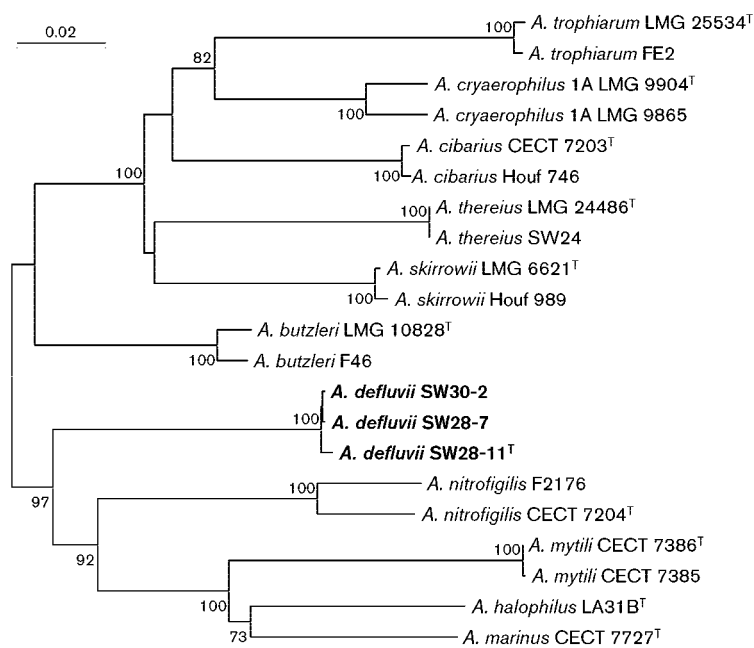
members of the genus *Arcobacter* that includes *A. nitrofigilis* (Fig. 2).

DNA–DNA hybridization (DDH) studies were performed only between strain SW28-11<sup>T</sup> and SW31-1 as these strains showed 16S rRNA gene sequence similarities of <97 % with other species of the genus *Arcobacter* and therefore the overall genomic relatedness was considered to be less than 70 % (Stackebrandt & Goebel, 1994; Stackebrandt & Ebers, 2006). DNA was extracted using the method described by Marmur (1961) and DDH was conducted according to the method described by Urdaín *et al.* (2008). Renaturation was performed under optimal conditions at 57 °C, single- and double-stranded DNA molecules were separated by the use of hydroxyapatite and colour development was measured at 405 nm using a Bio Whittaker Kinetic-QCL microplate reader. DDH values were determined three times for both direct and reciprocal reactions. Mean DDH relatedness % ( $\pm$ SD) between strains SW28-11<sup>T</sup> and SW31-1 was 80.4 % ( $\pm$ 5.48), confirming that these strains belonged to the same species.

The procedures for phenotypic characterization included the recommended media and methods as described previously (Ursing *et al.*, 1994; On *et al.*, 1996; Vandamme *et al.*, 2005). All tests were conducted at least twice with positive and negative controls for the eight new strains and for the type strains of all species of the genus *Arcobacter*. However, as previously mentioned, an additional strain, FE2, of *A. trophiarum* (M. J. Figueras, L. Collado, A. Levican & H. Fernández, unpublished results) was also tested. Motility was observed from young cultures in broth by examining wet mounts by phase-contrast microscopy. Cell size, morphology and presence of flagella were determined by electron microscopy following the procedures described by Collado *et al.* (2009a). The



**Fig. 1.** Neighbour-joining tree based on 16S rRNA gene sequences showing the phylogenetic position of *Arcobacter defluvii* sp. nov. within the genus *Arcobacter*. Bootstrap values (>70 %) based on 1000 replications are shown at the nodes of the tree. Bar, 2 substitutions per 100 bp.



**Fig. 2.** Neighbour-joining tree based on the concatenated *hsp60*, *rpoB* and *gyrB* gene sequences showing the phylogenetic position of *Arcobacter defluvii* sp. nov. within the genus *Arcobacter*. Bootstrap values (>70%) based on 1000 replications are shown at the nodes of the tree. Bar, 2 substitutions per 100 bp.

isolates showed a typical cell size and morphology for members of the genus *Arcobacter*, as well as the presence of a single polar flagellum (Supplementary Fig. S6). Phenotypically, the new strains ( $n=8$ ) could be differentiated from all other species of the genus *Arcobacter* by several specific tests as shown in Table 1. The easiest key diagnostic test was the ability to produce urease, which was characteristic only for the new strains and for *A. nitrofigilis*. The novel strains could be distinguished from *A. nitrofigilis* by their ability to grow in MacConkey agar and minimal medium and inability to grow in media containing 4% (w/v) NaCl. Phenotypic differentiation from *A. butzleri*, the most commonly isolated species, was possible by the novel strains' ability to produce urease and inability to grow in nutrient agar medium containing 0.04% 2,3,5 triphenyl tetrazolium chloride (TTC).

On the basis of the phylogenetic relationships and phenotypic characteristics, this study has revealed the existence of a novel species of the genus *Arcobacter*, for which the name *Arcobacter defluvii* sp. nov. is proposed. The species-specific RFLP pattern (407/243/ and a single band of 141–138 bp) observed for these new strains (Supplementary Fig. S1), obtained after the digestion of 1026 bp of the 16S rRNA gene with the *MseI* enzyme (Figueras *et al.*, 2008), was identical to the pattern obtained after a computational restriction (*MseI*) simulation of the 16S rRNA gene sequences. Therefore, the 16S rRNA-RFLP identification method (Figueras *et al.*, 2008), was proved to be a reliable and fast technique for the characterization of this novel species, and has been established as a useful method to differentiate all species of the genus *Arcobacter*, with the exception of *A. butzleri* from *A. thereius* (Collado *et al.*, 2009b). The novel strains described in this paper produce an amplicon of almost the same size (230 bp) as

that produced by *A. cryaerophilus* (257 bp) with the multiplex-PCR (m-PCR) of Houf *et al.* (2000) (Supplementary Fig. S7). After sequencing, this amplicon corresponded to the region of the 16S rRNA gene between nucleotides 1130 and 1357 (data not shown). With the m-PCR proposed recently by Doudidah *et al.* (2010), the new strains showed an amplicon of the same size expected for *A. butzleri* (Supplementary Fig. S8). Consequently, these methods are not useful since they could identify the novel species as members of existing species and this may hamper efforts to establish the true prevalence of this novel species.

In a previous study, all sewage samples from the same WWTP were positive for the presence of members of the genus *Arcobacter* and showed a great diversity of species (Collado *et al.*, 2008). Apart from the demonstrated association of members of the genus *Arcobacter* with faecal pollution in that study, it is clear that sewage may be an important reservoir for species of this genus. In a recent study investigating the population structure of micro-organisms in the inflow sewage water to WWTPs in Milwaukee (USA) using pyrosequencing of hypervariable regions of the 16S rRNA genes, a great number of sequences of members of the genus *Arcobacter* were found, contrary to the few detected in surface waters (McLellan *et al.*, 2010). These authors indicated that further work is needed to determine if these micro-organisms are residents growing in sewer systems. It remains to be confirmed whether *Arcobacter defluvii* sp. nov. could have a human origin. This is highly probable, considering that the WWTP from which the strains were isolated treated mainly human sewage, although the alternative hypothesis should not be ignored.

A recent BLASTN search showed that the 16S rRNA gene sequence of the type strain (SW28-11<sup>T</sup>) of *A. defluvii*

**Table 1.** Differential characteristics of *Arcobacter defluvii* sp. nov., and other members of the genus *Arcobacter*

Taxa: 1, *A. defluvii* sp. nov. ( $n=8$ , data from this study); 2, *A. nitrofigilis* ( $n=4$ ) (On *et al.*, 1996; Collado *et al.*, 2009a); 3, *A. cryaerophilus* ( $n=19$ ) (On *et al.*, 1996); 4, *A. butzleri* ( $n=12$ ) (On *et al.*, 1996); 5, *A. skirrowii* ( $n=9$ ) (On *et al.*, 1996); 6, *A. cibarius* ( $n=15$ ) (Houf *et al.*, 2005); 7, *A. halophilus* LA31B<sup>T</sup> (Donachie *et al.*, 2005); 8, *A. mytili* ( $n=3$ ) (Collado *et al.*, 2009a); 9, *A. thereius* ( $n=8$ ) (Houf *et al.*, 2009); 10, *A. marinus* CL-S1<sup>T</sup> (Kim *et al.*, 2010); 11, *A. trophiarum* ( $n=11$ ) (De Smet *et al.*, 2011); 12, *A. molluscorum* ( $n=3$ ) (Figueras *et al.*, 2011). Unless otherwise indicated: +,  $\geq 95\%$  strains positive; -,  $\leq 11\%$  strains positive; v, 12–94% strains positive; ND, not determined; CO<sub>2</sub> indicates microaerobic conditions.

Characteristic	1	2	3	4	5	6	7	8	9	10	11	12
Growth at/in												
Air at 37 °C	+	v	v	+	+	-	+	+	-	+	-	+
CO <sub>2</sub> at 37 °C	+	-	v	+	+	+	+	+	-	+	-	+
4% (w/v) NaCl	-	+	-	-	+	-	+	+	-	+	+	+
Growth on:												
1% (w/v) glycine	-	-	-	-	-	-	+†	+	+	+†	v‡	-
MacConkey	+	-	v	+	-	+	-	+	v	-†	v*	+
Minimal media	+	-	-§	+	-	+	-	-	+	-	-‡	-
0.04% TTC	-	-	+	+	v	v	-	-	v	ND	ND	-
Resistance to:												
Cefoperazone (64 mg l <sup>-1</sup> )	v	-	+	+	+	+	-	-	+	-†	+	+
Enzyme activity												
Catalase	+	+	+	v	+	v	-	+	+	-	+	+
Urease	+	+	-	-	-	-	-	-	-	-	-	-
Nitrate reduction	+	+	+¶	+	+	-	+	-	+	+	-	+ #
Indoxyl acetate hydrolysis	+	+	+	+	+	+	+	-	+	+	+	-

\*Strain FE2 (=CECT 7650) of this species was unable to grow in media with 4% NaCl, but grew in MacConkey agar.

†Data from (Figueras *et al.*, 2011), all tested in media supplemented with 2% NaCl.

‡Test not evaluated by De Smet *et al.* (2011) and derived from our study (Figueras *et al.*, 2011).

§Two strains (LMG 7537 and LMG 10241) of four strains tested were positive (Collado *et al.*, 2009a).

||Weak reaction.

¶Two strains (LMG 9904<sup>T</sup> and LMG 9065) of four strains tested were negative (Collado *et al.*, 2009a).

#Nitrate is reduced after 72 h and 5 days for all strains under microaerobic and aerobic conditions, respectively.

sp. nov. showed 99% similarity with the sequence of a strain named *Arcobacter*-L (GenBank accession no. FJ968635). Strain SW28-11<sup>T</sup> and *Arcobacter*-L also clustered together in a phylogenetic tree (data not shown). Strain *Arcobacter*-L was isolated as a part of a microbial fuel cell community that generated electricity (Fedorovich *et al.*, 2009). It remains to be investigated whether strains of *A. defluvii* sp. nov. could have a similar biotechnological potential.

### Description of *Arcobacter defluvii* sp. nov.

*Arcobacter defluvii* (de.flu'vi.i. L. neut. n. *defluvium* sewage; L. gen. n. *defluvii* of sewage).

Cells are Gram-negative, slightly curved rods, non-encapsulated, non-spore-forming and 0.3–0.5 µm wide and 1–2 µm long. Motile by a single polar flagellum. Colonies on blood agar incubated in aerobic conditions at 30 °C for 48 h are 2–4 mm in diameter, beige to off-white, circular with entire margins, convex and non-swarming. Pigments are not produced. Grows on blood agar at room temperature (18–22 °C), 30 °C and 37 °C under aerobic or microaerobic culture conditions with no significant differences. Weak growth is obtained both in anaerobic

conditions at 30 °C and in aerobic conditions at 42 °C. No haemolysis is observed on TSA supplemented with 5% sheep blood. Produces oxidase and shows a weak catalase activity. Hydrolyses indoxyl acetate. Does not hydrolyse casein, lecithin or starch. Urea is hydrolysed and nitrate is reduced. Hydrogen sulphide is not produced in triple-sugar-iron agar. Under aerobic conditions, grows at 30 °C on MacConkey agar, on minimal media, on *Campylobacter* charcoal deoxycholate agar and on media containing: 2% NaCl, 0.1% sodium deoxycholate, 1% oxgall, 0.05% safranin, 0.005% crystal violet, 0.005% basic fuchsin and 0.001% brilliant green. Three of the eight strains (37.5%), including the type strain, grow on media containing 64 mg cefoperazone l<sup>-1</sup>. Growth is not obtained on media containing 1% glycine, 4% (w/v) NaCl or 0.04% TTC.

The type strain, SW28-11<sup>T</sup> (=CECT 7697<sup>T</sup>=LMG 25694<sup>T</sup>), was isolated from raw sewage from the wastewater treatment plant in the town of Reus, Spain.

### Acknowledgements

This work was supported by funds from the European Commission for the HEALTHY WATER project (FOOD-CT-2006-036306). The

authors are solely responsible for the content of this publication. It does not represent the opinion of the European Commission. We thank the WWTP in Reus for their helpful assistance during sampling. Some of the sequences of the *gyrB* gene were determined by the Molecular Diagnostic Center (MDC), Orihuela, Spain. L. C. and A. L. are indebted to Universitat Rovira i Virgili for a doctoral grant.

## References

- Chun, J., Lee, J. H., Jung, Y., Kim, M., Kim, S., Kim, B. K. & Lim, Y. W. (2007). EzTaxon: a web-based tool for the identification of prokaryotes based on 16S ribosomal RNA gene sequences. *Int J Syst Evol Microbiol* **57**, 2259–2261.
- Collado, L., Inza, I., Guarro, J. & Figueras, M. J. (2008). Presence of *Arcobacter* spp. in environmental waters correlates with high levels of fecal pollution. *Environ Microbiol* **10**, 1635–1640.
- Collado, L., Cleenwerck, I., Van Trappen, S., De Vos, P. & Figueras, M. J. (2009a). *Arcobacter mytili* sp. nov., an indoxyl acetate-hydrolysis-negative bacterium isolated from mussels. *Int J Syst Evol Microbiol* **59**, 1391–1396.
- Collado, L., Guarro, J. & Figueras, M. J. (2009b). Prevalence of *Arcobacter* in meat and shellfish. *J Food Prot* **72**, 1102–1106.
- Collado, L., Kasimir, G., Perez, U., Bosch, A., Pinto, R., Saucedo, G., Huguet, J. M. & Figueras, M. J. (2010). Occurrence and diversity of *Arcobacter* spp. along the Llobregat River catchment, at sewage effluents and in a drinking water treatment plant. *Water Res* **44**, 3696–3702.
- De Smet, S., Vandamme, P., De Zutter, L., On, S. L., Doudiah, L. & Houf, K. (2011). *Arcobacter trophiarum* sp. nov., isolated from fattening pigs. *Int J Syst Evol Microbiol* **61**, 356–361.
- Debruyne, L., Gevers, D. & Vandamme, P. (2008). Taxonomy of the Family *Campylobacteraceae*. In *Campylobacter*, 3rd edn, pp. 3–25. Edited by I. Nachamkin, C. Szymanski & M. Blaser. Washington, DC: ASM press.
- Debruyne, L., Houf, K., Doudiah, L., De Smet, S. & Vandamme, P. (2010). Reassessment of the taxonomy of *Arcobacter cryaerophilus*. *Syst Appl Microbiol* **33**, 7–14.
- Donachie, S. P., Bowman, J. P., On, S. L. & Alam, M. (2005). *Arcobacter halophilus* sp. nov., the first obligate halophile in the genus *Arcobacter*. *Int J Syst Evol Microbiol* **55**, 1271–1277.
- Doudiah, L., De Zutter, L., Vandamme, P. & Houf, K. (2010). Identification of five human and mammal associated *Arcobacter* species by a novel multiplex-PCR assay. *J Microbiol Methods* **80**, 281–286.
- Fedorovich, V., Knighton, M. C., Pagaling, E., Ward, F. B., Free, A. & Goryanin, I. (2009). Novel electrochemically active bacterium phylogenetically related to *Arcobacter butzleri*, isolated from a microbial fuel cell. *Appl Environ Microbiol* **75**, 7326–7334.
- Figueras, M. J., Collado, L. & Guarro, J. (2008). A new 16S rDNA-RFLP method for the discrimination of the accepted species of *Arcobacter*. *Diagn Microbiol Infect Dis* **62**, 11–15.
- Figueras, M. J., Collado, L., Levican, A., Perez, J., Solsona, M. J. & Yustes, C. (2011). *Arcobacter molluscorum* sp. nov., a new species isolated from shellfish. *Syst Appl Microbiol* **34**, 105–109.
- González, A., Suski, J. & Ferrús, M. A. (2010). Rapid and accurate detection of *Arcobacter* contamination in commercial chicken products and wastewater samples by real-time polymerase chain reaction. *Foodborne Pathog Dis* **7**, 327–338.
- Ho, H. T., Lipman, L. J. & Gaastra, W. (2006). *Arcobacter*, what is known and unknown about a potential foodborne zoonotic agent! *Vet Microbiol* **115**, 1–13.
- Houf, K., Tutenel, A., De Zutter, L., Van Hoof, J. & Vandamme, P. (2000). Development of a multiplex PCR assay for the simultaneous detection and identification of *Arcobacter butzleri*, *Arcobacter cryaerophilus* and *Arcobacter skirrowii*. *FEMS Microbiol Lett* **193**, 89–94.
- Houf, K., De Zutter, L., Van Hoof, J. & Vandamme, P. (2002). Assessment of the genetic diversity among arcobacters isolated from poultry products by using two PCR-based typing methods. *Appl Environ Microbiol* **68**, 2172–2178.
- Houf, K., On, S. L., Coenye, T., Mast, J., Van Hoof, J. & Vandamme, P. (2005). *Arcobacter cibarius* sp. nov., isolated from broiler carcasses. *Int J Syst Evol Microbiol* **55**, 713–717.
- Houf, K., On, S. L., Coenye, T., Debruyne, L., De Smet, S. & Vandamme, P. (2009). *Arcobacter thereius* sp. nov., isolated from pigs and ducks. *Int J Syst Evol Microbiol* **59**, 2599–2604.
- Kim, H. M., Hwang, C. Y. & Cho, B. C. (2010). *Arcobacter marinus* sp. nov. *Int J Syst Evol Microbiol* **60**, 531–536.
- Kimura, M. (1980). A simple method for estimating evolutionary rates of base substitutions through comparative studies of nucleotide sequences. *J Mol Evol* **16**, 111–120.
- Marmur, J. (1961). A procedure for the isolation of deoxyribonucleic acid from microorganisms. *J Mol Biol* **3**, 208–218.
- McLellan, S. L., Huse, S. M., Mueller-Spitz, S. R., Andreishcheva, E. N. & Sogin, M. L. (2010). Diversity and population structure of sewage-derived microorganisms in wastewater treatment plant influent. *Environ Microbiol* **12**, 378–392.
- On, S. L., Holmes, B. & Sackin, M. J. (1996). A probability matrix for the identification of campylobacters, helicobacters and allied taxa. *J Appl Bacteriol* **81**, 425–432.
- Saitou, N. & Nei, M. (1987). The neighbor-joining method: a new method for reconstructing phylogenetic trees. *Mol Biol Evol* **4**, 406–425.
- Stackebrandt, E. & Ebers, J. (2006). Taxonomic parameters revisited: tarnished gold standards. *Microbiol Today* **33**, 152–155.
- Stackebrandt, E. & Goebel, B. M. (1994). A place for DNA-DNA reassociation and 16S rRNA sequence analysis in the present species definition in bacteriology. *Int J Syst Bacteriol* **44**, 846–849.
- Tamura, K., Dudley, J., Nei, M. & Kumar, S. (2007). MEGA4: molecular evolutionary genetics analysis (MEGA) software version 4.0. *Mol Biol Evol* **24**, 1596–1599.
- Thompson, J. D., Higgins, D. G. & Gibson, T. J. (1994). CLUSTAL W: improving the sensitivity of progressive multiple sequence alignment through sequence weighting, position-specific gap penalties and weight matrix choice. *Nucleic Acids Res* **22**, 4673–4680.
- Urdiain, M., López-López, A., Gonzalo, C., Busse, H. J., Langer, S., Kämpfer, P. & Rosselló-Móra, R. (2008). Reclassification of *Rhodobium marinum* and *Rhodobium pfennigii* as *Afifella marina* gen. nov., comb. nov. and *Afifella pfennigii* comb. nov., a new genus of photoheterotrophic *Alphaproteobacteria* and emended descriptions of *Rhodobium*, *Rhodobium orientis* and *Rhodobium gokarnense*. *Syst Appl Microbiol* **31**, 339–351.
- Ursing, J. B., Lior, H. & Owen, R. J. (1994). Proposal of minimal standards for describing new species of the family *Campylobacteraceae*. *Int J Syst Bacteriol* **44**, 842–845.
- van Driessche, E., Houf, K., van Hoof, J., De Zutter, L. & Vandamme, P. (2003). Isolation of *Arcobacter* species from animal feces. *FEMS Microbiol Lett* **229**, 243–248.
- Vandamme, P., Vancanneyt, M., Pot, B., Mels, L., Hoste, B., Dewettinck, D., Vlaes, L., van den Borre, C., Higgins, R. & other authors (1992). Polyphasic taxonomic study of the emended genus *Arcobacter* with *Arcobacter butzleri* comb. nov. and *Arcobacter skirrowii* sp. nov., an aerotolerant bacterium isolated from veterinary specimens. *Int J Syst Bacteriol* **42**, 344–356.

**Vandamme, P., Dewhirst, F. E., Paster, B. J. & On, S. L. W. (2005).** Genus II. *Arcobacter* Vandamme, Falsen, Rossau, Segers, Tytgat and De Ley 1991a, 99<sup>VP</sup>. In *Bergey's Manual of Systematic Bacteriology*, 2nd edn, vol. 2, pp. 1161–1165. Edited by D. J. Brenner, N. P. Kreig, J. T. Staley & G. M. Garrity. New York: Springer.

**Wirsen, C. O., Sievert, S. M., Cavanaugh, C. M., Molyneaux, S. J., Ahmad, A., Taylor, L. T., DeLong, E. F. & Taylor, C. D. (2002).**

Characterization of an autotrophic sulfide-oxidizing marine *Arcobacter* sp. that produces filamentous sulfur. *Appl Environ Microbiol* **68**, 316–325.

**Yamamoto, S. & Harayama, S. (1995).** PCR amplification and direct sequencing of *gyrB* genes with universal primers and their application to the detection and taxonomic analysis of *Pseudomonas putida* strains. *Appl Environ Microbiol* **61**, 1104–1109.