



Aspects of C^0 causal theory

Eric Ling¹

Received: 25 November 2019 / Accepted: 28 May 2020 / Published online: 8 June 2020
© The Author(s) 2020

Abstract

This paper serves as an introduction to C^0 causal theory. We focus on those parts of the theory which have proven useful for establishing spacetime inextendibility results in low regularity—a question which is motivated by the strong cosmic censorship conjecture in general relativity. This paper is self-contained; prior knowledge of causal theory is not assumed.

Keywords Causal theory · Low regularity

Contents

1	Introduction	2
2	Preliminary causal theory for C^0 spacetimes	3
2.1	C^0 spacetimes	3
2.2	Properties of timelike and causal curves	5
2.3	Limit curves	13
3	Global hyperbolicity for C^0 spacetimes	16
3.1	Globally hyperbolic spacetimes	16
3.2	Cauchy surfaces imply global hyperbolicity	19
3.3	Upper semi-continuity of the Lorentzian length functional	22
4	Bubbling spacetimes	28
4.1	Bubbling sets and causally plain spacetimes	28
4.2	Trapped sets in C^0 spacetimes	32
A	Appendix	34
A.1	Differences between C^0 and smooth (at least C^2) causal theory	34
A.2	Properties of locally Lipschitz curves	36
A.3	Achronal and edgeless subsets in a spacetime	39
	References	40

✉ Eric Ling
eling@math.miami.edu

¹ Department of Mathematics, KTH Royal Institute of Technology, Stockholm, Sweden

1 Introduction

Recently, there has been an interest in low regularity aspects of Lorentzian geometry motivated in part by the *strong cosmic censorship conjecture* in general relativity. Roughly, the conjecture states that the maximal globally hyperbolic development of generic initial data for the Einstein equations is inextendible as a suitably regular Lorentzian manifold. Formulating a precise statement of the conjecture is itself a challenge since one needs to make precise the phrases ‘generic initial data’ and ‘suitably regular Lorentzian manifold.’ Understanding the latter is where general relativity in low regularity and inextendibility results become significant.

The strongest form of the conjecture would prove inextendibility in the lowest regularity possible—continuity of the metric. Proving C^0 -inextendibility results is a nontrivial pursuit. The classical arguments of diverging curvature quantities only prove C^2 -inextendibility (since the curvature tensor requires two derivatives of the metric to be defined). The first example of a C^0 -inextendibility result is Sbierski’s impressive proof of the C^0 -inextendibility of Schwarzschild [19,20]. Since then other inextendibility results have been found [4–7] and also within the context of Lorentzian length spaces [8] and Lorentz–Finsler spaces [14].

Understanding which spacetimes are C^0 -inextendible is a highly investigated research problem in Lorentzian geometry. Therefore an understanding of causal theory for C^0 spacetimes is necessary for anyone who wants to break into the field. This paper serves as an introduction to C^0 causal theory. We focus on those parts of the theory which have proven useful for inextendibility results. These are

- $I^+(p)$ is open (Theorem 2.12).
- The existence of limit curves (Theorem 2.21).
- The existence of causal maximizers in globally hyperbolic spacetimes (Theorem 3.2).
- Cauchy surfaces imply global hyperbolicity (Theorem 3.8).

The main difference between C^0 and smooth (at least C^2) causal theory is the existence of bubbling sets in C^0 spacetimes. This was shown in [3]. Bubbling sets are open sets of the form $B^+(p) = \text{int}[J^+(p)] \setminus \overline{I^+(p)}$. In Appendix A.1 we show that $B^+(p) = \emptyset$ for all points in a C^2 spacetime. Hence bubbling sets are irrelevant in C^2 causal theory. But they play a prominent role in C^0 causal theory. Section 4.1 introduces them. In Sect. 4.2 we offer a notion of a trapped set for C^0 spacetimes and prove a C^0 version of Penrose’s theorem: if a C^0 spacetime has a noncompact Cauchy surface, then there are no trapped sets.

The treatment of C^0 causal theory in [3] and [18] uses a sequence of wider and narrower smooth metrics to approximate the C^0 metric. They then infer C^0 causal theory results from knowledge of smooth causal theory. Our approach is different. We obtain our results directly by using continuity to locally approximate the metric with wider and narrower metrics built from the Minkowski metric (Lemma 2.9). See also [13] which includes the results above and also generalizes causal theory even further with notable applications.

This paper is self-contained; prior knowledge of causal theory is not assumed. We only assume the Hopf–Rinow theorem and basic integration theory.

2 Preliminary causal theory for C^0 spacetimes

2.1 C^0 spacetimes

Let $k \geq 0$ be an integer. A C^k metric on a smooth manifold M is a nondegenerate symmetric tensor $g : TM \times TM \rightarrow \mathbb{R}$ with constant signature whose components $g_{\mu\nu} = g(\partial_\mu, \partial_\nu)$ in any coordinate system are C^k functions. Symmetric means $g(X, Y) = g(Y, X)$ for all $X, Y \in TM$. Nondegenerate means $g(X, Y) = 0$ for all $Y \in TM$ implies $X = 0$. With constant signature means there is an integer r such that at each point $p \in M$, there is a basis $e_0, \dots, e_r, \dots, e_n \in T_pM$ such that $g(e_\mu, e_\mu) = -1$ for $0 \leq \mu \leq r$ and $g(e_\mu, e_\mu) = 1$ for $r + 1 \leq \mu \leq n$ and $g(e_\mu, e_\nu) = 0$ for $\mu \neq \nu$. If $g(e_0, e_0) = -1$ and $g(e_i, e_i) = 1$ for all $i = 1, \dots, n$, then g is called a *Lorentzian* metric and (M, g) is called a Lorentzian manifold. If $g(e_\mu, e_\mu) = 1$ for all $\mu = 0, 1, \dots, n$, then g is called a *Riemannian* metric and (M, g) is called a Riemannian manifold. Our convention will be that Greek indices μ and ν will run through $0, 1, \dots, n$ and Latin indices i and j will run through $1, \dots, n$.

If (M, g) is a Lorentzian manifold, then a nonzero vector $X \in T_pM$ is *timelike*, *null*, or *spacelike* if $g(X, X) < 0, = 0, > 0$, respectively. A nonzero vector is *causal* if it is either timelike or null. A Lorentzian manifold (M, g) is *time-oriented* provided there is a C^1 timelike vector field X on M . A causal vector $Y \in T_pM$ is *future-directed* if $g(X, Y) < 0$ and *past-directed* if $g(X, Y) > 0$. Note that $-X$ defines an opposite time-orientation, and so any statement/theorem in a spacetime which is time-oriented by X has a time-dual statement/theorem with respect to the time-orientation given by $-X$.

Definition 2.1 Let $k \geq 0$. A C^k spacetime (M, g) is a time-oriented Lorentzian manifold with a C^k metric such that M is connected, Hausdorff, and second-countable.

We now proceed to define timelike and causal curves. The class of curves that we consider should be sufficiently regular so that we can integrate along them but not too regular so that limit curves are not considered causal curves. The class of locally Lipschitz curves live in this Goldilocks zone.

Fix a C^0 spacetime (M, g) and a smooth complete Riemannian metric h on M . Let $I \subset \mathbb{R}$ be an interval (i.e. any connected subset of \mathbb{R} with nonempty interior). A *locally Lipschitz* curve $\gamma : I \rightarrow M$ is a continuous function such that for any compact $K \subset I$, there is a constant C such that for any $a, b \in K$, we have

$$d_h(\gamma(a), \gamma(b)) \leq C|b - a|$$

where d_h is the Riemannian distance function associated with h . Proposition 2.2 shows that we can integrate along locally Lipschitz curves.

Proposition 2.2 *If $\gamma : I \rightarrow M$ is locally Lipschitz, then the components $\gamma^\mu = x^\mu \circ \gamma$ in any coordinate system are differentiable almost everywhere and $(\gamma^\mu)' \in L_{loc}^\infty$. Specifically, for any $t_0 \in I$, there is a coordinate system $\phi : U \rightarrow \mathbb{R}^{n+1}$ containing $\gamma(t_0)$ such that for any compact $K \subset I$ with $\gamma(K) \subset U$, there is a constant C such that $|(\gamma^\mu)'| \leq C$ almost everywhere in K for each μ .*

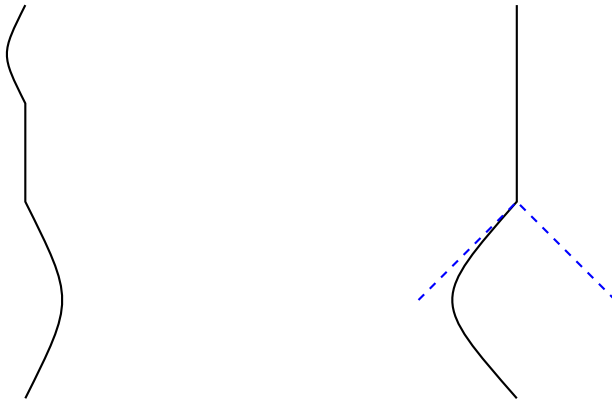


Fig. 1 Both of these curves are causal curves in two-dimensional Minkowski space. The curve on the left is a timelike curve. The curve on the right is a timelike almost everywhere curve. It is not a timelike curve since it approaches a null vector at its break point

We include a discussion of locally Lipschitz curves in Appendix A.2 where we prove Proposition 2.2. But we mention here that Proposition 2.2 is an immediate consequence of Radaemacher's theorem which is a higher-dimensional generalization of the well-known fact that if $f : [a, b] \rightarrow \mathbb{R}$ has Lipschitz constant C , then f is differentiable almost everywhere and $|f'| \leq C$ almost everywhere. A discussion of Rademacher's theorem in this setting along with references can be found in [2].

- Definition 2.3** (1) A *causal curve* is a locally Lipschitz curve $\gamma : I \rightarrow M$ such that γ' is future-directed causal almost everywhere.
- (2) A *timelike almost everywhere curve* is a causal curve $\gamma : I \rightarrow M$ such that γ' is future-directed timelike almost everywhere.
- (3) A *timelike curve* is a causal curve $\gamma : I \rightarrow M$ such that $g(\gamma', \gamma') < -\varepsilon$ almost everywhere for some $\varepsilon > 0$. See Fig. 1.

Remark – Our definition of a timelike curve is analogous to the locally uniform timelike curves which appear in [3].

- Note that ‘future-directed’ is implicit in our definition of causal and timelike curves. Therefore all causal and timelike curves in this paper will be future-directed.
- A causal curve γ satisfies $\gamma' \neq 0$ almost everywhere.
- Given a set $S \subset M$ and a causal curve $\gamma : I \rightarrow M$, we will write $\gamma \subset S$ instead of $\gamma(I) \subset S$. Likewise with the intersection $\gamma \cap S$.

Typically one constructs causal/timelike curves from smooth or piecewise smooth curves. That these are causal/timelike in the sense of Definition 2.3 follows from the next proposition.

Proposition 2.4 Let $\gamma : [a, b] \rightarrow M$ be a C^1 curve.

- (1) If $\gamma'(t)$ is future-directed causal for all $t \in [a, b]$, then γ is a causal curve.
- (2) If $\gamma'(t)$ is future-directed timelike for all $t \in [a, b]$, then γ is a timelike curve.

Proof (1) follows immediately since C^1 curves are locally Lipschitz (see Proposition A.4). Now we prove (2). From (1) we know that γ is a causal curve. Since γ is C^1 , we have $g(\gamma', \gamma')$ is continuous. Since $g(\gamma', \gamma') < 0$ and $[a, b]$ is compact, there exists an $\varepsilon > 0$ such that $g(\gamma'(t), \gamma'(t)) < -\varepsilon$ for all $t \in [a, b]$. Hence γ is a timelike curve. \square

Definition 2.5 Given a set S within an open neighborhood U , we define the *causal future* and *timelike future* of S within U as

$$J^+(S, U) = \{p \mid \text{there is a causal curve } \gamma : [a, b] \rightarrow U \text{ with } \gamma(a) \in S, \gamma(b) = p\} \cup S$$

$$I^+(S, U) = \{p \mid \text{there is a timelike curve } \gamma : [a, b] \rightarrow U \text{ with } \gamma(a) \in S, \gamma(b) = p\}$$

Remark – The *causal past* $J^-(S, U)$ and *timelike past* $I^-(S, U)$ are defined time-dually. Any statement/theorem for J^+ has a corresponding time-dual statement/theorem for J^- . Likewise with I^+ and I^- . For example, the proof that I^+ is open (Theorem 2.12) has a corresponding time-dual proof that I^- is open.

- If I^+ is defined via timelike almost everywhere curves, then it is not necessarily open (see [9]). This is the main distinction between timelike curves and timelike almost everywhere curves.
- If $U = M$, then we will write $I^+(S)$ instead. If $S = \{p\}$, then we will write $I^+(p, U)$ instead. Likewise with J^+ . If we wish to emphasize the Lorentzian metric g being used, then we will write I_g^+ and J_g^+ .
- Given our convention, the constant curve $\gamma : [0, 1] \rightarrow M$ given by $\gamma(t) = p$ for all t is not a causal curve. This is why we include the union with S in our definition of $J^+(S, U)$.

2.2 Properties of timelike and causal curves

For this section fix a C^0 spacetime (M, g) and a complete Riemannian metric h on M . The goal of this section is to prove the following two important properties of timelike and causal curves:

- (1) $I^+(p)$ and $I^-(p)$ are open sets. This is Theorem 2.12.
- (2) A causal curve is inextendible if and only if it has domain \mathbb{R} when parameterized by h -arclength. This is Theorem 2.19.

To simplify arguments, we will often parameterize causal curves by x^0 within a coordinate neighborhood. This is possible since x^0 is a *time function* for a small enough neighborhood (see (3) in Lemma 2.9).

Definition 2.6 Let $U \subset M$ be open. A C^1 function $\tau : U \rightarrow \mathbb{R}$ is a *time function* on U if its gradient $\nabla\tau$ is a past-directed timelike vector field on U . A curve $\gamma : [a, b] \rightarrow U$ is *parameterized by τ* provided $\tau \circ \gamma(t) = t$.

Proposition 2.7 Let $\tau : U \rightarrow \mathbb{R}$ be a time function and $\gamma : [a, b] \rightarrow U$ a causal curve. Then

$$\gamma \subset \{p \in U \mid \tau(p) \geq \tau \circ \gamma(a)\}$$

and γ has a reparameterization which is parameterized by τ .

Proof Integrating gives

$$\tau \circ \gamma(t) - \tau \circ \gamma(a) = \int_a^t (\tau \circ \gamma)' = \int_a^t g(\nabla\tau, \gamma') > 0.$$

The last inequality holds since $\nabla\tau$ is a past-directed timelike vector field and γ' is a future-directed causal almost everywhere. Moreover Proposition 2.2 implies that the above integral is finite. Thus $\tau \circ \gamma$ is a strictly increasing continuous function with a positive derivative almost everywhere; hence it is invertible with continuous inverse that is differentiable almost everywhere. The reparameterization we seek is $\tilde{\gamma} = \gamma \circ (\tau \circ \gamma)^{-1}$. \square

Definition 2.8 The Minkowski metric on \mathbb{R}^{n+1} is $\eta = \eta_{\mu\nu}dx^\mu dx^\nu = -(dx^0)^2 + \delta_{ij}dx^i dx^j$. For $0 < \varepsilon < 1$, we define the narrow and wide Minkowski metrics

$$\begin{aligned} \eta^\varepsilon &= -\frac{1-\varepsilon}{1+\varepsilon}(dx^0)^2 + \delta_{ij}dx^i dx^j = \eta + \frac{2\varepsilon}{1+\varepsilon}(dx^0)^2 \\ \eta^{-\varepsilon} &= -\frac{1+\varepsilon}{1-\varepsilon}(dx^0)^2 + \delta_{ij}dx^i dx^j = \eta - \frac{2\varepsilon}{1-\varepsilon}(dx^0)^2 \end{aligned}$$

Remark For example $\eta^{3/5}$ and $\eta^{-3/5}$ have lightcones with ‘slopes’ 2 and 1/2, respectively. Note that as ε approaches 0, we have η^ε and $\eta^{-\varepsilon}$ approach η .

Lemma 2.9 Fix $p \in M$. For any $0 < \varepsilon < 1$, there is a coordinate system $\phi : U_\varepsilon \rightarrow \mathbb{R}^{n+1}$ with the following properties

- (1) $\phi(p) = 0$
- (2) $g_{\mu\nu}(p) = \eta_{\mu\nu}$ and $|g_{\mu\nu}(x) - \eta_{\mu\nu}| < \varepsilon$ for all $x \in U_\varepsilon$
- (3) x^0 is a time function on U_ε .

For all $q \in U_\varepsilon$ and nonzero $X \in T_qM$, we have

- (4) $\eta^\varepsilon(X, X) < 0 \implies g(X, X) < 0 \implies g(X, X) \leq 0 \implies \eta^{-\varepsilon}(X, X) < 0$
- (5) $I_{\eta^\varepsilon}^+(q, U_\varepsilon) \subset I^+(q, U_\varepsilon) \subset J^+(q, U_\varepsilon) \subset I_{\eta^{-\varepsilon}}^+(q, U_\varepsilon)$.

Remark Technically, in (4) and (5) we should write $\phi^*\eta^\varepsilon$ instead of η^ε where $\phi^*\eta^\varepsilon$ is the pullback metric, likewise with $\eta^{-\varepsilon}$. We will continue to use this abuse of notation whenever we apply Lemma 2.9.

Proof Pick a coordinate system $\phi : U \rightarrow \mathbb{R}^{n+1}$ with $\phi(p) = 0$ to obtain (1) and apply Gram-Schmidt to obtain the first part of (2) with ∂_0 future-directed timelike at p . By continuity of the metric, given any $\varepsilon_0 > 0$, we can shrink our neighborhood so that $|g_{\mu\nu}(x) - \eta_{\mu\nu}| < \varepsilon_0$ for all $x \in U$. Choose $\varepsilon_0 < \varepsilon$ to obtain the second part of (2). Since $\varepsilon_0 < \varepsilon < 1$, we have $g_{00}(x) < 0$. Therefore ∂_0 is future-directed timelike in U . Since $1 = dx^0(\partial_0) = g(\nabla x^0, \partial_0)$, we have ∇x^0 is past-directed timelike. This shows (3).

To show (4), let $X = X^\mu \partial_\mu$ be any tangent vector in $T_q U$. Then we have

$$\begin{aligned} g_{\mu\nu} X^\mu X^\nu &= g_{00} |X^0|^2 + \sum_{i=1}^n g_{ii} |X^i|^2 + 2 \sum_{i=1}^n g_{0i} X^0 X^i + \sum_{i \neq j} g_{ij} X^i X^j \\ &< (\eta_{00} + \varepsilon_0) |X^0|^2 + \sum_i (\eta_{ii} + \varepsilon_0) |X^i|^2 + 2\varepsilon_0 \sum_i |X^0 X^i| + \varepsilon_0 \sum_{i \neq j} |X^i X^j| \\ &= \eta_{\mu\nu} X^\mu X^\nu + \varepsilon_0 \sum_{\mu, \nu} |X^\mu X^\nu|. \end{aligned}$$

Using the fact that $\eta = \eta^\varepsilon - \frac{2\varepsilon}{1+\varepsilon} (dx^0)^2$, we have

$$g(X, X) < \eta^\varepsilon(X, X) - \frac{2\varepsilon}{1+\varepsilon} |X^0|^2 + \varepsilon_0 \left[|X^0|^2 + 2 \sum_i |X^0 X^i| + \sum_{i,j} |X^i X^j| \right].$$

Now suppose X is η^ε -timelike, then $|X^i|^2/|X^0|^2 < (1 - \varepsilon)/(1 + \varepsilon)$ for each i . Therefore

$$g(X, X) < \eta^\varepsilon(X, X) - \frac{2\varepsilon}{1+\varepsilon} |X^0|^2 + \varepsilon_0 \left[1 + 2n \sqrt{\frac{1-\varepsilon}{1+\varepsilon}} + n^2 \frac{1-\varepsilon}{1+\varepsilon} \right] |X^0|^2.$$

By taking $\varepsilon_0 > 0$ small enough, we can ensure $2\varepsilon/(1 + \varepsilon)$ is strictly greater than the bracket term. Then for this choice of ε_0 , we have

$$g(X, X) < \eta^\varepsilon(X, X).$$

This proves the first implication in (4). The second implication is obvious. Now we prove the third implication. Note it suffices to prove it for X satisfying $h(X, X) = 1$. A similar computation as above shows that $\eta^{-\varepsilon}(X, X) < g(X, X) - \frac{2\varepsilon}{1-\varepsilon} |X^0|^2 + \varepsilon_0 \sum_{\mu, \nu} |X^\mu X^\nu|$. So in the same way we proved the first implication, it suffices to show that there is a neighborhood of p such that $|X^i|/|X^0|$ is bounded for all i . Suppose this were not true for $i = 1$. Then there is a sequence of points $p_k \in U$ with $p_k \rightarrow p$ and vectors $X_k \in T_{p_k} M$ such that $g(X_k, X_k) \leq 0$, $h(X_k, X_k) = 1$, and $|X_k^1|/|X_k^0| \rightarrow \infty$. Choosing U to have compact closure, the h -unit bundle of U within TM has compact closure. Therefore there is a subsequence (still denoted by X_k) such that $X_k \rightarrow X_* \in T_p M$ and continuity implies $h(X_*, X_*) = 1$ and $g(X_*, X_*) \leq 0$. The former implies $X_* \neq 0$ and so the latter implies X_* is a causal vector. But the limit $|X_k^1|/|X_k^0| \rightarrow \infty$ implies $X_*^0 = 0$ which implies X_* is spacelike—a contradiction. Therefore there is a neighborhood of p such that $|X^1|/|X^0|$ is bounded. Similarly this holds for all $i = 2, \dots, n$. Hence there is a neighborhood of p such that $|X^i|/|X^0|$ is bounded for all i . This proves the third implication in (4).

Now we prove (5). Let $\gamma : [a, b] \rightarrow U$ be an η^ε -timelike curve. Then there is a $\delta > 0$ such that $\eta^\varepsilon(\gamma', \gamma') < -\delta$ almost everywhere. Then by the first implication in (4) we have $g(\gamma', \gamma') < \eta^\varepsilon(\gamma', \gamma') < -\delta$ almost everywhere. Hence γ is a g -timelike

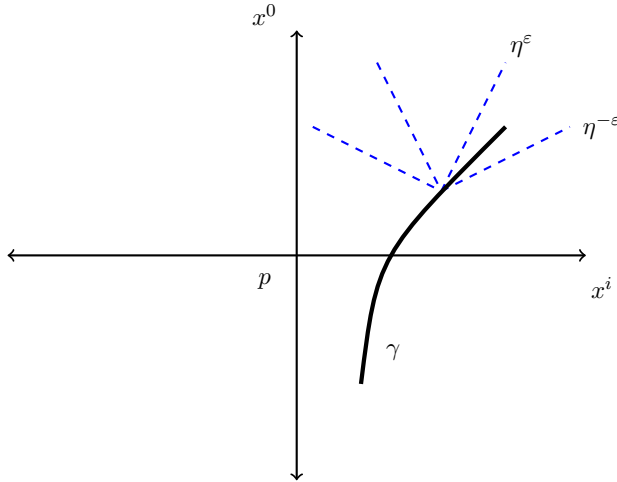


Fig. 2 The coordinate system $\phi : U_\varepsilon \rightarrow \mathbb{R}^{n+1}$ appearing in Lemma 2.9. The point p is located at the origin where the metric is exactly Minkowski: $g_{\mu\nu}(p) = \eta_{\mu\nu}$. Any causal curve $\gamma \subset U_\varepsilon$ will always be $\eta^{-\varepsilon}$ -timelike but it may be η^ε -spacelike

curve. This shows the first inclusion in (5). The second inclusion is obvious. To prove the third inclusion, recall from the proof of the third implication in (4), we have for any tangent vector $\eta^{-\varepsilon}(X, X) < g(X, X) - \frac{2\varepsilon}{1-\varepsilon}|X^0|^2 + \varepsilon_0 \sum_{\mu,\nu} |X^\mu X^\nu|$. Recall we chose ε_0 sufficiently small so that $\frac{2\varepsilon}{1-\varepsilon}|X^0|^2$ was strictly greater than $\sum_{\mu,\nu} |X^\mu X^\nu|$. Hence there is a $\delta > 0$ such that $\eta^{-\varepsilon}(X, X) < g(X, X) - \delta$. Thus, if γ is g -causal, then γ is $\eta^{-\varepsilon}$ -timelike. See Fig. 2. □

Definition 2.10 Let $\langle \cdot, \cdot \rangle$ and $|\cdot|$ denote the standard inner product and norm on \mathbb{R}^{n+1} with its standard global orthonormal basis $\{e_0, e_1, \dots, e_n\}$. Given any open set $U \subset \mathbb{R}^{n+1}$ and any point $p \in U$, we define for $-1 < \varepsilon < 1$

$$C_\varepsilon^+(p, U) = \left\{ q \in U \mid \frac{\langle q - p, e_0 \rangle}{|q - p|} > \sqrt{\frac{1 + \varepsilon}{2}} \right\}.$$

Remark C_ε^+ is the usual interior of a cone in \mathbb{R}^{n+1} which makes an angle θ with respect to the x^0 -axis where θ is given by $\cos \theta = \sqrt{(1 + \varepsilon)/2}$. Note that C_0^+ coincides with the future lightcone in Minkowski space.

Lemma 2.11 Let B be an open ball in \mathbb{R}^{n+1} and let $p \in B$. Then

- (1) $C_\varepsilon^+(p, B) \subset I_{\eta^\varepsilon}^+(p, B) \subset C_{\varepsilon'}^+(p, B) \quad 0 < \varepsilon' < \varepsilon < 1$
- (2) $C_{-\varepsilon}^+(p, B) \subset I_{\eta^{-\varepsilon}}^+(p, B) \subset C_{-\varepsilon'}^+(p, B) \quad 0 < \varepsilon < \varepsilon' < 1$

Proof We only prove (1) as the proof of (2) is analogous.

We first prove the left inclusion of (1). Let $q \in C_\varepsilon^+(p, B)$. Let $\gamma : [0, 1] \rightarrow B$ be the straight line $\gamma(t) = qt + (1 - t)p$. Then $\gamma'(t) = q - p$. Put $q - p = X =$

$X^\mu e_\mu$. By definition we have $X^0/|X| > \sqrt{(1 + \varepsilon)/2}$. Notice that $|X|^2 = \langle X, X \rangle = |X^0|^2 + \delta_{ij} X^i X^j$. Hence $|X^0|^2 > \frac{1}{2}(1 + \varepsilon)(|X^0|^2 + \delta_{ij} X^i X^j)$. Rearranging gives $|X^0|^2 > \frac{1+\varepsilon}{1-\varepsilon} \delta_{ij} X^i X^j$. Therefore

$$\eta^\varepsilon(\gamma', \gamma') = \eta^\varepsilon(X, X) = -\frac{1 - \varepsilon}{1 + \varepsilon} |X^0|^2 + \delta_{ij} X^i X^j < 0.$$

Therefore γ is an η^ε -timelike curve by Proposition 2.4. Hence $q \in I_{\eta^\varepsilon}^+(p, B)$.

Now we prove the right inclusion of (1). Suppose $q \in I_{\eta^\varepsilon}^+(p, B)$. Let $\gamma \subset B$ be an η^ε -timelike curve from p to q . To help visualize the proof consider $\varepsilon = 15/17$ and $\varepsilon' = 3/5$ which correspond to lightcones with ‘slopes’ 4 and 2, respectively. Consider the hyperplanes given by $x^0 - 2x^1 = \text{constant}$. Note that these hyperplanes are $\eta^{\varepsilon'}$ -null but η^ε -spacelike. Let τ be the η^ε -time function such that $\nabla\tau$ is orthogonal to these hyperplanes. Apply Proposition 2.7 with $g = \eta^\varepsilon$ to conclude that γ lies above the particular hyperplane which intersects p . Now replace x^1 with any arbitrary direction orthogonal to $\partial/\partial x^0$, and apply Proposition 2.7 again to conclude that $\gamma \subset C_{\varepsilon'}^+(p, B)$. Clearly this proof does not depend on the specific choices of ε and ε' .

Theorem 2.12 $I^+(p, U)$ is open.

Proof Fix $q \in I^+(p, U)$. Let $\gamma : [a, b] \rightarrow U$ be a timelike curve from p to q . Choose a coordinate system $\psi : V \rightarrow \mathbb{R}^{n+1}$ around $\gamma(b)$ from Proposition 2.2 such that $V \subset U$ and V has compact closure. By continuity, there is an $a_0 \in (a, b)$ such that $\gamma|_{[a_0, b]} \subset V$. Since $[a_0, b]$ is compact, there is a constant C such that $|(y^\mu \circ \gamma)'| \leq C$ almost everywhere in $[a_0, b]$ where (y^0, y^1, \dots, y^n) are the coordinates on V .

Let $\phi : U_\varepsilon \rightarrow \mathbb{R}^{n+1}$ be a coordinate system about q from Lemma 2.9 and choose U_ε small enough so that $U_\varepsilon \subset V$. Let (x^0, x^1, \dots, x^n) denote the coordinates on U_ε . Let $X = \gamma'$. By definition of a timelike curve, there is a $\delta > 0$ such that $g(X, X) < -\delta$ almost everywhere. For the portion of γ within U_ε , write $X = X^\mu \partial/\partial x^\mu$. Using $\eta_{\mu\nu} < g_{\mu\nu}(x) + \varepsilon$ and a similar calculation as in the proof of Lemma 2.9, we have

$$\eta(X, X) - \varepsilon \sum_{\mu, \nu} |X^\mu X^\nu| < g(X, X) < -\delta.$$

Since $\eta = \eta^\varepsilon - \frac{2\varepsilon}{1+\varepsilon} (dx^0)^2$, we have

$$\eta^\varepsilon(X, X) - \frac{2\varepsilon}{1 + \varepsilon} |X^0|^2 - \varepsilon \sum_{\mu, \nu} |X^\mu X^\nu| < -\delta.$$

Rearranging gives

$$\eta^\varepsilon(X, X) < -\delta + \frac{2\varepsilon}{1 + \varepsilon} |X^0|^2 + \varepsilon \left[1 + 2 \sum_{i=1}^n \frac{|X^i|}{|X^0|} + \sum_{1 \leq i, j \leq n} \frac{|X^i X^j|}{|X^0|^2} \right] |X^0|^2.$$

Choose $\varepsilon < 3/5$. Then by the third implication in (4) of Lemma 2.9, we have $|X^i|/|X^0| < 2$. Therefore the term in the bracket is bounded by $1 + 4n + 4n^2$, and so we have

$$\eta^\varepsilon(X, X) < -\delta + \frac{2\varepsilon}{1 + \varepsilon}|X^0|^2 + \varepsilon(1 + 4n + 4n^2)|X^0|^2.$$

Now we put a bound on $|X^0|$. We have $|X^0| = |(y^\mu \circ \gamma)' \partial x^0 / \partial y^\mu| \leq C \sum_\mu |\partial x^0 / \partial y^\mu|$. The inequality follows from the first paragraph of this proof. Since V has compact closure, there exists a c such that $|\partial x^0 / \partial y^\mu| \leq c$ for all points in U_ε . Thus $|X^0| \leq Cc(n + 1)$.

Therefore we can choose ε sufficiently small such that

$$\eta^\varepsilon(X, X) < -\frac{1}{2}\delta.$$

Hence, by shrinking U_ε small enough, the portion of γ within U_ε is η^ε -timelike. Let $B \subset U_\varepsilon$ be a neighborhood around q such that $\phi(B)$ is an open Euclidean ball centered around $\phi(q)$. By continuity, there exists an $a_1 < b$ such that $\gamma|_{[a_1, b]} \subset B$. Let $p_1 = \gamma(a_1)$ and recall $q = \gamma(b)$. Then we just showed $q \in I_{\eta^\varepsilon}^+(p_1, B)$. Choose $\varepsilon' \in (0, \varepsilon)$. Then (1) from Lemma 2.11 implies

$$q \in \phi^{-1} \circ C_{\varepsilon'}^+(\phi(p_1), \phi(B)) \subset I_{\eta^{\varepsilon'}}^+(p_1, B) \subset I^+(p_1, B).$$

The last inclusion follows from (5) in Lemma 2.9. Since $C_{\varepsilon'}^+(\phi(p_1), \phi(B))$ is an open set and its preimage is contained in $I^+(p_1, B) \subset I^+(p, U)$, we have $I^+(p, U)$ is open. □

Corollary 2.13 *$I^+(S, U)$ is open.*

Proof $I^+(S, U) = \bigcup_{p \in S} I^+(p, U)$. □

Now we set out to prove the second claim of this section: causal curves are inextendible when they have domain \mathbb{R} when parameterized by h -arclength. A locally Lipschitz curve $\gamma : I \rightarrow M$ is parameterized by h -arclength if $h(\gamma', \gamma') = 1$ almost everywhere. The next proposition will allow us to parameterize causal curves with respect to h -arclength.

Proposition 2.14 *Let $\gamma : I \rightarrow M$ be a causal curve. Then γ admits a reparameterization $\tilde{\gamma}$ such that $\tilde{\gamma}$ is parameterized by h -arclength and for all a, b in the domain of $\tilde{\gamma}$, we have*

$$d_h(\tilde{\gamma}(a), \tilde{\gamma}(b)) \leq |a - b|.$$

Proof By Proposition 2.2, the components of γ are differentiable almost everywhere and these derivatives are in L_{loc}^∞ . Therefore the integral

$$s(t) = \int_{t_0}^t \sqrt{h(\gamma', \gamma')}$$

is well-defined and finite where $t_0, t \in I$. Since γ is a causal curve, we have $\gamma' \neq 0$ almost everywhere. Therefore $s(t)$ is a strictly increasing continuous function; hence it is invertible. Moreover s is differentiable almost everywhere with $s' > 0$ wherever differentiable; hence s^{-1} is differentiable almost everywhere. The reparameterization we seek is $\tilde{\gamma} = \gamma \circ s^{-1}$. Then in any coordinate system, we have $h_{\mu\nu}(\tilde{\gamma}^\mu)'(\tilde{\gamma}^\nu)' = 1$. Hence $h(\tilde{\gamma}', \tilde{\gamma}') = 1$ almost everywhere. Thus

$$b - a = \int_a^b dt = \int_a^b \sqrt{h(\tilde{\gamma}', \tilde{\gamma}')} \geq d_h(\tilde{\gamma}(a), \tilde{\gamma}(b)).$$

□

Definition 2.15 Let $\gamma : [a, b) \rightarrow M$ be a causal curve. Suppose there exists a $p \in M$ such that $\gamma(t_n) \rightarrow p$ for every sequence $t_n \nearrow b$. Then p is called the *future endpoint* of γ . *Past endpoints* are defined time-dually.

Remark Future and past endpoints are unique since M is Hausdorff.

When $\gamma : [a, b) \rightarrow M$ has a future endpoint p , one is tempted to define a new curve $\tilde{\gamma} : [a, b] \rightarrow M$ such that $\tilde{\gamma}(t) = \gamma(t)$ for $t < b$ and $\tilde{\gamma}(b) = p$. However a problem arises: the extended curve $\tilde{\gamma}$ may not be locally Lipschitz. For example if one extends the curve $t \mapsto (\sqrt{t+1}, 0)$ in two-dimensional Minkowski space from $(-1, 0)$ to $[-1, 0]$ so that it includes the past endpoint $(0, 0)$, then the new curve defined on $[-1, 0]$ will not be locally Lipschitz since $(\sqrt{t+1} - \sqrt{t'+1})/(t - t')$ diverges as t and t' approach 0. However if we reparameterize causal curves with respect to h -arclength, then this problem goes away.

Proposition 2.16 Let $\gamma : [0, b) \rightarrow M$ be a causal curve parameterized by h -arclength. If $b < \infty$, then there is a future endpoint p of γ and the curve $\tilde{\gamma} : [0, b] \rightarrow M$ defined by $\tilde{\gamma}(t) = \gamma(t)$ for $0 \leq t < b$ and $\tilde{\gamma}(b) = p$ is a causal curve.

Proof Since γ is parameterized with respect to h -arclength, we have $b = L_h(\gamma)$. Therefore

$$\gamma \subset B_h(\gamma(a), b + 1)$$

where B_h denotes the h -geodesic ball. Write $B = B_h(\gamma(a), b + 1)$. Then \overline{B} is compact by the Hopf–Rinow theorem. Let $t_n \nearrow b$ be any sequence. Then $\gamma(t_n)$ has an accumulation point $p \in \overline{B}$. Therefore there is a subsequence (still denoted by t_n) such that $t_n \nearrow b$ and $\gamma(t_n) \rightarrow p$. We show that p is the future endpoint of γ . Let $\gamma(s_n)$ be any other sequence with $s_n \nearrow b$. Then $d_h(\gamma(s_n), \gamma(s_m)) \leq |s_n - s_m|$ implies that $\gamma(s_n)$ is a Cauchy sequence. Since (M, h) is complete, the Hopf–Rinow theorem implies $\gamma(s_n)$ converges to some point q . Put $p_n = \gamma(t_n)$ and $q_n = \gamma(s_n)$. Then the triangle inequality gives

$$d_h(p, q) \leq d_h(p, p_n) + d_h(p_n, q_n) + d_h(q_n, q).$$

Each of the three terms on the right hand side can be made arbitrarily small. Therefore $d_h(p, q) = 0$ and so $p = q$. Hence p is the future endpoint of γ .

Define the continuous function $\tilde{\gamma} : [0, b] \rightarrow M$ by $\tilde{\gamma}(t) = \gamma(t)$ for $0 \leq t < b$ and $\tilde{\gamma}(b) = p$. Since γ is parameterized by h -arclength, Proposition 2.14 implies

$$d_h(\gamma(t), \gamma(t')) \leq |t - t'|.$$

Passing to the limit $t' \nearrow b$, continuity of d_h implies

$$d_h(\gamma(t), p) \leq |t - b|.$$

Hence $\tilde{\gamma}$ is Lipschitz with Lipschitz constant 1. Therefore $\tilde{\gamma}$ is a causal curve. □

The following technical proposition is needed for Theorem 2.19.

Proposition 2.17 *Given any $p \in M$ and $\varepsilon > 0$, there is a neighborhood U such that $L_h(\gamma) < \varepsilon$ for all causal curves $\gamma \subset U$.*

Proof Fix $\varepsilon > 0$. Choose a neighborhood $\phi : U_{3/5} \rightarrow \mathbb{R}^{n+1}$ as in Lemma 2.9. Then the lightcones of $\eta^{-3/5}$ have ‘slope’ 1/2. Shrink $U_{3/5}$ so that it has compact closure and $-\varepsilon < x^0 < \varepsilon$. Let $\gamma \subset U_{3/5}$ be any causal curve. By (3) from Lemma 2.9 we can assume γ is parameterized by the time function x^0 . Put $X = \gamma'$ so that $X^0 = 1$. Therefore

$$h(\gamma', \gamma') = h_{\mu\nu} X^\mu X^\nu = h_{00} + 2h_{0i} X^i + h_{ij} X^i X^j.$$

Set $H = \sup \{|h_{\mu\nu}(q)| \mid q \in U_{3/5} \text{ and } 0 \leq \mu, \nu \leq n\}$. Then $H < \infty$ since $U_{3/5}$ has compact closure. By the third implication in (4) of Lemma 2.9, we have $|X^i| < 2$ for each i . Therefore $h(\gamma', \gamma') < HC$ where $C = 1 + 4n + 4n^2$. Since γ is parameterized by x^0 , we have $L_h(\gamma) = \int \sqrt{h(\gamma', \gamma')} dx^0 \leq 2\varepsilon\sqrt{HC}$. Since $\varepsilon > 0$ was arbitrary, the result follows. □

Definition 2.18 Let $\gamma : [a, b] \rightarrow M$ be a causal curve. We say γ is *future extendible* if there is a causal curve $\tilde{\gamma} : [a, b] \rightarrow M$ with $\tilde{\gamma}(t) = \gamma(t)$ for all $t \in [a, b)$. Otherwise γ is *future inextendible*. Time-dualizing gives *past inextendible* causal curves. γ is *inextendible* if it is both future and past inextendible.

Remark Proposition 2.16 shows that if p is a future endpoint for a causal curve γ parameterized by h -arclength, then γ is future extendible.

Theorem 2.19 *Let $\gamma : [0, b) \rightarrow M$ a causal curve parameterized by h -arclength.*

- (1) *If $b = \infty$, then γ is future inextendible.*
- (2) *If $b < \infty$, then γ can be extended to a future inextendible causal curve.*

Proof We first prove (1). Seeking a contradiction, suppose γ is future extendible. Then there is a causal curve $\tilde{\gamma} : [0, \infty] \rightarrow M$ which extends γ . Let $p = \tilde{\gamma}(\infty)$. Let U be any neighborhood of p . By continuity, there exists a $c > 0$ such that $\tilde{\gamma}|_{[c, \infty]} \subset U$. But $L_h(\tilde{\gamma}|_{[c, \infty]}) = \infty$ which contradicts Proposition 2.17. This proves (1).

Now we prove (2). Suppose $b < \infty$ and set

$$c = \sup \{c' > b \mid \gamma \text{ extends to a } h\text{-arclength parameterized causal curve on } [a, c']\}.$$

By Proposition 2.16, we know that γ extends to a causal curve $\tilde{\gamma}$ on $[0, b]$. Using a coordinate system from Lemma 2.9 centered around $\tilde{\gamma}(b)$, we can extend $\tilde{\gamma}$ even further (e.g. by concatenating $\tilde{\gamma}$ with the positive x^0 -axis). Therefore the set appearing in the above supremum is nonempty. Suppose $c < \infty$. Then there is a causal curve $\lambda : [0, c) \rightarrow M$ which extends γ . Proposition 2.16 implies λ extends to a causal curve $\tilde{\lambda} : [0, c] \rightarrow M$. We can extend $\tilde{\lambda}$ using a coordinate neighborhood via the same argument above. This contradicts the definition of c . Therefore $c = \infty$. Thus γ extends to a h -arclength parameterized causal curve on $[0, \infty)$ which is future inextendible by (1). This proves (2). \square

2.3 Limit curves

Fix a C^0 spacetime (M, g) with a complete Riemannian metric h on M . The purpose of this section is to prove the limit curve theorem in the C^0 setting.

Definition 2.20 Let $\gamma_n : I \rightarrow M$ be a sequence of causal curves. A causal curve $\gamma : I \rightarrow M$ is a *limit curve* of γ_n if there is a subsequence of γ_n which converges to γ uniformly on compact subsets of I .

Remark Limit curves are not necessarily unique. For this reason limit curves are called ‘accumulation curves’ in [2,3].

Let $\gamma_n : I \rightarrow M$ be a sequence of causal curves. We say γ_n *accumulates* to p at t_0 if there is a subsequence γ_{n_k} such that $\gamma_{n_k}(t_0) \rightarrow p$.

Theorem 2.21 (Limit Curve Theorem) *Let $\gamma_n : \mathbb{R} \rightarrow M$ be a sequence of causal curves parameterized by h -arclength. If γ_n accumulates to p at t_0 , then there is an inextendible limit curve $\gamma : \mathbb{R} \rightarrow M$ of γ_n such that $\gamma(t_0) = p$.*

The proof of the limit curve theorem requires three arguments: (1) An argument proving the existence of the limit curve γ which will follow from the Arzelá-Ascoli theorem. (2) An argument to prove that γ is in fact a causal curve. (3) An argument showing that γ is indeed inextendible. This last part is necessary, since, although each γ_n is parameterized by h -arclength, there is no guarantee that the limit curve γ will be.

Theorem 2.22 (Arzelá-Ascoli) *Let (M, d) be a metric space. If the sequence $\gamma_n : \mathbb{R} \rightarrow M$ is equicontinuous and for each $t \in \mathbb{R}$ the set $\bigcup_n \{\gamma_n(t)\}$ is bounded, then there exists a continuous $\gamma : \mathbb{R} \rightarrow M$ and a subsequence of γ_n which converges to γ uniformly on compact subsets of \mathbb{R} .*

Proposition 2.23 *Let $\gamma_n : \mathbb{R} \rightarrow M$ be a sequence of causal curves parameterized by h -arclength. If γ_n accumulates to p at t_0 , then there is a locally Lipschitz curve $\gamma : \mathbb{R} \rightarrow M$ with $\gamma(t_0) = p$ and a subsequence of γ_n which converges to γ uniformly on compact subsets of \mathbb{R} .*

Proof We apply the Arzelá-Ascoli theorem to the metric space (M, d_h) . Equicontinuity follows from the h -arclength parameterization: For $\varepsilon > 0$ choose $\delta = \varepsilon$. Then for all n and all $|a - b| < \delta$, we have

$$d_h(\gamma_n(a), \gamma_n(b)) \leq |a - b| < \varepsilon.$$

By assumption there is a subsequence (still denoted by γ_n) such that $\gamma_n(t_0) \rightarrow p$. By restricting to a further subsequence (still denoted by γ_n), we can assume $d_h(\gamma_n(t_0), p) < 1$ for all n . Then for each n we have $\gamma_n(t) \in \{q \mid d_h(p, q) \leq |t - t_0| + 1\}$. This set is bounded by $2|t - t_0| + 2$, and so $\bigcup_n \{\gamma_n(t)\}$ is bounded. Thus the Arzelá-Ascoli theorem applies to this subsequence. Therefore there is a continuous curve $\gamma : \mathbb{R} \rightarrow M$ and a subsequence (still denoted by γ_n) which converges to γ uniformly on compact subsets of \mathbb{R} . Hence $\gamma(t_0) = p$. That γ is in fact Lipschitz (and hence locally Lipschitz) follows since d_h is continuous:

$$d_h(\gamma_n(a), \gamma_n(b)) \leq |a - b| \quad \longrightarrow \quad d_h(\gamma(a), \gamma(b)) \leq |a - b|.$$

□

Lemma 2.24 *Suppose $\gamma_n : I \rightarrow M$ is a sequence of causal curves which converges uniformly to a locally Lipschitz curve $\gamma : I \rightarrow M$ on compact subsets of I . If t_0 is a differentiable point of γ and $\gamma'(t_0) \neq 0$, then $\gamma'(t_0)$ is future-directed causal.*

Proof Seeking a contradiction, suppose $\gamma'(t_0)$ is not future-directed causal. Since $\gamma'(t_0) \neq 0$, it is either spacelike or past-directed causal. First suppose $\gamma'(t_0)$ is spacelike. Without loss of generality, assume $t_0 = 0$. Set $p = \gamma(0)$ and $X = \gamma'(0)$. Let $\phi : U_{3/5} \rightarrow \mathbb{R}^{n+1}$ be a coordinate system as in Lemma 2.9 centered around p and apply the Gram-Schmidt process so that $X = X^1 \partial/\partial x^1|_p$ with $X^1 > 0$. Then the definition of the derivative gives $\gamma^1(t)/t \rightarrow X^1$ and $\gamma^\mu(t)/t \rightarrow 0$ for $\mu \neq 1$ as $t \rightarrow 0$.

Given any $\varepsilon > 0$, there exists a $\delta > 0$ such that $|\gamma^0(t)/t| < \varepsilon$ and $|\gamma^1(t)/t - X^1| < \varepsilon$ for all $0 < t < \delta$. Hence $\gamma^0(t)/\gamma^1(t) < \varepsilon/(X^1 - \varepsilon)$ for these t . Fix ε sufficiently small so that $\gamma^0(t)/\gamma^1(t) < 1/4$ for all $0 < t < \delta$. Fix $t_1 \in (0, \delta)$. Let $q \in U_{3/5}$ be a point on the negative x^0 -axis. Write $V_q = I_{\eta^{-3/5}}^+(q, U_{3/5})$. Then V_q is a neighborhood of p . Therefore for sufficiently large n , we have $\gamma_n(0) \in V_q$. Since γ_n converges uniformly to γ on $[0, t_1]$, we have $\gamma_n(0) \rightarrow \gamma(0)$ and $\gamma_n(t_1) \rightarrow \gamma(t_1)$. Since $\eta^{-3/5}$ has lightcones with ‘slope’ $1/2$ and $\gamma^0(t_1)/\gamma^1(t_1) < 1/4$, by choosing q sufficiently close to p , the convergence $\gamma_n(t_1) \rightarrow \gamma(t_1)$ contradicts the second inclusion of (2) from Lemma 2.11.

Similarly, assuming $\gamma'(t_0)$ is past-directed causal leads to a contradiction. □

Proposition 2.25 *Suppose $\gamma_n : I \rightarrow M$ is a sequence of causal curves parameterized by h -arclength which converges uniformly to a locally Lipschitz curve $\gamma : I \rightarrow M$ on compact subsets of I . Then γ is a causal curve.*

Proof By Lemma 2.24 it suffices to show that $\gamma' \neq 0$ almost everywhere. Let $t_0 \in I$ and $p = \gamma(t_0)$. Consider a neighborhood U from Lemma 2.9 centered around p .

Assume U has compact closure. Define C by

$$C = \inf \{g(\nabla x^0, X) \mid q \in U, X \in T_q M, g(\nabla x^0, X) > 0, h(X, X) = 1\}$$

Claim: $C > 0$. Suppose not. Then we can find a sequence $X_n \in T_{q_n} M$ with $g(\nabla x^0, X_n) > 0$ and $h(X_n, X_n) = 1$ such that $g(\nabla x^0, X_n) \rightarrow 0$. Since U has compact closure, the h -unit bundle of U within TM has compact closure. Therefore there is a subsequence (still denoted by X_n) such that $X_n \rightarrow X_*$. Continuity implies $h(X_*, X_*) = 1$ and $g(\nabla x^0, X_*) = 0$. Since ∇x^0 is past-directed, $g(\nabla x^0, X_n) > 0$ implies each X_n is future-directed causal. Hence $g(X_n, X_n) \leq 0$ and so continuity implies $g(X_*, X_*) \leq 0$. Therefore X_* is either the zero vector or future-directed causal. Since ∇x^0 is timelike, $g(\nabla x^0, X_*) = 0$ implies X_* is either the zero vector or spacelike. Thus X_* must be the zero vector, but this contradicts $h(X_*, X_*) = 1$. This proves the claim.

Fix $a < b$ in I such that $\gamma(a), \gamma(b) \in U$. For n sufficiently large, we have $\gamma_n(a), \gamma_n(b) \in U$. For these large n , we have

$$x^0 \circ \gamma_n(b) - x^0 \circ \gamma_n(a) = \int_a^b g(\nabla x^0, \gamma'_n) \geq C(b - a).$$

By continuity we have $x^0 \circ \gamma(b) - x^0 \circ \gamma(a) \geq C(b - a)$. Therefore

$$\frac{1}{b - a} \int_a^b g(\nabla x^0, \gamma') \geq C.$$

Since $a < b$ was arbitrary, Lebesgue’s differentiation theorem implies $g(\nabla x^0, \gamma') \geq C > 0$ almost everywhere. Thus $\gamma' \neq 0$ almost everywhere for points in I of γ which lie in U . Since $t_0 \in I$ was arbitrary, we have $\gamma' \neq 0$ almost everywhere in I . \square

Proposition 2.26 *Let $\gamma_n : \mathbb{R} \rightarrow M$ be a sequence of causal curves parameterized by h -arclength which converge to a causal curve $\gamma : \mathbb{R} \rightarrow M$ uniformly on compact subsets of \mathbb{R} . Then γ is inextendible.*

Proof Since γ is a causal curve, it has an h -arclength reparameterization $\tilde{\gamma} : (a, b) \rightarrow M$ by Proposition 2.14. Seeking a contradiction, suppose γ is future extendible. Then $\tilde{\gamma}$ is future extendible and so $b < \infty$ by Theorem 2.19. Proposition 2.16 implies that there is a future endpoint $p \in M$ such that $\tilde{\gamma}$ extends continuously through p . By Proposition 2.17, there is an open set U around p such that $L_h(\lambda) < 1$ for all causal curves $\lambda \subset U$. Since p is the future endpoint of γ , we have $\lim_{t \rightarrow \infty} \gamma(t) = p$ and hence there is some t_0 such that $\gamma([t_0, \infty)) \subset U$. Since the sequence γ_n converges uniformly to γ on compact subsets, there exists an N such that $\gamma_n([t_0, t_0 + 2]) \subset U$ for all $n \geq N$. The h -arclength of $\gamma_n|_{[t_0, t_0+2]}$ is 2. But $2 > 1$. Therefore this contradicts our choice of open set U . Thus γ is future inextendible. Likewise γ is past inextendible. \square

Proof of Theorem 2.21 Proposition 2.23 shows the existence of a locally Lipschitz curve γ . Proposition 2.25 shows that γ is a causal curve. Proposition 2.26 shows that γ is inextendible. \square

3 Global hyperbolicity for C^0 spacetimes

3.1 Globally hyperbolic spacetimes

Fix a C^0 spacetime (M, g) . The *Lorentzian length* of a causal curve $\gamma : I \rightarrow M$ is

$$L(\gamma) = \int_I \sqrt{-g(\gamma', \gamma')}.$$

If γ is a causal curve from p to q such that its Lorentzian length satisfies $L(\gamma) \geq L(\lambda)$ for any other causal curve λ from p to q , then γ is called a *causal maximizer* from p to q . In this section we will show that globally hyperbolic spacetimes always contain causal maximizers between causally related points (Theorem 3.2). We first define global hyperbolicity.

Definition 3.1 (M, g) is *strongly causal at p* if for every neighborhood U of p , there is a neighborhood $V \subset U$ of p such that

$$\gamma(a), \gamma(b) \in V \implies \gamma \subset U$$

whenever $\gamma : [a, b] \rightarrow M$ is a causal curve. (M, g) is *strongly causal* if it is strongly causal at every point. If (M, g) is strongly causal and $J^+(p) \cap J^-(q)$ is compact for all $p, q \in M$, then (M, g) is *globally hyperbolic*.

Remark – A spacetime is *causal* if there are no closed causal curves. A strongly causal spacetime implies that it is causal.

- For C^2 spacetimes strong causality can be weakened to causality in the definition of global hyperbolicity [1], and if the spacetime dimension is greater than 2, then even causality is not needed [10]. For C^0 spacetimes strong causality can be weakened to non-totally imprisoning [18].

The goal of this section is to prove the following fundamental result which was first established for continuous metrics by Sämman in [18] and later proved independently in [6].

Theorem 3.2 *Let (M, g) be a globally hyperbolic C^0 spacetime. Given any $q \in J^+(p)$ with $q \neq p$, there is a causal maximizer γ from p to q . Moreover $L(\gamma) < \infty$.*

Remark – Causal maximizers in globally hyperbolic spacetimes have been used to establish spacetime inextendibility results in low regularity [6,7,14,20].

- Theorem 3.2 shows that globally hyperbolic spacetimes are analogous to complete Riemannian manifolds: there is always a length-minimizing curve between any two points in a complete Riemannian manifold.

To prove Theorem 3.2, we first establish some facts about strongly causal spacetimes. The following proposition shows that compact sets in a strongly causal spacetime cannot contain inextendible causal curves. This is often referred to as the ‘no imprisonment’ property.

Proposition 3.3 *Suppose (M, g) is strongly causal and $K \subset M$ is compact. Then*

$$\sup \{L_h(\gamma) \mid \gamma \subset K\} < \infty.$$

Proof By Proposition 2.17, for each $x \in K$, there is a neighborhood U_x such that $L_h(\gamma) \leq 1$ for all $\gamma \subset U_x$. By strong causality, there are neighborhoods $V_x \subset U_x$ such that $\gamma \subset U_x$ whenever $\gamma : [a, b] \rightarrow M$ is a causal curve with endpoints in V_x . Since K is compact and covered by $\{V_x\}_{x \in K}$, there is a finite subcover V_1, \dots, V_N .

Fix a causal curve $\gamma : [a, b] \rightarrow K$. There exists some set from the finite cover which contains $\gamma(a)$, say V_1 . Define s_1 via $s_1 = \sup\{t \mid \gamma(t) \in V_1\}$. If $s_1 \neq b$, then $\gamma(s_1) \notin V_1$, and so there exists some set which contains $\gamma(s_1)$, say V_2 . Define s_2 via $s_2 = \sup\{t \mid \gamma(t) \in V_2\}$. If $s_2 \neq b$, then $\gamma(s_2) \notin V_2$, and so there exists some set which contains $\gamma(s_2)$, say V_3 . And so on until $s^k = b \in V_k$ for some $1 \leq k \leq N$. For $i = 1, \dots, k-1$, choose $t_1 < s_1$ such that $\gamma(t_1) \in V_i \cap V_{i+1}$. Define $\gamma_1 = \gamma|_{[a, t_1]}$ and $\gamma_2 = \gamma|_{[t_1, t_2]}$ and so on until $\gamma_k = \gamma|_{[t_{k-1}, b]}$. Then $\gamma_i \subset V_i$ and by the first paragraph of this proof, we have $L_h(\gamma_i) \leq 1$ for all $i = 1, \dots, k$. Therefore

$$L_h(\gamma) = \sum_{i=1}^k L_h(\gamma_i) \leq k \leq N.$$

□

The limit curve theorem guarantees the existence of a limit curve when there is *one* accumulation point. The next proposition shows that for strongly causal spacetimes we can apply the limit curve theorem to *two* accumulation points within a compact set.

Proposition 3.4 *Suppose (M, g) is strongly causal and $K \subset M$ is a compact set. Let $\gamma_n : [0, b_n] \rightarrow K$ be a sequence of causal curves parameterized by h -arclength such that $\gamma_n(0) \rightarrow p$ and $\gamma_n(b_n) \rightarrow q$ with $q \neq p$. Then there is a $b \in (0, \infty)$ and a limit curve $\tilde{\gamma} : [0, b] \rightarrow M$ from p to q of $\tilde{\gamma}_n|_{[0, b]}$ where $\tilde{\gamma}_n : \mathbb{R} \rightarrow M$ are inextendible causal curve extensions of γ_n .*

Proof By Theorem 2.19, we can extend $\gamma_n : [0, b_n] \rightarrow K$ to inextendible causal curves $\tilde{\gamma}_n : \mathbb{R} \rightarrow M$. Then $\tilde{\gamma}_n$ accumulates to p at 0. By the limit curve theorem, there is a subsequence (still denoted by $\tilde{\gamma}_n$) and a causal curve $\tilde{\gamma} : \mathbb{R} \rightarrow M$ with $\tilde{\gamma}(0) = p$ such that $\tilde{\gamma}_n$ converges to $\tilde{\gamma}$ uniformly on compact subsets of \mathbb{R} . Since every sequence in \mathbb{R} contains a monotone subsequence, we can assume b_n is monotone by restricting to a further subsequence. Then either (1) $b_n \rightarrow \infty$ or (2) $b_n \rightarrow b < \infty$. The first scenario is ruled out by Proposition 3.3. Therefore the second scenario must hold. The triangle inequality gives

$$\begin{aligned} d_h(q, \tilde{\gamma}_n(b)) &\leq d_h(q, \gamma_n(b_n)) + d_h(\gamma_n(b_n), \tilde{\gamma}_n(b)) \\ &\leq d_h(q, \gamma_n(b_n)) + |b_n - b|. \end{aligned}$$

Since $\gamma_n(b_n) \rightarrow q$ and $b_n \rightarrow b$, the right hand side limits to 0. Thus $\tilde{\gamma}_n(b) \rightarrow q$. Since $q \neq p$, we have $b > 0$. Therefore $\tilde{\gamma}|_{[0, b]}$ is a causal curve from p to q which is a limit curve of $\tilde{\gamma}_n|_{[0, b]}$. \square

Proposition 3.5 *If (M, g) is globally hyperbolic, then $J^+(p)$ is closed for all p .*

Proof Let q be an accumulation point of $J^+(p)$. If $q = p$, then $q \in J^+(p)$ by definition. Suppose $q \neq p$. There is a sequence of points $q_n \rightarrow q$ and causal curves γ_n from p to q_n . Let $r \in I^+(q)$. Since $I^-(r)$ is open, there is an integer N such that $n \geq N$ implies $q_n \in I^-(r)$. For these n , we have $\gamma_n \subset K$ where K is the compact set $K = J^+(p) \cap J^-(r)$. Since $q \neq p$, Proposition 3.4 implies that there is a causal curve from p to q . \square

The following technical proposition is needed for the proof of Theorem 3.2.

Proposition 3.6 *Given any $p \in M$ and $\varepsilon > 0$, there is a neighborhood U such that $L(\gamma) < \varepsilon$ for all causal curves $\gamma \subset U$.*

Proof The proof is similar to the proof of Proposition 2.17. Fix $\varepsilon > 0$. Choose a neighborhood $\phi : U_{3/5} \rightarrow \mathbb{R}^{n+1}$ from Lemma 2.9. By continuity, we can shrink the neighborhood so that $|g_{\mu\nu}(x) - \eta_{\mu\nu}| < \varepsilon$ for all $x \in U_{3/5}$. Shrink $U_{3/5}$ even further so that $-\varepsilon < x^0 < \varepsilon$. Let $\gamma \subset U_{3/5}$ be any causal curve. Put $X = \gamma'$. Reparameterize γ by x^0 so that $X^0 = 1$. Using $-g_{\mu\nu}(x) < -\eta_{\mu\nu} + \varepsilon$ and a similar calculation as in the proof of Lemma 2.9, we have

$$-g(X, X) < -\eta(X, X) + \varepsilon \sum_{\mu, \nu} |X^\mu X^\nu| < 1 + \varepsilon \left[1 + 2 \sum_i |X^i| + \sum_{i, j} |X^i X^j| \right].$$

Since $\eta^{-3/5}$ have ‘slope’ 1/2, we have $|X^i| < 2$ for each i . Therefore $-g(X, X) < 1 + \varepsilon C$ where $C = 1 + 4n + 4n^2$. Hence $L(\gamma) = \int \sqrt{-g(\gamma', \gamma')} dx^0 < 2\varepsilon\sqrt{1 + \varepsilon C}$. \square

The proof of Theorem 3.2 hinges on the upper semi-continuity of the Lorentzian length functional. This is Proposition 3.7. We first use it to prove Theorem 3.2. In Sect. 3.3 we prove Proposition 3.7.

Proposition 3.7 (Upper semi-continuity of L) *Suppose $\gamma_n : [a, b] \rightarrow M$ is a sequence of causal curves which converge uniformly to a causal curve $\gamma : [a, b] \rightarrow M$. Given any $\varepsilon > 0$, there exists an integer N such that $n \geq N$ implies $L(\gamma) \geq L(\gamma_n) - \varepsilon$.*

Proof of Theorem 3.2 Set

$$\mathcal{L} = \sup \{ L(\gamma) \mid \gamma \text{ is a causal curve from } p \text{ to } q \}.$$

We first show $\mathcal{L} < \infty$. Let $K = J^+(p) \cap J^-(q)$. By Proposition 3.6 for each $x \in K$, there is a neighborhood U_x such that $L(\gamma) \leq 1$ for all $\gamma \subset U_x$. By strong causality, there are neighborhoods $V_x \subset U_x$ such that $\gamma \subset U_x$ whenever $\gamma : [a, b] \rightarrow M$ is a

causal curve with endpoints in V_x . Since K is compact and covered by $\{V_x\}_{x \in K}$, there is a finite subcover V_1, \dots, V_N . Therefore \mathcal{L} is bounded by N via the same proof used in Proposition 3.3.

By definition of \mathcal{L} there is a sequence of causal curves $\gamma_n : [0, b_n] \rightarrow M$ from p to q satisfying $\mathcal{L} \leq L(\gamma_n) + 1/n$. Let γ_n be parameterized by h -arclength. Proposition 3.4 shows that there is a $b \in (0, \infty)$ and a limit curve $\tilde{\gamma} : [0, b] \rightarrow M$ from p to q of $\tilde{\gamma}_n|_{[0,b]}$ where $\tilde{\gamma}_n : \mathbb{R} \rightarrow M$ are inextendible causal curve extensions of γ_n . By restricting to a subsequence, we can assume $\tilde{\gamma}_n|_{[0,b]}$ converges uniformly to $\tilde{\gamma}$. By upper semi-continuity of the length functional, given any $\varepsilon > 0$ there exists an N such that $n \geq N$ implies

$$\begin{aligned} L(\tilde{\gamma}) + \varepsilon &\geq L(\tilde{\gamma}_n|_{[0,b]}) \\ &= L(\gamma_n) + \int_{b_n}^b \sqrt{-g(\tilde{\gamma}'_n, \tilde{\gamma}'_n)} \\ &\geq (\mathcal{L} - 1/n) + \int_{b_n}^b \sqrt{-g(\tilde{\gamma}'_n, \tilde{\gamma}'_n)}. \end{aligned}$$

Since this is true for all $n \geq N$, we have $L(\tilde{\gamma}) + \varepsilon \geq \mathcal{L}$ (note we used Proposition 2.2 here). Since ε was arbitrary, we have $L(\tilde{\gamma}) \geq \mathcal{L}$. Thus $\tilde{\gamma}$ is a causal maximizer from p to q . \square

3.2 Cauchy surfaces imply global hyperbolicity

Fix a C^0 spacetime (M, g) with a complete Riemannian metric h . In this section we show that global hyperbolicity is implied by the more familiar notion of a Cauchy surface:

Theorem 3.8 *Let (M, g) be a C^0 spacetime. If (M, g) has a Cauchy surface, then (M, g) is globally hyperbolic.*

Remark In fact global hyperbolicity is equivalent to the existence of a Cauchy surface even for continuous metrics [18].

Definition 3.9 A *Cauchy surface* for (M, g) is a set $S \subset M$ such that every inextendible causal curve intersects S exactly once.

Recall that a subset $S \subset M$ is *achronal* if $I^+(S) \cap S = \emptyset$. The *edge* of an achronal set S is the set of points $p \in \bar{S}$ such that for every neighborhood U of p , there is a timelike curve $\gamma : [a, b] \rightarrow U$ such that $\gamma(a) \in I^-(p, U)$, $\gamma(b) \in I^+(p, U)$, and $\gamma \cap S = \emptyset$.

Proposition 3.10 *If S is a Cauchy surface, then S is achronal and has empty edge.*

Proof We first show S is achronal. If $I^+(S) \cap S \neq \emptyset$, then there would be a timelike curve $\gamma : [a, b] \rightarrow M$ with endpoints on S . We can extend γ to an inextendible causal curve $\tilde{\gamma}$ via Theorem 2.19. But then $\tilde{\gamma}$ intersects S twice which contradicts the definition of a Cauchy surface. Therefore S is achronal.

Now we show S has no edge points. Seeking a contradiction, suppose $p \in \bar{S}$ is an edge point of S . Let U be a neighborhood of p . Then there is a timelike curve $\gamma : [a, b] \rightarrow U$ such that $\gamma(a) \in I^-(p, U)$, $\gamma(b) \in I^+(p, U)$, and $\gamma \cap S = \emptyset$. We can extend γ to an inextendible causal curve $\tilde{\gamma} : \mathbb{R} \rightarrow M$. Since S is a Cauchy surface, there exists some t_0 such that $\tilde{\gamma}(t_0) \in S$. By assumption we have $t_0 \notin [a, b]$. Suppose $t_0 < a$. Since $p \in \bar{S}$, there is a sequence of points $p_n \in S$ such that $p_n \rightarrow p$. Therefore for all sufficiently large n , we have $p_n \in I^+(\gamma(a), U)$. Then there is a causal curve from $\tilde{\gamma}(t_0)$ to $\gamma(a)$ to p_n . This contradicts the definition of a Cauchy surface. Likewise supposing $t_0 > b$ yields a contradiction. \square

Corollary 3.11 *If S is a Cauchy surface, then S is a C^0 hypersurface.*

Proof This follows from Theorem A. 6. \square

Lemma 3.12 *Let S be a Cauchy surface. Then S separates M via the disjoint union*

$$M = I^+(S) \sqcup S \sqcup I^-(S).$$

Proof Fix $p \in M$. Since M is time-oriented, there is a C^1 timelike vector field X on M . Let γ_p denote the maximal integral curve of X through $p = \gamma_p(0)$. Since γ_p is maximal and hence inextendible as a continuous curve, it is an inextendible causal curve. Therefore it must intersect S at some point t_0 . If $t_0 = 0$, then $p \in S$. If $t_0 > 0$, then γ_p is C^1 on $[0, t_0]$ and hence $\gamma_p|_{[0, t_0]}$ is a timelike curve by Proposition 2.4. Thus, if $t_0 > 0$, then $p \in I^-(S)$. Likewise, if $t_0 < 0$, then $p \in I^+(S)$. The disjointness follows from S being achronal. \square

Corollary 3.13 *If S is a Cauchy surface, then S is closed.*

Proposition 3.14 *Let S be a Cauchy surface. Then every inextendible causal curve intersects $I^+(S)$ and $I^-(S)$.*

Proof Let $\gamma : \mathbb{R} \rightarrow M$ be an inextendible causal curve. Seeking a contradiction, suppose γ does not intersect $I^+(S)$. Since S is a Cauchy surface, there exists some t_0 such that $\gamma(t_0) \in S$. Let $t_1 > t_0$. By Lemma 3.12, we have $\gamma(t_1) \in S \cup I^-(S)$. If $\gamma(t_1) \in S$, then there is a causal curve from $\gamma(t_0)$ to $\gamma(t_1)$ which is a contradiction. If $\gamma(t_1) \in I^-(S)$, then there is a causal from $\gamma(t_0)$ to $\gamma(t_1)$ to a point on S —again a contradiction. Therefore γ must intersect $I^+(S)$. Likewise γ must intersect $I^-(S)$. \square

Proposition 3.15 *Let S be a Cauchy surface. Let $\gamma : [0, \infty) \rightarrow M$ be a future inextendible causal curve. Then γ intersects $I^+(S)$.*

Proof Extend γ to an inextendible causal curve $\tilde{\gamma} : \mathbb{R} \rightarrow M$ via Theorem 2.19. If the conclusion did not hold, then Proposition 3.14 implies there exists a $t_0 < 0$ such that $\tilde{\gamma}(t_0) \in I^+(S)$. By Lemma 3.12, we must have $\gamma(0) \in S \cup I^-(S)$. But this implies we can find a causal curve which intersects S twice. \square

Lemma 3.16 *Let S be a Cauchy surface. If $p \in I^+(S)$, then*

$$\sup \{L_h(\gamma) \mid \gamma \text{ is a causal curve from } S \text{ to } p\} < \infty.$$

Proof Suppose this is not true. Then we can find a sequence of h -arclength parameterized causal curves $\gamma_n : [a_n, 0] \rightarrow M$ from S to p such that $a_n \rightarrow -\infty$. By Theorem 2.19 we can extend these curves to inextendible causal curves $\tilde{\gamma}_n : \mathbb{R} \rightarrow M$. By the limit curve theorem there is a subsequence (still denoted by $\tilde{\gamma}_n$) which converges to an inextendible causal curve $\gamma : \mathbb{R} \rightarrow M$ passing through $p = \gamma(0)$.

We will show $\gamma \subset S \cup I^+(S)$. Consider $t_0 \geq 0$. Since $p \in I^+(S)$, we have $\gamma(t_0) \notin I^-(S)$. Therefore $\gamma(t_0) \in S \cup I^+(S)$ by Lemma 3.12. Now consider $t_0 < 0$. Seeking a contradiction, suppose $\gamma(t_0) \in I^-(S)$. Since $I^-(S)$ is open, $\tilde{\gamma}_n(t_0) \in I^-(S)$ for all sufficiently large n . Since $a_n \rightarrow -\infty$, we can choose n large enough so that $a_n < t_0$. Then $\tilde{\gamma}_n(t_0) = \gamma_n(t_0)$. Therefore we have a causal curve from $\gamma_n(a_n)$ to $\gamma_n(t_0) \in I^-(S)$ which contradicts the definition of a Cauchy surface. Thus we have shown $\gamma \subset S \cup I^+(S)$, but this contradicts Proposition 3.14. \square

Lemma 3.17 *Let S be a Cauchy surface. Then there are no closed causal curves in M .*

Proof Let $\gamma : [0, b] \rightarrow M$ be a closed causal curve. We define an inextendible causal curve $\tilde{\gamma} : \mathbb{R} \rightarrow M$ by $\tilde{\gamma}|_{[0, b]} = \gamma$ and $\tilde{\gamma}(t+b) = \tilde{\gamma}(t)$ for all t . Since $\tilde{\gamma}$ is inextendible it must intersect S . Since γ is closed, it intersects S infinitely often. This contradicts the definition of a Cauchy surface. \square

Proposition 3.18 *Let S be a Cauchy surface. Then (M, g) is strongly causal.*

Proof Suppose strong causality failed at the point p . Then there is a neighborhood U and a sequence of causal curves $\gamma_n : [0, b_n] \rightarrow M$ parameterized by h -arclength such that $\gamma_n(0) \rightarrow p$ and $\gamma_n(b_n) \rightarrow p$ but each γ_n leaves U . Note this implies there is a $c > 0$ such that $b_n > c$ for all n . Extend each γ_n to inextendible causal curves $\tilde{\gamma}_n : \mathbb{R} \rightarrow M$ via Theorem 2.19. Since $\gamma_n(0) \rightarrow p$, the limit curve theorem yields a limit curve $\gamma : \mathbb{R} \rightarrow M$ of the $\tilde{\gamma}_n$ such that $\gamma(0) = p$. Therefore there is a subsequence (still denoted by $\tilde{\gamma}_n$) such that $\tilde{\gamma}_n$ converges to γ uniformly on compact subsets. By restricting to a further subsequence, we either have (1) $b_n \rightarrow \infty$ or (2) $b_n \rightarrow b < \infty$. Suppose the second case. Then the triangle inequality gives

$$d_h(\gamma(b), p) \leq d_h(\gamma(b), \tilde{\gamma}_n(b)) + d_h(\tilde{\gamma}_n(b), \tilde{\gamma}_n(b_n)) + d_h(\tilde{\gamma}_n(b_n), p).$$

Each of the terms on the right hand side limits to 0. Therefore $\gamma(b) = p$. Since $b \geq c > 0$, we have a closed causal curve through p . This contradicts Lemma 3.17.

Therefore we must have $b_n \rightarrow \infty$. Proposition 3.15 implies that there exists a $t_0 \geq 0$ such that $\gamma(t_0) \in I^+(S)$. By passing to a further subsequence, we can assume $b_n \geq t_0$. Therefore $\tilde{\gamma}_n(t_0) = \gamma_n(t_0)$. Fix $q \in I^+(p)$. There exists an N such that $n \geq N$ implies $\gamma_n(b_n) \in I^-(q)$ and $\gamma_n(t_0) \in I^+(S)$ since these are open sets. Therefore for these n , there is a causal curve λ_n from S to $\gamma_n(t_0)$ to $\gamma_n(b_n)$ to q . But $L_h(\lambda_n) \rightarrow \infty$ since $b_n \rightarrow \infty$. This contradicts Lemma 3.16 provided we show $q \in I^+(S)$. Indeed since $q \in J^+(S)$, we have $q \notin I^-(S)$. Therefore $q \in S \cup I^+(S)$ by Lemma 3.12. But $q \notin S$ otherwise λ_n would be a causal curve which intersects S twice. Hence $q \in I^+(S)$. \square

Lemma 3.19 *Let S be a Cauchy surface. Then for all $p \in I^-(S)$ and $q \in I^+(S)$, we have*

$$\sup \{L_h(\gamma) \mid \gamma \text{ is a causal curve from } p \text{ to } q\} < \infty.$$

Proof By Lemma 3.16, we have $\sup\{L_h(\gamma) \mid \gamma \text{ is causal from } S \text{ to } q\} = b < \infty$. Likewise the time-dual of Lemma 3.16 gives $\sup\{L_h(\gamma) \mid \gamma \text{ is causal from } p \text{ to } S\} = a < \infty$. Then any causal curve from p to q has h -arlength bounded by $a + b$. \square

Lemma 3.20 *Let S be a Cauchy surface. Then for all p and q we have*

$$\sup \{L_h(\gamma) \mid \gamma \text{ is a causal curve from } p \text{ to } q\} < \infty.$$

Proof Seeking a contradiction, suppose the supremum was infinite. By Proposition 3.15, there is a causal curve from q to $q' \in I^+(S)$. Likewise the time-dual of Proposition 3.15 guarantees a point $p' \in I^-(S)$ and a causal curve from p' to p . Since the supremum is infinite, we have $\sup\{L_h(\gamma) \mid \gamma \text{ is causal from } p' \text{ to } q'\} = \infty$. But this contradicts Lemma 3.19. \square

Proposition 3.21 *Let S be a Cauchy surface. Then $J^+(p)$ is closed for all $p \in M$.*

Proof Let q be an accumulation point of $J^+(p)$. If $q = p$, then $q \in J^+(p)$ by definition. Assume $q \neq p$. Then there is a sequence h -arlength parameterized causal curves $\gamma_n : [0, b_n] \rightarrow M$ from p to q_n where $q_n \rightarrow q$. Extend these to inextendible causal curves $\tilde{\gamma}_n : \mathbb{R} \rightarrow M$ via Theorem 2.19. By the limit curve theorem, there is a subsequence (still denoted by $\tilde{\gamma}_n$) which converges to an inextendible causal curve $\gamma : \mathbb{R} \rightarrow M$ with $\gamma(0) = p$. By restricting to a further subsequence, we either have (1) $b_n \rightarrow \infty$ or (2) $b_n \rightarrow b < \infty$. It suffices to show that only (2) can hold. For then the same triangle inequality argument used in the proof of Proposition 3.18 implies $\gamma : [0, b] \rightarrow M$ is a causal curve from p to q .

Seeking a contradiction, suppose (1) holds. Let $q_0 \in I^+(q)$. Then for all sufficiently large n , we have $q_n \in I^-(q_0)$. Therefore there are causal curves λ_n from p to q_0 with $L_h(\lambda_n) \rightarrow \infty$. But this contradicts Lemma 3.20. \square

Proof of Theorem 3.8 By Proposition 3.18 we have (M, g) is strongly causal. By Proposition 3.21 we have $J^+(p) \cap J^-(q)$ is closed for all p and q . So by the Hopf–Rinow theorem, it suffices to show that this intersection is bounded with respect to d_h . This follows from Lemma 3.20. \square

3.3 Upper semi-continuity of the Lorentzian length functional

This section is solely devoted to proving the upper semi-continuity of the Lorentzian length functional. This is Proposition 3.7 which played a chief role in the proof of Theorem 3.2.

Remark The proof of upper semi-continuity in [6] used approximating smooth metrics and the fact that the Lorentzian length of a causal curve can be found by taking the

length of a limit of interpolating geodesics. This last fact was somewhat of a folklore theorem until Minguzzi proved it in [12, Theorem 2.37]. The proof in this section relies on similar ideas but instead of approximating via geodesics, we approximate via $\eta^{-\varepsilon}$ -maximizers (see Definition 3.23).

Fix a C^0 spacetime (M, g) . Let $\phi : U_\varepsilon \rightarrow \mathbb{R}^{n+1}$ be a coordinate system as in Lemma 2.9, and $B_\varepsilon \subset U_\varepsilon$ denote an open set satisfying the same properties (1)–(5) as in Lemma 2.9, but in addition $\phi(B_\varepsilon)$ is also a Euclidean ball with respect to the usual norm on \mathbb{R}^{n+1} and also B_ε has compact closure. L will denote the Lorentzian length with respect to g while $L_{\eta^{-\varepsilon}}$ will denote the Lorentzian length with respect to $\eta^{-\varepsilon}$. Given two points $p, q \in B_\varepsilon$, the straight line joining p to q is the unique curve $\lambda : [0, 1] \rightarrow B_\varepsilon$ such that $\phi \circ \lambda(t) = t\phi(q) + (1 - t)\phi(p)$.

Proposition 3.22 *Suppose $\gamma : [a, b] \rightarrow B_\varepsilon$ is a causal curve. Let $\lambda \subset B_\varepsilon$ be the straight line joining $\gamma(a)$ to $\gamma(b)$. Then*

- (1) λ is an $\eta^{-\varepsilon}$ -timelike curve,
- (2) $L_{\eta^{-\varepsilon}}(\lambda) \geq L_{\eta^{-\varepsilon}}(\gamma)$.

Proof We first prove (1). Write $\tilde{\gamma} = \phi \circ \gamma$ and $\tilde{B}_\varepsilon = \phi \circ B_\varepsilon$. Since γ is a causal curve, it is an $\eta^{-\varepsilon}$ -timelike curve by Lemma 2.9. Therefore, by Lemma 2.11, we have $\tilde{\gamma}(b) \in C_{-\varepsilon'}^+(\tilde{\gamma}(a), \tilde{B}_\varepsilon)$ for all $\varepsilon' \in (\varepsilon, 1)$. Therefore $\tilde{\gamma}(b)$ lies in the closure \bar{C} where $C = C_{-\varepsilon}^+(\tilde{\gamma}(a), \tilde{B}_\varepsilon)$. If $\tilde{\gamma}(b)$ lies within the interior of C , then λ is $\eta^{-\varepsilon}$ -timelike. If $\tilde{\gamma}(b)$ lies on the boundary ∂C , then λ is $\eta^{-\varepsilon}$ -null. Therefore it suffices to show $\tilde{\gamma}(b)$ must lie within the interior. Seeking a contradiction, suppose $\tilde{\gamma}(b) \in \partial C$. Let $U \subset I_{\eta^{-\varepsilon}}^+(\gamma(a), B_\varepsilon)$ be an open set around $\gamma(b)$. Since $\tilde{\gamma}(b)$ lies on the boundary ∂C , there exists a point $\tilde{p} \in \tilde{U} \setminus \bar{C}$ where $\tilde{U} = \phi \circ U$. But since $p = \phi^{-1}(\tilde{p}) \in I_{\eta^{-\varepsilon}}^+(\gamma(a), B_\varepsilon)$, Lemma 2.11 implies $\tilde{p} \in C_{-\varepsilon'}^+(\tilde{\gamma}(a), \tilde{B}_\varepsilon)$ for all $\varepsilon' \in (\varepsilon, 1)$. Hence $\tilde{p} \in \bar{C}$ which is a contradiction.

Now we prove (2). From (1) we know that $\tilde{\lambda} = \phi \circ \lambda$ is an $\eta^{-\varepsilon}$ -timelike curve which is the straight line joining $\tilde{\gamma}(a)$ to $\tilde{\gamma}(b)$. Since $\tilde{\lambda}$ is $\eta^{-\varepsilon}$ -timelike, there is an $\eta^{-\varepsilon}$ -isometry $\psi : \mathbb{R}^{n+1} \rightarrow \mathbb{R}^{n+1}$ which sends $\tilde{\gamma}(a)$ to the origin and takes $\tilde{\gamma}(b)$ to $\psi \circ \tilde{\gamma}(b)$ which lies on the positive x^0 -axis. Note that ψ is composed of a translation and an $\eta^{-\varepsilon}$ -Lorentz transformation. Similarly we have $\psi \circ \tilde{\lambda}$ lies entirely on the positive x^0 -axis. Parameterize $\tilde{\gamma}$ and $\tilde{\lambda}$ by x^0 and put $X = (\psi \circ \tilde{\gamma})'$. Since ψ is an $\eta^{-\varepsilon}$ -isometry, we have

$$L_{\eta^{-\varepsilon}}(\gamma) = \int \sqrt{\frac{1 + \varepsilon}{1 - \varepsilon} - \delta_{ij} X^i X^j} \leq \int \sqrt{\frac{1 + \varepsilon}{1 - \varepsilon}} = L_{\eta^{-\varepsilon}}(\lambda).$$

□

Proposition 3.22 justifies the terminology in the next definition.

Definition 3.23 Let $\gamma : [a, b] \rightarrow B_\varepsilon$ be a causal curve.

1. Let P be a partition $a = t_0 < t_1 < \dots < t_k = b$ of the interval $[a, b]$. The interpolating $\eta^{-\varepsilon}$ -maximizer of γ with respect to P is the $\eta^{-\varepsilon}$ -causal curve $\lambda \subset B_\varepsilon$ formed by concatenating the straight lines joining $\gamma(t_{i-1})$ to $\gamma(t_i)$ for $i = 1, \dots, k$.

2. For $k = 1, 2, \dots$ let P_k denote the partition $a = t_0 < t_1 < \dots < t_k = b$ such that $t_i - t_{i-1} = (b - a)/k$ for all $i = 1, \dots, k$. Let λ_k denote the interpolating $\eta^{-\varepsilon}$ -maximizer of γ with respect to P_k .

The following proof is inspired by [12, Theorem 2.37].

Proposition 3.24 *Let $\gamma : [a, b] \rightarrow B_\varepsilon$ be a causal curve. Then*

$$L_{\eta^{-\varepsilon}}(\gamma) = \lim_{k \rightarrow \infty} L_{\eta^{-\varepsilon}}(\lambda_k).$$

Proof The proof is an application of Lebesgue’s dominated convergence theorem. Assume γ and λ_k are parameterized by the time function x^0 on B_ε . Then $-\eta^{-\varepsilon}(\lambda'_k, \lambda'_k) \leq (1 + \varepsilon)/(1 - \varepsilon)$. Thus it suffices to show $\lambda'_k \rightarrow \gamma'$ almost everywhere. Let A denote the set of points in $[a, b]$ where γ is not differentiable. Likewise, let A_k denote the set of points in $[a, b]$ where λ_k is not differentiable. Then $D = [a, b] \setminus (A \cup \bigcup_k A_k)$ has full measure and represents the set of differentiable points which belong to γ and each λ_k .

Fix $t_* \in D$. We will show $\lambda'_k(t_*) \rightarrow \gamma'(t_*)$. Let $\tilde{\gamma} = \phi \circ \gamma$ and $\tilde{\lambda}_k = \phi \circ \lambda_k$ where ϕ is the coordinate map for B_ε . Let a_k be the greatest point on the partition P_k such that $a_k < t_*$ and b_k be the least point on the partition such that $t_* < b_k$. Then $\gamma(a_k) = \lambda_k(a_k)$ and $\gamma(b_k) = \lambda_k(b_k)$. Therefore the triangle inequality gives

$$\begin{aligned} |\tilde{\gamma}'(t_*) - \tilde{\lambda}'_k(t_*)| &\leq \left| \tilde{\gamma}'(t_*) - \frac{\tilde{\gamma}(b_k) - \tilde{\gamma}(a_k)}{b_k - a_k} \right| + \left| \frac{\tilde{\lambda}_k(b_k) - \tilde{\lambda}_k(a_k)}{b_k - a_k} - \tilde{\lambda}'_k(t_*) \right| \\ &= \left| \tilde{\gamma}'(t_*) - \frac{\tilde{\gamma}(b_k) - \tilde{\gamma}(a_k)}{b_k - a_k} \right| + 0. \end{aligned}$$

We get zero for the second term on the right hand side since $\tilde{\lambda}_k$ is composed of straight lines. Now we use the definition of the derivative to bound the first term on the right hand side. First note the identity

$$\begin{aligned} \tilde{\gamma}'(t_*) - \frac{\tilde{\gamma}(b_k) - \tilde{\gamma}(a_k)}{b_k - a_k} &= \frac{b_k - t_*}{b_k - a_k} \left(\tilde{\gamma}'(t_*) - \frac{\tilde{\gamma}(b_k) - \tilde{\gamma}(t_*)}{b_k - t_*} \right) + \frac{t_* - a_k}{b_k - a_k} \left(\tilde{\gamma}'(t_*) - \frac{\tilde{\gamma}(t_*) - \tilde{\gamma}(a_k)}{t_* - a_k} \right). \end{aligned}$$

Fix $\varepsilon_0 > 0$. By definition of the derivative, there exists a $\delta > 0$ such that $|t - t_*| < \delta$ implies

$$\left| \tilde{\gamma}'(t_*) - \frac{\tilde{\gamma}(t_*) - \tilde{\gamma}(t)}{t_* - t} \right| < \varepsilon_0.$$

Choose N large enough so that $k \geq N$ implies $t_* - a_k < \delta$ and $b_k - t_* < \delta$. Then using the identity above, we have

$$|\tilde{\gamma}'(t_*) - \tilde{\lambda}'_k(t_*)| \leq \left| \tilde{\gamma}'(t_*) - \frac{\tilde{\gamma}(b_k) - \tilde{\gamma}(a_k)}{b_k - a_k} \right| \leq \frac{b_k - t_*}{b_k - a_k} \varepsilon_0 + \frac{t_* - a_k}{b_k - a_k} \varepsilon_0 = \varepsilon_0.$$

Thus $\lambda'_k(t_*) \rightarrow \gamma'(t_*)$ as desired. □

Lemma 3.25 will be used to prove the upper semi-continuity of L locally (Lemma 3.26). Then Lemma 3.26 will be used to prove the upper semi-continuity of L globally.

Lemma 3.25 *Given any $p \in M$, there is a neighborhood U around p and a constant C such that for any $p_0 \in U$ and any $0 < \varepsilon < 3/5$, there is a neighborhood $B_\varepsilon \subset U$ centered around p_0 such that $|L(\gamma) - L_{\eta^{-\varepsilon}}(\gamma)| \leq CL_h(\gamma)\sqrt{\varepsilon}$ for any causal curve $\gamma \subset B_\varepsilon$.*

Proof Fix $p \in M$. Let $U_{3/5}$ be a neighborhood from Lemma 2.9 with compact closure. Let (x^0, x^1, \dots, x^n) denote the coordinates for $U_{3/5}$. From (3) of Lemma 2.9, we have $|g_{00}(x) - \eta_{00}| < 3/5$ for all $x \in U_{3/5}$. Hence $|g_{00}(x)| < 8/5$.

Define c via $1/c^2 = \inf \{h(X, X) \mid x \in U_{3/5}, X \in T_x M, \delta_{\mu\nu} X^\mu X^\nu = 1\}$. Since $U_{3/5}$ has compact closure, we have $1/c^2 > 0$. Then for all $x \in U_{3/5}$ and $X \in T_x M$, we have $\delta_{\mu\nu} X^\mu X^\nu \leq c^2 h(X, X)$. In particular, if $h(X, X) = 1$, then $|X^0|^2 \leq \delta_{\mu\nu} X^\mu X^\nu \leq c^2$.

Fix $p_0 \in U_{3/5}$ and $0 < \varepsilon < 3/5$. By Lemma 2.9, there is a $B_\varepsilon \subset U_{3/5}$ neighborhood around p_0 with coordinates (y^0, y^1, \dots, y^n) , but we apply the Gram-Schmidt process so that $\partial/\partial y^0$ is parallel to $\partial/\partial x^0$ at p_0 . Then $x^0 = y^0/\sqrt{|g_{00}(p_0)|}$ and $\partial x^i/\partial y^0 = 0$ on B_ε . Let $\tilde{g}_{\mu\nu} = g(\frac{\partial}{\partial y^\mu}, \frac{\partial}{\partial y^\nu})$ denote the components of g with respect to (y^0, y^1, \dots, y^n) to distinguish them from $g_{\mu\nu}$. Then by construction, we have $\tilde{g}_{00} = -1$ at p_0 .

Let $\gamma : [0, b] \rightarrow B_\varepsilon$ be any causal curve parameterized by h -arclength. Let $X = \gamma'$. In components we write $X = X^\mu \frac{\partial}{\partial x^\mu} = \tilde{X}^\mu \frac{\partial}{\partial y^\mu}$. Then $|\tilde{g}_{\mu\nu}(x) - \eta_{\mu\nu}| < \varepsilon$ for all $x \in B_\varepsilon$ implies $|g(X, X) - \eta(X, X)| < \varepsilon \sum_{\mu, \nu} |\tilde{X}^\mu \tilde{X}^\nu|$. Then using $\eta = \eta^{-\varepsilon} + \frac{2\varepsilon}{1-\varepsilon}(dy^0)^2$, we have

$$\begin{aligned} -\eta^{-\varepsilon}(X, X) &< -g(X, X) + \frac{2\varepsilon}{1-\varepsilon} |\tilde{X}^0|^2 + \varepsilon \sum_{\mu, \nu} |\tilde{X}^\mu \tilde{X}^\nu| \\ &= -g(X, X) + \frac{2\varepsilon}{1-\varepsilon} |\tilde{X}^0|^2 + \varepsilon |\tilde{X}^0|^2 \left[1 + \sum_i \frac{|\tilde{X}^i|}{|\tilde{X}^0|} + \sum_{i,j} \frac{|\tilde{X}^i \tilde{X}^j|}{|\tilde{X}^0|^2} \right] \end{aligned}$$

Since $0 < \varepsilon < 3/5$, we have $2/(1 - \varepsilon) < 5$. Also, the term in the bracket is less than $1 + 4n + 4n^2$ where $n + 1$ is the dimension of the spacetime. Therefore

$$-\eta^{-\varepsilon}(X, X) < -g(X, X) + \varepsilon |\tilde{X}^0|^2 (6 + 4n + 4n^2).$$

By the first and second paragraphs of this proof, we have

$$\tilde{X}^0(t) = (y^0 \circ \gamma)'(t) = (x^0 \circ \gamma)'(t)\sqrt{|g_{00}(p_0)|} < c\sqrt{8/5}.$$

Thus

$$-\eta^{-\varepsilon}(X, X) < -g(X, X) + \varepsilon C^2$$

where $C^2 = c^2(8/5)(6 + 4n + 4n^2)$. This establishes $L_{\eta^{-\varepsilon}}(\gamma) < L(\gamma) + CL_h(\gamma)\sqrt{\varepsilon}$. The proof of the other inequality is analogous. \square

Lemma 3.26 *Given any $p \in M$, there is a neighborhood U around p such that given any $\varepsilon > 0$ and any sequence of causal curves $\gamma_n : [a, b] \rightarrow U$ which converge uniformly to the causal curve $\gamma : [a, b] \rightarrow U$, there exists an N such that $n \geq N$ implies $L(\gamma) \geq L(\gamma_n) - \varepsilon$.*

Proof Fix $p \in M$ and let U be the neighborhood from Lemma 3.25. Let $\gamma_n : [a, b] \rightarrow U$ be a sequence of causal curves parameterized by h -arclength which converge uniformly to a causal curve $\gamma : [a, b] \rightarrow U$.

Fix $\varepsilon > 0$. For any $p_0 \in \gamma([a, b])$, there is a $B_\varepsilon \subset U$ around p_0 from Lemma 3.25. Since $\gamma([a, b])$ is compact, we can cover it by finitely many neighborhoods $B_\varepsilon^1, \dots, B_\varepsilon^l$. We order these sets in the following way: There exists some set which contains $\gamma(a)$, say B_ε^1 . Define s^1 via $s^1 = \sup\{t \mid \gamma([a, t]) \subset B_\varepsilon^1\}$. Either $s^1 = b$ in which case we take $l = 1$ and stop. Otherwise $\gamma(s^1) \notin B_\varepsilon^1$, and so there exists some set which contains $\gamma(s^1)$, say B_ε^2 . Define s^2 via $s^2 = \sup\{t \mid \gamma([s^1, t]) \subset B_\varepsilon^2\}$. Either $s^2 = b$ in which case we take $l = 2$ and stop. Otherwise $\gamma(s^2) \notin B_\varepsilon^2$, and so there exists some set which contains $\gamma(s^2)$, say B_ε^3 . And so on. Repeat this process until $s^l = b \in B_\varepsilon^l$. For $i = 1, \dots, l - 1$, choose $t^i < s^i$ such that $\gamma(t^i) \in B_\varepsilon^i \cap B_\varepsilon^{i+1}$. Define $\gamma^1 = \gamma|_{[a, t^1]}$ and $\gamma^2 = \gamma|_{[t^1, t^2]}$ and so on until $\gamma^l = \gamma|_{[t^{l-1}, b]}$. Then $\gamma^i \subset B_\varepsilon^i$ for all $i = 1, \dots, l$.

Let $t^0 = a$ and $t^l = b$. For each $i = 1, \dots, l$, we partition the domain $[t^{i-1}, t^i]$ into k equal subintervals (i.e. via P_k) and let λ_k^i denote the interpolating $\eta^{-\varepsilon}$ -maximizer of γ^i with respect to P_k . By Proposition 3.24, we have $L_{\eta^{-\varepsilon}}(\gamma^i) = \lim_{k \rightarrow \infty} L_{\eta^{-\varepsilon}}(\lambda_k^i)$. Fix k large enough so that $L_{\eta^{-\varepsilon}}(\gamma^i) \geq L_{\eta^{-\varepsilon}}(\lambda_k^i) - \varepsilon/l$ for each i . Using Lemma 3.25, we have

$$\begin{aligned} L(\gamma) &= \sum_{i=1}^l L(\gamma^i) \geq \sum_{i=1}^l \left(L_{\eta^{-\varepsilon}}(\gamma^i) - CL_h(\gamma^i)\sqrt{\varepsilon} \right) \\ &= \sum_{i=1}^l L_{\eta^{-\varepsilon}}(\gamma^i) - CL_h(\gamma)\sqrt{\varepsilon} \\ &\geq \sum_{i=1}^l \left(L_{\eta^{-\varepsilon}}(\lambda_k^i) - \varepsilon/l \right) - CL_h(\gamma)\sqrt{\varepsilon} \end{aligned}$$

$$= \sum_{i=1}^l L_{\eta^{-\varepsilon}}(\lambda_k^i) - \left(\varepsilon + CL_h(\gamma)\sqrt{\varepsilon} \right).$$

Recall that λ_k^i is the concatenation of the curves $\lambda_{k,j}^i$ for $j = 1, \dots, k$ where $\lambda_{k,j}^i$ is the straight line in B_ε^i joining $p_{k,j}^i$ to $q_{k,j}^i$ where

$$p_{k,j}^i = \gamma^i \left(t^{i-1} + \frac{j-1}{k}(t^i - t^{i-1}) \right) \quad \text{and} \quad q_{k,j}^i = \gamma^i \left(t^{i-1} + \frac{j}{k}(t^i - t^{i-1}) \right).$$

We extend $\lambda_{k,j}^i$ just slightly to a new curve $\tilde{\lambda}_{k,j}^i$ such that $\tilde{\lambda}_{k,j}^i$ is still the straight line between its end points $\tilde{p}_{k,j}^i$ and $\tilde{q}_{k,j}^i$. Moreover, we choose the points $\tilde{p}_{k,j}^i$ and $\tilde{q}_{k,j}^i$ sufficiently close to $p_{k,j}^i$ and $q_{k,j}^i$, respectively, such that

$$L_{\eta^{-\varepsilon}}(\lambda_k^i) = \sum_{j=1}^k L_{\eta^{-\varepsilon}}(\lambda_{k,j}^i) \geq \sum_{j=1}^k L_{\eta^{-\varepsilon}}(\tilde{\lambda}_{k,j}^i) - \varepsilon/l.$$

Therefore

$$\begin{aligned} L(\gamma) &\geq \sum_{i=1}^l L_{\eta^{-\varepsilon}}(\lambda_k^i) - \left(\varepsilon + CL_h(\gamma)\sqrt{\varepsilon} \right) \\ &\geq \sum_{i=1}^l \left(\sum_{j=1}^k L_{\eta^{-\varepsilon}}(\tilde{\lambda}_{k,j}^i) - \varepsilon/l \right) - \left(\varepsilon + CL_h(\gamma)\sqrt{\varepsilon} \right) \\ &= \sum_{i=1}^l \sum_{j=1}^k L_{\eta^{-\varepsilon}}(\tilde{\lambda}_{k,j}^i) - \left(2\varepsilon + CL_h(\gamma)\sqrt{\varepsilon} \right). \end{aligned}$$

Let $D_{k,j}^i \subset V_\varepsilon^i$ denote the diamond

$$D_{k,j}^i = I_{\eta^{-\varepsilon}}^+(\tilde{p}_{k,j}^i, V_\varepsilon^i) \cap I_{\eta^{-\varepsilon}}^-(\tilde{q}_{k,j}^i, V_\varepsilon^i).$$

Let $C_{k,j}^i \subset \mathbb{R}$ denote the closed interval

$$C_{k,j}^i = \left[t^{i-1} + \frac{j-1}{k}(t^i - t^{i-1}), t^{i-1} + \frac{j}{k}(t^i - t^{i-1}) \right].$$

By uniform convergence of the γ_n , there is an integer N such that $n \geq N$ implies $\gamma_n|_{C_{k,j}^i}$ is contained in $D_{k,j}^i$ for all $i = 1, \dots, l$ and all $j = 1, \dots, k$. Since $\tilde{\lambda}_{k,j}^i$ is an $\eta^{-\varepsilon}$ -maximizer, the proof of (2) from Proposition 3.22 shows that

$$L_{\eta^{-\varepsilon}}(\tilde{\lambda}_{k,j}^i) \geq L_{\eta^{-\varepsilon}}(\gamma_n|_{C_{k,j}^i}).$$

Therefore

$$L(\gamma) \geq \sum_{i=1}^l \sum_{j=1}^k L_{\eta^{-\varepsilon}}(\gamma_n | C_{k,j}^i) - \left(2\varepsilon + CL_h(\gamma)\sqrt{\varepsilon}\right).$$

Using Lemma 3.25, we have

$$\sum_{i=1}^l \sum_{j=1}^k L_{\eta^{-\varepsilon}}(\gamma_n | C_{k,j}^i) \geq L(\gamma_n) - CL_h(\gamma)\sqrt{\varepsilon}.$$

Thus, for these $n \geq N$, we have

$$L(\gamma) \geq L(\gamma_n) - \left(2\varepsilon + 2CL_h(\gamma)\sqrt{\varepsilon}\right).$$

Since ε was arbitrary, the result follows. □

Proof of Proposition 3.7 Since $\gamma([a, b])$ is compact, we can cover it by finitely many neighborhoods U^1, U^2, \dots, U^l given from Lemma 3.26. We order these sets in the following way: There exists some set which contains $\gamma(a)$, say U^1 . Define s^1 via $s^1 = \sup\{t \mid \gamma([a, t]) \subset U^1\}$. Either $s^1 = b$ in which case we take $l = 1$ and stop. Otherwise $\gamma(s^1) \notin U^1$, and so there exists some set which contains $\gamma(s^1)$, say U^2 . Define s^2 via $s^2 = \sup\{t \mid \gamma([s^1, t]) \subset U^2\}$. Either $s^2 = b$ in which case we take $l = 2$ and stop. Otherwise $\gamma(s^2) \notin U^2$, and so there exists some set which contains $\gamma(s^2)$, say U^3 . And so on until $s^l = b \in U^l$. For $i = 1, \dots, l - 1$, choose $t^i < s^i$ such that $\gamma(t^i) \in U^i \cap U^{i+1}$. Define $\gamma^1 = \gamma|_{[a, t^1]}$ and $\gamma^2 = \gamma|_{[t^1, t^2]}$ and so on until $\gamma^l = \gamma|_{[t^{l-1}, b]}$. Then $\gamma^i \subset U^i$ for all $i = 1, \dots, l$. For each n , define γ_n^i with the same domain restriction as γ^i . Then γ_n^i converges uniformly to γ^i .

Fix $\varepsilon > 0$. By Lemma 3.26, for each i , there exists an N_i such that $n \geq N_i$ implies $L(\gamma_n^i) \geq L(\gamma_n^i) - \varepsilon/l$. Let $N = \max\{N_1, \dots, N_l\}$. Then for $n \geq N$, we have

$$L(\gamma) = \sum_{i=1}^l L(\gamma^i) \geq \sum_{i=1}^l \left(L(\gamma_n^i) - \varepsilon/l\right) = L(\gamma_n) - \varepsilon.$$

□

4 Bubbling spacetimes

4.1 Bubbling sets and causally plain spacetimes

We begin with a motivating example. Consider the spacetime (M, g) where

$$M = (-1, 1) \times \mathbb{R}, \quad g = -dt^2 - a(t) dt dx + b(t) dx^2$$

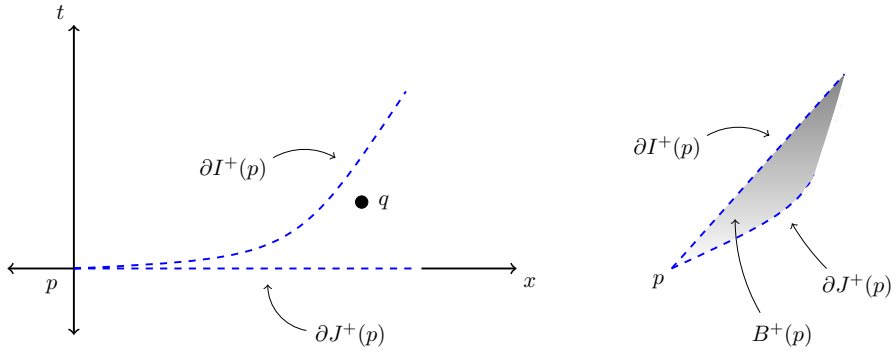


Fig. 3 Left: The C^0 spacetime from our motivating example. Here $q \in B^+(p)$. Right: A possible bubbling set in a C^0 spacetime. Here the shaded region represents the open set $B^+(p)$

and

$$a(t) = 2(1 - |t|^{1/2})$$

$$b(t) = |t|^{1/2}(2 - |t|^{1/2}).$$

Since $\frac{d}{dt}\sqrt{t} = 1/(2\sqrt{t})$, the metric components $a(t)$ and $b(t)$ are not C^1 . In fact they are not even Lipschitz. If γ is a curve beginning at the origin, then $\gamma(x) = (t(x), x)$ will be null when

$$t'(x) = |t|^{1/2}.$$

Since $|t|^{1/2}$ is continuous, we are guaranteed the existence of solutions. However it is not Lipschitz, so we are not guaranteed uniqueness. Indeed the solutions for the initial condition $t(0) = 0$ are given by the bifurcating family

$$t_c(x) = \begin{cases} 0 & \text{for } 0 \leq x \leq c \\ \frac{1}{2}(x - c)^2 & \text{for } c \leq x. \end{cases}$$

If we let $p = (0, 0) \in M$ denote the origin, then this example demonstrates the proper inclusion:

$$I^+(p) \subsetneq \text{int}[J^+(p)].$$

See Fig. 3.

Definition 4.1 Let (M, g) be a C^0 spacetime. Given a set S within a neighborhood U , we define the future *bubbling set* of S within U as the open set

$$B^+(S, U) = \text{int}[J^+(S, U)] \setminus \overline{I^+(S, U)}.$$

Remark Past bubbling sets are defined time-dually. When $U = M$, we will simply write $B^+(S)$. When $S = \{p\}$ we will simply write $B^+(p, U)$.

Since bubbling sets are unfamiliar (and hence undesirable), we set out to establish sufficient conditions which will guarantee they are empty.

Definition 4.2 Let (M, g) be a C^0 spacetime.

- (M, g) is called *causally plain* if $B^+(p) = \emptyset$ for all p .
- (M, g) satisfies the *push-up property* if $I^+(J^+(p)) = I^+(p)$ for all p .

Proposition 4.3 *If (M, g) satisfies the push-up property, then (M, g) is causally plain.*

Proof Fix $q \in \text{int}[J^+(p)]$. Then there is a neighborhood $U \subset \text{int}[J^+(p)]$ about q . Therefore there is a causal curve from p to a point $q' \in I^-(q, U)$. Thus $q \in I^+(p)$ by the push-up property. Hence $B^+(p) = \emptyset$. □

In Appendix A.1 we demonstrate that normal neighborhoods can be used to show that C^2 spacetimes satisfy the push-up property. Therefore they are causally plain. The motivating C^0 spacetime from the beginning of this section demonstrates that spacetimes with regularity less than C^1 are not causally plain. Therefore a natural question to ask is: are C^1 spacetimes causally plain? The answer is yes. In fact Lipschitz is sufficient.

Definition 4.4 A *Lipschitz* spacetime (M, g) is one such that the components of the metric $g_{\mu\nu}$ in any coordinate system are locally Lipschitz functions.

The following proof is inspired by [3, Lemma 1.15].

Theorem 4.5 *If (M, g) is Lipschitz, then (M, g) satisfies the push-up property. Hence Lipschitz spacetimes are causally plain.*

Proof Let (M, g) be a Lipschitz spacetime. Let $\gamma : [0, b] \rightarrow M$ be a causal parameterized by h -arclength. We will construct a timelike curve $\lambda : [0, b] \rightarrow M$ with $\lambda(0) = \gamma(0)$ and such that $\lambda(b) \in I^+(\gamma(b))$ and $\lambda(b)$ can be made arbitrarily close to $\gamma(b)$. Since I^- is open, this will prove the push-up property.

Since (M, g) is time-oriented, there is a C^1 future-directed timelike vector field T on M . Let c_p denote the integral curve of T through $p = c_p(0)$. Let $f : [0, b] \rightarrow \mathbb{R}$ be a (soon to be determined) continuous function with $f(0) = 0$ and $f(t) \geq 0$. Let $\varepsilon > 0$. For each $t \in [0, b]$, we define $\lambda(t) = c_{\gamma(t)}(\varepsilon f(t))$. Since integral curves are unique, this uniquely defines λ .

Since $T \neq 0$, given any point p , we can construct a neighborhood U around p with compact closure such that $T = \partial/\partial x^0$ within this neighborhood (see Lemma 1.57 in [15]). Since $[0, b]$ is compact, we can cover γ by finitely many such neighborhoods $\phi_\alpha : U_\alpha \rightarrow M$ for finite α . By choosing ε small enough, we can ensure $\lambda \subset \cup_\alpha U_\alpha$. In a particular neighborhood U_α , we have by construction $T = T_\alpha^\mu \partial/\partial x_\alpha^\mu$ where $T_\alpha^0 = 1$ and $T_\alpha^i = 0$. Therefore we have the following coordinate expression for $\lambda(t) \in U_\alpha$

$$\lambda_\alpha^\mu(t) = \gamma_\alpha^\mu(t) + \varepsilon f(t) T_\alpha^\mu.$$

This shows that λ is a locally Lipschitz curve. Since (M, g) is Lipschitz and there are only finitely many α , there is a $\Lambda > 0$ such that for any α and any $x, y \in U_\alpha$, we have $|g_{\mu\nu}(x) - g_{\mu\nu}(y)| \leq \Lambda|\phi_\alpha(x) - \phi_\alpha(y)|$ where $|\cdot|$ denotes the standard Euclidean norm.

Let $X = \lambda'$. Omitting the subscript α , we simply write $\lambda' = X^\mu \partial_\mu$. To utilize the Lipschitz assumption, we separate in any neighborhood U_α

$$\begin{aligned} g(\lambda'(t), \lambda'(t)) &= [g_{\mu\nu} \circ \lambda(t)]X^\mu(t)X^\nu(t) \\ &= [g_{\mu\nu} \circ \lambda(t) - g_{\mu\nu} \circ \gamma(t)]X^\mu(t)X^\nu(t) + [g_{\mu\nu} \circ \gamma(t)]X^\mu(t)X^\nu(t) \end{aligned}$$

Plugging $X^\mu = (\gamma^\mu)' + \varepsilon f' T^\mu$ into the last term above yields

$$\begin{aligned} g(\lambda', \lambda') &= [g_{\mu\nu} \circ \lambda - g_{\mu\nu} \circ \gamma]X^\mu X^\nu + g(\gamma', \gamma') + 2\varepsilon f' g(\gamma', T) + \varepsilon^2 |f'|^2 (g_{00} \circ \gamma) \\ &\leq [g_{\mu\nu} \circ \lambda - g_{\mu\nu} \circ \gamma]X^\mu X^\nu + 2\varepsilon f' g(\gamma', T). \end{aligned}$$

The Lipschitz assumption implies that for all α

$$|g_{\mu\nu} \circ \lambda - g_{\mu\nu} \circ \gamma| \leq \Lambda|\phi_\alpha \circ \lambda - \phi_\alpha \circ \gamma| = \Lambda \varepsilon f.$$

Therefore in each of the neighborhoods U_α , we have

$$|(g_{\mu\nu} \circ \lambda - g_{\mu\nu} \circ \gamma)X^\mu X^\nu| \leq \varepsilon \Lambda f \sum_{\mu, \nu} |X^\mu X^\nu|.$$

Write $Y = \gamma'$. We have for each μ

$$\begin{aligned} |X^\mu|^2 &= |Y^\mu + \varepsilon f' T^\mu|^2 \\ &\leq |Y^\mu|^2 + 2\varepsilon |Y^\mu| |f'| + \varepsilon^2 |f'|^2 \\ &\leq C^2 + 2\varepsilon C |f'| + \varepsilon^2 |f'|^2. \end{aligned}$$

The last inequality follows since compactness of $[0, b]$ along with Proposition 2.2 implies that there is a constant $C > 0$ (independent of α) such that $|Y^\mu| \leq C$ for all μ .

Letting $N = n + 1$ denote the dimension of the spacetime, we have

$$\begin{aligned} g(\lambda', \lambda') &\leq [g_{\mu\nu} \circ \lambda - g_{\mu\nu} \circ \gamma]X^\mu X^\nu + 2\varepsilon f' g(\gamma', T) \\ &\leq \varepsilon \Lambda f N^2 (C^2 + 2\varepsilon C |f'| + \varepsilon^2 |f'|^2) + 2\varepsilon f' g(\gamma', T) \end{aligned}$$

Now we put a bound on the sum of the first and fourth terms. Define the continuous function $r : [0, b] \rightarrow \mathbb{R}$ via $r(t) = -g(\gamma'(t), T)$. Consider the initial value problem $\Lambda C^2 N^2 f - 2f'r = -2$ with $f(0) = 0$. A solution is $f(t) = \frac{1}{D} [e^{\int_0^t \frac{D}{r(s)} ds} - 1]$ where $D = \frac{1}{2} \Lambda C^2 N^2$. With this choice of f , the first and fourth terms combine to give

$$g(\lambda', \lambda') \leq \varepsilon \Lambda N^2 f (2\varepsilon C |f'| + \varepsilon^2 |f'|^2) - 2\varepsilon.$$

Claim: $1/r$ is bounded almost everywhere in $[0, b]$. Assuming this claim for now, we have f is continuous and so it is bounded in $[0, b]$. And since $f' = (Df + 1)/r$, we also have $|f'|$ is bounded almost everywhere in $[0, b]$. Therefore we can choose ε small enough so that

$$g(\lambda', \lambda') \leq -\varepsilon$$

almost everywhere. Thus λ is a timelike curve. Since $r \geq 0$, we have $f \geq 0$. Therefore $\lambda(b) \in I^+(\gamma(b))$ and we can make $\lambda(b)$ arbitrarily close to $\gamma(b)$ by choosing ε sufficiently small. This proves the theorem once we prove the claim.

Now we prove the claim. Showing $1/r$ is bounded almost everywhere in $[0, b]$ is equivalent to showing that there exists a $c > 0$ such that $-g(\gamma', T) \geq c$ almost everywhere in $[0, b]$. Hence it suffices to show $c > 0$ where

$$c = \inf \{-g(Z, T) \mid p \in \cup_{\alpha} U_{\alpha}, Z \in T_p M, g(Z, T) < 0, h(Z, Z) = 1\}.$$

Since $\cup_{\alpha} U_{\alpha}$ has compact closure, the same argument used in the proof of Proposition 2.25 shows that $c > 0$. This proves the claim. □

4.2 Trapped sets in C^0 spacetimes

Trapped sets play a prominent role in C^2 causal theory where they are used to prove the existence of singularities in a spacetime (i.e incomplete geodesics). The most notable example of this is Penrose’s original singularity theorem [16,21]. In this section we offer a definition for trapped sets in C^0 spacetimes and prove a C^0 version of Penrose’s theorem: if (M, g) has a noncompact Cauchy surface, then there are no trapped sets in M .

Definition 4.6 Let (M, g) be a C^0 spacetime.

- F is a *future set* if $I^+(F) \subset F$.
- Σ is *future trapped* if there is a nonempty future set $F \subset J^+(\Sigma)$ such that ∂F is compact.

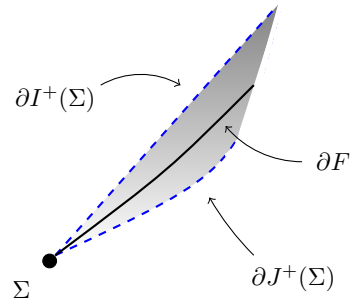
Examples of future sets are $I^+(\Sigma)$ and $J^+(\Sigma)$. In bubbling spacetimes, the boundaries of these future sets may not be equal: $\partial I^+(\Sigma) \neq \partial J^+(\Sigma)$, and so there can be a future set with boundary ∂F that lies between them. See Fig. 4.

Proposition 4.7 *If F is a future set, then ∂F is achronal and has empty edge.*

Proof We first show ∂F is achronal. Fix $p, q \in \partial F$ and suppose there is a timelike curve from p to q . Then $I^-(q)$ is an open set containing $p \in \partial F$. Hence it also contains a point $r \in F$. Therefore $q \in I^+(r)$. But the definition of a future set implies $I^+(r) \subset F$. Hence $q \in \text{int}[F]$ which contradicts the assumption $q \in \partial F$.

Now we show ∂F has no edge points. Fix $p_0 \in \partial F$. Let $p \in I^-(p_0)$ and $q \in I^+(p_0)$ and let $\gamma : [a, b] \rightarrow M$ be a timelike curve from p to q . Since $q \in I^+(p_0)$, we have

Fig. 4 A future set $F \subset J^+(\Sigma)$. If ∂F is compact, then Σ is future trapped



$q \in \text{int}[F]$ by definition of a future set. Since ∂F is achronal, we have $I^-(p_0) \subset M \setminus F$. Hence $p \in \text{int}[M \setminus F]$. Define

$$t_* = \inf \{t \in [a, b] \mid \gamma((t, b)) \subset \text{int}[F]\}.$$

Since $\text{int}[F]$ is open, we have $t_* < b$. Likewise $p \in \text{int}[M \setminus F]$ implies $t_* > a$. Since $\gamma(t_*)$ is an accumulation point of $\text{int}[F]$, we have γ intersects ∂F :

$$\gamma(t_*) \in \partial \text{int}[F] = \overline{\text{int}[F]} \setminus \text{int}[F] \subset \overline{F} \setminus \text{int}[F] = \partial F.$$

□

Corollary 4.8 *If F is a nonempty future set, then ∂F is a C^0 hypersurface.*

Proof This follows from Theorem A. 6. □

The following proof is a direct analogue of Penrose’s original proof [15]. We include it for the sake of (in)completeness.

Theorem 4.9 (Penrose) *Let (M, g) be a C^0 spacetime with a noncompact Cauchy surface. Then there are no future trapped sets in M .*

Proof Let S be the Cauchy surface. Claim: S is connected. Since M is time-oriented there is a C^1 timelike vector field \tilde{X} on M . Let $X = \tilde{X}/h(\tilde{X}, \tilde{X})^{1/2}$ so that $h(X, X) = 1$. Since maximal integral curves are inextendible as continuous curves, the integral curves of X are inextendible causal curves and are parameterized by h -arclength by construction. Let $\gamma_p : \mathbb{R} \rightarrow M$ denote the maximal integral curve of X through p . Let $\phi : M \times \mathbb{R} \rightarrow M$ denote the flow of X given by $\phi(p, t) = \gamma_p(t)$. Let $\phi_S : S \times \mathbb{R} \rightarrow M$ denote the restriction of ϕ to $S \times \mathbb{R}$. Then ϕ_S is one-to-one since integral curves don’t intersect, and ϕ_S is onto since S is a Cauchy surface. Since S is a C^0 hypersurface by Corollary 3.11, Brouwer’s invariance of domain theorem implies ϕ_S is a homeomorphism. Let $\pi : S \times \mathbb{R} \rightarrow S$ denote the natural projection. Put $r = \pi \circ \phi_S^{-1}$. Then $r : M \rightarrow S$ is a retraction of M onto S . Since M is connected, $S = r(M)$ is connected. This proves the claim.

Seeking a contradiction, suppose Σ is future trapped with future set F . Let $r_{\partial F} : \partial F \rightarrow S$ denote the restriction of r to ∂F . Since $r_{\partial F}$ is one-to-one and ∂F

is a C^0 hypersurface, Brouwer's invariance of domain theorem implies $r_{\partial F}$ is a homeomorphism of ∂F onto an open subset of S . Since ∂F is compact, $r_{\partial F}(\partial F)$ is closed in S . Therefore $r_{\partial F}(\partial F) = S$ since S is connected. But this contradicts S being noncompact. \square

Remark It would be interesting to see what conditions on a C^0 spacetime would force a future trapped set. For instance in a C^2 spacetime we have [15, Proposition 14.60]:

Trapped surface + null energy condition + null completeness \implies future trapped set

Acknowledgements Open access funding provided by Royal Institute of Technology. The author thanks Greg Galloway, Piotr Chruściel, and Annegret Burtscher for helpful comments and discussions. This material is based upon work supported by the Swedish Research Council under grant no. 2016-06596 while the author was a participant at Institut Mittag-Leffler in Djursholm, Sweden during the Fall semester of 2019.

Open Access This article is licensed under a Creative Commons Attribution 4.0 International License, which permits use, sharing, adaptation, distribution and reproduction in any medium or format, as long as you give appropriate credit to the original author(s) and the source, provide a link to the Creative Commons licence, and indicate if changes were made. The images or other third party material in this article are included in the article's Creative Commons licence, unless indicated otherwise in a credit line to the material. If material is not included in the article's Creative Commons licence and your intended use is not permitted by statutory regulation or exceeds the permitted use, you will need to obtain permission directly from the copyright holder. To view a copy of this licence, visit <http://creativecommons.org/licenses/by/4.0/>.

A Appendix

A.1. Differences between C^0 and smooth (at least C^2) causal theory

In this appendix we highlight the main difference between causal theory in smooth (at least C^2) spacetimes and causal theory in C^0 spacetimes. The goal is to see how the twice-differentiability of the metric is used in C^2 causal theory and the difference that arises with C^0 metrics. For references on C^2 causal theory one can look at classical sources such as [15,22] or more recent sources such as [2,12].

Let (M, g) be a C^2 spacetime. Then there is a unique affine connection ∇ such that $\nabla g = 0$. A curve γ is a *geodesic* if $\nabla_{\gamma'}\gamma' = 0$. A consequence of $\nabla g = 0$ is that a geodesic must be either timelike, null, or spacelike. The equation $\nabla_{\gamma'}\gamma' = 0$ is a second order differential equation. Introducing a coordinate system x^μ and putting $\gamma^\mu = x^\mu \circ \gamma$, this differential equation is $\frac{d^2\gamma^\mu}{dt^2} + \Gamma_{\alpha\beta}^\mu \frac{d\gamma^\alpha}{dt} \frac{d\gamma^\beta}{dt} = 0$.

Since the metric is C^2 , the Christoffel symbols are C^1 . Thus the fundamental existence and uniqueness theorem for differential equations implies a map $\exp_p : D \subset T_p M \rightarrow M$ called the *exponential map* given by $\exp_p(X) = \gamma(1)$ where $\gamma : [0, 1] \rightarrow M$ is the unique geodesic satisfying $\gamma(0) = p$ and $\gamma'(0) = X$. The set $D \subset T_p M$ is defined by requiring $X \in D$ implies $\gamma(1)$ is defined. The derivative of \exp_p at the origin is just the identity, so by the inverse function theorem, for any point $p \in M$ there is an open set $D \subset T_p M$ such that $\exp_p : D \rightarrow M$ is a diffeomorphism onto its image $U = \exp_p(D)$. In this case U is called a *normal neighborhood* (Fig. 5). For these open sets, we have the following characterizations [2]:

- points in $I^+(p, U)$ correspond to future-directed timelike vectors in $D \subset T_p M$

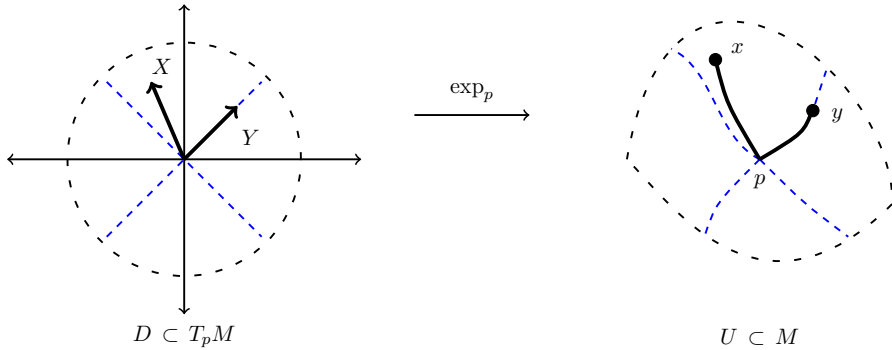


Fig. 5 The point $x = \exp_p(X)$ lies on the timelike geodesic generated by the timelike vector X . The point $y = \exp_p(Y)$ lies on the null geodesic generated by the null vector Y

– points in $\partial I^+(p, U)$ correspond to future-directed null vectors in $D \subset T_p M$

If γ is a causal curve from p to q and λ is a timelike curve from q to r , then using a finite number of normal neighborhoods and the properties above, we can deform the concatenation of γ and λ into a timelike curve from p to r [2,15]. This proves the push-up property.

Proposition A. 1 (Push-up property) *Let (M, g) be a C^2 spacetime. Then*

$$I^+(J^+(p)) = I^+(p).$$

The push-up property implies:

Proposition A. 2 *Let (M, g) be a C^2 spacetime. Then*

$$\text{int}[J^+(p)] = I^+(p).$$

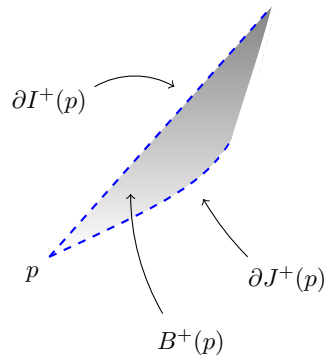
Proof Fix $q \in \text{int}[J^+(p)]$. Then there is a normal neighborhood $U \subset \text{int}[J^+(p)]$ about q . Therefore there is a causal curve from p to a point $q' \in I^-(q, U)$. Thus $q \in I^+(p)$ by the push-up property. \square

It was shown in [3] that Proposition A. 2 need not hold for C^0 spacetimes. See the example in the beginning of Sect.4.1. There can be nonempty *bubbling sets* in C^0 spacetimes. These are the open sets

$$B^+(p) = \text{int}[J^+(p)] \setminus \overline{I^+(p)}.$$

For C^2 spacetimes $B^+(p) = \emptyset$ for all p by Proposition A. 2. This highlights the main difference between C^2 and C^0 causal theory (Fig. 6).

Fig. 6 A nonempty bubbling set $B^+(p)$ in a C^0 spacetime. For C^2 spacetimes $B^+(p) = \emptyset$ for all points. For C^0 spacetimes this begs the question: what should one take as the lightcone?



A.2 Properties of locally Lipschitz curves

In Definition 2.3 we defined causal and timelike curves via locally Lipschitz curves. In this section we establish the properties of locally Lipschitz curves. These curves are defined via a complete Riemannian metric h . Therefore we first show that if (M, g) is a C^0 spacetime, then there is a complete Riemannian metric h on M .

Proposition A. 3 *Let M be a smooth manifold which is connected, Hausdorff, and second-countable. Then there is a smooth complete Riemannian metric h on M .*

Proof We could construct h directly via a partition of unity as in [17, Lemma 11.1], but also pointed out in [17] is another argument using the Hopf–Rinow and the Whitney embedding theorems (the latter of course still requires a partition of unity argument).

Since M is smooth, Hausdorff, and second-countable, we can apply the Whitney embedding theorem [11] to obtain a smooth proper embedding $f : M \rightarrow \mathbb{R}^N$. By pulling back the Euclidean metric onto M , we have a smooth Riemannian manifold (M, h) . Let d_h be the distance function on M induced by h . Since f is proper, any closed set in M maps to a closed subset of \mathbb{R}^N . Therefore any closed and bounded subset of (M, d_h) will be a closed and bounded subset within $f(M) \subset \mathbb{R}^N$ which is compact by the Heine-Borel theorem. Since M is connected, (M, h) is complete by the Hopf–Rinow theorem. \square

Fix a C^0 spacetime (M, g) and a complete Riemannian metric h on M . Let $I \subset \mathbb{R}$ be an interval (i.e. any connected subset of \mathbb{R} with nonempty interior). A *locally Lipschitz* curve $\gamma : I \rightarrow M$ is a continuous function such that for any compact $K \subset I$, there is a constant C such that for any $a, b \in K$, we have

$$d_h(\gamma(a), \gamma(b)) \leq C|b - a|$$

where d_h is the Riemannian distance function associated with h .

Of course one normally works with smooth or piecewise smooth curves in a spacetime. That these curves are locally Lipschitz follows from the next proposition.

Proposition A. 4 *If $\gamma : I \rightarrow M$ is C^1 , then γ is locally Lipschitz.*

Proof Let $K \subset I$ be compact. First suppose $\gamma(K) \subset B$ where $\phi : B \rightarrow \mathbb{R}^{n+1}$ is a coordinate chart and $\phi(B)$ is an open Euclidean ball in \mathbb{R}^{n+1} with finite radius. Hence B has compact closure. Let $\tilde{\gamma} = \phi \circ \gamma$. We first show there is a constant $C > 0$ such that

$$d_h(\gamma(a), \gamma(b)) \leq C|\tilde{\gamma}(a) - \tilde{\gamma}(b)| \quad \text{for all } a, b \in K.$$

Define C by

$$1/C^2 = \inf \{ \delta_{\mu\nu} X^\mu X^\nu \mid p \in B, X \in T_p M, h(X, X) = 1 \}.$$

Since B has compact closure, we have $1/C^2 > 0$. Then for all $p \in B$ and $X \in T_p M$, we have

$$h(X, X) \leq C^2 \delta_{\mu\nu} X^\mu X^\nu.$$

Fix $a, b \in K$. Let $\sigma : [0, 1] \rightarrow B$ denote the straight line joining $\gamma(a)$ to $\gamma(b)$. That is $\tilde{\sigma}(t) = \phi \circ \sigma(t) = t\tilde{\gamma}(b) + (1-t)\tilde{\gamma}(a)$. Let $X = \sigma'$. Hence $X^\mu = \gamma^\mu(b) - \gamma^\mu(a)$. Then

$$|\tilde{\gamma}(b) - \tilde{\gamma}(a)| = \sqrt{\delta_{\mu\nu} X^\mu X^\nu} = \int_0^1 \sqrt{\delta_{\mu\nu} X^\mu X^\nu} dt \geq \frac{1}{C} \int_0^1 \sqrt{h(\sigma', \sigma')} dt \geq \frac{1}{C} d_h(\gamma(a), \gamma(b)).$$

Therefore $d_h(\gamma(a), \gamma(b)) \leq C|\tilde{\gamma}(a) - \tilde{\gamma}(b)|$.

Since γ is C^1 , there is a constant $c^\mu > 0$ such that $|(\gamma^\mu)'(t)| \leq c^\mu$ for all $t \in K$. Let $c = \max_\mu \{c^\mu\}$. Then

$$|X^\mu| = |\gamma^\mu(b) - \gamma^\mu(a)| = \left| \int_0^1 (\gamma^\mu)'(a + t(b-a))(b-a) dt \right| \leq c|b-a|.$$

Therefore

$$d_h(\gamma(a), \gamma(b)) \leq C|\tilde{\gamma}(a) - \tilde{\gamma}(b)| = C\sqrt{\delta_{\mu\nu} X^\mu X^\nu} \leq C\delta_{\mu\nu} \sqrt{X^\mu X^\nu} \leq Cc(n+1)|b-a|.$$

This proves the proposition when $\gamma(K) \subset B$. In the general case, we can cover $\gamma(K)$ by finitely many such balls and then apply the triangle inequality to obtain the result. \square

Proposition 2.2 is a partial converse to the previous proposition.

Proof of Proposition 2.2 Fix $t_0 \in I$. Let $\phi : U \rightarrow \mathbb{R}^{n+1}$ be a coordinate system around $\gamma(t_0)$ such that U is a convex open neighborhood (with respect to the Riemannian metric h) with compact closure. Define c via

$$1/c^2 = \inf \{ h(X, X) \mid p \in U, X \in T_p M, \delta_{\mu\nu} X^\mu X^\nu = 1 \}.$$

Since U has compact closure, we have $1/c^2 > 0$. Then for all $p \in U$ and $X \in T_pM$, we have

$$\delta_{\mu\nu}X^\mu X^\nu \leq c^2h(X, X).$$

Let $K \subset I$ be compact with $\gamma(K) \subset U$. Fix $a, b \in K$. Since γ is locally Lipschitz, there is a constant $C > 0$ (independent of a and b) such that $d_h(\gamma(a), \gamma(b)) \leq C|b - a|$. Since U is convex, there is a minimizing h -geodesic $\sigma \subset U$ joining $\gamma(a)$ to $\gamma(b)$. Let $X = \sigma'$. Write $\tilde{\gamma} = \phi \circ \gamma$. Then

$$d_h(\gamma(a), \gamma(b)) = \int \sqrt{h(\sigma', \sigma')} \geq \frac{1}{c} \int \sqrt{\delta_{\mu\nu}X^\mu X^\nu} \geq \frac{1}{c} |\tilde{\gamma}(a) - \tilde{\gamma}(b)|$$

where $|\cdot|$ denotes the Euclidean distance in \mathbb{R}^{n+1} . The last inequality follows since the shortest distance between $\tilde{\gamma}(a)$ and $\tilde{\gamma}(b)$ with respect to the Euclidean metric $\delta_{\mu\nu}$ is just the straight line.

For any μ , we trivially have $|\gamma^\mu(b) - \gamma^\mu(a)| \leq |\tilde{\gamma}(a) - \tilde{\gamma}(b)|$. Thus

$$|\gamma^\mu(b) - \gamma^\mu(a)| \leq Cc|b - a|.$$

Hence the components γ^μ are Lipschitz functions on K . Therefore they are absolutely continuous and hence differentiable almost everywhere with derivative bounded by Cc almost everywhere on K . □

Lastly, we show that the definition of locally Lipschitz does not depend on the choice of complete Riemannian metric h . See also [2].

Proposition A.5 *Let h_1 and h_2 be complete Riemannian metrics on M . Then $\gamma : I \rightarrow M$ is locally Lipschitz with respect to h_1 if and only if it is locally Lipschitz with respect to h_2 .*

Proof Fix a compact set $K \subset I$. Let $L = \int_K \sqrt{h(\gamma', \gamma')}$ denote the h_1 -arclength of $\gamma|_K$. Note that $L < \infty$ by Proposition 2.2. Set $\mathcal{D} = \bigcup_{t \in K} \overline{B}_{h_1}(\gamma(t), L)$. Here \overline{B}_{h_1} denotes the closed geodesic ball with respect to h_1 . \mathcal{D} is closed since the compactness of K implies its complement is open, and \mathcal{D} is bounded by $3L$. Therefore \mathcal{D} is compact by the Hopf–Rinow theorem. Define C by

$$1/C^2 = \inf \{h_1(X, X) \mid p \in \mathcal{D}, X \in T_pM, h_2(X, X) = 1\}.$$

Compactness of \mathcal{D} implies $1/C^2 > 0$. Then for all $p \in \mathcal{D}$ and $X \in T_pM$, we have

$$h_2(X, X) \leq C^2h_1(X, X).$$

Fix $a, b \in K$. Let σ denote a minimizing h_1 -geodesic between $\gamma(a)$ and $\gamma(b)$. Note that the definition of \mathcal{D} implies $\sigma \subset \mathcal{D}$. Therefore

$$d_{h_1}(\gamma(a), \gamma(b)) = \int \sqrt{h_1(\sigma', \sigma')} \geq C^{-1} \int \sqrt{h_2(\sigma', \sigma')} \geq C^{-1}d_{h_2}(\gamma(a), \gamma(b)).$$

Thus, if γ is locally Lipschitz with respect to h_1 , then it is locally Lipschitz with respect to h_2 . Reversing the roles of h_1 and h_2 gives the reverse implication. \square

A.3 Achronal and edgeless subsets in a spacetime

Fix a C^0 spacetime (M, g) . A subset $S \subset M$ is *achronal* if $I^+(S) \cap S = \emptyset$. We say S is *achronal in U* if $I^+(S, U) \cap S = \emptyset$. We say S is *locally achronal* if for every $p \in S$, there is an open set U around p such that S is achronal in U . The *edge* of an achronal set S is the set of points $p \in \bar{S}$ such that for every neighborhood U of p , there is a timelike curve $\gamma : [a, b] \rightarrow U$ such that $\gamma(a) \in I^-(p, U)$, $\gamma(b) \in I^+(p, U)$, and $\gamma \cap S = \emptyset$. We say S is *edgeless* if S is disjoint from its edge.

A subset $S \subset M$ is a C^0 *hypersurface* provided for each $p \in S$ there is a neighborhood $U \subset M$ and a homeomorphism $\phi : U \rightarrow \phi(U) \subset \mathbb{R}^{n+1}$ such that $\phi(U \cap S) = \phi(U) \cap P$ where P is a hyperplane in \mathbb{R}^{n+1} .

Remark The following theorem shows that a locally achronal and edgeless set is a C^0 hypersurface, but the proof shows that the conclusion can be strengthened to a locally Lipschitz hypersurface.

Theorem A.6 *Let $S \subset M$ be nonempty. If S is locally achronal and edgeless, then S is a C^0 hypersurface.*

Proof Fix $p \in S$. Let $\phi : U_{3/5} \rightarrow \mathbb{R}^{n+1}$ be a coordinate system around p from Lemma 2.9. Recall that $\eta^{3/5}$ has lightcones with ‘slope’ 2. Since S is locally achronal, we can shrink our neighborhood $U_{3/5}$ to a new neighborhood U so that S is achronal in U . Moreover, since p is not an edge point of S , we can further shrink our neighborhood so that every timelike curve beginning in $I^-(p, U)$ and ending in $I^+(p, U)$ must intersect S . Choose $\alpha > 0$ small enough so that the hyperplanes $x^0 = \pm\alpha$ intersect $\phi(U)$. Let $B = \{(b^1, \dots, b^n) \mid \sqrt{\delta_{ij} b^i b^j} < \alpha/2\}$. By shrinking U , we can assume $\phi(U) = (-\alpha, \alpha) \times B$. For each $b \in B$, there is a vertical line $\gamma_b : (-\alpha, \alpha) \rightarrow U$ given by $\gamma_b(t) = \phi^{-1} \circ (t, b)$. Each γ_b intersects S at exactly one point $\xi(b) \in S$. This defines an injective map $\xi : B \rightarrow S$. Consider the composition $\phi \circ \xi : B \rightarrow \mathbb{R}^{n+1}$. Then $\phi \circ \xi(b) = (f(b), b)$ for some function $f : B \rightarrow \mathbb{R}$.

We will show f is Lipschitz (hence continuous) with a Lipschitz constant $C = 3$. Seeking a contradiction, suppose there exist points $b, b' \in B$ such that $|f(b) - f(b')| \geq 3|b - b'|$ where $|\cdot|$ denotes the standard Euclidean norm. Let λ be the straight line joining $(f(b), b)$ and $(f(b'), b')$. Then λ is $\eta^{3/5}$ -timelike. Hence it is g -timelike. This implies S is not achronal in U which is a contradiction. Thus f is Lipschitz. Then

$$\psi = (y^0, y^1, \dots, y^n) = (x^0 - f \circ (x^1, \dots, x^n), x^1, \dots, x^n)$$

is a homeomorphism from U onto $\psi(U) \subset \mathbb{R}^{n+1}$ such that $\psi(U \cap S) = \psi(U) \cap P$ where P is the hyperplane $y^0 = 0$. \square

References

1. Bernal, A.N., Sánchez, M.: Globally hyperbolic spacetimes can be defined as causal instead of strongly causal. *Class. Quantum Gravity* **24**(3), 745–749 (2007)
2. Chruściel, P.T.: *Geometry of Black Holes*. Oxford University Press, Oxford (2020). [arXiv:1110.6706](https://arxiv.org/abs/1110.6706)
3. Chruściel, P.T., Grant, J.D.E.: On Lorentzian causality with continuous metrics. *Class. Quantum Gravity* **29**(14), 145001 (2012)
4. Chruściel, P.T., Klinger, P.: The annoying null boundaries. *J. Phys. Conf. Ser.* **968**, 012003 (2018)
5. Galloway, G.J., Ling, E.: Some Remarks on the C^0 -(in)extendibility of Spacetimes. *Annales Henri Poincaré* **18**(10), 3427–3447 (2017)
6. Galloway, G.J., Ling, E., Sbierski, J.: Timelike completeness as an obstruction to C^0 -extensions. *Commun. Math. Phys.* **359**(3), 937–949 (2017)
7. Graf, M., Ling, E.: Maximizers in Lipschitz spacetimes are either timelike or null. *Class. Quantum Gravity* **35**(8), 087001 (2018)
8. Grant, J.D.E., Kunzinger, M., Sämann, C.: Inextendibility of spacetimes and Lorentzian length spaces. *Ann. Global Anal. Geom.* **55**(1), 133–147 (2018)
9. Grant, J.D.E., Kunzinger, M., Sämann, C., Steinbauer, R.: The future is not always open. *Lett. Math. Phys.* (2019)
10. Hounnonkpe, R.A., Minguzzi, E.: Globally hyperbolic spacetimes can be defined without the causal condition. *Class. Quantum Gravity* **36**(19), 197001 (2019)
11. Lee, J. M.: *Introduction to Smooth Manifolds*, 2nd ed., Graduate Texts in Mathematics, vol. 218, Springer, New York (2013)
12. Minguzzi, E.: Lorentzian causality theory. *Living Rev. Relativ.* **22**(1), 3 (2019)
13. Minguzzi, E.: Causality theory for closed cone structures with applications. *Rev. Math. Phys.* **31**(05), 1930001 (2019)
14. Minguzzi, E., Suhr, S.: Some regularity results for LorentzFinsler spaces. *Ann. Glob. Anal. Geom.* **56**(3), 597–611 (2019)
15. O’Neill, B.: *Semi-Riemannian Geometry, Pure and Applied Mathematics*, vol. 103. Academic Press Inc. [Harcourt Brace Jovanovich Publishers], New York (1983)
16. Penrose, R.: Gravitational collapse and space-time singularities. *Phys. Rev. Lett.* **14**, 57–59 (1965)
17. Ringström, H.: *The Cauchy Problem in General Relativity*, ESI Lectures in Mathematics and Physics, European Mathematical Society (EMS), Zürich (2009)
18. Sämann, C.: Global hyperbolicity for spacetimes with continuous metrics. *Ann. Henri Poincaré* **17**(6), 1429–1455 (2016)
19. Sbierski, J.: The C^0 -inextendibility of the Schwarzschild spacetime and the spacelike diameter in Lorentzian Geometry. *J. Differ. Geom.* **108**(2), 319–378 (2018)
20. Sbierski, J.: On the proof of the C^0 -inextendibility of the schwarzschild spacetime. *J. Phys. Conf. Ser.* **968**, 012012 (2018)
21. Senovilla, J.M., Garfinkle, D.: The 1965 Penrose singularity theorem. *Class. Quantum Gravity* **32**(12), 124008 (2015)
22. Wald, R.M.: *General Relativity*. University of Chicago Press, Chicago, IL (1984)

Publisher’s Note Springer Nature remains neutral with regard to jurisdictional claims in published maps and institutional affiliations.