

RESEARCH

Open Access



Assaying sensory ciliopathies using calcium biosensor expression in zebrafish ciliated olfactory neurons

Judith G. M. Bergboer^{1,2†}, Cameron Wyatt^{3†}, Christina Austin-Tse^{1,2}, Emre Yaksi^{3,4} and Iain A. Drummond^{1,2*†} 

Abstract

Background: Primary cilia mediate signal transduction by acting as an organizing scaffold for receptors, signalling proteins and ion channels. Ciliated olfactory sensory neurons (OSNs) organize olfactory receptors and ion channels on cilia and generate a calcium influx as a primary signal in odourant detection. In the zebrafish olfactory placode, ciliated OSNs and microvillus OSNs constitute the major OSN cell types with distinct odourant sensitivity.

Methods: Using transgenic expression of the calcium biosensor GCaMP5 in OSNs, we analysed sensory cilia-dependent odour responses in live zebrafish, at individual cell resolution. *oval/ift88* mutant and *ift172* knockdown zebrafish were compared with wild-type siblings to establish ciliated OSN sensitivity to different classes of odourants.

Results: *oval/ift88* mutant and *ift172* knockdown zebrafish showed fewer and severely shortened OSN cilia without a reduction in OSN number. The fraction of responding OSNs and response amplitudes to bile acids and food odour, both sensed by ciliated OSNs, were significantly reduced in *ift88* mutants and *ift172*-deficient embryos, while the amino acids responses were not significantly changed.

Conclusions: Our approach presents a quantitative model for studying sensory cilia signalling using zebrafish OSNs. Our results also implicate *ift172*-deficiency as a novel cause of hyposmia, a reduced sense of smell, highlighting the value of directly assaying sensory cilia signalling in vivo and supporting the idea that hyposmia can be used as a diagnostic indicator of ciliopathies.

Keywords: Cilia, Calcium imaging, Zebrafish, GCaMP5, Olfactory sensory neurons, *oval/ift88*, *ift172*

Background

Sensory function and sensory input elicits an appropriate response to external stimuli. Several sensory systems, including vision and olfaction, rely on cilia-mediated sensory transduction [1, 2]. Ciliopathies, a class of complex genetic syndromes caused by mutations in genes encoding cilia proteins, underscore the importance of cilia. Clinical features include renal cysts, laterality defects, cognitive impairment, retinal degeneration and obesity [3, 4]. Anosmia and hyposmia, absence or reduction of

olfaction, respectively, have also been shown to be a component of the phenotype in human syndromic ciliopathy patients, including the Bardet–Biedl syndrome (BBS), as well as several mouse models for ciliopathies [5–9]. Recent reports indicate that in addition to mutations in genes that encode cilia transition zone and vesicular transport proteins, syndromic ciliopathy may be caused by mutation in genes encoding intraflagellar transport proteins (IFTs) that are directly involved in building the axoneme [10–12].

In vertebrates, odourants are detected by olfactory sensory neurons (OSNs) located in the olfactory epithelium (OE) in the nasal cavity. In ciliated OSNs, dendrites terminate in a sensory knob from which sensory cilia arise. These cilia are enriched for all necessary components for olfactory signal transduction. In zebrafish, each ciliated

*Correspondence: IDrummond@mgh.harvard.edu

[†]Judith G. M. Bergboer, Cameron Wyatt and Iain A. Drummond contributed equally to this work

¹ Nephrology Division, Department of Medicine, Massachusetts General Hospital, 149 13th Street, Charlestown, MA 02129, USA

Full list of author information is available at the end of the article

OSN expresses one of approximately 140 different G-protein coupled olfactory receptors (ORs) [13–15]. Binding of odourants to the OR activates the olfaction-specific G-protein $G_{\alpha/olf}$ which activates adenylyl cyclase III to generate the second messenger cyclic adenosine monophosphate (cAMP). Elevated levels of cAMP activate the olfactory cyclic nucleotide-gated channels, leading to Na^+ and Ca^{2+} influx and Cl^- efflux, triggering depolarization and propagation of action potentials [16]. In zebrafish, the two most abundant types of OSNs are the olfactory marker protein (Omp)-positive ciliated OSNs and the transient receptor potential channel C2 (TrpC2)-positive microvillus OSNs, which have been shown to preferentially respond either to bile acids or amino acids, respectively [17, 18]. With OSN cilia directly exposed to the larval environment and visually accessible in transparent larvae, the zebrafish provides a vertebrate system to study sensory cilia function in vivo, complementing approaches developed in *Chlamydomonas* and *C. elegans* [19, 20].

In this study, we combined live imaging of neuronal calcium activity induced by odourants with genetic manipulation in zebrafish to study the effect of cilia protein deficiency on sensory cilia function. We used *Tg(elavl3:GCaMP5)* transgenic zebrafish expressing the calcium indicator GCaMP5 under the *elavl3* (formerly known as HuC) promoter in nearly all neurons including the ciliated OSNs [21, 22]. In addition, we generated a *Tg(omp:GCaMP6)* line, to specifically monitor the responses of the ciliated OSNs. These lines enabled recording of cilia-dependent OSN functional activity with single cell resolution after stimulation with different classes of odourants in vivo. Deficiencies in intra-flagellar transport (*ift*) genes essential for ciliogenesis (*oval/ift88* and *ift172*) severely affected OSN cilia length and number. We show that deficiency of either *ift* significantly reduced OSN responses to bile acids while the response to amino acids was not significantly changed. Our results show that sensory cilia-dependent signalling can be measured and quantified in living zebrafish. In addition, we show that *ift172* deficiency is a novel cause of hyposmia.

Methods

Zebrafish strains and maintenance

Zebrafish (*Danio rerio*) were maintained according to standard procedures [23] and experiments were performed in accordance with approved animal care guidelines under MGH IACUC (Boston) and EU (Leuven) licenses. These lines were previously published: *Tg(trpc2:Venus)*, *Tg(omp:gal4)* [17], *Tg(elavl3:GCaMP5)* *nacre^{-/-}* [24] and *oval/ift88^{-/-}* [25]. *Tg(omp:mCherry)* and *Tg(omp:GCaMP6f)* were generated by standard

Tol2-mediated transposition approach [26]. Vectors for transgenesis were generated by multisite Gateway recombination of the following vectors: pENTR-5' containing the *omp* promoter, pDestTol2CG2, pME-mCherry or pME-GCaMP6f and p3E-polyA [27]. The *omp* promoter was amplified by PCR using the OMP:Venus vector as a template [17], for primer sequences see Additional file 1: Table S1. For ISH and staining of pigmented embryos, embryos were kept in E3 with 0.003% 1-phenyl-2-thiourea (PTU) (Sigma-Aldrich) from 24 hpf onwards.

Morpholino knockdown

The exon1d splice donor antisense MO was used to target *ift172*, sequence 5'-TTTACCTGAGGCGT-TAAAAGAGTCT-3'. As a control MO 5'-CTCGAC-CGTCCATTTAAGTCAAATA-3' was used. MO oligonucleotides were diluted 0.25 mM in 100 mM KCl, 10 mM HEPES and 0.1% phenol red (Sigma-Aldrich, St Louis, MO). 4.6 nl was injected into one- to four-cell stage embryos. To verify the MO-induced splicing defects in the *ift172* morphants, nested RT-PCR was performed on total RNA extracted from individual MO-injected embryos. For primer sequences, see Additional file 1: Table S1.

Transmission electron microscopy

Zebrafish embryos were prepared for TEM by previously published protocols [28].

Cep290 antibody generation

The Cep290 C terminal antibody was developed at Rockland Immunochemicals by immunizing rabbits with a maltose binding protein-Danio rerio Cep290 fusion protein (Cep290 amino acids 2220–2396). Antibodies were affinity purified using 6×His-Cep290 (amino acids 2220–2396) on an NTA Ni column. Staining of basal body domains in Kupffer's vesicle (the zebrafish node) was eliminated by preincubation of the antibodies with free antigen (Additional file 1: Fig S7), demonstrating the specificity of Cep290 immunoreactivity.

Immunofluorescent imaging

Embryos were fixed in dent's fixative (80% MeOH, 20% DMSO) overnight at 4 °C or 4% paraformaldehyde (PFA) for 2 h and permeabilized in methanol for 7 min at RT. After rehydration, embryos were blocked in PBST with 10% normal goat serum at RT for 2 h, samples were incubated with primary antibodies overnight at 4 °C. Used dilutions: rabbit anti-IFT88 (1:400, gift from Brain Perkins), chicken anti-GFP (1:500, Invitrogen), mouse anti-acetylated α -tubulin (6-11B-1 1:400, Sigma), rabbit anti-cep290 (1:200), rabbit anti- $G_{\alpha/olf}$ (1:1000, Santa Cruz), Alexa 488- or 546-conjugated goat anti-rabbit,

goat anti-chicken or goat anti-mouse secondary antibodies (1:800, Invitrogen). For imaging, embryos were cleared in 53% benzyl alcohol, 45% glycerol and 2% *N*-propyl gallate. Two-colour *z* series were acquired on a Zeiss LSM5 Pascal confocal microscope via sequential laser excitation. Images were deconvolved using the Huygens Essential program (Scientific Volume Imaging, Hilversum, Netherlands) and processed using Adobe Photoshop software. For sensory cilia length measurements, the central sensory placodes (excluding peripheral motile cilia) of anti- $G_{\alpha/olf}$ -stained embryos were imaged in *Z*-stacks in a dorsal–ventral orientation on an upright Zeiss LSM5 Pascal confocal microscope. Deconvolved confocal stacks were analysed in ImageJ using the line tool to measure cilia length orthogonal to the *Z* axis. Any foreshortening due to cilia angle may lead to underestimates of the absolute length, however, since this applies to both mutant and wild-type, relative length measurements would not be affected. Fluorescent intensity measurements of anti-ift88 immunostaining were made using ImageJ to measure regions of interest encompassing olfactory placodes and correct for ROI area and background fluorescence.

In vivo confocal imaging

2.5-dpf-old, size-matched transgenic embryos were mounted and two-colour *z* series were acquired on a Zeiss LSM5 Pascal confocal microscope system using a water-dipping lens via sequential laser excitation.

RNA in situ hybridization

Whole mount in situ *hybridization* was performed as previously described [29], without the ProtK treatment to preserve the superficial localized olfactory epithelium. The *omp* probe was produced as described [30]. Stained, 4% PFA fixed embryos were transferred into PBS:glycerol (1:1) and imaged on a Leica MZ12 microscope equipped with a Spot Image digital camera.

Preparation of odour stimuli

Frozen stock solutions (10 mM) of amino acids, bile acids or nucleotides of the highest available purity (Fluka; Sigma-Aldrich) were diluted to a final concentration of 10 μ M per component. Amino acids mixture contained arginine, asparagine, aspartic acid, alanine, phenylalanine, histidine and methionine. Bile acid mixture consisted of glycocholic acid, taurodeoxycholic acid, taurochenodeoxycholic acid and taurocholic acid. Nucleotides mixture contained inosine monophosphate and adenosine monophosphate. Artificial fish water (AFW, 1.2 g of Instant Ocean sea salt per 20 l of water) was used as water control. Food odour was prepared by vortexing 0.5 g of ZM000 fish food in 50 ml of AFW and then

incubating for 1 h at RT. To remove undissolved particles, the saturated mixture was passed through filter paper.

Olfactory assay

2.5-dpf-old healthy, size-matched transgenic zebrafish were mounted in 1.5% low melting agarose. The nose region was cleared to provide access to the nostrils. Under a continuous flow of AFW (100 ml/h), each of three odourants (amino acids, bile acids, or nucleotides) were delivered by a computer-controlled HPLC valve (Rheodyne). Odours were delivered three times in a randomized order, separated by 1–2 min to exclude sensory adaptation. Imaging of the OE was performed with a two-photon laser scanning system (LSM 7 MP upright with 20 \times water immersion objective, Zeiss) at \sim 3 Hz. A mode-locked Ti:Sapphire laser tuned to 920 nm was used for excitation. Images were acquired using ZEN software (Zeiss).

Data analysis

Odour-response data analyses were performed using custom scripts written in MATLAB (Mathworks) [31]. Images were aligned, and for each trial, the change in fluorescence ($\Delta F/F$, DFF) relative to a control trial was calculated for each pixel, yielding a series of DFF frames. Pixels belonging to individual neurons were identified [32]. Automatically identified neurons were always manually confirmed. The relative change in fluorescence (DFF) was calculated for each neuron over time. Fluorescence time courses for each neuron were averaged across multiple stimulus trials. From these per neuron per frame DFF values, all subsequent analyses were performed using standard MATLAB functions. All odours were presented to larvae in triplicate (technical replicates) and measurements were made on up to ten different embryos from each of six different clutches of embryos (biological replicates). To minimize technical and biological variation, only datasets containing both control and affected embryos scanned on the same days and from the same clutches were included in the analyses. For odour measurements, we collected data from 80 to 100 OSNs per larvae and used up to ten different larvae and repeated measurements on six different clutches of embryos. Responding OSNs were defined as those exhibiting an odour evoked response deviating $> \pm 2$ SD from the baseline. Baseline was calculated individually for all cells based on their water response (negative odour control). No significant difference was observed between water responses for wild-type and mutant OSNs. DFF values were either plotted for the responding OSNs only (Figs. 3, 4) or with all OSNs included (Fig. 2 and Additional file 1: Fig. S4). For the responding OSNs only: DFF values were multiplied by number of responding cells to a specific

odour and divided by the total number of cells which represents the DFF for each cell relative to their contribution to the response of the entire olfactory epithelium.

Statistical analysis

Mann–Whitney U test was performed to compare response strengths to individual stimuli compared to water control (Fig. 2), to compare response strengths and responding cell counts to similar stimuli between groups (Figs. 3, 4). Student's t test was used to compare cell numbers and OSN sensory cilia length for which $G_{\alpha_{olf}}$ staining was used as a marker. Cilia length was measured using ImageJ. $P < 0.05$ was considered statistically significant.

Results

Cilia and ciliated OSNs in the zebrafish olfactory placode

Two types of ciliated cells are present in the zebrafish olfactory placode: motile and sensory (Fig. 1a) [33]. At the OE border motile multi-ciliated cells drive fluid across ciliated sensory nerve endings of OSNs in the centre (Additional file 1: Movie S1) [33, 34]. Similar to mammalian OSNs, zebrafish ciliated OSNs harbour multiple basal bodies in their olfactory knob (Fig. 1b) to support multiple cilia per neuron [33]. Next to ciliated Omp-positive OSNs, microvillus TrpC2 expressing OSNs are present in the OE [17]. At 2.5 days post fertilization (dpf), *Tg(omp:mCherry, trpc2:Venus)* zebrafish OSNs showed mutually exclusive expression of Omp or

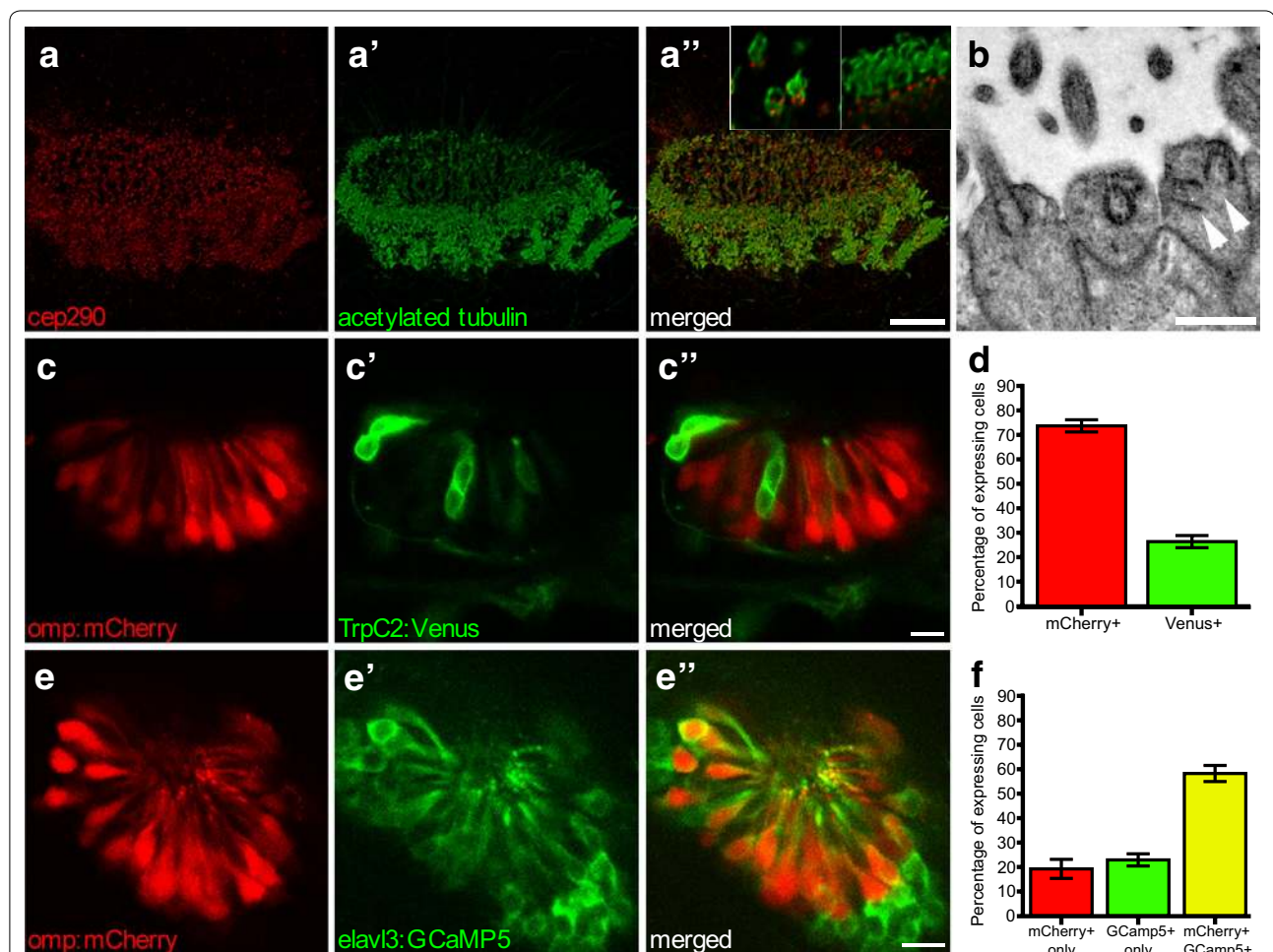


Fig. 1 Olfactory epithelium (OE) in 2.5-dpf zebrafish. Multi-ciliated motile cilia are present at the border, ciliated OSNs in the centre; maximum intensity projection. **a** Basal bodies stained with anti-cep290 (red), **a'** cilia stained with anti-acetylated tubulin (green), **a''** merged image. Inset in **a''** closeup of sensory (left) and motile (right) cilia showing basal body staining of anti-Cep290. **b** EM image of dendritic knob of ciliated zebrafish OSNs containing multiple basal bodies (arrowheads). **c** *Tg(omp:mCherry, trpc2:Venus)* zebrafish with ciliated Omp-positive OSNs (red) and **c'** microvillus TrpC2-positive OSNs (green), **c''** merged image; single confocal section. **d** Quantification of C, $N = 5$ fish. **e** *Tg(omp:mCherry, elavl3:GCaMP5)* zebrafish show overlap between ciliated Omp-positive OSNs (red) and **e'** GCaMP5-positive OSNs (green) OSNs, **e''** merged single confocal section. **f** Quantification of E, $N = 6$ fish. Bars represent mean and SEM. Scale bar is 10 μm , except **b** bar is 1 μm

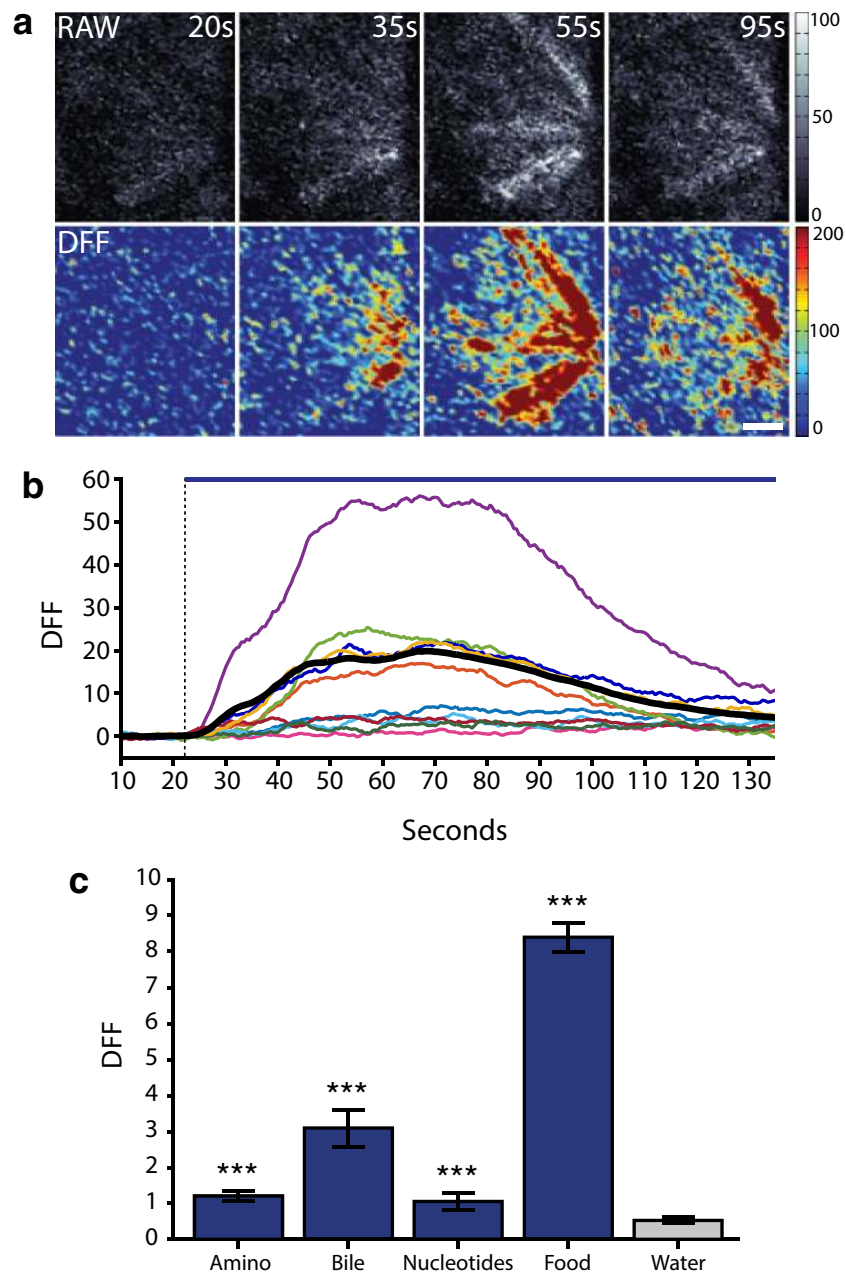
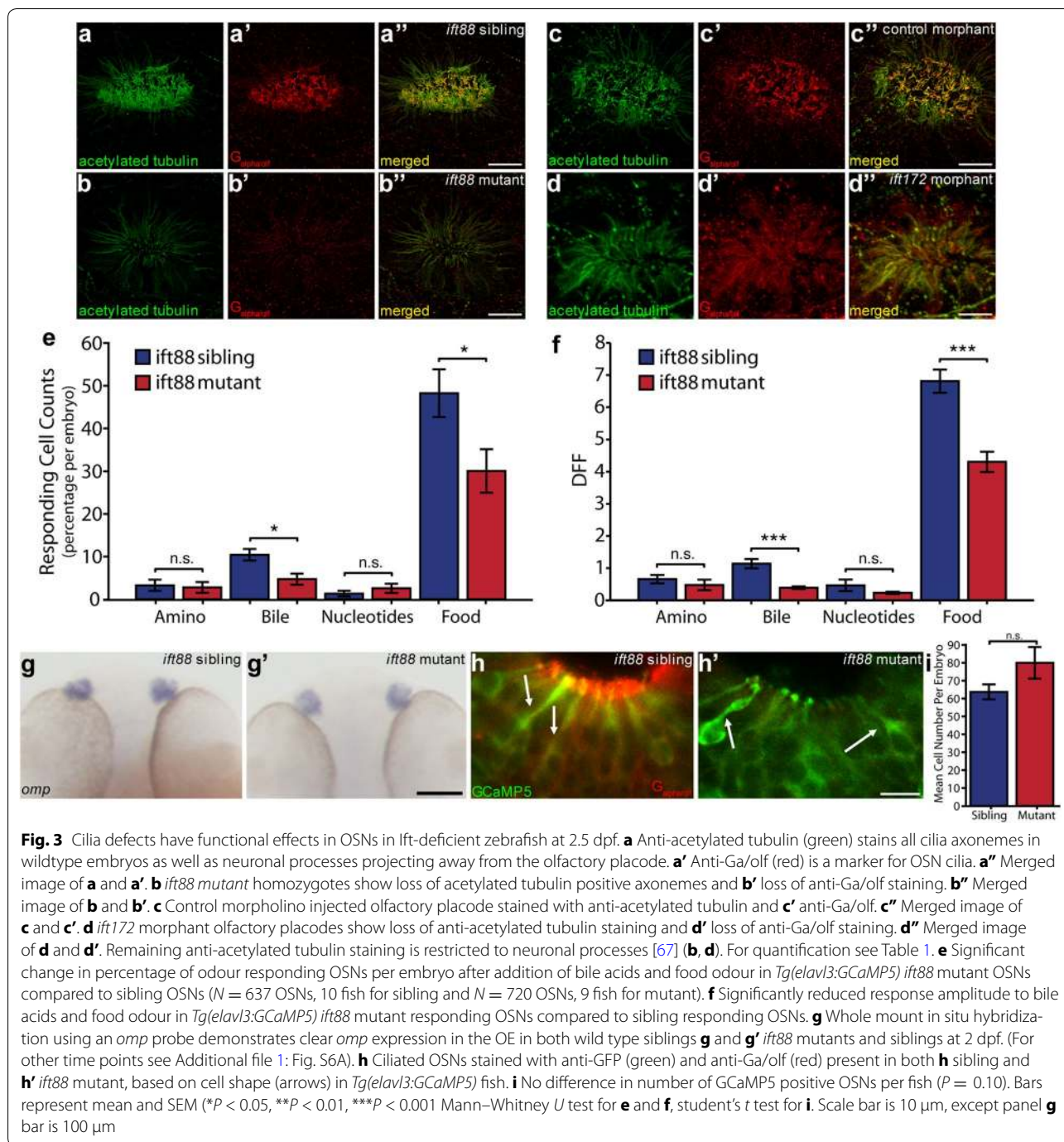


Fig. 2 Odour detection in OSNs of wild-type *Tg(elavl3:GCaMP5)* at 2.5 dpf. **a** Frames of food odour response time course displayed as RAW image (top row) and DFF (change in fluorescence over baseline fluorescence; $\Delta F/F$, DFF; bottom row). **b** Example traces of individual OSNs responses in time after addition of food odour, dashed line represents odour arrival at olfactory epithelium and solid line represents duration of odour delivery. Coloured lines represent individual example OSN responses, thick black line is mean of all OSNs ($N = 382$ OSNs). Data acquisition speed was 2 Hz. **c** Mean OSN-response amplitude to different odour classes used in this study compared to the water control ($N = 4$ fish, 382 OSNs, $***P < 0.001$, Mann–Whitney U test). Bars represent mean and SEM. Scale bar is 10 μ m

TrpC2 with the majority being ciliated, Omp positive, OSNs (74%) and 26% were TrpC2 positive, microvillus OSNs (Fig. 1c, d). To assay both ciliated and non-ciliated cell responses to odourants, we used *Tg(elavl3:GCaMP5)* zebrafish which express the calcium indicator GCaMP5

pan-neuronally, including the OSNs. At 2.5 dpf *Tg(elavl3:GCaMP5,omp:mCherry)* zebrafish revealed an overlap of 58% between mCherry and GCaMP5-positive OSNs, while 23% of the cells were GCaMP5 positive only ($n = 6$ fish, Fig. 1e, f). Considering *omp:mCherry*-positive



cells alone (ciliated OSNs), on average 76% of the cells were also GCaMP5 positive, confirming expression of GCaMP5 in the majority of ciliated OSNs.

Odour detection in 2.5 dpf *Tg(elavl3:GCaMP5)* zebrafish

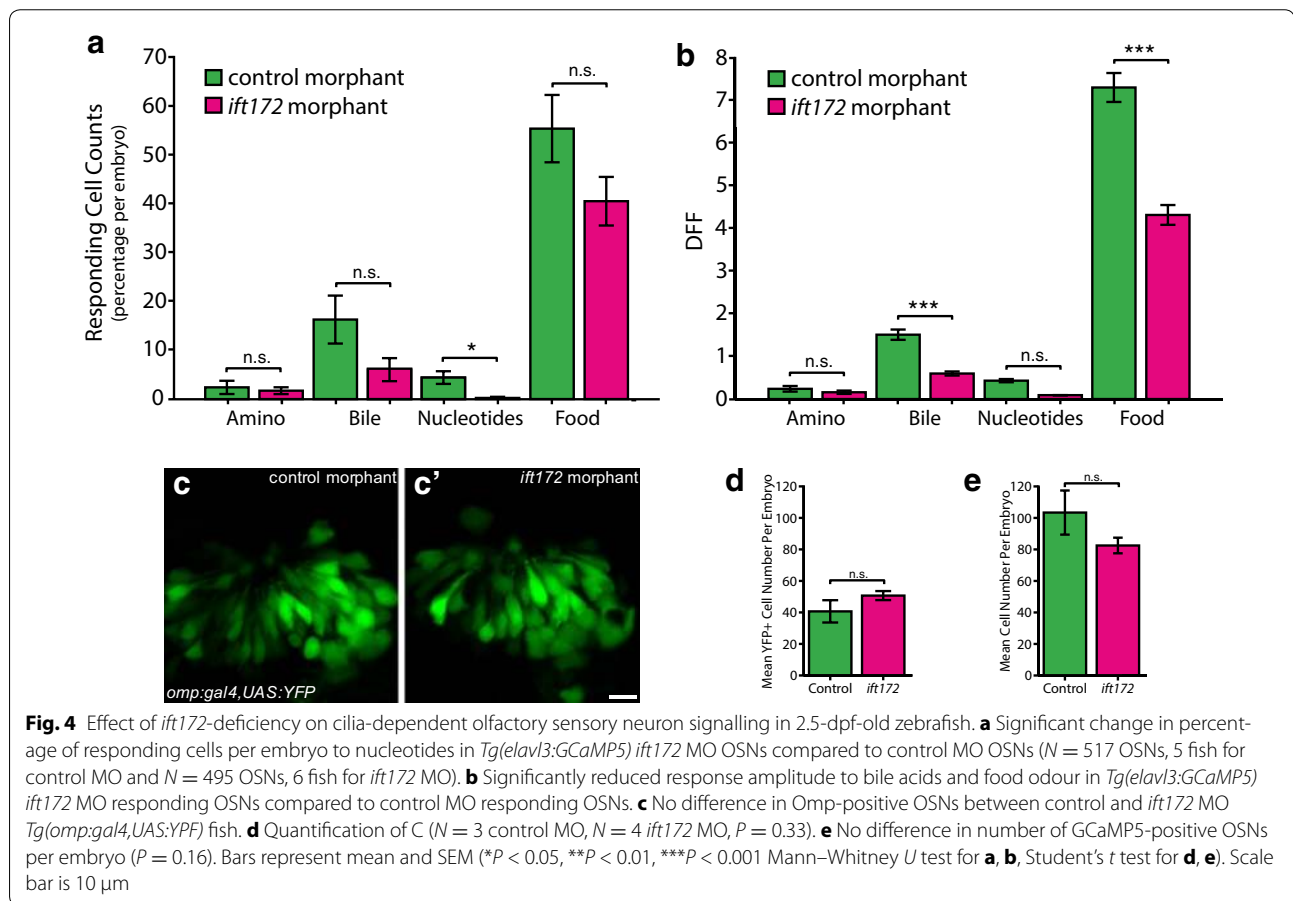
To establish OSN activity as a read-out for sensory cilia function in vivo, we tested 2.5 dpf wild-type *Tg(elavl3:GCaMP5)* zebrafish for OSN calcium responses

to three different odourant classes: amino acids, bile acids, or nucleotides. These distinct classes are known to activate different spatial domains within the olfactory bulb [35], and thus suggested to stimulate ORs on different OSN subtypes [17]. As a positive control, we used food odour, containing molecules from all classes, activating a substantial proportion of OSNs. As expected, food odour stimulation produced robust, widespread

Table 1 Effect of *Ift*-deficiency on OSN cilia number and length

	N	Number of OSN cilia		P value	Length of OSN cilia (μm) ^a		P value
		Average	SD		Average	SD	
<i>ift88</i> sibling	3	109	24.6	0.0052	1.53	0.34	1.61E−20
<i>ift88</i> mutant	3	25.0	9.2		0.82	0.37	
control morphant	3	112	11.7	0.0035	2.03	0.54	2.73E−25
<i>ift172</i> morphant	2	37.5	3.5		1.15	0.51	

^a Based on all or 50 OSN cilia per fish



calcium responses from OSNs (Fig. 2a, b, Additional file 1: Movie S2), while the specific odourant classes showed more confined responses. Analysis of 382 single OSNs ($N = 4$ fish) revealed that all odourants evoked significantly increased response amplitudes compared to water control ($P < 0.001$ Mann–Whitney U test, Fig. 2c), demonstrating that *Tg(elavl3:GCaMP5)* can be used for live, quantitative detection of sensory cilia signalling in zebrafish.

OSN cilia defects in *ift*-deficient olfactory placodes

To establish the role of *Ift* proteins in olfactory sensory ciliogenesis, we analysed the *oval* mutant (*ovl*^{tz288b}), carrying a nonsense mutation in the *intraflagellar transport protein 88* (*ift88*) gene (L260X) [36]. In a separate set of experiments, we knocked down another *ift* gene, *ift172*, using an exon 1 splice donor blocking antisense morpholino (*ift172* morphants). Importantly, the *ift172* morphant phenocopied the *ift172* mutant phenotype [37]. In the *ift88* mutant, we confirmed a 99% reduction of the *Ift88* immunofluorescence signal in the OE ($N = 3$ fish,

Additional file 1: Fig. S1). *ift172* knockdown was confirmed by RT-PCR (Additional file 1: Fig. S2). Anti- $G_{\alpha/olf}$ immunofluorescence, a marker of OSN cilia, revealed a 77% reduction in the number of OSN cilia in *ift88* mutant OSNs and, in OSNs that still had cilia, a 46% reduction in cilia length compared to wild-type siblings (Fig. 3a, b, Additional file 1: Fig. S3, Table 1). Also, *ift172* morphants showed a 66% reduction in cilia number and a 43% shortening of remaining cilia compared to control morphants (Fig. 3c, d, Table 1). These results indicate that zygotic Ift-deficiency markedly reduces OSN cilia number and length at 2.5 dpf but does not completely eliminate ciliogenesis.

***ift88* mutant embryos show reduced cilia-dependent OSN activity**

OSN responses to odourants were examined in 2.5 dpf *Tg(elavl3:GCaMP5) ift88* mutant zebrafish (720 OSNs, $N = 9$ fish) and compared to wild-type siblings (637 OSNs, $N = 10$ fish) (Fig. 3e, f). To control for any mechanosensory responses to potential change in rate of flow during valve switching for odour delivery, odour-responsive OSNs were first defined as the cells showing an odour evoked response exceeding ± 2 SD of the response to water delivery. Comparison of the number of cells responding to bile acids (expressed as a percentage of total responding cells per embryo) showed a 55% reduction ($P = 0.01$, Mann–Whitney U test) in mutant embryos while the number of cells responding to food odour was reduced by 38% ($P = 0.04$). The number of cells responding to amino acids and nucleotides showed no significant differences (Fig. 3e), demonstrating *ift88* loss of function did not affect microvillus OSNs. Furthermore, examination of the mutant OSN population responses, at single cell resolution, revealed a 66% reduction in the amplitude of bile acid responses ($P = 1.9E-08$, Mann–Whitney U test; Fig. 3f and Additional file 1: Movies S3–S5) and a 37% reduction in the amplitude of food odour responses ($P = 8.34E-11$) compared to wild-type siblings (Fig. 3f, responding OSNs only). No significant differences in OSN-response amplitudes were observed after stimulation with amino acid ($P = 0.10$) or nucleotide mixture ($P = 0.19$) (Fig. 3f). We observed similar results when response amplitudes were averaged for all OSNs (responding and non-responding) (Additional file 1: Fig. S4 a, b). The absence of large changes in response latency or in the shape and strength of responses to amino acids and nucleotides in *ift88* mutant olfactory neurons (Additional file 1: Fig. S4 c, d) indicated that loss of cilia-driven fluid flow at the olfactory placode [34] was not a factor in our approach applying odourants directly to OSNs. Overall, the data show a consistent and significantly lower

response of OSNs selectively to bile acids and food in the *ift88* mutants compared to the *ift88* wild-type siblings.

Reduction in OSN responses to odourants in *ift88* mutants is most likely due to observed ciliogenesis defects. Alternatively, loss of sensitivity could be due to reduced OSN survival as has been previously suggested [36]. We ruled out cell loss as a significant factor in reduced OSN responses by showing no loss of *omp* mRNA expression in *ift88* mutants up to 5 dpf (Fig. 3g, Additional file 1: Fig. S6a), no differences in mCherry expression in *Tg(omp:mCherry) ift88* mutants vs. siblings (Additional file 1: Fig. S6b), and no change in the presence of ciliated OSNs using anti- $G_{\alpha/olf}$ /anti-GFP double immunofluorescence in *Tg(elavl3:GCaMP5) ift88* mutants in which the ciliated OSNs were identified by their characteristic flask-like shape (Fig. 3h, Additional file 1: Fig. S6c, arrows) [17]. As expected, we observed a severely reduced anti- $G_{\alpha/olf}$ signal in the ciliary region in the mutants (Fig. 3h, Additional file 1: Fig. S3). Careful examination, however, revealed some residual anti- $G_{\alpha/olf}$ staining in the apical cell bodies of *ift88* mutant OSNs (Additional file 1: Figs. S3D, S5). Lastly, we observed no significant differences in the number of GCaMP5-positive OSNs per embryo used in the functional analyses ($P = 0.10$, Fig. 3i). We conclude that reduced OSN responses in *ift88* mutant olfactory placodes were due to a specific defect in ciliogenesis and not due to a reduction in the number of ciliated OSNs.

***ift172*-deficient embryos show reduced cilia-dependent OSN activity**

To test for other Ift-deficiencies as potentially novel causes of hyposmia, we tested responses to odourants in *ift172*-deficient zebrafish. *ift172* morpholino knockdown was accomplished using a previously validated exon1 donor blocking MO [11] that caused retention of intron1 and complete loss of wild-type *ift172* mRNA (Additional file 1: Fig. S2). *ift172* morphants phenocopied *ift172* mutants with ventral axis curvature, hydrocephalus and kidney cysts [37] (Additional file 1: Fig. S2). Similar to *ift88*-deficient embryos, analysis of six *Tg(elavl3:GCaMP5) ift172* morphants (495 OSNs) and five *Tg(elavl3:GCaMP5)* control morphants (517 OSNs) revealed a trend toward reduction in the number of cells responding to bile acids and food (Fig. 4a). Consistent with our results from *ift88* mutants, in *ift172*-deficient cells that responded to odourants, bile acid and food-response amplitudes were significantly reduced by 60% ($P = 7.93E-8$) and 41% ($P = 3.89E-12$), respectively. OSN-response amplitudes to amino acids ($P = 0.38$) and nucleotides ($P = 0.11$) in *ift172* morphants were not significantly changed (Fig. 4b, responding OSNs only). Similar results were observed when response amplitudes were

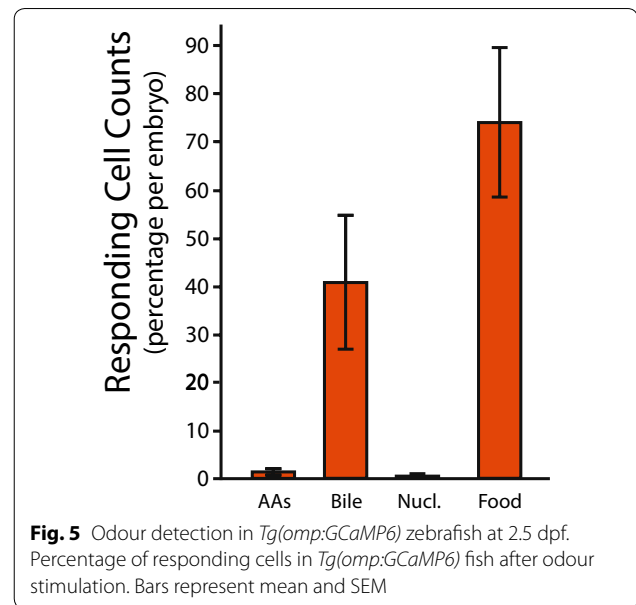
averaged over all OSNs (responding and non-responding) except for nucleotides mixture where we observed a significantly lower response in the *ift172*-deficient embryos (44% reduction, $P = 0.0018$, Additional file 1: Fig. S4b). Loss of odourant sensitivity in *ift172* morphants was not due to OSN cell loss as similar numbers of ciliated OSNs were observed in *Tg(omp:gal4,UAS:YFP)* and *Tg(elavl3:GCaMP5)* control and morphant embryos (Fig. 4c–e). These results support and extend our data on *ift88* mutants and further, establish *ift172* deficiency as a novel genetic cause of hyposmia.

Odour detection in 2.5 dpf *Tg(omp:GCaMP6)* zebrafish

To examine responses to odourants specifically in ciliated OSNs, we generated a *Tg(omp:GCaMP6)* line expressing GCaMP6 selectively in ciliated OSNs (Additional file 1: Fig. S8) and quantified the number of responding OSNs for different odourant classes at 2.5 dpf. The percentage of OSNs per embryo responding to amino acids and nucleotides was nearly undetectable in *Tg(omp:GCaMP6)* embryos while responses to bile acids and food were robust (Fig. 5). Our results differ from prior work [18] and show that as early as 2.5 dpf, GCaMP6 expressing, ciliated OSNs are bile acid selective.

Discussion

The role of primary cilia as cellular signalling centres, coupling receptors to intracellular signal transduction, is now well established [1, 38]. However, studies of sensory cilia function have relied largely on indirect measurements of marker protein transport, cilia length or downstream molecular endpoints of cilia-associated signalling pathways in vitro [39–42]. Prior work using GCaMP readouts for in vivo cilia mechanosensation provided evidence for calcium elevation in response to cilia bending and mechanosensation in endothelial cells [43] and cilia of Kupffer's vesicle, the zebrafish organ of laterality [44]. However, the concept that cilia bending is sufficient to propagate an intracellular calcium response has been challenged recently [45]. The function of photoreceptor cells in the retina depends on their sensory cilium outer segment [46]. Optokinetic responses (OKR) or electroretinograms [47, 48] can assay photoreceptor activity; however, these do not directly measure the activity of the ciliated cells since an altered OKR can also be caused by neuronal or muscle defects [49]. Direct patch-clamp of retinal cones has been performed in adult zebrafish retinas ex vivo [50]; however, the number of cells that can be studied per animal is small and this approach has not yet been demonstrated in larvae. Lateral line cilia in zebrafish have been used to study the role of dopamine in modulating mechanotransduction [51]. Most directly related to our work, DeMaria et al. demonstrated calcium



responses to odourants in transgenic zebrafish larvae with GCaMP1.6 targeted to different OSNs classes, including ciliated OSNs [18]. Our work takes advantage of the accessibility of ciliated OSNs and a newer generation of transgenic GCaMP calcium indicators to probe in vivo requirements for quantitative assessment of sensory cilia signalling at the resolution of single cells.

The accessibility of OSN cilia facilitates stimulation with a broad range of distinct stimuli. We demonstrated a reduced bile acid response in *Ift* protein-deficient OSNs with severely reduced cilia length and number, while no change in amino acid response was observed. Consistent with these results, our analysis using the *Tg(omp:GCaMP6)* transgenic demonstrated that in zebrafish, bile acids but not amino acids are sensed by ciliated OSNs. In zebrafish, amino acids can be detected by microvillous OSNs [18]. Sensitivity of ciliated OSNs to bile acids has also been found in channel catfish and rainbow trout [52, 53]; however, in these species both ciliated and microvillus OSNs respond to amino acids, albeit using distinct signal transduction pathways (G α (olf)/cAMP vs. G α (q)/11/phospholipase C) [52]. In the marine fish *Cabina* grunt, ciliated OSNs also respond to amino acids [54] indicating a degree of inter-species variation in OSN odourant specificity. In catfish, nucleotides are detected by microvillous OSNs [52]. Our results demonstrate no strong correlation between nucleotide odourant responses and ciliated OSNs, but should not be over-interpreted since at this stage of development there are a relatively small number of nucleotide responding OSNs compared to the populations responding to the other odourant classes. Other than developmental stage,

this could be an effect of the specific nucleotides used in the odourant mixture. In our study, we observed a reduction in ciliated OSN activation similar to ex vivo results obtained in isolated *ift88* mutant mouse ciliated OSNs [7]. In this study, hypomorphic mutation of IFT88 leads to olfactory cilia loss and hyposmia as recorded ex vivo using electro-olfactograms [7]. We found in addition that *ift88*-deficient OSNs remained sensitive to amino acids demonstrating specificity of Ift defects. Our work demonstrates that odourant responses can be detected in vivo and that selective sensory deficiencies in the zebrafish *ift88* mutant and *ift172* morphants reveal a loss of sensory cilia function.

The absence of OSN cell loss in our studies of the *oval/ift88* mutant OSNs is in contrast to a prior report suggesting that ciliogenesis may be required for OSN viability [36]. This difference in results may be due to the use of DiI labelling, a classical assay of structural cilia defects in *C. elegans* [55], to detect OSNs, since the absence of OSN DiI labelling may simply reflect lack of cilia on otherwise viable cells. Also, the stage we chose to make measurements, 2.5 dpf, precedes the reported loss of ciliated OSNs in *oval* mutants [36]. Although responses to specific odourant classes were strongly reduced in Ift-deficient embryos, we detected some residual activity in the mutant/morphant OSNs. This may be caused by the persistence of a limited number of shortened olfactory cilia in the mutants (Fig. 3a, b; Additional file 1: Fig. S3b, d), which may be supported by maternally provided ciliary mRNAs and proteins in the zygotic *ift88* mutant [56]. It has been demonstrated that natural differences in cilia length in the olfactory epithelium in mice correlate with odour sensitivity, with shorter cilia being less sensitive to odours [57]. We demonstrated severely reduced anti-G α_{olf} staining in the mutants, however, there was anti-G α_{olf} signal from the cell body, indicating that even with reduced cilia, some odour detection might persist. Alternatively, detection of bile acids may not be exclusively dependent on ciliated OSNs at this early stage of development and could involve other classes of OSNs.

Our results demonstrate that ciliated OSNs are functional considerably earlier in development than previously shown (2.5 vs. 4 dpf [18]). This is significant since a key experimental advantage of the zebrafish for cilia proteome studies, transient gene knockdown (antisense, CRISPRi [58, 59]), is limited to early (1–3 dpf) developmental time windows. Our results demonstrating ciliated OSN signalling activity and impact of transient *ift172* knockdown in 2.5 dpf embryos support the use of this assay for specific sensory cilia mutants or drug screening and is consistent with prior studies of olfactory placode development. The zebrafish olfactory pit opens at 34–36 hpf and ciliated and microvillus OSNs can be observed

by scanning EM at 48–50 hpf [33]. The first OSN projections to the presumptive olfactory bulb are present at 1 dpf [60] and olfactory bulb responses to the set of odourants we used have been recorded as early as 2.5 dpf [35]. Although we have not directly compared GCaMP1.6 [18] and GCaMP5 (this work), it is likely that the development of higher dynamic range biosensors will continue to improve selectivity and detection of cilia-dependent calcium signals in early embryos.

In addition to loss of cilia-dependent signalling in the *ift88* mutant, we demonstrate a sensory cilia signalling defect in *ift172*-deficient embryos. In humans, *IFT172* mutations cause isolated retinal degeneration, Jeune, Mainzer-Saldino and Bardet–Biedl syndromes [10–12]. Our study indicates that patients with *IFT172* mutations may present with hyposmia as well. Reduced olfaction has been demonstrated in several ciliopathies, and could provide a non-invasive method to more easily diagnose ciliopathy patients [5, 61–63]. In preliminary experiments, we found no defects in cilia structure or protein localization in zebrafish *cep290* and *bbs4* Crispr/Cas9 mutants (data not shown) suggesting that for some ciliopathy genes, compensation mechanisms may mask ciliopathy phenotypes [64, 65]. Nonetheless, our demonstration of a novel hyposmia phenotype in *ift172*-deficient zebrafish highlights the value of measuring sensory cilia signalling functions directly in vivo and provides a new approach for future studies of cilia protein delivery and signalling as well as an additional starting point for the development of ciliopathy therapies [66].

Conclusions

Calcium biosensor expression in ciliated, bile-sensitive zebrafish olfactory neurons can be used as a quantitative system for direct measurement of sensory cilia signalling in vivo in 2.5 dpf zebrafish larvae. Ift mutation and knockdown implicated *ift88* and *ift172*-deficiency in hyposmia, a reduced sense of smell. Our results highlight *ift172*-deficiency as a novel cause of hyposmia and support the idea that hyposmia can be used as a diagnostic indicator of ciliopathies.

Additional file

Additional file 1. Additional material and methods, figures, figure legends, and legends for supplemental movies.

Abbreviations

OSN: olfactory sensory neuron; ift: intraflagellar transport; OE: olfactory epithelium; BBS: Bardet Biedl syndrome; OKR: Optokinetic responses.

Authors' contributions

JGMB, CW and CA-T conducted experiments. JGMB and CW analysed the data. EY and IAD designed and supervised experiments. JGMB and IAD wrote the

manuscript. JGMB and CW prepared figures. All authors read and approved the final manuscript.

Author details

¹ Nephrology Division, Department of Medicine, Massachusetts General Hospital, 149 13th Street, Charlestown, MA 02129, USA. ² Department of Genetics, Harvard Medical School, 25 Shattuck Street, Boston, MA 02115, USA. ³ Neuro-electronics Research Flanders, Kapeldreef 75, 3001 Louvain, Belgium. ⁴ Centre for Neural Computation, Kavli Institute for Systems Neuroscience, Olav Kyrres Gate 9, 7030 Trondheim, Norway.

Acknowledgements

We thank Jonathan Raper, University of Pennsylvania, Philadelphia and Yoshihiro Yoshihara, RIKEN Brain Science Institute, Japan, for supplying the *Tg(omp:gal4)* and *Tg(trpc2:Venus)* zebrafish lines and the *omp:venus* plasmid. We thank Brain Perkins (Texas A&M University) for the anti-Ift88 antibody.

Competing interests

The authors declare that they have no competing interests.

Availability of data and materials

All data generated or analysed during this study are included in this published article [and its additional file].

Consent for publication

Not applicable/no individual person's data included.

Ethics approval and consent to participate

Not applicable/no human subjects.

Funding

Funding was supplied by Massachusetts General Hospital, Tosteston Award (JGMB), the Netherlands Organisation for Scientific Research (NWO), Rubicon Grant 825.12.019 (JGMB), AXA research Funds (CW), VIB/NERF (CW and EY) and NIH DK053093 (IAD).

Publisher's Note

Springer Nature remains neutral with regard to jurisdictional claims in published maps and institutional affiliations.

Received: 17 October 2017 Accepted: 22 February 2018

Published online: 15 March 2018

References

- Berberi NF, O'Connor AK, Haycraft CJ, Yoder BK. The primary cilium as a complex signaling center. *Curr Biol*. 2009;19(13):R526–35.
- Ishikawa H, Marshall WF. Ciliogenesis: building the cell's antenna. *Nat Rev Mol Cell Biol*. 2011;12(4):222–34.
- Hildebrandt F, Benzing T, Katsanis N. Ciliopathies. *N Engl J Med*. 2011;364(16):1533–43.
- Tobin JL, Beales PL. The nonmotile ciliopathies. *Genet Med*. 2009;11(6):386–402.
- Kulaga HM, Leitch CC, Eichers ER, Badano JL, Lesemann A, Hoskins BE, Lupski JR, Beales PL, Reed RR, Katsanis N. Loss of BBS proteins causes anosmia in humans and defects in olfactory cilia structure and function in the mouse. *Nat Genet*. 2004;36(9):994–8.
- McEwen DP, Koenekoop RK, Khanna H, Jenkins PM, Lopez I, Swaroop A, Martens JR. Hypomorphic CEP290/NPHP6 mutations result in anosmia caused by the selective loss of G proteins in cilia of olfactory sensory neurons. *Proc Natl Acad Sci USA*. 2007;104(40):15917–22.
- McIntyre JC, Davis EE, Joiner A, Williams CL, Tsai IC, Jenkins PM, McEwen DP, Zhang L, Escobedo J, Thomas S, et al. Gene therapy rescues cilia defects and restores olfactory function in a mammalian ciliopathy model. *Nat Med*. 2012;18(9):1423–8.
- Nishimura DY, Fath M, Mullins RF, Searby C, Andrews M, Davis R, Andorf JL, Myktyyn K, Swiderski RE, Yang B, et al. Bbs2-null mice have neurosensory deficits, a defect in social dominance, and retinopathy associated with mislocalization of rhodopsin. *Proc Natl Acad Sci USA*. 2004;101(47):16588–93.
- Tadenev AL, Kulaga HM, May-Simera HL, Kelley MW, Katsanis N, Reed RR. Loss of Bardet–Biedl syndrome protein-8 (BBS8) perturbs olfactory function, protein localization, and axon targeting. *Proc Natl Acad Sci USA*. 2011;108(25):10320–5.
- Bujakowska KM, Zhang Q, Siemiatkowska AM, Liu Q, Place E, Falk MJ, Consugar M, Lancelot ME, Antonio A, Lonjou C, et al. Mutations in IFT172 cause isolated retinal degeneration and Bardet–Biedl syndrome. *Hum Mol Genet*. 2015;24(1):230–42.
- Halbritter J, Bizet AA, Schmidts M, Porath JD, Braun DA, Gee HY, McInerney-Leo AM, Filhol E, Davis EE, et al. Defects in the IFT-B component IFT172 cause Jeune and Mainzer–Saldino syndromes in humans. *Am J Hum Genet*. 2013;93(5):915–25.
- Schaefer E, Stoetzel C, Scheidecker S, Geoffroy V, Prasad MK, Redin C, Missotte I, Lacombe D, Mandel JL, Muller J, et al. Identification of a novel mutation confirms the implication of IFT172 (BBS20) in Bardet–Biedl syndrome. *J Hum Genet*. 2016;61(5):447–50.
- Sato Y, Miyasaka N, Yoshihara Y. Hierarchical regulation of odorant receptor gene choice and subsequent axonal projection of olfactory sensory neurons in zebrafish. *J Neurosci*. 2007;27(7):1606–15.
- Miyasaka N, Wanner AA, Li J, Mack-Bucher J, Genoud C, Yoshihara Y, Friedrich RW. Functional development of the olfactory system in zebrafish. *Mech Dev*. 2013;130(6–8):336–46.
- Alioto TS, Ngai J. The odorant receptor repertoire of teleost fish. *BMC Genom*. 2005;6:173.
- Kaupp UB. Olfactory signalling in vertebrates and insects: differences and commonalities. *Nat Rev Neurosci*. 2010;11(3):188–200.
- Sato Y, Miyasaka N, Yoshihara Y. Mutually exclusive glomerular innervation by two distinct types of olfactory sensory neurons revealed in transgenic zebrafish. *J Neurosci*. 2005;25(20):4889–97.
- DeMaria S, Berke AP, Van Name E, Heravian A, Ferreira T, Ngai J. Role of a ubiquitously expressed receptor in the vertebrate olfactory system. *J Neurosci*. 2013;33(38):15235–47.
- Lans H, Rademakers S, Jansen G. A network of stimulatory and inhibitory Galpha-subunits regulates olfaction in *Caenorhabditis elegans*. *Genetics*. 2004;167(4):1677–87.
- Arias-Darraz L, Cabezas D, Colenso CK, Alegria-Arcos M, Bravo-Moraga F, Varas-Concha I, Almonacid DE, Madrid R, Brauchi S. A transient receptor potential ion channel in *Chlamydomonas* shares key features with sensory transduction-associated TRP channels in mammals. *Plant Cell*. 2015;27(1):177–88.
- Akerboom J, Chen TW, Wardill TJ, Tian L, Marvin JS, Mutlu S, Calderon NC, Esposti F, Borghuis BG, Sun XR, et al. Optimization of a GCaMP calcium indicator for neural activity imaging. *J Neurosci*. 2012;32(40):13819–40.
- Park HC, Kim CH, Bae YK, Yeo SY, Kim SH, Hong SK, Shin J, Yoo KW, Hibi M, Hirano T, et al. Analysis of upstream elements in the HuC promoter leads to the establishment of transgenic zebrafish with fluorescent neurons. *Dev Biol*. 2000;227(2):279–93.
- Westerfield M. The zebrafish Book. A Guide for the Laboratory Use of Zebrafish (*Danio rerio*). Eugene: University of Oregon Press; 2000.
- Ahrens MB, Li JM, Orger MB, Robson DN, Schier AF, Engert F, Portugues R. Brain-wide neuronal dynamics during motor adaptation in zebrafish. *Nature*. 2012;485(7399):471–7.
- Doerre G, Malicki J. Genetic analysis of photoreceptor cell development in the zebrafish retina. *Mech Dev*. 2002;110(1–2):125–38.
- Suster ML, Kikuta H, Urasaki A, Asakawa K, Kawakami K. Transgenesis in zebrafish with the tol2 transposon system. *Methods Mol Biol*. 2009;561:41–63.
- Kwan KM, Fujimoto E, Grabher C, Mangum BD, Hardy ME, Campbell DS, Parant JM, Yost HJ, Kanki JP, Chien CB. The Tol2kit: a multisite gateway-based construction kit for Tol2 transposon transgenesis constructs. *Dev Dyn*. 2007;236(11):3088–99.
- Drummond IA, Majumdar A, Hentschel H, Elger M, Solnica-Krezel L, Schier AF, Neuhauss SC, Stemple DL, Zwartkruis F, Rangini Z, et al. Early development of the zebrafish pronephros and analysis of mutations affecting pronephric function. *Development*. 1998;125(23):4655–67.
- Thisse B, Heyer V, Lux A, Alunni V, Degraeve A, Seiliez I, Kirchner J, Parkhill JP, Thisse C. Spatial and temporal expression of the zebrafish genome by large-scale in situ hybridization screening. *Methods Cell Biol*. 2004;77:505–19.

30. Yoshida T, Ito A, Matsuda N, Mishina M. Regulation by protein kinase A switching of axonal pathfinding of zebrafish olfactory sensory neurons through the olfactory placode-olfactory bulb boundary. *J Neurosci*. 2002;22(12):4964–72.
31. Vendrell-Llopis N, Yaksi E. Evolutionary conserved brainstem circuits encode category, concentration and mixtures of taste. *Sci Rep*. 2015;5:17825.
32. Jetli SK, Vendrell-Llopis N, Yaksi E. Spontaneous activity governs olfactory representations in spatially organized habenular microcircuits. *Curr Biol*. 2014;24(4):434–9.
33. Hansen A, Zeiske E. Development of the olfactory organ in the zebrafish, *Brachydanio rerio*. *J Comp Neurol*. 1993;333(2):289–300.
34. Reiten I, Uslu FE, Fore S, Pelgrims R, Ringers C, Diaz Verdugo C, Hoffman M, Lal P, Kawakami K, Pekkan K, et al. Motile-cilia-mediated flow improves sensitivity and temporal resolution of olfactory computations. *Curr Biol*. 2017;27(2):166–74.
35. Li J, Mack JA, Souren M, Yaksi E, Higashijima S, Mione M, Fetcho JR, Friedrich RW. Early development of functional spatial maps in the zebrafish olfactory bulb. *J Neurosci*. 2005;25(24):5784–95.
36. Tsujikawa M, Malicki J. Intraflagellar transport genes are essential for differentiation and survival of vertebrate sensory neurons. *Neuron*. 2004;42(5):703–16.
37. Sun Z, Amsterdam A, Pazour GJ, Cole DG, Miller MS, Hopkins N. A genetic screen in zebrafish identifies cilia genes as a principal cause of cystic kidney. *Development*. 2004;131(16):4085–93.
38. Goetz SC, Anderson KV. The primary cilium: a signalling centre during vertebrate development. *Nat Rev Genet*. 2010;11(5):331–44.
39. Besschetnova TY, Kolpakova-Hart E, Guan Y, Zhou J, Olsen BR, Shah JV. Identification of signaling pathways regulating primary cilium length and flow-mediated adaptation. *Curr Biol*. 2010;20(2):182–7.
40. Lai CK, Gupta N, Wen X, Rangell L, Chih B, Peterson AS, Bazan JF, Li L, Scales SJ. Functional characterization of putative cilia genes by high-content analysis. *Mol Biol Cell*. 2011;22(7):1104–19.
41. Ott C, Lippincott-Schwartz J. Visualization of live primary cilia dynamics using fluorescence microscopy. *Curr Protoc Cell Biol*. 2012; Chapter 4:Unit 4.26.
42. Rachel RA, Li T, Swaroop A. Photoreceptor sensory cilia and ciliopathies: focus on CEP290, RPGR and their interacting proteins. *Cilia*. 2012;1(1):22.
43. Goetz JG, Steed E, Ferreira RR, Roth S, Ramspacher C, Boselli F, Charvin G, Liebling M, Wyart C, Schwab Y, et al. Endothelial cilia mediate low flow sensing during zebrafish vascular development. *Cell Rep*. 2014;6(5):799–808.
44. Yuan S, Zhao L, Brueckner M, Sun Z. Intraciliary calcium oscillations initiate vertebrate left–right asymmetry. *Curr Biol*. 2015;25(5):556–67.
45. DeCaen PG, Delling M, Vien TN, Clapham DE. Direct recording and molecular identification of the calcium channel of primary cilia. *Nature*. 2013;504(7479):315–8.
46. Fliegauf M, Benzing T, Omran H. When cilia go bad: cilia defects and ciliopathies. *Nat Rev Mol Cell Biol*. 2007;8(11):880–93.
47. Brockerhoff SE, Hurley JB, Janssen-Bienhold U, Neuhauss SC, Driever W, Dowling JE. A behavioral screen for isolating zebrafish mutants with visual system defects. *Proc Natl Acad Sci USA*. 1995;92(23):10545–9.
48. Jurisch-Yaksi N, Rose AJ, Lu H, Raemaekers T, Munck S, Baatsen P, Baert V, Vermeire W, Scales SJ, Verleyen D, et al. *Rer1p* maintains ciliary length and signaling by regulating gamma-secretase activity and *Foxj1a* levels. *J Cell Biol*. 2013;200(6):709–20.
49. Portugues R, Engert F. The neural basis of visual behaviors in the larval zebrafish. *Curr Opin Neurobiol*. 2009;19(6):644–7.
50. Endeman D, Klaassen LJ, Kamermans M. Action spectra of zebrafish cone photoreceptors. *PLoS ONE*. 2013;8(7):e68540.
51. Toro C, Trapani JG, Pacentine I, Maeda R, Sheets L, Mo W, Nicolson T. Dopamine modulates the activity of sensory hair cells. *J Neurosci*. 2015;35(50):16494–503.
52. Hansen A, Rolen SH, Anderson K, Morita Y, Caprio J, Finger TE. Correlation between olfactory receptor cell type and function in the channel catfish. *J Neurosci*. 2003;23(28):9328–39.
53. Sato K, Suzuki N. Whole-cell response characteristics of ciliated and microvillous olfactory receptor neurons to amino acids, pheromone candidates and urine in rainbow trout. *Chem Senses*. 2001;26(9):1145–56.
54. Schmachtenberg O, Bacigalupo J. Olfactory transduction in ciliated receptor neurons of the Cavinza grunt, *Isacia conceptionis* (Teleostei: Haemulidae). *Eur J Neurosci*. 2004;20(12):3378–86.
55. Bae YK, Barr MM. Sensory roles of neuronal cilia: cilia development, morphogenesis, and function in *C. elegans*. *Front Biosci*. 2008;13:5959–74.
56. Huang P, Schier AF. Dampened Hedgehog signaling but normal Wnt signaling in zebrafish without cilia. *Development*. 2009;136(18):3089–98.
57. Challis RC, Tian H, Wang J, He J, Jiang J, Chen X, Yin W, Connelly T, Ma L, Yu CR, et al. An olfactory cilia pattern in the mammalian nose ensures high sensitivity to odors. *Curr Biol*. 2015;25(19):2503–12.
58. Pauli A, Montague TG, Lennox KA, Behlke MA, Schier AF. Antisense oligonucleotide-mediated transcript knockdown in zebrafish. *PLoS ONE*. 2015;10(10):e0139504.
59. Rossi A, Kontarakis Z, Gerri C, Nolte H, Holper S, Kruger M, Stainier DY. Genetic compensation induced by deleterious mutations but not gene knockdowns. *Nature*. 2015;524:230.
60. Whitlock KE, Westerfield M. A transient population of neurons pioneers the olfactory pathway in the zebrafish. *J Neurosci*. 1998;18(21):8919–27.
61. Brinckman DD, Keppler-Noreuil KM, Blumhorst C, Biesecker LG, Sapp JC, Johnston JJ, Wiggs EA. Cognitive, sensory, and psychosocial characteristics in patients with Bardet–Biedl syndrome. *Am J Med Genet A*. 2013;161A(12):2964–71.
62. Iannaccone A, Mykytyn K, Persico AM, Searby CC, Baldi A, Jablonski MM, Sheffield VC. Clinical evidence of decreased olfaction in Bardet–Biedl syndrome caused by a deletion in the *BBS4* gene. *Am J Med Genet A*. 2005;132A(4):343–6.
63. Papon JF, Perrault I, Coste A, Louis B, Gerard X, Hanein S, Fares-Taie L, Gerber S, Defoort-Dhellemmes S, Vojtek AM, et al. Abnormal respiratory cilia in non-syndromic Leber congenital amaurosis with CEP290 mutations. *J Med Genet*. 2010;47(12):829–34.
64. Rachel RA, Yamamoto EA, Dewanjee MK, May-Simera HL, Sergeev YV, Hackett AN, Pohida K, Munasinghe J, Gotoh N, Wickstead B, et al. CEP290 alleles in mice disrupt tissue-specific cilia biogenesis and recapitulate features of syndromic ciliopathies. *Hum Mol Genet*. 2015;24(13):3775–91.
65. Goetz SC, Bangs F, Barrington CL, Katsanis N, Anderson KV. The Meckel syndrome-associated protein *MKS1* functionally interacts with components of the BBSome and IFT complexes to mediate ciliary trafficking and hedgehog signaling. *PLoS ONE*. 2017;12(3):e0173399.
66. Williams CL, Uyttingco CR, Green WW, McIntyre JC, Ukhanov K, Zimmerman AD, Shively DT, Zhang L, Nishimura DY, Sheffield VC, et al. Gene therapeutic reversal of peripheral olfactory impairment in Bardet–Biedl syndrome. *Mol Ther*. 2017;25(4):904–16.
67. Pathak N, Obara T, Mangos S, Liu Y, Drummond IA. The zebrafish *fleeer* gene encodes an essential regulator of cilia tubulin polyglutamylation. *Mol Biol Cell*. 2007;18(11):4353–64.