

ORIGINAL RESEARCH

Open Access

# Assessment of a practical model to estimate the cell temperature of a photovoltaic module

Rodolfo Araneo<sup>\*</sup>, Umberto Grasselli and Salvatore Celozzi

## Abstract

Instantaneous solar irradiance profiles or solar irradiation data collected with small time intervals (e.g., minutes) are usually required for the energy simulation of photovoltaic systems, especially as concerns the estimation of the cell temperature. However, meteorological stations and technical standards often provide just monthly average values of the horizontal daily solar irradiation; extensive climate databases which make available up to date hourly observation data, or satellite-derived data are seldom available. The goal of the present paper is to investigate the suitability and the accuracy of a methodology aimed at estimating the time profile of the cell temperature of a photovoltaic system on the basis of only the monthly mean values of the daily global irradiation on a horizontal surface. The methodology consists of a chain of well-established models which are applied one after another, in a step-by-step procedure, in order to derive the cell temperatures from the solar radiation data. In particular, we selected different models as possible candidates for each step of the methodology and compared their predictions with measured data to identify the most suitable ones. In addition, we tried several combinations of models in order to identify the most accurate combination. Comparisons with data measured in Rome confirm the suitability of the proposed approach and give information about its accuracy.

**Keywords:** Photovoltaic cell; Irradiation; Irradiance; Linear model; Transient cell temperature

## Background

In the last century, it has become clear worldwide, the key role, that energy plays in human life [1,2]: it is at the base of our modern life and economy. Currently, the growing attention and increasing significance to environmental issues have stimulated countries to exploit renewable energy resources and to encourage their use [3-6]. Among them, solar photovoltaic (PV) energy is considered one of the leading potential sources of electricity for the 21st century [7-11]: it utilizes an abundant energy source (the sun), has no emissions, and can be easily integrated in buildings, and the cost of the installed kWp is decreasing and becoming more and more affordable with payback periods shorter and shorter. In fact, in the recent years, the generation of solar electricity from PV systems has penetrated the energy market in those countries where clear and stable policy for subsidies have been made.

The rapid growth of the solar industry has expanded the importance of PV system design and application for more reliable and efficient operation [12,13]. The design of PV systems in an economically optimal way [14-16] is usually done through detailed computer simulations [17,18]: transient analysis is useful when the different energy phenomena which take place in the heart of the production systems [19] should be accounted for, e.g., if they present some kind of solar tracking [20].

In performing such an analysis, the accurate evaluation of the operating temperature of the PV device (either a simple module or a PV/thermal collector of a building-integrated PV array) is of paramount importance [21] because several performance parameters of the PV system depend on it through the so-called temperature coefficients [22]. The derivatives can be determined for short-circuit current ( $I_{sc}$ ), maximum-power current ( $I_{mp}$ ), open-circuit voltage ( $V_{oc}$ ), maximum-power voltage ( $V_{mp}$ ), and maximum power ( $P_{mp}$ ), as well as fill factor ( $FF$ ) and, finally, efficiency ( $\eta$ ). Particular attention is focused on the energy conversion factor of a PV system that is commonly described by the electrical efficiency  $\eta$

\*Correspondence: rodolfo.araneo@uniroma1.it

<sup>1</sup>D.I.A.E.E. – Electrical Engineering Division, "Sapienza" University of Rome, Via Eudossiana 18, Rome 00184, Italy

[23] defined as the ratio of the electricity generated to the global solar irradiation impinging on the collector's surface. Furthermore, the temperature coefficients for PV systems are directly related to the temperature coefficients for their individual cells, and thus, the so-called cell temperature  $T_c$  is the real key parameter to be identified because it affects, directly or indirectly, the energy conversion efficiency [24] of any PV system. In addition, it plays an important role in PV system design and sizing since often, the worst case-operating conditions dictate the array size.

More physical insights about the dependence of the electric energy conversion mechanisms on the cell temperature can be obtained looking at the solid state physics of the cell [25-27]: the energy bandgap of semiconductors and, consequently, the quantum conversion efficiency tends to decrease as the temperature increases [24,28] due to the fact that the interatomic spacing increases when the amplitude of the atomic vibrations increases as a consequence of the increased thermal energy. An increased interatomic spacing decreases the potential seen by the electrons in the material, which in turn reduces the size of the energy bandgap (a direct increase/decrease of the interatomic distance and, consequently, bandgap can be obtained also by applying high compressive/tensile stress [29,30]).

Despite its great importance, the cell temperature  $T_c$  depends on such a lot of parameters and weather variables that its correct evaluation is the critical point of any methodology aimed at properly sizing PV systems. A scan of the relevant literature [31,32] easily produces an impressive number of correlations expressing the cell temperature as a function of the pertinent weather variables, namely ambient temperature, local wind speed as well as the solar irradiance on the surface of PV systems, which are tilted towards the sun to maximize the amount of the incident solar radiation [25,26,33]. Radiation data, such as hourly direct and diffuse irradiance on the tilted surface, are usually required but smaller time steps could be necessary when load profiles vary with smaller time constants. However, meteorological stations and National or International Standards often provide only daily global irradiation data on horizontal surface (sometimes, they measure also the diffuse component), which are commonly summarized in monthly average values [34-36].

In this framework, the objective of the present paper is a task of great practical importance from an engineering point of view: we want to define a methodology for estimating the operating cell temperature  $T_c$  starting *only* from the monthly mean value of the daily global irradiation on a horizontal surface. The methodology consists of a chain of models that are well established in literature and that we apply in a step-by-step procedure to derive the cell temperature from the solar radiation data. In particular, we compare several models, focusing on how to couple

them in order to obtain the best accuracy in the predicted data; finally, we investigate the suitability and the accuracy of the proposed methodology. In addition, we provide two new models for calculating the solar irradiance and the ambient temperature profiles. Comparisons with data measured in Rome confirm the applicability of the proposed approach and give information about the accuracy of the model.

The paper is organized as follows: in subsection 'Theory and models', the proposed procedure is illustrated; subsection 'Irradiance model' analyzes the radiation models used to predict the irradiance profiles on a tilted surface from the monthly average daily global irradiations on a horizontal surface; the models used to predict the PV cell temperature from the irradiance profiles are described in subsection 'Operating temperature of the photovoltaic cell'. Section 'Results and discussion' presents the relevant results; the measurement set-up is described in subsection 'Set-up', while in subsection 'Assessment of the models', a statistical analysis is performed on the results in order to assess the validity of the whole procedure, identifying and discussing the most accurate models. Finally, the main conclusions of the work are drawn.

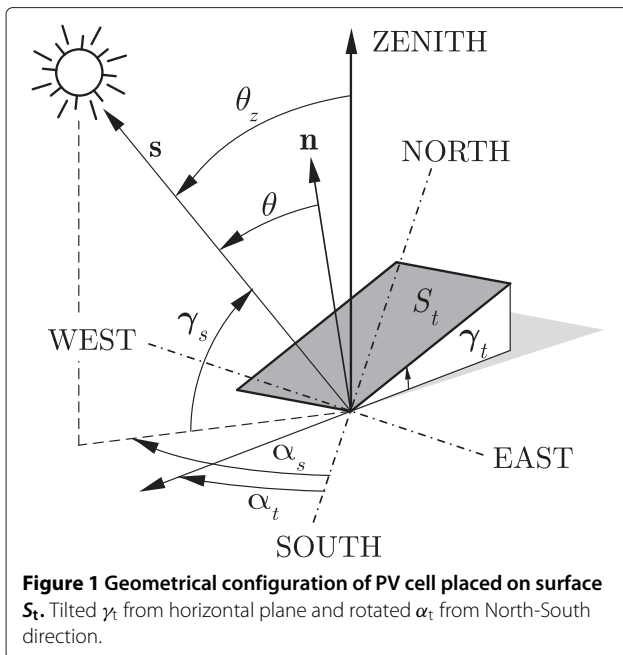
## Methods

### Theory and models

The goal of the procedure described in the following subsections is to estimate the transient temperature of the photovoltaic cell during the day  $n_d$  of the year, placed on a surface  $S_t$  tilted  $\gamma_t$  with respect to the horizontal plane and rotated  $\alpha_t$  with respect to the North-South direction, starting from the monthly average daily global irradiation value  $\bar{H}$  on a horizontal surface (the configuration is illustrated in Figure 1). The procedure consists of five steps that are applied one after another in succession as shown in Figure 2. Each step is based on the application of well-established models which are compared and discussed in order to obtain an accurate and robust procedure.

### Irradiance model

As is well known, the quantity of solar radiation reaching the Earth's surface during a day is governed by several factors: the solar elevation at noon, the duration of the day, the turbidity of the air, the total amount of water vapor in the air, and the type and amount of clouds [37]. When a direct measurement is not available, as often happens,  $H$  is taken as the monthly mean value  $\bar{H}$  referred to the 'average day' of the month, i.e., the day when the solar declination  $\delta$  is equal to the average value of the month [26,33]. The monthly average daily irradiation can be obtained from national standards or measurement campaigns or through an Angstrom-type regression equation which relates the ratio between monthly average daily global irradiation and monthly average daily extra-terrestrial irradiation at



a particular location to the average fraction of possible sunshine hours [38].

From  $\bar{H}$ , the global hourly irradiation  $H_h$  on a horizontal surface during the day  $n_d$  of the month has to be somehow evaluated in order to compute the hourly global irradiation  $G_{Th}$  incident on  $S_T$  (for all the details see [33]), as

$$G_{Th} = B_{Th} + D_{Th} + R_{Th}, \quad (1)$$

where the direct  $B_{Th}$ , sky-diffuse  $D_{Th}$  and ground reflected (albedo)  $R_{Th}$  components are given by

$$B_{Th} = B_h r_b = (1 - k_d) r_b H_h \quad (2a)$$

$$D_{Th} = D_h r_d = k_d r_d H_h \quad (2b)$$

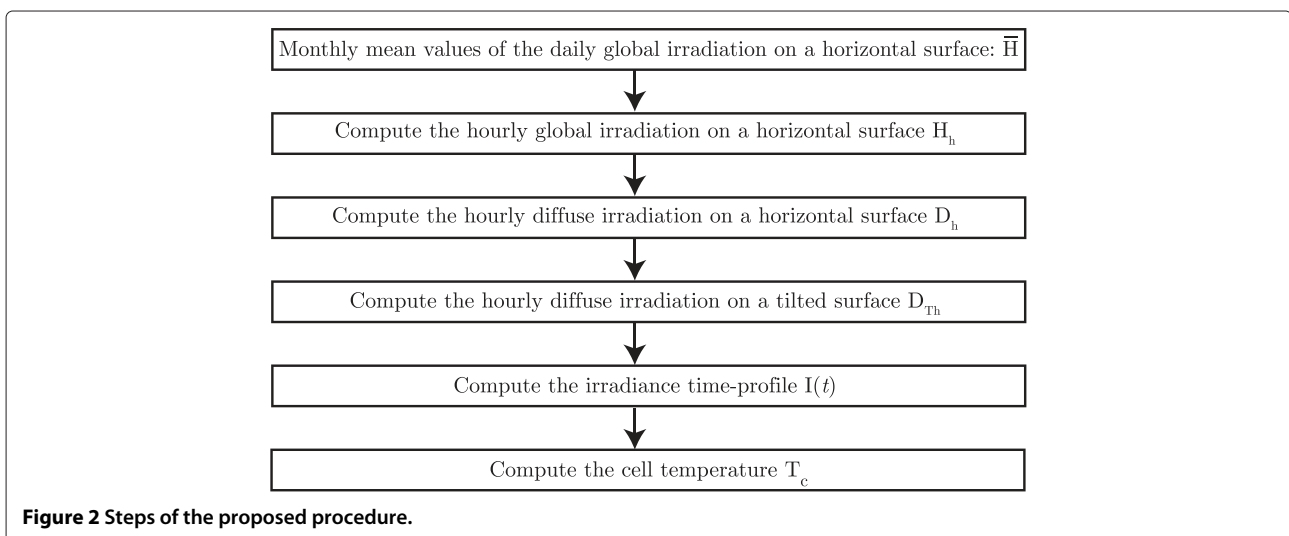
$$R_{Th} = \rho \frac{1 - \cos \gamma_t}{2} H_h. \quad (2c)$$

In Equation 2,  $B_h$ ,  $D_h$  and  $H_h = B_h + D_h$  are, respectively, the direct diffuse and global hourly irradiation on a horizontal surface,  $r_b = \cos \theta / \cos \theta_z$  is the beam radiation factor, with  $\theta$  the solar incidence angle on  $S_T$  and  $\theta_z$  the zenith angle of the Sun ([33], chap. 1),  $k_d$  is the cloudiness index,  $r_d = D_{Th}/D_h$  is the conversion factor for the hourly diffuse irradiation, and  $\rho$  is the ground reflectivity. It is assumed that the ground has very low reflectance, i.e., the reflected component is much lower than the sum of the direct and diffuse irradiation, so that an isotropic model may be used for the computation of the ground albedo. The relevant parameters in Equation 2, i.e.,  $H_h$ ,  $k_d$ , and  $r_d$ , are evaluated as described in the following subsections: 'Horizontal hourly global irradiation values', 'Hourly diffuse and direct irradiation', and 'Hourly diffuse irradiation on a tilted surface', respectively.

Once the hourly global irradiation  $G_{Th}$  is known, the irradiance profile  $I_{gT}(t)$  on the tilted surface is finally computed as reported in subsection 'Solar irradiance profiles'.

#### Horizontal hourly global irradiation values

Several well-established methods have been proposed in literature to convert the average daily horizontal global irradiation  $H$  into horizontal hourly global values  $H_h$ . Most of them assume that the day is symmetric, i.e., with the same irradiation values for hours situated symmetrically with respect to the solar noon [39-41], while a few of them try to account for the asymmetries between morning and afternoon [42,43]. The characterization of a general distribution of hourly solar irradiation is made difficult by the non-stationary nature of the solar irradiation, which is affected by an unpredictable noise due to a variety of factors. Recently, sophisticated methods have been proposed, such as neural networks and autoregressive average models [44,45]. Though all these methods are reliable and show good accuracy, they make the formulation more



difficult to be implemented, so that the simple but effective correlation model presented in [41] is used. The correlation has been confirmed to be compatible with results obtained for Canada, India, Israel, and lastly, Corsica [46] and to work best for clear days, when solar processes produce most of the output. According to this model, the hourly values  $H_h$  are computed as

$$H_h = r_t \bar{H}, \quad (3)$$

where the ratio  $r_t$  is given by

$$r_t = \frac{1}{2} \left( a + b \cos \frac{\omega_2 + \omega_1}{2} \right) \cdot \frac{(\sin \omega_2 - \sin \omega_1) - \frac{\pi(\omega_2 - \omega_1)}{180^\circ} \cos \omega_s}{\sin \omega_s - \frac{\pi \omega_s}{180^\circ} \cos \omega_s} \quad (4)$$

with

$$a = 0.4090 + 0.5016 \sin(\omega_s - 60^\circ) \quad (5a)$$

$$b = 0.6609 + 0.4767 \sin(\omega_s - 60^\circ) . \quad (5b)$$

In (4),  $\omega_1$  and  $\omega_2$  are the hour angles at the beginning and end, respectively, of the hour in question ( $\omega = 15^\circ (12 - h)$ , with  $h$  as the solar time), and  $\omega_s$  is the sunset hour angle for the day equal to  $\cos^{-1}(-\tan \delta \tan \phi)$ , with  $\phi$  as the latitude of the location and  $\delta$  as the declination for the day, which can be computed by means of the Cooper or Spencer formulas ([33], chap. 1).

In (3) the monthly mean value  $\bar{H}$  of the global daily solar irradiation on a horizontal surface has been used and the coefficient  $r_t$  accounts for the specific day  $n_d$  of the month through the declination angle  $\delta$ . The suitability and accuracy of (3) in the framework of the whole proposed methodology has been assessed in section 'Results and discussion'.

#### Hourly diffuse and direct irradiation

Since the pioneer work of Liu and Jordan [39] in the early 1960s, several models have been proposed in literature to evaluate the hourly average cloudiness index  $k_d = D_h/H_h$ , where  $D_h$  is the hourly sky-diffuse irradiation on a horizontal surface. A complete list of these models is beyond the scope of the present paper; comparative studies among the most frequently used correlations can be found in [47-49]. These correlations are usually expressed in terms of first- to fourth-degree polynomials relating the diffuse fraction  $k_d$  with the hourly clearness index  $k_t = H_h/H_{0h}$ , defined as the ratio of the hourly global solar irradiation  $H_h$  and the hourly extraterrestrial solar irradiation on a horizontal surface  $H_{0h}$  ([33], chap.1).

In the present work, we have compared the four models from Karatasou [50], Erbs [51], Miguel [52], and Reindl [53] against experimental irradiation values for the Italian location of Rome over a period of 2 years.

The Karatasou [50] model is a third-order polynomial correlation based on data from one location at Athens (Greece):

$$k_d = 0.9995 - 0.05k_t - 2.415k_t^2 + 1.4926k_t^3 \quad k_t \leq 0.78$$

$$k_d = 0.20 \quad k_t > 0.78 . \quad (6)$$

The Erbs [51] model is a fourth-order polynomial correlation based on data from four locations in USA:

$$k_d = 0.9996 - 0.09k_t \quad k_t \leq 0.22$$

$$k_d = 0.951 - 0.1604k_t + 4.388k_t^2 - 16.638k_t^3 + 12.336k_t^4 \quad 0.22 < k_t \leq 0.80$$

$$k_d = 0.1652 \quad k_t > 0.80 . \quad (7)$$

The Miguel [52] model yields a third-order polynomial for  $k_d$  using a dataset from several sites in the North Mediterranean Belt (e.g., France, Greece, Italy, Portugal, and Spain):

$$k_d = 0.9943 - 0.081k_t \quad k_t \leq 0.21$$

$$k_d = 0.724 + 2.734k_t - 8.32k_t^2 + 4.967k_t^3 \quad 0.21 < k_t \leq 0.76$$

$$k_d = 0.1766 \quad k_t > 0.76 . \quad (8)$$

Finally, Reindl [53] established a very simple correlation, studying the influence of climatic and geometric variables on the hourly diffuse fraction based on data measured at five European and US locations:

$$k_d = 1.0234 - 0.248k_t \quad k_t \leq 0.30$$

$$k_d = 1.45 - 1.67k_t \quad 0.3 < k_t \leq 0.78$$

$$k_d = 0.1474 \quad k_t > 0.78 . \quad (9)$$

A comparative analysis of the predictions of the four models based on consolidated standard statistical parameters [54] reported in section 'Results and discussion' has showed that the physically based method proposed by Miguel correlates better with the data collected in Rome.

Once the hourly diffuse irradiation component  $D_h$  is known, the hourly direct irradiation  $B_h$  is then computed as  $B_h = H_h - D_h$ .

#### Hourly diffuse irradiation on a tilted surface

The conversion of the hourly horizontal diffuse irradiation  $D_h$  to hourly diffuse irradiation  $D_{Th}$  on the tilted surface  $S_T$  can be expressed as

$$D_{Th} = r_d D_h , \quad (10)$$

where  $r_d$  is the conversion factor.

The methods proposed in literature for the evaluation of  $r_d$  are classified into isotropic or anisotropic models. The isotropic models assume that the sky dome irradiates uniformly so that the diffuse radiation incident on the tilted surface depends on the fraction of the sky dome seen by it. The anisotropic models try to model the anisotropy of the diffuse radiation, decomposing it in different components, i.e., the circumsolar component

(Sun's aureole), the brightness of the horizon, and the isotropic component of the sky dome. Validation studies and testing of several well-established models to predict  $r_d$  have been performed in [55-57]. However, results are not always in agreement, and ranking these models according to their accuracy is not simple. In fact, their abilities to predict the diffuse radiation on a tilted surface are *a priori* function of the atmospheric conditions (clear, partially cloudy, or overcast sky), since they take assumptions about the isotropy or anisotropy of the sky dome. The way in which the anisotropy is accounted for makes them strongly dependent on the surface orientation (it has been observed that all models produce large errors for east-west-facing PV surfaces [55]). In addition, several models are based on empirical data obtained for some particular geographical locations, so that they show enhanced/poor accuracy when used in locations with similar/different irradiation conditions. Anyway, the use of well-known statistical indicators [54], and much more complex statistical analyses [56] performed on data collected from several locations in the world, have generally, but not always, indicated that the Ma-Iqbal [58], Reindl [59], Muneer [60], and Perez [61,62] models are those that give the most accurate predictions for small azimuth angle  $\alpha_t$  (i.e., south-facing surfaces). In addition, in [56], it was found that the Ma-Iqbal model performs best under all sky conditions, clear and partially cloudily, whereas the Muneer model gives the best results for cloudy sky conditions.

In this framework, we have selected these four models and compared their predictions against experimental irradiation values, as reported in section 'Results and discussion'.

In the model proposed by Ma-Iqbal [58], the diffuse irradiance on an inclined plane is considered to be the addition of the circumsolar component coming from the direction near the solar disk and a diffuse component isotropically distributed from the rest of the sky. These two components are weighted according to an index of anisotropy which represents the transmittance through the atmosphere of direct irradiance. Unlike the original model of Hay [63] who defined his own sky clarity factor  $F = B_h/H_{0h}$ , Ma and Iqbal used the clearness index  $k_t$  as index of anisotropy. According to the Ma-Iqbal model, the conversion factor  $r_d$  can be computed as

$$r_d = k_t r_b + (1 - k_t) \frac{1 + \cos \gamma_t}{2} . \quad (11)$$

The Reindl model [59] assumes the linearity of the isotropic and circumsolar contributions to the diffuse radiation on a tilted plane according to the Hay model and adopts the same correction factor that takes into account the brightness of the sky near the horizon used in the Temps-Coulson model [64]. The conversion factor  $r_d$  is determined as

$$r_d = Fr_b + (1 - F) \frac{1 + \cos \gamma_t}{2} \left[ 1 + \sqrt{\frac{B_h}{H_h}} \sin^3 \frac{\gamma_t}{2} \right] , \quad (12)$$

where  $F = B_h/H_{0h}$  is Hay's sky clarity factor.

Muneer [60], partially following the model proposed by Gueymard [65], considers that the irradiance can be expressed as a linear combination of values between fully covered sky and cloudless sky which in turn is the addition of the circumsolar component and a hemispheric factor. The conversion factor  $r_d$  is expressed as

$$r_d = T_M (1 - F_M) + F_M r_b , \quad (13)$$

where  $T_M$  is Muneer's tilt factor defined as the ratio between the slope background diffuse radiation and the horizontal diffuse radiation given by

$$T_M = \frac{1 + \cos \gamma_t}{2} - \frac{2B}{3 + 2B} \left[ \frac{\gamma_t \cos \gamma_t - \sin \gamma_t}{\pi} + \frac{1 - \cos \gamma_t}{2} \right] , \quad (14)$$

and  $F_M$  is a composite anisotropic index, equal to Hay's sky clarity factor  $F$  for non-overcast conditions and 0 for overcast sky. In Equation 14,  $B$  is the radiation distribution index whose values depend on the particular sky and azimuthal conditions, and for the location for southern European locations, Muneer recommends the following correlation:

$$\frac{2B}{3 + 2B} = \pi (0.00263 - 0.712F - 0.688F^2) . \quad (15)$$

The Perez model is more computationally cumbersome than the others because it represents the isotropic diffuse, circumsolar, and horizon-brightening components with more details by using empirically derived coefficients. Yet, the model developed by Perez in [62] is considerably simpler, and more accurate, than the original model proposed in his first work [61]. In fact, the conversion factor  $r_d$  is computed as

$$r_d = (1 - F_1) \cos^2 \left( \frac{\gamma_t}{2} \right) + r'_b F_1 + F_2 \sin \gamma_t , \quad (16)$$

where  $F_1$  and  $F_2$  are, respectively, the circumsolar and horizon brightness coefficients

$$F_1 = \max \left[ 0, \left( f_{11} + f_{12} \Delta + \frac{\pi \theta_z}{180} f_{13} \right) \right] \quad (17a)$$

$$F_2 = f_{21} + f_{22} \Delta + \frac{\pi \theta_z}{180} f_{23} , \quad (17b)$$

where  $\theta_z$  is the beam radiation factor,  $\Delta = k_d k_t$  is the brightness parameter, and  $f_{ij}$  are tabulated statistically derived coefficients [62] depending on the clearness parameter

$$\varepsilon = \frac{1}{1 + 5.535 \cdot 10^{-6} \theta_z^3} \left( \frac{D_h + \frac{B_h}{\cos \theta_z}}{D_h} + 5.535 \cdot 10^{-6} \theta_z^3 \right) . \quad (18)$$

In Equation 16  $r'_b$  is the modified beam radiation conversion factor defined as

$$r'_b = \frac{\max(0, \cos \theta)}{\max(\cos 85^\circ, \cos \theta_z)} \quad (19)$$

**Solar irradiance profiles**

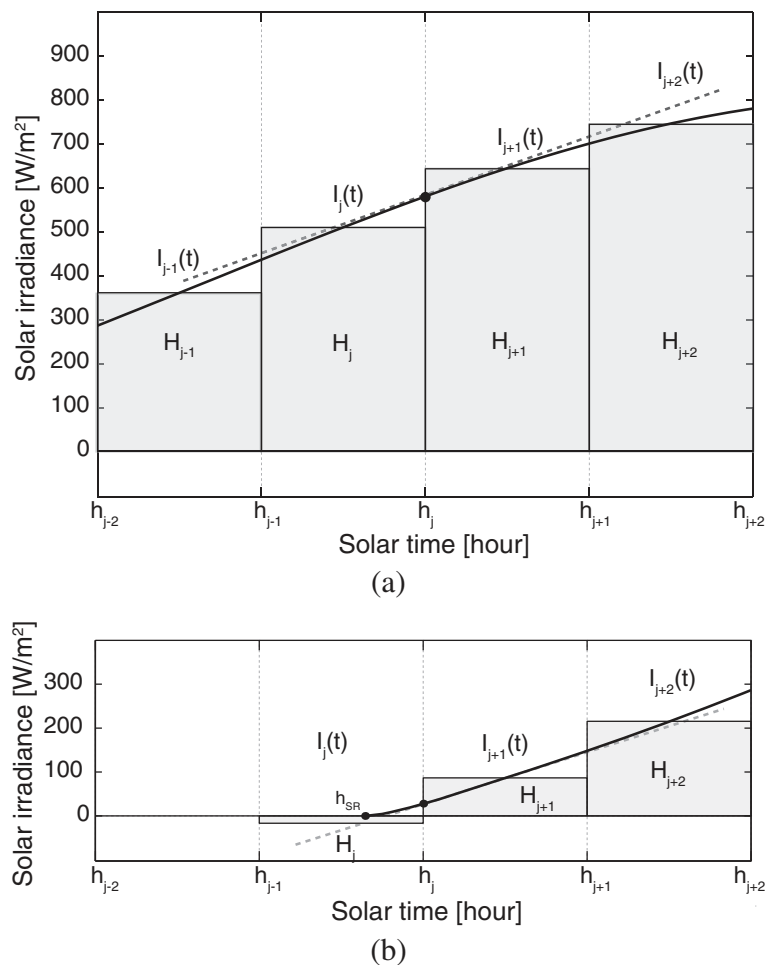
The transient simulation of the temperature of photovoltaic modules requires the knowledge of continuous profiles versus time  $t$  of the global solar irradiance  $I_{gT}$  on the tilted surface during the day  $n_d$ . Starting from the hourly mean values of the global irradiation  $G_{Th}$ , various studies consider that the solar irradiance is distributed over the time with a constant repartition which, however, has been demonstrated to be an unrealistic hypothesis, since this assumption does not provide a precise idea of the different transient energy phenomena which take place in the heart of the solar system. In [17], it was proposed that a linear model which allows the determination

of irradiance data, averaged on small time-step  $\Delta t$  (e.g., 1 min), from hourly irradiation values. Starting from this work, a second-order model is proposed here.

The solar irradiance  $I_j(t)$ , on the tilted surface, is assumed to vary in a quadratic manner between the beginning time  $h_{j-1}$  and the ending time  $h_j$  of the  $j$ th hour of the day (e.g., the first hour begins at time  $t$  equal to  $h_0 = 00 : 00$  and ends at time  $h_1 = 01 : 00$ ), i.e.

$$I_j = a_j t^2 + b_j t + c_j \quad (20)$$

with  $j = 1, 2 \dots 24$  and  $h_0 = 0, h_1 = 1, \dots, h_{24} = 24$ . It is evident that it is necessary to enforce three equations for every hour occurring between sunrise  $h_{SR}$  and sunset  $h_{SS}$  times since the number of unknowns for every hourly profile is equal to three. As shown in Figure 3a, if sunrise or sunset does not occur in the  $j$ th hour, the three conditions to be enforced are as follows:



**Figure 3** Illustration of quadratic model for approximating solar irradiance profile from hourly mean values of global irradiation. (a) Daylight hours. (b) Hour when sunrise takes place.

- the integration of the irradiance  $I_j(t)$  over the hour must be equal to the hourly irradiation  $H_j$  (on tilted or horizontal surface),

$$\int_{h_{j-1}}^{h_j} I_j(t) dt = H_j ; \quad (21)$$

- the profiles  $I_j(t)$  and  $I_{j+1}(t)$  and their first derivatives at every time  $h_j$  between two successive hours must be continuous

$$a_j h_j^2 + b_j h_j + c_j = a_{j+1} h_j^2 + b_{j+1} h_j + c_{j+1} \quad (22a)$$

$$2a_j h_j + b_j = 2a_{j+1} h_j + b_{j+1} . \quad (22b)$$

If sunrise or sunset occurs in the considered  $j$ th hour (Figure 3b), Equation 21 must be modified according to

$$\int_{h_{SR}}^{h_j} I_j(t) dt = H_j \quad (23a)$$

$$\int_{h_{j-1}}^{h_{SS}} I_j(t) dt = H_j \quad (23b)$$

because the model considers that the solar irradiance has been spread over the hour whereas it just took place from sunrise or until sunset.

Then, in the hour when sunrise (or sunset) takes place, the value of the irradiance profile at  $h_{SR}$  (or  $h_{SS}$ ) must be set equal to zero, i.e.,  $I_j(t \leq h_{SR}) = 0$  (or  $I_j(t \geq h_{SS}) = 0$ ).

#### Operating temperature of the photovoltaic cell

The cell-operating temperature  $T_c$  is the proper temperature to use in order to predict the electrical performance of the PV module. Because of the internal processes which take place within the cells during their exposure to the sun, a large portion of the incident irradiance is degraded and released as heat. Standard heat transfer mechanisms must be accounted for to compute the appropriate energy balance on the cell/module leading to the prediction of  $T_c$ . At steady-state conditions, only convection and radiation mechanisms are usually considered, since they are prevalent on the conduction mechanism which merely transports heat toward the surfaces of the mounting frame (especially in the case of rack-mounting free standing arrays). A survey of the explicit and implicit correlations proposed in literature linking  $T_c$  with standard weather variables and material and system-dependent properties can be found in [32].

In the present work, we compare four different explicit equations against experimental data. Among the large number of correlations proposed in the literature, we have chosen the equations whose application appears to be the best and simplest. Hence, we have chosen equations that are explicit, depend on easily measurable parameters, and

are of wide applicability. The four alternative correlations are [31,32,66,67]

$$T_c = T_a + \frac{I_{gT}}{I_{NOCT}} (T_{NOCT} - T_{a,NOCT}) \quad (24a)$$

$$T_c = T_a + \left( \frac{0.32}{8.91 + 2.0 v_w} \right) I_{gT} \quad (24b)$$

$$T_c = 0.943 T_a + 0.028 I_{gT} - 1.528 v_w + 4.3 \quad (24c)$$

$$T_c = T_a + 0.0138 I_{gT} (1 + 0.031 T_a) (1 - 0.042 v_w) \quad (24d)$$

where  $T_{NOCT}$  is the so-called nominal operating cell temperature (the temperature  $T_{NOCT}$  is defined as the temperature of the cell at the conditions of the Nominal Terrestrial Environment (NTE): Solar irradiance  $I_{NOCT} = 800 \text{ W/m}^2$ , ambient temperature  $T_{a,NOCT} = 20^\circ\text{C}$ , average wind speed is 1 m/s, nil electrical load, and free-standing mounting frame is oriented normal to solar noon),  $T_a$  is the ambient temperature and  $v_w$  is the wind speed (free stream wind speed in the windward side of the PV array).

Two remarks are necessary before applying the previous expressions. The cell temperature  $T_c$  may be higher than the back-side temperature  $T_b$ , which is the directly measured quantity, of a few degrees, being this difference dependent mainly on the module substrate material and the intensity of the solar irradiance  $I_{gT}(t)$ . The two temperatures are related through the simple linear expression [68]

$$T_c = T_b + \frac{I_{gT}}{I_{ref}} \Delta T_{ref} , \quad (25)$$

where  $I_{ref}$  is the reference solar irradiance of  $1,000 \text{ W/m}^2$  and  $\Delta T_{ref}$  is the temperature difference under this reference solar irradiance. This temperature difference is typically ranging between  $2^\circ\text{C}$  and  $3^\circ\text{C}$  for flat-plate modules in an open-rack setting [68].

The evaluation of  $T_c$  requires an accurate estimation of the ambient temperature. Assuming it constant during the day and equal to the average value are unrealistic assumptions. Here, the following third-order approximation for a smooth transient from the minimum  $T_{min}$  to the maximum  $T_{max}$  temperatures registered during the day is assumed

$$T_a(t) = \frac{1}{(h_{SR} - h_{SS})^3} [(h_{SS} - t)^2 (h_{SR} - 3h_{SS} + 2t) T_{max} + (3h_{SR} - h_{SS} - 2t)(h_{SS} - t)^2 T_{min}] . \quad (26)$$

It has been observed that the approximation (26) provides accurate agreement with the measured results during the hours from sunrise to sunset, when the PV system produces energy.

## Results and discussion

The ability of the proposed procedure to predict the PV cell temperature is tested comparing the predicted results with experimental values measured in Rome during the 2 years 2010 and 2011. The four models selected for the computation of the cloudiness index  $k_d$  in subsection ‘Hourly diffuse and direct irradiation’, for the computation of the hourly diffuse irradiation on a tilted surface (i.e., the conversion factor  $r_d$ ) in subsection ‘Hourly diffuse irradiation on a tilted surface’, and for the computation of the cell temperature  $T_c$  in subsection ‘Operating temperature of the photovoltaic cell’ are compared. Furthermore, we studied the best combination of these models in order to obtain the best accuracy of the predictions.

The accuracies have been assessed using well-known statistical indicators [54]: the mean bias error (MBE), the root mean square error (RMSE), and the coefficient of determination ( $R^2$ ). They are defined as

$$MBE = \frac{1}{N} \sum_{i=1}^N x_{p,i} - y_{M,i} \quad (27a)$$

$$RMSE = \sqrt{\frac{1}{N} \sum_{i=1}^N (x_{p,i} - y_{M,i})^2} \quad (27b)$$

$$R^2 = \frac{ESS}{TSS} = \frac{\sum_{i=1}^N (x_{p,i} - \bar{y}_M)^2}{\sum_{i=1}^N (y_{M,i} - \bar{y}_M)^2}, \quad (27c)$$

where  $N$  is the number of data points during each day,  $x_{p,i}$  and  $y_{M,i}$  are, respectively, the predicted and measured (observed) data points,  $\bar{y}_M = \sum_{i=1}^N y_{M,i}$  is the mean value of the measured data, ESS is the explained sum of squares and TSS is the total sum of squares. The MBE determines whether the model underestimates or overestimates experimental data, the RMSE gives a measure of how well the model can predict the experimental data (it provides information on the short-term performance of the model by allowing a term-by-term comparison of the actual deviation between the estimated and the measured values), and  $R^2$  provides a measure of how well the model explains observed phenomena (its value shows how well future outcomes can be predicted by the model).

### Set-up

The irradiance and temperature data have been measured on the roof of the Department of Electrical Engineering, Faculty of Engineering, located in Rome, Italy ( $\phi = 41^\circ 53' 38'' N$ ,  $\lambda = 12^\circ 29' 37'' E$ ) during the 2 years 2010 and 2011. As shown in Figure 4a, the set-up consists of 20 polycrystalline Si-modules mounted in free-standing manner, i.e., on racks placed above the roof. The modules are tilted  $\gamma_t = 30^\circ$  from the horizontal surface and are South-facing ( $\alpha_t = 0^\circ$ ). The modules are subdivided in two strings, each formed by the series connection of 10 modules (the upper and lower ones) which have

been left open circuited during the temperature measurements. The manufacturer’s specifications give  $T_{NOCT} = 48^\circ C \pm 3^\circ C$  (fixed to  $50^\circ C$ , in the following) and  $\Delta T_{ref} = 2^\circ C$  (added to  $T_b$  which is the real measured quantity). Figure 4b shows the PT100 sensors (platinum resistance thermometers sensors) placed on the back of the PV module to measure the rear temperature  $T_b$ . Six sensors have been placed on three modules (two sensors per module) in order to investigate the uniformity of the temperature among different modules with the same exposition. An identical PT100 sensor has been used to measure the ambient temperature as shown in Figure 4c. The Yokogawa DC100 data collector unit has been used to collect and register the data on seven independent channels. The solar irradiance data were acquired using a class-1 pyranometer Delta-Ohm LP Pyra (Soesterberg, The Netherlands). The measurements have been performed with a real-time data acquisition step of 30 s (2,880 data points for each channel per day). According to the Guide JCGM [69], the expanded uncertainty  $U(T_c)$  with a coverage factor  $k = 2$  (corresponding to a confidence level  $p = 95.45\%$ ) is  $\pm 0.81^\circ C$ .

The monthly average daily irradiation values used in the following computations are {2.33, 3.28, 4.25, 5.29, 6.34, 6.74, 6.72, 5.87, 4.70, 3.61, 2.51, 2.12} kWh/(m<sup>2</sup> day), provided by national standards for the 12 months of the year, respectively. The albedo factor has been set equal to 0.2 (dark-colored, rough soil surfaces). No particular shading affected the PV system output.

### Assessment of the models

As explained in the previous section, the correct modeling of the irradiance incident on the tilted surface of the PV module is required at the first step of the proposed procedure. Hence, it is mandatory to assess the accuracy of the selected models used for its prediction.

The diffuse and direct irradiation values on a horizontal surface predicted by the four models used for the computation of the cloudiness index  $k_d$  (subsection ‘Hourly diffuse and direct irradiation’) are reported in Figures 5 and 6, respectively, where they are plotted against observed values. The modeled results have been computed; considering that in the input of Equation 3, the aforementioned monthly average daily irradiation values  $\bar{H}_h$  were provided by national standards in order to compute the hourly values of the global irradiation on a horizontal surface and then these global values were decomposed into diffuse and direct components. For each model, the figures also show the plot of the linear line of best fit (dotted line) as well as a line of the one-to-one correlation (solid line) for comparison purposes. Table 1 (Hourly horizontal diffuse irradiance and Hourly horizontal direct irradiance) presents the modeled statistics for the diffuse  $D_h$  and direct  $B_h$  irradiance estimates,

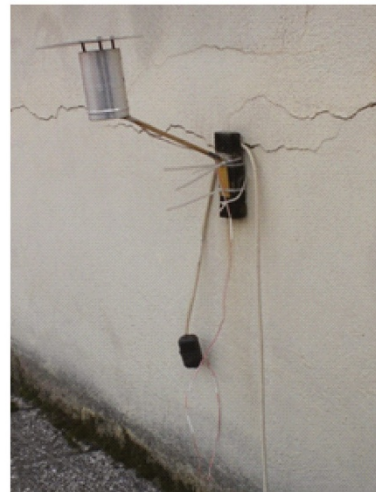




(a)



(b)



(c)

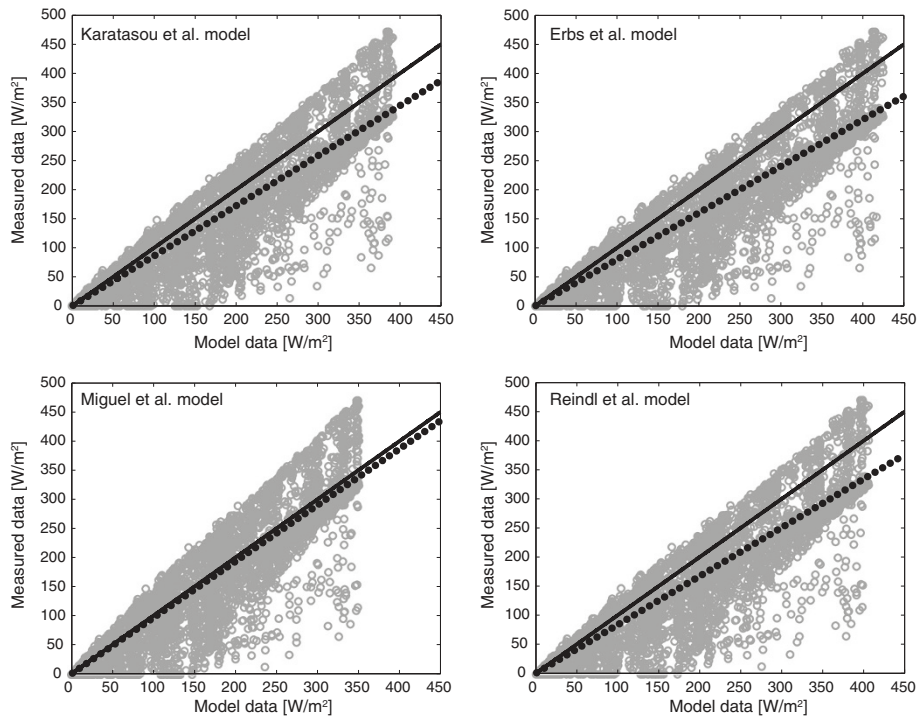
**Figure 4 Test set-up.** (a) Free-standing modules placed on the roof of the Electrical Engineering Department. (b) PT100 sensors used to measure the back temperature  $T_b$  of the modules. (c) PT100 sensor for the measurement of the ambient temperature  $T_a$ .

respectively, in comparison to the experimental data. The results indicate that all the models provide an acceptable agreement. The level of uncertainty for all the models, represented by the RMSE in  $W/m^2$ , varies between 25 and  $50 W/m^2$  for diffuse irradiance (33% to 61% of the average value) and between 80 and  $125 W/m^2$  for direct irradiance (27% to 43% of the average value). With regard to model bias, the results indicate that the level and the direction of the bias, represented by the MBE in  $W/m^2$ , vary among the four models. Results show that the Miguel model achieves the best match with the experimental data as indicated by the deviation of the line of best fit from the line of the one-to-one correlation and as confirmed by the higher  $R^2$  values.

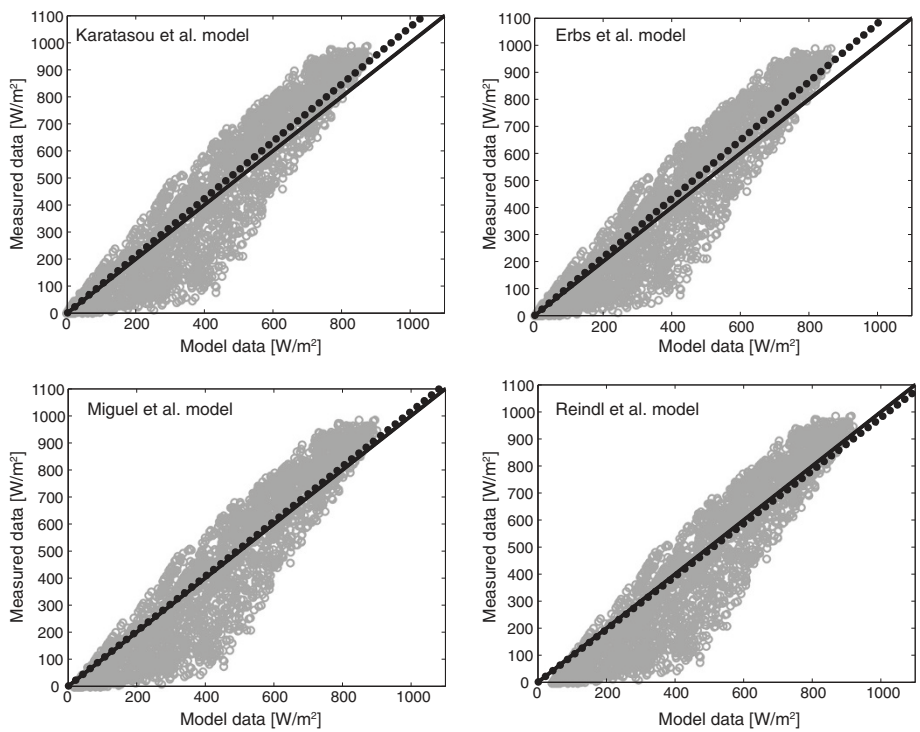
The models for converting the hourly horizontal diffuse irradiation  $D_h$  to the hourly diffuse irradiation  $D_{Th}$  on a tilted surface (subsection 'Hourly diffuse irradiation on a

tilted surface') are compared in Figure 7 where the values predicted by the four selected models are reported along with the experimental data measured on the horizontal surface. The figure shows the predicted values of the global irradiance  $G_{Th}$  on the tilted plane of the PV panels plotted against measured values. In addition, Table 1 (Hourly global irradiance) presents the statistics for the global irradiance estimates. The results show that the Perez model gives the best estimate of the global irradiance on the tilted surface. The bias values (MBE) highlight that the four models exhibit a tendency to underestimate global irradiance values compared to the experimental data and that the four models achieve comparable values of  $R^2$ . The uncertainty (RMSE) ranges between 80 and  $125 W/m^2$ .

The results of the four cell temperature models reported in Equation 24 are shown in Figure 8. The modeled results



**Figure 5** Experimental versus modeled hourly values of diffuse irradiation  $D_h$  on a horizontal surface for Rome. With a linear line of best fit (dotted line) and a line of one-to-one correlation (solid line).

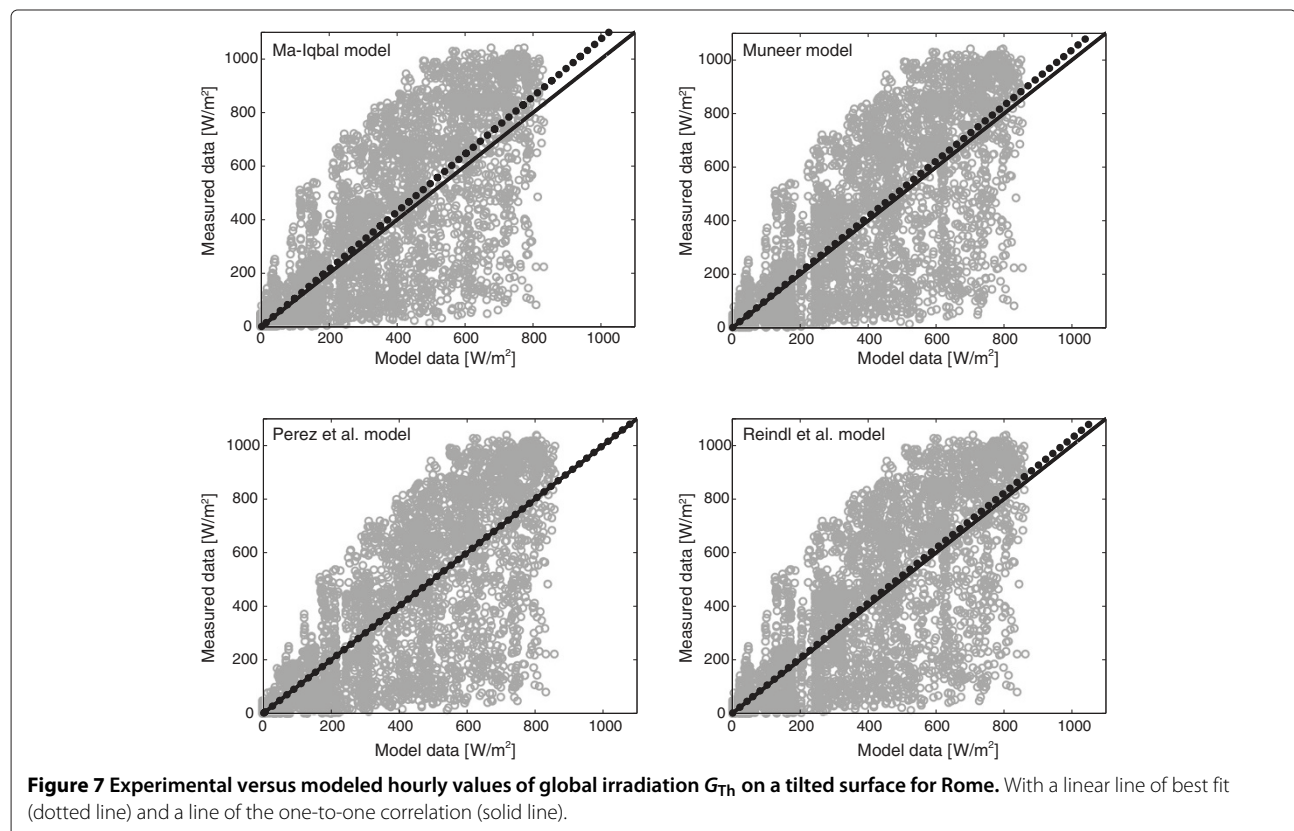


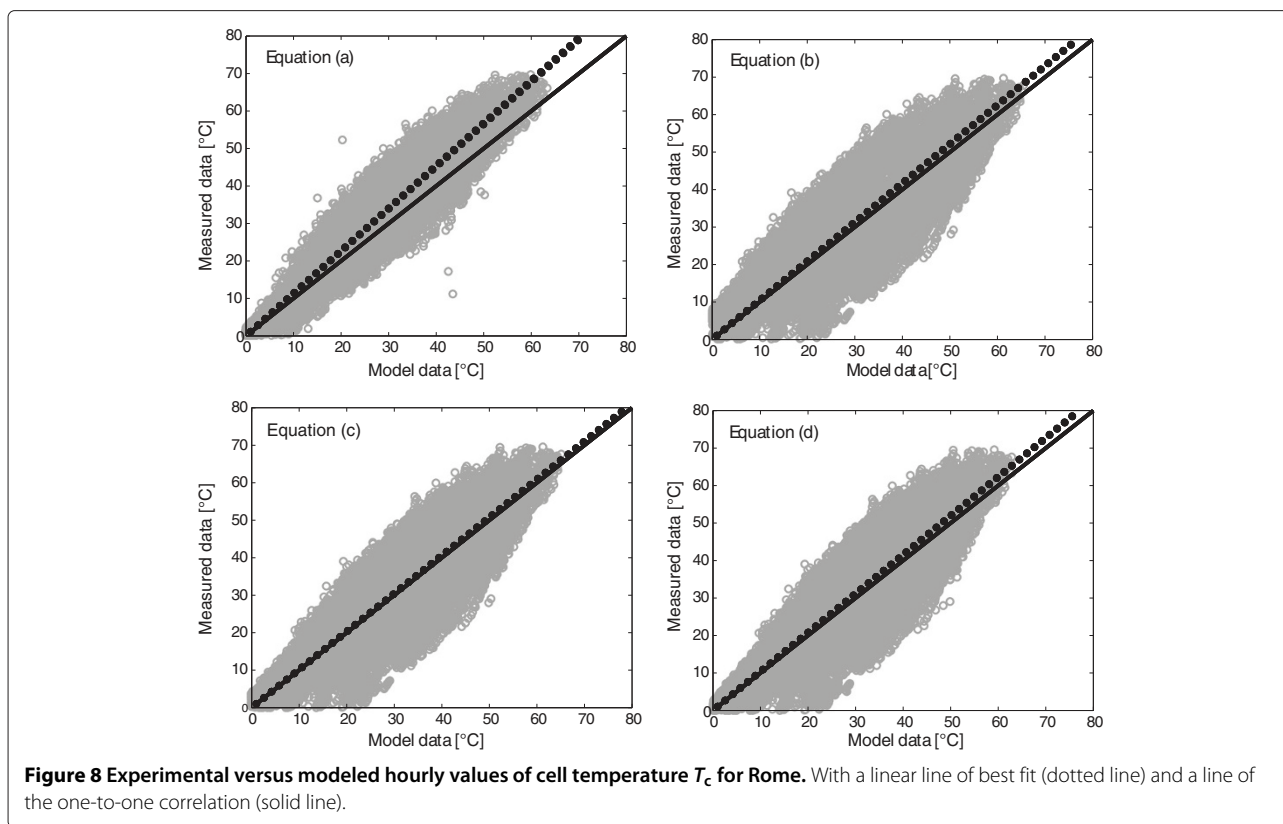
**Figure 6** Experimental versus modeled hourly values of direct irradiation  $B_h$  on a horizontal surface for Rome. With a linear line of best fit (dotted line) and a line of one to one correlation (solid line).

**Table 1 Irradiation and temperature statistics for model estimates against measured data**

	Model	MBE	RMSE	$R^2$
Hourly horizontal diffuse irradiance $D_h$ in $W/m^2$	Karatasou	+17.065	42.707	0.839
	Erbs	+20.332	47.642	0.799
	Miguel	+6.334	26.678	0.881
	Reindl	+18.443	44.678	0.823
Hourly horizontal direct irradiance $B_h$ in $W/m^2$	Karatasou	-42.459	125.004	0.820
	Erbs	-21.398	80.770	0.818
	Miguel	-7.54	118.221	0.902
	Reindl	+35.431	96.254	0.828
Hourly global irradiance $G_{Th}$ in $W/m^2$	Ma-Iqbal	-15.875	143.623	0.770
	Muneer	-9.169	142.357	0.784
	Perez	-0.320	137.428	0.815
	Reindl	-7.581	142.219	0.792
Cell temperature $T_c$ in $^{\circ}C$ computed every 15 min	Equation 24a	-2.330	3.263	0.579
	Equation 24b	-0.978	7.349	0.645
	Equation 24c	-0.340	4.193	0.884
	Equation 24d	-0.530	8.005	0.820

have been computed every 15 min using the experimental global irradiation measured on the surface of the PV panels, using Equation 26 to estimate the ambient temperature and setting the wind speed  $v_w$  to the average value of the day (the weight of the wind speed in the used equations is not so high as to require a more accurate approximation). The results indicate that the third model provides the closer agreement with the measured results. The level of uncertainty for all the models varies between  $4^{\circ}C$  and  $8^{\circ}C$  (23% to 47% of the average value) while the bias level ranges between  $0.8^{\circ}C$  and  $2.3^{\circ}C$ . The bias direction is always negative, i.e., the models tend to underestimate the cell temperature. This is mainly due to several reasons: there are uncertainties in the  $T_{NOCT}$  calculation; difficulties arise on the correct computation of the instantaneous wind velocity  $v_w$  due to the fact that there are at least seven different definitions in use as explained in [31]; the operating temperature  $T_c$  itself shows some variations on the same module and among different modules. In fact, looking at Figure 9, which shows the temperature profiles on August 21st 2010, temperature differences of around  $5^{\circ}C$  can be observed depending on the thermocouple position. It should be underlined that the estimation of the  $T_c$  from the back temperature  $T_b$  with reasonable accuracy is here possible because the modules are standard crystalline ones. When modules are specially designed for some particular applications, extra care must be exercised.





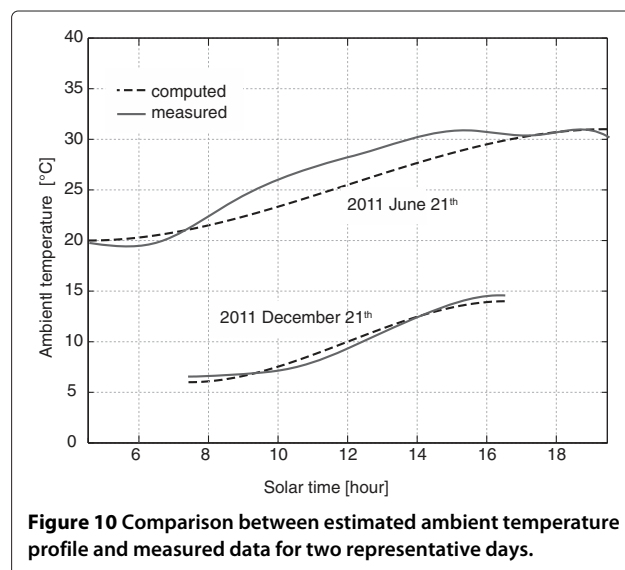
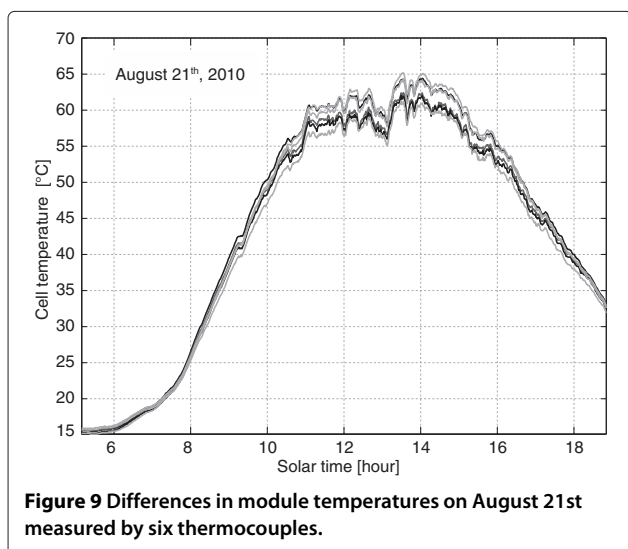
It should be observed that a heating of the module is observed during the afternoon-evening period: this makes differences between  $T_c$  and  $T_a$  higher in the afternoon than in the morning for the same values of irradiance.

Figure 10 shows the comparison between the profiles of the ambient temperature  $T_a$  measured during two representative days and the profiles estimated through Equation 26 starting from average historical temperature data (<http://www.ilmeteo.it>). It can be observed that the

accuracy is reasonable; when the day is particularly clear and the irradiance is high (e.g., June 21st), the measured profile rises a little faster than the predicted one. Yet, the differences remains always below 5°C.

#### Model combination results

From the previous results, it was found that the Miguel model, the Perez model, and Equation 24c achieve the best



**Table 2 Temperature statistics for combination-modeled estimates against measured data**

$D_h$ model	$D_{Th}$ model	$T_c$ model	MBE	RMSE	$R^2$
Miguel	Perez	Equation 24c	-0.340	4.193	0.884
Karatasou	Muneer	Equation 24d	-0.384	4.524	0.792
Reindl	Reindl	Equation 24c	+0.415	5.142	0.715
Erbs	Ma-Iqbal	Equation 24a	-0.854	5.836	0.693

estimates of the diffuse irradiance on a horizontal surface, the diffuse irradiance on a tilted surface, and the cell temperature, respectively. However, it is possible to observe, especially for the global irradiance on a tilted surface and the cell temperature, that none of the models consistently outrank the other ones. Hence, we have tried all the possible combinations of the models used for the estimation of the hourly horizontal diffuse (direct) irradiance, the hourly global irradiance on the titled surface and the cell temperature, in order to identify the best combination. Table 2 presents the statistical results for the comparison between the most significant values predicted by some combinations and the measured values for the cell temperature  $T_c$ . The statistics confirm that the combination of the Miguel and Perez models and Equation 24c achieves the highest level of accuracy for the cell temperature.

## Conclusions

The paper presents an exhaustive methodology for the estimation of the transient operating cell temperature of a PV system. The proposed procedure estimates the transient temperature of the photovoltaic cell during the day  $n_d$  of the year, placed on a surface  $S_T$  tilted  $\gamma_t$  from the horizontal plane and rotated  $\alpha_t$  from the North-South direction, starting from the monthly average daily global irradiation value  $\bar{H}$  on a horizontal surface. The study is considered of high interest since the values of horizontal solar irradiation are often the only data provided by meteorological stations.

The procedure consists of five steps that are applied one after another in succession:

- computation of the hourly global irradiation on a horizontal surface  $H_h$ ;
- computation of the hourly diffuse irradiation on a horizontal surface  $D_h$ ;
- computation of the hourly diffuse irradiation on a tilted surface  $D_{Th}$ ;
- computation of the irradiance time-profile  $I(t)$ ;
- computation of the cell temperature  $T_c$ .

Several well-established models have been used at each step and the accuracy of different combinations of these models has been investigated in comparison with data measured in Rome. In addition, two new models for

calculating the solar irradiance and the ambient temperature profiles have been also provided.

An error analysis, based on well-known statistical indicators, i.e., mean bias error (MBE), root mean square error (RMSE), and the coefficient of determination ( $R^2$ ), reveals that the combination of the Collares-Pereira, Miguel, and Perez models, the proposed irradiation model, and Equation 24c achieves the highest level of model accuracy for the cell temperature. However, it has been observed that, concerning the global irradiance on a tilted surface and the cell temperature, none of the models consistently outrank the other ones.

## Competing interests

The authors declare that they have no competing interest.

## Authors' contributions

RA and SC developed the models; RA carried out the calculations; UG performed the measurements. All authors read and approved the final manuscript.

## Acknowledgements

None.

Received: 18 September 2013 Accepted: 10 December 2013

Published: 02 Jan 2014

## References

1. Rosen, MA, Dincer, I: On exergy and environmental impact. *Int. J. Energy Res.* **21**(January 1996), 643–654 (1997)
2. Joshi, AS, Dincer, I, Reddy, BV: Performance analysis of photovoltaic systems: a review. *Renew. Sustain. Energy Rev.* **13**(8), 1884–1897 (2009)
3. Dresselhaus, MS, Thomas, IL: Alternative energy technologies. *Nature.* **414**(6861), 332–7 (2001)
4. Farret, FA, Simões, MG: *Integration of Alternative Sources of Energy.* Wiley-IEEE Press, New York (2006)
5. Eddine, B, Salah, M: Solid waste as renewable source of energy: current and future possibility in Algeria. *Int. J. Energy Environ. Eng.* **3**(17) (2012)
6. Lucchetti, E, Barbier, J, Araneo, R: Assessment of the technical usable potential of the TUM shaft hydro power plant on the Aurino River, Italy. *Renewable Energy.* **60**, 648–654 (2013)
7. Sharma, P, Harinarayana, T: Solar energy generation potential along national highways. *Int. J. Energy Environ. Eng.* **4**(16), 1–13 (2013)
8. Zahedi, A: Solar photovoltaic (PV) energy; latest developments in the building integrated and hybrid PV systems. *Renewable Energy.* **31**(5), 711–718 (2006)
9. Sári, M, Huld T a, Dunlop, ED, Ossenbrink H a: Potential of solar electricity generation in the European Union member states and candidate countries. *Solar Energy.* **81**(10), 1295–1305 (2007)
10. Sharma, P, Harinarayana, T: Enhancement of energy generation from two layer solar panels. *Int. J. Energy Environ. Eng.* **3**(12), 1–9 (2012)
11. Jäger-Waldau, A, Szabó M, Scarlat, N, Monforti-Ferrario, F: Renewable electricity in Europe. *Renew. Sustain. Energy Rev.* **15**(8), 3703–3716 (2011)
12. Kolhe, M: Techno-economic optimum sizing of a stand-alone solar photovoltaic system. *IEEE Transactions on Energy Conversion.* **24**(2), 511–519 (2009)
13. Notton, G, Lazarov, V, Stoyanov, L: Optimal sizing of a grid-connected PV system for various PV module technologies and inclinations, inverter efficiency characteristics and locations. *Renewable Energy.* **35**(2), 541–554 (2010)
14. Grasselli, U: Probabilistic design of high quality power supply photovoltaic systems. In: *Proceedings of the IEEE-IAS I&CPS May 2-6 1993, St.Petersburg, Florida, USA, (1993)*
15. Grasselli, U: A probabilistic method for simulation and design optimization of stand-alone photovoltaic systems. In: *Proceedings of the UPEC September 18-20, Iraklio, Crete, Greece, (1996)*



16. Araneo, R, Lammens, S, Grossi, M, Bertone, S: EMC issues in high-power grid-connected photovoltaic plants. *IEEE Trans. Electromag. Compat.* **51**, 639–648 (2009)
17. Notton, G, Cristofari, C, Poggi, P, Muselli, M: Calculation of solar irradiance profiles from hourly data to simulate energy systems behaviour. *Renewable Energy*. **27**, 123–142 (2002)
18. Eltawil, Ma, Zhao, Z: Grid-connected photovoltaic power systems technical and potential problems – a review. *Renew. Sustain. Energy Rev.* **14**, 112–129 (2010)
19. Kim, SK, Jeon, JH, Cho, CH, Kim, ES, Ahn, JB: Modeling and simulation of a grid-connected PV generation system for electromagnetic transient analysis. *Solar Energy*. **83**(5), 664–678 (2009)
20. Femia, N, Lisi, G, Petrone, G, Spagnuolo, G, Vitelli, M: Distributed maximum power point tracking of photovoltaic arrays: novel approach and system analysis. *IEEE Transactions on Industrial Electronics*. **55**(7), 2610–2621 (2008)
21. Nordmann, T, Clavadetscher, L: Understanding temperature effects on PV system performance. In: *Proceedings of 3rd World Conference on Photovoltaic Energy Conversion*, vol. 3, pp. 2243–2246, (2003)
22. King, DL, Kratochvil, JA, Boyson, WE: Temperature coefficients for PV modules and arrays : Measurement methods, difficulties, and results. In: *26th IEEE Photovoltaic Specialists Conference*, 29 September - 3 October, pp. 1183–1186, Anaheim, CA, (1997)
23. Skoplaki, E, Palyvos, J: On the temperature dependence of photovoltaic module electrical performance: a review of efficiency/power correlations. *Solar Energy*. **83**(5), 614–624 (2009)
24. Wysocki, JJ: Effect of temperature on photovoltaic solar energy conversion. *J. Appl. Phys.* **31**(3), 571–578 (1960)
25. Lasnier, F, Gang-Ang, T: *Photovoltaic Engineering Handbook*, Adam Hilger, Bristol (1990)
26. Messenger, RA, Ventre, J: *Photovoltaic Systems Engineering*. 3rd edition. CRC Press, New York (2010). ISBN-10 1439802920 ISBN-13 978-1439802922
27. Solanki, CS: *Solar Photovoltaics : Fundamentals, Technologies and Applications*. PHI Learning Pvt. Ltd., New Delhi (2011). ISBN-13 9788120343863 ISBN-10 8120343867
28. Ferguson, LG, Fraasb, LM: Theoretical study of GaSb PV cell efficiency as a function of temperature. *Solar Energy Mater. Solar Cells*. **39**, 11–18 (1995)
29. Araneo, R, Falconi, C: Lateral bending of tapered piezo-semiconductive nanostructures for ultra-sensitive mechanical force to voltage conversion. *Nanotechnology*. **24**(26), 265707 (2013)
30. Araneo, R, Lovat, G, Burghignoli, P, Falconi, C: Piezo-semiconductive quasi-1D nanodevices with or without anti-symmetry. *Adv. Mat. (Deerfield Beach, Fla.)* **24**(34), 4719–24 (2012)
31. Skoplaki, E, Boudouvis, AG, Palyvos, JA: A simple correlation for the operating temperature of photovoltaic modules of arbitrary mounting. *Solar Energy Mat. Solar Cells*. **92**, 1393–1402 (2008)
32. Skoplaski, E, Palyvos, JA: Operating temperature of photovoltaic modules A survey of pertinent correlations. *Renewable Energy*. **34**, 23–29 (2009)
33. Duffie, JA, Beckman, WA: *Solar engineering of thermal processes*. 3rd edition. Wiley, New York (2006)
34. Li, H, Bu, X, Lian, Y, Zhao, L, Ma, W: Further investigation of empirically derived models with multiple predictors in estimating monthly average daily diffuse solar radiation over China. *Renewable Energy*. **44**, 469–473 (2012)
35. Mubiru, J, Banda, E: Monthly average daily global solar irradiation maps for Uganda: a location in the equatorial region. *Renewable Energy*. **41**, 412–415 (2012)
36. Muneer, T: *Solar Radiation and Daylight Models*. Elsevier Butterworth-Heinemann Ltd, Oxford, UK (2004)
37. Moharil, RM, Kulkarni, PS: Reliability analysis of solar photovoltaic system using hourly mean solar radiation data. *Solar Energy*. **84**, 691–702 (2010)
38. Page, JK: New sources of energy. In: *Proceedings of the United Nations Conference on New Sources of Energy*, Solar Energy, Wind Power and Geothermal Energy, Rome, 21 - 31 August 1961, vol. 4 p 378, (1961)
39. Liu, BYH, Jordan, RC: The interrelationship and characteristic distribution of direct, diffuse and total solar insolation. *Solar Energy*. **1**, 1–19 (1960)
40. Jain, PC: Comparison of techniques for the estimation of daily global irradiation and a new technique for the estimation of hourly global irradiation. *Solar Wind Technol.* **1**, 123–134 (1988)
41. Collares-Pereira, M, Rabl, A: The average distribution of solar radiation-correlations between diffuse and hemispherical and between daily and hourly insolation values. *Solar Energy*. **22**, 155–164 (1979)
42. Iqbal, M: A study of Canadian diffuse and total solar radiation data, II. Monthly average hourly horizontal radiation. *Solar Energy*. **22**, 87–90 (1979)
43. Jain, PC, Jain, S, Ratto, CF: A new model for obtaining horizontal instantaneous global and diffuse radiation from the daily values. *Solar Energy*. **41**, 397–404 (1988)
44. Wu, J, Chan, CK: Prediction of hourly solar radiation using a novel hybrid model of ARMA and TDNN. *Solar Energy*. **85**, 808–817 (2011)
45. Hocaoğlu, FO, Gerek, ON, Kurban, M: Hourly solar radiation forecasting using optimal coefficient 2-D linear filters and feed-forward neural networks. *Solar Energy*. **82**, 714–726 (2008)
46. Notton, G, Muselli, M, Louche, A: Two estimation methods for monthly mean hourly total irradiation on tilted surfaces from monthly mean daily horizontal irradiation from solar radiation data of Ajaccio, Corsica. *Solar Energy*. **57**, 141–153 (1996)
47. Jacovideis, CP, Tymvios, FS, Assimakopoulos, VD, Kaltsounides, NA: Comparative study of various correlations in estimating hourly diffuse fraction of global solar irradiation. *Renewable Energy*. **31**, 2492–2504 (2006)
48. Mondol, JD, Yohanis, YG, Norton, B: Solar radiation modelling for the simulation of photovoltaic systems. *Renewable Energy*. **33**, 1109–1120 (2008)
49. Jacovides, CP, Boland, J, Assimakopoulos, DN, Kaltsounides, NA: Comparing diffuse radiation models with one predictor for partitioning incident PAR radiation into its diffuse component in the eastern Mediterranean basin. *Renewable Energy*. **35**, 1820–1827 (2010)
50. Karatasou, S, Santamouris, M, Geros, V: Analysis of experimental data on diffuse solar radiation in Athens, Greece for building application. *Int. J. Sustainable Energy*. **23**, 1–11 (2003)
51. Erbs, DG, Klein, SA, Duffie, JA: Estimation of the diffuse radiation fraction for hourly, daily and monthly average global radiation. *Solar Energy*. **28**, 293–302 (1982)
52. Miguel, A, Bilbao, J, Aguiar, R, Kambezidis, H, Negro, E: Diffuse solar radiation model evaluation in the north Mediterranean belt area. *Solar Energy*. **70**, 143–153 (2001)
53. Reindl, DT, Beckman, WA, Duffie, JA: Diffuse fraction correlations. *Solar Energy*. **45**, 1–7 (1990)
54. Iqbal, M: *An Introduction to Solar Radiation*. Academic press, New York (1983)
55. Noorian, AM, Morandi, I, Kamali, GA: Evaluation of 12 models to estimate hourly diffuse irradiation on inclined surfaces. *Renewable Energy*. **33**, 1406–1412 (2008)
56. Evseev, EG, Kudish, AI: The assessment of different models to predict the global solar radiation on a surface tilted to the South. *Solar Energy*. **83**, 377–388 (2009)
57. Loutzenhiser, PG, Manz, H, Felsmann, C, Strachan, PA, Frank, T, Maxwell, G: Empirical validation of models to compute solar irradiance on inclined surfaces for building energy simulation. *Solar Energy*. **81**, 254–267 (2007)
58. Ma, CY, Iqbal, M: Statistical comparison of models for estimating solar radiation on inclined surfaces. *Solar Energy*. **31**, 313–317 (1983)
59. Reindl, DT, Beckman, WA, Duffie, JA: Evaluation of hourly tilted surface radiation models. *Solar Energy*. **45**, 9–17 (1990)
60. Muneer, T: *Solar Radiation and Daylight Models for the Energy Efficient Design of Buildings*. Architectural Press, Oxford (1997)
61. Perez, R, Stewart, R, Arbogast, R, Seals, J, Scott, J: An anisotropic hourly diffuse radiation model for surfaces: description, performance validation, site dependency evaluation. *Solar Energy*. **36**, 487–497 (1986)
62. Perez, R, Ineichen, P, Seals, R, Michalsky, JJ, Stewart, R: Modelling daylight availability and irradiance components from direct and global irradiance. *Solar Energy*. **44**, 271–289 (1990)
63. Hay, JE: Study of shortwave radiation on non-horizontal surfaces. *Tech. Vol. 79-12*. Atmospheric Environment Service, Downsview, Ontario (1979)
64. Temps, RC, Coulson, KL: Solar radiation incident upon slopes of different orientation. *Solar Energy*. **19**, 179–184 (1977)
65. Gueymard, C: An anisotropic solar irradiance model for tilted surfaces and its comparison with selected engineering algorithms. *Solar Energy*. **38**, 367–386 (1987)
66. Markvart, T: *Solar electricity*. Wiley, Chichester (2000)

67. Chenni, R, Makhlouf, M, Kerbache, T, Bouzid, A: A detailed modelling method for photovoltaic cells. *Energy*. **32**, 1724–1730 (2007)
68. King, D, Boyson, W, Kratochvil, J: Photovoltaic Array Performance Model. Tech. report, SAND2004-3535. Sandia National Laboratories, Albuquerque (2004). <http://prod.sandia.gov/techlib/access-control.cgi/2004/043535.pdf>
69. Joint Committee for Guides in Metrology: JCGM 100: Evaluation of measurement data – Guide to the expression of uncertainty in measurement. BIPM - Bureau International des Poids et Mesures Sevres (2009)

10.1186/2251-6832-5-2

**Cite this article as:** Araneo et al.: Assessment of a practical model to estimate the cell temperature of a photovoltaic module. *International Journal of Energy and Environmental Engineering* 2014, 5:2

**Submit your manuscript to a SpringerOpen<sup>®</sup> journal and benefit from:**

- ▶ Convenient online submission
- ▶ Rigorous peer review
- ▶ Immediate publication on acceptance
- ▶ Open access: articles freely available online
- ▶ High visibility within the field
- ▶ Retaining the copyright to your article

---

Submit your next manuscript at ▶ [springeropen.com](http://springeropen.com)

---