



Cite this: *RSC Adv.*, 2018, 8, 27283

# Assessment of the mechanical properties of monolayer graphene using the energy and strain-fluctuation methods†

Siby Thomas,<sup>a</sup> K. M. Ajith,<sup>b</sup> Sang Uck Lee<sup>c</sup> and M. C. Valsakumar<sup>d</sup>

Molecular statics and dynamics simulations were performed to investigate the mechanical properties of a monolayer graphene sheet using an efficient energy method and strain-fluctuation method. Using the energy method, we observed that the mechanical properties of an infinite graphene sheet are isotropic, whereas for a finite sheet, they are anisotropic. This work is the first to report the temperature-dependent elastic constants of graphene between 100 and 1000 K using the strain-fluctuation method. We found that the out-of-plane thermal excursions in a graphene membrane lead to strong anharmonic behavior, which allows large deviations from isotropic elasticity. The computed Young's modulus and Poisson's ratio of a sheet with an infinite spatial extent are 0.939 TPa and 0.223, respectively. We also found that graphene sheets with both finite and infinite spatial extent satisfy the Born elastic stability conditions. We extracted the variation in bending modulus with the system size at zero kelvin (0.83 eV) using a formula derived from the Foppl–von Karman approach. When the temperature increases, the Young's modulus of the sample decreases, which effectively reduces the longitudinal and shear wave velocities.

Received 6th April 2018

Accepted 24th July 2018

DOI: 10.1039/c8ra02967a

[rsc.li/rsc-advances](http://rsc.li/rsc-advances)

## Introduction

Graphene is a perfect example of a true two-dimensional (2D) single-layer atomic crystal in which carbon atoms are arranged in a honeycomb non-Bravais lattice.<sup>1</sup> Although graphene contains a single type of carbon atoms, it has two sub-lattices with pseudo-spins that cause the electron velocity to become very high, which in turn leads to an increase in electron mobility. It is the first truly 2D material with a planar sp<sup>2</sup> arrangement of carbon atoms and has greatly influenced the scientific community through its exceptional electronic and thermo-mechanical properties, such as its large theoretical specific area, high melting point, and outstanding electrical properties.<sup>2–5</sup> Due to its extremely high crystal and electronic quality, graphene shows unique optical properties and a high thermal conductivity value of 4100 ± 500 W m<sup>-1</sup> K<sup>-1</sup>, which is quite large compared with any other known material.<sup>6</sup> The semi-metallic character and unique electronic properties of graphene can be effectively used in high-speed integrated devices, field

effect transistors, gas sensors, flexible electronics, super-capacitors, and nano-composites.<sup>7,8</sup>

An understanding of the temperature-dependent physical properties of materials is a prerequisite for advanced device-fabrication technology. Several groups have performed atomistic simulations and experimental analyses to calculate the mechanical properties of monolayer graphene. Using the atomic force microscopy (AFM)-nanoindentation technique, Lee *et al.* measured the elastic modulus of graphene and reported that it is the hardest known material, with an extraordinary Young's modulus of 1.0 TPa.<sup>3</sup> Mortazavi *et al.* reported that highly ordered defect-free graphene is one of the thinnest membranes, with a hardness a hundred times greater than steel.<sup>9</sup> They also used AFM to calculate the intrinsic stress of a monolayer graphene sheets and found it to be 130 ± 10 GPa, which corresponds to a strain of 0.25. Min *et al.* studied the mechanical properties of graphene extensively using atomistic simulation methods and compared those results with experimental analyses.<sup>10</sup> Even though the elastic moduli of a monolayer graphene sheet are comparable to those of a graphite crystal, significant changes have been reported in the Young's modulus and Poisson's ratio.<sup>11</sup> The superior mechanical properties of graphene have also been explained in terms of bond energy,<sup>12,13</sup> and the observed bond energy<sup>14</sup> of sp<sup>2</sup>-hybridized graphene with C–C bonds is higher than that of diamond with sp<sup>3</sup> hybridized bonds.<sup>15</sup>

In density functional theory studies, Kudin *et al.* reported the isotropy of the elastic moduli of graphene along the armchair (*n*, *n*) and zigzag (*n*, 0) directions, with an observed elastic

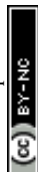
<sup>a</sup>Department of Bionano Technology, Hanyang University, Ansan 15588, Korea. E-mail: [sulee@hanyang.ac.kr](mailto:sulee@hanyang.ac.kr)

<sup>b</sup>Department of Physics, National Institute of Technology Karnataka (NITK), PO: Srinivasnagar, Mangalore, India – 575025

<sup>c</sup>Department of Chemical & Molecular Engineering, Hanyang University, Ansan 15588, Korea

<sup>d</sup>Department of Physics, Indian Institute of Technology Palakkad (IIT Palakkad), Ahalia Campus, Kozhipara, Palakkad, Kerala, India – 678557

† Electronic supplementary information (ESI) available. See DOI: 10.1039/c8ra02967a



modulus value of 1.150 TPa.<sup>16</sup> Using ab initio calculations, Liu *et al.* determined the phonon-induced instability of graphene under tension and reported a zero-temperature Young's modulus of 1.050 TPa.<sup>17</sup> Using molecular dynamics and the tight binding method, Zhao *et al.* reported a Young's modulus for graphene nanoribbons of 1.010 TPa and 0.910 TPa, respectively.<sup>18</sup> In general, 2D materials produce strong anharmonic effects that become more notable at high temperatures due to the excitation of high-energy phonon modes. From the intrinsic thermal mean square vibration amplitude, Jiang *et al.* investigated the Young's modulus of graphene using molecular dynamics simulations.<sup>19</sup> They observed a room temperature elastic modulus of 1.050 TPa using both experimental and theoretical studies. By combining the first principles calculation and a quasi-harmonic approximation, Shao *et al.* observed the temperature dependent elastic constants and Young's modulus of graphene at zero kelvin and reported a Young's modulus value of 1.208 TPa.<sup>20</sup> Jian *et al.* performed molecular dynamics simulations to investigate graphene's mechanical properties and reported the non-linear elastic behavior of pristine and defective graphene sheets.<sup>21</sup>

In this paper, we use the energy and strain-fluctuation methods to report the elastic constants of a free-standing graphene sheet. We also computed the elastic moduli and acoustic wave velocities from the obtained elastic constants and investigated the system size-dependence of those properties. An attempt has also been made to gauge the temperature dependence of the elastic constants using a strain-fluctuation method derived from the fluctuation–dissipation theorem.<sup>22</sup> To the best of our knowledge, this is the first independent analysis of the temperature-dependent elastic constants of graphene using a classical molecular dynamics simulation technique. We expect that our results will furnish ideas for new practical applications.

### Theoretical background for the calculation

The atomic arrangement of the simulated graphene sheet with primitive lattice vectors  $a$  and  $b$  is shown in Fig. 1. The top and bottom of the sheet are the zigzag edges, and the left and right sides represent the armchair edges. Two different kinds of atoms (based on the direction of orientation) represent the presence of two sub-lattices in the honeycomb lattice of the graphene. The red rectangular cell represents the unit cell of graphene with two different types of carbon atoms. The positions of the atoms in the sub-lattices are  $(1/2, 1/6)$ ,  $(0, 2/3)$  and  $(0, 1/3)$ ,  $(1/2, 5/6)$ , respectively, for the different kind of atoms. In this work, we calculated the elastic constants of a monolayer graphene sheet in two ways: (i) directly using an efficient energy method<sup>23–25</sup> by extracting the energy of the strained graphene layer and fitting it to a polynomial using strain as the variable; and (ii) using the strain fluctuation method,<sup>26,27</sup> which considers the averages of the statistical fluctuations in either strain or stress. The detailed theoretical description of these methods can be found in our previous works.<sup>25,28</sup> We briefly describe these methods here.

When the simulation cell size is very small, the movements of the atoms correlate with those of the neighboring atoms in

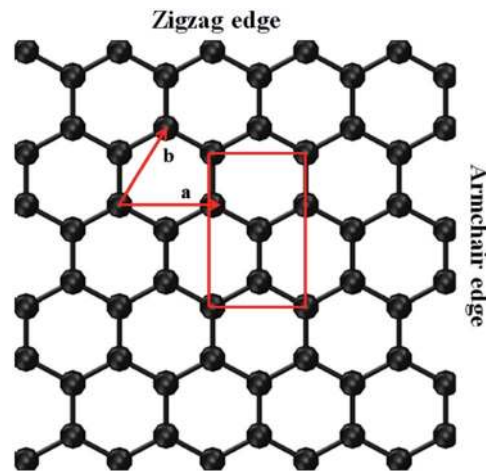


Fig. 1 The lattice structure of a graphene sheet with primitive lattice vectors  $a$  and  $b$  is shown here. The top and bottom of the sheet are the zigzag edges corresponding to a chirality angle of  $\theta = 0^\circ$ , whereas  $\theta = 30^\circ$  at the left and right armchair edges. The red rectangular unit cell consists of two sub-lattices in the honeycomb lattice. The positions of the atoms in the sub-lattices are  $(1/2, 1/6)$ ;  $(0, 2/3)$  and  $(0, 1/3)$ ;  $(1/2, 5/6)$ , respectively, for the carbon atoms.

the proximal edge of the same cell. As the size of the system increases, those correlations decrease. To simulate a system that mimics a sheet of finite size, we have added a large enough empty space to surround the entire sheet. The presence of this large empty space minimizes the atomic interactions during the simulation. We expected the computed elastic constants to be system-size dependent, so we varied the system size systematically from 900 atoms to 360 000 atoms. The finite size scaling method has also been carried out along with the molecular dynamics (MD) simulations, and the values are extrapolated to an infinite system-size limit.

It is also possible to deduce the elastic constants by studying the fluctuations in the stress or strain in the system at thermal equilibrium without applying any external constraint. To do that, we invoked the appropriate fluctuation–dissipation theorem, which is based on the assumption that in thermodynamic equilibrium, a system's response to a spontaneous fluctuation is the same as its response to a small applied force. We adopted that method<sup>22</sup> to calculate the elastic constants at a finite temperature; the fundamental equation used in the strain-fluctuation<sup>26,27</sup> method is given by:

$$\langle \varepsilon_{ij} \varepsilon_{kl} \rangle - \langle \varepsilon_{ij} \rangle \langle \varepsilon_{kl} \rangle = \frac{k_B T}{A_0 d_0} S_{ijkl}, \quad (1)$$

where  $k_B$  is the Boltzmann constant,  $A_0$  is the equilibrium area of the graphene sheet,  $d_0$  is the van der Waals's distance,  $S_{ijkl}$  is the elastic compliance tensor (the reciprocal of the elastic stiffness tensor), and  $\langle \rangle$  denotes the ensemble average in a constant particle number, pressure, and temperature (NPT) ensemble. It is now generally conceded that eqn (1) provides a decent way of calculating temperature-dependent elastic constants using the strain fluctuations in molecular dynamics simulations.<sup>29</sup>

One advantage of using eqn (1) is that it includes only the fluctuations in the  $h$  matrix, which is derived from the three



angles and sides of the simulation box and provides a technique for computing the elastic constants. We also used in-house codes to calculate the temperature dependent elastic constants from the derived MD data. We performed MD calculations with a time-dependent metric tensor to permit the volume and shape of the MD cell to change over time. We used the method detailed by Parrinello and Rahman to modulate the size and shape of the simulation cell for a system of  $N$  particles in a periodically repeating MD cell that varies in shape and volume over time.<sup>27,30</sup> The symmetry-equivalent elastic constants are extracted from the statistical fluctuations of the simulation box lengths and the angle. Then the relationship between the instantaneous strain tensor  $\varepsilon$  and the  $\mathbf{h}$  matrix can be expressed as,<sup>26</sup>

$$\varepsilon_{ij} = \frac{1}{2} \left[ \left( (\mathbf{h}_0^{-1})^T \mathbf{h}^T \mathbf{h} \mathbf{h}_0^{-1} \right)_{ij} - \delta_{ij} \right], \quad (2)$$

where  $\mathbf{h}_0$  corresponds to the reference system and is initially averaged over all the frames, and the  $\mathbf{h}$  matrix consists of the instantaneous values for the edges of the simulation box with respect to the reference system. The superscript T in the equation denotes the transpose of the given  $\mathbf{h}$  matrix.

### Computational details

We performed the simulations using the classical MD simulation package LAMMPS (Large scale Atomic/Molecular Massively Parallel Simulator).<sup>31</sup> Among the various types of empirical interatomic potentials for carbon, the Tersoff<sup>32–34</sup> and Tersoff-type<sup>35,36</sup> potentials belong to the most successful category. We used the long range bond order potential (LCBOP)<sup>37</sup> to model the interactions among the carbon atoms in graphene. Even though we performed the simulations using Tersoff and Tersoff type empirical potentials, along with the Tersoff potential recently tuned by Kinaci *et al.*<sup>38</sup> for studies of graphene-like nanostructures (as reported in Sevik *et al.*<sup>39</sup>), our results do not corroborate the experimental results. Monte Carlo simulations by Magnin *et al.*<sup>40</sup> indicated that the LCBOP potential shows the best agreement with their reference data near room temperature. Using classical MD simulations, Anees *et al.* investigated the temperature-dependent phonon frequency shift and structural stability of graphene using the LCBOP potential<sup>41</sup> and reported the importance of LCBOP in describing the bond making and bond breaking mechanisms. The ability of LCBOP to accurately describe various features such as bond distances, conjugation, stretching force constants, elastic constants, and interlayer interaction energy in graphite prompted us to use it to analyze the mechanical properties of a graphene sheet.<sup>37</sup> The interaction energy of the LCBOP potential can be expressed as:

$$E = \frac{1}{2} \sum_{ij}^N V_{ij}^{\text{tot}} = \frac{1}{2} \sum_{ij}^N \left[ f_{c,ij} V_{ij}^{\text{SR}} + S_{ij} V_{ij}^{\text{LR}} \right], \quad (3)$$

where  $V_{ij}^{\text{tot}}$  is the sum of the short-range part's total pair interaction,  $f_{c,ij} V_{ij}^{\text{SR}}$  describes the short-range covalent bonding, and  $V_{ij}^{\text{LR}}$  explains the long-range interactions in LCBOP. Periodic boundary conditions are used in all three directions of the

simulation cell to eliminate surface effects. We used an interplanar vacuum separation of 20 Å to avoid non-physical interactions between the graphene layer and its replicas. To eliminate the residual stresses, the initial geometry of the graphene sheet was relaxed using the conjugate-gradient minimization algorithm. To integrate the positions and velocities, we used a standard velocity Verlet time stepping algorithm with an integration time step of 1.0 femtosecond (fs) to solve the equations of motion.

## Results and discussion

The computed nearest neighbor distance of carbon atoms in the honeycomb lattice of graphene (Fig. S1†) is 1.42 Å. While applying a longitudinal strain to a finite system of 900 atoms, we observed considerable changes in bond length (1.44 Å) and angle compared to an infinite system subjected to the same strain (1.42 Å). The system size-dependence of the in-plane elastic moduli of graphene had not been studied experimentally until a recent experimental analysis seemed to report that such a size dependence does exist for graphene.<sup>42–44</sup> Even though experimental evidence is still lacking, finite size-scaling plays a pivotal role in understanding the material's behavior. Recently, experimental confirmation of the scaling behavior of bending rigidity with system size has been reported,<sup>45</sup> providing firm support for theoretical<sup>46</sup> and atomistic simulations.<sup>47</sup> We also found a finite size-scaling effect for the elastic properties of hexagonal boron nitride (h-BN) in accordance with a power law.<sup>25</sup>

### Elastic constants using molecular statics analysis

This section explains the results of the computed elastic constants of graphene at zero kelvin by means of molecular statics simulations. In a graphene sheet, the carbon atoms experience strong covalent bonding within the layers, and they experience weak (3.34 Å) van der Waal's interactions across the layers.<sup>16</sup> The elastic properties of graphene have a strong relationship with its mechanical stability; essentially, they indicate the material's response to a given external strain. We studied the cell-size dependence of the anisotropy in the in-plane elastic moduli of graphene by changing the system size from a  $15 \times 15 \times 1$  supercell (900 atoms) to a  $300 \times 300 \times 1$  supercell (360 000 atoms). First, we considered a rectangular simulation cell of the honeycomb lattice in which we took one of the basis vectors to be the basis vector along the  $x$ -direction. We took the other basis vector along the  $y$ -direction and set its magnitude as  $\sqrt{3}$  times the lattice parameter of the honeycomb lattice. All the calculations are done in the microcanonical ensemble (constant number of particles, volume and energy), with energy kept constant within one part in  $10^7$  for times in the order of 100 ps. Then, we extracted the change in energy upon different types of deformation of the simulation cell and calculated the respective elastic constants.

In the presence of small deformations, graphene is an isotropic and linear elastic material. During large deformations, graphene shows strain-softening behavior, and the relationship between stress and strain can be established on the basis of the second-order linear elastic modulus  $E$  and the third-order nonlinear elastic modulus  $D$ .<sup>3,48</sup> Then  $\sigma = E_\varepsilon + D_\varepsilon^2$ . Here, the



second-order term leads to a decrease in stiffness at a larger tensile strain, and  $D$  becomes less than zero. The intrinsic stress of graphene is calculated from the maximum value of  $\sigma$ , obeying the condition  $\frac{\partial \sigma}{\partial \epsilon} = 0$ . Then the intrinsic strength (maximum stress) and corresponding strain can be written as  $\sigma_{\text{intrinsic}} = -E^2/4D$  and  $\epsilon_{\text{intrinsic}} = -E^2/2D$ , respectively. Guoxin Cao<sup>49</sup> reported that graphene is a typical brittle-like material, and when  $\epsilon_{\text{intrinsic}}$  becomes high, its lattice becomes unstable.

The elastic behavior of graphene is characterized by isotropic in-plane interactions, and the elastic matrix of the second-order elastic constants is denoted as:

$$C_{ij} = \frac{1}{A_0 d_0} \left( \frac{\partial^2 E}{\partial \epsilon_i \partial \epsilon_j} \right),$$

where  $E$  is the energy,  $A_0$  is the equilibrium area of the graphene system,  $d_0$  is the van der Waals distance (which represents the effective thickness of the layer), and  $\epsilon$  is the strain tensor. Then, the elastic energy  $E(\epsilon)$  of the graphene sheet is represented in polynomial form as  $E(\epsilon) = \frac{1}{2} C_{11} \epsilon_{xx}^2 + \frac{1}{2} C_{22} \epsilon_{yy}^2 + C_{12} \epsilon_{xx} \epsilon_{yy} + 2\epsilon_{66} \epsilon_{xy}^2$ .<sup>25</sup> Now, the longitudinal strain along the  $x$ -direction can be represented as  $\epsilon_{xx}$ , that along the  $y$ -direction is  $\epsilon_{yy}$ , and the applied shear strain along the  $xy$  plane is  $\epsilon_{xy}$ . In the Voigt notation, these applied strains are denoted using the symbols  $\epsilon_1$ ,  $\epsilon_2$ , and  $\epsilon_6$ , respectively. Here, the  $x(y)$  axis is along the zigzag (armchair) direction,  $\epsilon_{ij}$ 's are the infinitesimal strain tensors, and  $C_{ij}$ 's are the corresponding linear elastic constants.<sup>50</sup> For the case of a 2D isotropic sheet, the linear elastic constants satisfy the conditions  $C_{11} = C_{22}$  and  $2C_{66} = C_{11} - C_{12}$ , which shows that the Born mechanical stability criterion of graphene becomes  $C_{11} > 0$ ,  $C_{11} > C_{12}$ , and  $C_{66} > 0$ .<sup>51,52</sup>

For small deformations, the in-plane stiffness matrix of a graphene sheet (generally, any 2D system) using elastic energy can be expressed as,

$$E(\epsilon) = \frac{1}{2} (\epsilon_1 \ \epsilon_2 \ 2\epsilon_6) = \begin{pmatrix} C_{11} & C_{12} & 0 \\ C_{21} & C_{22} & 0 \\ 0 & 0 & \frac{C_{11} - C_{12}}{2} \end{pmatrix} \begin{pmatrix} \epsilon_1 \\ \epsilon_2 \\ 2\epsilon_6 \end{pmatrix}. \quad (4)$$

We used the finite size-scaling method to analyze the effect of the simulation cell size on the calculated physical properties of graphene. Initially, we used simulation cells without any vacuum space at the boundaries, essentially mimicking an infinite system. We found that the calculations using an infinite sheet with 10 000 atoms in a simulation cell were quite adequate to obtain convergence with respect to the simulation cell size (or system size). Because all the atoms in the simulation cell are surrounded by atoms, no surface effects occur in the simulation. To calculate the finite size properties, we varied the size of the simulation cell from 900 atoms to 360 000 atoms, providing sufficient vacuum space at the boundaries. When the system size reached  $\sim 122$  500 atoms or more, the finite system produced a very good correlation with the infinite system.

The in-plane atomic arrangement of graphene in the  $x - y$  plane is expressed by the chirality angle  $\theta$ :  $0^\circ \leq \theta \leq 30^\circ$ , where  $\theta = 0^\circ$  corresponds to the zigzag chirality and  $\theta = 30^\circ$  corresponds to the armchair chirality.<sup>49</sup> Then, the Young's modulus and Poisson's ratio along an arbitrary orientation  $\theta$  using the calculated elastic constants are,<sup>48,50</sup>

$$E(\theta) = \frac{C_{11} C_{22} - C_{12}^2}{C_{11} s^4 + C_{22} c^4 + \left( \frac{C_{11} C_{22} - C_{12}^2}{C_{66}} - 2C_{12} \right) c^2 s^2} \quad (5)$$

and

$$\nu(\theta) = \frac{\left( C_{11} + C_{22} - \frac{C_{11} C_{22} - C_{12}^2}{C_{66}} \right) c^2 s^2 - C_{12} (c^4 + s^4)}{C_{11} s^4 + C_{22} c^4 + \left( \frac{C_{11} C_{22} - C_{12}^2}{C_{66}} - 2C_{12} \right) c^2 s^2}, \quad (6)$$

where  $c = \cos \theta$  and  $s = \sin \theta$ . If we consider the Cauchy relations in eqn (5) and (6), then  $C_{11} = C_{22}$  and  $2C_{66} = C_{11} - C_{12}$  for an isotropic sheet. If we use  $\theta = 0^\circ$  (corresponding to the zigzag chirality), then

$$E(\theta) = Y = \left( \frac{C_{11}^2 - C_{12}^2}{C_{11}} \right) \quad (7)$$

and

$$\nu(\theta) = \nu = \left( \frac{C_{12}}{C_{11}} \right). \quad (8)$$

The elastic constants are extracted from the total energy by fitting it as a function of various specific strains. Our calculations show that the elastic constants of a graphene sheet with an infinite system size are  $C_{11} = C_{22} = 0.989$  TPa,  $C_{12} = 0.221$  TPa, and  $C_{66} = 0.380$  TPa, which clearly depicts the isotropy of the material. We also made a direct comparison of the obtained  $C_{66}$  value with the theoretical value using the Cauchy relation for a hexagonal system and obtained  $C_{66} = \frac{(C_{11} - C_{12})}{2} = 0.383$  TPa, which is comparable to the result from the energy analysis method ( $C_{66} = 0.380$  TPa). We continued the simulation using finite system sizes in which the simulation cells are surrounded on all sides by a vacuum of an appropriate thickness and calculated the system-size dependence of the Young's modulus and Poisson's ratio of graphene using eqn (5) and (6). The direction-dependent anisotropy in the elastic constants is observed and calculated using  $\theta = 0^\circ$  for the zigzag direction and  $\theta = 30^\circ$  for the armchair direction. The values of  $C_{11}$  and  $C_{12}$  for each system size are fitted to the equation  $P(N) = \alpha - \beta/N^q$ , and the results are plotted as a function of  $1/N$ . The variation of  $C_{11}$  and  $C_{12}$  is inverse to the system size, as shown in Fig. 2(a) and (b), respectively. We also found that both  $C_{11}$  and  $C_{12}$  increase with the system size in accordance with the power law, reaching a saturated value when the simulation cell size becomes very high.

Furthermore, we noticed that the graphene sheet shows considerable variation in the computed Young's modulus and



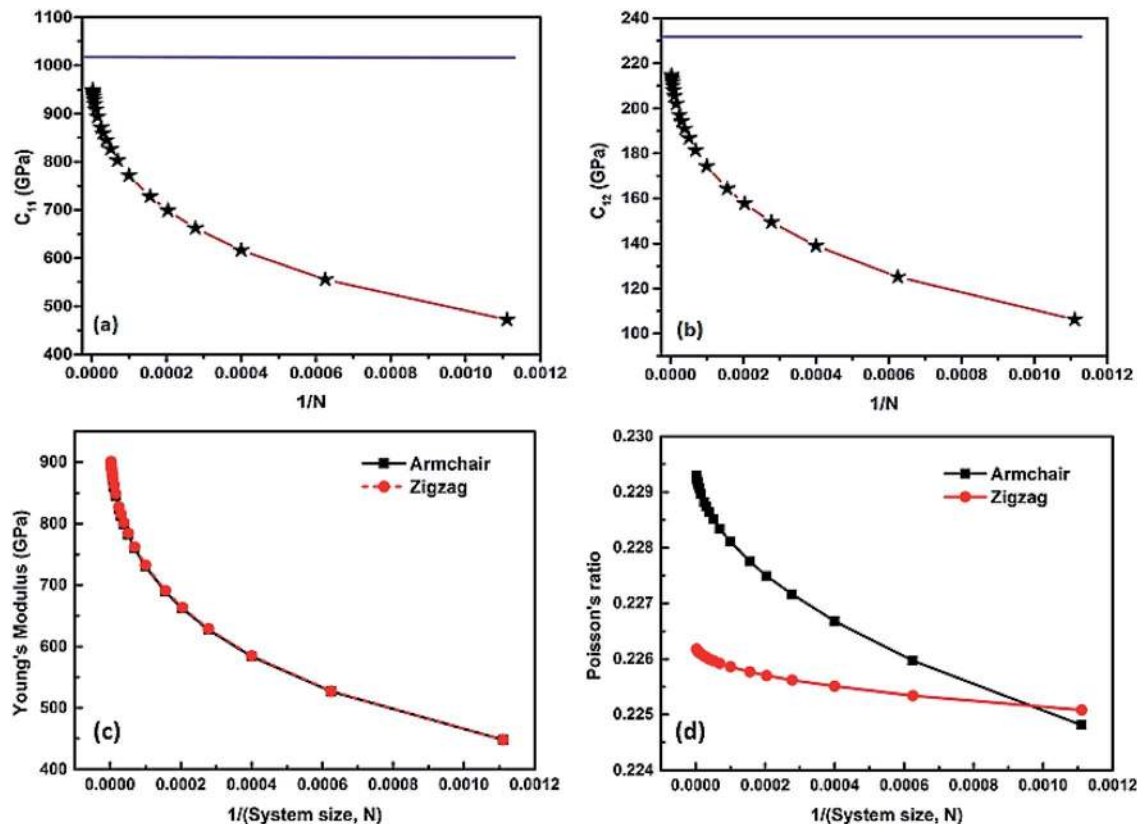


Fig. 2 The variation in computed elastic constants  $C_{11}$  and  $C_{12}$  is inverse to the system size, as shown in (a) and (b), respectively. Using the finite size scaling method, we fitted the values of  $C_{11}$  and  $C_{12}$  for each system size to the equation  $P(N) = \alpha - \beta/N^q$  and plotted the results as a function of  $1/N$ , where  $N$  is the number of atoms in the simulation cell. From the fit, we observed the value of the scaling exponent  $q$  to be 0.36. The blue line in both figures represents the value of the respective elastic constant extrapolated to an infinite system size. (c) and (d) show that the variation in the computed Young's modulus and Poisson's ratio is inverse system to the size along the armchair and zigzag chirality. When the system size increases, the value of the Young's modulus tends toward a saturated value in both directions and mimics an infinite system.

Poisson's ratio at small system sizes. As the system size increases, the Young's modulus converges to a value of  $\sim 1$  TPa, which corresponds to an infinite sheet. When the simulation cell size increases, the anisotropy of the Young's modulus and Poisson's ratio progressively decrease, as shown in Fig. 2(c) and (d), respectively. A detailed comparison of our computed Young's modulus with that in earlier studies is presented in Table 1. A comparison of the calculated Young's modulus and Poisson's ratio of the graphene sheet with other atomistic analysis using LAMMPS code is tabulated in Table S1.† The relative energy–strain response graph for calculating the elastic constants is shown in Fig. S2 in the ESI.† A finite system of 900 atoms subject to periodic boundary conditions and a vacuum space of 20 Å is shown in Fig. S2(a).† The computed elastic constants with 40 000 atoms and 122 500 atoms differed significantly, as shown in Fig. S2(b) and (c),† respectively. As the system size increases, the finite system tends to mimic an infinite sheet (10 000 atoms), as shown in Fig. S2(d).† The obtained Young's moduli for systems with 900, 40 000, 122 500, and 360 000 atoms are 0.447, 0.827, 0.873, and 0.939 TPa, respectively. The obtained elastic constants are positive values that ensure the mechanical stability of a graphene sheet.

The computed elastic constants also satisfy the necessary and sufficient conditions for elastic stability (Born-stability criterion), *i.e.*,  $C_{11} > 0$  and  $C_{11} > |C_{12}|$ .<sup>51</sup>

### Bending rigidity and thin shell thickness using molecular statics simulation

We used equations derived from Foppl–von Karman plate theory<sup>53,54</sup> to determine the zero temperature bending rigidity ( $k$ ) of a graphene sheet from the computed values of its Young's modulus and Poisson's ratio. The thin shell thickness ( $t_s$ ) characterizes structural flexibility and is used to compute the non-linear structural deformation mechanism in 2D materials.<sup>55</sup> The Young's modulus is a material property, whereas tensile stiffness is a structural property of the material that is profoundly influenced by its geometry and composition. First, we calculated the thin shell thickness from the known value for the bending stiffness of graphene. The tensile stiffness  $D$  is related to the Young's modulus  $Y$  and thin shell thickness ( $t_s$ ) as  $D = Yt_s$ . Then, the thin shell thickness can be expressed as  $t_s = \left( \frac{k[12(1-\nu^2)]}{Y} \right)^{\frac{1}{3}}$ , and the bending rigidity of the graphene sheet can be computed from the obtained value



**Table 1** The calculated Young's modulus ( $Y$ ) and Poisson's ratio ( $\nu$ ) of an infinite graphene sheet in comparison with experimental and other theoretical investigations. The Young's modulus is measured in tera pascal. MD – Molecular Dynamics, DFT – Density Functional Theory, QHA – Quasi-Harmonic Approximation, MM – Molecular Mechanics. LCBOP, AIREBO, REBO, COMPASS, etc. are the different types of force fields used for the MD simulation

| Reference                                 | Year | Method              | $Y$ (TPa) | $\nu$ |
|---|------|---------------------|-----------|-------|
| Present study                             | 2018 | MD (LCBOP)          | 0.939     | 0.223 |
| Gao <i>et al.</i> <sup>55</sup>           | 2015 | Elastic shell model | 1.028     | 0.150 |
| Shao <i>et al.</i> <sup>20</sup>          | 2012 | DFT-QHA             | 1.208     | —     |
| Jian <i>et al.</i> <sup>21</sup>          | 2012 | MD                  | 1.090     | —     |
| Hajgato <i>et al.</i> <sup>57</sup>       | 2012 | DFT                 | 1.050     | —     |
| Shen <i>et al.</i> <sup>58</sup>          | 2012 | MD                  | 1.025     | —     |
| Jing <i>et al.</i> <sup>59</sup>          | 2012 | MD (COMPASS)        | 1.032     | —     |
| Zhang <i>et al.</i> <sup>60</sup>         | 2012 | MD (AIREBO)         | 0.995     | —     |
| Terdalkar <i>et al.</i> <sup>61</sup>     | 2010 | MM (AIREBO)         | 0.840     | —     |
| Neek-Amal <i>et al.</i> <sup>62</sup>     | 2010 | MD                  | 0.800     | —     |
| Neek-Amal <i>et al.</i> <sup>63</sup>     | 2010 | MD indentation      | 0.501     | —     |
| Jiang <i>et al.</i> <sup>19</sup>         | 2009 | MD                  | 0.950     | 0.220 |
| Zhao <i>et al.</i> <sup>18</sup>          | 2009 | MD (AIREBO)         | 1.010     | 0.210 |
|   |      | TB                  | 0.910     | —     |
| Wei <i>et al.</i> <sup>64</sup>           | 2009 | Ab initio           | 1.037     | —     |
| Cadelano <i>et al.</i> <sup>48</sup>      | 2009 | TB                  | 0.931     | 0.310 |
| Lu <i>et al.</i> <sup>65</sup>            | 2009 | MD (REBO)           | 0.725     | 0.398 |
| Lee <i>et al.</i> <sup>3</sup>            | 2008 | Experiment          | 1.020     | —     |
| Hemmasizadeh <i>et al.</i> <sup>66</sup>  | 2008 | MM/CM               | 0.939     | —     |
| Liu <i>et al.</i> <sup>17</sup>           | 2007 | Ab initio           | 1.050     | 0.186 |
| Konstantinova <i>et al.</i> <sup>67</sup> | 2006 | DFT                 | 1.240     | —     |
| Reddy <i>et al.</i> <sup>68</sup>         | 2006 | MM                  | 0.669     | 0.416 |
| Kudin <i>et al.</i> <sup>16</sup>         | 2001 | DFT                 | 1.150     | 0.149 |
| Van Lier <i>et al.</i> <sup>69</sup>      | 2000 | Ab initio           | 1.110     | 0.149 |

of the thin shell thickness. The equation connecting the bending rigidity or bending stiffness of graphene to its Young's modulus, thin shell thickness ( $t_s$ ), and in-plane Poisson's ratio  $\nu$  is:

$$k = \frac{Yt_s^3}{12(1-\nu^2)} \quad (9)$$

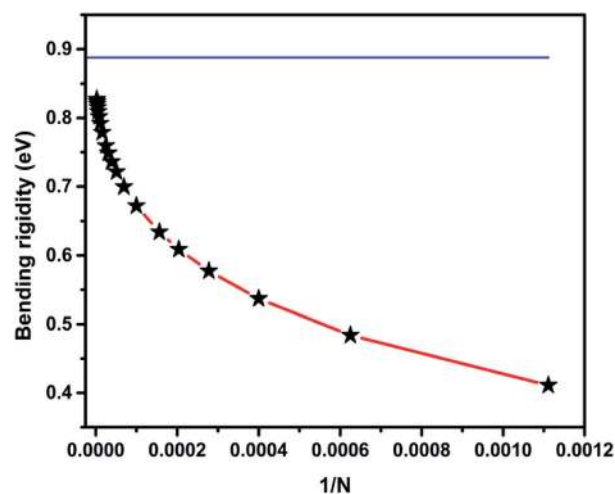
Using the atomistic Monte-Carlo technique, Fasolino *et al.* investigated the zero kelvin bending rigidity of a pristine graphene sheet (0.82 eV) and found that it increased with temperature.<sup>56</sup> We computed the thin shell thickness ( $t_s$ ) value of graphene as 1.1871 Å, which is greater than that of the thickness value (0.89 Å) obtained using density functional theory calculations.<sup>55</sup> The obtained thin shell thickness is much smaller than the inter-layer spacing ( $d = 3.4$  Å), which is comparable to earlier reports.<sup>55</sup> We extracted the bending rigidity of a graphene sheet of infinite spatial extent at zero kelvin using eqn (9) and found it to be 0.83 eV. We already reported that the zero temperature bending rigidity of an h-BN sheet with an infinite boundary is 0.62 eV, which is lower than the bending rigidity of a graphene sheet.<sup>25</sup> Those observations reveal that graphene is both the hardest 2D material and highly flexible. We also observed that  $k$ ,  $Y$ , and  $\nu$  monotonically increase with system size. The variation in bending rigidity,

calculated using the computed values of the Young's modulus and Poisson's ratio, is inverse to the system size, as shown in Fig. 3. The blue line in the figure corresponds to the value of the respective bending modulus extrapolated to an infinite system size limit.

### Finite temperature elastic constants

During the analysis of finite temperature elastic constants, we used the periodic boundary condition along the  $x$  and  $y$  directions, whereas, we used a non-periodic boundary condition (more specifically, shrink-wrapping with a minimum value of the simulation cell) along the  $z$ -direction. We performed the strain-fluctuation method using a constant temperature and ambient pressure (NPT) ensemble for 0.5 nanoseconds (ns), with the thermodynamic tension and external hydrostatic pressure set to zero. The size and shape of the periodically repeating molecular dynamics simulation cell is controlled using a Lagrangian, and the entire system was equilibrated by coupling it to a Nose–Hoover thermostat. The study of the finite temperature elastic constants of graphene provides new insight into the various intrinsic thermodynamic properties within a range of temperatures.

The general belief from harmonic theory predicts that a 2D membrane or crystal is highly unstable in principle. This refutation is solved by including the anharmonic coupling between the bending and stretching modes in the calculation.<sup>43</sup> In the harmonic approximation, the correlation function for the out of plane (flexural) displacements in graphene is denoted as  $h(r)$  (different from the  $h$  considered earlier) which, in Fourier space, is represented as  $G_0^{\text{harm}}(q) = |h(q)|^2|_{u=0} = \frac{k_B T}{kq^4}$ , where  $k_B$  is the Boltzmann constant,  $T$  is the temperature, the suffix  $u = 0$  in the average explains the absence of any external strain, and the subscript 0 denotes that we neglect anharmonic coupling between the in-plane stretching and out-of-plane bending modes. The harmonic theory predicts divergence of the mean-



**Fig. 3** The variation in bending modulus is inverse to the system size. The blue line represents the bending rigidity value extrapolated to an infinite system size using an equation derived from the Foppl–von Karman theory.



square amplitude of the out-of-plane displacements, and it is given by  $h_2^{\text{harm}} \propto L^2$  or  $h_2^{\text{harm}} = CL^2$ , where  $L$  is the size of the sample,  $C$  is a temperature dependent constant, and  $h^2 = |h(q)|^2$ . This is the well-known result by which the harmonic theory of membranes predicts a crumpled membrane rather than a flat one.

Recent studies reported that Young's modulus is a scale-dependent parameter and that the effective Young's modulus of graphene can be defined by considering the anharmonicities, coupling the lowest order in the in-plane ( $u(r)$ ) and out-of-plane ( $h(r)$ ) displacements.<sup>43,70</sup> The effect of temperature increases the ripple amplitude and effectively softens the elastic moduli of 2D systems due to the anharmonic coupling between the bending and stretching modes. The observed temperature-dependent, out-of-plane intrinsic buckling (ripples) in graphene is a highly nonlinear phenomenon that profoundly influences its elastic properties. A recent study by Ahmadpoor *et al.* reported the temperature dependency of the out-of-plane fluctuations in graphene sheet, and explained the variation of elastic stiffness with system size and also the associated nonlinearities.<sup>71</sup> We observed that the ripples (Fig. S3†) can effectively soften the elastic moduli, in the sense that stretching a crumpled graphene sheet requires less force than stretching a flat one.<sup>72</sup> In this way, we investigated the influence of temperature on the thermal rippling behavior of graphene, which effectively reduces the elastic constants and is completely absent from the zero kelvin molecular statics calculations. Our MD simulations predicted a nonlinear temperature dependence of the elastic constants with significant anharmonic effects. The elastic modulus changes considerably with temperature and also strongly depends on the thermal rippling of the material.

The temperature-dependent elastic constants are derived using the instantaneous strain fluctuations shown in eqn (1) and (2). The variation of the independent elastic constants ( $C_{11}$  and  $C_{12}$ ) with temperature is shown in Fig. 4. We calculated the Young's modulus and Poisson's ratio of the graphene sheet using eqn (7) and (8), and the analysis shows a decrease in those elastic physical quantities with an increase in temperature, as

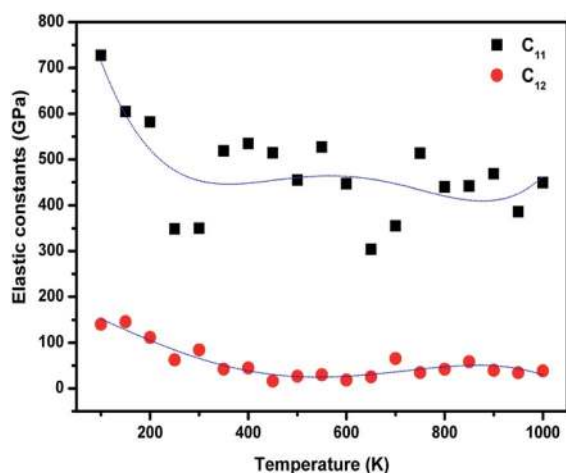


Fig. 4 Calculated independent elastic constants of graphene at various temperatures using the strain fluctuation method.

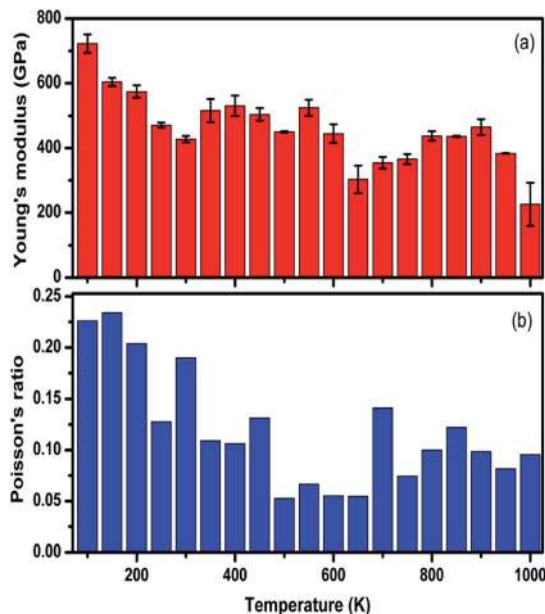


Fig. 5 The computed values for the (a) Young's modulus and (b) Poisson's ratio of graphene at various temperatures using the strain fluctuation method.

shown in Fig. 5(a) and (b), respectively. We also calculated the variation in the bulk and shear moduli with temperature using the computed elastic constants, Young's modulus, and Poisson's ratio in eqn (10) and (11), as shown in Fig. 6. The computed temperature-dependent elastic constants completely satisfy the Born mechanical stability criterion in the studied temperature range, which validates our efforts in this study. Even though the slow convergence of the strain-fluctuation method for calculating elastic constants has already been reported,<sup>73</sup> this method is quite easy to implement compared with the stress-fluctuation method.

$$K = \frac{Y}{3(1 - 2\nu)} \quad (10)$$

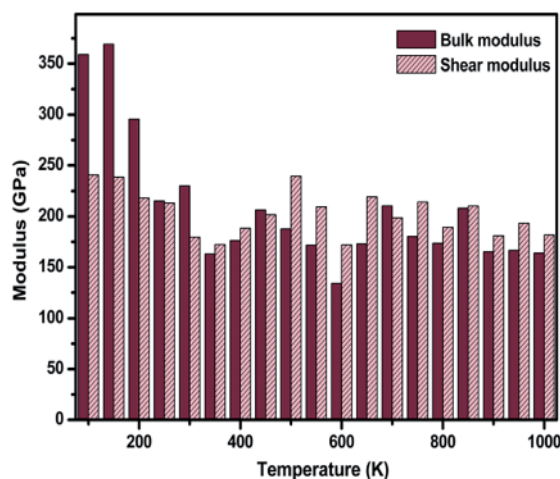


Fig. 6 The temperature-dependent variation in computed values for the bulk and shear modulus using the strain-fluctuation method.



$$G = \frac{Y}{2(1 + \nu)} \quad (11)$$

In our analysis, we noted a significant decrease in  $C_{11}$  with temperature compared with  $C_{12}$ . We emphasize that the lack of proper computational and experimental study of the finite temperature elastic constants of graphene restrict direct comparisons with our results. However, our results are quantitatively in agreement with the general trend, and the significant decrease in computed elastic constants and associated moduli with an increase in temperature is the direct consequence of the ripples intrinsic in 2D materials.<sup>28</sup> We suggest that fluctuations in temperature might need to be considered over a longer time, on the order of nanoseconds (ns), to reduce the error bar associated with our calculations.

### Longitudinal and shear wave velocities using elastic constants

The longitudinal and shear wave velocities of a monolayer graphene sheet are computed from the derived values of the elastic constants. It is commonly understood that, when applying a small deformation, each individual atom present in a graphene lattice is influenced by the motion of its nearest neighbor, and both the inertial and elastic restoring forces act upon each atom. The mass of the atom is closely related to the density of the material, whereas the spring constant is related to the elastic constants of the material. In graphene, we can generate soundwaves using the volumetric and shear deformations. From the computed values for the elastic constants, Young's modulus, and Poisson's ratio, we calculated two kinds of soundwaves: (1) longitudinal waves (p-waves)—soundwaves generated due to volumetric deformations (compressions) and (2) shear waves (s-waves)—soundwaves generated due to shear deformations. To analyze those sound velocities, we need the corresponding mass density of the graphene sheet. Using the equation  $\rho_m = 4m_c/(\sqrt{3}a^2)$ , we calculated the two-dimensional mass density of graphene<sup>74</sup> as  $7.6036 \times 10^{-7} \text{ kg m}^{-2}$ ,<sup>2</sup> where  $a$  is the in-plane lattice parameter of graphene, and  $m_c$  is the atomic mass of a carbon atom. Here, the observed mass density of graphene is almost half the mass density of h-BN, which we reported previously.<sup>25,28</sup> The in-plane elastic modulus (Young's modulus),  $Y$ ; two-dimensional mass density,  $\rho_m$ ; Poisson's ratio,  $\nu$ ; and in-plane elastic constants,  $C_{11}$  and  $C_{12}$ , are used in the following relations to obtain the longitudinal and shear wave velocities:<sup>75,76</sup>

$$V_p = \sqrt{\frac{Y(1 - \nu)}{\rho_m(1 + \nu)(1 - 2\nu)}} \quad (12)$$

$$V_s = \sqrt{\frac{C_{12}}{\rho_m}} \quad (13)$$

Using eqn (12) and (13), we calculated the longitudinal ( $V_p$ ) and shear wave ( $V_s$ ) velocities of a system with an infinite boundary as  $21.82 \text{ km s}^{-1}$  and  $9.88 \text{ km s}^{-1}$ , respectively. For a system with a finite spatial extent, the longitudinal ( $V_p$ ) and

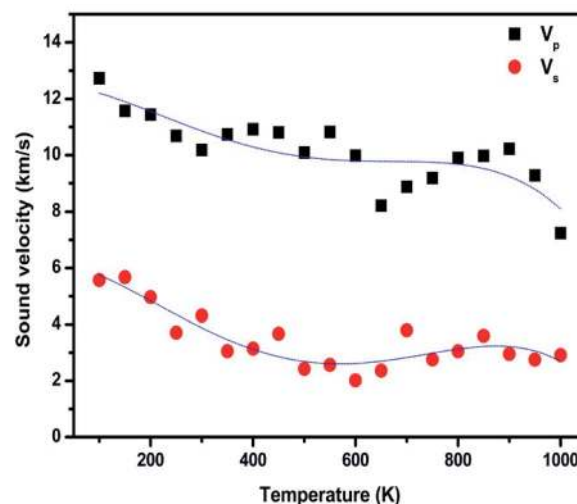


Fig. 7 Variation in longitudinal ( $V_p$ ) and shear wave ( $V_s$ ) velocities in monolayer graphene using the strain-fluctuation method at different temperatures.

shear wave ( $V_s$ ) velocities increase as the system size increases. For example, as the system size increases from 900 atoms to 360 000 atoms, the  $V_p$  value varies from  $15.07 \text{ km s}^{-1}$  to  $21.40 \text{ km s}^{-1}$ , with a corresponding change in  $V_s$  is  $9.73 \text{ km s}^{-1}$  from  $6.84 \text{ km s}^{-1}$ . The variation in the  $V_p$  and  $V_s$  of a finite sheet is inverse to the system size, as shown in Fig. S4(a) and (b),<sup>†</sup> respectively. As the system size increases, the Young's modulus and Poisson's ratio also increase, and at higher system sizes, those values saturate and mimic an infinite sheet. Those changes lead to an increase in both longitudinal and shear wave velocities. We also noticed that the longitudinal wave possesses a higher velocity than the shear wave in the entire studied range of system size. The  $V_p/V_s$  value lies in the range of 2.19 to 2.20. When the temperature increases, the Young's modulus of the sample decreases, which effectively reduces the longitudinal and shear wave velocities, as shown in Fig. 7. Peng *et al.* reported the advantages of measuring sound velocities in h-BNC heterostructures and predicted that the longitudinal and shear wave velocities could be used to validate the elastic properties of materials. When they introduced the h-BN domains into graphene structures, they found that the sound velocity gradient could be used to form a sound frequency and ranging channel, which they treated as the fundamental functional mechanism in surface acoustic wave sensors and waveguides.<sup>76</sup>

## Conclusions

In conclusion, we carried out systematic molecular statics and dynamics simulations to study the mechanical properties of a monolayer graphene sheet. Our analysis of temperature-dependent elastic constants for graphene between 100 and 1000 K is the first independent approach using the strain-fluctuation method. Direction-dependent anisotropic behavior is clearly observed in finite sheets, whereas infinite sheets are isotropic. The computed elastic constants satisfy the Born mechanical stability criterion and satisfy  $C_{11} > 0$ ,  $C_{11} > C_{12}$ , and  $C_{66} > 0$ . From the





computed values of the Young's modulus and Poisson's ratio, changes in the zero kelvin bending rigidity with system size are deduced using a formula derived from the Foppl-von Karman approach. Thermally excited ripples in graphene lead to strong anharmonic behavior that essentially causes a large deviation from isotropic elasticity. The elastic moduli and associated properties decreased with an increase in temperature. When the temperature increases, the Young's modulus of the sample decreases, which effectively reduces the longitudinal and shear wave velocities. In this paper, we focused only on the elastic and associated properties of a monolayer graphene sheet. Recent studies reported the possibility of creating other 2D carbon allotropes<sup>77,78</sup> with better practical applications, including energy storage. Our results provide new information about the mechanical stability of graphene that could be highly useful for the design of integrated electronic devices. Future research might be on a systematic study of defective graphene sheets to analyze the effects of direction-dependent anisotropic behavior on various physical properties. Further analysis into the dependence of mechanical and other properties of pristine and defective allotropes of 2D carbon should be done, along with experimental verification of our results.

## Conflicts of interest

There are no conflicts to declare.

## Acknowledgements

This research was supported by grants from the Basic Science Research Program (NRF-2018R1A2B6006320) and the Creative Materials Discovery Program (2015M3D1A1068062) through the National Research Foundation of Korea (NRF) funded by the Ministry of Science, ICT, and Future Planning.

## References

- 1 K. S. Novoselov, D. Jiang, F. Schedin, T. J. Booth, V. V. Khotkevich, S. V. Morozov and A. K. Geim, *Proc. Natl. Acad. Sci. U. S. A.*, 2005, **102**, 10451–10453.
- 2 A. K. Geim and K. S. Novoselov, *Nat. Mater.*, 2007, **6**, 183–191.
- 3 C. Lee, X. D. Wei, J. W. Kysar and J. Hone, *Science*, 2008, **321**, 385–388.
- 4 A. A. Balandin, *Nat. Mater.*, 2011, **10**, 569–581.
- 5 Y. W. Zhu, S. Murali, W. W. Cai, X. S. Li, J. W. Suk, J. R. Potts and R. S. Ruoff, *Adv. Mater.*, 2010, **22**, 3906–3924.
- 6 B. Mortazavi, O. Benzerara, H. Meyer, J. Bardon and S. Ahzi, *Carbon*, 2013, **60**, 356–365.
- 7 K. Z. Milowska, M. Woinska and M. Wierzbowska, *J. Phys. Chem. C*, 2013, **117**, 20229–20235.
- 8 M. Sreejesh, N. M. Huang and H. S. Nagaraja, *Electrochim. Acta*, 2015, **160**, 94–99.
- 9 B. Mortazavi and S. Ahzi, *Carbon*, 2013, **63**, 460–470.
- 10 K. Min and N. R. Aluru, *Appl. Phys. Lett.*, 2011, **98**, 013113.
- 11 M. Arroyo and T. Belytschko, *Phys. Rev. B: Condens. Matter Mater. Phys.*, 2004, **69**, 115415.
- 12 G. M. Rignanese and J. C. Charlier, *Phys. Rev. B: Condens. Matter Mater. Phys.*, 2008, **78**, 125415.
- 13 K. S. Novoselov, A. K. Geim, S. V. Morozov, D. Jiang, Y. Zhang, S. V. Dubonos, I. V. Grigorieva and A. A. Firsov, *Science*, 2004, **306**, 666–669.
- 14 K. Erickson, R. Erni, Z. Lee, N. Alem, W. Gannett and A. Zettl, *Adv. Mater.*, 2010, **22**, 4467–4472.
- 15 D. W. Bullett, *J. Phys. C: Solid State Phys.*, 1975, **8**, 2707–2714.
- 16 K. N. Kudin, G. E. Scuseria and B. I. Yakobson, *Phys. Rev. B: Condens. Matter Mater. Phys.*, 2001, **64**, 235406.
- 17 F. Liu, P. M. Ming and J. Li, *Phys. Rev. B: Condens. Matter Mater. Phys.*, 2007, **76**, 064120.
- 18 H. Zhao, K. Min and N. R. Aluru, *Nano Lett.*, 2009, **9**, 3012–3015.
- 19 J. W. Jiang, J. S. Wang and B. W. Li, *Phys. Rev. B: Condens. Matter Mater. Phys.*, 2009, **80**, 113405.
- 20 T. J. Shao, B. Wen, R. Melnik, S. Yao, Y. Kawazoe and Y. J. Tian, *J. Chem. Phys.*, 2012, **137**, 194901.
- 21 J. Zhu, M. He and F. Qiu, *Chin. J. Chem.*, 2012, **30**, 1399–1404.
- 22 L. D. Landau, E. M. Lifshic and L. P. Pitaevskij, *Statistical physics 1 5.*, Pergamon Press, Oxford, 1980.
- 23 N. M. A. Krishnan and D. Ghosh, *J. Appl. Phys.*, 2014, **115**, 064303.
- 24 Q. L. Xiong and X. G. Tian, *AIP Adv.*, 2015, **5**, 107215.
- 25 S. Thomas, K. M. Ajith and M. C. Valsakumar, *J. Phys.: Condens. Matter*, 2016, **28**, 295302.
- 26 J. R. Ray, *Comput. Phys. Rep.*, 1988, **8**, 111–151.
- 27 M. Parrinello and A. Rahman, *J. Chem. Phys.*, 1982, **76**, 2662–2666.
- 28 S. Thomas, K. M. Ajith and M. C. Valsakumar, *Superlattices Microstruct.*, 2017, **111**, 360–372.
- 29 P. J. Fay and J. R. Ray, *Phys. Rev. A: At., Mol., Opt. Phys.*, 1992, **46**, 4645–4649.
- 30 M. Parrinello and A. Rahman, *Phys. Rev. Lett.*, 1980, **45**, 1196–1199.
- 31 S. Plimpton, *J. Comput. Phys.*, 1995, **117**, 1–19.
- 32 J. Tersoff, *Phys. Rev. B: Condens. Matter Mater. Phys.*, 1988, **37**, 6991–7000.
- 33 J. Tersoff, *Phys. Rev. Lett.*, 1988, **61**, 2879–2882.
- 34 J. Tersoff, *Phys. Rev. B: Condens. Matter Mater. Phys.*, 1989, **39**, 5566–5568.
- 35 D. W. Brenner, *Phys. Rev. B: Condens. Matter Mater. Phys.*, 1990, **42**, 9458–9471.
- 36 D. W. Brenner, O. A. Shenderova, J. A. Harrison, S. J. Stuart, B. Ni and S. B. Sinnott, *J. Phys.: Condens. Matter*, 2002, **14**, 783–802.
- 37 J. H. Los and A. Fasolino, *Phys. Rev. B: Condens. Matter Mater. Phys.*, 2003, **68**, 024107.
- 38 A. Kinaci, J. B. Haskins, C. Sevik and T. Cagin, *Phys. Rev. B: Condens. Matter Mater. Phys.*, 2012, **86**, 115410.
- 39 C. Sevik, A. Kinaci, J. B. Haskins and T. Cagin, *Phys. Rev. B: Condens. Matter Mater. Phys.*, 2011, **84**, 085409.
- 40 Y. Magnin, G. D. Forster, F. Rabilloud, F. Calvo, A. Zappelli and C. Bichara, *J. Phys.: Condens. Matter*, 2014, **26**, 185401.
- 41 P. Anees, M. C. Valsakumar and B. K. Panigrahi, *2D Mater.*, 2015, **2**, 035014.
- 42 J. H. Los, A. Fasolino and M. I. Katsnelson, *Phys. Rev. Lett.*, 2016, **116**, 015901.



- 43 G. Lopez-Polin, C. Gomez-Navarro, V. Parente, F. Guinea, M. I. Katsnelson, F. Perez-Murano and J. Gomez-Herrero, *Nat. Phys.*, 2015, **11**, 26–31.
- 44 R. J. T. Nicholl, H. J. Conley, N. V. Lavrik, I. Vlassiouk, Y. S. Puzyrev, V. P. Sreenivas, S. T. Pantelides and K. I. Bolotin, *Nat. Commun.*, 2015, **6**, 8789.
- 45 M. K. Blees, A. W. Barnard, P. A. Rose, S. P. Roberts, K. L. McGill, P. Y. Huang, A. R. Ruyack, J. W. Kevek, B. Kobrin, D. A. Muller and P. L. McEuen, *Nature*, 2015, **524**, 204–207.
- 46 D. R. Nelson, T. Piran and S. Weingerg, *Statistical Mechanics of Membranes and Surfaces*, World Scientific, Singapore, 2004.
- 47 J. H. Los, M. I. Katsnelson, O. V. Yazyev, K. V. Zakharchenko and A. Fasolino, *Phys. Rev. B: Condens. Matter Mater. Phys.*, 2009, **80**, 121405(R).
- 48 E. Cadelano, P. L. Palla, S. Giordano and L. Colombo, *Phys. Rev. Lett.*, 2009, **102**, 235502.
- 49 G. X. Cao, *Polymers*, 2014, **6**, 2404–2432.
- 50 Y. Ding and Y. L. Wang, *J. Phys. Chem. C*, 2013, **117**, 18266–18278.
- 51 F. Mouhat and F. X. Coudert, *Phys. Rev. B: Condens. Matter Mater. Phys.*, 2014, **90**, 224104.
- 52 J. Zhou and R. Huang, *J. Mech. Phys. Solids*, 2008, **56**, 1609–1623.
- 53 A. Föppl, *Vorlesungen über technische Mechanik*, ed. B. G. Teubner, Leipzig, Berlin, 1911.
- 54 T. Von Kármán, *Encyklopädie der mathematischen Wissenschaften.*, 1910.
- 55 E. L. Gao and Z. P. Xu, *J. Appl. Mech.*, 2015, **82**, 121012.
- 56 A. Fasolino, J. H. Los and M. I. Katsnelson, *Nat. Mater.*, 2007, **6**, 858–861.
- 57 B. Hajgato, S. Guryel, Y. Dauphin, J. M. Blairon, H. E. Miltner, G. Van Lier, F. De Proft and P. Geerlings, *J. Phys. Chem. C*, 2012, **116**, 22608–22618.
- 58 Y. K. Shen and H. A. Wu, *Appl. Phys. Lett.*, 2012, **100**, 101909.
- 59 N. N. Jing, Q. Z. Xue, C. C. Ling, M. X. Shan, T. Zhang, X. Y. Zhou and Z. Y. Jiao, *RSC Adv.*, 2012, **2**, 9124–9129.
- 60 Y. Y. Zhang, Q. X. Pei and C. M. Wang, *Appl. Phys. Lett.*, 2012, **101**, 081909.
- 61 S. S. Terdalkar, S. Huang, H. Y. Yuan, J. J. Rencis, T. Zhu and S. L. Zhang, *Chem. Phys. Lett.*, 2010, **494**, 218–222.
- 62 M. Neek-Amal and F. M. Peeters, *Phys. Rev. B: Condens. Matter Mater. Phys.*, 2010, **81**, 235421.
- 63 M. Neek-Amal and F. M. Peeters, *Phys. Rev. B: Condens. Matter Mater. Phys.*, 2010, **81**, 235437.
- 64 X. D. Wei, B. Fragneaud, C. A. Marianetti and J. W. Kysar, *Phys. Rev. B: Condens. Matter Mater. Phys.*, 2009, **80**, 205407.
- 65 Q. Lu and R. Huang, *Int. J. Appl. Mech. Eng.*, 2009, **1**, 443–467.
- 66 A. Hemmasizadeh, M. Mahzoon, E. Hadi and R. Khandan, *Thin Solid Films*, 2008, **516**, 7636–7640.
- 67 E. Konstantinova, S. O. Dantas and P. M. V. B. Barone, *Phys. Rev. B: Condens. Matter Mater. Phys.*, 2006, **74**, 035417.
- 68 C. D. Reddy, S. Rajendran and K. M. Liew, *Nanotechnology*, 2006, **17**, 864–870.
- 69 G. Van Lier, C. Van Alsenoy, V. Van Doren and P. Geerlings, *Chem. Phys. Lett.*, 2000, **326**, 181–185.
- 70 R. Roldan, A. Fasolino, K. V. Zakharchenko and M. I. Katsnelson, *Phys. Rev. B: Condens. Matter Mater. Phys.*, 2011, **83**, 174104.
- 71 F. Ahmadpoor, P. Wang, R. Huang and P. Sharma, *J. Mech. Phys. Solids*, 2017, **107**, 294–319.
- 72 S. Chen, Buckling and topological defects in graphene and carbon nanotubes, PhD thesis, University of California, Berkeley, 2012.
- 73 A. A. Gusev, M. M. Zehnder and U. W. Suter, *Phys. Rev. B: Condens. Matter Mater. Phys.*, 1996, **54**, 1–4.
- 74 L. J. Karssemeijer and A. Fasolino, *Surf. Sci.*, 2011, **605**, 1611–1615.
- 75 L. E. Kinsler and A. R. Frey, *Fundamentals of acoustics*, Wiley, 1962.
- 76 Q. Peng, A. R. Zamiri, W. Ji and S. De, *Acta Mech.*, 2012, **223**, 2591–2596.
- 77 X. Y. Li, Q. Wang and P. Jena, *J. Phys. Chem. Lett.*, 2017, **8**, 3234–3241.
- 78 Z. H. Wang, X. F. Zhou, X. M. Zhang, Q. Zhu, H. F. Dong, M. W. Zhao and A. R. Oganov, *Nano Lett.*, 2015, **15**, 6182–6186.

