

 Open access • Posted Content • DOI:10.21203/RS.3.RS-56210/V1

Association Between Antecedent Statin Use and Decreased Mortality in Hospitalized Patients with COVID-19 — [Source link](#)

Aakriti Gupta, Maresh V. Madhavan, Timothy J. Poterucha, Ersilia M. DeFilippis ...+25 more authors

Institutions: NewYork–Presbyterian Hospital, Sahlgrenska University Hospital, Yale University

Published on: 11 Aug 2020

Topics: Clinical endpoint

Related papers:

- [Atorvastatin associated with decreased hazard for death in COVID-19 patients admitted to an ICU: a retrospective cohort study.](#)
- [In-Hospital Use of Statins Is Associated with a Reduced Risk of Mortality among Individuals with COVID-19.](#)
- [Relation of Statin Use Prior to Admission to Severity and Recovery Among COVID-19 Inpatients.](#)
- [The Effects of ARBs, ACEIs, and Statins on Clinical Outcomes of COVID-19 Infection Among Nursing Home Residents.](#)
- [Meta-analysis of Effect of Statins in Patients with COVID-19.](#)

Share this paper:    

View more about this paper here: <https://typeset.io/papers/association-between-antecedent-statin-use-and-decreased-s928tcnmoh>

Association Between Antecedent Statin Use and Decreased Mortality in Hospitalized Patients with COVID-19

Aakriti Gupta

NewYork-Presbyterian Hospital and the Columbia University Irving Medical Center; Cardiovascular Research Foundation; Yale Center for Outcomes Research and Evaluation

Mahesh V. Madhavan

NewYork-Presbyterian Hospital and the Columbia University Irving Medical Center; Cardiovascular Research Foundation

Timothy J. Poterucha

NewYork-Presbyterian Hospital and the Columbia University Irving Medical Center

Ersilia M. DeFilippis

NewYork-Presbyterian Hospital and the Columbia University Irving Medical Center

Jessica A. Hennessey

NewYork-Presbyterian Hospital and the Columbia University Irving Medical Center

Bjorn Redfors

NewYork-Presbyterian Hospital and the Columbia University Irving Medical Center; Cardiovascular Research Foundation; Sahlgrenska University Hospital

Christina Eckhardt

NewYork-Presbyterian Hospital and the Columbia University Irving Medical Center

Behnood Bikdeli

NewYork-Presbyterian Hospital and the Columbia University Irving Medical Center; Cardiovascular Research Foundation; Yale Center for Outcomes Research and Evaluation

Jonathan Platt

NewYork-Presbyterian Hospital and the Columbia University Irving Medical Center

Ani Nalbandian

NewYork-Presbyterian Hospital and the Columbia University Irving Medical Center

Pierre Elias

NewYork-Presbyterian Hospital and the Columbia University Irving Medical Center

Matthew J. Cummings

NewYork-Presbyterian Hospital and the Columbia University Irving Medical Center

Shayan N. Nouri

NewYork-Presbyterian Hospital and the Columbia University Irving Medical Center

Matthew Lawlor

NewYork-Presbyterian Hospital and the Columbia University Irving Medical Center

Lauren S. Ranard

NewYork-Presbyterian Hospital and the Columbia University Irving Medical Center

Jianhua Li

NewYork-Presbyterian Hospital and the Columbia University Irving Medical Center

Claudia Boyle

NewYork-Presbyterian Hospital and the Columbia University Irving Medical Center

Raymond Givens

NewYork-Presbyterian Hospital and the Columbia University Irving Medical Center

Daniel Brodie

NewYork-Presbyterian Hospital and the Columbia University Irving Medical Center

Harlan M. Krumholz

Yale Center for Outcomes Research and Evaluation

Gregg W. Stone

Cardiovascular Research Foundation

Sanjum S. Sethi

NewYork-Presbyterian Hospital and the Columbia University Irving Medical Center

Daniel Burkhoff

NewYork-Presbyterian Hospital and the Columbia University Irving Medical Center; Cardiovascular Research Foundation

Nir Uriel

NewYork-Presbyterian Hospital and the Columbia University Irving Medical Center

Allan Schwartz

NewYork-Presbyterian Hospital and the Columbia University Irving Medical Center

Martin B. Leon

NewYork-Presbyterian Hospital and the Columbia University Irving Medical Center; Cardiovascular Research Foundation

Ajay J. Kirtane

NewYork-Presbyterian Hospital and the Columbia University Irving Medical Center; Cardiovascular Research Foundation

Elaine Y. Wan (✉ eyw2003@cumc.columbia.edu)

NewYork-Presbyterian Hospital and the Columbia University Irving Medical Center

Sahil A. Parikh (✉ sap2196@cumc.columbia.edu)

NewYork-Presbyterian Hospital and the Columbia University Irving Medical Center; Cardiovascular Research Foundation

Research Article

Keywords: statins, COVID-19, in-hospital mortality, cardiovascular

Posted Date: August 11th, 2020

DOI: <https://doi.org/10.21203/rs.3.rs-56210/v1>

License:  This work is licensed under a Creative Commons Attribution 4.0 International License.

[Read Full License](#)

Abstract

The coronavirus disease 2019 (COVID-19), caused by the severe acute respiratory syndrome coronavirus 2 (SARS-CoV-2), can result in a hyperinflammatory state, leading to acute respiratory distress syndrome (ARDS), myocardial injury, and thrombotic complications, among other sequelae. Statins, which are known to have anti-inflammatory and antithrombotic properties, have been studied in the setting of other viral infections and ARDS, but their benefit has not been assessed in COVID-19. Thus, we sought to determine whether antecedent statin use is associated with lower in-hospital mortality in patients hospitalized for COVID-19. This is a retrospective analysis of patients admitted with COVID-19 from February 1st through May 12th, 2020 with study period ending on June 11th, 2020. Antecedent statin use was assessed using medication information available in the electronic medical record. We constructed a multivariable logistic regression model to predict the propensity of receiving statins, adjusting for baseline socio-demographic and clinical characteristics, and outpatient medications. The primary endpoint included in-hospital mortality within 30 days. A total of 2626 patients were admitted during the study period, of whom 951 (36.2%) were antecedent statin users. Among 1296 patients (648 statin users, 648 non-statin users) identified with 1:1 propensity-score matching, demographic, baseline, and outpatient medication information were well balanced. Statin use was significantly associated with lower odds of the primary endpoint in the propensity-matched cohort (OR 0.48, 95% CI 0.36 – 0.64, $p < 0.001$). We conclude that antecedent statin use in patients hospitalized with COVID-19 was associated with lower inpatient mortality. Randomized clinical trials evaluating the utility of statin therapy in patients with COVID-19 are needed.

Background

Severe acute respiratory syndrome coronavirus 2 (SARS-CoV-2), the causal pathogen responsible for coronavirus disease 2019 (COVID-19), enters human cells by engaging angiotensin-converting enzyme 2 (ACE2)¹. This interaction may lead to an imbalance of the renin-angiotensin-aldosterone system (RAAS), a potential mechanism contributing to this pathogen's virulence². A combination of direct viral toxicity and indirect effects such as untempered thromboinflammation and dysregulation of the RAAS may underlie severe presentations of COVID-19, which can manifest with acute respiratory distress syndrome (ARDS), myocardial injury, and micro-and macro-thrombotic events³. As such, several anti-inflammatory, immunomodulatory, and antithrombotic therapies may hold promise for prevention or treatment of patients with COVID-19⁴, and statins constitute one such class of medications.

Although statins have traditionally been administered to lower serum cholesterol, their pleiotropic effects, including anti-inflammatory and antithrombotic properties, make them an attractive class of drugs in the setting of COVID-19⁵⁻⁸. Moreover, through effects on lipid rafts in cellular membranes⁹⁻¹², statins may influence viral transmission and infectivity. By these putative mechanisms, statins appear to have the potential to mitigate the impact of myocardial injury and thrombotic events that are associated with severe COVID-19 presentations¹³.

To date, a number of studies have evaluated the use of statins in the treatment of pneumonia and ARDS^{5,14-20}. While primary results of randomized clinical trials evaluating statins in ARDS have not indicated a benefit^{19,20}, secondary analysis of 540 individuals from the HARP-2 (Hydroxymethylglutaryl-CoA Reductase Inhibition with Simvastatin in Acute Lung Injury to Reduce Pulmonary Dysfunction–2) trial demonstrated improved survival with statin treatment in patients with a hyperinflammatory phenotype¹⁵.

Therefore, we hypothesized that antecedent outpatient statin use may be associated with better clinical outcomes in patients hospitalized with COVID-19. In the current study, we sought to compare patient baseline and presentation characteristics as well as clinical outcomes, including in-hospital mortality, stratified by antecedent statin use, in a cohort of patients admitted with COVID-19 to a quaternary academic medical center in New York City.

Methods

Patient population and data elements. For this retrospective study, we utilized data from the Columbia University Irving Medical Center (CUIMC) and Allen Hospital sites of the NewYork-Presbyterian Hospital (NYPH). Adult patients (≥ 18 years of age) who were hospitalized between February 1st through May 12th, 2020, and tested positive for SARS-CoV-2 reverse transcriptase-polymerase chain reaction (RT-PCR) testing of nasopharyngeal or oropharyngeal specimens were included in the present analysis. All testing was conducted either by NYPH laboratories or the New York State Department of Health (in the period of time prior to when internal testing capabilities were available). Patients who were admitted for less than 24 hours were excluded from this analysis. The study period ended on June 11th, 2020, allowing for a follow-up period of at least 30 days in all patients. The CUIMC Institutional Review Board approved this study and waived the requirement for obtaining informed consent. De-identified data will be made available on request to the corresponding authors.

Patient data were identified in the electronic medical record by using the institution's clinical data warehouse, which includes outpatient and inpatient information on individuals who receive care at our institution. No manual chart abstraction was performed. Follow-up for each patient continued until patients were discharged, died in-hospital, or the end of the study period was reached. Data analysis was limited to the index hospitalization in the event of readmissions. Baseline information including age, gender, race and ethnicity, insurance, New York City borough of residence, body mass index (BMI), comorbidities, and outpatient medications were recorded. Clinical comorbidities, including hypertension, diabetes, coronary artery disease, heart failure, stroke or transient ischemic attack, atrial arrhythmias (atrial fibrillation, atrial flutter and supraventricular tachycardia), chronic lung disease, chronic kidney disease, and chronic liver disease were identified using ICD-10 medical billing codes (**Supplemental Table 1**). Outpatient medications, including statins, angiotensin-converting enzyme inhibitors (ACEi), angiotensin receptor blockers (ARB), beta-blockers, oral anticoagulants, and P2Y12 inhibitors were

extracted from medication reconciliation fields in the electronic medical record, which are entries that are updated at the time of hospital admission.

We included features of the clinical presentation, including vital signs at presentation (i.e. temperature, heart rate, blood pressure, respiratory rate, and peripheral oxygen saturation). Several laboratory parameters at presentation were also collected from the electronic medical record, including white blood cell count, platelet count, creatinine, hepatic panel tests including aspartate aminotransferase (AST), alanine aminotransferase (ALT) and albumin, lactate, high-sensitivity troponin T, D-dimer, ferritin, erythrocyte sedimentation rate (ESR), and C-reactive protein (CRP). Given that statins may act by lowering lipid levels, we collected lipid values for patients from inpatient and outpatient records at any dates after January 1st 2018, and averaged them for each patient over the study period. As some patients did not have all laboratory studies of interest collected as part of clinical care, data are presented for only the patients in whom these were available. Details for missing laboratory values are provided in the **Supplemental Table 2**.

Study exposure. The exposure in this study was antecedent statin use. Antecedent statin use was defined as record of statins as a home medication in the electronic medical record.

Study outcomes. The principal outcome was in-hospital mortality within 30 days of admission. The secondary outcome was a composite of in-hospital mortality or invasive mechanical ventilation within 30 days of admission. Other outcomes included in-hospital mortality at any time and invasive mechanical ventilation at any time, as some patients had a length of stay longer than 30 days. We also examined hospital length of stay (days), duration of invasive mechanical ventilation (days), renal replacement therapy with continuous veno-venous hemofiltration, and use of vasopressors.

Statistical analysis. We examined differences in socio-demographic, baseline clinical characteristics, and outpatient medications by antecedent statin use. Summary statistics are presented as numbers and percentages for categorical variables and medians and interquartile ranges for continuous variables. Differences between groups were examined using the 2-sided independent t-test and chi-squared test, as appropriate.

To address confounding by indication, we constructed a multivariable logistic regression model to predict the propensity of antecedent statin administration, adjusted for the following variables: age, sex, first BMI assessment, race and ethnicity, insurance, New York City borough of residence, history of hypertension, diabetes, coronary artery disease, heart failure, stroke or transient ischemic attack, atrial arrhythmias, chronic lung disease, chronic kidney disease, and liver disease; outpatient use of beta-blockers, ACEi, ARBs, oral anticoagulants, and P2Y₁₂ receptor inhibitors. Propensity-score matching was implemented with the use of a nearest-neighbor strategy with specification of caliper width equal to 0.1 of the standard deviation of the logit of the propensity score. Descriptive analyses were performed for all baseline variables in the propensity-matched cohort.

For the primary and secondary endpoints, we performed logistic regression on the propensity-matched cohort. In addition, to examine whether the effect estimate remained consistent in the overall cohort, we performed logistic regression with multivariable adjustment on the overall cohort. We adjusted the multivariable models for variables that have been previously studied in association with mortality in COVID-19 including baseline socio-demographic and clinical characteristics and outpatient medications.^{21,22}

Sensitivity Analyses. We performed sensitivity analyses by defining any recent statin use as either antecedent statin or inpatient statin use. Using this definition, we evaluated the association of any recent statin use with the primary endpoint using multivariable logistic regression. We also performed subgroup analyses to assess the association of antecedent statin use with primary endpoint in a subset of patients with history of hypertension, coronary artery disease and stroke, conditions for which statins are usually prescribed.

Missing data. BMI and insurance information were missing in 19% and 15% of the patients, respectively, and multiple imputation with predictive mean matching was utilized to adjust the models for BMI and insurance. We imputed one hundred datasets, fitted the logistic regression models for the primary and secondary endpoints for each imputed dataset, estimated the hazard ratios on each imputed dataset, and then averaged the one hundred estimated values to obtain the pooled estimates. Model estimates and standard errors were calculated with Rubin's rules¹¹. Race and ethnicity were missing in 30% of the patients and were classified as 'others/missing' while adjusting in the models. Lipid levels were available for only 32% of the cohort. As such, we have presented them only at baseline. The remaining variables were missing in fewer than 5% of the study cohort.

P-values <0.05 were considered significant for the analysis. We did not adjust for multiple comparisons as this was an exploratory analysis. All analyses were performed using version 3.5.1 of the R programming language (R Project for Statistical Computing; R Foundation, mice, MatchIt, cobalt, rms packages).

Results

Baseline Patient Characteristics. Of 2626 patients included in the analysis, 951 (36.2%) were considered antecedent statin users (**Table 1**). On average, patients who were prescribed statins were older ([median 70 (IQR 63-79) vs. 62 (49-76) years, $p < 0.001$] with no significant differences in sex ($p = 0.06$) or race/ethnicity ($p = 0.12$). Patients in the statin group were significantly more likely to have Medicare or Medicaid (63.0% vs. 53.6%) insurance, and less likely to have commercial insurance (35.4% vs. 42.5%) ($p < 0.001$ for both). There was no significant difference in the New York City borough of residence in the two groups.

Furthermore, patients using statins were significantly more likely to have hypertension (74.0% vs. 43.3%), diabetes (55.8% vs. 26.1%), coronary artery disease (22.5% vs. 6.9%), heart failure (17.0% vs. 6.7%), and

chronic kidney disease (22.0% vs. 9.6%) compared with patients not receiving statins ($p < 0.001$ for all). Similarly, patients receiving statins had higher rates of history of stroke/transient ischemic attack (13.9% vs. 5.6%) and atrial arrhythmias (11.0% vs. 5.6%), $p < 0.001$ for both. There were no significant differences in liver disease between the two groups.

Patients on statins were significantly more likely to be prescribed angiotensin-converting enzyme inhibitors (19.7% vs. 4.2%), angiotensin-receptor blockers (13.1% vs. 3.7%), P2Y12 inhibitors (11.9% vs. 1.1%), oral anticoagulants (20.3% vs. 12.3%), and beta-blockers (44.0% vs. 12.7%) as outpatients compared to those not taking statins ($p < 0.001$ for all). Of note, 77.0% of patients who were on antecedent statins and 8.6% of patients who were not on antecedent statins, received statins during hospitalization.

Furthermore, among the 850 patients for whom lipid levels were available, patients receiving statins had significantly lower mean low-density lipoprotein [77.9 (60.0 – 107.6) vs. 88.0 (67.0 – 117.0)] and total cholesterol levels [157.3 (127.7 – 191.0) vs. 164.9 (136.0 – 201.9)] compared with those who were not receiving them ($p < 0.01$ for all).

Propensity-Matched Cohort Characteristics. Using 1:1 matching, a propensity-matched cohort of 1296 patients (648 patients on statins, 648 patients not on statins) was identified. No significant differences in demographics, comorbidities, or home medications remained in the propensity-matched cohort (**Table 1**). The distribution of the estimated propensity scores for receipt of statins among patients who did and did not receive outpatient statins is shown in **Supplemental Figure 1**. In the matched analytic sample, the differences between pre-hospitalization variables were attenuated in the propensity-score-matched samples as compared with the unmatched samples (**Supplemental Figure 2**).

At the time of initial presentation, patients receiving statins were less likely to present with tachypnea (22.1% vs. 28.7%, $p < 0.01$). There were no significant differences in presence of fever, tachycardia, peripheral desaturation or hypotension on initial assessment (**Table 2**).

In the propensity-matched cohort, patients on statins had significantly lower white blood cell count at presentation [7.6 (5.5 – 10.3) vs. 8.1 (5.8 – 11.6)] and lower CRP levels [100.0 (46.2 – 168.5) vs. 120.7 (61.2 – 194.9)] ($p < 0.01$ for both) (**Table 2**). There were no significant differences in high-sensitivity troponin T, D-dimer, ferritin, or ESR levels between groups.

Clinical Outcomes of Propensity-Matched Cohort. Differences in clinical outcomes in the propensity-matched sample are presented in **Table 3**. The primary endpoint occurred in 96 (14.8%) patients receiving statins compared to 172 (26.5%) not receiving statins, (OR 0.48, 95% CI 0.36 – 0.64, $p < 0.001$). The secondary endpoint occurred in 179 (27.6%) patients receiving statins compared to 269 (41.5%) not receiving statins, (OR 0.54, 95% CI 0.43 – 0.68, $p < 0.001$). Patients with antecedent statin use had lower rates of in-hospital mortality at any time compared with individuals who were not on statins (20.8% vs. 33.7%, OR 0.46, 95% CI 0.36 – 0.60, $p < 0.001$). There were no significant differences in invasive mechanical ventilation, vasopressor use, renal replacement therapy, or length of stay between the groups.

Multivariable Adjustment in Overall Cohort. Statin use was significantly associated with a reduction in the primary endpoint (in-hospital mortality within 30 days) in the overall cohort in univariate (OR 0.69, 95% CI 0.56-0.85) and multivariable adjusted analysis (OR 0.49, 95% CI 0.38-0.63) (**Table 4**). Other factors associated with increased odds of the primary endpoint included age, male sex, history of atrial arrhythmias, and diabetes (**Figure 1**). Outpatient prescriptions of oral anticoagulants and P2Y12 inhibitor were also protective. These results were in agreement with sensitivity analyses performed within the dataset restricted to patients with hypertension, coronary artery disease and stroke/transient ischemic attack, and in the dataset with modified definition of antecedent statin use (**Supplemental Figures 3 and 4**).

In addition, statin use was associated with reduced hazards of the secondary endpoint in the overall cohort in univariate (OR 0.75, 95% CI 0.63-0.89) and multivariable adjusted analysis (OR 0.54, 95% CI 0.44 – 0.67) (**Table 4**). Other factors associated with increased odds of secondary endpoint included male sex, age, history of atrial arrhythmias, diabetes, and stroke/TIA (**Figure 2**).

Discussion

The principal findings of this detailed analysis regarding antecedent statin use in hospitalized patients with COVID-19 are 1) antecedent statin use was common in our cohort, as 36% of patients admitted to our institution were prescribed statins prior to their index admission; 2) patients receiving statins were older, with a higher burden of cardiovascular comorbidities, 3) patients receiving statins tended to present with lower levels of CRP, and 4) antecedent statin use was associated with significantly lower odds of patients experiencing the primary endpoint of in-hospital mortality within 30 days as well as the secondary endpoint of in-hospital mortality or invasive mechanical ventilation requirement within 30 days in a propensity-matched analysis.

In addition to respiratory failure due to pneumonia and ARDS, COVID-19 is known to result in a number of extrapulmonary manifestations²³. Posited mechanisms explaining the multiorgan dysfunction that can result from severe COVID-19 presentations include but are not limited to direct effects of SARS-CoV-2 infection as well as indirect effects of a dysregulated immune response and hyperinflammatory state²³. This is supported by clinical and laboratory markers of inflammation, as well as histopathologic and post-mortem data, which demonstrate extensive inflammation and endothelialitis as well as isolation of viral RNA in tissues from several organ systems in patients with COVID-19²³⁻²⁷. Cardiovascular complications, specifically myocardial injury and thrombotic complications, are common and relate closely to prognosis¹³. Therefore, identifying treatment strategies to prevent serious sequelae of this viral infection may have the potential to improve prognosis. The current analysis suggests that statins merit further evaluation as prophylactic and treatment agents for patients with COVID-19 given their pleiotropic properties and potentially disease-modifying effects in the setting of this viral illness.

There are many potential explanations as to how statins may have contributed to lower 30-day in-hospital mortality and invasive mechanical ventilation in our cohort, despite high prevalence of

cardiovascular comorbidities in patients with antecedent statin use. Statins, which target HMG-CoA (3-hydroxy-3-methylglutaryl coenzyme A) reductase, confer a significant mortality benefit in patients with atherosclerotic cardiovascular disease^{5,28,29}, who are overrepresented in hospitalized patients with COVID-19. In addition to hyperlipidemia and a number of other cardiovascular risk factors, inflammation has been identified as a key modulator of atherogenesis and can contribute considerably to adverse cardiovascular events^{5,30,31}. The potential benefits from statins extend beyond cholesterol-lowering properties, as there is a robust literature supporting the anti-inflammatory properties of statins in the preclinical and clinical arenas, suggesting that these drugs can stabilize and restore endothelial function, and lower rates of circulating inflammatory biomarkers such as CRP^{5,32}. Patients receiving statins presented with significantly lower CRP levels in this cohort compared with those who were not on statins.

Plaque stabilization^{33,34} and anti-thrombotic properties³⁵ are also favorable characteristics of this class of drugs. It has previously been demonstrated in several series of COVID-19 patients that pre-existing cardiovascular disease is associated with risk for clinical decompensation and severe disease^{13,36}. Therefore, it is conceivable that antecedent statin use may confer benefit by preventing myocardial injury and infarction as well as thrombotic events, both of which may have influenced mortality and endotracheal intubation rates, due to their multitude of effects. Similar mechanism may plausibly explain the association of outpatient use of antiplatelet agents and anticoagulants with lower mortality in patients with COVID-19, although these were not the focus of our study.

Other mechanisms, which may explain the effects of statin use in patients with COVID-19, have also been suggested. Functional membrane microdomains or lipid rafts consist of cholesterol and sphingolipids⁹⁻¹¹, and viruses may gain entry to cells via receptors which are concentrated in these regions of the plasma membrane¹². Thus, it has been theorized that statin-mediated reduction in cholesterol levels may sufficiently alter the makeup of these lipid rafts¹², potentially preventing or reducing likelihood for viral infection or replication, and hence disease severity. Though lipid levels were not available for our entire cohort, we did find lower levels of total cholesterol and low-density lipoprotein in patients receiving statins. Additionally, a recent computational docking analysis was performed to assess the interaction between an important SARS-CoV-2 protease (Mpro)³⁷ and statins³⁸. Interestingly, these authors found that several statins demonstrated stronger interactions with Mpro than some protease inhibitors, implicating a potential mechanism by which statins may be able to interfere with SARS-CoV-2 replication. Preclinical evidence suggests that statin use (as with ACEi and ARBs) can contribute to increased ACE2 expression and epigenetic modification³⁹. As ACE2 serves as the entry point for SARS-CoV-2 to human hosts, it remains to be completely understood how the modulation and modification of ACE2 levels may impact viral replication and infectivity.

In addition to the mechanisms above, studies prior to the current COVID-19 era evaluated the use of statins to prevent progression of ARDS and limit severity of illness^{5,15,19,40,41}, and evidence in this space is incomplete. While the primary results of the randomized SAILS (Statin for Acutely Injured Lungs From Sepsis) and HARP-2 trials did not demonstrate any benefit to statin use in ARDS^{19,20}, a secondary

analysis of HARP-2 suggested improved survival with statin use in a hyperinflammatory phenotype¹⁵. Subphenotype analysis of SAILS did not replicate these results⁴². In light of these dissimilar findings, it is important to note that these trials administered different drugs and were characterized by different inclusion criteria⁴³. Whether specific statins confer greater benefit due to higher bioavailability in lung tissue or more profound pleiotropic effects remains to be completely understood. However, the benefit noted from statins in our cohort may share mechanisms with some of the prior positive statin studies in the ARDS literature.

The limited evidence available regarding statins in the COVID-19 literature confirms the findings presented in the present manuscript. In a separate study which evaluated the prevalence and impact of myocardial injury in 2,736 hospitalized patients to the Mount Sinai Hospital System in New York City, 36% of this cohort was receiving statins prior to admission⁴⁴. In their multivariable model, while not the focus of their analysis, statin use was associated with significantly lower rates of in-hospital mortality (OR 0.57, 95% CI 0.47-0.69)⁴⁴. Additionally, a separate study of 154 elderly individuals (mean age 86 years) suggested that statin use prior to admission was associated with less severe symptoms, but they did not assess in-hospital mortality⁴⁵. Most recently, an analysis from the Wuhan, China demonstrated significantly lower 28-day mortality in patients who received inpatient statins compared with non-statin users (adjusted hazard ratio 0.58 [0.43-0.80])⁴⁶. In this study, however, less than 10% of hospitalized patients received statins, and may not be representative of Western populations with higher burden of cardiovascular comorbidities. Moreover, their focus on in-hospital statin use in an observational setting may be subject to immortal time bias. With these studies as well as the findings of the present analysis in mind, the results of ongoing randomized clinical trials and registries will be crucial, as they may provide important prospective data regarding the potential benefits of statin therapy in COVID-19 (Clinicaltrials.gov Identifiers: NCT04407273, NCT04390074, NCT04348695, NCT04426084, NCT04333407, and NCT04380402).

Limitations. Our study has important limitations. As a retrospective analysis of electronic medical record data, there remains the potential for unmeasured confounders. However, we performed propensity matched analysis and multivariable adjustment with logistic regression to control for a number of demographic and clinical characteristics to minimize the likelihood for confounding. Additionally, we also performed a number of sensitivity analyses, including assessing outcomes in patients who received either outpatient or inpatient statins, and analyses restricted to cohort with cardiovascular disease, and findings remained consistent. Additionally, medication reporting and reconciliation in the electronic medical record, especially in the setting of the ongoing pandemic, may have been subject to errors on the part of individual clinicians. Moreover, given this mechanism of assessing antecedent statin use, it was not possible to verify patient adherence with statin therapy despite evidence of prescription in the electronic medical record. However, patients in the antecedent statin group had better lipid profiles, suggestive of medication effect. Additionally, errors with data entry are unlikely to affect the primary endpoint, inpatient mortality. To increase the capacity for critical care interventions, multiple temporary intensive care units (ICU) were created in previously non-ICU patient care areas at our institution. Thus,

assessment for need for ICU level-of-care or outcomes in ICU patients was not possible. We did, however, assess need for invasive mechanical ventilation as part of the key secondary endpoint, a therapy which was almost exclusively used in ICU settings. Further, patients who are receiving statins may reflect overall better outpatient care, and possibly a low-risk cohort. However, patients on statins were much older, and had a more severe burden of comorbidities in our study. Moreover, we examined proxy variables for socioeconomic status, including NYC borough of residence and medical insurance, and these were not significantly different between the two groups. Lastly, a small proportion of patients (2.5%) included in this analysis remained hospitalized at the end of study period, and so reporting on in-hospital outcomes in such patients remains incomplete at this time.

Conclusions

In this large analysis from a quaternary academic medical institution in an epicenter of the COVID-19 pandemic, we demonstrated that antecedent statin use was associated with significantly lower rates of in-hospital mortality within 30 days. These results indicate the important need for randomized controlled trials evaluating the benefits of statin therapy in patients affected by COVID-19.

Abbreviations

ACE2 = angiotensin-converting enzyme 2

ARDS = acute respiratory distress syndrome

COVID-19 = coronavirus disease 2019

SARS-CoV-2 = severe acute respiratory syndrome coronavirus 2

Declarations

Data Availability

Deidentified data will be made available upon request to the corresponding authors.

Code availability

The analysis code utilized for this study will be made available upon request to the corresponding authors.

Disclosures

Dr. Gupta received payment from the Arnold & Porter Law Firm for work related to the Sanofi clopidogrel litigation and from the Ben C. Martin Law Firm for work related to an inferior vena cava filter litigation; received consulting fees from Edward Lifesciences; and holds equity in the healthcare telecardiology

startup Heartbeat Health. Dr. Madhavan has received support from an institutional grant by the National Institutes of Health/National Heart, Lung, and Blood Institute to Columbia University Irving Medical Center (T32 HL007854). Dr. Bikdeli reports that he is a consulting expert, on behalf of the plaintiff, for litigation related to a specific type of IVC filter. Dr. Cummings reports being a co-investigator for clinical trials evaluating the efficacy and safety of Remdesivir (Gilead Sciences) and convalescent plasma (Amazon) in hospitalized patients with COVID-19. Support for this work, which is unrelated to the current study, is paid to Columbia University. Dr. Brodie receives research support from ALung Technologies, he was previously on their medical advisory board. He has been on the medical advisory boards for Baxter, BREETHE, Xenios and Hemovent. Dr. Stone reports speaker or other honoraria from Cook, Terumo, QOOL Therapeutics and Orchestra Biomed; Consultant to Valfix, TherOx, Vascular Dynamics, Robocath, HeartFlow, Gore, Ablative Solutions, Miracor, Neovasc, V-Wave, Abiomed, Ancora, MAIA Pharmaceuticals, Vectorious, Reva, Matrizyme, Cardiomech; equity/options from Ancora, Qool Therapeutics, Cagent, Applied Therapeutics, Biostar family of funds, SpectraWave, Orchestra Biomed, Aria, Cardiac Success, MedFocus family of funds, and Valfix. Dr. Poterucha owns stock in Abbott Laboratories, AbbVie, Inc, Baxter International, and Edwards Lifesciences. Dr. Krumholz works under contract with the Centers for Medicare & Medicaid Services to support quality measurement programs; was a recipient of a research grant, through Yale, from Medtronic and the U.S. Food and Drug Administration to develop methods for post-market surveillance of medical devices; was a recipient of a research grant with Medtronic and is the recipient of a research grant from Johnson & Johnson, through Yale University, to support clinical trial data sharing; was a recipient of a research agreement, through Yale University, from the Shenzhen Center for Health Information for work to advance intelligent disease prevention and health promotion; collaborates with the National Center for Cardiovascular Diseases in Beijing; receives payment from the Arnold & Porter Law Firm for work related to the Sanofi clopidogrel litigation, from the Ben C. Martin Law Firm for work related to the Cook Celect IVC filter litigation, and from the Siegfried and Jensen Law Firm for work related to Vioxx litigation; chairs a Cardiac Scientific Advisory Board for UnitedHealth; was a participant/participant representative of the IBM Watson Health Life Sciences Board; is a member of the Advisory Board for Element Science, the Advisory Board for Facebook, and the Physician Advisory Board for Aetna; and is the co-founder of HugoHealth, a personal health information platform, and co-founder of Refactor Health, an enterprise healthcare AI-augmented data enterprise. Other authors report no disclosures. Dr Kirtane reports institutional funding to Columbia University and/or Cardiovascular Research Foundation from Medtronic, Boston Scientific, Abbott Vascular, Abiomed, CSI, Philips, ReCor Medical.

References

1. Zhou, P., *et al.* A pneumonia outbreak associated with a new coronavirus of probable bat origin. *Nature* (2020).
2. Vaduganathan, M., *et al.* Renin–angiotensin–aldosterone system inhibitors in patients with Covid-19. *New England Journal of Medicine* **382**, 1653-1659 (2020).

3. Tay, M.Z., Poh, C.M., Rénia, L., MacAry, P.A. & Ng, L.F. The trinity of COVID-19: immunity, inflammation and intervention. *Nature Reviews Immunology*, 1-12 (2020).
4. Sanders, J.M., Monogue, M.L., Jodlowski, T.Z. & Cutrell, J.B. Pharmacologic Treatments for Coronavirus Disease 2019 (COVID-19): A Review. *JAMA* (2020).
5. Ridker, P.M., *et al.* Rosuvastatin to prevent vascular events in men and women with elevated C-reactive protein. *N Engl J Med* **359**, 2195-2207 (2008).
6. Oesterle, A., Laufs, U. & Liao, J.K. Pleiotropic Effects of Statins on the Cardiovascular System. *Circ Res* **120**, 229-243 (2017).
7. Bikdeli, B., *et al.* Pharmacological Agents Targeting Thromboinflammation in COVID-19: Review and Implications for Future Research. *Thromb Haemost* (2020).
8. Kong, F., *et al.* Atorvastatin suppresses NLRP3 inflammasome activation via TLR4/MyD88/NF-kappaB signaling in PMA-stimulated THP-1 monocytes. *Biomed Pharmacother* **82**, 167-172 (2016).
9. Guo, H., *et al.* The Important Role of Lipid Raft-Mediated Attachment in the Infection of Cultured Cells by Coronavirus Infectious Bronchitis Virus Beaudette Strain. *PLoS One* **12**, e0170123 (2017).
10. Wang, H., *et al.* SARS coronavirus entry into host cells through a novel clathrin- and caveolae-independent endocytic pathway. *Cell Res* **18**, 290-301 (2008).
11. Lu, Y., Liu, D.X. & Tam, J.P. Lipid rafts are involved in SARS-CoV entry into Vero E6 cells. *Biochem Biophys Res Commun* **369**, 344-349 (2008).
12. Bifulco, M. & Gazzo, P. Statins in coronavirus outbreak: It's time for experimental and clinical studies. *Pharmacol Res* **156**, 104803 (2020).
13. Driggin, E., *et al.* Cardiovascular Considerations for Patients, Health Care Workers, and Health Systems During the Coronavirus Disease 2019 (COVID-19) Pandemic. *J Am Coll Cardiol* (2020).
14. Shyamsundar, M., *et al.* Simvastatin decreases lipopolysaccharide-induced pulmonary inflammation in healthy volunteers. *Am J Respir Crit Care Med* **179**, 1107-1114 (2009).
15. Calfee, C.S., *et al.* Acute respiratory distress syndrome subphenotypes and differential response to simvastatin: secondary analysis of a randomised controlled trial. *Lancet Respir Med* **6**, 691-698 (2018).
16. Grudzinska, F.S., *et al.* Statin therapy in patients with community-acquired pneumonia. *Clin Med (Lond)* **17**, 403-407 (2017).
17. Mansur, A., *et al.* Impact of statin therapy on mortality in patients with sepsis-associated acute respiratory distress syndrome (ARDS) depends on ARDS severity: a prospective observational cohort study. *BMC Med* **13**, 128 (2015).
18. Yende, S., *et al.* Understanding the potential role of statins in pneumonia and sepsis. *Crit Care Med* **39**, 1871-1878 (2011).
19. McAuley, D.F., *et al.* Simvastatin in the acute respiratory distress syndrome. *N Engl J Med* **371**, 1695-1703 (2014).

20. National Heart, L., *et al.* Rosuvastatin for sepsis-associated acute respiratory distress syndrome. *N Engl J Med* **370**, 2191-2200 (2014).
21. Cummings, M.J., *et al.* Epidemiology, clinical course, and outcomes of critically ill adults with COVID-19 in New York City: a prospective cohort study. *Lancet* (2020).
22. Reynolds, H.R., *et al.* Renin-Angiotensin-Aldosterone System Inhibitors and Risk of Covid-19. *N Engl J Med* **382**, 2441-2448 (2020).
23. Gupta, A., Madhavan, M.V. & Sehgal, K. Extrapulmonary Manifestations of COVID-19 *Nature Medicine* (2020 (accepted): <https://doi.org/10.1038/s41591-020-0968-3>).
24. Ackermann, M., *et al.* Pulmonary Vascular Endothelialitis, Thrombosis, and Angiogenesis in Covid-19. *N Engl J Med* (2020).
25. Wichmann, D., *et al.* Autopsy Findings and Venous Thromboembolism in Patients With COVID-19: A Prospective Cohort Study. *Ann Intern Med* (2020).
26. Varga, Z., *et al.* Endothelial cell infection and endotheliitis in COVID-19. *Lancet* (2020).
27. Schaller, T., *et al.* Postmortem Examination of Patients With COVID-19. *JAMA* (2020).
28. Randomised trial of cholesterol lowering in 4444 patients with coronary heart disease: the Scandinavian Simvastatin Survival Study (4S). *Lancet* **344**, 1383-1389 (1994).
29. Yusuf, S., *et al.* Blood-Pressure and Cholesterol Lowering in Persons without Cardiovascular Disease. *N Engl J Med* **374**, 2032-2043 (2016).
30. Libby, P., Ridker, P.M., Hansson, G.K. & Leducq Transatlantic Network on, A. Inflammation in atherosclerosis: from pathophysiology to practice. *J Am Coll Cardiol* **54**, 2129-2138 (2009).
31. Ridker, P.M. & Luscher, T.F. Anti-inflammatory therapies for cardiovascular disease. *Eur Heart J* **35**, 1782-1791 (2014).
32. Jain, M.K. & Ridker, P.M. Anti-inflammatory effects of statins: clinical evidence and basic mechanisms. *Nat Rev Drug Discov* **4**, 977-987 (2005).
33. Nicholls, S.J., *et al.* Effect of two intensive statin regimens on progression of coronary disease. *N Engl J Med* **365**, 2078-2087 (2011).
34. Kwon, O., *et al.* Relationship Between Serum Inflammatory Marker Levels and the Dynamic Changes in Coronary Plaque Characteristics After Statin Therapy. *Circ Cardiovasc Imaging* **10**(2017).
35. Kunutsor, S.K., Seidu, S. & Khunti, K. Statins and primary prevention of venous thromboembolism: a systematic review and meta-analysis. *Lancet Haematol* **4**, e83-e93 (2017).
36. Prescribing information. Brilinta (ticagrelor). Wilmington, DE: AstraZeneca LP, 07/2011.
37. Jin, Z., *et al.* Structure of M(pro) from SARS-CoV-2 and discovery of its inhibitors. *Nature* **582**, 289-293 (2020).
38. Reiner, Z., *et al.* Statins and the COVID-19 main protease: in silico evidence on direct interaction. *Arch Med Sci* **16**, 490-496 (2020).
39. Alexander, S.P.H., *et al.* A rational roadmap for SARS-CoV-2/COVID-19 pharmacotherapeutic research and development. IUPHAR Review 29. *Br J Pharmacol* (2020).

40. Nagendran, M., *et al.* Statin therapy for acute respiratory distress syndrome: an individual patient data meta-analysis of randomised clinical trials. *Intensive Care Med* **43**, 663-671 (2017).
41. O'Neal, H.R., Jr., *et al.* Prehospital statin and aspirin use and the prevalence of severe sepsis and acute lung injury/acute respiratory distress syndrome. *Crit Care Med* **39**, 1343-1350 (2011).
42. Sinha, P., *et al.* Latent class analysis of ARDS subphenotypes: a secondary analysis of the statins for acutely injured lungs from sepsis (SAILS) study. *Intensive Care Med* **44**, 1859-1869 (2018).
43. Heijnen, N.F.L., Bergmans, D., Schnabel, R.M. & Bos, L.D.J. Targeted treatment of acute respiratory distress syndrome with statins—a commentary on two phenotype stratified re-analysis of randomized controlled trials. *J Thorac Dis* **11**, S296-S299 (2019).
44. Paranjpe, I., *et al.* Association of Treatment Dose Anticoagulation with In-Hospital Survival Among Hospitalized Patients with COVID-19. *J Am Coll Cardiol* (2020).
45. De Spiegeleer, A., *et al.* The effects of ARBs, ACEIs and statins on clinical outcomes of COVID-19 infection among nursing home residents. *J Am Med Dir Assoc* (2020).
46. Zhang, X.J., *et al.* In-Hospital Use of Statins Is Associated with a Reduced Risk of Mortality among Individuals with COVID-19. *Cell Metab* (2020).

Tables

Table 1. Baseline Characteristics in Unmatched and Propensity-Matched Cohorts of Patients Hospitalized with COVID-19

	Unmatched			Matched		
Total N= 2626	Statin Use	No Statin Use	p-value	Statin Use (n = 648)	No Statin Use (n = 648)	p-value
	951 (36.2%)	1675 (63.8%)				
Demographics						
Age, years, median (IQR)	70 (63 - 79)	62 (49 - 76)	<0.001	69 (61 - 77)	71 (60 - 81)	0.18
Body Mass Index (kg/m ²)	28.3 (24.7 - 32.8)	27.9 (24.5 - 32.6)	0.23	28.1 (24.7 - 32.4)	27.1 (23.8 - 32.0)	0.66
Sex			0.06			1.0
Male	519 (34.7%)	978 (65.3%)		366 (56.5%)	366 (56.5%)	
Female	432 (38.2%)	697 (61.7%)		282 (43.5%)	282 (43.5%)	
Race/Ethnicity			0.12			0.76
Hispanic	489 (51.4%)	825 (49.2%)		327 (50.5)	310 (47.8%)	
Non-Hispanic White	88 (9.3%)	149 (8.9%)		60 (9.3%)	68 (10.5%)	
Non-Hispanic Black	126 (13.2%)	194 (11.6%)		87 (13.4%)	87 (13.4%)	
Others/Missing	248 (26.1%)	507 (30.3%)		174 (26.9%)	183 (28.2%)	
Location			0.88			0.50
Manhattan	553 (58.1%)	936 (55.9%)		371 (57.3%)	381 (58.8%)	
Brooklyn	24 (2.5%)	46 (2.7%)		16 (2.5%)	12 (1.9%)	
Queens	29 (3.0%)	47 (2.8%)		25 (3.9%)	16 (2.5%)	
Bronx	294 (3.1%)	546 (3.3%)		197 (30.4%)	209 (32.2%)	
Staten Island	2 (0.2%)	4 (0.2%)		2 (0.3%)	1 (0.1%)	
Outside NYC	49 (5.1%)	96 (5.7%)		37 (5.7%)	29 (4.5%)	
Insurance			<0.001			0.80
Medicare/Medicaid	599 (63.0%)	896 (53.6%)		396 (61.1%)	399 (61.6%)	
Commercial	337 (35.4%)	710 (42.5%)		241 (37.2%)	235 (36.2%)	
Other/Uninsured	15 (1.6%)	65 (3.9%)		11 (1.7%)	14 (2.1%)	
Comorbidities						
Hypertension	704 (74.0%)	726 (43.3%)	<0.001	434 (67.0%)	453 (69.9%)	0.28

Diabetes	531 (55.8%)	437 (26.1%)	<0.001	297 (45.8%)	309 (47.7%)	0.54
Coronary Artery Disease	214 (22.5%)	115 (6.9%)	<0.001	96 (14.8%)	91 (14.0%)	0.75
Heart Failure	162 (17.0%)	113 (6.7%)	<0.001	91 (14.0%)	78 (12.0%)	0.32
Chronic Lung Disease	196 (20.6%)	267 (15.9%)	<0.01	124 (19.1%)	124 (19.1%)	1.0
Chronic Kidney Disease	209 (22.0%)	161 (9.6%)	<0.001	116 (17.9%)	113 (17.4%)	0.88
Stroke/TIA	132 (13.9%)	93 (5.6%)	<0.001	68 (10.5%)	67 (10.3%)	1.0
Atrial arrhythmias*	105 (11.0%)	118 (7.0%)	<0.001	64 (9.9%)	61 (9.4%)	0.85
Liver disease	31 (3.3%)	53 (3.2%)	0.98	22 (3.4%)	21 (3.2%)	1.0
Home medications						
ACE inhibitors	187 (19.7%)	70 (4.2%)	<0.001	76 (11.7%)	63 (9.7%)	0.28
ARBs	125 (13.1%)	62 (3.7%)	<0.001	60 (9.3%)	52 (8.0%)	0.49
P2Y12 inhibitors	113 (11.9%)	20 (1.1%)	<0.001	35 (5.4%)	20 (3.1%)	0.05
Oral anticoagulants	193 (20.3%)	206 (12.3%)	<0.001	111 (17.1%)	118 (18.2%)	0.66
Beta-blockers	419 (44.0%)	212 (12.7%)	<0.001	194 (29.9%)	177 (27.3%)	0.32
Inpatient statins	732 (77.0%)	144 (8.6%)	<0.001	487 (75.1%)	86 (13.3%)	<0.001
Lipid profile (n = 850)						
Total Cholesterol	157.3 (127.7 - 191.0)	164.9 (136.0 - 201.9)	<0.01			
Low-Density Lipoprotein	77.9 (60.0 - 107.6)	88.0 (67.0 - 117.0)	<0.01			
High-Density Lipoprotein	43.0 (34.0 - 54.4)	42.0 (32.4 - 54.4)	0.25			
Triglycerides	136.0 (98.0 - 187.8)	136.0 (93.7 - 215.5)	0.22			

Data are presented as N (%). *Any atrial fibrillation, atrial flutter, and supraventricular tachycardia. ACE = Angiotensin-converting enzyme, ARB = angiotensin receptor blocker, IQR = interquartile range, NYC = New York City, TIA = transient ischemic attack

Table 2. Presenting Vital Signs and Laboratory Data in the Propensity-Matched Cohort of Patients Hospitalized with COVID-19

	Statins Use (n = 648)	No Statins Use (n=648)	P-Value
Presenting vital signs			
Temperature	99.0 (98.2 - 100.1)	98.8 (98.2 - 100.0)	0.21
Fever (temperature>100.4 °F)	139 (21.4%)	129 (19.9%)	0.54
Respiratory Rate	18.0 (18.0 - 20.0)	19.0 (18.0 - 22.0)	0.19
Tachypnea (RR>21)	143 (22.1%)	186 (28.7%)	<0.01
Oxygen saturation	94.0 (91.0 - 97.0)	94.0 (91.0 - 96.0)	0.03
Oxygen saturation <92%	186 (28.7%)	204 (31.5%)	0.30
Systolic Blood Pressure	123.0 (109.0 - 139.0)	124.0 (110.0 - 141.0)	0.38
Diastolic Blood Pressure	72.0 (64.8 - 81.0)	73.0 (65.0 - 81.0)	0.08
Hypotension (SBP<90 mmHg)	25 (3.9%)	15 (2.3%)	0.15
Heart rate	96.0 (86.0 - 109.3)	98.0 (86.0 - 110.3)	0.47
Tachycardia (HR>100)	270 (41.7%)	287 (44.3%)	0.37
Presenting laboratory values			
White blood cell count (10 ³ /uL)	7.6 (5.5 - 10.3)	8.1 (5.8 - 11.6)	<0.01
Platelet count (10 ³ /uL)	235.0 (159.0 - 329.0)	224.0 (149.0 - 314.0)	0.43
Creatinine (mg/dL)	1.8 (1.1 - 3.3)	1.9 (1.1 - 3.8)	0.19
AST (U/L)	81.0 (44.8 - 126.3)	84.0 (45.5 - 142.5)	0.32
ALT (U/L)	62.5 (33.3 - 95.8)	60.5 (33.3 - 107.3)	0.43
Albumin (g/dL)	3.6 (2.8 - 4.4)	3.6 (2.7 - 4.4)	0.93
Lactate (mmol/L)	2.8 (1.6 - 4.2)	3.1 (1.8 - 4.7)	0.35
Hs-Troponin (ng/L)	76.5 (34.3 - 164.8)	88.0 (39.8 - 162.3)	0.50
D-dimer (ug/mL)	2.1 (1.1 - 3.7)	2.5 (1.3 - 5.0)	0.37
Ferritin (ng/mL)	667.8 (335.1 - 1248.5)	714.2 (368.2 - 1299.0)	0.74
ESR (mm/hour)	67.5 (37.8 - 97.3)	66.5 (36.3 - 96.8)	0.84
CRP (mg/L)	100.0 (46.2 - 168.5)	120.7 (61.2 - 194.9)	<0.001

Data presented as N (%) or median (IQR). ALT = alanine transaminase, AST = aspartate transaminase, CRP = C-reactive protein, ESR = erythrocyte sedimentation rate, F = Fahrenheit, HR = heart rate, IQR = interquartile range, IL-6 = interleukin 6, SBP = systolic blood pressure.

Table 3. Clinical Outcomes in the Propensity-matched Cohort of Patients Hospitalized with COVID-19

	Statins Use (n = 648)	No Statins Use (n = 648)	P-Value
Primary endpoint	96 (14.8%)	172 (26.5%)	<0.001
Secondary endpoint	179 (27.6%)	269 (41.5%)	<0.001
In-hospital mortality (anytime)	112 (17.2%)	201 (31.0%)	<0.001
Mechanical ventilation (anytime)	130 (20.1%)	158 (24.4%)	0.07
Vasopressor use	151 (23.3%)	200 (30.9%)	<0.01
CVVH	37 (5.7%)	45 (6.9%)	0.42
Length of hospital stay (days)	7.0 (4.0 – 12.0)	7.0 (3.0 – 14.0)	0.27
Days on ventilator	13.5 (3.8 – 31.6)	12.8 (2.6 – 34.7)	0.77

Data presented as Kaplan Meier estimates N (%) or median (IQR).

Table 4. Associations between Statin Use with Primary and Second Endpoints in Propensity-Matched Cohort and Multivariable-Adjusted Overall Cohorts of Patients Hospitalized with COVID-19

Primary endpoint - In-hospital mortality within 30 days			
	OR	95% CI	p-value
PS-matched	0.48	0.36 - 0.63	<0.001
Multivariable (overall)	0.49	0.38 - 0.63	<0.001
Secondary endpoint - In-hospital mortality or mechanical ventilation within 30 days			
	OR	95% CI	p-value
PS-matched	0.54	0.43 - 0.68	<0.001
Multivariable (overall)	0.54	0.44 - 0.67	<0.001

Figures

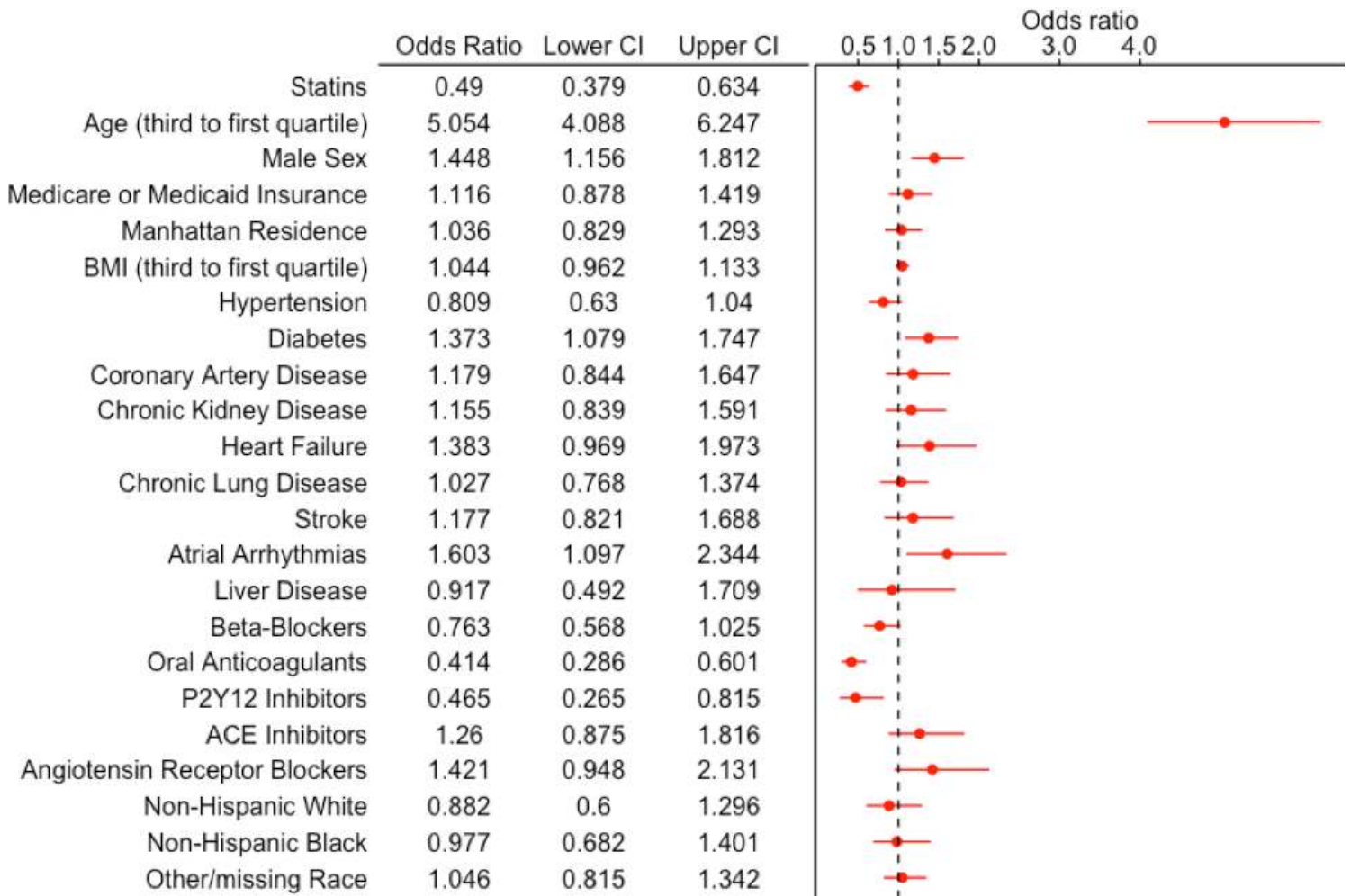


Figure 1

Forest Plot for In-Hospital Mortality Within 30 Days. Forest plot demonstrating the odds ratio (OR) and 95% confidence interval (CI) for in-hospital mortality within 30 days with antecedent statin use (vs. no antecedent statin use) after multivariable logistic regression in the overall cohort. A number of other sociodemographic and baseline medication variables are also presented in this forest plot.

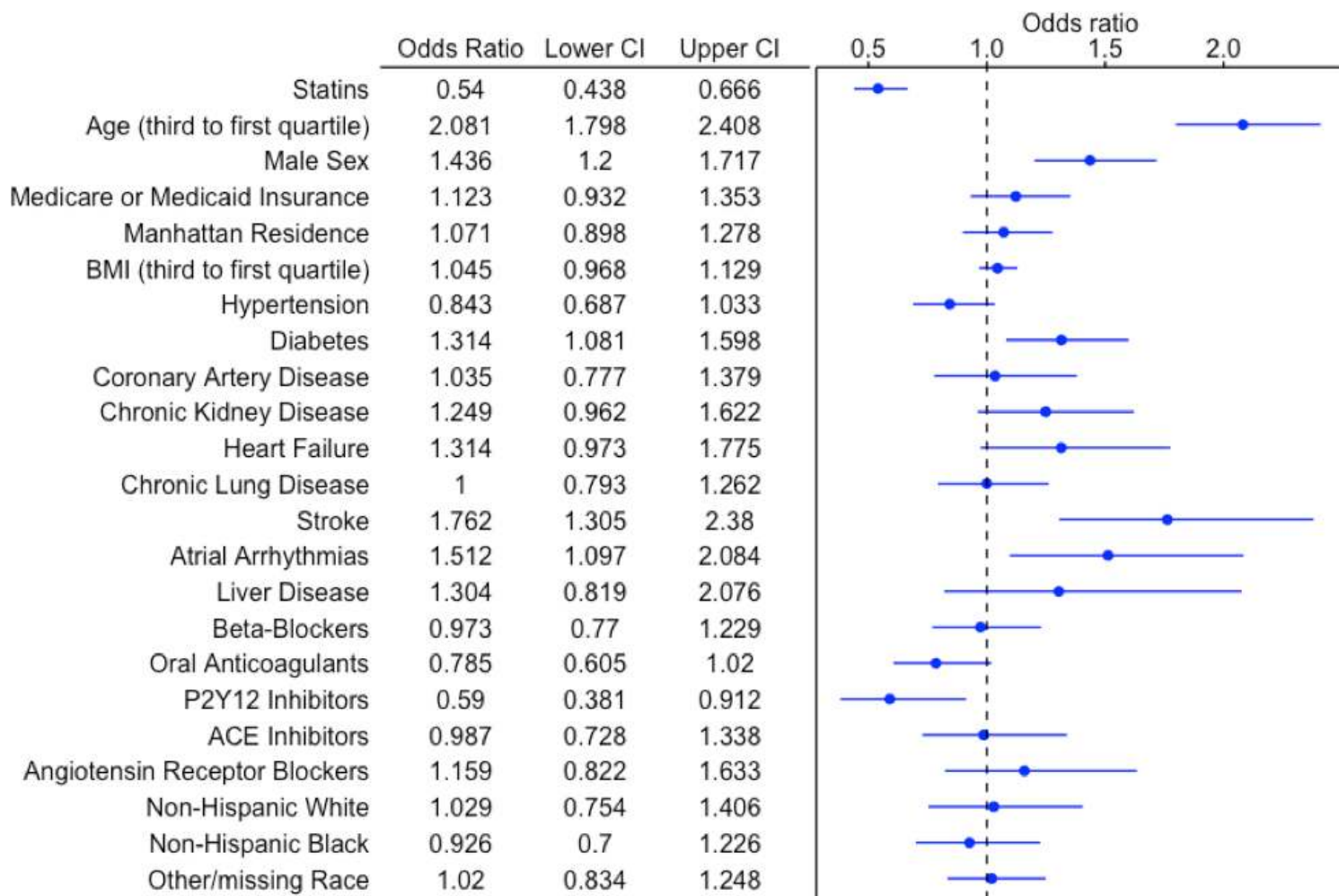


Figure 2

Forest Plot for In-hospital Mortality or Invasive Mechanical Ventilation Within 30 days. Forest plot demonstrating the odds ratio (OR) and 95% confidence interval (CI) for the composite endpoint of in-hospital mortality or invasive mechanical ventilation requirement within 30 days with antecedent statin use (vs. no antecedent statin use) after multivariable logistic regression in the overall cohort. A number of other sociodemographic and baseline medication variables are also presented in this forest plot.

Supplementary Files

This is a list of supplementary files associated with this preprint. Click to download.

- [supplementalfile.docx](#)