

Title: Association of Stimulants With Dopaminergic Alterations in Users of Cocaine, Amphetamine, and Methamphetamine: A Systematic Review and Meta-analysis

Authors

Abhishekh H Ashok MBBS^{1,2,3}, Yuya Mizuno MD^{3,4}, Nora D Volkow MD⁵, Oliver D

Howes MRCPsych MD PhD^{1,2,3}

Affiliation

¹ Psychiatric Imaging Group, MRC London Institute of Medical Sciences Centre (LMS), Du Cane Road, London, UK

² Psychiatric Imaging Group, Institute of Clinical Sciences (ICS), Faculty of Medicine, Imperial College London, Du Cane Road, London, UK

³ Department of Psychosis Studies, Institute of Psychiatry, Psychology & Neuroscience, King's College London, London, UK

⁴ Department of Neuropsychiatry, Keio University School of Medicine, Tokyo, Japan

⁵ National Institute on Alcohol Abuse and Alcoholism and National Institute on Drug Abuse, Bethesda, USA

Word count: 3598

Corresponding Author

Abhishekh H Ashok, MBBS
Department of psychosis studies
Institute of Psychiatry, Psychology and Neurosciences
Kings College London
16 De Crespigny Park, London SE5 8AF
Email: abhishekh.ashok@kcl.ac.uk
Ph: 02083833703

Oliver D Howes D.M., Ph.D., M.A., B. M. B.Ch., MRCPsych
Professor, Psychiatric Imaging Group, MRC London Institute of Medical Sciences Centre (LMS), Du Cane Road, London W12 0NN. (Email: oliver.howes@lms.mrc.ac.uk)
Ph: +44 (0)20 8383 3298

Date of revision 12 January 2017

Abstract:

Importance: Stimulant use disorder is common, affecting between 0.3 to 1.1% of the population, and costs over \$85 billion per year globally. There are currently no licensed treatments. Several lines of evidence implicate the dopamine system in the pathophysiology of substance use disorder. Thus understanding the nature of dopamine dysfunction seen in stimulant users has the potential to aid the development of new therapeutics.

Objective: To comprehensively review the in-vivo imaging evidence for dopaminergic alterations in stimulant (cocaine or amphetamine/methamphetamine) drug abuse or dependence.

Data sources: The entire PubMed, EMBASE and PsycINFO databases were searched for studies from inception date to May 14, 2016.

Study selection: A total of 31 studies were identified that compared dopaminergic measures between 519 stimulant users and 512 controls using positron emission tomography or single-photon emission computed tomography to measure striatal dopamine synthesis or release, or dopamine transporter or receptor availability.

Data extraction and synthesis: Demographic, clinical and imaging measures were extracted from each study and meta-analyses and sensitivity analyses were conducted for stimulants combined and cocaine and amphetamines separately where there were sufficient studies.

Main Outcomes and Measures: We determined the difference in dopamine release (assessed using change in the D2/3 receptor availability following administration of amphetamine or methylphenidate), transporter and receptor availability in cocaine, amphetamine and methamphetamine users and healthy controls.

Results: In majority of the studies the duration of abstinence varied from 5 days to 3 weeks.

There was a significant decrease in striatal dopamine release (stimulants combined: Hedge's $g = -0.84$; cocaine: -0.87 , both $p < 0.001$), dopamine transporter availability (stimulants combined: Hedge's $g = -0.91$, $p < 0.01$; amphetamine and methamphetamine: Hedge's $g = -1.47$, $p < 0.001$) and D2/3 availability (stimulants combined: Hedge's $g = -0.76$; cocaine: -0.73 ; amphetamine and methamphetamine: -0.81 , all $p < 0.001$). We did not find consistent alterations in vesicular monoamine transporter, dopamine synthesis or D1 receptor studies.

Conclusion and relevance: Our data suggest that both pre and post-synaptic aspects of the dopamine system in the striatum are down-regulated in stimulant users. We discuss the commonality and difference between these findings and the discrepancies with the preclinical literature as well as their implications for future drug development.

Introduction:

According to World Health Organization estimates amphetamine-like stimulants (predominantly methamphetamine and amphetamine) and cocaine are the second and fourth most common forms of illicit substance abuse respectively (world drug report 2015; <https://www.unodc.org>). The world-wide prevalence of amphetamine-like stimulant use was estimated at between 0.3-1.1 percent in 2015 (between 13.8 million and 53.8 million users), and for cocaine it was 0.3-0.4 percent of the population aged 15-64 (between 13 million and 20 million users) (world drug report 2015; <https://www.unodc.org>). Stimulant use is thus a significant burden to society ¹. Dopamine dysregulation is hypothesized to underlie addictive behaviour ²⁻⁶ and stimulants such as amphetamine and cocaine act on dopamine transporters and increase extracellular dopamine ⁷⁻¹⁰. Furthermore, preclinical models show that the acute rewarding effects of stimulant drugs are linked to the release of dopamine in the nucleus accumbens measured using micro-dialysis or fast scan cyclic voltammetry ^{6,11}. Positron emission tomography (PET) and single photon emission computed tomography (SPECT) enable us to measure dopaminergic function in-vivo in humans ¹². Using these imaging tools, human studies have found that stimulant drugs increase synaptic dopamine levels in the whole striatum (including ventral striatum which includes the nucleus accumbens) and that increases are associated with the subjective perception of drug reward in non-drug abusing controls ^{13,14}. However, determining the dopaminergic effects of stimulants in human stimulant users is essential as the neurobiological mechanisms may be different. A number of studies have investigated dopamine release, dopamine transporter and dopamine receptor levels in stimulant addiction. However, to our knowledge, there has not been a previous meta-analysis of these findings. Thus we aimed to synthesize the PET and SPECT imaging findings on dopaminergic

function in cocaine and amphetamine-like (amphetamine and methamphetamine) stimulant addiction and to consider their implications for its treatment. Since both drugs are known to increase extracellular dopamine levels, either by blocking (cocaine) or reversing (amphetamine/methamphetamine) the dopamine transporter, we pooled the data¹⁰. We group findings into studies of dopamine release, dopamine transporter availability, and dopamine receptor availability. We focus on the whole striatum as it is richly innervated with dopaminergic neurons and reliably imaged with PET and SPECT in humans¹⁵.

Methods:

Study selection

To be included in the meta-analysis, an article needed to investigate the striatal dopaminergic system in cocaine or amphetamine-like stimulant users (this included amphetamine and methamphetamine) and a control group, including the mean and standard deviations for both groups (see supplementary figures 1 and 2 for the study selection and supplementary methods for further details on the search and inclusion criteria). We focused on amphetamine and methamphetamine as these are the most widely used amphetamine-like drugs.

Data extraction

The main outcome measure was the difference in the dopaminergic imaging index between stimulant users and controls. The following variables were extracted from all the studies: authors, year of publication, subject characteristics of the control and stimulant users group (group size, age, sex, substance use characteristics, comorbid substance abuse, method of abstinence confirmation, duration of abstinence, diagnosis), imaging characteristics

(method, radiotracer, scanner type and resolution), route of administration of drug challenge and modelling method.

Data analysis

The main outcome measure was the effect size for the dopaminergic index for the whole striatum in the stimulant users (cocaine and amphetamine-like stimulants studies combined) using a random effects model. Separate secondary meta-analyses were conducted for the studies of dopamine transporter (DAT), dopamine release and dopamine receptor availability in cocaine and amphetamine-like substance users to determine if the effects were consistent across categories of stimulants. Publication bias was assessed using funnel plots as well as regression tests. Heterogeneity was estimated using the I^2 value (I^2 values <50% indicate low to moderate heterogeneity, whereas I^2 >50% indicate moderate to high heterogeneity). Leave-one-out sensitivity analyses were conducted. A significance level of $p < 0.05$ (2-tailed) was taken as significant (see supplementary materials for further methodological details).

Results

Dopamine release

There were 7 studies (5 in cocaine users and 2 in amphetamine-like stimulant users) assessing dopamine release in 164 stimulant users with 139 healthy controls¹⁶⁻²². The meta-analysis showed a significant reduction in dopamine release in the stimulant users relative to controls with an effect size of -0.84 ([95% confidence interval (CI), $-1.08 - -0.60$], $p < 0.001$). This was also seen when the meta-analysis was restricted to cocaine users, effect size -0.87 ([95% CI, $-1.15 - -0.60$], $p < 0.001$). There were too few studies of amphetamine-

like stimulant users for a meta-analysis, but the effect sizes in the two studies were in the same direction (standardized mean difference (SMD): -1.05 [95% CI, $-1.76 - -0.34$] and -0.40 [95% CI, $-1.11 - 0.32$])^{20,21}. The results of heterogeneity and sensitivity analysis are provided in supplementary material.

Dopamine transporter:

There were 12 studies (3 in cocaine users²⁴⁻²⁶ and 9 in amphetamine-like stimulant users²⁷⁻³⁵) assessing dopamine transporter availability in 177 stimulant users and 191 healthy controls. The meta-analysis showed a significant reduction in dopamine transporter availability in the stimulant users relative to controls with an effect size of -0.91 ([95% CI, $-1.5 - -0.32$], $p < 0.01$). For sub-analysis, there were 9 studies in amphetamine-like stimulant users²⁷⁻³⁵ assessing dopamine transporter availability in 108 stimulant users and 126 healthy controls. The meta-analysis showed significantly reduced dopamine transporter availability in amphetamine-like stimulant users (effect size: -1.47 ([95% CI, $-1.83 - -1.1$], $p < 0.001$). There were 5 studies in cocaine users^{24-26,36,37}. However, one study was excluded as it included cocaine users with potential CNS co-morbidity (HIV)³⁶. This left too few studies for a separate meta-analysis in cocaine users. The results of these studies were inconsistent, with the two PET studies (where there was an overlap of samples) showing no significant difference in the DAT availability in cocaine users^{26,37}, whilst the two SPECT studies reported elevated DAT in cocaine users who were acutely abstinent^{24,25}. The two SPECT studies in cocaine users had durations of abstinence of a maximum of 4 days²⁵ and mean of 7 days.²⁴ As such, residual cocaine could block radiotracer binding to DAT, resulting in a slight underestimation of DAT levels in these studies. The results of heterogeneity and sensitivity analysis are provided in supplementary material.

Dopamine receptor availability

There were 19 studies assessing dopamine receptor availability in 342 stimulant users and 321 healthy controls (7 studies in amphetamine-like stimulant users^{20,21,38-42} and 12 studies in cocaine users^{16-19,22,37,43-48}).

The meta-analysis revealed an overall reduction in D2/3 receptor availability in stimulant users relative to controls with an effect size of -0.76 ([95% CI, $-0.92 - -0.6$], $p < 0.001$). In the separate analyses a reduction in D2/3 receptor availability was noted in both cocaine users (effect size = -0.73 [95% CI, $-0.94 - -0.53$], $p < 0.001$) and amphetamine-like stimulant users (effect size = -0.81 [95% CI, $-1.12 - -0.49$], $p < 0.001$) relative to controls. The results of heterogeneity and sensitivity analysis are provided in supplementary material.

Other dopaminergic measures:

There was only one study in stimulant users using 6-[¹⁸F]fluoro-dihydroxy-phenylalanine ([¹⁸F]-DOPA) assessing dopamine synthesis capacity⁴⁹. This study showed reduced dopamine synthesis capacity in cocaine users and the estimated effect size was found to be 0.46 [95% CI, $-0.46 - 1.39$]. We could not find any studies on dopamine synthesis capacity in amphetamine-like stimulant users. Four studies assessed vesicular monoamine transporter - 2 (VMAT2) availability, with inconsistent findings. Two studies showed significantly reduced VMAT2 availability, one in cocaine users with two weeks of abstinence [Hedge's g : 1.6 , 95% CI: $0.68 - 2.52$]⁵⁰, and the other in methamphetamine abusers after three months of abstinence [Hedge's g : 1.68 , 95% CI: $0.86 - 2.5$]²⁸. However, two studies in recently abstinent methamphetamine users (mean duration of abstinence: 2.6 days and 19 days) showed elevated VMAT2 levels [Hedge's g : 1.16 , 95% CI: $0.56 - 1.76$]^{51,52}. Moreover, given

that metamphetamine interacts with VMAT2 at the same site as the PET tracers and the relatively short duration of abstinence, it is possible that VMAT2 levels were underestimated in some subjects.

There was only one study on stimulant users and D1 receptors, which used [11C] NNC112 to compare cocaine abusers with controls⁵³. Though there were no differences in D1 receptors between groups, the availability of D1 receptors in cocaine abusers was negatively associated with the choice to self-administer cocaine by the cocaine abusers

Discussion:

To our knowledge this is first meta-analysis investigating the nature of dopaminergic dysfunction in stimulant users. Our main findings are that dopamine release, transporter levels and D2/3 receptor availability are all lower in vivo in stimulant users compared to healthy controls with large to very large effect sizes (Hedge's g : -0.84 , -0.91 and -0.76 respectively). This indicates that there is a generalised down-regulation of the dopaminergic system in stimulant users, as summarised in Figure 4. Our sensitivity analyses of the dopamine D2/3 receptor availability and dopamine release findings showed consistent results and we noted low heterogeneity across studies of cocaine and amphetamine-like drugs, and across differing radiotracers and techniques. However, there was a difference between results in amphetamine/methamphetamine and cocaine drug users in dopamine transporter availability. In amphetamine/methamphetamine users there were large and consistent reductions in dopamine transporter availability. In contrast for cocaine users, despite the limited number of studies preventing sub-analysis, there were two studies that showed no difference^{26,54} and two other studies that reported elevated dopamine transporter availability, both in acutely abstinent cocaine users^{24,25}. This may point to a mechanistic difference between the

effects of amphetamine-like drugs and cocaine on dopamine transporters, consistent with preclinical findings⁵⁵, and highlights the need for more studies in cocaine users. Cocaine is known to primarily act by blocking DAT, while amphetamine competitively inhibits dopamine re-uptake at DAT, and increases DAT mediated reverse-transport of dopamine from the cytoplasm into the synaptic cleft independent of action potential evoked vesicular release.⁷⁻⁹ It has also been suggested that amphetamine's actions depend on its concentration, with it acting primarily as a DAT blocker at low concentrations and reversing dopamine transport at high concentrations.⁷ In addition, amphetamine-like stimulants are known to trigger internalization of plasmalemmal DAT.⁵⁶ Finally, cocaine, amphetamine and methamphetamine are also known to act on serotonin and norepinephrine transporters, although their affinities for these are different.⁵⁷ Given these pharmacological differences between stimulants, there could be differences in dopaminergic effects between stimulants that are masked by pooling studies.

There are some specific issues that affect interpretation of the results. For studies of D2/3 receptors, the tracers generally used do not distinguish between D2 and D3 receptors, or between the high and low affinity forms of the D2 receptor, so the reduction could reflect a change in one, or more of these. However, two studies used [11C]-PHNO, which is selective for the D2 high affinity form and shows a higher affinity for D3 receptors over D2 receptors. These studies did not show significant differences between stimulant users and controls in the striatum^{44,46}. This could suggest that the reduction seen in our meta-analysis reflects a reduction in the low affinity form of the D2 receptor availability. Also, given that the radiotracers used to measure D2/3 receptor availability are sensitive to endogenous dopamine levels⁵⁸, one possible interpretation of our finding of reduced D2/3 receptor levels is that this reflects elevated synaptic dopamine levels. However, a dopamine depletion study in cocaine users has shown that baseline synaptic levels are also reduced⁴³. This indicates that the reduction in D2/3 receptor availability represents a reduction in D2/3 receptor levels. Furthermore, when our findings are taken with the observation of reductions in synaptic dopamine levels⁴³, and dopamine synthesis capacity⁴⁹, they suggest there is a generalised reduction

in presynaptic dopaminergic activity. Although, with the available data we could not specifically rule out the possibility of upregulation D3 receptor.

Limitations

In common with other meta-analyses of psychiatric imaging studies⁵⁹⁻⁶³, there are variations between studies in terms of both the sample characteristics, such as the inclusion of current or abstinent users, co-morbid use of other substances such as nicotine and alcohol and variations in the durations of abstinence, and methods, in particular in the radiotracer used and delineation of the striatum (see supplementary discussion).

Nevertheless, there was low heterogeneity across the analyses, with the exception of the dopamine transporter, and the random effects model we used allows for variations in effects. Furthermore, if anything, these variations between studies would obscure rather than account for the effects we observed. A general limitation of the literature, apparent in the funnel plots, is that there are few studies with large sample sizes. It should also be noted that there have been a relatively small number of studies on dopamine release and we could not investigate potential differences between oral and intravenous routes of drug challenge to elicit dopamine release. Although, in absolute terms the oral challenge studies showed lower release than those using an intravenous route, both indicated blunted release in stimulant users compared to controls.

Implications for understanding stimulant misuse and dependence

Preclinical studies using *in vivo* micro-dialysis and chronoamperometry conclusively demonstrate that acute administration of stimulants increases extra-cellular dopamine concentrations in the striatum, and nucleus accumbens.¹¹ Furthermore, *in vivo* fast-scan cyclic voltammetry and implantable micro-sensor studies, which are able to quantify the dopamine signalling over a sub-second timescale, have shown that stimulants increase phasic dopamine release^{6,11}, and human *in vivo* imaging studies also show evidence consistent with acute exposure of stimulants leading to increased synaptic dopamine either through cue induced dopamine release or blockade of DAT, and

that this is linked to subjective 'high'⁵⁴ and craving^{66,67}. Moreover, change in in vivo dopamine imaging indices, following amphetamine administration, has been shown to be directly related to change in microdialysis measures⁶⁸, providing convergence across methods. Thus there is consistency between the preclinical and clinical findings indicating that acute administration of stimulants results in increased extra-cellular dopamine either by stimulating release (amphetamines) or by DAT blockade (cocaine).

Our meta-analysis shows a consistent reduction in dopamine release in people who have been exposed to chronic stimulants. In contrast, preclinical models of chronic use are inconsistent, with some studies showing no change in basal dopamine output after withdrawal of chronic amphetamine⁶⁹⁻⁷² and cocaine⁷³⁻⁷⁷, whilst others have reported *increases* in dopamine output after cocaine withdrawal⁷⁸⁻⁸¹. The first major implication of our meta-analysis is thus that the findings in many preclinical models of chronic use do not reflect what is seen in the human studies. This suggests caution in extrapolating from preclinical models, and may explain the failure to develop treatments for stimulant addiction based on them. There are a number of potential explanations for this inconsistency, including differences in the dosing regimens and durations used in preclinical models relative to human usage patterns. Nevertheless, this discrepancy suggests we need to develop new preclinical models that reproduce the dopaminergic changes seen in the human condition.

Our findings are also striking in showing reductions in both presynaptic and post-synaptic aspects of the dopaminergic system, suggesting a generalised down-regulation. One potential explanation for the reduction in dopamine release and transporter availability (seen in amphetamine/methamphetamine users only) could be a loss of dopamine neurons per se or damage to the dopaminergic terminals. There is evidence that both cocaine and amphetamines induce apoptosis as indexed by activation of caspases, loss of mitochondrial potential, cytochrome c release and oxidative stress.⁸² However, in addition to this, amphetamine and methamphetamine induce dopaminergic neuron damage through the formation of quinones and free radicals.⁸³⁻⁸⁵

Moreover, preclinical models with methamphetamine have shown evidence of dopamine terminal damage that recovers with detoxification^{86,87}. Furthermore, in humans, dopamine transporters recover with detoxification in methamphetamine abusers (reviewed in^{5,35}), which was interpreted to indicate that dopamine neurons were not lost. Moreover in the only post-mortem study we could find, which was in methamphetamine abusers, there was evidence of reduction in dopamine transporters but not of dopamine neuronal loss⁸⁸. However preliminary evidence from two recent epidemiological studies that methamphetamine abuse might increase the risk for Parkinson's disease^{89,90} suggests that in some cases its abuse might accelerate age-associated dopamine neuronal degeneration⁹¹.

It has been suggested that repeated drug use causes tolerance by various mechanisms including dopamine receptor alterations, changes in second messenger systems and altered regulation of dopamine neuron function.⁹²⁻⁹⁴ Thus, it is possible that the dopaminergic differences noted in our meta-analysis could be due to the development of tolerance through one or more of these mechanisms. Pre-clinical studies have also demonstrated that dopaminergic synaptic transmission is modulated by glutamatergic and GABAergic neurons⁹⁴. Neuroimaging studies investigating these interactions are needed to determine if this is the case in humans.

Two alternative basic models are possible to account for both our pre and post-synaptic findings. The first is that repeated stimulant use results in adaptive changes in the dopamine system that lead to reduced firing of dopamine neurons, potentially similar to the depolarisation blockade that is seen after a period of repeated firing⁹⁵, and consequently reduced dopamine synthesis and release. In this context, reduced transporter levels may be compensatory in response to reduced tonic dopamine levels in the synapse. The reduction in D2/3 receptor levels is less easy to understand in the context of the presynaptic reductions. However, D2/3 receptors undergo internalisation following activation by dopamine, and this would reduce radiotracer binding, at least to a number of the tracers used in the studies in our analyses^{96,97}. Thus the reduction in D2/3 receptor availability could reflect a compensatory increase in internalized D2/3 receptors, which would reduce the

number of D2/3 receptors available to bind to dopamine. Repeated exposure may lead to loss of these internalized receptors and long-term transcriptional changes that reduce receptor availability. The second model is that reductions underlie the pathoetiology of stimulant misuse, and precede its onset. Thus individuals at risk of stimulant misuse may have reductions in dopamine release, transporter levels and D2/3 receptor levels secondary to genetic and/or environmental risk factors. Reductions in D2/3 receptor levels and reduced release of dopamine to stimulants could mean an individual is less sensitive to the effects of taking a stimulant, leading to escalating use. However, it is less easy to see how reduced dopamine transporter levels fit with this model, as they would be anticipated to prolong the effects of stimulants. Longitudinal studies on the effects of stimulant drugs on patients with attention deficit disorder showed downregulation of dopamine release with chronic exposure⁹⁸, which indicates that some of the changes are driven by chronic drug exposures. Finally, a hybrid model may best account for our findings. Evidence suggests that reduced D2/3 receptor levels may precede and predispose to the onset of stimulant misuse but also show further reductions during stimulant use⁹⁹, and similar effects may be seen with dopamine release and transporter levels. It is interesting to note in our meta-analysis that dopaminergic alterations are marked even in the studies of several months abstinence, with evidence suggesting that dopamine receptor density and release are down-regulated even after 9 months of abstinence³⁵. This suggests that effects may persist, with implications for understanding relapse. Our findings also support the opponent process model¹⁰⁰.

This highlights one fundamental issue raised by our meta-analysis, namely that current findings do not address the temporal relationship between down-regulation in the dopamine system and phase of addiction. Future longitudinal human PET studies as well as preclinical studies that investigate changes in the dopamine system prior to and during stimulant misuse-, and following abstinence are needed to test these models (Box 1; supplementary material). In addition this will help to identify biomarkers to guide treatment and predict outcomes.

Clinical implications of our findings

Our data identify a number of clear targets for treatment interventions. D2/3 receptors stand-out, given our finding of a large effect size reduction. This is further supported by studies in cocaine and in methamphetamine users showing that lower dopamine D2/3 receptor availability at baseline predicts relapse following treatment ^{19 21}. Our data also provide a rationale for the development of drugs that target the presynaptic dopaminergic system to restore tonic striatal dopamine release, which is necessary for the function of the striato-cortical indirect pathway (a key system disrupted in addiction) ⁵. This is supported by recent preclinical evidence showing that administration of the dopamine precursor L-DOPA restored the aberrant dopaminergic signalling in a cocaine addiction animal model ^{6,100}, and preliminary clinical evidence that inhibiting dopamine reuptake (e.g., with bupropion, modafinil, or mazindol), or inhibiting dopamine metabolism (e.g., with selegiline or disulfiram) might hold some promise in the treatment for stimulant addiction ¹⁰¹. Strategies to upregulate striatal D2 receptors have been shown in animal models to protect against compulsive stimulant drug intake ¹⁰² and, thus, interventions that lead to D2 up-regulation, such as physical activity as recently shown in a preliminary study in methamphetamine abusers ¹⁰³, merit further investigation. A number of dopaminergic treatments have been tried to treat stimulant use disorder with limited success to date. ¹⁰⁴⁻¹⁰⁶ Our data suggest some potential explanations for the lack of success and identify a number of clear targets for treatment interventions. D2/3 receptors stand-out, given our finding of a large effect size reduction. This is further supported by studies in cocaine and in methamphetamine users showing that lower dopamine D2/3 receptor availability at baseline predicts relapse following treatment ^{19 21}. Our findings may also explain why strategies to block dopamine neurotransmission, for example using dopamine receptor antagonists ¹⁰⁷, have largely been disappointing to date as dopamine receptor levels are already low, and suggest that strategies to increase dopamine receptor levels or sensitivity could have potential.

Conclusions

There is robust evidence for down-regulated presynaptic and post-synaptic dopamine function in stimulant addiction with large effect sizes. These findings suggest that drug development should target the restoration of dopaminergic function as a target for the treatment of stimulant addiction.

Acknowledgments Statement

Conflict of Interest Disclosure

Dr Ashok conducts research funded by the Medical Research Council (UK) and King's College London. Dr Mizuno has received manuscript fees or speaker's honoraria from Sumitomo Dainippon Pharma, Astellas, and Yoshitomi Yakuhin, fellowship grants from the Japanese Society of Clinical Neuropsychopharmacology (Eli Lilly Fellowship for Clinical Psychopharmacology) and the Mochida Memorial Foundation for Medical and Pharmaceutical Research, and consultant fees from Bracket within the past three years. Prof Volkow is Director of the National Institute on Drug Abuse (USA) and conducts research as an intramural scientist that is funded by the National Institute of Alcohol Abuse and Alcoholism (USA). Prof Howes conducts research funded by the Medical Research Council (UK), the National Institute of Health Research (UK) and the Maudsley Charity. Prof Howes has received investigator-initiated research funding from and/or participated in advisory/speaker meetings organized by Astra-Zeneca, BMS, Eli Lilly, Janssen, Lundbeck, Lyden-Delta, Servier, and Roche. Neither Prof Howes or his family have been employed by or have holdings/a financial stake in any biomedical company.

Funding/ Support: This study was funded by grants MC-A656-5QD30 from the Medical Research Council-UK, 666 from the Maudsley Charity 094849/Z/10/Z from the Brain and Behavior Research Foundation, and Wellcome Trust to Dr Howes and King's College London scholarship to Dr Ashok.

Author Contributions:

Dr Ashok and Dr Mizuno had full access to all the data in the study and takes responsibility for the integrity of the data and the accuracy of the data analysis.

Study concept and design: Ashok, Howes

Acquisition, analysis, or interpretation of data: All authors

Drafting of the manuscript: All authors

Critical revision of the manuscript for important intellectual content: All authors

Statistical analysis: Ashok

Administrative, technical, or material support: Ashok and Mizuno

Study supervision: Howes and Volkow

Role of the Funder/Sponsor :The funders had no role in the design and conduct of the study; collection, management, analysis, and interpretation of the data; preparation, review, or approval of the manuscript; and decision to submit the manuscript for publication.

REFERENCE

1. Degenhardt L, Hall W. Extent of illicit drug use and dependence, and their contribution to the global burden of disease. *Lancet (London, England)*. 2012;379(9810):55-70.
2. Di Chiara G, Bassareo V. Reward system and addiction: what dopamine does and doesn't do. *Current opinion in pharmacology*. 2007;7(1):69-76.
3. Keiflin R, Janak PH. Dopamine Prediction Errors in Reward Learning and Addiction: From Theory to Neural Circuitry. *Neuron*. 2015;88(2):247-263.
4. Nutt DJ, Lingford-Hughes A, Erritzoe D, Stokes PR. The dopamine theory of addiction: 40 years of highs and lows. *Nature reviews Neuroscience*. 2015;16(5):305-312.
5. Volkow ND, Morales M. The Brain on Drugs: From Reward to Addiction. *Cell*. 2015;162(4):712-725.
6. Willuhn I, Burgeno LM, Groblewski PA, Phillips PE. Excessive cocaine use results from decreased phasic dopamine signaling in the striatum. 2014;17(5):704-709.
7. Calipari ES, Ferris MJ. Amphetamine mechanisms and actions at the dopamine terminal revisited. *The Journal of neuroscience : the official journal of the Society for Neuroscience*. 2013;33(21):8923-8925.
8. Daberkow DP, Brown HD, Bunner KD, et al. Amphetamine paradoxically augments exocytotic dopamine release and phasic dopamine signals. *The Journal of neuroscience : the official journal of the Society for Neuroscience*. 2013;33(2):452-463.
9. Fleckenstein AE, Volz TJ, Riddle EL, Gibb JW, Hanson GR. New insights into the mechanism of action of amphetamines. *Annual review of pharmacology and toxicology*. 2007;47:681-698.
10. Kahlig KM, Galli A. Regulation of dopamine transporter function and plasma membrane expression by dopamine, amphetamine, and cocaine. *European journal of pharmacology*. 2003;479(1-3):153-158.
11. Willuhn I, Wanat MJ, Clark JJ, Phillips PE. Dopamine signaling in the nucleus accumbens of animals self-administering drugs of abuse. *Current topics in behavioral neurosciences*. 2010;3:29-71.
12. Kim E, Howes OD, Kapur S. Molecular imaging as a guide for the treatment of central nervous system disorders. *Dialogues in clinical neuroscience*. 2013;15(3):315-328.
13. Laruelle M, Abi-Dargham A, van Dyck CH, et al. SPECT imaging of striatal dopamine release after amphetamine challenge. *Journal of nuclear medicine : official publication, Society of Nuclear Medicine*. 1995;36(7):1182-1190.
14. Volkow ND, Wang GJ, Fowler JS, et al. Reinforcing effects of psychostimulants in humans are associated with increases in brain dopamine and occupancy of D(2) receptors. *The Journal of pharmacology and experimental therapeutics*. 1999;291(1):409-415.
15. Egerton A, Demjaha A, McGuire P, Mehta MA, Howes OD. The test-retest reliability of 18F-DOPA PET in assessing striatal and extrastriatal presynaptic dopaminergic function. *NeuroImage*. 2010;50(2):524-531.
16. Volkow ND, Wang GJ, Fowler JS, et al. Decreased striatal dopaminergic responsiveness in detoxified cocaine-dependent subjects. *Nature*. 1997;386(6627):830-833.
17. Volkow ND, Wang GJ, Ma Y, et al. Activation of orbital and medial prefrontal cortex by methylphenidate in cocaine-addicted subjects but not in controls: relevance to addiction. *The Journal of neuroscience : the official journal of the Society for Neuroscience*. 2005;25(15):3932-3939.
18. Martinez D, Narendran R, Foltin RW, et al. Amphetamine-induced dopamine release: markedly blunted in cocaine dependence and predictive of the choice to self-administer cocaine. *The American journal of psychiatry*. 2007;164(4):622-629.
19. Martinez D, Carpenter KM, Liu F, et al. Imaging dopamine transmission in cocaine dependence: link between neurochemistry and response to treatment. *The American journal of psychiatry*. 2011;168(6):634-641.

20. Schrantee A, Vaclavu L, Heijtel DF, et al. Dopaminergic system dysfunction in recreational dexamphetamine users. *Neuropsychopharmacology : official publication of the American College of Neuropsychopharmacology*. 2015;40(5):1172-1180.
21. Wang GJ, Smith L, Volkow ND, et al. Decreased dopamine activity predicts relapse in methamphetamine abusers. *Molecular psychiatry*. 2012;17(9):918-925.
22. Volkow ND, Tomasi D, Wang GJ, et al. Stimulant-induced dopamine increases are markedly blunted in active cocaine abusers. *Molecular psychiatry*. 2014;19(9):1037-1043.
23. Horne MK, Cheng CH, Wooten GF. The cerebral metabolism of L-dihydroxyphenylalanine. An autoradiographic and biochemical study. *Pharmacology*. 1984;28(1):12-26.
24. Crits-Christoph P, Newberg A, Wintering N, et al. Dopamine transporter levels in cocaine dependent subjects. *Drug and alcohol dependence*. 2008;98(1-2):70-76.
25. Malison RT, Best SE, van Dyck CH, et al. Elevated striatal dopamine transporters during acute cocaine abstinence as measured by [123I] beta-CIT SPECT. *The American journal of psychiatry*. 1998;155(6):832-834.
26. Wang GJ, Volkow ND, Fowler JS, et al. Cocaine abusers do not show loss of dopamine transporters with age. *Life sciences*. 1997;61(11):1059-1065.
27. Chou YH, Huang WS, Su TP, Lu RB, Wan FJ, Fu YK. Dopamine transporters and cognitive function in methamphetamine abuser after a short abstinence: A SPECT study. *European neuropsychopharmacology : the journal of the European College of Neuropsychopharmacology*. 2007;17(1):46-52.
28. Johanson CE, Frey KA, Lundahl LH, et al. Cognitive function and nigrostriatal markers in abstinent methamphetamine abusers. *Psychopharmacology*. 2006;185(3):327-338.
29. McCann UD, Kuwabara H, Kumar A, et al. Persistent cognitive and dopamine transporter deficits in abstinent methamphetamine users. *Synapse (New York, NY)*. 2008;62(2):91-100.
30. McCann UD, Wong DF, Yokoi F, Villemagne V, Dannals RF, Ricaurte GA. Reduced striatal dopamine transporter density in abstinent methamphetamine and methcathinone users: evidence from positron emission tomography studies with [11C]WIN-35,428. *The Journal of neuroscience : the official journal of the Society for Neuroscience*. 1998;18(20):8417-8422.
31. Schouw ML, Caan MW, Geurts HM, et al. Monoaminergic dysfunction in recreational users of dexamphetamine. *European neuropsychopharmacology : the journal of the European College of Neuropsychopharmacology*. 2013;23(11):1491-1502.
32. Sekine Y, Iyo M, Ouchi Y, et al. Methamphetamine-related psychiatric symptoms and reduced brain dopamine transporters studied with PET. *The American journal of psychiatry*. 2001;158(8):1206-1214.
33. Volkow ND, Chang L, Wang GJ, et al. Loss of dopamine transporters in methamphetamine abusers recovers with protracted abstinence. *The Journal of neuroscience : the official journal of the Society for Neuroscience*. 2001;21(23):9414-9418.
34. Yuan J, Lv R, Robert Basic J, et al. Dopamine transporter dysfunction in Han Chinese people with chronic methamphetamine dependence after a short-term abstinence. *Psychiatry research*. 2014;221(1):92-96.
35. Volkow ND, Wang GJ, Smith L, et al. Recovery of dopamine transporters with methamphetamine detoxification is not linked to changes in dopamine release. *NeuroImage*. 2015;121:20-28.
36. Chang L, Wang GJ, Volkow ND, et al. Decreased brain dopamine transporters are related to cognitive deficits in HIV patients with or without cocaine abuse. *NeuroImage*. 2008;42(2):869-878.
37. Volkow ND, Wang GJ, Fowler JS, et al. Cocaine uptake is decreased in the brain of detoxified cocaine abusers. *Neuropsychopharmacology : official publication of the American College of Neuropsychopharmacology*. 1996;14(3):159-168.

38. Okita K, Ghahremani DG, Payer DE, et al. Emotion dysregulation and amygdala dopamine D2-type receptor availability in methamphetamine users. *Drug and alcohol dependence*. 2016;161:163-170.
39. Ballard ME, Mandelkern MA, Monterosso JR, et al. Low Dopamine D2/D3 Receptor Availability is Associated with Steep Discounting of Delayed Rewards in Methamphetamine Dependence. *The international journal of neuropsychopharmacology / official scientific journal of the Collegium Internationale Neuropsychopharmacologicum (CINP)*. 2015;18(7):pyu119.
40. Boileau I, Payer D, Houle S, et al. Higher binding of the dopamine D3 receptor-preferring ligand [¹¹C]-(+)-propyl-hexahydro-naphtho-oxazin in methamphetamine polydrug users: a positron emission tomography study. *The Journal of neuroscience : the official journal of the Society for Neuroscience*. 2012;32(4):1353-1359.
41. Volkow ND, Chang L, Wang GJ, et al. Low level of brain dopamine D2 receptors in methamphetamine abusers: association with metabolism in the orbitofrontal cortex. *The American journal of psychiatry*. 2001;158(12):2015-2021.
42. Iyo M, Nishio M, Itoh T, et al. Dopamine D2 and serotonin 5₂ receptors in susceptibility to methamphetamine psychosis detected by positron emission tomography. *Psychiatry research*. 1993;50(4):217-231.
43. Martinez D, Greene K, Broft A, et al. Lower level of endogenous dopamine in patients with cocaine dependence: findings from PET imaging of D(2)/D(3) receptors following acute dopamine depletion. *The American journal of psychiatry*. 2009;166(10):1170-1177.
44. Matuskey D, Gallezot JD, Pittman B, et al. Dopamine D(3) receptor alterations in cocaine-dependent humans imaged with [(1)(1)C](+)PHNO. *Drug and alcohol dependence*. 2014;139:100-105.
45. Narendran R, Martinez D, Mason NS, et al. Imaging of dopamine D2/3 agonist binding in cocaine dependence: a [¹¹C]NPA positron emission tomography study. *Synapse (New York, NY)*. 2011;65(12):1344-1349.
46. Payer DE, Behzadi A, Kish SJ, et al. Heightened D3 dopamine receptor levels in cocaine dependence and contributions to the addiction behavioral phenotype: a positron emission tomography study with [¹¹C]-+PHNO. *Neuropsychopharmacology : official publication of the American College of Neuropsychopharmacology*. 2014;39(2):311-318.
47. Volkow ND, Fowler JS, Wang GJ, et al. Decreased dopamine D2 receptor availability is associated with reduced frontal metabolism in cocaine abusers. *Synapse (New York, NY)*. 1993;14(2):169-177.
48. Volkow ND, Fowler JS, Wolf AP, et al. Effects of chronic cocaine abuse on postsynaptic dopamine receptors. *The American journal of psychiatry*. 1990;147(6):719-724.
49. Wu JC, Bell K, Najafi A, et al. Decreasing striatal 6-FDOPA uptake with increasing duration of cocaine withdrawal. *Neuropsychopharmacology : official publication of the American College of Neuropsychopharmacology*. 1997;17(6):402-409.
50. Narendran R, Lopresti BJ, Martinez D, et al. In vivo evidence for low striatal vesicular monoamine transporter 2 (VMAT2) availability in cocaine abusers. *The American journal of psychiatry*. 2012;169(1):55-63.
51. Boileau I, Rusjan P, Houle S, et al. Increased vesicular monoamine transporter binding during early abstinence in human methamphetamine users: Is VMAT2 a stable dopamine neuron biomarker? *The Journal of neuroscience : the official journal of the Society for Neuroscience*. 2008;28(39):9850-9856.
52. Boileau I, McCluskey T, Tong J, Furukawa Y, Houle S, Kish SJ. Rapid Recovery of Vesicular Dopamine Levels in Methamphetamine Users in Early Abstinence. *Neuropsychopharmacology : official publication of the American College of Neuropsychopharmacology*. 2015.

53. Martinez D, Slifstein M, Narendran R, et al. Dopamine D1 receptors in cocaine dependence measured with PET and the choice to self-administer cocaine. *Neuropsychopharmacology : official publication of the American College of Neuropsychopharmacology*. 2009;34(7):1774-1782.
54. Volkow ND, Wang GJ, Fischman MW, et al. Relationship between subjective effects of cocaine and dopamine transporter occupancy. *Nature*. 1997;386(6627):827-830.
55. Zahniser NR, Sorkin A. Rapid regulation of the dopamine transporter: role in stimulant addiction? *Neuropharmacology*. 2004;47 Suppl 1:80-91.
56. Schmitt KC, Reith ME. Regulation of the dopamine transporter: aspects relevant to psychostimulant drugs of abuse. *Annals of the New York Academy of Sciences*. 2010;1187:316-340.
57. Han DD, Gu HH. Comparison of the monoamine transporters from human and mouse in their sensitivities to psychostimulant drugs. *BMC pharmacology*. 2006;6:6.
58. Egerton A, Mehta MA, Montgomery AJ, et al. The dopaminergic basis of human behaviors: A review of molecular imaging studies. *Neuroscience and biobehavioral reviews*. 2009;33(7):1109-1132.
59. Howes OD, Kambaitz J, Kim E, et al. The nature of dopamine dysfunction in schizophrenia and what this means for treatment. *Archives of general psychiatry*. 2012;69(8):776-786.
60. Chen KC, Yang YK, Howes O, et al. Striatal dopamine transporter availability in drug-naive patients with schizophrenia: a case-control SPECT study with [(99m)Tc]-TRODAT-1 and a meta-analysis. *Schizophrenia bulletin*. 2013;39(2):378-386.
61. Kambaitz J, Abi-Dargham A, Kapur S, Howes OD. Alterations in cortical and extrastriatal subcortical dopamine function in schizophrenia: systematic review and meta-analysis of imaging studies. *The British journal of psychiatry : the journal of mental science*. 2014;204(6):420-429.
62. Selvaraj S, Arnone D, Cappai A, Howes O. Alterations in the serotonin system in schizophrenia: a systematic review and meta-analysis of postmortem and molecular imaging studies. *Neuroscience and biobehavioral reviews*. 2014;45:233-245.
63. Kambaitz JP, Howes OD. The serotonin transporter in depression: Meta-analysis of in vivo and post mortem findings and implications for understanding and treating depression. *Journal of affective disorders*. 2015;186:358-366.
64. Tziortzi AC, Searle GE, Tzimopoulou S, et al. Imaging dopamine receptors in humans with [11C]-(+)-PHNO: dissection of D3 signal and anatomy. *NeuroImage*. 2011;54(1):264-277.
65. Gallezot JD, Beaver JD, Gunn RN, et al. Affinity and selectivity of [(1)(1)C]-(+)-PHNO for the D3 and D2 receptors in the rhesus monkey brain in vivo. *Synapse (New York, NY)*. 2012;66(6):489-500.
66. Wong DF, Kuwabara H, Schretlen DJ, et al. Increased occupancy of dopamine receptors in human striatum during cue-elicited cocaine craving. *Neuropsychopharmacology : official publication of the American College of Neuropsychopharmacology*. 2006;31(12):2716-2727.
67. Volkow ND, Wang GJ, Telang F, et al. Cocaine cues and dopamine in dorsal striatum: mechanism of craving in cocaine addiction. *The Journal of neuroscience : the official journal of the Society for Neuroscience*. 2006;26(24):6583-6588.
68. Schiffer WK, Volkow ND, Fowler JS, Alexoff DL, Logan J, Dewey SL. Therapeutic doses of amphetamine or methylphenidate differentially increase synaptic and extracellular dopamine. *Synapse (New York, NY)*. 2006;59(4):243-251.
69. Crippens D, Camp DM, Robinson TE. Basal extracellular dopamine in the nucleus accumbens during amphetamine withdrawal: a 'no net flux' microdialysis study. *Neuroscience letters*. 1993;164(1-2):145-148.
70. Crippens D, Robinson TE. Withdrawal from morphine or amphetamine: different effects on dopamine in the ventral-medial striatum studied with microdialysis. *Brain research*. 1994;650(1):56-62.

71. Paulson PE, Robinson TE. Regional differences in the effects of amphetamine withdrawal on dopamine dynamics in the striatum. Analysis of circadian patterns using automated on-line microdialysis. *Neuropsychopharmacology : official publication of the American College of Neuropsychopharmacology*. 1996;14(5):325-337.
72. Segal DS, Kuczenski R. Repeated cocaine administration induces behavioral sensitization and corresponding decreased extracellular dopamine responses in caudate and accumbens. *Brain research*. 1992;577(2):351-355.
73. Hooks MS, Duffy P, Striplin C, Kalivas PW. Behavioral and neurochemical sensitization following cocaine self-administration. *Psychopharmacology*. 1994;115(1-2):265-272.
74. Kalivas PW, Duffy P. Time course of extracellular dopamine and behavioral sensitization to cocaine. I. Dopamine axon terminals. *The Journal of neuroscience : the official journal of the Society for Neuroscience*. 1993;13(1):266-275.
75. Kuczenski R, Segal DS, Todd PK. Behavioral sensitization and extracellular dopamine responses to amphetamine after various treatments. *Psychopharmacology*. 1997;134(3):221-229.
76. Meil WM, Roll JM, Grimm JW, Lynch AM, See RE. Tolerance-like attenuation to contingent and noncontingent cocaine-induced elevation of extracellular dopamine in the ventral striatum following 7 days of withdrawal from chronic treatment. *Psychopharmacology*. 1995;118(3):338-346.
77. Robinson TE, Jurson PA, Bennett JA, Bentgen KM. Persistent sensitization of dopamine neurotransmission in ventral striatum (nucleus accumbens) produced by prior experience with (+)-amphetamine: a microdialysis study in freely moving rats. *Brain research*. 1988;462(2):211-222.
78. Heidbreder CA, Thompson AC, Shippenberg TS. Role of extracellular dopamine in the initiation and long-term expression of behavioral sensitization to cocaine. *The Journal of pharmacology and experimental therapeutics*. 1996;278(2):490-502.
79. Imperato A, Mele A, Scrocco MG, Puglisi-Allegra S. Chronic cocaine alters limbic extracellular dopamine. Neurochemical basis for addiction. *European journal of pharmacology*. 1992;212(2-3):299-300.
80. Johnson DW, Glick SD. Dopamine release and metabolism in nucleus accumbens and striatum of morphine-tolerant and nontolerant rats. *Pharmacology, biochemistry, and behavior*. 1993;46(2):341-347.
81. Weiss F, Paulus MP, Lorang MT, Koob GF. Increases in extracellular dopamine in the nucleus accumbens by cocaine are inversely related to basal levels: effects of acute and repeated administration. *The Journal of neuroscience : the official journal of the Society for Neuroscience*. 1992;12(11):4372-4380.
82. Cunha-Oliveira T, Rego AC, Oliveira CR. Cellular and molecular mechanisms involved in the neurotoxicity of opioid and psychostimulant drugs. *Brain research reviews*. 2008;58(1):192-208.
83. LaVoie MJ, Hastings TG. Dopamine quinone formation and protein modification associated with the striatal neurotoxicity of methamphetamine: evidence against a role for extracellular dopamine. *The Journal of neuroscience : the official journal of the Society for Neuroscience*. 1999;19(4):1484-1491.
84. Tata DA, Yamamoto BK. Interactions between methamphetamine and environmental stress: role of oxidative stress, glutamate and mitochondrial dysfunction. *Addiction (Abingdon, England)*. 2007;102 Suppl 1:49-60.
85. De Vito MJ, Wagner GC. Methamphetamine-induced neuronal damage: a possible role for free radicals. *Neuropharmacology*. 1989;28(10):1145-1150.
86. Harvey DC, Lacan G, Tanious SP, Melega WP. Recovery from methamphetamine induced long-term nigrostriatal dopaminergic deficits without substantia nigra cell loss. *Brain research*. 2000;871(2):259-270.

87. Melega WP, Jorgensen MJ, Lacan G, et al. Long-term methamphetamine administration in the vervet monkey models aspects of a human exposure: brain neurotoxicity and behavioral profiles. *Neuropsychopharmacology : official publication of the American College of Neuropsychopharmacology*. 2008;33(6):1441-1452.
88. Wilson JM, Kalasinsky KS, Levey AI, et al. Striatal dopamine nerve terminal markers in human, chronic methamphetamine users. *Nature medicine*. 1996;2(6):699-703.
89. Callaghan RC, Cunningham JK, Sykes J, Kish SJ. Increased risk of Parkinson's disease in individuals hospitalized with conditions related to the use of methamphetamine or other amphetamine-type drugs. *Drug and alcohol dependence*. 2012;120(1-3):35-40.
90. Curtin K, Fleckenstein AE, Robison RJ, Crookston MJ, Smith KR, Hanson GR. Methamphetamine/amphetamine abuse and risk of Parkinson's disease in Utah: a population-based assessment. *Drug and alcohol dependence*. 2015;146:30-38.
91. Collier TJ, Kanaan NM, Kordower JH. Ageing as a primary risk factor for Parkinson's disease: evidence from studies of non-human primates. *Nature reviews Neuroscience*. 2011;12(6):359-366.
92. Nestler EJ. Epigenetic mechanisms of drug addiction. *Neuropharmacology*. 2014;76 Pt B:259-268.
93. Nestler EJ. Reflections on: "A general role for adaptations in G-Proteins and the cyclic AMP system in mediating the chronic actions of morphine and cocaine on neuronal function". *Brain research*. 2016;1645:71-74.
94. Volkow ND, Koob GF, McLellan AT. Neurobiologic Advances from the Brain Disease Model of Addiction. *The New England journal of medicine*. 2016;374(4):363-371.
95. Grace AA. The tonic/phasic model of dopamine system regulation: its relevance for understanding how stimulant abuse can alter basal ganglia function. *Drug and alcohol dependence*. 1995;37(2):111-129.
96. Sun W, Ginovart N, Ko F, Seeman P, Kapur S. In vivo evidence for dopamine-mediated internalization of D2-receptors after amphetamine: differential findings with [3H]raclopride versus [3H]spiperone. *Molecular pharmacology*. 2003;63(2):456-462.
97. Guo N, Guo W, Kralikova M, et al. Impact of D2 receptor internalization on binding affinity of neuroimaging radiotracers. *Neuropsychopharmacology : official publication of the American College of Neuropsychopharmacology*. 2010;35(3):806-817.
98. Volkow ND, Wang GJ, Tomasi D, et al. Methylphenidate-elicited dopamine increases in ventral striatum are associated with long-term symptom improvement in adults with attention deficit hyperactivity disorder. *The Journal of neuroscience : the official journal of the Society for Neuroscience*. 2012;32(3):841-849.
99. Nader MA, Morgan D, Gage HD, et al. PET imaging of dopamine D2 receptors during chronic cocaine self-administration in monkeys. *Nature neuroscience*. 2006;9(8):1050-1056.
100. Caprioli D, Calu D, Shaham Y. Loss of phasic dopamine: a new addiction marker? *Nature neuroscience*. 2014;17(5):644-646.
101. Perez-Mana C, Castells X, Vidal X, Casas M, Capella D. Efficacy of indirect dopamine agonists for psychostimulant dependence: a systematic review and meta-analysis of randomized controlled trials. *Journal of substance abuse treatment*. 2011;40(2):109-122.
102. Thanos PK, Michaelides M, Umegaki H, Volkow ND. D2R DNA transfer into the nucleus accumbens attenuates cocaine self-administration in rats. *Synapse (New York, NY)*. 2008;62(7):481-486.
103. Robertson CL, Ishibashi K, Chudzynski J, et al. Effect of Exercise Training on Striatal Dopamine D2/D3 Receptors in Methamphetamine Users during Behavioral Treatment. *Neuropsychopharmacology : official publication of the American College of Neuropsychopharmacology*. 2016;41(6):1629-1636.
104. Volkow ND, Fowler JS, Wang GJ, Swanson JM. Dopamine in drug abuse and addiction: results from imaging studies and treatment implications. *Molecular psychiatry*. 2004;9(6):557-569.

105. Minozzi S, Amato L, Pani PP, et al. Dopamine agonists for the treatment of cocaine dependence. *The Cochrane database of systematic reviews*. 2015(5):Cd003352.
106. Castells X, Cunill R, Perez-Mana C, Vidal X, Capella D. Psychostimulant drugs for cocaine dependence. *The Cochrane database of systematic reviews*. 2016;9:Cd007380.
107. Indave BI, Minozzi S, Pani PP, Amato L. Antipsychotic medications for cocaine dependence. *The Cochrane database of systematic reviews*. 2016;3:Cd006306.

Figure 1: Studies of dopamine release in stimulant users.

The forest plot shows the effect sizes estimated using a random effects model and 95% confidence intervals of the percentage change in the difference of change in D2/3 binding after challenge. There was an overall decrease in dopamine release in stimulant users relative to controls with a large to very large effect size (-0.84 [95% CI, $-1.08 - -0.60$], $p < 0.001$) Schrantee et al. 2015 and Wang et al. 2012 studied amphetamine-like stimulant users. The remaining studies included cocaine users.

Figure 2: Studies of dopamine transporter availability.

The forest plot shows the effects sizes estimated using a random effects model and 95% confidence intervals of the difference between amphetamine/methamphetamine users and controls. There was an overall decrease in the dopamine transporter availability in methamphetamine users relative to controls (-0.91 [95% CI, $-1.5 - -0.32$], $p < 0.01$)

Figure 3: Studies of dopamine receptor availability.

The forest plot shows the effect sizes estimated using a random effects model and 95% confidence intervals of D2/3 receptor binding potentials. There was an overall decrease in dopamine receptor availability compared to controls (-0.76 [95% CI, $-0.92 - -0.60$], $p < 0.001$).

Figure 4: A summary of dopaminergic alterations in stimulant users

Summary of the synaptic location of the major dopaminergic findings from our meta-analyses and findings from studies of other aspects of the dopamine system.

1. Based on study by Wu et al. 1997
2. Based on study by Boileau et al. 2008 & 2015
3. Based on study by Narendran et al. 2012 and Johanson et al. 2006
4. Meta-analysis finding with effect size of -0.81 [95% CI, $-1.34 - -0.29$], $p < 0.01$
5. Meta-analysis finding with effect size of -0.91 [95% CI, $-1.50 - -0.32$], $p < 0.01$
6. Meta-analysis finding with effect size of -0.71 [95% CI, $-0.91 - -0.52$], $p < 0.001$

Supplementary methods

Search strategy

The Pubmed, EMBASE and PsycINFO databases were searched from inception date to May 14, 2016 for relevant papers without language restrictions. The electronic searches using EMBASE and PsycINFO were carried out together using Ovid. The following keywords were used for cocaine use: “(Positron Emission Tomography OR PET OR Single photon emission tomography OR SPET OR Single Photon Emission Computed Tomography OR SPECT) AND (dopamine OR dopamine release OR dopamine synthesis OR dopamine availability OR dopamine transporter OR dopamine reuptake OR dopamine receptor) AND (cocaine OR cocaine abuse OR cocaine dependence)”. Furthermore the following keywords were used for amphetamine-like substance use: “(Positron Emission Tomography OR PET OR Single Photon Emission Tomography OR SPET OR Single Photon Emission Computed Tomography OR SPECT) AND (dopamine OR dopamine release OR dopamine synthesis OR dopamine availability OR dopamine transporter OR dopamine reuptake OR dopamine receptor) AND (amphetamine OR amphetamine abuse OR amphetamine dependence OR methamphetamine OR methamphetamine abuse OR methamphetamine dependence OR methylphenidate OR methylphenidate abuse OR methylphenidate dependence)”. In addition the reference lists in the included studies and relevant review papers were screened to search for additional studies.

Inclusion and exclusion criteria

The inclusion criteria were: 1) original molecular imaging studies that indexed dopamine receptors, dopamine transporters and/or dopamine release or synthesis; 2) in patients with a diagnosis of cocaine or amphetamine/ methamphetamine dependence or abuse and 3)

reported data for the whole striatum or a striatal sub-region. We excluded studies which did not have a healthy control group or that included subjects with CNS co-morbidity. For studies with an overlap in participants, we included the study with the largest sample size without potentially missing any subjects and excluded the smaller study from the meta-analysis to avoid duplication of subjects.

Outcome measures

Our primary outcome was the effect size for the difference in the dopaminergic index for the whole striatum between the stimulant user and control groups. Some studies only reported values for striatal subdivisions. Where this was the case, we averaged the striatal subdivision values to estimate the value for the whole striatum as described in other imaging meta-analyses^{1,2}.

Meta-analysis

The `statstodo` software was used for the estimation of pooled standard deviation (http://statstodo.com/ComMeans_Pgm.php). Plot digitizer software was used to extract the data from studies where data was available only in a plot format (<http://plotdigitizer.sourceforge.net/>). The statistical analysis of the extracted data was conducted using the R statistical programming language version 3.2.2 with the 'metafor' package. One study reported data on dopamine receptor availability with both [11C] raclopride and 11C-(+)-4-propyl-9-hydroxynaphthoxazine ([11C]-(+)-PHNO). We included the [11C] raclopride data for the main analysis to maintain consistency with the other studies, more of which had also used this tracer than had used [11C] PHNO. However we also discuss the [11C] PHNO findings where relevant. A minimum of five studies was required to conduct a meta-analysis as findings from meta-analyses with small numbers of studies may

be less stable. Two independent authors (A.H.A. and Y.M.) conducted the electronic search and assessed studies for eligibility, while data extraction was carried out by A.H.A. and results of analyses confirmed by Y.M. and O.D.H.

Supplementary results:

Dopamine release

Heterogeneity and sensitivity analyses

Methylphenidate challenge was used to index dopamine release in 5 studies while one study each used intravenous amphetamine and dexamphetamine challenge. The I^2 value was 0 % (95% CI, 0%-70%), indicating low heterogeneity. The regression test for funnel plot asymmetry was not significant ($t = 0.69$, $df = 5$, $p = 0.52$), suggesting publication bias is unlikely. In addition, the trim-and-fill analysis indicated that there were no missing studies on the funnel plot (Supplementary figure 3). The summary effect size reached significance in all cases in the leave-one-out analysis, with summary effect sizes varying from -0.78 to -0.90 (all $p < 0.001$).

Among the 7 studies investigating dopamine release, two studies used oral methylphenidate challenge while the others used intravenous challenge. Since only two studies used the oral challenge, we could not perform sub-analysis to investigate effect of route of administration. However, it appears that an oral challenge produces less dopamine release [effect size: -0.4^3 and -0.57^4] compared to an iv challenge, although further studies are needed to directly test this.

Dopamine transporter

Heterogeneity and sensitivity analyses

The I^2 value was 84 % (95% CI, 69%- 94%), indicating high heterogeneity between studies. The regression test for funnel plot asymmetry was significant ($t = -2.5$, $df = 10$, $p = 0.03$). In addition, visual inspection of the funnel plot revealed asymmetry, indicating possible publication bias. The trim-and-fill analysis indicate two missing studies on the right side of the funnel plot (Supplementary figure 4). However, the results remained significant after

correcting for putatively missing studies [effect size= -0.68, (95%CI, - 1.3 - - 0.09), p=0.02].

The summary effect size reached significance in all cases in the leave-one-out analysis, with summary effect sizes (SMD) varying from -0.77 to -1.07 (all p<0.01).

Dopamine receptor availability

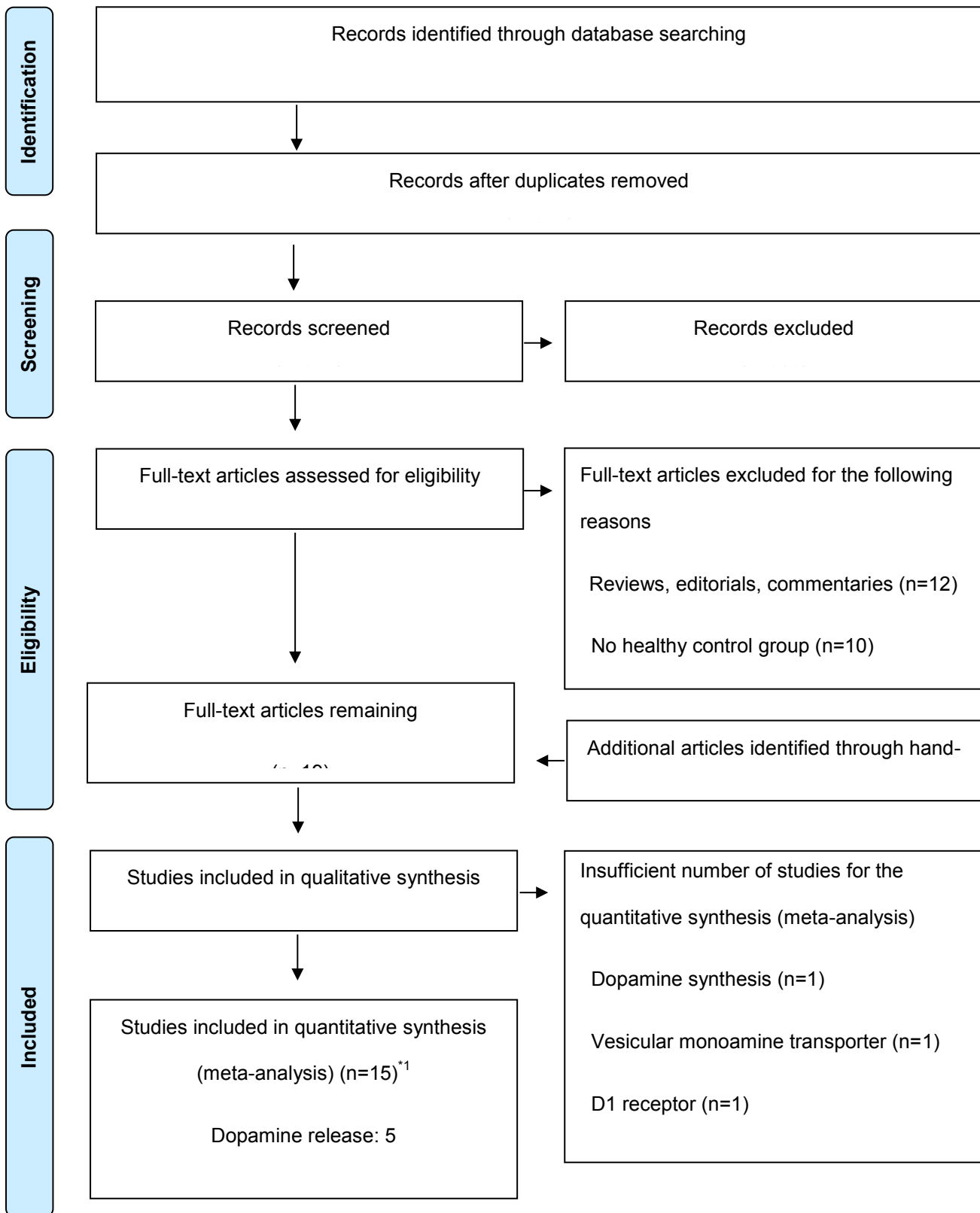
Heterogeneity and sensitivity analyses

The I^2 value was 0 % (95% CI, 0 %- 57 %), indicating heterogeneity was low. The regression test for funnel plot asymmetry was not significant ($t = -1.1$, $df = 17$, $p = 0.27$). However, a visual inspection of the funnel plot revealed asymmetry, indicating possible publication bias. The trim-and-fill analysis indicated that there were potentially five missing studies on the funnel plot (Supplementary figure 5). Nevertheless, the summary effect size remained large and highly significant after correcting for these putatively missing studies (corrected effect size: -0.66 [95% CI, -0.83 - -0.5]; $z: -8$; $p<0.001$). The summary effect size reached significance in all cases in the leave-one-out analysis, with summary effect sizes varying from SMD = -0.72 to -0.8 (all $p<0.001$). To investigate the effect of radiotracer on the outcome measure, we performed sub-analysis of studies which used [^{11}C] raclopride. The results remained significant with an effect size of -0.69 [95% CI, -0.9—0.48; $p<0.001$].

Supplementary discussion:

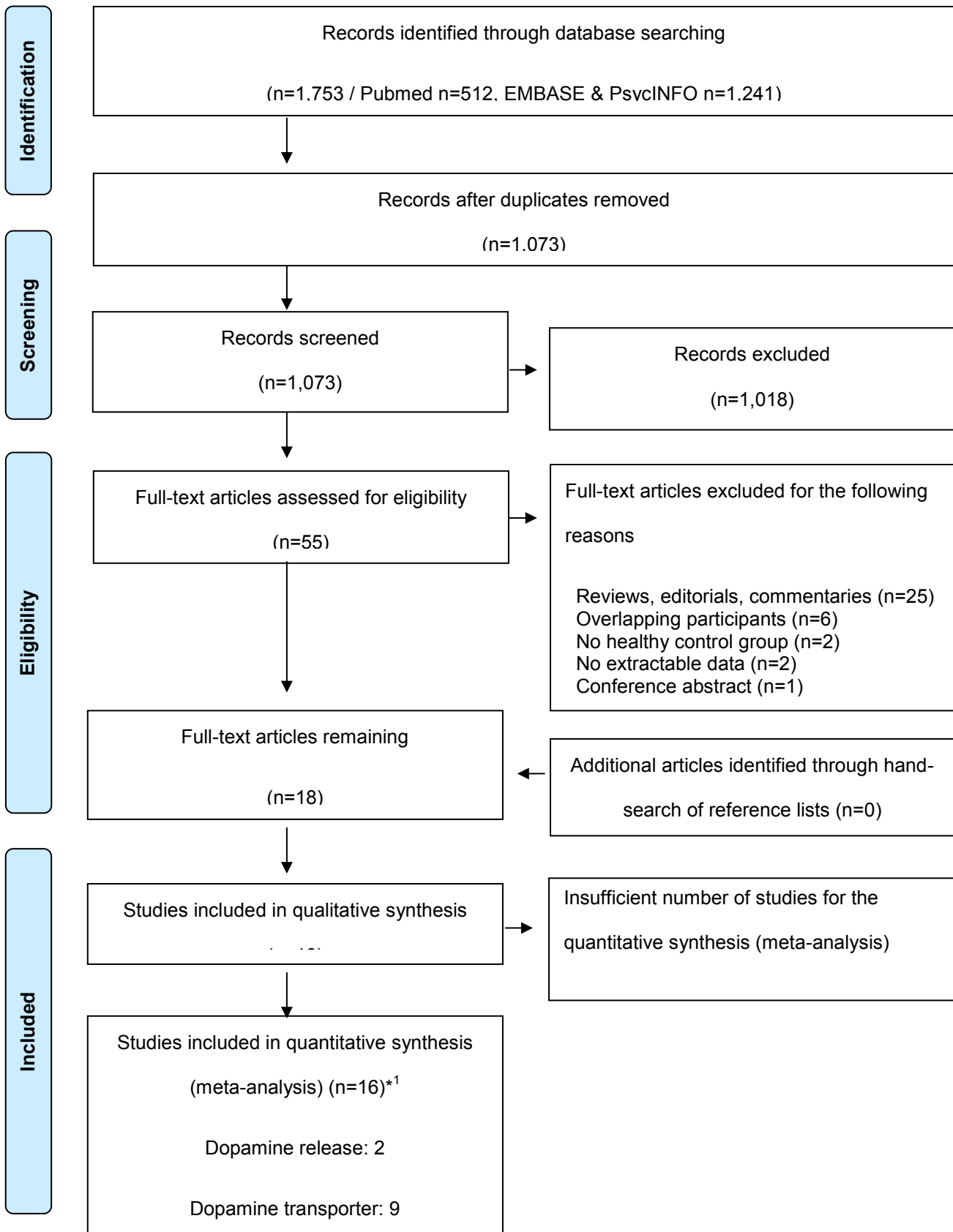
Moreover, where a value was not given for the whole striatum, we derived this by averaging the data for sub-regions. These variations may add noise to the findings. Thus the effect sizes calculated from these studies should be considered an estimate. It should also be noted that there are differences in dopaminergic indices between striatal sub-regions. For example D3 receptor levels are higher in ventral than dorsal striatum.^{5,6} Most of the radiotracers used to measure D2-like receptor levels have similar affinities for both D2 and D3 receptors. Thus the reduction in whole striatal D2/3 receptor levels we report could potentially mask sub-regional increases in D3 receptors or differences in the ratio of D2 to D3 receptors. Unfortunately there were insufficient studies reporting data from sub-regions for us to investigate sub-regional dopaminergic changes and only two studies in cocaine users used [11C]-PHNO, a tracer that does show significant selectivity for D3 over D2 receptors.^{7,8} Interestingly, in contrast to our overall findings, the two studies that used [11C] PHNO did not show significant differences in BP_{ND} between stimulant users and controls in the whole striatum.^{5,6} One explanation could be that an increase in D3 in ventral striatum is off set by a reduction in D2 receptors in dorsal striatum. However, neither study reported a significant difference in ventral striatum with [11C]-PHNO. Moreover, studies which used [11C] raclopride demonstrated reduced ventral as well as whole striatal D2/3 availability.⁹⁻¹³ Taken together, these lines of evidence suggest our findings in the whole striatum are not explained by opposing sub-regional differences. Nevertheless, the absence of marked differences in the [11C]-PHNO studies is intriguing and warrants further investigation.

Supplementary figure 1. Flowchart showing the inclusion of studies for the meta-analysis on dopaminergic function in cocaine users



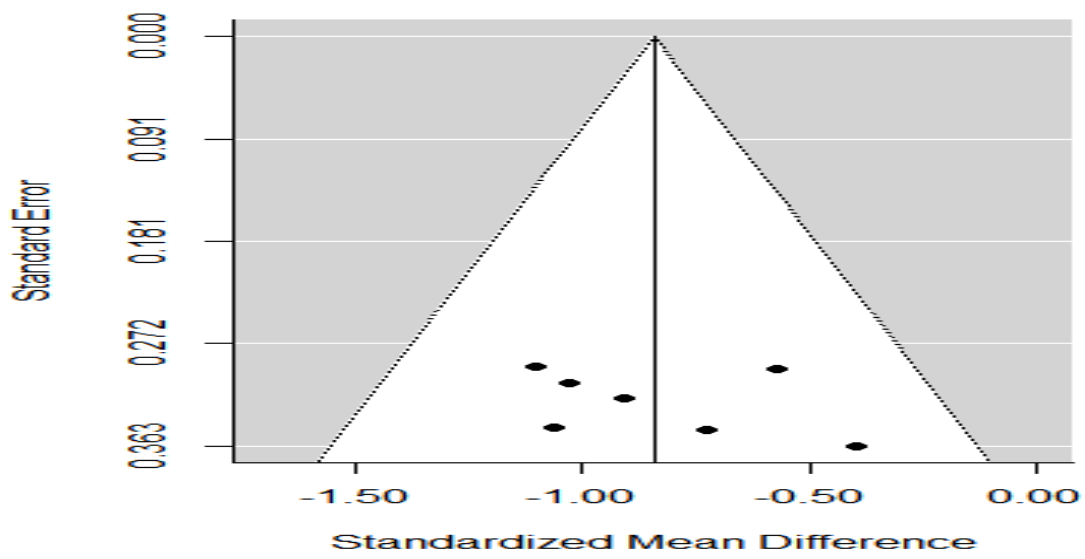
*1 Dopamine release studies also reported on D2/3 availability.

Supplementary figure 2. Flowchart showing the inclusion of studies for the meta-analysis on dopaminergic function in amphetamine-like stimulant users



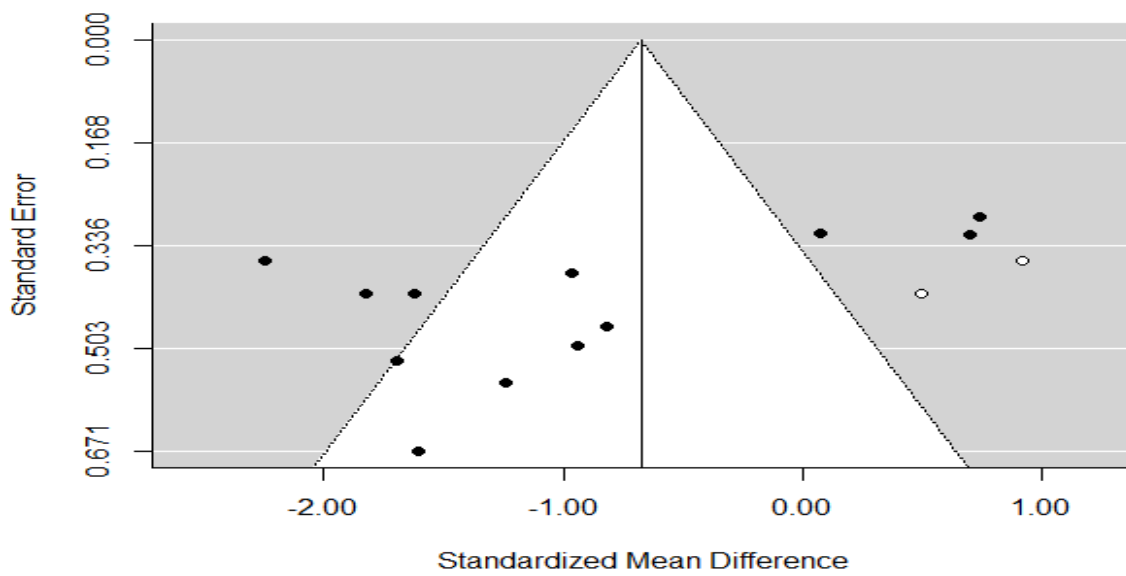
*1 Dopamine release studies also reported on D2/3 availability.

Supplementary figure 3: Funnel plot of dopamine release studies in stimulant users



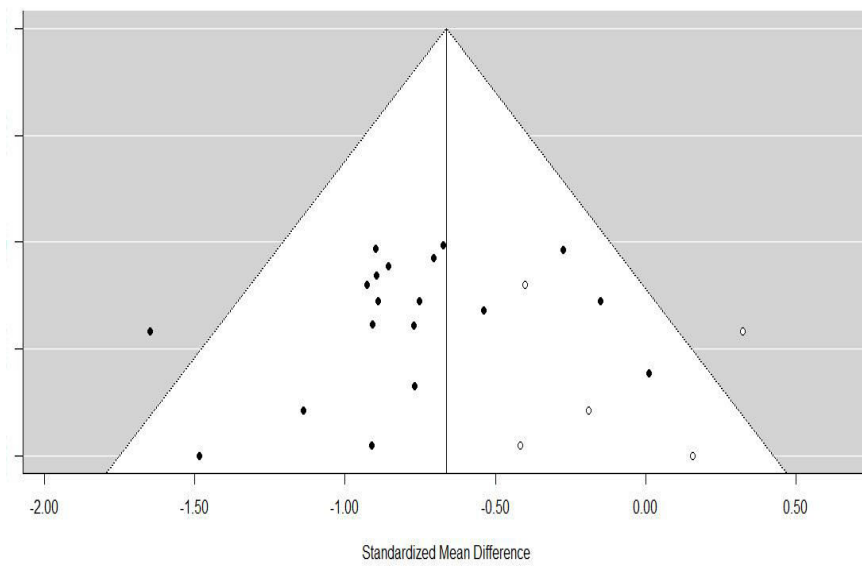
Supplementary figure 4: Funnel plot of dopamine transporter studies in stimulant users

○ indicate potentially missing studies



Supplementary figure 5: Funnel plot of dopamine D2/3 receptor studies in stimulant users

○ indicate potentially missing studies



Author/year	Patients/ Controls, n	Dopamine release paradigm	Diagnosis	Duration of abstinence	Co- morbid substance abuse	Abstinence confirmed by	Region of interest	Tracer	Reference region	Measure	Results in patients compared to controls
Cocaine users											
Volkow et al. 1997 ¹⁴	20/23	i.v. MP challenge	DSM-IV, cocaine dependence	3-6 wk	Nicotine and caffeine	Toxicological drug screens before scan	Striatum, thalamus	[11C] raclopride	Cerebellum	$\Delta B_{max}/K_d$	↓
Volkow et al. 2014 ¹³	43/19	i.v. MP challenge with concomitant cocaine cue-video	DSM-IV, cocaine dependence	Mean(SD) = 5(5) d	Nicotine	Not specified	Striatum prefrontal cortex	[11C] raclopride	Cerebellum	ΔBP_{ND}	↓
Volkow et al. 2005 ¹⁵	21/15	i.v. MP challenge	DSM-IV, cocaine dependence	Maximum 1 mo, mean(SD) = 14(7) d	Nicotine and caffeine	Supervised admission	Striatum	[11C] raclopride	Cerebellum	$\Delta B_{max}/K_d$	↓
Martinez et al. 2007 ¹¹	24/24	i.v. amphetamine challenge	DSM-IV, cocaine dependence	Minimum 14 d	Nicotine	Supervised admission	Striatum	[11C] raclopride	Cerebellum	ΔV_3	↓
Martinez et al. 2011 ⁹	25/24	Oral MP challenge	DSM-IV, cocaine dependence	Minimum 14 d	Nicotine	Supervised admission or repeated urine drug screen	Striatum	[11C] raclopride	Cerebellum	ΔBP_{ND}	↓
Amphetamine-like stimulant users											
Schranter et al. 2015 ¹⁶	16/19	i.v. dAMPH challenge	dAMPH users with ≥ 30 lifetime and ≥ 10 past year exposures	Minimum 1 wk	Nicotine	Multi-drug screen on a urine sample before scan	Striatum	[123I] IBZM	Occipital cortex	BP_{ND} ratio	↓
Wang et al. 2012 ³	16/15	Oral MP challenge	DSM-IV, MA dependence	Minimum 2 wk	Nicotine	Urine screening tests	Striatum	[11C] raclopride	Cerebellum	ΔBP_{ND}	↓
Volkow et al. 2015 ^{17 *1}	16/15	Oral MP challenge	DSM-IV, MA abuse or dependence	Minimum 2 wk	Nicotine	Urine screening tests	Striatum	[11C] raclopride	Cerebellum	BP_{ND} ratio	↓

Supplementary table 1: Molecular imaging studies on dopamine release in stimulant users compared to healthy controls

Abbreviations: BP, binding potential; d, days; dAMPH, dexamphetamine; i.v., intravenous; MA, methamphetamine; mo, months; MP, methylphenidate; SD, standard deviation; wk, weeks

*1 Excluded from the meta-analysis on dopamine release due to overlapping participants with Wang et al. 2012.

Supplementary table 2: Molecular imaging studies on other presynaptic dopaminergic indices in stimulant users

Dopaminergic measure	Author/year	Patients/ Controls, n	Diagnosis	Duration of abstinence	Abstinence confirmed by	Co-morbid substance abuse	Region of interest	Tracer	Measure	Results in patients compared to controls
Cocaine users										
Dopamine synthesis capacity	Wu et al. 1997 ¹⁸	11/8	DSM-III-R, cocaine dependence	Less than 30 d	Frequent random urine drug screens during admission	Not mentioned	Striatum	[18]-6-FDOPA	K _i	↓
Vesicular Monoamine Transporter 2	Narendran et al. 2012 ¹⁹	12/12	DSM-IV, cocaine dependence	Minimum 2 wk	Witnessed urine sampling 3 times a week for 2 weeks in outpatient setting and 2 day admission	Nicotine	Striatum	[11C]DTBZ	BP _{ND}	↓
Amphetamine-like stimulant users										
Vesicular Monoamine Transporter 2	Boileau et al. 2008 ²⁰	16/14	DSM-IV, MA dependence or abuse	Recently withdrawn, mean(SD) = 19(24) d	Urine sample for drug toxicology	Nicotine	Striatum	[11C]DTBZ	BP _{ND}	↑
	Boileau et al. 2015 ²¹	28/22	DSM-IV, MA dependence or abuse	2 scans, mean(SD) = 2.6(2.0) and 9.9(2.3) d	Urine and blood samples for drug toxicology	Nicotine	Striatum	[11C]DTBZ	BP _{ND}	↑
	Johanson et al. 2006 ²²	16/18	DSM-IV, past MA dependence	Minimum 3 mo	Urine drug screen	Nicotine, past abuse of other drugs were allowed	Striatum	[11C]DTBZ	BP	↓

Abbreviations: BP, binding potential; d, days; MA, methamphetamine; mo, months; SD, standard deviation; wk, weeks

Supplementary table 3: Molecular imaging studies on dopamine transporter availability in stimulant users compared to healthy controls

Author/year	Patients/ Controls, n	Diagnosis	Duration of abstinence	Abstinence confirmed by	Co-morbid substance abuse	Region of interest	Reference region	Tracer	Measure	Results in patients compared to controls
Cocaine users										
Volkow et al. 1996 ^{23 *1}	12/20	DSM-III-R, cocaine dependence	3-6 wk	Random urine samples at least twice a week during admission	Nicotine and caffeine	Basal ganglia, thalamus, occipital cortex	Cerebellum	[11C]Cocai ne	Distribution volume ratio	↔
Wang et al. 1997 ²⁴	20/20	DSM-IV, cocaine dependence	Active users, mean(SD) = 5(8) d	Pre-scan urine tests ensured the absence of psychoactive drugs except cocaine	Not specified	Striatum	Cerebellum	[11C]Cocai ne	Distribution volume ratio	↔
Crits-Christoph et al. 2008 ²⁵	21/21	DSM-IV, cocaine dependence	Minimum 1 d, mean(SD) = 7.5(9.7) d	History, urine drug screen for other substance use	Nicotine and cannabis	Striatum	Elliptical ROI was placed on two consecutive slices of the supratentorial uptake	99mTc TRODAT-1.	Distribution volume ratio	↑
Malison et al. 1998 ²⁶	28/24	DSM-III-R, cocaine dependence	Maximum of 96 hours	Urine laboratory test to rule out other illicit drug use	Not specified	Striatum	Occipital cortex	[123I]b- CIT	Distribution volume ratio	↑
Amphetamine-like stimulant users										
Johanson et al. 2006 ²²	16/18	DSM-IV, past MA dependence	Minimum 3 mo	Urine drug screen	Nicotine, past abuse of other drugs were allowed	Striatum	Occipital cortex	[11C] Methylphe nidate	BP	↓
McCann et al. 1998 ²⁷	6/10	MA users (diagnostic criteria not	Minimum 2 wk	Blood and urine drug screens before scan	No restrictions	Striatum	Cerebellum	[11C]WIN- 35,428	BP	↓

		specified)								
McCann et al. 2008 ²⁸	7/16	DSM-IV, MA users	Minimum 2 wk	Urine drug screen	No restrictions	Striatum	Cerebellum	[¹¹ C]WIN-35,428	BP	↓
Sekine et al. 2001 ²⁹	11/9	DSM-IV, MA users	Minimum 7 d, range 7 d-1.5 years	Urinary drug screening test	Occasional nicotine and alcohol	Striatum, nucleus accumbens, prefrontal cortex	Cerebellar cortex	[¹¹ C]WIN-35,428	BP	↓
Volkow et al. 2001 ³⁰	15/18	DSM-IV, MA dependence	Minimum 2 wk, mean(SD) = 5.9(9.0) mo, range 0.5-36.0 mo	Urine toxicology screen	Nicotine	Striatum	Cerebellum	[¹¹ C]d-threo-methylphenidate	B _{max} /K _d	↓
Volkow et al. 2015 ¹⁷	16/15	DSM-IV, MA abuse or dependence	Minimum 2 wk, mean(SD) = 102(49) d	Urine screening tests	Nicotine	Striatum	Cerebellum	[¹¹ C]cocaine	BP _{ND}	↓ caudate, putamen and ventral striatum
Chou et al. 2007 ³¹	7/7	DSM-IV, MA abuse	Two scans (baseline and after 2 wk abstinence)	Drug urine analysis used to exclude polysubstance abuse	Nicotine	Striatum	Occipital region	Tc-99m TRODAT	SUR	↓ baseline, partial recovery after two wk
Schouw et al. 2013 ³²	8/10	Recreational dAMPH users, more than 40 occasions of previous use	Minimum 2 wk, mean(SD) = 1.1(1.3) mo	Urine drug screening	No caffeine on scan day	Striatum	Occipital cortex	[¹²³ I]FP-CIT	Binding ratio: striatum to occipital cortex	↓

Yuan et al. 2014 ³³	25/25	DSM-IV-TR, MA dependence	Three scans (24-48 hours, 2 wk, and 4 wk abstinence)	Urine drug screen	None	Striatum	Occipital cortex	99mTc-TRODAT-1	SUR	↓
Volkow et al. 2001 ³⁴ * ²	12/11	DSM-IV, MA dependence	Mean(SD) = 64 ± 40 d	Urine drug screen	Nicotine and caffeine	Striatum	Cerebellum	[11C]d-threo-methylphenidate	B _{max} /K _d	↓
Sekine et al. 2003 ³⁵ * ³	11/9	MA users (diagnostic criteria not specified)	Minimum 7 d abstinence	Not specified	Not specified	Orbitofrontal cortex, prefrontal cortex, amygdala	Cerebellum	[11C]WIN 35,428	BP	↓
Yuan et al. 2015 ³⁶ * ⁴	25/21	DSM-IV, MA dependence	2 wk	Urine drug screen	None	Striatum	Occipital cortex	99mTc-TRODAT-1	SUR	↓

Abbreviations: BP, binding potential; d, days; dAMPH, dexamphetamine; MA, methamphetamine; mo, months; ROI, region of interest; SD, standard deviation; SUR, specific uptake ratio; wk, weeks

*1 Excluded from the meta-analysis on dopamine transporter availability due to overlapping participants with Wang et al 1997.

*2 Excluded from the meta-analysis on dopamine transporter availability due to overlapping participants with Volkow et al. 2001.

*3 Excluded from the meta-analysis on dopamine transporter availability due to overlapping participants with Sekine et al. 2001.

*4 Excluded from the meta-analysis on dopamine transporter availability due to overlapping participants with Yuan et al. 2014.

Supplementary table 4: Molecular imaging studies on baseline D2/3 availability in stimulant users compared to healthy controls

Author/year	Patients/ Controls, n	Diagnosis	Duration of abstinence	Abstinence confirmed by	Co-morbid substance abuse	Region of interest	Reference region	Tracer	Measure	Results in patients compared to controls
Cocaine users										
Martinez et al. 2011 ⁹	25/24	DSM-IV, cocaine dependence	Minimum 14 d	Supervised admission or repeated urine drug screen	Nicotine	Striatum	Cerebellum	[11C]raclopride	BP _{ND}	↓
Martinez et al. 2009 ¹⁰	15/15	DSM-IV, cocaine dependence	Minimum 14 d	Admitted for 14 d and underwent random urine toxicology tests	Nicotine	Striatum	Cerebellum	[11C]raclopride	BP _{ND}	↓
Volkow et al. 1993 ³⁷	20/20	DSM-III-R, cocaine dependence	Minimum 8 d	Random urine samples at least twice a wk during hospitalization	Nicotine and caffeine	Striatum	Cerebellum	[18F]N-methylspiroperidol	Ratio index	↓
Volkow et al. 1996 ²³	12/20	DSM-III-R, cocaine dependence	3-6 wk	Random urine samples at least twice a wk during hospitalization	Nicotine and caffeine	Basal ganglia, cortex, thalamus	Cerebellum	[18F]N-methylspiroperidol	Distribution volume ratio	↓
Volkow et al. 1997 ¹⁴	20/23	DSM-IV, cocaine dependence	3-6 wk	Toxicological drug screens before scan	Nicotine and caffeine	Striatum, thalamus	Cerebellum	[11C]raclopride	B _{max} /K _d	↓
Payer et al. 2014 ⁶	15/15	DSM-IV, cocaine dependence	Mean (SD) 50.1(64.4) d; range 7-240 d	Urine drug screen	Nicotine, caffeine and cannabis	Striatum	Cerebellum	[11C]raclopride	BP _{ND}	↓
Volkow et al. 2014 ¹³	43/19	DSM-IV, cocaine dependence	Mean(SD) = 5(5) d	Not specified	Nicotine	Striatum	Cerebellum	[11C]raclopride	BP _{ND}	↓
Matuskey et al. 2014 ⁵	10/10	DSM-IV, cocaine dependence	Mean(SD) = 7(4) d	Urine drug screen	Nicotine, caffeine and cannabis	Amygdala, hypothalamus, striatum, thalamus	Cerebellum	[11C](+)PHNO	BP _{ND}	↑ amygdala, hypothalamus and substantia nigra; ↔ striatum

Narendran et al. 2011 ¹²	10/10	DSM-IV, cocaine dependence	Minimum 2 wk	Witnessed urine sampling 3 times a wk for 2 wk in outpatient setting and 2 d admission	Nicotine	Striatum	Cerebellum	[11C] raclopride	BP _{ND}	↓
Martinez et al. 2007 ¹¹	24/24	DSM-IV, cocaine dependence	Minimum 14 d	Supervised admission	Nicotine	Striatum	Cerebellum	[11C] raclopride	BP (ml/g)	↓
Volkow et al. 1990 ³⁸	10/10	DSM-III-R, cocaine abuse	Minimum 2 d, range 2-30 d	Not specified	Nicotine and caffeine	Striatum	Cerebellum	[18F]N-methylspiroperidol	Ratio Index: striatum to cerebellum	↓ in detoxified for one wk or less ↔ after one mo
Volkow et al. 2005 ¹⁵	21/15	DSM-IV, cocaine dependence	Maximum 1 mo, mean(SD) = 14(7) d	Supervised admission	Nicotine and caffeine	Striatum	Cerebellum	[11C]raclopride	B _{max} /K _d	↓
Payer et al. 2014 ^{6 *1}	15/15	DSM-IV, cocaine dependence	Mean(SD) = 50.1(64.4) d; range 7-240 d	Urine drug screen	Nicotine, caffeine and cannabis	Striatum	Cerebellum	[11C](+)PHNO	BP _{ND}	↔
Martinez et al. 2004 ^{39 *2}	17/17	DSM-IV, cocaine abuse or dependence	19-21 d	Random urine testing during admission	Nicotine	Striatum	Cerebellum	[11C]raclopride	BP	↓
Wiers et al. 2016a ^{40 *3}	38/42	Cocaine abusers (criteria not specified)	Mean(SD) = 5(5) d (From Volkow et al. 2014)	Not specified	Nicotine	Striatum	Cerebellum	[11C]raclopride	BP _{ND}	↓
Wiers et al. 2016b ^{41 *4}	24/21	DSM-IV, cocaine dependence	Mean(SD) = 5(5) d (From Volkow et al. 2014)	Not specified	Nicotine	Striatum	Cerebellum	[11C]raclopride	BP _{ND}	↓
Amphetamine-like stimulant users										
Ballard et al. 2015 ⁴²	27/27	DSM-IV, MA dependence	4-7 d	Supervised admission and urine test on scan day	Nicotine and cannabis	Striatum	Cerebellum	[18F]fallypride	BP _{ND}	↓
Boileau et al. 2012 ⁴³	16/16	DSM-IV, MA abuse	Mean(SD) =	Urine drug screen on	Nicotine	Substantia	Cerebellar	[11C]-PHNO	BP _{ND}	↑

		or dependence	18.5(20.5) d, range 6-90 d	scan day		nigra, globus pallidus, ventral pallidum, striatum	cortex			Substantia nigra, globus pallidus, ventral pallidum ↓ striatum
Iyo et al. 1993 ⁴⁴	6/10	DSM-III-R, history of MA abuse and psychotic symptoms	Minimum 1 mo, range 2 mo-3 years	Not specified	Occasional alcohol	Striatum, frontal cortex	Cerebellum	[11C]N-Methylspiperone	K'	↔ in striatum, ↓ striatum to frontal cortex ratio
Volkow et al. 2001 ⁴⁵	15/20	DSM-IV, MA dependence	Minimum 2 wk, range 2 wk-35 mo	Urine toxicology screen	Nicotine	Striatum	Cerebellum	[11C]raclopride	B _{max} /K _d	↓
Wang et al. 2012 ³	16/15	DSM-IV, MA dependence	Minimum 2 wk	Urine screening tests	Nicotine	Striatum	Cerebellum	[11C] Raclopride	BP _{ND}	↓
Okita et al. 2016 ⁴⁶	27/20	DSM-IV, MA dependence	Mean(SD) = 6.9(2.24) d	Urine testing	Nicotine and marijuana	Amygdala, striatum	Cerebellum	[18F] fallypride	BP _{ND}	↔ in amygdala, ↓ in striatum
Schrantee et al. 2015 ¹⁶	16/19	dAMPH users with ≥30 lifetime and ≥10 past year exposures	Minimum 1 wk	Nicotine	Multi-drug screen on a urine sample before scan	Striatum	Occipital cortex	[123I] IBZM	BP _{ND}	↓
Lee et al. 2009 ^{47 *5}	22/30	DSM-IV, current MA dependence	4-10 d	Residing at a research center during study	Nicotine	Striatum	Cerebellum	[18F]fallypride	BP _{ND}	↓
Ballard et al. 2015 ^{48 *6}	18/18	DSM-IV, MA dependence	4-7 d	Supervised admission	Nicotine and caffeine	Striatum	Cerebellum	[18F] fallypride	BP _{ND}	↓
Okita et al 2015 ^{49 *7}	23/17	DSM-IV, MA dependence	Mean(SD) = 7.2(3.11) d, range: 4-15	Nicotine, cannabis and alcohol	Admission and urine screening	Striatum	Cerebellum	[18F] Fallypride	BP _{ND}	↓

			d							
--	--	--	---	--	--	--	--	--	--	--

Abbreviations: BP, binding potential; d, days; dAMPH, dexamphetamine; MA, methamphetamine; mo, months; N/A, not applicable; SD, standard deviation; SUR, specific uptake ratio; wk, weeks

*1 [11C] PHNO data was excluded from the meta-analysis on dopamine receptor availability due to overlapping participants with [11C] raclopride data.

*2 Excluded from the meta-analysis on dopamine receptor availability due to overlapping participants with Martinez et al. 2007.

*3 Excluded from the meta-analysis on dopamine receptor availability due to overlapping participants with Volkow et al. 2014.

*4 Excluded from the meta-analysis on dopamine receptor availability due to overlapping participants with Volkow et al. 2014.

*5 Excluded from the meta-analysis on dopamine receptor availability due to overlapping participants with Ballard et al. 2015.

*6 Excluded from the meta-analysis on dopamine receptor availability due to overlapping participants with Ballard et al. 2015.

*7 Excluded from the meta-analysis on dopamine receptor availability due to overlapping participants with Lee et al. 2009.

Preclinical research

- Develop preclinical models that reflect the chronic usage seen in human users and measure levels of dopamine receptors, transporters and release prior to and following chronic use in longitudinal studies
- Use translational methods such as imaging so findings can be directly related to human studies
- Evaluate dosing regimens (both doses and patterns) that reflect human usage
- Develop genetic or other models that reproduce the magnitude of lower dopamine receptor, transporter and release levels seen in human users and determine if these increase the risk of the animals self-administering stimulants
- Determine if reduced dopamine release, transporter and receptor levels seen in chronic stimulant use are reversible with abstinence

Clinical research

- Determine if the reduced dopaminergic activity is a pre-existing vulnerability factor or a direct result of repeated drug exposure
- Determine the dopaminergic changes over the course of stimulant use and its reversibility with abstinence.
- Determine dopaminergic activity in extra-striatal regions in stimulant addiction.
- Address the possible confounding factors which may affect dopamine signalling such as disrupted sleep patterns, obesity and co-morbid substance use (particularly of tobacco)
- Determine the interaction of the dopaminergic system with the glutamatergic and GABAergic systems.

Box 1: Future research direction

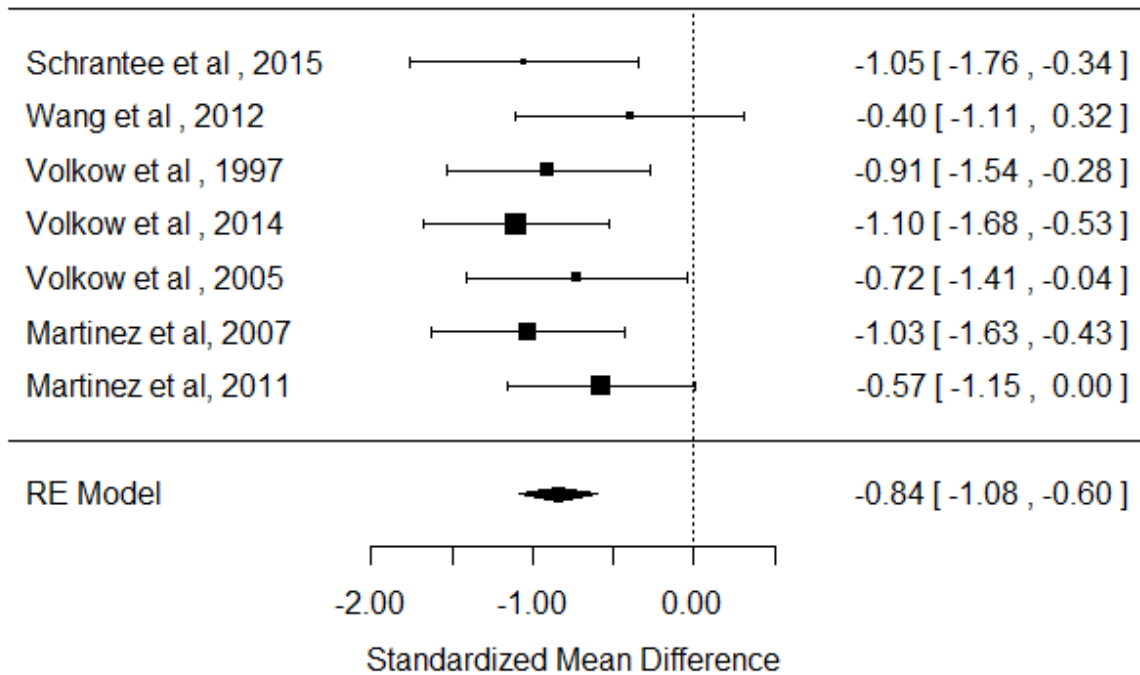
Reference:

1. Howes OD, Kambeitz J, Kim E, et al. The nature of dopamine dysfunction in schizophrenia and what this means for treatment. *Archives of general psychiatry*. 2012;69(8):776-786.
2. Kambeitz J, Abi-Dargham A, Kapur S, Howes OD. Alterations in cortical and extrastriatal subcortical dopamine function in schizophrenia: systematic review and meta-analysis of imaging studies. *The British journal of psychiatry : the journal of mental science*. 2014;204(6):420-429.
3. Wang GJ, Smith L, Volkow ND, et al. Decreased dopamine activity predicts relapse in methamphetamine abusers. *Molecular psychiatry*. 2012;17(9):918-925.
4. Horne MK, Cheng CH, Wooten GF. The cerebral metabolism of L-dihydroxyphenylalanine. An autoradiographic and biochemical study. *Pharmacology*. 1984;28(1):12-26.
5. Matuskey D, Gallezot JD, Pittman B, et al. Dopamine D(3) receptor alterations in cocaine-dependent humans imaged with [(1)(1)C](+)PHNO. *Drug and alcohol dependence*. 2014;139:100-105.
6. Payer DE, Behzadi A, Kish SJ, et al. Heightened D3 dopamine receptor levels in cocaine dependence and contributions to the addiction behavioral phenotype: a positron emission tomography study with [11C]-+-PHNO. *Neuropsychopharmacology : official publication of the American College of Neuropsychopharmacology*. 2014;39(2):311-318.
7. Tziortzi AC, Searle GE, Tzimopoulou S, et al. Imaging dopamine receptors in humans with [11C]-(+)-PHNO: dissection of D3 signal and anatomy. *NeuroImage*. 2011;54(1):264-277.
8. Gallezot JD, Beaver JD, Gunn RN, et al. Affinity and selectivity of [(1)(1)C]-(+)-PHNO for the D3 and D2 receptors in the rhesus monkey brain in vivo. *Synapse (New York, NY)*. 2012;66(6):489-500.
9. Martinez D, Carpenter KM, Liu F, et al. Imaging dopamine transmission in cocaine dependence: link between neurochemistry and response to treatment. *The American journal of psychiatry*. 2011;168(6):634-641.
10. Martinez D, Greene K, Broft A, et al. Lower level of endogenous dopamine in patients with cocaine dependence: findings from PET imaging of D(2)/D(3) receptors following acute dopamine depletion. *The American journal of psychiatry*. 2009;166(10):1170-1177.
11. Martinez D, Narendran R, Foltin RW, et al. Amphetamine-induced dopamine release: markedly blunted in cocaine dependence and predictive of the choice to self-administer cocaine. *The American journal of psychiatry*. 2007;164(4):622-629.
12. Narendran R, Martinez D, Mason NS, et al. Imaging of dopamine D2/3 agonist binding in cocaine dependence: a [11C]NPA positron emission tomography study. *Synapse (New York, NY)*. 2011;65(12):1344-1349.
13. Volkow ND, Tomasi D, Wang GJ, et al. Stimulant-induced dopamine increases are markedly blunted in active cocaine abusers. *Molecular psychiatry*. 2014;19(9):1037-1043.
14. Volkow ND, Wang GJ, Fowler JS, et al. Decreased striatal dopaminergic responsiveness in detoxified cocaine-dependent subjects. *Nature*. 1997;386(6627):830-833.
15. Volkow ND, Wang GJ, Ma Y, et al. Activation of orbital and medial prefrontal cortex by methylphenidate in cocaine-addicted subjects but not in controls: relevance to addiction. *The Journal of neuroscience : the official journal of the Society for Neuroscience*. 2005;25(15):3932-3939.
16. Schrantee A, Vaclavu L, Heijtel DF, et al. Dopaminergic system dysfunction in recreational dexamphetamine users. *Neuropsychopharmacology : official publication of the American College of Neuropsychopharmacology*. 2015;40(5):1172-1180.

17. Volkow ND, Wang GJ, Smith L, et al. Recovery of dopamine transporters with methamphetamine detoxification is not linked to changes in dopamine release. *NeuroImage*. 2015;121:20-28.
18. Wu JC, Bell K, Najafi A, et al. Decreasing striatal 6-FDOPA uptake with increasing duration of cocaine withdrawal. *Neuropsychopharmacology : official publication of the American College of Neuropsychopharmacology*. 1997;17(6):402-409.
19. Narendran R, Lopresti BJ, Martinez D, et al. In vivo evidence for low striatal vesicular monoamine transporter 2 (VMAT2) availability in cocaine abusers. *The American journal of psychiatry*. 2012;169(1):55-63.
20. Boileau I, Rusjan P, Houle S, et al. Increased vesicular monoamine transporter binding during early abstinence in human methamphetamine users: Is VMAT2 a stable dopamine neuron biomarker? *The Journal of neuroscience : the official journal of the Society for Neuroscience*. 2008;28(39):9850-9856.
21. Boileau I, McCluskey T, Tong J, Furukawa Y, Houle S, Kish SJ. Rapid Recovery of Vesicular Dopamine Levels in Methamphetamine Users in Early Abstinence. *Neuropsychopharmacology : official publication of the American College of Neuropsychopharmacology*. 2015.
22. Johanson CE, Frey KA, Lundahl LH, et al. Cognitive function and nigrostriatal markers in abstinent methamphetamine abusers. *Psychopharmacology*. 2006;185(3):327-338.
23. Volkow ND, Wang GJ, Fowler JS, et al. Cocaine uptake is decreased in the brain of detoxified cocaine abusers. *Neuropsychopharmacology : official publication of the American College of Neuropsychopharmacology*. 1996;14(3):159-168.
24. Wang GJ, Volkow ND, Fowler JS, et al. Cocaine abusers do not show loss of dopamine transporters with age. *Life sciences*. 1997;61(11):1059-1065.
25. Crits-Christoph P, Newberg A, Wintering N, et al. Dopamine transporter levels in cocaine dependent subjects. *Drug and alcohol dependence*. 2008;98(1-2):70-76.
26. Malison RT, Best SE, van Dyck CH, et al. Elevated striatal dopamine transporters during acute cocaine abstinence as measured by [123I] beta-CIT SPECT. *The American journal of psychiatry*. 1998;155(6):832-834.
27. McCann UD, Wong DF, Yokoi F, Villemagne V, Dannals RF, Ricaurte GA. Reduced striatal dopamine transporter density in abstinent methamphetamine and methcathinone users: evidence from positron emission tomography studies with [11C]WIN-35,428. *The Journal of neuroscience : the official journal of the Society for Neuroscience*. 1998;18(20):8417-8422.
28. McCann UD, Kuwabara H, Kumar A, et al. Persistent cognitive and dopamine transporter deficits in abstinent methamphetamine users. *Synapse (New York, NY)*. 2008;62(2):91-100.
29. Sekine Y, Iyo M, Ouchi Y, et al. Methamphetamine-related psychiatric symptoms and reduced brain dopamine transporters studied with PET. *The American journal of psychiatry*. 2001;158(8):1206-1214.
30. Volkow ND, Chang L, Wang GJ, et al. Association of dopamine transporter reduction with psychomotor impairment in methamphetamine abusers. *The American journal of psychiatry*. 2001;158(3):377-382.
31. Chou YH, Huang WS, Su TP, Lu RB, Wan FJ, Fu YK. Dopamine transporters and cognitive function in methamphetamine abuser after a short abstinence: A SPECT study. *European neuropsychopharmacology : the journal of the European College of Neuropsychopharmacology*. 2007;17(1):46-52.
32. Schouw ML, Caan MW, Geurts HM, et al. Monoaminergic dysfunction in recreational users of dexamphetamine. *European neuropsychopharmacology : the journal of the European College of Neuropsychopharmacology*. 2013;23(11):1491-1502.
33. Yuan J, Lv R, Robert Basic J, et al. Dopamine transporter dysfunction in Han Chinese people with chronic methamphetamine dependence after a short-term abstinence. *Psychiatry research*. 2014;221(1):92-96.

34. Volkow ND, Chang L, Wang GJ, et al. Loss of dopamine transporters in methamphetamine abusers recovers with protracted abstinence. *The Journal of neuroscience : the official journal of the Society for Neuroscience*. 2001;21(23):9414-9418.
35. Sekine Y, Minabe Y, Ouchi Y, et al. Association of dopamine transporter loss in the orbitofrontal and dorsolateral prefrontal cortices with methamphetamine-related psychiatric symptoms. *The American journal of psychiatry*. 2003;160(9):1699-1701.
36. Yuan J, Liu XD, Han M, et al. Comparison of striatal dopamine transporter levels in chronic heroin-dependent and methamphetamine-dependent subjects. *Addiction biology*. 2015.
37. Volkow ND, Fowler JS, Wang GJ, et al. Decreased dopamine D2 receptor availability is associated with reduced frontal metabolism in cocaine abusers. *Synapse (New York, NY)*. 1993;14(2):169-177.
38. Volkow ND, Fowler JS, Wolf AP, et al. Effects of chronic cocaine abuse on postsynaptic dopamine receptors. *The American journal of psychiatry*. 1990;147(6):719-724.
39. Martinez D, Broft A, Foltin RW, et al. Cocaine dependence and d2 receptor availability in the functional subdivisions of the striatum: relationship with cocaine-seeking behavior. *Neuropsychopharmacology : official publication of the American College of Neuropsychopharmacology*. 2004;29(6):1190-1202.
40. Wiers CE, Shokri-Kojori E, Cabrera E, et al. Socioeconomic status is associated with striatal dopamine D2/D3 receptors in healthy volunteers but not in cocaine abusers. *Neuroscience Letters*. 2016;617:27-31.
41. Wiers CE, Shumay E, Cabrera E, et al. Reduced sleep duration mediates decreases in striatal D2/D3 receptor availability in cocaine abusers. *Translational psychiatry*. 2016;6:e752.
42. Ballard ME, Mandelkern MA, Monterosso JR, et al. Low Dopamine D2/D3 Receptor Availability is Associated with Steep Discounting of Delayed Rewards in Methamphetamine Dependence. *The international journal of neuropsychopharmacology / official scientific journal of the Collegium Internationale Neuropsychopharmacologicum (CINP)*. 2015;18(7):pyu119.
43. Boileau I, Payer D, Houle S, et al. Higher binding of the dopamine D3 receptor-preferring ligand [11C]-(+)-propyl-hexahydro-naphtho-oxazin in methamphetamine polydrug users: a positron emission tomography study. *The Journal of neuroscience : the official journal of the Society for Neuroscience*. 2012;32(4):1353-1359.
44. Iyo M, Nishio M, Itoh T, et al. Dopamine D2 and serotonin S2 receptors in susceptibility to methamphetamine psychosis detected by positron emission tomography. *Psychiatry research*. 1993;50(4):217-231.
45. Volkow ND, Chang L, Wang GJ, et al. Low level of brain dopamine D2 receptors in methamphetamine abusers: association with metabolism in the orbitofrontal cortex. *The American journal of psychiatry*. 2001;158(12):2015-2021.
46. Okita K, Ghahremani DG, Payer DE, et al. Emotion dysregulation and amygdala dopamine D2-type receptor availability in methamphetamine users. *Drug and alcohol dependence*. 2016;161:163-170.
47. Lee B, London ED, Poldrack RA, et al. Striatal dopamine d2/d3 receptor availability is reduced in methamphetamine dependence and is linked to impulsivity. *The Journal of neuroscience : the official journal of the Society for Neuroscience*. 2009;29(47):14734-14740.
48. Ballard ME, Dean AC, Mandelkern MA, London ED. Striatal Dopamine D2/D3 Receptor Availability Is Associated with Executive Function in Healthy Controls but Not Methamphetamine Users. *PLoS one*. 2015;10(12):e0143510.
49. Okita K, Ghahremani DG, Payer DE, Robertson CL, Mandelkern MA, London ED. Relationship of Alexithymia Ratings to Dopamine D2-type Receptors in Anterior Cingulate and Insula of Healthy Control Subjects but not Methamphetamine-Dependent Individuals. *The international journal of neuropsychopharmacology / official scientific journal of the Collegium Internationale Neuropsychopharmacologicum (CINP)*. 2015.

Figure 1: Studies of dopamine release in stimulant users. The forest plot shows the effect sizes estimated using a random effects model and 95% confidence intervals of the percentage change in the difference of change in D2/3 binding after challenge. There was an overall decrease in dopamine release in stimulant users relative to controls with a large to very large effect size (-0.84 [95% CI, -1.08 - -0.60], $p < 0.001$)



Schrantee et al. 2015 and Wang et al. 2012 studied amphetamine-like stimulant users. The remaining studies included cocaine users.

Figure 2: Studies of dopamine transporter availability. The forest plot shows the effects sizes estimated using a random effects model and 95% confidence intervals of the difference between amphetamine/methamphetamine users and controls. There was an overall decrease in the dopamine transporter availability in methamphetamine users relative to controls (-0.91 [95% CI, -1.5 - -0.32], $p < 0.01$)

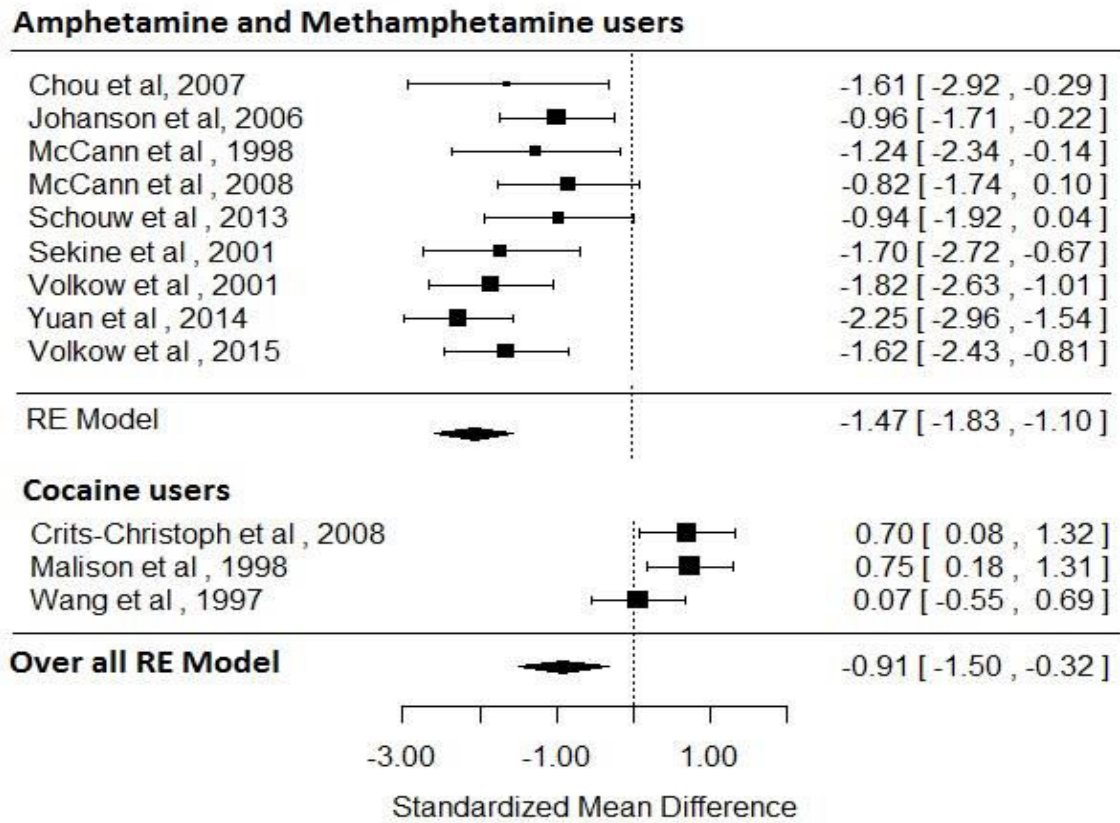


Figure 3: Studies of dopamine receptor availability. The forest plot shows the effect sizes estimated using a random effects model and 95% confidence intervals of D2/3 receptor binding potentials. There was an overall decrease in dopamine receptor availability compared to controls (-0.76 [95% CI, -0.92 - -0.60], $p < 0.001$).

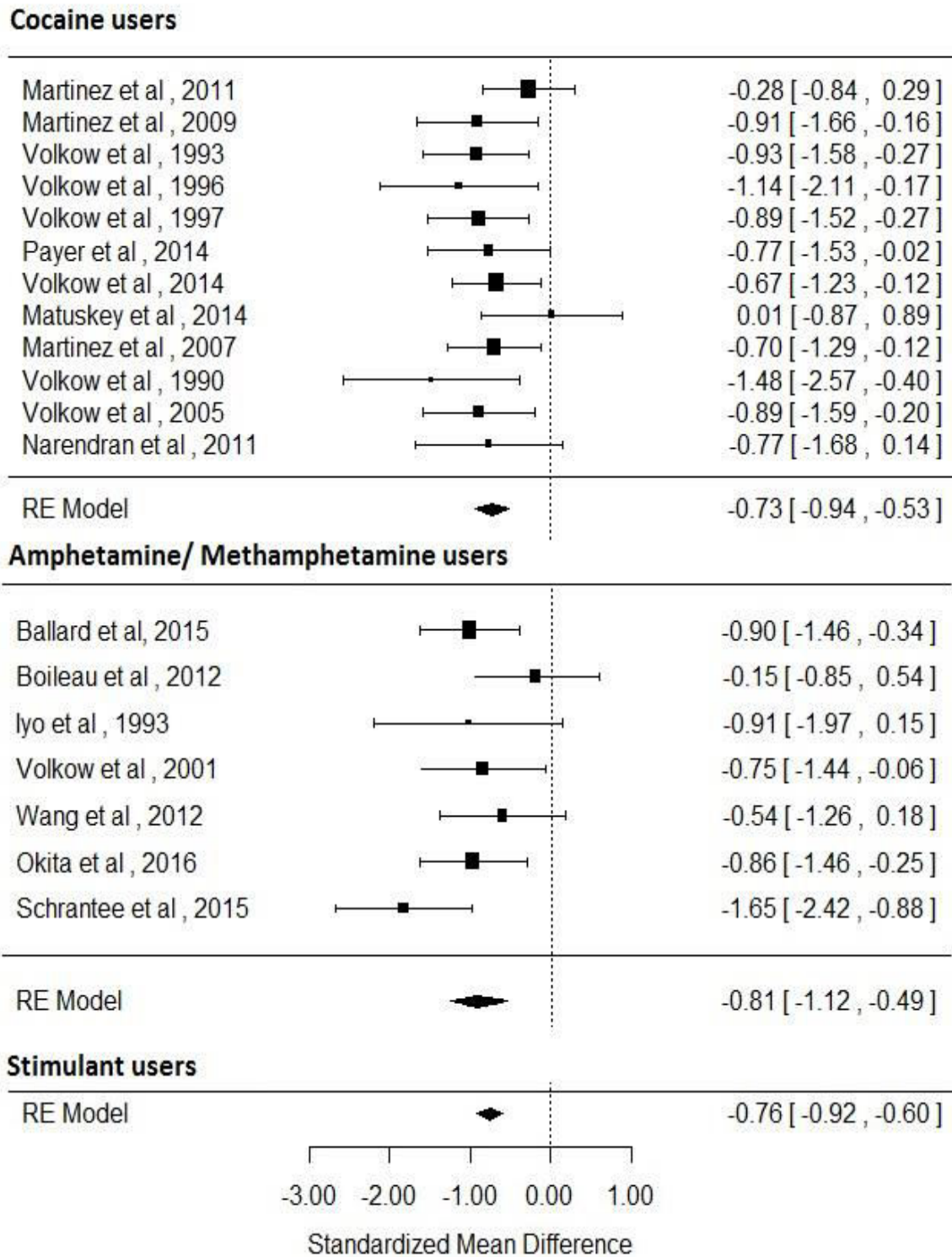
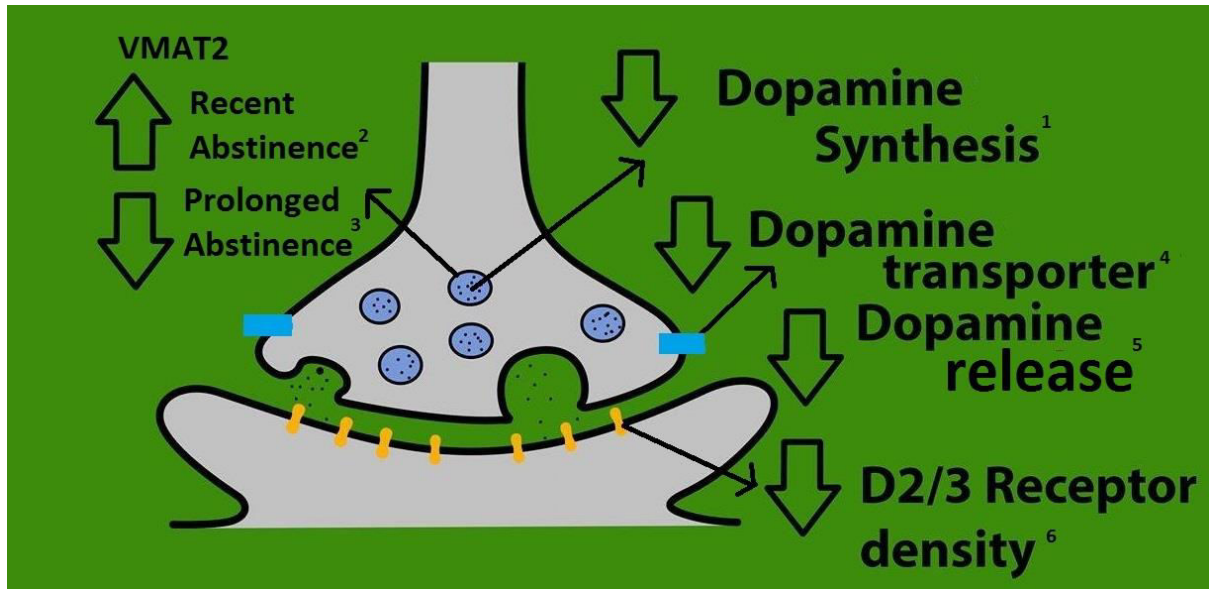


Figure 4: A summary of dopaminergic alterations in stimulant users

Summary of the synaptic location of the major dopaminergic findings from our meta-analyses and findings from studies of other aspects of the dopamine system.



1. Based on study by Wu et al. 1997

2. Based on study by Boileau et al. 2008 & 2015

3. Based on study by Narendran et al. 2012 and Johanson et al. 2006

4. Meta-analysis finding with effect size of -0.81 [95% CI, $-1.34 - -0.29$], $p < 0.01$

5. Meta-analysis finding with effect size of -0.91 [95% CI, $-1.50 - -0.32$], $p < 0.01$

6. Meta-analysis finding with effect size of -0.71 [95% CI, $-0.91 - -0.52$], $p < 0.001$