

Association of the Age at Menarche with Site-Specific Cancer Risks in Pooled Data from Nine Cohorts



Barbara J. Fuhrman^{1,2}, Steven C. Moore³, Celia Byrne⁴, Issam Makhoul², Cari M. Kitahara³, Amy Berrington de González³, Martha S. Linet³, Elisabete Weiderpass⁵, Hans-Olov Adami^{6,7}, Neal D. Freedman³, Linda M. Liao³, Charles E. Matthews³, Rachael Z. Stolzenberg-Solomon³, Mia M. Gaudet^{3,8}, Alpa V. Patel⁸, I-Min Lee⁹, Julie E. Buring⁹, Alicja Wolk¹⁰, Susanna C. Larsson¹⁰, Anna E. Prizment¹¹, Kim Robien¹², Michael Spriggs¹³, David P. Check³, Neil Murphy¹⁴, Marc J. Gunter¹⁴, Harold L. Van Dusen Jr¹³, Regina G. Ziegler³, and Robert N. Hoover³

ABSTRACT

The average age at menarche declined in European and U.S. populations during the 19th and 20th centuries. The timing of pubertal events may have broad implications for chronic disease risks in aging women. Here we tested for associations of recalled menarcheal age with risks of 19 cancers in 536,450 women [median age, 60 years (range, 31–39 years)] in nine prospective U.S. and European cohorts that enrolled participants from 1981 to 1998. Cox regression estimated multivariable-adjusted HRs and 95% confidence intervals (CI) for associations of the age at menarche with risk of each cancer in each cohort and random-effects meta-analysis was used to generate summary estimates for each cancer. Over a median 10 years of follow-up, 60,968 women were diagnosed with a first primary incident cancer. Inverse linear associations were observed for seven of 19 cancers studied. Each additional year in the age at menarche was associated with reduced risks of endometrial cancer (HR = 0.91; 95% CI, 0.89–0.94), liver cancer (HR = 0.92; 95% CI,

0.85–0.99), melanoma (HR = 0.95; 95% CI, 0.93–0.98), bladder cancer (HR = 0.96; 95% CI, 0.93–0.99), and cancers of the colon (HR = 0.97; 95% CI, 0.96–0.99), lung (HR = 0.98; 95% CI, 0.96–0.99), and breast (HR = 0.98; 95% CI, 0.93–0.99). All but one of these associations remained statistically significant following adjustment for baseline body mass index. Similarities in the observed associations between menarche and seven cancers suggest shared underlying causes rooted early in life. We propose as a testable hypothesis that early exposure to sex hormones increases mid-life cancer risks by altering functional capacities of stem cells with roles in systemic energy balance and tissue homeostasis.

Significance: Age at menarche is associated with risk for seven cancers in middle-aged women, and understanding the shared underlying causal pathways across these cancers may suggest new avenues for cancer prevention.

Introduction

Menarche, defined as the first menstrual period, signals the initiation of monthly hormonal cycles and the reproductive lifespan. It is

also the closing event of female puberty, a phase of accelerated growth, weight gain, and secondary sexual development (1).

In Western Europe and the United States, compiled records suggest that average ages at menarche declined by as much as 5 years between 1840 and 1940 (2, 3) and still vary substantially across population subgroups (3). More recent studies have documented similar declining trends in many other countries including developing nations (4). Historical and geographic variations in menarcheal age and its stereotypical alteration in response to modern life suggest a role for environmental factors experienced early in life (5, 6).

Early menarche has long been recognized as a risk factor for breast and endometrial cancers (7–9) and so it has been conceived narrowly as a risk factor for reproductive cancers with effects mediated through the lifetime duration of estrogen exposure. Recently, epidemiologic studies have demonstrated that women who experience early menarche are also at greater risks of cardiovascular diseases (10), type 2 diabetes (11), and premature mortality of all causes (10), suggesting broader consequences for women's health than previously appreciated.

The full range of cancer risks associated with the age at menarche is not known. Multiple adequately-powered prospective studies have been done to test associations of menarche with the risks of cancers of the lung (12, 13), pancreas (14), colon or rectum (15, 16), ovary (17), and stomach (18), but the findings for these sites are inconsistent. Menarche has been studied as a risk factor for other cancers sporadically or in small studies only, including those of the liver (19), skin (20), brain (21), bladder (22), thyroid (23), and kidney (24). Because cancers other than breast and endometrial cancers constitute 71% of incident cancers among women globally (25), clarifying age at menarche's

¹University of Pittsburgh, Pittsburgh, Pennsylvania. ²University of Arkansas for Medical Sciences, Little Rock, Arkansas. ³Division of Cancer Epidemiology and Genetics, National Institutes of Health, Rockville, Maryland. ⁴Uniformed Health Services University, Bethesda, Maryland. ⁵International Agency for Research on Cancer, World Health Organization, Lyon, France. ⁶Harvard T. H. Chan School of Public Health, Harvard University, Cambridge, Massachusetts. ⁷Department of Medical Epidemiology and Biostatistics, Karolinska Institutet, Stockholm, Sweden. ⁸Epidemiology Research Program, American Cancer Society, Atlanta, Georgia. ⁹Brigham and Women's Hospital, Harvard Medical School, Boston, Massachusetts. ¹⁰Institute of Environmental Medicine, Karolinska Institute, Stockholm, Sweden. ¹¹Division of Hematology, Oncology and Transplantation, Masonic Cancer Center, University of Minnesota, Minneapolis, Minnesota. ¹²Exercise and Nutrition Sciences, Public Health, George Washington University, Washington, District of Columbia. ¹³Information Management Services, Rockville, Maryland. ¹⁴Section of Nutrition and Metabolism, International Agency for Research on Cancer, World Health Organization, Lyon, France.

Note: Supplementary data for this article are available at Cancer Research Online (<http://cancerres.aacrjournals.org/>).

B.J. Fuhrman and S.C. Moore are shared first authors.

Corresponding Author: Barbara Fuhrman, Pediatrics, University of Pittsburgh, 120 Lytton Ave., Pittsburgh, PA 15217. E-mail: barbara.fuhrman@pitt.edu

Cancer Res 2021;81:2246–55

doi: 10.1158/0008-5472.CAN-19-3093

©2021 American Association for Cancer Research.

association with risk of other cancers is essential for understanding its role in cancer overall. A broader understanding of associations across cancer types may also provide hints about biological mechanisms. If, for example, age at menarche is associated with many different cancer types (not just estrogen-driven cancers), then we might infer multiple pathways or a shared non-estrogen-mediated mechanism.

To cast a wide net, we have tested for associations of 19 site-specific cancer risks with the age at menarche in a large consortial dataset that includes 536,450 women enrolled in nine prospective cohorts in the United States and Europe. In secondary analyses, we assessed body mass index (BMI) at baseline and in young adulthood as potential confounders, and then tested whether associations differed by birth cohort, height, adiposity, parity, smoking history, or postmenopausal hormone use.

Patients and Methods

Study design and population

We used a pooled data resource developed originally through the National Cancer Institute Cohort Consortium for studies of obesity and mortality (26), and of leisure-time physical activity with cancer risks (27). Of the 10 cohorts in the physical activity project that included women, nine agreed to participate in the current analysis, including six from the United States and three from Europe. This study includes the 536,450 women (>18 years of age) who had available data on age at menarche and attained height, who accrued at least 1 year of follow-up time, and who reported no history of any malignant cancer at baseline (Supplementary Table S1).

Assessment of age at menarche and covariates

Participants in each study completed questionnaires at the start of study follow-up that inquired about age at menarche, demographics, and other participant characteristics. For the five cohorts that did not assess key variables on their baseline questionnaire but collected the data later, we redefined baseline as the date of the later questionnaire.

Cohorts assessed age at menarche by asking participants to report their age when they had their first menstrual period (see Supplementary Table S2). Participants wrote responses directly in six cohorts, and chose from precoded responses, for example, age 10 to 11 years, in three cohorts. For statistical analyses, we assigned the age at menarche as the midpoint of precoded response options, for example, age 11 for the category of 10 to 11 years.

We included in our models covariates that prior studies identified as major cancer risk factors,²⁹ although we acknowledge our list is not exhaustive. Covariates were harmonized as follows: age (continuous), smoking status (never, former, current), alcohol consumption (0, 0.1–14.9, 15.0–29.9, ≥30.0 g/day), race (black, white, other), education (less than high school, high school graduate, post-high school training, some college, college degree or greater), postmenopausal hormone therapy use (ever, never), oral contraceptive use (ever, never), age at menopause (premenopausal, 40–44, 45–49, 50–54, >55 years), parity (0, 1, 2, ≥3 children), height (continuous), and physical activity level (continuous). In select models (described below), we also adjusted for BMI. BMI was calculated for each participant as her self-reported weight in kilograms divided by the square of the self-reported height in meters and categorized as follows: <18.5, 18.5 to 24.9, 25.0 to 29.9, 30.0 to 34.9, 35.0 to 39.9, ≥40.0 kg/m².

Cancer ascertainment

Incident first primary cancers were identified by individual participating studies through follow-up questionnaires with subsequent

review of medical records (28, 29), cancer registry linkages (12, 30, 31), or both (23, 32–34). Cancer types were defined using the Surveillance Epidemiology and End Results site recode and the International Classification of Diseases for Oncology, Third Edition (for specific ICD codes used, see Supplementary Table S3; ref. 35). As in our prior paper (27), we selected for analysis those cancer types that had at least 300 cases across studies, namely cancers of the bladder, brain, breast, colon, endometrium, stomach (noncardia only), head and neck, kidney, liver, lung, ovary, pancreas, rectum, skin (melanoma), small intestine, and thyroid, as well as lymphocytic leukemia, myeloma, myeloid leukemia, and non-Hodgkin lymphoma (case numbers in Supplementary Table S4). For each cancer, only cohorts with at least 15 cases were included in analyses. Follow-up time was calculated from the date of questionnaire response to the date of first incident cancer diagnosis, death, or the end of follow-up within each study, whichever came first.

Statistical methods

To corroborate reports of declining menarcheal age over the 20th century, we examined the relationship of birth year with age at menarche in general linear models that adjusted for study cohort. Each birth year from 1905 to 1962 was modeled relative to pre-1905 birth years, and we calculated the mean ages at menarche and 95% confidence intervals (CI) using least squares means.

Cox proportional hazards models were used to estimate covariate-adjusted HRs and 95% CIs for each association of age at menarche with a site-specific cancer risk, using study time as the underlying time-metric. When modeling risks of ovarian and endometrial cancers, we excluded women who reported, at baseline, previous oophorectomy or hysterectomy; those with missing/unknown status for these outcomes (1.1% and 1.6%, of all participants, respectively) were included as though they had reported no history of these procedures at baseline. HRs were estimated for each additional year in the age at menarche, modeled as a continuous variable.

In our initial models, we used restricted cubic splines (stratified by cohort) and likelihood ratio tests to confirm that associations of menarche and cancer risks were consistent with linearity. Thereafter, our primary analyses evaluated age at menarche and cancer relationships as linear functions in each cohort and used random-effects meta-analysis to generate summary risk estimates across studies (36). Multiple imputation procedures were used to accommodate missing covariate data within each cohort (37), with the overall proportions of missing data as follows: age (0%), smoking status (1.7%), alcohol consumption (2.2%), race (1.6%), education (3.3%), postmenopausal hormone therapy use (0.6%), oral contraceptive use (0.5%), age at menopause (1.6%), parity (0.6%), height (0%), and physical activity level (3.1%). For models that adjusted for BMI, BMI had a missingness of (1.3%). We considered $P < 0.05$ to be statistically significant, but also calculated the false discovery rate (38) for our primary findings to account for the increased type I error rate stemming from multiple testing. Statistical heterogeneity was evaluated using Cochran's Q (39). We calculated the population attributable risk to estimate the percentage of cases that, theoretically, would be prevented among study participants if age at menarche occurred one year later, assuming causal relationships between age at menarche and cancer (40).

To evaluate anthropometric measures as confounders and/or mediators of the observed associations, we ran models that additionally adjusted for baseline BMI and, in six cohorts with available data, adjusted instead for BMI in young adulthood. In exploratory analyses, we also evaluated multiplicative effect modification by the median birth year (before 1934; in or after 1934), median height (<162.5 cm;

Table 1. Selected participant characteristics according to cohort study.

Cohort	Participants	Year of birth, median (range)	Age at menarche, median (IQR), years	Study baseline	Age at study baseline, median (range), years	Follow-up, median (maximum), years
AARP	198,244	1934 (1925–45)	13 (11–13)	1995–97	62 (50–71)	11 (11)
BCDDP	38,511	1927 (1895–1948)	13 (12–14)	1987–89	60 (39–93)	9 (11)
CPS-II	80,821	1930 (1903–52)	13 (12–13)	1992–93	63 (40–91)	14 (17)
IWHS	37,537	1924 (1915–33)	13 (12–14)	1986	61 (52–70)	20 (20)
PLCO	29,211	1934 (1919–46)	13 (13–15)	1993–2003	62 (52–77)	9 (13)
SMC	32,716	1937 (1914–49)	13 (12–14)	1998	60 (47–83)	10 (10)
USRT	49,374	1950 (1905–66)	12 (12–13)	1994–98	45 (31–88)	9 (12)
WHS	39,334	1941 (1904–55)	12 (12–13)	1993–96	52 (39–90)	17 (18)
WLH	30,702	1952 (1942–62)	13 (12–14)	2003–04	51 (40–62)	7 (7)
Total	536,450	1934 (1895–1966)	13 (11–14)	1986–2004	60 (31–93)	11 (20)

Abbreviations: AARP, National Institutes of Health–AARP Diet and Health Study; BCDDP, Breast Cancer Detection and Demonstration Project; CPS II, Cancer Prevention Study II; IWHS, Iowa Women's Health Study; PLCO, Prostate, Lung, Colorectal and Ovarian Cancer Screening Trial; SMC, Swedish Mammography Cohort; USRT, US Radiologic Technologists Cohort; WHS, Women's Health Study; WLH, Women's Lifestyle and Health Study; IQR, interquartile range.

≥162.5 cm), by baseline BMI (<25 kg/m²; ≥25 kg/m²), smoking status (current; never smokers), postmenopausal hormone therapy (ever-users or never-users), country (USA vs. Sweden) and follow-up time (<5 years follow up; ≥5 years follow up) using the Wald test for homogeneity. The tests for effect modification were based on dichotomous categories to minimize multiple testing, and median splits were used for these categories (where possible) to maximize statistical power. Interactions were declared if $P < 0.01$.

We conducted several sensitivity analyses to evaluate whether results were robust. We tested models that used age instead of person-years as the underlying time metric and adjusted for birth year instead of age. To evaluate the influence of outliers, we reran analyses after excluding the 4% of participants whose age at menarche was 9 or younger or 17 or older and compared results. We tested the proportional hazards assumption using an interaction term for continuous age at menarche with follow-up time and used a Wald test to assess its statistical significance.

Statistical analyses were carried out using SAS 9.4.

Results

Study participants included pre- and postmenopausal women, with an overall median age of 60 years (range: 31–93 years) at study enrollment (Table 1); 95% of participants were White. In a pooled sample, later age at menarche was associated with older age at baseline, lower levels of education, never use of oral contraceptives, greater attained height, and lower baseline BMI (Supplementary Table S5). Age at menarche was also higher among participants born early in the 20th century compared with those born later (Fig. 1). For example, participants born in 1905 had a mean menarcheal age of 13.4 years whereas those born in 1960 had a mean menarcheal age of 12.4 years. Thus, age at menarche appeared to decline by one year over the 55 year span we studied, or by 0.18 years per study decade. Selected characteristics of study participants are described by cohort in Supplementary Table S6.

Over the course of follow-up (median 10.5 years), we identified 60,968 incident cancers (occurring at a median age at diagnosis of 68.8 years; further details in Supplementary Table S7). In initial models, we used splines to evaluate the shape of the dose–response associations between age at menarche and cancer risk (see Figs. 2 and 3 for cancers

with statistically significant linear associations, and Supplementary Fig. S1 for all other cancers). The associations were generally consistent with linearity, except for melanoma, for which the association was null at the youngest menarcheal ages but strongly inverse after age 12 years ($P_{\text{nonlinearity}} = 0.01$). Because this association was still approximately linear, and because all other site-specific cancer risks were best modeled as linear functions, we based primary analyses on linear models.

In our primary analyses, we observed statistically significant inverse associations of age at menarche with the risks of 7 of 19 cancers (Table 1; Fig. 4). Each additional year in the age at menarche was associated with a small but statistically significant reduction in the risks of endometrial cancer (HR = 0.91; 95% CI, 0.89–0.94), liver cancer (HR = 0.92; 95% CI, 0.85–0.99), melanoma skin cancer (HR = 0.95; 95% CI, 0.93–0.98), bladder cancer (HR = 0.96; 95% CI, 0.93–0.99),

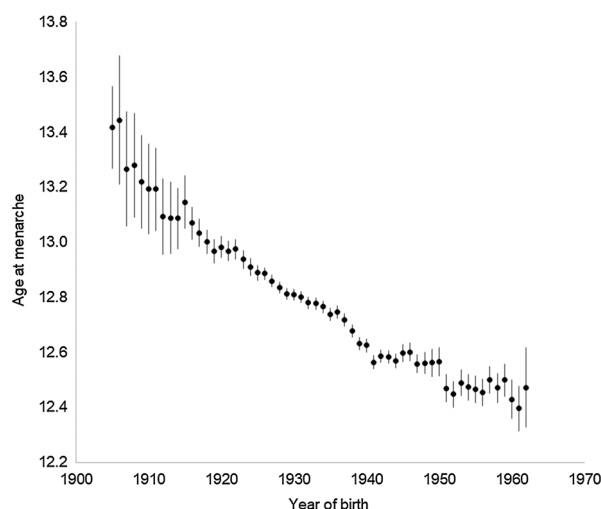
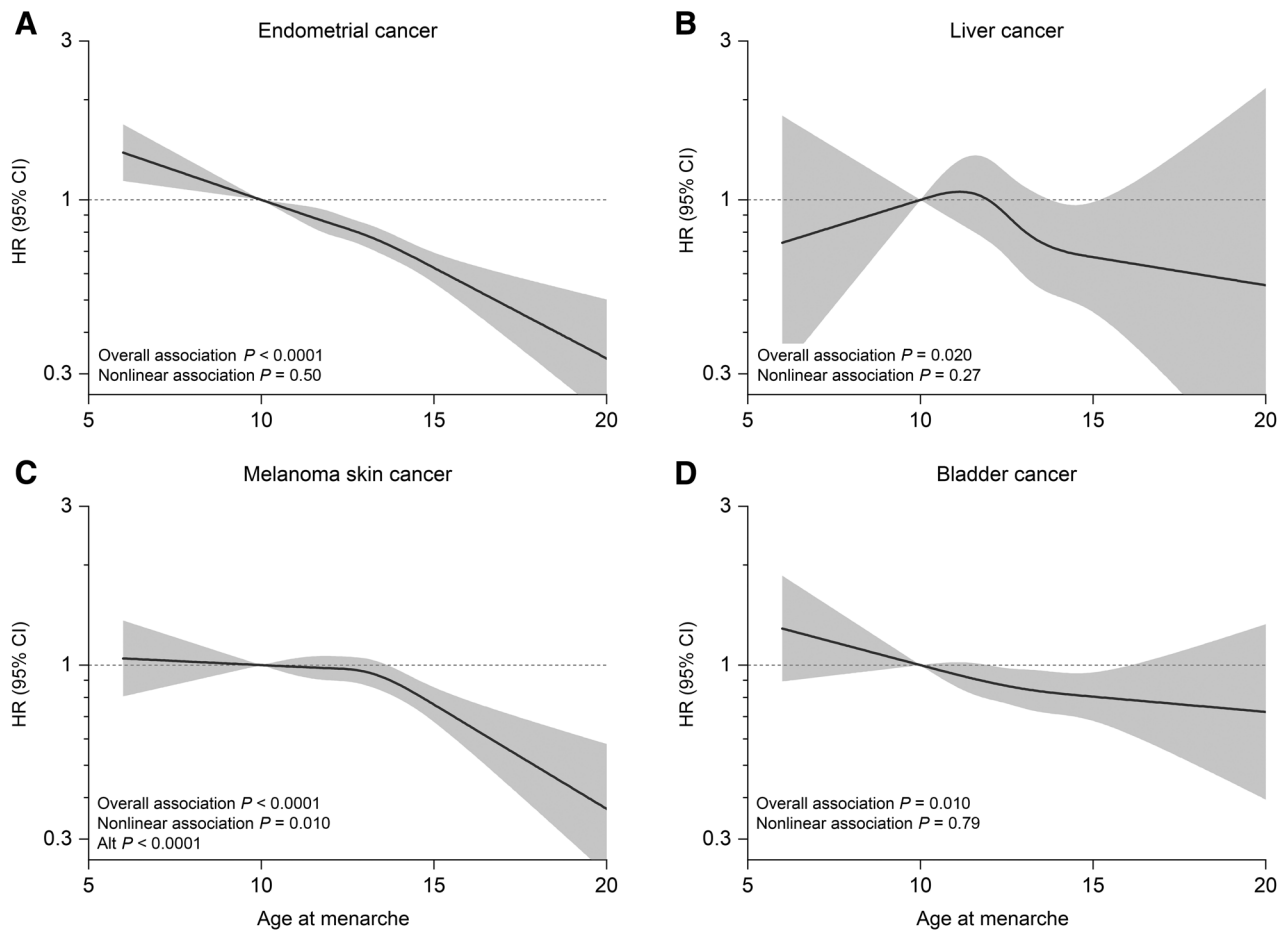


Figure 1. Mean age at menarche (95% CIs) stratified by year of birth and adjusted for cohort, in a pooled sample of 536,450 middle-aged women drawn from nine cohort studies. Data markers indicate the mean, and error bars, the 95% CIs of the estimated mean.

**Figure 2.**

Splines describing associations of cancer risks in middle-aged women with the age at menarche (years). Nonlinear associations of selected site-specific cancer risks with the age at menarche among middle-aged women drawn from nine cohorts: endometrial cancer (A), liver cancer (B), melanoma (C), and bladder cancer (D). Separate models were fit for each cancer type using cubic restricted splines in samples stratified by cohort. Models adjusted for baseline age, smoking, alcohol, race/ethnicity, education, and hormone replacement therapy, oral contraceptive use, age at menopause, parity, and height.

and cancers of the colon (HR = 0.97; 95% CI, 0.96–0.99), breast (HR = 0.98; 95% CI, 0.93–0.99), and lung (HR = 0.98; 95% CI, 0.96–0.99; Fig. 3). Over the 19 cancers, the estimated false-discovery rate is 5%. This low rate suggests that few, if any, of our primary findings are due to chance. If the observed associations are assumed to be causal, cases attributable to the 1-year shift in the age at menarche observed in our sample across birth years would represent 9.9% of endometrial cancer cases, 8.7% of liver cancer cases, 5.3% of melanoma cases, 4.2% of bladder cancer cases, 3.1% of colon cancer cases, 2.0% of lung cancer cases, and 2.0% of breast cancer cases, accounting for a total of 1,545 cancer diagnoses in a population of 536,450 middle-aged women per ~10 to 11 years of follow-up.

When models were additionally adjusted for baseline BMI, the summary HR were altered by <5% and remained statistically significant for each of these cancer sites, except liver (Table 2). Adjustment for BMI in young adulthood altered summary relative risks by less than 1% (Supplementary Table S8).

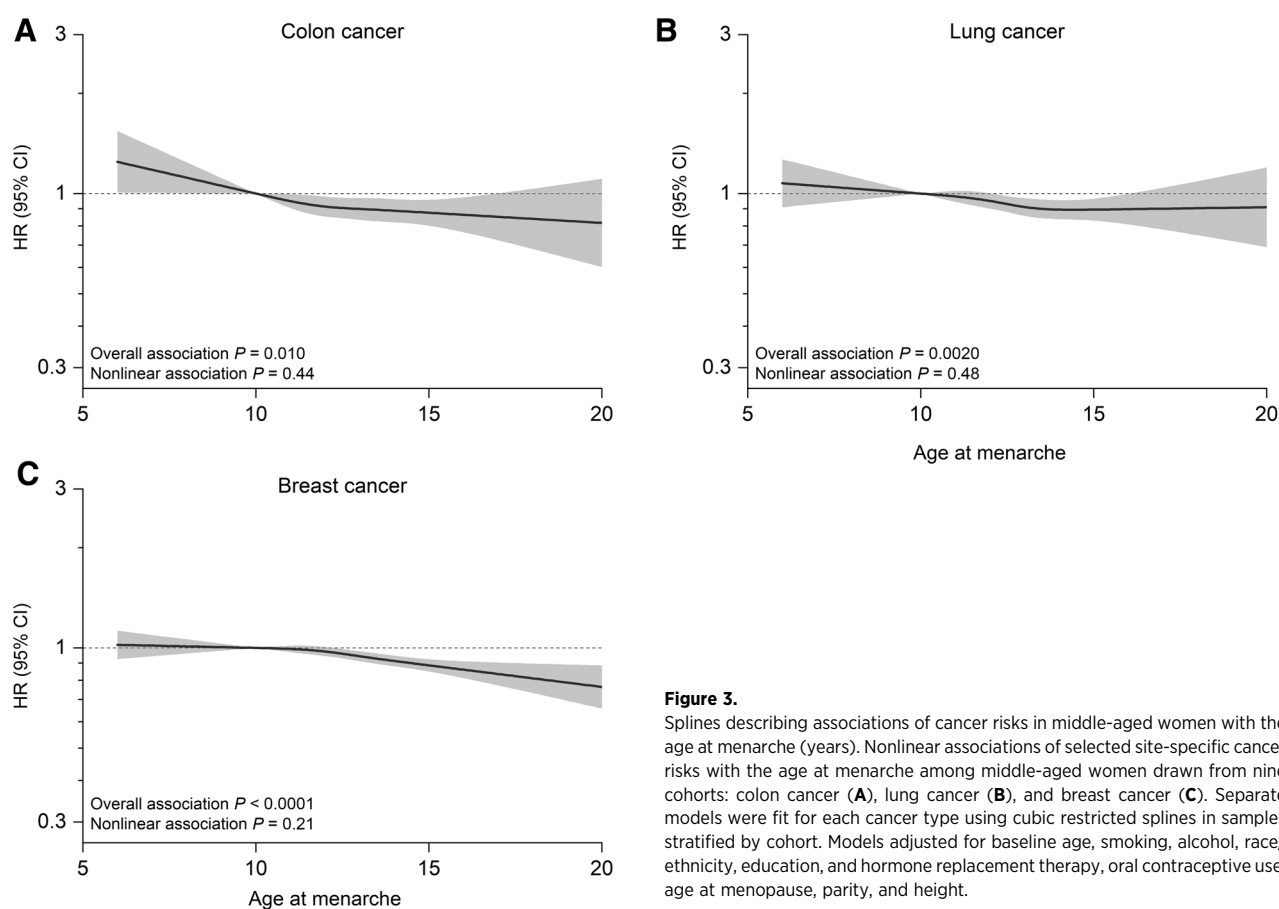
We tested for effect modification by selected covariates including birth year, baseline age, baseline BMI, parity, smoking status, height, use of menopausal hormones, and nation (Supplementary Tables S9–S16). Effect modification was not observed by baseline age, BMI, parity,

or country. The association of age at menarche with endometrial cancer risk was more strongly inverse in never-users compared with current-users of hormone therapy (HR_{never user} = 0.89; 95% CI, 0.86–0.93 vs. HR_{current user} = 0.96; 95% CI, 0.93–0.99; $P_{\text{interaction}} = 0.01$). In addition, qualitative interactions were observed by height for ovarian cancer (HR_{tall} = 0.92; 95% CI, 0.87–0.98 vs. HR_{short} = 1.05; 95% CI, 0.98–1.12; $P_{\text{interaction}} = 0.01$), and by smoking status for thyroid cancer (HR_{never} = 0.90; 95% CI, 0.85–0.95 vs. HR_{ever} = 1.09; 95% CI, 1.00–1.19; $P_{\text{interaction}} < 0.001$).

In sensitivity analyses, models run after excluding participants with outlying menarcheal ages yielded substantively similar results (Supplementary Table S17). HRs for a few cancers were stronger in this analysis (e.g., for liver cancer, the HR changed from 0.92 to 0.88), but the differences did not appear to be systematic across cancers.

Discussion

In this pooled analysis of 536,450 middle-aged and elderly women drawn from nine cohorts in the United States and Europe, we observed that each additional year in the age at menarche was associated with

**Figure 3.**

Splines describing associations of cancer risks in middle-aged women with the age at menarche (years). Nonlinear associations of selected site-specific cancer risks with the age at menarche among middle-aged women drawn from nine cohorts: colon cancer (A), lung cancer (B), and breast cancer (C). Separate models were fit for each cancer type using cubic restricted splines in samples stratified by cohort. Models adjusted for baseline age, smoking, alcohol, race/ethnicity, education, and hormone replacement therapy, oral contraceptive use, age at menopause, parity, and height.

modest but statistically significant reductions in the risks of seven cancers, including endometrial and liver cancers, melanoma skin cancers, and cancers of the bladder, colon, lung, and breast. These associations showed no evidence of heterogeneity by cohort and were robust to adjustment for baseline BMI.

Our findings for the two cancers with the strongest priors, endometrial and breast cancers, are consistent with previous literature showing inverse risk associations with menarcheal age (7, 8, 9). The effect sizes observed here are similar to summary estimates from pooled or meta-analyses (7, 9). In a Mendelian randomization studies, genetic scores predicting early menarche were associated with higher risks of endometrial and breast cancers, respectively, suggesting that the consistently observed risk associations are not a result of confounding (41). In this analysis, we observed that the association of menarcheal age with endometrial cancer risk was modestly attenuated by adjustment for baseline BMI. Thus, this association is likely mediated, in part, through the association of early menarche with greater mid-life adiposity (42).

With respect to the cancer outcomes with inconsistent epidemiologic support, we observed inverse linear associations of the age at menarche with risks of colon and lung cancers, but not with risks of pancreatic, rectal, ovarian, or gastric (noncardia) cancers.

In a meta-analysis that included 11 case-control and 11 cohort studies of the association of colorectal cancer with menarcheal age, substantial heterogeneity was observed across study-specific estimates, and a nonstatistically significant summary estimate was just under

1.00; findings remained null and heterogeneous whether stratified on study design, study quality, population, exposure assessment, anatomic cancer site or subsite (15). In analyses carried out in NIH-AARP, investigators observed effect modification by menopausal hormone use, with inverse associations observed in never-users, but not ever-users (16). In this study, which includes NIH-AARP, associations of menarcheal age with colon cancer did not differ by history of menopausal hormone use.

Our finding of an inverse linear association of lung cancer risk with menarcheal age contrasts with a recent meta-analysis that included more than 20 studies and observed nonsignificant summary estimates of association and substantial heterogeneity across studies (13). It is possible that the distribution of lung cancer subtypes influences findings—one previous study showed inverse associations of small cell and adenocarcinoma lung cancer risks with menarcheal age, and direct associations for some other subtypes (12). In this analysis, we did not have data on lung cancer subtypes.

Among cancers that have not been frequently studied in association with reproductive factors, we observed inverse associations for cancers of the liver, skin, and bladder, but not for the remaining outcomes.

The inverse association of liver cancer risk with menarcheal age observed here is consistent with two previous studies. In a consortial analysis drawing data from 11 prospective studies (seven of which are also included in the present study) with 203 incident cases of hepatocellular carcinoma, McGlynn and colleagues observed a monotonic

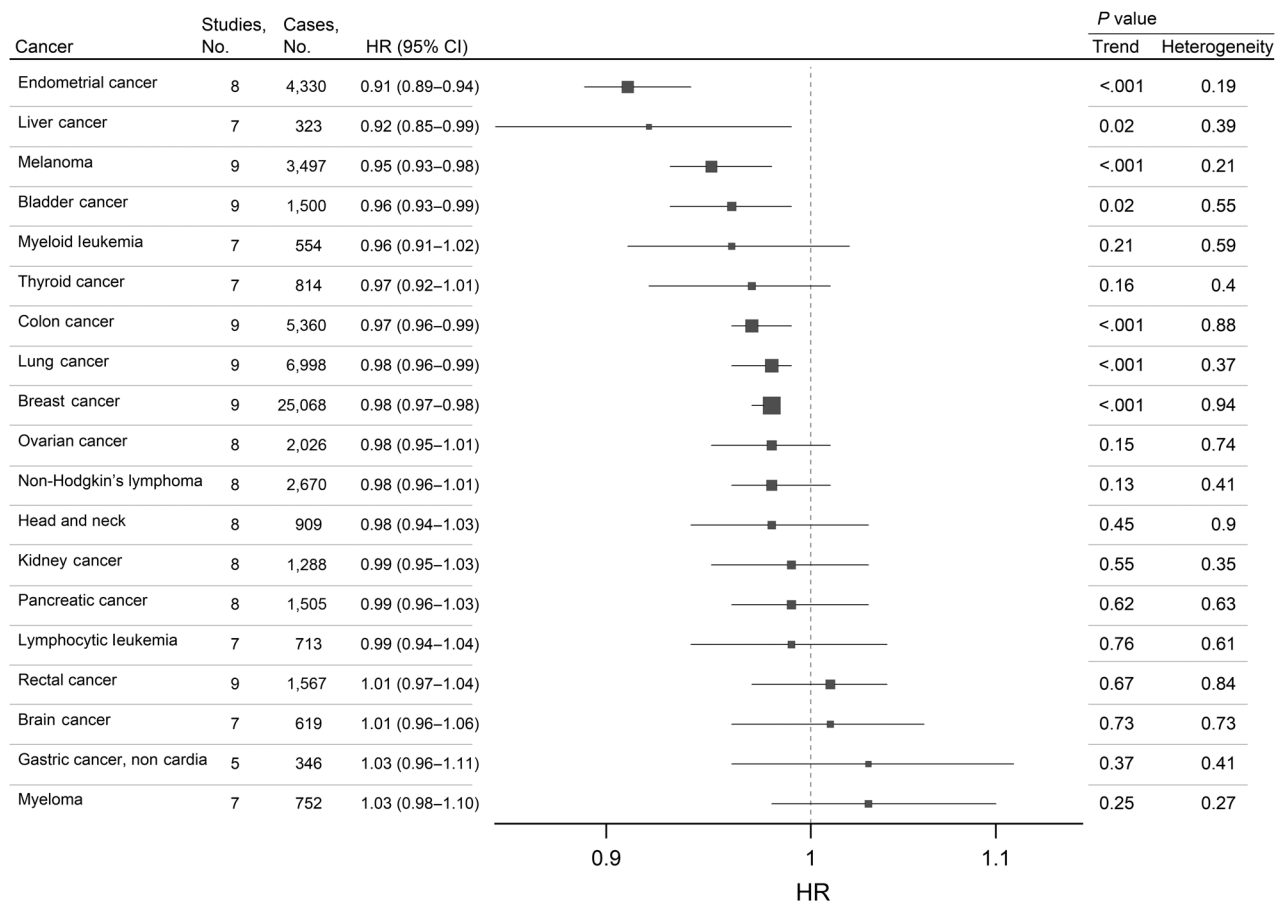


Figure 4.

Summary estimates for multivariable-adjusted relative risks of 19 site-specific cancers for each additional year in the age at menarche among middle-aged women drawn from nine cohorts. This forest plot describes summary estimates for multivariable-adjusted relative risks of site-specific cancers per additional year in the age at menarche among middle-aged women drawn from nine prospective cohorts. Cancers are ordered by effect size. Cox proportional hazard models adjusted for baseline age, smoking, alcohol, race/ethnicity, education, and hormone replacement therapy, oral contraceptive use, age at menopause, parity, and height.

but non-significant inverse trend ($OR_{14+ \text{ years vs. } <12 \text{ years}} = 0.64$; 95% CI, 0.40–1.03; $P_{\text{trend}} = 0.09$; ref. 43). In another retrospective study, with 218 cases of incident hepatocellular carcinoma, early menarche was strongly associated with increased risk in hepatitis B carriers (multivariable-adjusted $OR_{<12 \text{ years vs. } >16 \text{ years}} = 6.96$; 95% CI, 2.52–19.18) but not in non-carriers ($P_{\text{interaction}} = 0.005$; ref. 44). In this study, no data on viral infections was available to address this issue.

Few studies have reported on melanoma risks associated with reproductive factors and most have been underpowered or retrospective. Our finding of an inverse risk association is consistent with a previous prospective study, in which significantly reduced risk of melanoma was observed in association with each additional year in the age at menarche ($RR_{\geq 15 \text{ years vs. } 13-14 \text{ years}} = 0.67$; 95% CI, 0.46–0.97; $P_{\text{trend}} = 0.30$; ref. 45).

Several studies have tested associations of bladder cancer risk with menarcheal age and other reproductive factors. In the large NIH-AARP cohort, with 651 incident cases of incident bladder cancer observed among women, Daugherty and colleagues found reduced risk in association with late menarche and a significant trend across categories ($HR_{\text{age } >15 \text{ years vs. } <10 \text{ years}} = 0.57$; 95% CI, 0.39–0.84; $P_{\text{trend}} = 0.02$; ref. 22). Other studies were smaller and had mixed findings (36, 46).

One potential explanation for our findings is confounding by year of birth, which was strongly associated with the age at menarche, and may also be associated with trends in the prevalence of cancer risk factors and thus, with cancer incidence rates. We saw little evidence of confounding in models stratified by the median year of birth and findings were similar in models adjusted for year of birth instead of baseline age.

In other stratified models, we observed a stronger inverse association between age at menarche and endometrial cancer risk among never-users versus current-users of hormone therapy. This pattern echoes that observed for BMI, which is known to be more strongly associated with endometrial cancer risk among never hormone users than current users (46). Presumably, this occurs because BMI's estrogenic effects are blunted in hormone therapy users and it is conceivable that age at menarche's hormonal effects are similarly blunted in this group. The qualitative interactions observed for ovarian cancer (by height) and thyroid cancer (by smoking status) are harder to explain but could reflect small case numbers and/or chance.

The seven menarche–cancer associations identified here may encompass several distinct etiologic explanations but could also arise as a result of a common cause, either associated with, or mediated by, variations in pubertal development.

Table 2. Summary estimates for relative risks of site-specific cancers associated with the age at menarche, in multivariable models without, and with, additional adjustment for BMI.

	Model 1 ^a			Model 2 ^b			Percent difference in HR
	HR	<i>P</i> _{trend}	<i>P</i> _{het}	HR	<i>P</i> _{trend}	<i>P</i> _{het}	
Endometrial cancer	0.91 (0.89–0.94)	<0.001	0.19	0.95 (0.92–0.98)	<0.001	0.16	4.0%
Liver cancer	0.92 (0.85–0.99)	0.02	0.39	0.94 (0.87–1.01)	0.07	0.40	2.3%
Melanoma	0.95 (0.93–0.98)	<0.001	0.21	0.95 (0.93–0.99)	0.002	0.25	0.0%
Bladder cancer	0.96 (0.93–0.99)	0.02	0.55	0.96 (0.93–1.00)	0.03	0.49	0.4%
Myeloid Leukemia	0.96 (0.91–1.02)	0.21	0.59	0.98 (0.93–1.04)	0.56	0.46	1.9%
Thyroid cancer	0.97 (0.92–1.01)	0.16	0.40	0.97 (0.93–1.02)	0.18	0.50	0.3%
Colon cancer	0.97 (0.96–0.99)	<0.001	0.88	0.98 (0.96–1.00)	0.04	0.76	0.6%
Lung cancer	0.98 (0.96–0.99)	<0.001	0.37	0.97 (0.95–0.99)	<0.001	0.37	–0.6%
Breast cancer	0.98 (0.97–0.98)	<0.001	0.94	0.98 (0.97–0.99)	<0.001	0.91	0.6%
Ovarian cancer	0.98 (0.95–1.01)	0.15	0.74	0.98 (0.95–1.01)	0.17	0.70	0.1%
Non-Hodgkin's lymphoma	0.98 (0.96–1.01)	0.13	0.41	0.99 (0.96–1.01)	0.26	0.52	0.5%
Head & Neck	0.98 (0.94–1.03)	0.45	0.90	0.98 (0.94–1.02)	0.37	0.79	–0.3%
Kidney cancer	0.99 (0.95–1.03)	0.55	0.35	1.01 (0.97–1.06)	0.57	0.22	2.5%
Pancreatic cancer	0.99 (0.96–1.03)	0.62	0.63	1.00 (0.96–1.03)	0.83	0.56	0.5%
Lymphocytic Leukemia	0.99 (0.94–1.04)	0.76	0.61	0.99 (0.95–1.05)	0.84	0.53	0.3%
Rectal cancer	1.01 (0.97–1.04)	0.67	0.84	1.01 (0.98–1.05)	0.50	0.91	0.4%
Brain cancer	1.01 (0.96–1.06)	0.73	0.73	1.01 (0.96–1.06)	0.81	0.70	–0.3%
Gastric cancer, noncardia	1.03 (0.96–1.11)	0.37	0.41	1.03 (0.96–1.11)	0.39	0.38	0.0%
Myeloma	1.03 (0.98–1.10)	0.25	0.27	1.04 (0.99–1.10)	0.17	0.26	0.6%

^aModel 1 included adjustments for baseline age, smoking, alcohol, race/ethnicity, education, and hormone replacement therapy, oral contraceptive use, age at menopause, parity, and height.

^bModel 2 included adjustments for baseline age, smoking, alcohol, race/ethnicity, education, and hormone replacement therapy, oral contraceptive use, age at menopause, parity, and height and BMI.

In the populations of developed nations, later menarche is associated with greater attained height and with lower BMI in childhood (47) and in midlife (48). In this study sample made up mostly of postmenopausal women, we observed similar associations of menarcheal timing with baseline anthropometric measures. Of note, incidence of each of the seven cancers shown here to be associated with the age at menarche has previously been associated with adult BMI (49). The addition of baseline BMI to our models attenuated many of the observed associations slightly but, with the exception of liver cancer, all remained statistically significant, suggesting a BMI-independent role for menarcheal age in cancer pathogenesis. We also observed that the risk associations were not substantially attenuated by adjustment for young adult BMI, a retrospective measure more proximal to menarche, although still not its antecedent. Additionally, it is not completely clear from the literature whether there is an effect of early-life BMI, independent of mid-life BMI, on cancer risks, with the notable exception of premenopausal breast cancer (50). A large mature prospective study with measures of many early-life factors will be required to fully address the question of whether the timing of menarche represents a cause, an intermediate, or a correlate of a true early-life cause of cancers in aging women.

Associations of breast and endometrial cancers with menarcheal age have often been framed as reflecting the duration of women's exposure to repeated menstrual cycles, with estrogens as the causal agent, and precancerous epithelium, the target (7, 51, 52). The cancers observed to be associated with menarche in this study are, however, heterogeneous with respect to etiologic roles for estrogen. Breast and endometrial tumors express estrogen receptors and higher circulating estrogens predict increased risk of these cancers in postmenopausal women (53, 54). Similarly, estrogen receptors are observed in bladder

tumors, and at least one subtype can be promoted via an estrogen-mediated signaling pathway (55). In contrast, although hepatocellular carcinoma cells also express estrogen receptors, exposure to estrogens reduces their proliferation and survival (56). Among the seven cancers, distinct sex ratios are observed among incident cases (57). Similarly, differences in their associations with menopausal hormone use (58) and with early menopause (7, 8, 12, 34) also suggest that estrogen exposure is not the shared causal pathway.

An emerging explanation for the effects of early-life risk factors on cardiovascular health suggests that *in utero* exposure to corticosteroids and metabolic stress causes epigenetically-mediated alterations in the hypothalamic–pituitary–adrenal axis associated with earlier puberty and predisposition to insulin resistance (59). Early adrenarche may contribute directly to a lifelong susceptibility to metabolic syndrome when the premature rise of adrenal androgens limits the number or proliferative capacities of mesenchymal stem cell (MSC)-derived preadipocytes seeded to subcutaneous fat depots (60, 61). Subsequent exposures to chronically elevated insulin and inflammation could contribute directly to the development of cancers later in life (62). In addition, as women age, premature exhaustion, or senescence of the MSCs found in bone marrow, which play key roles in tissue repair and homeostasis, may change tissue microenvironments in ways that permit or promote carcinogenesis (63).

Strengths of this study include large sample size, and prospective, individual-level data, that have been harmonized and analyzed using a uniform approach. The modest effect sizes observed here suggest that power is limited for the rarer cancers. The age at menarche has previously been shown to be reported by middle-aged women with excellent reliability (64), but only modest validity compared with self-report in adolescence (65). Because the age at

menarche was reported before any cancer diagnosis, errors would likely bias estimates of association towards the null. The consortial dataset did not include all known risk factors for some cancers, and so we were not able to adjust for the effects of family histories of cancer, viral infections, dietary habits, or occupational exposures. Our data include only cohorts from developed nations, and most participants were of European ancestry, perhaps limiting the generalizability of our findings.

In conclusion, we observed similar, inverse associations of seven cancers with the age at menarche. Although the effects of early menarche on site-specific cancer risks experienced by individual women are modest, these findings suggest that population-level shifts towards earlier menarche impose a cumulative burden on public health by adding to the incidence of multiple cancers. An understanding of the environmental factors that influence the timing of menarche and of the causal pathways that mediate its association with cancer risks could suggest new approaches for cancer prevention.

Authors' Disclosures

No disclosures were reported.

Disclaimers

For C. Byrne: The views expressed are those of the author(s) and do not necessarily reflect the official views of the Uniformed Services University of the Health Sciences or the Department of Defense.

For M.J. Gunter, N. Murphy, and E. Weiderpass: As personnel of the International Agency for Research on Cancer/World Health Organization, the authors alone are responsible for the views expressed in this article and they do not necessarily represent the decisions, policy or views of the International Agency for Research on Cancer/World Health Organization.

Authors' Contributions

B.J. Fuhrman: Conceptualization, formal analysis, investigation, methodology, writing—original draft, writing—review and editing. **S.C. Moore:** Conceptualization, resources, data curation, formal analysis, supervision, funding acquisition, investigation, methodology, project administration, writing—review and editing. **C. Byrne:** Formal analysis, investigation, methodology, writing—review and editing. **I. Makhoul:** Investigation, writing—review and editing. **C.M. Kitahara:** Data curation, investigation, writing—review and editing. **A. Berrington de González:** Data curation, investigation, writing—review and editing. **M.S. Linet:** Data curation, funding acquisition, investigation, writing—review and editing. **E. Weiderpass:** Conceptualization, data curation, investigation, writing—review and editing. **H.-S. Adami:** Data curation, funding acquisition, investigation,

writing—review and editing. **N.D. Freedman:** Data curation, investigation, writing—review and editing. **L.M. Liao:** Data curation, investigation, writing—review and editing. **C.E. Matthews:** Data curation, funding acquisition, investigation, writing—review and editing. **R.Z. Stolzenberg-Solomon:** Data curation, investigation, writing—review and editing. **M.M. Gaudet:** Data curation, investigation, writing—review and editing. **A.V. Patel:** Data curation, investigation, writing—review and editing. **I.-M. Lee:** Data curation, funding acquisition, investigation, writing—review and editing. **J.E. Buring:** Data curation, funding acquisition, investigation, writing—review and editing. **A. Wolk:** Data curation, investigation, writing—review and editing. **S.C. Larsson:** Data curation, investigation, writing—review and editing. **A.E. Prizment:** Data curation, investigation, writing—review and editing. **K. Robien:** Data curation, investigation, writing—review and editing. **M. Spriggs:** formal analysis, investigation, writing—review and editing. **D.P. Check:** Investigation, visualization, writing—review and editing. **N. Murphy:** Investigation, writing—review and editing. **M.J. Gunter:** Investigation, writing—review and editing. **H.L. Van Dusen Jr:** Formal analysis, supervision, writing—review and editing. **R.G. Ziegler:** Data curation, investigation, writing—review and editing. **R.N. Hoover:** Conceptualization, resources, funding acquisition, investigation, project administration, writing—review and editing.

Acknowledgments

This work, the NIH-AARP Diet and Health study, the Breast Cancer Detection Demonstration Project (BCDDP) Follow-up Study, the U.S. Radiologic Technologists (USRT) cohort study, and longitudinal follow-up of the Prostate, Lung, Colon and Ovarian Cancer Trial (PLCO) cohort were each supported by the Intramural Research Program of the NCI, NIH, Department of Health and Human Services (DHHS; Z99 CA999999): S. Moore, C. Kitahara, A. Berrington de González, M. Linet, N. Freedman, L. Liao, C. Matthews, R. Stolzenberg-Solomon, R. Ziegler, R. Hoover. The American Cancer Society funds the creation, maintenance, and updating of the Cancer Prevention Study-II cohort: M. Gaudet, A. Patel. The Iowa Women's Health Study was supported by a grant from the NCI (R01 CA39742): K. Robien, A. Prizment. The Swedish Mammography Cohort was supported by the Swedish Research Council, the Swedish Research Council for Health, Working Life and Welfare and the Swedish Cancer Foundation: A. Wolk. The WHS was supported by grants from the NCI and the National Heart, Lung, and Blood Institute (CA047988, CA182913, HL043851, HL080467, and HL099355): J. Buring, I. Lee. The Women's Lifestyle and Health project was supported by the Swedish Cancer Society and the Swedish Research Council: A. Wolk. The funding organizations had no role in the study design, or in the collection, analysis, and interpretation of data, in the writing of the manuscript, or in the decision to submit the manuscript for publication.

The costs of publication of this article were defrayed in part by the payment of page charges. This article must therefore be hereby marked *advertisement* in accordance with 18 U.S.C. Section 1734 solely to indicate this fact.

Received October 7, 2019; revised November 16, 2020; accepted January 22, 2021; published first April 5, 2021.

References

- Patton GC, Viner R. Pubertal transitions in health. *Lancet North Am Ed* 2007; 369:1130–9.
- Tanner JM, Eveleth PB. *Worldwide variation in human growth*. Cambridge: Cambridge University Press; 1991.
- McDowell MA, Brody DJ, Hughes JP. Has age at menarche changed? Results from the National Health and Nutrition Examination Survey (NHANES) 1999–2004. *J Adolesc Health* 2007;40:227–31.
- Parent A-S, Teilmann G, Juul A, Skakkebaek NE, Toppari J, Bourguignon J-P. The timing of normal puberty and the age limits of sexual precocity: variations around the World, secular trends, and changes after migration. *Endocr Rev* 2003; 24:668–93.
- Mishra GD, Cooper R, Tom SE, Kuh D. Early life circumstances and their impact on menarche and menopause. *Women's Health* 2009;5:175–90.
- D'Aloisio AA, DeRoo LA, Baird DD, Weinberg CR, Sandler DP. Prenatal and infant exposures and age at menarche. *Epidemiology* 2013;24:277–84.
- Collaborative Group on Hormonal Factors in Breast Cancer. Menarche, menopause, and breast cancer risk: individual participant meta-analysis, including 118 964 women with breast cancer from 117 epidemiological studies. *Lancet Oncol* 2012;13:1141–51.
- McPherson CP, Sellers TA, Potter JD, Bostick RM, Folsom AR. Reproductive factors and risk of endometrial cancer the Iowa Women's Health study. *Am J Epidemiol* 1996;143:1195–202.
- Gong T-T, Wang Y-L, Ma X-X. Age at menarche and endometrial cancer risk: a dose-response meta-analysis of prospective studies. *Sci Rep* 2015;5:14051.
- Lakshman R, Forouhi NG, Sharp SJ, Luben R, Bingham SA, Khaw K-T, et al. Early age at menarche associated with cardiovascular disease and mortality. *J Clin Endocrinol Metab* 2009;94:4953–60.
- Lakshman R, Forouhi N, Luben R, Bingham S, Khaw K, Wareham N, et al. Association between age at menarche and risk of diabetes in adults: results from the EPIC-Norfolk cohort study. *Diabetologia* 2008;51:781–6.
- Brinton LA, Gierach GL, Andaya A, Park Y, Schatzkin A, Hollenbeck AR, et al. Reproductive and hormonal factors and lung cancer risk in the NIH-AARP diet and health study cohort. *Cancer Epidemiol Biomarkers Prev* 2011; 20:900–11.
- Zhang Y, Yin Z, Shen L, Wan Y, Zhou B. Menstrual factors, reproductive factors and lung cancer risk: a meta-analysis. *Zhongguo Fei Ai Za Zhi* 2012; 15:701–19.

14. Navarro Silvera SA, Miller AB, Rohan TE. Hormonal and reproductive factors and pancreatic cancer risk: a prospective cohort study. *Pancreas* 2005;30:369–74.
15. Li C-Y, Song B, Wang Y-Y, Meng H, Guo S-B, Liu L-N, et al. *PLoS One* 2013;8:e65645.
16. Zervoudakis A, Strickler HD, Park Y, Xue X, Hollenbeck A, Schatzkin A, et al. Reproductive history and risk of colorectal cancer in postmenopausal women. *J Natl Cancer Inst* 2011;103:826–34.
17. Braem MGM, Onland-Moret NC, van den Brandt PA, Goldbohm RA, Peeters PHM, Kruitwagen RFP, et al. Reproductive and hormonal factors in association with ovarian cancer in the Netherlands cohort study. *Am J Epidemiol* 2010;172:1181–9.
18. Freedman ND, Chow W-H, Gao Y-T, Shu X-O, Ji B-T, Yang G, et al. Menstrual and reproductive factors and gastric cancer risk in a large prospective study of women. *Gut* 2007;56:1671–7.
19. Zhong G-C, Liu Y, Chen N, Hao F-B, Wang K, Cheng J-H, et al. Reproductive factors, menopausal hormone therapies and primary liver cancer risk: a systematic review and dose–response meta-analysis of observational studies. *Hum Reprod Update* 2016;23:126–38.
20. Gallagher RP, Elwood JM, Hill GB, Coldman AJ, Threlfall WJ, Spinelli JJ. Reproductive factors, oral contraceptives and risk of malignant melanoma: Western Canada melanoma study. *Br J Cancer* 1985;52:901–7.
21. Kabat GC, Park Y, Hollenbeck AR, Schatzkin A, Rohan TE. Reproductive factors and exogenous hormone use and risk of adult glioma in women in the NIH-AARP Diet and Health Study. *Int J Cancer* 2011;128:944–50.
22. Daugherty SE, Lacey JV, Pfeiffer RM, Park Y, Hoover RN, Silverman DT. Reproductive factors and menopausal hormone therapy and bladder cancer risk in the NIH-AARP Diet and Health Study: MHT and bladder cancer. *Int J Cancer* 2013;133:462–72.
23. Braganza MZ, de Gonzalez AB, Schonfeld SJ, Wentzensen N, Brenner AV, Kitahara CM. Benign breast and gynecologic conditions, reproductive and hormonal factors, and risk of thyroid cancer. *Cancer Prev Res* 2014;7:418–25.
24. Karami S, Daugherty SE, Schonfeld SJ, Park Y, Hollenbeck AR, Grubb RL, et al. Reproductive factors and kidney cancer risk in 2 US cohort studies, 1993–2010. *Am J Epidemiol* 2013;177:1368–77.
25. Bray F, Ferlay J, Soerjomataram I, Siegel RL, Torre LA, Jemal A. Global cancer statistics 2018: GLOBOCAN estimates of incidence and mortality worldwide for 36 cancers in 185 countries. *CA Cancer J Clin* 2018;68:394–424.
26. Kitahara CM, Flint AJ, Berrington de Gonzalez A, Bernstein L, Brotzman M, MacInnis RJ, et al. Association between class III obesity (BMI of 40–59 kg/m²) and mortality: a pooled analysis of 20 prospective studies. *PLoS Med* 2014;11:e1001673.
27. Moore SC, Lee I-M, Weiderpass E, Campbell PT, Sampson JN, Kitahara CM, et al. Association of leisure-time physical activity with risk of 26 types of cancer in 1.44 million adults. *JAMA Intern. Med* 2016;176:816.
28. Zhang SM, Moore SC, Lin J, Cook NR, Manson JE, Lee I-M, et al. Folate, Vitamin B6, multivitamin supplements, and colorectal cancer risk in women. *Am J Epidemiol* 2006;163:108–15.
29. Sigurdson AJ, Doody MM, Rao RS, Freedman DM, Alexander BH, Hauptmann M, et al. Cancer incidence in the U.S. radiologic technologists health study, 1983–1998. *Cancer* 2003;97:3080–9.
30. Larsson SC, Håkansson N, Giovannucci E, Wolk A. Folate intake and pancreatic cancer incidence: a prospective study of Swedish women and men. *J Natl Cancer Inst* 2006;98:407–13.
31. Roswall N, Sandin S, Adami H-O, Weiderpass E. Cohort profile: the Swedish women's lifestyle and health cohort. *Int J Epidemiol* 2017;46:e8.
32. Leitzmann MF, Moore SC, Peters TM, Lacey JV, Schatzkin A, Schairer C, et al. Prospective study of physical activity and risk of postmenopausal breast cancer. *Breast Cancer Research* 2008;10:R92.
33. Hildebrand JS, Gapstur SM, Campbell PT, Gaudet MM, Patel AV. Recreational physical activity and leisure-time sitting in relation to postmenopausal breast cancer risk. *Cancer Epidemiol Biomarkers Prev* 2013;22:1906–12.
34. Prizment AE, Anderson KE, Harlow BL, Folsom AR. Reproductive risk factors for incident bladder cancer: Iowa Women's Health Study. *Int J Cancer* 2006;120:1093–8.
35. WHO. International classification of diseases for oncology (ICD-O). 3rd ed., 1st rev.; 2013.
36. DerSimonian R, Laird N. Meta-analysis in clinical trials revisited. *Contemporary Clinical Trials* 2015;45:139–45.
37. Schafer JL. Multiple Imputation. Analysis of incomplete multivariate data. Chapman and Hall; 1997. page104–17.
38. Benjamini Y, Hochberg Y. Controlling the false discovery rate: a practical and powerful approach to multiple testing. *J Royal Statist Soc Series B* 1995;57:289–300.
39. Cochran W. The combination of estimates from different experiments. *Biometrics* 1954;10:101–29.
40. Rothman K, Greenland S. *Modern epidemiology*. 2nd ed. Philadelphia: Lippincott-Raven; 1998.
41. Day FR, Thompson DJ, Helgason H, Chasman DI, Finucane H, Sulem P, et al. Genomic analyses identify hundreds of variants associated with age at menarche and support a role for puberty timing in cancer risk. *Nat Genet* 2017;49:834–41.
42. Wang Z, Risch H, Lu L, Irwin ML, Mayne S, Schwartz P, et al. Joint effect of genotypic and phenotypic features of reproductive factors on endometrial cancer risk. *Sci Rep* 2015;5:15582.
43. McGlynn KA, Sahasrabudhe VV, Campbell PT, Graubard BI, Chen J, Schwartz LM, et al. Reproductive factors, exogenous hormone use and risk of hepatocellular carcinoma among US women: results from the Liver Cancer Pooling Project. *Br J Cancer* 2015;112:1266–72.
44. Yu M-W, Chang H-C, Chang S-C, Liaw Y-F, Lin S-M, Liu C-J, et al. Role of reproductive factors in hepatocellular carcinoma: impact on hepatitis B- and C-related risk. *Hepatology* 2003;38:1393–400.
45. Kvaskoff M, Bijon A, Mesrine S, Boutron-Ruault M-C, Clavel-Chapelon F. Cutaneous melanoma and endogenous hormonal factors: a large French prospective study. *Am J Epidemiol* 2011;173:1192–202.
46. Crosbie EJ, Zwahlen M, Kitchener HC, Egger M, Renehan AG. Body mass index, hormone replacement therapy, and endometrial cancer risk: a meta-analysis. *Cancer Epidemiol Biomarkers Prev* 2010;19:3119–30.
47. Biro FM, Pajak A, Wolff MS, Pinney SM, Windham GC, Galvez MP, et al. Age of menarche in a longitudinal US Cohort. *J Pediatr Adolesc Gynecol* 2018;31:339–45.
48. Gallicchio L, Flaws JA, Smith RL. Age at menarche, androgen concentrations, and midlife obesity: findings from the Midlife Women's Health Study. *Menopause* 2016;23:1182–8.
49. Choi EK, Park HB, Lee KH, Park JH, Eisenhut M, van der Vliet HJ, et al. Body mass index and 20 specific cancers: re-analyses of dose–response meta-analyses of observational studies. *Ann Oncol* 2018;29:749–57.
50. Baer HJ, Colditz GA, Rosner B, Michels KB, Rich-Edwards JW, Hunter DJ, et al. Body fatness during childhood and adolescence and incidence of breast cancer in premenopausal women: a prospective cohort study. *Breast Cancer Res* 2005;7:R314–25.
51. Pike MC, Krailo MD, Henderson BE, Casagrande JT, Hoel DG. 'Hormonal' risk factors, 'breast tissue age' and the age-incidence of breast cancer. *Nature* 1983;303:767–70.
52. Yang HP, Murphy KR, Pfeiffer RM, George N, Garcia-Closas M, Lissowska J, et al. Lifetime number of ovulatory cycles and risks of ovarian and endometrial cancer among postmenopausal women. *Am J Epidemiol* 2016;183:800–14.
53. Endogenous Hormones and Breast Cancer Collaborative Group. Circulating sex hormones and breast cancer risk factors in postmenopausal women: reanalysis of 13 studies. *Br J Cancer* 2011;105:709–22.
54. Brinton LA, Trabert B, Anderson GL, Falk RT, Felix AS, Fuhrman BJ, et al. Serum estrogens and estrogen metabolites and endometrial cancer risk among postmenopausal women. *Cancer Epidemiol Biomarkers Prev* 2016;25:1081–9.
55. Godoy G, Gakis G, Smith CL, Fahmy O. Effects of androgen and estrogen receptor signaling pathways on bladder cancer initiation and progression. *Bladder Cancer* 2016;2:127–37.
56. Zhao Y, Li Z. Interplay of estrogen receptors and FOXA factors in the liver cancer. *Mol Cell Endocrinol* 2015;418:334–9.
57. Cook MB, Dawsey SM, Freedman ND, Inskip PD, Wichner SM, Quraishi SM, et al. Sex disparities in cancer incidence by period and age. *Cancer Epidemiol Biomarkers Prev* 2009;18:1174–82.
58. Chlebowski RT, Anderson GL. Menopausal hormone therapy and cancer: changing clinical observations of target site specificity. *Steroids* 2014;90:53–9.
59. Reynolds RM. Glucocorticoid excess and the developmental origins of disease: two decades of testing the hypothesis – 2012 Curt Richter Award winner. *Psychoneuroendocrinology* 2013;38:1–11.

60. Gupta V, Bhasin S, Guo W, Singh R, Miki R, Chauhan P, et al. Effects of dihydrotestosterone on differentiation and proliferation of human mesenchymal stem cells and preadipocytes. *Mol Cell Endocrinol* 2008;296:32–40.
61. Mansilla E, Diaz Aquino V, Zambón D, Marin GH, Mártire K, Roque G, et al. Could metabolic syndrome, lipodystrophy, and aging be mesenchymal stem cell exhaustion syndromes? *Stem Cells Int* 2011;2011:943216.
62. Pollak MN. Insulin, insulin-like growth factors, insulin resistance, and neoplasia. *Am J Clin Nutr* 2007;86:820S–2S.
63. Ahmed ASI, Sheng MH, Wasnik S, Baylink DJ, Lau K-HW. Effect of aging on stem cells. *World J Exp Med* 2017;7:1–10.
64. Lundblad MW, Jacobsen BK. The reproducibility of self-reported age at menarche: the Tromsø Study. *BMC Women's Health* 2017; 17:62.
65. Cooper R, Blell M, Hardy R, Black S, Pollard TM, Wadsworth MEJ, et al. Validity of age at menarche self-reported in adulthood. *J Epidemiol Community Health* 2006;60:993–7.