



Asymptotic Correlations in Gapped and Critical Topological Phases of 1D Quantum Systems

N. G. Jones^{1,2} · R. Verresen^{3,4}

Received: 21 June 2018 / Accepted: 23 February 2019 / Published online: 8 April 2019
© The Author(s) 2019

Abstract

Topological phases protected by symmetry can occur in gapped and—surprisingly—in critical systems. We consider non-interacting fermions in one dimension with spinless time-reversal symmetry. It is known that the phases are classified by a topological invariant ω and a central charge c . We investigate the correlations of string operators, giving insight into the interplay between topology and criticality. In the gapped phases, these non-local string order parameters allow us to extract ω . Remarkably, ratios of correlation lengths are universal. In the critical phases, the scaling dimensions of these operators serve as an order parameter, encoding ω and c . We derive exact asymptotics of these correlation functions using Toeplitz determinant theory. We include physical discussion, e.g., relating lattice operators to the conformal field theory. Moreover, we discuss the dual spin chains. Using the aforementioned universality, the topological invariant of the spin chain can be obtained from correlations of local observables.

Keywords Topological insulators · Symmetry-protected topological phases · Universality · Toeplitz determinants · Conformal field theory

1 Introduction

Topological phases are fascinating examples of quantum matter. In one spatial dimension, they can be stabilised if the Hamiltonian has a symmetry group. Gapped topological phases have been classified for both non-interacting fermionic systems (dubbed topological insulators or superconductors) [1–6] as well as general fermionic and bosonic systems (dubbed symmetry protected topological (SPT) phases) [7–12]. However, it has recently been realised

✉ N. G. Jones
n.g.jones@bristol.ac.uk

R. Verresen
rubenverresen@gmail.com

¹ School of Mathematics, University of Bristol, Bristol BS8 1TW, UK

² The Heilbronn Institute for Mathematical Research, Bristol, UK

³ Department of Physics T42, Technical University of Munich, 85748 Garching, Germany

⁴ Max-Planck-Institute for the Physics of Complex Systems, 01187 Dresden, Germany

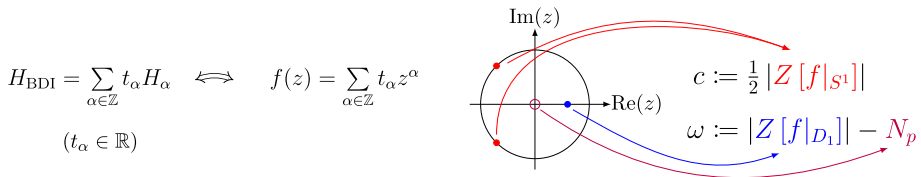


Fig. 1 The Hamiltonians we consider can be expanded in a basis H_α (defined below Eq. (2)). The physics is encoded in the meromorphic function $f(z)$. The given definitions of c and ω classify the phases of H_{BDI} , where $Z[g]$ denotes the (multi)set of zeros of g (with multiplicity) and N_p the order of the pole at the origin. Physically, c encodes the low-energy behaviour in the bulk, and ω the topological properties

that critical matter can also form distinct topological phases—even without gapped degrees of freedom in the bulk [13]. As in the gapped case, the topology manifests itself physically: for example, through exponentially localised zero-energy modes at the physical edges. As long as a symmetry is preserved, a topological invariant can prevent two critical systems from being smoothly connected. Relatedly, there is a lot of recent interest in topological critical phases which do have additional gapped degrees of freedom [14–27].

In a previous work, we extended the well-known classification of the gapped topological phases of quadratic fermionic Hamiltonians with spinless time-reversal symmetry [28] (‘BDI class’ of Altland and Zirnbauer’s tenfold way [4]) to gapless topological phases [13]. These are labelled by a topological invariant $\omega (\in \mathbb{Z})$ and the central charge $c (\in \frac{1}{2}\mathbb{Z}_{\geq 0})$ of the conformal field theory (CFT) that describes the continuum limit if the model is critical. If the system is gapped, we say that $c = 0$ and ω reduces to the well-known winding number of the BDI class [28]. What allowed for a complete analysis was the fact that each Hamiltonian in this class can be efficiently encoded into a holomorphic function $f(z)$ on the punctured complex plane $\mathbb{C} \setminus \{0\}$. Remarkably, c and ω can then be obtained by counting zeros of $f(z)$ (see Fig. 1). This rephrasing allowed us to argue that two critical models in this class can be smoothly connected if and only if they have the same topological invariants and central charges.

What remained an open question is the extent to which the topological nature of these gapped and gapless phases is reflected in their correlation functions. Relatedly, it is natural to ask how the correlations are encoded in $f(z)$ —especially since c and ω are easily derived from its zeros. Moreover, our earlier work left an uneasy tension: distinct critical phases could be distinguished by the topological invariant ω , yet it was not clear to what extent this lattice quantity is related to the CFT in the continuum. Hence, bridging this gap in terms of a lattice-continuum correspondence is desirable. More generally, since these models are exactly solvable we can hope to obtain a lot of information, and perhaps uncover unexpected features. This is relevant also to the spin chains that are Jordan-Wigner dual to these fermionic chains: whilst the non-interacting classification is less natural there, the correlation functions we obtain contain useful physical information that can be related to an interacting classification.

The aim of this work is twofold: on the one hand, we focus on answering the aforementioned questions conceptually, linking universal properties of correlations to the function $f(z)$ and shedding light on the interplay of criticality and topology. On the other hand, since our models allow for a rigorous analysis, we give derivations of exact asymptotic expressions for important correlators. The method we use, Toeplitz determinant theory, has a long association with statistical mechanics (for a review, see [29]), and our analysis generalises the pioneering work of [30–32] to a wider class of physical models.

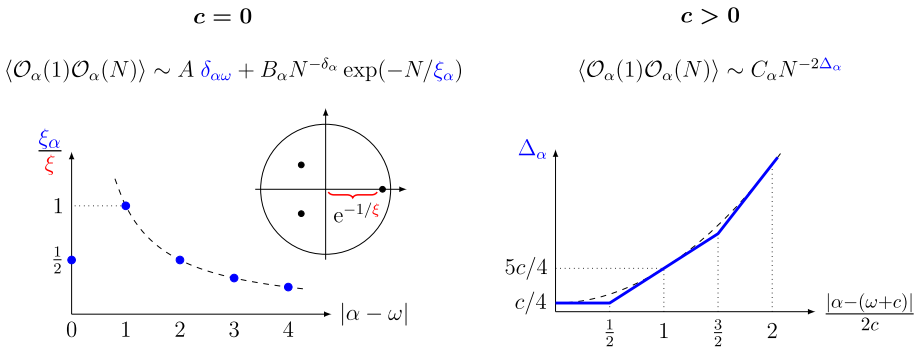


Fig. 2 Universal asymptotics of the ground-state correlation functions considered in this work. If $c = 0$ (i.e. the system is gapped), then \mathcal{O}_α has exponentially decaying correlations with correlation length ξ_α . The ratios ξ_α/ξ_β are a universal function of ω , with the global scale set by $1/\xi := \min_{\zeta \in Z[f]} |\log|\zeta||$; see the discussion before Eq. (9). (There is long-range order, i.e. $a_\alpha \neq 0$, if and only if $\alpha = \omega$; see Theorem 1b.) If $c > 0$ and the zeros on the unit circle have multiplicity one (i.e. the bulk is described by a CFT with central charge c), then the correlation functions obey a power law with universal scaling dimension Δ_α ; see Theorem 4. The dependence of Δ_α on both c and ω means that these parameters may be determined by measurements of scaling dimensions; see the discussion below Theorem 4. Note that there are exceptional cases that behave differently, as discussed in the text

Since topological phases cannot be distinguished locally, in this work we study the correlations of so-called string-like objects \mathcal{O}_α (labelled by $\alpha \in \mathbb{Z}$), meaning that $\langle \mathcal{O}_\alpha(1)\mathcal{O}_\alpha(N) \rangle$ involves an extensive ($\sim N$) number of operators. Using Wick’s theorem, these correlations reduce to $N \times N$ determinants. We calculate their asymptotic behaviour using the theory of Toeplitz determinants [29], phrasing the answers in terms of the zeros of $f(z)$. Figure 2 summarises some of the main results. In the gapped case ($c = 0$), it is well-known that SPT phases can be distinguished by string order parameters [33–37], and we indeed prove that \mathcal{O}_α has long-range order *if and only if* $\alpha = \omega$. More surprising is that the ratios of the correlation lengths of these operators are universal, i.e. they depend on ω only. Moreover, the largest correlation length has a universal relationship to the zero of $f(z)$ which is nearest to the unit circle. In the critical case ($c \neq 0$), all correlations are algebraically decaying and we obtain the corresponding scaling dimensions of \mathcal{O}_α . It turns out that measuring these gives access to both c and ω . Moreover, we propose a continuum-lattice correspondence for these operators. We expect that this correspondence will prove useful in exploring the effect of interactions on the phase diagram.

Additionally, we discuss these correlators in the spin chain picture that is obtained after a Jordan-Wigner transformation. For odd α , \mathcal{O}_α becomes a local spin operator, and long-range order in $\langle \mathcal{O}_\alpha(1)\mathcal{O}_\alpha(N) \rangle$ signals spontaneous symmetry breaking. However, for even α these correlators are string order parameters for spin chain SPTs. Whilst there is no natural notion of ‘non-interacting spin chains’, our analysis may be helpful for determining the (interacting) classification of topologically non-trivial critical spin chains.

Since the physical consequences of our results can be understood without going into the mathematical details, we structure the paper as follows. First, in Sect. 2, we outline the model and state our main results. In Sect. 2.5 we discuss the dual spin chain; then in Sect. 2.6 we discuss connections to previous works. In Sect. 3 we give further details of how our results fit into the broader physical context. In particular, we discuss general approaches to string order parameters and the consequences of universality in the gapped phases, give a CFT analysis of long-distance correlations and also show how our results allow us to deduce

critical exponents. Only after this do we give the mathematical preliminaries in Sects. 4 and 5. The proofs of our results then follow in Sects. 6 and 7 for the gapped and critical cases respectively. Finally, in Sect. 8, we explain how our results may be extended in different directions.

2 Statement of Main Results

2.1 The Model

Consider a periodic chain where each site has a single spinless fermionic degree of freedom¹ $\{c_n^\dagger, c_n; n = 1 \dots L\}$. For convenience define the Majorana modes on each site:

$$\gamma_n = c_n^\dagger + c_n, \quad \tilde{\gamma}_n = i(c_n^\dagger - c_n), \quad (1)$$

where $\{\gamma_n, \gamma_m\} = 2\delta_{nm}$ and $\{\gamma_n, \tilde{\gamma}_m\} = 0$. Our class of interest—time-reversal symmetric, translation-invariant free fermions with finite-range couplings—has Hamiltonian [13,38–40]

$$H_{\text{BDI}} = \frac{i}{2} \sum_{\alpha=-\alpha_l}^{\alpha_r} \sum_{n \in \text{sites}} t_\alpha \tilde{\gamma}_n \gamma_{n+\alpha}, \quad t_\alpha \in \mathbb{R}. \quad (2)$$

This can be understood as an expansion in the basis $H_\alpha = i/2 \sum_{n \in \text{sites}} \tilde{\gamma}_n \gamma_{n+\alpha}$. The coupling between sites has maximum range $\alpha_{l/r}$ to the left and right. This model has an antiunitary symmetry, T , that acts as complex conjugation in the occupation number basis associated to the fermions c_n and satisfies $T^2 = 1$. The Majorana operators γ_n ($\tilde{\gamma}_n$) are called real (imaginary) since $T\gamma_n T = \gamma_n$ and $T\tilde{\gamma}_n T = -\tilde{\gamma}_n$. This class of models is also invariant under parity symmetry $P = e^{i\pi \sum_j c_j^\dagger c_j}$. We study the thermodynamic limit $L \rightarrow \infty$, with $\alpha_{l/r}$ finite but not fixed—i.e. we will consider models with differing maximum range. The results given in this section are all for such finite-range chains, but we discuss the extension to long-range chains in Sect. 8.1. This model was first analysed in its spin chain form in reference [41].

The coupling constants t_α establish a one-to-one correspondence between H_{BDI} and the complex functions

$$f(z) = \sum_{\alpha} t_\alpha z^\alpha. \quad (3)$$

This is a holomorphic function away from a possible pole at the origin. By the fundamental theorem of algebra, $f(z)$ is specified by the degree of this pole and a multiset of zeros (up to an overall multiplicative constant). The basic relevance of $f(z)$ is that $|f(e^{ik})|$ gives the one-particle energy of a mode with momentum k . The phase $\arg(f(e^{ik}))$ is the angle required in the Bogoliubov rotation that defines these quasiparticle modes [13,42]. Remarkably, many other physical questions can be answered through simple properties of this function. Note that we will consistently abuse notation $f(k) := f(z = e^{ik})$ whenever we restrict z to the unit circle.

¹ Further details supporting this section are given in Appendix A.1.

2.2 Phase Diagram

Our results characterise the correlations in the different phases of H_{BDI} , hence we give them context by describing the phase diagram. First, phases of matter are defined as equivalence classes of ground states under smooth changes of the Hamiltonian, where two states are equivalent if they can be connected without a phase transition (i.e. a sharp change in physical behaviour²). In particular, we define two *critical* models to be in the same phase if physical quantities such as scaling dimensions vary smoothly. Smooth changes to the Hamiltonian (i.e. smooth changes to t_α , including increasing the *finite* range by tuning some t_α off zero) are equivalent to smooth motions of the zeros of $f(z)$, as we discuss in Appendix A.2.

H_{BDI} has two invariants that label both gapped and gapless phases (see also Fig. 1):

$$c = \frac{1}{2} (\# \text{ zeros of } f(z) \text{ on the unit circle}) \quad (4)$$

$$\omega = N_z - N_p, \quad (5)$$

where N_z is the number of zeros of $f(z)$ inside the unit disk and N_p is the degree of the pole at the origin. If $c = 0$, the model is gapped. For gapless models, c is the central charge of the low energy CFT when the zeros on the circle are non-degenerate³. Note that ω is an invariant since it cannot change under smooth motion of the zeros without changing c . It is moreover topological: it cannot be probed locally, but distinguishes phases and manifests itself through protected edge modes [13]. That the pair (c, ω) specifies the phases of H_{BDI} was shown in reference [13]. If in addition to the symmetries P and T that stabilise the aforementioned phases, one also enforces translation symmetry, then there are additional invariant signs, denoted Σ , that are discussed in Appendix A.2.

Note that the equivalence between H_{BDI} and $f(z)$ allows us to easily find a Hamiltonian within each phase: H_ω is a representative of the gapped phase with winding number ω and $H_\omega + H_{2c+\omega}$ is a representative of the gapless phase (c, ω) .

2.3 String Operators

The above is already established in the literature. The results of the current work show that given $f(z)$, one can ‘read off’ detailed information about two-point ground-state correlation functions of the operators $\mathcal{O}_\alpha(n)$:

$$\mathcal{O}_\alpha(n) = \begin{cases} i^x \left(\prod_{m=1}^{n-1} i\tilde{\gamma}_m \gamma_m \right) \gamma_n \gamma_{n+1} \cdots \gamma_{n+\alpha-1} & \alpha > 0 \\ (-i)^x \left(\prod_{m=1}^{n-1} i\tilde{\gamma}_m \gamma_m \right) (-i\tilde{\gamma}_n) \cdots (-i\tilde{\gamma}_{n+|\alpha|-1}) & \alpha < 0 \\ \prod_{m=1}^{n-1} i\tilde{\gamma}_m \gamma_m & \alpha = 0 \end{cases} \quad (6)$$

where $x = |\alpha|/2$ for α even and $x = (|\alpha| - 1)/2$ for α odd (the phase factors make \mathcal{O}_α hermitian). These operators are a cluster of $|\alpha|$ Majorana operators to the right of site n multiplied by an operator giving the parity of the number of fermions to the left of n . Such operators appear naturally as we discuss in Sect. 3.1, see also [43]. There are two typical behaviours for these correlators. Let angle brackets denote ground-state expectation value,

² Transitions between gapped phases requires the closing of the gap. For two gapless phases a transition occurs when there is a change in the low-energy description, for example an increase in the central charge of the CFT.

³ This is argued in Appendix A.2, see also Sect. 3.4. If there are degeneracies then we have dynamical critical exponent greater than one—we will discuss this further below.

then in the gapped case we expect:

$$\langle \mathcal{O}_\alpha(1)\mathcal{O}_\alpha(N + 1) \rangle \sim A_\alpha + B_\alpha N^{-\delta_\alpha} e^{-N/\xi_\alpha}. \tag{7}$$

The constants A_α and δ_α as well as the correlation length ξ_α do not depend on N . If $A_\alpha \neq 0$ we have long-range order. B_α is $\mathcal{O}(1)$ and may include an oscillation with N . Note that, by translation invariance, we could equally well have considered the correlation function $\langle \mathcal{O}_\alpha(r)\mathcal{O}_\alpha(N + r) \rangle$ for any $r \in \mathbb{Z}$ —we fix $r = 1$ throughout for notational convenience. Note that $\langle \mathcal{O}_\alpha(1)\mathcal{O}_\beta(N + 1) \rangle = 0$ if $\alpha \neq \beta$ as a simple consequence of the Majorana two-point functions given in Sect. 4.

We will see below that the ground state expectation value $\lim_{N \rightarrow \infty} \langle \mathcal{O}_\alpha(1)\mathcal{O}_\alpha(N + 1) \rangle$ in the gapped phase with winding number ω is non-zero only when $\alpha = \omega$, and is hence an order parameter for that phase—this can be seen as an extension of the results of [43].

Because these correlators contain a string of fermionic operators of length of order N , these are called *string order parameters* with value A_α . Note that in the case that \mathcal{O}_α is local, (as happens in the spin picture given in Sect. 2.5), it is usual to call the one point function $\langle \mathcal{O}_\alpha(n) \rangle$ the order parameter. This is because in that case the ground state will spontaneously collapse such that $\sqrt{A_\alpha} = \langle \mathcal{O}_\alpha(n) \rangle$. In this work we prefer to use a single convention and always refer to the two point function as ‘the’ order parameter.

At critical points with a low-energy CFT description we expect:

$$\langle \mathcal{O}_\alpha(1)\mathcal{O}_\alpha(N + 1) \rangle \sim C_\alpha N^{-2\Delta_\alpha} \tag{8}$$

where Δ_α is the smallest scaling dimension of a CFT operator that appears in the expansion of the continuum limit of \mathcal{O}_α . The prefactor C_α may include spatial oscillations, and further details are given in Sect. 3.4. Surprisingly, the set \mathcal{O}_α also act as order parameters for critical phases in a sense that we explain following Theorem 4.

2.4 Main Results

To fix notation, let us write:

$$f(z) = \frac{\rho}{z^{N_p}} \prod_{j=1}^{N_z} (z - z_j) \prod_{j=1}^{2c} (z - e^{ik_j}) \prod_{j=1}^{N_Z} (z - Z_j). \tag{9}$$

N_p is the order of the pole at the origin, which is also the range of the longest non-zero coupling to the left. The number⁴ of zeros inside, on and outside the circle are denoted N_z , $2c$, N_Z respectively, and ρ is a real number. Since the t_α are real, all zeros are either real or come in complex conjugate pairs.

We first state results for the gapped case. Firstly we have that the correlators $\langle \mathcal{O}_\alpha(1)\mathcal{O}_\alpha(N + 1) \rangle$ form a complete set of order parameters for the gapped phases of H_{BDI} .

Theorem 1a *In the phase $(\omega, c = 0, \Sigma)$ we have*

$$\lim_{N \rightarrow \infty} |\langle \mathcal{O}_\alpha(1)\mathcal{O}_\alpha(N + 1) \rangle| = \text{const} \times \delta_{\omega\alpha}. \tag{10}$$

The non-zero constant is given in Theorem 1b. The value of the sign Σ may be inferred by the presence or absence of a $(-1)^N$ oscillation in this correlator.

⁴ We consider a multiset of zeros $\{\zeta_j\}$ and allow ζ_j with different index to coincide. This makes the counting unambiguous.

Theorem 1b *In the phase $(\omega, c = 0, \Sigma)$, the non-universal value of the order parameter is given by*

$$\lim_{N \rightarrow \infty} |\langle \mathcal{O}_\omega(1) \mathcal{O}_\omega(N + 1) \rangle| = \left(\frac{\prod_{i_1, i_2=1}^{N_z} (1 - z_{i_1} z_{i_2}) \prod_{j_1, j_2=1}^{N_z} \left(1 - \frac{1}{z_{j_1} z_{j_2}}\right)}{\prod_{i=1}^{N_z} \prod_{j=1}^{N_z} \left(1 - \frac{z_i}{z_j}\right)^2} \right)^{1/4}. \tag{11}$$

Thus from the decomposition (9) we can read off $\omega = N_z - N_p$ and calculate the order parameter through the detailed values of the zeros. We discuss the mathematical form of the order parameter in Appendix E.

The next results show that the length scale in gapped phases is set by $\xi = 1/|\log|\zeta_\star||$ where ζ_\star is any zero that maximises the right hand side of that equation (see Fig. 2 for illustration). The set of ζ that are optimal in this way we call closest to the unit circle; we will always mean this logarithmic scale⁵ when we talk about distance from the unit circle. The following results will be stated for ‘generic cases’—we argue that these cases are typical in Appendix A.2.

Now, in the phase ω we then have that ξ_α , as defined in (7), is equal to $\frac{\xi}{|\omega - \alpha|}$ (for $\alpha \neq \omega$)—this is a consequence of:

Theorem 2 *If the system is in the phase $(\omega, c = 0, \Sigma)$ then, in generic systems, we have the large N asymptotics*

$$\langle \mathcal{O}_\alpha(1) \mathcal{O}_\alpha(N + 1) \rangle = \det(M(N)) \left(\lim_{M \rightarrow \infty} |\langle \mathcal{O}_\omega(1) \mathcal{O}_\omega(M) \rangle| \right) e^{-N|\omega - \alpha|/\xi} e^{i\pi N m} (1 + o(1)); \tag{12}$$

$m \in \mathbb{Z}$ is a known constant and $M(N)$ is a known $|\omega - \alpha| \times |\omega - \alpha|$ matrix. The elements of this matrix have magnitudes that depend algebraically on N —in particular, $\det M(N) = \Theta(N^{-\delta})$ for some $\delta > 0$. Generic systems are those where the nearest zero(s) to the unit circle is either a single real zero, or are a complex conjugate pair of zeros.

The analysis we give extends to exceptional cases—more than two closest zeros will almost always give the same ξ_α , but if one has multiplicity, ξ_α may be controlled by the next-closest zero. The ξ_α are always upper bounded by ξ , and in fact this bound is saturated in all exceptional cases except when there are mutually inverse closest zeros. See the discussion in Sect. 6.2 for full details.

The form of $\det M(N)$ derived in Sect. 6.2.3 allows for some further general statements. Firstly, if there is one real zero nearest to the circle, then $\det M(N)$ is real and does not oscillate with N . The algebraic factor depends non-trivially on $|\omega - \alpha|$, as demonstrated in Table 1 for the case that $|\zeta_\star| < 1$. If $|\zeta_\star| > 1$ then the second and fourth columns of Table 1 should be interchanged (and the definitions of λ and κ change in the obvious way based on the formulae in Propositions 1 and 3).

If there are two complex zeros nearest to the unit circle then $\det M(N)$ is real but can contain $O(1)$ oscillatory terms such as $\sin(N \arg(\zeta_\star))$ (these oscillations may, however, not appear in the leading order term of $\det M(N)$). Moreover, if $|\zeta_\star| < 1$ then $\det M(N) = \Theta(N^{-K|\omega - \alpha|})$, where $K = 1/2$ for $\omega - \alpha > 0$ and $K = 3/2$ for $\omega - \alpha < 0$. The assignment of K is reversed when $|\zeta_\star| > 1$.

We complete our analysis of gapped models with a result for the asymptotic approach to the value of the order parameter. In particular, we prove that $\xi_\omega = \xi/2$, following from:

⁵ That is, $1/|\log|\zeta_i||$. This gives the natural length scale set by each zero, since the set of these lengths is invariant under spatial inversion $f(z) \rightarrow f(1/z)$.

Table 1 The value of $\det(M(N))$ in the case that there is one zero closest to the unit circle, and that zero is inside the circle; the constants κ and λ are independent of N and defined in Propositions 1 and 3

$\omega - \alpha$	$\det M(N)$	$\omega - \alpha$	$\det M(N)$
1	$\kappa N^{-1/2}$	-1	$-\lambda N^{-3/2}$
2	$-\frac{\kappa^2}{2} N^{-3}$	-2	$-\frac{3\lambda^2}{2} N^{-5}$
3	$-\frac{3\kappa^3}{4} N^{-15/2}$	-3	$\frac{45\lambda^3}{4} N^{-21/2}$
4	$\frac{135\kappa^4}{16} N^{-14}$	-4	$\frac{14175\lambda^4}{16} N^{-18}$

Theorem 3 *In generic systems that are in the phase $(\omega, c = 0, \Sigma)$, we have for large N that*

$$\langle \mathcal{O}_\omega(1)\mathcal{O}_\omega(N + 1) \rangle = \left(e^{i\pi Nm} \lim_{M \rightarrow \infty} |\langle \mathcal{O}_\omega(1)\mathcal{O}_\omega(M) \rangle| \right) \left(1 + B_N \frac{e^{-2N/\xi}}{N^2} \right) (1 + o(1)). \tag{13}$$

The factor B_N is given implicitly in the proof and satisfies $|B_N| = O(1)$, $m \in \mathbb{Z}$ is a known constant. Generic systems are defined as in Theorem 2.

The results of the discussion in Sect. 6.2 allow extension to non-generic systems. Given non-zero correlation lengths of \mathcal{O}_α for $\alpha \neq \omega$, the formula $1/\xi_\omega = 1/\xi_{\omega-1} + 1/\xi_{\omega+1}$ holds. This agrees with Theorem 3 in the generic case where $\xi_{\omega+1} = \xi_{\omega-1}$.

We now discuss results for the gapless phases. In critical chains the phases in the BDI class described in the bulk by a CFT and connected to a stack of translation invariant chains with arbitrary unit cell are classified by the semigroup $\mathbb{Z}_{\geq 0} \times \mathbb{Z}$: they are labelled by the central charge $c \in \frac{1}{2}\mathbb{Z}_{\geq 0}$ and topological invariant $\omega \in \mathbb{Z}$. The proof, using the $f(z)$ picture, is given in [13]. Our present interest is confined to translation-invariant Hamiltonians that lie in one of these phases, and our next result gives the scaling dimension of the infinite class of operators \mathcal{O}_α . A graphical representation of this theorem is given in Fig. 2.

Theorem 4 *Consider a critical chain in the phase $(\omega, c > 0, \Sigma)$ where the $2c$ zeros on the unit circle are non-degenerate. Let $\tilde{\alpha} = \alpha - (\omega + c)$. Then the operator \mathcal{O}_α has scaling dimension*

$$\Delta_\alpha(c, \omega) = c \left(\frac{1}{4} + x^2 - (x - [x])^2 \right) \Big|_{x=\tilde{\alpha}/2c} \tag{14}$$

$[x]$ denotes the nearest integer to x .

Note that Δ_α explicitly depends on the topological invariant ω . Equation (14) is independent of the choice in rounding half-integers, although for later notational convenience we define it to round upwards in that case. In Sect. 7 we prove Theorem 4 on the way to the more detailed Theorem 10. That theorem gives the full leading order term in the asymptotic expansion of $\langle \mathcal{O}_\alpha(1)\mathcal{O}_\alpha(N + 1) \rangle$ at criticality, including nontrivial oscillatory factors that are helpful in identifying lattice operators with fields in the CFT description. We give a discussion of this CFT description in Sect. 3.4. A similar result holds when we have degenerate zeros on the unit circle, as long as every degeneracy is odd. We do not give results for the case that we have any zero of even degeneracy.

In the gapped case, Theorem 1a makes a simple link between measuring $\langle \mathcal{O}_\alpha(1)\mathcal{O}_\alpha(N+1) \rangle$ and learning ω —one simply looks for the value of α with long-range order. It is not immediately obvious how to generalise this to critical models. Theorem 4 shows that, as in the gapped phases, the behaviour of correlation functions allows us to see marked differences between

different critical phases. In particular, the link between lattice operator and the operators that dominate its CFT description changes at a transition between critical phases (discussed in detail below). In the critical case one can determine c and ω , but this requires information about more than one correlator. Inspecting the form of Eq. (14), displayed in Fig. 2, one concludes that it is not necessary to measure the scaling dimension of all \mathcal{O}_α in order to determine the phase. One method would be to measure the scaling dimensions of $\{\Delta_\alpha, \Delta_{\alpha\pm 1}, \Delta_{\alpha+2}\}$ for some convenient α , and form the set of $\delta_\alpha = \Delta_{\alpha+1} - \Delta_\alpha$. This difference is equal to $[(\alpha - \omega)/2c - 1/2]$ —this means that δ_α is a constant integer on plateaus of width⁶ $2c$, and that neighbouring plateaus differ in value by one. If the δ_α are all different⁷ then we must have $c = 1/2$ and ω can be determined easily using $\omega = \alpha - \delta_\alpha$. Otherwise, one should then measure further scaling dimensions until the width of the constant plateau (equal to $2c$) is found. Once c is known, ω may be determined: on the edge of the plateau we have $\omega = \alpha - 2c\delta_\alpha$. Inferring the critical phase through these scaling dimensions is analogous to distinguishing the gapped phases through the string order parameter. If our model is taken to represent a spin chain then the \mathcal{O}_α are local for α odd. In Appendix C we show that it is possible to recover both c and ω using scaling dimensions of local operators on the spin chain. Moreover, in gapped chains one can use the universality of the gapped correlations to similarly infer ω from knowing only two correlation lengths; this is explained in Sect. 3.1.

2.5 The Dual Spin Chain

Our results apply not only to H_{BDI} but also to certain spin-1/2 chains. We briefly review this correspondence so that the reader can have both pictures in mind, and to help us make links to the literature in the next section. We write the Pauli operators as

$$X = \begin{pmatrix} 0 & 1 \\ 1 & 0 \end{pmatrix}, \quad Y = \begin{pmatrix} 0 & -i \\ i & 0 \end{pmatrix}, \quad Z = \begin{pmatrix} 1 & 0 \\ 0 & -1 \end{pmatrix}. \tag{15}$$

Define X_n, Y_n, Z_n as the operators X, Y, Z acting on the n th site (and tensored with identity on all other sites). A class of translation-invariant spin chains is given by Hamiltonians of the form

$$H_{\text{spin}} = \frac{t_0}{2} \sum_{n \in \text{sites}} Z_n - \sum_{\alpha > 0} \frac{t_\alpha}{2} \left(\sum_{n \in \text{sites}} X_n \left(\prod_{m=n+1}^{n+\alpha-1} Z_m \right) X_{n+\alpha} \right) - \sum_{\alpha < 0} \frac{t_\alpha}{2} \left(\sum_{n \in \text{sites}} Y_n \left(\prod_{m=n+1}^{n+|\alpha|-1} Z_m \right) Y_{n+|\alpha|} \right). \tag{16}$$

As before, we only allow a finite sum over α , have $t_\alpha \in \mathbb{R}$ and take periodic boundary conditions. This is the class of generalised cluster models. Note that this includes the quantum Ising, XY and cluster models as special cases. In Appendix A.3 we give details of the Jordan-Wigner transformation that relates H_{spin} to H_{BDI} . The main point is that our results for the behaviour of $\langle \mathcal{O}_\alpha(1)\mathcal{O}_\alpha(N+1) \rangle$ apply equally well to the spin chain. The expressions for \mathcal{O}_α in terms of spin operators are given in Table 2. Some of these operators appeared in the recent works [44,45]. Note that, as displayed in Table 2, \mathcal{O}_α is local for odd α but remains a non-local string for even α . One can easily see that for odd α , $\langle \mathcal{O}_\alpha \rangle$ is zero in any symmetric

⁶ For clarity, by a plateau of width $2c$ we mean that δ_α is constant for $2c$ consecutive values of α .

⁷ We need three values of δ_j to check whether $c = 1/2$ as δ_α and $\delta_{\alpha+1}$ can be different if we happened to choose α at a kink in the scaling dimension plot—see Fig. 2.

Table 2 Spin operators that are the Jordan-Wigner dual of the fermionic operators \mathcal{O}_α

α	$\mathcal{O}_\alpha(n)$
Positive, odd	$X_n Y_{n+1} X_{n+2} Y_{n+3} \dots X_{n+\alpha-1}$
Positive, even	$\left(\prod_{j=1}^{n-1} Z_j\right) Y_n X_{n+1} Y_{n+2} X_{n+3} \dots Y_{n+\alpha-2} X_{n+\alpha-1}$
Zero	$\prod_{j=1}^{n-1} Z_j$
Negative, odd	$Y_n X_{n+1} Y_{n+2} X_{n+3} \dots Y_{n+ \alpha -1}$
Negative, even	$\left(\prod_{j=1}^{n-1} Z_j\right) X_n Y_{n+1} X_{n+2} Y_{n+3} \dots X_{n+ \alpha -2} Y_{n+ \alpha -1}$

state; hence Theorem 1a implies that for odd ω we have spontaneous symmetry breaking. For even ω , however, \mathcal{O}_ω is a string order parameter for the spin chain. As we discuss further in Sect. 3.1, this is indicative of the spin chain forming an interacting SPT phase. Note that the two phases can coexist: for $\alpha = 3$, the order parameter is $\mathcal{O}_3(n) = X_{n+1} Y_{n+2} X_{n+3}$; hence $P = \prod_j Z_j$ and $T = K$ have been broken. However, PT is preserved, and due to the similarity of \mathcal{O}_3 with the cluster model Hamiltonian— $\sum_j X_j Z_{j+1} X_{j+2}$ —the ground state is *also* an SPT phase protected by PT . Further details may be found in reference [40].

2.6 Relation to Previous Work

In reference [46], Lieb, Schultz and Mattis set the stage for the analysis of determinantal correlations in free fermion models and related spin chains. The key reference related to our results for gapped models is the classic paper of Barouch and McCoy [31]. There the authors study bulk correlations in the XY model which is the spin model equivalent to (2) with non-zero t_0, t_1, t_{-1} only (and hence $f(z)$ depends on two zeros). The section of that paper on zero temperature correlations contains results for $\langle \mathcal{O}_\alpha(1) \mathcal{O}_\alpha(N+1) \rangle$ for $\alpha = 1, -1$ in the phases $\omega = 0, 1$ that include what one would obtain from our theorems. Beyond that, the paper [47] includes a calculation of the value of the order parameter for $\alpha = -1, 2$ in the special case that $f(z) = z^3 - \lambda$. Some portion of the phase diagram for $-2 \leq \omega \leq 2$ is mapped out in reference [48] where order parameters are identified and calculated numerically. Several papers, for example [49,50], study spin models with competing ‘large’ cluster term and Ising term (i.e. non-zero t_α, t_{-1} and t_0). In these cases winding numbers are identified, but not order parameters or their values. Our computation giving Theorem 1b is novel, extending previous calculations by addressing the full set of translation invariant models in the BDI class which require $f(z)$ with an arbitrary (finite) set of zeros. Moreover, this generality shows the robustness of these order parameters throughout the phase diagram.

As mentioned, several papers have identified the form of the order parameters for $|\omega| \leq 4$ in the spin language. Equivalent fermionic order parameters are easily found using the Jordan-Wigner transformation and the paper [43] includes the fermionic \mathcal{O}_α for $|\alpha| \leq 2$ as well as discussing the general case. In our work we prove that the intuitive general case holds by linking these order parameters to the generating function $f(z)$ and matching the winding number of $f(z)$ to the ‘unwinding number’ of each correlator.

There are many works that study correlations in particular quantum phase transitions in our model. Again reference [31] should be mentioned, along with [51], as seminal early works that derived critical behaviour for correlators $\langle \mathcal{O}_\alpha(1) \mathcal{O}_\alpha(N+1) \rangle$ with $|\alpha| \leq 1$ at the $c = 1/2$ Ising transition. Transitions with higher c include the $c = 1$ XX model that is a standard model in physics [52], and the same correlators were analysed in reference [53] using the

mathematical methods found below. We also mention the quantum inverse scattering method as a tool for calculating scaling dimensions in certain cases [54].

An isotropic spin chain is invariant under spin-rotation around the Z axis. In our fermionic model H_{BDI} , this manifests as invariance under spatial inversion $H_\alpha \leftrightarrow H_{-\alpha}$, and hence is a model for which $f(z) = f(1/z)$. This relation implies that $\omega = -c$. The correlators $\langle \mathcal{O}_\alpha(1)\mathcal{O}_\alpha(N+1) \rangle$ with $|\alpha| \leq 1$ in isotropic models with general c and $\omega = -c$ were derived in references [55,56] using the same methods as this paper. Our results go further by studying a wider class of models, including critical phases with general (c, ω) , as well as a wider class of observables: $\langle \mathcal{O}_\alpha(1)\mathcal{O}_\alpha(N+1) \rangle$ for all α . This allows us to observe that from knowledge of the scaling dimensions of these operators, one can identify the topological invariant ω .

3 Physical Context and Discussion

In this section we interpret our results and give them context. In Sect. 3.1 we discuss universality and its implications for spin chains, as well as the relation to symmetry fractionalisation. In Sect. 3.2 we relate correlation length in the bulk to localisation length at the edge and in Sect. 3.3 we derive critical exponents from our results. In Sect. 3.4 we connect our lattice results to continuum (CFT) models and finally in Sect. 3.5 we discuss entanglement scaling approaching a transition.

3.1 SPT Phases and String Orders: Universality and Symmetry Fractionalisation

In Sect. 2.4, we saw that for both gapped and critical systems in our class of models, one can measure the topological invariant ω by looking at the string order parameters \mathcal{O}_α . For gapped phases, one needs to find the value of α for which there is long-range order (Theorem 1a), whereas in the critical case, one uses the scaling dimensions (see Theorem 4 and the discussion following it). The existence of topological string order parameters for critical phases is novel. However, even for the gapped phases that we consider, the string order parameters are unusual. This is for two reasons. Firstly, the usual justification for string orders relies on the concept of symmetry fractionalisation, which arises in the classification of *interacting* SPT phases and is usually not employed in the classification of non-interacting topological insulators and superconductors. Secondly, even in the interacting case, phases which are protected by anti-unitary symmetries do not give rise to the kind of string order parameters we discuss in this work. Bridging this gap is the purpose of Sect. 3.1.2. However, first we discuss the remarkable result that the correlations in the gapped phases exhibit universal properties.

3.1.1 Universality

In the gapped phases, \mathcal{O}_α has correlation length $\xi_\alpha = \frac{\xi}{|\alpha-\omega|}$ (if $\alpha \neq \omega$), see Fig. 2 (we assume the generic case for this discussion). This means that although ξ depends on microscopic properties (like the position of the zeros of $f(z)$), the ratio ξ_α/ξ_β depends only on ω and is hence constant in each phase. This has interesting consequences. In principle, to determine the topological invariant of a gapped phase, one has to find an α such that $|\langle \mathcal{O}_\alpha(1)\mathcal{O}_\alpha(N) \rangle|$ tends to a non-zero limit as $N \rightarrow \infty$. This requires going through an arbitrarily large set of observables. Surprisingly, it is sufficient to measure only, for example, *two* correlation lengths ξ_{α_1} and ξ_{α_2} (for the observables \mathcal{O}_{α_1} and \mathcal{O}_{α_2}) for any fixed choice of α_1 and α_2

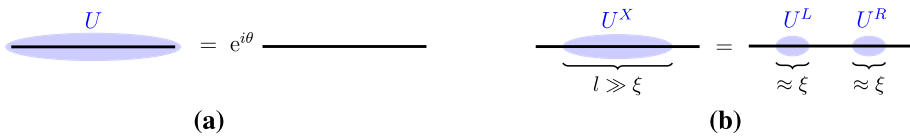


Fig. 3 Consider a system which does not exhibit spontaneous symmetry breaking. **a** The ground state remains invariant when applying a global symmetry $U = \prod_n U_n$. **b** When acting with U^X on a line segment X of length $l \gg \xi$, then deep within that segment, the action is indistinguishable from the global symmetry operation U . Hence, the state can only be changed near the boundaries of X . In conclusion, effectively, $U \approx U^L U^R$

satisfying $|\alpha_1 - \alpha_2| \in \{1, 2\}$. To see this, note that there are three cases. Firstly, if one finds long-range order for either α_1 or α_2 , then ω is known. Secondly, if $\xi_{\alpha_1} = \xi_{\alpha_2}$, one knows that $\omega = \frac{\alpha_1 + \alpha_2}{2}$. In any other case, α_1 and α_2 will either both be larger or smaller than ω , such that $\frac{\xi_{\alpha_1}}{\xi_{\alpha_2}} = \frac{\omega - \alpha_2}{\omega - \alpha_1}$. This can be uniquely solved, giving $\omega = \frac{\alpha_1 \xi_{\alpha_1} - \alpha_2 \xi_{\alpha_2}}{\xi_{\alpha_1} - \xi_{\alpha_2}}$.

The above shows that, using universality, one can replace an infinite number of observables by just two. However, it has an even more surprising consequence in the spin language. If we choose $\alpha_1 = 1$ and $\alpha_2 = -1$, then this corresponds to the correlation lengths ξ_X and ξ_Y of the local observables X_n and Y_n . This fully determines the invariant

$$\omega = \begin{cases} -1 & \text{if } \lim_{N \rightarrow \infty} \langle Y_1 Y_N \rangle \neq 0 \\ 1 & \text{if } \lim_{N \rightarrow \infty} \langle X_1 X_N \rangle \neq 0 \\ 0 & \text{otherwise and if } \xi_X = \xi_Y \\ \frac{\xi_X + \xi_Y}{\xi_X - \xi_Y} & \text{otherwise.} \end{cases} \tag{17}$$

This means that one can distinguish, for example, the trivial paramagnetic phase from the topological cluster phase⁸ by measuring the decay of correlation functions of *local* observables. This is truly unusual and presumably an artifact of looking at spin models that are dual to non-interacting fermions. It would be interesting to investigate such ratios between correlation lengths in interacting models and determine whether this is a measure of the interaction strength between quasi-particles.

3.1.2 Symmetry Fractionalisation

To contrast our analysis to the standard justification for string orders, we briefly repeat how string order parameters arise within the context of symmetry fractionalisation. It is worth emphasising that the known constructions for string order parameters of the type that we discuss are only for SPT phases which are protected by *unitary* symmetries [35,57].

Let U be some on-site unitary symmetry, i.e. $[U, H] = 0$ with $U = \prod_n U_n$. Consider the operator $U^X = \prod_{n \in X} U_n$ where X is some large line segment of length l (see Fig. 3). If $l \gg \xi$, then deep within X , U^X looks like a bona fide symmetry operator. Hence, it is only near the edge of X that U^X can have a non-trivial effect. In other words, if $|\text{gs}\rangle$ is the ground state, then effectively $U^X |\text{gs}\rangle = U^L U^R |\text{gs}\rangle$, where U^L and U^R are operators that are exponentially localised near the boundary of the region X . This can be made rigorous using matrix product states [35,58]. This phenomenon is known as *symmetry fractionalisation* and is the essential insight that led to the classification of (interacting) SPT phases in 1D [9,11,12,59]. To illustrate this, consider the case with a symmetry group $\mathbb{Z}_2 \times \mathbb{Z}_2$, generated by global on-site unitary symmetries U and V . Since U_n and V_n commute on every site, we have that $U^X V = V U^X$.

⁸ I.e. models that can be connected to $H = -\sum_i X_i Z_{i+1} X_{i+2}$ without a phase transition.

Moreover, $U^X = U^L U^R$ (when acting on the ground state subspace), implying that U^L and V have to commute up to a complex phase. Using that $V^2 = 1$, we arrive at $U^L V = (-1)^{\frac{\omega}{2}} V U^L$ where $\omega \in \{0, 2\}$. This defines a discrete invariant which allows to distinguish two symmetry-preserving phases. (One says that the phases are labelled by the inequivalent classes of projective representations of $\mathbb{Z}_2 \times \mathbb{Z}_2$.) In fact, one can show that in the phase where $\omega = 2$, the negative sign implies degeneracies both in the entanglement spectrum and, for open boundary conditions, in the energy spectrum [8]. Here we will not go into such details, referring the interested reader to the review in reference [40]. Instead, we consider the effect on correlation functions.

One can consider the string correlation function $\langle \text{gs} | U^X | \text{gs} \rangle = \langle U^X \rangle = \langle U^L U^R \rangle$. Due to locality, we have that $\langle U^X \rangle \approx \langle U^L \rangle \langle U^R \rangle$ for $l \gg \xi$. Since SPT phases do not spontaneously break symmetries, we have that $\langle U^L \rangle = \langle U^L V \rangle = (-1)^{\frac{\omega}{2}} \langle V U^L \rangle = (-1)^{\frac{\omega}{2}} \langle U^L \rangle$. Hence, we conclude that the string correlation function $\langle U^X \rangle$ has to be zero if $\omega = 2$. Equivalently, measuring $\langle U^X \rangle \neq 0$ implies that $\omega = 0$, such that one calls this a string order parameter for the trivial phase ($\omega = 0$). Analogously, one can construct a string order parameter for the non-trivial phase: if \mathcal{V}, \mathcal{W} are local operators anticommuting with V , then by repeating the above argument, we conclude that $\langle \mathcal{V} U^X \mathcal{W} \rangle \neq 0$ implies that $\omega = 2$ (with \mathcal{V} (\mathcal{W}) localised near the left (right) of region X). Note that these string order parameters always work only in one direction: there is no information if one measures them to be zero. This is in striking contrast with the string order parameters we found for our non-interacting class of models.

Let us make this discussion more concrete with an example, where $U = P = \prod_n Z_n$ and $V = P_{\text{odd}} = \prod_{m \text{ odd}} Z_m$. Two models with this symmetry are $H_0 = \sum_n Z_n$ and $H_2 = -\sum_n X_{n-1} Z_n X_{n+1}$. One can calculate that their symmetry fractionalisations are $\omega = 0$ and $\omega = 2$, respectively. The above tells us that $\prod_{n=1}^N Z_n$ is a string order parameter for the trivial phase. Similarly, taking $\mathcal{V}_{n,n+1} = Y_n X_{n+1}$ —which indeed anticommutes with P_{odd} —then $\mathcal{V}_{1,2} \left(\prod_{n=1}^N Z_n \right) \mathcal{V}_{N+1,N+2}$, or equivalently $X_1 Y_2 \left(\prod_{n=3}^N Z_n \right) Y_{N+1} X_{N+2}$, is an order parameter for the topological phase $\omega = 2$. In this case, the string order parameters we have derived—with respect to $\mathbb{Z}_2 \times \mathbb{Z}_2$ —for the trivial phase (connected to H_0) and the topological cluster phase (connected to H_2) happen to be the same as we encountered in the non-interacting case—with respect to the P and T symmetries—see Table 2.

Can we make a connection with our non-interacting classification and the concept of symmetry fractionalisation? For this it is easiest to work in the fermionic language. It is known that if one studies the fractionalisation of only the P and T symmetries, then there are only eight distinct phases [60]. However, since our model is non-interacting, the P and T symmetries imply an additional structural symmetry: the Hamiltonian can only contain terms which have an equal number of real and imaginary Majorana modes. This implies that if we have any operator which has a well-defined number of real minus imaginary Majorana operators (e.g. $\gamma_n \gamma_{n+1}$ would have ‘charge’ two), then the Hamiltonian time evolution would conserve this. To see how this is useful, consider a fixed-point model $H_\alpha = i/2 \sum_{n \in \text{sites}} \tilde{\gamma}_n \gamma_{n+\alpha}$. It is a simple exercise to check that for the symmetry fractionalisation of $P = P_L P_R$, we have that P_L has charge $-\omega$ (and P_R charge ω). By the aforementioned argument and the concept of adiabatic connectivity, these charges of P_L and P_R should be stable throughout each gapped phase. It is easy to see that $\langle \mathcal{V} \rangle = 0$ for any operator whose charge is non-zero. Hence, in this way we are naturally led to consider $\gamma_1 \cdots \gamma_\alpha (\tilde{\gamma}_{\alpha+1} \gamma_{\alpha+1} \cdots \tilde{\gamma}_N \gamma_N) \tilde{\gamma}_{N+1} \cdots \tilde{\gamma}_{N+\alpha}$: this operator can only have long-range order if $\alpha = \omega$.

The power of symmetry fractionalisation is that it is not specific to the non-interacting case. Does that mean that if one considers interacting Hamiltonians preserving the aforementioned

structural symmetry⁹, that we obtain an infinite number of distinct *interacting* phases, labelled by \mathbb{Z} and distinguished by the same string order parameters as the non-interacting case? This is not clear: the structural symmetry is not a conventional symmetry; in particular, the charge of this symmetry is not well-behaved under the multiplication of operators (which is usually essential to preserve charge under renormalization group flow). Hence, it is perhaps unlikely that this structural symmetry gives rise to non-trivial physics in the interacting case, but it might nevertheless be interesting to explore further.

3.2 Majorana Modes: Localisation Length Versus Correlation Length

In reference [13], we showed that if $\omega > 0$, then the system has ω Majorana zero modes per edge. More precisely, to each of the ω largest zeros $\{z_i\}_{i=1, \dots, \omega}$ of $f(z)$ within the unit disk, we associate a hermitian operator γ_L^i , all of them mutually commuting and squaring to the identity. Moreover, these operators commute with T and are exponentially localised near the left edge, with respective localisation lengths $-1/\ln|z_i|$. (The same is true for the right edge, where they anticommute with T .) The crucial property which makes them so-called *zero-energy* modes, is that they commute with the Hamiltonian (up to a finite-size error which is exponentially small in system size). Hence we have ω mutually anticommuting symmetries, from which one can show that to each edge we can associate a $\sqrt{2}^\omega$ -fold degeneracy.¹⁰ This is to be contrasted with the fact that the ground state is unique for periodic boundary conditions. This is a characteristic property of topological insulators (and more generally, symmetry-protected topological phases) in one spatial dimension. This is well-known for the gapped phases of the BDI class, but the proof in reference [13] shows that this analysis goes through when the bulk is critical (i.e. $c \neq 0$).

Reference [39] notes the link between the localisation length of the Majorana edge mode and the behaviour of bulk spin correlations in a model equivalent to the XY model, and conjectured that this is a general phenomenon. Here we simply point out that the largest localisation length of a Majorana mode (if present) need not coincide with the bulk correlation length. Indeed, the latter is determined by the zero of $f(z)$ closest to the unit circle. In particular, if $\omega > 0$, the localisation lengths of the Majorana modes are determined by zeros *within* the unit disk, whereas it could certainly be that a zero *outside* the unit circle dominates the bulk correlation length. This disagreement between the two quantities is consistent with the observation in [13] that one can tune a gapped phase to a critical point whilst (some of) the edge modes remain exponentially localised.

This discussion for $\omega > 0$ holds also for $\omega < -2c$ (if we interchange the words ‘left’ and ‘right’), with the edge modes now being associated to zeros *outside* the unit circle. As mentioned above, spatial left-right inversion corresponds to $f(z) \leftrightarrow f(1/z)$, which at the level the topological invariant corresponds to $\omega \leftrightarrow -\omega - 2c$. For any other value of ω , there are no edge modes [13].

3.3 Critical Exponents

Critical exponents encode how different physical quantities diverge upon approaching a phase transition. In the classical case, the tuning parameter is usually the renormalised temperature

⁹ That is, we allow any interaction term that contains the same number of real as imaginary Majorana modes.

¹⁰ Hence the system as a whole has a 2^ω -fold degeneracy.

Table 3 Summary of the critical exponents found in Sect. 3.3

Critical exponent	α	β	γ	δ	η	ν	z
Value	0	$mc/4$	$2 - mc/2$	$8/mc - 1$	$mc/2$	1	m

As above, c is half the number of zeros on the unit circle and m is the multiplicity of these zeros (taken to be uniform). If $m = 1$, then c is the central charge

$\tau = \frac{T - T_c}{T_c}$. In the current quantum setting, there is an equally natural¹¹ tuning parameter $\varepsilon \in \mathbb{R}$: if $f(z)$ represents a gapless Hamiltonian, then $f_\varepsilon(z) := f(z(1 - \varepsilon))$ interpolates between two gapped phases. One can think of this as shrinking ($\varepsilon < 0$) or expanding ($\varepsilon > 0$) the radial component of the zeros of $f(z)$. We will work in the case where the system is gapless at $\varepsilon = 0$ with $2c$ zeros on the unit circle, allowing for a multiplicity m (which we take to be the same for every distinct zero). This means we have $2c/m$ distinct zeros on the unit circle. We emphasise that the expressions in the remainder of this section are derived only in the case of uniform multiplicity. Our results allow for an analysis of the general case, but we do not wish to pursue this here.

We derive four critical exponents: the *anomalous scaling dimension*, η , defined by the scaling of the order parameter, Ψ , at the critical point ($\langle \Psi(1)\Psi(N) \rangle \sim 1/N^\eta$); ν , which encodes the divergence of the correlation length ($\xi \sim |\varepsilon|^{-\nu}$); the *dynamical critical exponent*, z , that relates how the correlation length ξ diverges relative to the characteristic time scale defined by τ , the inverse energy gap ($\tau \sim \xi^z$); and β which relates to the decay of the order parameter ($\Psi \sim |\varepsilon|^\beta$).

Exactly at the critical point, we have given explicit results above only for $m = 1$. In particular, Theorem 4 gives us that $\eta = c/2$. In the special case of $c = 1/2$, we recover the well-known result $\eta = 1/4$. For $m > 1$ and *odd*, we can use Eq. (113) from Appendix F to easily derive that $\eta = mc/2$. The other three exponents are defined away from criticality where we can allow for any $m \geq 1$. The correlation length is determined by the nearest zero, such that $\xi \sim 1/|\ln|1 + \varepsilon|| \sim 1/|\varepsilon|$. Hence, $\nu = 1$; independent of c and m . The energy gap, $\min_{z \in S^1} |f(z)|$, depends on the location of all zeros. However, close to criticality, we need to care only about the zeros describing the transition. Moreover, each of the distinct zeros has a local minimum, which all scale the same way. So without loss of generality, we can consider $f(z) = (z - (1 + \varepsilon))^m$. The gap scales as $\sim |\varepsilon|^m$, such that $\tau \sim \xi^m$ with dynamical critical exponent $z = m$. This is consistent with $m = 1$ being described by a CFT with central charge c , since that implies $z = 1$. Lastly, we consider the order parameter given in Theorem 1b. For each distinct zero, the order parameter has a factor $|1 - (1 + \varepsilon)^{-2|m^2/8}| \sim |\varepsilon|^{m^2/8}$; all other terms do not go to zero with ε . Combining $2c/m$ such factors, we have $\Psi \sim |\varepsilon|^{\frac{m^2}{8} \times \frac{2c}{m}}$. Hence, $\beta = mc/4$. In the special case of the Ising transition, $m = 1$ and $c = 1/2$, this reduces to the well-known result $\beta = 1/8$.

The above results are consistent with the well-known scaling relations [61]. In particular, we can straightforwardly confirm that $2\beta = \nu(\eta + d - 2)$, where our dimension is $d = 2$. In fact, the aforementioned relationship implies that $\eta = mc/2$ for any multiplicity m . Moreover, such scaling relations can be used to derive other critical exponents: such as $\gamma = \nu(2 - \eta) = 2 - mc/2$, $\alpha = 2 - \nu d = 0$ and $\delta = \nu d / \beta - 1 = 8/mc - 1$. It is interesting to note that the critical exponent γ changes sign for $mc = 4$. This data is summarised in Table 3.

¹¹ Moreover, one can check that this agrees with τ under the quantum-classical correspondence.

3.4 CFT and Continuum-Lattice Correspondence

We now explain how certain features of Theorem 4 (and Theorem 10) fit in to a CFT analysis of the critical point. This section is not rigorous, the aim is to complement the mathematical proofs with a perhaps more intuitive physical picture. We also use Theorem 10 to make claims about passing from the lattice to the continuum description of the operators \mathcal{O}_α .

If our system has $2c$ non-degenerate zeros on the unit circle, then one can argue that the appropriate low-energy theory is a CFT built from $2c$ real, massless, relativistic free fermions [62]. Briefly, one can linearise the dispersion relation $|f(k)|$ about all of its zeros on the circle (Fermi momenta), and each local linearised mode is such a fermion. Moreover, since $|f(k)| = |f(-k)|$ we can combine the real fermions from a pair of complex conjugate zeros to form a complex fermion with central charge one. This is helpful as complex fermions can be bosonised using the methods given in [52,63,64]. In general, then, we have a low energy theory of an even number of complex fermions and either 0, 1 or 2 real fermions (located at $k = 0$ or π). The central charge is always equal to c .

3.4.1 High Level Analysis

In reference [65], general CFT considerations are applied to integrable models to find asymptotic correlation functions of local operators $\mathcal{A}_n(x)$ that create fixed numbers, n_j , of quasiparticles of type j (i.e. excitations near momentum $\pm k_j$). For equal times, these take the form

$$\langle \mathcal{A}_n^\dagger(0) \mathcal{A}_n(x) \rangle = \sum_{\{m_j\}} C_{\mathcal{A}_n} x^{-2 \sum_j \Delta_n^{(j)}} e^{ix \sum_j m_j k_j} \quad (18)$$

for scaling dimensions $\Delta_n^{(j)}$, Fermi momenta k_j and the sum is over sets of $m_j \in 2\mathbb{Z}$. The amplitude $C_{\mathcal{A}_n}$ depends on the appropriate form factor [65]. The oscillatory term comes from a multiplicative factor $e^{-ix\delta p}$ when \mathcal{A} gives an intermediate excitation with momentum δp —these are non-zero when we have particle-hole excitations where the particles and holes are at different Fermi points. Relevant discussion is found in references [54,65,66]. The \mathcal{O}_α that we consider are ‘square-roots’ of local operators in the sense that the product $\mathcal{O}_\alpha(n) \mathcal{O}_\alpha(n+m)$ (for small m) is a local fermionic operator on the lattice and has an expansion dominated by such \mathcal{A} . One may then expect that correlations of \mathcal{O}_α will have the same form as (18), but with $m_j \in \mathbb{Z}$. This is verified in Theorem 10, apart from the possibility of an additional $(-1)^x$ oscillation. This is needed when the low energy degrees of freedom are modulated by this oscillation. The constant in Theorem 10 implicitly gives form factors of the relevant fields [65,67].

3.4.2 CFT Operator Correspondence for One Real Fermion

We now consider more details of the CFT description and the correspondence with canonical continuum operators. The following discussion will be in terms of the spin chain dual to the fermionic system, as discussed in Sect. 2.5.

If our model has one zero on the unit circle (which must be at $z = \pm 1$, corresponding to $k = 0, \pi$ respectively), then our continuum limit has $c = 1/2$, and is hence described by the Ising CFT [68]. The operator content of this theory is well understood and, amongst the primary operators, there are exactly two with scaling dimension $1/8$. These are the ‘spin’ and ‘disorder’ operators, denoted by σ and μ respectively. In the usual lattice Ising model, σ is

the field corresponding to the *local* order parameter of the neighbouring ordered phase and μ is a *non-local* string order parameter of the neighbouring paramagnetic phase. Moreover, σ is odd under parity symmetry (realised on the lattice as $P = \prod_j Z_j$), while μ is even under P . Now, if we are in a model with $\omega = 0$ and $c = 1/2$, then we can continuously tune to a critical Ising chain $H = \sum_j X_j X_{j+1} \pm Z_j$ for which the correspondence is standard and discussed in [68]. In particular, we will have $X_n \rightarrow \sigma(n)$ and $\prod_{j=-\infty}^n Z_j \rightarrow \mu(n)$; note that this is consistent with the aforementioned symmetry considerations. Moreover, models in our class with $\omega = -1$ and $c = 1/2$ are in the same phase as a critical Ising chain $H = \sum_j Y_j Y_{j+1} \pm Z_j$ where the analogous standard correspondence is $Y_n \rightarrow \sigma(n)$ and $\prod_{j=-\infty}^n Z_j \rightarrow \mu(n)$, again consistent with locality and symmetry properties.

Our results on the lattice, in particular Theorem 4, allow us to extend this by showing that a system with $c = 1/2$ and winding number ω has two operators with this dominant scaling dimension: \mathcal{O}_ω and $\mathcal{O}_{\omega+1}$. By considering locality and parity symmetry of the operators, as well as scaling dimension, we identify \mathcal{O}_ω with σ when ω is odd and μ when ω is even; $\mathcal{O}_{\omega+1}$ is then the other field. Importantly, we conclude that the operators on the lattice that have overlap with the dominant primary scaling fields depend on ω . Indeed, along a path that connects a model with $c = 1/2$ and winding number ω to a model with $c = 1/2$ and winding number $\omega' \neq \omega$ then we must encounter a multicritical point with $c \geq 1$ where the pair of dominant operators in the $c = 1/2$ models will have degenerate scaling dimension and the dominant pair changes as we go through this point—we give an example of this in Sect. 3.4.4. Other operators \mathcal{O}_α for α neither ω nor $\omega + 1$ will be dominated by descendants of σ for α odd and of μ for α even (the lattice operators have dimension $1/8 + j$ for some $j \in \mathbb{Z}_+$, so we should take CFT descendants at level j). Note that in all correspondences we may have a $(-1)^n$ oscillatory factor.

3.4.3 CFT Operator Correspondence for One Complex Fermion

Let us now consider the case $c = 1$ with a complex conjugate pair of zeros, at $e^{\pm ik_F}$, and a $U(1)$ symmetry generated by $S_{\text{tot}}^z = 1/2 \sum_i Z_i$ (the standard model in this class is the XX spin chain [52], which in our language corresponds to $H = H_{-1} + H_1$ with $f(z) = z + 1/z$). These are isotropic models with $f(z) = f(1/z)$, which implies that $\omega = -c$; we discuss other values of ω later.

The fermionic Hamiltonian may be bosonised as described in [63,69,70] and [52, Chap. 20], passing also to a continuum limit. We denote the resulting bosonic fields by $\theta(x)$ and $\varphi(x)$, such that

$$[\partial_x \varphi(x), \theta(y)] = [\partial_x \theta(x), \varphi(y)] = i\pi \delta(x - y) \tag{19}$$

where $\delta(x)$ is the Dirac delta function. We now recall some standard results for the isotropic model [52,71]. Firstly, the vertex operator $e^{i\theta(x)}$ creates a localised charge of the aforementioned $U(1)$ symmetry, and $\partial_x \varphi(x)$ is a density fluctuation: the total density is $\rho(x) = (k_F + \partial_x \varphi(x))/\pi$. Vertex operators of the form $e^{i(\lambda_1 \theta(x) + \lambda_2 \varphi(x))}$ have scaling dimension $(\lambda_1^2 + \lambda_2^2)/4$. When $\lambda_1 \in \mathbb{Z}$ and $\lambda_2 = 2k$ for $k \in \mathbb{Z}$, these operators are well-defined and mutually local. When $\lambda_1 \in \mathbb{Z}$ and $\lambda_2 = 2k + 1$ for $k \in \mathbb{Z}$, these operators have a branch cut extending to infinity. As discussed below, on the lattice this branch cut is related to the non-local Jordan Wigner strings. Notice that this is an asymmetry in the role of the fields φ and θ .

We now consider operator correspondences for \mathcal{O}_α . Bosonisation will not fix constant coefficients of the operators, so we will usually suppress them in the following. Note, however,

that hermiticity and symmetries constrain certain coefficients. We may also need to include an additional antiferromagnetic oscillation in order to correctly correspond to the lattice model and hence to our results.

Firstly, following [63,69], we note that $\rho(x)$ generates the U(1) symmetry. Hence, we can make the formal identification

$$e^{-i\frac{\chi}{2} \sum_j Z_j} = e^{i\chi \sum_j (c_j^\dagger c_j - 1/2)} \rightarrow e^{i\chi \int (\rho(x) - 1/2) dx}. \tag{20}$$

The Jordan-Wigner strings follow by setting $\chi = \pi$ and truncating the sum and integral respectively. We can then make the correspondence (see, for example, [69,70] and [52, Chap. 20]):

$$\prod_{i=-\infty}^n Z_i \rightarrow a e^{i(k_F n + \varphi(n))} + \bar{a} e^{-i(k_F n + \varphi(n))} \quad (a \in \mathbb{C}). \tag{21}$$

The fermionic creation operator creates a U(1) charge and is multiplied by a Jordan-Wigner string, this leads to standard expressions for the dominant contributions to the right (+) and left (-) moving continuum fermion fields

$$\psi_{\pm}(x) = e^{i\theta(x) \pm i\varphi(x)} + \dots \quad (c_n \rightarrow \psi(n) \simeq e^{ik_F n} \psi_+(n) + e^{-ik_F n} \psi_-(n)). \tag{22}$$

Time-reversal symmetry swaps these right and left moving fields (one may check the lattice expansion given in, for example, [70]) and so we have that $\varphi \rightarrow \varphi$ and $\theta \rightarrow -\theta$ under T . We can also confirm that the right-hand-side of (21) is hermitian and does not transform¹² under the U(1) or T , as required for the Z-string. The site at $-\infty$ may appear problematic in isolation, but we always consider two-point correlators and thus the infinite string to the left will drop out (similarly in the continuum one may take correlation functions to avoid considering the boundary). The meaningful correspondence here is:

$$\left\langle \prod_{i=0}^n Z_i \right\rangle \rightarrow \left\langle \left(e^{i(k_F n + \varphi(n))} + e^{-i(k_F n + \varphi(n))} \right) \left(e^{i\varphi(0)} + e^{-i\varphi(0)} \right) \right\rangle, \tag{23}$$

where we now suppress constant coefficients.

Now, by considering the U(1) action and time-reversal symmetry, we see that $\sigma_n^{\pm} \rightarrow e^{\pm i\theta(n)}$ (with real coefficients). We then have that

$$\begin{aligned} X_n &\rightarrow \cos(\theta(n)) \\ Y_n &\rightarrow \sin(\theta(n)). \end{aligned} \tag{24}$$

Note that the relation between σ^+ and ψ_{\pm} in the CFT corresponds on the lattice to (103).

The above correspondences are well known [52,69,70]. In our notation, (21) corresponds to \mathcal{O}_0 and (24) correspond to $\mathcal{O}_{\pm 1}$. Operators \mathcal{O}_{α} for $|\alpha| > 1$ are more involved. However, the correspondences that we have already established should allow us to find the continuum operator by taking operator products. We consider first the family of local spin operators, with α odd. In particular, let us analyse $\mathcal{O}_3(n) = X_n Y_{n+1} X_{n+2}$. From Theorem 4, we know that this operator has scaling dimension 9/4. In the field theory the operators $e^{\pm 3i\varphi}$ and $e^{\pm 3i\theta}$ share this scaling dimension, as well as operators that include derivatives, for example $(\partial^2 \theta) e^{i\theta}$. We should exclude terms that include $e^{i(2k+1)\varphi}$ on the grounds of locality. We now

¹² Under a U(1) rotation through $\chi \in \mathbb{R}$, lattice operators are conjugated by $\exp(i\chi \sum_n Z_n/2)$ and fields transform as $\theta(x) \rightarrow \theta(x) + \chi, \varphi(x) \rightarrow \varphi(x)$.

show that all operators depending solely on θ and that have the correct scaling dimension may appear. Moreover, we give a method for determining the exact correspondence.

First, note that any product of three neighbouring X or Y operators can be expanded as a linear combination of terms $\sigma_n^\pm \sigma_{n+1}^\pm \sigma_{n+2}^\pm$, with all possible sign combinations present. These products transform separately under $U(1)$ with charge $m \in \{-3, -1, 1, 3\}$ equal to the sum of the signs. The dominant terms would be $e^{\pm i\theta(n)}$, with subdominant contributions from $e^{\pm 3i\theta(n)}$ and products of $e^{\pm i\theta(n)}$ and $e^{\pm 3i\theta(n)}$ with derivatives of $\theta(n)$. It is possible that the coefficient of the dominant term and the first few subdominant terms vanish due to destructive interference—Theorem 4 verifies that this occurs and as stated above $\mathcal{O}_{\pm 3}(n)$ has the same scaling behaviour as $e^{\pm 3i\theta(n)}$. Details of a formal calculation in terms of the CFT operator product expansion are given¹³ in Appendix B. Intuitively, $\mathcal{O}_{\pm 3}$ is dominated by terms that create three charges, as well as the remnants of several terms that create one charge but (partially) destructively interfere with each other.

By generalising this idea to all odd α , we conjecture that $\mathcal{O}_\alpha(n)$ has an expansion of the form

$$\mathcal{O}_\alpha(n) \rightarrow \sum_{m=0}^{|\alpha|} e^{i(|\alpha|-2m)\theta(n)} \mathcal{D}_{(\alpha,m)}(\theta(n)) + \dots \quad (\alpha \text{ odd}). \tag{25}$$

$\mathcal{D}_{\alpha,m}(\theta)$ is constant for $m = \pm\alpha$, and for other values of m contains products of derivatives of θ such that the scaling dimensions of each term matches the extremal terms $e^{\pm i\alpha\theta(n)}$. This is consistent with both Theorem 10 and calculations of the type in Appendix B. Note that this conjecture includes all operators in the field theory that depend only on θ and that have the correct scaling dimension; carefully taking operator products will give explicit expressions for the \mathcal{D} .

The case of α even follows the same pattern, except that we should always include a Jordan-Wigner string: the dominant term of which is given in (21). Hence, we arrive at

$$\begin{aligned} \mathcal{O}_\alpha(n) \rightarrow \sum_{m=0}^{|\alpha|} & \left(e^{i(|\alpha|-2m)\theta(n)+i(k_F n+\varphi(n))} + e^{i(|\alpha|-2m)\theta(n)-i(k_F n+\varphi(n))} \right) \mathcal{D}_{(\alpha,m)}(\theta(n)) \\ & + \dots \quad (\alpha \text{ even}), \end{aligned} \tag{26}$$

where, as above, $\mathcal{D}_{\alpha,m}(\theta)$ is constant for $m = \pm\alpha$ and contains appropriate numbers of derivatives such that all terms have the same scaling dimension. This is consistent with Theorem 10 and CFT calculations. In all cases we should allow multiplication by a global antiferromagnetic oscillation as discussed in the previous section.

The preceding analysis required the $U(1)$ symmetry of isotropic models as a starting point. In reference [40], generalised Kramers-Wannier dualities were discussed that map between our models. One class of transformations swap models such that $f(z) \leftrightarrow z^m f(z)$ for some $m \in \mathbb{Z}$. If $f(z)$ is isotropic, then $z^m f(z)$ is not—this allows us to extend the preceding correspondence to anisotropic models. Anisotropic models that are dual to isotropic models in this way have an appropriately transformed $U(1)$ symmetry. First, let us separate two cases: m even and m odd. When m is even, the transformation will be local, and when m is odd it will be non-local (this is related to whether the neighbouring gapped phases have a local order parameter). Now, in both cases we should take the correspondences (25) and (26) and shift the label on the left-hand-side $\mathcal{O}_\alpha \rightarrow \mathcal{O}_{\alpha+m}$ while *not* shifting the right-hand-sides. In the case that m is even, we take this as the correspondence. In the case that

¹³ Parenthetically, this calculation indicates that other triples of neighbouring X and Y operators will scale as $e^{i\theta}$; we have confirmed this in numerical simulations.

Table 4 Behaviour of scaling dimensions across a transition between critical phases—the model is $f(z) = (1 - \lambda)z^2 + 2\lambda z - (1 + \lambda)$ and the dominant CFT fields associated to the dominant lattice operators are also given

c	ω	Y_n	$\prod_{j=1}^n Z_j$	X_n	$\prod_{j=1}^n Z_j Y_{n+1} X_{n+2}$	$X_n Y_{n+1} X_{n+2}$	
$\lambda > 0$	1/2	0	9/8	$1/8 - \mu$	$1/8 - \sigma$	9/8	25/8
$\lambda = 0$	1	0	5/4	$1/4 - \cos(\varphi)$	$1/4 - e^{\pm i\theta}$	$1/4 - \sin(\varphi)$	5/4
$\lambda < 0$	1/2	1	25/8	9/8	$1/8 - \sigma$	$1/8 - \mu$	9/8

m is odd, we alter the right-hand-side by swapping φ and θ . For example, in the transition $H = -\sum_n X_n Z_{n+1} X_{n+2} + \sum_n Z_n$ we identify X_n with $e^{i(k_F n + \theta(n))} + e^{-i(k_F n + \theta(n))}$. Notice that for odd m , the oscillatory factor $e^{ik_F n}$ appears with the field $\theta(x)$. This is because $\partial_x \theta(x)$ is related to the density of the transformed U(1) symmetry. Moreover, this correspondence is consistent with the requirement that the non-local vertex operators with factors $e^{(2k+1)\varphi(x)}$ always correspond to non-local lattice operators.

The dualities discussed so far allow us to map an isotropic model to a representative of each phase ($c = 1, \omega$). As mentioned above, these representatives all have a U(1) symmetry and are thus not generic. It is then nontrivial to extend this analysis to general anisotropic models. Theorem 10 indicates, however, that this correspondence should continue to hold. Since the above argument does not make use of the fact that our underlying lattice model is non-interacting, we expect the correspondence to persist¹⁴ in interacting models if the U(1) symmetry is preserved. However, if the U(1) symmetry is broken, we see no reason to expect it to continue to hold (in contrast to the non-interacting case).

3.4.4 Example: Transition Between Topologically Distinct Critical Phases

To complement the discussion so far, we consider the example

$$\begin{aligned}
 f(z) &= (1 - \lambda)z^2 + 2\lambda z - (1 + \lambda) \\
 &= (z - 1)((1 - \lambda)z + (1 + \lambda)).
 \end{aligned}
 \tag{27}$$

Tuning $-1 \leq \lambda \leq 1$ we interpolate between two critical phases, with a transition at $\lambda = 0$. For $\lambda = 1$ the system is the standard critical Ising chain with $H = -(\sum_j X_j X_{j+1} + Z_j)$. Models with $\lambda > 0$ are in the same phase: ($c = 1/2, \omega = 0$). For $\lambda = -1$ we have $H = -(\sum_j X_j Z_{j+1} X_{j+2} - X_j X_{j+1})$. Models with $\lambda < 0$ can be smoothly tuned to this model and have ($c = 1/2, \omega = 1$). For $\lambda = 0$, we have the $c = 1$ transition between topologically distinct critical phases, with $H = -\frac{1}{2}(\sum_j X_j Z_{j+1} X_{j+2} + Z_j)$. Table 4 gives the behaviour of the scaling dimensions of the most dominant \mathcal{O}_α as the system crosses the transition. We emphasise that while both sides of the transition are described by an Ising CFT, the scaling dimensions of the lattice operators change discontinuously. Note that the $c = 1$ model has two real zeros so the CFT discussion above does not quite apply—a similar bosonisation scheme does work, as applied to a doubled Ising model in reference [68].

¹⁴ Note that the scaling dimensions of the vertex operators will depend on the interactions, so the continuum operators in our expansions (including derivative terms) will not necessarily all have the same dimension. The dominant operators should be identified as a subset of these. Note also that for sufficiently strong interactions, subdominant contributions that we ignore above can become important.

3.4.5 CFT Operator Correspondence with c Complex Fermions

For higher values of c , we work formally with the linearised theory that consists of $2c$ real fermions. Note that it has been shown that spin models with $f(z) = \pm z^\omega(z^{2c} \pm 1)$ are described at low energy by $so(2c)_1$ WZW models [48,49], although a lattice-continuum operator correspondence has not been made. We can smoothly connect¹⁵ any critical model in H_{BDI} to that subset of models [13].

Let us suppose for now that we have no real zeros and c complex conjugate pairs of zeros (we order the zeros so that $k_i = -k_{2c-i}$). Then we have c canonical complex fermions which can each be bosonised as described above to give a set of fields $\theta_j(x)$ and $\varphi_j(x)$. The relevant vertex operators are of the form

$$\tau_{\mu, \nu}(x) = \prod_{j=1}^c e^{i((\mu_j + \nu_j)\theta_j(x) + (\mu_j - \nu_j)\varphi_j(x))} \tag{28}$$

where μ_i and ν_i are half-integer and have scaling dimension $\Delta_{\mu, \nu} = \sum_j (\mu_j^2 + \nu_j^2)/2$ (we suppress Klein factors [64]). The half-integer condition makes them twist operators for the linearised fermion field [72]. They act nontrivially on all fermionic sectors, and by considering decoupled lattice models with Hamiltonian $H_{-m} + H_m$ (where the bosonisation in each sector is clear), their locality properties correctly reflect those of the operators \mathcal{O}_α . Moreover, they have a minimal scaling dimension of $c/4$ (notice that this coincides with the smallest scaling dimension of the \mathcal{O}_α , given in Theorem 4). As in the $c = 1$ case, when we have a $U(1)$ symmetry, then $\partial_x \varphi_j(x)$ or $\partial_x \theta_j(x)$ will correspond to fluctuations in the charge density. Hence, the appropriate field will be accompanied by $k_j x$ —this is $\varphi(x)$ ($\theta(x)$) when the $U(1)$ charge is local (nonlocal) on the lattice. Again, as above, these oscillatory factors persist away from these symmetric models.

Suppose now that we are in an isotropic model, with $U(1)$ symmetry generated by S_{tot}^z . The conjectured expansion of lattice operators \mathcal{O}_α goes through roughly as above. However, the identification of, say, σ^+ with a charge one operator is no longer so restrictive; this is because charges can have different signs in the different sectors and cancel. By considering the scaling dimensions, one concludes that the leading order terms have charge distributed evenly throughout the different sectors. For example, observe that the charge-two operator $e^{i(\theta_1(x) + \theta_2(x))}$ with $\Delta = 1/2$ dominates the charge-two operator $e^{i(3\theta_1(x) - \theta_2(x))}$ with $\Delta = 5/2$.

More generally, as argued in [56], in isotropic models $\sigma^+ = (\mathcal{O}_1 + i\mathcal{O}_{-1})/2$ will be dominated by operators $\tau_{\mu, \nu}$ with $\sum_j (\mu_j + \nu_j) = 1$ (charge condition) and $|\mu_i - \nu_j| \leq 1$ (dominance condition). These conditions give a sum of terms that are products of $e^{\pm i\theta_j(x)}$ or $e^{\pm i(\varphi_j(x) + k_j x)}$ in each sector, and hence that can be distinguished by the presence or absence of oscillatory factors $e^{\pm i k_j x}$. This is analogous to the sum over Fisher-Hartwig representations (see Sect. 5) that we derive in Sect. 7.1, and the relevant oscillatory factors are confirmed in Theorem 10 (indeed, each such term is represented in the final result). Further, in [56] it was argued that \mathcal{O}_0 will have $\sum_j (\mu_j + \nu_j) = 0$ (charge condition) and $|\mu_i - \nu_j| \leq 1$. To extend this to operators with $|\alpha| > 1$, consider first the operators $\tau_{\mu, \nu}$ with $\sum_j (\mu_j + \nu_j) = |\alpha|$ (a maximal charge condition) and $|\mu_i - \nu_j| \leq 1$ (dominance condition). This gives a set of operators that we expect to dominate the continuum limit of \mathcal{O}_α . However, as in the $c = 1$ case, we expect that we should include terms where maximally charged operators $e^{iR\theta(x)}$ are substituted with a series of terms $e^{i(R-2m)\theta(x)}|_{m=1, \dots, R}$ multiplied by derivatives, such that

¹⁵ That is, along a path where the CFT data varies smoothly.

each term has the same scaling dimension. The relevant scaling dimensions and oscillatory factors are confirmed in Theorem 10.

To extend this to non-isotropic models, with $\omega = -c + m$, we note that there will again be two cases— m even and m odd. For m even we simply shift the correspondences argued for the isotropic case. For m odd we shift and further swap $\varphi_j(x)$ and $\theta_j(x)$. These correspondences may also be derived from $\sum_j (\mu_j + \nu_j) = |c + \omega - \alpha|$ (a maximal charge condition, when this is meaningful) and $|\mu_i - \nu_j| \leq 1$ (dominance condition)—although when m is odd we should swap $\nu_j \rightarrow -\nu_j$ in these equations. Then, as mentioned above, we should include descendant operators with lower charge. These correspondences again agree with Theorem 10.

Example: Consider a model with $c = \omega = 2$ (for example, $H = H_6 + H_2$). By solving $\sum_{j=1}^2 (\mu_j + \nu_j) = 3$ and then including descendants, we conjecture the correspondence:

$$\begin{aligned} \mathcal{O}_1(x) \rightarrow & \left(e^{i(2\theta_1(x)+\varphi_1(x)+k_1x)} + e^{i(2\theta_1(x)-\varphi_1(x)-k_1x)} + \mathcal{D}(\theta_1) \left(e^{i(\varphi_1(x)+k_1x)} + e^{-i(\varphi_1(x)+k_1x)} \right) \right. \\ & \left. + e^{-i(2\theta_1(x)+\varphi_1(x)+k_1x)} + e^{-i(2\theta_1(x)-\varphi_1(x)-k_1x)} \right) e^{i\theta_2(x)} + (1 \leftrightarrow 2) + \dots \end{aligned} \tag{29}$$

Note that all terms have $\Delta = 3/2$, and all oscillate as either $e^{\pm ik_1x}$ or $e^{\pm ik_2x}$ as expected. Furthermore, our conjecture gives the same expansion for \mathcal{O}_7 , although the (suppressed) coefficients are not expected to be the same in general. Indeed, Theorem 10 indicates that the coefficients are different in the general case, since (95) is not symmetric under taking sign-reversed Fisher-Hartwig representations.

In the case that $c \geq 1$ and any zero is real, we do not conjecture the operator correspondence. We expect that similar arguments could work after bosonising a doubled model—this is performed for the $c = 1/2$ case in [73]. Note that Theorem 10 does not distinguish the case of two real zeros from two complex conjugate zeros at the level of scaling dimension.

3.5 Entanglement Scaling

The entanglement entropy of a subsystem is another physically important quantity. Let ρ_A be the ground state reduced density matrix on sites 1 up to N and consider asymptotics in large N after taking the length of the (periodic) chain to infinity. The most general results for isotropic critical chains in our class are given in [42,74]. Having identified the correlation length in gapped chains, derived from the nearest zero to the unit circle, it is interesting to consider the following theorem adapted from [75].

Theorem 5 (Its, Mezzadri, Mo 2008) *Consider a sequence of gapped chains (as defined in Eq. (2)) such that $2c$ of the zeros approach the unit circle, and that the limiting chain has no degenerate zeros on the circle. We label these approaching zeros by ζ_j , noting that ζ_j can be either inside or outside the circle, and is either real or a member of a complex conjugate pair. Then the entanglement entropy of a subsystem of size N , in the limit $N \rightarrow \infty$, has the following expansion as $|\zeta_j| \rightarrow 1$:*

$$S[\rho_A] = -\frac{1}{6} \sum_{j=1}^{2c} \log |\zeta_j - 1/\bar{\zeta}_j| + O(1). \tag{30}$$

Note that the $O(1)$ term is constant with respect to all the zeros that approach the unit circle (which are allowed to approach independently). Now, let us consider a sequence of models

with a set of $2c$ zeros that approach the unit circle; for notational convenience let us fix them to be complex zeros outside the unit circle, other cases lead to the same result. Let this set of approaching zeros be specified by: $\{e^{\pm i\phi_1} e^{1/\xi}, e^{\pm i\phi_2} e^{t_2/\xi^{t_2}}, \dots, e^{\pm i\phi_c} e^{t_c/\xi^{t_c}}\}$, where $\phi_i \neq \phi_j$ for $i \neq j$, $t_j > 1$ and $r_j < 1$, and we approach the circle letting $\xi \rightarrow \infty$. The conditions on t_j and r_j ensure that a closest zero is $e^{\pm i\phi_1} e^{1/\xi}$ for ξ large enough. Inserting into Theorem 5, we get that:

$$S[\rho_A] = \sum_{j=1}^c \frac{r_j}{3} \log(\xi) + O(1). \tag{31}$$

Having different rates of approach to the circle means that we are necessarily approaching a multicritical point and we see crossover behaviour in the entanglement scaling. A simple example that allows this behaviour is the approach to the $c = 1$ critical point with $H = \sum_i X_i X_{i+1} - Y_i Y_{i+1}$ which is infinitesimally close to a $c = 1/2$ line of transitions in the phase diagram of the XY model.

This is reminiscent of the Calabrese-Cardy formula [76] that applies far more generally and gives asymptotics as the lattice spacing¹⁶ $a \rightarrow 0$

$$S[\rho_A] = \frac{c}{3} \log(\xi'/a) + O(1), \tag{32}$$

where c is the central charge of the underlying CFT and ξ' is the (fixed) correlation length of the system under consideration. This may also be interpreted as a scaling limit $\xi' \gg a$ [77], and the formula was confirmed in this sense for the XY model in [78]. Further relevant references are found in the review articles [77,79]. We see that Eq. (30) is equivalent to formula (32) in the vicinity of a regular critical point. At multicritical points the path approaching the transition is important, and the Calabrese-Cardy formula is expected to hold along renormalization group flow lines in parameter space.

4 String Correlators as Determinants

We now begin the analysis necessary to prove the results given in Sect. 2.4.

4.1 Fermionic Two Point Correlators

After defining $f(z)$ as in Eq. (3), we have that:

$$H = \sum_k |f(k)| \eta_k^\dagger \eta_k + \text{const} \tag{33}$$

where the Bogoliubov quasiparticles are found by rotating the Bloch sphere vector¹⁷ (c_{-k}, c_k^\dagger) through an angle $f(k)/|f(k)|$ about the x -axis, giving

$$\eta_k = \frac{1}{2} \left(1 + \frac{f(k)}{|f(k)|} \right) c_k^\dagger + \frac{1}{2} \left(1 - \frac{f(k)}{|f(k)|} \right) c_{-k}. \tag{34}$$

The sum over k goes over momenta $k_n = 2\pi n/L$, although we always work in the limit where this sum becomes an integral from 0 to 2π . Details of this diagonalisation may be found in, for example, [13,41,42]. The ground state, $|gs\rangle$, is the vacuum for the quasiparticles

¹⁶ Elsewhere in our work, units are fixed such that $a = 1$.

¹⁷ The c_k are the Fourier transform of the lattice fermions from which we built the η_n in Eq. (1).

η_k , and from this we can easily calculate fermionic correlation functions—we refer the reader to [42] for details. We will use

$$\begin{aligned} \langle -i\tilde{\gamma}_n \gamma_m \rangle &:= \langle \text{gs} | (-i\tilde{\gamma}_n \gamma_m) | \text{gs} \rangle = \frac{1}{2\pi} \int_0^{2\pi} \frac{f(k)}{|f(k)|} e^{-i(m-n)k} dk \\ \langle \tilde{\gamma}_n \tilde{\gamma}_m \rangle &= \langle \gamma_n \gamma_m \rangle = \delta_{nm} \end{aligned} \tag{35}$$

as elementary correlation functions in the rest of the paper, noting that it is $\arg(f(z))$, on the unit circle, that controls these correlations.

As an aside, note that for gapped chains the analysis of Sect. 6.2 allows us to find the large N asymptotics of $\langle -i\tilde{\gamma}_n \gamma_{n+N} \rangle$. As explained in the discussion around Sect. 6.2.4, in generic cases this correlator will be $\Theta(N^{-K} e^{-N/\xi})$ where $K \in \{1/2, 3/2\}$ is easily determined. For critical chains $f(k)$ has jump discontinuities. Decomposing as in Eq. (85) and integrating by parts, we have that the fermionic two point function is $\Theta(1/N)$ —this behaviour is as expected from the CFT description.

4.2 Wick’s Theorem

Because the Hamiltonian (2) is quadratic, ground state expectation values have a Pfaffian structure. More precisely, suppose that we have $2N$ distinct and mutually anticommuting operators, \mathcal{A}_n , then:

$$\begin{aligned} \langle \mathcal{A}_1 \cdots \mathcal{A}_{2N} \rangle &= \sum_{\text{all pairings}} (-1)^\sigma \prod_{\text{all pairs } (m,n)} \langle \mathcal{A}_m \mathcal{A}_n \rangle \\ &\left(= \langle \mathcal{A}_1 \mathcal{A}_2 \rangle \langle \mathcal{A}_3 \mathcal{A}_4 \rangle \cdots \langle \mathcal{A}_{2N-1} \mathcal{A}_{2N} \rangle - \langle \mathcal{A}_1 \mathcal{A}_3 \rangle \langle \mathcal{A}_2 \mathcal{A}_4 \rangle \cdots \langle \mathcal{A}_{2N-1} \mathcal{A}_{2N} \rangle + \dots \right). \end{aligned} \tag{36}$$

$(-1)^\sigma$ is the sign of the permutation that reorders the operators into each particular pairing. This expression is proportional to the Pfaffian of the antisymmetric matrix $\langle \mathcal{A}_m \mathcal{A}_n \rangle$, and is a form of Wick’s theorem that is given in reference [46].

4.3 String Correlation Functions

Consider the two point correlation function of \mathcal{O}_α for $\alpha > 0$:

$$\langle \mathcal{O}_\alpha(1) \mathcal{O}_\alpha(N+1) \rangle = (-1)^x \langle \gamma_1 \cdots \gamma_\alpha \left(\prod_{n=1}^N i\tilde{\gamma}_n \gamma_n \right) \gamma_{N+1} \gamma_{N+2} \cdots \gamma_{N+\alpha} \rangle \tag{37}$$

$$= (-1)^x \left\langle (-i\tilde{\gamma}_1) (-i\tilde{\gamma}_2) \cdots (-i\tilde{\gamma}_\alpha) \left(\prod_{n=\alpha+1}^N \gamma_n (-i\tilde{\gamma}_n) \right) \gamma_{N+1} \gamma_{N+2} \cdots \gamma_{N+\alpha} \right\rangle \tag{38}$$

We now transpose further terms to put unlike Majoranas as nearest neighbours and apply Wick’s theorem:

$$\begin{aligned} \langle \mathcal{O}_\alpha(1) \mathcal{O}_\alpha(N+1) \rangle &= (-1)^{N(\alpha-1)} \left\langle \prod_{n=1}^N (-i\tilde{\gamma}_n \gamma_{n+\alpha}) \right\rangle = (-1)^{N(\alpha-1)} \det \left((-i\tilde{\gamma}_n \gamma_{m+\alpha}) \right)_{m,n=1}^N \\ &\tag{39} \end{aligned}$$

$$= (-1)^{N(\alpha-1)} \det \left(\frac{1}{2\pi} \int_0^{2\pi} \frac{f(k)}{|f(k)|} e^{-i\alpha k} e^{-i(m-n)k} dk \right)_{m,n=1}^N. \tag{40}$$

For $\alpha < 0$ an analogous calculation again leads to Eq. (40). Table 2 gives the spin operators Jordan-Wigner dual to the fermionic operators $\mathcal{O}_\alpha(n)$ and Table 5 gives the equivalent spin correlators for all α . A derivation is given in Appendix A.4. Notice that for odd α these operators and correlation functions are local in the spin variables, and for even α they are nonlocal; they are always nonlocal for the fermions. Understanding the asymptotic behaviour of the determinant (40) is the key to the results given in Sect. 2.

5 Toeplitz Determinants

Several theorems for the asymptotic behaviour of large Toeplitz determinants are required to prove our results, hence we use this section to review them in detail. This section is intended to not only state the results but to give an exposition of how to use them in practice. The reader already familiar with these ideas can hence skip this section and refer back to it where necessary. Note that we reformulate and simplify the statement of some theorems appropriately for our application, the most general statements are available in the given references.

First, recall that an $N \times N$ Toeplitz matrix, T , takes the following ‘translation-invariant’ form:

$$(T)_{mn} = (t_{m-n}) = \begin{pmatrix} t_0 & t_{-1} & t_{-2} & \dots & t_{-(N-1)} \\ t_1 & t_0 & t_{-1} & \dots & t_{-(N-2)} \\ t_2 & t_1 & t_0 & \dots & t_{-(N-3)} \\ \vdots & \vdots & \vdots & \ddots & \vdots \\ t_{N-1} & t_{N-2} & t_{N-3} & \dots & t_0 \end{pmatrix}. \tag{41}$$

This matrix can be thought of as the $N \times N$ truncation of an infinite matrix, with element t_{-n} on the n th descending diagonal. Consider a region of the complex plane, U , such that $S^1 \subseteq U \subseteq \mathbb{C}$. A function $t : U \rightarrow \mathbb{C}$, integrable on the unit circle, generates a Toeplitz matrix through its Fourier coefficients:

$$t_n = \frac{1}{2\pi} \int_0^{2\pi} t(e^{ik}) e^{-ink} dk. \tag{42}$$

We refer to such $t(z)$ as the symbol of the Toeplitz matrix¹⁸ and denote the Toeplitz determinant of order N that is generated by t as

$$D_N[t(z)] = \det(t_{m-n})_{m,n=1}^N, \tag{43}$$

i.e. it is defined simply as the determinant of the $N \times N$ truncated matrix generated by t . It is the analytic properties of t that govern the form of the asymptotics of this determinant as $N \rightarrow \infty$. By inspecting Eq. (40), we see that $\langle \mathcal{O}_\alpha(1)\mathcal{O}_\alpha(N + 1) \rangle$ is, up to an oscillating sign, a Toeplitz determinant of order N generated by

$$t(z) = z^{-\alpha} \frac{f(z)}{|f(z)|}. \tag{44}$$

¹⁸ We will always go in this direction: from symbol to matrix. The reverse is possible providing the t_i decay fast enough.

To go further, we consider the symbol on the unit circle $z = e^{ik}$ and attempt to factorise it as:

$$t(z) = e^{V(z)} t_{\text{singular}}(z). \tag{45}$$

Here $e^{V(z)}$ is called the smooth part of the symbol, which we take to mean that $V(z)$ is analytic on the unit circle¹⁹. This implies that the winding number of $\exp(V(e^{ik}))$ is equal to zero. The Fourier coefficients of $V(e^{ik})$ are

$$V_n = \frac{1}{2\pi} \int_0^{2\pi} V(e^{ik}) e^{-ink} dk \tag{46}$$

and we define the Wiener-Hopf factorisation of $e^{V(z)}$ as:

$$e^{V(z)} = b_+(z)e^{V_0}b_-(z), \quad b_+(z) = e^{\sum_{n=1}^{\infty} V_n z^n}, \quad b_-(z) = e^{\sum_{n=1}^{\infty} V_{-n} z^{-n}}. \tag{47}$$

In our work, we will have three families of symbol to consider. The first case is $t_{\text{singular}}(z) = 1$, which works when our symbol $t(z)$ is smooth enough that its logarithm gives us an appropriate $V(z)$. The second case is $t_{\text{singular}}(z) = z^\omega$, this is needed to represent symbols $t(z)$ that have an integral winding number ω . Finally, the third case represents symbols $t(z)$ with sign-change jump discontinuities. Let $\zeta = e^{i\theta}$ and consider the function on the unit circle:

$$g_{\zeta,\beta}(z) = \begin{cases} e^{i\pi\beta}, & 0 \leq \arg z < \theta, \\ e^{-i\pi\beta}, & \theta \leq \arg z < 2\pi. \end{cases} \tag{48}$$

For β half-integer this is piecewise proportional to i , with a sign change at $z = \zeta$ and at $z = 1$. To represent a sign-change only at $z = \zeta$, we put $t_{\text{singular}}^{\zeta,\beta}(z) = z^\beta g_{\zeta,\beta}(z)$, removing the jump at $z = 1$. Conversely a jump only at $z = 1$ would be represented simply by z^β . Notice that any half-integer β represents the sign-change through $g_{\zeta,\beta}$, but the power of β that appears distinguishes the $t_{\text{singular}}^{\zeta,\beta}(z)$. The singular part of a function with several sign-change jump discontinuities can be decomposed as a product

$$t_{\text{singular}}(z) = \prod_j t_{\text{singular}}^{\zeta_j,\beta_j}(z) = \prod_j z^{\beta_j} g_{\zeta_j,\beta_j}(z) = z^{\sum_j \beta_j} \prod_j g_{\zeta_j,\beta_j}(z), \tag{49}$$

where all β_j are half-integer, but note that now only the total $\sum_j \beta_j$ is fixed by the symbol we wish to represent—this redundancy has important consequences. As an example, consider the symbol $s(k) = \text{sign}(\cos(k))$, this has jump discontinuities at $z = \pm i$. Hence we should represent it by two β half-integer singularities, and the fact that there is no overall winding implies that $\beta_1 = -\beta_2$. This gives a family of representations

$$s(z) = \text{const} \times g_{i, \frac{2n+1}{2}}(z) g_{-i, -\frac{2n+1}{2}}(z) \tag{50}$$

where $n \in \mathbb{Z}$ and the constant fixes the correct overall sign at $z = 1$.

With these ideas in place, notice that all three families of $t_{\text{singular}}(z)$ can be represented in the same way. If we use $t_{\text{singular}}(z) = z^\beta g_{\zeta,\beta}(z)$ as a building block, then $t_{\text{singular}}(z) = 1$ is the case $\zeta = 1, \beta = 0$ and $t_{\text{singular}}(z) = z^\omega$ is the case $\zeta = 1, \beta = \omega$. Motivated by

¹⁹ This smoothness requirement has been weakened by many authors; a strong result is given in [80], to which we refer the interested reader. For our purposes the strong condition of analyticity is acceptable.

this discussion, we write down the canonical form of reference [80] for a symbol that is non-vanishing on the unit circle and has sign-change jump discontinuities:

$$t_{\text{canon}}(z) = e^{V(z)} z^{\sum_{j=1}^m \beta_j} \prod_{j=1}^m g_{z_j, \beta_j}(z) z_j^{-\beta_j}, \quad z = e^{ik}, \quad k \in [0, 2\pi); \tag{51}$$

where for $j = 1, \dots, m$ and $0 \leq k_1 < \dots < k_m < 2\pi$, we have $z_j = e^{ik_j}$, $\beta_j \in \frac{1}{2}\mathbb{Z}$ and the function $V(z)$ must be smooth as above. The factor $\prod_j z_j^{-\beta_j}$ is just a multiplicative constant and is there to align notation with [80]. Any β_j in this expression must be nontrivial, hence the symbol has m jump discontinuities. Note that we allow $m = 0$ when the symbol is simply $\exp(V(z))$, and the edge case $z_1 = 1$ has $g_{1, \beta_1} = \exp(-i\pi\beta_1)$. Our notation deviates slightly from reference [80], where a β_0 is associated to $z = 1$ even if there is no singularity there—this does not affect the adapted theorems we quote below.

Now, as explained above, for a symbol $t(z)$ with multiple jump discontinuities, there is an infinite class of different $t_{\text{canon}}(z)$ to which it is equal. In fact, if we find a single representation with a set of $\{\beta_j\}$, we can find another representation by shifting each $\beta_j \rightarrow \beta_j + n_j$ such that $\sum n_j = 0$; however, we may have to amend our choice of $V(z)$ to include an additional multiplicative constant. We are interested in representations where $\sum_j \beta_j^2$ is minimal—these will contribute to the leading-order asymptotics and so we refer to them as dominant.

Following [80], in order to write down the dominant asymptotics, it is helpful to introduce the notion of *FH-representations*. Given a symbol $t(z)$ written in canonical form (51), replace all β_j by $\tilde{\beta}_j = \beta_j + n_j$ such that $\sum_j n_j = 0$. This new function is the FH-representation $t(z; n_1, \dots, n_m)$, defined relative to the representation $t(z; 0, \dots, 0) = t(z)$. We then have the equality:

$$t(z; n_0, \dots, n_m) = \prod_{j=1}^m z_j^{n_j} t(z), \tag{52}$$

this means that, in general, the FH-representation differs from a canonical form for the symbol by a multiplicative constant. We illustrate this by example in Appendix D. An algorithm is given in [80] to find the finite number of dominant FH-representations, where it is shown that *all of these* contribute to the leading asymptotics of the determinant (43). For our purposes, finding a dominant representation will be simple; and given one dominant FH-representation of $f(z)$ for which we define $n_j = 0$, all other dominant FH-representations have $n_j \in \{1, -1, 0\}$.

We now recall theorems relevant to the three cases introduced above. Szegő’s strong limit theorem [81] gives the dominant asymptotics for matrices generated by smooth symbols with no winding, i.e. the case $m = 0$. We use a form adapted from reference [80]:

Theorem 6 (Szegő 1952) *Let $t(z) = \exp(V(z))$ be a symbol, with $V(z)$ smooth as explained above and such that $\sum_{n=-\infty}^{\infty} |n| |V_n|^2 < \infty$. As the matrix dimension, N , goes to infinity:*

$$D_N[t(z)] = \exp\left(NV_0 + \sum_{n=1}^{\infty} nV_nV_{-n}\right) (1 + o(1)). \tag{53}$$

If we have a symbol with an integral winding number, i.e. $m = 1, k_1 = 0, \beta_1 \in \mathbb{Z}$, the next theorem, adapted from a result of Fisher and Hartwig [82], allows us to reduce it to the product of a determinant that can be evaluated by Szegő’s theorem and another small determinant.

Theorem 7 (Fisher, Hartwig 1969) *Let $t(z) = e^{V(z)}z^{-\nu}$, where $V(z)$ satisfies the conditions for Theorem 6. Given $b_{\pm}(z)$ as defined in (47), define the auxiliary functions:*

$$l(z) = \frac{b_-(z)}{b_+(z)} \quad m(z) = \frac{b_+(1/z)}{b_-(1/z)}, \tag{54}$$

with associated Fourier coefficients²⁰ l_k, m_k .
For $\nu > 0$ we have:

$$D_N[z^{-\nu}e^{V(z)}] = (-1)^{N\nu} D_{N+|\nu|}[e^{V(z)}] \times \det \begin{pmatrix} d_N & d_{N-1} & \dots & d_{N-\nu+1} \\ d_{N+1} & d_N & & d_{N-\nu+2} \\ \vdots & & & \vdots \\ d_{N+\nu-1} & d_{N+\nu-2} & \dots & d_N \end{pmatrix} \tag{55}$$

where $d_k = l_k + \delta_k^+$. For $\nu < 0$ we instead have $d_k = m_k + \delta_k^-$; (55) is otherwise unchanged.

General estimates for the error terms δ_k^{\pm} are given in [82]—the only case we need is as follows. Suppose that the large Fourier coefficients of $h(z) = e^{V(z)}$ behave as $|h_n| = O(\rho^n)$ and $|h_{-n}| = O(\sigma^n)$ then for large k , $\delta_k^+ = O(\rho^{2k}\sigma^k)$ and $\delta_k^- = O(\rho^k\sigma^{2k})$.

Given the definitions in the above theorem, we can also state a formula from [82] for the leading order correction to Theorem 6.

Theorem 8 (Fisher, Hartwig 1969) *Let $t(z) = e^{V(z)}$ satisfy the conditions for Theorem 6. Then we can write*

$$\log D_N[t(z)] = NV_0 + \sum_{n=1}^{\infty} nV_nV_{-n} + E_N^{(1)} + E_N^{(2)}, \tag{56}$$

where, for $l(z)$ and $m(z)$ defined above, we have $E_N^{(1)} = -\sum_{n=1}^{\infty} nl_{N+n}m_{N+n}$. The error term $E_N^{(2)}$ is subdominant—see [82] for general estimates. For the case relevant to us, with ρ and σ defined in Theorem 7, we have $E_N^{(1)} = O(\rho^N\sigma^N)$ and $E_N^{(2)} = O(\rho^{2N}\sigma^{2N})$.

The final theorem we need is the *generalised Fisher-Hartwig conjecture*. The asymptotics for symbols with fractional jump discontinuities was initially conjectured by Fisher and Hartwig in [32]; this conjecture was then generalised to the class of symbols that we need by Basor and Tracy [83]. This generalised case was proved by Deift, Its and Krasovsky in [80], and we give a simplified form of their result relevant to our work.

Theorem 9 (Deift, Its, Krasovsky 2011) *Consider a Toeplitz matrix generated by $t(z)$ in the canonical form (51). Suppose $\beta_j \notin \mathbb{Z}$ for all j . Then, as the matrix dimension, N , goes to infinity:*

$$D_N[t(z)] = \sum_{\substack{\text{Dominant} \\ \text{FH-reps: } \{n_j\}}} \left(\prod_{j=1}^m z_j^{n_j N} \right) \mathcal{R}(t(z); \{n_j\})(1 + o(1)). \tag{57}$$

Where:

²⁰ These exist by the Wiener-Lévy theorem [82].

$$\begin{aligned} \mathcal{R}(t(z; \{n_j\})) &= N^{-\sum_{j=1}^m \tilde{\beta}_j^2} \exp\left(NV_0 + \sum_{n=1}^{\infty} nV_n V_{-n}\right) \prod_{1 \leq i < j \leq m} |z_i - z_j|^{2\tilde{\beta}_i \tilde{\beta}_j} \\ &\times \prod_{j=1}^m b_+(z_j)^{\tilde{\beta}_j} b_-(z_j)^{-\tilde{\beta}_j} \prod_{j=1}^m G(1 + \tilde{\beta}_j) G(1 - \tilde{\beta}_j). \end{aligned} \tag{58}$$

(Recalling that $\tilde{\beta}_j = \beta_j + n_j$.)

The V_n are unaltered when passing between FH-reps. Branches of $b_{\pm}(z_j)^{\tilde{\beta}_j}$ are determined by $b_{\pm}(z_j)^{\tilde{\beta}_j} = e^{\tilde{\beta}_j \sum_{n=1}^{\infty} V_{\pm n} z_j^{\pm n}}$. $G(z)$ is the Barnes G -function [84, Sect. 5.17]; given as a Weierstrass product by

$$G(z + 1) = (2\pi)^{z/2} e^{-\frac{1}{2}z(z+1) - \frac{1}{2}\gamma_E z^2} \prod_{j=1}^{\infty} \left(\left(1 + \frac{z}{j}\right)^j \exp\left(-z + \frac{z^2}{2j}\right) \right), \tag{59}$$

where γ_E is the Euler-Mascheroni constant. It is clear from Eq. (59) that G vanishes whenever the argument is a negative integer. Hence if $\beta_j \in \mathbb{Z}$, the RHS of (58) vanishes and this is not the first term of the asymptotic expansion (instead we should use Theorem 7).

6 Gapped Chains: Analysis

6.1 Closed form for the Order Parameter—Proof of Theorem 1b

Since $c = 0$, the complex function is given by

$$f(z) = \rho \frac{1}{z^{N_p}} \prod_{i=1}^{N_z} (z - z_i) \prod_{j=1}^{N_Z} (z - Z_j) \tag{60}$$

$$= \left(\rho \prod_{j=1}^{N_Z} (-Z_j) \right) z^{\omega} \prod_{i=1}^{N_z} (1 - z_i/z) \prod_{j=1}^{N_Z} (1 - z/Z_j) =: \rho' z^{\omega} f_0(z). \tag{61}$$

$\rho' = \rho \prod_{j=1}^{N_Z} (-Z_j)$, and it is only the sign of this real number that is important; moreover, since the Z_j come in complex conjugate pairs, the sign only depends on N_Z^+ , the number of zeros on the positive real axis and outside the unit circle. For bookkeeping purposes, define

$$s = \text{sign}(\rho) \times (-1)^{N_Z^+}. \tag{62}$$

If we consider $(-1)^{N(\omega-1)} (\mathcal{O}_{\omega}(1) \mathcal{O}_{\omega}(N))$, then this is generated by $t(z) = e^{V(z)}$, where

$$V(z) - V_0 = \frac{1}{2} (\log f_0(z) - \log f_0(\bar{z})) \tag{63}$$

for a continuous logarithm that could be found by integrating the logarithmic derivative of f . We instead jump to the following solution:

$$V(z) - V_0 = \frac{1}{2} \sum_{i,j} \text{Log}(1 - z_i/z) - \text{Log}(1 - z_i/\bar{z}) + \text{Log}(1 - z/Z_j) - \text{Log}(1 - \bar{z}/Z_j) \tag{64}$$

$$= -\frac{1}{2} \sum_{n=1}^{\infty} \frac{1}{n} \left(\sum_{i=1}^{N_z} \left(\frac{z_i}{z}\right)^n - \left(\frac{z_i}{\bar{z}}\right)^n + \sum_{j=1}^{N_z} \left(\frac{z}{Z_j}\right)^n - \left(\frac{\bar{z}}{Z_j}\right)^n \right), \tag{65}$$

where the function $\text{Log}(z)$ is the principal branch of the complex logarithm—this is clearly smooth and recovers $f(z)$ when we take the exponential. Note that we used that the zeros are either real, or occur in complex conjugate pairs. On the unit circle $z = e^{ik}$ we can put $\bar{z} = 1/z$ into (65).

This gives us an honest $V(z)$ from which one can read off the Fourier coefficients:

$$V_0 = \log s = 0, \quad i\pi \tag{66}$$

$$V_n = \begin{cases} \frac{1}{2n} (\sum_i z_i^n - \sum_j Z_j^{-n}) & n > 0 \\ -\frac{1}{2n} (\sum_i z_i^n - \sum_j Z_j^{-n}) & n < 0. \end{cases} \tag{67}$$

Inserting into Theorem 6 we reach:

$$\det[t(z)] = s^N \exp \left(\sum_{n=1}^{\infty} -\frac{1}{4n} \left(\sum_{i=1}^{N_z} z_i^n - \sum_{j=1}^{N_z} Z_j^{-n} \right)^2 \right). \tag{68}$$

On expanding the square and interchanging the finite sums with the sum over n in the exponent, we can then perform the sum over n leading to Theorem 1b. The term under the fourth root is always a positive real, and the principal logarithm implies that we take the positive root. For completeness, note that the oscillatory factor multiplying the order parameter is given by $e^{i\pi N(\omega-1)+N \log(s)}$.

Note that with the Fourier coefficients of V in hand, we can find the Wiener-Hopf decomposition (47) of our symbol when z is on the unit circle.

$$b_+(z) = e^{\sum_{n=1}^{\infty} \frac{1}{2n} (\sum_i z_i^n - \sum_j Z_j^{-n}) z^n} = \prod_{i=1}^{N_z} e^{-\frac{1}{2} \text{Log}(1-zz_i)} \prod_{j=1}^{N_z} e^{\frac{1}{2} \text{Log}(1-z/Z_j)}$$

$$b_-(z) = e^{-\sum_{n=1}^{\infty} \frac{1}{2n} (\sum_i z_i^n - \sum_j Z_j^{-n}) z^{-n}} = \prod_{i=1}^{N_z} e^{\frac{1}{2} \text{Log}(1-z_i/z)} \prod_{j=1}^{N_z} e^{-\frac{1}{2} \text{Log}(1-1/(zZ_j))}. \tag{69}$$

Note that $1/b_+(z) = b_-(1/z)$. Moreover,

$$b_+(z) = \sqrt{\frac{\prod_{j=1}^{N_z} (1 - zZ_j^{-1})}{\prod_{i=1}^{N_z} (1 - zz_i)}} \tag{70}$$

where the square-root is continuous on the unit circle and the branch is fixed as the positive root of a positive real at $z = 1$.

6.2 Correlation Lengths

We now use Theorem 7 to find the behaviour of the correlation function $\langle \mathcal{O}_\alpha(1)\mathcal{O}_\alpha(N+1) \rangle$ in the gapped phase ω . For definiteness, let us label the zeros by proximity to the unit circle: $|Z_i| \leq |Z_j|$ and $|z_i| \geq |z_j|$ for $i < j$.

6.2.1 Asymptotics of $l(z)$, $m(z)$

The key ingredient that we need are the asymptotically large Fourier coefficients of the auxilliary functions

$$l(z) = \frac{b_-(z)}{b_+(z)} = \sqrt{\frac{\prod_{i=1}^{N_z} (1 - zz_i)(1 - z_i/z)}{\prod_{j=1}^{N_z} (1 - zZ_j^{-1})(1 - Z_j^{-1}/z)}} \tag{71}$$

$$m(z) = 1/l(z). \tag{72}$$

Note that so far l and m are defined only on the unit circle and with the principal branch of the square-root (in fact, due to the complex-conjugate pairs of roots, the arguments of the square-root are strictly positive). For the purposes of this calculation, we assume the generic problem where the branch points in $R = \{z_i, z_i^{-1}, Z_j, Z_j^{-1}\}$ are all distinct, we will comment later on the effect of multiplicity. We need the dominant asymptotic term of the n th Fourier coefficient of $l(k)$ for large n :

$$\begin{aligned} l_n &= \frac{1}{2\pi} \int_0^{2\pi} l(k) \exp(-ink) dk \\ &= \frac{1}{2\pi i} \int_{S^1} \left(\frac{\prod_{i=1}^{N_z} (1 - sz_i)(1 - z_i/s)}{\prod_{j=1}^{N_z} (1 - sZ_j^{-1})(1 - Z_j^{-1}/s)} \right)^{1/2} s^{-(n+1)} ds. \end{aligned} \tag{73}$$

We analytically continue $l(k)$ off the unit circle into the complex s -plane. The idea is to move the contour of integration out to infinity, where the s^{-n} term in the integrand will cause the integral to vanish there. The integrand has branch cuts on which the contour gets snagged, and the dominant contribution will come from the nearest branch points outside the unit circle—this is the Darboux principle [85].

By inspection we have either a square-root or inverse square-root branch point at every element of R . If there are an odd number of such points inside (and therefore, by symmetry, outside) the unit circle, then zero and infinity are also branch points—hence there are always an even number of branch points both inside and outside the unit circle. We choose any branch cut pattern inside the unit circle (where no cut crosses the circle). Outside the unit circle we order the branch points by radial distance from the origin. In generic circumstances there will be either one real branch point (case A), or a complex-conjugate pair of branch points (case B), closest to the origin. Choose the cuts to be leaving all branch points radially. An example for each of the two cases is depicted in Fig. 4—we call the nearest branch point(s) s_1 (and \bar{s}_1), for $\arg(s_1) \in [0, \pi]$. We connect up the radial cuts outside a circle of large radius, the precise choice is unimportant.

In case A we consider the Hankel contour connecting infinity to the nearest real zero and back—this is exactly the relevant part of the snagged contour. After parameterising $s = s_1 e^t$ for $t \in \mathbb{R}_+$ and where $\arg(t) = 0$ below the axis and $\arg(t) = -2\pi$ above the axis, this integral obeys the conditions for *Watson’s lemma for loop integrals*—see, for example, [86, §15.6.1] and [87]. This gives us an asymptotic series of which we need only the first term. Recall that we have ordered our zeros so that s_1 is either $1/z_1$ or Z_1 —then we have

Proposition 1 *Suppose there is a single real root closest to the unit circle. Then,*

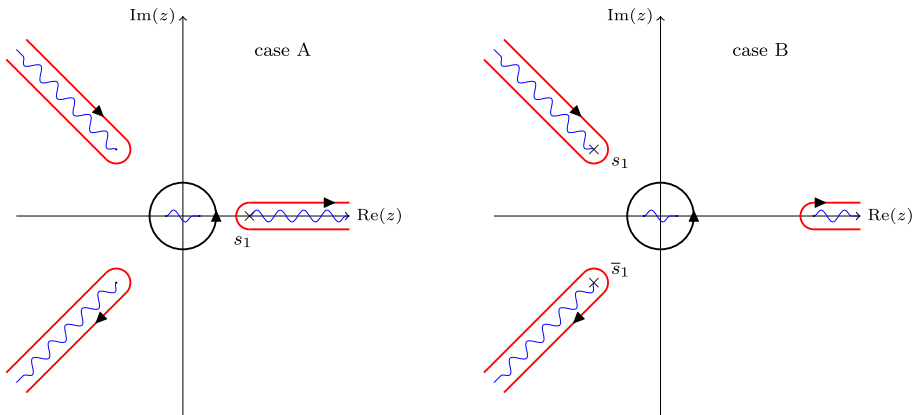


Fig. 4 Schematic for the two generic cases of the computation (73). Blue (wavy) lines indicate branch cuts in the integrand. The black curve is the initial integration contour S^1 , and the red (lighter) curve is the deformed contour. \times indicates the closest branch cuts to the unit circle that are outside the circle

$$l_n = \begin{cases} -z_1^{-n} \frac{1}{n^{3/2}} \frac{1}{2\sqrt{\pi}} \left(\frac{(1 - z_1^2) \prod_{i=2}^{N_z} (1 - z_i/z_1)(1 - z_1 z_i)}{\prod_{j=1}^{N_z} (1 - Z_j^{-1}/z_1)(1 - z_1 Z_j^{-1})} \right)^{1/2} (1 + O(1/n)) & s_1 = 1/z_1 \\ Z_1^{-n} \frac{1}{n^{1/2}} \frac{1}{\sqrt{\pi}} \left(\frac{\prod_{i=1}^{N_z} (1 - Z_1 z_i)(1 - z_i/Z_1)}{(1 - Z_1^{-2}) \prod_{j=2}^{N_z} (1 - Z_1 Z_j^{-1})(1 - (Z_1 Z_j)^{-1})} \right)^{1/2} (1 + O(1/n)) & s_1 = Z_1 \end{cases} \tag{74}$$

where the square-root is principal (with positive real argument).

This follows from the above discussion after using the same method to estimate the contribution of all other snagged contours—these are bounded above by $|z_*|^{-n}$ where $|z_*| > s_1$, and are thus exponentially subdominant.

In case B we use the same method but now sum over the dominant contributions coming from the two branch points. This leads to

Proposition 2

$$l_n = \begin{cases} \frac{1}{\sqrt{\pi}} \operatorname{Im}(c_1 z_1^n) \frac{1}{n^{3/2}} (1 + O(1/n)) & s_1 = 1/z_1 \\ \frac{2}{\sqrt{\pi}} \operatorname{Im}(c_2 Z_1^{-n}) \frac{1}{n^{1/2}} (1 + O(1/n)) & s_1 = Z_1 \end{cases} \tag{75}$$

for

$$c_1 = - \left(- \frac{(1 - z_1^2)(1 - z_1 \bar{z}_1)(1 - \bar{z}_1/z_1) \prod_{i=2}^{N_z} (1 - z_i/z_1)(1 - z_1 z_i)}{\prod_{j=1}^{N_z} (1 - Z_j^{-1}/z_1)(1 - z_1 Z_j^{-1})} \right)^{1/2}$$

$$c_2 = - \left(- \frac{\prod_{i=1}^{N_z} (1 - Z_1 z_i)(1 - z_i/Z_1)}{(1 - Z_1^{-2})(1 - Z_1/\bar{Z}_1)(1 - (Z_1 \bar{Z}_1)^{-1}) \prod_{j=2}^{N_z} (1 - Z_1 Z_j^{-1})(1 - (Z_1 Z_j)^{-1})} \right)^{1/2} . \tag{76}$$

This constant is the first term of the Taylor series of the regular part of the integrand at the branch point, and the square root is continuously connected to the principal branch on the real axis.

Note that in the case where we have only two roots, and they form a conjugate pair (as happens in the XY model), the constants are evaluated with the principal square root.

The exceptional cases where Propositions 1 and 2 do not apply are when $f(z)$ has zeros with multiplicity, more than a pair of zeros closest to the unit circle, or both. We discuss these cases below.

We also need the asymptotic behaviour of m_n . Fortunately no further analysis is needed: $m(z)$ and $l(z)$ share the same structure but are mutually inverse. Hence we have:

Proposition 3 *In the case of a nearest singularity s_1 on the real axis we have:*

$$m_n = \begin{cases} -Z_1^{-n} \frac{1}{n^{3/2}} \frac{1}{2\sqrt{\pi}} \left(\frac{(1-Z_1^{-2}) \prod_{j=2}^{N_z} (1-Z_1 Z_j^{-1})(1-(Z_1 Z_j)^{-1})}{\prod_{i=1}^{N_z} (1-Z_1 z_i)(1-z_i/Z_1)} \right)^{1/2} (1 + O(1/n)) & s_1 = Z_1 \\ z_1^n \frac{1}{n^{1/2}} \frac{1}{\sqrt{\pi}} \underbrace{\left(\frac{\prod_{j=1}^{N_z} (1-Z_j^{-1}/z_1)(1-z_1 Z_j^{-1})}{(1-z_1^2) \prod_{i=2}^{N_z} (1-z_i/z_1)(1-z_1 z_i)} \right)^{1/2}}_k (1 + O(1/n)) & s_1 = 1/z_1. \end{cases} \tag{77}$$

For a complex conjugate pair of nearest singularities we have:

$$m_n = \begin{cases} \frac{1}{\sqrt{\pi}} \operatorname{Im}(c_2^{-1} Z_1^{-n}) \frac{1}{n^{3/2}} (1 + O(1/n)) & s_1 = Z_1 \\ \frac{2}{\sqrt{\pi}} \operatorname{Im}(c_1^{-1} z_1^n) \frac{1}{n^{1/2}} (1 + O(1/n)) & s_1 = 1/z_1, \end{cases} \tag{78}$$

where the c_i are defined in (76).

Now, if a zero has multiplicity two then we get either a simple pole of $l(z)$ (and hence a zero of $m(z)$) or a zero of $l(z)$ (and hence a simple pole of $m(z)$). A simple pole will give an exponential decay $e^{-n/\xi}$, using Cauchy’s theorem, with no algebraic prefactor (recall that $\xi = 1/|\log |\zeta_\star||$ where ζ_\star is (any) one of the zeros of $f(z)$ closest to the unit circle). A zero of $l(z)$ is not a singularity so our contour will not be snagged there—we must hence look at the next-nearest singularity to the unit circle. Higher order multiplicities will give branch points, higher-order poles or higher-order zeros, and the calculations similarly go through. Higher-order poles will never have a vanishing residue for all n , and in fact for large n the dominant term in the residue will come from derivatives of $s^{-(n+1)}$ in (73). Importantly, even in these exceptional cases, the nearest zero *always* sets the longest correlation length for the operators \mathcal{O}_α . This is because, from the discussion above, either l_n or m_n has asymptotic decay controlled by the nearest zero (and hence there is an observable with correlation length ξ which follows from the calculation below).

Having more than two equidistant singularities requires summing over the contributions from each of them; this will give an $e^{-n/\xi}$ decay for zeros of multiplicity one (the coefficient must be calculated in each case, and for higher multiplicity one sums the contributions outlined above)—there may be destructive interference for certain values of n . This can include equidistant singularities coming from zeros both inside and outside the unit circle. Another exceptional case of this type is two closest zeros both on the real axis (i.e. at a and $-a$). Again we sum over the contributions which are given explicitly by the formulae in Propositions 1 and 3.

The final exceptional case is where we have degenerate closest zeros which are *mutually inverse*. For example, if the closest zeros are at a and at $1/a \in \mathbb{R}$. This is the only case where ξ defined in terms of one of these closest zeros is not realised as the longest correlation length (although it is still an upper bound)—the contribution of the mutually inverse zeros cancels in the definition of $b_{\pm}(z)$ and so they do not contribute to the asymptotics of *any* \mathcal{O}_{α} . In such a case, the longest correlation length is set by the closest zero of $f(z)$ whose inverse is not a zero. The starkest examples of this behaviour are in isotropic models, where $b_{\pm}(z) = 1$ and the correlation length is zero for all observables! This also follows from the observation that the ground state of a gapped isotropic model in our class is always a product state.

In summary, we have, in generic cases, that l_n and m_n decay exponentially with correlation length ξ . In exceptional cases their decay is at least this fast. Generically, if the nearest zero is inside the circle, we have an algebraically decaying prefactor $n^{-3/2}$ for l_n and $n^{-1/2}$ for m_n , this assignment is reversed if the nearest zero is outside. Moreover, if the nearest zero is complex then l_n and m_n have an oscillatory prefactor.

6.2.2 Error Terms in Theorem 7

In order to use Theorem 7 we need to estimate the errors δ_N^{\pm} . To do so, we need to find ρ and σ such that for $h(z) = e^{V(z)}$, $|h_n| = O(\rho^n)$ and $|h_{-n}| = O(\sigma^n)$ for large n . Recall that the relevant $e^{V(z)} = e^{V_0} b_+(z)b_-(z)$ —this has exactly the same singularities as $l(z)$ and $m(z)$ up to exchanging square-roots with inverse square-roots. The analysis above goes through and we see that, in all non-degenerate cases, $\rho = \sigma = 1/|s_1|$. We thus have that either $d_n = l_n + O(l_{2n}m_n)$ or $d_n = m_n + O(l_n m_{2n})$. For n large this means that we can replace the matrix elements d_n of the small determinant in Theorem 7 with either l_n or m_n without affecting the leading order behaviour.

6.2.3 The Asymptotics of the Correlator $\langle \mathcal{O}_{\alpha}(1)\mathcal{O}_{\alpha}(N + 1) \rangle$ —Proof of Theorem 2

Suppose that we are in the phase ω , then the generating function of the correlator is $se^{V(z)}z^{\omega-\alpha}$. In the case $\omega - \alpha > 0$, using Theorem 7 we have that

$$\langle \mathcal{O}_{\alpha}(1)\mathcal{O}_{\alpha}(N + 1) \rangle = (-1)^{N(\omega-1)} D_{N+\omega-\alpha}(se^{V(z)}) \times \det \begin{pmatrix} m_N & m_{N-1} & \dots & m_{N-(\omega-\alpha)+1} \\ m_{N+1} & m_N & & m_{N-(\omega-\alpha)+2} \\ \vdots & & & \vdots \\ m_{N+(\omega-\alpha)-1} & m_{N+(\omega-\alpha)-2} & \dots & m_N \end{pmatrix}. \tag{79}$$

The large determinant $D_{N+\omega-\alpha}(se^{V(z)})$ is of Szegő form, and is, to leading order, equal to the result of Theorem 1b—i.e. the value of the order parameter. Inserting the dominant term of m_N as found in the previous section, the second determinant may be evaluated directly to find the leading order term of the correlator.

We have almost proved Theorem 2, but need to do some further analysis to isolate the exponential decay. This is the point where we specialise to generic situations, so that we are guaranteed that $m_N = \Theta(e^{-N/\xi})$. Then, in the position (i, j) of the second matrix we have a factor of $e^{(-N+i-j)/\xi}$. The row and column index multiplicatively decouple, and so any individual term of the Laplace expansion of the determinant contains a factor of $e^{-N(\omega-\alpha)/\xi}$, hence we may factor this out and we have that:

$$\langle \mathcal{O}_\alpha(1)\mathcal{O}_\alpha(N + 1) \rangle = e^{i\pi N(\omega-1)+N \log s} \left(\lim_{R \rightarrow \infty} | \langle \mathcal{O}_\omega(1)\mathcal{O}_\omega(R) \rangle | \right) \times e^{-N(\omega-\alpha)/\xi} \underbrace{\det \left((N + i - j)^{-K} \alpha_{N+i-j} \right)_{i,j=1}^{\omega-\alpha}}_{\det M(N)}. \tag{80}$$

The matrix elements of $M(N)$ are derived from the propositions above: i.e. $K = 1/2$ or $3/2$ and α_n are the coefficients that can oscillate with n . Hence, $\det M(N)$ will contribute an algebraic dependence on N (and not affect the exponential scaling). For $\omega - \alpha < 0$ the same calculation goes through with m_n replaced by l_n (and the second matrix has dimension $|\omega - \alpha|$). We have hence proved Theorem 2.

Now, putting together Theorems 1b and 2 prove Theorem 1a. In particular, we have shown that the correlators $|\langle \mathcal{O}_\alpha(1)\mathcal{O}_\alpha(N + 1) \rangle|$ do indeed form a set of order parameters that distinguish ω . The sign of $f(z)$ (an invariant of our model) may be inferred by the presence or absence of $(-1)^N$ oscillation. As can be seen in (80), this oscillation depends on both ω and s , as defined in (62) (one must also take into account oscillations coming from $\det M$).

6.2.4 The Correlation Length of $\langle \mathcal{O}_\omega(1)\mathcal{O}_\omega(N) \rangle$ in the phase ω —Proof of Theorem 3

The proof follows from Theorem 8 and our calculations above. Firstly, using 6.2.2 we have that $E_N^{(2)}$ is exponentially subdominant compared to $E_N^{(1)}$. We do not evaluate $E_N^{(1)}$ in closed form, but need that the first term in the sum $(-l_{n+1}m_{n+1})$ gives the dominant scaling, as claimed in [32]. Thus, in the generic case, we have $E_N^{(1)} = O(|s_1|^{-2N}/N^2)$. To see this, one needs to consider the different orders in the full asymptotic expansion of l_n and m_n , as given by Watson’s lemma [86]. In particular, one can factor out the dominant term from $|l_{n+1}m_{n+1}|$ and $E_N^{(1)}$ then becomes a sum of many convergent series multiplied by non-positive powers of N (along with exponentially subdominant contributions coming from other singularities further from the circle than s_1). One of these convergent series is $O(1)$ and we denote it by B_N —this will oscillate with N if we have oscillation in l_N and m_N . Putting this together one reaches Theorem 3. The constant B_N , along with further corrections, are evaluated in [31,51] for correlators that are equivalent to X and Y correlators in the XY model.

6.2.5 Possible Alternative Proof

An alternative approach to proving Theorem 2 would be to use the Fisher-Hartwig conjecture. The idea of such a proof is given in [88]—one should expand the Fourier contour defining the Toeplitz matrix (42) out to the nearest singularity in the generating function, and then rescale back to the unit circle. The deformed symbol is then singular on the unit circle (by construction), and, if it can be written in Fisher-Hartwig form, then Theorem 9 can be used to derive the leading order asymptotics. This method is applied in [53] to X and Y correlation functions in the XY model.

7 Gapless Chains: Analysis

7.1 Scaling Dimensions

In this section we calculate the large N asymptotics of $\langle \mathcal{O}_\alpha(1)\mathcal{O}_\alpha(N + 1) \rangle$ for a system described by (9) with non-zero c . This was solved for isotropic models (i.e. models where

$f(z) = f(1/z)$) and for $\alpha \in \{-1, 0, 1\}$ in [56]. We now explain how to use Theorem 9 to find the answer in the general case. The idea is simple; take the symbol corresponding to $(-1)^{N(\alpha-1)} \langle \mathcal{O}_\alpha(1) \mathcal{O}_\alpha(N+1) \rangle$: $z^{-\alpha} f(z)/|f(z)|$ and find the dominant Fisher-Hartwig representations. This goes as follows:

$$z^{-\alpha} f(z)/|f(z)| = s z^{-\alpha} \frac{z^{Nz}}{z^{Np}} \prod_{j=1}^{Nz} \frac{(1 - z_j/z)}{|1 - z_j/z|} \prod_{j=1}^{2c} \frac{(z - e^{ik_j})}{|z - e^{ik_j}|} \prod_{j=1}^{NZ} \frac{(1 - z/Z_j)}{|1 - z/Z_j|} \tag{81}$$

$$= s C \underbrace{\prod_{j=1}^{Nz} \frac{(1 - z_j/z)}{|1 - z_j/z|} \prod_{j=1}^{NZ} \frac{(1 - z/Z_j)}{|1 - z/Z_j|}}_{e^{V(z)}} \underbrace{C^{-1} z^{\omega-\alpha} \prod_{j=1}^{2c} \frac{(z - e^{ik_j})}{|z - e^{ik_j}|}}_{\text{singular}}. \tag{82}$$

We reemphasise that in this analysis we pick the phase of the complex zeros such that $k_j \in [0, 2\pi)$. The smooth part $e^{V(z)}$ can be analysed as in the gapped case—in particular, the Fourier coefficients for $n \neq 0$ are given by (67) (the phase factor C is needed to put the singular part in canonical form, and this shifts V_0). Turning to the unit circle, $z = e^{ik}$, the analysis of the singular part is split into three cases: a real zero at $k = 0, \pi$, a pair of complex conjugate zeros at $k = \phi$ and $k = 2\pi - \phi$, or a set of zeros of multiplicity greater than one. The third (fine-tuned) case is discussed in Sect. 7.3, we ignore it for now. Note that we explicitly exclude such cases in the statement of Theorem 4 where we limit ourselves to chains described at low energy by a CFT. Now, for the real zero we have:

$$\frac{\exp(ik) \pm 1}{|\exp(ik) \pm 1|} = \exp(ik/2) \times \begin{cases} \cos(k/2)/|\cos(k/2)| \\ i \sin(k/2)/|\sin(k/2)| = i. \end{cases} \tag{83}$$

For a zero at -1 we have a sign-change discontinuity at $k = \pi$, and a zero at 1 has a sign-change-type²¹ singularity at $k = 0$. For a complex conjugate pair of zeros at $\exp(\pm i\phi)$ we have:

$$\frac{(e^{ik} - e^{i\phi})(e^{ik} - e^{-i\phi})}{|e^{ik} - e^{i\phi}| |e^{ik} - e^{-i\phi}|} = \exp(ik) \times \text{sign}(\cos(k) - \cos(\phi)). \tag{84}$$

Since $\phi \neq 0$ or π , $\text{sign}(\cos(k) - \cos(\phi))$ has sign-change discontinuities at $k = \phi$ and $k = 2\pi - \phi$. We conclude that every zero contributes a factor $\exp(ik/2)$ as well as a sign-change at the location of the zero, which we can represent with a $g_{k_j, \beta_j}(z)$ for β_j any half-integer.

Putting this information back into the symbol we reach

$$z^{-\alpha} f(z)/|f(z)| = s C \underbrace{\prod_{j=1}^{Nz} \frac{(1 - z_j/z)}{|1 - z_j/z|} \prod_{j=1}^{NZ} \frac{(1 - z/Z_j)}{|1 - z/Z_j|}}_{e^{V(z)}} \underbrace{z^{c+\omega-\alpha} \prod_{j=1}^{2c} g_{k_j, \beta_j}(z) e^{-i\beta_j k_j}}_{\text{singular}}, \tag{85}$$

where the β_j are half-integer and

$$\sum_{j=1}^{2c} \beta_j = c + \omega - \alpha. \tag{86}$$

²¹ I.e. we are in the limiting case where $g_{1,\beta}$ is actually constant, but the contribution to the Toeplitz determinant is as if it were a sign-change singularity.

We need to fix the multiplicative constant, C , by noting that the singular factors, isolated above, usually jump between ± 1 , rather than $\pm i$, and we also need to include $\prod e^{-i\beta_j k_j}$ in the singular part of (51). This leads to $C = \prod_{j=1}^{2c} e^{i\beta_j k_j + \delta_{k_j, 0} i\pi/2} / g_{k_j, \beta_j}(1)$.

To find the asymptotics we need some minimal representation (a set of β_j minimising $\sum_j \beta_j^2$), from which we can generate a set of minimal FH-reps to insert into Theorem 9. We find the solutions by first considering the cases $c + \omega - \alpha = (2m - 1)c$, for $m \in \mathbb{Z}$, where the minimal solution is unique: $\beta_j = \frac{2m-1}{2}$ for all j . If we have $(2m-1)c < c + \omega - \alpha < (2m+1)c$ we form the set of minimal FH-reps by starting from $\tilde{\beta}_j = \frac{2m-1}{2}$ and sending $\tilde{\beta}_j \rightarrow \tilde{\beta}_j + 1$ for

$$c + \omega - \alpha - (2m - 1)c = (1 - m)2c + \omega - \alpha \in \mathbb{Z} \tag{87}$$

of the $\tilde{\beta}_j$. We will consider our starting FH-rep (with all $n_i = 0$) to be the one where we shift the first $(1 - m)2c + \omega - \alpha$ of the $\tilde{\beta}_j$. There are

$$\binom{2c}{(1 - m)2c + \omega - \alpha} = \frac{(2c)!}{((1 - m)2c + \omega - \alpha)!(2mc - \omega + \alpha)!} \tag{88}$$

minimal FH-reps in total. Given the parameters ω, α, c we get that $m = 1 + \lfloor \frac{\omega - \alpha}{2c} \rfloor$, where $\lfloor x \rfloor$ denotes the greatest integer less than or equal to x . Theorem 9 immediately gives the dominant scaling

$$|\langle \mathcal{O}_\alpha(1)\mathcal{O}_\alpha(N + 1) \rangle| = \text{const} \times N^{-2\Delta}(1 + o(1)), \tag{89}$$

where

$$\Delta_\alpha(c, \omega) = \frac{1}{2} \left((2cm - \omega + \alpha) \frac{(2m - 1)^2}{4} + (2c(1 - m) + \omega - \alpha) \frac{(2m + 1)^2}{4} \right). \tag{90}$$

This formula for Δ_α obscures some features of this function, to bring them out define $\tilde{\alpha} = \alpha - (\omega + c)$, then one can show that

$$\Delta_\alpha(c, \omega) = c \left(\frac{1}{4} + x^2 - (x - [x])^2 \right) \Big|_{x=\tilde{\alpha}/2c} \tag{91}$$

where $[x]$ is the nearest integer to x . It is then clear that Δ_α is symmetric under $\tilde{\alpha} \leftrightarrow -\tilde{\alpha}$ and that the minimal scaling dimension of our operators is $c/4$.

7.2 The Dominant Asymptotic Term

We can go further with Theorem 9 to get the first term in the asymptotic expansion of $\langle \mathcal{O}_\alpha(1)\mathcal{O}_\alpha(N + 1) \rangle$ at large N . Firstly, note that:

$$e^{V(z)} = s \underbrace{\prod_{j=1}^{2c} e^{i\beta_j k_j} / g_{k_j, \beta_j}(1)}_{e^{V_0}} \underbrace{\prod_{j=1}^{N_z} \frac{(1 - z_j/z)}{|1 - z_j/z|} \prod_{j=1}^{N_Z} \frac{(1 - z/Z_j)}{|1 - z/Z_j|}}_{e^{V(z)-V_0}}. \tag{92}$$

The first factor is a pure phase and contributes to the asymptotics as e^{NV_0} . By inspection²²

$$V_0 = \text{Log}(s) + i \sum_{j=1}^{2c} (\beta_j(k_j - \pi) + (2\beta_j\pi + \pi/2)\delta_{k_j,0}), \tag{93}$$

it is important to emphasise that this is an imaginary number, and again recall that $k_j \in [0, 2\pi)$. The second factor contributes in two ways: firstly through $e^{\sum_n nV_n V_{-n}}$, exactly the quantity we calculated in Sect. 6.1. Secondly, we need powers of the Wiener-Hopf factors that were derived at the end of Sect. 6.1. Putting this all together we get:

Theorem 10

$$\langle \mathcal{O}_\alpha(1)\mathcal{O}_\alpha(N + 1) \rangle = N^{-2\Delta_\alpha} e^{iNK} \sum_{\{n_j\}} \left(\prod_{j=1}^{2c} e^{iNk_j n_j} \right) \mathcal{C}(\{\tilde{\beta}_j + n_j\})(1 + o(1)), \tag{94}$$

where the sum is over all dominant FH-reps, these are parameterised by $\{n_j\}$ and defined in Sect. 7.1. Δ_α is $\Delta_\alpha(c, \omega)$ given in (91) and K is equal to $-iV_0 + \pi(\alpha - 1)$. The representation dependent $O(1)$ multiplier is given by

$$\begin{aligned} \mathcal{C}(\{\tilde{\beta}_j\}) &= \left(\frac{\prod_{i_1, i_2=1}^{N_z} (1 - z_{i_1} z_{i_2}) \prod_{j_1, j_2=1}^{N_z} \left(1 - \frac{1}{z_{j_1} z_{j_2}}\right)}{\prod_{i=1}^{N_z} \prod_{j=1}^{N_z} \left(1 - \frac{z_i}{z_j}\right)^2} \right)^{1/4} \prod_{1 \leq i < j \leq 2c} |e^{ik_i} - e^{ik_j}|^{2\tilde{\beta}_i \tilde{\beta}_j} \\ &\times \prod_{j=1}^{2c} \left(\frac{\prod_{l=1}^{N_z} (1 - e^{ik_j} z_l^{-1})(1 - e^{-ik_j} z_l^{-1})}{\prod_{i=1}^{N_z} (1 - e^{ik_j} z_i)(1 - e^{-ik_j} z_i)} \right)^{\tilde{\beta}_j/2} \prod_{j=1}^{2c} G(1 + \tilde{\beta}_j)G(1 - \tilde{\beta}_j). \end{aligned} \tag{95}$$

In our construction of the dominant FH-reps we start from setting all $\tilde{\beta}_j$ to be equal and then add 1 to a fixed number of them. This means that the difference $\tilde{\beta}_i - \tilde{\beta}_j$ is either 0, 1 or -1 in all dominant FH-reps. Hence, pairs of complex conjugate zeros $e^{ik_i} = e^{-ik_j}$ contribute $e^{ink_i N}$ to the oscillatory factor in (94), where $n \in \{0, \pm 1\}$. We discuss the non-universal multiplier (95) in Appendix E.

7.3 Degenerate Zeros on the Unit Circle

In the case that some of the zeros on the unit circle are degenerate, the analysis of the singular part given above follows through by raising to the power of the relevant multiplicity. Conjugate pairs of zeros must have the same multiplicity so contribute to the singular part as

$$\left(\frac{(e^{ik} - e^{i\phi})(e^{ik} - e^{-i\phi})}{|e^{ik} - e^{i\phi}| |e^{ik} - e^{-i\phi}|} \right)^m = \exp(imk) \times \left(\text{sign}(\cos(k) - \cos(\phi)) \right)^m. \tag{96}$$

Equation (83) is similarly raised to the power m . We see an important difference between odd and even multiplicity. For odd m the degenerate zeros behave as above and we have a Fisher-Hartwig canonical form with half-integer β singularities at $e^{\pm i\phi}$. In the case that m is odd for all zeros on the unit circle we can derive an analogue of Theorem 10, the steps are given in Appendix F. For even m at any zero, there is no jump discontinuity and we do

²² The asymmetric second term in the sum is necessary because a singularity at $k_j = 0$ is an edge case where $g_{0,\beta}(1) = e^{-i\pi\beta}$. For all other k we have $g_{k,\beta}(1) = e^{+i\pi\beta}$.

not analyse this here. The multicritical point in the XY model, with $f(z) = (z + 1)^2$ is an example of such a case.

8 Extensions of Our Results

8.1 Long-Range Chains

In this section we discuss the effect of allowing our model (2) to have non-zero coupling constants between sites at ‘long-range’—i.e. that there is no finite constant beyond which all couplings vanish.

First, consider the case that the couplings decay with an exponential tail at large distances. This means that $f(z)$ has a C^∞ smooth part, and a well defined winding number. We still have that $\omega = N_z - N_p$, but note that poles are no longer restricted to the origin. The theory of Sect. 5, with care, may still be used to reach the same broad conclusions as in the finite-range case. In addition, we need the main result of [89]:

Theorem 11 (Erhardt, Silbermann 1996) *Take a symbol of the form*

$$f(z) = \exp(V(z))z^\beta,$$

i.e. a symbol with a single Fisher-Hartwig jump singularity at $z = 1$, and demand that $\exp(V(z))$ is a C^∞ function. Then:

$$D_N(f(z)) = \exp(NV_0)N^{-\beta^2}(E + o(1)) \quad (97)$$

where E is the constant defined implicitly in (58).

For nonvanishing E , or equivalently $\beta \notin \mathbb{Z}$, this is a special case of Theorem 9. However, for $\beta \in \mathbb{Z}$ this gives us a concrete asymptotic bound on the Toeplitz determinant in the case of a symbol with a C^∞ smooth part.

Szegő’s theorem along with Theorem 11 allows us to extend the classification of gapped phases via string order parameters to long-range chains with C^∞ symbol. In particular, in the phase ω we have that $\langle \mathcal{O}_\omega(1)\mathcal{O}_\omega(N+1) \rangle$ tends to a non-zero value that can be calculated using Szegő’s theorem. Moreover, Theorem 11 proves that $\langle \mathcal{O}_\alpha(1)\mathcal{O}_\alpha(N+1) \rangle$ for all $\alpha \neq \omega$ tends to zero at large N . This proves that Theorem 1a remains valid for long-range chains with exponentially decaying couplings. In fact, one can go further than Theorem 11 and use the methods of [82] to give an analogue of Theorem 2. The α th correlator in the phase ω is $O(e^{-N/\xi_\alpha})$, where ξ_α is defined as above and ξ is derived from the singularity of the symbol closest to the circle (this singularity will come from either a zero or a pole of $f(z)$).

In critical chains, we may use the Fisher-Hartwig conjecture to derive the scaling dimensions exactly as in the finite-range case, on condition that there are finitely many zeros of $f(z)$ that are on the unit circle, and that they remain well separated (this means that we may write our symbol in the canonical form (51)). Note that a study of the critical scaling of entanglement entropy for the isotropic subclass of such chains is included in [42]. While the winding number remains well defined, further analysis must be given to extend the results of [13] to long-range chains.

Models where couplings have algebraic tails are also physically relevant, and of topical interest [90,91]. In this case, $f(z)$ will no longer be analytic and so singularities occur in the symbol distinct from Fermi points (zeros on the circle) and winding number (discontinuities

in the logarithm). As $f(z)$ is continuous, the winding number remains geometrically well-defined for gapped models. The theory of Toeplitz determinants may still be used in this case, and is deserving of a detailed analysis.

8.2 Uniform Asymptotics Approaching Transitions

Our results give asymptotic correlations at particular points in the phase diagram. One may also be interested in how these correlations change along a path in parameter space, particularly where this path crosses a transition. This problem was studied analytically in reference [92] for the 2D classical Ising model (and hence the 1D quantum XY model). There are two cases where relatively recent ‘black-box’ results in the literature can be applied to a broader class of models. Firstly, consider a generalised Ising transition where we begin in a general gapped phase and a single zero approaches the unit circle. The relevant Toeplitz determinant asymptotics are given in reference [93]. Secondly, consider the case of two zeros $e^{\pm ik}$ that come together. This is a generalisation of the approach to the multicritical point in the XY model along the isotropic critical line. The relevant Toeplitz determinant asymptotics are given in reference [94]. In both cases the crossover is controlled by a solution to the Painlevé V equation (althought a different one in each case). Due to the multiplicative nature of contributions to Toeplitz asymptotics, one would expect²³ similar behaviour in more general transitions where, as well as the approaching zeros, there are additional ‘spectator’ zeros on the unit circle.

9 Conclusion

Using Toeplitz determinant theory, we have investigated string-like correlation functions in a wide class of gapped and critical topological models. The salient features of their asymptotics can be deduced from the zeros of the associated complex function $f(z)$. For example, the location of the zeros in the complex plane allow us to deduce whether the system is gapped or critical, furthermore giving access to correlation lengths and universal scaling dimensions (as summarised in Fig. 2). Even detailed information, like the exact value of the order parameter, is a simple function of the zeros of $f(z)$. The generality of these results allowed us to derive lattice-continuum correspondences, critical exponents and order parameters for the topologically distinct gapless phases. We now mention a few interesting paths to explore.

One surprising result was the universality of the ratios between the correlation lengths ξ_α —this allowed for the extraction of the topological invariant ω . This was more striking for the dual spin chains, where local observables can be used to measure ω . It would be interesting to explore what happens upon introducing interactions. One possible scenario is that ratios of distinct correlation lengths give a measure of the interaction strength between the quasi-particles created by the corresponding operators.

One of the motivations of this work was to study how the invariants c and ω are reflected in physical correlations. The full classification of topological gapless phases within this symmetry class was obtained in the non-interacting case in reference [13]. Since this relied on concepts that are well-defined only in the absence of interactions, it does not directly generalise.²⁴ However, correlation functions and their symmetries are much more general

²³ We are grateful to the participants of the AIM workshop ‘Fisher-Harwig asymptotics, Szegő expansions and statistical physics’ for discussions on this point.

²⁴ However, numerical simulations indicated the stability away from the non-interacting limit.

concepts, and having now characterised the topology in terms of them, a natural next step is to use this to extend the classification to the interacting case.

Lastly, as discussed in the previous section, the exact solvability and Toeplitz theory extend to cases with long-range couplings. This would certainly be interesting to explore, as removing constraints on $f(z)$ leads to new asymptotic behaviours of the correlation functions beyond those that we have analysed in this paper.

Acknowledgements We are grateful to Estelle Basor, John Cardy, Torsten Ehrhardt, Paul Fendley, Tarun Grover, Jon Keating, Francesco Mezzadri, Frank Pollmann, Tibor Rakovszky, Jonathan Robbins, Ryan Thorngren and Chris Turner for helpful discussions. RV thanks Roderich Moessner for discussions and collaboration on related topics. RV has been supported by the German Research Foundation (DFG) through the Collaborative Research Centre SFB 1143.

Open Access This article is distributed under the terms of the Creative Commons Attribution 4.0 International License (<http://creativecommons.org/licenses/by/4.0/>), which permits unrestricted use, distribution, and reproduction in any medium, provided you give appropriate credit to the original author(s) and the source, provide a link to the Creative Commons license, and indicate if changes were made.

A Details of H_{BDI} and the Dual Spin Model

In this appendix we give details of certain claims in the introductory sections.

A.1 The Model and Its Solution

Our model is a one-dimensional chain of L -sites, each hosting a spinless fermionic mode. In other words, we have operators c_n , labelled by a site index n , such that the fermionic anticommutation relations are satisfied:

$$\{c_n^\dagger, c_m\} = \delta_{nm} \quad \{c_n, c_m\} = 0. \quad (98)$$

The Hilbert space is the Fock space built from these L modes—i.e. $\mathcal{H} = \bigoplus_{n=0}^L \Lambda^n(\mathbb{C}^2)$, where the direct sum is over antisymmetric n -particle states. We take periodic boundary conditions, i.e. we identify sites 1 and $L + 1$, and reduce all site labels modulo L when appropriate. The ordering of sites induces a notion of locality. We always work in a double scaling limit $N \rightarrow \infty$, $L \rightarrow \infty$ and $N/L \rightarrow 0$, where L is the system size and N is the scale at which we are studying correlations. A local operator at site n should have support on a number of sites around n that is independent of N and L .

Our model H_{BDI} is defined in Eq. (2). This may be rewritten in terms of the fermions c_n as

$$H_{\text{BDI}} = \sum_{r=-R}^R \sum_{n \in \text{sites}} a_r c_n^\dagger c_{n+r} + \frac{b_r}{2} (c_n^\dagger c_{n+r}^\dagger - c_n c_{n+r}) \quad (+\text{const}) \quad (99)$$

where:

$$\begin{aligned} a_r &= -\frac{t_r + t_{-r}}{2} \\ b_r &= -\frac{t_r - t_{-r}}{2}. \end{aligned} \quad (100)$$

A general time-reversal symmetric, translation-invariant spinless free fermion Hamiltonian has a representation of the form (99) with $a_r = a_{-r} \in \mathbb{R}$ and $b_r = -b_{-r} \in \mathbb{R}$ —the first

condition follows from $H = H^\dagger$ and the second from the anticommuting fermion algebra. Through Eq. (100), this is in one-to-one correspondence with (2), which is hence general as claimed.

A.2 Further Discussion of the Phase Diagram

We first consider smooth changes to our model H_{BDI} . The coefficients t_α are symmetric functions of the zeros ζ_j , so vary continuously upon a continuous change of the ζ_j ; moreover the results of Harris and Martin show that, for a fixed degree polynomial, the zeros vary continuously with the coefficients [96]. We allow an increase in the range of $f(z)$ by tuning t_α off 0 for $\alpha < \alpha_L$ or $\alpha > \alpha_R$. In the first case we introduce a zero-pole pair at the origin, and in the second case we introduce a zero-pole pair at infinity—hence these should be allowed ‘smooth operations’ when we want to classify phases by thinking of a Hamiltonian in terms of the zeros and pole of the corresponding $f(z)$. The reverse is also important: we can decrease the range by tuning $t_{\alpha_{R/L}}$ to zero, or deleting a zero-pole pair at the origin or infinity.

When we study gapless systems in this work, we usually focus on the case where the zeros on the unit circle are non-degenerate. In that case, each zero corresponds to a linear zero-energy crossing of the single-particle dispersion, which after linearisation contributes a single real fermionic field to the low-energy description. Hence, c , as defined in terms of the zeros, exactly coincides with the central charge of the bulk CFT—see also Sect. 3.4. If any zero has degeneracy greater than one, then the low-energy theory will not be a CFT and the scaling behaviour changes. One can see that under the allowed smooth operations, $\omega = N_z - N_p$ and c are invariants of these phases. For $c > 0$ these phases are always critical points between neighbouring gapped phases—we can continuously move all zeros off the unit circle either inside or outside to reach different $c = 0$ phases.

We now consider what constitutes a generic model in our class. Since we have a finite number of zeros, fixed by the coupling range, by any reasonable distribution of zeros we expect either no zero or one independent zero at a particular radius. Since any complex zeros must come in conjugate pairs, we thus have either no zero, one real zero or two complex zeros at a particular radius. This means that typically gapless models will have $c = 1/2$ or $c = 1$. The theory extends easily to $2c$ nondegenerate zeros on the unit circle, and so we state our main results for this case. Such higher- c models arise as multi-critical points in the phase diagram. Typical gapped models will have either a single, real, zero or a complex conjugate pair of zeros closest to the unit circle. For gapped models this will be the ‘generic case’ that we refer to in some of our results. In the statements of our results we usually assume these generic cases, but discuss how the results are altered in other cases. For example, we do give results for some cases with degenerate zeros on the unit circle in Sect. 7.3. Then the dispersion relation $|f(k)|$ cannot be linearised and we do not have a CFT description. It is clear that even conditioning on having many zeros on the unit circle, these are rare points in parameter space.

Finally we mention the extra signs Σ . In the gapped case, the sign of $f(1)$ is invariant—it must be real so can only change by passing through zero and hence closing the gap. A gapped model in the phase ω can be smoothly connected to $f(z) = \pm z^\omega$. In reference [13] we showed that there are two invariant signs when $c > 0$ and the model is described by a CFT—in that case we can continuously connect any model to one with $f(z) = \pm z^\omega(z^{2c+\omega} \pm 1)$, the two signs cannot be removed without a phase transition. We hence have a description of the phase diagram that labels both gapped and critical phases by the triple $(\omega, c; \Sigma)$ where $\Sigma \in \mathbb{Z}_2$ for $c = 0$ and $\Sigma \in \mathbb{Z}_2 \times \mathbb{Z}_2$ for $c > 0$ gives the relevant signs. This sign information is easy

to keep track of, so we classify phases including this sign—one is free to discard the extra information this gives.

A.3 The Spin Model

We now go into more detail related to Sect. 2.5. First a note on the Hilbert space of the spin chain. It is formally similar to that of the fermionic chains, as both are built from a set of two-dimensional Hilbert spaces. They differ in that the mathematical structure is simpler: $\bigotimes_{n=1}^M \mathcal{H}_n$, where the local Hilbert space $\mathcal{H}_n \simeq \mathbb{C}^2$ —in contrast to the fermions, operators localised on distinct sites commute.

We now define a Jordan-Wigner transformation that allows us to (almost) map H_{BDI} into H_{spin} and back. Let

$$Z_n = i\tilde{\gamma}_n\gamma_n \quad X_n = \prod_{m=1}^{n-1} (i\tilde{\gamma}_m\gamma_m)\gamma_n \quad Y_n = \prod_{m=1}^{n-1} (i\tilde{\gamma}_m\gamma_m)\tilde{\gamma}_n. \tag{101}$$

transform fermions into spins. The inverse transformation is given by

$$\gamma_n = \prod_{m=1}^{n-1} Z_m X_n \quad \tilde{\gamma}_n = \prod_{m=1}^{n-1} Z_m Y_n. \tag{102}$$

Note that we also have the relationship

$$\sigma_n^+ = \prod_{m=1}^{n-1} (i\tilde{\gamma}_m\gamma_m) c_n \quad \sigma_n^- = \prod_{m=1}^{n-1} (i\tilde{\gamma}_m\gamma_m) c_n^\dagger. \tag{103}$$

Applying this transformation to H_{spin} gives us (2), except that for all couplings extending over the final bond between sites L and $L + 1 \equiv 1$, we have a multiplicative factor of $(-1)^F$ —the total fermionic parity. Since the Hamiltonian (2) is quadratic, it preserves the parity, and so we can solve (2) in two total parity sectors. Details may be found in [41], where it is shown that we get two copies of (2), one with periodic and one with antiperiodic boundary conditions. Since we will be interested in bulk correlation functions, which will be independent of boundary conditions in the $L \rightarrow \infty$ limit, we claim that simply using our results for the periodic fermion chain will be enough to understand these correlations in the periodic spin chain.

A.4 \mathcal{O}_α as a Spin Operator

In this section we explain how to derive the contents of Table 2, from which Table 5 follows. The quickest way to proceed in all cases is to use the nearest-neighbour substitutions:

$$X_n Y_{n+1} = \gamma_n i\tilde{\gamma}_n \gamma_n \tilde{\gamma}_{n+1} = -i\tilde{\gamma}_n \tilde{\gamma}_{n+1} \tag{104}$$

$$Y_n X_{n+1} = \tilde{\gamma}_n i\tilde{\gamma}_n \gamma_n \gamma_{n+1} = +i\gamma_n \gamma_{n+1}. \tag{105}$$

First consider the operator $X_{n+1} Y_{n+2} X_{n+3} Y_{n+4} \dots X_{n+\alpha}$. By substituting with (105) starting from the right and then inserting the Jordan-Wigner form of X_n , we reach:

$$X_{n+1} Y_{n+2} X_{n+3} Y_{n+4} \dots X_{n+\alpha} = X_{n+1} i\gamma_{n+2} \gamma_{n+3} \dots i\gamma_{n+\alpha-1} \gamma_{n+\alpha} \tag{106}$$

Table 5 Spin correlation functions that are the Jordan-Wigner dual of the fermionic string correlators $\langle \mathcal{O}_\alpha(1)\mathcal{O}_\alpha(N+1) \rangle$

α	$\langle \mathcal{O}_\alpha(1)\mathcal{O}_\alpha(N+1) \rangle$
Positive, odd	$\langle X_1 Y_2 X_3 Y_4 \dots Y_{\alpha-1} X_\alpha X_{N+1} Y_{N+2} X_{N+3} \dots Y_{N+\alpha-1} X_{N+\alpha} \rangle$
Positive, even	$\langle X_1 Y_2 \dots X_{\alpha-1} Y_\alpha \left(\prod_{j=\alpha+1}^N Z_j \right) Y_{N+1} X_{N+2} \dots X_{N+\alpha} \rangle$
Zero	$\langle \prod_{j=1}^N Z_j \rangle$
Negative, odd	$\langle Y_1 X_2 Y_3 X_4 \dots X_{ \alpha -1} Y_{ \alpha } Y_{N+1} X_{N+2} Y_{N+3} \dots X_{N+ \alpha -1} Y_{N+ \alpha } \rangle$
Negative, even	$\langle Y_1 X_2 \dots Y_{ \alpha -1} X_{ \alpha } \left(\prod_{j= \alpha +1}^N Z_j \right) X_{N+1} Y_{N+2} \dots Y_{N+ \alpha } \rangle$

$$= \prod_{m=1}^n (i\tilde{\gamma}_m \gamma_m) \gamma_{n+1} i\gamma_{n+2} \gamma_{n+3} \dots i\gamma_{n+\alpha-1} \gamma_{n+\alpha} \tag{107}$$

$$= i^{(\alpha-1)/2} \prod_{m=1}^n (i\tilde{\gamma}_m \gamma_m) \gamma_{n+1} \gamma_{n+2} \gamma_{n+3} \dots \gamma_{n+\alpha-1} \gamma_{n+\alpha} \tag{108}$$

$$= \mathcal{O}_\alpha(n+1) \quad (\alpha = 2m + 1 > 0). \tag{109}$$

Using that $\prod_m Z_m = \prod_m \tilde{\gamma}_m \gamma_m$ (i.e. the trivial correspondence for \mathcal{O}_0) and using (104) and (105), the same reasoning leads to the other cases (including the correct phase factor). The α odd and $\alpha = 0$ cases in Table 5 follow immediately. For α even, we put the operators on sites 1 up to α together and then simplify using the Pauli algebra.

B Expansion of Three Neighbouring Spin Operators

We wish to understand the CFT behaviour of lattice operators $P_{n+2}P_{n+1}P_n$ where $P_j = X_j$ or iY_j . Using the substitutions (24) we can write up to an overall multiplicative constant:

$$P_{n+2}P_{n+1}P_n \rightarrow \left(:e^{i\theta(n+2a)}: +s_2 :e^{-i\theta(n+2a)}: \right) \left(:e^{i\theta(n+a)}: +s_1 :e^{-i\theta(n+a)}: \right) \left(:e^{i\theta(n)}: +s_0 :e^{-i\theta(n)}: \right), \tag{110}$$

for $s_i = \pm 1$, lattice spacing a and colons indicate normal ordering (as defined in [71]). We then multiply out the brackets and use the normal ordering prescription to simplify. For all choices of s_i apart from $(1, -1, 1)$ and $(-1, 1, -1)$, the dominant terms are proportional to $e^{i\theta(n)}$ and $e^{-i\theta(n)}$. For $s_i = (1, -1, 1)$ we have

$$iX_{n+2}Y_{n+1}X_n \rightarrow :e^{3i\theta(n)}: - :e^{-3i\theta(n)}: - \sqrt{2}ia^2 :\theta''(x) \left(e^{i\theta(n)} + e^{-i\theta(n)} \right): - \sqrt{8}a^2 :\theta'(x)^2 \left(e^{i\theta(n)} - e^{-i\theta(n)} \right): + \dots \tag{111}$$

where the ellipsis indicates terms with subdominant scaling dimension. That these terms all have the same scaling dimension is a consequence of, for example, [71, Eq. 2.4.19]. The

Table 6 Differences in scaling dimension derived from Eq. (14) for small c

c	$1/2$	1	$3/2$	2
δ'_α	$2(\alpha - \omega) + 1$	$\alpha - \omega$	$\{2\lfloor x \rfloor, \alpha - \omega - 1 - \lfloor x \rfloor\}$	$\{2\lfloor x \rfloor, \alpha - \omega - 2 - 2\lfloor x \rfloor\}$
$\delta'_{\alpha+2} - \delta'_\alpha$	4	1	$\{1, 2\}$	$\{0, 2\}$ or 1

As defined above, $x = (\alpha - (\omega + c))/2c$

number of derivatives in each term exactly balances the difference in scaling dimension of the vertex operators.

C Recovering (c, ω) from Scaling Dimensions

We will show how to find c and ω even when we have access to the scaling dimensions of \mathcal{O}_α only for α odd (i.e. for the spin chain we have access to correlation functions of local operators only). As explained in the main text, it is helpful to consider differences between scaling dimensions. In this restricted case we calculate $\delta'_\alpha := \Delta_{\alpha+2} - \Delta_\alpha$.

First suppose that $c > 2$, we are then guaranteed to see plateaus with repeated values of δ'_α . If these plateaus are constant width then this width gives us c —if not, then a ‘plateau’ of width one implies the presence of a kink in $\Delta_\alpha(c, \omega)$ at the even value of α that is skipped over. We can then determine c , and hence ω as described in the main text.

For $c \leq 2$ we are not guaranteed to see these plateaus, however, we can still recover c and ω . By writing out δ'_α using Eq. (14), we derive the formulae in Table 6. These can be easily distinguished by taking the next level of differences.²⁵ Hence, given a finite set of Δ_α that are derived from local observables in the spin chain, we can recover (c, ω) . The size of the required set is of order c .

D Example Representations of a Fisher-Hartwig Symbol

In Table 7, we give some representations of the symbol $t(e^{ik}) = \text{sign}(\sin k)$. The aim is to illustrate the difference between canonical forms and FH-reps explained in Sect. 5.

E Discussion of Nonuniversal Factors

It is interesting to note that the order parameter given in Theorem 1b is a symmetric function in the variables $\{z_i\}$ and, separately, $\{1/Z_i\}$ (listing zeros with multiplicity as distinct symbols). Another way to see why this occurs is through noting that a Toeplitz determinant generated by $t(e^{ik})$ is the same as the average of $\tau(e^{ik_j}) := \prod_j t(e^{ik_j})$ over the group $U(N)$ (with eigenangles labelled by k_j) [42,97]. From the analysis of Sect. 6.1, for $t(z) = e^{V(z)}$ we have that τ is a symmetric function separately in the arguments $\{z_j\}$, $\{1/Z_j\}$ and e^{ik_j} ; so can be expanded in a basis of symmetric functions. Let us write $\tau(\{z_j, Z_j, e^{ik_j}\}) = \sum_k a_k s_k^{(1)}(\{z_j\}) s_k^{(2)}(\{1/Z_j\}) s_k^{(3)}(\{e^{ik_j}\})$ for some constants a_k and symmetric functions $s_k^{(i)}$. When integrating over $U(N)$, $s_k^{(1)}(\{z_j\}) s_k^{(2)}(\{1/Z_j\})$ can be factored

²⁵ Note that $c = 2$ allows two possible patterns depending on the parity of ω . For even ω , starting at $\alpha = \omega + 1$, we see the differences $\{0, 1, 2, 3, 4, \dots\}$, whereas for odd ω , starting at $\alpha = \omega$, we see $\{0, 0, 2, 2, 4, 4, \dots\}$.

Table 7 Example representations for the symbol $f(e^{ik}) = \text{sign}(\sin k)$

	$k_1 = 0$	$k_2 = \pi$	$V(z)$	Symbol $f_c(z)$:	
Canonical form 1:	$\beta_1 = 1/2$	$\beta_2 = -1/2$	$i\pi/2$	$\text{sign}(\sin k) = f(z)$	×
Canonical form 2:	$\beta_1 = -1/2$	$\beta_2 = 1/2$	$-i\pi/2$	$\text{sign}(\sin k) = f(z)$	×
Canonical form 3:	$\beta_1 = -3/2$	$\beta_2 = 3/2$	$i\pi/2$	$\text{sign}(\sin k) = f(z)$	
FH-rep($n_0 = 0, n_1 = 0$)	$\beta_1 = 1/2$	$\beta_2 = -1/2$	$i\pi/2$	$\text{sign}(\sin k) = f(z)$	×
FH-rep($n_0 = -1, n_1 = 1$)	$\beta_1 = -1/2$	$\beta_2 = 1/2$	$i\pi/2$	$-\text{sign}(\sin k) = e^{i\sum k_j n_j} f(z)$	×
FH-rep($n_0 = -2, n_1 = 2$)	$\beta_1 = -3/2$	$\beta_2 = 3/2$	$i\pi/2$	$\text{sign}(\sin k) = e^{i\sum k_j n_j} f(z)$	

Note that the given parameters $\{k_i, \beta_i, V\}$ fully specify the RHS of (51). In the final column, × indicates a dominant representation

out for each k , leaving us with a result that is a sum over products of symmetric functions and so the determinant is a symmetric function in the appropriate variables.

In the critical case we can rewrite the $\Theta(1)$ multiplier (95) in a way that gives a structure similar to the order parameter. In particular, when we have that all $|\beta_j| = 1/2$, then

$$\begin{aligned}
 C(\{\tilde{\beta}_j\}) &= \left(\frac{\prod_{i_1, i_2=1}^{N_z} (1 - z_{i_1} z_{i_2}) \prod_{j_1, j_2=1}^{N_z} \left(1 - \frac{1}{Z_{j_1} Z_{j_2}}\right)}{\prod_{i=1}^{N_z} \prod_{j=1}^{N_z} \left(1 - \frac{z_i}{Z_j}\right)^2} \prod_{i=1}^{2c} \prod_{j \neq i} (1 - e^{ik_j} e^{-ik_i})^{\text{sign}(\tilde{\beta}_i \tilde{\beta}_j)} \right. \\
 &\quad \left. \times \frac{\prod_{l=1}^{2c} \prod_{j=1}^{N_z} \left((1 - e^{ik_l} Z_j^{-1})(1 - e^{-ik_l} Z_j^{-1}) \right)^{\text{sign}(\tilde{\beta}_l)}}{\prod_{l=1}^{2c} \prod_{i=1}^{N_z} \left((1 - e^{ik_l} z_i)(1 - e^{-ik_l} z_i) \right)^{\text{sign}(\tilde{\beta}_l)}} \right)^{1/4} \left(G(3/2)G(1/2) \right)^{2c}.
 \end{aligned}
 \tag{112}$$

Notice that, up to the normalising G -functions, this constant is built from terms of the form $(1 - \zeta_i^{\pm 1} \zeta_j^{\pm 1})$ where the ζ_i are zeros of $f(z)$. The sign of $\tilde{\beta}_j$ somehow tells us whether the j th zero on the unit circle acts as if it is inside the unit circle, or acts as if it is outside. Indeed, we see that if the i th and j th zero are both inside or both outside, we get a positive power of the term $(1 - e^{ik_j} e^{-ik_i})$ and if one is in and one is out it is a negative power—this mirrors the behaviour of the factors coming from the z_i and Z_j . In the second line we have factors mixing zeros on the circle with zeros inside and outside the circle. Since all zeros on the circle come in complex conjugate pairs, terms of the form $(1 - e^{ik_l} z_j)$ appear twice—however depending on the relative sign of β_j and $\beta_{j'}$ for this pair these factors can either cancel, or give a square. A similar squared term appears in the factor matching the z_i to the Z_j on the first line. For $|\beta_j| = n/2$ for $n > 1$ we have a multiplicative effect where the contribution from the j th zero on the circle is counted n times. This is reminiscent of the CFT description where operators that involve many excitations give multiplicative contributions from the same Fermi point (which is located at some momentum k_j).

F Critical Models with Degenerate Roots on the Unit Circle

As explained in Sect. 7.3, we consider $f(z)$ with zeros of odd multiplicity m_j at e^{ik_j} . The index runs over $i = 1 \dots N_0$ and so the total number of zeros on the circle is given by $2c = \sum_{j=1}^{N_0} m_i$. Note that by symmetry we must have equal multiplicities at complex conjugate zeros.

The main difference in the analysis is that there is only one β for each unique zero (i.e. the degenerate zeros at that point correspond to only one FH singularity, but contribute to the winding multiple times)—this alters the sum rule (86), which becomes

$$\sum_{j=1}^{N_0} \beta_j = c + \omega - \alpha. \quad (113)$$

A method for solving (113) is to first solve (86) as in Sect. 7.1: assigning a half-integer $\hat{\beta}_{\hat{j}}$ where $\hat{j} = 1 \dots 2c$. We then group these as:

$$\beta_j = \sum_{\hat{j}: z_j=z_j} \hat{\beta}_{\hat{j}} \quad j = 1 \dots N_0. \quad (114)$$

As all multiplicities are odd, this will lead to a canonical form for the symbol, but not necessarily a dominant FH-rep—this is because we minimised $\sum_{\hat{j}=1}^{2c} \hat{\beta}_{\hat{j}}^2$ whereas we need to minimise $\sum_{j=1}^{N_0} \beta_j^2$. We proceed by adding one to the smallest β_j and subtracting one from the largest β_j until the distance between smallest and largest is equal to zero or one. With this set of β we can construct a dominant canonical form as in Sect. 7.1, noting that the sum in the definition of V_0 (93) should now range over unique zeros only (i.e. goes from 1 to N_0). Moreover, if the β_j are not all equal, we construct the other dominant FH-reps $\tilde{\beta}_j = \beta_j + n_j$ as described in Sect. 5. We then have that $\tilde{\beta}_j \in \{\lfloor \frac{c+\omega-\alpha}{N_0} \rfloor - 1/2, \lfloor \frac{c+\omega-\alpha}{N_0} \rfloor + 1/2\}$, and the scaling dimension follows. Theorem 9 leads again to a variant of Theorem 10, where we sum over the dominant FH-reps just described, and where all products over the k_j are over unique zeros only.

References

1. Fu, L., Kane, C.L., Mele, E.J.: Topological insulators in three dimensions. *Phys. Rev. Lett.* **98**(10), 106803 (2007)
2. Kitaev, A.: Periodic table for topological insulators and superconductors. *AIP Conf. Proc.* **1134**(1), 22–30 (2009)
3. Schnyder, A.P., Ryu, S., Furusaki, A., Ludwig, A.W.W.: Classification of topological insulators and superconductors in three spatial dimensions. *Phys. Rev. B* **78**, 195125 (2008)
4. Altland, A., Zirnbauer, M.R.: Nonstandard symmetry classes in mesoscopic normal-superconducting hybrid structures. *Phys. Rev. B* **55**, 1142–1161 (1997)
5. Ryu, S., Schnyder, A.P., Furusaki, A., Ludwig, A.W.W.: Topological insulators and superconductors: tenfold way and dimensional hierarchy. *N. J. Phys.* **12**(6), 065010 (2010)
6. Hasan, M.Z., Kane, C.L.: Colloquium. *Rev. Mod. Phys.* **82**, 3045–3067 (2010)
7. Zheng-Cheng, G., Wen, X.-G.: Tensor-entanglement-filtering renormalization approach and symmetry-protected topological order. *Phys. Rev. B* **80**, 155131 (2009)
8. Pollmann, F., Turner, A.M., Berg, E., Oshikawa, M.: Entanglement spectrum of a topological phase in one dimension. *Phys. Rev. B* **81**, 064439 (2010)
9. Fidkowski, L., Kitaev, A.: Topological phases of fermions in one dimension. *Phys. Rev. B* **83**, 075103 (2011)
10. Turner, A.M., Pollmann, F., Berg, E.: Topological phases of one-dimensional fermions: an entanglement point of view. *Phys. Rev. B* **83**, 075102 (2011)
11. Chen, X., Zheng-Cheng, G., Wen, X.-G.: Classification of gapped symmetric phases in one-dimensional spin systems. *Phys. Rev. B* **83**, 035107 (2011)
12. Schuch, N., Pérez-García, D., Cirac, J.I.: Classifying quantum phases using matrix product states and projected entangled pair states. *Phys. Rev. B* **84**, 165139 (2011)
13. Verresen, R., Jones, N.G., Pollmann, F.: Topology and edge modes in quantum critical chains. *Phys. Rev. Lett.* **120**, 057001 (2018)

14. Kestner, J.P., Wang, B., Sau, J.D., Das Sarma, S.: Prediction of a gapless topological Haldane liquid phase in a one-dimensional cold polar molecular lattice. *Phys. Rev. B* **83**, 174409 (2011)
15. Cheng, M., Hong-Hao, T.: Majorana edge states in interacting two-chain ladders of fermions. *Phys. Rev. B* **84**, 094503 (2011)
16. Fidkowski, L., Lutchyn, R.M., Nayak, C., Fisher, M.P.A.: Majorana zero modes in one-dimensional quantum wires without long-ranged superconducting order. *Phys. Rev. B* **84**, 195436 (2011)
17. Sau, J.D., Halperin, B.I., Flensberg, K., Das Sarma, S.: Number conserving theory for topologically protected degeneracy in one-dimensional fermions. *Phys. Rev. B* **84**, 144509 (2011)
18. Kraus, C.V., Dalmonte, M., Baranov, M.A., Läuchli, A.M., Zoller, P.: Majorana edge states in atomic wires coupled by pair hopping. *Phys. Rev. Lett.* **111**, 173004 (2013)
19. Keselman, A., Berg, E.: Gapless symmetry-protected topological phase of fermions in one dimension. *Phys. Rev. B* **91**, 235309 (2015)
20. Iemini, F., Mazza, L., Rossini, D., Fazio, R., Diehl, S.: Localized majorana-like modes in a number-conserving setting: an exactly solvable model. *Phys. Rev. Lett.* **115**, 156402 (2015)
21. Lang, N., Büchler, H.P.: Topological states in a microscopic model of interacting fermions. *Phys. Rev. B* **92**, 041118 (2015)
22. Montorsi, A., Dolcini, F., Iotti, R.C., Rossi, F.: Symmetry-protected topological phases of one-dimensional interacting fermions with spin-charge separation. *Phys. Rev. B* **95**, 245108 (2017)
23. Ruhman, J., Altman, E.: Topological degeneracy and pairing in a one-dimensional gas of spinless fermions. *Phys. Rev. B* **96**, 085133 (2017)
24. Scaffidi, T., Parker, D.E., Vasseur, R.: Gapless symmetry-protected topological order. *Phys. Rev. X* **7**, 041048 (2017)
25. Jiang, H.-C., Li, Z.-X., Seidel, A., Lee, D.-H.: Symmetry protected topological Luttinger liquids and the phase transition between them. *Sci. Bull.* **63**(12), 753–758 (2018)
26. Zhang, R.-X., Liu, C.-X.: Crystalline symmetry-protected Majorana mode in number-conserving Dirac Semimetal nanowires. *Phys. Rev. Lett.* **120**(15), 156802 (2018)
27. Parker, D.E., Scaffidi, T., Vasseur, R.: Topological Luttinger liquids from decorated domain walls. *Phys. Rev. B* **97**, 165114 (2018)
28. Asbóth, J.K., Oroszlány, L., Pályi, A.: *A Short Course on Topological Insulators*. Springer International Publishing, Berlin (2016)
29. Deift, P., Its, A., Krasovsky, I.: Toeplitz matrices and Toeplitz determinants under the impetus of the Ising model: some history and some recent results. *Commun. Pure Appl. Math.* **66**(9), 1360–1438 (2013)
30. McCoy, B.M.: Spin correlation functions of the $X - Y$ model. *Phys. Rev.* **173**, 531–541 (1968)
31. Barouch, E., McCoy, B.M.: Statistical mechanics of the XY model. ii. spin-correlation functions. *Phys. Rev. A* **3**, 786–804 (1971)
32. Fisher, M.E., Hartwig, R.E.: Toeplitz determinants: some applications, theorems, and conjectures. *Adv. Chem. Phys.* **15**, 333–353 (1968)
33. Kennedy, T., Tasaki, H.: Hidden symmetry breaking and the Haldane phase in $S=1$ quantum spin chains. *Commun. Math. Phys.* **147**(3), 431–484 (1992)
34. den Nijs, M., Rommelse, K.: Preroughening transitions in crystal surfaces and valence-bond phases in quantum spin chains. *Phys. Rev. B* **40**, 4709–4734 (1989)
35. Pérez-García, D., Wolf, M.M., Sanz, M., Verstraete, F., Cirac, J.I.: String order and symmetries in quantum spin lattices. *Phys. Rev. Lett.* **100**, 167202 (2008)
36. Haegeman, J., Pérez-García, D., Cirac, I., Schuch, N.: Order parameter for symmetry-protected phases in one dimension. *Phys. Rev. Lett.* **109**, 050402 (2012)
37. Else, D.V., Bartlett, S.D., Doherty, A.C.: Hidden symmetry-breaking picture of symmetry-protected topological order. *Phys. Rev. B* **88**, 085114 (2013)
38. DeGottardi, W., Thakurathi, M., Vishveshwara, S., Sen, D.: Majorana fermions in superconducting wires: effects of long-range hopping, broken time-reversal symmetry, and potential landscapes. *Phys. Rev. B* **88**(16), 165111 (2013)
39. Niu, Y., Chung, S.B., Hsu, C.-H., Mandal, I., Raghu, S., Chakravarty, S.: Majorana zero modes in a quantum ising chain with longer-ranged interactions. *Phys. Rev. B* **85**, 035110 (2012)
40. Verresen, R., Moessner, R., Pollmann, F.: One-dimensional symmetry protected topological phases and their transitions. *Phys. Rev. B* **96**, 165124 (2017)
41. Suzuki, M.: Relationship among exactly soluble models of critical phenomena. I*) 2D Ising model, dimer problem and the generalized XY-model. *Progr. Theor. Phys.* **46**(5), 1337 (1971)
42. Keating, J.P., Mezzadri, F.: Random matrix theory and entanglement in quantum spin chains. *Commun. Math. Phys.* **252**(1–3), 543–579 (2004)
43. Bahri, Y., Vishwanath, A.: Detecting Majorana fermions in quasi-one-dimensional topological phases using nonlocal order parameters. *Phys. Rev. B* **89**(15), 155135 (2014)

44. Minami, K.: Infinite number of solvable generalizations of XY-chain, with cluster state, and with central charge $c = m/2$. Nucl. Phys. B **925**, 144–160 (2017)
45. Friedman, B.-E., Rajak, A., Russomanno, A., Dalla Torre, E.G.: The 10 phases of spin chains with two Ising symmetries. ArXiv e-prints, August (2017)
46. Lieb, E., Schultz, T., Mattis, D.: Two soluble models of an antiferromagnetic chain. Ann. Phys. **16**(3), 407–466 (1961)
47. Smacchia, P., Amico, L., Facchi, P., Fazio, R., Florio, G., Pascazio, S., Vedral, V.: Statistical mechanics of the cluster Ising model. Phys. Rev. A **84**, 022304 (2011)
48. Ohta, T., Tanaka, S., Danshita, I., Totsuka, K.: Topological and dynamical properties of a generalized cluster model in one dimension. Phys. Rev. B **93**, 165423 (2016)
49. Lahtinen, V., Ardonne, E.: Realizing all $so(N)_1$ quantum criticalities in symmetry protected cluster models. Phys. Rev. Lett. **115**(23), 237203 (2015)
50. Nie, W., Mei, F., Amico, L., Kwek, L.C.: Scaling of geometric phase versus band structure in cluster-ising models. Phys. Rev. E **96**, 020106 (2017)
51. Wu, T.T.: Theory of Toeplitz determinants and the spin correlations of the two-dimensional Ising model. I. Phys. Rev. **149**, 380–401 (1966)
52. Sachdev, S.: Quantum Phase Transitions. Vintage Books, New York (2004)
53. Ovchinnikov, A.A.: Fisher-Hartwig conjecture and the correlators in the XY spin chain. Phys. Lett. A **366**(45), 357–362 (2007)
54. Korepin, V.E., Bogoliubov, N.M., Izergin, A.G.: Quantum Inverse Scattering Method and Correlation Functions. Cambridge University Press, Cambridge (1997)
55. Hutchinson, J., Keating, J.P., Mezzadri, F.: Random matrix theory and critical phenomena in quantum spin chains. Phys. Rev. E **92**, 032106 (2015)
56. Hutchinson, J., Jones, N.G.: Fisher-Hartwig determinants, conformal field theory and universality in generalised XX models. J. Stat. Mech. **2016**(7), 073103 (2016)
57. Pollmann, F., Turner, A.M.: Detection of symmetry-protected topological phases in one dimension. Phys. Rev. B **86**, 125441 (2012)
58. Hastings, M.B.: An area law for one-dimensional quantum systems. J. Stat. Mech. **2007**(08), P08024 (2007)
59. Pollmann, F., Berg, E., Turner, A.M., Oshikawa, M.: Symmetry protection of topological phases in one-dimensional quantum spin systems. Phys. Rev. B **85**, 075125 (2012)
60. Fidkowski, L., Kitaev, A.: Effects of interactions on the topological classification of free fermion systems. Phys. Rev. B **81**, 134509 (2010)
61. Cardy, J.: Scaling and Renormalisation in Statistical Physics. Cambridge University Press, Cambridge (1996)
62. Shankar, R.: Renormalization-group approach to interacting fermions. Rev. Mod. Phys. **66**, 129–192 (1994)
63. Haldane, F.D.M.: Effective harmonic-fluid approach to low-energy properties of one-dimensional quantum fluids. Phys. Rev. Lett. **47**(25), 1840 (1981)
64. von Delft, J., Schoeller, H.: Bosonization for beginners - refermionization for experts. Ann. Phys. **7**, 225–305 (1998)
65. Bogoliubov, N.M., Izergin, A.G., Reshetikhin, N.Y.: Finite-size effects and infrared asymptotics of the correlation functions in two dimensions. J. Phys. A **20**(15), 5361 (1987)
66. Izergin, A.G., Korepin, V.E., Reshetikhin, N.Yu.: Conformal dimensions in Bethe ansatz solvable models. J. Phys. A **22**(13), 2615 (1989)
67. Smirnov, F.A.: Form Factors in Completely Integrable Models of Quantum Field Theory. Advanced Series in Mathematical Physics. World Scientific, Singapore (1992)
68. di Francesco, P., Mathieu, P., Sénéchal, D.: Conformal Field Theory, Graduate Texts in Contemporary Physics. Springer, New York (1999)
69. Fisher, M.P.A., Glazman, L.I.: Transport in a one-dimensional Luttinger liquid. In: Sohn, L.L. (ed.) Mesoscopic Electron Transport, pp. 331–373. Springer, Dordrecht (1997)
70. Affleck, I. (ed.): Field theory methods and quantum critical phenomena. In: Proceedings, Fields, strings and critical phenomena. North-Holland (1988)
71. Polchinski, J.: String Theory: An Introduction to the Bosonic String. Cambridge Monographs on Mathematical Physics, vol. 1. Cambridge University Press, Cambridge (1998)
72. Ginsparg, P.: Applied conformal field theory. In: Brezin, E., Zinn-Justin, J. (eds.) Les Houches, Session XLIX, 1988, Fields, Strings and Critical Phenomena. Elsevier, Amsterdam (1990)
73. Boyanovsky, D.: Field theory of the two-dimensional ising model: Conformal invariance, order and disorder, and bosonization. Phys. Rev. B **39**, 6744–6756 (1989)

74. Keating, J.P., Mezzadri, F.: Entanglement in quantum spin chains, symmetry classes of random matrices, and conformal field theory. *Phys. Rev. Lett.* **94**, 050501 (2005)
75. Its, A.R., Mezzadri, F., Mo, M.Y.: Entanglement entropy in quantum spin chains with finite range interaction. *Commun. Math. Phys.* **284**(1), 117–185 (2008)
76. Calabrese, P., Cardy, J.: Entanglement entropy and quantum field theory. *J. Stat. Mech.* **2004**(06), P06002 (2004)
77. Calabrese, P., Cardy, J.: Entanglement entropy and conformal field theory. *J. Phys. A* **42**(50), 504005 (2009)
78. Peschel, I.: On the entanglement entropy for an XY spin chain. *J. Stat. Mech.* **2004**(12), P12005 (2004)
79. Castro-Alvaredo, O.A., Doyon, B.: Bi-partite entanglement entropy in massive $(1+1)$ -dimensional quantum field theories. *J. Phys. A* **42**(50), 504006 (2009)
80. Deift, P., Its, A., Krasovsky, I.: Asymptotics of Toeplitz, Hankel, and Toeplitz+Hankel determinants with Fisher-Hartwig singularities. *Ann. Math.* **174**(2), 1243–1299 (2011)
81. Szegő, G.: On certain Hermitian forms associated with the Fourier series of a positive function. *Comm. Sém. Math. Univ. Lund [Medd. Lunds Univ. Mat. Sem.]*, 1952(Tome Supplémentaire), pp. 228–238 (1952)
82. Hartwig, R.E., Fisher, M.E.: Asymptotic behavior of Toeplitz matrices and determinants. *Arch. Ration. Mech. Anal.* **32**(3), 190–225 (1969)
83. Basor, E.L., Tracy, C.A.: The Fisher-Hartwig conjecture and generalizations. *Physica A* **177**(1), 167–173 (1991)
84. NIST Digital Library of Mathematical Functions. <http://dlmf.nist.gov/>, Release 1.0.10 of 2015-08-07. Online companion to [95]
85. Dingle, R.B.: *Asymptotic Expansions: Their Derivation and Interpretation*. Academic Press, New York (1973)
86. Temme, N.M.: *Asymptotic Methods For Integrals*, Series In Analysis, vol. 6. World Scientific, Singapore (2014)
87. Olver, F.: *Asymptotics and Special Functions*. AKP Classics. Taylor & Francis, Abingdon (1997)
88. Forrester, P.J., Frankel, N.E.: Applications and generalizations of Fisher-Hartwig asymptotics. *J. Math. Phys.* **45**, 2003–2028 (2004)
89. Ehrhardt, T., Silbermann, B.: Toeplitz determinants with one Fisher-Hartwig singularity. *J. Funct. Anal.* **148**(1), 229–256 (1997)
90. Hernández-Santana, S., Gogolin, C., Ignacio Cirac, J., Acín, A.: Correlation decay in fermionic lattice systems with power-law interactions at nonzero temperature. *Phys. Rev. Lett.* **119**, 110601 (2017)
91. Patrick, K., Neupert, T., Pachos, J.K.: Topological quantum liquids with long-range couplings. *Phys. Rev. Lett.* **118**(26), 267002 (2017)
92. Wu, T.T., McCoy, B.M., Tracy, C.A., Barouch, E.: Spin-spin correlation functions for the two-dimensional Ising model: exact theory in the scaling region. *Phys. Rev. B* **13**, 316–374 (1976)
93. Claeys, T., Its, A., Krasovsky, I.: Emergence of a singularity for Toeplitz determinants and Painlevé V. *Duke Math. J.* **160**(2), 207–262, 11 (2011)
94. Claeys, T., Krasovsky, I.: Toeplitz determinants with merging singularities. *Duke Math. J.* **164**(15), 2897–2987, 12 (2015)
95. Olver, F.W.J., Lozier, D.W., Boisvert, R.F., Clark, C.W. (eds.): *NIST Handbook of Mathematical Functions*. Cambridge University Press, New York, NY (2010). Print companion to [84]
96. Harris, G., Martin, C.: Shorter notes: the roots of a polynomial vary continuously as a function of the coefficients. *Proc. Am. Math. Soc.* **100**(2), 390–392 (1987)
97. Itzykson, C.: *Toeplitz determinants as group averages*. Technical report (1968)