

2012

Atmospheric carbon dioxide retrieved from the Greenhouse gases Observing SATellite (GOSAT): Comparison with ground-based TCCON observations and GEOS-Chem model calculations

A Cogan
University of Leicester

H Boesch
University of Leicester

R Parker
University of Leicester

L Feng
University of Edinburgh

Paul Palmer
University of Edinburgh, pip@ed.ac.uk

See next page for additional authors
Follow this and additional works at: <https://ro.uow.edu.au/scipapers>



Part of the [Life Sciences Commons](#), [Physical Sciences and Mathematics Commons](#), and the [Social and Behavioral Sciences Commons](#)

Recommended Citation

Cogan, A; Boesch, H; Parker, R; Feng, L; Palmer, Paul; Blavier, J-F; Deutscher, Nicholas M.; Macatangay, Ronald; Notholt, Justus; Roehl, C M.; Warneke, Thorsten; and Wunch, Debra: Atmospheric carbon dioxide retrieved from the Greenhouse gases Observing SATellite (GOSAT): Comparison with ground-based TCCON observations and GEOS-Chem model calculations 2012.
<https://ro.uow.edu.au/scipapers/4708>

Atmospheric carbon dioxide retrieved from the Greenhouse gases Observing SATellite (GOSAT): Comparison with ground-based TCCON observations and GEOS-Chem model calculations

Abstract

We retrieved column-averaged dry air mole fractions of atmospheric carbon dioxide (XCO₂) from backscattered short-wave infrared (SWIR) sunlight measured by the Japanese Greenhouse gases Observing SATellite (GOSAT). Over two years of XCO₂ retrieved from GOSAT is compared with XCO₂ inferred from collocated SWIR measurements by seven ground-based Total Carbon Column Observing Network (TCCON) stations. The average difference between GOSAT and TCCON XCO₂ for individual TCCON sites ranges from -0.87 ppm to 0.77 ppm with a mean value of 0.1 ppm and standard deviation of 0.56 ppm. We find an average bias between all GOSAT and TCCON XCO₂ retrievals of -0.20 ppm with a standard deviation of 2.26 ppm and a correlation coefficient of 0.75. One year of XCO₂ was retrieved from GOSAT globally, which was compared to global 3-D GEOS-Chem chemistry transport model calculations. We find that the latitudinal gradient, seasonal cycles, and spatial variability of GOSAT and GEOS-Chem agree well in general with a correlation coefficient of 0.61. Regional differences between GEOS-Chem model calculations and GOSAT observations are typically less than 1 ppm except for the Sahara and central Asia where a mean difference between 2 to 3 ppm is observed, indicating regional biases in the GOSAT XCO₂ retrievals unobserved by the current TCCON network. Using a bias correction scheme based on linear regression these regional biases are significantly reduced, approaching the required accuracy for surface flux inversions. 2012. American Geophysical Union.

Keywords

calculations, dioxide, retrieved, greenhouse, gases, observing, satellite, gosat, comparison, ground, carbon, tcon, atmospheric, observations, geos, chem, model, GeoQUEST

Disciplines

Life Sciences | Physical Sciences and Mathematics | Social and Behavioral Sciences

Publication Details

Cogan, A., Boesch, H., Parker, R., Feng, L., Palmer, P., Blavier, J., Deutscher, N. M., Macatangay, R., Notholt, J., Roehl, C. M., Warneke, T. & Wunch, D. (2012). Atmospheric carbon dioxide retrieved from the Greenhouse gases Observing SATellite (GOSAT): Comparison with ground-based TCCON observations and GEOS-Chem model calculations. *Journal of Geophysical Research D: Atmospheres*, 117 (21), D21301.

Authors

A Cogan, H Boesch, R Parker, L Feng, Paul Palmer, J-F Blavier, Nicholas M. Deutscher, Ronald Macatangay, Justus Notholt, C M. Roehl, Thorsten Warneke, and Debra Wunch

Atmospheric carbon dioxide retrieved from the Greenhouse gases Observing SATellite (GOSAT): Comparison with ground-based TCCON observations and GEOS-Chem model calculations

A. J. Cogan,¹ H. Boesch,¹ R. J. Parker,¹ L. Feng,² P. I. Palmer,² J.-F. L. Blavier,³ N. M. Deutscher,⁴ R. Macatangay,⁵ J. Notholt,⁴ C. Roehl,³ T. Warneke,⁴ and D. Wunch³

Received 8 May 2012; revised 17 September 2012; accepted 21 September 2012; published 1 November 2012.

[1] We retrieved column-averaged dry air mole fractions of atmospheric carbon dioxide (X_{CO_2}) from backscattered short-wave infrared (SWIR) sunlight measured by the Japanese Greenhouse gases Observing SATellite (GOSAT). Over two years of X_{CO_2} retrieved from GOSAT is compared with X_{CO_2} inferred from collocated SWIR measurements by seven ground-based Total Carbon Column Observing Network (TCCON) stations. The average difference between GOSAT and TCCON X_{CO_2} for individual TCCON sites ranges from -0.87 ppm to 0.77 ppm with a mean value of 0.1 ppm and standard deviation of 0.56 ppm. We find an average bias between all GOSAT and TCCON X_{CO_2} retrievals of -0.20 ppm with a standard deviation of 2.26 ppm and a correlation coefficient of 0.75 . One year of X_{CO_2} was retrieved from GOSAT globally, which was compared to global 3-D GEOS-Chem chemistry transport model calculations. We find that the latitudinal gradient, seasonal cycles, and spatial variability of GOSAT and GEOS-Chem agree well in general with a correlation coefficient of 0.61 . Regional differences between GEOS-Chem model calculations and GOSAT observations are typically less than 1 ppm except for the Sahara and central Asia where a mean difference between 2 to 3 ppm is observed, indicating regional biases in the GOSAT X_{CO_2} retrievals unobserved by the current TCCON network. Using a bias correction scheme based on linear regression these regional biases are significantly reduced, approaching the required accuracy for surface flux inversions.

Citation: Cogan, A. J., et al. (2012), Atmospheric carbon dioxide retrieved from the Greenhouse gases Observing SATellite (GOSAT): Comparison with ground-based TCCON observations and GEOS-Chem model calculations, *J. Geophys. Res.*, *117*, D21301, doi:10.1029/2012JD018087.

1. Introduction

[2] Carbon dioxide (CO_2) is the dominant anthropogenic greenhouse gas and its atmospheric concentration has dramatically increased from a pre-industrial level of 280 ppm to a current value of about 390 ppm as a consequence of human

activities such as burning of fossil fuels or deforestation [*Intergovernmental Panel on Climate Change (IPCC)*, 2007; *Masarie and Tans*, 1995]. This increase in CO_2 concentrations is responsible for a change in global mean radiative forcing of 1.66 Wm^{-2} [*IPCC*, 2007] and it is expected that further increasing CO_2 concentrations will significantly alter our climate in the future [*IPCC*, 2001].

[3] Networks of surface in situ greenhouse gas sensors provide precise and accurate measurements of CO_2 concentrations. These measurements allow the quantification of large scale temporal, seasonal and latitudinal variations in CO_2 . However, their sparse and uneven global distribution results in large uncertainties in the natural carbon cycle for key regions such as tropical or boreal regions [*Hungerschoefer et al.*, 2010; *Gurney et al.*, 2002].

[4] As shown by numerous synthetic studies, densely-sampled satellite observations of CO_2 concentrations can help to reduce uncertainties in estimated regional carbon fluxes if the observations have precisions of 1 – 2 ppm on a regional scale with no regional to continental scale geographical biases [*Rayner and O'Brien*, 2001; *Houweling*

¹Earth Observation Science, Space Research Centre, Department of Physics and Astronomy, University of Leicester, Leicester, UK.

²School of GeoSciences, University of Edinburgh, Edinburgh, UK.

³Division of Geological and Planetary Sciences, California Institute of Technology, Pasadena, California, USA.

⁴Institute of Environmental Physics, Institute of Remote Sensing, University of Bremen, Bremen, Germany.

⁵Centre for Atmospheric Chemistry, School of Chemistry, University of Wollongong, Wollongong, New South Wales, Australia.

Corresponding author: A. J. Cogan, Earth Observation Science, Space Research Centre, Department of Physics and Astronomy, University of Leicester, Leicester LE1 7RH, UK. (ajc48@le.ac.uk)

©2012. American Geophysical Union. All Rights Reserved.
0148-0227/12/2012JD018087

et al., 2004; *Chevallier*, 2007; *Miller et al.*, 2007; *Feng et al.*, 2009; *Baker et al.*, 2010; *Hungershoefer et al.*, 2010; *Palmer et al.*, 2011]. However, *Palmer et al.* [2011] found that the benefit of the increased number of soundings of satellite observations is reduced with more correlated data.

[5] Satellite observations of short-wave infrared (SWIR) CO_2 absorption bands are well suited for constraining surface fluxes as they provide observations of column averaged dry air mole fraction of CO_2 (X_{CO_2}) with high precision and sensitivity to the planetary boundary layer [*Boesch et al.*, 2011; *Christi and Stephens*, 2004; *Kuang et al.*, 2002]. The use of SWIR measurements for retrievals of X_{CO_2} from space was demonstrated for the first time with the SCanning Imaging Absorption spectroMeter for Atmospheric CHartographY (SCIAMACHY) instrument onboard the ENVISAT satellite, which achieved precisions of 1–2% [*Barkley et al.*, 2006; *Buchwitz et al.*, 2005; *Reuter et al.*, 2010; *Schneising et al.*, 2008].

[6] The first dedicated greenhouse gas mission was launched in January 2009 by JAXA on a H-IIA rocket with the Greenhouse gases Observing SATellite (GOSAT) onboard it [*Kuze et al.*, 2009]. GOSAT contains the Thermal And Near-infrared Sensor for carbon Observation (TANSO) that comprises of two instruments; a Fourier Transform Spectrometer (FTS) and a Cloud and Aerosol Imager (CAI) that provides information about the scene, such as cloud quantities. The TANSO-FTS sensor measures radiance spectrain three SWIR bands between 0.756–0.775 μm , 1.56–1.72 μm and 1.92–2.08 μm , and in one thermal infrared (TIR) band between 5.6–14.3 μm with spectral resolutions between 0.257–0.367 cm^{-1} [*Kuze et al.*, 2009]. TANSO-FTS applies gain (low, medium or high) to the SWIR signals to amplify the signals to an appropriate voltage to compensate for high and low observed intensities. Additionally, it measures each polarization direction separately.

[7] TANSO-FTS nominally performs a cross-track scanning pattern with an instantaneous field of view (IFOV) of 15.8 mrad, equivalent to ~ 10.5 km diameter projected on to the Earth's surface. Until August 2010, the standard mode consisted of five cross-track points separated by ~ 158 km. This has since been changed to three points to reduce pointing errors caused by micro-vibrations which are most extreme at the largest off-nadir pointing angles [*Crisp et al.*, 2012]. Additionally, TANSO-FTS can measure in sun-glint mode within 20° of the sub-solar latitude and in specific observation mode that provides targeted observations for validation.

[8] Results of X_{CO_2} retrieved from GOSAT have previously been reported by other groups [*Oshchepkov et al.*, 2009; *Yokota et al.*, 2009; *Butz et al.*, 2011; *Morino et al.*, 2011; *Wunch et al.*, 2011b; *Yoshida et al.*, 2011; *Crisp et al.*, 2012; *Oshchepkov et al.*, 2012]. These include comparisons to ground-based measurements, global comparisons to model calculations and methods towards improving the retrieved X_{CO_2} precision.

[9] We describe our optimal estimation retrieval approach used to retrieve X_{CO_2} from GOSAT in Section 2. We compare these retrievals with coincident ground-based X_{CO_2} observations (Section 3) and to model calculations (Section 4). A bias correction scheme and its impact on X_{CO_2} retrieved from

GOSAT is discussed in Section 5, and in Section 6 we conclude the paper.

2. UoL-FP X_{CO_2} Retrieval Algorithm

[10] The University of Leicester Full Physics (UoL-FP) retrieval utilizes the algorithm developed for the NASA Orbiting Carbon Observation (OCO) mission [*Boesch et al.*, 2006, 2011; *Connor et al.*, 2008; *Crisp et al.*, 2004; *Parker et al.*, 2011], which was lost due to a launch vehicle malfunction [*Boesch et al.*, 2011]. The UoL-FP algorithm and the algorithm used for the NASA Atmospheric CO_2 Observations from Space (ACOS) project and the NASA OCO-2 mission [*Crisp et al.*, 2012; *O'Dell et al.*, 2012], are two parallel developments based on the OCO algorithm and thus both algorithms follow a similar retrieval strategy. While the UoL-FP algorithm utilizes the OCO algorithm, the ACOS algorithm is a re-development of it such that the implementation of both algorithms are independent of each other. Both retrieval algorithms differ in their definition of the state vector, a priori values, and a priori covariances, especially in the treatment of aerosols and cirrus clouds. There are also differences in spectroscopy, sounding selection methods, and postscreening criteria. All of these aspects can lead to differences in algorithm performance and X_{CO_2} .

[11] The algorithm has been designed to retrieve X_{CO_2} from SWIR spectra by simultaneously fitting the 0.76 μm O_2 A band, the 1.61 μm and the 2.06 μm CO_2 bands [*Boesch et al.*, 2006, 2011; *Connor et al.*, 2008]. The algorithm employs an inverse method, where an iterative retrieval system based on Bayesian optimal estimation (maximum likelihood estimation) fits the simulated spectral radiance to the measured spectral radiance in order to infer X_{CO_2} [*Rodgers*, 2000]. The OCO algorithm has been altered to perform retrievals of X_{CO_2} by simultaneously fitting the GOSAT SWIR bands, using the wavelength ranges of 0.758–0.772 μm , 1.588–1.623 μm , and 2.040–2.083 μm .

[12] The forward model that simulated the measured spectra includes solar, radiative transfer, and instrument models to simulate the spectral radiance of a scene. We use the low-streams interpolation functionality [*O'Dell*, 2010] to accelerate the LIDORT radiative transfer model [*Spurr et al.*, 2001], which is combined with a fast 2-orders-of-scattering vector radiative transfer code [*Natraj and Spurr*, 2007].

[13] The state vector gives the retrieved parameters and consists of a 20-level profile of CO_2 volume mixing ratio (VMR) and 20-level logarithmic extinction profiles of cirrus and two aerosol types. In addition, the state vector includes multiplicative scaling factors for CH_4 VMR and H_2O VMR, an additive offset for a temperature profile, surface pressure, surface albedo, spectral albedo slope, and spectral shift/stretch. We also retrieve an additive O_2 A band intensity offset to mitigate the effects of fluorescence and the GOSAT Band 1 non-linear response to the intensity of incident radiation, that is currently being characterized and calibrated [*Crisp et al.*, 2012; *Frankenberg et al.*, 2011; *Suto et al.*, 2011].

[14] The a priori temperature and water vapor profiles and surface pressure were obtained from the European Centre for Medium-Range Weather Forecasts (ECMWF) Operational Analyses data interpolated to the location and time of each

Table 1. Threshold Values for Parameters Used in Postscreening the UoL-FP Retrieval Algorithm v3G

Parameter	Lower Limit	Upper Limit
Retrieval convergence outcome	1	2
χ^2 Band 1	0.6	1.3
χ^2 Band 2	0.6	1.5
χ^2 Band 3	0.4	1.5
A Posterior Error (ppm)		1.6
Retrieved - A priori surface pressure (hPa)	0	16
Retrieved aerosol 1 optical depth		0.3
Retrieved aerosol 2 optical depth		0.4
Retrieved ice optical depth		0.05, 0.03 ^a
Retrieved total optical depth		0.5, 0.3 ^a
8–11 μm Brightness Temperature Difference		0
Number of divergences		2
Cirrus test	0.98	1.05
Retrieved temperature scale (K)	-2	
Retrieved H ₂ O scale factor	0.7	1.3
Retrieved - A priori band 2 spectral shift (cm ⁻¹)	-0.022	0.022
Retrieved band 1 zero level offset	-0.002	0.0014
Retrieved albedo band 1/band 3		4, 2 ^a

^aStricter postscreen threshold limit.

GOSAT sounding, with corrections for altitude. The a priori information for the CH₄ profile was taken from the TM3 model provided by S. Houweling (personal communication, 2009). The a priori CO₂ profiles were obtained from 2009 fields of the Laboratory of Climate Sciences and Environment (LCSE) General Circulation Model of Laboratoire de Meteorologie Dynamique (LMDZ) [Pickett-Heaps *et al.*, 2011]. A correction of 18.25 ppm was applied to the 2009 CO₂ profiles that was derived from a comparison with National Oceanic and Atmospheric Administration (NOAA) observations over Mauna Loa. Additionally, yearly increments of 1.63 ppm and 2.36 ppm were taken from global NOAA observations [Masarie and Tans, 1995] and applied to the CO₂ profiles for 2010 and 2011 respectively, to account for increasing atmospheric CO₂ concentrations. The albedo a priori was inferred using the reflectance of the measured radiance at continuum wavelengths of each band. The spectral dispersion a priori was calculated by comparing the measured radiance to the position of a known solar line at 12985.163 cm⁻¹.

[15] The a priori aerosol profiles are both set up as a Gaussian-shaped aerosol extinction profile with a height and width of 2 km. The aerosol optical properties for the two aerosol types that are used to describe the unknown scene-dependent aerosol are calculated for carbonaceous/dusty continental and carbonaceous/sooty continental aerosol mixtures described in Kahn *et al.* [2001], where the optical properties of spherical aerosol particles were computed using a poly-disperse Mie scattering code [de Rooij and van der Stap, 1984] and non-spherical aerosol particles were computed using a T-matrix code [Mishchenko and Travis, 1998]. A Gaussian-shaped extinction profile with latitudinal dependent height and width based on Eguchi *et al.* [2007] was used for the cirrus profile. The cirrus optical properties were taken from the Baum model [Baum *et al.*, 2005] for non-spherical ice particles with an effective radius of 60 μm . A total optical

depth of 0.15 was used globally, with each aerosol/cirrus profile having a total column optical depth of 0.05 at the O₂ A Band.

[16] For all retrievals we use a single a priori covariance matrix with a column variability of 12 ppm for CO₂ (based on global estimates of Dufour and Breon [2003]) that decreases with altitude, from an uncertainty of $\sim 10\%$ at the boundary layer to $\sim 1\%$ in the stratosphere. For the surface pressure we use a standard deviation of 4 hPa to allow for more difficult topographies. To account sufficiently for the expected large variability of aerosols and cirrus clouds, we use a standard deviation with a factor of 50 for each atmospheric level. A standard deviation of 0.32 is used for both CH₄ and H₂O scale factors. For the temperature offset we use a standard deviation of 3.2 K. We use a standard deviation of 1 for albedo and standard deviation of 0.01 cm⁻¹ for albedo slope of each band.

[17] The retrieval utilizes tabulated spectroscopic parameters for each trace gas; CO₂ and O₂ include line-mixing and are taken from v3.2 of the OCO line-lists [Crisp *et al.*, 2012], whereas CH₄ and H₂O are from the TCCON line-lists (Geoffrey Toon, personal communication, 2011). These are based on HITRAN08 [Rothman *et al.*, 2009] with updates to CO₂ [Toth, 2005], H₂O [Toth *et al.*, 2008; Jenouvrier *et al.*, 2007] and CH₄ [Frankenberg *et al.*, 2008].

[18] We apply the recommended radiometric calibration and solar diffuser degradation correction to the latest versions of the GOSAT Level 1B files (050.050C, 080.080C, 100.100C, 110.110C and 130.130C) acquired via the GOSAT User Interface Gateway. We calculate the noise from the standard deviation of the out-of-band signal and approximate the measured radiance by taking the average of the polarized intensities.

[19] We only use spectra over land with a solar zenith angle less than 70° and signal-to-noise ratio higher than 50 in each band. We also prescreen for non-saturated measurements using mean band 2 out-of-band radiances $< 3.5 \times 10^{-5}$ and mitigate the effects of micro-vibrations [Suto *et al.*, 2011] by limiting the along-track and cross-track angle errors to within 3-sigma values (inferred from August 2009) of $< 0.05^\circ$ and $< 0.007^\circ$ respectively, such that large pointing errors are removed. Additionally, we calculate the surface pressure for all locations where U.S. Geological Survey (USGS) GTOPO30 altitude information exists within an IFOV (~ 60 points), and screen for areas of large surface variations where the surface pressure may vary significantly, using a standard deviation threshold of < 10 hPa.

[20] Similar to Taylor *et al.* [2012], we use a cloud detection method based on the difference between retrieved clear-sky surface pressure from an O₂ A band retrieval and surface pressure from ECMWF interpolated to the location and time, where the maximum difference allowed is 20 hPa [Parker *et al.*, 2011]. Our approach uses only a small spectral window (13056 to 13074.8 cm⁻¹) where the O₂ A band absorption shows only a weak dependence on temperature.

[21] We apply a number of postscreening criteria to the successful retrievals to reduce the scatter and to remove problematic and potentially biased retrievals. An overview of the empirically derived postscreening criteria is shown in Table 1, with its application shown for a combination of seven TCCON sites (see Section 3) over a two year period in

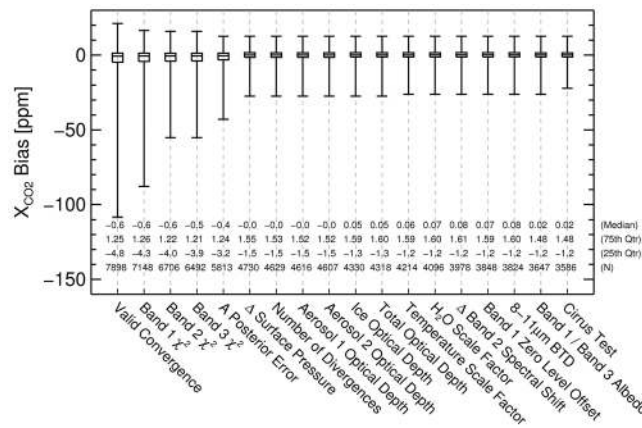


Figure 1. Box-whisker plot of X_{CO2} retrieved from GOSAT for seven TCCON sites combined between April 2009 and May 2011. The effect of each postscreen parameter is shown sequentially along the x-axis.

Figure 1. The post screen threshold values were inferred from correlations of various parameters with the X_{CO2} bias between GOSAT and TCCON for coincident observations over Lamont/USA and Darwin/Australia (see Section 3) and by considering the distribution and scatter of global X_{CO2} data retrieved for August 2009. The postscreen selects only converged retrievals with a good spectral fit (where the normalized χ^2 of the fit residual is ~ 1) and a low posterior error of X_{CO2} (<1.6 ppm). In addition, we also filter for a number of parameters related to thin clouds and aerosols, which include: the difference between retrieved and ECMWF surface pressure (0–16 hPa), the retrieved cirrus optical depth (<0.05), the band 4 (TIR) brightness temperature difference (BTD) between 8 μm and 11 μm (where >0 indicates cloud/cirrus), a test for cirrus based on the radiance ratio of 2.1038 μm to 2.0906 μm (where cirrus absorption occurs below a value of 0.98), and the ratio of 0.76 μm to 2.06 μm albedo that indicates ice/snow if the value is >4. Scenes containing a large retrieved aerosol amount (AOD >0.5) are also removed. We also find correlations of temperature and water vapor scale factors have an affect with the X_{CO2} bias; therefore we remove cases where these have clear outliers, which indicates a poor retrieval.

[22] On average, we observed a bias in retrieved surface pressure of ~ 4 hPa, which is lower than reported by *Crisp et al.* [2012]. This bias has been suggested to be due to deficiencies in the O₂ A band spectroscopy and that scaling the line strength of O₂ could reduce it [Butz et al., 2011]. For our retrieval, instead of scaling the line strength, we correct for the systematic overestimates of surface pressure by normalizing the retrieved X_{CO2} with the ratio of retrieved surface pressure and ECMWF surface pressure.

[23] A total of 1,718,561 GOSAT observations globally over land between June 2009 and May 2010 have been processed, reducing to 764,290 scenes (44.47%) once prescreened. These were then cloud-screened, leaving 372,479 scenes (21.67%) to be retrieved, which reduced to a total of 62,278 (3.62%) retrievals of X_{CO2} once postscreened. Details of this are given in Table 2. Additionally, we processed a total of 172,193 GOSAT observations over land for seven sites of the Total Carbon Column Observing Network (TCCON) between April 2009 and May 2011. Once prescreened, cloud-screened and postscreened 5,860 (3.40%) observations remained, details of which can be found in Table 3.

3. Comparison With the Total Carbon Column Observing Network (TCCON)

[24] The Total Carbon Column Observing Network (TCCON) is a network of ground-based, solar absorption, near infrared, Fourier transform spectrometers that measure atmospheric columns of the gases CO₂, CO, CH₄, H₂O and others with a precision of 0.25% for CO₂ [Wunch et al., 2010, 2011a], making it an ideal data set for validation of retrieved X_{CO2} from GOSAT. Since the TCCON instruments are direct solar-viewing, the effects of aerosol and high cirrus cloud are negligible. To maintain consistency between different TCCON observatories, all sites use the same instrumentation and the same software for data processing and analysis. This includes the conversion of raw interferograms into spectra, which are then spectrally fitted using the GFIT algorithm with subsequent quality controls applied to the column abundances [Wunch et al., 2011a]. Wunch et al. [2010] compared the retrieved X_{CO2} from TCCON with aircraft observations using 14 coincident profiles and found that a single, global calibration factor of 0.989 accurately matches the data within the error. Subsequently, Messerschmidt et al.

Table 2. UoL-FP v3G Retrieval Statistics for 1 Year of Daytime, Land Only Global GOSAT Observations

Year Month	Total From L1B	Passed Prescreen	O ₂ Completed	Cloudy Exposures	Clear Exposures	Retrieval Completed	Passed Postscreen
200906	126745	55303	51768	27863	23905	22881	5724
200907	139663	61514	57799	31098	26701	25660	7474
200908	139615	60201	56234	30330	25904	24928	7306
200909	141572	62622	56988	29217	27771	27012	6761
200910	150659	70907	63121	27433	35688	34135	6197
200911	146340	72724	64645	24510	40135	37844	4563
200912	149908	74701	67443	24562	42881	39356	4358
201001	146740	65452	58947	23001	35946	33295	4213
201002	145925	62328	56048	24161	31887	30089	3492
201003	158284	64685	59158	27064	32094	30811	3691
201004	138638	55586	50783	26310	24473	23207	3484
201005	134472	58267	54104	29010	25094	23719	5015
Total	1718561	764290	697038	324559	372479	352937	62278

Table 3. Statistics for the UoL-FP v3G Comparison to TCCON, Where the Bias, σ and r Were Calculated Using Coincident Daily Mean Data and Other Parameters Calculated From Individual Coincident Points

TCCON Site	Total From LIB	Passed Prescreen	Percent Cloudy	Passed Postscreen	Coincident Days	Bias (ppm)	σ (ppm)	r (Pearson)	Single Sounding σ (ppm)	A Posterior Error (ppm)	Mean Smoothing Error Difference (ppm)	σ Smoothing Error Difference (ppm)
Bialystok (53.230°N)	29376	8321	61.16	459	54	0.09	2.28	0.83	2.20	1.24	-0.21	0.32
Bremen (53.100°N)	24054	5484	66.36	260	19	0.50	2.96	0.56	2.00	1.20	-0.06	0.22
Orleans (47.970°N)	24047	9511	61.32	715	47	0.18	2.44	0.79	2.37	1.20	-0.50	0.17
Park Falls (45.945°N)	33277	5785	55.52	421	86	-0.35	2.04	0.85	3.05	1.22	-0.40	0.26
Lamont (36.604°N)	30984	9888	39.44	2445	261	0.41	2.12	0.74	2.85	1.14	-0.05	0.24
Darwin (12.424°S)	17273	4511	39.64	990	54	-0.87	2.35	-0.10	3.19	0.89	-0.08	0.07
Wollongong (34.406°S)	13182	4971	50.45	570	56	0.77	2.43	0.31	2.90	1.09	-0.26	0.10
Total	172193	48471	53.57	5860	577	-0.20	2.26	0.75	2.46	1.14	-0.14	0.26

[2011] found additional European TCCON sites to be consistent with this calibration factor. Additionally, an air mass dependent correction factor was applied as described in *Wunch et al.* [2011a].

[25] We performed X_{CO_2} retrievals from GOSAT between April 2009 and May 2011 over seven TCCON sites; Lamont/USA, Park Falls/USA, Orleans/France, Bialystok/Poland, Bremen/Germany, Darwin/Australia and Wollongong/Australia. These sites were selected to provide northern and southern hemispheric data with at least 200 GOSAT soundings per site. We use all prescreened, cloud-screened and postscreened GOSAT measurements over land within a coincidence criteria of 5° of each TCCON site and ± 2 hours of TCCON observations. The coincidence criteria is a compromise between a sufficient number of soundings and the spatial distance from a TCCON site.

[26] Figure 2 shows a comparison of the retrieved X_{CO_2} from GOSAT with coincident TCCON X_{CO_2} data for these seven TCCON sites (without averaging kernels applied). It also shows the correlation of coincident daily mean GOSAT X_{CO_2} with the average of all TCCON X_{CO_2} within ± 2 hours of coincident GOSAT data. We observe the GOSAT X_{CO_2} to have values consistent with TCCON retrievals for all sites for the entire time period and find a very good agreement between coincident data. In particular we find the seasonal cycle observed for northern hemispheric sites is well reproduced by GOSAT with correlation coefficients between 0.56 and 0.85, similar to that observed by *Butz et al.* [2011], *Oshchepkov et al.* [2012], and *Wunch et al.* [2011b]. Consistent to the TCCON measurements, the two southern hemisphere sites, Darwin and Wollongong, show weaker seasonal cycles than the northern hemisphere sites. However, we find the retrieved X_{CO_2} from GOSAT over Wollongong to have a slightly enhanced seasonal cycle.

[27] Gaps exist in the GOSAT and TCCON time-series due to clouds and instrumental issues. The number of points per site varies mainly due to seasonal cloud cover and the number of overpassing orbits. The number of soundings of each station varies from 260 for Bremen to 2445 for Lamont, with the number of coincident days with TCCON between 19 and 261, respectively. The Lamont site has the largest sample size due to multiple orbit overpasses within the coincidence criteria and less clouds than the other sites at higher absolute latitudes.

[28] Using the data for all sites (Figure 2, bottom right) we calculate the average bias of GOSAT compared to TCCON as -0.20 ppm with a standard deviation of 2.26 ppm (using daily means), which is similar to that found by *Butz et al.* [2011] and lower than reported by other algorithms [e.g., *Crisp et al.*, 2012; *Morino et al.*, 2011; *Oshchepkov et al.*, 2012]. Using single soundings instead of daily means, we find a standard deviation of 2.46 ppm. The average of the bias per station is 0.10 ppm with a range of -0.87 to 0.77 ppm and a standard deviation of 0.56 ppm (using daily mean data). We find the mean correlation coefficient between GOSAT and TCCON observations to be 0.75. The mean bias and scatter are largely influenced by the large number of soundings over the Lamont site. The highest scatter is observed for Bremen, which has the lowest number of scenes (see Table 3 for details).

[29] The standard deviation of the retrieved X_{CO_2} inferred from comparisons to coincident TCCON data is substantially

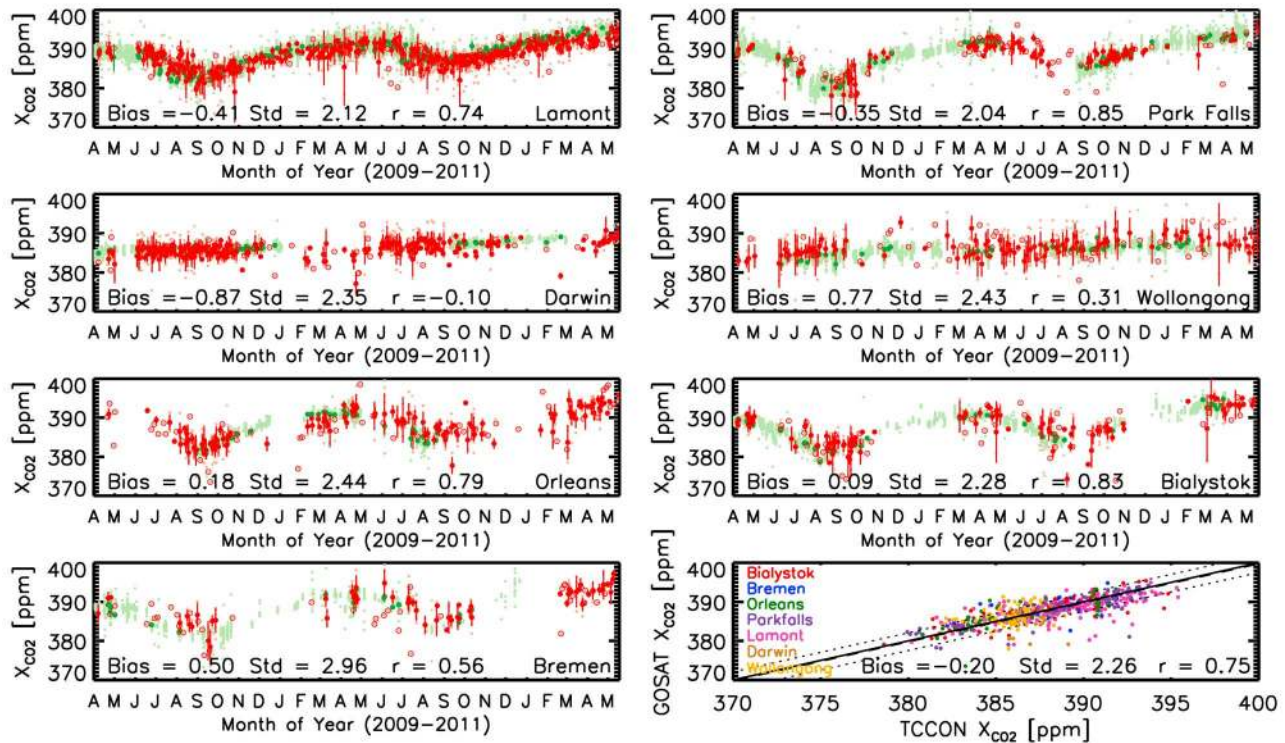


Figure 2. Comparison of retrieved X_{CO_2} from GOSAT with retrieved X_{CO_2} from seven TCCON site for coincident cloud-screened observations within 2 hours and 5° between April 2009 and May 2011. All TCCON data shown in light green, coincident daily mean TCCON shown in dark green, all GOSAT data shown in light red and daily mean GOSAT shown in dark red (with daily mean points with only one value per day are represented by open circles). The average difference between the daily means is given as the bias (ranging from -0.87 to 0.77 ppm), the standard deviation of daily means by the Std (between 2.04 and 2.96 ppm) and the correlation coefficient of daily means by r (-0.10 at Darwin to 0.85 at Park Falls). The lower right panel gives the correlation of daily mean coincident retrieved GOSAT X_{CO_2} with daily mean TCCON X_{CO_2} within ± 2 hours for the seven sites. This gives an overall bias of -0.20 ppm, scatter of 2.26 ppm and correlation of 0.75 between GOSAT and TCCON X_{CO_2} .

(factor of ~ 2 on average) larger than that predicted from the a posteriori error, which we find on average to be 1.14 ppm. The additional scatter observed is likely introduced by cloud perturbations, variations of aerosols, and other geophysical parameters. A similar value is reported by *O'Dell et al. [2012]* from simulations.

[30] There are some outliers between GOSAT and TCCON retrievals that have passed our screening and are likely due to scattering caused by undetected clouds or aerosols. Thus, we have also tested the effect of applying stricter postscreening, which when applied caused many of these outliers to be removed, reducing the mean bias to -0.08 ppm and the scatter to 1.92 ppm (of daily means), but at the cost of the number of exposures (see Table 4 for details).

[31] This comparison has not taken into account the effect of the different averaging kernels \mathbf{A} and a priori, which describe the sensitivity of a retrieval algorithm to the true state throughout the atmosphere [*Rodgers, 2000; Rodgers and Connor, 2003*]. The retrieved X_{CO_2} for GOSAT and TCCON depends on the averaging kernel and the a priori used in the retrieval algorithm according to:

$$\mathbf{X}_{CO_2} = \mathbf{h}^T \mathbf{x}_a + \mathbf{h}^T \mathbf{A} (\mathbf{x} - \mathbf{x}_a) \quad (1)$$

where \mathbf{h}^T is the transpose of the pressure weighting function [*O'Dell, 2010*], \mathbf{x} is the true VMR profile, and \mathbf{x}_a is the a priori VMR profile. A consequence of equation (1) is that the true and the retrieved X_{CO_2} will differ if \mathbf{A} is different from the Unity matrix. This difference is referred to as the smoothing error and it will be different for the GOSAT and TCCON retrievals due to their different averaging kernels and a priori values.

[32] We have assessed this effect on the comparison of X_{CO_2} retrievals from GOSAT and TCCON by calculating the X_{CO_2} retrieved from GOSAT and TCCON using GEOS-Chem model (described in Section 4) calculations as the true CO_2 profile. Since the GEOS-Chem model calculations will not necessarily represent the true atmospheric CO_2 profiles these values for smoothing error differences will only represent a rough estimate.

[33] For each of the seven TCCON sites considered, GEOS-Chem was interpolated temporally to the observation time of TCCON and GOSAT using the GEOS-Chem grid cell that includes the TCCON site. The averaging kernels were applied to GEOS-Chem for the period of April 2009 to December 2010 where both model, TCCON and GOSAT data exist. Only TCCON data that was temporally closest to

Table 4. Statistics for the UoL-FP v3G Comparison to TCCON With Stricter Postscreen, Where the Bias, σ and r Were Calculated Using Coincident Daily Mean Data and Other Parameters Calculated From Individual Coincident Points

TCCON Site	Total From LIB	Passed Prescreen	Percent Cloudy	Passed Postscreen	Coincident Days	Bias (ppm)	σ (ppm)	r (Pearson)	Single Sounding σ (ppm)	A Posterior Error (ppm)	Mean Smoothing Error Difference (ppm)	σ Smoothing Error Difference (ppm)
Bialystok (53.230°N)	29376	8321	61.16	179	28	0.05	1.62	0.91	1.79	1.22	-0.21	0.32
Bremen (53.100°N)	24054	5484	66.36	87	8	-0.60	1.99	0.77	1.46	1.13	-0.06	0.22
Orleans (47.970°N)	24047	9511	61.32	326	37	0.02	2.04	0.83	1.86	1.14	-0.50	0.17
Park Falls (45.945°N)	33277	5785	55.52	241	51	-0.23	1.50	0.84	2.65	1.19	-0.40	0.26
Lamont (36.604°N)	30984	9888	39.44	1448	194	-0.17	1.70	0.83	2.23	1.13	-0.05	0.24
Darwin (12.424°S)	17273	4511	39.64	711	47	-0.45	2.15	-0.06	2.04	0.85	-0.08	0.07
Wollongong (34.406°S)	13182	4971	50.45	363	48	0.70	2.14	0.48	1.96	1.04	-0.26	0.10
Total	172193	48471	53.57	3355	413	-0.08	1.84	0.81	1.92	1.11	-0.14	0.26

GOSAT data, which was coincident within ± 2 hours and 5° of each TCCON site was used.

[34] The mean smoothing errors of TCCON and GOSAT were calculated as 0.12 ppm and 0.27 ppm respectively. The mean smoothing error difference between the model X_{CO₂} with GOSAT averaging kernels applied and the model X_{CO₂} with TCCON averaging kernels applied was found to be -0.14 ppm. The average of the mean smoothing error difference per station is -0.22 ppm with Lamont having the smallest mean smoothing error difference of -0.05 ppm and Orleans having the largest mean smoothing error difference of -0.50 ppm. The standard deviation of the mean smoothing error difference per site is 0.18 ppm. The mean of the scatter of the smoothing error difference per station is 0.19 ppm, with a standard deviation of 0.09 ppm. We observe the smoothing error difference to have a small seasonal cycle dependence, with northern hemispheric sites varying from approximately -1.5 ppm to 0.5 ppm and a lower amplitude for southern hemisphere stations where the seasonal cycle is reduced. Hence, for southern hemispheric sites the difference of the smoothing errors has a very small impact on the comparison of GOSAT with TCCON. However, for northern hemispheric sites there is a seasonal cycle dependence between GOSAT and TCCON X_{CO₂} due to the smoothing error difference (see Figure 3). If we apply the point-by-point smoothing error difference to the coincident TCCON data, we find the mean bias of GOSAT compared to TCCON to increase by 0.14 ppm but the standard deviation and correlation coefficient to remain the same (see Table 5 for further details). It cannot be expected that the estimates are necessarily representing the correct value for each individual sounding as this would require that the model reproduces the shape of the CO₂ profile at each time step and location. Indeed, we find that including the smoothing error estimates from GEOS-Chem to the GOSAT-TCCON comparisons worsens the comparisons for some sites while it improves it for others.

4. Comparison to the GEOS-Chem Chemistry Transport Model

[35] We compare one year of GOSAT X_{CO₂} retrievals with CO₂ atmospheric concentrations from the GEOS-Chem global 3-D chemistry transport model (v8-02-01) [Feng *et al.*, 2011]. The GEOS-Chem simulations use assimilated GEOS-5 meteorology from the Global Modeling and Assimilation Office based at NASA Goddard to drive the model. For the surface CO₂ fluxes, GEOS-Chem assimilates annual fossil fuel emissions estimated from CDIAC, biofuel emissions obtained from Yevich and Logan [2003] climatology, monthly biomass burning emissions extracted from the third version of the Global Fire Emission Database (GFEDv3) that uses observations of the land surface by ground-based and satellite instruments, monthly ocean fluxes that are derived from sea-surface pCO₂ observations [Takahashi *et al.*, 2009], and biospheric fluxes that are computed using the CASA biosphere model [Randerson *et al.*, 1997]. The CASA model is three hourly and is constrained by GEOSmeteorology output and Normalized Difference Vegetation Index (NDVI). The mixing depths and surface fields are updated every three hours and the GEOS-5 meteorology is updated every six hours. The 4D fields include

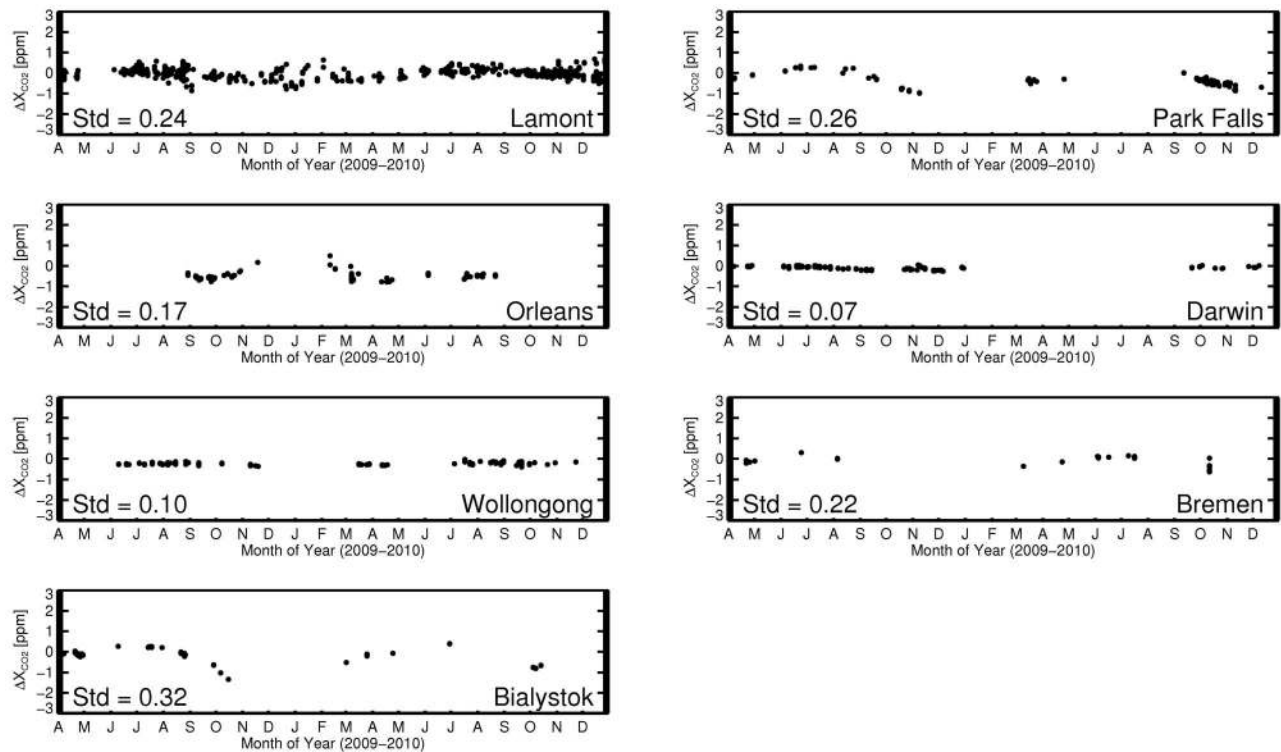


Figure 3. Calculated smoothing error differences for seven TCCON sites, for coincident cloud-screened observations within 2 hours and 5° between April 2009 and December 2010. The standard deviation of the smoothing error difference values are given by the Std (between 0.07 and 0.32 ppm).

47 vertical levels and a horizontal grid resolution of 2° latitude by 2.5° longitude.

[36] The GEOS-Chem simulations are forced by posterior fluxes inferred from the GLOBALVIEW CO₂ product, that includes 2009 to 2010 data [GLOBALVIEW-CO₂, 2011]. The GLOBALVIEW data from 78 surface sites are assimilated to estimate monthly surface fluxes over 144 global regions by

using an ensemble Kalman Filter (EnKF) [Feng *et al.*, 2009, 2011]. Feng *et al.* [2011] reported that the GEOS-Chem model is within 1.5 ppm of free and upper troposphere aircraft vertical profile measurements and CO₂ retrieved from Atmospheric InfraRed Sounder (AIRS) observations. Additionally, GEOS-Chem is on average within 0.5 to 1.0 ppm of observed partial CO₂ columns from the HIAPER Pole-to-Pole

Table 5. Statistics for the UoL-FP v3G Comparison to TCCON With and Without TCCON Data Being Corrected by the Smoothing Error Difference (SED) Between GOSAT and TCCON^a

TCCON Site	Bias Without SED (ppm)	σ Without SED (ppm)	r Without SED (Pearson)	Bias With SED (ppm)	σ With SED (ppm)	r With SED (Pearson)	Bias Difference (ppm)	σ Difference (ppm)	r Difference (Pearson)
Bialystok (53.230°N)	-0.13	2.34	0.73	-0.34	2.47	0.7	-0.21	0.13	-0.03
Bremen (53.100°N)	0.43	2.73	0.64	0.39	2.77	0.64	-0.04	0.04	0.00
Orleans (47.970°N)	-0.44	2.48	0.73	-0.91	2.44	0.74	-0.47	-0.04	0.00
Park Falls (45.945°N)	-0.37	2.84	0.77	-0.71	2.85	0.77	-0.34	0.01	0.00
Lamont (36.604°N)	-0.08	2.23	0.66	-0.09	2.23	0.66	-0.01	0.00	0.00
Darwin (12.424°S)	-0.96	2.36	0.09	-1.06	2.35	0.10	-0.10	-0.01	0.01
Wollongong (34.406°S)	0.91	2.47	0.24	0.67	2.47	0.24	-0.24	0.00	0.00
Total	-0.15	2.44	0.66	-0.29	2.44	0.66	-0.14	0.00	0.00

^aThe bias, σ and r were calculated using coincident daily mean data and other parameters calculated from individual coincident points, between April 2009 and December 2010.

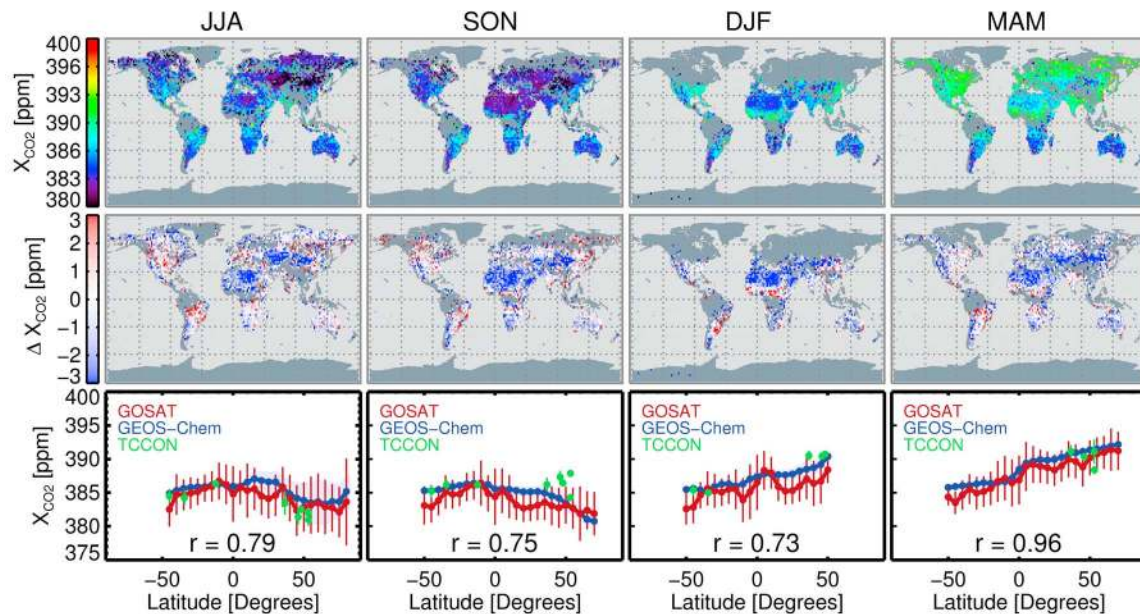


Figure 4. Comparison of X_{CO_2} retrieved from GOSAT and X_{CO_2} calculated from GEOS-Chem CO_2 profiles convolved with the scene-specific GOSAT averaging kernel. Shown for each season is (top) X_{CO_2} retrieved from GOSAT, (middle) the difference between GOSAT and GEOS-Chem, and (bottom) a zonal mean comparison of them. The global maps indicate the largest differences are observed over desert regions, such as the Sahara and central Asia. The zonal mean comparison shows a very good agreement between GOSAT and GEOS-Chem. It also includes the average TCCON X_{CO_2} from each site which in general agrees, with observed differences mostly due to zonal averaging of GOSAT/GEOS-Chem data.

Observation (HIPPO) project (James Barlow, personal communication, 2012). The GEOS-Chem model vertical transport errors are estimated to be less than ~ 2 ppm. This is supported by complementary model evaluation studies of CH_4 , CH_3Cl , and SF_6 [e.g., Fraser et al., 2011; Patra et al., 2011]. We have compared TCCON X_{CO_2} with that of GEOS-Chem (convolved with the TCCON averaging kernels) for each of the seven sites considered and find GEOS-Chem to have a mean bias of -0.09 ppm, standard deviation of 1.23 ppm and correlation coefficient of 0.93, comparing better than GOSAT with TCCON (see Figure A1). Based on our current understanding of model performance we conclude that the model should well reproduce large scale features of the atmospheric CO_2 distribution and that differences between GOSAT and GEOS-Chem are likely due to GOSAT retrieval biases. Although, model errors could also contribute to any observed differences.

[37] Figure 4 shows the comparison between X_{CO_2} from GOSAT and GEOS-Chem for each season, where the GEOS-Chem CO_2 profiles were interpolated to the locations and times of the GOSAT observations, and convolved with the averaging kernel (equation (1)) to obtain X_{CO_2} as measured by GOSAT. Overall, the spatial and temporal distribution of X_{CO_2} agrees well between GOSAT and GEOS-Chem. The mean difference observed between GOSAT and GEOS-Chem X_{CO_2} varies from -1.43 to -0.82 ppm seasonally, with the standard deviation ranging from 2.41 to 2.71 ppm. We find high correlations of the seasonal latitudinal gradient with correlation coefficients ranging between 0.73 and 0.96, but

slightly poorer global point-by-point correlation coefficients with values between 0.37 and 0.64. Between June 2009 and May 2010 we find the correlation between the GOSAT and GEOS-Chem annual mean latitudinal gradient is 0.76 and the annual spatial variability to have a global mean difference of -1.22 ppm, standard deviation of 2.59 ppm and correlation of 0.61 (not shown in figures).

[38] Over desert regions such as the Sahara, Saudi Arabia and Australia, we find differences between GOSAT and GEOS-Chem of up to 3 ppm. The medium gain mode is predominantly used over desert areas where surface reflectance causes the signal intensity to be high. Suto et al. [2011] found that TANSO-FTS instrument micro-vibrations produced a larger effect on medium gain observations and X_{CO_2} retrievals of medium gain have been observed to be $\sim 1\%$ higher than that of high gain [Crisp et al., 2012]. However, we find for desert regions observed with the high gain mode, such as central Asia, also give similar differences in X_{CO_2} compared to GEOS-Chem. Since all these regions include high albedo in the 1.61 and 2.06 μm CO_2 bands and high levels dust, the X_{CO_2} difference is not solely due to gain issues (as suggested by Crisp et al. [2012]) but also potentially an aerosol or other instrumental related issue.

[39] The time series of X_{CO_2} from GOSAT and GEOS-Chem for a number of different regions are shown in Figure 5. We find the seasonal cycle to match very well between GOSAT and GEOS-Chem for both northern and southern hemispheres, but we observe a difference of 1.5 ppm in the northern hemisphere throughout the year and a smaller

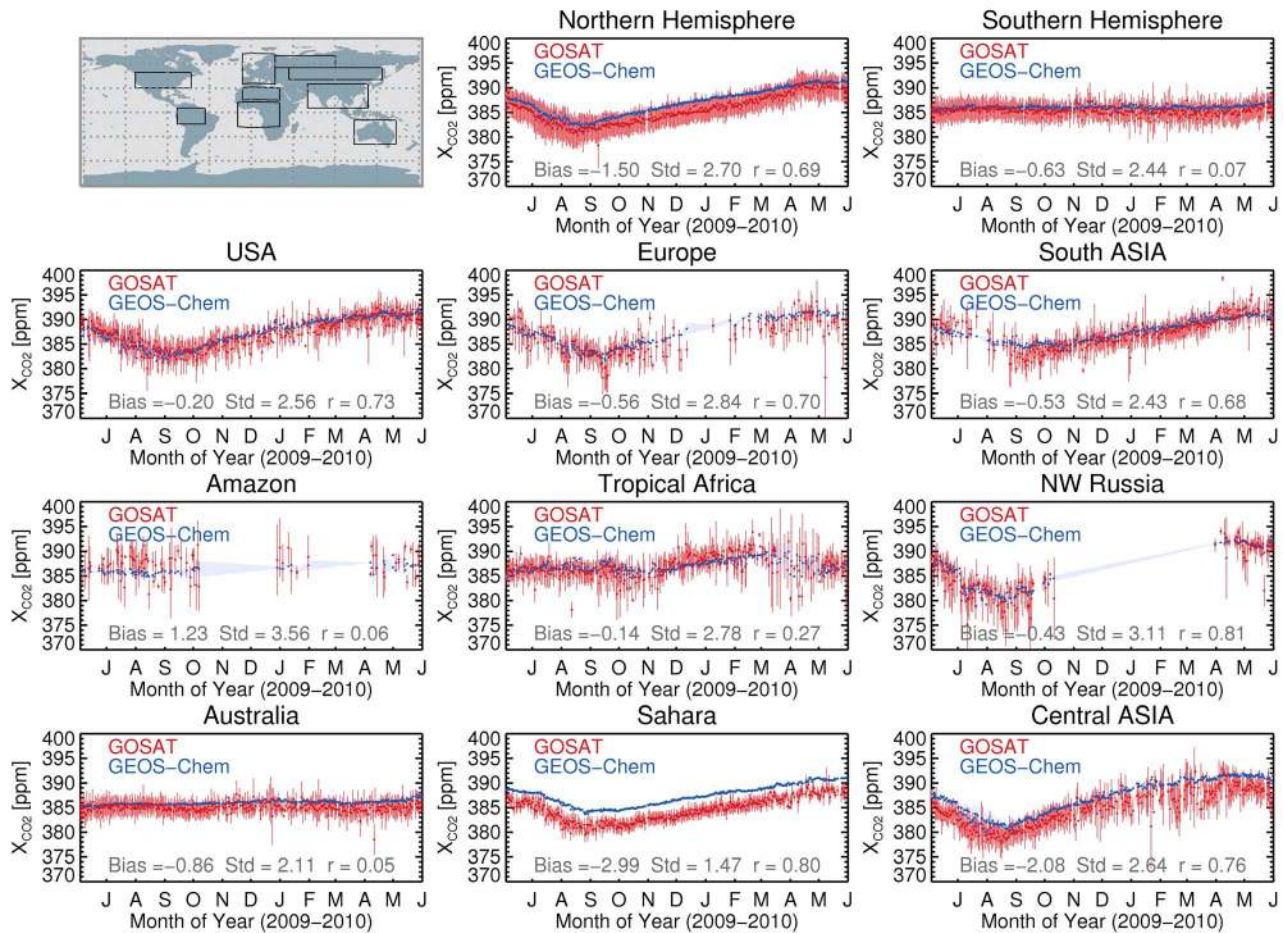


Figure 5. Comparison of X_{CO_2} retrieved from GOSAT and X_{CO_2} calculated from GEOS-Chem CO_2 profiles convolved with the scene-specific GOSAT averaging kernel, for a number of different regions between June 2009 and May 2010. The locations of these regions are indicated on the map by the black boxes (top left). The top center and top right panels give the time series of GOSAT and GEOS-Chem data for the northern and southern hemispheres, showing the seasonal cycle to be well matched but with GOSAT data offset lower by -1.50 ppm in the northern hemisphere and -0.63 ppm in the southern hemisphere. The second row of plots show a very good agreement between GOSAT and GEOS-Chem both in value and seasonality for regions containing urban environments. Below these, the time series of forested regions are shown, with GOSAT reproducing the GEOS-Chem data very well but with a larger scatter and fewer data points. The bottom panels show the time series for 3 different desert regions, with GOSAT matching the seasonal cycle of GEOS-Chem very well but offset lower in value from -0.86 to -2.99 ppm.

difference of 0.63 ppm in the southern hemisphere. GOSAT and GEOS-Chem X_{CO_2} show a high consistency for both Europe and the USA, with a X_{CO_2} difference of 0.20 ppm and 0.56 ppm and correlation coefficients of 0.73 and 0.70, respectively. On average, GOSAT and GEOS-Chem agree for South Asia with a mean difference of 0.53 ppm and correlation coefficient of 0.68, but we view differences in the seasonal cycle with GEOS-Chem over-estimating the X_{CO_2} in autumn 2009 and under-estimating during spring 2010.

[40] Few GOSAT soundings are observed over the Amazon due to tropical clouds, and those measurements that are retrieved have a large standard deviation (3.56 ppm) that is potentially due to partial cloud contamination. Similarly, we see a larger scatter in tropical Africa during autumn and spring

for GOSAT, whereas winter and summer have a reduced scatter and have similar values as GEOS-Chem. A very high agreement is observed for NW Russia with a correlation coefficient of 0.81 and a mean X_{CO_2} difference of 0.43 ppm.

[41] In central Asia where a desert region is observed with the high gain mode, we observe the seasonal cycle of GOSAT and GEOS-Chem to agree well ($r = 0.76$), but consistently with a ~ 2 ppm difference in value. We also find a ~ 3 ppm mean difference over the Sahara between GOSAT and GEOS-Chem X_{CO_2} where a desert region is observed with the medium gain mode, but the seasonal cycle agrees well with a correlation coefficient of 0.80. Australia, which comprises partially of desert and is observed partially with medium

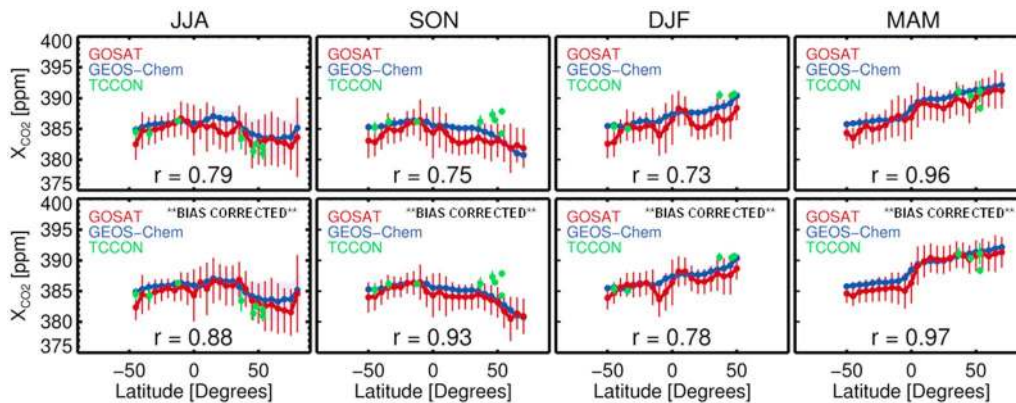


Figure 6. (top) Zonal mean comparisons for each season of X_{CO_2} retrieved from GOSAT and X_{CO_2} calculated from GEOS-Chem CO_2 profiles convolved with the scene-specific GOSAT averaging kernel. (bottom) Revised comparisons where the GOSAT X_{CO_2} was bias corrected. The latitudinal gradients of the bias corrected GOSAT X_{CO_2} match very well to GEOS-Chem with correlations between 0.78 and 0.97. The bias correction leads to increases of the correlation between 0.01 and 0.18, and shows a large improvement over the latitudes that contain the Sahara.

and high gain modes, also shows a difference in X_{CO_2} between GOSAT and GEOS-Chem with a value of 0.86 ppm.

5. Bias Correction Scheme

[42] A bias correction method was developed to help identify and reduce the observed biases of retrieved X_{CO_2} from GOSAT, especially over desert areas. Similar to *Wunch et al.* [2011b], our bias correction method is based on a multivariate linear regression of the difference between pseudo observations and retrieved X_{CO_2} from GOSAT between July 2009 to June 2010 over the region south $25^\circ S$ where the variability of CO_2 is low. The pseudo-observations were generated using GEOS-Chem calculations to provide information on vertical profile and spatial variations while the temporal variations and absolute values were scaled to match Wollongong/Australia ($34.406^\circ S$) and Lauder/New Zealand ($45.038^\circ S$) TCCON measurements. Initially we used all retrieval parameters and observation related parameters. Similar to *Wunch et al.* [2011b], we then identified the four parameters with the highest correlation to obtain the following equation:

$$\begin{aligned}
 X_{CO_2}^{\text{bias-corrected}} [\text{ppm}] = & X_{CO_2}^{\text{retrieved}} [\text{ppm}] + 4.19 \\
 & - 0.564 * CO_2_Signal_Ratio \\
 & - 0.193 * (\Delta P [\text{hPa}]) \\
 & + 56.8 * Ice_Optical_Depth \\
 & + 0.256 * 10^{-5} * O_2_Albedo_Slope \quad (2)
 \end{aligned}$$

These parameters have been identified by the regression which does not provide a means of identifying the physical link. We observe a correlation ($r = 0.37$) of the X_{CO_2} difference with the ratio of the mean signal of the $1.61 \mu m$ CO_2 band to the $2.06 \mu m$ CO_2 band ($CO_2_Signal_Ratio$), which may be a consequence of the spectroscopic differences of the different

CO_2 bands, but might also relate to aerosols or albedo. Spectroscopic errors may also result in systematic effects in the retrieved surface pressure as shown by *Wunch et al.* [2011b] and we find the X_{CO_2} difference to correlate ($r = 0.30$) with delta surface pressure (ΔP), even though we already normalize the X_{CO_2} with the surface pressure ratio. An anti-correlation ($r = -0.22$) of the X_{CO_2} difference with retrieved cirrus optical depth ($Ice_Optical_Depth$) is observed which indicates the path length was altered. Based on the geographical location of the bias correction for this parameter we can tell the ice optical depth refers to cirrus clouds. We also find an anti-correlation ($r = -0.29$) of the X_{CO_2} difference with the slope of the band 1 albedo ($O_2_Albedo_Slope$) which may be due to errors in the O_2 A band spectroscopy, zero-level offsets, or variations in signal intensity over vegetation regions that could be caused by not accounting for the known fluorescence [*Frankenberg et al.*, 2011].

[43] Whilst *Wunch et al.* [2011b] found biases partially due to air mass and the O_2 A band signal, we do not find any correlation between the air mass and the X_{CO_2} difference ($r = 0.01$) nor the O_2 A band signal ($r = 0.01$). Additionally, we already retrieve a zero level offset in the O_2 A band to mitigate the effects of the GOSAT Band 1 non-linearity and partially fluorescence [*Butz et al.*, 2011; *Frankenberg et al.*, 2011, 2012; *Suto et al.*, 2011].

[44] We applied this bias correction to one year (June 2009 to May 2010) of X_{CO_2} retrieved from GOSAT globally and compared it to X_{CO_2} calculated from the GEOS-Chem model with GOSAT averaging kernels applied. We find the annual mean global difference to be reduced from -1.22 ppm to -0.68 ppm and the correlation to increase from 0.61 to 0.74.

[45] Figure 6 shows a comparison between GOSAT and GEOS-Chem X_{CO_2} latitudinal gradients for each season, comparing with and without the bias correction. The seasonal latitudinal gradients show improvements with increases of the correlation between 0.01 and 0.18 depending on the season, for DJF the improvement in correlation coefficient is marginal.

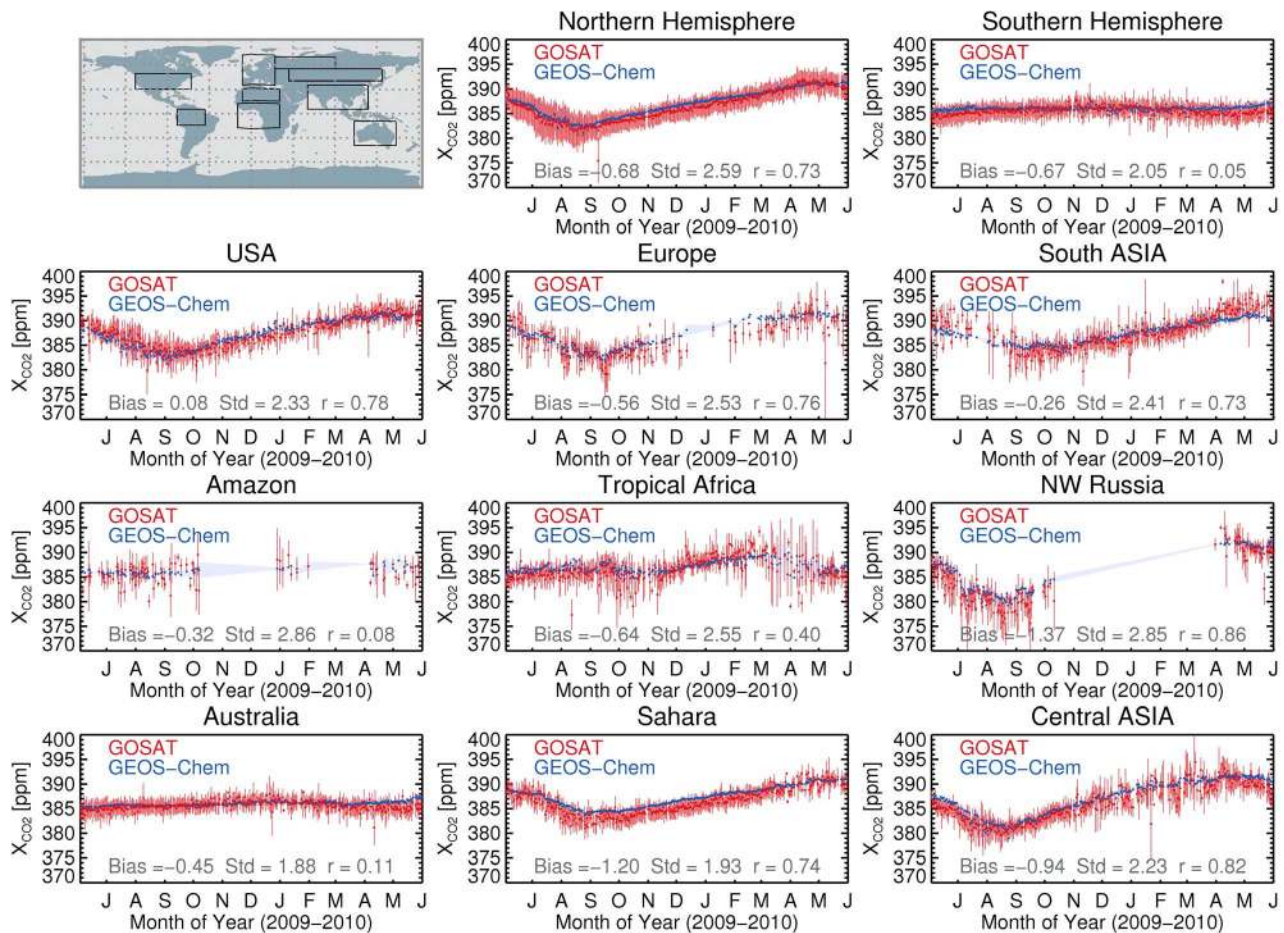


Figure 7. Comparison of bias corrected X_{CO_2} retrieved from GOSAT and X_{CO_2} calculated from GEOS-Chem CO_2 profiles convolved with the scene-specific GOSAT averaging kernel, for a number of different regions between June 2009 and May 2010. The locations of these regions are indicated on the map by the black boxes (top left). GOSAT agrees very well with GEOS-Chem for both hemispheres and all regions. GOSAT shows a good reproduction of the seasonal cycle of GEOS-Chem data, with the exception of south Asia where GOSAT is higher in the summer period. Minor offsets exist over the desert regions, such as Australia, the Sahara, and central Asia, which is a large improvement compared to the non-bias corrected X_{CO_2} shown in Figure 5. Additionally, the scatter of all regions is less than that of the non-bias corrected X_{CO_2} . Furthermore, the bias correction has brought the X_{CO_2} over the Amazon to be of the same magnitude as GEOS-Chem.

The majority of the improvement occurs in the northern hemisphere, especially over the Sahara region.

[46] The time series of bias corrected X_{CO_2} retrieved from GOSAT compared to GEOS-Chem data for different regions is shown in Figure 7. We find that for most regions the bias, standard deviation and correlation coefficient have improved. In particular, the bias correction has considerably reduced the larger differences previously seen over desert regions; the difference over the Sahara has reduced from -2.99 ppm to -1.20 ppm, the difference over Australia has reduced to about half, and the difference over central Asia improved from -2.08 ppm to -0.94 ppm. However, for the Sahara region, the standard deviation and correlation coefficient becomes worse. We also find that for some regions (Tropical

Africa and NW Russia) the bias increases when applying the bias correction.

6. Conclusions

[47] We introduce X_{CO_2} retrievals from GOSAT using the UoL-FP v3G algorithm and show from comparison to ground-based TCCON data that the retrievals have a random error of ~ 2.5 ppm, twice the a posteriori error estimate. With stricter screening this precision reduces to ~ 1.9 ppm, which should be sufficient to allow improved surface flux estimates [e.g., Chevallier, 2007; Chevallier et al., 2009; Miller et al., 2007]. The mean bias inferred from TCCON comparisons is 0.2 ppm with a station-to-station variation of 0.56 ppm (standard deviation). Thus, over TCCON sites the X_{CO_2} retrieval is very

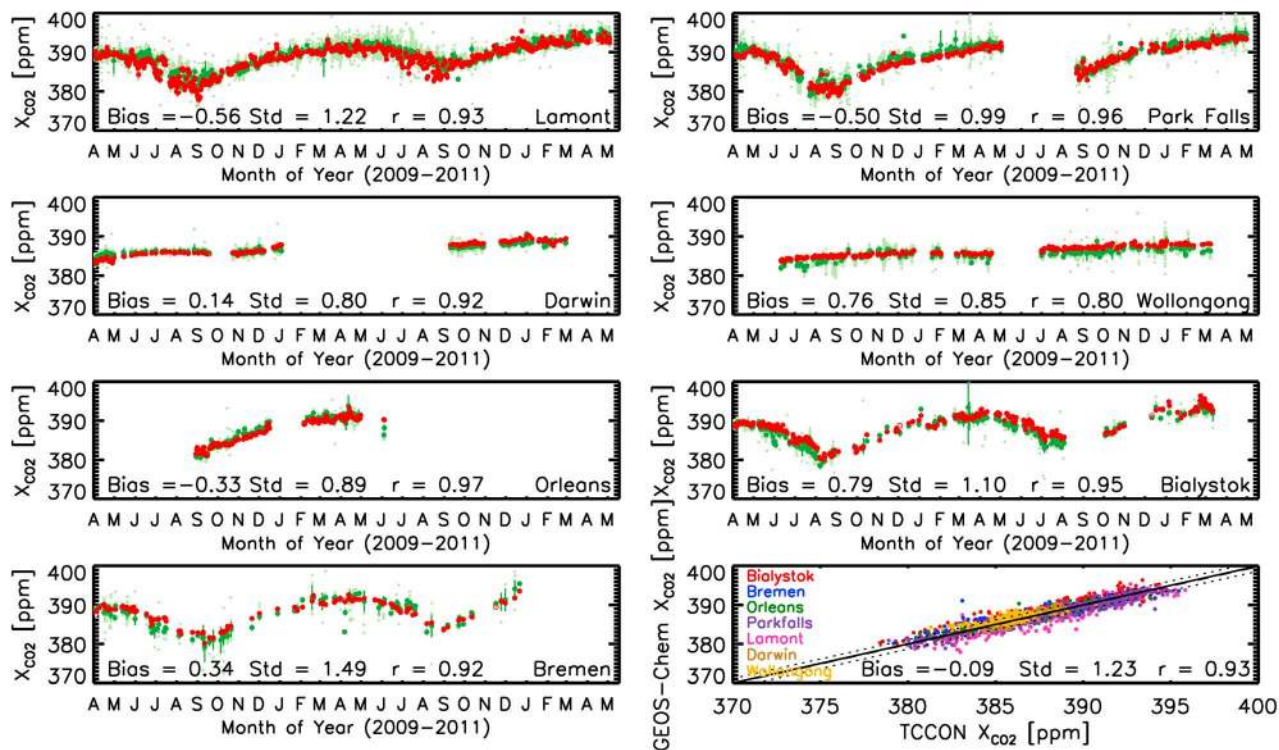


Figure A1. Comparison of X_{CO_2} calculated from GEOS-Chem (with TCCON averaging kernels applied) with retrieved X_{CO_2} from seven TCCON site for cloud-screened observations within 5° between April 2009 and May 2011. All TCCON data shown in light green, coincident daily mean TCCON shown in dark green, all GEOS-Chem data shown in light red and daily mean GEOS-Chem shown in dark red (with daily mean points with only one value per day are represented by open circles). The average difference between the daily means is given as the bias (ranging from -0.56 to 0.79 ppm), the standard deviation of daily means by the Std (between 0.80 and 1.49 ppm) and the correlation coefficient of daily means by r (0.80 at Darwin to 0.97 at Orleans). The lower right panel gives the correlation of daily mean retrieved GEOS-Chem X_{CO_2} with daily mean TCCON X_{CO_2} for the seven sites. This gives an overall bias of -0.09 ppm, scatter of 1.23 ppm and correlation of 0.93 between GEOS-Chem and TCCON X_{CO_2} .

accurate with biases approaching only a few tenth ppm, which is close to typical retrieval requirements of systematic bias for X_{CO_2} [e.g., Chevallier, 2007; Chevallier et al., 2009; Miller et al., 2007]. The latest results from other algorithms [Oshchepkov et al., 2009; Yokota et al., 2009; Butz et al., 2011; Morino et al., 2011; Wunch et al., 2011b; Yoshida et al., 2011; Crisp et al., 2012; Oshchepkov et al., 2012] find similar results with a variation in the number of soundings potentially due to the screening criteria applied. However, over desert regions, which are not observed by TCCON, we find that the retrieved X_{CO_2} from GOSAT shows significant (up to ~ 3 ppm) differences when compared to GEOS-Chem model calculations which we believe are biases in the GOSAT retrieval. Similar findings have been reported in Crisp et al. [2012] who suggested that these biases are related to instrument gain. We find that biases are observed for desert regions observed with both settings of the gain and we speculate that these biases could be introduced by desert dust or related to the high surface albedo in the CO_2 bands. This study highlights the need for further algorithm improvements, especially over the deserts, but improvements

in instrument calibration or spectroscopy might also lead to reduced biases for these regions. Until sufficient algorithmic improvements have been achieved, we suggest to either omit X_{CO_2} retrievals over deserts or apply the described bias correction method which significantly reduces the biases in our X_{CO_2} retrieved over deserts. However, except for the desert regions, the X_{CO_2} retrievals approach the point where they should be useful for the inversion of CO_2 surface fluxes with data assimilation methods [e.g., Baker et al., 2010; Chevallier et al., 2009; Feng et al., 2009].

Appendix A: Comparison of GEOS-Chem With TCCON

[48] Figure A1 shows a comparison of TCCON X_{CO_2} with that of GEOS-Chem (convolved with the TCCON averaging kernels) for each of the seven sites considered in Section 3. We find GEOS-Chem to have a mean bias of -0.09 ppm, standard deviation of 1.23 ppm and correlation coefficient of 0.93 . Between stations, the bias has a range of -0.56 to

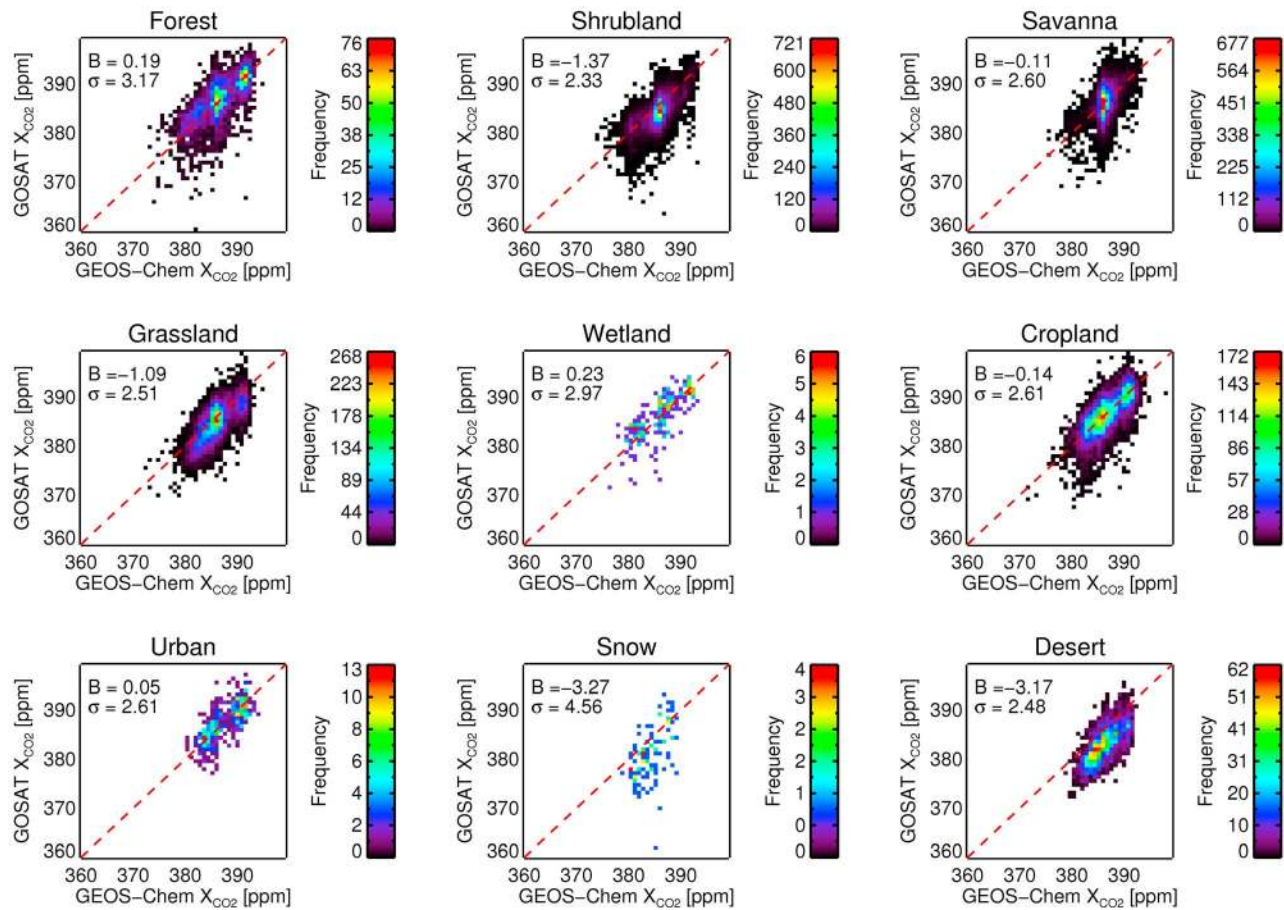


Figure B1. Comparison of X_{CO_2} retrieved from high gain GOSAT data with GEOS-Chem X_{CO_2} calculations for different MODIS land cover types. The red dashed line shows the one-to-one line, B represents the mean X_{CO_2} difference, and σ gives the standard deviation of X_{CO_2} . GOSAT and GEOS-Chem correlate well with X_{CO_2} differences less than 0.23 ppm for surfaces that consist of forest, cropland, savanna, wetland, or urban environments. However, larger X_{CO_2} differences (up to ~ 3.2 ppm) are found for surfaces that consist of desert, shrubland, grassland or snow.

0.79 ppm, standard deviation between 0.80 and 1.49 ppm, and correlation coefficients ranging between 0.80 and 0.97.

Appendix B: Comparison of GOSAT With Land Surface Type

[49] We have compared the X_{CO_2} difference between GOSAT and GEOS-Chem against the land surface type for each observation. The surface type was determined by using the most common land cover type within a coincidence of $\pm 0.1^\circ$ of the Moderate Resolution Imaging Spectroradiometer (MODIS) Level 3 yearly 0.05° land cover type (MCD12C1) for 2007 (assuming the land cover has not significantly altered between 2007 and 2010). Figures B1 and B2 show this comparison for each of the GOSAT gain modes separately.

[50] For retrievals of GOSAT high gain data, GOSAT and GEOS-Chem correlate well with X_{CO_2} differences less than 0.23 ppm for surfaces that consist of forest, cropland, savanna, wetland, or urban environments. However, larger

X_{CO_2} differences (up to ~ 3.2 ppm) are found for surfaces that consist of desert, shrubland, grassland or snow.

[51] Where medium gain data has been retrieved, X_{CO_2} differences are found to be similar to that of high gain data. The retrieved X_{CO_2} from GOSAT is found on average to be ~ 1.5 ppm lower than GEOS-Chem over both shrubland and grassland surfaces. The largest X_{CO_2} difference of 2.75 ppm is observed over desert surfaces. The lowest difference (0.35 ppm) is found over savanna surfaces. No observations over other surface types exist due to the specific observation locations where medium gain was used. We find the X_{CO_2} differences to be larger with certain land surface types, specifically deserts, irrespective of the gain setting used. This may, however, be different for alternative retrieval algorithms that do not correct for the systematic overestimates of surface pressure by normalizing the retrieved X_{CO_2} with the ratio of retrieved surface pressure and ECMWF surface pressure.

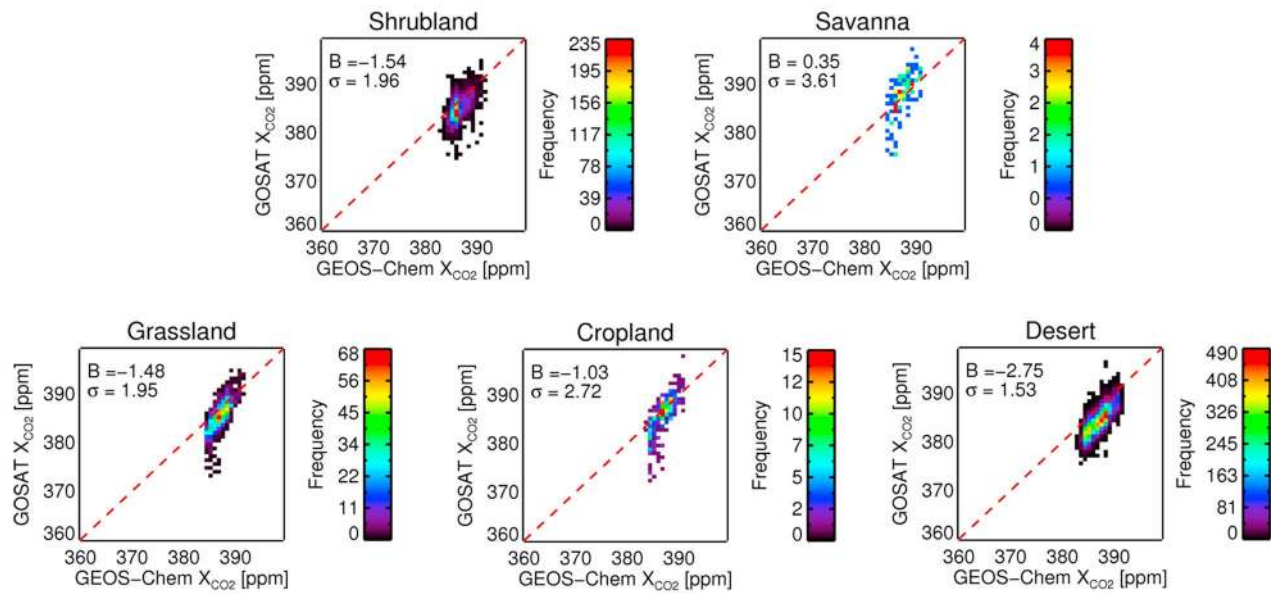


Figure B2. Comparison of X_{CO_2} retrieved from medium gain GOSAT data with GEOS-Chem X_{CO_2} calculations for different MODIS land cover types. The red dashed line shows the one-to-one line, B represents the mean X_{CO_2} difference, and σ gives the standard deviation of X_{CO_2} . The retrieved X_{CO_2} from GOSAT is found on average to be ~ 1.5 ppm lower than GEOS-Chem over both shrubland and grassland surfaces. The largest X_{CO_2} difference of 2.75 ppm is observed over desert surfaces. The lowest difference (0.35 ppm) is found over savanna surfaces.

[52] **Acknowledgments.** We thank JAXA, NIES, and MOE for the GOSAT data and their continuous support as part of the Joint Research Agreement. A.C. is supported by the NERC, R.P., and L.F. are supported by the NCEO and H.B. is supported by a RCUK fellowship. We also thank the OCO team at JPL for providing the retrieval algorithm. We thank the BADC for providing ECMWF Operational Analyses data. U.S. funding for TCCON comes from NASA's Terrestrial Ecology Program, grant NNX11AG01G, the Orbiting Carbon Observatory Program, the Atmospheric CO_2 Observations from Space (ACOS) Program and the DOE/ARM Program of Research Science and Technology contracts C01X0204 and C01X0406. Lauder TCCON data was obtained from the TCCON Data Archive, operated by the California Institute of Technology from the Web site at <http://tcon.ipac.caltech.edu/>. We acknowledge financial support of the Bialystok and Orleans TCCON sites from the Senate of Bremen and EU projects IMECC and GEOmon as well as maintenance and logistical work provided by AeroMeteo Service (Bialystok) and the RAMCES team at LSCE (Gif-sur-Yvette, France).

References

- Baker, D. F., H. Boesch, S. C. Doney, D. O'Brien, and D. S. Schimel (2010), Carbon source/sink information provided by column CO_2 measurements from the Orbiting Carbon Observatory, *Atmos. Chem. Phys.*, *10*, 4145–4165, doi:10.5194/acp-10-4145-2010.
- Barkley, M. P., U. Frieß, and P. S. Monks (2006), Measuring atmospheric CO_2 from space using full spectral initiation (FSI) WFM-DOAS, *Atmos. Chem. Phys.*, *6*, 3517–3534, doi:10.5194/acp-6-3517-2006.
- Baum, B. A., P. Yang, A. J. Heymsfield, S. Platnick, M. D. King, Y.-X. Hu, and S. T. Bedka (2005), Bulk scattering properties for the remote sensing of ice clouds. Part 2: Narrowband models, *J. Appl. Meteorol.*, *44*, 1896–1911, doi:10.1175/JAM2309.1.
- Boesch, H., et al. (2006), Space-based near-infrared CO_2 measurements: Testing the Orbiting Carbon Observatory retrieval algorithm and validation concept using SCIAMACHY observations over Park Falls, Wisconsin, *J. Geophys. Res.*, *111*, D23302, doi:10.1029/2006JD007080.
- Boesch, H., D. Baker, B. Connor, D. Crisp, and C. Miller (2011), Global characterization of CO_2 column retrievals from shortwave-infrared satellite observations of the Orbiting Carbon Observatory-2 mission, *Remote Sens.*, *3*(2), 270–304, doi:10.3390/rs3020270.
- Buchwitz, M., R. de Beek, S. Noel, J. P. Burrows, H. Bovensmann, H. Bremer, P. Bergamaschi, S. Kerner, and M. Heimann (2005), Carbon monoxide, methane and carbon dioxide columns retrieved from SCIAMACHY by WFM-DOAS: Year 2003 initial data set, *Atmos. Chem. Phys.*, *5*, 3313–3329, doi:10.5194/acp-5-3313-2005.
- Butz, A., et al. (2011), Toward accurate CO_2 and CH_4 observations from GOSAT, *Geophys. Res. Lett.*, *38*, L14812, doi:10.1029/2011GL047888.
- Chevallier, F. (2007), Impact of correlated observation errors on inverted CO_2 surface fluxes from OCO measurements, *Geophys. Res. Lett.*, *34*, L24804, doi:10.1029/2007GL030463.
- Chevallier, F., S. Maksyutov, P. Bousquet, F.-M. Bréon, R. Saito, Y. Yoshida, and T. Yokota (2009), On the accuracy of the CO_2 surface fluxes to be estimated from the GOSAT observations, *Geophys. Res. Lett.*, *36*, L19807, doi:10.1029/2009GL040108.
- Christi, M. J., and G. L. Stephens (2004), Retrieving profiles of atmospheric CO_2 in clear sky and in the presence of thin cloud using spectroscopy from the near and thermal infrared: A preliminary case study, *J. Geophys. Res.*, *109*, D04316, doi:10.1029/2003JD004058.
- Connor, B. J., H. Boesch, G. Toon, B. Sen, C. Miller, and D. Crisp (2008), Orbiting Carbon Observatory: Inverse method and prospective error analysis, *J. Geophys. Res.*, *113*, D05305, doi:10.1029/2006JD008336.
- Crisp, D., et al. (2004), The Orbiting Carbon Observatory (OCO) mission, *Adv. Space Res.*, *34*, 700–709, doi:10.1016/j.asr.2003.08.062.
- Crisp, D., et al. (2012), The ACOS X_{CO_2} retrieval algorithm, Part 2: Global X_{CO_2} data characterization, *Atmos. Meas. Tech. Discuss.*, *5*, 1–60, doi:10.5194/amt-5-687-2012.
- de Rooij, W. A., and C. C. A. H. van der Stap (1984), Expansion of Mie scattering matrices in generalized spherical function, *Astron. Astrophys.*, *131*(2), 237–248.
- Dufour, E., and F. M. Breon (2003), Spaceborne estimate of atmospheric CO_2 column by use of the differential absorption method: Error analysis, *Appl. Opt.*, *42*, 3595–3609.
- Eguchi, N., T. Yokota, and G. Inoue (2007), Characteristics of cirrus clouds from ICESat/GLAS observations, *Geophys. Res. Lett.*, *34*, L09810, doi:10.1029/2007GL029529.
- Feng, L., P. I. Palmer, H. Boesch, and S. Dance (2009), Estimating surface CO_2 fluxes from space-borne CO_2 dry air mole fraction observations using an ensemble Kalman filter, *Atmos. Chem. Phys.*, *9*, 2619–2633, doi:10.5194/acp-9-2619-2009.
- Feng, L., P. I. Palmer, Y. Yang, R. M. Yantosca, S. R. Kawa, J.-D. Paris, H. Matsueda, and T. Machida (2011), Evaluating a 3-D transport model of atmospheric CO_2 using ground-based, aircraft, and space-borne data, *Atmos. Chem. Phys.*, *11*, 2789–2803, doi:10.5194/acp-11-2789-2011.
- Frankenberg, C., T. Warneke, A. Butz, I. Aben, F. Hase, P. Spietz, and L. Brown (2008), Pressure broadening in the 2 ν_3 band of methane and its implication on atmospheric retrievals, *Atmos. Chem. Phys.*, *8*, 5061–5075, doi:10.5194/acp-8-5061-2008.
- Frankenberg, C., et al. (2011), New global observations of the terrestrial carbon cycle from GOSAT: Patterns of plant fluorescence with gross primary productivity, *Geophys. Res. Lett.*, *38*, L17706, doi:10.1029/2011GL048738.
- Frankenberg, C., C. O'Dell, L. Guanter, and J. McDuffie (2012), Chlorophyll fluorescence remote sensing from space in scattering atmospheres: Implications for its retrieval and interferences with atmospheric CO_2 retrievals, *Atmos. Meas. Tech. Discuss.*, *5*, 2487–2527, doi:10.5194/amt-5-2487-2012.
- Fraser, A., C. C. Miller, P. I. Palmer, N. M. Deutscher, N. B. Jones, and D. W. T. Griffith (2011), The Australian methane budget: Interpreting surface and train-borne measurements using a chemistry transport model, *J. Geophys. Res.*, *116*, D20306, doi:10.1029/2011JD015964.
- GLOBALVIEW-CO2 (2011), Cooperative Atmospheric Data Integration Project - Carbon Dioxide [CD-ROM], NOAA ESRL, Boulder, Colo.
- Gurney, K. R., et al. (2002), Towards robust regional estimates of CO_2 sources and sinks using atmospheric transport models, *Nature*, *415*, 626–630, doi:10.1038/415626a.
- Houweling, S., F. M. Breon, I. Aben, C. Rodenbeck, M. Gloor, M. Heimann, and P. Ciais (2004), Inverse modeling of CO_2 sources and sinks using satellite data: A synthetic inter-comparison of measurement techniques and their performance as a function of space and time, *Atmos. Chem. Phys.*, *4*, 523–538, doi:10.5194/acp-4-523-2004.
- Hungerschofer, K., F.-M. Bréon, P. Peylin, F. Chevallier, P. Rayner, A. Klonecki, S. Houweling, and J. Marshall (2010), Evaluation of various observing systems for the global monitoring of CO_2 surface fluxes, *Atmos. Chem. Phys.*, *10*, 10,503–10,520, doi:10.5194/acp-10-10503-2010.
- Intergovernmental Panel on Climate Change (IPCC) (2001), *Climate Change 2001: The Scientific Basis. Contribution of Working Group I to the Third Assessment Report of the Intergovernmental Panel on Climate Change (IPCC)*, edited by J. T. Houghton et al., Cambridge Univ. Press, Cambridge, U. K., doi:10.1256/004316502320517344.
- Intergovernmental Panel on Climate Change (IPCC) (2007), *Climate Change 2007: Working Group I: The Physical Science Basis. Contribution of Working Group I to the Fourth Assessment Report of the Intergovernmental Panel on Climate Change*, edited by S. Solomon et al., Cambridge Univ. Press, Cambridge, U. K.
- Jenouvrier, A., L. Daumont, L. Regalia-Jarlot, V. G. Tyuterev, M. Carleer, A. C. Vandaele, S. Mikhailenko, and S. Fally (2007), Fourier transform measurements of water vapor line parameters in the 4200–6600 cm^{-1} region, *J. Quant. Spectrosc. Radiat. Transfer*, *105*(2), 326–355, doi:10.1016/j.jqsrt.2006.11.007.
- Kahn, R., P. Banerjee, and D. McDonald (2001), Sensitivity of multiangle imaging to natural mixtures of aerosols over ocean, *J. Geophys. Res.*, *106*, 18,219–18,238, doi:10.1029/2000JD900497.
- Kuang, Z., J. Margolis, G. Toon, D. Crisp, and Y. Yung (2002), Spaceborne measurements of atmospheric CO_2 by high-resolution NIR spectrometry of reflected sunlight: An introductory study, *Geophys. Res. Lett.*, *29*(15), 1716, doi:10.1029/2001GL014298.
- Kuze, A., H. Suto, M. Nakajima, and T. Hamazaki (2009), Thermal and near infrared sensor for carbon observation Fourier-transform spectrometer on the Greenhouse Gases Observing Satellite for greenhouse gases monitoring, *Appl. Opt.*, *48*(35), 6716–6733, doi:10.1364/AO.48.006716.
- Masarie, K. A., and P. P. Tans (1995), Extension and integration of atmospheric carbon dioxide data into a globally consistent measurement record, *J. Geophys. Res.*, *100*, 11,593–11,610, doi:10.1029/95JD00859.
- Messerschmidt, J., et al. (2011), Calibration of TCCON column-averaged CO_2 : The first aircraft campaign over European TCCON sites, *Atmos. Chem. Phys.*, *11*, 10,765–10,777, doi:10.5194/acp-11-10765-2011.
- Miller, C. E., et al. (2007), Precision requirements for space-based X_{CO_2} data, *J. Geophys. Res.*, *112*, D10314, doi:10.1029/2006JD007659.
- Mishchenko, M. I., and L. D. Travis (1998), Capabilities and limitations of a current Fortran implementation of the T-matrix method for randomly oriented, rotationally symmetric scatterers, *J. Quant. Spectrosc. Radiat. Transfer*, *60*(3), 309–324, doi:10.1016/S0022-4073(98)00008-9.
- Morino, I., et al. (2011), Preliminary validation of column-averaged volume mixing ratios of carbon dioxide and methane retrieved from GOSAT short-wavelength infrared spectra, *Atmos. Meas. Tech.*, *4*(6), 1061–1076, doi:10.5194/amt-4-1061-2011.
- Natraj, V., and R. Spurr (2007), A fast linearized pseudo-spherical two orders of scattering model to account for polarization in vertically

- inhomogeneous scattering-absorbing media, *J. Quant. Spectrosc. Radiat. Transfer*, *107*, 263–293, doi:10.1016/j.jqsrt.2007.02.011.
- O'Dell, C. W. (2010), Acceleration of multiple-scattering, hyperspectral radiative transfer calculations via low-streams interpolation, *J. Geophys. Res.*, *115*, D10206, doi:10.1029/2009JD012803.
- O'Dell, C. W., et al. (2012), The ACOS CO₂ retrieval algorithm – Part 1: Description and validation against synthetic observations, *Atmos. Meas. Tech.*, *5*, 99–121, doi:10.5194/amt-4-6097-2011.
- Oshchepkov, S., A. Bril, and T. Yokota (2009), An improved photon path length probability density function-based radiative transfer model for space-based observation of greenhouse gases, *J. Geophys. Res.*, *114*, D19207, doi:10.1029/2009JD012116.
- Oshchepkov, S., et al. (2012), Effects of atmospheric light scattering on spectroscopic observations of greenhouse gases from space: Validation of PPDF-based CO₂ retrievals from GOSAT, *J. Geophys. Res.*, *117*, D12305, doi:10.1029/2012JD017505.
- Palmer, P. I., L. Feng, and H. Boesch (2011), Spatial resolution of tropical terrestrial CO₂ fluxes inferred using space-borne CO₂ sampled in different Earth orbits: The role of spatial error correlations, *Atmos. Meas. Tech.*, *4*, 1995–2006, doi:10.5194/amt-4-3251-2011.
- Parker, R., et al. (2011), Methane observations from the Greenhouse Gases Observing SATellite: Comparison to ground-based TCCON data and model calculations, *Geophys. Res. Lett.*, *38*, L15807, doi:10.1029/2011GL047871.
- Patra, P. K., et al. (2011), TransCom model simulations of CH₄ and related species: Linking transport, surface flux and chemical loss with CH₄ variability in the troposphere and lower stratosphere, *Atmos. Chem. Phys.*, *11*, 12,813–12,837, doi:10.5194/acp-11-12813-2011.
- Pickett-Heaps, C. A., et al. (2011), Atmospheric CO₂ inversion validation using vertical profile measurements: Analysis of four independent inversion models, *J. Geophys. Res.*, *116*, D12305, doi:10.1029/2010JD014887.
- Randerson, J. T., M. V. Thompson, T. J. Conway, I. Y. Fung, and C. B. Field (1997), The contribution of terrestrial sources and sinks to trends in the seasonal cycle of atmospheric carbon dioxide, *Global Biogeochem. Cycles*, *11*, 535–560, doi:10.1029/97GB02268.
- Rayner, P. J., and D. M. O'Brien (2001), The utility of remotely sensed CO₂ concentration data in surface source inversions, *Geophys. Res. Lett.*, *28*(1), 175–178, doi:10.1029/2000GL011912.
- Reuter, M., M. Buchwitz, O. Schneising, J. Heymann, H. Bovensmann, and J. P. Burrows (2010), A method for improved SCIAMACHY CO₂ retrieval in the presence of optically thin clouds, *Atmos. Meas. Tech.*, *3*, 209–232, doi:10.5194/amt-2-2483-2009.
- Rodgers, C. D. (2000), *Inverse Methods for Atmospheric Sounding: Theory and Practise*, Ser. Atmos. Oceanic Planet. Phys., vol. 3, World Sci., Hackensack, N. J.
- Rodgers, C. D., and B. J. Connor (2003), Intercomparison of remote sounding instruments, *J. Geophys. Res.*, *108*(D3), 4116, doi:10.1029/2002JD002299.
- Rothman, L. S., et al. (2009), The HITRAN 2008 molecular spectroscopic database, *J. Quant. Spectrosc. Radiat. Transfer*, *110*(9–10), 533–572, doi:10.1016/j.jqsrt.2009.02.013.
- Schneising, O., M. Buchwitz, J. P. Burrows, H. Bovensmann, M. Reuter, J. Notholt, R. Macatangay, and T. Warneke (2008), Three years of greenhouse gas column-averaged dry air mole fractions retrieved from satellite – Part 1: Carbon dioxide, *Atmos. Chem. Phys.*, *8*, 3827–3853, doi:10.5194/acp-8-3827-2008.
- Spurr, R. J. D., T. P. Kurosu, and K. V. Chance (2001), A linearized discrete ordinate radiative transfer model for atmospheric remote-sensing retrieval, *J. Quant. Spectrosc. Radiat. Transfer*, *68*, 689–735, doi:10.1016/S0022-4073(00)00055-8.
- Suto, H., A. Kuze, K. Shiomi, M. Nakajima, and T. Hamazaki (2011), Updated level-1 processing after two-years operation of TANSO-FTS, *Proc. SPIE Int. Soc. Opt. Eng.*, *8154*, 81541A, doi:10.1117/12.893405.
- Takahashi, T., et al. (2009), Climatological mean and decadal change in surface ocean pCO₂, and net sea–air CO₂ flux over the global oceans, *Deep Sea Res., Part II*, *56*(8–10), 554–577, doi:10.1016/j.dsr2.2008.12.009.
- Taylor, T. E., C. W. O'Dell, D. M. O'Brien, N. Kikuchi, T. Yokota, T. Y. Nakajima, H. Ishida, D. Crisp, and T. Nakajima (2012), Comparison of cloud-screening methods applied to GOSAT near-infrared spectra, *IEEE Trans. Geosci. Remote Sens.*, *50*(1), 295–309, doi:10.1109/TGRS.2011.2160270.
- Toth, R. (2005), Measurements of positions, strengths and self-broadened widths of H₂O from 2900 to 8000 cm⁻¹: Line strength analysis of the 2nd triad bands, *J. Quant. Spectrosc. Radiat. Transfer*, *94*(1), 51–107, doi:10.1016/j.jqsrt.2004.08.042.
- Toth, R., L. Brown, C. Miller, V. Malathy Devi, and D. Benner (2008), Spectroscopic database of CO₂ line parameters: 4300–7000cm⁻¹, *J. Quant. Spectrosc. Radiat. Transfer*, *109*(6), 906–921, doi:10.1016/j.jqsrt.2007.12.004.
- Wunch, D., et al. (2010), Calibration of the Total Carbon Column Observing Network using aircraft profile data, *Atmos. Meas. Tech.*, *3*, 1351–1362, doi:10.5194/amt-3-1351-2010.
- Wunch, D., G. C. Toon, J.-F. L. Blavier, R. A. Washenfelder, J. Notholt, B. J. Connor, D. W. T. Griffith, V. Sherlock, and P. O. Wennberg (2011a), The total carbon column observing network, *Philos. Trans. R. Soc. A*, *369*, 2087–2112, doi:10.1098/rsta.2010.0240.
- Wunch, D., et al. (2011b), A method for evaluating bias in global measurements of CO₂ total columns from space, *Atmos. Chem. Phys.*, *11*, 12,317–12,337, doi:10.5194/acp-11-12317-2011.
- Yevich, R., and J. A. Logan (2003), An assessment of biofuel use and burning of agricultural waste in the developing world, *Global Biogeochem. Cycles*, *17*(4), 1095, doi:10.1029/2002GB001952.
- Yokota, T., Y. Yoshida, N. Eguchi, Y. Ota, T. Tanaka, H. Watanabe, and S. Maksyutov (2009), Global concentrations of CO₂ and CH₄ retrieved from GOSAT: First preliminary results, *SOLA*, *5*, 160–163, doi:10.2151/sola.2009-041.
- Yoshida, Y., Y. Ota, N. Eguchi, N. Kikuchi, K. Nobuta, H. Tran, I. Morino, and T. Yokota (2011), Retrieval algorithm for CO₂ and CH₄ column abundances from short-wavelength infrared spectral observations by the greenhouse gases observing satellite, *Atmos. Meas. Tech.*, *4*, 717–734, doi:10.5194/amt-4-717-2011.