



# Auditory Deficits in Patients With Mild and Moderate Obstructive Sleep Apnea Syndrome: A Speech Syllable Evoked Auditory Brainstem Response Study

Qiuyang Fu<sup>1</sup> · Tao Wang<sup>2</sup> · Yong Liang<sup>3</sup> · Yong Lin<sup>4</sup> · Xiangdong Zhao<sup>1</sup> · Jian Wan<sup>1</sup> · Suxiao Fan<sup>1</sup>

<sup>1</sup>Department of Otolaryngology, Guangdong Second Provincial General Hospital, Guangzhou;

<sup>2</sup>Laboratory of Medical Data and Engineering, Shenzhen Technology University, Shenzhen;

<sup>3</sup>Department of Otolaryngology at Nanfang Hospital, Southern Medical University, Guangzhou;

<sup>4</sup>Department of Otolaryngology, The First People's Hospital of Kashi Area, Kashi, China

**Objectives.** The energy consumption process of cochlea and neural signal transduction along the auditory pathway are highly dependent on blood oxygen supply. At present, it is under debate on whether the obstructive sleep apnea syndrome (OSAS) would affect the auditory function since the patients suffer from low oxygen saturation. Moreover, it is difficult to detect the functional state of auditory in less severe stage of OSAS. Recently, speech-evoked auditory brainstem response (speech-ABR) has been reported to be a new electrophysiological tool in characterizing the auditory dysfunction. The aim of the present study is to evaluate the auditory processes in adult patients with mild and moderate OSAS by speech-ABR.

**Methods.** An experimental group of 31 patients with mild to moderate OSAS, and a control group without OSAS diagnosed by apnea hypopnea index in polysomnogram were recruited. All participants underwent otologic examinations and tests of pure-tone audiogram, distortion product otoacoustic emissions, click-evoked auditory brainstem response (click-ABR) and speech-ABR, respectively.

**Results.** The results of pure-tone audiogram, distortion product otoacoustic emissions, and click-ABR in OSAS group showed no significant differences compared with the control group ( $P > 0.05$ ). Speech-ABRs for OSAS participants and controls showed similar morphological waveforms and typical peak structures. There were significant group differences for the onset and offset transient peaks ( $P < 0.05$ ), where OSAS group had longer latencies for peak V ( $6.69 \pm 0.33$  ms vs.  $6.39 \pm 0.23$  ms), peak C ( $13.48 \pm 0.30$  ms vs.  $13.31 \pm 0.23$  ms), and peak O ( $48.27 \pm 0.39$  ms vs.  $47.60 \pm 0.40$  ms) compared to the control group. The latency of these peaks showed significant correlations with apnea hypopnea index for peak V ( $r = 0.37$ ,  $P = 0.040$ ), peak C ( $r = 0.36$ ,  $P = 0.045$ ), as well as peak O ( $r = 0.55$ ,  $P = 0.001$ ).

**Conclusion.** These findings indicate that some auditory dysfunctions may be present in patients with mild and moderate OSAS, and the damages were aggravated with the severity of OSAS, which suggests that speech-ABR may be a potential biomarker in the diagnosis and evaluation at early stage of OSAS.

**Keywords.** Hypoxia; Obstructive Sleep Apnea; Apnea Hypopnea Index; Speech Syllable; Auditory Brainstem Response

• Received February 3, 2018

Revised June 11, 2018

Accepted June 25, 2018

• Corresponding author: **Qiuyang Fu**

Department of Otolaryngology, Guangdong Second Provincial General Hospital, 466 Xingang, Middle Road, Haizhu District, Guangzhou 510317, China

Tel: +86-159-89089247, Fax: +86-020-89168090

E-mail: fqy98031@126.com

## INTRODUCTION

The obstructive sleep apnea syndrome (OSAS) is an apnea and hypopnea disorder caused by the collapse of the upper airway during sleep, which is characterized by nocturnal sleep snoring, apnea, and superficial breathing. This disorder may result in nocturnal hypoxemia, hypercapnia, and sleep disorders. Some cases

Copyright © 2019 by Korean Society of Otorhinolaryngology-Head and Neck Surgery.

This is an open-access article distributed under the terms of the Creative Commons Attribution Non-Commercial License (<http://creativecommons.org/licenses/by-nc/4.0>) which permits unrestricted non-commercial use, distribution, and reproduction in any medium, provided the original work is properly cited.

of severe OSAS were reported to cause functional damages in critical organs which gave rise to a high risk of disability [1-4]. A number of symptoms occur in OSAS patients, for example, daytime sleepiness, apathetic, memory loss and cognitive disorders, which may suggest functional damages in the nervous system [5]. In general, the functional impairment is reversible in the early hypoxemia due to OSAS, but it can be irreversible for chronic hypoxemia [6]. Since the energy consumption occurred in the process of signal transmission on the various levels of central nucleus and cochlea transduction, such energy consumption is highly dependent on blood oxygen. Thus, the persistent hypoxemia may lead to auditory impairments in OSAS patients. It has been found that some severe OSAS patients showed abnormalities in terms of conventional audiometry testing, such as pure-tone audiogram (PTA), distortion product otoacoustic emissions (DPOAEs), and auditory brainstem response (ABR) suggesting functional impairments in the auditory system [7]. However, it still lacks relevant research to investigate the auditory function in the case of less severe OSAS.

In clinic, the integrity of auditory neural pathway is generally examined by ABR elicited by a series of impulse sounds via air- or bone-conduction ways [8]. The ABR reflects the synaptic activity of auditory brainstem neurons, and makes it a useful tool in studying the functional integrity for OSAS. Some studies reported prolonged peak latencies and latencies in wave intervals such as I-V and III-V of the click-evoked auditory brainstem response (click-ABR) in OSAS patients [7,9,10]. The pathophysiologic mechanism may be accounted for by the neurotransmitter synthesis disorders and the abnormal conduction of the nerve impulse in the auditory pathway, which is due to hyperlipidemia caused by respiratory disturbances [10]. However, other studies claimed that no abnormal click-ABR found in the OSAS patients, suggesting no acute or chronic injury in the auditory brainstem caused by repeated nocturnal hypoxemia [11-13]. These conflicting findings inspire the need of new methods and more sophisticated studies in this regard.

Speech-evoked auditory brainstem response (speech-ABR) is a new technique of auditory evoked brainstem response in recent years. A commonly used stimulus is a 40-ms synthesized syllable /da/ [14]. The speech-ABR elicited by /da/ contains seven feature peaks termed waves V-A-C-D-E-F-O, which are commonly

analyzed in both time and frequency domains. The time domain indexes include the latencies of these feature peaks and slopes of VA complex; the frequency domain indexes include the amplitude of the fundamental frequency ( $F_0$ ), the first formant ( $F_1$ ) and high formant (HF) [15]. For a speech-ABR, the transient components defined by waves V, A, C and O, as well as  $F_1$  and HF were considered to reflect the filter information (temporal and formant related information) which was processed by the “where” pathway; while the periodic components defined by peaks D, E, and F, as well as  $F_0$  were considered to reflect the sound source information (pitch-related information) which was processed by “what” pathway [15,16]. Actually, “what/where” pathways are functional pathway represented by independent neural networks with different synaptic connections [17].

It was reported that the transient components of speech-ABR showed significant abnormalities for some patients, such as learning problem children (LPC) [18-21] and persistent developmental stuttering (PDS) population [22], while these patients are with normal click-ABR. These findings suggest that speech-ABR may be a more effective method for detecting auditory function than click-ABR. Therefore, speech-ABR may play a role in the study of neurological status of auditory system, and may be a useful tool to detect the early impairments of neurological functions in patients with OSAS. Based on this hypothesis, we conducted an auditory system testing on the selected group of OSAS patients of less severe condition and the control group of normal hearing participants. Since the hemispheric dominance is related to handedness, the right ears for right-handed participants were recorded and analyzed.

## MATERIALS AND METHODS

### Participants

Participants were recruited from 116 snoring patients undergoing overnight polysomnogram monitoring from January 2016 to May 2017 at the Sleep Center of Guangdong Second Provincial General Hospital. OSAS was diagnosed according to clinic criteria, and degree of severity was categorized as mild, moderate and severe according to the apnea hypopnea index (AHI) and the lowest oxygen saturation ( $\text{SaO}_2$ ) [23-25]. Specifically, OSAS was diagnosed for a patient with  $\text{AHI} \geq 5$ , where  $5 \leq \text{AHI} \leq 15$  was classified as mild degree,  $15 < \text{AHI} \leq 30$  moderate degree, and  $\text{AHI} > 30$  severe degree, meanwhile the degree of hypoxemia is required to be attached as well. The hypoxemia criterion is  $85\% \leq \text{lowest SaO}_2 \leq 90\%$  for mild degree,  $65\% \leq \text{lowest SaO}_2 < 85\%$  for moderate degree, and  $\text{lowest SaO}_2 < 65\%$  for severe degree [24,25]. For example, AHI of 35 times/hr and lowest  $\text{SaO}_2$  of 86% are reported as severe OSAS with mild hypoxemia.

The OSAS group contains mild to moderate OSAS patients with mild hypoxemia. Participants without OSAS and hypoxemia can be in control group. Both groups also required to be

### HIGHLIGHTS

- Auditory dysfunction without abnormal click-evoked auditory brainstem response (click-ABR) might be found in obstructive sleep apnea syndrome (OSAS) patients.
- More speech-evoked ABR (speech-ABR) than click-ABR helps to detect auditory deficits in OSAS patients.
- Therefore, speech-ABR may be a potential biomarker for auditory dysfunction of OSAS patients.

right-handed (Persian version of Edinburgh handedness questionnaire), fluent in Chinese Mandarin, and free from any history of cardiovascular, pulmonary, otological, neurological or mental disorders. Participants with any risk factors which may affect hearing such as noise exposure, smoking, diabetes, or hypercholesterolemia, were also excluded. In addition, they had normal otology examination and were asked to complete auditory tests. They were asked to participate in tests voluntarily, and to sign informed consent forms. The study was approved by the Medical Ethics Committee of Guangdong Second Provincial General Hospital (No. 2015-KYLL-004).

According to the selection criteria, 52 patients (34 males and 18 females; age, 23 to 39 years; mean age,  $32.2 \pm 4.0$  years) were selected. Based on the value of AHI, the participants were divided in OSAS group (31 patients with  $5 \leq \text{AHI} \leq 30$  and  $85\% \leq$  lowest  $\text{SaO}_2 \leq 90\%$ ; 21 males and 10 females; mean age,  $32.5 \pm 4.4$  years) and control group (21 participants with  $\text{AHI} < 5$  and lowest  $\text{SaO}_2 > 90\%$ ; 13 males and 8 females; mean age,  $31.7 \pm 3.5$  years).

#### Sleep monitoring

Sleep monitoring was performed to all participants with an Embla N7000 System (Natus Medical, Pleasanton, CA, USA). The monitoring sleep time is more than 7 hours with simultaneous recording of AHIs and lowest  $\text{SaO}_2$ . They were banned from taking hypnosis, caffeine, concentrated tea, sedatives, and antihypertensive drugs before the day of polysomnogram monitoring.

#### PTA tests

The pure-tone hearing threshold of all participants were tested with the GSI-61 (Grason-Stadler, Eden Prairie, MN, USA) diagnostic audiometer according to the international standard. The threshold from 250 Hz to 8,000 Hz for right ear was calculated.

#### DPOAE tests

DPOAE tests were performed by SmartOAE ver. 4.5 (Intelligent Hearing System, Miami, FL, USA). The frequency ratio  $f_2/f_1$  of two original stimuli is 1.22, the intensity of  $f_2$  is 55dB sound pressure level (SPL), intensity of  $f_1$  is 65dB SPL, and  $f_{dp} = 2f_1 - f_2$ . The geometric mean of the two initial pure tone frequencies were from 500 Hz to 8,000 Hz for a total of nine frequencies, which are 500, 700, 1,000, 1,400, 2,000, 3,000, 4,000, 6,000, and 8,000 Hz, respectively. The signal-to-noise ratio in right ear was recorded.

#### ABR tests

ABR tests were accomplished using a SmartEP System (Intelligent Hearing System) in an acoustically attenuated and electromagnetically shielded room. The signal were recorded from three gold-cup electrodes placed at forehead (+), ipsilateral mastoid (-), and nasion (ground). Conductive electrode gel was applied to keep the contact impedances lower than 3 k $\Omega$ . Three

blocks (1,024 sweeps each) of responses were collected. Stimulus clicks of alternating polarity were presented at 80 dB SPL through insert earphone (ER-3A Etymotic Research, Elk Grove Village, IL, USA). The analogue bandpass filter is 100–3,000 Hz, the response signals were digitalized at 800 Hz stored in a computer. Trials with signal voltage over 35  $\mu\text{V}$  were rejected. Participants were required to be quiet and ignore the stimulus sounds during testing. For click-ABR, the stimulus rate was 19.3 S/s (stimulus/sec) and the recording window was 12.8 ms; for speech-ABR, the stimulus rate was 11.1 S/s and the recording window was 64 ms. The stimulus for speech-ABR was syllable /da/, of five formants, in which the  $F_0$  and  $F_1$  rise from 105–125 Hz and 455–720 Hz, respectively, while the second formant decreases from 1,700 to 1,222 Hz, the third formant reduces from 2,550 to 2,000 Hz. The last two formants remain fixed at 3,600 Hz and 4,600 Hz [14,15].

The temporal measurements of click-ABR, such as the latencies of featured peaks I, III and V, and the interpeak periods I–V, I–III and III–V, were identified by the trained experts and measured in the SmartEP system. The data of speech-ABR were transferred to a Brainstem toolbox [14–16] on MATLAB platform (MathWorks, Natick, MA, USA) which is increasingly used in the customized analysis of ABR research [26] for further analysis. The automated peak-picking algorithm in the toolbox was used to detect all peaks objectively for a higher confidence. The detailed information regarding the frequency encoding in the sustained segment of speech-ABR was obtained using fast Fourier transform, in which the spectral magnitudes of the frequency following response were measured over a 11.4–40.6 ms time window in three frequency ranges, i.e.,  $F_0$ , 103–121 Hz;  $F_1$ , 454–719 Hz; and HF, 721–1,155 Hz, respectively.  $F_2$  and the higher formants of higher frequencies were not measured because of the upper limit of phase locking (1,500 Hz) [14,21] at the level of the rostral brainstem. A series of featured peaks V–A–C–D–E–F–O, VA slope, and spectral formants  $F_0$ – $F_1$ –HF were also identified and measured.

#### Statistical analysis

The statistical analysis was carried out with SPSS ver. 13.0 (SPSS Inc., Chicago, IL, USA). The level of significance was set at  $P < 0.05$  (two-tailed). Group differences were tested by independent sample *t*-test. Bivariate correlation analysis was applied to assess the relationship between AHI and speech ABRs.

## RESULTS

#### Sleep data

The AHI distribution of the 31 OSAS participants is shown in Fig. 1. It shows an uneven distribution of AHI from 7 to 26 ( $18.00 \pm 5.50$ ), with a large number of participants of moderate degree. All of them are with mild hypoxemia ( $85\% \leq$  lowest

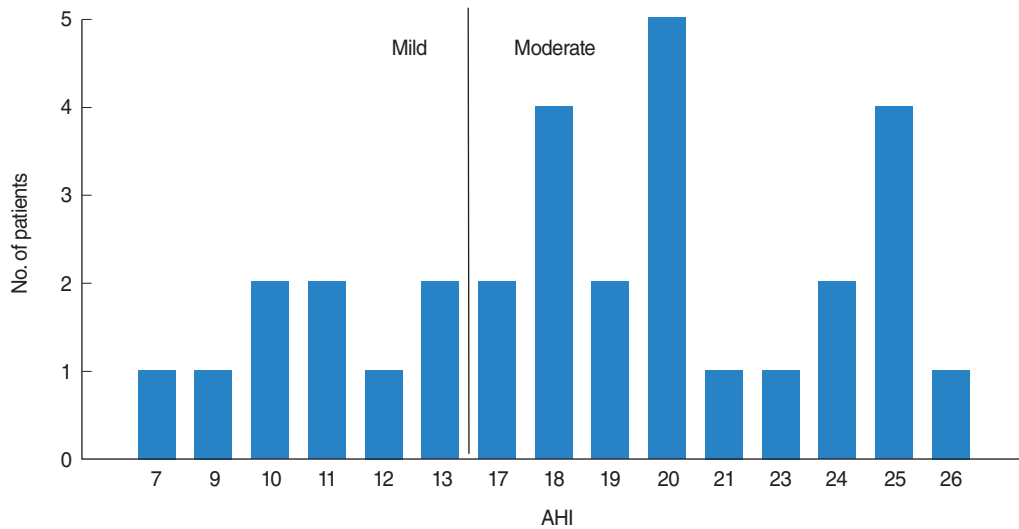


Fig. 1. Apnea hypopnea index (AHI) results of obstructive sleep apnea syndrome subjects, where level axis represented AHI number, and plumb axis indicated sum of AHI number.

Table 1. Auditory thresholds in OSAS and control groups

Frequency (Hz)	OSAS group	Control group	P-value
250	11.13±9.19	11.19±9.86	0.982
500	13.55±8.48	12.86±7.51	0.764
1,000	12.10±9.38	13.81±8.05	0.498
2,000	11.13±9.19	14.76±7.98	0.147
4,000	11.29±8.85	13.33±7.80	0.396
8,000	12.26±9.56	14.52±7.57	0.368
Average <sup>a)</sup>	11.51±4.85	12.66±4.58	0.394

Values are presented as mean±standard deviation.

OSAS, obstructive sleep apnea syndrome.

<sup>a)</sup>Average of four frequencies (500–4,000 Hz).

SaO<sub>2</sub> ≤90%).

#### PTA data

The data of PTA showed no significant differences between the OSAS patients and control group ( $P>0.05$ ), as shown in Table 1.

#### DPOAE data

No significant differences are found between OSAS group and control group ( $P>0.05$ ) for DPOAE test, as shown in Table 2.

#### Click-ABR data

The results of click-ABR are shown in Table 3, no significant differences are found between OSAS group and control group in terms of the peak latencies (I–III–V) and the interpeak latencies (I–III, III–V, and I–V) ( $P>0.05$ ).

#### Speech-ABR data

Speech-ABR waves for both groups are shown in Fig. 2. All the featured peaks are clearly elicited as labeled. By comparing the latency of these waves, we found that OSAS patients appeared

Table 2. Averages and standard deviations of the DPOAE amplitudes

Frequency (Hz)	OSAS group	Control group	P-value
500	10.97±3.51	11.16±3.40	0.846
700	10.01±2.99	11.26±3.55	0.177
1,000	10.22±3.24	11.48±3.24	0.175
1,400	10.05±2.99	9.70±2.51	0.665
2,000	10.69±3.08	12.01±3.36	0.150
3,000	9.57±2.72	9.55±2.79	0.971
4,000	9.76±2.86	10.73±3.02	0.247
6,000	10.25±3.27	9.64±2.63	0.480
8,000	10.36±3.05	11.04±3.07	0.438

Values are presented as mean±standard deviation.

DPOAE, distortion product otoacoustic emission; OSAS, obstructive sleep apnea syndrome.

Table 3. Characteristics of click-ABR in OSAS and control groups

Latency (ms)	OSAS group	Control group	P-value
I	1.57±0.39	1.58±0.44	0.418
III	3.65±0.53	3.65±0.45	0.862
V	5.64±0.82	5.60±0.77	0.125
I–III	2.07±0.68	2.06±0.57	0.697
III–V	1.99±0.94	1.95±0.92	0.158
I–V	4.06±0.99	4.02±0.80	0.089

Values are presented as mean±standard deviation.

click-ABR, click-evoked auditory brainstem response; OSAS, obstructive sleep apnea syndrome.

to have longer latency values than the control group for the transient portion of the speech-ABR (except for peak A) as shown in Fig. 3.

Table 4 presents all the statistics in time and frequency domains of the speech-ABR. Statistical analysis results show that

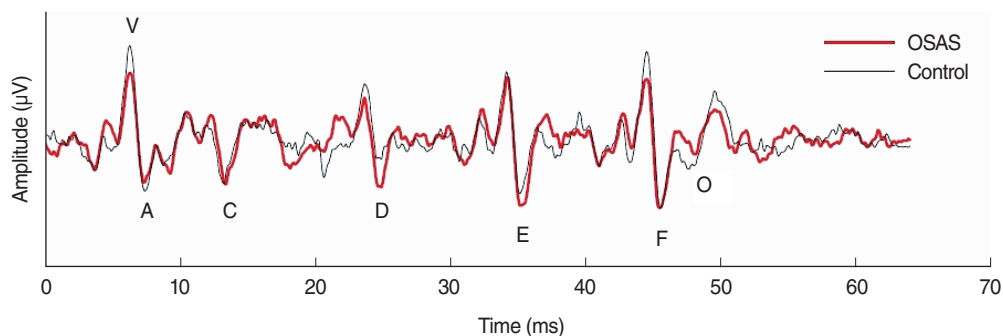


Fig. 2. Comparison of speech-evoked auditory brainstem response in obstructive sleep apnea syndrome (OSAS) patients and control subjects.

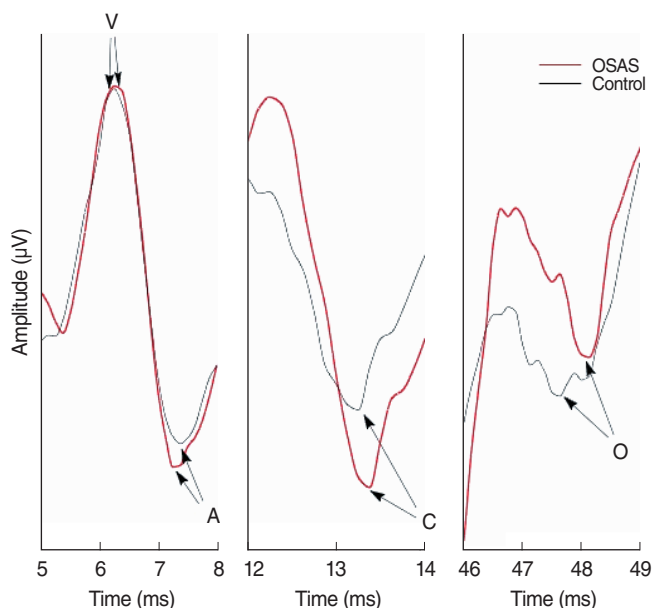


Fig. 3. Transient portion of speech-evoked auditory brainstem response in obstructive sleep apnea syndrome (OSAS) patients and control subjects.

there are significant latency differences between OSAS and control groups for peak V, peak C, and peak O ( $P < 0.05$ ). No significant latency differences are founded for peak A, peak D, peak E and peak F ( $P > 0.05$ ). Analysis of composite measure VA slope and the spectral amplitude of  $F_0$ ,  $F_1$ , and HF revealed no significant group differences ( $P > 0.05$ ).

### Correlations between the peak latencies of speech-ABR and AHIs

To assess whether the brainstem timing of speech-ABR is related to the severity of OSAS, latencies of the waves were correlated with the AHIs using bivariate correlation analysis method. The results of Pearson correlation coefficients showed significant correlations for peak V ( $r = 0.37, P = 0.040$ ), peak C ( $r = 0.36, P = 0.045$ ), and peak O ( $r = 0.55, P = 0.001$ ).

Table 4. Statistical analysis for latency, composite and spectral measures of speech-ABR

Measurement	OSAS group	Control group	<i>t</i>	<i>P</i> -value
Wave latency (ms)				
V	6.69±0.33	6.39±0.23	-3.63	0.001
A	7.42±0.16	7.46±0.22	0.68	0.499
C	13.48±0.30	13.31±0.23	-2.39	0.021
D	24.02±0.56	24.00±0.44	-0.16	0.877
E	33.89±0.54	33.85±0.33	-3.49	0.728
F	44.42±0.41	44.23±0.72	-1.10	0.280
O	48.27±0.39	47.60±0.40	-6.00	0.000
Composite measure				
VA slope	-0.32±0.14	-0.33±0.05	0.26	0.799
Spectral measure				
$F_0$	4.45±0.72	4.39±0.84	-3.12	0.756
$F_1$	0.95±0.27	0.95±0.17	0.12	0.988
HF	0.33±0.03	0.33±0.02	0.34	0.739

Values are presented as mean ± standard deviation. Speech-ABR, speech-evoked auditory brainstem response; OSAS, obstructive sleep apnea syndrome;  $F_0$ , fundamental frequency;  $F_1$ , the first formant; HF, high formant.

## DISCUSSION

Many studies have always been interested in the functional state of auditory nervous systems in patients with OSAS. In recent years, Casale et al. [7] found that severe OSAS patients may have lower DPOAE amplitudes, higher PTAs, and prolonged latencies as well as wave intervals in click-ABRs. It was considered that hypoxia of severe OSAS may be a risk-factor for auditory system dysfunction [7,9,10]. In our study, no significant differences are found for PTA, DPOAE, and click-ABR measurements as shown in Tables 1-3. The reasons may be ascribed to the small sample size, or, more likely, because it is a long persistent process for auditory impairment caused by hypoxemia [7], and the mild to moderate hypoxemia may not be sufficient to cause the above auditory impairments in patients. In this study, typical speech-ABR waveforms for both groups are morphologically similar (Fig. 2), while the latencies of peak V, C, and O are

significantly longer in OSAS patients (Table 4, Fig. 3), which indicates the abnormality may occur in the transient components of speech-ABR in mild-moderate OSAS participants without observed changes appeared in the conventional click-ABR. This finding is similar to cases of LPC [18-21] and PDS [22] patients in speech-ABR researches.

Although both click-ABRs and speech-ABRs are the auditory evoked potentials reflecting the synchronized activity of neurons in the auditory brainstem, they may have different sensitivities to the same stimulation properties. A feasible explanation involves possible differences in neural populations recruited during the encoding click and speech syllable. The process of complex sounds in auditory brainstem may have an independent mechanism in contrast with simple sounds [27]. Some researchers advocated this notion in the case of the abnormal performance of speech-ABR in LPC populations [18]. Note that the acoustical structure of click and speech sounds are of great difference. A click sound is a burst of impulse with a plain frequency distribution over a large hearing range, while a speech syllable generally contains tones (mainly reflected in the sound of the  $F_0$ ), timbre (reflected by harmonics), timing (mainly reflected in the start, end of sound and phoneme transitions), and other acoustic characteristics related to the meaningful language. Therefore, the auditory brainstem may need to adequately mobilize more neurons or regulate their functions for the speech stimulus, so that the auditory mechanisms involved in speech syllable coding are more complicated than that of click acoustic stimuli. Furthermore, it is more challenging in coding speech sound in auditory system due to the backward masking effect [28]. This may lead to the separation of click-ABR and speech-ABR in the case of the LPC [18-21], the PDS [22], and the mild to moderate OSAS population in this experiment. Thus, the normality of click-ABR cannot completely rule out the auditory dysfunction in patients with OSAS though it is sensitive to the detection of auditory brainstem injury in severe OSAS patients [7,9]. The incompetence of click-ABR is further supported by an animal study, which claimed that one-sided inferior colliculus degeneration and medial geniculate degeneration cannot be detected by click-ABR [29]. This study implies that speech-ABR may have broader application prospects since it can provide additional information on the auditory brainstem center to better reflect the auditory function [27].

The abnormality in the transient components (Table 4) of OSAS patients is considered to reflect the filter information, which is related to temporal and formant, as coding with “where” pathway. No significant differences were found for periodic components of speech-ABR, which reflects sound source information related to sound of  $F_0$  or pitch as coding with “what” pathway. The latency delay in peak V, C, and O of the transient components may support that the auditory what-where functional pathways consist of different neural networks and have independent functions [17]. These abnormal perfor-

mances of speech-ABR may be related to the interference of temporal information encoded in the auditory brainstem center [15,18-22]. It is presumed that peak V, C, and O occurred in response to transient stimulus events (in contrast to the periodic acoustic events in the speech stimulus), specifically, peak V may reflect a highly synchronized neural response to the onset of the stimulus; peak C is probably a response to the onset of the voicing that occurs after stimulus onset; peak O is probably a response to the cessation of sound, as it temporally corresponds to the offset of the stimulus [15,18,30].

These transient peaks of speech-ABR may originate from the consequence of activity of octopus cells in the brainstem nuclei representing the timing information of speech [31]. Burst responses produced by the auditory neurons require high energy consumptions, or equivalently more oxygen [7,31], these neurons may be more likely to be impaired by hypoxemia. The auditory neurons that generate transient components of speech-ABR are more susceptible to adverse effects than those that generate periodic components. This notion was supported by other studies under noisy environment [32] and in the old population [33]. Studies have shown that the higher the AHI, the lower the  $SaO_2$  of OSAS patients [1-3]. Therefore, the severe OSAS should be more likely to damage the involved neurons, or their temporal coding functions.

Although OSAS participants have mild hypoxemia, higher AHI means longer durations of apnea and hypopnea, or more frequent hypoxia, which leads to the damage of auditory functions due to the lack of blood supply in the brainstem [34]. The significantly positive correlations between the latency of peaks (V, C, and O) and AHI suggest that the damage may be aggravated with the severity of the OSAS. In this study, OSAS patients only have mild to moderate degree of AHI, which suggests that the damage occurred in the neurons may be responsible for speech-ABR transient elements, but it may not be adequate to cause observable changes in the periodic elements that required severe and accumulated effects from hypoxia.

In this study, the latency of peak O showed the strongest correlation coefficient ( $r=0.55$ ,  $P=0.001$ ), suggesting that the latency of peak O can be a sensitive indicator to the effects of OSAS severity on auditory system. Some researchers declared that the latency of peak O may reflect the ability of auditory brainstem to discriminate temporal information in speech syllable, which may have originated from neurons responsible for the termination and duration of acoustic signals [35]. These auditory neurons are present in the nucleus of the inferior colliculus [36], and can be used to distinguish temporal information from speech sound in environment noise [32]. It has been reported that the latency of peak O may be a strong predictor of weak temporal resolution abilities in some deficit populations. For example, the latency of peak O was used to measure the post-masking effects in LPC population [22,35]. In addition, it was also found that the latency of peak O was significantly delayed

in the elderly population with impaired auditory function and speech cognition which related to the temporal information processing capacity in the auditory brainstem of hearing loss associated with age [33,37,38]. These findings prompt that further research of the relationship between characteristic of peak O and temporal processing of auditory brainstem may be particularly informative, and then the latency of peak O may be an important indicator to the auditory deficits in OSAS patients.

In summary, we reported that the transient components of speech-ABR were significantly and positively correlated with the AHI in mild and moderate OSAS patients, while the change in conventional click-ABR is not detectable. As these components reflect the coding of temporal information in speech syllable, this finding suggests that OSAS may be responsible for the deficits of temporal information processing which can be represented by the speech-ABR. Thus speech-ABR can be a potential biomarker in the diagnosis and evaluation at early stage of OSAS.

### CONFLICT OF INTEREST

No potential conflict of interest relevant to this article was reported.

### ACKNOWLEDGMENTS

The authors thank the students, staff, and patients who took part in this study.

This work was supported by the Guangzhou Science and Technology Plan Project (grant no. 201804010282), China.

### REFERENCES

- Javaheri S, Parker TJ, Liming JD, Corbett WS, Nishiyama H, Wexler L, et al. Sleep apnea in 81 ambulatory male patients with stable heart failure: types and their prevalences, consequences, and presentations. *Circulation*. 1998 Jun;97(21):2154-9.
- Inonu Koseoglu H, Kanbay A, Kokturk O. An important concomitancy: interstitial lung diseases and sleep related breathing disorders. *Tuberk Toraks*. 2014;62(3):231-5.
- Hui DS, Wong TY, Ko FW, Li TS, Choy DK, Wong KK, et al. Prevalence of sleep disturbances in Chinese patients with end-stage renal failure on continuous ambulatory peritoneal dialysis. *Am J Kidney Dis*. 2000 Oct;36(4):783-8.
- Das A, Anupa AV, Radhakrishnan A. Reduced plastic brain responses to repetitive transcranial magnetic stimulation in severe obstructive sleep apnea syndrome. *Sleep Med*. 2013 Jul;14(7):636-40.
- Arlı B, Bilen S, Titiz AP, Ulusoy EK, Mungan S, Gurkas E, et al. Comparison of cognitive functions between obstructive sleep apnea syndrome and simple snoring patients: OSAS may be a modifiable risk factor for cognitive decline. *Appl Neuropsychol Adult*. 2015;22(4):282-6.
- Fanfulla F, Grassi M, Taurino AE, D'Artavilla Lupo N, Trentin R. The relationship of daytime hypoxemia and nocturnal hypoxia in obstructive sleep apnea syndrome. *Sleep*. 2008 Feb;31(2):249-55.
- Casale M, Vesperini E, Potena M, Pappacena M, Bressi F, Baptista PJ, et al. Is obstructive sleep apnea syndrome a risk factor for auditory pathway? *Sleep Breath*. 2012 Jun;16(2):413-7.
- Seo YJ, Kwak C, Kim S, Park YA, Park KH, Han W. Update on bone-conduction auditory brainstem responses: a review. *J Audiol Otol*. 2018 Apr;22(2):53-8.
- Liu D, Chen Q, Huang Z, Zhong J, Zhou L. Auditory brainstem response in severe obstructive sleep apnea-hypopnea syndrome children. *Lin Chuang Er Bi Yan Hou Ke Za Zhi*. 2005 Oct;19(19):868-70.
- Muchnik C, Rubel Y, Zohar Y, Hildesheimer M. Auditory brainstem response in obstructive sleep apnea patients. *J Basic Clin Physiol Pharmacol*. 1995;6(2):139-48.
- Wetmore SJ, Henderson C, Doshier NW, Milligan LB. Auditory brainstem response in obstructive sleep apnea. *Laryngoscope*. 1988 May;98(5):499-501.
- Karnaze D, Gott P, Mitchell F, Loftin J. Brainstem auditory evoked potentials are normal in idiopathic sleep apnea. *Ann Neurol*. 1984 Apr;15(4):406.
- Verma NP, Kapen S, King SD, Koshorek GJ. Bimodality electrophysiologic evaluation of brainstem in sleep apnea syndrome. *Neurology*. 1987 Jun;37(6):1036-9.
- Klatt DH. Software for a cascade/parallel formant synthesizer. *J Acoust Soc Am*. 1980;67:971-95.
- Johnson KL, Nicol TG, Kraus N. Brain stem response to speech: a biological marker of auditory processing. *Ear Hear*. 2005 Oct;26(5):424-34.
- Kraus N, Nicol T. Brainstem origins for cortical 'what' and 'where' pathways in the auditory system. *Trends Neurosci*. 2005 Apr;28(4):176-81.
- Purcell DW, John SM, Schneider BA, Picton TW. Human temporal auditory acuity as assessed by envelope following responses. *J Acoust Soc Am*. 2004 Dec;116(6):3581-93.
- King C, Warrier CM, Hayes E, Kraus N. Deficits in auditory brainstem pathway encoding of speech sounds in children with learning problems. *Neurosci Lett*. 2002 Feb;319(2):111-5.
- Wible B, Nicol T, Kraus N. Atypical brainstem representation of onset and formant structure of speech sounds in children with language-based learning problems. *Biol Psychol*. 2004 Nov;67(3):299-317.
- Banai K, Nicol T, Zecker SG, Kraus N. Brainstem timing: implications for cortical processing and literacy. *J Neurosci*. 2005 Oct;25(43):9850-7.
- Wible B, Nicol T, Kraus N. Correlation between brainstem and cortical auditory processes in normal and language-impaired children. *Brain*. 2005 Feb;128(Pt 2):417-23.
- Tahaei AA, Ashayeri H, Pourbakht A, Kamali M. Speech evoked auditory brainstem response in stuttering. *Scientifica (Cairo)*. 2014;2014:328646.
- Chung SA, Yuan H, Chung F. A systemic review of obstructive sleep apnea and its implications for anesthesiologists. *Anesth Analg*. 2008 Nov;107(5):1543-63.
- American Academy of Sleep Medicine. International classification of sleep disorders: diagnostic and coding manual. 2nd ed. Westchester (IL): American Academy of Sleep Medicine; 2005.
- Guideline for the diagnosis and surgical treatment of obstructive sleep apnea hypopnea syndrome. *Zhonghua Er Bi Yan Hou Tou Jing Wai Ke Za Zhi*. 2009 Feb;44(2):95-6.
- Yuvaraj P, Jayaram M. Audiological profile of adult persons with auditory neuropathy spectrum disorders. *J Audiol Otol*. 2016 Dec;20(3):158-67.
- Song JH, Banai K, Russo NM, Kraus N. On the relationship between

- speech- and nonspeech-evoked auditory brainstem responses. *Audiol Neurootol*. 2006 Jun;11(4):233-41.
28. Murphy CB, Peres AK, Zachi EC, Ventura DF, Pagan-Neves L, Wertzner HF, et al. Generalization of sensory auditory learning to top-down skills in a randomized controlled trial. *J Am Acad Audiol*. 2015 Jan; 26(1):19-29.
  29. Masuda S, Takeuchi K, Tsuruoka H, Ukai K, Sakakura Y. Word deafness after resection of a pineal body tumor in the presence of normal wave latencies of the auditory brain stem response. *Ann Otol Rhinol Laryngol*. 2000 Dec;109(12 Pt 1):1107-12.
  30. Russo N, Nicol T, Musacchia G, Kraus N. Brainstem responses to speech syllables. *Clin Neurophysiol*. 2004 Sep;115(9):2021-30.
  31. Akhoun I, Gallego S, Moulin A, Menard M, Veuillet E, Berger-Vachon C, et al. The temporal relationship between speech auditory brainstem responses and the acoustic pattern of the phoneme /ba/ in normal-hearing adults. *Clin Neurophysiol*. 2008 Apr;119(4):922-33.
  32. Song JH, Skoe E, Banai K, Kraus N. Perception of speech in noise: neural correlates. *J Cogn Neurosci*. 2011 Sep;23(9):2268-79.
  33. VanderWerff KR, Burns KS. Brain stem responses to speech in younger and older adults. *Ear Hear*. 2011 Mar-Apr;32(2):168-80.
  34. el-Kady MA, Durrant JD, Tawfik S, Abdel-Ghany S, Moussa AM. Study of auditory function in patients with chronic obstructive pulmonary diseases. *Hear Res*. 2006 Feb;212(1-2):109-16.
  35. Johnson KL, Nicol TG, Zecker SG, Kraus N. Auditory brainstem correlates of perceptual timing deficits. *J Cogn Neurosci*. 2007 Mar; 19(3):376-85.
  36. Faure PA, Fremouw T, Casseday JH, Covey E. Temporal masking reveals properties of sound-evoked inhibition in duration-tuned neurons of the inferior colliculus. *J Neurosci*. 2003 Apr;23(7):3052-65.
  37. Skoe E, Kraus N. Auditory brain stem response to complex sounds: a tutorial. *Ear Hear*. 2010 Jun;31(3):302-24.
  38. Clinard CG, Tremblay KL, Krishnan AR. Aging alters the perception and physiological representation of frequency: evidence from human frequency-following response recordings. *Hear Res*. 2010 Jun; 264(1-2):48-55.