



OPEN

# Author Correction: School grades and educational attainments of adolescents and young adults born preterm

Suvi Alenius, Eero Kajantie, Reijo Sund, Markku Nurhonen, Peija Haaramo, Pieta Näsänen-Gilmore, Sakari Lemola, Katri Räikkönen, Daniel D. Schnitzlein, Dieter Wolke, Mika Gissler & Petteri Hovi

Correction to: *Scientific Reports* <https://doi.org/10.1038/s41598-022-27295-4>, published online 05 January 2023

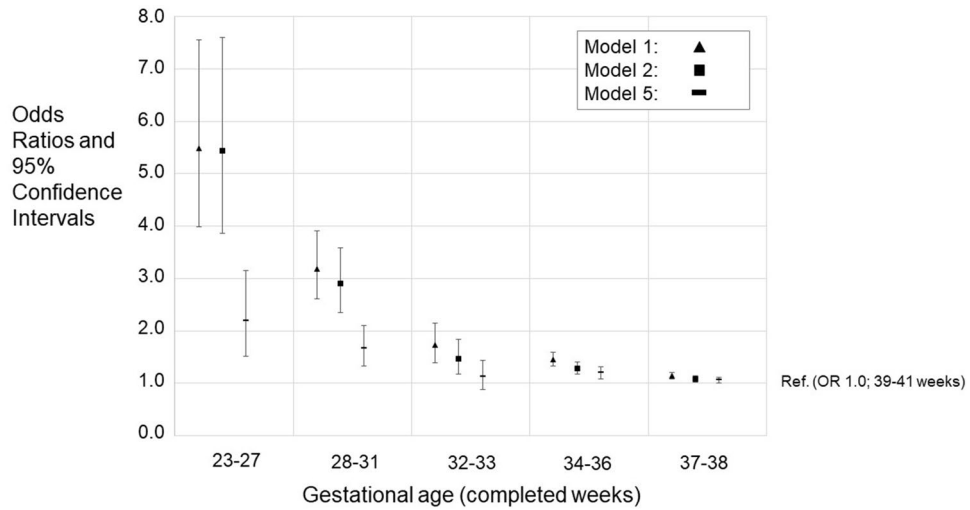
The original version of this Article contained an error in Figures 2, 3, 4 and 5, where the legend for the visual cues incorrectly states 'Model 2' for the black square.

The correct legends now read:

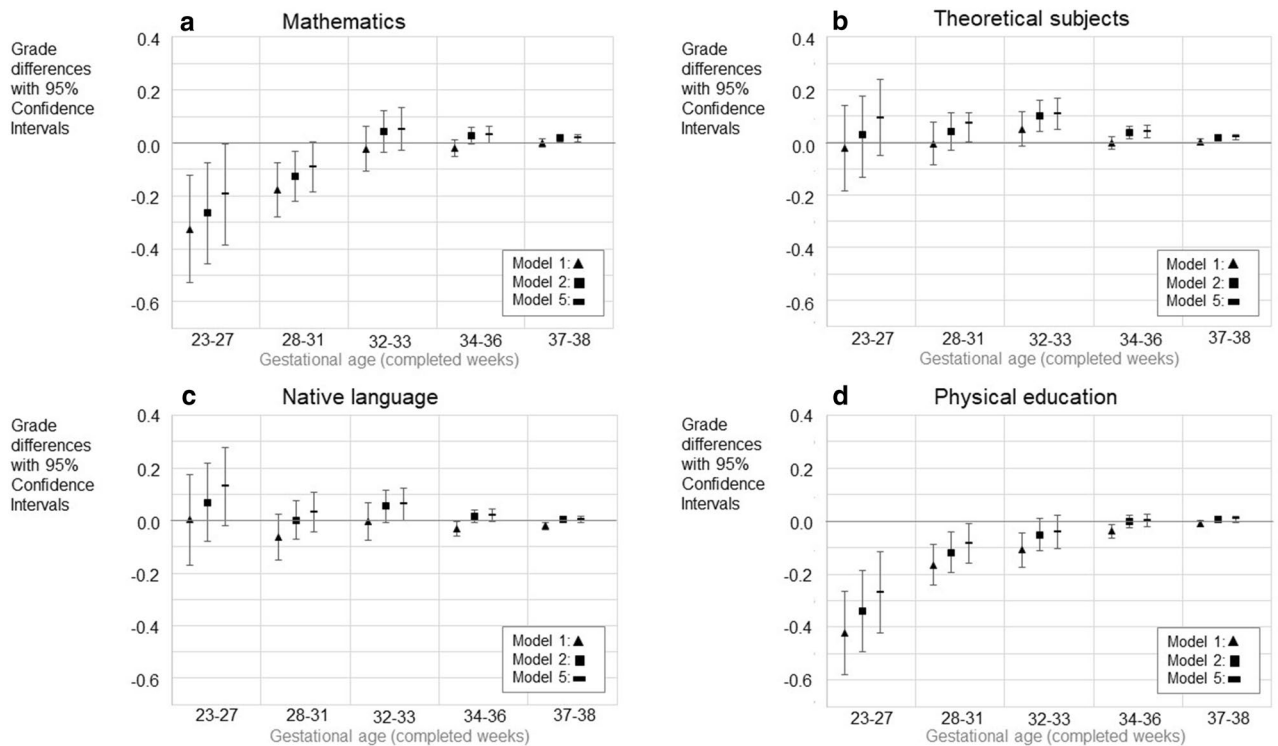
Model 1:	▲
Model 4:	■
Model 5:	—

The original Figures 2, 3, 4 and 5 and their respective accompanying legend appear below.

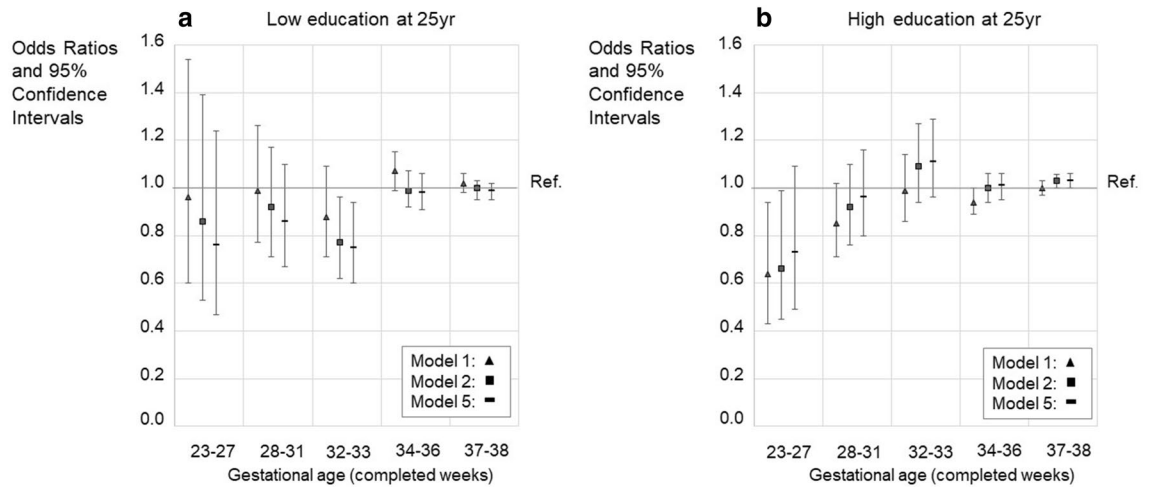
The original Article has been corrected.



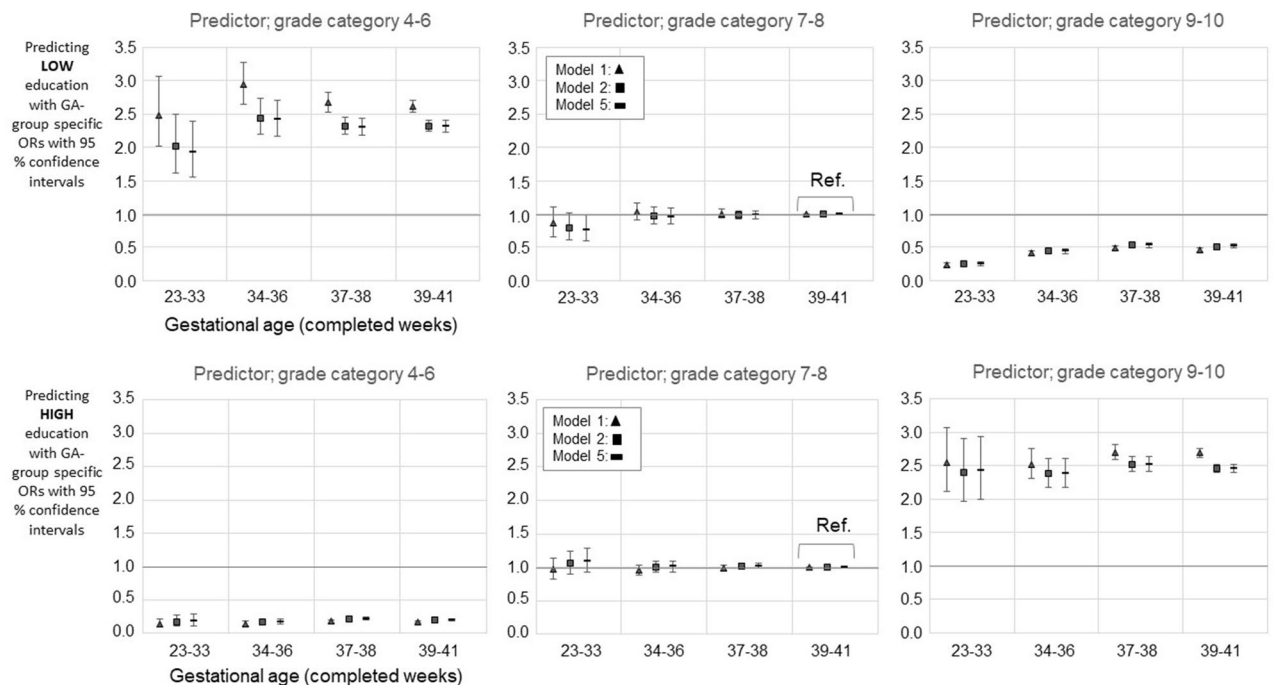
**Figure 2.** Odds ratios (ORs) and 95% confidence intervals (CIs) for special education in compulsory education according to gestational age category. The figure shows models 1, 4, and 5. Models 2 and 3 are available in the Supplementary Table 3. GA category 39–41 weeks is the reference group (OR = 1.0). Model 1; Unadjusted model, Model 4; Adjusted for the sex, birth year, maternal and paternal ages, maternal and paternal highest attained education, BWSDS, gestational disorder(s), maternal smoking at pregnancy, maternal marital status at the childbirth, and birth order, Model 5; Adjusted as Model 4, and for severe medical condition.



**Figure 3.** Differences in school grades (a–d) in mainstream education with 95% confidence intervals (CIs). The figures show models 1, 4, and 5. Models 2 and 3 are available in the Supplementary Tables 5–8. GA category 39–41 weeks is the reference group (with grade difference 0.0). Only such individuals who attended mainstream education in compulsory education are included. Model 1; Unadjusted model, Model 4; Adjusted for the sex, birth year, maternal and paternal ages, maternal and paternal highest attained education, BWSDS, gestational disorder(s), maternal smoking at pregnancy, maternal marital status at the childbirth, and birth order, Model 5; Adjusted as Model 4, and for severe medical condition.



**Figure 4.** Education at 25 years of age. Intermediate education (upper secondary, less than tertiary) as a reference. **A** - Odds ratios (OR) with 95% confidence intervals for low education (basic only or unknown). **B** - Odds ratios (OR) with 95% confidence intervals for high (lower tertiary or more) education. The figure shows models 1, 4, and 5. Models 2 and 3 are available in the Supplementary Table 9ab. GA category 39–41 weeks is the reference group (with OR=1.0). Only such individuals who attended mainstream education in compulsory education are included. Model 1; Unadjusted model, Model 4; Adjusted for the sex, birth year, maternal and paternal ages, maternal and paternal highest attained education, BWSDS, gestational disorder(s), maternal smoking at pregnancy, maternal marital status at the childbirth, and birth order, Model 5; Adjusted as Model 4, and for severe medical condition.



**Figure 5.** Mathematics grade and gestational age category together predicting [LOW] ‘basic only or unknown’ (upper panel) and [HIGH] ‘lower tertiary or more’ (lower panel) education. Comparisons to intermediate education i.e., ‘upper secondary, less than tertiary’. GA 39–41 and grade category 7–8 serves as a reference group. The figures show models 1, 4, and 5. Models 2 and 3 are available in the Supplementary Table 10ab. The *p* values (for Model 5) from the comparisons of interaction- and main-effects-only models were 0.721 for grade 4–6 group; 0.638 for grade 7–8 group; and 0.718 for grade 9–10 group. For unadjusted model (Model 1) the *p* values from the comparisons were as follows: 0.599 for grade 4–6 group; 0.785 for grade 7–8 group; and 0.704 for grade 9–10 group. Only such individuals who attended mainstream education in compulsory education are included. Model 1; Unadjusted model, Model 4; Adjusted for the sex, birth year, maternal and paternal ages, maternal and paternal highest attained education, BWSDS, gestational disorder(s), maternal smoking at pregnancy, maternal marital status at the childbirth, and birth order, Model 5; Adjusted as Model 4, and for severe medical condition.



**Open Access** This article is licensed under a Creative Commons Attribution 4.0 International License, which permits use, sharing, adaptation, distribution and reproduction in any medium or format, as long as you give appropriate credit to the original author(s) and the source, provide a link to the Creative Commons licence, and indicate if changes were made. The images or other third party material in this article are included in the article's Creative Commons licence, unless indicated otherwise in a credit line to the material. If material is not included in the article's Creative Commons licence and your intended use is not permitted by statutory regulation or exceeds the permitted use, you will need to obtain permission directly from the copyright holder. To view a copy of this licence, visit <http://creativecommons.org/licenses/by/4.0/>.

© The Author(s) 2023