



Axonal swellings are related to type 2 diabetes, but not to distal diabetic sensorimotor polyneuropathy

Pall Karlsson^{1,2} · Sandra S. Gylfadottir^{1,3} · Alexander G. Kristensen^{1,4} · Juan D. Ramirez⁵ · Pedro Cruz⁶ · Nhu Le⁷ · Pallai R. Shillo⁸ · Solomon Tesfaye⁸ · Andrew S. C. Rice^{9,10} · Hatice Tankisi⁴ · Nanna B. Finnerup^{1,3} · Jens R. Nyengaard² · Troels S. Jensen^{1,3} · David L. H. Bennett⁵ · Andreas C. Themistocleous⁵

Received: 12 August 2020 / Accepted: 23 October 2020 / Published online: 23 January 2021

© The Author(s) 2021

Abstract

Aims/hypothesis Distal diabetic sensorimotor polyneuropathy (DSP) is a common complication of diabetes with many patients showing a reduction of intraepidermal nerve fibre density (IENFD) from skin biopsy, a validated and sensitive diagnostic tool for the assessment of DSP. Axonal swelling ratio is a morphological quantification altered in DSP. It is, however, unclear if axonal swellings are related to diabetes or DSP. The aim of this study was to investigate how axonal swellings in cutaneous nerve fibres are related to type 2 diabetes mellitus, DSP and neuropathic pain in a well-defined cohort of patients diagnosed with type 2 diabetes.

Methods A total of 249 participants, from the Pain in Neuropathy Study (UK) and the International Diabetic Neuropathy Consortium (Denmark), underwent a structured neurological examination, nerve conduction studies, quantitative sensory testing and skin biopsy. The study included four groups: healthy control study participants without diabetes ($n = 45$); participants with type 2 diabetes without DSP (DSP–; $n = 31$); and participants with evidence of DSP (DSP+; $n = 173$); the last were further separated into painless DSP+ ($n = 74$) and painful DSP+ ($n = 99$). Axonal swellings were defined as enlargements on epidermal-penetrating fibres exceeding 1.5 μm in diameter. Axonal swelling ratio is calculated by dividing the number of axonal swellings by the number of intraepidermal nerve fibres.

Results Median (IQR) IENFD (fibres/mm) was: 6.7 (5.2–9.2) for healthy control participants; 6.2 (4.4–7.3) for DSP–; 1.3 (0.5–2.2) for painless DSP+; and 0.84 (0.4–1.6) for painful DSP+. Swelling ratios were calculated for all participants and those with IENFD > 1.0 fibre/mm. When only those participants with IENFD > 1.0 fibre/mm were included, the axonal swelling ratio was higher in participants with type 2 diabetes when compared with healthy control participants ($p < 0.001$); however, there was no difference between DSP– and painless DSP+ participants, or between painless DSP+ and painful DSP+ participants. The axonal swelling ratio correlated weakly with HbA_{1c} ($r = 0.16$, $p = 0.04$), but did not correlate with the Toronto Clinical Scoring System (surrogate measure of DSP severity), BMI or type 2 diabetes duration.

Conclusions/interpretation In individuals with type 2 diabetes where IENFD is > 1.0 fibre/mm, axonal swelling ratio is related to type 2 diabetes but is not related to DSP or painful DSP. Axonal swellings may be an early marker of sensory nerve injury in type 2 diabetes.

Keywords Axonal swellings · Diabetes · Diabetic neuropathy · Neuropathic pain · Skin biopsy

✉ Andreas C. Themistocleous
andreas.themistocleous@ndcn.ox.ac.uk

¹ Danish Pain Research Centre, Department of Clinical Medicine, Aarhus University, Aarhus, Denmark

² Core Centre for Molecular Morphology, Section for Stereology for Microscopy, Department of Clinical Medicine, Aarhus University, Aarhus, Denmark

³ Department of Neurology, Aarhus University Hospital, Aarhus, Denmark

⁴ Department of Clinical Neurophysiology, Aarhus University Hospital, Aarhus, Denmark

⁵ Nuffield Department of Clinical Neurosciences, University of Oxford, Oxford, UK

⁶ Faculty of Medicine, Universidade de Coimbra, Coimbra, Portugal

⁷ Radboud University Medical Centre, Nijmegen, the Netherlands

⁸ Diabetes Research Unit, Sheffield Teaching Hospitals NHS Foundation Trust, Sheffield, UK

⁹ Pain Research Group, Department of Surgery and Cancer, Faculty of Medicine, Imperial College London, Chelsea and Westminster Hospital Campus, London, UK

¹⁰ Pain Medicine, Chelsea and Westminster Hospital NHS Foundation Trust, London, UK

Research in context

What is already known about this subject?

- Intraepidermal nerve fibres are decreased in diabetic sensorimotor polyneuropathy
- While a decrease in intraepidermal nerve fibre density is a key finding in diabetic sensorimotor polyneuropathy, there is no clear association between the intraepidermal nerve fibre density and presence or intensity of neuropathic pain
- Axonal swellings are increased in diabetic sensorimotor polyneuropathy

What is the key question?

- Are axonal swellings related to the type 2 diabetes state, diabetic sensorimotor polyneuropathy, neuropathic pain or clinical variables relevant to type 2 diabetes?

What are the new findings?

- All study participants with type 2 diabetes, regardless of the presence of neuropathy or neuropathic pain, had higher axonal swelling ratios compared with healthy control participants
- Axonal swelling ratio did not differ between participants with type 2 diabetes, with or without diabetic sensorimotor polyneuropathy
- Axonal swelling ratio correlated with HbA_{1c}, but did not correlate with other clinical variables

How might this impact on clinical practice in the foreseeable future?

- Axonal swellings may be an early sign of nerve fibre injury in type 2 diabetes. An increase in axonal swellings may develop before diabetic sensorimotor polyneuropathy. Therefore, their quantification, along with intraepidermal nerve fibre density, may further assist in the early detection of neural damage in patients with type 2 diabetes

Abbreviations

DSP	Diabetic sensorimotor polyneuropathy
DSP+	Participants with DSP
DSP–	Participants without DSP
IDNC	International Diabetic Neuropathy Consortium
IENFD	Intraepidermal nerve fibre density
NeuPSIG	Neuropathic Pain Special Interest Group
PGP 9.5	Protein gene product 9.5
PiNS	Pain in Neuropathy Study
TCSS	Toronto Clinical Scoring System

Introduction

Diabetic sensorimotor polyneuropathy (DSP) is a common complication of diabetes, which typically presents as a distal symmetric polyneuropathy with sensory loss or pain in the feet and hands [1, 2]. As currently available treatments for neuropathic pain demonstrate modest pain relief [3], it is essential that we improve our understanding of the mechanisms that contribute to painful DSP [2, 4], and understand why some patients with DSP develop pain and others do not. Skin nerve fibre morphometric analysis offers potential insights, as differences are observed between individuals with painless and painful DSP [5].

Intraepidermal nerve fibre density (IENFD) assessment of skin biopsy samples is a validated and sensitive diagnostic tool for the assessment of small fibre neuropathies including DSP, but IENFD is considered the pathological hallmark of DSP [6–8]. There is some uncertainty as to whether IENFD differentiates between patients with painless and painful DSP, as some studies report an inverse correlation between IENFD and pain [9], while others report no correlation [10].

Morphometric analysis of nerve fibres detects a change in axonal structures termed axonal swellings, a degenerative change that contains watery axoplasm, neurofilaments and abnormal mitochondria [11]. It is postulated that axonal swellings, in particular larger swellings, precede small fibre degeneration [12, 13]. In patients with DSP the relationship of axonal swellings to polyneuropathy progression and symptoms is unclear. In one study an increase of axonal swellings was found in patients with painful DSP [5]; however, in another study axonal swellings did not differentiate between patients with painful and painless DSP [14]. In both studies, axonal swellings were higher in participants with DSP when compared with participants with diabetes but without DSP, and with healthy control (HC) participants.

Therefore, it is unclear if axonal swellings are related to type 2 diabetes, DSP or neuropathic pain.

This study investigates whether the axonal swelling ratio (axonal swellings/intraepidermal nerve fibres) is related to

DSP, neuropathic pain and clinical variables in a well-characterised and comprehensively phenotyped cohort of study participants with type 2 diabetes mellitus and HC participants [10, 15].

Methods

Standard protocol approvals, registrations and patient consents

The data presented in this paper are derived from the Pain in Neuropathy Study (PiNS) from the UK and the International Diabetic Neuropathy Consortium (IDNC) study from Aarhus, Denmark. PiNS is a multicentre study approved by the National Research Ethics Service of the UK (No.: 10/H0706/35). The IDNC study was approved by the regional ethics committee (No.: 1-10-72-130-16). All study participants signed written consent forms, in line with the Declaration of Helsinki, before enrolment.

Study protocol

All participants underwent a medical history review and a structured neurological examination. Study participants underwent nerve conduction studies, skin biopsy for IENFD assessment, quantitative sensory testing and diabetes-related biochemistry testing including a single HbA_{1c} test at the time of study. The clinical examination is described in detail elsewhere [10, 15]. The Toronto Clinical Scoring System (TCSS) score was calculated for all participants [16]. TCSS score is used as a surrogate measure of neuropathy severity, and was not used in the diagnosis of DSP.

Participant selection

A total of 249 study participants were recruited as part of two different studies, 204 participants with type 2 diabetes and 45 HC participants without diabetes. Clinical assessment, polyneuropathy grading, neuropathic pain grading and skin staining were performed uniformly using the same methodology. A subset, 142 of the participants (57.0%), were part of the PiNS study, and all were diagnosed with type 2 diabetes [10]. The remaining 107 participants, 62 individuals with type 2 diabetes and 45 HC participants, were part of the IDNC study [15] (Electronic supplementary material [ESM] Fig. 1). A detailed description of the clinical assessment and phenotyping of the study participants can be found elsewhere and will be briefly described here [10, 15].

Selection of IDNC participants

IDNC participants were part of a clinical study of 389 patients conducted in 2016–2018, initially recruited from a questionnaire study on neuropathy and pain of 5514 recently diagnosed individuals with type 2 diabetes from the Danish Centre for Strategic Research in Type 2 Diabetes (DD2) [15, 17]. Exclusion criteria were cognitive impairment, language difficulties and pregnancy. For more details see references [15, 17].

Of the 389 patients included at the two IDNC study sites (Aarhus and Odense), 49 were excluded with other causes of neuropathy and significant non-neuropathic pain. We then randomly selected 62 type 2 diabetes participants and 45 HC participants who were included in Aarhus where IENFD and nerve conduction study data were available (ESM Fig. 1).

We ensured that the included HC participants without diabetes, recruited from within the patients' social circle and by invitational flyers, were as close as possible to the diabetic participants in terms of age and sex. Exclusion criteria for HC participants were diabetes, severe chronic illness, psychiatric or neurologic illness, chronic pain or intake of any pain medication within 3 days before inclusion [15]. HbA_{1c} and blood glucose were measured for all HC participants to exclude diabetes (Table 1).

Selection of PiNS participants

PiNS is an observational cross-sectional multicentre study in which study participants were recruited from primary care practices in London and Oxford, and from tertiary clinics in Oxford, London and Sheffield. Patients with diabetes mellitus aged above 18 years with diagnosed DSP, or patients with symptoms and signs suggestive of DSP, were included. Exclusion criteria were pregnancy, coincident major psychiatric disorders, poor or no English language skills, severe pain at recruitment from a cause other than DSP, documented central nervous system lesions or insufficient mental capacity to provide informed consent or to complete questionnaires. The PiNS participants included in this study were participants with both IENFD and nerve conduction study data.

Nerve conduction studies

Nerve conduction tests were performed with an ADVANCE system (Neurometrix, Waltham, MA, USA) (PiNS study) or Keypoint.Net EMG equipment (Dantec, Skovlunde, Denmark) (Aarhus) and we used conventional reusable electrodes. We performed conventional nerve conduction studies of sural nerves bilaterally and the median, peroneal and tibial nerves unilaterally [18]. If the median nerve was found to be abnormal, the ulnar nerve was examined on the same side. The results were compared with laboratory controls using z

scores. Polyneuropathy was defined as ≥ 2 nerves with ≥ 1 abnormal measure, including at least one abnormal sural nerve [18].

Skin biopsy

Skin biopsy and staining All biopsy samples for determination of IENFD were taken in accordance with the consensus document produced by the European Federation of Neurological Societies and the Peripheral Nerve Society Guideline on the utilisation of skin biopsy samples in the diagnosis of peripheral neuropathies [7, 10]. Skin biopsies were taken 10 cm proximal to the lateral malleolus. The biopsies were fixed overnight in 2% fresh periodate-lysine-paraformaldehyde. After cryoprotection the samples were embedded in optimal cutting temperature (OCT).

For analysis under brightfield microscopy, 50 μm thin sections were used, and immunohistochemistry for protein gene product 9.5 (PGP 9.5) was performed on free-floating sections using the immunoperoxidase method. The primary antibody was a rabbit anti-PGP 9.5 antibody (1:15,000; Ultracolor, Yarmouth, Isle of Wight, UK or 1:1000; Zytomed, Dusseldorf, Germany). The secondary antibody was a biotinylated goat anti-rabbit IgG (1:400; Vector Laboratories, Burlingame, CA, USA).

Analysis PGP 9.5-immunoreactive nerve fibres crossing the basal membrane of the epidermis were counted under a dry $\times 40$ objective and a measurement of the epidermal length of the sample was obtained. IENFD was assessed using a double brightfield microscope using established counting rules and was expressed as fibres per millimetre of epidermal length. IENFD was considered abnormal if below the fifth centile for age- and sex-matched HC participants [19]. Axonal

swellings were measured using newCAST stereological software Version 2019.2 (Visiopharm, Hoersholm, Denmark) and quantified using a light microscope under a $\times 60$ oil objective (Olympus BX51 microscope, Olympus, Japan). Axonal swellings were defined as enlargements on epidermal-penetrating nerve fibres exceeding 1.5 μm in diameter and could be located anywhere on the nerve fibre, distally or proximally; i.e. located in the epidermal part of the fibre or in the dermal part [12, 20, 21]. There is currently no consensus on how to define axonal swellings, but the majority of studies define them either as enlargements exceeding 1.5 μm in diameter, as done here, or by counting swellings that exceed at least three or five times the diameter of the afferent nerve fibre. The 1.5 μm method was chosen as we believe it to be the more reliable measure of the two methods, requiring fewer measurements and calculations and thus reducing error rates. Axonal swelling ratio was obtained by dividing the number of swellings by the number of intraepidermal nerve fibres. Both IENFD and axonal swellings were counted in a blinded fashion.

The diagnosis of definite DSP and definite painful DSP

DSP was defined according to the Toronto Diabetic Neuropathy Expert Group [22] and painful DSP according to the Neuropathic Pain Special Interest Group (NeuPSIG) criteria [23] for neuropathic pain.

The following criteria were used for neuropathy and neuropathic pain grading of participants from both cohorts.

No DSP Study participants with no possible clinical neuropathy, normal nerve conduction studies and normal IENFD were defined as not having a DSP.

Possible clinical neuropathy is defined as the presence of symptoms and/or signs of neuropathy, including any one or

Table 1 Demographics of study participants

Characteristic	HC ($n = 45$)	DSP- ($n = 31$)	Painless DSP+ ($n = 74$)	Painful DSP+ ($n = 99$)	<i>p</i> value
Age, years	62.2 (55.3–68.4)	62.6 (51.1–68.2)	67.9 (60.1–72.9)	66.4 (57.4–71.6)	0.008
Sex, female (%)	25 (55.6)	16 (51.6)	43 (58.1)	60 (60.6)	0.83
BMI, kg/m^2	25.4 (22.8–28.1)	30.5 (25.3–34.3)	31.4 (26.9–35.7)	33.1 (28.1–37.9)	<0.001
Duration of type 2 diabetes, years		5.9 (3.8–7.9)	10.6 (6.0–17.5)	12.0 (6.0–18.9)	0.001
HbA _{1c}					
mmol/mol	37.0 (35.0–39.0)	50.0 (46.0–57.0)	52.0 (45.7–61.5)	58.0 (50.0–69.0)	<0.001
%	5.5	6.7	6.9	7.5	
TCSS total score (0–19)	1.0 (0.0–2.0)	1.0 (0.0–3.0)	8.0 (6.0–10.0)	11.0 (8.0–14.0)	<0.001

Data are shown as median (IQR) and analysed by Kruskal–Wallis. Categorical data are shown as numbers (percentages) and analysed by Pearson χ^2 test of association

HbA_{1c} is reported both in SI units (mmol/mol) and in percentages (NGSP: National Glycohemoglobin Standardization Program)

Detailed baseline characteristics for the original study cohorts in whole (PiNS and IDNC) are provided in previous studies [10, 15]

Missing data: BMI: 0.8%; duration of diabetes: 1.2%; HbA_{1c}: 2.8%; TCSS score: 0.4%

more of the following: neuropathy symptoms (decreased sensation, positive sensory symptoms, e.g. burning, aching pain) mainly in the toes, feet or legs; decreased distal sensation; or decreased/absent ankle reflexes [22].

Definite DSP Study participants with at least a possible clinical neuropathy and abnormalities on either nerve conduction studies or IENFD were defined as definite DSP.

Painful DSP Definite painful DSP was defined in line with NeuPSIG criteria [23], i.e. neuropathic pain in a neuroanatomically plausible distribution, feet and/or hands, in participants with DSP.

Statistical analysis

We used STATA version 14 (StataCorp, TX, USA) for data analysis. Data are reported as medians with IQR. Data were compared across the three groups with Kruskal–Wallis test or between two groups with Mann–Whitney *U* test. Categorical data were analysed with χ^2 test of association. Spearman's rank correlation analyses were performed to explore associations between swelling ratio and diabetes-related biochemical variables, e.g. HbA_{1c}. Significance was set at $p < 0.05$.

All comparisons between groups were performed twice: (1) all study participants; and (2) only participants with IENFD greater than 1 fibre/mm. The IENFD cut-off of 1 was set prior to statistical analyses since it was felt from our experience that axonal swellings with lower IENFD (<1) could not be reliably counted without potential bias of our outcomes.

Results

Study participants

A total of 249 study participants were included. The study included four groups: (1) HC participants, $n = 45$; (2) DSP–, $n = 31$; (3) DSP+, which were divided into painful and painless DSP+, $n = 99$ and $n = 74$, respectively (ESM Fig. 1, ESM Table 1).

The characteristics of the groups are shown in Table 1. Participants in the painful DSP+ group had the highest TCSS scores, HbA_{1c} levels and BMI and the longest diabetes duration.

IENFD and swelling ratios

There was a difference in IENFD and swelling ratios between the groups (Table 2, Fig. 1a,b, ESM Fig. 1). IENFD was decreased in DSP+ participants when compared with DSP– participants and HC participants. There was no difference between painless DSP+ and painful DSP+ participants ($p =$

0.08). Specifically, median (IQR) IENFD (fibres/mm) was: 6.7 (5.2–9.2) for healthy control participants; 6.2 (4.4–7.3) for DSP–; 1.3 (0.5–2.2) for painless DSP+; and 0.84 (0.4–1.6) for painful DSP+. The above differences remained when only participants with IENFD > 1.0 fibre/mm were included. The axonal swelling ratio was significantly higher in DSP– participants when compared with all DSP+ (painless and painful) patients and HC participants (Table 2). Figure 2 shows a representative image of axonal swellings.

If the IENFD is very low (as can be the case in DSP+), it is not possible to reliably calculate the swelling ratio because so few intraepidermal nerve fibres are sampled. A total of 86 study participants (out of 249) had IENFD ≤ 1 fibre/mm: 31 (41.9%) painless DSP+ participants and 55 (55.6%) painful DSP+ participants. When the participants with IENFD ≤ 1 fibre/mm were excluded, the median swelling ratios for painless DSP+ and painful DSP+ participants increased from 0.0 to 0.3 and 0.13, respectively (Table 2, Fig. 1b). Therefore, the axonal swelling ratio was higher in study participants with type 2 diabetes, irrespective of whether DSP was present, when compared with HC participants. The axonal swelling ratio increased in participants with type 2 diabetes with higher IENFD (Fig. 1c), but not in the HC participants (Fig. 1d).

Table 3 shows the correlation between clinical variables and swelling ratio in the study participants. The difference observed when including all study participants disappears when excluding patients with IENFD ≤ 1 , leaving only a weak correlation to HbA_{1c}; this suggests that the difference was driven by the fact that participants with low IENFD are unlikely to have swellings present (Table 3). Specifically, the axonal swelling ratio correlated weakly with HbA_{1c} ($r = 0.16$, $p = 0.04$), but did not correlate with the Toronto Clinical Scoring System (surrogate measure of DSP severity), BMI or type 2 diabetes duration.

Discussion

In this study, we addressed the question of whether axonal swellings are related to type 2 diabetes, DSP or neuropathic pain. Our key findings are that where IENFD > 1.0 fibre/mm, the axonal swelling ratio is increased in type 2 diabetes when compared with HC participants; axonal swelling ratio did not differ between study participants with or without painless DSP+, or between painless DSP+ and painful DSP+. There was a weak correlation between axonal swelling ratios and HbA_{1c} but not other clinical variables. These findings indicate that patients with type 2 diabetes with preserved intraepidermal nerve fibres have more axonal swellings compared with HC participants; however, the presence of axonal swellings is not associated with DSP or neuropathic pain. This suggests that axonal swellings are pathological and an early marker of sensory neuron injury in type 2 diabetes.

Table 2 IENFD and swelling ratio for all study participants and for those with IENFD > 1.0 fibre/mm

Variable	HC	DSP-	Painless DSP+	Painful DSP+	<i>p</i> value
All study participants, <i>N</i> = 249					
<i>n</i>	45	31	74	99	
Swelling ratio	0.03 (0.0–0.13)	0.35 (0.17–0.59)	0.0 (0.0–0.45)	0.0 (0.0–0.24)	<0.001 ^b
IENFD	6.6 (5.3–9.0)	6.2 (4.4–7.3)	1.3 (0.5–2.2)	0.8 (0.4–1.6)	<0.001 ^{a/b}
Swellings, <i>n</i> (%)	25 (55.6)	30 (96.8)	32 (43.2)	32 (32.3)	<0.001 ^b
IENFD >1 fibre/mm, <i>n</i> = 163					
<i>n</i>	45	31	43	44	
Swelling ratio	0.03 (0.0–0.13)	0.35 (0.17–0.59)	0.30 (0.0–0.57)	0.12 (0.0–0.36)	<0.001 ^{a/b}
IENFD	6.6 (5.3–9.0)	6.2 (4.4–7.3)	2.1 (1.6–3.2)	1.7 (1.4–2.8)	<0.001 ^{a/b}
Swellings, <i>n</i> (%)	25 (55.6)	30 (96.8)	27 (62.8)	23 (52.3)	<0.001 ^b

Data are shown as median (IQR)

Swellings: *n* (%) for swellings represents the number and percentage of patients who had at least one swelling present on an intraepidermal nerve fibre

Swelling ratio: number of swellings/number of intraepidermal nerve fibres

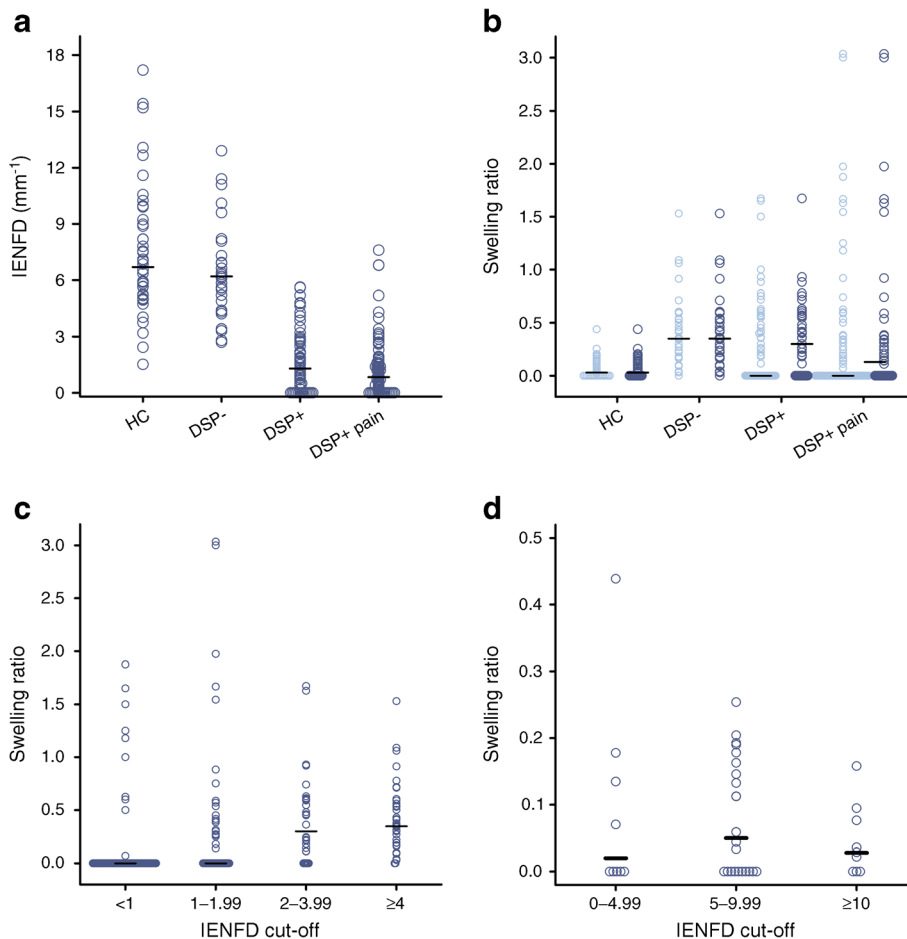
^a HC participants vs patients with type 2 diabetes (DSP-, painless DSP+, painful DSP+)

^b DSP- vs painless DSP+ and painful DSP+

Axonal swellings have been defined and quantified in different ways. Hence, direct comparison between studies is difficult. Axonal swellings in this study were defined by

absolute measurements of 1.5 μm [14], and not by their size relative to adjoining nerve fibres [5, 13]. We found, as did Cheung et al. [14], no axonal swelling ratio difference

Fig. 1 Skin biopsy results. (a) IENFD for all participants. (b) Swelling ratio for all participants (light blue) and those with IENFD >1 (dark blue). (c, d) four different IENFD cut-offs in (c) patients with type 2 diabetes and (d) HC participants



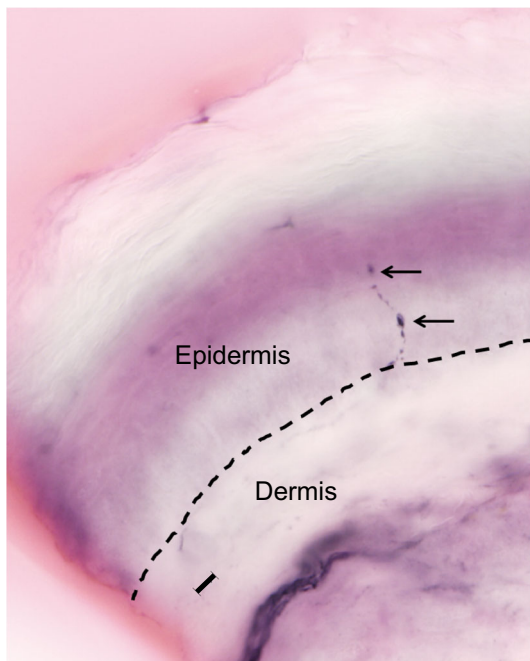


Fig. 2 A representative image of axonal intraepidermal nerve swellings, highlighted by the arrows. The dashed line represents the division between the epidermis and dermis. Scale bar, 10 μm

between those with painless DSP and those with painful DSP. In contrast, the studies that defined axonal swellings relative to adjoining nerve fibres, as 3–5 times the diameter of the afferent nerve fibre, found an association between axonal swellings and symptomatology [5, 13]. Therefore, studies that used axonal swellings relative to axon fibre saw an association with symptomatology, while studies using an absolute size cut-off did not. The reason for these differences is unclear. Such a finding highlights the importance of reaching a consensus on swelling definition and how this should be quantified and measured. We used an absolute cut-off value of 1.5 μm as it is more reliable than multiple measurements of the afferent fibre. Indeed, electron microscopy studies show that C fibre diameters in 95% of HC participants are less than 0.5 μm , with some as low as

Table 3 Correlation between swelling ratio and clinical characteristics, for all 249 study participants and the 163 with IENFD >1.0 fibre/mm

Characteristic	All study participants <i>N</i> = 249 Spearman's ρ/p	IENFD >1.0 fibre/mm <i>n</i> = 163 Spearman's ρ/p
Sex, female	0.02/0.70	0.02/0.83
Age, years	-0.03/0.68	0.04/0.60
BMI, kg/m^2	-0.07/0.22	0.06/0.45
HbA _{1c} , mmol/mol	-0.09/0.17	0.16/0.04
TCSS score	-0.15/0.02	0.07/0.40
Duration of type 2 diabetes, years	-0.18/0.01	-0.17/0.07
IENFD	0.36/<0.001	0.04/0.60

0.2 μm . Therefore, in our study the axonal swellings are at least three times the upper limits of normal of healthy C fibres [24]. Lastly, the discrepancy between our findings and other studies may be due to differences in clinical variables such as age or diabetes duration [5, 13].

Our findings may indicate that axonal swellings are related to type 2 diabetes rather than to DSP and neuropathic symptoms. There is a weak correlation to single-point HbA_{1c} and no correlation to type 2 diabetes duration or BMI. It is likely that axonal swellings are a sign of nerve injury. A longitudinal study tracking the development of DSP, symptoms and axonal swellings is needed to determine the natural history of axonal swellings and their relationship to DSP and neuropathic pain. It is also not clear what pathological process causes axonal swellings.

Axonal swellings are present in skin biopsies from HC participants, but are clearly higher in patients with polyneuropathies [5, 14, 20]. Axonal swellings are described in patients with AIDS/HIV [11, 12], pure small fibre neuropathy [21], distal symmetric polyneuropathy of various aetiologies [20], idiopathic neuropathic pain [11–14, 20], bortezomib-induced neuropathy [25] and amyotrophic lateral sclerosis (ALS) [26, 27], and in myelinated nerve fibres of patients with Charcot–Marie–Tooth disease [28]. Axonal swellings may be associated with dysfunctional axonal transport and future nerve fibre loss, or may even be a potential biomarker of axonal regeneration [5, 12]. Detailed electron microscopy analysis of axonal swellings could yield insights into their potential mechanism, but needs technical modifications in how skin biopsies are processed.

This study has a number of strengths and limitations. Our study consisted of a large cohort of individuals with type 2 diabetes that were well phenotyped. All participants were examined by a clinician and underwent multiple tests to confirm the presence or absence of polyneuropathy and neuropathic pain. Our approach of clinical assessment followed by confirmatory investigations is the current gold standard and most rigorous approach for the diagnosis of polyneuropathy and neuropathic pain. Limitations include the retrospective study design, participants from two distinct study sites and unequal distribution among subgroups. The axonal swelling ratio was only different when IENFD >1 fibre/mm, thus limiting its role in the diagnosis of DSP, where IENFD is often lower. However, this does not negate the importance of studying axonal swellings to improve our understanding of early morphological abnormalities in diabetic neural dysfunction. Lastly, the findings in this study are applicable to type 2 diabetes only, as no patients with type 1 diabetes were included.

Conclusion

We have shown in a large cohort of well-characterised participants that skin biopsies from participants with type 2 diabetes have higher axonal swelling ratio compared with skin biopsies

from healthy study participants, independent of DSP, if IENFD >1 fibre/mm. Axonal swelling ratio was weakly associated with HbA_{1c} levels but not with neuropathy severity, BMI or diabetes duration.

Supplementary Information The online version of this article (<https://doi.org/10.1007/s00125-020-05352-9>) contains peer-reviewed but unedited supplementary material.

Acknowledgements We would like to thank all patients and healthy volunteers for their participation.

Data availability All data are available from the corresponding author upon reasonable request.

Funding Research reported in this publication is part of the International Diabetic Neuropathy Consortium (IDNC) research programme, which is supported by a Novo Nordisk Foundation Challenge Programme grant (grant no. NNF14OC0011633). DLHB, NBF, AGK, PK, SSG, ACT, HT and TSJ are members of the IDNC. PK is funded by the Danish Diabetes Academy, supported by the Novo Nordisk Foundation, and a grant from the Novo Nordisk Foundation (grant no. NNF18OC0052301). DLHB is a Wellcome Senior Clinical Scientist (202747/Z/16/Z). This work was supported by the Wellcome Trust through a Strategic Award to the London Pain Consortium (ref. no. 083259). DLHB, ACT, ASCR, NBF and TSJ are members of the DOLORisk consortium funded by the European Commission Horizon 2020 (ID633491). ACT is an Honorary Research Fellow of the Brain Function Research Group, School of Physiology, Faculty of Health Science, University of the Witwatersrand.

Authors' relationships and activities DLHB has acted as a consultant on behalf of Oxford Innovation in the last 2 years for Amgen, CoDa Therapeutics, Bristows, Lilly, Mundipharma and Theranexus. DLHB has an MRC Industrial Partnership grant with Astra Zeneca. NBF has acted as a consultant for Novartis, Almirall, Merck, Mitsubishi Tanabe Pharma and NeuroPN and is part of PainCare, an EU IMI2 (Innovative Medicines Initiative) public–private consortium, and the companies involved are Grünenthal, Bayer, Eli Lilly, Esteve and Teva. PK has acted as an external steering committee member for Grünenthal. ASCR undertakes consultancy and advisory board work for Imperial College Consultants; in the last 24 months this has included remunerated work for: Abide, Pharmanovo, Lateral, Novartis, Pharmaleads, Mundipharma, Orion, Asahi Kasei, Toray and Theranexus. ASCR was the owner of share options in Spinifex Pharmaceuticals upon the acquisition of Spinifex by Novartis in July 2015. Personal benefit accrued until 2019. ASCR is named as an inventor on patents: (1) Rice A.S.C., Vandevoorde S. and Lambert D.M. Methods using N-(2-propenyl)hexadecanamide and related amides to relieve pain. WO 2005/079771; and (2) Okuse K. et al. Methods of treating pain by inhibition of vgf activity. EP13702262.0/WO2013 110945. SSG, AGK, JDR, PC, NL, PRS, ST, HT, JRN, TSJ and ACT report no disclosures.

Contribution statement All authors meet the ICMJE uniform requirements for authorship. PK conceptualised the study and contributed to study design, data acquisition, data analysis, manuscript drafting, editing and revision for intellectual content, and is one of three guarantors. SSG and ACT contributed to study design, data acquisition, data analysis, manuscript drafting, editing and revision for intellectual content, and are the remaining two guarantors. AGK, JDR, PC, NL, PRS, ST, ASCR, HT, NBF, JRN, TSJ and DLHB all contributed to data acquisition, data analysis, manuscript editing and revision for intellectual content. All authors have approved the final version for publication.

Open Access This article is licensed under a Creative Commons Attribution 4.0 International License, which permits use, sharing, adaptation, distribution and reproduction in any medium or format, as long as you give appropriate credit to the original author(s) and the source, provide a link to the Creative Commons licence, and indicate if changes were made. The images or other third party material in this article are included in the article's Creative Commons licence, unless indicated otherwise in a credit line to the material. If material is not included in the article's Creative Commons licence and your intended use is not permitted by statutory regulation or exceeds the permitted use, you will need to obtain permission directly from the copyright holder. To view a copy of this licence, visit <http://creativecommons.org/licenses/by/4.0/>.

References

- Hanewinkel R, van Oijen M, Ikram MA, van Doorn PA (2016) The epidemiology and risk factors of chronic polyneuropathy. *Eur J Epidemiol* 31(1):5–20. <https://doi.org/10.1007/s10654-015-0094-6>
- Feldman EL, Nave KA, Jensen TS, Bennett DLH (2017) New horizons in diabetic neuropathy: mechanisms, bioenergetics, and pain. *Neuron* 93(6):1296–1313. <https://doi.org/10.1016/j.neuron.2017.02.005>
- Finnerup NB, Attal N, Haroutounian S et al (2015) Pharmacotherapy for neuropathic pain in adults: a systematic review and meta-analysis. *Lancet Neurol* 14(2):162–173. [https://doi.org/10.1016/s1474-4422\(14\)70251-0](https://doi.org/10.1016/s1474-4422(14)70251-0)
- Hébert HL, Veluchamy A, Torrance N, Smith BH (2017) Risk factors for neuropathic pain in diabetes mellitus. *Pain* 158(4):560–568. <https://doi.org/10.1097/j.pain.0000000000000785>
- Cheng HT, Dauch JR, Porzio MT et al (2013) Increased axonal regeneration and swellings in intraepidermal nerve fibers characterize painful phenotypes of diabetic neuropathy. *J Pain* 14(9):941–947. <https://doi.org/10.1016/j.jpain.2013.03.005>
- Abbott CA, Malik RA, van Ross ER, Kulkarni J, Boulton AJ (2011) Prevalence and characteristics of painful diabetic neuropathy in a large community-based diabetic population in the U.K. *Diabetes Care* 34(10):2220–2224. <https://doi.org/10.2337/dc11-1108>
- Lauria G, Hsieh ST, Johansson O et al (2010) European Federation of Neurological Societies/Peripheral Nerve Society guideline on the use of skin biopsy in the diagnosis of small fiber neuropathy. Report of a joint task force of the European Federation of Neurological Societies and the Peripheral Nerve Society. *Eur J Neurol* 17(7):903–912, e944–909. <https://doi.org/10.1111/j.1468-1331.2010.03023.x>
- Devigili G, Tugnoli V, Penza P et al (2008) The diagnostic criteria for small fibre neuropathy: from symptoms to neuropathology. *Brain* 131(Pt 7):1912–1925. <https://doi.org/10.1093/brain/awn093>
- Sorensen L, Molyneaux L, Yue DK (2006) The relationship among pain, sensory loss, and small nerve fibers in diabetes. *Diabetes Care* 29(4):883–887. <https://doi.org/10.2337/diacare.29.04.06.dc05-2180>
- Themistocleous AC, Ramirez JD, Shillo PR et al (2016) The Pain in Neuropathy Study (PiNS): a cross-sectional observational study determining the somatosensory phenotype of painful and painless diabetic neuropathy. *Pain* 157(5):1132–1145. <https://doi.org/10.1097/j.pain.0000000000000491>

11. Ebenezer GJ, McArthur JC, Thomas D et al (2007) Denervation of skin in neuropathies: the sequence of axonal and Schwann cell changes in skin biopsies. *Brain* 130(Pt 10):2703–2714. <https://doi.org/10.1093/brain/awm199>
12. Lauria G, Morbin M, Lombardi R et al (2003) Axonal swellings predict the degeneration of epidermal nerve fibers in painful neuropathies. *Neurology* 61(5):631–636
13. Gibbons CH, Griffin JW, Polydefkis M et al (2006) The utility of skin biopsy for prediction of progression in suspected small fiber neuropathy. *Neurology* 66(2):256–258. <https://doi.org/10.1212/01.wnl.0000194314.86486.a2>
14. Cheung A, Podgorny P, Martinez JA, Chan C, Toth C (2015) Epidermal axonal swellings in painful and painless diabetic peripheral neuropathy. *Muscle Nerve* 51(4):505–513. <https://doi.org/10.1002/mus.24351>
15. Gylfadottir SS, Itani M, Krøigård T et al (2020) Diagnosis and prevalence of diabetic polyneuropathy: a cross-sectional study of Danish patients with type 2 diabetes. *Eur J Neurol*. <https://doi.org/10.1111/ene.14469>
16. Bril V, Perkins BA (2002) Validation of the Toronto Clinical Scoring System for diabetic polyneuropathy. *Diabetes Care* 25(11):2048–2052
17. Gylfadottir SS, Christensen DH, Nicolaisen SK et al (2020) Diabetic polyneuropathy and pain, prevalence, and patient characteristics: a cross-sectional questionnaire study of 5,514 patients with recently diagnosed type 2 diabetes. *Pain* 161(3):574–583. <https://doi.org/10.1097/j.pain.0000000000001744>
18. Tankisi H, Pugdahl K, Beniczky S, Andersen H, Fuglsang-Frederiksen A (2019) Evidence-based recommendations for examination and diagnostic strategies of polyneuropathy electrodiagnosis. *Clin Neurophysiol Pract* 4:214–222. <https://doi.org/10.1016/j.cnp.2019.10.005>
19. Lauria G, Bakkers M, Schmitz C et al (2010) Intraepidermal nerve fiber density at the distal leg: a worldwide normative reference study. *J Peripher Nerv Syst* 15(3):202–207. <https://doi.org/10.1111/j.1529-8027.2010.00271.x>
20. Karlsson P, Haroutounian S, Polydefkis M, Nyengaard JR, Jensen TS (2016) Structural and functional characterization of nerve fibres in polyneuropathy and healthy subjects. *Scand J Pain* 10:28–35. <https://doi.org/10.1016/j.sjpain.2015.08.007>
21. Karlsson P, Møller AT, Jensen TS, Nyengaard JR (2013) Epidermal nerve fiber length density estimation using global spatial sampling in healthy subjects and neuropathy patients. *J Neuropathol Exp Neurol* 72(3):186–193. <https://doi.org/10.1097/NEN.0b013e318284e849>
22. Tesfaye S, Boulton AJ, Dyck PJ et al (2010) Diabetic neuropathies: update on definitions, diagnostic criteria, estimation of severity, and treatments. *Diabetes Care* 33(10):2285–2293. <https://doi.org/10.2337/dc10-1303>
23. Finnerup NB, Haroutounian S, Kamerman P et al (2016) Neuropathic pain: an updated grading system for research and clinical practice. *Pain* 157(8):1599–1606. <https://doi.org/10.1097/j.pain.0000000000000492>
24. Doppler K, Rittner HL, Deckart M, Sommer C (2015) Reduced dermal nerve fiber diameter in skin biopsies of patients with fibromyalgia. *Pain* 156(11):2319–2325. <https://doi.org/10.1097/j.pain.0000000000000285>
25. Bechakra M, Nieuwenhoff MD, van Rosmalen J et al (2018) Clinical, electrophysiological, and cutaneous innervation changes in patients with bortezomib-induced peripheral neuropathy reveal insight into mechanisms of neuropathic pain. *Mol Pain* 14:1744806918797042. <https://doi.org/10.1177/1744806918797042>
26. Isak B, Pugdahl K, Karlsson P et al (2017) Quantitative sensory testing and structural assessment of sensory nerve fibres in amyotrophic lateral sclerosis. *J Neurol Sci* 373:329–334. <https://doi.org/10.1016/j.jns.2017.01.005>
27. Weis J, Katona I, Müller-Newen G et al (2011) Small-fiber neuropathy in patients with ALS. *Neurology* 76(23):2024–2029. <https://doi.org/10.1212/WNL.0b013e31821e553a>
28. Manganelli F, Nolano M, Pisciotta C et al (2015) Charcot-Marie-Tooth disease: new insights from skin biopsy. *Neurology* 85(14):1202–1208. <https://doi.org/10.1212/WNL.0000000000001993>

Publisher's note Springer Nature remains neutral with regard to jurisdictional claims in published maps and institutional affiliations.