

Backreaction issues in axion monodromy and Minkowski 4-forms

Irene Valenzuela

*Max-Planck-Institut für Physik,
Fohringer Ring 6, 80805 Munich, Germany
Institute for Theoretical Physics and Center for Extreme Matter and Emergent Phenomena,
Utrecht University,
Leuvenlaan 4, 3584 CE Utrecht, The Netherlands*

E-mail: ireneval@mpp.mpg.de

ABSTRACT: We clarify the differences between the usual Kaloper-Sorbo description of axion monodromy and the effective axionic potential in terms of Minkowski 4-forms derived in string compactifications. The fact that the metric of the 3-form fields coming from string theory is field dependent (unlike in Kaloper-Sorbo) leads to the backreaction issues recently studied in axion monodromy models within string theory. We reanalyse these problems in terms of the 4-forms focusing on the case in which the non-periodic scalars backreact on the Kahler metric of the inflaton reducing the physical field range. In the closed string sector of Type II Calabi-Yau compactifications with fluxes the metric becomes field dependent precisely when $\Delta\phi \sim M_p$, independently of the choice of fluxes. We propose, however, some counter-examples to this universal behaviour by including open string fields.

KEYWORDS: Cosmology of Theories beyond the SM, Flux compactifications, Superstring Vacua

ARXIV EPRINT: [1611.00394](https://arxiv.org/abs/1611.00394)

Contents

1	Introduction	1
2	Generalization of Kaloper-Sorbo structure in string theory	4
3	Backreaction effects in terms of 3-form fields	5
4	Backreaction on the Type IIA(B) closed string sector	10
4.1	Minima of the potential	11
4.2	Backreaction on the kinetic metric	13
4.3	Remarks and comments	15
5	A possible way out: open string moduli	16
6	Conclusions	19

1 Introduction

Axion monodromy is one of the most promising proposals to achieve transplanckian field ranges in string theory [1, 2] (see also [3–26]). It is based on having an axion with a multi-branched/multi-valued potential in such a way that the effective theory preserves the discrete shift symmetry of the axion if combined with appropriate shifts of the parameters of the potential. This multibranched structure unfolds the compact moduli space of the axion, allowing (a priori) for a transplanckian field range even if the fundamental periodicity (given by the axion decay constant) is subplanckian. Axion monodromy models can be described in terms of an axion coupled to a Minkowski 3-form field as follows [8, 27–29],

$$\mathcal{L} = -f^2(d\phi)^2 - F_4 \wedge *F_4 + 2mF_4\phi \tag{1.1}$$

where f is the decay constant of the axion. Upon integrating out the Minkowski 3-form (which has no propagating degrees of freedom in four dimensions) a scalar potential for the axion is generated with the aforementioned multi-branched structure,

$$*F_4 = f_0 + m\phi \rightarrow V = (f_0 + m\phi)^2 \tag{1.2}$$

Here f_0 is an integration constant corresponding to a possible constant value of the 4-form field strength in the vacuum. The above scalar potential is indeed invariant under the combined global shift

$$f_0 \rightarrow f_0 + c, \quad \phi \rightarrow \phi - c/m \tag{1.3}$$

which relates different branches labelled by f_0 . When $c/m = 2\pi f$ the above transformation relates gauge equivalent branches identified by the discrete periodicity of the axion. In the

presence of membranes electrically charged under the 3-form gauge field, the constant c is quantized in units of the 3-form gauge coupling Λ_k , implying in turn the following consistency relation¹ $2\pi f = n\Lambda_k^2/m$. This is what is commonly known as the Kaloper-Sorbo model since they were the first ones in using such a description in terms of a 3-form field for inflation [27, 28, 30, 31] (see, however, also the earlier work of Dvali [32, 33]).

It is important to remark that the discrete shift symmetry of the axion is preserved by the system and only broken spontaneously (not explicitly) upon selecting a vacuum. At classical level, f_0 is fixed, which selects a concrete branch and consequently a particular vacuum. One can then classically roll down a single branch for a field range much bigger than $2\pi f$. However, at quantum level the different branches are dynamically connected to each other since one can induce quantum tunneling transitions between them by nucleation of membranes [34–38]. By crossing a membrane of charge k one shifts the value of f_0 by k units. This tunneling between branches reduces the effective field range of the axion ruling out parametrically large displacements. The concrete bound on the field range will depend on the specific value of the tension of the membrane, which can be estimated for instance by using the Weak Gravity Conjecture [39] or specific UV completions in string theory. In [40–42] it was shown that generically the tunneling rate is highly suppressed and these ‘jumps’ do not generate a problem for large field inflation.

On the other hand, the gauge invariance of the 3-form highly constrains higher order corrections to the above Lagrangian [28]. Only corrections depending on the gauge invariant field strength are allowed, which implies that, upon integrating out the 3-form, the corrections to the scalar potential goes as powers of the potential itself,

$$\delta V = \left(\frac{V_0}{M_p^4} \right)^n \quad (1.4)$$

Therefore even if ϕ takes transplanckian values, as long as the potential energy remains subplanckian, the corrections remain under control. This is consistent with the fact that the discrete shift symmetry of the axion must be gauged in a consistent theory of quantum gravity and therefore cannot be explicitly, but only spontaneously, broken. Since the source of spontaneous breaking can always be parametrized in four dimensions by coupling the axion to an effective 4-form field strength, all corrections have to appear as functions of the field strength itself, which on shell is dual to the shift invariant function $\rho = m\phi + f_0$. In the case of a single axion and a single 4-form this leads to (1.4). We will see that in the presence of multiple 4-forms (multiple sources of spontaneous breaking) the corrections will be proportional to the different parts of the potential induced by each 4-form, so the corrections will take a more elaborated form than in (1.4). But again, as long as the energy density is subplanckian, they will be subleading. No need to mention that one can also have shift-symmetric non-perturbative corrections like $\sim \cos(\phi)$. But since they give rise to periodic bounded potentials the effective theory remains under control. In any case,

¹If $n \neq 1$, the original continuous global symmetry of the axion is broken to a discrete global symmetry Z_n by the coupling to the 3-form field. Therefore, the discrete periodicity of the axion is always preserved at the level of the theory.

corrections going as powers of ϕ/M_p that grow parametrically with the field overrunning the tree-level potential are forbidden because of the gauge symmetries of the system.

This outstanding protection under higher order corrections makes axion monodromy a promising proposal to get transplanckian field ranges in a controlled way. Besides, as explained above, constraints coming from the Weak Gravity Conjecture are much weaker than in models based on natural inflation with one or multiple axions [43–59]. However, all attempts to realise axion monodromy in string theory are not free of problems and technical difficulties [13, 15, 17, 60, 61]. In some cases, the backreaction of the rest of the moduli of the compactification can have non-negligible effects and reduce drastically the effective field range [62]. In this sense, the presence of a Kaloper-Sorbo coupling is not enough to guarantee a transplanckian field range. What is then missing in our above description of axion monodromy in terms of an axion coupled to a Minkowski 3-form?

In this paper we will explain the differences between the Kaloper-Sorbo model above and the effective theories that one actually obtain from string compactifications, with the aim of clarifying the advantages and drawbacks of the construction. Remarkably, the effective axionic potential coming from string theory can always be rewritten as a generalization of Kaloper-Sorbo with non-canonical field-dependent metrics [63, 64]. It is this field-dependence on the kinetic metric of the 3-form field, not present in the original Kaloper-Sorbo model but characteristic of any supergravity generalization of (1.1), what generates in the end the backreaction issues found in particular string realisations of axion monodromy. Here we will reanalyse these problems motivated by the question whether these difficulties are simply technical limitations of particular models or instead a hint of an underlying obstruction of having a transplanckian field range in a consistent theory of quantum gravity. The reformulation of the backreaction issues in the dual picture in terms of 3-form fields allows for a more model-independent analysis of these difficulties, hopefully shedding some light on this topic. This paper is organized as follows. In the next section we will explain the new ingredients appearing when constructing a supergravity description of the original bosonic model of Kaloper-Sorbo, which will also appear in any $N = 1$ string compactification and can lead to the backreaction issues discussed above. In section 3 we will review how the backreaction coming from other non-periodic fields can reduce the effective field range by redefining the proper field distance of the inflaton, and explain how this effect is encoded on having field-dependent kinetic metrics for the 3-form gauge fields. Whether this backreaction rules out transplanckian or only infinite (parametrically large) excursions depends on the concrete form of the kinetic metric, which will be related to the Kahler metric of the scalar manifold in an $N = 1$ compactification. Therefore, in section 4, we will analyse the effective theories derived in flux compactifications of Type IIA(B). We reproduce the results of [62] and find that the proper field distance for closed string axions grow at best logarithmically at large field and, remarkably, this logarithmic behaviour appears shortly after crossing $\phi \sim M_p$. However, we argue in section 5 that the presence of open string fields might provide a counter-example to this universal behaviour since, a priori, one can delay the logarithmic behaviour far away in field distance by tuning the fluxes. We leave section 6 for conclusions.

2 Generalization of Kaloper-Sorbo structure in string theory

As we reviewed in the Introduction, one can provide a mass term to an axion without breaking explicitly the shift symmetry and without adding new degrees of freedom, simply by coupling the axion to a 4-form field strength living in the four dimensional space-time [32, 65]. In fact, if the discrete shift symmetry of the axion is preserved, one can always write such a dual description in terms of a 3-form gauge field. Interestingly, this is indeed the way in which axions get a perturbative potential in string compactifications.² In [63] it was shown that the four dimensional effective theory coming from compactifications of Type IIA(B) on a Calabi-Yau 3-fold with orientifolds and fluxes can be written in the form

$$V = -Z_{ab}(s^i)F_4^a \wedge *F_4^b + 2F_4^a \rho_a(\phi^i) + V_{loc}(s^i) \tag{2.1}$$

where all the dependence of the scalar potential on the axions ϕ^i comes from couplings to 3-form gauge fields. In the above potential, s^i stand for the saxions (non-periodic scalars of the compactification), i, j runs over all the moduli and a, b over all the 3-form fields. In flux compactifications, the 3-forms are not effective or composite fields, but have a clear microscopic interpretation: they come from dimensional reduction of the higher RR and NSNS p-form fields. Therefore they are dual to the internal fluxes of the compactification, which are known to induce an F-term potential for the axions. Even if the axions only appear through couplings to 3-forms fields, the scalar potential for the saxions can receive other contributions from other elements of the compactification, which we include in $V_{loc}(s^i)$. Upon integrating out the 3-form fields, one gets

$$V = Z_{ab}(s^i)^{-1} \rho_a(\phi^i) \rho_b(\phi^i) + V_{loc}(s^i) \tag{2.2}$$

which can be rearranged to recover the usual $N = 1$ Cremmer et al. scalar potential of Type IIA(B). In the following we will highlight the differences between this effective theory and non-supersymmetric Kaloper-Sorbo model (1.1).

- Non-linear couplings \rightarrow Generic scalar potentials.

In Kaloper-Sorbo, the axion couples linearly to F_4 which induces a mass term for the axion in the effective theory. However, one can have more general couplings which induce, not only mass terms, but also cubic or higher couplings in the effective theory. In a string compactification, each 3-form couples to a function $\rho_a(\phi^i)$ which only depends on the axions (and not the saxions) and topological data of the compactification. This function has to be invariant under the discrete shifts of the axions (corresponding to large gauge transformations in the higher dimensional theory), implying that the parameters inside $\rho_a(\phi^i)$ have to transform accordingly to reabsorb these shifts. In flux compactifications, these parameters correspond to the internal

²Here we are writing only the scalar potential at perturbative level, but there can also be non-perturbative corrections leading to additional periodic (shift-symmetric) potentials for the axions. Interestingly, these terms can also be written in terms of effective 3-form fields, corresponding for instance to a composite Chern-Simons 3-form in the case of non-perturbative gauge dynamics [32, 33]. The formulation in terms of 3-form fields for the case of non-gauge D-brane instanton effects has been performed in [66].

flux quanta which indeed enjoy the appropriate shift transformations to keep each $\rho_a(\phi^i)$ invariant.

- Multiple 3-forms \rightarrow Higher order corrections.

The presence of multiple 3-forms implies that the higher order corrections will appear as products or combinations of the different 4-form field strengths. Therefore the corrections do not necessarily appear as powers of the potential itself, but as powers of combinations of the different $\rho(\phi)$, which are shift invariant by themselves. Therefore the corrections are under control if all the functions $\rho_a(\phi)$ remain subplanckian. This still protects large field inflation over transplanckian field ranges of the inflaton, but makes the computation more technically involved, because a priori one needs then to know all the 3-forms to whom the inflaton couples, in order to have control over all the $\rho_a(\phi)$. However, as long as the different parts of the potential remain subplanckian, the corrections will always be subleading. They can though have important implications for inflation and modify the scalar potential, leading for instance to interesting flattening effects (see e.g. [67]).

- Non-trivial field-dependent metrics \rightarrow Backreaction.

The main difference with respect to the non-supersymmetric Kaloper-Sorbo model comes from the presence of other non-periodic scalars, which we call saxions since they usually combine with the axions to fill $N = 1$ chiral multiplets. As usual in supergravity, the kinetic metric of the 3-form fields is field-dependent and only in the case in which there is a large mass hierarchy between the inflaton and the saxions, one can treat these fields as fixed parameters and recover approximately the Kaloper-Sorbo model of (1.1). However, it is precisely the backreaction of the saxions what has been proved to reduce drastically the effective field range in some string axion monodromy models. Therefore, we should reanalyse the problem without assuming the saxions as fixed parameters, but as fields that are also stabilized due to the presence of the 3-form fields. This is the task for the next section.

3 Backreaction effects in terms of 3-form fields

In order to have a well-defined and controlled effective theory of large field inflation in the IR, one needs to either fine-tune an infinite number of parameters corresponding to the infinite tower of non-renormalizable operators or invoke the presence of some UV symmetry that forbids these operators and protects the potential from large transplanckian excursions. Periodic real scalars (axions) with their shift symmetries are then promising candidates for large field inflation. A long-standing problem though in supersymmetric theories is how to stabilize the bosonic partner of the axion (the saxion) so that it does not spoil the dynamics of inflation. The typical solution is try to engineer a model in which the scale of moduli stabilization is higher than the inflationary scale, so the analysis can be divided in two steps. First, one stabilizes all the scalars except for the ones relevant for inflation, and secondly one studies the dynamics of the remaining fields assuming that the heavy

moduli stay approximately fixed at their minimum values. However, this is not always a valid truncation of the theory. Sometimes the vacuum expectation values (vev) of the heavy moduli can depend on the inflaton vev in such a way that they lead to non-negligible modifications of the effective inflationary model when the inflaton is displaced away from its minimum. These backreaction effects have been recently studied in the context of string compactifications, see e.g. [60, 62, 68–70]. The tricky part is to quantify these effects and extract general conclusions beyond the specific results of a particular model. Let us consider that the vev of a saxion depends on the value of the inflaton field as follows,

$$\langle s \rangle = s_0 + \delta s(\phi) \tag{3.1}$$

This will lead inevitably to backreaction effects on the inflationary dynamics. For large values of the inflaton ϕ the displacement of s from its minimum will be bigger, leading to a bigger modification of the effective theory which can affect both the potential and kinetic term of the inflaton. In general, one expects this displacement to depend on the mass ratio

$$\delta s(\phi) \sim f \left(\frac{m_\phi}{m_s} \phi^n \right) \tag{3.2}$$

such that a big mass hierarchy suppresses the backreaction. Unfortunately, sometimes even a small hierarchy is difficult to engineer (see the no-go theorems postulated for the complex structure moduli space of Calabi-Yau 3-folds near the large complex structure point in [15, 17]). In [62] it was claimed that in string theory one cannot delay indefinitely the backreaction effects by tuning the masses (which will be parametrized by fluxes in string Type II compactifications), but that the proper field distance of the inflaton will grow at best logarithmically with the inflaton vev as soon as field displacement becomes transplanckian. Let us review here the argument. The physical field distance is given by

$$\Delta\phi = \int K_{\phi,\bar{\phi}}^{1/2} d\phi \tag{3.3}$$

where the metric depends on the saxions of the compactification. If $K_{\phi,\bar{\phi}} \sim 1/s^2$ (like in typical string compactifications where $K = -\log(s)$) and the vev of the saxion depends on the inflaton as in (3.2) with $n > 0$, then the kinetic metric will be inversely proportional to the value of the inflaton itself. This leads to a redefinition of the canonical field reducing the effective field range. In particular if $\langle s \rangle = s_0 + \frac{m_\phi}{m_s} \phi$, then

$$\Delta\phi = \int K_{\phi,\bar{\phi}}^{1/2} d\phi \sim \int \frac{1}{s(\phi)} d\phi \sim \int \frac{1}{s_0 + \frac{m_\phi}{m_s} \phi} d\phi \sim \log \left(s_0 + \frac{m_\phi}{m_s} \phi \right) \tag{3.4}$$

and the physical field distance scales at best logarithmically for large values of the field, ruling out parametrically large field ranges. This logarithmic behaviour³ was shown to appear in some models of Type IIA string Calabi-Yau compactifications [62], but it is

³See also [71] for an analysis of the same type of canonical field redefinition in the context of Type IIB orientifolds with non-geometric fluxes. This logarithmic behaviour of the proper field distance implies that the effective potential becomes of Starobinsky-type at large field.

not fully clear how general it is and if it applies to any axionic field in string theory. Furthermore, it was shown in [62] that, at least for the cases studied in the paper, even if the strength of the logarithm is flux-dependent, the proper field distance available before the point at which $\delta s(\phi) > s_0$ and the logarithmic behaviour appears is flux independent and bounded by the Planck mass. Therefore one cannot delay the redefinition of the Kahler metric (and the consequent reduction of the field range) indefinitely by tuning the fluxes. Recently, in [72] it was argued that this behaviour is model independent and can be related to the Swampland Conjectures [73, 74], for which the logarithmic behaviour of the proper field distance at large field is associated to a tower of particles that becomes light for large values of the field. Hence it must be seen as a universal property of a consistent theory of quantum gravity. Here we will analyse this effect in more detail and discuss the features that an effective theory needs to satisfy in order to reproduce this behaviour, with the aim of finding out whether it is accidental or a universal characteristic of string theory. Unfortunately, the backreaction highly depends on the minimization process and therefore has only been studied in some particular models. In this paper we will reformulate the problem in terms of Minkowski 4-forms, which can help to analyse the backreaction from a broader and more model-independent perspective.

Let us also remark that the backreaction does not have to necessarily spoil inflation, but can have interesting effects. For instance, it can simply correct the inflationary potential leading to interesting flattening effects, e.g. [60, 67]. Here we are interested in studying the viability of having a transplanckian field range in string theory, so we will focus on identifying the cases which give rise to a reduction of the field range.

Let us repeat for convenience the general structure appearing in string compactifications in terms of Minkowski 4-forms,

$$V = -Z_{ab}(s^i)F_4^a \wedge *F_4^b + 2F_4^a \rho_a(\phi^i) \tag{3.5}$$

Notice that the axions and saxions appear in a very different way in the scalar potential. The former appear within shift invariant functions $\rho(\phi)$ coupled linearly to the 4-forms, while the saxions appear on the kinetic metrics of the 4-forms. Upon integrating out the 4-forms, the scalar potential becomes

$$*F_4^a = Z_{ab}^{-1}(s^i)\rho_b \rightarrow V = Z_{ab}^{-1}(s^i)\rho_a(\phi^i)\rho_b(\phi^j) \tag{3.6}$$

We can then minimize the potential with respect to the saxions, obtaining that the vacuum expectation value for the saxions can always be written as a function of the $\rho(\phi)$ functions. If the metrics Z_{ab} can be written in terms of powers of the saxions, then

$$s \sim \frac{\sum_i \rho_1^{n_1^i} \rho_2^{n_2^i} \dots \rho_a^{n_a^i}}{\sum_j \rho_1^{m_1^j} \rho_2^{m_2^j} \dots \rho_a^{m_a^j}} \tag{3.7}$$

where the different exponents (n_a^i, m_a^i) can be determined upon minimizing the potential. Remarkably the presence of a possible contribution $V_{loc}(s^i)$ does not break this structure in all the known examples, as we will see below. This procedure is simpler than minimizing

the complete scalar potential, since we do not need to know the explicit form of the ρ functions in terms of the axions, but only the form of $Z_{ab}(s)$. Besides, the backreaction problems appear intuitively. If the vev of a saxion s , which appears in the Kahler metric of the inflaton, is proportional to a ρ function including the inflaton ϕ , the Kahler metric of ϕ will decrease with the inflaton vev, leading to a reduction of the field range. For instance, if ϕ appears only in ρ_1 , all we need is that $n_1 - m_1 > 0$. Notice also that the metrics Z_{ab} are not arbitrary, but in $N = 1$ four dimensional effective theories correspond indeed to the real part of the Kahler metrics of the scalar manifold [29, 63, 75–85]. Therefore, once we know the Kahler potential, we can determine Z_{ab} and compute the exponents (n_a, m_a) in eq.(3.7). We leave the manifestly supersymmetric description of the above Lagrangian in terms of 3-form supermultiplets for future work. Let us also comment that the fact that the axions appears always within the shift-invariant functions $\rho(\phi)$, implies that the corrections arising from backreaction of the saxions also preserve the discrete shift symmetries of the axions. However, by choosing a branch, the shift symmetry is spontaneously broken and $\rho(\phi)$ can take large values that backreact on the kinetic metric in a non-negligible way.

The question now is how far in field distance we can delay the backreaction effects. The maximum proper field distance available before the inflaton dependence starts dominating the vacuum expectation values of the saxions and the Kahler metric starts depending at leading order on the inflaton itself is given by

$$\Delta\phi = \int \sqrt{K_{\phi,\bar{\phi}}(s(\phi))} d\phi \sim \phi_c \sqrt{K_{\phi,\bar{\phi}}(s_0)} \tag{3.8}$$

where ϕ_c is the critical point at which $s(\phi) \sim s_0$ (see figure 1 for a schematic drawing). Let us recall that this is not the total maximum field range, but only the maximum field range before $s(\phi) > s_0$ and the inflaton dependence on the saxion backreacts on the kinetic metric. Beyond this value, the effective field range will increase at best logarithmically with the field value, as discussed above. Therefore it gives us information about how far we can delay the backreaction effects. The constant value s_0 (and consequently $K_{\phi,\bar{\phi}}(s_0)$) is given by (3.7) evaluated at the minimum of the potential, i.e. at $\rho = \rho_0$. The critical value ϕ_c can be determined by requiring that at least one of the ρ functions including the inflaton dominates over all the constant values ρ_0 in (3.6). However, in order to give quantitative results regarding this issue, we need to know the explicit expression of the shift-invariant ρ functions. Therefore, for concreteness, we will continue the discussion in the next section analysing the closed string sector of Type II string compactifications, where (3.5) is known [63, 64].

Before concluding this section, a final remark is in order. The appealing feature of the original Kaloper-Sorbo model is the protection against higher order dimensional operators. However, it has been argued that in more elaborated models (like those coming from string theory) there can be higher operators that break the shift symmetry of the axion, making the formulation in terms of a 4-form useless. We want to stress here that this is not true: there is not explicit breaking of the discrete shift symmetry in any case. All higher dimensional operators correcting (3.5) must preserve the discrete shift symmetry (since it is the remnant of a large gauge transformation) and therefore must appear as functions of the

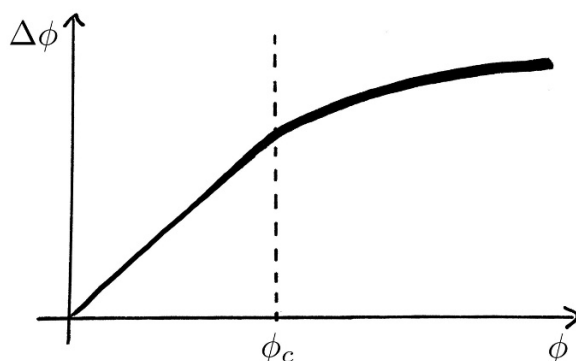


Figure 1. Behaviour of the proper field distance at large field.

gauge and shift invariant quantities⁴ F_4 and ρ . The coupling of the axion to the 4-form can be understood as a way to decompactify the compact moduli space of the axion, converting a circle in configuration space into an helix. This process of making global a local symmetry has also been recently discussed in a different context in [86], and it is the basis underlying axion monodromy. The large gauge transformation relating equivalent vacua requires now to shift the axion and the flux quanta simultaneously. Therefore, upon choosing a vacuum by fixing the flux quanta, the axionic field range can be made bigger than its fundamental periodicity. The backreaction effects can also be understood in this way, without requiring the introduction of any shift symmetry breaking operator that makes the theory out of control. The Lagrangian (3.5) is perfectly shift invariant, and the problems come only upon the choice of vacuum which spontaneously breaks the symmetry. One could think of integrating out the saxions in order to get the effective theory only in terms of the 4-forms and the axions, but this is in general not analytically doable. Besides, it is not clear whether it is even consistent to integrate out the saxion while keeping the 3-form fields in the effective theory. Notice that we are talking about properly integrating out the heavy degrees of freedom and not about making a truncation of the theory by fixing the saxions to their vevs at the minimum of the potential. Therefore we think that the best way of analysing the backreaction effects in axion monodromy is by considering the generalization of Kaloper-Sorbo in (3.5) with the non-trivial kinetic metrics. Hence the limitation of Kaloper-Sorbo is not related to mysterious higher dimensional non-shift-symmetric operators, but to the field dependent metrics of the 4-forms and our current ignorance of the manifestly supersymmetric description of Kaloper-Sorbo in $N = 1$ supergravity.

⁴Corrections as powers of the field strength F_4 give rise to corrections to the scalar potential going as powers of the potential itself, while corrections going as powers of the coupling $F_4\rho$ lead to corrections to the axionic kinetic term involving higher derivative terms of ϕ [31].

4 Backreaction on the Type IIA(B) closed string sector

For the sake of concreteness, let us analyse the above backreaction issues in the context of Type II string compactifications, so we can see how the generic properties discussed in the previous section emerge in particular examples. The four dimensional scalar potential of Type IIA Calabi-Yau orientifold flux compactifications is given by [63]

$$V = V_{RR} + V_{NS} + V_{loc} \tag{4.1}$$

where

$$V_{RR} = \frac{e^{K_{cs}}}{2s} \left[-kF_4^0 \wedge *F_4^0 + 2F_4^0 \rho_0 - 4kg_{ij} *F_4^i \wedge F_4^j + 2F_4^i \rho_i - \right. \\ \left. - \frac{1}{4k} g_{ij} \tilde{F}_4^i \wedge * \tilde{F}_4^j + 2\tilde{F}_4^i \tilde{\rho}_j + kF_4^m \rho_m \right] \tag{4.2}$$

$$V_{NS} = e^{K_{cs}} \frac{s^2}{k} H_4 \wedge *H_4, \quad V_{loc} = e^{K_{cs}} \frac{2t^3}{3st^3} (2mh_i u^i - 2mh_0 s) \tag{4.3}$$

and

$$\begin{aligned} \rho_0 &= e_0 + b^i e_i - \frac{m}{6} k_{ijk} b^i b^j b^k + k_{ijk} \frac{1}{2} q_i b^j b^k - h_0 c_3^0 - h_i c_3^i \\ \rho_i &= e_i + k_{ijk} b^j q^k - \frac{m}{2} k_{ijk} b^j b^k \\ \tilde{\rho}_i &= q_i - mb_i \\ \rho_m &= m \end{aligned} \tag{4.4}$$

The ρ functions are invariant under the axionic discrete shifts

$$b^i \rightarrow b^i + n^i, \quad q_i \rightarrow \tilde{\rho}_i (b^i = -n^i), \quad e_i \rightarrow \rho_i (b^i = -n^i), \quad e_0 \rightarrow \rho_0 (b^i = -n^i) \tag{4.5}$$

$$c_3^I \rightarrow c_3^I + n^I, \quad e_0 \rightarrow e_0 + h_I n^I \tag{4.6}$$

The 3-form gauge fields come from higher dimensional NSNS and RR p-form fields. In particular,

$$\begin{aligned} F_0 &= -m, & F_2 &= \sum_i q_i \omega_i, & F_4 &= F_4^0 + \sum_i e_i \tilde{\omega}_i \\ F_6 &= \sum_i F_4^i \omega_i + e_0 \text{dvol}_6, & F_8 &= \sum_i \tilde{F}_4^i \tilde{\omega}_i, & F_{10} &= F_4^m \text{dvol}_6 \end{aligned} \tag{4.7}$$

where $i, a = 1, \dots, h_{-}^{(1,1)}$. The parameters e_0, e_i, q_i, m refer to internal RR fluxes on the Calabi-Yau Y , and we get $2h_{-}^{(1,1)} + 2$ Minkowski 4-forms: $F_4^0, F_4^i, \tilde{F}_4^i$ and F_4^m . The metric is defined as $g_{ij} = \frac{1}{4k} \int \omega_i \wedge * \omega_j$. Similarly the NS H_3 background and its H_7 dual can be expanded in harmonic forms as

$$H_3 = \sum_{I=0}^{h_{2,1}^-} h_I \beta_I, \quad H_7 = \sum_{I=0}^{h_{2,1}^+} H_4^I \wedge \alpha_I \tag{4.8}$$

obtaining $h_{2,1}^+ + 1$ additional Minkowski 4-forms H_4^I coming from the NSNS sector. The 4d axions come from expanding B_2 and C_3 as follows

$$B_2 = \sum_i b_i \omega_i, \quad C_3 = \sum_I c_3^I \alpha_I \quad (4.9)$$

and correspond to the axionic part of the complex supergravity fields T, S, U ,

$$T^i = v^i + i b^i, \quad U^i = u^i + i c_3^i, \quad S = s + i c_3^0 \quad (4.10)$$

Upon integrating out the 3-form fields via their equations of motion,

$$\begin{aligned} *_4 F_4^0 &= \frac{1}{k} \rho_0, & *_4 F_4^i &= \frac{g^{ij}}{4k} \rho_j \\ *_4 \tilde{F}_4^i &= 4k g^{ij} \tilde{\rho}_j, & *_4 F_4^m &= \rho_m \end{aligned} \quad (4.11)$$

the RR and NS scalar potential reads

$$V_{RR} + V_{NS} = \frac{e^{K_{cs}}}{s} \left[\frac{1}{2k} |\rho_0|^2 + \frac{g_{ij}}{8k} \rho^i \rho^j + 2k g_{ij} \tilde{\rho}^i \tilde{\rho}^j + k |\rho_m|^2 + \frac{1}{k} c_{IJ} \rho^I \rho^J \right] \quad (4.12)$$

where c_{IJ} is the metric in the complex structure moduli space. By plugging eq.(4.4) into the above formula one recovers the well known scalar potential of Type IIA flux compactifications [87–91]. We will use this scalar potential, written as a sum of the squares of the different ρ functions, to analyse the backreaction of the saxions.

Finally, the kinetic metrics are determined by second derivatives of the Kahler potential, which is given by [87]

$$K = -2 \log(\mathcal{F}_{KL} (N^K - \bar{N}^K)(N^L - \bar{N}^L)) - \log(k_{ijk} (T + T^*)^i (T + T^*)^j (T + T^*)^k) \quad (4.13)$$

Here N^K stands both for the dilaton S and complex structure moduli U with $K = 0, \dots, h^{2,1}$, while $\mathcal{F}_{KL} = \partial_K \partial_L \mathcal{F}$ is the second derivative of the prepotential \mathcal{F} inherited from the $N = 2$ unorientifolded theory. Once we are located at a special point in the complex structure moduli space we can expand the periods around it and obtain an explicit expression for the Kahler potential. For instance, if we consider a manifold with only one complex structure modulus, the result near the large complex structure point will be given by

$$K = -\log(S + S^*) - 3 \log(U + U^*) - \log(k_{ijk} (T + T^*)^i (T + T^*)^j (T + T^*)^k) \quad (4.14)$$

For concreteness, we will use this Kahler potential in the following, and leave the study of other special points in the complex structure moduli space for future work.

4.1 Minima of the potential

First we minimize the potential with respect to the axions. Since they only appear inside the ρ functions we do not need to worry about V_{loc} . If all the fluxes are not vanishing, the axions b^i and the combination $\phi = h_0 c_3^0 + h_i c_3^i$ are stabilized by the fluxes. Since ϕ appears

only inside ρ_0 which appears quadratically in the potential, minimization with respect to ϕ implies $\rho_0 = 0$ at the minimum,

$$\rho_0 = 0 \rightarrow \phi_0 = e_0 + \frac{q}{m} \left(\gamma - \frac{q^2}{6m} \right) \quad (4.15)$$

where we denote $\gamma = e_i + \frac{1}{2} \frac{q^2}{m}$. Furthermore, each ρ function is the derivative with respect to b^i of the previous one, obtaining

$$\frac{\partial V}{\partial b^i} = \frac{2}{su^3} \left[\frac{1}{2k} \rho_0 \rho_i + \frac{g^{jk}}{8k} k_{ijl} \rho_k \tilde{\rho}^l + 2k g_{ij} \tilde{\rho}^j \rho^m \right] \quad (4.16)$$

We have therefore two options,

$$(I) \quad \tilde{\rho}^i = 0 \rightarrow b_0^i = q^i/m \quad (4.17)$$

$$(II) \quad k_{ijl} \frac{g^{jk}}{8k} \rho_k + 2k g_{il} \rho^m = 0 \quad (4.18)$$

For simplicity let us consider only one Kahler modulus t (ie, $h_-^{(1,1)} = 1$) and one complex structure modulus u , which will be enough for our purposes. Notice that then the index i is not a running index but just $i = 1$. We will leave it, however, as a label to distinguish the different ρ functions. We also denote the NS fluxes as $\rho_{h_0} = h_0$ and $\rho_{h_i} = h_i$. The scalar potential is then given by

$$V_{RR} + V_{NS} = \frac{4}{st^3u^3} \left[(\rho_0)^2 + \frac{t^2}{3} (\rho_i)^2 + \frac{3t^4}{36} (\tilde{\rho}_i)^2 + \frac{t^6}{36} (\rho_m)^2 + s^2 \rho_{h_0}^2 + u_i^2 \rho_{h_i}^2 \right] \quad (4.19)$$

and the two possible solutions become

$$(I) \quad \tilde{\rho}_i = 0 \rightarrow b = q/m \quad (4.20)$$

$$\rho_i = \gamma \quad (4.21)$$

$$(II) \quad \rho_i = -\frac{t^2 \rho_m}{4} \rightarrow b_0 = q/m \pm m^{-1/2} \sqrt{2\gamma - t^2/2} \quad (4.22)$$

$$\tilde{\rho}_i = \pm m^{1/2} \sqrt{2\gamma - t^2/2} \quad (4.23)$$

Next we minimize the potential with respect to the saxions. It can be easily checked that both sets of solutions (since both will satisfy $\rho_i = \gamma$) yield (up to $\mathcal{O}(1)$ factors)

$$s_0 \sim \frac{\rho_i^{3/2}}{\rho_{h_0} \sqrt{\rho_m}}, \quad u_0 \sim \frac{\rho_i^{3/2}}{\rho_{h_1} \sqrt{\rho_m}}, \quad t_0 \sim \frac{\rho_i^{1/2}}{\sqrt{\rho_m}} \quad (4.24)$$

The only difference is that in the first set of solutions $\tilde{\rho}_i = 0$ (implying $b = q/m$) while in the second set $\tilde{\rho}_i = \sqrt{6\gamma m}$ (implying $b = \frac{q}{m} \pm \sqrt{\frac{6\gamma}{m}}$). Notice that the result can be written indeed as a ratio of the different ρ functions, in agreement with section 3. The explicit parametric dependence on the fluxes is then given by

$$s_0 \sim \frac{\gamma^{3/2}}{h_0 \sqrt{m}}, \quad u_0 \sim \frac{\gamma^{3/2}}{h_1 \sqrt{m}}, \quad t_0 \sim \frac{\gamma^{1/2}}{\sqrt{m}} \quad (4.25)$$

It is also interesting to notice how the structure of minima found for instance in [91] appears in a more transparent and clear way in terms of the ρ functions.

4.2 Backreaction on the kinetic metric

Let us study now how these minima change when we displace the inflaton away from its minimum. We will consider two options, depending on whether the inflaton belongs to the NS or the RR sector.

RR sector. The inflaton is the linear combination of RR axions $\phi = h_0 c_3^0 + h_i c_3^i$. When this field is displaced away from its minimum (4.15), then $\rho_0 \neq 0$, and the minima will depend both on $\rho_i = \gamma$ and ρ_0 . In fact, for large field⁵

$$s \xrightarrow{\phi \rightarrow \infty} \frac{\phi}{h_0}, \quad u \xrightarrow{\phi \rightarrow \infty} \frac{\phi}{h_1} \tag{4.26}$$

and the physical field distance scales as

$$\Delta\phi = \int (h_i K^{ij} h_j)^{-1/2} d\phi \sim \int \sqrt{\frac{1}{h_0^2 s(\phi)^2 + h_1^2 u(\phi)^2/3}} d\phi \xrightarrow{\phi \rightarrow \infty} \int \frac{1}{\phi} d\phi \sim \log(\phi) \tag{4.27}$$

where we have used the field distance formula derived in [62] and valid for the case in which the inflaton is a linear combination of axions. The larger the field displacement is, the smaller is the physical increase in field distance, ruling out parametrically large field ranges. Notice also that how fast the Kahler metric decreases at large field is model dependent (it might depend on the flux parameters). Therefore, large field inflation with a field displacement of a few times the Planck mass is still possible by tuning the fluxes. However, here we are not interested in whether a modest large field excursion is allowed, but in understanding if string theory distinguishes between sub- or trans-planckian field distances. We have seen that parametrically large field values are not possible, but does anything special happen when crossing the threshold $\Delta\phi \sim M_p$? In order to answer this question, let us see how far we can delay the appearance of the logarithm in the above expression.

Let us roughly divide the field range in two regimes, before and after the metric becomes field-dependent on the inflaton,

$$\Delta\phi \sim \int_{\phi_0}^{\phi_c} K_{\phi, \bar{\phi}}^{-1/2} d\phi + \int_{\phi_c}^{\phi} K_{\phi, \bar{\phi}}^{-1/2} d\phi \sim \Delta\phi_- + \Delta\phi_+ \tag{4.28}$$

where ϕ_c is the critical value at which $\delta s(\phi_c) \sim s_0$. Before this point, the metric is roughly constant (ie, it does not depend to leading order on the value of ϕ) and the field range is given by

$$\Delta\phi_- \sim (\phi_c - \phi_0) K_{\phi, \bar{\phi}}^{1/2} \sim (\phi_c - \phi_0) \sqrt{\frac{1}{h_0^2 s_0^2 + h_1^2 u_0^2/3}} \tag{4.29}$$

After ϕ_c the leading contribution on the metric will depend on ϕ itself and $\Delta\phi_+$ will grow at best logarithmically with the field value. The question is, how large can $\Delta\phi_-$ be? As pointed out in [62] this quantity is flux-independent in the above Type IIA compactifications and cannot be bigger than the Planck mass, as we proceed to explain in the following.

⁵Actually, for large field the saxion vevs will go as $\rho_0(\phi)/h$, so the inflaton appears always within the shift invariant ρ functions. This is consistent with the fact that any correction to the effective theory cannot break explicitly the shift symmetry.

Let us consider for simplicity $h_0 > h_1$ without loss of generality, so we can focus only on the backreaction of the dilaton field. For small displacements, the dilaton minimum is modified as follows,

$$s = s_0 + \mathcal{O}(1) \frac{\sqrt{m}}{h_0 \gamma^{3/2}} \rho_0^2 = s_0 \left(1 + \frac{\phi_0^2}{h_0^2 s_0^2} \right) \quad (4.30)$$

so $\delta s(\phi) > s_0$ when $\phi > \phi_c \sim h_0 s_0$. Therefore,

$$\Delta\phi_- \sim \frac{\phi_c - \phi_0}{h_0 s_0} \lesssim 1 \quad (4.31)$$

in Planck units. This result can also be inferred by looking directly at the scalar potential. At the minima of the potential, all the vacuum expectation values for the saxions depend on the quantity $\rho_i = \gamma$. When the inflaton is displaced away from its minimum, $\rho_0 \neq 0$ and the minimization process depends on the balance between the terms involving ρ_0 and ρ_i . The inflaton dependence will dominate when $\rho_0 > t\rho_i$, implying $\phi > \phi_c \sim \gamma^{3/2}/\sqrt{m} \sim h_0 s_0$, recovering the previous result.

To sum up, if ϕ_c and s_0 scale the same way on the flux parameters, $\Delta\phi_-$ is flux independent and at best of order $\Delta\phi_- \sim \phi_c/s_0 \sim 1$ in Planck units. This implies that when the field displacement becomes transplanckian, the metric starts depending on the field value itself in a non-negligible way, such that it decreases when the field increases. The flux-independence of the available field range before backreaction effects become important suggests that there is a qualitative change on the effective theory when crossing $\Delta\phi \sim M_p$.

NS sector. Let us analyse now if the same behaviour appears when the inflaton is a NS axion b_i . In this case, the physical field distance will be given by

$$\Delta b \sim \int K_{TT}^{-1/2} db \sim \int \frac{\sqrt{3}}{t(b)} db \quad (4.32)$$

When b travels away from its minimum, the variation on the ρ functions is given by

$$\Delta\rho_a = -m\delta b, \quad \Delta\rho_i = -\frac{m}{2}(\delta b)^2, \quad \Delta\rho_0 = f\delta b - \frac{m}{6}(\delta b)^3 \quad (4.33)$$

We should replace this into the scalar potential and minimize again to see how the new minimum for the kahler modulus depends on b . However, the system of equation becomes non-linear and cannot be resolved analytically. Numerical studies show that the kinetic metric again decreases with the field value, and that Δb_- seems to be roughly independent of the fluxes. Let us though remark that in order to compute Δb_- we do not need to minimize the scalar potential for arbitrary values of b . We can estimate the critical value b_c by simply requiring that $\Delta\rho_i > \rho_i(b_0)$, i.e. that the variation on ρ_i dominates over the value of ρ_i at the minimum.⁶ This clearly remarks the simplicity of the computations when writing the potential in terms of 4-forms. This implies that

$$b_c \sim \sqrt{\frac{\gamma}{m}} \quad (4.34)$$

⁶The same result can be obtained by requiring $t^2\Delta\rho_a > \rho_i$ as in the previous section, so the term involving b dominates over the constant terms in the scalar potential.

which is valid for both sets of solutions in (4.23), since for both of them $\rho_i(b_0) = \gamma$. Notice that b_c has the same parametric dependence on the fluxes than the constant vev t_0 (4.25), implying that the maximum physical field distance available before the metric starts decreasing with the field vev,

$$\Delta b_- = \frac{b_c}{t_0} \sim 1 \tag{4.35}$$

is again flux-independent and at best of the order of the Planck mass, in agreement with [62].

4.3 Remarks and comments

The flux independence of $\Delta\phi_-$ is clearly remarkable. If it is not accidental but can be proved to be a generic property of any string model, it would be a strong hint in favour of a fundamental reason why transplanckian field ranges are disfavoured in string theory (see [62, 72] for the relation to the Swampland Conjecture). Let us therefore take a step back and analyse the reason of this miraculous cancellation. Consider that the kinetic metric of the inflaton is inversely proportional to a saxion s whose vacuum expectation value is given by

$$s = s_0 + \delta s(\phi) \tag{4.36}$$

with $\delta s(\phi)$ vanishing at the minimum of ϕ . We have seen that $\delta s(\phi)$ will be given by some ratio of the ρ functions. In the case in which this ratio is proportional to ϕ , the kinetic metric will decrease when increasing ϕ leading to a reduction of the effective field range. In terms of the parameters of the effective theory, this ratio is proportional to some function of the mass ratio

$$\delta s(\phi) \propto f\left(\frac{m_\phi}{m_s}\phi\right) \tag{4.37}$$

so that a big mass hierarchy suppresses the backreaction. In the limit $m_s \rightarrow \infty$ the saxion is frozen at its minimum value and the kinetic metric for ϕ is not field dependent anymore (we would need infinite energy to move s from its minimum). However, our results and those from [62] show that a big mass hierarchy is not enough to suppress the backreaction effects and send the logarithmic behaviour far away in field distance. One needs to check that by decreasing $\frac{m_\phi}{m_s}$ one is not increasing in the same way the value of s_0 , so both effects cancel each other. In the examples studied above, one cannot vary the mass hierarchy while keeping the vev s_0 constant. In fact, both scale in the same way with the fluxes (due to the fact that $\phi_c \sim s_0$) implying that the maximum proper field distance available before reaching the inflection point ($\delta s(\phi) \sim s_0$) is flux-independent and of order one in Planck units. Can we then construct a string model in which s_0 and ϕ_c vary independently? We have shown that this is not possible within the closed string sector of Calabi-Yau compactifications of Type IIA. However, the open string sector might provide a counter-example to this behaviour, as we will explain in the next section.

Before moving to the open string sector, let us roughly discuss the case of Type IIB. The effective theory of IIB Calabi-Yau orientifold compactification with fluxes in terms of

Minkowski 4-forms was derived in [63]. However, the Minkowski 4-forms there correspond to the complexified 4-forms G_4 coming from expanding G_7 in harmonic internal 3-forms. Here G_7 is the dual in ten dimensions of G_3 ,

$$G_7 = *_{10}G_3, \quad G_3 = F_3 - SH_3 = \tilde{F}_3 - ie^{-\phi}H_3 \quad (4.38)$$

with $\tilde{F}_3 = F_3 - C_0H_3$. Therefore G_7 already includes the dilaton in its definition. In order to get the structure of (3.5) we need to reformulate the effective theory in terms of the real 4-forms \tilde{F}_4 and H_4 . In this case, since neither axions coming from B_2, C_2 nor C_4 (belonging to the Kahler sector) get stabilized by fluxes [92], the only candidate for axion monodromy (without considering extra contributions from the open string sector) is the fundamental axion C_0 , which will appear within the ρ function coupled to the RR gauge invariant form \tilde{F}_4 . The structure is then much simpler than in IIA, since everything will depend on this particular ρ function making the backreaction effects unavoidable. Another option would be to consider the inflaton within the complex structure moduli sector. Interestingly, axions with exact discrete shift symmetries (and approximate continuous symmetries) appear near special points in the complex structure moduli space that admit discrete monodromy symmetries of infinite order [19]. It would be interesting to study if an analogous formulation in terms of effective 4-forms is possible in these cases as well. In any case, we do not expect qualitatively different results from Type IIA, at least near the large complex structure point, because many models will be related by those of IIA by mirror symmetry. However, the complex structure moduli space is richer than considering only the large complex structure point, and different effective theories can arise near different special points [19, 93, 94]. Therefore, even if it is difficult to imagine how one can get a qualitatively different behaviour for the field range at large field, we cannot discard that possibility and leave a more careful analysis for future work. Instead, here we will focus now on the open string sector, which looks more promising to overcome the difficulties discussed above.

5 A possible way out: open string moduli

The introduction of the open string sector will have two effects in the effective theory. First, new superpotential couplings can be generated, which in terms of Minkowski 4-forms is equivalent to modify the ρ functions in order to include the open string axions inside. Besides, if one turns on open string fluxes, new dual Minkowski 4-forms will appear in the effective theory. Here we will not write the full scalar potential including the new open string fields. For our purposes it is enough to consider that the structure (2.1) is still preserved. A first analysis of the potential in terms of 4-forms in the case of Type IIA with D6-branes was performed in [64] (see also [18, 63, 95] for partial results for D7-branes and D5-branes). However, the complete reformulation of the scalar potential in terms of both closed and open 4-forms is still missing. The second effect is the modification of the Kahler potential due to the redefinition of the holomorphic chiral variables [96–103]. In Type IIA compactifications, the complex structure moduli is redefined in the presence of D6-brane moduli [96–100] and the Type IIA Kahler potential for the complex structure

sector becomes

$$K_{IIA} = -2\log(\mathcal{F}_{KL}(N^K - \bar{N}^K - Q^K(\phi - \bar{\phi})^2)(N^L - \bar{N}^L - Q^K(\phi - \bar{\phi})^2)) \quad (5.1)$$

where ϕ are D6 Wilson lines. Analogously, in Type IIB the D7 position moduli appear modifying the dilaton [101, 102]. Due to the lower codimension of the D7-brane, the backreaction of the D7 cannot be treated in a consistent global way within perturbative Type IIB string theory. Therefore, it is better to continue the analysis in the framework of F-theory. The complex structure deformations of the Calabi-Yau 4-fold can then be identified in the weak coupling limit with the IIB axio-dilaton, bulk complex structure moduli and positions of the D7's. The Kahler potential of the low energy theory is given by [100, 101]

$$K_{CS} = -\log\left(\int_X \Omega_4 \wedge \bar{\Omega}_4\right)^{g_s \rightarrow 0} \approx -\log((S_0 - \bar{S}_0)\Pi_i(z)Q^{ij}\bar{\Pi}_j(\bar{z}) + f(z, \bar{z}, \phi, \bar{\phi})) \quad (5.2)$$

where ϕ are the D7 position moduli and $\Pi_i(z)$ the period vectors of the base depending on the bulk complex structure coordinates z . In particular, the Kahler potential for the vector moduli of F-theory compactified on $K3 \times \tilde{K}3$ at the orientifold point (strong coupling limit of Type IIB on $K3 \times T^2/Z_2$) is known [104] to all orders in g_s and perturbatively exact in α' . At zeroth order in α' (but exact in g_s) the Kahler potential for the vector moduli is simply given by

$$K = -\log\left((S + \bar{S})(U + \bar{U}) - \frac{1}{2}\sum_a(\phi^a + \bar{\phi}^a)^2\right) - \log(T + T^*) \quad (5.3)$$

where S and T are the complex structure and Kahler modulus of the T^2 on the base respectively. Higher orders in α' will imply a mixing between the Kahler and complex structure sectors. This Kahler potential also corresponds to the one appearing in toroidal compactifications of Type IIB, with U being the complex structure coordinate along the torus transverse to the brane. We have focused on D6 wilson lines and D7 position moduli because they can be stabilized by fluxes and are therefore good candidates for monodromic axions. Notice that the leading order contribution (tree level in α' and g_s) for the Kahler metric of open string fields depends only on the closed string saxions. This opens a new possibility: if one can separate the source of stabilizing closed and open string moduli, one could a priori increase the critical value ϕ_c while keeping the saxion vev s_0 constant.

In the case of D6-branes, this can be done by turning on a magnetic worldvolume flux n_F on the brane. This flux will affect to the stabilization of both closed and open string fields, while some of the RR closed string fluxes can be chosen in order not to affect the open string field identified with the inflaton. Therefore we can tune n_F to small values to increase ϕ_c while keeping s_0 approximately constant (since the leading order contribution will still come from closed string fluxes). However, the possible choices of fluxes that are globally consistent and satisfy the 10d equations of motion of the internal manifold are not well understood, because the internal geometry is not Calabi-Yau anymore when we add the fluxes. Therefore it is not clear for us if the tuning of fluxes required to suppress the backreaction effects is even globally allowed. In this sense, it is better to consider the analogous model in Type IIB with D7's, where the global constraints are better understood.

In the case of D7's, one can add a supersymmetric ISD (2,1) flux to stabilize the D7 position moduli, which will appear as an extra term in the superpotential. When this flux is set to zero, a real field ϕ^- parametrize one of the transverse directions to the brane becomes massless, while the closed string saxions and the scalar ϕ^+ parametrize the other direction can be kept stabilized by the presence of other fluxes like ISD (0,3)-fluxes (which break supersymmetry). The position modulus which is stabilized even if there is not explicit term in the superpotential involving the open string fields is the one appearing in the Kahler potential, due to the well known Giudice-Masiero mechanism. In the notation of (5.3), it corresponds to $\phi^+ = \phi + \phi^*$, while $\phi^- = \phi - \phi^*$ would be the inflaton. Therefore we can play the same game and tune the (2,1)-flux to increase ϕ_c^- while keeping s_0 (and ϕ_0^+) approximately constant. Since ISD fluxes satisfy the supergravity ten-dimensional equations of motion of a Calabi-Yau manifold [105], this choice of fluxes is also consistent globally. Notice also that we are assuming that the transverse space to the D7 admits periodic directions, along the lines of [10, 12, 18]. This example will be analysed in detail in [106] which presents the implementation of Higgs-otic inflation [11, 18, 67, 107] in a moduli stabilization framework. Therefore we refrain ourselves from giving more technical details here. We will instead discuss the concrete properties and assumptions which allow this behaviour.

Notice that the above examples rely on the fact that the kinetic metric of the inflaton to leading order does not depend on the scalar within the same supermultiplet than the inflaton, but on a scalar from a different sector (let us denote it s_0) which can be stabilized independently and whose vev remains approximately constant even if the inflaton mass tends to zero. This is equivalent to engineer a sort of hierarchy between the inflationary potential and the scalar potential of the saxion s_0 , which is possible if there is a flux entering in one of them but not in the other one. The fact that this seems to be possible only upon introducing an open string sector nicely fits with the results of [15, 17], in which this kind of hierarchy was not possible within the complex structure moduli space of a Calabi-Yau threefold but might be realisable in Calabi-Yau fourfolds (from the point of view of M/F-theory the D7 position moduli are included as part of the complex structure deformations of the CY_4). In the example of D7-branes discussed above, we have:

- (2,1)-fluxes: they contribute to stabilize both closed string moduli (including s_0) and D7 position moduli (including the inflaton ϕ^-). This implies that the saxion vev will depend on the inflaton field and eventually backreact on the kinetic metric of the inflaton, leading to the logarithmic behaviour $\Delta\phi \sim \log(\phi)$ for large field.
- (0,3)-fluxes: they contribute to stabilize the closed string moduli and one D7 position modulus, but do not affect to the stabilization of the inflaton field ϕ^- (which in the absence of (2,1)-fluxes is a flat direction). This implies that ϕ_c and s_0 do not have the same dependence on the fluxes. For instance, if the contribution from (0,3)-fluxes is more important than the one from (2,1)-fluxes, then one can increase ϕ_c while keeping s_0 approximately constant (at the value determined by the (0,3) fluxes). Therefore the field range available before the logarithmic behaviour becomes important is flux-dependent and one can a priori delay the backreaction effects beyond the Planck mass in proper field distance.

Notice that the same arguments work for the backreaction coming from the open string fields in the Kahler potential (5.3), since they are also stabilized by (0,3)-fluxes. Besides, if ϕ^+ becomes larger than $\sqrt{s_0 u_0}$, the function inside the logarithm in (5.3) becomes negative and we exit the Kahler cone. This implies that our set of coordinates is not valid anymore in the local patch under consideration and we have to redefine the complex structure moduli to reabsorb the shift on the open string modulus. Therefore, what physically matters is the backreaction from the combination $su - (\phi^+)^2$.

Let us remark that the above example is possible because the source of supersymmetry breaking gives the leading contribution to stabilize the saxions while has no effect on the inflaton field mass. Since we are breaking supersymmetry, one should worry if loop or higher order corrections do not spoil this behaviour. However, we have argued that the axion appears in the Lagrangian only inside shift-invariant functions $\rho(\phi)$, and higher order corrections must appear as functions of $\rho(\phi)$. This leads to a sort of protection (similar to a chiral symmetry for fermionic masses) in the sense that the corrections remain naturally small if $\rho(\phi)$ was initially small. If one was able to find a source of supersymmetry breaking which stabilizes the axion (the inflaton) but not the saxion, then one could hope to get rid also of the backreaction effects which induce the logarithmic behaviour at large field. However, the saxions do not enjoy such a protection coming from the 3-form fields, so higher order corrections will completely spoil any hierarchy generated at leading order. This is the reason why we expect that the backreaction effects yielding that the proper field distance grows at best logarithmically at large field is a generic feature of string theory, but one can still delay this backreaction effects by tuning the fluxes in some cases. This would imply that parametrically large field values are forbidden in a consistent theory of quantum gravity, but the constraint on the field range is not necessarily tied to the Planck mass in axion monodromy models.

These properties suggest that models of axion monodromy based on open string fields might provide counterexamples to the universal behaviour of $\Delta\phi_-$ discussed in the previous section (and previously in [62]), since here $\Delta\phi_-$ is flux-dependent. Therefore the threshold at which backreaction effects become important can be set to a transplanckian value. However, a more careful analysis is required before extracting general conclusions, to check that we are not missing any relevant backreaction effect that could also reduce the field range and forbid transplanckian excursions.

6 Conclusions

We have analysed the differences between the original Kaloper-Sorbo description of axion monodromy and the effective theory for axions arising in $N = 1$ four-dimensional string compactifications of Type IIA/B. The latter can be completely reformulated in terms of a supersymmetric generalization of Kaloper-Sobro with: non-linear couplings to the 4-forms, multiple 4-forms and multiple axions, and field-dependent kinetic metrics of the 3-form fields (depending on the non-periodic scalars of the compactification). The Minkowski 4-forms couple to shift invariant functions $\rho(\phi)$ which encode all the dependence on the axions in the effective theory. Since the axions do not necessarily appear linearly in $\rho(\phi)$ this gives

rise, not only to mass terms, but to more general couplings in the effective scalar potential. The discrete shift symmetry of the axions can only be broken spontaneously, so there cannot be higher dimensional operators generating an explicit breaking. This is translated into the fact that all higher order corrections must appear as functions of the gauge-invariant 4-form field strength. However, the presence of multiple 4-forms imply that the higher order corrections can appear as functions of combinations of the different 4-forms mixing different parts of the potential, and not simply as powers of the leading order potential itself. Finally, the presence of the non-periodic scalars (saxions) in the kinetic metric of the 3-form fields leads to the backreaction issues that make axion monodromy models technically involved and difficult to control. By displacing the inflaton away from its minimum one can also destabilize the saxions from their corresponding minima, which might lead to non-negligible modifications of the effective theory and the inflationary dynamics.

We have analysed these backreaction issues in terms of the Minkowski 3-form fields. In particular, we have focused on the case in which the saxions backreact on the Kahler metric of the inflaton, inducing a redefinition of the canonical field and therefore of the proper field distance. If the vev of a saxion (appearing in the Kahler metric of the inflaton) is, upon minimization of the potential, proportional to the inflaton vev, then the proper field distance (for the inflaton) will grow at best logarithmically with the inflaton for large field values. Whether the saxion depends on the inflaton vev is easy to check when writing the effective theory in terms of Minkowski 4-forms, where axions and saxions enter in the potential in a very different way. In particular, the vev of the saxions will be given by ratios of the different $\rho(\phi)$ functions. Therefore, in order to see if the saxion depends on the inflaton we do not need to minimize the full scalar potential but we only need to have information about the metrics of the 3-form fields and about in which $\rho(\phi)$ appears the inflaton (i.e. to which 4-form the inflaton couples). Furthermore, the metric of the 3-form fields is not arbitrary but determined by the Kahler potential of the scalar manifold in $N = 1$ compactifications. The question is therefore whether string theory allows for Kahler metrics free of these backreaction problems.

We have then studied in detail the case of flux compactifications of Type IIA/B in orientifold Calabi-Yau manifolds. We find, in agreement with [62], that any axion within the closed string sector will suffer from these backreaction effects and its proper field distance will scale at best logarithmically at large field. This nicely fits with the reluctance of string theory to get parametrically large field displacements. But even more intriguing, the maximum field range before these backreaction effects become important turns out to be flux-independent and tied to the Planck mass. If this behaviour was universal for any string model it would point to a fundamental obstruction to have a transplanckian field range in axion monodromy models within string theory.

We propose, however, some possible counterexamples to this universal behaviour based on open string fields. In particular, one can consider Type IIB/F-theory compactifications with D7-branes, where one can have two sets of fluxes which allow for a sort of mass hierarchy between the saxions and the inflaton (the latter belonging to the open string sector). In these models, one can tune the fluxes in such a way that even if the logarithmic behaviour at large field is unavoidable, it can be delayed away in field distance. Therefore

the backreaction effects are not necessarily tied to the Planck mass. It would not be the first time that the introduction of the open string sector leads to new features that are not available within the closed string sector of perturbative Type II string theory. For instance, the prototypical mechanisms to get deSitter vacua in string theory require the presence of anti-D3 branes or D7-branes with fluxes. But as always happen when we add new ingredients, the model becomes more involved and a more careful analysis is required to check the global consistency of the proposal and ensure that we are not missing any relevant backreaction effect. In any case, they look like a promising arena to test if string theory only disfavors parametrically large displacements or instead a fundamental obstruction appears as soon as the field range becomes transplanckian. In addition to the implications for large field inflation, the definition of the boundaries of the string landscape is interesting by itself and clearly deserves more investigation.

Acknowledgments

I thank Luis Ibáñez, Fernando Marchesano, Miguel Montero, Eran Palti, Diego Regalado and Clemens Wieck for useful discussions. This work is supported by a grant from the Max Planck Society.

Open Access. This article is distributed under the terms of the Creative Commons Attribution License ([CC-BY 4.0](https://creativecommons.org/licenses/by/4.0/)), which permits any use, distribution and reproduction in any medium, provided the original author(s) and source are credited.

References

- [1] E. Silverstein and A. Westphal, *Monodromy in the CMB: gravity waves and string inflation*, *Phys. Rev. D* **78** (2008) 106003 [[arXiv:0803.3085](https://arxiv.org/abs/0803.3085)] [[INSPIRE](#)].
- [2] L. McAllister, E. Silverstein and A. Westphal, *Gravity waves and linear inflation from axion monodromy*, *Phys. Rev. D* **82** (2010) 046003 [[arXiv:0808.0706](https://arxiv.org/abs/0808.0706)] [[INSPIRE](#)].
- [3] R. Flauger, L. McAllister, E. Pajer, A. Westphal and G. Xu, *Oscillations in the CMB from axion monodromy inflation*, *JCAP* **06** (2010) 009 [[arXiv:0907.2916](https://arxiv.org/abs/0907.2916)] [[INSPIRE](#)].
- [4] M. Berg, E. Pajer and S. Sjörs, *Dante's inferno*, *Phys. Rev. D* **81** (2010) 103535 [[arXiv:0912.1341](https://arxiv.org/abs/0912.1341)] [[INSPIRE](#)].
- [5] E. Pajer and M. Peloso, *A review of axion inflation in the era of Planck*, *Class. Quant. Grav.* **30** (2013) 214002 [[arXiv:1305.3557](https://arxiv.org/abs/1305.3557)] [[INSPIRE](#)].
- [6] G. Gur-Ari, *Brane inflation and moduli stabilization on twisted tori*, *JHEP* **01** (2014) 179 [[arXiv:1310.6787](https://arxiv.org/abs/1310.6787)] [[INSPIRE](#)].
- [7] E. Palti and T. Weigand, *Towards large r from $[p, q]$ -inflation*, *JHEP* **04** (2014) 155 [[arXiv:1403.7507](https://arxiv.org/abs/1403.7507)] [[INSPIRE](#)].
- [8] F. Marchesano, G. Shiu and A.M. Uranga, *F-term axion monodromy inflation*, *JHEP* **09** (2014) 184 [[arXiv:1404.3040](https://arxiv.org/abs/1404.3040)] [[INSPIRE](#)].
- [9] R. Blumenhagen and E. Plauschinn, *Towards universal axion inflation and reheating in string theory*, *Phys. Lett. B* **736** (2014) 482 [[arXiv:1404.3542](https://arxiv.org/abs/1404.3542)] [[INSPIRE](#)].

- [10] A. Hebecker, S.C. Kraus and L.T. Witkowski, *D7-brane chaotic inflation*, *Phys. Lett. B* **737** (2014) 16 [[arXiv:1404.3711](#)] [[INSPIRE](#)].
- [11] L.E. Ibáñez and I. Valenzuela, *The inflaton as an MSSM Higgs and open string modulus monodromy inflation*, *Phys. Lett. B* **736** (2014) 226 [[arXiv:1404.5235](#)] [[INSPIRE](#)].
- [12] M. Arends et al., *D7-brane moduli space in axion monodromy and fluxbrane inflation*, *Fortsch. Phys.* **62** (2014) 647 [[arXiv:1405.0283](#)] [[INSPIRE](#)].
- [13] L. McAllister, E. Silverstein, A. Westphal and T. Wrase, *The powers of monodromy*, *JHEP* **09** (2014) 123 [[arXiv:1405.3652](#)] [[INSPIRE](#)].
- [14] S. Franco, D. Galloni, A. Retolaza and A. Uranga, *On axion monodromy inflation in warped throats*, *JHEP* **02** (2015) 086 [[arXiv:1405.7044](#)] [[INSPIRE](#)].
- [15] R. Blumenhagen, D. Herschmann and E. Plauschinn, *The challenge of realizing F-term axion monodromy inflation in string theory*, *JHEP* **01** (2015) 007 [[arXiv:1409.7075](#)] [[INSPIRE](#)].
- [16] H. Hayashi, R. Matsuda and T. Watari, *Issues in complex structure moduli inflation*, [arXiv:1410.7522](#) [[INSPIRE](#)].
- [17] A. Hebecker, P. Mangat, F. Rompineve and L.T. Witkowski, *Tuning and backreaction in F-term axion monodromy inflation*, *Nucl. Phys. B* **894** (2015) 456 [[arXiv:1411.2032](#)] [[INSPIRE](#)].
- [18] L.E. Ibáñez, F. Marchesano and I. Valenzuela, *Higgs-otic inflation and string theory*, *JHEP* **01** (2015) 128 [[arXiv:1411.5380](#)] [[INSPIRE](#)].
- [19] I. García-Etxebarria, T.W. Grimm and I. Valenzuela, *Special points of inflation in flux compactifications*, *Nucl. Phys. B* **899** (2015) 414 [[arXiv:1412.5537](#)] [[INSPIRE](#)].
- [20] R. Blumenhagen et al., *A flux-scaling scenario for high-scale moduli stabilization in string theory*, *Nucl. Phys. B* **897** (2015) 500 [[arXiv:1503.07634](#)] [[INSPIRE](#)].
- [21] A. Retolaza, A.M. Uranga and A. Westphal, *Bifid throats for axion monodromy inflation*, *JHEP* **07** (2015) 099 [[arXiv:1504.02103](#)] [[INSPIRE](#)].
- [22] D. Escobar, A. Landete, F. Marchesano and D. Regalado, *Large field inflation from D-branes*, *Phys. Rev. D* **93** (2016) 081301 [[arXiv:1505.07871](#)] [[INSPIRE](#)].
- [23] R. Blumenhagen, C. Damian, A. Font, D. Herschmann and R. Sun, *The flux-scaling scenario: de Sitter uplift and axion inflation*, *Fortsch. Phys.* **64** (2016) 536 [[arXiv:1510.01522](#)] [[INSPIRE](#)].
- [24] D. Escobar, A. Landete, F. Marchesano and D. Regalado, *D6-branes and axion monodromy inflation*, *JHEP* **03** (2016) 113 [[arXiv:1511.08820](#)] [[INSPIRE](#)].
- [25] A. Hebecker, J. Moritz, A. Westphal and L.T. Witkowski, *Towards axion monodromy inflation with warped KK-modes*, *Phys. Lett. B* **754** (2016) 328 [*Erratum ibid.* **B 767** (2017) 493] [[arXiv:1512.04463](#)] [[INSPIRE](#)].
- [26] A. Landete, F. Marchesano and C. Wieck, *Challenges for D-brane large-field inflation with stabilizer fields*, *JHEP* **09** (2016) 119 [[arXiv:1607.01680](#)] [[INSPIRE](#)].
- [27] N. Kaloper and L. Sorbo, *A natural framework for chaotic inflation*, *Phys. Rev. Lett.* **102** (2009) 121301 [[arXiv:0811.1989](#)] [[INSPIRE](#)].
- [28] N. Kaloper, A. Lawrence and L. Sorbo, *An ignoble approach to large field inflation*, *JCAP* **03** (2011) 023 [[arXiv:1101.0026](#)] [[INSPIRE](#)].

- [29] E. Dudas, *Three-form multiplet and inflation*, *JHEP* **12** (2014) 014 [[arXiv:1407.5688](#)] [[INSPIRE](#)].
- [30] N. Kaloper and A. Lawrence, *Natural chaotic inflation and ultraviolet sensitivity*, *Phys. Rev. D* **90** (2014) 023506 [[arXiv:1404.2912](#)] [[INSPIRE](#)].
- [31] N. Kaloper and A. Lawrence, *London equation for monodromy inflation*, *Phys. Rev. D* **95** (2017) 063526 [[arXiv:1607.06105](#)] [[INSPIRE](#)].
- [32] G. Dvali, *Three-form gauging of axion symmetries and gravity*, [hep-th/0507215](#) [[INSPIRE](#)].
- [33] G. Dvali, *A vacuum accumulation solution to the strong CP problem*, *Phys. Rev. D* **74** (2006) 025019 [[hep-th/0510053](#)] [[INSPIRE](#)].
- [34] S.R. Coleman and F. De Luccia, *Gravitational effects on and of vacuum decay*, *Phys. Rev. D* **21** (1980) 3305 [[INSPIRE](#)].
- [35] R. Bousso and J. Polchinski, *Quantization of four form fluxes and dynamical neutralization of the cosmological constant*, *JHEP* **06** (2000) 006 [[hep-th/0004134](#)] [[INSPIRE](#)].
- [36] J.D. Brown and C. Teitelboim, *Neutralization of the cosmological constant by membrane creation*, *Nucl. Phys. B* **297** (1988) 787 [[INSPIRE](#)].
- [37] M.J. Duncan and L.G. Jensen, *Four forms and the vanishing of the cosmological constant*, *Nucl. Phys. B* **336** (1990) 100 [[INSPIRE](#)].
- [38] J.L. Feng, J. March-Russell, S. Sethi and F. Wilczek, *Saltatory relaxation of the cosmological constant*, *Nucl. Phys. B* **602** (2001) 307 [[hep-th/0005276](#)] [[INSPIRE](#)].
- [39] N. Arkani-Hamed, L. Motl, A. Nicolis and C. Vafa, *The string landscape, black holes and gravity as the weakest force*, *JHEP* **06** (2007) 060 [[hep-th/0601001](#)] [[INSPIRE](#)].
- [40] L.E. Ibáñez, M. Montero, A. Uranga and I. Valenzuela, *Relaxion monodromy and the weak gravity conjecture*, *JHEP* **04** (2016) 020 [[arXiv:1512.00025](#)] [[INSPIRE](#)].
- [41] A. Hebecker, F. Rompineve and A. Westphal, *Axion monodromy and the weak gravity conjecture*, *JHEP* **04** (2016) 157 [[arXiv:1512.03768](#)] [[INSPIRE](#)].
- [42] J. Brown, W. Cottrell, G. Shiu and P. Soler, *Tunneling in axion monodromy*, *JHEP* **10** (2016) 025 [[arXiv:1607.00037](#)] [[INSPIRE](#)].
- [43] A. de la Fuente, P. Saraswat and R. Sundrum, *Natural inflation and quantum gravity*, *Phys. Rev. Lett.* **114** (2015) 151303 [[arXiv:1412.3457](#)] [[INSPIRE](#)].
- [44] T. Rudelius, *On the possibility of large axion moduli spaces*, *JCAP* **04** (2015) 049 [[arXiv:1409.5793](#)] [[INSPIRE](#)].
- [45] T. Rudelius, *Constraints on axion inflation from the weak gravity conjecture*, *JCAP* **09** (2015) 020 [[arXiv:1503.00795](#)] [[INSPIRE](#)].
- [46] M. Montero, A.M. Uranga and I. Valenzuela, *Transplanckian axions!?*, *JHEP* **08** (2015) 032 [[arXiv:1503.03886](#)] [[INSPIRE](#)].
- [47] J. Brown, W. Cottrell, G. Shiu and P. Soler, *Fencing in the swampland: quantum gravity constraints on large field inflation*, *JHEP* **10** (2015) 023 [[arXiv:1503.04783](#)] [[INSPIRE](#)].
- [48] T.C. Bachlechner, C. Long and L. McAllister, *Planckian axions and the weak gravity conjecture*, *JHEP* **01** (2016) 091 [[arXiv:1503.07853](#)] [[INSPIRE](#)].

- [49] A. Hebecker, P. Mangat, F. Rompineve and L.T. Witkowski, *Winding out of the swamp: evading the weak gravity conjecture with F-term winding inflation?*, *Phys. Lett. B* **748** (2015) 455 [[arXiv:1503.07912](#)] [[INSPIRE](#)].
- [50] J. Brown, W. Cottrell, G. Shiu and P. Soler, *On axionic field ranges, loopholes and the weak gravity conjecture*, *JHEP* **04** (2016) 017 [[arXiv:1504.00659](#)] [[INSPIRE](#)].
- [51] D. Junghans, *Large-field inflation with multiple axions and the weak gravity conjecture*, *JHEP* **02** (2016) 128 [[arXiv:1504.03566](#)] [[INSPIRE](#)].
- [52] E. Palti, *On natural inflation and moduli stabilisation in string theory*, *JHEP* **10** (2015) 188 [[arXiv:1508.00009](#)] [[INSPIRE](#)].
- [53] B. Heidenreich, M. Reece and T. Rudelius, *Sharpening the weak gravity conjecture with dimensional reduction*, *JHEP* **02** (2016) 140 [[arXiv:1509.06374](#)] [[INSPIRE](#)].
- [54] K. Kooner, S. Parameswaran and I. Zavala, *Warping the weak gravity conjecture*, *Phys. Lett. B* **759** (2016) 402 [[arXiv:1509.07049](#)] [[INSPIRE](#)].
- [55] B. Heidenreich, M. Reece and T. Rudelius, *Weak gravity strongly constrains large-field axion inflation*, *JHEP* **12** (2015) 108 [[arXiv:1506.03447](#)] [[INSPIRE](#)].
- [56] B. Heidenreich, M. Reece and T. Rudelius, *Evidence for a lattice weak gravity conjecture*, [arXiv:1606.08437](#) [[INSPIRE](#)].
- [57] M. Montero, G. Shiu and P. Soler, *The weak gravity conjecture in three dimensions*, *JHEP* **10** (2016) 159 [[arXiv:1606.08438](#)] [[INSPIRE](#)].
- [58] A. Hebecker, P. Mangat, S. Theisen and L.T. Witkowski, *Can gravitational instantons really constrain axion inflation?*, *JHEP* **02** (2017) 097 [[arXiv:1607.06814](#)] [[INSPIRE](#)].
- [59] P. Saraswat, *Weak gravity conjecture and effective field theory*, *Phys. Rev. D* **95** (2017) 025013 [[arXiv:1608.06951](#)] [[INSPIRE](#)].
- [60] W. Buchmüller, E. Dudas, L. Heurtier, A. Westphal, C. Wieck and M.W. Winkler, *Challenges for large-field inflation and moduli stabilization*, *JHEP* **04** (2015) 058 [[arXiv:1501.05812](#)] [[INSPIRE](#)].
- [61] D. Andriot, *A no-go theorem for monodromy inflation*, *JCAP* **03** (2016) 025 [[arXiv:1510.02005](#)] [[INSPIRE](#)].
- [62] F. Baume and E. Palti, *Backreacted axion field ranges in string theory*, *JHEP* **08** (2016) 043 [[arXiv:1602.06517](#)] [[INSPIRE](#)].
- [63] S. Bielleman, L.E. Ibáñez and I. Valenzuela, *Minkowski 3-forms, flux string vacua, axion stability and naturalness*, *JHEP* **12** (2015) 119 [[arXiv:1507.06793](#)] [[INSPIRE](#)].
- [64] F. Carta, F. Marchesano, W. Staessens and G. Zoccarato, *Open string multi-branched and Kähler potentials*, *JHEP* **09** (2016) 062 [[arXiv:1606.00508](#)] [[INSPIRE](#)].
- [65] F. Quevedo and C.A. Trugenberger, *Phases of antisymmetric tensor field theories*, *Nucl. Phys. B* **501** (1997) 143 [[hep-th/9604196](#)] [[INSPIRE](#)].
- [66] E. García-Valdecasas and A. Uranga, *On the 3-form formulation of axion potentials from D-brane instantons*, *JHEP* **02** (2017) 087 [[arXiv:1605.08092](#)] [[INSPIRE](#)].
- [67] S. Bielleman, L.E. Ibáñez, F.G. Pedro, I. Valenzuela and C. Wieck, *The DBI action, higher-derivative supergravity and flattening inflaton potentials*, *JHEP* **05** (2016) 095 [[arXiv:1602.00699](#)] [[INSPIRE](#)].

- [68] W. Buchmüller, C. Wieck and M.W. Winkler, *Supersymmetric moduli stabilization and high-scale inflation*, *Phys. Lett. B* **736** (2014) 237 [[arXiv:1404.2275](#)] [[INSPIRE](#)].
- [69] E. Dudas and C. Wieck, *Moduli backreaction and supersymmetry breaking in string-inspired inflation models*, *JHEP* **10** (2015) 062 [[arXiv:1506.01253](#)] [[INSPIRE](#)].
- [70] L. McAllister, P. Schwaller, G. Servant, J. Stout and A. Westphal, *Runaway relaxion monodromy*, [arXiv:1610.05320](#) [[INSPIRE](#)].
- [71] R. Blumenhagen, A. Font, M. Fuchs, D. Herschmann and E. Plauschinn, *Towards axionic Starobinsky-like inflation in string theory*, *Phys. Lett. B* **746** (2015) 217 [[arXiv:1503.01607](#)] [[INSPIRE](#)].
- [72] D. Klaewer and E. Palti, *Super-Planckian spatial field variations and quantum gravity*, *JHEP* **01** (2017) 088 [[arXiv:1610.00010](#)] [[INSPIRE](#)].
- [73] C. Vafa, *The string landscape and the swampland*, [hep-th/0509212](#) [[INSPIRE](#)].
- [74] H. Ooguri and C. Vafa, *On the geometry of the string landscape and the swampland*, *Nucl. Phys. B* **766** (2007) 21 [[hep-th/0605264](#)] [[INSPIRE](#)].
- [75] S.J. Gates Jr., *Super p -form gauge superfields*, *Nucl. Phys. B* **184** (1981) 381 [[INSPIRE](#)].
- [76] S.J. Gates Jr. and W. Siegel, *Variant superfield representations*, *Nucl. Phys. B* **187** (1981) 389 [[INSPIRE](#)].
- [77] B.B. Deo and S.J. Gates Jr., *Comments on nonminimal $N = 1$ scalar multiplets*, *Nucl. Phys. B* **254** (1985) 187 [[INSPIRE](#)].
- [78] P. Binetruy, F. Pillon, G. Girardi and R. Grimm, *The three form multiplet in supergravity*, *Nucl. Phys. B* **477** (1996) 175 [[hep-th/9603181](#)] [[INSPIRE](#)].
- [79] B.A. Ovrut and D. Waldram, *Membranes and three form supergravity*, *Nucl. Phys. B* **506** (1997) 236 [[hep-th/9704045](#)] [[INSPIRE](#)].
- [80] P. Binetruy, G. Girardi and R. Grimm, *Supergravity couplings: a geometric formulation*, *Phys. Rept.* **343** (2001) 255 [[hep-th/0005225](#)] [[INSPIRE](#)].
- [81] D.G. Cerdeno, A. Knauf and J. Louis, *A note on effective $N = 1$ super Yang-Mills theories versus lattice results*, *Eur. Phys. J. C* **31** (2003) 415 [[hep-th/0307198](#)] [[INSPIRE](#)].
- [82] G. Girardi, R. Grimm, B. Labonne and J. Orloff, *Correspondence between 3-form and non-minimal multiplet in supersymmetry*, *Eur. Phys. J. C* **55** (2008) 95 [[arXiv:0712.1923](#)] [[INSPIRE](#)].
- [83] H. Nishino and S. Rajpoot, *Alternative auxiliary fields for chiral multiplets*, *Phys. Rev. D* **80** (2009) 127701 [[INSPIRE](#)].
- [84] I.A. Bandos and C. Meliveo, *Three form potential in (special) minimal supergravity superspace and supermembrane supercurrent*, *J. Phys. Conf. Ser.* **343** (2012) 012012 [[arXiv:1107.3232](#)] [[INSPIRE](#)].
- [85] K. Groh, J. Louis and J. Sommerfeld, *Duality and couplings of 3-form-multiplets in $N = 1$ supersymmetry*, *JHEP* **05** (2013) 001 [[arXiv:1212.4639](#)] [[INSPIRE](#)].
- [86] C. Bachas and T. Tomaras, *Band structure in Yang-Mills theories*, *JHEP* **05** (2016) 143 [[arXiv:1603.08749](#)] [[INSPIRE](#)].
- [87] T.W. Grimm and J. Louis, *The effective action of type IIA Calabi-Yau orientifolds*, *Nucl. Phys. B* **718** (2005) 153 [[hep-th/0412277](#)] [[INSPIRE](#)].

- [88] J. Louis and A. Micu, *Type 2 theories compactified on Calabi-Yau threefolds in the presence of background fluxes*, *Nucl. Phys. B* **635** (2002) 395 [[hep-th/0202168](#)] [[INSPIRE](#)].
- [89] G. Villadoro and F. Zwirner, *$N = 1$ effective potential from dual type-IIA D6/O6 orientifolds with general fluxes*, *JHEP* **06** (2005) 047 [[hep-th/0503169](#)] [[INSPIRE](#)].
- [90] O. DeWolfe, A. Giryavets, S. Kachru and W. Taylor, *Type IIA moduli stabilization*, *JHEP* **07** (2005) 066 [[hep-th/0505160](#)] [[INSPIRE](#)].
- [91] P.G. Camara, A. Font and L.E. Ibáñez, *Fluxes, moduli fixing and MSSM-like vacua in a simple IIA orientifold*, *JHEP* **09** (2005) 013 [[hep-th/0506066](#)] [[INSPIRE](#)].
- [92] L.E. Ibáñez and A.M. Uranga, *String theory and particle physics: an introduction to string phenomenology*, Cambridge University Press, Cambridge U.K., (2012) [[INSPIRE](#)].
- [93] R. Blumenhagen, D. Herschmann and F. Wolf, *String moduli stabilization at the conifold*, *JHEP* **08** (2016) 110 [[arXiv:1605.06299](#)] [[INSPIRE](#)].
- [94] N. Cabo Bizet, O. Loaiza-Brito and I. Zavala, *Mirror quintic vacua: hierarchies and inflation*, *JHEP* **10** (2016) 082 [[arXiv:1605.03974](#)] [[INSPIRE](#)].
- [95] T.W. Grimm, T.-W. Ha, A. Klemm and D. Klevers, *The D5-brane effective action and superpotential in $N = 1$ compactifications*, *Nucl. Phys. B* **816** (2009) 139 [[arXiv:0811.2996](#)] [[INSPIRE](#)].
- [96] T.W. Grimm and D. Vieira Lopes, *The $N = 1$ effective actions of D-branes in type IIA and IIB orientifolds*, *Nucl. Phys. B* **855** (2012) 639 [[arXiv:1104.2328](#)] [[INSPIRE](#)].
- [97] M. Kerstan and T. Weigand, *The effective action of D6-branes in $N = 1$ type IIA orientifolds*, *JHEP* **06** (2011) 105 [[arXiv:1104.2329](#)] [[INSPIRE](#)].
- [98] P.G. Camara, L.E. Ibáñez and F. Marchesano, *RR photons*, *JHEP* **09** (2011) 110 [[arXiv:1106.0060](#)] [[INSPIRE](#)].
- [99] F. Marchesano, D. Regalado and G. Zoccarato, *U(1) mixing and D-brane linear equivalence*, *JHEP* **08** (2014) 157 [[arXiv:1406.2729](#)] [[INSPIRE](#)].
- [100] T.W. Grimm, *The $N = 1$ effective action of F-theory compactifications*, *Nucl. Phys. B* **845** (2011) 48 [[arXiv:1008.4133](#)] [[INSPIRE](#)].
- [101] H. Jockers and J. Louis, *The effective action of D7-branes in $N = 1$ Calabi-Yau orientifolds*, *Nucl. Phys. B* **705** (2005) 167 [[hep-th/0409098](#)] [[INSPIRE](#)].
- [102] H. Jockers and J. Louis, *D-terms and F-terms from D7-brane fluxes*, *Nucl. Phys. B* **718** (2005) 203 [[hep-th/0502059](#)] [[INSPIRE](#)].
- [103] P. Corvilain, T.W. Grimm and D. Regalado, *Shift-symmetries and gauge coupling functions in orientifolds and F-theory*, *JHEP* **05** (2017) 059 [[arXiv:1607.03897](#)] [[INSPIRE](#)].
- [104] I. García-Etxebarria, H. Hayashi, R. Savelli and G. Shiu, *On quantum corrected Kähler potentials in F-theory*, *JHEP* **03** (2013) 005 [[arXiv:1212.4831](#)] [[INSPIRE](#)].
- [105] S.B. Giddings, S. Kachru and J. Polchinski, *Hierarchies from fluxes in string compactifications*, *Phys. Rev. D* **66** (2002) 106006 [[hep-th/0105097](#)] [[INSPIRE](#)].
- [106] S. Bielleman, L.E. Ibáñez, F.G. Pedro, I. Valenzuela and C. Wieck, to appear.
- [107] S. Bielleman, L.E. Ibáñez, F.G. Pedro and I. Valenzuela, *Multifield dynamics in Higgs-otic inflation*, *JHEP* **01** (2016) 128 [[arXiv:1505.00221](#)] [[INSPIRE](#)].