



Barbed Wire: Property Rights and Agricultural Development

Citation

Hornbeck, Richard. 2010. Barbed wire: Property rights and agricultural development. *Quarterly Journal of Economics* 125(2): 767-810.

Published Version

doi:10.1162/qjec.2010.125.2.767

Permanent link

<http://nrs.harvard.edu/urn-3:HUL.InstRepos:11185832>

Terms of Use

This article was downloaded from Harvard University's DASH repository, and is made available under the terms and conditions applicable to Open Access Policy Articles, as set forth at <http://nrs.harvard.edu/urn-3:HUL.InstRepos:dash.current.terms-of-use#OAP>

Share Your Story

The Harvard community has made this article openly available.
Please share how this access benefits you. [Submit a story](#).

[Accessibility](#)

BARBED WIRE: PROPERTY RIGHTS AND AGRICULTURAL DEVELOPMENT*

RICHARD HORNBECK

July 2009

Abstract

This paper examines the impact on agricultural development from the introduction of barbed wire fencing to the American Plains in the late 19th century. Without a fence, farmers risked uncompensated damage by others' livestock. From 1880 to 1900, the introduction and near universal adoption of barbed wire greatly reduced the cost of fences, relative to predominant wooden fences, most in counties with the least woodland. Over that period, counties with the least woodland experienced substantial relative increases in settlement, land improvement, land values, and the productivity and production share of crops most in need of protection. This increase in agricultural development appears partly to reflect farmers' increased ability to protect their land from encroachment. States' inability to protect this full bundle of property rights on the frontier, beyond providing formal land titles, might have otherwise restricted agricultural development.

*An earlier version of this paper was distributed under the title "Good Fences Make Good Neighbors: Evidence on the Effects of Property Rights." I thank Daron Acemoglu, Esther Duflo, Michael Greenstone, Peter Temin, anonymous referees, and Larry Katz for their comments and suggestions; as well as Lee Alston, Josh Angrist, David Autor, Abhijit Banerjee, Dora Costa, Joe Doyle, Claudia Goldin, Tal Gross, Tim Guinnane, Raymond Guiteras, Jeanne Lafortune, Steve Levitt, Derek Neal, Philip Oreopoulos, Paul Rhode, Chris Udry, and numerous seminar participants. I thank Lisa Sweeney, Daniel Sheehan, and the GIS Lab at MIT; as well as Christopher Compean, Lillian Fine, Paul Nikandrou, and Praveen Rathinavelu for their research assistance. For supporting research expenses, I thank the MIT Schultz Fund, MIT World Economy Lab, and MIT UROP program.

I. Introduction

In *The Problem of Social Cost*, Coase (1960) begins with the example of a farmer and a cattle-raiser: without a fence, cattle will damage the farmer's crops. Land-use will be efficient if liability for damage is defined and enforced, and this property right can be traded costlessly. Otherwise, cattle damage imposes an externality that distorts the farmer's product choices, investment levels, and production methods (Cheung 1970). The externality is internalized or eliminated when those costs fall below the resulting gains (Demsetz 1967); for example, when fencing costs fall sufficiently, the farmer builds a fence and produces within at efficient levels.¹

The efficiency gains from establishing and enforcing property rights may be large, and much attention has focused on the role of land rights in development (Alston et al. 1996; De Soto 2000; Brasselle et al. 2002; Lanjouw and Levy 2002; Galiani and Schargrotsky 2006; Libecap 2007; Besley and Ghatak 2009). Insecurity distorts farmers' investments (Goldstein and Udry 2008), and increased tenure security can increase farmers' investment in land (Banerjee et al. 2002; Jacoby et al. 2002).² More broadly, insecure property rights can distort labor supply (Field 2007), reduce investment (Johnson et al. 2002), and slow economic growth (North 1981; Engerman and Sokoloff 2003; Acemoglu and Johnson 2005). Indeed, private enclosure of common lands in England may have contributed to the onset of the Industrial Revolution, by increasing both agricultural output and labor supplied to other sectors (Ashton 1962).

Returning to Coase's setting, this paper examines the impact on agricultural development from a decrease in the cost of protecting farmland: the introduction of barbed wire fencing to the American Plains in the late 19th century. Fences protected farmers' land and crops from damage by others' cattle. Farmers often had no formal right to compensation for such damage

¹De Meza and Gould (1992) outline conditions when private decisions to enforce property rights lead to more or less enclosure of land than is socially efficient.

²See Besley (1995) for a discussion of three mechanisms: decreased expropriation raises the expected return on investment; an improved ability to collateralize land increases access to credit; and lower costs of trading land raise the expected return on investment.

if their land was not enclosed with fences. Farmers with formal legal protection still faced uncertainty in their ability to collect damages to unfenced land. Fencing had relatively little effect on farmers' security of land ownership;³ rather, fencing improved farmers' property rights in the sense that it secured their ability to use land for certain purposes.

Before barbed wire, fence construction on the Plains was restricted by high costs in areas that lacked local fencing materials. Small sections of local woodland were a vital source of timber for fencing on the Plains. The introduction and universal adoption of barbed wire from 1880 to 1900 most affected areas with the least woodland that had been most costly to fence.⁴

Based on decennial data from the Census of Agriculture, this paper finds that counties with the least woodland experienced large increases in agricultural development from 1880 to 1900, relative to counties with sufficient woodland for farmers to have accommodated previous fencing material shortages. Controlling for time-invariant differences among counties and state-wide shocks to all counties, the fraction of county farmland that was improved increased by 19 percentage points in counties with the least woodland.

From 1880 to 1890, average crop productivity increased relatively by 23% in counties with the least woodland, controlling for crop-specific differences among counties and crop-specific state-wide shocks. The increased productivity was entirely among crops more susceptible to damage from roaming livestock, as opposed to hay. Farmers shifted the allocation of farmland toward crops and, in particular, more at-risk crops.

Agricultural development increased along intensive margins, even as counties with the least woodland expanded along the extensive margin of total farmland settled. Estimated increases in the fraction of farmland improved are robust to controlling for changes correlated with counties' distance West and distance from St. Louis; counties' region, subregion, or soil

³Fencing may have played some informal role in delineating and substantiating land claims.

⁴Anderson and Hill (1975) review the historical development of property rights on the American Plains and the role of barbed wire in enforcing private control over land-use.

group; counties' initial fraction of farmland improved; or the expansion of railroad networks. Estimated increases in total farmland are more sensitive to these robustness checks.

There were substantial and robust increases in total improved land, combining both intensive and extensive margins. Increases in agricultural development were capitalized in higher land values, totaling among sample counties roughly 0.9% of national GDP. In all, the estimates lend support to historical accounts that “without barbed wire the Plains homestead could never have been protected from the grazing herds and therefore could not have been possible as an agricultural unit” (Webb 1931, p.317). Indeed, some states' efforts to reform legal fencing requirements appear to have had little effect, suggesting a difficulty in enforcing land protection on the frontier without physical barriers.

In interpreting the results, this paper emphasizes the role of barbed wire in protecting farmland from encroachment by others' cattle. However, the estimates may also reflect barbed wire's contribution to agricultural technology. Aside from any external protection effects, cheaper fencing benefits an isolated farm by providing greater control over a farmers' own cattle. This allows the production of cattle and crops in close proximity, and increases cattle productivity through improvements in feeding and breeding. Barbed wire's effects are a combination of direct technological improvements and increased protection from others' cattle.

There are some indications, however, that direct technological effects of barbed wire do not drive the main results. Counties most affected by barbed wire became increasingly specialized in either crops or cattle, rather than increasing the joint production of cattle and crops. Furthermore, there is little evidence of an increase in cattle production. This suggests that barbed wire did not only affect agricultural production through the purely technological benefits of cheaper fencing; rather, barbed wire's effects partly reflect an increase in security from external encroachment. Overall, barbed wire appears to have had a substantial impact on agricultural development in the US and, in particular, this may reflect an important role for protecting land and securing farmers' full bundle of property rights.

The paper is organized as follows. Section II reviews historical accounts of the need for alternative fencing materials in timber-scarce areas and the introduction of barbed wire fencing. Section III provides a theoretical framework to the historical accounts. Section IV describes the data and presents summary statistics. Section V develops the empirical methodology. Section VI presents the main results and explores their robustness. Section VII discusses the interpretation of barbed wire’s effects, and Section VIII concludes.

II. History of Barbed Wire and the Great Plains

II.A. Timber Shortages Constrained Land Protection

English common law made livestock owners responsible for damages by roaming livestock, assigning the responsibility to fence-in livestock. In contrast, the American colonies adopted legal codes that required farmers to fence-out others’ livestock (Washburn and Moen 1880; Davis 1973; Kawashima 1994; Kantor 1998).⁵ Without a “lawful fence,” farmers had no formal entitlement to compensation for damages by others’ livestock. New states’ legal codes continued to require that farmers fence-out livestock, and gave technical specifications for what constituted a lawful fence.

In practice, fences were necessary to protect crops and required substantial investment. In 1872, fencing capital stocks in the United States were roughly equal to the value of all livestock, the national debt, or the railroads; annual fencing repair costs were greater than combined annual tax receipts at all levels of government (U.S. House 1872; Galveston News July 18, 1873; Webb 1931, pp.288–289).

Fencing became increasingly costly as settlement moved into areas with little woodland. High transportation costs made it impractical to supply low-woodland areas with enough timber for fencing (Kraenzel 1955, p.129; Hayter 1939; Bogue 1963b, pp.6–7). While wood

⁵This was meant to encourage livestock production and exploit widely available land. Some southern colonies took further steps to prohibit fencing of pasture lands, even private pasture lands.

scarcity encouraged experimentation, hedge fences were costly to control and smooth iron fences were broken by animals and prone to rust (Primack 1969). Writers in agricultural journals argued that the major barrier to settlement was the lack of timber for fencing: the *Union Agriculturist and Western Prairie Farmer* in 1841, the *Prairie Farmer* in 1848, and the *Iowa Homestead* in 1863 (Bogue 1963a, p.74). An 1871 guide for immigrants focused on three main characteristics of farmland in Plains counties: its price, the amount of timber, and the amount fenced (U.S. House 1871).⁶

Historians emphasize the importance of fencing for protecting farmers from encroachment by others' cattle. "When he sought to fence his crops against marauding livestock, the prairie farmer faced the timber problem at its most acute" (Bogue 1963b, p.7). "Without fences [farmers] could have no crops; yet the expense of fencing was prohibitive, especially in the Plains proper. It is not strange that the farmers began to insist that stock be fenced and that fields be permitted to lie out" (Webb 1931, p.287).⁷

Political debates took place in Plains states about changing farmers' fencing requirements (Davis 1973).⁸ For example, in 1872, Kansas gave counties the option of adopting a herd law that would make livestock owners liable for damages to farmers' unfenced crops. Counties' decisions were attributed explicitly to divided local public sentiment: opposed by stockmen, good for farmers and grain production (Kansas State Board of Agriculture 1876, 1877-78, 1879-80).⁹ Formal fencing requirements began to vary by state, county, and township, and were collected by wire manufacturer Washburn and Moen (1880).¹⁰ However, these legal

⁶Similarly, timber availability is among the first county characteristics described in 1870s Kansas State Board of Agriculture Reports.

⁷Recent scholarship has associated barbed wire with society's need to define control over space, beginning with the Western frontier and continuing in wars and prisons (Razac 2002, Netz 2004).

⁸The desire for legal reform underscores the inability of individual cattle-raisers and farmers to negotiate private guarantees: the large number of potential neighbors may have contributed to high transaction costs, along with an inability to enforce such contracts. Violent conflict on the plains between farmers and cattle-raisers was largely prevented by farmers' concession to settle elsewhere (Alston et al. 1998).

⁹Kantor (1998) analyzes similar debates in Georgia, counties' decisions to adopt herd laws, and relative changes in counties that adopted herd laws.

¹⁰Among the sample states, Iowa left farmers liable for livestock damage. Texas left farmers liable for cattle damage, but allowed counties to determine liability for other animals. Kansas and Colorado allowed damage liability to be determined by counties, while Minnesota left this decision to townships. Information that Nebraska left farmers liable appears to be from 1867 and outdated; in 1871, Nebraska resolved a period

reforms faced challenges in monitoring damages and enforcing payments on the frontier, while also overcoming established fence-out social norms.¹¹

Farmers mainly adjusted to fencing material shortages by settling in areas with nearby timber plots. Bogue (1963b, p.6) writes about central Iowa:

Where timber and prairie alternated, locations in or near wooded areas were relatively much more attractive... [T]here developed a landholding pattern of which the timber lot was an intricate part. Settlers on the prairie purchased five or ten acres along the stream bottoms or in the prairie groves and drove five, ten or fifteen miles to cut building timber or to split rails during the winter months.

Smaller counties were roughly 30 miles on each side, so farmers traveling 5–15 miles for timber would have been mostly within their home county. For a standard homestead farm size of 160 acres, a county would need to be roughly 4% woodland for each farm to acquire 5–10 acres of woodland.

Based on this calculation, counties can be grouped in three woodland categories: low (0–4%), medium (4–8%), and high (8–12%). The “low” counties are roughly those most constrained by timber scarcities, while “medium” counties could have partially adjusted with this landholding pattern and have been less affected along with “high” counties. The exact cutoffs for these categories are not relevant for the results; rather, the continuous estimates will be evaluated at three corresponding benchmark levels (0%, 6%, 12%) to assist in interpreting the estimated magnitudes.

II.B. The Arrival of Cheap Barbed Wire Fences, 1880 to 1900

The most practical and ultimately successful design for barbed wire was patented in 1874 by Joseph Glidden, a farmer in DeKalb, Illinois. Glidden’s design had three important characteristics: barbs prevented cattle from breaking the fence, twisted wires tolerated temperature

of conflicting decisions and passed a state-wide herd law making livestock owners liable for damage (Davis 1973, Kawashima 1994).

¹¹Ellickson (1991) analyzes a modern California county, in which farmers and ranchers appeal more to social norms than strict legal responsibilities. In Ellickson’s setting, social norms encourage ranchers to control cattle.

changes, and the design was easy to manufacture. Glidden sold a half-stake in the patent for a few hundred dollars to Isaac Ellwood, a hardware merchant in DeKalb, and the two started the first commercial production of barbed wire, producing a few thousand pounds per year by hand (Hayter 1939; McCallum and McCallum 1965).

Barbed wire was cheaper than wooden fencing, particularly in timber-scarce areas, and it had lower labor requirements.¹² Ellwood wrote to sales agents in 1875 that he did “not expect the wire to be much in demand where farmers can build brush and pole fences out of the growth on their own land” (Hayter 1939) and that “where lumber is reportedly dearer, the wire would probably sell for more” (Webb 1931, p.310).

In 1876, the country’s largest plain wire manufacturer (Washburn & Moen) bought half of the Glidden-Ellwood business for \$60,000 cash plus royalties, and began the first large-scale production of barbed wire.¹³ In contrast to Glidden’s sale to Ellwood, Washburn & Moen’s purchase showed an awareness of barbed wire’s potential and they made “enormous profits” (Webb 1931, p.309).¹⁴

Newspaper advertisements began to appear in Kansas and Nebraska in 1878 and 1879 (Davis 1973, pp.133–134). There were a series of public demonstrations and, once the effectiveness of barbed wire was proved, “Glidden himself could hardly realize the magnitude of his business. One day he received an order for a hundred tons; ‘he was dumbfounded and telegraphed to the purchaser asking if his order should not read one hundred pounds’ ” (Webb 1931, p.312).

¹²In Iowa, wooden fences varied in total construction costs per rod from \$0.91–\$1.31 in 1871, while barbed wire fences cost \$0.60 in 1874 and below \$0.30 in 1885 (Bogue 1963b, p.8). Other reports quote barbed wire fences as costing \$0.75 per rod in Indiana in 1880, while hedge fences cost \$0.90 per rod and were wasteful of the land (Primack 1977, p.73). Primack (1977, p.82) estimates that a rod of barbed wire took 0.08, 0.06, and 0.04 days to construct in 1880, 1900, and 1910. The labor requirements for constructing wooden fences were constant throughout this period: 0.20, 0.34, and 0.40 days for board, post and rail, and Virginia rail.

¹³This process began in 1875 when Washburn & Moen, headquartered in Massachusetts, sent an agent to investigate unusually large orders from DeKalb, Illinois. They acquired barbed wire samples and designed automatic machines for its production.

¹⁴McFadden (1978) provides details on the further development of these businesses, with the 1899 incorporation of the American Steel and Wire Company of New Jersey leading to the monopolization of the barbed wire industry.

Local newspapers that had successfully lobbied for herd law reform recognized the importance of barbed wire, writing: “every farm needs *some* fencing” and as “soon as a farmer is able, he fences his farm. There must be an apparent benefit” (Nebraska Farmer and Wichita Beacon, quoted in Davis, p.134).¹⁵ Legal and illegal fencing led to controversy and conflict on the range, as stockmen competed with each other and with farmers for control over land. This culminated in fence-cutting wars that were resolved by the late 1880s (McCallum and McCallum 1965, pp.159–166; Webb, pp.312–316).

Local recognition of barbed wire’s importance is most reflected in the rapid increase and magnitude of its use. Table I, Panel A, shows a sharp increase around 1880 in the annual production of barbed wire. Panel B shows the resulting transformation in regional fence stocks. Before 1880, fences were predominately made of wood. From 1870 to 1880, there were some small increases in wire fencing, including both smooth wire and barbed wire. After 1880, there were rapid increases in barbed wire fencing. Total fencing increased most in the Plains and Southwest regions where there were more timber-scarce areas. Wood fencing also initially increased, however, highlighting that it would be inappropriate to attribute all regional increases in fencing and economic activity to the introduction of barbed wire.

Even as the quality of barbed wire improved and consumers became increasingly aware of its effectiveness in the early 1880s, falling input costs and manufacturing improvements drove down prices: \$20 (1874), \$10 (1880), \$4.20 (1885), \$3.45 (1890), and \$1.80 (1897).¹⁶ Panel C of Table I reports that new fence construction was all barbed wire after 1900, so further price declines or quality improvements would have had no differential effect across counties with varying access to wooden fences.¹⁷ Barbed wire differentially affected farmers’ fencing costs from roughly 1880 to 1900.

¹⁵Despite the previous attention focused on herd laws, Kansas State Board of Agriculture Reports stopped including details on these decisions after 1880 and entirely stopped reporting the law status after 1884.

¹⁶Prices are per hundred pounds (Webb 1931, p.310). Hayter reports similar prices for 1874 and 1893.

¹⁷Complete adoption was slower in the Prairie and Southwest, which may reflect less-developed distribution networks and ranchers’ opposition.

The empirical approach presented here requires that the introduction of barbed wire fencing was exogenous, i.e., that its rapid rise around 1880 was not caused by the anticipated development of low-woodland areas. This assumption appears plausible for two main reasons. First, from a microeconomic perspective, the demand for fencing alternatives had been high for decades and Glidden-Ellwood appear not to have anticipated the tremendous market demand for barbed wire. Second, from a more macroeconomic perspective, the necessary cheap steel was only becoming available around 1880.

Barbed wire’s widespread commercial success was made possible by unrelated developments in the industrial steel sector. Strong rust-free wire became dramatically cheaper as the Bessemer-steel process became widely used, originally patented in England in 1855. Figure I shows prices for barbed wire, steel, and iron. Barbed wire’s introduction and mass-production follows the sharp decline in steel prices in the 1870s.¹⁸ By contrast, iron prices are more stable and follow a weighted index of general prices over this period. Primack (1969) summarizes:

Outcries about the burdens of fencing by agriculturists in the 1850 to 1880 period seem amply justified. A need was revealed and the problem was resolved, not by changing laws and institutions but rather by technological change. This solution had to wait for the development of cheap steel in the industrial sector. Then a solution was found in wire fencing, cheap in both money and labor costs. (p.289)

III. Theoretical Framework

To motivate the empirical analysis, consider a farmer in each county c and time period t choosing a level of investment I_{ct} and protection P_{ct} to maximize profits. The farmer produces output $F(I_{ct}, q_{ct})$, where q_{ct} denotes land quality. $F(\cdot, \cdot)$ is increasing in both arguments and $F_{12}(\cdot, \cdot) > 0$. Following Besley (1995), a fraction of output is lost in each period, $\tau(P_{ct}) \in [0, 1]$, and it is decreasing in the level of protection, $\tau'(P_{ct}) < 0$. Investment

¹⁸Before 1877, the Aldrich report lists high and variable prices in 1876 (\$184, \$381, \$324), and Webb/Hayter report a high price in 1874 (\$450). Price increases around 1900 coincide with the monopolization of the barbed wire industry, as well as the Spanish-American War.

and protection are each produced at some cost, $C_{ct}(I_{ct})$ and $C_{ct}(P_{ct})$. Thus, farmers choose I_{ct} and P_{ct} to maximize:

$$(1) \quad (1 - \tau(P_{ct}))F(I_{ct}, q_{ct}) - C_{ct}(I_{ct}) - C_{ct}(P_{ct}).$$

An optimal interior solution satisfies two first-order constraints:

$$(2) \quad C'_{ct}(I_{ct}) = F_1(I_{ct}, q_{ct})(1 - \tau(P_{ct}))$$

$$(3) \quad C'_{ct}(P_{ct}) = -\tau'(P_{ct})F(I_{ct}, q_{ct}).$$

In equation (2), the marginal cost of investment is set equal to the marginal return that the farmer expects to retain. In equation (3), the marginal cost of protection is set equal to the marginal increase in retained total output. These equations generate three relationships of interest. First, the optimal choice of investment is increasing in the level of protection because a greater proportion of the marginal return would be kept. Second, the optimal choice of protection is increasing in the level of investment because total output is greater. Third, higher land quality directly increases both investment and protection by raising the marginal return to investment and total output. The empirical identification problem is that an observed correlation between I_{ct} and P_{ct} could reflect more than one of these three effects.

The effect of a change in the marginal cost of protection, however, can be informative about the direct effect of protection on investment. Equation (2) defines the optimal choice of investment, $I_{ct}^*(P_{ct}^*, q_{ct})$, and inserting that function into equation (3) defines the optimal choice of protection, $P_{ct}^*(q_{ct}, C'_{ct}(P_{ct}^*))$. Denoting C_p as the marginal cost of protection, it follows that $\frac{dI_{ct}^*}{dC_p} = \frac{\partial I_{ct}^*}{\partial P_{ct}^*} \cdot \frac{\partial P_{ct}^*}{\partial C_p}$; that is, the effect on investment from a change in protection cost equals the direct effect of protection on investment, multiplied by the effect on protection from a change in protection cost. Because protection can be assumed to decrease in its cost ($\frac{\partial P_{ct}^*}{\partial C_p} < 0$), an estimate of $\frac{dI_{ct}^*}{dC_p}$ is informative about the sign of $\frac{\partial I_{ct}^*}{\partial P_{ct}^*}$. If investment

increases when the marginal cost of protection falls, this implies that greater protection directly increases investment.¹⁹

To model the effect of barbed wire, assume that protection is provided by building fences with timber and barbed wire, $P_{ct} = P(T_{ct}, B_{ct})$. The price of barbed wire (p_t^B) is assumed to be decreasing over time, but constant across counties. The price of timber in each county (p_c^T) is assumed to be constant over time, but decreasing in the percentage of the county that is woodland, i.e., $p_c^T = g(W_c)$ and $g'(W_c) < 0$. The cost of protection reflects choosing B_{ct} and T_{ct} to minimize

$$(4) \quad p_t^B \cdot B_{ct} + p_c^T \cdot T_{ct}, \text{ subject to: } P_{ct}(T_{ct}, B_{ct}) = \bar{P}.$$

If timber is used initially and it is not a perfect complement to barbed wire, a decrease in the price of barbed wire that results in its use would decrease the marginal cost of protection more in counties with less woodland and higher timber prices, i.e., $\frac{\partial^3 C}{\partial p^T \partial p^B \partial P} > 0$. Once the price of barbed wire declines sufficiently that timber is no longer used, further price declines have no differential effect across counties with different woodland levels.²⁰ Thus, barbed wire especially reduces the cost of protection in timber-scarce areas during the period from its widespread introduction until its universal adoption (1880–1900). If protection directly encourages investment, then investment should increase during this time period and especially in timber-scarce areas.

¹⁹The marginal cost of protection can be thought of as an instrumental variable, where estimating $\frac{dI^*}{dC_p}$ is the “reduced form.” Without data on protection levels, it is not possible to estimate the “first-stage” term $\frac{\partial P^*}{\partial C_p}$ and ultimately recover $\frac{\partial I^*}{\partial P^*}$. Still, the magnitude of the reduced form reflects the importance of that particular decrease in protection costs for increasing investment.

²⁰This represents a corner solution to equation (4).

IV. Data and Summary Statistics

IV.A. Data Construction

County-level data are drawn from the US Census of Agriculture (Gutmann 2005; Haines 2005). The sample is restricted to counties in Plains states (Iowa, Kansas, Nebraska, Minnesota, Texas, and Colorado) for which data are available in each decennial census from 1870 to 1920: data are first available in 1870 and land improvement data are available through 1920. Some county boundaries changed over this period, so the data are adjusted to hold the 1870 geographical units constant.²¹

A natural measure of local woodland would be the number of acres of woodland in a county, divided by the total area of the county.²² This measure is unavailable, but data are available on the number of acres of woodland in farms. The amount of woodland in farms may reasonably reflect the total woodland in the county, given that woodland was particularly valuable on the frontier and acquired first (Bogue 1963b, p.6, Webb 1931, p.281; Davis 1973, p.125).

Local woodland is defined to be the number of acres of woodland in farms in 1880, divided by the total area of the county (in acres).²³ One indication that this is a reasonable measure is its correlation with the fraction of the county area mapped as forest vegetation in the 1924 Atlas of Agriculture (USDA 1924). After digitally overlaying the Atlas with county

²¹Using historical US county boundary files (Carville et al. 1999), county borders in later decades are intersected with county borders in 1870 using ArcView GIS software. When later counties fall within more than one 1870 county, data for each piece are calculated by multiplying the later county data by the share of its area in the 1870 county. For those later periods, each 1870 county is then assigned the sum of all pieces falling within its area. This procedure assumes that data are evenly distributed across county area, though for 85% of counties in later periods less than 1% of their area overlaps with a second 1870 county. The sum is left missing when data for any piece is missing. After adjustment, counties are dropped when their standard deviation in number of acres is greater than 50,000 (3% of the sample).

²²Woodland in nearby counties could be included at some discount to reflect transportation costs, but historical accounts indicate that farmers traveled relatively short distances to cut rails for fences. Focusing on counties' own woodland provides a simple and transparent measure.

²³Woodland data are used from 1880 when the most woodland might be included in farms, but before woodland stocks might be influenced by barbed wire. The empirical results are not sensitive to the date used to assign woodland levels. Plains agriculture did not typically involve clearing woodland for cultivation, as there was much open land and woodlands were a valuable asset.

boundaries and tracing vegetation cover, the overall correlation between local woodland and the fraction of the county in forest vegetation is 0.63 and state-specific correlations are 0.75 (Iowa), 0.64 (Kansas), 0.61 (Texas), 0.54 (Minnesota), 0.45 (Nebraska), 0.37 (Colorado).

This measure of local woodland also appears to proxy for differences in wooden fence prices, based on 1879-1880 county-level data from Kansas (Kansas State Board of Agriculture 1879-80). Figure IIa shows that counties with less local woodland face higher per unit wooden rail fencing costs. Prices also appear to have the earlier hypothesized convex relationship with local woodland.²⁴ Fitting a fourth-degree polynomial to the data: counties with 0% woodland pay 56 cents (standard error of 21 cents) more than counties with 6% woodland, while counties with 6% woodland pay a statistically insignificant 23 cents (19 cents) less than counties with 12% woodland. By contrast, Figure IIb shows that barbed wire fencing costs are not systematically related to local woodland.²⁵

Figure III shows all sample counties based on 1870 geographical boundaries, and shaded to represent their defined local woodland level. Counties with different woodland levels are not evenly balanced geographically, so the later empirical analysis controls for state-by-decade fixed effects. Thus, the relevant woodland variation is mostly in Iowa, southern Minnesota, and the eastern parts of Kansas and Nebraska.²⁶ The empirical results are not sensitive to excluding Colorado and Texas. To account partly for geographic differences within states, additional specifications control for distance West, distance from St. Louis, or finer regional groupings. Non-sample counties are mainly excluded because of unavailable data in 1870 or 1880.

²⁴Primack (1977, p.70) describes an increasing difficulty in adjusting wooden fence types to conserve timber. This convex relationship may also reflect distance to the nearest wood plot falling at a decreasing rate as wooded areas are scattered throughout a county.

²⁵Substantial quantities of rail and wire fencing are reported in later years, but differences in per unit costs cannot be inferred. Data on fence posts, pine, and native lumber are only available in 1879-1880, and show a similar convex relationship to local woodland. Plain wire sells at roughly a 10-15 cent discount to barbed wire and its price is not related to local woodland, though it is often reported to be in little use.

²⁶The estimates therefore reflect changes in the eastern Plains, and may not extrapolate to western Plains regions in which agricultural production faces somewhat different environmental and technological factors. As shorthand, the text simply refers to this eastern Plains sample region as the Plains.

The empirical analysis focuses initially on three land-use outcomes: the fraction of county land in farms, the fraction of county land that is improved, and the fraction of land in farms that is improved. The fraction of county land in farms represents the extensive margin of settlement, which reflects farmers’ expected returns to converting land from the public domain.²⁷ The fraction of farmland improved represents the intensive margin, which reflects farmers’ willingness to fix investments in land. Note that improved land could be plowed for crops or otherwise prepared for livestock, but the definition appears to exclude land that is simply fenced.²⁸ The fraction of county land improved is a combination of extensive and intensive margins, reflecting the total increase in farmers’ fixed investments. Other outcome variables are introduced as the results are presented.

These data are available by decade, so there is limited flexibility in analyzing responses to the exact timing of barbed wire’s introduction. Because the mass distribution of barbed wire was just beginning by 1880 and fencing stocks had yet to respond substantially, all 1880 county outcomes represent the end of the pre-barbed wire period.²⁹ Because new fence construction was entirely barbed wire by 1900, this marks when barbed wire no longer had a differential effect.

IV.B. Summary Statistics

Average local woodland among sample counties is 10%, but most counties have lower woodland levels: 39% have 0–4% woodland, 15% have 4–8% woodland, 11% have 8–12% woodland, and 35% have more than 12% woodland. Three corresponding benchmarks (0%, 6%, 12%)

²⁷Land in farms “describes the number of acres of land devoted to considerable nurseries, orchards and market-gardens, which are owned by separate parties, which are cultivated for pecuniary profit, and employ as much as the labor of one able-bodied workman during the year. To be included are wood-lots, sheep-pastures, and cleared land used for grazing, grass or tillage, or lying fallow. Those lands not included in this variable are cabbage and potato patches, family vegetable-gardens, ornamental lawns, irreclaimable marshes, and considerable bodies of water” (Gutmann 2005).

²⁸Improved land is “all land regularly tilled or mowed, land in pasture which has been cleared or tilled, land lying fallow, land in nurseries, gardens, vineyards, and orchards, and land occupied by farm buildings” (Gutmann 2005).

²⁹Land-use measures were reported for the Census year and productivity is imputed from production and acreage in the previous year.

are informative: 20% of the sample has less than 1% woodland; the median woodland level is 6%; and 12% is among the higher typical levels of woodland.

Table II reports average county characteristics in 1880 for all sample counties and within the three woodland categories. Prior to barbed wire’s introduction, low-woodland counties were less settled, less improved, and a lower share of farmland was improved. A lower share of farmland was used for crops, and cropland was allocated less to corn and more to hay. While low-woodland counties were larger, the total value of land was lower.

Total fencing expenditures were lower in low-woodland counties, somewhat lower per farm acre, and roughly similar per dollar of output.³⁰ Given higher per unit costs in low-woodland areas, this suggests a lower intensity of fencing in those areas. Medium-woodland county averages generally fell between those for low-woodland and high-woodland counties, and were more similar to high-woodland counties.

V. Measurement Framework

V.A. Estimation Setup: A Discrete Example

The estimation strategy is illustrated in a discrete example with two county types ($c \in L, M$) and two time periods ($t \in 1, 2$). Farmers in county type L (low-woodland) have a high timber price p_H^T in both periods, while farmers in county type M (medium-woodland) have a medium timber price p_M^T in both periods. The price of barbed wire is constant across county types, but infinite in the first time period and p^B in the second time period, with $p^B < p_H^T$. Given this setup, a difference-in-difference estimate of the change in production outcome Y from a decrease in the cost of protecting land is:

$$(5) \quad (\widehat{Y}_{c=L,t=2} - \widehat{Y}_{c=L,t=1}) - (\widehat{Y}_{c=M,t=2} - \widehat{Y}_{c=M,t=1}).$$

³⁰Data on fencing expenditures was only collected in 1880.

For this estimate to be unbiased, farmers' production decisions must depend additively on unobserved factors. Following the notation from Section III, production outcome Y in county c and time t is a function of land protection P and other characteristics q . This general function $Y_{ct}^*(P_{ct}^*, q_{ct})$ is assumed to be a function of land protection only and then separate unobserved factors:

$$(6) \quad Y_{ct}^*(P_{ct}^*, q_{ct}) = F(P_{ct}^*) + \gamma_t + \mu_c + \epsilon_{ct},$$

where γ_t is a time effect, μ_c is a county effect, and ϵ_{ct} is a random error term. For example, consider Y_{ct} to be the fraction of farmland improved in county c and time t . The identifying assumption is that the fraction of farmland improved in each county would change the same, apart from any change due to increased land protection in the low-woodland county after barbed wire's introduction.

It is impossible to test this identification assumption directly, but additional time periods and greater variation in county types can be used to form indirect tests. First, the same estimator for two periods before the introduction of barbed wire tests whether these county types had been trending similarly. Second, the same estimator for two periods after the universal adoption of barbed wire tests for other sources of differences, given that further price declines would not have differential effects across county types. Any differential trends before barbed wire's introduction or after its universal adoption may or may not have occurred between those periods, but the results can be tested for robustness to each scenario.

A third specification test exploits the potentially non-linear relationship between local wooden fencing costs and local woodland. If a third county type H (high-woodland) has a low timber price p_L^T that is much closer to p_M^T than was p_H^T , then an estimate from equation (5) should be greater than the same estimate comparing medium- and high-woodland counties. This test is given by the difference-in-difference-in-difference estimator:

$$(7) \quad [(\hat{Y}_{c=L,t=2} - \hat{Y}_{c=L,t=1}) - (\hat{Y}_{c=M,t=2} - \hat{Y}_{c=M,t=1})]$$

$$- [(\hat{Y}_{c=M,t=2} - \hat{Y}_{c=M,t=1}) - (\hat{Y}_{c=H,t=2} - \hat{Y}_{c=H,t=1})].$$

The intuition for this empirical approach can be seen in a plot of the average share of farmland improved, by county woodland group and decade. Figure IV shows that medium- and high-woodland counties changed similarly over the entire 1870 to 1920 period. Low-woodland counties also changed similarly, except for large relative increases from barbed wire’s introduction until its universal adoption (1880–1900). This analysis of woodland categories is intended only to illustrate the intuition for the methodology, whereas the later empirical analysis examines continuous variation in woodland levels and includes controls for other potential changes.

V.B. Main Estimating Equation

For the main empirical analysis, county-level outcomes are first-differenced to control for any county characteristics that are constant over time. State-by-decade fixed effects α_{st} are included to control for state-specific shocks that have an equal effect on all counties in the state. To allow flexibly for changes over time to be correlated with county woodland levels, included for each decade is a fourth-degree polynomial function of a county’s 1880 local woodland level. The baseline estimated equation is:

$$(8) \quad Y_{ct} - Y_{c(t-1)} = \alpha_{st} + \beta_{1t}W_c + \beta_{2t}W_c^2 + \beta_{3t}W_c^3 + \beta_{4t}W_c^4 + \epsilon_{ct}.$$

The estimated β ’s are allowed to vary in each decade, and summarize how changes over each decade in county outcome Y vary by county woodland level W . The regression is estimated on a pooled sample of all decadal changes from 1870 to 1920.³¹

³¹The estimated coefficients are identical when the sample is restricted to changes over any one decade, because the coefficients on each variable are allowed to vary over each decade. As in the case of two time periods, estimating equation (8) in first-differences or with county fixed effects yields the same estimated changes.

VI. Estimation Results

VI.A. Land Improvement and Land Settlement

Equation (8) is estimated for the fraction of farmland improved in each county. The full set of estimated β 's is difficult to interpret numerically, but the results can be seen in Figure V.³² The solid line reports the estimated change over the indicated time period for a county with that woodland level, relative to the estimated change for a county with 0% woodland.³³ The two dashed lines report 95% confidence intervals around the estimates.

From 1880 to 1890 and 1890 to 1900, counties with the least woodland made large relative gains in the improvement intensity of farmland. By contrast, there were no substantial relative changes at low woodland levels before 1880, after 1900, or at higher woodland levels from 1880 to 1900.

To display and interpret these results numerically, the estimated changes are evaluated at representative woodland levels: the most affected low-woodland county, with 0% woodland; the average medium-woodland county, with 6% woodland; and the least affected high-woodland county, with 12% woodland. The predicted change for a county with 0% woodland relative to the predicted change for a county with 6% woodland is analagous to a difference-in-difference estimate for counties with those exact woodland levels, but the parameterized regression uses available data from counties with similar woodland levels.³⁴

Columns (1) and (2) of Table III report the evaluated results from estimating equation (8) for the fraction of farmland improved. In each decade, the coefficient in column (1) corresponds exactly to the difference in the graphed solid line at 0 and 0.06 in Figure V. The estimated magnitude is interpreted as follows: the top coefficient in column (1) reports that acres of improved land per acre of farmland increased from 1870 to 1880, on average, 1.5

³²For conciseness, the displayed results are limited to woodland levels less than 0.12 or 12%, though equation (8) is estimated for the entire distribution of woodland levels.

³³Due to the inclusion of state-decade fixed effects, the estimated results are only interpretable relative to some defined benchmark woodland level.

³⁴These evaluated estimates are not sensitive to the fourth-degree polynomial functional form, as long as the functional form is sufficiently flexible to capture the basic non-linearity in Figure V.

percentage points more in a county with 0% woodland than in a county with 6% woodland.³⁵ From the same regression, column (2) reports the predicted change for a county with 6% woodland relative to a county with 12% woodland. In parentheses is the standard error for each coefficient, corrected for heteroskedasticity and clustered at the county level. In brackets is the t-statistic of the absolute difference between the coefficients comparing 0% vs. 6% and 6% vs. 12%. For example, the coefficients in the first row of columns (1) and (2) are not statistically different with a t-statistic of 0.22.

The first main result is that, from 1880 to 1900, the improvement intensity of farmland increased by a statistically significant and substantial 19 percentage points in counties with 0% woodland relative to counties with 6% woodland (Table III, column (1)). By contrast, there are not substantial changes before 1880, after 1900, or between higher woodland levels from 1880 to 1900. This result is clear in Figure VI, which plots the estimated cumulative changes after 1870.

The increase in the improvement intensity of farmland came despite substantial expansion along the extensive margin of total settlement, which removed land from the public domain. Columns (3) and (4) of Table III report the results from estimating equation (8) for the fraction of county land in farms. In these baseline estimates, settlement increased by 26 percentage points from 1880 to 1900 in counties with 0% woodland relative to counties with 6% woodland. There were also some relative increases from 1870 to 1880, and from 1880 to 1900 counties with 6% woodland made relative gains on counties with 12% woodland.

Combining changes in both intensive and extensive margins, columns (5) and (6) of Table III report estimated changes in the fraction of all county land that is improved. Total land improvement increased by 29 percentage points from 1880 to 1900, reversing a negative trend from 1870 to 1880 in counties with 0% woodland relative to counties with 6% woodland.

Table IV presents the robustness of the baseline results to including control variables for other potential changes in agricultural development. Also, to account for potential spatial

³⁵That is, a county with 0% woodland that had 50% of its farmland improved would have, in expectation, caught up to a county with 6% woodland that initially had 51.5% of its farmland improved.

correlation among counties, Conley standard errors are estimated (Conley 1999).³⁶ Overall, the estimated changes in land improvement are robust to these alternative specifications, while the changes in land settlement are less robust.

Column (1) of Table IV presents the results without additional controls, as a basis for comparison. Allowing for spatial correlation increases the standard errors, but the estimated coefficients remain statistically significant. The results are condensed to show only the changes from 1880 to 1890 and from 1890 to 1900 in counties with 0% woodland relative to counties with 6% woodland.

Because counties with less woodland tend to be further West, a concern is that baseline estimates could be confounded with an independent push toward increased westward development, changes in land policies,³⁷ reduced armed conflict with Native Americans,³⁸ or other factors. Column (2) includes controls for the distance West of each county centroid, interacted with each decade. Column (3) also controls for distance from St. Louis (“Gateway to the West”) interacted with each decade, to allow for expansion out from the middle of the country. The results are similar when including higher-order polynomial distance measures, with and without including Colorado and Texas.

Counties with different woodland levels may be suited to different agricultural products, so changes in prices and technologies may contribute to differential development over this time period.³⁹ To explore the robustness of the results to these types of factors, county data was merged with traced land resource regions and subregions, and great soil groups.⁴⁰

³⁶Spatial correlation among counties is assumed to be declining linearly up to a distance of 100 miles and zero after 100 miles (the shortest distance between the most-wooded and least-wooded counties in Kansas).

³⁷Libecap (2007) reviews changing US land policy, highlighted by the 1862 Homestead Act and small subsequent revisions in 1904, 1912, and 1916.

³⁸Hess and Weidenmier record individual armed conflicts with Native Americans: 14 events from 1866 to 1869, 69 events in the 1870s, 13 events from 1880 to 1883, and 1 event in 1890. The last recorded conflict in the sample states, outside of Texas, was in 1876. I thank the authors for providing their data.

³⁹Regarding technological change in agriculture, there are not obvious relative advances for low-woodland areas during the particular 1880 to 1900 period (Rasmussen 1962, Primack 1977, Olmstead and Rhode 2002). Changes in local wood prices would have differential effects, though the timber market in all sample counties was a small sector: in 1870, forest products averaged 0.6% of the total value of all farm products.

⁴⁰Land resource regions and subregions were mapped in the 1966 U.S. Department of Agriculture Handbook 296. Soil groups were mapped by the U.S. Soil Conservation Service in 1951 and were retained in the National Archives Record Group 114, item 148. These maps were scanned, traced in GIS software, and

Within the sample of counties, there are 11 regions, 43 subregions, and 19 soil groups. To allow for differential growth patterns, equation (8) is estimated with a quadratic time trend for each of the 11 regions (column (4)), 43 subregions (column (5)), or 19 soil groups (column (6)).⁴¹

The baseline estimates may also be confounded with convergence in agricultural development, whereby counties with lower initial levels of land improvement or settlement may have otherwise experienced higher subsequent growth. Counties with less woodland were initially less developed along each measure, though there were only small relative increases from 1870 to 1880 when initial differences were greatest. Column (7) controls for an additional fourth-degree polynomial function of the county's fixed 1870 outcome level, interacted with each decade. This effectively focuses the analysis on counties with different woodland levels but similar outcome levels in 1870.⁴²

One particular source of convergence may have been an expansion of the railroad network into previously less-developed and lower-woodland areas. Counties' railroad track mileage was calculated by merging county borders with railroad network maps, by decade from 1870 to 1920.⁴³ Total track increased in sample counties from 6k miles (1870) to 19k (1880), 30k (1890), 32k (1900), 38k (1910 and 1920).

Railroad expansion after 1880 was mainly on the intensive margin: in 1870, 50% of sample counties had some railroad track and this increased to 89% (1880), 95% (1890), 97% (1900),

digitally merged to 1870 county boundaries. Separate variables are defined for the fraction of each county area falling into each region, subregion, or soil group.

⁴¹Because equation (8) is in changes, the first-differenced analog of a quadratic time trend is included: the fraction of the county in that region, and the fraction multiplied by 3 in 1880, 5 in 1890, 7 in 1900, 9 in 1910, 11 in 1920.

⁴²Pre-barbed wire land-use is endogenously determined, so counties with similar land-use outcomes and different amounts of woodland might be expected to differ along other important dimensions for farmers to be compensated for the lack of woodland. Also, if low initial outcome counties converge due to barbed wire's introduction, this specification will suffer from over-controlling bias.

⁴³Railroad network maps were obtained from the Library of Congress railroad maps collection: Colton's 1871 map for 1870, Colton's 1882 map for 1880, Matthew's 1890 map for 1890, 1897 Century Atlas for 1900, 1911 Century Atlas for 1910, 1918 General Railway map for 1920. Railroad lines on each map were traced and merged to 1870 county boundaries, though the railroad map projections did not merge precisely. To minimize measurement error in the changes, railroad lines for each decade were snapped to their corresponding line in the 1910 map (the most detailed and precise map). Mapped track mileages produce similar state-by-decade aggregates as those published in *Poor's Manual of Railroads*; I thank Paul Rhode for providing these data.

99% (1910 and 1920). The construction of railroad spur lines may be endogenous and a channel through which barbed wire affected development. Aside from potentially following agricultural development, railroads were often required to fence-out cattle from tracks and, as lines pushed into less-wooded areas, lumber became more expensive and was sometimes stolen by settlers (McCallum and McCallum 1965, pp.196–201).⁴⁴ While potentially inducing over-controlling bias, column (7) presents the baseline results when controlling for changes in county railroad track mileage. The results are similar when controlling for a fourth-degree polynomial in railroad mileage, or whether a county has any railroad track.⁴⁵

Overall, Table IV shows that the estimated increases in land improvement are robust, while increases in land settlement are less robust to some specifications. Adjusting for spatial correlation increases the standard errors, but the estimates generally remain statistically significant. The remainder of the analysis presents standard errors that are simply clustered at the county level.

In contrast to the above estimates, herd laws appear to have been of little benefit. Nebraska adopted a state-wide herd law in 1871 that was intended to make livestock owners liable for damage to farmers' unfenced crops, which had the potential to benefit farmers more in counties with the least woodland (Davis 1973, Kawashima 1994). However, from 1870 to 1880, the improved fraction of farmland declined by 22 percentage points (standard error of 10 percentage points) in a county with 0% woodland relative to a county with 6% woodland.⁴⁶ It was not until 1890, after the introduction of barbed wire, that counties with the least woodland showed a 29 (6) percentage point increase. Settlement was mostly unchanged, until a 18 (6) percentage point increase from 1890 to 1900. Total land improvement

⁴⁴From estimating equation (8) for county track mileage, there were few systematic changes aside from that a county with 0% woodland experienced a 12.5 (5.0) mile increase from 1880 to 1890 relative to a county with 6% woodland.

⁴⁵Railroad network expansion may also have a differential effect on areas that had different access to major riverways; note that one of the soil groups (column (6)) effectively captures the presence of a major river.

⁴⁶These coefficients (and standard errors in parentheses) are from estimating equation (8) for Nebraska only.

declined by 24 (9) percentage points from 1870 to 1880, and increased by 18 (7) and 8 (5) percentage points from 1880 to 1890 and 1890 to 1900.

Kansas gave counties the option of adopting a herd law, beginning in 1872. Counties' adoption decisions are analyzed by Sanchez and Nugent (2000), and this endogenous decision complicates an analysis of the law's effects. Nearly all herd law counties have less woodland than non-herd law counties, so it is not practical to estimate whether the herd law had a greater effect in counties with less woodland.

However, based on which counties had adopted the herd law by 1880, it is possible to compute difference-in-difference estimates of the change in each land-use outcome for herd law counties relative to non-herd law counties.⁴⁷ Herd law counties had an insignificant 6 (7) percentage point decline in the improved fraction of farmland from 1870 to 1880; it was not until after barbed wire's introduction that they experienced a 20 (3) percentage point increase from 1880 to 1890. Similarly, total improved land had a 3 (3) point increase from 1870 to 1880 and a 11 (3) point increase from 1880 to 1890. By contrast, land settlement increased by 26 (4) percentage points from 1870 to 1880, and declined by 7 (3) points from 1880 to 1890; this may reflect increasingly settled areas managing to adopt the law over the 1870s.

Kansas then adopted a state-wide herd law in 1889, which did not lead to relative increases for non-herd law counties. The state-wide law also did not benefit counties with the least woodland: the improved fraction of farmland declined by 9 (5) percentage points from 1890 to 1900, while settlement and total land improvement were little changed. Farmers made substantial investments in fencing before the legal reforms, after the legal reforms, and after the introduction of barbed wire. These laws may have had some small influence or they might not have been so hotly debated. In the absence of physical barriers, however, formal laws appear to have provided farmers little refuge from roaming livestock.

⁴⁷Kansas State Board of Agriculture Reports indicate adoption and provide quick comments on the political situation and hypothesized effects in 1876, 1877–1878, and 1879–1880; yes/no information on adoption in 1881–1882 and 1883–1884; and no information in 1885–1886. This is consistent with the earlier hypothesis that barbed wire defused these political debates.

VI.B. Crop Productivity and Crop Choice

Barbed wire’s introduction may also lead farmers to adjust crop production. When liability for damage can be traded, Coase (1960) discusses how the optimal allocation of land could favor crops or livestock. However, without the ability to protect land physically or contractually, the returns to certain crops may be particularly sensitive to the threat of uncompensated damage by others’ livestock. Farmers could reduce crop acreage or, if they continue to grow crops without fencing, reduce investment in cropland, harvest crops earlier, or otherwise adjust production in ways that lower productivity.

County-level data are available on the total production and acreage for each of the six main crops on the Plains (corn, wheat, hay, oats, barley, rye), by decade and beginning in 1880.⁴⁸ Productivity for each crop p in each county c is defined as its total production per acre harvested. To assist in interpreting the results, productivity in each decade is normalized by its value in 1880.⁴⁹

For the empirical estimation, equation (8) is slightly modified. To control for regional changes in crop productivity, state-decade fixed effects are replaced with crop-state-decade fixed effects. The equation is first-differenced by crop-county, to control for constant differences in crop productivity across counties. Data on all crops are pooled in the baseline analysis, which constrains the change in productivity across woodland levels to be the same for all crops:

$$(9) \quad \frac{Y_{pct} - Y_{pc(t-1)}}{Y_{pc1880}} = \alpha_{pst} + \beta_{1t}W_c + \beta_{2t}W_c^2 + \beta_{3t}W_c^3 + \beta_{4t}W_c^4 + \epsilon_{pct}.$$

Columns (1) and (2) of Table V present baseline results. From 1880 to 1890, average productivity across all six crops increased 23.4% more in a county with 0% woodland than

⁴⁸Cotton is excluded from the analysis, as data are only available for Texas and the boll weevil blight severely impacted cotton productivity. Using the same technique as before, data are adjusted to maintain 1880 geographical boundaries.

⁴⁹The upper and lower centiles of the normalized productivity distribution are dropped: those less than 0.36 or greater than 6.4. The results are not sensitive to these cutoffs, as long as the clearly extreme observations are dropped.

in a county with 6% woodland.⁵⁰ By comparison, US crop yields and total crop production increased annually by 0.23% and 1.7% from 1880 to 1920.⁵¹ Crop productivity decreased by 4.6% from 1890 to 1900, leaving it 18.8% higher than in 1880.

Consistent with cropland becoming more productive, an increasing share of farmland became allocated to crops. From estimating equation (8), the fraction of farmland allocated to cropland increased by 12 percentage points from 1880 to 1890 in a county with 0% woodland relative to a county with 6% woodland (Table V, column (3)). As in the case of crop productivity, there was little change from 1890 to 1900.

An extension of the results uses crop-level differences in vulnerability to livestock damage. While cattle eat hay (various grasses), hay is more resistant to livestock damage before being harvested. Hay fields can even be intended for grazing at certain times of the year. The other crops (corn, wheat, oats, barley, rye) would yield substantially less grain if they were trampled, so it would be more important to protect them from others' livestock.⁵² Restricting the analysis to these five crops more at-risk of damage, productivity increased by 29% in counties with the least woodland (columns (5) and (6), Table V). By contrast, hay productivity was unchanged from 1880 to 1890. From estimating equation (8) for the fraction of cropland allocated to more at-risk crops, columns (7) and (8) report that more cropland became allocated to more at-risk crops from 1880 to 1890.

In interpreting the results, changes in productivity for a given plot of land may be confounded by productivity differences for new lands coming under cultivation. Newly cultivated lands on the Plains may be especially productive due to stored soil nutrients. Parton et al. (2005) estimate that this productivity advantage mostly dissipates over 20–30 years; note

⁵⁰The results are similar when weighting by crop acreages in 1880.

⁵¹These numbers are estimated using indexes of total US crop production and yield per acre harvested for twelve major crops (NBER Macrohistory Database, files a01005aa and a01297). The production index is computed by weighting the production of each commodity by average farm prices from 1910–1914. To obtain the average annual increase, the natural log of each index is regressed on a time trend from 1880 to 1920.

⁵²Grazing these crops would require close management of timing and intensity, and even then would substantially lower grain yields (Smith et al. 2004). The Census defines data for these crops as that which is grown for grain, rather than grazed or grown for hay.

that productivity gains from 1880 to 1890 are mostly persistent over the next 30 years. Permanent composition effects could appear if less-wooded areas of counties were inherently more productive. However, very little land in farms was wooded: in 1880, less than 6% of the land in farms was wooded in 76% of the counties with less than 6% woodland. Furthermore, it may be that cheaper fencing encouraged the expansion of production into otherwise unprofitable and lower quality lands within a county, which would cause the estimates to understate the increase in productivity for a given plot of land.

A limitation of decadal census data is that crop production is sensitive to weather and other short-term shocks, so productivity in Census years may not be representative. Evidence on the representativeness of Census years is mixed, based on annual county-level data from Kansas for the productivity of corn, wheat, and oats (Parker et al. 2000). For wheat, 0% woodland counties were unusually unproductive in 1879 relative to 6% woodland counties. By contrast, corn productivity differences in Census production years were similar to average non-Census years.⁵³ These data caution that Census years may happen to give an inaccurate picture of typical changes in productivity. This highlights the advantage of comparing productivity changes for at-risk crops and hay, which implicitly includes county-year fixed effects. Additionally, the estimates in Table V are robust to the distance, region, subregion, and soil group specifications reported in Table IV. These additional controls may absorb changes in technology, weather, or other factors.⁵⁴

Overall, it appears that farmers secured, improved, and expanded crop production from 1880 to 1890. If after 1890 farmers no longer cultivated substantial lands without fences, then crop productivity would not be expected to increase further.

⁵³Census data in 1880 reports production data from 1879. Oats were less commonly grown, but estimates are more similar to wheat than corn: 1879 was fairly unproductive, 1880 was fairly productive, and later Census years were similar to non-Census years.

⁵⁴When analyzing productivity, the additional controls are interacted with each crop.

VI.C. Land Value

Changes in land values potentially capitalize the total value of barbed wire to farmers. The Census provides self-reported data on land values, and farmers may have been familiar with their lands' market value. Speculation in land markets was active at this time and taxes were paid on separately assessed land values (Gates 1973).⁵⁵ Land value data are only available in each period for the combined value of farmland, buildings, and fences. However, land was the largest component of this measure: in 1900 and 1910, buildings' value was between 13% and 17% of the total in low-, medium-, and high-woodland counties; in 1879, the cost of building and repairing fences was 1% of the total value.

Equation (8) is estimated for the natural log of land value, per county acre. The log is analyzed because technology, prices, and land protection are typically modeled to have multiplicative effects on output value. Similar increases in land settlement or other additive shocks would have a larger percentage effect in areas with low initial levels, so the analysis also controls for initial land values.⁵⁶ Table VI presents the results.

Land values increased substantially from 1880 to 1890 in counties with 0% woodland, relative to counties with 6% woodland. Land values continued to increase from 1890 to 1900, but not statistically more than the relative increase at higher woodland levels. Before 1880 or after 1900, by contrast, there were either relative declines or small changes.

Focusing on the increase from 1880 to 1890, this represents an economically substantial increase of 50% above 1880 levels. This is 1.7 times the 1880 value of all agricultural products in low-woodland counties. Assuming that barbed wire had no effect on counties with more than 6% woodland, the estimated total benefit to farmers is \$103 million (1880 US dollars)

⁵⁵Farmers may have partly anticipated the arrival of barbed wire by the 1880 Census, though unsettled land would still be valued at zero.

⁵⁶The specification controls for a fourth-degree polynomial function of the 1870 log land value, interacted with each decade. Without these additional controls, the estimates fit a clear pattern of economic convergence for both low- and medium-woodland counties: there are large relative increases from 1870 to 1880 that then decline over time.

with a standard error of \$32 million.⁵⁷ This is approximately 0.9% of total US GDP in 1880 (Historical Statistics 2006).

The estimated increase in land value understates the total value of barbed wire if counties with more than 6% woodland also benefited (or non-sample counties). This number overstates the total value to the extent that farmers' investment costs became capitalized into land values. As a check on the results, an upper bound on the value of barbed wire is the total saved fence construction costs, which is estimated to be \$767 million.⁵⁸ If fencing demand declines linearly, then an implied tighter upper bound on farmer surplus is half this amount.

VII. Interpretation

Barbed wire appears to have had a substantial impact on US agricultural development, as seen in the relative development of low-woodland areas from 1880 to 1900. Given the simple nature of the innovation, the estimated magnitudes are remarkable and reflect the substantial cost of fencing before 1880.

Barbed wire was particularly important in this historical context, due to timber scarcities and the importance of fencing. Farmers had secure legal title to land, but had to pay high fencing costs to receive protection from damage by others' livestock. Farmers had lobbied for legal reforms to states' fencing requirements, but effective protection came about only with the introduction of barbed wire. Legal title was not affected; rather, the ability to exclude others' livestock became part of farmers' bundle of property rights over land.⁵⁹

⁵⁷This total is calculated as follows. Sixty-four counties had between 0% and 1% woodland, with an average of 0.42% woodland and \$1.7 million of land value in 1880. For an average county with 0.42% woodland, land values increased by an estimated 43% relative to a county with 6% woodland. This gives an overall effect of approximately \$47 million ($64 \times \$1.7\text{m} \times 43\%$). Summing across the woodland bins (1-2%, 2-3%, 3-4%, 4-5%, 5-6%) yields an estimate of \$103 million with a standard error of \$32 million.

⁵⁸This is found by multiplying the difference in cost between wooden and barbed wire fences (roughly \$1 per rod) by the total amount of barbed wire built by 1900 in the Prairie and Southwest (roughly 767 rods). If land values increased by more, then farmers should have been willing to construct these fences prior to barbed wire's introduction.

⁵⁹Property rights often vary beyond whether ownership is secure: rights may not include the ability to sell, rent, mortgage, pledge, bequeath, or gift land (Besley 1995); land ownership may be contingent on not

Barbed wire may also have been influential as a general improvement in agricultural technology. Cheaper fencing benefits even an isolated farm by providing greater control over a farmer’s own cattle. This allows the production of cattle and crops in close proximity, and increases cattle productivity through improvements in feeding and breeding. This would be particularly beneficial if nearby lands varied substantially in their suitability for cattle and crops.⁶⁰ However, empirical estimates suggest that barbed wire did not increase cattle production and decreased the joint production of cattle and crops. These findings suggest that barbed wire had relatively small technological benefits for an isolated farm.

To examine changes in cattle production, equation (8) is estimated for the number of cattle per five county acres.⁶¹ A cow required roughly five acres to graze in this region, so the estimated magnitudes can be compared to estimated changes in settlement and land improvement. Columns (1) and (2) of Table VII present the results. From 1880 to 1890, there was no substantial increase in cattle production for a county with 0% woodland relative to a county with 6% woodland. By contrast, cattle production increased moderately in all subsequent periods and at higher woodland levels from 1880 to 1890.

To examine changes in the joint production of cattle and crops, an index is defined that captures the degree to which counties are specialized in crop production.⁶² The index is the squared difference between the fraction of county farmland devoted to crops and the average over all counties in that decade and state: $I_{ct} = (M_{ct} - \overline{M}_{st})^2$. The index increases when a county with above-average crop intensity increases crop production, and vice versa. Changes in this index are estimated using equation (8), which controls for average county deviations

leaving it fallow (Goldstein and Udry 2008); others may have the right to kill and eat animals on your land, but not keep the fur (Demsetz 1967). In addition, these rights only exist to the extent that they are enforced and not simply allocated.

⁶⁰To avoid encroachment and operate more in isolation, there was an incentive to expand farms prior to barbed wire’s introduction. These farms would still have neighbors, however, and farm scale may have been restricted by inferior fencing or monitoring options. Estimating equation (8) for log average farm size, there are not systematic changes by woodland levels, apart from an increase in average farm sizes at low-woodland levels from 1890 to 1900.

⁶¹Data on cattle are first available in 1880, so county regions are held constant at their 1880 boundaries.

⁶²Pasture land is not directly observed, and per cow acreage requirements vary with the environment, production methods, and desired sustainability.

from the mean and state-by-decade shocks. Columns (3) and (4) of Table VII present the results. From 1880 to 1890, counties with 0% woodland became increasingly specialized by half a standard deviation, relative to counties with 6% woodland.⁶³

Barbed wire may affect cattle production and county specialization through multiple channels, but these results suggest that barbed wire's effects are not simply the direct technological benefits that would be expected for an isolated farm. On the contrary, it appears that barbed wire affected agricultural development largely by reducing the threat of encroachment by others' cattle.

VIII. Conclusion

There is growing evidence from current developing countries that insecure property rights may limit economic development. Complementing that literature, the historical development of American agriculture appears to have been limited when farmers were unable to protect frontier lands from encroachment by others' cattle. In the United States, this institutional failure was resolved not by legal reform but by technological change: the introduction of barbed wire fencing.

Following the introduction of barbed wire, low-woodland areas that had been especially costly to fence experienced substantial relative increases in agricultural development. Increases along intensive margins were particularly rapid and substantial: land improvement, crop production, and crop productivity. Land values increased substantially, indicating a large increase in total economic production. These results suggest that land protection has an important role in facilitating agricultural development. Indeed, rather than being a unique feature of some modern developing countries, that this also occurred on the American frontier suggests that it may be a more universal characteristic of economic development.

HARVARD UNIVERSITY AND NATIONAL BUREAU OF ECONOMIC RESEARCH

⁶³Estimates are robust to the distance, region, subregion, and soil group specifications from Table IV.

REFERENCES

- Aldrich, "Wholesale prices, wages, and transportation," Report to the Committee on Finance, 1893.
- Acemoglu, Daron, and Simon Johnson, "Unbundling Institutions," *Journal of Political Economy*, 113 (2005), 949-995.
- Alston, Lee J., Gary D. Libecap, and Robert Schneider, "The Determinants and Impact of Property Rights: Land Titles on the Brazilian Frontier," *Journal of Law, Economics, and Organization*, 12 (1996), 25-61.
- Alston, Lee J., Gary D. Libecap, and Bernardo Mueller, "Property Rights and Land Conflict: A Comparison of Settlement of the U.S. Western and Brazilian Amazon Frontiers," in *Latin America and the World Economy Since 1800*, John H. Coatsworth and Alan M. Taylor, eds. (Cambridge, MA: Harvard University Press, 1998).
- Anderson, Terry L., and Peter J. Hill, "The Evolution of Property Rights: A Study of the American West," *Journal of Law and Economics*, 18 (1975), 163-179.
- Ashton, T.S., *The Industrial Revolution, 1760-1830*, (New York, NY: Oxford University Press, 1997).
- Banerjee, Abhijit V., Paul J. Gertler, and Maitreesh Ghatak, "Empowerment and Efficiency: Tenancy Reform in West Bengal," *Journal of Political Economy*, 110 (2002), 239-280.
- Besley, Timothy, "Property Rights and Investment Incentives: Theory and Evidence from Ghana," *Journal of Political Economy*, 103 (1995), 903-937.
- Besley, Timothy, and Maitreesh Ghatak, "Property Rights and Economic Development," *Handbook of Development Economics V*, D. Rodrik and M. Rosenzweig, eds. (North Holland, 2009).
- Bogue, Allan G., *From Prairie to Corn Belt: Farming on the Illinois and Iowa Prairies in the Nineteenth Century*, (University of Chicago Press, 1963).
- , "Farming in the Prairie Peninsula, 1830-1890," *Journal of Economic History*, 23 (1963), 3-29.
- Brasselle, A.-S., F. Gaspart, and J.-P. Platteau, "Land Tenure Security and Investment Incentives: Puzzling Evidence from Burkina Faso," *Journal of Development Economics*, 68 (2002), 373-418.
- Carville, Earle, John Heppen, and Samuel Otterstrom, *HUSCO 1790-1999: historical United States county boundary files*, (Baton Rouge, LA: Louisiana State University, 1999).
- Cheung, Steven, "The Structure of a Contract and the Theory of a Non-Exclusive Resource," *Journal of Law and Economics*, 13 (1970), 49-70.
- Coase, Ronald H, "The Problem of Social Cost," *Journal of Law and Economics*, 3 (1960), 1-44.
- Conley, T.G., "GMM estimation with cross sectional dependence," *Journal of Econometrics*, 92 (1999), 1-45.
- Davis, Rodney O., "Before Barbed Wire: Herd Law Agitations in Early Kansas and Nebraska," in *Essays in American History in Honor of James C. Malin*, Burton J. Williams, ed. (Coronado Press, 1973).
- De Meza, David, and J.R. Gould, "The Social Efficiency of Private Decisions to Enforce Property Rights," *Journal of Political Economy*, 100 (1992), 561-580.
- De Soto, Hernando, *The Mystery of Capital*, (New York, NY: Basic Books, 2000).
- Demsetz, Harold, "Toward a Theory of Property Rights," *American Economic Review: Papers and Proceedings*, 57 (1967), 347-359.
- Ellickson, Robert C., *Order without Law: How Neighbors Settle Disputes*, (Cambridge, MA: Harvard University Press, 1991).
- Encyclopedia Britannica, "Barbed Wire," (11th ed., 1911).

- Engerman, S., and K. Sokoloff, "Institutional and Non-institutional Explanations of Economic Differences," in *Handbook of New Institutional Economics*, Claude Menard and Mary M. Shirley, eds. (Dordrecht: Springer, 2003).
- Field, Erica, "Entitled to Work: Urban Property Rights and Labor Supply in Peru," *Quarterly Journal of Economics*, 122 (2007), 1561-1602.
- Galiani, Sebastian, and Ernesto Schargrodsky, "Property Rights for the Poor: Effects of Land Titling," mimeo, 2006.
- Gates, Paul W., "The Role of the Land Speculator in Western Development," in *Landlords and Tenants on the Prairie Frontier*, (Cornell University Press, 1973).
- Goldstein, Markus and Christopher Udry, "The Profits of Power: Land Rights and Agricultural Investment in Ghana," *Journal of Political Economy*, 116 (2008), 981-1022.
- Gutmann, Myron P., *Great Plains Population and Environment Data: Agricultural Data*, (Ann Arbor, MI: University of Michigan and ICPSR, 2005).
- Hayter, Earl W., "Barbed Wire Fencing – A Prairie Invention," *Agricultural History*, 13 (1939), 189-207.
- Haines, Michael R., *Historical, Demographic, Economic, and Social Data: The United States, 1790-2000*, (Hamilton, NY: Colgate University and ICPSR, 2005).
- Hess, Greg and Marc D. Weidenmier, "How the West was Won," Claremont McKenna College Working Paper.
- Historical Statistics of the United States, 2006. <http://hsus.cambridge.org>
- Jacoby, Hanan G., Guo Li, and Scott Rozelle, "Hazards of Expropriation: Tenure Insecurity and Investment in Rural China," *American Economic Review*, 92 (2002), 1420-1447.
- Johnson, Simon, John McMillan, and Christopher Woodruff, "Property Rights and Finance," *American Economic Review*, 92 (2002), 1335-1356.
- Kansas State Board of Agriculture, "Report of the State Board of Agriculture to the Legislature of the State of Kansas," (Topeka: The Board, 1876-1888).
- Kantor, Shawn E., *Politics and Property Rights: The Closing of the Open Range in the Postbellum South*, (Chicago, IL: University of Chicago Press, 1998).
- Kawashima, Yasuhide, "Fence Laws on the Great Plains, 1865-1900," in *Essays on English Law and the American Experience*, Elizabeth A. Cawthorn and David E. Narrett, eds. (Texas A&M University Press, 1994).
- Kraenzel, Carl Frederick, *The Great Plains in Transition*, (Norman, OK: University of Oklahoma Press, 1955).
- Lanjouw, Jean O. and Philip I. Levy, "Untitled: A Study of Formal and Informal Property Rights in Urban Ecuador," *Economic Journal*, 112 (2002), 986-1019.
- Libecap, Gary D., "The Assignment of Property Rights on the Western Frontier: Lessons for Contemporary Environmental and Resource Policy," *Journal of Economic History*, 67 (2007), 257-291.
- McFadden, Joseph M., "Monopoly in Barbed Wire: The Formation of the American Steel and Wire Company," *Business History Review*, 52 (1978), 465-489.
- McCallum, Henry D., and Frances T. McCallum, *The Wire that Fenced the West*, (Norman, OK: University of Oklahoma Press, 1972).
- Netz, Reviel, *Barbed Wire: an Ecology of Modernity*, (Middleton, CT: Wesleyan University Press, 2004).
- North, Douglass C., *Structure and Change in Economic History*, (W.W. Norton & Company, 1981).
- Olmstead, Alan L., and Paul W. Rhode, "The Red Queen and the Hard Reds: Productivity Growth in American Wheat, 1880-1940," *Journal of Economic History*, 62 (2002), 929-966.

- Parker, William N., Stephen J. DeCanio, and Joseph M. Trojanowski, *Adjustments to Resource Depletion: the Case of American Agriculture – Kansas, 1874-1936*, (ICPSR, 2000).
- Parton, William J., Myron P. Gutmann, Stephen A. Williams, Mark Easter, and Dennis Ojima, “Ecological Impact of Historical Land-use Patterns in the Great Plains: a Methodological Assessment,” *Ecological Applications*, 15 (2005), 1915-1928.
- Primack, Martin L., “Farm Fencing in the Nineteenth Century,” *Journal of Economic History*, 29 (1969), 287-291.
- Primack, Martin L., *Farm Formed Capital in American Agriculture 1850-1910*, (New York, NY: Arno Press, 1977).
- Rasmussen, Wayne D., “The Impact of Technological Change on American Agriculture, 1862-1962,” *Journal of Economic History*, 22 (1962), 578-591.
- Razac, Olivier, *Barbed Wire: A Political History*, (New York, NY: W.W. Norton, 2002).
- Sanchez, Nicolas, and Jeffrey B. Nugent, “Fence Laws vs. Herd Laws: A Nineteenth-Century Kansas Paradox,” *Land Economics*, 76 (2000), 518-533.
- Smith, S. Ray, Brinkley Benson, and Wade Thomason, “Growing Small Grains for Forage in Virginia,” (Virginia Cooperative Extension, Publication Number 424-006, 2004).
- U.S. Department of Agriculture, *Atlas of Agriculture, Part I, section E*, (Washington, DC: GPO, 1924).
- U.S. House of Representatives, 42nd Congress, 1st session, “Special Report on Immigration; accompanying Information for Immigrants...,” Edward Young, Chief Bureau of Statistics, (Washington, DC: GPO, 1871).
- U.S. House of Representatives, 42nd Congress, 2nd session, “Statistics of fences in the United States,” *House Executive Documents*, 17 (1872), 497-512, (Washington, DC: GPO, Report of the Commissioner of Agriculture, US Congressional Serial Set Vol. 1522).
- Washburn and Moen Manufacturing Company, *Fence laws: the statute prescriptions as to the legal fence in the United States and territories, the Dominion of Canada and provinces, and Australia, with illustrative historical notes and judicial decisions, and a view of fences and fence laws in Great Britain*, (Worcester, MA: Snow, Woodman & Co, 1880).
- Webb, Walter Prescott, *The Great Plains*, (New York, NY: Grosset & Dunlap, 1931, 1978 printing).

Table I
Barbed Wire Production, Fence Stocks, and New Fence Construction

Panel A. Annual Production of Barbed Wire, thousands of tons										
1911 Encyclopedia	<u>1874</u>	<u>1875</u>	<u>1876</u>	<u>1877</u>	<u>1878</u>	<u>1879</u>	<u>1880</u>	<u>1890</u>	<u>1900</u>	<u>1907</u>
Britannica	0.005	0.3	1.5	7	13	25	40	125	200	250
Webb 1931, p.309	<u>1874</u>	<u>1875</u>	<u>1876</u>	<u>1877</u>	<u>1878</u>	<u>1879</u>	<u>1880</u>		<u>1901</u>	
	0.005	0.3	1.3	6	12	23	37		~ 250	
Hayter 1939						<u>1880-1884</u>	<u>1888</u>	<u>1895</u>		
						80 - 100	150	157		
Panel B. Fence Stocks, millions of rods (1 rod = 16.5 feet)										
North Central	<u>1850</u>	<u>1860</u>	<u>1870</u>		<u>1880</u>	<u>1890</u>	<u>1900</u>		<u>1910</u>	
Total	228	303	359		427	443	493		483	
Wood	226	285	320		369	279	192		75	
Stone	2	3	3		3	0	0		0	
Hedge	0	9	22		26	27	30		27	
Wire	0	6	14		30	137	271		382	
South Central										
Total	175	230	245		344	531	685		701	
Wood	171	219	235		330	425	411		280	
Stone	3	5	4		7	0	0		0	
Hedge	0	5	2		3	0	0		0	
Wire	0	2	3		3	106	274		420	
Prairie										
Total	5	22	41		80	255	607		718	
Wood	4	17	23		40	130	176		7	
Stone	0	1	2		2	0	0		0	
Hedge	0	3	13		26	3	18		22	
Wire	0	1	4		12	122	413		689	
Southwest										
Total	39	78	94		162	280	710		749	
Wood	38	71	80		123	174	312		187	
Stone	1	2	2		2	0	0		0	
Hedge	0	2	4		5	0	0		0	
Wire	0	4	9		32	106	398		562	
Panel C. New Fence Construction, percentage										
North Central		<u>1850-59</u>	<u>1860-69</u>	<u>1870-79</u>	<u>1880-89</u>	<u>1890-99</u>	<u>1900-09</u>			
Wood		79	66	73	3	0	0		0	
Stone		1	0	0	0	0	0		0	
Hedge		12	21	6	1	0	0		0	
Wire		8	13	22	96	100	100		100	
South Central										
Wood		90	94	100	50	0	0		0	
Stone		2	0	0	0	0	0		0	
Hedge		4	1	1	0	0	0		0	
Wire		3	5	0	50	100	100		100	
Prairie										
Wood		71	39	38	45	18	0		0	
Stone		5	4	0	0	0	0		0	
Hedge		18	45	38	0	0	0		0	
Wire		6	12	24	55	82	100		100	
Southwest										
Wood		84	56	63	42	32	0		0	
Stone		2	3	0	0	0	0		0	
Hedge		5	11	2	0	0	0		0	
Wire		9	29	35	58	68	100		100	

Notes: "Wood" fences include three types: Virginia worm, post and rail, and board. "Wire" fences are smooth iron from 1850-1870 and include barbed wire beginning in 1880. Each region includes the following states: (North Central)

Ohio, Indiana, Illinois; (South Central) Kentucky, Tennessee, Alabama, Arkansas, Louisiana, Mississippi; (Prairie) North Dakota, South Dakota, Iowa, Nebraska, Kansas; (South West) Oklahoma, Missouri, Texas. Panel B is excerpted from Primack 1977, Table 23, pp. 206-208. Panel C is excerpted from Primack 1977, Table 26, pp. 83-84.

Table II
Mean County Characteristics in 1880, by County Woodland Group

	All Counties (1)	Low Woodland, 0% – 4% (2)	Medium Woodland, 4% – 8% (3)	High Woodland, 8% – 12% (4)	P-value (2) vs. (3) (5)	P-value (3) vs. (4) (6)
1870 county boundaries:						
Number of counties	377	147	57	43	--	--
Acres of improved land, per acre in farms	0.54 [0.23]	0.55 [0.20]	0.64 [0.28]	0.65 [0.24]	0.032	0.835
Acres of land in farms, per county acre	0.53 [0.26]	0.42 [0.26]	0.59 [0.28]	0.65 [0.26]	0.000	0.257
Acres of improved land, per county acre	0.33 [0.25]	0.25 [0.19]	0.45 [0.30]	0.48 [0.28]	0.000	0.542
Acres in county	550,718 [526,638]	645,898 [801,941]	470,219 [239,127]	430,631 [180,333]	0.018	0.348
Acres of land in farms	237,407 [113,987]	188,967 [125,574]	242,318 [104,289]	254,210 [92,210]	0.002	0.548
Value of land, buildings, and fences	3,192,401 [2,851,257]	2,294,290 [1,750,834]	4,271,744 [3,635,498]	4,776,354 [3,245,953]	0.000	0.467
Value of all products	838,986 [659,730]	593,556 [452,311]	1,060,637 [867,683]	1,158,761 [756,448]	0.000	0.548
Cost of building and repairing fences	33,514 [24,120]	23,267 [18,173]	41,589 [31,547]	40,162 [19,616]	0.000	0.782
1880 county boundaries:						
Number of counties	490	246	61	44	--	--
Acres of cropland, per acre in farms	0.31 [0.20]	0.29 [0.19]	0.38 [0.25]	0.42 [0.19]	0.009	0.415
% cropland for each crop:						
Corn	40.2 [22.4]	34.3 [23.6]	51.1 [24.0]	42.6 [21.3]	0.000	0.060
Wheat	23.2 [19.6]	28.5 [19.0]	22.6 [19.5]	24.1 [19.7]	0.033	0.711
Hay	18.3 [20.5]	26.2 [24.5]	13.7 [9.2]	14.6 [10.8]	0.000	0.662
Oats	7.6 [6.5]	8.2 [7.9]	6.7 [4.3]	8.6 [4.6]	0.050	0.037
Barley	1.0 [1.7]	1.4 [1.8]	1.2 [2.6]	1.0 [1.6]	0.589	0.664
Rye	0.5 [0.9]	0.6 [1.0]	0.6 [0.9]	0.5 [0.7]	0.773	0.499

Notes: For the top panel, the sample is the same as in Figure III and Tables III and IV. For the bottom panel, the sample is the same as in Tables V and VII. Missing data for crop acreage is treated as a zero.

Column (1) reports average county characteristics for the entire sample. Columns (2), (3), and (4) report average county characteristics for counties with the indicated amounts of local woodland (as defined in the notes to Figure III). Standard deviations are reported in brackets. Column (4) (or Column (5)) reports the probability that the coefficients in columns (2) and (3) (or columns (3) and (4)) are the same, based on standard errors that are adjusted for heteroskedasticity.

Table III
Changes in Land Improvement and Settlement, Evaluated at Woodland Levels (0%, 6%, 12%)

		Acres of Improved Land, per acre in farms		Acres of Land in Farms, per county acre		Acres of Improved Land, per county acre		
		Woodland levels: 0% vs. 6%	6% vs. 12%	0% vs. 6%	6% vs. 12%	0% vs. 6%	6% vs. 12%	
		(1)	(2)	(3)	(4)	(5)	(6)	
Decade:								
Before Barbed Wire	{	1870 - 1880	0.015 (0.040) [0.22]	0.023 (0.013)	0.039 (0.026) [0.41]	0.028** (0.010)	- 0.093** (0.019) [5.09]	- 0.001 (0.008)
		1880 - 1890	0.100** (0.029) [4.12]	- 0.004 (0.012)	0.129** (0.023) [3.81]	0.048** (0.009)	0.144** (0.021) [6.26]	0.026** (0.008)
After Barbed Wire's Introduction	{	1890 - 1900	0.086** (0.020) [3.40]	0.020* (0.009)	0.128** (0.026) [3.13]	0.057** (0.009)	0.152** (0.023) [5.31]	0.046** (0.008)
		1900 - 1910	- 0.019 (0.011) [2.25]	0.004 (0.006)	- 0.022 (0.024) [0.36]	- 0.014 (0.009)	- 0.020* (0.009) [1.54]	- 0.005 (0.004)
After Barbed Wire's Universal Adoption	{	1910 - 1920	0.003 (0.010) [0.31]	0.006 (0.004)	0.024 (0.016) [1.59]	- 0.003 (0.007)	0.019* (0.008) [1.28]	0.007* (0.004)
		R ²	0.4432			0.5012	0.5696	
Observations		1885		1885		1885		

Notes: Estimates are from equation (8) in the text: county-level changes in each outcome are regressed on a fourth-degree polynomial function of county woodland (see notes to Figure III) and state-by-decade fixed effects. The estimates are evaluated at three woodland levels (0%, 6%, 12%) and represent the predicted change over each decade for a county with 0% woodland relative to a county with 6% woodland (columns (1), (3), (5)) or for a county with 6% woodland relative to a county with 12% woodland (columns (2), (4), (6)). In parentheses are standard errors corrected for heteroskedasticity and clustered by county: ** denotes statistical significance at 1% and * at 5%. In brackets are t-statistics for the difference between coefficients in columns (1) and (2), (3) and (4), or (5) and (6).

Table IV
Changes in Land Improvement and Settlement (0% vs. 6% Woodland), Robustness to Alternative Specifications

	Baseline Specification	Additional Controls for:						Railroad Track Mileage
		Distance West	Distance West and from St. Louis	Quadratic Time Trend by Region	Quadratic Time Trend by Subregion	Quadratic Time Trend by Soil Group	1870 Outcome Difference	
	(1)	(2)	(3)	(4)	(5)	(6)	(7)	(8)
Panel A: Acres of Improved Land, per acre in farms								
1880 - 1890	0.100** (0.034) [3.72]	0.094** (0.036) [3.64]	0.119** (0.033) [4.36]	0.100** (0.034) [3.39]	0.086* (0.034) [3.15]	0.120** (0.034) [4.04]	0.065* (0.031) [3.03]	0.098** (0.034) [3.68]
1890 - 1900	0.086** (0.033) [2.36]	0.094* (0.038) [2.36]	0.106** (0.037) [2.62]	0.087** (0.033) [2.28]	0.070* (0.032) [1.90]	0.094** (0.032) [2.50]	0.076** (0.028) [2.48]	0.086** (0.033) [2.36]
Panel B: Acres of Land in Farms, per county acre								
1880 - 1890	0.129** (0.040) [2.43]	0.068 (0.038) [1.39]	0.083* (0.037) [1.66]	0.106* (0.043) [1.52]	0.078* (0.039) [1.20]	0.121** (0.041) [2.24]	0.031 (0.034) [1.04]	0.129** (0.040) [2.420]
1890 - 1900	0.128** (0.030) [2.76]	0.079* (0.035) [1.35]	0.066 (0.036) [1.10]	0.116** (0.032) [2.06]	0.097** (0.031) [1.69]	0.122** (0.030) [2.58]	0.062 (0.038) [1.03]	0.128** (0.030) [2.76]
Panel C: Acres of Improved Land, per county acre								
1880 - 1890	0.144** (0.032) [4.42]	0.103** (0.027) [4.02]	0.126** (0.027) [4.57]	0.140** (0.032) [3.84]	0.123** (0.028) [3.89]	0.154** (0.030) [4.88]	0.061* (0.024) [3.41]	0.142** (0.032) [4.33]
1890 - 1900	0.152** (0.043) [3.19]	0.153** (0.045) [3.08]	0.164** (0.043) [3.36]	0.150** (0.042) [2.97]	0.130** (0.040) [2.68]	0.154** (0.040) [3.33]	0.097** (0.032) [2.83]	0.152** (0.043) [3.19]

Notes: Each column reports a modified version of the specification from Table III (see notes). The results shown are the estimated changes from 1880-1890 and 1890-1900 for a county with 0% woodland relative to a county with 6% woodland. Conley standard errors that adjust for spatial correlation are reported in parentheses; reported in brackets are t-statistics for the difference from the relative change for a county with 6% woodland and 12% woodland, which are also calculated using Conley standard errors. Column (1) reports the baseline results, adjusted for spatial correlation. Column (2) controls for a county's distance West, interacted with each decade. Column (3) controls for a county's distance West and distance from St. Louis, interacted with each decade. Columns (4), (5), and (6) control for a quadratic time trend for each of 11 regions, 43 subregions, or 19 soil groups. Column (7) controls for a fourth-degree polynomial of a county's 1870 outcome level, interacted with each decade. Column (8) controls for county-level changes in railroad track mileage.

Table V
Changes in Crop Productivity and Crop Intensity

		All Crops				At-Risk Crops			
		Productivity		Acres of Cropland, per acre in farms		Productivity		Acres of At-Risk Crops, per acre of cropland	
		0% vs. 6%	6% vs. 12%	0% vs. 6%	6% vs. 12%	0% vs. 6%	6% vs. 12%	0% vs. 6%	6% vs. 12%
Woodland levels:	(1)	(2)	(3)	(4)	(5)	(6)	(7)	(8)	
Decade:									
After Barbed Wire's Introduction	1880 - 1890	0.234** (0.057) [3.31]	0.018 (0.025)	0.121** (0.015) [8.01]	0.015** (0.005)	0.292** (0.067) [3.47]	0.036 (0.027)	0.058* (0.023) [2.84]	0.000 (0.007)
	1890 - 1900	-0.046 (0.039) [0.97]	-0.003 (0.018)	-0.013 (0.009) [0.24]	-0.011** (0.004)	-0.057 (0.046) [0.86]	-0.012 (0.021)	0.007 (0.015) [0.91]	-0.005 (0.006)
After Barbed Wire's Universal Adoption	1900 - 1910	0.054 (0.035) [1.70]	-0.019 (0.018)	0.039** (0.010) [3.44]	0.004 (0.004)	0.058 (0.039) [1.81]	-0.027 (0.019)	0.020 (0.019) [1.75]	-0.015 (0.009)
	1910 - 1920	-0.036 (0.042) [0.95]	0.014 (0.025)	0.010 (0.007) [1.06]	0.001 (0.004)	0.011 (0.049) [0.44]	0.038 (0.029)	0.016 (0.015) [0.63]	0.005 (0.009)
R ²		0.3949		0.3922		0.4000		0.2777	
Observations		9104		1960		7320		1960	

Notes: For changes in productivity, estimates are from equation (9) in the text. For each crop and county, output per acre is normalized by its value in 1880. Changes in this normalized productivity measure are regressed on a fourth-degree polynomial function of county woodland (see notes to Figure III) and crop-by-state-by-decade fixed effects. For columns (1) and (2), data are pooled for all crops (corn, wheat, hay, oats, barley, rye). For columns (5) and (6), the sample is limited to more at-risk crops, i.e., hay is excluded. The estimates are evaluated at three woodland levels (0%, 6%, 12%) and represent the predicted change over each decade for a county with 0% woodland relative to a county with 6% woodland (columns (1) and (5)) or for a county with 6% woodland relative to a county with 12% woodland (columns (2) and (6)). In parentheses are standard errors corrected for heteroskedasticity and clustered by county: ** denotes statistical significance at 1% and * at 5%. In brackets are t-statistics for the difference between coefficients in columns (1) and (2), (5) and (6).

For changes in cropland, estimates are from equation (8) in the text. The results are presented in the same form as in Table III (see notes).

Table VI
Changes in Land Value

		Log Value of Land in Farms, per county acre		
		0% vs. 6% (1)	6% vs. 12% (2)	
Woodland levels:				
Decade:				
Before Barbed Wire	{	1870 - 1880	- 0.364* (0.151) [1.11]	- 0.224** (0.053)
		1880 - 1890	0.406** (0.105) [3.99]	0.074* (0.037)
After Barbed Wire's Introduction	{	1890 - 1900	0.213** (0.072) [1.45]	0.126** (0.027)
		1900 - 1910	- 0.101 (0.073) [2.07]	0.013 (0.027)
After Barbed Wire's Universal Adoption	{	1910 - 1920	0.044 (0.063) [0.50]	0.018 (0.024)
R ²		0.7569		
Observations		1880		

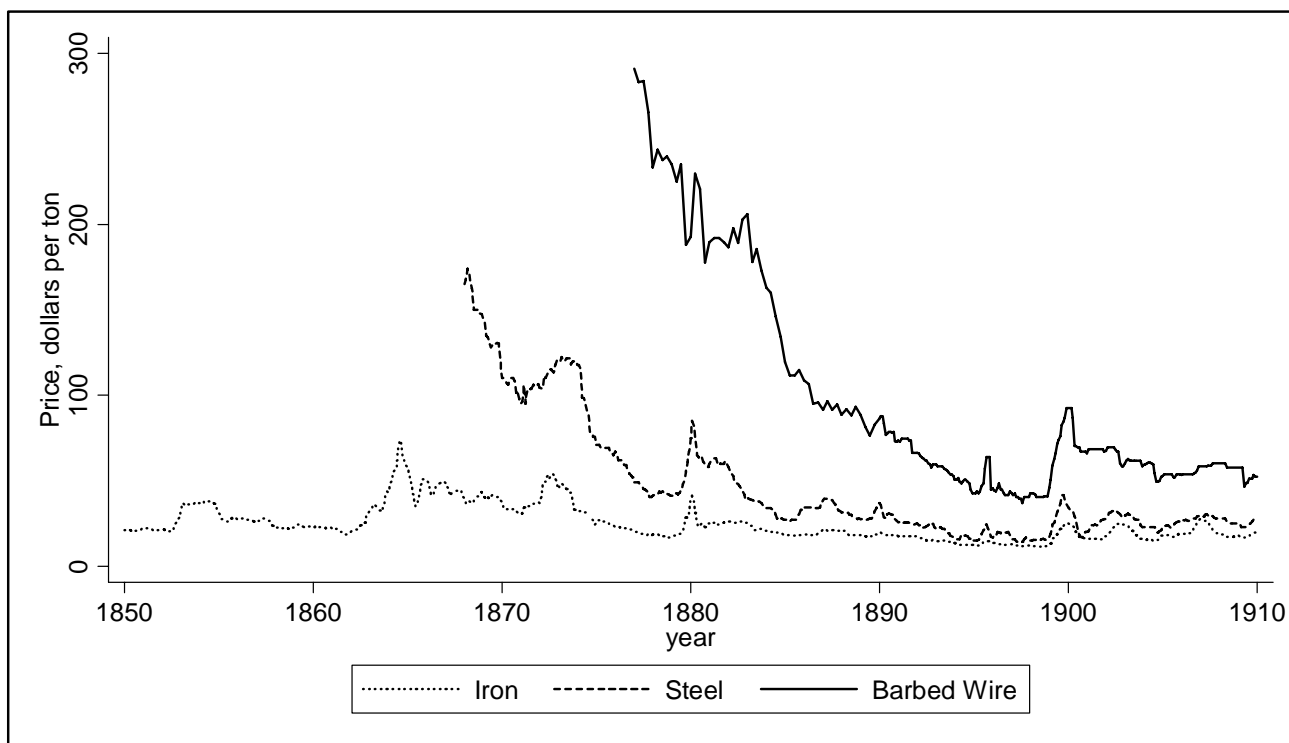
Notes: Estimates are from a modified version of equation (8) in the text: county-level changes in land value (farmland, buildings, fences) are regressed on a fourth-degree polynomial function of county woodland (see notes to Figure III), state-by-decade fixed effects, and a fourth-degree function of the county's 1870 log land value. The estimates are evaluated at three woodland levels (0%, 6%, 12%) and represent the predicted change over each decade for a county with 0% woodland relative to a county with 6% woodland (column (1)) or for a county with 6% woodland relative to a county with 12% woodland (column (2)). In parentheses are standard errors corrected for heteroskedasticity and clustered by county: ** denotes statistical significance at 1% and * at 5%. In brackets are t-statistics for the difference between coefficients in columns (1) and (2).

Table VII
Changes in Cattle Production and County Specialization

		Number of Cattle, per five county acres		Degree of Specialization in Crops	
In 1880:					
Mean		0.2034		0.0175	
Std. deviation		0.1570		0.0248	
Woodland levels:		0% vs. 6%	6% vs. 12%	0% vs. 6%	6% vs. 12%
		(1)	(2)	(3)	(4)
Decade:					
After Barbed Wire's Introduction	1880 - 1890	- 0.0039 (0.0137) [2.01]	0.0247** (0.0066)	0.0117** (0.0039) [3.50]	- 0.0007 (0.0012)
	1890 - 1900	0.0567** (0.0150) [1.29]	0.0355** (0.0071)	0.0007 (0.0032) [2.05]	- 0.0070** (0.0020)
After Barbed Wire's Universal Adoption	1900 - 1910	0.0437** (0.0140) [3.50]	- 0.0122 (0.0065)	- 0.0023 (0.0025) [1.48]	0.0021 (0.0014)
	1910 - 1920	0.0348** (0.0102) [3.32]	- 0.0064 (0.0052)	- 0.0015 (0.0020) [0.28]	- 0.0023 (0.0014)
R ²		0.5823		0.1681	
Observations		1960		1960	

Notes: Estimates are from equation (8) in the text: county-level changes in each outcome are regressed on a fourth-degree polynomial function of county woodland (see notes to Figure III) and state-by-decade fixed effects. Specialization is defined as the squared difference between the fraction of farmland allocated to crops in a county and the average over all counties in that state and decade. The estimates are evaluated at three woodland levels (0%, 6%, 12%) and represent the predicted change over each decade for a county with 0% woodland relative to a county with 6% woodland (columns (1) and (3)) or for a county with 6% woodland relative to a county with 12% woodland (columns (2) and (4)). In parentheses are standard errors corrected for heteroskedasticity and clustered by county: ** denotes statistical significance at 1% and * at 5%. In brackets are t-statistics for the difference between coefficients in columns (1) and (2), (3) and (4).

Figure I
Declining Steel Prices and the Introduction of Barbed Wire

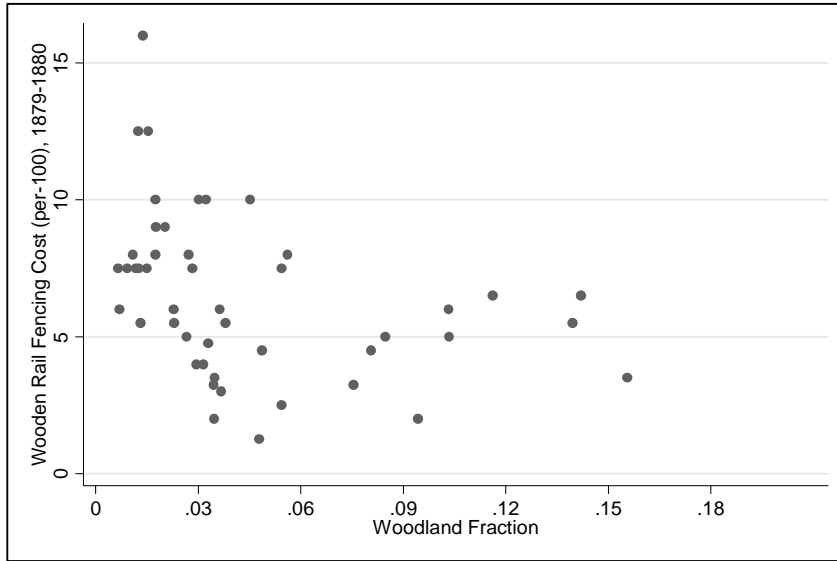


Notes: From the NBER Macroeconomy Database: “Iron” is the price of pig iron in PA, and follows the reported general price level from 1860 to 1910; “Steel” is the price of Bessemer steel rails in PA before 1890 and the price of Bessemer steel billets in PA after 1890; “Barbed Wire” is the price of galvanized barbed wire in Chicago after 1890. From 1877 to 1890, “Barbed Wire” is the price from the 1893 Aldrich Report (reported by manufacturer Washburn and Moen, Vol. 2, p. 183).

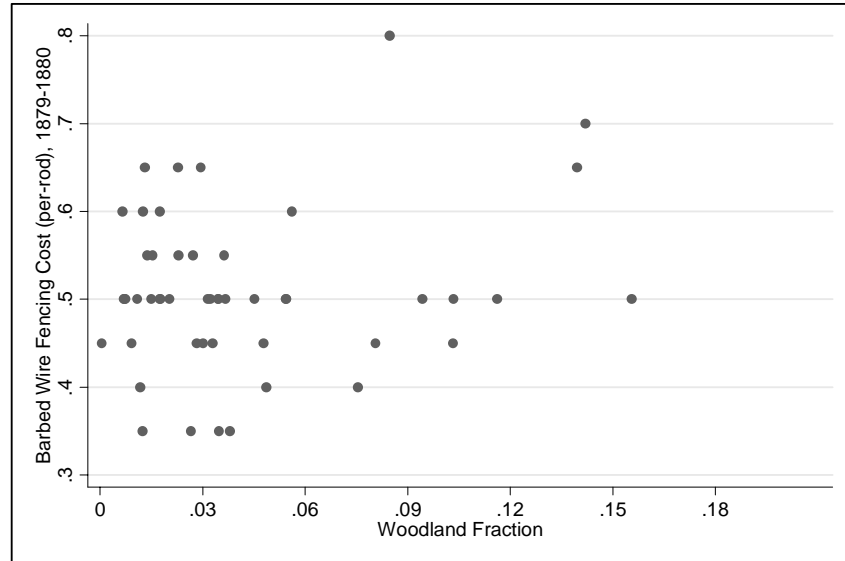
Figure II

Kansas Counties' Wooden and Barbed Wire Fencing Costs (per unit), 1879-1880

Panel A. Wooden Rail Fences

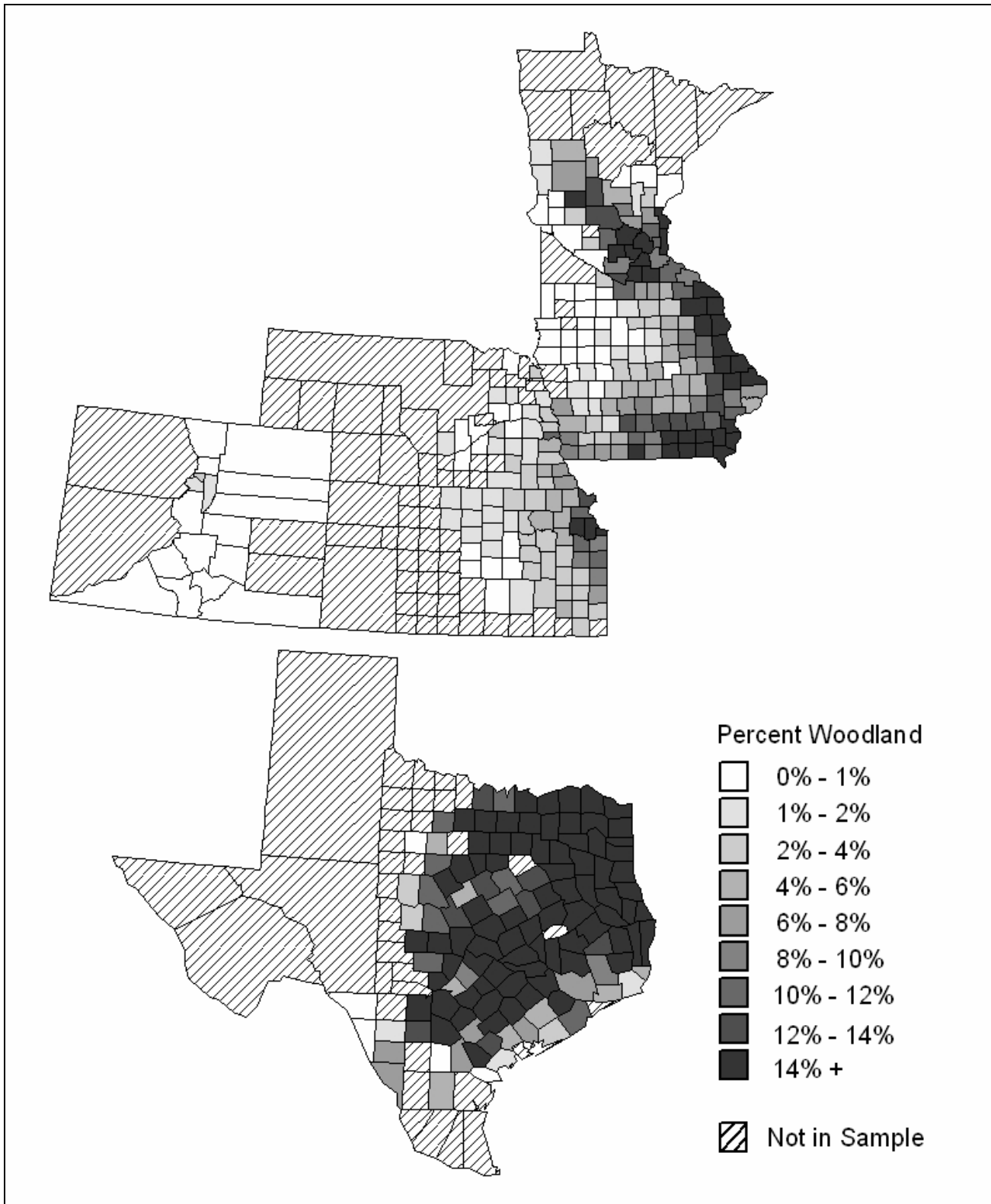


Panel B. Barbed Wire Fences



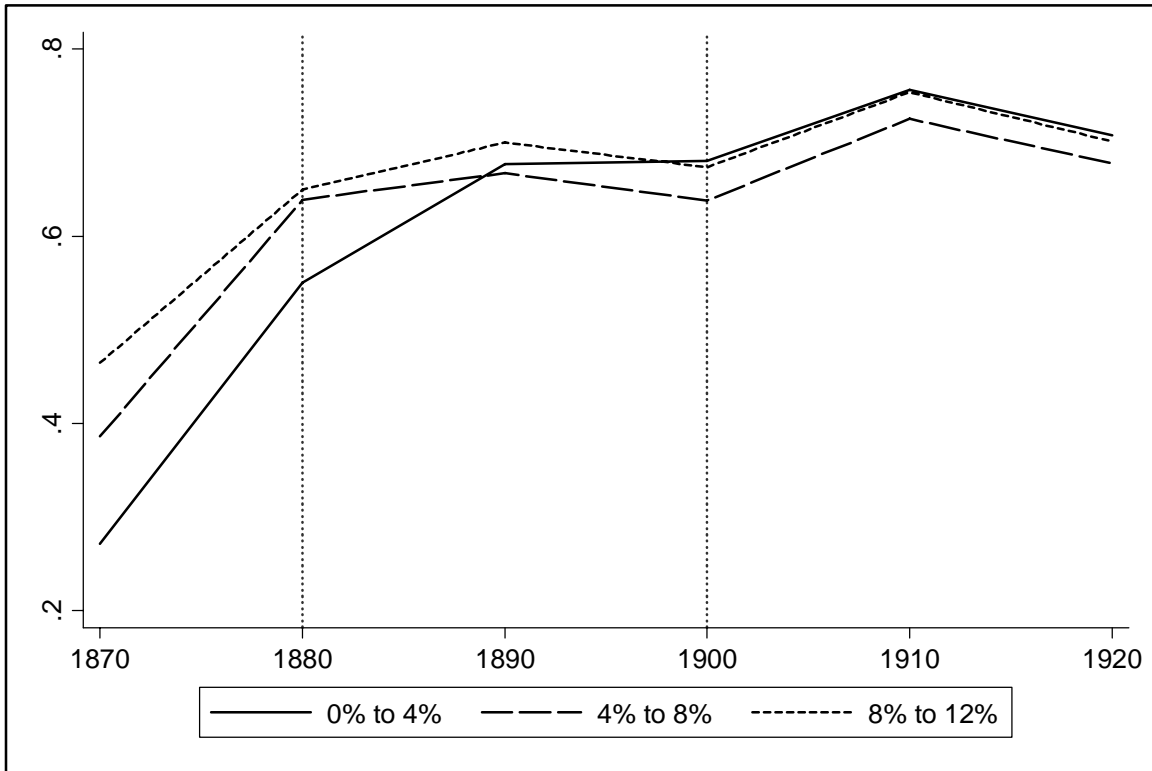
Notes: County-level data on per unit fencing costs are from the 1879-1880 Kansas State Board of Agriculture Report. “Woodland Fraction” is defined based on Census data: the number of acres of woodland in farms in 1880, divided by the total area of the county (in acres). This measure of local woodland is shown in Figure III, and used throughout the analysis.

Figure III
 Sample Counties Based on 1870 Boundaries, by Local Woodland Levels



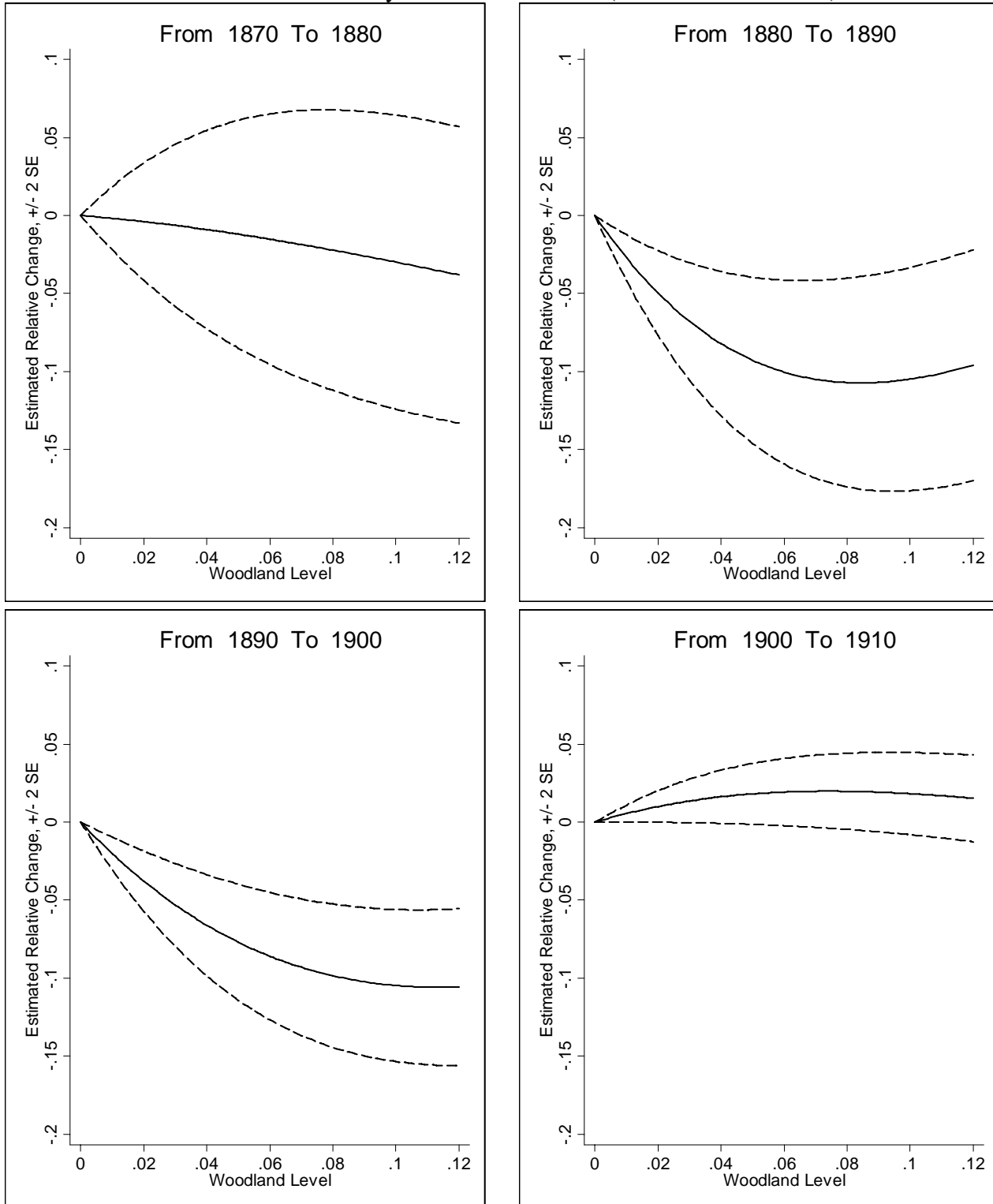
Notes: Based on 1870 geographical boundaries, the 377 sample counties are shown. Counties are shaded to represent the defined amount of local woodland based on Census data: the number of acres of woodland in farms in 1880, divided by the total area of the county (in acres). This measure of local woodland is used throughout the analysis.

Figure IV
 Acres of Improved Land (per farm acre), by County Woodland Group and Decade



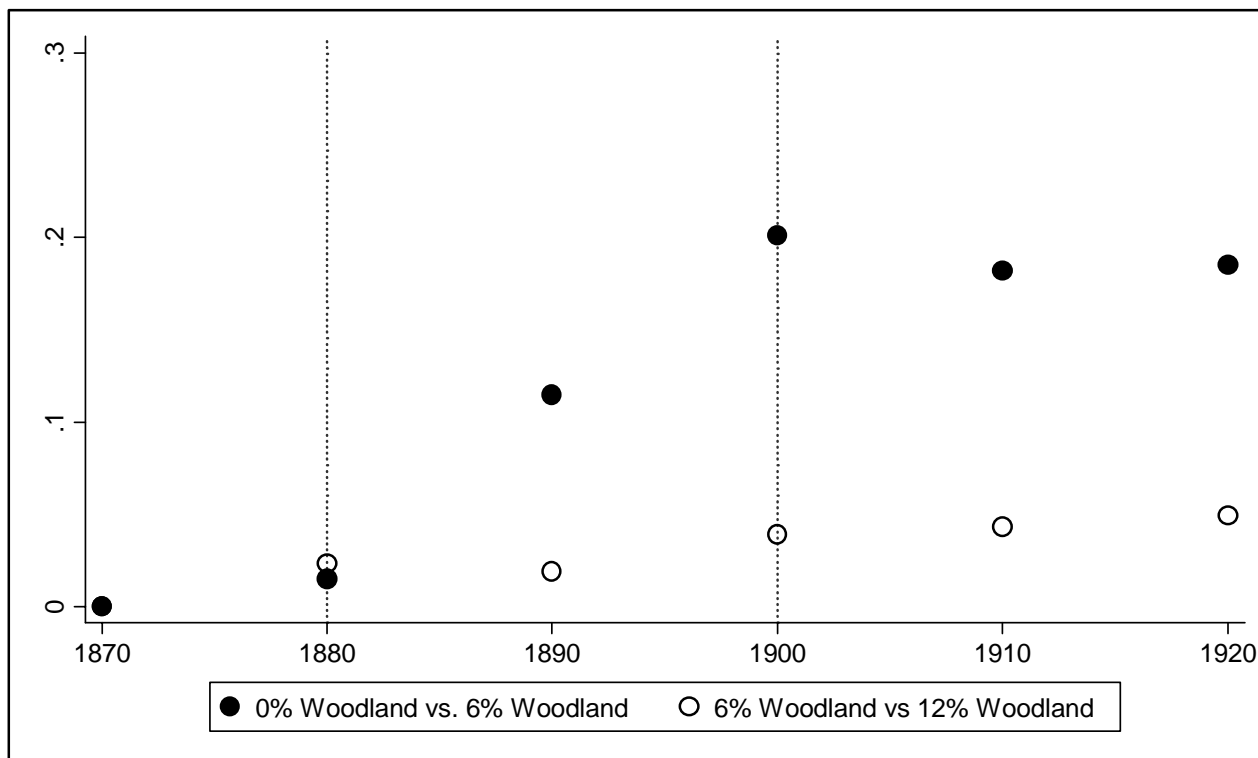
Notes: Counties are allocated to three groups based on defined local woodland levels (see notes to Figure III). For all counties in each woodland group and decade, shown are the average number of improved acres per acre of land in farms. Two vertical dotted lines represent the approximate date of barbed wire's introduction (1880) and its universal adoption (1900).

Figure V
 Estimated Changes in Acres of Improved Land (per farm acre),
 Relative to a County with 0% Woodland (± 2 Standard Errors)



Notes: The solid line reports the estimated polynomial function from equation (8) in the text, normalized at (0,0). County-level changes in the number of improved acres per farm acre are regressed on a fourth-degree polynomial function of local woodland (see notes to Figure III) and state-by-decade fixed effects. Dashed lines report 95% confidence intervals around the estimated changes.

Figure VI
 Estimated Cumulative Change in Acres of Improved Land (per farm acre)



Notes: Based on the estimates reported in Table III (columns (1) and (2)), the solid circles represent the estimated cumulative change after 1870 in acres of improved land per farm acre for a county with 0% woodland relative to a county with 6% woodland. The hollow circles represent the estimated cumulative change after 1870 for a county with 6% woodland relative to a county with 12% woodland. Two vertical dotted lines represent the approximate date of barbed wire's introduction (1880) and its universal adoption (1900).