

# Bedside sonography assessment of extravascular lung water increase after major pulmonary resection in non-small cell lung cancer patients

Lucio Cagini<sup>1</sup>, Marco Andolfi<sup>1,2</sup>, Cecilia Becattini<sup>3</sup>, Maria Giovanna Ranalli<sup>4</sup>, Francesco Bartolucci<sup>5</sup>, Alessandra Mancuso<sup>3</sup>, Jacopo Vannucci<sup>1</sup>, Giancarlo Agnelli<sup>3</sup>, Francesco Puma<sup>1</sup>

<sup>1</sup>Department of Thoracic Surgery, University of Perugia Medical School, Perugia, Italy; <sup>2</sup>Thoracic Surgery Unit, AOU Ospedali Riuniti, Ancona, Italy; <sup>3</sup>Internal and Cardiovascular Medicine, Department of Medicine, University of Perugia Medical School, Perugia, Italy; <sup>4</sup>Department of Political Science, <sup>5</sup>Department of Economics, University of Perugia, Perugia, Italy

**Contributions:** (I) Conception and design: L Cagini, M Andolfi; (II) Administrative support: None; (III) Provision of study materials or patients: C Becattini, A Mancuso; (IV) Collection and assembly of data: L Cagini, C Becattini, M Andolfi; (V) Data analysis and interpretation: MG Ranalli, F Bartolucci; (VI) Manuscript writing: All authors; (VII) Final approval of manuscript: All authors.

**Correspondence to:** Lucio Cagini, MD. Department of Thoracic Surgery, Santa Maria della Misericordia Hospital, Piazzale Menghini 1, University of Perugia Medical School, 06134 Perugia, Italy. Email: lucio.cagini@unipg.it.

**Background:** Extra vascular lung water (EVLW) following pulmonary resection increases due to fluid infusion and rises in capillary surface and permeability of the alveolar capillary membranes. EVLW increase clinically correlates to pulmonary oedema and it may generate impairments of gas exchanges and acute lung injury. An early and reliable assessment of postoperative EVLW, especially following major pulmonary resection, is useful in terms of reducing the risk of postoperative complications. The currently used methods, though satisfying these criteria, tend to be invasive and cumbersome and these factors might limit its use. The presence and burden of EVLW has been reported to correlate with sonographic B-line artefacts (BLA) assessed by lung ultrasound (LUS). This observational study investigated if bedside LUS could detect EVLW increases after major pulmonary resection. Due to the clinical association between EVLW increase and impairment of gas exchange, secondary aims of the study included investigating for associations between any observed EVLW increases and both respiratory ratio ( $\text{PaO}_2/\text{FiO}_2$ ) and fluid retention, measured by brain natriuretic peptide (BNP).

**Methods:** Overall, 74 major pulmonary resection patients underwent bedside LUS before surgery and at postoperative days 1 and 4, in the inviolate hemithorax which were divided into four quadrants. BLA were counted with a four-level method. The respiratory ratio  $\text{PaO}_2/\text{FiO}_2$  and fluid retention were both assessed.

**Results:** BLA resulted being increased at postoperative day 1 (OR 9.25; 95% CI, 5.28–16.20;  $P < 0.0001$  vs. baseline), and decreased at day 4 (OR 0.50; 95% CI, 0.31–0.80;  $P = 0.004$  vs. day 1). Moreover, the BLA increase was associated with both increased BNP (OR 1.005; 95% CI, 1.003–1.008;  $P < 0.0001$ ) and body weight (OR 1.040; 95% CI, 1.008–1.073;  $P = 0.015$ ). Significant inverse correlations were observed between the BLA values and the  $\text{PaO}_2/\text{FiO}_2$  respiratory ratios.

**Conclusions:** Our results suggest that LUS, due to its non-invasiveness, affordability and capacity to detect increases in EVLW, might be useful in better managing postoperative patients.

**Keywords:** Extra vascular lung water (EVLW); B-lines artefacts (BLA); lung ultrasound (LUS); post-operative acute lung injury (PALI); alveolar-interstitial syndrome (AIS)

Submitted Feb 15, 2018. Accepted for publication Jun 19, 2018.

doi: 10.21037/jtd.2018.06.130

View this article at: <http://dx.doi.org/10.21037/jtd.2018.06.130>

## Introduction

Extra vascular lung water (EVLW) is all the fluid within the lung outside the vascular compartment. Its presence depends on hydrostatic pressure and pulmonary capillary permeability and clinically correlates to pulmonary oedema (1). Immediately following pulmonary resection, several conditions are known to enhance EVLW expansion including a rise in the permeability of the alveolar capillary membranes due to inflammatory states (2,3), fluid infusion, a decrease in the vascular bed for the loss of pulmonary tissue and an increase in the capillary surface due to capillary recruitment (4).

The increase of EVLW generates alveolar-interstitial syndrome (AIS) which is clinically linked to pulmonary oedema with impaired gas exchange and may result in postoperative acute lung injury which is associated to mortality ranging from 20% up to 100% (5). The clinical signs of pulmonary oedema present themselves only once EVLW rises over 7 mL/Kg of ideal body weight (4). The clinical relevance of these findings is that, following major pulmonary resection, an early assessment of this postoperative EVLW increase could reduce the risk of postoperative complications especially in critical patients.

Among other things, lung ultrasonography (LUS), compared to other currently used methods for the detection of EVLW increases, has been reported to be a non-invasive, affordable and radiation-free technique, allowing for a rapid detection (6). Specifically, sonographic B-line artefacts (BLA) originate from fluid in the alveoli or water-thickened interlobular septa, are absent in normal lungs and have been shown to predict the presence and burden of EVLW (7). BLA indicate a loss of lung aeration, due to interstitial disease involvement, and the number of lines increases with decreasing air content and increasing lung density of the peripheral lung parenchyma (6). Moreover, LUS has been studied in various groups of critically ill patients. Reported results suggest that EVLW levels were independently associated with worse prognosis (8,9).

In light of the above, we proposed to assess the EVLW levels utilizing LUS on a group of non-small cell lung cancer (NSCLC) patients accepted to undergo major pulmonary resection. We conducted a prospective, single-centre, observational study to investigate if bedside LUS could detect EVLW increases after major pulmonary resection in consecutive NSCLC patients. Secondary aims included investigating for associations between observed EVLW increases and both respiratory ratio ( $\text{PaO}_2/\text{FiO}_2$ ) and fluid

retention estimated by brain natriuretic peptide (BNP).

## Methods

### *Study design*

This prospective observational cohort study was carried out between June and December 2015 at a single tertiary care hospital. The study protocol was approved by the local regional ethics committee (reference no. 28609/11). Informed written consent was obtained from each patient prior to enrolment. This prospective study investigated if bedside LUS could be useful for detecting EVLW increases after major pulmonary resection in consecutive NSCLC patients. Sample size was not calculated as we had not had any “a priori” indication of whether any difference was to be expected and the size of any possible changes.

### *Study population*

Consecutive NSCLC patients,  $\geq 18$  years old, scheduled for elective major pulmonary resection with curative intent, either lobectomy or pneumonectomy were assessed for eligibility. American Society of Anaesthesiologists (ASA) score  $\leq 3$  and New York Heart Association (NYHA)  $\leq \text{II}$  were also inclusion criteria. Exclusion criteria included: pre-existing pulmonary fibrosis or interstitial lung disease, recent thoracic surgery, impossibility to perform LUS at scheduled times, any need for mechanical ventilation after surgery.

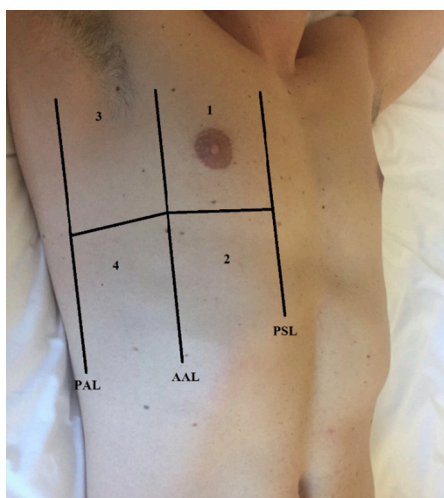
### *Study methods*

Preoperative evaluation included a detailed medical history, blood gas analysis, a 12-lead electrocardiogram, spirometry and diffusing capacity of the lung for carbon monoxide. Echocardiography was performed to exclude right ventricle overload, left ventricle diastolic dysfunction and cardiac impairments.

All surgical procedures were performed using standard posterolateral thoracotomy or three-portal video assisted thoracic surgery (VATS) under general anaesthesia with selective one-lung ventilation and the insertion of a radial arterial catheter to guarantee continuous blood pressure monitoring. All resections included systematic lymph node dissections. All patients were extubated immediately after surgery and no patients were re-intubated after this. Moreover, all patients were treated in accordance with the

established practice of fluid-restriction regime (10).

All thoracic ultrasounds were carried out and interpreted by an emergency-internal medicine physician (CB or AM), who had decade-long experience in performing LUS techniques. Moreover, these physicians were blinded to the clinical findings of the patients. All LUS scans were performed at bedside the day before surgery and at days one and four post-surgery using a GE Logiq E portable ultrasound device and a 3.5 MHz abdominal convex probe. LUS assessment was performed on the hemi-thorax contralateral to the site of surgical procedure; this sought to reduce the risk of any confounding results associated



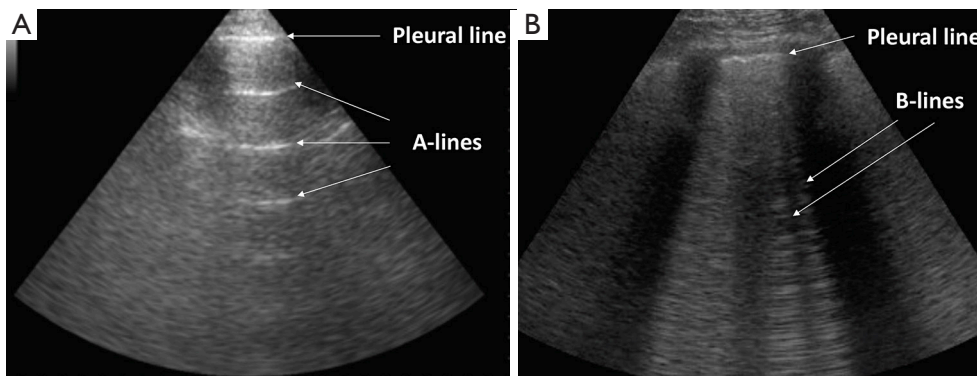
**Figure 1** Each hemithorax was separated into 4 quadrants: anterior and lateral separated by the anterior axillary line; each divided into upper and lower portions. PSL, parasternal line; AAL, anterior axillary line; PAL, posterior axillary line.

with lung manipulation and the presence of subcutaneous emphysema.

All patients were assessed in a sitting position with the homolateral hand placed behind the neck. Chest scans were performed according to international evidence-based recommendations for point-of care LUS using a simplified four-sector protocol (11). Each hemithorax was divided into four quadrants, in order to define the anterior and lateral regions; the parasternal, anterior axillary and posterior axillary lines were traced and each region was further divided into an upper and lower sub-region at the fourth intercostal space (*Figure 1*). Therein, four scanning sites resulted for each hemithorax: upper anterior, upper lateral, lower anterior and lower lateral. As the reference standard, for each of these sites, BLAs were estimated applying a four-level semi-quantitative method: sum the BLA estimated for each scanning site in order to yield a score (I for no BLA, II for 1–3 BLA, III for 3–5 BLA, IV for >5 BLA). When performing LUS, patients were required to breathe deeply, maximizing their degree of respiratory excursion. The mean time of LUS investigation was 8 minutes (*Figure 2*).

#### *BNP and PaO<sub>2</sub>/FiO<sub>2</sub> measurements*

All analytical measurements were performed at our in-hospital laboratory. Fasting haematological, biochemical profile and the levels of BNP were measured the day before surgery and on the mornings of the first and fourth postoperative days using a technique already described (12). Respiratory ratio PaO<sub>2</sub>/FiO<sub>2</sub> was assessed the day before surgery and on the morning of the first postoperative day by arterial sample with patients in a sitting position and breathing room air.



**Figure 2** LUS findings. (A) Ultrasound image of a normal lung with multiple bright repeating horizontal lines (A-lines); (B) several BLA arising from the pleural line. LUS, lung ultrasound; BLA, B-line artefact.

**Table 1** Characteristics of the enrolled patients

Characteristic	Total (n=74)
Age (yrs)	65.5 (57.0–73.0)
BNP admission (pg/mL)	25.00 (13.25–43.75)
PaO <sub>2</sub> /FiO <sub>2</sub>	3.70 (3.04–4.41)
Body mass index (kg/m <sup>2</sup> )	26.7 (23.7–28.2)
Body weight (kg)	74.75 (66.00–85.38)
Duration of surgery (min)	200 (180.0–240.0)
Males (%)	64.9
Diabetes (%)	18.9
Hypertension (%)	45.9
DLCO (%)	89 (78.0–110.0)
FEV1 (%)	94 (75.0–115.0)
Induction chemotherapy (n)	8

Data are expressed as median (IQ). BNP, brain natriuretic peptide; FEV1, forced expiratory volume in the first second; DLCO, diffusing capacity of the lung for carbon monoxide.

### Statistical analysis

Data were analyzed cross-sectionally, on the first postoperative day, and longitudinally before surgery and on days 1 and 4 post surgery. In the cross-sectional analysis, for the 4-level ordinal outcome variables, measured at postoperative day 1 in the four sub-regions, a multivariate proportional odds model was assumed (13). This model used baseline individual characteristics as covariates. Missing data in these covariates were handled by a random donor imputation technique, so that an augmented data model could be implemented according to the generalized missing-indicator approach (14). In the longitudinal analysis, a mixed-effect proportional odds model for repeated measures was estimated. This model used patient-level random effects and baseline individual characteristics as covariates (15). Both analyses were carried out using R software, applying the package ordinal (<http://cran.r-project.org/web/packages/ordinal/ordinal.pdf>).

### Results

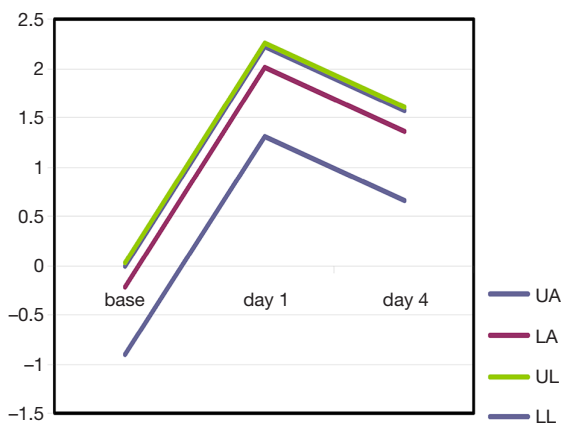
In our study we enrolled 74 consecutive patients who underwent 64 lobectomies and 10 pneumonectomies. Patient characteristics are provided in *Table 1* and surgical results are listed in *Table 2*. Baseline LUS, one day prior

**Table 2** Surgical results of the enrolled patients

Characteristic	Total (n=74)
Lobectomy (%)	64 (86.5)
Pneumonectomy (%)	10 (13.5)
VATS/thoracotomy (%)	8 [11]/66 [89]
Histology (n)	51 adenocarcinomas, 12 squamous cell carcinomas, 4 large cell carcinomas, 4 carcinoids, 3 adenosquamous carcinoma
pTNM staging (7 <sup>th</sup> edition)	
T1aN0M0 (stage IA)	18
T1bN0M0 (stage IA)	10
T2aN0M0 (stage IB)	15
T1bN1M0 (stage IIA)	5
T2aN1M0 (stage IIA)	3
T2bN1M0 (stage IIB)	3
T3N0M0 (stage IIB)	4
T1bN2M0 (stage IIIA)	3
T3N1M0 (stage IIIA)	6
T3N2M0 (stage IIIA)	7
Mortality/morbidity (n)	13 Atrial fibrillation, 5 pulmonary complication, 2 acute kidney failure, 1 death

VATS, video-assisted thoracic surgery.

to surgery, revealed level I (absence of BLA) in all four scanning regions, and BNP values were within normal range for all patients. In addition, we observed BLA increases on postoperative day 1 and significantly lower BLA levels on day 4 for all patients (*Figure 3*). After adjusting for the time effect using a suitable set of time dummies (*Table 3*) surgery resulted being associated with both BLA increase at postoperative day 1 (OR 9.256; 95% CI, 5.286–16.208; P=0.000 *vs.* baseline), and BLA decrease at postoperative day 4 (OR 0.503; 95% CI, 0.316–0.800; P=0.004 *vs.* postoperative day 1). Overall, the increased BLA value at day 1 post-surgery was significantly associated with both increased BNP (OR 1.005; 95% CI, 1.003–1.008; P<0.001) and body weight (OR 1.040; 95% CI, 1.008–1.073; P=0.015) (*Table 4*). Specifically, BNP was increased on postoperative day 1 and was significantly lower than this on day 4. Moreover, the day after surgery, a significant inverse correlation was observed between the BLA values and the



**Figure 3** Log-odds ratio from model reported in *Table 3* of BLA values identified in each scanning region at baseline, at days one and four postoperative. Surgery resulted being associated with both BLA increase at postoperative day 1 (OR 9.25; 95% CI, 5.28–16.20;  $P < 0.0001$  vs. baseline), and BLA decrease at postoperative day 4 (OR 0.50; 95% CI, 0.31–0.80;  $P = 0.004$  vs. postoperative day 1). y-axis = Log-odds Ratio estimates. UA, upper anterior; UL, upper lateral; LA, lower anterior; LL, lower lateral; BLA, B-line artefact.

PaO<sub>2</sub>/FiO<sub>2</sub> respiratory ratios; this correlation remained significant after adjusting for the individual covariates (OR 0.592; 95% CI, 0.550–0.991;  $P = 0.040$ ) (*Table 5*). Patients affected by diabetes (OR 4.769) or systemic arterial hypertension (OR 2.478) had larger increases in BLA values on day 1. A non-significant positive association was observed between BLA and preoperative forced expiratory volume in 1 second (OR 1.04), while a negative association was observed for sex (OR 0.192 for males vs. females, 95% CI, 0.060–0.618;  $P = 0.006$ ). Non-significant associations, even when using quadratic or smooth functions, were revealed for age, body mass index, side of surgery, VATS or open procedure, lobectomy or pneumonectomy, surgical approach and length of surgery. Finally, throughout the analysis, a non-significant association was observed between post-surgery complications and BLA increase.

### Discussion

EVLW clinically correlates to pulmonary oedema (1), is considered the pathophysiological hallmark of acute respiratory distress syndrome (7) and in critically ill

**Table 3** Model for the three time occasions with the time effect

Variable	Parameter estimate	Standard error	P value	Odds ratio	95% CI lower limit	95% CI upper limit
Day 1 vs. baseline	2.225	0.286	0.000	9.256	5.286	16.208
Day 4 vs. day 1	-0.687	0.237	0.004	0.503	0.316	0.800
Males*	-1.286	0.553	0.020	0.276	0.094	0.816
Age group* (yrs)						
56–64	0.134	0.713	0.851	1.143	0.283	4.621
65–73	-0.374	0.695	0.590	0.688	0.176	2.686
74–82	1.466	0.710	0.039	4.331	1.076	17.423
Surgery on left side	-0.038	0.490	0.938	0.963	0.369	2.513
Body weight	0.012	0.017	0.480	1.012	0.979	1.047
BNP	-0.002	0.002	0.256	0.998	0.995	1.001
Presence of hypertension	0.777	0.503	0.123	2.175	0.811	5.832
Presence of diabetes	0.782	0.640	0.222	2.185	0.624	7.657
Morbidity and mortality	0.189	0.391	0.628	1.209	0.561	2.602

\*Reference patient is female, age 25–55, surgery on right side, without hypertension, morbidity or diabetes. BNP, brain natriuretic peptide.

**Table 4** Model for the three time occasions without the time effect

Variable	Log-odds ratio	Standard error	P value	Odds ratio	95% CI lower limit	95% CI upper limit
Males*	-1.108	0.536	0.039	0.330	0.115	0.944
Age group*						
56-64	-0.296	0.691	0.669	0.744	0.192	2.883
65-73	-0.585	0.677	0.387	0.557	0.148	2.099
74-82	0.912	0.686	0.184	2.489	0.648	9.554
Surgery on left side	-0.321	0.473	0.497	0.725	0.287	1.831
Body weight	0.039	0.016	0.015	1.040	1.008	1.073
BNP	0.005	0.001	<0.001	1.005	1.003	1.008
Presence of hypertension	0.290	0.487	0.551	1.336	0.515	3.469
Presence of diabetes	0.809	0.622	0.193	2.245	0.664	7.592
Morbidity	0.034	0.331	0.918	1.035	0.540	1.981

\*Reference patient is female, age 25-55, surgery on right side, without hypertension, morbidity or diabetes. BNP, brain natriuretic peptide.

**Table 5** Model at postoperative day 1

Variable	Log-odds ratio	Standard error	P value	Odds ratio	95% CI lower limit	95% CI upper limit
PaO <sub>2</sub> /FiO <sub>2</sub>	-0.511	0.264	0.040	0.592	0.550	0.991
Males*	-1.650	0.596	0.006	0.192	0.060	0.618
Age group*						
56-64	-0.815	0.840	0.332	0.443	0.085	2.295
65-73	-1.496	0.883	0.090	0.224	0.040	1.263
74-82	0.369	0.815	0.650	1.447	0.293	7.148
Surgery on left side	0.275	0.549	0.617	1.316	0.449	3.861
Presence of hypertension	0.907	0.568	0.110	2.478	0.814	7.544
Presence of diabetes	1.562	0.772	0.043	4.769	1.050	21.656
FEV1	0.048	0.012	<0.001	1.049	1.024	1.075
Body mass index	-0.015	0.054	0.776	0.985	0.886	1.095
DLCO	-0.017	0.010	0.079	0.983	0.965	1.002
Surgery type						
Pneumonectomy	0.728	0.777	0.349	2.071	0.452	9.492

\*Reference patient is female, age 25-55, surgery on right side, without hypertension or diabetes. FEV1, forced expiratory volume in the first second; DLCO, diffusing capacity of the lung for carbon monoxide.



patients, high EVLW levels have been reported to be independently associated with worse clinical outcome (8). This multidisciplinary study prospectively investigated if bedside LUS could detect EVLW increases after major pulmonary resection in consecutive NSCLC patients. Secondary aims included investigating for associations between observed EVLW and both respiratory ratio ( $\text{PaO}_2/\text{FiO}_2$ ) and fluid retention estimated by BNP.

Our primary result suggests that, in the absence of any signs and/or symptoms of heart or respiratory failure, bedside LUS was able to detect at 24 hours post-surgery EVLW increase. This finding might be relevant because pulmonary fluids status is a common problem particularly following major pulmonary resections that is implicated in the development of interstitial pulmonary oedema and in a clinically relevant accumulation of EVLW. Therein LUS seems able to allow for an early and tailored management of patients following pulmonary resection.

Moreover, LUS might have a useful role in monitoring the postoperative modification of hydration status and in directing the diagnostic process. This is suggested by the fact that our data indicate significantly lower BLA levels on day 4 post-surgery for all patients, compared to day 1. This conclusion is in line with several past studies (16) reporting that changes in BLA were rapid.

Our secondary results suggest a postoperative association between EVLW and BNP at days 1 and 4 post-surgery. It is known that BNP is a specific marker of fluid retention, peaking on day 1 post-surgery (12). Our findings suggest that LUS, at day 1 post-surgery, might be able to reliably detect the expansion of interstitial fluids in the lungs correlated to the fluid retention and increased body weight, and to detect variation in the hydration status post-surgery.

We observed that at day 1 after surgery there was a significant inverse correlation between the BLA values and the  $\text{PaO}_2/\text{FiO}_2$  respiratory ratios. Though many known factors can play a role in altering this ratio, the air-blood barrier is a functionally dry space reflecting a condition of minimum hydration (4). Therefore, it is plausible that, our observed postoperative rise of the interstitial water might have triggered an increased thickness of the air-blood barrier and consequently an impairment of gas exchanges.

Our results did not suggest a correlation between BLA increase and the incidence of postoperative complications. This could have been influenced by the limited patient pool, the adoptions of the ASA score  $\leq 3$  and NYHA  $\leq \text{II}$  and by the fact that all patients were treated in accordance with the established practice of fluid-restriction regime (10).

Moreover, BLA variation can be associated with many factors including perioperative fluid input and output, as well as intraoperative ventilation strategy.

Limits of this study were: it was a single-centre study conducted on a limited number of patients and limited a-priori knowledge was available to define an ideal sample size. Despite these limitations, we do not seek to make recommendations with our obtained results.

In conclusion, LUS resulted being able to detect asymptomatic post-operative EVLW increases after surgery. Though LUS did not seem to be able to measure EVLW postoperatively, the results of our study suggest that LUS was able to detect early variations in EVLW following pulmonary resection, therein allowing for the management of interstitial fluid increase before the onset of symptoms. This later result, if confirmed, could lead to a reduction of the risk of postoperative complications especially in critical patients.

## Acknowledgements

None.

## Footnote

*Conflicts of Interest:* The authors have no conflicts of interest to declare.

*Ethical Statement:* The study protocol was approved by the local regional ethics committee (reference no. 28609/11). Informed written consent was obtained from each patient prior to enrolment.

## References

1. Shyamsundar M, Attwood B, Keating L, et al. Clinical review: the role of ultrasound in estimating extra-vascular lung water. *Crit Care* 2013;17:237.
2. Mathru M, Blakeman B, Dries DJ, et al. Permeability pulmonary edema following lung resection. *Chest* 1990;98:1216-8.
3. Mitchell JP, Schuller D, Calandrino FS, et al. Improved outcome based on fluid management in critically ill patients requiring pulmonary artery catheterization. *Am Rev Respir Dis* 1992;145:990-8.
4. Miserocchi G. Mechanisms controlling the volume of pleural fluid and extravascular lung water. *Eur Respir Rev* 2009;18:244-52.

5. Kometani T, Okamoto T, Yoshida S, et al. Acute respiratory distress syndrome after pulmonary resection. *Gen Thorac Cardiovasc Surg* 2013;61:504-12. Erratum in: *Gen Thorac Cardiovasc Surg* 2013;61:608.
6. Baston C, West TE. Lung ultrasound in acute respiratory distress syndrome and beyond. *J Thorac Dis* 2016;8:E1763-6.
7. Sakka SG, Klein M, Reinhart K, et al. Prognostic value of extravascular lung water in critically ill patients. *Chest* 2002;122:2080-6.
8. Gargani L. Lung ultrasound: a new tool for the cardiologist. *Cardiovasc Ultrasound* 2011;9:6.
9. Zhao Z, Jiang L, Xi X, et al. Prognostic value of extravascular lung water assessed with lung ultrasound score by chest sonography in patients with acute respiratory distress syndrome. *BMC Pulm Med* 2015;15:98.
10. Cagini L, Capozzi R, Tassi V, et al. Fluid and electrolyte balance after major thoracic surgery by bioimpedance and endocrine evaluation. *Eur J Cardiothorac Surg* 2011;40:e71-6.
11. Volpicelli G, Elbarbary M, Blaivas M, et al. International evidence-based recommendations for point-of-care lung ultrasound. *Intensive Care Med* 2012;38:577-91.
12. Cagini L, Andolfi M, Leli C, et al. B-type natriuretic peptide following thoracic surgery: a predictor of postoperative cardiopulmonary complications. *Eur J Cardiothorac Surg* 2014;46:e74-80.
13. McCullagh P. Regression models for ordinal data (with discussion). *J R Stat Soc Series B Stat Methodol* 1980;42:109-142.
14. Dardanoni V, Modica S, Peracchi F. Regression with imputed covariates: a generalized missing-indicator approach. *J Econom* 2011;362-8.
15. Agresti A. *Categorical Data Analysis*, 2nd edition. New York: John Wiley & Sons Ltd., 2001:513-6.
16. Dietrich CF, Mathis G, Blaivas M, et al. Lung B-line artefacts and their use. *J Thorac Dis* 2016;8:1356-65.

**Cite this article as:** Cagini L, Andolfi M, Becattini C, Ranalli MG, Bartolucci F, Mancuso A, Vannucci J, Agnelli G, Puma F. Bedside sonography assessment of extravascular lung water increase after major pulmonary resection in non-small cell lung cancer patients. *J Thorac Dis* 2018;10(7):4077-4084. doi: 10.21037/jtd.2018.06.130