

Beyond Bacteria: A Study of the Enteric Microbial Consortium in Extremely Low Birth Weight Infants

Mariam Susan LaTuga¹*, Joseph Christopher Ellis²*, Charles Michael Cotton^{3,6}, Ronald N. Goldberg^{3,6}, James L. Wynn^{3,6}, Robert B. Jackson^{2,4}, Patrick C. Seed^{3,5,6*}

1 Department of Pediatrics, Albert Einstein College of Medicine, New York, New York, United States of America, **2** Department of Biology, Duke University, Durham, North Carolina, United States of America, **3** Department of Pediatrics, Duke University Medical Center, Durham, North Carolina, United States of America, **4** Nicholas School of the Environment and Center on Global Change, Duke University, Durham, North Carolina, United States of America, **5** Center for Microbial Pathogenesis, Duke University, Durham, North Carolina, United States of America, **6** Jean and George Brumley, Jr Neonatal-Perinatal Research Institute, Duke University, Durham, North Carolina, United States of America

Abstract

Extremely low birth weight (ELBW) infants have high morbidity and mortality, frequently due to invasive infections from bacteria, fungi, and viruses. The microbial communities present in the gastrointestinal tracts of preterm infants may serve as a reservoir for invasive organisms and remain poorly characterized. We used deep pyrosequencing to examine the gut-associated microbiome of 11 ELBW infants in the first postnatal month, with a first time determination of the eukaryote microbiota such as fungi and nematodes, including bacteria and viruses that have not been previously described. Among the fungi observed, *Candida sp.* and *Clavispora sp.* dominated the sequences, but a range of environmental molds were also observed. Surprisingly, seventy-one percent of the infant fecal samples tested contained ribosomal sequences corresponding to the parasitic organism *Trichinella*. Ribosomal DNA sequences for the roundworm symbiont *Xenorhabdus* accompanied these sequences in the infant with the greatest proportion of *Trichinella* sequences. When examining ribosomal DNA sequences in aggregate, *Enterobacteriales*, *Pseudomonas*, *Staphylococcus*, and *Enterococcus* were the most abundant bacterial taxa in a low diversity bacterial community (mean Shannon-Weaver Index of 1.02 ± 0.69), with relatively little change within individual infants through time. To supplement the ribosomal sequence data, shotgun sequencing was performed on DNA from multiple displacement amplification (MDA) of total fecal genomic DNA from two infants. In addition to the organisms mentioned previously, the metagenome also revealed sequences for gram positive and gram negative bacteriophages, as well as human adenovirus C. Together, these data reveal surprising eukaryotic and viral microbial diversity in ELBW enteric microbiota dominated by types of bacteria known to cause invasive disease in these infants.

Citation: LaTuga MS, Ellis JC, Cotton CM, Goldberg RN, Wynn JL, et al. (2011) Beyond Bacteria: A Study of the Enteric Microbial Consortium in Extremely Low Birth Weight Infants. PLoS ONE 6(12): e27858. doi:10.1371/journal.pone.0027858

Editor: Adam Driks, Loyola University Medical Center, United States of America

Received: June 15, 2011; **Accepted:** October 26, 2011; **Published:** December 8, 2011

Copyright: © 2011 LaTuga et al. This is an open-access article distributed under the terms of the Creative Commons Attribution License, which permits unrestricted use, distribution, and reproduction in any medium, provided the original author and source are credited.

Funding: This research was supported by a pilot grant from the Duke Institute for Genome Sciences and Policy, the Duke Department of Pediatrics Division of Perinatal-Neonatal Medicine, the Jean and George Brumley, Jr Neonatal-Perinatal Research Network, and by the Center on Global Change at Duke University. MSL received support from the Gerber Foundation. PCS received support from the Hartwell Foundation. The funders had no role in study design, data collection and analysis, decision to publish, or preparation of the manuscript.

Competing Interests: The authors have declared that no competing interests exist.

* E-mail: patrick.seed@duke.edu

† These authors contributed equally to this work.

Introduction

Prematurity is the leading cause of neonatal deaths and long-term infant disability, with the rate of preterm births continuing to rise [1,2]. Despite improved medical and respiratory management, the mortality rate for the most premature infants remains high [3,4]. Extremely low birth weight infants (ELBW) are at increased risk for complications such as sepsis, meningitis, necrotizing enterocolitis (NEC) and poor growth- problems, all associated with high risk for neurodevelopmental impairment, and all of which may be impacted by the microbial communities in their gut [4,5,6,7,8,9,10]. Among premature infants, frequently used treatments, such as antibiotics and histamine-2 blockers are associated with an increased risk of necrotizing enterocolitis (NEC) and may exert their influence via alternations in gut microbiota [11,12].

In full term infants, using high-resolution molecular technologies, bacterial succession starts with a limited number of aerobic and anaerobic organisms and diversifies over the first postnatal year to assume a more adult makeup and distribution [13]. In comparison, in premature infants, the intestinal microbiome has been studied primarily using stool cultures and low resolution molecular techniques, for example DGGE, which may underestimate bacterial diversity [14,15,16,17,18,19].

Three recent studies that applied high-throughput sequencing were primarily motivated by the hypothesis that deeper molecular analysis of the gut-associated microbiota of preterm infants would reveal previously unappreciated bacterial taxa or groups of taxa associated with NEC or systemic inflammatory response (SIRS). In the study by Mshvildadze, *et al.*, 10 predominant families of bacteria were identified among 12 infants with no specific association between the microbiota present and the development

Table 1. Demographic data for the clinical cohort.

Infant	GA (wk)	Gender	BW (gm)	Delivery mode	Bacteremia	Other	Death	Sample collection (day of life)
1	26	M	925	Vaginal	CONS		No	30
2	25	F	720	Caesarean section ¹	CONS	SVT	No	25
3	24	M	490	Caesarean section ²	CONS	Hypospadias	No	21, 36
4	27	M	900	Vaginal		Hypertension	No	25, 25
5	25	M	980	Vaginal		PDA ligation	No	20, 34
6	27	F	882	Caesarean section ³	CONS	Heart block- mat. Lupus	Yes	9, 29
7	25	F	560	Caesarean section ¹		Surgical NEC, PVL	No	16, 26
8	27	M	940	Caesarean section ²		Medical NEC	No	16, 30
9	27	M	640	Caesarean section ³		NEC totalis	Yes	16, 23, 35
10	26	M	880	Caesarean section ¹			No	13, 27
11	24	M	500	Caesarean section ²	CONS		Yes	23

Indication for Caesarean section: 1-Breech presentation, 2-pregnancy induced hypertension, 3-fetal bradycardia.

CONS-coagulase negative staphylococcus, SVT-supraventricular tachycardia, PDA-patent ductus arteriosus, NEC-necrotizing enterocolitis, PVL-periventricular leukomalacia.

doi:10.1371/journal.pone.0027858.t001

of NEC or SIRS [20]. The bacterial taxa were similar to full term infants at birth, with a dominance of *Enterobacteriaceae*, *Staphylococcaceae*, and *Lactobacilliales* (*Enterococcus* genus). In a study by Wang, *et al*, terminal restriction fragment length polymorphism analysis was employed to compare the bacterial constituents of the fecal microbiomes among infants with (N = 10) and without NEC (N = 10), with slightly lower diversity observed among infants with NEC [21]. Another recent study that examined one premature infant over the first three weeks of life found a predominance of limited bacterial genera and evidence of bacteriophage [22].

Previous studies have provided important insights into the bacterial constituents of the preterm gut microbiome but have not comprehensively evaluated for eukaryotic microbes and human viruses [16,23,24]. Invasive infections with *Candida* species cause significant morbidity and mortality among ELBW infants [25,26]. Furthermore, ELBW infants consistently receive empirical anti-bacterial agents, which increase risk for invasive disease by *Candida sp* [25,27,28]. It is unclear how *Candida* species contribute to risk of invasive disease. They may invade primarily, infect once physiologic barriers have been breached or occupy the gut in the absence of healthy bacterial communities [29,30,31]. Although *Candida* species have been identified in the first two weeks of life in preterm infants using culture methods, a more complex analysis of primary succession of fungal, viral, and parasitic organisms in the ELBW infant gut-associated microbiome has not been performed.

Because of the critical role of development in the first month of life and the high risk of morbidity and mortality of ELBW infants, we applied current molecular methodologies to help resolve the microbial constituents of the gut-associated microbiome. Our study highlights unprecedented early fungal diversity, evidence of roundworms, human and bacterial viruses, and a bacterial community harboring many potential pathogens.

Results

Clinical characteristics

Of twenty-one infants eligible, eleven infants were enrolled in the study. The mean gestational age was 27 weeks, with an average birth weight of 765 gm (Table 1). All infants received antibacterials as well as oral nystatin as prophylaxis against

C.albicans infection. Infants were fed maternal breast milk or donor breast milk with mean initiation and cumulative feeding days of 9 and 23, respectively (Table 2 and Information S2). Sample collection was convenience-based, with two samples collected from 8 infants and one collected from the remaining three.

Among the cohort, five blood culture positive episodes of coagulase negative *Staphylococcus* (CONS) bacteremia were identified (Table 1). Three episodes of NEC occurred among enrolled infants with one episode, in infant 8, occurring during the sample collection period (Table 1; Information S2). There was one death during the study period due to a non-infectious medical complication.

Eukaryotic microbial constituents of the ELBW enteric tract

Based on deep sequencing of eukaryote-directed ITS amplicons, sequences from fungal, metazoan and viridiplantae organisms were identified (Figure 1). Of the eleven infants, ITS amplicons were successfully amplified from seven infants. All experiments were run in parallel. Rarefaction curves of ITS amplicons begin to reach asymptotic levels, indicating sufficient depth of sequencing to account for most of the taxa amplified by ITS-targeted primers (Figure 2). *Saccharomyces* was the most prevalent and abundant order, constituting 38.2% of amplicons in aggregate. Despite daily nystatin administration, a species-level examination of the yeasts present revealed sequences most similar to eight candidal species

Table 2. Clinical features.

Medical Intervention	Days (Mean)
Duration* of antibiotics	15
Duration* of nystatin	21
Initiation of feeding**	9
Cumulative duration of feeding	23

*Duration reflects time prior to sample collection.

**Indicates day of life when started.

doi:10.1371/journal.pone.0027858.t002

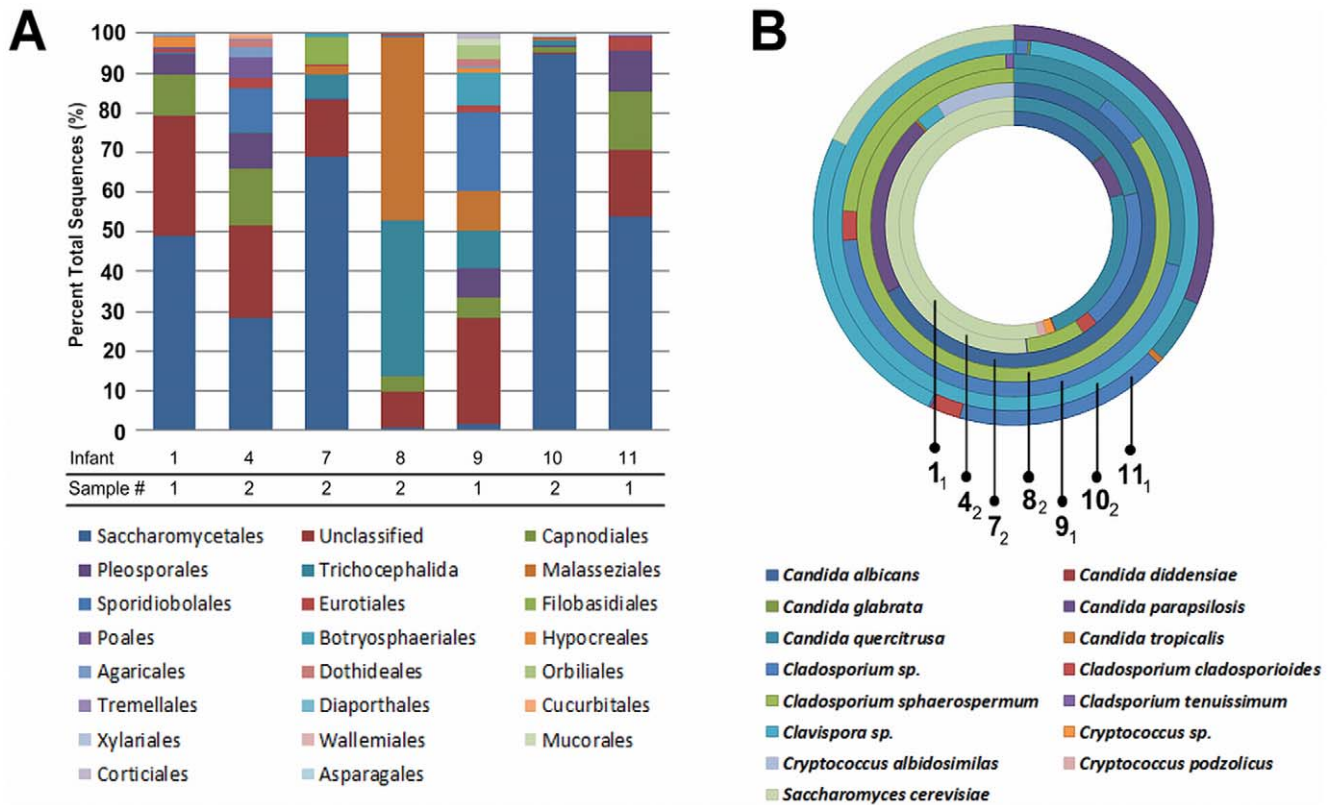


Figure 1. Lower eukaryotic sequence abundance. Panel A: Order level data per sample is shown as a percentage of the total sequences. Panel B: Predominant yeast genera and species. Best match genus-species estimates per infant's sample are shown. Where only a genus is indicated, species level data could not be confidently determined. doi:10.1371/journal.pone.0027858.g001

and three predicted cryptococcal species (Figure 1). Of the *Candida* spp. detected, six infants had fecal samples with abundant sequences corresponding to *C. quercitrusa* (Figure 1; Information S1). *C. quercitrusa* has been described in association with agriculturally-important fruit crops such as grapes and citrus but has never to our knowledge been identified in healthy humans or associated with infectious diseases [32,33,34].

Five infants had *Trichocephalida* sequences (E scores ranging from 0 to 1×10^{-142} and percent identity 90–98%) in the absence of clinical

symptoms of infection (Figure 1). These 4,042 sequences were a best match at the genus level to *Trichinella*, a parasitic nematode (Information S1). Previously, ITS amplification has been shown to have excellent specificity for nematode identification and taxonomic classification [35]. Infant 8 had the greatest proportion of *Trichocephalida* sequences. On 16S rDNA analysis (described below), fecal genomic DNA from Infant 8 also had identifiable sequences corresponding to *Xenorhabdus*, a symbiont of some nematodes [36], providing further support for the presence of *Trichocephalida* in these infants.

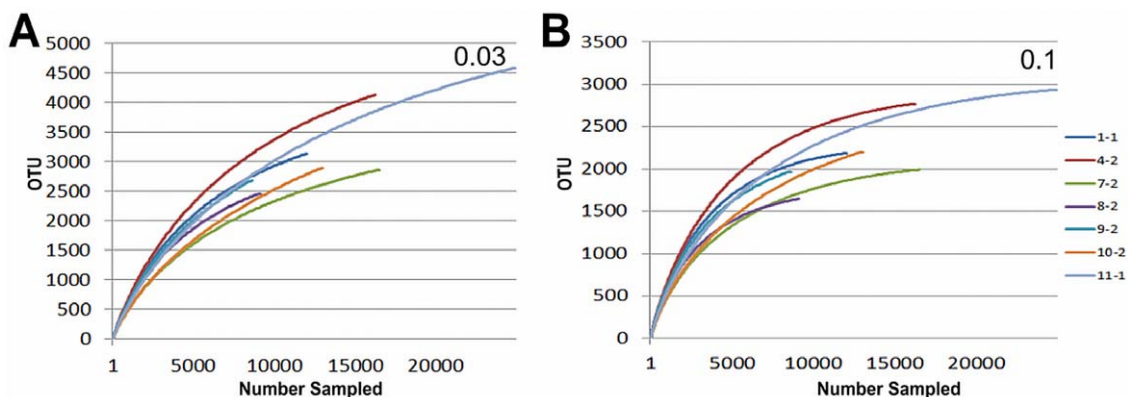


Figure 2. Rarefaction curves for lower eukaryotic sequences begin to plateau. Curves are identified by infant (first number) and sample number (second number). Phylogenetic cutoff distances for 0.03 (approximately species level) and 0.1 (approximately genus level) are shown in Panels A and B respectively. doi:10.1371/journal.pone.0027858.g002

Bacterial constituents of the ELBW infant gut-associated microbiome

In aggregate, over 95% of amplicons of the V6-8 region of the bacterial 16S rDNA coding sequences were classified at a phyla level as *Firmicutes* and *Proteobacteria*, with an additional eleven phyla being assigned at <1% abundance (Figure 3). Rare, low-abundance sequences were assigned to additional phyla not previously described in premature infants, including *TM7* and *Verrucomicrobia*. Even within the aggregated data, *Bacteroidetes* were extremely rare, suggesting that the gut of the ELBW infant does not support strictly anaerobic organisms.

Among bacteria at the level of order, 99.7% of amplicons were identified in descending order of abundance as: *Enterobacteriales*, *Bacillales*, *Lactobacillales*, *Pseudomonadales*, *Actinomycetales*, and *Pasteurellales* (Figure 3). *Clostridiales* represented the most abundant order of known anaerobes but accounted for <0.5% of the total sequences (Figure 3). We identified a total of 61 genera, of which nine genera accounted for 94.7% of amplicons (Figure 4). Fifty-two genera represented less than 1% of all amplicons and the remainder were unclassified (Figure 4). We observed that 1–2 genera predominated in most of the fecal samples. Although shifts are observed between samples, the same genera often remain predominant even between samples collected several weeks apart and while off antibiotics (Information S2).

To quantify community diversity, we calculated Shannon-Weaver indices [37] based on 16S rDNA sequences in each sample. Values ranged from 0.02 and 2.5 (distance cutoff = 0.1), with a mean of 1.02±0.69 (Figure 4), indicating a range of extremely low to moderate diversity. Among infants with multiple samples, the change in the Shannon-Weaver Indices between samples did not consistently increase (mean = 0.35±0.75), indicating that diversity was relatively static over time (Figure 4). Chao1 indices [38] ranged from 3 to 65, reflecting a range of taxonomic richness. In most individual samples, 1 to 2 genera comprised over 90% of the sequences as exemplified by Infant 6, Sample 1 (6-1). In this case, the Shannon-Weaver Index was lower than expected compared to the Chao1, reflecting the uneven bacterial population (Figure 4). Rarefaction curves of 16S rDNA sequences demonstrated adequate sampling in the majority of samples (Figure 5).

The composition of the microbiome is particularly notable in several cases of antibiotic administration and breast milk feedings. For instance, the fecal samples from Infant 1 had extremely low Shannon-Weaver and Chao1 indices 6 days after the administration of all antibiotics ended and after 11 days of breast milk feeding (Figure 4).

Notably, and in contrast to culture-based data in full-term infants, we found only 16 sequences among all of the samples

corresponding to lactic acid fermenting bacteria despite exclusive breast milk feedings (*Lactobacillus sp.* or *Bifidobacterium spp.*) (Information S2). To confirm that the U968/L1401 primer set recognized these organisms, we obtained isolates of *Bifidobacteria sp.* and *Lactobacillus spp.* de-identified from the Duke Clinical Microbiology Laboratory. Genomic DNA was isolated using the same column genomic DNA preparation as was used for the fecal samples. Using the U968/L1401 primers in PCR amplification, amplicons of the expected product were produced, confirming that our amplification strategy would be expected to be sufficient to detect these genera were they present (data not shown).

The metagenomes from 2 infant samples

To explore the viral and bacteriophage constituents of the microbiome, we used shotgun sequencing of MDA-derived total genomic DNA from 2 infants (samples 5-1 and 7-1). MDA was employed to overcome the low DNA content of the ELBW stool samples. However, this approach has known biases, including greater proficiency over low GC content, which is found in *Firmicutes*, the predominant taxa of both the samples analyzed. Also, in sample 5-1, 62% of sequences matched to a bacteriocin-like-peptide, likely a function of the random octamer primer. Due to these biases, the shotgun sequences may be best evaluated as qualitative and semi-quantitative data.

Approximately 71.5% of the shotgun-derived sequences were taxonomically assigned with E scores of $<1e10^{-5}$ ("Classified") (Table 3). The GC content in both samples was low, consistent with an abundance of gram-positive organisms, as revealed in directed 16S rDNA phylogenetic analysis (Figure 3). The average sequence length was >370 nucleotides (nt) from both samples, providing significant confidence in comparing the sequences to the SEED reference database [39]. As anticipated, sequences were primarily bacterial in origin. Among the bacterial sequences in each sample, *Firmicutes* predominated with rare *Bacteroidetes*. Sequences with a best match to Candidal species were identified. A small percentage of sequences originated from double-stranded and single-stranded DNA viruses. Single-stranded DNA virus sequences identified included bacteriophages S13, phiX174, and alpha 3. Double-stranded phage sequences included *Staphylococcus* Phage K, a *Caudovirales* species with a *Staphylococcus* host. Further analysis identified rare human adenovirus C sequences.

Discussion

Overall, an initial analysis of organisms in the intestinal microbiome of ELBW infants revealed surprising fungal diversity, evidence of nematodes, and low to moderate bacterial diversity

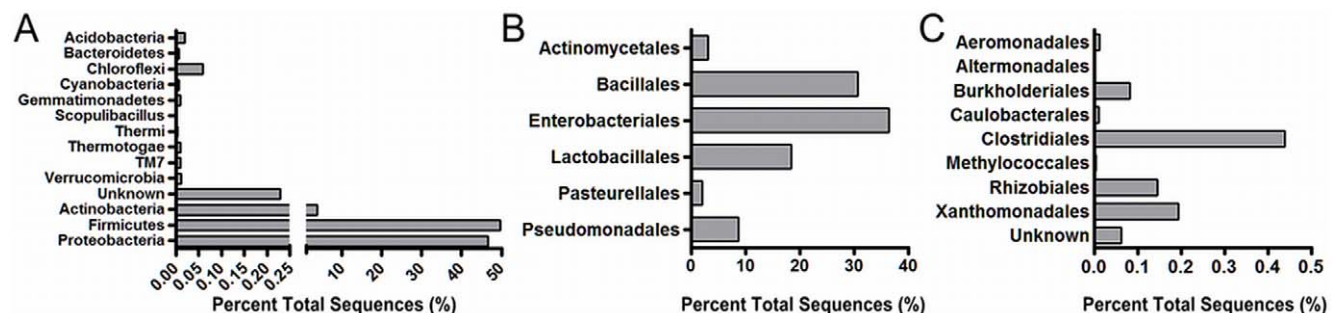


Figure 3. Bacterial phyla and orders in aggregate. Sequences from 16S rDNA were combined among all samples and analyzed in aggregate. Only taxa with greater than 50 sequences are shown. *Panel A*: Phyla-level sequence analysis. *Panel B*: Most-abundant orders (>0.5% of total sequences). *Panel C*: Low-abundance orders (<0.5% of total sequences). doi:10.1371/journal.pone.0027858.g003

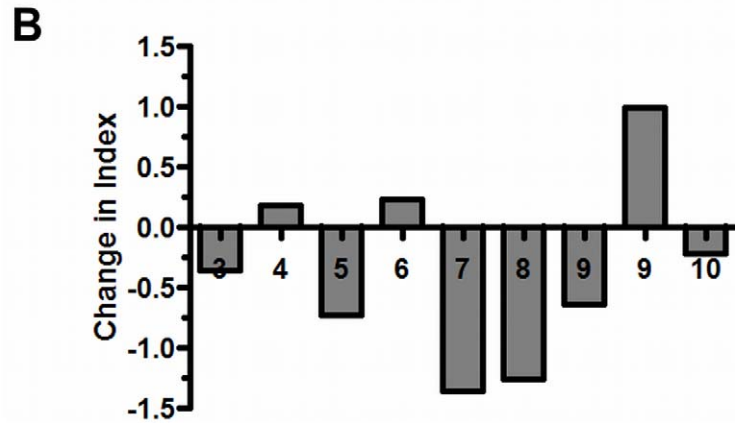
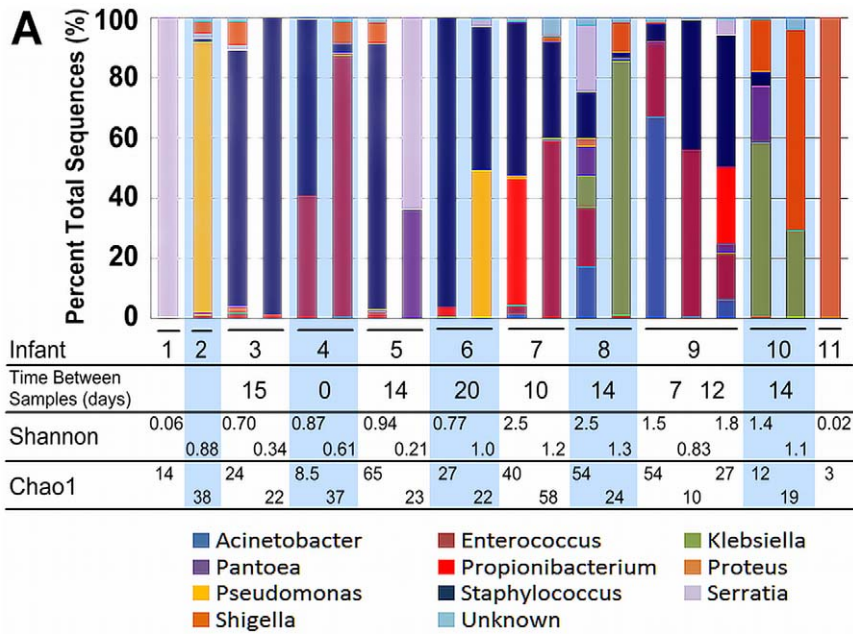


Figure 4. Bacterial genera by infant sample. *Panel A:* Percentages of the total sequences are shown for each sample. Shannon-Weaver Index (cutoff distance of 0.1) and Chao1 (cutoff distance of 0.1) are shown. *Panel B:* A graphical representation of the change in the Shannon-Weaver Index between samples per infant.
doi:10.1371/journal.pone.0027858.g004

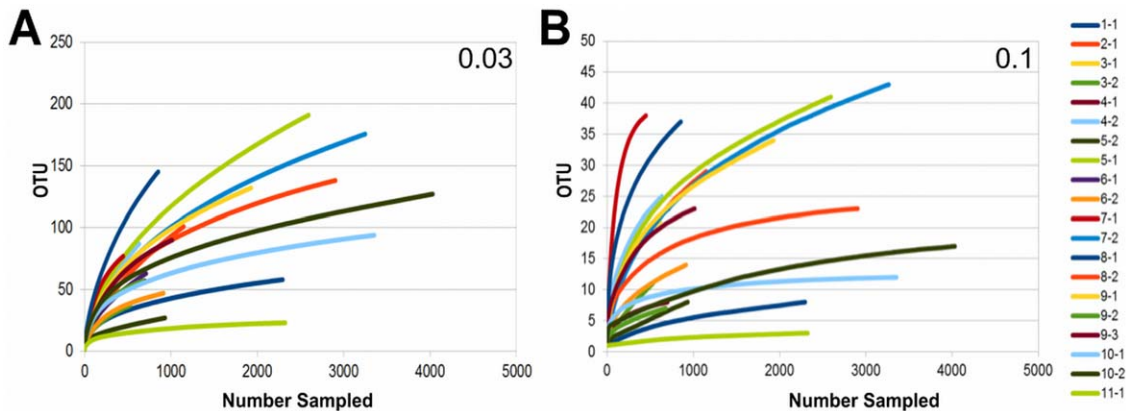


Figure 5. Rarefaction curves for 16S rDNA sequences. Curves are identified by infant (first number) and sample number (second number). Phylogenetic cutoff distances for 0.03 (approximately species level) and 0.1 (approximately genus level) are shown in Panels A and B, respectively.
doi:10.1371/journal.pone.0027858.g005

Table 3. Characteristics of sequences applied in metagenomics.

	5-1	7-2
Classified	70.32% (# 649,286)	73.08% (# 769,267)
Unclassified	29.69% (# 273,087)	26.95% (# 256,714)
GC Content (Average; range)	35% (5–70%)	25% (10–70%)
Average sequence length	370.4 nt	394.5 nt

Sequences for Infants 5 and 7 (samples 1 and 2 respectively) are shown. Classified sequences indicate the percentage and number with a phylogenetic assignment (based on the SEED database) at a score of $<1e-5$. nt = nucleotides.

doi:10.1371/journal.pone.0027858.t003

with nine genera accounting for the majority of sequences. Metagenomic analysis showed evidence of numerous bacteriophage as well as viral sequences. Examination of eukaryotic microbial sequences revealed environmental yeasts including *Candida albicans* despite universal prophylaxis with oral nystatin. Sequences closely corresponding to *Candida quercitrusa* were found, which previously has not been described in humans. In addition, sequences identified as *Trichinella*, a parasitic roundworm, were found in five infants.

Our analysis of the eukaryotic microbial constituents of the gut-associated microbiome in ELBW infants is the first of extensive depth and resolution. Due to varying abundance of fungi and parasites, ITS amplification was successful in only 7 of the 11 infants. Among the yeasts, we found DNA from pathogenic organisms typically sensitive to nystatin such as *C. albicans* as well as DNA sequences which correspond most closely to organisms with reduced susceptibility to nystatin such as *C. parapsilosis* and *C. tropicalis*. All of the infants received oral nystatin prophylaxis to decrease the risk of infection through the proposed mechanism of decontamination [40]. Although we cannot eliminate the possibility of nystatin resistant species, based on our results and culture-based data, oral nystatin may suppress *C. albicans* growth rather than eliminate the organism to prevent invasive disease [41,42].

In addition to known pathogenic yeasts, the feces of six of the seven infants had sequences corresponding to *Candida quercitrusa*. This yeast has been described in fruit crops but does not have a known commensal or pathogenic relationship to humans, including neonates [33,34]. *C. quercitrusa* has been used to control leaf blight through competitive exclusion, suggesting that the organism occupies microbial spaces at the expense of competing organisms [43]. We hypothesize that *C. quercitrusa* may be a benign yeast with unique tropism for the ELBW gut without virulence capacity, presenting an opportunity for its potential use in excluding other *Candida spp.* In order to understand the role of this organism in succession in the ELBW gut, future studies must explore *C. quercitrusa's* environmental sources, overall prevalence in the intensive care environment, and relationship with pathogenic yeasts in the gut of ELBW infants.

Surprisingly, we found that 5 of 7 infant samples contained sequences that matched within the genus *Trichinella* ($e < -150$), a parasitic roundworm, in the absence of clinical disease. Consistent with this unusual finding, sequences for the symbiont of nematodes, *Xenorhabdus spp.*, were identified in fecal genomic DNA from Infant 8 where the *Trichinella sp.* sequences were also most abundant [36]. PCR amplification would not be expected to

differentiate DNA originating from *Trichinella* eggs or worms. We can only posit that the likely sources of acquisition for *Trichinella* would be parents, breast milk or hospital personnel. These unexpected results will need to be confirmed in larger cohorts of preterm infants, healthy term infants, and the intensive care setting.

Consistent with culture-based studies, we found limited bacterial diversity in the premature gut at the end of the first postnatal month. Nine genera accounted for ~95% of all the bacterial sequences. Because the predominant organisms we and others have identified also grow well in culture, prior studies using culture and lower-resolution molecular techniques provided a reasonable estimate of the major types of bacteria in the ELBW gut at single time points [15,16,17,18]. However, true species richness and organisms at low abundance, which persist over time, can only be identified through deep sequencing. In order to understand the contribution of these less abundant bacteria in succession, infants must be sampled at defined intervals and analyzed with deep sequencing.

Using high-resolution techniques to examine the intestinal microbiome in preterm infants, limited data connects bacterial diversity with health outcomes. Wang, *et al* generated 16S rDNA clone libraries from infants with and without NEC and found lower diversity among the infants with NEC [21]. However, in our cohort, consistent with prior data from the same group, the one infant that developed medical NEC had a fecal sample collected 3 days prior, with a Shannon-Weaver Index of 2.51 above the average value of 1.02, suggesting that increased diversity, compared to peers, may not necessarily protect against NEC [20]. Our data also do not show a consistent increase in diversity over the first month of life.

When exploring the bacterial constituents using molecular techniques, previous studies found that *Proteobacteria* including *Enterobacteriaceae* and *Pseudomonas* were most abundant in prior studies of the ELBW gut-associated microbiome [19,20,21]. In our cohort, *Staphylococcus spp.* and *Enterococcus spp.* were found in 75% of samples and were abundant in aggregate. In the case of *Staphylococcus spp.*, the genus was found in 95% of samples and accounted for >25% of the sequences among 10/20 samples (from 6 different infants). Furthermore, on the genera level, *Staphylococcus* maintained a significant proportion of the bacterial constituency over repeated sampling. In their cohorts, Wang, *et al.* and Millar, *et al.* also reported infants with abundant *Staphylococcus spp.* [14,21]. However, in the Mshvildadze, *et al* study [20], the gut associated microbiome was dominated by *Streptococci sp.*, an organism that we did not find among our infants. These significant differences may reflect environmental reservoirs in the respective intensive care units, differences in enteral nutrition, or varying antibiotic usage patterns.

While lactic acid fermenting bacteria have been found by culture, these organisms have not consistently been identified in the gut-associated microbiome of preterm infants using molecular techniques. These organisms, such as *Lactobacilli* and *Bifidobacteria*, modulate gut development and inflammation in cell culture and animal models [44,45]. When used as a probiotic, they may also decrease the incidence of NEC and sepsis [46,47,48,49]. Like data from Mshvildadze, *et al.* in preterm infants and Palmer, *et al.* in full-term infants [13,20], our data failed to identify these organisms among infants, despite breast milk feedings. This is particularly notable for *Bifidobacteria* for which oligosaccharides in breast milk have been proposed to enhance their growth [50]. Thus, it is unlikely that lactic acid fermenting bacteria confer protection against invasive disease by competitive exclusion. If the goal of oligosaccharide supplementation of breast milk and formula is to

increase colonization with lactic acid fermenting bacteria, this strategy may not be effective due to the relative absence of these organisms in primary succession of the preterm infant gut [51,52].

While the gut is a known reservoir for invasive infection[9], not all infants who harbor potentially pathogenic organisms develop bacteremia. Other factors such as host immunocompetence, genetic susceptibility and severity of clinical course contribute to risk of invasive disease [53,54]. And, though some researchers have hypothesized a microbial signature for NEC, no single organism or collection of organisms has consistently been linked to its development [55]. Consistent with our data, microbial diversity in the infant gut may not protect infants against development of invasive infection. Though diversity appears low at the genera level, subspecies differences among organisms may be important. We theorize that clones with enhanced pathogenicity may evade physiologic barriers and produce invasive disease. Within a microbial community, a clone without enhanced virulence may predominate and overwhelm other members. Or a pathogenic clone may be minor player in an unhealthy environment which does not restrain its growth and invasive capacity. Thus, future work will require subspecies-level analysis with temporal-spatial tracking of microbial constituents using in-depth environmental surveys to understand the sources of acquisition of specific clones that ultimately predominate in the microbiomes of individual infants and either cause or compete against infection.

As a first step in exploring the metagenome of the premature infant, we performed shotgun sequencing of genomic DNA amplified by MDA. Phylogenetic analysis of the genomic DNA confirmed the findings of 16S rDNA sequences, a predominance of *Firmicutes* and rare *Bacteroidetes*. The identification of Candidal species using MDA and ITS amplification corroborates its presence. In addition, the data suggest the presence of bacteriophage similar to previous research [22]. Furthermore, we have identified human adenovirus in the early ELBW enteric microbiome. The contributions of phage and viruses to the overall gut ecology will be a subject of future studies.

In conclusion, our goal was to broadly explore the range of microbes forming the ELBW gut microbiota during the critical first window of development. By the end of the first postnatal month, the ELBW microbiome is moderately diverse, but a small number of organisms are disproportionately over-represented, principally bacteria, among a complex milieu of yeasts and environmental molds. The first evidence of possible exposure to a parasitic organism, *Trichinella sp.*, among ELBW infants in an intensive care unit in an industrialized nation, must be replicated in a separate cohort. Additionally, bacteriophage and viruses are present in the microbial communities that we observed. We hypothesize that these findings suggest that ELBW are subject to greater environmental exposure and acquisition of microbes than previously thought. Future studies must determine the sources of microbes that colonize the infants and elucidate how the widely variable microbiomes affect health outcomes in very premature infants, including invasive infections, necrotizing enterocolitis, growth, neurocognitive development, and immunity.

Materials and Methods

Clinical cohort

Eligible participants included ELBW infants (birth-weight <1000 g) admitted to the Duke University Intensive Care Nursery. Each ELBW infant remained in a temperature and humidity controlled isolette during the study period. As part of standard clinical procedure, all health care providers wore gloves when handling ELBW infants for the first two postnatal weeks.

Infants with congenital anomalies, predictable terminal conditions, or gastrointestinal tract anomalies were excluded from the study. After informed consent was obtained from parents, stool samples from the first postnatal month were transferred from diapers into sterile vials and stored at -80°C for processing.

Ethics Statement

The Duke Institutional Review Board approved all study protocols (Pro 00000012). Samples and clinical information were obtained after informed, written consent by the study subjects' legal guardians.

Stool genomic DNA extraction

Total stool genomic DNA was isolated using the Zymo Research Soil Microbe DNA Kit for all experiments except the metagenomic experiments that used Whatman FTA filter card technology [56]. Whatman FTA filter cards are designed for long term storage of nucleic acid at room temperature. For the Whatman FTA filter cards, stool was rolled onto one quadrant of an individual card with a sterile swab and allowed to dry overnight. Three to four 3.5-mm punches were made in the FTA cards using a hole punch pretreated with RNase Away followed by ethanol and flame sterilization of the punch device to ensure elimination of contaminating nucleic acids. The discs were soaked in 1% Triton X-100 in 1 X Tris-EDTA (TE; 10 mM Tris-HCl, 1 mM EDTA, pH 8) with 1% proteinase K for 15 minutes at 42°C . Next, the discs were placed onto a custom-designed vacuum filter unit washed three times with 1X TE made with diethylpyrocarbonate-treated water under suction. A final rinse using molecular biology-grade isopropanol was performed. The discs were dried at room temperature, and the genomic DNA was eluted from the discs into 1xTE by heating at 95°C for 5 minutes. Eluted samples were stored at -80°C until later use. Blank punches were performed in parallel for quality assurance that there was no contamination of the purification process.

Amplification of bacterial rDNA and fungal ITS

Amplification of fungal and parasitic sequences was performed using ITS3 (GCATCGATGAAGAACGCAGCnbp₃) and ITS4 [TCCTCCGCTTATTGATATGC] [57], with the addition of 454 GS-FLX Titanium Primers A and B sequences from genomic DNA in 25 μl reactions performed in triplicate. Thermocycler conditions consisted of initial denaturation at 94°C x 5 minutes, amplification with 35 cycles of 94°C x 1 minute, 50°C x 1 minute, 72°C x 1 minute. PCR was completed with a 72°C cycle for 10 minutes followed by a 4°C dwell.

Amplification of 16S rDNA bacterial sequences from genomic DNA was performed using a U968 (AACGCGAAGAACCCTTAC) and L1401 (CGGTGTGTACAAGACCC) primer set to amplify the V6-V8 region of 16S ribosomal DNA [58] Roche 454 GS FLX Titanium Primer A and B sequences and, where applicable, MID key sequences were added to the respective primers. Thermocycler conditions consisted of initial denaturation at 95°C for 3 minutes followed by 10 cycles of 95°C x 15 seconds, 62°C x 30 seconds decreasing temp 1°C every cycle, 72°C x 30 seconds followed by 25 cycles of 95°C x 10 seconds, 52°C x 30 seconds, 72°C x 30 seconds. Two independent amplification reactions were pooled for sequencing at the Duke IGSP Genome Sequencing & Analysis Facility using Roche 454 GS-FLX Titanium technology. Purified genomic DNA from *E.coli* strains UTI89 and MG1655 were used as positive controls [59,60].

Metagenomic shotgun sequencing

Using three 3.5 mm-diameter discs per sample, approximately 5–20 ng of DNA was then subjected to whole genome amplifica-

tion as follows. Genomic DNA was denatured with 200 mM HCl followed by neutralization with 200 mM Tris-HCl, pH 7.5. Trehalose was added on ice. This mixture was combined with 10 μ l of 10 \times phi29 buffer (Fermentas), 25 mM dNTP mixture, 500 μ M random octamer primer [61], Trehalose 1.5 M (final); and 1 μ L of 100 \times acetylated BSA (NEB). This mixture was incubated for 16 hours at 30°C and heated for 20 minutes at 70°C.

For all techniques described, negative controls included amplification reactions without template and eluate from empty genomic DNA isolation column preparations. Gel electrophoresis and ethidium bromide staining was used to verify the presence and absence of amplicons, plus their size and integrity. The amplicons from experimental samples were discarded if amplicons were visualized from negative control reactions.

ITS amplicon analysis

Successful amplification using ITS3/ITS4 primers from genomic DNA was achieved in seven of the eleven infants. Experiments were run in parallel. There was no cross contamination or difference in lab protocol. Primers were removed *In Silico* from all 454 amplicons. We constructed a 672,000 sequence database of ITS region 1 and 2 from NCBI. A total of 87,560 454 ITS amplicons were then BLAST-searched against this ITS database to determine sequence identity. Per sample, the average number of sequences was 4919 [range 2157–11656] with an average read length of 280 nt [range 61–381]. Only ITS sequence matches with greater than 75% identity were kept for further analysis. The highest e-value was kept for each sequence meeting the above criterion. In the event of a 454 sequence having multiple database sequence matches with the same e-value, the first match reported was used. Taxonomic assignments based on NCBI taxonomy were then compiled for graphical representation at the Phylum, Class, Order, Family, and Species level with the number occurrences tabulated. In addition, to analyze the quality of the matches, all sequences with their corresponding e-values and percent identity in the *Trichinella* genus were collected to construct frequency distribution graphs.

16S rDNA amplicon analysis

A total of 1.1×10^5 sequences between 150–450 nt were obtained from the stool samples of the eleven infants. Sequences were processed and analyzed through a pipeline entailing pyrotagger [pyrotagger.jgi-psf/org/;] [62], Mothur tools [63], and RDP Classified [64]. Pyrotagger eliminates sequences with Phred values <27, performs dereplication, and clusters non-redundant sequences using a 97% sequence identity threshold, approximately species level distance [62]. Groups of sequences from independent samples were processed using subprograms within Mothur for confirmation of taxonomic assignments as follows [63]. Sequences were trimmed of primer and mid tags while retaining only sequences with a minimum size of 150 nt, q-average of 25, and maximum homopolymer tolerance of 10.

References

1. US Department of Health and Human Services HRaSA, Maternal and Child Health Bureau (2010) Child Health USA 2010. In: Services UDoHaH, ed. Rockville, Maryland.
2. Davidoff MJ, Dias T, Damus K, Russell R, Bettgowda VR, et al. (2006) Changes in the gestational age distribution among U.S. singleton births: impact on rates of late preterm birth, 1992 to 2002. *Semin Perinatol* 30: 8–15.
3. Wilson-Costello D, Friedman H, Minich N, Fanaroff AA, Hack M (2005) Improved survival rates with increased neurodevelopmental disability for extremely low birth weight infants in the 1990 s. *Pediatrics* 115: 997–1003.
4. Stoll BJ, Hansen NI, Bell EF, Shankaran S, Laptook AR, et al. (2010) Neonatal outcomes of extremely preterm infants from the NICHD Neonatal Research Network. *Pediatrics* 126: 443–456.
5. Stoll BJ, Hansen NI, Adams-Chapman I, Fanaroff AA, Hintz SR, et al. (2004) Neurodevelopmental and growth impairment among extremely low-birth-weight infants with neonatal infection. *Jama* 292: 2357–2365.
6. Stoll BJ, Hansen N, Fanaroff AA, Wright LL, Carlo WA, et al. (2002) Changes in pathogens causing early-onset sepsis in very-low-birth-weight infants. *N Engl J Med* 347: 240–247.

Unique sequences were aligned against the greengenes reference alignment database (4,938 bacterial and archaeal sequences) followed by filtering to remove empty columns. Sequences were compared to the RDP database [64], verifying the relative proportions of sequences for the predominant organisms identified through Pyrotagger. Chimera identification and removal was performed using Uchime as implemented in Mothur. After these processing steps, the average number of sequences per sample was 1718 [range 450–4031]. Phylogenetic distances were determined using the functions dist.seqs and cluster functions in Mothur. Rarefaction curves, Shannon-Weaver Index, and Chao1 Index [38] were determined using the functions rarefaction.seqs and summary.single on the high quality sequence data pre-processed in Mothur. Cutoff distances of 0.1 and 0.03 (90% and 97%) were used as indicated for phylogenetic distances. At the genus level, E scores ranged from 1×10^{-95} to zero, providing confidence in the genera assignments.

Metagenome analysis

For analysis of the metagenome, sheared MDA-derived DNA was subjected to 454 Titanium sequencing, yielding a total of 1,948,354 sequences. The sequences were analyzed using MG-RAST and the SEED database for phylogenetic assignment of the sequences [39].

Supporting Information

Information S1 E-score and percent identity for *Trichinella pseudospiralis* and *Candida quercitrusa* sequences. Panels A, C: Histogram of E-score distribution of 454 Titanium sequences that matched *Trichinella pseudospiralis* and *Candida quercitrusa* ITS2 regions, respectively. **Panels B, D:** Percent identity frequency distribution of 454 Titanium sequences that matched *Trichinella pseudospiralis* and *Candida quercitrusa* ITS2 regions, respectively.

(DOC)

Information S2 Diagram of feeding, antimicrobial administration, infection and sampling patterns.

(DOC)

Acknowledgments

We wish to thank Huntington Willard and Greg Wray for their support of this work. Lisa Bukovnik and the staff of the IGSP Genome Sequencing & Analysis Facility were critical for the success of these studies.

Author Contributions

Conceived and designed the experiments: MSL JCE CMC RBJ PCS. Performed the experiments: MSL JCE PCS. Analyzed the data: MSL JCE CMC RG JW RBJ PCS. Contributed reagents/materials/analysis tools: MSL JCE MCM PCS. Wrote the paper: MSL JCE CMC RG JW RBJ PCS.

7. Stoll BJ, Hansen N, Fanaroff AA, Wright LL, Carlo WA, et al. (2002) Late-onset sepsis in very low birth weight neonates: the experience of the NICHD Neonatal Research Network. *Pediatrics* 110: 285–291.
8. Ehrenkranz RA, Dusick AM, Vohr BR, Wright LL, Wraga LA, et al. (2006) Growth in the neonatal intensive care unit influences neurodevelopmental and growth outcomes of extremely low birth weight infants. *Pediatrics* 117: 1253–1261.
9. Smith A, Saiman L, Zhou J, Della-Latta P, Jia H, et al. (2010) Concordance of Gastrointestinal Tract Colonization and Subsequent Bloodstream Infections With Gram-negative Bacilli in Very Low Birth Weight Infants in the Neonatal Intensive Care Unit. *Pediatr Infect Dis J* 29: 831–835.
10. Embleton NE, Pang N, Cooke RJ (2001) Postnatal malnutrition and growth retardation: an inevitable consequence of current recommendations in preterm infants? *Pediatrics* 107: 270–273.
11. Guillet R, Stoll BJ, Cotten CM, Gantz M, McDonald S, et al. (2006) Association of H2-blocker therapy and higher incidence of necrotizing enterocolitis in very low birth weight infants. *Pediatrics* 117: e137–142.
12. Cotten CM, Taylor S, Stoll B, Goldberg RN, Hansen NI, et al. (2009) Prolonged duration of initial empirical antibiotic treatment is associated with increased rates of necrotizing enterocolitis and death for extremely low birth weight infants. *Pediatrics* 123: 58–66.
13. Palmer C, Bik EM, DiGiulio DB, Relman DA, Brown PO (2007) Development of the human infant intestinal microbiota. *PLoS Biol* 5: e177.
14. Millar MR, Linton CJ, Cade A, Glancy D, Hall M, et al. (1996) Application of 16S rRNA gene PCR to study bowel flora of preterm infants with and without necrotizing enterocolitis. *J Clin Microbiol* 34: 2506–2510.
15. Schwertz A, Gruhl B, Lobnitz M, Michel P, Radke M, et al. (2003) Development of the intestinal bacterial composition in hospitalized preterm infants in comparison with breast-fed, full-term infants. *Pediatr Res* 54: 393–399.
16. Gewolb IH, Schwalbe RS, Taciak VL, Harrison TS, Panigrahi P (1999) Stool microflora in extremely low birthweight infants. *Arch Dis Child Fetal Neonatal Ed* 80: F167–173.
17. de la Cochetiere MF, Piloquet H, des Robert C, Darmaun D, Galmiche JP, et al. (2004) Early intestinal bacterial colonization and necrotizing enterocolitis in premature infants: the putative role of *Clostridium*. *Pediatr Res* 56: 366–370.
18. Favier CF, Vaughan EE, De Vos WM, Akkermans AD (2002) Molecular monitoring of succession of bacterial communities in human neonates. *Appl Environ Microbiol* 68: 219–226.
19. Magne F, Abely M, Boyer F, Morville P, Pochart P, et al. (2006) Low species diversity and high interindividual variability in faeces of preterm infants as revealed by sequences of 16S rRNA genes and PCR-temporal temperature gradient gel electrophoresis profiles. *FEMS Microbiol Ecol* 57: 128–138.
20. Mshvildadze M, Neu J, Shuster J, Theriaque D, Li N, et al. (2010) Intestinal microbial ecology in premature infants assessed with non-culture-based techniques. *J Pediatr* 156: 20–25.
21. Wang Y, Hoenig JD, Malin KJ, Qamar S, Petrof EO, et al. (2009) 16S rRNA gene-based analysis of fecal microbiota from preterm infants with and without necrotizing enterocolitis. *ISME J* 3: 944–954.
22. Morowitz MJ, Deneff VJ, Costello EK, Thomas BC, Poroyko V, et al. (2011) Strain-resolved community genomic analysis of gut microbial colonization in a premature infant. *Proc Natl Acad Sci U S A* 108: 1128–1133.
23. Ormala T, Korppi M, Katila ML, Ojanen T, Heinonen K (1992) Fungal gut colonization with *Candida* or *Pityrosporum* sp. and serum *Candida* antigen in preterm neonates with very low birth weights. *Scand J Infect Dis* 24: 781–785.
24. Sims ME, Yoo Y, You H, Salminen C, Walther FJ (1988) Prophylactic oral nystatin and fungal infections in very-low-birthweight infants. *Am J Perinatol* 5: 33–36.
25. Benjamin DK Jr., Stoll BJ, Fanaroff AA, McDonald SA, Oh W, et al. (2006) Neonatal candidiasis among extremely low birth weight infants: risk factors, mortality rates, and neurodevelopmental outcomes at 18 to 22 months. *Pediatrics* 117: 84–92.
26. Fridkin SK, Kaufman D, Edwards JR, Shetty S, Horan T (2006) Changing incidence of *Candida* bloodstream infections among NICU patients in the United States: 1995–2004. *Pediatrics* 117: 1680–1687.
27. Clark RH, Bloom BT, Spitzer AR, Gerstmann DR (2006) Reported medication use in the neonatal intensive care unit: data from a large national data set. *Pediatrics* 117: 1979–1987.
28. Cotten CM, McDonald S, Stoll B, Goldberg RN, Poole K, et al. (2006) The association of third-generation cephalosporin use and invasive candidiasis in extremely low birth-weight infants. *Pediatrics* 118: 717–722.
29. Coates EW, Karłowicz MG, Croitoru DP, Buescher ES (2005) Distinctive distribution of pathogens associated with peritonitis in neonates with focal intestinal perforation compared with necrotizing enterocolitis. *Pediatrics* 116: e241–246.
30. Cerikcioglu N, Ilki A, Bilgen H, Ozek E, Metin F, et al. (2004) The relationships between candidemia and candidal colonization and virulence factors of the colonizing strains in preterm infants. *Turk J Pediatr* 46: 245–250.
31. Parra-Herran CE, Pelaez L, Sola JE, Urbiztondo AK, Rodriguez MM (2010) Intestinal candidiasis: an uncommon cause of necrotizing enterocolitis (NEC) in neonates. *Fetal Pediatr Pathol* 29: 172–180.
32. Duarte WF, Dias DR, de Melo Pereira GV, Gervasio IM, Schwan RF (2009) Indigenous and inoculated yeast fermentation of gabiropa (*Campomanesia pubescens*) pulp for fruit wine production. *J Ind Microbiol Biotechnol* 36: 557–569.
33. Chavan P, Mane S, Kulkarni G, Shaikh S, Ghormade V, et al. (2009) Natural yeast flora of different varieties of grapes used for wine making in India. *Food Microbiol* 26: 801–808.
34. Li SS, Cheng C, Li Z, Chen JY, Yan B, et al. (2010) Yeast species associated with wine grapes in China. *Int J Food Microbiol* 138: 85–90.
35. Blouin MS (2002) Molecular prospecting for cryptic species of nematodes: mitochondrial DNA versus internal transcribed spacer. *Int J Parasitol* 32: 527–531.
36. Liu J, Berry RE, Blouin MS (2001) Identification of symbiotic bacteria (*Photorhabdus* and *Xenorhabdus*) from the entomopathogenic nematodes *Heterorhabditis marelatus* and *Steinernema oregonense* based on 16S rDNA sequence. *J Invertebr Pathol* 77: 87–91.
37. Krebs C (1989) *Ecological Methodology*. New York: Harper Collins.
38. Chao A (1984) Nonparametric estimation of the number of classes in a population. *Scand J Statist* 11: 265–270.
39. Disz T, Akhter S, Cueva D, Olson R, Overbeek R, et al. (2010) Accessing the SEED genome databases via Web services API: tools for programmers. *BMC Bioinformatics* 11: 319.
40. Ozturk MA, Gunes T, Koklu E, Cetin N, Koc N (2006) Oral nystatin prophylaxis to prevent invasive candidiasis in Neonatal Intensive Care Unit. *Mycoses* 49: 484–492.
41. Damjanovic V, Connolly CM, van Saene HK, Cooke RW, Corkill JE, et al. (1993) Selective decontamination with nystatin for control of a *Candida* outbreak in a neonatal intensive care unit. *J Hosp Infect* 24: 245–259.
42. Aydemir C, Oguz SS, Dizdar EA, Akar M, Sarikabadayi YU, et al. (2010) Randomised controlled trial of prophylactic fluconazole versus nystatin for the prevention of fungal colonisation and invasive fungal infection in very low birth weight infants. *Arch Dis Child Fetal Neonatal Ed*.
43. Chanchaichaovivata A, Ruenwongsa P, Panijpan B (2007) Screening and identification of yeast strains from fruits and vegetables: Potential for biological control of postharvest chilli anthracnose (*Colletotrichum capsici*) *Biological Control* 42: 326–335.
44. Gareau MG, Sherman PM, Walker WA (2010) Probiotics and the gut microbiota in intestinal health and disease. *Nat Rev Gastroenterol Hepatol* 7: 503–514.
45. Lutgendorff F, Akkermans LM, Soderholm JD (2008) The role of microbiota and probiotics in stress-induced gastro-intestinal damage. *Curr Mol Med* 8: 282–298.
46. Lin HC, Hsu CH, Chen HL, Chung MY, Hsu JF, et al. (2008) Oral probiotics prevent necrotizing enterocolitis in very low birth weight preterm infants: a multicenter, randomized, controlled trial. *Pediatrics* 122: 693–700.
47. Caplan MS (2009) Probiotic and prebiotic supplementation for the prevention of neonatal necrotizing enterocolitis. *J Perinatol* 29 Suppl 2: S2–6.
48. Braga TD, da Silva GA, de Lira PI, de Carvalho Lima M (2011) Efficacy of *Bifidobacterium breve* and *Lactobacillus casei* oral supplementation on necrotizing enterocolitis in very-low-birth-weight preterm infants: a double-blind, randomized, controlled trial. *Am J Clin Nutr* 93: 81–86.
49. Guthmann F, Kluthe C, Buhner C (2010) Probiotics for prevention of necrotizing enterocolitis: an updated meta-analysis. *Klin Padiatr* 222: 284–290.
50. Sela DA, Chapman J, Adeuya A, Kim JH, Chen F, et al. (2008) The genome sequence of *Bifidobacterium longum* subsp. infantis reveals adaptations for milk utilization within the infant microbiome. *Proc Natl Acad Sci U S A* 105: 18964–18969.
51. Ben XM, Zhou XY, Zhao WH, Yu WL, Pan W, et al. (2004) Supplementation of milk formula with galacto-oligosaccharides improves intestinal micro-flora and fermentation in term infants. *Chin Med J (Engl)* 117: 927–931.
52. Westerbeek EA, van den Berg A, Laféber HN, Fetter WP, van Elburg RM (2010) The effect of enteral supplementation of a prebiotic mixture of non-human milk galacto-, fructo- and acidic oligosaccharides on intestinal permeability in preterm infants. *Br J Nutr* pp 1–7.
53. Ramet M, Korppi M, Hallman M (2011) Pattern recognition receptors and genetic risk for rsv infection: value for clinical decision-making? *Pediatr Pulmonol* 46: 101–110.
54. Abu-Maziad A, Schaa K, Bell EF, Dagle JM, Cooper M, et al. (2010) Role of polymorphic variants as genetic modulators of infection in neonatal sepsis. *Pediatr Res* 68: 323–329.
55. Neu J, Walker WA (2011) Necrotizing enterocolitis. *N Engl J Med* 364: 255–264.
56. Nechvatal JM, Ram JL, Basson MD, Namprachan P, Nicc SR, et al. (2008) Fecal collection, ambient preservation, and DNA extraction for PCR amplification of bacterial and human markers from human feces. *J Microbiol Methods* 72: 124–132.
57. White TJ BT, Lee S, Taylor JW (1990) Amplification and direct sequencing of fungal ribosomal RNA genes for phylogenetics. In: Innis MA GD, Sninsky JJ, White TJ, eds. *PCR Protocols: A guide to methods and applications*. New York City: Academic Press, Inc. pp 315–322.
58. Huys G, Vanhoutte T, Joossens M, Mahieux AS, De Brandt E, et al. (2008) Coamplification of eukaryotic DNA with 16S rRNA gene-based PCR primers: possible consequences for population fingerprinting of complex microbial communities. *Curr Microbiol* 56: 553–557.
59. Mulvey MA, Lopez-Boado YS, Wilson CL, Roth R, Parks WC, et al. (1998) Induction and evasion of host defenses by type 1-piliated uropathogenic *Escherichia coli*. *Science* 282: 1494–1497.

60. Blattner FR, Plunkett G III, Bloch CA, Perna NT, Burland V, et al. (1997) The complete genome sequence of *Escherichia coli* K-12. *Science* 277: 1453–1462.
61. Pan X, Urban AE, Palejev D, Schulz V, Grubert F, et al. (2008) A procedure for highly specific, sensitive, and unbiased whole-genome amplification. *Proc Natl Acad Sci U S A* 105: 15499–15504.
62. Kunin V HP (2010) PyroTagger: A fast, accurate pipeline for analysis of rRNA amplicon pyrosequence data. *The Open Journal Article* 1.
63. Schloss PD, Westcott SL, Ryabin T, Hall JR, Hartmann M, et al. (2009) Introducing mothur: open-source, platform-independent, community-supported software for describing and comparing microbial communities. *Appl Environ Microbiol* 75: 7537–7541.
64. Cole JR, Chai B, Marsh TL, Farris RJ, Wang Q, et al. (2003) The Ribosomal Database Project (RDP-II): previewing a new autoaligner that allows regular updates and the new prokaryotic taxonomy. *Nucleic Acids Res* 31: 442–443.