

# Beyond Endometriosis Genome-Wide Association Study: From Genomics to Phenomics to the Patient

Krina T. Zondervan, DPhil<sup>1,2</sup> Nilufer Rahmioglu, PhD<sup>2</sup> Andrew P. Morris, PhD<sup>2,3</sup> Dale R. Nyholt, PhD<sup>4</sup>  
Grant W. Montgomery, PhD<sup>5</sup> Christian M. Becker, MD<sup>1</sup> Stacey A. Missmer, ScD<sup>6,7,8</sup>

<sup>1</sup>Nuffield Department of Obstetrics and Gynaecology, Endometriosis Care Centre, University of Oxford, Oxford, United Kingdom

<sup>2</sup>Wellcome Trust Centre for Human Genetics, University of Oxford, Oxford, United Kingdom

<sup>3</sup>Department of Biostatistics, University of Liverpool, Liverpool, United Kingdom

<sup>4</sup>Institute of Health and Biomedical Innovation, Queensland University of Technology, Brisbane, Australia

<sup>5</sup>QIMR Berghofer Medical Research Institute, Brisbane, Australia

<sup>6</sup>Department of Epidemiology, Harvard T.H. Chan School of Public Health, Boston, Massachusetts

<sup>7</sup>Channing Division of Network Medicine, Department of Medicine, Brigham and Women's Hospital, Harvard Medical School, Boston, Massachusetts

<sup>8</sup>Department of Obstetrics, Gynecology and Reproductive Biology, Brigham and Women's Hospital, Harvard Medical School, Boston, Massachusetts

Address for correspondence Krina T. Zondervan, DPhil, Nuffield Department of Obstetrics and Gynaecology, University of Oxford, Level 3, Women's Centre, John Radcliffe Hospital, Oxford OX3 9DU, United Kingdom (e-mail: krina.zondervan@obs-gyn.ox.ac.uk).

Semin Reprod Med 2016;34:242–254

## Abstract

Endometriosis is a heritable, complex chronic inflammatory disease, for which much of the causal pathogenic mechanism remains unknown. Genome-wide association studies (GWAS) to date have identified 12 single nucleotide polymorphisms at 10 independent genetic loci associated with endometriosis. Most of these were more strongly associated with revised American Fertility Society stage III/IV, rather than stage I/II. The loci are almost all located in intergenic regions that are known to play a role in the regulation of expression of target genes yet to be identified. To identify the target genes and pathways perturbed by the implicated variants, studies are required involving functional genomic annotation of the surrounding chromosomal regions, in terms of transcription factor binding, epigenetic modification (e.g., DNA methylation and histone modification) sites, as well as their correlation with RNA transcription. These studies need to be conducted in tissue types relevant to endometriosis—in particular, endometrium. In addition, to allow biologically and clinically relevant interpretation of molecular profiling data, they need to be combined and correlated with detailed, systematically collected phenotypic information (surgical and clinical). The WERF Endometriosis Phenome and Biobanking Harmonisation Project is a global standardization initiative that has produced consensus data and sample collection protocols for endometriosis research. These now pave the way for collaborative studies integrating phenomic with genomic data, to identify informative subtypes of endometriosis that will enhance understanding of the pathogenic mechanisms of the disease and discovery of novel, targeted treatments.

## Keywords

- ▶ endometriosis
- ▶ genes
- ▶ genome-wide association study
- ▶ epigenetic
- ▶ phenotype
- ▶ EPHeCT

Endometriosis is a chronic inflammatory condition affecting an estimated 176 million women worldwide in their reproductive years,<sup>1</sup> associated with pelvic pain (dysmenorrhea, dyspareunia, and chronic pelvic pain) as well as reduced fertility.<sup>2</sup> It is characterized by the presence of tissue resembling endometrium outside the uterine cavity. This is present mainly on pelvic surfaces such as the ovaries, uterosacral ligaments, peritoneal surface, and in deeper tissue such as the rectovaginal septum or the bladder. Definitive diagnosis can only be established through surgical (laparoscopic) visualization of the lesions ideally with histological verification,<sup>3</sup> resulting in reported average diagnostic delays worldwide of 7 to 10 years from onset of symptoms.<sup>4</sup> The disease is most commonly staged using the revised American Fertility Society (rAFS)/American Society for Reproductive Medicine (ASRM) stages I to IV classification,<sup>5,6</sup> based on lesion number and size, presence of adhesions, and ovarian versus peritoneal involvement. Higher stages are assigned with the occurrence of ovarian cysts and adhesions, but do not correlate well with pain severity.<sup>7</sup> Current treatment options are limited to surgical removal (often repeated) of lesions and/or hormone medication with considerable side effects.<sup>2</sup>

The exact prevalence of endometriosis in the population is unknown, because of the need for a surgical diagnosis, but it is estimated to affect approximately 5 to 10% of women during the reproductive years<sup>8</sup>; the prevalence increases to 35 to 50% in women having a laparoscopy for endometriosis-associated symptoms of pelvic pain and subfertility.<sup>9</sup> The condition has substantial long-term impact on the quality of life of sufferers and their families, affecting general wellbeing, daily life, and work productivity.<sup>4</sup> It also carries a substantial economic burden, with direct and indirect costs combined estimated at €9,500/woman/year, and treatment costs similar to those of type II diabetes and rheumatoid arthritis.<sup>10</sup> Therefore, endometriosis is an area of major unmet personal, clinical, and societal need, for which novel treatments and methods of noninvasive diagnosis urgently need to be identified.

The path to providing new therapeutic options that benefit patients lies in improved understanding of the fundamental pathogenic processes underlying endometriosis. Although advances have been made in the past decade shedding more light on mechanisms that are likely to promote the maintenance and growth of lesions, the actual *causes* remain largely unclear. The most widely accepted origin of peritoneal lesions is through *retrograde menstruation*, in which menstrual debris containing viable endometrial cells enter the pelvic cavity via the Fallopian tubes.<sup>11</sup> This hypothesis is supported by prospective epidemiological studies showing that increased “exposure to menstruation” (e.g., early age at menarche, increased menstrual flow, shorter cycle length)<sup>12</sup> increases disease risk. As retrograde menstruation is common,<sup>13</sup> research has focused on providing explanations for the selective adherence of endometrial cells and progressive growth into lesions, including the potential role of endometrial aberrations in women with endometriosis, altered peritoneal environment, impaired immune surveillance, and increased angiogenic capacity.<sup>2,14</sup> Certainly, inflammatory and immune responses, angiogenesis, and apoptosis are

altered in affected women favoring the survival and maintenance of endometriotic tissue.<sup>15</sup> In particular, lesions produce estradiol, in a feedback cycle that favors the overexpression of P450 aromatase and decreases the expression of 17 $\beta$ -HSD2, while failing to respond to progesterone (“progesterone resistance”) required to counteract estradiol effects.<sup>15</sup> This mechanism is considered one key process through which lesion maintenance and growth may be promoted in endometriosis, but, crucially, it is not known whether these processes are a necessary cause, or rather an effect of the disease process.

One method to improve understanding of complex disease pathogenesis is through the identification of genetic factors (DNA sequence variants) underlying disease risk. As germline (inherited) genetic variants in DNA are not subject to environmental influences, or a result of the disease process, a significant association between a variant and disease implies a role in its pathophysiology—provided the study is well designed and there are no systematic biases in genetic profiles between cases and controls.<sup>16</sup> The involvement of genetic factors in the development of endometriosis is supported by numerous studies,<sup>17–20</sup> and its heritability (the proportion of variability in disease risk in the population due to genetic factors) is estimated at 47 to 52%.<sup>18,21</sup>

The first types of study design to unravel genetic factors underlying disease were so-called “linkage” studies in families containing multiple affected members. Linkage studies considered the statistical evidence of sharing of chromosomal regions between multiple cases within a family and between families. They assume that most of the disease risk in a family is attributable to the same genetic variant(s) shared by cases, and that other affected families have disease-causing variants in the same gene (“monogenic disease”). Linkage studies were extremely successful in the 1980s/1990s to uncover single rare variants responsible for monogenic diseases (e.g., cystic fibrosis,<sup>22</sup> Huntington disease<sup>23</sup>); however, they proved to be problematic in elucidating the genetic basis for complex diseases because of their multifactorial origin (multiple cases in the same and between families may not have the same underlying etiology of disease). Although significant linkage to chromosomes 10 and 7 was observed for endometriosis, the (likely rare) variants responsible for these linkages remain to be identified.<sup>24,25</sup> Subsequently, candidate gene association studies based on biological hypotheses became commonplace to identify specific DNA variants associated with disease. Indeed, in endometriosis, hundreds such studies have been conducted but due to inherent issues in study design (e.g., validity of the biological hypothesis; few variants tested per gene; varying case definitions; small sample sizes), very few of their results have been replicated.<sup>19,20</sup>

Given the disappointments with linkage and candidate gene association studies in complex disease, enthusiasm then grew for genome-wide association studies (GWAS). GWAS are hypothesis-free and test genetic variants across the entire genome for association with a disease or trait. From the year 2000 onward, several major parallel developments paved the way for GWAS to become feasible: (1) the sequencing of the human genome (the Human Genome Project<sup>26</sup>);

(2) the discovery of common single base-pair variants that are highly abundant across the genome (single nucleotide polymorphisms [SNPs])<sup>27</sup> and that can be used for genome-wide association testing; and (3) the development of technology to genotype these SNPs at large scale and ever decreasing cost. Subsequent developments included the International HapMap project<sup>28</sup> and recently, the 1000 Genomes Project<sup>29</sup> that provided data on the correlation between SNPs in close proximity to each other (linkage disequilibrium [LD]) in different ethnic populations, thus allowing the statistical inference (“imputation”) of most of the known common SNPs in the human genome based on genotyping of only a few 100K SNPs. In addition, statistical methods and guidelines were developed for the appropriate analysis of GWAS, which arise from a large multiple-testing issue that could lead to many false-positive results. After quite some debate, a general genome-wide significance threshold per SNP of a  $p$ -value of less than  $5 \times 10^{-8}$  was generally accepted by journals to indicate a statistically robust association.

Early GWAS findings were from analyses performed in individual and/or relatively small datasets (e.g., ~2,000 cases vs. 2,000 controls),<sup>30</sup> and were therefore required to be supplemented by evidence of replication in independent datasets. However, the high statistical significance threshold coupled with the current practice of meta-analysis of multiple large independent GWAS datasets makes the possibility of a false-positive association signal being produced by random sampling variation extremely low. Furthermore, studies have shown that joint analysis of GWAS is more powerful than two-stage (discovery and replication) GWAS designs.<sup>31</sup>

These developments led to wide-scale adoption of GWAS for the investigation of common genetic variants underlying complex disease. Indeed, since the first study in 2005, GWAS have been successful in identifying thousands of common DNA sequence variants associated with hundreds of human diseases and traits.<sup>32</sup> Given the considerable uncertainty about the causes of endometriosis, and its substantial heritability, GWAS also have provided a promising approach in improving the understanding of the genetic contribution to the disease.

## Genome-Wide Association Study in Endometriosis

### Overview of Studies to Date

Five GWAS analyses have been published for endometriosis, comprising four independent datasets—one on women of Japanese ancestry and three on women of European ancestry.<sup>33</sup> The first, smallest, GWAS published in 2010 including 696 cases and 825 controls yielded no genome-wide significant associations.<sup>34</sup> This was quickly followed in the same year by Uno et al,<sup>35</sup> including 1,907 Japanese cases and 5,292 controls from Biobank Japan (BBJ). They reported one genome-wide significant association in *CDKN2B-AS1* ( $p = 5.57 \times 10^{-12}$ ; odds ratio [OR] = 1.44; 95% confidence interval [CI]: 1.30–1.59) and two suggestive associations (rs13271465 in an intergenic region on chromosome 8,  $p = 9.84 \times 10^{-6}$

and rs16826658 16.6 kb away from wingless-type MMTV integration site family member 4 [*WNT4*],  $p = 1.66 \times 10^{-6}$ ).

In 2011, the International Endogene Consortium (IEC) published the first GWAS in women of European ancestry (3,194 cases and 7,060 controls, with replication in 2,392 cases and 2,271 controls).<sup>36</sup> They observed one genome-wide significant locus, in an intergenic region on chromosome 7 (rs12700667;  $p = 1.4 \times 10^{-9}$ ; OR = 1.20; 95% CI: 1.13–1.32), and meta-analyzing their results for *WNT4* with those reported by Uno et al<sup>35</sup> reported genome-wide significant association also for this locus (rs7521902;  $p = 4.2 \times 10^{-8}$ ; OR = 1.19; 95% CI: 1.12–1.27). A subsequent collaborative genome-wide meta-analysis<sup>37</sup> of the IEC and BBJ datasets in 2012 identified seven genome-wide significant loci, confirming 7p15.2, *WNT4*, and *CDKN2B-AS1* while finding four new loci in *GREB1* at 2p25.1 (rs13394619;  $p = 6.1 \times 10^{-8}$ ; OR = 1.15; 95% CI: 1.09–1.20), near *VEZT* at 12q22 (rs10859871;  $p = 5.5 \times 10^{-9}$ ; OR = 1.20; 95% CI: 1.14–1.26), near *ID4* (rs7739264;  $p = 3.6 \times 10^{-10}$ ; OR = 1.17; 95% CI: 1.11–1.23), and rs4141819 in an intergenic region on 2p14 ( $p = 8.5 \times 10^{-8}$ ; OR = 1.15; 95% CI: 1.09–1.21). A recent further analysis of these datasets using 1,000 genomes imputation of genotypes<sup>38</sup> additionally identified *IL1A* (OR: 1.21; 95% CI = 1.13–1.29;  $p = 3.43 \times 10^{-8}$ ). The fourth GWAS, in women of European ancestry (2,019 cases and 14,471 controls), was published in 2013, confirming *WNT4* and reporting a new intergenic locus on 2q23.3 ( $p = 4.7 \times 10^{-8}$ ; OR: 1.20; 95% CI: 1.13–1.29).<sup>39</sup>

Meta-analysis<sup>33</sup> of the reported loci across all four independent GWAS and four replication datasets, totaling > 11,000 cases and > 30,000 controls, confirmed consistency of effects across datasets and populations for six of the reported loci (rs12700667 on 7p15.2, rs7521902 near *WNT4*, rs10859871 near *VEZT*, rs1537377 near *CDKN2B-AS1*, rs7739264 near *ID4*, rs13394619 in *GREB1*), with an additional two (rs1250248 in fibronectin 1 [FN1] and rs4141819 on 2p14) showing evidence close to the genome-wide significance threshold of  $p < 5 \times 10^{-8}$ . Details of all the loci and evidence of association are provided in ►Table 1.

### Insight into Disease Origin Heterogeneity

GWAS have to be large in sample size (typically > 2,000 cases) to detect, with genome-wide significance, the modest effect sizes that common genetic variants exert in complex disease.<sup>40</sup> Most case datasets are therefore collected retrospectively and often lack detailed phenotypic information. Of the endometriosis GWAS conducted to date, two studies<sup>36,39</sup> involving three datasets included surgically confirmed cases (IEC QIMR; IEC Oxford; Utah). In the IEC datasets, retrospective evaluation of records only allowed broad classification into stage B (rAFS stage III/IV defined by large lesion volume and/or large ovarian disease with many adhesions) and stage A (stage I/II defined by small lesion volume and allowing for only small ovarian disease with a few adhesions). The IEC used various statistical methods to show that stage B disease is more “genetically driven” than stage A: the relative contributions of common genetic variation assayed in the GWAS to stage B versus stage A disease were 31 versus 15%,

**Table 1** Overview of all 10 genetic loci (12 SNPs) associated with endometriosis in GWAS to date, ranked by meta-analysis association *p*-value including all endometriosis cases

SNP ID	Location (chr bp) <sup>a</sup>	Genomic annotation <sup>b</sup>	Nearest gene (kb distance)	Meta-analysis <i>p</i> -value all endo (stage III/IV) <sup>c</sup>	All endometriosis		Stage III/IV endometriosis	
					OR (95% CI)	Sample size (cases:controls)	OR (95% CI)	Sample size (cases:controls)
rs7521902	1:22,490,474	Intergenic	WNT4 (21)	$1.8 \times 10^{-15}$ ( $1.8 \times 10^{-10}$ )	1.18 (1.13–1.23)	9,114:30,407	1.25 (1.16–1.33)	2,432:24,241
rs10859871	12:95,711,626	Intergenic; regulatory region variant	VEZT (17)	$4.8 \times 10^{-15}$ ( $6.8 \times 10^{-7}$ )	1.18 (1.13–1.22)	7,680:26,866	1.19 (1.11–1.27)	2,212:21,531
rs7739264	6:19,785,338	Intergenic; noncoding transcript variant	ID4 (52)	$6.2 \times 10^{-10}$ ( $1.2 \times 10^{-8}$ )	1.11 (1.08–1.15)	10,072:29,137	1.20 (1.13–1.28)	2,212:21,531
rs12700667	7:25,901,389	Intergenic	NFE2L3 (290/331)	$1.6 \times 10^{-9}$ ( $3.6 \times 10^{-8}$ )	1.13 (1.08–1.17)	11,506:32,678	1.22 (1.14–1.31)	2,432:24,241
rs7798431	7:25,860,562							
rs1537377	9:22,169,450	Intergenic	CDKN2BAS1 (48/4)	$1.0 \times 10^{-8}$ ( $2.3 \times 10^{-7}$ )	1.12 (1.08–1.17)	7,680:26,866	1.18 (1.11–1.26)	2,212:21,531
rs1333049	9:22,125,253							
rs13394619	2:11,727,257	Intronic splice variant	GREB1 (0)	$2.9 \times 10^{-8}$ ( $2.1 \times 10^{-3}$ )	1.13 (1.07–1.20)	8,376:27,691	1.18 (1.11–1.24)	2,212:21,531
rs6542095	2:113,529,183	Downstream gene variant	IL1A (2.3)	$3.6 \times 10^{-7}$ ( $3.4 \times 10^{-8}$ )	1.15 (1.09–1.22)	5,300:10,218	1.21 (1.13–1.29)	1,357:10,218
rs4141819	2:67,864,425	Intergenic; noncoding transcript variant	ETAA1 (227)	$8.8 \times 10^{-6}$ ( $9.2 \times 10^{-8}$ )	1.08 (1.04–1.12)	7,680:26,866	1.16 (1.09–1.24)	2,212:21,531
rs1250248	2:216,286,843	Intronic	FN1 (0)	$1.1 \times 10^{-4}$ ( $8.0 \times 10^{-8}$ )	1.11 (1.04–1.18)	8,443:14,190	1.26 (1.16–1.38)	1,584:9,770
rs6734792	2:151,624,632	Intergenic	RND3 (281)	$2.2 \times 10^{-6}$ ( $2.7 \times 10^{-5}$ )	1.10 (1.06–1.16)	6,636:22,849	1.10 (1.05–1.15)	2,212:21,531

Abbreviations: CI, confidence interval; OR, odds ratio.

<sup>a</sup>Human Genome Build 38.

<sup>b</sup>Annotation according to Ensembl genome browser: [www.ensembl.org](http://www.ensembl.org) and UCSC genome browser: <https://genome.ucsc.edu/>.

<sup>c</sup>Meta-analysis *p*-value is from Rahmioglu et al.<sup>33</sup> For rs4141819, rs1250248, and rs6542095, the meta-analysis *p*-values including only stage III/IV cases is given in parenthesis, which reach borderline significance.

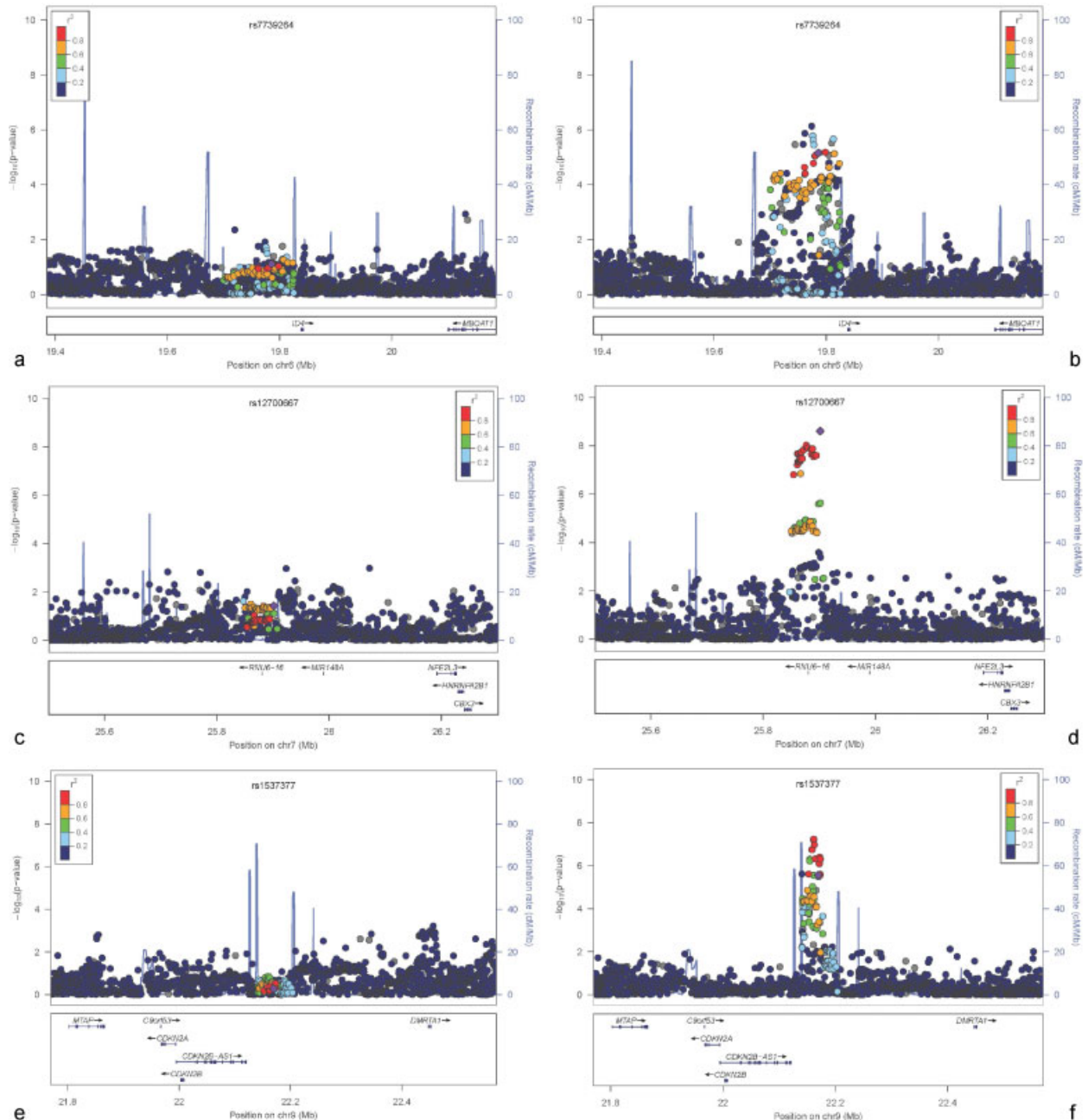
respectively,<sup>36</sup> results that were supported by subsequent analyses.<sup>41</sup> The genetic distinction between origins of stage A versus stage B became further apparent when considering the association at individual genetic loci (► Fig. 1).

Unfortunately, no other phenotypic information was collected in the individual case datasets, hampering further dissection of genetic heterogeneity between the surgically defined stages. Whether these differences can be attributed to the pathogenesis of ovarian disease or adhesion development cannot be determined. Furthermore, this rAFS stage-

based dichotomization does not provide insight into genetic heterogeneity by different surgically or symptomatically defined case definitions.

**Insights into Biology**

Of the 12 “index” SNPs (defined as the SNP with the lowest *p*-value at a GWAS locus) that have been associated with endometriosis, only two are located within genes, in introns, while the remaining are intergenic at varying distances from known genes (► Table 1). Because of this, it has been difficult



**Fig. 1** Regional ‘locuszoom’ chromosomal plots showing contrasting evidence of association for individual SNPs with stage A (left column; 1,686 cases) vs. stage B (right column; 1,364 cases) endometriosis vs. 7,060 controls. Data were from the International Endogene Consortium GWAS dataset<sup>36</sup> after imputation to the 1000 Genomes panel version 3. Each data point signifies a variant (SNP), and SNPs are colour coded according to their correlation (*r*<sup>2</sup>) with the top associated genotyped SNP (purple diamond) from meta-analysis (Table 1). The x-axis shows the genomic location, relative to gene locations. The y-axis shows the significance of association ( $-\log_{10}$  of *p*-value).

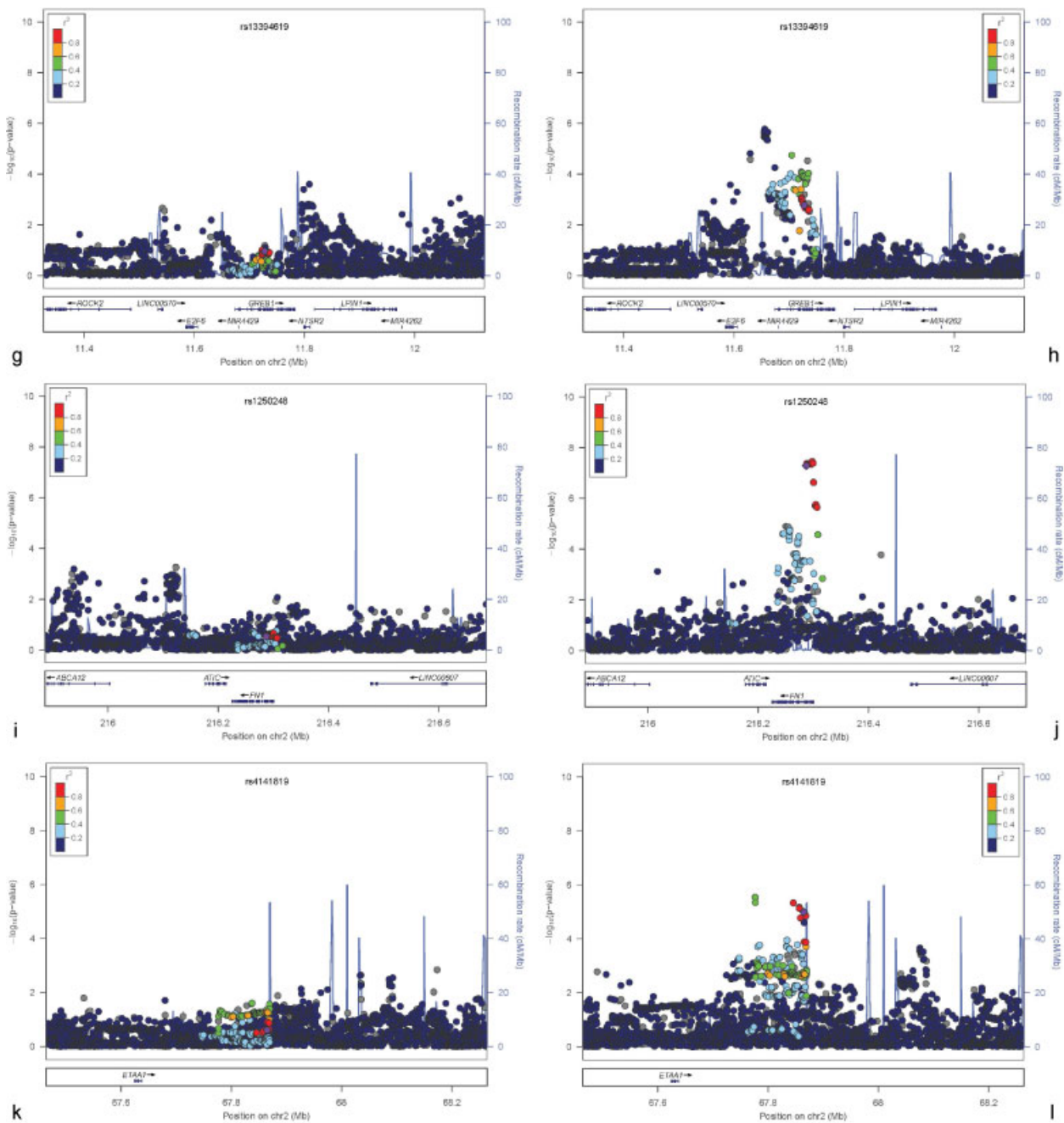


Fig. 1 (Continued)

to highlight specific causal molecular mechanisms through which endometriosis-associated variants impact on disease, and the genes through which their effects are mediated. For a more detailed review of the biology implicated by these loci, refer to the study by Rahmioglu et al.<sup>33</sup>

Genetic variants in the identified loci are likely to have roles in regulation of expression of near or distantly located genes. Genomic annotation provided by the Encyclopedia of DNA Elements (ENCODE) project<sup>42</sup> on a wide variety of cell types and tissues is useful to investigate the putative regulatory function of these variants. ENCODE is an international collaboration of research groups funded by the National Human Genome Research Institute (United States) to build

a comprehensive list of functional elements in the human genome, including elements that act at the protein and RNA levels, and regulatory elements that control cells and circumstances in which a gene is active (<https://www.encodeproject.org/>). Regulatory elements are typically investigated through DNA hypersensitivity assays, assays of DNA methylation, and immunoprecipitation of proteins that interact with DNA and RNA, that is, modified histones, transcription factors, chromatin regulators, and RNA-binding proteins, followed by sequencing. Though information on endometrial tissue and cells is very limited, a major limitation for endometriosis research, many of the genomic annotation features are shared across different cell and tissue types.

The following genomic loci have been associated with endometriosis in GWAS:

Rs13394619 is an intronic splice variant (affecting the formation of different transcripts) in *GREB1* (growth regulation by estrogen in breast cancer 1). *GREB1* encodes for an early response gene involved in estrogen-induced growth of breast cancer cells.<sup>43</sup> Its role in estrogen-induced endometrium proliferation remains to be uncovered.

Rs1250248 is located in an intron of *FN1*, which is a transcription factor-binding site (ENCODE). *FN1* mediates various cellular interactions with the extracellular matrix and has important roles in cell adhesion, migration, growth, and differentiation.<sup>44</sup> It has been shown that *SOX2*, a transcription factor that targets *FN1*, is involved in mediating cell migration in ovarian cancer.<sup>45</sup>

Rs7521902 is an intergenic variant that is located 21 kb downstream of *WNT4*. *WNT4* encodes for a protein imperative for development of the female reproductive tract.<sup>46</sup> Moreover, *WNT4* is shown to be expressed in normal peritoneum, suggesting that endometriosis can arise through metaplasia using developmental pathways involved in development of the female reproductive tract.<sup>47</sup>

Rs7739264 is an intergenic variant located 52 kb downstream of *ID4* (inhibitor of DNA binding 4). *ID4* is an oncogene that is overexpressed in most primary ovarian cancers but not in normal ovary and fallopian tubes. Moreover, it has been shown to be overexpressed in most ovarian, endometrial, and breast cancer cell lines.<sup>48</sup> *ID4* can potentially regulate *HOXA9* and *CDKN1A* genes, which are mediators of cell proliferation and differentiation. More specifically, *HOXA* genes are involved in differentiation of fallopian tubes, uterus, cervix, and vagina.<sup>49</sup>

Rrs1537377 and rs1333049 are intergenic variants located 48 kb and 4 kb upstream of cyclin-dependent kinase inhibitor 2B antisense RNA (*CDKN2B-AS1*). *CDKN2B-AS1* has been shown to mediate tumor suppressor genes, namely, *CDKN2B*, *CDKN2A*, and *ARF* expression.<sup>50–52</sup> Inactivation of *CDKN2A* has been previously reported in endometriosis, adenomyosis, endometrial cancer through loss of heterozygosity or hypermethylation of its promoter.<sup>53–55</sup>

Rs10859871 is an intergenic variant, located in a regulatory region (DNase hypersensitivity cluster present in 71/125 cell types, ENCODE), 17 kb upstream of vezatin (*VEZT*). *VEZT* encodes an adherens junction transmembrane protein. It is also a putative tumor suppressor gene<sup>56</sup> that targets cell migration, cell adhesion genes, and *TCF19*, a cell cycle progression gene which has been associated with lymphocyte count, mean cell hemoglobin, white blood cell count, hematocrit count, and eosinophil count.<sup>57</sup> The collective evidence suggests *VEZT* can have a role in maintaining immunological balance through regulation of *TCF19*.

Rs6542095 is a downstream region variant located 2.3 kb of *IL1A*. *IL1A* (interleukin 1A) encodes for a member of the interleukin I cytokine family that is involved in proinflammatory immune processes and hematopoiesis. This protein may have a role in the inflammatory component of endometriosis that has been suggested by co-occurrence of autoimmune disease<sup>58,59</sup> and endometriosis as well as success of

anti-inflammatory drugs on relieving endometriosis-related pelvic pain.<sup>60</sup>

The remaining four variants are in three independent intergenic regions that have no genes within 200 kb.

Rs12700667 is an intergenic variant in chromosome 7p15.2, and located in histone modification (acetylation and methylation) marks H3K27ac and H3K4me1 (ENCODE). The region contains multiple potentially relevant genes including (1) a transcription factor called *NFE2L3* (nuclear factor erythroid derived 2-like 3) that regulates cell differentiation, inflammation, and carcinogenesis<sup>61</sup>; (2) a microRNA, miRNA\_148a which is involved in regulation of Wnt/ $\beta$ -catenin signaling pathway<sup>62</sup> that has a documented role in communication of epithelial and stromal cells of the endometrium,<sup>63</sup> in infertility associated with endometriosis through sex hormone regulation,<sup>64,65</sup> fibrogenesis,<sup>66</sup> and adipogenesis<sup>62</sup>; and (3) two members of a transcription factors family called homeobox A, *HOXA10* and *HOXA11*, that have a role in uterine development.<sup>67,68</sup>

The intergenic signal on 2p14 is 227 kb away from *ETAA1* (Ewing tumor-associated antigen 1) gene, which encodes for a Ewing family tumor-specific cell surface antigen.<sup>69</sup> Likely more relevant is that this variant sits in a 188 kb long noncoding RNA called, *AC007422.1*, the function of which remains unknown.

The intergenic signal on 2q23.3 is located 280 kb upstream of *RND3* (rho family GTPase 3) gene, encoding a member of Rho family of small guanosine triphosphate-binding proteins that is involved in regulating actin cytoskeleton and stress fiber formation. It is also a regulator of cell cycle progression, transformation, and cell migration.<sup>70,71</sup>

We considered the magnitude of the *p*-value testing association for each of these loci with stage A versus stage B endometriosis in the IEC GWAS,<sup>36</sup> imputed to the latest 1000 Genomes panel (version 3). Of the 10 loci, 6 showed a strong signal for stage B disease, but no statistically significant association at all with stage A (Fig. 1): *ID4*, *GREB1*, 7p15.2, *CDKN2B-AS1*, *FN1*, and 2p14. *WNT4* showed weaker association for stage A, much reduced compared with stage B (not shown). *VEZT* showed a similar strength of association for stage A and B, as did *IL1A* albeit with different SNP sets (not shown). Finally, the SNPs reported on 2q23.3 showed limited evidence of association in the IEC dataset (not shown), nor did it show consistent evidence in the meta-analysis by Rahmioglu et al.<sup>33</sup> Thus, the majority of GWAS loci identified to date are implicated most strongly in the origins of stage B (rASRM stage III/IV) disease. The discrepancy in association signals with stage I/II may be driven by inclusion of stage I cases, as our previous work showed stages II and III to be similar in terms of genetic burden.<sup>41</sup>

Two of the signals, *WNT4* and 7p15.2 point at WNT signaling as a key pathway involved in endometriosis pathogenesis. Interestingly, the 7p15.2 locus was also found to be genome-wide significantly associated with fat distribution (waist-to-hip ratio adjusted for body mass index) in an entirely independent GWAS.<sup>72</sup> This led to a study leveraging the two GWAS datasets showing, for the first time, evidence of shared genetic origins and pathways between

endometriosis and fat distribution, mostly through the WNT/ $\beta$  catenin signaling pathway.<sup>73</sup> In a similar type of analysis, shared genetic origins between endometriosis and ovarian cancer were explored, showing strong genetic correlations between endometriosis and clear-cell, endometrioid, and low-grade serous ovarian cancer.<sup>74</sup>

The GWAS SNPs associated with endometriosis to date explain less than 2% of disease risk variability. In contrast, half of the estimated 50% heritability (26%) is estimated to be due to common variants that can be captured through GWAS.<sup>75</sup> Successful examples from other complex diseases have shown that by increasing sample sizes, many more common genetic loci (with population frequencies > 1%) can be discovered. For instance, the most recent GWAS analyses in breast cancer involving 62,000 cases identified more than 90 GWAS loci, explaining 16% of disease risk.<sup>76</sup> For Crohn disease, 140 common genetic loci have been found, explaining 14% of disease risk, in meta-analyses involving 20,000 cases. Extended endometriosis consortium efforts are currently ongoing to conduct further meta-GWAS studies including datasets with endometriosis diagnostic information worldwide, increasing sample size fourfold to around 20,000, as well as the first “exome-wide” analyses focusing on variants that directly impact gene protein products and allow more direct biological interpretation.

### Utility of Endometriosis GWAS Results: What Are the Big Questions?

Broadly speaking, there are three areas of potential utility for GWAS results for a disease/trait: (1) improve understanding of pathogenesis; (2) dissection of phenotypic heterogeneity (discovery of “subtypes”); and (3) risk prediction. We will discuss the endometriosis GWAS results for each of these areas later.

#### Understanding the Pathogenesis

Making headway with inferring causality and functional mechanisms for pathogenesis from any GWAS results is hampered by two issues. First, the most significantly associated SNP with a disease may not be the causal variant but may be correlated (in LD) with the causal variant.<sup>40</sup> Due to common ancestry of individuals in a population, SNPs located near each other are typically correlated (“in LD”). LD can stretch over many thousands of DNA base pairs and include 10 to 1,000s of SNPs. Although there are various ways to narrow down the region of association, including sequencing and fine mapping as well as statistical methods (e.g., through transethnic mapping<sup>77</sup> or calculation of so-called “credible sets” of SNPs<sup>78</sup> that have the highest probability to include the causal variant), these methods need to be supplemented by other functional evidence that associate a specific variant to actual transcription variation. Second, as mentioned earlier, most variants at GWAS loci are now known to be located in distal intergenic or intronic (regulatory) regions,<sup>79</sup> with unknown effects on transcription of protein-coding genes and pathways. This feature, characteristic of GWAS variants, represents a major challenge we face in translating our

endometriosis GWAS signals into clinically meaningful results. Understanding the effects of genetic variants on perturbation of protein-coding “effector” transcripts and pathways requires integration with genomic annotation data, including gene expression (RNA) and DNA modification profiles, in tissues/cells relevant to the disease.

Recently, there have been major advances in understanding the regulatory architecture of the human genome, and, in particular, in the development of techniques for assessing the relationships between regulatory elements and the genes they control. Studies integrating gene expression data from a diverse range of tissues with genetic data have provided important insights into DNA variants that regulate gene expression (“expression quantitative trait loci SNPs [eQTL SNPs]”), showing that many eQTLs are tissue specific and that this tissue specificity is an important feature of disease susceptibility variants.<sup>80–82</sup> Studies have similarly shown that genetic variants can also affect transcription through altering DNA methylation profiles (metQTLs), and—of particular significance—can affect how DNA is “packaged” by altering chromatin signatures that can create or destroy transcription factor binding sites and thereby alter the chromatin signature with long range (100 kb) effects on gene expression transcription factor binding.<sup>83</sup> Many GWAS associations map to “DNase I hypersensitive” sites (DHS) that mark chromatin accessibility for transcription factor binding, which in turn have been associated with changes in RNA expression.<sup>79,84</sup>

The importance of identifying which variant controls which gene was recently highlighted by analyses of regulatory control at the *FTO* locus (influencing BMI and obesity). The causal variants map intronic to *FTO* and it had been widely assumed that they regulate expression of this gene. However, it was subsequently shown that these *FTO* intronic SNPs lie within a region that regulates expression of a gene 500 kb away (*IRX3*),<sup>85</sup> demonstrating that enhancers (DNA sequences affecting levels of transcription) of one gene can lie in the introns of another.

The crucial need for genomic annotation data to advance our knowledge of the mode of action of GWAS variants is now fully recognized. Large-scale initiatives such as ENCODE,<sup>42</sup> the Genotype-Tissue Expression (GTEx) project<sup>86</sup> and the NIH Roadmap Epigenomics Project<sup>87</sup> are underway and aimed at building public databases providing tissue- and cell-specific genomic profiling landscapes (e.g., RNA transcription, DNA methylation, DHS) to enable investigations of the impact of genetic variation on these. However, none of these sources includes endometrium and its constituent cell types—the target tissue for endometriosis—preventing systematic progress on the translation of endometriosis GWAS signals. Also, none of the genome-wide expression studies of endometrium or endometrial cell types published to date has included genomic data that would allow the investigation of eQTLs.

To make headway with understanding the causality and functionality of endometriosis loci, genomic profiling (including eQTLs) of endometrium and endometrial cell types from 100s of women with and without the disease needs to be conducted. Tissue-based profiling has the advantage of assessment of profiles reflecting intercellular communications in their “natural



biological state"; however, cellular heterogeneity means that for this type of study in particular, sufficiently large sample sizes are required to detect signals. Such sample sizes can more easily be achieved in collaborative efforts between research groups; however, differences in case definitions and phenotypic data collected, as well as protocols for tissue sampling, have made combination and comparison of the data difficult. The WERF Endometriosis Phenome and Biobanking Harmonisation Project (EPHect) (see later), which has harmonized and standardized data and sample collection protocols for endometriosis research, now enables these large-scale collaborative studies to be conducted.

### Dissection of Phenotypic Heterogeneity

The endometriosis GWAS to date have provided the first biological evidence that rAFS stage III/IV disease may arise from distinct pathophysiology compared with stage I/II. However, the limited information available from retrospectively assessed surgical records did not allow analysis of the disease element driving the staging for these cases nor other surgical/clinical phenotypes (e.g., deep infiltrating vs. peritoneal disease), as these data were not systematically collected. Moreover, the limited detail of surgical/clinical data also begged the question as to what the genetically dissected subtypes rAFS "I/II" versus "III/IV" signified. For example, since ovarian endometriosis (endometrioma) typically falls into the rAFS III/IV category, did the GWAS results associate predominantly to this disease entity, or to other disease aspects captured by this categorization? To allow this question to be answered, systematic collection of surgical and clinical data needs to accompany genetic profiling of samples.

Identification of functionally distinct disease subtypes based on molecular profiles will allow much-needed patient stratification for focused endometriosis drug target and biomarker discovery programs. In cancer, there are many successful examples of this approach, for example, the gene expression-based identification of basal, ER<sup>+/-</sup>, HER2<sup>+/-</sup>, and "normal" breast cancer subtypes,<sup>88</sup> which have different risk factor/survival rate profiles<sup>89</sup> and targeted drug regimes (e.g., tamoxifen for ER + ; trastuzumab for HER2 tumors). The Cancer Genome Atlas<sup>90,91</sup> has embarked on comprehensive, large-scale molecular profiling (DNA genomic, DNA methylation, exome, mRNA/miRNA sequencing) to uncover further cancer subtypes and targeted treatments. To date, only one such study has been conducted in endometriosis—limited to using expression profiling of eutopic endometrium to distinguish cases from controls and rAFS stage III/IV from I/II.<sup>92</sup> There is therefore clear scope for similar detailed molecular dissection studies in endometriosis, and to assess to what extent detailed surgical and clinical data are correlated with—or can capture—such molecularly defined subtypes. Again, to allow such studies to be conducted, we need detailed and standardized data collection on women with biological samples collected through standardized protocols.

### Endometriosis Risk Prediction

With the successes in GWAS, disease risk prediction based on genetic profiles ("genetic risk scores") in complex disease has

been a rapidly emerging field of interest as the proportion of disease risk explained has been increasing due to larger studies performed.<sup>93–96</sup> At present, the genetic loci discovered for endometriosis do not have utility in terms of disease risk prediction or screening. This is because, together, they explain less than 2% of all disease risk variance. As the sample size for future planned endometriosis GWAS grows, the proportion of variance explained by new loci will increase. Whether these will have utility in screening tools will depend on the proportion of disease risk they explain at a population level. More likely, screening tools will require combinations of genetic variants with other molecular profile changes between cases and controls (e.g., distinct epigenomic or transcriptomic patterns in eutopic endometrium), though whether such markers will be detectable in readily accessible samples such as blood is also unknown. In addition, inclusion of standardized collection of phenotypic profiles (e.g., clinical, symptomatic, metabolic) in screening tools that correlate with distinct molecular profiles between endometriosis cases and controls may be of benefit.

### Toward the Integration of Genomics with Phenomics: WERF EPHect

As we highlighted earlier, the translation of endometriosis GWAS results in all three major areas of potential utility—elucidation of causal mechanisms, identification of subtypes of disease, and even risk prediction—will require integration with other molecular profiling as well as detailed phenotypic data. To allow the investigation of the full spectrum of potential disease-related effects, such phenotypic data can (and should) include surgical, clinical (symptomatic), and image-based manifestations of disease, as well as disease correlates such as comorbidities, covariate characteristics (e.g., BMI and fat distribution, cigarette smoking), and demographic factors. Houle et al<sup>97</sup> referred to such deep phenotyping (the acquisition of high-dimensional phenotypic data on an organism-wide scale) as phenomics. Key to the valid acquisition and cross-study comparability of phenomic data are standardization of tools and measurements of data collection. Similarly, robust molecular phenotyping that allows comparisons among studies and centers requires standardization of the protocols with which samples are obtained. The WERF EPHect ([endometriosisfoundation.org/ephect](http://endometriosisfoundation.org/ephect)) was designed for exactly the following objectives: to standardize and harmonize data collection instruments and sample collection protocols for endometriosis research, reduce data variability, facilitate comparability, and encourage large-scale clinical and basic research collaborations.<sup>98–101</sup>

WERF EPHect was established in 2013, through a global collaboration between 34 academic endometriosis research centers and 3 industry partners. Through two workshops and several consultation rounds, the Working Group reached a consensus on freely available instruments for surgical<sup>98</sup> and clinical data collection,<sup>99</sup> as well as standard operating protocols (SOPs) for the collection of 10 biological sample types (tissue<sup>101</sup> and fluids<sup>100</sup>) in endometriosis research. All instruments have standard, as well as minimum versions.

The WERF EPHect Surgical Standard Form (SSF)<sup>98</sup> was developed with the aim to collect all currently deemed relevant and important information describing the visual endometriosis phenotype and surgical treatment that would allow clinically and scientifically meaningful studies.<sup>102</sup> It includes detailed information about clinical covariates: current menstrual cycle, current hormone treatment, and history of previous endometriosis surgery, as well as any imaging findings before the procedure. The second part concentrates on intraoperative findings including the type and duration of the procedure, and the extent, exact location, and color of endometriotic lesions, with a particular focus on size of endometrioma and endometriotic nodules. It allows for an exact description of tissue biopsies, including location and appearance, and surgical treatment of lesions. The WERF EPHect Endometriosis Phenotype Questionnaire Standard (EPQ-S)<sup>99</sup> was developed to capture standardized clinical patient information, and includes validated instruments to assess pelvic pain, subfertility and reproductive history, menstrual history and hormone use, medical and surgical history, medication use, and personal information. For both the SSF and EPQ-S, minimum versions (MSF and EPQ-M) were developed for centers without research support; however, the standard tools are recommended as it allows a much broader phenotypic exploration.

The WERF EPHect standardized biological sample collection protocols were developed by systematic comparison and review of evidence using (1) information provided by the Working Group centers; (2) publicly available SOPs from general large-scale biobanking efforts (e.g., UK Biobank); large biorepositories (International Society for Biological and Environmental Biorepositories; the NCI Biorepositories and Biospecimen Research Branch; and the Australian Biospecimen Network); and (3) systematic literature searches in PubMed, of reference lists of retrieved articles, and of online material from biobanks and biorepositories. Based on review of the evidence, consensus SOPs were developed for the collection, processing, and storage of six biofluid types: blood and its derivatives (serum, plasma, and red/white blood cells), urine, saliva, peritoneal fluid, endometrial fluid, and menstrual effluent.<sup>100</sup> Similarly, consensus on SOPs for collection, processing, and storage of five tissue types was reached (ectopic and eutopic endometrium, myometrium, and peritoneum).<sup>101</sup> For most steps in the SOPs, two tiers were agreed upon: standard and minimum required. Although following standard protocol steps was recommended whenever possible, the minimum required SOP steps were offered to provide the fundamentals for standardization that need to be adhered to as an absolute minimum requirement given unavoidable logistical and budgetary circumstances.

Feedback on the WERF EPHect instruments is strongly encouraged through its Web site; the tools will be reviewed and updated, first after 1 year and then every 3 years. In addition, to facilitate collaboration, WERF EPHect has implemented a voluntary registry for centers using the tools after having obtained local Institutional Review Board approval ([endometriosisfoundation.org/ephect](http://endometriosisfoundation.org/ephect)).

## Conclusion

The path to providing new therapeutic options for endometriosis, targeted to subtypes of disease, lies in improved understanding of the fundamental pathogenic processes underlying the disease. Although GWAS SNP risk loci typically have small effects, they can reveal novel insights into disease pathogenesis and do not imply that their implicated targets will have low therapeutic value.<sup>103</sup> GWAS results for endometriosis have delivered novel identification of potential pathophysiologic pathways involved (e.g., WNT signaling). However, as the study sample sizes have been relatively modest, the number of GWAS loci robustly identified to date has been limited to seven; further loci will no doubt be discovered in ongoing meta-GWAS analyses that will increase sample size fourfold.

As is typical for GWAS signals—most of the endometriosis loci reside in intergenic or intronic regions that are likely to regulate gene expression elsewhere. These regulatory pathways, and the causal driver variants at each locus, remain to be uncovered; for example, through integrated gene-expression (eQTL) studies in endometrium. The loci robustly associated with endometriosis in GWAS to date have also suggested that the pathogenesis of rAFS stage III/IV disease is likely to be distinct from stage I/II. To understand this observation, further phenotypic dissection requires the collection of much more detailed, standardized surgical and clinical data, integrated with genomic and other molecular profiling of endometrium and other relevant samples from the same women. The WERF EPHect standardized data collection instruments and sample collection protocols now allow such data to be collected and compared across different endometriosis research centers, paving the way for studies focused on the translation of GWAS results into results that are meaningful for patients and practitioners: novel treatments that target subtypes of disease.

## Funding

N.R. was supported by an MRC grant (MR/K011480/1). A.P.M. is a Wellcome Trust Senior Fellow in Basic Biomedical Science (WT098017). G.W.M. is supported by the NHMRC Fellowships Scheme (339446, 619667).

## References

- Adamson GD, Kennedy SH, Hummelshoj L. Creating solutions in endometriosis: global collaboration through the World Endometriosis Research Foundation. *J Endometriosis Pelvic Pain Disord* 2010;2(1):3–6
- Giudice LC, Kao LC. Endometriosis. *Lancet* 2004;364(9447):1789–1799
- Dunselman GA, Vermeulen N, Becker C, et al; European Society of Human Reproduction and Embryology. ESHRE guideline: management of women with endometriosis. *Hum Reprod* 2014;29(3):400–412
- Nnoaham KE, Hummelshoj L, Webster P, et al; World Endometriosis Research Foundation Global Study of Women's Health consortium. Impact of endometriosis on quality of life and work

- productivity: a multicenter study across ten countries. *Fertil Steril* 2011;96(2):366–373.e8
- 5 Society AF. Revised American fertility society classification of endometriosis: 1985. *Fertil Steril* 1985;43(3):351–352
  - 6 Revised American Society for Reproductive Medicine classification of endometriosis: 1996. *Fertil Steril* 1997;67(5):817–821
  - 7 Vercellini P, Trespidi L, De Giorgi O, Cortesi I, Parazzini F, Crosignani PG. Endometriosis and pelvic pain: relation to disease stage and localization. *Fertil Steril* 1996;65(2):299–304
  - 8 Missmer SA, Hankinson SE, Spiegelman D, Barbieri RL, Marshall LM, Hunter DJ. Incidence of laparoscopically confirmed endometriosis by demographic, anthropometric, and lifestyle factors. *Am J Epidemiol* 2004;160(8):784–796
  - 9 Eskenazi B, Warner ML. Epidemiology of endometriosis. *Obstet Gynecol Clin North Am* 1997;24(2):235–258
  - 10 Simoons S, Dunselman P, Dirksen C, et al. The burden of endometriosis: costs and quality of life of women with endometriosis and treated in referral centres. *Hum Reprod* 2012;27(5):1292–1299
  - 11 Sampson JA. Peritoneal endometriosis due to the menstrual dissemination of endometrial tissue into the peritoneal cavity. *Am J Obstet Gynecol* 1927;14:422–469
  - 12 Missmer SA, Hankinson SE, Spiegelman D, et al. Reproductive history and endometriosis among premenopausal women. *Obstet Gynecol* 2004;104(5, Pt 1):965–974
  - 13 Halme J, Hammond MG, Hulka JF, Raj SG, Talbert LM. Retrograde menstruation in healthy women and in patients with endometriosis. *Obstet Gynecol* 1984;64(2):151–154
  - 14 Missmer SA, Cramer DW. The epidemiology of endometriosis. *Obstet Gynecol Clin North Am* 2003;30(1):1–19, vii
  - 15 Bulun SE. Endometriosis. *N Engl J Med* 2009;360(3):268–279
  - 16 Zondervan KT, Cardon LR, Kennedy SH. What makes a good case-control study? Design issues for complex traits such as endometriosis. *Hum Reprod* 2002;17(6):1415–1423
  - 17 Simpson JL, Elias S, Malinak LR, Buttram VC Jr. Heritable aspects of endometriosis. I. Genetic studies. *Am J Obstet Gynecol* 1980;137(3):327–331
  - 18 Treloar SA, O'Connor DT, O'Connor VM, Martin NG. Genetic influences on endometriosis in an Australian twin sample. [sueT@qimr.edu.au](mailto:sueT@qimr.edu.au). *Fertil Steril* 1999;71(4):701–710
  - 19 Rahmioglu N, Missmer SA, Montgomery GW, Zondervan KT. Insights into assessing the genetics of endometriosis. *Curr Obstet Gynecol Rep* 2012;1(3):124–137
  - 20 Rahmioglu N, Montgomery GW, Zondervan KT. Genetics of endometriosis. *Womens Health (Lond Engl)* 2015;11(5):577–586
  - 21 Saha R, Pettersson HJ, Svedberg P, et al. Heritability of endometriosis. *Fertil Steril* 2015;104(4):947–952
  - 22 Kerem B, Rommens JM, Buchanan JA, et al. Identification of the cystic fibrosis gene: genetic analysis. *Science* 1989;245(4922):1073–1080
  - 23 Gilliam TC, Tanzi RE, Haines JL, et al. Localization of the Huntington's disease gene to a small segment of chromosome 4 flanked by D4S10 and the telomere. *Cell* 1987;50(4):565–571
  - 24 Treloar SA, Wicks J, Nyholt DR, et al. Genomewide linkage study in 1,176 affected sister pair families identifies a significant susceptibility locus for endometriosis on chromosome 10q26. *Am J Hum Genet* 2005;77(3):365–376
  - 25 Zondervan KT, Treloar SA, Lin J, et al. Significant evidence of one or more susceptibility loci for endometriosis with near-Mendelian inheritance on chromosome 7p13–15. *Hum Reprod* 2007;22(3):717–728
  - 26 Lander ES, Linton LM, Birren B, et al; International Human Genome Sequencing Consortium. Initial sequencing and analysis of the human genome. *Nature* 2001;409(6822):860–921
  - 27 Sachidanandam R, Weissman D, Schmidt SC, et al; International SNP Map Working Group. A map of human genome sequence variation containing 1.42 million single nucleotide polymorphisms. *Nature* 2001;409(6822):928–933
  - 28 International HapMap Consortium. A haplotype map of the human genome. *Nature* 2005;437(7063):1299–1320
  - 29 Auton A, Brooks LD, Durbin RM, et al; 1000 Genomes Project Consortium. A global reference for human genetic variation. *Nature* 2015;526(7571):68–74
  - 30 Wellcome Trust Case Control Consortium. Genome-wide association study of 14,000 cases of seven common diseases and 3,000 shared controls. *Nature* 2007;447(7145):661–678
  - 31 Skol AD, Scott LJ, Abecasis GR, Boehnke M. Joint analysis is more efficient than replication-based analysis for two-stage genome-wide association studies. *Nat Genet* 2006;38(2):209–213
  - 32 Welter D, MacArthur J, Morales J, et al. The NHGRI GWAS catalog, a curated resource of SNP-trait associations. *Nucleic Acids Res* 2014;42(Database issue):D1001–D1006
  - 33 Rahmioglu N, Nyholt DR, Morris AP, Missmer SA, Montgomery GW, Zondervan KT. Genetic variants underlying risk of endometriosis: insights from meta-analysis of eight genome-wide association and replication datasets. *Hum Reprod Update* 2014;20(5):702–716
  - 34 Adachi S, Tajima A, Quan J, et al. Meta-analysis of genome-wide association scans for genetic susceptibility to endometriosis in Japanese population. *J Hum Genet* 2010;55(12):816–821
  - 35 Uno S, Zembutsu H, Hirasawa A, et al. A genome-wide association study identifies genetic variants in the CDKN2BAS locus associated with endometriosis in Japanese. *Nat Genet* 2010;42(8):707–710
  - 36 Painter JN, Anderson CA, Nyholt DR, et al. Genome-wide association study identifies a locus at 7p15.2 associated with endometriosis. *Nat Genet* 2011;43(1):51–54
  - 37 Nyholt DR, Low SK, Anderson CA, et al. Genome-wide association meta-analysis identifies new endometriosis risk loci. *Nat Genet* 2012;44(12):1355–1359
  - 38 Sapkota Y, Low SK, Attia J, et al. Association between endometriosis and the interleukin 1A (IL1A) locus. *Hum Reprod* 2015;30(1):239–248
  - 39 Albertsen HM, Chettier R, Farrington P, Ward K. Genome-wide association study link novel loci to endometriosis. *PLoS ONE* 2013;8(3):e58257
  - 40 Zondervan KT, Cardon LR. The complex interplay among factors that influence allelic association. *Nat Rev Genet* 2004;5(2):89–100
  - 41 Sapkota Y, Attia J, Gordon SD, et al. Genetic burden associated with varying degrees of disease severity in endometriosis. *Mol Hum Reprod* 2015;21(7):594–602
  - 42 Bernstein BE, Birney E, Dunham I, Green ED, Gunter C, Snyder M; ENCODE Project Consortium. An integrated Encyclopedia of DNA Elements in the human genome. *Nature* 2012;489(7414):57–74
  - 43 Rae JM, Johnson MD, Scheys JO, Cordero KE, Larios JM, Lippman ME. GREB 1 is a critical regulator of hormone dependent breast cancer growth. *Breast Cancer Res Treat* 2005;92(2):141–149
  - 44 Pankov R, Yamada KM. Fibronectin at a glance. *J Cell Sci* 2002;115(Pt 20):3861–3863
  - 45 Lou X, Han X, Jin C, et al. SOX2 targets fibronectin 1 to promote cell migration and invasion in ovarian cancer: new molecular leads for therapeutic intervention. *OMICS* 2013;17(10):510–518
  - 46 Vainio S, Heikkilä M, Kispert A, Chin N, McMahon AP. Female development in mammals is regulated by Wnt-4 signalling. *Nature* 1999;397(6718):405–409
  - 47 Gaetje R, Holtrich U, Engels K, et al. Endometriosis may be generated by mimicking the ontogenetic development of the female genital tract. *Fertil Steril* 2007;87(3):651–656
  - 48 Ren Y, Cheung HW, von Maltzhan G, et al. Targeted tumor-penetrating siRNA nanocomplexes for credentialing the ovarian cancer oncogene ID4. *Sci Transl Med* 2012;4(147):147ra112
  - 49 Kobayashi A, Behringer RR. Developmental genetics of the female reproductive tract in mammals. *Nat Rev Genet* 2003;4(12):969–980

- 50 Jarinova O, Stewart AF, Roberts R, et al. Functional analysis of the chromosome 9p21.3 coronary artery disease risk locus. *Arterioscler Thromb Vasc Biol* 2009;29(10):1671–1677
- 51 Liu Y, Sanoff HK, Cho H, et al. INK4/ARF transcript expression is associated with chromosome 9p21 variants linked to atherosclerosis. *PLoS ONE* 2009;4(4):e5027
- 52 Pasmant E, Laurendeau I, Héron D, Vidaud M, Vidaud D, Bièche I. Characterization of a germ-line deletion, including the entire INK4/ARF locus, in a melanoma-neural system tumor family: identification of ANRIL, an antisense noncoding RNA whose expression coclusters with ARF. *Cancer Res* 2007;67(8):3963–3969
- 53 Goumenou AG, Arvanitis DA, Matalliotakis IM, Koumantakis EE, Spandidos DA. Loss of heterozygosity in adenomyosis on hMSH2, hMLH1, p16Ink4 and GALT loci. *Int J Mol Med* 2000;6(6):667–671
- 54 Guida M, Sanguedolce F, Bufo P, et al. Aberrant DNA hypermethylation of hMLH-1 and CDKN2A/p16 genes in benign, premalignant and malignant endometrial lesions. *Eur J Gynaecol Oncol* 2009;30(3):267–270
- 55 Martini M, Ciccarone M, Garganese G, et al. Possible involvement of hMLH1, p16(INK4a) and PTEN in the malignant transformation of endometriosis. *Int J Cancer* 2002;102(4):398–406
- 56 Miao R, Guo X, Zhi Q, et al. VEZT, a novel putative tumor suppressor, suppresses the growth and tumorigenicity of gastric cancer. *PLoS ONE* 2013;8(9):e74409
- 57 Ferreira MA, Hottenga JJ, Warrington NM, et al. Sequence variants in three loci influence monocyte counts and erythrocyte volume. *Am J Hum Genet* 2009;85(5):745–749
- 58 Barrier BF. Immunology of endometriosis. *Clin Obstet Gynecol* 2010;53(2):397–402
- 59 Mathur SP. Autoimmunity in endometriosis: relevance to infertility. *Am J Reprod Immunol* 2000;44(2):89–95
- 60 Vercellini P, Crosignani P, Somigliana E, Viganò P, Frattaruolo MP, Fedele L. 'Waiting for Godot': a commonsense approach to the medical treatment of endometriosis. *Hum Reprod* 2011;26(1):3–13
- 61 Chevillard G, Blank V. NFE2L3 (NRF3): the Cinderella of the Cap'n'Collar transcription factors. *Cell Mol Life Sci* 2011;68(20):3337–3348
- 62 Qin L, Chen Y, Niu Y, et al. A deep investigation into the adipogenesis mechanism: profile of microRNAs regulating adipogenesis by modulating the canonical Wnt/beta-catenin signaling pathway. *BMC Genomics* 2010;11:320
- 63 Tulac S, Nayak NR, Kao LC, et al. Identification, characterization, and regulation of the canonical Wnt signaling pathway in human endometrium. *J Clin Endocrinol Metab* 2003;88(8):3860–3866
- 64 Matsuzaki S, Darcha C, Maleysson E, Canis M, Mage G. Impaired down-regulation of E-cadherin and beta-catenin protein expression in endometrial epithelial cells in the mid-secretory endometrium of infertile patients with endometriosis. *J Clin Endocrinol Metab* 2010;95(7):3437–3445
- 65 Wang Y, van der Zee M, Fodde R, Blok LJ. Wnt/ $\beta$ -catenin and sex hormone signaling in endometrial homeostasis and cancer. *Oncotarget* 2010;1(7):674–684
- 66 Matsuzaki S, Darcha C. In vitro effects of a small-molecule antagonist of the Tcf/ $\beta$ -catenin complex on endometrial and endometriotic cells of patients with endometriosis. *PLoS ONE* 2013;8(4):e61690
- 67 Taylor HS, Bagot C, Kardana A, Olive D, Arici A. HOX gene expression is altered in the endometrium of women with endometriosis. *Hum Reprod* 1999;14(5):1328–1331
- 68 Wu Y, Halverson G, Basir Z, Strawn E, Yan P, Guo SW. Aberrant methylation at HOXA10 may be responsible for its aberrant expression in the endometrium of patients with endometriosis. *Am J Obstet Gynecol* 2005;193(2):371–380
- 69 Borowski A, Dirksen U, Lixin L, Shi RL, Göbel U, Schneider EM. Structure and function of ETAA16: a novel cell surface antigen in Ewing's tumours. *Cancer Immunol Immunother* 2006;55(4):363–374
- 70 Chardin P. Function and regulation of Rnd proteins. *Nat Rev Mol Cell Biol* 2006;7(1):54–62
- 71 Guasch RM, Scambler P, Jones GE, Ridley AJ. RhoE regulates actin cytoskeleton organization and cell migration. *Mol Cell Biol* 1998;18(8):4761–4771
- 72 Heid IM, Jackson AU, Randall JC, et al; MAGIC. Meta-analysis identifies 13 new loci associated with waist-hip ratio and reveals sexual dimorphism in the genetic basis of fat distribution. *Nat Genet* 2010;42(11):949–960
- 73 Rahmioglu N, Macgregor S, Drong AW, et al; International Endogene Consortium (IEC), The GIANT Consortium. Genome-wide enrichment analysis between endometriosis and obesity-related traits reveals novel susceptibility loci. *Hum Mol Genet* 2015;24(4):1185–1199
- 74 Lu Y, Cuellar-Partida G, Painter JN, et al; Australian Ovarian Cancer Study; International Endogene Consortium (IEC). Shared genetics underlying epidemiological association between endometriosis and ovarian cancer. *Hum Mol Genet* 2015;24(20):5955–5964
- 75 Lee SH, Harold D, Nyholt DR, et al; ANZGene Consortium; International Endogene Consortium; Genetic and Environmental Risk for Alzheimer's disease Consortium. Estimation and partitioning of polygenic variation captured by common SNPs for Alzheimer's disease, multiple sclerosis and endometriosis. *Hum Mol Genet* 2013;22(4):832–841
- 76 Michailidou K, Beesley J, Lindstrom S, et al; BOCS; kConFab Investigators; AOCs Group; NBCS; GENICA Network. Genome-wide association analysis of more than 120,000 individuals identifies 15 new susceptibility loci for breast cancer. *Nat Genet* 2015;47(4):373–380
- 77 Morris AP. Transethnic meta-analysis of genomewide association studies. *Genet Epidemiol* 2011;35(8):809–822
- 78 Maller JB, McVean G, Byrnes J, et al; Wellcome Trust Case Control Consortium. Bayesian refinement of association signals for 14 loci in 3 common diseases. *Nat Genet* 2012;44(12):1294–1301
- 79 Maurano MT, Humbert R, Rynes E, et al. Systematic localization of common disease-associated variation in regulatory DNA. *Science* 2012;337(6099):1190–1195
- 80 Grundberg E, Small KS, Hedman AK, et al; Multiple Tissue Human Expression Resource (MuTHER) Consortium. Mapping cis- and trans-regulatory effects across multiple tissues in twins. *Nat Genet* 2012;44(10):1084–1089
- 81 Grundberg E, Meduri E, Sandling JK, et al; Multiple Tissue Human Expression Resource Consortium. Global analysis of DNA methylation variation in adipose tissue from twins reveals links to disease-associated variants in distal regulatory elements. *Am J Hum Genet* 2013;93(5):876–890
- 82 Min JL, Nicholson G, Halgrimsdottir I, et al; GIANT Consortium; MolPAGE Consortium. Coexpression network analysis in abdominal and gluteal adipose tissue reveals regulatory genetic loci for metabolic syndrome and related phenotypes. *PLoS Genet* 2012;8(2):e1002505
- 83 Lower KM, De Gobbi M, Hughes JR, et al. Analysis of sequence variation underlying tissue-specific transcription factor binding and gene expression. *Hum Mutat* 2013;34(8):1140–1148
- 84 Degner JF, Pai AA, Pique-Regi R, et al. DNase I sensitivity QTLs are a major determinant of human expression variation. *Nature* 2012;482(7385):390–394
- 85 Smemo S, Tena JJ, Kim KH, et al. Obesity-associated variants within FTO form long-range functional connections with IRX3. *Nature* 2014;507(7492):371–375
- 86 GTEx Consortium. The genotype-tissue expression (GTEx) project. *Nat Genet* 2013;45(6):580–585
- 87 Chadwick LH. The NIH Roadmap Epigenomics Program data resource. *Epigenomics* 2012;4(3):317–324

- 88 Sorlie T, Tibshirani R, Parker J, et al. Repeated observation of breast tumor subtypes in independent gene expression data sets. *Proc Natl Acad Sci U S A* 2003;100(14):8418–8423
- 89 Tamimi RM, Colditz GA, Hazra A, et al. Traditional breast cancer risk factors in relation to molecular subtypes of breast cancer. *Breast Cancer Res Treat* 2012;131(1):159–167
- 90 Cancer Genome Atlas Research Network. Integrated genomic analyses of ovarian carcinoma. *Nature* 2011;474(7353):609–615
- 91 Cancer Genome Atlas Network. Comprehensive molecular portraits of human breast tumours. *Nature* 2012;490(7418):61–70
- 92 Tamaresis JS, Irwin JC, Goldfien GA, et al. Molecular classification of endometriosis and disease stage using high-dimensional genomic data. *Endocrinology* 2014;155(12):4986–4999
- 93 Jostins L, Barrett JC. Genetic risk prediction in complex disease. *Hum Mol Genet* 2011;20(R2):R182–R188
- 94 Yarwood A, Han B, Raychaudhuri S, et al; Rheumatoid Arthritis Consortium International (RACI). A weighted genetic risk score using all known susceptibility variants to estimate rheumatoid arthritis risk. *Ann Rheum Dis* 2015;74(1):170–176
- 95 Ibrahim-Verbaas CA, Fornage M, Bis JC, et al. Predicting stroke through genetic risk functions: the CHARGE Risk Score Project. *Stroke* 2014;45(2):403–412
- 96 Mavaddat N, Pharoah PD, Michailidou K, et al. Prediction of breast cancer risk based on profiling with common genetic variants. *J Natl Cancer Inst* 2015;107(5):djv036
- 97 Houle D, Govindaraju DR, Omholt S. Phenomics: the next challenge. *Nat Rev Genet* 2010;11(12):855–866
- 98 Becker CM, Laufer MR, Stratton P, et al; WERF EPHect Working Group. World Endometriosis Research Foundation Endometriosis Phenome and Biobanking Harmonisation Project: I. Surgical phenotype data collection in endometriosis research. *Fertil Steril* 2014;102(5):1213–1222
- 99 Vitonis AF, Vincent K, Rahmioglu N, et al; WERF EPHect Working Group. World Endometriosis Research Foundation Endometriosis Phenome and Biobanking Harmonization Project: II. Clinical and covariate phenotype data collection in endometriosis research. *Fertil Steril* 2014;102(5):1223–1232
- 100 Rahmioglu N, Fassbender A, Vitonis AF, et al; WERF EPHect Working Group. World Endometriosis Research Foundation Endometriosis Phenome and Biobanking Harmonization Project: III. Fluid biospecimen collection, processing, and storage in endometriosis research. *Fertil Steril* 2014;102(5):1233–1243
- 101 Fassbender A, Rahmioglu N, Vitonis AF, et al; WERF EPHect Working Group. World Endometriosis Research Foundation Endometriosis Phenome and Biobanking Harmonisation Project: IV. Tissue collection, processing, and storage in endometriosis research. *Fertil Steril* 2014;102(5):1244–1253
- 102 Rogers PA, D'Hooghe TM, Fazleabas A, et al. Defining future directions for endometriosis research: workshop report from the 2011 World Congress of Endometriosis in Montpellier, France. *Reprod Sci* 2013;20(5):483–499
- 103 Barrett JC, Dunham I, Birney E. Using human genetics to make new medicines. *Nat Rev Genet* 2015;16(10):561–562