

## Biomechanical simulations of the scoliotic deformation process in the pinealectomized chicken: a preliminary study

Pierre Lafortune<sup>1,2</sup>, Carl-Éric Aubin\*<sup>1,2</sup>, Hugo Boulanger<sup>2</sup>,  
Isabelle Villemure<sup>1,2</sup>, Keith M Bagnall<sup>3</sup> and Alain Moreau<sup>2,4</sup>

Address: <sup>1</sup>Department of Mechanical Engineering, Ecole Polytechnique, University of Montreal, P.O. Box 6079, Station Centre-ville, Montreal, Quebec, H3C 3A7, Canada, <sup>2</sup>Research Centre, Sainte-Justine University Hospital Centre, University of Montreal, Montreal, Quebec, Canada, <sup>3</sup>Division of Anatomy/Department of Surgery, University of Alberta, Edmonton, Alberta, Canada and <sup>4</sup>Department of Biochemistry, Faculty of Medicine, University of Montreal, Montreal, Quebec, Canada

Email: Pierre Lafortune - pierre.lafortune@polymtl.ca; Carl-Éric Aubin\* - carl-eric.aubin@polymtl.ca;  
Hugo Boulanger - h.boulanger@umontreal.ca; Isabelle Villemure - isabelle.villemure@polymtl.ca; Keith M Bagnall - kbagnall@med.ualberta.ca;  
Alain Moreau - alain.moreau@recherche-ste-justine.qc.ca

\* Corresponding author

Published: 9 November 2007

Received: 26 April 2007

*Scoliosis* 2007, **2**:16 doi:10.1186/1748-7161-2-16

Accepted: 9 November 2007

This article is available from: <http://www.scoliosisjournal.com/content/2/1/16>

© 2007 Lafortune et al; licensee BioMed Central Ltd.

This is an Open Access article distributed under the terms of the Creative Commons Attribution License (<http://creativecommons.org/licenses/by/2.0>), which permits unrestricted use, distribution, and reproduction in any medium, provided the original work is properly cited.

### Abstract

**Background:** The basic mechanisms whereby mechanical factors modulate the metabolism of the growing spine remain poorly understood, especially the role of growth adaptation in spinal disorders like in adolescent idiopathic scoliosis (AIS). This paper presents a finite element model (FEM) that was developed to simulate early stages of scoliotic deformities progression using a pinealectomized chicken as animal model.

**Methods:** The FEM includes basic growth and growth modulation created by the muscle force imbalance. The experimental data were used to adapt a FEM previously developed to simulate the scoliosis deformation process in human. The simulations of the spine deformation process are compared with the results of an experimental study including a group of pinealectomized chickens.

**Results:** The comparison of the simulation results of the spine deformation process (Cobb angle of 37°) is in agreement with experimental scoliotic deformities of two representative cases (Cobb angle of 41° and 30°). For the vertebral wedging, a good agreement is also observed between the calculated (28°) and the observed (25° – 30°) values.

**Conclusion:** The proposed biomechanical model presents a novel approach to realistically simulate the scoliotic deformation process in pinealectomized chickens and investigate different parameters influencing the progression of scoliosis.

## Introduction

The etiology of adolescent idiopathic scoliosis (AIS), a three dimensional deformity of the spine and surrounding paravertebral tissues, remains obscure and many researchers have explored different hypotheses ([1], and see [2] for a review). Among them, paravertebral muscle abnormalities (increased electromyographic activity in the muscles of the convex side of the deformed spine [2-5]) have been observed in scoliotic patients. This force imbalance may in fact be a secondary factor in the development of AIS [2].

The Hueter-Volkman concept of 'growth modulation' [6,7] explains, in a phenomenological way, how asymmetrical loading distribution on vertebral epiphyseal growth plate involved in scoliosis can alter the development of vertebrae and promote vertebral wedging. This created deformity is part of a vicious cycle where vertebral asymmetry is generating a spinal curvature, then accentuating the load asymmetrical distribution in the global spine, leading to further asymmetrical growth and so on [8,9].

Finite element models (FEM) that include the mechanical structure of the musculoskeletal system as well as the growth and growth adaptation processes have been already used in humans to simulate the mechanisms underlying the growth modulation of the spine and its associated structures under specific forces [1,10,11]. However, due to the slow progression of the human scoliotic deformities, relevant parameters of these models are relatively complicated to calculate (e.g. material properties, boundary conditions, parameters of the growth process such as the growth rate, the sensitivity of the growth plate to external loads, etc.).

The pinealectomized chicken model has been widely reported in the literature [12-17], especially to test the effects of melatonin in the progression of AIS. Pineal gland removal shortly after hatching induces scoliosis in 45% [12] to 95% [15] of the cases. Although there are some important differences between avian and human osteology (density, shape, growth, etc), scoliosis developed by chicken has spinal deformity and morphological characteristics similar to those seen in AIS. Another interesting issue is that the chicken develops scoliosis within only one month, so the curvature progression pattern is very easy to evaluate.

The main objective of this study was to develop a FEM of the pinealectomized chicken incorporating the main mechanical characteristics of the spine, as well as vertebral growth and growth modulation. Recent studies have reported the difficulty in extrapolating the etiological factors producing AIS in chicken to human beings [18]. The

emphasis of this study was therefore not to investigate the pathogenesis but rather the pathomechanisms underlying the progression of scoliosis. The primary objective was to estimate the magnitude of the coronal plane moment that would be expected in the chicken model while the secondary objective was to study the mechanical phenomena that control the spinal deformity progression in the chicken. The FEM of the pinealectomized chicken thus developed provides a means to understand the mechanical parameters associated with the progression of scoliosis, a study that cannot be implemented on human subjects. Knowledge of the growth mechanism from a validated chicken FEM will help to understand the influence of the geometric simplifications implemented in the spine model and will further help to identify the sensitivity of the model parameters to scoliotic progression. This information could then be adapted to a human spine FEM.

## Methods

### *Experimental animals and surgical technique*

All procedures of this study were reviewed and approved by the institutional committee for care and use of animals of Sainte-Justine University Hospital.

For this study, newly hatched chicken (Mountain Hubbard) were purchased from a local hatchery. The chickens were divided into three distinct groups (pinealectomized, shams and control). The first group, pinealectomized (n = 76), underwent complete removal of the pineal gland according to a protocol described in the literature [19,20]. Basically, a longitudinal incision is made in the scalp of a newly-hatched, anaesthetised chicken followed by a U shaped incision (1 cm width) in the delicate skull around the confluence of sinuses. A 'flap' of skull is then pulled back to reveal the pineal gland which is removed either by forceps or light suction. The flap is replaced and the skin sutured. The second group, shams (n = 20), underwent superficial cranial incision without the ablation of the pineal gland. All surgeries were performed between day three and five after hatching by the same surgeon. In the last group, the controls (n = 25), the chickens did not undergo any surgical procedure. For all three groups, the chicken were immediately introduced into a 12/12 hours light and dark cycle, and kept in constant environmental conditions of 26°C and 70% relative humidity throughout the experimental procedures.

### *Finite element model*

Finite element models (FEM) provide a means to simulate a natural physiological/biomechanical phenomenon and to test various hypotheses on the simulated model under multiple conditions in order to deduce an approximate solution. In this study, the spinal anatomy of a chicken was approximated by a geometric model comprising of a system of inter-linked mechanical elements. For example,

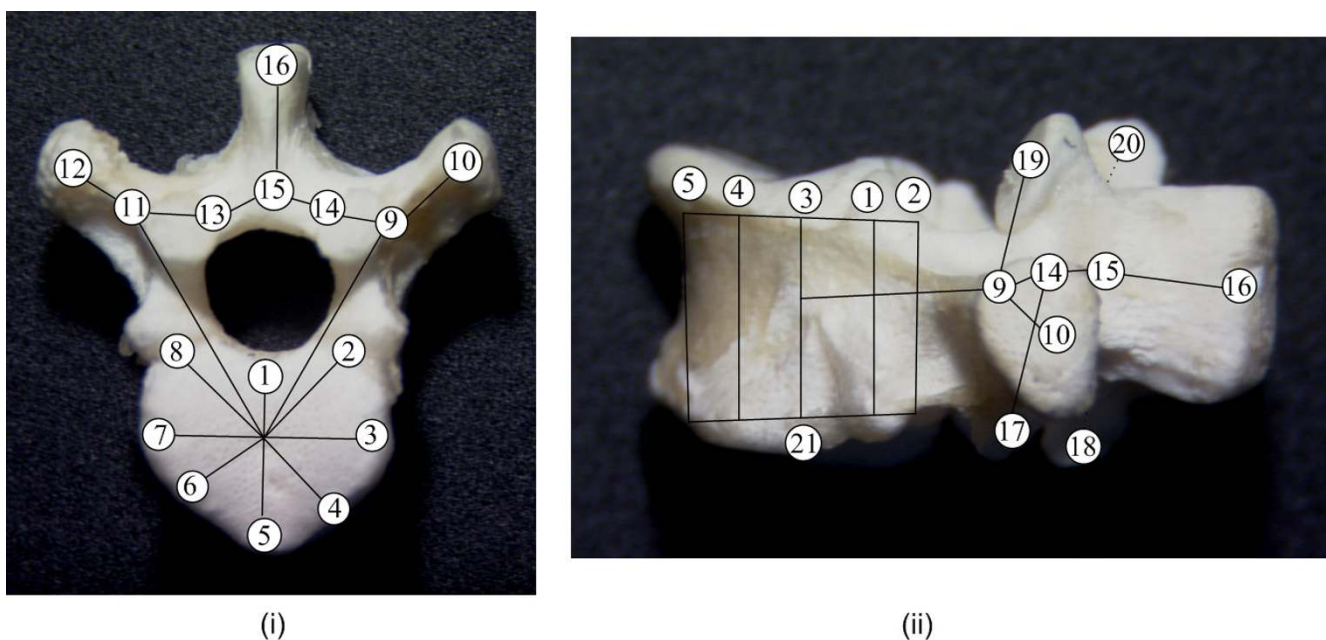
intricate geometry of the vertebrae was modeled using *freeform surfaces* and, ligaments and muscles were represented as multi-linear springs with appropriate material properties. The regions of interest are discretized into small units or elements (e.g. beam, plate or shell type). Articulation between contacting surfaces are exemplified at the element nodes using appropriate boundary/loading conditions/constraints that defined the associated degree-of-freedom thus simulating, as close as possible, the nature of the actual anatomical interaction. The analysis procedure solves a series of model equations at each node from which mechanical parameters (displacements, stresses, strains etc.) within the elements are derived using shape functions and stress-strain relations assumed during the generation of the model equations. FEM analysis therefore enables a systematic understanding of load distribution parameters and injury mechanisms underlying various pathogenesis hypotheses (e.g. spinal deformities, as described in this paper). Additional details specific to finite element analysis in the biomechanics of scoliosis can be found in Aubin [21] and Aubin et al [22].

Creating a FEM model requires information about the material properties of the anatomical entities, their respective surface geometry and the nature of articulation between the anatomical entities in contact. The geometry of each vertebra in the spine of the chicken, from T1 to L1 (8 vertebrae in total), was obtained from 21 anatomical landmarks (12 for the posterior elements and 9 for the vertebral body) measured on one cadaveric vertebra of the

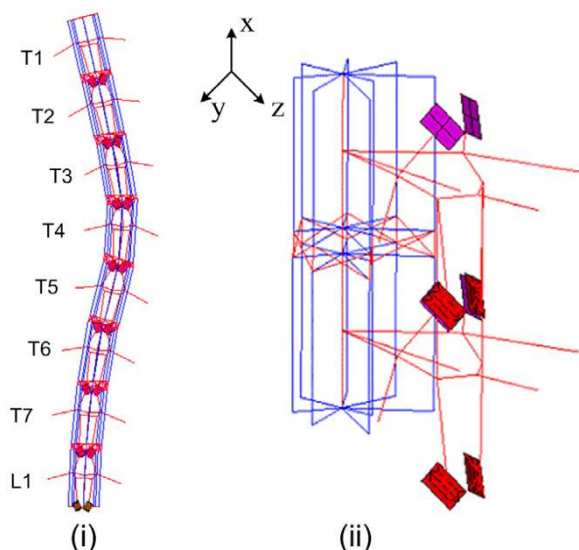
control type with a caliper. The measurements were made on the 14th day after hatch (Figure 1 shows the approximate position of the landmarks).

A finite element model (FEM) previously developed by Villemure et al [1,11] was adapted to the chicken morphology. The original model is a complete representation of the spine, pelvis and thorax used to simulate the scoliosis deformation process in the human spine. It uses a 3D reconstruction technique to recreate the personalized geometry of the patient from calibrated multi-view radiographs. This model has been used thereafter for different projects (effect of brace treatment, spine surgeries, vertebral deformities progression, etc.) Although simplified in terms of geometry, this type of model (beam/link/contact elements) has been proven to be suitable to analyze scoliosis pathomechanisms in humans [11,23,24]. Basically, the mesh and nodes of Villemure's model were adjusted to fit the chicken geometry while respecting the overall topology of the chicken spine (Figure 2).

Each vertebral body was modeled using a system of 3D elastic beams and rigid crossbars (25 elements in total). Local coordinate systems were defined on each vertebral body, with the 'x' axis being perpendicular to the vertebral endplate, and the 'y' and 'z' axis in the plane of the endplate. Eight distributed elements along the vertebral edge enable the evaluation of internal stresses variation within the vertebral bodies and the representation of their wedged shape. The circumferential nodes located on the



**Figure 1**  
**Position of the landmarks.** Position of the landmarks used to build the FEM: (i) Top view, (ii) lateral view



**Figure 2**  
**FEM.** The deformed FEM of the chicken spine: (i) spine in the frontal plane (the 8 vertebrae from T1 to L1); (ii) vertebral motion segment (two vertebrae and one disk).

top of the vertebral body correspond to landmarks 1 to 8 (Figure 1). The middle nodes of the body (one on the upper endplate and one on the lower endplate) are situated approximately in the centre of the body. The height of the body is given by landmarks 21 and 3. Intervertebral disks were modeled similarly (one central beam and eight distributed beams on the circumference), except that tension-only links are inserted in a cross-like fashion to represent collagen fibers (Figure 2). Posterior parts also used 3D beams with landmarks 9 to 20 representing nodes for those elements while the articular facets are represented using shell and contact (point-to-surface) elements. The material properties of human spines were used as an initial approximation (based on experimental data published by Descrimes et al. [25]), as to our knowledge no study provided Young modulus values for the chicken bones or disks. In order to avoid rigid body movements of the overall model, all degrees of freedom at the inferior endplate of L1 were fixed, as well as axial rotation and transverse translations at superior endplate of T1.

#### Biomechanical model of bone growth and growth modulation

The growth and its modulation due to mechanical loads were modeled similarly to the phenomenological model proposed by Stokes et al. [24] and adapted by Villemure et al. [1]: the resultant growth included two components. First, the 'normal' endochondral growth of the vertebral body generated at the endplate physes is represented by the baseline growth component  $\delta G_x$ . Second, the response

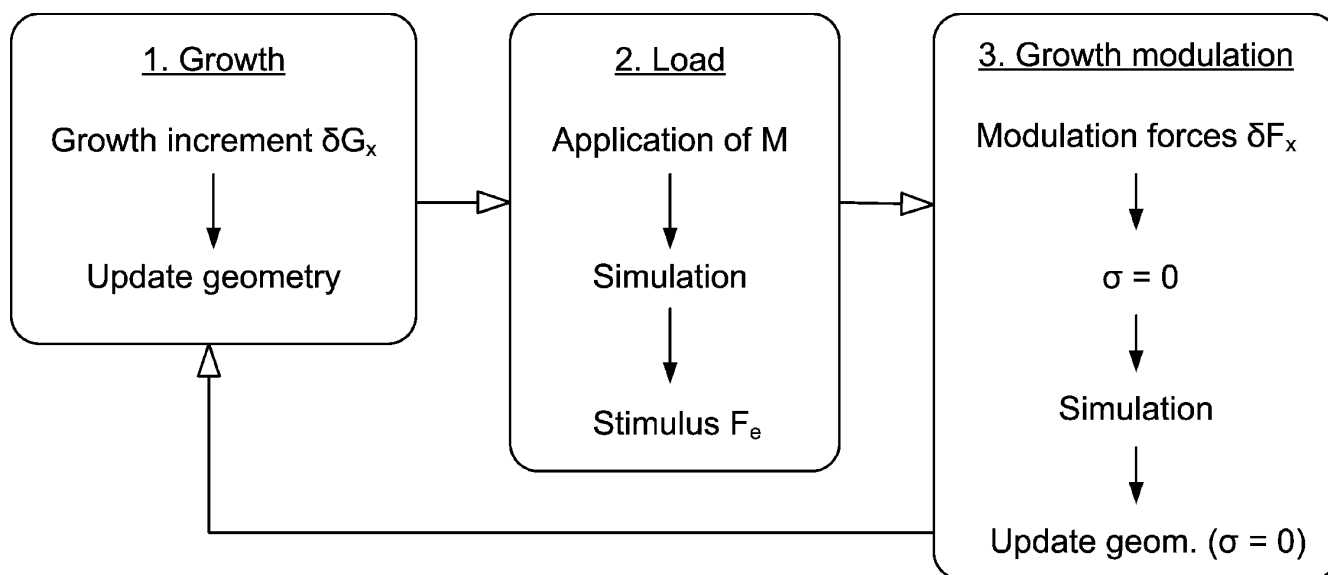
of the growth plates to the external loads is modeled by the growth modulation component  $\delta \varepsilon_x$ , where increased compression on the growth plates reduces growth ( $-\delta \varepsilon_x$ ), while reduced compression accelerates growth ( $+\delta \varepsilon_x$ ), as observed experimentally by Stokes et al. [26]. Both components are perpendicular ('x' direction) to the plane of the growth plates and expressed as a strain increment (mm/mm).

In this model, corresponding deformation increments  $\delta \varepsilon_x$  due to growth modulation is defined by the expression  $\delta \varepsilon_x = \beta_x \sigma_x \delta G_x$ . The relation depends on the baseline growth  $\delta G_x$  on a functional biomechanical stimulus, which corresponds to internal stresses  $\sigma_x$  (MPa), and on a parameter  $\beta_x$  (MPa<sup>-1</sup>) simulating the sensitivity of bone to that stimulus. In the case of the beam elements used to model the vertebral bodies, the deformation increments  $\delta \varepsilon_x$  due to growth modulation was represented by an equivalent internal modulation force  $\delta F_x$ . This force is applied on the nodes of the vertebral bodies lying on the endplates, and is oriented on the axial direction defined by the local coordinate system of the endplate. The force is expressed as follow:  $\delta F_x = \beta_x (E F_e) \delta G_x$  where  $E$  is the Young modulus (MPa) and  $F_e$  the actual force (N) in the element of the vertebral body directly calculated from the finite element program, as a result of external loading on the vertebrae.

The baseline growth of the vertebral bodies (0.130 mm/day) used in the model was obtained by measurements on the pinealectomized chickens during the simulation period. Growth modulation of the vertebral bodies in 'y' and 'z' directions as well as that in the intervertebral discs were neglected [11]. Although, growth of the posterior parts was neglected, the modulation was indirectly accounted for by dragging the elements with the deformation of the vertebral bodies to maintain coherent geometry of the spine. Initial wedging of the discs was taken into account by the geometric representation of the vertebral endplate anatomy.

#### Integration of growth and growth modulation into the FEM

The entire longitudinal growth of the vertebral bodies was implemented in the finite element software package Ansys 8.0 (Ansys inc., USA) through the following iterative process (Figure 3): 1) *Growth*: application of a growth increment and update of the geometry by relocation of nodes; 2) *Load*: application of asymmetric loads (a moment representing the asymmetric forces of the muscles at the supposed apex of the curve) and simulation of the FEM, which provides the internal forces  $F_e$  caused by the moment, as calculated by the finite element software; 3) *Growth modulation*: application of the modulated forces  $\delta F_x$  calculated with the expression  $\delta F_x = \beta_x (E F_e) \delta G_x$ , simulation of the FEM and update of the geometry. Note that



**Figure 3**

**Flow chart.** Stepwise incremental procedure simulating growth, load and growth modulation.

stresses were set to zero before and after the simulation of the modulated forces in order to perform the step of geometry change due to growth modulation. The accumulation of stresses was indirectly integrated via the geometry, which was modified at each iteration.

#### Simulations

Two weeks of growth was simulated based on the observations made on the chicken from the pinealectomized group. The scoliotic deformation appeared early at the second week around the 14<sup>th</sup> day after hatching. During the next 3 or 4 weeks, scoliosis progressed with a significant deformation. Around the fifth week, spontaneous fusion occurred from the second to the sixth thoracic vertebrae, forming a bony plate [27], as is usually observed in normal chicken. Because we were not interested to represent this phenomenon which does not occur in the human spine, simulations were conducted over a period of 2 weeks in the 14–28 days after hatching period.

In a scoliotic subject, the normal pre-stress of the discs [28] is affected by the unequal loads of the musculo-ligamentous structures [29]. An unpublished in-house study, performed on pinealectomized chickens, investigated muscle recruitment patterns associated with walking, by recording EMG activation in different paraspinal muscles. Aside from a decrease in bone mass density after pinealectomy, the findings also revealed an increase in muscle tone during rest and an asymmetry in EMG activation patterns during walking. To simulate this complex force pattern, a range of asymmetric loads (2–14 Nmm) were

applied at the supposed apical vertebra (T5) to produce bending in the frontal plane of the spine. These loads correspond to a range of possible moments caused by suspected muscle activity imbalance. The applied moment therefore creates a shift from the normal load on the vertebrae (stabilizing action of muscles), and consequently produces an asymmetric growth plate activity. As mentioned above, this unbalance accentuates the spinal curvature according to the Hueter-Volkman concept. The load values were chosen to create a coherent deformation of the spine and were considered to be plausible taking into account the size of the animal. The incremental procedure of Figure 3 was repeated over 14 cycles, each cycle representing a day. The value of the parameter  $\beta$  was set to 1.87 MPa<sup>-1</sup>, as obtained empirically by Stokes [30]. More recent data are available [31], but since a variation of this parameter allows simulating modulations of different intensity the present value was found to be adequate for this study. A future objective however is to investigate the influence and the validity of this complex parameter. The solution considered non-linearity due to large displacements and change of state at the contact elements of the articular facets. At each iteration, three geometric descriptors were evaluated. The Cobb angle of the spine is defined as the angle between the perpendiculars at the inflexion points of the spinal curve in the frontal plane. Wedging angle of the apical vertebra is the angle between the endplates of the most off-centered vertebra in the frontal plane. Finally, the lateral displacement of the vertebral body is the distance between the deformed position of one vertebra and its original position.



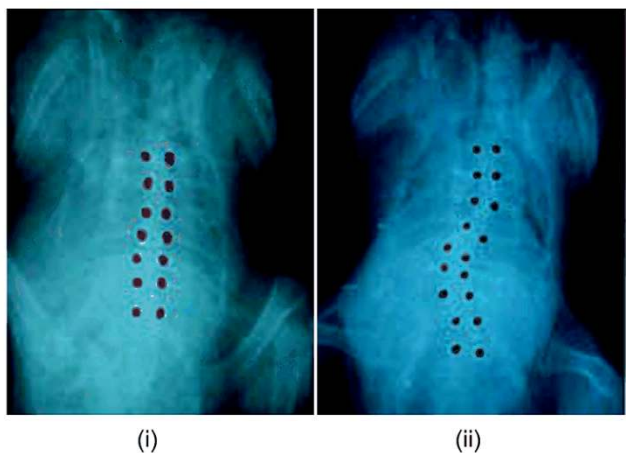
**Results**

**Experimental results**

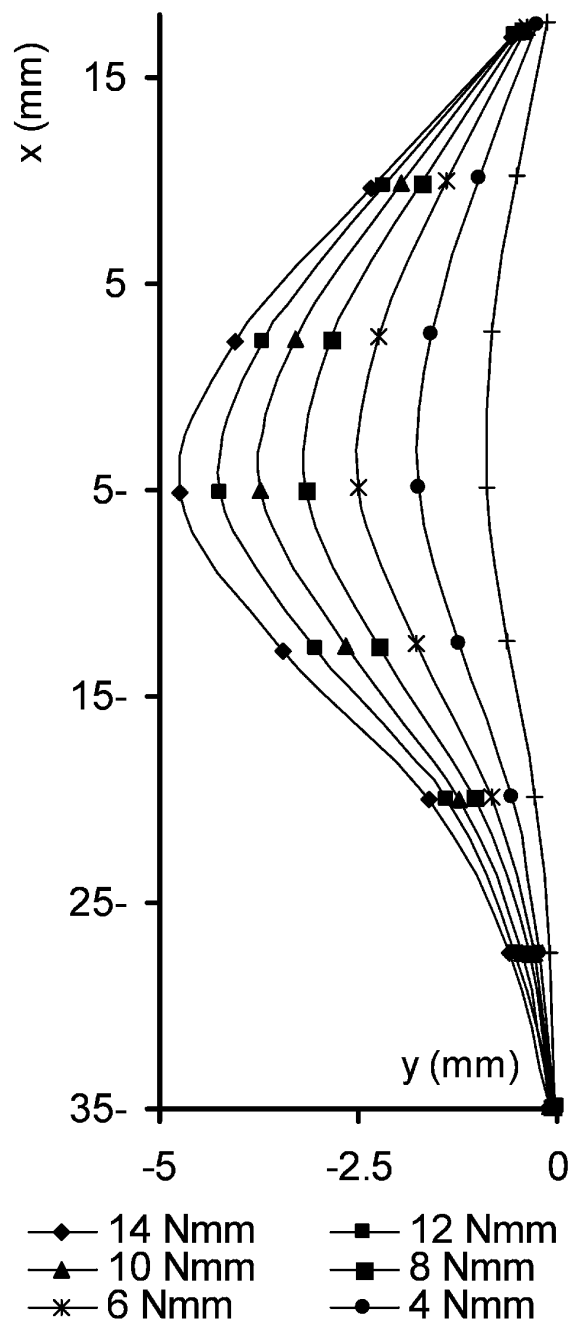
None of the *shams* or *control* chicken developed scoliosis. Within the first group (*pinealectomized*), 55% of the animals (n = 42) developed a scoliosis. Chickens underwent radiological analysis on day 28 to measure the scoliotic deformities (Figure 4). The Cobb angle values were quite variable, with a mean value of 26° and a standard deviation of 12° (range between 5° to 56°). Few chickens developed a double curve. In those situations, only the most severe deformation was considered. Because of the low level of definition on the radiographs, the wedging angle of individual vertebrae was measured only when the vertebra corners were visible. The most deformed vertebrae were generally located near the apex of the curvature. A typical wedge angle was around 25° to 30° for a severe scoliosis after four weeks.

**Numerical results**

By varying the value of the applied moment, different scoliosis configurations were simulated. The resulting Cobb angle varied between 6° and 37°. The maximal vertebral wedging (range between 5° to 28°) appeared at T4 for moments of 14, 12 and 10 N.mm, and at T5 for the other applied moments. Lateral displacement of the apical vertebrae varied from 1 to 5 mm. The segment of the spine studied had an initial length of 39 mm, while final length was around 53 mm after the application of the moments and growth processes. Table 1 summarizes the scoliotic descriptors for the seven loading cases simulated, and Figure 5 shows the lateral displacements of the vertebral bodies.



**Figure 4**  
**Radiographs.** Radiographs of a sham chicken (i) and of a pinealectomized chicken at day 28 (ii).



**Figure 5**  
**Simulated curves.** The Simulated spinal curves (vertebral body centroids), for moments of 14, 12, 10, 8, 6, 4 and 2 Nmm.

**Preliminary validation**

A descriptive comparison of the simulation results with the experimental deformation patterns was made as a preliminary validation. Among the 42 pinealectomized

**Table 1: Numerical simulation results**

Applied moment (Nmm)	Cobb Angle (degrees)	Wedging angle (Max.) (degrees)	Lateral displacement (Max.) (mm)
14	37	28	4.7
12	32	25	4.2
10	27	22	3.7
8	22	18	3.2
6	17	14	2.5
4	12	10	1.7
2	6	5	0.9

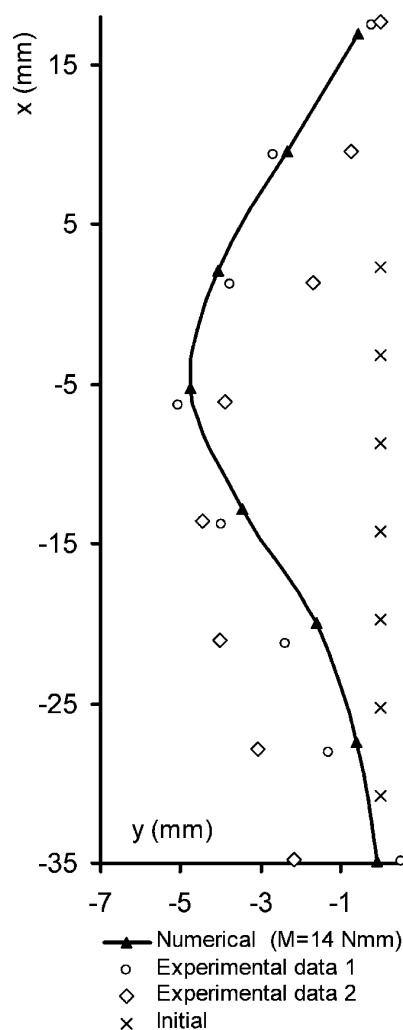
Numerical simulation results of the deformed spine after 14 days of growth, for the different applied moments. Cobb angle, wedging angle and lateral displacements are in the frontal plane.

chickens that developed a scoliosis during the experimental study, two of them have been chosen for that purpose. Chickens produce a large variety of deformations, so we are reporting here the results of two cases that showed a single curve, a moderate to important Cobb angle, and an apex located approximately at the middle of the spine. These were considered as typical cases most representative of the single thoracic spine deformity. Figure 6 illustrates a comparison of the numerical and the experimental deformations in the frontal plane obtained when a moment of 14 N.mm was applied.

**Discussion**

The deformed shape simulated was similar to the one seen in the scoliotic chickens. The Cobb angle produced by the numerical simulation was 37°, while the ones observed on the selected chickens were 41° and 30°. Apical vertebrae of the model and the two experimental spines were situated at T4. The growth of the spine was slightly underestimated in the numerical simulations due to the fact that we neglected the growth of the discs. Finally, the vertebral wedging value of 28° reached similar values than the experimental values (25° - 30°). The relation between the applied moment and the scoliotic descriptors presented a non-linear pattern, due to the non-linear behavior of the growth introduced by the contact elements representing the articular facets.

Other experimental studies have shown similar results. Inoh et al. [32] obtained an average Cobb angle of 12.9° on a group of 22 pinealectomized chickens at the age of 4 weeks. Turgut et al. [17], with a group of 6 chickens of 8 weeks old, obtained an average Cobb angle of 18°. Machida et al. [15] studied separately wedged-shape and non-wedged-shape deformities on chickens aged from 1 to 20 weeks. They obtained average Cobb angle of 59° and 26° for the wedged-shape and the non-wedged-shape groups. Cheung et al. [33] reported wedging in the thoraco-lumbar junction, with the apex at either T7 or L1, and not in the thoracic region. Those results present different experimental conditions, and are not directly comparable with our results, but they show that the simulated Cobb angles



**Figure 6**  
**Comparison of simulations and clinical curves.** Position in the frontal plane of the vertebral bodies for two selected curves and for the simulation (moment values of 14 Nmm). The initial position of the vertebrae is also illustrated.

(6° to 37°) are in the same order of magnitude. Even if all those studies reported the vertebral wedged near the apex, none of them gave an angle value for this deformation. However, approximate measurements made from their published radiographs of cadaver chickens were showing wedge angles in the range of 30° – 40°, which is comparable with the numerical values (25° – 30°) obtained in this study.

Some factors are limiting the use of the chicken model to study AIS. Indeed, the fusion occurring in the thoracic spine, limiting the evaluations over a period of three weeks, is a main obstacle and difference with the human spine. Very few data are available on the growth parameters and materials properties of the chicken. In particular, parameter  $\beta_x$ , simulating the sensitivity of bone to the growth stimulus ( $\sigma_x$ ), is very difficult to evaluate, and may be different between the specimens. At present, there are no studies that have documented spinal loading imbalance and EMG patterns in animal subjects. Research should be pursued in this direction in order to better understand the spinal forces imbalance. Finally, the horizontal (versus vertical in human) position of the thoracic and lumbosacral spine changes the way that gravity forces act on the vertebral growth plates, which perhaps limits the role of gravity loads in the progression cycle of chicken scoliosis, as compared to the effects of gravity on the whole human spine.

The growth process of the scoliotic spine was monitored under different asymmetric spinal loading conditions wherein the loads were selected from a range of plausible values. It is to be noted that the simulation model provided a quantitative representation of the growth process in the scoliotic spine and its prediction of curve evolution is only valid within the bounds of the estimated parameters of the model. However, the qualitative interpretation of the results is limited due to the estimations made in the model. Furthermore, since the objective of the study was to examine the pathomechanics of scoliosis we cannot comment on the cause/effect relationship between asymmetric spinal loading and scoliosis.

## Conclusion

This paper presents an adaptation of a previously developed FEM used here to develop a novel approach to study scoliosis. The agreement between the experimental study and the simulations showed the feasibility of the biomechanical model to realistically simulate the scoliotic deformation process in pinealectomized chickens and investigate different parameters influencing the progression of scoliosis.

When further developed and completely validated, this modeling approach could help investigating the influence

and the sensitivity of additional parameters on the progression of scoliosis, such as materials properties, sensitivity factor of bone to mechanical stimulus, boundaries conditions, etc. A few studies have reported similar anatomical characteristics in the scoliotic development induced by pinealectomy in chickens to those of human idiopathic scoliosis [34-36]. The challenge now is to use this new tool and to eventually find ways to transfer the knowledge to understanding that pathomechanics underlying the progression of idiopathic scoliosis in humans.

## Competing interests

The author(s) declare that they have no competing interests.

## Authors' contributions

PL participated in the concept and design of the study, carried out the computer simulations and drafts the manuscript. CEA and IV participated in the coordination, concept and design of the study and helped to draft the manuscript. HB performed the experimental data acquisition and analysis and helped to draft the manuscript. KMB and AM performed the experimental data acquisition and analysis and participated in coordinating the study.

## Acknowledgements

This project was supported by the Natural Sciences and Engineering Research Council of Canada, the Canada Research Chair Program and the Canadian Orthopedic Foundation. Special thanks to Professor P.A. Mathieu for the EMG data, and to Dr Archana Sangole for the careful revision of the text.

## References

1. Villemure I, Aubin C-E, Dansereau J, Labelle H: **Simulation of progressive deformities in adolescent idiopathic scoliosis using a biomechanical model integrating vertebral growth modulation.** *Journal of Biomechanical Engineering* 2002, **124(6)**:784-790.
2. Machida M: **Cause of Idiopathic Scoliosis.** *Spine* 1999, **25(19)**:2552-2553.
3. Odermatt D, Mathieu PA, Beausejour M, Labelle H, Aubin CE: **Electromyography of scoliotic patients treated with a brace.** *Journal of Orthopaedic Research* 2003, **21(5)**:931-936.
4. Reuber M, Schultz A, Mc Neill T, Spencer D: **Trunk muscle myoelectric activities in idiopathic scoliosis.** *Spine* 1983, **8**:447-456.
5. Zetterberg C, Bjork R, Ortengren R, Andersson : **Electromyography of the paravertebral muscles in idiopathic scoliosis.** *Acta Orth Scand* 1984, **55**:304-309.
6. Arkin AM, Katz JF: **The effects of pressure on epiphyseal growth. The mechanism of plasticity of growing bone.** *J Bone Joint Surg Am* 1956, **38-A(5)**:1056-76.
7. Stokes IA, Aronsson DD, Urban JPG: **Biomechanical factors influencing progression of angular skeletal deformities during growth.** *Eur J Exp Musculoskel Res* 1994, **3**:51-60.
8. Burwell RG, Cole AA, Cook TA, Grivas TB, Kiel AW: **Pathogenesis of idiopathic scoliosis: The Nottingham concept.** *Acta Orthop Belg* 1992, **58-Suppl(1)**:33-58.
9. Perdiolle R, Becchetti S, Vidal J, Lopez P: **Mechanical process and growth cartilages-Essential factors in the progression of scoliosis.** *Spine* 1993, **18**:343-349.
10. Fagan MJ, Julian S, Mohsen AM: **Finite element analysis in spine research.** *Proceedings of the Institution of Mechanical Engineers, Part H: Journal of Engineering in Medicine* 2002, **216(5)**:281-298.
11. Villemure I, Aubin CE, Dansereau J, H. Labelle: **Biomechanical simulations of the spine deformation process in adolescent idio-**



- pathic scoliosis from different pathogenesis hypotheses.** *European Spine Journal* 2003, **13(1)**:83-90.
12. Bagnall KM, Moreau M, Raso J, Mahood J, Wang X, Zhao J, Beuerlein M: **The Phenomenon Of Scoliosis Production Following Pinealectomy In A Young Chicken.** *Proceeding of the 10th International Philip Zorab Symposium: 30 March-1 April 1998; Oxford* .
  13. Coillard C, Rivard CH: **Vertebral deformities and scoliosis.** *Eur Spine J* 1996, **5**:91-100.
  14. Machida M, Miyashita Y, Murai I, Dubousset J, Yamada T, Kimura J: **Role of serotonin for scoliotic deformity in pinealectomized chicken.** *Spine* 1997, **22(12)**:1297-1301.
  15. Machida M, Dubousset J, Satoh T, Murai I, Wood K, Yamada T, Ryu J: **Pathologic mechanism of experimental scoliosis in pinealectomized chickens.** *Spine* 2001, **26(17)**:385-391.
  16. Moreau A, Wang D, Forget S, Azeddine B, Angeloni D, Fraschini F, Labelle H, Poitras B, Rivard C-H, Grimard G: **Melatonin signaling dysfunction in adolescent idiopathic scoliosis.** *Spine* 2004, **29(16)**:1772-1781.
  17. Turgut M, Yenisey C, Uysal A, Bozkurt M, Yurtseven ME: **The effects of pineal gland transplantation on the production of spinal deformity and serum melatonin level following pinealectomy in the chicken.** *Eur Spine J* 2003, **12**:487-494.
  18. Cheung K, Wang T, Poon A, Carl A, Tranmer B, Hu Y, Luk K, Leong J: **The Effect of Pinealectomy on Scoliosis Development in Young Nonhuman Primates.** *Spine* 2005, **30(18)**:2009-2013.
  19. Thillard M-J: **Deformations de la colonne vertébrale consécutives à l'épiphyséctomie chez le poussin.** *Extrait de comptes rendus de l'Association des Anatomistes* 1959, **46**:22-26.
  20. O'Kelly C, Wang X, Raso J, Moreau M, Mahood J, Zhao J, Bagnall K: **The production of scoliosis after pinealectomy in young chickens, rats, and hamsters.** *Spine* 1999, **24(1)**:35-43.
  21. AUBIN CÉ: **Finite element analysis for the biomechanical study of scoliosis.** In *Spine state of the art review on the etiology of idiopathic scoliosis Volume Chapter 21*. Edited by: Burwell RG et al. Philadelphia: Hanley & Belfus, Inc.; 2000:489-504.
  22. Aubin CE, Describes JL, Dansereau J, Skalli W, Lavaste F, Labelle H: **Geometrical Modelling of the Spine and Thorax for Biomechanical Analysis of Scoliotic Deformities Using Finite Element Method.** *Ann Chir* 1995, **49(8)**:749-761.
  23. Huynh A, Aubin CE, Rajwani T, Bagnall K, Villemure I: **Pedicle growth asymmetry as a cause of adolescent idiopathic scoliosis: a biomechanical study.** *Eur Spine J* 2007, **16(4)**:523-529.
  24. Stokes IAF, Laible JP: **Three-dimensional osseo-ligamentous model of the thorax representing initiation of scoliosis by asymmetric growth.** *Journal of Biomechanics* 1990, **23(6)**:589-595.
  25. Describes JL, Aubin CE, Skalli W, Zeller R, Dansereau J, Lavaste F: **Modelling of facet joints in a finite element model of the scoliotic spine and thorax: mechanical aspects.** *Rachis* 1995, **7(5)**:301-314.
  26. Stokes IA, Gwadera J, Dimock A, Farnum CE, Aronsson DD: **Modulation of vertebral and tibial growth by compression loading: diurnal versus full-time loading.** *Journal of Orthopaedic Research* 2005, **23(1)**:188-195.
  27. Koch T, Rossa E: *Anatomy of the chicken and domestic birds* Ames: The Iowa State University Press; 1973.
  28. Nachemson A: **The loads on lumbar disks in different positions of the body.** *Clin Orthop* 1964, **45**:107-122.
  29. Wever D, Veldhuizen A, Klein J, Webb P, Nijenbanning G, Cool J, v. Horn J: **A biomechanical analysis of the vertebral and rib deformities in structural scoliosis.** *European Spine Journal* 1999, **8**:252-260.
  30. Stokes IAF: **How vicious is the 'Vicious Cycle'?** *Proceedings of the International Research Society of Spinal Deformities: 10-12 June 2004; Vancouver* .
  31. Stokes I, Aronsson D, Dimock A, Cortright V, Beck S: **Endochondral growth in growth plates of three species at two anatomical locations modulated by mechanical compression and tension.** *J Orthop Res* 2006, **24(6)**:1327-1334.
  32. Inoh H, Kawakami N, Matsuyama Y, Aoki T, Kanemura T, Natsume N, Iwata H: **Correlation Between the Age of Pinealectomy and the Development of Scoliosis in Chickens.** *Spine* 2001, **26(9)**:1014-1021.
  33. Cheung KM, Wang T, Hu YG, Leong JC: **Primary thoracolumbar scoliosis in pinealectomized chickens.** *Spine* 2003, **28(22)**:2499-504.
  34. Machida M, Dubousset J, Satoh T, Murai I, Wood KB, Yamada T, Ryu J: **Pathologic Mechanism of Experimental Scoliosis in Pinealectomized Chickens.** *Spine* 2001, **26(17)**:E385-91.
  35. Kanemura T, Kawakami N, Deguchi M, Mimatsu K, Iwata H: **Natural Course of Experimental Scoliosis in Pinealectomized Chickens.** *Spine* 1997, **22(14)**:1563-7.
  36. Wang X, Jiang H, Raso J, Moreau M, Mahood J, Zhao J, Bagnall K: **Characterization of the Scoliosis that Develops after Pinealectomy in the Chicken and Comparison with Adolescent Idiopathic Scoliosis in Humans.** *Spine* 1997, **22(22)**:2626-35.

Publish with **BioMed Central** and every scientist can read your work free of charge

"BioMed Central will be the most significant development for disseminating the results of biomedical research in our lifetime."

Sir Paul Nurse, Cancer Research UK

Your research papers will be:

- available free of charge to the entire biomedical community
- peer reviewed and published immediately upon acceptance
- cited in PubMed and archived on PubMed Central
- yours — you keep the copyright

Submit your manuscript here:  
[http://www.biomedcentral.com/info/publishing\\_adv.asp](http://www.biomedcentral.com/info/publishing_adv.asp)

