

Cite this: *Chem. Sci.*, 2020, 11, 748

All publication charges for this article have been paid for by the Royal Society of Chemistry

Biomimetic nanochannels for the discrimination of sialylated glycans *via* a tug-of-war between glycan binding and polymer shrinkage†‡

 Minmin Li,^{ab} Yuting Xiong,^{ab} Dongdong Wang,^a Yunhai Liu,^b Bing Na,^b Haijuan Qin,^c Jinxuan Liu,^{id} Xinmiao Liang,^{id}*^a and Guangyan Qing,^{id}*^a

Sialylated glycans that are attached to cell surface mediate diverse cellular processes such as immune responses, pathogen binding, and cancer progression. Precise determination of sialylated glycans, particularly their linkage isomers that can trigger distinct biological events and are indicative of different cancer types, remains a challenge, due to their complicated composition and limited structural differences. Here, we present a biomimetic nanochannels system integrated with the responsive polymer polyethyleneimine-*g*-glucopyranoside (Glc-PEI) to solve this problem. By using a dramatic "OFF-ON" change in ion flux, the nanochannels system achieves specific recognition for *N*-acetylneuraminic acid (Neu5Ac, the predominant form of sialic acid) from various monosaccharides and sialic acid species. Importantly, different "OFF-ON" ratios of the conical nanochannels system allows the precise and sensitive discrimination of sialylated glycan linkage isomers, α 2-3 and α 2-6 linkage (the corresponding ion conductance increase ratios are 96.2% and 264%, respectively). Analyses revealed an unusual tug-of-war mechanism between polymer-glycan binding and polymer shrinkage. The low binding affinity of Glc-PEI for the α 2-6-linked glycan caused considerable shrinkage of Glc-PEI layer, but the high affinity for the α 2-3-linked glycan resulted in only a slight shrinkage. This competition mechanism provides a simple and versatile materials design principle for recognition or sensing systems that involve negatively charged target biomolecules. Furthermore, this work broadens the application of nanochannel systems in bioanalysis and biosensing, and opens a new route to glycan analysis that could help to uncover the mysterious and wonderful glycoworld.

 Received 22nd October 2019
 Accepted 25th November 2019

DOI: 10.1039/c9sc05319k

rsc.li/chemical-science

Introduction

Mammalian cell surfaces are covered with a dense layer of glycans, that are attached to various glycoconjugates, constituting essential mediators of diverse cellular processes.¹ As a key component, sialic acid is typically linked to glycan non-reducing termini with an α 2-3 or α 2-6 linkage.² This outmost position and ubiquitous distribution enable sialylated glycans,

acting as critical binding sites for lectins or pathogens, to be involved in numerous cellular processes.³ For example, the avian influenza H7N9 virus specifically recognizes sialylated glycans with an α 2-3 linkage (α 2-3-linked glycans). However, in 2013, a reassortant avian-origin H7N9 acquired the ability to bind α 2-6-linked glycans that are dominant in human respiratory epithelial cells and infect humans (Scheme 1A).⁴ In addition, aberrant protein sialylation has been closely correlated with various cancers.⁵ For instance, prostate cancer features an elevated expression of α 2-3-linked glycans,^{5c,d} whereas breast cancer exhibits overexpression of α 2-6-linked glycans (Scheme 1B).^{5e,f} Additionally, HIV-1 disguises itself with a glycan-shield to escape the recognition by the host immune system.⁶ Virion-incorporated, host-derived α 2-3-linked glycans mediate the capture of mature dendritic cells to HIV-1, constituting a key early step in HIV-1 infection.⁷ Therefore, precisely recognizing sialylated glycans, discriminating different glycan linkage types, and determining the glycan fine structure can facilitate both the understanding of disease progression and the improvement of early diagnoses and targeted treatments.⁸ However, due to complicated composition, subtle structural differences, and ultralow abundance of these glycans,^{2,9a} current glycan analysis

^aKey Laboratory of Separation Science for Analytical Chemistry, Dalian Institute of Chemical Physics, Chinese Academy of Sciences, 457 Zhongshan Road, Dalian 116023, China. E-mail: qinggy@dicp.ac.cn; liangxm@dicp.ac.cn

^bJiangxi Province Key Laboratory of Polymer Micro/Nano Manufacturing and Devices, East China University of Technology, 418 Guanglan Avenue, Nanchang 330013, China

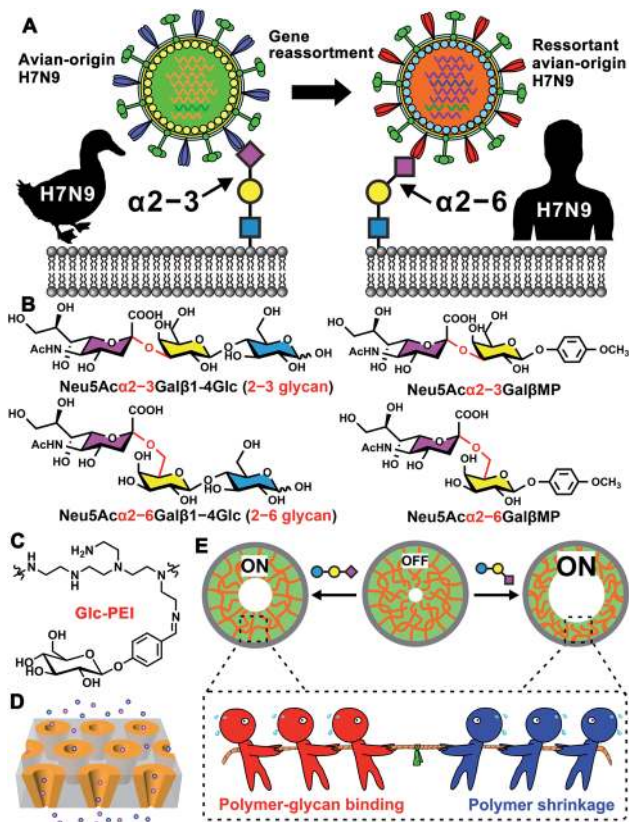
^cResearch Centre of Modern Analytical Technology, Tianjin University of Science and Technology, Tianjin 300457, China

^dInstitute of Artificial Photosynthesis, State Key Laboratory of Fine Chemicals, Dalian University of Technology, Dalian 116024, China

† Dedicated to the 70th anniversary of Dalian Institute of Chemical Physics, CAS.

‡ Electronic supplementary information (ESI) available: Materials and instruments, preparation and characterization of functional nanochannels, other experimental details, and supplementary schemes and figures. See DOI: 10.1039/c9sc05319k





Scheme 1 Schematics illustration of the biomimetic nanochannels for glycan recognition. (A) H7N9 virus binds to avian $\alpha 2-3$ -linked sialylated glycan receptor, while the reassortant H7N9 virus binds to human $\alpha 2-6$ -linked glycan receptor. (B) Chemical structures of two sialylated glycan models (2-3 glycan and 2-6 glycan), and two sialylated disaccharides with same linkage types. (C) Chemical structure of Glc-PEI. (D) Schematic illustration of the Glc-PEI-modified nanochannels. (E) Glycan-induced nanochannel “OFF-ON” changes, and the tug-of-war cartoon to illustrate the competition between polymer-glycan binding and the polymer shrinkage.

and determination methods rely excessively on multistage mass spectrum (MS),^{9a,b} ultra-high field nuclear magnetic resonance spectroscopy (NMR),^{9c} or various informatics approaches,^{9d} which usually require significant expertise in complex operation and data analysis, complicated glycans derivatization, and high sample amounts. Thus, developing highly sensitive, easily accessible, and label-free glycan analysis methods and devices represents a major challenge, albeit one with potential rewards.

Biomimetic ion nanochannels offer an ideal solution to the challenge.¹⁰ Over the past decade, various exquisite functional nanochannel systems (resulting from integration of the functional elements onto the inner wall of nanochannel) have been developed for detection, sensing, and molecular transport applications.¹¹ For example, Rant's group reported that a solid nanochannel modified with nitrilotriacetic acid receptors can be used to detect His-tagged proteins and discriminate subclasses of rodent IgG antibodies.^{11d} Xia's group used DNA nanostructures as the functional element to prepare the nanochannel-based sensor and detected the target DNA with

a detection limit of 10 fM in complex matrices.^{11e} Jiang's group constructed a series of biomimetic nanochannels integrated with peptides or DNA aptamers as selective molecule transport platforms, and explored the prospect of drug delivery with a feedback function.^{11fg} However, few reports exist for the detection of biologically significant glycan molecules using this functional nanochannels platform. The gap in complex glycan-sensing devices has persisted despite several excellent research papers describing glucose recognition based on a pillar[6]arene and an enzyme-functionalized nanochannel,^{12a,b} and several other similarly creative research papers involving the analyses of hyaluronan^{12c} and heparin^{12d} via a solid nanopore approach. Compared with monosaccharides, disaccharides, and polysaccharides with periodic repeated units, the recognition of complex glycans is substantially more challenging, owing to their complicated monosaccharide compositions, branched structures and microheterogeneity,^{2,9a} which poses higher demands in the design of the functional elements of nanochannels. To solve this challenge, we propose a simple but versatile strategy that combines a responsive polymer with artificial nanochannels, and report that the precise recognition and discrimination of glycan linkage isomers can be achieved with this biomimetic nanochannels system.

As shown in Scheme 1C, the polymer polyethyleneimine-glycopyranoside (Glc-PEI) was prepared by grafting the glucopyranoside unit onto the polyethyleneimine chain, which was further integrated into the nanochannels to produce a functional nanochannels system (Scheme 1D). This system achieved recognition of monosaccharides, sialic acids, and sialylated glycans through “OFF-ON” changes in ion flux through the nanochannel (Scheme 1E). Notably, different “OFF-ON” ratios enable precise discrimination of glycan linkage isomers. Binding affinity studies of Glc-PEI with glycans have indicated that the competition between Glc-PEI-glycan binding and Glc-PEI shrinkage leads to varying shrinkage levels of Glc-PEI, finally causing increases in nanopore size and ion conductance. This system exhibits high selectivity, high sensitivity, and label-free features, indicating its potential for applications of functional nanochannel platforms in glycomics and the development of glycan-related devices.

Results and discussion

Cylindrical nanochannels for glycan recognition

The polymer Glc-PEI comprises two parts. Polycationic PEI functions as the flexible main chain, with a conformation transition feature.¹³ Inspired by emerging trends in carbohydrate-carbohydrate interactions,¹⁴ the glucose unit (Glc) from glucopyranoside was chosen as the recognition element for the glycans, which could participate in multiple hydrogen bonding interactions via its four hydroxyl groups.¹⁵ A cylindrical porous anodic alumina (PAA) membrane was chosen as the nanochannels substrate, due to its regular and parallel porous structure, which aids investigations of recognition effects and controlled transport of molecules and ions.¹⁶ After being constructed by grafting Glc units onto PEI chains through aldimine condensation (the grafted ratio of Glc was approximately 9%,



Scheme S1, Fig. S1†), the resulting Glc-PEI was anchored onto the inner walls of the PAA nanochannels through a two-step coupling reaction (Scheme S2, Fig. S2 and S3†). The Glc-PEI-modified PAA membrane was then mounted in a home-made electrochemical device (Fig. 1A, inset), and the transmembrane ionic current was recorded 10 min after the addition of a NaCl electrolyte containing the target analyte.

The addition of Neu5Ac caused an increase of the ionic current (at +0.2 V) from an initial 1.58 μA to 2.35 μA (Fig. 1A), that is, the ion conductance (G) increased from 7.9 μS ("OFF" state) to 11.75 μS ("ON" state). The corresponding ion conductance increase ratio (defined as $[G - G_0]/G_0$, *i.e.*, $\Delta G/G_0$) was approximately 48% (the concentration was 1 mM, and similarly hereinafter). Concentration-dependent measurements demonstrate that the increase ratios of ion conductance with the addition of Neu5Ac are more pronounced than with the addition of galactose, mannose, and glucose (Fig. 1B). These different conductance increases demonstrate a distinct recognition effect. Moreover, the ion conductance measurement results from three sialic acids, namely Neu5Ac, *N*-glycolylneuraminic acid (Neu5Gc), and 2-keto-3-deoxyonic acid (KDN), also revealed a significant discrimination effect. The conductance

increase ratio of Neu5Ac (47%) was higher than those of Neu5Gc (11.6%) and KDN (5.3%) (Fig. 1C). These results reveal that the Glc-PEI-modified PAA has a strong specific recognition ability for Neu5Ac, which cannot be attributed to the acidity of Neu5Ac.

Next, we turned our attention to Neu5Ac-capped glycans. Neu5Ac α 2-3Gal β 1-4Glc (abbreviated as 2-3 glycan) and Neu5Ac α 2-6Gal β 1-4Glc (abbreviated as 2-6 glycan), a pair of model glycan linkage isomers with similar composition to the glycan fragments found in H7N9 receptor (Scheme 1B), was chosen to perform the transmembrane ionic current measurement. The ion conductance change of Glc-PEI-modified PAA was concentration dependent for both 2-3 glycan and 2-6 glycan (Fig. 1D). Notably, the effect of increasing the concentration of 2-6 glycan on the increase in ion conductance was greater than that of 2-3 glycan. The maximum increase ratios of 2-6 glycan and 2-3 glycan were 42.5% and 20%, respectively. This implies that Glc-PEI-modified PAA exhibited a strong recognition preference for the sialylated trisaccharide with α 2-6 linkage. This preference for α 2-6 linkage was further confirmed in the evaluations of two sialylated disaccharide linkage isomers, Neu5Ac α 2-6Gal β MP and Neu5Ac α 2-3Gal β MP (two kinds of methoxyphenyl pyranoside disaccharides, MP denotes the 4-methoxyphenyl, the chemical structures are shown in Scheme 1B). A series of ion conductance increase ratios observed for the 2-6-linked disaccharide were considerably higher than those observed for the 2-3-linked disaccharide (Fig. 1E). In addition, control experiments to explore the glycan-recognition capacity of PEI-modified PAA nanochannels in the absence of the grafted Glc unit was performed. The treatment of either 2-6 glycan or 2-3 glycan produced small, nearly indistinguishable changes in ion conductance (Fig. 1F). This indicates that the Glc unit of the Glc-PEI polymer is necessary to achieve efficient glycan recognition.

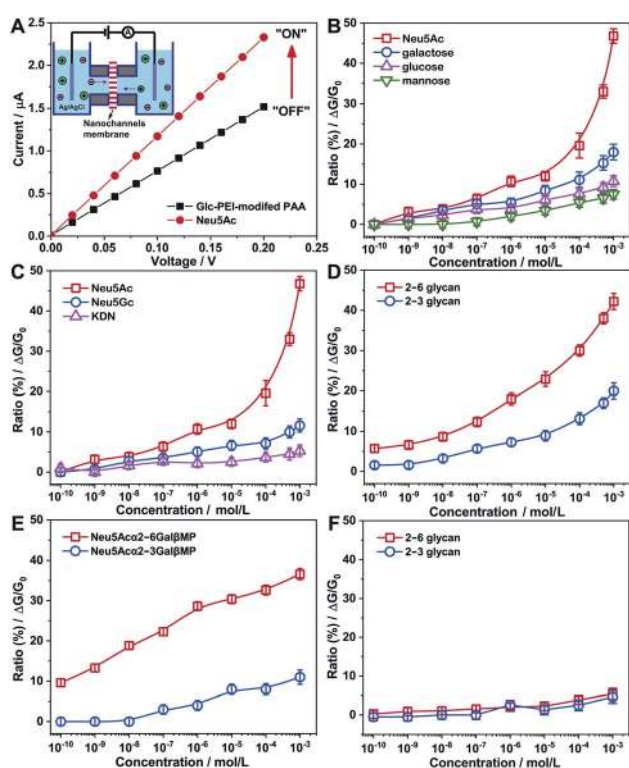


Fig. 1 Transmembrane ionic current measurements based on the PAA nanochannels. (A) I - V curves of Glc-PEI-modified PAA in 0.01 M NaCl solution before and after addition of Neu5Ac (1 mM). The inset represents the electrochemical device. (B-E) Concentration-dependent transmembrane ion conductance increase ratios ($\Delta G/G_0$) of Glc-PEI-modified PAA upon treatment by various monosaccharides (B), sialic acids (C), sialylated glycan linkage isomers (D), sialylated disaccharide linkage isomers (E). (F) Control experiment based on the PEI-modified PAA membrane.

Asymmetric conical nanochannels for glycan recognition

The polyethylene terephthalate (PET) conical nanoporous membrane features a significant ionic current rectification effect that can facilitate the study of recognition sensitivity.¹⁷ Thus, the PET membrane was chosen as substrate to prepare functional nanochannels system. The PET conical nanoporous membranes was prepared using an asymmetric ion track-etching technique based on the home-made electrochemical device (Fig. S4†). The diameters of the large opening (base side) and the small opening (tip side) of the nanochannels were determined to be approximately 323 nm and 31 nm, respectively, by scanning electron microscope (Fig. S5†). Then, the Glc-PEI polymer was anchored to the PET conical nanochannel inner wall through a one-step coupling reaction (Scheme S3, Fig. S6 and S7†). The resulting Glc-PEI-modified PET membrane was used to conduct the same transmembrane ionic current measurement. The results show that, addition of 2-6 glycan caused an obvious change in ionic current (Fig. 2A). Taking the current value at -2 V for example, the current change shows a concentration-dependent increase trend. The ionic rectification effect ($|I_{-2V}|/|I_{+2V}|$) of Glc-PEI-modified PET also becomes evident as the concentration of 2-6 glycan increases (Fig. S8†).



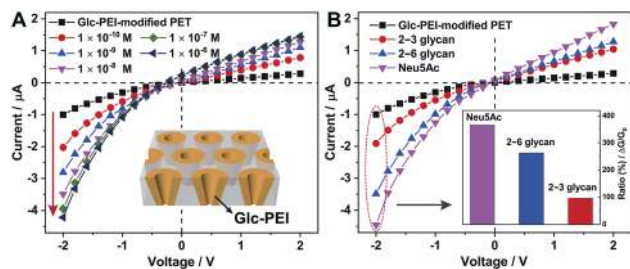


Fig. 2 Transmembrane ionic current measurements based on the PET conical nanochannels. (A) I - V curves of Glc-PEI-modified PET in 0.1 M NaCl solution before and after addition of 2-6 glycan solutions with different concentration. (B) I - V curves of Glc-PEI-modified PET before and after addition of 2-3 glycan, 2-6 glycan, and Neu5Ac solution (1×10^{-8} M). The inset is the corresponding current change ratios at -2 V.

More specifically, for the 2-6 glycan solution with a concentration of 0.1 nM (1×10^{-8} M), the recorded current value was 3.49 μ A at -2 V. The current increase ratio (conductance increase ratio) was approximately 102%, representing a considerably higher recognition sensitivity than that observed for the Glc-PEI-modified PAA nanochannels, where the maximum ratio was only approximately 42.5% and the corresponding concentration was as high as 1 mM (Fig. 1D). Comparative analyses revealed that Glc-PEI-modified PET achieved a significant discrimination effect for 2-6 glycan and 2-3 glycan, and the ion conductance increase ratios (at -2 V, concentration = 10 nM) were approximately 264%, and 96.2%, respectively (Fig. 2B). Under the same conditions, the ion conductance increase ratio that was observed for Neu5Ac reached approximately 367% (see inset, Fig. 2B). These results indicated that the Glc-PEI-modified PET conical nanochannels system could significantly elevate the recognition sensitivity, and amplify the discrimination effect, presumably owing to the ionic rectification property of the conical nanochannel.

Given these results, we performed a Laser Scanning Confocal Microscopy (LSCM) experiment to investigate the response of the Glc-PEI-modified PET nanochannel when it encountered different glycan molecules. First, fluorescein-labelled sialylated glycans were obtained by reductive amination of the glycan reducing end with fluoresceinamine under the agency of sodium cyanoborohydride (Fig. 3A and S9, Scheme S4 \ddagger). Three-dimensional (3D) reconstructed LSCM images obtained by a layer-by-layer scanning way are shown Fig. 3B and C. Many green cylinders are apparent on the image of Glc-PEI-modified PET nanochannels after treatment with the fluorescein-labelled 2-3 glycan and subsequent rinsing with water. As the Glc-PEI-modified PET membrane itself does not fluoresce, the green fluorescent signals must be the result of the fluorescein-labelled 2-3 glycan adsorption. A 3D reconstructed image of a single, bright green signal shows a conical shape (right panel, Fig. 3B). This implies that the Glc-PEI, that were anchored to the inner wall of conical nanochannels, had adsorbed a large amount of the fluorescein-labelled 2-3 glycan molecules. These disperse fluorescence signals reflect the conical nanochannels of the PET membrane. However, for the Glc-PEI-modified PET

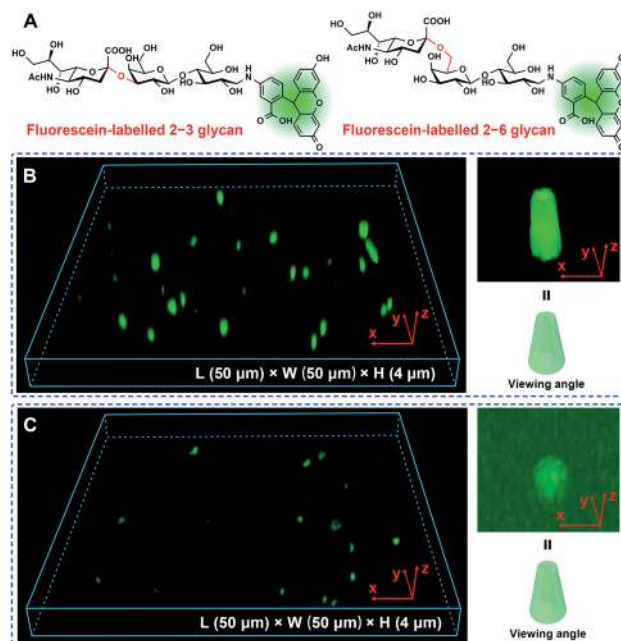


Fig. 3 LSCM observation of the Glc-PEI-modified PET conical nanochannels. (A) Chemical structures of the fluorescein-labelled 2-3 glycan and 2-6 glycan. (B and C) 3D reconstructed LSCM images of the Glc-PEI-modified PET membrane and a single conical nanochannels upon interaction with the fluorescein-labelled 2-3 glycan (B), and the fluorescein-labelled 2-6 glycan (C). The drawn conical nanochannel model shown in the bottom right is used to indicate the viewing angle of the 3D reconstructed LSCM image.

membrane that was treated with the fluorescein-labelled 2-6 glycan, there were fewer green spots observed (Fig. 3C), and they were less intense in strength compared with that observed with the fluorescein-labelled 2-3 glycan treatment. A similar difference was observed in different areas of the membrane surface (Fig. S10 \ddagger). In addition, the intrinsic weak fluorescence signal obtained from the fluorescein-labelled 2-6 glycan obscured the distinctive cone shapes from view (Fig. 3C). Thus, in the 3D reconstructed image of single fluorescent feature (right panel, Fig. 3C), the shape of a partial cone is only faintly discernible. The results indicate that the Glc-PEI has stronger adsorbing capability towards α 2-3-linked glycan compared with α 2-6-linked isomer.

Investigation of conformational changes of the Glc-PEI polymer

LSCM observation provided direct evidence for the different adsorption behaviours of 2-3 glycan and 2-6 glycan onto the asymmetric nanochannels grafted with the polymer; however, this did not explain the change of the transmembrane ion conductance. Generally, changes in transmembrane ion conductance depend on a change in the effective aperture of nanochannel.¹⁸ Thus, here we used Atomic Force Microscopy (AFM) to study the surface morphology change of the nanochannels based on the PAA substrate. The AFM image of the Glc-PEI-modified PAA nanochannels is shown in Fig. 4A. After



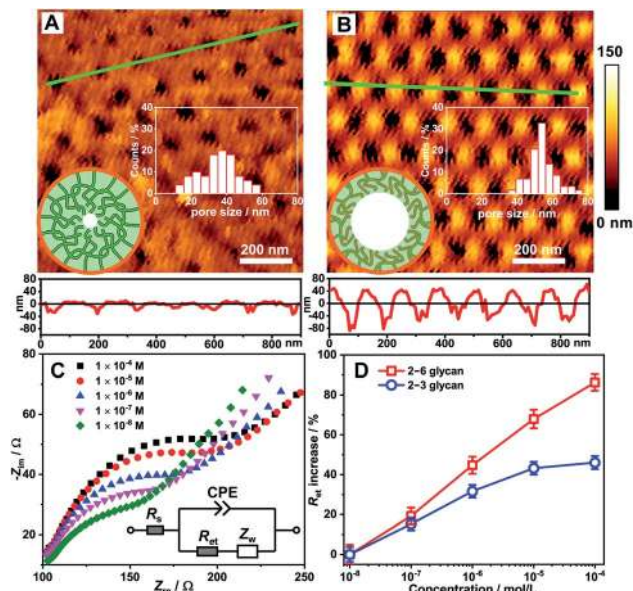


Fig. 4 Investigation of conformational changes of the Glc-PEI polymer. AFM images of the Glc-PEI-modified PAA membrane (A) before and (B) after being immersed in the 2–6 glycan solution (1 mM) for 10 min. The low panels are the corresponding section profiles along the green lines. The inserts represent the distribution of pore size and schematic of a Glc-PEI-modified PAA nanochannel. (C) EIS measurements of the Glc-PEI-modified gold electrode in 0.1 M KCl solution containing 5 mM $\text{Fe}(\text{CN})_6^{3-}/4-^{-}$, after treatment with 2–6 glycan solution with different concentration for 10 min. The inset represents the equivalent circuit for fitting the impedance spectrum to offer the electron transfer resistance. R_s : solution resistance; R_{et} : electron transfer resistance; Z_w : Warburg impedance; CPE: constant phase element. (D) Concentration-dependent R_{et} increase.

treatment with the 2–6 glycan solution for 10 min, the average aperture changed from approximately 37 to 55 nm (Fig. 4B), implying that the Glc-PEI layer had shrunk, following adsorption of the 2–6 glycan molecules. This offers direct evidence that Glc-PEI shrinkage was responsible for the “OFF–ON” change of the nanochannel, and the corresponding increase in ion flux, *i.e.*, ion conductance.

This distinct shrinkage behaviour was confirmed by Electrochemical Impedance Spectroscopy (EIS) measurements using a gold electrode decorated with the Glc-PEI film (see Section 5 in ESI†). The EIS spectrum of Glc-PEI-modified electrode was recorded in an electrolyte solution after immersion in the target solution for 10 min. The EIS spectra from the treatment with 2–6 glycan are shown in Fig. 4C. The semicircle diameters correspond to electron transfer resistance (R_{et}) through the Glc-PEI layer. This indicates that R_{et} increases as the concentration of 2–6 glycan increases. This means that the Glc-PEI layer, after the treatment of 2–6 glycan, changed from an initial swollen state to a compact shrunken state, blocking the electron transfer process through the polymer layer and causing the increase of R_{et} .¹⁹ Notably, under the same conditions, the R_{et} increase ratios due to the treatment of 2–6 glycan are higher than those of 2–3 glycan (Fig. 4D). This implies Glc-PEI shrinkage upon the adsorption of 2–6 glycan was much

more substantial than that of 2–3 glycan. The different shrinkage levels are fully consistent with the corresponding ion conductance changes of the Glc-PEI-modified nanochannels (Fig. 1D).

Investigations of the binding affinities of Glc-PEI with glycans

Generally, in a recognition or sensing system, a stronger binding affinity of the material to the target of interest results in a more dramatic recognition effect; examples of such an effect include more obvious colour changes, or larger current changes.²⁰ However, in this study, a unique phenomenon was observed for glycan recognition based on the Glc-PEI-modified nanochannels system. Specifically, the high binding affinity between the Glc-PEI and the target caused a slight shrinkage of the Glc-PEI layer and a small increase in ion conductance. On the other hand, low binding affinity caused an obvious shrinkage and a much larger increase in ion conductance. This unusual scenario was initially observed in affinity measurements using an Isothermal Titration Calorimetry (ITC) method. With the titration of Neu5Ac in the Glc-PEI solution, strong exothermic data were recorded, and the optimal fitting curve yielded a binding constant (K_a) value of approximately $3.52 \times 10^3 \text{ M}^{-1}$ (Fig. 5A). Under the same conditions, Glc-PEI with either 2–6 glycan or 2–3 glycan exhibited much stronger, and gradually increasing affinity levels, giving K_a values of approximately $1.52 \times 10^4 \text{ M}^{-1}$ and $5.33 \times 10^4 \text{ M}^{-1}$, respectively (red columns, Fig. 5B). The affinity results of Glc-PEI with 2–6 glycan and 2–3 glycan are in agreement with the strength of the fluorescent signals observed in the LSCM experiments (Fig. 3B and C).

Surprisingly, when the corresponding ion conductance increase ratio obtained from ionic current measurements based on Glc-PEI-modified PAA nanochannels was plotted side by side with the K_a value in the chart, a negative correlation between binding affinity (K_a value) and conductance increase was observed (Fig. 5B). In other words, the higher the affinity of Glc-PEI with the analyte is, the smaller the increase in conductance increase of Glc-PEI-modified PAA nanochannels upon the treatment with the analyte is, and *vice versa*. More specifically, the highest binding affinity ($5.33 \times 10^4 \text{ M}^{-1}$) of Glc-PEI with 2–3 glycan corresponds to the smallest conduction increase (20%). The lowest affinity ($3.52 \times 10^3 \text{ M}^{-1}$) of Glc-PEI with Neu5Ac is associated with the largest conductance increase (47%). Not coincidentally, a similar negative correlation was also observed for the comparison of Neu5Ac, Neu5Gc, and KDN (Fig. 5C). Given that the shrinkage of the Glc-PEI polymer is responsible for the increase of ion conductance of the Glc-PEI-modified nanochannel (which has been proven by AFM and EIS experiments), these results indicate the existence of an unusual negative correlation between the binding affinity of Glc-PEI with the analyte and the shrinkage level of Glc-PEI caused by the binding to the analyte, which warrants further investigation.

Correlation of the binding affinity and conformational change

The correlation between the binding affinity and conformational change of the Glc-PEI polymer was investigated using Quartz Crystal Microbalance with Dissipation monitoring (QCM-D).



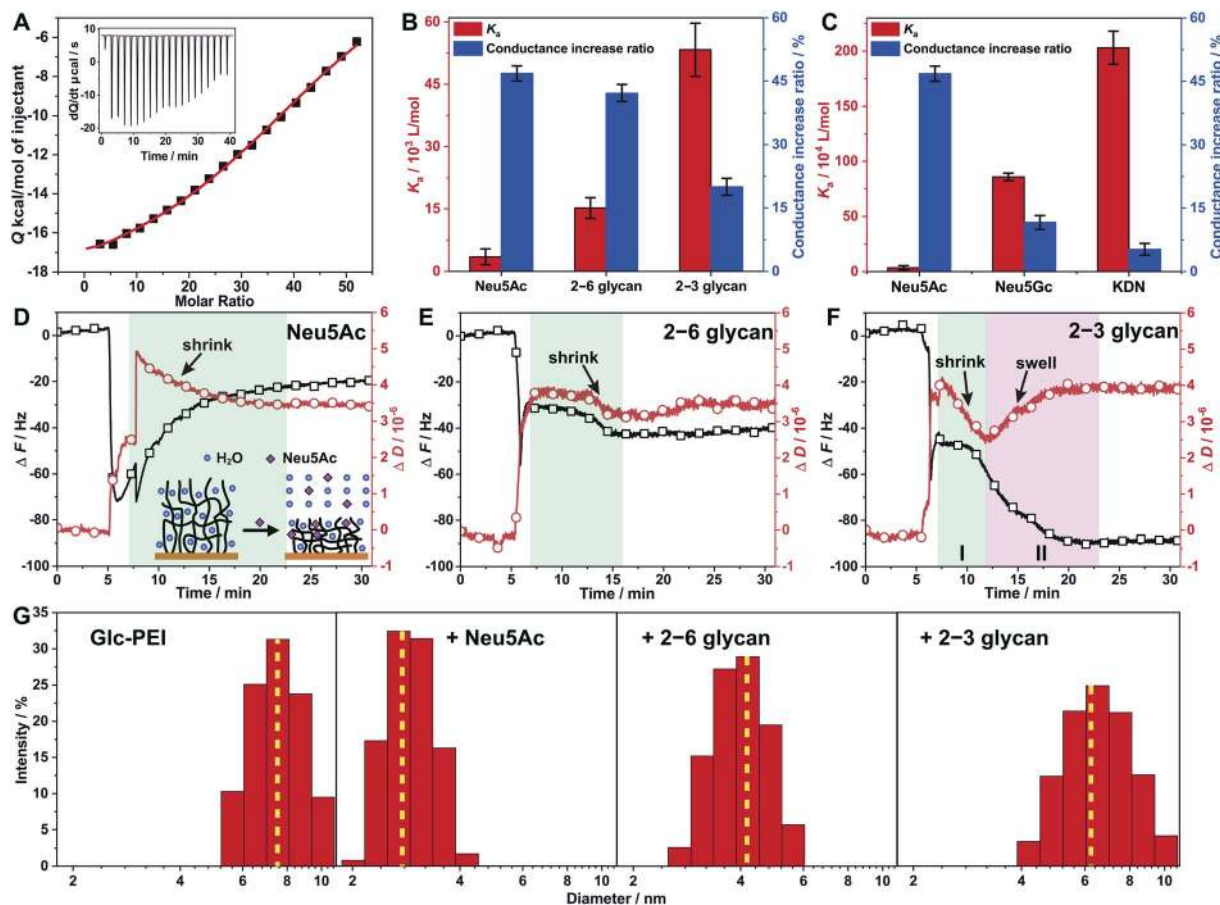


Fig. 5 Investigations of the binding affinity of the Glc-PEI polymer with glycans and conformational changes of Glc-PEI. (A) ITC data recorded for Glc-PEI titrated with Neu5Ac. (B and C) Comparison between K_a values of Glc-PEI with different targets and corresponding ion conductance increase of the Glc-PEI-modified PAA nanochannels, where the conductance increase ratios are derived from Fig. 1D and C. Note, these two charts are double Y axis chart, the colour of the column corresponds to the colour of the Y axis. (D–F) Frequency shift (ΔF) and energy dissipation shift (ΔD) of the Glc-PEI film modified on QCM-D sensor upon injection of Neu5Ac, 2–6 glycan, and 2–3 glycan solution; all data were from the third overtone ($n = 3$). The initial sharp shifts or oscillations for both curves observed resulted from the switching of solution with different density and viscosity, which were unaccounted in analysis.²³ (D) After initial sharp shifts and oscillations, the frequency curve is shown to gradually increase and level off, the dissipation curve is shown to gradually decrease and level off in 15 min. This indicates the Glc-PEI film, upon adsorbing Neu5Ac, gradually extruded water and was shrunk considerably to a more compact conformation. (E) After initial sharp shifts, the frequency shift is shown to decrease weakly and level off immediately, whereas the dissipation shift is shown to decrease abnormally and level off in 8 min, implying that both 2–6 glycan adsorption and water extrusion occurred simultaneously. However, the dehydration and the shrinkage were short-lived, finally resulting in a moderate shrinkage of the Glc-PEI film. (F) Both the frequency shift and dissipation shift decreased in stage I, implying that 2–3 glycan adsorption occurred along with dehydration and shrinkage of the Glc-PEI film. Subsequently, the dissipation shift is shown to turn upward and level off, the frequency shift is shown to decrease and level off in stage II, indicating the Glc-PEI film gradually swelled instead. (G) Hydrodynamic diameter distribution determined by DLS of the Glc-PEI polymer before and after addition of Neu5Ac, 2–6 glycan, and 2–3 glycan.

First, the QCM-D sensor was modified with Glc-PEI *via* EDC coupling to the exposed carboxylic acid groups of a gold-immobilized mercaptoacetic acid, yielding a Glc-PEI film on the sensor surface (see Section 7 in ESI†). The different adsorption behaviours of the Glc-PEI film towards different analytes are shown in Fig. 5D–F. The overall frequency shifts (ΔF) for Neu5Ac, 2–6 glycan, and 2–3 glycan were approximately 20, 40, and 85 Hz, respectively. ΔF is dependent on the mass absorbed on polymer films, and thus can serve as a direct reporter for binding affinity of the analyte with the polymer.²¹ Accordingly, the affinity difference implied in those ΔF values is

in good agreement with the K_a values obtained from ITC assays (red columns, Fig. 5B).

On the other hand, for energy dissipation shift (ΔD), a downward curve generally signifies the shrinkage and densification of the polymer film, whereas an upward curve signifies the swelling of the polymer film.²² In this study, ΔD curves and the implied conformational change information of the Glc-PEI polymer for the entire dynamic adsorption process are detailed in Fig. 5D–F. In short, under the same conditions, the adsorption of Neu5Ac caused a significant shrinkage of the Glc-PEI film, yielding a ΔD value of approximately 3.4×10^{-6} (Fig. 5D). However, the adsorption of 2–6 glycan resulted in only



moderate shrinkage with a ΔD value of approximately 3.5×10^{-6} (Fig. 5E). In contrast, the adsorption of 2–3 glycan produced a short-lived shrinking process and subsequent swelling process, finally giving a ΔD value of approximately 4.0×10^{-6} (Fig. 5F). The comparison of the dynamic processes, as well as ΔD values, indicated that Neu5Ac caused the highest shrinkage level of Glc-PEI, 2–6 glycan led to a moderate shrinkage, and 2–3 glycan caused the lowest shrinkage level. The different levels of Glc-PEI shrinkage were determined to be highly consistent with the observed changes in the corresponding ion conductance increase (blue columns, Fig. 5B). Furthermore, the polymer particle size determined by Dynamic Light Scattering (DLS) in solution confirmed these different shrinking behaviours, where the average diameter of the Glc-PEI changed from approximately 7 nm initially to about 3, 4.1, and 6.2 nm after the addition of Neu5Ac, 2–6 glycan, and 2–3 glycan, respectively (Fig. 5G). Thus, the results of QCM-D experiments from two aspects of frequency shift and energy dissipation shift confirmed the difference in binding affinity and ion conductance increase, respectively. In other words, the results offer direct evidence that the negative correlation exists between Glc-PEI-analyte binding affinity and Glc-PEI shrinkage.

Discussion of the underlying tug-of-war competition mechanism

Quantum chemistry calculations were performed to reveal the binding modes between Glc-PEI and glycan isomers, and the corresponding binding difference. First, a Glc-PEI fragment with two Glc units was designed as a model for ease of calculation. Prior to calculation, glycans were placed in the middle of two Glc arms of the model. The result shows that the 2–3 glycan molecule was trapped by the two Glc arms *via* nine sets of H-bonds (Fig. 6A). This multivalent H-bonding model implies a strong binding affinity of Glc-PEI with 2–3 glycan. Meanwhile, the multiple H-bonds could significantly increase polymer network rigidity. On the other hand, 2–6 glycan showed a semi-inclusive binding involving only one Glc arm *via* four sets of H-bonds, with the aid of an amine from the PEI chain (Fig. 6B). The other Glc arm hung freely on the outside. The affinity resulting from this semi-inclusive binding mode was relatively low, and the Glc-PEI polymer still retained partial flexibility. Furthermore, the binding difference with a preference for the α 2–3 linkage was confirmed by the calculated binding modes of the Glc-PEI fragment with Neu5Ac α 2–3Gal β MP and Neu5Ac α 2–6Gal β MP (Fig. S11 \ddagger).

Based on the preceding results, possible conformational change models to explain the distinct recognition effects of the Glc-PEI polymer for Neu5Ac and two glycans were proposed (Fig. 6C). Initially, Glc-PEI exhibited a loose conformation due to the electrostatic repulsions among protonated amines. In the presence of Neu5Ac, the binding of Glc-PEI to Neu5Ac caused the introduction of negatively charged Neu5Ac into the inside of the Glc-PEI network, causing a considerable shrinkage of the Glc-PEI network induced by electrostatic attraction. For the 2–3 glycan molecule, its strong affinity with Glc-PEI and the multi-site binding mode significantly increased the rigidity of the Glc-

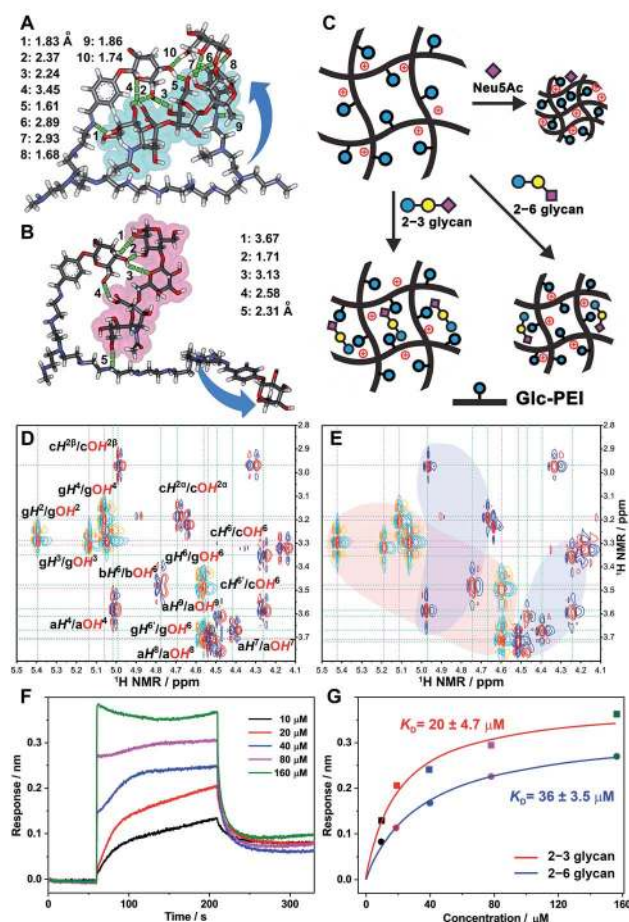


Fig. 6 Discussion of the underlying tug-of-war competition mechanism. (A and B) Optimized binding models of the Glc-PEI fragment with 2–3 glycan (A) and 2–6 glycan (B) from quantum chemistry calculations (Gaussian, density functional theory (DFT), B3LYP, at the 3–21G level); hydrogen bonds are indicated with green dashed lines of different lengths. (C) Possible conformation models of Glc-PEI upon binding to target molecules. (D) Stack of the partial ^1H – ^1H COSY NMR spectrum of the glucopyranoside (orange-cyan contours) and 2–3 glycan (red-blue contours). (E) Partial ^1H – ^1H COSY NMR spectrum of mixture of the glucopyranoside and 2–3 glycan at a molar ratio of 2 : 1 in DMSO- d_6 . “g” denotes the glucopyranoside unit, “a”, “b”, and “c” denote Neu5Ac, Gal, and Glc unit of 2–3 glycan, respectively. The light-red area means that, for OH protons of glucopyranoside, shifts were observed. The light-blue areas mean that, for OH protons of 2–3 glycan, shifts were observed. (F) Sensorgrams of the Glc-PEI-modified sensor binding to 2–3 glycan from BLI measurements. (G) Response curves of the steady-state fitting to provide dissociation constant (K_D) of Glc-PEI with 2–3 glycan and 2–6 glycan, respectively.

PEI network. Thus, most of the shrinkage potential of the Glc-PEI network that was induced by the introduction of the counter-charge from the 2–3 glycan was counteracted, finally resulting in a slight shrinkage. For the 2–6 glycan molecule, the semi-inclusive mode and the relatively weak binding enabled retention of the partial shrinking potential of the Glc-PEI film; thus, a moderate shrinkage was exhibited. The relationship between polymer-target binding, and the shrinkage of polymer itself, exhibited a tug-of-war competition mechanism (Scheme 1E).



The above calculation regarding the difference in binding affinity were further verified by NMR spectroscopy and Bio-layer Interferometry (BLI) tests. When glucopyranoside (Glc component of Glc-PEI) was mixed with 2–3 glycan, obvious shifts of several OH protons of glucopyranoside was observed (Fig. 6D, light-red area in Fig. 6E and S12[†]). For example, OH^4 and OH^6 protons shifted downfield from 5.06 and 4.56 ppm to 5.11 and 4.60 ppm, respectively. At the same time, evident shifts of partial OH protons of 2–3 glycan were also observed (light-blue areas in Fig. 6E). In contrast, although similar OH protons' shifts were observed, the corresponding shift ranges were small, and the number of OH moieties of 2–6 glycan involved in the binding was relatively small (Fig. S13 and S14[†]). These results proved the binding preference of the grafted Glc units for 2–3 glycan, and confirmed the recognition role of Glc unit at the molecular level. Additionally, BLI tests of the Glc-PEI film with 2–3 glycan revealed an equilibrium dissociation constant (K_D) of $20 \pm 4.7 \mu\text{M}$, which was evidently smaller than the K_D value ($36 \pm 3.5 \mu\text{M}$) of the Glc-PEI film with 2–6 glycans (Fig. 6F, G, and S15[†]). Because the K_D is the inverse of K_a , this result demonstrates the binding preference of Glc-PEI for 2–3 glycan at the polymer level.

Conclusions

This work presented a biomimetic nanochannels system integrated with a biomolecule-responsive polymer, which achieved precise recognition and discrimination of sialylated glycan linkage isomers based on dramatic “OFF-ON” ion flux changes. Notably, the “OFF-ON” change range was attributed to the result of tug-of-war competition between polymer-glycan binding and the shrinkage of polymer itself. The findings of this study demonstrated that a functional nanochannel platform constitutes an excellent tool for glycan recognition and analysis. The high selectivity, high sensitivity, and label-free features of this nanochannels system render it attractive as a basis for the development of devices that can improve the detection of glycan-related disease biomarkers. This simple yet effective design rationale for functional nanochannel offers a general strategy for the analysis or detection of other biologically significant molecules. In addition, the underlying tug-of-war competition mechanism also provides inspiration for material design of those recognition or sensing systems that involve the recognition of negatively charged target biomolecules. For example, those system can be designed by combining diverse polycationic polymers and receptor molecules. In particular, this work highlights the great potential of a single nanochannel or nanopore as a powerful complement for glycomics techniques for glycans structure determination at the single-molecule level.^{12c,d}

Conflicts of interest

There are no conflicts of interest to declare.

Acknowledgements

This work was supported by the National Natural Science Foundation of China (51473131, 51533007, 21775116 and 21922411), DICP Innovation Funding (DICP-RC201801). G. Qing acknowledges Wuhan Morning Light Plan of Youth Science and Technology. The authors are thankful for Energy Biotechnology Platform-DICP for their technical support.

Notes and references

- (a) J. Alper, *Science*, 2003, **301**, 159–160; (b) S. Weinbaum, J. M. Tarbell and E. R. Damiano, *Annu. Rev. Biomed. Eng.*, 2007, **9**, 121–167.
- T. Hayashi, G. Kehr, K. Bergander and R. Gilmour, *Angew. Chem., Int. Ed.*, 2019, **58**, 3814–3818.
- (a) A. Varki, *Nature*, 2007, **446**, 1023–1029; (b) S. Ghosh, *Glycoconjugate J.*, 2015, **32**, 79–85; (c) Y. Chen, H. Liu, Y. Xiong and H. Ju, *Angew. Chem., Int. Ed.*, 2018, **57**, 785–789.
- (a) Y. Shi, W. Zhang, F. Wang, J. Qi, Y. Wu, H. Song, F. Gao, Y. Bi, Y. Zhang, Z. Fan, *et al.*, *Science*, 2013, **342**, 243–247; (b) J. Zhou, D. Wang, R. Gao, B. Zhao, J. Song, X. Qi, Y. Zhang, Y. Shi, L. Yang, W. Zhu, *et al.*, *Nature*, 2013, **499**, 500–503.
- (a) C. Büll, M. A. Stoel, M. H. den Brok and G. J. Adema, *Cancer Res.*, 2014, **74**, 3199–3204; (b) A. Magalhães, H. O. Duarte and C. A. Reis, *Cancer Cell*, 2017, **31**, 733–735; (c) S. Gilgunn, P. J. Conroy, R. Saldoval, P. M. Rudd and R. J. O'Kennedy, *Nat. Rev. Urol.*, 2013, **10**, 99–107; (d) R. Saldoval, Y. Fan, J. M. Fitzpatrick, R. William, G. Watson and P. M. Rudd, *Glycobiology*, 2011, **21**, 195–205; (e) W. R. Alley and M. V. Novotny, *J. Proteome Res.*, 2010, **9**, 3062–3072; (f) S. Wang, X. Chen, A. Wei, X. Yu, B. Niang and J. Zhang, *Tumor Biol.*, 2015, **36**, 885–892.
- J. R. Mascola and D. C. Montefiori, *Nat. Med.*, 2003, **9**, 393–394.
- W. B. Puryear, X. Yu, N. P. Ramirez, B. M. Reinhard and S. Gummuluru, *Proc. Natl. Acad. Sci. U. S. A.*, 2012, **109**, 7475–7480.
- (a) D. H. Dube and C. R. Bertozzi, *Nat. Rev. Drug Discovery*, 2005, **4**, 477–488; (b) X. P. He, Y. L. Zeng, X. Y. Tang, N. Li, D. M. Zhou, G. R. Chen and H. Tian, *Angew. Chem., Int. Ed.*, 2016, **55**, 13995–13999; (c) R. Xing, S. Wang, Z. Bie, H. He and Z. Liu, *Nat. Protoc.*, 2017, **12**, 964–987; (d) L. Yang, X. Du, Y. Peng, Y. Cai, L. Wei, Y. Zhang and H. Lu, *Anal. Chem.*, 2019, **91**, 1486–1493.
- (a) P. Both, A. P. Green, C. J. Gray, R. Šardžik, J. Voglmeir, C. Fontana, M. Austeri, M. Rejzek, D. Richardson, R. A. Field, G. Widmalm, S. L. Flitsch and C. E. Eyers, *Nat. Chem.*, 2014, **6**, 65–74; (b) C. Pett, W. Nasir, C. Sihlbom, B.-M. Olsson, V. Caixeta, M. Schorlemer, R. P. Zahedi, G. Larson, J. Nilsson and U. Westerlind, *Angew. Chem., Int. Ed.*, 2018, **57**, 9320–9324; (c) M. Lundborg and G. Widmalm, *Anal. Chem.*, 2011, **83**, 1514–1517; (d) M.-Q. Liu, W.-F. Zeng, P. Fang, W.-Q. Cao, C. Liu, G.-Q. Yan, Y. Zhang, C. Peng, J.-Q. Wu, X.-J. Zhang, *et al.*, *Nat. Commun.*, 2017, **8**, 438.



- 10 (a) M. Tagliazucchi and I. Szleifer, *Mater. Today*, 2015, **18**, 131–142; (b) A. de la Escosura-Muñiz and A. Merkoçi, *Trends Anal. Chem.*, 2016, **79**, 134–150; (c) G. Pérez-Mitta, A. G. Albesa, C. Trautmann, M. E. Toimil-Molares and O. Azzaroni, *Chem. Sci.*, 2017, **8**, 890–913.
- 11 (a) H. Zhang, Y. Tian and L. Jiang, *Nano Today*, 2016, **11**, 61–81; (b) M. Ali, I. Ahmed, P. Ramirez, S. Nasir, C. M. Niemeyer, S. Mafe and W. Ensinger, *Small*, 2016, **12**, 2014–2021; (c) Q. Ma, Z. Si, Y. Li, D. Wang, X. Wu, P. Gao and F. Xia, *Trends Anal. Chem.*, 2019, **115**, 174–186; (d) R. Wei, V. Gatterdam, R. Wieneke, R. Tampé and U. Rant, *Nat. Nanotechnol.*, 2012, **7**, 257–263; (e) N. Liu, Y. Jiang, Y. Zhou, F. Xia, W. Guo and L. Jiang, *Angew. Chem., Int. Ed.*, 2013, **52**, 2007–2011; (f) K. Xiao, K. Wu, L. Chen, X.-Y. Kong, Y. Zhang, L. Wen and L. Jiang, *Angew. Chem., Int. Ed.*, 2018, **57**, 151–155; (g) P. Li, G. Xie, P. Liu, X.-Y. Kong, Y. Song, L. Wen and L. Jiang, *J. Am. Chem. Soc.*, 2018, **140**, 16048–16052; (h) G. Nie, Y. Sun, F. Zhang, M. Song, D. Tian, L. Jiang and H. Li, *Chem. Sci.*, 2015, **6**, 5859–5865; (i) Q. Li, Y.-L. Ying, S.-C. Liu, Y. Lin and Y.-T. Long, *ACS Sens.*, 2019, **4**, 1185–1189.
- 12 (a) Y. Sun, F. Zhang, J. Quan, F. Zhu, W. Hong, J. Ma, H. Pang, Y. Sun, D. Tian and H. Li, *Nat. Commun.*, 2018, **9**, 2617; (b) G. Hou, H. Zhang, G. Xie, K. Xiao, L. Wen, S. Li, Y. Tian and L. Jiang, *J. Mater. Chem. A*, 2014, **2**, 19131–19135; (c) F. Rivas, O. K. Zahid, H. L. Reesink, B. T. Peal, A. J. Nixon, P. L. DeAngelis, A. Skardal, E. Rahbar and A. R. Hall, *Nat. Commun.*, 2018, **9**, 1037; (d) B. Karawdeniya, J. W. Nichols, R. B. Chevalier, J. R. Dwyer and Y. M. N. D. Y. Bandara, *Nat. Commun.*, 2018, **9**, 3278.
- 13 S. Suriyanarayanan, H.-H. Lee, B. Liedberg, T. Aastrup and I. A. Nicholls, *J. Colloid Interface Sci.*, 2013, **396**, 307–315.
- 14 I. Bucior and M. M. Burger, *Curr. Opin. Struct. Biol.*, 2004, **14**, 631–637.
- 15 X. Li, Y. Xiong, G. Qing, G. Jiang, X. Li, T. Sun and X. Liang, *ACS Appl. Mater. Interfaces*, 2016, **8**, 13294–13302.
- 16 (a) G. Rajeev, B. Prieto Simon, L. F. Marsal and N. H. Voelcker, *Adv. Healthcare Mater.*, 2018, **7**, 1700904; (b) S. B. Lee, D. T. Mitchell, L. Trofin, T. K. Nevanen, H. Söderlund and C. R. Martin, *Science*, 2002, **296**, 2198–2200.
- 17 (a) M. Ali, B. Yameen, R. Neumann, W. Ensinger, W. Knoll and O. Azzaroni, *J. Am. Chem. Soc.*, 2008, **130**, 16351–16357; (b) W.-J. Lan, M. A. Edwards, L. Luo, R. T. Perera, X. Wu, C. R. Martin and H. S. White, *Acc. Chem. Res.*, 2016, **49**, 2605–2613.
- 18 (a) Z. Long, S. Zhan, P. Gao, Y. Wang, X. Lou and F. Xia, *Anal. Chem.*, 2018, **90**, 577–588; (b) M. Wang, H. Meng, D. Wang, Y. Yin, P. Stroeve, Y. Zhang, Z. Sheng, B. Chen, K. Zhan and X. Hou, *Adv. Mater.*, 2019, **31**, 1805130.
- 19 M. Motornov, R. Sheparovych, E. Katz and S. Minko, *ACS Nano*, 2008, **2**, 41–52.
- 20 (a) F. Zhang, D. Wang, H. Qin, L. Feng, X. Liang and G. Qing, *ACS Appl. Mater. Interfaces*, 2019, **11**, 13114–13122; (b) H. Okuyama, Y. Oshiba, H. Ohashi and T. Yamaguchi, *Small*, 2018, **14**, 1702267; (c) H. Peng, X.-F. Li, H. Zhang and X. C. Le, *Nat. Commun.*, 2016, **8**, 14378.
- 21 N.-J. Cho, C. W. Frank, B. Kasemo and F. Höök, *Nat. Protoc.*, 2010, **5**, 1096–1106.
- 22 (a) G. Zhang and C. Wu, *Macromol. Rapid Commun.*, 2009, **30**, 328–335; (b) J.-G. Wu, S.-C. Wei, Y. Chen, J.-H. Chen and S.-C. Luo, *Langmuir*, 2018, **34**, 943–951.
- 23 (a) E. Guzmán, F. Ortega, N. Baghdadli, C. Cazeneuve, G. S. Luengo and R. G. Rubio, *ACS Appl. Mater. Interfaces*, 2011, **3**, 3181–3188; (b) Y. Hou, G. Liu, W. Wu and G. Zhang, *Phys. Chem. Chem. Phys.*, 2011, **13**, 2880–2886.

