

1-1-2003

Board Composition, Corporate Performance, and the Cadbury Committee Recommendation

Jay Dahya
Baruch College

John J. McConnell
Purdue University

Follow this and additional works at: <http://docs.lib.purdue.edu/ciberwp>

Dahya, Jay and McConnell, John J., "Board Composition, Corporate Performance, and the Cadbury Committee Recommendation" (2003). *Purdue CIBER Working Papers*. Paper 21.
<http://docs.lib.purdue.edu/ciberwp/21>

This document has been made available through Purdue e-Pubs, a service of the Purdue University Libraries. Please contact epubs@purdue.edu for additional information.

**Board Composition, Corporate Performance, and the Cadbury Committee
Recommendation**

Jay Dahya
Baruch College

and

John J. McConnell
Purdue University

First draft: February 25, 2003

May 22, 2003

JEL Classifications: G38 (Government policy), G34 (Corporate governance), D21 (Firm behavior)

Corresponding author: John J. McConnell, Krannert School of Management, Purdue University, West Lafayette, IN 47907. mcconnell@mgmt.purdue.edu

Board Composition, Corporate Performance, and the Cadbury Committee Recommendation

Abstract

During the 1990s and beyond, countries around the world have witnessed calls and/or mandates for more outside directors on publicly-traded companies' boards even though extant studies find no significant correlation between outside directors and corporate performance. We examine the connection between changes in board composition and corporate performance in the UK over the interval 1989–1996, a period that surrounds publication of the *Cadbury Report* calling for at least three outside directors for publicly-traded corporations. We find that companies that added directors to conform with this standard exhibited a significant improvement in operating performance both in absolute terms and relative to various peer-group benchmarks. We also find a statistically significant increase in stock prices around announcements that outside directors are added in conformance with this recommendation. We do not necessarily endorse mandated board structures, but the evidence appears to be that such a mandate was associated with an improvement in performance in UK companies.

Board Composition, Corporate Performance, and the Cadbury Committee Recommendation

During the 1990s and beyond, the global economy appears to have become caught up in what might be described as “outside director mania” - - at least 24 countries have witnessed publication of guidelines that stipulate minimum levels for the representation of outside directors on boards of publicly traded companies. At the time of their publication, in most countries, these minimum standards represented a dramatic increase in outside director representation. A presumption that appears to underlie this movement toward more outside directors is that boards with more outside directors will lead to better board decisions and, as a consequence, better corporate performance. In large measure, this presumption rests more on faith than evidence. As observed by Sanjai Bhagat and Bernard Black (1999) and Benjamin E. Hermalin and Michael S. Weisbach (2003), various studies of the relationship between board composition and corporate performance appear to show that board composition affects the way in which boards accomplish certain discrete tasks, such as hiring and firing the CEO, responding to hostile takeovers, setting CEO compensation and so forth (James A. Brickley, Jeffrey L. Coles, and Rory L. Terry (1994), James A. Brickley and Christopher James (1987), John W. Byrd and Kent A. Hickman (1992), John E. Core, Robert W. Holthausen and David F. Larcker (1999), James F. Cotter, Anil Shivdasani, and Marc Zenner (1997), Jay Dahya, John J. McConnell and Nikolaos G. Travlos (2002), Omesh Kini, William Kracaw and Shehzad Mian (1995), Anil Shivdasani (1993), and Michael S. Weisbach (1988)). However, other studies generally report little or no correlation between board composition and corporate profitability (Anup Agrawal and Charles R. Knoeber (1996), Sanjai Bhagat and Bernard Black (2002), Benjamin E. Hermalin and Michael S. Weisbach (1991), and Hamid Mehran (1995)).

Three related explanations have been offered as to why prior studies might fail to find a relationship between board composition and corporate performance even if one exists. First, board composition is endogenous. Thus, if board composition does affect corporate performance, but every board is at its optimum construction, no relationship between board composition and corporate performance will be observed in a cross-section (Harold Demsetz and Kenneth Lehn (1985)). Second, firms tend to add outside directors during periods of poor performance. Thus, outside directors may become more prominent in poorly performing firms. If so, then even if outside directors do lead to improved performance, in a cross-section, the relationship will be obscured (Hermalin and Weisbach (2003)). Third, prior studies have focused primarily on US companies and most US companies have boards that are and have been dominated by outside directors for many years. Thus, it is difficult to find boards with few outside directors to serve as a control group and, because boards rarely undergo radical and swift alterations, the effect of changes in board composition on corporate performance is difficult to discern.

In this study, we investigate further the relationship between outside directors and corporate performance. As a laboratory for our analysis, we use the UK over the years surrounding the issuance of the *Report of the Committee on the Financial Aspects of Corporate Governance*, commonly known as the *Cadbury Report*, published in December 1992. This *Report* established a minimum number of three outside directors for publicly traded UK firms. As documented by Dahya, McConnell and Travlos (DMT) (2002), the years following publication of the *Report* witnessed widespread increases in the number and fraction of outside directors on UK boards.

By using UK firms in our analysis, we hope to circumvent, or at least alleviate, some of

the shortcomings attributed to studies conducted with US data. First, it can be argued that the *Cadbury Report* represented an exogenous shock that perturbed UK board structures. Second, to the extent that boards were coerced into adding outside directors, directors were just as likely to have been added during a period of good performance as during a period of poor performance. And, third, the significant changes in board composition that followed publication of the *Report* were concentrated over a relatively short interval thus providing a large sample of boards with altered structures so as to permit a clean before- and after-event analysis.

Beyond these reasons, exploration of the effect of the adoption of the *Cadbury Report* recommendation on corporate performance is interesting in its own right because, in terms of GDP, the UK is the world's 7th largest economy and, according to market capitalization, the London Stock Exchange (LSE) is the world's 3rd largest stock market (after the New York Stock Exchange and Nasdaq). It is also interesting because many other countries appear to have modeled their *Codes of Best Governance* along the lines of the *Cadbury Report*. Because the *Cadbury Report* was one of the first of such national *Codes*, it has now been in effect long enough to observe what, if any, impact it has had on corporate performance. Thus, this study can be thought of as a preview of what might occur in other countries that have adopted similar *Codes*.

The primary question that we address is whether UK companies that came into compliance with the *Cadbury Report* recommendation of having at least three outside directors experienced an improvement in performance. We measure performance in two ways. First, we compare the return on assets (ROA) for companies that came into compliance with the Cadbury recommendation against various benchmarks. The benchmarks are composed either of companies already in compliance with the recommendation at least four years prior to the

Cadbury Report or of companies that never complied with the recommendation during the period of our analysis. Second, we conduct an event study of stock prices around announcements that companies were appointing a sufficient number of outside directors so as to conform with the recommendation.

We find that compliance with the Cadbury recommendation is followed by a statistically and economically significant improvement in operating performance regardless of the performance benchmark employed. For example, from one year before to two years after adoption of the Cadbury recommendation, the adopting firms experienced a statistically significant increase in average ROA of 2.50%, from 7.04% to 9.54%. Over the same time interval, the adopting companies' industry peers experienced an insignificant increase in average ROA of 0.33%, from 8.69% to 9.02%.

The data also show that, in the year prior to adoption, on average, firms that came into compliance with the Cadbury recommendation exhibited relatively low ROAs. It could be that earnings are mean reverting such that companies that adopted the recommendation would have rebounded anyway and that what we observe is merely a natural mean reversion in earnings. To address that possibility, we match adopting companies with industry peers on the basis of ROA using a version of the Brad M. Barber and John D. Lyon (1996) performance-matching methodology. Against this benchmark too, companies that adopted the Cadbury recommendation experienced a statistically and economically significant improvement in ROA in comparison with companies that were already in compliance with the Cadbury recommendation and in comparison with companies that never came into compliance during the period of our analysis.

As regards the event study of stock returns, instances in which a company with fewer

than three outside directors announced additions of outside directors that increase the number of outsiders to three or more are accompanied by an average 2-day excess return of 0.44%. In comparison, the average 2-day excess return associated with announcements of the addition of inside directors is 0.17%. The difference between the two is statically significant. Thus, the reaction of investors to the announcement that a firm has complied with the Cadbury recommendation is consistent with an expectation by investors that the decision will lead to an improvement in operating performance - - and our analysis documents such an improvement. Numerous caveats are in order. Perhaps the most important is that we do not offer up our results as a blanket endorsement of mandated minimum levels for outside directors. The results do show that companies that increased their number of outside directors to meet the Cadbury standard experienced a significant improvement in performance, but that experience may be unique to the UK or to the time period studied. Other studies of other countries will provide insight regarding the extent to which the outcome in the UK can be generalized.

The next section briefly reviews prior studies of board composition and corporate performance and provides further details about the *Cadbury Report*. Section 3 describes the sample and data used in our analysis. Section 4 presents the results of our analysis of operating performance. Section 5 contains the results of our event study of stock prices. Section 6 presents sensitivity analysis and tests of whether splitting the positions of Chairman of the Board and CEO influenced performance. It does not. Section 7 provides a commentary and conclusion.

I. Background

A. Prior studies

Bhagat and Black (1999) and Hermalin and Weisbach (2003) provide excellent and

extensive surveys of prior studies of the connection between board composition and corporate decisions. Thus, our review of this literature will be brief.

Studies of the relationship between board composition and performance fall into one of two categories. In the first, various measures of corporate performance are regressed against the fraction of the board composed of outside directors. For example, Benjamin E. Hermalin and Michael S. Weisbach (1991) study a sample of 134 NYSE firms at three year intervals over the period 1971 through 1983. They regress operating earnings and Tobin's Q against the fraction of the board made-up of outside directors and various control variables. They experiment with various specifications of their regressions, but in none do they find performance to be significantly correlated with the fraction of outside directors. Agrawal and Knoeber (1996) conduct cross-sectional regressions with a sample of 383 large US firms for which they have board data for 1987. In their regressions, Tobin's Q is the dependent variable. Initially, they report a significant negative correlation between the fraction of outside directors and Q. However, in later work with the same sample and other control variables, the significance of the relationship disappears (Anup Agrawal and Charles R. Knoeber (2001)). Bhagat and Black (2002) analyze the relationship between board composition and four different measures of corporate performance - - Q, ROA, Sales/Assets, and long-term stock returns. They conduct their analysis with a sample of 828 US firms for which they have board data in 1991. They report that firms that experience poor performance tend to appoint more outside directors, but that the maneuver does not lead to an improvement in performance. They also find no significant relationship between board composition and various measures of "long term" performance.

The second category includes event studies of stock returns around announcements of

director appointments. Stuart Rosenstein and Jeffrey G. Wyatt (1990, 1997) report that announcements of outside director appointments are associated with a significant excess return of 0.20% and that announcements of inside directors appointments are associated with an insignificant excess return. Both of their samples use US companies.

As we describe below, our analysis differs from those of earlier studies in that we focus on the relationship between *changes* in the composition of corporate boards and *changes* in corporate performance.

B. The Cadbury Committee

The Cadbury Committee was appointed by the Conservative Government of the UK in May 1991 with a broad mandate to “...address the financial aspects of corporate governance” (*Report of the Committee on the Financial Aspects of Corporate Governance*, 1992, Section 1.8). The Committee, chaired by Sir Adrian Cadbury, CEO of the Cadbury confectionary empire, issued its report, the cornerstone of which was *The Code of Best Practice*, in December 1992. A key recommendation of the *Code* is that boards of publicly traded companies have at least three non-executive (i.e., outside) directors.¹ Although the *Code* has not been enacted into law, it does have the implicit backing of the UK government. Additionally, the LSE requires that any listed company that does not comply with the *Code* issue a statement to shareholders indicating that the company is not in compliance and explaining why not.

As reported in DMT (2002), over the years 1989 through 1992, for a random sample of 460 LSE firms, the average size of the board of directors of an LSE-listed company was 5.7 members with a median of 5.0. Over the years 1993-1996, the mean board size was 7.3

¹ Among other things, the *Code* also recommended that the positions of CEO and the Chairman of the Board be held by two different individuals. We briefly report the results of our analyses of the effect of splitting the positions of Chairman of the Board and CEO in section 7.

members with a median of 7.0. Over the same two periods, the proportion of outside directors increased from an average of 35% to an average of 46%. Thus, over the years immediately preceding issuance of the *Cadbury Report*, the average board had just under 2 outside directors. In comparison, over the years immediately after the issuance of the *Report*, the average board had about 3.3 outside directors. These statistics indicate that publication of the *Code* was associated with a significant increase in the presence of outside directors on UK boards.

Arguably, publication of the *Code of Best Practice* in the UK touched off an explosion of similar *Codes* elsewhere. A commonality of such codes is that they specify a minimum standard for the representation of outside directors on boards of publicly traded companies. Sometimes these minima are framed as a minimum number of outside directors (Sweden, Thailand, Australia, India, Belgium, New Zealand, Denmark, Portugal, and Russia), sometimes they are framed as a minimum fraction of outside directors (Mexico, Singapore, Greece, Brazil, Japan, Switzerland, Czech Republic, Indonesia, Kenya, and Poland), and sometimes they specify both a minimum number and a minimum fraction of outside directors (South Africa, Korea, France, Malaysia, and Cyprus).

II. Sample and Data

The sample used in our analysis includes the universe of industrial companies (with data on board composition and certain financial information) listed on the LSE over the period 1989 through 1996.² In the aggregate, the sample includes 1,124 firms that enter the analysis with at least one year of data.³

For our analysis, we split the sample into 3 mutually exclusive groups: (1) the set of firms

² Thus, we exclude financial firms.

³ We identified 1,681 industrial companies listed on the LSE over the period 1989 through 1996. Of these, 344 were dropped due to insufficient accounting data to calculate ROA; 213 were dropped because neither the *Stock Exchange Yearbook* nor the *Corporate Register* identified whether board members were outsiders.

that had at least three outside directors every year in which they were listed on the LSE over the period 1989 through 1996 (we call this the always-in-compliance set, 336 firms); (2) the set of firms that never had more than two outside directors any year in which they were listed over the period 1989 through 1996 (we call this the never-in-compliance set, 279 firms); and (3) the remaining set of firms that comprises those that added a sufficient number of outside directors so as to come into compliance with the Cadbury recommendation of at least three outside directors any year during the interval 1989 through 1996 (we call this the adopted-Cadbury set, 509 firms). To determine into which set to classify a firm, we manually collected the number of outside directors and the total number of directors each year for each firm from the *Stock Exchange Yearbook*.

We employ accounting earnings and stock prices to measure corporate performance. We use return on assets (ROA) as our measure of accounting earnings. For each firm in the sample, for each year for which data are available, we calculate return on assets (ROA) as earnings before depreciation, interest, and taxes divided by the beginning-of-the-year total assets. For each firm in the sample, accounting data are taken from *Datastream* each year for which such data are available from 1986 through 1999. Stock prices used in our event study are also taken from *Datastream*. Each firm is identified according to its *Financial Times Industry Classification (FTIC)*. Because firms enter and exit the sample for various reasons, the number of firms differs from year to year. Any year for which a firm has the requisite data, the firm is included in our analysis.

Summary statistics on board size, outside directors, total assets, and market value of equity along with the number of firms in the sample each year are presented in table 1 for the three sets of firms. Panel A is the adopted-Cadbury set; Panel B is the always-in-compliance set;

Panel C is the never-in-compliance set. The average firm in the adopted-Cadbury set shows a marked increase in board size from 6.8 members in 1989 to 8.2 members in 1996. The always-in-compliance set is relatively constant in terms of board size with about 8.2 members (which is the ending board size for the adopted-Cadbury set). The never-in-compliance set exhibits a mild increase from 6.5 to 7.1 members. Thus, in terms of size, this set is close to the beginning point for the adopted-Cadbury set.

By definition, of course, the adopted-Cadbury set will end up with a larger number of outside directors than it began. It also exhibits an increase in the fraction of outside directors, from 26.4% to 44.9%. As might be expected, this statistic shows its largest increase between year-end 1992 and year-end 1993. This fraction also exhibits a relatively large increase from year-end 1991 to year-end 1992 which may reflect anticipation of the *Cadbury Report* on the part of some firms.⁴ In contrast, in terms of board composition the always-in-compliance set is relatively stable - - it begins with an average of 42.1% outside directors and ends with 45.7%. The never-in-compliance set shows an increase in the fraction of outside directors, but does not rise to the level of the other two sets - - it begins with 16.7% and ends with 21.5%.

Finally, as shown in the table, in terms of market value of equity and book value of assets, on average, firms in the adopted-Cadbury set are smaller than those in the always-in-compliance set and larger than those in the never-in-compliance set. This suggests that we should control for firm size in our subsequent analyses.

III. Analysis and Results

A. Operating Performance: An Overview

The statistic that we employ for presenting our results is the trimmed mean of the

⁴ An initial draft of the *Code* was issued for comments in May 1991. After various revisions, the final report was published in December 1992.

distribution of ROAs where the distribution is trimmed at the 1% and 99% level. Henceforth, unless we state otherwise, we refer to this statistic as the mean of the distribution.

Figure 1 provides an overview of the operating performance of the three sets of firms over the period 1989 through 1996. The graph gives the time series mean ROA for each set of firms. First, as the graph shows, in each year, the average ROA of the always-in-compliance set (the dotted line) lies above the average ROA of the never-in-compliance set (the dashed line). The difference between the two ranges from 0.6% (in 1989) to 2.6% (in 1992). This suggests that firms with three or more outside directors tend to outperform firms with fewer than three outside directors. Second, and more interestingly, the average ROA of the adopted-Cadbury set (the solid line) starts out in 1989 at the same level as the never-in-compliance set and progressively moves toward the mean of the always-in-compliance set. By 1996, the average ROA of the adopted-Cadbury set lies slightly above the mean ROA of the always-in-compliance set.

Recall that the adopted-Cadbury set is composed of firms that came into compliance with the Cadbury recommendation at various points in time. As of the beginning of 1989, none were in compliance; as of the end of 1996, all were in compliance. One way to interpret these results is that the ROA of the never-in-compliance set represents the ROA that the adopted-Cadbury firms would have achieved had they not adopted the Cadbury recommendation, while the always-in-compliance ROA represents the ROA that the adopted-Cadbury set would have had each year had they always been in compliance. Taken at face value, figure 1 indicates that adoption of the Cadbury recommendation is associated with an increase in operating profitability in absolute terms and relative to other firms. That is, the never-in-compliance set was composed of poor performers relative to those in the always-in-compliance set. Those firms that adopted

the Cadbury-recommendation started out as poor performers and then improved their performance to be on par with the always-in-compliance firms. In the remainder of this section, we examine this issue from various perspectives with a variety of tests. Each of these tests supports the face value interpretation of figure 1 - - adoption of the Cadbury recommendation is associated with an improvement in corporate operating performance.

(One further observation about figure 1 previews some of the tests we conduct later. Note that in 1991-1992, all three sets of firms experienced a sharp decline in ROA and in 1993-1994, all firms exhibited a sharp increase in ROA. This time period happens to coincide with publication of the *Cadbury Report* and with an increase in outside directors as shown in table 1. We investigate whether the coincidental occurrence of these two events might explain our results.)

B. Changes in ROA From Before to After Adoption of the Cadbury Recommendation in Comparison with Industry-Matched Benchmarks

Having examined the time series level of operating performance, we now examine changes in operating performance from before to after adoption of the Cadbury recommendation for the adopted-Cadbury firms in comparison with various benchmarks. In these analyses, we refer to the year in which a firm adopted the recommendation as event year y , year $y+1$ is event year $y+1$ and so forth. (Year y is the calendar year in which a firm that previously had less than three outside directors increases the number of outside directors to three or more.)

We present certain of the results in graphical form in figures 2 and 3. Univariate tests of statistical significance are reported in the accompanying tables 2 and 3. Further univariate tests are presented in tables 4 and 5.

The solid line in figure 2 depicts the mean ROA of the adopted-Cadbury set over the seven-year interval surrounding the year in which the firms adopted the recommendation. This

is event period $y-3$ through $y+3$. This set contains 500 firms in year y . The number of firms in the sample decreases as we move away from y in either direction. Thus, the number of firms in year $y-1$, $y-2$, and $y-3$ is 490, 418, and 355, respectively; the number of firms in year $y+1$, $y+2$, and $y+3$ is 491, 424, and 343. (Because the sample sizes decline by about one-third by year $y+3$, results based on year $y+3$ may be less reliable than those based on shorter time intervals.)

As the figure demonstrates, the mean ROA of the adopting firms increased sharply following adoption of the Cadbury recommendation. As shown in table 2 (panel B), the increase is statistically significant regardless of the interval considered. For example, from year $y-1$ through $y+2$, the average ROA increased by 2.50%, from 7.04% to 9.54% (p -value < 0.01). This jump is consistent with adoption of the Cadbury recommendation leading to an increase in operating performance. But, it is also possible that part, or all, of the increase in ROA was due to macroeconomic factors having nothing to do with a change in the number of outside directors. As we noted above, each set of firms evidenced an increase in ROA from 1992 through 1994 and, as we also noted above, a significant fraction of firms adopted the Cadbury recommendation in 1992 and 1993. It could be that the increase in ROA from $y-1$ through $y+2$ merely reflects the economy-wide uptick in corporate profitability that occurred between 1992 and 1994 along with the purely coincidental publication of the Cadbury recommendation.

To control for macroeconomic factors that affected ROAs generally, for each adopted-Cadbury firm, we identify all firms in the always-in-compliance set and all firms in the never-in-compliance set with the same *FTIC* as the adopted-Cadbury firms and which had an available ROA during any year over the adopting firm's $y-3$ through $y+3$ interval. We then calculate the adopting firm's industry-matched (i.e., *FTIC*-matched) mean ROA for the always-in-compliance set and for the never-in-compliance set for each year over the interval $y-3$ through $y+3$. These

industry-matched mean ROAs are also presented in figure 2.

According to figure 2, from $y-1$ to $y+2$, the mean ROA of the industry-matched always-in-compliance set (the dotted line) is essentially unchanged. The never-in-compliance set (the dashed line) does exhibit an increase in ROA, but this increase is less pronounced than the increase achieved by the adopted-Cadbury firms.

Panel B of table 2 provides tests of statistical significance for the changes in ROA from before to after year y for the Cadbury-adopted set and the always-in-compliance set. The changes in ROA from before to after year y for the always-in-compliance set are never statistically significant (all p -values > 0.10). More importantly, the changes in mean ROA from before to after year y for the adopted-Cadbury set are always significantly greater than the changes in the ROA of the always-in-compliance set. For example, the change in ROA from $y-1$ to $y+2$ for the adopted-Cadbury firms is 2.50%; the change for the always-in-compliance set is 0.05%. The difference between the two is statistically significant (p -value < 0.01).

Panel B of table 3 presents tests of statistical significance for the changes in ROA from before to after year y for the adopted set and the never-in-compliance set. For the never-in-compliance set the changes in ROA are typically small and not statistically significant. The only exception is for the interval $y-1$ to $y+3$ over which the increase in ROA is 1.05% (p -value < 0.05). Most importantly, the changes in ROA from before to after year y for the adopted-Cadbury set is always significantly greater than the changes in ROA for the never-in-compliance set. For example, the difference between the changes in ROA for the two groups over the interval $y-1$ through $y+2$ is 1.82% which is significant at better than the 0.01 level. Apparently, the increase in profitability for firms that adopted the Cadbury recommendation is not due solely to macroeconomic factors that influenced all companies' profitability.

C. Changes in ROA From Before to After Adoption of the Cadbury Recommendation in Comparison with Industry- and Performance-Matched Benchmarks

Figure 2 also shows that the companies that came into compliance with the Cadbury recommendation experienced a significant decline in ROA over the two years prior to adoption.⁵ As Barber and Lyon (1996) emphasize, if earnings are mean reverting, and if the companies being analyzed have experienced especially poor or especially good performance prior to the event being examined, comparison with a simple industry benchmark can be misleading. To account for mean reversion in earnings, they propose that companies be matched on the basis of industry classification and prior performance. Thus, we generate a set of always-in-compliance firms and a set of never-in-compliance firms that match the adopting firm on the basis of industry (i.e., *FTIC*) and ROA in year $y-1$. Specifically, for each adopting company, we identify all firms in the always-in-compliance set with the same *FTIC* as of year $y-1$. From among these firms, we choose the one whose ROA during year $y-1$ is closest to the ROA of the adopting firm so long as the matching company's ROA lies within 75% and 125% of the adopting firm's ROA. As we noted above, the number of firms in the adopted-Cadbury set declines as we move away from year y . This phenomenon also occurs in the always-in-compliance matching firms which further reduces the sample size as we move away from year y . In years $y+1$, $y+2$, and $y+3$, the sample sizes (and their matching firm sample sizes) are 484, 409, and 304 respectively. We then replicate the industry and performance matching procedure for the set of never-in-compliance firms. In years $y+1$, $y+2$, and $y+3$, the sample sizes are 481, 396, and 297, respectively. Because the number of always-in-compliance firms and the number of never-in-compliance firms is less than the number of adopted-Cadbury firms, some of the matching firms enter the

⁵ The phenomenon of firms increasing their number of outside directors following a decline in performance has been documented for US firms by David J. Denis and Atulya Sarin (1999) and Hermalin and Weisbach (1991). As documented by Bhagat and Black (2002), however, this practice does not lead to an improvement in performance.

analysis more than once, albeit typically in a different calendar year.

The mean ROAs of the adopted-Cadbury firms along with the mean ROAs of their industry- and performance-matched firms are displayed in figure 3. By construction, the mean ROAs of the three sets of firms are nearly identical in year $y-1$. According to the figure, each set of firms experienced a significant decline in mean ROA from year $y-3$ through year $y-1$. And each set exhibited a marked improvement in average ROA from year $y-1$ through year $y+1$ and from year $y-1$ through year $y+2$. However, the improvement in ROA for the adopted-Cadbury set exceeds that of the improvement in either the industry- and performance-matched always-in-compliance set or the industry- and performance-matched never-in-compliance set. Thus, even against these benchmarks, the adopted-Cadbury firms exhibit a greater increase in operating performance from before to after year y . Statistical tests are presented in tables 2 and 3.

As shown in panel B of table 2, in comparison with the always-in-compliance set, over the intervals $y-1$ through $y+1$ and $y-1$ through $y+2$, the performance improvement for the adopted-Cadbury firms is statistically significantly greater than zero. For example, from $y-1$ to $y+2$, the difference is 0.92% with a p -value < 0.05 . However, over the interval $y-1$ to $y+3$, the difference of 0.26% is positive, but not significantly greater than zero. Thus, the performance improvement for the adopted-Cadbury set exceeds that of its industry- and performance-matched always-in-compliance benchmark, but by year $y+3$, the benchmark firms close the gap.

As shown in panel B of table 3, however, over every interval, the improvement in ROA for the adopted-Cadbury set is statistically significantly greater than the improvement in ROA for the industry- and performance-matched never-in-compliance set. For example, from $y-1$ to $y+2$, the difference is 1.30% (p -value < 0.05). Thus, although firms that adopted the Cadbury recommendation experienced a decline in operating performance prior to adoption, the

subsequent improvement is not due solely to mean reversion. Adoption of the Cadbury recommendation appears to be associated with an absolute and relative improvement in operating performance, especially in comparison with firms that never conformed with the recommendation during the period of our analysis.

D. Changes in ROA From Before to After Adoption of the Cadbury Recommendation in Comparison with Industry-Matched Good, Moderate, and Poor Performers

As one further way to determine whether the improvement in performance is due merely to mean reversion in poorly performing firms, we split the adopted-Cadbury set into three subsets - - a set of “poor performers,” a set of “moderate performers,” and a set of “good performers” - - as of year $y-1$. Specifically, we sort the adopted-Cadbury firms from highest to lowest ROA in year $y-1$. The one-third of the firms with the lowest ROA is put into the poor performers subset. The one-third of the firms with the highest ROA is put into the good performers subset. The middle one-third of the firms is put into the moderate performers subset.

For each subset of adopted-Cadbury firms and their industry- and performance-matching always-in-compliance firms (as identified above), we calculate the mean ROAs and mean changes in ROA over the intervals $y-1$ through $y+1$, $y-1$ through $y+2$, and $y-1$ through $y+3$. The results are presented in table 4. Table 5 presents a parallel set of results for the never-in-compliance firms.

The results present an interesting pattern. First, the poor performers exhibit the greatest improvement in ROA. For example, as shown in panel B of table 4, for the adopted-Cadbury firms, on average, from $y-1$ to $y+2$, the increase in ROA is 11.27%, from -7.25% to 4.02%. Moderate performers show a mild improvement in ROA. For them, the change in ROA from $y-1$ to $y+2$ is 0.57%. But, the good performers actually show a decline in ROA of -1.26%. In combination, these results are very consistent with mean reversion in earnings. The question

then becomes whether the change in performance for the adopted-Cadbury firms is different from that of their performance-matched peers. In fact, it is.

As shown in panel B of table 4, columns E-G, the ROA of the always-in-compliance firms mimics that of the adopted-Cadbury firms. However, for the poor performers and the moderate performers, the increase in ROA from before to after year y is greater (typically significantly greater) for the adopted-Cadbury firms than for the always-in-compliance firms. Most intriguingly is the good performer set. For these firms, both the adopted-Cadbury set and the always-in-compliance set show a decline in ROA. However, the decline in ROA for the always-in-compliance set is greater than the decline in ROA for the adopted-Cadbury set, albeit it is statistically significant only for the interval $y-1$ to $y+3$. Thus, mean reversion does play a role in the change in ROA from before to after adoption of the Cadbury recommendation, but companies that adopted the Cadbury recommendation have changes in performance that override the effects of mean reversion.

The pattern observed in comparing the adopted-Cadbury set with the always-in-compliance set is even more pronounced when the adopted-Cadbury set is compared with the never-in-compliance set. This comparison is given in table 5.

As with the adopted-Cadbury firms and the always-in-compliance, the poor performers in the never-in-compliance set show a significant improvement from before to after year y . However, the change in ROA for the adopted-Cadbury firms significantly outstrips the improvement of the never-in-compliance firms. For example, the change in ROA over the interval $y-1$ to $y+2$ for the adopted-Cadbury poor performers exceeds the change in ROA of the never-in-compliance poor performers by 2.85% (p -value < 0.01). Interestingly, for the never-in-compliance set, the moderate performers and the good performers both exhibit declines in ROA

from before to after year y , and the decreases are statistically significant for the good performers. For example, from $y-1$ to $y+2$, the good performers among the never-in-compliance set show a change in mean ROA of -3.49% (p-value <0.01). As shown in columns H-J of table 5, when the three subsets of adopted-Cadbury firms are compared with the three subsets of the never-in-compliance firms, the mean changes in ROA for the adopted-Cadbury firms from before to after December 1992 are always significantly greater than the mean changes for the never-in-compliance firms with all having p-values less than 0.05 and 7 of the 9 having p-values less than 0.01. Furthermore, the differences across the three sets are reasonably consistent at approximately 1.5% to 3.0%.

The message that comes through this analysis is that the starting point does have an effect on the change in ROA - - in particular, all firms exhibit mean reversion. However, regardless of the starting point, firms that move to at least three outside directors outperform their performance-matched benchmarks. Compliance with the Cadbury recommendation appears to lead to an improvement in performance regardless of what the firm's performance was when it adopted the recommendation.

E. Changes in ROA From Before to After Adoption of the Cadbury Recommendation Pre- and Post-December 1992

A further question that may arise is whether it is publication of the *Cadbury Report* per se or whether it is moving to three outside directors that is associated with an improvement in ROA. In our analyses, we have not distinguished between firms that moved to three outside directors pre- and post-December 1992. In fact, 103 firms in the adopted-Cadbury set moved to three outside directors between January 1989 and December 1992. We, thus, split the sample into those that came into compliance before and after December 1992 and redo our analysis of ROA using the industry- and performance-matched firms as benchmarks for each subsample. The

results are given in table 4 columns K-P when the benchmark comprises the always-in-compliance firms and in table 5 columns K-P when the benchmark is the never-in-compliance firms.

The results are nearly identical regardless of whether the firms move to three outside directors before or after December 1992. These results indicate that, regardless of when the firms moved to have three or more outside directors, that decision was associated with an improvement in operating performance both absolutely and relative to industry- and performance-matching benchmarks. One interpretation of this result is that the Cadbury recommendation was not exogenous. That is, even before Cadbury, on average, firms that altered their boards to have three outside directors exhibited better performance. As a result, other firms might well have followed that lead anyway. As a consequence, the *Cadbury Report* merely codified an outcome that would have occurred anyway. Of course, regardless of the interpretation, the conclusion is the same: Companies that altered their boards to have at least three outside directors experienced an improvement in operating performance.

F. Multivariate Tests of Statistical Significance

By construction, the univariate tests control for industry factors that might affect ROA and for mean reversion in ROA. An additional factor that has sometimes been shown to influence ROA is size of the company. To control for the influence that size may have on ROA and changes in ROA, we estimate regressions using the change in ROA across event time intervals as the dependent variable. In the first set of regressions, we include the adopted-Cadbury firms and their matched always-in-compliance firms. The independent variables are an indicator for adopted-Cadbury firms (1) or always-in-compliance firms (0), the log of book assets, and an indicator for pre (0)- and post (1)- December 1992 adoption. The regression is

estimated separately for the intervals $y-1$ through $y+1$, $y-1$ through $y+2$, and $y-1$ through $y+3$. And the regressions are estimated separately with the always-in-compliance industry-matched firms and with the always-in-compliance industry- and performance-matched firms. There are, thus, six regressions, the results of which are presented in panel A of table 6. The pre-/post-December 1992 indicator variable is never significant and the size variable is significant in about half the regressions. We are most interested in the adopted-Cadbury indicator. This variable is significant at the 0.01 level in five of the six regressions. In the sixth regression, the coefficient is significant at the 0.10 level. Thus, in comparison with firms that had at least three outside directors prior to 1989 (the always-in-compliance set) and after controlling for firm size, industry, prior performance, and pre-/post- 1992, the improvement in operating earnings for companies that altered their boards by increasing the number of outside directors to three or more is significantly greater than zero.

The set-up of panel B mimics panel A except that the regressions reported in panel B include the adopted-Cadbury firms and the never-in-compliance firms. Log assets is typically not significant and pre-/post- 1992 adoption is never significant. Importantly, however, the coefficient of the adopted-Cadbury indicator variable is significant at the 0.01 or better in five of the six regressions and in the sixth, it is significant at the 0.05 level.

The multivariate analysis is consistent with the univariate analysis, after controlling for industry, pre-adoption performance, asset size, and whether the movement to three outside directors occurred before or after December 1992, adoption of the Cadbury recommendation foreshadowed a significant improvement in corporate earnings.

IV. Event Study Around Announcements of Director Appointments

A. Sample and Methodology

Our analyses of changes in board composition and operating performance indicate that addition of outside directors to corporate boards coincided with an improvement in operating performance, as measured by ROA. In this section, we perform an event study to analyze stock returns around announcements of appointments of inside and outside directors to determine whether the addition of outside directors showed up as an increase in stock price. We should note that in this analysis, because of the *Cadbury Report*, much of the stock price effect of moving to three outside directors may already have been incorporated into stock prices prior to the announcements. Thus, whatever stock price effect we find may be attenuated.

To conduct our event study, we use the market model procedure with market model parameters estimated using daily stock returns over the interval of 153 trading days prior to the announcement day through 3 days prior to the announcement day. We examine excess stock returns over the 2-day interval that encompasses the day on which the company issued its press release announcing a director appointment and the following day.

To construct our sample of director appointments, we identified all new directors each year over the period 1989 through 1996 from the annual board rosters of the 1,124 companies in our sample. Many appointments have no effect on board composition. For example, suppose that in 1994, a board consisted of four members, three of which were insiders and one of which was an outsider. And, suppose in 1995, the board still consisted of four members, of which three were the same insiders as 1994 and the fourth was a different outsider. In this case, we observe the appointment of a new outside director, but the appointment has no impact on either the number or fraction of outside directors. Because we are interested in the composition of the

board, appointments that do not alter the split between insiders and outsiders are dropped from the sample. With this construction, the total number of new directors was 1,988. Of these, 985 were inside director appointments and 1,003 were outside director appointments. The announcement date for each director appointment was manually collected from the *Extel Weekly News Summary*. If the company announced the appointment of both an inside and outside director appointment on the same date, this observation is further excluded from the event study. If the company announced the appointment of multiple outside or multiple inside directors on the same date, this observation remains in the sample. If more than one inside or outside director is announced on the same day, that observation is included only once. This process leaves 952 outside director and 940 inside director appointments.

B. Stock Prices and Appointments of Outside Directors

We are interested in appointments that increase the number of outside directors to three or more in comparison with other types of appointments. Thus, we separate our sample of director appointments into three groups: (1) appointments that increase the number of outside directors to two or less (326 observations); (2) appointments that increase the number of outside directors to three or more (626 observations); and (3) inside director appointments (940 observations).

As shown in panel A of table 7, the average two-day announcement period excess return for each group is positive and statistically significantly greater than zero. The average two-day announcement period excess return for appointments that increase the number of outside directors to two or less is 0.25% (p-value = 0.03); the average two-day announcement period excess return for appointments that increase the number of outside directors to three or more is 0.44% (p-value < 0.01); and the average announcement period excess return for appointments

that increase the number of inside directors is 0.17% (p-value = 0.06). Further, the average excess return for appointments that increase the number of outside directors to three or more is significantly greater than the average excess return for either of the other two subsets (with p-values of 0.01 and 0.05, respectively). However, the average excess return surrounding announcements that add outside directors, but bring the total number of outside directors to less than three (i.e., 0.25%), is not significantly different from the average excess return surrounding announcements that add inside directors (0.17%). Thus investors appear to view all appointments of directors as good news. However, they appear to view appointments that increase the number of outside directors to three or more as the best news. These results are consistent with our analysis of ROA.

C. Director Appointments Pre- and Post-December 1992

We also split the group of outside director appointments that increased the number of outsiders to three or more into those that occurred pre-December 1992 and those that occurred post-December 1992. The average two-day announcement period excess return for the 139 pre-1992 outside director appointments and for the 487 post-1992 outside director appointments were 0.47% and 0.41%, respectively. With p-values < 0.01, both are statistically significantly different from zero, but not significantly different from each other. Thus, the positive stock return associated with outside director appointments that increase the number of outsiders on the board to three or more is not confined to those that came about as a result of the *Cadbury Report* - - outside director appointments that increase the number of outside directors on the board appear to be good news for shareholders both before and after Cadbury. Again, this result is consistent with our analysis of operating earnings.

D. Stock Prices and the Fraction of Inside and Outside Director Appointments

We consider one further question. Our analysis indicates that appointing more outside directors is better than appointing fewer. It may also be that appointing more inside directors is better than appointing fewer. That is, the significant effect of appointing outside directors such that the total is three or more, may be due to adding more directors and we might find a similar effect in cases where more inside directors are appointed. To address that question, albeit somewhat obliquely, we separate the sample of 940 inside director appointments into three groups: (1) appointments that increase the fraction of inside directors by 0.20 or less (611 observations); (2) appointments that increase the fraction of inside directors by 0.21 to 0.39 (250 observations); and (3) appointments that increase the fraction of inside directors by 0.40 or more (79 observations). We undertake the analysis by stratifying the sample according to the proportional increase in inside directors rather than in terms of whether the number of inside directors increased to three or more because most boards already had three or more inside directors as of the date they entered our sample.

As shown in panel B of table 7, the average two-day announcement period excess returns for the three groups are 0.20% (p-value = 0.06); 0.13% (p-value = 0.17); and -0.03% (p-value = 0.65), respectively. Thus, the greater the proportional increase in inside directors, the lower the announcement period return. The addition of more inside directors is associated with a smaller (or negative) change in value for shareholders.

For a direct comparison, we also stratify outside director appointments according to the percentage increase in outside directors. Also as shown in panel B of table 7, the average two-day announcement period excess return for appointments that increase the fraction of outside directors by 0.20 or less is 0.16% (p-value = 0.08); for appointments that increase the fraction of

outside directors by 0.21 to 0.39, the average announcement period excess return is 0.40% (p-value < 0.01); and for appointments that increase the fraction of outside directors by 0.40 or more it is 0.59% (p-value < 0.01). Thus, what we observed above was that the average announcement period excess return for inside director appointments declined monotonically as the percentage increase in outside directors increased. For outside director appointments, the results are exactly reversed - a greater increase in the percentage of outside directors is associated with a higher excess return. These results compliment the results from our analysis of operating earnings. Apparently investors expect that more outside directors will lead to an improvement in corporate performance and our analysis of operating performance indicates that, on average, those expectations are realized.

V. Sensitivity Analysis

In this section we discuss certain sensitivity analyses.

A. Tests of Operating Performance

To determine the robustness of our results wherein we examine ROA, we trimmed the distribution at the 0.5% and 99.5% and the 2.0% and 98% levels. The significance of none of the results is changed. We also conducted the analysis with no trimming. With no trimming, in some cases the mean change in ROA for the adopting firms was not significantly different from the benchmark. That seems to be due to six benchmark firms with extraordinary changes in ROA over some intervals. With the various trimmed distributions, we conducted both univariate and multivariate tests. We also conducted the univariate tests with median changes in ROA. The results were mildly more significant with median than mean changes in ROA.

In section 5, we noted that some of the industry- and performance-matching firms enter the analysis more than once, albeit usually in different years. We reran all of the tests making

sure that each matching firm entered the analysis only once. The significance of the results is unchanged. Thus, our results appear to be robust.

B. Event Study of Stock Prices

To determine whether the results of our stock price event study are robust, we employed announcement periods of various lengths. We also estimated the market model parameters over various pre-event intervals. The event study results are robust to the length of the announcement period considered and to the interval used to estimate market model parameters.

C. Separating the Positions of Chairman of the Board and CEO

As we noted in footnote 1, a second major component of the *Cadbury Report* is a recommendation that the positions of Chairman of the Board and Chief Executive Officer (CEO) not be held by the same individual. This recommendation has shown up in the US in the Sarbanes-Oxley Act and has garnered much publicity. As in the UK, the proposal has been advanced with a sense of “feel-good” urgency with little or no evidence to indicate that its adoption would actually do good. We conducted all of our multivariate tests including an additional indicator variable to identify firms that adopted this provision of the *Cadbury Report*. In none of these tests is the coefficient of this indicator variable significant, but the “three outside directors” variable continues to be significant. Based upon our evidence, hopes that this feel-good provision will lead to corporate governance nirvana in the US are probably misplaced.

IV. Commentary and Conclusion

Over the past decade, the global economy appears to have been captured by what might be best characterized as “outside director mania”. A presumption that underlies this movement is that boards with more outside directors will lead to better board decisions and, as a result, better corporate performance. Dahya, McConnell and Travlos (2002) examine the relationship

between corporate performance and CEO turnover before and after firms adopted the key recommendations of the *Cadbury Report*, in the UK they find that CEO turnover is significantly more sensitive to performance after firms came into compliance with the report by moving to three outside directors. They go on to note that this result is consistent with the recommendations having improved corporate governance, but they remain skeptical as to whether that would inevitably lead to improved corporate performance: “[I]ncreased management turnover and increased sensitivity of turnover to performance do not necessarily mean an improvement in performance” (p. 482). In this study, we examine changes in performance directly. We find that UK firms that moved to three outside directors in conformance with the Cadbury Committee recommendation show an improvement in operating performance both absolutely and relative to various peer-group benchmarks from before to after moving to have three outside directors. We also find that firms that move to three outside directors have a statistically significant stock price increase at the time of announcement of this decision. The results strongly suggest that adding outside directors, at least up to three, lead to improved performance by UK firms and increased value for shareholders.

A concern that might be raised about our analysis is one of reverse causality - - that is, management of companies that were anticipating an improvement in performance added outside directors; whereas management of companies that were anticipating a worsening of performance stayed with the status quo. Certainly that story would also be consistent with our results, but the motives of management are difficult to discern. It would seem more natural for managers of poorly performing firms to add outside directors as a way of showing that they are doing something to improve performance or as a shield if matters do not improve.

A second concern has to do with endogeneity - - perhaps it is a third unobservable factor

that causes firms to have improved performance and to add outside directors concurrently. Of course, we do not know what the third factor might be which is not the same as saying there isn't one (Hermalin and Weisbach (1988, 1998)). However, as we noted, several studies with US data find that firms tend to add outside directors after a period of poor performance, but the addition of outside directors does not lead to an improvement.

Our results do show that UK firms that moved to three outside directors so as to conform with the Cadbury recommendation experienced a significant improvement in performance. Even, then, however, most UK firms had less than a majority of outside directors; on average, outside directors comprised 44% of UK firms. Thus, one question that our study raises is whether there is an optimal number or fraction of outside directors that may be less than 50%. A second question is whether the results from UK firms can be generalized to other countries that have adopted similar *Codes of Best Practice*. We do not answer those questions here, but expect that future studies by others will address them.

References

- Agrawal, Anup and Knoeber, Charles R., Firm performance and mechanisms to control agency problems between managers and shareholders, *Journal of Financial and Quantitative Analysis*, September 1996, 31(3), 377 – 397.
- Agrawal, Anup and Knoeber, Charles R., Do some outside directors play a political role?, *Journal of Law and Economics*, April 2001, 44(1), 179 – 198.
- Barber, Brad M. and Lyon, John D., Detecting abnormal operating performance: the empirical power and specification of test-statistics, *Journal of Financial Economics*, July 1996, 41(3), 359 – 399.
- Bhagat, Sanjai and Black, Bernard, The uncertain relationship between board composition and firm performance, *Business Lawyer*, May 1999, 54(3), 921 – 961.
- Bhagat, Sanjai and Black, Bernard, The non-correlation between board independence and long-term firm performance, *Journal of Corporation Law*, Winter 2002, 27(2), 232 – 273.
- Brickley, James A., Coles, Jeffrey L., and Terry Rory L., Outside directors and the adoption of poison pills, *Journal of Financial Economics*, June 1994, 35(3), 371 – 390.
- Brickley, James A. and James, Christopher M., The takeover market, corporate board composition, and ownership structure: the case of banking, *Journal of Law and Economics*, April 1987, 30(1), 161 – 180.
- Byrd, John W. and Hickman, Kent A., Do outside directors monitor managers?: Evidence for tender offer bids, *Journal of Financial Economics*, October 1992, 32(2), 195 – 221.
- Core, John. E., Holthausen, Robert. W., and Larcker, David. F., Corporate governance, chief executive officer compensation and firm performance, *Journal of Financial Economics*, March 1999, 51(3), 373 – 406.
- Cotter, James F., Shivdasani, Anil, and Zenner, Marc, Do independent directors enhance target shareholder wealth during tender offers?, *Journal of Financial Economics*, February 1997, 43(2), 195 – 218.
- Dahya, Jay, McConnell, John J., and Travlos, Nickolaos G., The Cadbury committee, corporate performance, and top management turnover, *Journal of Finance*, February 2002, 57(1), 461 – 483.
- Demsetz, Harold and Lehn, Kenneth, The structure of corporate ownership: causes and consequences, *Journal of Political Economy*, December 1985, 93(6), 1155 – 1177.

Denis, David J. and Sarin, Atulya, Ownership and board structures in publicly traded firms, *Journal of Financial Economics*, May 1999, 52(2), 187 – 223.

Hermalin, Benjamin E. and Weisbach, Michael S., The determinants of board composition, *The RAND Journal of Economics*, Winter 1988, 19(4), 589 – 606.

Hermalin, Benjamin E. and Weisbach, Michael S., The effects of board composition and direct incentives on firm performance, *Financial Management*, Winter 1991, 20(4), 101 – 112.

Hermalin, Benjamin E. and Weisbach, Michael S., Endogenously chosen boards of directors and their monitoring of the CEO, *The American Economic Review*, March 1998, 88(1), 96 – 118.

Hermalin, Benjamin E. and Weisbach, Michael S., Boards of directors as an endogenously determined institution; A survey of the economic literature, *Economic Policy Review*, 2003, forthcoming.

Kini, Omesh, Kracaw, William A., and Mian, Shehzad, Corporate takeovers, firm performance, and board composition, *Journal of Corporate Finance*, April 1995, 1(3-4), 383 – 412.

Klein, April, Audit committee, board of director characteristics and earnings management, *Journal of Accounting and Economics*, August 2002, 33(3), 375 – 400.

Mehran, Hamid, Executive compensation structure, ownership and firm performance, *Journal of Financial Economics*, June 1995, 38(2), 163 – 184.

Rosenstein, Stuart and Wyatt, Jeffrey G., Outside directors, board independence, and shareholder wealth, *Journal of Financial Economics*, August, 1990, 26(2), 175 – 191.

Rosenstein, Stuart and Wyatt, Jeffrey G., Inside directors, board effectiveness, and shareholder wealth, *Journal of Financial Economics*, May 1997, 44(2), 229 – 250.

Shivdasani, Anil, Board composition, ownership structure, and hostile takeovers, *Journal of Accounting and Economics*, January/April/July 1993, 16(1/2/3), 167 – 198.

Weisbach, Michael S., Outside directors and CEO turnover, *Journal of Financial Economics*, January/March 1988, 20(1/2), 431 – 460.

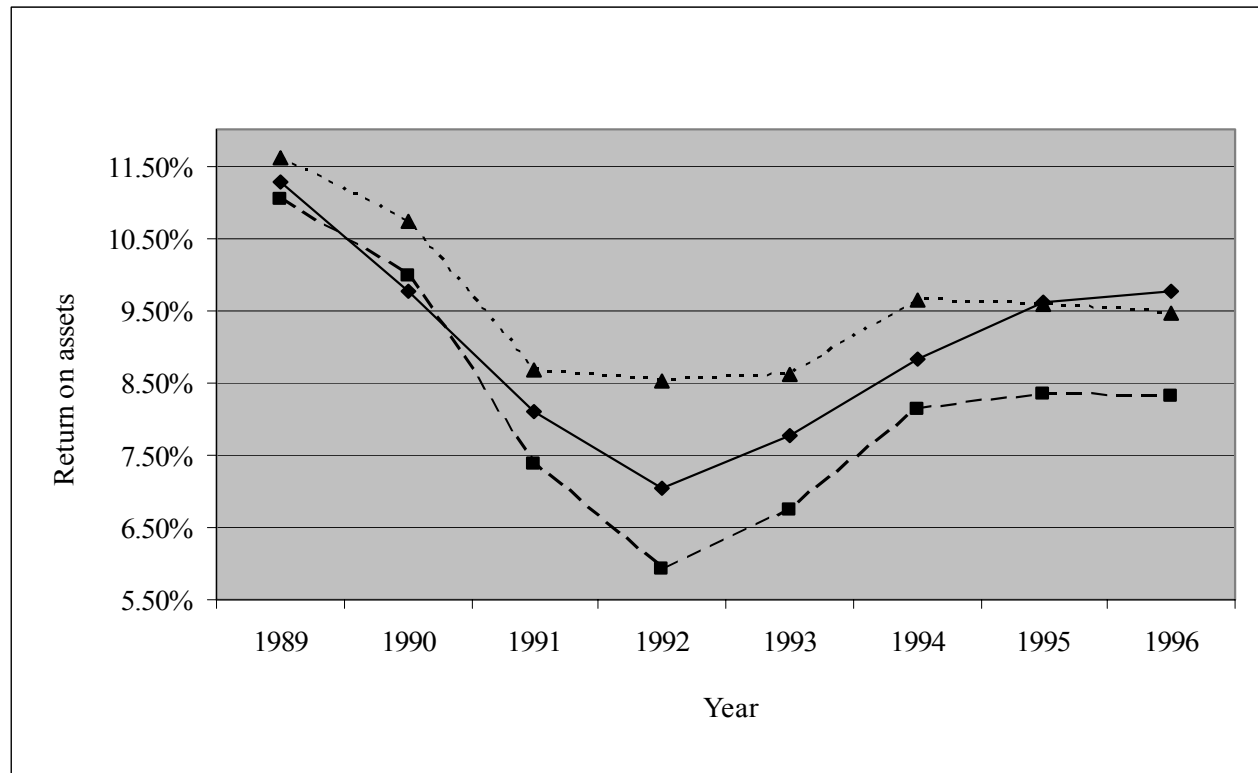


Figure 1. Trimmed mean return on assets (ROA) through time for three mutually exclusive sets of UK industrial firms listed on the LSE over the period 1989-1996: (1) the dotted line is the set of firms that had at least 3 outside directors every year in which they were listed (the always-in-compliance firms), (2) the dashed line is the set of firms that never had more than 2 outside directors any year in which they were listed (the never-in-compliance firms), and (3) the solid line is the remaining set of firms which comprise those that added a sufficient number of outside directors so as to come into compliance with the Cadbury Committee recommendation of at least 3 outside directors any year during 1989 through 1996 (the adopted-Cadbury firms). To determine into which set to classify a firm, we identified the number of outside directors each year for each firm from the *Stock Exchange Yearbook*. Accounting information is taken from *Datastream*. ROA is calculated as earnings before interest, taxes and depreciation divided by beginning-of-year total book value of assets.

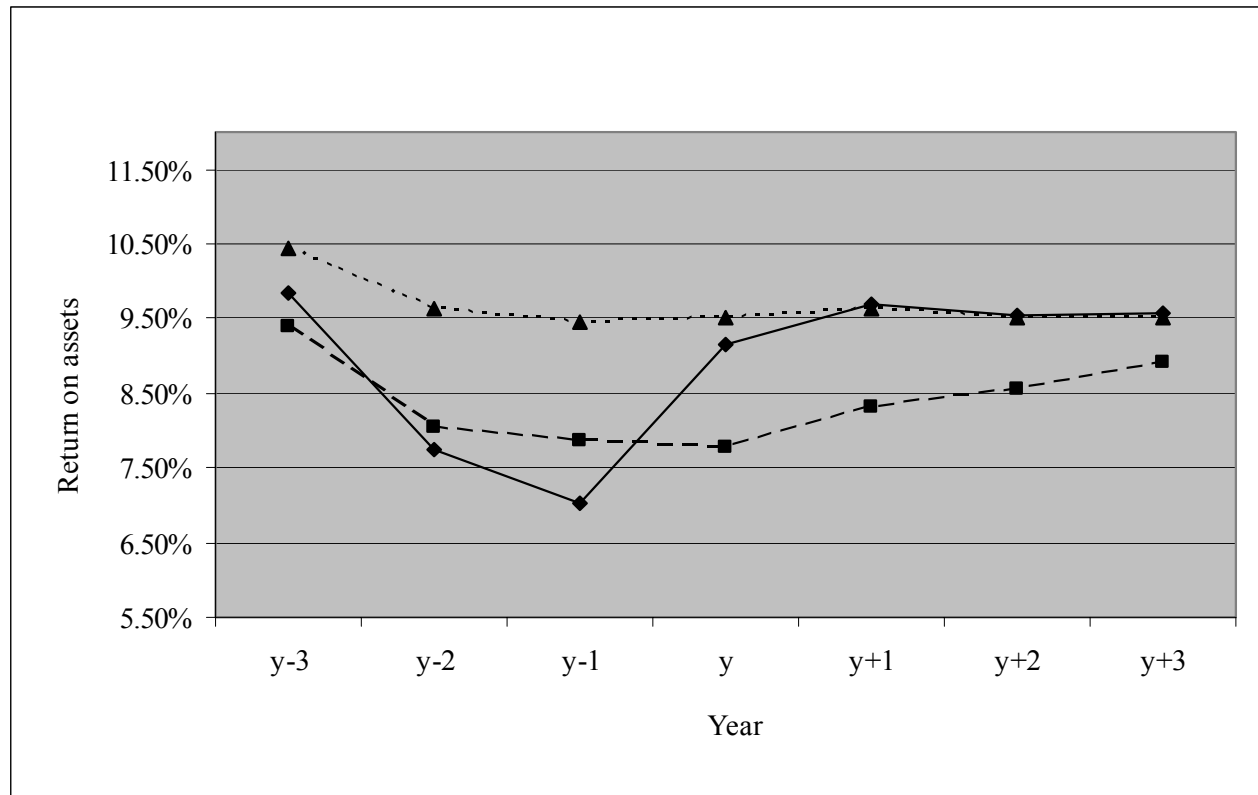


Figure 2. Trimmed mean return on assets (ROA) in event time for three mutually exclusive sets of UK industrial firms listed on the LSE over the period 1989-1996. The solid line represents the set of firms that added a sufficient number of outside directors so as to come into compliance with the Cadbury Committee recommendation of at least 3 outside directors any time over the period 1989-1996. Year y is the year in which these firms adopted the Cadbury recommendation. The dotted line represents firms that were always in compliance with the Cadbury recommendation and that match the adopting firms on the basis of *FTIC*. The dashed line represents the set of firms that were never in compliance and that match the adopting firms on the basis of *FTIC*. To determine into which set to classify a firm, we identified the number of outside directors each year for each firm from the *Stock Exchange Yearbook*. Accounting information is taken from *Datastream*. ROA is calculated as earnings before interest, taxes and depreciation divided by beginning-of-year total book value of assets.

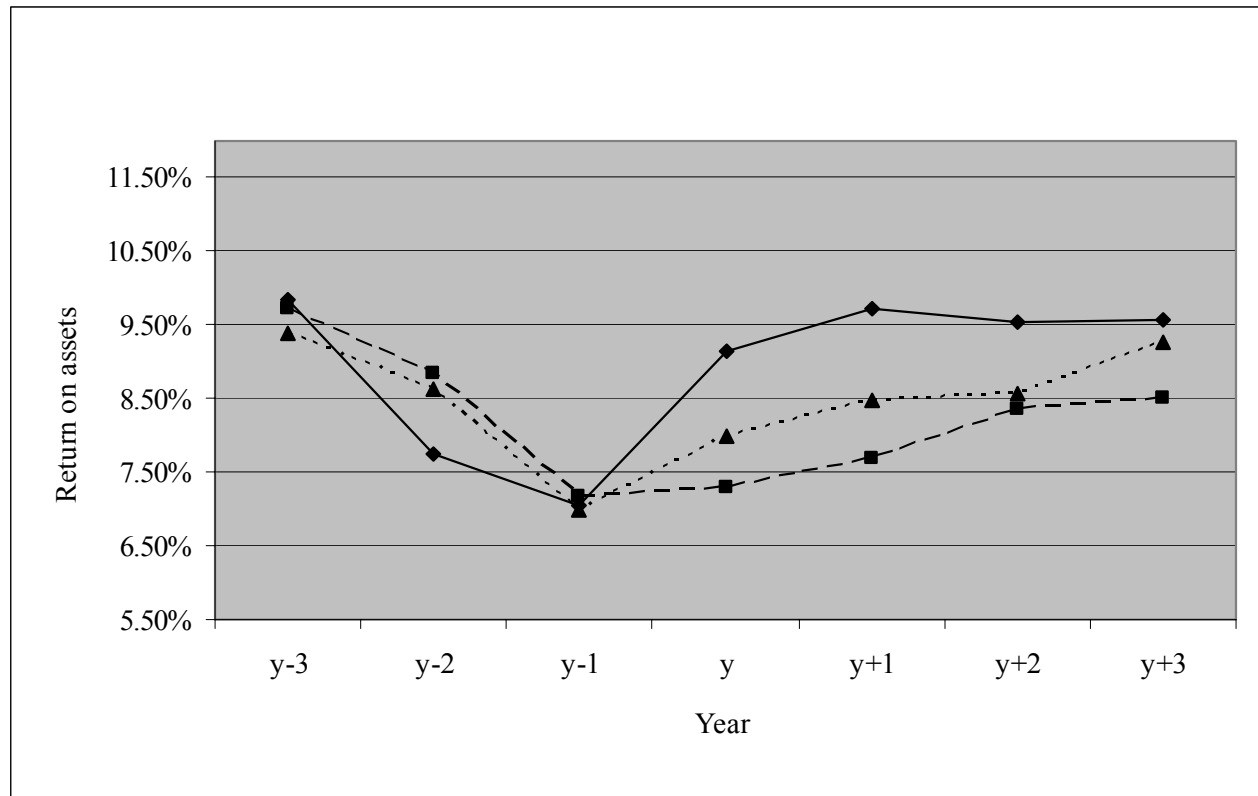


Figure 3. Trimmed mean return on assets (ROA) in event time for three mutually exclusive sets of UK industrial firms listed on the LSE over the period 1989-1996. The solid line represents the set of firms that added a sufficient number of outside directors so as to come into compliance with the Cadbury Committee recommendation of at least 3 outside directors any time over the period 1989-1996. Year y is the year in which these firms adopted the Cadbury recommendation. The dotted line represents firms that were always in compliance with the Cadbury recommendation and that match the adopting firms on the basis of *FTIC* and ROA in year $y-1$. The dashed line represents the set of firms that were never in compliance and that match the adopting firms on the basis of *FTIC* and ROA in year $y-1$. To determine into which set to classify a firm, we identified the number of outside directors each year for each firm from the *Stock Exchange Yearbook*. Accounting information is taken from *Datastream*. ROA is calculated as earnings before interest, taxes and depreciation divided by beginning-of-year total book value of assets.

Table 1

Financial and board characteristics for UK industrial firms listed on the London Stock Exchange over the period 1989 through 1996

Variable	Year							
	1989	1990	1991	1992	1993	1994	1995	1996
Panel A: Adopted-Cadbury firms								
Sample size	321	373	395	434	445	463	452	440
Percentage of firms in compliance at year end	3%	9%	15%	25%	54%	75%	89%	100%
Board size (mean)	6.8	6.8	6.8	7.0	7.9	8.1	8.2	8.2
Percentage of outside directors (mean)	26.4%	26.5%	27.1%	29.6%	38.9%	40.3%	42.7%	44.9%
Book value of assets (mean in millions)	£ 194.2	£ 149.4	£ 186.4	£ 215.8	£ 262.5	£ 285.6	£ 312.6	£ 370.6
Market value of equity (mean in millions)	£ 219.5	£ 226.8	£ 247.9	£ 277.3	£ 299.9	£ 293.6	£ 322.8	£ 342.0
Panel B: Always-in-compliance firms								
Sample size	204	240	237	254	245	284	273	286
Board size (mean)	8.1	8.1	8.1	8.1	8.3	8.4	8.4	8.5
Percentage of outside directors (mean)	42.1%	44.3%	45.0%	43.4%	42.5%	44.1%	44.1%	45.7%
Book value of assets (mean in millions)	£ 547.7	£ 602.6	£ 684.9	£ 741.8	£ 670.6	£ 644.9	£ 740.6	£ 747.8
Market value of equity (mean in millions)	£ 620.2	£ 448.7	£ 563.7	£ 613.6	£ 736.4	£ 682.3	£ 771.5	£ 904.4

Panel C: Never-in-compliance firms

Sample size	175	190	182	193	192	190	182	176
Board size (mean)	6.5	6.3	6.2	6.5	6.8	7.0	7.0	7.1
Percentage of outside directors (mean)	16.7%	16.0%	17.7%	18.5%	19.4%	20.1%	21.3%	21.5%
Book value of assets (mean in millions)	£ 221.2	£ 256.0	£ 264.5	£ 252.7	£ 247.0	£ 211.4	£ 242.2	£ 231.6
Market value of equity (mean in millions)	£ 97.5	£ 86.2	£ 92.2	£ 91.8	£ 100.5	£ 107.3	£ 139.6	£ 134.1

Descriptive statistics for publicly-traded UK industrial firms (with data on board composition and financial information) over the period 1989 through 1996. In the aggregate, the sample includes 1,124 firms that enter the analysis with at least one year of data. The sample is split into three mutually exclusive groups: (1) the set of firms that had at least 3 outside directors every year in which they were listed on the LSE over the period 1989 through 1996 (the always-in-compliance firms), (2) the set of firms that never had more than 2 outside directors any year in which they were listed over the period 1989 through 1996 (the never-in-compliance firms), and (3) the remaining set of firms which comprise those that added a sufficient number of outside directors so as to come into compliance with the Cadbury Committee recommendation of at least 3 outside directors any year during 1989 through 1996 (the adopted-Cadbury firms). To determine into which set to classify a firm, we identified the number of outside directors each year for each firm from the *Stock Exchange Yearbook*. Accounting information and share prices are taken from *Datastream*. Return on assets (ROA) is calculated as earnings before interest, taxes and depreciation divided by beginning-of-year total book value of assets.

Table 2

ROA and change in ROA for adopted-Cadbury firms and always-in-compliance firms listed on the London Stock Exchange over the period 1989 through 1996

Event year	Sample size	Adopted-Cadbury firms (in %)	Always-in-compliance industry-matched firms (in %)	Difference in means (col. C minus col. D)	Always-in-compliance industry- & performance-matched firms (in %)	Difference in means (col. C minus col. F)
(A)	(B)	(C)	(D)	(E)	(F)	(G)
Panel A: Return on assets (mean ROA in percent)						
y-1	490	7.04%	9.45%		6.99%	
y	500	9.15	9.53		7.99	
y+1	491	9.71	9.64		8.47	
y+2	424	9.54	9.51		8.57	
y+3	343	9.58	9.51		9.27	
Panel B: Change in return on assets (mean Δ ROA in percent)						
y-1 to y+1	491	2.67% ^a	0.19%	2.48% ^a	1.48% ^b	1.19% ^b
y-1 to y+2	424	2.50 ^a	0.05	2.45 ^a	1.58 ^a	0.92 ^b
y-1 to y+3	343	2.54 ^a	0.05	2.49 ^a	2.28 ^a	0.26

The sample includes 1,124 firms that enter the analysis with at least one year of data. We split the sample into three mutually exclusive groups: (1) the set of firms that had at least 3 outside directors every year in which they were listed on the LSE over the period 1989 through 1996 (the always-in-compliance firms), (2) the set of firms that never had more than 2 outside directors any year in which they were listed over the period 1989 through 1996 (the never-in-compliance firms), and (3) the remaining set of firms that comprises those that added a sufficient number of outside directors so as to come into compliance with the Cadbury Committee recommendation of at least 3 outside directors any year during 1989 through 1996 (the adopted-Cadbury firms). To determine into which set to classify a firm, we identified the number of outside directors each year for each firm from the *Stock Exchange Yearbook*. Accounting information to compute ROA is taken from *Datastream*. ROA is calculated as earnings before interest, taxes and depreciation divided by the total book value of assets. Industry matching is based on *FTIC*. Performance matching is based on ROA in year y-1. ^a and ^b indicate significance at the 0.01 and 0.05 level.

Table 3

ROA and change in ROA for adopted-Cadbury firms and never-in-compliance firms listed on the London Stock Exchange over the period 1989 through 1996

Event year	Sample size firms (in %)	Adopted-Cadbury (in %)	Never-in-compliance industry-matched firms (in %)	Difference in means (col. C minus col. D)	Never-in-compliance- & performance-matched firms (in %)	Difference in means (col. C minus col. F)
(A)	(B)	(C)	(D)	(E)	(F)	(G)
Panel A: Return on assets (mean ROA)						
y-1	490	7.04%	7.87%		7.17%	
y	500	9.15	7.77		7.28	
y+1	491	9.71	8.30		7.69	
y+2	424	9.54	8.54		8.37	
y+3	343	9.58	8.92		8.50	
Panel B: Change in return on assets (change in mean ROA)						
y-1 to y+1	491	2.67% ^a	0.44%	2.23 ^a	0.52%	2.15% ^a
y-1 to y+2	424	2.50 ^a	0.67	1.82 ^a	1.20 ^b	1.30 ^b
y-1 to y+3	343	2.54 ^a	1.05 ^b	1.49 ^b	1.33 ^b	1.21 ^b

The sample includes 1,124 firms that enter the analysis with at least one year of data. We split the sample into three mutually exclusive groups: (1) the set of firms that had at least 3 outside directors every year in which they were listed on the LSE over the period 1989 through 1996 (the always-in-compliance firms), (2) the set of firms which never had more than 2 outside directors any year in which they were listed over the period 1989 through 1996 (the never-in-compliance firms), and (3) the remaining set of firms that comprises those that added a sufficient number of outside directors so as to come into compliance with the Cadbury Committee recommendation of at least 3 outside directors any year during 1989 through 1996 (the adopted-Cadbury firms). To determine into which set to classify a firm, we identified the number of outside directors each year for each firm from the *Stock Exchange Yearbook*. Accounting information to compute ROA is taken from *Datastream*. ROA is calculated as earnings before interest, taxes and depreciation divided by the total book value of assets. Industry matching is based on *FTIC*. Performance matching is based on ROA in year y-1. ^a and ^b indicate significance at the 0.01 and 0.05 level.

Table 4

ROA and change in ROA for adopted-Cadbury firms and their industry- and performance-matched always-in-compliance firms listed on the London Stock Exchange over the period 1989 through 1996

Event year	Adopted-Cadbury firms			Industry- & performance-matched always-in-compliance firms			Difference in means			Adopted-Cadbury firms		Industry- & performance-matched always-in-compliance firms		Difference in means	
	Low ROA (in %)	Moderate ROA (in %)	High ROA (in %)	Low ROA (in %)	Moderate ROA (in %)	High ROA (in %)	Low ROA (in %)	Moderate ROA (in %)	High ROA (in %)	Pre 1992 (in %)	Post 1993 (in %)	Pre 1992 (in %)	Post 1993 (in %)	Pre 1992 (in %)	Post 1993 (in %)
(A)	(B)	(C)	(D)	(E)	(F)	(G)	(H)	(I)	(J)	(K)	(L)	(M)	(N)	(O)	(P)
Panel A: Return on assets (mean ROA in percent)															
y-1	-7.25%	9.96%	19.73%	-6.90%	10.06%	19.18%				7.16%	6.76%	7.27%	6.77%		
y	0.66	10.10	19.55	-4.59	10.14	18.39				9.23	9.03	7.80	8.21		
y+1	3.63	10.61	18.77	0.28	10.17	18.17				9.66	9.80	8.11	8.71		
y+2	4.02	10.53	18.47	1.37	10.15	17.13				9.51	9.75	8.27	8.78		
y+3	4.76	11.11	18.61	3.14	10.08	17.07				9.44	9.95	9.07	9.44		
Panel B: Change in return on assets (mean Δ ROA in percent)															
y-1 to y+1	10.88% ^a	0.65%	-0.96%	7.18% ^a	0.11%	-1.01% ^b	3.70% ^a	0.54%	0.05%	2.50% ^a	3.04% ^a	0.84%	1.94% ^a	1.66% ^a	1.10% ^b
y-1 to y+2	11.27 ^a	0.57	-1.26 ^b	8.27 ^a	0.09	-2.05 ^a	3.00 ^a	0.48	0.79	2.35 ^a	2.99 ^a	1.00 ^b	2.01 ^a	1.35 ^a	0.98 ^b
y-1 to y+3	12.01 ^a	1.15 ^b	-1.11 ^b	10.04 ^a	0.02	-2.11 ^a	1.97 ^a	1.13 ^b	1.00 ^b	2.28 ^a	3.19 ^a	1.80 ^b	2.67 ^a	0.48	0.52

The sample includes 1,124 firms that enter the analysis with at least one year of data. We split the sample into three mutually exclusive groups: (1) the set of firms that had at least 3 outside directors every year in which they were listed on the LSE over the period 1989 through 1996 (the industry- and performance-matched always-in-compliance firms), (2) the set of firms that never had more than 2 outside directors any year in which they were listed over the period 1989 through 1996 (the industry- and performance-matched never-in-compliance firms), and (3) the remaining set of firms that comprises those that added a sufficient number of outside directors so as to come into compliance with the Cadbury Committee recommendation of at least 3 outside directors any year during 1989 through 1996 (the adopted-Cadbury firms). To determine into which set to classify a firm, we identified the number of outside directors each year for each firm from the *Stock Exchange Yearbook*. Accounting information to compute ROA is taken from *Datastream*. ROA is calculated as earnings before interest, taxes and depreciation divided by the total book value of assets. Industry matching is based on *FTIC*. Performance matching is based on ROA in year y-1. ^a and ^b indicate significance at the 0.01 and 0.05 level.

Table 5

ROA and change in ROA for adopted-Cadbury firms and never-in-compliance firms listed on the London Stock Exchange over the period 1989 through 1996

Event year	Adopted-Cadbury firms			Industry- & performance-matched never-in-compliance firms			Difference in means			Adopted-Cadbury firms		Industry- & performance-matched never-in-compliance firms		Difference in means	
	Low ROA (in %)	Moderate ROA (in %)	High ROA (in %)	Low ROA (in %)	Moderate ROA (in %)	High ROA (in %)	Low ROA (in %)	Moderate ROA (in %)	High ROA (in %)	Pre 1992 (in %)	Post 1993 (in %)	Pre 1992 (in %)	Post 1993 (in %)	Pre 1992 (in %)	Post 1993 (in %)
(A)	(B)	(C)	(D)	(E)	(F)	(G)	(H)	(I)	(J)	(K)	(L)	(M)	(N)	(O)	(P)
Panel A: Return on assets (mean ROA in percent)															
y-1	-7.25%	9.96%	19.73%	-6.28%	9.99%	18.19%				7.16%	6.76%	7.45%	6.95%		
y	0.66	10.10	19.55	-1.84	9.71	16.28				9.23	9.03	7.07	7.47		
y+1	3.63	10.61	18.77	0.72	9.30	14.68				9.66	9.80	7.10	8.00		
y+2	4.02	10.53	18.47	2.14	9.32	14.70				9.51	9.75	7.70	8.66		
y+3	4.76	11.11	18.62	2.11	9.01	13.42				9.44	9.95	8.32	8.72		
Panel B: Change in return on assets (mean DROA in percent)															
y-1 to y+1	10.88% ^a	0.65%	-0.96%	7.00% ^a	-0.69%	-3.51% ^a	3.88% ^a	1.34% ^b	2.55% ^a	2.50% ^a	3.04% ^a	-0.35%	1.05% ^b	2.85% ^a	1.99% ^a
y-1 to y+2	11.27 ^a	0.57	-1.26 ^b	8.42 ^a	-0.67	-3.49 ^a	2.85 ^a	1.24 ^b	2.23 ^a	2.35 ^a	2.99 ^a	0.25	1.71 ^a	2.10 ^a	1.28 ^b
y-1 to y+3	12.01 ^a	1.15 ^b	-1.11 ^b	8.39 ^a	-0.98	-4.77 ^a	3.62 ^a	2.13 ^a	3.66 ^a	2.28 ^a	3.19 ^a	0.87	1.77 ^a	1.41 ^b	1.42 ^b

The sample includes 1,124 firms that enter the analysis with at least one year of data. We split the sample into three mutually exclusive groups: (1) the set of firms that had at least 3 outside directors every year in which they were listed on the LSE over the period 1989 through 1996 (the industry- and performance-matched always-in-compliance firms), (2) the set of firms that never had more than 2 outside directors any year in which they were listed over the period 1989 through 1996 (the industry- and performance-matched never-in-compliance firms), and (3) the remaining set of firms that comprises those that added a sufficient number of outside directors so as to come into compliance with the Cadbury Committee recommendation of at least 3 outside directors any year during 1989 through 1996 (the adopted-Cadbury firms). To determine into which set to classify a firm, we identified the number of outside directors each year for each firm from the *Stock Exchange Yearbook*. Accounting information to compute ROA is taken from *Datastream*. ROA is calculated as earnings before interest, taxes and depreciation divided by the total book value of assets. Industry matching is based on *FTIC*. Performance matching is based on ROA in year y-1. ^a and ^b indicate significance at the 0.01 and 0.05 level.

Table 6

**Regressions of the change in ROA on indicator variable for adopted-Cadbury (1) or not (0),
log of firm assets, and an indicator variable for adopted-Cadbury before (0) or after (1) December 1992 for
U.K. industrial firms listed on the London Stock Exchange over the period 1989 through 1996**

Independent variable	Adopted-Cadbury & industry-matching firms' changes in ROA (dependent variable = Δ ROA)			Adopted-Cadbury & industry- and performance-matching firms' changes in ROA (dependent variable = Δ ROA)		
	y-1 to y+1	y-1 to y+2	y-1 to y+3	y-1 to y+1	y-1 to y+2	y-1 to y+3
Panel A: Adopted-Cadbury firms matched with always-in-compliance firms						
Intercept	0.035	0.047	0.034	0.041	0.079 ^b	0.093 ^a
Adopted-Cadbury indicator	0.027 ^a	0.040 ^a	0.038 ^a	0.018 ^a	0.021 ^a	0.011
Log assets	-0.003	-0.005	-0.005	-0.003	-0.006 ^b	-0.007 ^a
Adopted-Cadbury after 1992 indicator	-0.001	0.002	-0.003	-0.002	0.002	-0.004
No. of observations	882	848	686	882	848	692
Adj. R-squared	0.003	0.055	0.067	0.009	0.017	0.012
Panel B: Adopted-Cadbury firms matched with never-in-compliance firms						
Intercept	0.033	0.058	0.072	-0.004	0.112 ^a	0.075
Adopted-Cadbury indicator	0.027 ^a	0.026 ^a	0.012 ^b	0.030 ^a	0.020 ^a	0.018 ^a
Log assets	-0.002	-0.005	-0.005	0.000	-0.009 ^a	-0.006 ^a
Adopted-Cadbury after 1992 indicator	-0.001	0.002	-0.004	-0.001	-0.000	-0.006
No. of observations	882	848	686	882	848	686
Adj. R-squared	0.024	0.028	0.015	0.023	0.027	0.018

The dependent variable in each regression is the change in ROA over the interval indicated in the column heading. The independent variables are an indicator variable to identify whether a firm adopted Cadbury (1) or not (0), the log of book value of assets and an indicator identify whether the firm adopted Cadbury after 1992. The sample includes 1,124 firms that enter the analysis with at least one year of data. The sample constitutes three mutually exclusive groups: (1) the set of firms that had at least 3 outside directors every year in which they were listed on the LSE over the period 1989 through 1996 (the always-in-compliance firms), (2) the set of firms that never had more than 2 outside directors any year in which they were listed over the period 1989 through 1996 (the never-in-compliance firms), and (3) the remaining set of firms that comprises those that added a sufficient number of outside directors so as to come into compliance with the Cadbury Committee recommendation of at least 3 outside directors any year during 1989 through 1996 (the adopted-Cadbury firms). To determine into which set to classify a firm, we identified the number of outside directors each year for each firm from the *Stock Exchange Yearbook*. Accounting information for ROA is taken from *Datastream*. ROA is calculated as earnings before interest, tax and depreciation divided by beginning of year assets. Log assets is the logarithm of book assets as of the beginning of the year. Industry matching is based on *FTIC*. Performance matching is based on ROA in year y-1. The OLS regressions are reported with robust standard errors. ^a and ^b indicate significance at the 0.01 and 0.05 level.

Table 7**Stock price response to the appointments of directors of UK firms listed on the London Stock Exchange, 1989-1996**

	Sample size	Announcement period excess return
Panel A: Outside and inside director appointments		
Appointments that increase outside directors to ≤ 2	326	0.25% (0.03)
Appointments that increase outside directors to ≥ 3	626	0.44% (< 0.01)
Appointments of inside directors	940	0.17% (0.06)
Panel B: Director appointments classified by proportionate change in board composition		
Appointments that increase the fraction of inside directors by 0.20 or less	611	0.20% (0.06)
Appointments that increase the fraction of inside directors by 0.21 – 0.39	250	0.13% (0.17)
Appointments that increase the fraction of inside directors by 0.40 or more	79	-0.03% (0.65)
Appointments that increase the fraction of outside directors by 0.20 or less	332	0.16% (0.08)
Appointments that increase the fraction of outside directors by 0.21 – 0.39	396	0.40% (< 0.01)
Appointments that increase the fraction of outside directors by 0.40 or more	224	0.59% (< 0.01)

The sample includes director appointments from the board rosters for the 1,124 firms that enter our analysis over the period 1989 through 1996. The total number of new director appointments was 1,988 of which 1,003 were outside directors and the remainder were inside directors. We initially split the sample of director appointments into three groups: (1) appointments that increase the number of outside directors to two or less, (2) appointments that increase the number of outside directors to three or more, and (3) inside director appointments. In subsequent analyses, we split the sample of all inside director appointments into

three sub-groups according to the increase in the fraction of inside directors on the board resulting from the board appointment: (1) appointments that increase the fraction of inside directors by 0.20 or less, (2) appointments that increase the fraction of inside directors by 0.21 to 0.39, and (3) appointments that increase the fraction of inside directors by 0.40 or more. We also repeat this analysis for outside director appointments. To conduct our event study, we use the market model procedure to estimate market model parameters using daily stock returns over the interval 153 trading days prior to the announcement day through 3 days prior to the announcement date. Stock returns are from *Datastream*. *p*-values are in parentheses.