



**Bony labyrinth morphology in early neopterygian fishes
(Actinopterygii: Neopterygii)**

Journal:	<i>Journal of Morphology</i>
Manuscript ID	JMOR-16-0037.R1
Wiley - Manuscript type:	Research Article
Date Submitted by the Author:	n/a
Complete List of Authors:	Giles, Sam; University of Oxford, Department of Earth Sciences Rogers, Molly; University of Oxford, Department of Zoology Friedman, Matt; University of Oxford, Department of Earth Sciences
Keywords:	Actinopterygii, computed tomography, Neopterygii, semicircular canals, bony labyrinth

SCHOLARONE™
Manuscripts

Review

1
2
3
4 **Bony labyrinth morphology in early neopterygian fishes (Actinopterygii:**
5
6 **Neopterygii)**
7

8
9
10
11 Sam Giles^a, Molly Rogers^b, Matt Friedman^a
12

13
14
15 ^aDepartment of Earth Sciences, University of Oxford, Oxford, UK, OX1 3AN
16

17 ^aDepartment of Zoology, University of Oxford, Oxford, UK, OX1 3PS
18
19

20
21
22 *Correspondence to: Sam Giles, +44 (0) 1865 282117, sam.giles@earth.ox.ac.uk,
23

24 Department of Earth Sciences, University of Oxford, Oxford, UK, OX1 3AN
25
26
27
28
29
30
31
32

33 Short title: Neopterygian bony labyrinths
34
35
36
37
38
39
40
41
42
43
44
45
46
47
48
49
50
51
52
53
54
55
56
57
58
59
60

1
2
3
4 *ABSTRACT*
5
6
7
8
9
10
11

12
13 KEY WORDS: (3-6) Actinopterygii; computed tomography; endocast; bony labyrinth;
14
15 Neopterygii; semicircular canals.
16
17
18
19
20
21
22
23
24
25
26
27
28
29
30
31
32
33
34
35
36
37
38
39
40
41
42
43
44
45
46
47
48
49
50
51
52
53
54
55
56
57
58
59
60

For Peer Review

INTRODUCTION

The bony labyrinth of jawed vertebrates includes three semicircular canals (anterior, posterior and horizontal) that contribute to the inner ear. These canals are instrumental in detecting head movement and rotation, and communicating such inputs to the brain. The outer canals (typically formed in bone, although they may be continuous with the rest of the cranial cavity) house a membranous duct filled with endolymphatic fluid and tethered to the bony canals by means of membranous connections (de Burlet, 1934). The space between the membranous and bony canal is filled with perilymphatic fluid, which has inertia. Movement of the head causes a current in this fluid, which in turn deforms the cupula, a diaphragm within the canal's ampulla that is covered in cilia. This deformation is transmitted to the brain via the vestibulocochlear (VIII) cranial nerve.

The labyrinth, in particular the morphology of the semicircular canals, represents important evidence for understanding the history of movement and behavioural adaptations in fossil and extinct groups, as demonstrated for taxa as diverse as dinosaurs (e.g. Rogers, 1999), cetaceans (Spoor et al., 2002), and hominids (e.g. Spoor et al., 1994; see also general review in Hullar, 2006). However, studies of comparable scope in actinopterygians (ray-finned fishes) are hampered by a conspicuous failure to collect primary data on labyrinth morphology. Retzius (1881) remains the most comprehensive account to date, describing the inner ear in the sturgeon *Acipenser*, the gar *Lepisosteus*, the bowfin *Amia* and a number of teleosts. Several surveys of labyrinth measurements in extant fishes were carried out in the 1960s and '70s (Jones & Spells, 1963; ten Kate, 1969; ten Kate et al. 1970; Howland & Masci 1973a,b; see also Gauldie & Radtke, 1990), but were conducted primarily with the aim of testing the theoretical underpinning

1
2
3
4 of how the ear detects angular acceleration. In addition, these past investigations
5
6 focussed almost exclusively on just two measurements: R , radius of curvature of the
7
8 bony canal; and r , radius of curvature of the membranous canal; demonstrated to
9
10 account for much of the variability observed in canal sensitivity (Jones & Spells, 1963).
11
12 More recently, sporadic accounts of inner ear anatomy have targeted isolated taxa such
13
14 as perch (*Perca*: Ladich & Popper, 2004), arrowana (*Osteoglossum*: Popper et al.,
15
16 2003), and a number of catfishes (e.g. *Ictalurus*: Jenkins, 1977; *Arius*: Popper &
17
18 Tavolga, 1981; *Pterygoplichthys*: Rogers, 2008).
19
20
21
22
23

24 While some data have been collected for extant taxa, understanding of bony labyrinth
25
26 anatomy is even more scant for extinct species, with Bernacsek & Carroll (1981)
27
28 presenting one of the only analyses of semicircular canal size in fossil fishes (including
29
30 seven actinopterygians). This is largely due to the paucity of reconstructions in the
31
32 literature, despite a relatively large number of candidate specimens. Labyrinth
33
34 morphology has been described for just two Devonian actinopterygians, *Mimipiscis*
35
36 (Giles & Friedman, 2014) and *Raynerius* (Giles et al., 2015), although the latter is
37
38 incompletely preserved. A further four are known from the Carboniferous: *Kansasiella*
39
40 (Poplin, 1974), *Kentuckia* (Giles & Friedman, 2014), *Lawrenciella* (Hamel & Poplin,
41
42 2008), and an unnamed actinopterygian from which only a rudimentary interpretation of
43
44 labyrinth morphology can be drawn (Moodie 1929). None are described from the
45
46 Permian. A larger number of descriptions (of varying completeness) of the bony
47
48 labyrinth and associated structures are known from the earliest Triassic, reflecting a
49
50 series of productive fossil fish localities yielding three-dimensional material and studied
51
52 largely either through serial grinding or examination of natural moulds: *Saurichthys*
53
54
55
56
57
58
59
60

1
2
3
4 *ornatus*, *S. wimani*, and *S. hamiltoni* (Stensiö, 1925: figs 9, 49) from Spitzbergen;
5
6 *Boreosomus gillioti*, *Devillersia madagascariensis*, *Pteronisculus* sp., and *Watsonulus*
7
8 sp. (Beltan, 1968: figs 7, 28, 39-40) from Madagascar; *Ospia* sp. (Stensiö, 1932: fig.74),
9
10 *Australosomus kochi* (Nielsen, 1949: figs 17-19), *B. piveteaui* and *P. stensioi* (Nielsen,
11
12 1942: figs 13-16, 66) from Greenland. A handful of labyrinths have also been
13
14 reconstructed in more stratigraphically recent taxa: *Dorsetichthys bechei* (Patterson,
15
16 1975: fig. 66) and ‘*Caturus*’ sp. (Rayner, 1948: fig. 9) from the Early Jurassic; *Caturus*
17
18 *groenlandicus* (Aldinger, 1932: fig. 2) and *Ionoscopus cyprinoides* (Maisey, 1999: fig.
19
20 10) from the Late Jurassic; and *Calamopleurus cylindricus* (Maisey, 1999: fig. 66) and
21
22 *Notelops brama* (Dunkle, 1940: fig. 6) from the Early Cretaceous.
23
24
25
26
27

28
29 Of existing models of labyrinth morphology in fossil actinopterygians, the most
30
31 complete examples belong to taxa that fall outside the neopterygian (holostean +
32
33 teleost) crown, and consequently cannot easily be related to living groups. Fossil
34
35 neopterygian labyrinth anatomy is best known in *Caturus groenlandicus* (Aldinger
36
37 1932; Fig. 1A), where the endocast is preserved as a ‘steinkern’ (or natural internal
38
39 mould), and ‘*Caturus*’ sp. (an indeterminate halecomorph referred to *Caturus* by Rayner
40
41 1948 (Fig. 1B), where half of the braincase was serially sectioned and a model of the
42
43 endocast produced. This latter example lacks many of the features present in the type
44
45 species *C. furcatus* (e.g. sutural division of the braincase; see discussion in Patterson,
46
47 1975). Such problems of attribution characterise other thoroughly described early
48
49 neopterygian braincases, which are often known in isolation from other parts of the
50
51 skeleton (Patterson, 1975).Accounts of labyrinth morphology in other neopterygians are
52
53 largely based on fragmentary material (e.g. Beltan, 1968; Fig. 1C-E and Stensiö, 1932;
54
55
56
57
58
59
60

1
2
3
4 Fig. 1F), examination of the labyrinth cavity (e.g. Patterson, 1975; Fig. 1G), and
5
6 extrapolation from the anatomy of extant taxa (e.g. Maisey, 1999; Fig. 1H,I). This is
7
8 despite a large number of well-preserved, mechanically- and acid-prepared braincases
9
10 from the Mesozoic (e.g. Rayner, 1948; Gardiner, 1960; Patterson, 1975).
11

12
13
14
15 In addition to providing primary data on canal morphology and potentially the
16
17 behavioural history of the group, it is to be expected that a detailed description of the
18
19 inner ear in neopterygians--and fishes more generally--will provide anatomical
20
21 characters of use in reconstructing phylogenetic relationships. While it has been shown
22
23 that specific variables such as R and r do not correlate with taxonomic groupings
24
25 (Howland & Masci, 1973a), studies in other lineages have found numerous anatomical
26
27 characteristics of the endoskeletal labyrinth that support the monophyly of major clades
28
29 (e.g., chondrichthyans: Maisey, 2001; afrotherian mammals: Benoit et al. 2015;
30
31 strepsirrhine primates: Lebrun et al., 2010; xenarthran mammals: Billet et al. 2015).
32
33 This potential to provide an increased morphological character set is of particular
34
35 importance given the current state of comprehension of relationships among early
36
37 neopterygians. While there is consensus on the branching pattern of the three major
38
39 extant neopterygian lineages based on both molecular (Near et al., 2012) and
40
41 morphological (Grande, 2010) evidence, the placement of some fossils deep within
42
43 neopterygian phylogeny are less certain. *Dapedium* is variably considered a total-group
44
45 holostean (e.g., Schaeffer, 1967; Tintori, 1983; Thies & Herzog, 1999; Thies &
46
47 Waschke, in press) or stem teleost (e.g., Olsen, 1984; Gardiner et al., 1996; Hurley
48
49 et al., 2007; Xu & Wu, 2012); pycnodonts have been interpreted as both stem teleosts
50
51 (e.g., Gardiner et al. 1996; Hurley et al., 2007; Nursall, 2010; Friedman 2012) and stem
52
53
54
55
56
57
58
59
60

1
2
3
4 neopterygians (e.g., Poyota-Ariza, 2015); and parasemionotids have been resolved as
5
6 both crown-group holosteans (e.g., Patterson, 1973, 1975, 1977; Wiley 1976; Grande &
7
8 Bemis, 1998) and as stem neopterygians (e.g., Olsen, 1984).
9

10
11
12
13
14 Here we use CT scanning to present a preliminary study of labyrinth morphology in
15
16 eight fossil neopterygians, the braincases of all but one of which (*Elopoidea*) have
17
18 previously been described on the basis of external morphology (see Rayner, 1948 and
19
20 Patterson, 1975; endocast and braincase anatomy on the basis of CT scanning will be
21
22 considered in a later publication). This report seeks to determine whether the
23
24 morphology of the labyrinth and associated features in neopterygians is sufficiently rich
25
26 in characters to be of use when reconstructing phylogenetic relationships, while setting
27
28 the framework for future, more data-rich analyses focussing on both phylogenetic and
29
30 ecological patterns. It will also test the hypotheses of labyrinth anatomy advanced by
31
32 Rayner (1948) for '*Caturus*' sp. and Patterson (1975) for *Dorsetichthys bechei*,
33
34 providing explicit examples of the degree to which labyrinth reconstructions derived
35
36 from different analytical approaches might be comparable.
37
38
39
40
41
42

43 MATERIALS AND METHODS

44 Institutional/Geographic Abbreviations

45
46 Specimens are curated in the Natural History Museum, London, UK (NHMUK),
47
48 Mineralogisk Museum, Copenhagen, Denmark (MGUH), Muséum national d'Histoire
49
50 naturelle, Paris, France (MNHN), and Bath Royal Literary and Scientific Institute, Bath,
51
52 UK (BRLSI).
53
54
55
56
57
58
59
60

Materials

SUBCLASS NEOPTERYGII Regan, 1923

INFRACCLASS HOLOSTEI Müller, 1844

SUBDIVISION HALECOMORPHI Cope, 1872

Neurocrania of four halecomorph taxa were studied. The first is the acid-prepared braincase of an undetermined parasemionotid from the Early Triassic (Induan) of east Greenland (MGUH 492), previously described by Patterson (1975:p.434). The second is *Heterolepidotus* sp. from the Early Jurassic (Sinemurian) of Charmouth, UK (NHMUK PV P.13260), also represented by a single, acid-prepared braincase and described by Patterson (1975: p.436). '*Caturus*' sp. from the Early Jurassic (Toarcian) of Somerset, UK (BRS LI M.1288A) has been described by Rayner (1948:p.293) on the basis of an isolated neurocranium, prepared mechanically and subjected to physical tomography. '*Aspidorhynchus*' sp. from the Middle Jurassic (Bathonian) of Northampton, UK (NHMUK PV P.9844) is represented by a mechanically prepared braincase, initially described by Smith Woodward (1918). Despite being referred to *Aspidorhynchus* sp. by Rayner (1948: p.314), Patterson (1975:p.286) notes that this and another specimen from the same locality most likely belong to a new genus, and provides an additional description of the material (1975:p.436).

INFRACCLASS TELEOSTEI Müller, 1844

Dorsetichthys bechei from the Early Jurassic (Sinemurian) of Charmouth, UK, is known from numerous complete specimens. The braincase studied here (NHMUK PV P.1052) is acid prepared, and the subject of a description by Patterson (1975:p.321). The braincase of '*Pholidophorus*' sp. from the Middle Jurassic (Callovian) of France

(NHMUK PV P.32579) is isolated, and appears to have not been collected *in situ* (Patterson 1975:p.284). The specimen was briefly referred to by Smith Woodward (1895) and Wenz (1968), and more fully described by Patterson (1975:p.288). *Elopoidea tomassoni* from the Early Cretaceous (Albian) of Aube, France (MNHN CTE 14), is known from a complete skull and the anterior portions of the trunk. Wenz (1965) described this taxon on the basis of external morphology alone, providing no details of the endocranium.

NEOPTERYGII INCERTAE SEDIS

We studied an acid-prepared specimen of *Dapedium* sp. from the Early Jurassic (Sinemurian) of Charmouth, UK (NHMUK PV P.11177). Patterson provides a reconstruction of neurocranial anatomy in *Dapedium* that draws heavily on this specimen (1975:p.455), which was previously investigated by Frost (1913), Rayner (1948) and Gardiner (1960).

Methods

Most specimens were scanned at the Imaging and Analysis Centre, NHMUK, using a Metris X-Tek HMX ST 225 CT System with a 2000 x 2000 pixel detector, tungsten reflection target, and 3142 projections, using the following parameters: parasemionotid: 180 kV, 160 μ A, 0.25 mm thick copper filter, voxel size 12.2 μ m; *Heterolepidotus* sp.: 205 kV, 155 μ A, 3 mm thick copper filter, voxel size 41.9 μ m; '*Caturus*' sp.: kV, μ A, mm thick xx filter, voxel size μ m; '*Aspidorhynchus*': 205 kV, 180 μ A, 1 mm thick copper filter, voxel size 59.7 μ m; *Dapedium* sp.: 175 kV, 165 μ A, 0.5 mm thick copper filter, voxel size 40.9 μ m; *Dorsetichthys bechei*: 175 kV, 160 μ A, 0.5 mm thick copper

1
2
3
4 filter, voxel size 18.6 μm ; '*Pholidophorus*' sp.: 185 kV, 160 μA , 0.5 mm thick copper
5
6 filter, voxel size 21 μm . *Elopoidea* was scanned using a GE Phoenix v|tome|x 240 L in
7
8 the AST-RX unit, MNHN, with the following settings: 130 kV, 400 μA , 0.5 mm thick
9
10 copper filter, voxel size 59.8 μm .

11
12
13
14
15 Scans were manipulated and manually segmented in Mimics version 18.01
16
17 (biomedical.materialise.com/mimics; Materialise, Leuven, Belgium). Meshes were
18
19 exported as .ply surface files and imaged in Blender (blender.org). These files are
20
21 available as part of the online supporting materials.
22
23

24 25 26 27 28 **RESULTS**

29 30 31 **Holostei**

32 Undertermined parasemionotid (Figs. 2A,B and 3A,B). The roof of the braincase is
33
34 damaged, and consequently the labyrinth is incompletely preserved on both sides. Little
35
36 can be said about the course of the anterior semicircular canal, but the anterior ampulla
37
38 is well developed. The utriculus is rounded and fairly shallow. The horizontal canal is
39
40 inclined, and its ampulla is distinct from the utriculus. Posteriorly, the horizontal canal
41
42 communicates with the cranial cavity through the same opening as the posterior
43
44 ampulla, but the path of the horizontal canal can be traced some way within the
45
46 ampulla. As the lateral cranial canal is incomplete it cannot be fully described, and it is
47
48 unclear whether it was confluent with the cranial cavity anteriorly as well as posteriorly.
49
50 The cranial cavity and lateral cranial canal are not widely separated. The sacculus is
51
52 deep, and opens into the large vestibular fontanelle. The hind margin of the otic capsule
53
54
55
56
57
58
59
60

1
2
3
4 is marked by the exit of the vagus (CN X) nerve, which left the cranial cavity through a
5
6 fairly large, rounded canal.
7
8
9

10 *Heterolepidotus* (Figs. 2C,D and 3C,D). The labyrinth is completely preserved in
11
12 *Heterolepidotus*, with all three semicircular canals fully enclosed in bone, although
13
14 sheets of pyrite pervading the specimen occasionally obscure some aspects. The anterior
15
16 semicircular canal is long and shallow, such that the long axis of the anterior ampulla is
17
18 horizontally oriented. The crus commune of the anterior and posterior canals sits level
19
20 with the endocranial roof, and there is a moderately large separation between the left
21
22 and right crus. Although incompletely preserved on the left side, the utriculus is fairly
23
24 deep, with an elongate dorsoventral axis. Posteriorly, the horizontal canal is confluent
25
26 with the posterior ampulla, but the path of the canal is delimited by a slight constriction.
27
28 The lateral cranial canal is rounded, with a small ventral lobe. There is relatively little
29
30 separation between the lateral cranial canal and the lateral wall of the cranial cavity, and
31
32 communication is through the loops of both the anterior and posterior semicircular
33
34 canals. The root of the vagus (CN X) nerve is large and anteroposteriorly long.
35
36
37
38
39
40

41 ‘*Caturus*’ (Figs. 2E,F and 3E,F). Only one half of this specimen survives; its antimere
42
43 was investigated via destructive serial sectioning by Rayner (1949). The braincase is
44
45 well mineralised and the labyrinth completely preserved. All three semicircular canals
46
47 are completely invested in bone. The canals are of a similar length, although the anterior
48
49 canal is slightly longer. The crus commune is set into the lateral portion of the cranial
50
51 roof, rather than projecting above it. The ampulla of the anterior canal is moderately
52
53 well developed and its long axis oriented vertically. In contrast, the horizontal ampulla
54
55
56
57
58
59
60

1
2
3
4 is indistinct. Instead of entering the cranial cavity independently, the horizontal canal
5
6 runs into the ampulla of the posterior canal. It is not possible to trace the course of the
7
8 canal once it joins the posterior ampulla. The utriculus is deep, and the sacculus bears a
9
10 posterior extension delimited by a distinct notch. The lateral cranial canal is narrow,
11
12 with a fairly large separation between it and the lateral wall of the cranial cavity.
13
14 Although it is confluent with the remainder of the cranial cavity anteriorly and
15
16 posteriorly, the anterior connection is very small. Its shape is very irregular, with
17
18 medial, anterolateral and ventral diverticulae. A dorsally directed canal lateral to the
19
20 crus commune marks the route of the endolymphatic duct. The root of the vagus (CN X)
21
22 nerve is robust and anteroposteriorly long.
23
24
25
26
27

28 '*Aspidorhynchus*' (Figs. 2G,H and 3G,H). The labyrinth in '*Aspidorhynchus*' is
29
30 completely preserved, and all canals are fully enclosed in bone. Of the three canals, the
31
32 anterior is the longest, and joins the posterior in a crus commune that extends dorsal to
33
34 the roof of the endocranial cavity. The angle of the anterior semicircular canal is so
35
36 shallow that the long axis of the anterior ampulla is oriented almost horizontally. The
37
38 left and right crus commune are very closely set, separated by only a narrow portion of
39
40 the cranial cavity. A distinct posterodorsal diverticulum is present on the posterior
41
42 canal. The horizontal canal is inclined at angle of around 30 degrees from the horizontal
43
44 plane, and posteriorly joins the ampulla of the posterior canal before entering the cranial
45
46 cavity. Both the anterior and horizontal canal bear rather poorly developed ampullae,
47
48 connected via a dorsoventrally deep utriculus. The sacculus is antero-posteriorly
49
50 elongate, with a posteroventral extension. Large openings allow the lateral cranial canal
51
52 to communicate with the cranial cavity through the loops of both the anterior and
53
54
55
56
57
58
59
60

1
2
3
4 posterior canal, and a spur-like ventral diverticulum is present. Posterior to the
5
6 labyrinth, the root of the vagus (CN X) nerve is large with a long anteroposterior axis.
7
8
9

10 *Incertae sedis*

11
12 *Dapedium* (Figs. 4A,B and 5A,B). The specimen has suffered some damage, with the
13
14 dorsal portion of the braincase missing behind the orbit, but the labyrinth is complete.
15
16 All three semicircular canals are invested in bone. Although the anterior semicircular
17
18 canal is slightly longer, all three canals are of a similar length, and have small but well
19
20 developed ampullae. The long axis of the anterior ampulla is near-vertically aligned. As
21
22 well as projecting some way above the endocranial roof, the left and right crus
23
24 commune are closely set, approaching the midline. The utriculus is small but
25
26 dorsoventrally deep, and a slight constriction subdivides it into dorsal and ventral
27
28 components. In addition to bearing a spur-like posterior extension, the sacculus is
29
30 notched both anteriorly and posteriorly, creating a dorsal constriction. The horizontal
31
32 canal sits entirely within the horizontal plane. While the horizontal canal and posterior
33
34 ampulla share a common opening into the endocranial cavity, the path of the horizontal
35
36 canal is separated from the ampulla by a slight constriction along its entire length. The
37
38 lateral cranial canal is very large, projecting well above the roof of the cranial
39
40 endocavity, with wide connections through the loop of the anterior and posterior
41
42 semicircular canals. In addition, it has both dorsal and ventral extensions, the latter with
43
44 a horizontal component. Two canals extending from the roof of the endocranial cavity
45
46 transmit what we identify as endolymphatic ducts into an extensive median sinus (not
47
48 figured here). The root of the vagus (CN X) nerve is fairly large, and is long and narrow
49
50 at its base.
51
52
53
54
55
56
57
58
59
60

Teleosts

Dorsetichthys (Figs. 4C,D and 5C,D). The labyrinth is almost completely preserved, with only the left sacculus and horizontal canal unknown. Each of the three semicircular canals is fully enclosed in bone, although there is almost no separation between the bone surrounding the anterior canal and that of the endocavity. In addition, the crus commune is set very closely into the endocavity, projecting only slightly above the endocranial roof. The anterior canal is the longest of the three, and the long axis of its ampulla is near-horizontal. In contrast, the horizontal canal is very short. All three canals have large, rounded ampullae, and the posterior ampulla completely engulfs the posterior portion of the horizontal canal. The utriculus is also rounded. As the posterior limit of the sacculus is missing on both sides of the specimen its shape cannot be fully described, but it appears small with no anterior extensions. A very thin sheet of bone separates the lateral cranial canal from the cranial cavity. The shape of the canal itself is irregular, with both dorsal and ventral extensions. The morphology of the vagus (CN X) nerve is unknown.

'*Pholidophorus*' (Figs. 4E,F and 5E,F). The specimen is well preserved, missing only the anterior-most part of the endocast. Only the horizontal semicircular canal is completely enclosed in bone. Significant portions of the remainder of the labyrinth are accommodated within the endocranial cavity, in particular the medial wall of the anterior and posterior canals. As such it is difficult to describe their paths, but the anterior canal appears to be fairly long and shallow, with the long axis of its ampulla being horizontally oriented. Both the anterior and horizontal ampullae are large and

1
2
3
4 swollen. The crus commune is wholly contained within the cranial cavity. The utriculus
5
6 is fairly deep but rounded, and is poorly separated from the sacculus. The sacculus is
7
8 deep and narrow, with an anterior notch and a posterior swelling. The posterior canal
9
10 bears a large, elongate ampulla, into which the horizontal canal opens, although its path
11
12 can be clearly traced up to its junction with the cranial cavity. As with the whole
13
14 endocast, the horizontal canals are latero-medially wide, with the anterior and posterior
15
16 limbs being almost isoclinal. The lateral cranial canal is dorsoventrally extensive and
17
18 dorsally positioned, projecting some little way above the roof of the endocast. Only a
19
20 very thin sheet of bone separates it medially from the remainder of the endocavity. The
21
22 root of the vagus (CN X) is small and rounded, and is directed posteriorly.
23
24
25
26
27

28 *Elopoides* (Figs. 4G,H and 5G,H). Although completely preserved, the specimen is
29
30 slightly sheared, and the left horizontal and posterior semicircular canals are broken.
31
32 The morphology of the labyrinth is posteriorly shifted and antero-posteriorly short when
33
34 compared to the taxa described above. Most of the path of the anterior canal is
35
36 uninvested in bone, and its small ampulla is very posteriorly placed underneath the crus
37
38 commune. This latter feature projects above the endocranial roof. The external ampulla
39
40 is poorly defined and widely separated from the anterior ampulla; the utriculus is barely
41
42 discernible. The path of the posterior semicircular canal is almost straight, extending
43
44 ventrally with very little curvature. Although the endocast as a whole is fairly narrow,
45
46 the external canal is wide, and is isoclinally curved. The posterior ampulla is also small,
47
48 and the horizontal canal enters the endocavity via this ampulla. Although posteriorly
49
50 positional and inclined from the horizontal, the sacculus is large, with anterior and
51
52 posterior notches. Although at first glance it appears absent, the vestige of a lateral
53
54
55
56
57
58
59
60

1
2
3
4 cranial canal is indicated by a slight protrusion that begins ventral to the crus commune
5
6 and continues anteriorly. There is no connection through the loop of the posterior canal.
7
8 The root of the vagus (CN X) is small and rounded.
9

10 11 12 **DISCUSSION**

13 **Validation of previous models**

14
15 A portion of this study reinvestigated the labyrinth anatomy of '*Caturus*' sp., one of the
16
17 few fossil neopterygians for which a comprehensive description exists in the literature
18
19 (Rayner, 1948). The results given in the previous section can be used to test the
20
21 interpretations made on the basis of an endocranial plaster cast, produced as a result of
22
23 serial grinding (Rayner, 1948: p.340-342). Rayner's depiction is broadly accurate,
24
25 especially in the morphology of the lateral cranial canal, which almost exactly mirrors
26
27 that seen in our reconstruction of the opposite side of the head, but many additional
28
29 aspects of anatomy were not captured (e.g., the crus commune). The relative sizes of the
30
31 canals is somewhat inexact in Rayner's illustrations (the horizontal canal is in fact
32
33 somewhat shorter and the anterior rather longer than previously depicted), but this may
34
35 be a constraint imposed by the lower resolution of her serial sectioning: Rayner
36
37 achieved a slice thickness of 100 μm , whereas the slice thickness in our CT scan is 49
38
39 μm . While the variation in the geometry of the canals between Rayner's interpretation
40
41 and that given above may be a result of natural differences in opposing halves of the
42
43 specimen, a similar asymmetry is not seen in any of the other taxa described above, and
44
45 symmetry of the labyrinth is generally well documented in many groups (e.g.,
46
47 mammals: Welker et al., 2009).
48
49
50
51
52
53
54
55
56
57
58
59
60

1
2
3
4 The labyrinth of *Dorsetichthys bechei* has also been previously reconstructed by
5
6 Patterson (1975). Patterson did not section his specimen, and his account is based on an
7
8 examination of the labyrinth cavities in sagittal view (1975: p. 336). While the general
9
10 proportions of the canals are accurate and the ampullae are in the correct positions, the
11
12 ampullae and utriculus are proportionally much smaller in Patterson's figure than in our
13
14 model. The ventral extremity of the sacculus in his reconstruction seems greatly
15
16 exaggerated. In other aspects, Patterson's description closely matches that given above,
17
18 but his illustration (and text) fail to capture additional morphological features (e.g., the
19
20 relationship between the labyrinth and cranial cavity).
21
22
23

24
25
26 The principal shortcoming with many past accounts is a failure--or inability-- to fully
27
28 illustrate the labyrinth; although the descriptions are typically comprehensive, many
29
30 features indicated in the current work have not been noted previously (e.g. the shape of
31
32 the vagus root, the morphology of the sacculus, etc.). A lack of adequate illustration
33
34 means that the presence or absence of these features cannot be corroborated without
35
36 independent examination of the specimens, some of which have been destructively
37
38 sectioned (e.g., half of '*Caturus*': Rayner, 1948; many 'palaeoniscoid' endocasts: e.g.,
39
40 Nielsen, 1942). As hinted above, this may be due to the lower resolution offered by
41
42 traditional techniques, combined with a possible loss of morphological characters in
43
44 specimens that are fragmentary or incomplete. However written descriptions often
45
46 capture features not shown in figures, for example Patterson's (1975) description of the
47
48 narrow anterior connection of the lateral cranial canal in '*Caturus*' sp., absent from
49
50 Rayner's illustration (Rayner, 1948: fig. 9), suggests that many illustrations are stylized
51
52 or simplified to some extent. Consequently existing accounts of labyrinth morphology
53
54
55
56
57
58
59
60

1
2
3
4 in the literature should be treated with caution, particularly with respect to subtle or
5
6 fine-scale morphological features.
7
8
9

10 **Can labyrinth characters inform neopterygian phylogeny?**

11
12 The new data presented in this study highlight a number of morphological features of
13
14 the labyrinth and associated structures that are variable across our sample of taxa, such
15
16 as the degree of enclosure of the semicircular canals by bone, dorsoventral elongation of
17
18 the utriculus, and anteroposterior extension of the root of the vagus (CN X) nerve..
19
20 These features may well have some phylogenetic significance. In our discussion below,
21
22 we have assessed character polarity based on conditions in *Australosomus*, the closest
23
24 putative fossil relative of crown neopterygians for which structure of the endocavity and
25
26 bony labyrinth is known in sufficient detail (Nielsen, 1949). However, given the
27
28 discrepancies between our new models and past structural interpretations in
29
30 neopterygians, character state assessments in *Australosomus* must of course be viewed
31
32 tentatively.
33
34
35
36
37
38
39

40 Given the current state of uncertainty over how certain fossil taxa relate to living
41
42 neopterygian clades, the taxa examined herein may follow one of four topologies,
43
44 chiefly affected by the positions of *Dapedium* and parasemiontoids: *Dapedium* may be
45
46 more closely related to holosteans (represented in this study only by halecomorphs)
47
48 inclusive of parasemionotids (Patterson, 1975, 1977; Thies & Waschke, 2015; Fig.
49
50 6A); more closely related to holosteans exclusive of parasemionotids, with this group
51
52 falling either on the neopterygian (Olsen, 1984, although this analysis considered
53
54 *Dapedium* to be a stem teleost; Fig. 6B) or holostean stem (Wiley 1976; Grade &
55
56
57
58
59
60

1
2
3
4 Bemis, 1998; Fig. 6C); or more closely related to teleosts (Gardiner et al., 1996; Hurley
5 et al., 2007; Xu & Wu 2012; Fig. 6D). On the basis of morphological features of the
6 labyrinth alone, we find no characters to support the first or last topologies (Figs 6A,
7 D). When restricted to such characters, parsimony suggests that *Dapedium* is more
8 closely related to holosteans (i.e., there are characters uniting it with holosteans, but not
9 with teleosts; Fig. 7). As parasemionotids share no specialised inner characters with
10 either holosteans or teleosts, there is insufficient evidence to select between a stem
11 neopterygian, stem holostean or stem teleost placement on the basis of labyrinth
12 morphology alone (Fig. 7). This ambiguity is perhaps unsurprising. Parasemionotids
13 appear more primitive than crown holosteans in bearing well-developed clavicles and a
14 plate-like preoperculum (Olsen, 1984), while some features classically cited as linking
15 parasemionotids to halecomorphs appear to be broadly distributed among early
16 neopterygians (e.g., a double jaw joint involving the symplectic, reported in both
17 ‘pholidophorids’ and pycnodonts; Arratia, 2013; Poyato-Ariza, 2015).
18
19
20
21
22
23
24
25
26
27
28
29
30
31
32
33
34
35
36

37 **Bony labyrinth morphology in the earliest neopterygians**

38
39 Aside from the uncertainty surrounding the branching pattern of parasemionotids and
40 *Dapedium*, this work finds a large number of characters in the bony labyrinth and
41 associated structures supporting well-established clades (Fig. 7). The halecomorphs
42 *Heterolepidotus*, ‘*Caturus*’ and ‘*Aspidorhynchus*’, as well as the *incertae sedis* genus
43 *Dapedium*, all possess a dorsoventrally deep utriculus, an expanded, anteroposteriorly
44 long root of the vagus (CN X) nerve, and show a wide separation between the lateral
45 cranial canal and cranial cavity (Fig. 7, node 2). Exclusive of *Dapedium*, the long axis
46 of the anterior ampulla of the former three taxa is oriented horizontally (Fig. 7, node 3).
47
48
49
50
51
52
53
54
55
56
57
58
59
60

1
2
3
4 'Caturus' and 'Aspidorhynchus' are further united by the presence of a posterior notch
5
6 in the saccular chamber and a lack of definition between the posterior ampulla and
7
8 horizontal canal (Fig. 7, node 4). A relationship between the teleosts *Dorsetichthys*,
9
10 *Pholidophorus* and *Elopoides* is supported by the lateral cranial canal and the cranial
11
12 cavity being separated by only a very thin sheet of bone, and the posterior portion of the
13
14 horizontal canal being entirely engulfed by the posterior ampulla (Fig. 7, node 5).
15
16 'Pholidophorus' and *Elopoides* are further united by an isoclinally curved horizontal
17
18 canal and a partially uninvested anterior canal (Fig. 7, node 6).
19
20
21
22
23

24 It is difficult to assess whether the characters identified in Fig. 7 can be used to support
25
26 placement of other early neopterygians for which the labyrinth has been described. So
27
28 little is known about the morphology of the bony labyrinth in the parasemionotids
29
30 *Watsonulus*, *Devillersia* and *Ospia* (Stensiö, 1932; Beltan, 1968) that identifying
31
32 derived characters shared with the (also incomplete) parasemionotid described above is
33
34 difficult. The accounts of labyrinth anatomy presented by Beltan (1968) do highlight a
35
36 number of shared primitive features (as shown in Fig. 7), such as a small, subcircular
37
38 root of the vagus (CN X) nerve, a rounded utriculus, and an anterior ampulla with a
39
40 long axis oriented vertically. By contrast, it is more possible to discern potentially
41
42 synapomorphies in *Caturus groenlandicus* (Aldinger 1932), thanks partly to a more
43
44 complete specimen (in which the endocast is preserved as a natural mould)
45
46 accompanied by a more detailed illustration. This taxon possesses a wide separation
47
48 between the lateral cranial canal and the cranial cavity, and the root of the vagus (CN X)
49
50 nerve appears broad and anteroposteriorly long. These features are both shared with
51
52 'Caturus' and 'Aspidorhynchus', although other details concerning the condition of the
53
54
55
56
57
58
59
60

1
2
3
4 utriculus, sacculus and ampullae cannot be discerned. The orientation at which the
5
6 inner ear is reconstructed (i.e. medial) in the halecomorphs *Ionoscopus* and
7
8 *Calamopleurus* (Maisey, 1999) makes it difficult to identify shared characters with the
9
10 taxa described above.

11
12
13
14
15 Clearly this preliminary survey is not intended to be an exhaustive test of relationships,
16
17 and it remains for these new characters to be incorporated into a more comprehensive
18
19 anatomical analysis. We do not attempt this here given the small number of taxa in
20
21 which labyrinth morphology is currently known in sufficient detail. Future work will
22
23 seek to expand this dataset for both fossil and modern lineages. Obvious paleontological
24
25 candidates include highly apomorphic fossil groups often interpreted as stem teleosts,
26
27 such as pycnodonts, pachycormids, and aspidorynchids, as well as ‘semionotids’, an
28
29 assemblage of stem-group gars. Three-dimensionally preserved neurocranial structures
30
31 are known for each of these groups, although reduced ossification in some of them (e.g.,
32
33 ‘semionotids’) might make reconstruction and interpretation of endocasts difficult.
34
35
36
37
38
39

40 **Towards a more comprehensive understanding of labyrinth anatomy in early** 41 **neopterygians**

42
43
44 The results presented in this work are necessarily preliminary, intended to show that the
45
46 bony labyrinth and associated structures in neopterygians display a variety of
47
48 morphological characters with the potential to inform phylogenetic hypotheses. Such
49
50 information can now be easily unlocked by CT scanning of the abundant early
51
52 neopterygian braincases known from the Triassic and Jurassic (e.g., Rayner, 1948;
53
54 Gardiner, 1960; Patterson, 1975). Beyond this systematic application, new data on inner
55
56
57
58
59
60

1
2
3
4 ears have potential to shed light on additional aspects of early neopterygian biology.
5
6 Semicircular canal morphology has been shown to correlate with functional and
7
8 ecological specialisation in a great variety of tetrapod groups (e.g. charadriiform birds:
9
10 Smith & Clarke, 2012; hominids: Spoor et al., 1994; mustelid mammals: Grohé et al.
11
12 2015; rodents: Pfaff et al., 2015; snakes: Yi & Norell, 2015). Few data exist to test this
13
14 hypothesis in fishes, although Gaudie & Radtke (1990) found evidence that the
15
16 labyrinth morphology of the walking catfish *Clarius fuscus*, which is able to spend time
17
18 on land, is more similar to those of terrestrial vertebrates than other fishes, suggesting
19
20 that its inner ear shows adaptations towards a swaying (i.e. walking-like) rather than
21
22 undulatory (i.e. swimming-like) gait. Using 3D data from CT scanning opens up the
23
24 possibility of moving beyond simple linear measurements by applying three-
25
26 dimensional geometric morphometrics to compare shape data, which previous studies
27
28 have established as a powerful technique for identifying phylogenetic and ecological
29
30 correlates of labyrinth anatomy (e.g., Lebrun et al., 2010; Gunz et al., 2012; Benoit et al.,
31
32 2015; Billet et al., 2015; Grohé et al., 2015).

33 34 35 36 37 38 39 CONCLUSIONS

40
41 The inner ears of early neopterygians exhibit morphological characters that may be of
42
43 help in resolving phylogenetic relationships amongst problematic clades. The characters
44
45 highlighted in this work suggest that *Dapedium* may be allied more closely to
46
47 holosteans than teleosts, and find no additional evidence for parasemionotids being
48
49 halecomorphs or even holosteans. A wider understanding of inner ear and bony
50
51 labyrinth morphology in extinct and extant neopterygians is hampered by a dearth of
52
53 published accounts. Additional data will test whether morphological innovation in the
54
55
56
57
58
59
60

1
2
3
4 labyrinths of neopterygian fishes (both living and extinct) accompanies diversification
5
6 into new habitats and ecological niches, as has been inferred for other groups across the
7
8 Tree of Life (Ekdale et al., 2016; Ni et al., 2010; Spoor et al., 1994, 2002; Yi & Norell,
9
10 2015).

11 12 13 14 15 16 17 **Acknowledgements**

18
19 The authors thank Cathrin Pfaff, Julia Schultz and Rico Schellhorn for the invitation to
20
21 contribute to this issue. Roger Close, Zerina Johanson, Dan Sykes, Rebecca
22
23 Summerfield and Miguel Garcia Sanz assisted with CT scanning. Donald Davense
24
25 helped coordinate specimen access at MNHN. Stig Walsh and an anonymous reviewer
26
27 provided useful comments on improving the manuscript. Support for tomographic
28
29 analyses and computational infrastructure for processing resulting data was provided by
30
31 the Leverhulme Trust (Research Project Grant RPG-2012-658, Philip Leverhulme Prize
32
33 PLP-2012-130; both to MF). Funding for SG was provided by a Junior Research
34
35 Fellowship from Christ Church, Oxford.
36
37
38
39
40
41

42 **REFERENCES**

43
44 Aldinger H. 1932. Über einen Eugnathiden aus der unteren Wolgastufe von
45
46 Ostgrönland. Meddr Grönland 86:1–51.
47
48
49
50
51 Arratia G. 2013. Morphology, taxonomy, and phylogeny of Triassic pholidophorid
52
53 fishes (Actinopterygii, Teleostei). *J Vertebr Paleontol* (suppl.) 33:1-138.
54
55
56
57
58
59
60

1
2
3
4 Beltan L. 1968. La faune ichthyologique de l'Eotrias du N.W. de Madagascar: le
5
6 neurocrâne. Paris: Éditions du C.N.R.S. 135p.
7
8
9

10 Benoit J, Lehmann T, Vatter M, Lebrun R, Merigeaud S, Costeur L, Tabuce R. 2015.
11
12 Comparative anatomy and three-dimensional geometric-morphometric study of the
13
14 bony labyrinth of Bibymalagasia (Mammalia, Afrotheria). J Vertebr Paleontol
15
16 35:e930043.
17
18

19
20
21 Bernacsek GM, Carroll RL. 1981. Semicircular canal size in fossil fishes and
22
23 amphibians. Can J Earth Sci 18:150–156.
24
25
26

27
28 Billet G, Hautier L, Lebrun R. 2015. Morphological diversity of the bony labyrinth
29
30 (inner ear) in extant xenarthrans and its relation to phylogeny. J Mammal :gyv074.
31
32
33

34
35 de Burlet HM. 1934. Vergleichende Anatomie des stato-akustischen Organs. Handbuch
36
37 der vergleichenden Anatomie der Wirbeltiere 1293–1380.
38
39
40

41
42 Cope ED. 1871. Observations on the systematic relations of the fishes. Am Nat 5:579–
43
44 93.
45
46
47

48 Dunkle DH. 1940. The cranial osteology of *Notelops brama* (Agassiz), an elopid fish
49
50 from the Cretaceous of Brazil. Lloydia 3:157–190.
51
52
53

54
55 Ekdale EG. 2016. Form and function of the mammalian inner ear. J Anat 228:324–337.
56
57
58
59
60

1
2
3
4
5
6 Friedman M. 2012. Ray-finned fishes (Osteichthyes, Actinopterygii) from the type
7
8 Maastrichtian, the Netherlands and Belgium. Scripta GeolSpecial Issue 8:113–42.
9

10
11
12 Frost GA. 1913. The internal cranial elements and foramina of *Dapedius granulatus*,
13
14 from a specimen recently found in the Lias at Charmouth. Q J Geol 69:219–22.
15
16

17
18
19 Gauldie RW, Radtke RL. 1990. Using the physical dimensions of the semicircular canal
20
21 as a probe to evaluate inner ear function in fishes. Comparative Biochemistry and
22
23 Physiology Part A: Physiology 96:199–203.
24
25

26
27
28 Gardiner BG. 1960. A revision of certain actinopterygian and coelacanth fishes, chiefly
29
30 from the Lower Lias. Bull Br Mus Nat Hist Geol 4:239-384.
31
32

33
34
35 Gardiner BG, Maisey JG, Littlewood DT. 1996. Interrelationships of basal
36
37 neopterygians. In: Stiassny MLJ, Paenti LR, Johnson GD. Interrelationships of fishes.
38
39 London: Academic Press. p 117–146.
40
41

42
43
44 Giles S, Friedman M. 2014. Virtual reconstruction of endocast anatomy in early ray-
45
46 finned fishes (Osteichthyes, Actinopterygii). J Paleontol 88:636-651.
47
48

49
50
51 Giles S, Darras L, Clément G, Blicck A, Friedman M. (2015a). An exceptionally
52
53 preserved Late Devonian actinopterygian provides a new model for primitive cranial
54
55 anatomy in ray-finned fishes. Proc R Soc London, Ser B 282:20151485.
56
57
58
59
60

1
2
3
4
5
6 Giles S, Friedman M, Brazeau MD. 2015b. Osteichthyan-like cranial conditions in an
7
8 Early Devonian stem gnathostome. *Nature* 520:82-85.
9

10
11
12 Grande L. 2010. An empirical synthetic pattern study of gars (Lepisosteiformes) and
13 closely related species, based mostly on skeletal anatomy. The resurrection of Holostei.
14
15 American Society of Ichthyologists and Herpetologists Special Publication 6:1-871.
16
17

18
19
20 Grande L, Bemis WE. 1998. A comprehensive phylogenetic study of amiid fishes
21 (Amiidae) based on comparative skeletal anatomy. An empirical search for
22 interconnected patterns of natural history. *Society of Vertebrate Paleontology Memoir*
23
24
25
26
27
28 4:1-690.
29

30
31
32
33 Grohé C, Tseng ZJ, Lebrun R, Boistel R, Flynn JJ. 2015. Bony labyrinth shape variation
34 in extant Carnivora: a case study of Musteloidea. *J Anat*

35
36
37
38
39
40 Gunz P, Ramsier M, Kuhrig M, Hublin JJ, Spoor F. 2012 The mammalian bony
41
42 labyrinth reconsidered, introducing a comprehensive geometric morphometric approach.
43
44
45
46
47
48
49
50
51
52
53
54
55
56
57
58
59
60
60
J Anat 6:529-43.

Hamel M-H, Poplin C. 2008. The braincase anatomy of *Lawrenciella schaefferi*,
actinopterygian from the Upper Carboniferous of Kansas (USA). *J Vertebr Paleontol*
28:989-1006.

1
2
3
4 Howland HC, Masci J. 1973a. The phylogenetic allometry of the semicircular canals of
5 small fishes. *Z Morphol Tiere* 75:283-96.
6
7

8
9
10 Howland HC, Masci J. 1973b. The functional allometry of semicircular canals, fins, and
11 body dimensions in the juvenile centrarchid fish, *Lepomis gibbosus* (L.). *Development*
12 29:721-43.
13
14
15

16
17
18
19 Hurley IA, Mueller RL, Dunn KA, Schmidt EJ, Friedman M, Ho RK, Prince VE, Yang
20 Z, Thomas MG, Coates MI. 2007. A new time-scale for ray-finned fish evolution. *Proc*
21 *R Soc London, Ser B* 274:489-98.
22
23
24

25
26
27
28 Hullar TE. 2006. Semicircular canal geometry, afferent sensitivity, and animal behavior.
29 *Anat Rec Part A* 288:466-72.
30
31

32
33
34
35 Jenkins DB. 1977. A light microscopic study of the saccule and lagena in certain
36 catfishes. *Am J Anat* 150:605-29.
37
38

39
40
41
42 Jones GM, Spells KE. 1963. A theoretical and comparative study of the functional
43 dependence of the semicircular canal upon its physical dimensions. *Proc R Soc London,*
44 *Ser B* 157:403-19.
45
46
47

48
49
50 Ladich F, Popper AN. 2004. Parallel evolution in fish hearing organs. In: Manley GA,
51 Fay RR, Popper AN, editors. *Evolution of the vertebrate auditory system 2004* (pp. 95-
52 127). Springer: New York. p 95–127.
53
54
55
56
57
58
59
60

1
2
3
4
5
6 Lebrun R, De León MP, Tafforeau P, Zollikofer C. 2010. Deep evolutionary roots of
7 strepsirrhine primate labyrinthine morphology. *J Anat* 216:368-80.
8
9

10
11
12 Maisey JG. 1999. The supraotic bone in neopterygian fishes (Osteichthyes,
13 Actinopterygii). *Am Mus Novit* 3267:1-52.
14
15
16

17
18
19 Maisey JG. 2001. Remarks on the inner ear of elasmobranchs and its interpretation from
20 skeletal labyrinth morphology. *J Morphol* 250:236-64.
21
22
23

24
25
26 Moodie RL. 1929. On a New Specimen of a Paleoniscid Brain from Iowa. Iowa
27 Geological Survey Annual Report 35:489-98.
28
29
30

31
32
33 Müller J. 1844. Über den Bau und die Grenzen der Ganoiden und über das natürliche
34 System der Fische. *Behricht Akademie der Wissenschaften Berlin* 1844:416-422.
35
36
37

38
39 Near TJ, Eytan RI, Dornburg A, Kuhn KL, Moore JA, Davis MP, Wainwright PC,
40 Friedman M, Smith WL. 2012. Resolution of ray-finned fish phylogeny and timing of
41 diversification. *Proc Natl Acad Sci USA* 109: 13698-13703.
42
43
44
45

46
47
48 Ni X, Flynn JJ, Wyss AR. 2010. The bony labyrinth of the early platyrrhine primate
49 *Chilecebus*. *J Hum Evol* 59:595-607.
50
51
52
53
54
55
56
57
58
59
60

1
2
3
4 Nielsen E. 1942. Studies on Triassic fishes from East Greenland. I. *Glaucolepis* and
5
6 *Boreosomus*. Meddr Grønland 138:1-403.
7
8

9
10
11 Nielsen E. 1949. Studies on Triassic fishes from East Greenland. II. *Australosomus* and
12
13 *Birgeria*. Meddr Grønland 146:1-309.
14
15

16
17 Nursall JR. The case for pycnodont fishes as the fossil sister-group of teleosts. In:
18
19 Nelson JS, Schultze, H-P, Wilson, MVH. Origin and phylogenetic interrelationships of
20
21 teleosts. Munich: Verlag Dr. Friedrich Pfeil. 37-60.
22
23

24
25
26 Olsen PE. 1984. The skull and pectoral girdle of the parasemionotid fish *Watsonulus*
27
28 *eugnathoides* from the Early Triassic Sakamena Group of Madagascar, with comments
29
30 on the relationships of the holostean fishes. J Vertebr Paleontol 4:481-499.
31
32

33
34
35 Patterson C. 1973. Interrelationships of holosteans. In: Greenwood PH, Miles, RS,
36
37 Patterson, C, editors. Interrelationships of fishes. London: Academic Press. p 233-305.
38
39

40
41
42 Patterson, C. 1975. The braincase of pholidophorid and leptolepid fishes, with a review
43
44 of the actinopterygian braincase. Philos T R Soc B 269:275-579.
45
46

47
48
49 Patterson, C. 1977. The contribution of paleontology to teleostean phylogeny. In: Hecht
50
51 MK, Goody PC, Hecht BM, editors. Major patterns in vertebrate evolution. New York:
52
53 Plenum Press p 579-643.
54
55

1
2
3
4 Pfaff C, Martin T, Ruf I. 2015. Bony labyrinth morphometry indicates locomotor
5 adaptations in the squirrel-related clade (Rodentia, Mammalia). Proc R Soc B
6 282:20150744.
7
8
9

10
11
12 Poyato-Ariza FJ. 2015. Studies on pycnodont fishes (I): evaluation of their phylogenetic
13 position among actinopterygians. Riv Ital Paleontol
14
15 121:329–343.
16
17

18
19
20
21 Poplin C. 1974. *Étude de quelques paléoniscidés pennsylvaniens du Kansas*. Paris:
22 Éditions du C.N.R.S. 151 p.
23
24

25
26
27
28 Popper AN, Tavalga WN. 1981. Structure and function of the ear in the marine catfish,
29 *Arius felis*. J Comp Physiol A: Neuroethology, Sensory, Neural, and Behavioral
30 Physiology 144:27-34.
31
32
33

34
35
36
37 Popper AN, Fay RR, Platt C, Sand O. 2003. Sound detection mechanisms and
38 capabilities of teleost fishes. In: Collin SP, Marchall NJ, editors. Sensory processing in
39 aquatic environments. New York: Springer. p 3-38.
40
41
42
43

44
45
46 Rayner DM. 1948. The structure of certain Jurassic holostean fishes, with special
47 reference to their neurocrania. Philos T R Soc B 233:287-345.
48
49

50
51
52
53 Regan CT. 1923. The skeleton of *Lepidosteus*, with remarks on the origin and evolution
54 of the lower neopterygian fishes. P Zool Soc Lond 93:445-461.
55
56
57
58
59
60

1
2
3
4
5
6 Retzius G. 1881. Das Gehörorgan der Fische und Amphibien. Stockholm: Samson and
7
8 Wallin. 222 p.
9

10
11
12 Rogers SW. 1999. *Allosaurus*, crocodiles, and birds: evolutionary clues from spiral
13 computed tomography of an endocast. *Anat Rec* 257:162-73.
14
15

16
17
18 Rogers BD. 2008. Morphology of the inner and peripheral ear of the loricariid catfish
19 *Pterygoplochthys gibbiceps* K. [dissertation]. Kentucky: Western Kentucky University.
20
21
22
23
24 35 p.
25

26
27
28 Schaeffer B. 1968. The origin and basal radiation of the Osteichthyes. In Ørvig T,
29 editor. Current problems in lower vertebrate phylogeny. *Nobel Symposium, Stockholm*,
30
31 4207-222.
32
33

34
35
36
37 Thies D, Waschkewitz J. In press. Redescription of *Dapedium pholidotum* (Agassiz,
38 1832) (Actinopterygii, Neopterygii) from the Lower Jurassic Posidonia Shale, with
39
40 comments on the phylogenetic position of *Dapedium* Leach, 1822. *J Syst Palaeontol*
41
42
43

44
45
46 Woodward AS. 1893. On the cranial osteology of the Mesozoic ganoid fishes,
47
48 *Lepidotus* and *Dapedius*. *P Zool Soc Lond* 38:559-565.
49

50
51
52 Wenz S. 1965. Les poissons albiens de Vallentigny (Aube). *Annal Paléontol Vertébr*
53
54 51: 1-23.
55
56
57
58
59
60

1
2
3
4
5
6 Wenz S. 1968. Compléments a l'étude des poissons actinopterygiens du Jurassique
7 française. Paris: Centre national de le recherché scientifique. 276 p.
8
9

10
11
12 Woodward AS. 1895. Catalogue of the Fossil Fishes in the British Museum:(Natural
13 History.) London: British Museum (Natural History). 544 p.
14
15

16
17
18 Woodward AS. 1918. The fossil fishes of the English Wealden and Purbeck formations.
19 Cambridge University Press.
20
21
22

23
24
25
26 Smith NA, Clarke JA. 2012. Endocranial anatomy of the Charadriiformes: sensory
27 system variation and the evolution of wing-propelled diving. PloS one 7:e49584.
28
29

30
31
32 Spoor F, Bajpai S, Hussain ST, Kumar K, Thewissen JG. 2002. Vestibular evidence for
33 the evolution of aquatic behaviour in early cetaceans. Nature 417:163-6.
34
35
36

37
38
39 Spoor F, Wood B, Zonneveld F. 1994. Implications of early hominid labyrinthine
40 morphology for evolution of human bipedal locomotion. Nature 369:645-8.
41
42
43

44
45
46 Stensiö EA. 1924. Triassic fishes from Spitzbergen. K svenska VetenskAkad Handl
47 2:1–261.
48
49

50
51
52 Stensiö EA 1932. Triassic fishes from East Greenland collected by the Danish
53 expeditions in 1929–1931. Meddr Grønland 83:1-305.
54
55
56
57
58
59
60

1
2
3
4
5
6 ten Kate JH. 1969. The oculo-vestibulo reflex of the growing pike [dissertation]. The
7
8 Netherlands: University of Groningen.
9

10
11
12 Ten Kate JH, Van Barneveld HH, Kuiper JW. 1970. The dimensions and sensitivities of
13
14 semicircular canals. J Exp Biol. 53:501-14.
15
16

17
18
19 Thies D, Herzog A. 1999. New information on †*Dapedium* LEACH 1822
20
21 (Actinopterygii, †Semionotiformes). In: Arratia, G, Schultze, H-P, editors. Munich:
22
23 Verlag Dr. Friedrich Pfeil. p 143-52.
24
25
26

27
28 Tintori TAH. 1983. Hynsisomatic Semionotidae (Pisces, Actinopterygii) from the
29
30 Upper Triassic of Lombardy (N. Italy). Riv Ital Paleontol, **88**, 417–442.
31
32

33
34
35 Welker KL, Orkin JD, Ryan TM. 2009. Analysis of intraindividual and intraspecific
36
37 variation in semicircular canal dimensions using high-resolution x-ray computed
38
39 tomography. J Anat 215:444-51.
40
41
42

43
44 Wenz S. 1968. 1968. Compléments à l'étude des poissons Actinoptérogens du Jurassique
45
46 français. Paris: Éditions du C.N.R.S. 276p.
47
48

49
50
51 Wiley EO. 1976. The phylogeny and biogeography of fossil and recent gars
52
53 (Actinopterygii: Lepisosteidae). Miscellaneous Publications, museum of Natural
54
55 History, University of Kansas 64:1-11.
56
57
58
59
60

1
2
3
4
5
6 Xu G, Wu F. 2012. A deep-bodied ginglymodian fish from the Middle Triassic of
7 eastern Yunnan Province, China, and the phylogeny of lower neopterygians. Chinese
8 Sci Bull 57:111-8.
9

10
11
12
13
14
15 Yi H, Norell MA. 2015. The burrowing origin of modern snakes. Science Advances
16 e1500743.
17
18
19
20
21
22
23
24
25
26
27
28
29
30

31 **Fig. 1.** Pre-existing accounts of fossil neopterygian bony labyrinth structure. **A:** *Caturus*
32 *groendlandicus* in dorsal view (modified from Aldinger, 1937). **B:** ‘*Caturus*’ sp. in
33 dorsal view (modified from Rayner, 1948). **C:** *Watsonulus* sp. (modified from Beltan,
34 1968). **D:** *Devillersia madagascariensis* in dorsal view (modified from Beltan, 1968).
35 **E:** *Devillersia madagascariensis* in lateral view (modified from Beltan, 1968). **F:** *Ospia*
36 sp. in lateral view (modified from Stensiö, 1932). **G:** *Dorsetichthys bechei* in lateral and
37 medial view (modified from Patterson, 1975). **H:** *Calamopleurus cylindricus* in sagittal
38 view (modified from Maisey, 1999). **I:** *Ionoscopus cyprinoides* in sagittal view
39 (modified from Maisey, 1999).
40
41
42
43
44
45
46
47
48
49
50
51
52

53 **Fig. 2.** Three dimensional renderings of endocast and bony labyrinth structure.
54 Undertermined parasemionotid (MGUH 492) in **A:** right lateral (image flipped to
55
56
57
58
59
60

1
2
3
4 resemble left lateral) and **B**: dorsal view. *Heterolepidotus* sp. (NHMUK PV P.13260) in
5
6 **C**: left and **D**: dorsal view. '*Caturus*' sp. (BRS LI M.1288A) in **E**: left and **F**: dorsal
7
8 view (right half of specimen lost, so left half is mirrored and faded). '*Aspidorhynchus*'
9
10 (NHMUK PV P.9844) in **G**: left and **H**: dorsal view. Scale bar in all is 10 mm.
11
12
13

14
15 **Fig. 3.** Interpretive drawings of endocast and bony labyrinth structure. Oblique lines
16 indicate broken surfaces. Undertermined parasemionotid (MGUH 492) in **A**: right
17 lateral (image flipped to resemble left lateral) and **B**: dorsal view. *Heterolepidotus* sp.
18 (NHMUK PV P.13260) in **C**: left and **D**: dorsal view. '*Caturus*' sp. (BRS LI M.1288A)
19 in **E**: left and **F**: dorsal view (right half of specimen lost, so left half is mirrored and
20 faded). '*Aspidorhynchus*' sp. (NHMUK PV P.9844) in **G**: left and **H**: dorsal view.
21
22 Scale bar in all is 10 mm. aa, anterior ampulla; asc, anterior semicircular canal; end,
23 endolymphatic duct; ha, horizontal ampulla; hsc, horizontal semicircular canal; lcc,
24 lateral cranial canal; olf, olfactory tract; optl, optic lobe; psc, posterior semicircular
25 canal; sac, sacculus; utr, utriculus; vag, vagus nerve.
26
27
28
29
30
31
32
33
34
35
36
37
38
39

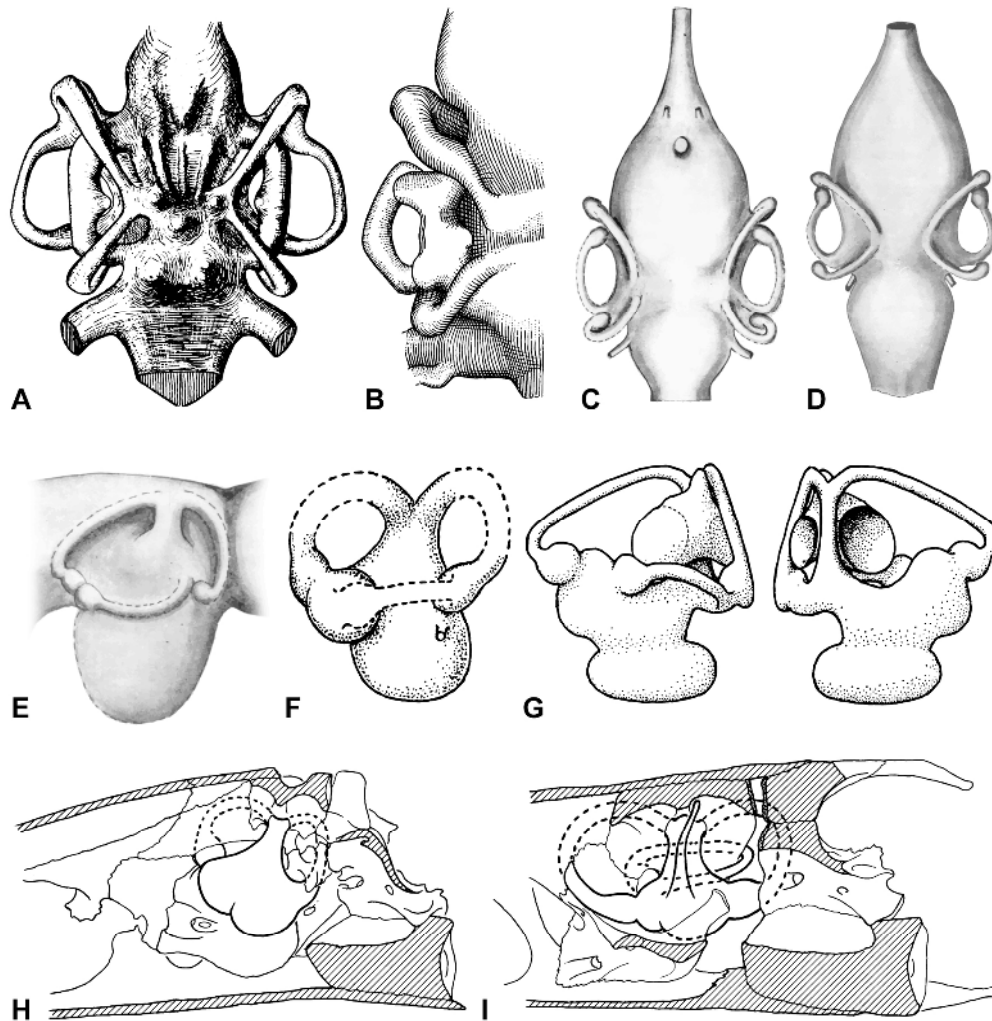
40 **Fig. 4.** Three dimensional renderings of endocast and bony labyrinth structure.
41 *Dapedium* sp. (NHMUK PV P.11177) in **A**: left lateral and **B**: dorsal view.
42
43 *Dorsetichthys bechei* (NHMUK PV P.1052) in **C**: right lateral (image flipped to
44 resemble left lateral) and **D**: dorsal view. '*Pholidophorus*' sp. (NHMUK PV P.32579)
45 in **E**: left and **F**: dorsal view. *Elopoides tomassoni* (MNHN CTE 14 in **G**: left and **H**:
46
47 dorsal view. Scale bar in all is 5 mm.
48
49
50
51
52
53
54
55
56
57
58
59
60

Fig. 5. Interpretive drawings of endocast and bony labyrinth structure. Oblique lines indicate broken surfaces; stippling indicates regions of inner ear uninvested in bone. *Dapedium* sp. (NHMUK PV P.11177) in **A:** left lateral and **B:** dorsal view. *Dorsetichthys bechei* (NHMUK PV P.1052) in **C:** right lateral (image flipped to resemble left lateral) and **D:** dorsal view. '*Pholidophorus*' sp. (NHMUK PV P.32579) in **E:** left and **F:** dorsal view. *Elopoides tomassoni* (MNHN CTE 14 in **G:** left and **H:** dorsal view. Scale bar in all is 5 mm. aa, anterior ampulla; asc, anterior semicircular canal; end, endolymphatic duct; ha, horizontal ampulla; hsc, horizontal semicircular canal; lcc, lateral cranial canal; olf, olfactory tract; optl, optic lobe; psc, posterior semicircular canal; sac, sacculus; trfa, trigeminofacialis chamber; utr, utriculus; vag, vagus nerve.

Fig. 6. Alternative tree topologies amongst early neopterygians. **A:** based on Patterson, 1975, 1977; **B:** based on Olsen, 1984; **C:** based on Wiley 1976; Grade & Bemis, 1998; **D:** based on Gardiner et al., 1996; Hurley et al., 2007; Xu & Wu 2012.

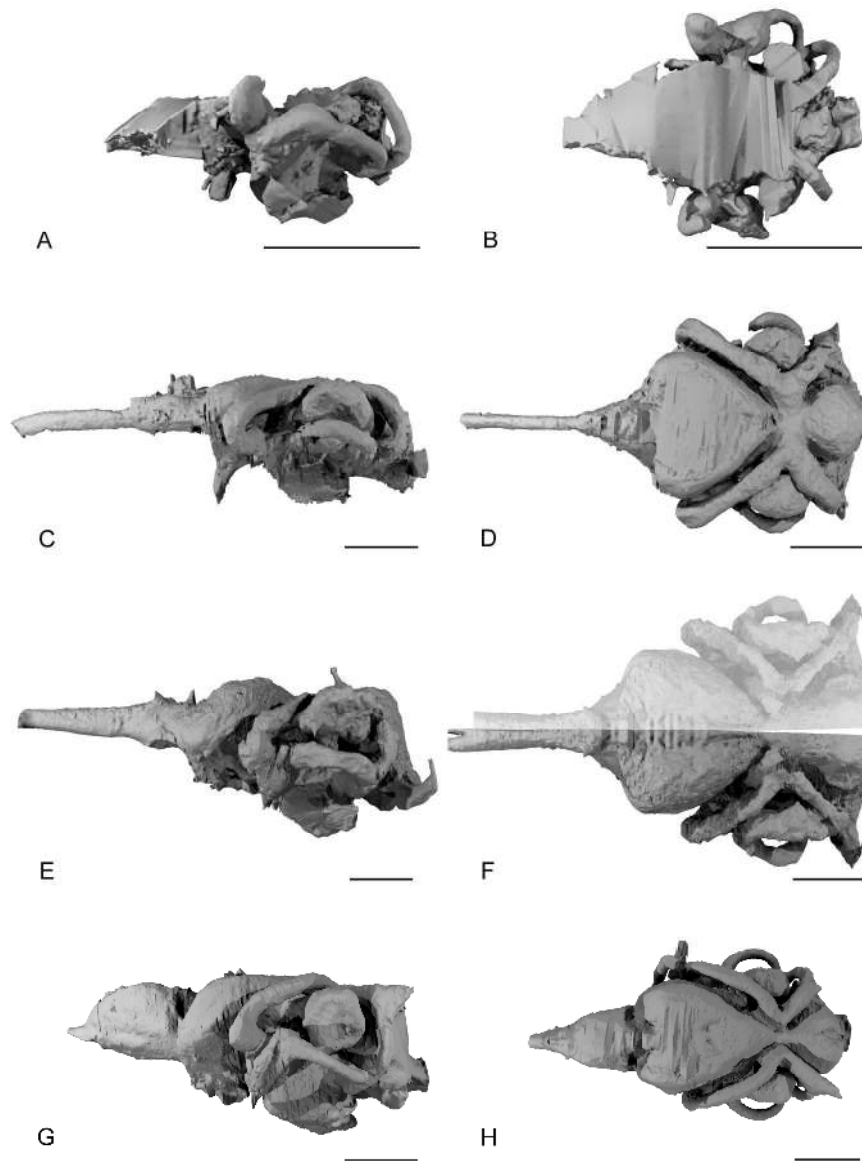
Fig. 7. Character evolution in the bony labyrinth of early neopterygians. Potential synapomorphies are given at successive nodes. **A:** *Dapedium* sp. **B:** *Heterolepidotus* sp. **C:** '*Caturus*' sp. **D:** '*Aspidorhynchus*' sp. **E:** Undetermined parasemionotid. **F:** *Dorsetichthys bechei*. **G:** '*Pholidophorus*' sp. **H:** *Elopoides tomassoni*. 1: semicircular canals fully invested in bone; long axis of anterior ampulla oriented vertically; posterior portion of horizontal canal distinct within posterior ampulla; lateral cranial canal has anterior and posterior connection to cranial cavity; root of vagus (CN X) nerve rounded. 2: wide separation between lateral cranial canal and cranial cavity; utriculus deep; root

1
2
3
4 of vagus (CN X) nerve large and anteroposteriorly long. 3: long axis of anterior ampulla
5
6 oriented horizontally. 4: posterior portion of horizontal canal completely engulfed by
7
8 posterior ampulla; narrow separation between lateral cranial canal and cranial cavity;
9
10 sacculus has posterior notch. 5: posterior portion of horizontal canal completely
11
12 engulfed by posterior ampulla; lateral cranial canal and cranial cavity separated by only
13
14 a thin sheet of bone. 6: anterior canals partially uninvested in bone; horizontal canal
15
16 curved isoclinally.
17
18
19
20
21
22
23
24
25
26
27
28
29
30
31
32
33
34
35
36
37
38
39
40
41
42
43
44
45
46
47
48
49
50
51
52
53
54
55
56
57
58
59
60

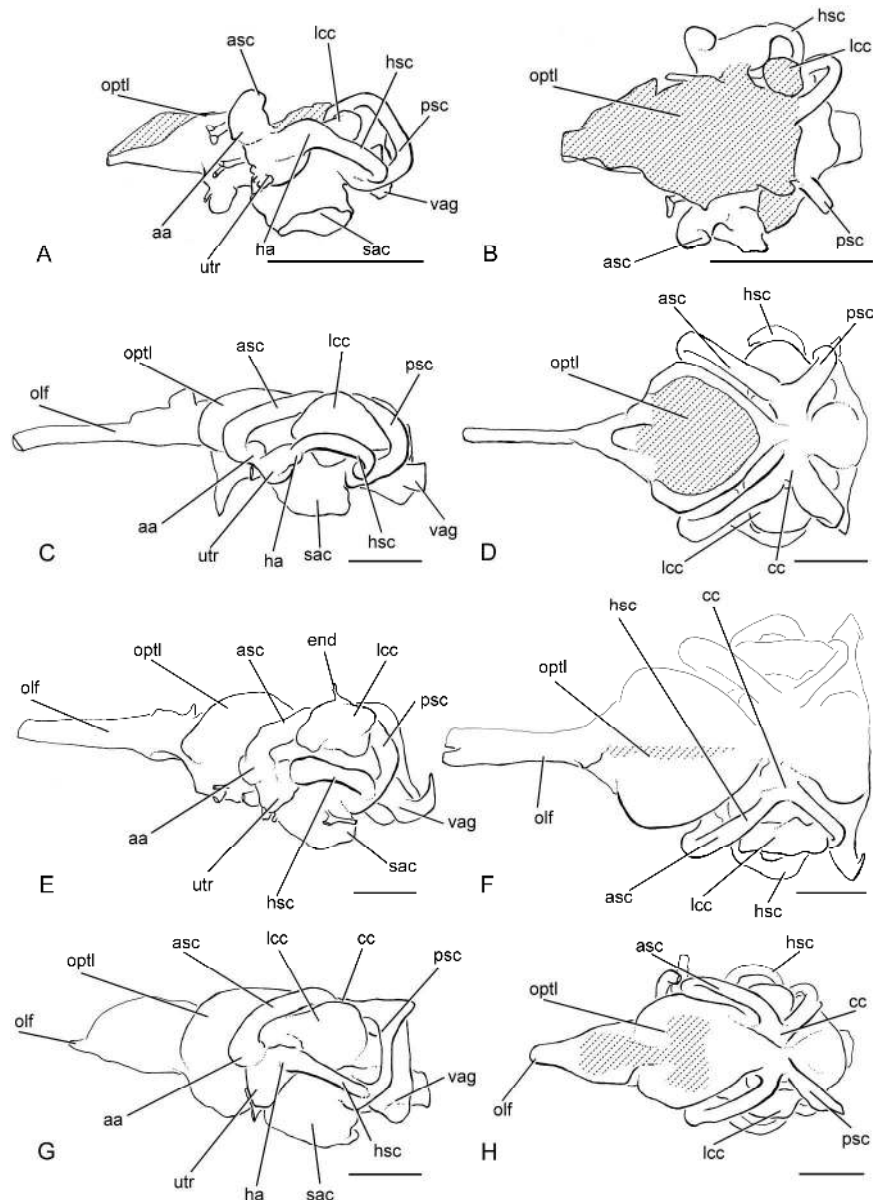


Pre-existing accounts of neopterygian and inner ear structure. A: *Caturus groenlandicus* in dorsal view (modified from Aldinger, 1937). B: '*Caturus*' sp. in dorsal view (modified from Rayner, 1948). C: *Watsonulus* sp. (modified from Beltan, 1968). D: *Devillersia madagascariensis* in dorsal view (modified from Beltan, 1968). E: *Devillersia madagascariensis* in lateral view (modified from Beltan, 1968). F: *Ospia* sp. in lateral view (modified from Stensiö, 1932). G: *Dorsetichthys bechei* in lateral and medial view (modified from Patterson, 1975). H: *Calamopleurus cylindricus* in sagittal view (modified from Maisey, 1999). I: *Ionoscopus cyprinoides* in sagittal view (modified from Maisey, 1999).

155x160mm (300 x 300 DPI)

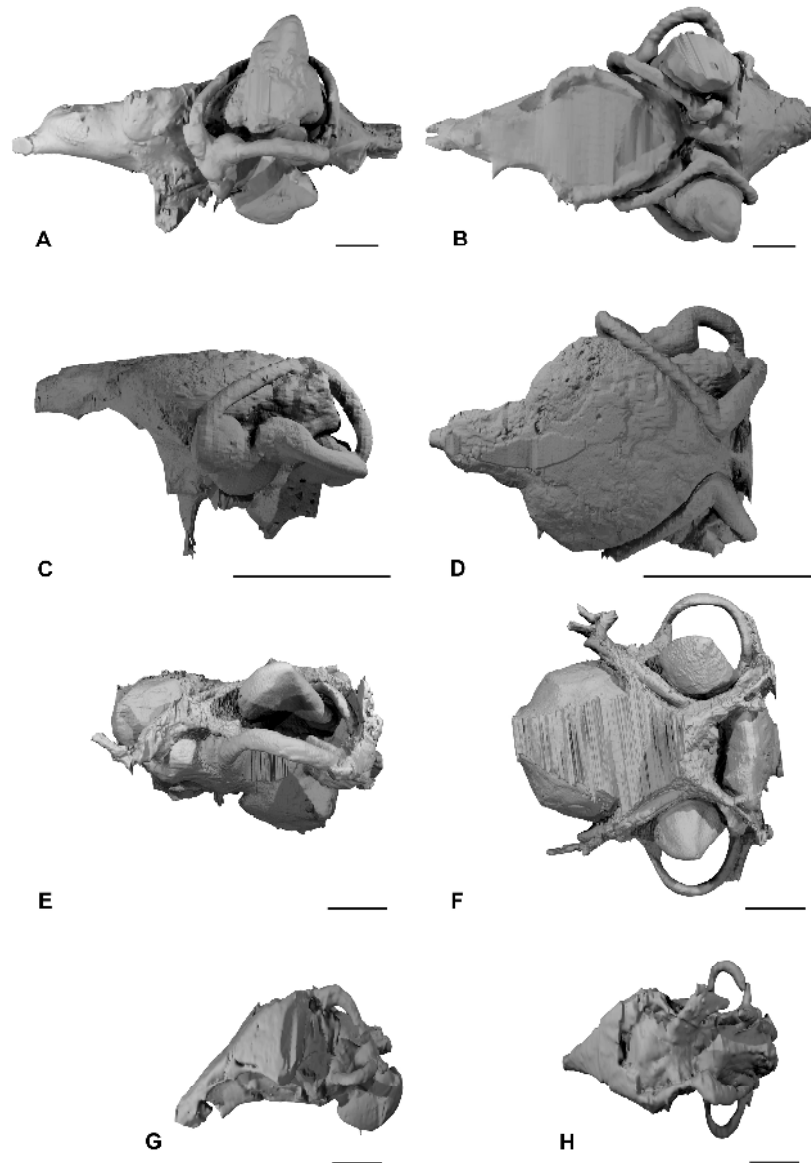


Three dimensional renderings of endocast and inner ear structure. Undertermined parasemionotid (MGUH 492) in A: right lateral (image flipped to resemble left lateral) and B: dorsal view. *Heterolepidotus* sp. (NHMUK PV P.13260) in C: left and D: dorsal view. '*Caturus*' sp. (BRSLI M.1288A) in E: left and F: dorsal view (right half of specimen lost, so left half is mirrored and faded). '*Aspidorhynchus*' (NHMUK PV P.9844) in G: left and H: dorsal view. Scale bar in all is 10 mm.
214x296mm (300 x 300 DPI)

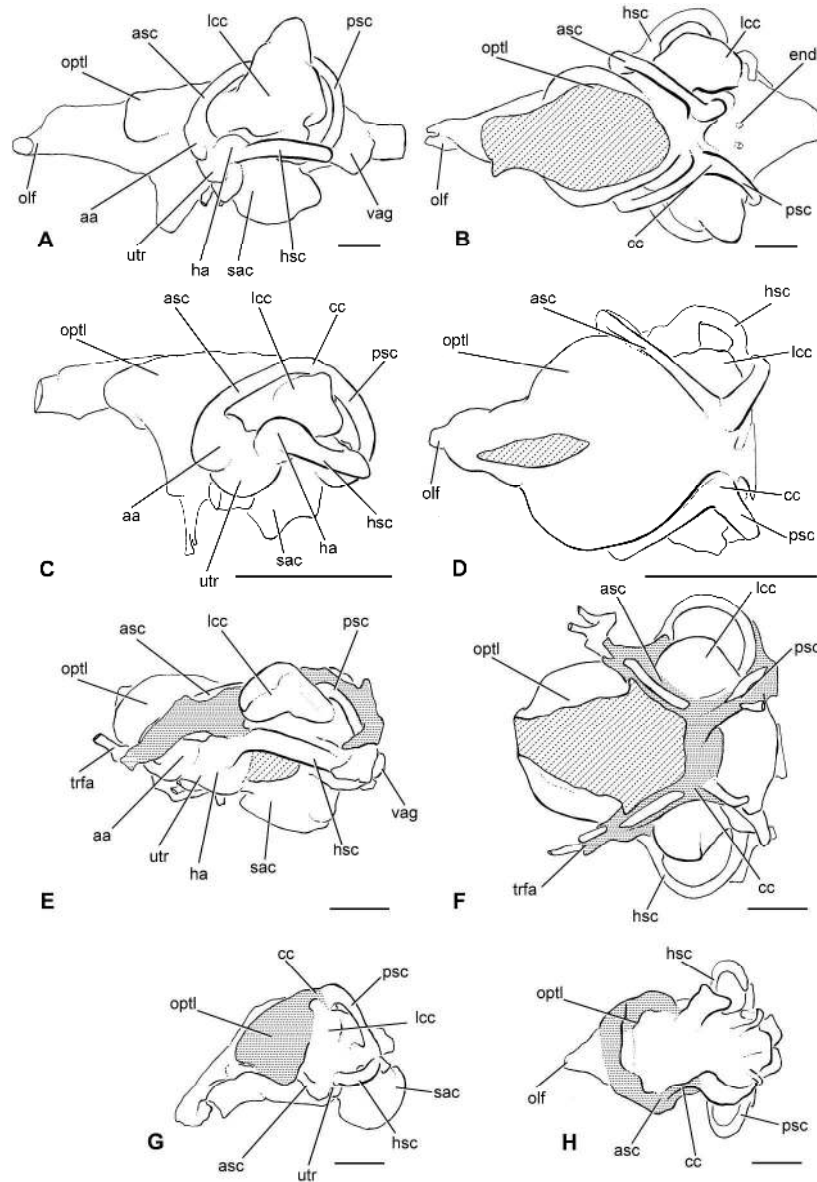


Interpretive drawings of endocast and inner ear structure. Oblique lines indicate broken surfaces. Undertermined parasemionotid (MGUH 492) in A: right lateral (image flipped to resemble left lateral) and B: dorsal view. Heterolepidotus sp. (NHMUK PV P.13260) in C: left and D: dorsal view. 'Caturus' sp. (BRSLI M.1288A) in E: left and F: dorsal view (right half of specimen lost, so left half is mirrored and faded). 'Aspidorhynchus' sp. (NHMUK PV P.9844) in G: left and H: dorsal view. Scale bar in all is 10 mm. aa, anterior ampulla; asc, anterior semicircular canal; end, endolymphatic duct; ha, horizontal ampulla; hsc, horizontal semicircular canal; lcc, lateral cranial canal; olf, olfactory tract; optl, optic lobe; psc, posterior semicircular canal; sac, sacculus; utr, utricle; vag, vagus nerve.

214x296mm (300 x 300 DPI)



Three dimensional renderings of endocast and inner ear structure. *Dapedium* sp. (NHMUK PV P.11177) in A: left lateral and B: dorsal view. *Dorsetichthys bechei* (NHMUK PV P.1052) in C: right lateral (image flipped to resemble left lateral) and D: dorsal view. '*Pholidophorus*' sp. (NHMUK PV P.32579) in E: left and F: dorsal view. *Elopoides tomassoni* (MNHN CTE 14 in G: left and H: dorsal view. Scale bar in all is 5 mm. 230x341mm (300 x 300 DPI)



Interpretive drawings of endocast and inner ear structure. Oblique lines indicate broken surfaces; stippling indicates regions of inner ear uninvested in bone. *Dapedium* sp. (NHMUK PV P.11177) in A: left lateral and B: dorsal view. *Dorsetichthys bechei* (NHMUK PV P.1052) in C: right lateral (image flipped to resemble left lateral) and D: dorsal view. '*Pholidophorus*' sp. (NHMUK PV P.32579) in E: left and F: dorsal view. *Elopoides tomassoni* (MNHN CTE 14 in G: left and H: dorsal view. Scale bar in all is 5 mm. aa, anterior ampulla; asc, anterior semicircular canal; end, endolymphatic duct; ha, horizontal ampulla; hsc, horizontal semicircular canal; lcc, lateral cranial canal; oif, olfactory tract; optl, optic lobe; psc, posterior semicircular canal; sac, sacculus; trfa, trigeminofacialis chamber; utr, utricle; vag, vagus nerve.

230x340mm (300 x 300 DPI)

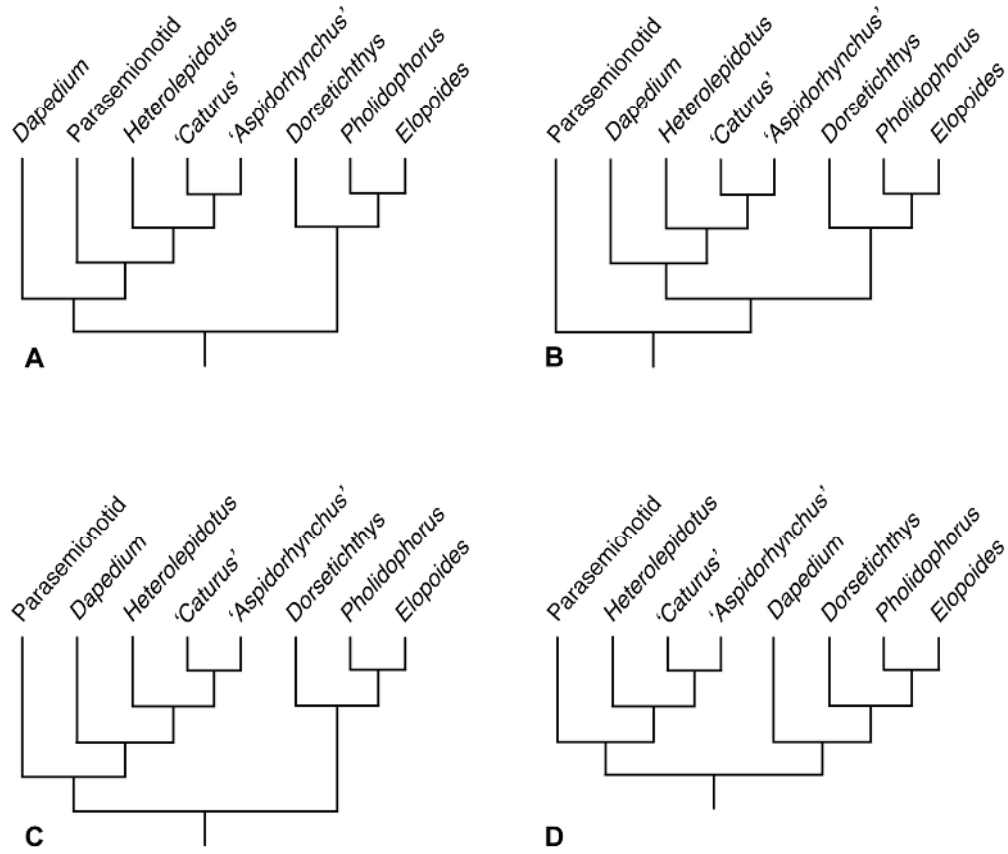
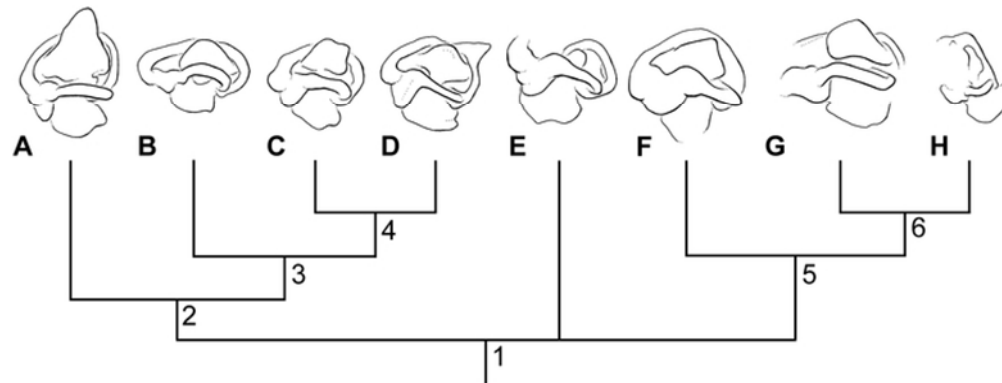


Fig. 6. Alternative tree topologies amongst early neopterygians. A: based on Patterson, 1975, 1977; B: based on Olsen, 1984; C: based on Wiley 1976; Grade & Bemis, 1998; D: based on Gardiner et al., 1996; Hurley et al., 2007; Xu & Wu 2012.
132x113mm (300 x 300 DPI)



Character evolution in the bony labyrinth of early neopterygians. Potential synapomorphies are given at successive nodes. A: *Dapedium* sp. B: *Heterolepidotus* sp. C: '*Caturus*' sp. D: '*Aspidorhynchus*' sp. E: Undetermined parasemionotid. F: *Dorsetichthys bechei*. G: '*Pholidophorus*' sp. H: *Elopoides tomassoni*. 1: semicircular canals fully invested in bone; long axis of anterior ampulla oriented vertically; posterior portion of horizontal canal distinct within posterior ampulla; lateral cranial canal has anterior and posterior connection to cranial cavity; root of vagus (CN X) nerve rounded. 2: wide separation between lateral cranial canal and cranial cavity; utricle deep; root of vagus (CN X) nerve large and anteroposteriorly long. 3: long axis of anterior ampulla oriented horizontally. 4: posterior portion of horizontal canal completely engulfed by posterior ampulla; narrow separation between lateral cranial canal and cranial cavity; sacculus has posterior notch. 5: posterior portion of horizontal canal completely engulfed by posterior ampulla; lateral cranial canal and cranial cavity separated by only a thin sheet of bone. 6: anterior canals partially uninvested in bone; horizontal canal curved isoclinally.

61x24mm (300 x 300 DPI)