

Bouncing or sticky droplets: Impalement transitions on superhydrophobic micropatterned surfaces

D. BARTOLO¹(*), F. BOUAMRIRENE¹, É. VERNEUIL², A. BUGUIN²,
P. SILBERZAN² and S. MOULINET¹(**)

¹ *Laboratoire de Physique Statistique de l'ENS, CNRS, UMR 8550 associée aux Universités Paris 6 et Paris 7 - 24 rue Lhomond, 75231 Paris Cédex 05, France*

² *Laboratoire de Physico-Chimie Curie, Institut Curie, CNRS, UMR 168 26 rue d'Ulm, 75248 Paris Cédex, France*

received 18 November 2005; accepted in final form 14 February 2006

published online 15 March 2006

PACS. 68.08.Bc – Wetting.

PACS. 68.03.Cd – Surface tension and related phenomena.

PACS. 47.55.D- – Drops and bubbles.

Abstract. – When a liquid drop impinges a hydrophobic rough surface it can either bounce off the surface (fakir droplets) or be impaled and strongly stuck on it (Wenzel droplets). The analysis of drop impact and quasi-static “loading” experiments on model microfabricated surfaces allows to clearly identify the forces hindering the impalement transitions. A simple semi-quantitative model is proposed to account for the observed relation between the surface topography and the robustness of fakir non-wetting states. Motivated by potential applications in microfluidics and in the fabrication of self-cleaning surfaces, we finally propose some guidelines to design robust superhydrophobic surfaces.

Some plants leaves and insects shells exhibit extreme hydrophobicity, making the deposition of water drops on their surface almost impossible [1]. All these superhydrophobic biosurfaces share two common features: they are made of (or covered by) hydrophobic materials, and are structured at the micron and sub-micron scales.

During the last decade much effort has been devoted to design artificial solid surfaces with comparable water-repellent properties. Their potential applications range from lab on a chip devices to self-cleaning coating for clothes, glasses, The actual strategy consists in mimicking superhydrophobic biosurfaces by designing rough substrates out of hydrophobic materials. To achieve this goal, both top-down and bottom-up approaches have been successfully developed: chemical synthesis of fractal surfaces [2], growth of carbon nanotube forests [3], deep silicon dry etching [4]; see also [5] and references therein. We briefly recall the paradigm to account for superhydrophobicity. Two different wetting states can be observed on microstructured hydrophobic surfaces: i) Wenzel state: the liquid follows the topography of the solid surface. Defining the surface roughness ζ as the ratio between the total surface area over the apparent surface area, the equilibrium contact angle of a liquid drop is given by $\cos(\theta) = \zeta \cos(\theta_{\text{flat}})$, where θ_{flat} is the Young contact angle on the flat surface [6]. ii) Fakir state: The liquid only contacts the highest parts of the rough solid, air pockets remain trapped

(*) E-mail: denis.bartolo@espci.fr (corresponding author)

(**) E-mail: sebastien.moulinet@lps.ens.fr

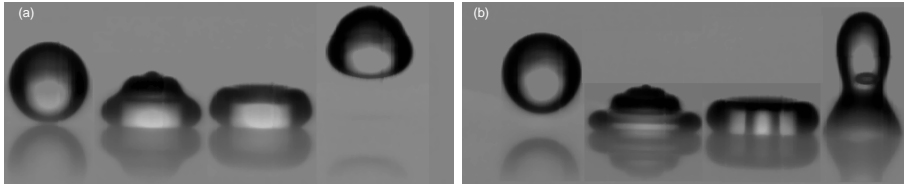


Fig. 1 – Rapid camera snapshots. (a) Impact of a water droplet on a micropatterned surface: pattern geometry S_1 ($h = 8 \mu\text{m}$), impact speed $V_I = 0.27 \text{ m s}^{-1}$, droplet radius 1 mm. The droplet bounces off the surface. (b) Impact on the same substrate for $V_I = 0.6 \text{ m s}^{-1}$, droplet radius 1 mm. The water droplet remains stuck on the surface. Time intervals $\approx 15 \text{ ms}$ for the two sequences.

between the solid and the liquid surface. Only a fraction ϕ of the solid surface, corresponding to the extremities of the protrusions, is wetted by the liquid. As proposed by Cassie, a water drop adopts a contact angle given by the weighted sum $\cos \theta_{\text{fakir}} = \phi \cos \theta_{\text{flat}} - (1 - \phi)$ (Cassie-Baxter relation) [7]. More precisely, it has been shown that the surface energy is minimal in the fakir (respectively Wenzel) regime if ζ is larger (respectively smaller) than $\cos \theta_{\text{fakir}} / \cos \theta_{\text{flat}}$. In other words, the rougher the substrate, the more the fakir state is energetically favored.

The characterization of superhydrophobic surfaces is usually restricted to equilibrium contact angle measurements. However, it has been recently reported that: i) the value of the measured contact angle strongly depends on the way the droplet is deposited on the surface [8, 9] and ii) droplets squeezed between two moderately rough surfaces can undergo a sharp and irreversible transition from a fakir to a lower contact angle Wenzel [8]. Moreover, the drops do not only reduce their contact angle, but also increase their contact angle hysteresis, the contact line appears to be strongly pinned on the substrate, any self-cleaning properties are thus definitely lost. Today, a clear picture allowing to identify the mechanisms responsible for the impalement transition from a fakir to a Wenzel wetting state is missing. Only a few theoretical explanations have been attempted [11–13], see also [14] in a different context. Beyond the usual thermodynamic approach, it appears crucial to extend the understanding of such impalement transition to drop impact dynamics. Indeed almost all practical applications of superhydrophobic surfaces rely ultimately on their ability to repel impinging drops (rain drops, sprays, ...).

In this letter, we present the characterization of the drop impalement transition on microfabricated surfaces under quasi-static and impact dynamics as well. The dual analysis of the two series of experiments is completed by a simple model that allows to unambiguously identify the forces hindering drop impalement and to propose a unified criterion for the robustness of fakir non-wetting states.

All the presented experiments have been performed on PDMS silicon elastomer (polydimethylsiloxane, Sylgard 184 Dow-Corning) surfaces, micropatterned using classical soft-lithography molding methods [10]. The microfabricated surfaces are triangular arrays (pitch p) of cylindrical pillars (radius r). Varying the thickness of the primary mold made of photoresist resin (SU08, Microchem), we have varied the pillar height from $2.7 \mu\text{m}$ up to $75 \mu\text{m}$. Two different patterns have been used: S_1 ($r = 11 \mu\text{m}$, $p = 50 \mu\text{m}$) and S_2 ($r = 9 \mu\text{m}$, $p = 42 \mu\text{m}$). Both patterns have the same pillars density: $\phi \sim 0.15$. Water drops lying on flat PDMS surfaces have an advancing (respectively receding) contact angle $\theta_a = 110^\circ$ (respectively $\theta_r = 80^\circ$). All contact angle measurements are performed with an accuracy of $\pm 2^\circ$. When gently deposited on the patterned surfaces, the measured contact angles of the water drops (advancing angle $\theta_a \sim 155^\circ$) agrees with the value expected from Cassie-Baxter relation (154°). Fakir states are hence observed despite their surface energy would be minimized in the impregnated Wenzel state (except for $h = 75 \mu\text{m}$ pillars that should ensure equilibrium in the fakir state).

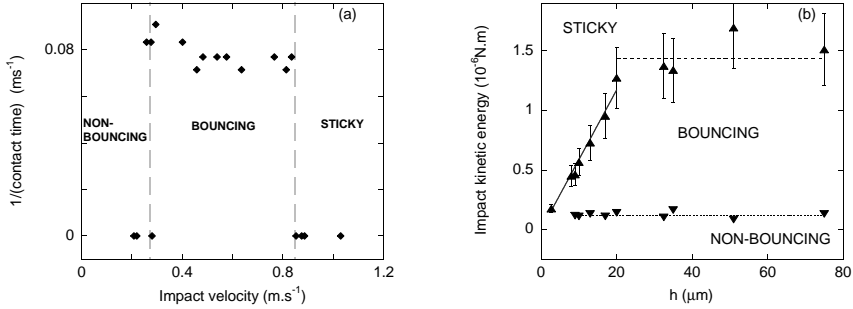


Fig. 2 – (a) Inverse of the impact contact time plotted *vs.* the impact velocity, V_I . Surface geometry: pattern S_1 , pillars height, $h = 9 \mu\text{m}$. (b) Critical impalement kinetic energy plotted *vs.* pillars height, for S_1 pattern geometry. \blacktriangle Critical energies delimiting the Bouncing-Sticky transition. Solid line: linear best fit of the data ($0 < h < 20 \mu\text{m}$). Dashed line: best constant fit ($h > 20 \mu\text{m}$). \blacktriangledown Critical energies delimiting the bouncing–non-bouncing transition. Dotted line: best constant fit.

A first experiment consists in studying the impact of water droplets (radius 1 mm) delivered by a precision needle on the micropatterned PDMS substrates. Increasing the fall height increases the impact velocity V_I . The impact events have been observed using a high-speed video system (frame rate: 1000 fps).

The impinging drops first expand rapidly. Subsequently, due to the hydrophobicity of the surface, the drops retract and sometimes bounce off the surface as illustrated in fig. 1. In fig. 2a, the inverse of the contact time is plotted *vs.* the impact speed. We observe that bouncing occurs only in a range of impact velocities ($V_{\text{NB}} < V_I < V_{\text{BS}}$). As previously discussed by Richard *et al.* in [15], the contact time does not depend on V_I . Looking more carefully at the retraction dynamics, three distinct regime can be identified.

- $V_I > V_{\text{BS}}$: sticky droplets. In this regime, the contact line hardly retracts and the instantaneous contact angle reaches values as small as 40° , see fig. 1b. This strong pinning is a clear evidence that the microstructure has impaled the liquid surface. Observations with a microscope have systematically confirmed that the pillars are impregnated.

- $V_{\text{NBB}} < V_I < V_{\text{BS}}$: bouncing droplets. At intermediate velocities, the drop bounces on the surface (this behavior is never observed on flat PDMS), several bouncing events can be observed. Finally, the drop remains on the surface adopting a large contact angle consistent with the Cassie-Baxter prediction. The initial kinetic energy of the drop is not sufficient to overcome the energy barrier hindering the impalement transition.

- $V_I < V_{\text{NBB}}$: non-bouncing droplets. As previously reported in [16], we observe a low-speed threshold below which droplets do not bounce anymore. In this regime, the drop weakly expands after impact. Then, the drop undergoes damped oscillations to reach a quasi-spherical shape, corresponding again to a fakir non-wetting state. Though bouncing is not observed, water does not fill the microstructure.

Varying the height of the pillars we construct the phase diagram plotted in fig. 2b. The kinetic energy thresholds delimiting the three regimes are plotted *vs.* h .

The non-bouncing to bouncing transition can be easily understood. During the drop retraction stage, we assume that the pinning of the contact line is the main source of kinetic energy dissipation. Denoting γ the liquid-air surface tension and $\Delta \cos \theta$ the contact angle hysteresis of the fakir drop (independent of h), we can assess the pinning force per unit length: $\gamma \Delta \cos \theta$. The energy dissipated during the retraction stages scales as $\gamma R^2 \Delta \cos \theta$. To achieve bouncing, the kinetic energy must overcome this threshold. Its order of magnitude is $\sim 5 \cdot 10^{-7} \text{N m}$, in good agreement with what is experimentally observed.

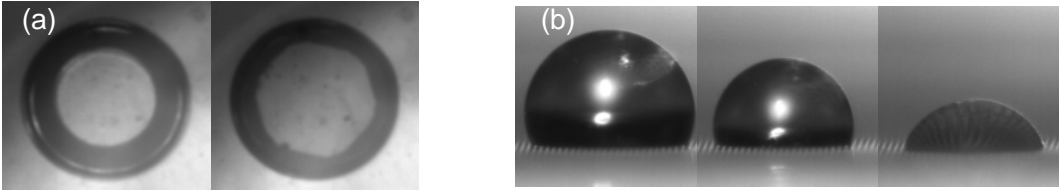


Fig. 3 – (a) Two consecutive pictures of a compressed droplet viewed from above. The light part inside the droplet is in contact with the microstructured substrate. Between the two snapshots the droplet has transitioned from a fakir to a Wenzel state. Note that the contact line on the S_1 surface adopts the hexagonal symmetry of the pattern. External drop radius ~ 2.9 mm. (b) Three consecutive pictures of an evaporating droplet gently deposited on a substrate S_1 , $h = 20 \mu\text{m}$ (time interval between each frame 30 s). Between the two last snapshots the droplet has transitioned from a fakir to a Wenzel state. Contact radius of the drop on the last picture: $450 \mu\text{m}$.

The critical impalement threshold delimiting the bouncing and the sticky regimes exhibits nontrivial variations with h , see fig. 2b. For short pillars, the critical kinetic energy increases linearly with h . Above $h = 20 \mu\text{m}$, it becomes independent of the texture roughness. We insist on the irreversible nature of the impalement transition whatever the equilibrium wetting states. This result is one of our most important findings. We now have to identify the physical mechanism hindering the liquid impalement upon impact of a droplet. *A priori*, both capillary and hydrodynamic forces, act on the liquid surface to impede the impalement process. We disentangle the two effects by performing two sets of systematic quasistatic experiments. This allows the role of the sole capillary forces to be assessed.

– Squeezing [17]: A droplet is squeezed between a microstructured substrate and a fluorinated glass slide (advancing contact angle with water 120°). The drop is observed through the glass plate (see fig. 3a). The gap between the substrate and the glass plate is slowly decreased until we observe a rapid jump forward of the contact line on the PDMS substrate. This jump is the signature of the liquid impalement. The increase of the drop Laplace pressure is the motor behind the liquid impalement. Fitting the droplet shape just before the transition by a surface with a constant mean curvature (\mathcal{C}), we infer a critical impalement Laplace pressure $P_{\text{imp}} = \gamma\mathcal{C}$, fig. 4. For the microstructures made of long pillars, our experimental setup did not allow to reduce the gap between the two solid surfaces sufficiently to observe the impalement transition. To circumvent this technical obstacle, we used an alternative method to increase the Laplace pressure in the drop.

– Evaporation: A millimetric water droplet is gently deposited on the microstructured substrates. Since the drop evaporates, its radius slowly decreases with time, hence its curvature and the Laplace pressure pushing the liquid surface on the micropillars rise continuously. Similar experiments are reported in [18]. After few minutes, the drop adopts its receding contact angle ($\approx 120^\circ$) and the contact line retracts. Again, above a critical pressure P_{imp} , one can observe a sudden variation of the contact angle and a strong pinning of the contact line that stops its retraction until complete evaporation, see fig. 3b. These two observations witness the drop impalement transition. Once a drop has reached a Wenzel state, it never relaxes toward a fakir conformation. We emphasize that arbitrarily small drops cannot be maintained in a fakir state. This result seems to be at odds with the criterion: $\zeta > \cos\theta_{\text{fakir}}/\cos\theta_{\text{flat}}$ which is independent of the drop size. We point out that this criterion has been established ignoring any pressure difference across the liquid interface, *i.e.* for infinitely large drops.

To quantitatively compare the outcome of our quasistatic and impact experiments, we assess the pressure pushing the liquid interface when a water drop hits the micropillars.

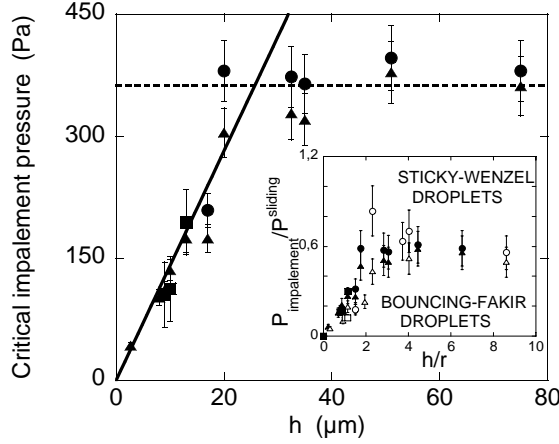


Fig. 4 – Impalement pressure P_{imp} plotted *vs.* the pillars’ height h . Circles: evaporation experiments, squares: compression experiments, triangles: drop impact experiments. Pattern geometry: S_1 . Plain line: best linear fit ($h < 20 \mu\text{m}$). Dashed line: best constant fit ($h > 20 \mu\text{m}$). Inset: impalement pressure normalized by $P_{\text{crit}}^{\text{sliding}}$, see eq. (3), plotted *vs.* the pillars’ aspect ratio h/r . Filled (respectively open) symbols correspond to surface S_1 (respectively S_2).

Neglecting any viscous effect, the dynamic pressure acting on the liquid interface scales as $P \sim \frac{1}{2}\rho V_I^2$, with ρ the liquid density. Figure 4 gathers static and impact experimental data. The collapse of our data on a single master curve is a strong evidence that hydrodynamic forces do not play any significant role in the impalement transition on our surfaces rough at the 10 microns scale. The wetting of the microstructure is mainly hindered by capillary forces. This constitutes our second main result.

We have unambiguously identified the forces impeding the fakir to Wenzel transition, we can now propose a simple semi-quantitative model to account for the relation between the pattern geometry and the critical impalement pressure. Whatever its precise origin (curvature, liquid flow, ...), the internal drop pressure pushes the liquid interface downward. A force $F_P = P[A(1 - \phi)]$ is experienced by the liquid free surface enclosed by an elementary cell of the lattice, where we have denoted A the projected area of one cell. At mechanical equilibrium, this force is balanced by the capillary force, $F_C = N_p[2\pi\gamma r \cos(\theta)]$ applied at the top of $N_p = \phi A/\pi r^2$ pillars, see fig. 5. Here θ is the “average” contact angle defined on the pillars sides. Writing explicitly the equilibrium condition $F_P + F_C = 0$, we obtain

$$P = \frac{2\phi}{1 - \phi} |\cos(\theta)| \frac{\gamma}{r}. \tag{1}$$

Note that in the above equation the precise shape adopted by the liquid interface is encoded solely in the $\cos(\theta)$ prefactor.

We now propose two impalement scenarios characterized by two critical values of the contact angle on the pillars.

– “Touch down” scenario: increasing the drop pressure, the curvature of the interface increases. This implies that the minimal height separating the liquid interface and the basal surface of the substrate diminishes. Fakir states cannot be stabilized if this minimal height goes to zero, see fig. 5a. This contact condition can be expressed in terms of a critical angle value $\theta(h)$. An exact computation of this critical angle would require the full determination of

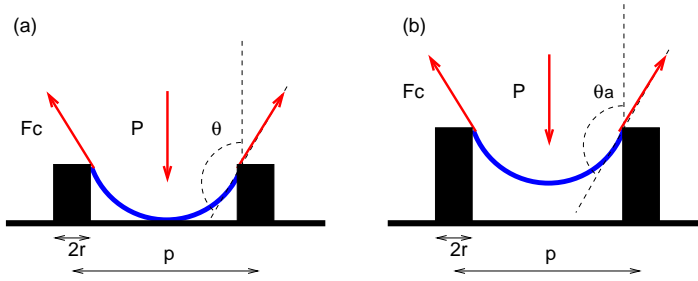


Fig. 5 – (a) Sketch of the “touch down” scenario for the fakir-sticky droplet transition. (b) Sketch of the “sliding” scenario for the fakir-sticky droplet transition.

the drop shape. To bypass this difficulty, we can estimate this critical angle in a much simpler manner. Using a the small deformation approximation it is straightforward to compute the profile of a fluid interface lying on top of two concentric cylinders (radius r and p). For this simplified geometry, one can easily show that $\cos[\theta(h)] \sim h/r$, for $r/p \ll 1$ and omitting logarithmic corrections. It then follows that the critical “touch down” impalement pressure scales at first order with respect to the solid fraction ϕ [19]:

$$P_{\text{imp}}^{\text{T}} \sim \frac{\gamma h}{p^2}, \quad (2)$$

where we have used $\phi = (2\pi/\sqrt{3})(r/p)^2$ for a triangular lattice. Note that for denser patterns, *i.e.* for $2r \simeq p$, $\cos[\theta(h)]$ would scale as $\sim h/p$. The above equation would then be modified and $P_{\text{imp}}^{\text{contact}} \sim \gamma hr/p^3$. For weakly rough substrates, eq. (2) correctly predicts the linear scaling of the impalement pressure with respect to the pillars height reported in fig. 2 and fig. 4. Though several simplifications were made, one can compare the estimate of the numerical prefactor to its experimental value. For the S_1 surface, eq. (2) predicts a slope $P^{\text{contact}}/h \simeq 30 \text{ Pa } \mu\text{m}^{-1}$, the slope extracted from Fig. 4 is 2 times smaller. We do not think that this slight difference arises solely from the approximations used to estimate $\theta(h)$: a precise numerical description of the free surface, that takes into account the details of the substrate geometry, actually increases this discrepancy. We will show elsewhere that localized heterogeneities are good candidates to account for the overestimate of the P^{contact}/h value [20]. Indeed, the effect of chemical or geometrical heterogeneities cannot be captured by our simple “mean field” model.

– “sliding” scenario: For higher pillars a transition to a critical impalement pressure independent of the aspect ratio h/r can be understood as follows. The contact angle θ has another upper limit, namely the local advancing contact angle value θ_a . If θ exceeds θ_a , the contact line will spontaneously slide downward along the pillars to reach the floor of the microstructure. Therefore, this critical “sliding” impalement pressure is obtained taking $\theta = \theta_a$ in eq. (1):

$$P_{\text{imp}}^{\text{S}} = \frac{2\phi}{1-\phi} |\cos(\theta_a)| \frac{\gamma}{r}. \quad (3)$$

Beyond the correct scaling prediction eq. (3) provides a rather good estimate of the experimental prefactor value for the two tested patterns, see inset in fig. 4. A factor of 2 is as good as we could have expected given the simplicity of our model and the precision of the microfabrication process.

This simplified model conveys a clear picture to account for the relation between the micropattern geometry and the robustness against liquid impalement. The drop will undergo an

impalement transition if the pressure in the drop exceeds $\min(P_{\text{imp}}^{\text{T}}, P_{\text{imp}}^{\text{S}})$, the crossover between the two impalement scenarios corresponds to an aspect ratio $h/r \sim 1$ for low- ϕ patterns.

We eventually emphasize that the above description may be a useful guide for the design of superhydrophobic surfaces. Efficient water-repellent surfaces must obviously exhibit a high Young contact angle, a small contact angle hysteresis and a strong resistance against irreversible impalement. The two first requirements can be achieved reducing the solid fraction ϕ . The sole comparison of the surface energies associated with fakir and Wenzel states would lead to the fabrication of substrates as rough as possible. We have shown that, for a given solid fraction and above a roughness threshold the value of the energy barrier stabilizing the fakir states remains constant. Thus, putting efforts to design an ultra rough surface seems ineffective. Conversely, reducing the size of the elementary pattern of the surface would arbitrarily increase the resistance against impalement, in agreement with [21]. We precise that this conclusion relies on the quantitative agreement between our impact and quasistatic experiments. However, for impacts on substrates patterned at ultra-small scales, the confinement of the fluid flows would enhance the magnitude of the hydrodynamic forces hindering impalement. The identification of this characteristic scale at which they would overcome capillary effects remains an open question.

* * *

M. CALLIES and D. QUÉRÉ are gratefully thanked for insightful discussions and stimulating interactions. We thank A. AJDARI, D. BONN and J. MEUNIER for useful comments and suggestions.

REFERENCES

- [1] NEINHUIS C. and BARTHLOTT W., *Ann. Botany*, **79** (1997) 668.
- [2] SHIBUICHI S. *et al.*, *J. Phys. Chem.*, **100** (1996) 19512.
- [3] LAU K. K. S. *et al.*, *Nano Lett.*, **3** (2003) 1701.
- [4] KRUPENKIN T. *et al.*, *Langmuir*, **20** (2004) 3824.
- [5] BLOSSEY R., *Nature Mater.*, **2** (2003) 301.
- [6] WENZEL R. N., *Ind. Eng. Chem.*, **28** (1936) 988.
- [7] CASSIE A. B. D. and BAXTER S., *Trans. Faraday Soc.*, **40** (1944) 546.
- [8] LAFUMA A. and QUÉRÉ D., *Nature Mater.*, **2** (2003) 457.
- [9] HE B., PATANKAR N. A. and LEE J., *Langmuir*, **19** (2003) 4999.
- [10] XIA Y. and WHITESIDES G., *Angew. Chem. Int. Ed.*, **37** (1998) 550.
- [11] PATANKAR N. A., *Langmuir*, **20** (2004) 7097.
- [12] CARBONE G. and MANGIALARDI L., *Eur. Phys. J. E*, **16** (2005) 67.
- [13] ISHINO C., OKUMURA K. and QUÉRÉ D., *Europhys. Lett.*, **68** (2004) 419.
- [14] COTTIN-BIZONNE C. *et al.*, *Eur. Phys. J. E*, **15** (2004) 438.
- [15] RICHARD D., CLANET C. and QUÉRÉ D., *Nature*, **417** (2002) 811.
- [16] RICHARD D. and QUÉRÉ D., *Europhys. Lett.*, **50** (2000) 769.
- [17] JOURNET C. *et al.*, *Europhys. Lett.*, **71** (2005) 104.
- [18] MCHALE G. *et al.*, *Langmuir*, **21** (2005) 11053.
- [19] A similar criterion obtained using a different approach has been proposed in BICO J., PhD Thesis, Université Paris 6 (2000).
- [20] MOULINET S. and BARTOLO D., in preparation.
- [21] REYSSAT M. *et al.*, *Europhys. Lett.*, **74** (2006) 306 (this issue).