

Brain α -synuclein accumulation in multiple system atrophy, Parkinson's disease and progressive supranuclear palsy: a comparative investigation

Junchao Tong,^{1,2} Henry Wong,¹ Mark Guttman,^{2,3} Lee C. Ang,⁴ Lysia S. Forno,⁵ Mitsunobu Shimadzu,⁶ Ali H. Rajput,⁷ Manfred D. Muentert,⁸ Stephen J. Kish,² Oleh Hornykiewicz⁹ and Yoshiaki Furukawa^{1,10,11}

- 1 Movement Disorders Research Laboratory, Centre for Addiction and Mental Health, Toronto, Ontario, Canada
- 2 Human Neurochemical Pathology Laboratory, Centre for Addiction and Mental Health, Toronto, Ontario, Canada
- 3 Centre for Movement Disorders, Markham, Ontario, Canada
- 4 Department of Pathology, University of Western Ontario, London, Ontario, Canada
- 5 Department of Pathology, VA Palo Alto Health Care System, Palo Alto, CA, USA
- 6 Mitsubishi Chemical Medience Corporation, Tokyo, Japan
- 7 Division of Neurology, University of Saskatchewan, Saskatoon, Saskatchewan, Canada
- 8 Department of Neurology, Mayo Clinic Scottsdale, Scottsdale, AZ, USA
- 9 Center for Brain Research, University of Vienna, Vienna, Austria
- 10 Department of Neurology, Juntendo Tokyo Koto Geriatric Medical Center, Tokyo, Japan
- 11 Department of Neurology, Faculty of Medicine, University & Post Graduate University of Juntendo, Tokyo, Japan

Correspondence to: Prof. Yoshiaki Furukawa,
Department of Neurology,
Juntendo Tokyo Koto Geriatric Medical Center,
3-3-20 Shinsuna, Koto,
Tokyo 136-0075,
Japan
E-mail: furukawa@juntendo.gmc.ac.jp

α -Synuclein is a major component of Lewy bodies and glial cytoplasmic inclusions, pathological hallmarks of idiopathic Parkinson's disease and multiple system atrophy, and it is assumed to be aetiologically involved in these conditions. However, the quantitative status of brain α -synuclein in different Parkinsonian disorders is still unresolved and it is uncertain whether α -synuclein accumulation is restricted to regions of pathology. We compared membrane-associated, sodium dodecyl sulfate-soluble α -synuclein, both the full-length 17 kDa and high molecular weight species, by western blotting in autopsied brain of patients with Parkinson's disease (brainstem-predominant Lewy body disease: $n=9$), multiple system atrophy ($n=11$), progressive supranuclear palsy ($n=16$), and of normal controls ($n=13$). Brain of a patient with familial Parkinsonism-dementia due to α -synuclein locus triplication (as positive control) showed increased membrane-associated, sodium dodecyl sulfate-soluble α -synuclein levels with abundant high molecular weight immunoreactivity. In multiple system atrophy, a massive increase in 17 kDa membrane-associated, sodium dodecyl sulfate-soluble α -synuclein was observed in highly pathologically affected regions, including putamen (+1760%, range +625–2900%), substantia nigra [+1000% (+356–1850%)], and white matter of internal capsule [+2210% (+430–6830%)] together with numerous high molecular weight species. Levels of 17 kDa membrane-associated, sodium dodecyl sulfate-soluble α -synuclein were only modestly increased in less affected areas (cerebellar cortex, +95%; caudate, +30%; with both also showing numerous high molecular weight species) and were generally normal in cerebral cortices. In both Parkinson's disease and progressive supranuclear palsy, membrane-associated, sodium dodecyl sulfate-soluble α -synuclein levels were normal in putamen and frontal cortex whereas a trend was observed for variably

increased 17 kDa membrane-associated, sodium dodecyl sulfate-soluble α -synuclein concentrations [+184% (–60% to +618%)] with additional high molecular weight species in Parkinson's disease substantia nigra. No obvious correlation was observed between nigral membrane-associated, sodium dodecyl sulfate-soluble α -synuclein accumulation and Lewy body density in Parkinson's disease. Two progressive supranuclear palsy cases had membrane-associated, sodium dodecyl sulfate-soluble α -synuclein accumulation in substantia nigra similar to multiple system atrophy. Several Parkinson's disease patients had very modest high molecular weight membrane-associated, sodium dodecyl sulfate-soluble α -synuclein accumulation in putamen. Levels of 17-kDa membrane-associated, sodium dodecyl sulfate-soluble α -synuclein were generally positively correlated with those of high molecular weight membrane-associated, sodium dodecyl sulfate-soluble α -synuclein and there was a trend for a positive correlation between striatal dopamine loss and 17-kDa membrane-associated, sodium dodecyl sulfate-soluble α -synuclein concentrations in multiple system atrophy. Brain membrane-associated, sodium dodecyl sulfate-soluble α -synuclein accumulations in Parkinson's disease and multiple system atrophy are regionally specific, suggesting that these sporadic α -synucleinopathies, unlike familial Parkinsonism-dementia, are not associated with a simple global over-expression of the protein. Despite a similar extent of dopamine depletion, the magnitude of brain membrane-associated, sodium dodecyl sulfate-soluble α -synuclein changes is disease specific, with multiple system atrophy clearly having the most severe accumulation. Literature discrepancies on α -synuclein status in 'Parkinson's disease' might be explained by inclusion of cases not having classic brainstem-predominant Lewy body disease and by variable α -synuclein accumulation within this diagnostic classification.

Keywords: α -synuclein; Parkinson's disease; multiple system atrophy; progressive supranuclear palsy; western blot

Abbreviations: α -Synuclein_M = membrane-associated, sodium dodecyl sulfate-soluble α -synuclein; AU = arbitrary units; GCI = glial cytoplasmic inclusion; HMW = high molecular weight; SDS = sodium dodecyl sulfate; SNAP-25 = synaptosome-associated protein 25; SS = synaptic systems

Introduction

The discoveries of α -synuclein gene mutations (Polymeropoulos *et al.*, 1997; Singleton *et al.*, 2003) in autosomal-dominant hereditary Parkinsonism and α -synuclein protein as the major component of Lewy bodies (Spillantini *et al.*, 1997, 1998b; Wakabayashi *et al.*, 1997) and glial cytoplasmic inclusions (GCIs) (Spillantini *et al.*, 1998a; Wakabayashi *et al.*, 1998), the pathological hallmarks of idiopathic Parkinson's disease (Forno, 1996) and multiple system atrophy (Papp *et al.*, 1989; Papp and Lantos, 1994), respectively, have provided clues to the pathogenesis of Parkinson's disease and associated illnesses. Collectively, these illnesses, including Parkinson's disease, dementia with Lewy bodies, and multiple system atrophy, are now described as ' α -synucleinopathies' (Goedert and Spillantini, 1998).

α -Synuclein is a small (140 amino acids), naturally unfolded, cytosolic protein that associates occasionally with membranes (Maroteaux and Scheller, 1991; Ueda *et al.*, 1993; Jakes *et al.*, 1994; Irizarry *et al.*, 1996; Weinreb *et al.*, 1996); however, under certain pathological conditions, it can aggregate and become insoluble, accumulating in various neuronal or glial inclusion bodies including Lewy bodies and GCIs. A number of studies have examined α -synuclein accumulation in post-mortem brain of patients with different Parkinsonian conditions and revealed the presence of membrane associated, sodium dodecyl sulfate (SDS)-soluble α -synuclein [α -synuclein_M: full-length and non-reducible, high molecular weight (HMW) oligomers/polymers] and, to a lesser extent, SDS-insoluble and non-reducible (tough) large α -synuclein aggregates that can be extracted by urea or formic acid (Table 1). However, as elaborated in the 'Discussion' section, many conflicting findings have been reported regarding, for example, the question of abnormal levels of α -synuclein in the substantia nigra in

Parkinson's disease (unchanged, Fuchs *et al.*, 2008; slight increase, Xu *et al.*, 2002; massive increase, Devi *et al.*, 2008; Shehadeh *et al.*, 2009). Part of the uncertainty in the literature can be explained by the selection in some investigations of only a small number of subjects and/or brain regions for examination. The neurochemical studies have also generally focused on qualitative similarity in α -synuclein accumulation among the α -synucleinopathies, with possible quantitative differences not addressed. Indeed, the limited information on quantitation of brain α -synuclein in Parkinsonian conditions is surprising and might be related to the laborious effort required for quantitative western blotting analysis in subfractionated regional tissue samples, uncertainty in selecting an appropriate procedure for tissue extraction (e.g. a mild detergent is unlikely to solubilize HMW species), and possibly by the assumption that the status of α -synuclein in the disorders has already been established. Further, findings in dementia with Lewy bodies have often been generalized, possibly inappropriately, to classical 'uncomplicated' idiopathic Parkinson's disease (sporadic Parkinson's disease with brainstem-predominant type of Lewy bodies; Li *et al.*, 2005; Anderson *et al.*, 2006; Kramer and Schulz-Schaeffer, 2007). In this regard, it continues to be debated whether the two conditions represent a continuum within the spectrum of Lewy body disease or, despite some overlap, are clinically and pathologically distinct entities (see Jellinger, 2008 for a review). This confusion regarding the status of α -synuclein in Parkinson's disease may be partly related to recent histochemical reports of wide-spread α -synuclein immunoreactive pathology (Lewy bodies, Lewy neurites, glial inclusions) in brain of some patients with Parkinson's disease (Hishikawa *et al.*, 2001; Duda *et al.*, 2002; Braak *et al.*, 2003, 2007; Mori *et al.*, 2008), raising the issue whether α -synuclein accumulation in Parkinson's disease is regionally specific or as diffuse as in dementia with Lewy bodies.

Table 1 α -Synuclein in multiple system atrophy and Parkinson's disease

References	Regions	n	Buffer-soluble		Buffer-insoluble			
					SDS-soluble		SDS-insoluble ^a	
			17 kDa	HMW	17 kDa	HMW	17 kDa	HMW
Multiple system atrophy								
Tu <i>et al.</i> , 1998	Frontal GM	2	↔	NE	↔	NE	NE	NE
	Frontal WM	2	↔	NE	↑800%	NE	NE	NE
Dickson <i>et al.</i> , 1999	Putamen	7	↔ ^b	– ^b	↑2700%	+	↔	+
	8 other GM	1	↔ ^b	– ^b	↑	+	↑	±
Duda <i>et al.</i> , 2000	Cerebellar WM	3	↓	–	↑	+	↑	+
Campbell <i>et al.</i> , 2001	Pons	4	↔	–	↑500%	+	↑	+
	Frontal WM	4	↑	–	↑700%	+	↔	–
	Cerebellar WM	4	↔	–	↑470%	+	↔	–
Kahle <i>et al.</i> , 2002	Cerebellar WM	2	↑	+	↑	+	↑	+
Pawlyk <i>et al.</i> , 2003	Cerebellar WM	3	↔	NE	↑	NE	NE	NE
Meulener <i>et al.</i> , 2005	Cerebellar WM	2	↔	–	↑ ^c	+ ^c	NE	NE
Uryu <i>et al.</i> , 2006	Pons	10	↔	–	NE	NE	↑	+
Parkinson's disease								
Langston <i>et al.</i> , 1998	Caudate	14	↔	–	NE	NE	NE	NE
	Frontal cortex	14	↔	–	NE	NE	NE	NE
Culvenor <i>et al.</i> , 1999	Cingulate cortex	4	↔	–	↑↔	±	↑↔	±
Duda <i>et al.</i> , 2000	Cerebellar WM	1	↔	–	↔	–	↔	–
Campbell <i>et al.</i> , 2000	Temporal cortex	4	↔	–	↔	–	↑↔	±
Campbell <i>et al.</i> , 2001	SN	3	↔	–	↔	+	↑	+
Kahle <i>et al.</i> , 2001	Parietal cortex	1	NE	NE	NE	NE	↑	+
Xu <i>et al.</i> , 2002	SN	6	↑64% ^b	+ ^b	↑	+	NE	NE
	VTA	6	↔ ^b	– ^b	↔	–	NE	NE
Sharon <i>et al.</i> , 2003	Frontal cortex	5	NE	+	NE	NE	NE	NE
Tofaris <i>et al.</i> , 2003	SN, cingulate and frontal cortices	3	↔ ^b	– ^b	↑ ^f	+ ^f		
Pletnikova <i>et al.</i> , 2005	Cingulate cortex	4 ^d	↔ ^b	– ^b	↑↔	±	NE	NE
		6 ^e	↔ ^b	– ^b	↑	+	NE	NE
Liu <i>et al.</i> , 2005	SN	1	↔	–	↔	+	↑	+
Deramecourt <i>et al.</i> , 2006	Temporal cortex	2	↔	–	↔	–	NE	NE
Uryu <i>et al.</i> , 2006	Cingulate cortex	9	↔	–	NE	NE	↑	+
Devi <i>et al.</i> , 2008	SN	11	↑ 10-fold (17 kDa) in mitochondria. HMW, NE.					
	Striatum	5	↑ 6-fold (17 kDa) in mitochondria. HMW, NE. (ELISA and WB)					
Fuchs <i>et al.</i> , 2008	SN, MO, Cerebellum, Cingulate cortex	8–17	↔ Total α -synuclein protein in any brain regions examined (ELISA, guanidine HCl extracts).					
Shehadeh <i>et al.</i> , 2009	SN	5	↑ 11-fold in total α -synuclein (TRIZOL extracts). HMW, NE.					

Levels of full-length 17 kDa α -synuclein were increased (↑), decreased (↓), or normal (↔). HMW species were positive (+) or undetected (–). The method employed was western blotting unless otherwise indicated. SDS=sodium dodecyl sulfate; HMW=high molecular species of α -synuclein; GM=gray matter; WM=white matter; SN=substantia nigra; VTA=ventral tegmental area; MO=medulla oblongata; NE=not examined; ELISA=enzyme-linked immunosorbent assay; WB=western blotting.

a The SDS-insoluble fraction was extracted with either urea or formic acid.

b Include both buffer soluble and Triton X-100 or Nonidet P-40 soluble fractions.

c Sarkosyl instead of SDS was used.

d Parkinson's disease cases with dementia.

e Parkinson's disease cases with dementia plus A β deposits.

f The mild detergent-insoluble fraction was extracted with both SDS and urea.

Similarly, in the case of multiple system atrophy it has been assumed that α -synuclein accumulates throughout the brain (Trojanowski and Revesz, 2007) although neurochemical evidence employing an attempt at quantitation (e.g. by western blots) appears to be based on data from only a single case study (Dickson *et al.*, 1999). Most studies of multiple system atrophy have been restricted to only a few brain areas with a key degenerative area, the substantia nigra, yet to be examined (Table 1).

Our study was designed to address the literature deficiencies by systematic examination of brain α -synuclein and comparison

of protein levels in multiple brain areas (pathological and non-pathological), in representative numbers of patients with idiopathic Parkinson's disease (brainstem-predominant type of Lewy body disease) and multiple system atrophy. We selected a western blotting procedure for α -synuclein measurement to confirm absolutely whether the protein measured was the full-length protein or HMW species. As a positive control, a single case of familial Parkinsonism-dementia with triplicated α -synuclein locus was also included. In addition, we examined patients with progressive supranuclear palsy as a presumed negative control as this atypical

Parkinsonian condition is classified as a tauopathy (Albers and Augood, 2001) rather than synucleinopathy, although it shares nigrostriatal dopamine loss with Parkinson's disease and multiple system atrophy.

Materials and methods

Patients

Autopsied brains, collected at the Centre for Addiction and Mental Health in Toronto through collaboration with neurologists, were obtained from a total of 11 patients with multiple system atrophy, 9 patients with Parkinson's disease, 16 patients with progressive supranuclear palsy, and 13 normal subjects. No significant difference (one-way ANOVA) was found in post-mortem interval (in hours) among the four groups (control: 13.6 ± 1.7 ; multiple system atrophy: 13.1 ± 1.6 ; Parkinson's disease: 13.2 ± 1.9 ; progressive supranuclear palsy: 11.4 ± 1.3 ; mean \pm SEM), or in age between control (70.8 ± 2.4 years) and patients with multiple system atrophy (65.4 ± 2.7 years), Parkinson's disease (76.7 ± 3.1 years), or progressive supranuclear palsy (73.4 ± 2.3 years) although the Parkinson's disease patients had significantly higher age than those with multiple system atrophy ($P < 0.05$). One half-brain was used for neuropathological examination, whereas the other half was frozen for neurochemical analyses. The characteristics of the patients are summarized in Supplementary Table 1. No detailed information on the neuropsychological or mental function of the patients was available. The causes of death for the control subjects were cardiovascular illnesses (9), bronchopneumonia (1), cancer (2), and natural death (1).

Neuropathological assessment

Neuropathological findings of neuronal loss and gliosis and assessment of the pathological hallmarks including GCIs and Lewy bodies in brains of patients with multiple system atrophy and Parkinson's disease are summarized in Supplementary Table 2. Lewy bodies (by routine haematoxylin-eosin stain) were confirmed in all of the Parkinson's disease patients but were absent in multiple system atrophy. The presence of GCIs (by Bielschowsky silver impregnation) was confirmed in five multiple system atrophy patients whereas the analysis of the remaining patients was conducted prior to the consensus statement on the diagnosis of multiple system atrophy in 1999 (Gilman *et al.*, 1999), which incorporated assessment of the neuropathology of GCIs. For all of the progressive supranuclear palsy cases, pathological examination confirmed the absence of Lewy bodies and the presence of neuronal loss and gliosis in substantia nigra, globus pallidus, subthalamic nucleus, brainstem, and cerebellar dentate nucleus together with tau-positive neurofibrillary tangles (by Bielschowsky silver impregnation). α -Synuclein immunohistochemistry was not performed on any of the subjects and it is possible that some cortical Lewy bodies might have been undetected by our conventional methods.

A familial Parkinsonism-dementia case with triplicated α -synuclein locus

An affected case (Muentner *et al.*, 1998: Patient IV-7) in a large familial Parkinsonism-dementia pedigree (Iowa kindred associated with α -synuclein locus triplication; Waters and Miller, 1994; Muentner *et al.*, 1998; Gwinn-Hardy *et al.*, 2000; Singleton *et al.*, 2003) was also examined. Neuropathological examination disclosed severe

degeneration of the substantia nigra, remarkable neuronal loss and vacuolation (or spongiosis) in the temporal cortex, and widespread subcortical and cortical Lewy bodies in patients with familial Parkinsonism-dementia, including our case, from the Iowa kindred. Using α -synuclein immunostaining, neuronal and glial inclusions resembling those reported by Gwinn-Hardy *et al.* (2000) were observed in the degenerated putamen of our patient (unpublished data, L.S. Forno). Quantitative genomic analysis of α -synuclein exons 2 and 6 (Farrer *et al.*, 2004) showed a doubling of genomic copy number in our patient with familial Parkinsonism-dementia, confirming α -synuclein locus triplication (Singleton *et al.*, 2003).

Tissue sample preparation for SDS-polyacrylamide gel electrophoresis

Brain dissection followed published procedures (Kish *et al.*, 1988). Whole homogenate was prepared by sonicating brain samples for 15 s at 4°C in 25 mM Tris-HCl (pH 7.4) buffer containing protease inhibitors. An aliquot of homogenate was centrifuged at 18,000g for 10 min and the supernatant was saved as a buffer-soluble fraction (Langston *et al.*, 1998; Mash *et al.*, 2003). The membrane fraction was prepared by centrifugation at 35,000g for 15 min as described previously (Wilson *et al.*, 1996) and the pellet was re-suspended in 10% SDS. We confirmed that the neuron specific enolase (control protein for cytosolic fraction) and the synaptosome-associated protein 25 (SNAP-25: control protein in the membrane fraction), were recovered by 89% and 84%, respectively, suggesting high efficiency of recovery. In each of the three brain fractions (homogenate, cytosolic, membrane), total protein content was determined by Bio-Rad assay.

Western blotting

Using quantitative blot immunolabeling (Furukawa *et al.*, 2002a, b), levels of the full length, 17 kDa α -synuclein were measured with a monoclonal antibody (Syn-1, clone 42, epitope at amino acids 91–96, Anderson *et al.*, 2006; or amino acids 91–99, Perrin *et al.*, 2003) from Transduction Laboratories (Lexington, KY, USA). The specificity was confirmed by using purified recombinant α -synuclein (Alpha Diagnostic International, San Antonio, TX, USA) and by three other antibodies against different epitopes of human α -synuclein, including polyclonal antibodies from Synaptic Systems (SS, raised in rabbit, against amino acids 2–25) and Oncogene (raised in guinea pig, against amino acids 123–140) and by another monoclonal antibody from Zymed (clone LB509, epitope at amino acids 115–122, Jakes *et al.*, 1999) (Fig. 1). Five concentrations of tissue standard (whole homogenate protein, 10–50 μ g/lane; soluble fraction protein, 10–50 μ g/lane; membrane fraction protein, 5–40 μ g/lane), consisting of a pool of human frontal cortex, were loaded onto each gel to construct a standard curve. Immunoreactivities were visualized with chemiluminescence reagents and quantified by a computer-based imaging device (MCID, Imaging Research Inc., St. Catharines, ON, Canada). The amount of 17 kDa α -synuclein immunoreactivity (for simplicity referred to as 'protein') was interpolated from the tissue standard curve, which had been calibrated by using purified recombinant α -synuclein, and expressed in ng/ μ g protein. At the same time, levels of the HMW α -synuclein-immunoreactive species in the membrane fraction were determined by taking the optical density of the whole smear bands above α -synuclein, normalized against the same tissue standard curve for the 17 kDa α -synuclein on the same blot, and expressed in arbitrary units (AU) equivalent to μ g tissue standard protein (17 kDa)/ μ g tissue sample protein. In addition,

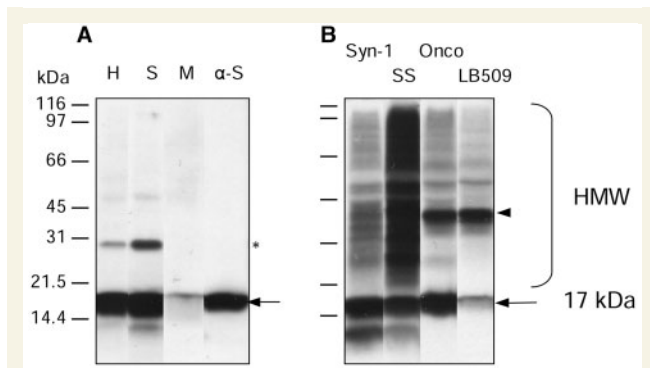


Figure 1 Western blot of α -synuclein in human brain. (A) α -synuclein in homogenate (H), cytosolic (S), and membrane (M) fractions of pooled human frontal cortex (30 μ g protein each) detected by the monoclonal antibody from Transduction Laboratory (Syn-1, clone 42). Purified recombinant human α -synuclein (α -S, 40 ng) was used as the positive control. (B) α -synuclein immunoreactivity in putamen of a patient with multiple system atrophy (MSA Case 4) as detected by different antibodies, including the monoclonal Syn-1 (epitope at amino acids 91–96), a rabbit polyclonal antibody from Synaptic Systems (SS, epitope 2–25), a guinea pig polyclonal antibody from Oncogene (Onco, epitope 123–140), and the monoclonal LB509 from Zymed (epitope 115–122). The arrow identifies the full-length 17 kDa α -synuclein(-s) and the bracket identifies HMW α -synuclein immunoreactive species. *Identifies a non-specific band at \sim 31 kDa recognized by the second antibody alone upon longer exposure. Note in (B) the protein band at \sim 40 kDa (arrowhead) preferentially recognized by both C-terminal antibodies (Onco and LB509) and the relatively higher reactivity of the N terminal antibody (SS) to the HMW species versus the 17 kDa band.

levels of neuron specific enolase, SNAP-25, and α B-crystallin, as another component of GCIs and a 23 kDa membrane protein (Pountney *et al.*, 2005), were also determined by the same quantitative immunoblotting technique.

Measurement of tissue dopamine levels

Dopamine levels in putamen and caudate were measured by high-performance liquid chromatography-electrochemical detection (Wilson *et al.*, 1994), with those for patients with Parkinson's disease (caudate and putamen), multiple system atrophy (putamen), and progressive supranuclear palsy (putamen, 10 of the 16 subjects) previously published (Tong *et al.*, 2004; Kish *et al.*, 2008).

Statistical analyses

Statistical analyses on differences in the outcome measures among the control and the Parkinsonian conditions were carried out using non-parametric Kruskal–Wallis ANOVA followed by Dunn's multiple comparison tests or Mann–Whitney U-tests. Correlations were examined by Pearson product-moment or Spearman rank order correlation analyses as indicated in the text. The criterion of statistical significance was $P < 0.05$.

Results

Immunoblotting assay of α -synuclein in human brain

As expected, the full-length 17 kDa α -synuclein protein was highly enriched (87% on average) in the cytosolic fraction in normal human brain (Fig. 1A). The low molecular weight protein bands (\leq 12 kDa) were detected by both Syn-1 and SS antibodies but not by those from Oncogene or LB509 (Fig. 1B) and therefore were presumably C-terminal truncated α -synuclein fragments. The HMW α -synuclein immunoreactive species, best observed in putamen of multiple system atrophy patients (Fig. 1B, see also below in Fig. 3), were detected by all four antibodies although of different relative sensitivity and preference. The C-terminal antibodies (Oncogene, LB509) preferentially recognized an α -synuclein immunoreactive protein band at approximately 40 kDa which presumably represents an α -synuclein dimer (Duda *et al.*, 2000; Sharon *et al.*, 2003) or ubiquitin modified α -synuclein (Sampathu *et al.*, 2003; Anderson *et al.*, 2006). The N-terminal antibody (SS) differed from the others by relatively stronger reactivity with the smear HMW species than with the 17 kDa band, which is consistent with similar findings with other N-terminal antibodies (Waxman *et al.*, 2008) and might suggest that C-terminal truncated α -synuclein fragments are major components of many of the HMW species, corresponding to its increased hydrophobicity and propensity to aggregate (Li *et al.*, 2005; Liu *et al.*, 2005). In the following neurochemical studies, quantitative or semi-quantitative measurements of the full-length 17 kDa α -synuclein and the HMW species were carried out by using the Syn-1 antibody. The between-gels coefficients of variance of replicate samples from a single extraction were 13%, 15% and 15% for membrane and cytosol fractions and homogenate, respectively.

α -Synuclein in normal human brain

As expected, 17 kDa α -synuclein_M brain immunoreactivity was enriched in grey matter regions in normal human brain, with the white matter sample from the rostral limb of the internal capsule containing a very low level of α -synuclein_M (Table 2). Mean levels of 17 kDa α -synuclein_M in the substantia nigra pars compacta were lower than those in other grey matter brain regions. This was also true for α -synuclein in tissue homogenate and in the cytosolic fraction: substantia nigra (homogenate: 1.81 ± 0.18 ng/ μ g protein; supernatant: 5.10 ± 0.55 ng/ μ g protein); putamen (homogenate: 7.04 ± 0.50 ng/ μ g protein; supernatant: 10.5 ± 0.63 ng/ μ g protein); and frontal cortex (homogenate: 8.75 ± 0.66 ng/ μ g protein; supernatant: 11.9 ± 1.1 ng/ μ g protein).

We did not observe markedly above-normal accumulation of HMW α -synuclein_M in normal brains except in two cases (Table 2, see Figs 2B, 3B and 5B). Control 10 had high levels of α -synuclein_M accumulation in frontal (HMW, 5.10 AU; 17 kDa, 5.75 ng/ μ g protein) and occipital (HMW, 1.24 AU; 17 kDa, 3.54 ng/ μ g protein) cortices, and some HMW α -synuclein_M in the caudate (0.15 AU; normal 17 kDa, 2.43 ng/ μ g protein), with

Table 2 Levels of α-synuclein in the brain membrane fraction (α-Synuclein_M) of patients with multiple system atrophy, Parkinson's disease, progressive supranuclear palsy, hereditary Parkinsonism-dementia and of normal controls

	SNpc	Putamen	Caudate	Cerebellar cortex	WM	A10	A22	A18
17 kDa α-synuclein (ng/μg protein)								
Controls (n = 10 or 13) ^a	0.26 ± 0.08 (0.03–0.87)	0.94 ± 0.08 (0.63–1.74)	2.14 ± 0.18 (1.35–3.03)	1.09 ± 0.09 (0.64–1.47)	0.06 ± 0.01 (0.02–0.12)	1.73 ± 0.36 (0.75–5.75)	1.87 ± 0.16 (0.79–2.70)	1.76 ± 0.22 (0.89–3.54)
Hereditary Parkinsonism-dementia (n = 1)	2.81	4.51	5.06	NE	NE	3.88	6.05	1.96
Progressive supranuclear palsy (n = 16 or 8) ^b	0.70 ± 0.27 (0.12–3.83)	0.82 ± 0.06 (0.54–1.06)	NE	NE	NE	1.28 ± 0.21 (0.48–2.39)	NE	NE
Multiple system atrophy (n = 8–11) ^c	2.86 ± 0.37** (1.18–5.07)	17.5 ± 2.77** (6.82–28.3)	2.78 ± 0.38 (1.29–4.82)	2.13 ± 0.35 (0.59–3.64)	1.42 ± 0.45** (0.32–4.24)	1.91 ± 0.26 (1.03–4.42)	2.70 ± 0.40 (0.76–4.64)	1.69 ± 0.21 (0.86–3.16)
Parkinson's disease (n = 9)	0.74 ± 0.19 (0.10–1.86)	1.14 ± 0.13 (0.77–1.85)	NE	NE	NE	1.43 ± 0.10 (1.06–1.84)	NE	NE
HMW α-synuclein (arbitrary unit)								
Controls (n = 10 or 13) ^a	ND	ND	0.15 ND in others	ND	ND	5.10, 0.60 ND in others	ND	1.24 ND in others
Hereditary Parkinsonism-dementia (n = 1)	5.41	4.73	5.04	NE	NE	4.26	10.8	0.36
Progressive supranuclear palsy (n = 16 or 8) ^b	0.52, 2.54, ND in others	ND	NE	NE	NE	2.72, ND in others	NE	NE
Multiple system atrophy (n = 8–11) ^c	4.02 ± 0.95 (0.34–8.55)	11.1 ± 1.9 (3.27–20.6)	2.26 ± 0.88 (0.08–8.82)	1.28 ± 0.52 (0.16–5.67)	0.55 ± 0.22 (0.13–1.94)	1.37, 0.93 ND in others	1.45, 0.80 ND in others	0.66 (ND in others)
Parkinson's disease (n = 9)	0.48 ± 0.14† (0.09–1.50)	0.66, 0.51, 0.28, ND in others	NE	NE	NE	ND	NE	NE

Data represent mean ± SEM (range) or individual values of exceptional cases in some brain regions. SNpc = substantia nigra pars compacta; WM = white matter at rostral internal capsule; A10, A22, A18 = Brodmann cerebral cortical (grey matter) areas 10 (frontal), 22 (temporal), and 18 (occipital), respectively. HMW = high molecular weight; ND = not detectable; NE = not examined.

a n = 13 except for n = 10 for SNpc, caudate, cerebellar cortex, and white matter of control subjects.

b n = 16 for SNpc and n = 8 for putamen and frontal cortex of progressive supranuclear palsy cases.

c n = 11 except for n = 10 for putamen and cerebellar cortex or n = 8 for WM of multiple system atrophy cases.

** P < 0.001 for the difference from the controls in 17 kDa α-Synuclein_M (Kruskal–Wallis ANOVA followed by Dunn's multiple comparison tests or Mann–Whitney U-test); †P < 0.002, Parkinson's disease versus multiple system atrophy in HMW α-Synuclein_M (Mann–Whitney U-test).

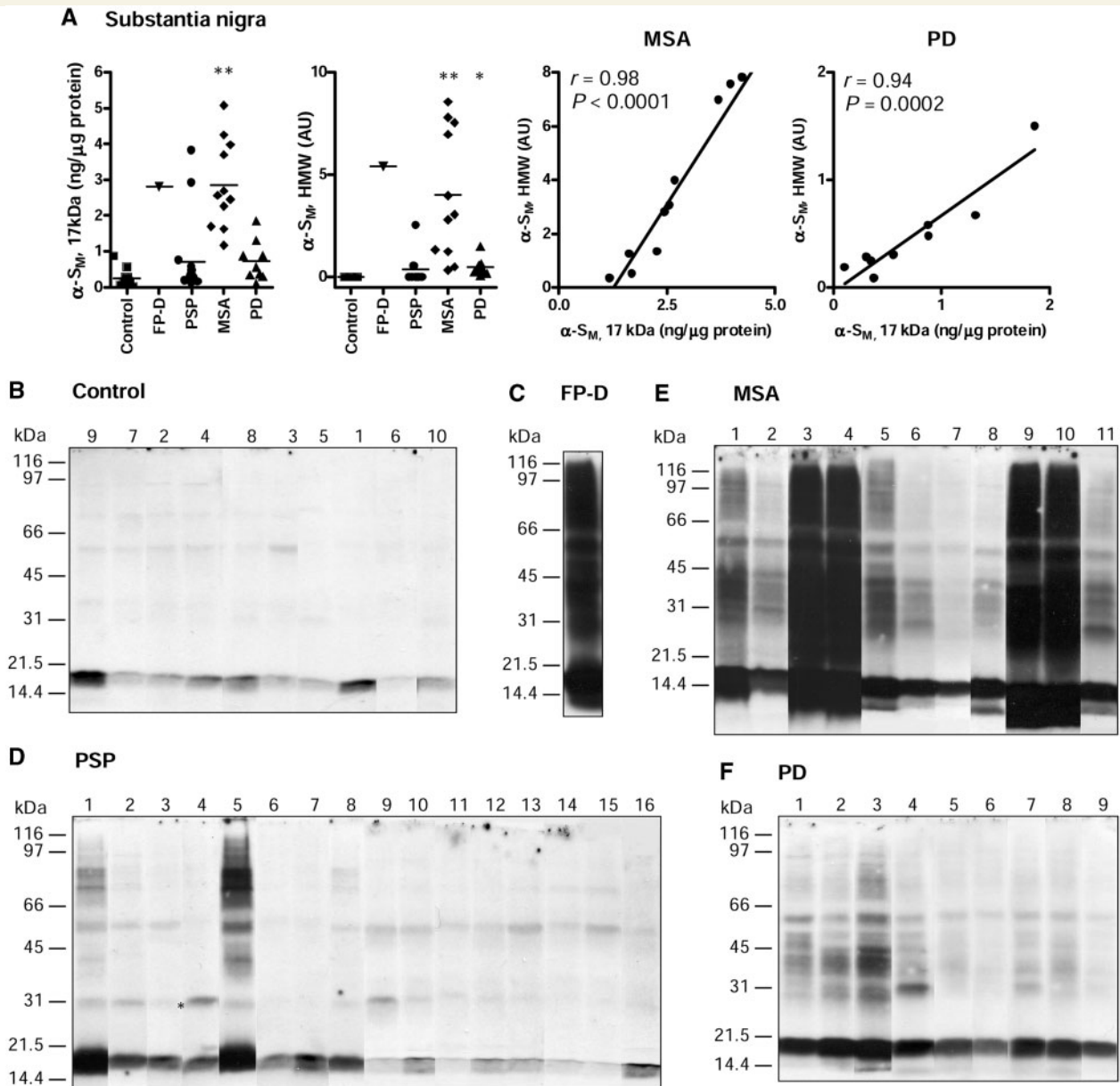


Figure 2 α -Synuclein in membrane fraction (α -S_M) of substantia nigra in patients with multiple system atrophy (MSA), Parkinson's disease (PD), progressive supranuclear palsy (PSP), familial Parkinsonism-dementia with triplicated α -synuclein locus (FP-D), and control subjects. (A) Scatter plots of levels of the 17 kDa and HMW α -synuclein_M and the correlations (Pearson). ** $P < 0.001$, multiple system atrophy versus control; * $P < 0.05$, Parkinson's disease versus control (Kruskal–Wallis ANOVA followed by Dunn's multiple comparison tests). (B)–(F) Individual western blots (over-exposure) showing variability among subjects in HMW α -synuclein_M species. * Identifies a non-specific band at ~31 kDa recognized by the second antibody alone. Note two exceptional progressive supranuclear palsy cases (Cases 1 and 5) with increased 17 kDa and HMW α -synuclein_M.

other brain regions examined normal. Control 11 showed mild HMW α -synuclein_M accumulation only in the frontal cortex (0.60 AU; normal 17 kDa, 0.99 ng/ μ g protein).

α -Synuclein in familial Parkinsonism-dementia

The patient with familial Parkinsonism-dementia showed marked α -synuclein_M accumulation throughout the brain (Table 2). For the

17 kDa α -synuclein_M, the magnitude of increase was most marked in the substantia nigra (10-fold), intermediate in temporal and frontal cortices and striatum (2.2- to 4.8-fold), and least in the occipital cortex (+12%). All brain regions showed numerous HMW α -synuclein_M species (see Figs 2C, 3C and 5C), which were most prominent in the temporal cortex and least so in the occipital cortex. Across brain regions, there was a significant positive correlation (Pearson) between levels of HMW and 17 kDa α -synuclein_M ($r = 0.83$, $P = 0.04$). Levels of SNAP-25, a control

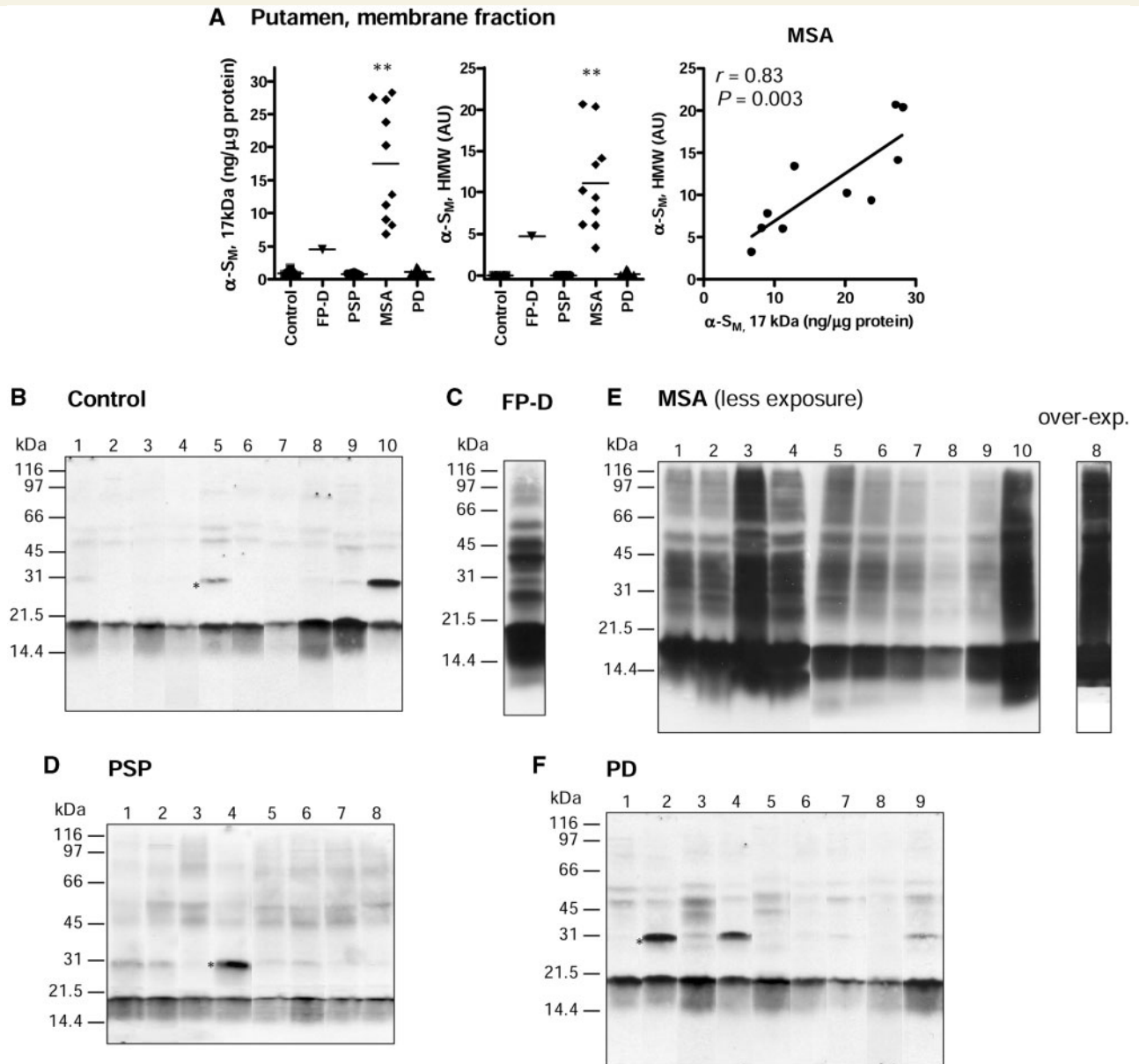


Figure 3 α-Synuclein in membrane fraction (α-S_M) of putamen in patients with multiple system atrophy (MSA), Parkinson's disease (PD), progressive supranuclear palsy (PSP), familial Parkinsonism-dementia with triplicated α-synuclein locus (FP-D), and control subjects. **(A)** Scatter plots of levels of 17kDa and HMW α-synuclein_M and the correlation (Pearson). ** $P < 0.001$, multiple system atrophy versus control (Kruskal–Wallis ANOVA followed by Dunn's multiple comparison tests). **(B)–(F)** Individual western blots [over-exposure except that indicated in **(E)**] showing variability among subjects in HMW α-synuclein_M species. * Identifies a non-specific band at ~31 kDa recognized by the second antibody alone. Note modestly increased HMW species in three cases of Parkinson's disease (Cases 3, 5 and 9).

protein, were decreased by 27% in substantia nigra but were normal in putamen (Supplementary Figure).

In the cytosolic fraction, only 17kDa α-synuclein could be detected and levels were normal in putamen (Fig. 4A) and increased (+115%) in the frontal cortex (25.5 versus 11.9 ± 1.1 ng/μg protein in controls). In contrast, levels of the control protein neuron specific enolase were normal in these brain areas (data not shown).

α-Synuclein in progressive supranuclear palsy

In progressive supranuclear palsy, 17kDa and HMW α-synuclein_M species were generally normal (Table 2; see Figs 2D–5D). The increase (+171%) in 17kDa α-synuclein_M observed in the substantia nigra in progressive supranuclear palsy was explained by two progressive supranuclear palsy cases who had high levels of

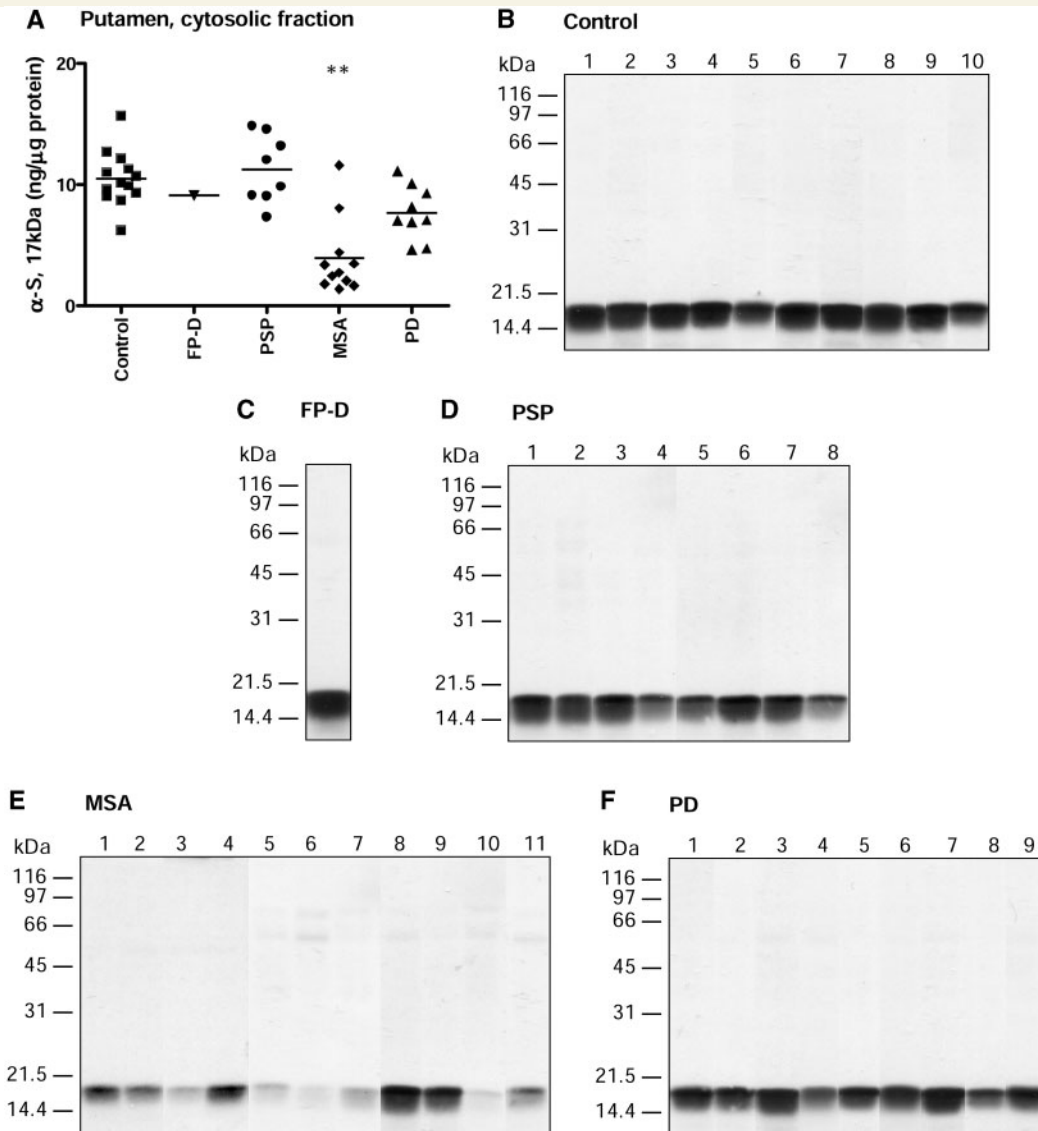


Figure 4 α -Synuclein in cytosolic fraction of putamen in patients with multiple system atrophy (MSA), Parkinson's disease (PD), progressive supranuclear palsy (PSP), familial Parkinsonism-dementia with triplicated α -synuclein locus (FP-D), and control subjects. (A) Scatter plots of levels of the full-length 17 kDa α -synuclein. $**P < 0.001$, multiple system atrophy versus control (Kruskal–Wallis ANOVA followed by Dunn's multiple comparison tests). (B)–(F) Individual western blots (over-exposure) showing variability among subjects.

17 kDa α -synuclein_M (Cases 1 and 5, 2.92 and 3.83 ng/ μ g protein, respectively) similar to that in familial Parkinsonism-dementia (Fig. 2A) and moderate accumulation of HMW α -synuclein_M (0.52 and 2.54 AU). In the frontal cortex (Fig. 5D), another patient with progressive supranuclear palsy (Case 3) had moderate accumulation of HMW α -synuclein_M (2.72 AU) despite a normal level of 17 kDa α -synuclein_M (1.54 ng/ μ g protein). Levels of SNAP-25 were significantly decreased in the substantia nigra (–28%) but were normal in the putamen (Supplementary Figure).

α -Synuclein in multiple system atrophy

In multiple system atrophy, we observed heterogeneous α -synuclein_M accumulation both among brain regions (Table 2)

and individual subjects (Figs 2E–5E). The putamen had an 18-fold increase (range from +625% to +2900%) in 17 kDa α -synuclein_M and the highest levels of HMW species observed in our investigation (Fig. 3A). The white matter had a 23-fold increase (+430% to +6830%) in 17 kDa α -synuclein_M; however, due to its low α -synuclein content, levels of the HMW species were correspondingly much lower. The substantia nigra of multiple system atrophy showed a magnitude of α -synuclein_M accumulation similar to that of the familial Parkinsonism-dementia case, with a 10-fold increase in 17 kDa α -synuclein_M (+356% to +1850%) and a high level of HMW α -synuclein_M (Fig. 2A). In other brain regions, levels of 17 kDa α -synuclein_M were normal or only modestly increased (cerebral and cerebellar cortices, caudate: –4% to +95%, non-significant) but with caudate and

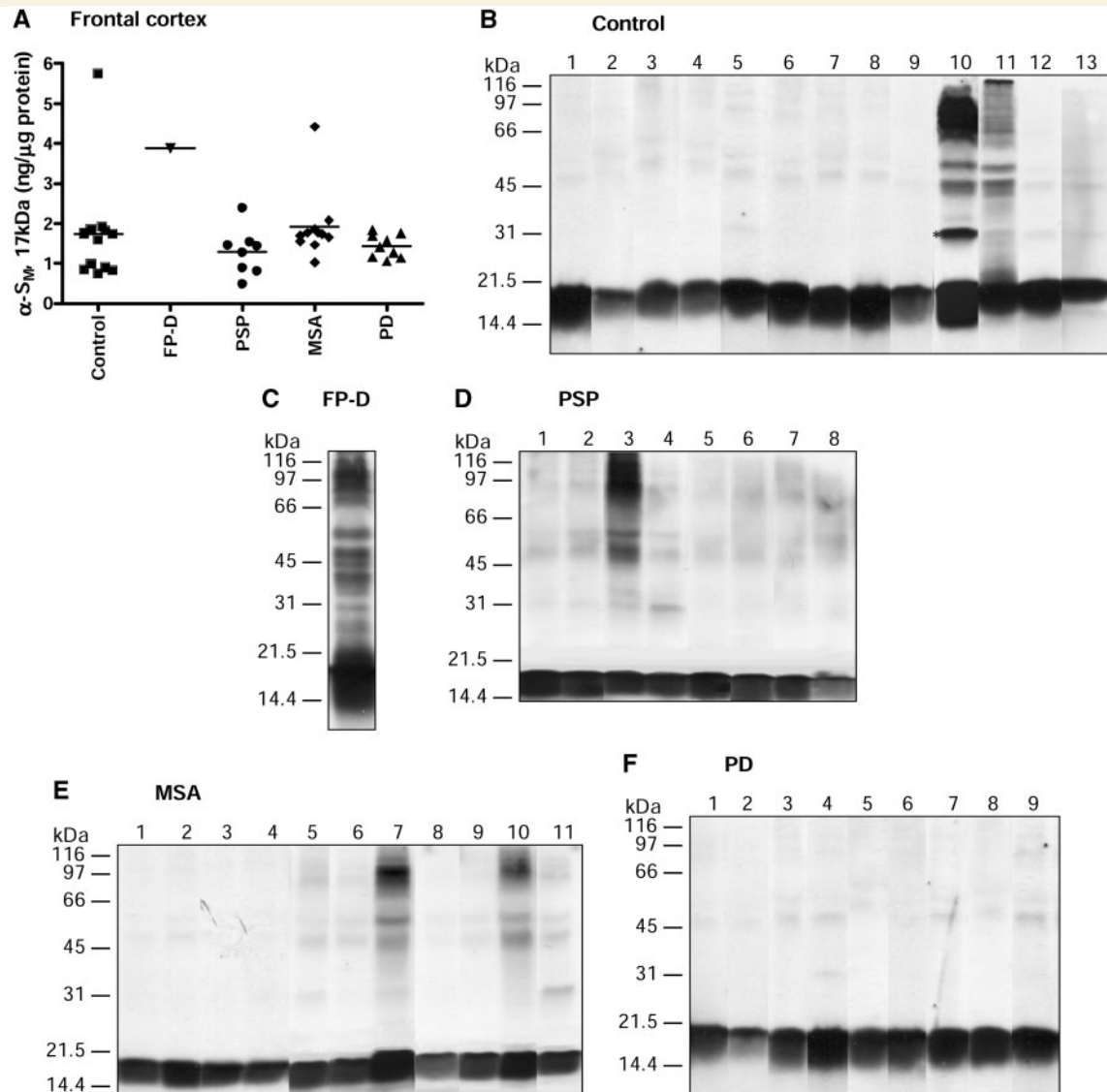


Figure 5 α -Synuclein in membrane fraction (α -S_M) of frontal cortex in patients with multiple system atrophy (MSA), Parkinson's disease (PD), progressive supranuclear palsy (PSP), familial Parkinsonism-dementia with triplicated α -synuclein locus (FP-D), and control subjects. (A) Scatter plots of levels of 17 kDa α -synuclein_M. (B)–(F) Individual western blots (over-exposure) showing variability among subjects. *Identifies a non-specific band at ~31 kDa recognized by the second antibody alone. Note increased HMW species in two control subjects 10 and 11, two multiple system atrophy Cases 7 and 10 and one progressive supranuclear palsy Case 3.

cerebellar cortex also showing mild to high levels of HMW species in all the cases (Table 2). Two cases (Cases 7 and 10, Fig. 5E) showed moderate accumulation of HMW α -synuclein_M in the cerebral cortices (for occipital cortex, only in Case 7); however, for Case 7 the cerebral cortical α -synuclein_M change was not correlated with that in subcortical regions (compare with Fig. 2E and 3E). The two multiple system atrophy cases differed from the subject with familial Parkinsonism-dementia in relative involvement of putamen (multiple system atrophy \gg familial Parkinsonism-dementia) and cerebral cortices, in particular the temporal cortex (familial Parkinsonism-dementia \gg multiple system atrophy).

Despite heterogeneity among individuals, there were significant positive correlations (Pearson) between levels of HMW and 17 kDa α -synuclein_M in each brain region examined

($r=0.67$ – 0.98 , $P<0.05$; see Figs. 2A and 3A for examples). Among the areas of pathology in multiple system atrophy, significant correlations (Pearson) in levels of the 17 kDa α -synuclein_M were observed between putamen and substantia nigra ($r=0.66$, $n=10$, $P=0.04$), caudate and white matter ($r=0.78$, $n=8$, $P=0.02$), and caudate and cerebellar cortices ($r=0.74$, $n=10$, $P=0.01$). In the striatum (putamen and caudate) but not in other brain regions, there were significant positive correlations (Spearman) between pathological ratings of neuronal loss/gliosis and levels of α -synuclein_M, both 17 kDa ($r=0.84$, $n=21$, $P<0.0001$) and HMW species ($r=0.75$, $n=21$, $P<0.0001$). Dopamine concentrations (see Supplementary Table 1) were severely reduced from control levels [–96% (–83% to –99.5%)] in putamen of all of the subjects whereas in the caudate, levels of

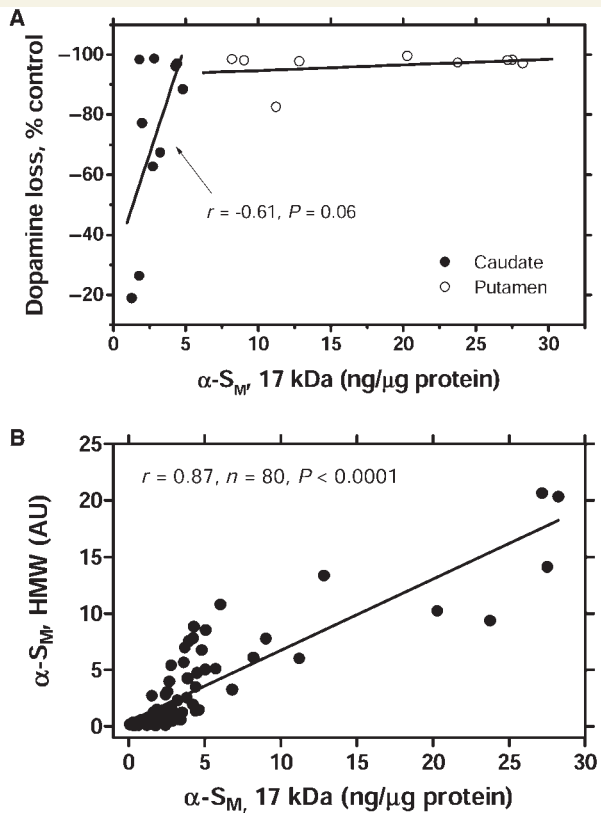


Figure 6 (A) Correlations (Pearson) between levels of 17 kDa α -synuclein in membrane fraction (α -S_M) and dopamine loss in caudate and putamen of patients with multiple system atrophy (MSA). Dopamine levels in putamen of the multiple system atrophy patients were previously published (Tong *et al.*, 2004). (B) Correlations (Pearson) between levels of 17 kDa α -synuclein_M and HMW species. See Table 2 for number of cases for each brain regions included ($n=80$ for total data points).

the neurotransmitter were variably decreased [−73% (−19% to −99%)]. In the caudate there was a trend for a positive correlation (Pearson) that just missed statistical significance ($P=0.06$) between levels of 17 kDa α -synuclein_M and dopamine loss (Fig. 6A).

In contrast to the α -synuclein levels, nigral concentrations of α B-crystallin in the same membrane fraction were not increased in all of the patients with multiple system atrophy [23.6 ± 2.2 (7.5–34.0) μ g tissue standard/10 μ g protein] compared with the normal control subjects [21.5 ± 2.7 (15.7–37.1)]. On the other hand, levels of SNAP-25 were significantly decreased in the membrane fraction of substantia nigra (−40%) and putamen (−42%) in multiple system atrophy (Supplementary Figure).

Examination of the cytosolic fraction of putamen and frontal cortex in the multiple system atrophy cases revealed a significant decrease in soluble 17 kDa α -synuclein levels in the putamen (by 63%; Fig. 4A and E) but not in the frontal cortex (10.3 ± 1.3 versus 11.9 ± 1.1 ng/ μ g protein in controls). Levels of neuron specific enolase in the cytosolic fraction of multiple system atrophy putamen were significantly decreased by 25%. After adjustment

for tissue and neuronal loss against neuron specific enolase, the multiple system atrophy putamen still had a significant 52% loss of cytosolic 17-kDa α -synuclein as compared with control values.

Comparing the subtypes of multiple system atrophy, there were trends ($0.05 < P < 0.1$) for higher levels of α -synuclein_M accumulation in the striatonigral areas in multiple system atrophy with predominant Parkinsonian features than in multiple system atrophy with predominant cerebellar features (Supplementary Table 3).

α -Synuclein in Parkinson's disease

Qualitatively, the substantia nigra of the patients with Parkinson's disease showed some generally 'modest' α -synuclein_M accumulation (Fig. 2F), with levels of HMW and 17 kDa α -synuclein_M significantly correlated with each other (Fig. 2A). Quantitatively, however, the magnitude of the increased 17 kDa α -synuclein_M [+184%, (−60% to +618%)] was much less than that in multiple system atrophy and the increase was only statistically significant before correction for multiple comparison ($P=0.01$, Mann–Whitney U-test). Examination of individual subject data revealed a wide scatter of values in which some values fell within the normal control range (Fig. 2A). Nigral levels of HMW α -synuclein_M in Parkinson's disease were also significantly lower than in multiple system atrophy (Table 2). Levels of soluble 17 kDa α -synuclein in the cytosolic fraction of substantia nigra in Parkinson's disease were not significantly different from those of the controls (4.70 ± 0.44 versus 5.10 ± 0.55 ng/ μ g protein in controls). Nigral levels of SNAP-25 were normal in Parkinson's disease (Supplementary Figure).

In putamen of the patients with Parkinson's disease levels of the 17 kDa α -synuclein_M (Table 2 and Fig. 3A) and SNAP-25 (Supplementary Figure) were normal. However, three Parkinson's disease patients (3, 5 and 9) had a modest accumulation of HMW α -synuclein_M and also had the three highest levels of 17 kDa α -synuclein_M in putamen of Parkinson's disease (Fig. 3F, see Table 2 and Supplementary Table 1 for individual values). In the cytosolic fraction, the putamen showed a slight, but not statistically significant reduction of soluble 17 kDa α -synuclein (by 27%) as compared with the controls (Fig. 4A and F).

The frontal cortex of Parkinson's disease was normal in 17 kDa α -synuclein immunoreactivity in both membrane (Table 2 and Fig. 5A) and cytosolic fractions (10.3 ± 1.4 versus 11.9 ± 1.1 ng/ μ g protein in controls) and was without any increased HMW species (Fig. 5F).

Employing all of the different brain regions examined with detectable HMW α -synuclein_M, there was a significant positive correlation (Pearson) between levels of HMW and 17 kDa α -synuclein_M (Fig. 6B). No other statistically significant correlations (Spearman or Pearson) were observed between levels of α -synuclein_M accumulation in any of the brain regions examined and retrospective data obtained from subject profiles including age, age of disease onset, post-mortem time, estimated disease duration, disease stage (Hoehn–Yahr for Parkinson's disease), striatal dopamine levels (for Parkinson's disease and progressive supranuclear palsy), and pathological ratings of neuronal

loss/gliosis and Lewy bodies (for Parkinson's disease nigra, see Supplementary Table 2).

Discussion

The major finding of our study is that, in contrast to the global α -synuclein_M (both 17 kDa and HMW species) accumulation in familial Parkinsonism-dementia with triplicated α -synuclein locus, the accumulation in Parkinson's disease, multiple system atrophy and progressive supranuclear palsy was, in general, specific to regions of pathology, with multiple system atrophy clearly having the most severe α -synuclein_M accumulation. However, we also found high variability in protein levels amongst individual subjects, e.g. above-normal α -synuclein_M in substantia nigra of some patients with progressive supranuclear palsy, in putamen of some Parkinson's disease cases, and in frontal cortex of some multiple system atrophy and progressive supranuclear palsy patients and even control subjects, which could relate to similar 'discrepancies' in the literature.

Methodological considerations and limitations

We measured the full-length 17 kDa α -synuclein by quantitative immunoblotting whereas the HMW species could only be quantified in a crude semi-quantitative manner. Although it is reasonable to compare the HMW species, as a semi-quantitative estimate, between subjects, it is not possible to compare its absolute intensity to that of the 17 kDa band because of possibly different transfer efficiency and antibody reactivities. However, the good correlation between levels of the HMW species and 17 kDa α -synuclein_M provides some justification for our semi-quantitative analyses and also suggests that an equilibrium might exist among the different pools of α -synuclein species and that analysis of the membrane-associated forms is relevant.

We focused primarily on a simple, crude membrane fraction preparation rather than complex sub-fractionations with multi-step centrifugations and extractions by different detergents, organic solvents and/or chaotropic reagents as used previously by many investigators (Table 1). Our rationale was to reduce as much as possible disturbance to endogenous α -synuclein because, given its natively unfolded structure, it can be vulnerable to the above mentioned reagents (Weinreb *et al.*, 1996) and because our primary interest was the quantitative comparison of α -synuclein accumulation in different Parkinsonian conditions rather than a qualitative sub-fraction distribution. Recently, a sandwich enzyme-linked immunosorbent assays have been developed to measure in body fluids (*cf.* Mollenhauer *et al.*, 2008) and in brain extracts levels of total α -synuclein and in particular of its soluble oligomers in the cytosolic fraction (Paleologou *et al.*, 2009). Our assay did not include α -synuclein soluble oligomers, which, given its low abundance, might not be achieved by a quantitative western blotting procedure. In future, it would be of interest to establish whether levels of α -synuclein_M are correlated with those of the soluble oligomers in the Parkinsonian brains. It should also be pointed out that compared with western

blotting, enzyme-linked immunosorbent assay of total α -synuclein appeared to give lower values of concentration in blood (Barbour *et al.*, 2008) and even more so in the brain (Paleologou *et al.*, 2009 versus Iwai *et al.*, 1995 and this study). The reason for the discrepancy is unknown but could be related to different reagents and procedures employed for brain α -synuclein extraction and the possible complex *in vivo* status of α -synuclein, e.g. interaction with other proteins including parkin (Choi *et al.*, 2001), a proteasomal protein (Snyder *et al.*, 2003), 14–3–3 protein (Xu *et al.*, 2002), and DJ-1 (Meulener *et al.*, 2005).

α -Synuclein in normal human brain

Our observation in two (of 13) neurologically normal control subjects of α -synuclein_M accumulation in cerebral cortices but not in subcortical areas including substantia nigra is somewhat surprising as it is generally assumed that 'incidental α -synuclein pathology' should propagate caudo-rostrally from the brainstem to the neocortex (Braak *et al.*, 2003; McKeith *et al.*, 2005; but see Jellinger, 2003; Attems and Jellinger, 2008; Kalaitzakis *et al.*, 2008; Zaccai *et al.*, 2008; see also Burke *et al.*, 2008; Jellinger, 2008; Parkkinen *et al.*, 2008 for discussions). In principle, the two cases might have incidental Lewy pathology in the cerebral cortices without the participation of midbrain, which could be related to normal aging without clinical consequence or a preclinical stage of, perhaps, a dementing illness.

α -Synuclein accumulation in familial Parkinsonism-dementia

Our familial Parkinsonism-dementia case findings are consistent with western blot reports of the Iowa kindred (Gwinn-Hardy *et al.*, 2000; Miller *et al.*, 2004) and a Swedish-American family (Farrer *et al.*, 2004). Interestingly, we demonstrated a massive accumulation of α -synuclein_M in substantia nigra of the member of Iowa kindred whereas in another (clinically similar) member of the kindred the substantia nigra appeared to be much less affected by α -synuclein accumulation (see Fig. 7, Gwinn-Hardy *et al.*, 2000). Pathological examination of both cases revealed severe neuronal loss and only a few Lewy bodies in substantia nigra. Possibly, shorter disease duration (9 versus 15 years) and/or older disease onset (46 versus 32 years old) in our case could explain the difference; although our study of multiple system atrophy and Parkinson's disease (see below) did not reveal a clear relationship between α -synuclein_M accumulation and disease duration or age of onset. We also report here similar α -synuclein_M accumulation in putamen and caudate of the familial Parkinsonism-dementia case (Table 2), which is consistent with the global nature of the disorder and similar extent of dopamine loss in the two striatal subdivisions of the subject (Muentner *et al.*, 1998). Unexpectedly, our familial Parkinsonism-dementia patient with doubling in gene dosage showed a more than 2-fold increase in 17 kDa α -synuclein_M in severely affected regions (e.g. 10-fold increase in substantia nigra). This suggests the presence of additional genetic and/or environmental factors that may modulate the steady-state level of α -synuclein_M in this autosomal dominant disorder.

α -Synuclein in progressive supranuclear palsy

We did not observe significant α -synuclein_M accumulation in most of the patients with progressive supranuclear palsy except in 2 (of 16) cases in substantia nigra and in a third subject in frontal cortex. These findings confirm histochemical observations of rare α -synuclein pathology in progressive supranuclear palsy (Tsuboi *et al.*, 2001; Mori *et al.*, 2002). The exceptional cases might reflect incidental α -synuclein pathology in normal aging (Tsuboi *et al.*, 2001), as we did observe occasional α -synuclein_M accumulation in two of our aged controls, or coexisting multiple system atrophy/Parkinson's disease-like α -synuclein pathology (e.g. Lewy neurites) accompanying progressive supranuclear palsy (Mori *et al.*, 2002; Uchikado *et al.*, 2006) that was missed by our conventional methods.

α -Synuclein accumulation in multiple system atrophy

To our knowledge, this is the first systematic and quantitative study of α -synuclein accumulation in both white and grey matter (including especially substantia nigra) regions in a representative number of patients with multiple system atrophy. Our finding in putamen of a massive accumulation of α -synuclein_M is consistent with that of Dickson *et al.* (1999). The observation of mostly normal levels of α -synuclein in the frontal cortex is similar to that of Tu *et al.* (1998). However, in a single case report, Dickson *et al.* (1999) demonstrated increased α -synuclein (full-length and HMW) in the SDS-soluble fraction of nine grey matter regions including the frontal cortex, suggesting a global accumulation of α -synuclein_M in multiple system atrophy brain. In contrast, our findings, by examination of a more representative number of cases, suggest that α -synuclein_M accumulation, while showing marked individual heterogeneity, is generally regionally specific, with the putamen clearly having the most severe accumulation of α -synuclein_M (more in fact than in familial Parkinsonism-dementia) but with cerebral cortices generally spared. Nevertheless, we did find that in some multiple system atrophy cases (e.g. Cases 7 and 10), there was α -synuclein_M accumulation in cerebral cortices and, in this respect, are consistent with the single case observation of Dickson.

A limitation of our study is that GCIs were only examined in 5 of the 11 patients. Nevertheless, we did not observe any qualitative or quantitative differences in α -synuclein_M accumulation between the two sub-groups, consistent with our assessment of the multiple system atrophy cases. In addition, the extent of 17 kDa α -synuclein_M accumulation (expressed as %change) among the brain regions examined (white matter > putamen > substantia nigra > cerebellar > caudate > cerebral cortices) correspond approximately to qualitative regional pathological findings (neuronal loss, gliosis and GCIs where available). However, the normal concentrations of α B-crystallin in multiple system atrophy nigra suggest that the accumulation of monomeric α -synuclein_M is not merely caused by the formation of GCIs. Indeed, in a multiple system atrophy case with only occasional

brain GCIs (Case 9, Supplementary Table 2), the substantia nigra showed striking accumulation of α -synuclein_M (Fig. 2E).

In putamen, the brain area with the most severe α -synuclein_M accumulation and abundant GCIs, there was also a marked depletion of cytosolic α -synuclein (Fig. 4A and E). These observations circumstantially support a possible role of increased α -synuclein insolubility in the formation of GCIs in multiple system atrophy and are consistent with previous findings of Tu *et al.* (1998) and Campbell *et al.* (2001) (but see Dickson *et al.*, 1999).

α -Synuclein accumulation in Parkinson's disease

Our data suggest that α -synuclein_M accumulation in Parkinson's disease is quite heterogeneous amongst individual subjects and is, on average, much less severe than in familial Parkinsonism-dementia and multiple system atrophy, with the substantia nigra bearing the brunt of the changes.

The literature has been contradictory on the question of nigral α -synuclein accumulation in Parkinson's disease (Table 1), in which findings appear to be dependent on the methods used for tissue extraction. Similarly, α -synuclein mRNA expression data in this key pathological brain region of Parkinson's disease are also not consistent (increased: Rockenstein *et al.*, 2001; Chiba-Falek *et al.*, 2006; Grundemann *et al.*, 2008; unchanged: Tan *et al.*, 2005; decreased: Kingsbury *et al.*, 2004; Papapetropoulos *et al.*, 2007; Simunovic *et al.*, 2008; Bossers *et al.*, 2009). However, our findings are consistent with western blot reports showing an increase in the membrane-associated α -synuclein in Parkinson's disease substantia nigra (full-length plus HMW, not necessarily full-length alone; Campbell *et al.*, 2001; Xu *et al.*, 2002; Liu *et al.*, 2005; Devi *et al.*, 2008) but normal levels in the cytosolic fraction (Campbell *et al.*, 2001; Liu *et al.*, 2005). The heterogeneity we observed in nigral α -synuclein_M levels (Fig. 2A; see also below), with many values falling within the range of normal controls, is also consistent with the contradictory reports in the literature (Table 1). We did not observe any correlation between α -synuclein_M accumulation and nigral Lewy body intensity (Supplementary Table 2). This observation is in agreement with some findings in the cerebral cortex in patients with dementia with Lewy bodies (Klucken *et al.*, 2006; but see Li *et al.*, 2005), although we are cautious in this interpretation due to a lack of quantitative assessment of Lewy bodies and Lewy neurites. Further studies by α -synuclein immunohistochemistry would help resolve this question in Parkinson's disease.

We did not observe regionally wide-spread, extra-nigral α -synuclein_M accumulation in Parkinson's disease as suggested by some recent immunohistochemical reports (Hishikawa *et al.*, 2001; Duda *et al.*, 2002; Braak *et al.*, 2003, 2007; Mori *et al.*, 2008) except for some mildly increased HMW α -synuclein species in putamen in three subjects (Fig. 3F). Our observation is more in line with the classic brainstem-predominant Lewy body pathology in idiopathic Parkinson's disease, i.e. low incidence of Lewy bodies in the striatum and frontal cortex. There are several possible explanations for the apparent discrepancy between the neurochemistry and histochemistry findings. First, our cases had been screened by

pathological examination to exclude those with diffuse Lewy bodies and therefore we aimed to represent only the 'classical' brainstem-predominant type of Parkinson's disease, i.e. at Braak stage III/IV. Indeed, in a case of dementia with Lewy bodies (data not shown), much higher levels of α -synuclein_M accumulation (both 17 kDa and HMW) were observed in the putamen in addition to those in cerebral cortices, consistent with immunohistochemical findings. In this respect, we suggest that some of the variability in the literature on α -synuclein status in Parkinson's disease might be explained by the failure to distinguish, in some studies, between classic brainstem-predominant Lewy body disease and dementia with Lewy bodies. The variance observed in our study could also involve inclusion of subjects with and without cognitive impairment. Second, there are differences between cortical/striatal Lewy bodies/Lewy neurites and brainstem Lewy bodies in Parkinson's disease, including size, density, staining pattern, and antibody reactivities, which might make α -synuclein-positive inclusions in cerebral cortex/striatum in Parkinson's disease less resistant to extraction and evade our neurochemical detection. However, cortical Lewy bodies as observed in dementia with Lewy bodies appear to be as 'tough' as those in the substantia nigra in Parkinson's disease (Campbell *et al.*, 2001). Finally, the evidence that detection of wide-spread α -synuclein immunoreactive pathology, in particular in oligodendrocytes (Hishikawa *et al.*, 2001) or astrocytes (Braak *et al.*, 2007) in Parkinson's disease depends on the type of antibody employed or a special pretreatment (Duda *et al.*, 2002; Braak *et al.*, 2007) suggests that the α -synuclein pathology revealed by immunohistochemistry might not be caused by α -synuclein_M accumulation but rather by conformational changes or changes in partnership status of α -synuclein. Surprisingly, the antibodies employed in the histochemical study did not recognize the massive α -synuclein_M accumulation in putamen of multiple system atrophy (Duda *et al.*, 2002) found in the present study, suggesting possible differences in neuronal (Lewy bodies) and glial (GICs) α -synuclein conformation/accumulation (*cf.* Croisier *et al.*, 2006).

Multiple system atrophy versus Parkinson's disease

We now show in a single comparative investigation striking quantitative differences in α -synuclein_M accumulation between Parkinson's disease and multiple system atrophy, in particular in substantia nigra (Fig. 2). This much more severe α -synuclein_M accumulation, together with wider regional involvement, might in part underlie the more aggressive progress of disease in multiple system atrophy than in Parkinson's disease, although we did not observe a significant correlation between levels of α -synuclein_M and estimated duration of either disease. On the other hand, the more prolonged disease duration in Parkinson's disease might have caused gradual loss of Lewy bodies and α -synuclein with the loss of dopamine neurons, resulting in less α -synuclein_M accumulation at an advanced stage. This relationship between α -synuclein accumulation and disease progression between the disorders was also noted for dementia with Lewy bodies and Parkinson's disease with dementia, with the former having

higher levels of α -synuclein pathology and shorter disease duration (Jellinger and Attems, 2006).

Our observation in multiple system atrophy suggests a positive association between striatal (caudate and putamen), but not substantia nigra, dopamine loss and α -synuclein_M accumulation in the striatum. This is indicated by the much more marked increase in α -synuclein_M levels in the putamen versus the caudate, in which the putamen was more affected by dopamine loss, and the positive correlation, that just missed statistical significance, between 17 kDa α -synuclein_M levels and dopamine loss in caudate (the striatal subdivision in which there was some variability in dopamine concentrations). In addition, α -synuclein_M accumulation was also correlated with neuronal loss/gliosis in the striatum. These findings suggest that there might be a causal relationship between striatal α -synuclein pathology and dopamine neuronal terminal damage, perhaps also suggesting a dying-back (striatum to nigra) degenerative mechanism in multiple system atrophy. We did not observe such correlations in Parkinson's disease. Indeed, there was a non-significant trend for a positive correlation (Pearson) between levels of the 17 kDa α -synuclein_M in the substantia nigra and dopamine levels in the caudate in Parkinson's disease ($r=0.57$, $P=0.11$). In this respect our data are consistent with other findings pointing towards a lack of correlation between α -synuclein pathology and clinical symptoms in Lewy body disorders (Parkkinen *et al.*, 2005, 2008; Burke *et al.*, 2008; Jellinger, 2008). Indeed, the presence of α -synuclein immunoreactive Lewy inclusions could represent a neuroprotective process (Kramer and Schulz-Schaeffer, 2007; Burke *et al.*, 2008). Although our finding might seem at variance with a recent observation by Kovacs *et al.* (2008) of an inverse correlation between nigral α -synuclein burden and concentration of a dopamine marker (dopamine transporter) in putamen, this investigation did not distinguish (as was our aim) between brainstem-predominant Lewy body disorders and dementia with Lewy bodies, thus allowing for the possibility of a lack of correlation between α -synuclein and brain pathology in classic Parkinson's disease (see also Jellinger, 2008). Further studies are needed to address the fundamental question whether it is dysregulated α -synuclein metabolism that does in fact drive the pathology of Parkinson's disease.

Funding

This study was supported in part by the Centre for Addiction and Mental Health Foundation, the Friedman Multiple System Atrophy Fund, the William S Storey and Al Silverberg Progressive Supranuclear Palsy Funds, the Society for progressive supranuclear palsy Fund, the VA Medical Research Program, and the Center of Excellence Program of the National Parkinson Foundation (Miami).

Supplementary material

Supplementary material is available at *Brain* online.

References

- Albers DS, Augood SJ. New insights into progressive supranuclear palsy. *Trends Neurosci* 2001; 24: 347–53.
- Anderson JP, Walker DE, Goldstein JM, de Laat R, Banducci K, Caccavello RJ, et al. Phosphorylation of Ser-129 is the dominant pathological modification of alpha-synuclein in familial and sporadic Lewy body disease. *J Biol Chem* 2006; 281: 29739–52.
- Attems J, Jellinger KA. The dorsal motor nucleus of the vagus is not an obligatory trigger site of Parkinson's disease. *Neuropathol Appl Neurobiol* 2008; 34: 466–7.
- Barbour R, Kling K, Anderson JP, Banducci K, Cole T, Diep L, et al. Red blood cells are the major source of alpha-synuclein in blood. *Neurodegener Dis* 2008; 5: 55–9.
- Bossers K, Meerhoff G, Balesar R, van Dongen JW, Kruse CG, Swaab DF, et al. Analysis of gene expression in Parkinson's disease: possible involvement of neurotrophic support and axon guidance in dopaminergic cell death. *Brain Pathol* 2009; 19: 91–107.
- Braak H, Del Tredici K, Rub U, de Vos RA, Jansen Steur EN, Braak E. Staging of brain pathology related to sporadic Parkinson's disease. *Neurobiol Aging* 2003; 24: 197–211.
- Braak H, Sastre M, Del Tredici K. Development of alpha-synuclein immunoreactive astrocytes in the forebrain parallels stages of intraneuronal pathology in sporadic Parkinson's disease. *Acta Neuropathol* 2007; 114: 231–41.
- Burke RE, Dauer WT, Vonsattel JP. A critical evaluation of the Braak staging scheme for Parkinson's disease. *Ann Neurol* 2008; 64: 485–91.
- Campbell BC, Li QX, Culvenor JG, Jakala P, Cappai R, Beyreuther K, et al. Accumulation of insoluble alpha-synuclein in dementia with Lewy bodies. *Neurobiol Dis* 2000; 7: 192–200.
- Campbell BC, McLean CA, Culvenor JG, Gai WP, Blumbergs PC, Jakala P, et al. The solubility of alpha-synuclein in multiple system atrophy differs from that of dementia with Lewy bodies and Parkinson's disease. *J Neurochem* 2001; 76: 87–96.
- Chiba-Falek O, Lopez GJ, Nussbaum RL. Levels of alpha-synuclein mRNA in sporadic Parkinson disease patients. *Mov Disord* 2006; 21: 1703–8.
- Choi P, Golts N, Snyder H, Chong M, Petrucelli L, Hardy J, et al. Co-association of parkin and alpha-synuclein. *Neuroreport* 2001; 12: 2839–43.
- Croisier E, De MR, Deprez M, Goldring K, Dexter DT, Pearce RK, et al. Comparative study of commercially available anti-alpha-synuclein antibodies. *Neuropathol Appl Neurobiol* 2006; 32: 351–6.
- Culvenor JG, McLean CA, Cutt S, Campbell BC, Maher F, Jakala P, et al. Non-Abeta component of Alzheimer's disease amyloid (NAC) revisited. NAC and alpha-synuclein are not associated with Abeta amyloid. *Am J Pathol* 1999; 155: 1173–81.
- Deramecourt V, Bombois S, Maurage CA, Ghestem A, Drobecq H, Vanmechelen E, et al. Biochemical staging of synucleinopathy and amyloid deposition in dementia with Lewy bodies. *J Neuropathol Exp Neurol* 2006; 65: 278–88.
- Devi L, Raghavendran V, Prabhu BM, Avadhani NG, Anandatheerthavarada HK. Mitochondrial import and accumulation of alpha-synuclein impair complex I in human dopaminergic neuronal cultures and Parkinson disease brain. *J Biol Chem* 2008; 283: 9089–100.
- Dickson DW, Liu W, Hardy J, Farrer M, Mehta N, Uitti R, et al. Widespread alterations of alpha-synuclein in multiple system atrophy. *Am J Pathol* 1999; 155: 1241–51.
- Duda JE, Giasson BI, Gur TL, Montine TJ, Robertson D, Biaggioni I, et al. Immunohistochemical and biochemical studies demonstrate a distinct profile of alpha-synuclein permutations in multiple system atrophy. *J Neuropathol Exp Neurol* 2000; 59: 830–41.
- Duda JE, Giasson BI, Mabon ME, Lee VM, Trojanowski JQ. Novel antibodies to synuclein show abundant striatal pathology in Lewy body diseases. *Ann Neurol* 2002; 52: 205–10.
- Farrer M, Kachergus J, Forno L, Lincoln S, Wang DS, Hulihan M, et al. Comparison of kindreds with Parkinsonism and alpha-synuclein genomic multiplications. *Ann Neurol* 2004; 55: 174–9.
- Forno LS. Neuropathology of Parkinson's disease. *J Neuropathol Exp Neurol* 1996; 55: 259–72.
- Fuchs J, Tichopad A, Golub Y, Munz M, Schweitzer KJ, Wolf B, et al. Genetic variability in the SNCA gene influences alpha-synuclein levels in the blood and brain. *FASEB J* 2008; 22: 1327–34.
- Furukawa Y, Kapatos G, Haycock JW, Worsley J, Wong H, Kish SJ, et al. Brain biopterin and tyrosine hydroxylase in asymptomatic dopa-responsive dystonia. *Ann Neurol* 2002a; 51: 637–41.
- Furukawa Y, Vigouroux S, Wong H, Guttman M, Rajput AH, Ang L, et al. Brain proteasomal function in sporadic Parkinson's disease and related disorders. *Ann Neurol* 2002b; 51: 779–82.
- Gilman S, Low PA, Quinn N, Albanese A, Ben-Shlomo Y, Fowler CJ, et al. Consensus statement on the diagnosis of multiple system atrophy. *J Neurol Sci* 1999; 163: 94–8.
- Goedert M, Spillantini MG. Lewy body diseases and multiple system atrophy as alpha-synucleinopathies. *Mol Psychiatry* 1998; 3: 462–5.
- Grundemann J, Schlaudraff F, Haeckel O, Liss B. Elevated alpha-synuclein mRNA levels in individual UV-laser-microdissected dopaminergic substantia nigra neurons in idiopathic Parkinson's disease. *Nucleic Acids Res* 2008; 36: e38.
- Gwinn-Hardy K, Mehta ND, Farrer M, Maraganore D, Muentner M, Yen SH, et al. Distinctive neuropathology revealed by alpha-synuclein antibodies in hereditary Parkinsonism and dementia linked to chromosome 4p. *Acta Neuropathol* 2000; 99: 663–72.
- Hishikawa N, Hashizume Y, Yoshida M, Sobue G. Widespread occurrence of argyrophilic glial inclusions in Parkinson's disease. *Neuropathol Appl Neurobiol* 2001; 27: 362–72.
- Irizarry MC, Kim TW, McNamara M, Tanzi RE, George JM, Clayton DF, et al. Characterization of the precursor protein of the non-A beta component of senile plaques (NACP) in the human central nervous system. *J Neuropathol Exp Neurol* 1996; 55: 889–95.
- Iwai A, Masliah E, Yoshimoto M, Ge N, Flanagan L, de Silva HA, et al. The precursor protein of non-A beta component of Alzheimer's disease amyloid is a presynaptic protein of the central nervous system. *Neuron* 1995; 14: 467–75.
- Jakes R, Crowther RA, Lee VM, Trojanowski JQ, Iwatsubo T, Goedert M. Epitope mapping of LB509, a monoclonal antibody directed against human alpha-synuclein. *Neurosci Lett* 1999; 269: 13–6.
- Jakes R, Spillantini MG, Goedert M. Identification of two distinct synucleins from human brain. *FEBS Lett* 1994; 345: 27–32.
- Jellinger KA. Alpha-synuclein pathology in Parkinson's and Alzheimer's disease brain: incidence and topographic distribution—a pilot study. *Acta Neuropathol* 2003; 106: 191–201.
- Jellinger KA. A critical reappraisal of current staging of Lewy-related pathology in human brain. *Acta Neuropathol* 2008; 116: 1–16.
- Jellinger KA, Attems J. Does striatal pathology distinguish Parkinson disease with dementia and dementia with Lewy bodies? *Acta Neuropathol* 2006; 112: 253–60.
- Kahle PJ, Neumann M, Ozmen L, Muller V, Jacobsen H, Spooen W, et al. Hyperphosphorylation and insolubility of alpha-synuclein in transgenic mouse oligodendrocytes. *EMBO Rep* 2002; 3: 583–8.
- Kahle PJ, Neumann M, Ozmen L, Muller V, Odoj S, Okamoto N, et al. Selective insolubility of alpha-synuclein in human Lewy body diseases is recapitulated in a transgenic mouse model. *Am J Pathol* 2001; 159: 2215–25.
- Kalaitzakis ME, Graeber MB, Gentleman SM, Pearce RK. The dorsal motor nucleus of the vagus is not an obligatory trigger site of Parkinson's disease: a critical analysis of alpha-synuclein staging. *Neuropathol Appl Neurobiol* 2008; 34: 284–95.
- Kingsbury AE, Daniel SE, Sangha H, Eisen S, Lees AJ, Foster OJ. Alteration in alpha-synuclein mRNA expression in Parkinson's disease. *Mov Disord* 2004; 19: 162–70.
- Kish SJ, Shannak K, Hornykiewicz O. Uneven pattern of dopamine loss in the striatum of patients with idiopathic Parkinson's disease.

- Pathophysiologic and clinical implications. *N Engl J Med* 1988; 318: 876–80.
- Kish SJ, Tong J, Hornykiewicz O, Rajput A, Chang LJ, Guttman M, et al. Preferential loss of serotonin markers in caudate versus putamen in Parkinson's disease. *Brain* 2008; 131: 120–31.
- Klucken J, Ingelsson M, Shin Y, Irizarry MC, Hedley-Whyte ET, Frosch M, et al. Clinical and biochemical correlates of insoluble alpha-synuclein in dementia with Lewy bodies. *Acta Neuropathol* 2006; 111: 101–8.
- Kovacs GG, Milenkovic JJ, Preusser M, Budka H. Nigral burden of alpha-synuclein correlates with striatal dopamine deficit. *Mov Disord* 2008; 23: 1608–12.
- Kramer ML, Schulz-Schaeffer WJ. Presynaptic alpha-synuclein aggregates, not Lewy bodies, cause neurodegeneration in dementia with Lewy bodies. *J Neurosci* 2007; 27: 1405–10.
- Langston JW, Sastry S, Chan P, Forno LS, Bolin LM, Di Monte DA. Novel alpha-synuclein-immunoreactive proteins in brain samples from the Contursi kindred, Parkinson's, and Alzheimer's disease. *Exp Neurol* 1998; 154: 684–90.
- Li W, West N, Colla E, Pletnikova O, Troncoso JC, Marsh L, et al. Aggregation promoting C-terminal truncation of alpha-synuclein is a normal cellular process and is enhanced by the familial Parkinson's disease-linked mutations. *Proc Natl Acad Sci USA* 2005; 102: 2162–7.
- Liu CW, Giasson BI, Lewis KA, Lee VM, Demartino GN, Thomas PJ. A precipitating role for truncated alpha-synuclein and the proteasome in alpha-synuclein aggregation: implications for pathogenesis of Parkinson disease. *J Biol Chem* 2005; 280: 22670–8.
- Maroteaux L, Scheller RH. The rat brain synucleins; family of proteins transiently associated with neuronal membrane. *Brain Res Mol Brain Res* 1991; 11: 335–43.
- Mash DC, Ouyang Q, Pablo J, Basile M, Izenwasser S, Lieberman A, et al. Cocaine abusers have an overexpression of alpha-synuclein in dopamine neurons. *J Neurosci* 2003; 23: 2564–71.
- McKeith IG, Dickson DW, Lowe J, Emre M, O'Brien JT, Feldman H, et al. Diagnosis and management of dementia with Lewy bodies: third report of the DLB Consortium. *Neurology* 2005; 65: 1863–72.
- Meulener MC, Graves CL, Sampathu DM, Armstrong-Gold CE, Bonini NM, Giasson BI. DJ-1 is present in a large molecular complex in human brain tissue and interacts with alpha-synuclein. *J Neurochem* 2005; 93: 1524–32.
- Miller DW, Hague SM, Clarimon J, Baptista M, Gwinn-Hardy K, Cookson MR, et al. Alpha-synuclein in blood and brain from familial Parkinson disease with SNCA locus triplication. *Neurology* 2004; 62: 1835–8.
- Mollenhauer B, Cullen V, Kahn I, Krastins B, Outeiro TF, Pepivani I, et al. Direct quantification of CSF alpha-synuclein by ELISA and first cross-sectional study in patients with neurodegeneration. *Exp Neurol* 2008; 213: 315–25.
- Mori F, Tanji K, Zhang H, Kakita A, Takahashi H, Wakabayashi K. alpha-Synuclein pathology in the neostriatum in Parkinson's disease. *Acta Neuropathol* 2008; 115: 453–9.
- Mori H, Oda M, Komori T, Arai N, Takanashi M, Mizutani T, et al. Lewy bodies in progressive supranuclear palsy. *Acta Neuropathol* 2002; 104: 273–8.
- Muentner MD, Forno LS, Hornykiewicz O, Kish SJ, Maraganore DM, Caselli RJ, et al. Hereditary form of Parkinsonism—dementia. *Ann Neurol* 1998; 43: 768–81.
- Paleologou KE, Kragh CL, Mann DM, Salem SA, Al-Shami R, Allsop D, et al. Detection of elevated levels of soluble alpha-synuclein oligomers in post-mortem brain extracts from patients with dementia with Lewy bodies. *Brain* 2009; 132: 1093–101.
- Papapetropoulos S, Adi N, Mash DC, Shehadeh L, Bishopric N, Shehadeh L. Expression of alpha-synuclein mRNA in Parkinson's disease. *Mov Disord* 2007; 22: 1057–9; author reply 1057.
- Papp MI, Kahn JE, Lantos PL. Glial cytoplasmic inclusions in the CNS of patients with multiple system atrophy (striatonigral degeneration, olivopontocerebellar atrophy and Shy-Drager syndrome). *J Neurol Sci* 1989; 94: 79–100.
- Papp MI, Lantos PL. The distribution of oligodendroglial inclusions in multiple system atrophy and its relevance to clinical symptomatology. *Brain* 1994; 117 (Pt 2): 235–43.
- Parkkinen L, Kauppinen T, Pirttila T, Autere JM, Alafuzoff I. Alpha-synuclein pathology does not predict extrapyramidal symptoms or dementia. *Ann Neurol* 2005; 57: 82–91.
- Parkkinen L, Pirttila T, Alafuzoff I. Applicability of current staging/categorization of alpha-synuclein pathology and their clinical relevance. *Acta Neuropathol* 2008; 115: 399–407.
- Pawlyk AC, Giasson BI, Sampathu DM, Perez FA, Lim KL, Dawson VL, et al. Novel monoclonal antibodies demonstrate biochemical variation of brain parkin with age. *J Biol Chem* 2003; 278: 48120–8.
- Perrin RJ, Payton JE, Barnett DH, Wraight CL, Woods WS, Ye L, et al. Epitope mapping and specificity of the anti-alpha-synuclein monoclonal antibody Syn-1 in mouse brain and cultured cell lines. *Neurosci Lett* 2003; 349: 133–5.
- Pletnikova O, West N, Lee MK, Rudow GL, Skolasky RL, Dawson TM, et al. Abeta deposition is associated with enhanced cortical alpha-synuclein lesions in Lewy body diseases. *Neurobiol Aging* 2005; 26: 1183–92.
- Polymeropoulos MH, Lavedan C, Leroy E, Ide SE, Dehejia A, Dutra A, et al. Mutation in the alpha-synuclein gene identified in families with Parkinson's disease. *Science* 1997; 276: 2045–7.
- Pountney DL, Treweek TM, Chataway T, Huang Y, Chegini F, Blumberg PC, et al. Alpha B-crystallin is a major component of glial cytoplasmic inclusions in multiple system atrophy. *Neurotox Res* 2005; 7: 77–85.
- Rockenstein E, Hansen LA, Mallory M, Trojanowski JQ, Galasko D, Masliah E. Altered expression of the synuclein family mRNA in Lewy body and Alzheimer's disease. *Brain Res* 2001; 914: 48–56.
- Sampathu DM, Giasson BI, Pawlyk AC, Trojanowski JQ, Lee VM. Ubiquitination of alpha-synuclein is not required for formation of pathological inclusions in alpha-synucleinopathies. *Am J Pathol* 2003; 163: 91–100.
- Sharon R, Bar-Joseph I, Frosch MP, Walsh DM, Hamilton JA, Selkoe DJ. The formation of highly soluble oligomers of alpha-synuclein is regulated by fatty acids and enhanced in Parkinson's disease. *Neuron* 2003; 37: 583–95.
- Shehadeh L, Mitsi G, Adi N, Bishopric N, Papapetropoulos S. Expression of Lewy body protein septin 4 in postmortem brain of Parkinson's disease and control subjects. *Mov Disord* 2009; 24: 204–10.
- Simunovic F, Yi M, Wang Y, Macey L, Brown LT, Krichevsky AM, et al. Gene expression profiling of substantia nigra dopamine neurons: further insights into Parkinson's disease pathology. *Brain* 2008.
- Singleton AB, Farrer M, Johnson J, Singleton A, Hague S, Kachergus J, et al. alpha-Synuclein locus triplication causes Parkinson's disease. *Science* 2003; 302: 841.
- Snyder H, Mensah K, Theisler C, Lee J, Matouschek A, Wolozin B. Aggregated and monomeric alpha-synuclein bind to the 56' proteasomal protein and inhibit proteasomal function. *J Biol Chem* 2003; 278: 11753–9.
- Spillantini MG, Crowther RA, Jakes R, Cairns NJ, Lantos PL, Goedert M. Filamentous alpha-synuclein inclusions link multiple system atrophy with Parkinson's disease and dementia with Lewy bodies. *Neurosci Lett* 1998a; 251: 205–8.
- Spillantini MG, Crowther RA, Jakes R, Hasegawa M, Goedert M. alpha-Synuclein in filamentous inclusions of Lewy bodies from Parkinson's disease and dementia with lewy bodies. *Proc Natl Acad Sci USA* 1998b; 95: 6469–73.
- Spillantini MG, Schmidt ML, Lee VM, Trojanowski JQ, Jakes R, Goedert M. Alpha-synuclein in Lewy bodies. *Nature* 1997; 388: 839–40.
- Tan EK, Chandran VR, Fook-Chong S, Shen H, Yew K, Teoh ML, et al. Alpha-synuclein mRNA expression in sporadic Parkinson's disease. *Mov Disord* 2005; 20: 620–3.
- Tofaris GK, Razaq A, Ghetti B, Lilley KS, Spillantini MG. Ubiquitination of alpha-synuclein in Lewy bodies is a pathological event not associated with impairment of proteasome function. *J Biol Chem* 2003; 278: 44405–11.

- Tong J, Fitzmaurice PS, Ang LC, Furukawa Y, Guttman M, Kish SJ. Brain dopamine-stimulated adenylyl cyclase activity in Parkinson's disease, multiple system atrophy, and progressive supranuclear palsy. *Ann Neurol* 2004; 55: 125–9.
- Trojanowski JQ, Revesz T. Proposed neuropathological criteria for the post mortem diagnosis of multiple system atrophy. *Neuropathol Appl Neurobiol* 2007; 33: 615–20.
- Tsuboi Y, Ahlskog JE, Apaydin H, Parisi JE, Dickson DW. Lewy bodies are not increased in progressive supranuclear palsy compared with normal controls. *Neurology* 2001; 57: 1675–8.
- Tu PH, Galvin JE, Baba M, Giasson B, Tomita T, Leight S, et al. Glial cytoplasmic inclusions in white matter oligodendrocytes of multiple system atrophy brains contain insoluble alpha-synuclein. *Ann Neurol* 1998; 44: 415–22.
- Uchikado H, DelleDonne A, Ahmed Z, Dickson DW. Lewy bodies in progressive supranuclear palsy represent an independent disease process. *J Neuropathol Exp Neurol* 2006; 65: 387–95.
- Ueda K, Fukushima H, Masliah E, Xia Y, Iwai A, Yoshimoto M, et al. Molecular cloning of cDNA encoding an unrecognized component of amyloid in Alzheimer disease. *Proc Natl Acad Sci USA* 1993; 90: 11282–6.
- Uryu K, Richter-Landsberg C, Welch W, Sun E, Goldbaum O, Norris EH, et al. Convergence of heat shock protein 90 with ubiquitin in filamentous alpha-synuclein inclusions of alpha-synucleinopathies. *Am J Pathol* 2006; 168: 947–61.
- Wakabayashi K, Matsumoto K, Takayama K, Yoshimoto M, Takahashi H. NACP, a presynaptic protein, immunoreactivity in Lewy bodies in Parkinson's disease. *Neurosci Lett* 1997; 239: 45–8.
- Wakabayashi K, Yoshimoto M, Tsuji S, Takahashi H. Alpha-synuclein immunoreactivity in glial cytoplasmic inclusions in multiple system atrophy. *Neurosci Lett* 1998; 249: 180–2.
- Waters CH, Miller CA. Autosomal dominant Lewy body Parkinsonism in a four-generation family. *Ann Neurol* 1994; 35: 59–64.
- Waxman EA, Duda JE, Giasson BI. Characterization of antibodies that selectively detect alpha-synuclein in pathological inclusions. *Acta Neuropathol* 2008; 116: 37–46.
- Weinreb PH, Zhen W, Poon AW, Conway KA, Lansbury PT Jr. NACP, a protein implicated in Alzheimer's disease and learning, is natively unfolded. *Biochemistry* 1996; 35: 13709–15.
- Wilson JM, Levey AI, Rajput A, Ang L, Guttman M, Shannak K, et al. Differential changes in neurochemical markers of striatal dopamine nerve terminals in idiopathic Parkinson's disease. *Neurology* 1996; 47: 718–26.
- Wilson JM, Nobrega JN, Carroll ME, Niznik HB, Shannak K, Lac ST, et al. Heterogeneous subregional binding patterns of 3H-WIN 35,428 and 3H-GBR 12,935 are differentially regulated by chronic cocaine self-administration. *J Neurosci* 1994; 14: 2966–79.
- Xu J, Kao SY, Lee FJ, Song W, Jin LW, Yankner BA. Dopamine-dependent neurotoxicity of alpha-synuclein: a mechanism for selective neurodegeneration in Parkinson disease. *Nat Med* 2002; 8: 600–6.
- Zaccai J, Brayne C, McKeith I, Matthews F, Ince PG. Patterns and stages of alpha-synucleinopathy: Relevance in a population-based cohort. *Neurology* 2008; 70: 1042–8.