

---

**Revision:** SCAN-13-283

**Running title:** Neural correlates of trait creativity

**Title:** Brain Structure Links Trait Creativity to Openness to Experience

**Authors:** Wenfu Li<sup>1,2\*</sup>, Xueting Li<sup>3\*</sup>, Lijie Huang<sup>3</sup>, Xiangzhen Kong<sup>3</sup>, Wenjing Yang<sup>1,2</sup>, Dongtao Wei<sup>1,2</sup>, Jingguang Li<sup>3</sup>, Hongsheng Chen<sup>1,2</sup>, Qinglin Zhang<sup>1,2</sup>, Jiang Qiu<sup>1,2\*</sup>, Jia Liu<sup>3\*</sup>

\*Equal contribution

**Affiliation:**

<sup>1</sup>Key Laboratory of Cognition and Personality (SWU), Ministry of Education, Chongqing 400715, China

<sup>2</sup>School of Psychology, Southwest University, Chongqing 400715, China

<sup>3</sup>State Key Laboratory of Cognitive Neuroscience and Learning, Beijing Normal University, Beijing 100875, China

**Correspondence Author:**

Jiang Qiu, School of Psychology, Southwest University, Beibei, Chongqing, 400715 China. Tel: +86 23 6836 7942, E-mail: [qiu318@swu.edu.cn](mailto:qiu318@swu.edu.cn)

Jia Liu, Ph.D.; Room 405, Yingdong Building, 19 Xijiekouwai St, Haidian District, Beijing 100875, China. Tel.: +86-10-58806154; fax: +86-10-58806154.

E-mail: [liujia@bnu.edu.cn](mailto:liujia@bnu.edu.cn)

**Number of manuscript pages:** 37

**Number of tables:** 2

**Number of figures:** 3

---

**Abstract**

Creativity is crucial to the progression of human civilization and has led to important scientific discoveries. Especially, individuals are more likely to have scientific discoveries if they possess certain personality traits of creativity (trait creativity), including imagination, curiosity, challenge, and risk-taking. The current study used voxel-based morphometry (VBM) to identify the brain regions underlying individual differences in trait creativity, as measured by the Williams creativity aptitude test, in a large sample ( $n = 246$ ). We found that creative individuals had higher gray matter volume in the right posterior middle temporal gyrus (pMTG), which might be related to semantic processing during novelty seeking (e.g., novel association, conceptual integration, and metaphor understanding). More importantly, although basic personality factors such as openness to experience, extroversion, conscientiousness and agreeableness (as measured by the NEO Personality Inventory) all contributed to trait creativity, only openness to experience mediated the association between the right pMTG volume and trait creativity. Taken together, our results suggest that the basic personality trait of openness might play an important role in shaping an individual's trait creativity.

**Key words:** Openness to experience; Trait creativity; Creativity assessment packet; Voxel-based morphometry

---

## 1 Introduction

Creativity is imperative to the progression of human civilization and is essential to cultural life. It is characterized by the formation of something that is both novel and useful (Jung et al., 2013; Sternberg & Lubart, 1993). Throughout the history of human civilization, there have been many creative individuals, such as Albert Einstein, Thomas Alva Edison, Sir Isaac Newton, or Charles Dickens, who made outstanding contributions to society. Eminent creators like these also share certain personality traits (e.g., curiosity and imagination) and creative cognition (e.g., divergent thinking) that make them more creative than individuals who lack of these characteristics (Feist, 1998; Oldham & Cummings, 1996; Piffer, 2012). In fact, creative potential can be separated into those aspects related to personality and those related to cognition (Amabile, 1996; Gough, 1979; Piffer, 2012; Rhodes, 1961; Runco, 2007). Thus, based on these findings, trait creativity might be a set of aptitude or personality variables that influence an individual's creativity, while creative cognition refers to cognitive processes and metacognitive strategies during creative production, such as divergent thinking (Satzinger et al., 1999; Zeng et al., 2009). Here, we use structural magnetic resonance imaging (sMRI) to investigate the brain structures underlying individual differences in trait creativity.

As early as 1969, Williams suggested a cognitive-affective model of creativity and developed a corresponding creativity assessment packet (CAP, Williams, 1969, 1980). The CAP included a divergent thinking test (similar to the figural Torrance Tests of Creative Thinking) and a divergent feeling test (including 4 aptitude elements:

---

imagination, risk-taking, curiosity and challenge) (Hwang et al., 2007; Liu et al., 2011; Williams, 1993). The divergent feeling test [also known as the Williams creative aptitude test (WCAT); Lin and Wang (1994)] is a self-report creative personality assessment that is widely used in creativity studies (Cai & Zhu, 2007; Chan, 2005; Claxton et al., 2005; Fekken, 1985; Maker & Schiever, 2005; Miller, 2009; Williams, 1993). Sternberg (1999) also suggested that these aptitudes (trait creativity) can have an impact on creative problem solving ability. Studies of creative personality have indicated that trait creativity is associated with certain personality characteristics, such as norm doubting, ambition, impulsivity, willing to take risks, autonomy, imagination, hostility, curiosity, and self-confidence (Cassandro & Simonton, 2010; Davis, 1992; Eysenck, 1997; Feist, 1998; Piffer, 2012). In addition, many studies have investigated the relationship between creativity (as measured by divergent thinking tests, creative achievement questionnaires or creative personality assessments) and the five basic factors of personality (as measured by the NEO Personality Inventory: openness to experience, conscientiousness, extraversion, agreeableness, and neuroticism (Costa & McCrae, 1992). The central finding is that openness to experience and extraversion are positive predictors of creativity, whereas neuroticism is a negative predictor of creativity (Aguilar-Alonso, 1996; Chamorro-Premuzic & Reichenbacher, 2008; Dollinger et al., 2004; Furnham et al., 2009; Hoseinifar et al., 2011; King et al., 1996; McCrae, 1987). These findings indicate that creative potential might be positively related to some basic dimensions of personality (e.g., openness to experience and extraversion).

---

Recent investigations into creativity have utilized brain imaging techniques, such as functional magnetic resonance imaging (fMRI) and structural MRI (sMRI) to study the neural correlates of creative cognition (for reviews see Arden et al., 2010; Dietrich & Kanso, 2010; Jung et al., 2013). To some extent, previous fMRI studies have indicated that the hippocampus, anterior cingulate cortex, rostralateral prefrontal cortex (PFC), right anterior superior temporal gyrus, parieto-temporal brain regions, precuneus and inferior occipital gyrus are associated with creative thinking (Bowden et al., 2005; Ellamil et al., 2012; Fink et al., 2009). However, there is little overlap in patterns of brain activation reported by studies that employed different measures of creative cognition (Arden et al., 2010; Dietrich & Kanso, 2010; Piffer, 2012).

Further evidence comes from sMRI studies that have explored the relationships between brain anatomy and creative cognition. These studies measured brain structure using volume, concentration, and thickness index. For example, Moore et al. (2009) found that the score of a visuo-spatial divergent thinking task, as measured by the Torrance Tests of Creative Thinking (TTCT) was correlated negatively with the size of the splenium region of the corpus callosum. In addition, Jung et al. (2010) linked the measure of divergent thinking [as scored by composite creativity index (CCI)] and creative achievement questionnaire (CAQ) to cortical thickness. Their results showed that the left lingual gyrus, right cuneus, right inferior parietal gyrus, right angular gyrus, and fusiform gyrus were negatively correlated with CCI, while the right posterior cingulate was positively correlated with CCI. In addition, the right angular gyrus was associated positively with CAQ score while the left lateral orbitofrontal

---

gyrus was associated negatively with the CAQ score. Takeuchi et al. (2010a) also found positive correlations between regional gray matter volume (rGMV) and individual creativity (as assessed by S-A creativity test) in the right dorsolateral prefrontal cortex (DLPFC), bilateral precuneus, bilateral caudate and right midbrain regions using VBM. Gansler et al. (2011) subsequently found that creative performance on the figural TTCT to be positively related to the gray matter volume of the right parietal lobe gray matter, which might be related to global attention and visuo-spatial processing. In sum, brain structures that have been positively correlated with creativity are the right dorsolateral prefrontal cortex (DLPFC), right posterior cingulate, right parietal lobe, bilateral caudate, and right midbrain regions (Jung et al., 2010; Moore et al., 2009; Takeuchi et al., 2010a), while, brain structures that have been inversely correlated with creativity are the left lateral orbitofrontal gyrus, lingual gyrus, inferior parietal gyrus, and fusiform gyrus (Gansler et al., 2011; Jung et al., 2010). Thus, the anatomical correlates of creativity is not “limited to one lobe of the brain, nor to one hemisphere, nor to the ‘more is better’ notion” (Jung et al., 2010). Although there have been inconsistent findings in these studies, both increased and decreased brain regions might be consistent with the high complexity of human creativity which requires diverse cognitive abilities (Dietrich, 2004; Dietrich & Kanso, 2010; Jung et al., 2013; Takeuchi et al., 2010a).

An increasing amount of research has focused on inter-individual differences in behavior (e.g., those related to stable personality characteristics) and associated variations in brain anatomy using non-invasive structural MRI (Jung et al., 2010;

Kanai & Rees, 2011; Takeuchi et al., 2010b). Trait creativity is likely to be relatively stable and reliable as opposed to creative thinking. The examination of anatomical features using structural imaging may be more efficacious for investigations of (stable) trait creativity than functional MRI. Therefore, the present study employ VBM to identify the anatomical correlates of individual trait creativity, as measured by the Williams creativity aptitude test (WCAT) (Lin & Wang, 1994). In light of previous neuroscience findings on creativity (Gansler et al., 2011; Jung et al., 2010; Jung et al., 2013; Moore et al., 2009; Takeuchi et al., 2010a), we hypothesized that individual differences in trait creativity (higher trait creativity) would be associated with larger volume in the DLPFC a brain region that has been linked to the inhibition of control (challenge and risk-taking) (Takeuchi et al., 2010a) and the right posterior superior temporal sulcus, which has been implicated in novelty seeking (curiosity and imagination) (Knoch et al., 2006; Krain et al., 2006). In addition, higher trait creativity might be associated with decreased volume in the lateral orbitofrontal gyrus (novel goal-directed behavior; Jung et al., 2010; Rolls et al., 2005). We further examine which basic personality trait (e.g., openness to experience or extraversion) would be able to mediate the relationship between brain structure and trait creativity.

## **2 Materials and methods**

### ***2.1 Subjects***

In this study, 252 healthy college students (114 men, mean age = 21.65 years) from Beijing Normal University (China) participated in this study. The experimental protocol was approved by the Institutional Review Board of Beijing Normal

---

University. Written informed consent was obtained from all participants prior to the experiment. In addition, participants were paid for their participation.

Two participants were excluded because of incomplete or erroneous questionnaire data. Four participants were omitted from further analyses due to excessive artifacts or abnormal brain structure (e.g., unusually large ventricles). Therefore, 246 of the students were included in further analyses (112 men, aged 18–25 years, mean = 21.70  $\pm$  1.02 years; 134 women, aged 19–24 years, mean = 21.63  $\pm$  1.06 years).

Specifically, the majority of the remaining participants (n=230) were right-handed based on their self-report on handedness and all reported no history of neurological deficits. Excluding non-right-handedness participants did not change the correlation between rGMV and SWCAT (for details, see the results section). Thus, all the participants were included in the current study.

## ***2.2 Assessment of individual trait creativity***

Trait creativity was assessed using the test of divergent feelings, which is part of the creativity assessment packet developed by Williams (Williams, 1980). Specifically, the current study utilized the Chinese version of the scale developed by Lin and Wang (1994) known as the Williams creative aptitude test (WCAT). This scale, which contains 50 items (e.g., an item of imagination such as: “If the final page of a storybook is missing, I will make up the story’s ending myself.”), provides scores for imagination, curiosity, challenge and risk-taking. Subjects were asked to rate the extent to which they agree or disagree with each item on a six-point Likert scales ranging from strongly disagree to strongly agree. The total score of the WCAT



---

(SWCAT) was calculated by adding the responses of the 50 items (the eight reverse item scores were subtracted from the seven prior in order to obtain the total score). The higher this score, the higher creative potential. The split half reliability of the WCAT is 0.41~0.92, the Cronbach alpha coefficient is 0.40~0.87, and the test-retest reliability is 0.49~0.81 (Hwang et al., 2007). The Cronbach alpha coefficient in the current study was 0.88. In the gray matter volume analysis, only the total scores were included. The scores for each individual factor were omitted from this analysis because of the high correlations among the total scores, the factor scores, and inter-factor correlations.

### ***2.3 Assessment of personality***

The Revised NEO Personality Inventory (NEO-PI-R, Costa & McCrae, 1992) is a 120-item self-report questionnaire based on the five-factor model of personality (Costa & McCrae, 1995; Digman, 1990). Respondents are required to indicate (on a five-point Likert scale) the extent to which they agree or disagree with each statement (ranging from strongly disagree to strongly agree) (Ortet et al., 2012). This inventory provides summary scores for five different domains of personality: neuroticism, extraversion, openness to experience, agreeableness and conscientiousness.

### ***2.4 Assessment of general intelligence***

We used the Raven's Advanced Progressive Matrix (RAPM, Raven, 1998) to measure participants' general intelligence (Takeuchi et al., 2010b; Takeuchi et al., 2011) in order to control for the influence of general intelligence on brain gray matter

---

(Colom et al., 2006; Jung & Haier, 2007; Takeuchi et al., 2011). This scale contains 36 nonverbal items. For each item, the participant is required to select the missing piece of a  $3 \times 3$  matrix from one of eight alternatives (Takeuchi et al., 2010a). The score of this psychometric test, which is used as an index of individual intelligence, is equal to the number of correct answers given by participants within a 30-minute period (Takeuchi et al., 2010b).

### ***2.5 Data acquisition***

Participants were scanned using a Siemens 3T scanner (MAGENTOM Trio, a Tim System) with a 12-channel phased-array head coil located at the BNU Imaging Center for Brain Research, Beijing, China. Structural MRI images were acquired using a 3D magnetization-prepared rapid gradient-echo (MP-RAGE) T1-weighted sequence (TR/TE/TI = 2530/3.39/1100 ms, flip angle = 7 degrees, FOV =  $256 \times 256$  mm). In total, 128 contiguous sagittal slices were acquired with  $1 \times 1$  mm in-plane resolution and 1.33 mm slab thickness for whole brain coverage.

### ***2.6 Data preprocessing***

VBM was employed to characterize the differences in gray matter volume (GMV) to determine the neuroanatomical correlates of behavioral performance across participants (Ashburner & Friston, 2000). VBM was performed using Statistical Parametric Mapping (SPM) version 8 (Wellcome Department of Imaging Neuroscience, London, UK), with an optimized VBM protocol (Good et al., 2001) on

---

T1-weighted structural images. First, image quality was assessed by visual inspection. A total of four participants, whose images had excessive scanner artifacts or showed gross anatomical abnormalities, were excluded. Second, the image was reoriented manually to the anterior commissure for each participant. Third, images were segmented into four distinct tissue classes, namely gray matter, white matter, cerebrospinal fluid, and everything else (e.g., skull and scalp) using a unified segmentation approach (Ashburner & Friston, 2005). Fourth, gray matter images for each participant were normalized to a study-specific template in MNI152 space using the Diffeomorphic Anatomical Registration through Exponential Lie algebra (DARTEL) registration method (Ashburner, 2007). The DARTEL registration involves repetitively computing the study-specific template based on the average tissue probability maps from all participants followed by warping all participants' tissue maps into the generated template to improve the alignment. Fifth, gray matter voxel values were modulated by multiplying the Jacobian determinants derived from the normalization procedure in order to preserve the volume of tissue in each structure after warping. The modulated gray matter images were then smoothed with an 8-mm full width at half maximum (FWHM) isotropic Gaussian kernel. Finally, to exclude noisy voxels, the modulated images were masked using an absolute masking with a threshold of 0.2. The masked modulated gray matter images were used for further statistical analyses.

## ***2.7 Statistical analysis***

### 2.7.1 Behavioral data analysis

All behavioral data were analyzed using the statistical software SPSS 13.0 (SPSS Inc., Chicago, IL, USA). Pearson correlations were carried out to examine the relationships between: the SWCAT (total score) and the WCAT subscale score; the SWCAT and the five NEO-PI-R subscale scores; the SWCAT and age; and the SWCAT and the RAPM score. The differences in the SWCAT, RAPM and subscales scores of NEO-PI-R between males and females were also computed.

### 2.7.2 MRI data analysis

Statistical analysis of the MRI data was conducted using a general linear model (GLM). To investigate the anatomical correlates of individual differences in creativity, the SWCAT was entered as the covariate of interest, while the effect of gender, age, the score of RAPM and the total GMV (tGMV) were treated as the covariates of no interest. To perform the multiple comparisons correction, the voxel-wise intensity threshold was set at  $P < 0.005$  and a cluster-level threshold was calculated using the AlphaSim program in AFNI, with Monte Carlo simulation (Cox, 1996; Ward, 2000). AlphaSim program is one of the methods for multiple comparison correction combining voxel intensity and cluster extent. Effects were deemed to be significant when the volume of a cluster was greater than the minimum cluster size on whole brain GMV (determined using the Monte Carlo simulation; 129 voxels, 1032 mm<sup>3</sup>), in which case the probability of a type I error was less than 0.05. Finally, the results were displayed using FSLviewer (<http://fsl.fmrib.ox.ac.uk/fsl/fslview/>). Generally,

---

AlphaSim is widely used in previous literatures about VBM data analysis (DeYoung et al., 2010b; Ding et al., 2012; Farb et al.; Kong et al., 2013; Schwartz et al., 2010; Yang et al., 2013; Zou et al., 2012). Although the results corrected by Monte Carlo simulation might have some limitations reported in the study of Silver et al. (2011), it can provide the appropriate cluster-level threshold to achieve the desired false-positive rate.

### 3 Results

#### 3.1 Behavioral results

The mean, standard deviation and data distribution range for age, the SWCAT, RAPM scores and NEO-PI-R scores are shown in Table 1.

#### INSERT TABLE 1 ABOUT HERE

As the total score of the WCAT was highly correlated with the WCAT subscale scores (curiosity:  $r = 0.88$ ,  $P < 0.001$ ; risk-taking:  $r = 0.81$ ,  $P < 0.001$ ; challenge:  $r = 0.87$ ,  $P < 0.001$ ; imagination:  $r = 0.76$ ,  $P < 0.001$ ), only the SWCAT was used as the measure of individual trait creativity in the VBM analysis.

There were no statistically significant differences between males and females ( $P_s > 0.1$ ) in terms of: the SWCAT (mean standard deviation for females was  $199.55 \pm 22.75$ , and for males was  $203.21 \pm 17.78$ ,  $P = 0.159$ ), RAPM scores (females  $26.31 \pm 3.60$ , males  $25.41 \pm 4.83$ ,  $P = 0.106$ ) or NEO-PI-R subscale scores (agreeableness: females  $62.48 \pm 7.52$ , males  $61.10 \pm 7.60$ ,  $P = 0.156$ ; conscientiousness: females  $60.51 \pm 11.20$ , males  $59.37 \pm 10.50$ ,  $P = 0.411$ ; extraversion: females  $50.84 \pm 9.27$ ,

---

males  $49.74 \pm 8.85$ ,  $P = 0.342$ ; neuroticism: females  $46.22 \pm 11.77$ , males  $44.77 \pm 11.65$ ,  $P = 0.332$ ; and openness: females  $56.37 \pm 9.28$ , males  $57.34 \pm 7.74$ ,  $P = 0.370$ ). Thus, differences in the distributions of gender, age, RAPM score and NEO-PI-R subscale scores did not contribute to the gray matter analysis findings.

The Pearson correlation coefficient was calculated respectively between intelligence, age and trait creativity as measured by WCAT. The results revealed no correlation between the SWCAT and age ( $r = -0.03$ ,  $P = 0.644$ ) as well as between the SWCAT and the RAPM score ( $r = 0.09$ ,  $P = 0.179$ ). The Pearson correlation coefficient between the SWCAT and subscale of the NEO-PI-R was also carried out. The results showed that the scores for the dimensions of conscientiousness ( $r = 0.18$ ,  $P = 0.004$ ) and extraversion ( $r = 0.31$ ,  $P < 0.001$ ) were weakly but significantly positively correlated with the SWCAT. However, there was a stronger positive correlation between openness to experience and the SWCAT ( $r = 0.53$ ,  $P < 0.001$ ), which suggests a closer relationship between openness to experience and trait creativity as opposed to conscientiousness and extraversion as measured by the WCAT.

### **3.2 Structural imaging results**

#### *3.2.1 Correlation between rGMV and the SWCAT*

We investigated the association between brain structure, measured in terms of GMV, and creativity (the SWCAT). Gender, age, the score of RAPM and tGMV of individual brains were included as covariates of no interest and regressed out. The

---

multiple regression analysis revealed that the SWCAT was significantly positively correlated with rGMV in a cluster that mainly included areas in the right posterior middle temporal gyrus (pMTG) and extended to the inferior temporal gyrus (ITG) (see Fig. 1 for the peak coordination regions). In addition, significant negative correlations were found between the SWCAT and rGMV in: (a) a cluster that mainly included areas in the right precentral gyrus (PCG) and extended to the posterior middle frontal gyrus (pMFG); and (b) a cluster that mainly included regions in the left lateral orbitofrontal cortex (OFC) (see Fig. 2). There was no significant difference between these brain regions in terms of gender. Information regarding the regions that were (positively or negatively) correlated with the SWCAT is shown in Table 2.

**INSERT FIGURE 1 ABOUT HERE**

**INSERT FIGURE 2 ABOUT HERE**

**INSERT TABLE 2 ABOUT HERE**

Moreover, we examined these areas showing an association between rGMV and trait creativity as measured by WCAT after excluding all participants who were not right-handed ( $n=16$ ). After controlling for age, sex, and score of RAPM, the regression analysis revealed that the results using data from only right-handedness was similar to those using data from all participants. The statistical values and coordinates of the peak voxel in the right pMTG positively correlated with WCAT changes as  $x, y, z = 64, -40, -10, z = 3.33$ . The statistical values and coordinates of the peak voxel in the PCG and the OFC that inversely correlated with WCAT were as follows:  $x, y, z = 44, -6, -44, z = 4.48$ ;  $x, y, z = -24, 22, -16, z = 4.18$ . Although there were small variations in cluster size, significant regions were identical to those

---

identified in the whole sample analyses ( $n=246$ ). These results might support the view that there was no direct relationship between right- or left-handedness and creativity (Shobe et al., 2009). In the future, the handedness-specific relationship between regional gray matter volume and creativity need to be investigated further.

### *3.2.2 Openness to experience mediated the relationship between brain structure and the SWCAT*

To test our hypothesis about the relationship between personality, trait creativity and brain structure, we first examined the association between personality factors (neuroticism, extraversion, openness, agreeableness and conscientiousness) and gray matter volume in clusters that correlated trait creativity (pMTG, OFC and PCG), with gender, age, intelligence and tGMV as covariates. As expected, we found that openness was positively correlated with the right pMTG cluster ( $r = 0.22, P < 0.001$ ) and negatively correlated with the OFC cluster ( $r = -0.13, P = 0.040$ ). All other personality factors showed no significant correlation with these clusters. This indicated a closer association among openness, trait creativity and brain structure compared to other personality dimensions.

The results above indicated that openness, trait creativity and brain structure were linked closely to one another. But the role of openness in the relationship between the regional gray matter volume in the right pMTG or OFC and creativity remains unknown. So, as a second step, we examined the association between the gray matter volume in the right pMTG or OFC and trait creativity while controlled openness



---

personality factor. The results indicated that there was no significant correlation between the right pMTG and SWCAT ( $P = 0.067$ ), whereas the association between the OFC and SWCAT did not change ( $P = 0.006$ ). This indicated a partial role of openness between the regional gray matter volume in the right pMTG and trait creativity.

To establish whether in fact this was the case, a mediation analysis was then conducted using an INDIRECT macro implemented in SPSS (Preacher & Hayes, 2008) to examine whether openness mediated the relationship between brain structure and trait creativity. While adding gender, age, the score of RAPM and tGMV of individual brains as covariates in the model, the mediation analysis showed that there was no significant effect of the right pMTG gray matter volume on trait creativity (beta = 0.13,  $P = 0.067$ ) after including openness as a mediator in the model. In contrast, the direct relationship was significant (beta = 0.27,  $p < 0.001$ ). Bootstrap simulation ( $n = 10,000$ ) further confirmed this reduction (i.e., the indirect effect through openness) was statistically significant ( $p < 0.05$ ) with 95% confidence interval (CI) range from 0.07 to 0.24. That is, the mediation analysis confirmed our notion that the personality trait of openness partially mediated the correlation between the right pMTG volume and trait creativity (Figure 3).

#### 4 Discussions

In this study, we investigated the associations between brain structure and individual trait creativity as measured by the WCAT. Behavioral results showed that

---

the total score of WCAT was related to three domains of personality: openness to experience, conscientiousness, and extraversion. VBM results showed that the rGMV of the right pMTG/ITG (BA21) was positively correlated with individual trait creativity, while the rGMV of the right PCG/pMFG (BA6) and the left lateral OFC (BA47) were inversely correlated with individual trait creativity. Interestingly, we found that openness to experience (as measured using the NEO-PI-R) partially mediated the relationship between the rGMV of right pMTG and trait creativity. These results indicate that the specific personality trait of openness to experience might play an important role in shaping an individual's trait creativity.

The relationship between creativity and personality has received a great deal of attention for a long time (Feist, 1998; Ma, 2009; Woodman, 1981). Obviously, certain cognitive ability and personality characteristic would modulate individual differences in creativity (Gibson et al., 2009). Specifically, numerous studies consistently revealed that creativity had a positive association with openness to experience (Carson et al., 2005; Dollinger et al., 2004; King et al., 1996; McCrae, 1987; Miller & Tal, 2007). For example, Feist (1998) found that openness to experience was a distinguishing feature of creative people by contrasting scientists and nonscientists, more creative and less creative scientists, as well as artists and non-artists. In addition, conscientiousness had a positive relationship with scientific performance and a negative one with artistic performance (Feist, 1999). As early as 1987, McCrae (1987) investigated the associations between creativity as measured by Creative Personality Scale (CPS, Gough, 1979) and personality and found a stronger relation between CPS

---

score and openness than between CPS score and extraversion/conscientiousness. Moreover, King et al. (1996) found individual creative ability as measured by TTCT verbal test also positively correlated with openness and extraversion. In this study, the strong correlation between SWCAT and openness (0.53) was also consistent with these previous findings (Feist, 1998), and indicated that conscientiousness and extraversion might indeed be important personality variables that influence an individual's creativity.

It is suggested that increased rGMV in the right pMTG/ITG may contribute to higher trait creativity (e.g., curiosity and imagination) through “semantic processing” functions that are associated with this region (Binder et al., 2009; Dronkers et al., 2004; Turken & Dronkers, 2011). That is, greater rGMV in the right pMTG in subjects with higher SWCAT might aid the generation of novel, unique connections between ideas. Many previous studies have indicated that the lateral temporal cortex (including the right posterior middle temporal gyrus) might play key roles in: semantic processing such as metaphor understanding (the right posterior middle/superior temporal gyrus) (Cardillo et al., 2012; Goel & Dolan, 2001); semantic representation and control (Badre et al., 2005; Whitney et al., 2011); conceptual integration and comprehension (posterior middle temporal gyrus) (Hickok & Poeppel, 2004; Turken & Dronkers, 2011); and novel association (the right posterior superior temporal sulcus) (Jung-Beeman et al., 2004; Kröger et al., 2012). In addition, Abraham et al. (2012) have recently stated that divergent thinking could involve brain regions implicated in declarative memory and semantic cognition, such as the lateral

---

inferior temporal cortex (BA 20/21), hippocampus and medial PFC (Binder et al., 2009; Cappa, 2008). Thus, our results indicate that individual differences in trait creativity (e.g., curiosity and imagination) might be linked with rGMV variations in the right pMTG.

In 2005, Kaasinen et al. (2005) showed a positive correlation between rGMV in the temporal, parietal and frontal cortices, and self-transcendence as measured using the Temperament and Character Inventory. High scores on self-transcendence are related to open, unusual and divergent thoughts, which might be similar to curiosity and imagination (novelty seeking), and their results suggested that high self-transcendence might be associated with relatively greater rGMV in the middle temporal region (Kaasinen et al., 2005). Chávez-Eakle et al. (2007) also found that subjects with high creative performance (originality, fluency and flexibility) showed greater cerebral blood flow (CBF) in the inferior temporal gyrus. In addition, investigations of word-generation found that the posterior temporal cortex might be related to object-concept representations and object category retrieval (novel ideas generation; Dobbins & Wagner, 2005; Martin & Chao, 2001). Moreover, Whitney et al. (2011) also indicated that the right posterior temporal gyrus might be related to semantic representation and control during ambiguous semantic associations. Based on these findings, and our own results, we suggest that higher trait creativity (e.g., curiosity and imagination) might be associated with enhanced semantic processing skills (e.g., novel association and conceptual expansion), which may be positively correlated with the rGMV in the pMTG.

---

Moreover, lower rGMV in the PCG/pMFG (BA 6) and OFC (BA 47) in subjects with higher trait creativity might be associated with reduced response inhibition and increased intuitive thinking, leading to challenge and risk-taking, which are two characteristics of trait creativity. The PCG/pMFG (sometimes named the “inhibitory motor area”) (Brass et al., 2009; Kozasa et al., 2012; Kreitzer & Malenka, 2008) has been implicated in tasks that require stimulus-response associations. Westerhausen et al. (2010) also provided evidence that the PCG/pMFG might be involved in the top-down control of attention processes (e.g., conflict-resolution, top-down and bottom-up processing bias integration) (Dwyer et al., 2009; Gautam et al., 2011; Hill & Miller, 2010). The MFG might also play a role in working memory during the manipulation of actively maintained information (Bunge & Zelazo, 2006; DeYoung et al., 2010a; Woodward et al., 2006). These findings suggest that the reduced rGMV in the PCG/pMFG revealed in the present study might be associated with reduced inhibition control, which may be associated with particular characteristics of higher trait creativity such as challenge and risk-taking. Additionally, a recent study found that the premotor region was a critical region for goal-directed actions (Gremel & Costa, 2013). Other fMRI studies also indicated that the premotor cortex is involved in diverse creative activities (Aziz-Zadeh et al., 2012; Bengtsson et al., 2007; Chávez-Eakle et al., 2007). In addition, Mostofsky et al. (2002) found that boys with Attention-Deficit/Hyperactivity Disorder (ADHD), which were known for being excessively impulsive, hyperactive, and off-task (“inattentive”), had decreased volume in the premotor cortex. That is, decreased gray matter volume in the

---

PCG/pMFG might be associated with challenge and risk-taking actions during goal-directed process.

The OFC has been found to be related to: the motivational control of goal-directed behavior (OFC activity signaled the expected rewards/punishments of a choice) (Decety et al., 2004; Plassmann et al., 2010; Schoenbaum et al., 2009); reversal learning (brain activations in the OFC reflected the disparity between the expected reward/punishment and the actual reward/punishment) (Rudebeck & Murray, 2008; Schoenbaum & Roesch, 2005; Tsuchida et al., 2010); and autonomic function (inhibitory and excitatory) regulation (Cavada & Schultz, 2000). For example, some disorders of executive functioning and impulse control, such as obsessive–compulsive disorder and trichotillomania, may be affected by dysregulation within the OFC (Chamberlain et al., 2009; Menzies et al., 2008; Tekin & Kircaali-Iftar, 2002). In addition, Jung et al. (2010) found that higher creative achievement (as measured using the Creative Achievement Questionnaire) was associated with lower left lateral orbitofrontal volume, which might be related to novel goal-directed behavior (Rolls et al., 2005). Recently, Takeuchi et al. (2012) also found that an individual's need for uniqueness (associated with the intrinsic satisfaction derived from the individual's perception of themselves as different from the masses) was correlated with smaller rGMV in the right inferior frontal gyrus and the ventral part of the precentral gyrus, which might be related to reduced response inhibition function. In fact, the OFC projects to the inferior frontal gyrus (Area 47) and belongs to the ventro-lateral prefrontal cortex (VLPFC). Many previous studies have observed that the VLPFC is

---

critical for creativity (Goel & Vartanian, 2005; Qiu et al., 2010). Specifically, the VLPFC is a brain region extending from the anterior premotor cortex (BA 6) to the posterior frontal pole (BA 10), which had been implicated in cognitively controlled access to relevant information from semantic memory (Croxson et al., 2005; Petrides & Pandya, 2002). Together, our results and those of previous studies suggest that reduced rGMV in the PCG/pMFG and the OFC might be associated with increased intuitive thinking and risk-taking actions (reduced response inhibition and novel goal-directed behavior), and disrespect for social customs and rules.

Interestingly, the present study found that openness to experience (a dimension of the NEO-PI-R) can partially mediate the relationship between the rGMV of the right pMTG and trait creativity (as measured using the WCAT). However, this mediation effect was not observed for the other factors of personality, such as extraversion and conscientiousness, which were also correlated with the SWCAT. Many previous studies have indicated that openness to experience is a stable personality factor and that is strongly related to creativity in the real world (Funder, 2001; Hu et al., 2011; Taki et al., 2012). For example, Soldz and Vaillant (1999) found that openness to experience scores were significantly correlated across 45 years in a sample of men. Our behavioral data also showed that the score for openness to experience had a strongly significant correlation with the SWCAT. Based on previous findings (Fleeson, 2001; Graziano & Ward, 1992; Lee et al., 2005), we suggest that openness to experience might induce some particular patterns of cognitive processing associated with intuition, imagination, curiosity and fantasy through “semantic

---

processing” functions related to the right pMTG (Binder et al., 2009; Dronkers et al., 2004; Turken & Dronkers, 2011). That is, the basic personality features related to the trait of openness to experience might play an important role in shaping an individual’s trait creativity. Although we cannot determine the direction of causation between openness to experience, trait creativity (based on the SWCAT) and the right pMTG volume, it might be hypothesized that the openness to experience capacity (which is stable and enduring in healthy adults) is associated with characteristics of trait creativity (e.g., curiosity, imagination and intuitive thinking), which enhances creative thinking and creative achievement. On the basis of this hypothesis, one could infer that the cultivation of the basic personality features of openness to experience in children and adolescents may increase an individual’s trait creativity and, thereby, facilitate divergent thinking and creative achievement.

## **5. Conclusion**

The present study used VBM to identify the GMV correlates of individual trait creativity as measured by the WCAT. We found a positive correlation between rGMV in the right pMTG and the SWCAT. In addition, rGMV in the PCG/pMFG and the OFC were negatively correlated with the SWCAT. These results indicate that higher trait creativity might be related to enhanced curiosity, imagination, challenge and risk-taking facilitated by semantic processing skills and reduced inhibition control. In addition, we found that openness to experience partially mediated the relationship between the right pMTG volume and trait creativity. This specific personality trait may therefore play an important role in shaping an individual’s trait creativity.



---

However, because we used young healthy college students with a high-level of education and mainly included right-handedness, our interpretations may have some limitations. In addition, we cannot determine the direction of causation between openness to experience, trait creativity and the right pMTG volume. The implementation of longitudinal or intervention studies may help to elucidate the complex relationships between openness to experience, trait creativity and brain structure further.

---

**Acknowledgments:**

This research was supported by the National Natural Science Foundation of China (31070900; 31271087), the Program for New Century Excellent Talents in University (2011) by the Ministry of Education, the Fundamental Research Funds for the Central Universities (SWU1209101) and the Key Discipline Fund of National 211 Project (TR201208-1). The authors declare no competing interests.

---

**Figure captions**

Fig. 1 Brain regions that positively correlated with the SWCAT

(A) The right pMTG in which regional gray matter volume (rGMV) was significantly positively correlated with the SWCAT after adjusting for gender and total GMV. The significant cluster is shown at  $P < 0.05$  (corrected by the AlphaSim program in AFNI with a combined threshold of  $P < 0.005$  for each voxel and a cluster size  $> 129$  voxels). (B) The corresponding partial correlation scatterplot illustrates this relationship (for display purposes only). The x-axis of the scatterplot represents the total WCAT score and the y-axis represents standardized residuals of GMV. For standardized residual measures, gender and tGMV were regressed out. Statistical inference was based on the multiple comparison correction using the 3dClustSim (AFNI) program.

Fig. 2 Brain regions that negatively correlated with the SWCAT

The PCG (A) and OFC (B), for which regional gray matter volume (rGMV) was negatively correlated with the SWCAT after adjusting for gender and total GMV. The significant cluster is shown at  $P < 0.05$  (corrected by the AlphaSim program in AFNI with a combined threshold of  $P < 0.005$  for each voxel and a cluster size  $> 129$  voxels). The corresponding partial correlation scatterplot illustrates this relationship (for display purposes only). The x-axis of the scatterplot represents the total WCAT score and the y-axis represents standardized residuals of the GMV. For standardized residual measures, gender and tGMV were regressed out. Statistical inference was

based on the multiple comparison correction using the 3dClustSim (AFNI) program.

Fig.3 Mediation analysis: the personality trait of openness to experience partially mediated the correlation between the rGMV of right pMTG and trait creativity.

## Tables

Table 1 Participant demographics (N = 246; men = 112, women = 134).

Measure	Mean	SD	Range
Age	21.66	1.04	18–25
SWCAT	201	20.67	129–276
Raven's Advanced Progressive Matrix	26	4.22	5–35
NEO-PI-R			
Agreeableness	62	7.57	40–86
Conscientiousness	60	10.88	32–87
Extraversion	50	9.08	24–77
Neuroticism	46	11.71	13–75
Openness to experience	57	8.61	29–86

Note: N = number; SD = standard deviation; SWCAT = total score of Williams creative aptitude test; NEO-PI-R = Revised NEO Personality Inventory.

Table 2 Brain regions significantly correlated with the SWCAT

Brain Regions	H	BA	Peak Coordination(MNI)			Cluster Volume (mm <sup>3</sup> )	Z
			X	Y	Z		
Positive Correlation							
Middle temporal gyrus/Inferior temporal gyrus	R	21	64	-38	-10	1176	3.59
Negative Correlation							
Precentral gyrus/Middle frontal gyrus	R	6	44	-6	44	1720	4.00
Orbitofrontal cortex/Inferior frontal gyrus	L	47	-24	22	-16	1064	4.03

Note: H = hemisphere; L = left; R = right; BA = brodmann area.

## Reference

- Abraham, A., Pieritz, K., Thybusch, K., Rutter, B., Kroger, S., Schweckendiek, J., et al. (2012). Creativity and the brain: uncovering the neural signature of conceptual expansion. *Neuropsychologia*, *50*(8), 1906-1917.
- Aguilar-Alonso, Angel. (1996). Personality and creativity. *Personality and Individual Differences*, *21*(6), 959-969.
- Amabile, T. M. (1996). *Creativity in context*. New York: Westview.
- Arden, Rosalind, Chavez, Robert S., Grazioplene, Rachael, & Jung, Rex E. (2010). Neuroimaging creativity: A psychometric view. *Behavioural Brain Research*, *214*(2), 143-156.
- Ashburner, John. (2007). A fast diffeomorphic image registration algorithm. *Neuroimage*, *38*(1), 95-113.
- Ashburner, John, & Friston, Karl J. (2000). Voxel-based morphometry—the methods. *Neuroimage*, *11*(6), 805-821.
- Ashburner, John, & Friston, Karl J. (2005). Unified segmentation. *Neuroimage*, *26*(3), 839-851.
- Aziz-Zadeh, L., Liew, S.L., & Dandekar, F. (2012). Exploring the neural correlates of visual creativity. *Social cognitive and affective neuroscience*.
- Badre, D., Poldrack, R. A., Pare-Blagoev, E. J., Insler, R. Z., & Wagner, A. D. (2005). Dissociable controlled retrieval and generalized selection mechanisms in ventrolateral prefrontal cortex. *Neuron*, *47*(6), 907-918.
- Bengtsson, S.L., Csikszentmihályi, M., & Ullén, F. (2007). Cortical regions involved in the generation of musical structures during improvisation in pianists. *Journal of Cognitive Neuroscience*, *19*(5), 830-842.
- Binder, Jeffrey R, Desai, Rutvik H, Graves, William W, & Conant, Lisa L. (2009). Where is the semantic system? A critical review and meta-analysis of 120 functional neuroimaging studies. *Cerebral Cortex*, *19*(12), 2767-2796.
- Bowden, Edward M, Jung-Beeman, Mark, Fleck, Jessica, & Kounios, John. (2005). New approaches to demystifying insight. *Trends in Cognitive Sciences*, *9*(7), 322-328.
- Brass, Marcel, Wenke, Dorit, Spengler, Stephanie, & Waszak, Florian. (2009). Neural correlates of overcoming interference from instructed and implemented stimulus–response associations. *The Journal of Neuroscience*, *29*(6), 1766-1772.
- Bunge, Silvia A, & Zelazo, Philip David. (2006). A brain-based account of the development of rule use in childhood. *Current Directions in Psychological Science*, *15*(3), 118-121.
- Cai, Xiaoyue, & Zhu, Yujie. (2007). The Correlation of Adolescent's Creative Inclination, Intelligence and Academic Achievement. *Psychological Development and Education*, *23*(2), 36-41.
- Cappa, Stefano F. (2008). Imaging studies of semantic memory. *Current opinion in neurology*, *21*(6), 669-675.
- Cardillo, E. R., Watson, C. E., Schmidt, G. L., Kranjec, A., & Chatterjee, A. (2012). From novel to familiar: tuning the brain for metaphors. *Neuroimage*, *59*(4), 3212-3221.
- Carson, Shelley H., Peterson, Jordan B., & Higgins, Daniel M. (2005). Reliability, Validity, and Factor Structure of the Creative Achievement Questionnaire. *Creativity Research Journal*, *17*(1), 37-50.
- Cassandro, Vincent J., & Simonton, Dean Keith. (2010). Versatility, Openness to Experience, and Topical Diversity in Creative Products: An Exploratory Historiometric Analysis of Scientists, Philosophers, and Writers. *The Journal of Creative Behavior*, *44*(1), 9-26.

- Cavada, Carmen, & Schultz, Wolfram. (2000). The mysterious orbitofrontal cortex. Foreword. *Cerebral Cortex*, *10*(3), 205-205.
- Chávez-Eakle, Rosa Aurora, Graff-Guerrero, Ariel, García-Reyna, Juan-Carlos, Vaugier, Víctor, & Cruz-Fuentes, Carlos. (2007). Cerebral blood flow associated with creative performance: A comparative study. *NeuroImage*, *38*(3), 519-528.
- Chamberlain, Samuel R, Hampshire, Adam, Müller, Ulrich, Rubia, Katya, Del Campo, Natalia, Craig, Kevin, et al. (2009). Atomoxetine modulates right inferior frontal activation during inhibitory control: a pharmacological functional magnetic resonance imaging study. *Biological psychiatry*, *65*(7), 550-555.
- Chamorro-Premuzic, Tomas, & Reichenbacher, Lisa. (2008). Effects of personality and threat of evaluation on divergent and convergent thinking. *Journal of Research in Personality*, *42*(4), 1095-1101.
- Chan, K. W. (2005). *Creative teaching and learning*. Hong Kong: Infolink Publishing Ltd.
- Claxton, Amy F., Pannells, Tammy C., & Rhoads, Paul A. (2005). Developmental Trends in the Creativity of School-Age Children. *Creativity Research Journal*, *17*(4), 327-335.
- Colom, Roberto, Jung, Rex E., & Haier, Richard J. (2006). Distributed brain sites for the g-factor of intelligence. *NeuroImage*, *31*(3), 1359-1365.
- Costa, P.T., & McCrae, R.R. (1992). Professional manual: Revised NEO personality inventory (NEO-PI-R) and NEO five-factor inventory (NEO-FFI). Odessa (FL): Psychological Assessment Resources.
- Costa, P.T., & McCrae, R.R. (1995). Domains and facets: Hierarchical personality assessment using the Revised NEO Personality Inventory. *Journal of personality assessment*, *64*(1), 21-50.
- Cox, Robert W. (1996). AFNI: software for analysis and visualization of functional magnetic resonance neuroimages. *Computers and Biomedical research*, *29*(3), 162-173.
- Croxson, P. L., Johansen-Berg, H., Behrens, T. E., Robson, M. D., Pinsk, M. A., Gross, C. G., et al. (2005). Quantitative Investigation of Connections of the Prefrontal Cortex in the Human and Macaque Using Probabilistic Diffusion Tractography. *Journal of Neuroscience*, *25*(39), 8854-8866.
- Davis, G. A. (1992). *Creativity is forever (3rd ed.)*. Dubuque, IA: Kendall/Hunt.
- Decety, Jean, Jackson, Philip L, Sommerville, Jessica A, Chaminade, Thierry, & Meltzoff, Andrew N. (2004). The neural bases of cooperation and competition: an fMRI investigation. *Neuroimage*, *23*(2), 744-751.
- DeYoung, Colin G, Hirsh, Jacob B, Shane, Matthew S, Papademetris, Xenophon, Rajeevan, Nallakkandi, & Gray, Jeremy R. (2010a). Testing Predictions From Personality Neuroscience Brain Structure and the Big Five. *Psychological Science*, *21*(6), 820-828.
- DeYoung, Colin G., Hirsh, Jacob B., Shane, Matthew S., Papademetris, Xenophon, Rajeevan, Nallakkandi, & Gray, Jeremy R. (2010b). Testing Predictions From Personality Neuroscience: Brain Structure and the Big Five. *Psychological Science*, *21*(6), 820-828.
- Dietrich, Arne. (2004). The cognitive neuroscience of creativity. *Psychonomic Bulletin & Review*, *11*(6), 1011-1026.
- Dietrich, Arne, & Kanso, Riam. (2010). A Review of EEG, ERP, and Neuroimaging Studies of Creativity and Insight. *Psychological Bulletin*, *136*(5), 822-848.
- Digman, J.M. (1990). Personality structure: Emergence of the five-factor model. *Annual review of psychology*, *41*(1), 417-440.

- Ding, Hui, Qin, Wen, Jiang, Tianzi, Zhang, Yunting, & Yu, Chunshui. (2012). Volumetric variation in subregions of the cerebellum correlates with working memory performance. *Neuroscience Letters*, 508(1), 47-51.
- Dobbins, Ian G., & Wagner, Anthony D. (2005). Domain-general and Domain-sensitive Prefrontal Mechanisms for Recollecting Events and Detecting Novelty. *Cerebral Cortex*, 15(11), 1768-1778.
- Dollinger, Stephen J., Urban, Klaus K., & James, Troy A. (2004). Creativity and Openness: Further Validation of Two Creative Product Measures. *Creativity Research Journal*, 16(1), 35-47.
- Dronkers, N. F., Wilkins, D. P., Van Valin, R. D., Jr., Redfern, B. B., & Jaeger, J. J. (2004). Lesion analysis of the brain areas involved in language comprehension. *Cognition*, 92(1-2), 145-177.
- Dwyer, Larry, Edwards, Deborah, Mistilis, Nina, Roman, Carolina, & Scott, Noel. (2009). Destination and enterprise management for a tourism future. *Tourism Management*, 30(1), 63-74.
- Ellamil, Melissa, Dobson, Charles, Beeman, Mark, & Christoff, Kalina. (2012). Evaluative and generative modes of thought during the creative process. *NeuroImage*, 59(2), 1783-1794.
- Eysenck, H. J. (1997). Creativity and personality. In M. Runco (Ed.), *The creativity research handbook* (pp. 41-46). Cresskill, NJ: Hampton Press.
- Farb, Norman A. S., Grady, Cheryl L., Strother, Stephen, Tang-Wai, David F., Masellis, Mario, Black, Sandra, et al. Abnormal network connectivity in frontotemporal dementia: Evidence for prefrontal isolation. *Cortex*(0).
- Feist, Gregory J. (1998). A Meta-Analysis of Personality in Scientific and Artistic Creativity. *Personality and Social Psychology Review*, 2(4), 290-309.
- Feist, Gregory J. (1999). The influence of personality on artistic and scientific creativity. In R. J. Sternberg (Ed.), *Handbook of creativity* (pp. 273-296). Cambridge, UK: Cambridge University Press.
- Fekken, G.C. (1985). Barron-Welsh Art Scale. In D. J. K. R. C. Sweetland (Ed.), *Test critiques* (Vol. IV, pp. 58-67). Kansas City, MO: Test Corporation of America.
- Fink, A., Graif, Barbara, & Neubauer, Aljoscha C. (2009). Brain correlates underlying creative thinking: EEG alpha activity in professional vs. novice dancers. *NeuroImage*, 46(3), 854-862.
- Fleeson, W. (2001). Toward a structure- and process-integrated view of personality: traits as density distribution of states. *J Pers Soc Psychol*, 80(6), 1011-1027.
- Funder, D. C. (2001). Personality. *Annu Rev Psychol*, 52, 197-221.
- Furnham, Adrian, Crump, John, Batey, Mark, & Chamorro-Premuzic, Tomas. (2009). Personality and ability predictors of the "Consequences" Test of divergent thinking in a large non-student sample. *Personality and Individual Differences*, 46(4), 536-540.
- Gansler, David A., Moore, Dana W., Susmaras, Teresa M., Jerram, Matthew W., Sousa, Janelle, & Heilman, Kenneth M. (2011). Cortical morphology of visual creativity. *Neuropsychologia*, 49(9), 2527-2532.
- Gautam, Sakshi, Sood, Aman D, Puri, Rajeev K, & Aichelin, J. (2011). Sensitivity of the transverse flow to the symmetry energy. *Physical Review C*, 83(3), 034606.
- Gibson, Crystal, Folley, Bradley S., & Park, Sohee. (2009). Enhanced divergent thinking and creativity in musicians: A behavioral and near-infrared spectroscopy study. *Brain and Cognition*, 69(1), 162-169.
- Goel, V., & Dolan, R. J. (2001). The functional anatomy of humor: segregating cognitive and affective components. *Nat Neurosci*, 4(3), 237-238.



- Goel, Vinod, & Vartanian, Oshin. (2005). Dissociating the roles of right ventral lateral and dorsal lateral prefrontal cortex in generation and maintenance of hypotheses in set-shift problems. *Cerebral Cortex*, *15*(8), 1170-1177.
- Good, Catriona D., Johnsrude, Ingrid, Ashburner, John, Henson, Richard N. A., Friston, Karl J., & Frackowiak, Richard S. J. (2001). Cerebral Asymmetry and the Effects of Sex and Handedness on Brain Structure: A Voxel-Based Morphometric Analysis of 465 Normal Adult Human Brains. *NeuroImage*, *14*(3), 685-700.
- Gough, Harrison G. (1979). A creative personality scale for the Adjective Check List. *Journal of Personality and Social Psychology*, *37*(8), 1398.
- Graziano, W. G., & Ward, D. (1992). Probing the big five in adolescence: personality and adjustment during a developmental transition. *J Pers*, *60*(2), 425-439.
- Gremel, Christina, & Costa, Rui. (2013). Premotor cortex is critical for goal-directed actions. *Frontiers in Computational Neuroscience*, *7*.
- Hickok, G., & Poeppel, D. (2004). Dorsal and ventral streams: a framework for understanding aspects of the functional anatomy of language. *Cognition*, *92*(1-2), 67-99.
- Hill, Kevin T, & Miller, Lee M. (2010). Auditory attentional control and selection during cocktail party listening. *Cerebral cortex*, *20*(3), 583-590.
- Hoseinifar, Jafar, Siedkalan, Mir Mohammad, Zirak, Seyyed Rasoul, Nowrozi, Masoomeh, Shaker, Ali, Meamar, Elmira, et al. (2011). An Investigation of The Relation Between Creativity and Five Factors of Personality In Students. *Procedia-Social and Behavioral Sciences*, *30*, 2037-2041.
- Hu, Xiaochen, Erb, Michael, Ackermann, Hermann, Martin, Jason A, Grodd, Wolfgang, & Reiterer, Susanne M. (2011). Voxel-based morphometry studies of personality: Issue of statistical model specification—effect of nuisance covariates. *Neuroimage*, *54*(3), 1994-2005.
- Hwang, W.Y., Chen, N., Dung, J., & Yang, Y. (2007). Multiple representation skills and creativity effects on mathematical problem solving using a multimedia whiteboard system. *Educational Technology and Society*, *10*(2), 191.
- Jung-Beeman, Mark, Bowden, Edward M., Haberman, Jason, Frymiare, Jennifer L., Arambel-Liu, Stella, Greenblatt, Richard, et al. (2004). Neural Activity When People Solve Verbal Problems with Insight. *PLoS Biol*, *2*(4), e97.
- Jung, R.E., Segall, Judith M., Jeremy Bockholt, H., Flores, Ranee A., Smith, Shirley M., Chavez, Robert S., et al. (2010). Neuroanatomy of creativity. *Human Brain Mapping*, *31*(3), 398-409.
- Jung, Rex E, & Haier, Richard J. (2007). The parieto-frontal integration theory (P-FIT) of intelligence: Converging neuroimaging evidence. *Behavioral and Brain Sciences*, *30*(02), 135-154.
- Jung, Rex Eugene, Mead, Brittany S, Carrasco, Jessica, & Flores, Ranee A. (2013). The structure of creative cognition in the human brain. *Frontiers in Human Neuroscience*, *7*.
- Kaasinen, V, Maguire, RP, Kurki, T, Brück, A, & Rinne, JO. (2005). Mapping brain structure and personality in late adulthood. *Neuroimage*, *24*(2), 315-322.
- Kanai, Ryota, & Rees, Geraint. (2011). The structural basis of inter-individual differences in human behaviour and cognition. *Nature Reviews Neuroscience*, *12*(4), 231-242.
- King, Laura A., Walker, Lori McKee, & Broyles, Sheri J. (1996). Creativity and the Five-Factor Model. *Journal of Research in Personality*, *30*(2), 189-203.
- Knoch, Daria, Gianotti, Lorena R. R., Pascual-Leone, Alvaro, Treyer, Valerie, Regard, Marianne, Hohmann, Martin, et al. (2006). Disruption of Right Prefrontal Cortex by Low-Frequency Repetitive Transcranial Magnetic Stimulation Induces Risk-Taking Behavior. *The Journal of*

- Neuroscience*, 26(24), 6469-6472.
- Kong, Lingtao, Chen, Kaiyuan, Womer, Fay, Jiang, Wenyan, Luo, Xingguang, Driesen, Naomi, et al. (2013). Sex differences of gray matter morphology in cortico-limbic-striatal neural system in major depressive disorder. *Journal of Psychiatric Research*, 47(6), 733-739.
- Kozasa, Elisa H, Sato, João R, Lacerda, Shirley S, Barreiros, Maria AM, Radvany, João, Russell, Tamara A, et al. (2012). Meditation training increases brain efficiency in an attention task. *Neuroimage*, 59(1), 745-749.
- Kröger, Sören, Rutter, Barbara, Stark, Rudolf, Windmann, Sabine, Hermann, Christiane, & Abraham, Anna. (2012). Using a shoe as a plant pot: Neural correlates of passive conceptual expansion. *Brain research*, 1430, 52-61.
- Krain, A. L., Wilson, A. M., Arbuckle, R., Castellanos, F. X., & Milham, M. P. (2006). Distinct neural mechanisms of risk and ambiguity: a meta-analysis of decision-making. *Neuroimage*, 32(1), 477-484.
- Kreitzer, Anatol C, & Malenka, Robert C. (2008). Striatal plasticity and basal ganglia circuit function. *Neuron*, 60(4), 543.
- Lee, Kibeom, Ogunfowora, Babatunde, & Ashton, Michael C. (2005). Personality traits beyond the big five: are they within the HEXACO space? *Journal of personality*, 73(5), 1437-1463.
- Lin, C, & Wang, M. (1994). *The creativity assessment packet*. Taipei, Taiwan: Psychological Publ.
- Liu, Meng-Jung, Shih, Wei-Lin, & Ma, Le-Yin. (2011). Are children with Asperger syndrome creative in divergent thinking and feeling? A brief report. *Research in Autism Spectrum Disorders*, 5(1), 294-298.
- Ma, H.H. (2009). The effect size of variables associated with creativity: A meta-analysis. *Creativity Research Journal*, 21(1), 30-42.
- Maker, C. J., & Schiever, S. W. (2005). *Teaching Models In Education Of The Gifted: PRO-ED, Incorporated*.
- Martin, Alex, & Chao, Linda L. (2001). Semantic memory and the brain: structure and processes. *Current Opinion in Neurobiology*, 11(2), 194-201.
- McCrae, Robert R. (1987). Creativity, divergent thinking, and openness to experience. *Journal of personality and social psychology*, 52(6), 1258.
- Menzies, Lara, Chamberlain, Samuel R, Laird, Angela R, Thelen, Sarah M, Sahakian, Barbara J, & Bullmore, Ed T. (2008). Integrating evidence from neuroimaging and neuropsychological studies of obsessive-compulsive disorder: the orbitofronto-striatal model revisited. *Neuroscience & Biobehavioral Reviews*, 32(3), 525-549.
- Miller, Angela L. (2009). Cognitive processes associated with creativity scale development and validation. from <http://cardinalsolar.bsu.edu/handle/123456789/193389>
- Miller, Geoffrey F., & Tal, Ilanit R. (2007). Schizotypy versus openness and intelligence as predictors of creativity. *Schizophrenia Research*, 93(1-3), 317-324.
- Moore, Dana W., Bhadelia, Rafeeqe A., Billings, Rebecca L., Fulwiler, Carl, Heilman, Kenneth M., Rood, Kenneth M. J., et al. (2009). Hemispheric connectivity and the visual-spatial divergent-thinking component of creativity. *Brain and Cognition*, 70(3), 267-272.
- Mostofsky, Stewart H., Cooper, Karen L., Kates, Wendy R., Denckla, Martha B., & Kaufmann, Walter E. (2002). Smaller prefrontal and premotor volumes in boys with attention-deficit/hyperactivity disorder. *Biological Psychiatry*, 52(8), 785-794.
- Oldham, Greg R, & Cummings, Anne. (1996). Employee creativity: Personal and contextual factors at

- work. *Academy of management journal*, 39(3), 607-634.
- Ortet, G., Ibáñez, M.I., Moya, J., Villa, H., Viruela, A., & Mezquita, L. (2012). Assessing the Five Factors of Personality in Adolescents The Junior Version of the Spanish NEO-PI-R. *Assessment*, 19(1), 114-130.
- Petrides, M., & Pandya, D. N. . (2002). Association pathways of the prefrontal cortex and functional observations. *Principles of frontal lobe function*(1), 31-50.
- Piffer, Davide. (2012). Can creativity be measured? An attempt to clarify the notion of creativity and general directions for future research. *Thinking Skills and Creativity*, 7(3), 258-264.
- Plassmann, Hilke, O'Doherty, John P, & Rangel, Antonio. (2010). Appetitive and aversive goal values are encoded in the medial orbitofrontal cortex at the time of decision making. *The Journal of neuroscience*, 30(32), 10799-10808.
- Preacher, K.J., & Hayes, A.F. (2008). Asymptotic and resampling strategies for assessing and comparing indirect effects in multiple mediator models. *Behavior research methods*, 40(3), 879-891.
- Qiu, Jiang, Li, Hong, Jou, Jerwen, Liu, Jia, Luo, Yuejia, Feng, Tingyong, et al. (2010). Neural correlates of the “Aha” experiences: evidence from an fMRI study of insight problem solving. *Cortex*, 46(3), 397-403.
- Raven, J. (1998). Manual for Raven’s progressive matrices and vocabulary scales. *Oxford: Oxford Psychologists*, 12, G60p.
- Rhodes, Mel. (1961). An analysis of creativity. *The Phi Delta Kappan*, 42(7), 305-310.
- Rolls, E. T., Browning, A. S., Inoue, K., & Hernadi, I . (2005). Novel visual stimuli activate a population of neurons in the primate orbitofrontal cortex. *Neurobiol Learn Mem*, 84, 111–123.
- Rudebeck, Peter H, & Murray, Elisabeth A. (2008). Amygdala and orbitofrontal cortex lesions differentially influence choices during object reversal learning. *The Journal of Neuroscience*, 28(33), 8338-8343.
- Runco, M.A. (2007). *Creativity: theories and themes: Research, development, and practice*. Amsterdam: Elsevier Academic Press.
- Satzinger, John W., Garfield, Monica J., & Nagasundaram, Murli. (1999). The creative process: the effects of group memory on individual idea generation. *J. Manage. Inf. Syst.*, 15(4), 143-160.
- Schoenbaum, Geoffrey, & Roesch, Matthew. (2005). Orbitofrontal cortex, associative learning, and expectancies. *Neuron*, 47(5), 633-636.
- Schoenbaum, Geoffrey, Roesch, Matthew R, Stalnaker, Thomas A, & Takahashi, Yuji K. (2009). A new perspective on the role of the orbitofrontal cortex in adaptive behaviour. *Nature Reviews Neuroscience*, 10(12), 885-892.
- Schwartz, Daniel L., Mitchell, Alex D., Lahna, David L., Luber, Hannah S., Huckans, Marilyn S., Mitchell, Suzanne H., et al. (2010). Global and local morphometric differences in recently abstinent methamphetamine-dependent individuals. *NeuroImage*, 50(4), 1392-1401.
- Shobe, Elizabeth R., Ross, Nicholas M., & Fleck, Jessica I. (2009). Influence of handedness and bilateral eye movements on creativity. *Brain and Cognition*, 71(3), 204-214.
- Silver, Matt, Montana, Giovanni, & Nichols, Thomas E. (2011). False positives in neuroimaging genetics using voxel-based morphometry data. *NeuroImage*, 54(2), 992-1000.
- Soldz, Stephen, & Vaillant, George E. (1999). The Big Five personality traits and the life course: A 45-year longitudinal study. *Journal of Research in Personality*, 33(2), 208-232.
- Sternberg, Robert J. (1999). *Handbook of creativity*. New York: Cambridge University Press.
- Sternberg, Robert J., & Lubart, Todd I. (1993). Investing in Creativity. *Psychological Inquiry*, 4(3),

- 229-232.
- Takeuchi, H., Taki, Y., Sassa, Y., Hashizume, H., Sekiguchi, A., Fukushima, A., et al. (2010a). Regional gray matter volume of dopaminergic system associate with creativity: Evidence from voxel-based morphometry. *NeuroImage*, *51*(2), 578-585.
- Takeuchi, Hikaru, Sekiguchi, Atsushi, Taki, Yasuyuki, Yokoyama, Satoru, Yomogida, Yukihito, Komuro, Nozomi, et al. (2010b). Training of Working Memory Impacts Structural Connectivity. *The Journal of Neuroscience*, *30*(9), 3297-3303.
- Takeuchi, Hikaru, Taki, Yasuyuki, Hashizume, Hiroshi, Sassa, Yuko, Nagase, Tomomi, Nouchi, Rui, et al. (2011). Failing to deactivate: The association between brain activity during a working memory task and creativity. *NeuroImage*, *55*(2), 681-687.
- Takeuchi, Hikaru, Taki, Yasuyuki, Nouchi, Rui, Sekiguchi, Atsushi, Kotozaki, Yuka, Miyauchi, Carlos Makoto, et al. (2012). A voxel-based morphometry study of gray and white matter correlates of a need for uniqueness. *NeuroImage*, *63*(3), 1119-1126.
- Taki, Y., Thyreau, B., Kinomura, S., Sato, K., Goto, R., Wu, K., et al. (2012). A longitudinal study of the relationship between personality traits and the annual rate of volume changes in regional gray matter in healthy adults. *Hum Brain Mapp*.
- Tekin, Elif, & Kircaali-Iftar, Gonul. (2002). Comparison of the Effectiveness and Efficiency of Two Response Prompting Procedures Delivered by Sibling Tutors. *Education and Training in Mental Retardation and Developmental Disabilities*, *37*(3), 283-299.
- Tsuchida, Ami, Doll, Bradley B, & Fellows, Lesley K. (2010). Beyond reversal: a critical role for human orbitofrontal cortex in flexible learning from probabilistic feedback. *The Journal of Neuroscience*, *30*(50), 16868-16875.
- Turken, A. U., & Dronkers, N. F. (2011). The neural architecture of the language comprehension network: converging evidence from lesion and connectivity analyses. *Front Syst Neurosci*, *5*, 1.
- Ward, B Douglas. (2000). Simultaneous inference for fMRI data. *AFNI 3dDeconvolve Documentation, Medical College of Wisconsin*.
- Westerhausen, René, Moosmann, Matthias, Alho, Kimmo, Belsby, Stein-Ove, Hämäläinen, Heikki, Medvedev, Svyatoslav, et al. (2010). Identification of attention and cognitive control networks in a parametric auditory fMRI study. *Neuropsychologia*, *48*(7), 2075-2081.
- Whitney, C., Jefferies, E., & Kircher, T. (2011). Heterogeneity of the left temporal lobe in semantic representation and control: priming multiple versus single meanings of ambiguous words. *Cereb Cortex*, *21*(4), 831-844.
- Williams, F. E. (1969). Models for encouraging creativity in the classroom by integrating cognitive-affective behaviors. *Educational Technology*, *9*(12), 7-13.
- Williams, F. E. (1980). *Creativity Assessment Packet: (CAP)*: DOK Publishers.
- Williams, F. E. (1993). *Creativity assessment packet examiner's manual*. Austin, TX: PRO-ED.
- Woodman, Richard W. (1981). Creativity as a Construct in Personality Theory. *The Journal of Creative Behavior*, *15*(1), 43-66.
- Woodward, TS, Cairo, TA, Ruff, CC, Takane, Y, Hunter, MA, & Ngan, ETC. (2006). Functional connectivity reveals load dependent neural systems underlying encoding and maintenance in verbal working memory. *Neuroscience*, *139*(1), 317-325.
- Yang, Fu-Chi, Chou, Kun-Hsien, Fuh, Jong-Ling, Huang, Chu-Chung, Lirng, Jiing-Feng, Lin, Yung-Yang, et al. (2013). Altered gray matter volume in the frontal pain modulation network in patients with cluster headache. *PAIN*, *154*(6), 801-807.

- 
- Zeng, Liang, Salvendy, Gavriel, & Zhang, Min. (2009). Factor structure of web site creativity. *Computers in Human Behavior, 25*(2), 568-577.
- Zou, Lijuan, Ding, Guosheng, Abutalebi, Jubin, Shu, Hua, & Peng, Danling. (2012). Structural plasticity of the left caudate in bimodal bilinguals. *Cortex, 48*(9), 1197-1206.

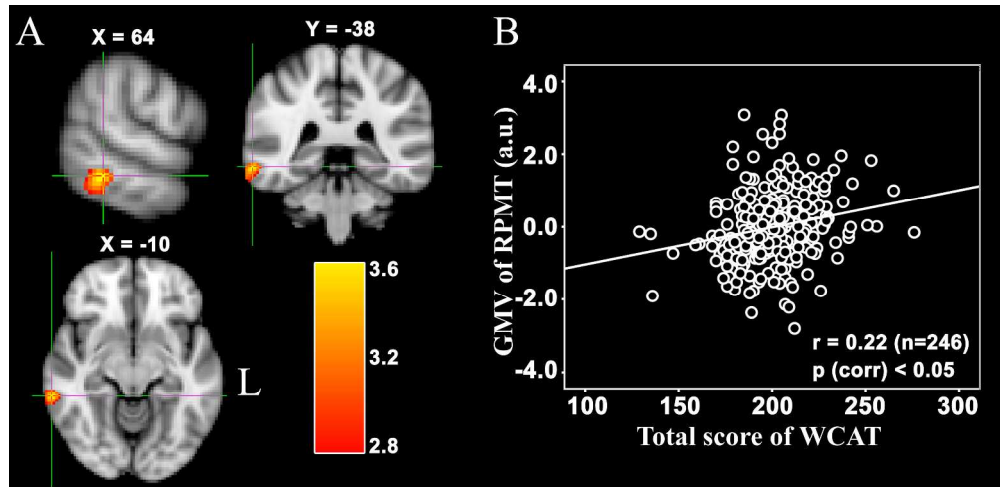


Fig. 1 Brain regions that positively correlated with the SWCAT  
 (A) The RPMT in which regional gray matter volume (rGMV) was significantly positively correlated with the SWCAT after adjusting for gender and total GMV. The significant cluster is shown at  $z > 2.8$  for visualization purpose. (B) The corresponding partial correlation scatterplot illustrates this relationship (for display purposes only). The x-axis of the scatterplot represents the total WCAT score and the y-axis represents standardized residuals of GMV. For standardized residual measures, gender and tGMV were regressed out. Statistical inference was based on the multiple comparison correction using the 3dClustSim (AFNI) program.

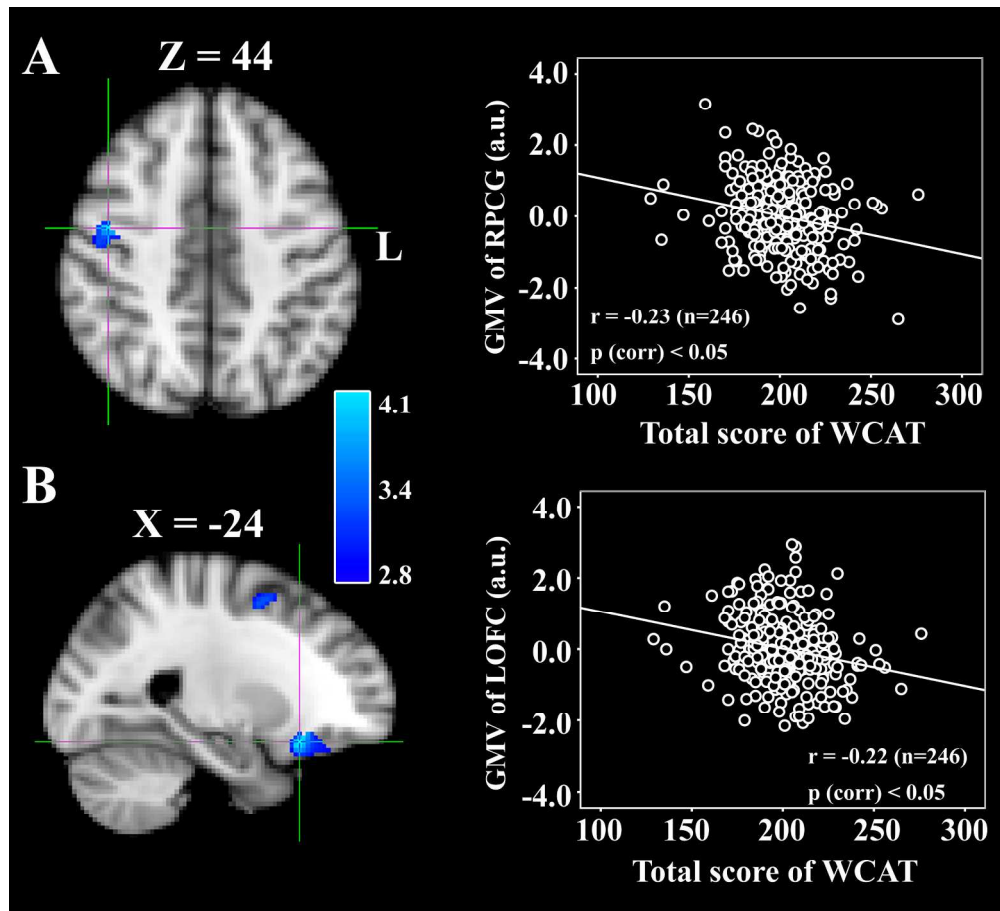


Fig. 2 Brain regions that negatively correlated with the SWCAT  
 The RPCG (A) and LOFC (B), for which regional gray matter volume (rGMV) was negatively correlated with the SWCAT after adjusting for gender and total GMV. The significant cluster is shown at  $z > 2.8$  for visualization purpose. The corresponding partial correlation scatterplot illustrates this relationship (for display purposes only). The x-axis of the scatterplot represents the total WCAT score and the y-axis represents standardized residuals of the GMV. For standardized residual measures, gender and tGMV were regressed out. Statistical inference was based on the multiple comparison correction using the 3dClustSim (AFNI) program.

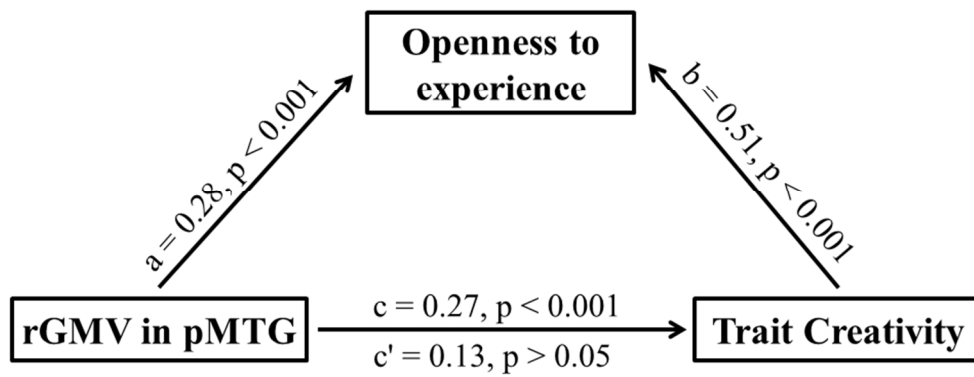


Fig. 3 Mediation analysis: the personality trait of openness to experience partially mediated the correlation between the rGMV of right pMTG and trait creativity.  
82x33mm (300 x 300 DPI)