



Azad, M. B., Nickel, N. C., Bode, L., Brockway, M., Brown, A., Chambers, C., Goldhammer, C., Hinde, K., McGuire, M., Munblit, D., Patel, A. L., Pérez-Escamilla, R., Rasmussen, K. M., Shenker, N., Young, B. E., & Zuccolo, L. (2020). Breastfeeding and the origins of health: Interdisciplinary perspectives and priorities. *Maternal and Child Nutrition*, [e13109]. <https://doi.org/10.1111/mcn.13109>

Publisher's PDF, also known as Version of record

License (if available):
CC BY

Link to published version (if available):
[10.1111/mcn.13109](https://doi.org/10.1111/mcn.13109)

[Link to publication record in Explore Bristol Research](#)
PDF-document






This is the final published version of the article (version of record). It first appeared online via Wiley Open Access at <https://doi.org/10.1111/mcn.13109> . Please refer to any applicable terms of use of the publisher.

University of Bristol - Explore Bristol Research

General rights

This document is made available in accordance with publisher policies. Please cite only the published version using the reference above. Full terms of use are available: <http://www.bristol.ac.uk/red/research-policy/pure/user-guides/ebr-terms/>

Breastfeeding and the origins of health: Interdisciplinary perspectives and priorities

Meghan B. Azad^{1,2,3,4}  | Nathan C. Nickel^{2,3,5}  | Lars Bode⁶ |
 Meredith Brockway^{1,3} | Amy Brown⁷  | Christina Chambers⁸ |
 Camie Goldhammer⁹ | Katie Hinde¹⁰ | Michelle McGuire¹¹ |
 Daniel Munblit^{12,13,14} | Aloka L. Patel¹⁵ | Rafael Pérez-Escamilla¹⁶  |
 Kathleen M. Rasmussen¹⁷ | Natalie Shenker^{18,19}  | Bridget E. Young²⁰ |
 Luisa Zuccolo²¹

¹Department of Pediatrics and Child Health, University of Manitoba, Winnipeg, Manitoba, Canada

²Developmental Origins of Chronic Diseases in Children Network (DEVOTION), Children's Hospital Research Institute of Manitoba, Winnipeg, Manitoba, Canada

³Manitoba Interdisciplinary Lactation Centre (MILC), Winnipeg, Manitoba, Canada

⁴Human Capital & Economic Opportunity Global Working Group, Center for the Economics of Human Development, University of Chicago, Chicago, Illinois, USA

⁵Department of Community Health Sciences and Manitoba Centre for Health Policy, University of Manitoba, Winnipeg, Manitoba, Canada

⁶Department of Pediatrics and Larsson-Rosenquist Foundation Mother-Milk-Infant Center of Research Excellence, University of California San Diego, La Jolla, California, USA

⁷Department of Public Health, Policy and Social Sciences and Centre for Lactation, Infant Feeding and Translation, Swansea University, Swansea, UK

⁸Mommy's Milk Human Milk Research Biorepository, Center for Better Beginnings, University of California San Diego, San Diego, California, USA

⁹Indigenous Breastfeeding Counsellor, Seattle, Washington, USA

¹⁰Center of Evolution and Medicine and School of Human Evolution and Social Change, Arizona State University, Tempe, Arizona, USA

¹¹Margaret Ritchie School of Family and Consumer Sciences, University of Idaho, Moscow, Idaho, USA

¹²Department of Paediatrics and Paediatric Infectious Diseases, Institute of Child's Health, Sechenov First Moscow State Medical University, Moscow, Russia

¹³Inflammation, Repair and Development Section, National Heart and Lung Institute, Imperial College London, London, UK

¹⁴inVIVO Planetary Health, Worldwide Universities Network (WUN), West New York, New Jersey, USA

¹⁵Department of Pediatrics, Section of Neonatology, Rush University Children's Hospital, Chicago, Illinois, USA

¹⁶Department of Social and Behavioral Sciences, Yale School of Public Health, Yale University, New Haven, Connecticut, USA

¹⁷Division of Nutritional Sciences, Cornell University, Ithaca, New York, USA

¹⁸Department of Surgery and Cancer, Imperial College London, London, UK

¹⁹Human Milk Foundation, Harpenden, UK

²⁰Division of Allergy and Immunology, Department of Pediatrics, School of Medicine and Dentistry, University of Rochester, Rochester, New York, USA

²¹MRC Integrative Epidemiology Unit and Department of Population Health Sciences, University of Bristol, Bristol, UK

Correspondence

Meghan B. Azad, Manitoba Interdisciplinary Lactation Centre, Children's Hospital Research Institute of Manitoba 501G 715 McDermot Ave, Winnipeg, Manitoba, Canada, R3E 3P4.
 Email: meghan.azad@umanitoba.ca

Abstract

Breastfeeding and human milk (HM) are critically important to maternal, infant and population health. This paper summarizes the proceedings of a workshop that convened a multidisciplinary panel of researchers to identify key priorities and

Abbreviations: HM, human milk; DHM, donor human milk.

This is an open access article under the terms of the Creative Commons Attribution License, which permits use, distribution and reproduction in any medium, provided the original work is properly cited.

© 2020 The Authors. *Maternal & Child Nutrition* published by John Wiley & Sons Ltd.

Nathan C. Nickel, Manitoba Interdisciplinary Lactation Centre, Children's Hospital Research Institute of Manitoba
Email: nathan.nickel@umanitoba.ca

Funding information

DEVOTION Network, Children's Hospital Research Institute of Manitoba, University of Manitoba; Human Capital & Economic Opportunity Global Working Group, Center for the Economics of Human Development, University of Chicago

anticipated breakthroughs in breastfeeding and HM research, discuss perceived barriers and challenges to achieving these breakthroughs and propose a constructive action plan to maximize the impact of future research in this field. Priority research areas identified were as follows: (1) addressing low breastfeeding rates and inequities using mixed methods, community partnerships and implementation science approaches; (2) improving awareness of evidence-based benefits, challenges and complexities of breastfeeding and HM among health practitioners and the public; (3) identifying differential impacts of alternative modes of HM feeding including expressed/pumped milk, donor milk and shared milk; and (4) developing a mechanistic understanding of the health effects of breastfeeding and the contributors to HM composition and variability. Key barriers and challenges included (1) overcoming methodological limitations of epidemiological breastfeeding research and mechanistic HM research; (2) counteracting 'breastfeeding denialism' arising from negative personal breastfeeding experiences; (3) distinguishing and aligning research and advocacy efforts; and (4) managing real and perceived conflicts of interest. To advance research on breastfeeding and HM and maximize the reach and impact of this research, larger investments are needed, interdisciplinary collaboration is essential, and the scientific community must engage families and other stakeholders in research planning and knowledge translation.

KEYWORDS

breastfeeding, breastmilk, conflict of interest, human milk, infant feeding, lactation, research methodology

1 | WORKSHOP RATIONALE AND METHODS

Breastfeeding provides a constellation of health benefits for mothers and infants. Considering the abundance of evidence and long-standing global recommendations to support breastfeeding, it is surprising that we still do not understand the underlying biological mechanisms of these benefits, and it is concerning that most mother–infant dyads do not achieve breastfeeding recommendations. To address these issues, we convened a workshop of experts in the field of breastfeeding and human milk (HM). The workshop focused on two main areas of concern emphasized by participants through priority-setting exercises before and during the workshop: the need for more interdisciplinary research in this field and the need to address counterproductive tensions between breastfeeding research and advocacy efforts.

1.1 | Interdisciplinary research

Knowledge about the health effects of breastfeeding and HM has typically come from disparate lines of research in the basic, clinical and social sciences. Basic scientists have advanced our understanding of milk composition through laboratory research (e.g., Andreas, Kampmann, & Mehring Le-Doare, 2015; Boix-Amorós et al., 2019; Doherty et al., 2018; Fitzstevens et al., 2017; Gay et al., 2018;

Key messages

- Breastfeeding is critically important to maternal, infant and population health, yet we still lack a fundamental understanding of human milk (HM) composition and most mother–infant dyads do not achieve breastfeeding recommendations.
- This field of transdisciplinary research is challenged by methodological limitations and the need to inform, yet remain distinct from, breastfeeding advocacy.
- To advance research related to breastfeeding and HM science and maximize its reach and impact, the scientific community must engage families and other stakeholders in research planning and knowledge translation and properly manage COI. Larger investments are needed, and interdisciplinary collaboration is essential.

Waidyatillake et al., 2018), whereas social scientists and clinical researchers have studied the complex social, clinical, economic and institutional factors that influence breastfeeding at the individual and population levels (e.g., Nickel et al., 2014; Pérez-Escamilla, Martinez, & Segura-Pérez, 2016; Schindler-Ruwisch et al., 2019; Temple Newhook et al., 2017). For the most part, these advances have occurred with

minimal interaction between disciplines, limiting the translation and impact of this research. It is encouraging to see that interdisciplinary research in this field is increasing thanks to recent efforts by international organizations (e.g., International Society for Research in Human Milk and Lactation and Academy of Breastfeeding Medicine), research centres (e.g., Carolina Global Breastfeeding Institute, Manitoba Interdisciplinary Lactation Centre [MILC] and Mother-Milk-Infant Centre of Research Excellence [MOMI-CORE]) and initiatives (e.g., Lactation, Infant Feeding and Translational Research [LIFT], International Milk Composition Consortium [IMiC] and Breastmilk Ecology-Genesis of Infant Nutrition: Understanding Human Milk as a Biological System [BEGIN])—however, there is still much room for improvement and expansion of the interdisciplinary efforts in HM and lactation research.

1.2 | Counterproductive tensions

Like other areas of study, the major sources of funding for research on HM and infant feeding originate from governments, philanthropic or charitable foundations and other non-profit organizations, and industry. Many HM and breastfeeding researchers carefully manage potential conflicts of interest (COIs) with industry. Others choose to avoid financial COI altogether, and some also recognize and uphold the World Health Organization (WHO) Code of Marketing of Breastmilk Substitutes, which, although relevant to breastfeeding, is focused on the marketing of commercial products and not research governance. Scientists on both ends of this spectrum have been publicly shamed for their decisions. Aside from directly impacting the targeted individuals and areas of investigation, these dynamics may discourage young scientists from entering the field. Breastfeeding and HM researchers must also navigate increasingly complex social challenges when translating their research because social media is increasingly used to perpetuate misinformation or biased interpretations of scientific evidence about breastfeeding and infant formula. Correcting misinformation is challenging and time consuming and can detract from research activities. Although these challenges are not entirely unique to breastfeeding and HM research, they are heightened in this field due to the emotion associated with infant feeding decisions.

1.3 | Methods

To discuss these challenges facing breastfeeding and HM researchers, a multinational group of breastfeeding and HM researchers from diverse disciplines and career stages gathered in February 2019 in Winnipeg, Canada, for a workshop titled 'Breastfeeding and the Origins of Health: Interdisciplinary Perspectives and Priorities'. The mandate of this workshop was to identify and discuss research priorities and anticipated breakthroughs in breastfeeding or HM research (Section 2); discuss the perceived barriers and challenges to achieving these breakthroughs (Section 3); and outline a plan of action towards supporting and maximizing the impact of future breastfeeding and HM research (Section 4). Participants were invited on the basis of

their expertise in breastfeeding and HM research or practice, with consideration for equity, diversity and inclusion across disciplines, settings and career stages. Not everyone who was invited was able to attend, and a few declined participation precisely because of the tensions the workshop aimed to address. Participants completed a preworkshop survey to guide preparations. The workshop consisted of short presentations, interactive priority-setting exercises, group discussions and breakout sessions. Local stakeholders (researchers, trainees and healthcare practitioners) attended some sessions and contributed to discussions. During the workshop, participants codeveloped the outline of this paper and formed writing groups to draft each section in response to the workshop's stated aims. Writing continued after the workshop through a collaborative and iterative process involving all invited participants as co-authors.

2 | PRIORITIES AND ANTICIPATED BREAKTHROUGHS IN BREASTFEEDING AND HUMAN MILK RESEARCH

2.1 | Using implementation science to address low breastfeeding rates and breastfeeding inequities

2.1.1 | Low breastfeeding rates, inequities and barriers

Breastfeeding is among the most cost-effective public health interventions available, providing protection against several short- and long-term health conditions for both mother and infant (Victora et al., 2016), which reduces healthcare costs (Rollins et al., 2016). The WHO recommends that all infants be exclusively breastfed for around 6 months and continue breastfeeding with complementary foods until 2 years or beyond (WHO, 2003), yet by 6 months of age, only 58% of US infants are breastfed and just 25% are exclusively breastfed (Centers for Disease Control and Prevention, 2018). Rates are lower in the United Kingdom (34% any breastfeeding at 6 months), the Netherlands (32%) and France (23%) (Victora et al., 2016). In many settings, breastfeeding rates are even lower among infants born to minority and/or low-income mothers, which may contribute to long-term health inequities in these marginalized populations (Anstey, Chen, Elam-Evans, & Perrine, 2017; Merewood et al., 2019; Patel et al., 2019).

Barriers to breastfeeding include stigma, lack of support and structural factors that disproportionately affect marginalized populations (e.g., lack of breastfeeding education and support services and inadequate maternity leave policies) (Nickel et al., 2014). Social determinants of health and cultural factors also influence breastfeeding outcomes (Byrd, Balcazar, & Hummer, 2001; Cattaneo, 2011; Celi, Rich-Edwards, Richardson, Kleinman, & Gillman, 2005; Dubois & Girard, 2003; Patel et al., 2019). Of great concern, the breastfeeding gap within populations is widening (Li et al., 2019; Logan et al., 2016; Nickel et al., 2014). It is critical to understand the reasons for this disparity and to collaboratively develop context-specific strategies to address them.

2.1.2 | Implementation science

Addressing low breastfeeding rates and breastfeeding inequities requires *implementation science* (Pérez-Escamilla & Hall Moran, 2016) to translate research into evidence-based advocacy efforts, policies and large-scale programmes. Implementation science involves mixed-methods approaches to design, evaluate and scale up effective programme innovations, and strategies to enhance the use of existing knowledge, tools and frameworks based on a systems thinking approach (Tumilowicz et al., 2019). Coordinated efforts by multi-disciplinary teams are required to execute planning, collaboration, monitoring and adjustments. Implementation science has been applied successfully to scale up effective breastfeeding programmes across world regions using the breastfeeding gear model (Pérez-Escamilla, Curry, Minhas, Taylor, & Bradley, 2012) and building upon evidence-based interventions (Merewood et al., 2019; Nickel, Taylor, Labbok, Weiner, & Williamson, 2013; Pérez-Escamilla et al., 2016).

2.2 | Improving awareness of evidence-based benefits, challenges and complexities of breastfeeding among health practitioners and the public using effective messaging platforms

2.2.1 | Lack of awareness and competing/inconsistent messaging

Evidence-based and culturally competent engagement about breastfeeding remains a constant challenge, particularly when contrasted by the sophisticated messaging strategies used by infant formula companies (Seals Allers, 2018). This challenge is compounded by a lack of formal education about lactation and breastfeeding support for most healthcare professionals (Freed et al., 1995; Younger Meek, 2019). There is also a lack of rigorous science investigating the implications of breastfeeding and/or HM on infant health. At the same time, health-focused research and messaging often fail to acknowledge that many women want to breastfeed for cultural or religious reasons, or simply because it is a physiological norm and a reproductive right, regardless of any health benefits (Brown, 2018). This constellation of challenges has resulted in public confusion and inconsistent messaging regarding breastfeeding and HM.

2.2.2 | Reaching everyone with appropriate messaging

Supporting breastfeeding is a societal responsibility (Rollins et al., 2016). Mothers and infants are underserved by societies that deprive families of the autonomy and information to make evidence-based decisions about infant feeding, invalidate mothers' emotions and desires to breastfeed (or not), default to infant formula rather than effectively supporting breastfeeding and undervalue the time

and energy that women dedicate to breastfeeding (Brown, 2018). Messages should not focus on the individual mother alone; they should be adapted for traction across all stakeholders that influence breastfeeding success—from grandparents and clinicians to employers, business owners and political bodies. It is also important to 'normalize' breastfeeding for the next generation of families through embedding breastfeeding education in school curriculums (Glaser, Roberts, Grosskopf, & Basch, 2015).

Messages must be culturally sensitive and recognize that, in some countries, inequities in breastfeeding have resulted from historical trauma and discrimination against marginalized communities (Asiodu & Flaskerud, 2011; Heart, Chase, Elkins, & Altschul, 2011). Effective initiatives built within these communities are foundational models for achieving inclusive care (e.g., Momma's Village, Indigenous Breastfeeding Counsellor, and Reaching Our Sisters Everywhere: African American Breastfeeding Blueprint) (Bugg & Bugg, 2013). Healthcare providers (Pound, Moreau, Hart, Ward, & Plint, 2015) and policymakers must be properly and comprehensively trained, as messaging to promote breastfeeding will have limited success without equitable policies that support and protect breastfeeding at the individual, institutional and societal levels.

2.2.3 | Leveraging social media and online communities

Social media platforms provide a global medium to amplify public health campaigns, influence health behaviours and establish social norm (Giustini, Ali, Fraser, & Kamel Boulos, 2018; Merchant, 2020). Social media can be used to share educational and supportive messaging about breastfeeding and HM (Marcon, Bieber, & Azad, 2018; Price et al., 2018); however, it can also facilitate dissemination of pseudo-science and provide a platform for divisive agents (Giustini et al., 2018). Opportunities exist to spread breastfeeding messaging more broadly and effectively using social media (Brown, 2016), smartphone apps (Coughlin, 2016), animations (e.g., bit.ly/2euMoxh), interactive infographics (e.g., human-milk.com) and popular science writing. Academics studying breastfeeding and HM should make better use of these 'nontraditional' forms of knowledge translation or actively engage with messaging experts to maximize the reach and impact of their research.

2.3 | Studying and supporting alternative modes of human milk feeding: Expressed milk, donor milk and shared milk

2.3.1 | Expressed milk

Exacerbated by the lack of a national paid parental leave policy, over 85% of US mothers express (pump) their milk at some point during lactation (Labiner-Wolfe, Fein, Shealy, & Wang, 2008), including some who solely feed expressed HM (Keim, Boone, Oza-Frank, &

Geraghty, 2017). This practice has also increased in other industrialized nations—for example, in Hong Kong, exclusive pumping increased from 5–8% in 2006 to 18–20% in 2011 (Bai, Fong, Lok, Wong, & Tarrant, 2017).

Feeding bottled HM may not be biologically equivalent to feeding at the breast. Differences have been observed for infant weight gain (Azad et al., 2018), satiety (Li, Fein, & Grummer-Strawn, 2010), asthma (Klopp et al., 2017) and memory (Pang et al., 2019), suggesting a potential negative impact from the process of bottle feeding and/or reduced bioactivity of expressed HM. However, feeding expressed HM still provides benefits compared with infant formula (Azad et al., 2018; Klopp et al., 2017) and should be encouraged when nursing is not possible or preferred. Future research should capture the complexity of modern HM feeding practices, even among exclusively breast (milk)-fed infants. As new evidence emerges, guidelines (Eglish & Simon, 2017) may require revision to provide up-to-date advice for storing and feeding expressed HM. It is also critical to address the structural barriers that force women to choose between pumping and stopping breastfeeding altogether.

2.3.2 | Donor milk and milk sharing

The availability and use of donor HM (DHM) is increasing. In preterm infants, access to DHM (as compared with infant formula) lowers the risk of developing necrotizing enterocolitis (Quigley, Embleton, & McGuire, 2019) and can support the establishment of the mother's own milk supply (Kantorowska et al., 2016; Wilson et al., 2018) but may result in lower growth rates (Quigley et al., 2019). Research is needed to identify best practices, including whether and how pooling (Young et al., 2018) and pasteurizing (Ewaschuk, Unger, Harvey, O'Connor, & Field, 2011) should be conducted to preserve the bioactive integrity. 'Personalizing' DHM is another area requiring innovation—for example, by matching DHM on maternal and/or infant characteristics or using mother's own milk to seed the microbiota of DHM (Cacho et al., 2017). Research is also needed to inform prioritization of DHM allocation and improve milk banking processes (Matthews et al., 2019).

The limited access to DHM in most countries has led to a large increase in unregulated informal HM sharing (Palmquist et al., 2019). To prevent potential harms from these practices, a pragmatic approach has been proposed by the Academy of Breastfeeding Medicine (Sriraman, Evans, Lawrence, & Noble, 2018), outlining risks versus benefits to help parents make evidence-based decisions. Research is underway to address the paucity of evidence available regarding the use of DHM in term infants.

Overall, modern caregivers are actively seeking practical advice (Lupton, 2016) to inform their diverse feeding regimens, and much more research is necessary to provide evidence-based recommendations. This will require researchers to explore and document alternative feeding modes and engage with diverse stakeholders

including breast pump manufacturers, donor milk banks and regulatory agencies.

2.4 | Using innovative approaches to understand mechanisms of the health effects of breastfeeding and the variability of human milk composition

2.4.1 | Human Milk: A complex, dynamic, living tissue

Evidence linking breastfeeding to health benefits for mothers and infants varies across studies, settings and populations—possibly because of methodological differences or variation in HM composition. Milk contains vitamins, minerals, lipids, proteins, carbohydrates, enzymes, hormones, cytokines, antibodies and microRNAs. Milk is also a 'living tissue' containing viable human and microbial cells, although their role in infant health is unclear (Witkowska-Zimny & Kaminska-EI-Hassan, 2017). The concept of 'lactotypes' has been proposed, suggesting that women can be characterized according to their milk composition profile (Munblit et al., 2017) and that variation in combinations of milk components rather than single factors may be linked with infant health.

2.4.2 | Determinants of human milk composition

Many HM constituents vary greatly between and within populations, and even within the same individual over time, depending on multiple fixed and modifiable factors (Boix-Amorós et al., 2019; Bravi et al., 2016)—including maternal age, diet, parity, stage of lactation, metabolic and immune health, physical activity, medications, mode of delivery, length of gestation, infant sex and social networks (e.g., Bravi et al., 2016; Cacho et al., 2017; Meehan et al., 2018; Munblit et al., 2017; Witkowska-Zimny & Kaminska-EI-Hassan, 2017) (Figure 1). Genetics are also relevant; for example, single-nucleotide polymorphisms in the fucosyltransferase and fatty acid desaturase gene clusters are associated with 2'-fucosyllactose and ω -6-polyunsaturated fatty acid concentrations, respectively (Glaser, Latka, Rzehak, Steer, & Koletzko, 2011; Meldrum et al., 2018). Genome-wide association studies have been used for decades in the dairy industry (Fang et al., 2017) and are warranted to examine HM composition.

Geographic variation in HM composition has also been described (Gay et al., 2018; Kumar et al., 2016; McGuire, Meehan, Brooker, et al., 2017; Munblit et al., 2016; Ruiz et al., 2017) and might reflect optimization of milk for particular environments (McGuire, Meehan, McGuire, et al., 2017). This 'eco-homeorhesis' phenomenon suggests that there is no one-size-fits-all construct for milk composition and could inform strategies to 'personalize' HM for particular settings and contexts. However, these differences in milk composition may reflect historical exposures—such as pathogens that are no longer common to the region. Thus, milk composition likely reflects the sum of previous and current circumstances. Investigation of this important

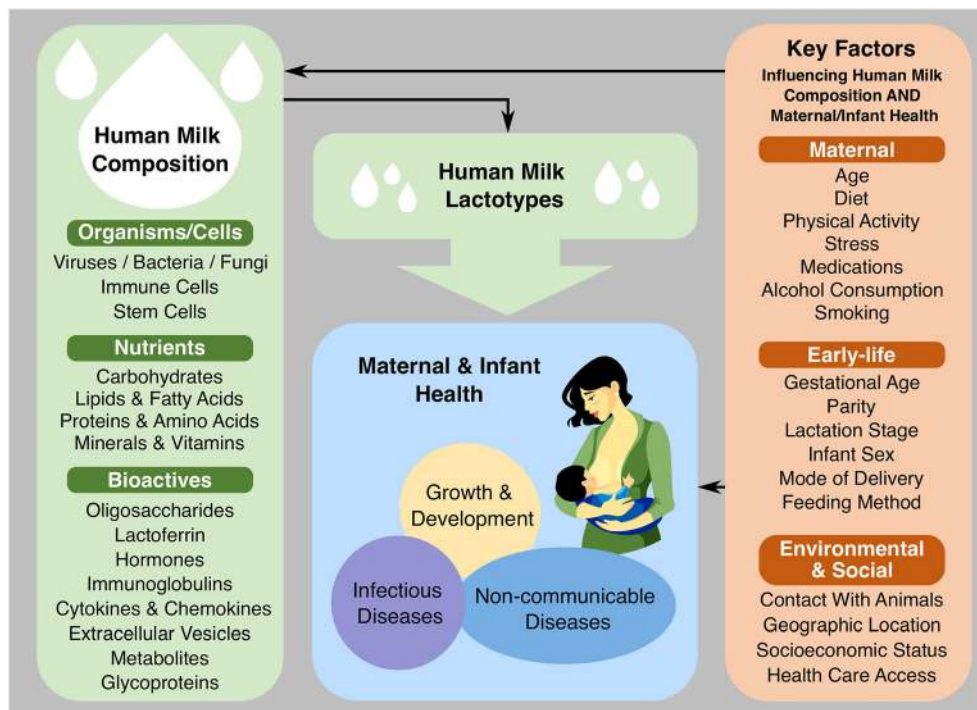


FIGURE 1 Determinants and consequences of human milk composition

concept requires tightly controlled studies with standardized collection of milk and health data on a global scale.

2.4.3 | Relating variation in human milk composition to infant health

Current evidence relating HM components to infant health is limited by several factors related to study design and methodology (see Section 3.1) and frequently focuses on single HM constituents. Future studies should investigate a wider selection of components and engage experts in statistics and data science to consider the interactions between them. Translational approaches are needed to build on these observations with mechanistic studies. This will require randomized controlled trials (e.g., milk components as supplements), *in vitro* experiments and animal models. Systematic reviews are also needed (Doherty et al., 2018; Fitzstevens et al., 2017; Gao et al., 2019; Khaleva et al., 2019; Waidyatillake et al., 2018) to inform future research.

3 | BARRIERS AND CHALLENGES TO BREASTFEEDING AND HUMAN MILK RESEARCH

3.1 | Methodological limitations of epidemiological and mechanistic research

Evidence supporting or refuting 'health claims' associated with breastfeeding is often conflicting (Doherty et al., 2018; Evenhouse & Reilly, 2005; Munblit et al., 2017; Torregrosa Paredes et al., 2014; Waidyatillake et al., 2018). This is problematic because when claims are publicly refuted, trust in the scientists and health professionals producing and conveying these claims could be eroded, potentially

leading to a backlash against researchers and breastfeeding promotion efforts. Robust evidence quantifying specific health effects (or lack thereof) and their mechanisms will be key to producing reliable cost-benefit analyses and advocating for more investment in services to protect, promote and support breastfeeding.

3.1.1 | Epidemiological studies of breastfeeding

It is not ethical to randomize breastfeeding, so almost all evidence supporting or refuting breastfeeding or HM feeding comes from observational studies or animal models. Epidemiological studies vary in design, size and setting (e.g., low- vs. high-income countries), and their collective results reflect considerable heterogeneity for many of the outcomes studied (Victora et al., 2016). Heterogeneous results do not necessarily signal a 'reproducibility crisis' as there may be genuine differences when breastfeeding interacts with setting-specific cultural and environmental factors. For example, breastfeeding appears to lessen the negative effect of air pollution and tobacco smoke on development of asthma (Moshhammer & Hutter, 2019); thus, the effect of breastfeeding on asthma may appear greater in settings with high rates of these exposures. However, differences in effect estimates could also result from different degrees of bias, which contributes to a lack of reproducibility. Box 1 lists the main sources of heterogeneity in epidemiological studies of breastfeeding. The cluster-randomized Promotion of Breastfeeding Intervention Trial (PROBIT) (Kramer et al., 2001) offered a rare opportunity to evaluate the causal impact of this programme in Belarus; however, this trial excluded nonbreastfed infants and the results may not be generalizable to other settings and modern feeding regimens (Martens, 2012).

Box 1 Sources of heterogeneity in epidemiological studies of breastfeeding

A) Bias-inducing limitations (measuring the same effects, but with bias)

- **Confounding**—The main barrier to inferring causality in observational studies of breastfeeding is confounding by socioeconomic factors and variables following a socioeconomic gradient (e.g. maternal health and lifestyle). This is because establishing or continuing to breastfeed is strongly associated with socioeconomic status (particularly in high-income countries), as are many of the health outcomes.
- **Selection bias**—Studies focused on determinants of breastfeeding duration can be biased if they exclude mothers who do not initiate breastfeeding, particularly if these same determinants also affect initiation (Paternoster, Tilling, & Davey Smith, 2017).
- **Publication bias**—Compared to studies suggesting no relationship between breastfeeding and a health outcome, those showing positive associations are more likely to be published (Horta & Victora, 2013), thus affecting conclusions drawn in systematic reviews and meta-analyses.

B) Non-bias inducing limitations (measuring different effects)

- **Misclassification of breastfeeding exposures**—Standardized definitions have been proposed for breastfeeding research, but many studies do not apply them (Miliku & Azad, 2018). Ideally, studies should capture and distinguish the following:
 - Duration and exclusivity of breastfeeding
 - Nursing at the breast vs expressed HM (relative proportion of each; storage of expressed milk)
 - Perinatal feeding exposures in hospital
 - Introduction of complementary foods (both age and type/quality of food)
 - If partially breastfed: relative proportion of HM vs infant formula
 - If bottle fed (whether infant formula or HM): feeding style
 - If formula fed: variation in type of infant formula used (e.g. high/low protein, protein source and size, percentage carbohydrate from lactose, addition of pre/probiotics, lactoferrin, milk fat globule membrane, etc.)
- **Failure to address effect modifiers and interactions**—There may be genuine differences in breastfeeding effects when breastfeeding interacts with setting-specific cultural/environmental factors. Such interactions are rarely addressed but should be considered. Possible modifiers include the following (though it should be noted that some of these factors could also be confounders).
 - Maternal diet, lifestyle and drug use (prescription or recreational)
 - Maternal physical and mental health
 - Maternal/parental attachment and parenting style
 - Environmental exposures that are mitigated or exacerbated by breastfeeding (e.g. pollution, smoking)
 - Differences in HM composition (see Section 2.3)

3.1.2 | Mechanistic studies of human milk components

HM contains a plethora of nutritional and bioactive components (Section 2.4). Methods may differ between studies, occasionally without appropriate validation for measurement in HM, which is a unique and complex matrix compared with other body fluids and even other types of milk. HM components are often quantified in terms of concentrations as opposed to the cumulative 'dose' received by the nursing infant. The dose is more relevant but also more challenging to measure because it requires knowing the volume of milk consumed by the infant. Methods used to obtain and store HM samples are often not reported (factors to consider are shown in Box 2).

3.2 | Negative personal experiences with breastfeeding can fuel 'breastfeeding denialism' and impede research progress and translation

Public discussions about infant feeding in mainstream and social media highlight the deeply personal nature of infant feeding experiences. Women express the joy they experience while breastfeeding and share their struggles and emotional turmoil when they are unable to meet their own breastfeeding goals (Brown, 2018). Negative or 'denialist' attitudes towards breastfeeding are sometimes fuelled by individuals with negative personal experiences (Palmer, 2019), which often originate from disempowering interactions with healthcare systems (Brown, 2018). Researchers face complex challenges when discussing the health benefits of breastfeeding because, although

Box 2 Selected sources of heterogeneity in human milk research

- Full feed expression vs foremilk only (beginning of feed) vs. hindmilk only (end of feed) vs. mid-feed
- Time of day
- Method of collection (hand pump, electric pump, or hand expressed) and container (material, sterilized or not)
- Method used to clean (or not) the breast and/or pump
- Collection and storage containers (glass, plastic, clear, opaque, amber)
- Temperature and time in storage
- Maternal characteristics (feed-specific), prandial state/diet/medications/drug use
- Stage of lactation (age of infant)
- Samples from a single feed or pooled samples from multiple feeds
- Thawing, processing and mixing protocol
- Validity of assay in human milk
- Capture milk volume to calculate dose consumed

advancing research on this topic will ultimately improve health for *all* mothers and infants, it also perpetuates a dialogue that can cause guilt among women who did not breastfeed. These personal biases can impede research progress and impact by influencing the peer review process and the translation of research results. One way to address this challenge is to avoid focusing entirely on the mother–infant dyad and their (in)ability to breastfeed, which ignores the myriad underlying social and structural determinants that affect this process, as discussed in Section 2.2. Another way to address this challenge is to undertake qualitative research focused on understanding the lived experiences of families who have struggled with breastfeeding (Spencer, 2008). It is also important that women unable to breastfeed

are supported through research on alternative feeding methods and responsive bottle feeding.

3.3 | Distinguishing and aligning advocacy and research efforts

Advocacy is central to advancing public health agendas, including breastfeeding (Michaud-Létourneau, Gayard, & Pelletier, 2019; Pérez-Escamilla et al., 2012; Rosen, 1993). In parallel, marketing messaging by industry has been used heavily to advocate for infant formula (Robinson, Buccini, Curry, & Pérez-Escamilla, 2018). Although it is generally agreed that advocacy should be based on research, it can be difficult to reach consensus on the sufficient level of evidence. In the case of breastfeeding and HM, there is often a lack of consensus stemming from the limitations and inconsistency of current evidence (Section 3.1), the complex nature of HM composition (Section 2.4) and the personal biases of individual experts. Moreover, breastfeeding itself is a complex construct (Figure 2) that can be considered as a health issue for both mother and infant, a basic human right for the infant and a reproductive right for the mother. Breastfeeding can be approached from clinical, public health or anthropological perspectives and can be viewed as nutrition, ‘personalized medicine’ or a means of maternal–infant nurturing interactions. Given these complexities and nuances, it is not surprising that experts can struggle to reach consensus on the type of evidence needed for informing advocacy efforts.

3.3.1 | Unsubstantiated or poorly substantiated claims

Infant formula manufacturers have been known to make unsubstantiated claims for marketing purposes (Munblit, Crawley, Hyde, & Boyle, 2020). For example, some products fortified with DHA

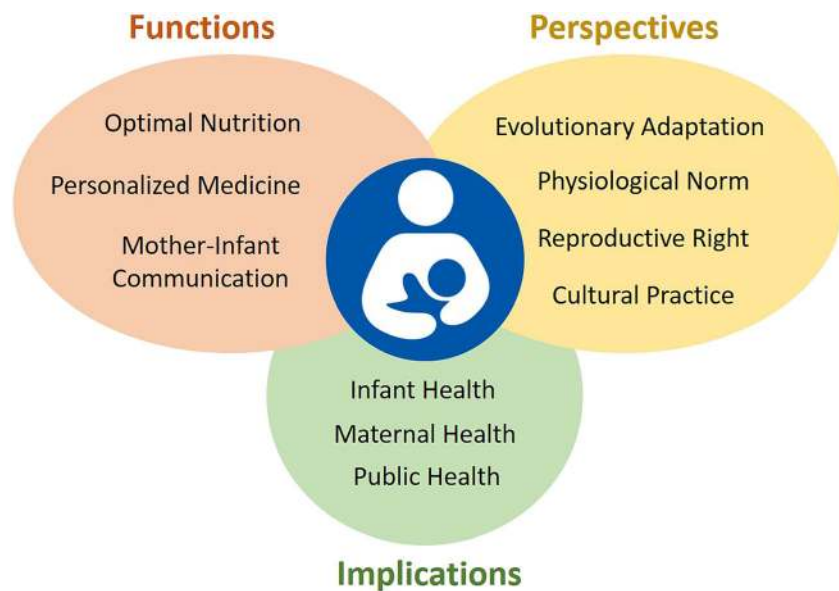


FIGURE 2 The biopsychosocial construct of breastfeeding: functions, perspectives and implications

are advertised as improving cognitive development, yet there is little rigorous evidence to support this claim (Moon, Rao, Schulzke, Patole, & Simmer, 2016). The addition of biologically active ingredients to infant formulas without clear evidence of long-term safety or benefit is an issue of increasing concern (Abrams & Daniels, 2019; Kaneko, Fasano, & Choudhuri, 2019).

Claims may also be unsubstantiated in breastfeeding advocacy and promotion efforts. There is a danger that interesting new clinical or laboratory findings related to HM (e.g., the presence of stem cells) may be used prematurely by advocacy groups before the direct benefits to infant or maternal health are understood. Such claims can inadvertently undermine the support of breastfeeding by implying that further research is not needed and giving the impression that research in this field is not sufficiently rigorous. Such claims may later be used by industry to justify adding new ingredients to infant formula without appropriate evidence.

3.3.2 | Supporting advocacy with evidence

As a general strategy, population-wide efforts to improve science literacy will help individuals understand research in context and appreciate that all research has limitations. Targeted efforts are being made to ensure that breastfeeding and HM-related advocacy is based on rigorous evidence. For example, great improvements have occurred in the process for developing evidence-informed infant feeding guidelines through the WHO (2012). The United States Department of Agriculture (USDA) has developed the Nutrition Evidence Systematic Review (formerly known as the Nutrition Evidence Library) to help systematize the grading of dietary recommendations, including for infants (see <https://www.fns.usda.gov/resource/nutrition-evidence-systematic-review>). The Cochrane Collaboration launched a special collection of systematic reviews on support and care for breastfeeding women, treatment of breastfeeding-associated problems and breastfeeding infants with additional needs (see <https://www.cochranelibrary.com/collections/doi/10.1002/14651858.SC000027/full>).

Advocacy efforts should be grounded in evidence, and research efforts should involve knowledge users to inform advocacy. Unjustified claims often result from genuine misunderstanding or poor knowledge translation. Researchers can support advocacy efforts by providing clear evidence summaries and speaking up when findings are inappropriately used for advocacy. In addition, researchers can contribute by evaluating advocacy strategies to objectively determine their efficacy (Brindis & Gardner, 2017; Glass, 2017) and actively participating in initiatives that lead to effective public policy and advocacy recommendations (Pérez-Escamilla et al., 2012).

3.4 | COIs in breastfeeding and human milk research

COIs in research put the process at risk by potentially biasing a researcher's professional judgement (Suter & Cormier, 2015). COI can

emerge across a variety of dimensions when an individual has a personal, professional or financial interest that could affect how they carry out or interpret their work. Here we focus on financial COI and offer a discussion of the challenges and opportunities afforded by working with industry partners for breastfeeding and HM research. Workshop discussions highlighted the diversity of opinions on this topic.

3.4.1 | Industry sponsorship of breastfeeding and human milk research can lead to bias and incorrect public health messaging

Over the past century, many industries have funded research as a strategy for gaining public credibility and acquiring market share (Bekelman, Li, & Gross, 2003; Flacco et al., 2015; Lexchin, Bero, Djulbegovic, & Clark, 2003; Lundh, Lexchin, Mintzes, Schroll, & Bero, 2018). This practice extends to breastfeeding and HM science, where the infant feeding industry invests heavily in breastfeeding and HM research (Shenker, 2018; Van Tulleken, 2018). Industry funding may influence decision making in academic healthcare settings on an unconscious level, reflecting 'motivational bias' (Dana & Loewenstein, 2003). The act of declaring COI may actually exaggerate rather than mitigate this form of bias (Cain, Loewenstein, & Moore, 2005, 2010). Scientists who ignore the risks of motivational bias can inadvertently facilitate the dissemination of incorrect public health messages (Bekelman et al., 2003; Campbell, Louis, & Blumenthal, 1998; Smith, 2006; Thompson, 1993). There is no guarantee that open declarations of COI will prevent such bias when researchers accept grant funding (whether or not it is restricted) from companies with vested interests in the outcomes generated. Further, a randomized study (Sharek, Schoen, & Loewenstein, 2012) showed that the impact of motivational bias may extend to the development and evaluation of COI policies when these policies are developed by those closest to the field. Involving impartial organizations and ethicists in the development of COI policies could help prevent this potential bias.

3.4.2 | Industry partnerships can contribute meaningfully to breastfeeding and human milk research and produce unbiased results when COIs are effectively managed

Industry partnerships can be important for the advancement of science and translation of discoveries. Throughout this process, however, it is important to manage COI to ensure that they do not bias study findings or the dissemination of results. It is critical that researchers fully disclose their funding sources and the nature of any potential COIs and apply appropriate study designs and oversight to ensure the validity and integrity of their study's results. This includes standardization of methods, use of appropriate control groups, and application of statistical techniques and models to account for confounders. In clinical trials, randomization and blinding are standard

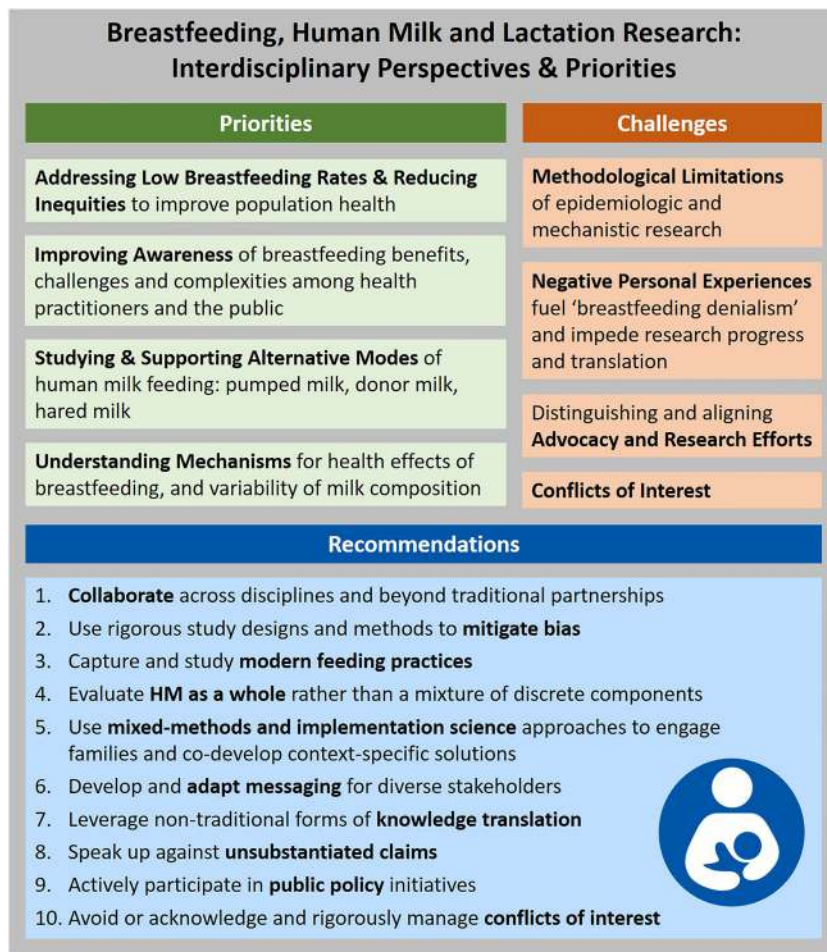


FIGURE 3 Key priorities and anticipated breakthroughs, barriers and challenges, and recommendations for research on breastfeeding and human milk (HM)

methods applied to prevent COI from influencing results. Most academic institutions do not allow funders (e.g., granting agencies, foundations or corporate entities) to influence whether or not research findings can be published and have policies in place to prevent funders from influencing study findings and publication. Moreover, most scientists publish their studies in refereed journals, adding important, though imperfect (Dyer, 2019; John, Loewenstein, Marder, & Callahan, 2019), layers of protection against COI.

3.4.3 | Moving forward

Responses to concerns surrounding real and perceived COI need to be balanced. Given that public research funding is limited, particularly for maternal and infant health research (Johnson, 2019), some scientists are concerned that strictly refusing all interactions with industry could hinder research progress and limit the ability of researchers to hold scientific meetings, unless alternative forms of funding are made available. Other scientists perceive that ignoring or mismanaging COI concerns could jeopardize research integrity in this field. Ultimately, the enduring solution to potential problems related to COI will involve a combination of avoiding (where possible and prudent) or acknowledging, declaring and rigorously managing COI.

4 | ROADMAP AND CONCLUSIONS

4.1 | How to achieve breakthroughs and overcome barriers

There is a growing recognition of the importance and exquisite complexity of HM as a living tissue promotes infant health. At the same time, there is an increasing appreciation that breastfeeding practices and HM composition are influenced by psychosocial factors and the social and structural determinants of health. These findings indicate a need for scientists to adopt a holistic view of breastfeeding and HM and establish interdisciplinary collaborations to carry out this research. In particular:

- To address breastfeeding inequities experienced by marginalized communities, mixed-methods implementation research is needed to engage families and codevelop context-specific solutions, followed by cost-effective scale-up of effective policies and programmes.
- To improve awareness about breastfeeding among health practitioners and the public, and support evidence-informed advocacy efforts, researchers should develop and adapt messaging for diverse stakeholders.

- To generate much needed knowledge about alternative methods of HM feeding (e.g., pumping, donor milk and milk sharing), researchers should accurately capture feeding practices.
- To evaluate the causal health effects of breastfeeding and HM, studies should be rigorously designed, carried out, analysed and interpreted to mitigate bias.
- To advance our knowledge of HM composition, synthesis and consumption, it is essential to apply standardized and validated sampling and analytical methods, to evaluate milk as a whole instead of a mixture of discrete components and to measure the volume of milk consumed accurately.
- To support evidence-informed advocacy efforts, researchers should provide clear evidence summaries of their findings, discredit unsubstantiated claims and actively participate in initiatives leading to effective public policy and advocacy recommendations.

4.2 | Call to action

Dissonance between groups in the breastfeeding and HM sector detracts from the energy and resources that advocates, researchers, health professionals and policymakers should be directing towards advancing a collective goal of supporting families and improving maternal-child health. Although it is understandable that members of the diverse breastfeeding advocacy and research communities will not always agree, they should endeavour to work together, not against each other, to advance this effort. To alleviate this conflict, *we call on individuals, companies and advocacy groups* to abstain from ad hominem attacks on HM and breastfeeding researchers and invest in developing a reasonable COI framework for effective governance of research in the field.

Further, *we call on governments and non-profit organizations* to invest more in breastfeeding and HM research. We are encouraged that the US National Institutes of Health recently held a dedicated workshop on HM composition (Casavale et al., 2020) and launched a Task Force on Research Specific to Pregnant Women and Lactating Women. To support the development of updated Dietary Reference Intakes for infants, the US National Academies of Sciences, Engineering, and Medicine has created the Committee on Scanning for New Evidence on the Nutrient Content of Human Milk. We are also encouraged that philanthropic foundations have invested in implementation research to study policies and practices that support breastfeeding outcomes.

Finally, *we call on researchers* to embrace interdisciplinary initiatives to learn fresh perspectives, acquire new expertise and explore new applications for breastfeeding and HM research. Addressing outcomes beyond immediate infant health indicators (e.g., childhood educational performance, maternal health, environmental impacts and HM components as therapeutics for adult diseases) may encourage larger research initiatives focused on holistic and long-term impacts of breastfeeding and HM. Research efforts are also needed to help mothers overcome lactational challenges,

understand lactational failure and create an evidence base for donor milk provision in these cases.

5 | CONCLUSION

Breastfeeding and HM research is vital to understanding and improving health worldwide. As summarized in Figure 3, this transdisciplinary field is on the cusp of major discoveries with implications for lifelong health. However, unlike many other areas of health research, this field is laden with emotion and denialism. It is also challenged with informing yet remaining distinct, to some extent, from breastfeeding advocacy efforts. To advance research in this field and maximize its reach and impact, larger research investments are needed and interdisciplinary collaboration is essential; the scientific community must properly manage COI and engage families and other stakeholders in research planning and knowledge translation efforts.

ACKNOWLEDGMENTS

We thank all workshop participants for participating with open minds and respectful dialogue. We also thank Natalie Rodriguez and Erika Bloomfield (DEVOTION), Valorie Nash, Kerry Cardoza and Alison Baulous (University of Chicago) for administrative support, Anita Durksen (University of Manitoba) for note taking and Michelle La, John Schellenberg and Kelsey Fehr (University of Manitoba) for document formatting and graphic design. The 'Breastfeeding and the Origins of Health: Interdisciplinary Perspectives and Priorities' Workshop was funded by the University of Chicago's Centre for the Economics of Human Development and supported by the University of Manitoba and Children's Hospital Research Institute of Manitoba's Developmental Origins of Chronic Diseases in Children Network (DEVOTION).

CONFLICTS OF INTEREST

The authors have declared all relevant potential sources of conflict of interest, including salary/research funding, patents, stock ownership, speaking activities at sponsored conferences/workshops/events, consulting, boards, societies, committees, expert panels and community organizations, detailed in Table S1.

CONTRIBUTIONS

MBA and NCN planned and facilitated the workshop. All authors actively participated in workshop discussions, which formed the basis for this paper. The primary authors for Section 2.1 were ALP, RP-E and NCN; Section 2.2: MB, AB, CG, KH and LZ; Section 2.3: BEY, CC, KMR and NS; Section 2.4: DM, MBA, LB and MM; Section 3.1: LZ, MBA, LB, DM and BEY; Section 3.2: NCN, MB and MBA; Section 3.3: DM, RP-E, KH, LZ, MB and MM; and Section 3.4: NS, MM, RP-E and NCN. MBA and NCN compiled and edited the individual sections with assistance from MB. All authors reviewed and revised the full manuscript and approved the final version for submission.

ORCID

Meaghan B. Azad  <https://orcid.org/0000-0002-5942-4444>

Nathan C. Nickel  <https://orcid.org/0000-0001-5836-5297>

Amy Brown  <https://orcid.org/0000-0002-0438-0157>

Rafael Pérez-Escamilla  <https://orcid.org/0000-0001-9416-8039>

Natalie Shenker  <https://orcid.org/0000-0002-8067-1079>

REFERENCES

- Abrams, S. A., & Daniels, S. R. (2019). Protecting vulnerable infants by ensuring safe infant formula use. *Journal of Pediatrics*, 211, 201–206. <https://doi.org/10.1016/j.jpeds.2019.04.032>
- Andreas, N. J., Kampmann, B., & Mehring Le-Doare, K. (2015). Human breast milk: A review on its composition and bioactivity. *Early Human Development*, 91(11), 629–635.
- Anstey, E. H., Chen, J., Elam-Evans, L. D., & Perrine, C. G. (2017). Racial and geographic differences in breastfeeding—United States, 2011–2015. *Morbidity and Mortality Weekly Report*, 66(27), 723–727. <https://doi.org/10.15585/mmwr.mm6627a3>
- Asiodu, I., & Flaskerud, J. H. (2011). Got milk? A look at breastfeeding from an African American perspective. *Issues in Mental Health Nursing*, 32(8), 544–546. <https://doi.org/10.3109/01612840.2010.544842>
- Azad, M. B., Vehling, L., Chan, D., Klopp, A., Nickel, N. C., McGavock, J. M., ... Subbarao, P. (2018). Infant feeding and weight gain: Separating breast milk from breastfeeding and formula from food. *Pediatrics*, 142(4). <https://doi.org/10.1542/peds.2018-1092>
- Bai, D. L., Fong, D. Y. T., Lok, K. Y. W., Wong, J. Y. H., & Tarrant, M. (2017). Practices, predictors and consequences of expressed breast-milk feeding in healthy full-term infants. *Public Health Nutrition*, 20(3), 492–503. <https://doi.org/10.1017/S136898001600241X>
- Bekelman, J. E., Li, Y., & Gross, C. P. (2003). Scope and impact of financial conflicts of interest in biomedical research: A systematic review. *JAMA*, 289(4), 454–465. <https://doi.org/10.1001/jama.289.4.454>
- Boix-Amorós, A., Collado, M. C., Van't Land, B., Calvert, A., Le Doare, K., Garssen, J., ... Munblit, D. (2019). Reviewing the evidence on breast milk composition and immunological outcomes. *Nutrition Reviews*, 77(8), 541–556. <https://doi.org/10.1093/nutrit/nuz019>
- Bravi, F., Wiens, F., Decarli, A., Dal Pont, A., Agostoni, C., & Ferraroni, M. (2016). Impact of maternal nutrition on breast-milk composition: A systematic review. *American Journal of Clinical Nutrition*, 104(3), 646–662. <https://doi.org/10.3945/ajcn.115.120881>
- Brindis, C., & Gardner, A. (2017). *Advocacy and policy change evaluation: Theory and practice*. Palo Alto, CA: Stanford University Press.
- Brown, A. (2016). What do women really want? Lessons for breastfeeding promotion and education. *Breastfeeding Medicine*, 11(3), 102–110. <https://doi.org/10.1089/bfm.2015.0175>
- Brown, A. (2018). What do women lose if they are prevented from meeting their breastfeeding goals? *Clinical Lactation*, 9, 200–207. <https://doi.org/10.1891/2158-0782.9.4.200>
- Bugg, K., & Bugg, G. (2013). Reaching our sisters everywhere: Promoting breastfeeding in African American communities. *Breastfeeding Medicine*, 8(5), 453.
- Byrd, T. L., Balcazar, H., & Hummer, R. A. (2001). Acculturation and breast-feeding intention and practice in Hispanic women on the US-Mexico border. *Ethnicity & Disease*, 11(1), 72–79.
- Cacho, N. T., Harrison, N. A., Parker, L. A., Padgett, K. A., Lemas, D. J., Marcial, G. E., ... Lorca, G. L. (2017). Personalization of the microbiota of donor human milk with mother's own milk. *Frontiers in Microbiology*, 8, 1470. <https://doi.org/10.3389/fmicb.2017.01470>
- Cain, D. M., Loewenstein, G., & Moore, D. A. (2005). The dirt on coming clean: Perverse effects of disclosing conflicts of interest. *The Journal of Legal Studies*, 34(1), 1–25. <https://doi.org/10.1086/426699>
- Cain, D. M., Loewenstein, G., & Moore, D. A. (2010). When sunlight fails to disinfect: Understanding the perverse effects of disclosing conflicts of interest. *Journal of Consumer Research*, 37(5), 836–857. <https://doi.org/10.1086/656252>
- Campbell, E. G., Louis, K. S., & Blumenthal, D. (1998). Looking a gift horse in the mouth: Corporate gifts supporting life sciences research. *Journal of the American Medical Association*, 279(13), 995–999. <https://doi.org/10.1001/jama.279.13.995>
- Casavale, K. O., Ahuja, J. K. C., Wu, X., Li, Y., Quam, J., Olson, R., & Pehrsson, P. (2020). NIH workshop on human milk composition: Summary and visions. *American Journal of Clinical Nutrition*, 110(3), 769–779.
- Cattaneo, A. (2011). Academy of Breastfeeding Medicine founder's lecture 2011: Inequalities and inequities in breastfeeding: An international perspective. *Breastfeeding Medicine*, 7(1), 3–9. <https://doi.org/10.1089/bfm.2012.9999>
- Celi, A. C., Rich-Edwards, J. W., Richardson, M. K., Kleinman, K. P., & Gillman, M. W. (2005). Immigration, race/ethnicity, and social and economic factors as predictors of breastfeeding initiation. *Archives of Pediatrics & Adolescent Medicine*, 159(3), 255–260. <https://doi.org/10.1001/archpedi.159.3.255>
- Centers for Disease Control and Prevention. (2018). Breastfeeding report card, United States 2018 (Issue Dc).
- Coughlin, S. S. (2016). The need for research-tested smartphone applications for promoting breastfeeding. *MHealth*, 2(5). <https://doi.org/10.21037/mhealth.2016.04.03>
- Dana, J., & Loewenstein, G. (2003). A social science perspective on gifts to physicians from industry. *JAMA*, 290(2), 252–255. <https://doi.org/10.1001/jama.290.2.252>
- Doherty, A. M., Lodge, C. J., Dharmage, S. C., Dai, X., Bode, L., & Lowe, A. J. (2018). Human milk oligosaccharides and associations with immune-mediated disease and infection in childhood: A systematic review. *Frontiers in Pediatrics*, 6, 91. <https://doi.org/10.3389/fped.2018.00091>
- Dubois, L., & Girard, M. (2003). Social determinants of initiation, duration and exclusivity of breastfeeding at the population level: The results of the Longitudinal Study of Child Development in Quebec (ELDEQ 1998–2002). *Canadian Journal of Public Health. Revue Canadienne de Sante Publique*, 94(4), 300–305.
- Dyer, O. (2019). US researchers' conflicts of interest are still widespread and under-reported, investigations find. 6931(December), 10–11. <https://doi.org/10.1136/bmj.l6931>
- Eglash, A., & Simon, L. (2017). ABM clinical protocol #8: Human milk storage information for home use for full-term infants, revised 2017. *Breastfeeding Medicine*, 12(7), 390–395.
- Evenhouse, E., & Reilly, S. (2005). Improved estimates of the benefits of breastfeeding using sibling comparisons to reduce selection bias. *Health Services Research*, 40(6 Pt 1), 1781–1802. <https://doi.org/10.1111/j.1475-6773.2005.00453.x>
- Ewaschuk, J. B., Unger, S., Harvey, S., O'Connor, D. L., & Field, C. J. (2011). Effect of pasteurization on immune components of milk: Implications for feeding preterm infants. *Applied Physiology, Nutrition, and Metabolism=Physiologie Appliquee, Nutrition et Metabolisme*, 36(2), 175–182. <https://doi.org/10.1139/h11-008>
- Fang, L., Sahana, G., Su, G., Yu, Y., Zhang, S., Lund, M. S., & Sørensen, P. (2017). Integrating sequence-based GWAS and RNA-Seq provides novel insights into the genetic basis of mastitis and milk production in dairy cattle. *Scientific Reports*, 7(February), 1–16. <https://doi.org/10.1038/srep45560>
- Fitzstevens, J. L., Smith, K. C., Hagadorn, J. I., Caimano, M. J., Matson, A. P., & Brownell, E. A. (2017). Systematic review of the human milk microbiota. *Nutrition in Clinical Practice*, 32(3), 354–364. <https://doi.org/10.1177/0884533616670150>
- Flacco, M. E., Manzoli, L., Boccia, S., Capasso, L., Aleksovska, K., Rosso, A., ... Ioannidis, J. P. A. (2015). Head-to-head randomized trials are mostly

- industry sponsored and almost always favor the industry sponsor. *Journal of Clinical Epidemiology*, 68(7), 811–820. <https://doi.org/10.1016/j.jclinepi.2014.12.016>
- Freed, G. L., Clark, S. J., Sorenson, J., Lohr, J. A., Cefalo, R., & Curtis, P. (1995). National assessment of physicians' breast-feeding knowledge, attitudes, training, and experience. *JAMA*, 273(6), 472–476. <https://doi.org/10.1001/jama.1995.03520300046035>
- Gao, C., Miller, J., Middleton, P. F., Huang, Y. C., McPhee, A. J., & Gibson, R. A. (2019). Changes to breast milk fatty acid composition during storage, handling and processing: A systematic review. *Prostaglandins, Leukotrienes, and Essential Fatty Acids*, 146(January), 1–10. <https://doi.org/10.1016/j.plefa.2019.04.008>
- Gay, M. C. L., Koleva, P. T., Slupsky, C. M., du Toit, E., Eggesbo, M., Johnson, C. C., ... Kozyrskyj, A. L. (2018). Worldwide variation in human milk metabolome: Indicators of breast physiology and maternal lifestyle? *Nutrients*, 10(9), 1151. <https://doi.org/10.3390/nu10091151>
- Giustini, D., Ali, S. M., Fraser, M., & Kamel Boulos, M. N. (2018). Effective uses of social media in public health and medicine: A systematic review of systematic reviews. *Online Journal of Public Health Informatics*, 10(2), e215. <https://doi.org/10.5210/ojphi.v10i2.8270>
- Glaser, C., Lattka, E., Rzehak, P., Steer, C., & Koletzko, B. (2011). Genetic variation in polyunsaturated fatty acid metabolism and its potential relevance for human development and health. *Maternal & Child Nutrition*, 7(SUPPL. 2), 27–40. <https://doi.org/10.1111/j.1740-8709.2011.00319.x>
- Glaser, D. B., Roberts, K. J., Grosskopf, N. A., & Basch, C. H. (2015). An evaluation of the effectiveness of school-based breastfeeding education. *Journal of Human Lactation*, 32(1), 46–52. <https://doi.org/10.1177/0890334415595040>
- Glass, J. (2017). "Advocates change the world; Evaluation can help": A literature review and key insights from the practice of advocacy evaluation. *The Canadian Journal of Program Evaluation*, 32(1), 46–64. <https://doi.org/10.3138/cjpe.31039>
- Heart, M. Y. H. B., Chase, J., Elkins, J., & Altschul, D. B. (2011). Historical trauma among Indigenous Peoples of the Americas: Concepts, research, and clinical considerations. *Journal of Psychoactive Drugs*, 43(4), 282–290. <https://doi.org/10.1080/02791072.2011.628913>
- Horta, B. L., & Victora, C. (2013). Long-term health effects of breastfeeding: A systematic review. In *World Health Organization*.
- John, L. K., Loewenstein, G., Marder, A., & Callahan, M. L. (2019). Effect of revealing authors' conflicts of interests in peer review: Randomized controlled trial. *The BMJ*, 367, 1–10. <https://doi.org/10.1136/bmj.l5896>
- Johnson, C. Y. (2019, March). Long overlooked by science, pregnancy is finally getting attention it deserves. *Washington Post*.
- Kaneko, K. J., Fasano, J., & Choudhuri, S. (2019). Bioactive ingredients in infant formula: The value for a robust interdisciplinary discussion on safety assessment paradigm. *The Journal of Pediatrics*, 216, 250–251. <https://doi.org/10.1016/j.jpeds.2019.08.035>
- Kantorowska, A., Wei, J. C., Cohen, R. S., Lawrence, R. A., Gould, J. B., & Lee, H. C. (2016). Impact of donor milk availability on breast milk use and necrotizing enterocolitis rates. *Pediatrics*, 137(3), e20153123. <https://doi.org/10.1542/peds.2015-3123>
- Keim, S. A., Boone, K. M., Oza-Frank, R., & Geraghty, S. R. (2017). Pumping milk without ever feeding at the breast in the Moms2Moms study. *Breastfeeding Medicine: The Official Journal of the Academy of Breastfeeding Medicine*, 12(7), 422–429. <https://doi.org/10.1089/bfm.2017.0025>
- Khaleva, E., Gridneva, Z., Geddes, D. T., Oddy, W. H., Colicino, S., Blyuss, O., ... Munblit, D. (2019). Transforming growth factor beta in human milk and allergic outcomes in children: A systematic review. *Clinical and Experimental Allergy*, 49(9), 1201–1213. <https://doi.org/10.1111/cea.13409>
- Klopp, A., Vehling, L., Becker, A. B., Subbarao, P., Mandhane, P. J., Turvey, S. E., ... Azad, M. B. (2017). Modes of infant feeding and the risk of childhood asthma: A prospective birth cohort study. *The Journal of Pediatrics*, 190, 192–199.e2. <https://doi.org/10.1016/j.jpeds.2017.07.012>
- Kramer, M. S., Chalmers, B., Hodnett, E. D., Sevkovskaya, Z., Dzikovich, I., ... Helsing, E. (2001). Promotion of Breastfeeding Intervention Trial (PROBIT): A randomized trial in the Republic of Belarus. *JAMA*, 285(4), 413–420. <https://doi.org/10.1001/jama.285.4.413>
- Kumar, H., du Toit, E., Kulkarni, A., Aakko, J., Linderborg, K. M., Zhang, Y., ... Salminen, S. (2016). Distinct patterns in human milk microbiota and fatty acid profiles across specific geographic locations. *Frontiers in Microbiology*, 7, 1619. <https://doi.org/10.3389/fmicb.2016.01619>
- Labiner-Wolfe, J., Fein, S. B., Shealy, K. R., & Wang, C. (2008). Prevalence of breast milk expression and associated factors. *Pediatrics*, 122(Suppl 2), S63–S68. <https://doi.org/10.1542/peds.2008-1315h>
- Lexchin, J., Bero, L. A., Djulbegovic, B., & Clark, O. (2003). Pharmaceutical industry sponsorship and research outcome and quality: Systematic review. *BMJ (Clinical Research Ed.)*, 326(7400), 1167–1170. <https://doi.org/10.1136/bmj.326.7400.1167>
- Li, R., Fein, S. B., & Grummer-Strawn, L. M. (2010). Do infants fed from bottles lack self-regulation of milk intake compared with directly breastfed infants? *Pediatrics*, 125(6), e1386–e1393. <https://doi.org/10.1542/peds.2009-2549>
- Li, R., Perrine, C. G., Anstey, E. H., Chen, J., Macgowan, C. A., & Elam-Evans, L. D. (2019). Breastfeeding trends by race/ethnicity among US children born from 2009 to 2015. *JAMA Pediatrics*, 173(12), E1–E9. <https://doi.org/10.1001/jamapediatrics.2019.3319>
- Logan, C., Zittel, T., Striebel, S., Reister, F., Brenner, H., Rothenbacher, D., & Genuneit, J. (2016). Changing societal and lifestyle factors and breastfeeding patterns over time. *Pediatrics*, 137(5), e20154473. <https://doi.org/10.1542/peds.2015-4473>
- Lundh, A., Lexchin, J., Mintzes, B., Schroll, J. B., & Bero, L. (2018). Industry sponsorship and research outcome: Systematic review with meta-analysis. *Intensive Care Medicine*, 44(10), 1603–1612. <https://doi.org/10.1007/s00134-018-5293-7>
- Lupton, D. (2016). The use and value of digital media for information about pregnancy and early motherhood: A focus group study. *BMC Pregnancy and Childbirth*, 16(1), 171. <https://doi.org/10.1186/s12884-016-0971-3>
- Marcon, A. R., Bieber, M., & Azad, M. B. (2018). Protecting, promoting, and supporting breastfeeding on Instagram. *Maternal & Child Nutrition*, 15, e12658. <https://doi.org/10.1111/mcn.12658>
- Martens, P. (2012). What do Kramer's Baby-Friendly Hospital Initiative PROBIT studies tell us? A review of a decade of research. *Journal of Human Lactation*, 28(3), 335–342. <https://doi.org/10.1177/0890334412438264>
- Matthews, E., Collins, C. T., Ellison, V., Hussey, L., Slade, J., Keir, A., & Miller, J. (2019). Top 10 research priorities for human milk banking and use of donor human milk: A partnership between parents and clinicians. *Journal of Paediatrics and Child Health, Early view.*, 56, 770–776. <https://doi.org/10.1111/jpc.14742>
- Meehan, C. L., Lackey, K. A., Hagen, E. H., Williams, J. E., Roulette, J., Helfrecht, ... McGuire, M. K. (2018). Social networks, cooperative breeding, and the human milk microbiome. *American Journal of Human Biology*, 30(4), e23131.
- McGuire, M. K., Meehan, C. L., Brooker, S., Williams, J. E., Foster, J. A., & McGuire, M. A. (2017). Chapter 14—An evolutionary, biosocial perspective on variation in human milk microbes and oligosaccharides: An example of eco-homeorhesis? In M. K. McGuire, M. A. McGuire, & L. Bode (Eds.), *Prebiotics and probiotics in human milk: Origins and functions of milk-borne oligosaccharides and bacteria* (pp. 367–399). San Diego: Elsevier. <https://doi.org/10.1016/B978-0-12-802725-7.00014-2>
- McGuire, M. K., Meehan, C. L., McGuire, M. A., Williams, J. E., Foster, J., Sellen, D. W., ... Bode, L. (2017). What's normal? Oligosaccharide concentrations and profiles in milk produced by healthy women vary

- geographically. *The American Journal of Clinical Nutrition*, 105(5), 1086–1100. <https://doi.org/10.3945/ajcn.116.139980>
- Meldrum, S. J., Li, Y., Zhang, G., Heaton, A. E. M., D'Vaz, N., Manz, J., ... Simmer, K. (2018). Can polymorphisms in the fatty acid desaturase (FADS) gene cluster alter the effects of fish oil supplementation on plasma and erythrocyte fatty acid profiles? An exploratory study. *European Journal of Nutrition*, 57(7), 2583–2594. <https://doi.org/10.1007/s00394-017-1529-5>
- Merchant, R. M. (2020). Evaluating the potential role of social media in preventive health care. *Jama*, 323(5), 411–412.
- Merewood, A., Bugg, K., Burnham, L., Krane, K., Nickel, N., Broom, S., ... Feldman-Winter, L. (2019). Addressing racial inequities in breastfeeding in the southern United States. *Pediatrics*, 143(2), e20181897. <https://doi.org/10.1542/peds.2018-1897>
- Michaud-Létourneau, I., Gayard, M., & Pelletier, D. (2019). Strengthening advocacy and policy change for infant and young child feeding. *Maternal & Child Nutrition*, 15(Suppl 2), e12749. <https://doi.org/10.1111/mcn.12749>
- Miliku, K., & Azad, M. B. (2018). Breastfeeding and the developmental origins of asthma: Current evidence, possible mechanisms, and future research priorities. *Nutrients*, 10(8), 995. <https://doi.org/10.3390/nu10080995>
- Moon, K., Rao, S. C., Schulzke, S. M., Patole, S. K., & Simmer, K. (2016). Longchain polyunsaturated fatty acid supplementation in preterm infants. *Cochrane Database of Systematic Reviews*, 12(12), CD000375.
- Moshammer, H., & Hutter, H.-P. (2019). Breast-feeding protects children from adverse effects of environmental tobacco smoke. *International Journal of Environmental Research and Public Health*, 16(3), 304. <https://doi.org/10.3390/ijerph16030304>
- Munblit, D., Crawley, H., Hyde, R., & Boyle, R. (2020). Health and nutrition claims for infant formula are poorly substantiated and potentially harmful. *BMJ*, 369, m875. <https://doi.org/10.1136/bmj.m875>
- Munblit, D., Peroni, D. G., Boix-Amoros, A., Hsu, P. S., Van't Land, B., Gay, M. C. L., ... Warner, J. O. (2017). Human milk and allergic diseases: An unsolved puzzle. *Nutrients*, 9(8), 894. <https://doi.org/10.3390/nu9080894>
- Munblit, D., Treneva, M., Peroni, D. G., Colicino, S., Chow, L., Dissanayeke, S., ... Warner, J. O. (2016). Colostrum and mature human milk of women from London, Moscow, and Verona: Determinants of immune composition. *Nutrients*, 8(11). <https://doi.org/10.3390/nu8110695>
- Nickel, N. C., Martens, P. J., Chateau, D., Brownell, M. D., Sarkar, J., Goh, C. Y., ... the PATHS Equity Team. (2014). Have we left some behind? Trends in socio-economic inequalities in breastfeeding initiation: A population-based epidemiological surveillance study. *Canadian Journal of Public Health*, 105(5), e362–e368. <https://doi.org/10.17269/cjph.105.4499>
- Nickel, N. C., Taylor, E. C., Labbok, M. H., Weiner, B. J., & Williamson, N. E. (2013). Applying organisation theory to understand barriers and facilitators to the implementation of baby-friendly: A multisite qualitative study. *Midwifery*, 29(8), 956–964. <https://doi.org/10.1016/j.midw.2012.12.001>
- Palmer, L. (2019). Previous breastfeeding difficulties: An existential breastfeeding trauma with two intertwined pathways for future breastfeeding-fear and longing. *International Journal of Qualitative Studies on Health and Well-Being*, 14(1), 1588034. <https://doi.org/10.1080/17482631.2019.1588034>
- Palmquist, A. E. L., Perrin, M. T., Cassar-Uhl, D., Gribble, K. D., Bond, A. B., & Cassidy, T. (2019). Current trends in research on human milk exchange for infant feeding. *Journal of Human Lactation*, 35(3), 453–477. <https://doi.org/10.1177/0890334419850820>
- Pang, W. W., Tan, P. T., Cai, S., Fok, D., Chua, M. C., Lim, S. B., ... Rifkin-Graboi, A. (2019). Nutrients or nursing? Understanding how breast milk feeding affects child cognition. *European Journal of Nutrition*, 59, 609–619. <https://doi.org/10.1007/s00394-019-01929-2>
- Patel, A. L., Schoeny, M. E., Hoban, R., Johnson, T. J., Bigger, H., Engstrom, J. L., ... Meier, P. P. (2019). Mediators of racial and ethnic disparity in mother's own milk feeding in very low birth weight infants. *Pediatric Research*, 85(5), 662–670. <https://doi.org/10.1038/s41390-019-0290-2>
- Paternoster, L., Tilling, K., & Davey Smith, G. (2017). Genetic epidemiology and Mendelian randomization for informing disease therapeutics: Conceptual and methodological challenges. *PLoS Genetics*, 13(10), e1006944. <https://doi.org/10.1371/journal.pgen.1006944>
- Pérez-Escamilla, R., Curry, L., Minhas, D., Taylor, L., & Bradley, E. (2012). Scaling up of breastfeeding promotion programs in low- and middle-income countries: The “breastfeeding gear” model. *Advances in Nutrition (Bethesda, MD)*, 3(6), 790–800. <https://doi.org/10.3945/an.112.002873>
- Pérez-Escamilla, R., & Hall Moran, V. (2016). Scaling up breastfeeding programmes in a complex adaptive world. *Maternal & Child Nutrition*, 12(3), 375–380. <https://doi.org/10.1111/mcn.12335>
- Pérez-Escamilla, R., Martinez, J. L., & Segura-Pérez, S. (2016). Impact of the Baby-friendly Hospital Initiative on breastfeeding and child health outcomes: A systematic review. *Maternal & Child Nutrition*, 12, 402–417. <https://doi.org/10.1111/mcn.12294>
- Pound, C. M., Moreau, K. A., Hart, F., Ward, N., & Plint, A. C. (2015). The planning of a national breastfeeding educational intervention for medical residents. *Medical Education Online*, 20, 26380. <https://doi.org/10.3402/meo.v20.26380>
- Price, S. L., Aston, M., Monaghan, J., Sim, M., Tomblin Murphy, G., Etowa, J., ... Little, V. (2018). Maternal knowing and social networks: Understanding first-time mothers' search for information and support through online and offline social networks. *Qualitative Health Research*, 28(10), 1552–1563. <https://doi.org/10.1177/1049732317748314>
- Quigley, M., Embleton, N. D., & McGuire, W. (2019). Formula versus donor breast milk for feeding preterm or low birth weight infants. *Cochrane Database of Systematic Reviews*, 7, CD002971. <https://doi.org/10.1002/14651858.CD002971.pub5>
- Robinson, H., Buccini, G., Curry, L., & Pérez-Escamilla, R. (2018). The World Health Organization Code and exclusive breastfeeding in China, India, and Vietnam. *Maternal & Child Nutrition*, 15, e12685. <https://doi.org/10.1111/mcn.12685>
- Rollins, N. C., Bhandari, N., Hajeebhoy, N., Horton, S., Lutter, C. K., Martines, J. C., ... Victora, C. G. (2016). Why invest, and what it will take to improve breastfeeding practices? *Lancet (London, England)*, 387(10017), 491–504. [https://doi.org/10.1016/S0140-6736\(15\)01044-2](https://doi.org/10.1016/S0140-6736(15)01044-2)
- Rosen, G. A. (1993). *A history of public health*. Baltimore: Johns Hopkins University Press.
- Ruiz, L., Espinosa-Martos, I., Garcia-Carral, C., Manzano, S., McGuire, M. K., Meehan, C. L., ... Rodriguez, J. M. (2017). What's normal? Immune profiling of human milk from healthy women living in different geographical and socioeconomic settings. *Frontiers in Immunology*, 8, 696. <https://doi.org/10.3389/fimmu.2017.00696>
- Schindler-Ruwisch, J., Roess, A., Robert, R. C., Napolitano, M., Woody, E., Thompson, P., & Ilakkuvan, V. (2019). Determinants of breastfeeding initiation and duration among African American DC WIC recipients: Perspectives of recent mothers. *Women's Health Issues*, 29, 513–521. <https://doi.org/10.1016/j.whi.2019.07.003>
- Seals Allers, K. (2018). The false and the furious: Countering misinformation and negative messaging in breastfeeding support. *Clinical Lactation*, 9, 164–170. <https://doi.org/10.1891/2158-0782.9.4.164>
- Sharek, Z., Schoen, R. E., & Loewenstein, G. (2012). Bias in the evaluation of conflict of interest policies. *The Journal of Law, Medicine & Ethics*, 40(2), 368–382. <https://doi.org/10.1111/j.1748-720X.2012.00670.x>
- Shenker, N. S. (2018). The resurgent influence of big formula. *BMJ (Clinical research ed.)*, 362, k3577. <https://doi.org/10.1136/bmj.k3577>

- Smith, R. (2006). Conflicts of interest: How money clouds objectivity. *Journal of the Royal Society of Medicine*, 99(6), 292–297. <https://doi.org/10.1258/jrsm.99.6.292>
- Spencer, R. L. (2008). Research methodologies to investigate the experience of breastfeeding: A discussion paper. *International Journal of Nursing Studies*, 45(12), 1823–1830. <https://doi.org/10.1016/j.ijnurstu.2008.04.008>
- Sriraman, N. K., Evans, A. E., Lawrence, R., & Noble, L. (2018). Academy of Breastfeeding Medicine's 2017 position statement on informal breast milk sharing for the Term healthy infant. *Breastfeeding Medicine: The Official Journal of the Academy of Breastfeeding Medicine*, 13(1), 2–4. <https://doi.org/10.1089/bfm.2017.29064.nks>
- Suter, G. W., & Cormier, S. M. (2015). The problem of biased data and potential solutions for health and environmental assessments. *Human and Ecological Risk Assessment: An International Journal*, 21(7), 1736–1752. <https://doi.org/10.1080/10807039.2014.974499>
- Temple Newhook, J., Newhook, L. A., Midodzi, W. K., Murphy Goodridge, J., Burrage, L., Gill, N., ... Twells, L. (2017). Poverty and breastfeeding: Comparing determinants of early breastfeeding cessation incidence in socioeconomically marginalized and privileged populations in the FiNaL study. *Health Equity*, 1(1), 96–102.
- Thompson, D. F. (1993). Understanding financial conflicts of interest. *The New England Journal of Medicine*, 329(8), 573–576. <https://doi.org/10.1056/NEJM199308193290812>
- Torregrosa Paredes, P., Gutzeit, C., Johansson, S., Admyre, C., Stenius, F., Alm, J., ... Gabriellsson, S. (2014). Differences in exosome populations in human breast milk in relation to allergic sensitization and lifestyle. *Allergy*, 69(4), 463–471. <https://doi.org/10.1111/all.12357>
- Tumilowicz, A., Ruel, M. T., Pelto, G., Pelletier, D., Monterrosa, E. C., Lapping, K., ... Sturke, R. (2019). Implementation science in nutrition: Concepts and frameworks for an emerging field of science and practice. *Current Developments in Nutrition*, 3(3), 1–11. <https://doi.org/10.1093/cdn/nzy080>
- Van Tulleken, C. (2018). Overdiagnosis and industry influence: How cow's milk protein allergy is extending the reach of infant formula manufacturers. *BMJ (Online)*, 363(December), 1–5. <https://doi.org/10.1136/bmj.k5056>
- Victora, C. G., Bahl, R., Barros, A. J. D., França, G. V. A., Horton, S., Krasevec, J., ... Richter, L. (2016). Breastfeeding in the 21st century: Epidemiology, mechanisms, and lifelong effect. *The Lancet*, 387(10017), 475–490. [https://doi.org/10.1016/S0140-6736\(15\)01024-7](https://doi.org/10.1016/S0140-6736(15)01024-7)
- Waidyatillake, N. T., Dharmage, S. C., Allen, K. J., Lodge, C. J., Simpson, J. A., Bowatte, G., ... Lowe, A. J. (2018). Association of breast milk fatty acids with allergic disease outcomes—A systematic review. *Allergy*, 73(2), 295–312. <https://doi.org/10.1111/all.13300>
- Wilson, E., Edstedt Bonamy, A. K., Bonet, M., Toome, L., Rodrigues, C., Howell, E. A., ... Zeitlin, J. (2018). Room for improvement in breast milk feeding after very preterm birth in Europe: Results from the EPICE cohort. *Maternal & Child Nutrition*, 14(1), 1–11. <https://doi.org/10.1111/mcn.12485>
- Witkowska-Zimny, M., & Kaminska-El-Hassan, E. (2017). Cells of human breast milk. *Cellular and Molecular Biology Letters*, 22(11), 11. <https://doi.org/10.1186/s11658-017-0042-4>
- World Health Organization. (2003). Global strategy for infant and young child feeding. UNICEF.
- World Health Organization. (Ed.) (2012). *Handbook for guideline development* (2nd ed.). Geneva: World Health Organization. https://apps.who.int/iris/bitstream/handle/10665/145714/9789241548960_eng.pdf?sequence=1&isAllowed=y.
- Young, J., Borman, L., Heinrich, R., Pinney, S., Westcott, J., Fletcher, B., ... B. E. L. L. (2018). Macronutrient zinc and insulin variation in donor human milk—Attempting to hit the moving target of infant needs. *Pediatric Academic Society Annual Meeting*.
- Younger Meek, J. (2019). Educational objectives and skills for the physician with respect to breastfeeding, revised 2018. *Breastfeeding Medicine*, 14(1), 5–13.

SUPPORTING INFORMATION

Additional supporting information may be found online in the Supporting Information section at the end of this article.

How to cite this article: Azad MB, Nickel NC, Bode L, et al. Breastfeeding and the origins of health: Interdisciplinary perspectives and priorities. *Matern Child Nutr*. 2020;e13109. <https://doi.org/10.1111/mcn.13109>