



# Brief communication: Impacts of a developing polynya off Commonwealth Bay, East Antarctica, triggered by grounding of iceberg B09B

Christopher J. Fogwill<sup>1,2</sup>, Erik van Sebille<sup>2,3</sup>, Eva A. Cougnon<sup>4,5,6</sup>, Chris S. M. Turney<sup>1,2</sup>, Steve R. Rintoul<sup>4,5,6</sup>, Benjamin K. Galton-Fenzi<sup>5,7</sup>, Graeme F. Clark<sup>2</sup>, E. M. Marzinelli<sup>2,8</sup>, Eleanor B. Rainsley<sup>9</sup>, and Lionel Carter<sup>10</sup>

<sup>1</sup>PANGAEA Research Centre, School of Biological, Earth and Environmental Sciences, UNSW, Sydney, Australia

<sup>2</sup>Climate Change Research Centre, School of Biological, Earth and Environmental Sciences, UNSW, Sydney, Australia

<sup>3</sup>Grantham Institute & Department of Physics, Imperial College London, London, UK

<sup>4</sup>Institute for Marine and Antarctic Studies, University of Tasmania, Private Bag 129, Hobart, Tasmania 7001, Australia

<sup>5</sup>Antarctic Climate & Ecosystems Cooperative Research Centre, University of Tasmania, Private Bag 80, Hobart, Tasmania 7001, Australia

<sup>6</sup>Commonwealth Scientific and Industrial Research Organisation, Ocean and Atmospheric Research, Hobart, Tasmania, Australia

<sup>7</sup>Australian Antarctic Division, Kingston, Tasmania, Australia

<sup>8</sup>Centre for Marine Bio-Innovation, School of Biological, Earth and Environmental Sciences, UNSW, Sydney, Australia

<sup>9</sup>Wollongong Isotope Geochronology Laboratory, School of Earth and Environmental Sciences, University of Wollongong, Wollongong, Australia

<sup>10</sup>Antarctic Research Centre, Victoria University of Wellington, Wellington, New Zealand

*Correspondence to:* Christopher J. Fogwill (c.fogwill@unsw.edu.au)

Received: 22 January 2016 – Published in The Cryosphere Discuss.: 7 March 2016

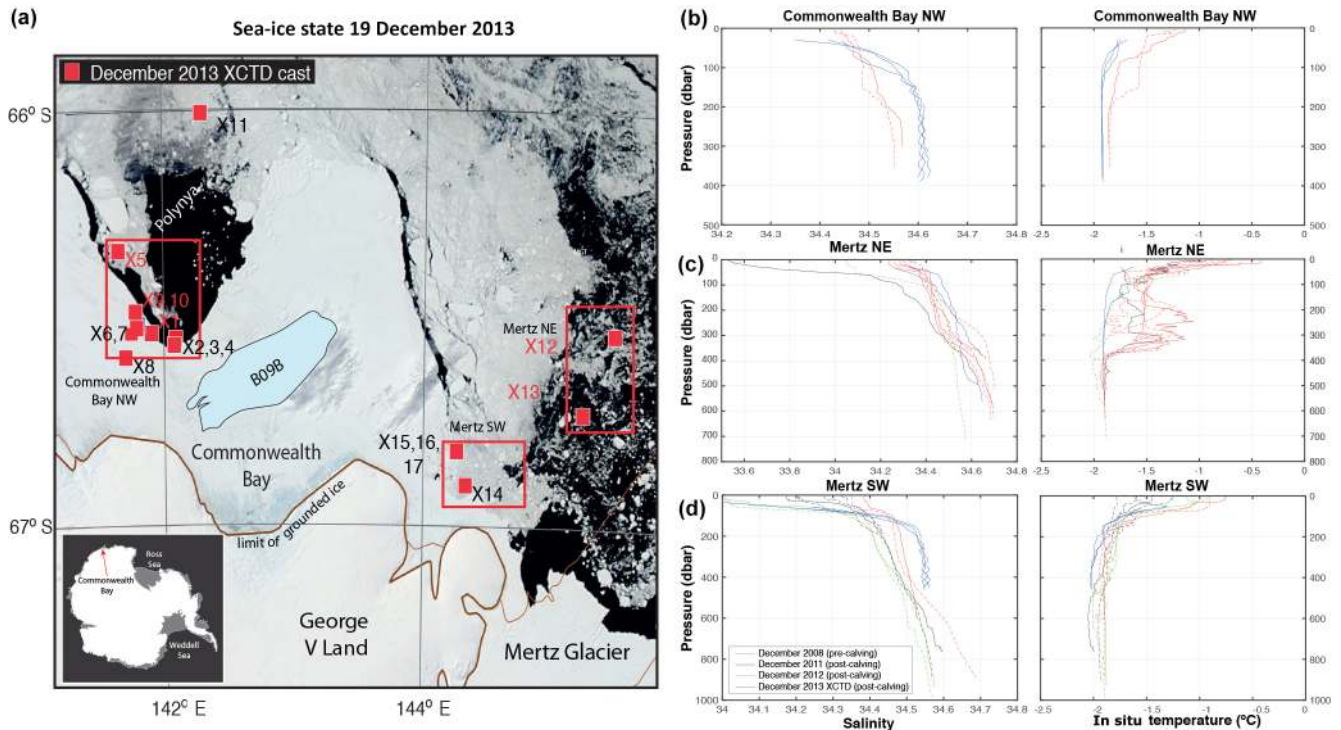
Revised: 23 September 2016 – Accepted: 14 October 2016 – Published: 4 November 2016

**Abstract.** The dramatic calving of the Mertz Glacier tongue in 2010, precipitated by the movement of iceberg B09B, reshaped the oceanographic regime across the Mertz Polynya and Commonwealth Bay, regions where high-salinity shelf water (HSSW) – the precursor to Antarctic bottom water (AABW) – is formed. Here we present post-calving observations that suggest that this reconfiguration and subsequent grounding of B09B have driven the development of a new polynya and associated HSSW production off Commonwealth Bay. Supported by satellite observations and modelling, our findings demonstrate how local icescape changes may impact the formation of HSSW, with potential implications for large-scale ocean circulation.

## 1 Introduction

The events triggered by the movement of the 97 km long iceberg B09B adjacent to the Mertz Glacier tongue (MGT) in

2010 precipitated a significant iceberg calving event that was captured in real time from satellite data and shipboard observations (Shadwick et al., 2013). Prior to the calving event, Commonwealth Bay – the site of Sir Douglas Mawson's Australasian Antarctic Expedition (AAE) of 1911–1914 – was usually free of sea ice, owing to the presence of an extensive coastal polynya maintained by strong offshore katabatic winds sustained by the local ice-sheet topography and the presence of the Mertz Polynya to the east. Historically, newly formed sea ice has been rapidly transported offshore by these winds; for example, during the original AAE of 1911–1914, the sea ice in Commonwealth Bay was stable enough to walk on for only 2 days each year (Mawson, 1940). In December 2010, however, the grounding of iceberg B09B in Commonwealth Bay changed the local icescape considerably (Shadwick et al., 2013; Lacarra et al., 2014) (Fig. 1a). The presence of the grounded iceberg B09B since 2010 has blocked the offshore transport of sea ice, leading to the build-



**Figure 1.** Comparison of new XCTD observations with previous data from the Commonwealth Bay and Mertz Glacier region of Adélie Land, Antarctica. (a) Locations of XCTD casts taken in December 2013 on the AAE 2013–2014. The outline of the grounded B09B iceberg is indicated. Base map is visible MODIS image from 19 December 2013 (credit: Dr. Jan Lieser; source: NASA WORLDVIEW). Inset bottom left: location map of Commonwealth Bay. Charts show comparison between salinity and temperature from XCTD casts in 2013 (blue) and CTD profiles from the same month in previous years for which data are available for that region (2012: green; 2011: black; 2008, pre-calving: red) from Commonwealth Bay NW (b), NE Mertz (c) and SW Mertz (d). (See SOM Fig. S2 in the Supplement for details of specific sites of historic data.)

up of year-round fast ice up to 3 m thick landward of the iceberg between 2011 and 2014 (Clark et al., 2015). This transition from an area that was often ice-free to one of continuous fast-ice cover has created a natural experiment into the impacts of fast-ice change on both local biota (Clark et al., 2015) and ocean circulation (Shadwick et al., 2013; Lacarra et al., 2014). The latter is particularly important given that the Adélie–George V Land region is a key region of formation of Antarctic bottom water (AABW; a generic term that encompasses the variable nature of such bottom waters; Orsi et al., 1999; van Wijk and Rintoul, 2014; Nihashi and Ohshima, 2015). Prior to the calving of the Mertz Glacier, both the Mertz and Commonwealth Bay polynyas were important sources of high-salinity shelf water (HSSW) and dense shelf water (DSW) formation, which are precursors to AABW. As AABW supplies the lower limb of the global thermohaline circulation system (Orsi et al., 1999), changes in the properties or rate of formation of AABW in response to the local icescape can influence the continental shelf sea circulation, sea ice and HSSW production (Kusahara et al., 2011; Cougnon, 2016), with potentially widespread consequences

for deep ocean circulation and ventilation (Shadwick et al., 2013).

The loss of the 78 km long Mertz Glacier tongue in 2010, which had previously reduced westward flow of ice into the Mertz Polynya and Commonwealth Bay, is estimated to have caused a marked impact on sea-ice formation regionally (Tamura et al., 2012, 2016). Furthermore, model studies suggest that this has led to a reduction in HSSW formation in the area (Kusahara et al., 2011), a hypothesis supported by in situ observations in 2011/2012 (Shadwick et al., 2013; Lacarra et al., 2014). Together, these data indicate an abrupt reduction in the salinity and density of shelf water and an increase in carbon uptake in the region of the Mertz Polynya when compared to pre-calving levels. Palaeoceanographic studies suggest that the impacts of MGT calving on AABW formation may be a cyclical process, possibly occurring on centennial timescales (Campagne et al., 2015).

Given that the majority of AABW is formed at a number of key sites around Antarctica (Rintoul, 1998; Orsi et al., 1999) – including the Weddell Sea, the Ross Sea, the Amery–Shackleton Ice Shelf, Cape Darnley, Vincennes Bay and Adélie–George V Land – any major long-term circula-

tion change in these regions could have a significant impact on the global climate system. At present the long-term stability of AABW formation is not fully understood, and it is possible that the rates of AABW production from regional areas are highly variable both temporally and spatially (Broecker et al., 1998). Therefore, studying the impacts of natural perturbations such as the grounding of B09B can provide insights into the sensitivity of AABW formation to past and future changes in regional icescape.

Here we report new data that provide a snapshot of change in the region of the Mertz Polynya and Commonwealth Bay from in situ oceanographic observations taken in December 2013, the austral summer, which suggest the region is in a process of transition towards a new steady state (Fig. 1). To explore the potential future impacts of these changes, we use high-resolution ocean model simulations to examine regional ocean dynamics in two steady states (pre- and post-calving), focussing particularly on changes in velocity and advection of water masses between the Mertz Polynya and Commonwealth Bay for stable scenarios pre- and post-grounding of B09B.

## 2 In situ observations and comparison with past data

We report observations of changes in ocean water properties recorded during December 2013 on the Australasian Antarctic Expedition 2013–2014 (AAE 2013–2014) from the MV *Akademik Shokalskiy*. A research programme was designed to examine the changes in the region since the Mertz Glacier calving event in 2010, building upon observations from previous research expeditions in the region (Shadwick et al., 2013; Lacarra et al., 2014). To compare the current oceanographic conditions in the region with previous measurements, expendable conductivity temperature and depth probes (XCTDs; model XCTD-1, Tsurumi-Seiki Co.) were deployed. To demonstrate the reliability of the XCTD data, test casts were assessed against repeat casts using Sea-Bird SBE 37-SM MicroCAT CTD calibrated for cold-water conditions (see SOM Fig. S1 in the Supplement). A TSK TS-MK-21 expendable XCTD system was used to gather oceanographic data, which were recorded on a laptop computer. Given the marked expansion of fast ice in Commonwealth Bay, in some locations XCTDs and MicroCAT were deployed through the fast ice as well as in open water from the vessel. Although some deployments were opportunistic, many were repeat casts of previous stations in Commonwealth Bay and in the Mertz Polynya to allow direct comparison with studies taken during past austral summers (Fig. 1).

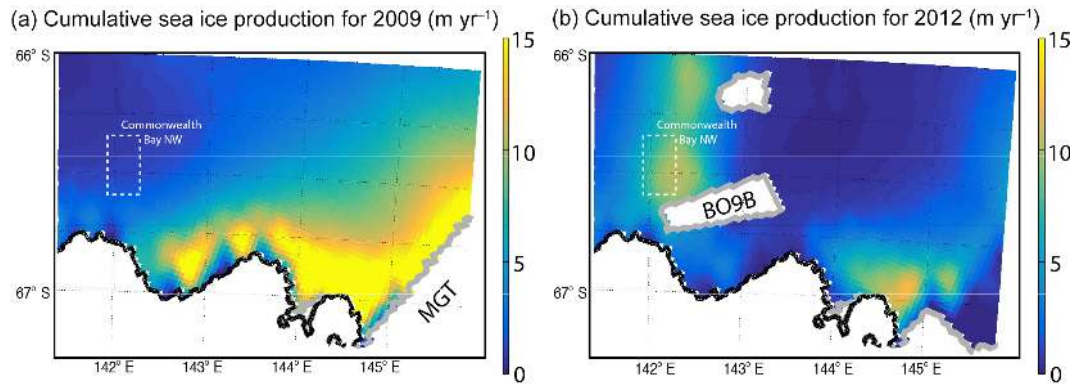
The XCTD results from December 2013 are divided into three geographic areas to allow comparison with data from previous cruises from the same season (Fig. 1 and SOM Fig. S2 in the Supplement). Salinity and temperature data from the austral summer 2013/2014 from northwest of Commonwealth Bay (“Commonwealth Bay NW”), and northeast

(“Mertz NE”) and southwest (“Mertz SW”) of the MGT are compared to previous years in Fig. 1b, c and d respectively. As salinities and water density vary both spatially and seasonally across the region (Lacarra et al., 2014), here we compare our data to those collected in similar seasons (December/January) and locations (Fig. 1, SOM Fig. S2 in the Supplement).

In Commonwealth Bay NW (Fig. 1b) our results show an increased salinity at  $\sim 350$  m (34.62‰) since the pre-calving values of 2008 (34.55‰). We also find a temperature decrease of  $\sim 0.2$  °C from  $-1.7$  °C in 2008 to  $-1.9$  °C in 2013. In the Mertz NE region (Fig. 1c), we measure the salinity at  $\sim 550$  m to be 34.7‰, higher than the post-calving salinity low in 2012 of  $\sim 34.58$ ‰ and similar to those immediately post-calving (2011) and pre-calving (2008). The water is also colder and, importantly, shows minimal stratification through the water column in comparison to previous austral summer CTD casts. Finally, in December 2013 in the Mertz SW (Fig. 1d), we record an increase in salinity and decrease in temperature in the upper water column ( $\sim 200$ – $400$  m); the salinity in 2013 is 34.56‰ compared to 34.52‰ in 2008, whilst the temperature is  $-2$  °C, somewhat colder than previous years, which cluster around  $-1.8$  °C. Unfortunately, in the Mertz SW region the XCTD casts did not reach a sufficient depth to analyse the structure of deeper circulation within the former Mertz Polynya.

## 3 Discussion

Data from the region west of B09B (Commonwealth Bay NW) show evidence of a shift in water properties following the grounding of B09B in its position during December 2013 (Fig. 1b). Prior to the grounding, the water column was stratified, with relatively warm and fresh water overlying a colder, saltier layer. Following the grounding of B09B, the entire water column below 100 dbar has changed, transitioning to become slightly saltier, colder and evidently better mixed by 2013 (Fig. 1b). Whilst salinity values are not yet as high as those in regions of HSSW production pre-calving, our observations suggest that the Commonwealth Bay NW area may be becoming an area of deep convection and HSSW formation, in a region where historically no HSSW was formed (Lacarra et al., 2014). Although we cannot discount that this water mass may have been advected from other regions, this interpretation is supported by interpolation of satellite-derived sea-ice concentrations, which suggest that sea-ice production in the Commonwealth Bay NW region has been significantly enhanced post-calving of the MGT and grounding of B09B (Fig. 2; Tamura et al., 2016). These estimates suggest that sea-ice production within the former Mertz Glacier polynya has decreased markedly compared to 2009 levels (Fig. 2a; Tamura et al., 2016) and has become restricted to an area closer to the coast (Fig. 2b; Tamura et al., 2016). Contrastingly, sea-ice production in the area of Com-



**Figure 2.** Cumulative sea-ice production estimated from the Special Sensor Microwave Imager (SSM/I) observations for the Mertz and Commonwealth Bay region for pre-2009 (a) and post-2012 (b) Mertz Glacier tongue (MGT) calving (after Tamura et al., 2016). The location of the Commonwealth Bay NW area is shown by a dashed white box, and B09B is outlined in light grey.

monwealth Bay NW, in the lee of the B09B iceberg, is shown to have increased markedly by 2012 (Fig. 2b), compared to pre-calving estimates (Fig. 2a). Combined, the evidence of enhanced sea-ice production, deep convection and HSSW production in the Commonwealth Bay NW region suggest that an emerging polynya may be developing in the lee of B09B.

Calving of the MGT released a large volume of sea ice from the immediate east of the Mertz Glacier, and the subsequent melting of this sea ice produced a significant input of freshwater and rapid freshening of the upper-ocean post-calving (Shadwick et al., 2013), as seen in Fig. 1c and d (green). Our observations hint at a partial recovery of upper-ocean salinity by 2013 in the Mertz NE (Fig. 1c) and Mertz SW (Fig. 1d) regions as of December 2013. Unfortunately, as mentioned, our 2013 XCTD measurements do not extend to sufficient depths to sample the layers below 550 m, critical to HSSW production. However, the apparent reduction in the amount of buoyant freshwater in the upper water column may pre-condition these regions for a resumption or strengthening of HSSW formation in future years, if sufficient formation of sea ice and subsequent brine rejection occur. Prior to the grounding of B09B in its present position, intrusions of relatively warm modified Circumpolar Deep Water were observed in the Mertz NE region (Fig. 1c). Our observations suggest this was not occurring in December 2013, when the upper water column was found to be colder ( $\sim 0.8^\circ\text{C}$ ) and unstratified with respect to temperature.

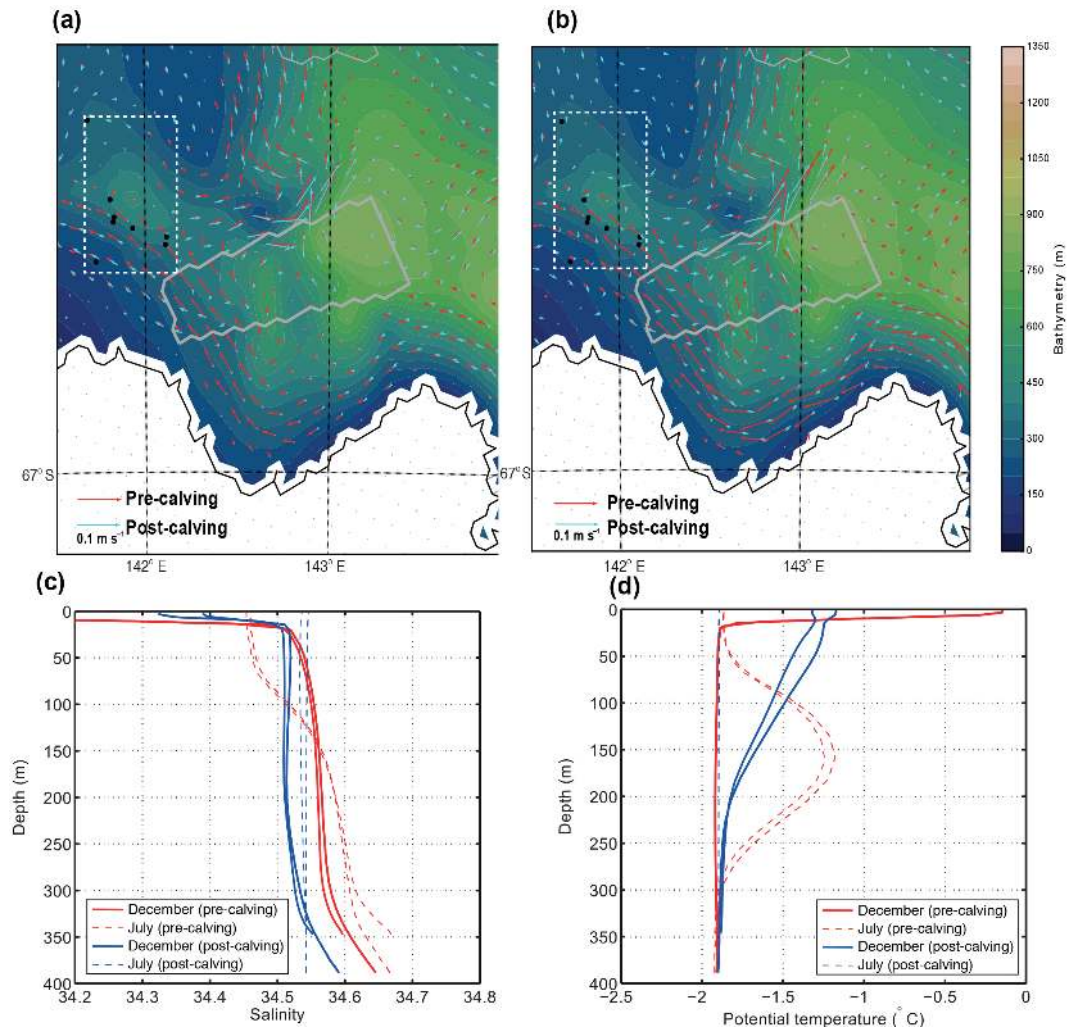
Our in situ observations, in combination with satellite observations, provide valuable insights into ocean dynamics post-MGT calving and grounding of B09B in this region that is critical to HSSW production. Whilst the implications for shifting focus of HSSW on regional AABW formation are unquantified, the changes recorded locally demonstrate that this region is still undergoing marked and dramatic oceanographic changes (Shadwick et al., 2013; Clark et al., 2015). To further explore potential future impacts of these changes

once the region has re-equilibrated, we use high-resolution ocean modelling to construct pre- and post-calving steady states independently, allowing us to look at the possible implications on regional HSSW production.

### 3.1 Exploring the processes driving the new Commonwealth Bay polynya

To gain an increased understanding of how regional oceanographic changes triggered by the events that began in 2010 could develop over future years, high-resolution regional ocean model simulations were undertaken to compare two steady states in Commonwealth Bay, both pre- and post-calving of B09B. These were run using a modified version of the Regional Ocean Modelling System (ROMS) (Shchepetkin and McWilliams, 2005), with a model set-up following Cougnon (2016; see SOM for full model description and set-up). The model includes ocean/ice-shelf thermodynamics and frazil ice thermodynamics (Galton-Fenzi et al., 2012; Cougnon et al., 2013) but does not include sea-ice/ocean model coupling. Without a dynamic sea-ice model, the fine-scale polynya activity is resolved by forcing the surface of the model with monthly heat and salt fluxes from the Tamura et al. (2016) dataset, which is based on sea-ice concentration estimated with the Tamura et al. (2007) algorithm. This algorithm estimates thin-ice thickness using Special Sensor Microwave Imager (SSM/I) observations and the European Centre for Medium-Range Weather Forecast Re-Analysis data (ERA-Interim) (Tamura et al., 2016). In summer the dataset is supplemented with heat and salt fluxes using monthly climatology from ERA-Interim. The model simulations are forced at the surface with data from the year 2009 (pre-calving; SOM Fig. S3 in the Supplement) and 2012 (post-calving), providing general information on the ocean circulation for stable ice geometries that includes meltwater from the B09B and other fast ice and icebergs/ice shelves present in the domain. The results from these simulations are





**Figure 3.** Results of high-resolution model simulations. Upper panels: simulated bottom-current velocity ( $\text{m s}^{-1}$ ) from ROMS, averaged on the five lowest layers of the model for both pre-calving (red vectors) and post-calving (cyan vectors) geometries near Commonwealth Bay for summer (a: November–December) and winter (b: August–September). The location of the Commonwealth Bay NW area is shown by a dashed white box, and B09B is outlined in light grey. Lower panels: modelled salinity (c) and potential temperature (d) from independent simulations with ROMS ( $n = 2$ ), for Commonwealth Bay NW for “stable” pre- (red) and post-calving (blue) geometries, averaged for December (solid lines) and July (dashed lines).

not restricted to the year chosen for the forcing and can be compared with other years of similar salt and heat flux intensity both pre- and post-calving (see SOM for discussion). The same lateral boundary forcing is used in both pre- and post-calving simulations. Lateral boundary fields – including salinity, horizontal velocities and potential temperature – were relaxed to a climatology calculated from monthly fields in the project Estimating the Circulation and Climate of the Ocean, Phase II (ECCO2): High-Resolution Global-Ocean and Sea-Ice Data Synthesis for the period 1992–2013 (Wunsch, 2009). Each 33-year run includes a spin-up phase of 30 years to reach equilibrium using a repeating loop of the climatology forcing. A climatology of the last 3 years of the run is used for the analysis presented here.

The numerical simulations pre- and post-calving indicate a change in oceanographic conditions in the area of the B09B iceberg, supporting our interpretation of the development of a polynya area in the lee of B09B post-calving (Fig. 3). Whilst the simulations do not perfectly reproduce the limited in situ observations, they do capture the broadscale ocean circulation and HSSW changes well (Fig. 3 and Figs. S4 and S5 in the Supplement). The modelled ocean circulation for December shows that in the pre-calving simulation a westward coastal current carries water masses from the Mertz Polynya and Commonwealth Bay regions towards Commonwealth Bay NW (Fig. 3a, b), forming a stratified water column with warm and fresh surface water (Fig. 3c). The dramatic change in advection from the Mertz Polynya region is shown in more

detail in Fig. S4 in the Supplement. The cold and salty water mass simulated pre-calving at the Commonwealth Bay NW region is advected from the Mertz Polynya and Commonwealth Bay. Water column stratification in the model simulation is stronger in winter when there is sea-ice production. The model simulates a relatively warm layer at around 150 m depth ( $-1.18\text{ }^{\circ}\text{C}$ ) in July pre-calving (Fig. 3d). From 250 m to the ocean floor there is a cold ( $-1.92\text{ }^{\circ}\text{C}$ ) and salty ( $34.67\text{ }‰$ ) water mass that originates from the advection of HSSW from the Mertz Polynya and Commonwealth Bay.

Post-calving, the coastal current is blocked by the B09B iceberg, associated with a decrease in sea-ice production within the Mertz Polynya (Fig. 2); little HSSW is advected into the area of Commonwealth Bay NW (Fig. 3). The model average for December shows a stratified water column in summer, due to the advection from the north of a relatively warm water mass in summer. However, in winter the water column post-calving in Commonwealth Bay NW is entirely homogeneous in potential temperature ( $-1.90\text{ }^{\circ}\text{C}$ ) and salinity ( $34.54\text{ }‰$ ), illustrating that under a stable post-calving geometry an active polynya is present, which locally produces HSSW capable of being convected to the sea floor. The seasonality illustrates the potential of a polynya developing in the lee of the B09B iceberg to locally form HSSW dense enough to sink to the sea floor, as inferred from the trends in the summer observations. It should be noted that our model simulations do not show the current evolution of the impact of the calving but rather simulate the ocean conditions for two stable ice geometries, before and after the Mertz calving. Thus, whilst our simulations cannot be directly inter-compared to our XCTD data, the trends in both regional circulation and local salinity and temperature provide valuable insights into mechanisms driving circulation changes potentially triggered as a response to the loss of the MGT and the grounding of B09B off Commonwealth Bay.

### 3.2 Implications of data and modelling

Our XCTD data, in combination with satellite-derived estimates of sea-ice production, indicate that the regional re-configuration of the Mertz Polynya and Commonwealth Bay and the grounding of iceberg B09B have had a marked and continuing oceanographic impact, suggesting a shift from an equilibrated regime to a transitional one. High-resolution model simulations suggest that, once re-equilibrated to a new steady state, this may result in a shift in the focus of HSSW production (Fig. 1). Data from Commonwealth Bay NW hint at the development of a polynya west of B09B, where today HSSW formation may be taking place outside the previously well-established foci of regional HSSW production in the former Mertz or Commonwealth Bay polynyas (Lacarra et al., 2014). The effect this change of location will have on regional ocean circulation is currently unquantified, and much of the impact depends on the changes occurring deep in Commonwealth Bay itself under the perennial fast ice that has

formed across the bay, triggered by the grounding of B09B (Lacarra et al., 2014; Clark et al., 2015; Cougnon, 2016).

Whilst the observations we present cannot account for seasonal variability (Lacarra et al., 2014) – which can only be fully reconciled by the recovery and analysis of the in situ CTD arrays deployed in the region – our data and model analyses suggest that water mass characteristics have been affected markedly in the area off Commonwealth Bay and across the former Mertz Polynya. Regardless, our analysis, supported by satellite interpolations of sea-ice production (Tamura et al., 2016), suggests that the grounding of B09B off Commonwealth Bay in 2010 has led to the development of a new polynya to its leeward side that is capable of producing HSSW outside the Mertz Polynya or the former Commonwealth Bay polynya (Lacarra et al., 2014).

## 4 Conclusions

Before the Mertz Glacier calving event, dense shelf water production from the Adélie Shelf supplied 15–25 % of the global volume of AABW (Rintoul, 1998). Several studies have documented the decrease in activity of the Mertz and Commonwealth Bay polynyas – and reduction in salinity and density of HSSW – following the calving event and subsequent grounding of B09B (Tamura et al., 2012; Shadwick et al., 2013; Lacarra et al., 2014). This study provides a unique snapshot of change in key areas of the Adélie Land continental shelf, capturing the formation of a new polynya and further enhancing our understanding of the sensitivity of HSSW formation to changes in the local icescape. Critically, it illustrates how movement of large icebergs can alter regional ocean circulation and air–sea interaction patterns, producing new polynyas and hence new regions of dense-water formation. While the salinity of HSSW produced in the polynya found in the lee of B09B does not achieve the high values observed in the Mertz and Commonwealth Bay polynyas pre-calving of the MGT, HSSW formed in this new polynya may in part compensate for the reduction in dense-water production in these now much weaker polynyas. This remarkable “natural experiment” underscores the sensitivity of HSSW to local changes in the cryosphere and provides insight into the consequences of regional change on ocean circulation.

## 5 Data availability

The XCTD data are available on the UNSW research data archive ([http://handle.unsw.edu.au/1959.4/resource/collection/resdatac\\_460/1](http://handle.unsw.edu.au/1959.4/resource/collection/resdatac_460/1)). The model simulations were undertaken on the Australian National Computing Infrastructure under grants m68 and gh8, and analysed and stored on the Tasmanian Partnership for Advanced Computing cluster (<http://www.tpac.org.au/>).

The Supplement related to this article is available online at doi:10.5194/tc-10-2603-2016-supplement.

**Acknowledgements.** This work was supported by the Australasian Antarctic Expedition 2013–2014, the Australian Research Council (FL100100195, FT120100004 and DP130104156) and the University of New South Wales. Eva A. Cougnon is supported by CSIRO and the Institute for Marine and Antarctic Studies (University of Tasmania) through the Quantitative Marine Science PhD Program. We would also like to thank Jan Lieser (University of Tasmania) for the sea ice imagery used in Fig. 1 and two anonymous reviewers whose comments significantly strengthened the manuscript. Computing resources were provided by both the Tasmanian Partnership for Advanced Computing and the Australian National Computing Infrastructure under grants m68 and gh8, and analysed and stored on the Tasmanian Partnership for Advanced Computing cluster. We thank members of the AAE 2013–2014, the captain and crew of the MV *Akademik Shokalskiy* and of the *Aurora Australis*, and Australian Antarctic Division expeditioners.

Edited by: K. Matsuoka

Reviewed by: two anonymous referees

## References

- Broecker, W., Peacock, S., Walker, S., Weiss, R., Fahrback, E., Schröder, M., Mikolajewicz, U., Heinze, C., Key, R., and Peng, T.: How much deep water is formed in the Southern Ocean?, *J. Geophys. Res.*, 103, 15833–15843, 1998.
- Campagne, P., Crosta, X., Houssais, M. N., Swingedouw, D., Schmidt, S., Martin, A., Devred, E., Capo, S., Marieu, V., Closet, I., and Massé, G.: Glacial ice and atmospheric forcing on the Mertz Glacier Polynya over the past 250 years, *Nat. Commun.*, 6, 6642, doi:10.1038/ncomms7642, 2015.
- Clark, G., Marzinelli, E., Fogwill, C. J., Turney, C. S. M., and Johnston, E.: Effects of sea-ice cover on marine benthic communities: a natural experiment in Commonwealth Bay, East Antarctica, *Polar Biol.*, 38, 1213, doi:10.1007/s00300-015-1688-x, 2015.
- Cougnon, E. A.: Modelling the sensitivity of dense shelf water formation in the Mertz Glacier region, East Antarctica, unpublished PhD thesis, 210 pp., University of Tasmania, 2016.
- Cougnon, E. A., Galton-Fenzi, B. K., Meijers, A. J. S., and Legerésy, B.: Modeling interannual dense shelf water export in the region of the Mertz Glacier Tongue (1992–2007), *J. Geophys. Res.-Ocean.*, 118, 5858–5872, doi:10.1002/2013JC008790, 2013.
- Galton-Fenzi, B. K., Hunter, J. R., Coleman, R., Marsland, S. J., and Warner, R. C.: Modeling the basal melting and marine ice accretion of the Amery Ice Shelf, *J. Geophys. Res.-Ocean.*, 117, C09031, doi:10.1029/2012JC008214, 2012.
- Kusahara, K., Hasumi, H., and Williams, G. D.: Impact of the Mertz Glacier Tongue calving on dense water formation and export, *Nat. Commun.*, 2, 1–6, doi:10.1038/ncomms1156, 2011.
- Lacarra, M., Houssais, M.-N., Herbaut, C., Sultan, E., and Beauverger, M.: Dense shelf water production in the Adélie Depression, East Antarctica, 2004–2012: Impact of the Mertz Glacier calving, *J. Geophys. Res.-Ocean.*, 119, 5203–5220, doi:10.1002/2013jc009124, 2014.
- Mawson, D.: Oceanography. Part 4, Hydrological Observations, Sydney, 24, AAE Reports, Series A, 2, 103–104, 1940.
- Nihashi, S. and Ohshima, K. I.: Circumpolar Mapping of Antarctic Coastal Polynyas and Landfast Sea Ice: Relationship and Variability, *J. Climate*, 28, 3650–3670, doi:10.1175/JCLI-D-14-00369.1, 2015.
- Orsi, A. H., Johnston, G. C., and Biullister, J. L.: Circulation, mixing, and production of Antarctic Bottom Water, *Prog. Oceanogr.*, 43, 55–109, 1999.
- Rintoul, S.: On the origin and influence of Adelie Land Bottom Water, in *Ocean, Ice and Atmosphere: Interactions at the Antarctic Continental Margin*, *Antarct. Res. Ser.*, vol. 75, 151–172, edited by: Jacobs S. S. and Weiss, R. F., AGU, Washington, D.C., 1998.
- Shadwick, E. H., Rintoul, S. R., Tilbrook, B., Williams, G. D., Young, N., Fraser, A. D., Marchant, H., Smith, J., and Tamura, T.: Glacier Tongue calving reduced dense water formation and enhanced carbon uptake, *Geophys. Res. Lett.*, 40, 904–909, doi:10.1002/grl.50178, 2013.
- Shchepetkin, A. F. and McWilliams, J. C.: The regional oceanic modeling system (ROMS): a split-explicit, free-surface, topography-following-coordinate oceanic model, *Ocean Model.*, 9, 347–404, doi:10.1016/j.ocemod.2004.08.002, 2005.
- Tamura, T., Ohshima, K. I., Markus, T., Cavalieri, D. J., Nihashi, S., and Hirasawa, N.: Estimation of thin ice thickness and detection of fast ice from SSM/I data in the Antarctic Ocean, *J. Atmos. Ocean. Technol.*, 24, 1757–1772, 2007.
- Tamura, T., Williams, G. D., Fraser, A. D., and Ohshima, K. I.: Potential regime shift in decreased sea ice production after the Mertz Glacier calving, *Nat. Commun.*, 3, 826, doi:10.1038/ncomms1820, 2012.
- Tamura, T., Ohshima, K. I., Fraser, A. D., and Williams, G. D.: Sea ice production variability in Antarctic coastal polynyas, *J. Geophys. Res.-Ocean.*, 121, 2967–2979, doi:10.1002/2015JC011537, 2016.
- van Wijk, E. M. and Rintoul, S. R.: Freshening drives contraction of Antarctic Bottom Water in the Australian Antarctic Basin, *Geophys. Res. Lett.*, 41, 1657–1664, doi:10.1002/2013GL058921, 2014.
- Wunsch, C., Heimbach, P., Ponte, R., Fukumori, I., and the ECCO-GODAE Consortium members: The global general circulation of the ocean estimated by the ECCO Consortium, *Oceanography*, 22–103, 2009.