

RESEARCH

Open Access

Busulfan plus fludarabine as a myeloablative conditioning regimen compared with busulfan plus cyclophosphamide for acute myeloid leukemia in first complete remission undergoing allogeneic hematopoietic stem cell transplantation: a prospective and multicenter study

Hui Liu¹, Xiao Zhai¹, Zhaoyang Song², Jing Sun¹, Yang Xiao³, Danian Nie⁴, Yu Zhang¹, Fen Huang¹, Hongsheng Zhou¹, Zhiping Fan¹, Sanfang Tu², Yonghua Li³, Xutao Guo¹, Guopan Yu¹ and Qifa Liu^{1*}

Abstract

Objective: We conducted a prospective, randomized, open-label, multicenter study to compare busulfan plus fludarabine (BuFlu) with busulfan plus cyclophosphamide (BuCy) as the conditioning regimen in allogeneic hematopoietic stem cell transplantation (allo-HSCT) for acute myeloid leukemia (AML) in first complete remission (CR1).

Methods: Totally 108 AML-CR1 patients undergoing allo-HSCT were randomized into BuCy (busulfan 1.6 mg/kg, q12 hours, -7 ~ -4d; cyclophosphamide 60 mg/kg.d, -3 ~ -2d) or BuFlu (busulfan 1.6 mg/kg, q12 hours, -5 ~ -2d; fludarabine 30 mg/m².d, -6 ~ -2d) group. Hematopoietic engraftment, regimen-related toxicity (RRT), graft-versus-host disease (GVHD), transplant related mortality (TRM), and overall survival were compared between the two groups.

Results: All patients achieved hematopoietic reconstitution except for two patients who died of RRT during conditioning. All patients obtained complete donor chimerism by day +30 post-transplantation. The incidence of total and III-IV RRT were 94.4% and 81.5% ($P = 0.038$), and 16.7% and 0.0% ($P = 0.002$), respectively, in BuCy and BuFlu group. With a median follow up of 609 (range, 3–2130) days after transplantation, the 5-year cumulative incidence of TRM were $18.8 \pm 6.9\%$ and $9.9 \pm 6.3\%$ ($P = 0.104$); the 5-year cumulative incidence of leukemia relapse were $16.5 \pm 5.8\%$ and $16.2 \pm 5.3\%$ ($P = 0.943$); the 5-year disease-free survival and overall survival were $67.4 \pm 7.6\%$ and $75.3 \pm 7.2\%$ ($P = 0.315$), and $72.3 \pm 7.5\%$ and $81.9 \pm 7.0\%$ ($P = 0.177$), respectively in BuCy and BuFlu group.

Conclusion: Compared with BuCy, BuFlu as a myeloablative condition regimen was associated with lower toxicities and comparable anti-leukemic activity in AML-CR1 patients undergoing allo-HSCT.

Keywords: Busulfan, Fludarabine, Allogeneic hematopoietic stem cell transplantation

* Correspondence: liuqifa628@163.com

¹Department of Hematology, Nanfang Hospital, Southern Medical University, Guangzhou 510515, China

Full list of author information is available at the end of the article

Background

Acute myeloid leukemia (AML) is one of the most common leukemias with a 20% 5-year event-free survival in adults. The incidence of AML increases sharply with age [1]. Allogeneic hematopoietic stem-cell transplantation (allo-HSCT) is an effective and potentially curative treatment for AML [2,3]. The conditioning regimen with busulfan plus cyclophosphamide (BuCy) is considered as the standard myeloablative regimen for AML. However, it is associated with significant risks of regimen-related toxicity (RRT) as well as transplant related mortality (TRM), especially for the elderly and those with comorbidities. Although the introduction of intravenous busulfan has been associated with a decreased incidence of RRT, the incidence of fatal hepatic veno-occlusive disease (HVD) remains high. Interactions between busulfan and cyclophosphamide might result in increased liver toxicity [4]. Recently, to decrease the incidence of RRT and TRM, fludarabine, a strongly immunosuppressive purine analog with considerable anti-neoplastic and immunosuppressive activity, was selected to replace cyclophosphamide in myeloablative and non-myeloablative conditioning regimens [5-12]. Non-randomized comparisons showed that myeloablative regimen based on busulfan and fludarabine (BuFlu) might be associated with limited extra-hematologic toxicities, sufficient anti-leukemic effects, better overall survival (OS) and disease free survival (DFS) for patients undergoing HSCT compared with BuCy [8-10]. However, some studies have documented that BuFlu was associated with an increased risk of relapse compared with BuCy regimen, especially in patients with active disease at the time of transplantation [13-15]. Moreover, a recent randomized comparison trial suggested that BuFlu regimen had significantly lower OS and DFS than BuCy regimen for allo-HSCT in patients with leukemia and myelodysplastic syndrome (MDS). This randomized comparison trial enrolled a heterogeneous group of patients including patients with myeloid and lymphoid neoplasms, cases in complete remission (CR) or non-remission (NR) before transplantation [14]. There have been no randomized studies comparing the toxicity and effectiveness of BuCy and BuFlu as myeloablative conditioning regimens in patients with a single disease and having a similar, balanced, disease status at the time of transplantation.

In this study, we performed a prospective, randomized, open-labeled, multicenter trial to compare the safety and efficacy of BuCy and BuFlu myeloablative conditioning regimens in patients undergoing allo-HSCT for AML in first CR (CR1).

Materials and methods

Study design

This prospective, randomized, open-label, multicenter study was conducted from January 2007 to May 2012 in

Nanfang Hospital, Southern Medical University; Zhujiang Hospital, Southern Medical University; Guangzhou General Hospital of Guangzhou Military Command, and Sun Yat-Sen Memorial Hospital, Sun Yat-Sen University. The study was performed in accordance with the modified Helsinki Declaration. The protocol was approved by respective ethical review boards.

Patients

Eligibility criteria included patients with AML-CR1 and age between 12 and 60 years. Exclusion criteria included the following: ① acute promyelocytic leukemia; ② patients with secondary leukemia; ③ more than 3 cycles of induction chemotherapy; ④ systolic ejection fraction less than 30%; ⑤ abnormal pulmonary spirometry test (percentage of the predicted value of forced expiratory volume in first second less than 60% and/or percentage of the predicted value of pulmonary diffusion capacity less than 60%); ⑥ serum bilirubin or alanine aminotransferase and/or aspartate aminotransferase two times more than the upper limit of normal; ⑦ creatinine clearance less than 50 ml/min. Written informed consent was obtained from each recipient and donor.

Conditioning regimen

Eligible patients were randomized to receive BuCy or BuFlu conditioning regimen using a permuted block randomization. In the BuCy group, busulfan was administered continuously for 4 hours through a central venous catheter at 1.6 mg/kg every 12 hours on days -7 to -4, and cyclophosphamide 60 mg/kg.d was given daily on days -3 to -2. In the BuFlu group, busulfan was given at the same dose and schedule, and fludarabine 30mg/m².d was given continuously for 1 hour once daily after the first dose of busulfan on days -6 to -2.

HLA typing and source of donor

Genomic high-resolution molecular typing was used for HLA-A, -B, -C, -DRB1 and -DRQ. Ninety-four cases were HLA-matched and 14 were HLA-mismatched. Ninety three patients were transplanted from related donors (siblings in 89 cases and family members in 4 cases), and 15 patients from unrelated donor. Ninety eight patients received peripheral blood stem cells (PBSCs) grafts, and 10 received bone marrow cells and PBSCs mixed grafts.

Graft-versus-host disease (GVHD) and infections prophylaxis

Cyclosporine A (CsA, 1-3 mg/kg.d, with serum valley value maintained at 200-300 ng/ml) plus methotrexate (MTX, 15 mg on days +1 and 10 mg on days +3 and +6) were administered in the patients undergoing HLA matched sibling donor transplants for GVHD prophylaxis. CsA, MTX and mycophenolate mofetil (MMF, 0.5 g twice a

day on days 0 to +28) were used in the patients undergoing 1 locus HLA-mismatched sibling donor transplantation, and CsA, MTX and human anti-thymocyte globulin (ATG [Thymoglobulin; Genzyme, Cambridge, MA]; 2.5 mg/kg.d on days -3 to -1) in the patients undergoing HLA-mismatched unrelated donor, or more than 1 locus HLA-mismatched sibling donor transplantation. The patients undergoing HLA-mismatched unrelated donor or haplo-identical transplantation received CsA + MTX and ATG + MMF as GVHD prophylaxis [16].

Oral sulfamethoxazole and norfloxacin were given to all patients. Acyclovir was given daily from the beginning of preparation therapy to engraftment, and for 7 days every 2 weeks up to 1 year after transplantation. Ganciclovir was used for 2 weeks before transplantation for prophylaxis of cytomegalovirus (CMV) infection, and used again during CMV viremia periods within 1 year post-transplantation. Antifungal agents were administered 5 days pre-transplantation for +30 to +60 days in patients with no history of invasive fungal infection (IFI), and at least 90 days post-transplantation in those with a history of IFI [16].

Monitoring of epstein barr virus (EBV) -DNA and CMV-DNA levels in blood

Generally, the EBV-DNA and CMV-DNA levels in blood were monitored weekly for three months after transplantation. During the 4th to 9th month post-transplantation, the monitoring frequency was once every two weeks; the 10th to the 24th month, once a month; the 25th to 36th month, once every three months. If EBV-DNA or CMV-DNA was positive, it was monitored twice a week. The DNA levels of EBV and CMV in blood were detected by quantitative real-time polymerase chain reaction (RQ-PCR) according to our method previously described [17].

Supportive care

Low molecular weight heparin (Fraxiparine, 0.6 mg i.v. continuously for 24 h) and prostaglandin E (Alprostadil, 10 mg, 3 times per day) were used from the beginning of the conditioning to engraftment for HVD prophylaxis. Phenytoin (400 mg, 3 times per day) orally was used from 1 day before intravenous busulfan therapy to 48 h after the discontinuation of busulfan for the prophylaxis of busulfan toxicities on central nervous system. All patients received granulocyte colony-stimulating factor (G-CSF, 5 μ g/kg.d) from +3 days post-transplantation until achievement of the peripheral white blood cells count reached 1.0×10^9 /L or absolute neutrophil count (ANC) reached 0.5×10^6 /L. Patients received red blood cells and platelet transfusions if hemoglobin levels were ≤ 70 g/L and platelet count $\leq 20.0 \times 10^9$ /L.

Analysis of chimerism

Bone marrow donor-recipient chimerism on days +15 and +30 after transplantation was evaluated using fluorescein

in situ hybridization (FISH) in sex-mismatched transplantation and short tandem repeat analysis in sex-matched transplantation.

Endpoints and definitions

The primary endpoint was RRT, and secondary endpoints were hematopoietic engraftment, bone marrow toxicities, the incidence and severity of acute and chronic GVHD, early infections, disease relapse, TRM, OS and DFS after transplantation. RRT was graded according to Bearman's criteria [18]. Hematopoietic engraftment was defined as the first of 2 consecutive days with an ANC in the peripheral blood exceeding 0.5×10^9 /L and the first of 3 days with an absolute platelet count exceeding 20×10^9 /L without transfusion support. Complete chimerism was defined as >95% donor cells detected; mixed chimerism, as 5% to 95% donor cells detected [16]. Acute GVHD (aGVHD) was graded according to standard criteria, and chronic GVHD (cGVHD) was assessed in patients alive after day 100 and defined as limited or extensive [19,20]. Hematologic relapse was defined by reappearance of blasts in the blood, any manifestation of leukemia outside the hematopoietic system, or greater than 5% blasts in the bone marrow smear. Genetic relapse was assessed by chimerism status and presence of the tumor target gene marker, and relapse was defined as the rate of donor chimerism status decreasing more than 5% or the reappearance of the tumor target gene marker. TRM was defined as death from any cause other than relapse. DFS was defined as survival in a state of continuous complete remission.

Statistics

All patients were studied in their assigned treatment group on an intent-to-treat analysis. Analysis was performed on October 31, 2012. Comparisons of categorical variables were made by means of chi-squared and Fisher exact tests for small numbers. Differences between numerical variables were calculated by means of 2-sample t test. Incidence of time-dependent variables was estimated by the method of Kaplan-Meier. The Cox' regression model was used for analyzing prognostic factors for relapse, DFS, and OS. Numerical variables were analyzed as categories based on their values being below or above the median of the entire cohort. Patient's age, gender, pre-transplantation chemotherapy cycles, genetic subgroups, HLA-typing, donor age, the source of grafts, conditioning regimen, mononuclear cell dose, CD34⁺ cell dose, aGVHD, and cGVHD were analyzed in univariate and multivariate analysis. Intervals were measured from the day of transplantation until the last day of follow-up, transplant-related death or relapse. The SPSS software package (SPSS, Chicago, IL) was used for all data analysis. All statistical tests were two-sided, and P-value less than 0.05 was used to indicate statistical

significance. The study was originally designed for 110 patients in order to detect a 10% decrease in RRT with an α error of 0.05 and a β error of 0.10.

Results

Patient and transplant characteristics

At the time when the study was closed, a total of 110 patients were enrolled and two patients were eliminated before randomization because of disease relapse before transplantation. A hundred and eight patients were randomized to BuCy group ($n = 54$) or BuFlu group ($n = 54$). The median age was 30.5 years (range 12–54 years), with 56 males and 52 females. Genetic data was available in 90 patients. The genetic subgroups according to the criteria [21] were favorable in 11 cases, intermediate in 49 cases, and unfavorable in 30 cases. Within the study population, 4 patients had comorbidities: 1 had hypertension, 1 had diabetes mellitus, 1 had diabetes mellitus and hypertension, and 1 had Gilbert's syndrome and chronic bronchitis. Two patients had a history of pulmonary tuberculosis and 28 had a history of IFI (including stable in 21 cases, and active in 7 cases) at the time of transplantation. Characteristics of patients, donors and transplants are summarized in Table 1. There were no significant differences in patients' age, gender, induction and consolidation chemotherapy cycles, genetic subgroups, HLA-typing, and the source of donors and grafts between the two groups (Table 1, all $P > 0.05$).

Engraftment and chimerism

All patients achieved hematopoietic reconstitution except two patients who died of RRT during conditioning. The median time to neutrophil engraftment were 12 (range, 9–19 days) and 11 days (range, 9–15 days), respectively, in BuCy and BuFlu group ($P = 0.056$). The median time to platelet engraftment were 13 (range, 9–35 days)

and 12 days (range, 9–45 days), respectively, in BuCy and BuFlu group ($P = 0.562$). All 106 evaluable patients achieved donor chimerism, including 24 cases with complete chimerism and 30 cases with mixed donor chimerism (with donor chimerism ranging from 78% to 93%) in BuCy group, and 23 cases with complete chimerism and 31 cases with mixed donor chimerism (with donor chimerism ranging from 68% to 92%) in BuFlu group ($P = 0.845$) by day 15 after transplantation. All patients achieved complete donor chimerism by day 30 after transplantation.

Bone marrow toxicities

The median duration of neutrophil count below $0.1 \times 10^9/L$ were 4 (range, 1–14 days) and 3 days (range, 0–9 days), respectively, in BuCy and BuFlu group ($P = 0.008$). The median duration of platelet count below $20 \times 10^9/L$ were 5 (range, 1–21 days) and 3 days (range, 0–43 days), respectively, in BuCy and BuFlu group ($P = 0.043$). The median number of the red blood cell transfusion were 2 (range, 0–7u) and 1u (range, 0–8u), respectively, in BuCy and BuFlu group ($P = 0.007$). The median number of the platelet concentrates transfusion were 3 (range, 0–19u) and 2u (range, 0–11u), respectively, in BuCy and BuFlu group ($P = 0.028$).

RRT

The most common toxicity was mucositis (60/108). The incidence of total RRT were 94.4% and 81.5% ($P = 0.038$), and III-IV RRT were 16.7% and 0.0% ($P = 0.002$), respectively, in BuCy and BuFlu group. There were four regimen-related deaths in BuCy group, including 1 who died from delayed hemorrhagic cystitis, 1 who died from HVD and 2 who died from acute heart failure; no patient died from RRT in BuFlu group ($P = 0.042$). In addition, autopsy of one patient that died from cardiac toxicity showed limited

Table 1 The characteristics of the patients

	BuCy	BuFlu	P value
No. of patients	54	54	
Sex male/female	27/27	25/29	0.700
Median age in years (range)	30.5(12 ~ 52)	30.5(14 ~ 54)	0.518
Genetic subgroups favorable/intermediate/poor risk/unknown	2/24/16/12	9/25/14/6	0.085
Induction chemotherapy cycles (range)	1 (1–3)	1 (1–3)	0.056
Consolidation chemotherapy cycles (range)	2.5 (1–4)	2 (1–4)	0.222
Source of donors related/unrelated	47/7	45/9	0.588
HLA typing matched/mismatched	48/6	46/8	0.567
Source of stem cells PB /BM + PB	48/6	50/4	0.507
Cell yield (median) MNC($10^8/Kg$)	7.87	7.22	0.510
CD34 + ($10^6/Kg$)	7.30	5.92	0.112

Abbreviations: BuCy, busulfan-cyclophosphamide; BuFlu, busulfan-fludarabine; BM, bone marrow; PB, peripheral blood; MNC, mononucleated cell.

myocardial fibrosis. Organ toxicities are summarized in Table 2.

Infections post-transplantation

Within the first 100 days after transplantation, 67 patients developed 90 episodes of bacterial and/or fungal infections. There were 14 and 12 cases of bacterial infections, 8 and 7 cases of fungal infections, and 14 and 12 cases of bacterial and fungal mixed infections, respectively, in BuCy and BuFlu group ($P = 0.805$). One patient died from bacterial infection in BuFlu group, while no patient died from bacterial or fungal infections in BuCy group ($P = 1.000$). In addition, within the 6 months of transplantation, 11 patients in BuCy group and 10 patients in BuFlu group had CMV viremia ($P = 0.808$); 4 patients in BuCy group and 4 patients in BuFlu group had EBV viremia ($P = 1.000$). With a median follow up of 609 days after transplantation, CMV associated diseases occurred in 2 patients in BuCy group and 1 patient in BuFlu group (CMV pneumonia, $P = 1.000$); EBV associated diseases occurred in 4 patients in BuCy group [post-transplant lymphoproliferative disease (PTLD) in 3, and EBV associated fever in 1] and 3 patients in BuFlu group (PTLD in 1, EBV associated fever in 1, and encephalitis in 1) ($P = 1.000$). One patient died from CMV pneumonia in BuCy group and 2 patients died from EBV and CMV associated diseases in BuFlu group (EBV encephalitis in 1 and CMV pneumonia in 1).

GVHD

The incidence of I-II° and III-IV° aGVHD were 53.8% and 7.7%, and 44.4% and 0.0%, respectively, in BuCy and BuFlu group ($P = 0.333$ and $P = 0.054$, respectively). cGVHD occurred in 24 of 51 (47.1%) and 24 of 54 (44.4%) patients, respectively, in BuCy and BuFlu group ($P = 0.788$). And the incidence of extensive cGVHD were 19.6% and 14.8%, respectively, in BuCy and BuFlu group ($P = 0.515$). Two patients died from cGVHD in BuCy group, while no patients died from GVHD in BuFlu group.

Table 2 Organ toxicity according to Bearman's criteria

	Grade I or II		Grade III or IV		P value
	BuCy	BuFlu	BuCy	BuFlu	
Heart (single/multiple)	4/8	2/4	2/0	0/0	0.048
Bladder	5/8	2/4	0/1	0/0	0.010
Kidneys	0/2	0/1	0/0	0/0	0.500
Lungs	0/0	0/0	0/0	0/0	
Liver	4/10	4/5	0/1	0/0	0.165
CNS	0/0	0/1	0/3	0/0	0.618
Mucosa	16/20	15/9	0/0	0/0	0.020
Gut	1/24	10/6	0/2	0/0	0.018

Abbreviations: BuCy, busulfan-cyclophosphamide; BuFlu, busulfan-fludarabine; CNS, central nervous system.

Relapse

During our study, 15 patients relapsed (13.0%): hematologic relapse was detected in 6 and 6 patients, and genetic relapse occurred in 1 and 2 patients, respectively, in BuCy and BuFlu group ($P = 0.781$). The 5-year cumulative incidence of relapse were $16.5 \pm 5.8\%$ and $16.2 \pm 5.3\%$ in BuCy and BuFlu group (Figure 1A, $P = 0.943$). Of the 15 relapse patients, 3 patients abandoned treatment and the other 12 patients were treated with chemotherapy, donor lymphocyte infusion or second allo-HSCT. Seven cases achieved CR after treatment. In the univariate analysis, genetic subgroups and HLA-typing were significantly associated with disease relapse ($P = 0.002$ and $P = 0.011$, respectively). In the multivariate analysis, higher genetic risk (relative risk [RR] 2.218, CI 1.146–4.293, $P = 0.018$) was significantly associated with a higher relapse rate (Table 3).

OS and DFS

With a median follow up time of 609 days (range, 3–2130) after transplantation, 89 patients were alive and 19 patients died. TRM occurred in 8 patients (RRT in 4, cGVHD in 2, thrombotic microangiopathy in 1, and CMV pneumonia in 1) in BuCy group, and 3 patients (bacterial infection in 1, EBV encephalitis in 1 and CMV pneumonia in 1) in BuFlu group ($P = 0.112$). The 5-year cumulative incidence of TRM were $18.8 \pm 6.9\%$ and $9.9 \pm 6.3\%$ in BuCy and BuFlu group (Figure 1B, $P = 0.104$). The 5-year cumulative OS were $72.3 \pm 7.5\%$ and $81.9 \pm 7.0\%$, respectively, in BuCy and BuFlu group (Figure 1C, $P = 0.177$), and DFS were $67.4 \pm 7.6\%$ and $75.3 \pm 7.2\%$, respectively, in BuCy and BuFlu group (Figure 1D, $P = 0.315$). In the univariate analysis, aGVHD was significantly associated with OS ($P = 0.014$) and TRM ($P = 0.001$), and age was significantly associated with TRM ($P = 0.026$). In the multivariate analysis, severe aGVHD was significantly associated with a lower OS (RR 5.214, CI 1.333–20.404, $P = 0.018$), and a higher TRM (RR 18.538, CI 2.280–150.723, $P = 0.006$). All factors studied were not significantly associated with DFS in the univariate and multivariate analysis (Table 3).

Discussion

BuCy is considered as a standard conditioning regimen for allo-HSCT in AML patients. The introduction of i.v. busulfan decreases the intra- and inter-individual variability in systemic busulfan exposure, improving the safety of BuCy regimen. However, early RRT was still substantial, especially HVOD. Busulfan and cyclophosphamide are mainly metabolized in liver. Both toxic cyclophosphamide metabolites and busulfan can decrease the levels of glutathione (GSH) [4,22]. Combination of these two alkylating agents may result in an exacerbated risk for serious hepatic injuries [4]. Recently, to limit RRT and TRM, non-myeloablative and reduced-intensity conditioning regimens are increasingly used, however, relapse

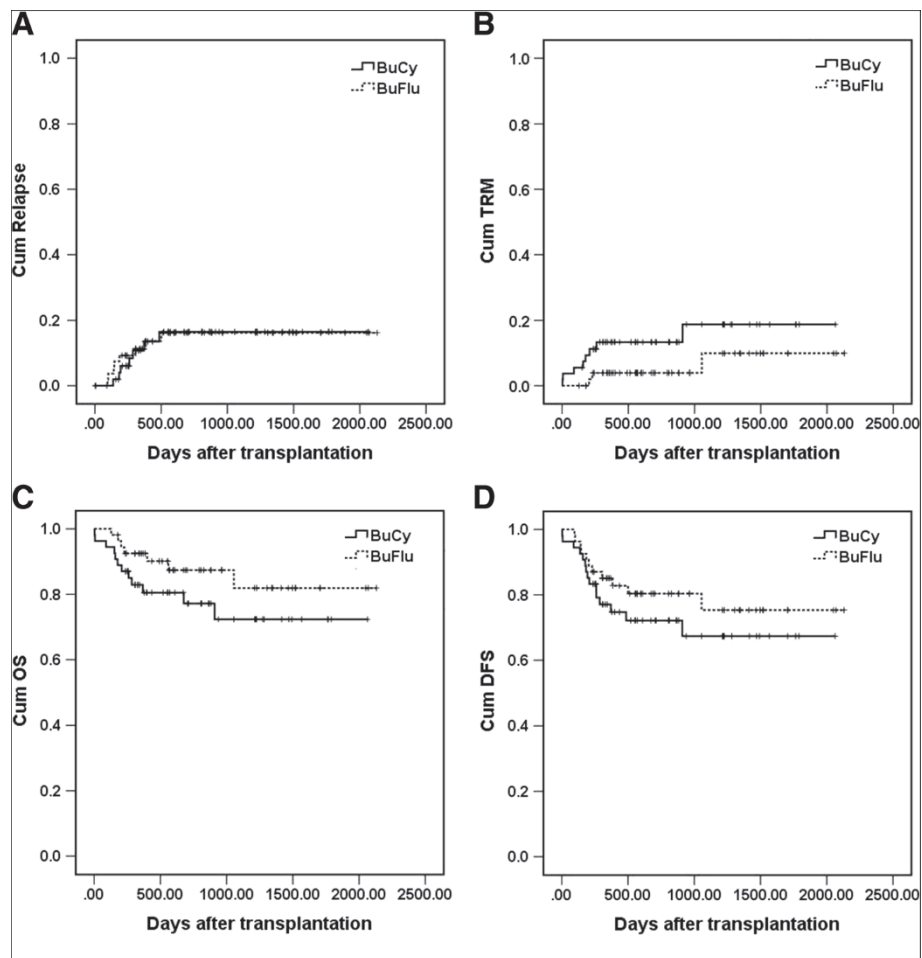


Figure 1 Cumulative incidence of relapse (A), transplant related mortality (TRM) (B), overall survival (OS) (C) and disease free survival (DFS) (D). The 5-year cumulative incidence of relapse were $16.5 \pm 5.8\%$ and $16.2 \pm 5.3\%$ in BuCy and BuFlu group ($P = 0.943$). The 5-year cumulative incidence of TRM were $18.8 \pm 6.9\%$ and $9.9 \pm 6.3\%$ in BuCy and BuFlu group ($P = 0.104$). The 5-year cumulative OS were $72.3 \pm 7.5\%$ and $81.9 \pm 7.0\%$, respectively, in BuCy and BuFlu group ($P = 0.177$), and DFS were $67.4 \pm 7.6\%$ and $75.3 \pm 7.2\%$, respectively, in BuCy and BuFlu group ($P = 0.315$).

becomes more prevalent. Therefore, the challenge is to develop myeloablative regimens associated with low TRM and sufficient anti-leukemic effect.

Fludarabine is widely used in chemotherapy of acute leukemia (especially refractory leukemia) and in conditioning regimens for allo-HSCT. Fludarabine has a synergistic interaction with busulfan through inhibition of DNA ligase and DNA primase, and prevention of DNA polymerization, impairing alkylator-induced damage repair. In addition, fludarabine does not depend on hepatic GSH-stores for its detoxification. Thus, there are non-overlapping organ toxicities between fludarabine and busulfan. A growing body of evidence suggests that fludarabine plus busulfan as myeloablative or non-myeloablative conditioning regimen results in a favorable balance between anti-malignancy efficacy and reduced toxicities [5-12]. In this study, we observed that the incidence of RRT and regimen-related

death were significantly higher in BuCy regimen compared with BuFlu regimen in patients with AML-CR1 undergoing allo-HSCT. BuCy regimen showed higher incidence of bladder, mucosa and gut adverse events compared with BuFlu regimen. These results were consistent with previous studies [8-10]. Surprisingly, we observed that 2 patients died from heart toxicities and autopsy of one case showed limited myocardial fibrosis, suggesting that BuCy might be more toxic to the heart than BuFlu, especially to those with a history of heart disease. Although total hepatic toxicities were similar between the two regimens, one patient died of HVD in BuCy regimen in our study. No differences in TRM between the two regimens might be attributed to the young age and lack of comorbidities of patients in our cohort. We also observed that the median duration of neutrophil count below $0.1 \times 10^9/L$ and platelet count below $20 \times 10^9/L$ in BuCy regimen were significantly longer

Table 3 Risk factors for OS, DFS, TRM and relapse incidence

	OS		DFS		TRM		Relapse rate	
	Univariate	Multivariate (RR)	Univariate	Multivariate (RR)	Univariate	Multivariate (RR)	Univariate	Multivariate (RR)
Sex male/female	NS	NS	NS	NS	NS	NS	NS	NS
Genetic subgroups favorable/intermediate/poor risk/unknown	NS	NS	NS	NS	NS	NS	$P=0.002$	$P=0.018$ (2.218)
Age ≤ 30.5 / >30.5 years	NS	NS	NS	NS	NS	NS	NS	NS
Induction Chemotherapy cycles ≤ 1 / >1 cycles	NS	NS	NS	NS	NS	NS	NS	NS
Consolidation chemotherapy cycles ≤ 2 / >2 cycles	NS	NS	NS	NS	NS	NS	NS	NS
Source of stem cells PB /BM + PB	NS	NS	NS	NS	NS	NS	NS	NS
Source of donors related/unrelated	NS	NS	NS	NS	NS	NS	NS	NS
Age of donors ≤ 30.0 / >30.0 years	NS	NS	NS	NS	$P=0.026$	NS	NS	NS
HLA typing matched/mismatched	NS	NS	NS	NS	NS	NS	$P=0.011$	NS
Conditioning regimen BuCy/BuFlu	NS	NS	NS	NS	NS	NS	NS	NS
MNC(10^6 /Kg) ≤ 7.33 / >7.33	NS	NS	NS	NS	NS	NS	NS	NS
CD34 + (10^6 /Kg) ≤ 6.22 / >6.22	NS	NS	NS	NS	NS	NS	NS	NS
Acute GVHD With/without	$P=0.014$	$P=0.018$ (5.214)	NS	NS	$P=0.001$	$P=0.006$ (18.538)	NS	NS
Chronic GVHD With/without	NS	NS	NS	NS	NS	NS	NS	NS

Abbreviations: OS, overall survival; DFS, disease free survival; TRM, transplant related mortality; BuCy, busulfan-cyclophosphamide; BuFlu, busulfan-fludarabine; BM, bone marrow; PB, peripheral blood; MNC, mononucleated cell.

than that in BuFlu regimen. Meanwhile, BuCy regimen required more red blood cells and platelet concentrates transfusions compared with BuFlu regimen. From these data, it can be suggested that BuFlu regimen might possess less RRT and bone marrow toxicities as well as safer than BuCy regimen. In addition, Russell et al. reported that single daily intravenous busulfan would be more convenient and could be achieved with acceptable toxicity compared with traditional 4-times-daily dosing. In this report, busulfan was administered every 12 hours and associated with higher peak blood concentration after the first day and similar toxicity compared with 4-times-daily dosing (data not shown). Whether this 2-times-daily dosing is associated with increased anti-leukemic activity remains to be discussed.

Other than relapse of malignancy, GVHD and infections remain as the two main causes of death after allo-HSCT. A shorter duration of neutropenia and faster hematopoietic recovery may reduce risk of infection after transplants [23,24]. In the present study, the bone marrow suppression toxicities were lower in BuFlu regimen than BuCy regimen. However, the incidence of early infectious post-transplantation (including bacterial and fungal infections) did not differ between the two regimens, probably as a consequence of almost all patients being treated in a sterile ward for 100 days after transplantation and the short duration of neutropenia. Some studies suggested that the conditioning regimens containing fludarabine were

associated with higher incidence of opportunistic infections such as CMV and EBV after transplantation because of the immunosuppressive effect of fludarabine [10,25,26]. Here, we observed that the incidence of CMV and EBV viremia was similar between BuFlu and BuCy regimens within 6 months after transplantation. During the follow-up period, there were also no differences in the incidence of CMV and EBV-associated diseases between the two regimens.

GVHD is a complex pathological process mediated by allo-reactive donor T cells recognizing the disparate HLA antigens and involving tissue-specific immune cells and inflammatory cytokines [27]. The incidence and severity of GVHD can be influenced by many factors including age of recipient and donor, HLA typing, source of donor and stem cells, and conditioning regimens. The conditioning can provoke the release of inflammatory factors, which play critical roles in aGVHD [28]. Chae et al. reported that the incidence and severity of acute and chronic GVHD were lower in BuFlu regimen compared with BuCy regimen [9]. However, in a randomized trial, Lee et al. suggested that the incidence and severity of acute and chronic GVHD were similar between the two regimens [14]. In this report, the incidence of I-II° and III-IV° aGVHD as well as total and extensive cGVHD were also similar between BuFlu and BuCy regimens.

Some single arm and retrospective comparison studies suggested that myeloablative BuFlu regimen did not increase the risk of disease relapse [9,10]. However,

Shimoni et al. reported a non-statistically significant trend for higher incidence of relapse after BuFlu myeloablative regimen [13]. Lee et al. reported that BuFlu regimen had lower relapse-free survival than BuCy regimen [14]. However, these two studies enrolled patients with different diseases and disease status before transplantation. In this study, we found no significant difference in relapse rate between BuCy and BuFlu regimens for AML-CR1 patients. Based on these results, we concluded that BuFlu and BuCy had equivalent anti-leukemic activity to AML-CR1 patients undergoing allo-HSCT.

The survival of patients with AML after allo-HSCT is influenced by many factors, such as the response to induction therapy, white blood cell count at diagnosis, cytogenetics, the status of disease during transplantation, and conditioning regimens [29,30]. Several single arm and retrospective comparisons showed that myeloablative regimen based on busulfan and fludarabine might be associated with fewer RRT, lower TRM, and higher survival rates compared with BuCy [8-10]. However, a recent randomized prospective trial from Lee et al. reported that BuCy regimen had better 2-year OS and DFS than BuFlu in patients with leukemia and MDS [14]. In the present randomized prospective trial, the 5-year cumulative OS and DFS were $81.9 \pm 7.0\%$ and $75.3 \pm 7.2\%$ in AML-CR1 patients receiving BuFlu, and were not different from patients receiving BuCy ($72.3 \pm 7.5\%$ and $67.4 \pm 7.6\%$). We used similar conditioning regimen as Lee et al's study except the schedule of busulfan. The different results might be attributed to the different disease composition and disease status in these two studies.

Conclusions

Our randomized prospective trial suggests that BuFlu regimen is a myeloablative conditioning regimen with reduced toxicity. It is well tolerated and possesses similar anti-leukemic activity compared with BuCy in AML-CR1 patients undergoing allo-HSCT.

Abbreviations

Bu: Busulfan; Flu: Fludarabine; Cy: Cyclophosphamide; allo-HSCT: Allogeneic hematopoietic stem cell transplantation; AML: Acute myeloid leukemia; CR1: First complete remission; RRT: Regimen-related toxicity; GVHD: Graft-versus-host disease; TRM: Transplant related mortality; HVOD: Hepatic veno-occlusive disease; OS: Overall survival; DFS: Disease free survival; MDS: Myelodysplastic syndrome; PBSCs: Peripheral blood stem cells; G-CSF: Granulocyte colony-stimulating factor; CsA: Cyclosporine A; MTX: Methotrexate; ATG: Human anti-thymocyte globulin; MMF: Mycophenolate; CMV: Cytomegalovirus; IFI: Invasive fungal infection; EBV: Epstein barr virus; ANC: Absolute neutrophil count; PTLD: Post-transplant lymphoproliferative disease; RR: Relative risk.

Competing interests

The authors declare that they have no competing interests.

Authors' contributions

HL performed investigations, analyzed data and wrote the paper; XZ, YZ, ZPF and GPY analyzed data; ZYS, JS, YX, DNN, SFT, YHL, FH, HSZ and XTG performed investigations; QFL designed study and wrote the paper. The authors reported no potential conflicts of interest. All authors read and approved the final manuscript.

Acknowledgements

The study was supported by grants from National Natural Science Foundation of China (No.81000231, No.81270647, and No.30971300), National Public Health Grand Research Foundation (No. 201202017), and Science and Technology Project of Guangzhou (11A72121174).

Author details

¹Department of Hematology, Nanfang Hospital, Southern Medical University, Guangzhou 510515, China. ²Department of Hematology, Zhujiang Hospital, Southern Medical University, Guangzhou 510282, China. ³Department of Hematology, Guangzhou General Hospital of Guangzhou Military Command, Guangzhou, China. ⁴Department of Hematology, Sun Yat-Sen Memorial Hospital, Sun Yat-Sen University, Guangzhou, Guangdong, China.

Received: 2 December 2012 Accepted: 3 February 2013

Published: 8 February 2013

References

- De Lima M, Anagnostopoulos A, Munsell M, Shahjahan M, Ueno N, Ippoliti C, Andersson BS, Gajewski J, Couriel D, Cortes J, Donato M, Neumann J, Champlin R, Giralt S: **Nonablative versus reduced-intensity conditioning regimens in the treatment of acute myeloid leukemia and high-risk myelodysplastic syndrome: dose is relevant for long-term disease control after allogeneic hematopoietic stem cell transplantation.** *Blood* 2004, **104**(3):865-872.
- Copelan EA: **Hematopoietic stem-cell transplantation.** *N Engl J Med* 2006, **354**(17):1813-1826.
- Ali N, Adil SN, Shaikh MU, Moosajee M, Masood N: **Outcome of match related allogeneic stem cell transplantation procedures performed from 2004 till 2011.** *Exp Hematol Oncol* 2012, **1**(1):13.
- Ciurea SO, Andersson BS: **Busulfan in hematopoietic stem cell transplantation.** *Biol Blood Marrow Tr* 2009, **15**(5):523-536.
- Russell JA, Tran HT, Quinlan D, Chaudhry A, Duggan P, Brown C, Stewart D, Ruether JD, Morris D, Glick S, Gyonyor E, Andersson BS: **Once-daily intravenous busulfan given with fludarabine as conditioning for allogeneic stem cell transplantation: study of pharmacokinetics and early clinical outcomes.** *Biol Blood Marrow Tr* 2002, **8**(9):468-476.
- De Lima M, Couriel D, Thall PF, Wang X, Madden T, Jones R, Shpall EJ, Shahjahan M, Pierre B, Giralt S, Korbling M, Russell JA, Champlin RE, Andersson BS: **Once-daily intravenous busulfan and fludarabine: clinical and pharmacokinetic results of a myeloablative, reduced-toxicity conditioning regimen for allogeneic stem cell transplantation in AML and MDS.** *Blood* 2004, **104**(3):857-864.
- Iravani M, Evazi MR, Mousavi SA, Shamshiri AR, Tavakoli M, Ashouri A, Samiee S, Chahardovali B, Alimoghaddam K, Ghaffari SH, Ghavamzadeh A: **Fludarabine and busulfan as a myeloablative conditioning regimen for allogeneic stem cell transplantation in high- and standard-risk leukemic patients.** *Biol Blood Marrow Tr* 2007, **40**(2):105-110.
- Andersson BS, De Lima M, Thall PF, Wang X, Couriel D, Korbling M, Roberson S, Giralt S, Pierre B, Russell JA, Shpall EJ, Jones RB, Champlin RE: **Once daily i.v. busulfan and fludarabine (i.v. Bu-Flu) compares favorably with i.v. busulfan and cyclophosphamide (i.v. BuCy2) as pretransplant conditioning therapy in AML/MDS.** *Biol Blood Marrow Tr* 2008, **14**(6):672-684.
- Chae YS, Sohn SK, Kim JG, Cho YY, Moon JH, Shin HJ, Chung JS, Cho GJ, Yang DH, Lee JJ, Kim YK, Kim HJ: **New myeloablative conditioning regimen with fludarabine and busulfan for allogeneic stem cell transplantation: comparison with BuCy2.** *Bone Marrow Transplant* 2007, **40**(6):541-547.
- Lee JH, Choi J, Kwon KA, Lee S, Oh SY, Kwon HC, Kim HJ, Han JY, Kim SH: **Fludarabine-based myeloablative regimen as pretransplant conditioning therapy in adult acute leukemia/myelodysplastic syndrome: comparison with oral or intravenous busulfan with cyclophosphamide.** *Korean J Hematol* 2010, **45**(2):102-108.
- Chunduri S, Dobogai LC, Peace D, Sauntharajah Y, Quigley J, Chen YH, Mahmud N, Hurter E, Beri R, Rondelli D: **Fludarabine/i.v. BU conditioning regimen: myeloablative, reduced intensity or both?** *BMT* 2008, **41**(11):935-940.
- Pidala J, Kim J, Anasetti C, Kharfan-Dabaja MA, Nishihori T, Field T, Perkins J, Perez L, Fernandez HF: **Pharmacokinetic targeting of intravenous busulfan reduces conditioning regimen related toxicity following allogeneic hematopoietic cell transplantation for acute myelogenous leukemia.** *J Hematol Oncol* 2010, **3**(1):36.
- Shimoni A, Hardan I, Shem-Tov N, Yeshurun M, Yerushalmi R, Avigdor A, Ben-Bassat I, Nagler A: **Allogeneic hematopoietic stem-cell transplantation**

- in AML and MDS using myeloablative versus reduced-intensity conditioning: the role of dose intensity. *Leukemia* 2006, **20**(2):322–328.
14. Lee JH, Joo YD, Kim H, Ryoo HM, Kim MK, Lee GW, Lee JH, Lee WS, Park JH, Bae SH, Hyun MS, Kim DY, Kim SD, Min YJ, Lee KH: **Randomized Trial of Myeloablative Conditioning Regimens: Busulfan Plus Cyclophosphamide Versus Busulfan Plus Fludarabine.** *J Clin Oncol* 2012, in press.
 15. Shimoni A, Hardan I, Shem-Tov N, Yerushalmi R, Nagler A: **Allogeneic hematopoietic stem-cell transplantation in AML and MDS using myeloablative versus reduced-intensity conditioning: long-term follow-up.** *Leukemia* 2010, **24**(5):1050–1052.
 16. Liu QF, Fan ZP, Zhang Y, Jiang ZJ, Wang CY, Xu D, Sun J, Xiao Y, Tan H: **Sequential intensified conditioning and tapering of prophylactic immunosuppressants for graft-versus-host disease in allogeneic hematopoietic stem cell transplantation for refractory leukemia.** *BBMT* 2009, **15**(11):1376–1385.
 17. Xuan L, Huang F, Fan Z, Zhou H, Zhang X, Yu G, Zhang Y, Liu C, Sun J, Liu Q: **Effects of intensified conditioning on Epstein-Barr virus and cytomegalovirus infections in allogeneic hematopoietic stem cell transplantation for hematological malignancies.** *J Hematol Oncol* 2012, **5**:46.
 18. Bearman SI, Appelbaum FR, Buckner CD, Petersen FB, Fisher LD, Clift RA, Thomas ED: **Regimen-related toxicity in patients undergoing bone marrow transplantation.** *J Clin Oncol* 1988, **6**(10):1562–1568.
 19. Przepiorka D, Weisdorf D, Martin P, Klingemann HG, Beatty P, Hows J, Thomas ED: **Consensus Conference on Acute GVHD Grading.** *Bone Marrow Transplant* 1994, **15**(6):825–828.
 20. Horwitz ME, Sullivan KM: **Chronic graft-versus-host disease.** *Blood Rev* 2006, **20**(1):15–27.
 21. O'Donnell MR, Abboud CN, Altman J, Appelbaum FR, Arber DA, Attar E, Borate U, Coutre SE, Damon LE, Goorha S, Lancet J, Maness LJ, Marcucci G, Millenson MM, Moore JO, Ravandi F, Shami PJ, Smith BD, Stone RM, Strickland SA, Tallman MS, Wang ES, Naganuma M, Gregory KM: **Acute myeloid leukemia.** *J Natl Compr Canc Netw* 2012, **10**(8):984–1021.
 22. McDonald GB, Slattey JT, Bouvier ME, Ren S, Batchelder AL, Kalthorn TF, Schoch HG, Anasetti C, Gooley T: **Cyclophosphamide metabolism, liver toxicity, and mortality following hematopoietic stem cell transplantation.** *Blood* 2003, **101**(5):2043–2048.
 23. Ozcan M, Ustün C, Akçağlayan E, Akan H, Arslan O, İlhan O, Bektaş M, Gürman G, Demirer T, Arat M, Celebi H, Konuk N, Uysal A, Koç H: **Recombinant human granulocyte colony-stimulating factor (rh-G-CSF) may accelerate hematopoietic recovery after HLA-identical sibling allogeneic peripheral blood stem cell transplantation.** *BMT* 2001, **27**(5):499–505.
 24. Anderson D, DeFor T, Burns L, McGlave P, Miller J, Wagner J, Weisdorf D: **A comparison of related donor peripheral blood and bone marrow transplants: importance of late-onset chronic graft-versus-host disease and infections.** *BBMT* 2003, **9**(1):52–59.
 25. Lazzarino M, Orlandi E, Baldanti F, Furione M, Pagnucco G, Astori C, Arcaini L, Viglio A, Paulli M, Gerna G, Bernasconi C: **The immunosuppression and potential for EBV reactivation of fludarabine combined with cyclophosphamide and dexamethasone in patients with lymphoproliferative disorders.** *Br J Haematol* 1999, **107**(4):877–882.
 26. Bainton RD, Byrne JL, Davy BJ, Russell NH: **CMV infection following nonmyeloablative allogeneic stem cell transplantation using Campath.** *Blood* 2002, **100**(10):3843–3844.
 27. Pidala J: **Graft-vs-host disease following allogeneic hematopoietic cell transplantation.** *Cancer Control* 2011, **18**(4):268–276.
 28. Reddy P, Socie G, Cutler C, Weisdorf D: **GVHD prevention: an ounce is better than a pound.** *BBMT* 2012, **18**(1 Suppl):S17–26.
 29. Jing Y, Li H, Zhao Y, Bo J, Wang S, Wang Q, Huang W, Gao C, Yu L: **Efficacy of allogeneic and autologous hematopoietic SCT in patients with AML after first complete remission.** *BMT* 2012, in press.
 30. Wang Y, Liu DH, Liu KY, Xu LP, Zhang XH, Han W, Chen H, Chen YH, Huang XJ: **Impact of Pretransplantation Risk Factors on Post Transplantation Outcome of Patients With Acute Myeloid Leukemia in Remission After Haploidentical Hematopoietic Stem Cell Transplantation.** *BBMT* 2012, in press.

doi:10.1186/1756-8722-6-15

Cite this article as: Liu et al.: Busulfan plus fludarabine as a myeloablative conditioning regimen compared with busulfan plus cyclophosphamide for acute myeloid leukemia in first complete remission undergoing allogeneic hematopoietic stem cell transplantation: a prospective and multicenter study. *Journal of Hematology & Oncology* 2013 **6**:15.

Submit your next manuscript to BioMed Central and take full advantage of:

- Convenient online submission
- Thorough peer review
- No space constraints or color figure charges
- Immediate publication on acceptance
- Inclusion in PubMed, CAS, Scopus and Google Scholar
- Research which is freely available for redistribution

Submit your manuscript at
www.biomedcentral.com/submit

