

# c-Myc Is Required for Maintenance of Glioma Cancer Stem Cells

Jialiang Wang<sup>1,5</sup>, Hui Wang<sup>2,5</sup>, Zhizhong Li<sup>2,5</sup>, Qiulian Wu<sup>1,5</sup>, Justin D. Lathia<sup>1,5</sup>, Roger E. McLendon<sup>3,5</sup>, Anita B. Hjelmeland<sup>1,5</sup>, Jeremy N. Rich<sup>1,2,4,5,6\*</sup>

**1** Department of Surgery, Duke University, Durham, North Carolina, United States of America, **2** Department of Pharmacology and Cancer Biology, Duke University, Durham, North Carolina, United States of America, **3** Department of Pathology, Duke University, Durham, North Carolina, United States of America, **4** Department of Medicine, Duke University, Durham, North Carolina, United States of America, **5** Preston Robert Tisch Brain Tumor Center, Duke University Medical Center, Durham, North Carolina, United States of America, **6** Department of Stem Cell Biology and Regenerative Biology, Cleveland Clinic, Cleveland, Ohio, United States of America

## Abstract

**Background:** Malignant gliomas rank among the most lethal cancers. Gliomas display a striking cellular heterogeneity with a hierarchy of differentiation states. Recent studies support the existence of cancer stem cells in gliomas that are functionally defined by their capacity for extensive self-renewal and formation of secondary tumors that phenocopy the original tumors. As the c-Myc oncoprotein has recognized roles in normal stem cell biology, we hypothesized that c-Myc may contribute to cancer stem cell biology as these cells share characteristics with normal stem cells.

**Methodology/Principal Findings:** Based on previous methods that we and others have employed, tumor cell populations were enriched or depleted for cancer stem cells using the stem cell marker CD133 (Prominin-1). We characterized c-Myc expression in matched tumor cell populations using real time PCR, immunoblotting, immunofluorescence and flow cytometry. Here we report that c-Myc is highly expressed in glioma cancer stem cells relative to non-stem glioma cells. To interrogate the significance of c-Myc expression in glioma cancer stem cells, we targeted its expression using lentivirally transduced short hairpin RNA (shRNA). Knockdown of c-Myc in glioma cancer stem cells reduced proliferation with concomitant cell cycle arrest in the G<sub>0</sub>/G<sub>1</sub> phase and increased apoptosis. Non-stem glioma cells displayed limited dependence on c-Myc expression for survival and proliferation. Further, glioma cancer stem cells with decreased c-Myc levels failed to form neurospheres *in vitro* or tumors when xenotransplanted into the brains of immunocompromised mice.

**Conclusions/Significance:** These findings support a central role of c-Myc in regulating proliferation and survival of glioma cancer stem cells. Targeting core stem cell pathways may offer improved therapeutic approaches for advanced cancers.

**Citation:** Wang J, Wang H, Li Z, Wu Q, Lathia JD, et al. (2008) c-Myc Is Required for Maintenance of Glioma Cancer Stem Cells. PLoS ONE 3(11): e3769. doi:10.1371/journal.pone.0003769

**Editor:** Juha Klefstrom, University of Helsinki, Finland

**Received:** July 11, 2008; **Accepted:** November 2, 2008; **Published:** November 20, 2008

**Copyright:** © 2008 Wang et al. This is an open-access article distributed under the terms of the Creative Commons Attribution License, which permits unrestricted use, distribution, and reproduction in any medium, provided the original author and source are credited.

**Funding:** Jialiang Wang is a recipient of the American Brain Tumor Association Basic Research Fellowship. Other financial support was provided by the Childhood Brain Tumor Foundation, the Pediatric Brain Tumor Foundation of the United States, Accelerate Brain Cancer Cure, Alexander and Margaret Stewart Trust, Brain Tumor Society, Goldhirsh Foundation, Duke Comprehensive Cancer Center Stem Cell Initiative Grant (J.R.), NIH grants NS047409, NS054276, and CA116659 (J.R.). J.R. is a Damon Runyon-Lilly Clinical Investigator supported by the Damon Runyon Cancer Research Foundation and a Sidney Kimmel Foundation for Cancer Research Scholar. The funders had no role in study design, data collection and analysis, decision to publish, or preparation of the manuscript.

**Competing Interests:** The authors have declared that no competing interests exist.

\* E-mail: richj@ccf.org

## Introduction

The emerging cancer stem cell model suggests that tumors are organized in a hierarchy with a subpopulation of cancer stem cells responsible for tumor maintenance and progression. Cancer stem cells are highly tumorigenic and phenocopy the original tumors in rodent xenograft models. Depletion of the cancer stem cell population greatly impairs the potential to initiate xenograft tumor formation of the bulk tumors [1,2]. The cancer stem cell population also contributes to solid tumor angiogenesis [3], metastasis [4], and resistance to chemotherapy and radiotherapy [3,5,6,7,8,9]. While this model has been validated in a growing list of haematopoietic and solid tumors, the molecular signaling pathways orchestrating the biology of cancer stem cells remain to be elucidated.

The c-Myc oncoprotein has been extensively studied for its instrumental role in proliferation and growth of normal and

neoplastic cells. Deregulated c-Myc is found in diverse human tumors and is often associated with advanced malignancy and poor prognosis [10]. As c-Myc has been recently recognized as an important regulator of stem cell biology, it may serve as a link connecting malignancy and “stemness” [11]. In either normal or transformed cells, c-Myc alone activates an embryonic stem cell-like transcriptional module, which strongly correlates with tumor metastasis and mortality [12]. Ectopic c-Myc expression in transformed human keratinocytes dramatically increases the cancer stem cell fraction and enhances tumorigenicity [12]. Introduction of c-Myc with other transcription factors (including Oct3/4, Sox2, and Klf4) generates induced pluripotent stem (iPS) cells from differentiated cells [13]. Excluding c-Myc from this combination without eliminating endogenous c-Myc expression, drastically reduces the efficiency of iPS cell production [13,14,15,16]. While all of these data suggest a role for c-Myc in maintaining stem cells, other

functions of c-Myc in regulating stem cell biology have also been described. Conditional knockout of c-Myc in mouse bone marrow does not prevent proliferation or self-renewal of haematopoietic stem cells [17]. It rather results in accumulation of haematopoietic stem cells in bone marrow, suggesting that c-Myc specifically controls the interaction between haematopoietic stem cells and their niches. Additionally, over-expression of c-Myc-estrogen receptor fusion protein in human epidermal stem cells drives differentiation rather than proliferation [18,19].

Because of the recognized functions of c-Myc in both normal stem cell biology and neural malignancy, we investigated the role of c-Myc in human glioma cancer stem cells. Gliomas are the most common primary intrinsic tumor type of the central nervous system. High grade gliomas (World Health Organization grades III and IV) are among the most lethal human malignancies [20]. In glioma, c-Myc expression correlates with the grade of malignancy [21]. Expression of c-Myc driven by the glial fibrillary acidic protein (GFAP)-promoter in developing mouse astroglia induces tumors that resemble human glioblastoma multiforme [22]. In this mouse model, the tumor mass contains fast dividing subpopulation that express c-Myc and relatively quiescent tumor cells that lack c-Myc expression [22]. We have now determined that the glioma cancer stem cells expressed higher levels of c-Myc relative to matched non-stem tumor cells and the activity of c-Myc is required for proliferation, growth, and survival of glioma cancer stem cells. Loss of c-Myc abolished xenograft formation by glioma cancer stem cells, underscoring a key role of c-Myc in glioma cancer stem cell maintenance.

## Results

### Glioma cancer stem cells express high levels of c-Myc

To investigate the biological functions of c-Myc in regulation of glioma cancer stem cells, we first determined expression of c-Myc in these cells. Short term cultures enriched or depleted for cancer stem cells were derived from human brain tumor specimens using CD133 selection and characterized as we have previously demonstrated [9]. Quantitative real-time PCR revealed that CD133+ glioma cells expressed higher c-Myc mRNA levels than matched CD133- glioma cells (Figure 1A). The differential mRNA levels translated into higher levels of c-Myc protein in CD133+ glioma cells than matched CD133- cells (Figure 1B). Consistent with prior reports [23,24], the cancer stem cell-enriched fractions also expressed high levels of Olig2, a marker of adult neural multipotent progenitors (Figure 1B). To directly measure the expression of c-Myc in human brain tumors, we further evaluated c-Myc expression by flow cytometry in both CD133+ and CD133- fractions of glioma cells acutely isolated from human surgical biopsy specimens without *in vitro* culture (Figure 1C). Approximately half of the CD133+ cells were high in c-Myc expression, whereas nearly 90% CD133- cells expressed low levels of c-Myc (Figure 1D). We further examined c-Myc expression in glioma cancer stem cells using sections generated from acutely frozen human glioma surgical specimens. Because co-staining with CD133 was not compatible with antigen retrieval method required for c-Myc staining, we co-stained c-Myc with another neural stem cell marker Nestin. Greater than 90% of Nestin positive glioma cells were also c-Myc positive (Figure 1E). These data suggest that c-Myc is highly expressed in glioma cancer stem cells.

### c-Myc regulates cell cycle progression and proliferation of glioma cancer stem cells

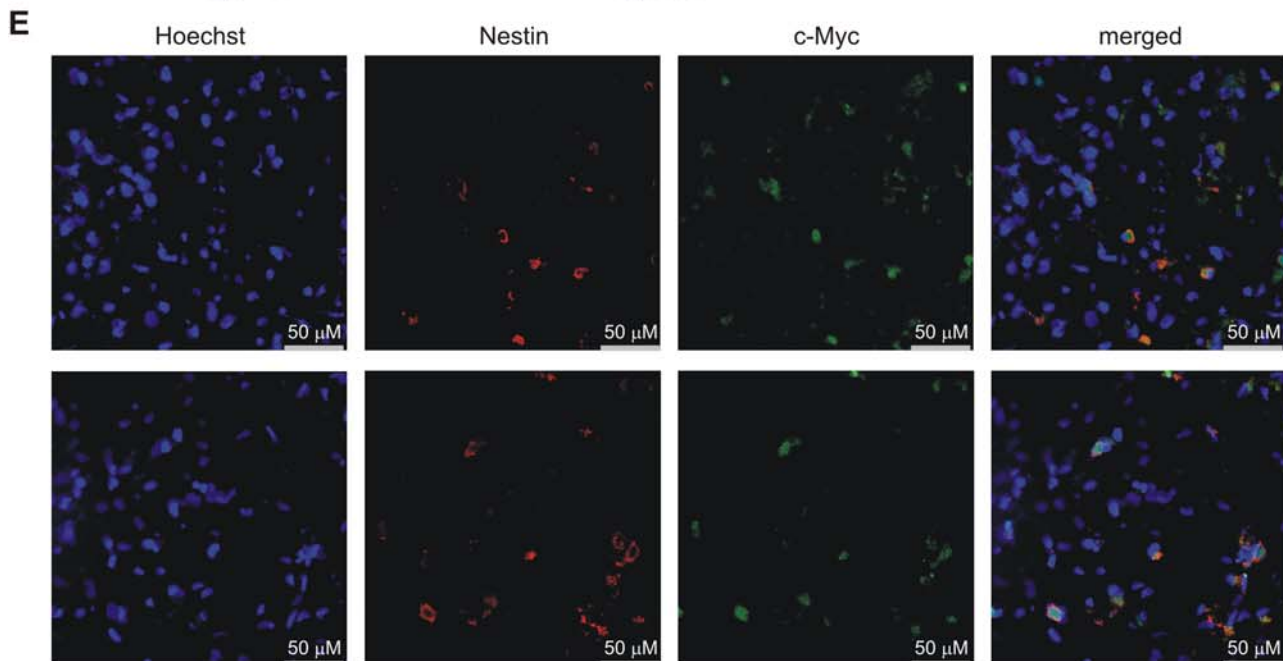
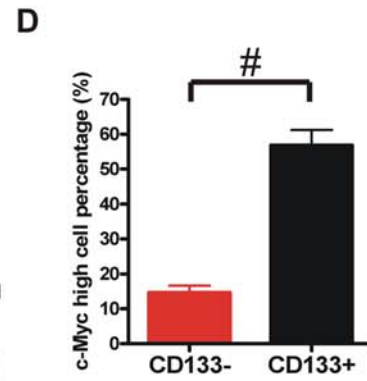
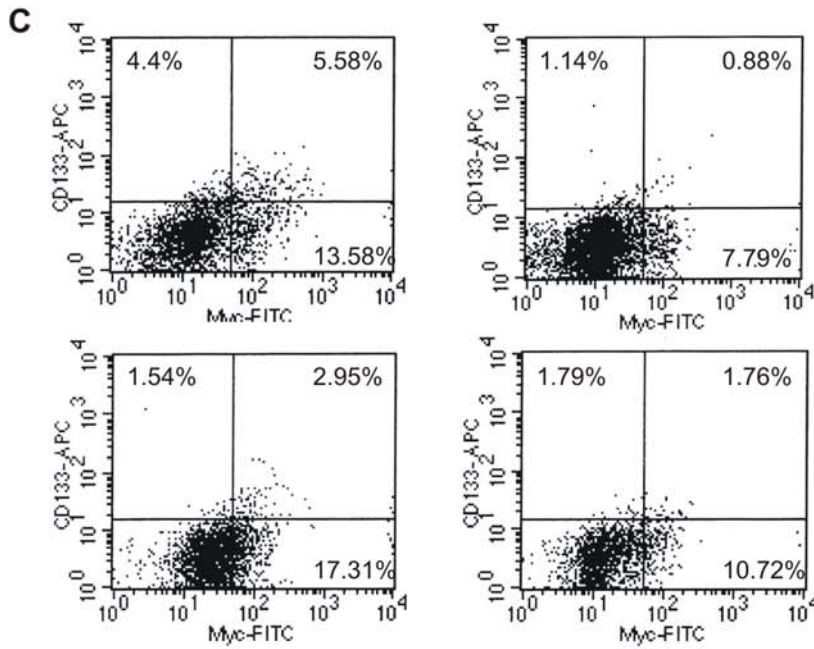
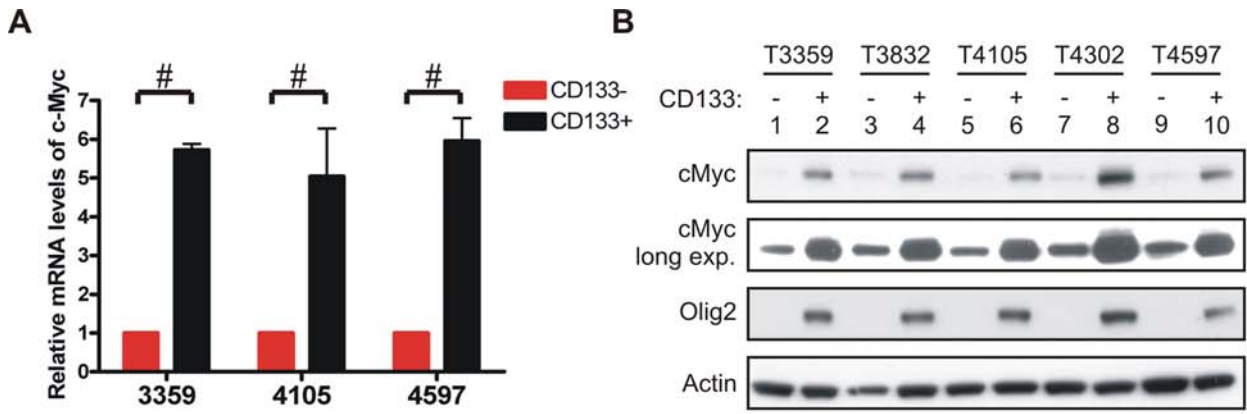
c-Myc plays a key role in regulating cellular proliferation by controlling the expression of cell cycle proteins. To interrogate the

role of c-Myc in the cell cycle of glioma cancer stem cells, we targeted c-Myc expression by infection with lentivirus expressing shRNA specific to c-Myc. Two different shRNAs efficiently decreased c-Myc expression in both CD133- and CD133+ glioma cells as shown by quantitative real-time PCR and immunoblotting (Figure 2A and 2B). Similar results were found in another tumor specimen (T4597, data not shown). Depletion of c-Myc significantly reduced the S phase cell population with concomitant increase of the G<sub>0</sub>/G<sub>1</sub> cell population in CD133+ cells ( $p < 0.001$ , Figure 3). In contrast, CD133- cells displayed a lower rate of proliferation with a smaller S phase population than matched CD133+ cells (Figure 3 and data not shown), and the cell cycle progression in CD133- cells was not significantly altered by knockdown of c-Myc. Regulation of the cell cycle by c-Myc is commonly mediated through transcriptional regulation of the cyclins and the cyclin-dependent kinase inhibitors, including cyclins D<sub>1</sub>, D<sub>2</sub>, and E and p21<sup>WAF1/CIP1</sup> [26,27] (<http://www.myc-cancer-gene.org>). Attenuating c-Myc expression specifically reduced cyclin D<sub>1</sub> protein levels, but not cyclins D<sub>2</sub> or E, in CD133+ cells (Figure 2B). Additionally, p21<sup>WAF1/CIP1</sup> protein levels were upregulated in cancer stem cells depleted of c-Myc, whereas p53 levels were only moderately altered (Figure 2B). Quantitative real-time PCR showed a similar pattern of cyclin D<sub>1</sub> and p21<sup>WAF1/CIP1</sup> regulation at mRNA levels by c-Myc in CD133+ cells, suggesting c-Myc regulated these two genes at the level of transcription. In striking contrast, cyclin D<sub>1</sub> and p21<sup>WAF1/CIP1</sup> were minimally altered by knocking down c-Myc at either the mRNA or protein levels in CD133- cells. Notably, basal cyclin D<sub>1</sub> levels were higher in CD133+ cells than matched CD133- cells, whereas cyclin D<sub>2</sub> and cyclin E levels were higher in CD133- cells, suggesting that cyclin D<sub>1</sub>, but not cyclins D<sub>2</sub> or E, is critical for the G<sub>1</sub>/S transition in CD133+ glioma cells. Taken together, these results suggest that c-Myc regulates cell cycle progression in glioma cancer stem cells, at least partially, through controlling expression of cyclin D<sub>1</sub> and p21<sup>WAF1/CIP1</sup>.

Previous reports demonstrated that brain tumor stem cells isolated from human surgical biopsy specimens were actively proliferative *in vitro* [28,29], but the numbers of matched CD133- tumor cells barely increased after a week of culture. Our data that the relatively high expression of c-Myc in glioma cancer stem cells is essential for their cell cycle regulation suggest that the growth of these cells may also require c-Myc activity. As demonstrated by growth curve assays, the total number of control CD133+ cells increased roughly six or seven fold over five days, whereas CD133+ cells depleted of c-Myc did not increase or decreased in number (Figure 4). Conversely, growth of the CD133- population was only moderately attenuated with c-Myc knockdown (Figure 4). These results suggest that c-Myc preferentially contributes to sustained growth of tumor initiating cells.

### Loss of c-Myc induces apoptosis in glioma cancer stem cells

c-Myc regulates not only cellular proliferation but also cellular survival. In concordance with a role in survival, we noted an accumulation of dead cells in the CD133+ fraction depleted of c-Myc expression during the growth curve experiments that was not present in controls (data not shown). Conversely, indications of cell death were limited in matched CD133- cells, regardless of c-Myc status, suggesting that loss of c-Myc might specifically induce apoptosis in CD133+ cells. The role of c-Myc in regulating apoptosis remains controversial. Previous reports have demonstrated that c-Myc promotes apoptosis in cancer cell lines and various normal cell types, whereas downregulation of c-Myc also leads to apoptosis under certain circumstances [30,31,32,33]. To distinguish the anti-apoptot-



**Figure 1. c-Myc is highly expressed in glioma cancer stem cells.** (A) CD133<sup>-</sup> and CD133<sup>+</sup> cells were isolated from glioma surgical biopsy specimens passaged short-term in immunocompromised mice and briefly cultured. Total RNA was isolated from both CD133<sup>-</sup> and CD133<sup>+</sup> cells. cDNA was prepared by reverse transcription. Expression of c-Myc was then determined by quantitative real-time PCR and normalized to  $\beta$ -actin and HPRT1. Relative mRNA levels of c-Myc in CD133<sup>-</sup> cells were assigned a value of 1. Data are represented as mean  $\pm$  S.E.M in this and all subsequent graphs (#:  $p < 0.001$ ). (B) Total cellular lysates were resolved by SDS-PAGE. Protein levels of c-Myc and Olig2 were determined by immunoblotting. Actin was blotted as the loading control. (C) Glioma cells were isolated directly from human surgical biopsy specimens, fixed in 4% paraformaldehyde following dissociation, labeled with anti-CD133-APC and anti-c-Myc-FITC, and subjected to FACS analysis. (D) Percentage of cells expressing high levels of c-Myc within either the CD133<sup>-</sup> fraction or the CD133<sup>+</sup> fraction was demonstrated (#:  $p < 0.001$ ). (E) Sections of freshly frozen human glioma surgical biopsy specimens were fixed and co-stained for c-Myc (green) and Nestin (red). Nuclei were counterstained with Hoechst 33342. Representative images (630 $\times$ ) were demonstrated.  
doi:10.1371/journal.pone.0003769.g001

ic or pro-apoptotic role of c-Myc in glioma cancer stem cells, we quantified apoptotic cell populations following knockdown of c-Myc. Annexin V staining revealed that depletion of c-Myc induced apoptosis in CD133<sup>+</sup> glioma cells, whereas the control CD133<sup>+</sup> cells contained a minimal apoptotic population (Figure 5A, C). In contrast, the CD133<sup>-</sup> population had only background staining of Annexin V regardless of c-Myc levels. Consistent with these data, the combined caspase 3/7 activity was elevated in CD133<sup>+</sup> cells following c-Myc knockdown, but not in matched CD133<sup>-</sup> cells (Figure 5B, D). Taken together, these data suggest that c-Myc is a survival factor for glioma cancer stem cells.

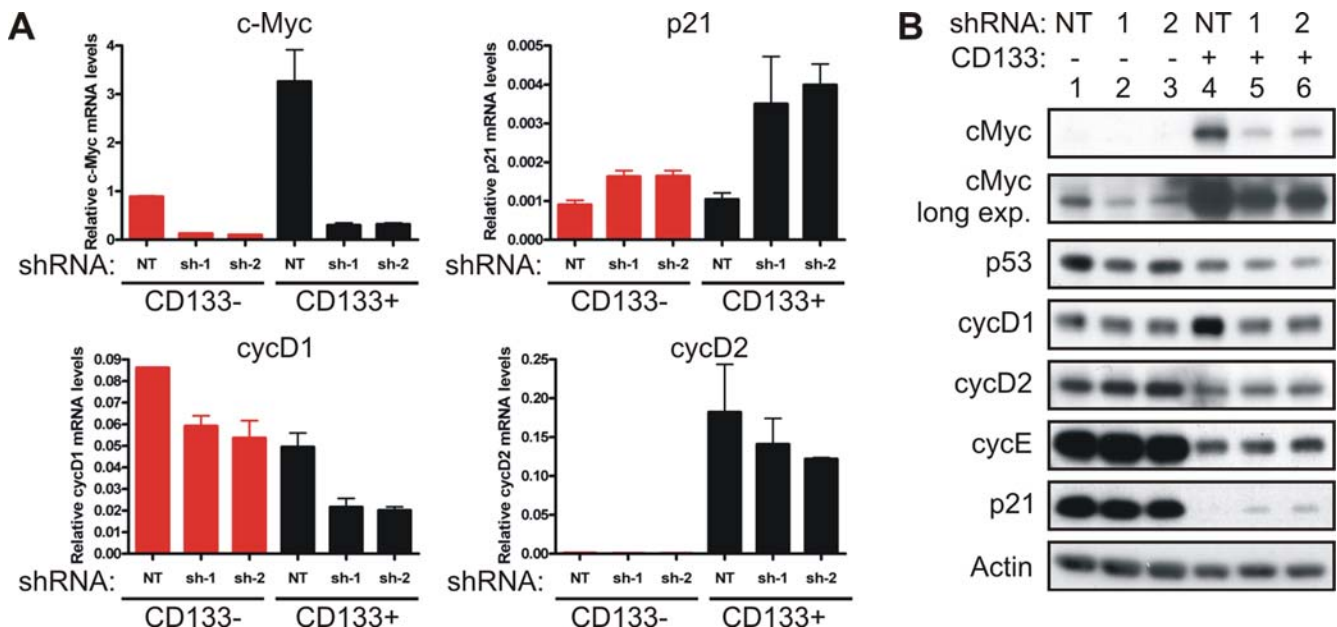
### Loss of c-Myc impairs neurosphere formation by glioma cancer stem cells

Sharing certain key characteristics of normal stem cells, cancer stem cells are capable of self-renewal, which allows sustained maintenance of this subpopulation and expansion of the whole tumor. Serial neurosphere formation assay has been utilized as a surrogate of the self-renewal capacity of neural stem cells [34], and was recently employed in the brain tumor stem cells [9,28]. In primary neurosphere formation assays, approximately 15% of control CD133<sup>+</sup> cells formed neurospheres, whereas very few spheres were formed by cells depleted of c-Myc (Figure 6A). Neurospheres developed in 100% of wells in the control group when

plated at a density of 100 cells/well and in 80–85% wells when plated at 10 cells/well (Figure 6B). In contrast, neurospheres were formed by cells depleted of c-Myc expression in only 10% (shRNA-1) or 30% (shRNA-2) of wells when plated at a density of 100 cells/well, while no spheres were found when these cells were plated at 10 cells/well. Of note, neurospheres formed by cells with reduced c-Myc expression were markedly smaller than the spheres formed by the control cells (Figure 6C) and merely met the minimal criteria to be scored in our experiments. Lack of neurospheres formed by glioma cancer stem cells depleted of c-Myc suggests impaired self-renewal. However, assessing secondary neurosphere formation was precluded because very few spheres were generated in the knockdown groups in the primary assay and the neurospheres had limited viability. These studies therefore could not definitely determine if c-Myc expression is required for self-renewal of glioma cancer stem cells. However, it is expected that self-renewal of glioma cancer stem cells is inhibited by knockdown of c-Myc, based on our observations that glioma cancer stem cells failed to proliferate and underwent apoptosis upon knockdown of c-Myc.

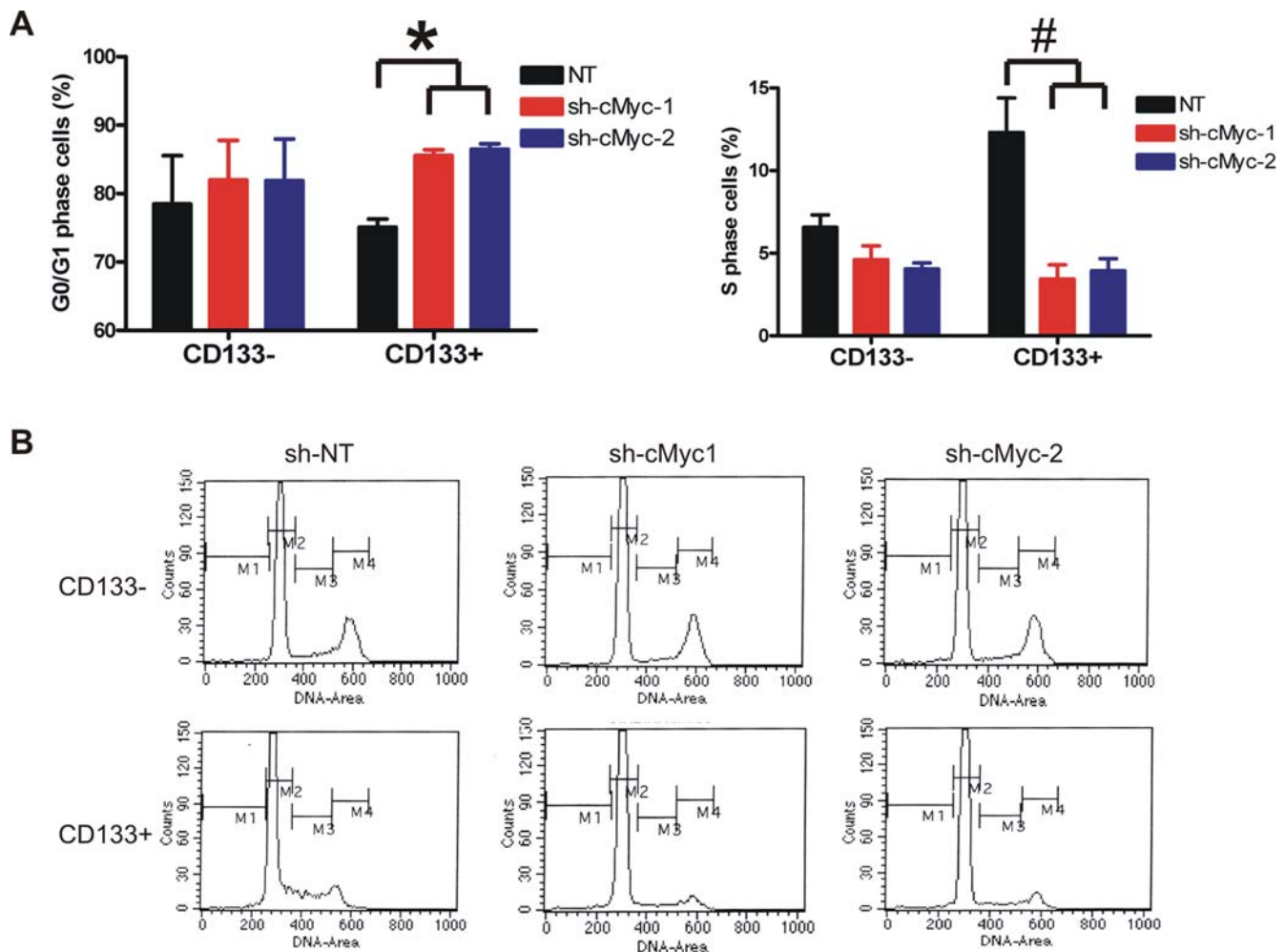
### Knockdown of c-Myc inhibits the tumorigenic potential of glioma cancer stem cells

Based on the requirement of c-Myc activity for cell cycle progression, growth and survival, of CD133<sup>+</sup> glioma cells in



**Figure 2. c-Myc modulates cell cycle regulators of glioma cancer stem cells.** (A) Early passage (<P5) T3359 glioblastoma CD133<sup>-</sup> or CD133<sup>+</sup> cells were infected by lentivirus directing expression of either non-targeting shRNA (NT) or c-Myc specific shRNAs (sh-1 and sh-2). The mRNA levels of c-Myc, p21<sup>WAF1/CIP1</sup>, cyclin D<sub>1</sub> (cycD1) and cyclin D<sub>2</sub> (cycD2) were determined by quantitative real-time PCR 3 days after infection. (B) Protein levels of c-Myc, p53, cyclin D<sub>1</sub>, cyclin D<sub>2</sub>, cyclin E and p21<sup>WAF1/CIP1</sup> were determined by immunoblotting.  
doi:10.1371/journal.pone.0003769.g002





**Figure 3. c-Myc induces cell cycle arrest of glioma cancer stem cells.** (A, B) Early passage (<P5) T3359 glioblastoma CD133<sup>-</sup> or CD133<sup>+</sup> cells were infected by lentivirus directing expression of either non-targeting shRNA (NT) or c-Myc specific shRNAs (sh-1 and sh-2). Three days after infection, cells were fixed in 75% ethanol and labeled with 10  $\mu$ g/ml propidium iodide. Cell cycle distribution was determined by flow cytometry. (A) Data were generated from three independent experiments. \*,  $p < 0.05$ ; #,  $p < 0.001$  with one-way ANOVA comparison of the control groups to the corresponding c-Myc knockdown groups. (B) Representative FACS plots are displayed. M1-sub G<sub>0</sub> phase; M2-G<sub>0</sub>/G<sub>1</sub> phase; M3-S phase; M4-G<sub>2</sub>/M phase.

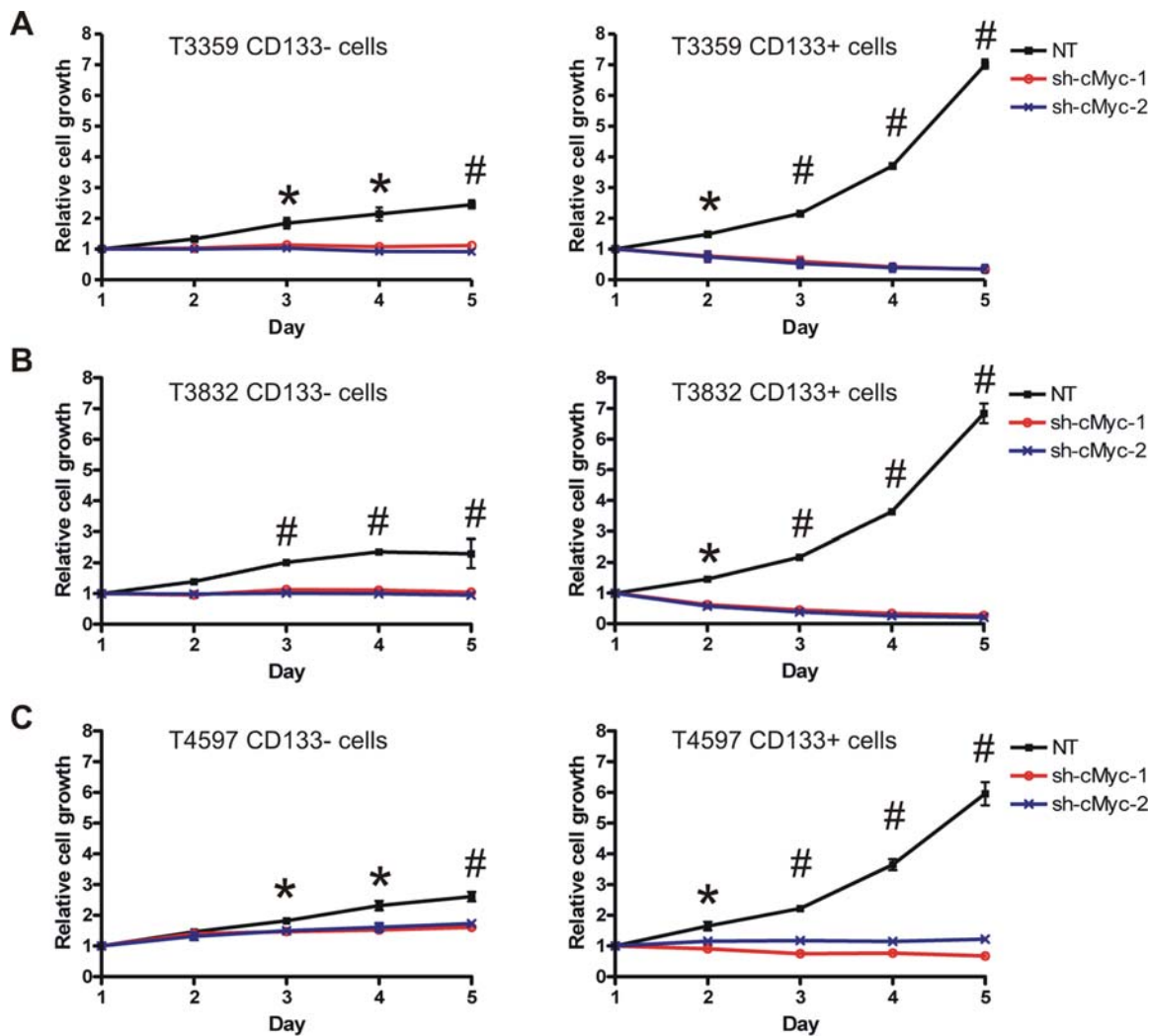
doi:10.1371/journal.pone.0003769.g003

culture, we examined the role of c-Myc expression in their tumorigenic potential. CD133<sup>+</sup> glioma cells were infected with non-targeting control lentivirus or lentivirus expressing c-Myc shRNA. Following puromycin selection, 5000 cells of each group were injected into the brains of nude mouse in quadruplicate. 100% of mice bearing control cells rapidly developed neurologic signs and displayed large tumors on histopathology composed of pleomorphic cells featuring high nuclear to cytoplasmic ratios, prominent nucleoli with minimal cytoplasm, brisk mitotic activity and central geographic necrosis, consistent with a high grade glial malignancy (Figure 7). In contrast, no mice injected with cells depleted of c-Myc expression developed signs and after 100 days demonstrated no evidence of neoplastic cells (Figure 7). Thus, c-Myc appears to be essential for cancer stem cells to form tumors.

## Discussion

The cancer stem cell hypothesis has engendered significant controversy, but the presence of heterogeneity of tumor cells in some cancers is well recognized. Tumor cells that display stem cell-

like characteristics and initiate xenograft tumors have been purified from an increasing number of cancers, including leukemia [35,36], brain [28,29], breast [37], colorectal [38,39], pancreatic [40], and head and neck cancers [41]. These cancer stem cells are functionally defined through assays of self-renewal and serial xenotransplantation assays in rodent models. Experiments demonstrate that the tumorigenic potential of cancer stem cells is at least several magnitudes higher than the bulk tumors. For example, glioma cancer stem cells enriched by selection of the CD133 surface antigen form orthotopic xenograft tumors with 500 cells in athymic nude mice, whereas  $2 \times 10^6$  CD133<sup>-</sup> cells cannot [9]. In line with the potent tumorigenicity of brain tumor stem cells, we demonstrated here that CD133<sup>+</sup> glioma cancer stem cells highly expressed the c-Myc oncoprotein. FACS analysis demonstrated that at least half of CD133<sup>+</sup> cells acutely dissociated from human surgical biopsy specimens had high levels of c-Myc, whereas the majority (>85%) of CD133<sup>-</sup> cells were c-Myc-low (Figure 1D). Similar co-expression of c-Myc and a stem cell marker, Nestin, was identified directly on human surgical biopsy specimen sections (Figure 1E). Notably, glioma cancer stem cells

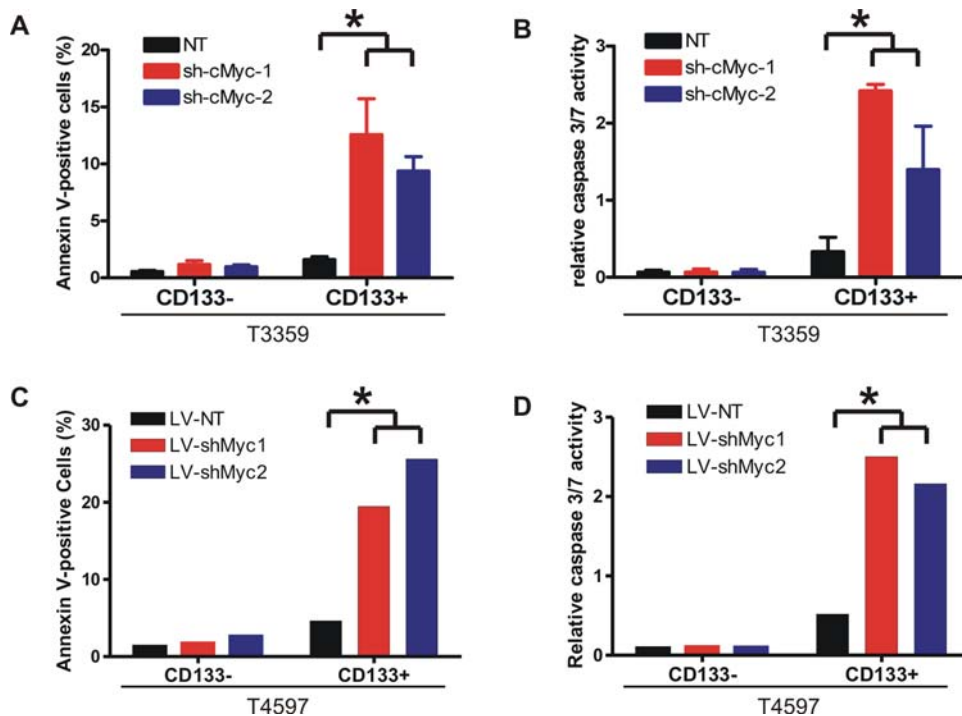


**Figure 4. Depletion of c-Myc inhibits growth of glioma cancer stem cells.** (A) T3359, (B) T3832, and (C) T4597 CD133<sup>-</sup> and CD133<sup>+</sup> cells were isolated and infected as described. Cells were then plated in 96-well plates in triplicate at 5000 cells per well for CD133<sup>-</sup> cells or 1000 cells per well for CD133<sup>+</sup> cells. Total viable cell numbers were then determined by the CellTiter-Glo Luminescent Cell Viability Assay (Promega) daily. \*,  $p < 0.05$ ; #,  $p < 0.001$  with one-way ANOVA comparison of the control groups to the corresponding c-Myc knockdown groups on the same day. doi:10.1371/journal.pone.0003769.g004

expressing c-Myc shRNA still retained residual levels of c-Myc protein (Figure 2B, lanes 5 and 6) that were higher than the c-Myc levels found in CD133<sup>-</sup> cells expressing non-targeting shRNA (Figure 2B, lane 1). Nonetheless, the reduced levels of c-Myc were incapable of supporting proliferation, growth, survival, and tumorigenesis of glioma cancer stem cells. A recent mouse model of T-cell lymphoma using conditionally expressed c-Myc also suggest that certain threshold level of c-Myc is required to maintain the tumor phenotype [42]. Collectively, our results highlight a necessary requirement of high c-Myc expression in glioma cancer stem cells.

Cancer stem cells have been proposed as slowly cycling cells, like their somatic stem cell counterparts [43]. Rapid expansion of tumors is then dependent on the fast dividing progenitor cells. The slow cell cycle may provide cancer stem cells a protective mechanism against certain therapeutic approaches that target rapid proliferating cells. For example, in human acute myelogenous leukemia, the quiescent leukemia stem cells are resistant to chemo-drugs that dependent on cell cycle [44]. Nevertheless, characteristics of cancer stem cells may not be necessarily uniform across different cancer types, and the

biology of cancer stem cells may change throughout different stages of tumor development. In brain tumors, Singh and co-workers first demonstrated that only the CD133<sup>+</sup> cancer stem cell population proliferate *in vitro* when acutely isolated from human surgical biopsy specimens [28,29]. These results were similar to the highly proliferative cancer stem cells that were characterized in a RAS-induced zebrafish embryonal rhabdomyosarcoma [45]. In the present study, we determined that the CD133<sup>+</sup> glioma cells contained a higher percentage of S phase cells and grew faster *in vitro* than matched CD133<sup>-</sup> cells (Figures 3 and 4). We also found that proliferation and growth of glioma cancer stem cells were severely impaired upon knockdown of c-Myc, but importantly, the cell cycle progression of CD133<sup>-</sup> glioma cells were relatively insensitive to loss of c-Myc. The transcriptional programs regulated by c-Myc remain poorly defined and dependent on cell state [26,46], but include induction of cyclin D<sub>1</sub> [47] and repression of the p21<sup>WAF1/CIP1</sup> cyclin-dependent kinase inhibitor [48,49]. Consistently, expression of cell cycle regulators downstream of c-Myc, including p21<sup>WAF1/CIP1</sup> and cyclin D<sub>1</sub>, was altered in glioma cancer stem cells following c-Myc knockdown, but not in the CD133<sup>-</sup> cells. These data uncover a

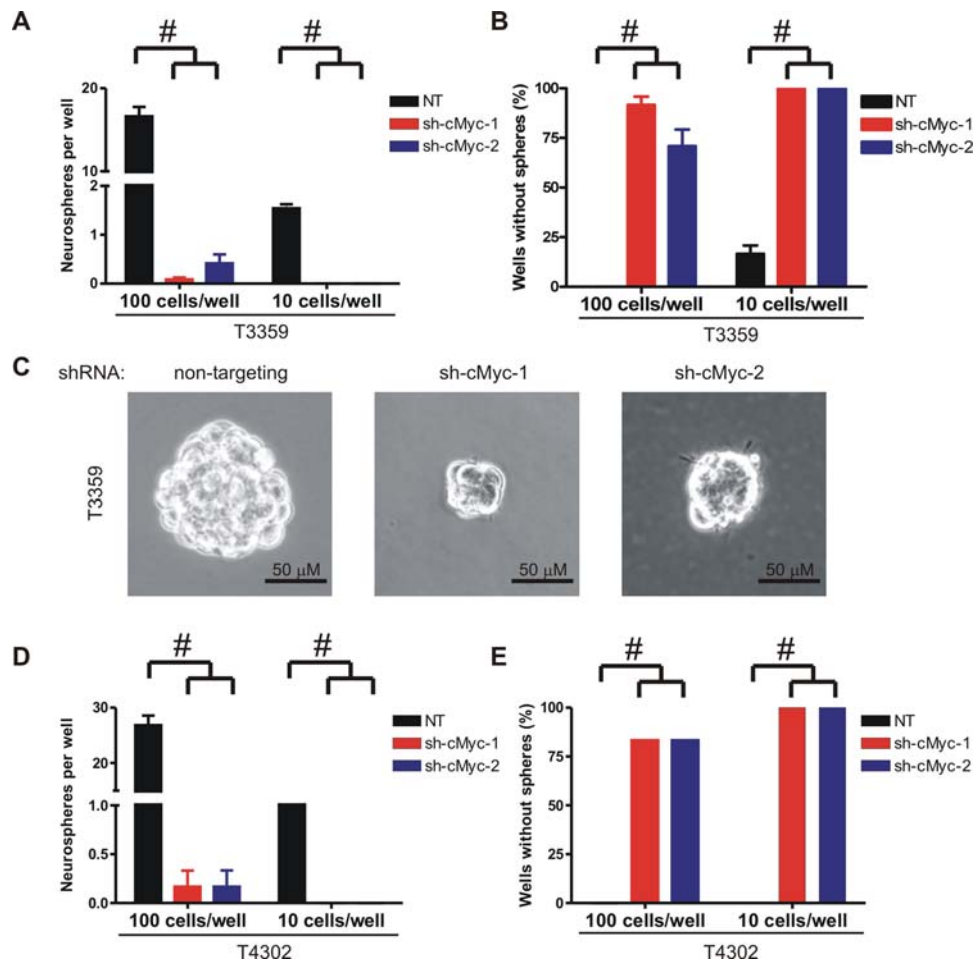


**Figure 5. Depletion of c-Myc induces apoptosis in glioma cancer stem cells.** (A, B) T3359 and (C, D) T4597 CD133<sup>-</sup> and CD133<sup>+</sup> cells were isolated and infected as described. (A, C) Six days after infection, cells were trypsinized and quantified for apoptosis using the Annexin V-FITC Apoptosis Detection kit (Calbiochem). The percentage of FITC positive cells was determined by FACS analysis, and dead cells were excluded by propidium iodide staining. (B, D) These cells were also plated in 96-well plates at 5000 cells per well for CD133<sup>-</sup> cells and 1000 cells per well for CD133<sup>+</sup> cells after infection and selection. Six days after infection, combined activities of caspase 3 and caspase 7 were determined by the Caspase 3/7 Luminescence Assay kit (Promega), and were normalized by the viable cell numbers determined by the CellTiter-Glo assays as described in Figure 4. \*,  $p < 0.05$  with one-way ANOVA comparison of the control groups to the corresponding c-Myc knockdown groups. doi:10.1371/journal.pone.0003769.g005

specific role of c-Myc and its downstream target genes in regulating proliferation and growth of the CD133<sup>+</sup> glioma cancer stem cells.

Apoptosis can be induced by aberrant expression of certain oncogenes, such as c-Myc and E2F1, which may act as a “fail-safe” mechanism to eradicate potential cellular transformation [33,50]. Apoptosis induced by c-Myc can be mediated through activation of the ARF-MDM2-p53 pathway, or by activating death receptors, such as CD95/Fas [33]. However, deregulation of c-Myc is common in human tumors and is an indicator of poor prognosis because tumors are well equipped with various anti-apoptosis mechanisms which can neutralize the apoptotic pressure introduced by c-Myc. Tumorigenesis in c-Myc transgenic mouse models is accelerated if combined with other anti-apoptosis genetic alterations, such as overexpression of Bcl-2 [51] or Bmi1 [52], or disrupting the ARF-MDM2-p53 pathway [53]. Further, it has been directly demonstrated that sustained c-Myc activity is required for tumor maintenance in a variety of conditional transgenic mouse models. These models show that inactivation of c-Myc almost inevitably results in tumor regression regardless of tumor type with concomitant growth inhibition, differentiation, and apoptosis (reviewed in [54]). In some cases, such as osteosarcoma [55] and skin tumors [56], brief inactivation of c-Myc is sufficient to induce sustained tumor regression. However, the dependence on c-Myc can be tumor-type specific. In certain conditional transgenic models, reactivation of c-Myc after transient disruption restores tumor growth [57], which may involve activation of dormant cancer stem cells. Alternatively, tumors may relapse in a portion of animals even in the absence of c-Myc activity, suggesting that cancer stem cells may have accumulated additional mutations to compensate loss of c-Myc [58,59,60]. The

sustained tumor regression may be associated with complete eradication of cancer stem cells following inactivation of c-Myc, whereas cancer stem cells may survive and/or escape c-Myc dependence in recurrent tumors. Our study demonstrated a marked induction of apoptosis following c-Myc knockdown in the cancer stem cell population (Figure 4), and the cancer stem cells depleted of c-Myc expression failed to develop orthotopic xenograft tumors in nude mice (Figure 6). Of particular interest, survival of the non-stem glioma cells was not dependent on sustained expression of c-Myc. In a number of recent studies in other cancer models, targeting c-Myc expression impaired cellular proliferation and induced senescence [61,62,63]. These models may represent outcome of loss of c-Myc in more homogeneous cancer cell populations, particularly genetically engineered models driven by overexpression of c-Myc. Our study has important implications as targeting c-Myc has unique benefits specific to cellular compartments in models representing cellular heterogeneity. Although targeting c-Myc was sufficient to prevent tumor growth in our studies, the dichotomous effects of c-Myc inhibition that we have detected may support the need to simultaneously target the non-stem cell tumor populations to achieve clinical efficacy. Thus, c-Myc as a molecular target must be approached with sophistication as the majority of tumor cells may demonstrate limited therapeutic responses but a critical tumor population – the cancer stem cells – may be inhibited or killed to improve overall tumor control and decrease resistance to other therapies. Taken together, our study suggests that the proliferation, growth, and survival of glioma cancer stem cells are critically dependent on c-Myc expression and that targeting c-Myc pathways may significantly improve brain tumor therapy.



**Figure 6. Depletion of c-Myc attenuates neurosphere formation by glioma cancer stem cells.** (A) T3359 CD133+ cells were infected with lentivirus and selected as described. Cells were then plated at 100 or 10 cells per well in 24-well plates in the presence of 1  $\mu$ g/ml puromycin. Eight wells were plated for each group. The numbers of neurospheres in each well were determined in seven days. Spheres that contained more than 20 cells were scored. (B) Percentage of wells without neurospheres formed was quantified. #,  $p < 0.001$  with one-way ANOVA comparison of the control groups to the corresponding c-Myc knockdown groups. (C) Representative photographs of neurospheres formed by cells expressing non-targeting shRNA or c-Myc specific shRNA (bars = 50  $\mu$ m). (D, E) Similar results were demonstrated in T4302 CD133+ cells. doi:10.1371/journal.pone.0003769.g006

## Materials and Methods

### Cell isolation and culture

Primary glioma surgical biopsy specimens were obtained from patients undergoing resection for newly diagnosed or recurrent glioma in accordance with protocols approved by the Duke University Medical Center Institutional Review Board. Written consent to utilize excess tissue for research was obtained from each patient, and de-identified tissues were used for all studies. Cells were isolated from human glioma surgical specimens and cultured as previously described [3,9]. Briefly, tumors were dissected, washed in Earle's balanced salt solution, digested with papain, titrated, and filtered. Red blood cells were lysed in diluted phosphate buffered saline solution (0.25 $\times$ ). Glioma cells were then cultured overnight in stem cell media (neurobasal media supplemented with B27 and epidermal growth factor and basic fibroblast growth factor (Invitrogen, Carlsbad, CA) at 20 ng/ml) prior to cell sorting for recovery of cellular surface antigens. The CD133<sup>-</sup> and CD133<sup>+</sup> fractions were separated by magnetic sorting using the CD133 Microbead kit (Miltenyi Biotec, Auburn, CA). CD133<sup>-</sup> cells were maintained in Dulbecco's modified Eagle's medium (DMEM) with 10% fetal bovine serum (Invitro-

gen), but were cultured in stem cell media at least 24 hours prior to experiments to control differences in cell media. T3359, T3382, T4302 and T4597 were originally derived from human glioma surgical biopsy specimens and were maintained as subcutaneous xenografts in athymic BALB/c nude mice.

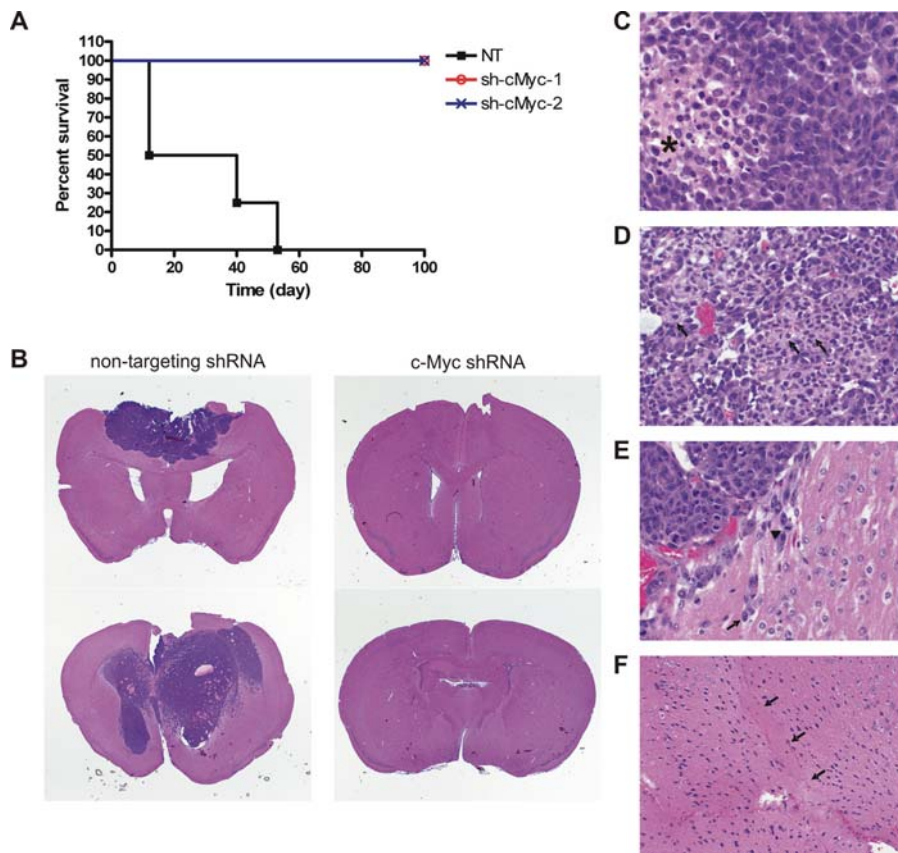
### Antibodies

The antibodies used were as follows: Mouse anti-c-Myc antibody (9E10), FITC-conjugated rabbit anti-c-Myc antibody (A14), mouse anti-cyclin D<sub>1</sub> antibody (DCS-6), rabbit anti-cyclin D<sub>2</sub> antibody (H-289), mouse anti-cyclin E antibody (13A3), mouse anti-p53 antibody (DO-1) were from Santa Cruz Biotechnology (Santa Cruz, CA); APC-conjugated mouse anti-CD133 antibody (AC133-1) was from Miltenyi; goat anti-Olig2 antibody was from R&D Systems (Minneapolis, MN); mouse anti-p21<sup>WAF1/CIP1</sup> antibody was from Cell signaling Technology (Danvers, MA); mouse anti-actin antibody was from Millipore (Billerica, MA).

### Immunofluorescent staining

Freshly frozen human glioma surgical biopsy samples were processed and 10 micron sections were mounted on glass slides in accordance with the Duke University Medical Center Institutional





**Figure 7. c-Myc knockdown abolishes xenograft tumor formation by glioma cancer stem cells.** (A) T3359 CD133+ cells were infected and selected as described. After selection, cells were injected into brains of athymic BALB/c nu/nu mice (5000 cells per mouse). Four mice were injected for each group. Mice in the control group were sacrificed upon the development of neurologic signs. All the mice bearing c-Myc knockdown glioma cells did not develop neurologic signs and were sacrificed after 100 days without evidence of tumor. Kaplan-Meier survival curves are displayed. (B) Representative photographs of hematoxylin and eosin staining of intracranial xenograft tumors (10 $\times$ ). (C) Xenograft tissue of the control group composed of pleomorphic cells featuring high nuclear to cytoplasmic ratios, prominent nucleoli with minimal cytoplasm, brisk mitotic activity and central geographic necrosis (asterisk, 600 $\times$ ). (D) The control glioma xenograft exhibited focal areas of better differentiated tumor cells with relatively more eosinophilic cytoplasm and cells with eccentric cytoplasmic profiles suggestive of a gemistocytic appearance (arrows, 400 $\times$ ). (E) Xenograft tumor of the control group exhibits infiltration of tumor cells into the surrounding brain tissue along the margin. The mitotically active (arrowhead) infiltrating tumor cells exhibit high nuclear to cytoplasmic ratios and elongated fibrillar cytoplasm (arrow) (600 $\times$ ). (F) Mouse brain injected with T3359 cells expressing c-Myc shRNA showed no evidence of tumor at the needle injection site (arrows, 200 $\times$ ).  
doi:10.1371/journal.pone.0003769.g007

Review Board. Prior to staining, the sections were fixed in 4% paraformaldehyde at room temperature for 10 minutes, boiled in 10 mM sodium citrate solution (pH = 6.0) for 10 minute, and were blocked in 10% normal goat serum (Sigma-Aldrich, St. Louis, MO) and 0.1% Triton X-100 for 30 minutes at room temperature. Sections were incubated with primary antibodies at 4 $^{\circ}$ C overnight and secondary antibodies at room temperature for 45 minutes, and then were counterstained with Hoechst 33342 (Invitrogen). For fluorescence imaging, confocal z-stacks were taken by a 63 $\times$  water immersion objective lens on a Leica SP-5 microscope using sequential scans (blue-red, green). The following antibodies were used: mouse anti-c-Myc (Santa Cruz, 1:50); rabbit anti-Nestin (Abcam, Cambridge, MA, 1:100); goat anti-mouse IgG<sub>1</sub> Alexa 488 (Invitrogen, 1:200), goat anti-rabbit IgG Alexa 568 (Invitrogen, 1:200).

#### Lentivirus production

The lentiviral vectors directing expression of shRNA specific to c-Myc (TRCN0000039640 and TRCN0000039641) or a non-targeting shRNA (SHC002) (Sigma-Aldrich) were co-transfected with the packaging vectors psPAX2 and pCI-VSVG (Addgene,

Cambridge, MA) into 293FT cells by lipofectamine 2000 (Invitrogen) to produce virus. Two days following transfection, viral supernatants were collected, filtered, and concentrated by ultracentrifugation at 100,000 g for 3 hours.

#### FACS analysis

Glioma cells isolated from surgical biopsy specimens were fixed in 4% paraformaldehyde, and permeabilized in 0.1% Triton X-100 for 10 minutes. Cells were then washed twice in PBS and labeled with APC-conjugated CD133 antibody (AC133, 1:11) and FITC-conjugated c-Myc antibody (A14, 1:50) for 1 hour at room temperature. Cells were then washed once in PBS and sorted.

#### Real-time PCR

Total RNA was prepared using the RNeasy kit (Qiagen, Valencia, CA), and reverse transcribed into cDNA by iScript cDNA synthesis kit (BioRad, Hercules, CA). Real-time PCR was performed on an ABI 7900HT system using SYBR-Green Mastermix (SuperArray, Frederick, MD). PCR products were verified by melting curves and were also run on a 2% agarose gel to confirm the appropriate size. The threshold cycle ( $C_T$ ) values for

each gene were normalized to expression levels of  $\beta$ -Actin and HPRT1 (hypoxanthine phosphoribosyltransferase 1). The primers used were as follows:  $\beta$ -Actin, forward 5'-AGAAATCTGGCAC-CACACC-3'; reverse 5'-AGAGCGGTACAGGGATAGCA-3'; HPRT1, forward 5'-TGACCTGATTTATTTTGCATACC-3'; reverse 5'-CGAGCAAGCGTTTCAGTCCCT-3'; c-Myc, forward 5'-TCAAGAGGCGAACACACAAC-3'; reverse 5'-GGCCTT-TTCATTGTTTTCCA-3'; cyclin D1, forward 5'-CCGCTGG-CCATGAACCTACCT-3'; reverse 5'-ACGAAGGTCTGCGC-GTGT-3'; cyclin D2, forward 5'-TGGAGCTGCTGTGC-CACG-3'; reverse 5'-GTGGCCACCATTCTGCGC-3'; p21<sup>WAF1/CIP1</sup>, forward 5'-TCACTGTCTTGTACCCTTGTGC-3'; reverse 5'-GGCGTTTGGAGTGGTAGAAA-3'.

### Growth Curve and Neurosphere formation assay

Both CD133<sup>-</sup> and CD133<sup>+</sup> glioma fractions of glioma cells were infected by the control lentivirus or lentivirus directing expression of c-Myc shRNA and were selected with 1  $\mu$ g/ml puromycin for 2 days. 5000 CD133<sup>-</sup> cells or 1000 CD133<sup>+</sup> cells were plated in 96-well plate in triplicate. Cell number was measured for 5 consecutive days using the CellTiter-Glo assay kit (Promega, Madison, MI). Additionally, 100 or 10 CD133<sup>+</sup> cells were seeded per well in 24-well tissue culture plates. Eight wells

were plated for each group. Seven days after plating, neurospheres containing more than 20 cells were scored.

### Intracranial xenograft formation assay

5000 T3359 CD133<sup>+</sup> cells lentivirally infected and selected for expression of the puromycin marker were implanted into brains of athymic BALB/c nude mice under a Duke University Institutional Animal Care and Use Committee-approved protocol. Mice were maintained for 100 days or until development of neurologic signs. Brains of euthanized mice were collected, fixed in 4% paraformaldehyde, paraffin embedded, sectioned, and subjected to hematoxylin and eosin staining.

### Acknowledgments

We thank Y. H. Sun, S. Keir, D. Satterfield, L. Ehinger and J. Faison for technical assistance. We are also grateful to R. Wechsler-Reya for helpful discussions.

### Author Contributions

Conceived and designed the experiments: JW JR. Performed the experiments: JW HW ZL QW JDL. Analyzed the data: JW ABH JR. Contributed reagents/materials/analysis tools: REM. Wrote the paper: JW ABH JR.

### References

- Jin L, Hope KJ, Zhai Q, Smadja-Joffe F, Dick JE (2006) Targeting of CD44 eradicates human acute myeloid leukemic stem cells. *Nat Med* 12: 1167–1174.
- Ito K, Bernardi R, Morotti A, Matsuoka S, Saglio G, et al. (2008) PML targeting eradicates quiescent leukaemia-initiating cells. *Nature* 453: 1072–1078.
- Bao S, Wu Q, Sathornsumetee S, Hao Y, Li Z, et al. (2006) Stem cell-like glioma cells promote tumor angiogenesis through vascular endothelial growth factor. *Cancer Res* 66: 7843–7848.
- Hermann PC, Huber SL, Herrler T, Aicher A, Ellwart JW, et al. (2007) Distinct populations of cancer stem cells determine tumor growth and metastatic activity in human pancreatic cancer. *Cell Stem Cell* 1: 313–323.
- Li X, Lewis MT, Huang J, Gutierrez C, Osborne CK, et al. (2008) Intrinsic resistance of tumorigenic breast cancer cells to chemotherapy. *J Natl Cancer Inst* 100: 672–679.
- Zhang M, Behbod F, Atkinson RL, Landis MD, Kittrell F, et al. (2008) Identification of tumor-initiating cells in a p53-null mouse model of breast cancer. *Cancer Res* 68: 4674–4682.
- Liu G, Yuan X, Zeng Z, Tunici P, Ng H, et al. (2006) Analysis of gene expression and chemoresistance of CD133<sup>+</sup> cancer stem cells in glioblastoma. *Mol Cancer* 5: 67.
- Todaro M, Alea MP, Di Stefano AB, Cammareri P, Vermeulen L, et al. (2007) Colon cancer stem cells dictate tumor growth and resist cell death by production of interleukin-4. *Cell Stem Cell* 1: 389–402.
- Bao S, Wu Q, McLendon RE, Hao Y, Shi Q, et al. (2006) Glioma stem cells promote radioresistance by preferential activation of the DNA damage response. *Nature* 444: 756–760.
- Vita M, Henriksson M (2006) The Myc oncoprotein as a therapeutic target for human cancer. *Semin Cancer Biol* 16: 318–330.
- Murphy MJ, Wilson A, Trumpp A (2005) More than just proliferation: Myc function in stem cells. *Trends Cell Biol* 15: 128–137.
- Wong DJ, Liu H, Ridky TW, Cassarino D, Segal E, et al. (2008) Module map of stem cell genes guides creation of epithelial cancer stem cells. *Cell Stem Cell* 2: 333–344.
- Takahashi K, Yamanaka S (2006) Induction of pluripotent stem cells from mouse embryonic and adult fibroblast cultures by defined factors. *Cell* 126: 663–676.
- Nakagawa M, Koyanagi M, Tanabe K, Takahashi K, Ichisaka T, et al. (2008) Generation of induced pluripotent stem cells without Myc from mouse and human fibroblasts. *Nat Biotechnol* 26: 101–106.
- Knoepfler PS (2008) Why myc? An unexpected ingredient in the stem cell cocktail. *Cell Stem Cell* 2: 18–21.
- Takahashi K, Tanabe K, Ohnuki M, Narita M, Ichisaka T, et al. (2007) Induction of pluripotent stem cells from adult human fibroblasts by defined factors. *Cell* 131: 861–872.
- Wilson A, Murphy MJ, Oskarsson T, Kaloulis K, Bettess MD, et al. (2004) c-Myc controls the balance between hematopoietic stem cell self-renewal and differentiation. *Genes Dev* 18: 2747–2763.
- Waikel RL, Kawachi Y, Waikel PA, Wang XJ, Roop DR (2001) Deregulated expression of c-Myc depletes epidermal stem cells. *Nat Genet* 28: 165–168.
- Gandarillas A, Watt FM (1997) c-Myc promotes differentiation of human epidermal stem cells. *Genes Dev* 11: 2869–2882.
- Louis DN (2006) Molecular pathology of malignant gliomas. *Annu Rev Pathol* 1: 97–117.
- Hermes JW, von Loewenich FD, Behnke J, Markakis E, Kretzschmar HA (1999) c-myc oncogene family expression in glioblastoma and survival. *Surg Neurol* 51: 536–542.
- Jensen NA, Pedersen KM, Lihme F, Rask L, Nielsen JV, et al. (2003) Astroglial c-Myc overexpression predisposes mice to primary malignant gliomas. *J Biol Chem* 278: 8300–8308.
- Bao S, Wu Q, Li Z, Sathornsumetee S, Wang H, et al. (2008) Targeting cancer stem cells through L1CAM suppresses glioma growth. *Cancer Res*, In press.
- Ligon KL, Huillard E, Mehta S, Kesari S, Liu H, et al. (2007) Olig2-regulated lineage-restricted pathway controls replication competence in neural stem cells and malignant glioma. *Neuron* 53: 503–517.
- Panchision DM, Chen HL, Pistollato F, Papini D, Ni HT, et al. (2007) Optimized flow cytometric analysis of central nervous system tissue reveals novel functional relationships among cells expressing CD133, CD15, and CD24. *Stem Cells* 25: 1560–1570.
- Dang CV, O'Donnell KA, Zeller KI, Nguyen T, Osthus RC, et al. (2006) The c-Myc target gene network. *Semin Cancer Biol* 16: 253–264.
- Bouchard C, Staller P, Eilers M (1998) Control of cell proliferation by Myc. *Trends Cell Biol* 8: 202–206.
- Singh SK, Hawkins C, Clarke ID, Squire JA, Bayani J, et al. (2004) Identification of human brain tumour initiating cells. *Nature* 432: 396–401.
- Singh SK, Clarke ID, Terasaki M, Bonn VE, Hawkins C, et al. (2003) Identification of a cancer stem cell in human brain tumors. *Cancer Res* 63: 5821–5828.
- Kaptein JS, Lin CK, Wang CL, Nguyen TT, Kalunta CI, et al. (1996) Anti-IgM-mediated regulation of c-myc and its possible relationship to apoptosis. *J Biol Chem* 271: 18875–18884.
- Thompson EB (1998) The many roles of c-Myc in apoptosis. *Annu Rev Physiol* 60: 575–600.
- Huang MJ, Cheng YC, Liu CR, Lin S, Liu HE (2006) A small-molecule c-Myc inhibitor, 10058-F4, induces cell-cycle arrest, apoptosis, and myeloid differentiation of human acute myeloid leukemia. *Exp Hematol* 34: 1480–1489.
- Prendergast GC (1999) Mechanisms of apoptosis by c-Myc. *Oncogene* 18: 2967–2987.
- Jensen JB, Parmar M (2006) Strengths and limitations of the neurosphere culture system. *Mol Neurobiol* 34: 153–161.
- Lapidot T, Sirard C, Vormoor J, Murdoch B, Hoang T, et al. (1994) A cell initiating human acute myeloid leukaemia after transplantation into SCID mice. *Nature* 367: 645–648.
- Bonnet D, Dick JE (1997) Human acute myeloid leukemia is organized as a hierarchy that originates from a primitive hematopoietic cell. *Nat Med* 3: 730–737.
- Al-Hajj M, Wicha MS, Benito-Hernandez A, Morrison SJ, Clarke MF (2003) Prospective identification of tumorigenic breast cancer cells. *Proc Natl Acad Sci U S A* 100: 3983–3988.
- Ricci-Vitiani L, Lombardi DG, Pilozzi E, Biffoni M, Todaro M, et al. (2007) Identification and expansion of human colon-cancer-initiating cells. *Nature* 445: 111–115.

39. O'Brien CA, Pollett A, Gallinger S, Dick JE (2007) A human colon cancer cell capable of initiating tumour growth in immunodeficient mice. *Nature* 445: 106–110.
40. Li C, Heidt DG, Dalerba P, Burant CF, Zhang L, et al. (2007) Identification of pancreatic cancer stem cells. *Cancer Res* 67: 1030–1037.
41. Prince ME, Sivanandan R, Kaczorowski A, Wolf GT, Kaplan MJ, et al. (2007) Identification of a subpopulation of cells with cancer stem cell properties in head and neck squamous cell carcinoma. *Proc Natl Acad Sci U S A* 104: 973–978.
42. Shachaf CM, Gentles AJ, Elchuri S, Sahoo D, Soen Y, et al. (2008) Genomic and proteomic analysis reveals a threshold level of MYC required for tumor maintenance. *Cancer Res* 68: 5132–5142.
43. Dalerba P, Cho RW, Clarke MF (2007) Cancer stem cells: models and concepts. *Annu Rev Med* 58: 267–284.
44. Ishikawa F, Yoshida S, Saito Y, Hijikata A, Kitamura H, et al. (2007) Chemotherapy-resistant human AML stem cells home to and engraft within the bone-marrow endosteal region. *Nat Biotechnol* 25: 1315–1321.
45. Langenau DM, Keefe MD, Storer NY, Guyon JR, Kutok JL, et al. (2007) Effects of RAS on the genesis of embryonal rhabdomyosarcoma. *Genes Dev* 21: 1382–1395.
46. Zeller KI, Zhao X, Lee CW, Chiu KP, Yao F, et al. (2006) Global mapping of c-Myc binding sites and target gene networks in human B cells. *Proc Natl Acad Sci U S A* 103: 17834–17839.
47. Daksis JI, Lu RY, Facchini LM, Marhin WW, Penn IJ (1994) Myc induces cyclin D1 expression in the absence of de novo protein synthesis and links mitogen-stimulated signal transduction to the cell cycle. *Oncogene* 9: 3635–3645.
48. Gartel AL, Ye X, Goufman E, Shianov P, Hay N, et al. (2001) Myc represses the p21(WAF1/CIP1) promoter and interacts with Sp1/Sp3. *Proc Natl Acad Sci U S A* 98: 4510–4515.
49. Mitchell KO, El-Deiry WS (1999) Overexpression of c-Myc inhibits p21WAF1/CIP1 expression and induces S-phase entry in 12-O-tetradecanoylphorbol-13-acetate (TPA)-sensitive human cancer cells. *Cell Growth Differ* 10: 223–230.
50. Knezevic D, Brash DE (2004) Role of E2F1 in apoptosis: a case study in feedback loops. *Cell Cycle* 3: 729–732.
51. Strasser A, Harris AW, Bath ML, Cory S (1990) Novel primitive lymphoid tumours induced in transgenic mice by cooperation between myc and bcl-2. *Nature* 348: 331–333.
52. Jacobs JJ, Scheijen B, Voncken JW, Kieboom K, Berns A, et al. (1999) Bmi-1 collaborates with c-Myc in tumorigenesis by inhibiting c-Myc-induced apoptosis via INK4a/ARF. *Genes Dev* 13: 2678–2690.
53. Eischen CM, Weber JD, Roussel MF, Sherr CJ, Cleveland JL (1999) Disruption of the ARF-Mdm2-p53 tumor suppressor pathway in Myc-induced lymphomagenesis. *Genes Dev* 13: 2658–2669.
54. Arvanitis C, Felsner DW (2006) Conditional transgenic models define how MYC initiates and maintains tumorigenesis. *Semin Cancer Biol* 16: 313–317.
55. Jain M, Arvanitis C, Chu K, Dewey W, Leonhardt E, et al. (2002) Sustained loss of a neoplastic phenotype by brief inactivation of MYC. *Science* 297: 102–104.
56. Flores I, Murphy DJ, Swigart LB, Knies U, Evan GI (2004) Defining the temporal requirements for Myc in the progression and maintenance of skin neoplasia. *Oncogene* 23: 5923–5930.
57. Shachaf CM, Kopelman AM, Arvanitis C, Karlsson A, Beer S, et al. (2004) MYC inactivation uncovers pluripotent differentiation and tumour dormancy in hepatocellular cancer. *Nature* 431: 1112–1117.
58. Boxer RB, Jang JW, Sintasath L, Chodosh LA (2004) Lack of sustained regression of c-MYC-induced mammary adenocarcinomas following brief or prolonged MYC inactivation. *Cancer Cell* 6: 577–586.
59. D'Cruz CM, Gunther EJ, Boxer RB, Hartman JL, Sintasath L, et al. (2001) c-MYC induces mammary tumorigenesis by means of a preferred pathway involving spontaneous Kras2 mutations. *Nat Med* 7: 235–239.
60. Karlsson A, Giuriato S, Tang F, Fung-Weier J, Levan G, et al. (2003) Genomically complex lymphomas undergo sustained tumor regression upon MYC inactivation unless they acquire novel chromosomal translocations. *Blood* 101: 2797–2803.
61. Wang H, Mannava S, Grachtchouk V, Zhuang D, Soengas MS, et al. (2008) c-Myc depletion inhibits proliferation of human tumor cells at various stages of the cell cycle. *Oncogene* 27: 1905–1915.
62. Wu CH, van Riggelen J, Yetil A, Fan AC, Bachireddy P, et al. (2007) Cellular senescence is an important mechanism of tumor regression upon c-Myc inactivation. *Proc Natl Acad Sci U S A* 104: 13028–13033.
63. Cappellen D, Schlange T, Bauer M, Maurer F, Hynes NE (2007) Novel c-MYC target genes mediate differential effects on cell proliferation and migration. *EMBO Rep* 8: 70–76.