



Can we use environmental DNA as holotypes?

Sinang Hongsanan^{1,2} · Rajesh Jeewon³ · Witoon Purahong⁴ · Ning Xie¹ · Jian-Kui Liu⁵ · Ruvishika S. Jayawardena⁶ · Anusha H. Ekanayaka⁶ · Asha Dissanayake⁶ · Olivier Raspé^{7,8} · Kevin D. Hyde⁶ · Marc Stadler⁹ · Derek Peršoh¹⁰

Published online: 12 July 2018
© The Author(s) 2018

Abstract

The advantages and disadvantages of giving a valid name to a sequence of DNA detected from environmental specimens is presently a hot debate amongst the mycological community. The idea of using intracellular DNA (“mgDNA”) from environmental samples as holotypes seems at face value, to be a good idea, considering the expansion of knowledge among these ‘dark taxa’ or ‘dark matter fungi’ that it could provide (i.e. sequence based taxa without physical specimens and formal nomenclature). However, the limitations of using mgDNA as holotypes needs careful thought, i.e. can we use a short mgDNA fragment, which may contain a small amount of genetic information, to allow discrimination between species? What is the point and are the potential problems of giving valid scientific names to mgDNA? Numerous mycologists and taxonomists, who have many years of experience working on the taxonomy and phylogeny of different groups of fungi, are concerned about the consequences of providing valid names to mgDNA. There has been much debate, through several publications on the considerable problems of using mgDNA as holotypes. The proponents have tried to debate the virtues of using mgDNA as holotypes. Those against have shown that identification to species using mgDNA does not work in many fungal groups, while those for have shown cases where species can be identified with mgDNA. Different disciplines have different reasons and opinions for using mgDNA as holotypes, however even groups of the same disciplines have dissimilar ideas. In this paper we explore the use of mgDNA as holotypes. We provide evidences and opinions as to the use of mgDNA as holotypes from our own experiences. In no way do we attempt to degrade the study of DNA from environmental samples and the expansion of knowledge in to the dark taxa, but relate the issues to fungal taxonomy. In fact we show the value of using sequence data from these approaches, in dealing with the discovery of already named taxa, taxa numbers and ecological roles. We discuss the advantages and the pitfalls of using mgDNA from environmental samples as holotypes. The impacts of expanding the nomenclatural concept to allow using mgDNA from environmental samples as holotypes are also discussed. We provide evidence from case studies on *Botryosphaeria*, *Colletotrichum*, *Penicillium* and *Xylaria*. The case studies show that we cannot use mgDNA due to their short fragments and the fact that most ITS sequence data presently result from environmental sequencing. We conclude from the evidence that it is highly undesirable to use mgDNA as holotypes in naming fungal species. If this approach adopted, it would result in numerous problems where species identification cannot be confirmed due to limited sequence data available for the holotypes. We also propose an alternative DNA-based system for naming DNA based species which would provide considerably less problems and should be adopted.

Keywords DNA-based sequence · Fungal identification · ITS · Next-generation sequencing · Nomenclature · Taxonomy

Introduction

Over the last few decades, novel molecular techniques and DNA based sequence data, coupled with phylogenetic analyses, have been used to test traditional taxonomic findings and overcome the difficulties in taxonomic studies (White et al. 1990; Liew et al. 2000; Hyde et al. 2013;

✉ Ning Xie
ning.xie@szu.edu.cn

Extended author information available on the last page of the article

Lücking et al. 2014). Traditional molecular tools are most appropriate for cultivatable and fast growing species isolated from the environment, but DNA from single spores isolates and fresh specimens can usually also be extracted and sequenced. A combination of traditional characterization and molecular approaches has been used to identify and discover numerous novel species in recent years, e.g. Ariyawansa et al. (2015), Liu et al. (2015), Hyde et al. (2016, 2017a), Li et al. (2016), Tibpromma et al. (2017), and Wanasinghe et al. (2018). Targeting highly variable loci for distinguishing species has resulted in the discovery of cryptic species in molecular phylogenetic studies (Herbert et al. 2003; Divakar et al. 2016).

Species in the environment may not be cultivatable or even visible (Mitchell and Zuccaro 2006; Stewart 2012). DNA metabarcoding has therefore become an important tool and is now commonly used to understand species diversity and community structure in complex communities of microorganisms (Heeger et al. 2018; Jayawardena et al. 2018b). The approach is based on the DNA-barcoding concept and uses the massive amount of sequence data produced through high-throughput sequencing (HTS) techniques. “Environmental DNA” from high throughput sequencing generally refers to DNA extracted from samples such as soil, water, or air. It contains two types of DNA, extracellular and intracellular (i.e., genomic DNA) (Levy-Booth et al. 2007; Pietramellara et al. 2009; Taberlet et al. 2018). Mycologists extract environmental DNA from a community composed of multiple organisms to analyse their composition and structure. Accordingly, they use the terms “environmental DNA” which is synonymous to “metagenomic DNA” in the sense of Handelsman et al. (1998). However, DNA extracts from environmental samples contain extracellular DNA in addition to the intracellular metagenomic DNA. Extracellular DNA may be released from an organism before or after its death. In particular macroorganisms always leave DNA behind in their environment, e.g. faeces, hair, urine, and skin cells (Herder et al. 2014). While zoologists introduced the term “eDNA” for this extracellular DNA, mycologists use this abbreviation for environmental DNA representing metagenomics. However, to avoid confusion, we suggest using the abbreviation “mgDNA” (metagenomic DNA) to designate intracellular DNA from environmental samples.

Fungal species which cannot be linked to any physical specimen are referred to as “dark taxa” or “dark matter fungi” (Parr et al. 2012; Grossart et al. 2015; Page 2016; Tedersoo and Smith 2017; Ryberg and Nilsson 2018). In recent years, a large amount of mgDNA ITS sequence data from environmental samples have been deposited in GenBank. These data have neither been linked to any specimens nor given any formal names to genus and species level (Taberlet et al. 2012; Herder et al. 2014; Hawksworth

et al. 2016). Although an informal system was assigned for giving codes to species known only from sequence data (e.g. *Inocybe* sp. 3, Nara 2006; Hibbett et al. 2011), errors in communication have occurred.

The problems of dark taxa are believed by a minority of mycologists to be resolved by giving valid names to these taxa under the International Code of Nomenclature for Algae, Fungi and Plants, ICN (Hawksworth et al. 2016). Ryberg and Nilsson (2018) suggested that an integrated naming system is needed to facilitate unambiguous communication, to record and accumulate data on the dark taxa. However, there are some limitations of high-throughput sequencing metabarcoding, prompting many mycologists to disagree with validating names or using mgDNA as holotypes. The worldwide accepted set of rules for nomenclature is the *Melbourne Code* (McNeill et al. 2012). Article 38 states that a new taxon must be associated with a formal description or diagnosis from a physical specimen or an illustration of a specimen. Adapting that code allowing for the use of mgDNA data as holotype with all its consequences is currently under debate. A proposal by Hawksworth et al. (2016) that DNA sequences should serve as substitutes for type specimens of new taxa was already rejected at the nomenclature session of the last International Botanical Conference in Shenzhen, China (July 2017), but has been brought forward again to be discussed in the nomenclature session of the 11th International Mycological Congress in Puerto Rico. Two recent opinion papers that were co-authored by the majority of the current officers of the International Commission on the Taxonomy of Fungi (ICTF; Thines et al. 2018) and by over 400 mycologists (Zamora et al. 2018), respectively, have summarized various concerns of the mycological community against the premature introduction of DNA-only based nomenclature. There can be no doubt that the majority of mycologists neither need nor want to have these proposed changes, at least at the present time.

However, the implementation of new rules in botanical and mycological nomenclature does unfortunately not strictly rely on democratic principles. Instead, a rather old-fashioned system based on oligocratic committee votes is still in place and the decisions will eventually be made in the general assembly of the IMC conferences, where many people cannot attend for financial reasons. Therefore, an intrinsic risk exists that a small minority of mycologists will be able to overrule the majority and decisions will be made that will lead to chaos and substantial drawbacks in the progress of basic as well as applied mycology.

This paper aims to discuss on the major issues of using mgDNA as holotype without a physical specimen from a biological, ecological and taxonomic perspective. Case studies that illustrate some problems of using mgDNA for fungal identification and classification are provided with

discussion (*Botryosphaeria* Ces. & De Not., *Colletotrichum* Corda, *Penicillium* Link and *Xylaria* Hill ex Schrank). The issues of using ITS non-coding regions from high-throughput sequencing metabarcoding are discussed. We also discuss about the solution of nomenclature codes and whether we should have the separate code for dark taxa and DNA specimen-based for fungi or an integrated system for both cases. Additionally, recommendations on detailed body of nomenclature codes based on some further case studies and review articles are provided.

Pitfalls of using mgDNA for taxon naming

mgDNA has the potential to provide a much better understanding of fungal biodiversity. We are still far away from having a real estimate of the real numbers of organisms yet to be discovered on earth, especially with microorganisms and fungi, and mgDNA has provided clues as to where these potential organisms can be found. The systems which provide code/ID to a sequence from environmental sample are not linked to species-based databases, e.g. Index Fungorum and MycoBank (Hibbett et al. 2011). The errors in communication of using these systems have occurred from one publication to another (Hibbett et al. 2011; Ryberg and Nilsson 2018). The idea of naming species from mgDNA-based data was raised to improve the efficiency of communication, reducing erroneous publication and data records, which may lead to erratic results, and ultimately, false estimates of fungal biodiversity (Hawksworth et al. 2016; Ryberg and Nilsson 2018). Some authors have proposed that the naming of “dark taxa” can help to explore some important contexts, e.g. species counts (Ryberg and Nilsson 2018). However, there are many controversial issues that will emerge concerning the impact of using mgDNA as holotypes.

Formation of chimeras

Although high-throughput sequencing can represent the existence of uncultivable and invisible microbes, novel sequences can be raised artificially by chimeras formation and erroneous sequencing (Reeder and Knight 2009; Porazinska et al. 2012). Chimeric sequences are commonly detected in amplicon sequencing, but rarely detected with shotgun sequencing (Edgar et al. 2011). Chimeric sequences are known as artifactual PCR products which are erroneously generated from aborted extension during subsequent cycles of PCR. Chimeras are formed by an aborted extension strand generated from an earlier cycle which can bind to another single strand DNA template and function as a primer in DNA synthesis (Smith et al. 2010). Adjustment of the methodology to attain a low number of PCR cycles is

recommended to avoid this formation (Hoshino 2012), while, on the other hand, high numbers of PCR cycles are needed to obtain enough PCR products (Hoshino and Matsumoto 2008). Hence, an increase in sensitivity of the PCR also increases the risk of chimeras. Therefore, it is very important to detect and filter out such sequences to avoid false diversity estimates (Wintzingerode et al. 1997), increasing the number of OTUs and novel discovery of “species” from erroneous sequence data (Smith et al. 2010; Hoshino 2012). However, it is difficult to detect chimeras as normally they have a short length, and occur near the end of a template (Hughes et al. 2015). Most fungal sequence data from high-throughput sequencing available in GenBank were obtained from amplicon sequencing, with ITS as the barcoding locus (Schoch et al. 2012). Multiple studies have discovered some unusual chimeric ITS sequences in public databases (e.g. Ryberg et al. 2008; Mullineux and Hausner 2009). Jumpponen (2007) noted that 40 or 31% of the sequences, respectively, in two clone libraries (from soil fungal analyses) were detected as chimeric. These errors increase the concern for fungal chimeric sequences in databases and might be a problem in the near future (Christen 2008), especially if mgDNA is adopted as possible holotypes.

Although chimera formation rates can be reduced by detecting chimeras approaches (e.g. de novo detection), there is still no perfect method to completely eliminate chimeric sequences (Haas et al. 2011). Thus, giving a scientific name (Latin name) to mgDNA which includes chimeras can lead to an overestimate of the community diversity and we might see many “new species” descriptions based on chimeric sequences in the future. It may happen that some taxonomists are not well versed in detecting chimeras and these results in assuming that these could apparently represent novel taxa. A scientific name is currently not assigned to chimeric sequences. Rather, they are often annotated as e.g. “Unidentified fungus”, which has no implications on fungal classification.

The cryptic species

Morphologically indistinguishable species that can be recognized only by their DNA sequences are referred to as cryptic species (Shivas and Cai 2012). Due to the widespread use of DNA sequence based techniques, there has been a rapid increase in the number of cryptic species of plant pathogenic fungi being detected. Multiple cryptic species are often found within previously described single morphological species, even for some “well-studied” species (O’Donnell et al. 2004; Cai et al. 2009; Cannon et al. 2012; Hagen et al. 2015; Udayanga et al. 2015). *Colletotrichum* Corda, *Diaporthe* Nitschke, *Fusarium* Link, and *Phyllosticta* Pers. are examples of important

plant pathogenic fungal genera that actually include a considerable number of cryptic species. Due to their overlapping morphological characters, reliable identification at the species level is best based on the use of multi loci sequence data in these genera (Hyde et al. 2014; Jayawardena et al. 2016; Dissanayake et al. 2017) or better a polyphasic approach using many facets (Cai et al. 2009). The use of mgDNA in naming fungal taxa in these pathogenic genera would cause serious problems, as it is based on overall sequence identity between the query sequence as well as those in the reference databases. At present, 97% or greater sequence identity for OTU/species is used for species delimitation, identification and assessment of species numbers (O'Brien et al. 2005; Nilsson et al. 2008; Tedersoo et al. 2014; Garnica et al. 2016; Dissanayake et al. 2018; Jayawardena et al. 2018b). However, there is a large range of intra- and interspecific ITS sequence variation depending on the taxonomic groups (Nilsson et al. 2008). For example, the similarity of the ITS sequence exceeds 99% for some species (Xu et al. 2000; Dettman et al. 2001; Johannesson and Stenlid 2003). The ITS sequence of the ex-type culture of *Col. queenslandicum* B.S. Weir & P.R. Johnst. has a 99% similarity to the ex-type ITS sequences of *Col. aenigma*, *Col. alienum* B.S. Weir & P.R. Johnst., *Col. Aotearoa* B.S. Weir & P.R. Johnst., *Col. clidemiae* B.S. Weir & P.R. Johnst., *Col. salsolae* B.S. Weir & P.R. Johnst. and *Col. ti* B.S. Weir & P.R. Johnst. The ITS sequence of the ex-type culture of *Col. kahawae* subsp. *kahawae* J.M. Waller & Bridge and *Col. kahawae* subsp. *ciggario* B.S. Weir & P.R. Johnst. have 100% similarity over a 100% query cover. Another example is the ITS sequence of the ex-type culture of *Diaporthe hongkongensis* R.R. Gomes et al. showing 98% similarity to the ITS sequences of the types of *D. eucalyptorum* Crous & R.G. Shivas and *D. pseudophoenicicola* R.R. Gomes et al. In some cases, intraspecific ITS identity of $\leq 90\%$ has been reported for certain taxa (Kuninaga et al. 1997; O'Donnell et al. 2000). The species can be resolved properly with the use of multi-loci sequence data instead of ITS alone. In mgDNA, ITS1 or ITS2 sequence data are presently being used, which are evidently shorter than the sequence of the complete ITS region. However, it has been demonstrated that shorter sequences lead to less reliable identification and ITS alone is largely insufficient for species resolution. Therefore, identification of the cryptic species will become even more difficult. Another pitfall of naming cryptic species based on mgDNA is that the correspondence of OTU with species can be unreliable. Normally, the OTUs are defined based on a 97% similarity threshold (Sneath and Sokal 1973). However, this threshold is usually an overall group average and may deviate for individual pairs of OTUs. Sometimes, some species may have $\leq 97\%$ similarity can result in merged OTUs

containing multiple species (Jayawardena et al. 2018b). Likewise, a single species may have $\geq 97\%$ similarity but split into two or more species. Dissanayake et al. (2018) and Jayawardena et al. (2018b) were unable to identify the cryptic species using mgDNA to the species level.

Re-discovery of already named species

Over the past centuries, mycologists have studied and provided scientific names for numerous specimen-based species and this has allowed for effective communication amongst ecologists, plant pathologists and workers in other disciplines. Valuable dried type specimens (herbarium materials) have been preserved in fungaria and this allows for re-examination, which is a requirement of any reliable science. Epitypification was established to resolve the taxonomic problems when the type material is ambiguous, in poor condition or has been lost (McNeill et al. 2006; Hyde and Zhang 2008; Ariyawansa et al. 2014). Even though the type material is in good condition, DNA cannot usually be extracted from type materials easily. Thus, epitypification is often carried out (although not strictly recommended) to obtain molecular data from living materials (Hibbett et al. 2007; Hyde and Zhang 2008). If fungi were named without physical specimens, it would be difficult to establish epitypes based on the current rules (see Hyde and Zhang 2008; Ariyawansa et al. 2014), i.e. the epitype specimen should be identical and obtained from the same location, host or substrate as the type it interprets (Ariyawansa et al. 2014). On the other hand, when the morphological data available were insufficient, a few species have been established mainly based on sequence data, but accompanied with some additional evidence e.g. cultural characters, metabolite profiles (Pažoutová et al. 2013; Kamil et al. 2018). Ambiguous type materials of mgDNA will need epitypification, and this can lead to future problems when a new taxon discovered by using traditional methodology turns out to be identical to a short ITS fragment of holotype-mgDNA, which has no morphological features to compare it with. In addition, it should be kept in mind that it will still be possible to erect and describe new species based on morphological characters alone. There may even be some cases of coincidental redundant descriptions of the same fungus based on morphology and DNA, respectively. The whole concept should therefore be carefully reconsidered because there is actually no need to rush and change a well-working system.

Character evolution studies

Character evolution is the process of how and why a trait evolves along the branches over a period of time in order to reveal common ancestry. It improves the understanding in

the history of life, explains the relationships among extant species, character states for each species, and a model for character evolution (Huxley 1957; Harvey and Pagel 1991; Vijaykrishna et al. 2006). For example, the evolution of closed fruiting bodies in apothecioid Pezizomycotina was described by Hansen et al. (2005) and Ekanayaka et al. (2017). Schmitt et al. (2009) found that perithecia in Lecanoromycetes have evolved independently, several times from apotheciate ancestors. Their results also suggested that angiocarpous ascomata are a means of pre-adaptation for the repeated gain of perithecia (Schmitt et al. 2009), which supported the hypothesis of neotenic evolution of perithecioid fruiting bodies in Lecanoromycetes (Grube et al. 2004). However, the phenotypic evolution of fruiting bodies should be considered in conjunction with functional correlations of characters (Schmitt et al. 2009). Character evolution also refers to the identifying features, the divergence which makes a lineage unique from others based on phenotypic changes, nucleotide or amino acid substitutions (Ariyawansa et al. 2015; Liu et al. 2015, 2017; Li et al. 2016; Hyde et al. 2016, 2017a, b; Hongsanan et al. 2017; Tibpromma et al. 2017). Many character evolution studies have been carried out within the past 15 years (e.g. Liu and Hall 2004; Li et al. 2005; Schoch et al. 2009; Schmitt 2011; Kumar et al. 2012). However still there are many incomplete points to resolve. For example, although there is a general agreement on exposed hymenium (apothecium) as the primitive fruiting body type of Pezizomycotina, its relationships with other partially (perithecia) or completely enclosed (cleistothecia) fruiting body types are still unclear (Ekanayaka et al. 2017). Moreover, it is difficult to infer the complete flow of character evolution. The major issues for these problems are the unavailability of complete sets of taxon sampling during analyses and the lack of taxonomic studies. Both, complete sets of sequence data and relevant corresponding morphological characters are required.

We can use environmental sequences (mgDNA) to provide an almost complete set of sequence data. The mgDNA reveal that there are species that are highly divergent and not yet discovered. Moreover, it reveals new phylogenetic relationships at higher taxonomic levels, where it is almost impossible to compare character evolution only with morphological characters. Using mgDNA as holotypes does not provide any clue on morphology and its evolution across species. Therefore, there are still certain deficiencies in character evolution studies. Even when sequence data can reveal the phylogenetic relationships among taxa and their evolution with time, morphological characters are essential to explain these evolutionary processes in detail and how these evolved traits have become advantageous and useful according to the environment they live.

Can mgDNA fill the gap pertaining to any evolutionary distance we have seen among different fungal relatives? Yes possibly they can, but only from only one angle as we would be dealing with DNA sequences and the other aspect with regards to evolution of fungal phenotypes will still be unresolved. However the former should not be a drawback. Given that we are slowly moving from a morph based approach to a DNA based one, we envisage that sooner or later, we should be able to culture those fungi and examine their morphs as well as retrieve DNA sequences again. At that point in time, we should be able to bridge the gap in a similar way we have linked asexual fungi to their sexual ones, but now is premature.

Why Next Generation Sequencing (NGS)?

NGS unraveled complex fungal communities across different ecosystems

Diversity and distribution patterns of fungal communities and their diversity are central issues in fungal ecology as these information are crucial for understanding and predicting the roles played by fungi in maintaining ecosystem functions and stability (Kubartová et al. 2012; Peršoh 2015; Hoppe et al. 2016). Since fungal communities in environmental samples are generally complex comprising an unseen majority of members and cannot be efficiently be evaluated using direct observation and culture-dependent approaches, high resolution culture independent approaches (i.e. NGS) are needed to reasonably characterize those fungal communities (van der Heijden et al. 2008; Dissanayake et al. 2018; Jayawardena et al. 2018b). The existing ecological knowledge on fungal ecology, and in particular the information on their diversity patterns, community composition, resource use and the determinants of their community composition, was primarily obtained via culture dependent approaches or direct observation (i.e. sporocarp surveys), which only detect the composition of a portion of the culturable or the actively reproducing fungal community at some specific points in time (Hoppe et al. 2016). Thus, such existing knowledge in fungal ecology should be validated using NGS approaches. With such validation, we can gain better insights into fungal ecology and improve our understanding of the diversity and distribution patterns of fungal communities across wide ranges of habitats (Purahong et al. 2018b). Here we give some examples on important existing knowledge in fungal ecology that has been recently challenged by NGS in various environments, which includes the terrestrial and aquatic ecosystems.

NGS has unraveled the unseen majority of soil fungi

The first NGS study on forest soil fungi significantly changed the expectation of the magnitude of the fungal diversity in soils (1000 molecular operational taxonomic units (OTUs) in 4 g soil) and shed light on the factors (including the tree species and soil organic matter composition) that may have the largest influence on the soil fungal communities (Buée et al. 2009). Further studies have confirmed these findings by revealing a high diversity of soil fungi that is related to tree species and soil physicochemical factors (i.e. soil macro- and micro-nutrients, soil pH) (Rousk et al. 2010; Baldrian et al. 2012; Tedersoo et al. 2014). Furthermore, the high resolution of metabarcoding revealed highly pronounced niche preferences along vertical soil profiles (Peršoh et al. 2018).

Diversity of root endophytic mycobiomes

Knowledge on the patterns of diversity and community composition of fungi associated with plant roots has been challenged also with the results from NGS. It has been concluded that nonclavicipitaceous fungal endophytes (class 2) are characterized by a low *in planta* diversity and a broad host range (Rodriguez et al. 2009). However, NGS studies demonstrate that they may have rather high *in planta* diversity and exhibit strong host preferences (Schöps et al. 2018). The host preferences of the root-associated fungi have been shown before even within the asteraceous plants (Wehner et al. 2014). The specific DSE fungi (dark-septate endophytes; also known as non-clavicipitaceous endophytic fungi class 4) were also shown to be broadly distributed; however, the extent of their *in planta* diversity is unknown (Rodriguez et al. 2009). A recent NGS study indicates that most of detected DSE fungi exhibit some degree of host preferences and have low *in planta* diversity in temperate grassland plants (Schöps et al. 2018).

Tree species preferences and diversity of wood-inhabiting fungi

Existing knowledge pertaining to wood-inhabiting fungal distribution and diversity based on sporocarp surveys indicates that wood-inhabiting fungal communities in temperate forests exhibit low α -diversity (average ~ 2 species or less/deadwood log) (Blaser et al. 2013) and are not specific to host tree species, leading to researchers differentiating only between softwood and hardwood decomposers (Tuor et al. 1995). These views have been confirmed recently by the results from sporocarp surveys

during a large-scale, long term monitoring study of deadwood (BELongDead) experiment (Baber et al. 2016). However, there are few studies that have shown some degrees of host specificity of heart-rot fungi for trees species (Rayner and Boddy 1988; Boddy 2001; Boddy et al. 2017). NGS has been applied to the same sets of deadwood as the sporocarp surveys in BELongDead experiment (Baber et al. 2016) to answer the questions regarding to diversity and tree species preferences of wood-inhabiting fungi (Purahong et al. 2018b). The results from NGS demonstrate high diversity (22–42 OTUs /deadwood log) and strong tree species preferences (especially in broadleaf species), which contradict existing knowledge based on sporocarp surveys and challenges current views on wood-inhabiting fungal distribution and diversity in temperate forests (Purahong et al. 2018a, b). It has yet to be established if this high diversity is however, functional.

NGS challenges the classical view of fungal succession during leaf litter decomposition

NGS consistently confirmed that Ascomycota have highest relative abundances in the early stages of litter decomposition in temperate forests, and then there is a clear shift from Ascomycota to Basidiomycota in the later stages (Voříšková and Baldrian 2013; Purahong et al. 2016). However, the presence/absence data show that Ascomycota (66–82%) are much more frequently detected as compared with Basidiomycota (18–33%) across different sampling times during 473 days (Purahong et al. 2016). NGS data may in general only partly support the view of a succession from an Ascomycota to a Basidiomycota-dominated community from early to later stages of litter decomposition (Peršoh 2015) and the accuracy of relative abundance data derived from NGS is still questionable (Amend et al. 2010). A recent NGS study also suggests that the complex litter decomposition process is the result of a dynamic cross-kingdom functional succession between fungi and bacteria, where bacteria may facilitate the saprotrophic fungi by providing essential nutrients (Purahong et al. 2016).

Diversity of fungi in groundwater

Natural groundwater limestone aquifers are a challenging and unexplored fungal habitats. There is one study using 18S based eukaryote clone libraries to detect the fungal community in groundwater (Risse-Buhl et al. 2013) and a two further studies using direct microscopic morphological identification of fungal spores (Krauss et al. 2003) and a culture-dependent approach (Lategan et al. 2012). With little oxygen available, it is expected that anoxic groundwater exhibits low fungal diversity limited to facultative

anaerobes. Recent NGS studies based on both DNA and RNA (ITS amplicon sequencing) have revealed a diverse taxonomy (mainly Ascomycota and Basidiomycota) and ecological functional groups (mainly saprotrophs) of fungi found in this habitat (Nawaz et al. 2016). The RNA study is interesting as it demonstrates that the detected fungal OTUs are not only spores but they also include the viable and/or active fungi (Nawaz et al. 2018). Life span of the precursor RNA containing ITS regions is very short, thus it can be considered to represent the active community during the last few minutes before sampling (Kos and Tollervey 2010; Purahong and Krüger 2012). Specifically, only metabolically active fungi are continuously transcribing rRNA precursor molecules and their ITS regions can be detected in the precursor rRNA pool (Anderson and Parkin 2007; Rajala et al. 2011). The living fungal community (RNA based) in this habitat mainly corresponds with availability of NH_4^+ and some macronutrients. Notably, all of these exciting results on the fungal community can be obtained without any need to name the involved organisms, and accordingly the experts refrain from reporting species names.

Numbers of taxa

The numbers of taxa detected via NGS are usually much higher than those detected by direct observations or culturing methods and they are assumed to include both cultural and non-cultivable fungi (Buée et al. 2009; Kubartová et al. 2012). However, due to the methodological biases in NGS, this assumption has not been verified. For example, not all cultivable fungi can be detected with NGS, but only the predominant ones are detected (Dissanayake et al. 2018; Jayawardena et al. 2018b), and for certain taxa, in particular the smut fungi, specific PCR primers need to be developed because the standard methods do not work for their ITS (Kruse et al. 2017). Similar to the direct observation or culturing methods, fungal richness from different studies may not be compared directly due to different laboratory standards, protocols and data processing (Lindahl et al. 2013; Purahong et al. 2017). Nevertheless, apart from the laboratory standard and protocol, we can get data from comparable datasets, i.e. same NGS platform, same primer pairs (or at least same targeted region) and re-analyze all interested data together to answer specific questions. With this procedure, we can reasonably compare the results of NGS across different studies and biomes (Nilsson et al. 2011). However, we must be aware that, based on the available methods, such studies have their limitations. Many species that are known from morphological studies have never been sequenced, and many predominant taxonomic groups of fungi cannot be well-separated at the species level without using at least a second barcode (see

Figs. 3, 4). Therefore, it is not really possible to tell the exact number of species from NGS studies and we may be able to use the fungal taxonomic information only at genus level (Purahong et al. 2017; Purahong et al. 2018b).

Ecological data

During the past decade, NGS has emerged as a high resolution culture independent approach for characterizing microbial community composition and diversity in various ecosystems and biomes (van Dijk et al. 2014). It is clear that NGS has significantly increased the amount of data and expanded our knowledge of microbial communities and their distribution (Prosser et al. 2007; Kubartová et al. 2012). Recently, the cost of analyzing the DNA samples with NGS has also dropped significantly, thus boosting the potential for using this technique (van Dijk et al. 2014). Long-read sequencing has become currently available at high quality by using nanopore or PacBio sequencing (Heeger et al. 2018; Wurzbacher et al. 2018). By detecting hundreds to thousands of fungal OTUs in hundreds of samples within weeks, metabarcoding approaches tear down the limits of cultivation-based approaches in community ecology studies (Peršoh 2015). Furthermore, the new technologies allow to analyse a suitable number of replicates to infer statistical support for hypothesis testing. However, the first years of metabarcoding revealed that fungal communities are more complex and more dynamic in space and time than previously thought (Peršoh 2015). While this awareness demands for even more comprehensive sampling designs in future studies, metabarcoding already largely widened our knowledge of community ecology. A major finding is certainly the functional redundancy of compositionally diverse communities (Talbot et al. 2014). Furthermore, it was shown that they may differ for one plant species in dependence of the surrounding plant community (Toju et al. 2013). We also learned that endophytic and litter decomposing fungal communities are much tighter linked than previously thought (Guerreiro et al. 2018).

Using mgDNA from environment in species identification

To a large extent, mycologists have relied heavily on morphology from specimens and DNA sequence data derived from cultures for species identification (e.g. Jee-won et al. 2003, 2017; Ariyawansa et al. 2015; Liu et al. 2015; Hyde et al. 2017a, b; Tibpromma et al. 2017; Wanasinghe et al. 2017, 2018; Jayawardena et al. 2018a, b). The use of other molecular approaches based on DNA sequence data (e.g. PCR based DGGE and

metatranscriptomics), have also provided insights into assigning species into specific taxonomic ranks and enumerating fungal diversity (e.g. Duong et al. 2006; Ram-padarath et al. 2018). With such rapid advances in DNA sequencing technologies coupled with an ever increasing number of DNA sequences (for instance from NGS) being analysed from diverse fungal communities without any available morphs, mycologists are recovering a myriad of genetic data from the environment. Fungal taxonomy is dynamic with rapid changes in nomenclature and classification. One always has a certain uncertainty when naming a species, especially if the morphs are unclear or DNA sequence data fail to resolve species relationships. This mostly happens whenever we deal with genera containing many potential cryptic species, such as *Aspergillus* (Houbraken et al. 2014; Samson et al. 2014) or *Colletotrichum* (e.g. Damm et al. 2014; Jayawardena et al. 2016). The major advantage of going forward with a mgDNA approach is that it largely overcomes the discrepancies associated with morphological-based identification (e.g. time consuming, recovery of fungi in different stages, phenotypic plasticity). In addition, it increases the probability of detecting species where traditional methods will usually fail and when the species occurs in low density. For the time being, we cannot culture all species *in vitro*, but they are there. So mgDNA does help to track rare and elusive species and pave the way to facilitate future taxonomy. In the same way, we have old fungal specimens where nowadays, DNA sequence can be retrieved and analysed to compare with existing ones, we can anticipate that mgDNA can also serve as potential “reference molecular types” for any important taxa that are yet to be cultured or discovered based on morphology.

However, there are some pertinent issues that merit attention before formalizing the use of mgDNA in taxonomic studies. Under most circumstances, mgDNA is usually sheared and results in shorter reads as compared to other commonly used gene regions in phylogenetics. If coverage is low, the likelihood that the mgDNA clusters with other “eDNA” / OTUs is high and this does not help in species identification. In addition, the bootstrap support to link mgDNA with its known counterparts is often low and hence ends up in low taxonomic resolution. There is a need to standardize analytical methodologies and for better interpretation/assessment of false positives and negatives generated from NGS sequences. Otherwise we might run the risk of using contaminated samples, repetitive DNA sequences or reads with sequencing errors generated through inadvertent quality control procedures. This will obviously have an impact on our taxonomic interpretations especially if dealing with nucleotide-level variation between populations of related species. While mgDNA does provide insights into potential fungal organisms

associated with a particular substrate, no other informative data which are considered important for taxonomists and ecologists can be obtained. For example, if mgDNA has been recovered from organic matter or from water samples, it could have been due to transport of DNA from other sources and hence this poses a challenge in space and time for mgDNA species detection. The lifestyle of those so called organisms remains elusive as well, because it would be almost impossible to predict whether it would be a saprobe, endophyte or potential pathogen. The mere presence of isolated mgDNA does not give any indication whatsoever in what state is the fungus (either sexual or asexual).

Comparing whole organisms with detailed phenotypic features and occasionally physiological characteristics have always been an integral part of taxonomy. With mgDNA, no such comparisons can be made and any taxonomic relationships based on a fragment of mgDNA would be like looking at some letters in a person’s name and making an attempt to decipher that person’s physiognomy. The other major problem would be to how to define a species based on mgDNA. There has been an ongoing discussion, but never a consensus on the use of DNA sequences in defining species for those taxa whose morphology is known, hence we contemplate that establishing a species concept based on mgDNA would be even much more difficult and should be dealt with much precaution. One major taxonomic determinant is the number of available DNA sequences in databases, but some markers are far better represented. For fungal species, the ITS gene regions and occasionally some protein genes are well represented and hence caution is warranted herein to avoid misidentifications and this will affect fungal biodiversity statistics. Despite the reduction in pricing over the last decade, the cost per sample analyses is still a major limiting factor, especially for those researchers in developing countries, and even for many amateur mycologists who are not associated with academic institutions in the rich countries. With the latest third and fourth generation sequencing technologies, which eliminate PCR amplification procedures and yield better reads with lower error rates, the costs are even higher. When it comes to the analytical part to compare the mgDNA with others, the question arises of how many sequence data is enough. We have seen in many circumstances when investigating phylogenetic relationships of fungal organisms that there has been a need to shift from a single DNA locus (e.g. ITS rDNA sequence data) to multigene phylogenetic analyses for better species identification and circumscription. How are we going to proceed with mgDNA, should we start accepting them as holotypes? Undoubtedly mycologists should tap into the potential benefits of mgDNA for extracting taxonomic knowledge, but should we set clear guidelines to validate

our DNA sequence data? We are still some steps away from appropriate DNA-based molecular markers that can be used reliably for species identification and analysed phylogenetically with certainty. This poses a considerable challenge as many mycologists have diverged opinions on which gene fragment can be considered as a universal barcode. There will be obviously concerns of “holotype recognition” with mgDNA and under what circumstances/situations should we really accept a holotype. What would be the consequence or compromise when we have identical sequences or minor DNA differences, or where phylogenies fail to provide reliable support for specific lineages? Which metagenomics approach is more reliable to conclusively assign a specific DNA sequence as a holotype and the long debated issue of which genes/regions should be given priority rises again. We should treat name assignments with caution. Even if a sample of mgDNA has a high-level match with any previously deposited sequence, should we give them the same name? Many will have divergent opinions on this.

There will be discussion on the use of DNA sequence data as types during the International Code of Nomenclature for algae, fungi, and plants (ICN)-Fungal Nomenclature Session in the upcoming IMC meeting in Puerto Rico in July 2018. A major concern would be how to align existing DNA sequence data available or anticipated DNA sequence data especially from environmental samples into a framework that does not give rise to problems that arose with our existing dual nomenclatural system. It would be interesting to see how we proceed in relation to “old names” proposed by Dayarathne et al. (2016) following discovery of proper morphs/cultures after acceptance of DNA as types. Leaving a taxon as “Unnamed” or “Named inappropriately” are both a taxonomic concern. While we inevitably acknowledge that resorting to acceptance of DNA as types is deemed important given the huge number of undiscovered species, precaution is warranted so that we do not end up in vague guidelines that defeat purpose of fungal taxonomy. Mycologists have already stepped into the era of mgDNA and there is obviously no going back as the latter has already started to alter the landscape of fungal taxonomy. Perhaps we should be more confident that the outcome of most of these mgDNA can aid in the discovery of potential novel biomarkers and results in better species diagnostics. Meanwhile, mgDNA can be considered as additional novel genetic data in our databases, this does not really translate into species *per se*. With metagenomics, only well-known gene fragments are recovered which are compared to existing ones. However, DNA sequences without any associated morphological descriptions should not be considered totally obsolete, but a timely, systematic and accurate approach towards characterizing the DNA

sequences and make them available as recognized taxonomic entities is the way forward.

Using ITS for species identification

After over two decades of intensive research on the most important classes of the Ascomycota, regarding both the numbers of species and the economical and practical importance (in particular, the Eurotiomycetes, Sordariomycetes and Dothideomycetes), we can now conclude that ITS is better than LSU and SSU for getting a species identification. A recent paper (Vu et al. 2018) relying on the type strains of the CBS culture collection (housed at the Westerdijk Fungal Biodiversity Institute, Utrecht, the Netherlands) has confirmed that ITS is an excellent primary barcode. However, it would not have been possible to reach that conclusion, were it not for the fact that many of the studied strains had previously been studied very carefully by polythetic taxonomic approaches. Many of the recent taxonomic rearrangements in this area have relied on a combination of multi-locus phylogenies and phenotype-derived characters. In some cases, aside from morphological traits of both, the sexual and asexual states, even secondary metabolite profiles were generated as additional informative parameters (Frisvad and Samson 2004; Stadler et al. 2014b). This is of very high practical concern because for example, the classification of biosafety levels of fungi heavily relies on the taxonomy and nomenclature. A very important example is the species pair *Aspergillus flavus* Link vs. *A. oryzae* (Ahlb.) Cohn, where it was found out that both species have identical ITS sequences, probably because the latter fungus has eventually been domesticated by humans in Asia from wild type strains of *A. flavus*. However, recent comparisons of the genome have revealed that they differ in 350 genes! In fact, *A. oryzae* is a very important industrial organism that has not only been used to produce various foods, such as soy sauce and tofu for many centuries, but is now even employed in other industrial processes such as the production of enzymes and commodity chemicals because it was granted GRAS status (generally recognised as safe). On the other hand, *A. flavus* is one of the most dangerous fungi on Earth because it is not only a pathogen but also produces highly toxic and mutagenic mycotoxins and is therefore classified in Biosafety Risk Class 2. If the polythetic taxonomy of these fungi were to be abandoned, and only ITS data were sufficient for nomenclature, the two aforementioned species would need to be treated as synonyms—possibly, with fatal consequences for the biotechnological industry! This relates to a very important point, i.e. that taxonomy should accommodate the requirements of the users and not just be a self-fulfilling prophecy. Taxonomists have a great

responsibility to the other scientific communities such as plant pathologists, medical mycologists and biotechnologists and should therefore always use all sources of information that are available to them. Therefore, the nomenclatural rules should never be adapted to the lowest possible standards.

Moreover, a nomenclature based on small DNA fragments would even mock the current developments in fungal biology, where many capable scientists are working hard to provide new evidence on the functional biodiversity within the fungal kingdom. For example, the trichothecenes are a very important class of hazardous mycotoxins, and until recently, it remained unclear whether they are being produced at random by various hypocrealean taxa. Initial studies had concentrated on model organisms such as *Fusarium graminearum* Schwabe, and it was at first very tedious work to elucidate the mechanisms of their biosynthesis. However, based on this pioneer work and the availability of modern bioinformatic tools, Proctor et al. (2018) have recently provided a conclusive outline on the evolution of trichothecenes biosynthesis in the fungal kingdom. This is only a single exemplary study to indicate that, due to the recent advent of genomics, transcriptomics and bioinformatics technologies, it even appears feasible to employ secondary metabolite biosynthesis genes or other genes encoding for important functional traits in phylogenomic studies to verify the affinities of higher taxa, or even species hypotheses.

In the light of these exciting developments, an approach that will generally allow for any type of DNA-based data to disrupt the current nomenclatural system appears highly anachronistic. We admit that a very large portion of the fungal biodiversity cannot be subjected to multi-locus phylogenies. This certainly applies to those taxa that cannot (easily) be brought into axenic culture or have hitherto been neglected by taxonomists. For example, the current outline of Orbiliomycetes taxonomy (Baral et al. 2018) has been heavily reliant on a conjunction of rDNA data with meticulous morphological studies, specifically because many of the important taxa were never cultured, or the cultures that were eventually made from these fungi did not survive as they were never deposited in professional biodiversity repositories. Likewise, there are many other examples for important fungal groups including the powdery mildews, the mycorrhizal Agaricomycetes and the rust fungi, where only rDNA sequences are presently available. Even fresh material of these fungi can normally not be cultured. As the protein coding genes that might give more conclusive results cannot normally be amplified, there is presently no other option for taxonomists than to generate rDNA sequences of these specimens and try to find correlations to certain morphological traits. Evidently, this will work very well if enough data on the phenotypic

characters within a certain taxonomic group are available. However, in the absence of morphological characters, it seems very unlikely that DNA-only nomenclature can replace the polythetic approach in defining species boundaries. We will demonstrate based on a few examples based on well-studied fungi that the ITS-based approach does not work well.

On one hand, polymorphism of ITS can be a big obstacle. Stadler et al. (2014a) have epitypified the important species, *Xylaria hypoxylon* (L.) Grev., based on a specimen that was previously examined by Fournier et al. (2011) and Peršoh et al. (2009). While the morphological examinations, which even included a comparison with authentic material going back to Linnaeus and Fries were rather conclusive, it was found that out of five cultures of the epitype specimen made from ascospores originating from the same perithecium, three different ITS genotypes were observed. If these genotypes would be found in the course of a molecular ecology study, and it were allowed to erect new taxa, based on slight divergence of the ITS, two superfluous species could be validly erected!

In general, ITS sequence data are often not 100% reproducible when a particular fungal strain is revived from liquid nitrogen. It is not uncommon that slight deviations are observed, and this cannot only be attributed to sequencing errors. O'Donnell and Cigelnik (1997) have already reported the phenomenon of polymorphism in *Fusarium*. Nevertheless, many taxonomic studies are relying on one or a few isolates of a given species, and the segregation of entire species complexes is sometimes based on the characteristics of a single representative isolate.

The second problem with ITS and rDNA as such is that there are whole genera and species groups in large genera that cannot be discriminated well without the housekeeping gene sequencing. Even though there are not many reports in the literature, owing to the fact that negative results (e.g. about the uselessness of ITS for species discrimination and phylogenetics) do not normally get published, this phenomenon frequently occurs across the fungal kingdom. The fact that the leading mycological taxonomists are always striving to attain higher standards is reflected by the increasing number of new taxonomic concepts that rely on multi locus studies. We should therefore rather refine the detection techniques, so that we can go for e.g., Calmodulin, TUB2, TEF and RBP2 even in NGS approaches and for the study of small specimens.

The third issue is that very often the high-throughput sequencing will result in sequencing errors, as discussed elsewhere in this paper, and the authors will then falsely believe that they have discovered new phylogenetic lineages. This can only be amended by using a dual approach such as the one that was recently published in Dissanayake et al. (2018).

Using the polythetic approach, we can now see clearly that ITS is less well-suited than certain protein coding genes for species segregation in many fungal groups (e.g. Dothideomycetes, Eurotiomycetes, or Sordariomycetes). We provide some representative case studies of using ITS from fungal identification and classification here.

Case studies from Basidiomycota

The global performance of full length ITS region sequences for species identification of Basidiomycota was estimated to be only 63% (PCI, percentage of correct identification) and PCI lower than 50% was observed in 38 out of 113 genera (Badotti et al. 2017). Some of the low PCI values might be explained by dataset characteristics such as low numbers of species or sequences used and/or by the presence of “outliers”, or they may be due to poor intrinsic performance of ITS. Neither the complete ITS region nor the sub-regions (ITS1 or ITS2) were useful in identifying species in eleven of the 113 genera studied (Badotti et al. 2017).

Problems with the use of ITS sequences have been reported for a number of basidiomycete genera. For example, ITS of *Cortinarius* (Pers.) Gray is less variable than RPB2 but it performs as well as RPB2 and RPB1 to retrieve supported close relationships in the phylogeny (Frøslev et al. 2005). However, out of 901 species, 30–39 species (depending on alignment method) could not be separated based on full ITS sequences owing to a lack of a barcoding gap (Garnica et al. 2016). “In a very few cases, there is evidence of ‘morphological species’: a morphologically and ecogeographically distinguishable species/subspecies with identical ITS regions, e.g. *Cor. atrovirens* Kalchbr. versus *Cor. ionochlorus* Maire (Brandrud et al. 1990, 1992, 1994, 1998, 2012; Garnica et al. 2016). More importantly, up to 40% false positives (wrongly splitting species) were obtained with full ITS regions sequences in subgenus *Myxadium* (Garnica et al. 2016).

Harder et al. (2013) used a two single-copy nuclear genes dataset to study *Mycena pura* (Pers.) P. Kumm. species complex. With the two protein-coding genes, they identified eleven phylopecies whereas ITS not only underestimated diversity as found by the two single-copy genes, but also identified an OTU which was not a phylogenetic species (“false positive”). On the other hand, ITS in *Hygrocybe* (Fr.) P. Kumm. is highly variable, with up to 25% distance (Babos et al. 2011, 2017), which is expected to lead to overestimation of the number of species.

den Bakker and Noordeloos (2005) indicated that some disagreements were found between a single-copy protein-coding gene (*Gapdh*) and ITS2 phylogeny of *Leccinum* Gray. In one case (*L. cyaneobasileucum* Lannoy &

Estadès), the species was well supported both by morphological differences and the *Gapdh* phylogeny, but was included in *L. holopus* (Rostk.) Watling in the ITS2 tree. This may have resulted from past hybridization followed by concerted evolution of the ITS2 locus. Introgression and incomplete lineage sorting have been documented in other Leccinoideae genera, namely *Rossbeevera* T. Lebel et al. and *Turmalinea* Orihara & N. Maek., and may have been overlooked in other groups (Orihara et al. 2016). However, this kind of phenomenon, although problematic in species identification and phylogenetic analysis should not commonly result in false-positives in mgDNA species delimitation (i.e., wrongly considering divergent sequences as belonging to different species), except in the case of incomplete concerted evolution of the ITS sequences.

Case studies from Ascomycota genera

Overall methodology—Sequence data used in each case study are provided in Supplementary tables. Datasets were aligned for each gene partition using MAFFT (Katoh and Standley 2013). Aligned datasets were manually checked in Bioedit (Hall 2011). Maximum Parsimony, Maximum likelihood and Bayes analyses were performed by using PAUP*4, raxmlGUIv.0.9b2 and MrBayes v 3.1.2 (BMCMC; Ronquist and Huelsenbeck 2003) respectively, for each gene partitioned and combined dataset. Maximum parsimony trees were inferred using the heuristic search option with 1000 random sequence additions, and Maxtrees were setup to 1000. GTRGAMMAI model of nucleotide substitution, and the search strategy were set to Rapid bootstrapping in Maximum Likelihood (RAxML) Analyses (Silvestro and Michalak 2012), with 1000 replications. The best fit model of evolution was performed by MrModeltest 2.2 (Nylander 2004) and was used in the Bayesian analyses. The six simultaneous Markov chains were run for 1,000,000 generations (3,000,000 generations for dataset of *Colletotrichum destructivum*), with sampling frequency at 100. The first 2,000 trees were discarded based on the result from Tracer software. The selected examples actually go back in part to published conclusive multi-locus studies where only combined datasets were published, apparently because the authors realised that the ITS data alone would not provide enough resolution. We have constructed the trees from the published sequence data in order to demonstrate the problems.

Colletotrichum Corda

Colletotrichum is a genus of pathogens, saprobes or endophytes occurring worldwide (Yang et al. 2009; Hyde et al. 2014; Jayawardena et al. 2016). There are 51 OTU sequences in GenBank, which are assigned to the genus based on LSU (12), SSU (6) and ITS (33) gene regions.

Jayawardena et al. (2018b) identified saprobic fungi based on culture-dependent and culture-independent methods including several *Colletotrichum* species. *Colletotrichum* species isolated from culture-dependent method had ≥ 500 bp for ITS region. In their study using multigene analyses the species were identified. ITS sequence data alone can be used in identification to genus or the species complex levels (Jayawardena et al. 2016, 2018a), but it has insufficient information to provide a better resolution at species or below species level.

For the case studies we have selected OTUs available in GenBank and have constructed separate phylogenetic trees for the *destructivum* species complex and other species (Fig. 1). We used the Blastn search in GenBank and considered a similarity at 99–100% as the same species (Garnica et al. 2016; Jeewon and Hyde 2016; Jayawardena et al. 2018b). A phylogenetic tree based on ITS sequence data was constructed for the *Col. destructivum* O’Gara species complex with both OTU sequences and sequences derived from type specimens (Fig. 1). Results depict that almost all of the OTUs identified as *Col. destructivum* clustered together with the type ITS sequence of *Col. tabaci* Böning with the exception of MF330413 which is basal to all others. The Blastn results of these OTUs showed 100% query cover and 100% similarity to species within the *destructivum* species complex (*Col. tabaci* Böning, *Col. higginsianum* Sacc., *Col. utrechtense* Damm, *Col. destructivum*, *Col. fuscum* Laubert) and to *Col. coccodes* (Wallr.) S. Hughes. Herein we note that those short ITS sequences are not suitable for resolving the *destructivum* species complex. A similar phylogenetic scenario was obtained when the ITS sequence data was analysed for other species complexes (Fig. 2). OTUs could be assigned to species complexes but phylogenetic placement was ambiguous hence the reliability of the ITS is being questioned. For a better resolution of this genus protein coding gene regions are required (Jayawardena et al. 2018a) but how far are we going to favour the use of alternative genes should we be dealing with OTUs suspected to be plant pathogens for a stable classification and appropriate nomenclature.

Penicillium Link

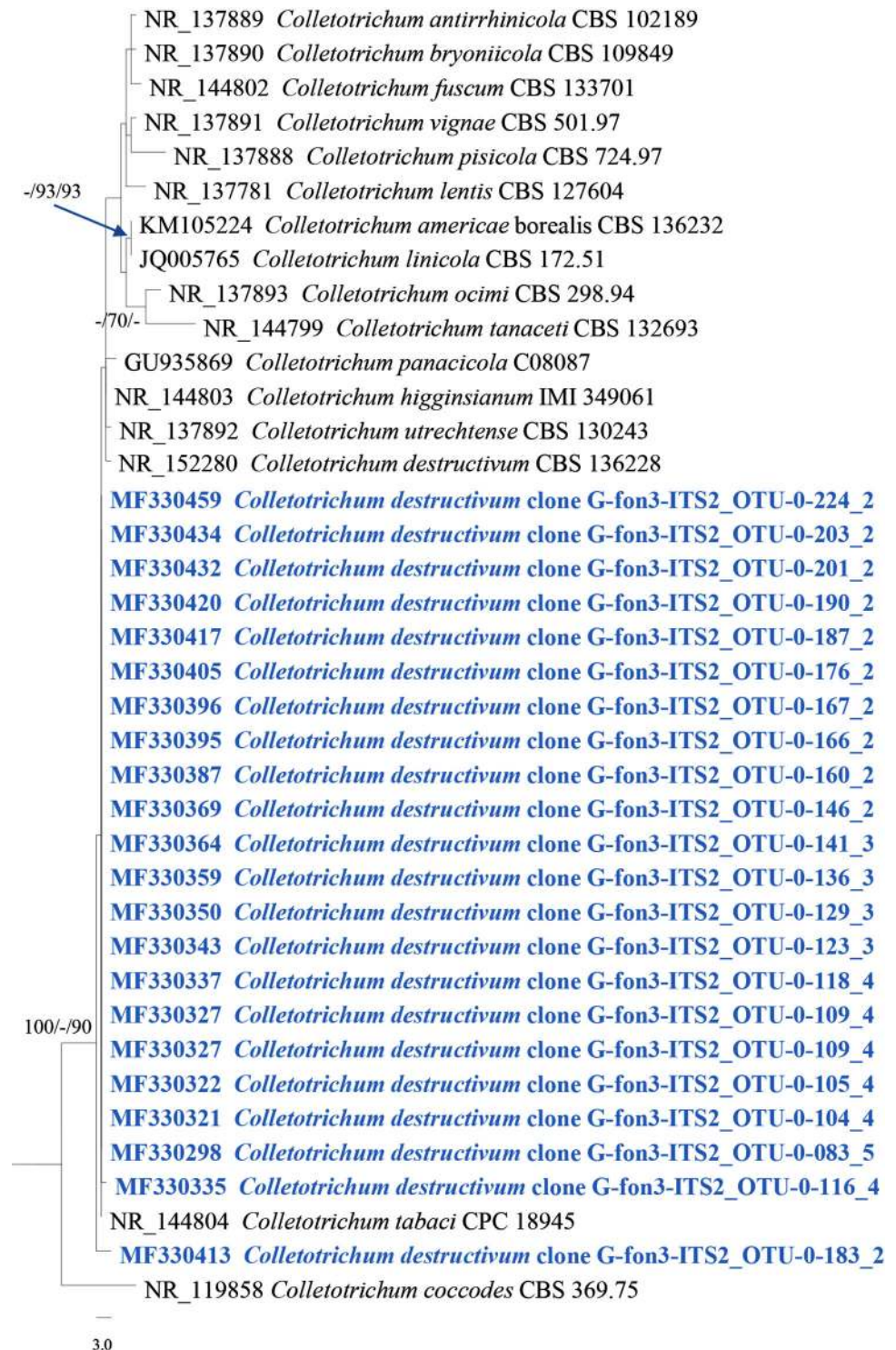
Penicillium is a very large genus, containing over 350 species (Visagie et al. 2014b), many of which play an important role in medicinal and industrial applications as producers of mycotoxins, antibiotics and enzymes. Therefore, it is instrumental to maintain a stable taxonomy of these fungi and provide concise species concepts. Species in this genus can be found on various substrates, for example, occurring as pathogenic species in humans, and contamination of foods. The genus was recently divided into 25 sections (Visagie et al. 2014a). Presently, more than

200 sequence datasets of ‘Uncultured *Penicillium*’ are available in GenBank. All of these have less than 200 bp linear DNA (June, 2018). In this study, sequence data from *Penicillium* section *Citrina* were selected to show the potential of ITS for species identification and classification. In Fig. 3, the maximum parsimony tree generated from ITS sequence data indicate that the clade containing strains of *P. citrinum* Thom and *P. hetheringtonii* Houbraken et al., which includes “*P. citrinum*” OTU-43 (available in GenBank with 201 bp, others have ca. 500 bp) are not well-resolved. *Penicillium citrinum* OTU-43 is placed outside the clade of *P. citrinum*, while *P. tropicum* Houbraken and *P. tropicoides* Houbraken et al. could not be differentiated by ITS. Figure 4 shows the classification within *Penicillium* section *Citrina* which is well-resolved by using the TUB2 gene. The maximum parsimony tree generated from TUB2 is in accordance with previous studies by Houbraken et al. (2010) and Visagie et al. (2014a), in that TUB2 is better suited to segregate species in *Penicillium* than ITS. Unfortunately, there are no TUB2 sequences of *P. citrinum* from environmental samples available in GenBank.

Botryosphaeria Ces. & De Not

Species from the genus are saprobic, parasitic or endophytic on plants worldwide (Phillips et al. 2013; Dissanayake et al. 2016). Some species of *Botryosphaeria* are known to cause cankers, dieback and other plants diseases (e.g. Maas and Uecker 1984; Rumbos 1987; Michailides 1991; Smith et al. 1994; Phillips et al. 2013). For example, *B. dothidea* (Moug.) Ces. & De Not. (associated with botryosphaeria dieback in grapevine) could be considered as the major pathogen in this genus. Several molecular studies have indicated that the affinities of this important genus need to be further clarified (Hyde et al. 2013; Dissanayake et al. 2018). There are over 50 sequences in GenBank assigned to the genus *Botryosphaeria* based on ITS regions. Dissanayake et al. (2018) identified many endophytic species using a culture-dependent method, including species of *Botryosphaeria*. In their study, *B. dothidea* isolates obtained from culture dependent method had more than 500 bases for ITS. All isolates of *B. dothidea* clustered with the type species, thus, there is no problem in using ITS for identification of *B. dothidea*. However, ITS has insufficient information to resolve the relationship between *B. dothidea* and other species in the genus. Therefore, sequence data of combined ITS and TEF1 regions were used in their phylogenetic analyses to increase the phylogenetic resolution. *Botryosphaeria* (OTU_7) was detected and identified as *B. dothidea* (OTU_7) even the OTU has only 219 bases (Dissanayake et al. 2018). The short read sequence of OTU_7 is actually unable to clarify its position in the phylogenetic tree, thus Dissanayake et al. (2018) did not include it in their

Fig. 1 Maximum parsimony phylogenetic tree of *Colletotrichum destructivum* (ITS) and allies. The first and second sets of numbers at each node are MP and ML values, respectively (only BS values above 70% shown). The third set of at each node is Bayesian posterior probabilities (only PP values above 90% shown). Strain numbers are indicated after species names. Sequences from environmental sample are in **blue bold**

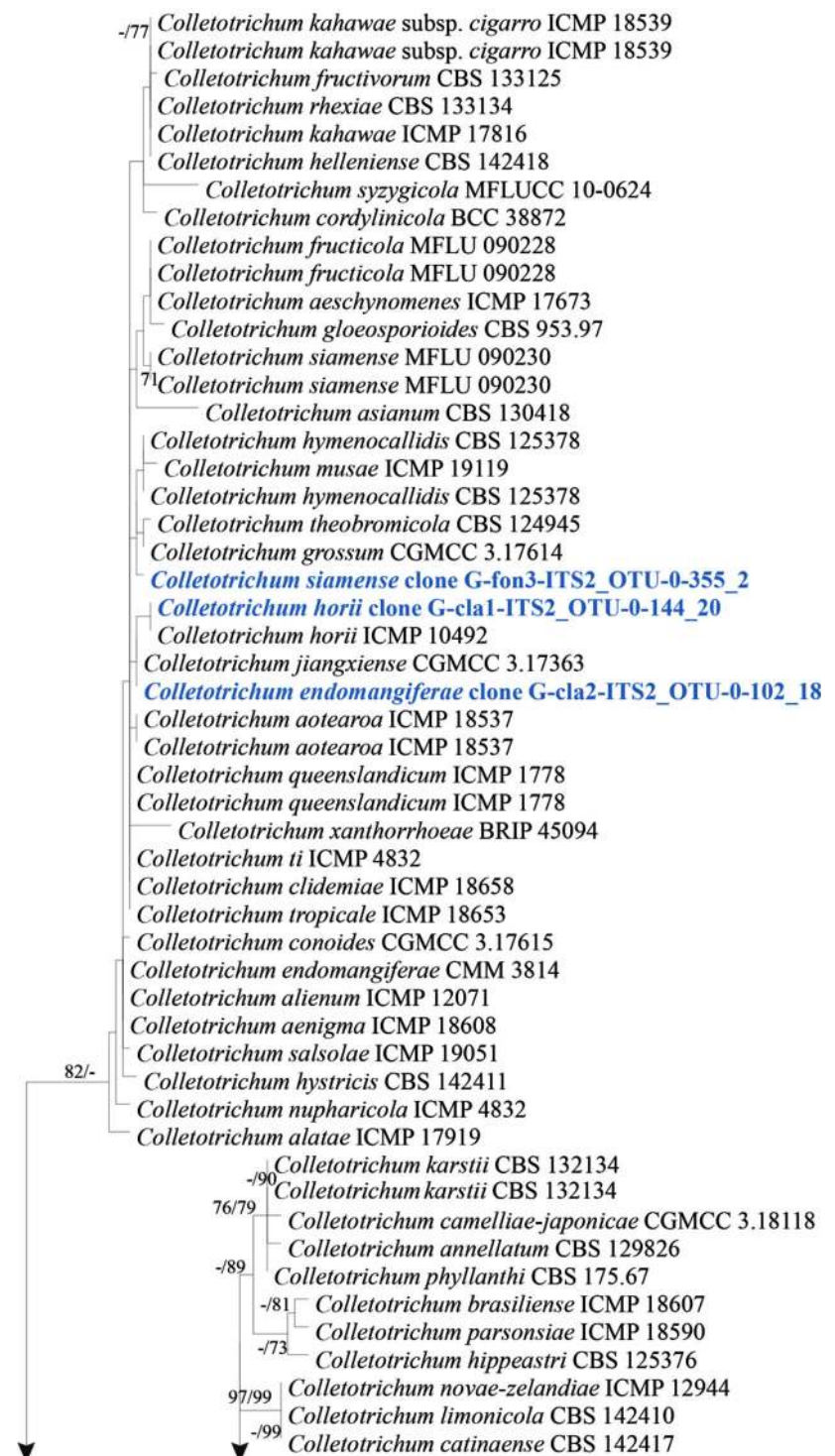


phylogenetic tree. However, bioinformatic tools indicated that OTU_7 belongs to the species *B. dothidea*.

In this paper, we provide phylogenetic trees using the dataset as in Dissanayake et al. (2018), but included only one dataset from the uncultured fungus OTU_7 (Figs. 5, 6). The phylogenetic tree generated from combined ITS and

TEF1 sequence data shows more variability and is thus more useful for species discrimination. Isolates of *B. dothidea* cluster together with strong statistical support; which is in accordance with the previous studies. The OTU_7 in Fig. 6 placed OTU_7 closer to *B. auasmontanum* F.J.J. Van der Walt et al., and this is due to the fact

Fig. 2 Maximum parsimony phylogenetic tree of other *Colletotrichum* species (ITS). The first and second sets of numbers at each node are MP and ML values, respectively (only BS values above 70% shown). Strain numbers are indicated after species names. Sequences from environmental sample are in **blue bold**



that the NGS-derived fragment has only 219 base pairs. For comparison, a single DNA locus tree based on ITS is only provided in Fig. 5, demonstrating that only ITS OTUs data cannot resolve the identification or classification of taxa. These results imply that the inclusion of OTU data should be incorporated together with the bioinformatics analyses, and/or that the NGS methodology must be further

developed to allow for generation of larger contigs and, even more importantly, the generation of DNA sequences from protein-coding genes.

Xylaria Hill ex Schrank

Xylaria is the generic type of *Xylariaceae* Tul. & C. Tul., with around 790 epithets listed in Index Fungorum

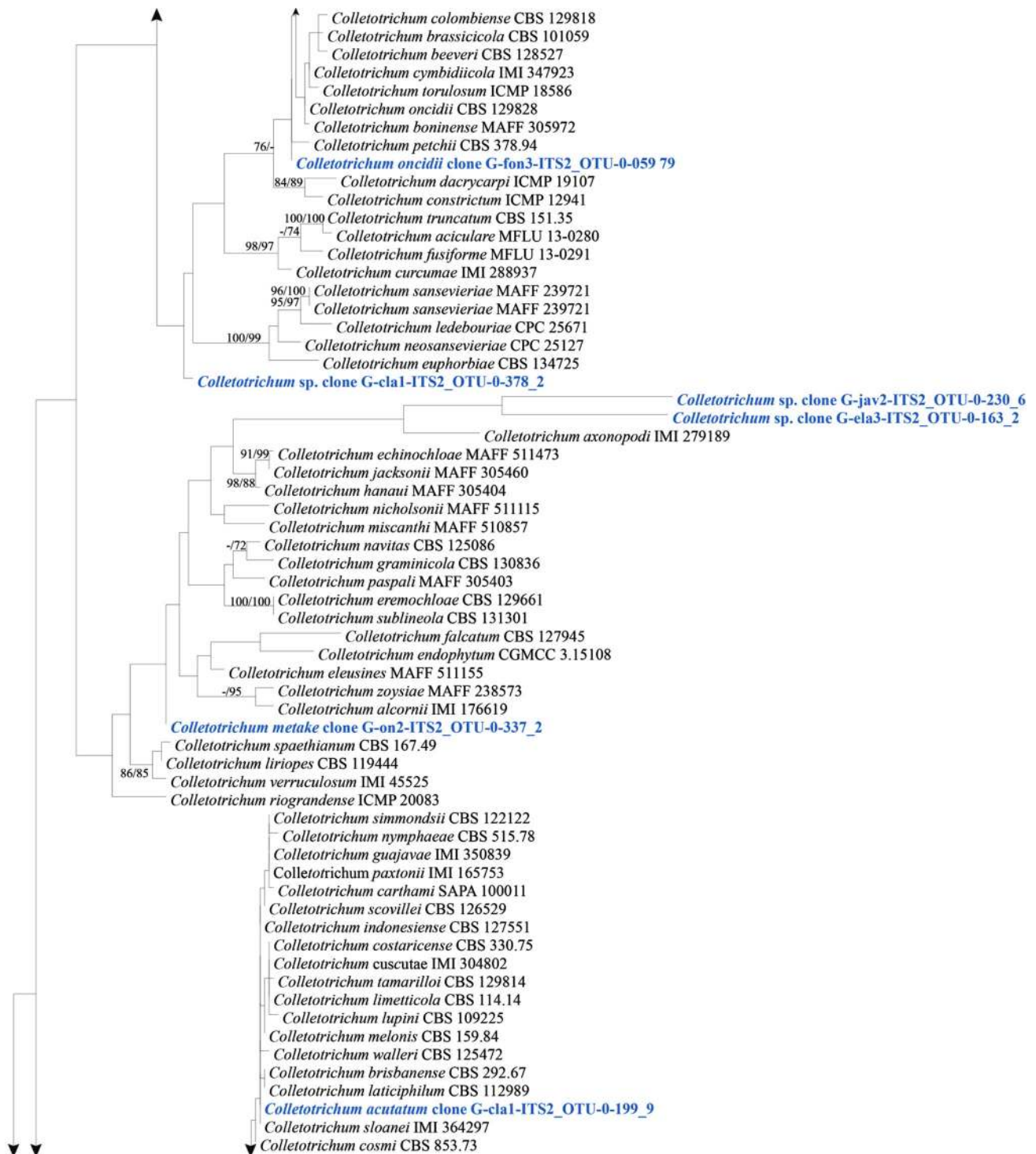


Fig. 2 continued

(2018, <http://www.indexfungorum.org/names/Names.asp>). Species in this genus constitute a rich source of bioactive secondary metabolites (Song et al. 2014). Recently the phylogeny of the family was changed, following multi-locus DNA phylogenies and some comprehensive reviews

of their taxonomy have been provided by Daranagama et al. (2018) and Wendt et al. (2018). Helaly et al. (2018) concluded that future culturing and phylogenetic studies are needed to reach a better taxonomic classification of *Xylaria*. Thus, it may finally become possible to link the

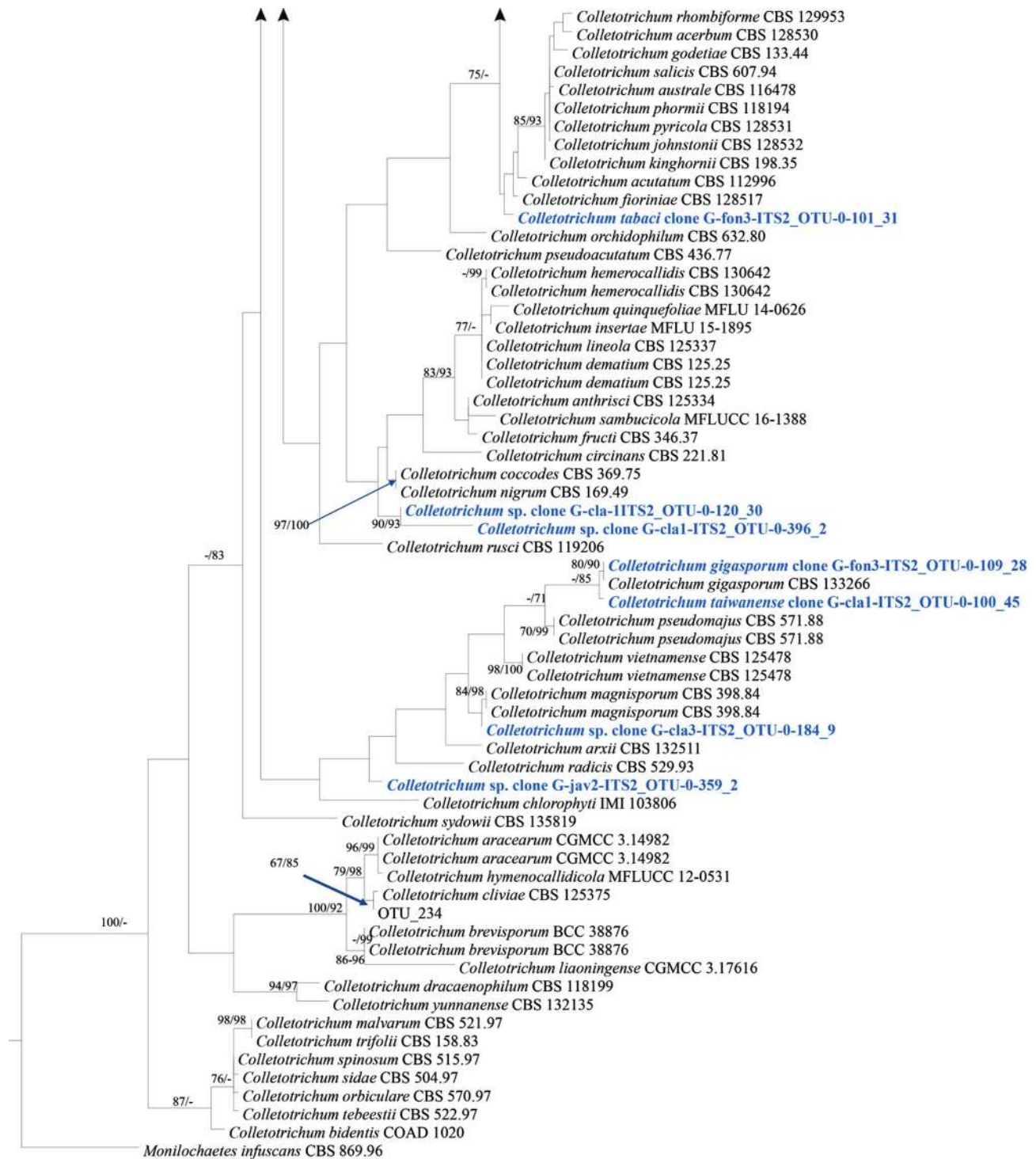


Fig. 2 continued

secondary metabolites to the taxonomy of the genus. Presently, there are around 36 sequence data from “*Uncultured Xylaria*” available in GenBank (June, 2018). Most of these are ITS (32), with 22 sequences shorter than 200 bp, and only 6 sequences longer than 300 bp (Fig. 7). We

selected *X. schweinitzii* clone G-ela3-ITS2_OTU-0-069_9 to be a case study in this paper. The sequence was initially checked through Blast search, and we found that *X. ophiopoda* is identical to *X. schweinitzii* (Fig. 8). *Xylaria ophiopoda* isolate 1081 was “identified” by Thomas et al.

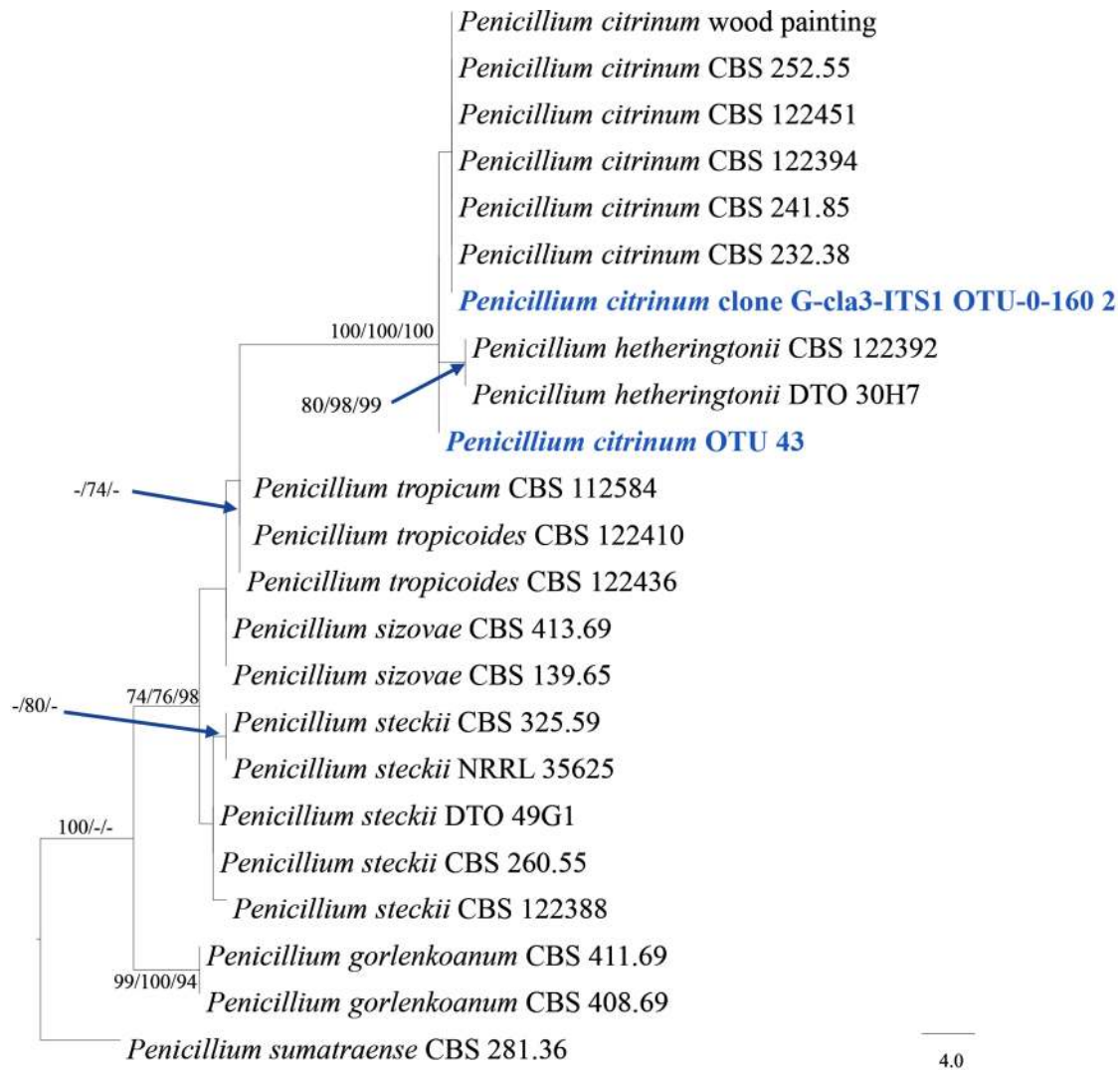


Fig. 3 Maximum parsimony phylogenetic tree of *Penicillium* sect. *Citrina* (ITS). The first and second sets of numbers at each node are MP and ML values, respectively (only BS values above 70% shown). The third set of at each node is Bayesian posterior

probabilities (only PP values above 90% shown). Strain numbers are indicated after species names. Sequences from environmental sample are in **blue bold**

(2016, in their supporting information, even though it remains obscure how they could relate the sequence to an old name that was never verified since it was mentioned by Saccardo!), while *X. schweinitzii* isolate 92092023 was published by Hsieh et al. (2010) and therefore represents an authentic specimen that was studied by experts. Thus, a misidentification may have been involved between the two species, because ITS gives insufficient information for this fungal group. In Fig. 8, the most identical to *X. schweinitzii* G-cla3-ITS2_OTU-0-069_9 is *X. schweinitzii* isolate 904, it however has 197 bp and that will definitely not be enough to differentiate them.

Linking multiple loci in mgDNA extracts

In DNA extracts, i.e. after cell disruption, only genes located on the same chromosome are physically linked. The usage of multiple genes for “species” delimitation usually relies on the assumption that DNA extract contains only DNA from a single species (i.e. gDNA). This assumption usually only applies for pure cultures, and even those may contain undetected species, such as fungicolous yeasts. We currently think that we know for several groups (but not for all) which genes are required to delimitate species in these groups. But this changed with time and is certainly still changing. For most fungal taxa, consecutive phylogenetic studies revealed more and more genes to be necessary for reconstruction of their phylogenetic

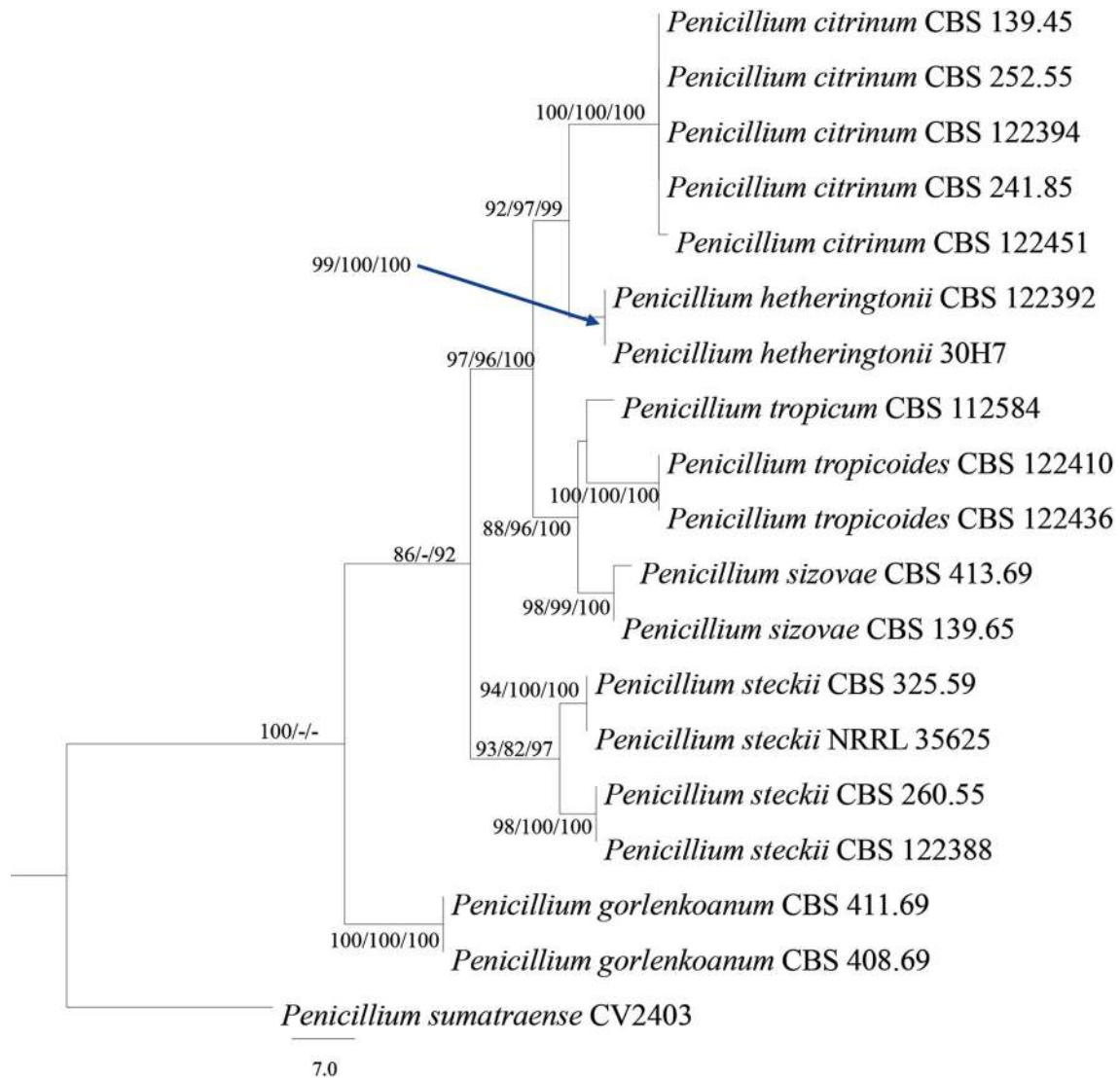


Fig. 4 Maximum parsimony phylogenetic tree of *Penicillium* sect. *Citrina* (TUB2). The first and second sets of numbers at each node are MP and ML values, respectively (only BS values above 70% shown). The third set of at each node is Bayesian posterior

probabilities (only PP values above 90% shown). Strain numbers are indicated after species names. There are no TUB2 sequence data available from environmental samples

relationships. In case the original DNA extract had been deposited, however, additional loci may be sequenced to fulfill emerging demands.

With regard to a type specimen consisting of mgDNA this is challenging. Different chromosomes of multiple species are mixed in mgDNA extracts. If a species is represented only by mgDNA, we are currently not aware of an approach to link multiple loci for species delimitation if these are positioned on different chromosomes. Assuming that subsequent analyses reveal that additional loci are required for proper phylogenetic resolution, it is only possible to identify these loci in a mgDNA-based type, if they are located on the same chromosome as the originally

sequenced loci. While this may already require the sequencing of the whole chromosome, it is currently not possible to assess the required data if the locus is located on another chromosome than the previously sequenced loci. Even if the information is theoretically there, we may not be able to assess it in the mgDNA based type specimen. Accordingly, an mgDNA based type specimen may only serve as appropriate reference for a species if all chromosomes of the represented species are assignable to that species.

In the long term sequence data of numerous whole metagenomes will be available. Once assembled to the chromosome level, correlation analyses of multiple

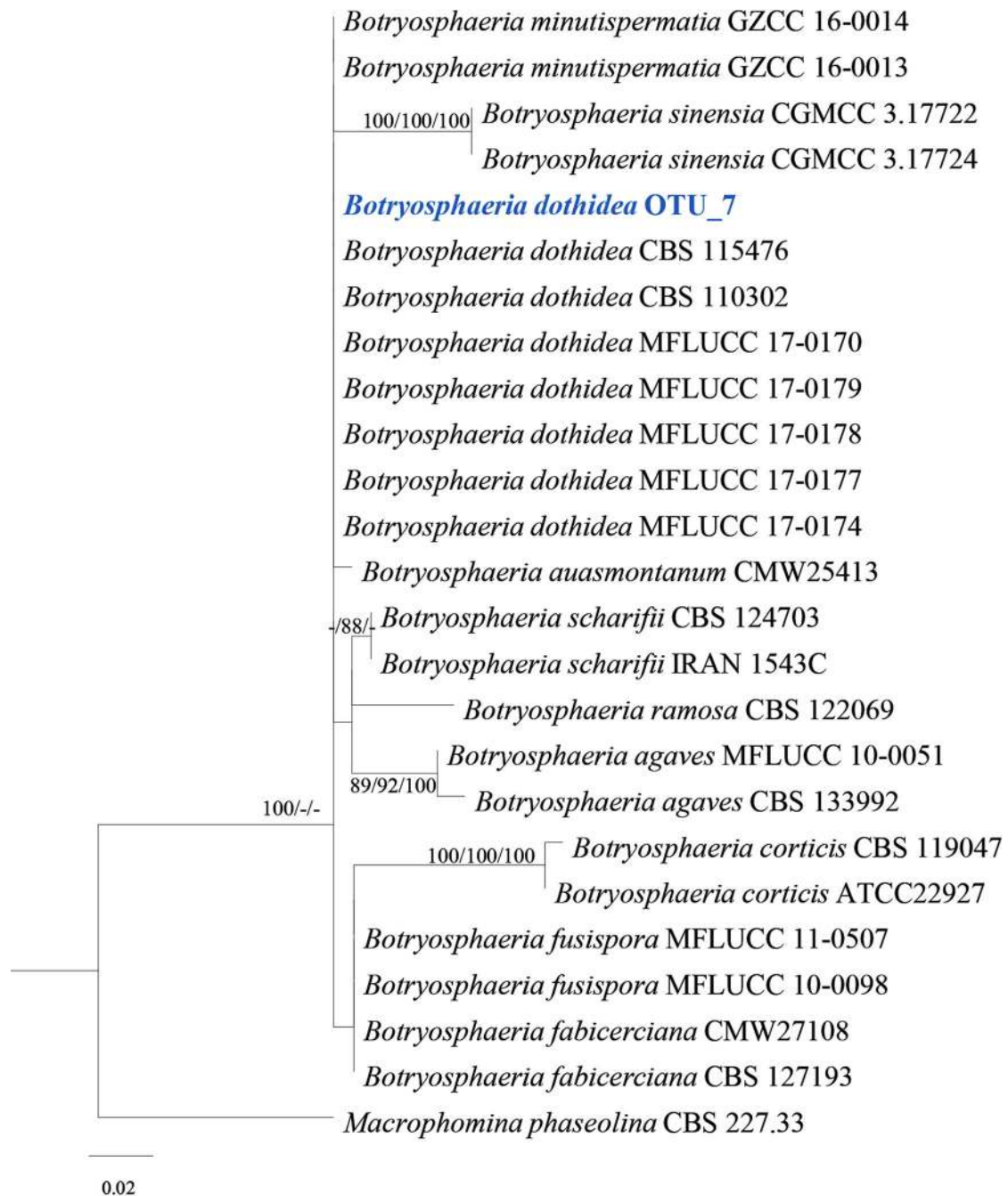


Fig. 5 RAxML maximum likelihood phylogenetic tree of *Botryosphaeria* (ITS). The first and second sets of numbers at each node are MP and ML values, respectively (only BS values above 70% shown). The third set of at each node is Bayesian posterior probabilities (only

PP values above 90% shown). Strain numbers are indicated after species names. Sequences from environmental sample are in **blue bold**

metagenomes will enable an assignment of chromosome sequences to species. However, such an assignment would require data beyond a single “mgDNA type” and would only be correlative, i.e. with a certain probability specified by statistical support values.

Conclusions and an alternative DNA-based system

Mycologists have studied and provided scientific names for novel fungal species with specimens-based holotypes for effective communication. Cultures and dried type specimens are preserved in various biodiversity repositories to

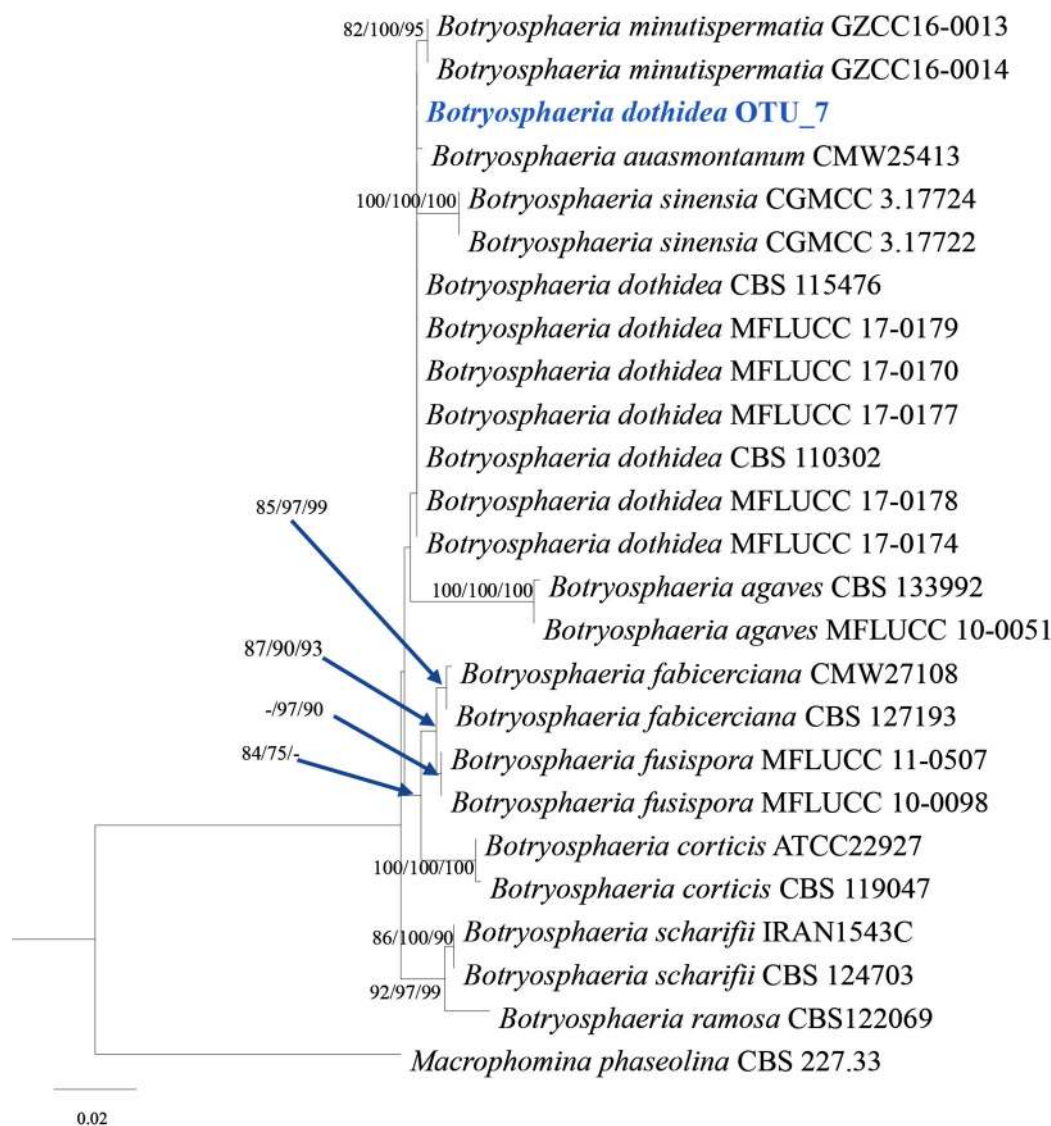


Fig. 6 RAxML maximum likelihood phylogenetic tree of *Botryosphaeria* (ITS and TEF1). The first and second sets of numbers at each node are MP and ML values, respectively (only BS values above 70% shown). The third set of at each node is Bayesian posterior

probabilities (only PP values above 90% shown). Strain numbers are indicated after species names. Sequences from environmental sample are in **blue bold**

facilitate future studies and re-examination of taxa. We have already witnessed how DNA sequencing has revolutionized taxonomy and has become the most appropriate and standard taxonomic tool to identify species. However as mycologists, we are still mostly convinced to use morphological characterization and supplement our taxonomy with DNA sequence data to resolve species, more reliable identification and establish natural relationships. We estimate that sooner or later, our sequencing strategies can become our “molecular microscope”, not in view of solely relying on DNA for identification, but to better complement morphology and assign taxa to any particular taxonomic rank.

There are some benefits of naming mgDNA especially if it would bring numerous dark data into the light (Ryberg and Nilsson 2018) and monitor species diversity. However without careful considerations, this can end up in disregard of appropriate nomenclatural issues with fungi and future taxonomic problems that can arise. There will be no morph to study, no cultures, and no phenotypic identification. If the DNA barcodes used in generating mgDNA which does not have counterparts in DNA databases, then it defeats the purpose to make any comparison. With morphological based studies, we compare like with like, but with mgDNA, there is often a totally different scenario. Another problem is that there are already numerous erroneous or fake sequences in databases. Furthermore, mgDNA strains will

- 1. [uncultured Xylaria genomic DNA sequence contains ITS2](#)
165 bp linear DNA
Accession: LT965594.1 GI: 1401584101
[BioProject](#) [Taxonomy](#)
[GenBank](#) [FASTA](#) [Graphics](#)
- 2. [uncultured Xylaria genomic DNA sequence contains ITS2](#)
151 bp linear DNA
Accession: LT965490.1 GI: 1401583827
[BioProject](#) [Taxonomy](#)
[GenBank](#) [FASTA](#) [Graphics](#)
- 3. [uncultured Xylaria genomic DNA sequence contains ITS2](#)
170 bp linear DNA
Accession: LT965349.1 GI: 1401583086
[BioProject](#) [Taxonomy](#)
[GenBank](#) [FASTA](#) [Graphics](#)
- 4. [uncultured Xylaria genomic DNA sequence contains ITS2](#)
153 bp linear DNA
Accession: LT965290.1 GI: 1401582636
[BioProject](#) [Taxonomy](#)
[GenBank](#) [FASTA](#) [Graphics](#)
- 5. [Uncultured Xylaria genomic DNA sequence contains ITS1_clone OTU_1764](#)
178 bp linear DNA
Accession: LT610486.1 GI: 1063413063
[Taxonomy](#)
[GenBank](#) [FASTA](#) [Graphics](#)
- 6. [Uncultured Xylaria clone HATFD14-91 internal transcribed spacer 1, partial sequence, 5.8S ribosomal RNA gene, complete sequence, and internal transcribed spacer 2, partial sequence](#)
379 bp linear DNA
Accession: KU762352.1 GI: 1091432258
[Taxonomy](#)
[GenBank](#) [FASTA](#) [Graphics](#) [ProSeq](#)
- 7. [Uncultured Xylaria genomic DNA sequence contains ITS1_5.8S rRNA gene ITS2_isolate Spoil](#)
453 bp linear DNA
Accession: LT547748.1 GI: 1018806863
[Taxonomy](#)
[GenBank](#) [FASTA](#) [Graphics](#)
- 8. [Uncultured Xylaria genes for 18S rRNA ITS1_5.8S rRNA ITS2_28S rRNA, partial and complete sequence, note: SMOTU61](#)
507 bp linear DNA
Accession: LCD15711.1 GI: 983169655
[PubMed](#) [Taxonomy](#)
[GenBank](#) [FASTA](#) [Graphics](#)
- 9. [Uncultured Xylaria genomic DNA sequence contains ITS2_clone HEZ0VMB01EUPB0](#)
163 bp linear DNA
Accession: LN912697.1 GI: 974862743
[Taxonomy](#)
[GenBank](#) [FASTA](#) [Graphics](#)
- 10. [Uncultured Xylaria genomic DNA sequence contains ITS2_clone HEZ0VMB01ESK7Z](#)
161 bp linear DNA
Accession: LN912699.1 GI: 974862705
[Taxonomy](#)
[GenBank](#) [FASTA](#) [Graphics](#)
- 11. [Uncultured Xylaria genomic DNA sequence contains ITS2_clone HEZ0VMB01ERHOS](#)
159 bp linear DNA
Accession: LN912637.1 GI: 974862653
[Taxonomy](#)
[GenBank](#) [FASTA](#) [Graphics](#)
- 12. [Uncultured Xylaria genomic DNA sequence contains ITS2_clone HEZ0VMB01EIT4S](#)
152 bp linear DNA
Accession: LN912478.1 GI: 974862522
[Taxonomy](#)
[GenBank](#) [FASTA](#) [Graphics](#)

Fig. 7 Representative strains of uncultured *Xylaria* available in GenBank

Description	Max score	Total score	Query cover	E value	Ident	Accession
<input type="checkbox"/> <i>Xylaria schweinitzii</i> clone G-ela3-ITS2_OTU-0-069_9 internal transcribed spacer 2 and large subunit ribosor	364	364	100%	4e-97	100%	KY592366.1
<input type="checkbox"/> <i>Xylaria schweinitzii</i> isolate 904 18S ribosomal RNA gene, partial sequence; internal transcribed spacer 1_5_1	359	359	100%	2e-95	99%	KP133472.1
<input type="checkbox"/> <i>Xylaria schweinitzii</i> isolate 1142 18S ribosomal RNA gene, partial sequence; internal transcribed spacer 1_5	359	359	100%	2e-95	99%	KP133471.1
<input type="checkbox"/> <i>Xylaria schweinitzii</i> isolate 1000 18S ribosomal RNA gene, partial sequence; internal transcribed spacer 1_5	359	359	100%	2e-95	99%	KP133455.1
<input type="checkbox"/> Fungal endophyte isolate 1091 18S ribosomal RNA gene, partial sequence; internal transcribed spacer 1_5	359	359	100%	2e-95	99%	EU686802.1
<input type="checkbox"/> <i>Xylaria schweinitzii</i> isolate 902 18S ribosomal RNA gene, partial sequence; internal transcribed spacer 1_5_1	355	355	100%	3e-94	99%	KP133460.1
<input type="checkbox"/> <i>Kretzschmaria aff. pavimentosa</i> voucher GAB010 small subunit ribosomal RNA gene, partial sequence; inte	353	353	100%	9e-94	99%	KY250387.1
<input type="checkbox"/> <i>Xylaria schweinitzii</i> isolate 972 18S ribosomal RNA gene, partial sequence; internal transcribed spacer 1_5_1	353	353	100%	9e-94	99%	KP133470.1
<input type="checkbox"/> <i>Xylaria schweinitzii</i> isolate 1016 18S ribosomal RNA gene, partial sequence; internal transcribed spacer 1_5	353	353	100%	9e-94	99%	KP133466.1
<input type="checkbox"/> <i>Xylaria schweinitzii</i> isolate 921 18S ribosomal RNA gene, partial sequence; internal transcribed spacer 1_5_1	353	353	100%	9e-94	99%	KP133464.1
<input type="checkbox"/> <i>Xylaria schweinitzii</i> isolate 949 18S ribosomal RNA gene, partial sequence; internal transcribed spacer 1_5_1	353	353	100%	9e-94	99%	KP133463.1
<input type="checkbox"/> <i>Xylaria schweinitzii</i> isolate 1140 18S ribosomal RNA gene, partial sequence; internal transcribed spacer 1_5	353	353	100%	9e-94	99%	KP133459.1
<input type="checkbox"/> <i>Xylaria schweinitzii</i> isolate 1106 18S ribosomal RNA gene, partial sequence; internal transcribed spacer 1_5	353	353	100%	9e-94	99%	KP133458.1
<input type="checkbox"/> <i>Xylaria schweinitzii</i> isolate R15 18S ribosomal RNA gene, partial sequence; internal transcribed spacer 1_5_1	353	353	100%	9e-94	99%	KP133457.1
<input type="checkbox"/> <i>Xylaria schweinitzii</i> isolate 1008 18S ribosomal RNA gene, partial sequence; internal transcribed spacer 1_5	353	353	100%	9e-94	99%	KP133454.1
<input type="checkbox"/> <i>Xylaria schweinitzii</i> isolate 935 18S ribosomal RNA gene, partial sequence; internal transcribed spacer 1_5_1	353	353	100%	9e-94	99%	KP133448.1
<input checked="" type="checkbox"/> <i>Xylaria ohiopoda</i> isolate 1081 18S ribosomal RNA gene, partial sequence; internal transcribed spacer 1_5_1	353	353	100%	9e-94	99%	KP133446.1
<input type="checkbox"/> <i>Xylaria schweinitzii</i> isolate FJ28 internal transcribed spacer 1, partial sequence; 5.8S ribosomal RNA gene f	353	353	100%	9e-94	99%	KJ572197.1
<input checked="" type="checkbox"/> <i>Xylaria schweinitzii</i> isolate 92092023 18S ribosomal RNA gene, partial sequence; internal transcribed space	353	353	100%	9e-94	99%	GU322463.1
<input type="checkbox"/> <i>Xylaria schweinitzii</i> voucher GAB205 small subunit ribosomal RNA gene, partial sequence; internal transcrib	348	348	100%	4e		
<input type="checkbox"/> <i>Xylaria schweinitzii</i> isolate 1059 18S ribosomal RNA gene, partial sequence; internal transcribed spacer 1_5	348	348	100%	4e		

Fig. 8 *Xalaria schweinitzii* clone G-ela3-ITS2_OTU-0-069_9 in Blast search shows similarity of different species

often not be deposited in the public domain collections. The integrity of mgDNA deposited can be questionable. With morph based specimens, one can go back, recollect samples, re-examined, re-evaluate nomenclature and classification. What can we do with mgDNA? Should we just bluntly accept a given name and classification with little possibility of scientific re-evaluation?

The present discussion goes back to the previous one on the introduction of an IFIN concept, when the issue with DNA based nomenclature has been brought up for the first

time and in retrospective the decision for a radical introduction made at the IBC in Melbourne has created lots of name changes. This has resulted in a lot of fruitful collaborations within the mycological community, and finally in a workable system that was built from a team effort of mycologists world-wide. However, for us, in retrospective it would have been much better to maintain the priority of the sexual morph, except in such cases as *Aspergillus* where the asexual morph is clearly more important, which would have afforded much less discussion and name

changes. In any case, there was no way to avoid this, thus we should accept mgDNA as holotypes once we have eliminated all possible shortfalls. Another way would be to include the DNA of the taxa that are known to occur in the respective habitat as a sort of positive control. The extent of the potential damage of implementation of DNA data as a type cannot be foreseen, but it could be very important. As mentioned above, if we use ITS only to assign a species name, some scientists would probably be tempted to erect a new species when we could not find a highly similar sequence in GenBank possibly because of erroneous sequences deposited. We strongly suggest to re-discuss the matter of using mgDNA as holotypes once whole genomes can be obtained from environmental samples, which may soon become feasible.

Several publications have shown serious errors in DNA sequences (we sometimes even suspected that we were dealing with fake sequences!) over the past decade. While one can argue that it does not matter if we add some more species during biodiversity assessments, the nomenclature of pathogens or otherwise practically important taxa should definitely not be messed up, but it would lead to a decrease in scientific quality standard. mgDNA evidently plays a significant role to discover potentially rare and elusive species but not directly in taxonomy *per se*. One way to avoid a further decline of good scientific standards might be to install a similar procedure as in case of bacterial taxonomy, that is naming a few journals that are allowed to publish new fungal taxa on DNA-based data (e.g. where the editorial boards are composed of capable specialists), but this will be very difficult to implement. After all, there is no restriction regarding the place of publication, and even if an irrational species concept is being rejected by the editors of ten or more mycological journals, it can still be published on the Internet.

To allow naming of species based on mgDNA for dealing with environmental data cannot be the reason to undermine all the results of the excellent work dealing with polythetic taxonomy which has been accomplished over the past years. Actually only the polythetic approach has led to a situation where we can now see clearly that ITS is less well-suited than certain protein-coding genes for species segregation in many fungal groups. Another hypothesis from Peršoh et al. (2010) and Peršoh (2013) is to give independent rules from the code for mgDNA, i.e. it would be not a real species name, but an “indication” that there might be something new (a new species) related to the taxon given in the name, or the name of the closest physical type appended by a number. This way a conflict with the code might be avoided, because the naming approach (and thus the resulting name) would not claim to follow the standards of the code. However, we think this would not work in cryptic species and other species which could not

be classified by ITS. We could of course live with a “*candidatus system*” such as the one outlined in the paper by de Beer et al. (2016) where the DNA based types are being flagged, but it must be carefully considered which criteria can apply to such a system. There are already some cases where it was regarded feasible to forego previously established species concepts, e.g. if newly discovered insect-associated and/or endophytic fungi were found to belong to a well-studied genus and could thus be recognised as new from a comparison of molecular data (e.g. Pažoutová et al. 2013), but we have to be aware that this does not really work in numerous phylogenetic lineages where almost no molecular data in closest species are extant. An additional way that the provisional names similar the ones generated by GenBank when sequences from new or unidentified species are submitted, like *Fungus* sp. MAN-2018.25, in which *Fungus* can be replaced by any genus name, MAN are the initials of the author of the sequence, 2018 the year of the submission of the sequence to the database, and 25 the species number. Such a system could be extended to higher rank taxa, by replacing “*fungus*” by the nearest known higher rank taxon. A database of all those names could be implemented to allow unambiguous and efficient communication about those taxa, without the negative effects of designating single-locus (ITS) DNA sequences as holotypes.

We conclude that taxonomy is impossible to manage if the nomenclature becomes uncertain. The accuracy of fungal identification and classification is needed (morphology together with molecular data) to understand morphological evolution, adaptation, epidemiology of fungal pathogens and in many other work areas. To allow the use of naming of mgDNA as holotypes currently may benefit a minority of mycologists, but not the majority of mycologists who work on fungal taxonomy and classification.

No approach is better than its counterparts. Traditional taxonomists have battled through a long way over centuries. We can still describe fungi without sequence data based on morphology alone (as we can see the characters). Although undesirable, it can be done. However, if we can describe species based only on DNA we are at a real risk of describing already named species. The disadvantage will be that for the DNA-based species we can never look at additional characters and we believe that mgDNA is still in its infancy and not a substitute for use as holotypes for the time being. We should not rush to spoil the scientific beauty of fungal taxonomy and disregard acquired knowledge.

Acknowledgements This project has received funding from the European Union’s Horizon 2020 research and innovation programme (RISE) under the Marie Skłodowska-Curie grant agreement No 645701, Project acronym “GoMyTri”; lead beneficiary Marc Stadler). We thank Jennifer Luangsa-ard, Pedro W. Crous and all

colleagues of the Board of the International Committee for the Taxonomy of Fungi (ICTF) for valuable discussions. This work was also supported by the development special funds of Shenzhen strategic emerging industries and future industries (201708021308) and the Shenzhen science and technology key project (JSGG20171013091238230).

Open Access This article is distributed under the terms of the Creative Commons Attribution 4.0 International License (<http://creativecommons.org/licenses/by/4.0/>), which permits unrestricted use, distribution, and reproduction in any medium, provided you give appropriate credit to the original author(s) and the source, provide a link to the Creative Commons license, and indicate if changes were made.

References

- Amend AS, Seifert KA, Bruns TD (2010) Quantifying microbial communities with 454 pyrosequencing: does read abundance count? *Mol Ecol* 19:5555–5565
- Anderson IC, Parkin PI (2007) Detection of active soil fungi by RTPCR amplification of precursor rRNA molecules. *J Microbiol Methods* 68:248–253
- Ariyawansa HA, Hawksworth DL, Hyde KD, Jones EBG, Maharachchikumbura SSN, Manamgoda DS, Thambugala KM, Udayanga D, Camporesi E, Daranagama A, Jayawardena R, Liu J-K, McKenzie EHC, Phookamsak R, Senanayake IC, Shivas RG, Tian Q, Xu J-C (2014) Epitypification and neotypification: guidelines with appropriate and inappropriate examples. *Fungal Divers* 69:57–91
- Ariyawansa HA, Hyde KD, Jayasiri SC, Buyck B, Chethana KWT, Dai DQ, Dai YC, Daranagama DA, Jayawardena RS, Lücking R, Ghobad-Nejhad M, Niskanen T, Thambugala KM, Voigt K, Zhao RL, Li GJ, Doilom M, Boonmee S, Yang ZL, Cai Q, Cui YY, Bahkali AH, Chen J, Cui BK, Chen JJ, Dayarathne MC, Dissanayake AJ, Ekanayaka AH, Hashimoto A, Hongsan S, Jones EBG, Larsson E, Li WJ, Li QR, Liu JK, Luo ZL, Maharachchikumbura SSN, Mapook A, McKenzie EHC, Norphanphou C, Konta S, Pang KL, Perera RH, Phookamsak R, Phukhamsakda C, Pinruan U, Randrianjohany E, Singtripop C, Tanaka K, Tian CM, Tibpromma Saowaluck, Abdel-Wahab Mohamed A, Wanasinghe Dhanushka N, Wijayawardene Nalin N, Zhang JF, Zhang H, Abdel-Aziz FA, Wedin M, Westberg M, Ammirati JF, Bulgakov Timur S, Lima DX, Callaghan TM, Callac P, Chang CH, Coca LF, Dal-Forno M, Dollhofer V, Fliiegerová K, Greiner K, Griffith GW, Ho HM, Hofstetter V, Jeewon R, Kang JC, Wen TC, Kirk PM, Kytövuori I, Lawrey JD, Xing J, Li H, Liu ZY, Liu XZ, Liimatainen K, Lumbsch TH, Matsumura M, Moncada B, Nuankaew S, Parnmen S, Santiago ALCMDA, Sommai S, Song Y, de Souza CAF, de Souza-Motta CM, Su HY, Suetrong S, Wang Y, Wei SF, Yuan HS, Zhou LW, Réblová M, Fournier J, Camporesi E, Luangsa-ard JJ, Tasanathai K, Khonsanit A, Thanakitpipattana D, Somrithipol S, Diederich P, Millanes AM, Common RS, Stadler M, Yan JY, Li XH, Lee HW, Nguyen TTT, Lee HB, Battistin E, Marsico O, Vizzini A, Vila J, Ercole E, Eberhardt U, Simonini G, Wen HA, Chen XH, Miettinen O, Spirin V, Hernawati (2015) Fungal diversity notes 111–252—taxonomic and phylogenetic contributions to fungal taxa. *Fungal Divers* 75:27–274
- Baber K, Ottob P, Kahlc T, Gossner MM, Wirthae C, Gminderf A, Bässlerg C (2016) Disentangling the effects of forest-stand type and dead-wood origin of the early successional stage on the diversity of wood-inhabiting fungi. *For Ecol Manag* 377:161–169
- Babos M, Halász K, Zagyva T, Zöld-Balogh Á, Szego D, Bratek Z (2011) Preliminary notes on dual relevance of ITS sequences and pigments in *Hygrocybe* taxonomy. *Persoonia* 26:99–107
- Badotti F, de Oliveira FS, Garcia CF, Vaz AB, Fonseca PL, Nahum LA, Oliveira G, Góes-Neto A (2017) Effectiveness of ITS and sub-regions as DNA barcode markers for the identification of Basidiomycota (Fungi). *BMC Microbiol* 17:42
- Baldrian P, Kolařík M, Štursová M, Kopecký J, Valášková V, Větrovský T, Zifčáková L, Snajdr J, Rídl J, Vlček C, Voříšková J (2012) Active and total microbial communities in forest soil are largely different and highly stratified during decomposition. *ISME J* 6:248–258
- Baral HO, Weber E, Gams W, Hagedorn G, Liu B, Liu X, Marson G, Marvanová L, Stadler M, Weiß M (2018) Generic names in the *Orbiliaceae* (Orbiliomycetes) and recommendations on which names should be protected or suppressed. *Mycol Prog* 17:5–31
- Blaser S, Prati D, Senn-Irlet B, Fischer M (2013) Effects of forest management on the diversity of deadwood-inhabiting fungi in Central European forests. *For Ecol Manag* 304:42–48
- Boddy L (2001) Fungal community ecology and wood decomposition processes in angiosperms: from standing tree to complete decay of coarse woody debris. *Ecol Bull* 49:43–56
- Boddy L, Hiscox J, Gilmartin EC, Johnston S, Heilmann-Clausen J (2017) Chapter 12 wood decay communities in angiosperm wood. In: Dighton J, White JF, Oudemans P (eds) *The fungal community*. CRC Press, Boca Raton, pp 169–190
- Brandrud TE, Lindstrom H, Marklund H, Melot J, Muskos S (1990) *Cortinarius* flora photographica, vol I. Cortinarius HB, Matfors
- Brandrud TE, Lindstrom H, Marklund H, Melot J, Muskos S (1992) *Cortinarius* flora photographica, vol II. Cortinarius HB, Matfors
- Brandrud TE, Lindstrom H, Marklund H, Melot J, Muskos S (1994) *Cortinarius* flora photographica (English version), vol II. Cortinarius HB, Matfors
- Brandrud TE, Lindstrom H, Marklund H, Melot J, Muskos S (1998) *Cortinarius* flora photographica (English version), Vol. 4. DOI, D18. Cortinarius HB, Matfors
- Brandrud TE, Lindström H, Marklund H, Melot J, Muskos S (2012) *Cortinarius* flora photographica, Vol. V (Swedish version). Cortinarius HB, Sweden
- Buée M, Reich M, Murat C, Morin E, Nilsson RH, Uroz S, Martin F (2009) 454 Pyrosequencing analyses of forest soils reveal an unexpectedly high fungal diversity. *New Phytol* 184:449–456
- Cai L, Hyde KD, Taylor PWJ, Weir BS, Waller J, Abang MM, Zhang JZ, Yang YL, Phouivong S, Liu ZY, Prihastuti H, Shivas RG, McKenzie EHC, Johnston PR (2009) A polyphasic approach for studying *Colletotrichum*. *Fungal Divers* 39:183–204
- Cannon PF, Damm U, Johnston PR, Weir BS (2012) *Colletotrichum*—current status and future directions. *Stud Mycol* 73:181–213
- Christen R (2008) Global sequencing: a review of current molecular data and new methods available to assess microbial diversity. *Microbes Environ* 23:253–268
- Damm U, O’Connell RJ, Groenewald JZ, Crous PW (2014) The *Colletotrichum destructivum* species complex—hemibiotrophic pathogens offorage and field crops. *Stud Mycol* 79:49–84
- Daranagama DA, Hyde KD, Sir EB, Thambugala KM, Tian Q, Samarakoon MC, McKenzie EHC, Jayasiri SC, Tibpromma S, Bhat JD, Liu X, Stadler M (2018) Towards a natural classification and backbone tree for *Graphostromataceae*, *Hypoxyalaceae*, *Lopodostomataceae* and *Xylariaceae*. *Fungal Divers* 88:1–165
- Dayarathne MC, Boonmee S, Braun U, Crous PW, Daranagama DA, Dissanayake AJ, Ekanayaka H, Jayawardena R, Jones EBG, Maharachchikumbura SSN, Perera RH, Phillips AJL, Stadler M, Thambugala KM, Wanasinghe DN, Zhao Q, Hyde KD, Jeewon R (2016) Taxonomic utility of old names in current fungal

- classification and nomenclature: conflicts, confusion & clarifications. *Mycosphere* 7:1622–1648
- de Beer ZW, Marinowitz S, Duong TA, Kim JJ, Rodrigues A, Wingfield MJ (2016) *Hawksworthiomyces* gen. nov. (Ophiostomatales) *Hawksworthiomyces* gen. nov. (Ophiostomatales), illustrates the urgency for a decision on how to name novel taxa known only from environmental nucleic acid sequences (ENAS). *Fungal Biol* 120:1323–1340
- den Bakker HC, Noordeloos ME (2005) A revision of European species of *Leccinum* Gray and notes on extralimital species. *Persoonia* 18:511–587
- Dettman JR, Harbinski FM, Taylor JW (2001) Ascospore morphology is a poor predictor of the phylogenetic relationships of *Neurospora* and *Gelasinospora*. *Fungal Genet Biol* 34:49–61
- Dissanayake AJ, Camporesi E, Hyde KD, Wei Z, Yan J, Li XH (2017) Molecular phylogenetic analysis reveals seven new *Diaporthe* species from Italy. *Mycosphere* 8:53–877
- Dissanayake AJ, Purahong W, Wubet T et al (2018) Direct comparison of culture-dependent and culture-independent molecular approaches reveal the diversity of fungal endophytic communities in stems of grapevine *Vitis vinifera*. *Fungal Divers* 90:85–107
- Divakar PK, Leavitt SD, Molina MC, Prado RD, Lumbsch HT, Crespo ANA (2016) A DNA barcoding approach for identification of hidden diversity in *Parmeliaceae* (Ascomycota): *Parmelia* sensu stricto as a case study. *Bot J Linn Soc* 180:21–29
- Duong LM, Jeewon R, Lumyong S, Hyde KD (2006) DGGE coupled with ribosomal DNA phylogenies reveal uncharacterized fungal phylotypes on living leaves of *Magnolia liliifera*. *Fungal Divers* 23:121–138
- Edgar RC, Haas BJ, Clemente JC, Quince C, Knight R (2011) UCHIME improves sensitivity and speed of chimera detection. *Bioinformatics* 27:2194–2200
- Ekanayaka AH, Ariyawansa HA, Hyde KD, Jones EGB, Daranagama DA, Phillips AJL, Hongsanan S, Jayasiri SC, Zhao Qi (2017) DISCOMYCETES: the apothecial representatives of the phylum Ascomycota. *Fungal Divers* 87:237–298
- Fournier J, Flessa F, Peršoh D, Stadler M (2011) Three new *Xylaria* species from southwestern Europe. *Mycol Prog* 10:33–52
- Frisvad JC, Samson RA (2004) Polyphasic taxonomy of *Penicillium* subgenus *Penicillium*. A guide to identification of food and airborne terverticillate *Penicillia* and their mycotoxins. *Stud Mycol* 49:1–174
- Frøslev TG, Matheny PB, Hibbett DS (2005) Lower level relationships in the mushroom genus *Cortinarius* (Basidiomycota, Agaricales): a comparison of RPB1, RPB2, and ITS phylogenies. *Mol Phyl Evol* 37:602–618
- Garnica S, Schön ME, Abarenkov K, Riess K, Liimatainen K, Niskanen T, Dima B, Soop K, Frøslev TG, Jeppesen TS, Peintner U, Kuhnert-Finkernagel R, Brandrud TE, Saar G, Oertel B, Ammirati JF (2016) Determining threshold values for barcoding fungi: lessons from *Cortinarius* (Basidiomycota), a highly diverse and widespread ectomycorrhizal genus. *FEMS Microbiol Ecol* 92:fiw045
- Grossart H-P, Wurzbacher C, James TY, Kagami M (2015) Discovery of dark matter fungi in aquatic ecosystems demands a reappraisal of the phylogeny and ecology of zoosporic fungi. *Fungal Ecol* 19:28–38
- Grube M, Baloch E, Lumbsch HT (2004) The phylogeny of *Porinaceae* (Ostropomycetidae) suggests a neotenic origin of perithecia in Lecanoromycetes. *Mycol Res* 108:1111–1118
- Guerreiro MA, Brachmann A, Begerow D, Peršoh D (2018) Transient leaf endophytes are the most active fungi in 1-year-old beech leaf litter. *Fungal Divers* 89:237–251
- Haas BJ, Gevers D, Earl AM, Feldgarden M, Ward DV, Giannoukos G, Ciulla D, Tabbaa D, Highlander SK, Sodergren E, Methé B, DeSantis TZ, Human Microbiome Consortium, Petrosino JF, Knight R, Birren BW (2011) Chimeric 16S rRNA sequence formation and detection in Sanger and 454-pyrosequenced PCR amplicons. *Genome Res* 21:494–504
- Hagen F, Khayhan K, Theelen B, Kolecka A, Polacheck I, Sionov E, Falk R, Parmen S, Lumbsch HT, Boekhout T (2015) Recognition of seven species in the *Cryptococcus gattii*/*Cryptococcus neoformans* species complex. *Fungal Genet Biol* 78:16–48
- Hall T (2011) BioEdit: an important software for molecular biology. *GERF Bull Biosci* 2:60–61
- Handelsman J, Rondon MR, Brady SF, Clardy J, Goodman RM (1998) Molecular biological access to the chemistry of unknown soil microbes: a new frontier for natural products. *Chem Biol* 5:R245
- Hansen K, Perry BA, Pfister DH (2005) Phylogenetic origins of two cleistothecial fungi, *Orbicula parietina* and *Lasiobolidium orbiculoides*, within the operculate discomycetes. *Mycologia* 97:1023–1033
- Harder CB, Læssøe T, Frøslev TG, Ekelund F, Rosendahl S, Kjølner R (2013) A three-gene phylogeny of the *Mycena pura* complex reveals 11 phylogenetic species and shows ITS to be unreliable for species identification. *Fungal Biol* 117:764–775
- Harvey P, Pagel M (1991) The comparative method in evolutionary biology. Oxford Series in Ecology and Evolution. Oxford University Press, Oxford
- Hawksworth DL, Hibbett DS, Kirk PM, Lücking R (2016) (308–310) Proposals to permit DNA sequence data to serve as types of names of fungi. *Taxon* 65:899–900
- Hebert PD, Cywinska A, Ball SL (2003) Biological identifications through DNA barcodes. *Proc R Soc Lond B Biol Sci* 270:313–321
- Heeger F, Bourne EC, Baschien C, Yurkov A, Bunk B, Spröer C, Overmann J, Mazzoni CJ, Monaghan MT (2018) Long-read DNA metabarcoding of ribosomal rRNA in the analysis of fungi from aquatic environments. *bioRxiv*. <https://doi.org/10.1101/283127>
- Helaly SE, Thongbai B, Stadler M (2018) Diversity of biologically active secondary metabolites from endophytic and saprotrophic fungi of the ascomycete order Xylariales. *Nat Prod Rep*, in press. <https://doi.org/10.1039/c8np00010g>
- Herder JE, Valentini A, Bellemain E, Dejean T, van Delft JJCW, Thomsen PF, Taberlet P (2014) Environmental DNA - a review of the possible applications for the detection of (invasive) species. Stichting RAVON, Nijmegen. Report 2013–104
- Hibbett DS, Binder M, Bischoff JF, Blackwell M, Cannon PF, Eriksson OE, Huhndorf S, James T, Kirk PM, Lücking R, Thorsten Lumbsch H, Lutzoni F, Matheny PB, McLaughlin DJ, Powell MJ, Redhead S, Schoch CL, Spatafora JW, Stalpers JA, Vilgalys R, Aime MC, Aptroot A, Bauer R, Begerow D, Benny GL, Castlebury LA, Crous PW, Dai YC, Gams W, Geiser DM, Griffith GW, Gueidan C, Hawksworth DL, Hestmark G, Hosaka K, Humber RA, Hyde KD, Ironside JE, Kõljalg U, Kurtzman CP, Larsson KH, Lichtwardt R, Longcore J, Miadlikowska J, Miller A, Moncalvo JM, Mozley-Standridge S, Oberwinkler F, Parmasto E, Reeb V, Rogers JD, Roux C, Ryvarden L, Sampaio JP, Schüssler A, Sugiyama J, Thorn RG, Tibell L, Untereiner WA, Walker C, Wang Z, Weir A, Weiss M, White MM, Winka K, Yao YJ, Zhang N (2007) A higher-level phylogenetic classification of the Fungi. *Mycol Res* 111:509–547
- Hibbett DS, Ohman A, Glotzer D, Nuhn M, Kirk P, Nilsson RH (2011) Progress in molecular and morphological taxon discovery in Fungi and options for formal classification of environmental sequences. *Fungal Biol Rev* 25:38–47
- Hongsanan S, Maharachchikumbura SSN, Hyde KD, Samarakoon MC, Jeewon R, Zhao Q, Al-Sadi AM, Bahkali AH (2017) An

- updated phylogeny of Sordariomycetes based on phylogenetic and molecular clock evidence. *Fungal Divers* 84:25–41
- Hoppe B, Purahong W, Wubet T, Jürgen K, Bauhus T, Arnstadt T, Hofrichter M, Buscot F, Krüger D (2016) Linking molecular deadwood-inhabiting fungal diversity and community dynamics to ecosystem functions and processes in Central European forests. *Fungal Divers* 77:367–379
- Hoshino YT (2012) Molecular analyses of soil fungal community—methods and applications. In: Soriano MCH (ed) *Soil health and land use management*. InTech, Osaka
- Hoshino YT, Matsumoto N (2008) Comparison of 18S rDNA primers for estimating fungal diversity in agricultural soils using polymerase chain reaction-denaturing gradient gel electrophoresis. *J Soil Sci Plant Nutr* 54:701–710
- Houbraken JAMP, Frisvad JC, Samson RA (2010) Taxonomy of *Penicillium citrinum* and related species. *Fungal Divers* 44:117–133
- Houbraken J, de Vries RP, Samson RA (2014) Modern taxonomy of biotechnologically important *Aspergillus* and *Penicillium* species. *Adv Appl Microbiol* 86:199–249
- Hsieh HM, Lin CR, Fang MJ, Rogers JD, Fournier J, Lechat C, Ju YM (2010) Phylogenetic status of *Xylaria* subgenus *Pseudoxyalaria* among taxa of the subfamily Xylarioideae (*Xylariaceae*) and phylogeny of the taxa involved in the subfamily. *Mol Phylogenet Evol* 54:957–969
- Hughes KW, Morris SD, Reboredo-Segovia A (2015) Cloning of ribosomal ITS PCR products creates frequent, non-random chimeric sequences – a test involving heterozygotes between *Gymnopus dichrous* taxa I and II. *MycKeys* 10:45–56
- Huxley JS (1957) The three types of evolutionary process. *Nature* 180:454–455
- Hyde KD, Zhang Y (2008) Epitypification: should we epitypify? *J Zhejiang Univ Sci* 9:842–846
- Hyde KD, Jones EBG, Liu JK, Ariyawansa H, Boehm E, Boonmee S, Braun U, Chomnunti P, Crous PW, Dai DQ, Diederich P, Dissanayake A, Doilom M, Doveri F, Hongsanan S, Jayawardena R, Lawrey JD, Li YM, Liu Y-X, Lücking R, Monkai J, Muggia L, Nelsen MP, Pang KL, Phookamsak R, Senanayake IC, Shearer CA, Suetrong S, Tanaka K, Thambugala KM, Wijayawardene NN, Wikee S, Wu HX, Zhang Y, Aguirre-Hudson B, Alias SA, Aptroot A, Bahkali AH, Bezerra JL, Bhat DJ, Camporesi E, Chukeatirote E, Gueidan C, Hawksworth DL, Hirayama K, De Hoog S, Kang JC, Knudsen K, Li WJ, Li XH, Liu ZY, Mapook A, McKenzie EHC, Miller AN, Mortimer PE, Phillips AJL, Raja HA, Scheuer C, Schumm F, Taylor JE, Tian Q, Tibpromma S, Wanasinghe DN, Wang Y, Xu JC, Yacharoen S, Yan JY, Zhang M (2013) Families of Dothideomycetes. *Fungal Divers* 63:1–313
- Hyde KD, Nilsson RH, Alias SA, Ariyawansa HA, Blair JE, Cai L, de Cock AWAM, Dissanayake AJ, Glockling SL, Goonasekara ID, Gorczak M, Hahn M, Jayawardena RS, van Kan JAL, Laurence MH, Levesque CA, Li XH, Liu JK, Maharachchikumbura SSN, Manamgoda DS, Martin FN, McKenzie EHC, McTaggart AR, Mortimer PE, Nair PVR, Pawłowska J, Rintoul TL, Shivas RG, Spies CFI, Summerell BA, Taylor PWJ, Terhem RB, Udayanga D, Vaghefi N, Walther G, Wilk M, Wrzosek M, Xu JC, Yan JY, Zhou N (2014) One stop shop: backbones trees for important phytopathogenic genera: I. *Fungal Divers* 67:21–125
- Hyde KD, Hongsanan S, Jeewon R, Bhat DJ, McKenzie EHC, Jones EBG, Phookamsak R, Ariyawansa HA, Boonmee S, Zhao Q, Abdel-Aziz FA, Abdel-Wahab MA, Banmai S, Chomnunti P, Cui BK, Daranagama DA, Das K, Dayarathne MC, de Silva NI, Dissanayake AJ, Doilom M, Ekanayaka AH, Gibertoni TB, Goes-Neto A, Huang SK, Jayasiri SC, Jayawardena RS, Konta S, Lee HB, Li WJ, Lin CG, Liu JK, Lu YZ, Luo ZL, Manawasinghe IS, Manimohan P, Mapook A, Niskanen T, Norphanphou C, Papizadeh M, Perera RH, Phukhamsakda C, Richter C, de Santiago ALCMA, Drechsler-Santos ER, Senanayake IC, Tanaka K, Tennakoon TMD, Thambugala KM, Tian Q, Tibpromma S, Thongbai B, Vizzini A, Wanasinghe DN, Wijayawardene NN, Wu HX, Yang J, Zeng XY, Zhang H, Zhang JF, Bulgakov TS, Camporesi E, Bahkali AH, Amoozegar AM, Araujo-Neta LS, Ammirati JF, Baghela A, Bhatt RP, Bojantchev S, Buyck B, da Silva GA, de Lima CLF, de Oliveira RJV, de Souza CAF, Dai YC, Dima B, Duong TT, Ercole E, Mafalda-Freire F, Ghosh A, Hashimoto A, Kamolhan S, Kang JC, Karunarathna SC, Kirk PM, Kytovuori I, Lantieri A, Liimatainen K, Liu ZY, Liu XZ, Lücking R, Medardi G, Mortimer PE, Nguyen TTT, Promptutha I, Raj KNA, Reck MA, Lumyong S, Shahzadeh-Fazeli SA, Stadler M, Soudi MR, Su HY, Takahashi T, Tangthirasun N, Uniyal P, Wang Y, Wen TC, Xu JC, Zhang ZK, Zhao YC, Zhou JZ, Zhu L (2016) Fungal diversity notes 367–490: taxonomic and phylogenetic contributions to fungal taxa. *Fungal Divers* 80:1–270
- Hyde KD, Maharachchikumbura SSN, Hongsanan S, Samarakoon MC, Lücking R, Pem D, Harishchandra D, Jeewon R, Zhao RL, Xu JC, Liu JK, Al-Sadi AM, Bahkali AH, Elgorban AM (2017a) The ranking of fungi—a tribute to David L. Hawksworth on his 70th birthday. *Fungal Divers* 84:1–23
- Hyde KD, Norphanphou C, Abreu VP, Bazzicalupo A, Chethana KT, Clericuzio M, Dayarathne MC, Dissanayake AJ, Ekanayaka AH, He MQ, Hongsanan S, Huang SK, Jayasiri SC, Jayawardena RS, Karunarathna A, Konta S, Kušan I, Lee H, Li J, Lin CG, Liu NG, Lu YZ, Luo ZL, Manawasinghe IS, Mapook A, Perera RH, Phookamsak R, Phukhamsakda C, Siedlecki I, Soares AM, Tennakoon D, Tian Q, Tibpromma S, Wanasinghe DN, Xiao YP, Yang J, Zeng XY, Abdel-Aziz FA, Li WJ, Senanayake IC, Shang QJ, Daranagama DA, de Silva NI, Thambugala KM, Abdel-Wahab MA, Bahkali AH, Berbee ML, Boonmee S, Bhat DJ, Bulgakov TS, Buyck B, Camporesi E, Castaneda-Ruiz RF, Chomnunti P, Doilom M, Dovana F, Gibertoni TB, Jadan M, Jeewon R, Jones EBG, Kang JC, Karunarathna SC, Lim YW, Liu JK, Liu ZY, Plautz HL Jr, Lumyong S, Maharachchikumbura SSN, Matocec N, McKenzie EHC, Mesic A, Miller D, Pawłowska J, Pereira OL, Promptutha I, Romero AI, Ryvarde L, Su HY, Suetrong S, Tkalec Z, Vizzini A, Wen TC, Wisitrassameewong K, Wrzosek M, Xu JC, Zhao Q, Zhao RL, Mortimer P (2017b) Fungal diversity notes 603–708: taxonomic and phylogenetic notes on genera and species. *Fungal Divers* 87:1–235
- Jayawardena RS, Hyde KD, Damm U, Cai L, Liu M, Li XH, Zhang W, Zhao WS, Yan JY (2016) Notes on currently accepted species of *Colletotrichum*. *Mycosphere* 7:1192–1260
- Jayawardena RS, Hyde KD, Chethana KWT, Daranagama DA, Dissanayake AJ, Goonasekara ID, Manawasinghe IS, Mapook A, Jayasiri SC, Karunarathne A, Li C-G, Phukhamsakda C, Senanayake IC, Wanasinghe DN, Camporesi E, Bulgakov TS, Li XH, Liu M, Zhang W, Yan JY (2018a) *Mycosphere Notes* 102–168: saprotrophic fungi on *Vitis* in China, Italy, Russia and Thailand. *Mycosphere* 9:1–114
- Jayawardena RS, Purahong W, Zhang W, Wubet T, Li XH, Liu M, Zhao W, Hyde KD, Liu JH, Yan JY (2018b) Biodiversity of fungi on *Vitis vinifera* L. revealed by traditional and high-resolution culture-independent approaches. *Fungal Divers* 90:1–84
- Jeewon R, Hyde KD (2016) Establishing species boundaries and new taxa among fungi: recommendations to resolve taxonomic ambiguities. *Mycosphere* 7:1669–1677
- Jeewon R, Cai L, Zhang K, Hyde KD (2003) *Dyrithiopsis lakefuxianensis* gen et sp. nov. from Fuxian Lake, Yunnan, China and notes on the taxonomic confusion surrounding *Dyrithium*. *Mycologia* 95:911–920

- Jeewon R, Wanasinghe DN, Rampadaruth S, Puchooa D, Li-Gang Zhou, Ai-Rong Liu, Hong-Kai Wang (2017) Nomenclatural and identification pitfalls of endophytic mycota based on DNA sequence analyses of ribosomal and protein genes phylogenetic markers: a taxonomic dead end? *Mycosphere* 8:1802–1817
- Johannesson H, Stenlid J (2003) Molecular markers reveal genetic isolation and phylogeography of the S and F intersterility groups of the wood-decay fungus *Heterobasidion annosum*. *Mol Phylogenet Evol* 29:94–101
- Jumpponen A (2007) Soil fungal communities underneath willow canopies on a primary successional glacier forefront: rDNA sequence results can be affected by primer selection and chimeric data. *Microb Ecol* 53:233–246
- Kamil FH, Saeed EE, Tarabily KAEI, AbuQamar S (2018) Biological Control of Mango Dieback Disease Caused by *Lasiodiplodia theobromae* Using *Streptomyces* and non-streptomycete Actinobacteria in the United Arab Emirates. *Front Microbiol* 9(289)
- Katoh K, Standley DM (2013) MAFFT multiple sequence alignment software version 7: improvements in performance and usability. *Mol Biol Evol* 30:772–780
- Kos M, Tollervey D (2010) Yeast pre-rRNA processing and modification occur cotranscriptionally. *Mol Cell* 37:809–820
- Krauss G, Sridhar KR, Jung K, Wennrich R, Ehrman J, Barlocher F (2003) Aquatic hyphomycetes in polluted groundwater habitats of central Germany. *Microb Ecol* 45:329–339
- Kruse J, Choi YJ, Thines M (2017) New smut-specific primers for the ITS barcoding of Ustilaginomycotina. *Mycol Prog* 16:213–221
- Kubartová A, Ottosson E, Dahlberg A, Stenlid J (2012) Patterns of fungal communities among and within decaying logs, revealed by 454 sequencing. *Mol Ecol* 21:4514–4532
- Kumar TKA, Healy R, Spatafora JW, Blackwell M, McLaughlin DJ (2012) *Orbilia ultrastructure*, character evolution and phylogeny of Pezizomycotina. *Mycologia* 104:462–476
- Kuninaga S, Tomohide N, Takeuchi T (1997) Sequence variation of the rDNA ITS regions within and between anastomosis groups in *Rhizoctonia solani*. *Curr Genet* 32:237–243
- Lategan MJ, Torpy FR, Newby S, Stephenson S, Hose GC (2012) Fungal diversity of shallow aquifers in Southeastern Australia. *Geomicrobiol J* 29:352–361
- Levy-Booth D, Campbell R, Gulden R, Hart M, Powell J, Klironomos J, Pauls K, Swanton C, Trevors J, Dunfield K (2007) Cycling of extracellular DNA in the soil environment. *Soil Biol Biochem* 39:2977–2991
- Li Y, Hyde KD, Jeewon R, Cai L, Vijaykrishna D, Zhang KQ (2005) Phylogenetics and evolution of nematode-trapping fungi (Orbiliales) estimated from nuclear and protein coding genes. *Mycologia* 97:1034–1046
- Li GJ, Hyde KD, Zhao RN, Hongsanan S, Abdel-Aziz FA, AbdelWahab MA, Alvarado P, Alves-Silva G, Ammirati JF, Ariyawansa HA, Baghela A, Bahkali AH, Beug M, Bhat DJ, Bojantchev D, Boonpratuang T, Bulgakov TS, Camporesi E, Boro MC, Ceska O, Chakraborty D, Chen JJ, Chethana KWT, Chomnunti P, Consiglio G, Cui BK, Dai DQ, Dai YC, Daranagama DA, Das K, Dayarathne MC, Crop ED, De Oliveira RJV, de Souza CAF, de Souza JI, Dentinger BTM, Dissanayake AJ, Doilom M, Drechsler-Santos ER, Ghobad-Nejhad M, Gilmore SP, Goes-Neto A, Gorczak M, Haitjema GH, Hapuarachchi KK, Hashimoto A, He MQ, Henske JK, Hirayama K, Iribarren MJ, Jayasiri SC, Jayawardena RS, Jeon SJ, Jeronimo GH, Jesus AL, Jones EBG, Kang JC, Karunarathna SC, Kirk PM, Konta S, Kuhnert E, Langer E, Lee HS, Lee HB, Li WJ, Li XH, Liimatainen K, Lima DX, Lin CG, Liu JK, Liu XZ, Liu ZY, Luangsa-ard JJ, Lücking R, Lumbsch HT, Lumyong S, Leano EM, Marano AV, Matsumura M, McKenzie EHC, Mongkol-samrit S, Mortimer PE, Nguyen TTT, Niskanen T, Norphanphoun C, O'Malley MA, Parnmen S, Pawłowska J, Perera RH, Phookamsak R, Phukhamsakda C, Pires-Zottarelli CLA, Raspé O, Reck MA, Rocha SCO, de Santiago ALCMA, Senanayake IC, Setti L, Shang QJ, Singh SK, Sir EB, Solomon KV, Song J, Srikitkulchai P, Stadler M, Suetrong S, Takahashi H, Takahashi T, Tanaka K, Tang LP, Thambugala KM, Thanakitpipattana D, Theodorou MK, Thongbai B, Thummarukcharoen T, Tian Q, Tibpromma S, Verbeken A, Vizzini A, Vlasak J, Voigt K, Wanasinghe DN, Wang Y, Weerakoon G, Wen HA, Wen TC, Wijayawardene NN, Wongkanoun S, Wrzosek M, Xiao YP, Xu JC, Yan JY, Yang J, Yang SD, Hu Y, Zhang JF, Zhao J, Zhou LW, Peršoh D, Phillips AJL, Maharachchikumbura SSN (2016) Fungal divers notes 253–366: taxonomic and phylogenetic contributions to fungal taxa. *Fungal Divers* 78:1–237
- Liew ECY, Aptroot A, Hyde KD (2000) Phylogenetic significance of the pseudoparaphyses in Loculoascomycete taxonomy. *Mol Phylogenet Evol* 16:392–402
- Lindahl BD, Nilsson RH, Tedersoo L, Abarenkov K, Carlsen T, Kjoller R, Kõljalg U, Pennanen T, Rosendahl S, Stenlid J, Kauterud H (2013) Fungal community analysis by high-throughput sequencing of amplified markers – a user's guide. *New Phytol* 199:288–299
- Liu YJ, Hall BD (2004) Body plan evolution of ascomycetes, as inferred from an RNA polymerase II, phylogeny. *Proc Natl Acad Sci USA* 101:4507–4512
- Liu JK, Hyde KD, Jones EBG, Ariyawansa HA, Bhat JD, Boonmee S, Maharachchikumbura SSN, McKenzie EHC, Phookamsak R, Phukhamsakda C, Shenoy BD, Abdel-Wahab MA, Buyck B, Chen J, Chethana KWT, Singtripop C, Dai DQ, Dai YC, Daranagama DA, Dissanayake AJ, Doilom M, D'souza MJ, Fan XL, Goonasekara ID, Hirayama K, Hongsanan S, Jayasiri SC, Jayawardena RS, Karunarathana SC, Li WJ, Mapook A, Norphanphoun C, Pang KL, Perera RH, Peršoh D, Pinruan U, Senanayake IC, Somrithipol S, Suetrong S, Tanaka K, Thambugala KM, Tian Q, Tibpromma S, Udayanga D, Wuayawardene NN, Wanasinghe D, Wisitrassameewong K, Zeng XY, Abdel-Aziz FA, Adamčík S, Bahkali AH, Boonyuen N, Bulgakov T, Callac P, Chomnunti P, Greiner K, Hashimoto A, Hofstetter V, Kang JC, Lewis D, Li XL, Liu XX, Liu ZY, Matsumura M, Mortimer PE, Rambold G, Randrianjohany E, Sato G, Sriindrasutdhi V, Tian CM, Verbeken A, Von Brackel W, Wang Y, Wen TC, Xu JC, Yan JY, Zhao RL, Camporesi E (2015) Fungal diversity notes 1–110: taxonomic and phylogenetic contributions to fungal species. *Fungal Divers* 72:1–197
- Liu JK, Hyde KD, Jeewon R, Phillips AJL, Maharachchikumbura SSN, Ryberg M, Liu ZY, Zhao Q (2017) Ranking higher taxa using divergence times: a case study in Dothideomycetes. *Fungal Divers* 84:75–99
- Lücking R, Dal-Forno M, Sikaroodi M, Gillevet PM, Bungartz F, Moncada B, Yáñez-Ayabaca A, Chaves JL, Coca LF, Lawrey JD (2014) A single macrolichen constitutes hundreds of unrecognized species. *Proc Natl Acad Sci* 111:11091–11096
- Maas JL, Uecker FA (1984) *Botryosphaeria dothidea* canker of thornless blackberry. *Plant Dis* 68:720–726
- McNeill J, Barrie FR, Brundet HM, Demoulin V, Hawksworth DJ, Marhold K, Nicolson DH, Prado J, Silva PC, Skog JE, Wiersma JH, Turland NJ (2006) International code of botanical nomenclature (Vienna Code) adopted by the Seventh International Botanical Congress Vienna, Austria, July 2005. A.R.G. Gantner Velag, Ruggell, p 568
- McNeill J, Barrie FR, Buck WR, Demoulin V, Greuter W, Hawksworth DL, Herendeen PS, Knapp S, Marhold K, Prado J, Reine PV, Smith GF, Wiersma JH, Turland NJ (2012) International Code of Nomenclature for algae, fungi and plants (*Melbourne Code*) adopted by the Eighteenth International Botanical Congress Melbourne, Australia, July 2011. Publ. 2012. Regnum

- Vegetabile 154. Koeltz Scientific Books. ISBN 978-3-87429-425-6
- Michailides TJ (1991) Pathogenicity, distribution, sources of inoculum, and infection courts of *Botryosphaeria dothidea* on pistachio. *Phytopathology* 81:566–573
- Mitchell JI, Zuccaro A (2006) Sequences, the environment and fungi. *Mycologist* 20:62–74
- Mullineux T, Hausner G (2009) Evolution of rDNA ITS1 and ITS2 sequences and RNA secondary structures within members of the fungal genera *Grossmannia* and *Leptographium*. *Fungal Genet Biol* 46:855–867
- Nara K (2006) Pioneer dwarf willow may facilitate tree succession by providing late colonizers with compatible ectomycorrhizal fungi in a primary successional volcanic desert. *New Phytol* 171:187–198
- Nawaz A, Purahong W, Lehmann R, Herrmann M, Küsel K, Totsche KU, Buscot F, Wubet T (2016) Superimposed pristine limestone aquifers with marked hydrochemical differences exhibit distinct fungal communities. *Front Microbiol* 7:666
- Nawaz A, Purahong W, Lehmann R, Herrmann M, Totsche KU, Küsel K, Wubet T, Buscot F (2018) First insights into the living groundwater mycobiome of the terrestrial biogeosphere. *Water Res* (in revision)
- Nilsson RH, Kristiansson E, Ryberg M, Hallenberg N, Larsson K-H (2008) Intraspecific ITS variability in the kingdom Fungi as expressed in the international sequence databases and its implications for molecular species identification. *Evol Bioinform Online* 4:193
- Nilsson RH, Tedersoo L, Lindahl BD, Kjølner R, Carlsen T, Quince C, Abarenkov K, Pennanen T, Stenlid J, Bruns T, Larsson KH, Kõljalg U, Kauterud H (2011) Towards standardization of the description and publication of next-generation sequencing datasets of fungal communities. *New Phytol* 191:314–318
- Nylander JAA (2004) MrModeltest 2.0. Program distributed by the author. Evolutionary Biology Centre, Uppsala University
- O'Brien BL, Parrent JL, Jackson JA, Moncalvo JM, Vilgalys R (2005) Fungal community analysis by large-scale sequencing of environmental samples. *J Appl Environ Microbiol* 71:5544–5550
- O'Donnell K, Kistler HC, Tacke BK, Casper HH (2000) Gene genealogies reveal global phylogeographic structure and reproductive isolation among lineages of *Fusarium graminearum*, the fungus causing wheat scab. *Proc Natl Acad Sci USA* 97:7905–7910
- O'Donnell K, Sutton DA, Rinaldi MG, Magnon KC, Cox PA, Revankar SG, Sanche S, Geiser DM, Juba JH, van Burik JAH, Padhye A, Anaissie EJ, Francesconi A, Walsh TJ, Robinson JS (2004) Genetic diversity of human pathogenic members of the *Fusarium oxysporum* complex inferred from multilocus DNA sequence data and amplified fragment length polymorphism analyses: evidence for the recent dispersion of a geographically widespread clonal lineage and nosocomial origin. *J Clin Microbiol* 42:5109–5120
- O'Donnell K, Cigelnik E (1997) Two divergent intragenomic rDNA ITS2 types within a monophyletic lineage of the fungus *Fusarium* are nonorthologous. *Mol Phylogenet Evol* 7:103–116
- Orihara T, Lebel T, Ge ZW, Smith ME, Maekawa N (2016) Evolutionary history of the sequestrate genus *Rossbeevera* (*Boletaceae*) reveals a new genus *Turmalinea* and highlights the utility of ITS minisatellite-like insertions for molecular identification. *Persoonia* 37:173–198
- Page RDM (2016) DNA barcoding and taxonomy: dark taxa and dark texts. *Phil Trans R Soc B* 371:20150334
- Parr CS, Guralnick R, Cellinese N, Page RD (2012) Evolutionary informatics: unifying knowledge about the diversity of life. *Trends Ecol Evol* 27:94–103
- Pažoutová S, Follert S, Bitzer J, Keck M, Surup F, Šrůtka P, Holuša J, Stadler M (2013) A new endophytic insect-associated *Daldinia* species, recognised from a comparison of secondary metabolite profiles and molecular phylogeny. *Fungal Divers* 60:107–123
- Peršoh D (2013) Factors shaping community structure of endophytic fungi—evidence from the *Pinus-Viscum*-system. *Fungal Divers* 60:55–69
- Peršoh D (2015) Plant-associated fungal communities in the light of meta'omics. *Fungal Divers* 75:1–25
- Peršoh D, Melcher M, Graf K, Fournier J, Stadler M, Rambold G (2009) Molecular and morphological evidence for the delimitation of *Xylaria hypoxylon*. *Mycologia* 101:256–268
- Peršoh D, Melcher M, Flessa F, Rambold G (2010) First fungal community analyses of endophytic ascomycetes associated with *Viscum album* ssp. *austriacum* and its host *Pinus sylvestris*. *Fungal Biol* 114:585–596
- Peršoh D, Stolle N, Brachmann A, Begerow D, Rambold G (2018) Fungal guilds are evenly distributed along a vertical spruce forest soil profile while individual fungi show pronounced niche partitioning. *Mycol Progress*, in press. <https://doi.org/10.1007/s11557-018-1405-6>
- Phillips AJL, Alves A, Abdollahzadeh J, Slippers B, Wingfield MJ, Groenewald JZ, Crous PW (2013) The *Botryosphaeriaceae*: genera and species known from culture. *Stud Mycol* 76:51–167
- Pietramellara G, Ascher J, Borgogni F, Ceccherini MT, Guerri G, Nannipieri P (2009) Extracellular DNA in soil and sediment: fate and ecological relevance. *Biol Fertil Soils* 45:219–235
- Porazinska DL, Giblin-Davis RM, Sung W, Thomas WK (2012) The nature and frequency of chimeras in eukaryotic metagenetic samples. *J Nematol* 44:8–25
- Proctor RH, McCormick SP, Kim HS, Cardoza RE, Stanley AM, Lindo L, Kelly A, Brown DW, Lee T, Vaughan MM, Alexander NJ (2018) Evolution of structural diversity of trichothecenes, a family of toxins produced by plant pathogenic and entomopathogenic fungi. *PLoS Pathog* 14:e1006946
- Prosser JI, Bohannan BJM, Curtis TP, Ellis RJ, Firestone MK, Freckleton RP, Green JL, Green LE, Killham K, Lennon JJ, Osborn AM, Solan M, van der Gast CJ, Young JP (2007) The role of ecological theory in microbial. *Nat Rev Microbiol* 5:384–392
- Purahong W, Krüger D (2012) A better understanding of functional roles of fungi in the decomposition process: using precursor rRNA containing ITS regions as a marker for the active fungal community. *Ann For Sci* 69:659–662
- Purahong W, Wubet T, Lentendu G, Schloter M, Pecyna MJ, Kapturska D, Hofrichter M, Krüger D, Buscot F (2016) Life in leaf litter: novel insights into community dynamics of bacteria and fungi during litter decomposition. *Mol Ecol* 25:4059–4074
- Purahong W, Pietsch KA, Lentendu G, Schöps R, Bruelheide H, Wirth C, Buscot F, Wubet T (2017) Characterization of unexplored deadwood mycobiome in highly diverse subtropical forests using culture-independent molecular technique. *Front Microbiol* 8:574
- Purahong W, Wubet T, Kahl T, Arnstadt T, Hoppe B, Lentendu G, Baber K, Rose T, Kellner H, Hofrichter M, Bauhus J, Krüger D, Buscot F (2018a) Increasing N deposition impacts neither diversity nor functions of deadwood-inhabiting fungal communities, but adaptation and functional redundancy ensure ecosystem function. *Environ Microbiol* 20:1693–1710
- Purahong W, Wubet T, Krüger D, Buscot F (2018b) Molecular evidence strongly supports deadwood-inhabiting fungi exhibiting unexpected tree species preferences in temperate forests. *ISME J* 12:289–295
- Rajala T, Peltoniemi M, Hantula J, Mäkipää R, Pennanen T (2011) RNA reveals a succession of active fungi during the decay of Norway spruce logs. *Fungal Ecol* 4:437–448

- Rampadarath S, Bandhoa K, Puchooa D, Jeewon R, Bal S (2018) Metatranscriptomics analysis of mangroves habitats around Mauritius. *World J Microbiol Biotechnol* 34:59
- Rayner ADM, Boddy L (1988) Fungal decomposition of wood: its biology and ecology. Wiley, New York
- Reeder J, Knight R (2009) The “rare biosphere”: a reality check. *Nat Methods* 6:636–637
- Risse-Buhl U, Herrmann M, Lange P, Akob DM, Pizani N, Schönborn W, Totsche KU, Küsel K (2013) Phagotrophic protist diversity in the groundwater of a karstified aquifer - morphological and molecular analysis. *J Eukaryot Microbiol* 60:467–479
- Rodríguez RJ, White JFW Jr, Arnold AE, Redman RS (2009) Fungal endophytes: diversity and functional roles. *New Phytol* 182:314–330
- Ronquist F, Huelsenbeck JP (2003) MrBayes 3: bayesian phylogenetic inference under mixed models. *Bioinformatics* 19:1572–1574
- Rousk J, Bååth E, Brookes PC, Lauber CL, Lozupone C, Caporaso JG, Knight R, Fierer N (2010) Soil bacterial and fungal communities across a pH gradient in an arable soil. *ISME J* 4:1340–1351
- Rumbos IC (1987) Twig dieback of walnut trees induced by *Botryosphaeria ribis*. *Plant Pathol* 36:602–605
- Ryberg M, Nilsson RH (2018) New light on names and naming of dark taxa. *MycKeys* 23:31–39
- Ryberg M, Nilsson RH, Kristiansson E, Töpel M, Jacobsson S, Larsson E (2008) Mining metadata from unidentified ITS sequences in GenBank: a case study in *Inocybe* (Basidiomycota). *BMC Evol Biol* 8:50
- Samson RA, Visagie CM, Houbraken J, Hong SB, Hubka V, Klaassen CHW, Perrone G, Seifert KA, Susca A, Tanney JB, Varga J, Kocsubé S, Szigeti G, Yaguchi T, Frisvad JC (2014) Phylogeny, identification and nomenclature of the genus *Aspergillus*. *Stud Mycol* 78:141–173
- Schmitt I (2011) 8 fruiting body evolution in the ascomycota: a molecular perspective integrating lichenized and non-lichenized groups. In: Pöggeler S, Wöstemeyer J (eds) Evolution of fungi and fungal-like organisms. The Mycota (A comprehensive treatise on fungi as experimental systems for basic and applied research), vol 14. Springer, Berlin
- Schmitt I, Crespo A, Divakar PK, Fankhauser JD, Herman-Sackett E, Kalb K, Nelsen MP, Nelson NA, Rivas-Plata E, Shimp AD, Widhalm T, Lumbsch HT (2009) New primers for promising single-copy genes in fungal phylogenetics and systematics. *Persoonia* 23:35–40
- Schoch CL, Wang Z, Townsend JP, Spatafora JW (2009) Geoglossomycetes cl. nov., Geoglossales ord. nov., and taxa above class rank in the Ascomycota tree of life. *Persoonia* 22:129–138
- Schoch CL, Seifert KA, Huhndorf S, Robert V, Spouge JL, Levesque CA, Chen W (2012) Nuclear ribosomal internal transcribed spacer (ITS) region as a universal DNA barcode marker for Fungi. *Proc Natl Acad Sci USA* 109:6241–6246
- Schöps R, Purahong W, Herz K (2018) Life in the roots: plant species and macronutrients shaping the endophytic mycobiomes in temperate grassland plants (Manuscript)
- Shivas R, Cai L (2012) Cryptic fungal species unmasked. *Microbiol Aust* 33:36–37
- Silvestro D, Michalak I (2012) raxmlGUI: a graphical front-end for RAxML. *Org Divers Evol* 12:335–337
- Smith H, Kemp GHJ, Wingfield MJ (1994) Canker and die-back of *Eucalyptus* in South Africa caused by *Botryosphaeria dothidea*. *Plant Pathol* 43:1031–1034
- Smith MCM, Brown WRA, McEwan AR, Rowley PA (2010) Site-specific recombination by phiC31 integrase and other large serine recombinases. *Biochem Soc Trans* 38:388–394
- Sneath PH, Sokal RR (1973) Numerical taxonomy. The principles and practice of numerical classification. Freeman WH, San Francisco
- Song F, Wu S, Zhai Y, Xuan QC, Wang T (2014) Secondary metabolites from the genus *Xylaria* and their bioactivities. *Chem Biodivers* 11:673–694
- Stadler M, Hawksworth DL, Fournier J (2014a) The application of the name *Xylaria hypoxylon*, based on *Clavaria hypoxylon* of Linnaeus. *IMA Fungus* 5:57–66
- Stadler M, Læssøe T, Fournier J, De Cock C, Schmieschek B, Tichy HV, Peršoh D (2014b) A polyphasic taxonomy of *Daldinia* (*Xylariaceae*). *Stud Mycol* 77:1–143
- Stewart EJ (2012) Growing unculturable bacteria. *J Bacteriol* 194:4151–4160
- Taberlet P, Prud'Homme SM, Campione E, Roy J, Miquel C, Shehzad W, Gielly L, Rioux D, Choler P, Clément JC, Melodelima C, Pompanon F, Coissac E (2012) Soil sampling and isolation of extracellular DNA from large amount of starting material suitable for metabarcoding studies. *Mol Ecol* 21:1816–1820
- Taberlet P, Bonin A, Zinger L, Coissac E (2018) Environmental DNA: for biodiversity research and monitoring. Oxford University Press, Oxford, p 272
- Talbot JM, Bruns TD, Taylor JW, Smith DP, Branco S, Glassman SI, Erlandson S, Vilgalys R, Liao H, Smith ME, Peay KG (2014) Endemism and functional convergence across the North American soil mycobiome. *Proc Natl Acad Sci USA* 111:6341–6346
- Tedersoo L, Smith ME (2017) Ectomycorrhizal fungal lineages: detection of four new groups and notes on consistent recognition of ectomycorrhizal taxa in high-throughput sequencing studies. In: Tedersoo L (ed) Biogeography of mycorrhizal symbiosis. Springer, Cham, pp 125–142
- Tedersoo L, Bahram M, Pöhlme S, Kõljalg U, Yorou NS, Wijesundera R, Villarreal Ruiz L, Vasco-Palacios AM, Thu PQ, Suija A, Smith ME, Sharp C, Saluveer E, Saitta A, Rosas M, Riit T, Ratkowsky D, Pritsch K, Põldmaa K, Piepenbring M, Phosri C, Peterson M, Parts K, Pärtel K, Otsing E, Nouhra E, Njouonkou AL, Nilsson RH, Morgado LN, Mayor J, May TW, Majuakim L, Lodge DJ, Lee SS, Larsson KH, Kohout P, Hosaka K, Hiiesalu I, Henkel TW, Harend H, Guo LD, Greslebin A, Grelet G, Geml J, Gates G, Dunstan W, Dunk C, Drenkhan R, Dearnaley J, De Kesel A, Dang Chen X, Buegger F, Brearley FQ, Bonito G, Anslan S, Abell S, Abarenkov K (2014) Global diversity and geography of soil fungi. *Science* 346:1256688
- Thines M, Crous PW, Aime MC, Aoki T, Cai L, Hyde KD, Miller AN, Zhang N, Stadler M (2018) Ten reasons why a sequence-based nomenclature is not useful for fungi anytime soon. *IMA Fungus* 9:177–183
- Thomas DC, Vandegrift R, Ludden A, Carroll GC, Roy BA (2016) Spatial ecology of the fungal genus *Xylaria* in a tropical cloud forest. *Biotropica* 48:381–393
- Tibpromma S, Hyde KD, Jeewon R, Maharachchikumbura SSN, Liu JK, Bhat DJ, Jones EBG, McKenzie EHC, Camporesi E, Bulgakov TS, Doilom M, de Azevedo Santiago ALCM, Das K, Manimohan P, Gibertoni TB, Lim YW, Ekanayaka AH, Thongbai B, Lee HB, Yang JB, Kirk PM, Sysouphanthong P, Singh SK, Boonmee S, Dong W, Raj KNA, Latha KPD, Phookamsak R, Phukhamsakda C, Konta S, Jayasiri SC, Norphanphou C, Tennakoon DS, Li JF, Dayaratne MC, Perera RH, Xiao Y, Wanasinghe DN, Senanayake IC, Goonasekara ID, de Silva NI, Mapook A, Jayawardena RS, Dissanayake AJ, Manawasinghe IS, Chethana KWT, Luo ZL, Hapuarachchi KK, Baghela A, Soares AM, Vizzini A, Meiras-Ottoni A, Mešić A, Dutta AK, de Souza CAF, Richter C, Lin CG, Chakraborty D, Daranagama DA, Lima DX, Chakraborty D, Ercole E, Wu F, Simonini G, Vasquez G, da Silva GA, Plautz HL Jr, Ariyawansa HA, Lee H, Kušan I, Song J, Sun J, Karmakar J, Hu K, Semwal

- KC, Thambugala KM, Voigt K, Acharya K, Rajeshkumar KC, Ryvarden L, Jadan M, Hosen MI, Mikšik M, Samarakoon MC, Wijayawardene NN, Kim NK, Matočec N, Singh PN, Tian Q, Bhatt RP, de Oliveira RJV, Tulloss RE, Aamir S, Kaewchai S, Svetasheva STY, Nguyen TTT, Antonin V, Li WJ, Wang Y, Indoliya Y, Tkalčec Z, Elgorban AM, Bahkali AH, Tang AMC, Su HY, Zhang H, Promputtha I, Luangsa-ard J, Xu JC, Yan J, Chuan KJ, Stadler M, Mortimer PE, Chomnunti P, Zhao Q, Phillips AJL, Nontachaiyapoom S, Wen TC, Karunarathna SC (2017) Fungal diversity notes 491–602: taxonomic and phylogenetic contributions to fungal taxa. *Fungal Divers* 83:1–261
- Toju H, Yamamoto S, Sato H, Tanabe AS, Gilbert GS, Kadowaki K (2013) Community composition of root-associated fungi in a Quercus-dominated temperate forest: “codominance” of mycorrhizal and root-endophytic fungi. *Ecol Evol* 3:1281–1293
- Tuor U, Winterhalter K, Fiechter A (1995) Enzymes of white-rot fungi involved in lignin degradation and ecological determinants for wood decay. *J Biotechnol* 41:1–17
- Udayanga D, Castlebury LA, Rossman AY, Chukeatirote E, Hyde KD (2015) Insights into the genus *Diaporthe*: phylogenetic species delimitation in the *D. eres* species complex. *Fungal Divers* 67:203–229
- van der Heijden MGA, Bardgett RD, van Straalen NM (2008) The unseen majority: soil microbes as drivers of plant diversity and productivity in terrestrial ecosystems. *Ecol Lett* 11:296–310
- van Dijk EL, Auger H, Jaszczyszyn Y, Thermes C (2014) Ten years of next-generation sequencing technology. *Trends Genet* 30:418–426
- Vijaykrishna D, Jeewon R, Hyde KD (2006) Molecular taxonomy, origins and evolution of freshwater ascomycetes. *Fungal Divers* 23:351–390
- Visagie CM, Hirooka Y, Tanney JB, Whitfield E, Mwange K, Meijer M, Amend AS, Seifert KA, Samson RA (2014a) *Aspergillus*, *Penicillium* and *Talaromyces* isolated from house dust samples collected around the world. *Stud Mycol* 78:63–139
- Visagie CM, Houbraken J, Frisvad JC, Hong SB, Klaassen CHW, Perrone G, Seifert KA, Varga J, Yaguchi T, Samson RA (2014b) Identification and nomenclature of the genus *Penicillium*. *Stud Mycol* 78:343–371
- Voříšková J, Baldrian P (2013) Fungal community on decomposing leaf litter undergoes rapid successional changes. *ISME J* 7:477–486
- Vu D, Groenewald M, de Vries M, Gehrman T, Stielow B, Eberhardt U, Al-Hatmi A, Groenewald JZ, Cardinali G, Houbraken J, Boekhout T (2018) Large-scale generation and analysis of filamentous fungal DNA barcodes boosts coverage for kingdom Fungi and reveals thresholds for fungal species and higher taxon delimitation. *Stud Mycol*. <https://doi.org/10.1016/j.simyco.2018.05.001>
- Wanasinghe DN, Hyde KD, Jeewon R, Crous PW, Wijayawardene NN, Jones EBG, Bhat DJ, Phillips AJL, Groenewald JZ, Dayarathne MC, Phukhamsakda C, Thambugala KM, Bulgakov TS, Camporesi E, Gafforov YS, Mortimer PE, Karunarathna SC (2017) Phylogenetic revision of *Camarosporium* (Pleosporineae, Dothideomycetes) and allied genera. *Stud Mycol* 87:207–256
- Wanasinghe DN, Phukhamsakda C, Hyde KD, Jeewon R, Lee HB, Jones EBG, Tibpromma S, Tennakoon DS, Dissanayake AJ, Jayasiri SC, Gafforov Y, Camporesi E, Bulgakov TS, Ekanayake AH, Perera RH, Samarakoon MC, Goonasekara ID, Mapook A, Li WJ, Indunil C, Senanayake IC, Li JF, Norphanphoun C, Doilom M, Bahkali AH, Xu JC, Mortimer PE, Tibell L, Tibell S, Karunarathna SC (2018) Fungal diversity notes 709–839: taxonomic and phylogenetic contributions to fungal taxa with an emphasis on fungi on *Rosaceae*. *Fungal Divers* 89:1–238
- Wehner J, Powell JR, Muller LAH et al (2014) Determinants of root-associated fungal communities within *Asteraceae* in a semi-arid grassland. *J Ecol* 102:425–436
- Wendt L, Sir EB, Kuhnert E, Heitkämper S, Lambert C, Hladki AI, Romero AI, Luangsa-ard JJ, Srikritikulchai P, Peršoh D, Stadler M (2018) Resurrection and emendation of the *Hypoxylaceae*, recognised from a multi-gene genealogy of the Xylariales. *Mycol Prog* 17:115–154
- White TJ, Bruns T, Lee S, Taylor JW (1990) Amplification and direct sequencing of fungal ribosomal RNA genes for phylogenetics. In: Innis MA, Gelfand DH, Sninsky JJ, White TJ (eds) PCR protocols: a guide to methods and applications. Academic Press, New York, pp 315–322
- Wintzingerode FV, Göbel UB, Stackebrandt E (1997) Determination of microbial diversity in environmental samples: pitfalls of PCR-based rRNA analysis. *FEMS Microbiol Rev* 21:213–229
- Wurzbacher C, Larsson E, Bengtsson-Palme J, Van den Wyngaert S, Svantesson S, Kristiansson E, Kagami M, Nilsson RH (2018) Introducing ribosomal tandem repeat barcoding for fungi. [bioRxiv 310540](https://doi.org/10.1101/310540)
- Xu J, Vilgalys R, Mitchell TG (2000) Multiple gene genealogies reveal recent dispersion and hybridisation in the human pathogenic fungus *Cryptococcus neoformans*. *Mol Ecol* 9:1471–1481
- Yang YL, Liu ZY, Cai L, Hyde KD, Yu ZN, McKenzie EHC (2009) *Colletotrichum anthracnose* of *Amaryllidaceae*. *Fungal Divers* 39:123–146
- Zamora JC, Svensson M, Kirschner R, Olariaga I, Ryman S, Parra LA, Geml J, Rosling A, Adamčík S, Ahti T, Aime MC et al (2018) Considerations and consequences of allowing DNA sequence data as types of fungal taxa. *IMA Fungus* 9:167–175

Affiliations

Sinang Hongsanan^{1,2} · Rajesh Jeewon³ · Witoon Purahong⁴ · Ning Xie¹ · Jian-Kui Liu⁵ · Ruvishika S. Jayawardena⁶ · Anusha H. Ekanayaka⁶ · Asha Dissanayake⁶ · Olivier Raspé^{7,8} · Kevin D. Hyde⁶ · Marc Stadler⁹ · Derek Peršoh¹⁰

¹ Shenzhen Key Laboratory of Microbial Genetic Engineering, College of Life Sciences and Oceanography, Shenzhen University, Shenzhen 518060, People’s Republic of China

² Shenzhen Key Laboratory of Laser Engineering, College of Optoelectronic Engineering, Shenzhen University, Shenzhen 518060, People’s Republic of China

³ Department of Health Sciences, Faculty of Science, University of Mauritius, Reduit 80837, Mauritius

⁴ UFZ-Helmholtz Centre for Environmental Research, Department of Soil Ecology, Theodor-Lieser-Str. 4, 06120 Halle (Saale), Germany

-
- ⁵ Guizhou Key Laboratory of Agricultural Biotechnology, Guizhou Academy of Agricultural Sciences, Guiyang, Guizhou 550006, People's Republic of China
- ⁶ Center of Excellence in Fungal Research, Mae Fah Luang University, Chiang Rai 57100, Thailand
- ⁷ Botanic Garden Meise, Nieuwelaan 38, 1860 Meise, Belgium
- ⁸ Fédération Wallonie–Bruxelles, Service général de l'Enseignement universitaire et de la Recherche scientifique, Rue Adolphe Lavallée 1, 1080 Brussels, Belgium
- ⁹ Department of Microbial Drugs, Helmholtz-Zentrum für Infektionsforschung GmbH, Inhoffenstrasse 7, 38124 Braunschweig, Germany
- ¹⁰ Ruhr-Universität Bochum, Geobotany, Universitätsstrasse 150, 44801 Bochum, Germany