



# CAR-NK Cell: A New Paradigm in Tumor Immunotherapy

Faroogh Marofi<sup>1</sup>, Alaa S. Al-Awad<sup>2</sup>, Heshu Sulaiman Rahman<sup>3,4</sup>, Alexander Markov<sup>5,6</sup>, Walid Kamal Abdelbasset<sup>7,8</sup>, Yulianna Ivanovna Enina<sup>9</sup>, Mahnaz Mahmoodi<sup>10</sup>, Ali Hassanzadeh<sup>11</sup>, Mahboubeh Yazdanifar<sup>12</sup>, Max Stanley Chartrand<sup>13</sup> and Mostafa Jarahian<sup>14\*</sup>

<sup>1</sup> Immunology Research Center (IRC), Tabriz University of Medical Sciences, Tabriz, Iran, <sup>2</sup> College of Medicine, University of Babylon, Babylon, Iraq, <sup>3</sup> College of Medicine, University of Sulaimani, Sulaymaniyah, Iraq, <sup>4</sup> Department of Medical Laboratory Sciences, Komar University of Science and Technology, Sulaymaniyah, Iraq, <sup>5</sup> Tyumen State Medical University, Tyumen, Russia, <sup>6</sup> Tyumen Industrial University, Tyumen, Russia, <sup>7</sup> Department of Health and Rehabilitation Sciences, College of Applied Medical Sciences, Prince Sattam bin Abdulaziz University, Al Kharj, Saudi Arabia, <sup>8</sup> Department of Physical Therapy, Kasr Al-Aini Hospital, Cairo University, Giza, Egypt, <sup>9</sup> Sechenov First Moscow State Medical University, Moscow, Russia, <sup>10</sup> Department of Biology, School of Basic Science, Science and Research Branch, Islamic Azad University, Tehran, Iran, <sup>11</sup> Department of Applied Cell Sciences, School of Advanced Technologies in Medicine, Tehran University of Medical Sciences, Tehran, Iran, <sup>12</sup> Stem Cell Transplantation and Regenerative Medicine, Department of Pediatrics, Stanford University School of Medicine, Palo Alto, CA, United States, <sup>13</sup> DigiCare Behavioral Research, Casa Grande, AZ, United States, <sup>14</sup> German Cancer Research Center, Toxicology and Chemotherapy Unit (G401), Heidelberg, Germany

## OPEN ACCESS

### Edited by:

Rizwan Ronee,  
Dana–Farber Cancer Institute,  
United States

### Reviewed by:

Evren Alici,  
Karolinska Institutet (KI), Sweden  
Manisha Singh,  
University of Texas MD Anderson  
Cancer Center, United States

### \*Correspondence:

Mostafa Jarahian  
mostafajarahian@gmail.com

### Specialty section:

This article was submitted to  
Cancer Immunity and Immunotherapy,  
a section of the journal  
Frontiers in Oncology

**Received:** 09 March 2021

**Accepted:** 14 May 2021

**Published:** 10 June 2021

### Citation:

Marofi F, Al-Awad AS,  
Sulaiman Rahman H, Markov A,  
Abdelbasset WK, Ivanovna Enina Y,  
Mahmoodi M, Hassanzadeh A,  
Yazdanifar M, Stanley Chartrand M  
and Jarahian M (2021)  
CAR-NK Cell: A New Paradigm  
in Tumor Immunotherapy.  
Front. Oncol. 11:673276.  
doi: 10.3389/fonc.2021.673276

The tumor microenvironment (TME) is greatly multifaceted and immune escape is an imperative attribute of tumors fostering tumor progression and metastasis. Based on reports, the restricted achievement attained by T cell immunotherapy reflects the prominence of emerging other innovative immunotherapeutics, in particular, natural killer (NK) cells-based treatments. Human NK cells act as the foremost innate immune effector cells against tumors and are vastly heterogeneous in the TME. Currently, there exists a rapidly evolving interest in the progress of chimeric antigen receptor (CAR)-engineered NK cells for tumor immunotherapy. CAR-NK cells superiorities over CAR-T cells in terms of better safety (e.g., absence or minimal cytokine release syndrome (CRS) and graft-versus-host disease (GVHD), engaging various mechanisms for stimulating cytotoxic function, and high feasibility for ‘off-the-shelf’ manufacturing. These effector cells could be modified to target various antigens, improve proliferation and persistence *in vivo*, upturn infiltration into tumors, and defeat resistant TME, which in turn, result in a desired anti-tumor response. More importantly, CAR-NK cells represent antigen receptors against tumor-associated antigens (TAAs), thereby redirecting the effector NK cells and supporting tumor-related immunosurveillance. In the current review, we focus on recent progress in the therapeutic competence of CAR-NK cells in solid tumors and offer a concise summary of the present hurdles affecting therapeutic outcomes of CAR-NK cell-based tumor immunotherapies.

**Keywords:** chimeric antigen receptor, natural killer cells, solid tumors, immunotherapy, tumor-associated antigens

## INTRODUCTION

Currently, natural killer (NK) cell-based immunotherapy has become a promising and advanced scientific research topic in the context of cancer immunotherapy, either solid tumors or hematological malignancies (1). NK cells are innate lymphocytes holding a spectrum of functional aptitudes, comprising anti-cancer, anti-viral, and anti-graft-versus-host disease (GVHD) functions (2). They act as the foremost effector cells against tumor in innate immunity and are greatly heterogeneous in the microenvironment. Today, some restrictions such as the failure of T cells to identify and kill HLA-I negative tumor cells hinder their clinical efficacy (3); new strategies for cancer immunotherapy are emphasizing NK cells.

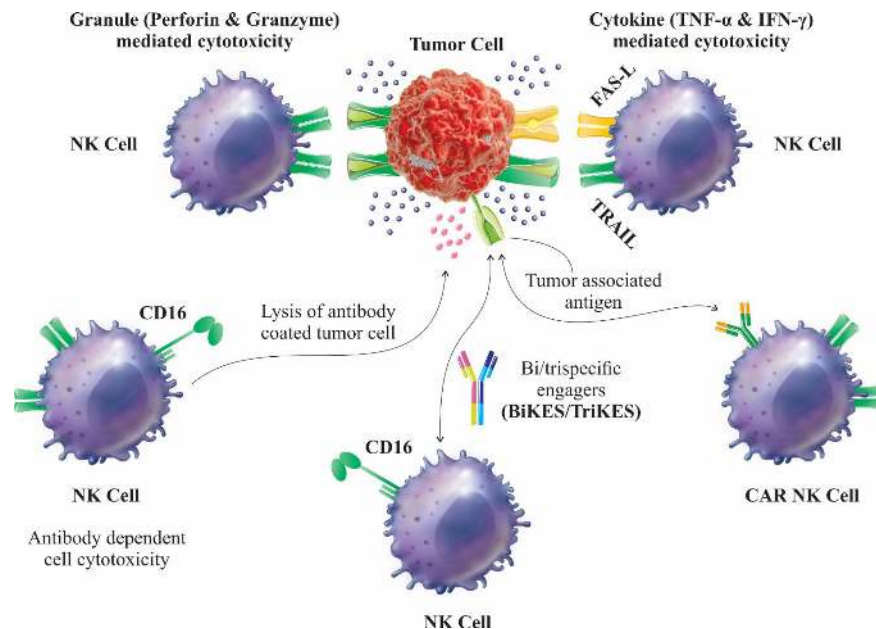
For the first time, NK cells were recognized in the 1970s as an exclusive lymphocyte subclass capable to identify and rapidly kill abnormal cells in the absence of prior sensitization or detection of specific tumor antigens, enabling shrinkage of the tumor (4). A few years later, it was shown that NK cells could lyse an MHC class I negative lymphoma cell line, while the original MHC class I positive cells were resistant to lysis. This delivered the proof of a hypothesis citing that NK cells are capable of sensing the lack of “self” MHC class-I molecules on cancerous cells, which is known as “missing self-hypothesis” (5). Later, this premise was supported following the discovery of inhibitory (6) and activating NK receptors (7). Based on the literature, the chief NK inhibitory receptors are the killer Ig-like receptors (KIRs) which identify allotypic determinants mutual by groups of HLA class-I alleles (8), and CD94/NKG2A heterodimer (9) which recognizes the non-classical HLA-E molecule. The activating NK cell receptors include a variety of non-HLA-specific receptors and co-receptors capable to elicit NK cell stimulation *via* straight interaction with ligands overexpressed or expressed *de novo* on malignant cells (10, 11).

Triggered NK cells can kill cancerous cells by direct cell cytotoxicity and/or generation of pro-inflammatory cytokines. In addition to the releases of perforin and granzymes for tumor cell elimination, NK cells exert antibody-dependent cellular cytotoxicity (ADCC) by the membrane receptor CD16 or apoptotic axis intermediated by Fas ligand (FasL) or TNF-related apoptosis-inducing ligand (TRAIL) (**Figure 1**) (12, 13). Furthermore, modulation of anti-tumor immune responses by NK cells leads to secretion of cytokines and chemokines including interferon- $\gamma$  (IFN- $\gamma$ ) and granulocyte-macrophage colony-stimulating factor (GM-CSF) (14). Although NK cells can identify and eliminate tumor cells; malignant cells continue to advance their mechanisms to avoid identification by NK cells or limit NK cells activities. Tumor cell immune evasion is thought to mainly rely on the generation of immunosuppressive cytokines or chemokines, ranging from IL-10 and transforming growth factor-beta (TGF- $\beta$ ) to the soluble IL-2 receptor (sCD25), CXCL9, and CXCL10 (15–17). As well, transformed cells can attenuate the expression of tumor-associated antigens (TAAs) (18) and also raise the expression of MHC class I-related molecules (19) to obstruct NK cells activation.

Recent observations have indicated that engineering NK cells to express a chimeric antigen receptor (CAR) can defeat immune evasion (20). In addition to an array of strategies such as CAR T cells, checkpoint inhibitors, antibodies, antibody–drug conjugates, and tumor vaccinations, the progress of “off-the-shelf” CAR-modified NK cells is considered as an emerging and rapidly evolving approach in the advancement of potent anti-cancer immunotherapeutic products (21). These CAR-modified cells express antigen receptors toward TAAs, which redirect their effector functions and improve tumor-specific immunosurveillance (20). A large number of preclinical studies have been executed, and some clinical trials are being carried out to address the clinical efficacy of CAR-NK cells in human tumors. Herein, we will discuss CAR-NK cell’s therapeutic potential for treating solid tumors, focusing on *in vivo* researches, and also will deliver a brief overview of existing challenges in the context of CAR-NK cell-based cancer immunotherapy.

## NK CELLS IN THE TUMOR MICROENVIRONMENT

The importance of NK cells in cancer is not limited to only hematological malignancies. Recent reports indicate that NK cells contribute to the modification of extravascular tumor growth, and to the primary steps of oncogenesis. Recent investigations have revealed that cancerous cells could progress more rapidly in spontaneous leukemia and prostate cancer models wherein the NK cells were exhausted, compared to those with normal NK cell activity (22). Correspondingly, fully advanced tumors from NK-cell-deficient rodents could present ligands for NKG2D, while tumors from NK-competent rodents did not show these ligands, thus signifying that tumors evolving in these rodents had been modulated by NK cells (22). In this regard, the prognostic importance of NK cells in patients suffering from colorectal carcinomas was first evidenced by Coca et al. (23) showing that patients with lower NK infiltration experienced shorter survival rates compared with those with widespread infiltration. Meanwhile, some studies proposed that the rate of tumor-infiltrating NK cells performed as an influential factor to determine the survival of patients with squamous cell lung cancer (24). However, Vaquero et al. study didn’t support the existence of an association between the rate of NK-cell infiltration inside resected brain metastases and the period free of intracranial disease in patients with lung adenocarcinoma (25). Nevertheless, the number of cancer types in which a correlation between intratumoral NK-cell levels and prognosis has been established and is progressively rising. Indeed, regardless of recruitment into the solid tumors, NK cells can functionally affect the host–tumor relationship. Sun et al. found that NK cells density in the blood and tumor tissues of hepatocellular carcinoma (HCC) patients could be certainly associated with survival and prognosis. On the other hand, a cluster of NK cells-related genes in HCC tissues is related with sustained survival, therefore implying that NK cells and HCC



**FIGURE 1** | Mechanisms of NK cell cytotoxicity against tumors. The Fc receptor CD16 is presented on NK cells following the identification of antibody-coated cells stimulates a signal to NK cells, enabling tumor cell eradication by direct lysis and cytokine generation. Despite the secretion of perforin and granzymes for tumor cell killing, NK cells elicit ADCC *via* the membrane receptor CD16, or apoptotic axis mediated through FASL and TRAIL. Furthermore, BiKES and TriKES that induce NK cells toward one or more TAAs are the capable strategies for treating human solid tumors; on the other hand, CARs re-direct NK cells against tumor cells showing specific antigens, making key opportunities in the battle toward tumors. NKs, Natural killer cells; BiKES, Bispecific killer cell engagers; TriKES, Trispecific killer cell engagers; TAAs, Tumor-associated antigens; TRAIL, Tumor necrosis factor-related apoptosis-inducing ligand; FasL, Fas ligand; ADCC, Antibody-dependent cellular cytotoxicity; CARs, Chimeric antigen receptors.

development are strongly associated (26). Moreover, it seems that any abnormalities in NK cells functions in patients with chronic Hepatitis B virus (HBV) and hepatitis C virus (HCV) infections affect HCC development, and also depletion of NK cells that presents lesser cytotoxicity and compromised cytokine generation may serve as a prognosticator for HCC incidences (26). Molecular analysis displayed that impairment in NK cells-exerted cytotoxicity against cancer cells relies on unregulated signaling and expression of stem cell factor (SCF), *c-myc*, and signal transducer and activator of transcription 3 (STAT3) in NK cells (27). In STAT3 deficiency, NK cells progress typically and in normal frequencies, while show modifications in the kinetics of IFN- $\gamma$  generation through direct bindings to IFN- $\gamma$  promoter (28). In a variety of preclinical models of hematological malignancies, STAT3 deficiency in NK cells improves tumor surveillance, recommending that STAT3 inhibitors could trigger the NK cells-induced cytotoxicity against leukemia (28). Moreover, a study in 320 patients with stage II colon cancer suggested that the density of NK cells is linked with the lymph nodes (LNs) frequencies and is an independent predictive factor (29). Similarly, a study in 180 gastric cancer patients verified a significant association between the NK cells percentage and overall survival of enrolled participants (30). NK cells number was directly related to lymphocyte count and albumin but was conversely related to cancer antigen 125 (CA 125) and neutrophil-lymphocyte ratio. Remarkably, patients at early

clinical stages had superior NK cell numbers over those at advanced clinical stages of gastric cancer (30).

## CARS STRUCTURES AND FUNCTIONS

To date, most CAR-NK cell surveys use CAR constructs designed for CAR-T cells. Lately, new specific CAR constructs have been designed for NK cells, and diverse CAR constructs displayed variable influences on cytotoxicity and cytokine generation in NK cells (31).

Briefly, CAR is an engineered altered fusion protein based on the T cell receptor, encompassing an extracellular antigen identifying domain bonded to a diversity of intracellular signaling domains (32). The extracellular domain of CARs is typically an antibody single-chain variable fragment (scFv) detecting the specific antigen, which is regularly overexpressed on or is specific to cancer cells, and this detection is in the absence of presentation by major histocompatibility complex (MHC) molecules, similarly to an antibody (33). The intracellular domains commonly consist of CD28, 4-1BB, or OX40 for sustaining engineered-cell activation, and CD3 $\zeta$  for cytotoxicity. While 4-1BB/CD28-comprising CARs that were firstly exploited in T cells could stimulate anti-cancer functions following use in NK cells; NK cells with 2B4 (CD244), a well-known NK-specific co-stimulatory domain, -comprising CAR

showed improved cytotoxic function, triggered rapid proliferation, augmented cytokine releases, and diminished apoptosis compared to NK cells bearing the typical 4-1BB comprising CAR (34). Besides, CARs containing signaling domain DAP12 showed more prominent anti-cancer potentials in primary NK cells or NK92 cell lines compared to CD3 $\zeta$  containing CARs (35).

Genetically-altered T cells expressing a CAR can detect CAR-targeted antigen and thereby induce T cell activation, proliferation, cytokine secretion, and cytotoxicity toward tumor cells that express specific antigens (36). Accordingly, CAR-modified T cell therapy resulted in appreciated achievement for treating hematological malignancies, containing lymphoma, chronic lymphocytic leukemia (CLL), and acute lymphoblastic leukemia (ALL) (37, 38). Especially, CD19-targeting CAR-T cells lead to complete response rate of 70 to 90% in patients suffering from ALL (39), while display usually non-significant clinical efficacy for solid tumors (36, 40). Due to the incidence of GVHD elicited by allogeneic T cells which impedes their clinical use, patient autologous cells are required for the construction of CAR-T cells (41). Alike with CAR-expressing T cells, CAR-NK cells show sustained tumor-specific targeting and cytotoxicity against cancer cells. Prominently, NK cells possess various superiorities over T cells in CAR-targeted immunotherapy, in particular, offering the chance of allogeneic NK cell application as GVHD rely usually on T cell, not NK cells. On the other hand, CAR-NK cells seem to be safer than CAR-T cells since they commonly do not induce cytokine storms (42, 43). In the next sections, we will explain in depth the differences between these two types of engineered cells and their potent advantages and disadvantages.

## NK CELLS SOURCE AND TRANSDUCING PROCESS FOR CAR-NK GENERATION

To generate CAR-NK cells, NK cells have been firstly obtained from various sources and then transduced using varied vectors (**Figure 2**) (44). We will discuss various sources of NK cells and also evaluate transduction procedures applied typically to establish effector CAR-NK cells.

### Source

NK cells are found in peripheral blood (PB) and umbilical cord blood (UCB) and also can be derived from stem cell sources, ranging from hematopoietic stem cells (HSCs) to human pluripotent stem cells (hiPSCs) (45, 46). The clinical scale expansion of NK cells enables the production of sufficient cells for immunotherapy. Further, allogeneic NK cells can be utilized as effector cells because they are not responsible for GVHD but they improve graft-versus-leukemia (GVL) (47).

While PB-NK cells can be easily obtained, low transduction efficiency along with poor expansion restrict their use (48). However, NK cells can be established in large numbers from hiPSC and are more permissive to engineering (49). Moreover, UCB-NK cells are more readily engineered because of their

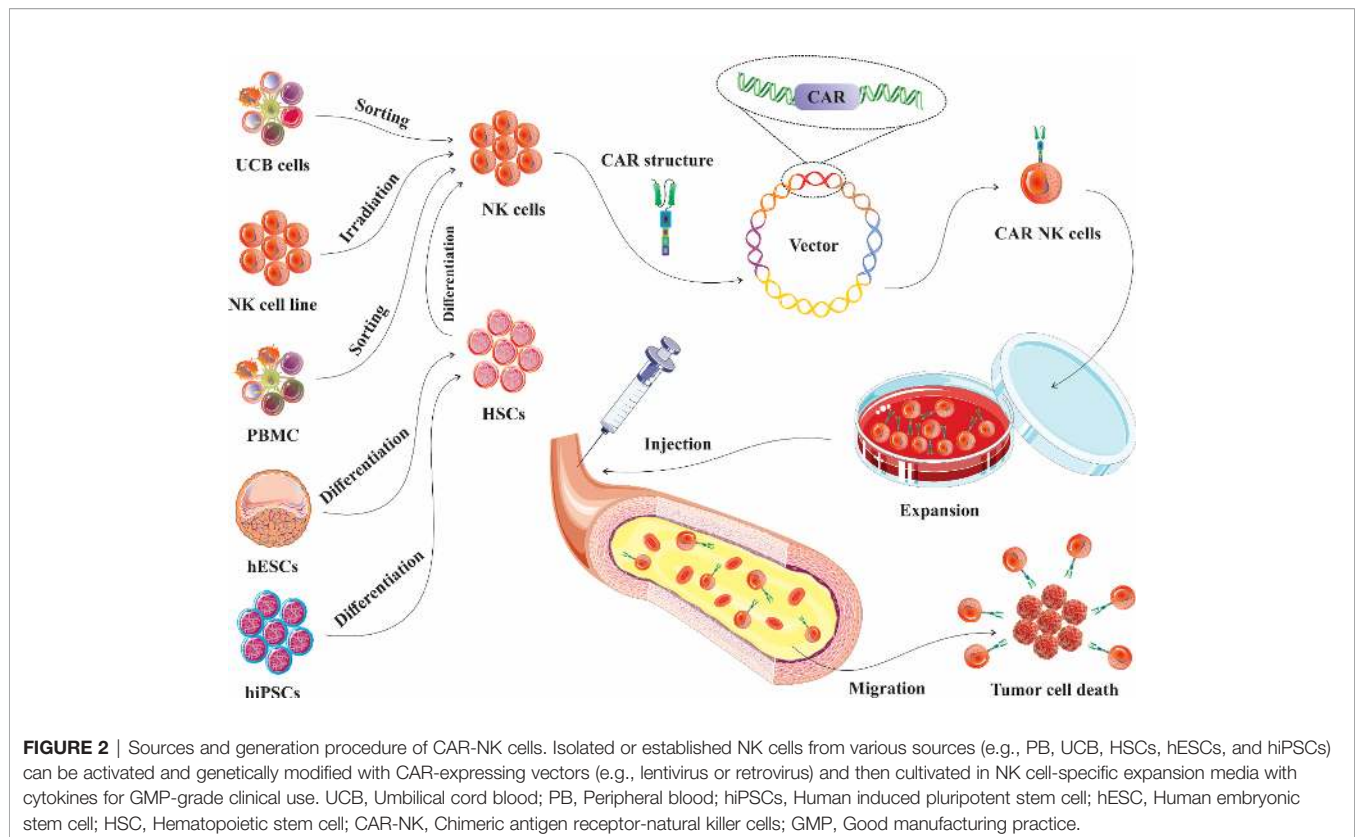
greater proliferative competence, as has been evidenced in the first available clinical trial of CAR-NK cells (50). Nonetheless, a potential difficulty is the comparatively immature nature of UCB-NK cells, leading to condensed cytotoxicity in comparison to PB-NK cells (51). Compared to PB-NK cells, UCB-NK cells express comparable levels of CD56, NCRs (NKp46 and NKp30) and NKG2D but a lower levels of CD16, adhesion molecules (e.g., CD2, CD11a, CD18, CD62L), KIRs, DNAM-1, NKG2C, IL-2R and CD57, and CD8 concomitant with a higher level of inhibitory receptor NKG2A (**Figure 3**) (52, 53). Although cell lines such as NK-92 are relatively easy to engineer; there are challenges related to the safety concerns, and the fact that they must be lethally irradiated before injection, impedes their persistence in the host consequently (43, 54). Currently, feeder cell lines are available to expand NK cells *ex vivo*. These MHC-negative cell lines, most importantly K562, are frequently engineered to generate IL-15 and IL-21 and are irradiated before use (55). Finally, NK cells can be generated from CD34-positive cells from the BM or UCB. These cells are usually similar to PB-NK cells and show functionality, the capability to eliminate leukemic cell lines and patient's tumor cells, and also generate cytokines following exposure to various stimuli *in vitro* and *in vivo*, while exhibiting low rates of inhibitory receptors (56).

### Transduction

Transduction denotes introduction of genetic material using viral vectors, containing the retroviral and lentiviral-based vectors (57). Throughout the life-cycle of retroviruses, viral RNAs are reverse transcribed into double-stranded cDNA that subsequently integrate into the target cell's genome semi-randomly. Owing to this fact, this approach usually takes longer till the genes are expressed (58). Vectors constructed by these pathogens possess some benefits, which make it comparatively simple to form complex vectors and then insert them into the target cells. Normally, these vectors are up to 10 kb in size without experiencing substantial loss of titer throughout manufacture, permitting the introduction of up to 7–8 kb (59). Besides, these vector's integration support cell's prolonged alteration in the lack of antibiotic resistance markers, and then altered cells typically are upheld in the host during a long duration (60). Rendering reports, NK cell susceptibilities to external genetic material accompanying the demanding procedure of transduction usually leads to low rates of transduction along with high apoptosis, making the NK cells transduction efficiency lower than T-cells (59). It is because of the resistance to viral transduction exerted by the innate immune system directed by pattern recognition receptors identifying foreign genetic material (61). Given this problem, the use of PDK1 inhibitors such as BX795 is recommended as they negatively regulate the induction of signaling pathways elicited by RIG-I-like receptors or Toll-like receptor 3 (TLR3) (62), and eventually promote lentiviral transduction efficiency up to ~4 fold (63). However, to obtain sufficient transgene expression in this strategy, commonly a series of transduction is required.

Compared to gene expression using viral vectors, CAR expression *via* non-viral-based approaches is typically short-





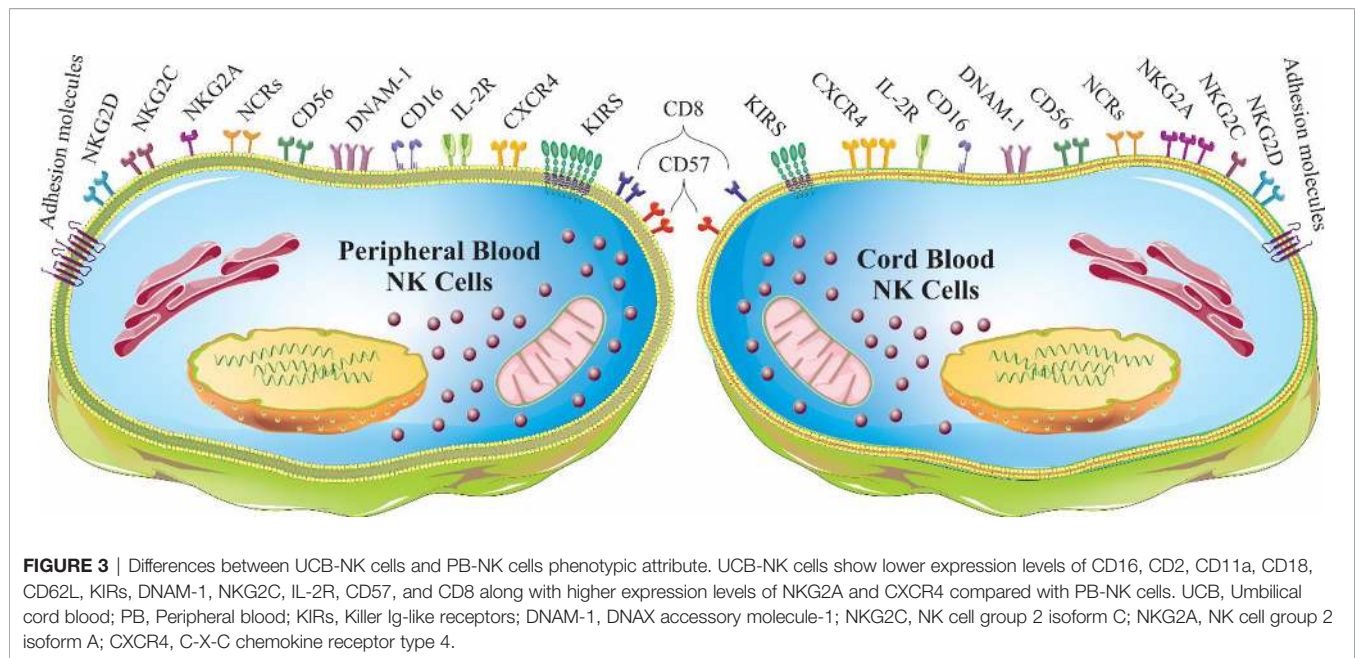
lived, and lasts for a few days (64). Though, the permanent expression can be attained when the sequence is integrated through particular systems, such as transposon-based systems (64, 65). Moreover, nucleic acid integration is also carried out *via* electroporation, a well-known simple and cost-effective tactic, providing large-scale clinical applications (66, 67). A foremost drawback of electroporation is that permeabilization of cell membrane by electric pulses may lead to loss of a large number of cells due to formation of enduring membrane leakage (68).

In sum, the insertion of foreign genetic material and succeeding proliferation of NK cells is challenging, thus delaying the advances of feasible and reproducible GMP practices. Accordingly, selection of more appropriate and effective transfection approaches is an influential step for conduction of a successful clinical trial.

## CAR-NK CELLS SUPERIORITY OVER CAR-T CELLS

Regardless of the initial success of CAR-T cell therapy, specifically in hematological disorders, its large-scale clinical use is restricted through the individualized preparation and several unwanted effects, encompassing CRS, CNS-related toxicity, and also on-target/off-tumor effects (37). Given these problems, NK cells have been suggested to be superior CAR

drivers than T cells. Especially, NK cells pose some benefits to T cells in the context of CAR-based cancer immunotherapy. In this regard, CAR-expressing NK cells seem to be safer than CAR-T cells in clinical application, and NK cell immunotherapy is considered a safe and feasible therapeutic approach, as shown by various clinical trials' outcomes (69). For instance, some phase I/II trials have indicated that allogeneic NK cell administration is well-tolerated and does not result in GVHD and other severe unwanted events (70–72), pointing that NK cells are general CAR drivers without any restriction to autologous cells. Moreover, on-target/off-tumor effects mediated by the persistence of CAR-T cells are chief side effects in CAR-T cell therapy. For example, CD19 CAR-T-cells boost intense and ongoing B-cell deficiency, which may depend on the cellular memory of T cells and activation of either normal mature or progenitor B cells (73). Conversely, the restricted lifespan of CAR-NK cells in the circulation supports limited on-target/off-tumor effects (43). Additionally, there are differences between cytokines established by NK cells and those generated by T cells. Stimulated NK cells typically produce IFN- $\gamma$  and GM-CSF, while the cytokine storm exerted by CAR-T cells is mostly achieved by pro-inflammatory cytokines (e.g., TNF- $\alpha$ , IL-1 and IL-6) (74, 75). Despite eliminating cancerous cells by a CAR-specific mechanism which involves tumor-related antigen's identification through scFv, NK cells naturally eliminate malignant cells by detecting various ligands through a diversity of activating receptors, such as natural cytotoxicity receptors



(NKp46, NKp44, and NKp30), NKG2D and DNAM-1 (CD226) (76). Indeed, these receptors typically identify stress-elicited ligands presented on cancer cells following initial exposure with immune cells or lasting treatment throughout tumor development. Also, NK cells facilitate the antibody-dependent cell-mediated cytotoxicity (ADCC) by Fc $\gamma$ RIII (CD16) (77). CAR-T cells cannot eliminate malignant cells that are vastly heterogeneous (78); however, CAR-NK cells are capable of efficiently killing residual malignant cells that can modify their phenotypes following lasting treatment.

NK cells, as previously described, are found frequently in clinical samples and can be procured or generated from PB, UCB, hESCs, iPSCs, and even NK-92 cell lines. NK-92 cells deliver a homogeneous cell inhabitant and can be simply cultivated under reliable manufacturing practice standards for wider clinical use, allowing the “off-the-shelf” construction of CAR-NK-92 cells (2). Stimulated PB-NK cells present a broader series of activating receptors and can be infused without irradiation, permitting them to grow *in vivo* (79). NK cells derived from pluripotent stem cells, iPSCs and hESCs, merge the clinical benefits of PB-NK and NK-92 cells because they show a phenotype similar to PB-NK cells and are a homogeneous inhabitant. Notably, CARs are simply expressed in hESC- and/or iPSC-established NK cells *via* nonviral gene transfer strategies (80).

## CAR NK CELLS IN SOLID TUMORS

As cited, CAR NK cells re-directed against cancer cells carrying particular antigens, make a chief prospect in the battle against cancer. Modified NK cells can be utilized as general CAR cells in the absence of any requirement for HLA matching or prior exposure to TAAs. Stimulating results from various studies have

improved attentiveness in the ground of cancer immunotherapy due to competence of CAR-NK cells in manufacture of “off-the-shelf” anti-tumor immunotherapeutic products (Tables 1 and 2).

## CAR NK in Neuroblastoma (NB)

Neuroblastoma (NB) is the most mutual extracranial tumor in children with a 5-year mortality rate of ~50% in the high-risk group (110). Though dinutuximab, a monoclonal antibody against ganglioside GD2, has revealed promising capacity to promote overall NB outcomes, it doesn’t considerably improve the 5-year overall survival of high-risk patients (111). Currently, it has been suggested that frequency of NK cells may sponsor improved outcomes in NB. Indeed, NK cells hamper tumor-associated macrophages (TAMs) and myeloid-derived suppressor cells (MDSCs), eliminate neuroblasts and cancer stem cells (CSCs), and vigorously release cytokines to recruit supplementary immune effectors (112, 113).

NK cells bearing activating receptor NKG2D fused to the cytotoxic  $\zeta$ -chain of the T-cell receptor (NKG2D. $\zeta$ ) could target NKG2D ligands-overexpressing MDSCs within the TME (114). Significantly, NKG2D. $\zeta$ -NK cells could produce a variety of proinflammatory cytokines and chemokines in response to MDSCs at the tumor area and promote recruitment and anti-cancer activities of subsequently administrated CAR-T cells. *In vivo*, NKG2D. $\zeta$ -NK cells produced from patients suffering from NB could eradicate autologous intratumoral MDSCs which regularly hinder CAR-T activities (114). Moreover, Seidel and colleagues found that GD2-CAR-NK-92-scFv (ch14.18)-zeta, in addition to the exertion of remarkable cytotoxicity toward GD2-positive CHLA-20 NB cell line *in vitro*, could elicit a substantial anti-tumor response in a drug-resistant GD2-positive NB xenograft murine model (115). GD2-CAR-NK-92-scFv (ch14.18)-zeta meaningfully improved the median survival rate of the NB xenograft murine model to 52 days, while the median

survival rate of control groups was 30 days. Observations indicated that detection of GD2 by CAR is the principal mechanism contributed to NK-92-scFv (ch14.18)-zeta-achieved killing and is independent of activating NK cell receptor/ligand interactions (115). Also, GD2-NK-92-scFv (ch14.18)-zeta could provide effective detection and eradication of GD2-positive NB cells that were resistant to parental NK-92. Intensely boosted cytotoxicity of the GD2-specific NK cells toward primary NB cells and GD2-expressing tumor cells of other origins, signify potential clinical application of the redirected NK cells (94).

## CAR NK in Glioblastoma (GB)

Glioblastoma (GB) is the most invasive and most shared primary brain cancer identified in adults. It displays a poor prognosis, and existing treatment options are incapable of alleviating its clinical outcome, emphasizing the importance of developing innovative therapeutic strategies (116). Unfortunately, GB microenvironment can suppress immune cell activities *via* varied procedures, most importantly, recruitment of cell modulators. GB immunotherapy consists of diverse immune cells, including

dendritic cells, cytotoxic T lymphocytes, and also NK cells (117, 118).

Molecular analysis has evidenced that epidermal growth factor receptor (EGFR) and its mutant form EGFRvIII are commonly overexpressed in GB, and immunotherapy based on EGFRvIII-specific vaccine has resulted in promising outcomes in GB clinical trials (119). Studies have shown that ErbB2 (also called human epidermal growth factor receptor 2 (HER2))-CAR-NK-92/5.28.z cells in contradiction of untargeted NK-92 cells could eliminate ErbB2-positive GB cells *in vitro* (101). Also, significant *in vivo* anti-cancer potential of modified NK cells was detected in orthotopic GB xenograft models in NSG mice, as evidenced by the improvement of median survival of transplanted models with ErbB2-CAR-NK-92/5.28.z cells to 200.5 days compared with 73 days in models treated with parental NK-92 cells (101). Importantly, another study suggested that EGFRvIII-CAR-NK-92 cells only could kill EGFRvIII-positive GB cells, whereas dual-specific NK cells showing EGFR inhibitor cetuximab-based CAR could trigger cytotoxic effects toward both EGFRvIII-positive and -negative

**TABLE 1** | Overview of *in vitro* studies based on CAR-NK cell therapy for solid tumors.

Condition	Target Ag	Main results	Ref
<b>Colorectal cancer</b>	EpCAM	Recognition of EpCAM-positive colorectal cancer cells and the secretion of cytokines, such as IFN- $\gamma$ , perforin, and granzyme B, and showing specific cytotoxicity by EpCAM-CAR-NK-92	(81)
<b>Ovarian cancer</b>	$\alpha$ FR	The elimination of $\alpha$ FR-positive ovarian cancer cells by $\alpha$ FR-CAR-NK-92 cells	(82)
<b>Hepatocellular carcinoma</b>	GPC3	Significant <i>in vitro</i> cytotoxicity and cytokine production by GPC3-CAR-NK-92 cells	(83)
<b>liver cancer</b>	c-MET	Remarkable cytotoxicity against HepG2 cells with high c-MET expression by c-MET-CAR-NK cells in comparison with the lung cancer cell line H1299 that demonstrate low rates of c-MET expression	(84)
<b>Breast cancer</b>	EGFR	EGFR-CAR-NK cell activation by TNBC cells resulted in cytotoxicity against these TNBC cells	(85)
<b>Colorectal cancer</b>	CEA	Targeting CEA-positive HCT116 cells and stimulating their elimination by CEA-CAR-NK cells	(86)
<b>Gastric cancer</b>	HER2	The killing of gastric cancer cells expressing HER2 mediated by the promotion of the cytokine releases by HER2-CAR-NK-92	(87)
<b>Pancreatic cancer</b>	Mesothelin	Successful engraftment of mesothelin-CAR-NK-92 cells along with interferon- $\gamma$ and granzyme B secretion, and specific elimination of pancreatic cancer cell lines	(88)
<b>Breast cancer</b>	HER2	Specific elimination of HER2-expressing tumor cells, and serial target cell killing by HER2-CAR-NK-92 cells	(89)
<b>Glioblastoma</b>	EGFRvIII	Specific elimination of EGFRvIII-positive glioblastoma cells by EGFRvIII-CAR-NK-92 cells	(90)
<b>Lung cancer</b>	NKG2D	Antitumor function against human lung cancer H1299 cells by NKG2D-CAR-NK cells	(91)
<b>Various cancers</b>	HER2	Antitumor function against HER2-positive tumor cells by HER2-CAR-NK-92 cells	(92)
<b>Breast cancer</b>	HER 2	Induction of elimination of HER2-expressing human breast cancer cell lines MDA-MB-453 and SKBr3 by HER2-CAR-NK-92 cells	(93)
<b>Glioblastoma</b>	EGFRvIII	Suppression of glioblastoma cell-growth upon induction of apoptosis by EGFRvIII-CAR-NK-92 cells	(94)
<b>Neuroblastoma</b>	GD2	Effective recognition and elimination of GD2 expressing neuroblastoma cells by GD2-CAR-NK-92 cells	(95)
<b>Breast cancer</b>	EpCAM	Promoted selective cytotoxicity against EpCAM-expressing breast carcinoma cells by EpCAM-CAR-NK-92 cells	(96)
<b>Ovarian cancer</b>	HER2	Specifically activation of HER2-CAR-NK cells following recognition of HER-2 positive tumor cells concomitant with high levels of cytokine release and degranulation	(97)
<b>Glioma and Neuroblastoma</b>	Robo1	The specific cytotoxicity of Robo1-CAR-NK-92 cells against glioma and neuroblastoma accompanied by secretion of a variety of cytokines including IL-6, IL-10, TNF- $\alpha$ and IFN- $\gamma$	(97)

EpCAM, Epithelial cell adhesion molecule;  $\alpha$ FR, Folate receptor alpha; GPC3, Glypican 3; EGFR, Epidermal growth factor receptor; CEA, Carcinoembryonic antigen; HER2, Human epidermal growth factor receptor 2; NKG2D, Natural killer group 2 member D; Robo1, Roundabout homolog 1; TNBC, Triple-negative breast cancer.



**TABLE 2** | Overview of *in vivo* studies based on CAR-NK cell therapy for solid tumors.

Condition	Target Ag	Main results	Ref
<b>Colorectal cancer</b>	EpCAM	Suppression of colorectal cancer growth upon combination therapy with regorafenib and EpCAM-CAR-NK-92 cells in EpCAM-positive tumor xenografts model	(81)
<b>Ovarian cancer</b>	GPC3	The significant therapeutic effect resulted in prolonged survival of the mouse xenograft model of ovarian cancer upon injection of GPC3-CAR-iPSC-NK cells	(98)
<b>Ovarian cancer</b>	$\alpha$ FR	Inhibition of cancer cells growth in a mouse xenograft model of ovarian cancer leading to the knowingly extended survival of tumor-bearing mice by $\alpha$ FR-CAR-NK-92 cells	(82)
<b>Hepatocellular carcinoma</b>	GPC3	Significant anti-tumor activities of GPC3-CAR-NK-92 cells against hepatocellular carcinoma xenografts with both high and low GPC3 expression, as showed by reduced tumor proliferation, and boosted tumor apoptosis	(83)
<b>Ovarian cancer</b>	NKG2D	Significantly improved antitumor activities in mice carrying established peritoneal ovarian cancer xenografts by NKG2D-CAR-NK cells	(99)
<b>Breast cancer</b>	EGFR	Inhibition of breast tumors proliferation in mice models by EGFR-CAR-NK cell	(85)
<b>Hepatocellular carcinoma</b>	CD147	Stimulation of apoptosis by CD147-CAR-NK cells in a human CD147 transgenic mouse HCC model	(100)
<b>Gastric cancer</b>	HER2	Eliminating of small but not larger gastric tumor xenografts by HER2-CAR-NK-92 cells	(87)
<b>Glioblastoma</b>	HER2	Potent <i>in vivo</i> antitumor responses of HER2-CAR-NK-92 cells in orthotopic glioblastoma xenograft models in NSG mice	(101)
<b>Pancreatic ductal adenocarcinoma</b>	Robo1	Exerting anti-tumor effects on pancreatic cancer in an orthotopic nude mouse model by Robo1-CAR-NK-92 cells	(102)
<b>Lung cancer</b>	B7-H3	Inhibition of tumor growth in mouse xenografts of non-small cell lung cancer and promotion of survival of transplanted mice by B7-H3-CAR-NK-92 cells	(103)
<b>Lung cancer</b>	NKG2D	Eliciting of cytotoxicity against CD73-positive human lung cancer xenograft models by NKG2D-CAR-NK cells	(104)
<b>Breast cancer</b>	HER2	Specific lysis of tumor cells and anti-tumor functions exerted by HER2-CAR-NK-92 cells in orthotopic breast carcinoma xenografts, and decrease of lung metastasis in a renal cell carcinoma model by HER2-CAR-NK-92 cells	(88)
<b>Renal cancer</b>	EGFRvIII	Complete tumor remission resulted in promoted survival by EGFRvIII-CAR-NK cells in the murine model	(105)
<b>Glioblastoma</b>	HER2	Elimination of HER2-positive tumors, as showed by MRI analysis upon systemic injection of HER2-CAR-NK cells	(106)
<b>Breast cancer</b>	HER 2	Reduction in tumor volume and lung metastasis of nude mice bearing established MDA-MB-453 cells upon injection of HER2-CAR-NK-92 cells	(92)
<b>Hepatocellular carcinoma</b>	NKG2D	Inhibition of tumor growth in a hepatocellular carcinoma xenograft tumor model by NKG2D-CAR-NK-92 cells	(107)
<b>Glioblastoma</b>	EGFRvIII	Inhibition of tumor growth and promoted survival rate of the orthotopic glioblastoma xenograft mouse models following intracranial injection of EGFRvIII-CAR-NK-92 cells	(108)
<b>Glioblastoma</b>	HER2	Eliciting of endogenous antitumor immunity upon treatment with HER2-CAR-NK-92 cells in glioblastoma xenograft mouse models	(109)

EpCAM, Epithelial cell adhesion molecule;  $\alpha$ FR, Folate receptor alpha; GPC3, Glypican 3; EGFR, Epidermal growth factor receptor; HER2, Human epidermal growth factor receptor 2; NKG2D, Natural killer group 2 member D; Robo1, Roundabout homolog 1; iPSCs, Induced pluripotent stem cells.

GB cells *in vitro* (89). *In vivo*, local application of dual-specific NK cells showed superiority over treatment with the corresponding monospecific CAR NK cells in xenografts GB models, supporting promoted survival without triggering fast immune escape as commonly detected following treatment with monospecific effectors (89). Moreover, further modification of EGFRvIII-specific NK cells with the chemokine receptor CXCR4 could provide particular chemotaxis to CXCL12/SDF-1 $\alpha$ -producing U87-MG GB cells, and consequently improve survival of xenografts compared to treatment with NK cells expressing only EGFRvIII-specific CAR (105). Interestingly, EGFR-CAR-NK cells have shown more prominent cytolytic competence and IFN- $\gamma$  secretion succeeding co-culture with GB cells or patient-derived GB stem cells, thus eliciting inhibition of tumor development leading to the promoted tumor-bearing mice survival in orthotopic GB xenograft models (108).

## CAR NK in Liver Cancers

The great introduction of antigens makes the liver a significant immunological organ whose exclusive microenvironment forms both innate and adaptive immune reactions for supporting a precise balance between immune tolerance and immune activation. Deregulation of immune responses in the liver is

responsible for the pathogenesis of various hepatic diseases, containing viral hepatitis, autoimmune disorders as well as tumors (120). The liver immune system includes varied innate effectors, including NK cells, NKT cells, gamma delta ( $\gamma\delta$ ) T cells, and adaptive lymphocytes, such as  $\alpha\beta$  T cells and B cells. The probability of the modification of NK cell activities has recently been introduced as an innovative treatment option for liver disorders, as proved for infections and tumors (121).

Recently, glypican-3 (GPC3) has been described as a logical immunotherapeutic target for hepatocellular carcinoma (HCC). GPC3-specific NK-92/9.28.z cell treatment could lead to substantial *in vitro* cytotoxicity and cytokine generation against HCC cells (83). As well, modified NK-92/9.28.z cells were capable of induction of cytotoxicity in multiple HCC xenografts with either high or low GPC3 expression, but not GPC3-negative models. Potent infiltration of NK-92/9.28.z cells reduced the tumor development along with boosted tumor cell eradication in the GPC3-positive HCC xenografts, which suggested clinical efficacy of GPC3-specific NK-92/9.28.z cell in HCC (83). Moreover, evaluating the specificity and efficiency of c-MET-specific-NK cells against human c-MET-positive HepG2 revealed that c-MET-CAR-NK cells induced more specific cytotoxicity against HepG2 cells with high c-MET



expression than H1299 cells, a human lung cancer cell line with low c-MET expression, suggesting that c-MET could be a rational target for CAR-NK immunotherapy in liver cancer (84). In another study, T and NK cells transduced with a CD147-specific CAR could efficiently eliminate several HCC cell lines *in vitro* and HCC tumors in xenograft murine models. The use of logic-gated (log) GPC3-synNotch-inducible CD147-CAR for reducing on-target/off-tumor toxicity in HCC showed that LogCD147-CAR could selectively eliminate dual antigen (GPC3-positive CD147-positive), but not single antigen (GPC3-negative CD147-positive) positive HCC cells without any serious on-target/off-tumor toxicity in a human CD147 transgenic murine model (100). Besides, respecting the TGF- $\beta$  capability to inhibit NK cell function, Wang and his coworkers genetically modified NK-92 cells to present a chimeric receptor with TGF- $\beta$  type II receptor extracellular and transmembrane domains associated with intracellular domain of NKG2D, termed as TN chimeric receptor. *In vitro*, NK-92 cells expressing TN receptors displayed potent resistance against TGF- $\beta$ -elicited inhibitory signaling, and triggered higher cytolytic competence and IFN- $\gamma$  secretion toward tumor cells (107). More excitingly, NK-92 cells presenting TN receptors demonstrated a higher infiltration rate to tumors expressing TGF- $\beta$ , and also reserved the differentiation of human naïve CD4-positive T cells to regulatory T cells. Also, NK-92-TN cell infusion resulted in suppressed tumor development in an HCC xenograft murine model, thereby implying that these chimeric receptors could be utilized to increase anti-cancer efficacy in NK cell adoptive therapy (107).

## CAR NK in Breast Cancers

The growth of breast tumors is a complicated procedure comprising several cell types. HER2 has been introduced as a pivotal oncogene in breast cancer, which its activation is mediated mainly *via* gene amplification and re-arrangement (122–124). Overexpression of HER2 usually is detected in about 20% of primary breast cancers accompanying by poor prognosis and mainly promote CSCs proliferation through PTEN/Akt/mTORC1 axis (125).

*In vivo*, infusion of NK-92-scFv (FRP5)-zeta cells presenting HER2-specific CAR resulted in the elimination of HER2-expressing human breast tumor cells (126). As well, investigation of the capacity of focused ultrasound (FUS) to deliver targeted NK-92 cells to the brain using a model of metastatic breast cancer verified FUS capabilities to augment the targeting of iron-loaded immune cell therapy of brain metastases, as shown by MRI test 16 h following treatment (126). Moreover, studies delivered proof of the concept that EGFR-CAR-NK cells could be applied for treating patients suffering from triple-negative breast cancer (TNBC) displaying heightened EGFR expression. EGFR-CAR-NK cells could stimulate potent cytotoxicity against TNBC cell lines, HS578T, MDA-MB-468 and MDA-MB-231 cells, with upregulated EGFR expression and selectively stimulated lysis of these cells *in vitro* (85). EGFR-CAR-NK cells co-cultured with TNBC cells showing promoted EGFR expression produced greater rates of IFN- $\gamma$ , granzyme B and perforin compared to EGFR-CAR-NK cells in

co-culture condition with the MCF7 cells, a non-TNBC cell line. Moreover, there was a consistency between levels of cytokine generation by modified NK cells and EGFR expression by experimental cell lines (85). Similarly, modified NK cells inhibited the tumor growth in breast cancer cell line-derived xenograft (CLDX) and patient-derived xenograft (PDX) murine models (85). Besides, genetically modified NK cells to identify a prominent surface antigen expressed in 50–85% of patients with TNBC, tissue factor (TF), demonstrated significant efficacy *in vivo* for the treatment of mouse models of orthotopic CDX and PDX. This was evidenced with a striking reduction in tumor weight between control and treatment groups without any significant change in mice body weight. *In vitro*, the analysis proposed that though TF-CAR-NK cells could kill TF-positive MDA-MB-231 cells, their efficacy could be improved when used in combination with TF-targeting therapeutic antibody-like immunoconjugates, such as L-ICON1 (127). As well, Sahm et al. found that effector NK-92 cells which co-expressed epithelial cell adhesion molecule (EpCAM), a type I transmembrane glycoprotein identified as a TAA-specific CAR and IL-15 could proliferate without exogenous cytokines *in vitro* and exhibited potent and specific cell-killing functions against EpCAM-expressing breast carcinoma cells those were resistant to unmodified NK cells-induced cytotoxicity (95). In another research, combinatorial treatment with EGFR-CAR-NK-92 cells and oncolytic herpes simplex virus (oHSV) elicited improved cytolytic functions and IFN- $\gamma$  generation when co-cultured with breast cancer cell lines MDA-MB-231, MDA-MB-468, and MCF-7 in comparison to the mock-transduced NK-92 cells. As well, intratumoral injection of either EGFR-CAR-NK-92 cells or oHSV-1 abrogated tumor development, while combination of EGFR-CAR NK-92 cells with oHSV-1 led to more effective elimination of MDA-MB-231 tumor cells compared to monotherapies in MDA-MB-231 cell bearing mice (128).

## CAR NK in Gastrointestinal (GI) Cancers

The particular activity of NK cell in gastrointestinal (GI) cancer was firstly revealed by a retrospective study with an 11-year follow-up showing that infiltration and cytotoxicity of NK cells have a tight association with cancer risk, thus suggesting an efficient role of NK cell in tumorigenesis (129). Then in colorectal cancer (CRC), through evaluating NK cells in the TME and peripheral blood, the lower frequencies of NK cell were concluded to be allied with a promoted risk of both cancer incidence and progress with poor prognosis (130).

Recent findings revealed that NKG2D-CAR adoptive NK cell therapy could increase the cytolytic activity of effector cells toward CRC cell lines *in vitro* and deliver therapeutic advantages to mice with CRC (131). Moreover, intraperitoneal infusion of NKG2D CAR mRNA-engineered NK cells to three participants with metastatic CRC verified its safety and efficacy in two of them. Respecting the results of Doppler ultrasound imaging, fast tumor deterioration was proven in the liver area, thereby pointing to a capable therapeutic competence of using RNA CAR-modified NK cells for treating metastatic CRC (131). On the other hand, HER2-CAR NK-92 cells significantly eliminated HER2-positive gastric cancer cells mediated by

advanced levels of cytokine generation *in vitro*. *In vivo*, effector cells could eradicate small tumor xenografts, while larger gastric tumors were not significantly affected by HER2-CAR NK-92 cells (87). Nevertheless, NK cells infiltration into large tumor xenografts and their therapeutic capacity were promoted following infusion in combination with apatinib, a tyrosine kinase inhibitor that exclusively suppresses the vascular endothelial growth factor receptor-2 (VEGFR2) (87). Further, despite the release of a variety of cytokine (e.g., IFN- $\gamma$ , perforin and granzyme B) and cytotoxicity induced by EpCAM-specific CAR-NK-92 cells against EpCAM-positive CRC cells *in vitro*, synergistic influences of multi-kinase inhibitor regorafenib and modified CAR-NK-92 cells were supported in a murine model with human CRC xenografts. Accordingly, combination therapy with regorafenib and CAR-NK-92 cells showed superiority over monotherapy with CAR-NK-92 cells or regorafenib in terms of inhibition of CRC growth in xenografts (81). Other *in vitro* studies proposed that anti-carcinoembryonic antigen (CEA)-CAR NK-92MI cells selectively recognized and eliminated high CEA-expressing CRC tumor cell lines (LS174T); without any cytolytic effects on low CEA-expressing tumor cells (HCT116) (86). Interestingly, anti-CEA-CAR NK-92MI combination therapy with either histone deacetylase-inhibitor sodium butyrate (NaB) or the methylation-inhibitor 5-azacytidine (5-AZA) caused selective killing of HCT116, which imply the clinical importance of epidrugs for prompting CAR-NK cell therapeutic efficacy in human CRC (86).

## CAR NK in Ovarian Cancers

Rendering findings, immunotherapy could be an effective therapy for ovarian cancer (OC), as OC is an immunogenic disorder with existence of T and NK cell infiltration in the TME. Remarkably, presence of tumor-infiltrating CD3-positive T cells directly associates with survival in OC patients (132). Additionally, CD103-positive tumor-infiltrating NK cells usually co-infiltrate with CD8-positive CD103-positive T cells, while the involvement of NK cells in promoting outcome is hard to evaluate (133). Furthermore, *ex vivo*-cultivated PB-NK cells of OC patients seem to be cytotoxic toward autologous primary OC cells (134).

Recently, *in vivo* study in OC xenograft models has revealed that NKG2D-CAR- iPSC-derived NK cells with 2B4 co-stimulatory domain and CD3 $\zeta$  signaling domain could exert robust cytotoxicity against cancerous cells. Meanwhile, NKG2D-CAR-iPSC-NK cells displayed *in vivo* function similar to NKG2D-CAR-iPSC-T cells, while showing less toxicity (135). As well, GPC3-CAR-iPSC-NK cells could produce higher levels of IFN- $\gamma$  against GPC3-expressing tumor cells *in vitro*, and also stimulated substantial therapeutic effect in OC murine models, as supported by prolonged survival of these models compared with the control group. Importantly, infusion of modified cells into immunodeficient mice caused no acute systemic toxicity or tumorigenicity (136). Besides, mesothelin (MSLN)-CAR NK92 cells selectively eliminated MSLN-positive OC cells (OVCAR-3 and SK-OV-3), rather than MSLN-negative cells (SK-HEP-1), *in vitro*. On the other hand, effector NK cells significantly killed OC cells in both subcutaneous and intraperitoneal tumor models resulted in improvement of survival of intraperitoneally tumor-

bearing mice (137). Also, CD24-CAR-NK-92 cells presented great cytolytic functions towards CD24-positive OC cell lines (SKOV3, OVCAR3), but not CD24-negative cell lines (A2780, HEK-293T), suggesting for the first time that anti-CD24-CAR will be assessed in the future clinical trials as an interesting immunotherapeutic strategy against OC (138). The importance of CD24, as a small sialoglycoprotein commonly localized in lipid rafts through its glycosylphosphatidylinositol (GPI) anchor, in OC therapy relies on its influential role in development, invasion and metastasis of OC cells through targeting a variety of signaling axis, in particular, Akt and ERK pathways (139). Moreover, Klapdor et al. cited that CD33-CAR-NK-92 cells selectively eliminated CD33-positive OC cells *in vitro* mainly achieved by IFN- $\gamma$  secretion. They also showed that NK cells retain their cytolytic competencies under cisplatin treatment and, prominently, successive treatment with cisplatin followed by CAR-NK cells resulted in the strongest killing effect, representing an encouraging strategy to prevent recurrent disease (140).

## CAR NK in Other Cancers

There are evidences indicating that intratumoral and intraperitoneal delivery of GD2-specific CAR-NK cells could not eradicate GD2-expressing cells in Ewing sarcomas (EwS) xenografts possibly sustained by upregulation of the immunosuppressive ligand HLA-G by tumor cells (141). These finding signify that HLA-G is a candidate immune checkpoint in EwS involved in stimulating resistance to NK cell therapy (141). Conversely, ErbB2-CAR-NK cells established robust cytotoxicity against ErbB2-positive sarcoma cells in 3D tumor spheroids (142). Similarly, ErbB2-CAR-NK cells selectively activated and eliminated ErbB2-positive melanoma cells, as shown through high levels of cytokine generation and degranulation, in both *in vitro* and in recombination activating gene 2 (Rag2) knockout mice (96). Likewise, MSLN-specific CAR-NK-92MI cells selectively eliminated pancreatic cancer lines *in vitro* by secreting IFN- $\gamma$  and granzyme B (143), and also Roundabout homolog 1 (Robo1)-specific CAR-NK cells demonstrated great cytotoxicity against pancreatic ductal adenocarcinoma (PDAC) in an orthotopic nude mouse model (102). It has been suggested that NK cells engineered to express a PD-L1 specific CAR could eradicate human and murine head and neck cancer cells at low effector-to-target ratios in a PD-L1-dependent manner (144). Furthermore, EGFR-CAR-NK-92 cells displayed synergistic therapeutic efficacy with cabozantinib toward human renal cell carcinoma (RCC) xenograft models as cabozantinib could improve EGFR and attenuate PD-L1 membrane surface expression in RCC cells. This data provided the proof of concept that combination therapy using chemotherapeutic agents and CAR-modified NK cells is an operational approach for treating solid tumors (145).

## CHALLENGES OF CAR-NK CELLS THERAPIES IN HUMAN SOLID TUMORS

To date, several clinical trials have been designed and conducted based on CAR-NK cell therapy for human solid tumors (**Table 3**); however, the encouraging consequences displayed in CAR NK cell therapy of hematological malignancies have not yet

**TABLE 3** | A brief overview of clinical trials in the context of the CAR NK cell-based therapy for human solid tumors registered in ClinicalTrials.gov (March 2021).

Diseases	Target Ag	Intervention Models	Participant Number	Study Phase	Study Location	Dose	Status	Masking	NCT number
<b>Castration-resistant prostate cancer</b>	PSMA	Sequential Assignment	9	Early 1	China	0.5–3 × 10 <sup>7</sup> /kg	Not yet recruiting	Open-Label	NCT03692663
<b>Various cancers</b>	Robo1	Single Group Assignment	20	1/2	China	N.A.	Recruiting	Open-Label	NCT03940820
<b>Ovarian cancer</b>	Mesothelin	Single Group Assignment	30	Early 1	China	0.5–3 × 10 <sup>7</sup> /kg	Not yet recruiting	Open-Label	NCT03692637
<b>Metastatic solid tumors</b>	NKG2D	Single Group Assignment	30	1	China	N.A.	Unknown	Open-Label	NCT03415100
<b>Neuroblastoma</b>	GD2	Single Group Assignment	0	1	USA	3 × 10 <sup>6</sup> –1 × 10 <sup>9</sup> /kg	Withdrawn*	Open-Label	NCT02439788

NKG2D, Natural killer group 2 member D; Robo1, Roundabout homolog 1; PSMA, Prostate-specific membrane antigen; N.A., Not available.

\*Researcher's explanation: "Based on newly available preclinical data we changed the CAR construct to a more effective version and will now study that product on a different protocol".

been shown in solid tumors due to tumor heterogeneity concomitant with the hostile TME (146). For instance, CD19 is vastly and homogeneously presented on the surface of transformed B cells in a variety of hematological disorders, and CD19-specific effectors do not face large anatomical barricades in the blood before establishing communication with their targets. However, CAR-NK cells must transfer in the bloodstream and then migrate into the tissue to finally shape interaction with the tumor cells while combating several suppressive molecules in the TME (147). Nonetheless, it seems that local infusion, intra-peritoneal infusion, and FUS-guided delivery of CARs into tissues can defeat the anatomical hurdles faced by the CAR-NK cells in solid tumors (148). CAR NK cell therapy appears more favorable in breast, ovarian, and prostate cancers compared with other forms of solid tumors as they are simply and safely available and devastation of the normal tissue can be tolerated (88, 149). Besides, in solid tumors, TAAs commonly are presented by both cells in the tumor and also in pivotal organs, making it difficult to evade "on-target, off-tumor" effects (42). On the other hand, though *in vitro* cultivated NK cells show remarkable cytotoxicity toward transformed cells, they lose this capability following administration *in vivo* due to existence of immunosuppressive molecules such as TGF- $\beta$ , IL-10, PD-1, or arginase, produced by neutrophils, macrophages and Tregs in the TME (148). Tregs and immunosuppressive MDSCs are vigorously infiltrated into the TME, wherein they shape a robust immunosuppressive environment encouraging tumor development (150). Currently, some reports evidenced that injection of TGF- $\beta$  kinase inhibitors in combination with NK cells conserves the cytotoxic capacity and expression of activating NK receptors NKG2D and CD16 (151).

Also, transformed malignant cells escape immune surveillance by expression of checkpoint proteins averting immune responses. For instance, TIGIT moderates NK cell cytolytic activities by opposing CD226 (152), and also PD-1-positive NK cells

demonstrate diminished proliferation and effector functions, while PD-L1-positive cells own improved effector activities (153). Accordingly, combining CARs with inhibitors of checkpoint proteins including PD-1, CTLA-4, LAG3 and TIGIT can support desired outcomes in human solid tumors (127).

## CONCLUSION

Current developments in gene manipulation systems have permitted construction of novel CAR-NK cell products with effective anti-cancer influences, without toxicity against normal tissues. Manifold approaches such as CRISPR-based gene manipulation and introduction of novel genes to modify tumor microenvironment in CAR structure can result in noteworthy achievements in this regard. With the improving safety and sustaining cytotoxicity in preclinical reports and clinical studies accompanying advanced efforts to address existing hindrances, it seems that CAR-NK cell therapy can lead to auspicious therapeutic outcomes in the clinic. Taken together, we believe promoting CAR construction for ideal NK cell functions and cytotoxicity, boosting CAR-NK cell infiltration into TME, modifying these effector cells to defeat tumor inhibition and escape, generating CAR-NK cells with memory possessions *in vivo* for enduring tumor's surveillance, and also improving CAR-elicited selective killing are of paramount importance.

## AUTHOR CONTRIBUTIONS

FM, HS, MM, AH, AA-A, AM, WA, YE, and MC drafted the main text, figures, and tables. MJ supervised the work and provided the comments and additional scientific information. FM and AH also reviewed and revised the text. All authors contributed to the article and approved the submitted version.

## REFERENCES

- Zamai L, Ponti C, Mirandola P, Gobbi G, Papa S, Galeotti L, et al. NK Cells and Cancer. *J Immunol* (2007) 178(7):4011–6. doi: 10.4049/jimmunol.178.7.4011
- Minetto P, Guolo F, Pesce S, Greppi M, Obino V, Ferretti E, et al. Harnessing NK Cells for Cancer Treatment. *Front Immunol* (2019) 10:2836. doi: 10.3389/fimmu.2019.02836
- Iyer JG, Afanasiev OK, McClurkan C, Paulson K, Nagase K, Jing L, et al. Merkel Cell Polyomavirus-Specific CD8+ and CD4+ T-Cell Responses



- Identified in Merkel Cell Carcinomas and Blood. *Clin Cancer Res* (2011) 17(21):6671–80. doi: 10.1158/1078-0432.CCR-11-1513
4. Herberman RB, Nunn ME, Lavrin DH. Natural Cytotoxic Reactivity of Mouse Lymphoid Cells Against Syngeneic and Allogeneic Tumors. I. Distribution of Reactivity and Specificity. *Int J Cancer* (1975) 16(2):216–29. doi: 10.1002/ijc.2910160204
  5. Ljunggren HG, Kärre K. Experimental Strategies and Interpretations in the Analysis of Changes in MHC Gene Expression During Tumour Progression: Opposing Influences of T Cell and Natural Killer Mediated Resistance? *Int J Immunogenet* (1986) 13(2-3):141–51. doi: 10.1111/j.1744-313X.1986.tb01095.x
  6. Moretta A, Bottino C, Vitale M, Pende D, Biassoni R, Mingari MC, et al. Receptors for HLA Class-I Molecules in Human Natural Killer Cells. *Annu Rev Immunol* (1996) 14(1):619–48. doi: 10.1146/annurev.immunol.14.1.619
  7. Moretta A, Tambussi G, Bottino C, Tripodi G, Merli A, Ciccone E, et al. A Novel Surface Antigen Expressed by a Subset of Human CD3-CD16+ Natural Killer Cells. Role in Cell Activation and Regulation of Cytolytic Function. *J Exp Med* (1990) 171(3):695–714. doi: 10.1084/jem.171.3.695
  8. Hilton HG, Parham P. Missing or Altered Self: Human NK Cell Receptors That Recognize HLA-C. *Immunogenetics* (2017) 69(8):567–79. doi: 10.1007/s00251-017-1001-y
  9. Jinushi M, Takehara T, Tatsumi T, Kanto T, Miyagi T, Suzuki T, et al. Negative Regulation of NK Cell Activities by Inhibitory Receptor CD94/NKG2A Leads to Altered NK Cell-Induced Modulation of Dendritic Cell Functions in Chronic Hepatitis C Virus Infection. *J Immunol* (2004) 173(10):6072–81. doi: 10.4049/jimmunol.173.10.6072
  10. Lanier LL, Corliss B, Wu J, Phillips JH. Association of DAP12 With Activating CD94/NKG2C NK Cell Receptors. *Immunity* (1998) 8(6):693–701. doi: 10.1016/S1074-7613(00)80574-9
  11. Zhang C, Liu Y. Targeting NK Cell Checkpoint Receptors or Molecules for Cancer Immunotherapy. *Front Immunol* (2020) 11:1295. doi: 10.3389/fimmu.2020.01295
  12. Bald T, Krummel MF, Smyth MJ, Barry KC. The NK Cell–Cancer Cycle: Advances and New Challenges in NK Cell–Based Immunotherapies. *Nat Immunol* (2020) 21(8):835–47. doi: 10.1038/s41590-020-0728-z
  13. Widowati W, Jasaputra DK, Sumitro SB, Widodo MA, Mozef T, Rizal R, et al. Effect of Interleukins (IL-2, IL-15, IL-18) on Receptors Activation and Cytotoxic Activity of Natural Killer Cells in Breast Cancer Cell. *Afr Health Sci* (2020) 20(2):822–32. doi: 10.4314/ahs.v20i2.36
  14. Qiu JT, Alson D, Lee T-H, Tsai C-C, Yu T-W, Chen Y-S, et al. Effect of Multiple Vaccinations With Tumor Cell-Based Vaccine With Codon-Modified GM-CSF on Tumor Growth in a Mouse Model. *Cancers* (2019) 11(3):368. doi: 10.3390/cancers11030368
  15. Chiu J, Ernst DM, Keating A. Acquired Natural Killer Cell Dysfunction in the Tumor Microenvironment of Classic Hodgkin Lymphoma. *Front Immunol* (2018) 9:267. doi: 10.3389/fimmu.2018.00267
  16. Whiteside TL. Immune Modulation of T-Cell and NK (Natural Killer) Cell Activities by TEXs (Tumour-Derived Exosomes). *Biochem Soc Trans* (2013) 41(1):245–51. doi: 10.1042/BST20120265
  17. Yang H-L, Zhou W-J, Chang K-K, Mei J, Huang L-Q, Wang M-Y, et al. The Crosstalk Between Endometrial Stromal Cells and Macrophages Impairs Cytotoxicity of NK Cells in Endometriosis by Secreting IL-10 and TGF- $\beta$ . *Reproduction* (2017) 154(6):815–25. doi: 10.1530/REP-17-0342
  18. Vanichapol T, Chutipongtanat S, Anurathapan U, Hongeng S. Immune Escape Mechanisms and Future Prospects for Immunotherapy in Neuroblastoma. *BioMed Res Int* (2018) 2018:1812535. doi: 10.1155/2018/1812535
  19. B Seliger, T Cabrera, F Garrido and S Ferrone eds. HLA Class I Antigen Abnormalities and Immune Escape by Malignant Cells. In: *Seminars in Cancer Biology*. Amsterdam: Elsevier.
  20. Glienke W, Esser R, Priesner C, Suerth JD, Schambach A, Wels WS, et al. Advantages and Applications of CAR-Expressing Natural Killer Cells. *Front Pharmacol* (2015) 6:21. doi: 10.3389/fphar.2015.00021
  21. Xie G, Dong H, Liang Y, Ham JD, Rizwan R, Chen J. CAR-NK Cells: A Promising Cellular Immunotherapy for Cancer. *EBioMedicine* (2020) 59:102975. doi: 10.1016/j.ebiom.2020.102975
  22. Guerra N, Tan YX, Joncker NT, Choy A, Gallardo F, Xiong N, et al. NKG2D-Deficient Mice are Defective in Tumor Surveillance in Models of Spontaneous Malignancy. *Immunity* (2008) 28(4):571–80. doi: 10.1016/j.immuni.2008.02.016
  23. Coca S, Perez-Piqueras J, Martinez D, Colmenarejo A, Saez MA, Vallejo C, et al. The Prognostic Significance of Intratumoral Natural Killer Cells in Patients With Colorectal Carcinoma. *Cancer* (1997) 79(12):2320–8. doi: 10.1002/(SICI)1097-0142(19970615)79:12<2320::AID-CNCR5>3.0.CO;2-P
  24. Villegas FR, Coca S, Villarrubia VG, Jiménez R, Chillón M, Jareño J, et al. Prognostic Significance of Tumor Infiltrating Natural Killer Cells Subset CD57 in Patients With Squamous Cell Lung Cancer. *Lung Cancer* (2002) 35(1):23–8. doi: 10.1016/S0169-5002(01)00292-6
  25. Vaquero J, Zurita M, Coca S. Clinical Behavior in Metastatic Brain Disease is Not Influenced by the Immunological Defense Mediated by CD57+ NK-Cells. *Int J Surg Oncol* (2012) 2012:444–7. doi: 10.1155/2012/834852
  26. Sun C, Sun HY, Xiao WH, Zhang C, Tian ZG. Natural Killer Cell Dysfunction in Hepatocellular Carcinoma and NK Cell-Based Immunotherapy. *Acta Pharmacol Sin* (2015) 36(10):1191–9. doi: 10.1038/aps.2015.41
  27. Zakiryanova GK, Kustova E, Urazalieva NT, Amirbekov A, Baimuchametov ET, Nakisbekov NN, et al. Alterations of Oncogenes Expression in NK Cells in Patients With Cancer. *Immun Inflamm Dis* (2017) 5(4):493–502. doi: 10.1002/iid3.179
  28. Gotthardt D, Putz EM, Straka E, Kudweis P, Biaggio M, Poli V, et al. Loss of STAT3 in Murine NK Cells Enhances NK Cell-Dependent Tumor Surveillance. *Blood* (2014) 124(15):2370–9. doi: 10.1182/blood-2014-03-564450
  29. Okada K, Sadahiro S, Chan LF, Ogimi T, Miyakita H, Saito G, et al. The Number of Natural Killer Cells in the Largest Diameter Lymph Nodes Is Associated With the Number of Retrieved Lymph Nodes and Lymph Node Size, and Is an Independent Prognostic Factor in Patients With Stage II Colon Cancer. *Oncology* (2018) 95(5):288–96. doi: 10.1159/000491019
  30. Xie MZ, Tang YP, Hu BL, Li KZ, Li JL, Liang XQ. Percentage of Natural Killer (NK) Cells in Peripheral Blood Is Associated With Prognosis in Patients With Gastric Cancer: A Retrospective Study From a Single Center. *Med Sci Monit* (2021) 27:e927464. doi: 10.12659/MSM.927464
  31. Kotanides H, Sattler RM, Lebron MB, Carpenito C, Shen J, Li J, et al. Characterization of 7A5: A Human CD137 (4-1BB) Receptor Binding Monoclonal Antibody With Differential Agonist Properties That Promotes Antitumor Immunity. *Mol Cancer Ther* (2020) 19(4):988–98. doi: 10.1158/1535-7163.MCT-19-0893
  32. Zhang C, Liu J, Zhong JF, Zhang X. Engineering Car-T Cells. *Biomark Res* (2017) 5(1):1–6. doi: 10.1186/s40364-017-0102-y
  33. MacKay M, Afshinnekoo E, Rub J, Hassan C, Khunte M, Baskaran N, et al. The Therapeutic Landscape for Cells Engineered With Chimeric Antigen Receptors. *Nat Biotechnol* (2020) 38(2):233–44. doi: 10.1038/s41587-019-0329-2
  34. Xu Y, Liu Q, Zhong M, Wang Z, Chen Z, Zhang Y, et al. 2B4 Costimulatory Domain Enhancing Cytotoxic Ability of Anti-CD5 Chimeric Antigen Receptor Engineered Natural Killer Cells Against T Cell Malignancies. *J Hematol Oncol* (2019) 12(1):1–13. doi: 10.1186/s13045-019-0732-7
  35. Imai C, Iwamoto S, Campana D. Genetic Modification of Primary Natural Killer Cells Overcomes Inhibitory Signals and Induces Specific Killing of Leukemic Cells. *Blood* (2005) 106(1):376–83. doi: 10.1182/blood-2004-12-4797
  36. Gilham DE, Debets R, Pule M, Hawkins RE, Abken H. CAR-T Cells and Solid Tumors: Tuning T Cells to Challenge an Inveterate Foe. *Trends Mol Med* (2012) 18(7):377–84. doi: 10.1016/j.molmed.2012.04.009
  37. Hartmann J, Schüßler-Lenz M, Bondanza A, Buchholz CJ. Clinical Development of CAR T Cells—Challenges and Opportunities in Translating Innovative Treatment Concepts. *EMBO Mol Med* (2017) 9(9):1183–97. doi: 10.15252/emmm.201607485
  38. Gardner RA, Finney O, Annesley C, Brakke H, Summers C, Leger K, et al. Intent-to-Treat Leukemia Remission by CD19 Car T Cells of Defined Formulation and Dose in Children and Young Adults. *Blood* (2017) 129(25):3322–31. doi: 10.1182/blood-2017-02-769208
  39. Fitzgerald JC, Weiss SL, Maude SL, Barrett DM, Lacey SF, Melenhorst JJ, et al. Cytokine Release Syndrome After Chimeric Antigen Receptor T Cell Therapy for Acute Lymphoblastic Leukemia. *Crit Care Med* (2017) 45(2):e124. doi: 10.1097/CCM.0000000000002053



40. Liu X, Ranganathan R, Jiang S, Fang C, Sun J, Kim S, et al. A Chimeric Switch-Receptor Targeting PD1 Augments the Efficacy of Second-Generation CAR T Cells in Advanced Solid Tumors. *Cancer Res* (2016) 76(6):1578–90. doi: 10.1158/0008-5472.CAN-15-2524
41. Anwer F, Shaikat A-A, Zahid U, Husnain M, McBride A, Persky D, et al. Donor Origin CAR T Cells: Graft Versus Malignancy Effect Without GVHD, a Systematic Review. *Immunotherapy* (2017) 9(2):123–30. doi: 10.2217/imt-2016-0127
42. Siegler EL, Zhu Y, Wang P, Yang L. Off-the-Shelf CAR-NK Cells for Cancer Immunotherapy. *Cell Stem Cell* (2018) 23(2):160–1. doi: 10.1016/j.stem.2018.07.007
43. Tang X, Yang L, Li Z, Nalin AP, Dai H, Xu T, et al. First-in-Man Clinical Trial of CAR-NK-92 Cells: Safety Test of CD33-CAR NK-92 Cells in Patients With Relapsed and Refractory Acute Myeloid Leukemia. *Am J Cancer Res* (2018) 8(6):1083.
44. Morandi F, Yazdanifar M, Cocco C, Bertaina A, Airoldi I. Engineering the Bridge Between Innate and Adaptive Immunity for Cancer Immunotherapy: Focus on  $\gamma\delta$  T and NK Cells. *Cells* (2020) 9(8):1757. doi: 10.3390/cells9081757
45. Herrera L, Santos S, Vesga M, Anguita J, Martín-Ruiz I, Carrascosa T, et al. Adult Peripheral Blood and Umbilical Cord Blood NK Cells Are Good Sources for Effective CAR Therapy Against CD19 Positive Leukemic Cells. *Sci Rep* (2019) 9(1):1–10. doi: 10.1038/s41598-019-55239-y
46. Spanholtz J, Preijers F, Tordoir M, Trilsbeek C, Paardekoojer J, De Witte T, et al. Clinical-Grade Generation of Active NK Cells From Cord Blood Hematopoietic Progenitor Cells for Immunotherapy Using a Closed-System Culture Process. *PLoS One* (2011) 6(6):e20740. doi: 10.1371/journal.pone.0020740
47. Baggio L, Laureano AM, da Rocha Silla LM, Lee DA. Natural Killer Cell Adoptive Immunotherapy: Coming of Age. *Clin Immunol* (2017) 177:3–11. doi: 10.1016/j.clim.2016.02.003
48. Szmánia S, Lapteva N, Garg T, Greenway A, Lingo J, Nair B, et al. Ex Vivo Expanded Natural Killer Cells Demonstrate Robust Proliferation In Vivo in High-Risk Relapsed Multiple Myeloma Patients. *J Immunother (Hagerstown Md: 1997)* (2015) 38(1):24. doi: 10.1097/CJI.0000000000000059
49. Zeng J, Tang SY, Toh LL, Wang S. Generation of “Off-the-Shelf” Natural Killer Cells From Peripheral Blood Cell-Derived Induced Pluripotent Stem Cells. *Stem Cell Rep* (2017) 9(6):1796–812. doi: 10.1016/j.stemcr.2017.10.020
50. Della Chiesa M, Falco M, Podesta M, Locatelli F, Moretta L, Frassonni F, et al. Phenotypic and Functional Heterogeneity of Human NK Cells Developing After Umbilical Cord Blood Transplantation: A Role for Human Cytomegalovirus? *Blood J Am Soc Hematol* (2012) 119(2):399–410. doi: 10.1182/blood-2011-08-372003
51. Sarvaria A, Jawdat D, Madrigal JA, Saudemont A. Umbilical Cord Blood Natural Killer Cells, Their Characteristics, and Potential Clinical Applications. *Front Immunol* (2017) 8:329. doi: 10.3389/fimmu.2017.00329
52. Luevano M, Daryouzeh M, Alnabhan R, Querol S, Khakoo S, Madrigal A, et al. The Unique Profile of Cord Blood Natural Killer Cells Balances Incomplete Maturation and Effective Killing Function Upon Activation. *Hum Immunol* (2012) 73(3):248–57. doi: 10.1016/j.humimm.2011.12.015
53. Tanaka H, Kai S, Yamaguchi M, Misawa M, Fujimori Y, Yamamoto M, et al. Analysis of Natural Killer (NK) Cell Activity and Adhesion Molecules on NK Cells From Umbilical Cord Blood. *Eur J Haematol* (2003) 71(1):29–38. doi: 10.1034/j.1600-0609.2003.00081.x
54. Klingemann H-G, Wong E, Maki G. A Cytotoxic NK-Cell Line (NK-92) for Ex Vivo Purging of Leukemia From Blood. *Biol Blood Marrow Transplant* (1996) 2(2):68–75.
55. Tonn T, Schwabe D, Klingemann HG, Becker S, Esser R, Koehl U, et al. Treatment of Patients With Advanced Cancer With the Natural Killer Cell Line NK-92. *Cytotherapy* (2013) 15(12):1563–70. doi: 10.1016/j.jcyt.2013.06.017
56. Luevano M, Domogala A, Blundell M, Jackson N, Pedroza-Pacheco I, Derniame S, et al. Frozen Cord Blood Hematopoietic Stem Cells Differentiate Into Higher Numbers of Functional Natural Killer Cells In Vitro Than Mobilized Hematopoietic Stem Cells or Freshly Isolated Cord Blood Hematopoietic Stem Cells. *PLoS One* (2014) 9(1):e87086. doi: 10.1371/journal.pone.0087086
57. Tomanin R, Scarpa M. Why Do We Need New Gene Therapy Viral Vectors? Characteristics, Limitations and Future Perspectives of Viral Vector Transduction. *Curr Gene Ther* (2004) 4(4):357–72. doi: 10.2174/1566523043346011
58. Miller A. Retroviral Vectors. Viral Expression Vectors. *J Curr Top Microbiol Immunol* (1992) 158:1–24. doi: 10.1007/978-3-642-75608-5\_1
59. Schmidt P, Raftery MJ, Pecher G. Engineering NK Cells for CAR Therapy—Recent Advances in Gene Transfer Methodology. *Front Immunol* (2020) 11:611163. doi: 10.3389/fimmu.2020.611163
60. Bett AJ, Prevec L, Graham FL. Packaging Capacity and Stability of Human Adenovirus Type 5 Vectors. *J Virol* (1993) 67(10):5911–21. doi: 10.1128/JVI.67.10.5911-5921.1993
61. Littwitz E, Francois S, Dittmer U, Gibbert K. Distinct Roles of NK Cells in Viral Immunity During Different Phases of Acute Friend Retrovirus Infection. *Retrovirology* (2013) 10(1):1–7. doi: 10.1186/1742-4690-10-127
62. Clark K, Plater L, Peggie M, Cohen P. Use of the Pharmacological Inhibitor BX795 to Study the Regulation and Physiological Roles of TBK1 and Ikb Kinase  $\epsilon$ : A Distinct Upstream Kinase Mediates Ser-172 Phosphorylation and Activation. *J Biol Chem* (2009) 284(21):14136–46. doi: 10.1074/jbc.M109.000414
63. Sutlu T, Nyström S, Gilljam M, Stellan B, Applequist SE, Alici E. Inhibition of Intracellular Antiviral Defense Mechanisms Augments Lentiviral Transduction of Human Natural Killer Cells: Implications for Gene Therapy. *Hum Gene Ther* (2012) 23(10):1090–100. doi: 10.1089/hum.2012.080
64. Yin H, Kanasty RL, Eltoukhy AA, Vegas AJ, Dorkin JR, Anderson DG. Non-Viral Vectors for Gene-Based Therapy. *Nat Rev Genet* (2014) 15(8):541–55. doi: 10.1038/nrg3763
65. Li Z, Wang H, Cai C, Wong AH-H, Wang J, Gao J, et al. Genome-Wide piggyBac Transposon-Based Mutagenesis and Quantitative Insertion-Site Analysis in Haploid *Candida* Species. *Nat Protoc* (2020) 15(8):2705–27. doi: 10.1038/s41596-020-0351-3
66. Heintz N, Gong S. Two-Step Bacterial Artificial Chromosome (BAC) Engineering: Electroporation of Competent BAC Host Cells With the Recombinant Shuttle Vector. *Cold Spring Harb Protoc* (2020) 2020(4):098079. doi: 10.1101/pdb.prot098079
67. Boissel L, Betancur M, Lu W, Wels WS, Marino T, Van Etten RA, et al. Comparison of mRNA and Lentiviral Based Transfection of Natural Killer Cells With Chimeric Antigen Receptors Recognizing Lymphoid Antigens. *Leuk Lymphoma* (2012) 53(5):958–65. doi: 10.3109/10428194.2011.634048
68. Grund EM, Muise-Helmericks RC. Cost Efficient and Effective Gene Transfer Into the Human Natural Killer Cell Line, NK92. *J Immunol Methods* (2005) 296(1–2):31–6. doi: 10.1016/j.jim.2004.10.008
69. Becker PS, Suck G, Nowakowska P, Ullrich E, Seifried E, Bader P, et al. Selection and Expansion of Natural Killer Cells for NK Cell-Based Immunotherapy. *Cancer Immunol Immunother* (2016) 65(4):477–84. doi: 10.1007/s00262-016-1792-y
70. Ciurea SO, Schafer JR, Bassett R, Denman CJ, Cao K, Willis D, et al. Phase I Clinical Trial Using mbIL21 Ex Vivo-Expanded Donor-Derived NK Cells After Haploidentical Transplantation. *Blood* (2017) 130(16):1857–68. doi: 10.1182/blood-2017-05-785659
71. Concha-Benavente F, Kansy B, Moskovitz J, Moy J, Chandran U, Ferris RL. PD-L1 Mediates Dysfunction in Activated PD-1(+) NK Cells in Head and Neck Cancer Patients. *Cancer Immunol Res* (2018) 6(12):1548–60. doi: 10.1158/2326-6066.CIR-18-0062
72. Sakamoto N, Ishikawa T, Kokura S, Okayama T, Oka K, Ideno M, et al. Phase I Clinical Trial of Autologous NK Cell Therapy Using Novel Expansion Method in Patients With Advanced Digestive Cancer. *J Transl Med* (2015) 13:277. doi: 10.1186/s12967-015-0632-8
73. Kalos M, Levine BL, Porter DL, Katz S, Grupp SA, Bagg A, et al. T Cells With Chimeric Antigen Receptors Have Potent Antitumor Effects and can Establish Memory in Patients With Advanced Leukemia. *Sci Transl Med* (2011) 3(95):95ra73–3. doi: 10.1126/scitranslmed.3002842
74. Dranoff G. GM-CSF-Based Cancer Vaccines. *Immunol Rev* (2002) 188(1):147–54. doi: 10.1034/j.1600-065X.2002.18813.x
75. Harrison C. Calming the Cytokine Storm. *Nat Rev Drug Discov* (2010) 9(5):360–1. doi: 10.1038/nrd3162
76. Han B, Mao F-Y, Zhao Y-L, Lv Y-P, Teng Y-S, Duan M, et al. Altered Nkp30, Nkp46, NKG2D, and DNAM-1 Expression on Circulating NK Cells Is Associated With Tumor Progression in Human Gastric Cancer. *J Immunol Res* (2018) 2018:6248590. doi: 10.1155/2018/6248590

77. Hatjiharissi E, Xu L, Santos DD, Hunter ZR, Ciccarelli BT, Verselis S, et al. Increased Natural Killer Cell Expression of CD16, Augmented Binding and ADCC Activity to Rituximab Among Individuals Expressing the FcγRIIIa-158 V/V and V/F Polymorphism. *Blood J Am Soc Hematol* (2007) 110(7):2561–4. doi: 10.1182/blood-2007-01-070656
78. Maude SL, Frey N, Shaw PA, Aplenc R, Barrett DM, Bunin NJ, et al. Chimeric Antigen Receptor T Cells for Sustained Remissions in Leukemia. *N Engl J Med* (2014) 371(16):1507–17. doi: 10.1056/NEJMoa1407222
79. Del Zotto G, Antonini F, Pesce S, Moretta F, Moretta L, Marcenaro E. Comprehensive Phenotyping of Human PB NK Cells by Flow Cytometry. *Cytometry Part A* (2020) 97(9):891–9. doi: 10.1002/cyto.a.24001
80. Hu Y, Tian Z-G, Zhang C. Chimeric Antigen Receptor (CAR)-Transduced Natural Killer Cells in Tumor Immunotherapy. *Acta Pharmacol Sin* (2018) 39(2):167–76. doi: 10.1038/aps.2017.125
81. Zhang Q, Zhang H, Ding J, Liu H, Li H, Li H, et al. Combination Therapy With EpCAM-CAR-NK-92 Cells and Regorafenib Against Human Colorectal Cancer Models. *J Immunol Res* (2018) 2018:4263520. doi: 10.1155/2018/4263520
82. Ao X, Yang Y, Li W, Tan Y, Guo W, Ao L, et al. Anti-αFR CAR-Engineered NK-92 Cells Display Potent Cytotoxicity Against αFR-Positive Ovarian Cancer. *J Immunother (Hagerstown Md 1997)* (2019) 42(8):284–96. doi: 10.1097/CJI.0000000000000286
83. Yu M, Luo H, Fan M, Wu X, Shi B, Di S, et al. Development of GPC3-Specific Chimeric Antigen Receptor-Engineered Natural Killer Cells for the Treatment of Hepatocellular Carcinoma. *Mol Ther* (2018) 26(2):366–78. doi: 10.1016/j.yimthe.2017.12.012
84. Liu B, Liu ZZ, Zhou ML, Lin JW, Chen XM, Li Z, et al. Development of C-MET-Specific Chimeric Antigen Receptor-Engineered Natural Killer Cells With Cytotoxic Effects on Human Liver Cancer HepG2 Cells. *Mol Med Rep* (2019) 20(3):2823–31. doi: 10.3892/mmr.2019.10529
85. Liu Y, Zhou Y, Huang KH, Fang X, Li Y, Wang F, et al. Targeting Epidermal Growth Factor-Overexpressing Triple-Negative Breast Cancer by Natural Killer Cells Expressing a Specific Chimeric Antigen Receptor. *Cell Prolif* (2020) 53(8):e12858. doi: 10.1111/cpr.12858
86. Shiozawa M, Chang CH, Huang YC, Chen YC, Chi MS, Hao HC, et al. Pharmacologically Upregulated Carcinoembryonic Antigen-Expression Enhances the Cytolytic Activity of Genetically-Modified Chimeric Antigen Receptor NK-92MI Against Colorectal Cancer Cells. *BMC Immunol* (2018) 19(1):27. doi: 10.1186/s12865-018-0262-z
87. Wu X, Huang S. HER2-Specific Chimeric Antigen Receptor-Engineered Natural Killer Cells Combined With Apatinib for the Treatment of Gastric Cancer. *Bull Cancer* (2019) 106(11):946–58. doi: 10.1016/j.bulcan.2019.03.012
88. Schönfeld K, Sahn C, Zhang C, Naundorf S, Brendel C, Odendahl M, et al. Selective Inhibition of Tumor Growth by Clonal NK Cells Expressing an ErbB2/HER2-Specific Chimeric Antigen Receptor. *Mol Ther* (2015) 23(2):330–8. doi: 10.1038/mt.2014.219
89. Genßler S, Burger MC, Zhang C, Oelsner S, Mildnerberger I, Wagner M, et al. Dual Targeting of Glioblastoma With Chimeric Antigen Receptor-Engineered Natural Killer Cells Overcomes Heterogeneity of Target Antigen Expression and Enhances Antitumor Activity and Survival. *Oncoimmunology* (2016) 5(4):e1119354. doi: 10.1080/2162402X.2015.1119354
90. Lu C, Guo C, Chen H, Zhang H, Zhi L, Lv T, et al. A Novel Chimeric PD1-NKG2D-41BB Receptor Enhances Antitumor Activity of NK92 Cells Against Human Lung Cancer H1299 Cells by Triggering Pyroptosis. *Mol Immunol* (2020) 122:200–6. doi: 10.1016/j.molimm.2020.04.016
91. Uherek C, Tonn T, Uherek B, Becker S, Schnierle B, Klingemann HG, et al. Retargeting of Natural Killer-Cell Cytolytic Activity to ErbB2-expressing Cancer Cells Results in Efficient and Selective Tumor Cell Destruction. *Blood* (2002) 100(4):1265–73. doi: 10.1182/blood.V100.4.1265.h81602001265\_1265\_1273
92. Liu H, Yang B, Sun T, Lin L, Hu Y, Deng M, et al. Specific Growth Inhibition of ErbB2-expressing Human Breast Cancer Cells by Genetically Modified NK-92 Cells. *Oncol Rep* (2015) 33(1):95–102. doi: 10.3892/or.2014.3548
93. Murakami T, Nakazawa T, Natsume A, Nishimura F, Nakamura M, Matsuda R, et al. Novel Human NK Cell Line Carrying Car Targeting EGFRvIII Induces Antitumor Effects in Glioblastoma Cells. *Anticancer Res* (2018) 38(9):5049–56. doi: 10.21873/anticancerres.12824
94. Esser R, Müller T, Stefes D, Kloess S, Seidel D, Gillies SD, et al. NK Cells Engineered to Express a GD2 -Specific Antigen Receptor Display Built-in ADCC-like Activity Against Tumour Cells of Neuroectodermal Origin. *J Cell Mol Med* (2012) 16(3):569–81. doi: 10.1111/j.1582-4934.2011.01343.x
95. Sahn C, Schönfeld K, Wels WS. Expression of IL-15 in NK Cells Results in Rapid Enrichment and Selective Cytotoxicity of Gene-Modified Effectors That Carry a Tumor-Specific Antigen Receptor. *Cancer Immunol Immunother* (2012) 61(9):1451–61. doi: 10.1007/s00262-012-1212-x
96. Kruschinski A, Moosmann A, Poschke I, Norell H, Chmielewski M, Seliger B, et al. Engineering Antigen-Specific Primary Human NK Cells Against HER-2 Positive Carcinomas. *Proc Natl Acad Sci USA* (2008) 105(45):17481–6. doi: 10.1073/pnas.0804788105
97. Qu Y, Bi JZ. [Killing Effect of Robo1 Targeted Chimeric Antigen Receptor Modified NK92 Cells Against Glioma and Neuroblastoma Cells]. *Zhonghua Yi Xue Za Zhi* (2018) 98(11):860–6. doi: 10.3760/cma.j.issn.0376-2491.2018.11.014
98. Ueda T, Kumagai A, Iriguchi S, Yasui Y, Miyasaka T, Nakagoshi K, et al. Non-Clinical Efficacy, Safety and Stable Clinical Cell Processing of Induced Pluripotent Stem Cell-Derived Anti-Glypican-3 Chimeric Antigen Receptor-Expressing Natural Killer/Innate Lymphoid Cells. *Cancer Sci* (2020) 111(5):1478–90. doi: 10.1111/cas.14374
99. Ng YY, Tay JCK, Wang S. CXCR1 Expression to Improve Anti-Cancer Efficacy of Intravenously Injected CAR-NK Cells in Mice With Peritoneal Xenografts. *Mol Ther Oncolytics* (2020) 16:75–85. doi: 10.1016/j.omto.2019.12.006
100. Tseng H-C, Xiong W, Badeti S, Yang Y, Ma M, Liu T, et al. Efficacy of Anti-CD147 Chimeric Antigen Receptors Targeting Hepatocellular Carcinoma. *Nat Commun* (2020) 11(1):4810. doi: 10.1038/s41467-020-18444-2
101. Zhang C, Burger MC, Jennewein L, Genßler S, Schönfeld K, Zeiner P, et al. ErbB2/HER2-Specific NK Cells for Targeted Therapy of Glioblastoma. *J Natl Cancer Inst* (2016) 108(5):djv375. doi: 10.1093/jnci/djv375
102. Li C, Yang N, Li H, Wang Z. Robo1-Specific Chimeric Antigen Receptor Natural Killer Cell Therapy for Pancreatic Ductal Adenocarcinoma With Liver Metastasis. *J Cancer Res Ther* (2020) 16(2):393–6. doi: 10.4103/jcrt.JCRT\_190\_20
103. Yang S, Cao B, Zhou G, Zhu L, Wang L, Zhang L, et al. Targeting B7-H3 Immune Checkpoint With Chimeric Antigen Receptor-Engineered Natural Killer Cells Exhibits Potent Cytotoxicity Against Non-Small Cell Lung Cancer. *Front Pharmacol* (2020) 11:1089. doi: 10.3389/fphar.2020.01089
104. Wang J, Lupo KB, Chambers AM, Matosevic S. Purinergic Targeting Enhances Immunotherapy of CD73(+) Solid Tumors With piggyBac-Engineered Chimeric Antigen Receptor Natural Killer Cells. *J Immunother Cancer* (2018) 6(1):136. doi: 10.1186/s40425-018-0441-8
105. Müller N, Michen S, Tietze S, Töpfer K, Schulte A, Lamszus K, et al. Engineering NK Cells Modified With an EGFRvIII-Specific Chimeric Antigen Receptor to Overexpress CXCR4 Improves Immunotherapy of CXCL12/SDF-1α-Secreting Glioblastoma. *J Immunother (Hagerstown Md 1997)* (2015) 38(5):197–210. doi: 10.1097/CJI.0000000000000082
106. Daldrup-Link HE, Meier R, Rudelius M, Piontek G, Piert M, Metz S, et al. In Vivo Tracking of Genetically Engineered, Anti-HER2/neu Directed Natural Killer Cells to HER2/neu Positive Mammary Tumors With Magnetic Resonance Imaging. *Eur Radiol* (2005) 15(1):4–13. doi: 10.1007/s00330-004-2526-7
107. Wang Z, Guo L, Song Y, Zhang Y, Lin D, Hu B, et al. Augmented Anti-Tumor Activity of NK-92 Cells Expressing Chimeric Receptors of TGF-β<sub>II</sub> and NKG2D. *Cancer Immunol Immunother* (2017) 66(4):537–48. doi: 10.1007/s00262-017-1959-1
108. Han J, Chu J, Keung Chan W, Zhang J, Wang Y, Cohen JB, et al. CAR-Engineered NK Cells Targeting Wild-Type EGFR and EGFRvIII Enhance Killing of Glioblastoma and Patient-Derived Glioblastoma Stem Cells. *Sci Rep* (2015) 5:11483. doi: 10.1038/srep11483
109. Zhang C, Oberoi P, Oelsner S, Waldmann A, Lindner A, Tonn T, et al. Chimeric Antigen Receptor-Engineered NK-92 Cells: An Off-the-Shelf Cellular Therapeutic for Targeted Elimination of Cancer Cells and Induction of Protective Antitumor Immunity. *Front Immunol* (2017) 8:533. doi: 10.3389/fimmu.2017.00533
110. Coughlan D, Gianferante M, Lynch CF, Stevens JL, Harlan LC. Treatment and Survival of Childhood Neuroblastoma: Evidence From a Population-Based Study in the United States. *Pediatr Hematol Oncol* (2017) 34(5):320–30. doi: 10.1080/08880018.2017.1373315

111. McNerney KO, Karageorgos SA, Hogarty MD, Bassiri H. Enhancing Neuroblastoma Immunotherapies by Engaging iNKT and NK Cells. *Front Immunol* (2020) 11:873. doi: 10.3389/fimmu.2020.00873
112. Jewett A, Kos J, Fong Y, Ko M-W, Safaei T, Nanut MP, et al. NK Cells Shape Pancreatic and Oral Tumor Microenvironments; Role in Inhibition of Tumor Growth and Metastasis. In: *Seminars in Cancer Biology*. Amsterdam: Elsevier.
113. Husain Z, Huang Y, Seth P, Sukhatme VP. Tumor-Derived Lactate Modifies Antitumor Immune Response: Effect on Myeloid-Derived Suppressor Cells and NK Cells. *J Immunol* (2013) 191(3):1486–95. doi: 10.4049/jimmunol.1202702
114. Parihar R, Rivas C, Huynh M, Omer B, Lapteva N, Metelitsa LS, et al. NK Cells Expressing a Chimeric Activating Receptor Eliminate MDSCs and Rescue Impaired CAR-T Cell Activity Against Solid Tumors. *Cancer Immunol Res* (2019) 7(3):363–75. doi: 10.1158/2326-6066.CIR-18-0572
115. Seidel D, Shibina A, Siebert N, Wels WS, Reynolds CP, Huebener N, et al. Disialoganglioside-Specific Human Natural Killer Cells Are Effective Against Drug-Resistant Neuroblastoma. *Cancer Immunol Immunother* (2015) 64(5):621–34. doi: 10.1007/s00262-015-1669-5
116. Golán I, Rodríguez de la Fuente L, Costoya JA. NK Cell-Based Glioblastoma Immunotherapy. *Cancers* (2018) 10(12):522. doi: 10.3390/cancers10120522
117. Lupo KB, Matosevic S. CD155 Immunoregulation as a Target for Natural Killer Cell Immunotherapy in Glioblastoma. *J Hematol Oncol* (2020) 13(1):76. doi: 10.1186/s13045-020-00913-2
118. Nakazawa T, Nakamura M, Park YS, Motoyama Y, Hironaka Y, Nishimura F, et al. Cytotoxic Human Peripheral Blood-Derived  $\gamma\delta$  T Cells Kill Glioblastoma Cell Lines: Implications for Cell-Based Immunotherapy for Patients With Glioblastoma. *J Neurooncol* (2014) 116(1):31–9. doi: 10.1007/s11060-013-1258-4
119. Platten M. EGFRvIII Vaccine in Glioblastoma-InACT-IVE or Not ReACTive Enough? *Neuro Oncol* (2017) 19(11):1425–6. doi: 10.1093/neuonc/nox167
120. Hilmi M, Vienot A, Rousseau B, Neuzillet C. Immune Therapy for Liver Cancers. *Cancers* (2020) 12(1):77. doi: 10.3390/cancers12010077
121. Rohr-Udilova N, Klinglmüller F, Schulte-Hermann R, Stift J, Herac M, Salzmann M, et al. Deviations of the Immune Cell Landscape Between Healthy Liver and Hepatocellular Carcinoma. *Sci Rep* (2018) 8(1):1–11. doi: 10.1038/s41598-018-24437-5
122. Yarden Y. Biology of HER2 and its Importance in Breast Cancer. *Oncology* (2001) 61(Suppl. 2):1–13. doi: 10.1016/S0140-6736(16)32417-5
123. Loibl S, Gianni L. HER2-Positive Breast Cancer. *Lancet* (2017) 389(10087):2415–29. doi: 10.1016/S0140-6736(16)32417-5
124. Slamon DJ, Leyland-Jones B, Shak S, Fuchs H, Paton V, Bajamonde A, et al. Use of Chemotherapy Plus a Monoclonal Antibody Against HER2 for Metastatic Breast Cancer That Overexpresses HER2. *N Engl J Med* (2001) 344(11):783–92. doi: 10.1056/NEJM200103153441101
125. Sun YS, Zhao Z, Yang ZN, Xu F, Lu HJ, Zhu ZY, et al. Risk Factors and Preventions of Breast Cancer. *Int J Biol Sci* (2017) 13(11):1387–97. doi: 10.7150/ijbs.21635
126. Alkins R, Burgess A, Ganguly M, Francia G, Kerbel R, Wels WS, et al. Focused Ultrasound Delivers Targeted Immune Cells to Metastatic Brain Tumors. *Cancer Res* (2013) 73(6):1892–9. doi: 10.1158/0008-5472.CAN-12-2609
127. Hu Z. Tissue Factor as a New Target for CAR-NK Cell Immunotherapy of Triple-Negative Breast Cancer. *Sci Rep* (2020) 10(1):1–13. doi: 10.1038/s41598-020-59736-3
128. Chen X, Han J, Chu J, Zhang L, Zhang J, Chen C, et al. A Combinational Therapy of EGFR-CAR NK Cells and Oncolytic Herpes Simplex Virus 1 for Breast Cancer Brain Metastases. *Oncotarget* (2016) 7(19):27764–77. doi: 10.18632/oncotarget.8526
129. Imai K, Matsuyama S, Miyake S, Suga K, Nakachi K. Natural Cytotoxic Activity of Peripheral-Blood Lymphocytes and Cancer Incidence: An 11-Year Follow-Up Study of a General Population. *Lancet (London England)* (2000) 356(9244):1795–9. doi: 10.1016/S0140-6736(00)03231-1
130. Wang F, Lau JKC, Yu J. The Role of Natural Killer Cell in Gastrointestinal Cancer: Killer or Helper. *Oncogene* (2021) 40(4):717–30. doi: 10.1038/s41388-020-01561-z
131. Xiao L, Cen D, Gan H, Sun Y, Huang N, Xiong H, et al. Adoptive Transfer of NKG2D CAR mRNA-Engineered Natural Killer Cells in Colorectal Cancer Patients. *Mol Ther* (2019) 27(6):1114–25. doi: 10.1016/j.ymthe.2019.03.011
132. Hoogstad-van Evert JS, Bekkers R, Ottevanger N, Jansen JH, Massuger L, Dolstra H. Harnessing Natural Killer Cells for the Treatment of Ovarian Cancer. *Gynecol Oncol* (2020) 157(3):810–6. doi: 10.1016/j.ygyno.2020.03.020
133. Webb JR, Milne K, Watson P, Deleeuw RJ, Nelson BH. Tumor-Infiltrating Lymphocytes Expressing the Tissue Resident Memory Marker CD103 Are Associated With Increased Survival in High-Grade Serous Ovarian Cancer. *Clin Cancer Res* (2014) 20(2):434–44. doi: 10.1158/1078-0432.CCR-13-1877
134. Nham T, Poznanski SM, Fan IY, Shenouda MM, Chew MV, Lee AJ, et al. Ex Vivo-Expanded NK Cells From Blood and Ascites of Ovarian Cancer Patients are Cytotoxic Against Autologous Primary Ovarian Cancer Cells. *Cancer Immunol Immunother* (2018) 67(4):575–87. doi: 10.1007/s00262-017-2112-x
135. Li Y, Hermanson DL, Moriarity BS, Kaufman DS. Human iPSC-derived Natural Killer Cells Engineered With Chimeric Antigen Receptors Enhance Anti-Tumor Activity. *Cell Stem Cell* (2018) 23(2):181–92.e5. doi: 10.1016/j.stem.2018.06.002
136. Ueda T, Kumagai A, Iriguchi S, Yasui Y, Miyasaka T, Nakagoshi K, et al. Non-Clinical Efficacy, Safety and Stable Clinical Cell Processing of Induced Pluripotent Stem Cell-Derived Anti-Glypican-3 Chimeric Antigen Receptor-Expressing Natural Killer/Innate Lymphoid Cells. *Cancer Sci* (2020) 111(5):1478–90. doi: 10.1111/cas.14374
137. Cao B, Liu M, Wang L, Liang B, Feng Y, Chen X, et al. Use of Chimeric Antigen Receptor NK-92 Cells to Target Mesothelin in Ovarian Cancer. *Biochem Biophys Res Commun* (2020) 524(1):96–102. doi: 10.1016/j.bbrc.2020.01.053
138. Klapdor R, Wang S, Morgan M, Dörk T, Hacker U, Hillemanns P, et al. Characterization of a Novel Third-Generation Anti-CD24-CAR Against Ovarian Cancer. *Int J Mol Sci* (2019) 20(3):660. doi: 10.3390/ijms20030660
139. Nakamura K, Terai Y, Tanabe A, Ono YJ, Hayashi M, Maeda K, et al. CD24 Expression Is a Marker for Predicting Clinical Outcome and Regulates the Epithelial-Mesenchymal Transition in Ovarian Cancer Via Both the Akt and ERK Pathways. *Oncol Rep* (2017) 37(6):3189–200. doi: 10.3892/or.2017.5583
140. Klapdor R, Wang S, Hacker U, Büning H, Morgan M, Dörk T, et al. Improved Killing of Ovarian Cancer Stem Cells by Combining a Novel Chimeric Antigen Receptor-Based Immunotherapy and Chemotherapy. *Hum Gene Ther* (2017) 28(10):886–96. doi: 10.1089/hum.2017.168
141. Kailayangiri S, Altwater B, Spurny C, Jamitzky S, Schelhaas S, Jacobs AH, et al. Targeting Ewing Sarcoma With Activated and GD2-specific Chimeric Antigen Receptor-Engineered Human NK Cells Induces Upregulation of Immune-Inhibitory HLA-G. *Oncoimmunology* (2017) 6(1):e1250050. doi: 10.1080/2162402X.2016.1250050
142. Merker M, Pfirrmann V, Oelsner S, Fulda S, Klingebiel T, Wels WS, et al. Generation and Characterization of ErbB2-CAR-Engineered Cytokine-Induced Killer Cells for the Treatment of High-Risk Soft Tissue Sarcoma in Children. *Oncotarget* (2017) 8(39):66137–53. doi: 10.18632/oncotarget.19821
143. Batchu RB, Gruzdyn OV, Tavva PS, Kolli BK, Dacheppalli R, Weaver DW, et al. Engraftment of Mesothelin Chimeric Antigen Receptor Using a Hybrid Sleeping Beauty/Minicircle Vector Into NK-92MI Cells for Treatment of Pancreatic Cancer. *Surgery* (2019) 166(4):503–8. doi: 10.1016/j.surg.2019.05.047
144. Robbins Y, Greene S, Friedman J, Clavijo PE, Van Waes C, Fabian KP, et al. Tumor Control Via Targeting PD-L1 With Chimeric Antigen Receptor Modified NK Cells. *eLife* (2020) 9:e54854. doi: 10.7554/eLife.54854
145. Zhang Q, Tian K, Xu J, Zhang H, Li L, Fu Q, et al. Synergistic Effects of Cabozantinib and EGFR-Specific CAR-NK-92 Cells in Renal Cell Carcinoma. *J Immunol Res* (2017) 2017:6915912. doi: 10.1155/2017/6915912
146. Wang L, Dou M, Ma Q, Yao R, Liu J. Chimeric Antigen Receptor (CAR)-Modified NK Cells Against Cancer: Opportunities and Challenges. *Int Immunopharmacol* (2019) 74:105695. doi: 10.1016/j.intimp.2019.105695
147. Melaiu O, Lucarini V, Cifaldi L, Fruci D. Influence of the Tumor Microenvironment on NK Cell Function in Solid Tumors. *Front Immunol* (2020) 10:3038. doi: 10.3389/fimmu.2019.03038

148. Yilmaz A, Cui H, Caligiuri MA, Yu J. Chimeric Antigen Receptor-Engineered Natural Killer Cells for Cancer Immunotherapy. *J Hematol Oncol* (2020) 13(1):168. doi: 10.1186/s13045-020-00998-9
149. Pinthus JH, Waks T, Kaufman-Francis K, Schindler DG, Harmelin A, Kanety H, et al. Immuno-Gene Therapy of Established Prostate Tumors Using Chimeric Receptor-Redirected Human Lymphocytes. *Cancer Res* (2003) 63(10):2470–6.
150. Heyman B, Yang Y. Chimeric Antigen Receptor T Cell Therapy for Solid Tumors: Current Status, Obstacles and Future Strategies. *Cancers* (2019) 11(2):191. doi: 10.3390/cancers11020191
151. Otegbeye F, Ojo E, Moreton S, Mackowski N, Lee DA, de Lima M, et al. Inhibiting TGF-beta Signaling Preserves the Function of Highly Activated, In Vitro Expanded Natural Killer Cells in AML and Colon Cancer Models. *PLoS One* (2018) 13(1):e0191358. doi: 10.1371/journal.pone.0191358
152. Chan CJ, Martinet L, Gilfillan S, Souza-Fonseca-Guimaraes F, Chow MT, Town L, et al. The Receptors CD96 and CD226 Oppose Each Other in the Regulation of Natural Killer Cell Functions. *Nat Immunol* (2014) 15(5):431. doi: 10.1038/ni.2850
153. Dong W, Wu X, Ma S, Wang Y, Nalin AP, Zhu Z, et al. The Mechanism of Anti-PD-L1 Antibody Efficacy Against PD-L1-Negative Tumors Identifies NK Cells Expressing PD-L1 as a Cytolytic Effector. *Cancer Discov* (2019) 9(10):1422–37. doi: 10.1158/2159-8290.CD-18-1259

**Conflict of Interest:** The authors declare that the research was conducted in the absence of any commercial or financial relationships that could be construed as a potential conflict of interest.

Copyright © 2021 Marofi, Al-Awad, Sulaiman Rahman, Markov, Abdelbasset, Ivanovna Enina, Mahmoodi, Hassanzadeh, Yazdanifar, Stanley Chartrand and Jarahian. This is an open-access article distributed under the terms of the Creative Commons Attribution License (CC BY). The use, distribution or reproduction in other forums is permitted, provided the original author(s) and the copyright owner(s) are credited and that the original publication in this journal is cited, in accordance with accepted academic practice. No use, distribution or reproduction is permitted which does not comply with these terms.