

# Carbapenem-Resistant KPC- and TEM-Producing *Escherichia coli* ST131 Isolated from a Hospitalized Patient with Urinary Tract Infection: First Isolation in Molise Region, Central Italy, July 2018

Giancarlo Ripabelli,<sup>1</sup> Michela Lucia Sammarco,<sup>1</sup> Massimiliano Scutellà,<sup>2</sup>  
Valentina Felice,<sup>2</sup> and Manuela Tamburro<sup>1</sup>

In July 2018, a *Klebsiella pneumoniae* carbapenemase (KPC)-producing *Escherichia coli* ST131 was isolated from a patient admitted to the Vascular Surgery Unit of the main hospital of Molise region, Central Italy. Sequencing and alignment with the available sequences revealed that the isolate harbored the KPC-2 variant and TEM-1 beta-lactamase. This observation raises great concerns about the spread of carbapenem resistance in national and local settings with high endemicity level of KPC in *K. pneumoniae*, and underlines the importance of strengthening a proactive surveillance.

**Keywords:** *Escherichia coli*, health care settings, KPC carbapenemase, TEM beta-lactamase, sequence type, Central Italy

## Case Description

**I**N JULY 2018, THE local surveillance system was triggered by the isolation of an “Alert Organism” at the “Antonio Cardarelli” hospital in Molise region, Central Italy, which was identified as a carbapenem-resistant *Escherichia coli* showing a “*Klebsiella pneumoniae* carbapenemase” (KPC) phenotype. This *E. coli* was recovered from urine culture of an 84-year-old Italian male patient with an ongoing urinary tract infection, who has admitted to the Vascular Surgery Unit. As consequence of the alert, the patient was isolated in a single room, and nursing staff was encouraged to perform increased hand hygiene, and infection control measures, ensuring patient areas and environment cleaning and proper disinfection, were adopted. The patient died shortly thereafter of multiorgan failure.

We report in this study the first isolation of a KPC-producing *E. coli* in Molise region, and describe its biomolecular characteristics.

## Laboratory Investigations

The *E. coli* isolate was tested by the hospital microbiology laboratory for antimicrobial susceptibility testing by using BD Phoenix™ Automated Microbiology System (Becton-Dickinson Diagnostic Systems, Sparks, MD), which

is equipped with software suitable for results interpretation using the clinical breakpoints as established by the European Committee on Antimicrobial Susceptibility Testing (EUCAST).<sup>1</sup> In particular, the system panels include 20 and 22 antibiotics with minimum inhibitory concentration for gram-negative and for gram-positive microorganisms, respectively.<sup>2</sup> Indeed, the *E. coli* isolate was tested for 20 antimicrobials, and the susceptibility status was classified as susceptible, S; susceptible, increased exposure, I; and resistant, R based on the updated EUCAST breakpoints.<sup>1</sup> In the hospital, the matrix-assisted laser desorption ionization-time of flight system is also available for a rapid bacterial identification.

This *E. coli* showed a multidrug resistance (MDR) profile, with a resistant phenotype for 14 out of 20 (70%) tested antimicrobials, including resistance to carbapenems, particularly to ertapenem, and a susceptible, increased exposure profile for both imipenem and meropenem (formerly reported as intermediate). Furthermore, the *E. coli* isolate was resistant to: amoxicillin-clavulanate and piperacillin-tazobactam (combinations of penicillins, including beta-lactamase inhibitors); ampicillin (penicillins with extended spectrum); cephalexin (first-generation cephalosporins); cefuroxime (second-generation cephalosporins); ceftazidime, cefixime and cefotaxime (third-generation cephalosporins); cefepime (fourth-generation cephalosporins); gentamicin and

<sup>1</sup>Department of Medicine and Health Sciences “Vincenzo Tiberio,” University of Molise, Campobasso, Italy.

<sup>2</sup>Laboratory Medicine Unit, “Antonio Cardarelli” Hospital, Azienda Sanitaria Regionale del Molise, Campobasso, Italy.

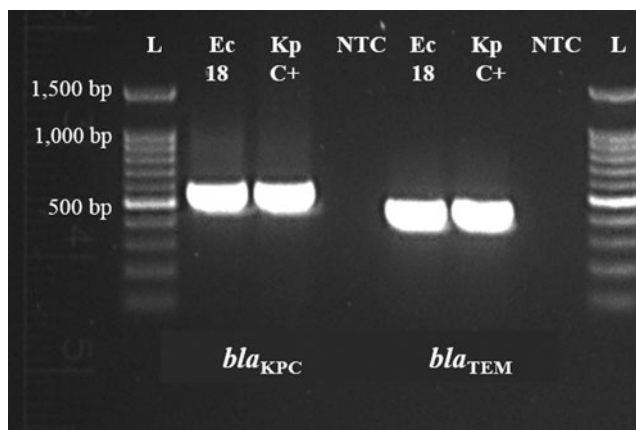
tobramycin (other aminoglycosides); ciprofloxacin (fluoroquinolones); and tigecycline (tetracyclines). The isolate showed susceptibility only to trimethoprim-sulfamethoxazol (combinations of sulfonamides and trimethoprim, including derivatives); trimethoprim (trimethoprim and derivatives); fosfomycin (other antibacterials); nitrofurantoin (nitrofurantoin derivatives).

There was no evidence for previous treatment with carbapenems for the patient.

The presence of KPC (class A carbapenemase)-encoding gene was confirmed by singleplex PCR assay, as previously reported.<sup>3</sup> Sanger sequencing using both primers for the amplification<sup>4</sup> and following alignment through Basic Local Alignment Search Tool (<https://blast.ncbi.nlm.nih.gov/Blast.cgi>) revealed that it was KPC-2 allele. We further explored by singleplex PCRs for the carbapenemases VIM, IMP, and NDM-1 (class B metallo-beta-lactamases), and oxacillinase OXA-48-like (class D) using oligonucleotides previously designed<sup>4</sup> and specific reaction conditions,<sup>3</sup> as well as for TEM, CTX-M, and SHV beta-lactamases.<sup>5</sup> In addition to the KPC-2 enzyme, the *E. coli* harbored TEM-1 beta-lactamase (Fig. 1), as revealed through Sanger sequencing of TEM amplicon with both primers for the amplification<sup>5</sup> and BLAST alignment (<https://blast.ncbi.nlm.nih.gov/Blast.cgi>). None of the other tested enzymes was detected. The multilocus sequence typing scheme<sup>6</sup> assigned the isolate to Sequence Type ST131.

## Discussion

Infections due to MDR Enterobacteriaceae, especially *K. pneumoniae* and *E. coli*, represent a serious threat to global public health. In particular, carbapenem resistance is the utmost concern, which is mostly conferred by plasmid-encoded KPC carbapenemase.



**FIG. 1.** Detection of *bla*<sub>KPC</sub> and *bla*<sub>TEM</sub> in the *Escherichia coli* strain isolated on July 2018, Molise region, Central Italy. L: ladder 100 bp; Ec18: *E. coli* isolated in Molise region on July 2018 carrying *bla*<sub>KPC</sub> (538 bp); Kp C+: KPC-producing *K. pneumoniae* isolated in the same hospital, used as internal positive control; NTC: nontemplate control; Ec18: *E. coli* isolated in Molise region on July 2018 carrying *bla*<sub>TEM</sub> (445 bp); Kp C+: TEM-producing *K. pneumoniae* isolated in the same hospital, used as internal positive control. KPC, *Klebsiella pneumoniae* carbapenemase; NTC, no template control.

The KPC enzyme is usually associated with *K. pneumoniae* infections in hospital settings,<sup>7</sup> and occasionally observed in other Enterobacteriaceae and *Pseudomonas aeruginosa*.<sup>8</sup> The first KPC-2 producer was a *K. pneumoniae* strain isolated in the United States, and unlike other variants, KPC-2 together with KPC-3 have rapidly disseminated to endemic levels in the United States, Greece, Israel, China, and Latin America, as well as in Italy.<sup>7</sup> Epidemiological evidences underscored that the epidemic spread of the *K. pneumoniae* ST258 lineage has significantly contributed to the global dissemination of *bla*<sub>KPC-2</sub> and *bla*<sub>KPC-3</sub>,<sup>7,8</sup> as well in other species.

KPC-producing *E. coli* strains, although globally distributed, are rare, and only described for countries with high prevalence of this carbapenemase in *K. pneumoniae*, and Italy is characterized with the highest rates in Europe.<sup>8</sup> After the first isolation of KPC-producing *E. coli* strain, further cases were reported elsewhere, including evidence for the direct transfer of *bla*<sub>KPC</sub> plasmid from *K. pneumoniae* to *E. coli*.<sup>9</sup>

In Europe, the first isolation of *E. coli* KPC-producing strain was reported in France in a patient initially admitted to a hospital in Israel.<sup>10</sup> Afterward, it was notified in Padua, Northern Italy (Table 1) as a consequence of KPC-2 allele transfer from *K. pneumoniae* strain to *E. coli* in the same patient.<sup>11</sup> Isolations of carbapenem-resistant KPC-producing *E. coli* strains from health care setting have been reported in Italy,<sup>12–17</sup> as well by ST131 *E. coli* KPC-2 and KPC-8 positive in nursing care homes, and the emergence of ST3948 associated with *bla*<sub>KPC-3</sub> (Table 1).<sup>18</sup> Furthermore, the “European survey of carbapenemase-producing Enterobacteriaceae (EuSCAPE)” conducted between 2013 and 2014<sup>19</sup> allowed collecting consistent data on *K. pneumoniae* and *E. coli* incidence in 455 hospitals with diagnostic capabilities in Turkey, Israel, and 34 European countries, including 22 hospitals in Italy. Overall, 37% and 19% carbapenemase-producing *K. pneumoniae* and *E. coli* were detected, respectively, most often from south and southeast Europe. As expected, KPC prevalence was higher in *K. pneumoniae* than *E. coli* (31.5% vs. 7.2%), and Italy showed the highest rate. At the European level, OXA-48-like was the most common (56%) carbapenemase in *E. coli*, followed by NDM (26%) and KPC (18%), which was only identified in *E. coli* from Israel ( $n=6$ ), Italy (4/5, 80%), Portugal ( $n=2$ ), Greece, and Cyprus ( $n=1$  each).<sup>19</sup>

It has been reported that more than 60% of KPC-producing *E. coli* belong to ST131, which are probably responsible for the rapid spread of *bla*<sub>KPC</sub> in this bacterium,<sup>10,18</sup> and a similar distribution is observed for Italy (Table 1). To date, the KPC-producing *E. coli* ST131 isolates are of significant concern, being considered a “successful” clinical strain with a global distribution,<sup>8,20</sup> including Italy (Table 1). *E. coli* ST131 along with *K. pneumoniae* ST258 have extensively spread throughout the world due to hyperendemic properties, such as increased transmissibility, longer duration of infectiousness, and/or higher pathogenic potential compared with other lineages of the same species,<sup>21</sup> and are responsible for the rapid increase of antimicrobial resistance.<sup>22</sup> Since the first identification, *E. coli* ST131 has been strongly associated with fluoroquinolone resistance, and coresistance to aminoglycosides and trimethoprim-sulfamethoxazole, and alarmingly to carbapenems resistance.<sup>23</sup>

TABLE 1. REPORTS OF THIRTY *KLEBSIELLA PNEUMONIAE* CARBAPENEMASE-PRODUCING *ESCHERICHIA COLI* ISOLATED FROM MULTIPLE SAMPLES IN HEALTH CARE SETTINGS IN ITALY

Collection date	Patient (gender—age)	Sample	Setting	ERT	IMP	MER	KPC	TEM	ST	References
2010	M—55	Bronchoalveolar lavage fluid	“Sant’Antonio Hospital of Padua,” Intensive Care Unit, Padua, North Italy	NA	R	R	KPC-2	TEM-1	ST9	11
2010	F—NA	Inter-hepatodiaphragmatic area	“Mauriziano Hospital of Turin,” Turin, North Italy	R	I	I	KPC (undefined variant)	NA	NA	12
2011	NA	Abdominal drainage	“University Hospital of Verona,” Verona, North Italy	R	R	R	KPC-3	TEM-1	ST43	14
2011	F—77	Urine	Geriatric Institutes: “P. Redaelli” of Vimodrone, Milan; “C. Golgi” of Abbiategrasso, Milan, and “P. Redaelli” of Milan, North Italy	R	I	I	KPC-2	NA	ST131	18
2011–2012	M—56	Liver aspirate Blood Rectal swab Blood Liver aspirate	“Agostino Gemelli,” General Hospital Department of Surgery, Rome, Central Italy	R	I	I	KPC-3	NA	NA	13
2012	F—89	Urine	Geriatric Institutes: “P. Redaelli” of Vimodrone, Milan; “C. Golgi” of Abbiategrasso, Milan, and “P. Redaelli” of Milan, North Italy	R	I	I	KPC-2	TEM-1	ST131	18
2012	F—92	Urine	“Santa Maria delle Croci” Hospital of Ravenna, Ravenna, Central Italy	R	S	S	KPC-2	TEM-1	NA	
2012	M—85	Urine	“S. Croce and Carle” Hospital of Cuneo, Long-term centre/facility, Cuneo, North Italy	R	R	I	KPC-2	TEM-1	ST131	15
2012	M—85	Urine		R	R	R	KPC-2	TEM-1	ST131	
2012	F—87	Urine		R	I	I	KPC-2	TEM-1	NA	
2012	F—84	Urine		R	S	S	KPC-2	TEM-1	ST131	
2012	M—85	Blood sample		R	I	I	KPC-3	TEM-1	ST131	
2013	M—76	Blood sample		R	I	R	KPC-3	TEM-1	ST457	15

(continued)

TABLE 1. (CONTINUED)

Collection date	Patient (gender—age)	Sample	Setting	ERT	IMP	MER	KPC	TEM	ST	References
2013	M—68	Blood culture	“IRCCS San Martino” University Hospital of Genoa, Emergency Department, Genoa, North Italy	NA	R	R	KPC-3	TEM-1	ST69	16
2013	M—82	Blood culture	“IRCCS San Martino” University Hospital of Genoa, Emergency Department, Genoa, North Italy	NA	R	R	KPC-3	TEM-1	ST69	16
2013	NA	Two patients underwent organ transplantation, and three patients underwent cardiac surgery	“Mediterranean Institute for Transplantation and Advanced Specialized Therapies (ISMETT)” of Palermo, Palermo, South Italy	R	S	S	KPC-3	TEM-1	ST131	9
2013	F—87	Urine	Geriatric Institutes: “P. Redaelli” of Vimodrone, Milan; “C. Golgi” of Abbiategrasso, Milan, and “P. Redaelli” of Milan, North Italy	R	S	S	KPC-2	TEM-1	NA	18
	M—85	Urine		R	S	S	KPC-8	TEM-1	ST131	
	M—82	Sputum		R	S	S	KPC-2	TEM-1	NA	
	M—84	Sputum		R	R	R	KPC-3	TEM-1	ST3948	
2016–2017	NA	NA	“General Hospital of Perugia”, Perugia, Central Italy	NA	NA	NA	KPC (undefined variant)	NA	NA	17
2018	M—84	Urine	“Antonio Cardarelli” Hospital of Campobasso, Molise, Central Italy	R	I	I	KPC-2	TEM-1	ST131	This study

NA, not available; ERT, ertapenem; IMP, imipenem; MER, meropenem; KPC, *Klebsiella pneumoniae* carbapenemase; I, intermediate; S, susceptible; R, resistant.

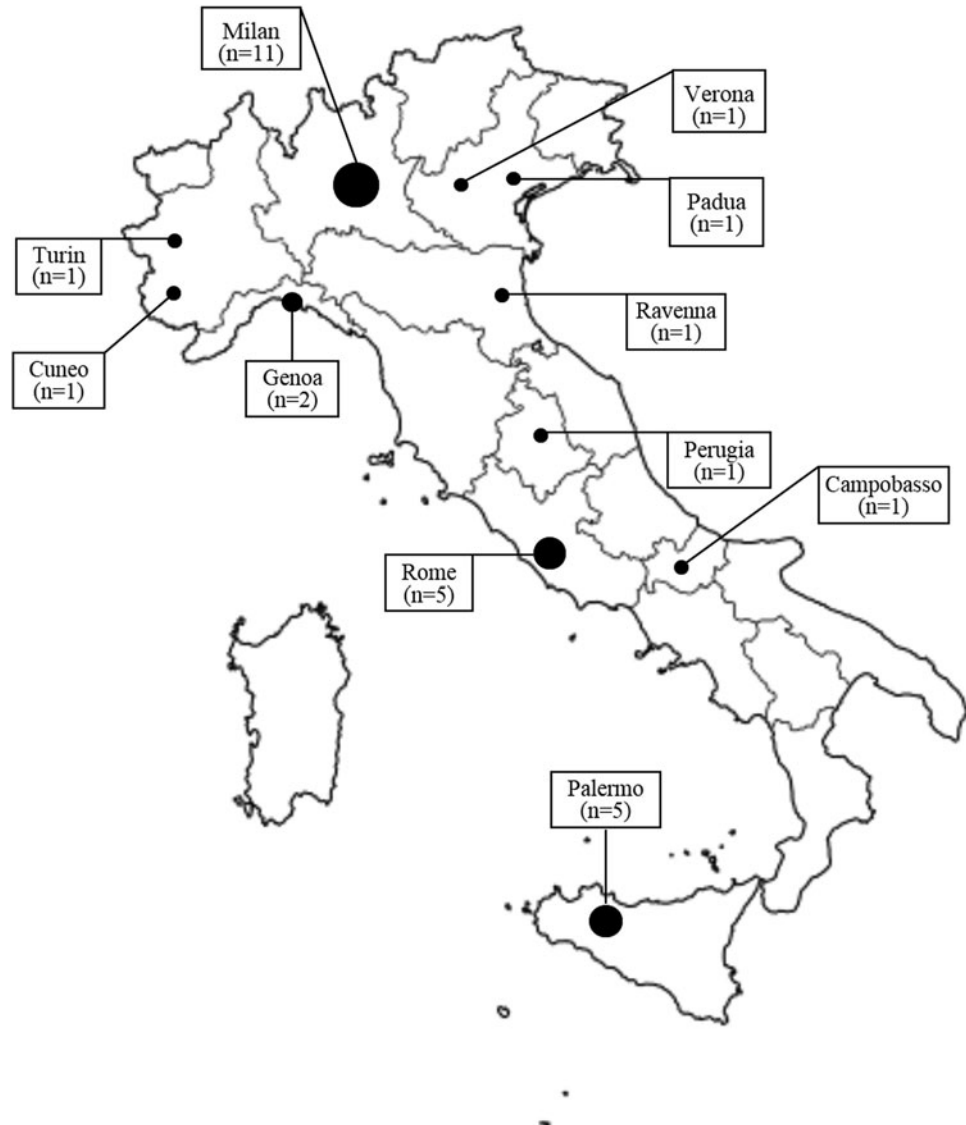
*E. coli* ST131, causing a high proportion of urinary tract and bloodstream infections,<sup>23</sup> is also often associated with extended-spectrum beta lactamase (ESBLs) production, especially cefotaximases (CTX-M-15)<sup>22,24</sup> that efficiently hydrolyze cefotaxime, and confer resistance to penicillins, extended-spectrum cephalosporins, and monobactams.<sup>25</sup> Although initially identified through its association with CTX-M-15, the geographical and temporal origin of ST131 ancestor is poorly understood; nonetheless, some events gained the acquisition of virulence-associated genes, followed by development of antibiotic resistance, both likely contributing to the successful ST131 global spreading.<sup>26</sup>

*E. coli* ST131 has been also reported to occur without ESBLs,<sup>24</sup> as found in our study, where CTX-M was not detected. This finding was in agreement with other studies conducted in Italy. In fact, in Italy, the presence of CTX-M, as well as of SHV, in KPC-producing *E. coli* strains was assessed in all except one<sup>17</sup> study as reported in Table 1. However, data analysis underlined that CTX-M variants were only detected in three cases, and only one CTX-M-15 strain was of ST131.<sup>15</sup> The CTX-M-15 was further found in

a strain of ST394,<sup>9</sup> and CTX-M-55 together with SHV-11 in a strain of ST457.<sup>15</sup> Indeed, since multiple studies have been performed on ESBL producers, the role of non-ESBL-producing *E. coli* ST131 could be underestimated.<sup>27</sup> Interestingly, the reviewed studies (Table 1) revealed a significant prevalence of the oxacillin-hydrolyzing beta-lactamase OXA-9 in Italian KPC-producing *E. coli*.<sup>11,14,18</sup>

The *E. coli* collected from our hospital also carried TEM-1, which hydrolyzes penicillin and first generation cephalosporins, in agreement with other Italian studies, which always found this enzyme when investigated in KPC-*E. coli* (Table 1). Currently, more than hundred TEM type beta-lactamases have been identified, and all with the exception of TEM-1 and TEM-2 are ESBLs.<sup>28,29</sup> Remarkably, TEM-1 prevalence was estimated as of 90% among ampicillin-resistant *E. coli* isolates.<sup>28,30</sup>

In this scenario, the spread of carbapenem-resistant *E. coli* has critical implications in patient management and infection control compared to the most prevalent carbapenem-resistant Enterobacteriaceae (CRE), since *E. coli* can spread easily to the community. Considering the occurrence of infections due



**FIG. 2.** Geographical distribution of a total of 30 KPC-producing *E. coli* strains reported in Italy since 2010 to date.

to *E. coli* ST131 and its capability for the gastrointestinal colonization,<sup>20</sup> the association between ST131 and *bla*<sub>KPC</sub> could have severe consequences for infection management, especially in elderly people with comorbidities who are at high risk for ST131 colonization.<sup>18</sup> To date, detailed information concerning the genetics of *bla*<sub>KPC</sub> in *E. coli* and the mechanisms by which these elements can spread are limited. Nevertheless, the increasing emergence of *bla*<sub>KPC</sub> in *E. coli* has been linked to multiple mechanisms, such as the global spread of genetically related strains, plasmid exchange with other Enterobacteriaceae and between lineage, and the transpositional events in the species.<sup>31</sup>

## Conclusions

Infections with CRE organisms, particularly when KPC-producing, are highly diffusive, and the treatment of a consequently high number of patients is critical, since an optimal therapy is not yet defined, and data on the clinical outcome are still scarce.

The first notification of an infection by a KPC-producing *E. coli* ST131 strain in Molise region, Central Italy, on July 2018 is noteworthy due to the general low isolation rate in health care settings compared to other CRE organisms, and to its antimicrobial resistance profile. Our findings further support the national epidemiological background, which is characterized by a sporadic occurrence of carbapenem-resistant KPC-2 and TEM-1 *E. coli* ST131 isolated in health care settings (Table 1), as reported in certain geographical areas (Fig. 2). This report underlines the urgent need to enhance awareness and strengthen education on hand hygiene and appropriate procedures among health care personnel,<sup>32</sup> principally considering that ST131 *E. coli* isolates are strictly pathogenic due to the spectrum of infections caused in both community and hospital settings, and the virulence-associated genes content.<sup>23,33</sup>

In this context, it should be considered that identification of the KPC production at phenotypic level is still a challenge and has likely contributed to the rapid spread of this carbapenemase. Only molecular methodologies can quickly and comprehensively detect the presence of *bla*<sub>KPC</sub> in clinical isolates, whose routine identification should be considered as necessary for all bacterial species exhibiting this resistance mechanism, to optimize antibiotic therapy, limit KPC-mediated resistance to carbapenems and increase patient survival.

The reinforcement of antimicrobial stewardship programs at both local and national levels, as well as the support for research and development of novel antibiotic molecules, is required. This is considered necessary taking into account that *E. coli* resistance toward third-generation cephalosporins is estimated as 77% in 2030 compared to 64.5% in 2015, and toward carbapenems as 11.8% compared to 5.8%.<sup>34</sup>

Furthermore, such measures significantly contribute to reduce the likelihood of occurrence of infections by CRE organisms, and should be part of the implementation of multimodal strategies (bundles) of infection/colonization control to avoid transmission, in agreement with the globally developed evidence-based recommendations,<sup>35</sup> and taking into account their high capabilities of clonal expansion.<sup>31</sup>

This report draws attention on the concrete risk of the spread of KPC enzymes producing *E. coli*, as well as the likelihood of a rapid dissemination due to the genetic characteristics, particularly related to ST131 high-risk clone circulation, and its potential of spreading resistance. Since ST131 has markedly contributed to an increased prevalence of antimicrobial resistance among *E. coli* isolates, targeted and direct interventional measures are required to prevent the spread of these epidemiologically successful strains.

## Acknowledgments

We thank Dr. Jim McLauchlin, Public Health England, London, United Kingdom, for the helpful comments provided to the article and Dr. Giuliana Guerrizio for supporting the molecular laboratory investigations.

## Authors' Contributions

G.R., M.L.S., and M.T. drafted the article and conducted molecular data analysis. M.S. and V.F. isolated and provided the strain with routine phenotypical data.

## Disclosure Statement

No competing financial interests exist.

## Funding Information

No funding was received for this article.

## References

- European Committee on Antimicrobial Susceptibility Testing (EUCAST). 2019. Breakpoint tables for interpretation of MICs and zone diameters. Version 9.0. Available at <http://eucastr.org> (accessed February 21, 2019).
- Duggal, S., R. Gaiind, N. Tandon, M. Deb, and T.D. Chugh. 2012. Comparison of an automated system with conventional identification and antimicrobial susceptibility testing. *ISRN Microbiol.* 2012:107203.
- Ripabelli, G., M. Tamburro, G. Guerrizio, I. Fanelli, R. Flocco, M. Scutellà, and M.L. Sammarco. 2018. Tracking multidrug-resistant *Klebsiella pneumoniae* from an Italian hospital: molecular epidemiology and surveillance by PFGE, RAPD and PCR-based resistance genes prevalence. *Curr. Microbiol.* 75:977–987.
- Dallenne, C., A. Da Costa, D. Decré, C. Favier, and G. Arlet. 2010. Development of a set of multiplex PCR assays for the detection of genes encoding important beta-lactamases in Enterobacteriaceae. *J. Antimicrob. Chemother.* 65:490–495.
- Ghasemi, Y., T. Archin, M. Kargar, and M. Mohkam. 2013. A simple multiplex PCR for assessing prevalence of extended-spectrum  $\beta$ -lactamases producing *Klebsiella pneumoniae* in intensive care units of a referral hospital in Shiraz, Iran. *Asian Pac. J. Trop. Med.* 6:703–708.
- Wirth, T., D. Falush, R. Lan, F. Colles, P. Mensa, L.H. Wieler, H. Karch, P.R. Reeves, M.C. Maiden, H. Ochman, and M. Achtman. 2006. Sex and virulence in *Escherichia coli*: an evolutionary perspective. *Mol. Microbiol.* 60: 1136–1151.
- Munoz-Price, L.S., L. Poirer, R.A. Bonomo, M.J. Schwaber, G.L. Daikos, M. Cormican, G. Cornaglia, J. Garau, M. Gniadkowski, M.K. Hayden, K. Kumarasamy, D.M. Li-

- vermore, J.J. Maya, P. Nordmann, J.B. Patel, D.L. Paterson, J. Pitout, M.V. Villegas, H. Wang, N. Woodford, and J.P. Quinn. 2013. Clinical epidemiology of the global expansion of *Klebsiella pneumoniae* carbapenemases. *Lancet Infect. Dis.* 13:785–796.
8. Peirano, G., P.A. Bradford, K.M. Kazmierczak, R.E. Badal, M. Hackel, D.J. Hoban, and J.D. Pitout. 2014. Global incidence of carbapenemase-producing *Escherichia coli* ST131. *Emerg. Infect. Dis.* 20:1928–1931.
  9. Gona, F., F. Barbera, A.C. Pasquariello, P. Grossi, B. Gridelli, M.L. Mezzatesta, C. Caio, S. Stefani, and P.G. Conaldi. 2014. *In vivo* multiclonal transfer of *bla*<sub>(KPC-3)</sub> from *Klebsiella pneumoniae* to *Escherichia coli* in surgery patients. *Clin. Microbiol. Infect.* 20:O633–O635.
  10. Petrella, S., N. Ziental-Gelus, C. Mayer, M. Renard, V. Jarlier, and W. Sougakoff. 2008. Genetic and structural insights into the dissemination potential of the extremely broad-spectrum class A beta-lactamase KPC-2 identified in an *Escherichia coli* strain and an *Enterobacter cloacae* strain isolated from the same patient in France. *Antimicrob. Agents Chemother.* 52:3725–3736.
  11. Richter, S.N., I. Frasson, C. Bergo, S. Parisi, A. Cavallaro, and G. Palù. 2011. Transfer of KPC-2 carbapenemase from *Klebsiella pneumoniae* to *Escherichia coli* in a patient: first case in Europe. *J. Clin. Microbiol.* 49:2040–2042.
  12. Ferlini, M., P.A. Serna Ortega, M. Amisano, F. Giraldi, L. Andriani, A. Raglio, and M. Migliardi. 2012. *Escherichia coli* bla-KPC-type carbapenemase producing in surgical patient previously colonized by *Klebsiella pneumoniae* KPC. *GImPIOS.* 2:108–110.
  13. Spanu, T., G. De Angelis, M. Cipriani, B. Pedruzzi, T. D'Inzeo, M.A. Cataldo, G. Sganga, and E. Tacconelli. 2012. *In vivo* emergence of tigecycline resistance in multidrug-resistant *Klebsiella pneumoniae* and *Escherichia coli*. *Antimicrob. Agents Chemother.* 56:4516–4518.
  14. Kocsis, E., G. Lo Cascio, M. Piccoli, G. Cornaglia, and A. Mazzarioli. 2014. KPC-3 carbapenemase harbored in FIIK plasmid from *Klebsiella pneumoniae* ST512 and *Escherichia coli* ST43 in the same patient. *Microb. Drug Resist.* 20:377–382.
  15. Accogli, M., T. Giani, M. Monaco, M. Giufrè, A. García-Fernández, V. Conte, F. D'Ancona, A. Pantosti, G.M. Rossolini, and M. Cerquetti. 2014. Emergence of *Escherichia coli* ST131 sub-clone H30 producing VIM-1 and KPC-3 carbapenemases, Italy. *J. Antimicrob. Chemother.* 69:2293–2296.
  16. Giacobbe, D.R., V. Del Bono, E. Coppo, A. Marchese, and C. Viscoli. 2015. Emergence of a KPC-3-producing *Escherichia coli* ST69 as a cause of blood stream infections in Italy. *Microb. Drug Resist.* 21:342–344.
  17. Ferranti, M., E. Schiaroli, M.I. Palmieri, A. Repetto, A. Vecchiarelli, D. Francisci, A. Mencacci, and C. Monari. 2018. Carbapenemase-producing Enterobacteriaceae isolates resistant to last-line antibiotics in an Italian general hospital. *New Microbiol.* 41:274–281.
  18. Piazza, A., M. Caltagirone, I. Bitar, E. Nucleo, M. Spalla, E. Fogato, R. D'Angelo, L. Pagani, and R. Migliavacca. 2016. Emergence of *Escherichia coli* sequence type 131 (ST131) and ST3948 with KPC-2, KPC-3 and KPC-8 carbapenemases from a long-term care and rehabilitation facility (LTCRF) in Northern Italy. *Adv. Exp. Med. Biol.* 901:77–89.
  19. Grundmann, H., C. Glasner, B. Albiger, D.M. Aanensen, C.T. Tomlinson, A.T. Andrasević, R. Cantón, Y. Carmeli, A.W. Friedrich, C.G. Giske, Y. Glupczynski, M. Gniadkowski, D.M. Livermore, P. Nordmann, L. Poirel, G.M. Rossolini, H. Seifert, A. Vatopoulos, T. Walsh, N. Woodford, and D.L. Monnet, and European Survey of Carbapenemase-Producing Enterobacteriaceae (EuSCAPE) Working Group. 2017. Occurrence of carbapenemase-producing *Klebsiella pneumoniae* and *Escherichia coli* in the European survey of carbapenemase-producing Enterobacteriaceae (EuSCAPE): a prospective, multinational study. *Lancet Infect. Dis.* 17: 153–163.
  20. Banerjee, R., and J.R. Johnson. 2014. A new clone sweeps clean: the enigmatic emergence of *Escherichia coli* sequence type 131. *Antimicrob. Agents Chemother.* 58:4997–5004.
  21. Dautzenberg, M.J., M.R. Haverkate, M.J. Bonten, and M.C. Bootsma. 2016. Epidemic potential of *Escherichia coli* ST131 and *Klebsiella pneumoniae* ST258: a systematic review and meta-analysis. *BMJ Open* 6:e009971.
  22. Mathers, A.J., G. Peirano, and J.D. Pitout. 2015. The role of epidemic resistance plasmids and international high-risk clones in the spread of multidrug-resistant Enterobacteriaceae. *Clin. Microbiol. Rev.* 28:565–591.
  23. Petty, N.K., N.L. Ben Zakour, M. Stanton-Cook, E. Skipington, M. Totsika, B.M. Forde, M.D. Phan, D. Gomes Moriel, K.M. Peters, M. Davies, B.A. Rogers, G. Dougan, J. Rodriguez-Baño, A. Pascual, J.D. Pitout, M. Upton, D.L. Paterson, T.R. Walsh, M.A. Schembri, and S.A. Beatson. 2014. Global dissemination of a multidrug resistant *Escherichia coli* clone. *Proc. Natl. Acad. Sci. U S A.* 111: 5694–5699.
  24. Woodford, N., J.F. Turton, and D.M. Livermore. 2011. Multiresistant Gram-negative bacteria: the role of high-risk clones in the dissemination of antibiotic resistance. *FEMS Microbiol. Rev.* 35:736–755.
  25. Chong, Y., S. Shimoda, and N. Shimono. 2018. Current epidemiology, genetic evolution and clinical impact of extended-spectrum beta-lactamase-producing *Escherichia coli* and *Klebsiella pneumoniae*. *Infect. Genet. Evol.* 61:185–188.
  26. Ben Zakour, N.L., A.S. Alsheikh-Hussain, M.M. Ashcroft, N.T. Khanh Nhu, L.W. Roberts, M. Stanton-Cook, M.A. Schembri, and S.A. Beatson. 2016. Sequential acquisition of virulence and fluoroquinolone resistance has shaped the evolution of *Escherichia coli* ST131. *MBio.* 7:e00347-16.
  27. Torres, E., L. López-Cerero, I. Morales, M.D. Navarro, J. Rodríguez-Baño, and A. Pascual. 2018. Prevalence and transmission dynamics of *Escherichia coli* ST131 among contacts of infected community and hospitalized patients. *Clin. Microbiol. Infect.* 24:618–623.
  28. Ghafourian, S., N. Sadeghifard, S. Soheili, and Z. Sekawi. 2015. Extended spectrum beta-lactamases: definition, classification and epidemiology. *Curr. Issues Mol. Biol.* 17: 11–21.
  29. Bajpai, T., M. Pandey, M. Varma, and G.S. Bhatnagar. 2017. Prevalence of TEM, SHV, and CTX-M beta-lactamase genes in the urinary isolates of a tertiary care hospital. *Avicenna J. Med.* 7:12–16.
  30. Paterson, D.L., and R.A. Bonomo. 2005. Extended-spectrum beta-lactamases: a clinical update. *Clin. Microbiol. Rev.* 18:657–686.
  31. Stoesser, N., A.E. Sheppard, G. Peirano, L.W. Anson, L. Pankhurst, R. Sebra, H.T.T. Phan, A. Kasarskis, A.J. Mathers, T.E.A. Peto, P. Bradford, M.R. Motyl, A.S. Walker, D.W. Crook, and J.D. Pitout. 2017. Genomic ep-

- idemiology of global *Klebsiella pneumoniae* carbapenemase (KPC)-producing *Escherichia coli*. *Sci. Rep.* 7:5917–5928.
32. Ripabelli, G., A. Salzo, A. Mariano, M.L. Sammarco, and M. Tamburro, and Collaborative Group for HAIs Point Prevalence Surveys in Molise Region. 2019. Healthcare-associated infections point prevalence survey and antimicrobials use in acute care hospitals (PPS 2016–2017) and long-term care facilities (HALT-3): a comprehensive report of the first experience in Molise Region, Central Italy, and targeted intervention strategies. *J. Infect. Public Health* [Epub ahead of print]; DOI: 10.1016/j.jiph.2019.01.060.
33. Nicolas-Chanoine, M.H., X. Bertrand, and J.Y. Madec. 2014. *Escherichia coli* ST131, an intriguing clonal group. *Clin. Microbiol. Rev.* 27:543–574.
34. Alvarez-Uria, G., S. Gandra, S. Mandal, and R. Laxminarayan. 2018. Global forecast of antimicrobial resistance in invasive isolates of *Escherichia coli* and *Klebsiella pneumoniae*. *Int. J. Infect. Dis.* 68:50–53.
35. World Health Organization. 2017. Guidelines for the Prevention and Control of Carbapenem-Resistant Enterobacteriaceae, *Acinetobacter baumannii* and *Pseudomonas aeruginosa* in Health Care Facilities. World Health Organization, Geneva, Switzerland. Licence: CC BY-NC-SA 3.0 IGO.

Address correspondence to:

Giancarlo Ripabelli, PhD  
Department of Medicine and Health Sciences  
“Vincenzo Tiberio”  
University of Molise  
Via de Sanctis  
Campobasso 86100  
Italy

E-mail: ripab@unimol.it