

2011

# Cathepsin B: a potential prognostic marker for inflammatory breast cancer

Mohamed A. Nough

*Department of Pathology, National Cancer Institute, Cairo University, akramnouh@alborglab.com*

Mona M. Mohamed

*Cairo University, Egypt, monamos@link.net*

Mohamed El-Shinawi

*Ain Shams University, Egypt, mohamedshinawi@hotmail.com*

Mohamed A. Shaalan

*Cairo University, Egypt, mshaalan@link.net*

Dora Cavallo-Medved

*Wayne State University, dcavallo@med.wayne.edu*

*See next page for additional authors*

---

## Recommended Citation

Nough et al.: Cathepsin B: a potential prognostic marker for inflammatory breast cancer. *Journal of Translational Medicine* 2011 9:1.  
Available at: <http://digitalcommons.wayne.edu/biomedcentral/82>

This Article is brought to you for free and open access by DigitalCommons@WayneState. It has been accepted for inclusion in Wayne State University Associated BioMed Central Scholarship by an authorized administrator of DigitalCommons@WayneState.

---

**Authors**

Mohamed A. Nough, Mona M. Mohamed, Mohamed El-Shinawi, Mohamed A. Shaalan, Dora Cavallo-Medved, Hussein M. Khaled, and Bonnie F. Sloane



RESEARCH

Open Access

# Cathepsin B: a potential prognostic marker for inflammatory breast cancer

Mohamed A Nouh<sup>1†</sup>, Mona M Mohamed<sup>2\*†</sup>, Mohamed El-Shinawi<sup>3</sup>, Mohamed A Shaalan<sup>4</sup>, Dora Cavallo-Medved<sup>5,6</sup>, Hussein M Khaled<sup>7</sup>, Bonnie F Sloane<sup>5,8</sup>

## Abstract

**Background:** Inflammatory breast cancer (IBC) is the most aggressive form of breast cancer. In non-IBC, the cysteine protease cathepsin B (CTSB) is known to be involved in cancer progression and invasion; however, very little is known about its role in IBC.

**Methods:** In this study, we enrolled 23 IBC and 27 non-IBC patients. All patient tissues used for analysis were from untreated patients. Using immunohistochemistry and immunoblotting, we assessed the levels of expression of CTSB in IBC versus non-IBC patient tissues. Previously, we found that CTSB is localized to caveolar membrane microdomains in cancer cell lines including IBC, and therefore, we also examined the expression of caveolin-1 (cav-1), a structural protein of caveolae in IBC versus non-IBC tissues. In addition, we tested the correlation between the expression of CTSB and cav-1 and the number of positive metastatic lymph nodes in both patient groups.

**Results:** Our results revealed that CTSB and cav-1 were overexpressed in IBC as compared to non-IBC tissues. Moreover, there was a significant positive correlation between the expression of CTSB and the number of positive metastatic lymph nodes in IBC.

**Conclusions:** CTSB may initiate proteolytic pathways crucial for IBC invasion. Thus, our data demonstrate that CTSB may be a potential prognostic marker for lymph node metastasis in IBC.

## Background

Inflammatory breast cancer (IBC) is the most lethal form of primary breast cancer, with a 3-year survival rate of 40% as compared to 85% for non-IBC [1]. IBC is defined by distinct clinical features including a rapid onset, erythema, edema of the breast and a “peau d’orange” appearance of the skin. High metastatic behavior (for review see [2]), rapid invasion into blood and lymphatic vessels and formation of tumor emboli within these vessels [3] are also major characteristics of IBC. Obstruction of lymphatic flow by tumor emboli within the dermal lymphatics causes swelling of the breast tissue and underlies the inflammatory nature of the disease [3].

Positive axillary lymph node metastasis is a characteristic of IBC at the time of diagnosis and most IBC

patients present with extensive lymph node metastasis [3,4]. Indeed, the number of positive metastatic lymph nodes contributes to poor survival outcome with each positive lymph node increasing risk of breast cancer mortality by approximately 6% [5]. Although IBC is characterized by the extensive presentation of metastatic lymph nodes, the molecular pathways that direct IBC lymph node invasion are not well defined. Recent studies conducted by Ellsworth and colleagues, using laser capture microdissection and gene expression analysis of primary breast tumors and corresponding metastatic lymph nodes, indicate that overexpression of genes involved in degradation of the extracellular matrix (ECM) in primary breast cancer cells induces them to disseminate to nearby lymph nodes [6].

The invasive properties of IBC are consistent with a crucial role for proteolytic enzymes in the degradation of ECM, cell motility and metastasis [7]. Cathepsin B (CTSB), a lysosomal cysteine protease, has been shown to be a contributor to the progression and invasion of various types of cancer [8]. Specifically, CTSB is

\* Correspondence: monamos@link.net

† Contributed equally

<sup>2</sup>Department of Zoology, Faculty of Science, Cairo University, Giza 12613 Egypt

Full list of author information is available at the end of the article

involved in proteolytic pathways that lead to the degradation of ECM proteins thereby promoting cancer cell motility and invasion [8,9]. In cancer cells, CTSB is shuttled to the plasma membrane where it can activate receptor-bound pro-urokinase-type plasminogen activator (pro-uPA). uPA activate plasminogen a serine protease that can digest ECM proteins and activate MMPs, a family of proteolytic enzymes that are also major participants in ECM degradation and cancer cell motility and invasion [10]. CTSB is associated with cell surface caveolae, specialized membrane microdomains that are involved in signaling pathways, endocytosis and proteolysis (for review see [11,12]). The role of caveolin-1 (cav-1), the main structural protein of caveolae, in cancer progression and invasion is contradictory and appears to depend upon the cancer type and stage of progression. In IBC patient tissues and cell lines, cav-1 is overexpressed [7], a phenotype observed in other aggressive breast carcinomas that show high metaplastic properties [13]. Overexpression of cav-1 has been shown to be associated with ECM degradation and formation of invadopodia, which contain membrane-type-1-MMP (MT1-MMP) and mediate breast cancer cell motility and invasion [14]. In previous *in vitro* studies, we have shown that interaction of IBC cells with human monocytes augments invasion of IBC cells through increased ECM degradation, events correlated with an increase in CTSB expression, secretion and activity and an increase in cav-1 expression in the IBC cells [15]. More recently, we have co-localized active CTSB and uPA with cav-1 in caveolar fractions of SUM149 IBC cells (unpublished data).

In the present study, we assessed the expression levels of CTSB and cav-1 in IBC versus non-IBC patient breast tissues. Furthermore, we examined the correlation between these proteins and the number of metastatic lymph nodes in IBC versus non-IBC patient tissues. Our results revealed an overexpression of CTSB and cav-1 in IBC tissues and demonstrated a positive correlation between CTSB expression and the number of positive lymph node metastases. We speculate that CTSB expressed by tumor cells and localized in caveolae may promote IBC metastasis to lymph nodes by enhancing ECM degradation and tumor invasion.

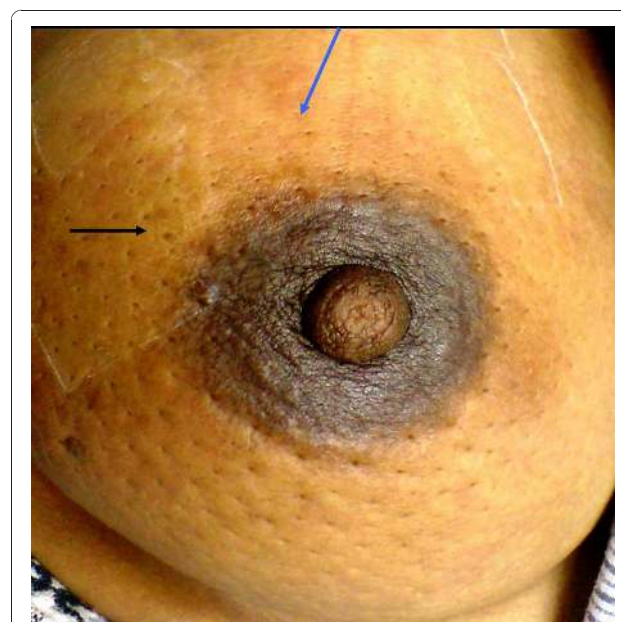
## Methods

### Patients and Tissue Specimens

For the purpose of patient enrollment in this study, we obtained Institutional Review Board (IRB) approval from the ethics committee of Ain-Shams University and the National Cancer Institute (NCI), Cairo University. Patients were selected from those referred to outpatient breast clinics of Ain Shams University hospital and NCI Cairo University during the period of June 2008 to December 2009. Inclusion criteria of breast cancer

patients were dependent upon a combination of clinical, mammographic, ultrasound, and pathological diagnoses. Clinical diagnosis of IBC is applied, according to the American Joint Committee on Cancer (AJCC) T4 d designation for IBC (for review see [16]), when a patient presented with a diffuse erythema, peau d'orange and edema of the breast (Figure 1). For IBC patients, pathological confirmation of the clinical diagnosis was dependent upon examination of both skin and core biopsies (M.A.N.). In the absence of breast masses, diagnosis was depended upon pathological examination of skin biopsies that showed permeation of dermal lymphatics by carcinoma cells and the presence of dermal tumor emboli (M.A.N.). Non-IBC patients of stage II-III were also included in our study as a comparison group. Patients subjected to neo-adjuvant chemotherapy or those with viral hepatitis or autoimmune disease were excluded from our study. Based on the criteria described here, we enrolled 23 IBC and 27 non-IBC patients in the present study.

Tissue samples were fixed in 10% neutral buffered formalin and processed into paraffin blocks for routine sectioning and immunohistochemistry (IHC). Pathological data regarding tumor size, tumor grade [17], and the presence of lymphovascular invasion, dermal tumor emboli and tumor parenchyma emboli [2,18] were assessed (M.A.N), reviewed (H.I.) and tabulated for statistical analysis. Additional sections were generated from the paraffin tissue blocks and immunostained for estrogen receptor (ER), progesterone receptor (PR) and



**Figure 1** Photograph of IBC patient showing clinical criteria for IBC diagnosis, i.e., edema, erythema (blue arrow) and peau d'orange (black arrow).

HER2-neu expression status. IHC staining for CTSB, and cav-1 was performed as described below.

### Immunohistochemistry

Mouse anti-caveolin-1 was purchased from BD Biosciences (San Diego, CA, USA) and polyclonal rabbit anti-human CTSB antibody was previously prepared in house (B.F.S.) [19]. Antibody diluent with background reducing components and DakoCytomation EnVision+ Dual Link System-HRP (DAB+) kits were purchased from Dako (Carpinteria, CA, USA); and Permount® was from Fisher Scientific (Pittsburgh, PA, USA).

Tissue sections were prepared from paraffin blocks and stained with hematoxylin and eosin to select tissue sections for immunostaining and scoring. IHC staining for each marker was performed in duplicate on 5 µm thick tissue sections. Tissue sections were first deparaffinized and rehydrated followed by antigen retrieval. Tissue sections were incubated for 1 hour at room temperature with the following primary antibodies prepared in Dako Antibody diluent with reduced background components: polyclonal CTSB antibody (1:500) and monoclonal anti-cav-1 (1:150). Detection was carried out by incubating tissue sections with 100 µl of horse radish peroxidase-labeled rabbit or mouse secondary antibody [EnVision+ Dual Link System-HRP (DAB+)] for 45 min. Staining was achieved by adding 100 µl of DAB+ diluted 1:50 in substrate buffer [EnVision+ Dual Link System-HRP (DAB+)] for 15 min. Nuclei were counterstained with hematoxylin and specimens were rinsed in PBS and mounted using Permount® for microscopic examination. Negative control slides were run in parallel in which each primary antibody was replaced with PBS.

Two independent readers (M.A.N. and M.M.M.) assessed immunostaining of CTSB and cav-1 using light microscopy (Olympus, CX41, Japan). Discordant results were resolved by consultation with a third reader (H.I.). The expression of CTSB B and cav-1 was scored according to both the intensity of staining and the proportion of positive staining carcinoma cells within the entire slide: "0", no immunostaining was observed within carcinoma cells; "+", less than 10% of carcinoma cells showed cytoplasmic staining of moderate to marked intensity; "++", 10-50% of carcinoma cells showed cytoplasmic staining of moderate to marked intensity; and "+++", greater than 50% of carcinoma cells show cytoplasmic staining of moderate to marked intensity.

### SDS-Polyacrylamide Gel Electrophoresis (PAGE) and Immunoblotting

Peroxidase-labeled goat anti-rabbit secondary antibody and tetramethyl benzidine (TMB membrane peroxidase substrate were purchased from Kirkegaard and Perry Laboratories Inc (Gaithersburg, MD, USA).

Fresh breast tissue specimen obtained from core biopsy or during modified radical mastectomy were minced into small pieces on ice in RIPA buffer [25 mM Tris-HCl pH 7.6, 150 mM NaCl, 1% NP-40, 1% sodium deoxycholate, 0.1% SDS (Sigma-Aldrich, St. Louis, MO, USA)]. Protein concentrations of cell lysates were measured using Bradford reagent (Sigma-Aldrich, Germany). Samples were equally loaded (20 µg protein/well), separated by 12% SDS-PAGE under reducing conditions and transferred onto nitrocellulose membranes as previously described [20]. Immunoblotting analysis was performed using primary antibodies against CTSB (1:4000) and caveolin-1 (1:5000) and a secondary antibody conjugated with horseradish peroxidase (1:10,000) in Tris-buffered saline wash buffer (20 mM Tris, pH 7.5, 0.5 M NaCl) containing 0.5% Tween 20 and 5% (w/v) non-fat dry milk. After washing, bound antibodies were detected by adding a TMB chromagen/substrate solution. Once a signal was detected reactions were terminated by immersing membranes in water for 20-30 seconds.

### Statistical Analysis

The data were analyzed using SPSS software version 16.0. Differences were evaluated by Student's t-test and Fisher's exact test. Immunohistochemical scores of 0 and + were considered negative and scores of ++ and +++ were considered positive. Fisher exact test was performed to analyze differences in CTSB and cav-1 immunostaining (i.e., positive versus negative) between IBC and non-IBC groups. Correlations between categorical variables were assessed using Fisher's exact test as previously described [21].

### Results

#### Clinical and pathological characterization of IBC versus non-IBC patients

Clinical and pathological characterization of the IBC (n = 23) and non-IBC patients (n = 27) used in this study is indicated in Table 1. Age of IBC patients ranged from 29-60 years (mean age of 40.9 ± 7.5), whereas the age of non-IBC patients ranged from 33-67 years (median age of 49.9 ± 9.1). Thus, IBC patients were significantly (P = 0.001) younger at the time of diagnosis as compared to non-IBC patients.

Tumor size measurements revealed that 5 IBC patients (21.7%) presented with no tumor mass that could be detected clinically, mammographically or upon examination of the mastectomy specimen; however, tumor emboli were present in skin and core biopsies. For IBC patients with detectable masses, 5.6% of them exhibited tumor masses less than 2 cm and 94.4% had a tumor mass more than 2 cm with tumor sizes ranging from 4-10 cm (mean size of 6.5 ± 3.3 cm). Non-IBC patients had tumor sizes ranging from 1.8-12 cm (mean



**Table 1 Clinical and pathological characterization of IBC versus non-IBC patients**

Clinical characteristic	IBC n = 23 (%)	Non-IBC n = 27 (%)	p-value
<b>Age</b>			
Range	29-60	33-67	0.001 <sup>a*</sup>
Mean ± SD	40.9 ± 7.5	49.9 ± 9.1	t- test
<b>Tumor size<sup>‡</sup></b>			
Mean ± SD	6.5 ± 3.3	4.31 ± 2.30	1.000 <sup>b</sup>
< 2	1 (5.6%)	1 (3.7%)	
≥ 2	17 (94.4%)	26 (96.3%)	
<b>Tumor grade</b>			
I- II	15 (65%)	21 (77.8%)	0.511 <sup>b</sup>
III	8(35%)	6 (22.2%)	
<b>Axillary Lymph Node Status<sup>†</sup></b>			
Negative	0(0%)	7 (25.9%)	0.037 <sup>b*</sup>
< 4	3 (15%)	9 (33.4%)	
4-7	6 (30%)	6 (22.2%)	
≥ 8	11(55%)	5 (18.5%)	
<b>ER</b>			
Positive	6 (27.3%)	6 (22.2%)	
Negative	17 (72.7%)	21 (77.8%)	0.747 <sup>b</sup>
<b>PR</b>			
Positive	7 (31.8%)	8 (29.6%)	1.000 <sup>b</sup>
Negative	16 (68.2%)	19 (70.4%)	
<b>HER-2</b>			
Positive	4 (18.2%)	4 (14.8%)	1.000 <sup>b</sup>
Negative	19 (81.8%)	23 (85.2%)	
<b>Lymphovascular invasion</b>			
Positive	17 (73.9%)	3 (11.1%)	0.000 <sup>b*</sup>
Negative	6 (26.1%)	24 (88.9%)	
<b>Tumor emboli</b>			
Positive	23 (100%)	3 (11.1%)	0.000 <sup>b*</sup>
Negative	0	24 (88.9%)	

\* Significant p value calculated by <sup>a</sup>Student- T test or <sup>b</sup>Fisher's exactTest.

<sup>‡</sup> n = 18 (five IBC patients did not have a tumor mass).

<sup>†</sup> n = 20 (three patients were not evaluated because they died before surgery).

size of 4.3 ± 2.3 cm) with 3.7% having tumor sizes less than 2 cm and 96.3% having tumor sizes greater than or equal to 2 cm.

Tumor grading revealed that 65% of IBC patients were tumor grade I or II and 35% were tumor grade III. In non-IBC patients 77.8% were diagnosed as tumor grade I or II, and 22.2% were diagnosed as tumor grade III.

We assessed the number of axillary lymph nodes that were positive for metastases in IBC versus non-IBC patients. All IBC patients who underwent surgery had positive metastatic lymph nodes: 15% had 1-3 positive metastatic lymph nodes, 30% had 4-7 positive metastatic lymph nodes and 55% had greater than or equal to 8 positive metastatic lymph nodes. Among non-IBC

patients, 25.9% were node negative, 33.4% had 1-3 metastatic lymph nodes, 22.2% had 4-7 metastatic lymph nodes and 18.5% had greater than or equal to 8 positive metastatic lymph nodes. In addition, the difference between the number of positive metastatic lymph nodes in IBC versus non-IBC patients was determined to be statistically significant ( $P = 0.037$ ).

Lymphovascular invasion was significantly greater ( $P = 0.000$ ) in IBC (73.9%) versus non-IBC (11.1%) patients. Tumor emboli, a phenotypic hallmark of IBC and defined as tight tumor cell clusters retracted away from the surrounding endothelial lining [2,18], were detected in 100% of IBC tissue sections as compared to only 11.1% of non-IBC tissue sections ( $P = 0.000$ ). Positive staining for ER, PR and HER-2 was detected in 27.3%, 31.8% and 18.2% of the IBC patients, respectively. In non-IBC patients, positive staining for ER, PR and HER-2 was 22.2%, 29.6% and 14.8%, respectively.

#### Overexpression of CTSSB in IBC versus non-IBC tissues

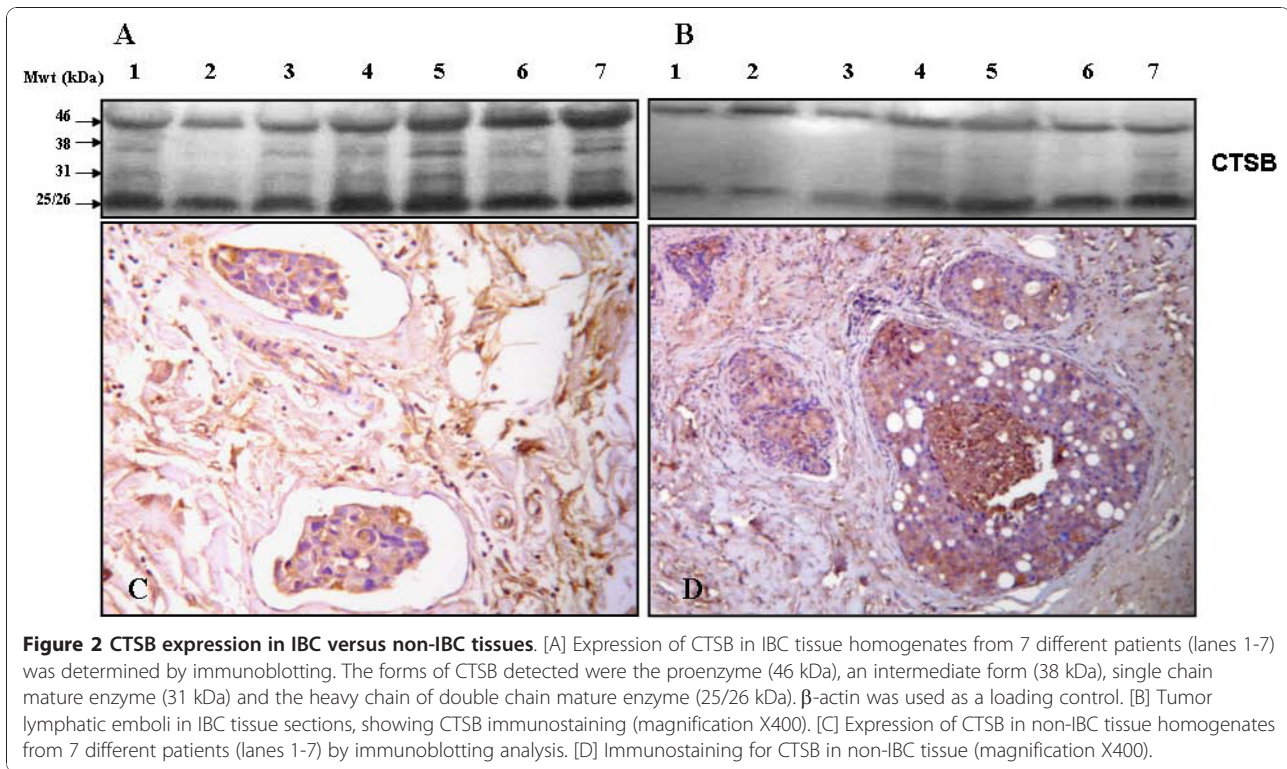
To assess the level of expression of CTSSB in tissue homogenates of IBC versus non-IBC patients, we used immunoblotting analysis. Results showed that different forms of CTSSB comprising pro-CTSSB (46-kDa); intermediate-CTSSB (38 kDa); and mature-CTSSB forms (31 kDa single chain and 25/26 kDa double chain) were highly expressed in IBC tissues (Figure 2A) as compared to non-IBC tissues (Figure 2B).

To further localize cellular expression of CTSSB in IBC versus non-IBC carcinoma cells, we used IHC to stain CTSSB in paraffin embedded tissue sections. Results of IHC staining were scored for the intensity of CTSSB staining (Table 2). CTSSB was localized in the cytoplasm and cell membrane of IBC tumor emboli (Figure 2C) and non-IBC carcinoma cells (Figure 2D).

IHC scoring results revealed a statistical significance ( $P = 0.025$ ) in the level of expression of CTSSB in IBC versus non-IBC carcinoma cells. In IBC, 34.8% showed CTSSB staining score of ++ and 65.2% showed staining score of +++. In non-IBC, CTSSB staining was variable with 3.7% scoring 0, 18.5% scoring +, 25.9% scoring ++ and 51.9% scoring +++ (Table 2).

#### Overexpression of cav-1 in IBC versus non-IBC tissues

Immunoblot analysis revealed an overexpression of cav-1 (22 kDa) in IBC tissues as compared to non-IBC tissues (Figure 3A and 3B). Using IHC staining, we showed that 100% of IBC tissues express cav-1 (Figure 3C) whereas only 51.8% of non-IBC samples expressed cav-1 (Figure 3D). Scoring for cav-1 expression in IBC (Figure 3C) cells was as follows: 30.4% scored +, 39.2% scored ++ and 30.4% scored +++ (Table 2). In the non-IBC tissues (Figure 3D), 48.2% of patient tissue samples revealed negative staining for cav-1 in carcinoma cells, whereas 29.6% scored +, 7.4% scored ++ and 14.8% scored +++ (Table



2). Our results revealed a statistically significant overexpression of cav-1 ( $P = 0.001$ ) in IBC versus non-IBC patients. The present results agree with those of Van den Eynden et al. [7] in demonstrating an overexpression of cav-1 in IBC patient tissues.

#### Expression of CTSB correlates with positive metastatic lymph nodes in IBC

We tested whether the number of positive metastatic lymph nodes correlates with the expression levels of each of CTSB and cav-1 in IBC versus non-IBC patient tissues. In the IBC patient group, CTSB showed a statistically significant correlation ( $P = 0.0478$ ) with the presence of positive metastatic lymph

**Table 2 Scoring of CTSB and cav-1 expression in breast carcinoma cells in IBC versus non-IBC tissues**

	CTSB		Cav-1	
	IBC <i>n</i> (%)	Non-IBC <i>n</i> (%)	IBC <i>n</i> (%)	Non-IBC <i>n</i> (%)
negative	0 (0%)	1 (3.7%)	0 (0%)	13 (48.2%)
+	0(0%)	5 (18.5%)	7 (30.4%)	8 (29.6%)
++	8 (34.8%)	7 (25.9%)	9 (39.2%)	2 (7.4%)
+++	15 (65.2%)	14 (51.9%)	7 (30.4%)	4 (14.8%)
Fisher's exact test	$P = 0.025^*$		$P = 0.001^*$	

*n*: number of patients.

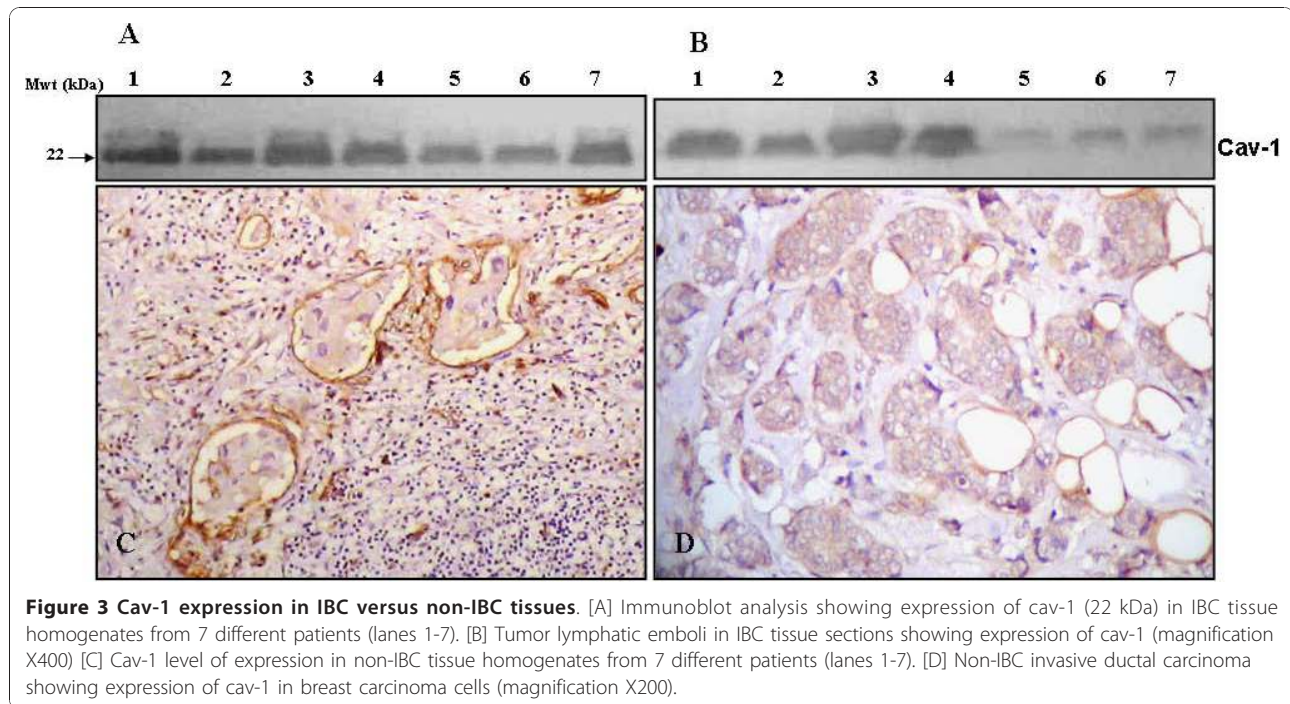
\* Significant *P* value.

nodes as compared to the non-IBC group (Table 3). Cav-1 expression showed statistically non-significant correlation ( $P = 0.0717$ -this number does not match table 3) with the number of positive lymph node metastasis (Table 3).

Thus, our data reveal that the overexpression of CTSB in IBC versus non-IBC is significantly correlated with the increase in number of positive metastatic lymph nodes, suggesting a potential role for this proteolytic enzyme in promoting the invasion of IBC cells into lymphatic vessels.

#### Discussion

Criteria for the TNM staging system for breast cancer indicate that the number of positive metastatic axillary lymph nodes is one of the most important prognostic factors for predicting a low survival rate of breast cancer patients [22]. Despite therapeutic regimes, patients with 10 or more positive lymph nodes have a 70% chance of disease recurrence [23,24]. Indeed, dissemination of IBC cells to lymph nodes is consistent with the aggressive phenotype of IBC although the molecular and cellular pathways underlining this process are poorly understood. In the present study, we show a significant positive correlation between expression of the cysteine protease CSTB and the number of metastatic lymph nodes in IBC patients. In addition, cav-1 was also shown to be overexpressed in IBC tissue as compared to non-IBC tissue.



Our previous *in vitro* studies showed that increased ECM degradation and invasion of the SUM149 IBC cell line are associated with an overexpression of CTSB and cav-1 [15]. Cav-1 is the main structural protein of lipid raft caveolae, a site that has been hypothesized to localize cell surface proteases involved in pericellular proteolytic events [12]. Indeed, downregulation of cav-1 in colorectal carcinoma cells decreased trafficking of CTSB to caveolae on the surface of these cells and decreased degradation of ECM proteins and cellular invasion [25]. Although the role of cav-1 in breast cancer is contradictory, overexpression of cav-1 is present in aggressive types of breast cancer such as metaplastic carcinoma [13] and IBC [7]. Moreover, in IBC cell lines and tissues, overexpression of cav-1 is correlated with increased RhoC expression, a GTPase involved in cell motility and invasion [7]. In the present study, overexpression of cav-1

did not significantly correlate with an increase in expression of CTSB; however, current studies in our laboratory have localized CTSB to caveolae of SUM149 IBC cells (unpublished data). Moreover these cells exhibit extracellular degradation of ECM proteins that was partially blocked by cysteine and serine protease inhibitors (unpublished data). Thus, our data suggest that overexpression of cav-1 in IBC cells contributes to proteolytic events involving CTSB that lead to ECM degradation, tumor invasion and metastasis.

IBC is characterized by extensive involvement of positive metastatic lymph nodes, which are associated with the aggressive phenotype of the disease [26] and are a determining factor in therapeutic decisions [27-29]. As such, we determined whether there were correlations between CTSB and cav-1 and the number of positive metastatic lymph nodes in IBC versus non-IBC patients. Our results revealed a statistically significant positive correlation only between the level of CTSB expression in IBC carcinoma cells and the number of positive metastatic lymph nodes ( $P = 0.0478$ ). Such a correlation was not detected in non-IBC patients. A positive correlation between CTSB expression and the metastasis of carcinoma cells to lymph nodes has previously been reported in breast [30], prostate [31] and gastric [32] cancers. Overexpression of CTSB in breast cancer has been shown to enhance tumor growth and invasion [33]. This parallels increased recurrence and shortened disease-free survival [30]. Moreover in an animal mammary cancer model, the number of positive metastatic lymph nodes has also been found to be

**Table 3 Correlation between lymph node metastasis and expression of CTSB and cav-1 in IBC versus non-IBC patients**

Variable	CTSB Expression		Cav-1 Expression	
	IBC (%)	Non-IBC (%)	IBC (%)	Non-IBC (%)
Lymph node metastasis				
Negative	0 (0%)	5 (23.8%)	0 (0%)	3 (27.2%)
Positive	20 (100%)	16 (76.25)	14 (100%)	8 (72.7%)
Fisher's exact test	$P = 0.0478^*$		$P = 0.0717$	

\*Significant p value calculated by Fisher's exact test.



associated with expression of CTSB [34]. Thus, our data are consistent with a crucial role for CTSB in promoting the highly metastatic behaviour of IBC.

## Conclusions

The positive correlation between CTSB and nodal metastatic burden in IBC patients suggests that this proteolytic enzyme may promote nodal metastasis in IBC patients. We hypothesize that the overexpression of cav-1 in IBC increases trafficking of CTSB to the cell surface where it promotes IBC invasion into lymphatic vessels and metastasis to lymph nodes. Further studies to validate CTSB as a prognostic marker in IBC and delineate the mechanisms by which the association of CTSB with cav-1 is involved in lymph node metastasis in IBC patients are in progress.

## Acknowledgements

We acknowledge the contribution of Prof. Hoda Ismail (Department of Pathology, National Cancer Institute, Cairo University, Giza, Egypt) for her assistance in reviewing and scoring of pathology slides. We also thank Ms. A Dhiha Alraawi and Ms. Marwa Tantawy (Department of Zoology, Cairo University, Giza, Egypt) for their assistance in the statistical analysis and immunoblotting, respectively. The authors were supported by Avon Grant # 02-2007-049 (M.M.M., B.F.S.) and Science and Technology Development Funds (Grant # 343 and 408), Egypt (M.M.M.).

## Author details

<sup>1</sup>Department of Pathology, National Cancer Institute, Cairo University, Giza 12613 Egypt. <sup>2</sup>Department of Zoology, Faculty of Science, Cairo University, Giza 12613 Egypt. <sup>3</sup>Department of General Surgery, Faculty of Medicine, Ain Shams University, Cairo 11566, Egypt. <sup>4</sup>Department of Surgery, National Cancer Institute, Cairo University, Giza 12613 Egypt. <sup>5</sup>Department of Pharmacology, Wayne State University, Detroit, MI 48201, USA. <sup>6</sup>Department of Biological Sciences, University of Windsor, Windsor, ON, N9B 3P4 Canada. <sup>7</sup>Department of Medical Oncology, National Cancer Institute, Cairo University, Giza 12613 Egypt. <sup>8</sup>Barbara Ann Karmanos Cancer Institute, Wayne State University, Detroit, MI 48201, USA.

## Authors' contributions

All authors read and approved the final manuscript. B.F.S., M.M.M. and D.C.M. were responsible for the design of the study and critical revisions of the manuscript. M.A.N. was responsible for patients' pathological evaluation, performing IHC and scoring analysis. M.M.M. was responsible for conducting laboratory experimental procedures, their interpretation and manuscript preparation. M.E.S. was responsible for patients' recruitment, clinical diagnosis, patients' follow-up, providing patients' data and contributions to manuscript preparation. M.A.S. participated in patients' recruitment. H.M.K. was responsible for patients' treatment decisions, participated in scientific discussions and revision of the manuscript.

## Competing interests

The authors declare that they have no competing interests.

Received: 21 August 2010 Accepted: 3 January 2011

Published: 3 January 2011

## References

1. Lerebours F, Bieche I, Lidereau R: **Update on inflammatory breast cancer.** *Breast Cancer Res* 2005, **7**:52-58.
2. Gong Y: **Pathologic aspects of inflammatory breast cancer: part 2. Biologic insights into its aggressive phenotype.** *Semin Oncol* 2008, **35**:33-40.
3. Van Laere SJ, Van den Eynden GG, Van der Auwera I, Vandenberghe M, van Dam P, Van Marck EA, van Golen KL, Vermeulen PB, Dirix LY: **Identification**

- of cell-of-origin breast tumor subtypes in inflammatory breast cancer by gene expression profiling. *Breast Cancer Res Treat* 2006, **95**:243-255.
4. Alberini JL, Lerebours F, Wartski M, Fourme E, Le Stanc E, Gontier E, Madar O, Cherel P, Pecking AP: **18F-fluorodeoxyglucose positron emission tomography/computed tomography (FDG-PET/CT) imaging in the staging and prognosis of inflammatory breast cancer.** *Cancer* 2009, **115**:5038-5047.
5. Michaelson JS, Chen LL, Silverstein MJ, Cheongsiatmoy JA, Mihm MC Jr, Sober AJ, Tanabe KK, Smith BL, Younger J: **Why cancer at the primary site and in the lymph nodes contributes to the risk of cancer death.** *Cancer* 2009, **115**:5084-5094.
6. Ellsworth RE, Seebach J, Field LA, Heckman C, Kane J, Hooke JA, Love B, Shriver CD: **A gene expression signature that defines breast cancer metastases.** *Clin Exp Metastasis* 2009, **26**:205-213.
7. Van den Eynden GG, Van Laere SJ, Van der Auwera I, Merajver SD, Van Marck EA, van Dam P, Vermeulen PB, Dirix LY, van Golen KL: **Overexpression of caveolin-1 and -2 in cell lines and in human samples of inflammatory breast cancer.** *Breast Cancer Res Treat* 2006, **95**:219-228.
8. Mohamed MM, Sloane BF: **Cysteine cathepsins: multifunctional enzymes in cancer.** *Nat Rev Cancer* 2006, **6**:764-775.
9. Ren WP, Sloane BF: **Cathepsins D and B in breast cancer.** *Cancer Treat Res* 1996, **83**:325-352.
10. Kobayashi H, Moniwa N, Sugimura M, Shinohara H, Ohi H, Terao T: **Effects of membrane-associated cathepsin B on the activation of receptor-bound proreceptor kinase and subsequent invasion of reconstituted basement membranes.** *Biochim Biophys Acta* 1993, **1178**:55-62.
11. Anderson RG: **The caveolae membrane system.** *Annu Rev Biochem* 1998, **67**:199-225.
12. Cavallo-Medved D, Sloane BF: **Cell-surface cathepsin B: understanding its functional significance.** *Curr Top Dev Biol* 2003, **54**:313-341.
13. Elsheikh SE, Green AR, Rakha EA, Samaka RM, Ammar AA, Powe D, Reis-Filho JS, Ellis IO: **Caveolin 1 and Caveolin 2 are associated with breast cancer basal-like and triple-negative immunophenotype.** *Br J Cancer* 2008, **99**:327-334.
14. Yamaguchi H, Takeo Y, Yoshida S, Kouchi Z, Nakamura Y, Fukami K: **Lipid rafts and caveolin-1 are required for invadopodia formation and extracellular matrix degradation by human breast cancer cells.** *Cancer Res* 2009, **69**:8594-8602.
15. Mohamed MM, Cavallo-Medved D, Sloane BF: **Human monocytes augment invasiveness and proteolytic activity of inflammatory breast cancer.** *Biol Chem* 2008, **389**:1117-1121.
16. Dawood S, Merajver SD, Viens P, Vermeulen PB, Swain SM, Buchholz TA, Dirix LY, Levine PH, Lucci A, Krishnamurthy S, Robertson FM, Woodward WA, Yang WT, Ueno NT, Cristofanilli M: **International expert panel on inflammatory breast cancer: consensus statement for standardized diagnosis and treatment.** *Ann Oncol* 2010.
17. Genestie C, Zafrani B, Asselain B, Fourquet A, Rozan S, Validire P, Vincent-Salomon A, Sastre-Garau X: **Comparison of the prognostic value of Scarff-Bloom-Richardson and Nottingham histological grades in a series of 825 cases of breast cancer: major importance of the mitotic count as a component of both grading systems.** *Anticancer Res* 1998, **18**:571-576.
18. Bonnier P, Charpin C, Lejeune C, Romain S, Tubiana N, Beedassy B, Martin PM, Serment H, Piana L: **Inflammatory carcinomas of the breast: a clinical, pathological, or a clinical and pathological definition?** *Int J Cancer* 1995, **62**:382-385.
19. Moin K, Day NA, Sameni M, Hasnain S, HIRAMA T, Sloane BF: **Human tumour cathepsin B. Comparison with normal liver cathepsin B.** *Biochem J* 1992, **285**(Pt 2):427-434.
20. Mohamed MM, Cavallo-Medved D, Rudy D, Anbalagan A, Moin K, Sloane BF: **Interleukin-6 increases expression and secretion of cathepsin B by breast tumor-associated monocytes.** *Cell Physiol Biochem* 2010, **25**:315-324.
21. Savage K, Lambros MB, Robertson D, Jones RL, Jones C, Mackay A, James M, Hornick JL, Pereira EM, Milanezi F, et al: **Caveolin 1 is overexpressed and amplified in a subset of basal-like and metaplastic breast carcinomas: a morphologic, ultrastructural, immunohistochemical, and in situ hybridization analysis.** *Clin Cancer Res* 2007, **13**:90-101.
22. Singletary SE, Allred C, Ashley P, Bassett LW, Berry D, Bland KI, Borgen PI, Clark G, Edge SB, Hayes DF, et al: **Revision of the American Joint Committee on Cancer staging system for breast cancer.** *J Clin Oncol* 2002, **20**:3628-3636.

23. Carter CL, Allen C, Henson DE: **Relation of tumor size, lymph node status, and survival in 24,740 breast cancer cases.** *Cancer* 1989, **63**:181-187.
24. Fisher B, Bauer M, Wickerham DL, Redmond CK, Fisher ER, Cruz AB, Foster R, Gardner B, Lerner H, Margolese R, *et al*: **Relation of number of positive axillary nodes to the prognosis of patients with primary breast cancer. An NSABP update.** *Cancer* 1983, **52**:1551-1557.
25. Cavallo-Medved D, Mai J, Dosesco J, Sameni M, Sloane BF: **Caveolin-1 mediates the expression and localization of cathepsin B, pro-urokinase plasminogen activator and their cell-surface receptors in human colorectal carcinoma cells.** *J Cell Sci* 2005, **118**:1493-1503.
26. Kleer CG, van Golen KL, Merajver SD: **Molecular biology of breast cancer metastasis. Inflammatory breast cancer: clinical syndrome and molecular determinants.** *Breast Cancer Res* 2000, **2**:423-429.
27. Hudis CA, Seidman AD, Baselga J, Raptis G, Lebewohl D, Gilewski T, Currie V, Moynahan ME, Sklarin N, Fennelly D, *et al*: **Sequential adjuvant therapy with doxorubicin/paclitaxel/cyclophosphamide for resectable breast cancer involving four or more axillary nodes.** *Semin Oncol* 1995, **22**:18-23.
28. Gianni AM, Siena S, Bregni M, Di Nicola M, Orefice S, Cusumano F, Salvadori B, Luini A, Greco M, Zucali R, *et al*: **Efficacy, toxicity, and applicability of high-dose sequential chemotherapy as adjuvant treatment in operable breast cancer with 10 or more involved axillary nodes: five-year results.** *J Clin Oncol* 1997, **15**:2312-2321.
29. Bristol IJ, Woodward WA, Strom EA, Cristofanilli M, Domain D, Singletary SE, Perkins GH, Oh JL, Yu TK, Terrefe W, *et al*: **Locoregional treatment outcomes after multimodality management of inflammatory breast cancer.** *Int J Radiat Oncol Biol Phys* 2008, **72**:474-484.
30. Foekens JA, Kos J, Peters HA, Krasovec M, Look MP, Cimerman N, Meijer-van Gelder ME, Henzen-Logmans SC, van Putten WL, Klijn JG: **Prognostic significance of cathepsins B and L in primary human breast cancer.** *J Clin Oncol* 1998, **16**:1013-1021.
31. Sinha AA, Quast BJ, Wilson MJ, Fernandes ET, Reddy PK, Ewing SL, Gleason DF: **Prediction of pelvic lymph node metastasis by the ratio of cathepsin B to stefin A in patients with prostate carcinoma.** *Cancer* 2002, **94**:3141-3149.
32. Czyzewska J, Guzinska-Ustymowicz K, Kemon A, Bandurski R: **The expression of matrix metalloproteinase 9 and cathepsin B in gastric carcinoma is associated with lymph node metastasis, but not with postoperative survival.** *Folia Histochem Cytobiol* 2008, **46**:57-64.
33. Vigneswaran N, Wu J, Muller S, Zacharias W, Narendran S, Middleton L: **Expression analysis of cystatin C and M in laser-capture microdissected human breast cancer cells—a preliminary study.** *Pathol Res Pract* 2005, **200**:753-762.
34. Robey IF, Baggett BK, Kirkpatrick ND, Roe DJ, Dosesco J, Sloane BF, Hashim AI, Morse DL, Raghunand N, Gatenby RA, Gillies RJ: **Bicarbonate increases tumor pH and inhibits spontaneous metastases.** *Cancer Res* 2009, **69**:2260-2268.

doi:10.1186/1479-5876-9-1

**Cite this article as:** Nouh *et al*: **Cathepsin B: a potential prognostic marker for inflammatory breast cancer.** *Journal of Translational Medicine* 2011 **9**:1.

**Submit your next manuscript to BioMed Central  
and take full advantage of:**

- Convenient online submission
- Thorough peer review
- No space constraints or color figure charges
- Immediate publication on acceptance
- Inclusion in PubMed, CAS, Scopus and Google Scholar
- Research which is freely available for redistribution

Submit your manuscript at  
[www.biomedcentral.com/submit](http://www.biomedcentral.com/submit)

