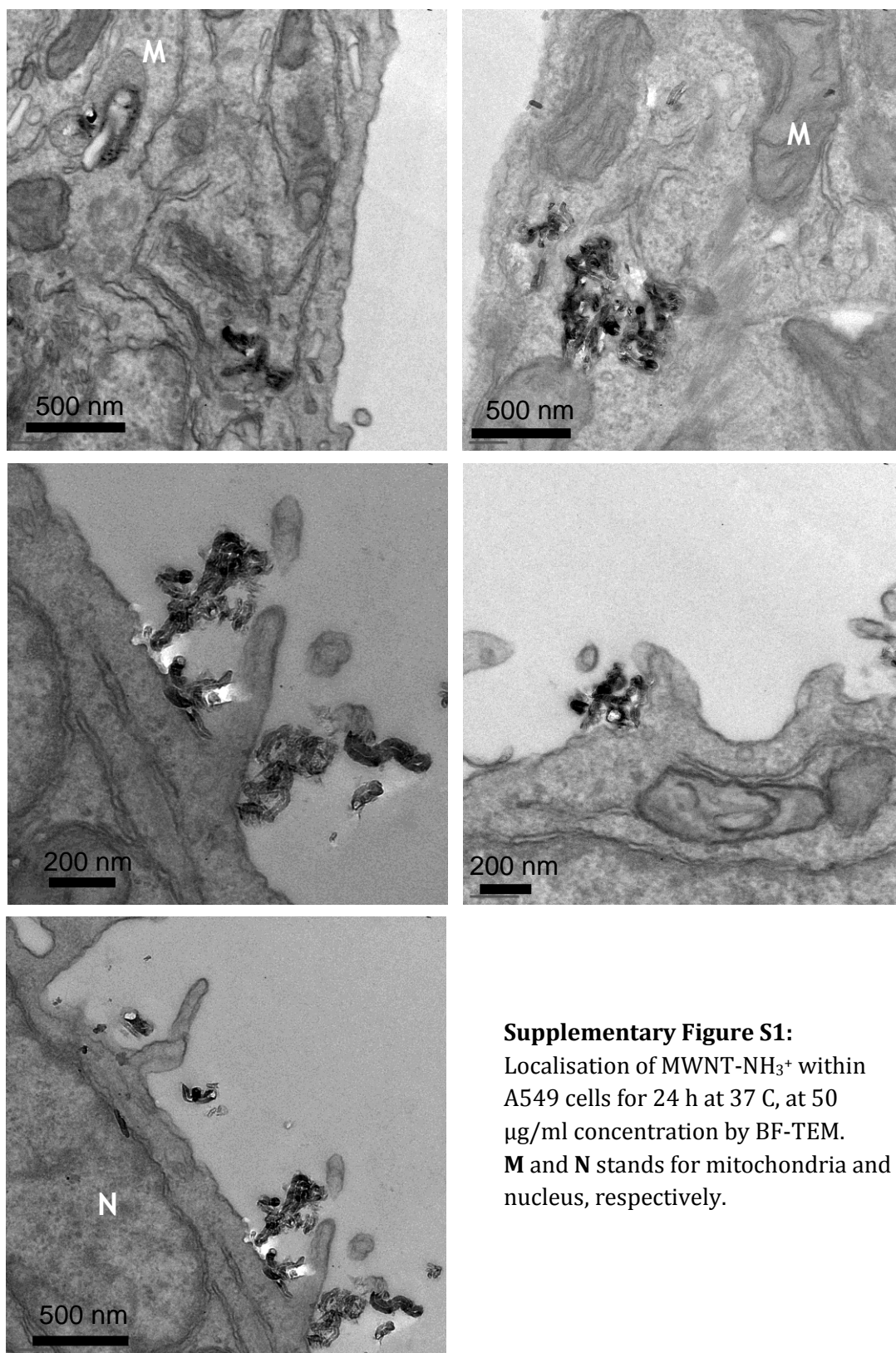


Cellular Uptake Mechanisms of Functionalised Multi-Walled Carbon Nanotubes by 3D Electron Tomography Imaging

Khuloud T. Al-Jamal, Hannah Nerl, Karin H. Müller, Hanene Ali-Boucetta, Shouping Li, Peter D. Hanes, Joerg R. Jinschek, Maurizio Prato, Alberto Bianco, Kostas Kostarelos, Alexandra E. Porter

Supplementary Information



Supplementary Figure S1:

Localisation of MWNT-NH₃⁺ within A549 cells for 24 h at 37 C, at 50 µg/ml concentration by BF-TEM.

M and **N** stands for mitochondria and nucleus, respectively.