

2018

Cerebrospinal fluid biomarkers measured by Elecsys assays compared to amyloid imaging

Suzanne E. Schindler

Washington University School of Medicine in St. Louis

Julia D. Gray

Washington University School of Medicine in St. Louis

Brian A. Gordon

Washington University School of Medicine in St. Louis

Chengjie Xiong

Washington University School of Medicine in St. Louis

Richard Batrla-Utermann

Roche Diagnostics International Ltd

See next page for additional authors

Follow this and additional works at: https://digitalcommons.wustl.edu/open_access_pubs

Recommended Citation

Schindler, Suzanne E.; Gray, Julia D.; Gordon, Brian A.; Xiong, Chengjie; Batrla-Utermann, Richard; Quan, Marian; Wahl, Simone; Benzinger, Tammie L.S.; Holtzman, David M.; Morris, John C.; and Fagan, Anne M., "Cerebrospinal fluid biomarkers measured by Elecsys assays compared to amyloid imaging." *Alzheimer's & Dementia*. 14,11. 1460-1469. (2018).

https://digitalcommons.wustl.edu/open_access_pubs/7415

This Open Access Publication is brought to you for free and open access by Digital Commons@Becker. It has been accepted for inclusion in Open Access Publications by an authorized administrator of Digital Commons@Becker. For more information, please contact vanam@wustl.edu.

Authors

Suzanne E. Schindler, Julia D. Gray, Brian A. Gordon, Chengjie Xiong, Richard Batrla-Utermann, Marian Quan, Simone Wahl, Tammie L.S. Benzinger, David M. Holtzman, John C. Morris, and Anne M. Fagan

Featured Article

Cerebrospinal fluid biomarkers measured by Elecsys assays compared to amyloid imaging

Suzanne E. Schindler^{a,b,c}, Julia D. Gray^{a,b,c}, Brian A. Gordon^{a,b,d}, Chengjie Xiong^{a,b,e}, Richard Batrla-Utermann^f, Marian Quan^g, Simone Wahl^h, Tammie L. S. Benzinger^{a,b,d}, David M. Holtzman^{a,b,c}, John C. Morris^{a,b}, Anne M. Fagan^{a,b,c,*}

^aDepartment of Neurology, Washington University School of Medicine, St. Louis, MO, USA

^bKnight Alzheimer's Disease Research Center, Washington University School of Medicine, St. Louis, MO, USA

^cHope Center for Neurological Disorders, Washington University School of Medicine, St. Louis, MO, USA

^dMallinckrodt Institute of Radiology, Washington University School of Medicine, St. Louis, MO, USA

^eDivision of Biostatistics, Washington University School of Medicine, St. Louis, MO, USA

^fRoche Diagnostics International Ltd, Rotkreuz, Switzerland

^gRoche Diagnostics, Indianapolis, IN, USA

^hRoche Diagnostics GmbH, Penzberg, Germany

Abstract

Introduction: Levels of amyloid β peptide 42 (A β 42), total tau, and phosphorylated tau-181 are well-established cerebrospinal fluid (CSF) biomarkers of Alzheimer's disease, but variability in manual plate-based assays has limited their use. We examined the relationship between CSF biomarkers, as measured by a novel automated immunoassay platform, and amyloid positron emission tomography. **Methods:** CSF samples from 200 individuals underwent separate analysis for A β 42, total tau, and phosphorylated tau-181 with automated Roche Elecsys assays. A β 40 was measured with a commercial plate-based assay. Positron emission tomography with Pittsburgh Compound B was performed less than 1 year from CSF collection.

Results: Ratios of CSF biomarkers (total tau/A β 42, phosphorylated tau-181/A β 42, and A β 42/A β 40) best discriminated Pittsburgh Compound B-positive from Pittsburgh Compound B-negative individuals.

Discussion: CSF biomarkers and amyloid positron emission tomography reflect different aspects of Alzheimer's disease brain pathology, and therefore, less-than-perfect correspondence is expected. Automated assays are likely to increase the utility of CSF biomarkers.

© 2018 The Authors. Published by Elsevier Inc. on behalf of the Alzheimer's Association. This is an open access article under the CC BY license (<http://creativecommons.org/licenses/by/4.0/>).

Keywords:

Alzheimer's disease; Biomarker; Cerebrospinal fluid; Cutoff; Amyloid

1. Introduction

Alzheimer's disease (AD) refers to the progressive brain disease that is characterized by amyloid plaques that are comprised primarily of amyloid β peptide 42 (A β 42) and neurofibrillary tangles that are comprised primarily of tau, including phosphorylated forms of tau. Individuals with

AD are typically asymptomatic (have no apparent cognitive decline) for one to two decades during the preclinical phase of the disease [1,2]. As the disease progresses, individuals enter the symptomatic phase when they develop cognitive decline that culminates in dementia. Fluid biomarkers can identify individuals with AD brain pathology who are in either the preclinical phase or the symptomatic phase of the disease. Decreases in cerebrospinal fluid (CSF) A β 42 levels and increases in CSF total tau (tTau) and phosphorylated tau-181 (pTau) may be the earliest markers

*Corresponding author. Tel.: (314) 362-3453; Fax (314) 362-2244.
E-mail address: fagana@wustl.edu

of AD brain pathology [3–6]. CSF A β 42, tTau, or pTau individually, and especially the ratios of CSF tTau/A β 42 and pTau/A β 42, predict future cognitive decline of cognitively normal adults [7,8] and individuals diagnosed with mild cognitive impairment due to AD [9–12].

It is likely that the use of AD biomarkers will continue to increase in clinical practice and clinical trials. As demonstrated by clinicopathological series, the clinical diagnosis of AD can be incorrect [13], so biomarkers may be helpful in establishing an accurate diagnosis. CSF biomarkers are especially useful when the etiology of cognitive impairment is uncertain and AD is a possible cause [14]. Drug trials now routinely test CSF or imaging biomarkers in potential participants after it was found that many individuals enrolled in past AD drug trials did not have AD brain pathology [15–18]. CSF biomarkers are also being used in clinical trials to verify that drugs are having expected biological effects and may eventually be used as surrogate end points [15,16]. When an effective drug for AD is available, CSF biomarkers will become even more important in guiding the diagnosis and management of patients.

CSF A β 42, tTau, and pTau were the first biomarkers described for AD [19], and now, molecular imaging biomarkers have also become well established [20,21]. Radiotracers that bind to β -amyloid (e.g., Pittsburgh Compound B [PIB], florbetapir, florbetaben, and flutemetamol) or aggregated tau (e.g., flortaucipir) can visualize plaques and tangles, respectively, with positron emission tomography (PET). Although these PET imaging techniques provide information regarding the degree and spatial distribution of brain pathology, there are limitations to their use, including high cost, limited access, use of radiation, and imaging of only a single type of pathology per scan [22,23]. A number of studies have previously evaluated the relationship between CSF biomarkers of AD and amyloid PET and found a strong inverse correlation between levels of CSF A β 42 and binding of amyloid PET tracers [3,5,6,24–33]. The ratio of A β 42 with another AD biomarker (e.g., tTau/A β 42, pTau/A β 42, or A β 42/A β 40) may provide the best correlation with amyloid PET measures [24,30,32].

The use of CSF biomarkers has been limited by a number of technical factors. There has been substantial variability in the intralaboratory and interlaboratory performance of the three most commonly used commercial enzyme-linked immunosorbent assays (ELISAs) for CSF A β 42, tTau, and pTau: INNOTEST, AlzBio3, and Meso Scale Discovery. Issues with these assays include high lot-to-lot variability [34] and between-laboratory variability associated with differences in laboratory procedures and analytical techniques because the assays are run manually [12,35–37]. Practically, because most assays are based on the 96-well plate immunoassay format, laboratories must await a large number of samples to financially justify analysis, which in turn leads to delays in obtaining results. The lack of standardized reference materials for quantitation of these analy-

tes has made it difficult to compare absolute values across assays and studies [38]. Taken together, these issues have prevented the establishment of universal diagnostic cutoffs for CSF biomarkers and decreased the potential utility of CSF biomarkers in the clinic and in clinical trials.

Next-generation automated assay platforms are being developed to overcome the shortcomings of previous assay systems. Roche Diagnostics has developed Elecsys assays that utilize the automated cobas 601 analyzer. This assay platform exhibits high degrees of precision, accuracy, reliability, and reproducibility, with very low variability, in large part due to its automation [39]. We tested this novel assay platform using CSF samples obtained from individuals who had also undergone amyloid PET. CSF A β 42, tTau, and pTau were measured separately with Elecsys assays. CSF A β 40 was measured with a standard plate-based ELISA [24]. We then examined the relationship between cortical amyloid load as defined by PIB PET and CSF A β 42, A β 40, tTau, pTau, and three ratios of A β 42 with another AD biomarker (tTau/A β 42, pTau/A β 42, and A β 42/A β 40).

2. Materials and methods

2.1. Participants, standard protocol approvals, and consents

Participants were community-dwelling volunteers enrolled in studies of normal aging and dementia at the Knight Alzheimer's Disease Research Center at Washington University in St. Louis. Participants had no neurological, psychiatric, or systemic medical illness that might compromise longitudinal study participation and no medical contraindication to lumbar puncture (LP) or PET. All participants underwent clinical assessments that included the Clinical Dementia Rating (CDR) [40]. *APOE* genotype was obtained from the Knight Alzheimer's Disease Research Center Genetics Core [41]. All procedures were approved by the Washington University Human Research Protection Office, and written informed consent was obtained from each participant.

Participants included in this study underwent a clinical assessment, LP, and PIB PET within a 365-day period. Of participants who met these criteria, 200 were selected based on cortical amyloid load by PIB PET (25% PIB-positive and 75% PIB-negative based on a previously established cutoff [42]). We chose to include more PIB-negative participant samples to enrich for discordant (PIB-negative and CSF biomarker positive) cases. Furthermore, we chose participants with a broad range of CSF A β 42 values based on previous data from plate-based assays. Selection was independent of participant demographics and clinical status.

2.2. CSF collection, processing, and analysis

CSF was collected under standardized operating procedures. Participants underwent LP at 8 AM after overnight fasting. Twenty to 30 mLs of CSF was collected in a 50-mL

polypropylene tube via gravity drip using an atraumatic Sprotte 22 gauge spinal needle. The entire sample was gently inverted to disrupt potential gradient effects and centrifuged at low speed to pellet any cellular debris. Five hundred microliters of CSF was aliquoted into polypropylene tubes and stored at -80°C as previously described [5].

A β 42, tTau, and pTau were measured with the corresponding Elecsys immunoassays utilizing the Roche cobas e 601 analyzer—a fully automated system. The Elecsys immunoassays are electrochemiluminescence immunoassays using a quantitative sandwich principle with a total assay duration of 18 minutes. Pristine aliquots from the selected cohort were measured according to the Roche study protocol (RD002967) written specifically to measure these samples. A β 40 concentrations were measured with a plate-based ELISA from IBL International (Hamburg, Germany) according to the manufacturer's protocol. A single lot of assays for each analyte (either Elecsys for A β 42, tTau, and pTau or IBL for A β 40) was used to measure all samples to avoid lot-to-lot variability.

2.3. Amyloid PET imaging

Participants underwent a 60-minute dynamic scan with ^{11}C PIB [43]. PET imaging was performed with a Siemens 962 HR + ECAT PET or Biograph 40 scanner (Siemens/CTI, Knoxville, KY). Structural magnetic resonance imaging using MPRAGE T1-weighted images was also acquired. Structural magnetic resonance images were processed using FreeSurfer [44] (<http://freesurfer.net/>) to derive cortical and subcortical regions of interest used in the PET processing [45,46]. Regional PIB values were converted to standardized uptake value ratios (SUVRs) using cerebellar gray as a reference and partial volume corrected using a regional spread function approach [45,46]. Values from the left and right lateral orbitofrontal, medial orbitofrontal, precuneus, rostral middle frontal, superior frontal, superior temporal, and middle temporal cortices were averaged together to represent a mean cortical SUVR. PIB positivity was defined as a mean cortical SUVR > 1.42 [42], which is commensurate with a mean cortical binding potential of 0.18 that has previously been used to define PIB positivity [45].

2.4. Statistical analyses

Characteristics of PIB-positive and PIB-negative groups were compared using t-tests for continuous variables and χ^2 tests for categorical variables. Performance of the Elecsys assay has not yet been formally established for measuring A β 42 concentrations < 200 pg/mL or > 1700 pg/mL. None of the samples used for this study had A β 42 concentrations < 200 pg/mL. Concentrations of A β 42 > 1700 pg/mL were extrapolated based on the calibration curve. These values are restricted to research use and are not for clinical decision making. Values for CSF biomarkers, including sin-

gle analytes and ratios, were compared to PIB PET SUVR using Spearman correlation.

Receiver operating characteristic (ROC) analyses were performed to determine the cutoffs for each CSF biomarker analyte and ratio that best distinguished PIB-positive from PIB-negative individuals. Positive percent agreement (PPA) was defined as the percent of PIB-positive individuals who were positive by a CSF biomarker measure. Negative percent agreement (NPA) was defined as the percent of PIB-negative individuals who were negative by a CSF biomarker measure. Overall percent agreement was defined as the sum of the PIB-positive individuals who were positive by a CSF biomarker measure and the PIB-negative individuals who were negative by a CSF biomarker measure divided by the entire cohort size. The CSF biomarker single analyte or ratio value with the highest Youden index (PPA + NPA - 1) was selected as the cutoff value. Analyses were performed with GraphPad Prism version 6.07 (GraphPad Software, La Jolla, CA).

3. Results

3.1. Participant characteristics

CSF samples from 198 individuals were analyzed (see Table 1 for participant characteristics). Samples from two participants in the selected cohort were omitted because of failure of PIB PET quality control (i.e., movement artifact or out of LP-PET window of 365 days). The average absolute interval from LP to PIB PET was 67 ± 78 days (mean \pm standard deviation). Most of the participants ($n = 176$, 89%) were cognitively normal at the time of CSF collection with a CDR of 0, but some ($n = 22$, 11%)

Table 1
Participant characteristics

Characteristic	PIB negative	PIB positive	<i>P</i>
<i>n</i>	148	50	
CDR 0/0.5/1/2/3	141/7/0/0/0	35/11/3/1/0	
CDR > 0 (%)*	5%	30%	$<.0001$
MMSE [†]	29.1 ± 1.2	28.0 ± 3.0	$<.001$
Age at LP (years) [†]	64.2 ± 9.6	72.5 ± 7.2	$<.0001$
Gender (% male)*	34%	58%	$<.01$
Education (years) [†]	15.9 ± 2.5	15.5 ± 3.0	N.S.
APOE e4 positive (%)*	31%	56%	$<.01$
PIB mean cortical SUVR [†]	1.04 ± 0.12	2.40 ± 0.70	$<.0001$
Elecsys A β 42, pg/mL [†]	1428 ± 610	789 ± 256	$<.0001$
IBL A β 40, pg/mL [†]	$13,950 \pm 4347$	$15,310 \pm 4147$.06
Elecsys tTau, pg/mL [†]	191 ± 76	309 ± 127	$<.0001$
Elecsys pTau, pg/mL [†]	16.7 ± 7.8	30.3 ± 14.8	$<.0001$
Elecsys tTau/A β 42 [†]	0.150 ± 0.090	0.420 ± 0.173	$<.0001$
Elecsys pTau/A β 42 [†]	0.013 ± 0.010	0.041 ± 0.020	$<.0001$
Elecsys A β 42/IBL A β 40 [†]	0.103 ± 0.028	0.052 ± 0.014	$<.0001$

Abbreviations: CDR, clinical dementia rating; MMSE, Mini-Mental State Examination; PIB, Pittsburgh Compound B; tTau, total tau; pTau, phosphorylated tau-181; A β 42, amyloid β peptide 42; SUVR, standardized uptake value ratio; LP, lumbar puncture; IBL, IBL International (Hamburg, Germany).

*Percent, *P* values by χ^2 test.

[†]Mean \pm standard deviation, *P* values by student's t-test.

had very mild (CDR 0.5) or mild (CDR 1) dementia. By design, 50 (~25%) of the individuals were PIB-positive (mean cortical SUVR > 1.42). As expected, individuals who were PIB-positive were more likely to be cognitively impaired (30% vs. 5%, $P < .0001$), older (72.5 ± 7.2 vs. 64.2 ± 9.6 years, $P < .0001$), and carry an *APOE* $\epsilon 4$ allele (56% vs. 31%, $P < .01$). In addition, PIB-positive individuals were more likely to be male ($P < .01$) in this cohort.

3.2. Correlations between CSF biomarker measures and PIB binding

The Roche cobas e 601 analyzer was used to measure levels of A β 42, tTau, and pTau with the corresponding Elecsys assays. At the time of analysis, this platform did not have an A β 40 assay available. Therefore, A β 40 levels were measured with the IBL A β 40 ELISA kit. The values for A β 42, A β 40, tTau, or pTau versus PIB mean cortical SUVR were plotted (Fig. 1, upper panels). By Spearman correlation analysis, PIB binding was negatively correlated with CSF A β 42 ($r = -0.45$, $P < .0001$) and positively correlated with CSF A β 40 ($r = 0.20$, $P < .01$), tTau ($r = 0.46$, $P < .0001$), and pTau ($r = 0.51$, $P < .0001$). PIB binding was positively correlated with tTau/A β 42 ($r = 0.66$) and pTau/A β 42 ($r = 0.66$) and negatively correlated with A β 42/A β 40 ($r = -0.63$), all at $P < .0001$ (Fig. 2, upper panels). Notably, tTau and pTau were almost perfectly correlated ($r = 0.98$, $P < .0001$).

3.3. Determination of cutoffs for CSF biomarker measures

ROC analyses were performed to determine the cutoffs for each biomarker analyte and ratio that best distinguished

PIB status (positive or negative). Because PIB PET is not the gold standard for brain amyloid deposition (autopsy is the gold standard), we refer to PPA rather than sensitivity and NPA rather than specificity. The cutoffs selected are depicted in the lower panels of Fig. 1 for A β 42 (A), A β 40 (B), tTau (C), and pTau (D) and Fig. 2 for tTau/A β 42 (A), pTau/A β 42 (B), and A β 42/A β 40 (C). The lower panels also indicate the associated PPA, NPA, and overall percent agreement for each CSF measure with PIB status. The ROC curves and a summary of cutoff characteristics for all biomarker measures are shown in Fig. 3. Inspection of the ROC curves shows that A β 42/A β 40 and A β 42 have a lower NPA for a given PPA at most potential cutoff values compared to the other ratios or single analytes, respectively (e.g., at a cut point with a PPA of 0.50 for all analytes, the NPA for A β 42/A β 40 is lower than for tTau/A β 42 and pTau/A β 42 and the NPA for A β 42 is lower than for tTau and pTau). For the cutoff values selected, the PPAs for tTau/A β 42, pTau/A β 42, and A β 42/A β 40 were high (0.92–0.96) with somewhat lower NPAs (0.82–0.89). The PPA and NPA for A β 42, tTau, and pTau as single analytes (0.68–0.90 for PPA and 0.73–0.83 for NPA) were not as high as the three ratios but were superior to A β 40 (0.60 for PPA and 0.58 for NPA).

Levels of A β 42 > 1700 pg/mL were extrapolated and therefore estimated, so we performed alternative analyses to determine whether inaccuracies in high A β 42 values could bias our results. We reanalyzed our data treating individuals with A β 42 > 1700 pg/mL as biomarker negative, regardless of the level of other analytes (Supplementary Fig. 1). Notably, all 40 individuals in our cohort with A β 42 values > 1700 pg/mL were PIB-negative. We found

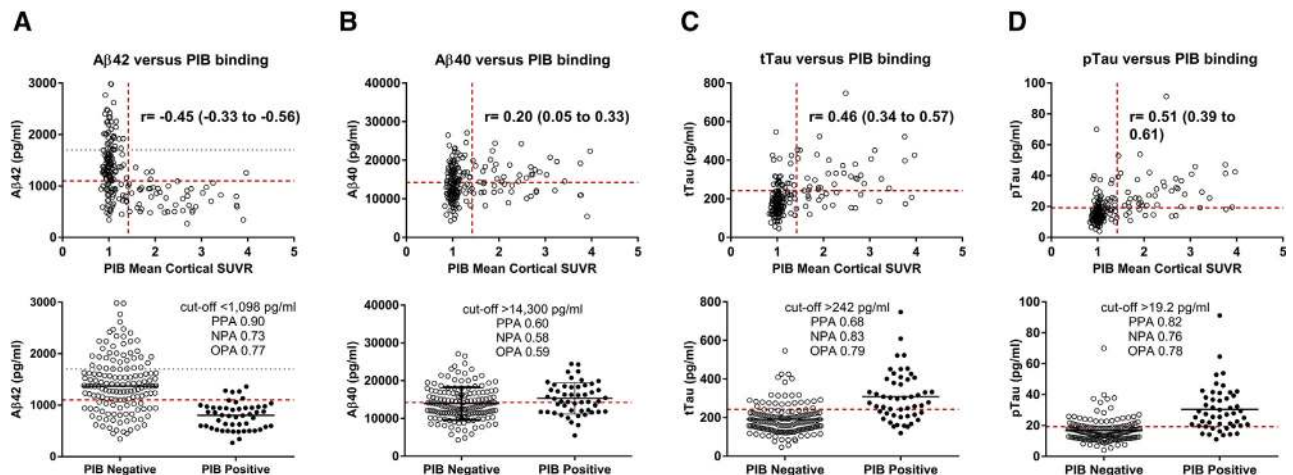


Fig. 1. Single CSF analyte values compared to PIB binding. PIB binding was negatively correlated with CSF A β 42 (A) and positively correlated with CSF A β 40 (B), tTau (C), and pTau (D). Each point represents the analyte value and PIB mean cortical SUVR for one individual. The horizontal red dashed lines represent the cutoff values that best distinguish between PIB-positive and PIB-negative individuals. The horizontal gray dotted line represents the upper limit of quantitation for A β 42 (A). For the upper panels, the vertical red dashed lines represent the established cutoff value for PIB positivity (SUVR > 1.42). The Spearman correlation coefficient (r) with 95% confidence intervals is indicated. For the lower panels, individuals were dichotomized into PIB-negative (SUVR \leq 1.42) and PIB-positive (SUVR > 1.42) groups. The lower panels indicate the cutoff values and associated positive percent agreement (PPA), negative percent agreement (NPA), and overall percent agreement (OPA) for each CSF analyte with PIB binding. Abbreviations: CSF, cerebrospinal fluid; PIB, Pittsburgh Compound B; tTau, total tau; pTau, phosphorylated tau-181; A β 42, amyloid β peptide 42; SUVR, standardized uptake value ratio.

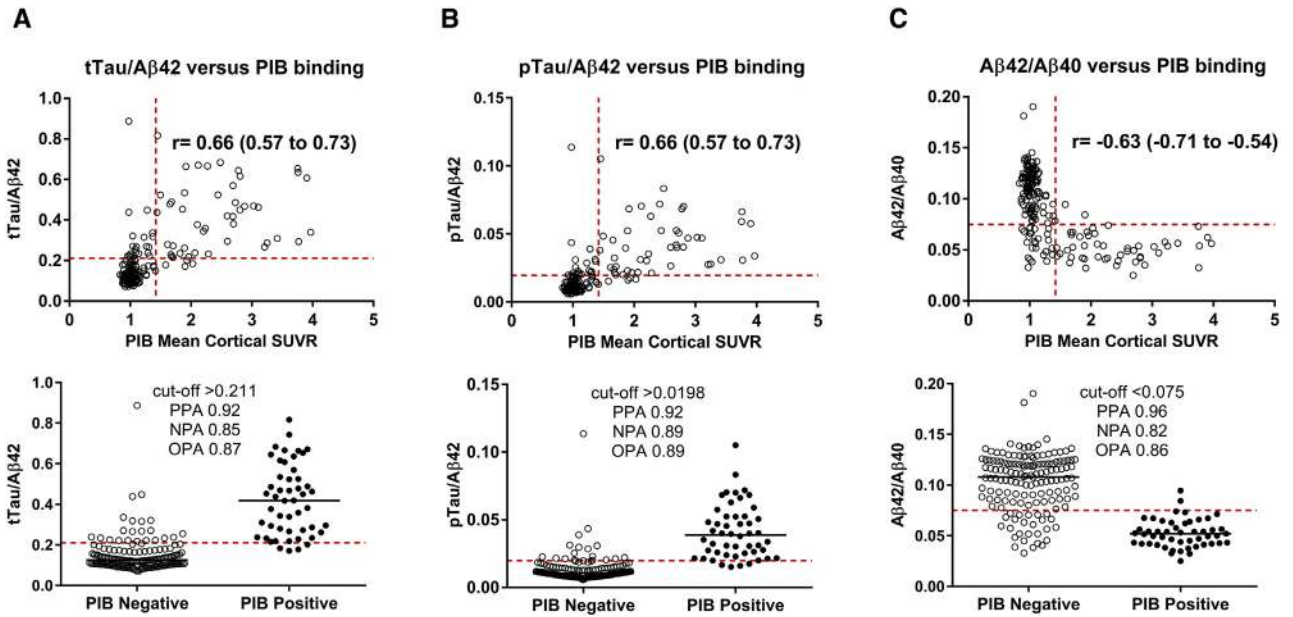
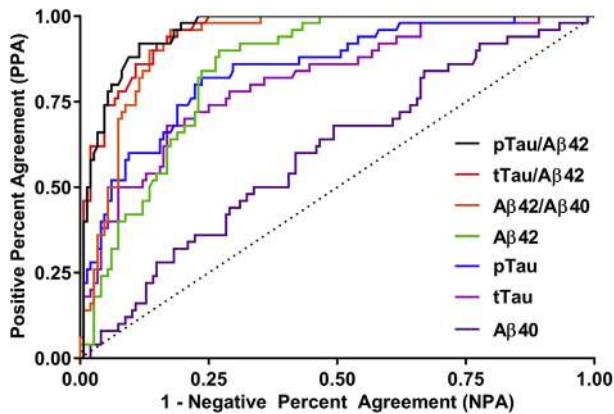


Fig. 2. CSF ratios compared to PIB binding. PIB binding is positively correlated with CSF tTau/Aβ42 (A), pTau/Aβ42 (B), and Aβ42/Aβ40 (C). Each point represents the ratio of analytes and PIB mean cortical SUVR for one individual. The horizontal red dashed lines represent the cutoff values that best distinguish between PIB-positive and PIB-negative individuals. For the upper panels, the vertical red dashed lines represent the established cutoff value for PIB positivity (SUVR > 1.42). The Spearman correlation coefficient (r) with 95% confidence intervals is indicated. For the lower panels, individuals were dichotomized into PIB-negative (SUVR ≤ 1.42) and PIB-positive (SUVR > 1.42) groups. The lower panels indicate the cutoff values and associated positive percent agreement (PPA), negative percent agreement (NPA), and overall percent agreement (OPA) for each CSF analyte with PIB binding. Abbreviations: CSF, cerebrospinal fluid; PIB, Pittsburgh Compound B; tTau, total tau; pTau, phosphorylated tau-181; Aβ42, amyloid β peptide 42; SUVR, standardized uptake value ratio.



	cut-off	PPA	NPA	AUC
pTau/Aβ42	>0.0198	0.92 (0.81-0.98)	0.89 (0.82-0.93)	0.96 (0.93-0.98)
tTau/Aβ42	>0.211	0.92 (0.81-0.98)	0.85 (0.78-0.90)	0.95 (0.92-0.98)
Aβ42/Aβ40	<0.075	0.96 (0.86-1.00)	0.82 (0.75-0.88)	0.93 (0.89-0.96)
Aβ42	<1,098 pg/ml	0.90 (0.78-0.97)	0.73 (0.65-0.80)	0.85 (0.80-0.90)
pTau	>19.2 pg/ml	0.82 (0.69-0.91)	0.76 (0.69-0.83)	0.84 (0.78-0.91)
tTau	>242 pg/ml	0.68 (0.53-0.80)	0.83 (0.76-0.89)	0.81 (0.74-0.88)
Aβ40	>14,300 pg/ml	0.60 (0.45-0.74)	0.58 (0.50-0.66)	0.60 (0.51-0.69)

Fig. 3. Receiver operator characteristic (ROC) curves for CSF biomarkers compared to PIB binding. For ROC analysis, individuals were dichotomized into PIB-negative (SUVR ≤ 1.42) and PIB-positive (SUVR > 1.42) groups. For each CSF biomarker measure, the table indicates the cutoff values and associated positive percent agreement (PPA), negative percent agreement (NPA), and area under the ROC curve (AUC) for the measure compared to PIB status. 95% confidence intervals are included in parentheses. Abbreviations: CSF, cerebrospinal fluid; PIB, Pittsburgh Compound B; SUVR, standardized uptake value ratio.

minimal changes in the results, likely because individuals with Aβ42 > 1700 pg/mL typically do not have significant AD brain pathology and therefore rarely have elevated tTau or pTau. The only small differences we found were that the NPA for tTau/Aβ42 increased from 0.85 to 0.86 and the NPA for Aβ42/Aβ40 increased from 0.82 to 0.83 when individuals with Aβ42 > 1700 pg/mL were considered biomarker negative. We therefore concluded that estimation of Aβ42 values > 1700 pg/mL did not affect concordance with PIB PET.

3.4. Concordance of CSF ratios and PIB binding

Because the three CSF ratios (tTau/Aβ42, pTau/Aβ42, and Aβ42/Aβ40) performed well in discriminating PIB-positive and PIB-negative individuals, we next examined the degree to which the CSF ratios were concordant with other CSF ratios and with PIB status (Table 2). Biomarker status (positive or negative according to the cutoffs previously discussed) was visualized in scatterplots of CSF tTau versus Aβ42 (Fig. 4A), pTau versus Aβ42 (B), and Aβ40 versus Aβ42 (C). There was a concordance of all three CSF ratios and PIB PET in 166 of 198 individuals in our cohort (84%): all three CSF ratios were positive in 46 of the 50 PIB-positive individuals (92%) and all three CSF ratios were negative in 120 of the 148 PIB-negative individuals (81%). Four individuals were PIB-positive but either all three CSF ratios were negative (two individuals) or Aβ42/

Table 2
Concordance between CSF tTau/A β 42, pTau/A β 42, A β 42/A β 40, and PIB PET

Characteristic	n (% of PIB group)	CDR 0/0.5/1/2/3	PIB SUVR >1.42	tTau/A β 42 >0.211	pTau/A β 42 >0.0198	A β 42/A β 40 <0.075
PIB positive, n = 50						
PIB + and all CSF ratios +	46 (92)	31/11/3/1/0	2.45 \pm 0.71	0.440 \pm 0.165	0.0434 \pm 0.0194	0.050 \pm 0.011
PIB +, all CSF ratios –	2 (4)	2/0/0/0/0	1.74 \pm 0.23	0.175 \pm 0.005	0.0156 \pm 0.0006	0.089 \pm 0.007
tTau/A β 42 and pTau/A β 42 –, A β 42/A β 40 +	2 (4)	2/0/0/0/0	1.98 \pm 0.07	0.193 \pm 0.012	0.0172 \pm 0.0006	0.069 \pm 0.003
PIB negative, n = 148						
All CSF ratios –	120 (81)	114/6/0/0/0	1.03 \pm 0.10	0.120 \pm 0.030	0.0104 \pm 0.0026	0.114 \pm 0.019
All CSF ratios +	16 (11)	16/0/0/0/0	1.16 \pm 0.14	0.334 \pm 0.162	0.0322 \pm 0.0228	0.050 \pm 0.011
A β 42/A β 40 +, tTau/A β 42, and pTau/A β 42 –	6 (4)	6/0/0/0/0	0.98 \pm 0.08	0.189 \pm 0.013	0.0165 \pm 0.0019	0.067 \pm 0.005
A β 42/A β 40 and tTau/A β 42 +, pTau/A β 42 –	4 (3)	3/1/0/0/0	1.06 \pm 0.16	0.222 \pm 0.003	0.0192 \pm 0.0003	0.066 \pm 0.007
tTau/A β 42 and pTau/A β 42 +, A β 42/A β 40 –	1 (1)	1/0/0/0/0	1.05	0.222	0.0203	0.083
tTau/A β 42 +, A β 42/A β 40, and pTau/A β 42 –	1 (1)	1/0/0/0/0	1.32	0.223	0.0183	0.084

Abbreviations: CSF, cerebrospinal fluid; CDR, clinical dementia rating; PIB, Pittsburgh Compound B; tTau, total tau; pTau, phosphorylated tau-181; A β 42, amyloid β peptide 42; SUVR, standardized uptake value ratio; PET, positron emission tomography.

A β 40 was positive but tTau/A β 42 and pTau/A β 42 were negative (two individuals). Sixteen individuals were PIB-negative, but all three CSF ratios were positive. Twelve individuals were PIB-negative and had partial discordance of the CSF ratios; most (10 of 12) had high A β 42/A β 40.

There was a concordance of PIB PET and all three CSF ratios in 21 of the 22 individuals in our cohort with cognitive impairment (CDR > 0): Fifteen individuals were positive by all measures and six were negative by all measures. One individual rated CDR 0.5 was PIB-negative, A β 42/A β 40 and tTau/A β 42 positive, but pTau/A β 42 negative. The six individuals rated CDR > 0 who were negative by both PET PIB and all three CSF ratios likely have a non-AD cause of their cognitive symptoms. In all 198 cases, tTau/A β 42 was positive if pTau/A β 42 was positive, but tTau/A β 42 was positive in some individuals (n = 5) when pTau/A β 42 was negative. Notably, many of the individuals with partial discordance of the CSF ratios had values close to the cutoffs and therefore may be in a transitional or borderline stage (see Table 2).

4. Discussion

Overall, we found a high concordance between PIB PET and CSF biomarkers of AD as measured by the Elecsys assays. Ratios of CSF biomarkers that included A β 42 (tTau/A β 42, pTau/A β 42, and A β 42/A β 40) best distinguished PIB-positive from PIB-negative individuals. All three CSF ratios were positive in 46 of the 50 PIB-positive individuals (92%), and all three CSF ratios were negative in 120 of the 148 PIB-negative individuals (81%). Out of the 32 individuals (16% of the cohort) with discordance between the three CSF ratios and PIB PET, 28 individuals were negative by PIB but positive by at least one CSF ratio.

Previous reports have identified amyloid PET-negative individuals with positive CSF biomarkers [3,5,6,42]. Recent work has demonstrated that amyloid PET-negative but CSF biomarker-positive individuals have increased rates of amy-

loid accumulation, suggesting these individuals have early AD brain pathology and are likely to develop amyloid PET positivity [3,42]. While CSF biomarkers and amyloid PET are both markers of amyloid pathology, CSF biomarkers indicate the state of A β 42 production and clearance at the time of LP while amyloid PET images the accumulation of neuritic amyloid plaques over many years. In addition, amyloid PET tracers are designed to bind to neuritic amyloid plaques [47], whereas CSF biomarkers could be more sensitive to deposition of both neuritic amyloid plaques and diffuse amyloid plaques [48]. It appears likely that CSF biomarkers become positive very early in the course of the disease, before sufficient amyloid has accumulated to create an amyloid PET signal. Therefore, less-than-perfect correspondence of PIB PET and CSF biomarkers is expected and may reflect differences in AD brain pathology.

Notably, we found that in cases of partial discordance between CSF biomarker ratios and PIB PET (when some, but not all, CSF biomarker ratios agreed with PIB PET), A β 42/A β 40 was typically the positive ratio (nine of 11 cases) in PIB-negative cases and was the sole positive ratio in two PIB-positive cases. These findings suggest that abnormal A β 42/A β 40 may be the earliest indicator of amyloid brain pathology, potentially reflecting stage 1 of preclinical AD (amyloid deposition but no abnormalities in tTau or pTau) [49]. Compared to A β 42, the ratio of A β 42/A β 40 may better reflect deposition of amyloid because it may normalize for individual variation in overall amyloid production [24]. However, many of the cases with partial discordance of CSF ratios have borderline values and selecting different cutoffs would change the concordance of the ratios somewhat. Larger studies are required to determine whether A β 42/A β 40 becomes altered at an earlier stage than tTau/A β 42 and pTau/A β 42. Interestingly, we also found that tTau and pTau were almost perfectly correlated (r = 0.98, P < .0001) in our cohort. It is possible that tTau and pTau may be less highly correlated in a cohort enriched for non-AD dementia—this is a topic for future studies.

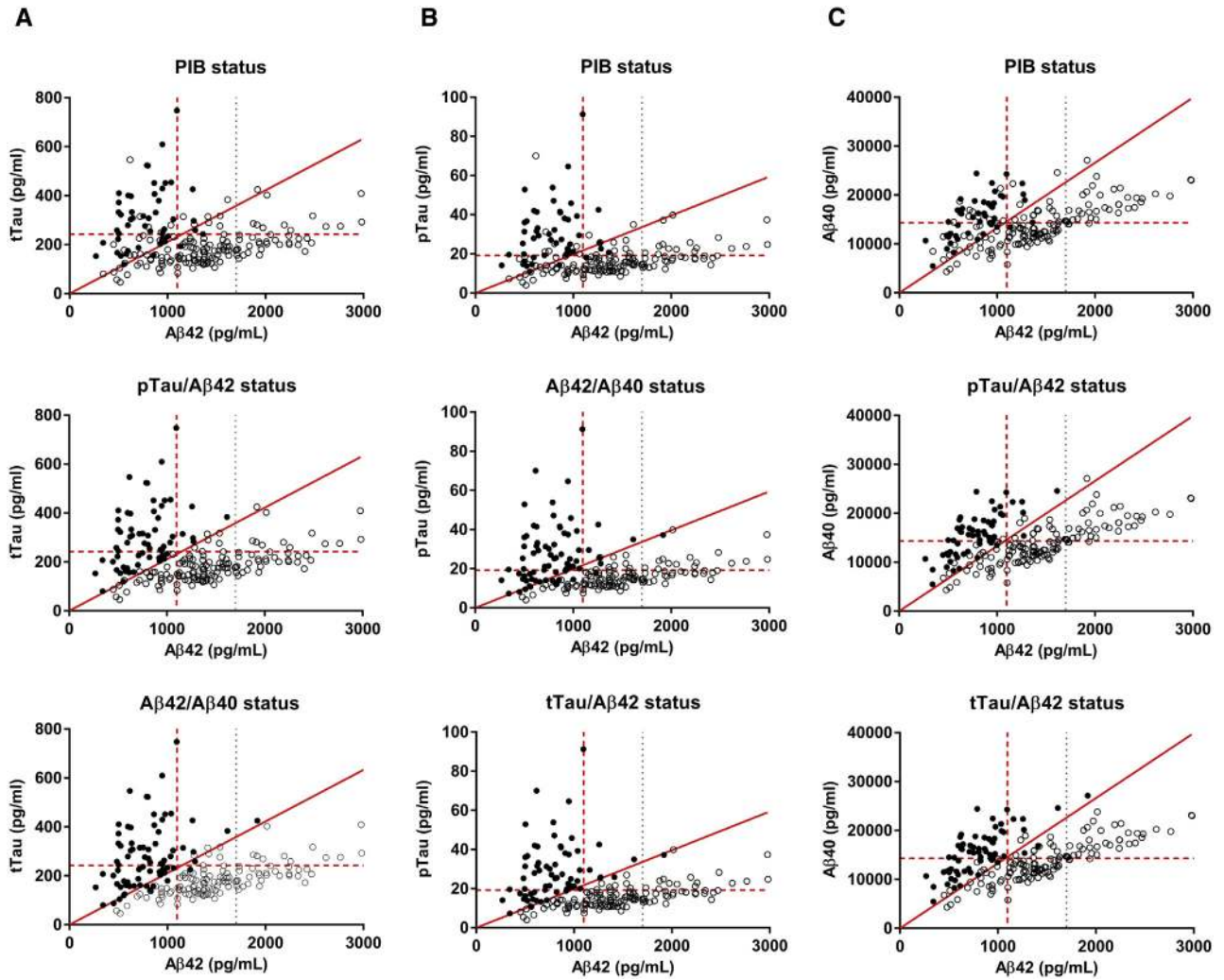


Fig. 4. Concordance of CSF ratios and PIB binding. The status (positive or negative according to CSF ratios or PIB binding) was evaluated in scatterplots of CSF tTau versus A β 42 (A), pTau versus A β 42 (B), and A β 40 versus A β 42 (C). Each point represents CSF biomarkers in one individual. Solid points have a positive biomarker status (as defined in the plot titles) and open points have a negative status. The horizontal red dashed lines represent the cutoff values for CSF tTau (A), pTau (B), and A β 40 (C). The vertical red dashed lines represent the cutoff value for A β 42. The vertical gray dotted lines represent the upper limit of quantitation for A β 42. The sloped solid red lines represent the cutoff values for tTau/A β 42 (A), pTau/A β 42 (B), and A β 40/A β 42 (C). Abbreviations: CSF, cerebrospinal fluid; PIB, Pittsburgh Compound B; tTau, total tau; pTau, phosphorylated tau-181; A β 42, amyloid β peptide 42.

The Roche Elecsys assays and other automated assays for CSF biomarkers are likely to increase the utility of CSF biomarkers in research, clinical trials, and clinical diagnosis. Further studies are needed to examine the concordance between CSF biomarkers of AD as measured by the Elecsys assays and other amyloid PET tracers. Studies are also needed to evaluate whether CSF biomarkers of AD as measured by the Elecsys assays predict future cognitive decline. It is unclear whether the same cutoff values that correspond with amyloid PET status will also best predict cognitive decline. Finally, comparison of CSF biomarkers with brain autopsy data in cases with a short CSF collection to autopsy interval would be helpful in demonstrating that CSF biomarkers as measured by the Elecsys assays are strongly correlated with AD brain pathology.

Given the high degree of precision, accuracy, reliability, and reproducibility of the Elecsys assays [39], it is possible that an Elecsys CSF biomarker measure could be found that is reproducible across all sites worldwide and is highly predictive of AD brain pathology. It is important to note that preanalytical factors may affect CSF biomarker values, especially of A β 42. Therefore, further refinement of CSF testing for AD will require rigorous standardization of preanalytical factors, including sample collection and processing. It will also be important to further define when it is appropriate for clinicians to perform CSF testing for AD. When a disease-modifying agent for AD becomes available, many patients will be interested in learning their amyloid status, and it will be important to have clear guidelines in place for all aspects of CSF testing.

Acknowledgments

The authors would like to express their gratitude to the research volunteers who participated in the studies from which these data were obtained and their supportive families. The authors would like to thank the Clinical, Biomarker and Imaging Cores at the Knight Alzheimer's Disease Research Center for sample and data collection. The authors thank Sandra Rutz and Valeria Lifke at Roche Diagnostics GmbH, who were the Development Leads for the A β 42 and tTau/pTau assays, respectively. This study was supported by National Institute on Aging grants P01AG026276, P01AG03991, and P50AG05681 (John C. Morris, PI) and a research grant from Roche Diagnostics (Anne M. Fagan, PI). Additional support for imaging was provided by the Barnes Jewish Hospital Foundation and the NIH P30NS098577, R01EB009352, and UL1TR000448.

Dr. Schindler is currently supported by National Institutes of Health (NIH) grants K23AG053426 and R03AG050921. During part of this study, she was supported by UL1 TR00448, subaward KL2 TR000450. She has a family member with stock in Eli Lilly. Ms. Gray reports no conflicts. Dr. Gordon reports no conflicts. Dr. Xiong is supported by NIH grants R01AG034119 and R01AG053550. Dr. Batrla-Utermann, Ms. Quan, and Dr. Wahl are employees of Roche Diagnostics, the developer and manufacturer of the Elecsys assay. Dr. Benzinger has investigator-initiated research funded by Avid Radiopharmaceuticals (a wholly owned subsidiary of Eli Lilly) and is an investigator in clinical trials sponsored by Avid Radiopharmaceuticals, Eli Lilly, Roche, Jansen, and Biogen. Dr. Holtzman cofounded and is on the scientific advisory board of C₂N Diagnostics. He consults for Genentech, AbbVie, Eli Lilly, Proclara, Glaxosmithkline, and Denali. Washington University receives research grants to the laboratory of Dr. Holtzman from C₂N Diagnostics, Eli Lilly, AbbVie, and Denali. Dr. Morris has served as a consultant for Lilly, USA, and Takeda Pharmaceuticals. Dr. Morris receives research support from Eli Lilly/Avid Radiopharmaceuticals and is funded by NIH grants P50AG005681, P01AG003991, P01AG026276, and UF01AG032438. Dr. Fagan is supported by NIH grants including P50AG005681, P01AG003991, P01AG026276, and UF01AG03243807. She is on the scientific advisory boards of Roche Diagnostics, IBL International, and AbbVie and consults for Biogen, DiamiR, LabCorp, and Araclobiotech/Grifols.

Supplementary data

Supplementary data related to this article can be found at <https://doi.org/10.1016/j.jalz.2018.01.013>.

RESEARCH IN CONTEXT

1. Systematic review: Cerebrospinal fluid (CSF) biomarkers of Alzheimer's disease are used in research, in clinical trials, and to inform clinical diagnosis. Technical factors, including lot-to-lot variability in assays, have limited the utility of CSF assays.
2. Interpretation: CSF biomarker values measured with Roche Elecsys assays were compared to Pittsburgh Compound B (PIB) positron emission tomography. We found that ratios of CSF biomarkers that included amyloid β peptide 42 (A β 42) (total tau/A β 42, pTau/A β 42, and A β 42/A β 40) best distinguished between individuals who were PIB-positive and PIB-negative. Discordance between CSF biomarkers and PIB positron emission tomography may occur because CSF biomarkers measure different aspects of Alzheimer's disease brain pathology.
3. Future directions: Automated assays for CSF biomarkers are likely to improve the reliability of CSF testing for Alzheimer's disease. Further work is needed to standardize preanalytical factors.

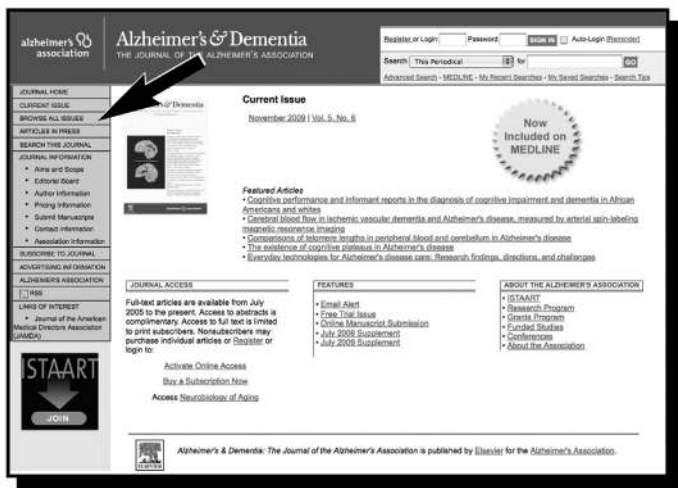
References

- [1] Price JL, Morris JC. Tangles and plaques in nondemented aging and "preclinical" Alzheimer's disease. *Ann Neurol* 1999;45:358–68.
- [2] Price JL, McKeel DW Jr, Buckles VD, Roe CM, Xiong C, Grundman M, et al. Neuropathology of nondemented aging: presumptive evidence for preclinical Alzheimer disease. *Neurobiol Aging* 2009;30:1026–36.
- [3] Palmqvist S, Mattsson N, Hansson O. Alzheimer's Disease Neuroimaging I. Cerebrospinal fluid analysis detects cerebral amyloid-beta accumulation earlier than positron emission tomography. *Brain* 2016;139:1226–36.
- [4] Bateman RJ, Xiong C, Benzinger TL, Fagan AM, Goate A, Fox NC, et al. Clinical and biomarker changes in dominantly inherited Alzheimer's disease. *N Engl J Med* 2012;367:795–804.
- [5] Fagan AM, Mintun MA, Mach RH, Lee SY, Dence CS, Shah AR, et al. Inverse relation between in vivo amyloid imaging load and cerebrospinal fluid A β 42 in humans. *Ann Neurol* 2006;59:512–9.
- [6] Fagan AM, Mintun MA, Shah AR, Aldea P, Roe CM, Mach RH, et al. Cerebrospinal fluid tau and ptau(181) increase with cortical amyloid deposition in cognitively normal individuals: implications for future clinical trials of Alzheimer's disease. *EMBO Mol Med* 2009;1:371–80.
- [7] Fagan AM, Roe CM, Xiong C, Mintun MA, Morris JC, Holtzman DM. Cerebrospinal fluid tau/beta-amyloid(42) ratio as a prediction of cognitive decline in nondemented older adults. *Arch Neurol* 2007;64:343–9.
- [8] Li G, Sokal I, Quinn JF, Leverenz JB, Brodey M, Schellenberg GD, et al. CSF tau/A β 42 ratio for increased risk of mild cognitive impairment: a follow-up study. *Neurology* 2007;69:631–9.

- [9] Duits FH, Teunissen CE, Bouwman FH, Visser PJ, Mattsson N, Zetterberg H, et al. The cerebrospinal fluid “Alzheimer profile”: easily said, but what does it mean? *Alzheimers Dement* 2014; 10:713–723.e2.
- [10] Brys M, Pirraglia E, Rich K, Rolstad S, Mosconi L, Switalski R, et al. Prediction and longitudinal study of CSF biomarkers in mild cognitive impairment. *Neurobiol Aging* 2009;30:682–90.
- [11] Hansson O, Zetterberg H, Buchhave P, Londos E, Blennow K, Minthon L. Association between CSF biomarkers and incipient Alzheimer’s disease in patients with mild cognitive impairment: a follow-up study. *Lancet Neurol* 2006;5:228–34.
- [12] Shaw LM, Vanderstichele H, Knapik-Czajka M, Figurski M, Coart E, Blennow K, et al. Qualification of the analytical and clinical performance of CSF biomarker analyses in ADNI. *Acta Neuropathol* 2011;121:597–609.
- [13] Beach TG, Monsell SE, Phillips LE, Kukull W. Accuracy of the clinical diagnosis of Alzheimer disease at National Institute on Aging Alzheimer Disease Centers, 2005–2010. *J Neuropathol Exp Neurol* 2012; 71:266–73.
- [14] Molinuevo JL, Blennow K, Dubois B, Engelborghs S, Lewczuk P, Perret-Liaudet A, et al. The clinical use of cerebrospinal fluid biomarker testing for Alzheimer’s disease diagnosis: a consensus paper from the Alzheimer’s Biomarkers Standardization Initiative. *Alzheimers Dement* 2014;10:808–17.
- [15] Morris JC, Selkoe DJ. Recommendations for the incorporation of biomarkers into Alzheimer clinical trials: an overview. *Neurobiol Aging* 2011;32(Suppl 1):S1–3.
- [16] Hampel H, Wilcock G, Andrieu S, Aisen P, Blennow K, Broich K, et al. Biomarkers for Alzheimer’s disease therapeutic trials. *Prog Neurobiol* 2011;95:579–93.
- [17] Wang J, Tan L, Yu JT. Prevention trials in Alzheimer’s disease: current status and future perspectives. *J Alzheimers Dis* 2016;50:927–45.
- [18] Sperling RA, Rentz DM, Johnson KA, Karlawish J, Donohue M, Salmon DP, et al. The A4 study: stopping AD before symptoms begin? *Sci Transl Med* 2014;6:228fs13.
- [19] Galasko D, Chang L, Motter R, Clark CM, Kaye J, Knopman D, et al. High cerebrospinal fluid tau and low amyloid beta42 levels in the clinical diagnosis of Alzheimer disease and relation to apolipoprotein E genotype. *Arch Neurol* 1998;55:937–45.
- [20] Frisoni GB, Bocchetta M, Chetelat G, Rabinovici GD, de Leon MJ, Kaye J, et al. Imaging markers for Alzheimer disease: which vs how. *Neurology* 2013;81:487–500.
- [21] Klunk WE, Engler H, Nordberg A, Wang Y, Blomqvist G, Holt DP, et al. Imaging brain amyloid in Alzheimer’s disease with Pittsburgh Compound-B. *Ann Neurol* 2004;55:306–19.
- [22] Witte MM, Foster NL, Fleisher AS, Williams MM, Quaid K, Wasserman M, et al. Clinical use of amyloid-positron emission tomography neuroimaging: Practical and bioethical considerations. *Alzheimers Dement* 2015;1:358–67.
- [23] O’Brien JT, Herholz K. Amyloid imaging for dementia in clinical practice. *BMC Med* 2015;13:163.
- [24] Lewczuk P, Matzen A, Blennow K, Parnetti L, Molinuevo JL, Eusebi P, et al. Cerebrospinal fluid Abeta42/40 corresponds better than Abeta42 to amyloid PET in Alzheimer’s disease. *J Alzheimers Dis* 2017; 55:813–22.
- [25] Grimmer T, Riemenschneider M, Forstl H, Henriksen G, Klunk WE, Mathis CA, et al. Beta amyloid in Alzheimer’s disease: increased deposition in brain is reflected in reduced concentration in cerebrospinal fluid. *Biol Psychiatry* 2009;65:927–34.
- [26] Jagust WJ, Landau SM, Shaw LM, Trojanowski JQ, Koeppe RA, Reiman EM, et al. Relationships between biomarkers in aging and dementia. *Neurology* 2009;73:1193–9.
- [27] Landau SM, Lu M, Joshi AD, Pontecorvo M, Mintun MA, Trojanowski JQ, et al. Comparing positron emission tomography imaging and cerebrospinal fluid measurements of beta-amyloid. *Ann Neurol* 2013;74:826–36.
- [28] Mattsson N, Insel PS, Landau S, Jagust W, Donohue M, Shaw LM, et al. Diagnostic accuracy of CSF Ab42 and florbetapir PET for Alzheimer’s disease. *Ann Clin Transl Neurol* 2014;1:534–43.
- [29] Palmqvist S, Zetterberg H, Blennow K, Vestberg S, Andreasson U, Brooks DJ, et al. Accuracy of brain amyloid detection in clinical practice using cerebrospinal fluid beta-amyloid 42: a cross-validation study against amyloid positron emission tomography. *JAMA Neurol* 2014;71:1282–9.
- [30] Palmqvist S, Zetterberg H, Mattsson N, Johansson P, Alzheimer’s Disease Neuroimaging I, Minthon L, Blennow K, et al. Detailed comparison of amyloid PET and CSF biomarkers for identifying early Alzheimer disease. *Neurology* 2015;85:1240–9.
- [31] Tolboom N, van der Flier WM, Yaqub M, Boellaard R, Verwey NA, Blankenstein MA, et al. Relationship of cerebrospinal fluid markers to 11C-PiB and 18F-FDDNP binding. *J Nucl Med* 2009;50:1464–70.
- [32] Fagan AM, Shaw LM, Xiong C, Vanderstichele H, Mintun MA, Trojanowski JQ, et al. Comparison of analytical platforms for cerebrospinal fluid measures of beta-amyloid 1–42, total tau, and p-tau181 for identifying Alzheimer disease amyloid plaque pathology. *Arch Neurol* 2011;68:1137–44.
- [33] Vos SJB, Gordon BA, Su Y, Visser PJ, Holtzman DM, Morris JC, et al. NIA-AA staging of preclinical Alzheimer disease: discordance and concordance of CSF and imaging biomarkers. *Neurobiol Aging* 2016;44:1–8.
- [34] Vos SJ, Visser PJ, Verhey F, Aalten P, Knol D, Ramakers I, et al. Variability of CSF Alzheimer’s disease biomarkers: implications for clinical practice. *PLoS one* 2014;9:e100784.
- [35] Mattsson N, Andreasson U, Persson S, Arai H, Batish SD, Bernardini S, et al. The Alzheimer’s Association external quality control program for cerebrospinal fluid biomarkers. *Alzheimers Dement* 2011;7:386–395.e6.
- [36] Mattsson N, Andreasson U, Persson S, Carrillo MC, Collins S, Chalbot S, et al. CSF biomarker variability in the Alzheimer’s Association quality control program. *Alzheimers Dement* 2013;9:251–61.
- [37] Schindler SE, Sutphen CL, Teunissen C, McCue LM, Morris JC, Holtzman DM, et al. Upward drift in cerebrospinal fluid amyloid beta 42 assay values for more than 10 years. *Alzheimers Dement* 2018;14:62–70.
- [38] Mattsson N, Zegers I, Andreasson U, Bjerke M, Blankenstein MA, Bowser R, et al. Reference measurement procedures for Alzheimer’s disease cerebrospinal fluid biomarkers: definitions and approaches with focus on amyloid beta42. *Biomarkers Med* 2012;6:409–17.
- [39] Bittner T, Zetterberg H, Teunissen CE, Ostlund RE Jr, Militello M, Andreasson U, et al. Technical performance of a novel, fully automated electrochemiluminescence immunoassay for the quantitation of beta-amyloid (1–42) in human cerebrospinal fluid. *Alzheimers Dement* 2016;12:517–26.
- [40] Morris JC. The Clinical Dementia Rating (CDR): current version and scoring rules. *Neurology* 1993;43:2412–4.
- [41] Pastor P, Roe CM, Villegas A, Bedoya G, Chakraverty S, Garcia G, et al. Apolipoprotein Epsilon4 modifies Alzheimer’s disease onset in an E280A PS1 kindred. *Ann Neurol* 2003;54:163–9.
- [42] Vlassenko AG, McCue L, Jaselecz MS, Su Y, Gordon BA, Xiong C, et al. Imaging and cerebrospinal fluid biomarkers in early preclinical Alzheimer disease. *Ann Neurol* 2016;80:379–87.
- [43] Mintun MA, Larossa GN, Sheline YI, Dence CS, Lee SY, Mach RH, et al. [11C]PIB in a nondemented population: potential antecedent marker of Alzheimer disease. *Neurology* 2006;67:446–52.
- [44] Fischl B, van der Kouwe A, Destrieux C, Halgren E, Segonne F, Salat DH, et al. Automatically parcellating the human cerebral cortex. *Cereb Cortex* 2004;14:11–22.
- [45] Su Y, D’Angelo GM, Vlassenko AG, Zhou G, Snyder AZ, Marcus DS, et al. Quantitative analysis of PiB-PET with FreeSurfer ROIs. *PLoS one* 2013;8:e73377.
- [46] Su Y, Blazey TM, Snyder AZ, Raichle ME, Marcus DS, Ances BM, et al. Partial volume correction in quantitative amyloid imaging. *NeuroImage* 2015;107:55–64.

- [47] Clark CM, Pontecorvo MJ, Beach TG, Bedell BJ, Coleman RE, Doraiswamy PM, et al. Cerebral PET with florbetapir compared with neuropathology at autopsy for detection of neuritic amyloid-beta plaques: a prospective cohort study. *Lancet Neurol* 2012;11:669–78.
- [48] Cairns NJ, Ikonovic MD, Benzinger T, Storandt M, Fagan AM, Shah AR, et al. Absence of Pittsburgh compound B detection of cerebral amyloid beta in a patient with clinical, cognitive, and cerebrospinal fluid markers of Alzheimer disease: a case report. *Arch Neurol* 2009;66:1557–62.
- [49] Sperling RA, Aisen PS, Beckett LA, Bennett DA, Craft S, Fagan AM, et al. Toward defining the preclinical stages of Alzheimer's disease: recommendations from the National Institute on Aging-Alzheimer's Association workgroups on diagnostic guidelines for Alzheimer's disease. *Alzheimers Dement* 2011;7:280–92.

Did you know?



You can access back issues of **Alzheimer's & Dementia** online.