

# Cerebrovascular disease in ageing and Alzheimer's disease

Seth Love<sup>1</sup> · J. Scott Miners<sup>1</sup>

Received: 8 November 2015 / Revised: 3 December 2015 / Accepted: 7 December 2015 / Published online: 28 December 2015  
© The Author(s) 2015. This article is published with open access at Springerlink.com

**Abstract** Cerebrovascular disease (CVD) and Alzheimer's disease (AD) have more in common than their association with ageing. They share risk factors and overlap neuropathologically. Most patients with AD have A $\beta$  amyloid angiopathy and degenerative changes affecting capillaries, and many have ischaemic parenchymal abnormalities. Structural vascular disease contributes to the ischaemic abnormalities in some patients with AD. However, the stereotyped progression of hypoperfusion in this disease, affecting first the precuneus and cingulate gyrus, then the frontal and temporal cortex and lastly the occipital cortex, suggests that other factors are more important, particularly in early disease. Whilst demand for oxygen and glucose falls in late disease, functional MRI, near infrared spectroscopy to measure the saturation of haemoglobin by oxygen, and biochemical analysis of myelin proteins with differential susceptibility to reduced oxygenation have all shown that the reduction in blood flow in AD is primarily a problem of inadequate blood supply, not reduced metabolic demand. Increasing evidence points to non-structural vascular dysfunction rather than structural abnormalities of vessel walls as the main cause of cerebral hypoperfusion in AD. Several mediators are probably responsible. One that is emerging as a major contributor is the vasoconstrictor endothelin-1 (EDN1). Whilst there is clearly an additive component to the clinical and pathological effects of hypoperfusion and AD, experimental and clinical observations suggest that the disease processes also interact mechanistically at a cellular level in a manner that exacerbates both. The elucidation of some of the mechanisms responsible for hypoperfusion in AD and for

the interactions between CVD and AD has led to the identification of several novel therapeutic approaches that have the potential to ameliorate ischaemic damage and slow the progression of neurodegenerative disease.

**Keywords** Cerebrovascular disease · Alzheimer's disease · Ageing · Hypoperfusion · Myelin proteins · Endothelin-1

## Introduction

The relationship between age-associated cerebrovascular disease (CVD) and Alzheimer's disease (AD) is complex. They share multiple risk factors and overlap more often than not, to an extent that increases with age. Whilst there is clearly an additive component to the clinical and pathological effects of CVD and AD, increasing evidence suggests that the disease processes also interact mechanistically at a cellular level, probably in a manner that exacerbates both. However, partly because it has proven difficult to model either of these diseases accurately individually, let alone in combination, it has been difficult to determine the extent of that interaction or to establish which of the many potential mechanisms are biologically relevant.

This review covers some of the evidence of pathophysiological interaction between CVD and AD and considers possible mechanisms and therapeutic implications.

## Clinical and pathological associations between CVD and AD

CVD and AD share many risk factors, including *APOE*  $\epsilon$ 4 [102, 141]; diabetes mellitus [139]; atrial fibrillation [38,

✉ Seth Love  
seth.love@bris.ac.uk

<sup>1</sup> Institute of Clinical Neurosciences, School of Clinical Sciences, Learning and Research Level 2, Southmead Hospital, University of Bristol, Bristol BS10 5NB, UK

123]; ‘non-Mediterranean’ diet [87]; hyperhomocysteinaemia [92]; midlife hypertension, obesity and hypercholesterolaemia [30, 104, 160]; and, of course, age. The presence of vascular risk factors was reported to predict the development of AD or the conversion from mild cognitive impairment (MCI) to AD [35, 61, 90, 99]. Not all studies have found an association between vascular risk factors and AD [31, 134], and there are several potential confounders that should be considered in interpreting studies of shared risk factors or overlapping pathology, particularly as CVD and AD also overlap clinically. Concurrent ischaemic cerebrovascular disease may simply lower the threshold for clinical manifestation of AD pathology [64, 134, 143, 149]. Conversely, a history of hypertension or diabetes in patients with AD may bias clinicians towards a misdiagnosis of vascular dementia, underestimating the contribution of AD. The timing of several of the putative shared risk factors is of interest—coincident with the initial, presymptomatic deposition of A $\beta$  in midlife (and in some studies associated with the extent of that presymptomatic deposition), rather than the maximum severity of disease as would be expected if the effects of these risk factors on CVD and AD were simply additive. Meta-analysis of data from three large-scale genome-wide association studies highlighted the involvement of cardiovascular disease-related pathways in AD [94].

Abnormalities broadly described as ‘cerebrovascular’ are common in AD. The relevant neuropathological literature was reviewed in detail by Attems and Jellinger [8]. In most cases of neuropathologically confirmed AD, post-mortem examination also reveals parenchymal vascular disease—both A $\beta$  amyloid angiopathy and arteriolosclerotic small vessel disease (SVD) [75]. Cerebral infarcts or foci of haemorrhage can be demonstrated in over 50 % of AD brains, a figure that rises with age [46, 74, 75, 152]. Yet, other studies did not find any relationship between the burden of ischaemic vascular pathology and AD [31, 143].

Some studies suggest that AD is also associated with extracerebral atherosclerotic disease [65]. AD was associated with coronary artery disease in one study [151] but two other studies found no relationship between the severity of coronary artery disease and the A $\beta$  plaque load [37, 86].

In several large post-mortem cohorts, AD was associated with atherosclerosis of the Circle of Willis [13, 67, 135, 172]. The age- and sex-adjusted severity of the atherosclerosis correlated with neuritic plaque [13, 67, 135, 172], tangle [13, 135, 172] and CAA severity scores [172], independent of *APOE* genotype [13, 172]. In contrast, there was no relationship between severity of the atherosclerosis and AD pathology in a series of elderly Japanese [73] or in the Baltimore Longitudinal Study of Aging cohort [37]. The explanation for the discrepant finding between these studies is not clear.

Two recent biomarker studies provided additional evidence of an association between CVD and AD. Hughes et al. [69] looked at the relationship between pulse wave velocity (an indicator of artery wall stiffness) and cerebral accumulation of A $\beta$  over 2 years, as measured by positron emission tomography with Pittsburgh compound B, in 82 non-demented people aged 83 years or older. The authors found a significant relationship between vascular stiffness in larger central arteries (as indicated by carotid-femoral and heart-femoral pulse wave velocity) and cerebral A $\beta$  accumulation over the two-year period. In another study, Kester et al. [83] analysed brain magnetic resonance imaging (MRI) findings and cerebrospinal fluid (CSF) tau and A $\beta$  levels in 914 consecutive participants in the Amsterdam Dementia Cohort. The cohort included 30 people with a clinical diagnosis of vascular dementia, and 337 who had subjective memory complaints but were normal on cognitive testing. In both groups, white matter hyperintensities were associated with reduced A $\beta$ 42 in the CSF, as in AD. Microbleeds were associated with lower CSF A $\beta$ 42 in the vascular dementia group and higher CSF tau in the participants with subjective memory complaints. The associations were largely attributable to the *APOE*  $\epsilon$ 4 carriers in these groups.

### Structural disease of cerebral blood vessels in ageing in AD

Most patients with AD have A $\beta$  amyloid angiopathy. Arteriolar A $\beta$  amyloid angiopathy is demonstrable post-mortem in over 90 % of patients with AD compared with about 30 % of elderly controls [27, 44, 50, 95, 98, 101, 161, 162, 171]. The angiopathy predominantly affects the cerebral leptomeninges and cortex but sometimes also the cerebellum and, very occasionally, the brain stem. It tends to be more severe in AD than controls, particularly in *APOE*  $\epsilon$ 4-positive patients [27, 52, 131, 142]. In controls, arteriolar A $\beta$  amyloid angiopathy is more strongly associated with *APOE*  $\epsilon$ 2 [95].

Accumulation of A $\beta$  amyloid in cerebral arterioles may be accompanied by its accumulation in capillaries, a finding strongly associated with *APOE*  $\epsilon$ 4 and usually also with AD [1, 7, 95, 157]. In a series of 51 AD cases and 14 controls assessed independently by neuropathologists in three different centres, capillary amyloid angiopathy was detected in 35–45 % of the AD cases, predominantly in the occipital lobe, but in only a single control brain [95].

It is unclear whether or not patients with AD are more likely to have (non-amyloid) SVD. Numerous imaging and pathological studies have reported an increased prevalence of ‘small vessel disease’ in AD but most have conflated parenchymal ischaemic lesions—particularly in the white

matter—with structural disease of cerebral blood vessels. *APOE* genotype influences the likelihood of ischaemic changes in AD. Morgen et al. [109] found that AD carriers of the *APOE*  $\epsilon 4$  allele had a significantly greater volume of white matter hyperintensities than did non-carriers.

Whilst it is possible that many of the ischaemic lesions in patients with AD are attributable to cerebral SVD, some may have resulted from amyloid angiopathy or basal artery atherosclerosis, and a range of extracranial processes may also have contributed, including atherothrombotic or cholesterol emboli from carotid or aortic plaques, orthostatic hypotension [9, 81, 82, 150], cardiac valvular disease and cardiac arrhythmias [153], particularly atrial fibrillation [38, 123]. To try to address this, some of the studies excluded or adjusted for cardiovascular risk factors [140] but there remains a paucity of direct evidence linking SVD and AD, or indeed linking SVD and white matter lesions in AD: a post-mortem study of 125 cases of AD did not find any association between several objective measures of white matter damage (extent of immunolabelling for glial fibrillary acidic protein, axonal accumulation of A $\beta$  precursor protein, axon density in superficial and deep white matter, intensity of staining for myelin) and severity of basal artery atherosclerosis, cerebral arteriolosclerosis or A $\beta$  amyloid angiopathy, or *APOE* genotype [26].

Indirect evidence that SVD is more marked in AD comes from functional MRI analysis of regional cerebrovascular resistance (CVRi). In a study of CVRi in 12 patients with AD, 23 with MCI and 46 normal elderly controls, Nation et al. [114] found that cerebrovascular resistance was increased in several regions in AD and, to a lesser extent, in MCI. The increase was most marked in the thalamus and caudate nucleus, regions that are spared in A $\beta$  amyloid

angiopathy but have a predilection for SVD. Limitations of the study included the small cohort size and the use of non-contemporaneous measurements of peripheral rather than central blood pressure to calculate the CVRi, and in the absence of neuropathological confirmation the precise substrate of the increase in vascular resistance remains a matter of speculation.

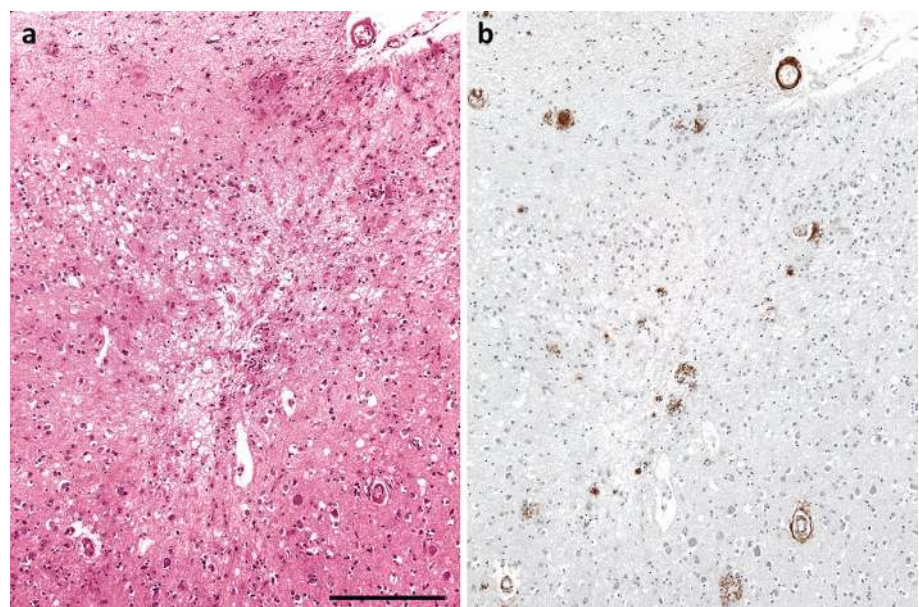
Several studies have reported that the degeneration of cerebral capillaries in AD exceeds that in age-matched controls [10, 25, 70, 144]. The degeneration affects both endothelial cells and pericytes and leads eventually to an increase in the number of ‘string’ vessels consisting solely of tubes of collagen. This is not accompanied by a compensatory increase in the formation of new capillaries [11, 70, 158]. The degeneration of pericytes and endothelial cells is probably interrelated.

### CVD exacerbates neurological dysfunction and brain damage in AD

The most obvious impact of CVD is on cerebral perfusion. There is a substantial literature documenting the association of A $\beta$  amyloid angiopathy and SVD with infarcts (Fig. 1) and other ischaemic abnormalities [21, 23, 32, 33, 43, 45, 121, 122, 133, 134, 136, 161]. The mechanisms include susceptibility to thrombosis [21, 97], permanent reduction in blood flow as a result of reduced calibre of more severely affected blood vessels, and impaired modulation of the calibre in response to haemodynamic stress and alteration in metabolic demand.

Patients with AD have impaired autoregulation (i.e. reduced ability to maintain cerebral perfusion when

**Fig. 1** Infarction associated with A $\beta$  amyloid angiopathy. **a** Microinfarct in cerebral cortex. The lesion is rarefied and gliotic, and includes a few macrophages. **b** A $\beta$  immunohistochemistry on an adjacent section revealed moderately severe A $\beta$  amyloid angiopathy. Note the circumferential deposition of A $\beta$  in a sulcal arteriole overlying the microinfarct. Bar 250  $\mu$ m





perfusion pressure changes, usually as a result of hypotension) and reduced vasomotor reactivity to hypercapnia [36]. Patients with probable A $\beta$  amyloid angiopathy (diagnosed according to the Boston criteria [84]) also show neurovascular decoupling, as evidenced by impaired functional hyperaemia [39, 130] (i.e. a reduced regional increase in blood flow in response to increased local metabolic demand). Similar abnormalities in regulation of cerebral blood flow were demonstrated in mouse models of cerebral A $\beta$  accumulation [71, 117] and A $\beta$  amyloid angiopathy [129, 147]. In patients with A $\beta$  amyloid angiopathy, reduced primary visual cortex fMRI responsiveness to a visual task correlated with the volume of white matter hyperintensities, an indicator of the severity of white matter ischaemia [130].

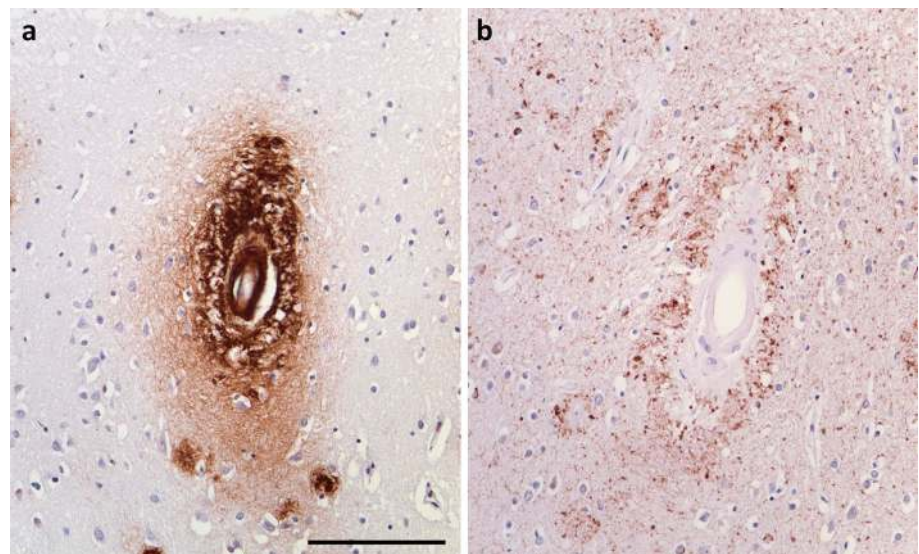
In a series of studies of human brain tissue and animal models, Weller, Carare, Hawkes and colleagues showed that interstitial fluid drains from the brain along perivascular spaces and basement membranes [164, 174], and that A $\beta$  within the interstitial fluid tends to precipitate within the perivascular basement membranes [165, 166]. Further evidence that A $\beta$  amyloid angiopathy reflected the precipitation of A $\beta$  from the interstitial fluid came from the finding of Jucker and colleagues that neuron-specific overexpression of A $\beta$  precursor protein caused the development of A $\beta$  amyloid angiopathy in APP23 mice [22, 63]. Vascular deposition of A $\beta$  is increased by possession of *APOE*  $\epsilon$ 4 [27]; this is probably partly related to elevation of the ratio A $\beta$ 40:42 [48, 63] and partly to alterations in the composition of the perivascular basement membranes [60]. Vascular deposition of A $\beta$  is also increased if drainage is impeded by A $\beta$  amyloid angiopathy or by age-related changes to the perivascular basement membranes [58, 59, 76, 166]. The full range of downstream effects of impeded drainage

of solutes in A $\beta$  amyloid angiopathy remains to be determined. One probable consequence is an increase in the phosphorylation of tau, as evidenced by the more abundant neurofibrillary pathology around A $\beta$ -laden than non-A $\beta$ -laden parenchymal arterioles in AD (Fig. 2) [169]. A similar increase in neurofibrillary pathology was demonstrated adjacent to parenchymal arterioles in the amyloid angiopathy of familial British dementia, in which there is vascular deposition of ABri [66], which, like vascular A $\beta$ , probably impedes the drainage of interstitial fluid.

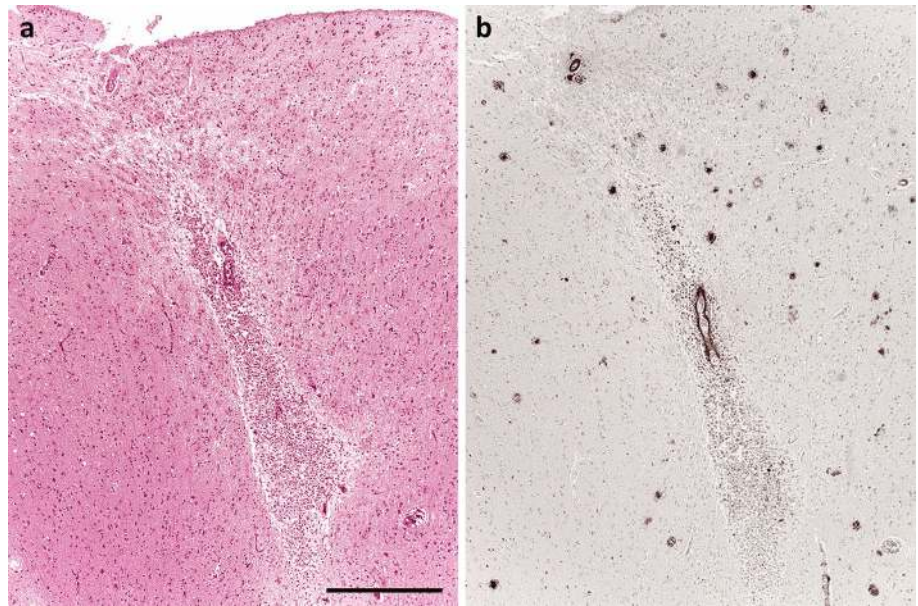
Other ways in which AD-associated structural vascular disease exacerbates neurological dysfunction and brain damage include increased susceptibility to haemorrhage and, possibly, impaired blood–brain barrier (BBB) function. Carrano et al. [24] noted the loss of several components of endothelial tight junctions in A $\beta$ -laden capillaries in post-mortem brain tissue from patients with A $\beta$  amyloid angiopathy, and similar findings were documented in several in vitro and ex vivo experimental studies, in which exposure of endothelial cells to A $\beta$ 40 or A $\beta$ 42 caused loss or mislocation of tight junction proteins [57, 85, 100, 154]. Hartz et al. [57] reported that 2 of 19 patients who fulfilled clinical criteria for probable A $\beta$  amyloid angiopathy had MRI evidence of BBB leakage and posterior reversible encephalopathy syndrome.

Degeneration of pericytes probably contributes to the impairment of BBB function in AD. In mice pericytes were shown to be needed for maintenance of the blood–brain barrier and capillary perfusion [3, 14]. Sengillo et al. [144] found the loss of pericytes in cerebral cortex and hippocampus from AD patients to correlate with the extent of disruption of the blood–brain barrier, as demonstrated by extravasation of immunoglobulin G and perivascular deposition of fibrin. In contrast, a study of a range of mouse

**Fig. 2** Perivascular tau associated with A $\beta$  amyloid angiopathy. **a** Arteriolar and dyschoric deposition of A $\beta$  in a patient with severe amyloid angiopathy. **b** Immunolabelling of an adjacent section for phospho-tau showed accentuated accumulation of tau around the affected arteriole. Bar 250  $\mu$ m



**Fig. 3** Microhaemorrhage associated with A $\beta$  amyloid angiopathy. **a** Accumulation of numerous haemosiderin-laden macrophages around a cortical arteriole with a strongly eosinophilic wall. **b** The arteriole is immunopositive for A $\beta$ , as demonstrated in this adjacent section. Bar 500  $\mu$ m

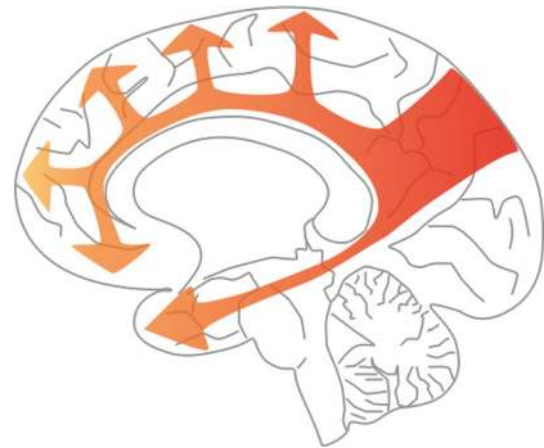


models of AD did not find increased permeability of the BB to antibodies [17].

Numerous studies have documented that patients with A $\beta$  amyloid angiopathy are prone to cerebral haemorrhage, particularly lobar haemorrhage and cortical microhaemorrhage (Fig. 3) [43, 50, 51, 97, 111, 115, 131, 161, 171]. Both the  $\epsilon$ 2 and  $\epsilon$ 4 alleles of *APOE* increase the risk of A $\beta$  amyloid angiopathy-associated lobar haemorrhage [52, 53, 116];  $\epsilon$ 4 may do so by promoting the accumulation of A $\beta$  in the walls of arterioles, and  $\epsilon$ 2 by promoting the development of vasculopathic changes, particularly fibrinoid necrosis, in the amyloid-laden vessels [54, 103]. Patients with A $\beta$  amyloid angiopathy are also prone to develop superficial cortical siderosis [29, 93].

### Cerebral hypoperfusion is an early feature of AD

Cerebral hypoperfusion is demonstrable several years before the onset of clinical AD. Imaging studies in people with MCI [6, 18, 34], healthy carriers of the *APOE*  $\epsilon$ 4 allele [89] and those with gene mutations known to cause autosomal dominant AD [15] have shown that the distribution and spread of the hypoperfusion are highly stereotyped, and mirror the accumulation of A $\beta$  amyloid within the brain parenchyma, particularly during the preclinical phases of disease. The first affected region is the precuneus, about 10 years before the development of dementia (Fig. 4). From there the hypoperfusion spreads to involve the cingulate gyrus and the lateral part of the parietal lobe, then the frontal and temporal lobes and eventually most of the cerebrum.



**Fig. 4** Stereotyped pattern of spread of hypoperfusion in AD. The arrows in this diagram indicate the progression of hypoperfusion, starting from the precuneus, well before the onset of dementia, and spreading to the rest of the parietal cortex and the cingulate gyrus, then the frontal and temporal cortex, largely sparing the occipital cortex until late disease

At least in preclinical early AD, the primary abnormality is one of inadequate blood supply, not reduced metabolic demand, in that the reduction in oxygenation is not commensurate with the decline in blood flow. Several fMRI studies have found that the regional oxygen extraction fraction (rOEF) is significantly elevated in AD, particularly in the parietal cortex [112, 113, 159], and Tarumi et al. [156] found the tissue oxygenation index (TOI, a measure of the saturation of haemoglobin by oxygen, determined by near infrared spectroscopy) to be significantly increased in the cortex in people with amnesic MCI. Were the decline in



blood flow to be a response to decreased metabolic demand, the rOEF would be reduced and the TOI increased.

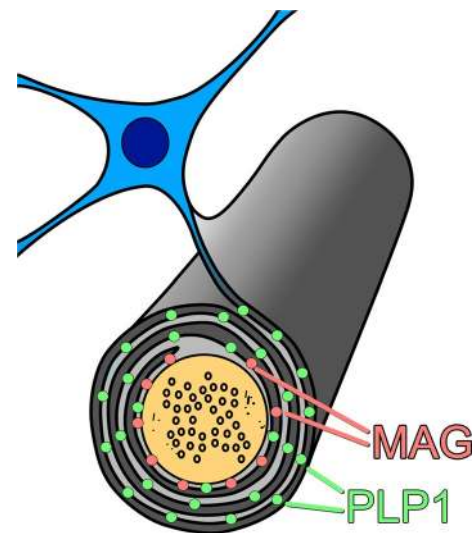
We recently developed a post-mortem biochemical method to study hypoperfusion in brain tissue [11, 12, 96]. The method is based on the differential susceptibility of different myelin proteins to ischaemia. The myelin proteins are synthesised in the oligodendrocyte cell body and require energy-dependent transport to reach their sites of insertion into the myelin sheath. Myelin-associated glycoprotein (MAG) is one of the myelin proteins inserted furthest away from the cell body, in the adaxonal loop of myelin, the first part of the sheath to degenerate when blood supply is insufficient to meet the energy demands of the oligodendrocyte. Measurement of the ratio of MAG to another myelin protein such as proteolipid protein-1 (PLP1), present throughout the myelin sheath, indicates the extent to which the blood supply meets the energy requirements of the oligodendrocyte (Fig. 5).

In the deep parietal white matter in an elderly cohort that included AD, VaD and cognitively normal cases, MAG:PLP1 showed a highly significant negative correlation with severity of SVD and a highly significant positive correlations with the concentration of the vasoconstrictor endothelin-1 (EDN1) and with the concentration of vascular endothelial growth factor (VEGF) [11, 12]. These biochemical relationships were confirmed in deep frontal white matter in an Oxford cohort that had excluded brains with more than mild AD or Lewy body pathology [12]. Our interpretation was that as SVD severity increased, EDN1 production had been downregulated and VEGF production upregulated in response to the reduced tissue oxygenation.

Having established the utility of this post-mortem biochemical assessment of ante-mortem oxygenation of brain tissue, we examined mid-frontal cortex from AD and control brains, to determine whether there was evidence that any reduction in perfusion exceeded the decline in metabolic demand, and to try to identify possible mediators of hypoperfusion [158]. Our findings confirmed that perfusion was indeed pathologically reduced in AD. More recently, we examined precuneus, the region first affected by hypoperfusion in AD [106]. MAG:PLP1 in this region was reduced ~50 % in early AD (Braak stage III–IV). Although MAG:PLP1 in the precuneus remained low in advanced AD (stage V–VI), the reduction was less pronounced, possibly reflecting falling oxygen demand.

### The main cause of cerebral hypoperfusion in AD is probably non-structural vascular dysfunction rather than structural pathology

Although structural disease of blood vessels contributes to cerebral hypoperfusion in at least some patients with AD,



**Fig. 5** Schematic illustration of the distribution of MAG (Pink dots) and PLP1 (Green dots) in the myelin sheath. When the supply of oxygen and glucose is insufficient to meet the metabolic needs of the oligodendrocyte, as occurs in hypoperfusion, the first part of the cell to degenerate is the adaxonal loop of myelin—the part of the oligodendrocyte that is furthest away from the cell body (so-called dying-back oligodendrogliopathy). Because MAG is restricted to the adaxonal loop of myelin whereas PLP1 is widely distributed throughout the myelin sheath, hypoperfusion leads to greater loss of MAG than PLP1. In contrast, degeneration of nerve fibres causes loss of both MAG and PLP1. The severity of ante-mortem hypoperfusion can be assessed by measuring the MAG:PLP1 ratio

we did not find A $\beta$  amyloid angiopathy, SVD or reduced microvessel density to contribute significantly to the reduction in MAG:PLP1 in the frontal cortex, medial parietal cortex or parietal white matter in most cases [11, 106, 158]. It is of note that the consistent distribution of hypoperfusion in early AD, involving the precuneus and, to a lesser extent, the cingulate gyrus, is not in a watershed region, as might be expected if postural hypotension or basal atheroma were responsible. If SVD were the explanation, the hypoperfusion would be more likely to involve the deep white matter and basal ganglia. Lastly, the distribution of A $\beta$  amyloid angiopathy is quite variable but it tends to be most severe in the occipital region, which is affected by hypoperfusion only in the late stages of AD.

There is a range of potential non-structural substrates of hypoperfusion in AD, several of which involve pathways that are strongly influenced by A $\beta$ . Elevated A $\beta$  was previously shown to cause vasoconstriction, reduce cerebral perfusion and prevent functional hyperaemia and autoregulation in mice transgenic for mutant human APP [71, 117, 118, 129]; to increase expression of endothelin-converting enzyme-1 and -2 (ECE1 and ECE2) by human cerebrovascular endothelial cells and neuroblastoma cells, respectively, leading to elevated EDN1 production [126–128]; to inhibit endothelial

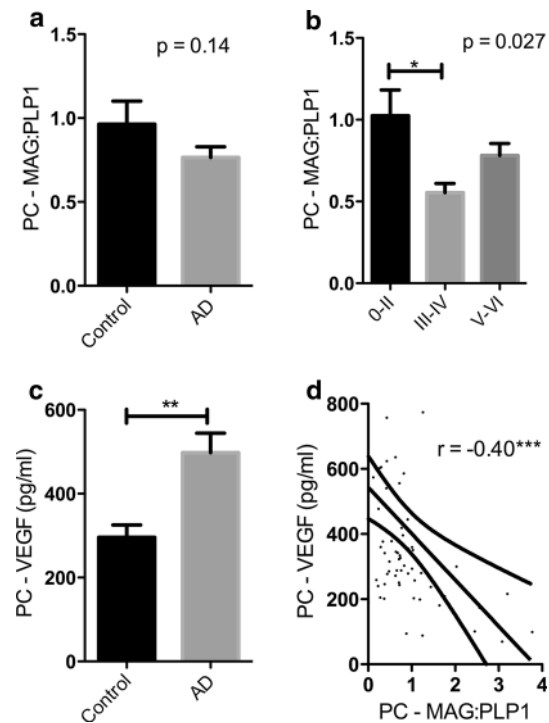
nitric oxide synthase activity [49, 88], reducing endothelial production of the vasodilator nitric oxide; and to increase the neuronal expression and activity of angiotensin-converting enzyme (ACE) [107], which catalyses the production of the vasoconstrictor angiotensin II (AngII). Support for the pathogenic relevance of several of these experimental observations comes from the demonstration of elevated EDN1 level and ACE activity in post-mortem temporal and frontal cortex from patients with AD [105, 127, 158]. A $\beta$  is a substrate of ECE1 and ECE2 [40–42, 124] and also of ACE [62, 68, 120], and it seems possible that the upregulation of production of EDN1 and AngII may be a side effect of over-activation of these enzyme systems by the accumulation of substrate.

More recently, we looked at MAG:PLP1, SVD, A $\beta$  amyloid angiopathy, EDN1 level, ACE level and activity, and AngII level in precuneus from post-mortem human brains showing a spectrum of severity of AD (as indicated by Braak tangle stage). We showed that MAG:PLP1 declined in the precuneus even in early AD (i.e. in Braak stage III–IV disease) (Fig. 6). Indeed, despite progressive elevation in EDN1 concentration with disease progression, the MAG:PLP1 ratio was lower in early than in late AD (Fig. 7), presumably reflecting falling metabolic demand with increasing synaptic and neuronal damage. In the precuneus, unlike in the frontal cortex in advanced AD, we did not find elevation of ACE or AngII.

EDN1 in the cortex correlated highly significantly with the levels of both soluble and insoluble A $\beta$ 42, which we showed previously to upregulate neuronal ECE2 [126], but not with A $\beta$ 40, which we found to upregulate endothelial ECE1 [127]. The findings suggest that reduced oxygenation of the precuneus in early AD is likely to result, at least in part, from A $\beta$ 42-mediated upregulation of ECE2.

MAG:PLP1 was also reduced in the parietal white matter in AD but here the decline correlated positively with the level of EDN1, in keeping with a protective vasodilatory response to reduced oxygenation. However, the decline of MAG:PLP1 in the white matter was associated with increasing EDN1 in the overlying cortex, perhaps reflecting EDN1-mediated vasoconstriction of perforating arterioles, which traverse the cortex to perfuse the white matter.

Although the main focus of studies of functional rather than structural vascular abnormalities has been on changes in arteriolar calibre, biochemical alterations in AD may also affect vascular permeability. In particular, several lines of evidence indicate that A $\beta$  upregulates the plasma kallikrein-kinin system, leading to the production of bradykinin, which causes dilatation and increased permeability of venules and, at higher concentration, dilatation of arterioles as well [2]. The activating enzyme, plasma kallikrein, circulates as an inactive zymogen and is activated through a cleavage process involving Factor XIIa. Active plasma kallikrein cleaves its major substrate, high molecular weight kininogen (HK)

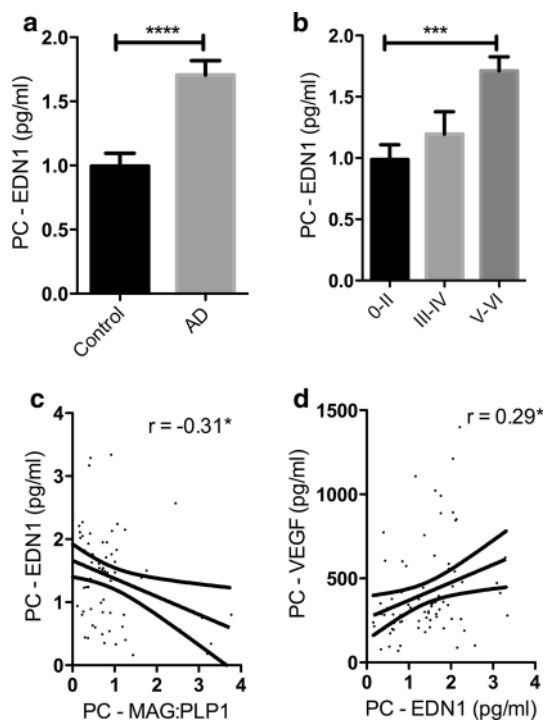


**Fig. 6** Oxygenation of the precuneus is reduced in early Alzheimer's disease. **a** Bar chart showing a reduction in the ratio of myelin glycoprotein (MAG) to proteolipid-1 protein (PLP-1) (MAG:PLP1) in the precuneus in AD. The bars indicate the mean and SEM. **b** Bar chart showing marked variation in MAG:PLP1 ( $P = 0.027$ ) with disease stage. For this analysis, control and AD cases were combined and grouped according to Braak tangle stage (0–II, III–IV and V–VI). Post hoc analysis revealed that MAG:PLP1 was significantly reduced in early AD (Braak stage III–IV) compared to controls ( $P = 0.027$ ). **c** Bar chart showing elevated vascular endothelial growth factor (VEGF), an independent marker of cerebral perfusion, in AD. **d** Scatterplot showing the highly significant negative correlation between MAG:PLP1 and VEGF concentration in the precuneus ( $r = -0.40$ ,  $P = 0.0007$ ). The best-fit linear regression line and 95 % confidence interval are superimposed. \*\* $P < 0.001$ , \*\*\* $P < 0.0001$ . Reproduced with permission from [106]

to liberate bradykinin and activated HK. A $\beta$  was shown to stimulate the production of bradykinin by endothelial cells [16, 146, 170]. Cerebroventricular infusion of A $\beta$ 40 in rats caused a 10-fold increase of bradykinin in the CSF and accumulation of degradation fragments of bradykinin in brain tissue [72]. Ashby et al. [5] demonstrated that plasma kallikrein mRNA was significantly increased in the frontal cortex in AD, and plasma kallikrein activity was significantly increased in the frontal and temporal cortex in AD.

### Cerebral hypoperfusion probably accelerates the progression of AD

As noted above, ischaemic brain damage is common in AD and in many cases contributes to the cognitive impairment.



**Fig. 7** Reduced oxygenation of the precuneus in AD is associated with elevated endothelin-1 (EDN1). **a** Bar chart showing significantly increased EDN1 in AD within the precuneus. **b** Bar chart showing increased EDN1 levels in relation to disease severity when control and AD cases were subdivided according to Braak tangle stage (0–II, III–IV and V–VI) irrespective of the presence or absence of a history of dementia. Scatterplots showing the inverse correlation between EDN1 concentration and MAG:PLP1 ratio ( $r = -0.31^*$ ) (**c**), and the positive correlation between EDN1 and VEGF ( $r = 0.29^*$ ) (**d**).  $*P < 0.05$ ,  $***P < 0.001$ ,  $****P < 0.0001$ . Reproduced with permission from [106]

Ischaemia may also contribute to the progression of AD itself. Ischaemia in animal models, or its in vitro stimulation, is associated with increased production of A $\beta$ 42 (for reviews see [31, 96]). Acute cerebral ischaemia or hypoxia caused overexpression of APP mRNA [145], upregulation of BACE1 mRNA and protein, increased  $\beta$ -secretase activity and the production of A $\beta$  peptide [55, 91, 167, 175]. BACE1 and A $\beta$  (but not APP) level were also elevated in a chronic hypoperfusion model [176]. Transient ischaemia increased PSEN1 mRNA in the gerbil hippocampus [155] and repeated episodes of hypoxia enhanced  $\beta$ -secretase-mediated cleavage of APP, and the level of APH-1a, another component of  $\gamma$ -secretase complex [91]. In other in vitro studies, hypoxia and/or oxidative modification reduced the activity of the A $\beta$ -degrading enzymes neprilysin and insulin-degrading enzyme [47, 148, 163]. Lastly, transient cerebral ischaemia caused hyperphosphorylation of tau in cortical neurons [168].

Although most evidence that cerebral hypoperfusion may accelerate the progression of AD comes from in vitro

and animal studies, some clinical observations support this possibility. In several clinical studies of cerebral blood flow and glucose utilisation in patients with a clinical diagnosis of AD or MCI, hypoperfusion predicted the development or rate of cognitive decline [19, 20, 28]. Patients who survived transient cerebral hypoperfusion as a result of cardiac arrest had elevated serum A $\beta$ 42 over several days [173]. And whilst that might be explained by non-specific ‘leakage’ of A $\beta$ 42 from damaged brain tissue, the same explanation could not be applied to the sustained elevation of serum A $\beta$ 42 in a study of patients with diffuse TBI with brain swelling and presumably at least some hypoperfusion, as they showed a concomitant reduction of A $\beta$ 42 in the CSF [108].

### Implications for therapy

The identification of functionally important non-structural abnormalities of the cerebral vasculature in ageing and dementia, particularly in AD, raises the prospect that pharmacotherapy targeting the relevant biochemical pathways might slow the progression of dementia, by improving cerebral perfusion and reducing permeability of the BBB. An obvious potential target is the endothelin system, for which there are already several well-tolerated antagonists. Bosentan, a non-selective endothelin receptor (EDNR) antagonist [138], has been licenced since 2001 for the treatment of pulmonary hypertension, another disease in which there is upregulation of ECEs and increased production of EDN1 [132, 137]. Bosentan produces significant, clinically useful, sustained improvement in pulmonary blood flow and exercise tolerance in patients with pulmonary hypertension. Bosentan was also shown to prevent the attenuation of endothelium-dependent aortic and carotid vasodilatation that is seen in Tg2576 mice (which overexpress a mutant form of APP bearing the Swedish double mutation). However, EDN1 is thought to act on EDNRA receptors (the predominant EDN1 receptor type in cerebral vessels) to reduce CBF in AD, and there are selective EDNRA receptor antagonists such as zibotentan [56, 110] which offer potential advantages over non-selective EDNR antagonists [125]. Other targets might include the plasma kallikrein-kinin [5] and renin-angiotensin systems [78]. The therapeutic potential of inhibiting the renin-angiotensin system in AD is attracting a great deal of interest and clinical investigation [4, 77, 79, 80, 119].

**Acknowledgments** Supported by grants from the Medical Research Council MR/K015397/1; Alzheimer’s Research UK ART-PG2011-1, ARUK-NCG2013A-3, ARUK-PG2015-11; British Heart Foundation PG/10/47/28285; and BRACE (Bristol Research into Alzheimer’s and Care of the Elderly).



**Open Access** This article is distributed under the terms of the Creative Commons Attribution 4.0 International License (<http://creativecommons.org/licenses/by/4.0/>), which permits unrestricted use, distribution, and reproduction in any medium, provided you give appropriate credit to the original author(s) and the source, provide a link to the Creative Commons license, and indicate if changes were made.

## References

- Allen N, Robinson AC, Snowden J, Davidson YS, Mann DM (2014) Patterns of cerebral amyloid angiopathy define histopathological phenotypes in Alzheimer's disease. *Neuropathol Appl Neurobiol* 40:136–148. doi:10.1111/nan.12070
- Altura BM, Hershey SG, Altura BT (1970) Microcirculatory actions of polypeptides and their use in the treatment of experimental shock. In: Sicuteri F, Rocha e Silva M, Back N (eds) Bradykinin and related kinins: cardiovascular, biochemical, and neural actions. Plenum Press, New York, pp 239–248
- Armulik A, Genove G, Mae M, Nisancioglu MH, Wallgard E, Niaudet C, He L, Norlin J, Lindblom P, Strittmatter K et al (2010) Pericytes regulate the blood–brain barrier. *Nature* 468:557–561. doi:10.1038/nature09522
- Ashby EL, Kehoe PG (2013) Current status of renin-aldosterone angiotensin system-targeting anti-hypertensive drugs as therapeutic options for Alzheimer's disease. *Expert Opin Investig Drugs* 22:1229–1242. doi:10.1517/13543784.2013.812631
- Ashby EL, Love S, Kehoe PG (2012) Assessment of activation of the plasma kallikrein–kinin system in frontal and temporal cortex in Alzheimer's disease and vascular dementia. *Neurobiol Aging* 33:1345–1355. doi:10.1016/j.neurobiolaging.2010.09.024
- Asllani I, Habeck C, Scarmeas N, Borogovac A, Brown TR, Stern Y (2008) Multivariate and univariate analysis of continuous arterial spin labeling perfusion MRI in Alzheimer's disease. *J Cereb Blood Flow Metab* 28:725–736. doi:10.1038/sj.jcbfm.9600570
- Attems J, Jellinger KA (2004) Only cerebral capillary amyloid angiopathy correlates with Alzheimer pathology—a pilot study. *Acta Neuropathol* 107:83–90. doi:10.1007/s00401-003-0796-9
- Attems J, Jellinger KA (2014) The overlap between vascular disease and Alzheimer's disease—lessons from pathology. *BMC Med* 12:206. doi:10.1186/s12916-014-0206-2
- Ballard C, Shaw F, McKeith I, Kenny R (1998) High prevalence of neurovascular instability in neurodegenerative dementias. *Neurology* 51:1760–1762
- Baloyannis SJ, Baloyannis IS (2012) The vascular factor in Alzheimer's disease: a study in Golgi technique and electron microscopy. *J Neurol Sci* 322:117–121. doi:10.1016/j.jns.2012.07.010
- Barker R, Ashby EL, Wellington D, Barrow VM, Palmer JC, Kehoe PG, Esiri MM, Love S (2014) Pathophysiology of white matter perfusion in Alzheimer's disease and vascular dementia. *Brain* 137:1524–1532. doi:10.1093/brain/awu040
- Barker R, Wellington D, Esiri MM, Love S (2013) Assessing white matter ischemic damage in dementia patients by measurement of myelin proteins. *J Cereb Blood Flow Metab* 33:1050–1057. doi:10.1038/jcbfm.2013.46
- Beach TG, Wilson JR, Sue LI, Newell A, Poston M, Cisneros R, Pandya Y, Esh C, Connor DJ, Sabbagh M et al (2007) Circle of Willis atherosclerosis: association with Alzheimer's disease, neuritic plaques and neurofibrillary tangles. *Acta Neuropathol* 113:13–21. doi:10.1007/s00401-006-0136-y
- Bell RD, Winkler EA, Sagare AP, Singh I, LaRue B, Deane R, Zlokovic BV (2010) Pericytes control key neurovascular functions and neuronal phenotype in the adult brain and during brain aging. *Neuron* 68:409–427. doi:10.1016/j.neuron.2010.09.043
- Benzinger TL, Blazey T, Jack CR Jr, Koeppe RA, Su Y, Xiong C, Raichle ME, Snyder AZ, Ances BM, Bateman RJ et al (2013) Regional variability of imaging biomarkers in autosomal dominant Alzheimer's disease. *Proc Natl Acad Sci USA* 110:E4502–E4509. doi:10.1073/pnas.1317918110
- Bergamaschini L, Donarini C, Foddi C, Gobbo G, Parnetti L, Agostoni A (2001) The region 1–11 of Alzheimer amyloid- $\beta$  is critical for activation of contact-kinin system. *Neurobiol Aging* 22:63–69
- Bien-Ly N, Boswell CA, Jeet S, Beach TG, Hoyte K, Luk W, Shihadeh V, Ulufatu S, Foreman O, Lu Y et al (2015) Lack of widespread BBB disruption in Alzheimer's disease models: focus on therapeutic antibodies. *Neuron* 88:289–297. doi:10.1016/j.neuron.2015.09.036
- Binnewijzend MA, Kuijper JP, Benedictus MR, van der Flier WM, Wink AM, Wattjes MP, van Berckel BN, Scheltens P, Barkhof F (2013) Cerebral blood flow measured with 3D pseudocontinuous arterial spin-labeling MR imaging in Alzheimer disease and mild cognitive impairment: a marker for disease severity. *Radiology* 267:221–230. doi:10.1148/radiol.12120928
- Borroni B, Perani D, Broli M, Colciaghi F, Garibotto V, Paghera B, Agosti C, Giubbini R, Di Luca M, Padovani A (2005) Pre-clinical diagnosis of Alzheimer disease combining platelet amyloid precursor protein ratio and rCBF spect analysis. *J Neurol* 252:1359–1362. doi:10.1007/s00415-005-0867-z
- Brown DR, Hunter R, Wyper DJ, Patterson J, Kelly RC, Montaldi D, McCullough J (1996) Longitudinal changes in cognitive function and regional cerebral function in Alzheimer's disease: a SPECT blood flow study. *J Psychiatr Res* 30:109–126
- Cadavid D, Mena H, Koeller K, Frommelt RA (2000) Cerebral  $\beta$  amyloid angiopathy is a risk factor for cerebral ischemic infarction. A case control study in human brain biopsies. *J Neuropathol Exp Neurol* 59:768–773
- Calhoun ME, Burgermeister P, Phinney AL, Stalder M, Tolnay M, Wiederhold KH, Abramowski D, Sturchler-Pierrat C, Sommer B, Staufenbiel M et al (1999) Neuronal overexpression of mutant amyloid precursor protein results in prominent deposition of cerebrovascular amyloid. *Proc Natl Acad Sci USA* 96:14088–14093
- Caplan LR (2015) Lacunar infarction and small vessel disease: pathology and pathophysiology. *J Stroke* 17:2–6. doi:10.5853/jos.2015.17.1.2
- Carrano A, Hoozemans JJ, van der Vies SM, Rozemuller AJ, van Horssen J, de Vries HE (2011) Amyloid  $\beta$  induces oxidative stress-mediated blood-brain barrier changes in capillary amyloid angiopathy. *Antioxid Redox Signal* 15:1167–1178. doi:10.1089/ars.2011.3895
- Challa VR, Thore CR, Moody DM, Anstrom JA, Brown WR (2004) Increase of white matter string vessels in Alzheimer's disease. *J Alzheimers Dis* 6:379–383 (discussion 443–379)
- Chalmers K, Wilcock G, Love S (2005) Contributors to white matter damage in the frontal lobe in Alzheimer's disease. *Neuropathol Appl Neurobiol* 31:623–631. doi:10.1111/j.1365-2990.2005.00678.x
- Chalmers K, Wilcock GK, Love S (2003) *APOE*  $\epsilon$ 4 influences the pathological phenotype of Alzheimer's disease by favouring cerebrovascular over parenchymal accumulation of A $\beta$  protein. *Neuropathol Appl Neurobiol* 29:231–238
- Chao LL, Buckley ST, Kornak J, Schuff N, Madison C, Yaffe K, Miller BL, Kramer JH, Weiner MW (2010) ASL perfusion MRI predicts cognitive decline and conversion from MCI to dementia. *Alzheimer Dis Assoc Disord* 24:19–27. doi:10.1097/WAD.0b013e3181b4f736

29. Charidimou A, Linn J, Vernooij MW, Opherk C, Akoudad S, Baron JC, Greenberg SM, Jager HR, Werring DJ (2015) Cortical superficial siderosis: detection and clinical significance in cerebral amyloid angiopathy and related conditions. *Brain* 138:2126–2139. doi:[10.1093/brain/awv162](https://doi.org/10.1093/brain/awv162)
30. Chuang YF, An Y, Bilgel M, Wong DF, Troncoso JC, O'Brien RJ, Breitner JC, Ferruci L, Resnick SM, Thambisetty M (2015) Midlife adiposity predicts earlier onset of Alzheimer's dementia, neuropathology and presymptomatic cerebral amyloid accumulation. *Mol Psychiatry*: doi:[10.1038/mp.2015.129](https://doi.org/10.1038/mp.2015.129)
31. Chui HC, Zheng L, Reed BR, Vinters HV, Mack WJ (2012) Vascular risk factors and Alzheimer's disease: are these risk factors for plaques and tangles or for concomitant vascular pathology that increases the likelihood of dementia? An evidence-based review. *Alzheimers Res Ther* 4:1. doi:[10.1186/alzrt98](https://doi.org/10.1186/alzrt98)
32. Chung YA, JH O, Kim JY, Kim KJ, Ahn KJ (2009) Hypoperfusion and ischemia in cerebral amyloid angiopathy documented by 99mTc-ECD brain perfusion SPECT. *J Nucl Med* 50:1969–1974. doi:[10.2967/jnumed.109.062315](https://doi.org/10.2967/jnumed.109.062315)
33. Conijn MM, Kloppenborg RP, Algra A, Mali WP, Kappelle LJ, Vincken KL, van der Graaf Y, Geerlings MI, SMART Study Group (2011) Cerebral small vessel disease and risk of death, ischemic stroke, and cardiac complications in patients with atherosclerotic disease: the Second Manifestations of ARterial disease-Magnetic Resonance (SMART-MR) study. *Stroke* 42:3105–3109. doi:[10.1161/STROKEAHA.110.594853](https://doi.org/10.1161/STROKEAHA.110.594853)
34. Dai W, Lopez OL, Carmichael OT, Becker JT, Kuller LH, Gach HM (2009) Mild cognitive impairment and alzheimer disease: patterns of altered cerebral blood flow at MR imaging. *Radiology* 250:856–866. doi:[10.1148/radiol.2503080751](https://doi.org/10.1148/radiol.2503080751)
35. de Bruijn RF, Ikram MA (2014) Cardiovascular risk factors and future risk of Alzheimer's disease. *BMC Med* 12:130. doi:[10.1186/s12916-014-0130-5](https://doi.org/10.1186/s12916-014-0130-5)
36. den Abeelen AS, Lagro J, van Beek AH, Claassen JA (2014) Impaired cerebral autoregulation and vasomotor reactivity in sporadic Alzheimer's disease. *Curr Alzheimer Res* 11:11–17
37. Dolan H, Crain B, Troncoso J, Resnick SM, Zonderman AB, O'Brien RJ (2010) Atherosclerosis, dementia, and Alzheimer disease in the Baltimore Longitudinal Study of Aging cohort. *Ann Neurol* 68:231–240. doi:[10.1002/ana.22055](https://doi.org/10.1002/ana.22055)
38. Dublin S, Anderson ML, Haneuse SJ, Heckbert SR, Crane PK, Breitner JC, McCormick W, Bowen JD, Teri L, McCurry SM et al (2011) Atrial fibrillation and risk of dementia: a prospective cohort study. *J Am Geriatr Soc* 59:1369–1375. doi:[10.1111/j.1532-5415.2011.03508.x](https://doi.org/10.1111/j.1532-5415.2011.03508.x)
39. Dumas A, Dierksen GA, Gurol ME, Halpin A, Martinez-Ramirez S, Schwab K, Rosand J, Viswanathan A, Salat DH, Polimeni JR et al (2012) Functional magnetic resonance imaging detection of vascular reactivity in cerebral amyloid angiopathy. *Ann Neurol* 72:76–81. doi:[10.1002/ana.23566](https://doi.org/10.1002/ana.23566)
40. Eckman EA, Adams SK, Troendle FJ, Stodola BA, Kahn MA, Fauq AH, Xiao HD, Bernstein KE, Eckman CB (2006) Regulation of steady-state  $\beta$ -amyloid levels in the brain by neprilysin and endothelin-converting enzyme but not angiotensin-converting enzyme. *J Biol Chem* 281:30471–30478. doi:[10.1074/jbc.M605827200](https://doi.org/10.1074/jbc.M605827200)
41. Eckman EA, Reed DK, Eckman CB (2001) Degradation of the Alzheimer's amyloid  $\beta$  peptide by endothelin-converting enzyme. *J Biol Chem* 276:24540–24548. doi:[10.1074/jbc.M007579200](https://doi.org/10.1074/jbc.M007579200)
42. Eckman EA, Watson M, Marlow L, Sambamurti K, Eckman CB (2003) Alzheimer's disease  $\beta$ -amyloid peptide is increased in mice deficient in endothelin-converting enzyme. *J Biol Chem* 278:2081–2084. doi:[10.1074/jbc.C200642200](https://doi.org/10.1074/jbc.C200642200)
43. Ellis RJ, Olichney JM, Thal LJ, Mirra SS, Morris JC, Beekly D, Heyman A (1996) Cerebral amyloid angiopathy in the brains of patients with Alzheimer's disease: the CERAD experience, part XV. *Neurology* 46:1592–1596
44. Esiri MM, Wilcock GK (1986) Cerebral amyloid angiopathy in dementia and old age. *J Neurol Neurosurg Psychiatry* 49:1221–1226
45. Esiri MM, Wilcock GK, Morris JH (1997) Neuropathological assessment of the lesions of significance in vascular dementia. *J Neurol Neurosurg Psychiatry* 63:749–753
46. Fernando MS, Ince PG, MRC Cognitive Function and Ageing Neuropathology Study Group (2004) Vascular pathologies and cognition in a population-based cohort of elderly people. *J Neurol Sci* 226:13–17. doi:[10.1016/j.jns.2004.09.004](https://doi.org/10.1016/j.jns.2004.09.004)
47. Fisk L, Nalivaeva NN, Boyle JP, Peers CS, Turner AJ (2007) Effects of hypoxia and oxidative stress on expression of neprilysin in human neuroblastoma cells and rat cortical neurons and astrocytes. *Neurochem Res* 32:1741–1748. doi:[10.1007/s11064-007-9349-2](https://doi.org/10.1007/s11064-007-9349-2)
48. Fryer JD, Simmons K, Parsadanian M, Bales KR, Paul SM, Sullivan PM, Holtzman DM (2005) Human apolipoprotein E4 alters the amyloid- $\beta$  40:42 ratio and promotes the formation of cerebral amyloid angiopathy in an amyloid precursor protein transgenic model. *J Neurosci* 25:2803–2810. doi:[10.1523/JNEUROSCI.5170-04.2005](https://doi.org/10.1523/JNEUROSCI.5170-04.2005)
49. Gentile MT, Vecchione C, Maffei A, Aretini A, Marino G, Poullet R, Capobianco L, Selvetella G, Lembo G (2004) Mechanisms of soluble  $\beta$ -amyloid impairment of endothelial function. *J Biol Chem* 279:48135–48142. doi:[10.1074/jbc.M407358200](https://doi.org/10.1074/jbc.M407358200)
50. Gilbert JJ, Vinters HV (1983) Cerebral amyloid angiopathy: incidence and complications in the aging brain. I. Cerebral hemorrhage. *Stroke* 14:915–923
51. Greenberg SM (1998) Cerebral amyloid angiopathy: prospects for clinical diagnosis and treatment. *Neurology* 51:690–694
52. Greenberg SM, Briggs ME, Hyman BT, Kokoris GJ, Takis C, Kanter DS, Kase CS, Pessin MS (1996) Apolipoprotein E  $\epsilon$ 4 is associated with the presence and earlier onset of hemorrhage in cerebral amyloid angiopathy. *Stroke* 27:1333–1337
53. Greenberg SM, Rebeck GW, Vonsattel JP, Gomez-Isla T, Hyman BT (1995) Apolipoprotein E  $\epsilon$ 4 and cerebral hemorrhage associated with amyloid angiopathy. *Ann Neurol* 38:254–259. doi:[10.1002/ana.410380219](https://doi.org/10.1002/ana.410380219)
54. Greenberg SM, Vonsattel JP, Segal AZ, Chiu RI, Clatworthy AE, Liao A, Hyman BT, Rebeck GW (1998) Association of apolipoprotein E  $\epsilon$ 2 and vasculopathy in cerebral amyloid angiopathy. *Neurology* 50:961–965
55. Guglielmo M, Aragno M, Autelli R, Giliberto L, Novo E, Colomatto S, Danni O, Parola M, Smith MA, Perry G et al (2009) The up-regulation of BACE1 mediated by hypoxia and ischemic injury: role of oxidative stress and HIF1 $\alpha$ . *J Neurochem* 108:1045–1056. doi:[10.1111/j.1471-4159.2008.05858.x](https://doi.org/10.1111/j.1471-4159.2008.05858.x)
56. Haque SU, Dashwood MR, Heetun M, Shiwen X, Farooqui N, Ramesh B, Welch H, Savage FJ, Ogunbiyi O, Abraham DJ et al (2013) Efficacy of the specific endothelin a receptor antagonist zibotentan (ZD4054) in colorectal cancer: a preclinical study. *Mol Cancer Ther* 12:1556–1567. doi:[10.1158/1535-7163.MCT-12-0975](https://doi.org/10.1158/1535-7163.MCT-12-0975)
57. Hartz AM, Bauer B, Soldner EL, Wolf A, Boy S, Backhaus R, Mihaljevic I, Bogdahn U, Klunemann HH, Schuierer G et al (2012) Amyloid- $\beta$  contributes to blood-brain barrier leakage in transgenic human amyloid precursor protein mice and in humans with cerebral amyloid angiopathy. *Stroke* 43:514–523. doi:[10.1161/STROKEAHA.111.627562](https://doi.org/10.1161/STROKEAHA.111.627562)
58. Hawkes CA, Gatherer M, Sharp MM, Dorr A, Yuen HM, Kalaria R, Weller RO, Carare RO (2013) Regional differences in the morphological and functional effects of aging on cerebral basement membranes and perivascular drainage of amyloid- $\beta$  from the mouse brain. *Aging Cell* 12:224–236. doi:[10.1111/accel.12045](https://doi.org/10.1111/accel.12045)

59. Hawkes CA, Hartig W, Kacza J, Schliebs R, Weller RO, Nicoll JA, Carare RO (2011) Perivascular drainage of solutes is impaired in the ageing mouse brain and in the presence of cerebral amyloid angiopathy. *Acta Neuropathol* 121:431–443. doi:[10.1007/s00401-011-0801-7](https://doi.org/10.1007/s00401-011-0801-7)
60. Hawkes CA, Sullivan PM, Hands S, Weller RO, Nicoll JA, Carare RO (2012) Disruption of arterial perivascular drainage of amyloid- $\beta$  from the brains of mice expressing the human *APOE*  $\epsilon$ 4 allele. *PLoS ONE* 7:e41636. doi:[10.1371/journal.pone.0041636](https://doi.org/10.1371/journal.pone.0041636)
61. Helzner EP, Luchsinger JA, Scarmeas N, Cosentino S, Brickman AM, Glymour MM, Stern Y (2009) Contribution of vascular risk factors to the progression in Alzheimer disease. *Arch Neurol* 66:343–348. doi:[10.1001/archneur.66.3.343](https://doi.org/10.1001/archneur.66.3.343)
62. Hemming ML, Selkoe DJ (2005) Amyloid  $\beta$ -protein is degraded by cellular angiotensin-converting enzyme (ACE) and elevated by an ACE inhibitor. *J Biol Chem* 280:37644–37650. doi:[10.1074/jbc.M508460200](https://doi.org/10.1074/jbc.M508460200)
63. Herzig MC, Van Nostrand WE, Jucker M (2006) Mechanism of cerebral  $\beta$ -amyloid angiopathy: murine and cellular models. *Brain Pathol* 16:40–54
64. Heyman A, Fillenbaum GG, Welsh-Bohmer KA, Gearing M, Mirra SS, Mohs RC, Peterson BL, Pieper CF (1998) Cerebral infarcts in patients with autopsy-proven Alzheimer's disease: CERAD, part XVIII. Consortium to establish a registry for Alzheimer's Disease. *Neurology* 51:159–162
65. Hofman A, Ott A, Breteler MM, Bots ML, Slieter AJ, van Hartkamp F, van Duijn CN, Van Broeckhoven C, Grobbee DE (1997) Atherosclerosis, apolipoprotein E, and prevalence of dementia and Alzheimer's disease in the Rotterdam Study. *Lancet* 349:151–154
66. Holton JL, Ghiso J, Lashley T, Rostagno A, Guerin CJ, Gibb G, Houlden H, Ayling H, Martinian L, Anderton BH et al (2001) Regional distribution of amyloid- $\beta$  deposition and its association with neurofibrillary degeneration in familial British dementia. *Am J Pathol* 158:515–526. doi:[10.1016/S0002-9440\(10\)63993-4](https://doi.org/10.1016/S0002-9440(10)63993-4)
67. Honig LS, Kukull W, Mayeux R (2005) Atherosclerosis and AD: analysis of data from the US National Alzheimer's Coordinating Center. *Neurology* 64:494–500. doi:[10.1212/01.WNL.0000150886.50187.30](https://doi.org/10.1212/01.WNL.0000150886.50187.30)
68. Hu J, Igarashi A, Kamata M, Nakagawa H (2001) Angiotensin-converting enzyme degrades Alzheimer amyloid  $\beta$ -peptide (A $\beta$ ); retards A $\beta$  aggregation, deposition, fibril formation; and inhibits cytotoxicity. *J Biol Chem* 276:47863–47868. doi:[10.1074/jbc.M104068200](https://doi.org/10.1074/jbc.M104068200)
69. Hughes TM, Kuller LH, Barinas-Mitchell EJ, McDade EM, Klunk WE, Cohen AD, Mathis CA, Dekosky ST, Price JC, Lopez OL (2014) Arterial stiffness and  $\beta$ -amyloid progression in nondemented elderly adults. *JAMA Neurol* 71:562–568. doi:[10.1001/jamaneurol.2014.186](https://doi.org/10.1001/jamaneurol.2014.186)
70. Hunter JM, Kwan J, Malek-Ahmadi M, Maarouf CL, Kokjohn TA, Belden C, Sabbagh MN, Beach TG, Roher AE (2012) Morphological and pathological evolution of the brain microcirculation in aging and Alzheimer's disease. *PLoS ONE* 7:e36893. doi:[10.1371/journal.pone.0036893](https://doi.org/10.1371/journal.pone.0036893)
71. Iadecola C (2004) Neurovascular regulation in the normal brain and in Alzheimer's disease. *Nat Rev Neurosci* 5:347–360. doi:[10.1038/nrn1387](https://doi.org/10.1038/nrn1387)
72. Iores-Marcial LM, Viel TA, Buck HS, Nunes VA, Gozzo AJ, Cruz-Silva I, Miranda A, Shimamoto K, Ura N, Araujo MS (2006) Bradykinin release and inactivation in brain of rats submitted to an experimental model of Alzheimer's disease. *Peptides* 27:3363–3369. doi:[10.1016/j.peptides.2006.08.012](https://doi.org/10.1016/j.peptides.2006.08.012)
73. Itoh Y, Yamada M, Sodeyama N, Suematsu N, Matsushita M, Otomo E, Mizusawa H (1999) Atherosclerosis is not implicated in association of *APOE*  $\epsilon$ 4 with AD. *Neurology* 53:236–237
74. Jellinger KA, Attems J (2003) Incidence of cerebrovascular lesions in Alzheimer's disease: a postmortem study. *Acta Neuropathol* 105:14–17. doi:[10.1007/s00401-002-0634-5](https://doi.org/10.1007/s00401-002-0634-5)
75. Kalaria RN, Ballard C (1999) Overlap between pathology of Alzheimer disease and vascular dementia. *Alzheimer Dis Assoc Disord* 13(Suppl 3):S115–S123
76. Keable A, Fenna K, Yuen HM, Johnston DA, Smyth NR, Smith C, Salman RA, Samarasekera N, Nicoll JA, Attems J et al (2015) Deposition of amyloid  $\beta$  in the walls of human leptomeningeal arteries in relation to perivascular drainage pathways in cerebral amyloid angiopathy. *Biochim Biophys Acta*. doi:[10.1016/j.bbadis.2015.08.024](https://doi.org/10.1016/j.bbadis.2015.08.024)
77. Kehoe PG (2003) The renin-angiotensin-aldosterone system and Alzheimer's disease? *J Renin Angiotensin Aldosterone Syst* 4:80–93. doi:[10.3317/jraas.2003.017](https://doi.org/10.3317/jraas.2003.017)
78. Kehoe PG, Miners S, Love S (2009) Angiotensin in Alzheimer's disease—friend or foe? *Trends Neurosci* 32:619–628. doi:[10.1016/j.tins.2009.07.006](https://doi.org/10.1016/j.tins.2009.07.006)
79. Kehoe PG, Passmore PA (2012) The renin-angiotensin system and antihypertensive drugs in Alzheimer's disease: current standing of the angiotensin hypothesis? *J Alzheimers Dis* 30(Suppl 2):S251–S268. doi:[10.3233/JAD-2012-111376](https://doi.org/10.3233/JAD-2012-111376)
80. Kehoe PG, Wilcock GK (2007) Is inhibition of the renin-angiotensin system a new treatment option for Alzheimer's disease? *Lancet Neurol* 6:373–378. doi:[10.1016/S1474-4422\(07\)70077-7](https://doi.org/10.1016/S1474-4422(07)70077-7)
81. Kenny RA, Kalaria R, Ballard C (2002) Neurocardiovascular instability in cognitive impairment and dementia. *Ann N Y Acad Sci* 977:183–195
82. Kenny RA, Shaw FE, O'Brien JT, Scheltens PH, Kalaria R, Ballard C (2004) Carotid sinus syndrome is common in dementia with Lewy bodies and correlates with deep white matter lesions. *J Neurol Neurosurg Psychiatry* 75:966–971
83. Kester MI, Goos JD, Teunissen CE, Benedictus MR, Bowman FH, Wattjes MP, Barkhof F, Scheltens P, van der Flier WM (2014) Associations between cerebral small-vessel disease and Alzheimer disease pathology as measured by cerebrospinal fluid biomarkers. *JAMA Neurol* 71:855–862. doi:[10.1001/jamaneurol.2014.754](https://doi.org/10.1001/jamaneurol.2014.754)
84. Knudsen KA, Rosand J, Karluk D, Greenberg SM (2001) Clinical diagnosis of cerebral amyloid angiopathy: validation of the Boston criteria. *Neurology* 56:537–539
85. Kook SY, Hong HS, Moon M, Ha CM, Chang S, Mook-Jung I (2012)  $\beta$ (1–42)-RAGE interaction disrupts tight junctions of the blood-brain barrier via Ca(2+)-calcineurin signaling. *J Neurosci* 32:8845–8854. doi:[10.1523/JNEUROSCI.6102-11.2012](https://doi.org/10.1523/JNEUROSCI.6102-11.2012)
86. Kosunen O, Talasniemi S, Lehtovirta M, Heinonen O, Helisalmi S, Mannermaa A, Paljarvi L, Ryyanen M, Riekkinen PJ Sr, Soininen H (1995) Relation of coronary atherosclerosis and apolipoprotein E genotypes in Alzheimer patients. *Stroke* 26:743–748
87. Koyama A, Weuve J, Jackson JW, Blacker D (2014) “Dietary pattern”. The AlzRisk database. Alzheimer research forum. <http://www.alzrisk.org>. Accessed 5 July 2015
88. Lamoche F, Mazzone V, Persichini T, Maraschi A, Harris MB, Venema RC, Colasanti M, Gliozzi M, Muscoli C, Bartoli M et al (2015) Amyloid  $\beta$  peptide-induced inhibition of endothelial nitric oxide production involves oxidative stress-mediated constitutive eNOS/HSP90 interaction and disruption of agonist-mediated Akt activation. *J Neuroinflammation* 12:84. doi:[10.1186/s12974-015-0304-x](https://doi.org/10.1186/s12974-015-0304-x)
89. Langbaum JB, Chen K, Caselli RJ, Lee W, Reschke C, Bandy D, Alexander GE, Burns CM, Kaszniak AW, Reeder SA et al (2010) Hypometabolism in Alzheimer-affected brain regions in cognitively healthy Latino individuals carrying the apolipoprotein E  $\epsilon$ 4 allele. *Arch Neurol* 67:462–468. doi:[10.1001/archneurol.2010.30](https://doi.org/10.1001/archneurol.2010.30)



90. Li J, Wang YJ, Zhang M, Xu ZQ, Gao CY, Fang CQ, Yan JC, Zhou HD (2011) Vascular risk factors promote conversion from mild cognitive impairment to Alzheimer disease. *Neurology* 76:1485–1491 (WNL.0b013e318217e7a4)
91. Li L, Zhang X, Yang D, Luo G, Chen S, Le W (2009) Hypoxia increases A $\beta$  generation by altering  $\beta$ - and  $\gamma$ -cleavage of APP. *Neurobiol Aging* 30:1091–1098. doi:10.1016/j.neurobiolaging.2007.10.011
92. Li S, Goonesekera S, Weuve J, Jackson JW, Blacker D “Homocysteine”. The AlzRisk database. Alzheimer research forum. <http://www.alzrisk.org>. Accessed 5 July 2015
93. Linn J, Halpin A, Demaerel P, Ruhland J, Giese AD, Dichgans M, van Buchem MA, Bruckmann H, Greenberg SM (2010) Prevalence of superficial siderosis in patients with cerebral amyloid angiopathy. *Neurology* 74:1346–1350. doi:10.1212/WNL.0b013e3181dad605
94. Liu G, Yao L, Liu J, Jiang Y, Ma G, Genetic and Environmental Risk for Alzheimer’s disease (GERAD1) Consortium, Chen Z, Zhao B, Li K (2014) Cardiovascular disease contributes to Alzheimer’s disease: evidence from large-scale genome-wide association studies. *Neurobiol Aging* 35:786–792. doi:10.1016/j.neurobiolaging.2013.10.084
95. Love S, Chalmers K, Ince P, Esiri M, Attems J, Jellinger K, Yamada M, McCarron M, Minett T, Matthews F et al (2014) Development, appraisal, validation and implementation of a consensus protocol for the assessment of cerebral amyloid angiopathy in post-mortem brain tissue. *Am J Neurodegener Dis* 3:19–32
96. Love S, Miners JS (2015) White matter hypoperfusion and damage in dementia: post-mortem assessment. *Brain Pathol* 25:99–107. doi:10.1111/bpa.12223
97. Love S, Miners S, Palmer J, Chalmers K, Kehoe P (2009) Insights into the pathogenesis and pathogenicity of cerebral amyloid angiopathy. *Front Biosci (Landmark Ed)* 14:4778–4792
98. Love S, Nicoll JA, Hughes A, Wilcock GK (2003) APOE and cerebral amyloid angiopathy in the elderly. *NeuroReport* 14:1535–1536. doi:10.1097/01.wnr.0000085694.46774.90
99. Luchsinger JA, Reitz C, Honig LS, Tang MX, Shea S, Mayeux R (2005) Aggregation of vascular risk factors and risk of incident Alzheimer disease. *Neurology* 65:545–551. doi:10.1212/01.wnl.0000172914.08967.dc
100. Marco S, Skaper SD (2006) Amyloid  $\beta$ -peptide1-42 alters tight junction protein distribution and expression in brain microvesSEL endothelial cells. *Neurosci Lett* 401:219–224. doi:10.1016/j.neulet.2006.03.047
101. Masuda J, Tanaka K, Ueda K, Omae T (1988) Autopsy study of incidence and distribution of cerebral amyloid angiopathy in Hisayama, Japan. *Stroke* 19:205–210
102. McCarron MO, Delong D, Alberts MJ (1999) APOE genotype as a risk factor for ischemic cerebrovascular disease: a meta-analysis. *Neurology* 53:1308–1311
103. McCarron MO, Nicoll JA, Stewart J, Ironside JW, Mann DM, Love S, Graham DI, Dewar D (1999) The apolipoprotein E  $\epsilon$ 2 allele and the pathological features in cerebral amyloid angiopathy-related hemorrhage. *J Neuropathol Exp Neurol* 58:711–718
104. Meng XF, Yu JT, Wang HF, Tan MS, Wang C, Tan CC, Tan L (2014) Midlife vascular risk factors and the risk of Alzheimer’s disease: a systematic review and meta-analysis. *J Alzheimers Dis* 42:1295–1310. doi:10.3233/JAD-140954
105. Miners JS, Ashby E, Van Helmond Z, Chalmers KA, Palmer LE, Love S, Kehoe PG (2008) Angiotensin-converting enzyme (ACE) levels and activity in Alzheimer’s disease, and relationship of perivascular ACE-1 to cerebral amyloid angiopathy. *Neuropathol Appl Neurobiol* 34:181–193. doi:10.1111/j.1365-2990.2007.00885.x
106. Miners JS, Palmer J, Love S (in press) Pathophysiology of hypoperfusion of the precuneus in early Alzheimer’s disease. *Brain Pathol*. doi: 10.1111/bpa.12331
107. Miners S, Ashby E, Baig S, Harrison R, Tayler H, Speedy E, Prince JA, Love S, Kehoe PG (2009) Angiotensin-converting enzyme levels and activity in Alzheimer’s disease: differences in brain and CSF ACE and association with ACE1 genotypes. *Am J Transl Res* 1:163–177
108. Mondello S, Buki A, Barzo P, Randall J, Provuncher G, Hanlon D, Wilson D, Kobeissy F, Jeromin A (2014) CSF and plasma amyloid- $\beta$  temporal profiles and relationships with neurological status and mortality after severe traumatic brain injury. *Sci Rep* 4:6446. doi:10.1038/srep06446
109. Morgen K, Schneider M, Frolich L, Tost H, Plichta MM, Kolsch H, Rakebrandt F, Rienhoff O, Jessen F, Peters O et al (2015) Apolipoprotein E-dependent load of white matter hyperintensities in Alzheimer’s disease: a voxel-based lesion mapping study. *Alzheimers Res Ther* 7:27. doi:10.1186/s13195-015-0111-8
110. Morris CD, Rose A, Curwen J, Hughes AM, Wilson DJ, Webb DJ (2005) Specific inhibition of the endothelin A receptor with ZD4054: clinical and pre-clinical evidence. *Br J Cancer* 92:2148–2152. doi:10.1038/sj.bjc.6602676
111. Murshid WR, Nelson RJ, Love S (1994) Spontaneous cerebral haemorrhage from cerebral amyloid angiopathy. *Br J Neurosurg* 8:457–460
112. Nagata K, Kondoh Y, Atchison R, Sato M, Satoh Y, Watahiki Y, Hirata Y, Yokoyama E (2000) Vascular and metabolic reserve in Alzheimer’s disease. *Neurobiol Aging* 21:301–307
113. Nagata K, Sato M, Satoh Y, Watahiki Y, Kondoh Y, Sugawara M, Box G, Wright D, Leung S, Yuya H et al (2002) Hemodynamic aspects of Alzheimer’s disease. *Ann N Y Acad Sci* 977:391–402
114. Nation DA, Wierenga CE, Clark LR, Dev SI, Stricker NH, Jak AJ, Salmon DP, Delano-Wood L, Bangen KJ, Rissman RA et al (2013) Cortical and subcortical cerebrovascular resistance index in mild cognitive impairment and Alzheimer’s disease. *J Alzheimers Dis* 36:689–698. doi:10.3233/JAD-130086
115. Ni J, Auriel E, Martinez-Ramirez S, Keil B, Reed AK, Fotiadis P, Guroi EM, Greenberg SM, Viswanathan A (2015) Cortical localization of microbleeds in cerebral amyloid angiopathy: an ultra high-field 7T MRI study. *J Alzheimers Dis* 43:1325–1330. doi:10.3233/JAD-140864
116. Nicoll JA, Burnett C, Love S, Graham DI, Dewar D, Ironside JW, Stewart J, Vinters HV (1997) High frequency of apolipoprotein E  $\epsilon$ 2 allele in hemorrhage due to cerebral amyloid angiopathy. *Ann Neurol* 41:716–721. doi:10.1002/ana.410410607
117. Niwa K, Kazama K, Younkin L, Younkin SG, Carlson GA, Iadecola C (2002) Cerebrovascular autoregulation is profoundly impaired in mice overexpressing amyloid precursor protein. *Am J Physiol Heart Circ Physiol* 283:H315–H323. doi:10.1152/ajpheart.00022.2002
118. Niwa K, Porter VA, Kazama K, Cornfield D, Carlson GA, Iadecola C (2001) A $\beta$ -peptides enhance vasoconstriction in cerebral circulation. *Am J Physiol Heart Circ Physiol* 281:H2417–H2424
119. O’Caoimh R, Kehoe PG, Molloy DW (2014) Renin angiotensin aldosterone system inhibition in controlling dementia-related cognitive decline. *J Alzheimers Dis* 42(Suppl 4):S575–S586. doi:10.3233/JAD-141284
120. Oba R, Igarashi A, Kamata M, Nagata K, Takano S, Nakagawa H (2005) The N-terminal active centre of human angiotensin-converting enzyme degrades Alzheimer amyloid  $\beta$ -peptide. *Eur J Neurosci* 21:733–740. doi:10.1111/j.1460-9568.2005.03912.x
121. Okazaki H, Reagan TJ, Campbell RJ (1979) Clinicopathologic studies of primary cerebral amyloid angiopathy. *Mayo Clin Proc* 54:22–31

122. Olichney JM, Hansen LA, Hofstetter CR, Grundman M, Katzman R, Thal LJ (1995) Cerebral infarction in Alzheimer's disease is associated with severe amyloid angiopathy and hypertension. *Arch Neurol* 52:702–708
123. Ott A, Breteler MM, de Bruyne MC, van Harskamp F, Grobbee DE, Hofman A (1997) Atrial fibrillation and dementia in a population-based study. The Rotterdam Study. *Stroke* 28:316–321
124. Pacheco-Quinto J, Eckman EA (2013) Endothelin-converting enzymes degrade intracellular  $\beta$ -amyloid produced within the endosomal/lysosomal pathway and autophagosomes. *J Biol Chem* 288:5606–5615. doi:10.1074/jbc.M112.422964
125. Palmer J, Love S (2011) Endothelin receptor antagonists: potential in Alzheimer's disease. *Pharmacol Res* 63:525–531. doi:10.1016/j.phrs.2010.12.008
126. Palmer JC, Baig S, Kehoe PG, Love S (2009) Endothelin-converting enzyme-2 is increased in Alzheimer's disease and up-regulated by  $A\beta$ . *Am J Pathol* 175:262–270. doi:10.2353/ajpath.2009.081054
127. Palmer JC, Barker R, Kehoe PG, Love S (2012) Endothelin-1 is elevated in Alzheimer's disease and upregulated by amyloid- $\beta$ . *J Alzheimers Dis* 29:853–861. doi:10.3233/JAD-2012-111760
128. Palmer JC, Tayler HM, Love S (2013) Endothelin-converting enzyme-1 activity, endothelin-1 production, and free radical-dependent vasoconstriction in Alzheimer's disease. *J Alzheimers Dis* 36:577–587. doi:10.3233/JAD-130383
129. Park L, Koizumi K, El Jamal S, Zhou P, Previti ML, Van Nostrand WE, Carlson G, Iadecola C (2014) Age-dependent neurovascular dysfunction and damage in a mouse model of cerebral amyloid angiopathy. *Stroke* 45:1815–1821. doi:10.1161/STROKEAHA.114.005179
130. Peca S, McCreary CR, Donaldson E, Kumarpillai G, Shobha N, Sanchez K, Charlton A, Steinback CD, Beaudin AE, Fluck D et al (2013) Neurovascular decoupling is associated with severity of cerebral amyloid angiopathy. *Neurology* 81:1659–1665. doi:10.1212/01.wnl.0000435291.49598.54
131. Premkumar DR, Cohen DL, Hedera P, Friedland RP, Kalaria RN (1996) Apolipoprotein E- $\epsilon 4$  alleles in cerebral amyloid angiopathy and cerebrovascular pathology associated with Alzheimer's disease. *Am J Pathol* 148:2083–2095
132. Raja SG, Dreyfus GD (2008) Current status of bosentan for treatment of pulmonary hypertension. *Ann Card Anaesth* 11:6–14
133. Reijmer YD, van Veluw SJ, Greenberg SM (2015) Ischemic brain injury in cerebral amyloid angiopathy. *J Cereb Blood Flow Metab*. doi:10.1038/jcbfm.2015.88
134. Richardson K, Stephan BC, Ince PG, Brayne C, Matthews FE, Esiri MM (2012) The neuropathology of vascular disease in the Medical Research Council Cognitive Function and Ageing Study (MRC CFAS). *Curr Alzheimer Res* 9:687–696
135. Roher AE, Esh C, Kokjohn TA, Kalback W, Luehrs DC, Seward JD, Sue LI, Beach TG (2003) Circle of Willis atherosclerosis is a risk factor for sporadic Alzheimer's disease. *Arterioscler Thromb Vasc Biol* 23:2055–2062. doi:10.1161/01.ATV.0000095973.42032.44
136. Rossi R, Joachim C, Geroldi C, Combrinck M, Esiri MM, Smith AD, Frisoni GB (2004) Association between subcortical vascular disease on CT and neuropathological findings. *Int J Geriatr Psychiatry* 19:690–695. doi:10.1002/gps.1144
137. Rubin LJ, Badesch DB, Barst RJ, Galie N, Black CM, Keogh A, Pulido T, Frost A, Roux S, Leconte I et al (2002) Bosentan therapy for pulmonary arterial hypertension. *N Engl J Med* 346:896–903. doi:10.1056/NEJMoa012212
138. Rubin LJ, Roux S (2002) Bosentan: a dual endothelin receptor antagonist. *Expert Opin Investig Drugs* 11:991–1002. doi:10.1517/13543784.11.7.991
139. Sajeev G, Weuve J, McQueen MB, Blacker D “Diabetes”. The AlzRisk database. Alzheimer research forum. <http://www.alz-risk.org>. Accessed 5 July 2015
140. Scheltens P, Barkhof F, Valk J, Algra PR, van der Hoop RG, Nauta J, Wolters EC (1992) White matter lesions on magnetic resonance imaging in clinically diagnosed Alzheimer's disease. Evidence for heterogeneity. *Brain* 115(Pt 3):735–748
141. Schilling S, DeStefano AL, Sachdev PS, Choi SH, Mather KA, DeCarli CD, Wen W, Hogg P, Raz N, Au R et al (2013) APOE genotype and MRI markers of cerebrovascular disease: systematic review and meta-analysis. *Neurology* 81:292–300. doi:10.1212/WNL.0b013e31829bfa44
142. Schmechel DE, Saunders AM, Strittmatter WJ, Crain BJ, Hulette CM, Joo SH, Pericak-Vance MA, Goldgaber D, Roses AD (1993) Increased amyloid  $\beta$ -peptide deposition in cerebral cortex as a consequence of apolipoprotein E genotype in late-onset Alzheimer disease. *Proc Natl Acad Sci USA* 90:9649–9653
143. Schneider JA, Wilson RS, Bienias JL, Evans DA, Bennett DA (2004) Cerebral infarctions and the likelihood of dementia from Alzheimer disease pathology. *Neurology* 62:1148–1155
144. Sengillo JD, Winkler EA, Walker CT, Sullivan JS, Johnson M, Zlokovic BV (2013) Deficiency in mural vascular cells coincides with blood-brain barrier disruption in Alzheimer's disease. *Brain Pathol* 23:303–310. doi:10.1111/bpa.12004
145. Shi J, Yang SH, Stubble L, Day AL, Simpkins JW (2000) Hypoperfusion induces overexpression of  $\beta$ -amyloid precursor protein mRNA in a focal ischemic rodent model. *Brain Res* 853:1–4
146. Shibayama Y, Joseph K, Nakazawa Y, Ghebrehiwet B, Peerschke EI, Kaplan AP (1999) Zinc-dependent activation of the plasma kinin-forming cascade by aggregated  $\beta$  amyloid protein. *Clin Immunol* 90:89–99. doi:10.1006/clim.1998.4621
147. Shin HK, Jones PB, Garcia-Alloza M, Borrelli L, Greenberg SM, Bacskai BJ, Frosch MP, Hyman BT, Moskowitz MA, Ayata C (2007) Age-dependent cerebrovascular dysfunction in a transgenic mouse model of cerebral amyloid angiopathy. *Brain* 130:2310–2319. doi:10.1093/brain/awm156
148. Shinnall H, Song ES, Hersh LB (2005) Susceptibility of amyloid  $\beta$  peptide degrading enzymes to oxidative damage: a potential Alzheimer's disease spiral. *Biochemistry* 44:15345–15350. doi:10.1021/bi050650l
149. Snowdon DA, Greiner LH, Mortimer JA, Riley KP, Greiner PA, Markesbery WR (1997) Brain infarction and the clinical expression of Alzheimer disease. The Nun Study. *JAMA* 277:813–817
150. Sonnesyn H, Nilsen DW, Rongve A, Nore S, Ballard C, Tysnes OB, Aarsland D (2009) High prevalence of orthostatic hypotension in mild dementia. *Dement Geriatr Cogn Disord* 28:307–313. doi:10.1159/000247586
151. Sparks DL, Hunsaker JC 3rd, Scheff SW, Kryscio RJ, Henson JL, Markesbery WR (1990) Cortical senile plaques in coronary artery disease, aging and Alzheimer's disease. *Neurobiol Aging* 11:601–607
152. Stroyk D, Dickson DW, Lipton RB, Katz M, Derby CA, Lee S, Wang C, Verghese J (2010) Contribution of vascular pathology to the clinical expression of dementia. *Neurobiol Aging* 31:1710–1720. doi:10.1016/j.neurobiolaging.2008.09.011
153. Suter OC, Sunthorn T, Kraftsik R, Straubel J, Darekar P, Khalili K, Miklossy J (2002) Cerebral hypoperfusion generates cortical watershed microinfarcts in Alzheimer disease. *Stroke* 33:1986–1992
154. Tai LM, Holloway KA, Male DK, Loughlin AJ, Romero IA (2010) Amyloid- $\beta$ -induced occludin down-regulation and increased permeability in human brain endothelial cells is mediated by MAPK activation. *J Cell Mol Med* 14:1101–1112. doi:10.1111/j.1582-4934.2009.00717.x
155. Tanimukai H, Imaizumi K, Kudo T, Katayama T, Tsuda M, Takagi T, Tohyama M, Takeda M (1998) Alzheimer-associated

- presenilin-1 gene is induced in gerbil hippocampus after transient ischemia. *Brain Res Mol Brain Res* 54:212–218
156. Tarumi T, Dunskey DI, Khan MA, Liu J, Hill C, Armstrong K, Martin-Cook K, Cullum CM, Zhang R (2014) Dynamic cerebral autoregulation and tissue oxygenation in amnesic mild cognitive impairment. *J Alzheimers Dis* 41:765–778. doi:[10.3233/JAD-132018](https://doi.org/10.3233/JAD-132018)
  157. Thal DR, Ghebremedhin E, Rub U, Yamaguchi H, Del Tredici K, Braak H (2002) Two types of sporadic cerebral amyloid angiopathy. *J Neuropathol Exp Neurol* 61:282–293
  158. Thomas T, Miners S, Love S (2015) Post-mortem assessment of hypoperfusion of cerebral cortex in Alzheimer's disease and vascular dementia. *Brain* 138:1059–1069. doi:[10.1093/brain/awv025](https://doi.org/10.1093/brain/awv025)
  159. Tohgi H, Yonezawa H, Takahashi S, Sato N, Kato E, Kudo M, Hatao K, Sasaki T (1998) Cerebral blood flow and oxygen metabolism in senile dementia of Alzheimer's type and vascular dementia with deep white matter changes. *Neuroradiology* 40:131–137
  160. Tolppanen AM, Ngandu T, Kareholt I, Laatikainen T, Rusanen M, Soininen H, Kivipelto M (2014) Midlife and late-life body mass index and late-life dementia: results from a prospective population-based cohort. *J Alzheimers Dis* 38:201–209. doi:[10.3233/JAD-130698](https://doi.org/10.3233/JAD-130698)
  161. Tomonaga M (1981) Cerebral amyloid angiopathy in the elderly. *J Am Geriatr Soc* 29:151–157
  162. Vinters HV, Gilbert JJ (1983) Cerebral amyloid angiopathy: incidence and complications in the aging brain. II. The distribution of amyloid vascular changes. *Stroke* 14:924–928
  163. Wang R, Wang S, Malter JS, Wang DS (2009) Effects of HNE-modification induced by A $\beta$  on neprilysin expression and activity in SH-SY5Y cells. *J Neurochem* 108:1072–1082. doi:[10.1111/j.1471-4159.2008.05855.x](https://doi.org/10.1111/j.1471-4159.2008.05855.x)
  164. Weller RO, Kida S, Zhang ET (1992) Pathways of fluid drainage from the brain—morphological aspects and immunological significance in rat and man. *Brain Pathol* 2:277–284
  165. Weller RO, Massey A, Newman TA, Hutchings M, Kuo YM, Roher AE (1998) Cerebral amyloid angiopathy: amyloid  $\beta$  accumulates in putative interstitial fluid drainage pathways in Alzheimer's disease. *Am J Pathol* 153:725–733
  166. Weller RO, Subash M, Preston SD, Mazanti I, Carare RO (2008) Perivascular drainage of amyloid- $\beta$  peptides from the brain and its failure in cerebral amyloid angiopathy and Alzheimer's disease. *Brain Pathol* 18:253–266. doi:[10.1111/j.1750-3639.2008.00133.x](https://doi.org/10.1111/j.1750-3639.2008.00133.x)
  167. Wen Y, Onyewuchi O, Yang S, Liu R, Simpkins JW (2004) Increased  $\beta$ -secretase activity and expression in rats following transient cerebral ischemia. *Brain Res* 1009:1–8. doi:[10.1016/j.brainres.2003.09.086](https://doi.org/10.1016/j.brainres.2003.09.086)
  168. Wen Y, Yang S, Liu R, Simpkins JW (2004) Transient cerebral ischemia induces site-specific hyperphosphorylation of tau protein. *Brain Res* 1022:30–38. doi:[10.1016/j.brainres.2004.05.106](https://doi.org/10.1016/j.brainres.2004.05.106)
  169. Williams S, Chalmers K, Wilcock GK, Love S (2005) Relationship of neurofibrillary pathology to cerebral amyloid angiopathy in Alzheimer's disease. *Neuropathol Appl Neurobiol* 31:414–421. doi:[10.1111/j.1365-2990.2005.00663.x](https://doi.org/10.1111/j.1365-2990.2005.00663.x)
  170. Wirth KJ, Fink E, Rudolphi K, Heitsch H, Deutschlander N, Wiemer G (1999) Amyloid  $\beta$ -(1–40) stimulates cyclic GMP production via release of kinins in primary cultured endothelial cells. *Eur J Pharmacol* 382:27–33
  171. Yamada M, Tsukagoshi H, Otomo E, Hayakawa M (1987) Cerebral amyloid angiopathy in the aged. *J Neurol* 234:371–376
  172. Yarchoan M, Xie SX, Kling MA, Toledo JB, Wolk DA, Lee EB, Van Deerlin V, Lee VM, Trojanowski JQ, Arnold SE (2012) Cerebrovascular atherosclerosis correlates with Alzheimer pathology in neurodegenerative dementias. *Brain* 135:3749–3756. doi:[10.1093/brain/aws271](https://doi.org/10.1093/brain/aws271)
  173. Zetterberg H, Mortberg E, Song L, Chang L, Provuncher GK, Patel PP, Ferrell E, Fournier DR, Kan CW, Campbell TG et al (2011) Hypoxia due to cardiac arrest induces a time-dependent increase in serum amyloid  $\beta$  levels in humans. *PLoS ONE* 6:e28263. doi:[10.1371/journal.pone.0028263](https://doi.org/10.1371/journal.pone.0028263)
  174. Zhang ET, Richards HK, Kida S, Weller RO (1992) Directional and compartmentalised drainage of interstitial fluid and cerebrospinal fluid from the rat brain. *Acta Neuropathol* 83:233–239
  175. Zhang X, Zhou K, Wang R, Cui J, Lipton SA, Liao FF, Xu H, Zhang YW (2007) Hypoxia-inducible factor 1 $\alpha$  (HIF-1 $\alpha$ )-mediated hypoxia increases BACE1 expression and  $\beta$ -amyloid generation. *J Biol Chem* 282:10873–10880 (**M608856200**)
  176. Zhiyou C, Yong Y, Shanquan S, Jun Z, Liangguo H, Ling Y, Jieying L (2009) Upregulation of BACE1 and  $\beta$ -amyloid protein mediated by chronic cerebral hypoperfusion contributes to cognitive impairment and pathogenesis of Alzheimer's disease. *Neurochem Res* 34:1226–1235. doi:[10.1007/s11064-008-9899-y](https://doi.org/10.1007/s11064-008-9899-y)