

# Chain length dependence of the polymer–solvent critical point parameters

N. B. Wilding, M. Müller, and K. Binder

*Institut für Physik, Johannes Gutenberg Universität, Staudinger Weg 7, D-55099 Mainz, Germany*

(Received 24 January 1996; accepted 3 April 1996)

We report grand canonical Monte Carlo simulations of the critical point properties of homopolymers within the bond fluctuation model. By employing configurational bias Monte Carlo methods, chain lengths of up to  $N=60$  monomers could be studied. For each chain length investigated, the critical point parameters were determined by matching the ordering operator distribution function to its universal fixed-point Ising form. Histogram reweighting methods were employed to increase the efficiency of this procedure. The results indicate that the scaling of the critical temperature with chain length is relatively well described by Flory theory, i.e.,  $\Theta - T_c \sim N^{-0.5}$ . The critical volume fraction, on the other hand, was found to scale like  $\phi_c \sim N^{-0.37}$ , in clear disagreement with the Flory theory prediction  $\phi_c \sim N^{-0.5}$ , but in good agreement with experiment. Measurements of the chain length dependence of the end-to-end distance indicate that the chains are not collapsed at the critical point. © 1996 American Institute of Physics. [S0021-9606(96)52026-X]

## I. INTRODUCTION AND OVERVIEW

When long flexible polymers are dissolved in a bad solvent there exists a critical temperature  $T_c(N)$  of unmixing slightly beneath the  $\Theta$  temperature (Fig. 1). At this critical temperature, the system phase separates into a very dilute (solvent rich) solution of collapsed chains and a semidilute (polymer rich) solution. The process is qualitatively described by the mean field theory of Flory,<sup>1</sup> which predicts simple power laws for the chain length ( $N$ ) dependences of  $T_c(N)$  and the corresponding critical volume fraction  $\phi_c(N)$

$$T_c(N) = \Theta / (1 + 1/\sqrt{N})^2 \approx \Theta - 2\Theta/\sqrt{N}, \quad N \rightarrow \infty, \quad (1)$$

$$\phi_c(N) = 1/(1 + \sqrt{N}) \approx 1/\sqrt{N}, \quad N \rightarrow \infty. \quad (2)$$

Another power law is predicted for the shape of the coexistence curve near  $T_c(N)$

$$\phi_{\text{coex}}^{(2)} - \phi_{\text{coex}}^{(1)} = 2\hat{B}(N)\tau^\beta, \quad \tau \equiv 1 - T/T_c(N), \quad (3)$$

with a critical order parameter exponent  $\beta$  and a chain length dependent critical amplitude  $\hat{B}(N)$  given by

$$\beta = \beta_{\text{MF}} = 1/2, \quad \hat{B}(N) \propto N^{-1/4}. \quad (4)$$

Further power laws describe the intensity of critical scattering, the associated correlation lengths and the interfacial tension, etc.,<sup>2,3</sup> but will not be considered here.

Notwithstanding the qualitative correctness of the Flory theory in predicting a phase separation, it should be emphasised that the exponent  $\beta = \beta_{\text{MF}} = 1/2$  in Eq. (4), as well as the powers of  $N$  in Eqs. (2)–(4) are mean field results, and thus cannot be expected to be quantitatively correct. More generally one expects that (we follow the notation of a recent experimental study<sup>4</sup>)

$$\begin{aligned} \hat{B}(N) &\propto N^{-x_1}, \\ \phi_c(N) &\propto N^{-x_2}, \\ \Theta - T_c(N) &\propto N^{-x_3}, \end{aligned} \quad (5)$$

where the mean field values of the exponents defined in Eq. (5) are

$$\begin{aligned} x_1^{\text{MF}} &= 1/4, \\ x_2^{\text{MF}} = x_3^{\text{MF}} &= 1/2. \end{aligned} \quad (6)$$

It is an interesting open question to ask what are the correct values of these exponents. While it is generally accepted from the ‘‘universality principle,’’<sup>5</sup> as well as experimental findings,<sup>4,7–13</sup> that the phase separation of polymer solutions falls in the same universality class as the three dimensional Ising model, so that<sup>6</sup>

$$\beta \approx 0.325, \quad (7)$$

the theoretical understanding of the exponents  $x_1, x_2, x_3$  in Eq. (5) is rather limited. Experimental data have yielded the estimates<sup>4,7–14</sup>

$$\begin{aligned} x_1 &\approx 0.23 - 0.34, \\ x_2 &\approx 0.38 \\ x_3 &\approx 0.47 - 0.50. \end{aligned} \quad (8)$$

However, theoretical estimates for these exponents are still controversial. De Gennes<sup>15</sup> suggested that in the limit of large  $N$ , one has the same scaling behavior as in mean field theory, i.e., the coexistence curve scales as

$$\phi_{\text{coex}}^{(2)} - \phi_{\text{coex}}^{(1)} = \frac{1}{\sqrt{N}} \tilde{\phi}(\sqrt{N}\tau), \quad (9)$$

Since  $\tilde{\phi}(z)$  must behave for small argument  $z$  as  $\tilde{\phi}(z) \propto z^\beta$ , this yields

$$x_1 = (1 - \beta)/2 \approx 0.34, \quad (10)$$

which is roughly compatible with experiments. However, the scaling with  $\sqrt{N}$  in Eq. (9) implies that  $x_2 = 1/2$ , which clearly disagrees with Eq. (8). Muthukumar<sup>16</sup> on the other hand, suggested that in a limit where ternary interactions are important, one should have different exponents, namely,

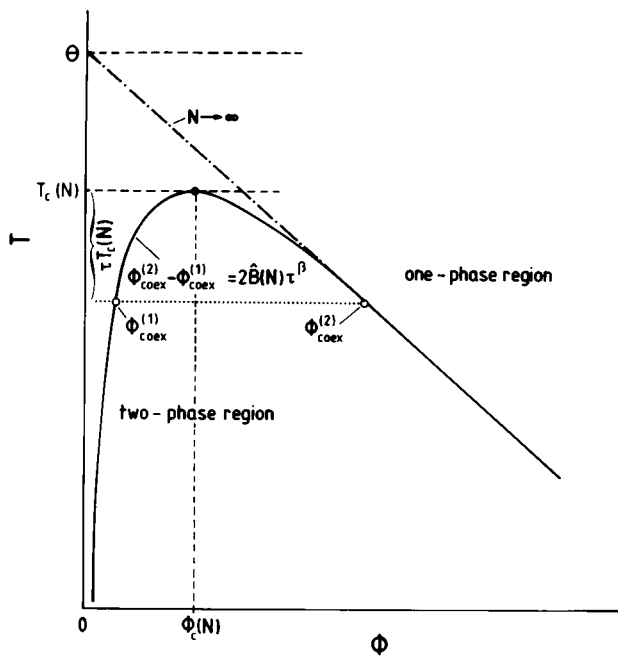


FIG. 1. Schematic phase diagram of a polymer solution in the space of the temperature  $T$  and the volume fraction  $\phi$ . The coexistence curve separates a dilute solution of collapsed chains [at  $\phi_{\text{coex}}^{(1)}$ ] from a semidilute solution of overlapping chains [at  $\phi_{\text{coex}}^{(2)}$ ]. These two branches of the coexistence curve merge at a critical point  $T_c(N)$ ,  $\phi_c(N)$ . For  $N \rightarrow \infty$  the critical point merges with the  $\Theta$  point of a dilute polymer solution [ $T_c(N \rightarrow \infty) \rightarrow \Theta$ ,  $\phi_c(N \rightarrow \infty) \rightarrow 0$ ] and the unmixing transition has a tricritical character. At  $T = \Theta$ , the chain configurations are ideal Gaussian coils, while their structure at  $T_c(N)$  is nontrivial.

$$x_1 = x_3 = 2/9, \quad x_2 = 1/3. \quad (11)$$

Subsequently this problem has received further attention in the literature.<sup>3,17–20</sup> Recall that the scaling structure in Eq. (9) can be justified in terms of a Ginzburg criterion<sup>21</sup> if one assumes that the chain linear dimensions are ideal.<sup>15</sup> It then follows (remembering that the chain gyration radius enters as a critical amplitude prefactor in the mean field power laws of the correlation length of the monomer density fluctuations), that the critical density  $\phi_c(N)$  coincides (up to a universal prefactor) with the onset of the “semidilute” regime, where chains overlap significantly.<sup>15</sup> This assumption is plausible because of the vicinity to the  $\Theta$  state ( $T = \Theta$ ,  $\phi \rightarrow 0$ ), where chains indeed behave ideally and the end-to-end distance scales as

$$R_e \propto N^{1/2}, \quad T = \Theta, \quad \phi \rightarrow 0, \quad N \rightarrow \infty. \quad (12)$$

However, the fact that for  $T < \Theta$  and  $\phi \rightarrow 0$ ,  $N \rightarrow \infty$  chains are collapsed

$$R_e \propto N^{1/3}, \quad T < \Theta, \quad \phi \rightarrow 0, \quad N \rightarrow \infty, \quad (13)$$

implies that one does not really know how  $R_e$  scales with  $N$  at the critical point. Therefore, it is tempting to generalize the scaling ansatz 9 as follows:<sup>19</sup>

$$\phi_{\text{coex}}^{(2)} - \phi_{\text{coex}}^{(1)} = \frac{1}{N^{x_4}} \tilde{\phi}(N^{x_4} \tau). \quad (14)$$

Equation (8) is, of course, still consistent with the behaviour of the coexistence curve at fixed  $\tau$  in the limit  $N \rightarrow \infty$ <sup>3</sup>

$$\phi_{\text{coex}}^{(1)} = 0, \quad \phi_{\text{coex}}^{(2)} = \frac{3}{2}(1 - T/\Theta), \quad (15)$$

if  $\tilde{\phi}(z \rightarrow \infty) = 3z/2$ . Since for small  $z = N^{x_4} \tau$ , the scaling function must behave as  $\tilde{\phi}(z) \propto z^\beta$  in order to comply with Eqs. (3) and (7), we conclude that

$$\phi_{\text{coex}}^{(2)} - \phi_{\text{coex}}^{(1)} = N^{x_4(1-\beta)} \tau^\beta, \quad x_1 = x_4(1-\beta). \quad (16)$$

From renormalization group arguments, Cherayil<sup>19</sup> has suggested that the exponents  $x_2$  and  $x_3$  can be expressed in terms of the new exponent  $x_4$  as

$$x_2 = 1 - x_4, \quad x_3 = x_4. \quad (17)$$

This theory, however, does not yield a prediction for  $x_4$  itself, and to fit some experimental data it was assumed that  $x_4 = 0.62$ ,  $x_2 = 0.38$ .<sup>19</sup> Kholodenko and Qian<sup>18</sup> have presented arguments that the exponent  $x_2$  is not even a universal quantity. If the scaling relations of Cherayil [Eqs. (16) and (17)] hold, this would imply that  $x_1$ ,  $x_2$ , and  $x_3$  are all system specific quantities, depending upon the material under consideration! Finally, we note that Muthukumar’s result, Eq. (11), disagrees with the above scaling relation  $x_1 = x_3(1-\beta)$ , and thus the theoretical situation is clearly somewhat confusing.

In view of these problems and the difficulties of extracting all relevant information from experiments (one not only wishes to check the relations of Eq. (5) but also seeks to clarify how the chain span scales with  $N$  at criticality), study of this problem by Monte Carlo computer simulations techniques<sup>22</sup> is highly desirable. In fact there has been some previous work on this problem which considered the vapor–liquid phase diagram of alkane chains<sup>23</sup> and coarse-grained off-lattice polymer models (see, e.g., Refs. 24 and 25). However, the work of Ref. 23 considers the problem of estimating absolute values of  $T_c(N)$  and  $\phi_c(N)$  for a chemically realistic model of alkanes for small  $N$  and does not address the universal properties of the limit  $N \rightarrow \infty$ . The Gibbs ensemble Monte Carlo method of Panagiotopoulos<sup>26,27</sup> allows an efficient estimation of the coexistence curve well below the critical point, but a precise estimation of critical point parameters is difficult in this framework.

An alternative approach for estimating critical point properties from simulations is based on finite-size scaling.<sup>28,29</sup> This approach has been very successful for both symmetrical<sup>30</sup> and asymmetrical<sup>31</sup> polymer mixtures in conjunction with the bond-fluctuation lattice model<sup>32</sup> and semi-grand canonical ensemble simulation techniques.<sup>33</sup> These studies also relied on the use of histogram reweighting<sup>34</sup> and (in the asymmetric case) recent advances in disentangling order parameter and energy fluctuations near criticality in a finite-size scaling context.<sup>35</sup>

In the present work we attempt to apply a related approach to study the liquid–vapor critical point of homopolymers within the bond fluctuation model. This problem is, however, somewhat more intricate than that of polymer mixtures since one must employ the grand canonical ensemble (GCE)<sup>35</sup> in order to effectively deal with the strong near-

critical density fluctuations. As is well known, GCE simulations for chain molecules are extremely difficult, since the insertion probability for a polymer chain into a many chain system is vanishingly small.<sup>22,36–38</sup> For chains that are not too long (and/or systems that are not too dense), this problem can be eased by the configurational bias Monte Carlo (CBMC) method.<sup>36–38</sup> In the present paper we combine CBMC with histogram reweighting and a finite-size scaling analysis in its form extended to asymmetric systems.<sup>31,35</sup> By this special combination of recent techniques (which will be briefly reviewed in Sec. II) we are able, for the first time to obtain accurate results, both for  $\phi(N)$  and  $T_c(N)$  up to  $N=60$  effective monomers. Since the effective bond in the bond-fluctuation model can be thought of as corresponding to 3 to 5 chemical bonds (when a mapping to chemically realistic chain molecules is attempted<sup>32</sup>), our simulations thus correspond to a degree of polymerization up to a few hundred chemical bonds along the chain backbone.

Section III then presents our results, including a estimation of the  $\Theta$  temperature from an analysis of the end-to-end distance of single isolated chains. We obtain both the location of the critical point in the  $(T, \phi)$  plane as a function of chain length and, for the first time, the associated dependence of the chain span. In Sec. IV we discuss our results and compare them to the theoretical ideas sketched above. We obtain very good agreement with experiment, but as in the latter the need to study much longer chains is clearly apparent to definitively clarify the true asymptotic behaviour for chain lengths  $N \rightarrow \infty$ .

## II. ALGORITHMIC AND COMPUTATIONAL ASPECTS

The bond-fluctuation model (BFM) studied in this paper is a coarse-grained lattice-based polymer model that combines computational tractability with the important qualitative features of real polymers, namely, monomer excluded volume, monomer connectivity, and short range interactions. Within the framework of the model, each monomer occupies a whole unit cell of a 3D periodic simple cubic lattice. Neighboring monomers along the polymer chains are connected via one of 108 possible bond vectors. These bond vectors provide for a total of 5 different bond lengths and 87 different bond angles. Thermal interactions are catered for by a short range intermonomer potential. The cutoff range of this potential was set at  $r_m = \sqrt{6}$  (in units of the lattice spacing), a choice which ensures that the first peak of the correlation function is encompassed by the range of the potential. We note also, that within our model, solvent molecules are not modeled explicitly, rather their role is played by vacant lattice sites. Further details concerning the BFM can be found in Ref. 32.

To implement a grand canonical ensemble simulation of the BFM, the configurational bias Monte Carlo (CBMC) method was employed.<sup>36–38</sup> The CBMC scheme utilizes a biased insertion method to “grow” a polymer into the system in a stepwise fashion, each successive step being chosen so as to avoid excluded volume where possible. For brevity

we shall merely outline the GCE implementation of this CBMC method and refer the reader to Ref. 39 for a fuller description.

Within the GCE scheme there are two complementary types of moves, insertion attempts and deletion attempts, both of which are made with equal frequency. An insertion move first involves attempting to grow a candidate polymer into the system. The basic strategy for achieving this is to insert successive monomers of the chain into the system one by one. The position of each successive monomer is chosen probabilistically from the set of 108 possible BFM bond vectors emanating from the previously inserted monomer. The selection probability for each of the possible monomer positions is weighted by its Boltzmann factor, effectively biasing the choice in favor of low energy chain configurations. In order to keep track of the accumulated bias, a book keeping scheme is maintained. Once a candidate chain has been successfully grown, it is submitted to a Monte Carlo lottery to decide whether or not it is to be accepted. The total chain construction bias is compensated for in the acceptance probability, thereby ensuring that detailed balance is obeyed.

For chain deletion moves, one chooses a chain at random from those in the system and “reconstructs” its bias by examining the alternative growth scenarios at each step of the chain. The candidate chain for deletion is also submitted to a Monte Carlo lottery to decide whether the proposed deletion should take place. As with the insertion lottery, the chain bias is taken into account in the deletion probability. The chemical potential,  $\mu$ , which controls the system chain density, also enters into the acceptance probability for both insertion and deletion.

The principal observables measured in the course of the simulations were the monomeric volume fraction

$$\phi = 8nN/V \quad (18)$$

and the dimensionless energy density:

$$u = 8w^{-1}\Phi(\{r\})/V, \quad (19)$$

where  $n$  is the number of chains,  $\Phi(\{r\})$  is the configurational energy,  $w$  is the depth of the square well interaction potential (so that  $T=w^{-1}$ ) and  $V$  is the system volume. Here, the factor of 8 derives from the number of lattice sites occupied by one monomer in the BFM. Measurements of  $\phi$  and  $u$  were performed at intervals of 500 chain insertion attempts and accumulated in the joint histogram  $p_L(\phi, u)$ . The final histograms comprised some  $10^5$  entries. Also measured were the distributions of the chain radius of gyration and the chain end-to-end distances.

Using the GCE algorithm, chains of lengths  $N=10, 20, 40, 60$  were studied. For the  $N=10$  and  $N=20$  system size  $V=40^3$  and  $V=50^3$  were employed, while for  $N=40$  and  $N=60$  chain lengths only the  $V=50^3$  was studied. Unfortunately, it was not possible to study chains longer than  $N=60$  since the acceptance rate for chain insertions falls exponentially with increasing  $N$  and volume fraction  $\phi$ . This problem is illustrated in Fig. 2, where we plot the acceptance rate for a number of chain lengths as a function of the monomeric volume fraction. One sees for example, that for  $N=80$  the

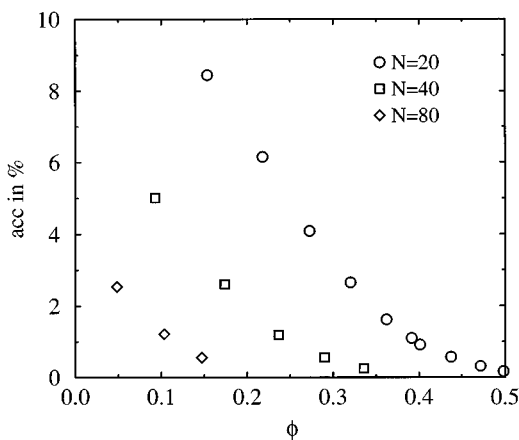


FIG. 2. The CBMC acceptance rate as a function of the monomeric volume fraction for chain lengths  $N=20, 40, 80$ .

acceptance rate is too low to provide reliable statistics within reasonable run times. Indeed, even for our longest chain length  $N=60$ , extremely long runs were required to gather adequate statistics.

Having outlined our model and simulation technique we now turn to a brief description of our data analysis methods. As mentioned in the introduction, finite-size scaling (FSS) methods are an indispensable tool for the proper treatment of critical behavior, serving as they do to provide estimates of infinite-volume critical properties from simulations of finite-sized systems. The FSS methods we shall employ here are especially tailored to fluid systems and have been described in detail elsewhere.<sup>35</sup> The basic idea is to exploit the Ising character of the polymer liquid–vapor critical point to accurately locate the critical point. This is done by observing that precisely at criticality the distributions of certain readily measurable observables assume scale-invariant universal forms. The particular universal scaling form on which we shall focus, is the distribution of the ordering scaling operator  $p_L(\mathcal{M})$ . For the Ising model, the special symmetry between the coexisting phases implies  $\mathcal{M} \rightarrow m$  (the magnetization). The critical point form of  $p_L(m)$  is independently known from extensive studies of large Ising lattices.<sup>40</sup> For fluids, however, the lack of symmetry between the coexisting phases implies<sup>35</sup> that the ordering operator is a linear combination of the fluid density and energy density, i.e.,  $\mathcal{M} \rightarrow \phi + su$ , where  $s$  is a system specific “field mixing” parameter that controls the strength of the coupling between the density and energy fluctuations.

Thus, in principle, one is able to accurately locate the critical point of a fluid system simply by tuning the  $T$ ,  $\mu$ , and  $s$  until the measured form of  $p_L(\mathcal{M})$  matches the known fixed point Ising form. In performing this task, the histogram reweighting method<sup>30,34</sup> can be of great assistance. This technique allows one to generate estimated histograms  $p_L(\phi, u)$  for values of the control parameters  $T$  and  $\mu$  other than those at which the simulations were actually performed. Such extrapolations are generally very reliable in the neighborhood of the critical point, due to the large critical fluctuations.<sup>34</sup> In

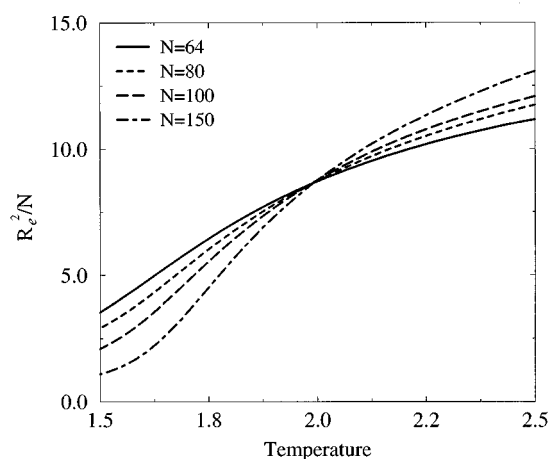


FIG. 3. The temperature dependence of  $R_e^2/N$  for a single chain with a variety of chain lengths. All simulations were performed at the temperature  $T=2.0$  and the temperature dependence obtained by histogram extrapolation. The common intersection point for large  $N$  yields the estimate  $\Theta=2.02(2)$ .

what follows we shall detail the application of all these techniques to the problem of determining the liquid–vapor critical point parameters of our polymer model.

### III. PROCEDURE AND RESULTS

The first task undertaken was a determination of the  $\Theta$  temperature for our model, knowledge of which is a prerequisite for studying the scaling of  $\Theta - T_c(N)$  [cf. Eq. (5)]. To achieve this the end-to-end distance  $R_e$  of single chains was studied as a function of temperature and chain length. From Eqs. (12) one sees that precisely at the  $\Theta$  temperature, and modulo corrections to scaling,  $R_e^2/N$  should be independent of  $N$ . Extensive simulations were therefore carried out for single chains of length  $N=64, 80, 100$ , and  $150$  at a temperature  $T=2.0$ . The full temperature dependence of  $R_e$  for each chain length was subsequently obtained by histogram reweighting. This involves recording the joint histogram of the end-to-end distance and conformational energy of each configuration generated. The histogram for other temperatures may then be obtained by reweighting the Boltzmann factor for each histogram entry in the manner described in Ref. 33. Figure 3 shows the resulting curves of  $R_e^2/N(T)$ , which exhibit a very precise intersection point at  $T=2.02(2)$ , a value that we therefore adopt as our estimate of the  $\Theta$  temperature.

In general for fluid systems, the coexistence curve is not known *a priori* and must therefore be identified empirically as a prelude to locating the critical point itself. In the following we exemplify the general strategy for determining the critical parameters by considering the case of the  $N=20$  system.

Initially a temperature of  $T=1.75$  somewhat beneath the  $\Theta$  temperature was chosen and the approximate value of the coexistence chemical potential was determined by tuning  $\mu$  until  $p_L(\phi)$  exhibited a double peaked structure. A long run was then carried out at this near-coexistence  $\mu$  value, in

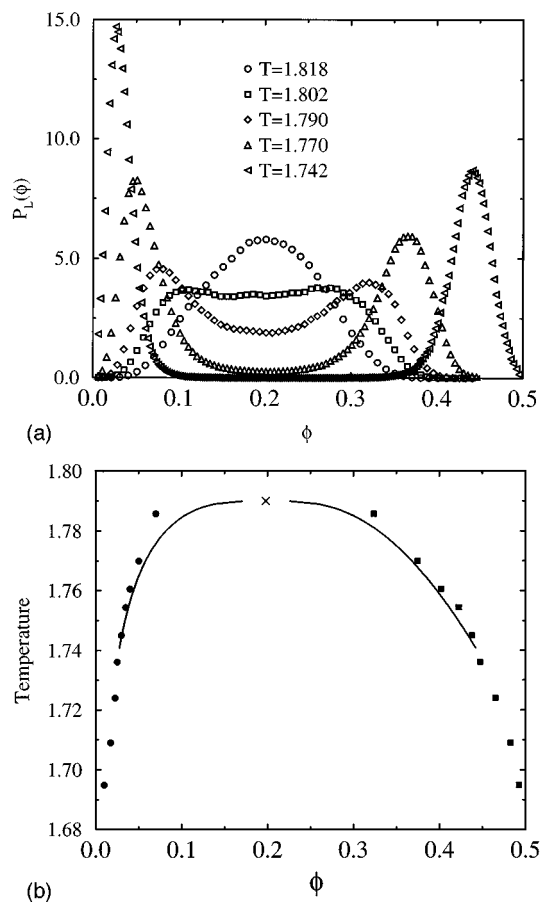


FIG. 4. (a) The distribution function of the monomeric volume fraction  $p_L(\phi)$  for the  $N=20$  system at a selection of temperatures along the line of liquid-vapor coexistence. (b) The measured liquid (squares) and vapor (circles) peak densities corresponding to the histogram extrapolation along the coexistence curve. Also shown is an attempted fit to the data (full line) and the estimate for the critical point (X), both obtained as described in the text.

which the histogram of  $p_L(\phi, u)$  was accumulated. A histogram extrapolation based on this data was then used to extrapolate along the coexistence curve using the equal peak-weight criterion for  $p_L(\phi)$ .<sup>41</sup> In this way a sizeable portion of the near-critical coexistence curve (and its analytic extension<sup>35</sup>) could be located. Representative forms of the density distributions along this line of pseudocoexistence are shown in Fig. 4(a), while the positions of the density peaks are shown in Fig. 4(b).

To locate the critical point along the line of phase coexistence, we utilized the universal matching condition for the operator distributions  $p_L(\mathcal{M})$ . Again applying the histogram reweighting technique, the temperature, chemical potential, and field mixing parameter  $s$  were tuned until the form of  $p_L(\mathcal{M})$  most accurately matched the universal fixed point Ising form  $\tilde{p}_{\mathcal{M}}^*(x)$ . The results of performing this procedure are shown in Fig. 5 for the  $V=40^3$  and  $V=50^3$  system sizes. Given that these systems contain on average less than 100 polymer chains at criticality, the quality of the data collapse is remarkable. The mappings shown were effected for a choice of the parameters  $T_c = 1.791(5)$ ,  $\mu_c = -5.164\ 25(2)$ ,

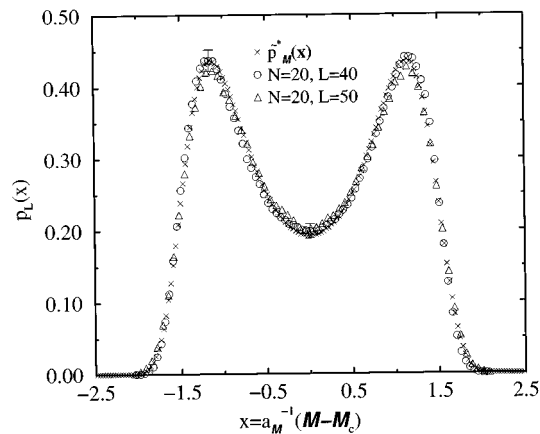


FIG. 5. The ordering operator distribution  $p_L(\mathcal{M})$  of the polymer model at the assigned critical parameters. Also shown for comparison is the universal fixed point form  $\tilde{p}_{\mathcal{M}}^*(x)$  obtained in a separate study (Ref. 39). In accordance with convention all data has been scaled to unit norm and variance, by choice of the scale factor  $a_{\mathcal{M}}$ .

$s = -0.135(4)$ , where we have defined  $\mu$  to be the chemical potential per monomer. The associated estimates for the critical volume fraction is  $\phi_c = 0.198(5)$ . We note that this estimate of  $T_c$  is rather less than what would be obtained, were one simply to extrapolate the liquid and vapor densities to the point at which they merge [Fig. 4(b)]. Thus our results further emphasize the finite-size errors that can arise using such a procedure.

We have also attempted to fit the coexistence curve data of Fig. 4(b), using fits of the Ising form:  $\phi_l = \phi_c + 0.745(T_c - T) + 0.55(T_c - T)^{0.324}$ ,  $\phi_v = \phi_c + 0.745(T_c - T) + 0.55(T_c - T)^{0.324}$ , with  $T_c$  and  $\phi_c$  assigned the values obtained above. For the Lennard-Jones fluid,<sup>42</sup> a fit of this type gave a good description of the coexistence data for temperatures down to  $0.8T_c$ . Here, one sees that a reasonable fit can be obtained, but only for temperature within some 3% of  $T_c$ . This would seem to suggest that the asymptotic Ising region in the polymer system is much smaller than in the Lennard-Jones system.

With regard to our estimates for the critical parameters, it should be emphasized that they are subject to errors arising both from corrections to scaling, as well as field mixing effects in the case of the critical volume fraction.<sup>35</sup> While in principal one can also correct for these effects, if one has access to a sufficient range of system sizes and ample statistics (see, e.g., Ref. 42), the computational difficulties of the present problem preclude such an analysis. Indeed, for the  $N=60$  system studied here, only one system size,  $V=50$  was employed, this being the largest that could reasonably be tackled. Smaller system sizes were not studied since these would contain so few chains at criticality as to be excessively influenced by corrections to scaling. The matching to the universal form for the largest size available was then the only guide to the location of the critical point. Notwithstanding these problems, however, we feel on the basis of our experience of corrections to scaling in other systems,<sup>42</sup> that

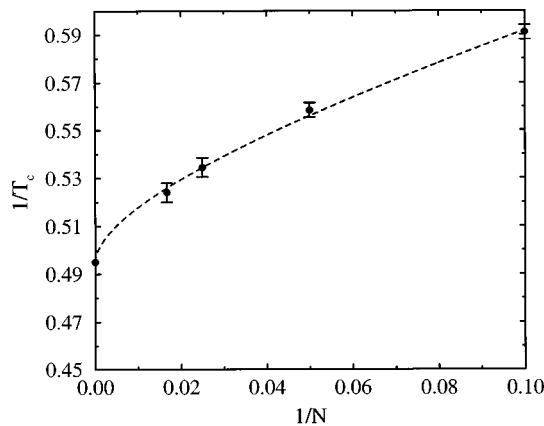


FIG. 6. The measured estimates of the inverse critical temperature as a function of inverse chain length, together with the  $\Theta$  temperature, representing the critical temperature in the limit of infinite  $N$ . Also shown is a fit of the form  $1/T_c = 1/\theta(1 + 0.402N^{-0.5} + 0.696N^{-1})$ .

the quoted uncertainties generously encompass the infinite-volume critical parameters.

The procedure described above was repeated for the other chain lengths studied, allowing estimates to be obtained for  $T_c(N)$  and  $\phi_c(N)$ . However, the computational difficulty became progressively greater as  $N$  increased, making the accumulation of good statistics problematic. As a result it was not possible to perform a reliable histogram extrapolation away from the critical point into the subcritical two-phase region and thus no information on the  $N$  dependence of the critical amplitude prefactor featuring in Eq. (5) could be obtained. An additional hindrance to probing the subcritical coexistence region is that the BFM appears to be unable to support a liquid phase for volume fractions  $\phi \geq 0.6$ , instead collapsing into an amorphous crystal. This artifact is traceable to the limited conformational entropy of our lattice-based chains, and has also been observed in a previous study of tethered chains using the same model.<sup>43</sup>

The results for  $T_c(N)$  and  $\phi_c(N)$  are plotted against  $N^{-1}$  in Figs. 6 and 7, respectively. For  $T_c(N)$  we find that

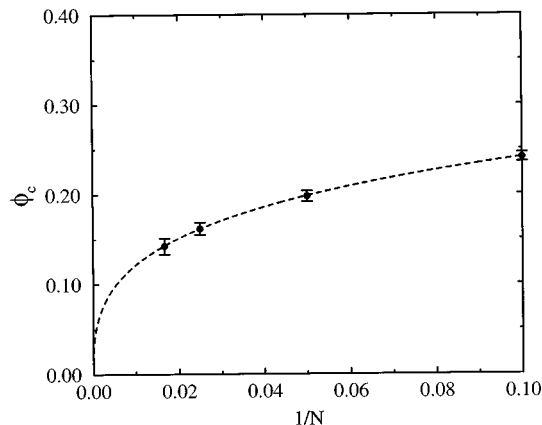


FIG. 7. The measured estimates of the critical density as a function of chain length, together with the infinite  $N$  value  $\phi_c = 0$ . Also shown is a fit of the form  $\phi_c = (1.1126 + 1.3N^{0.369})^{-1}$ .

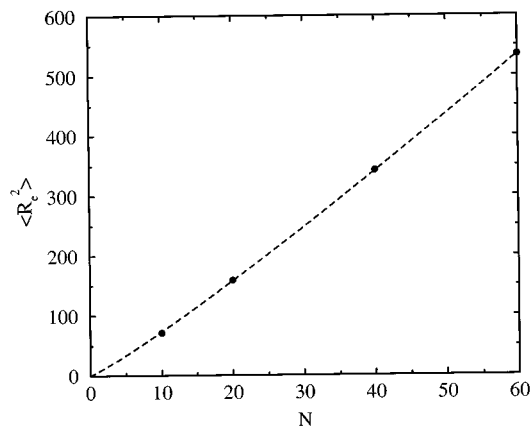


FIG. 8. The  $N$  dependence of the end-to-end distance squared. The fit is of the form  $R_e^2 = 5.653N^{1.112}$ .

the data can be well fitted by a Flory-type formula of the form  $T_c = \Theta + a_1N^{-0.5} + a_2N^{-1}$  (where the  $N^{-1}$  term can be thought of as a free-end correction and where we assume that  $\lim_{N \rightarrow \infty} T_c = \theta$ ), although fits of the form  $T_c(N) = \Theta + a_1N^{-x_3}$  yield a comparable fit quality for values of  $x_3$  in the range  $x_3 = 0.46 - 0.53$ . For  $\phi(N)$  we have performed a fit of the form  $\phi_c(N) = (b_1 + b_2N^{x_2})^{-1}$ , and obtain  $x_2 = 0.37(2)$ .

Finally, we have considered the  $N$  dependence of the average squared end-to-end distance,  $R_e^2(N)$  at criticality. This quantity has been conjectured to scale as<sup>19</sup>

$$R_e^2(N) \propto N^{2\nu'} \quad (20)$$

It was observed that the scaling of  $\phi_c$  with  $N$  could be explained if  $\nu' = 0.46$ , and we would like to check this conjecture. Our results are plotted in Fig. 8. Despite the very limited number of data points, we have attempted to fit this data to the form Eq. (20), with the result  $R_e^2(N) \propto N^{1.11(4)}$ . This finding that  $\nu' > 0.5$  is also supported by a study of the distribution function of end-to-end distances  $p(r)$  at the estimated critical point. A scaling form for this function (valid for large  $N$ ) may be written<sup>44</sup>

$$p(r) \propto r^\kappa \exp(-Dr^\delta), \quad (21)$$

where  $\delta \equiv (1 - \nu)^{-1}$ ,  $D$  is a constant and  $\kappa = 0.249 \pm 0.011$  in three dimensions.<sup>44</sup> In Fig. 9 we plot the function  $p(r^2)r^{-0.1245}$  against  $r^2$  on a logarithmic scale, for the chain length  $N = 40$  and  $N = 60$ . Fits to the data yields estimates  $\nu' = 0.51$  and  $\nu = 0.518$ , respectively. Of course, it is hard to believe that the chains are swollen at  $T_c(N)$  which is below  $\Theta$ , given the fact that for  $\phi \rightarrow 0$  at  $T = \Theta$ , the chains are not swollen. It is thus possible that the slight deviation from  $\nu' = 1/2$  is simply due to corrections to scaling.

#### IV. DISCUSSION

In summary we have performed a study of the liquid-vapor critical point of a polymer model for chain lengths up to  $N = 60$  monomers. Owing to the low acceptance rate for chain transfers it was not possible to study either very long

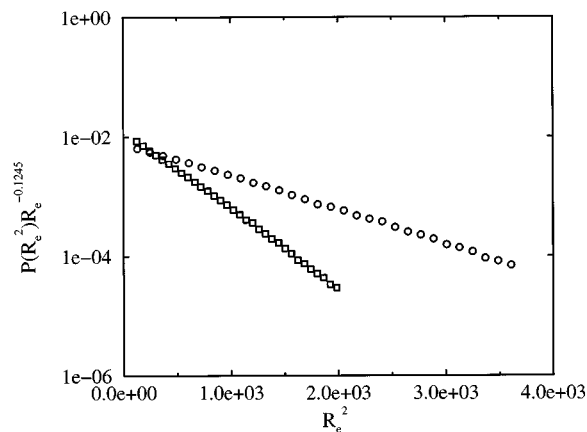


FIG. 9. The measured function  $p(R_c^2)R_c^{-0.1245}$ . Fits shows that  $\nu > 0.5$  implying that the chains are slightly swollen at criticality.

chains, or very large systems. Nevertheless we believe that the FSS-based technique we employed, of matching the measured scaling operator distribution functions to their fixed point universal forms is considerably more reliable than the practice of simply extrapolating a power law fit to coexistence curve data obtained well away from criticality, as has been the norm in previous simulation studies.<sup>23–25,27</sup> Indeed, while we reproduce the previous results with regard to the finding that  $T_c(N)$  is well described by a Flory formula, our measured value for the exponent  $x_2 = 0.37(2)$ , is in much closer accord with experiment ( $x_2 = 0.38$ ) than previous simulation measurements. It is also interesting to note that for a similar range of monomeric units  $N$ , our coarse grained model seems to be much better at describing the asymptotic limit than chemically realistic models such as that employed in a recent study of Alkanes,<sup>23</sup> which did not even yield a monotonically decreasing  $\phi_c(N)$ .

With regard to the critical  $N$  dependence of the chain span, our results suggest (albeit on the basis of a very limited number of data points) that the exponent  $\nu' > 0.5$ , which, if correct, would imply that the chains are slightly swollen at criticality—at variance with the suggestion of Cherayil<sup>19,45</sup> and L’huillier<sup>20</sup> that  $\nu' \approx 0.46$ , which is based on the assumption that the phase separation occurs when the chains just barely begin to overlap. We consider it possible, however, that our estimates for  $\nu'$  should be considered as effective exponents, which exceed the classical value  $\nu' = 1/2$  only because of corrections to scaling. But in any case there is no evidence that the chains are somewhat collapsed at criticality.

Finally, we remark that there is evidently a need to study longer chain and larger system sizes in order both to validate the results thus far obtained and to confirm that the limiting scaling behaviour is being observed. In view of the low acceptance rates for chain transfers at large  $N$ , algorithmic improvements are clearly necessary before this can be achieved.

*Note added in proof.* Very recently P. Grassberger has remeasured the  $\Theta$  temperature using much longer chains than considered here. His results suggest that the  $\Theta$  tempera-

ture lies in the range  $T = 2.08–2.11$ . Use of values in this range in the fit of Fig. 6, yields improved agreement with the Flory form. We thank Professor Grassberger for communicating his results to us prior to publication.

## ACKNOWLEDGMENTS

The authors thank M. Muthukumar for a helpful discussion. N.B.W. acknowledges financial support from the Max Planck Institut für Polymerforschung, Mainz. Part of the simulations described here were performed at the IWR, Universität Heidelberg. Partial support from the Deutsche Forschungsgemeinschaft (DFG) under Grant Number B314/3-2 and from the Bundesministerium für Bildung, Wissenschaft, Forschung und Technologie (BMBF) under Grant Number O3N8008C, is also gratefully acknowledged.

- <sup>1</sup>P. J. Flory, *Principles of Polymer Chemistry* (Cornell University Press, Ithaca, 1953), Ch. XIII.
- <sup>2</sup>H. E. Stanley, *An Introduction to Phase Transitions and Critical Phenomena* (Oxford University Press, Oxford, 1971).
- <sup>3</sup>B. Widom, *Physica A* **194**, 532 (1993).
- <sup>4</sup>S. Enders, B. A. Wolf, and K. Binder, *J. Chem. Phys.* **103**, 3809 (1995).
- <sup>5</sup>M. E. Fisher, *Rev. Mod. Phys.* **46**, 597 (1974).
- <sup>6</sup>J. C. Le Guillou and J. Zinn-Justin, *Phys. Rev. B* **21**, 3976 (1980).
- <sup>7</sup>R. Perzynski, M. Delsanti, and M. Adam, *J. Phys. (Paris)* **48**, 115 (1987).
- <sup>8</sup>T. Dobashi, M. Nakata, and M. Kaneko, *J. Chem. Phys.* **72**, 6685, 6692 (1980).
- <sup>9</sup>K. Shinozaki, T. V. Tan, Y. Saito, and T. Nose, *Polymer* **23**, 728 (1982).
- <sup>10</sup>I. C. Sanchez, *J. Appl. Phys.* **58**, 2871 (1985).
- <sup>11</sup>B. Chu and Z. Wang, *Macromolecules* **21**, 2283 (1988).
- <sup>12</sup>I. C. Sanchez, *J. Phys. Chem.* **93**, 6983 (1989).
- <sup>13</sup>K.-Q. Xia, C. Franck, and B. Widom, *J. Chem. Phys.* **97**, 1446 (1992).
- <sup>14</sup>Y. Izumi and Y. Miyake, *J. Chem. Phys.* **81**, 1501 (1984).
- <sup>15</sup>P. G. de Gennes, *Scaling Concepts in Polymer Physics* (Cornell University, Ithaca, 1979), Ch. IV, Sec. 3.
- <sup>16</sup>M. Muthukumar, *J. Chem. Phys.* **85**, 4722 (1986).
- <sup>17</sup>S. Stepanow, *J. Phys. (Paris)* **48**, 2037 (1987).
- <sup>18</sup>A. L. Kholodenko and C. Qian, *Phys. Rev. B* **40**, 2477 (1989).
- <sup>19</sup>B. J. Cherayil, *J. Chem. Phys.* **95**, 2135 (1991); **98**, 9126 (1993).
- <sup>20</sup>D. L’huillier, *J. Phys. II (Paris)* **2**, 1411 (1992); **3**, 547 (1993).
- <sup>21</sup>V. I. Ginzburg, *Sov. Phys.-Solid State* **2**, 1824 (1960).
- <sup>22</sup>K. Binder, in *Monte Carlo and Molecular Dynamics Simulations in Polymer Science*, edited by K. Binder (Oxford University Press, Oxford, 1995).
- <sup>23</sup>B. Smit, S. Karaborni, and J. I. Siepmann, *J. Chem. Phys.* **102**, 2126 (1995).
- <sup>24</sup>Y.-J. Sheng, A. Z. Panagiotopoulos, S. K. Kumar, and I. Szleifer, *Macromolecules* **27**, 400 (1994).
- <sup>25</sup>F. A. Escobedo and J. J. de Pablo, *Mol. Phys.* **87**, 347 (1996).
- <sup>26</sup>A. Z. Panagiotopoulos, *Fluid Phase Equilibria* **76**, 97 (1992); *Mol. Simulation* **9**, 1 (1992).
- <sup>27</sup>A. D. Mackie, A. Z. Panagiotopoulos, and S. K. Kumar, *J. Chem. Phys.* **102**, 1014 (1995).
- <sup>28</sup>For a review, see *Finite Size Scaling and Numerical Simulation of Statistical Systems*, edited by V. Privman (World Scientific, Singapore, 1990).
- <sup>29</sup>K. Binder in *Computational Methods in Field Theory*, edited by H. Gaussterer and C. B. Lang (Springer, Berlin, 1992), pp. 59–125.
- <sup>30</sup>H.-P. Deutsch and K. Binder, *Macromolecules* **25**, 6214 (1992); *J. Stat. Phys. II (Paris)* **3**, 1049 (1993); H.-P. Deutsch, *J. Stat. Phys.* **67**, 1039 (1992).
- <sup>31</sup>H.-P. Deutsch, *J. Chem. Phys.* **99**, 4825 (1993); M. Müller and K. Binder, *Macromolecules* **28**, 1825 (1995); M. Müller and N. B. Wilding, *Phys. Rev. E* **51**, 2079 (1995); M. Müller, *Macromolecules* **28**, 6556 (1995).
- <sup>32</sup>I. Carmesin and K. Kremer, *Macromolecules* **21**, 2819 (1988); H. P. Deutsch and K. Binder, *J. Chem. Phys.* **94**, 2294 (1991); W. Paul, K. Binder, D. W. Heermann, and K. Kremer, *J. Phys. II* **1**, 37 (1991).
- <sup>33</sup>A. Sariban and K. Binder, *J. Chem. Phys.* **86**, 5859 (1987).
- <sup>34</sup>A. M. Ferrenberg and R. H. Swendsen, *Phys. Rev. Lett.* **61**, 2635 (1988); **63**, 1195 (1989).

- <sup>35</sup>N. B. Wilding and A. D. Bruce, *J. Phys. Condens. Matter* **4**, 3087 (1992); N. B. Wilding, *Z. Phys. B* **93**, 119 (1993); N. B. Wilding and M. Müller, *J. Chem. Phys.* **102**, 2562 (1995).
- <sup>36</sup>D. Frenkel, in *Computer Simulation in Chemical Physics*, edited by M. P. Allen and D. J. Tildesley (Kluwer Academic, Dordrecht, 1993).
- <sup>37</sup>J. I. Siepmann, *Mol. Phys.* **70**, 1145 (1990).
- <sup>38</sup>D. Frenkel, G. C. A. M. Mooij, and B. Smit, *J. Phys. Condens. Matter* **3**, 3053 (1992).
- <sup>39</sup>B. Smit, *Mol. Phys.* **85**, 153 (1995).
- <sup>40</sup>R. Hilfer and N. B. Wilding, *J. Phys. A* **28**, L281 (1995).
- <sup>41</sup>C. Borgs and R. Kotecky, *J. Stat. Phys.* **60**, 79 (1990).
- <sup>42</sup>N. B. Wilding, *Phys. Rev. E* **52**, 602 (1995).
- <sup>43</sup>P.-Y. Lai and K. Binder, *J. Chem. Phys.* **97**, 586 (1992).
- <sup>44</sup>J. Des Cloizeaux and G. Jannick, *Polymers in Solution* (Oxford University Press, Oxford, 1990).
- <sup>45</sup>P. Biswas and B. J. Cherayil, *J. Chem. Phys.* **100**, 4665 (1994).