

# Changing Effective Population Size and the McDonald-Kreitman Test

Adam Eyre-Walker<sup>1</sup>

*Centre for the Study of Evolution and School of Biological Sciences, University of Sussex, Brighton BN1 9QG, United Kingdom*

Manuscript received May 21, 2002  
Accepted for publication September 30, 2002

## ABSTRACT

Artifactual evidence of adaptive amino acid substitution can be generated within a McDonald-Kreitman test if some amino acid mutations are slightly deleterious and there has been an increase in effective population size. Here I investigate the conditions under which this occurs. I show that fairly small increases in effective population size can generate artifactual evidence of positive selection if there is no selection upon synonymous codon use. This problem is exacerbated by the removal of low-frequency polymorphisms. However, selection on synonymous codon use restricts the conditions under which artifactual evidence of adaptive evolution is produced.

THE McDonald-Kreitman (MK; McDONALD and KREITMAN 1991) test is a powerful test of neutral molecular evolution; furthermore, it can be used to infer the proportion of substitutions driven by positive adaptive evolution (CHARLESWORTH 1994; AKASHI 1999; FAY *et al.* 2001; SMITH and EYRE-WALKER 2002). Under the MK test, the pattern of evolution within a species is compared to that between species, for two different types of site. Typically the data are divided into synonymous and nonsynonymous sites, and this is how the test is phrased throughout this article. However, the test can also be applied to other categorizations of sites; for example, JENKINS *et al.* (1995) applied the test to protein and nonprotein binding sites within the *ftz* enhancer element in *Drosophila*.

Let us imagine that we have multiple alleles of a gene from within a species and a single outgroup sequence, of the same gene, from a different species. We count the number of sites at which we have a synonymous ( $P_s$ ) or a nonsynonymous polymorphism ( $P_n$ ) and the number of sites at which there has been a synonymous ( $D_s$ ) or a nonsynonymous ( $D_n$ ) substitution. Under the neutral theory of molecular evolution, in which all mutations are either neutral or strongly deleterious, it is not difficult to show that  $P_n/P_s = D_n/D_s$ . This forms the basis of the MK test of neutral evolution. In a number of data sets violations of the equality  $P_n/P_s = D_n/D_s$  have been demonstrated. Possibly the most interesting of these are those in which  $D_n/D_s > P_n/P_s$ , since this is consistent with adaptive amino acid substitution. If there has been adaptive amino acid substitution, the proportion of substitutions that were adaptive can be estimated as

$$\alpha = 1 - \frac{D_s P_n}{D_n P_s} \quad (1)$$

(SMITH and EYRE-WALKER 2002). The statistic  $\alpha$  can vary between  $-\infty$  and 1. Negative values can be produced by sampling error or violations of the model; in particular, the segregation of slightly deleterious amino acid mutations can cause negative  $\alpha$ -values.

It has been argued that artifactual evidence of adaptive amino acid substitution can be obtained in a MK test if some nonsynonymous mutations are slightly deleterious and the current effective population size is larger than the long-term effective population size (MCDONALD and KREITMAN 1991); this is because slightly deleterious mutations that currently do not segregate in the population, may have been fixed in the past. Here I investigate the difference in effective population size that is needed to generate artifactual evidence of adaptive evolution when there are slightly deleterious amino acid mutations.

## THE MODEL

Let us consider the divergence between two species and let us imagine that the effective population size was  $N_c^*$  for a proportion  $\gamma$  of the time for which the two species diverged and that for the rest of the time it was  $\lambda N_c^*$ , the current effective population size of the species from which the polymorphism data were obtained (Figure 1). Consider a mutation upon which the strength of selection is  $s$ —if  $s > 0$  the mutation is advantageous and if  $s < 0$  it is deleterious—where the homozygote has an advantage (disadvantage) of  $2s$  and the mutation is semidominant. WRIGHT (1938) showed that the time a mutation spends in the interval between  $x$  and  $x + \delta x$  is

$$\Phi(x) = 2 \frac{N_c(1 - e^{-4N_c s(1-x)})}{N(1 - e^{-4N_c s})x(1-x)} \quad (2)$$

(see also SAWYER and HARTL 1992). Therefore the prob-

<sup>1</sup>Author e-mail: a.c.eyre-walker@sussex.ac.uk

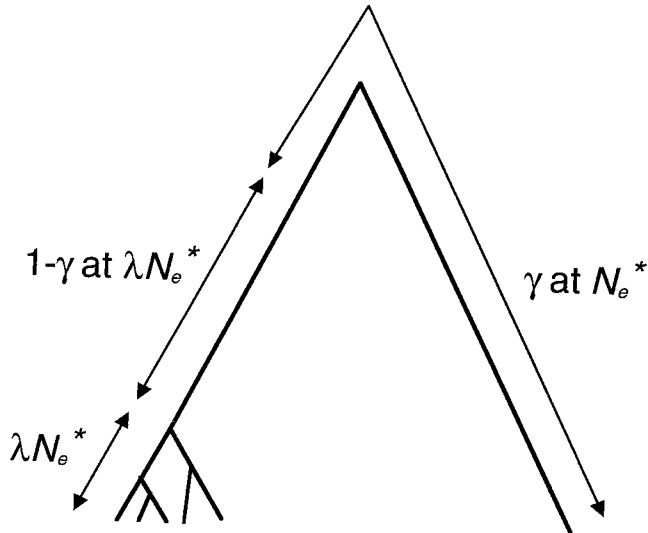


FIGURE 1.—The model.

ability that we will observe a mutation in a sample of  $n$  sequences is

$$H(S, U) = U \int_0^1 (1 - x^n - (1 - x)^n) \frac{(1 - e^{-S(1-x)})}{(1 - e^{-S})x(1-x)} dx, \quad (3)$$

where  $S = 4N_e s$ ,  $U = 4N_e u$ , and  $u$  is the mutation rate per generation.

KIMURA (1983) has shown that the probability that such a mutation will ultimately become fixed in the population is

$$P(s) = \frac{2(N_e/N)s}{1 - e^{-4N_e s}}. \quad (4)$$

Since  $2Nu$  mutations enter the population each generation, the rate of substitution of mutations of selection strength  $s$  is

$$Q(S, u) = \frac{uS}{1 - e^{-S}}. \quad (5)$$

Hence, the rate of divergence between the two species in our model is

$$R(S, \lambda, \gamma, u) = \gamma Q(S, u) + (1 - \gamma) Q(\lambda S, u). \quad (6)$$

**A simple model:** Let us assume for simplicity that all synonymous mutations are neutral and that nonsynonymous mutations are either deleterious or slightly deleterious; then the estimated proportion of amino acid substitutions that have been driven by adaptive evolution is

$$\alpha = 1 - \frac{R(0, \lambda, \gamma, u) H(\lambda S, \lambda U)}{R(S, \lambda, \gamma, u) H(0, \lambda U)}, \quad (7)$$

an expression that is solely a function of  $\gamma$ ,  $\lambda$ , and  $S$ , since the mutation parameters,  $U$  and  $u$ , cancel out.

Let us begin by assuming that the effective population

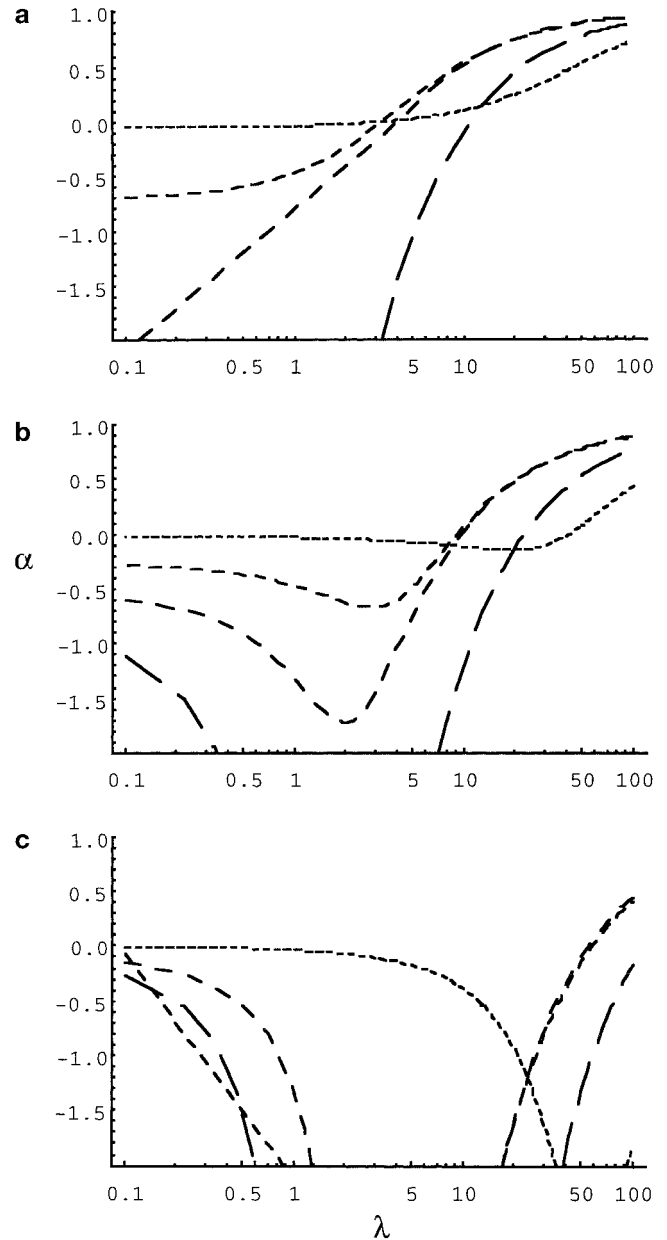


FIGURE 2.—The effect of increasing  $N_e$  for deleterious mutations when the increase occurred (a) very recently ( $\gamma = 1$ ) and (b) at the time of divergence of the two species being considered ( $\gamma = 0.5$ ). (c) The case when the population was bottlenecked for 10% of the divergence time ( $\gamma = 0.1$ ). In all cases the sample size was set at 10 sequences and the curves with increasing dash length are  $4N_e s = -0.1, -1, -2$ , and  $-4$ .

was  $N_e^*$  until very recently such that  $\gamma = 1$ . Figure 2 shows the estimate of  $\alpha$  for mutations of different selection coefficients as a function of  $\lambda$ . As expected,  $\alpha$  is negative when there has been no change in  $N_e$  ( $\lambda = 1$ ); however, as  $\lambda$  increases,  $\alpha$  becomes less negative until it eventually becomes positive (note  $\alpha$  decreases if the population size has decreased). A change in the population size has little consequence for mutations with  $S \leq 0.1$  since  $\alpha \approx 0$  unless the increase in effective popula-

TABLE 1

The critical value of  $\lambda$  above which  $\alpha > 0$  for a model in which nonsynonymous mutations are deleterious and synonymous mutations are neutral

$n$	$S$	$\lambda^*$ for $\gamma = 1$	$\lambda^*$ for $\gamma = 0.5$	$\lambda^*$ for $\gamma = 0.1$
2	-0.1	3.0	31.4	210.3
	-0.5	2.8	9.4	51.9
	-1.0	2.8	6.7	34.4
	-2.0	3.2	6.4	31.9
	-4.0	6.7	13.4	67.0
	-8.0	93.1	186.2	930.0
10	-0.1	3.4	42.9	338.2
	-0.5	3.3	12.4	84.9
	-1.0	3.4	9.1	57.3
	-2.0	4.2	9.7	54.7
	-4.0	11.0	22.8	117.5
	-8.0	164.1	328.6	1642.1
20	-0.1	3.9	55.2	512.3
	-0.5	3.8	16.1	130.0
	-1.0	4.0	12.3	88.6
	-2.0	5.5	14.1	85.9
	-4.0	16.8	35.7	186.7
	-8.0	261.4	523.7	2619.8

tion size has been very large. Similarly a change in population size has little effect for mutations with  $S \gg 4$  since  $\alpha < 0$  unless the change in  $N_e$  is very large. It is worth noting here that mutations for which  $S > 4$  are unlikely to contribute much to evolution since their probabilities of fixation are very low; a mutation of  $S = 4$  has a fixation probability that is 6% that of a neutral mutation.

Table 1 gives the critical value of  $\lambda$  above which  $\alpha > 0$ . The threshold increases as a function of both the strength of selection and the sample size, although it is not heavily dependent upon the latter. The increase in  $N_e$  needs to be at least threefold to generate artifactual evidence of positive selection for a sample of 10 sequences.

If we now assume that the increase in effective population size occurred sometime in the past (*i.e.*,  $\gamma < 1$ ), then  $\alpha$  is again underestimated for deleterious mutations (Figure 2). Small increases in  $N_e$  actually decrease  $\alpha$ , but larger increases generate artifactual evidence of positive selection. If  $\lambda^*$  is the value of  $\lambda$  that gives  $\alpha > 0$  when  $\gamma = 1$ , the threshold for  $\gamma < 1$  is at least  $\lambda^*/\gamma$ , although it is much greater than this for mutations of small effect (Table 1). Note that a decrease in effective population size can increase  $\alpha$ , but it never leads to artifactual evidence of adaptive evolution.

Although I phrased the model in terms of an increase in effective population size, one can equally think of the population as going through a bottleneck during the divergence between the species; in fact, it is more sensible to think in terms of a population bottleneck

when  $\gamma$  is small—for example,  $\gamma = 0.1$  corresponds to a bottleneck of 10% of the total divergence time. Furthermore, it is worth noting that this bottleneck could have occurred at any time during the divergence of the species; it does not have to have been in the lineage leading to the outgroup taxon.

**Excluding rare variants:** The fact that slightly deleterious mutations can make the McDonald-Kreitman test highly conservative, when the population size has not changed, led FAY *et al.* (2001; see also CHARLESWORTH 1994) to suggest that polymorphisms segregating below a certain frequency be ignored. They reasoned that this would increase the power of the MK test because slightly deleterious mutations do not segregate at high frequency. Unfortunately this is also likely to make the test more sensitive to changes in effective population size. To investigate, I reevaluated Equation 3, ignoring mutations segregating at a frequency  $< k$ , where  $k$  was set to 0.1 and 0.2 (Figure 3). The effect is clear, as the cutoff frequency increases so that the MK test becomes more sensitive to changes in  $N_e$ ; the overestimation of  $\alpha$  becomes larger, it occurs more readily, and the range of selection coefficients that readily yield an overestimation of  $\alpha$  is broader. This latter effect is slightly deceptive, since mutations with selection coefficients  $4N_e s < -4$  contribute little to evolution, since their fixation probabilities are very low. If we assume that the change in  $N_e$  occurred sometime in the past, then larger increases in  $N_e$  are needed to generate artifactual evidence of adaptive evolution; exactly the same relationship holds as above, if  $\lambda^*$  is the value of  $\lambda$  that gives  $\alpha > 0$  when  $\gamma = 1$ , the threshold for  $\gamma < 1$  is at least  $\lambda^*/\gamma$ .

**Selection on synonymous codon use:** We have so far assumed that synonymous mutations are neutral, but there is evidence in many species that synonymous codon use is subject to selection (SHARP *et al.* 1992). To start, let us assume that both nonsynonymous and synonymous mutations are unconditionally deleterious with effects of  $S_n = 4N_e s_n$  and  $S_s = 4N_e s_s$ . Under this model

$$\alpha' = 1 - \frac{R(S_s, \lambda, \gamma, u) H(\lambda S_n, \lambda U)}{R(S_n, \lambda, \gamma, u) H(\lambda S_s, \lambda U)}. \quad (8)$$

Figure 4 shows the effect of increasing  $S_s$  relative to  $S_n$  for two values of  $S_n$ . As one might expect, there is artifactual evidence of amino acid substitution if  $|S_s| > |S_n|$  even with no change in effective population size, and there is no artifactual evidence of adaptive evolution when  $S_s = S_n$ . However, if  $|S_s| < |S_n|$  selection upon synonymous codon use reduces the likelihood of producing artifactual evidence of positive selection. This is true whether the increase in population size increased very recently (*i.e.*,  $\gamma = 1$ ) or in the past ( $\gamma < 1$ , data not shown).

However, assuming that synonymous mutations are unconditionally deleterious is unrealistic. It is more usual to model synonymous codon bias as being a balance among mutation, selection, and genetic drift (LI

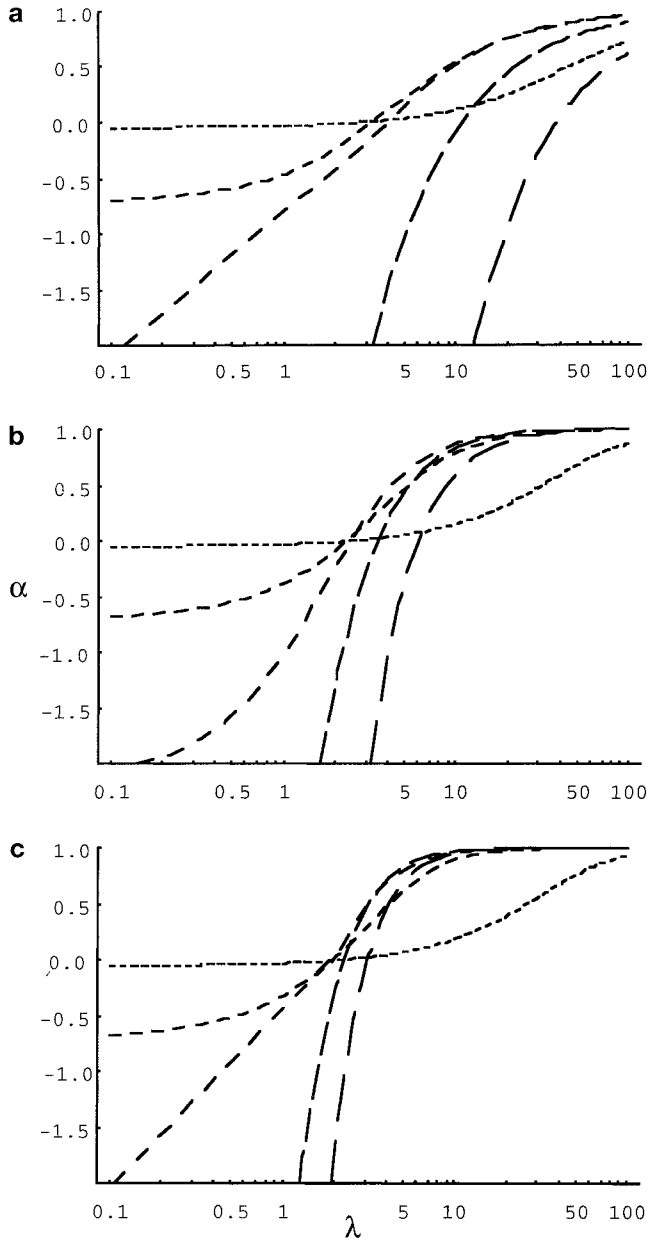


FIGURE 3.—The effect of removing mutations segregating at frequencies  $\leq 0.1$  (b) and  $0.2$  (c) *vs.* when all mutations are considered (a). The sample size was set at 10 sequences and the curves with increasing dash length are  $4N_e s = -0.1, -1, -2, -4,$  and  $-6$ .

1987; BULMER 1991). Consider a biallelic site at which an individual homozygous for allele A1 has an advantage of  $+2s$  over an individual homozygous for A2, where there is semidominance (*i.e.*, the advantage of the heterozygote is  $+s$ ). We assume that the mutation rate between A1 and A2 is the same in both directions and is equal to  $u$ . At equilibrium the proportion of sites occupied by the A1 allele is

$$X(S) = \frac{e^S}{e^S + 1} \quad (9)$$

(LI 1987; BULMER 1991). Let us consider two situations.

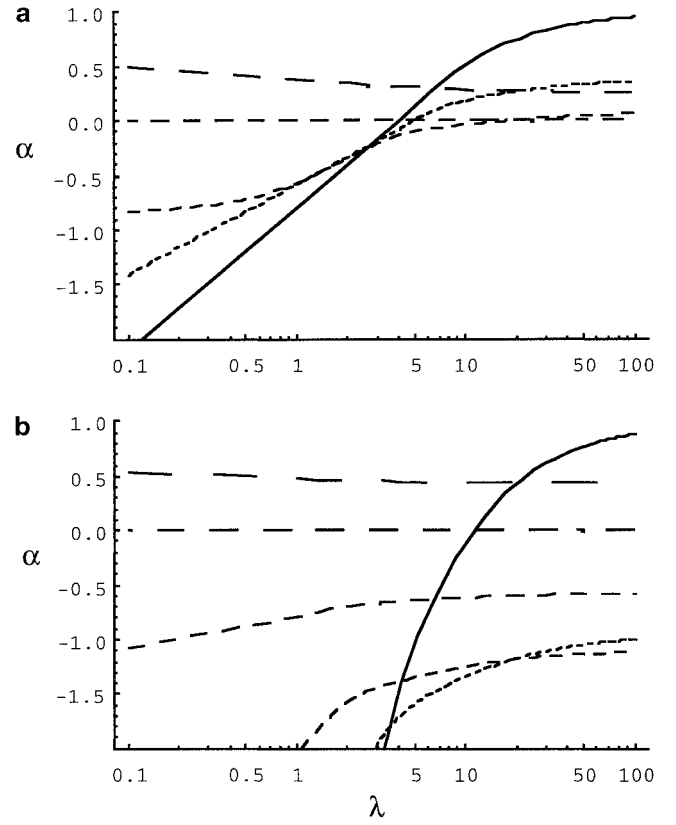


FIGURE 4.—The effect of slightly deleterious synonymous mutations. (a)  $S_n = -2$  and for increasing dash length, starting with the solid lines,  $S_s = 0.1, 0.5, 1, 2,$  and  $3$ . (b)  $S_s = -4$  and for increasing dash length, starting with the solid lines,  $S_s = 0.1, 1, 2, 3, 4,$  and  $5$ . The sample size was set at 10 sequences.

In the first let us imagine that the ancestral population size was  $N_e^*$  and that it has been for some time so that an equilibrium has been reached, and that the population size recently increased instantaneously to  $\lambda N_e^*$ . However, we assume that the divergence during the increased population size is sufficiently small that the equilibrium frequency of A1 does not change. Under this model the probability of detecting an A1 or A2 polymorphism is

$$H''(S, \lambda, U) = X(S)H(-\lambda S, \lambda U) + (1 - X(S))H(\lambda S, \lambda U) \quad (10)$$

and the rate of evolution is

$$R''(S, \lambda, \gamma, u) = \gamma[X(S)R(-S, u) + (1 - X(S))R(S, u)] \\ + (1 - \gamma)[X(S)R(-\lambda S, u) \\ + (1 - X(S))R(\lambda S, u)]. \quad (11)$$

If we assume that the strength of selection acting upon synonymous codon use is  $S_s$  and that the strength of selection acting against nonsynonymous mutations, which are all assumed to be deleterious, is  $S_n$ , then

$$\alpha'' = 1 - \frac{R''(S_s, \lambda, \gamma, u) H(\lambda S_n, \lambda U)}{R(S_n, \lambda, \gamma, u) H''(S_s, \lambda, U)}. \quad (12)$$

Let us begin by assuming that the effective population was  $N_e^*$  until very recently such that  $\gamma = 1$ . If  $|\mathcal{S}_s| > |\mathcal{S}_n|$ , then artifactual evidence of adaptive evolution results even if the effective population size has not increased or decreased—if the population size increases substantially, then the artifactual evidence of adaptive amino acid substitution vanishes. When  $|\mathcal{S}_s| < |\mathcal{S}_n|$  selection on synonymous codon use reduces the effect of increases in effective population size. If the change in effective population size occurred sometime in the past, selection on synonymous codon use greatly reduces the chance of detecting artifactual evidence of positive selection (Figure 5)—in fact,  $\alpha$  decreases with increases in effective population size for some parameter combinations because synonymous sites undergo adaptive evolution when the population size increases. For higher values of  $\mathcal{S}_n$ ,  $\alpha$  is greatly underestimated unless  $\mathcal{S}_s$  is of very similar magnitude (results not shown).

Now let us consider the case where the ancestral population size was  $\lambda N_e^*$ , the population size the species has been for many generations, but that it occasionally goes through bottlenecks (or sudden expansions) of size  $N_e^*$ . Under this model the probability of detecting an A1 or A2 polymorphism is

$$H'''(S, \lambda, U) = X(\lambda S)H(-\lambda S, \lambda U) + (1 - X(\lambda S))H(\lambda S, \lambda U) \tag{13}$$

and the rate of evolution is

$$\begin{aligned} R'''(S, \lambda, \gamma, u) = & \gamma[X(\lambda S)R(-S, u) \\ & + (1 - X(\lambda S))R(S, u)] \\ & + (1 - \gamma)[X(\lambda S)R(-\lambda S, u) \\ & + (1 - X(\lambda S))R(\lambda S, u)]. \end{aligned} \tag{14}$$

The estimated proportion of amino acid substitutions driven by positive selection is

$$\alpha''' = 1 - \frac{R'''(\mathcal{S}_s, \lambda, \gamma, u)}{R(\mathcal{S}_n, \lambda, \gamma, u)} \frac{H(\lambda \mathcal{S}_n, \lambda U)}{H'''(\mathcal{S}_s, \lambda, U)}. \tag{15}$$

These equations differ from Equations 10–12 only in that  $X(S)$  has been replaced by  $X(\lambda S)$ .

Since it does not seem sensible to consider the case where  $\gamma = 1$ , since synonymous codon bias would not have equilibrated at the population size of  $\lambda N_e^*$  under this model, I have considered the cases where the species have spent 50 and 10% of their divergence bottlenecked ( $\lambda > 1$ ; or as an expanded population). In this model  $\alpha$  is underestimated unless  $|\mathcal{S}_s|$  is similar in value to  $|\mathcal{S}_n|$  (Figure 6).

### DISCUSSION

As McDonald and Kreitman originally pointed out in their seminal paper (McDONALD and KREITMAN 1991),

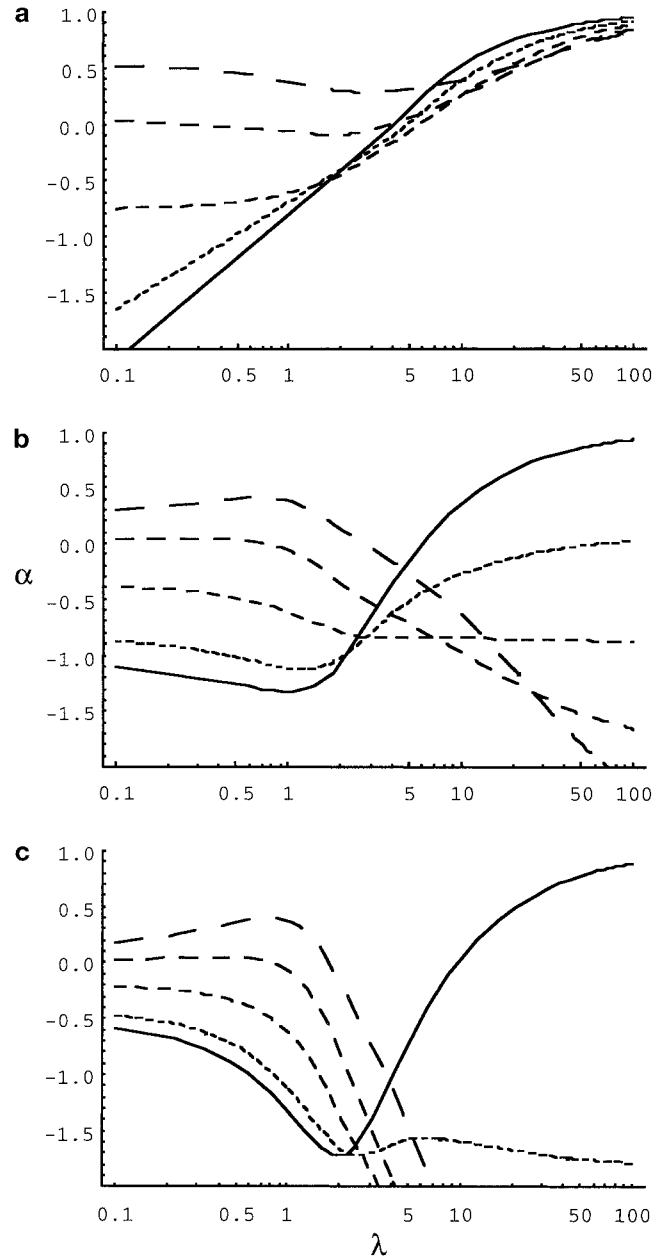


FIGURE 5.—The effect of selection on synonymous codon use, where synonymous codon use is in a mutation-selection-drift balance equilibrated at a population size of  $N_e^*$ . In each graph  $\mathcal{S}_n = -2$  and for increasing dash length, starting with the solid lines,  $\mathcal{S}_s = 0.001, 1, 2, 3, 4,$  and  $5$ . (a)  $\gamma = 1.0$ , (b)  $\gamma = 0.75$ , and (c)  $\gamma = 0.5$ . The sample size was set at 10 sequences.

artifactual evidence of adaptive amino acid substitution can be generated by an increase in effective population size, if some amino acid mutations are slightly deleterious. The conditions under which this can occur appear to be quite permissive if there is no selection upon synonymous codon use—a 3-fold increase in effective population size is sufficient to generate artifactual evidence of positive selection if the change in effective population size occurred very recently. If the change in effective population size occurred sometime in the past,



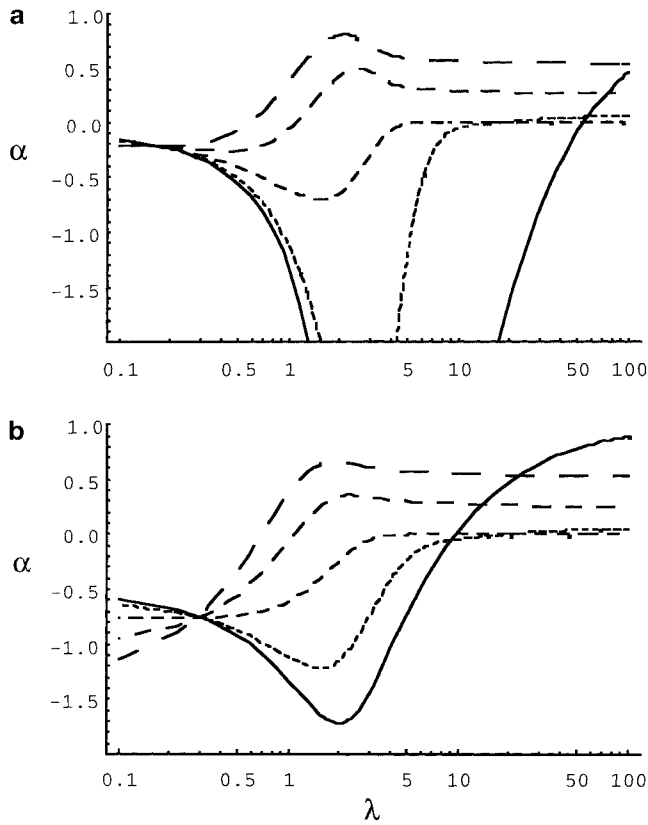


FIGURE 6.—The effect of selection on synonymous codon use, where synonymous codon use is in a mutation-selection-drift balance equilibrated at a population size of  $\lambda N_c^*$ . In each graph  $S_i = -2$  and increasing dash length, starting with the solid lines,  $S_s = 0.001, 1, 2, 3,$  and  $4$ . (a)  $\gamma = 0.1$  and (b)  $\gamma = 0.5$ . The sample size was set at 10 sequences.

be it an increase to the current population size or a bottleneck during the divergence of the species, the change in the population size needs to be larger, but not very large; for example, if the population was bottlenecked for 10% of the divergence time, then mutations of moderate effect would produce artifactual evidence of adaptive evolution if the reduction in population size was  $\sim 50$ -fold.

The range of selection coefficients over which an increase in effective population generates artifactual evidence of positive selection may seem rather small, but mutations with  $4N_c s$  values  $< -4$  contribute little to substitution anyway, since their fixation probabilities are very low ( $< 6\%$  that of a neutral mutation). The critical quantity is the proportion of mutations with  $-0.1 > 4N_c s > -4$  out of the mutations with  $0 > 4N_c s > -4$ . This we do not know, but we can make some inferences. The level of constraint in protein-coding genes, as measured by the ratio of the nonsynonymous to the synonymous substitution rate, is  $< 0.3$  in most species (*e.g.*, see EYRE-WALKER *et al.* 2002; KEIGHTLEY and EYRE-WALKER 2000), including species like our own that have very low effective population sizes. If all mutations were equally deleterious the strength of selection needed to produce

such a level of constraint would be  $4N_c s \approx -2$  (calculated using Equation 5). However, it seems very likely that some mutations are actually much more deleterious than this, which means that on average  $4N_c s > -2$  for slightly deleterious mutations. In fact, a substantial proportion of mutations could be effectively neutral at all population sizes, in which case they will provide no artifactual evidence of adaptive evolution. To investigate this further, let us assume that the strength of selection is exponentially distributed,

$$D(S; \bar{S}) = \frac{-E^{-S/\bar{S}}}{\bar{S}}, \quad (16)$$

where  $\bar{S}$  is the average strength of selection. Under this distribution-of-fitness effect the average probability of detecting a new mutation in a sample of sequences and the rate of evolution are

$$H^*(\bar{S}, U) = U \int_{-\infty}^0 \int_0^1 D(S; \bar{S}) (1 - x^n - (1 - x)^n) \times \frac{(1 - e^{-S(1-x)})}{(1 - e^{-S})x(1 - x)} \partial x \partial S \quad (17)$$

and

$$R^*(\bar{S}, \lambda, \gamma, u) = \gamma \int_{-\infty}^0 D(S; \bar{S}) Q(S, u) \partial S + (1 - \gamma) \int_{-\infty}^0 D(S; \bar{S}) Q(\lambda S, u) \partial S, \quad (18)$$

respectively. If we assume that nonsynonymous mutations are deleterious but synonymous mutations are neutral, then the estimated proportion of amino acid substitutions that are adaptive is

$$\alpha^* = 1 - \frac{R(0, \lambda, \gamma, u)}{R^*(\bar{S}, \lambda, \gamma, u)} \frac{H^*(\lambda \bar{S}, \lambda U)}{H(0, U)} \quad (19)$$

and the ratio of the nonsynonymous to the synonymous substitution rate is

$$\omega = \frac{R^*(\bar{S}, \lambda, \gamma, u)}{R(0, \lambda, \gamma, u)}. \quad (20)$$

Equations 19 and 20 are functions of  $\bar{S}$ ,  $\lambda$ , and  $\gamma$  since the mutation parameters cancel out. We can solve Equation 20 to find the value of  $\bar{S}$  that gives a certain nonsynonymous over synonymous ratio for values of  $\lambda$  and  $\gamma$ . As a guide let us assume that  $\lambda = 1$ ; then to obtain a nonsynonymous over synonymous ratio ( $\omega$ ) of 0.3 requires that  $\bar{S} = -3.99$ ; for  $\omega = 0.2$   $\bar{S} = -6.74$ ; and for  $\omega = 0.1$   $\bar{S} = -15.0$ . Figure 7 shows the consequences of changing the effective population size when  $\bar{S} = -6.74$ ; qualitatively similar results are obtained with  $\bar{S} = -3.99$  and  $\bar{S} = -15.0$ . The model behaves in a similar way to one in which all mutations are mildly deleterious ( $4N_c s \approx -1$ ): Modest changes in  $N_c$  can generate artifactual evidence of positive selection, but the change in  $N_c$  needs

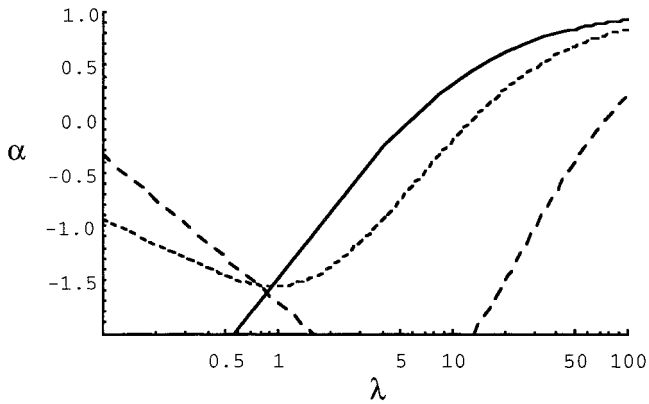


FIGURE 7.—The effect of variation in the strength of selection acting upon nonsynonymous mutations, which are assumed to be deleterious, but exponentially distributed with  $\bar{s} = -6.74$ . Synonymous mutations are assumed to be neutral. Curves of increasing dash length, starting with the solid lines, are  $\gamma = 1, 0.5$ , and  $0.1$ .

to be larger if the change occurred sometime in the past.

Although it is relatively easy to generate artifactual evidence of positive selection when there is no selection on synonymous codon use, this is generally not the case when there is selection. The behavior depends upon which population size synonymous codon use has equilibrated at—if we assume that synonymous codon bias equilibrated at some ancestral population size and that the population size has subsequently increased in the lineage we have sampled polymorphism from, then selection on synonymous codon use reduces the effect of increasing population size; *i.e.*, if  $\alpha$  is overestimated, the bias is not as great as if there was no selection on synonymous codon use. Furthermore, there is often no artifactual evidence of adaptive amino acid substitution for any parameter combination if the change occurred sometime in the past, since under these conditions adaptive evolution occurs at synonymous sites leading to  $\alpha < 0$ . Adaptive evolution occurs at synonymous sites because the equilibrium frequency of the preferred codon is lower in the ancestral population size than it will be eventually at the increased population size, and there is therefore a period during which advantageous preferred codons are fixed. In contrast, if synonymous codon bias equilibrated at the current size of the population that has been sampled for polymorphism data, but there have been bottlenecks during the divergence of the species, then synonymous codon bias increases  $\alpha$ , but  $\alpha$  is still often negative. Only if the strength of selection on synonymous mutations is similar to the strength of selection on nonsynonymous mutations, do we get artifactual evidence of positive selection. Of course, artifactual evidence of adaptive amino acid substitution is produced if the strength of selection is greater upon synonymous mutations than on nonsynonymous mutations, but this is true whether or not the population size has changed.

Do these results have any implications for our estimates of adaptive evolution? The proportion of amino acid substitutions that have been fixed by adaptive evolution has been estimated in *Drosophila* (AKASHI 1999; FAY *et al.* 2002; SMITH and EYRE-WALKER 2002) and in humans (FAY *et al.* 2001). AKASHI (1999) suggested that the vast majority of the amino acid substitutions in *Drosophila* were probably a consequence of adaptive evolution, since in the sample of genes he studied, amino acid variants were present either as very rare polymorphisms or as fixed differences between species, in contrast to synonymous variants that segregated at a variety of frequencies; he therefore inferred that most of the amino acid polymorphisms were slightly deleterious and that the fixed differences were due to adaptive evolution. Subsequently FAY *et al.* (2002) estimated that 26% of the amino acid substitutions between *Drosophila melanogaster* and *D. simulans* had been fixed by positive selection, a number not significantly different from the 45% estimated for the divergence between *D. simulans* and *D. yakuba* (SMITH and EYRE-WALKER 2002). However, it is believed that *D. melanogaster* and *D. simulans* have both spread out from Africa relatively recently, so many of the polymorphism data, coming as they do from North America, are from a population that has undergone an increase in size (BEGUN and AQUADRO 1993; ANDOLFATTO 2001). Furthermore, there is no evidence of selection currently acting on synonymous codon use in *D. melanogaster* (AKASHI 1996; AKASHI and SCHAEFFER 1997). In *D. simulans* there is evidence of current selection on synonymous codon use (AKASHI and SCHAEFFER 1997; KLIMAN 1999; BEGUN 2001) but also evidence that selection may have been absent in the past (BEGUN 2001). The conditions in *Drosophila* therefore appear to be exactly those most likely to generate an overestimation of adaptive evolution—*i.e.*, an expansion in population size and little, or no, selection on synonymous codon use.

However, there are several reasons for believing that  $\alpha$  has not been overestimated. First, although *D. simulans* and *D. melanogaster* have expanded out of Africa, the effective population size of the non-African population appears to be lower than that of the African population (BEGUN and AQUADRO 1993; ANDOLFATTO 2001), which means that the non-African population is probably smaller than the ancestral population (*i.e.*, the situation actually corresponds to a recent contraction rather than an expansion). Some caution needs to be exercised because an increase in the population size increases the efficiency of selection, so the effective population size experienced by neutral variation might be lower than that experienced by selected variation (OTTO and WHITLOCK 1997). Second, there is evidence of adaptive amino acid substitution between *D. melanogaster* and *D. simulans* even when only African *D. melanogaster* sequences are used in the analysis (FAY *et al.* 2002). Third, although the average frequency of nonsynonymous

polymorphisms was lower than that of synonymous polymorphisms in the eight genes studied by AKASHI (1999), this is not generally the case for genes in either *D. simulans* (SMITH and EYRE-WALKER 2002) or *D. melanogaster* (N. G. C. SMITH and A. EYRE-WALKER, unpublished results). Furthermore, the ratio of  $P_n/P_s$  does not differ significantly, or in a consistent direction, between African and non-African populations of *D. melanogaster* and *D. simulans*, despite their different effective population sizes (ANDOLFATTO 2001). So there is no evidence that amino acid mutations are on average more deleterious than synonymous mutations, although neither of these lines of evidence is strong. Fourth, FAY *et al.* (2002) have argued that evidence of positive selection in *Drosophila* is unlikely to be a consequence of an expansion in effective population size since the effect should be seen for all genes, whereas positive selection is observed for only a small number of genes. However, genes may vary in the proportion of mutations that are slightly deleterious.

FAY *et al.* (2001) have estimated that ~35% of all amino acid substitutions in the divergence in humans and old-world monkeys were adaptive, using single-nucleotide polymorphism data from humans. However, humans have undergone population size expansion and there is no clear evidence of selection on synonymous codon use (EYRE-WALKER and HURST 2001). Furthermore, because nonsynonymous polymorphisms were segregating at lower frequencies than synonymous mutations in their data, FAY *et al.* removed low-frequency variants. So the estimate of adaptive evolution in humans may be an overestimate. Interestingly, there is an excess of amino acid polymorphism, and not substitution, in human mitochondrial DNA, when human mtDNA is compared to chimpanzee (NACHMAN *et al.* 1996). This suggests that although the human population size has expanded, the current effective population size is actually similar to or smaller than the long-term effective population size separating humans and chimpanzees, a view corroborated by the fact that the estimate of the effective population size of humans is lower than that of chimpanzees (WISE *et al.* 1998; EYRE-WALKER *et al.* 2002) and the ancestor of humans and chimpanzees (CHEN and LI 2001). This may mean that the estimate of adaptive substitution in nuclear DNA is not a substantial overestimate.

In summary, an increase in effective population size can generate artifactual evidence of adaptive amino acid substitution if there are slightly deleterious amino acid mutations; the conditions are quite permissive if there is no selection upon synonymous codon use, but the conditions become more restrictive if there is selection at synonymous sites.

Thanks to Nicolas Bierné for helpful discussion and the Biotechnology and Biological Sciences Research Council and Royal Society for support.

## LITERATURE CITED

- AKASHI, H., 1996 Molecular evolution between *Drosophila melanogaster* and *D. simulans*: reduced codon bias, faster rates of amino acid substitution, and larger proteins in *D. melanogaster*. *Genetics* **144**: 1297–1307.
- AKASHI, H., 1999 Inferring the fitness effects of DNA mutations from polymorphism and divergence data: statistical power to detect directional selection under stationarity and free recombination. *Genetics* **151**: 221–238.
- AKASHI, H., and S. W. SCHAEFFER, 1997 Natural selection and the frequency distributions of “silent” DNA polymorphism in *Drosophila*. *Genetics* **146**: 295–307.
- ANDOLFATTO, P., 2001 Contrasting patterns of X-linked and autosomal nucleotide variation in *Drosophila melanogaster* and *Drosophila simulans*. *Mol. Biol. Evol.* **18**: 279–290.
- BEGUN, D., 2001 The frequency distribution of nucleotide variation in *Drosophila simulans*. *Mol. Biol. Evol.* **18**: 1343–1352.
- BEGUN, D., and C. F. AQUADRO, 1993 African and North American populations of *Drosophila melanogaster* are very different at the DNA level. *Nature* **365**: 548–550.
- BULMER, M., 1991 The selection-mutation-drift theory of synonymous codon usage. *Genetics* **129**: 897–907.
- CHARLESWORTH, B., 1994 The effect of background selection against deleterious mutations on weakly selected, linked variants. *Genet. Res.* **63**: 213–227.
- CHEN, F.-C., and W.-H. LI, 2001 Genomic divergences between humans and other hominoids and the effective population size of the common ancestor of humans and chimpanzees. *Am. J. Hum. Genet.* **68**: 444–456.
- EYRE-WALKER, A., and L. D. HURST, 2001 The evolution of isochores. *Nat. Rev. Genet.* **2**: 549–555.
- EYRE-WALKER, A., P. D. KEIGHTLEY, N. G. C. SMITH and D. GAFFNEY, 2002 Quantifying the slightly deleterious model of molecular evolution. *Mol. Biol. Evol.* **19**: 2142–2149.
- FAY, J., G. J. WYCOFF and C.-I. WU, 2001 Positive and negative selection on the human genome. *Genetics* **158**: 1227–1234.
- FAY, J., G. J. WYCOFF and C.-I. WU, 2002 Testing the neutral theory of molecular evolution with genomic data from *Drosophila*. *Nature* **415**: 1024–1026.
- JENKINS, D. L., C. A. ORTORI and J. F. Y. BROOKFIELD, 1995 A test for adaptive change in DNA sequences controlling transcription. *Proc. R. Soc. Lond. Ser. B* **261**: 203–207.
- KEIGHTLEY, P. D., and A. EYRE-WALKER, 2000 Deleterious mutations and the evolution of sex. *Science* **290**: 331–333.
- KIMURA, M., 1983 *The Neutral Theory of Molecular Evolution*. Cambridge University Press, Cambridge, UK.
- KLIMAN, R., 1999 Recent selection on synonymous codon usage in *Drosophila*. *J. Mol. Evol.* **49**: 343–351.
- LI, W.-H., 1987 Models of nearly neutral mutations with particular implications for the nonrandom usage of synonymous codons. *J. Mol. Evol.* **24**: 337–345.
- MCDONALD, J. H., and M. KREITMAN, 1991 Adaptive evolution at the *Adh* locus in *Drosophila*. *Nature* **351**: 652–654.
- NACHMAN, M. W., W. M. BROWN, M. STONEKING and C. F. AQUADRO, 1996 Nonneutral mitochondrial DNA variation in humans and chimpanzees. *Genetics* **142**: 953–963.
- OTTO, S. P., and M. C. WHITLOCK, 1997 The probability of fixation in populations of changing size. *Genetics* **146**: 723–733.
- SAWYER, S. A., and D. L. HARTL, 1992 Population genetics of polymorphism and divergence. *Genetics* **132**: 1161–1176.
- SHARP, P. M., C. J. BURGESS, A. T. LLOYD and K. J. MITCHELL, 1992 Selective use of termination and variation in codon choice, pp. 397–425 in *Transfer RNA in Protein Synthesis*, edited by D. L. HATFIELD, B. J. LEE and R. M. PIRTLE. CRC Press, Boca Raton, FL.
- SMITH, N. G. C., and A. EYRE-WALKER, 2002 Adaptive protein evolution in *Drosophila*. *Nature* **415**: 1022–1024.
- WISE, C. A., M. SRAML and S. EASTEAL, 1998 Departure from neutrality at the mitochondrial NADH dehydrogenase subunit 2 gene in humans, but not in chimpanzees. *Genetics* **148**: 409–421.
- WRIGHT, S., 1938 The distribution of gene frequencies under irreversible mutation. *Proc. Natl. Acad. Sci. USA* **24**: 253–259.