



Characteristics, Outcomes, and Severity Risk Factors Associated With SARS-CoV-2 Infection Among Children in the US National COVID Cohort Collaborative

Blake Martin, MD; Peter E. DeWitt, PhD; Seth Russell, MS; Adit Anand; Katie R. Bradwell, PhD; Carolyn Bremer, BS; Davera Gabriel, RN; Andrew T. Girvin, PhD; Janos G. Hajagos, PhD; Julie A. McMurry, MPH; Andrew J. Neumann, MBA; Emily R. Pfaff, PhD; Anita Walden, MS; Jacob T. Wooldridge, MD; Yun Jae Yoo; Joel Saltz, MD, PhD; Ken R. Gersing, MD; Christopher G. Chute, MD, DrPH; Melissa A. Haendel, PhD; Richard Moffitt, PhD; Tellen D. Bennett, MD, MS

Abstract

IMPORTANCE Understanding of SARS-CoV-2 infection in US children has been limited by the lack of large, multicenter studies with granular data.

OBJECTIVE To examine the characteristics, changes over time, outcomes, and severity risk factors of children with SARS-CoV-2 within the National COVID Cohort Collaborative (N3C).

DESIGN, SETTING, AND PARTICIPANTS A prospective cohort study of encounters with end dates before September 24, 2021, was conducted at 56 N3C facilities throughout the US. Participants included children younger than 19 years at initial SARS-CoV-2 testing.

MAIN OUTCOMES AND MEASURES Case incidence and severity over time, demographic and comorbidity severity risk factors, vital sign and laboratory trajectories, clinical outcomes, and acute COVID-19 vs multisystem inflammatory syndrome in children (MIS-C), and Delta vs pre-Delta variant differences for children with SARS-CoV-2.

RESULTS A total of 1 068 410 children were tested for SARS-CoV-2 and 167 262 test results (15.6%) were positive (82 882 [49.6%] girls; median age, 11.9 [IQR, 6.0-16.1] years). Among the 10 245 children (6.1%) who were hospitalized, 1423 (13.9%) met the criteria for severe disease: mechanical ventilation (796 [7.8%]), vasopressor-inotropic support (868 [8.5%]), extracorporeal membrane oxygenation (42 [0.4%]), or death (131 [1.3%]). Male sex (odds ratio [OR], 1.37; 95% CI, 1.21-1.56), Black/African American race (OR, 1.25; 95% CI, 1.06-1.47), obesity (OR, 1.19; 95% CI, 1.01-1.41), and several pediatric complex chronic condition (PCCC) subcategories were associated with higher severity disease. Vital signs and many laboratory test values from the day of admission were predictive of peak disease severity. Variables associated with increased odds for MIS-C vs acute COVID-19 included male sex (OR, 1.59; 95% CI, 1.33-1.90), Black/African American race (OR, 1.44; 95% CI, 1.17-1.77), younger than 12 years (OR, 1.81; 95% CI, 1.51-2.18), obesity (OR, 1.76; 95% CI, 1.40-2.22), and not having a pediatric complex chronic condition (OR, 0.72; 95% CI, 0.65-0.80). The children with MIS-C had a more inflammatory laboratory profile and severe clinical phenotype, with higher rates of invasive ventilation (117 of 707 [16.5%] vs 514 of 8241 [6.2%]; $P < .001$) and need for vasoactive-inotropic support (191 of 707 [27.0%] vs 426 of 8241 [5.2%]; $P < .001$) compared with those who had acute COVID-19. Comparing children during the Delta vs pre-Delta eras, there was no significant change in hospitalization rate (1738 [6.0%] vs 8507 [6.2%]; $P = .18$) and lower odds for severe disease (179 [10.3%] vs 1242 [14.6%]) (decreased by a factor of 0.67; 95% CI, 0.57-0.79; $P < .001$).

CONCLUSIONS AND RELEVANCE In this cohort study of US children with SARS-CoV-2, there were observed differences in demographic characteristics, preexisting comorbidities, and initial vital sign

(continued)

Key Points

Question What are the characteristics, changes over time, outcomes, and severity risk factors of children with SARS-CoV-2 within the National COVID Cohort Collaborative?

Findings In this cohort study, 167 262 children at 56 sites were SARS-CoV-2-positive and 10 245 were hospitalized. Several demographic and comorbidity variables and many initial vital sign and laboratory test values were associated with higher peak illness severity.

Meaning This study noted clinical data elements that could assist with early identification of children at risk for severe disease due to SARS-CoV-2 infection.

+ Supplemental content

Author affiliations and article information are listed at the end of this article.

Open Access. This is an open access article distributed under the terms of the CC-BY License.

Abstract (continued)

and laboratory values between severity subgroups. Taken together, these results suggest that early identification of children likely to progress to severe disease could be achieved using readily available data elements from the day of admission. Further work is needed to translate this knowledge into improved outcomes.

JAMA Network Open. 2022;5(2):e2143151. doi:10.1001/jamanetworkopen.2021.43151

Introduction

As of January 2022, SARS-CoV-2 had infected more than 290 million people and caused more than 5.4 million deaths worldwide.¹ The associated infection, COVID-19, is characterized by pneumonia, hypoxemic respiratory failure, cardiac and kidney dysfunction, and substantial mortality and morbidity. Although children often experience milder illness,²⁻⁴ SARS-CoV-2 can cause severe pediatric disease via both acute COVID-19 and multisystem inflammatory syndrome in children (MIS-C).⁵⁻¹⁰ MIS-C is a hyperinflammatory, postinfectious complication of SARS-CoV-2.^{5,11,12} Characterized by cardiovascular, respiratory, neurologic, gastrointestinal, and mucocutaneous manifestations and organ dysfunction, more than 5900 cases of MIS-C have been reported to the US Centers for Disease Control and Prevention, with more than half of the patients requiring intensive care unit admission and greater than one-third experiencing shock.^{13,14}

Research in pediatric COVID-19 and MIS-C has been slowed by the lack of large, multi-institutional data sets of affected children. Investigators in Europe⁷ and the US^{8,13,15} have reported multicenter studies, but analysis of individual patient vital sign and laboratory data was absent. An extensive, granular, representative clinical data set is needed to improve our understanding of the presentation, risk factors, and severity signals of pediatric COVID-19 and MIS-C.

The National COVID Cohort Collaborative (N3C) was formed to improve understanding of SARS-CoV-2 via a novel approach to data sharing and analytics.¹⁶ The N3C is composed of members from the National Institutes of Health Clinical and Translational Science Awards Program, its Center for Data to Health, the IDeA Centers for Translational Research,¹⁷ and several electronic health record-based research networks.¹⁸ N3C structure, data ingestion/integration, supported common data models, and patient variables have been previously described^{16,18} (eMethods in the [Supplement](#) provides N3C patient inclusion criteria).

Our objective was to provide a detailed clinical characterization of the largest cohort of US pediatric SARS-CoV-2 cases to date. We hypothesized we could (1) identify risk factors for higher severity disease among hospitalized children, (2) describe SARS-CoV-2 case and hospitalization rates over time, (3) visualize changes in SARS-CoV-2 medication treatment regimens over time, (4) compare changes in vital sign and laboratory results between hospitalized children with varying clinical severity, and (5) identify differences in risk factors and outcomes between children with acute COVID-19 vs MIS-C. In addition, at the time of the study, Centers for Disease Control and Prevention reporting indicated the Delta (B.1.617.2) variant was the predominant SARS-CoV-2 strain, surpassing 50% of US specimens tested during the 2-week period ending June 26, 2021.¹⁹ Given reports of increased transmissibility²⁰ and hospitalization among adults²¹ and children²² with SARS-CoV-2 infection, we also report preliminary data comparing demographic characteristics, comorbidities, and clinical outcomes of infected children with SARS-CoV-2 infection in the pre-Delta era (before June 26, 2021) with the Delta era (beginning June 26, 2021).

Methods

Cohort Definition

We performed an analysis of all children younger than 19 years at the first SARS-CoV-2 testing at the 56 N3C sites if their index encounter (eMethods in the [Supplement](#)) ended before September 24, 2021. Children were considered to have SARS-CoV-2 if they had a positive SARS-CoV-2 polymerase chain reaction (PCR), antigen (Ag), or antibody test result. Children were considered to have MIS-C if they were hospitalized with a positive SARS-CoV-2 test result and assigned either of 2 recommended *International Statistical Classification of Diseases, 10th Revision* diagnosis codes for MIS-C: during the early phase of the pandemic, M35.8,²³ or the more specific code M35.81 introduced October 1, 2020, and effective January 1, 2021.²⁴ The N3C Data Enclave is approved under the authority of the National Institutes of Health Institutional Review Board. Each N3C site maintains an institutional review board–approved data transfer agreement. The analyses in this article were approved by institutional review boards from each institution for study investigators with data access (eMethods in the [Supplement](#)), including the waiver of informed consent. Study results are reported in accordance with the Strengthening the Reporting of Observational Studies in Epidemiology (STROBE) reporting guideline for cohort studies.²⁵

For children with positive SARS-CoV-2 test results within the N3C, we describe the geographic location, monthly incidence, and changes in pediatric age distribution and maximum clinical severity over time. We determined the proportion of hospitalized children given different antimicrobial and immunomodulatory medications and provide corresponding adult changes over time for comparison. We compared the clinical characteristics, outcomes, and laboratory test profiles of children with MIS-C with those of children with acute COVID-19 (positive SARS-CoV-2 PCR/Ag test but no MIS-C diagnosis code or positive antibody result). In addition, we report preliminary results comparing the demographic characteristics, comorbidities, and outcomes of children infected in the Delta era (encounter start date after June 26, 2021) with the pre-Delta era.

Hospital Index Encounter and Clinical Severity Definition

For each child with laboratory-confirmed SARS-CoV-2, we selected the associated encounter demonstrating the maximum Clinical Progression Scale score created by the World Health Organization for COVID-19 clinical research^{18,26} (eMethods in the [Supplement](#)). Clinical severity categories include mild (outpatient or emergency department visits only), moderate (hospitalized), and severe (hospitalized and requiring invasive ventilation, vasopressor-inotropic support, or extracorporeal membrane oxygenation, or death). eMethods in the [Supplement](#) provides additional information.

Statistical Analysis

For each clinical concept (eg, laboratory measure, vital sign, medication, or comorbidity) we defined or identified existing concept sets in the Observational Medical Outcomes Partnership²⁷ common data model. We thus identified children with the preselected comorbidities of asthma, diabetes types 1 and 2, and obesity, given reports of severe disease among such patients.^{8,9} We identified children with chronic medical conditions using the pediatric complex chronic conditions (PCCC) algorithm via adaptation of prior use of R software implementation.^{28,29}

We assessed the outcomes associated with potential clinical severity risk factors (eg, demographic or comorbidity variable) by calculating the odds of severe vs moderate peak clinical severity using multivariable logistic regression. All patient demographic characteristics were obtained from each site's electronic health record database. Race and ethnicity data provided by N3C sites were also analyzed to assist with identification of patients at higher risk of severe disease. Classifications for race and ethnicity are made using the data provided to the N3C from each health care site. How an individual's race and ethnicity are determined and then stored in their electronic health record is at the discretion of each health care site. We used χ^2 deviance tests to evaluate

changes in relative proportions of predefined pediatric age ranges over time and changes in proportions of moderate and severe cases over time. We evaluated differences in initial vital sign and laboratory values between moderate and severe subgroups using generalized estimating equations with an exchangeable working correlation structure. We assessed the change over time for each vital sign or laboratory test during a patient's hospitalization using a linear model to average over the first week of values. We used these model results to estimate the difference between hospital day 0 and day 7 for each severity subgroup. In addition, we determined the change in odds of severe vs moderate disease in the pre-Delta era with the Delta era (overall and for each preselected risk factor), using multivariable logistic regression. As a sensitivity analysis, we determined the association between health care site and the strength of each variable's association with severe disease, using a 2-sided significance threshold of $P < .05$. Study analyses were performed using Foundry Code Workbook, version 4.339.0 (Palantir Technologies Inc).

Results

Study Cohort Demographics and Comorbidities

The N3C data set released September 24, 2021, contains 1 068 410 pediatric patients; of these, 167 262 children (15.6%) had a positive SARS-CoV-2 test result. A total of 82 882 patients (49.6%) were girls, and 83 789 were boys (49.6%); information on the biologic sex category of the remaining 591 children (0.35%) was not available (Table; eTable 1 in the Supplement). The 56 hospital systems from which these data were obtained were geographically diverse (eFigure 1 in the Supplement; eFigure 2 in the Supplement shows changes in subregion caseload over time). The incidence of positive SARS-CoV-2 pediatric encounters peaked in November 2020, with peak hospitalization incidence in December 2020 (Figure 1B).

The demographic characteristics of children with SARS-CoV-2 are presented in the Table, stratified by maximum clinical severity. Multivariable logistic regression showed that, among hospitalized children, those who were male (odds ratio [OR], 1.37; 95% CI, 1.21-1.56; $P < .001$), Black/African American (OR, 1.25; 95% CI, 1.06-1.47; $P = .008$), non-Black and non-White (OR, 1.23; 95% CI, 1.04-1.45; $P = .01$), obese (OR, 1.19; 95% CI, 1.01-1.41; $P = .04$), and members of several PCCC categories had higher odds of severe disease. After controlling for health care site, non-Black and non-White race and ethnicity status and the respiratory and neuromuscular PCCCs were not significant predictors (eTable 2 in the Supplement).

Clinical Course and Illness Severity

Overall, 10 245 children (6.1%) were hospitalized. Of these, 1423 (13.9%) met the criteria for severe disease, 796 (7.8%) required mechanical ventilation, 868 (8.5%) required vasoactive-inotropic support, 42 (0.4%) required extracorporeal membrane oxygenation, and 131 (1.3%) died. The 1.3% mortality rate is consistent with 2 other pediatric reports (0.9% and 2%)^{8,15} and lower than the 11.6% rate among hospitalized adults in the N3C.¹⁸ Studies have reported a decrease in COVID-19 severity in adults as the pandemic progresses.^{18,30} We also observed a decrease in the proportion of children with moderate and severe disease during the study period (Figure 1A). eFigure 3 in the Supplement illustrates changes in proportions of severe disease qualification criteria over time.

Age Distribution

Patient age distributions over time are illustrated in Figure 1B. Although most children were aged 12 to 17 years, more aged 1 to 5 and 5 to 12 years were hospitalized over time. Among hospitalized children with antibody-positive findings (regardless of PCR/Ag testing), the peak incidence occurred in January 2021 and more hospitalizations were in children aged 1 to 5 or 5 to 12 years (Figure 1B). Because antibody testing may be a surrogate for MIS-C evaluation, the timing of this peak is consistent with prior studies demonstrating maximal MIS-C risk in the 2 to 5 weeks after SARS-CoV-2

Table. SARS-CoV-2 Laboratory-Confirmed Positive Pediatric Cohort Characteristics Stratified by Maximum Clinical Severity^{a,b}

Variable	All pediatric encounters (N = 167 262)	Mild (n = 138 480)	Mild ED (n = 18 537)	Moderate (n = 8822)	Severe (n = 1423)	OR (95% CI) ^c	P value
Sex^d							
Male	83 789 (50.1)	69 451 (50.2)	9229 (49.8)	4318 (48.9)	791 (55.6)		
Female	82 882 (49.6)	68 473 (49.4)	9290 (50.1)	4488 (50.9)	631 (44.3)	1.37 (1.21-1.56) ^e	<.001
Other	591 (0.4)	556 (0.4)	<20	<20	<20		
Age, median (IQR), y ^d	11.9 (6.0-16.1)	12.2 (6.7-16.2)	9.5 (2.6-15.5)	10.7 (2.3-16.0)	11.1 (4.7-15.5)	0.88 (0.77-1.00)	.05
Ethnicity^d							
Hispanic or Latino	36 468 (21.8)	28 917 (20.9)	4863 (26.2)	2343 (26.6)	345 (24.2)		
Not Hispanic or Latino	105 231 (62.9)	87 012 (62.8)	12 103 (65.3)	5325 (60.4)	791 (55.6)	0.96 (0.81-1.12)	.58
Missing/unknown	25 563 (15.3)	22 551 (16.3)	1571 (8.5)	1154 (13.1)	287 (20.2)		
Race^f							
Asian	3608 (2.2)	3037 (2.2)	356 (1.9)	179 (2.0)	36 (2.5)	1.23 (1.04-1.45) ^e	<.01
Black or African American ^g	27 030 (16.2)	17 500 (12.6)	6823 (36.8)	2293 (26.0)	414 (29.1)	1.25 (1.06-1.47) ^e	.008
Native Hawaiian/Pacific Islander	536 (0.2)	415 (0.2)	66 (0.2)	46 (0.3)	<20 (0)	NA	NA
White	92 847 (55.5)	81 637 (59.0)	6877 (37.1)	3799 (43.1)	534 (37.5)	NA	NA
Other	39 143 (23.4)	32 640 (23.6)	3891 (21.0)	2273 (25.8)	339 (23.8)	NA	NA
Missing/unknown	4098 (2.5)	3251 (2.3)	524 (2.8)	232 (2.6)	91 (6.4)	NA	NA
Comorbidities							
Known BMI ^h	69 879 (41.8)	58 743 (42.4)	6015 (32.4)	4155 (47.1)	966 (67.9)	NA	NA
Obese (≥95th percentile) ⁱ	17 814 (25.5)	14 259 (24.3)	1889 (31.4)	1352 (32.5)	314 (32.5)	1.19 (1.01-1.41) ^e	.04
Asthma diagnosis	13 289 (7.9)	10 712 (7.7)	1578 (8.5)	819 (9.3)	180 (12.6)	0.91 (0.73-1.13)	.38
Diabetes diagnosis	1071 (0.6)	658 (0.5)	128 (0.7)	233 (2.6)	52 (3.7)	NA	NA
PCCC^j							
Any category	23 786 (14.2)	18 386 (13.3)	2763 (14.9)	2106 (23.9)	531 (37.3)	1.20 (1.16-1.24) ^e	<.001
Congenital/genetic	6676 (4.0)	5226 (3.8)	674 (3.6)	584 (6.6)	192 (13.5)	1.17 (0.91-1.49)	.22
Cardiovascular	4800 (2.9)	3315 (2.4)	528 (2.8)	682 (7.7)	275 (19.3)	1.76 (1.40-2.22) ^e	<.001
Gastrointestinal	3538 (2.1)	2409 (1.7)	361 (1.9)	553 (6.3)	215 (15.1)	1.03 (0.75-1.43)	.85
Heme/immune	5895 (3.5)	4228 (3.1)	785 (4.2)	694 (7.9)	188 (13.2)	0.83 (0.65-1.07)	.16
Cancer	1722 (1.0)	1180 (0.9)	150 (0.8)	290 (3.3)	102 (7.2)	1.82 (1.33-2.49) ^e	<.001
Metabolic	5513 (3.3)	4098 (3.0)	587 (3.2)	628 (7.1)	200 (14.1)	1.16 (0.91-1.49)	.23
Neonatal	1850 (1.1)	1180 (0.9)	372 (2.0)	223 (2.5)	75 (5.3)	0.99 (0.70-1.41)	.95
Neuromuscular	4249 (2.5)	2924 (2.1)	473 (2.6)	614 (7.0)	238 (16.7)	1.36 (1.06-1.74) ^e	.002
Kidney	2788 (1.7)	1964 (1.4)	290 (1.6)	417 (4.7)	117 (8.2)	0.62 (0.45-0.86) ^e	.004
Respiratory	2558 (1.5)	1755 (1.3)	304 (1.6)	344 (3.9)	155 (10.9)	1.51 (1.10-2.08) ^e	.01
Technology dependence	2188 (1.3)	1194 (0.9)	252 (1.4)	505 (5.7)	237 (16.7)	1.68 (1.19-2.38) ^e	.004
Transplant	254 (0.2)	129 (0.1)	<20	71 (0.8)	37 (2.6)	1.37 (0.82-2.27)	.23

Abbreviations: BMI, body mass index; ED, emergency department; NA, not applicable; OR, odds ratio; PCCC, pediatric complex chronic condition.

^a Adapted from Clinical Progression Scale of the World Health Organization.²⁶

^b Cells with less than 20 patients are censored; reported as less than 20.¹⁶

^c OR for severe disease vs moderate disease for a given variable.

^d The OR for sex is the odds of a male patient developing severe disease compared with a female patient. The OR for age is the odds of a patient younger than 12 years developing severe disease compared with a patient aged 12 years or older. The OR for ethnicity is the odds of a patient who is Hispanic developing severe disease vs a patient who is non-Hispanic (either not Hispanic or unknown).

^e OR for severe disease vs moderate disease for a given variable.

^f The OR for race is the odds of a patient who is Black or African American developing severe disease compared with a White patient. The OR for ethnicity is the odds of a patient who is Hispanic developing severe disease compared with a non-Hispanic patient.

^g The OR for sex is the odds of a male patient developing severe disease compared with a female patient. The OR for age is the odds of a patient younger than 12 years developing severe disease compared with a patient aged 12 years or older. The OR for ethnicity is the odds of a patient who is Hispanic developing severe disease vs a patient who is non-Hispanic (either not Hispanic or unknown).

^h BMI calculated per Centers for Disease Control and Prevention guideline: obesity defined as any child aged 2 years or older with a BMI greater than or equal to the 95th percentile for age and sex.

ⁱ Percentages of patients with a known BMI value who had a BMI greater than 95th percentile for age and sex.

^j PCCC comorbidities determined via prior R software implementation of PCCC to the NBC data enclave.^{28,29}

^e Statistically significant.

^f The OR for a non-Black, non-White child developing severe disease compared with a White child.

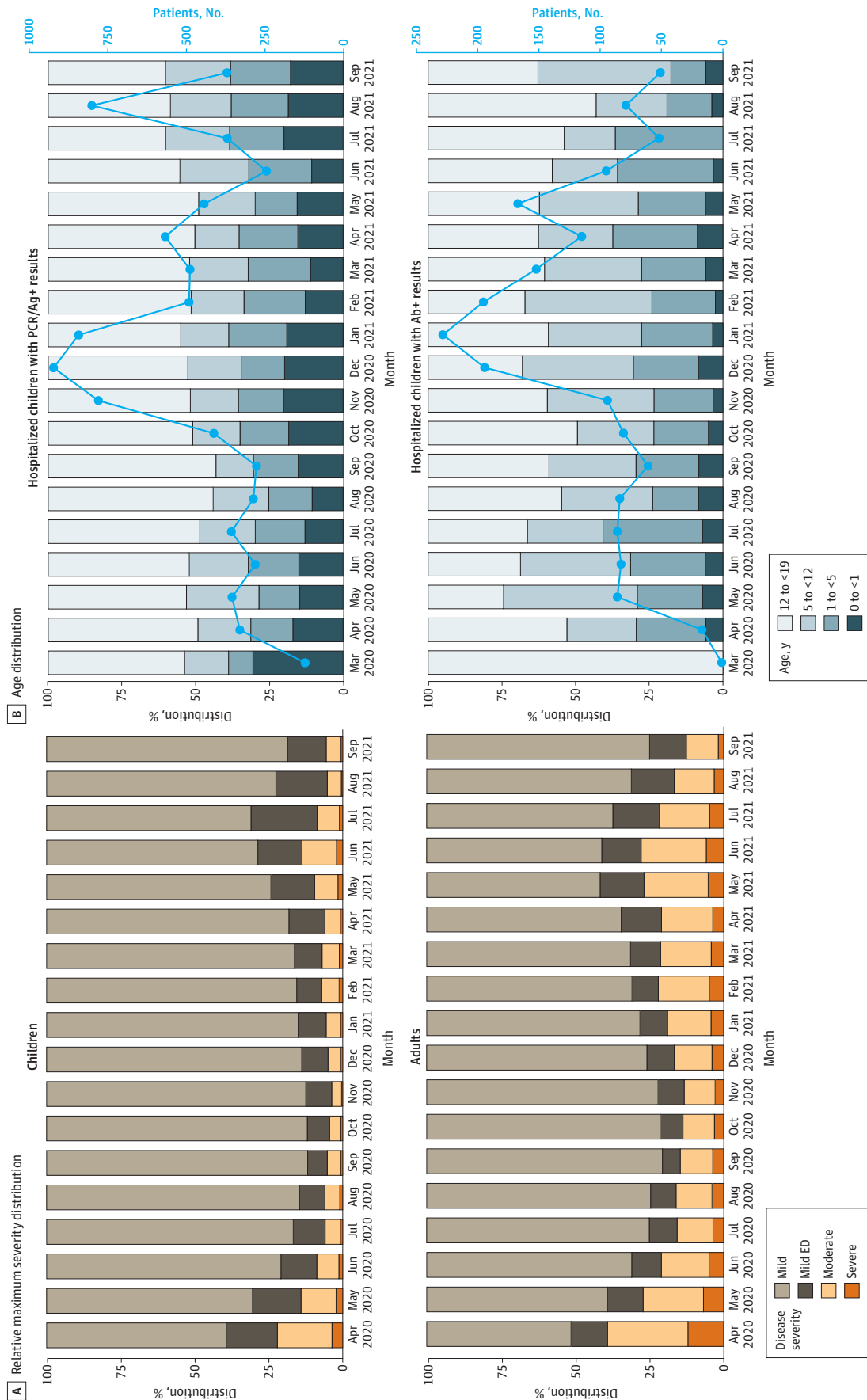
^g The OR for a Black/African American child developing severe disease compared with a White child.

^h BMI calculated per Centers for Disease Control and Prevention guideline: obesity defined as any child aged 2 years or older with a BMI greater than or equal to the 95th percentile for age and sex.

ⁱ Percentages of patients with a known BMI value who had a BMI greater than 95th percentile for age and sex.

^j PCCC comorbidities determined via prior R software implementation of PCCC to the NBC data enclave.^{28,29}

Figure 1. Age and Maximum Clinical Severity Distributions Over Time for Children With SARS-CoV-2



(A) Distribution of relative maximum clinical severity (by adapted World Health Organization Clinical Progression Scale categories) by month during the study period compared with adults in the National COVID Cohort Collaborative database. Severe indicates hospital mortality, invasive ventilation, vasoactive-inotropic support, or extracorporeal membrane oxygenation; moderate, hospitalized without any of the severe factors; mild ED, emergency department visit; and mild, outpatient visit. March 2020 data not shown given because there were less than 20 pediatric patients in the severe subgroup. (B) Age category distribution of children with SARS-CoV-2 infection by month during the study period stratified by test type (polymerase chain reaction [PCR]/antigen [Ag]-positive with negative or no antibody [Ab]-testing vs Ab-positive regardless of PCR/Ag testing results). The light blue trendline represents monthly positive test incidence.

infection.¹³ Overall severity distributions for each age group are illustrated in eFigure 4 in the [Supplement](#).

Treatments

Antimicrobial and immunomodulatory medication use changed over time (eFigure 5 in the [Supplement](#)). As with adults in the N3C database,¹⁸ a higher proportion of children with severe vs moderate status received antimicrobials (987 of 1423 [69.4%] vs 2679 of 8822 [30.4%]; $P < .001$), with antibacterials (955 of 1423 [67.1%] vs 2569 of 8822 [29.1%]) and antivirals (188 of 1423 [13.2%] vs 234 of 8822 [2.7%]) being more common ($P < .001$ for all) (eTable 3 in the [Supplement](#)). Remdesivir was given to more children with severe than moderate infection (118 of 1423 [8.3%] vs 147 of 8822 [1.7%]; $P < .001$). We observed decreases in systemic antibacterial use over time, potentially related to accumulating evidence regarding the low incidence of concomitant bacterial infections.³¹

Immunomodulatory medications were more frequently given to children with severe vs moderate infection (753 of 1423 [52.9%] vs 1230 of 8822 [13.9%]), with systemic corticosteroid (684 of 1423 [48.1%] vs 1142 of 8822 [12.9%]), anakinra (153 of 1423 [10.8%] vs 89 of 8822 [1.0%]), and infliximab (39 of 1423 [2.7%] vs 52 of 8822 [0.6%]) use also more common in the severe vs moderate subgroup ($P < .001$ for all).

The US Food and Drug Administration emergency use authorization for remdesivir³² occurred on May 1, 2020, and the trial indicating adult survival benefit from dexamethasone³³ and a landmark publication describing MIS-C⁵ were both published in July 2020.

Vital Sign and Laboratory Measurements

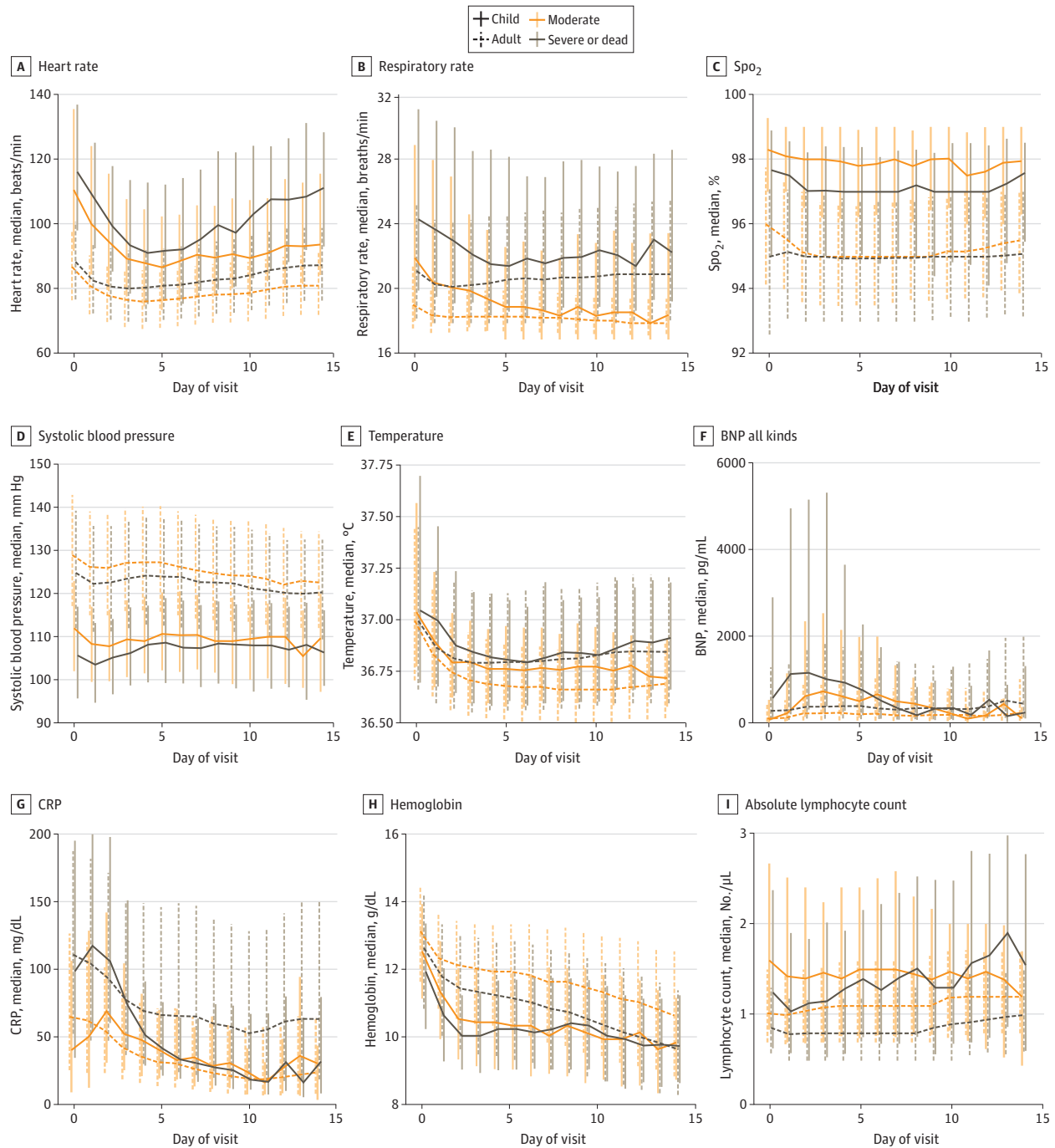
Compared with the moderate severity subgroup, the severe subgroup had more abnormal initial (day 0) values for many vital signs, including systolic and diastolic blood pressure (lower), oxygen saturation as measured by pulse oximetry (lower), heart rate (higher), and respiratory rate (higher) (eTable 4 in the [Supplement](#)). We saw statistically significant improvements (values becoming more within the reference ranges) in most vital signs when comparing day 0 with day 7 for both severity subgroups (**Figure 2**).

Children who eventually experienced the highest maximum clinical severity also had many laboratory test results with initial values that were more abnormal than in the moderate severity subgroup (eTable 5 in the [Supplement](#)). Specifically, initial median values were more abnormal in the severe subgroup for several tests demonstrative of organ dysfunction (alanine aminotransferase and aspartate aminotransferase [higher], brain-type natriuretic peptide [higher], creatinine [higher], and platelets [lower]), and inflammation (albumin [lower], D-dimer [higher], ferritin [higher], C-reactive protein [higher], and procalcitonin [higher]) (eTable 5 in the [Supplement](#)). Compared with hospital day 0, laboratory values on day 7 changed in a statistically significant way with values increasingly within the reference ranges for most tests within both severity subgroups (Figure 2; eTable 5 in the [Supplement](#)). eTable 6 in the [Supplement](#) presents the proportions of patients with each laboratory result available. The improving trajectories for most vital sign and laboratory values likely reflect the low mortality rate and high recovery rate of the children. eFigure 6 in the [Supplement](#) provides additional vital sign and laboratory trajectory results.

Acute COVID-19 vs MIS-C

We identified 707 children with MIS-C of whom 261 (36.9%) met the criteria for severe disease. Demographic characteristics, laboratory results, and clinical outcomes for children with MIS-C vs acute COVID-19 are shown in **Figure 3**. A multivariable logistic regression model demonstrated that male sex (OR, 1.59; 95% CI, 1.33-1.90; $P < .001$), age younger than 12 years (OR, 1.81; 95% CI, 1.51-2.18; $P < .001$), Black/African American race (OR, 1.44; 95% CI, 1.17-1.77; $P < .001$), obesity (OR, 1.76; 95% CI, 1.40-2.22; $P < .001$), and not having a PCCC (OR, 0.72; 95% CI, 0.65-0.80; $P < .001$) were associated with increased odds of MIS-C diagnosis vs acute COVID-19. Compared with children with

Figure 2. In-Hospital Vital Sign and Laboratory Value Trajectories



Trajectories of selected vital sign (A-E) and laboratory (F-I) median values by day of hospitalization during pediatric hospital encounters compared with National COVID Cohort Collaborative adult values. For each day of hospitalization, the median (IQR) for patients with a given vital sign or laboratory value available on that day were calculated. The vertical bars represent the IQR for measurements of that specific vital sign or

laboratory value on that day of hospitalization. SpO₂ indicates oxygen saturation as measured by pulse oximetry. To convert brain-type natriuretic peptide (BNP) to nanograms per liter, multiply by 1; C-reactive protein to milligrams per liter, multiply by 10; hemoglobin to grams per liter, multiply by 10; and lymphocytes to $\times 10^9$ per liter, multiply by 0.001.

acute COVID-19 infection, a higher proportion of children with MIS-C required vasoactive-inotropic support (191 of 707 [27.0%] vs 426 of 8241 [5.2%]; $P < .001$) and invasive ventilation (117 of 707 [16.5%] vs 514 of 8241 [6.2%]; $P < .001$) (eTable 7 in the Supplement). In addition, for all 18 preselected laboratory tests, the MIS-C group had a higher proportion of children with abnormal values compared with the acute COVID-19 group.

Figure 3. Characteristics and Outcomes of Children Hospitalized With Multisystem Inflammatory Syndrome in Children (MIS-C) vs Acute COVID-19

Variable	MIS-C (N = 707)			Acute COVID-19 (N = 8241)		
	No.	Total	% (MIS-C)	No.	Total	% (Acute COVID)
Age, y						
<1	<20	707	0	1449	8241	18
1 to <5	162	707	23	1400	8241	17
5 to <12	294	707	42	1469	8241	18
12 to 18	235	707	33	3923	8241	48
Sex						
Male	416	707	59	3987	8241	48
Female	291	707	41	4237	8241	51
Race						
Asian	<20	707	0	168	8241	2
Black or African American	250	707	35	2065	8241	25
White	277	707	39	3578	8241	43
Ethnicity						
Hispanic	153	707	22	2155	8241	26
Non-Hispanic	413	707	58	5034	8241	61
Missing/unknown	138	707	20	1015	8241	12
Preselected comorbidities						
Obesity ^a	169	529	32	1275	3829	33
Asthma	47	707	7	850	8241	10
Diabetes (type 1 or 2)	<20	707	0	256	8241	3
PCCC comorbidity categories						
At least 1 PCCC category	112	707	16	2208	8241	27
Cardiovascular	52	707	7	777	8241	9
Hematologic/immunologic	43	707	6	737	8241	9
Metabolic	41	707	6	700	8241	9
Neuromuscular	<20	707	0	721	8241	9
Gastrointestinal	22	707	3	650	8241	8
Congenital/genetic	25	707	4	659	8241	8
Kidney	20	707	3	445	8241	5
Respiratory	<20	707	0	425	8241	5
Malignant neoplasm	<20	707	0	333	8241	4
Neonatal	<20	707	0	264	8241	3
SARS-CoV-2 testing						
Antibody positive	624	707	88	<20	8241	0
PCR/Ag positive	207	707	29	8241	8241	100
Laboratory values						
ESR > 13 mm/h	509	707	72	693	8241	8
Albumin < 3 g/dL	454	707	64	648	8241	8
Serum Na < 135 mmol/L	426	707	60	1075	8241	13
D-Dimer > 0.5 mcg/mL	401	707	57	591	8241	7
NT-Pro-BnP > 1000 pg/mL	363	707	51	315	8241	4
ALC < 1.0×10^9 /L	351	707	50	1219	8241	15
C-reactive protein > 100 mg/dL	349	707	49	343	8241	4
Ferritin > 500 ng/mL	285	707	40	285	8241	4
Platelet count < 150×10^9 /L	261	707	37	668	8241	8
WBC count > 15000×10^3 /uL	229	707	32	829	8241	10
ALT > 54 IU/L	217	707	31	658	8241	8
Procalcitonin > 0.5 ng/mL	201	707	28	227	8241	3
BNP > 100 pg/mL	184	707	26	80	8241	1
IL-6 > 1.8 pg/mL	137	707	19	107	8241	1
WBC count < 4500×10^3 /uL	122	707	17	840	8241	10
Hemoglobin level < 7 g/dL	59	707	8	342	8241	4
Fibrinogen < 150 mg/dL	31	707	4	63	8241	1
Clinical outcomes						
Severe	261	707	37	818	8241	10
Invasive mechanical ventilation	117	707	17	514	8241	6
Vasopressor-inotropic support	191	707	27	426	8241	5
ECMO	<20	707	0	25	8241	0.3
Death/discharge to hospice	<20	707	0	95	8241	1

Comparison of the percentage of hospitalized children with MIS-C (identified via the presence of qualifying *International Statistical Classification of Diseases, 10th Revision* code) and acute COVID-19 (positive SARS-CoV-2 PCR/Ag but no positive antibody test or MIS-C *International Statistical Classification of Diseases, 10th Revision* code) with a given demographic characteristic, preexisting comorbidity, abnormal laboratory test value (during hospitalization), or clinical outcome. eTable 7 in the Supplement provides the absolute number of patients in each corresponding category. Per National COVID Cohort Collaborative policy, groups with fewer than 20 patient encounters were censored and are reported as 0%. ALC indicates absolute lymphocyte count; ALT, alanine aminotransferase; ANC, absolute neutrophil count; BNP, brain-type natriuretic peptide; ECMO, extracorporeal membrane oxygenation; ESR, erythrocyte sedimentation rate; IL-6, interleukin 6; Na, sodium; NT-Pro-BnP, N-terminal pro b-type natriuretic peptide; PCCC, pediatric complex chronic condition; PCR/Ag, polymerase chain reaction/antigen; and WBC, white blood cell. To convert ALC to $\times 10^9$ per liter, multiply by 0.001; ALT to microkatals per liter, multiply by 0.0167; ANC to $\times 10^9$ per liter, multiply by 0.001; BNP to nanograms per liter, multiply by 1; ferritin to micrograms per liter, multiply by 1; and Na to millimoles per liter, multiply by 1.

^a The percentage of children with obesity was calculated by dividing the number of children aged 2 years or older with a body mass index (for age and sex) greater than or equal to the 95th percentile by the number of children in that subgroup who were aged 2 years or older and had a body mass index measurement available.

Delta Era vs Pre-Delta Era Comparisons

Of the 29 191 Delta era encounters, 1738 children (6.0%) were hospitalized compared with 8507 of 138 071 children (6.2%) in the pre-Delta era ($P = .18$). There were 1242 children (14.6%) in the pre-Delta era and 179 children (10.3%) in the Delta era with severe disease. A multivariable logistic regression model demonstrated the odds of severe vs moderate disease decreased by a factor of 0.67 (95% CI, 0.57-0.79; $P < .001$) during the Delta era. Multivariable logistic regression demonstrated an increase in the odds of severe disease (Δ OR, 1.69; 95% CI, 1.02-2.82; $P = .04$) for children classified as non-Black, non-White during the Delta era (Figure 4; eTable 8 in the Supplement).

Discussion

Using the largest US pediatric SARS-CoV-2 cohort at the time of the study, we addressed a gap in the pediatric SARS-CoV-2 literature: a description of vital sign and laboratory values and trajectories during hospitalization among children with SARS-CoV-2 infection with varying peak clinical severity. Although reports from Feldstein et al^{5,6} include median laboratory results from children with MIS-C and acute COVID-19, to our knowledge, ours is the first report describing vital sign and laboratory trajectories during pediatric SARS-CoV-2 hospitalization with specific attention to maximum clinical severity. We observed differences in initial vital sign and laboratory values between severity

Figure 4. Characteristics and Outcomes of Children in the Pre-Delta and Delta Eras

Variable	Delta (N = 1738)			Pre-Delta (N = 8507)		
	No.	Total	%	No.	Total	%
Age, y						
<1	298	1738	17	1259	8507	15
1 to <5	339	1738	20	1526	8507	18
5 to <12	389	1738	22	1736	8507	20
12 to 18	712	1738	41	3986	8507	47
Sex						
Male	830	1738	48	4279	8507	50
Female	906	1738	52	4213	8507	50
Race						
Asian	21	1738	1	194	8507	2
Black or African American	611	1738	35	2096	8507	25
Missing/unknown	22	1738	1	301	8507	4
White	753	1738	43	3580	8507	42
Other	323	1738	19	2289	8507	27
Ethnicity						
Hispanic	287	1738	16	2401	8507	28
Non-Hispanic	1262	1738	73	4854	8507	57
Missing/unknown	189	1738	11	1252	8507	15
Preselected conditions						
Obesity ^a	254	765	33	1402	4356	32
Asthma	198	1738	11	801	8507	9
Diabetes (type 1 or 2)	32	1738	2	253	8507	3
Underlying medical conditions						
At least 1 PCCC category	432	1738	25	2205	8507	26
Cardiovascular	154	1738	9	803	8507	9
Heme/immune	162	1738	9	720	8507	8
Metabolic	134	1738	8	694	8507	8
Neuromuscular	143	1738	8	709	8507	8
Gastrointestinal	119	1738	7	649	8507	8
Kidney	88	1738	5	446	8507	5
Respiratory	80	1738	5	419	8507	5
Malignant neoplasm	48	1738	3	344	8507	4
Congenital/genetic	151	1738	9	625	8507	7
Neonatal	64	1738	4	234	8507	3
Clinical outcomes						
Severe	179	1738	10	1242	8507	15
Invasive mechanical ventilation	96	1738	6	700	8507	8
Vasopressor-inotropic support	108	1738	6	760	8507	9
ECMO	<20	1738	0	39	8507	0.5
Death/discharge to hospice	<20	1738	0	122	8507	1

Comparison of the percent of children in the pre-Delta era (before June 26, 2021) to the Delta era with a given demographic characteristic, comorbidity, abnormal laboratory value during hospitalization, or clinical outcome. eTable 8 in the Supplement reports the absolute number of patients in each corresponding category. Per National COVID Cohort Collaborative policy, groups with less than 20 patient encounters were censored and are reported as 0%.

^a The percentage of children with obesity was calculated by dividing the number of children aged 2 years or older with a body mass index (for age and sex) greater than or equal to the 95th percentile by the number of children in that subgroup who were aged 2 years or older and had a body mass index measurement available.

subgroups. Many differences were subtle and without obvious clinical implication. When combined with the identified demographic characteristic and comorbidity risk factors, these results suggest that early identification of children likely to progress to a more severe phenotype could be achieved using readily available data from the day of admission. Future work may include design of predictive models and clinical decision support tools able to use these often subtle differences to aid in early identification of children at risk for subsequent deterioration.

We also report on hospitalization trends, age and severity distributions, and treatment regimens throughout the study period. The 6.1% hospitalization rate in our cohort is similar to the 7% rate reported by Bailey et al,¹⁵ although lower than reported by Kompaniyets et al⁸ (9.9%) and Preston et al³ (12%). Our cohort's median age (11.9 years) was similar in the Kompaniyets et al⁸ study (12 years) as was the prevalence of comorbid asthma (7.9% vs 10.2%) and neurologic/neuromuscular disease (2.5% vs 3.9%). Our cohort's rate of mechanical ventilation (7.8%) among hospitalized children was similar to 2 prior reports (7% and 6%),^{7,8} although less than in Belay et al¹³ (14.6% in the COVID-19 cohort). Similar to Göttinger et al⁷ and Preston et al,³ we observed that male sex and chronic medical conditions (PCCCs in this study) were risk factors for severe disease. We found that Black/African American race and obesity were also associated with higher maximum clinical severity once the children were hospitalized.

Although Shekerdeman et al¹⁰ and Feldstein et al⁶ both reported use of various antimicrobial and immunomodulatory medications in pediatric SARS-CoV-2, to our knowledge, ours is the first report describing changes in medication use over time. In this study, systemic antimicrobials and immunomodulatory medications were frequently used in the severe subgroup. The high frequency of corticosteroid use, specifically, is likely associated with emerging evidence of efficacy for treatment of severe COVID-19 and MIS-C.^{33,34}

As others have reported,^{6,13,35} compared with children with acute COVID-19, we found that being male, Black/African American, younger than 12 years, and not having preexisting comorbidities (a PCCC) were associated with increased odds of MIS-C diagnosis. We also found obesity to be a significant MIS-C predictor. Children with MIS-C demonstrated a severe clinical phenotype with significant laboratory evidence of inflammation and frequent need for invasive ventilation and vasopressor-inotropic support.

Given the relatively recent introduction of *International Statistical Classification of Diseases, 10th Revision* codes for MIS-C (and unknown consistency of use), sensitivity of the codes for MIS-C is uncertain. However, in the setting of hospitalization with a positive SARS-CoV-2 test, the positive predictive value is likely to be high. The MIS-C incidence we describe is likely a conservative estimate. A recent study by Geva et al³⁵ used unsupervised clustering techniques to distinguish MIS-C from acute COVID-19 and identified many clinical and laboratory indicators similar to those highlighted in this study. Additional work is needed to develop and validate computable phenotypes for identification of MIS-C cases for subsequent research.

Clinical outcomes (eg, rates of mechanical ventilation) and medication use in acute COVID-19 and MIS-C have varied between studies.^{6-8,10,15,36} Many reports of pediatric acute COVID-19 and MIS-C originate from single centers or health systems.^{2,4,36-39} Recently, several large-scale studies reported risk factors and outcomes for pediatric COVID-19^{3,7,8,10,15} and MIS-C.^{6,13} However, none have included analysis of highly granular, patient-level data to compare trajectories of individual vital sign and laboratory values between different clinical severity subgroups. Such analyses improve the capacity to build SARS-CoV-2-specific predictive models and clinical decision support tools and allowed for successful testing of our 5 original hypotheses.

In addition, this report provides preliminary data on differences among children infected with SARS-CoV-2 in the era prior to Delta variant dominance compared with those in the Delta era. We found a similar hospitalization rate and that odds for severe vs moderate disease decreased during the Delta era. This decrease may reflect that more previously healthy children were hospitalized in the Delta era.

Limitations

This study has limitations. Because our data were aggregated from many health systems using 4 different common data models that vary in granularity, some sites may have systematic missingness of certain variables. In addition, some respiratory data (oxygen flow, fraction of inspired oxygen, and specific ventilator settings) are not fully available. Because the exact timing of laboratory specimens is inconsistently provided by sites, laboratory findings were standardized to a calendar day.

With high rates of asymptomatic to minimally symptomatic pediatric infections and increasing adoption of universal SARS-CoV-2 testing policies for pediatric hospital admissions, we cannot definitively attribute reasons for hospital admissions (SARS-CoV-2 vs another unrelated cause). Because many hospitalized children were not given antimicrobials or immunomodulatory medications, admission may have been due to non-SARS-CoV-2 conditions. Inability to definitively link SARS-CoV-2 infection to the need for hospitalization may limit interpretation of variables associated with higher clinical severity because care for pre-existing comorbidities in children with medically complex conditions could be difficult to distinguish from management of SARS-CoV-2 sequelae. We also were not able to account for the differing reference ranges for vital signs and many laboratory findings known to vary throughout childhood. In addition, the diagnostic organ dysfunction criteria for MIS-C require, by definition, a high-acuity phenotype, and MIS-C clinical outcomes should be interpreted with this in mind.

Conclusions

This cohort study reports the characteristics and outcomes of what is, to our knowledge, the largest US cohort of children with SARS-CoV-2 to date. The N3C database provides a diverse, granular view of pediatric SARS-CoV-2 infections and allows for novel vital sign and laboratory value trajectory mapping. Further work is warranted to optimize translation of this knowledge into improved clinical care.

ARTICLE INFORMATION

Accepted for Publication: November 15, 2021.

Published: February 8, 2022. doi:10.1001/jamanetworkopen.2021.43151

Open Access: This is an open access article distributed under the terms of the [CC-BY License](#). © 2022 Martin B et al. *JAMA Network Open*.

Corresponding Author: Blake Martin, MD, Section of Critical Care Medicine, Department of Pediatrics, University of Colorado School of Medicine, 13121 E 17th Ave, MS8414, Aurora, CO 80045 (blake.martin@cuanschutz.edu).

Author Affiliations: Section of Critical Care Medicine, Department of Pediatrics, University of Colorado School of Medicine, University of Colorado, Aurora (Martin, Bennett); Section of Informatics and Data Science, Department of Pediatrics, University of Colorado School of Medicine, University of Colorado, Aurora (DeWitt, Russell, Bennett); Department of Biomedical Informatics, Stony Brook University, Stony Brook, New York (Anand, Bremer, Hajagos, Wooldridge, Yoo, Saltz, Moffitt); Palantir Technologies, Denver, Colorado (Bradwell, Girvin); Johns Hopkins University School of Medicine, Baltimore, Maryland (Gabriel, Chute); Translational and Integrative Sciences Center, University of Colorado, Aurora (McMurry, Neumann); Center for Health AI, University of Colorado, Aurora (McMurry, Neumann, Walden, Haendel); North Carolina Translational and Clinical Sciences Institute, University of North Carolina at Chapel Hill, Chapel Hill (Pfaff); National Center for Advancing Translational Sciences, National Institutes of Health, Bethesda, Maryland (Gersing); Schools of Public Health, and Nursing, Johns Hopkins University, Baltimore, Maryland (Chute).

Author Contributions: Dr Martin had full access to all of the data in the study and takes responsibility for the integrity of the data and the accuracy of the data analysis.

Concept and design: Martin, Chute, Haendel, Moffitt, Bennett.

Acquisition, analysis, or interpretation of data: Martin, DeWitt, Russell, Anand, Bradwell, Bremer, Gabriel, Girvin, Hajagos, McMurry, Neumann, Pfaff, Walden, Wooldridge, Yoo, Saltz, Gersing, Chute, Moffitt, Bennett.

Drafting of the manuscript: Martin, DeWitt, Anand, Bremer, Gabriel, Hajagos, Yoo, Saltz, Haendel.

Critical revision of the manuscript for important intellectual content: Martin, Russell, Bradwell, Gabriel, Girvin, McMurry, Neumann, Pfaff, Walden, Woolldridge, Gersing, Chute, Moffitt, Bennett.

Statistical analysis: Martin, DeWitt, Russell, Anand, Girvin, Yoo, Moffitt, Bennett.

Obtained funding: McMurry, Walden, Chute, Haendel, Bennett.

Administrative, technical, or material support: Martin, Bradwell, Gabriel, Hajagos, McMurry, Neumann, Pfaff, Walden, Saltz, Gersing, Chute, Haendel.

Supervision: Martin, Chute, Haendel, Bennett.

Conflict of Interest Disclosures: Mr Anand reported receiving grants from National Institutes of Health (NIH) during the conduct of the study. Dr Bradwell reported being a Palantir Technologies employee. Dr Girvin reported being an employee of Palantir Technologies. Dr. Hajagos reported receiving grants from the NIH/National Center for Advancing Translational Sciences (NCATS) during the conduct of the study. Dr McMurry reported being a cofounder of Pryzm Health. Dr Pfaff reported receiving grants from the NCATS during the conduct of the study. Dr Walden reported receiving grants from Oregon Health and Science Institution and grants from University of Colorado-Anschutz and moved to this university under the same grant during the conduct of the study. Dr Chute reported receiving grants from the NIH/NCATS during the conduct of the study. Dr Haendel reported being a founding shareholder for Pryzm Health but has relinquished her shares and role. Dr Haendel also reported receiving grants from the NIH during the conduct of the study. Dr Moffitt reported receiving grants from the NIH during the conduct of the study. Dr Bennett reported receiving grants from the National Institute of Allergy and Infectious Diseases and grants from the NICHD outside the submitted work. No other disclosures were reported.

Funding/Support: The primary study sponsors are multiple institutes of the NIH. The NCATS is the primary steward of the N3C data and created the underlying architecture of the N3C Data Enclave, manages the data transfer agreements and data use agreements, houses the data access committee, and supports contracts to vendors to help build various aspects of the N3C Data Enclave. Employees of the NIH and of the contracting companies are included as authors of the article and participated in the writing and decision to submit the manuscript. The analyses for this work were conducted using data and tools accessed through the NCATS N3C Data Enclave and supported by NCATS U24 TRO02306 (Drs Saltz, Chute, and Haendel; also supporting Dr Pfaff, Ms Walden, Ms McMurry, Mr Neumann, and Ms Gabriel). Drs Martin, Bennett, DeWitt, Moffitt, and Mr Russell were partially supported by NICHD grant R01 HD105939-01S1 and Dr Bennett was supported by NICHD grant R01 HD105939. This study was also supported by the following (institutions with release data): grants U24TRO02306 (Stony Brook University), U54GM104938 (Oklahoma Clinical and Translational Science Institute, University of Oklahoma Health Sciences Center), U54GM104942 (West Virginia Clinical and Translational Science Institute, West Virginia University), U54GM115428 (Mississippi Center for Clinical and Translational Research, University of Mississippi Medical Center), U54GM115458 (Great Plains IDeA-Clinical & Translational Research, University of Nebraska Medical Center), U54GM115516 (Northern New England Clinical & Translational Research Network, Maine Medical Center), UL1TRO01420 (Wake Forest Clinical and Translational Science Institute, Wake Forest University Health Sciences), UL1TRO01422 (Northwestern University Clinical and Translational Science Institute, Northwestern University), UL1TRO01425 (Center for Clinical and Translational Science and Training, University of Cincinnati), UL1TRO01439 (Institute for Translational Sciences, University of Texas Medical Branch at Galveston), UL1TRO01450 (South Carolina Clinical & Translational Research Institute, Medical University of South Carolina), UL1TRO01453 (UMass Center for Clinical and Translational Science, University of Massachusetts Medical School Worcester), UL1TRO01855 (Southern California Clinical and Translational Science Institute, University of Southern California), UL1TRO01873 (Irving Institute for Clinical and Translational Research, Columbia University Irving Medical Center), UL1TRO01876 (Clinical and Translational Science Institute at Children's National, George Washington Children's Research Institute), UL1TRO01998 (Appalachian Translational Research Network, University of Kentucky), UL1TRO02001 (University of Rochester Clinical & Translational Science Institute), UL1TRO02003 (University of Illinois at Chicago Center for Clinical and Translational Science), UL1TRO02014 (Penn State Clinical and Translational Science Institute), UL1TRO02240 (Michigan Institute for Clinical and Health Research, University of Michigan, Ann Arbor), UL1TRO02243 (Vanderbilt Institute for Clinical and Translational Research, Vanderbilt University Medical Center), UL1TRO02319 (Institute of Translational Health Sciences, University of Washington), UL1TRO02345 (Institute of Clinical and Translational Sciences, Washington University in St. Louis), UL1TRO02369 (Oregon Clinical and Translational Research Institute, Oregon Health & Science University), UL1TRO02373 (Wisconsin Network for Health Research, University of Wisconsin-Madison), UL1TRO02389 (Institute for Translational Medicine, Rush University Medical Center), UL1TRO02389 (Institute for Translational Medicine, University of Chicago), UL1TRO02489 (North Carolina Translational and Clinical Science Institute, University of North Carolina at Chapel Hill), UL1TRO02494 (Clinical and Translational Science Institute, University of Minnesota), UL1TRO02535 (Colorado Clinical and Translational Sciences Institute and Children's Hospital Colorado), UL1TRO02537 and UL1TRO02535 0352 (Institute for Clinical and Translational Science, University of Iowa), UL1TRO02538 (Uhealth Center for Clinical and Translational Science, University of Utah),

UL1TRO02544 (Tufts Clinical and Translational Science Institute, Tufts Medical Center), UL1TRO02553 (Duke Clinical and Translational Science Institute, Duke University), UL1TRO02649 (C. Kenneth and Dianne Wright Center for Clinical and Translational Research, Virginia Commonwealth University), UL1TRO02733 (Center for Clinical and Translational Science, Ohio State University), UL1TRO02736 (University of Miami Clinical and Translational Science Institute), UL1TRO03015 (iTHRIVL Integrated Translational Health Research Institute of Virginia, University of Virginia), UL1TRO03015 (iTHRIVL Integrated Translational Health Research Institute of Virginia, Carilion Clinic), UL1TRO03096 (Center for Clinical and Translational Science, University of Alabama at Birmingham), UL1TRO03098 (Johns Hopkins Institute for Clinical and Translational Research, Johns Hopkins University), UL1TRO03107 (Consortium of Rural States, University of Arkansas for Medical Sciences), U54GM104941 (Delaware CTR ACCEL Program, Nemours), UL1TRO02535 (Colorado Clinical and Translational Sciences Institute, University of Colorado, Denver, Anschutz Medical Campus), UL1TRO02377 (Mayo Clinic Center for Clinical and Translational Science, Mayo Clinic Rochester), UL1TRO02389 (Institute for Translational Medicine, Loyola University Medical Center), UL1TRO02389 (Institute for Translational Medicine, Advocate Health Care Network). Additional support (data release pending) was provided as follows: UL1TRO01866 (Center for Clinical and Translational Science, Rockefeller University), UL1TRO02550 (Scripps Research Translational Institute, The Scripps Research Institute), UL1TRO02645 (Institute for Integration of Medicine and Science, University of Texas Health Science Center at San Antonio), UL1TRO03167 (Center for Clinical and Translational Sciences, The University of Texas Health Science Center at Houston), UL1TRO02389 (Institute for Translational Medicine, NorthShore University HealthSystem), UL1TRO01863 (Yale Center for Clinical Investigation, Yale New Haven Hospital), UL1TRO02378 (Georgia Clinical and Translational Science Alliance, Emory University), UL1TRO02384 (Weill Cornell Medicine Clinical and Translational Science Center, Weill Medical College of Cornell University), UL1TRO02556 (Institute for Clinical and Translational Research at Einstein and Montefiore, Montefiore Medical Center), UL1TRO01436 (Clinical and Translational Science Institute of Southeast Wisconsin, Medical College of Wisconsin), UL1TRO01449 (University of New Mexico Clinical and Translational Science Center, University of New Mexico Health Sciences Center), UL1TRO01876 (Clinical and Translational Science Institute at Children's National, George Washington University), UL1TRO03142 (Spectrum: The Stanford Center for Clinical and Translational Research and Education, Stanford University), UL1TRO02529 (Indiana Clinical and Translational Science Institute, Regenstrief Institute), UL1TRO01425 (Center for Clinical and Translational Science and Training, Cincinnati Children's Hospital Medical Center), UL1TRO01430 (Boston University Clinical and Translational Science Institute, Boston University Medical Campus), U54GM104940 (Louisiana Clinical and Translational Science Center, University Medical Center New Orleans), UL1TRO01412 (Clinical and Translational Science Institute, The State University of New York at Buffalo), UL1TRO02373 (Wisconsin Network for Health Research, Aurora Health Care), U54GM115677 (Advance Clinical Translational Research, Brown University), UL1TRO03017 (New Jersey Alliance for Clinical and Translational Science, Rutgers, The State University of New Jersey), UL1TRO02389 (Institute for Translational Medicine, Loyola University Chicago), UL1TRO01445 (Langone Health's Clinical and Translational Science Institute, New York University Grossman School of Medicine), UL1TRO01878 (Institute for Translational Medicine and Therapeutics, Children's Hospital of Philadelphia), UL1TRO02366 (Frontiers: University of Kansas Clinical and Translational Science Institute, University of Kansas Medical Center), UL1TRO02541 (Harvard Catalyst, Massachusetts General Brigham), INV-018455 (Bill and Melinda Gates Foundation grant to Sage Bionetworks, OCHIN), UL1TRO01433 (ConduITS Institute for Translational Sciences, Icahn School of Medicine at Mount Sinai), U54GM104940 (Louisiana Clinical and Translational Science Center, Ochsner Medical Center), UL1TRO01414 (University of California, Irvine Institute for Clinical and Translational Science), UL1TRO01442 (Altman Clinical and Translational Research Institute, University of California, San Diego), UL1TRO01860 (UCDavis Health Clinical and Translational Science Center, University of California, Davis), UL1TRO01872 (University of California, San Francisco Clinical and Translational Science Institute), and UL1TRO01881 (UCLA Clinical Translational Science Institute).

Role of the Funder/Sponsor: Authors who are employees of the NIH and of the listed contracting companies contributed to the design and conduct of the study; collection, management, analysis, and interpretation of the data; review and approval of the manuscript; and decision to submit the manuscript for publication.

REFERENCES

1. Johns Hopkins University & Medicine. Coronavirus Research Center. COVID-19 dashboard. Johns Hopkins University. 2021. Accessed January 3, 2022. <https://coronavirus.jhu.edu/map.html>
2. Ludvigsson JF. Systematic review of COVID-19 in children shows milder cases and a better prognosis than adults. *Acta Paediatr*. 2020;109(6):1088-1095. doi:10.1111/apa.15270
3. Preston LE, Chevinsky JR, Kompaniyets L, et al. Characteristics and disease severity of US children and adolescents diagnosed with COVID-19. *JAMA Netw Open*. 2021;4(4):e215298. doi:10.1001/jamanetworkopen.2021.5298
4. She J, Liu L, Liu W. COVID-19 epidemic: disease characteristics in children. *J Med Virol*. 2020;92(7):747-754. doi:10.1002/jmv.25807

5. Feldstein LR, Rose EB, Horwitz SM, et al; Overcoming COVID-19 Investigators; CDC COVID-19 Response Team. Multisystem inflammatory syndrome in US children and adolescents. *N Engl J Med*. 2020;383(4):334-346. doi:10.1056/NEJMoa2021680
6. Feldstein LR, Tenforde MW, Friedman KG, et al; Overcoming COVID-19 Investigators. Characteristics and outcomes of US children and adolescents with multisystem inflammatory syndrome in children (MIS-C) compared with severe acute COVID-19. *JAMA*. 2021;325(11):1074-1087. doi:10.1001/jama.2021.2091
7. Götzinger F, Santiago-García B, Noguera-Julían A, et al; ptbnet COVID-19 Study Group. COVID-19 in children and adolescents in Europe: a multinational, multicentre cohort study. *Lancet Child Adolesc Health*. 2020;4(9):653-661. doi:10.1016/S2352-4642(20)30177-2
8. Kompaniyets L, Agathis NT, Nelson JM, et al. Underlying medical conditions associated with severe COVID-19 illness among children. *JAMA Netw Open*. 2021;4(6):e2111182-e2111182. doi:10.1001/jamanetworkopen.2021.11182
9. Ouldali N, Yang DD, Madhi F, et al; investigator group of the PANDOR study. Factors associated with severe SARS-CoV-2 infection. *Pediatrics*. 2021;147(3):e2020023432. doi:10.1542/peds.2020-023432
10. Shekerdemian LS, Mahmood NR, Wolfe KK, et al; International COVID-19 PICU Collaborative. Characteristics and outcomes of children with coronavirus disease 2019 (COVID-19) infection admitted to US and Canadian pediatric intensive care units. *JAMA Pediatr*. 2020;174(9):868-873. doi:10.1001/jamapediatrics.2020.1948
11. Centers for Disease Control and Prevention. Information for healthcare providers about multisystem inflammatory syndrome in children. May 20, 2021. Accessed April 1, 2021. <https://www.cdc.gov/mis-c/hcp/>
12. Verdoni L, Mazza A, Gervasoni A, et al. An outbreak of severe Kawasaki-like disease at the Italian epicentre of the SARS-CoV-2 epidemic: an observational cohort study. *Lancet*. 2020;395(10239):1771-1778. doi:10.1016/S0140-6736(20)31103-X
13. Belay ED, Abrams J, Oster ME, et al. Trends in geographic and temporal distribution of US children with multisystem inflammatory syndrome during the COVID-19 pandemic. *JAMA Pediatr*. 2021;175(8):837-845. doi:10.1001/jamapediatrics.2021.0630
14. Centers for Disease Control and Prevention. COVID Data Tracker. Health department–reported cases of multisystem inflammatory syndrome in children (MIS-C) in the United States. 2021. Accessed January 3, 2022. <https://covid.cdc.gov/covid-data-tracker/#mis-national-surveillance>
15. Bailey LC, Razzaghi H, Burrows EK, et al. Assessment of 135 794 pediatric patients tested for severe acute respiratory syndrome coronavirus 2 across the United States. *JAMA Pediatr*. 2021;175(2):176-184. doi:10.1001/jamapediatrics.2020.5052
16. Haendel MA, Chute CG, Bennett TD, et al; N3C Consortium. The National COVID Cohort Collaborative (N3C): rationale, design, infrastructure, and deployment. *J Am Med Inform Assoc*. 2021;28(3):427-443. doi:10.1093/jamia/ocaa196
17. NIH National Institute of General Medical Sciences. Institutional Development Award (IDeA) Networks for Clinical and Translational Research (IDeA-CTR). National Institutes of Health. Accessed April 1, 2021. <https://www.nigms.nih.gov/Research/DRCB/IDeA/Pages/IDeA-CTR.aspx>
18. Bennett TD, Moffitt RA, Hajagos JG, et al; National COVID Cohort Collaborative (N3C) Consortium. Clinical characterization and prediction of clinical severity of SARS-CoV-2 infection among US adults using data from the US National COVID Cohort Collaborative. *JAMA Netw Open*. 2021;4(7):e2116901-e2116901. doi:10.1001/jamanetworkopen.2021.16901
19. Centers for Disease Control and Prevention. COVID Data Tracker. Variant proportions. 2022. Accessed January 3, 2022. <https://covid.cdc.gov/covid-data-tracker/#variant-proportions>
20. Burki TK. Lifting of COVID-19 restrictions in the UK and the delta variant. *Lancet Respir Med*. 2021;9(8):e85. doi:10.1016/S2213-2600(21)00328-3
21. Sheikh A, McMenamin J, Taylor B, Robertson C; Public Health Scotland and the EAVE II Collaborators. SARS-CoV-2 delta VOC in Scotland: demographics, risk of hospital admission, and vaccine effectiveness. *Lancet*. 2021;397(10293):2461-2462. doi:10.1016/S0140-6736(21)01358-1
22. Delahoy MJ, Ujamaa D, Whitaker M, et al; COVID-NET Surveillance Team; COVID-NET Surveillance Team. COVID-NET Surveillance Team; COVID-NET Surveillance Team. Hospitalizations associated with COVID-19 among children and adolescents: COVID-NET, 14 states, March 1, 2020-August 14, 2021. *MMWR Morb Mortal Wkly Rep*. 2021;70(36):1255-1260. doi:10.15585/mmwr.mm7036e2
23. American Academy of Pediatrics. AAP Division of Health Care Finance. New ICD-10-CM guidance addresses coding for MIS-C, COVID, influenza. September 1, 2020. Accessed April 1, 2021. <https://www.aappublications.org/news/2020/09/01/coding090120>

24. Centers for Medicare & Medicaid. ICD-10-CM official guidelines for coding and reporting—FY 2021: updated January 1, 2021. 2021. Accessed January 3, 2022. <https://cms.gov>
25. von Elm E, Altman DG, Egger M, Pocock SJ, Gøtzsche PC, Vandenbroucke JP; STROBE Initiative. The Strengthening of Reporting of Observational Studies in Epidemiology (STROBE) Statement: guidelines for reporting observational studies. *Int J Surg*. 2014;12(12):1495-1499. doi:10.1016/j.ijso.2014.07.013
26. Marshall J, Murthy S, Diaz J, Adhikari N, Angus D, Arabi Y. WHO Working Group on the Clinical Characterisation and Management of COVID-19 infection: a minimal common outcome measure set for COVID-19 clinical research. *Lancet Infect Dis*. 2020;20(8):e192-e197. doi:10.1016/S1473-3099(20)30483-7
27. OHDSI. Observational Health Data Sciences and Informatics. OMOP common data model. 2021. Accessed June 18, 2021. <https://www.ohdsi.org/data-standardization/the-common-data-model/>
28. Feinstein JA, Russell S, DeWitt PE, Feudtner C, Dai D, Bennett TD. R package for pediatric complex chronic condition classification. *JAMA Pediatr*. 2018;172(6):596-598. doi:10.1001/jamapediatrics.2018.0256
29. Feudtner C, Christakis DA, Connell FA. Pediatric deaths attributable to complex chronic conditions: a population-based study of Washington State, 1980-1997. *Pediatrics*. 2000;106(1, pt 2):205-209. doi:10.1542/peds.106.51.205
30. Horwitz LI, Jones SA, Cerfolio RJ, et al. Trends in COVID-19 risk-adjusted mortality rates. *J Hosp Med*. 2021;16(2):90-92. doi:10.12788/jhm.3552
31. Garcia-Vidal C, Sanjuan G, Moreno-García E, et al; COVID-19 Researchers Group. Incidence of co-infections and superinfections in hospitalized patients with COVID-19: a retrospective cohort study. *Clin Microbiol Infect*. 2021;27(1):83-88. doi:10.1016/j.cmi.2020.07.041
32. US Food & Drug Administration. Veklury (remdesivir) EUA letter of approval. October 22, 2020. Accessed January 11, 2022. <https://www.fda.gov/media/137564/download>
33. Horby P, Lim WS, Emberson JR, et al; RECOVERY Collaborative Group. Dexamethasone in hospitalized patients with Covid-19. *N Engl J Med*. 2021;384(8):693-704. doi:10.1056/NEJMoa2021436
34. Ouldali N, Toubiana J, Antona D, et al; French Covid-19 Paediatric Inflammation Consortium. Association of intravenous immunoglobulins plus methylprednisolone vs immunoglobulins alone with course of fever in multisystem inflammatory syndrome in children. *JAMA*. 2021;325(9):855-864. doi:10.1001/jama.2021.0694
35. Geva A, Patel MM, Newhams MM, et al; Overcoming COVID-19 Investigators. Data-driven clustering identifies features distinguishing multisystem inflammatory syndrome from acute COVID-19 in children and adolescents. *EClinicalMedicine*. 2021;40:101112. doi:10.1016/j.eclinm.2021.101112
36. Verma S, Lumba R, Dapul HM, et al. Characteristics of hospitalized children with SARS-CoV-2 in the New York City metropolitan area. *Hosp Pediatr*. 2021;11(1):71-78. doi:10.1542/hpeds.2020-001917
37. Ma X, Liu S, Chen L, Zhuang L, Zhang J, Xin Y. The clinical characteristics of pediatric inpatients with SARS-CoV-2 infection: a meta-analysis and systematic review. *J Med Virol*. 2021;93(1):234-240. doi:10.1002/jmv.26208
38. Oualha M, Bendavid M, Berteloot L, et al. Severe and fatal forms of COVID-19 in children. *Arch Pediatr*. 2020;27(5):235-238. doi:10.1016/j.arcped.2020.05.010
39. Zachariah P, Johnson CL, Halabi KC, et al; Columbia Pediatric COVID-19 Management Group. Epidemiology, clinical features, and disease severity in patients with coronavirus disease 2019 (COVID-19) in a children's hospital in New York City, New York. *JAMA Pediatr*. 2020;174(10):e202430. doi:10.1001/jamapediatrics.2020.2430

SUPPLEMENT.

eMethods. Detailed Methods

eTable 1. N3C Pediatric and Adult Cohort Characteristics

eTable 2. Adjusted Odds for Severe Disease by Demographic or Comorbidity Variable

eTable 3. Medication Administration Rates by Pediatric Severity Subgroup

eTable 4. Vital Sign Changes During the First Week of Hospitalization

eTable 5. Changes in Laboratory Test Values During the First Week of Hospitalization

eTable 6. Proportion of Children With a Given Lab Test Result by Severity Subgroup

eTable 7. MIS-C Versus Acute COVID-19 Characteristics, Outcomes, and Risk Factors

eTable 8. Delta Versus Pre-Delta Differences in Patient Characteristics, Outcomes, and Severity Risk Factors

eFigure 1. Geographic Distribution and Case Incidence Over Time N3C Pediatric Patients

eFigure 2. Subregion Positive Test Result Trends by Test Type

eFigure 3. Change in Qualifying Criteria for “Severe” Subgroup Classification Over Time

eFigure 4. Maximum Clinical Severity Distributions Among Prespecified Age Groups

eFigure 5. Antimicrobial and Immunomodulatory Medication Usage Trends

eFigure 6. Additional Vital Sign and Laboratory Value In-Hospital Trajectories

eReferences