

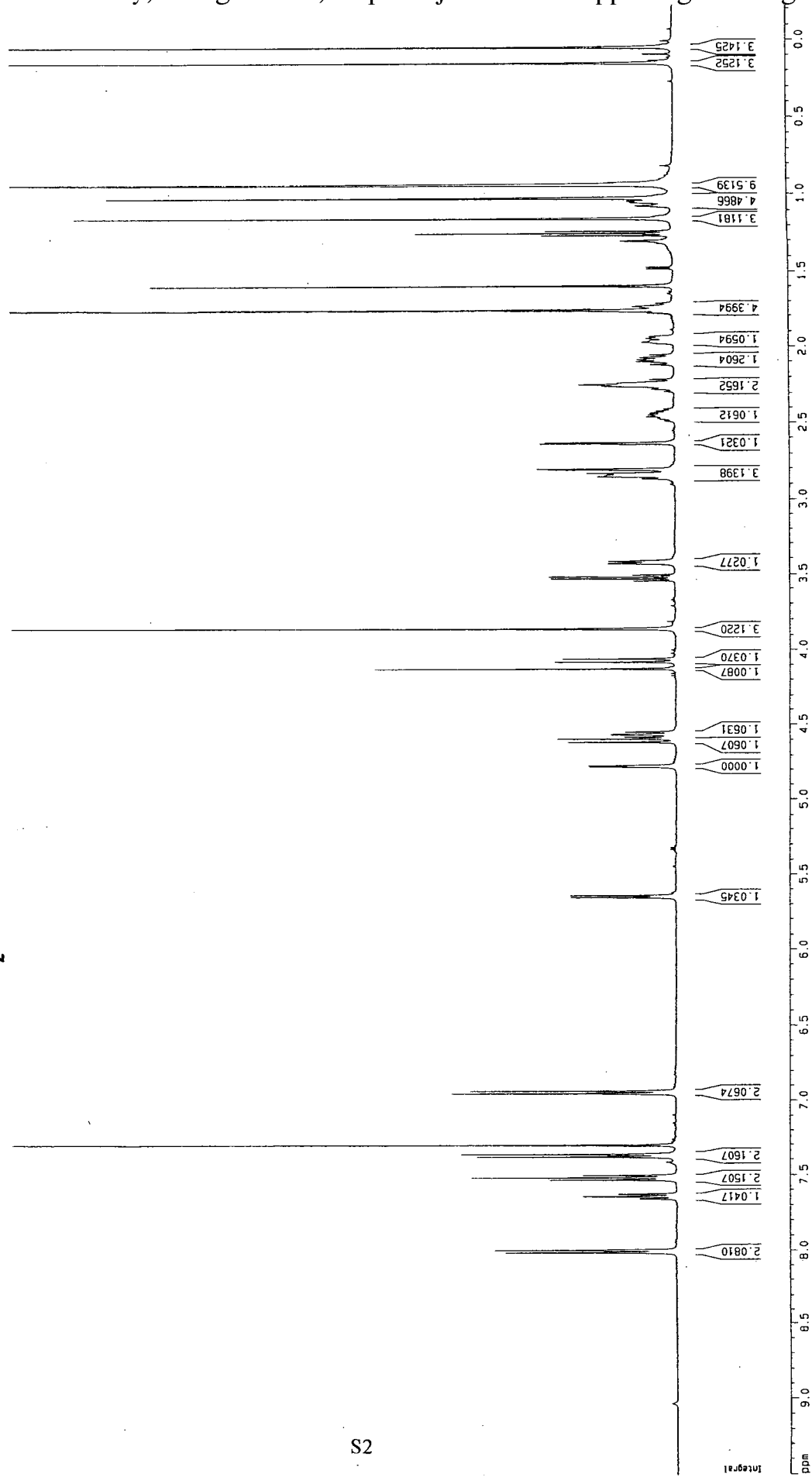
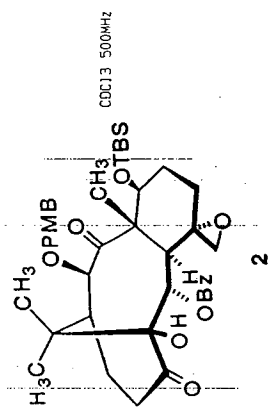
SUPPORTING INFORMATION

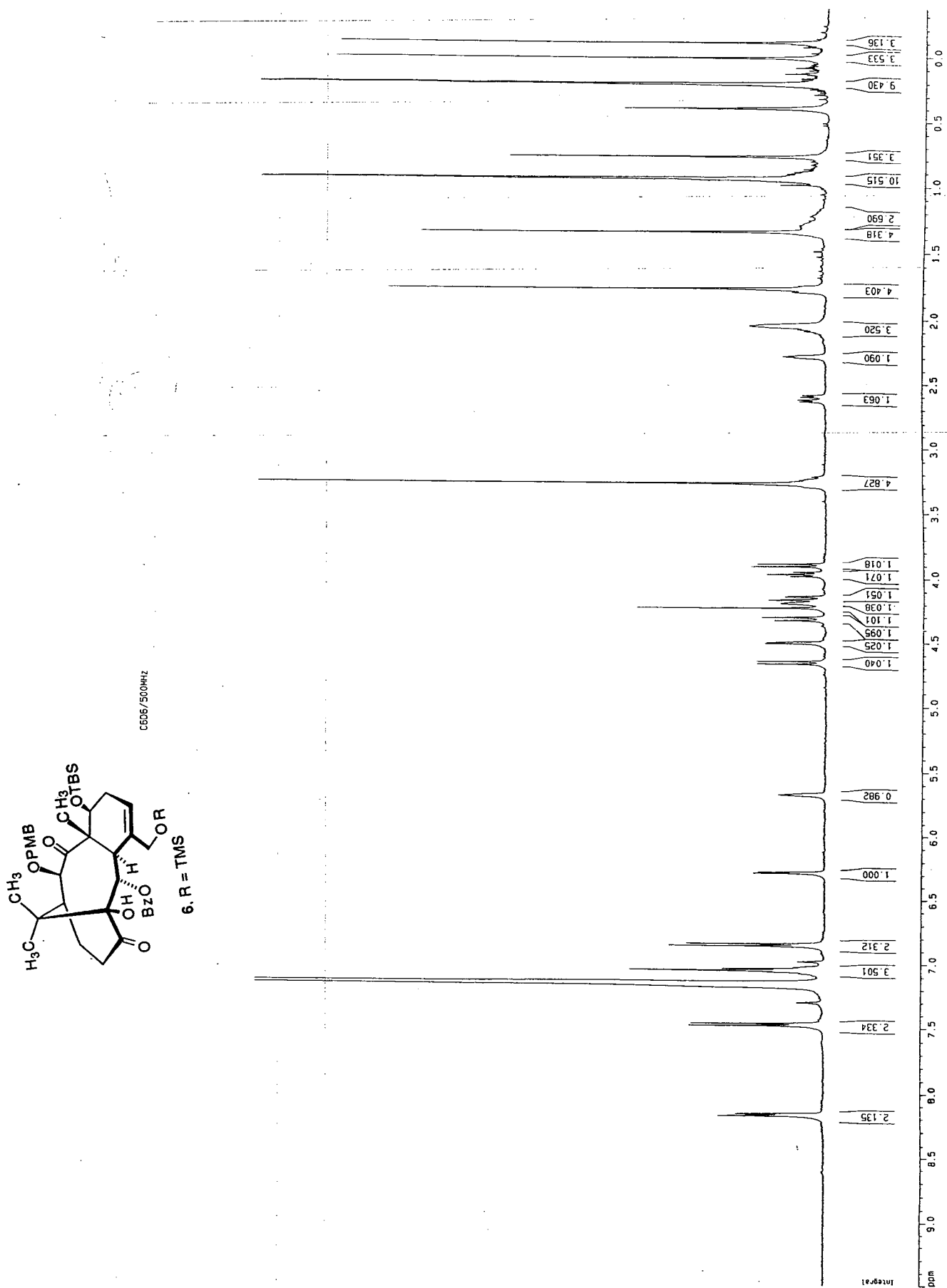
for

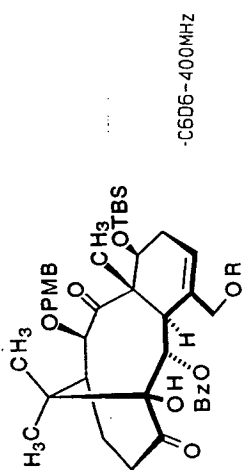
**"Chemical Modification of a Highly Functionalized Taxane. The
Consequences of an Absent Bridgehead Double Bond on Oxetane D-Ring
Construction"**

by Leo A. Paquette and Ho Yin Lo

Evans Chemical Laboratories, The Ohio State University, Columbus, Ohio 43210

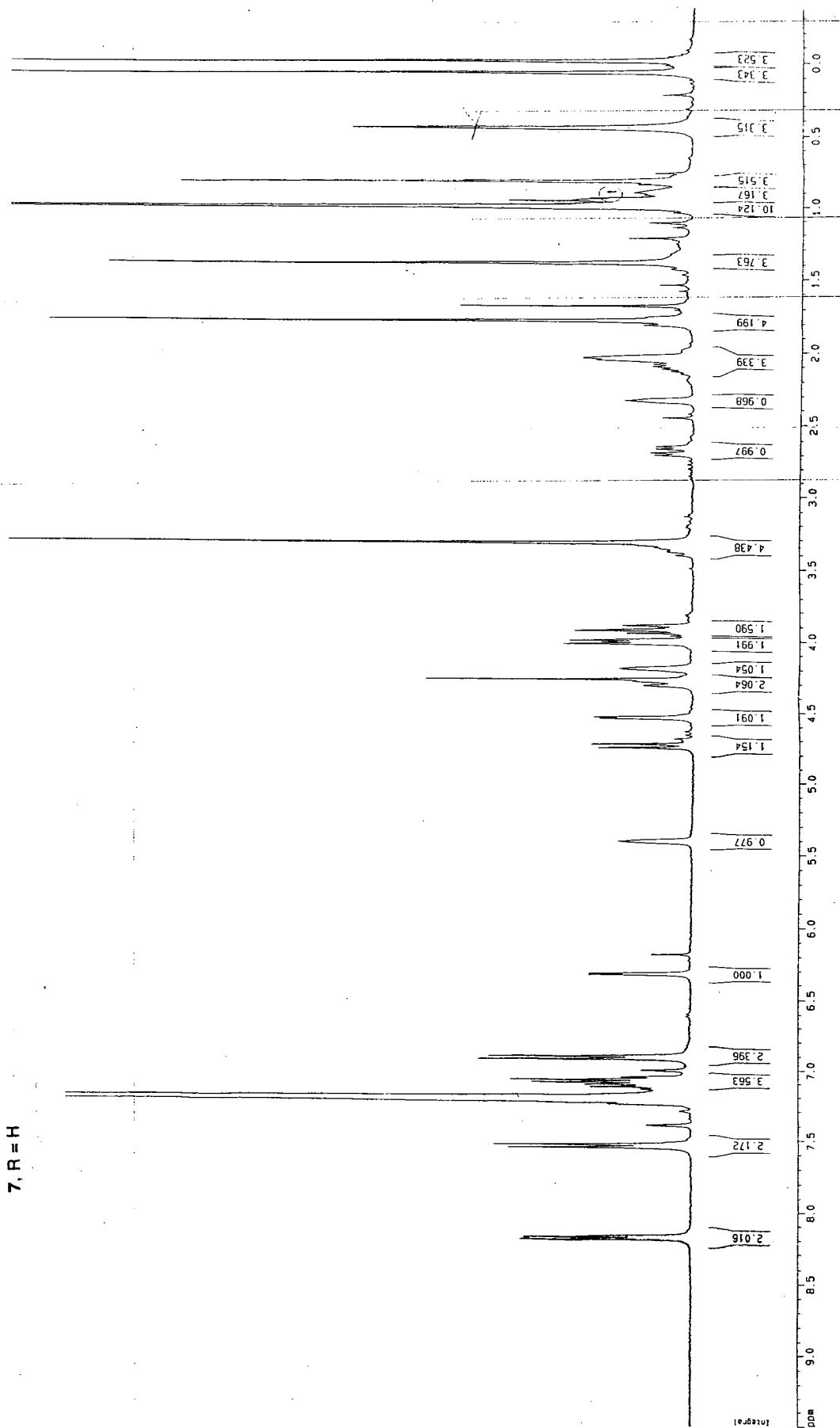


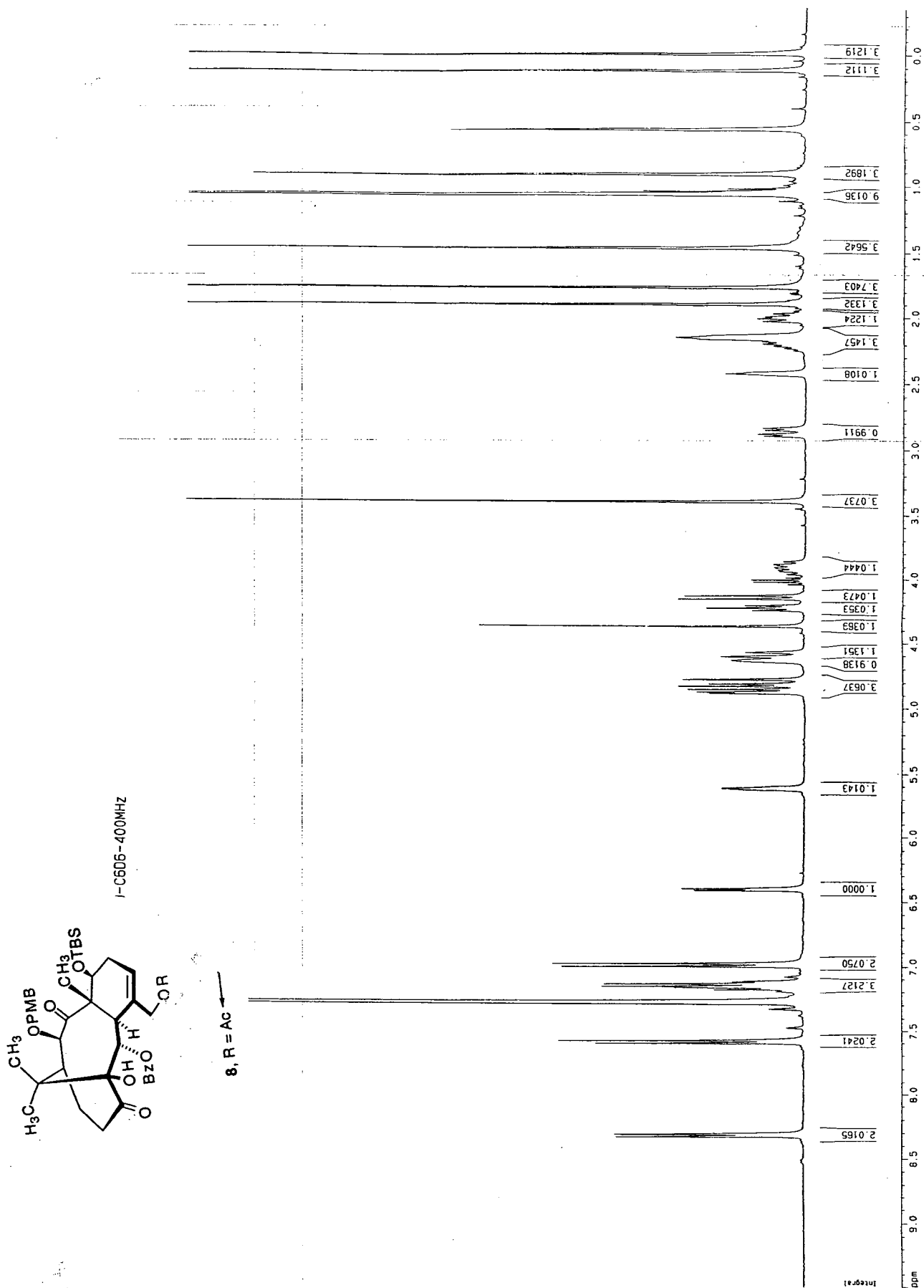


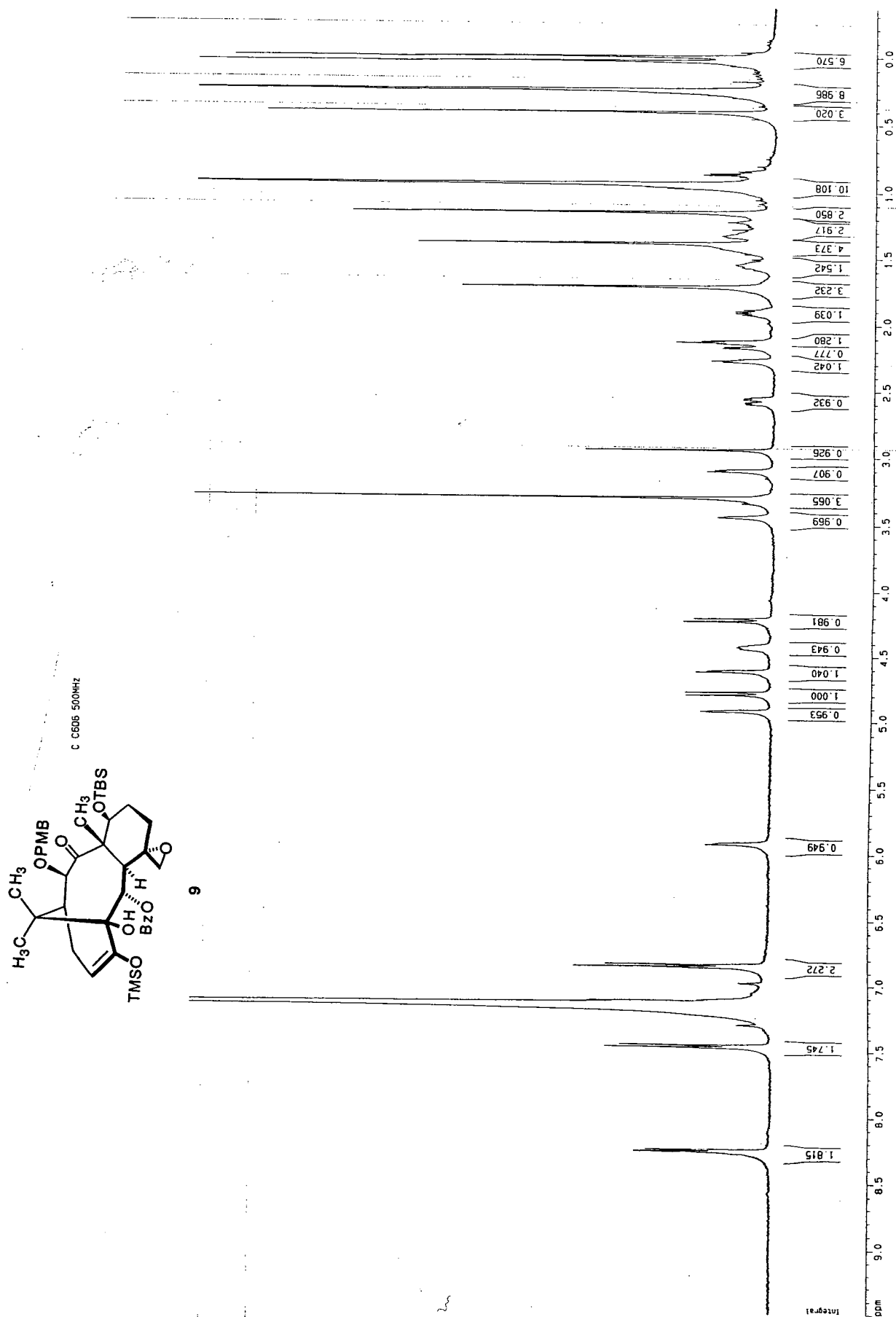


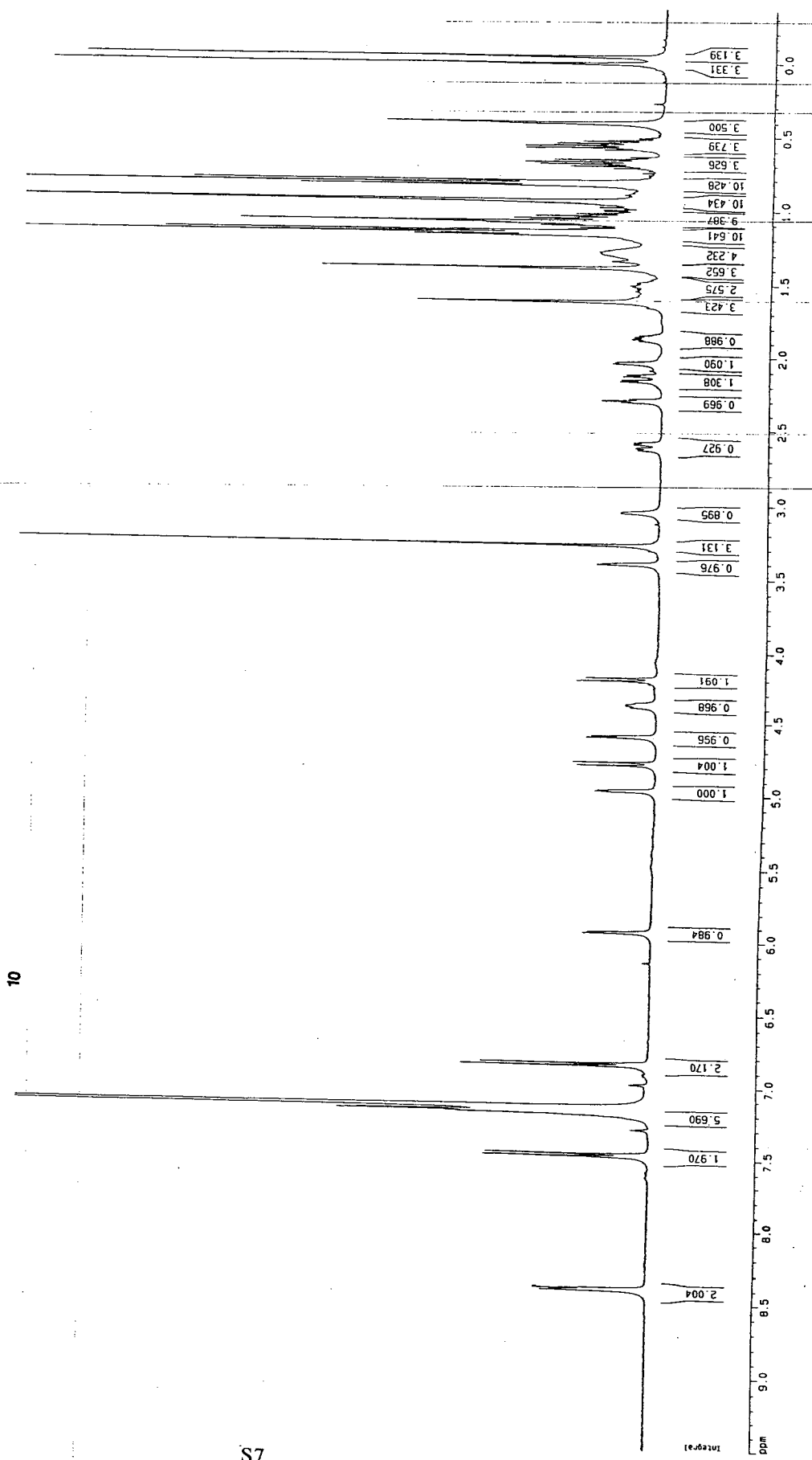
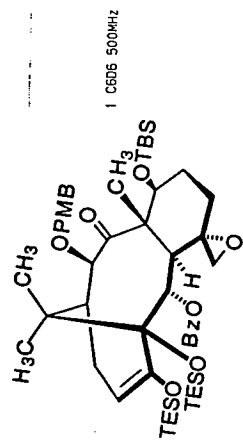
-C606-400MHZ

7, R = H

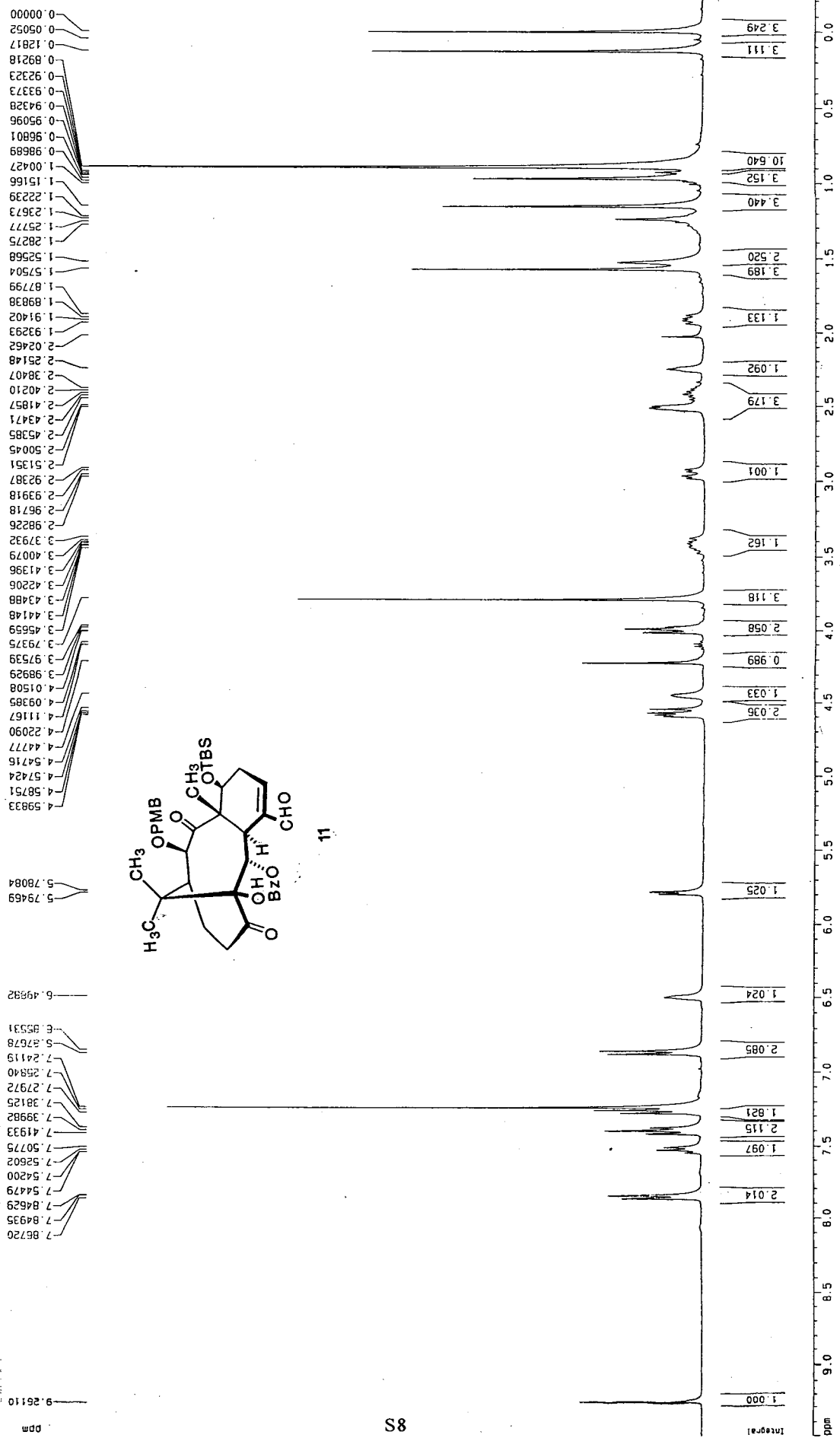




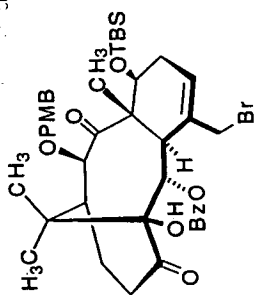




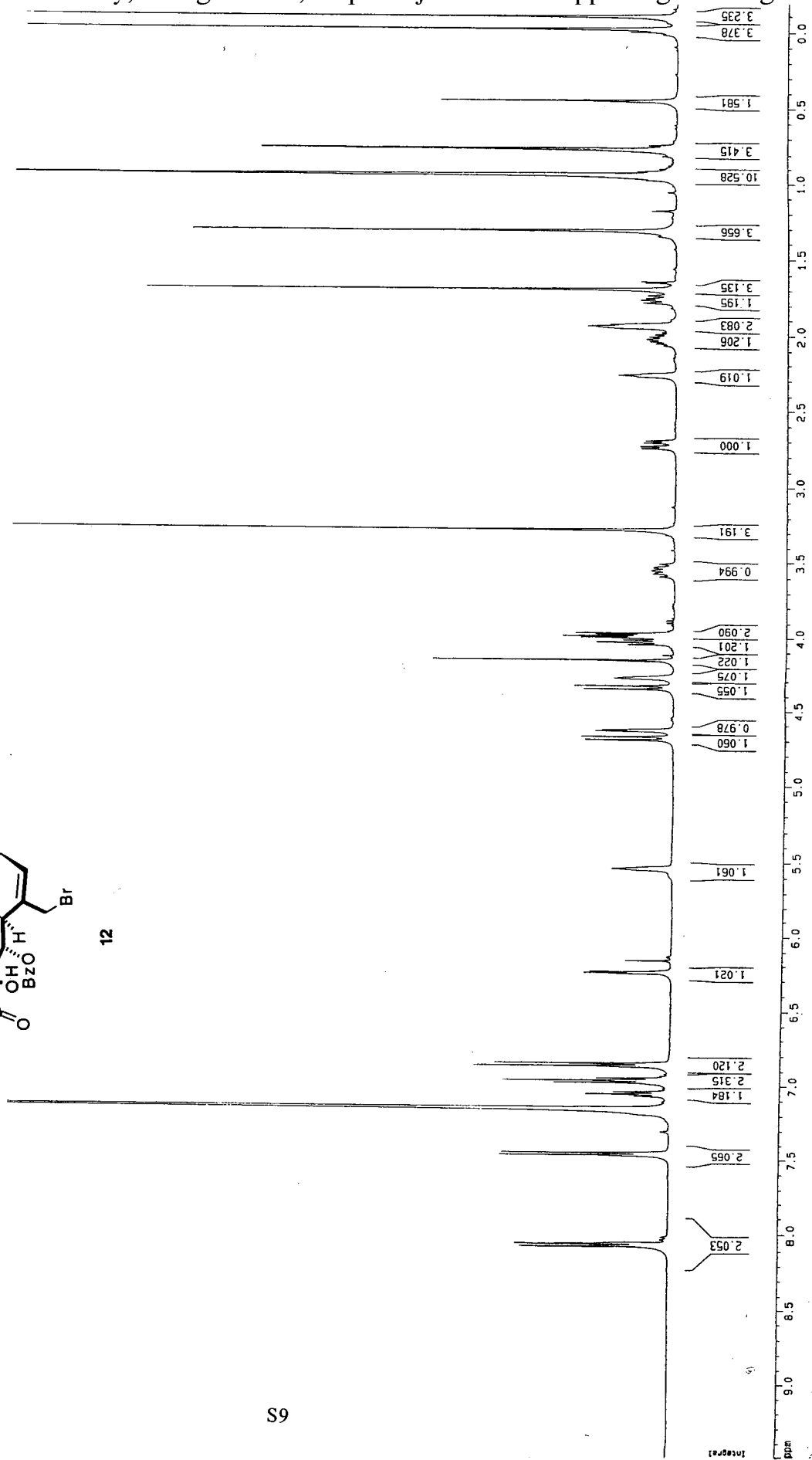
CDCl₃-400MHZ

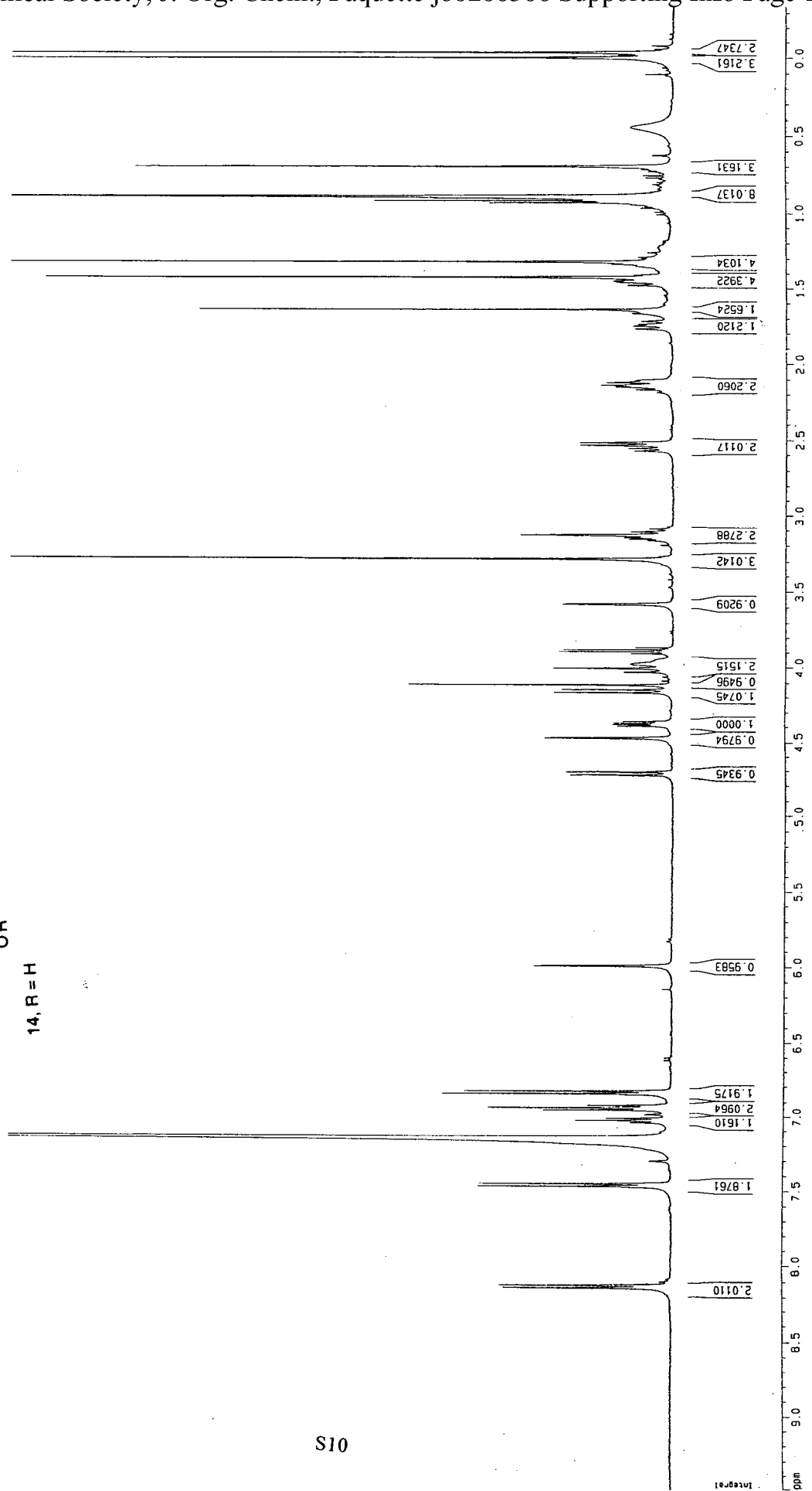
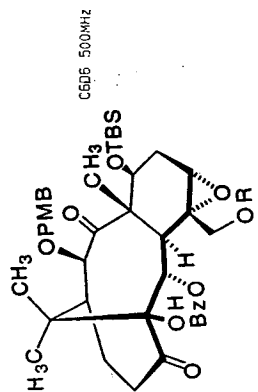


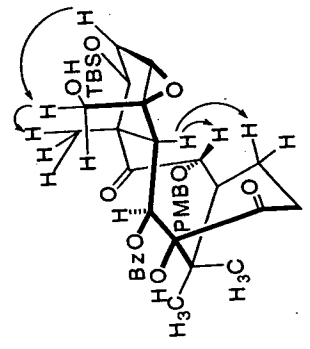
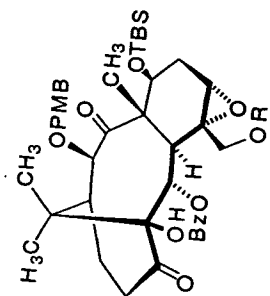
3606.500MHz



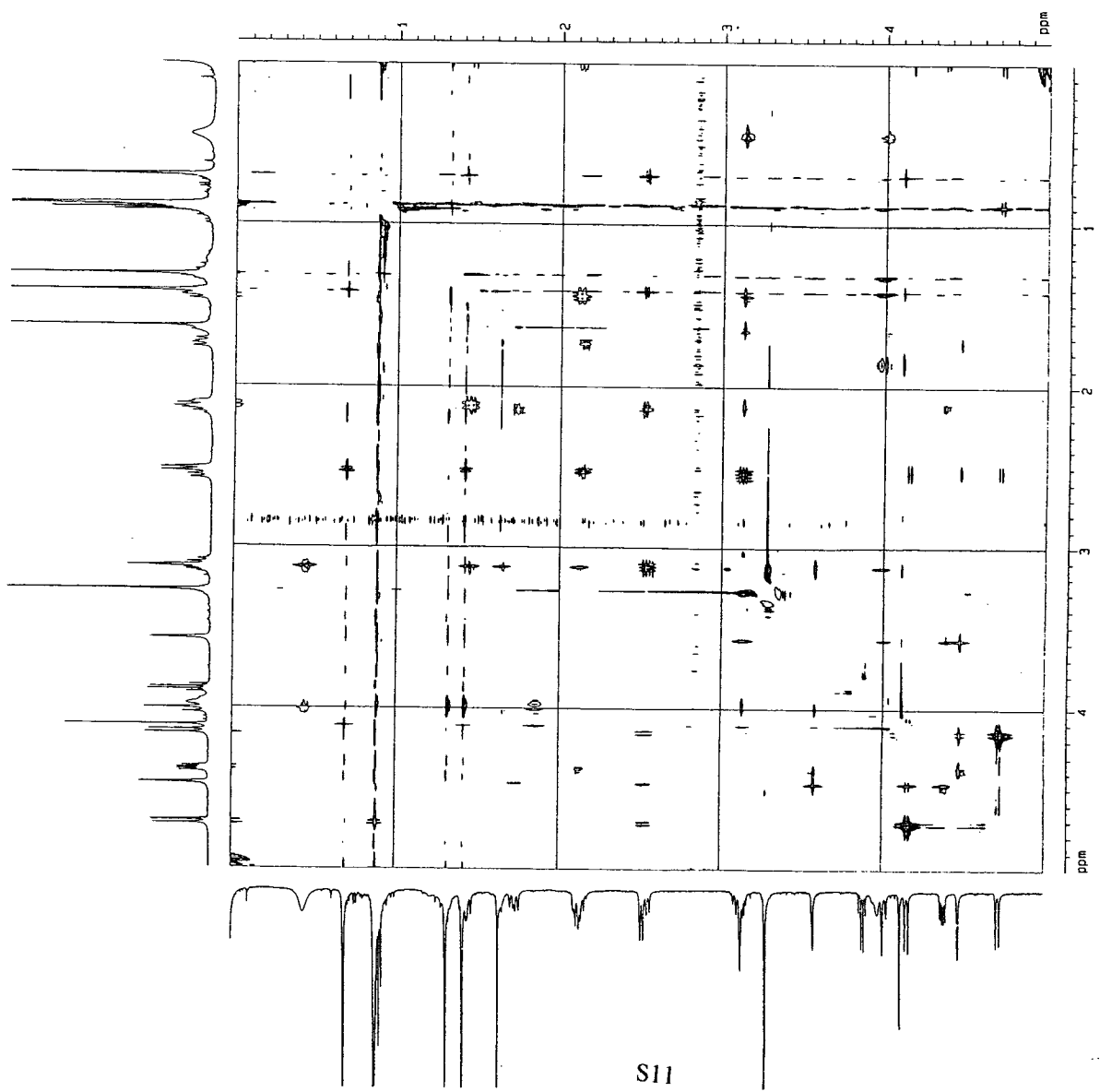
12







11-808-77 6606



S11

Current Data Parameters
 Run: 77
 ExpNO: 30
 PROCNO: 1

F2 - Acquisition Parameters
 Date_: 20010514
 Time: 13:29
 INSTRUM: spect
 PROGNO: 5 mm BBO BB-1
 PULPROG: zgpg30
 TO: 2048
 SOLVENT: CDCl3
 NS: 9
 DS: 16
 SWH: 3500.000 Hz
 FIDRES: 1.220703 Hz
 AQ: 0.4265500 sec
 RG: 724.1
 DM: 200.000 usec
 DE: 6.00 usec
 TE: 300.0 K
 D1: 0.6000000 sec
 D2: 0.0000000 sec
 D3: 2.0000000 sec
 D4: 0.0000000 sec
 D5: 0.0002000 sec
 d20: 0.99875989 sec
 INO: 0.0002000 sec

***** CHANNEL f1 *****
 NUC1: 13C
 P1: 13.70 usec
 PL1: 27.40 usec
 SFO1: 500.1312503 MHz

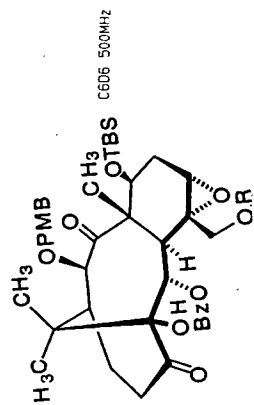
***** GRADIENT CHANNEL *****
 GPM1: 10.00
 GPM2: 5.10
 GPC1: 0.00 X
 GPC2: 0.00 X
 GPC3: 0.00 X
 GPC4: 0.00 X
 GPC5: 40.00 X
 GPC6: 40.00 X
 PRG: 1000.00 usec

F1 - Acquisition Parameters
 ND0: 2
 TD: 128
 SFO1: 500.1313 MHz
 FIDRES: 19.540000 Hz
 SN: 4.959 dBm

F2 - Processing parameters
 SI: 500.1300000 MHz
 SF: 1024
 WDW: SINE
 LB: 0.00 Hz
 GB: 0
 PC: 1.40

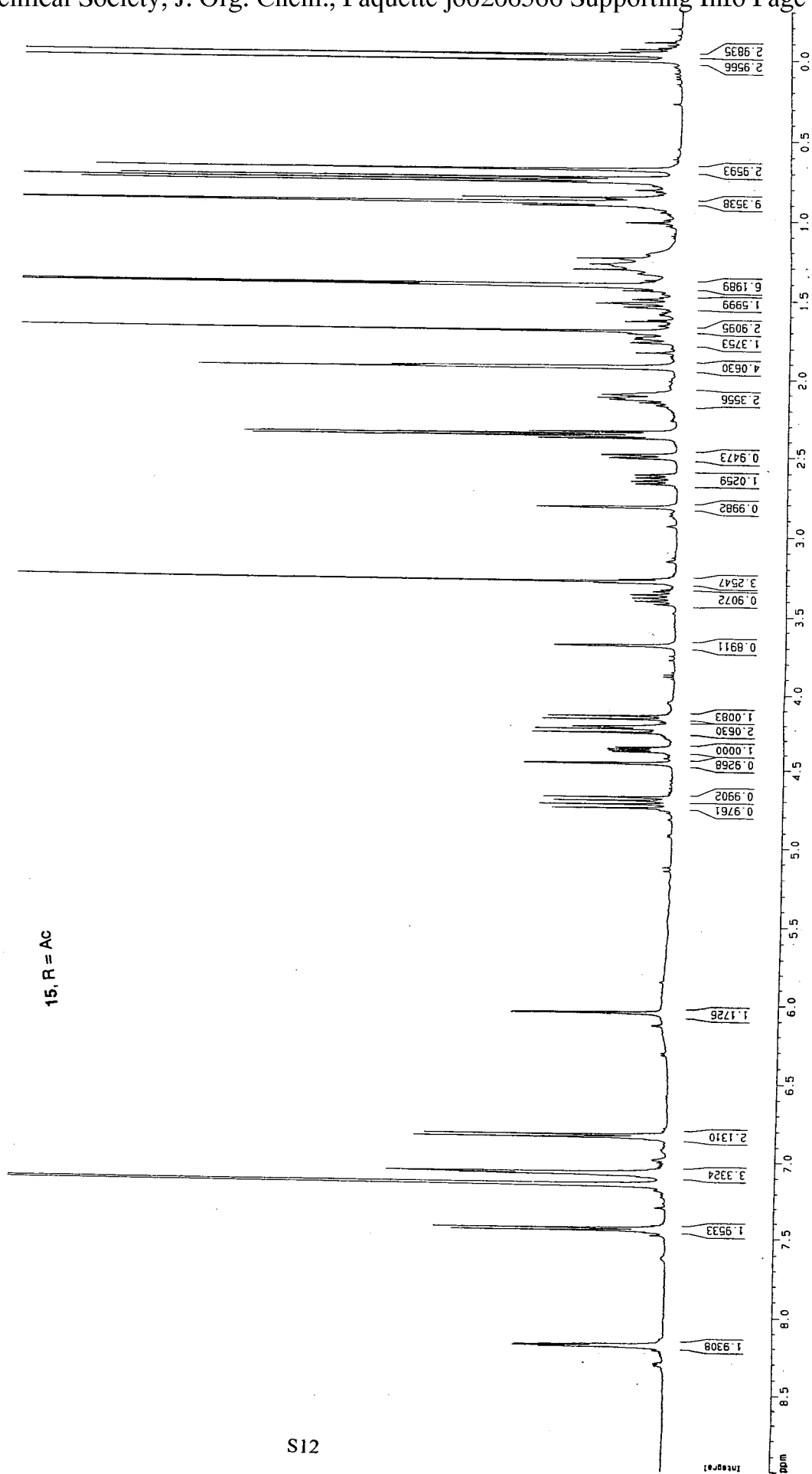
F1 - Processing parameters
 SI: 1024
 SF: 500.1300000 MHz
 WDW: COSINE
 LB: 0.00 Hz
 GB: 0

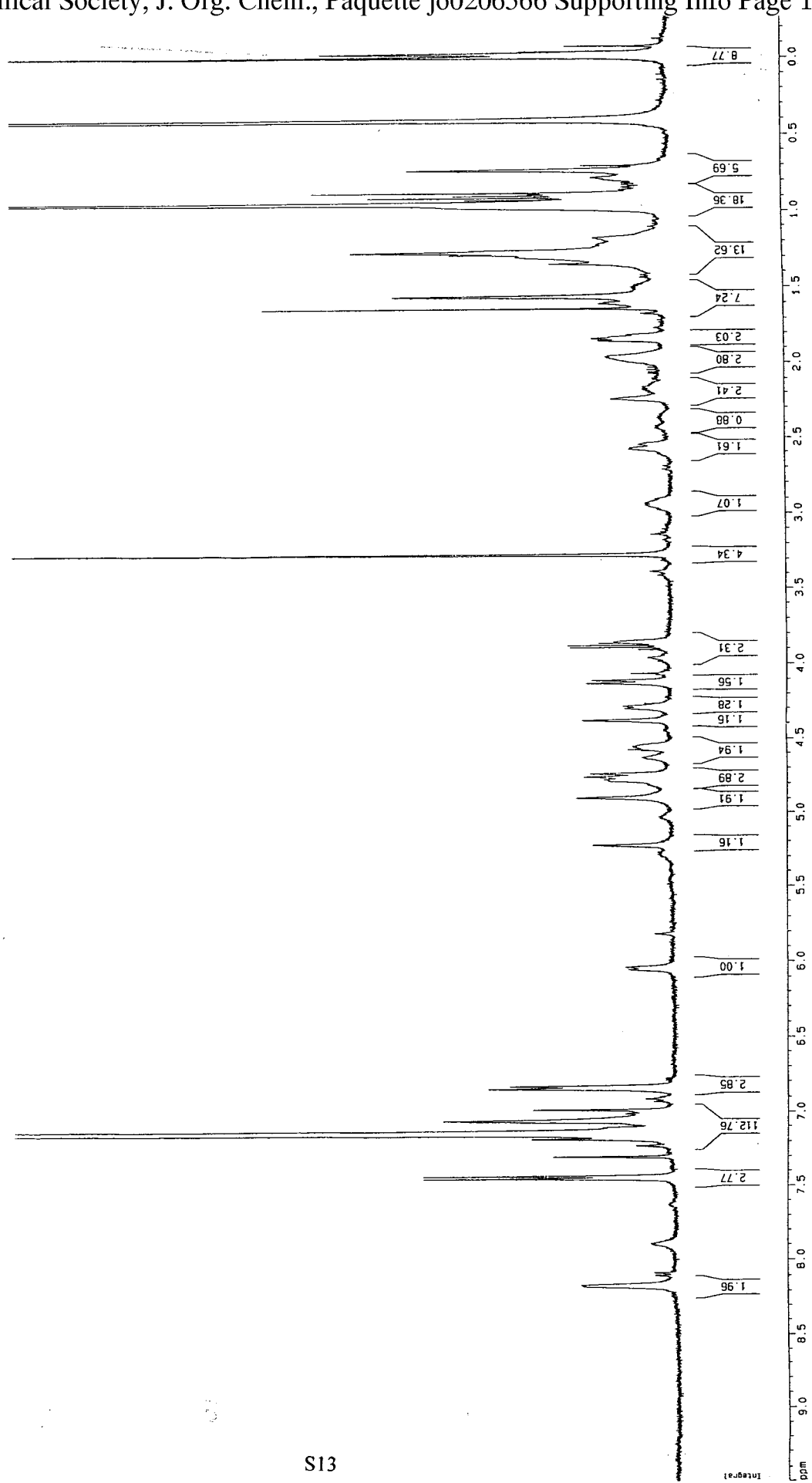
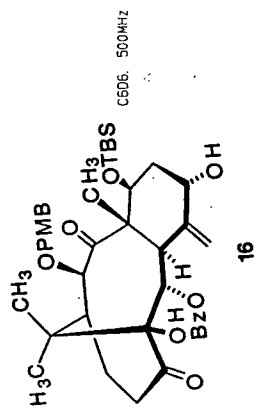
20 NMR P101 Parameters
 CX1: 18.00 GA
 F2P10: 4.959 dBm
 F2L0: 2500.32 Hz
 F2PH1: 0.001 dBm
 F2P10: 4.959 dBm
 F1L0: 2500.32 dBm
 F1PH1: 0.001 dBm
 F1PH1: 0.32 Hz
 F2PMCK: 0.27771 ppm/cm
 F2ZCN: 138.68890 Hz/cm
 F1PMCK: 0.27771 ppm/cm
 F1ZCN: 138.68890 Hz/cm

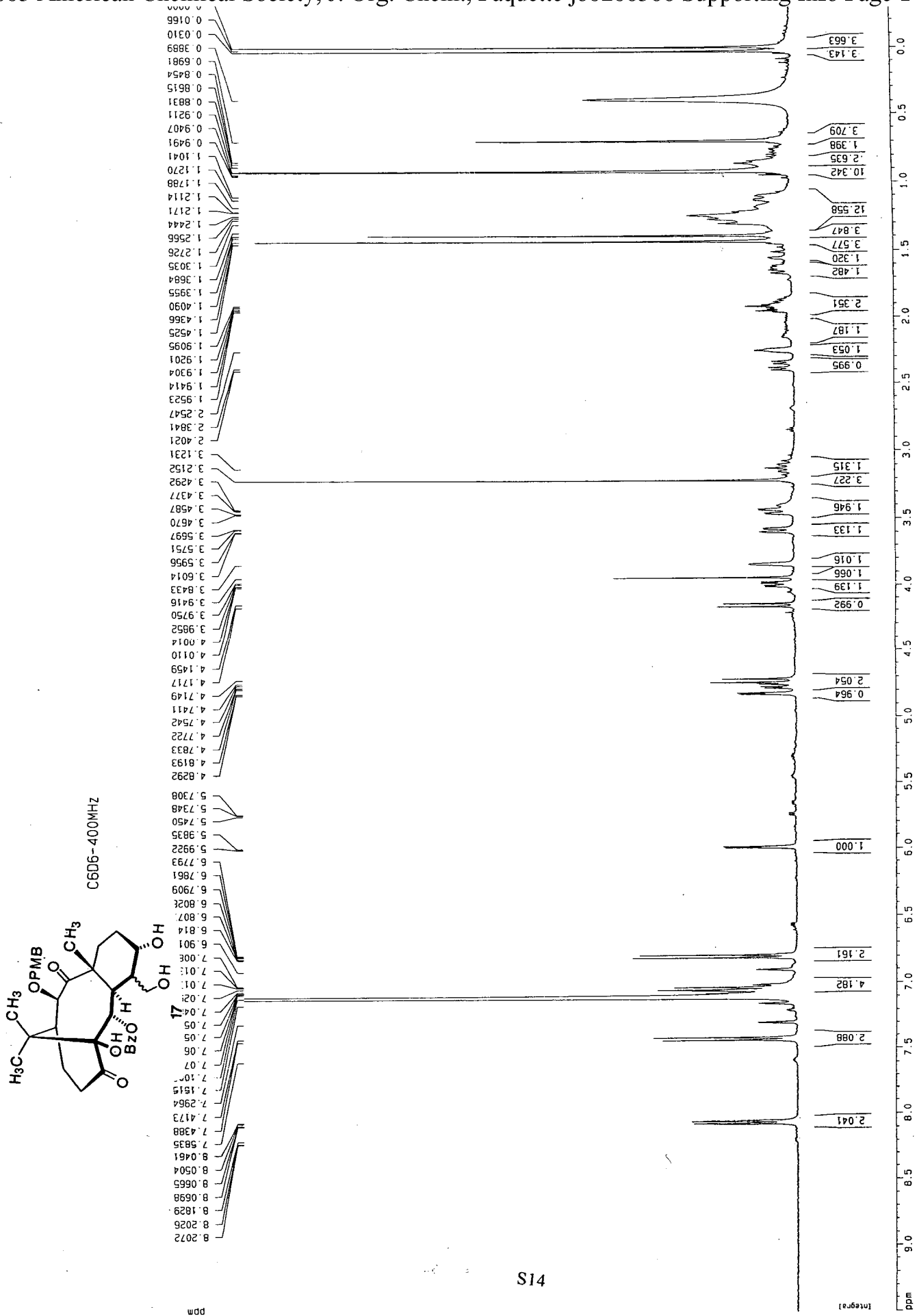


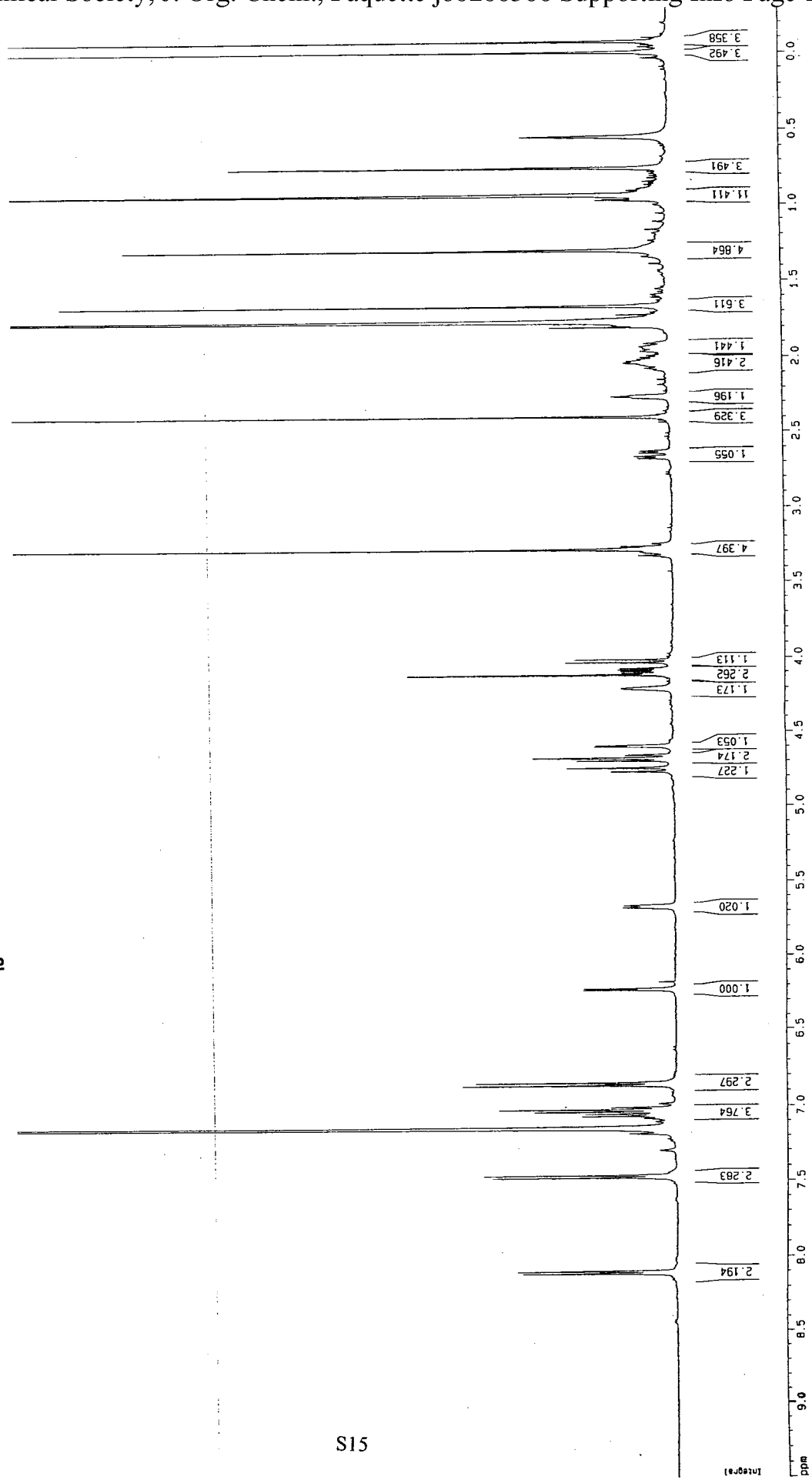
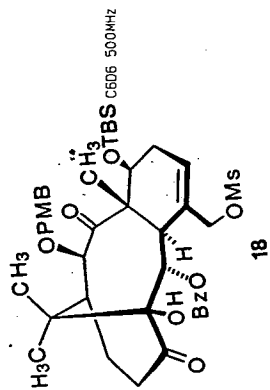
6005 500MHz

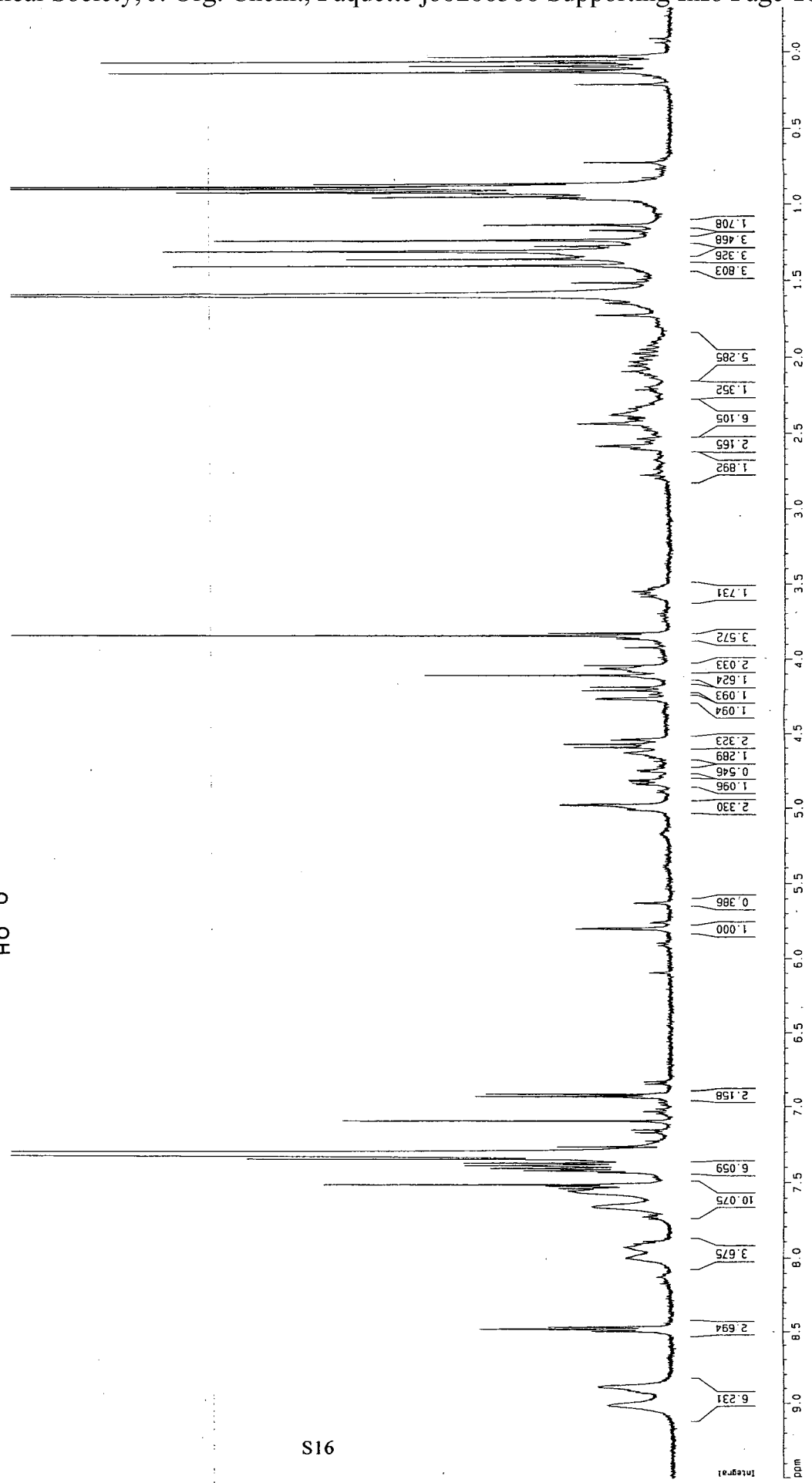
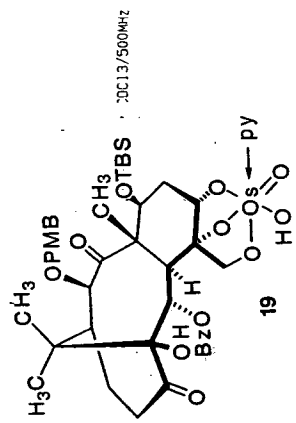
15, R = AC

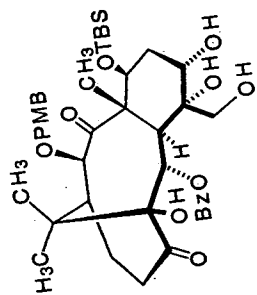






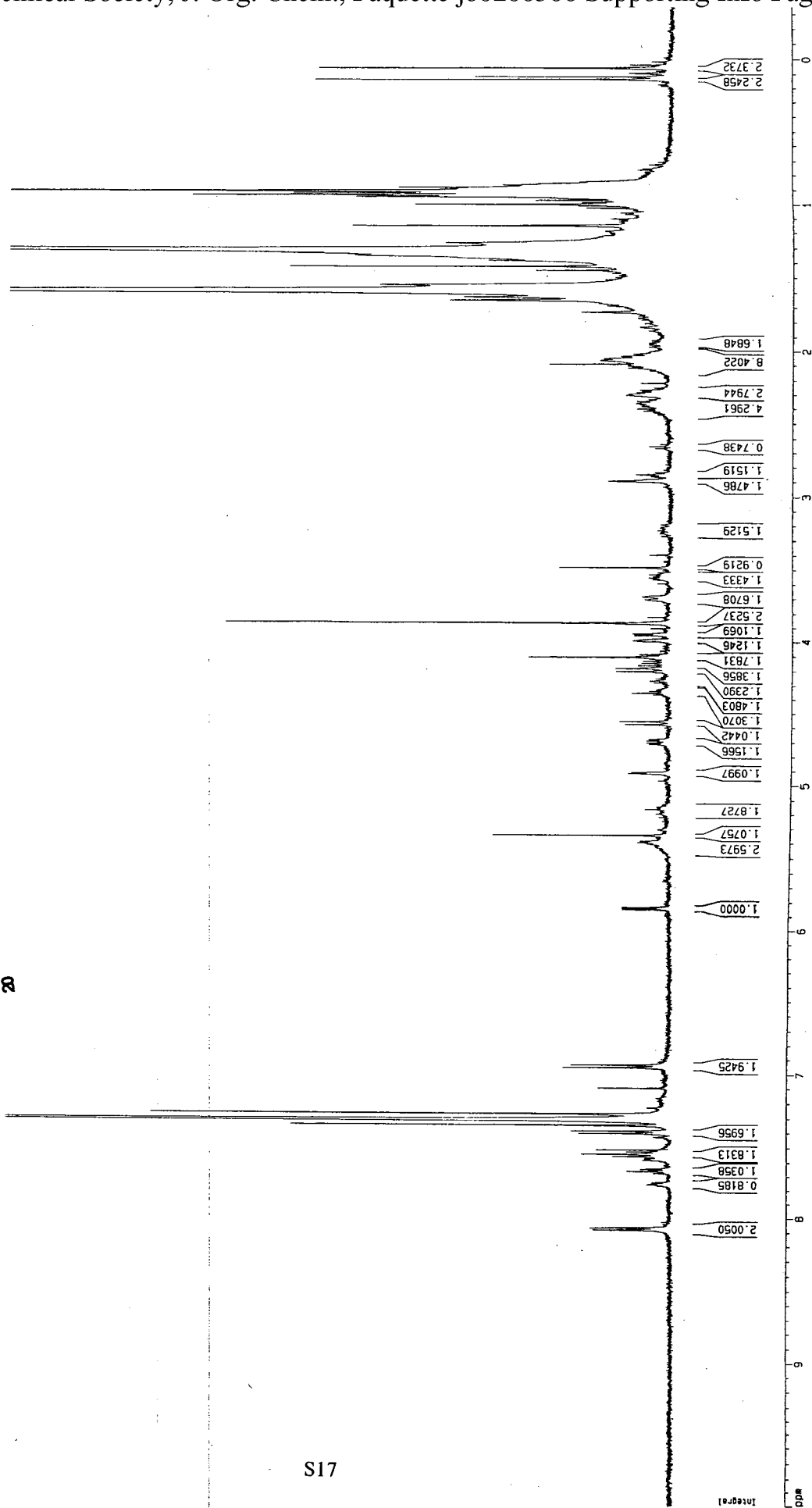


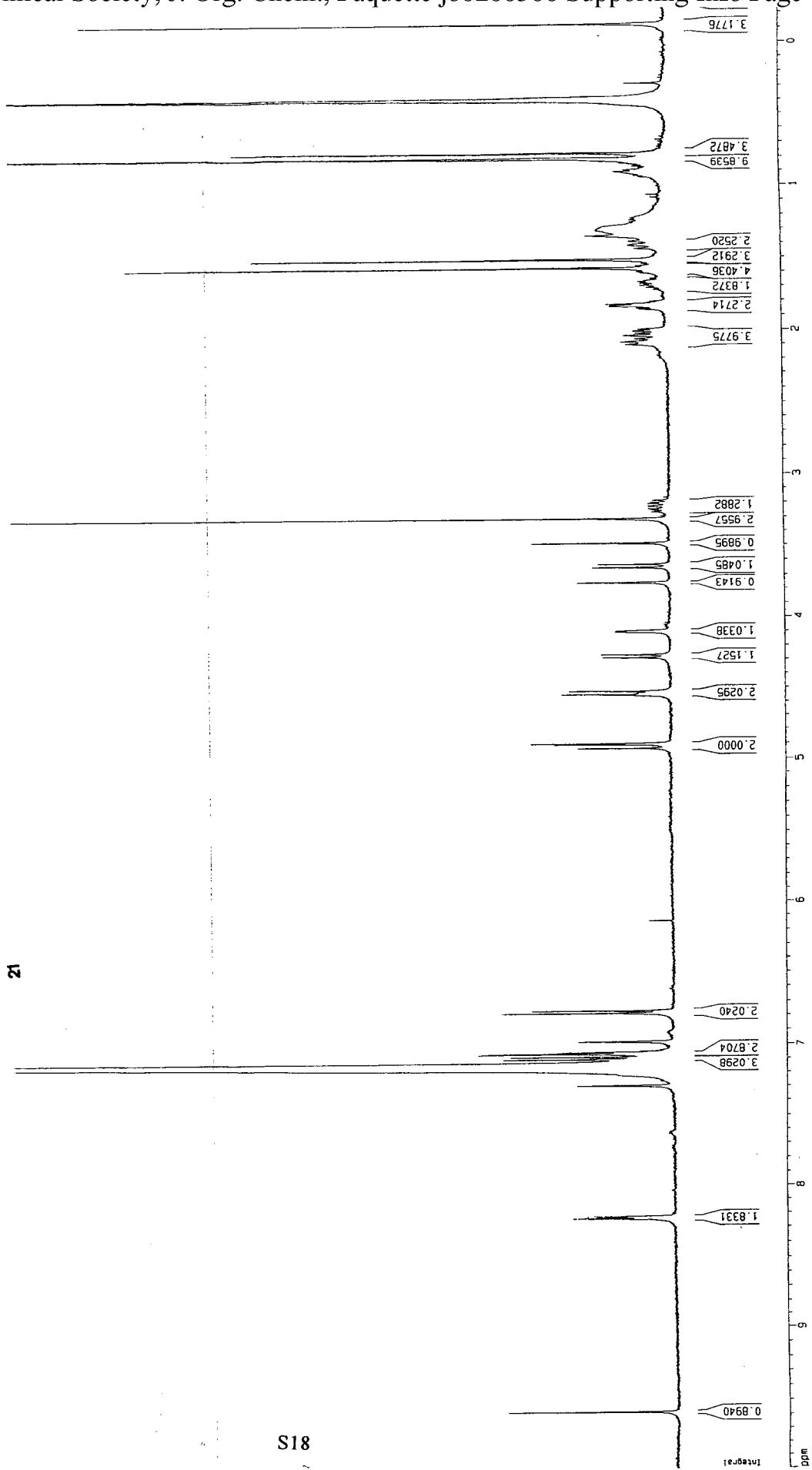
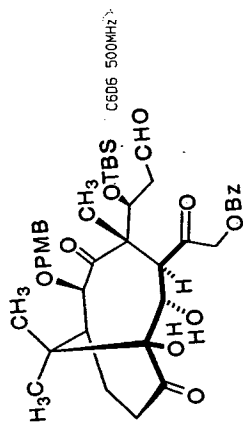


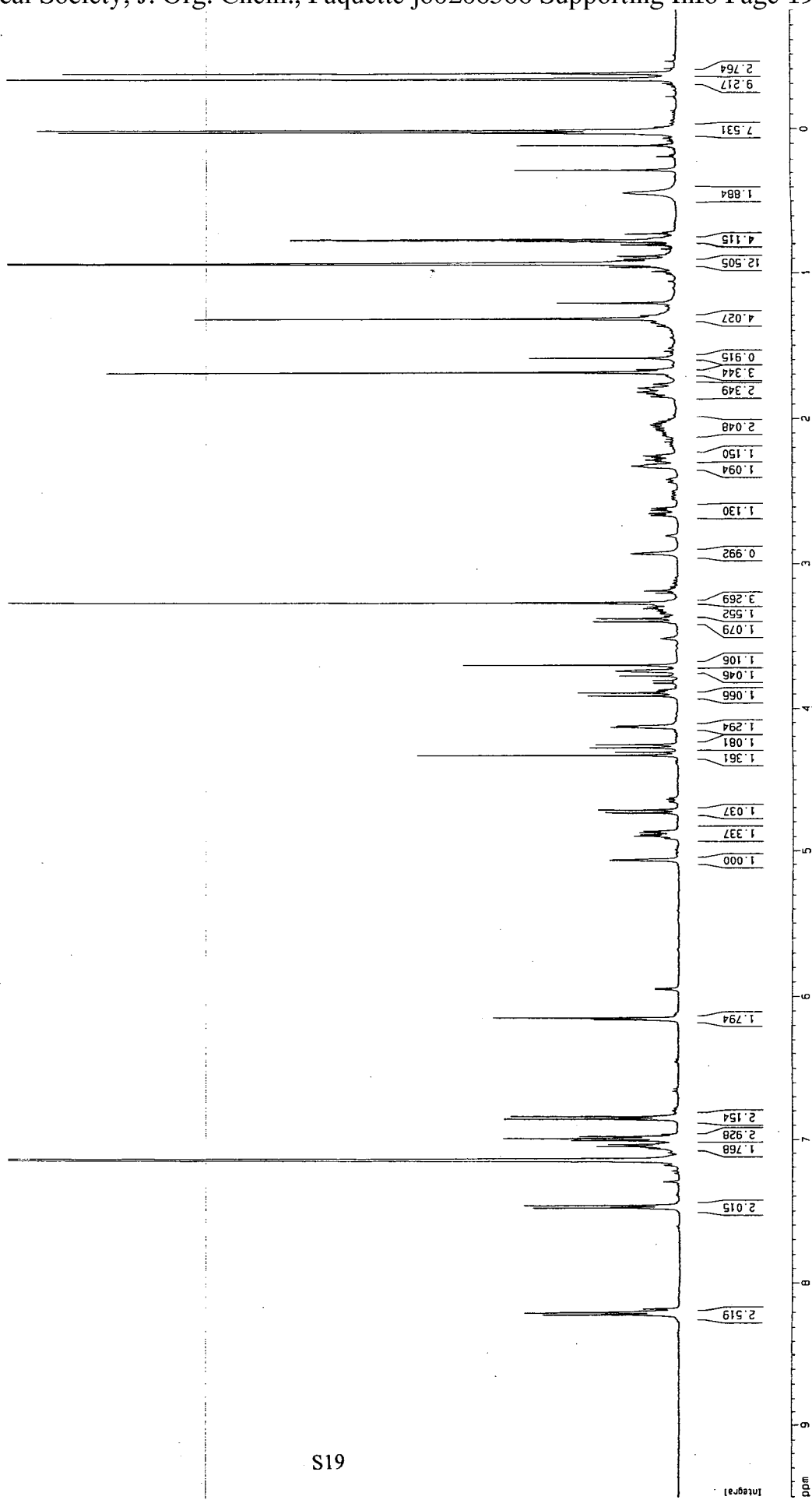
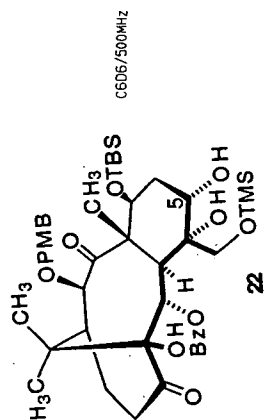


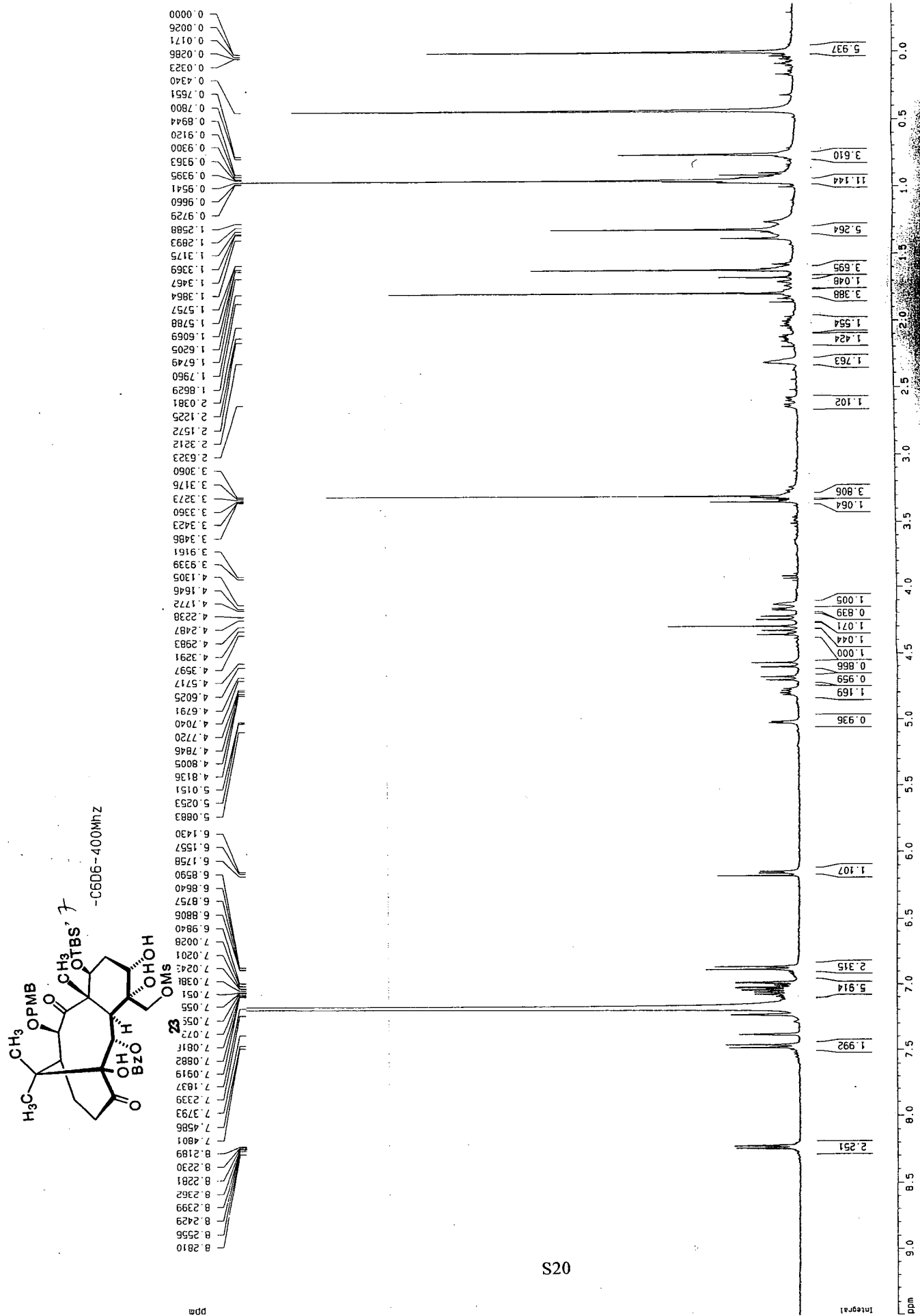
Z4H005/E1300
CDDC

20

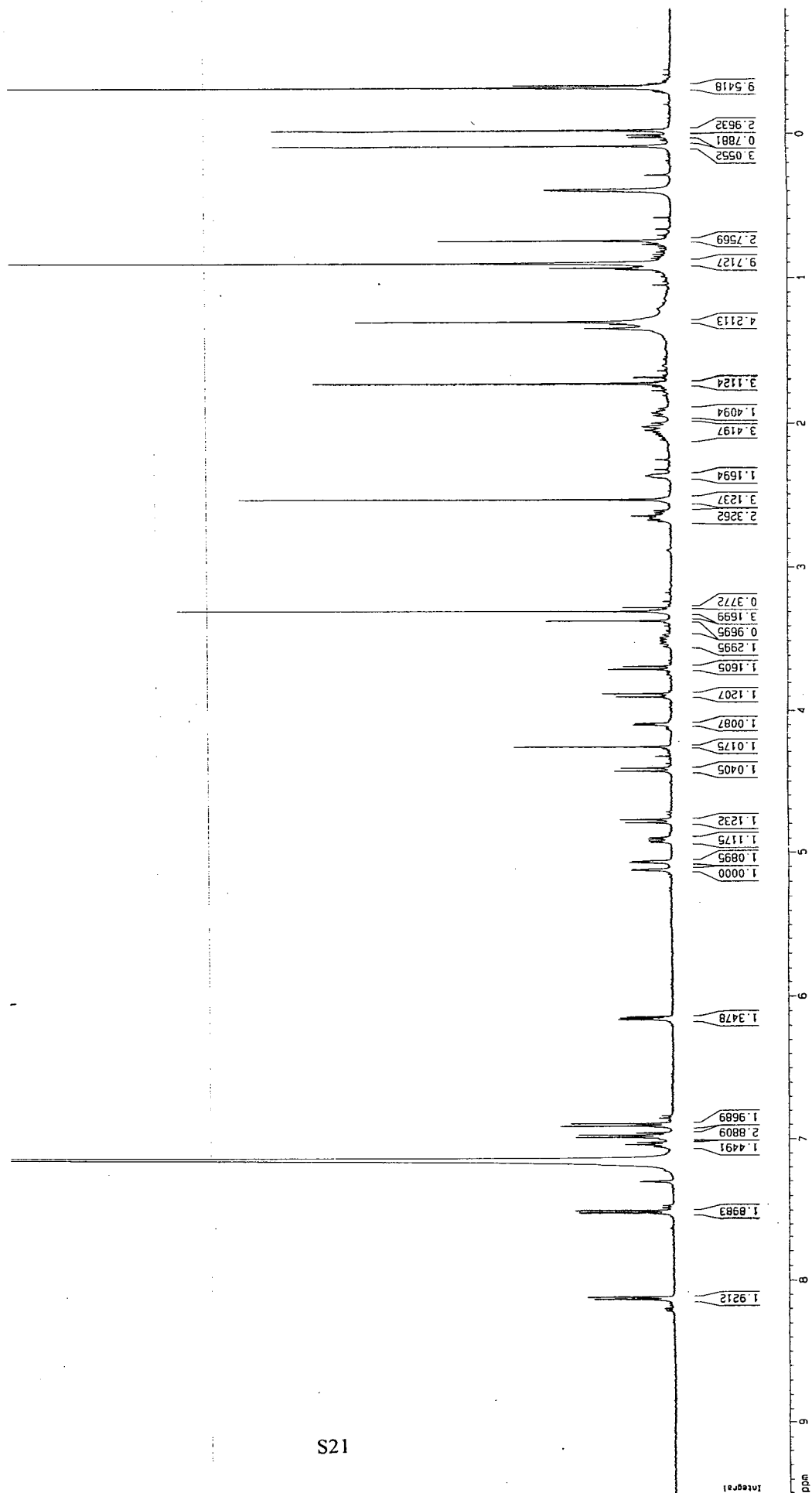
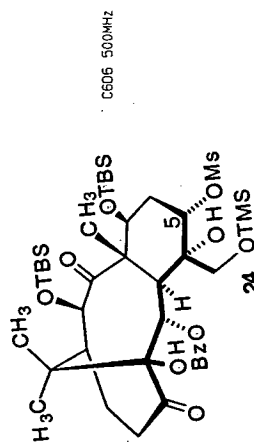




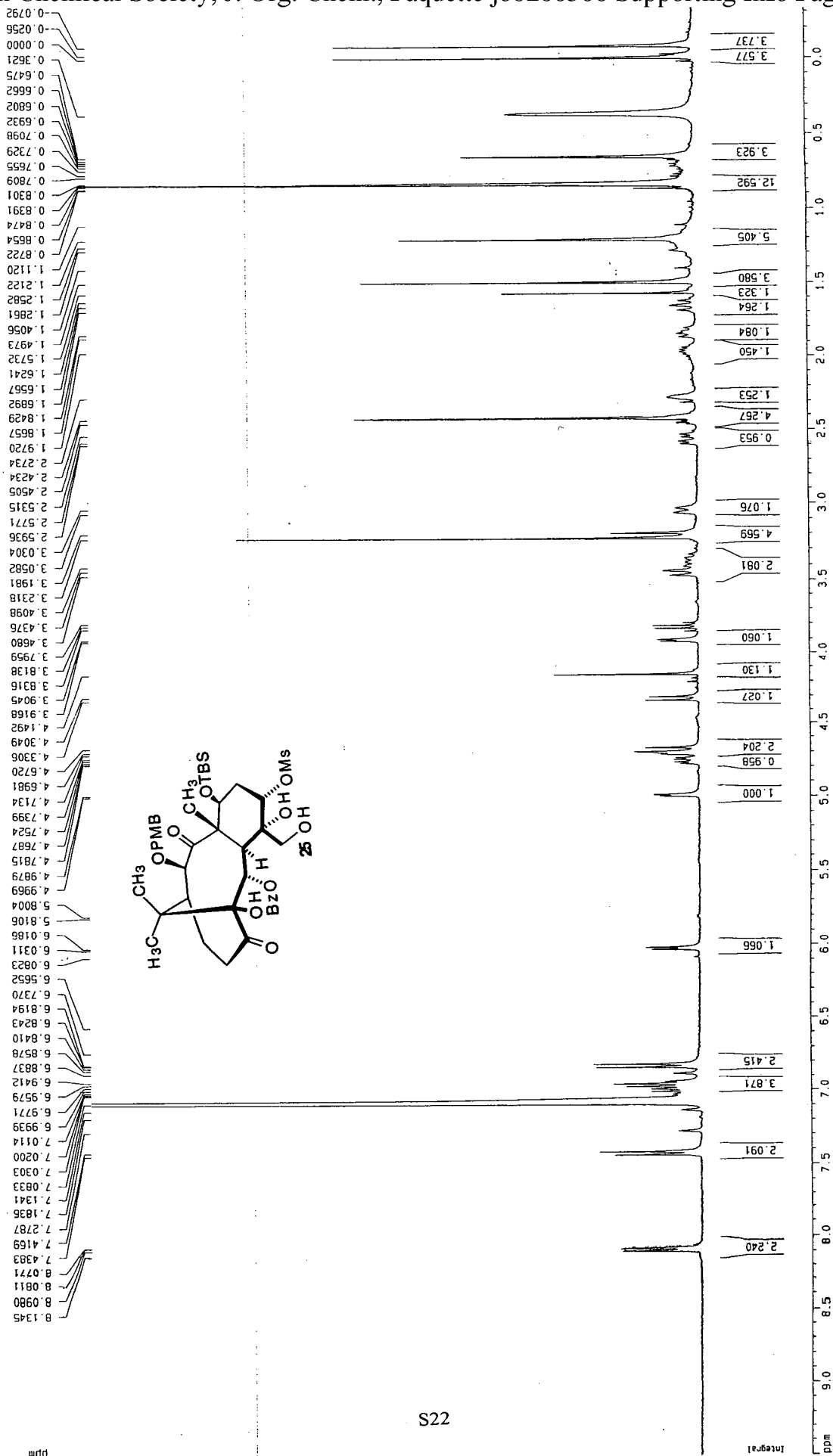




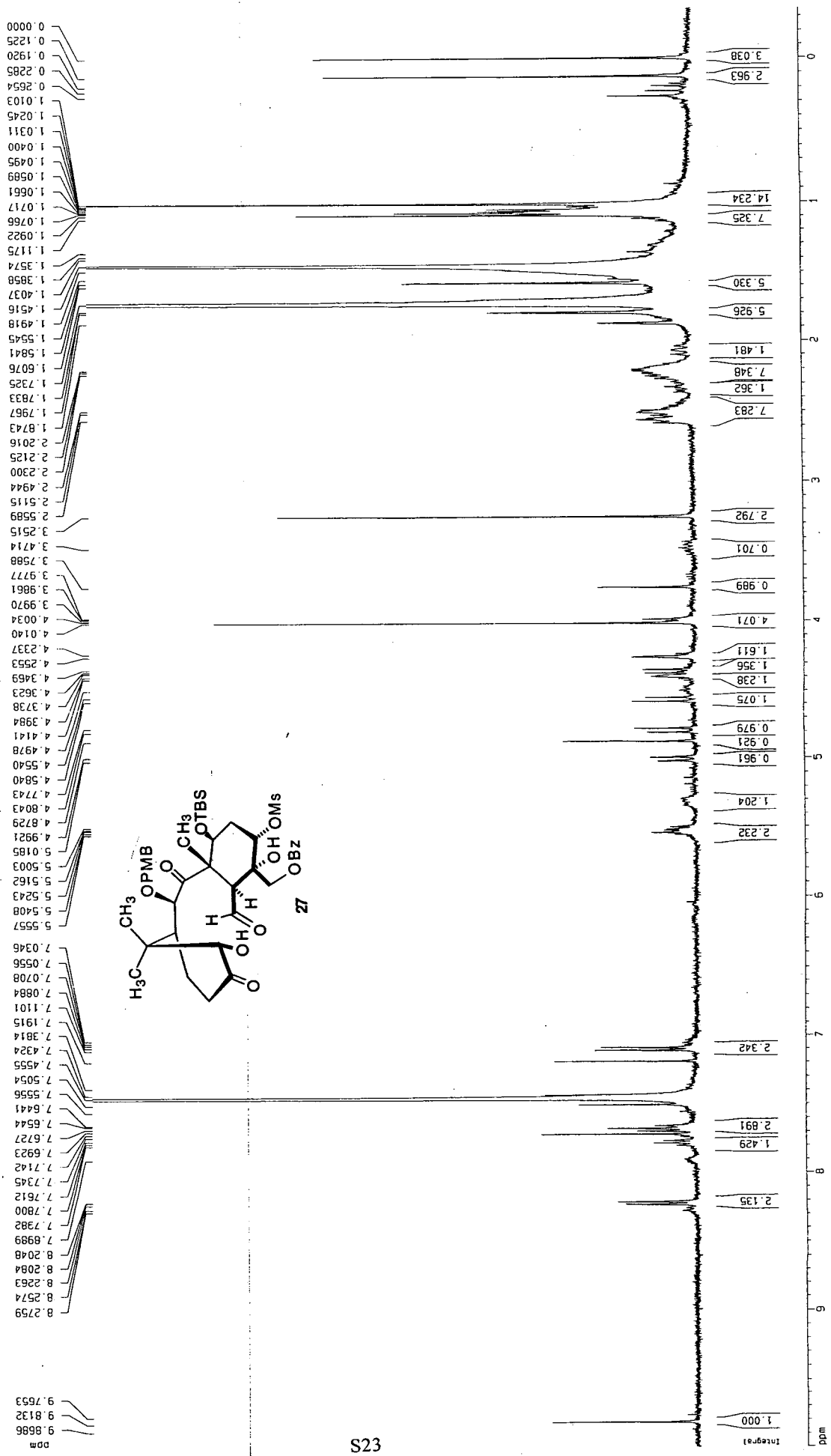
S20



C6D6-400MHZ



COIC13-1000117



000137500 MHz

