



THE UNIVERSITY *of* EDINBURGH

Edinburgh Research Explorer

Chemistry and high temperature superconductivity

Citation for published version:

Atfield, JP 2011, 'Chemistry and high temperature superconductivity', *Journal of Materials Chemistry*, vol. 21, no. 13, pp. 4756-4764. <https://doi.org/10.1039/c0jm03274c>

Digital Object Identifier (DOI):

[10.1039/c0jm03274c](https://doi.org/10.1039/c0jm03274c)

Link:

[Link to publication record in Edinburgh Research Explorer](#)

Document Version:

Early version, also known as pre-print

Published In:

Journal of Materials Chemistry

Publisher Rights Statement:

Copyright © 2011 by the Royal Society of Chemistry. All rights reserved.

General rights

Copyright for the publications made accessible via the Edinburgh Research Explorer is retained by the author(s) and / or other copyright owners and it is a condition of accessing these publications that users recognise and abide by the legal requirements associated with these rights.

Take down policy

The University of Edinburgh has made every reasonable effort to ensure that Edinburgh Research Explorer content complies with UK legislation. If you believe that the public display of this file breaches copyright please contact openaccess@ed.ac.uk providing details, and we will remove access to the work immediately and investigate your claim.



Chemistry and High Temperature Superconductivity

J. Paul Attfield

*Centre for Science at Extreme Conditions and School of Chemistry, University of Edinburgh,
Mayfield Road, Edinburgh EH9 3JZ, UK. Fax: 44 131 6517049; Tel: 44 131 6517229; E-mail:
5 j.p.attfield@ed.ac.uk*

Abstract

Seven distinct families of superconductors with critical temperatures at ambient pressure that equal or surpass the historic 23 K limit for Nb₃Ge have been discovered in the last 25 years. Each family is reviewed briefly and their common chemical features are discussed. High temperature superconductors are distinguished by having a high ($\geq 50\%$) content of nonmetallic elements and fall into two broad classes. ‘Metal-nonmetal’ superconductors require a specific combination of elements such as Cu-O and Fe-As which give rise to the highest known T_c ’s, probably through a magnetic pairing mechanism. ‘Nonmetal-bonded’ materials contain covalently-bonded nonmetal anion networks and are BCS-like superconductors. Fitting an extreme value function to the distribution of T_c values for the known high- T_c families suggests that the probability of a newly discovered superconductor family having maximum $T_c > 100$ K is $\sim 0.1-1\%$, decreasing to $\sim 0.02-0.2\%$ for room temperature superconductivity.

20 1. Introduction

Superconductors have zero electrical resistance and behave as perfect diamagnets (known as the Meissner effect). This arises from the condensation of electrons near the Fermi level into Cooper pairs that behave as a collective quantum mechanical state – a superconductor is a charged superfluid. Thermal pair-breaking limits superconductivity to a maximum critical temperature (T_c) above which the material shows metallic or semiconducting behaviour with a finite resistance. Superconductivity is also limited by critical magnetic fields (H_c) and current densities (J_c) at temperatures below T_c . The critical temperature is mainly determined by chemical composition and structure, whereas the critical fields and currents are also strongly influenced by microstructure and are often not optimum in homogenous materials. The electron-pairing interactions are relatively weak, e.g. in comparison to magnetic exchange interactions, so that all known superconductors have T_c ’s well below ambient temperature. Cryogenic cooling is thus needed to exploit the useful properties of superconductors such as in power

transmission cables, magnetically levitated trains, or SQUID (superconducting quantum interference device) electronics based on the Josephson effect of tunnelling Cooper pairs. Increasing T_c towards ambient temperature is thus a major ambition for superconductivity research.

5 The first century of superconducting materials research divides into two eras, the ‘low- T_c ’ period from the 1911 discovery of the zero-electrical resistance transition in mercury until 1986 when the record critical temperature was $T_c = 23$ K in Nb_3Ge , and the subsequent ‘high- T_c ’ era, during which several types of chemically complex solids with T_c ’s up to 138 K have emerged. This review will briefly describe the seven distinct families of high- T_c superconductors (taken
10 to be those with $T_c \geq 23$ K at ambient pressure) that have been discovered in the last quarter century. The families vary in size from containing one to many chemically and structurally similar materials with a common physical mechanism for superconductivity. The overall chemical trends and possible future directions for materials discovery are also discussed.

2. High- T_c families

15 2.1 Cuprates

High (critical) temperature superconductivity was born from the discovery of an unprecedented $T_c = 35$ K transition in Ba-doped La_2CuO_4 in 1986.¹ A flurry of activity in the following years led to the identification of many more superconducting cuprates, with the highest T_c of 138 K found in $HgBa_2Ca_2Cu_3O_{8+\delta}$. A fluorinated sample of this phase showed an onset T_c of 166 ± 1 K
20 at 23 GPa pressure which is the highest measured superconducting critical temperature to date,² and approaches the lowest recorded terrestrial temperature of 184 K. An enormous literature is available for the cuprate superconductors; some recent books and review articles are cited here.^{3,4,5,6,7} Although the pairing mechanism and a convincing explanation for the magnitude of T_c in this family remain controversial, the essential chemical features are clearly established.

25 The complex chemistry of the cuprates results from the requirement for several structural features, shown schematically in Fig. 1(a), to optimise superconductivity;

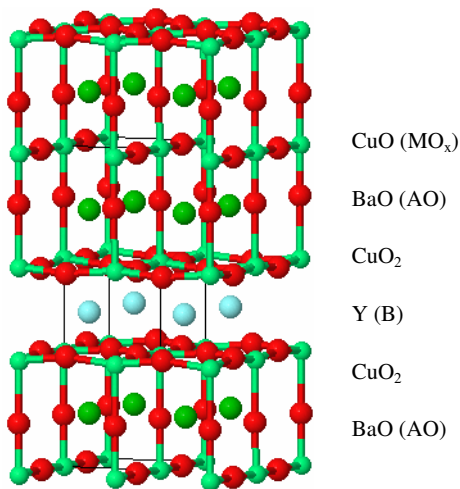
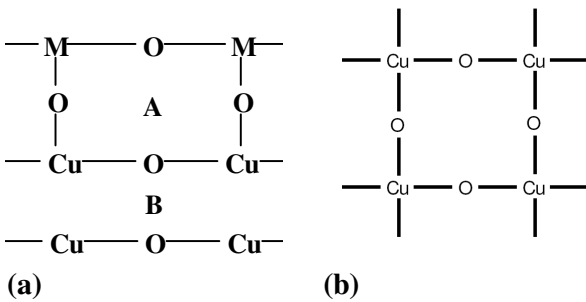
1 Copper oxide planes are essential. These have stoichiometry CuO_2 and a geometry like that found in the MO_2 planes of the AMO_3 perovskite structure (Fig. 1(b)). Hence cuprates are sometimes described as ‘layered perovskites’. Maximum T_c ’s are generally found for
30 materials with blocks of three adjacent, hole-doped CuO_2 planes.

2 Electropositive cations, usually from the alkaline earth (Ca, Sr, Ba) or rare earth (La-Lu, Y) metals, act as layer separators in two distinctive structural roles. Large ‘A’ cations (typically Sr^{2+} , Ba^{2+} or La^{3+}) support additional coordination of a further oxygen to copper, and this can provide a connection to additional metal (M) oxide layers. Smaller electropositive ‘B’

cations (usually Ca^{2+} or a small rare earth) separate CuO_2 planes in multilayer cuprates without allowing intercalation of O between Cu's in adjacent planes which is detrimental to superconductivity. n CuO_2 planes require $(n-1)$ B cation spacer layers.

3 Blocks of one or two covalent metal oxide layers MO_x (M can be Cu, Ru, Hg, Tl, Pb, Bi) layers are connected to CuO_2 planes via interplanar oxides in the AO layers. The MO_x layers are sometimes termed the 'charge reservoir' as they compensate for the doping of the CuO_2 planes although this can also be achieved by non-aliovalent substitutions at the A or B sites.

Hence many cuprates have compositions $(\text{MO}_x)_m(\text{AO})_2\text{B}_{n-1}(\text{CuO}_2)_n = \text{M}_m\text{A}_2\text{B}_{n-1}\text{Cu}_n\text{O}_z$, often abbreviated as $\text{M-m}2(n-1)n$, e.g. the highest- T_c material $\text{HgBa}_2\text{Ca}_2\text{Cu}_3\text{O}_{8+\delta}$ is abbreviated as Hg-1223.



15 (c)

Fig. 1 Structural features of the high- T_c cuprate superconductors (a) schematic view of the key structural components, (b) a CuO_2 plane, (c) the crystal structure of $\text{YBa}_2\text{Cu}_3\text{O}_7$ with the repeat sequence of layers labelled following (a).

The undoped cuprates contain Cu^{2+} within the CuO_2 sheets and are antiferromagnetic insulators, with very strong antiferromagnetic Cu-O-Cu superexchange interactions of coupling strength $J/k \sim 1500$ K. Superconductivity is induced by doping the CuO_2 sheets; electron doping (reduction of Cu^{2+}) is effective in a few cases, e.g. Nd_2CuO_4 , but for the majority including all the highest- T_c materials, hole-doping is achieved by cation substitutions, increasing oxygen content, or by band overlap. The latter two mechanisms are found in many materials, e.g. maximum T_c 's ≈ 40 K are obtained for $x = 0.16$ and $y = 0.08$ in the $\text{La}_{2-x}\text{Sr}_x\text{CuO}_4$ and $\text{La}_2\text{CuO}_{4+y}$ systems respectively, both of which yield an average +2.16 oxidation state for Cu. Hole-doping through band overlap is less common, but is well-established in the important 93 K superconductor $\text{YBa}_2\text{Cu}_3\text{O}_7$ (also known as YBCO or (Y)123). This contains distinct CuO chains as the MO_x layers in the above structural classification (see Fig. 1(c)), and Cu band overlap results in a formal charge distribution $\text{Cu}^{2.6+}\text{Ba}_2\text{YCu}^{2.2+}_2\text{O}_8$. Similar Ru-Cu charge transfer induces superconductivity in the ruthenocuprate $\text{Ru}^{4.8+}\text{Sr}_2\text{GdCu}^{2.1+}_2\text{O}_8$.⁸

A simplified electronic phase diagram for the hole-doped cuprates is shown in Fig. 2. Initial doping of a Cu^{2+} parent material disrupts long range antiferromagnetic order and the Néel transition is suppressed at 3% doping. Superconductivity appears above 5% doping – the intermediate region is found to be physically inhomogenous with both magnetic and superconducting correlations present. Further oxidation increases T_c to a maximum at 15-20% doping, above which superconductivity is suppressed and is no longer apparent above ~25% hole doping. There is substantial evidence for a diffuse high temperature insulator-metal transition at which a pseudo-gap opens,³ and this coincides with T_c for the overdoped superconductors. Above T_c , the cuprates have unusual normal state electronic properties that evidence strong electron-electron correlations, but at high doping levels they become more like conventional metals.

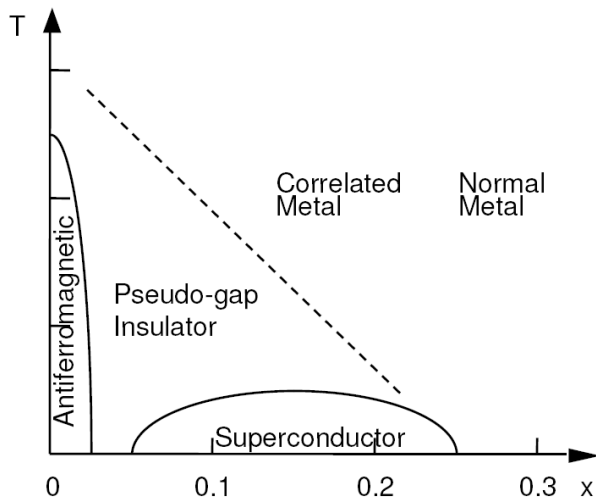


Fig. 2 Schematic electronic phase diagram for cuprate superconductors as a function of the hole doping x (equivalent to average Cu oxidation state $2+x$).

In addition to the doping level, structural features are also very important for optimising T_c in the cuprates. Buckling of the Cu-O-Cu bridges in the CuO_2 sheets suppresses superconductivity and favours alternative charge and spin ordered insulating ground states, so large Ba^{2+} cations at the A type cation sites help to preserve flat CuO_2 planes and high T_c 's. Disorder arising from mixed A or B cations adjacent to the planes also suppresses superconductivity. Hence the highest reported T_c for single layer cuprates is 98 K for optimally doped $\text{HgBa}_2\text{CuO}_{4+\delta}$ ($\delta = 0.08$) which has only Ba^{2+} cations adjacent to the CuO_2 planes, and relatively little additional strain and disorder from the small concentration δ of oxygen interstitials between the Hg sites.

Coupling between nearby CuO_2 layers separated by B cation layers also enhances T_c ; the highest values are found in the Hg-family where T_c increases up to 138 K for $n = 3$. T_c decreases for higher n most probably because the doping becomes non-uniform across inequivalent CuO_2 planes.

The pairing mechanism for superconductivity in the cuprates remains unclear. The essential features for theoretical descriptions are the d-wave symmetry of the order parameter (the wavefunction describing the Cooper pairs has the symmetry of a $d_{x^2-y^2}$ atomic orbital), the presence of strong antiferromagnetic correlations, and the pseudogap feature. A plausible explanation is that antiferromagnetic fluctuations mediate the pairing instead of the electron-phonon coupling found in conventional BCS (Bardeen, Cooper and Schrieffer) type materials.

2.2 Fullerenes

The discovery of high temperature superconductivity in copper oxides was followed by another

remarkable finding from a very different group of materials. After buckminsterfullerene (C_{60}) was first identified and isolated in the 1980's, alkali metal fulleride derivatives were synthesised and superconductivity was first reported in K_3C_{60} with $T_c = 19$ K.⁹ The fulleride superconductors are highly air-sensitive which hinders their characterisation and limits their practical utility. Nevertheless, the variation of superconductivity across the A_3C_{60} family has been explored in detail and related alkaline earth and lanthanide-doped fullerides, with T_c 's up to 8 K for Ca_5C_{60} and $Sm_{2.75}C_{60}$, have also been prepared.^{10,11,12}

The main tuning parameter for the A_3C_{60} superconductors is the interfulleride separation, represented by the unit cell volume per C_{60} , as shown in Fig. 3. T_c increases up to a maximum of 33 K for $RbCs_2C_{60}$ as the volume increases, but beyond this limit superconductivity is destabilised with respect to an antiferromagnetic magnetic ground state. Recent studies have found that T_c increases under pressure up to 35 and 38 K in the face- and body- centred cubic polymorphs of Cs_3C_{60} , respectively.¹³

The phonon-mediated BCS mechanism for superconductivity in the weak coupling limit describes many aspects of the fullerides. Vibrational spectra reveal a coupling between the conduction electrons and high frequency vibrations of the C_{60}^{3-} anions that strengthens as the interfulleride separation increases, and a BCS-type ^{13}C isotope effect is also observed. However, the transition to a Mott (magnetic) insulating state at limiting high separations is more similar to the breakdown of metallic and superconducting behaviour at low dopings in cuprates and other unconventional high- T_c superconductors.

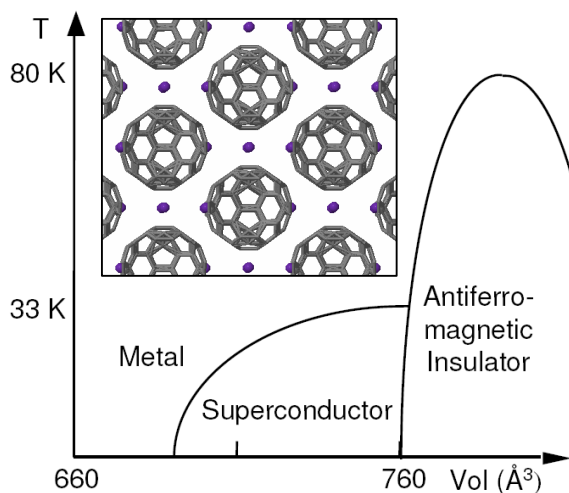
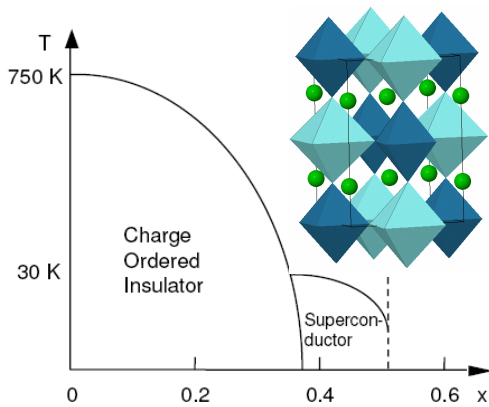


Fig. 3 Schematic phase diagram for the A_3C_{60} fulleride superconductors as a function of the volume per C_{60} unit (adapted from ref. 12). The inset shows the face-centred cubic A_3C_{60} structure.

2.3 Barium bismuthate

The perovskite BaBiO_3 undergoes charge disproportionation that results in a distorted crystal structure containing an ordered alternation of Bi^{3+} and Bi^{5+} sites (Fig. 4). Suppression of charge order in $\text{Ba}_2\text{Bi}^{3+}\text{Bi}^{5+}\text{O}_6$ to give a superconductor was first demonstrated by substituting Pb for Bi , and the maximum T_c in this system is 13 K.¹⁴ Renewed interest following the discovery of superconductivity in cuprates led to the further discovery of T_c 's up to 30 K in $\text{Ba}_{1-x}\text{K}_x\text{BiO}_3$.¹⁵ The phase diagram for this system¹⁶ in Fig. 4 shows that superconductivity emerges with the maximum T_c immediately beyond the suppression of the charge ordered state at $x = 0.38$ and diminishes with further doping up to the $x = 0.5$ stability limit of the solid solution.



10

Fig. 4 Schematic $\text{Ba}_{1-x}\text{K}_x\text{BiO}_3$ phase diagram (temperature not to scale) showing the onset of superconductivity above the $x = 0.38$ limit of the charge ordered phase. The inset shows the charge ordered perovskite superstructure of $\text{Ba}_2\text{Bi}^{3+}\text{Bi}^{5+}\text{O}_6$ with light/dark shading of the $\text{Bi}^{3+}/\text{Bi}^{5+}$ octahedra.

15

As superconductivity is only found in the three-dimensional bismuthate perovskite structure there are few chemical variations. $\text{Sr}_{1-x}\text{K}_x\text{BiO}_3$ and $\text{Sr}_{1-x}\text{Rb}_x\text{BiO}_3$ analogues have been prepared at high pressure, but these have lower T_c 's of 12 and 13 K respectively.¹⁷ The large radii and good size matching of Ba^{2+} and K^+ ions appear to be optimal for superconductivity in doped-
20 BaBiO_3 .

Optical spectra show that $\text{Ba}_{1-x}\text{K}_x\text{BiO}_3$ is an s-wave superconductor (like conventional low- T_c materials),¹⁸ but the electron-phonon coupling constant was found to be too small for conventional BCS coupling to explain the high T_c . Electron-phonon coupling may be enhanced by electron-electron interactions in negative-(Hubbard) U models, which follow the negative- U
25 description of the disproportionation of the average s^1 configuration to give ordered s^0 and s^2

states in the BaBiO₃ parent material.

2.4 Quaternary borocarbides

Many rare earth transition metal borides and carbides are superconducting but most have low T_c values. However a specific family of quaternary materials with composition RM_2B_2C (R = rare earth, M = Ni, Pd) were discovered to have T_c 's up to the past record value of 23 K for YPd_2B_2C .¹⁹ The structure (Fig. 5) consists of layers of isolated linear B_2C groups between R and M layers. Magnetic R cations suppress superconductivity completely for R = Pr, Nd, Sm, Gd, and Tb in the RNi_2B_2C series and a variety of antiferromagnetic states is found, but coexistence of superconductivity and magnetic order is observed for the later R = Dy, Ho, Er, Tm.^{20,21,22} This strong coupling of the rare earth metal moments to the conduction electrons is in contrast to the $RBa_2Cu_3O_7$ and $RFeAsO$ series where the R -magnetism has little influence on superconductivity. The RM_2B_2C superconductors appear to be s -wave materials but with an anisotropic energy gap.

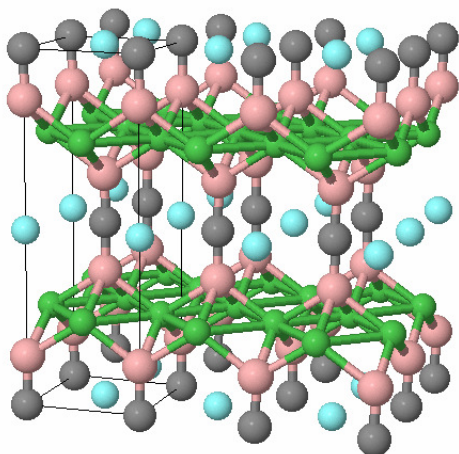


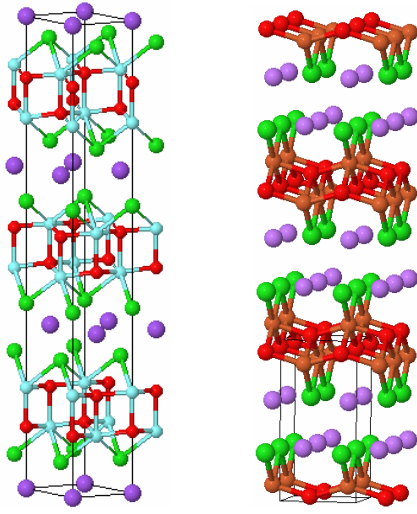
Fig. 5 Crystal structure of the YPd_2B_2C superconductor showing metal-metal bonded Pd layers connected by linear BCB units, with Y atoms in the C plane.

2.5 Intercalated Nitride Halides

MNX (M = Zr, Hf; X = Cl, Br, I) phases are insulators that contain hexagonal $X(MN)_2X$ layers which may be stacked in several polymorphic arrangements. Chemical or electrochemical intercalation of alkali metals (Li, Na, K) into the van der Waals gaps between the layers (Fig. 6(a)), or removal of a small amount of halogen X , dopes electrons into the M d -band inducing superconductivity.^{23,24} The maximum observed T_c in this family is in the original report of 25.5

K for $\text{Li}_{0.48}(\text{THF})_y\text{HfNCl}$ containing cointercalated tetrahydrofuran solvent (THF).²⁵ Intercalation staging has been observed in Na_xHfNCl , and T_c 's of 24 and 20 K were reported for the stage 1 and 2 materials respectively.²⁶ The intercalated MNX phases are very air-sensitive which has hampered study of their physical properties.

5



(a)

(b)

Fig. 6 Crystal structures of (a) Na_xHfNCl and (b) Li_xTiNCl showing alkali metals intercalated between hexagonal and orthorhombic MNCl layers respectively.

10

Superconductivity with maximum $T_c = 16.3$ K has recently been reported in A_xTiNCl ($A = \text{Li}, \text{Na}, \text{K}, \text{Rb}$),²⁷ where the constituent layers have an orthorhombic (FeOCl type) structure that differs from that of the Zr and Hf based materials (Fig. 6(b)). This reveals that superconductivity is not specific to one underlying lattice symmetry in this family.

15

Physical measurements show that the nitride halides are not conventional BCS superconductors and have a large superconducting gap ratio $2\Delta/k_B T_c = 4.6\text{--}5.6$. In the Li_xZrNCl system, the maximum T_c is observed for minimum $x = 0.06$ doping, below which a magnetic insulating state is observed.²⁸

20

2.6 Magnesium diboride

The discovery of high- T_c superconductivity at 39 K in MgB_2 in 2001 was one of the most unexpected developments in this field.²⁹ Transition metal diborides were explored extensively during the low- T_c era but the magnesium analogue, which is a standard, air-stable chemical reagent, was thought to be uninteresting as it has no available d-states. Subsequent

measurements have shown that MgB_2 can have a T_c of up to 41 K in thin films and can be processed into practical conductors, with critical current densities of up to $J_c = 3.4 \times 10^7 \text{ Acm}^{-2}$ reported.³⁰

MgB_2 has a layered structure with magnesium atoms between graphitic boron sheets (Fig. 7). It appears to be an optimum superconductor 'as is', and doping or substitutions of other metals for Mg or of C for B have not enhanced T_c . However, this discovery has inspired reinvestigation of graphite intercalation compounds resulting in several new superconductors with T_c 's up to 11.5 K in CaC_6 .³¹ Extensive physical measurements have shown that MgB_2 is a near-perfect BCS superconductor, with an isotope-effect increase of approximately 1 K in T_c when ^{11}B is replaced by ^{10}B .³² An important feature is the presence of two superconducting gaps with $2\Delta/k_B T_c$ values of 1.1 and 4.0 resulting from Cooper pairing of electrons in σ and π -bands, respectively. The latter value is close to the BCS s-wave value of 3.53. Coupling between the two gap pairings results in the single, observed superconducting transition.

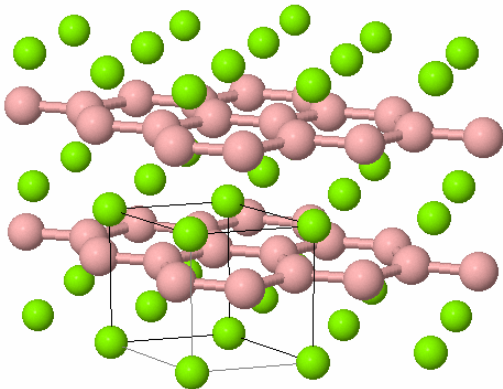


Fig. 7 The hexagonal structure of the MgB_2 superconductor showing graphitic boron sheets interleaved by layers of magnesium.

2.7 Iron Arsenides

The final family provides an appropriately symmetric closure to the first quarter century of high temperature superconductor discovery, with very high T_c 's second only to those of the cuprates, and many chemical and physical similarities.³³ They are based on FeAs layers in which Fe is tetrahedrally coordinated by As atoms (Fig. 8) and several structure types with different additional layers are known. A comprehensive review of the field has recently been published.³⁴

High- T_c 's were first reported in the electron-doped $\text{LaFeAsO}_{1-x}\text{F}_x$ series³⁵ and subsequent study of rare earth $\text{RFeAsO}_{1-x}\text{F}_x$ and oxygen-deficient $\text{RFeAsO}_{1-\delta}$ analogues led to discovery of the highest $T_c = 55 \text{ K}$ to date in $\text{SmFeAsO}_{1-x}\text{F}_x$.³⁶ Hole-doped materials are also

superconducting; $\text{La}_{0.85}\text{Sr}_{0.15}\text{FeAsO}$ has $T_c = 25 \text{ K}$,³⁷ and in the related AFe_2As_2 and AFeAs families, $\text{Ba}_{0.6}\text{K}_{0.4}\text{Fe}_2\text{As}_2$ has $T_c = 38 \text{ K}$ ³⁸ and LiFeAs has $T_c = 18 \text{ K}$.³⁹

Superconductivity is also observed in analogues where Fe or As are replaced by similar elements, but with lower T_c 's. The binary phase Fe_{1+x}Se containing only the FeAs-type layers is superconducting with $T_c = 9 \text{ K}$ for a small Fe excess $x = 0.01$,⁴⁰ and T_c increases up to 14 K for $\text{Fe}_{1+x}\text{Se}_{0.6}\text{Te}_{0.4}$. LaFePO has $T_c = 6.6 \text{ K}$.⁴¹ Non-Fe analogues such as LaNiPO and LaNiAsO , BaM_2As_2 ($M = \text{Cr, Mn, Co, Ni, Ru, Rh}$) and BaM_2P_2 ($M = \text{Ni, Rh, Ir}$), and LiFeP have T_c 's $< 5 \text{ K}$.

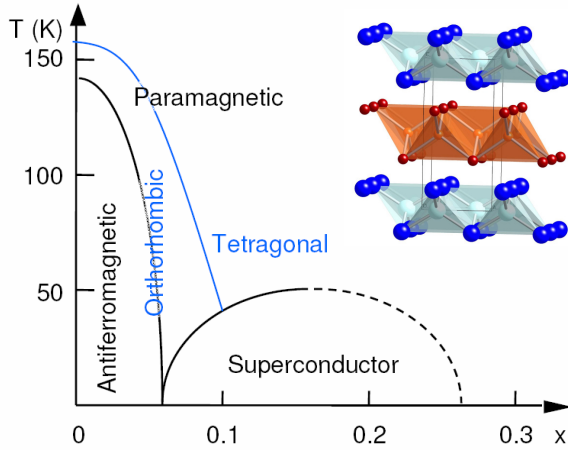


Fig. 8 Schematic electronic and structural phase diagram for $\text{RFeAsO}_{1-x}\text{F}_x$ iron arsenide superconductors as a function of the electron doping x (equivalent to average Fe oxidation state $2-x$). The inset shows the stacking of RO and FeAs slabs in the crystal structure.

The electronic phase diagram for the high- T_c iron arsenide superconductors (Fig. 8) appears similar to that of the cuprates, although an important difference is that the parent materials are metallic whereas the undoped cuprates are Mott insulators. Hence the observed antiferromagnetic order of small ($0.1-1 \mu_B$) Fe moments is probably a spin density wave rather than an array of local moments. Doping suppresses the long range antiferromagnetism and superconductivity emerges with a high T_c for 10-20% doping. The competing ground states stabilise different lattice symmetries. The spin order is antiferromagnetic along one of the two in-plane axes but ferromagnetic in the perpendicular direction, which drives an orthorhombic distortion of the ideal tetragonal structure. However, superconducting phases are tetragonal as the spin density wave is suppressed. The structural transition occurs above the Néel temperature, as shown in Fig. 8, and probably reflects the onset of antiferromagnetic fluctuations. Coexisting antiferromagnetic and superconducting phases are found in the crossover region for some systems. T_c is very sensitive to lattice effects and is optimised when

the As-Fe-As angle in the tetrahedral layers is close to the geometric ideal of 109.5° ,⁴² as shown in Fig. 9.

Two gaps with s-wave symmetry have been found in many experiments and the values of $2\Delta/k_B T_c$ fall into the range 1-4 and 5-9. As for MgB_2 , coupling between the two orders results in a single superconducting transition. The emergence of superconductivity from a consistent magnetic state in the iron arsenides provides strong evidence for an antiferromagnetic spin fluctuation pairing model, as for the cuprates.

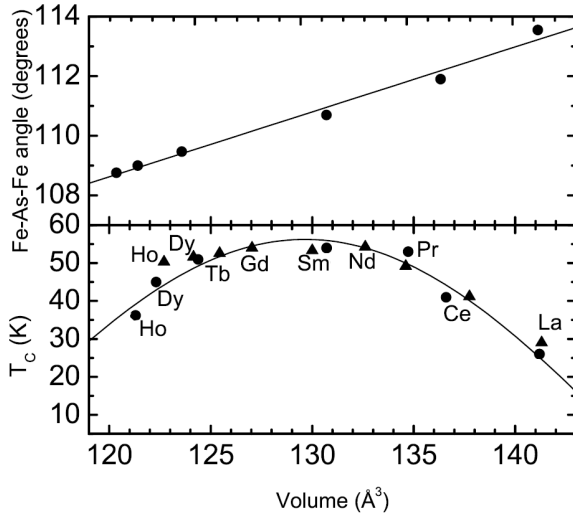


Fig. 9 Variations of Fe-As-Fe angle (upper panel) and the maximum reported T_c (lower panel) with unit cell volume for optimally doped $RFeAsO_{1-x}F_x$ (circles) and $RFeAsO_{1-\delta}$ (triangles) superconductors, with rare earths R as shown. The overall maximum $T_c = 56$ K obtains for an angle of 110.6° , close to the ideal tetrahedral angle. (Adapted from ref. 42.)

3. Chemical Commonalities

The seven families of high temperature superconducting materials do not fall into a well-defined chemical group. However, one general feature that clearly distinguishes the high- T_c set from the metals and alloys that dominated the low- T_c era is apparent from the simple chemical sorting shown in Fig. 10. This follows the standard classification of the elements as metals or nonmetals. A plot of T_c against the atomic fraction of nonmetal shows that all of the highest T_c materials have at least 50% nonmetal content, whereas Nb_3Ge and the alloys that dominated the low- T_c era have <50% nonmetal. This plot follows the Edwards and Sienko classification of elements based on refractivity/volume ratios,⁴³ in which As and Ge are respectively a nonmetal and metal, but the above observation is unchanged if Ge is taken to be a nonmetal. In only one

of the seven families, the iron arsenides, are some high- T_c materials with <50% nonmetal content observed, and even here the highest- T_c member of the family, $\text{SmFeAsO}_{1-x}\text{F}_x$, has 50% nonmetal content. In this context, the AFe_2As_2 family with T_c 's up to 38 K in $\text{Ba}_{0.6}\text{K}_{0.4}\text{Fe}_2\text{As}_2$ are notable as the only metal-rich materials to have exceeded the 23 K limit.

5 A well-known physical truism is that ‘*a good superconductor is a bad metal*’, meaning that the electron-pairing interactions that give rise to superconductivity also diminish conductivity in the normal state above T_c . The equivalent chemical statement is thus that ‘*a good superconductor is mostly nonmetal*’, meaning that the narrow bands and strong electron-electron correlations required for high temperature superconductivity are found in conducting
10 materials with a high nonmetal content.

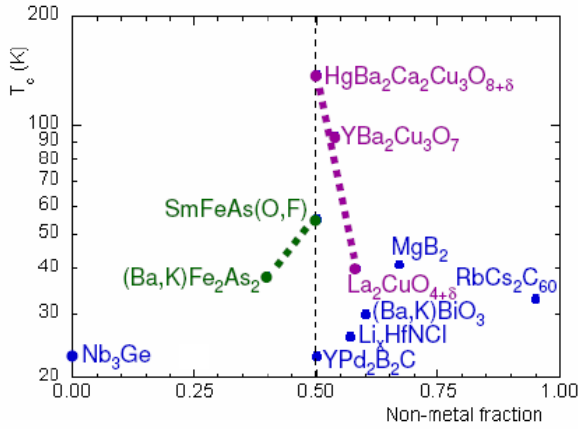


Fig. 10 T_c (on a log scale) plotted against the atomic proportion of nonmetallic elements for the seven distinct highest- T_c materials plus Nb_3Ge , with other iron arsenide and cuprate types also shown.

15 As for many metal-nonmetal compounds, the electron distribution in high- T_c superconductors and their parent materials can be represented to a first approximation by ionic formulae based on typical valence states, e.g. $(\text{La}^{3+})_2\text{Cu}^{2+}(\text{O}^{2-})_4$ and $\text{Sm}^{3+}\text{Fe}^{2+}\text{As}^{3-}\text{O}^{2-}$, although the distribution $\text{Y}^{3+}(\text{Pd}_2^{3+})(\text{B}_2\text{C}^{6-})$ implies some Pd-Pd bonding as is observed in the quaternary borocarbide
20 crystal structure. Further consideration of the roles of the metal and nonmetal in the high- T_c families shows that there are two limiting cases. The first is where only metal to nonmetal bonding is significant. These ‘metal-nonmetal’ families (cuprates, iron arsenides, bismuthates and nitride halides) have structures that follow simple ionic principles, with metal and nonmetal atoms bonded to each other but not to themselves, leading to near 50:50 metal:nonmetal
25 compositions (between 40:60 and 60:40 for the high- T_c materials on Fig. 10). The oxide and

nitride halide superconductors have average anion charges of -2 and the presence of higher valent cations leads to nonmetal contents >50%. The AFe_2As_2 (and $AFeAs$) arsenides fall below the 50% limit because the magnitude of the anion charge is greater than that of the cations. From Fig. 10 it is apparent that the highest- T_c members of the cuprates and iron arsenides are those with compositions closest to 50% nonmetal content, but the significance of this observation is unclear. An important chemical feature is that a specific metal-nonmetal pair is required to generate high- T_c 's in these families. No obvious analogues to the Cu-O and Bi-O combinations have been reported, but in the other two cases optimum pairings with $T_c > 23$ K/suboptimal pairings with $T_c < 23$ K are evident; Fe-As/Fe-P, Ni-P, etc. for iron pnictides; Hf-N/Zr-N, Ti-N for nitride halides. This demonstrates that superconductivity is very sensitive to the degree of nonmetal to metal charge transfer that occurs through orbital hybridisation. This group includes the most unconventional (least BCS-like) families, where metal-nonmetal orbital hybridisation is also important in strengthening the magnetic exchange that may mediate spin fluctuation superconductivity in cuprates and iron arsenides.

In the second 'nonmetal-bonded' limit, nonmetal to nonmetal bonding is important, and the cations play a subsidiary role. This is best exemplified by the A_3C_{60} fullerides where the alkali metal cations act only as spacers for the fulleride anions and do not contribute to the electronic states near the Fermi level. MgB_2 is close to this limit although here some B to Mg charge transfer is important to the electronic structure. The presence of covalent bonding between nonmetal atoms leads to a lower anion charge per atom and hence higher nonmetal contents; MgB_2 contains $(B^-)_\infty$ sheets and the fullerides contain discrete C_{60}^{3-} anions. This group of high temperature superconductors is more BCS-like, with nonmetal-nonmetal bonding leading to narrow bands and high vibrational frequencies, and hence strong electron-phonon coupling. However, the antiferromagnetism observed at the limit of superconductivity in fullerides may also be relevant.

The quaternary borocarbides are intermediate between the above two limits as they contain strongly bonded, discrete B_2C groups but also show chemical specificity for Pd over Ni or other metals and have a 50:50 metal-nonmetal composition. Of the seven high temperature superconductor families, this is the only one to show prominent metal-metal bonding, and as the T_c does not exceed that of Nb_3Ge , it could equally be regarded as 'low T_c '.

4. Future Prospects

The first 25 years of the high- T_c era have been spectacularly productive, with a new $T_c \geq 23$ K superconductor family discovered every few years. As noted above, each family is chemically

distinct from the others, so prediction of future discoveries is difficult, however some indicators are evident.

Based on the known high- T_c materials, future high- T_c superconductors are likely to have a substantial ($\geq 50\%$) nonmetal content. Very high T_c 's are associated with a specific pairing in the 'metal-nonmetal' group, and have nonmetal contents of 40-60% and structures in keeping with simple ionic bonding considerations. Neither element may have featured in previous high- T_c families, as for Fe and As prior to 2008. Spin-spin fluctuations appear to be important to the superconducting mechanism in the highest- T_c cuprates and iron arsenide materials where magnetic transition metals are needed. However, f-block magnetism may also be beneficial, as found in the intermetallic heavy fermion superconductor PuCoGa_5 which has $T_c = 18 \text{ K}$,⁴⁴ so incorporation of nonmetals into such materials might prove a useful aid to future discoveries. Non-magnetic mechanisms based on other electronic instabilities may also emerge, as for the bismuthate superconductors based on suppression of charge disproportionation.

Chemical doping is required to suppress the spin or charge ordered ground state and induce superconductivity in the metal-nonmetal families. This is typically achieved through non-aliovalent substitutions or non-stoichiometry, but can sometimes occur through a fortuitous band overlap, as in $\text{YBa}_2\text{Cu}_3\text{O}_7$. However, disorder within the essential metal-nonmetal network tends to suppress superconductivity, and so additional parts of the structure that can be chemically tuned (the 'charge reservoir' in cuprates) are needed to obtain high- T_c 's. This is illustrated by the difference between the maximum T_c 's of 13 K for $\text{BaBi}_{1-x}\text{Pb}_x\text{O}_3$ doped at the essential Bi sites, and 30 K for $\text{Ba}_{1-x}\text{K}_x\text{BiO}_3$ doped at the secondary Ba sites.

The second group of high- T_c materials is characterised by nonmetal-nonmetal bonding which may lead to very high nonmetal contents (potentially 100% for a purely organic superconductor). This group is limited to those elements that form strongly bonded covalent molecules and networks, typically B and C, although similar nonmetals such as N, O, Si, P, S could also be incorporated. Superconductivity is BCS-like in this group and the maximum observed T_c to date of 41 K is in keeping with optimal BCS weak-coupling predictions. In these families the optimal electronic structures for superconductivity are achieved for the stoichiometric compositions A_3C_{60} and MgB_2 (and also $\text{YPd}_2\text{B}_2\text{C}$) and chemical doping does not raise T_c .

Structurally, most of the high- T_c families are based on layered arrangements, although the cubic structures of A_3C_{60} and $\text{Ba}_{1-x}\text{K}_x\text{BiO}_3$ show that this is not a strict requirement. Two-dimensionality may be physically important for enhancing the pairing fluctuations needed for superconductivity. However, layered structures also offer far greater chemical and structural flexibility than three-dimensional networks, and so it is more likely that the optimal conditions

for superconductivity can be realised. The highest- T_c $\text{HgBa}_2\text{Ca}_2\text{Cu}_3\text{O}_{8+\delta}$ material represents one of approximately 30 chemically or structurally distinct cuprate subfamilies.

Predictions of the highest-possible T_c 's given the present known materials are extremely difficult. As estimates based on physical understanding of the mechanisms for high temperature superconductivity are still limited, a statistical approach may be the most realistic approach to gauge the likelihood of discovering new high- T_c materials. Extreme value theory describes the probabilities of substantial deviations from the median in a large collection of values generated from a given set of rules, and is used to model the likelihood of occurrence of rare events such as mechanical failures or extreme weather.⁴⁵ Three limiting distributions are found, of which the Fréchet type is appropriate to a variable bounded by a lower limit such as $T_c > 0$ here. The Fréchet probability distribution function is:

$$f(T_c) = (\alpha/\beta)(\beta/T_c)^{1+\alpha}\exp(-(\beta/T_c)^\alpha),$$

and the cumulative distribution function is:

$$F(T_c \leq T) = \exp(-(\beta/T)^\alpha).$$

Fig. 11 shows the distribution of maximum T_c values from the seven families known to have maximum $T_c \geq 23$ K (as shown in Table 1) plus Nb_3Ge . Assuming that the total number of presently known superconductor families is $N_{\text{Tot}} \sim 1000$, $f(T_c)$ values were obtained in 10 K intervals as n/N_{Tot} where n is the number of superconductor families with maximum T_c in the ranges $23 \leq T_c/\text{K} < 33$, $33 \leq T_c/\text{K} < 43$, etc. The $f(T_c)$ fit shown has parameters $\alpha = 1.5$ and $\beta = 5$. Improved estimates of these parameters could be obtained by analysing maximum T_c values in the low- T_c region.

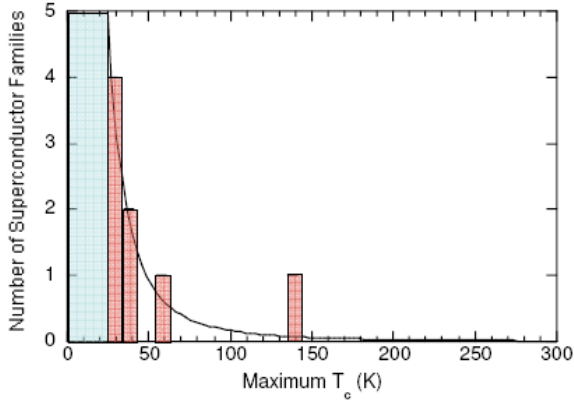


Fig. 11 The distribution of superconductor families according to their maximum T_c , binned in 10 K intervals for $T_c \geq 23$ K materials. The curve has equation $1000f(T_c)$ with Fréchet function parameters as shown in the text.

5 The probability of a superconductor family having maximum $T_c > T$ is $(1 - F(T_c \leq T))$ so from the above parameter values, the probability of a newly discovered superconductor family having maximum $T_c > 100$ K is 1%, decreasing to 0.2% for $T_c > 300$ K (room temperature superconductivity). These statistical estimates appear up to an order of magnitude too high as only one presently known family has $T_c > 100$ K, so ranges of 0.1-1% and 0.02-0.2% may be
10 more realistic, and even these should be treated with appropriate caution. On a statistical basis, several hundred new families of superconductor may have to be discovered to find another $T_c > 100$ K material, and perhaps many hundreds or a few thousand to realise the possibility of superconductivity at room temperature. However, more targeted approaches based on knowledge of known materials as presented here, or perhaps on new theoretical insights, should
15 reduce the chemical space to be explored.

Conclusions

Seven distinct superconductor families with ambient pressure T_c 's that equal or surpass the historic limit of $T_c = 23$ K in Nb_3Ge have been discovered in the last 25 years. These high- T_c
20 families are all nonmetal-rich unlike the metals and alloys that dominated the earlier low- T_c era. The high- T_c superconductors are chemically diverse, but broadly fall into 'metal-nonmetal' and 'nonmetal-bonded' groups. Materials in the former group are based on an essential metal-nonmetal pair e.g. Cu-O, Fe-As and approximate to an ionic description where only metal-nonmetal bonding is significant and the metal:nonmetal ratio is near 50:50. Superconductivity is
25 optimised in non-stoichiometric materials through chemical doping and leads to the highest known T_c 's in the cuprates and iron arsenides, probably through a magnetic spin fluctuations

mechanism, although other coupling mechanisms such as charge fluctuation interactions may also operate in this group. ‘Nonmetal-bonded’ materials contain covalently bonded molecular or extended anion networks and are BCS-like superconductors with T_c ’s up to ~ 40 K.

Replicating the principal features of the ‘metal-nonmetal’ group may provide the best
5 chemical guidance to the discovery of future high-temperature superconductors at present. Layered structures are advantageous for introducing strong pairing fluctuations and provide a good opportunity for chemical and structural optimisation of T_c . The distribution of T_c values for the known high- T_c families follows a typical extreme values distribution and a statistical analysis suggests that the probability of a newly discovered superconductor family having
10 maximum $T_c > 100$ K is ~ 0.1 - 1% , decreasing to ~ 0.02 - 0.2% for room temperature superconductivity.

Acknowledgements

I acknowledge support from EaStCHEM, EPSRC and the Leverhulme Trust, and the use of
15 the Chemical Database Service at Daresbury.

References

- 1 J.G. Bednorz and K.A. Muller, *Z. Phys.*, 1986, **64**, 189.
- 2 M. Monteverde, C. Acha, M. Nunez-Regueiro, D.A. Pavlov, K.A. Lokshin, S.N. Putilin and E.V. Antipov, *Europhys. Lett.*, 2005, **72**, 458.
- 3 S. Hufner, M.A. Hossain, A. Damascelli and G.A. Sawatzky, *Rep. Prog. Phys.*, 2008, **71**, 062501.
- 4 K. Le Hur, T. Maurice Rice, *Ann. Phys.*, 2009, **324**, 1452.
- 5 M. Vojta, *Advances in Physics*, 2009, **58**, 699.
- 6 N. Plakida, *High-Temperature Cuprate Superconductors: Experiment, Theory, and Applications*, Springer, New York, 2010.
- 7 A.K. Saxena, *High-Temperature Superconductors*, Springer, New York, 2009.
- 8 A. C. McLaughlin, V. Janowitz, J. A. McAllister and J. P. Attfield, *Chem. Comm.*, 2000, 1331.
- 9 A.F. Hebard, M.J. Rosseinsky, R.C. Haddon, D.W. Murphy, S.H. Glarum, T.T.M. Palstra, A.P. Ramirez and A.R. Kortan, *Nature*, 1991, **350**, 600.
- 10 M.J. Rosseinsky, *Chem. Mater.*, 1998, **10**, 2665.
- 11 L. Forro and L. Mihaly, *Rep. Prog. Phys.*, 2001, **64**, 649.
- 12 Y. Iwasa and T. Takenobu, *J. Phys.: Condens. Matter*, 2003, **15**, R495.

- 13 A.Y. Ganin, Y. Takabayashi, P. Jeglič, D. Arčon, A. Potočnik, P.J. Baker, Y. Ohishi, M.T. McDonald, M.D. Tzirakis, A. McLennan, G.R. Darling, M. Takata, M.J. Rosseinsky and K. Prassides, *Nature*, 2010, **466**, 221.
- 14 A.W. Sleight, J.L. Gillson and P.E. Bierstedt, *Solid State Comm.*, 1975, **17**, 27.
- 15 R.J. Cava, B. Batlogg, J.J. Krajewski, R. Farrow, L.W. Rupp Jr, A.E. White, K. Short, W.F. Peck and T. Kometani, *Nature*, 1988, **332**, 814.
- 16 S. Pei, J.D. Jorgensen, B. Dabrowski, D.G. Hinks, D.R. Richards, and A.W. Mitchell, *Phys. Rev. B*, 1990, **41**, 4126.
- 17 S.M. Kazakov, C. Chaillout, P. Bordet, J.J. Capponi, M. Nunez-Regueiro, A. Rysak, J.L. Tholence, P.G. Radaelli, S.N. Putilin and E.V. Antipov, *Nature*, 1997, **390**, 148.
- 18 F. Marsiglio, J.P. Carbotte, A. Puchkov and T. Timusk, *Phys. Rev. B*, 1996, **53**, 9433.
- 19 R.J. Cava, H. Takagi, B. Batlogg, H.W. Zandbergen, J.J. Krajewski, W.F. Peck, R.B. Vandover, R.J. Felder, T. Siegrist, K. Mizuhashi, J.O. Lee, H. Eisaki, S.A. Carter and S. Uchida, *Nature*, 1994, **367**, 146.
- 20 K.-H. Müller and V.N. Narozhnyi, *Rep. Prog. Phys.*, 2001, **64**, 943.
- 21 C. Mazumdar and R. Nagarajan, *Curr. Sci.*, 2005, **88**, 83.
- 22 L.C. Gupta, *Adv. Phys.*, 2006, **55**, 691.
- 23 S. Yamanaka, *Annu. Rev. Mater. Sci.*, 2000, **30**, 53.
- 24 S. Yamanaka, *J. Mater. Chem.*, 2010, **20**, 2922.
- 25 S. Yamanaka, K. Hotehama and H. Kawaji, *Nature*, 1998, **392**, 580.
- 26 J. Oró-Solé, C. Frontera, B. Martínez, D. Beltrán-Porter, M. R. Palacín and A. Fuertes, *Chem. Commun.*, 2005, 3352.
- 27 S. Yamanaka, Toshihiro Yasunaga, Kosuke Yamaguchi and M. Tagawa, *J. Mater. Chem.*, 2009, **19**, 2573.
- 28 Y. Taguchi, A. Kitora and Y. Iwasa, *Phys. Rev. Lett.*, 2006, **97**, 107001.
- 29 J. Nagamatsu, N. Nakagawa, T. Muranaka, Y. Zenitani and J. Akimitsu, *Nature*, 2001, **410**, 63.
- 30 X.X. Xi, *Rep. Prog. Phys.*, 2008, **71**, 116501.
- 31 T.E. Weller, M. Ellerby, S.S. Saxena, R.P. Smith and N.T. Skipper, *Nat. Phys.*, 2005, **1**, 39.
- 32 S.L. Budko, G. Lapertot, C. Petrovic, C.E. Cunningham, N. Anderson and P.C. Canfield, *Phys. Rev. Lett.*, 2001, **86**, 1877.
- 33 I.I. Mazin, *Nature*, 2010, **464**, 183.
- 34 D.C. Johnston, *Adv. Phys.*, 2010, **59**, 803.
- 35 Y. Kamihara, T. Watanabe, M. Hirano and H. Hosono, *J. Am. Chem. Soc.*, 2008, **130**, 3296.
- 36 Z.A. Ren, W. Lu, J. Yang, W. Yi, X.L. Shen, Z.C. Li, G. . Che, X.L. Dong, L.L. Sun, F. Zhou and Z.X. Zhao, *Chin. Phys. Lett.*, 2008, **25**, 2215.

- 37 H.H. Wen, G. Xu, L. Fang, H. Yang and X. Zhu, *Europhys. Lett.*, 2008, **82**, 17009.
- 38 M. Rotter, M. Tegel, and D. Johrendt, *Phys. Rev. Lett.*, 2008, **101**, 107006.
- 39 J.H. Tapp, Z. Tang, B. Lv, K. Sasmal, B. Lorenz, P.C.W. Chu and A.M. Guloy, *Phys. Rev. B*, 2008, **78**, 060505(R).
- 40 T.M. McQueen, Q. Huang, V. Ksenofontov, C. Felser, Q. Xu, H. Zandbergen, Y.S. Hor, J. Allred, A.J. Williams, D. Qu, J. Checkelsky, N.P. Ong and R.J. Cava, *Phys. Rev. B*, 2009, **79**, 014522.
- 41 J.J. Hamlin, R.E. Baumbach, D.A. Zocco, T.A. Sayles and M.B. Maple, *J. Phys.: Condens. Matter*, 2008, **20**, 365220.
- 42 J. A. Rodgers, G. B. S. Penny, A. Marcinkova, J.W.G. Bos, D.A. Sokolov, A. Kusmartseva, A. D. Huxley and J. P. Attfield, *Phys. Rev. B*, 2009, **80**, 052508.
- 43 P.P. Edwards and M. J. Sienko, *Chem. Brit.*, 1983, 39.
- 44 J.L. Sarrao, L.A. Morales, J.D. Thompson, B.L. Scott, G.R. Stewart, F. Wastin, J. Rebizant, P. Boulet, E. Colineau and G.H. Lander, *Nature*, 2002, **420**, 297.
- 45 L. de Haan and A. Ferreira, *Extreme value theory: an introduction*, Springer, New York, 2006.