



Conference on ‘Childhood Nutrition and Obesity: Current Status and Future Challenges’ Symposium 3: Effects of early nutrition on later health

Childhood dietary patterns and later obesity: a review of the evidence

Gina L. Ambrosini

MRC Human Nutrition Research, Elsie Widdowson Laboratory, 120 Fulbourn Road, Cambridge CB1 9NL, UK

A range of individual nutrients and foods have been suggested to increase obesity risk in childhood, but the evidence is inconsistent. Dietary patterns that summarise the whole diet may, however, be more informative. The aim of the present paper was to systematically review the current evidence pertaining to overall dietary patterns in childhood and later obesity risk. Studies eligible for review identified childhood dietary patterns using an empirical method, i.e. principal components analysis, factor analysis or reduced rank regression, and reported their prospective associations with an obesity-related outcome. Literature searches identified 166 studies and of these, seven met the eligibility criteria. Despite differences between studies, a common dietary pattern was identified in all seven studies that was high in energy-dense, high-fat and low-fibre foods. The quality of studies varied, however; the four studies reporting positive associations between this type of dietary pattern and later obesity risk were of consistently higher quality than those reporting null associations. The balance of evidence from this systematic review indicates that dietary patterns that are high in energy-dense, high-fat and low-fibre foods predispose young people to later overweight and obesity. It also highlights that examining multiple dietary factors within a dietary pattern may better explain obesity risk than individual nutrients or foods. However, more prospective studies are needed and dietary pattern research requires greater rigour and focus, to further clarify the role of dietary factors in the aetiology of obesity and inform future interventions.

Dietary patterns: Obesity: Children: Adolescents: Cohort studies: Review

A range of specific nutrients and foods have been suggested as important dietary determinants of obesity in childhood and adolescence, including but not limited to, fruit and vegetables⁽¹⁾, fibre⁽²⁾, fat⁽³⁾, fast food⁽⁴⁾ and sugary drinks⁽⁵⁾. However, with the exception of sugary drinks, where the evidence is increasingly clear⁽⁵⁾, the specific dietary risk factors for obesity in young people remain a matter of debate.

It is plausible that the overall dietary pattern may better explain obesity risk than individual nutrients or foods. Dietary patterns can summarise the combined and potentially synergistic effects of a repertoire of foods contributing to usual dietary intake in a defined population. Many food and nutrient intakes are strongly correlated or colinear, providing the basis for dietary patterns. This colinearity is partly due to the natural composition of the human diet, which has evolved over

millennia by way of biology, ecology and culture. Moreover, where food is abundant, as in most western societies, dietary patterns may also be shaped by wider determinants, such as food environments⁽⁶⁾ and psychology, e.g. social norms⁽⁷⁾ and hedonic hunger⁽⁸⁾. While epidemiologists may wish to separate the effects of individual exposures, e.g. foods and nutrients, the correlated nature of dietary variables can make this difficult. However, given the complexity of human diets, a focus on only one food or nutrient while not considering others may be questionable. This is where empirical dietary patterns can assist, as they make use of the correlated nature of dietary data to identify patterns in total food consumption, offering a viable counterpoint to the reductionist approach. In addition, the food-based information provided by dietary patterns may be easier to translate into guidelines for the public. For example,

Abbreviations: CA, cluster analysis; FA, factor analysis; PCA, principal components analysis; RRR, reduced rank regression.
Corresponding author: Dr Gina L. Ambrosini, fax +44(0)1223 437515, email: Gina.Ambrosini@mrc-hnr.cam.ac.uk



they can be interpreted in the context of substituting foods positively associated with a dietary pattern linked to greater disease risk, with foods that are negatively associated with that pattern and thus, risk. Therefore, dietary patterns may be a useful approach when considering dietary risk factors for obesity.

The purpose of the present paper was to systematically review and summarise the current evidence on empirical dietary patterns in childhood and later obesity risk.

Identification and review of evidence

Empirical dietary patterns

This review focused on studies that utilised empirical methods to identify patterns in total food intake. Studies employing diet indices or diet quality scores, e.g. Healthy Eating Index⁽⁹⁾ were not included, as diet indices are not empirically derived and they usually focus on selected foods or nutrients rather than the total diet. Diet indices require many arbitrary decisions regarding cut-offs for scoring, weighting item contributions to the total score, and the scaling of scores. Some, for example, the Mediterranean diet score⁽¹⁰⁾, are strongly culturally influenced and may not be applicable in different populations.

To date, the most popular empirical dietary pattern methods have included principal components analysis (PCA), factor analysis (FA) and cluster analysis (CA). In brief, these are *a posteriori* data reduction techniques that identify underlying constructs or patterns in food intake. PCA and FA produce a number of dietary patterns, each consisting of a set of factor loadings (one for each food) that characterises a particular food and nutrient profile at the population level^(11,12). Individuals are then given a *z*-score quantifying the degree to which their reported dietary intake reflects the identified dietary patterns, relative to others in the same study population. These *z*-scores can be used as predictor variables to model disease risk. CA is a less frequently applied dietary pattern method that attempts to classify individuals into mutually exclusive groups or clusters with similar food intakes⁽¹³⁾. Unlike PCA and FA, CA does not produce continuous dietary pattern *z*-scores but rather, individuals are assigned membership to one of the identified clusters, which precludes examination of dose–response relationships.

PCA, FA and CA aim to explain the maximum variation in food intakes, but they do not necessarily explain the maximum variation in nutrient intakes relevant to the health outcome of interest⁽¹⁴⁾. It is after all nutrients, the product of food intake, that interact at the mechanistic level to influence disease risk. Furthermore, these methods are entirely exploratory, and their dependence on the data covariance can limit their reproducibility.

Reduced rank regression (RRR) is both an *a priori* and *a posteriori* empirical method⁽¹⁴⁾. RRR can be used to identify combinations of food intake, or dietary patterns, that explain the maximum variation in a predefined set of intermediate (or response) variables. These intermediate variables are hypothesised to be on the causal pathway

between food intake and a specific health outcome of interest. The intermediate variables may be nutrient intakes or biomarkers, but should be susceptible to food intake and not be proxies for the outcome. Similar to PCA and FA, RRR dietary patterns are characterised by a set of factor loadings at the population level, and individuals are scored for the dietary patterns using a *z*-score. By including *a priori* information in the form of intermediate variables, RRR can be a powerful method for examining specific diet–disease pathways that builds on prior knowledge. The incorporation of *a priori* information in RRR dietary patterns may also make them better at predicting disease risk than dietary patterns identified using exploratory methods such as PCA and FA^(14,15).

Identifying the literature

Studies eligible for this review were (i) of prospective design, (ii) employed an empirical method (i.e. PCA, FA or RRR) to identify dietary patterns in childhood or adolescence, and (iii) reported associations between these dietary patterns and a prospectively measured obesity-related outcome. Eligible studies were identified in the literature published between 1970 and June 2013 using electronic searches of PubMed and Web of Science (English language only) and the following search terms: dietary patterns; PCA; FA; RRR; children; adolescents; obesity; BMI; overweight; weight. Reference lists in eligible articles and relevant reviews^(16,17) were also hand searched. Studies on growth confined to infancy were excluded. Studies using CA were excluded because their dichotomous scores were not considered comparable with continuous dietary pattern *z*-scores produced by PCA, FA and RRR.

Study quality

At present, there is no universally accepted tool for scoring the methodological quality of observational studies⁽¹⁸⁾. In this review, a scoring tool applied by te Velde *et al.*⁽¹⁹⁾ (in a review of dietary and physical activity behaviours and obesity in preschool children) was used to assess the methodological quality of each eligible study. The tool assessed study quality according to information, validity and precision related to: (i) study population and participation, (ii) study attrition, (iii) data collection methods and (iv) data analysis methods (Table 1). The scoring tool consisted of twelve criteria. Each could be assigned one of three possible scores: a positive score (+) if the study met the quality criterion, a negative score (–) if it did not meet the quality criterion, and a ‘?’ if a decision was not possible because insufficient information was provided. Citations to earlier papers were searched if information relevant to the criteria could not be found in the primary paper. A total quality score for each study was based on the number of positive scores for criteria reflecting validity or precision⁽¹⁹⁾ (Table 1). Data from each study were extracted into a summary table and scored for methodological quality by two independent reviewers (G. L. Ambrosini and D. Johns).

Table 1. Criteria for assessing methodological quality of studies (adapted from⁽¹⁹⁾)

		I, V, P
Study population and participation (the study population represents the population of interest on key characteristics)		
1	Sufficient information ^a on sampling frame, recruitment methods, period of recruitment and place of recruitment (geographical location)	I
2	Participation rate at baseline was at least 80 %, or non-response was non-selective	V
3	Sufficient information ^a on key characteristics of the baseline study sample (i.e. subject number, age, gender, measured diet and anthropometry variables)	I
Study attrition: loss to follow up not associated with key characteristics (i.e. included subjects adequately represents the study sample)		
4	Provision of exact number of participants at each follow-up measurement	I
5	Provision of exact information on follow-up duration	I
6	Response at long term follow up (>12 months) was at least 70 % of participants at baseline	V
7	Non-response during follow up was non-selective, i.e. dropouts did not differ significantly from the study population in terms of key characteristics	V/P
Data collection		
8	Measurement of dietary intake using a quantitative method likely to represent usual dietary intake (i.e. at least 3 d diet record or an FFQ)	V
9	Measurement of weight status/overweight or obesity using objective measures (not self-report)	V
Data analysis		
10	Appropriate statistical models were applied, i.e. multivariate regression models including more than predictor variable	V/P
11	The number of cases (i.e. overweight or obese) was at least ten times the number of independent variables	V/P
12	Point estimates and measures of their variability (i.e. confidence intervals or standard errors) are provided	I

Criteria related to: I, information; V, validity; P, precision.

^a Sufficient to enable study replication.

Summarising the evidence

Meta-analysis can be used to combine statistical evidence from more than one study to estimate a pooled effect. However, this requires a sufficient number of comparable studies with a common outcome and exposure measurement, and limited between-study heterogeneity. Where appropriate, a meta-analysis was undertaken using a random effect model in STATA⁽²⁰⁾ to combine the log-transformed results of eligible studies⁽²¹⁾. The estimate of heterogeneity was used to gauge the appropriateness of combining studies for a pooled effect.

As the number of eligible studies was not expected to be large, a harvest plot was also employed to summarise the evidence. Harvest plots are an alternative to meta-analyses when large heterogeneity between studies precludes their statistical combination⁽²²⁾. A harvest plot was created by plotting each eligible study according to its quality score and grouping studies by size and finding (null, negative or positive)⁽²²⁾.

Results of literature review

Eligible studies

The literature searches identified 166 papers. Of these, nine papers met the eligibility criteria, including two that analysed the same cohort at different follow-up ages^(23,24) and one study published as a conference abstract⁽²⁵⁾. The most common reason for exclusion at the screening stage was cross-sectional study design. After full screening, two of the nine eligible papers were deemed invalid and excluded for issues we have previously raised regarding the use of RRR⁽²⁶⁾. At the end of the screening process, seven papers were eligible for review (Fig. 1).

The seven eligible studies were conducted in the UK^(23,24), USA⁽²⁷⁾, Australia⁽²⁵⁾, Norway⁽²⁸⁾, Finland⁽²⁹⁾ and Colombia⁽³⁰⁾ (Table 2). The median duration of follow up was 4.5 years. Follow-up ages ranged from 3 to 39 years, however, most studies included follow up until the mid-to-late teenage years. With the exception of two studies, sample sizes approximated 1000 or more subjects. All studies included appropriate adjustments for confounders, including age, gender, physical activity, socioeconomic status and maternal education. Two studies adjusted for total energy intake^(29,30).

Five studies applied PCA or FA and two applied RRR to identify dietary patterns. A comparable dietary pattern was identified in all the seven studies that consisted of a high consumption of energy-dense, high-fat and low-fibre foods. These were labelled ‘snacking’, ‘junk/convenient’, ‘sweet and salty snack foods’ ‘western’, ‘traditional’ and ‘energy-dense, high-fat, low-fibre’ (Table 3). All of these patterns were characterised by high intakes of confectionery and chocolate. High intakes of refined grains (low-fibre bread and breakfast cereals, rice and pasta), cakes and biscuits, savoury snacks and crisps, and processed meat (sausages, bacon, ham, salami, frankfurter/hot dogs) featured in most (83 %) of the patterns. High intakes of sugar-sweetened beverages, full fat milk, fried potato (chips), fats and oils, and takeaway foods (burgers, pizza, kebabs, fried/crumbed chicken or fish) featured in at least half of the patterns. Five of the seven studies reported that these dietary patterns had either negative factor loadings or were associated with lower intakes of fruit, vegetables and fibre (indicated by fibre, wholegrain, high-fibre breakfast cereal or high-fibre bread intake) and higher intakes of total fat and saturated fat^(23,24,27,29,31). In the remaining two studies^(28,30) it was not possible to determine the foods or nutrients

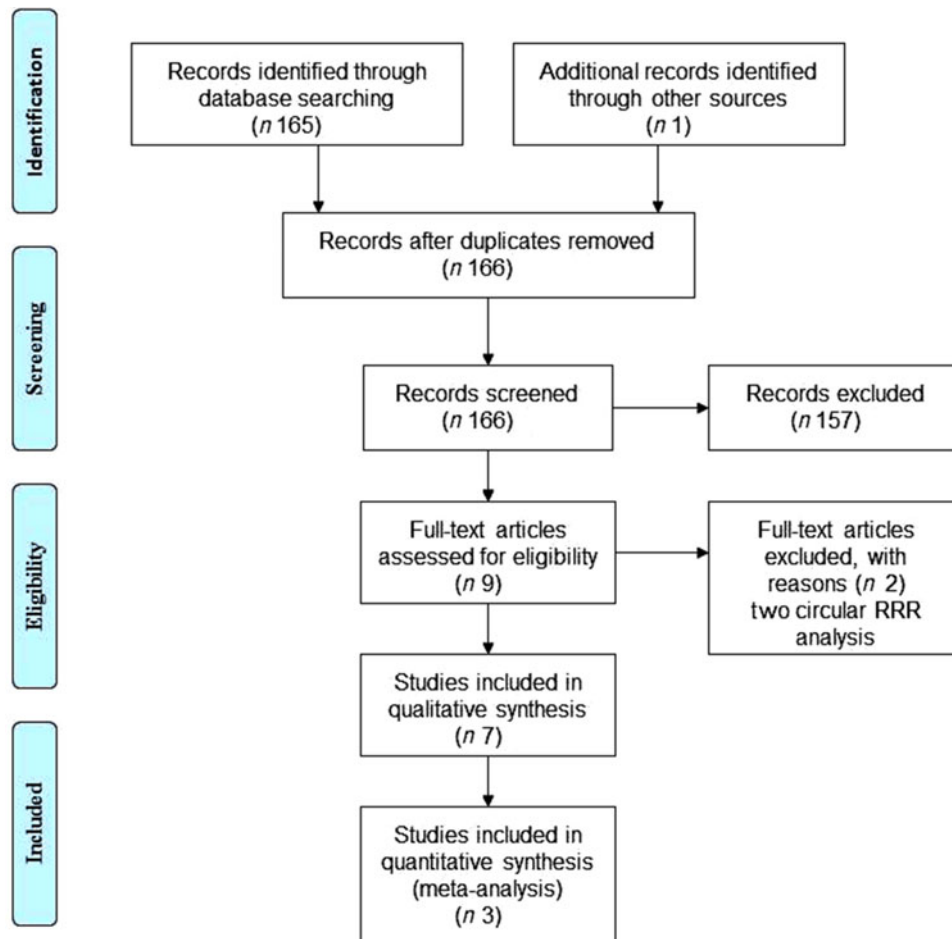


Fig. 1. (colour online). Flow diagram of the study identification process. RRR, reduced rank regression.

negatively associated with their dietary pattern, because neither negative factor loadings nor nutrient profiles were reported^(32,33).

Quality of eligible studies

There was 93 % agreement between the two reviewers and differences in study quality scores were discussed to reach a consensus. The final study quality scores ranged from 43 to 71 % (Supplementary Table 1). The quality criteria met least often related to participation rates and selective attrition. All studies scored negatively for achieving a participation rate at baseline (beginning of analysed follow up) of at least 80 % of the original cohort. Only two studies reported investigating selective attrition during follow up^(23,34) and three studies did not achieve at least 70 % follow up of the baseline sample 12 months later^(23,27,28). Other factors impacting study quality included reliance on a very small number of overweight or obese children⁽²⁸⁾ and the use of self-reported height and weight⁽²⁷⁾.

Summary of evidence relating to childhood empirical dietary patterns and later obesity

Various obesity-related outcome measures were reported in the seven eligible studies (Table 2). One study analysed dietary pattern *z*-score as the outcome⁽²⁸⁾. Only three

studies: Avon Longitudinal Study of Parents and Children (UK)⁽²⁴⁾; Western Australian Pregnancy (Raine) Cohort (Australia)⁽²⁵⁾; Project Eating Among Teens (USA)⁽²⁷⁾ had a comparable outcome measurement (OR) and dietary pattern measure (continuous *z*-score) suitable for meta-analysis. Of these, Project Eating Among Teens⁽²⁷⁾ reported OR for four age- and gender-specific subgroups. Therefore, a meta-analysis combining the six OR from these three studies was undertaken. This produced a large estimate of between-study heterogeneity (78 %, $P < 0.0001$), indicating that statistically combining these studies was inappropriate, and any estimated pooled effect misleading. There were an insufficient number of studies to conduct meta-analyses on other outcomes.

The harvest plot in Fig. 2 summarises the findings from all seven eligible studies. It can be seen that all four studies reporting a positive association between the dietary pattern and later obesity were of consistently higher quality than studies reporting null findings. No studies reported inverse associations between the dietary pattern and later obesity. The balance of evidence therefore supported a positive relationship between dietary patterns consisting of energy-dense, high-fat, low-fibre foods in childhood or adolescence and later obesity risk.



Table 2. Studies of common empirical dietary patterns* in childhood or adolescence and later obesity risk

Study (<i>n</i> in cohort)	Prospective analysis (<i>N</i>)	Follow-up ages	Follow-up period	Source	Pattern method	Dietary assessment	Dietary pattern*	Association with weight status [†]	Confounders
Cardiovascular Risk in Young Finns study, Finland (<i>n</i> 3596) ²⁹	1200	3–18 to 24–39 years	21 years	Population based	PCA	48 h recall	‘Traditional’	BMI z-score not associated with dietary pattern score: BMI z-score increased by 0.01 (SE=0.03, <i>P</i> =0.71) in women, 0.03 (SE=0.02, <i>P</i> =0.21) in men per 1 SD unit increase in dietary pattern score	Age, sex, total energy intake, smoking, physical activity, years since baseline
ALSPAC, UK (<i>n</i> 14 536) ²³	483	5–9 years	4 years	Pregnancy cohort	RRR	3-d diary	‘Energy-dense, high-fat, low-fibre’	Odds of excess adiposity (fat mass index ≥80th percentile) at 9 years per quintile of dietary pattern score at 5 and 7 years respectively: 1.26 (95 % CI 1.03, 1.57, <i>P</i> for trend=0.03) and 1.43 (95 % CI 1.18, 1.73, <i>P</i> for trend <0.0001).	Age, sex, dietary misreporting, maternal BMI, maternal education, BMI at baseline, television viewing at 54 months
ALSPAC, UK (<i>n</i> 14 536) ²⁴	6772	7–15 years	8 years	Pregnancy cohort	RRR	3-d diary	‘Energy-dense, high-fat, low-fibre’	Odds of excess adiposity (fat mass index ≥80th percentile) per increasing quintile of dietary pattern per year was 1.05 (95 % CI 1.03, 1.08, <i>P</i> for trend <0.001)	Age, sex, dietary misreporting, physical activity, maternal education
Bogota School Children Cohort (<i>n</i> 3202) ³⁰	961	5–12 to 7–14 years	2 years	School	PCA	FFQ	‘Snacking’	Children in the highest quartile of dietary pattern scores had 0.09 kg/m ² (95 % CI –0.01, 0.19; <i>P</i> for trend=0.05) higher BMI gain and 0.012 mm (95 % CI 0.001, 0.022; <i>P</i> for trend=0.05) higher gain in trunk adiposity (subscapular: triceps skinfold thickness) per year compared to children in lowest quartile	Age, sex, total energy intake, socioeconomic status
Telemark County, Norway (<i>n</i> 1045) ²⁸	427	9–13 years	4 years	School	PCA	FFQ	‘Junk/convenient’	Change in dietary pattern score not associated with moving from normal weight to overweight BMI category between 4th and 7th grade (β =–0.15, 95 % CI –0.50, 0.19); the odds of remaining in overweight BMI category was not associated with ‘stable’ or ‘increased’ dietary pattern scores (OR=0.8, 95 % CI 0.4, 1.7).	Sex, physical activity, sedentary activity, family income, maternal and paternal education and overweight

Childhood dietary patterns and later obesity



Table 2. (Cont.)

Study (n in cohort)	Prospective analysis (N)	Follow-up ages	Follow-up period	Source	Pattern method	Dietary assessment	Dietary pattern*	Association with weight status†	Confounders
Raine study, Australia ⁽²⁵⁾	1433	14 to 17 years	3 years	Pregnancy cohort	Factor	FFQ	‘Western’	Odds of overweight or obesity at 17 years per 1 SD increase in dietary pattern z-score: OR=1.98 (95 % CI 1.06, 3.71) for boys and OR=2.01 (95 % CI 1.01, 4.02) for girls.	Age, sex, pubertal stage, aerobic fitness, dietary misreporting
Project EAT, US (n 1062) ⁽²⁷⁾	‡	13–18 years	5 years	School	PCA	FFQ	‘Sweet and salty snacks’	Odds of overweight or obesity five years later (based on self-reported BMI) not associated with quintile of dietary pattern score: OR=0.92 (95 % CI 0.71, 1.19) for girls, OR=0.99 (95 % CI 0.74, 1.34) for boys.	Age, sex, race/ethnicity, socioeconomic status, other dietary patterns, physical activity and baseline weight status
	‡	16–21 years	5 years	School	PCA	FFQ	‘Sweet and salty snacks’	Odds of overweight or obesity five years later (based on self-reported BMI) not associated with quintile of dietary pattern score: OR=0.97 (95 % CI 0.83, 1.14) for girls, OR=0.86 (95 % CI 0.72, 1.03) for boys.	Age, sex, race/ethnicity, socioeconomic status, other dietary patterns, physical activity and baseline weight status

PCA, principal components analysis; RRR, reduced rank regression; ALSPAC, Avon Longitudinal Study of Parents and Children; Project EAT, Project Eating Among Teens.

* Dietary pattern characterised by high intakes of energy-dense, high-fat and low-fibre foods.

† Reported associations between dietary pattern and prospective measure of weight status.

‡ A total of 2516 were included from both age groups but the number in each age group was not reported.



Table 3. Mapping of common dietary patterns and their key components

Study	Young Finns	ALSPAC* 'Energy-dense, high-fat, low-fibre'	Bogota	Telemark	Raine	Project EAT 'Sweet and salty snack foods'
Dietary pattern:	'Traditional'		'Snacking'	'Junk/convenient'	'Western'	
Key food group						
Confectionery, chocolate	+	+	+	+	+	+
Cakes, biscuits		+	+	+	+	+
Crisps, savoury snacks		+	+	+	+	+
Processed meats [†]	+	+	+	+	+	+
Refined grains [‡]	+	+		+	+	+
Full fat milk	+	+		+	+	
Fried potato (chips, roasted)	+	+		+	+	
Sugar-sweetened beverages		+	+	+	+	
Total fat	+	+			+	+
Added fats, oils	+	+			+	
Takeaway dishes [§]		+	+		+	
Fruit	-	-			-	-
Vegetables	-	-			-	-
High-fibre breakfast cereal/bread		-				
Wholegrains or fibre		-			-	-

ALSPAC, Avon Longitudinal Study of Parents and Children (UK); Bogota, Bogota School Children Cohort (Colombia); Project EAT, Project Eating Among Teens (USA); Raine, Western Australian Pregnancy (Raine) Cohort (Australia); Telemark, Telemark County (Norway); Young Finns, Cardiovascular Risk in Young Finns Study (Finland). +, indicates that the food group/nutrient had a positive factor loading or a positive association with the dietary pattern; -, indicates either a negative factor loading or a negative association with the dietary pattern.

* Both ALSPAC papers identified the same dietary pattern^(23,24).

[†] Sausages, bacon, ham, salami, frankfurter/hot dogs.

[‡] Low-fibre breakfast cereals and bread, rice, pasta.

[§] Burgers, pizza, kebabs, fried/crumbed chicken or fish.

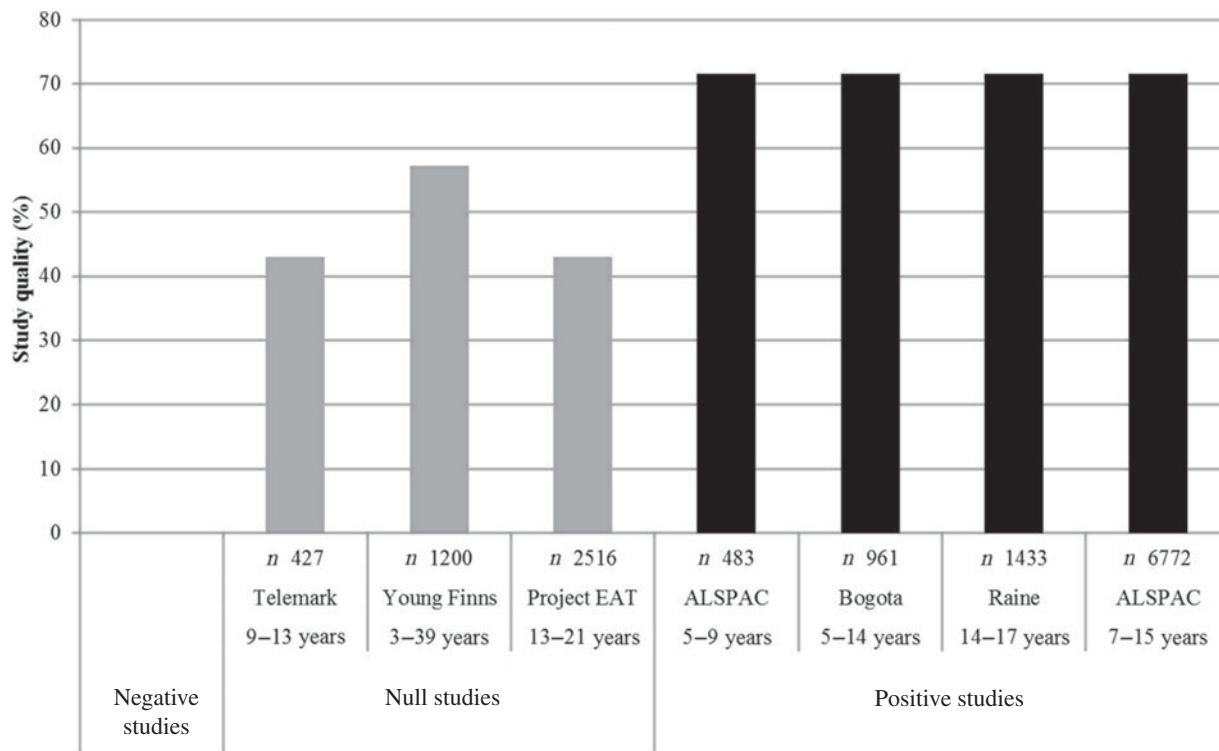


Fig. 2. Harvest plot summarising prospective studies examining a dietary pattern in childhood or adolescence characterised by high intakes of energy-dense, high-fat, low-fibre foods and later obesity risk. ALSPAC, Avon Longitudinal Study of Parents and Children (UK); Bogota, Bogota School Children Cohort (Colombia); Project EAT, Project Eating Among Teens (USA); Raine, Western Australian Pregnancy (Raine) Cohort (Australia); Telemark, Telemark County (Norway); Young Finns, Cardiovascular Risk in Young Finns Study (Finland).

Discussion

Summary of findings

This systematic review has identified support for a positive relationship between empirically derived dietary patterns in childhood or adolescence that are high in energy-dense, high-fat, low-fibre foods and later obesity risk. Another review recently concluded that energy-dense diets⁽³⁵⁾ are a risk factor for obesity in children, but there is less evidence specifically for dietary fibre⁽²⁾ and dietary fat⁽³⁾. These results of the present review therefore provide evidence that these correlated dietary factors may be important for childhood obesity when considered together in an overall dietary pattern, rather than as separate entities.

This review's conclusion is based on findings from high-quality studies; however, it has highlighted several limitations in the existing literature. Most clearly, there is a paucity of prospective studies on dietary patterns and obesity risk in young people. There is a predominance of cross-sectional studies, but these cannot reliably inform causation, or more specifically, the temporal sequence between dietary intake and obesity development. Once overweight or obese, individuals may change their dietary intake in an effort to combat further weight gain or encourage weight loss. As a result, associations reported in cross-sectional studies may reflect reverse causation and confuse our understanding of the true aetiological relationships.

Challenges combining the evidence

It is not possible to statistically combine the results of prospective studies published to date on empirical dietary patterns and obesity risk in young people. The initial obstacle was the reporting of different outcome measures. In the Telemark County (Norway)⁽²⁸⁾ and Western Australian Pregnancy (Raine) Cohort⁽²⁵⁾ studies, overweight or obesity was defined using International Obesity Task Force⁽³⁶⁾ cut offs for BMI. In Project Eating Among Teens⁽²⁷⁾, overweight or obesity was defined as having a BMI \geq 85th percentile using US reference data⁽³⁷⁾. In both Avon Longitudinal Study of Parents and Children analyses^(23,24) excess adiposity was the outcome and was defined as those subjects who were above the 80th percentile for fat mass index, a cut-off that also identified overweight or obese individuals according to their BMI in this cohort⁽²³⁾. Other studies reported BMI⁽³⁰⁾, BMI z-score⁽²⁹⁾ or trunk adiposity⁽³⁰⁾ as outcomes. Greater consistency in the reporting of outcome measures would enable more study comparisons.

Even among studies reporting similar outcome measures there was considerable heterogeneity, suggesting other contributors to between-study differences. Several factors are likely, but the differences in empirical dietary pattern methods are notable. The majority of studies used exploratory dietary pattern methods (PCA, FA) and although the key foods featuring in the observed dietary patterns were highly comparable, exploratory dietary patterns may lack specificity, limiting their comparability. On the other hand, RRR characterises more

specific dietary patterns based on a set of predefined intermediate variables, and this specificity could increase their reproducibility. Another source of variation is the differences in number (ranging from 23⁽²⁹⁾ to 152⁽²⁷⁾) and type of food groups included in each dietary pattern analysis. This will impact the observed dietary patterns, their factor loadings and scores. Most studies used either a FFQ or a 3-d diet diary; one used a 48 h dietary recall and this may be less representative of usual dietary intake in young people, who show greater day-to-day variation in dietary intake than adults⁽³⁸⁾. The sources of error in these dietary assessment methods may also vary. These differences may have influenced the dietary patterns observed in each study.

Childhood and adolescence includes periods of rapid growth and development, with accompanying changes in autonomy. The risk factors for obesity are multifactorial and the most influential risk factors may change with age. For example, in the Avon Longitudinal Study of Parents and Children, the association between an energy-dense, high-fat, low-fibre dietary pattern and adiposity diminished between 7 and 15 years of age⁽²⁴⁾. Although the majority of studies identified in this review focused on teenage years, there were some variations in follow-up ages. Additional data will allow a more precise consideration of the potential changing nature of dietary patterns during childhood and adolescence.

Methodological issues

There were considerable differences in study quality. All studies failed to follow up $>80\%$ of their original cohort, and most of the studies did not report on possible selective cohort attrition. Although dietary assessments are sometimes limited to cohort subsets for reasons beyond researchers' control, e.g. limited resources, investigations into selectiveness and attrition are to be encouraged. The differences between studies identified in this review present a challenge to orthodox meta-analysis. However, using harvest plots it has been possible to gain an overview across all eligible studies, reducing the risk of selection bias.

Other methodological issues not assessed by the quality scoring tool are worth noting. Dietary misreporting, particularly under-reporting, can obscure observed diet-disease relationships⁽³⁹⁾. This is especially relevant in obesity research, as dietary under-reporting is strongly associated with overweight and obesity⁽³⁸⁾ and may be related to reported dietary intake, as particular foods may be more susceptible to under-reporting⁽⁴⁰⁾. Furthermore, dietary under-reporting is common among older children and adolescents⁽³⁸⁾. All the three studies that attempted to control for dietary under-reporting observed positive associations between their dietary patterns and later obesity. Another debated issue in nutrition epidemiology is adjustment for total energy intake. Two studies included in this review adjusted for total energy intake in their analysis^(29,30). However, it can be argued that this is an over adjustment that may lead to under-estimating the true association, because total energy intake is assumed to be on the causal pathway to obesity.



The identified dietary patterns were not always well described. For example, many studies reported only those factor loadings outside an arbitrary (and variable) cut-off. One study did not report factor loadings for all dietary patterns (these were requested from the author)⁽³⁰⁾. Many studies did not describe the nutrient profiles of their dietary patterns or the amount of variation explained by their patterns. Better reporting of empirical dietary patterns is needed to support comparison and replication, and to improve our understanding of dietary patterns and health outcomes.

Conclusions

The balance of evidence from this systematic review is that empirical dietary patterns that are high in energy-dense, high-fat and low-fibre foods predispose young people to later overweight and obesity. This review also demonstrates that examining multiple dietary factors as a dietary pattern may better explain obesity risk than individual nutrients or foods. However, more work is required to clarify these relationships. To assist in developing and focusing obesity intervention efforts, more well-designed prospective studies are greatly needed. Research on empirical dietary patterns would benefit from a more focused approach and hypothesis-driven methods such as RRR may assist in clarifying potential pathways and minimise confusing public health messages. Such focus and more consistent reporting would also facilitate greater replication, i.e. the testing of similar dietary patterns in various study populations, to confirm associations and their generalisability.

Acknowledgements

The author wishes to thank Dr David Johns from MRC Human Nutrition Research, Cambridge, as the second reviewer assessing the methodological quality of studies for this review and Dr Susan Jebb (MRC Human Nutrition Research, Cambridge) for giving advice on the manuscript.

Financial support

The present paper was funded by a programme grant from the Medical Research Council (grant no. U105960389) and was presented as an invited oral presentation for the Nutrition Society Irish Section Summer Meeting, 'Childhood Nutrition and Obesity: current status and future challenges' in Dublin, June 2013.

Conflicts of interest

None.

Authorship

G.L.A. designed this review, conducted literature searches and data analyses, and wrote the paper.

Supplementary material

To view supplementary material for this article, please visit <http://dx.doi.org/10.1017/S0029665113003765>.

References

1. Ledoux TA, Hingle MD & Baranowski T (2011) Relationship of fruit and vegetable intake with adiposity: a systematic review. *Obes Rev* **12**, e143–e150.
2. Brauchla M, Juan W, Story J *et al.* (2012) Sources of dietary fiber and the association of fiber intake with childhood obesity risk (in 2–18 year olds) and diabetes risk of adolescents (12–18 year olds): NHANES 2003–2006. *J Nutr Metab* **2012**, 736258.
3. Pate RR, O'Neill JR, Liese AD *et al.* (2013) Factors associated with development of excessive fatness in children and adolescents: a review of prospective studies. *Obes Rev* **14**, 645–658.
4. Rosenheck R (2008) Fast food consumption and increased caloric intake: a systematic review of a trajectory towards weight gain and obesity risk. *Obes Rev* **9**, 535–547.
5. Hu FB (2013) Resolved: there is sufficient scientific evidence that decreasing sugar-sweetened beverage consumption will reduce the prevalence of obesity and obesity-related diseases. *Obes Rev* **14**, 606–619.
6. Story M, Kaphingst KM, Robinson-O'Brien R *et al.* (2008) Creating healthy food and eating environments: policy and environmental approaches. *Annu Rev Public Health* **29**, 253–272.
7. Lally P, Bartle N & Wardle J (2011) Social norms and diet in adolescents. *Appetite* **57**, 623–627.
8. Lowe MR & Butryn ML (2007) Hedonic hunger: a new dimension of appetite? *Physiol Behav* **91**, 432–439.
9. Guenther PM, Casavale KO, Reedy J *et al.* (2013) Update of the healthy eating index: HEI-2010. *J Acad Nutr Diet* **113**, 569–580.
10. Panagiotakos DB, Pitsavos C & Stefanadis C (2006) Dietary patterns: a Mediterranean diet score and its relation to clinical and biological markers of cardiovascular disease risk. *Nutr Metab Cardiovasc Dis* **16**, 559–568.
11. UCLA SCG (2013) Factor analysis. Annotated SPSS output. <http://www.ats.ucla.edu/stat/spss/output/factor1.htm> (accessed August 2013)
12. UCLA SCG (2013) Principal components analysis. Annotated SPSS output. http://statistics.ats.ucla.edu/stat/spss/output/principal_components.htm (accessed August 2013)
13. Devlin UM, McNulty BA, Nugent AP *et al.* (2012) The use of cluster analysis to derive dietary patterns: methodological considerations, reproducibility, validity and the effect of energy mis-reporting. *Proc Nutr Soc* **71**, 599–609.
14. Hoffmann K, Schulze MB, Schienkiewitz A *et al.* (2004) Application of a new statistical method to derive dietary patterns in nutritional epidemiology. *Am J Epidemiol* **159**, 935–944.
15. Hoffmann K, Boeing H, Boffetta P *et al.* (2005) Comparison of two statistical approaches to predict all-cause mortality by dietary patterns in German elderly subjects. *Br J Nutr* **93**, 709–716.
16. Smithers LG, Golley RK, Brazionis L *et al.* (2011) Characterizing whole diets of young children from developed countries and the association between diet and health: a systematic review. *Nutr Rev* **69**, 449–467.
17. Togo P, Osler M, Sorensen TI *et al.* (2001) Food intake patterns and body mass index in observational studies. *Int J Obes Relat Metab Disord* **25**, 1741–1751.



18. Sanderson S, Tatt ID & Higgins JP (2007) Tools for assessing quality and susceptibility to bias in observational studies in epidemiology: a systematic review and annotated bibliography. *Int J Epidemiol* **36**, 666–676.
19. te Velde SJ, van Nassau F, Uijtendwilligen L *et al.* (2012) Energy balance-related behaviours associated with overweight and obesity in preschool children: a systematic review of prospective studies. *Obes Rev* **13**, Suppl. 1, 56–74.
20. STATA Corp LP (2013) Stata/SE 12.1 for Windows. College Station, Texas: STATA Corp LP.
21. Egger M, Smith GD & Phillips AN (1997) Meta-analysis: principles and procedures. *BMJ* **315**, 1533–1537.
22. Ogilvie D, Fayer D, Petticrew M *et al.* (2008) The harvest plot: a method for synthesising evidence about the differential effects of interventions. *BMC Med Res Methodol* **8**, 8.
23. Johnson L, Mander AP, Jones LR *et al.* (2008) Energy-dense, low-fiber, high-fat dietary pattern is associated with increased fatness in childhood. *Am J Clin Nutr* **87**, 846–854.
24. Ambrosini GL, Emmett PM, Northstone K *et al.* (2012) Identification of a dietary pattern prospectively associated with increased adiposity during childhood and adolescence. *Int J Obes (Lond)* **36**, 1299–1305.
25. Ambrosini GL, Mori TA, Appannah G *et al.* (2011) Dietary patterns are prospectively associated with increases in cardio-metabolic risk factors during adolescence (conference poster). Heart Foundation (Australia) Conference – ‘Heart to Heart: From Access to Action’, Melbourne.
26. Ambrosini GL, Johns DJ & Jebb SA (2010) Identifying dietary patterns by using reduced rank regression. *Am J Clin Nutr* **92**, 1537.
27. Cutler GJ, Flood A, Hannan PJ *et al.* (2012) Association between major patterns of dietary intake and weight status in adolescents. *Br J Nutr* **108**, 349–356.
28. Oellingrath IM, Svendsen MV & Brantstaeter AL (2011) Tracking of eating patterns and overweight – a follow-up study of Norwegian schoolchildren from middle childhood to early adolescence. *Nutr J* **10**, 106.
29. Mikkilä V, Räsänen L, Raitakari OT *et al.* (2007) Major dietary patterns and cardiovascular risk factors from childhood to adulthood. The Cardiovascular Risk in Young Finns Study. *Br J Nutr* **98**, 218–225.
30. Shroff MR, Perng W, Baylin A *et al.* (2013) Adherence to a snacking dietary pattern and soda intake are related to the development of adiposity: a prospective study in school-age children. *Public Health Nutr* 1–7 (Epublication ahead of print version).
31. Ambrosini GL, Oddy WH, Robinson M *et al.* (2009) Adolescent dietary patterns are associated with lifestyle and family psycho-social factors. *Public Health Nutr* **12**, 1807–1815.
32. Oellingrath IM, Svendsen MV & Brantsaeter AL (2010) Eating patterns and overweight in 9- to 10-year-old children in Telemark County, Norway: a cross-sectional study. *Eur J Clin Nutr* **64**, 1272–1279.
33. Isanaka S, Mora-Plazas M, Lopez-Arana S *et al.* (2007) Food insecurity is highly prevalent and predicts underweight but not overweight in adults and school children from Bogotá, Colombia. *J Nutr* **137**, 2747–2755.
34. Cutler GJ, Flood A, Hannan P *et al.* (2009) Major patterns of dietary intake in adolescents and their stability over time. *J Nutr* **139**, 323–328.
35. Perez-Escamilla R, Obbagy JE, Altman JM *et al.* (2012) Dietary energy density and body weight in adults and children: a systematic review. *J Acad Nutr Diet* **112**, 671–684.
36. Cole TJ, Bellizzi MC, Flegal KM *et al.* (2000) Establishing a standard definition for child overweight and obesity worldwide: international survey. *BMJ* **320**, 1240–1243.
37. Must A, Dallal GE & Dietz WH (1991) Reference data for obesity: 85th and 95th percentiles of body mass index (wt/ht²) and triceps skinfold thickness. *Am J Clin Nutr* **53**, 839–846.
38. Livingstone MBE, Robson PJ & Wallace JMW (2004) Issues in dietary intake assessment of children and adolescents. *Br J Nutr* **92**, S213–S222.
39. Rennie KL, Coward A & Jebb SA (2007) Estimating under-reporting of energy intake in dietary surveys using an individualised method. *Br J Nutr* **97**, 1169–1176.
40. Scagliusi FB, Ferrioli E, Pfrimer K *et al.* (2008) Under-reporting of energy intake is more prevalent in a healthy dietary pattern cluster. *Br J Nutr* **100**, 1060–1068.