

CHLAMYDOSPORE FORMATION BY *Paracoccidioides brasiliensis* MYCELIAL FORM

Marcello FRANCO(1), Ayako SANO(2), Keiji KERA(2), Kazuko NISHIMURA(2), Kanji TAKEO(2) & Makoto MIYAJI(2)

SUMMARY

To investigate the role of some adverse environmental conditions in chlamydospore formation by the mycelial form of *P. brasiliensis*, we cultured four *P. brasiliensis* isolates (18, Bt4, 1183, Pb9) at 25°C within solid agar medium either rich or poor in nutrients. Isolates 18 and 1183 were also cultured under anaerobiosis in a nitrogen atmosphere. Isolate 18 produced great number of terminal and intercalary chlamydospore after 7-10 days of culture in a medium poor in nutrients (2% agar with 0.1% dextrose and polypepton).

The three other isolates also produced chlamydospores under the same conditions, but in lower numbers. Chlamydospore production by isolate 18 was abolished when the fungus was cultured in two agar media rich in nutrients (brain heart infusion and potato dextrose agar). Anaerobic incubation of isolate 18 under an atmosphere of N₂ showed small mycelial outgrowth with numerous chlamydospores. At the electron microscopical level, the chlamydospores showed one or various nuclei and numerous mitochondria, indicating great potential for further development. Accordingly, chlamydospores produced multiple budding after only 24 h incubation at 35°C. The results demonstrate that under adverse environmental conditions *P. brasiliensis* mycelial form produces chlamydospores within a short period of time.

KEY WORDS: Chlamydospore; *Paracoccidioides brasiliensis*.

INTRODUCTION

Paracoccidioides brasiliensis, the causative agent of paracoccidioidomycosis, is a thermally dimorphic fungus producing a mycelial form at room temperature and yeast form at 37°C. In the mycelial phase, it may give rise to either few nonspecific sporulating structures or characteristic spores^{19, 20}.

The exact mechanism of infection is not known, because of uncertainty about the natural

habitat of the fungus. Most authors believe that infection is acquired by inhalation, and that conidia may be the infectious propagules^{8, 20}. Recently the substrate and cultural requirements were met to the production of various types of *P. brasiliensis* conidia. Using culture media poor in nutrients and incubation time ranging from 3 to 6 weeks, RESTREPO and co-workers described the development of arthroconidia, single-celled conidia and aleuroconidia^{3, 22, 23}. The same

(1) Department of Pathology, Botucatu Medical School, São Paulo State University, Botucatu, São Paulo, Brazil.

(2) Research Center of Pathogenic Fungi & Microbial Toxicoses, Chiba University, 1-8-1, Inohana, Chiba 280, Japan.

Address for correspondence: Marcello Franco, M.D., Departamento de Patologia, Faculdade de Medicina UNESP, CEP 18610 Botucatu, São Paulo, SP, Brazil.

authors were able to separate and quantitate the arthroconidia and successfully infect mice by intranasal instillation, producing active disease in healthy animals¹³. Despite the fact that chlamyospore formation has long been described at early stages in the mycelial growth of *P. brasiliensis*^{4, 5, 7, 17, 18, 19, 24}, and that chlamyospores seem to be the transitional form in the mycelial to yeast conversion^{4, 16}, little attention has been given to its optimal cultural conditions and potential infectivity. CARBONELL & RODRIGUEZ⁴ gave indication that chlamyospore formation in *P. brasiliensis* mycelial form occurred under adverse condition, namely poor oxygenation; using slant cultures, the authors observed an outermost layer, outside the culture medium, consisting of slender hyphae without spores, and a middle layer, possibly under low oxygen atmosphere, with abundant intercalary and terminal chlamyospores.

While attempting to grow *P. brasiliensis* mycelia inside the agar of a culture medium poor in nutrients¹⁶, we observed that within a short period of time, the mycelial growth produced great number of intercalary and terminal chlamyospores. We hypothesized that the resistant cells were being formed subsequent to starvation and low oxygen content. The present investigation was aimed at studying chlamyospore formation among different isolates of *P. brasiliensis* in media with different nutritional content and different levels of O₂ atmosphere.

MATERIAL AND METHODS

1. Chlamyospore formation by *P. brasiliensis* isolates — Four isolates were examined. They were selected at random from a collection of stock cultures obtained worldwide, namely strain 18 (Department of Microbiology, São Paulo State School of Medicine, Brazil), strain Bt4 (Department of Pathology, Botucatu Medical School, São Paulo, Brazil), strain Pb9 (Instituto Venezolano de Investigaciones Científicas, Caracas, Venezuela) and strain 1183 (Centers for Disease Control, Atlanta Georgia, USA). Fresh transfers were done to slants of brain heart infusion agar (Difco, Detroit, Michigan), supplemented with 1% dextrose, and incubated at 35°C for 5 to 7 days. The growth was harvested in sterile phosphate buffered saline (PBS; pH 7.4; 1/15 M) by carefully scraping the yeast mat with a pipet-

te. The suspension was further homogenized by vortexing and then filtered through cotton gauze. The inoculum was adjusted to a concentration of 10⁵ to 10⁶ fungal cells/ml. Solid cultures in 90 x 20 mm petri dishes were then set up in duplicates: one ml of the yeast cell suspension was carefully mixed with 25 ml of 2% agar (immunodiffusion agar for immunoelectrophoresis, Oxoid, England), with 0.1% polypepton (Wako Pure Chemicals Ind., Osaka, Japan) and 0.1% anhydrous dextrose (Wako) (0.1% IDAgar), at 40-43°C. The cultures were prepared in duplicate for each strain. After solidification of the agar, the plates were incubated at 25°C for 5, 7 and 10 days. At day 10, the plates were incubated at 35°C for 5 days.

For direct examination of the cultures, a small sample of the medium was cut with a razor blade and placed on a microslide together with a drop of lacto-phenol cotton blue; a cover slip was then laid over it, carefully pressed, and the specimen was observed directly under a light microscope. For each dish, 2 slides were prepared. The numbers of chlamyospores present in 10 to 15 high power fields (HPF; 400X) of each slide selected at random were counted in a blind way. For histological examination, similar samples from each dish were formalin fixed, paraffin embedded, cut in 15 μm sections and stained with PAS, according to routine procedures.

2. Chlamyospore formation in poor and rich culture media — Isolate 18 and three different agar media were used, namely 0.1% IDAgar, brain heart infusion and potato dextrose agar (Difco). In all media, the agar concentration was 2%. One ml of yeast cell suspension was mixed with 25 ml of each melted medium (approx 40°C) and cultured in duplicates at 25°C for 10 days as described above. For the microscopical observation, lactophenol cotton blue preparations were made with a loopful of each plate; the numbers of chlamyospores were counted as described above.

3. Chlamyospore formation in anaerobic condition — The technique employed for culturing isolates 18 and 1183 of *P. brasiliensis* was the same described for the previous experiments. The culture medium used was 0.1% IDAgar. Cultures were kept at 25°C for 7 days under anaerobic conditions in a nitrogen atmosphere

produced as follows. A BBLGas Pak plastic jar (Becton, Dickinson Co., Cockeysville, USA) was placed inside a vinyl-isolated chamber for hazardous experiments, containing a sealed entrance and two vinyl-isolated windows for handling. A continuous flow of pure nitrogen (Nihon Sanso Co. Ltd, Tokyo, Japan) was then produced inside the chamber and the plastic jar. Afterwards the petri dishes containing the solid cultures were rapidly introduced inside the jar together with steel wool coated with copper for elimination of the residual oxygen. The jar was then sealed.

For coating the steel wool, approximately 50 g steel wool were dipped twice into 300 ml of a 1% cupric sulfate solution until decolouration of the solution. The copper-coated steel wool was squeezed to remove the excess of water and placed into the plastic jar. The copper in the surface of the wool reacts with the residual oxygen with the subsequent production of copper oxide. To ensure the presence of a atmosphere of N₂ inside the jar, a balloon filled with the gas was connected to the jar through the lid and clamped when no further shrinkage of the balloon was observed.

For the microscopic examination, the procedures were the same as used in the previous experiments.

4. Electron microscopic morphology of chlamyospores — Isolate 18 was cultured as described above in 0.1% IDAgar at 25°C for 10 days. Afterwards, samples from the solid culture medium were fixed in 2.5% glutaraldehyde in Hank's solution (pH 7.2 - 7.4) at 4°C for 4 days, post-fixed in 1% osmium tetroxide in Hank's solution for 2 h, dehydrated in a graded series of ethanol and embedded in Epon-812 resin.

Ultrathin sections were doubly stained with 2% uranyl acetate in 60% ethanol, and lead citrate. They were examined with a Hitachi H-700H electron microscope at 100 kV.

RESULTS

We defined chlamyospores, as proposed by AINSWORTH¹⁰, as thick-walled nondeciduous intercalary and terminal asexual spores formed by the rounding up of preexisting cells.

The numbers of chlamyospores produced by the four *P. brasiliensis* isolates, expressed by the median of spores present in 60 HPF (15 HPF in each cotton blue preparation: 2 microslides per plate, 2 plates per isolate) at day 10, are shown in Fig. 1. Isolate 18 produced a great number of both intercalary (Fig. 2A, B, C) and terminal (Fig. 2A, B, D, E, F) chlamyospores after 10 days of culture at 25°C. As the spores were counted at randomly selected microscopical fields, the number of spores per HPF shown by isolate 18 varied from 9 to 49. However, the process of sporulation was homogeneous throughout the fungal colonies inside the solid culture medium (Fig. 3a). The chlamyospores ranged in diameter from 5 to 20 μm and presented a thick cell wall (Fig. 2). In the cytoplasm, there were intensely blue-stained areas (Fig. 2). At day 10, when the plates containing numerous spores

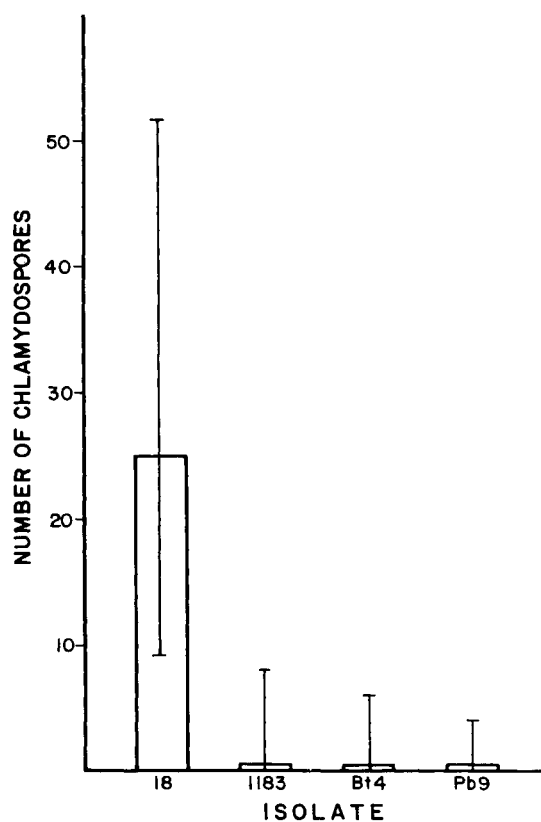


Fig. 1 — Chlamyospore formation by four *P. brasiliensis* isolates cultured in 2% agar with 0.1% polypepton and dextrose for 10 days at 25°C. Columns are the medians of the numbers of spores in 60 high power fields counted in 4 microslides (2 slides per plate; 2 plates per isolate). Bars represent the range between the highest and lowest numbers.

were incubated at 35°C, chlamyospores already showed multiple budding after 24 hours (Fig. 2 G, H, I). Chlamyospore formation by isolates 1183, Bt4 and Pb9 was significantly less frequent than by isolate 18 (Student's t test; $p < 0.001$).

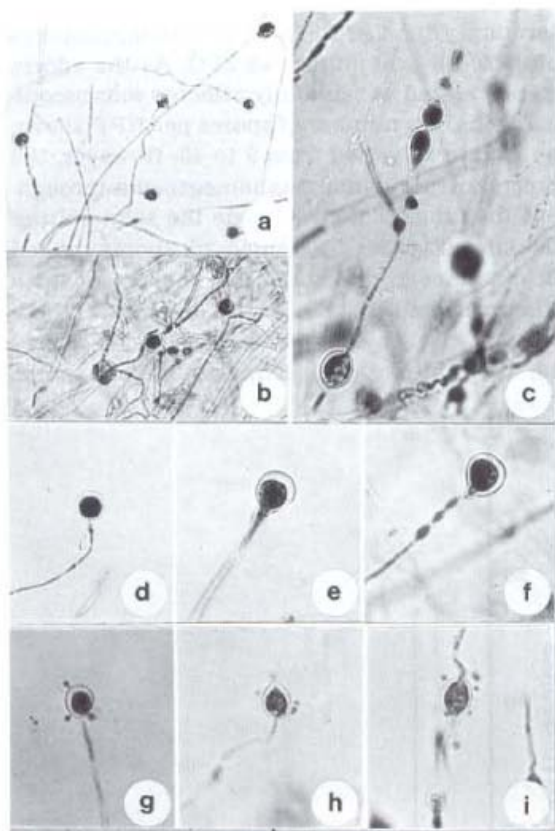


Fig. 2 — Terminal (A, B, D, E, F) and intercalary (A, B, C) chlamyospores. Note the thick cell wall and deeply stained matrix inside. Irregular swellings (immature chlamyospores) are less than 5 μm in diameter and show normal cell wall (A, B, C). Chlamyospores with multiple budding after 1 day at 35°C (G, H, I) (cotton blue preparations; A, C = 200x, B — I = 400x).

Sporulation by isolate 18 was already observed at day 7, although it was significantly less frequent than at day 10, as demonstrated by the median counts of 4 and 25 spores in 60 HPF, respectively (Student's t test; $p < 0.001$). No chlamyospore formation was detected at day 5.

In addition to typical chlamyospores, there were numerous segmentary swellings with diameter less than 5 μm and thin cell wall (Fig. 2 A, B, C); these structures were interpreted as immature chlamyospores.

The histological examination of the solid culture medium of both mature and immature chlamyospores showed similar findings to those described above (Fig. 3).

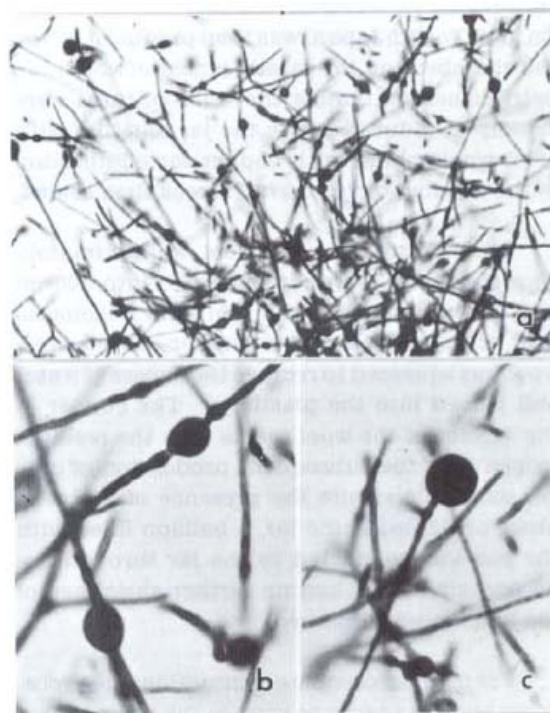


Fig. 3 — Sporulation by *P. brasiliensis* isolate 18, cultured in 2% agar with 0.1% polypepton and dextrose for 10 days at 25°C. Note terminal (C) and intercalary (B) chlamyospores with thick cell wall and deeply stained material inside (PAS; 15 μm sections of paraffin embedded solid culture medium; A = 200x, B, C = 400x).

Sporulation by isolate 18 showed a positive correlation with the poor nutritional content of the culture medium. The medium poor in nutrients (0.1% IDAgar) yielded a greater number of spores (median of spores per HPF = 22; lowest count = 14; highest count = 35). The two rich media (BHI and PDA) did not induce chlamyospore formation.

Anaerobic incubation of isolate 18 and 1183 under an atmosphere of N_2 resulted in a limited outgrowth as observed grossly by the small size of the colonies in the solid medium. Cotton blue preparations of the cultures of both isolates revealed hyphal growth with chlamyospore formation (Fig. 4).

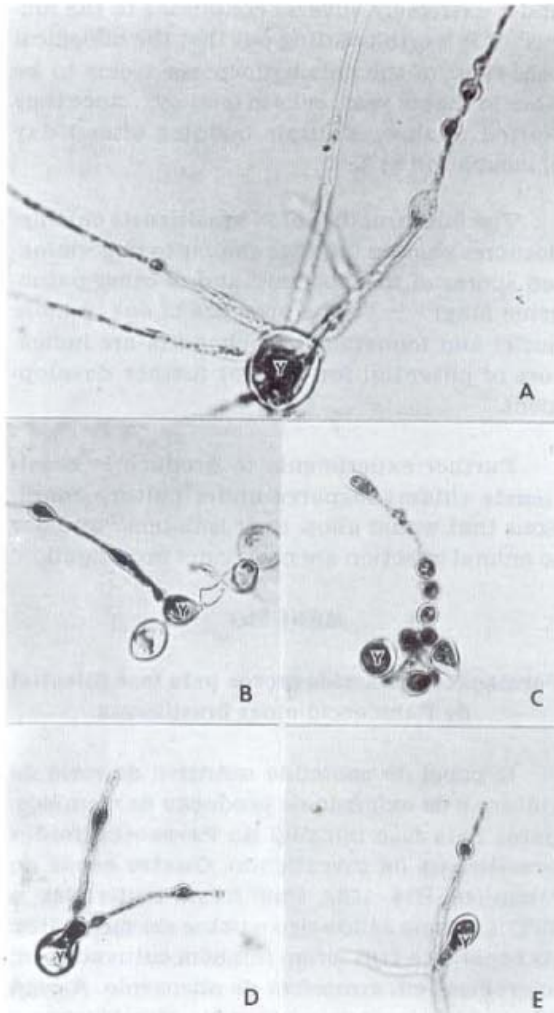


Fig. 4 — Anaerobic incubation of *P. brasiliensis* under an atmosphere of nitrogen. Yeast cells (Y) from the inoculum show hyphal growth with intercalary (A, B, D, E), and terminal chlamydospores (C, D) (cotton blue preparations; A = 200x, B, C, D, E = 400x).

The transformation process from hyphae to terminal chlamydospores of isolate 18 cultured in 0.1% IDAgar for 10 days was studied by electron microscopy. At the early stage intercalary and terminal cellular components of the hyphal form began to round up (Fig. 5). These irregular swellings or immature chlamydospores contained one or more nuclei, and showed all the organelles present in the hyphae counterpart; the cell wall had also the same morphological appearance and thickness. The fully developed spores were round structures with one or several nuclei, numerous vacuoles, lipid droplets, endoplasmic

reticulum, vesicles and mitochondria. The cell wall was characteristically thick (≈ 260 nm) and consisted of an electron-translucent inner layer and an electron-dense granular outer layer continuous with the outer layer of the suspensor cell wall.

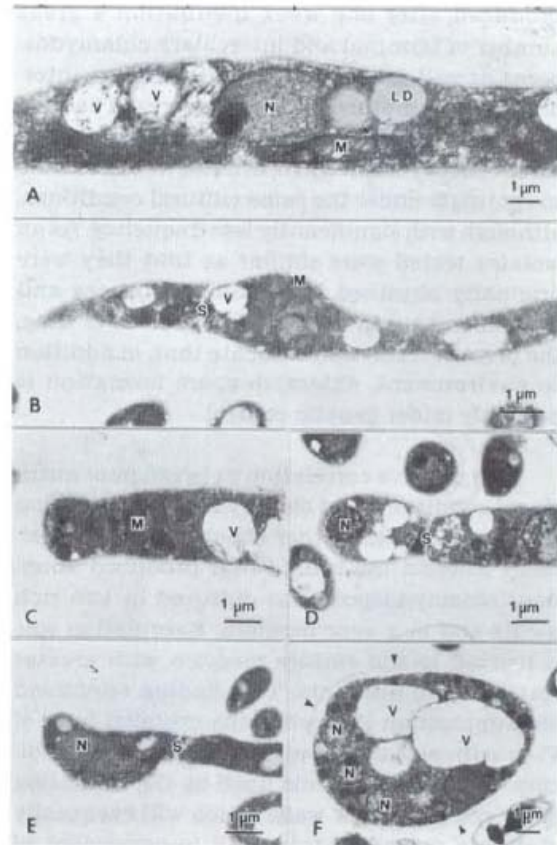


Fig. 5 — Chlamydospore formation by isolate 18 of *P. brasiliensis* cultured at 25°C for 10 days. Irregular intercalary (B) and terminal (C, D, E) swellings (immature forms), and mature chlamydospore (F). Note septum (S), one or more nuclei (N), mitochondria (M), vacuoles (V), lipid droplets (LD) and thick cell wall of the mature form (arrowheads) (E).

DISCUSSION

It is well known that several fungi under adverse conditions, such as starvation, exposure to membrane-altering or enzyme-activating agents, develop units of hyphal differentiation produced by isotropic growth^{9, 25}. These resistant cells are called chlamydospores and they need dissolution of the supporting hyphae before dispersal is possible^{6, 9}. The release can be accomplished by mechanical fracture of a non-dif-

ferentiated cell wall or by natural breaking down of the supporting hyphae through bacterial action, fungal lysis and/or weathering^{9, 25}.

Isolate 18 of *P. brasiliensis*, when grown at 25°C inside a solid agar medium with low nutritional content and poor availability of oxygen, produced after one week incubation a great number of terminal and intercalary chlamyospores, as well as irregular hyphal swellings, interpreted as immature chlamyospores. The phenomenon was not restricted to one isolate, since three other *P. brasiliensis* isolates were also able to sporulate under the same cultural conditions, although with significantly less frequency. As all isolates tested were similar as that they were originally obtained from clinical sources and have been kept in vitro for long period of time, the present result may indicate that, in addition to environment, chlamyospore formation is probably under genetic control.

The positive correlation between poor nutritional conditions and chlamyospore formation by isolate 18 was further checked in an experiment wherein the isolate that produced abundant chlamyospore was cultured in two rich media and in a poor medium. Sporulation was restricted to the culture medium with greater restriction of nutrients. This finding reinforced the supposition that when the mycelial form of *P. brasiliensis* meets adverse nutritional condition, the fungus defends itself by the formation of spores with thick walls which will eventually stay in a dormant state until improvement of the environmental conditions.

Based on our pilot experiments, we hypothesize that chlamyospore formation in *P. brasiliensis* might be multifactorial depending on nutrition and on the oxygen atmosphere. Accordingly, we carried out a further experiment to analyze the phenomenon under anaerobic condition.

Like other dimorphic pathogenic fungi^{1, 14}, *P. brasiliensis* showed growth under anaerobiosis although in a small scale. The growing hyphae of both isolates tested rapidly presented rounding up of some cells, with the formation of chlamyospores. This finding represents further evidence for the role of these structures as asexual spores primarily involved in perennation

under extremely adverse conditions to the fungus⁹. It is worth pointing out that the biological behaviour of the chlamyospores seems to be close to that of yeast cells in latency²¹, since they started to show multiple budding after 1 day of incubation at 35°C.

The fine structure of *P. brasiliensis* chlamyospores showed findings similar to ungerminated spores of this species²⁴ and of other pathogenic fungi^{11, 15, 26}. The presence of one or more nuclei and numerous mitochondria are indicators of potential for prompt further development.

Further experiments to produce *P. brasiliensis* chlamyospores under culture conditions that would allow their isolation¹² and use to animal infection are now under investigation.

RESUMO

Formação de clamidósporos pela fase micelial do *Paracoccidioides brasiliensis*

O papel do conteúdo nutritivo do meio de cultura e de oxigênio na produção de clamidósporos pela fase micelial do *Paracoccidioides brasiliensis* foi investigado. Quatro cepas do fungo (18, Bt4, 1183, Pb9) foram cultivadas, a 25°C, em meio sólido rico e pobre em nutrientes. As cepas 18 e 1183 foram também cultivadas em anaerobiose em atmosfera de nitrogênio. A cepa 18 produziu grande número de clamidósporos terminais e intercalares após 7-10 dias de cultura em meio sólido pobre em nutrientes (agar 2%, com dextrose e polipeptona 0,1%). As outras três cepas produziram número significativamente menor de esporos. A cepa 18 não produziu clamidósporos quando cultivada em dois meios ricos em nutrientes (infusão de cérebro e coração, e agar dextrose de batata). A incubação anaeróbica da cepa 18 em atmosfera de nitrogênio apresentou pequeno crescimento micelial com a presença de numerosos clamidósporos. A nível ultraestrutural, os clamidósporos apresentaram um ou mais núcleos e numerosas mitocôndrias, indicativos de potencial para posterior desenvolvimento. Assim, os esporos produziram gemulação múltipla 1 dia após incubação a 35°C. Os resultados demonstraram que, sob condições ambientais adversas, a fase micelial do *P. brasiliensis* produz clamidósporos em curto período

de tempo. É possível que o fungo encontre condições semelhantes no solo, produzindo os esporos, que poderiam desempenhar papel na propagação da paracoccidioidomicose.

ACKNOWLEDGEMENT

Dr. Marcello Franco was a Guest-Professor at the Research Center of Pathogenic Fungi and Microbial Toxicoses, Chiba University, under the auspices of Education Ministry of Japan.

REFERENCES

1. BARTNICKI GARCIA, S. & NICKERSON, W. J. — Thiamine and nicotinic acid: anaerobic growth factors for *Mucor rouxii*. *J. Bact.*, 82: 142-148, 1961.
2. BARTNICKI GARCIA, S. & NICKERSON, W. J. — Nutrition, growth, and morphogenesis of *Mucor rouxii*. *J. Bact.*, 84: 841-858, 1962.
3. BUSTAMANTE, B.; McEWEN, J. G.; TABARES, A. M.; ARANGO, M. & RESTREPO, A. — Characteristics of the conidia produced by the mycelial form of *Paracoccidioides brasiliensis*. *J. med. vet. Mycol.*, 23: 407-414, 1985.
4. CARBONELL, L. M. & RODRIGUEZ, J. — Transformation of mycelial and yeast forms of *Paracoccidioides brasiliensis* in cultures and in experimental inoculations. *J. Bact.*, 90: 504-510, 1965.
5. CARBONELL, L. M. & RODRIGUEZ, J. — Mycelial phase of *Paracoccidioides brasiliensis* and *Blastomyces dermatitidis*: an electron microscope study. *J. Bact.*, 96: 533-543, 1968.
6. CARMICHAEL, J. W. — Blastospores, aleuriospores, chlamydospores. In: KENDRICK, B., ed. — *Taxonomy of fungi imperfecti*. Toronto, University of Toronto Press, 1971. p. 50-70.
7. CONANT, N. F. & HOWELL, A. — The similarity of the fungi causing South American blastomycosis (paracoccidioid granuloma) and North American blastomycosis (Gilchrist's disease). *J. invest. Derm.*, 5: 353-370, 1942.
8. FRANCO, M.; MONTENEGRO, M. R.; MENDES, R. P.; MARQUES, S. A.; DILLON, N. L. & MOTA, N. G. S. — Paracoccidioidomycosis: a recently proposed classification of its clinical forms. *Rev. Soc. bras. Med. trop.*, 20: 129-132, 1987.
9. GRIFFITHS, D. A. — The origin, structure and function of chlamydospore in fungi. *Nova Hedwigia*, 25: 503-546, 1974.
10. HAWKSWORTH, D. L.; SUTTON, B. C. & AINSWORTH, B. C. — *Ainsworth & Bisby' dictionary of the fungi*. Huddersfield, England, H. Charlesworth, 1983.
11. JANSONS, V. K. & NICKERSON, W. J. — Induction, morphogenesis, and germination of the chlamydospores of *Candida albicans*. *J. Bact.*, 104: 910-921, 1970.
12. LIU, P. & NEWTON, A. — Rapid chlamydospore formation by *Candida albicans* in a buffered alkaline medium. *Amer. J. clin. Path.*, 25: 93-97, 1955.
13. McEWEN, J. G.; BEDOYA, V.; PATINO, M. M.; SALAZAR, M. E. & RESTREPO, A. — Experimental murine paracoccidioidomycosis induced by the inhalation of conidia. *J. med. vet. Mycol.*, 25: 165-175, 1987.
14. McVEIGH, I. & HOUSTON, W. E. — Factors affecting mycelial to yeast phase conversion and growth of the yeast phase of *Histoplasma capsulatum*. *Mycopathologia (Den Haag)*, 47: 135-151, 1972.
15. MILLER, S. E.; SPURLOCK, B. O. & MICHAELS, G. E. — Electron microscopy of young *Candida albicans* chlamydospores. *J. Bact.*, 119: 992-999, 1974.
16. MIYAJI, M. & NISHIMURA, K. — Experimental fungal infections. In: MIYAJI, M., ed. — *Animals models in medical mycology*. Boca Raton, Florida, USA, CRC Press, 1987. p. 1-52.
17. NEVES, J. A. & BOGLIOLO, L. — Researches on the etiological agents of the American blastomycosis. I. Morphology and systematic of the Lutz's disease agent. *Mycopathologia (Den Haag)*, 5: 133-142, 1951.
18. POLLAK, L. — Aleuriospores of *Paracoccidioides brasiliensis*. *Mycopathologia (Den Haag)*, 45: 217-219, 1971.
19. RESTREPO, A. — A reappraisal of the microscopical appearance of the mycelial phase of *Paracoccidioides brasiliensis*. *Sabouraudia*, 8: 141-144, 1970.
20. RESTREPO, A. — The ecology of *Paracoccidioides brasiliensis*: a puzzle still unsolved. *J. med. vet. Mycol.*, 23: 323-334, 1985.
21. RESTREPO, A.; BEDOUT, C.; CANO, L. E.; ARANGO, M. D. & BEDOYA, V. — Recovery of *Paracoccidioides brasiliensis* from a partially calcified lymph node lesion by microaerophilic incubation of liquid medium. *Sabouraudia*, 19: 295-300, 1981.
22. RESTREPO, A.; SALAZAR, M. E.; CANO, L. E. & PATINO, M. M. — A technique to collect and dislodge conidia produced by *Paracoccidioides brasiliensis* mycelial form. *J. med. vet. Mycol.*, 24: 247-250, 1986.
23. RESTREPO, B. I.; McEWEN, J. G.; SALAZAR, M. E. & RESTREPO, A. — Morphological development of the conidia produced by *Paracoccidioides brasiliensis* mycelial form. *J. med. vet. Mycol.*, 24: 337-339, 1986.
24. SAN BLAS, F. — Ultrastructure of spore formation in *Paracoccidioides brasiliensis*. *J. med. vet. Mycol.*, 24: 203-210, 1986.
25. SZANISZLO, P. J.; JACOBS, C. W. & GEIS, P. A. — Dimorphism: morphological and biochemical aspects. In: HOWARD, D. H. & HOWARD, L. F., ed. — *Fungi pathogenic for humans and animals. Part. A: Biology*. New York, Marcel Dekker, 1983. p. 323-436.
26. TAKEO, K. — Ultrastructure of polymorphic *Mucor* as observed by means of freeze-etching. III. Dormant sporangiospore. *Arch. Microbiol.*, 99: 99-107, 1974.

Recebido para publicação em 2/11/1988.