

LETTER TO THE EDITOR

Chromosome 11q23 aberrations activating *FOXR1* in B-cell lymphoma

Blood Cancer Journal (2016) 6, e433; doi:10.1038/bcj.2016.43; published online 10 June 2016

Recurrent chromosome 11q23 abnormalities, including focal gains and losses have been described in mantle cell lymphoma, diffuse large B-cell lymphoma (DLBCL) and in a subset of high-grade B-cell lymphomas lacking *MYC* rearrangements.^{1–3} We describe a novel fusion of *FOXR1* forkhead box gene, located at 11q23, with a neighboring gene in B-cell lymphoma.

RNAseq and sequencing of cloned PCR products revealed fusion transcripts of 5' *Ribosomal Protein S25* (*RPS25*) with *FOXR1* in the DLBCL cell line U-2932, both genes located at the amplified chromosomal region 11q23 (Figure 1a, Supplementary Figure S1A). Genomic cloning localized the breakpoint to intron 2/3 of *RPS25* and to the promoter region of *FOXR1* (bp –3532).

Cell line U-2932 comprises two distinct clones traceable to subclones present in the patient's tumor.⁴ These differences also affected 11q23, *FOXR1* and *RPS25* being tetraploid in subclone R1, and triploid in subclone R2 (3n) (Supplementary Figure S1A). In accordance with the genomic data, the *RPS25/FOXR1* fusion was detected in subclone R1 but not in R2 (Figure 1b). *RPS25/FOXR1* was also verified in the patient's DNA, which collectively suggested that the fusion had occurred at some later stages of tumor development (Figure 1b).

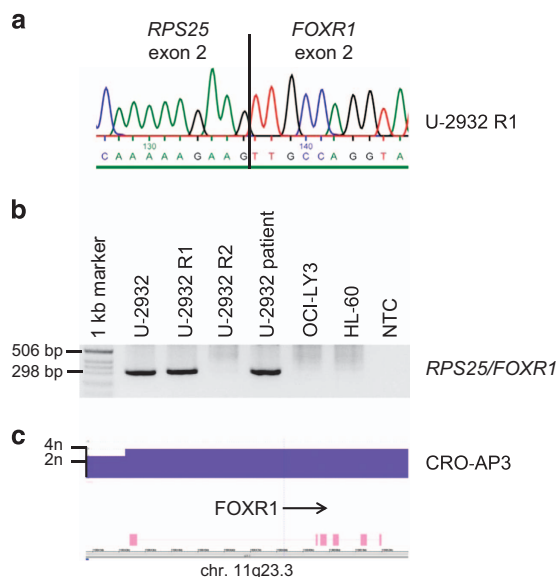


Figure 1. *FOXR1* aberration in B lymphoma cell lines. **(a)** *RPS25* exon 2 / *FOXR1* exon 2 fusion expressed in U-2932 subclone R1. Two additional transcripts targeting *RPS25* exon 2 with *FOXR1* 5' sequences were also detected. **(b)** *RPS25/FOXR1* fusion in patient's DNA and in one of two subclones of patient-derived cell line. Cell lines OCI-LY3 and HL-60 were used as negative controls. Size of PCR product: 294 bp. **(c)** *FOXR1* was amplified (4n) in CRO-AP3 according to Cytoscan HD Array analysis (Affymetrix, Santa Clara, CA, USA). NTC, nil template control.

Physiological *FOXR1* (formerly *FOXN5*) expression is restricted to the early stages of embryogenesis.^{5,6} Ectopic expression as result of 11q23 intrachromosomal deletion-fusion has hitherto been described in neuroblastoma only.⁷ In-frame fusions with the 5' *MLL* or *PAFAH1B2* genes led to overexpression of *FOXR1*.⁷ In accordance with the notion that a constitutively expressed 5' gene (*RPS25*) might be responsible for the ectopic expression of *FOXR1* in B-cell lymphoma also, *FOXR1* levels were 1000× higher in the fusion-positive than in the fusion-negative U-2932 subclone. Expression array analyses showed that the *RPS25/FOXR1*-positive U-2932 subclone had the highest *FOXR1* expression level of 55 B lymphoma cell lines tested, three log-scales higher than average (Figure 2a). Quantitative PCR analysis conducted to verify the expression arrays included 17 additional B lymphoma cell lines, revealing that the primary effusion lymphoma cell line CRO-AP3

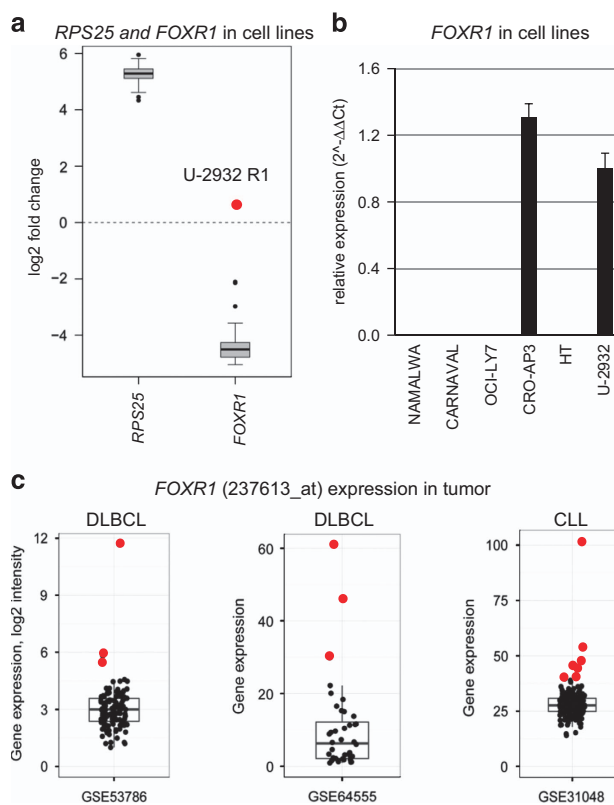


Figure 2. *FOXR1* expression in B lymphoma. **(a)** According to expression array analysis, *RPS25* is constitutively expressed in 55 B lymphoma cell lines, *FOXR1* is highest in the *RPS25/FOXR1*-positive U-2932 subclone (red dot). **(b)** Quantitative reverse-transcriptase PCR-verified ectopic expression in U-2932 subclone R1 and in the PEL cell line CRO-AP3. Cell lines NAMALWA (Burkitt's lymphoma), CARNAVAL, OCI-LY7 and HT (all DLBCL) do not express *FOXR1*. **(c)** Reanalysis of previously published normalized expression profiling data showing ectopic *FOXR1* expression in primary DLBCL and chronic lymphocytic leukemia (processed data from GEO).^{8–10} Red dots indicate *FOXR1*-high outliers.

expressed *FOXR1* at a level similar to the DLBCL cell line U-2932 (Figure 2b). High-density genomic array analysis demonstrated copy-number transition from 3n to 4n in CRO-AP3, occurring 5' of *FOXR1* (Figure 1c, Supplementary Figure S1B). Quantitative genomic PCR localized the site of amplification to the first 170 bases of exon 1. 5'-RACE, performed to identify potential 5'-mRNA partners in the two *FOXR1* expressing cell lines, confirmed *RPS25* as fusion partner of *FOXR1* in U-2932. In CRO-AP3, the 5'-RACE PCR product terminated inside the amplified region of *FOXR1* exon 1, upstream of the open reading frame. These results suggested that in CRO-AP3, *FOXR1* overexpression was the result of gene amplification without fusion mRNA formation. Fluorescence *in situ* hybridization using a fosmid clone covering *FOXR1* (G248P85736G6) yielded wild-type signals only restricted to chromosome 11 (not shown), leaving the putative 5' regulatory gene elusive.

Santo *et al.*⁷ reported that *FOXR1* acts as negative regulator of forkhead box factor-mediated transcription and suggested a possible role in tumorigenesis. We found ectopic expression of *FOXR1* in 2/72 (2.8%) B lymphoma cell lines. Both cell lines showed amplification of the *FOXR1* gene. In one cell line, *FOXR1* was fused to a constitutively expressed gene on 11q23, suggesting that the interstitial deletion was responsible for activation of *FOXR1*. Bioinformatic analyses document that the aberrant expression of *FOXR1* is rare, but recurrent in B-cell lymphoma (Figure 2c).^{8–10}

In conclusion, we show for the first time that *FOXR1* fusions, described as candidate oncogenes in neuroblastoma, also occur in B-cell lymphoma. Cell lines U-2932 and CRO-AP3 are presented as models for the functional analysis of *FOXR1*-mediated cellular events.

CONFLICT OF INTEREST

The authors declare no conflict of interest.

ACKNOWLEDGEMENTS

We thank Wilhelm Sander-Stiftung for financial support.

C Pommerenke¹, V Hauer¹, M Zaborski¹, RAF MacLeod¹,
S Nagel¹, RM Amini², M Berglund², R Geffers³,
HG Drexler¹ and H Quentmeier¹

¹Leibniz-Institute DSMZ-German Collection of Microorganisms and Cell Cultures, Braunschweig, Germany;

²Department of Immunology, Genetics and Pathology, Uppsala University, Uppsala University Hospital, Uppsala, Sweden and
³Genome Analytics Research Group, Helmholtz Centre for Infection Research, Braunschweig, Germany
E-mail: hqu@dsmz.de

REFERENCES

- Zhu Y, Monni O, Franssila K, Elonen E, Vilpo J, Joensuu H *et al.* Deletions at 11q23 in different lymphoma subtypes. *Haematologica* 2000; **85**: 908–912.
- Nagel S, Leich E, Quentmeier H, Meyer C, Kaufmann M, Zaborski M *et al.* Amplification at 11q23 targets protein kinase SIK2 in diffuse large B-cell lymphoma. *Leuk Lymphoma* 2010; **51**: 881–891.
- Salaverria I, Martin-Guerrero I, Wagener R, Kreuz M, Kohler CW, Richter J *et al.* A recurrent 11q aberration pattern characterizes a subset of MYC-negative high grade B-cell lymphomas resembling Burkitt lymphoma. *Blood* 2014; **123**: 1187–1198.
- Quentmeier H, Amini RM, Berglund M, Dirks WG, Ehrentraut S, Geffers R *et al.* U-2932: two clones in one cell line, a tool for the study of clonal evolution. *Leukemia* 2013; **27**: 1155–1164.
- Katoh M, Katoh M. Germ-line mutation of Foxn5 gene in mouse lineage. *Int J Mol Med* 2004; **14**: 463–467.
- Schuff M, Rössner A, Donow C, Knöchel W. Temporal and spatial expression patterns of FoxN genes in *Xenopus laevis* embryos. *Int J Dev Biol* 2006; **50**: 429–434.
- Santo EE, Ebus ME, Koster J, Schulte JH, Lakeman A, van Sluis P *et al.* Oncogenic activation of FOXR1 by 11q23 intrachromosomal deletion-fusions in neuroblastoma. *Oncogene* 2012; **31**: 1571–1581.
- Scott DW, Wright GW, Williams PM, Lih CJ, Walsh W, Jaffe ES *et al.* Determining cell-of-origin subtypes of diffuse large B-cell lymphoma using gene expression in formalin-fixed paraffin-embedded tissue. *Blood* 2014; **123**: 1214–1217.
- Linton K, Howarth C, Wappett M, Newton G, Lachel C, Iqbal J *et al.* Microarray gene expression analysis of fixed archival tissue permits molecular classification and identification of potential therapeutic targets in diffuse large B-cell lymphoma. *J Mol Diagn* 2012; **14**: 223–232.
- Wang L, Shalek AK, Lawrence M, Ding R, Gaublotte JT, Pochet N *et al.* Somatic mutation as a mechanism of Wnt/ β -catenin pathway activation in CLL. *Blood* 2014; **124**: 1089–1098.



This work is licensed under a Creative Commons Attribution 4.0 International License. The images or other third party material in this article are included in the article's Creative Commons license, unless indicated otherwise in the credit line; if the material is not included under the Creative Commons license, users will need to obtain permission from the license holder to reproduce the material. To view a copy of this license, visit <http://creativecommons.org/licenses/by/4.0/>

© The Author(s) 2016

Supplementary Information accompanies this paper on Blood Cancer Journal website (<http://www.nature.com/bcj>)