

1-1-2011

Circulating osteopontin: a dual marker of bone destruction and angiogenesis in patients with multiple myeloma

Aikaterini Sfridaki
Venizelion General Hospital Heraklion

Spiros Miyakis
Aristotle University of Thessaloniki, smiyakis@uow.edu.au

Constantina Pappa
University Hospital of Heraklion

George Tsirakis
University Hospital of Heraklion

Athanasios Alegakis
Medical School of Crete

See next page for additional authors

Follow this and additional works at: <https://ro.uow.edu.au/medpapers>



Part of the [Medicine and Health Sciences Commons](#)

Citation

Sfridaki, Aikaterini; Miyakis, Spiros; Pappa, Constantina; Tsirakis, George; Alegakis, Athanasios; Kotsis, Vasilios; Stathopoulos, Efstathios; and Alexandrakis, Michael, 2011, Circulating osteopontin: a dual marker of bone destruction and angiogenesis in patients with multiple myeloma, 1-3.
<https://ro.uow.edu.au/medpapers/559>

Circulating osteopontin: a dual marker of bone destruction and angiogenesis in patients with multiple myeloma

Abstract

The matrix protein osteopontin has been shown to be a marker of osteoclastic activity in multiple myeloma patients, as well as a regulator of angiogenesis. We measured serum levels of osteopontin in 50 untreated multiple myeloma patients (in 25, also after treatment) and examined the relation to markers of osteolytic and angiogenic activity. The median (range) of serum osteopontin was 85 (5-232) in the patient group vs. 36 (2-190) ng/ml in the control group. Serum osteopontin levels were significantly higher in patients with advanced stage or grade of myeloma disease. All patients with serum osteopontin levels >100 ng/ml had advanced stage (II or III) or high grade bone disease, whereas stage I or low grade patients had serum osteopontin levels <100ng/ml. Serum osteopontin levels significantly decreased after treatment. There was a positive correlation of osteopontin with the bone turnover marker N-terminal propeptide of procollagen type I (NTx) and the angiogenic markers vascular endothelial growth factor (VEGF) and bone marrow microvessel density (r : 0.35, 0.47 and 0.30 respectively, $p < 0.05$). These results support osteopontin as a dual marker of bone destruction and angiogenic activity in myeloma patients. Osteopontin represents a useful biomarker for monitoring myeloma disease activity.

Disciplines

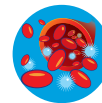
Medicine and Health Sciences

Publication Details

Sfridaki, A., Miyakis, S., Pappa, C., Tsirakis, G., Alegakis, A., Kotsis, V., Stathopoulos, E. & Alexandrakis, M. (2011). Circulating osteopontin: a dual marker of bone destruction and angiogenesis in patients with multiple myeloma. *Journal of Hematology & Oncology*, 4, 22 1-3.

Authors

Aikaterini Sfridaki, Spiros Miyakis, Constantina Pappa, George Tsirakis, Athanasios Alegakis, Vasilios Kotsis, Efstathios Stathopoulos, and Michael Alexandrakis



LETTER TO THE EDITOR

Open Access

Circulating osteopontin: a dual marker of bone destruction and angiogenesis in patients with multiple myeloma

Aikaterini Sfridakis¹, Spiros Miyakis², Constantina Pappa³, George Tsirakis³, Athanasios Alegakis⁴, Vasileios Kotsis², Efstathios Stathopoulos⁵ and Michael Alexandrakis^{3*}

Abstract

The matrix protein osteopontin has been shown to be a marker of osteoclastic activity in multiple myeloma patients, as well as a regulator of angiogenesis. We measured serum levels of osteopontin in 50 untreated multiple myeloma patients (in 25, also after treatment) and examined the relation to markers of osteolytic and angiogenic activity. The median (range) of serum osteopontin was 85 (5-232) in the patient group vs. 36 (2-190) ng/ml in the control group. Serum osteopontin levels were significantly higher in patients with advanced stage or grade of myeloma disease. All patients with serum osteopontin levels >100 ng/ml had advanced stage (II or III) or high grade bone disease, whereas stage I or low grade patients had serum osteopontin levels <100ng/ml. Serum osteopontin levels significantly decreased after treatment. There was a positive correlation of osteopontin with the bone turnover marker N-terminal propeptide of procollagen type I (NTx) and the angiogenic markers vascular endothelial growth factor (VEGF) and bone marrow microvessel density (r : 0.35, 0.47 and 0.30 respectively, $p < 0.05$). These results support osteopontin as a dual marker of bone destruction and angiogenic activity in myeloma patients. Osteopontin represents a useful biomarker for monitoring myeloma disease activity.

To the Editor

Osteopontin (Opn) is a non-collagenous matrix protein responsible for the migration and attachment of osteoclasts to mineral matrix of bone surfaces [1]. *In vitro* studies suggest that Opn and vascular endothelial growth factor (VEGF) cooperatively enhance angiogenesis in MM [2,3]. We compared the serum levels of Opn with those of established markers of angiogenic activity and bone destruction in 50 (23 males, median age 68 y.o.) untreated MM patients and 25 healthy age & sex-matched blood donors (median age 65 y.o.). In 25 patients, measurements were repeated after reaching plateau phase with chemotherapy. Ethics approval and informed consent from all subjects were obtained.

Osteopontin and VEGF were measured with a solid-phase sandwich enzyme-linked immunosorbent assay (Quantikine[®], R&D Systems Inc. Minneapolis MN, USA). Bone marrow cellularity and percentage of

infiltration by myeloma cells was estimated in all patients. Microvessel density (MVD) was assessed on bone marrow sections after staining endothelial cells with the anti-CD34 antibody (Immunotech, Marseille, France) [4]. The N-terminal propeptide of procollagen type I (Ntx) in urine was measured by a competitive inhibition ELISA (Ostex International, Seattle, WA, USA) [5]. Classification and regression tree (CART; Salford Systems, San Diego, CA, USA) analysis was used to identify the Opn levels best associating with disease parameters.

Opn among MM patients [median (range) 85 (5-232) ng/ml] was higher than controls [36 (2-190) ng/ml] but the difference did not reach statistical significance. However, Opn was significantly higher in 35 patients with Stage II or III compared with 15 Stage I patients ($p < 0.001$) (Figure 1). Similarly, there was a marked difference in Opn according to disease Grade (Figure 2), with increasing levels from Grades 0 to 3 ($p = 0.006$).

CART analysis determined Opn >100 ng/ml as predictor of advanced MM disease. All 17 patients with Opn

* Correspondence: alexandm@med.uoc.gr

³Department of Hematology, University Hospital of Heraklion, Crete, Greece
Full list of author information is available at the end of the article

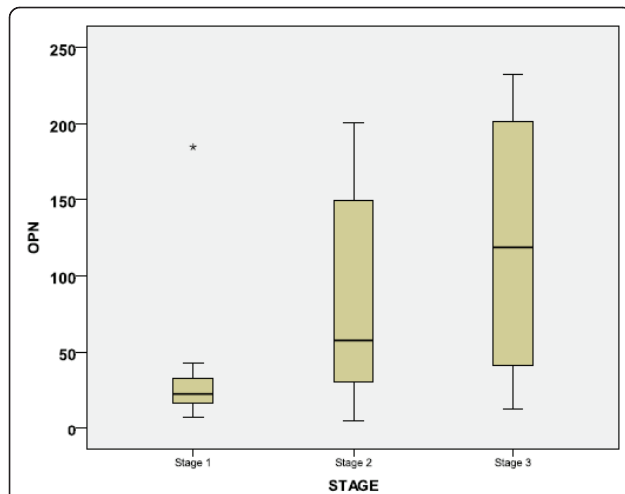


Figure 1 Serum osteopontin levels (ng/ml) according to Durie-Salmon stage in multiple myeloma patients. Columns: 25-75% of values; bold line: median; whiskers: 95% confidence intervals. (* = $p < 0.01$ by Kruskal Wallis test).

>100 ng/ml had advanced stage (II or III), whereas all 15 stage I patients had Opn <100 ng/ml (Odds Ratio 1.5, 95% Confidence Intervals 1.2-2.0; $p = 0.036$ Fisher's Exact test). Similarly, high grade (2 or 3) MM was associated with Opn >100 ng/ml (OR 1.9, 95% CI 1.2-2.9, $p = 0.001$) (Table 1).

Opn correlated significantly with VEGF, MVD, Ntx and disease infiltration (Spearman's rho 0.47, 0.30, 0.35 and 0.45 respectively; $p < 0.05$). In 25 patients, Opn decreased from a median 78 ng/ml to 45 ng/ml post-chemotherapy ($p < 0.05$). MVD, Ntx, VEGF and infiltration by myeloma cells were also significantly reduced post-treatment ($p < 0.001$).

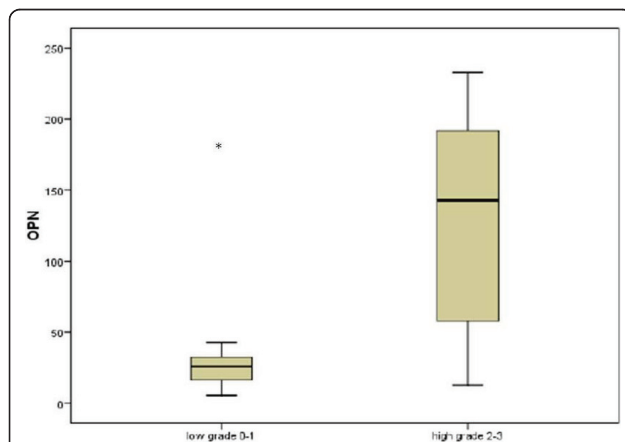


Figure 2 Serum osteopontin levels (ng/ml) according to grade of bone disease (low grade = grades 0 and 1; total 23 patients, versus high grade = grades 2 and 3; total 27 patients). Columns: 25-75% of values; bold line: median; whiskers: 95% confidence intervals. (* = $p < 0.01$ by Kruskal Wallis test).

Table 1 Association of serum osteopontin levels with: A) stage, and B) grade of Multiple Myeloma

Multiple myeloma status	Serum osteopontin level (ng/ml)		OR (95% CI)
	<100	≥ 100	
A. Stage			
Stage 1	15	0	1.5 (1.2-2.0)
Stage 2-3	18	17	
B. Grade			
Low (0-1)	23	0	1.9 (1.2-2.9)
High (2-3)	15	12	

Serum osteopontin cut-off has been determined using classification and regression tree analysis.

OR = Odds Ratio; CI = Confidence Interval.

Our results add to the weight of data supporting a relationship between circulating Opn and bone marrow angiogenesis in myelomatous disease. We have defined a cut-off value (100 ng/ml) strongly associated with advanced MM disease and grade of bone destruction. This may prove useful in patient stratification. The applicability of our findings in different patient populations (i.e. genetic background, treatments used, comorbidities, etc) awaits validation.

List of Abbreviations

MVD: microvessel density; VEGF: Vascular-Endothelial Growth Factor; VEGFR2: Vascular-Endothelial Growth Factor Receptor 2; Ntx: N-terminal propeptide of procollagen type I; ELISA: enzyme-linked immunosorbent assay.

Author details

¹Blood Bank Center, Venizelion General Hospital Heraklion, Crete, Greece.

²Third Department of Medicine, Aristotle University of Thessaloniki,

Papageorgiou General Hospital, Thessaloniki, Greece. ³Department of

Hematology, University Hospital of Heraklion, Crete, Greece. ⁴Toxicology

Laboratory, Medical School of Crete, Greece. ⁵Department of Pathology,

Medical School of Crete, Greece.

Authors' contributions

AS performed the experimental procedures; SM collected patient data and samples, assisted with statistical analysis and data interpretation, and wrote the manuscript; CP collected patient data and samples; GT collected patient data and samples; AA performed the statistical analysis; VK assisted with data interpretation and writing of the manuscript; ES performed the pathology measurements used in the study; and MA designed and coordinated the study, and interpreted data.

All authors have read and approved the final manuscript.

Conflicts of interests

The authors declare that they have no competing interests.

Received: 26 March 2011 Accepted: 8 May 2011 Published: 8 May 2011

References

- Haylock DN, Nilsson SK: Osteopontin: a bridge between bone and blood. *Br J Haematol* 2006, **134**:467-474.
- Tanaka Y, Abe M, Hiasa M, Oda A, Amou H, Nakano A, Takeuchi K, Kitazoe K, Kido S, Inoue D, Moriyama K, Hashimoto T, Ozaki S, Matsumoto T: Myeloma cell-osteoclast interaction enhances angiogenesis together with bone resorption: a role for vascular endothelial cell growth factor and osteopontin. *Clin Cancer Res* 2007, **13**:816-823.

3. Caers J, Gunthert U, De Raeve H, Van Valckenborgh E, Menu E, Van Riet I, Van Camp B, Vanderkerken K: **The involvement of osteopontin and its receptors in multiple myeloma cell survival, migration and invasion in the murine 5T33MM model.** *Br J Haematol* 2006, **132**:469-477.
4. Alexandrakis MG, Pappa CA, Miyakis S, Sfiridaki A, Kafousi M, Alegakis A, Stathopoulos EN: **Serum interleukin-17 and its relationship to angiogenic factors in multiple myeloma.** *Eur J Intern Med* 2006, **17**:412-416.
5. Alexandrakis MG, Sfiridaki A, Miyakis S, Pappa C, Kandidaki E, Alegakis A, Margioris AN: **Relationship between serum levels of vascular endothelial growth factor, hepatocyte growth factor and matrix metalloproteinase-9 with biochemical markers of bone disease in multiple myeloma.** *Clin Chim Acta* 2007, **379**:31-35.

doi:10.1186/1756-8722-4-22

Cite this article as: Sfiridaki et al.: Circulating osteopontin: a dual marker of bone destruction and angiogenesis in patients with multiple myeloma. *Journal of Hematology & Oncology* 2011 **4**:22.

**Submit your next manuscript to BioMed Central
and take full advantage of:**

- Convenient online submission
- Thorough peer review
- No space constraints or color figure charges
- Immediate publication on acceptance
- Inclusion in PubMed, CAS, Scopus and Google Scholar
- Research which is freely available for redistribution

Submit your manuscript at
www.biomedcentral.com/submit

