

Children's Mercy Kansas City

SHARE @ Children's Mercy

Manuscripts, Articles, Book Chapters and Other Papers

7-1-2017

Clinical pharmacogenetics implementation consortium guideline (CPIC) for CYP2D6 and CYP2C19 genotypes and dosing of tricyclic antidepressants: 2016 update.

J K. Hicks

K Sangkuhl

J J. Swen

V L. Ellingrod

D J. Müller

See next page for additional authors

Follow this and additional works at: <https://scholarlyexchange.childrensmercy.org/papers>



Part of the [Medical Genetics Commons](#), [Medical Pharmacology Commons](#), and the [Pharmaceutical Preparations Commons](#)

Recommended Citation

Hicks JK, Sangkuhl K, Swen JJ, et al. Clinical pharmacogenetics implementation consortium guideline (CPIC) for CYP2D6 and CYP2C19 genotypes and dosing of tricyclic antidepressants: 2016 update. *Clin Pharmacol Ther.* 2017;102(1):37-44. doi:10.1002/cpt.597

This Article is brought to you for free and open access by SHARE @ Children's Mercy. It has been accepted for inclusion in Manuscripts, Articles, Book Chapters and Other Papers by an authorized administrator of SHARE @ Children's Mercy. For more information, please contact hlsteel@cmh.edu.

Creator(s)

J K. Hicks, K Sangkuhl, J J. Swen, V L. Ellingrod, D J. Müller, K Shimoda, J R. Bishop, E D. Kharasch, T C. Skaar, Andrea Gaedigk, H M. Dunnenberger, T E. Klein, K E. Caudle, and J C. Stingl



Published in final edited form as:

Clin Pharmacol Ther. 2017 July ; 102(1): 37–44. doi:10.1002/cpt.597.

Clinical Pharmacogenetics Implementation Consortium Guideline (CPIC®) for *CYP2D6* and *CYP2C19* Genotypes and Dosing of Tricyclic Antidepressants: 2016 Update

J. Kevin Hicks¹, Katrin Sangkuhl², Jesse J. Swen³, Vicki L. Ellingrod⁴, Daniel J. Müller⁵, Kazutaka Shimoda⁶, Jeffrey R. Bishop⁷, Evan D. Kharasch⁸, Todd C. Skaar⁹, Andrea Gaedigk¹⁰, Henry M. Dunnenberger¹¹, Teri E. Klein², Kelly E. Caudle¹², and Julia C. Stingl¹³

¹DeBartolo Family Personalized Medicine Institute, Division of Population Science, H. Lee Moffitt Cancer Center and Research Institute, Tampa, Florida, USA ²Department of Genetics, Stanford University, Stanford, California, USA ³Department of Clinical Pharmacy and Toxicology, Leiden University Medical Center, Leiden, The Netherlands ⁴Department of Clinical, Social and Administrative Sciences, College of Pharmacy, and Department of Psychiatry, School of Medicine, University of Michigan, Ann Arbor, Michigan, USA ⁵Campbell Family Mental Health Research Institute, Centre for Addiction and Mental Health, Toronto, ON, Canada; Department of Psychiatry, University of Toronto, Toronto, ON, Canada ⁶Department of Psychiatry, Dokkyo Medical University, Japan ⁷Department of Experimental and Clinical Pharmacology, College of Pharmacy, and Department of Psychiatry, College of Medicine, University of Minnesota, Minneapolis, MN, USA ⁸Division of Clinical and Translational Research, Department of Anesthesiology, Washington University in St. Louis, St. Louis, Missouri, USA ⁹Division of Clinical Pharmacology, Department of Medicine, Indiana University School of Medicine, Indianapolis, IN, USA ¹⁰Division of Clinical Pharmacology, Toxicology & Therapeutic Innovation, Children's Mercy-, Kansas City, Missouri and Department of Pediatrics, University of Missouri-Kansas City, Kansas City, Missouri, USA ¹¹Center for Molecular Medicine, NorthShore University HealthSystem,

Corresponding Author: Julia C. Stingl, MD, Division of Research, Federal Institute of Drugs and Medical Devices And University of Bonn Medical School, Kurt-Georg-Kiesinger-Allee 3, D-53175 Bonn, Germany, Phone: +49 (0)228-99-307-3570, Julia.Stingl@bfarm.de.

DISCLAIMER

CPIC guidelines reflect expert consensus based on clinical evidence and peer-reviewed literature available at the time they are written and are intended only to assist clinicians in decision making and to identify questions for further research. New evidence may have emerged since the time a guideline was submitted for publication. Guidelines are limited in scope and are not applicable to interventions or diseases not specifically identified. Guidelines do not account for all individual variations among patients and cannot be considered inclusive of all proper methods of care or exclusive of other treatments. It remains the responsibility of the health-care provider to determine the best course of treatment for a patient. Adherence to any guidelines is voluntary, with the ultimate determination regarding its application to be made solely by the clinician and the patient. CPIC assumes no responsibility for any injury to persons or damage to persons or property arising out of or related to any use of CPIC's guidelines, or for any errors or omissions.

CPIC is a registered service mark of the U.S. Department of Health & Human Services (HHS).

CONFLICT OF INTEREST

A.G. is a paid consultant of Millennium Laboratories. T.E.K is a paid scientific advisor to the Rxight™ Pharmacogenetic Program. K.S. has received research support from Shionogi & Co., Ltd., Eli Lilly Japan, K.K., Yoshitomi Pharmaceutical Industries, Ltd., Meiji Seika Pharma Co., Ltd., Eisai Co., Ltd., Pfizer Inc., GlaxoSmithKlein K.K., Otsuka Pharmaceutical Co., Ltd., Daiichi Sankyo Co., and Takeda Pharmaceutical Co., Ltd. and honoraria from Kowa Pharmaceutical Co., Ltd., Mitsubishi Tanabe Pharma Corporation, Meiji Seika Pharma Co., Ltd., Dainippon Sumitomo Pharma Co., Ltd., Ono Pharmaceutical Co., Ltd., GlaxoSmithKlein K.K., and Eisai Co., Ltd

All other authors declare no conflict of interest.

Evanston, IL, USA ¹²Department of Pharmaceutical Sciences, St. Jude Children's Research Hospital, Memphis, Tennessee, USA ¹³Division of Research, Federal Institute of Drugs and Medical Devices, Bonn, Germany

Abstract

CYP2D6 and *CYP2C19* polymorphisms affect the exposure, efficacy and safety of tricyclic antidepressants (TCAs), with some drugs being affected by *CYP2D6* only (e.g., nortriptyline and desipramine) and others by both polymorphic enzymes (e.g., amitriptyline, clomipramine, doxepin, imipramine, and trimipramine). Evidence is presented for *CYP2D6* and *CYP2C19* genotype-directed dosing of TCAs. This document is an update to the 2012 Clinical Pharmacogenetics Implementation Consortium (CPIC) guideline for *CYP2D6* and *CYP2C19* Genotypes and Dosing of Tricyclic Antidepressants.

Keywords

CYP2D6; *CYP2C19*; pharmacogenetics; tricyclic antidepressants; amitriptyline; clomipramine; desipramine; doxepin; imipramine; nortriptyline; and trimipramine

INTRODUCTION

Observed inter-individual differences in tricyclic antidepressant (TCA) pharmacokinetic parameters and treatment outcomes are associated with *CYP2D6* and/or *CYP2C19* genetic variation. The purpose of this guideline is to provide information to allow the interpretation of existing *CYP2D6* and/or *CYP2C19* genotyping results to guide TCA dosing and selection. Other clinical variables that may influence TCA therapy as well as genotyping cost-effectiveness are beyond the scope of this document. CPIC guidelines are periodically updated at <https://cpicpgx.org/guidelines/> and <http://www.pharmgkb.org>.

FOCUSED LITERATURE REVIEW

A systematic literature review focused on *CYP2D6* and *CYP2C19* genetic variations and their relevance to gene-based dosing of TCAs was conducted (see Supplementary Data online). This guideline was developed based on interpretation of the literature by the authors and by experts in the field.

GENES: *CYP2D6* AND *CYP2C19*

CYP2D6 background

The *CYP2D6* gene is highly polymorphic. Over 100 known allelic variants and subvariants have been identified, and there are substantial ethnic differences in observed allele frequencies (*CYP2D6* Allele Definition Table and *CYP2D6* Frequency Table (1)). The most commonly reported alleles are categorized into functional groups as follows: normal function (e.g., *CYP2D6**1 and *2), decreased function (e.g., *CYP2D6**9, *10, and *41), and no function (e.g., *CYP2D6**3-*6) (2, 3). Because *CYP2D6* is subject to deletions or

duplications, many clinical laboratories also report copy number. Deletions are indicated by the *CYP2D6**5 allele, and gene duplications are denoted by an “xN” following the allele (e.g., *CYP2D6**1xN, where xN represents the number of *CYP2D6* gene copies).

CYP2C19 background

Similar to *CYP2D6*, the *CYP2C19* gene is highly polymorphic; over 35 known allelic variants and subvariants have been identified (3) (*CYP2C19* Allele Definition Table (4)). Although there are ethnic differences in allele frequencies (*CYP2C19* Frequency Table (4)), the majority of patients will carry a *CYP2C19**1, *2, *3 or *17 allele (5). *CYP2C19**1 is the wild-type allele encoding a fully functional enzyme. *CYP2C19**2-*8 are no function alleles of which *CYP2C19**2 is the most frequently observed, though *CYP2C19**3 is more common among individuals of Asian ancestry (3, 5). The *CYP2C19**17 allele, defined by a variant in the gene promoter region, causes enhanced gene transcription resulting in greater metabolic capacity (6) and is therefore classified as an increased function allele.

Genetic test interpretation

Clinical laboratories usually interrogate for the more frequently observed *CYP2D6* and *CYP2C19* genetic variants and translate the results into star-allele (*) nomenclature. Each star-allele, or haplotype, is defined by a specific combination of single-nucleotide polymorphisms and/or other genetic variants within the gene locus of either *CYP2D6* or *CYP2C19* (5). Genetic test results are reported as the summary of inherited maternal and paternal star-alleles referred to as a diplotype (e.g., *CYP2D6**1/*2 and *CYP2C19**1/*1). The more frequently observed alleles and their functional status can be found in the *CYP2D6* (1) and *CYP2C19* Allele Definition Tables (4).

Scoring systems have been developed in an attempt to provide a uniform approach to quantitate the predicted functional status of *CYP2D6* alleles as follows: 1 for normal function, 0.5 for decreased function, and 0 for no function alleles (see Supplemental Material; *CYP2D6* Allele Definition Table (1)) (2, 7). The activity value for each allele of the diplotype is totaled to provide a *CYP2D6* activity score. If *CYP2D6* gene duplications are detected, the activity value of the duplicated allele is multiplied by the number of duplications present before calculating the activity score (Table 1, Supplemental Tables S1 and S2). See the Supplement for further explanation.

Patients with two normal function *CYP2C19* alleles are categorized as normal metabolizers and individuals carrying one or two no function alleles are considered intermediate and poor metabolizers, respectively (Table 1). Limited data suggest that *CYP2C19**17 may not compensate for no function alleles such as the *CYP2C19**2 allele (8). Therefore, patients carrying the *CYP2C19**17 increased function allele in combination with a no function allele are considered intermediate metabolizers. These phenotype assignments are analogous to the CPIC guideline for selective serotonin reuptake inhibitors (3). See Supplement for discussion regarding *CYP2C19* rapid metabolizer phenotype.

Reference laboratories use varying methods to assign phenotypes. Before pharmacotherapy modifications are made based upon this guideline, it is advisable to determine a patient's phenotype as described above.

Available genetic test options

Commercially available genetic testing options change over time. Additional information about pharmacogenetic testing can be found at the Genetic Testing Registry website (<http://www.ncbi.nlm.nih.gov/gtr/>).

Incidental findings

Independent of drug metabolism and response, there are currently no diseases or conditions that have been convincingly linked to variants in the *CYP2D6* or *CYP2C19* genes (5, 7).

DRUGS: AMITRIPTYLINE AND NORTRIPTYLINE

Background

Tricyclic antidepressants (TCAs) are mixed serotonin and norepinephrine reuptake inhibitors used to treat several disease states including depression, obsessive-compulsive disorder, and neuropathic pain in addition to migraine prophylaxis. The TCAs have similar but distinct chemical structures referred to as tertiary and secondary amines. The pharmacological properties of the tertiary and secondary amines differ, with tertiary amines having a more pronounced serotonergic effect and secondary amines having a greater noradrenergic effect (Supplemental Tables S3 and S4) (9, 10). The tertiary amines (e.g., amitriptyline) are mainly metabolized by CYP2C19 to desmethyl-metabolites (Figure 1), also referred to as secondary amines (e.g., nortriptyline). It should be noted that the desmethyl-metabolites nortriptyline as well as desipramine are pharmacologically active with antidepressant properties as well as with distinct clinical features that differ from the parent drugs amitriptyline and imipramine. Both the tertiary and secondary amines are metabolized by CYP2D6 to less active hydroxy-metabolites (Figure 1, Supplemental Table S3). CYP2C19 impacts the ratio of tertiary to secondary amine plasma concentrations, but may have less influence on overall drug clearance than CYP2D6 (11). Although the total concentration of amitriptyline and nortriptyline may be unchanged for a CYP2C19 ultrarapid or poor metabolizer in certain instances, an imbalance between serotonergic and noradrenergic affect could influence clinical response or toxicities. There is limited evidence demonstrating that a serotonergic/noradrenergic imbalance influences outcomes, thus contributing to the optional recommendations in Table 3. Serotonin reuptake inhibition is expected to be more pronounced in CYP2C19 poor metabolizers due to the decreased conversion of parent tertiary amines to their respective metabolites (10).

The use of TCAs to treat psychiatric disorders has declined in part due to the occurrence of undesirable side effects along with the growing availability of alternatives with more acceptable side effect profiles. Although TCAs are still used to treat depression (12), they are now more often used in the context of pain management (13, 14). Inter-individual differences in side effects and treatment response have been associated with variability of tricyclic plasma concentrations (15, 16). Patients may be predisposed to treatment failure or adverse effects due to genetic variation in *CYP2D6* altering drug clearance or in *CYP2C19* altering the ratio of parent drug to metabolites. Common adverse effects include anticholinergic, central nervous system and cardiac effects. Tertiary and secondary amines

along with their metabolites each have unique side effect profiles as detailed in Supplemental Table S4.

Both amitriptyline and nortriptyline are used as representative TCAs for this guideline because the majority of pharmacogenomic studies have focused on these two drugs. However, the results of these studies may apply to other TCAs because these drugs have comparable pharmacokinetic properties (15, 17). TCAs are well absorbed from the gastrointestinal tract, and the average extent of first pass metabolism is approximately 50%, although the average first pass metabolism of doxepin may be closer to 70% (15). The clearance of TCAs is mostly a linear process, but saturation of the hydroxylation pathway may occur at higher plasma concentrations for certain TCAs including imipramine and desipramine (15, 18). Additionally, extrapolated dose adjustments based on metabolizer status are similar across the tricyclic class (17). Because some studies investigating the influence of *CYP2D6* and/or *CYP2C19* genotype/phenotype on the pharmacokinetics of TCAs used a single dose, it should be noted that in this guideline tricyclic metabolism was assumed to be similar after single or multiple dosing, and no differentiation was made between evidence from single dose studies or from multiple dose studies (16).

Linking genetic variability to variability in drug-related phenotypes

There is substantial evidence linking *CYP2D6* and *CYP2C19* genotypes to phenotypic variability in tricyclic side effects and pharmacokinetic profiles. Modifying pharmacotherapy for patients who have *CYP2D6* or *CYP2C19* genetic variants that affect drug efficacy and safety could potentially improve clinical outcomes, and reduce the failure rate of initial treatment. The application of a grading system to the evidence linking *CYP2D6* and *CYP2C19* genotypic variations to phenotypic variability in the response to amitriptyline or nortriptyline indicates a high quality of evidence in the majority of cases (Supplemental Tables S5–S7). This body of evidence, rather than randomized clinical trials, provides the basis for amitriptyline and nortriptyline dosing recommendations in Tables 2 and 3, respectively. Optimal therapeutic plasma concentrations for the TCAs have been defined (19). *CYP2D6* and *CYP2C19* poor or ultrarapid metabolizers may have tricyclic plasma concentrations outside the recommended therapeutic range, thus increasing the risk of treatment failure or side effects (17, 20–22). TCA plasma concentrations have been shown to be predictive of toxicity and efficacy, with guidelines defining therapeutic ranges for TCAs (19). However, there are less data supporting a direct correlation between genotype and response when compared to the correlation between genotype and plasma concentrations. Some studies describe a relationship between genotype and response (23–25) while other studies do not (26). Therefore, this guideline takes into consideration both clinical outcomes and observed tricyclic plasma concentrations based on genotype/phenotype characteristics.

Therapeutic recommendations

CYP2D6 dosing recommendations—For neuropathic pain treatment, where lower initial doses of TCAs are used, gene-based dosing recommendations are found in the subsection *Gene-based dosing recommendations for neuropathic pain treatment*. Table 2 summarizes the gene-based dosing recommendations for *CYP2D6* and amitriptyline and

nortriptyline for situations in which a higher initial dose is warranted, such as depression treatment. The recommended starting dose of amitriptyline or nortriptyline does not need adjustment for those with genotypes predictive of CYP2D6 normal metabolism. A 25% reduction of the recommended dose may be considered for CYP2D6 intermediate metabolizers (27). The strength of this recommendation is classified as “moderate” because patients with a CYP2D6 activity score of 1.0 are inconsistently categorized as intermediate or normal metabolizers in the literature, making these studies difficult to evaluate.

CYP2D6 ultrarapid metabolizers have a higher probability of failing amitriptyline or nortriptyline pharmacotherapy due to subtherapeutic plasma concentrations, and alternate agents are preferred. There are documented cases of CYP2D6 ultrarapid metabolizers receiving large doses of nortriptyline in order to achieve therapeutic concentrations (22). However, very high plasma concentrations of the nortriptyline hydroxy-metabolite were present, which may increase the risk for cardiotoxicity. If a tricyclic is warranted, there are insufficient data in the literature to calculate a starting dose for a patient with CYP2D6 ultrarapid metabolizer status, and therapeutic drug monitoring is strongly recommended. Adverse effects are more likely in CYP2D6 poor metabolizers due to elevated tricyclic plasma concentrations (28); therefore, alternate agents are preferred. If a tricyclic is warranted, consider a 50% reduction of the usual dose, and therapeutic drug monitoring is strongly recommended.

CYP2C19 dosing recommendations—Dosing recommendations for neuropathic pain treatment with amitriptyline are found in the subsection *Gene-based dosing recommendations for neuropathic pain treatment*. Table 3 summarizes the gene-based dosing recommendations for CYP2C19 and amitriptyline when higher initial starting doses are warranted. The usual starting dose of amitriptyline may be used in CYP2C19 normal and intermediate metabolizers. Although CYP2C19 intermediate metabolizers would be expected to have a modest increase in the ratio of amitriptyline to nortriptyline plasma concentrations, the evidence does not indicate that CYP2C19 intermediate metabolizers should receive an alternate dose.

Patients taking amitriptyline who are CYP2C19 rapid or ultrarapid metabolizers may be at risk for having low plasma concentrations and an imbalance between parent drug and metabolites causing treatment failure and/or adverse events. Although the *CYP2C19*17* allele did not alter the sum of amitriptyline plus nortriptyline plasma concentrations, it was associated with higher nortriptyline plasma concentrations, possibly increasing the risk of adverse events (8). For patients taking amitriptyline, extrapolated pharmacokinetic data suggest that CYP2C19 rapid or ultrarapid metabolizers may need a dose increase (17). Due to the need for further studies investigating the clinical importance of *CYP2C19*17* regarding tricyclic metabolism and the possibility of altered concentrations, we recommend to consider an alternative tricyclic or other drug not affected by CYP2C19. This recommendation is classified as optional due to limited available data. If amitriptyline is administered to a CYP2C19 rapid or ultrarapid metabolizer, therapeutic drug monitoring is recommended.

CYP2C19 poor metabolizers are expected to have a greater ratio of amitriptyline to nortriptyline plasma concentrations (29). The elevated amitriptyline plasma concentrations may increase the chance of a patient experiencing side effects. Consider a 50% reduction of the usual amitriptyline starting dose along with therapeutic drug monitoring (17).

Other TCAs—Because the TCAs have comparable pharmacokinetic properties, it may be reasonable to extrapolate this guideline to other TCAs including clomipramine, desipramine, doxepin, imipramine, and trimipramine (Tables 2 and 3; Supplemental Tables S8–S16), with the acknowledgement that there are fewer data supporting dose adjustments for these drugs than for amitriptyline or nortriptyline.

CYP2D6 and CYP2C19 combined dosing recommendations—Although specific combinations of *CYP2D6* and *CYP2C19* alleles are likely to result in additive effects on the pharmacokinetic properties of TCAs, little information is available on how to adjust initial doses based on combined genotype information. Patients carrying at least one *CYP2D6* no function allele and two *CYP2C19* normal function alleles had an increased risk of experiencing side effects when administered amitriptyline, while patients with at least one *CYP2C19* no function allele and two *CYP2D6* normal function alleles had a lower risk of experiencing side effects (22, 30). Combinatorial gene-based recommendations are provided in Table 4. Therapeutic drug monitoring may be advised if a tricyclic is prescribed to a patient with CYP2D6 ultrarapid, intermediate or poor metabolism in combination with CYP2C19 ultrarapid, rapid, intermediate or poor metabolism. There are sparse data in patients with a combinatorial CYP2C19 ultrarapid/rapid/intermediate/poor metabolizer phenotype and CYP2D6 ultrarapid/intermediate/poor phenotype. Because there are limited clinical or pharmacokinetic data regarding these combinatorial phenotypes, pharmacotherapy recommendations are classified as optional.

Gene-based dosing recommendations for neuropathic pain treatment—

Amitriptyline is often used at lower dosages (e.g., 0.1 mg/kg/day in pediatric patients; initial doses of 25 mg daily may be prescribed to adults) for treatment of neuropathic pain compared to treatment for depressive disorders (13, 14). Because of the lower dosage, it is less likely that CYP2D6 or CYP2C19 poor or intermediate metabolizers will experience adverse effects due to supratherapeutic plasma concentrations of amitriptyline (31). Therefore, we recommend no dose modifications for poor or intermediate metabolizers when prescribed amitriptyline at a lower dose for treatment of neuropathic pain, but these patients should be monitored closely for side effects. If larger doses of amitriptyline are warranted, we recommend following the gene-based dosing guidelines presented in Tables 2–4.

There are limited data to support dose recommendations for *CYP2C19*17* carriers who are prescribed amitriptyline at lower doses for neuropathic pain treatment. There are also little data describing the use of amitriptyline for neuropathic pain in CYP2D6 ultrarapid metabolizers. Based on predicted and observed pharmacokinetic data in those with depression, CYP2D6 ultrarapid metabolizers may be at an increased risk of failing amitriptyline therapy for neuropathic pain due to lower than expected drug concentrations, and thus alternative agents should be considered (32). Although there is sparse information

on how to adjust initial amitriptyline doses based on combined *CYP2D6* and *CYP2C19* genetic results when treating neuropathic pain, caution should be used when patients have a combination of poor or ultrarapid phenotypes (e.g., a *CYP2D6* poor metabolizer also having *CYP2C19* ultrarapid or poor metabolism).

Pediatrics—There are scarce studies focusing solely on *CYP2D6* or *CYP2C19* genotype and association with pharmacokinetic parameters or treatment outcomes of TCAs in pediatric patients. *CYP2D6* activity is fully mature by early childhood, but *CYP2C19* activity may be increased in children relative to adults (3). Although further genomic ontogeny studies are needed, there is a lack of evidence suggesting that this guideline cannot be extrapolated to pediatric patients.

Other considerations

Consideration of drug interactions and patient characteristics—Patients treated for psychiatric disorders often require multiple medications, which can influence tricyclic plasma concentrations, side effects, and therapeutic failure (15). Recent data indicate that up to 20% of patients treated for depression may be converted to *CYP2D6* poor metabolizer status (33). For example, patients taking amitriptyline in combination with a potent *CYP2D6* inhibitor, such as fluoxetine, may have dramatic increases in amitriptyline plasma concentrations (34). It has been suggested that patients taking strong *CYP2D6* inhibitors should be treated similarly to *CYP2D6* poor metabolizers (7). Additionally, patients with increased age, liver disease, and reduced renal function may require reduced doses of TCAs (15). Drug-drug interactions along with patient characteristics should be considered in addition to the gene-based dosing recommendations presented herein.

Minor metabolic pathways of TCAs—Other cytochrome P450 enzymes including *CYP3A4* and *CYP1A2* metabolize TCAs to a lesser extent (15, 31, 35, 36). There is currently no strong evidence supporting gene-based dosing recommendations for other CYP enzymes that metabolize TCAs.

Implementation of this guideline—The guideline supplement contains resources that can be used within electronic health records (EHRs) to assist clinicians in applying genetic information to patient care for the purpose of drug therapy optimization (see *Resources to incorporate pharmacogenetics into an electronic health record with clinical decision support* sections of supplement.).

POTENTIAL BENEFITS AND RISKS FOR THE PATIENT

For patients who have existing *CYP2D6* and/or *CYP2C19* genotyping test results, the potential benefit is identifying those patients who are at an elevated risk of experiencing side effects or therapeutic failure. For those patients, dose adjustments can be made or an alternative agent selected. A limitation inherent to most commercially available genotyping tests is that rare or *de novo* variants are not detected. Additionally, some alleles are not well characterized resulting in uncertainty when predicting the phenotype from some genetic test results. Genotyping is reliable when performed in qualified clinical laboratories, but as with any laboratory test, an error can occur. Any errors in genotyping or phenotype prediction,

along with the presence of a rare genomic variant not tested for, could potentially have lifelong implications for the patient's drug therapy.

CAVEATS: APPROPRIATE USE AND/OR POTENTIAL MISUSE OF GENETIC TESTS

The application of genotype-based dosing is most appropriate when initiating therapy with a tricyclic. Obtaining a pharmacogenetic test after months of drug therapy may be less helpful in some instances, as the drug dose may have already been adjusted based on plasma concentrations, response, or side effects. Similar to all diagnostic tests, genetic tests are one of several pieces of clinical information that should be considered before initiating drug therapy.

Supplementary Material

Refer to Web version on PubMed Central for supplementary material.

Acknowledgments

We acknowledge the critical input of Dr. M. Relling and members of the Clinical Pharmacogenetics Implementation Consortium of the Pharmacogenomics Research Network, funded by the National Institutes of Health. This work was funded by the National Institutes of Health (NIH) for CPIC (R24GM115264) and PharmGKB (R24GM61374). EDK is supported by R01 GM63674 and R01 DA14211. TCS is supported by R01 GM088076 and the Agency for Healthcare Research and Quality (R01 HS19818-01). The content is solely the responsibility of the authors and does not necessarily represent the official views of the Agency for Healthcare Research and Quality. VLE is supported by the NIMH (R01 MH082784). DJM is supported by a New Investigator Salary Award from the Canadian Institutes of Health Research, a New Investigator Fellowship Award from the Ontario Mental Health Foundation and an Early Researcher Award by the Ministry of Research and Innovation of Ontario. AG is supported by R01 GM088076-05.

References

1. [Accessed September 16 2016] PGx Gene-specific Information Tables for CYP2D6. <<https://www.pharmgkb.org/page/cyp2d6RefMaterials>>
2. Gaedigk A, Simon SD, Pearce RE, Bradford LD, Kennedy MJ, Leeder JS. The CYP2D6 activity score: translating genotype information into a qualitative measure of phenotype. *Clinical pharmacology and therapeutics*. 2008; 83:234–42. [PubMed: 17971818]
3. Hicks JK, et al. Clinical Pharmacogenetics Implementation Consortium (CPIC) Guideline for CYP2D6 and CYP2C19 Genotypes and Dosing of Selective Serotonin Reuptake Inhibitors. *Clinical pharmacology and therapeutics*. 2015; 98:127–34. [PubMed: 25974703]
4. [Accessed September 16 2016] PGx Gene-specific Information Tables for CYP2C19. <<https://www.pharmgkb.org/page/cyp2c19RefMaterials>>
5. Scott SA, et al. Clinical Pharmacogenetics Implementation Consortium guidelines for cytochrome P450-2C19 (CYP2C19) genotype and clopidogrel therapy. *Clinical pharmacology and therapeutics*. 2011; 90:328–32. [PubMed: 21716271]
6. Sim SC, et al. A common novel CYP2C19 gene variant causes ultrarapid drug metabolism relevant for the drug response to proton pump inhibitors and antidepressants. *Clinical pharmacology and therapeutics*. 2006; 79:103–13. [PubMed: 16413245]
7. Crews KR, et al. Clinical Pharmacogenetics Implementation Consortium (CPIC) guidelines for codeine therapy in the context of cytochrome P450 2D6 (CYP2D6) genotype. *Clinical pharmacology and therapeutics*. 2012; 91:321–6. [PubMed: 22205192]

8. de Vos A, van der Weide J, Loovers HM. Association between CYP2C19*17 and metabolism of amitriptyline, citalopram and clomipramine in Dutch hospitalized patients. *The pharmacogenomics journal*. 2011; 11:359–67. [PubMed: 20531370]
9. Gillman PK. Tricyclic antidepressant pharmacology and therapeutic drug interactions updated. *British journal of pharmacology*. 2007; 151:737–48. [PubMed: 17471183]
10. Shimoda K, Jerling M, Bottiger Y, Yasuda S, Morita S, Bertilsson L. Pronounced differences in the disposition of clomipramine between Japanese and Swedish patients. *J Clin Psychopharmacol*. 1999; 19:393–400. [PubMed: 10505580]
11. Jiang ZP, et al. The role of CYP2C19 in amitriptyline N-demethylation in Chinese subjects. *Eur J Clin Pharmacol*. 2002; 58:109–13. [PubMed: 12012142]
12. Association, A.P. Practice Guideline for the Treatment of Patients With Major Depressive Disorder. 3. American Psychiatric Publishing; Arlington, VA: 2010.
13. Watson CP. The treatment of neuropathic pain: antidepressants and opioids. *The Clinical journal of pain*. 2000; 16:S49–55. [PubMed: 10870740]
14. Laird B, Colvin L, Fallon M. Management of cancer pain: basic principles and neuropathic cancer pain. *European journal of cancer*. 2008; 44:1078–82. [PubMed: 18439818]
15. Rudorfer MV, Potter WZ. Metabolism of tricyclic antidepressants. *Cellular and molecular neurobiology*. 1999; 19:373–409. [PubMed: 10319193]
16. Potter WZ, Zavadil AP 3rd, Kopin IJ, Goodwin FK. Single-dose kinetics predict steady-state concentrations on imipramine and desipramine. *Archives of general psychiatry*. 1980; 37:314–20. [PubMed: 7362419]
17. Stingl JC, Brockmoller J, Viviani R. Genetic variability of drug-metabolizing enzymes: the dual impact on psychiatric therapy and regulation of brain function. *Molecular psychiatry*. 2012
18. Cooke RG, Warsh JJ, Stancer HC, Reed KL, Persad E. The nonlinear kinetics of desipramine and 2-hydroxydesipramine in plasma. *Clinical pharmacology and therapeutics*. 1984; 36:343–9. [PubMed: 6467794]
19. Hiemke C, et al. AGNP Consensus Guidelines for Therapeutic Drug Monitoring in Psychiatry: Update 2011. *Pharmacopsychiatry*. 2011; 44:195–235.
20. Dalen P, Dahl ML, Bernal Ruiz ML, Nordin J, Bertilsson L. 10-Hydroxylation of nortriptyline in white persons with 0, 1, 2, 3, and 13 functional CYP2D6 genes. *Clinical pharmacology and therapeutics*. 1998; 63:444–52. [PubMed: 9585799]
21. Kirchheiner J, Seeringer A. Clinical implications of pharmacogenetics of cytochrome P450 drug metabolizing enzymes. *Biochimica et biophysica acta*. 2007; 1770:489–94. [PubMed: 17113714]
22. Bertilsson L, Aberg-Wistedt A, Gustafsson LL, Nordin C. Extremely rapid hydroxylation of debrisoquine: a case report with implication for treatment with nortriptyline and other tricyclic antidepressants. *Therapeutic drug monitoring*. 1985; 7:478–80. [PubMed: 4082245]
23. Bertilsson L, et al. Molecular basis for rational megaprescribing in ultrarapid hydroxylators of debrisoquine. *Lancet*. 1993; 341:63.
24. Kawanishi C, Lundgren S, Agren H, Bertilsson L. Increased incidence of CYP2D6 gene duplication in patients with persistent mood disorders: ultrarapid metabolism of antidepressants as a cause of nonresponse. A pilot study. *Eur J Clin Pharmacol*. 2004; 59:803–7. [PubMed: 14652703]
25. Penas-Lledo EM, et al. CYP2D6 ultrarapid metabolism and early dropout from fluoxetine or amitriptyline monotherapy treatment in major depressive patients. *Molecular psychiatry*. 2013; 18:8–9. [PubMed: 22733128]
26. Hodgson K, et al. Genetic differences in cytochrome P450 enzymes and antidepressant treatment response. *J Psychopharmacol*. 2014; 28:133–41. [PubMed: 24257813]
27. Swen JJ, et al. Pharmacogenetics: from bench to byte--an update of guidelines. *Clinical pharmacology and therapeutics*. 2011; 89:662–73. [PubMed: 21412232]
28. Bertilsson L, Mellstrom B, Sjobkvist F, Martenson B, Asberg M. Slow hydroxylation of nortriptyline and concomitant poor debrisoquine hydroxylation: clinical implications. *Lancet*. 1981; 1:560–1.
29. Shimoda K, et al. The impact of CYP2C19 and CYP2D6 genotypes on metabolism of amitriptyline in Japanese psychiatric patients. *J Clin Psychopharmacol*. 2002; 22:371–8. [PubMed: 12172336]

30. Steimer W, et al. Amitriptyline or not, that is the question: pharmacogenetic testing of CYP2D6 and CYP2C19 identifies patients with low or high risk for side effects in amitriptyline therapy. *Clinical chemistry*. 2005; 51:376–85. [PubMed: 15590749]
31. Halling J, Weihe P, Brosen K. The CYP2D6 polymorphism in relation to the metabolism of amitriptyline and nortriptyline in the Faroese population. *British journal of clinical pharmacology*. 2008; 65:134–8. [PubMed: 17764479]
32. Dworkin RH, et al. Pharmacologic management of neuropathic pain: evidence-based recommendations. *Pain*. 2007; 132:237–51. [PubMed: 17920770]
33. Preskorn SH, et al. Cytochrome P450 2D6 phenoconversion is common in patients being treated for depression: implications for personalized medicine. *J Clin Psychiatry*. 2013; 74:614–21. [PubMed: 23541126]
34. el-Yazigi A, Chaleby K, Gad A, Raines DA. Steady-state kinetics of fluoxetine and amitriptyline in patients treated with a combination of these drugs as compared with those treated with amitriptyline alone. *Journal of clinical pharmacology*. 1995; 35:17–21. [PubMed: 7751409]
35. Ketter TA, et al. The emerging role of cytochrome P450 3A in psychopharmacology. *J Clin Psychopharmacol*. 1995; 15:387–98. [PubMed: 8748427]
36. Shen WW. Cytochrome P450 monooxygenases and interactions of psychotropic drugs: a five-year update. *International journal of psychiatry in medicine*. 1995; 25:277–90. [PubMed: 8567194]
37. Kim S, et al. PubChem Substance and Compound databases. *Nucleic Acids Res*. 2016; 44:D1202–13. [PubMed: 26400175]

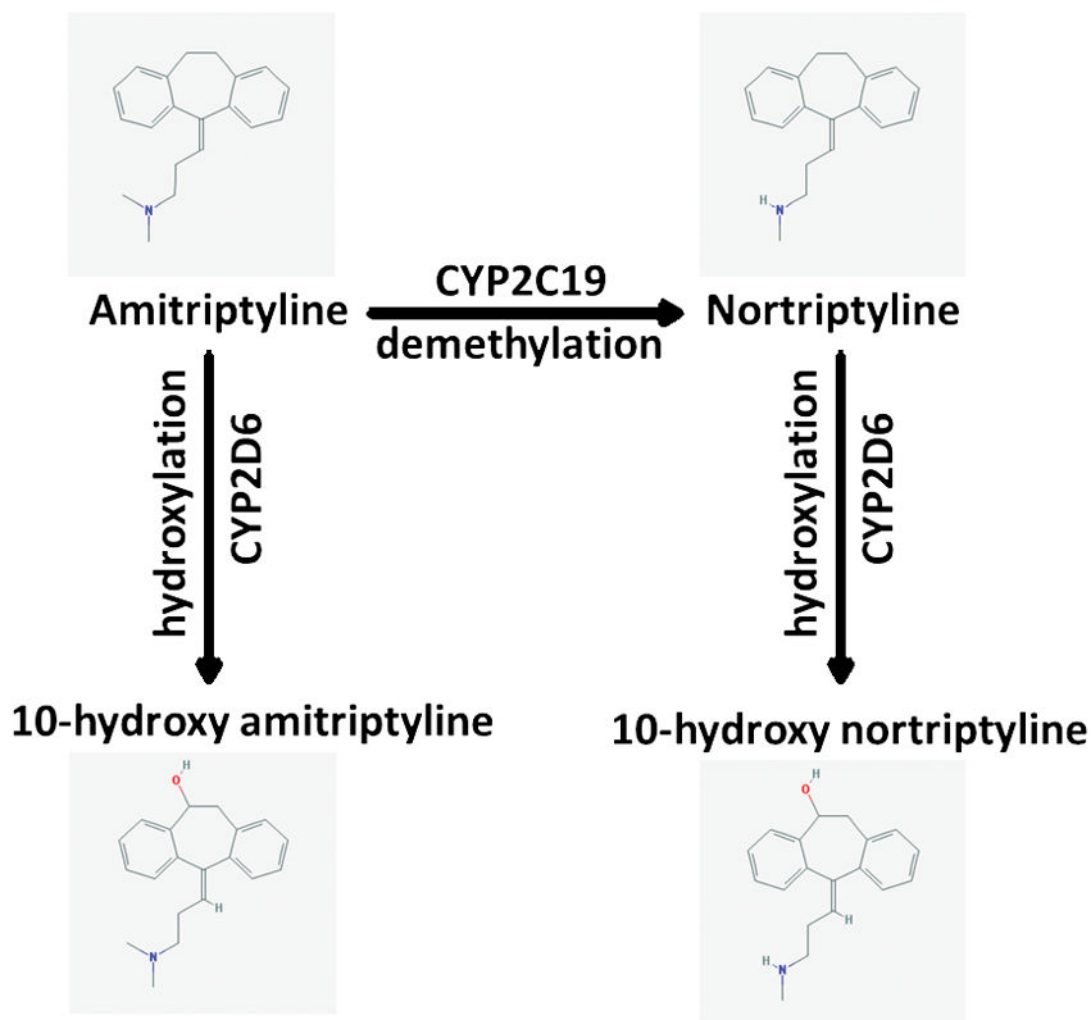


Figure 1.

Major metabolic pathway of the tertiary amine amitriptyline and the secondary amine nortriptyline. For the structural representation the following 2D-images from the National Center for Biotechnology Information PubChem Compound Database are used: amitriptyline - CID=2160 (<https://pubchem.ncbi.nlm.nih.gov/compound/2160>); nortriptyline - CID=4543 (<https://pubchem.ncbi.nlm.nih.gov/compound/4543>); 10-hydroxyamitriptyline - CID=6420900 (<https://pubchem.ncbi.nlm.nih.gov/compound/6420900>); 10-hydroxynortriptyline - CID=6420504 (<https://pubchem.ncbi.nlm.nih.gov/compound/6420504>) (37). All entries were accessed Nov. 8, 2016.

TABLE 1

ASSIGNMENT OF LIKELY PHENOTYPES BASED ON DILOTYPES

Assignment of CYP2D6 phenotypes			
Likely phenotype	Activity Score	Genotypes	Examples of diplotypes
Ultrarapid metabolizer (~1–20% of patients) ^a	> 2.0	An individual carrying duplications of functional alleles	(*1/*1) <i>xN</i> , (*1/*2) <i>xN</i> , (*2/*2) <i>xN</i> ^b
Normal metabolizer (~72–88% of patients)	1.0–2.0 ^c	An individual carrying two normal function alleles or two decreased function alleles or one normal and no function allele or one normal function and decreased function allele or combinations of duplicated alleles that result in an activity score of 1.0–2.0.	*1/*1, *1/*2, *2/*2, *1/*9, *1/*41, *41/*41, *1/*5, *1/*4
Intermediate metabolizer (~1–13% of patients)	0.5	An individual carrying one decreased function and one no function allele	*4/*41, *5/*9, *4/*10
Poor metabolizer (~1–10% of patients)	0	An individual carrying only no function alleles	*4/*4, (*4/*4) <i>xN</i> , *3/*4, *5/*5, *5/*6

Assignment of CYP2C19 phenotypes		
Likely phenotype	Genotypes	Examples of diplotypes
Ultrarapid metabolizer (~2–5% of patients) ^a	An individual carrying two increased function alleles	*17/*17
Rapid Metabolizer (~2–30% of patients)	An individual carrying one normal function allele and one increased function allele	*1/*17
Normal metabolizer (~35–50% of patients)	An individual carrying two normal function alleles	*1/*1
Intermediate metabolizer (~18–45% of patients)	An individual carrying one normal function allele and one no function allele or one no function allele and one increased function allele	*1/*2, *1/*3, *2/*17 ^d
Poor metabolizer (~2–15% of patients)	An individual carrying two no function alleles	*2/*2, *2/*3, *3/*3

^aCYP2D6 and CYP2C19 metabolizer status frequencies are based on average multi-ethnic frequencies. See the *CYP2C19*(4) and *CYP2D6* Frequency Tables (1) for population-specific allele and phenotype frequencies.

^bWhere *xN* represents the number of *CYP2D6* gene copies.

^cPatients with an activity score of 1.0 may be classified as intermediate metabolizers by some reference laboratories.

^dThe predicted metabolizer phenotype for the *2/*17 genotype is a provisional classification. The currently available evidence indicates that the *CYP2C19**17 increased function allele is unable to completely compensate for the *CYP2C19**2 no function allele. See Supplemental Materials for a more comprehensive list of predicted metabolizer phenotypes.

TABLE 2
DOSING RECOMMENDATIONS FOR TRICYCLIC ANTIDEPRESSANTS BASED ON CYP2D6 PHENOTYPE

Phenotype	Implication	Therapeutic Recommendation ^{a,b}	Classification of Recommendation for Amitriptyline and Nortriptyline ^c	Classification of Recommendation for Other TCAs ^{c,d}
CYP2D6 Ultrarapid metabolizer	Increased metabolism of TCAs to less active compounds compared to normal metabolizers Lower plasma concentrations of active drug will increase probability of pharmacotherapy failure	Avoid tricyclic use due to potential lack of efficacy. Consider alternative drug not metabolized by CYP2D6. If a TCA is warranted, consider titrating to a higher target dose (compared to normal metabolizers) ^e . Utilize therapeutic drug monitoring to guide dose adjustments.	Strong	Optional
CYP2D6 Normal metabolizer	Normal metabolism of TCAs	Initiate therapy with recommended starting dose ^f .	Strong	Strong
CYP2D6 Intermediate metabolizer	Reduced metabolism of TCAs to less active compounds compared to normal metabolizers Higher plasma concentrations of active drug will increase the probability of side effects	Consider a 25% reduction of recommended starting dose ^f . Utilize therapeutic drug monitoring to guide dose adjustments. ^c .	Moderate	Optional
CYP2D6 Poor metabolizer	Greatly reduced metabolism of TCAs to less active compounds compared to normal metabolizers Higher plasma concentrations of active drug will increase the probability of side effects	Avoid tricyclic use due to potential for side effects. Consider alternative drug not metabolized by CYP2D6. If a TCA is warranted, consider a 50% reduction of recommended starting dose ^f . Utilize therapeutic drug monitoring to guide dose adjustments. ^e .	Strong	Optional

^aFor tertiary amines (e.g., amitriptyline), if CYP2C19 genotype results are also available, see Table 3 for CYP2C19-based dosing recommendations and Table 4 for CYP2D6/CYP2C19-based dosing recommendations.

^bDosing recommendations only apply to higher initial doses of TCAs for treatment of conditions such as depression. See *other considerations* for dosing recommendations for conditions where lower initial doses are used, such as neuropathic pain.

^cThe rating scheme for the recommendation of classification is described in Supplementary Data.

^dIt may be reasonable to apply this recommendation to other TCAs also metabolized by CYP2D6 including clomipramine, desipramine, doxepin, imipramine, and trimipramine. There are fewer clinical and pharmacokinetic data supporting genotype-guided dose adjustments for these drugs when compared to amitriptyline or nortriptyline (Supplemental Tables S8–S16).

^eTitrate dose to observed clinical response with symptom improvement and minimal (if any) side effects.

^fPatients may receive an initial low dose of a tricyclic, which is then increased over several days to the recommended steady-state dose. The starting dose in this guideline refers to the recommended steady-state dose.

TABLE 3

DOSING RECOMMENDATIONS FOR THE TERTIARY AMINES AMITRIPTYLINE, CLOMIPRAMINE, DOXEPIN, IMPRAMINE, AND TRIMIPRAMINE BASED ON CYP2C19 PHENOTYPE

Phenotype	Implication	Therapeutic Recommendation ^{a,b}	Classification of Recommendation for Amitriptyline ^c	Classification of Recommendation for Other Tertiary Amine TCAs ^{c,d}
CYP2C19 Ultrarapid metabolizer and CYP2C19 Rapid Metabolizer	Increased metabolism of tertiary amines compared to normal metabolizers Greater conversion of tertiary amines to secondary amines may affect response or side effects	Avoid tertiary amine use due to potential for sub-optimal response. Consider alternative drug not metabolized by CYP2C19. TCAs without major CYP2C19 metabolism include the secondary amines nortriptyline and desipramine. If a tertiary amine is warranted, utilize therapeutic drug monitoring to guide dose adjustments ^e .	Optional	Optional
CYP2C19 Normal metabolizer	Normal metabolism of tertiary amines	Initiate therapy with recommended starting dose ^f .	Strong	Strong
CYP2C19 Intermediate metabolizer	Reduced metabolism of tertiary amines compared to normal metabolizers	Initiate therapy with recommended starting dose ^f .	Strong	Optional
CYP2C19 Poor metabolizer	Greatly reduced metabolism of tertiary amines compared to normal metabolizers Decreased conversion of tertiary amines to secondary amines may affect response or side effects	Avoid tertiary amine use due to potential for sub-optimal response. Consider alternative drug not metabolized by CYP2C19. TCAs without major CYP2C19 metabolism include the secondary amines nortriptyline and desipramine. For tertiary amines, consider a 50% reduction of the recommended starting dose ^f . Utilize therapeutic drug monitoring to guide dose adjustments ^e .	Moderate	Optional

^aIf *CYP2D6* genotype results are also available, see Table 2 for *CYP2D6*-based dosing recommendations and Table 4 for *CYP2D6/CYP2C19*-based dosing recommendations.

^bDosing recommendations only apply to higher initial doses of TCAs for treatment of conditions such as depression. See *other considerations* for dosing recommendations for conditions where lower initial doses are used, such as neuropathic pain.

^cThe rating scheme for the recommendation of classification is described in Supplementary Data.

^dIt may be reasonable to apply this recommendation to other TCAs also metabolized by CYP2C19 including clomipramine, doxepin, imipramine, and trimipramine. There are fewer clinical and pharmacokinetic data supporting dose adjustments for these drugs when compared to amitriptyline or nortriptyline (Supplemental Tables S8–S16).

^eTitrate dose to observed clinical response with symptom improvement and minimal (if any) side effects.

^fPatients may receive an initial low dose of a tricyclic, which is then increased over several days to the recommended steady-state dose. The starting dose in this guideline refers to the recommended steady-state dose.

TABLE 4

DOSING RECOMMENDATIONS FOR AMITRIPTYLINE BASED ON BOTH CYP2D6 AND CYP2C19 PHENOTYPES^{a,b}

Phenotype	CYP2D6 Ultrarapid metabolizer	CYP2D6 Normal metabolizer	CYP2D6 Intermediate metabolizer	CYP2D6 Poor metabolizer
CYP2C19 Ultrarapid or Rapid metabolizer	Avoid amitriptyline use ^c Classification of recommendation ^d : Optional	Consider alternative drug not metabolized by CYP2C19 ^{c,e} Classification of recommendation ^d : Optional	Consider alternative drug not metabolized by CYP2C19 ^{c,e} Classification of recommendation ^d : Optional	Avoid amitriptyline use ^c Classification of recommendation ^d : Optional
CYP2C19 Normal metabolizer	Avoid amitriptyline use. If amitriptyline is warranted, consider titrating to a higher target dose (compared to normal metabolizers) ^{f,g} Classification of recommendation ^d : Strong	Initiate therapy with recommended starting dose ^h Classification of recommendation ^d : Strong	Consider a 25% reduction of recommended starting dose ^{f,h} Classification of recommendation ^d : Moderate	Avoid amitriptyline use. If amitriptyline is warranted, consider a 50% reduction of recommended starting dose ^{f,h} Classification of recommendation ^d : Strong
CYP2C19 Intermediate metabolizer	Avoid amitriptyline use ^c Classification of recommendation ^d : Optional	Initiate therapy with recommended starting dose ^h Classification of recommendation ^d : Strong	Consider a 25% reduction of recommended starting dose ^{f,h} Classification of recommendation ^d : Optional	Avoid amitriptyline use. If amitriptyline is warranted, consider a 50% reduction of recommended starting dose ^{f,h} Classification of recommendation ^d : Optional
CYP2C19 Poor metabolizer	Avoid amitriptyline use ^c Classification of recommendation ^d : Optional	Avoid amitriptyline use. If a 50% reduction of recommended starting dose ^{f,h} Classification of recommendation ^d : Moderate	Avoid amitriptyline use ^c Classification of recommendation ^d : Optional	Avoid amitriptyline use ^c Classification of recommendation ^d : Optional

^aDosing recommendations only apply to higher initial doses of TCAs for treatment of conditions such as depression. See *other considerations* for dosing recommendations for conditions where lower initial doses are used, such as neuropathic pain.

^bThe dosing recommendations are based on studies focusing on amitriptyline. Because tricyclic antidepressants have comparable pharmacokinetic properties, it may be reasonable to apply these guidelines to other tertiary amines including clomipramine, doxepin, imipramine and trimipramine (the classification of this recommendation is optional).

^cIf amitriptyline is warranted, utilize therapeutic drug monitoring^f to guide dose adjustment.

^dThe rating scheme for the recommendation classification is described in Supplementary Data. See *CYP2D6 and CYP2C19 combined dosing recommendations* for explanation of classification of recommendations for this table.

^eTCAs without major CYP2C19 metabolism include the secondary amines nortriptyline and desipramine.

^fUtilizing therapeutic drug monitoring if a tricyclic is prescribed to a patient with CYP2D6 ultrarapid, intermediate or poor metabolism in combination with CYP2C19 ultrarapid, intermediate or poor metabolism is strongly recommended.

^gTitrate dose to observed clinical response with symptom improvement and minimal (if any) side effects.

Patients may receive an initial low dose of TCAs, which is then increased over several days to the recommended steady-state dose. The starting dose in this guideline refers to the recommended steady-state dose.

Author Manuscript

Author Manuscript

Author Manuscript

Author Manuscript