

The Open University's repository of research publications  
and other research outputs

## Cluster-formation in the Rosette molecular cloud at the junctions of filaments

### Journal Item

#### How to cite:

Schneider, N.; Csengeri, T.; Hennemann, M.; Motte, F.; Didelon, P.; Federrath, C.; Bontemps, S.; Di Francesco, J.; Arzoumanian, D.; Minier, V.; André, Ph.; Hill, T.; Zavagno, A.; Nguyen-Luong, Q.; Attard, M.; Bernard, J.-Ph.; Elia, D.; Fallscheer, C.; Griffin, M.; Kirk, J.; Klessen, R.; Könyves, V.; Martin, P.; Men'shchikov, A.; Palmeirim, P.; Peretto, N.; Pestalozzi, M.; Russeil, D.; Sadavoy, S.; Sousbie, T.; Testi, L.; Tremblin, P.; Ward-Thompson, D. and White, G. (2012). Cluster-formation in the Rosette molecular cloud at the junctions of filaments. *Astronomy & Astrophysics*, 540, article no. L11.

For guidance on citations see [FAQs](#).

© 2012 ESO

Version: Version of Record

Link(s) to article on publisher's website:  
<http://dx.doi.org/doi:10.1051/0004-6361/201118566>

---

Copyright and Moral Rights for the articles on this site are retained by the individual authors and/or other copyright owners. For more information on Open Research Online's data [policy](#) on reuse of materials please consult the policies page.

---

LETTER TO THE EDITOR

## Cluster-formation in the Rosette molecular cloud at the junctions of filaments<sup>★</sup>

N. Schneider<sup>1</sup>, T. Csengeri<sup>2</sup>, M. Hennemann<sup>1</sup>, F. Motte<sup>1</sup>, P. Didelon<sup>1</sup>, C. Federrath<sup>3,4</sup>, S. Bontemps<sup>5</sup>, J. Di Francesco<sup>6</sup>,  
D. Arzoumanian<sup>1</sup>, V. Minier<sup>1</sup>, Ph. André<sup>1</sup>, T. Hill<sup>1</sup>, A. Zavagno<sup>7</sup>, Q. Nguyen-Luong<sup>1</sup>, M. Attard<sup>1</sup>, J.-Ph. Bernard<sup>8</sup>,  
D. Elia<sup>9</sup>, C. Fallscheer<sup>6</sup>, M. Griffin<sup>10</sup>, J. Kirk<sup>10</sup>, R. Klessen<sup>4</sup>, V. Könyves<sup>1</sup>, P. Martin<sup>11</sup>, A. Men'shchikov<sup>1</sup>,  
P. Palmeirim<sup>1</sup>, N. Peretto<sup>1</sup>, M. Pestalozzi<sup>9</sup>, D. Russeil<sup>7</sup>, S. Sadavoy<sup>12</sup>, T. Sousbie<sup>13</sup>, L. Testi<sup>14</sup>, P. Tremblin<sup>1</sup>,  
D. Ward-Thompson<sup>10</sup>, and G. White<sup>15,16</sup>

(Affiliations can be found after the references)

Received 2 December 2011 / Accepted 6 March 2012

### ABSTRACT

**Aims.** For many years feedback processes generated by OB-stars in molecular clouds, including expanding ionization fronts, stellar winds, or UV-radiation, have been proposed to trigger subsequent star formation. However, hydrodynamic models including radiation and gravity show that UV-illumination has little or no impact on the global dynamical evolution of the cloud. Instead, gravitational collapse of filaments and/or merging of filamentary structures can lead to building up dense high-mass star-forming clumps. However, the overall density structure of the cloud has a large influence on this process, and requires a better understanding.

**Methods.** The Rosette molecular cloud, irradiated by the NGC 2244 cluster, is a template region for triggered star-formation, and we investigated its spatial and density structure by applying a curvelet analysis, a filament-tracing algorithm (DisPerSE), and probability density functions (PDFs) on *Herschel* column density maps, obtained within the HOBYS key program.

**Results.** The analysis reveals not only the filamentary structure of the cloud but also that all known infrared clusters except one lie at junctions of filaments, as predicted by turbulence simulations. The PDFs of sub-regions in the cloud show systematic differences. The two UV-exposed regions have a double-peaked PDF we interpret as caused by shock compression, while the PDFs of the center and other cloud parts are more complex, partly with a power-law tail. A deviation of the log-normal PDF form occurs at  $A_V \approx 9^m$  for the center, and around  $4^m$  for the other regions. Only the part of the cloud farthest from the Rosette nebula shows a log-normal PDF.

**Conclusions.** The deviations of the PDF from the log-normal shape typically associated with low- and high-mass star-forming regions at  $A_V \approx 3-4^m$  and  $8-10^m$ , respectively, are found here within the very same cloud. This shows that there is no fundamental difference in the density structure of low- and high-mass star-forming regions. We conclude that star-formation in Rosette – and probably in high-mass star-forming clouds in general – is not globally triggered by the impact of UV-radiation. Moreover, star formation takes place in filaments that arose from the primordial turbulent structure built up during the formation of the cloud. Clusters form at filament mergers, but star formation can be locally induced in the direct interaction zone between an expanding H II-region and the molecular cloud.

**Key words.** ISM: clouds – ISM: structure – evolution – H II regions

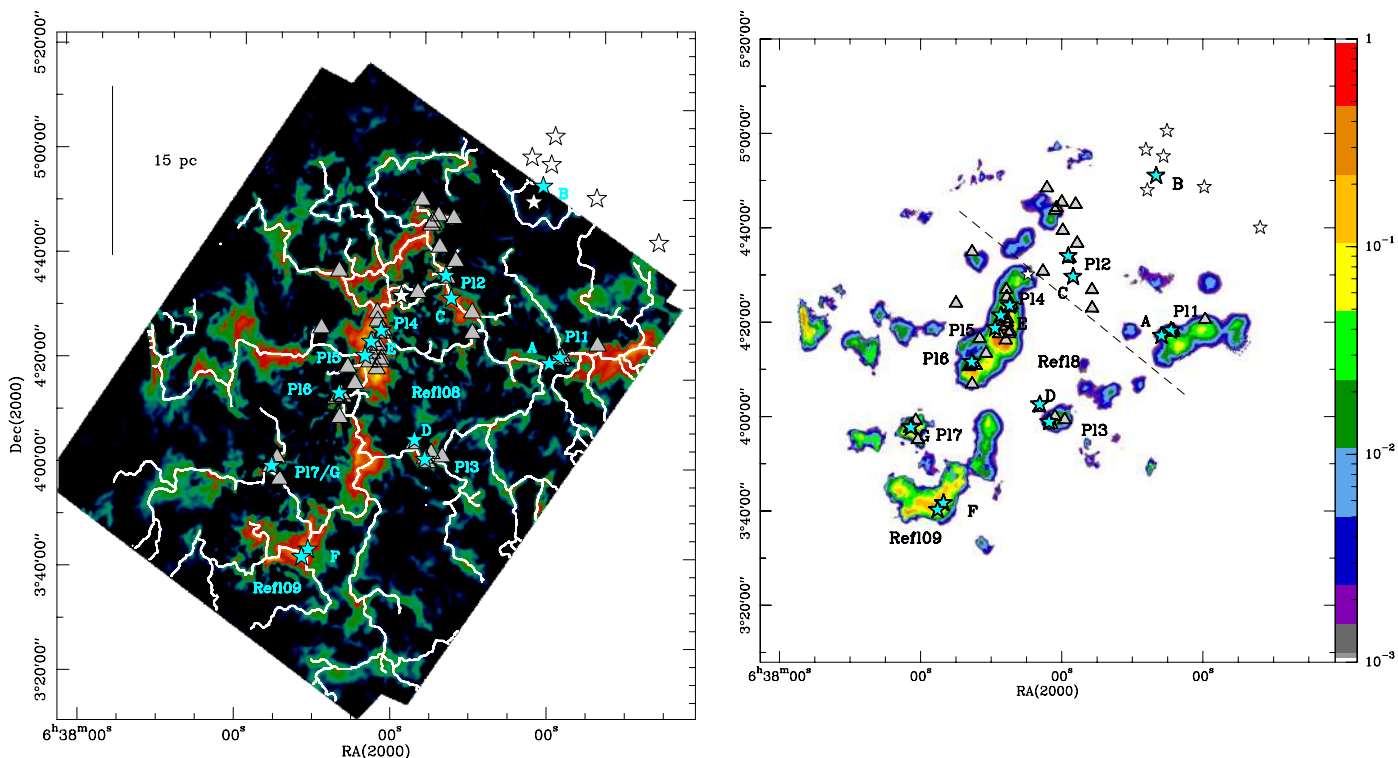
### 1. Introduction

The role of feedback from massive stars has been long discussed as a dynamical trigger for subsequent star formation (SF). One has to distinguish, however, between the driving scales on which the processes work – and their relative importance. *Large-scale* turbulence, even on a Galactic scale (Mac Low & Klessen 2004), can be excited by expanding supernova shells, colliding flows forming clouds, or globally by any form of accretion (Klessen & Hennebelle 2010). *Intermediate- to small-scale* processes include radiation, stellar winds, and outflows. Observationally, expanding ionization fronts were proposed to account for fragmented shells around bubble-like H II-regions (e.g. Zavagno et al. 2010). Shock compression of a simple layer is the initial idea of the *collect and collapse scenario* (Elmegreen & Lada 1977). Recent models (Walch et al. 2011) consider now an initially inhomogeneous cloud. In particular Dale & Bonnell (2011, 2012) showed that photoionizing radiation from an OB-cluster on a spatially highly inhomogeneous molecular

cloud has little or no impact on the global evolution of the cloud due to the presence of strong accretion flows. Generally, in a dynamic view of molecular cloud- and SF-interactions (e.g., Ballesteros-Paredes et al. 2007), stars form in gravitationally collapsing dense filaments that formed in turbulence-generated, interacting shocks. Dale & Bonnell (2011) proposed that the most massive clusters should be found at the *junctions of filaments*. This confirms the finding of Schneider et al. (2010a) where a mass flow through subfilaments, probably governed by magnetic fields, was observed for the DR21 filament. The prediction that (massive) clusters form preferentially in the deep potential wells where filaments merge can be verified observationally and it is within the scope of this paper to do so. We chose the Rosette molecular cloud (RMC) as a proposed template for “triggered” SF. A discussion of the advantages and disadvantages of this premise can be found in Schneider et al. (2010b). To characterize the cloud structure, a curvelet decomposition of column density maps obtained with *Herschel*<sup>1</sup> data is performed,

<sup>★</sup> Figures 4–6 and Appendices A–C are available in electronic form at <http://www.aanda.org>

<sup>1</sup> *Herschel* is an ESA space observatory with science instruments provided by European-led Principal Investigator consortia and with important participation from NASA.



**Fig. 1.** *Left:* curvelet map of the column density, expressed in logarithmic magnitudes of visual extinction ( $A_V = 0.05$  to 7). The absolute values, however, depend on the decomposition threshold ( $\approx 20\%$  of the intensity are in the curvelets) and are not relevant for this study. The filamentary structure becomes apparent and is additionally traced by DisPerSE (white lines). See Appendix B for more details and a close-up of the central region. Known infrared-clusters are indicated as blue stars (“PI” for Phelps & Lada 1997, A–F for Poulton et al. 2008, and Ref1 for Román-Zúñiga et al. 2008). White stars in the upper right corner indicate the O-stars from NGC 2244. Gray triangles are the massive dense cores (MDCs) identified in Motte et al. (2010). *Right:* a map showing the “confidence” (coded from 0 to 1 in color scale) of finding cluster formation sites. This map combines the information of the column density map and the locations of filament junctions (see text for details). Known clusters and MDCs are labeled as in the left panel. The dashed line indicates the approximate border beyond which (toward the cluster) SF due to the direct compression scenario may be at work.

and a filament-tracing algorithm is applied to the map (see Arzoumanian et al. 2011 and Appendix B for details).

The Rosette nebula at a distance of 1.6 kpc is illuminated by the central OB cluster NGC 2244 located inside a cavity. The expanding H II-region is interacting with a GMC (mass of a few  $10^5 M_\odot$ , Williams et al. 1995). Photon dominated regions (PDRs) are detected not only along the interface but also deep inside the molecular cloud (Schneider et al. 1998), reflecting the deep penetration of UV-radiation owing to its inhomogeneous structure. We investigated the density structure of the RMC by deriving probability density functions (PDFs) of the column density<sup>2</sup> of the whole cloud and subfields in the Rosette. To do this, we used observations from *Herschel* within the HOBYS (*Herschel* imaging survey of OB Young Stellar objects, Motte et al. 2010) guaranteed time key program. Column density maps were determined from a modified black body fit to the wavelengths of PACS and SPIRE (see Appendix A) and have an angular resolution of  $\approx 37''$ . Generally, a PDF characterizes the fraction of gas that has a column density  $N$  in the range  $[N, N+\Delta N]$  (e.g., Federrath et al. 2008).

## 2. Results and analysis

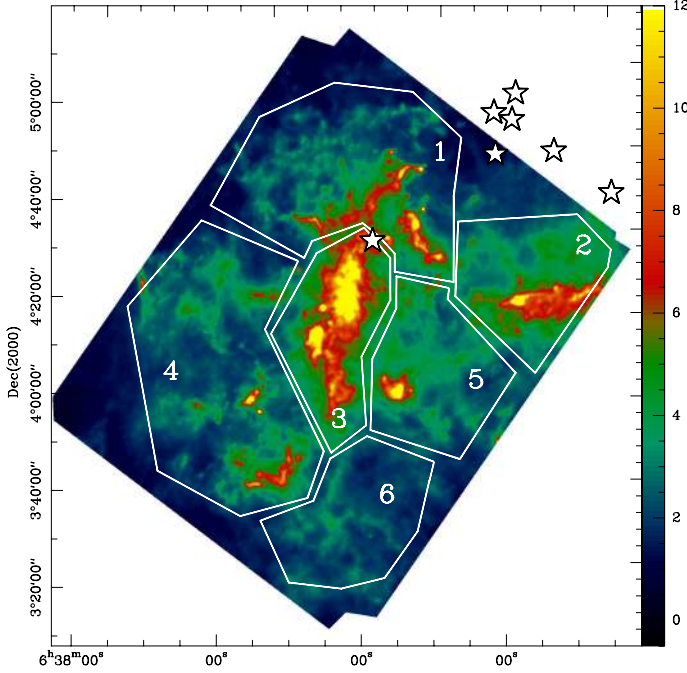
### 2.1. The filamentary structure of Rosette

Figure 1 (left) shows a curvelet image from a multi-resolution morphological decomposition (Starck et al. 2004) of the column

<sup>2</sup> Expressed in visual extinction  $A_V$  with  $N(\text{H}_2)/A_V = 0.94 \times 10^{21} \text{ cm}^{-2} \text{ mag}^{-1}$  (Bohlin et al. 1978).

density map of the Rosette (see Fig. 2) obtained from *Herschel* data. Overlaid on the image are the filaments traced by the DisPerSE algorithm (Sousbie et al. 2011). This method reveals the highly filamentary structure of the RMC, which is not fully apparent from visual inspection of the column density map (or molecular line maps). Existing infrared (IR) clusters and the most massive dense cores (MDCs) identified in the same data set (Motte et al. 2010; Hennemann et al. 2010) are overlaid on the image. The latter are potential sites of future massive star formation. It is apparent that all sources lie in the proximity of junctions of the most prominent filaments in high column density regions. Some of the MDCs and the cluster P12, however, are also located along filaments (see, e.g., close-up of the center region shown in Fig. 5). To better qualitatively characterize the filament-junction/cluster correlation, we created a “confidence map” that combines the two requirements for cluster formation: high column density and filament junction. First, we produced a mask containing only the junction points and then defined a Gaussian distribution function with a FWHM<sup>3</sup> of  $3' = 1.5 \text{ pc}$  around each point. This procedure yields a “junction-area” that is more realistic than only a single point. We then multiplied this map with the column density map, and normalized the resulting map to obtain values between 0 and 1. Inspection of Fig. 1 (right) shows that the IR-clusters and many MDCs are indeed found in regions of high column density where filaments merge

<sup>3</sup> The radii of the clusters vary between 1.3 and 3.6 pc (Román-Zúñiga et al. 2008), as a conservative value we assumed 1.5 pc. However, the resulting map does not change much in a range of  $\sim 1$  to  $\sim 5 \text{ pc}$ .



**Fig. 2.** Column density map of the Rosette molecular cloud, expressed in visual extinction (see color bar). The six regions that were selected to determine individual PDFs are indicated by polygons.

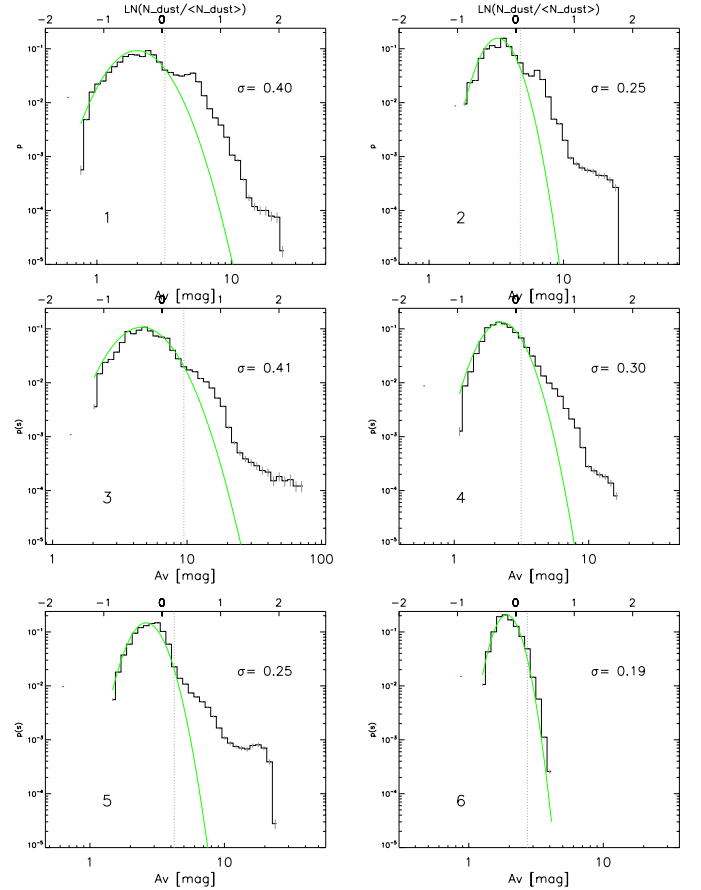
(all within the maximum cluster size of 7 pc). The only exception is the H II-region/molecular cloud interface (northwest of the dashed line in Fig. 1). Neither cluster P12 nor the majority of MDCs lie in regions of high confidence. Here, shock compression of the expanding ionization front with subsequent fragmentation into dense cores may be at work, as suggested by the PDFs of this region (see Sect. 2.2).

## 2.2. PDFs from the Herschel column density map of Rosette

Figure 2 shows the column density map including our division into several subregions, reflecting different morphological and physical properties. (1) and (2): interface of H II-region and molecular cloud with many UV-exposed pillars, (3): dense, main SF region of the RMC, including several IR-clusters (P14/5/6), (4) and (5): more diffuse and colder gas with dense, SF clumps (P17 in region 4 and P13 in region 5), (6): quiescent and cold remote part of the cloud without SF activity.

The PDF obtained for the whole molecular cloud is displayed in Appendix C (Fig. 6). A log-normal PDF with a width of  $\sigma_\eta = 0.63$  is fitted up to  $A_V = 3^m$  (noise level  $\approx 1^m$ ). The excess at high column densities ( $A_V = 3\text{--}20^m$ ) follows a power law. The slope corresponds to a volumetric, radial density profile of  $n \propto r^{-0.65}$  (Federrath et al. 2011). This does not assume that the cloud is a single sphere, moreover it consists of many clumps/cores, each with a radial profile leading to a common exponent  $\alpha$ . The exponent is smaller than what is typically found for dense cores ( $-1.5$  to  $-2$ ), suggesting that on large (cloud)-scales, turbulence is the dominating process compared to gravity.

Figure 3 displays the PDFs for the six subregions, all showing a log-normal distribution at low  $A_V$  and a more complex curvature or several peaks at higher  $A_V$ . Particularly interesting are the PDFs of the UV-exposed regions 1 and 2 (the OB-cluster is only 10–15 pc away in projected distance) because there are two “peaks” (at  $A_V \approx 3^m$  and  $6^m$ ). A similar double-peak PDF was



**Fig. 3.** PDFs for the six subregions in the Rosette, labeled from 1 to 6. The green line indicates the fitted PDF. The  $A_V$ -value of the deviation of the PDF from the log-normal form is shown as a dotted vertical line and the width of the PDF ( $\sigma_\eta$ ) is given in each panel.

observed (Schneider et al., priv. comm.) using a column density map of RCW120 (Zavagno et al. 2010), a very good example of a simple, “bubble”-like geometry. We interpret the second peak as arising from a higher column density component due to gas compression by the expanding ionization front. This interpretation is supported by recent numerical models including turbulence and radiation (Tremblin et al., in prep.) that exhibit double-peak PDFs depending on the turbulent state of the cloud and the initial curvature of the cloud surface. We therefore do not expect to see this feature in all UV-illuminated environments. Region 3 is the central SF region with the highest column density (up to  $70^m$ ). The PDF here is broad ( $\sigma_\eta = 0.41$ ), shows two “breaks” (around  $9^m$  and  $20^m$ ), and has a peak value at  $A_V \approx 5^m$  (all other PDFs peak at  $\approx 2^m$ ). The PDFs of regions 4 and 5 cover a lower density regime and deviate from the log-normal form around  $A_V \approx 4^m$ . The most quiescent region 6 is the only one displaying a well-defined log-normal PDF with the smallest width ( $\sigma_\eta = 0.19$ ).

## 3. Discussion

### 3.1. The density structure of the RMC

In Csengeri et al. (in prep.), we found that low-mass SF regions have a break in the log-normal shaped PDF at  $A_V \approx 4^m$  (and possibly around  $8^m$ ), and high-mass SF regions around  $A_V \approx 8^m$  and higher. We now show that these two breaks in  $A_V$  are found in the PDFs of subregions within one *single cloud*, the Rosette

GMC, suggesting that there is *no fundamental difference* in the density structure of low-mass and high-mass SF regions up to an  $A_V$  of typically  $7-10^m$ . Above this value, the tail(s) in the PDFs are associated with SF activity. Namely, if gravity starts to play a role during molecular cloud formation, an increasing fraction of gas will exceed a certain threshold of column density/extinction and form stars. Other studies (e.g., Lada et al. 2010; Heiderman et al. 2010; André et al. 2010) have arrived at the same value of around  $8^m$ . In addition, only numerical models that include gravity are able to reproduce this threshold and the corresponding break in the PDF. For example, Ballesteros-Paredes et al. (2011) showed that PDFs vary during cloud evolution. Purely log-normal shapes were found in an initially turbulent, non-gravitating cloud, while one or more log-normal PDFs at low column-densities and a power-law tail for higher values were found for later stages of cloud evolution. In addition, the slope of the power-law tails varies with time. All PDFs in the Rosette have the shape of the *later evolutionary states*, indicating that gravity remains an important process in cloud evolution, including star-formation. The impact of UV radiation, however, needs to be investigated using hydrodynamic simulations including gravity and radiation.

### 3.2. Where do stars form?

Our Rosette observations indicate that clusters preferentially form at *filament junctions* but cores (and subsequently stars) can also form *along filaments* (see also other studies of high-mass SF regions, e.g., the Nessie-nebula (Jackson et al. 2010), W48 (Nguyen Luong et al. 2011) or Cygnus (Motte et al. 2007)). In *Herschel* observations of low-mass SF regions (André et al. 2010; Arzoumanian et al. 2011) dense cores were found to be located along super-critical filaments<sup>4</sup> without higher concentrations at the junctions. This points toward a scenario in which it is the large potential well of merging filaments (subcritical or supercritical) that enables the formation of massive stars within a cluster. Conform with numerical simulations (e.g. Klessen & Hennebelle 2010; Vázquez-Semadeni et al. 2009) it is therefore ultimately the total mass and the high accretion rate that is the decisive factor for the formation of a cluster. Observationally, apart from the present study, there are more examples of how massive structures can be built up from parsec-scale filaments (DR21, Schneider et al. 2010a and Hennemann et al., in prep.; Vela C, Hill et al. 2011). The supply of material may continue on much smaller (subparsec) scales to build-up a cluster with massive stars, as proposed by, e.g., Csengeri et al. (2011). Alternatively, massive stars may form in a turbulence-regulated, quasi-static scenario (McKee & Tan 2003). However, the discussion of these small, subparsec scale processes is beyond the scope of this paper.

### 3.3. Does triggered star-formation exist?

Dale & Bonnell (2011, 2012) simulated the gravitational collapse of a turbulent (giant) molecular cloud exposed to photoionizing radiation. Their main conclusion was that although the gas and dust is heated, photoionization has no strong *global*, i.e. tens of parsec scale, effect on the dense gas because the massive clumps out of which OB clusters form are continuously accreting and most of the photoionizing flux is absorbed by these

accretion flows. Observationally, no clear picture emerges. In the RMC, a very low UV-field in the remote part of the cloud was determined ( $\approx 2-8$  Habing at a distance of 30 pc, Schneider et al. 1998), supporting the idea of low UV-impact. On the other hand, a temperature gradient, and a tentative age-gradient of sources, was derived (Schneider et al. 2010b)<sup>5</sup>. In addition, *local triggering* of SF, as seen in the RMC (and RCW36, Minier et al., in prep.) is possible (Sect. 2.1). The observed double-peak PDFs (Sect. 2.2) support this scenario. We therefore conclude that though the morphological and PDF analysis of Rosette shows no evidence that SF is *globally triggered* (across the whole extent of the cloud), but is moreover governed by gravity, the impact of UV-radiation is not settled and needs more investigation.

*Acknowledgements.* We thank V. Ossenkopf, E. Vázquez-Semadeni, and J. Dale for fruitful discussions, and the referee, J. Williams, for useful comments. SPIRE has been developed by a consortium of institutes led by Cardiff University (UK) and including Univ. Lethbridge (Canada); NAOC (China); CEA, LAM (France); IFSI, Univ. Padua (Italy); IAC (Spain); Stockholm Observatory (Sweden); Imperial College London, RAL, UCL-MSSL, UKATC, Univ. Sussex (UK); and Caltech, JPL, NHSC, Univ. Colorado (USA). This development has been supported by national funding agencies: CSA (Canada); NAOC (China); CEA, CNES, CNRS (France); ASI (Italy); MCINN (Spain); SNSB (Sweden); STFC (UK); and NASA (USA). PACS has been developed by a consortium of institutes led by MPE (Germany) and including UVIE (Austria); KU Leuven, CSL, IMEC (Belgium); CEA, LAM (France); MPIA (Germany); INAF-IFSI/OAA/OAP/OAT, LENS, SISSA (Italy); IAC (Spain). This development has been supported by the funding agencies BMVIT (Austria), ESA-PRODEX (Belgium), CEA/CNES (France), DLR (Germany), ASI/INAF (Italy), and CICYT/MCYT (Spain). Part of this work was supported by the ANR (*Agence Nationale pour la Recherche*) project “PROBeS”, number ANR-08-BLAN-0241. R.S.K. acknowledges support from the the German Bundesministerium für Bildung und Forschung via the ASTRONET project STAR FORMAT (grant 05A09VHA) and from the DFG via grant SFB 881. T.C.s. acknowledges financial support for the ERC Advanced Grant GLOSTAR under contract no. 247078.

## References

- André, Ph., Men'shchikov, A., Bontemps, S., et al. 2010, A&A, 518, L102  
 Arzoumanian, D., André, Ph., Didelon, P., et al. 2011, A&A, 529, L1  
 Ballesteros-Paredes, J., Klessen, R., et al. 2007, Protostars and Planets V, ed. B. Reipurth, D. Jewitt, & K. Keil, Univ. of Arizona Press, 951, 63  
 Ballesteros-Paredes, J., Vázquez-Semadeni, E., et al. 2011, MNRAS, 416, 1436  
 Bohlin, R. C., Savage, B. D., & Drake, J. F. 1978, ApJ, 224, 132  
 Csengeri, T., Bontemps, S., Schneider, N., et al. 2011, ApJ, 740, L5  
 Dale, J. E., & Bonnell, I. 2011, MNRAS, 414, 321  
 Dale, J. E., & Bonnell, I. 2012, MNRAS, accepted [arXiv:1202.1417]  
 Elmegreen, B., & Lada, C. 1977, ApJ, 214, 725  
 Federrath, C., Klessen, R. S., & Schmidt, W. 2008, ApJ, 688, L79  
 Federrath, C., Sur, S., Schleicher, D., et al. 2011, ApJ, 731, 62  
 Griffin, M., Abergel, A., Abreau, A., et al. 2010, A&A, 518, L3  
 Heiderman, A., Evans, N. J. II, Allen, L. E., et al. 2010, ApJ, 723, 1019  
 Hennemann, M., Motte, F., Bontemps, S., et al. 2010, A&A, 518, L84  
 Hill, T., Motte F., Didelon P., et al. 2011, A&A, 533, A94  
 Hill, T., Motte F., Didelon P., et al. 2012, A&A, submitted  
 Jackson, J., Finn, S., Chambers, E., et al. 2010, ApJ, 719, L185  
 Klessen, R. S., & Hennebelle, P. 2010, A&A, 520, A17  
 Lada, C. J., Lombardi, M., & Alves, J. 2010, ApJ, 724, 687  
 McKee, C. F., & Tan, J. C. 2003, ApJ, 585, 850  
 Mac Low, M.-M., & Klessen, R. 2004, Rev. Mod. Phys., 76, 125  
 Motte, F., Bontemps, S., Schilke P., et al. 2007, A&A, 476, 1243  
 Motte, F., Zavagno A., Bontemps S., Schneider N., et al. 2010, A&A, 518, L77  
 Nguyen Luong, Q., Motte, F., Hennemann, M., et al. 2011, A&A, 535, A76  
 Phelps, R. L., & Lada, E. A. 1997, ApJ 477, 176  
 Pilbratt, G., Riedinger, J., Passvogel, T., et al. 2010, A&A, 518, L1  
 Poglitsch, A., Waelkens, C., Geis, N., et al. 2010, A&A, 518, L2  
 Poulton, C., Robitaille, T. P., Greaves, J. S., et al. 2008, MNRAS, 384, 1249

<sup>4</sup> Gravitationally unstable with a mass per unit length larger than  $2c_s^2/G$  with the isothermal sound speed  $c_s$ .

<sup>5</sup> Temperature gradients on smaller scales ( $<10$  pc) were also seen in M16 (Hill et al. 2012) and Vela C (Minier et al., in prep.)

- Román-Zúñiga, C. G., Elston, R., Ferreira, B., & Lada, E. 2008, *ApJ*, 672, 861  
 Schneider, N., Stutzki, J., Winnewisser, G., et al. 1998, *A&A*, 338, 262  
 Schneider, N., Csengeri, T., Bontemps S., et al. 2010a, *A&A*, 520, A49  
 Schneider, N., Motte F., Bontemps S., et al. 2010b, *A&A*, 518, L83  
 Shetty, R., Kauffmann, J., Schnee, S., et al. 2009, *ApJ*, 696, 2234  
 Sousbie, T., Pichon, C., & Kawahara, H. 2011, *MNRAS*, 414, 384  
 Starck, J.-L., Elad, M., & Donoho, D. L. 2004, *Adv. Imag. Electron. Phys.*, 132, 287  
 Vázquez-Semadeni, E., et al. 2009, *ApJ*, 702, 1023  
 Walch, S., Withworth, A., Bisbas, T., et al. 2011, *ApJ*, submitted  
 [astro-ph:1109.3478]  
 Williams, J. P., Blitz, L., & Stark, A. 1995, *ApJ*, 451, 252  
 Zavagno, A., Anderson, L., Russeil, D., et al. 2010, *A&A*, 518, L101
- 
- <sup>1</sup> IRFU/SAP CEA/DSM, Laboratoire AIM CNRS - Université Paris Diderot, 91191 Gif-sur-Yvette, France  
<sup>2</sup> Max-Planck Institut für Radioastronomie, Auf dem Hügel, Bonn, Germany  
<sup>3</sup> Monash Centre for Astrophysics (MoCA), School of Mathematical Sciences, Monash University, Victoria 3800, Australia  
<sup>4</sup> Zentrum für Astronomie der Universität Heidelberg, Inst. für Theor. Astrophysik, Albert-Ueberle Str. 2, 69120 Heidelberg, Germany  
<sup>5</sup> OASU/LAB-UMR5804, CNRS, Université Bordeaux 1, 33270 Floirac, France  
<sup>6</sup> National Research Council of Canada, Herzberg Institute of Astrophysics, Victoria BC, Canada  
<sup>7</sup> Laboratoire d'Astrophysique de Marseille, CNRS/INSU – Université de Provence, 13388 Marseille Cedex 13, France  
<sup>8</sup> Université de Toulouse, UPS, CESR, 9 av. du colonel Roche, 31028 Toulouse, France  
<sup>9</sup> IAPS-INAF, Fosso del Cavaliere 100, 00133 Roma, Italy  
<sup>10</sup> Cardiff University School of Physics and Astronomy, Cardiff, UK  
<sup>11</sup> CITA & Dep. of Astronomy and Astrophysics, University of Toronto, Toronto, CA, Canada  
<sup>12</sup> Department of Physics and Astronomy, University of Victoria, PO B 355, STN CSC, Victoria BC, Canada  
<sup>13</sup> Institut d'Astrophysique de Paris, UPMC, UMR 7095, CNRS, 98 Bd. Arago, 75014 Paris, France  
<sup>14</sup> ESO, Karl Schwarzschild Str. 2, 85748 Garching, Germany  
<sup>15</sup> Department of Physics & Astronomy, The Open University, Milton Keynes MK7 6AA, UK  
<sup>16</sup> The Rutherford Appleton Laboratory, Chilton, Didcot, OX11 0NL, UK

## Appendix A: Observations and column density map

The Rosette was observed during the science demonstration phase (SDP) within the HOBYS key program. This program is dedicated to the earliest stages of high-mass star formation and images all molecular complexes that form high-mass stars at less than 3 kpc with SPIRE (Griffin et al. 2010) and PACS (Poglitch et al. 2010) using the *Herschel* satellite (Pilbratt et al. 2010). The SPIRE and PACS data<sup>6</sup> from 70  $\mu\text{m}$  to 500  $\mu\text{m}$  were obtained on October 20, 2009 in parallel mode with a scanning speed of 20"/s. Two orthogonal coverages of size  $1^\circ 45' \times 1^\circ 25'$  were performed, mapping the (largest) southeast part of the Rosette molecular cloud. The SPIRE data were reduced with HIPE version 7.1956, using a modified version of the pipeline scripts, i.e., observations that were taken during the turnaround at the map borders were included, the most recent calibration tree was used, and the destriper-module with a polynomial baseline of 0th order was applied. The two orthogonally scanned maps were then combined using the “naive-mapper” (i.e., a simple averaging algorithm). The destriper module significantly improved the resulting maps, compared to the first data reduction just after the SDP (Schneider et al. 2010b). The angular resolutions at 160, 250, 350, and 500  $\mu\text{m}$ , are  $\sim 12''$ ,  $\sim 18''$ ,  $\sim 25''$ , and  $\sim 37''$ , respectively.

The column density was determined from a pixel-to-pixel modified black body fit to four wavelengths of PACS and SPIRE (160, 250, 350, 500  $\mu\text{m}$ , all maps were smoothed to the beam-size of the 500  $\mu\text{m}$  map, i.e.,  $\sim 37''$ ). For the region covered by PACS and SPIRE simultaneously, we fixed the specific dust opacity per unit mass (dust+gas) approximated by the power law  $\kappa_\nu = 0.1 (\nu/1000 \text{ GHz})^\beta \text{ cm}^2/\text{g}$  and  $\beta = 2$ , and left the dust temperature and column density as free parameters (see Hill et al. 2011; Arzoumanian et al. 2011 for details). For the region only covered with SPIRE<sup>7</sup> we used 17.3 K, the median value of the SED-derived temperature across the main map where PACS and SPIRE overlap giving us four-band coverage at 160, 250, 350, and 500  $\mu\text{m}$ . We checked the fitted SEDs and found no major discrepancy in the fits, though the method described above assumes a single temperature and optically thin emission, which is not always a good approximation if there is a temperature variation along the line-of-sight, noise, and if the dust becomes optically thick at shorter wavelengths. Shetty et al. (2009), for example, showed that this can even produce an anti-correlation of  $\beta$  and T which was claimed to be observed by other authors. However, it is beyond the scope of this paper to go more into detail. While the column density map shown in Schneider et al. (2010b) was calibrated using extinction maps, we now recovered the *Herschel* zero-flux levels of the Rosette field with *Planck* data (Bernard et al., priv. commun.). The final column density map is shown in Fig. 4.

## Appendix B: Curvelet/wavelet decomposition and filament tracing

There are two parameters determining the detection of filaments: First, the separation into curvelets and wavelets, and second the threshold of DisPerSE to detect filaments. From our experience on the curvelet/wavelet analysis from *Herschel* column density maps so far (André et al. 2010; Arzoumanian et al. 2011; Hill et al. 2011), and from several tests with Rosette, we arrived at a good compromise of 20% of the intensity being in

the curvelets (a difference of around  $\pm 10\%$ , however, does not change the overall picture). This reveals the filamentary structure without completely suppressing the more compact sources. The DisPerSE algorithm detects filaments starting from a given threshold (defined as difference between saddle points and peak values) on the curvelet image. However, the column density map is a 2D-projection of the volume density while DisPerSE works topologically, connecting all emission features such that projection effects may create links between filaments that are not physically related. To overcome this caveat, filament tracing using molecular line data cubes can be a solution, as first tests on the DR21 filament have shown (Schneider et al., in prep.).

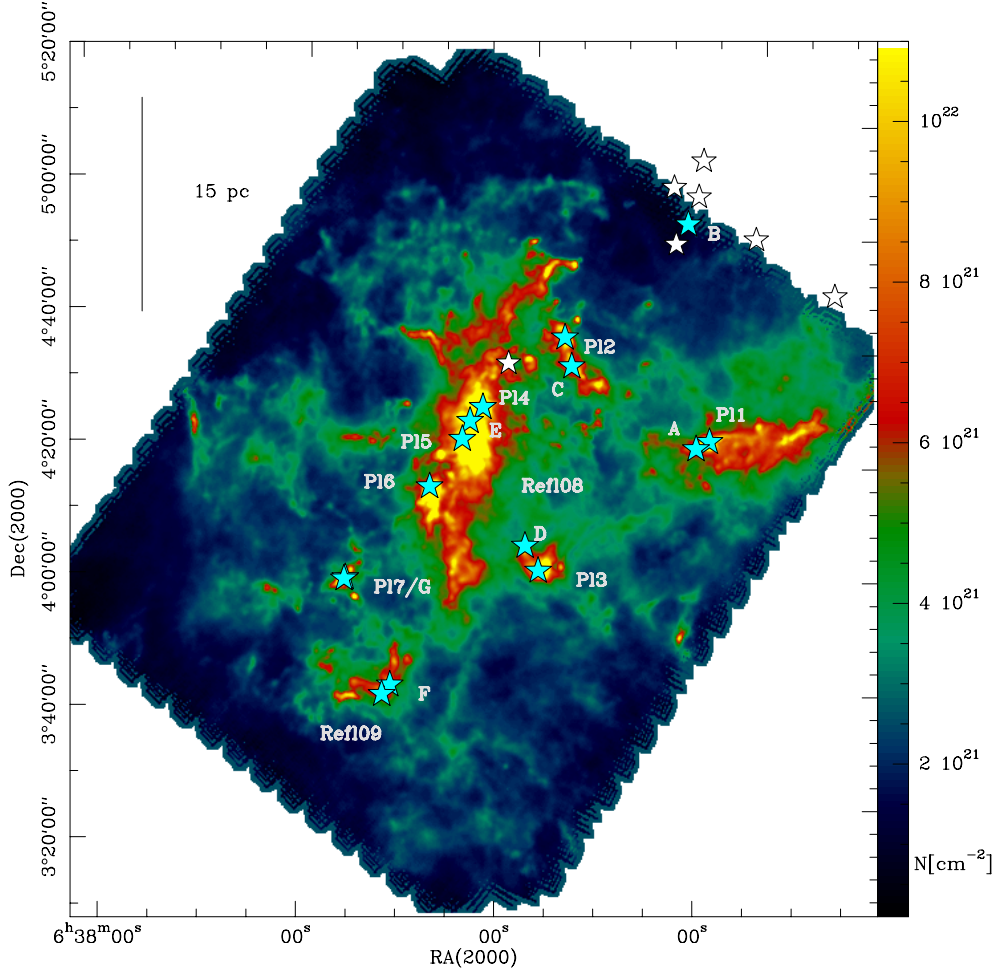
Figure 5 shows as an example a close-up of the crowded center region of Rosette where different thresholds were applied. A threshold is defined by an intensity contrast between pixels, the lowest one starting at  $0.5 \times 10^{21} \text{ cm}^{-2}$  and accordingly finding many filaments, up to to a fairly conservative value of  $2.9 \times 10^{21} \text{ cm}^{-2}$ , leaving only the most prominent features. For this paper, a threshold of  $1.0 \times 10^{21} \text{ cm}^{-2}$  was chosen in order not to detect too faint filaments. It is only the most prominent ones that are able to provide enough material that is accreted onto the cluster center to build up high enough masses. Again, changing the threshold does not alter these prominent filaments, they always remain detected.

## Appendix C: Probability density function of the Rosette cloud

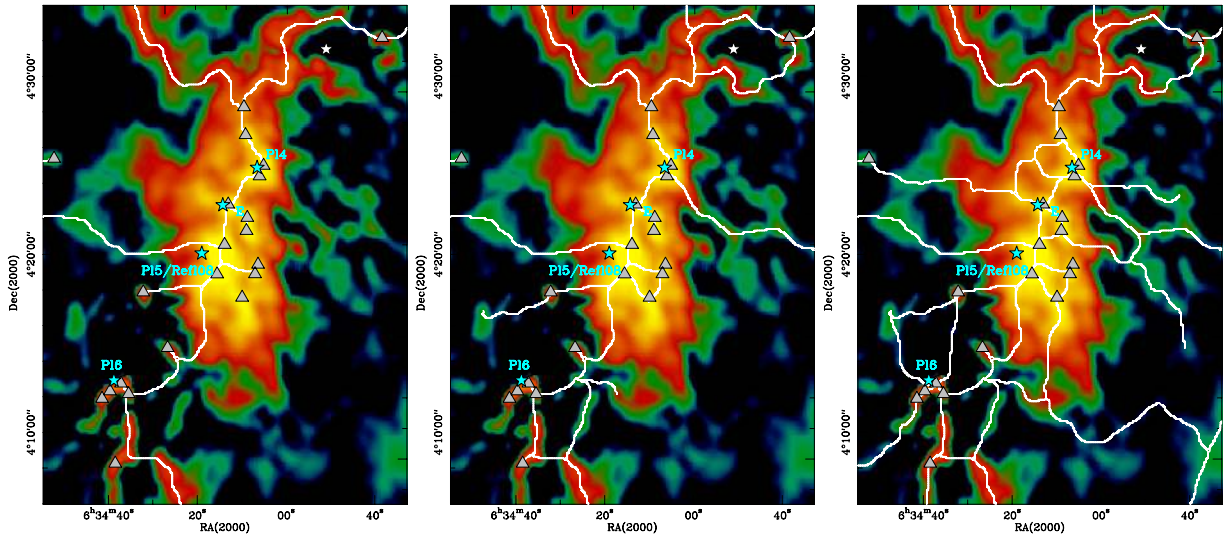
The probability density function of the whole cloud obtained from the column density map (Figs. 2 or 4) is shown in Fig. 6 in linear and logarithmic scaling. It displays a log-normal form for lower column densities and a clearly defined power-law tail for higher column densities that was fitted with a power-law. This is not generally the case, while the PDF of the high-mass SF region NGC 6334 also shows a clear power-law tail (Russeil et al., in prep.), the PDFs of other high-mass SF clouds are more complex and show several breaks in the PDFs (Hill et al. 2011; Csengeri et al., in prep.). The reason for that can partly be line-of-sight effects and limited angular resolution. A more detailed discussion of PDFs of intermediate- and high-mass SF regions and comparison to models is presented in Csengeri et al. (in prep.).

<sup>6</sup> Data are public available in the *Herschel* Science Archive.

<sup>7</sup> The instruments are offset by 11' in the focal plan.

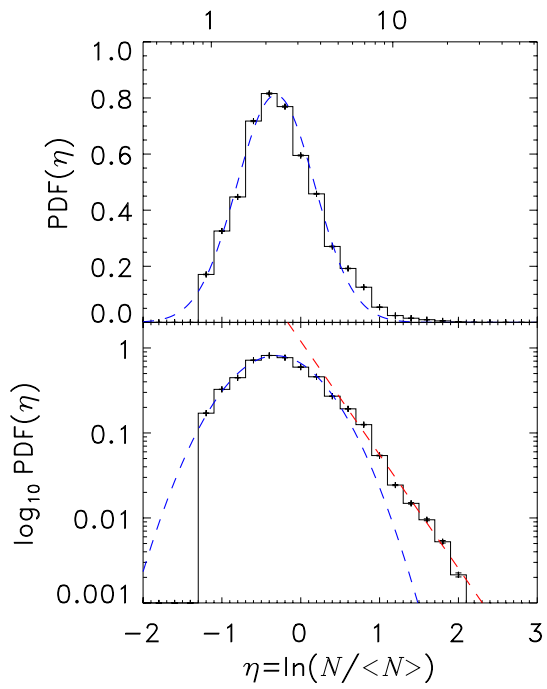


**Fig. 4.** Column density map of the Rosette molecular cloud, obtained from the 160, 250, 350, and 500  $\mu\text{m}$  maps from *Herschel*. Known infrared-clusters are indicated in the plot as blue stars (“PI” refers to Phelps & Lada (1997), A, B, etc. the clusters from Poulton et al. 2008), and labeling “Ref1” those from Román-Zúñiga et al. 2008). White stars in the upper right corner indicate the O-stars from NGC2244.



**Fig. 5.** Close-up of the curvlet image (Fig. 1) of the center region of the Rosette molecular cloud with the filamentary structure traced by DisPerSE, indicated with white lines. Different thresholds (called “persistence”, i.e. intensity contrast level, for filament detection were used ( $2.9, 1.0, 0.5 \times 10^{21} \text{ cm}^{-2}$  from left to right). The curvlet image has a maximum value for the column density of  $2 \times 10^{22} \text{ cm}^{-2}$  with a sigma of  $0.5 \times 10^{21}$  and the original column density map a maximum of  $9.4 \times 10^{22} \text{ cm}^{-2}$  with a sigma of  $1.4 \times 10^{21}$ .





**Fig. 6.** Probability density function of the whole cloud obtained from the column density map in linear (*top*) and logarithmic (*bottom*) scaling. The *upper* labeling indicates the visual extinction. The red dashed line shows a power-law fit (the high-density range beyond  $A_V = 20^m$  is not well resolved, we therefore did not attempt to fit a second power law.)