

**Draft Manuscript- Version 1.0, March 2010**

**(Do Not Cite or Quote Without Permission)**

# **COHERENCE, PHASE DIFFERENCES, PHASE SHIFT AND PHASE LOCK IN EEG/ERP ANALYSES**

**Robert W. Thatcher, Ph.D.**

**NeuroImaging Laboratory, Applied Neuroscience Research Institute, St. Petersburg, FL**

**Send Reprint Requests To:**

**Robert W. Thatcher, Ph.D.  
NeuroImaging Lab,  
Applied Neuroscience Research Institute  
7985 113<sup>th</sup> Street, Suite 210, Seminole, FL 33772  
rwthatcher@yahoo.com**

### **Abstract**

A review of the literature demonstrates that EEG coherence is related to a mixture of phase locking interrupted by phase shifts in the spontaneous EEG. EEG coherence is positively related to phase lock durations that range from approximately 100 msec to 400 msec in normal controls. Phase lock periods are interrupted for 30 to 80 msec by phase shifts which mark the beginning of a different set of connections that become phase locked and the process repeats continuously. Coherence is like a correlation coefficient and lacks temporal resolution in a time series and is influenced by volume conduction when phase difference = 0. Average reference and Laplacian transforms distort physiologically generated phase differences and invalidate the use of these transforms in the computation of coherence and phase differences as well as in the computation of directed coherence and phase reset. Time domain measures of phase shift and phase lock are less prone to artifact and are independent of volume conduction. Another advantage of measuring network coupling in the time domain is that basic neurophysiological processes such as IPSPs and EPSP durations can be directly related to the dynamics measured in ERP and EEG studies.

## Introduction

Coherence is a measure of the variability of time differences between two time series. The Fourier transform provides a direct relationship between the time and frequency domains and represents time difference as a phase difference or phase angle. If the phase angle is stable and constant over time i.e., phase locked then coherence = 1.0 and if time differences between two time series varies from moment-to-moment then coherence = 0. EEG coherence is often interpreted as a measure of “coupling” and as a measure of the functional association between two brain regions (Walter, 1968; Nunez, 1981; Nunez, 1995; Thatcher et al, 1986; 1987). Coherence is a sensitive measure that can reveal subtle aspects of the network dynamics of the brain which complement the data obtained by autopower spectral analyses. The earliest application of coherence measures to EEG was by Donald Walter in 1963 (Walter, 1963) and since this time there have been hundreds of studies of EEG coherence. Here is a small sampling of EEG coherence studies since this time, for example, cognition (Babiloni et al, 2010; Giannitrapani, 1985; Kislova and Rusalova, 2009; Marosi et al, 1997; Martin-Loeches et al, 2001; Thatcher et al, 2005), brain maturation (Thatcher et al, 1987; 2008a; Thatcher, 1992; 1998; Gasser et al, 1988; Hanlon et al, 1999); heritability ( van Baal et al, 2001; Van Beijsterveldt et al, 1998), gender differences (Koles et al, 2010; Hanlon et al, 1999), directed coherence (Kamiński and Blinowska, 1991; Kamiński et al, 1997; Tropini et al, 2009; Korzeniewska et al, 2003), EEG and electromyography (Florin et al, 2010; Astolfi et al, 2010) and various clinical disorders (Babiloni et al, 2010; Barry et al, 2002; Hughes and John, 1999; John et al, 1988; McAlaster, 1992; Kumar et al, 2009; De Vico Fallani et al, 2010; John, 2009; Shaw et al, 1983; Thatcher et al, 1998).

## EEG Phase Differences

EEG phase differences are often used to compute “directed coherence” which is a measure of the directional flow of information between two EEG electrode sites (Kamiński and Blinowska, 1991; Kamiński et al, 1997). EEG phase differences are also used to estimate conduction velocities and synaptic integration times as one increases the inter-electrode distance in different directions (Suzuki, 1974; Nunez, 1981; Thatcher et al, 1986; 2008a; Riddle and Baker, 2005). Volume conduction requires that phase differences = 0. Therefore, phase differences are very important in evaluating network dynamics that do not involve volume conduction. At the same time, zero phase lag relations exist across wide domains of the cerebral cortex due to the thalamus which is centrally located and can simultaneously activate neurons in distant cortical regions (Steriade, 2006). Therefore, just because phase difference = 0 does not mean that volume conduction explains the results, an underlying thalamic input to two or more locations can also explain the results. A method to distinguish zero phase lag due to volume conduction vs zero phase lag due to network connectivity is by phase reset measures that precisely define the onset and offset of phase shift which is by definition independent of volume conduction (Freeman et al, 2002; 2003; 2006; Thatcher et al, 2008; 2009). Phase differences have a clear physiological basis such as conduction velocities in white matter tracks, synaptic delays, refractoriness and the rise times of synaptic potentials and the stability of physiologically generated phase differences as estimated by coherence. Therefore, it is important that the physiological time differences in the common reference recording are preserved prior to calculating coherence or mean phase difference. All EEG recordings are actually bipolar recordings, i.e., differences between two scalar electrical potentials applied to the inputs of a differential amplifier. This is important because it is an error to use vector multiplication of scalp electrical potentials when in fact electrical potentials are not vectors but rather they are scalars (Malmivuo and Plonsey, 1995; Feynman et al, 1964). This incorrect representation has resulted in confusion about the contribution of a common reference (Guevara et al, 2005). A common reference is a bipolar recording in which there is a shared reference

for all scalp channels, for example, the same single input to one end of a differential amplifier, e.g., an ear, mastoid, physically linked ears or a single scalp location like Fpz, etc. and the other end of the amplifier is attached to a scalp electrode site referred to as the “active” lead. This arrangement is repeated for all of the scalp EEG electrodes using the same or common reference. Standard bipolar recordings involving closely spaced pairs of electrodes does not satisfy this relationship because there is no single electrode that is a reference common to all other electrodes. This is important because of the algebra of common reference recordings using a scalar where, for example, the instantaneous phase difference between scalp electrode A and the common reference  $R = 60^{\circ}$  and the instantaneous phase difference between scalp electrode B and the common reference  $R = 45^{\circ}$ , then  $(A-R) - (B-R) = A-B = 60^{\circ} - 45^{\circ} = 15^{\circ}$  instantaneous phase difference. In other words when a common reference is used in a differential amplifier then the phase or time differences due to the reference electrode ‘R’ cancels and drops out of the time series leaving the time difference between the two active scalp leads as the physiologically accurate measure, i.e.,  $15^{\circ}$  phase difference between locations A and B. This is important information because directed phase differences can be calculated based on this information, including epileptic spike propagation and many other neurophysiological processes such as IPSP and EPSP durations (Nunez, 1981; 1994; Steriade, 2006).

### **Problems with Re-Montaging and Distortions of the Original Time Series**

If the original EEG/ERP time series is transformed into a second time series by using the average reference then the original phase differences from three electrode locations are scrambled and lost. For example, electrodes A, B and C connected to different amplifiers and R is common to all three amplifiers and let the instantaneous phase differences be:  $A-R = 10^{\circ}$ ,  $B-R = 15^{\circ}$  and  $C-R = 267^{\circ}$ , and the average =  $97.33^{\circ}$  and if we subtract the average instantaneous phase difference from each electrode then we have  $-87.33^{\circ}$ ,  $-82.33^{\circ}$  and  $169.67^{\circ}$  which demonstrates that the phase differences of the original time series is distorted and not proportional and longer related to the underlying neurophysiology. A single large value in an average can distort and skew an entire distribution let alone distort the relationships in the original time series in the first place. This is why the average reference is not physiologically valid in the computation of coherence and has limited applicability to networks in the brain related to subtle and important physiological processes. The method of mixing phase differences precludes meaningful physiological or clinical correlations since measures such as conduction velocity or synaptic rise or fall times can no longer be estimated due to the average reference. The mixing together of phase differences in the EEG traces is also a problem when using the Laplacian transform and, similarly, reconstruction of EEG time series using Independent Component Analyses (ICA), also replaces the original time series with an altered time series that eliminates any physiological phase relationships and therefore is an invalid method of calculating coherence. One may obtain high reliability in test re-test measures of coherence using an average reference, however, the reliability is irrelevant because the method of computation using an average reference or a Laplacian is physiologically uninterpretable (Thatcher, 2010).

Figure one shows the results of a validation test of coherence using a 1 uV sine wave as one channel and then progressively more Gaussian noise mixed with the 1 uV sine wave that is shifted by 30 degrees in order to systematically increase the signal-to-noise ratio. That is, 1 uV signal + 1 uV noise, 1 uV signal + 2 uV noise, 1 uV signal + 3 uV noise, etc. According to the mathematics of coherence there should be a linear inverse relationship between coherence and signal-to-noise ratio and the 30 degree phase shift should be preserved. This is exactly what is seen in the left top (coherence) and left bottom (phase difference) of figure one for the common reference. There is a clear inverse relationship

between coherence and the signal-to-noise and mean phase is near to 30 degrees even though there is high variance at low signal-to-noise ratios. The middle top and bottom are the results of

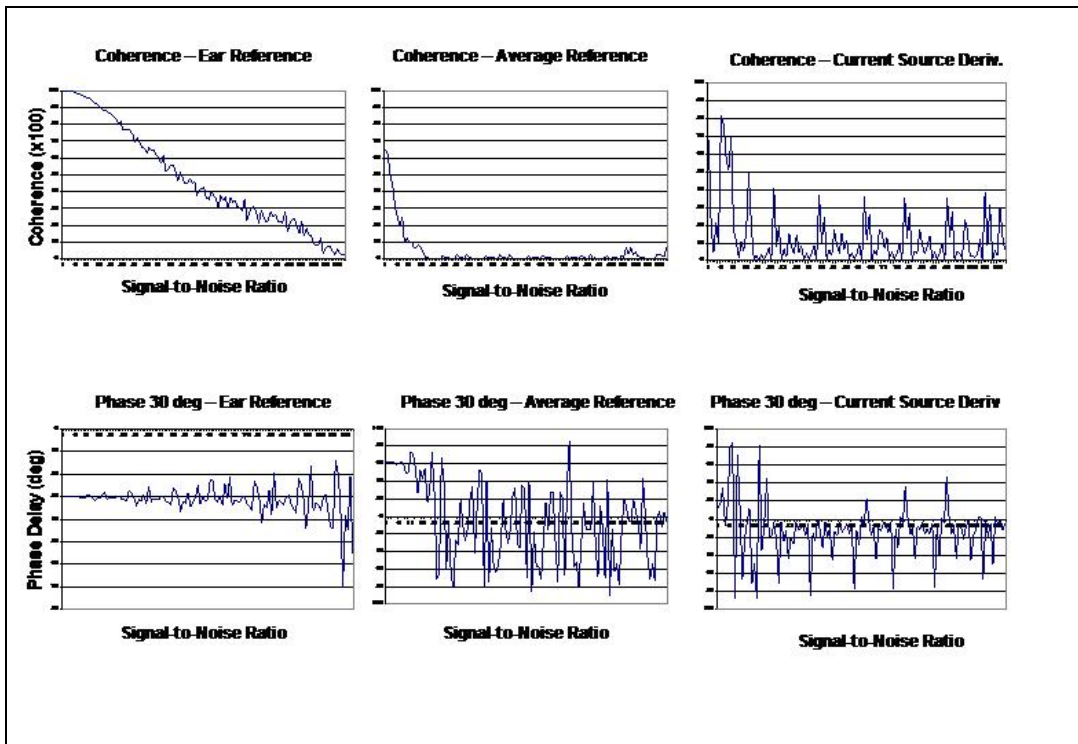


Fig. 1 - Calibration tests of coherence and phase differences using a 1 uV 5 Hz sine wave as a reference and then a 1 uV 30 deg phase shifted test sine wave + 1 uV of Gaussian noise, + 2 uV noise, + 3 uV noise, etc. to create a systematically reduced signal-to-noise ratio test. Top row is coherence, bottom row is phase difference in degrees. Left column is a common reference (one ear), middle column is the average reference and the right column is the Laplacian. A linear relationship coherence and signal-to-noise ratio and preservation of the 30 degree phase differences shows that the common reference is valid. A scrambled relationship between coherence and signal-to-noise ratio and a loss of the 30 degree phase difference for the average reference and Laplacian demonstrates that these reference methods are physiologically invalid for the calculation coherence and phase differences.

the test using an average reference and the right top and right bottom are the results of the test using the Laplacian transform. It can be seen in figure one that the mixing of signal and noise in all channels results in invalid coherence estimates and a complete loss of the 30 degree phase shift. This test can be performed by the interested reader for themselves if there is any doubt that the average reference and the Laplacian distort the original time differences and are therefore physiologically invalid when computing coherence.

EEG coherence and EEG phase delays are statistical estimates and are dependent on the number of degrees of freedom used to smooth or average spectra as well as the “reference” used to derive the data. Thus, while there is only one general mathematical equation for the computation of coherence, nonetheless, differences in the accuracy and sensitivity of the computation of coherence and phase

delays depends on the amount of averaging across frequency bands or across records to achieve statistical stability in both ERP and EEG applications (Thatcher et al, 1994). Zaveri et al (2000) show how increased amplitude in a common reference “inflates” coherence for all electrode combinations but does not distort relationships for any given common reference electrode pair. Fein et al (1988) also showed that interhemispheric coherence was inflated when a common reference with a strong signal was used such as Cz. These authors also computed coherence using reconstructed “reference-free” signals using the source derivation method of Hjorth (1975) with ambiguous results. Again, the process of adding together all of the phase differences from all electrodes destroys the physiologically based time differences that were present in the original time series and replaces the original time series with scrambled phase and thus an inability to accurately relate coherence and phase to an underlying neurophysiology. Using the same reference for all subjects and conditions helps in minimizing the effects of the reference electrode when computing coherence and phase differences.

This problem with the average reference was also pointed out by Nunez (1981) when he stated: “The average reference method of EEG recording requires considerable caution in the interpretation of the resulting record” (p. 194) and that “The phase relationship between two electrodes is also ambiguous”: (p. 195). Rappelsberger (1989) used EEG simulations to evaluate EEG coherence recorded with a single reference, the average reference and source derivation and concluded that EEG coherence is invalid using either the average reference or source derivation, e.g., “Tremendous distortions of the theoretical assumptions of common average reference recording and by source derivation are found in the coherence maps” pg. 66. Directed coherence is another important example where distortions of the time series by the average reference or the Laplacian will obliterate and invalidate directed coherence (Korzeniewska et al, 2003; Kamiński and Blinowska, 1991; Kamiński et al, 1997). Another method that is invalidated by the average reference is Joint-Time-Frequency-Analyses like the Hilbert transform used to calculate instantaneous phase shift and phase lock in the time domain (Freeman et al 2003; 2006; Thatcher et al, 2008b; 2009a; 2009b).

### **What is Phase Resetting?**

Coupled oscillators often drift apart in their phase relationship and a synchronizing pulse can shift the phase of one or both of the oscillations so that they are again in phase or phase locked for a period of time (Pikovsky et al, 2003). Phase reset is made up of a shift in phase followed by phase stability to a new regime or state that is constant for a period of time. The amount of phase resetting per unit time is depicted by phase reset curves or  $PRC = (\text{new phase} - \text{old phase})$ . Positive values of the PRC correspond to phase angle advances, negative values correspond to phase angle reductions. Weak coupling typically exhibits a slow and smooth PRC whereas strong coupling between oscillators often results in abrupt or a discontinuous PRC (Fos and Milton, 2000). The time interval between spike discharge and a post synaptic input can shift phase and firing patterns of neurons and the precise measurement of phase reset in recurrent neural loops has been well studied, see Foss and Milton (2000).

A useful method to measure phase resetting in EEG/ERP studies is to use of the Hilbert transform to compute a time series of instantaneous phase differences and then compute the first derivative of the time series of phase difference on the y-axis and time on the x-axis (Freeman 2002; 2006; Thatcher et al, 2008b; 2009a; 2009b). In the case of spontaneous or ongoing EEG where there is no evoking stimulus then a near zero 1<sup>st</sup> derivative of phase differences = phase lock while a significant positive or negative 1<sup>st</sup> derivative of the time series of phase differences represents a phase shift and both phase shift and phase lock = phase reset (Freeman et al, 2003; 2006; Thatcher et al, 2008b; 2009a). Phase reset is related to the onset of phase synchrony or phase locking and the period of near zero 1<sup>st</sup> derivatives in time is an example of a homeostatic and stable dynamical system (Pikovsky et al, 2003;

John, 2005). Two interesting properties of phase reset are that minimal energy is required to reset phase between weakly coupled oscillators and phase reset occurs independent of amplitude. In weakly coupled chaotic systems amplitude can vary randomly while phase locking is stable.

Figure two illustrates the relationship between coherence, phase differences and phase reset. Coherence is a measure of phase consistency or phase clustering on the unit circle as measured by the length of the unit vector  $r$ . The illustration in figure 2 shows that the resultant vector  $r_1 = r_2$  and therefore coherence when averaged over time is constant even though there can be a shift in the phase

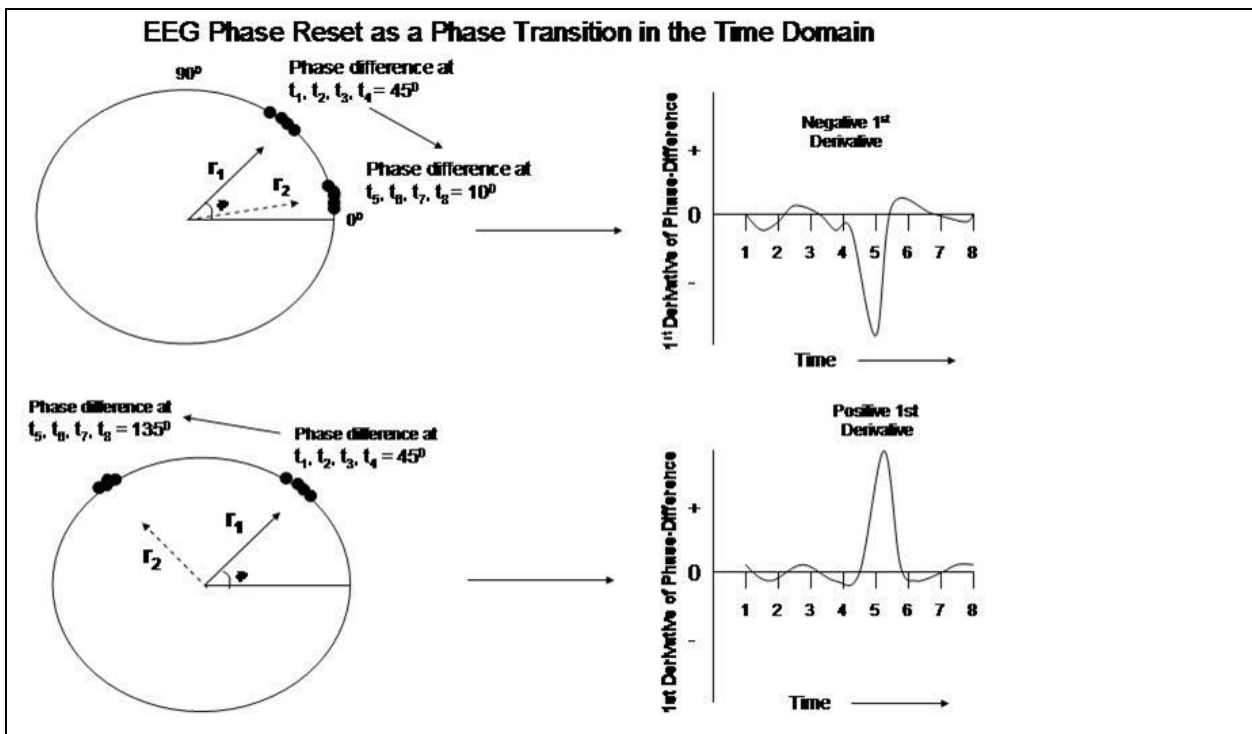


Fig. 2- Illustrations of phase reset. Left is the unit circle in which there is a clustering of instantaneous phase angles and thus high coherence as measured by the length of the unit vector  $r$ . The vector  $r_1 = 45^\circ$  occurs first in time and the vector  $r_2 = 10^\circ$  and  $135^\circ$  occurs later in time. The transition is between time point 4 and 5 where the 1<sup>st</sup> derivative is a maximum. The right displays are a time series of the approximated 1<sup>st</sup> derivative of the instantaneous phase differences for the time series  $t_1, t_2, t_3, t_4$  at mean phase angle =  $45^\circ$  and  $t_5, t_6, t_7, t_8$  at mean phase angle =  $10^\circ$ . Phase shift is defined as a significant negative or positive 1<sup>st</sup> derivative ( $y' < 0$  or  $y' > 0$ ). The 1<sup>st</sup> derivative near zero is when there is phase locking or phase stability and little change over time. The sign or direction of phase reset is arbitrary since two oscillating events being brought into phase synchrony and represent a stable state as measured by EEG coherence independent of direction. The clustering of stable phase relationships over long periods of time is more common than are the phase transitions. The phase transitions are time markers of the thalamo-cortical-limbic-reticular circuits of the brain (from Thatcher et al, 2009a).

angle (i.e., phase difference) that occurs during the summation and average of the computation of coherence. This illustrates the advantage of phase differences which are “instantaneous” and not a statistical average like coherence and a correlation coefficient.

As mentioned previously, an important property of phase reset is that it requires essentially zero

energy to change the phase relationship between coupled oscillators and by this process rapidly create synchronized clusters of neural activity. In addition to phase reset without any change in frequency or amplitude of the EEG spectrum is that it can also be independent of phase history. That is, phase reset occurs independent of magnitude and direction of the phase difference that existed before the onset of the reset pulse (Klinshov and Nekorkin, 2008; Pikovsky et al, 2003).

Figure 3 shows the relationship between the time series of phase differences (top) and the 1<sup>st</sup> derivative of the phase difference time series (bottom). Phase lock occurs when the 1<sup>st</sup> derivative of the time series approximates zero and phase shift is represented by a large 1<sup>st</sup> derivative of the time series of phase differences. The interval of time from the onset and offset of a peak in the 1<sup>st</sup> derivative of phase differences is defined as phase shift duration. The interval of time from the end of one phase shift and the beginning of a subsequent phase shift is defined as the duration of phase locking. For further details see Thatcher et al (2008b, 2009a; 2009b).

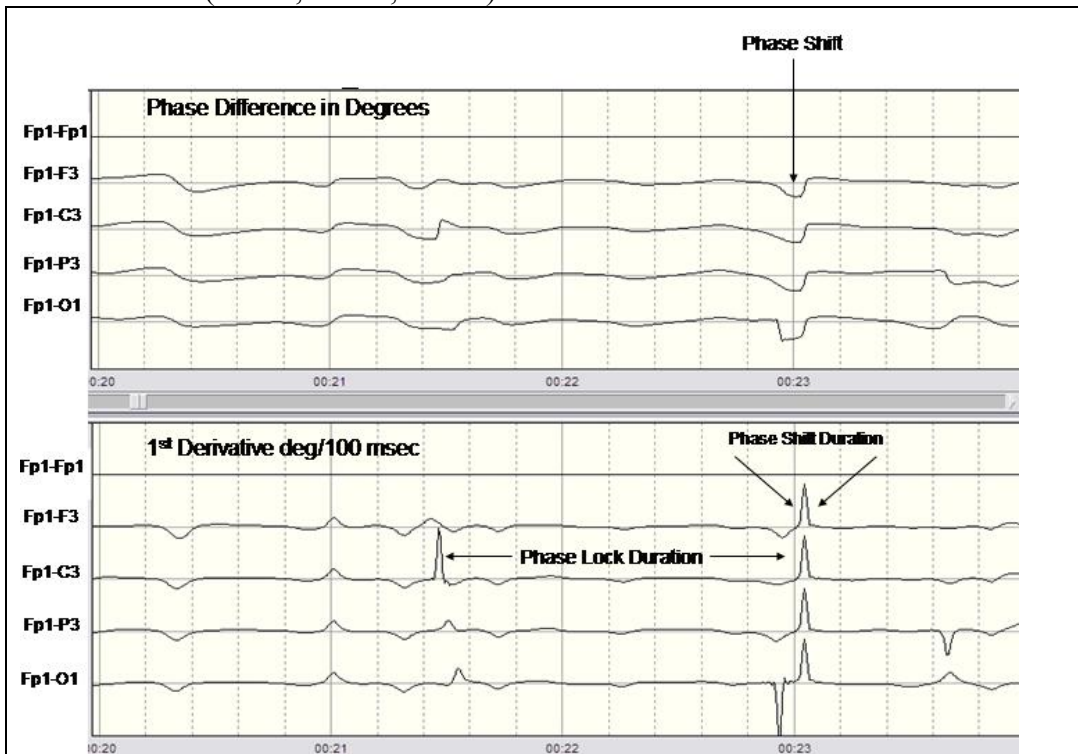


Fig. 3- Example from one subject. Top are the EEG phase differences between Fp1-F3, Fp1-C3, Fp1-P3 and Fp1-O1 in degrees. Bottom are the 1<sup>st</sup> derivatives of the phase differences in the top traces in degrees/centiseconds. A 1<sup>st</sup> derivative  $\geq 5^0$  /cs marked the onset of a phase shift and an interval of time following the phase shift where the 1<sup>st</sup> derivative  $\approx 0$  defined the phase locking interval as described in figure 2.

Patterns of spontaneously occurring synchronous activity involve the creation of temporary differentiated neural assemblies with oscillations and covarying phase at local and large scales (Breakspear and Terry, 2002a; 2002b; Rudrauf et al, 2006; Stam and de Bruin, 2004; Varela, 1995; Varela et al, 2001; Freeman and Rogers, 2002; Thatcher et al, 2008b). The dynamic balance between synchronization and desynchronization is essential for normal brain function and abnormal balance is often associated with pathological conditions such as epilepsy (Lopes da Silva and Pihl, 1995; LeVan



Quyen et al, 2001b; Chevez et al, 2003; Netoff and Schiff, 2002), dementia (Stam et al., 2002a; 2002b) and autism (Thatcher et al, 2009b) and thalamo-cortical dysrhythmias (Linas et al, 1999; Jeanmonod et al, 2001; 2003). Measures of EEG phase reset have been correlated to various frequency bands during cognitive tasks (Kahana, 2006; Kirschfeld, 2005; Tesche and Karhu, 2000), working memory (John, 1968; Rizzuto et al, 2003; Damasio, 1989; Tallon-Baudry et al, 2001), sensory-motor interactions (Vaadia et al, 1995; Roelfsema et al, 1997), hippocampal long-term potentiation (McCartney et al, 2004), brain development (Thatcher et al, 2008a), intelligence (Thatcher, 2008b; Sanseung and Klimesch, 2008) and consciousness (Cosmelli et al, 2004; Varela et al, 2001; John, 2002; 2005).

Myself and colleagues (Thatcher et al, 2008b) discovered opposite relations between phase shift duration and phase lock duration and intelligence with a positive correlation between intelligence and phase shift duration and a negative correlation to phase lock duration. A neural synchronization model was developed in which it was hypothesized that long phase shift durations represent an expanded neural recruitment process in which larger populations of neurons are recruited as phase shift duration lengthens. Phase shift duration was modeled by the duration of inhibitory burst activity in thalamo-cortical circuits in which the longer the inhibitory burst then the greater the phase shift duration (Thatcher et al, 2008b). Phase lock duration is mediated by inhibitory post synaptic potentials and represents periods of synchrony of selected clusters of neurons that temporarily mediate local and global functions (Buszaki, 2006; Thatcher et al, 2008b; 2009b). Too long of a phase lock period then there is less cognitive flexibility, less neural resource available to be allocated and reduced intelligence (Thatcher et al, 2008b). Follow-up studies in Autistic children indicated a deficiency of thalamo-cortical synchronization in which there is a low degree of neural resource recruitment resulting in a reduced number of neurons that are synchronized at each moment of time coupled with a prolonged period of phase locking that results in reduced flexibility and reduced capacity to recruit available neural resources to be phase locked at subsequent moments of time (Thatcher et al, 2009b).

### **Coherence and Volume Conduction**

Electrical events occur inside of the human body which is made up of 3-dimensional structures like membranes, skin and tissues that have volume. Electrical currents spread nearly instantaneously throughout any volume. Because of the physics of conservation there is a balance between negative and positive potentials inside the volume at each moment of time with slight delays near to the speed of light (Feynmann et al, 1964). Sudden synchronous synaptic potentials on the dendrites of a cortical pyramidal cell result in a change in the amplitude of the local electrical potential referred to as an "Equivalent Dipole". The shape of the electrical potential at the scalp surface is different depending on the solid angle between the source and the electrode. Volume conduction involves near zero phase delays between any two points within the electrical field as collections of dipoles oscillate in time (Nunez, 1981). As mentioned previously, zero phase delay is one of the important properties of volume conduction and it is for this reason that measures such as the cross-spectrum, imaginary spectrum, bi-coherence, phase reset and coherence of long phase delays are so critical in measuring brain connectivity independent of volume conduction (Pascual-Marqui, 2007). When separated generators exhibit a stable phase difference at, for example, 10 degrees then this can not be explained by volume conduction because by definition phase = 0. As will be explained in later sections correlation coefficient methods such as the Pearson product correlation do not compute phase and are therefore incapable of controlling for volume conduction. The use of complex numbers and the cross-spectrum is

essential for studies of brain connectivity not only because of the ability to control volume conduction but also because of the need to measure the fine temporal details and temporal history of coupling or “connectivity” within and between different regions of the brain (Nolte et al, 2004; Pascual-Marqui, 2007).

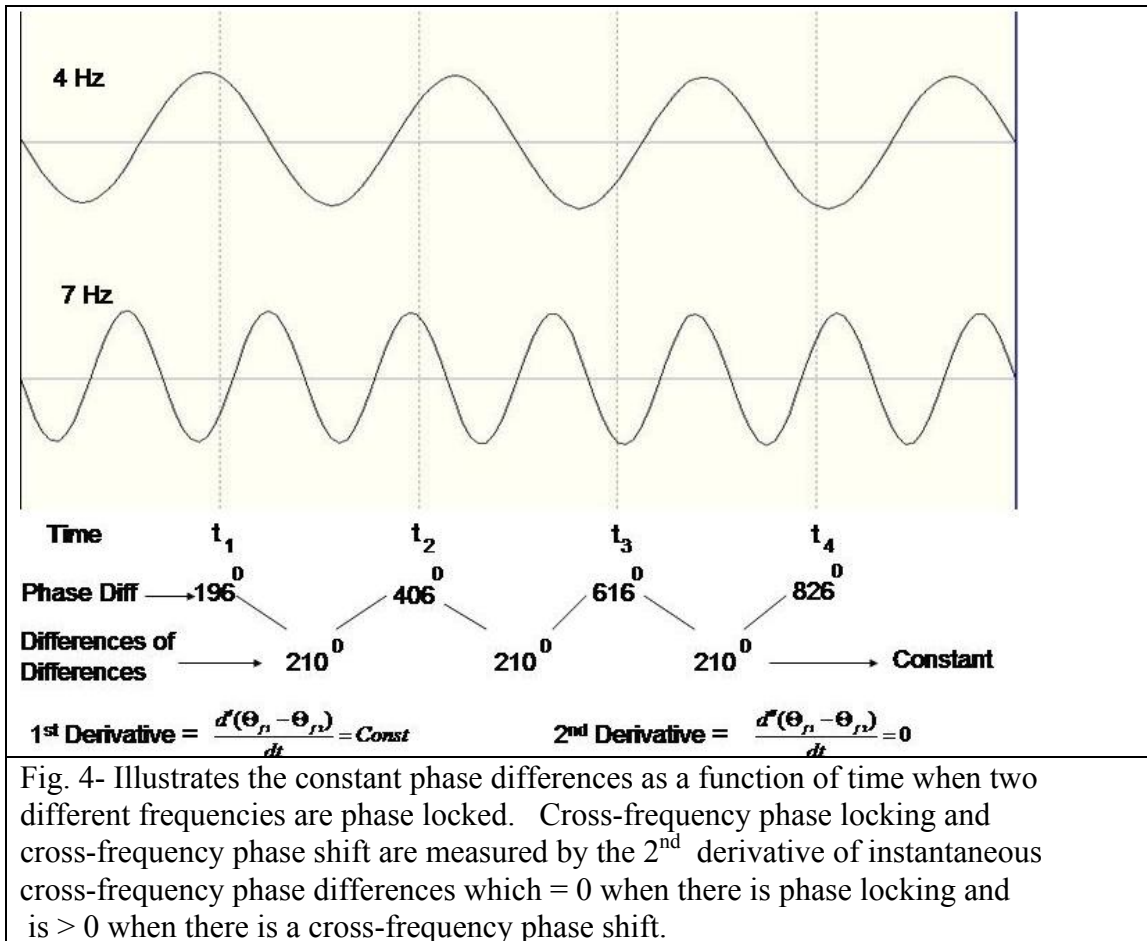
### **How is network zero phase lag different from volume conduction?**

Spatially distributed neurons exhibit near zero phase difference, referred to as a “binding” or “synchrony” within a network of neurons, which is independent of volume conduction (Ekhorn et al, 1988; Gray et al, 1989, John, 2005; Thatcher et al, 1994). The thalamus is the master synchronizer of the EEG and “binding” at zero phase lag can easily be produced by the centrally located thalamus (see Steriade, 1995; 2006). Multiple unit recordings and Magnetic electroencephalography (MEG) which is invisible to volume conduction have firmly established the scientific validity of network zero phase lag independent of volume conduction (Rogers, 1994). The thalamus and septo-hippocampal systems are centrally located inside of the brain and contain “pacemaker” neurons and neural circuits that regularly synchronize widely disparate groups of cortical neurons at different frequencies (Steriade, 2006). The cross-spectrum of coherence and phase difference can distinguish between volume conduction and network zero phase differences such as produced by the thalamus or the septal-hippocampus-entorhinal cortex, etc. For example, if the phase difference uniformly equals zero in the space between two electrodes without a possible third common source then this is volume conduction. On the other hand if a point intermediate between two sources is not at phase = 0 then this can not be explained by volume conduction. Discrete inverse solutions are especially useful to identify intermediate non-zero phase shifted sources (Scherg, 1992; Thatcher et al, 1994). Distributed source inverse methods such as LORETA also distinguish between intermediate non-zero phase shifted sources, albeit larger volumes than with the discrete inverse solutions (Thatcher et al, 2007).

### **Cross-Frequency Phase Synchrony or m:n Phase Synchronization**

Cross-frequency phase synchrony is also called m:n phase synchronization (Schack et al, 2002; 2005). Phase synchronization is the process by which two or more cyclic signals tend to oscillate with a repeating sequence of relative phase angles. Cross-frequency phase synchrony occurs when there is a constant integer relationship between two frequencies such that the two cyclic signals share a repeating sequence of phase angles over consecutive cycles. These integer relationships are the so called Arnold Tongues which follow from bifurcation of the circle map (Pikovsky et al, 2003).

Cross-frequency phase synchrony is mathematically defined by the average 2nd derivative of the instantaneous phase difference between two different frequency bands. Different frequencies, e.g., 4 Hz vs. 7 Hz results in a continuum of changing phase differences and in beat frequencies (frequency mixing). However, when the two frequencies are phase locked and do not change over time (i.e., cross-frequency phase synchrony is constant), then the first derivative of the phase difference between two different frequencies is constant. That is, if two different frequencies are coupled over time then the 1<sup>st</sup> derivative is constant, although different depending on the difference in phase angle between the two frequencies (e.g.,  $\Delta/\theta$  or  $\theta/\beta$  or  $\Delta/\alpha$ , etc). As illustrated in figure four, in order to



measure phase synchrony across frequencies it is necessary to compute the 2<sup>nd</sup> derivative of the phase differences because the 2<sup>nd</sup> derivative = 0 when the 1<sup>st</sup> derivative is constant which is the definition of cross-frequency phase locking. That is, a constant first derivative results in a zero 2<sup>nd</sup> derivative. Therefore, the instantaneous 2<sup>nd</sup> derivative is a direct measure of cross-frequency phase locking in the time domain. Measures of cross-frequency phase shift duration and cross-frequency phase lock duration are obtained using the same metrics as for phase reset within a frequency band (Thatcher, 2008b; 2009a).

The EEG is a mixture of multiple sources of rhythms from infra slow < 1 Hz to 300 Hz that are present in all states of consciousness (Steriade, 2006; Buzsaki, 2006). Cortico-thalamic, septo-hippocampal and intracortical loops resonate at different natural frequencies and cross-frequency phase locking and phase shift is a mechanism to organize multiple brain regions at the same time. For example, beta frequency bursts that ride on the crests of theta rhythms (Jensen and Lisman, 2005) or delta and beta cross-frequency coupling (Sauseng et al, 2008) or theta and alpha cross-frequency coupling (Sauseng et al, 2002). The GABAergic neurons in the nucleus reticularis control the pacemaker activity responsible for the waking EEG in the frequency range from about 2 to 13 Hz (Buzsaki, 2006; Steriade, 1994; 2006). Thalamic inhibitory burst activity shifts the phase of ongoing oscillations in cortico-thalamic loops and phase locking of reticular-limbic and reticular-frontal loops occurs via a spatial-temporal multiplexing. Phase locking of a multitude of frequencies for brief moments of time, approximately 100 msec to 300 msec is a powerful force that binds the action potential excitability cycles across widespread brain regions while complex sequential task activities are

mediated. Buzsaki(2006) characterized the temporal nesting of multiplexed processes by a logarhythmic scale where fine detailed processes are nested within larger scaled processes as a function of  $1/f$ . There is some debate about whether this is “pink” or “brown” noise (Freeman et al, 2006), however, this does not matter since what is important is the fact that relaxation oscillators are the basis functions and they are fit by a common exponential function that governs the nesting of EEG frequencies from  $< 0.1$  to 300 Hz with different exponents. The pervasiveness of the  $1/f$  function in EEG is important because of its linkage to fMRI involving infra-slow rhythms of 10 to 70 seconds with all of the EEG frequencies riding on the rising phase of a metabolic cycle (Monto et al, 2008; Raichle, 2010).

### **LORETA Spatial Temporal Correlations**

A deeper understanding of cortical coupling is possible by studying the coherence and phase relations between 3-dimensional current sources derived from the surface EEG using an inverse method (Thatcher et al, 1994; 2007; Thatcher, 1995; Pascual-Marqui et al, 2001; Hoehstetter et al, 2004). Myself and colleagues (Thatcher et al (1994) recorded EEG during voluntary finger movement and co-registered the event related potential dipole sources to PET scans obtained during when subjects executed the same movement. The PET and EEG dipole co-registration was within a few millimeters and provided for the calculation of three dipole time series, similar to what is expected if implanted electrodes had been used. Coherence and phase differences were then computed for the dipole time series and revealed millisecond by millisecond switching networks that underlay voluntary finger movements. Pascual-Marqui et al, (2001) computed a correlation between LORETA ROIs in schizophrenia patients and Hoehstetter et al (2004) used a discrete dipole solution and computed coherence between dipole time series using complex demodulation.

Myself and colleagues recently computed LORETA 3-dimensional source correlations during resting eyes closed conditions for 33 regions of interest (ROIs) within each hemisphere (Thatcher et al, 2005). Contour maps with frequency from 1 to 40 Hz on the x-axis and distance from a reference ROI on the y-axis with the magnitude of correlation represented on a color scale. The contour maps revealed regular spaced horizontal lines of increased and decreased coupling that had spacings that corresponded to the ‘U’ shaped cortico-cortical connection of the cerebral white matter. Vertical bands of high or low correlation at specific frequencies were also present and were unique to each ROI. The alpha frequency band was often prominent in occipital and parietal ROIs and less prominent in temporal and frontal ROIs. The frontal and temporal ROIs often showed maximal correlations at higher frequencies (e.g., 30-40 Hz), but each ROI showed maximal correlations at specific frequencies with single or a particular group of ROIs. These findings are similar to those reported by Shen et al (1999) using coherence of EEG recorded from subdural electrodes in which specific locations in the electrode grid exhibited high coherence to another location but at a specific frequency. In fact, the authors reported that each subdural electrode exhibited a unique spatial-frequency relationship to all other locations in the grid of electrodes; they presented a type of multiplexing model in which each domain of neurons communicated with all other domains but at specific frequencies. The findings by myself and colleagues using LORETA source correlations are consistent with the Shen et al (1999) “spatial-spectral signature of cortical synchrony” model of cortico-cortical coupling. According to this model, each ROI is connected to all other ROIs and a given region communicates with other regions at specific cross-frequency couplings. This same approach was recently used to replicate the anatomical connectivity of Hagmann et al’s (2006) anatomical ‘Modules’ using LORETA source correlations (Thatcher et al, 2010).

This is another example of cross-frequency phase synchrony but in this case the phase synchrony is between 3-dimensional regions of interest. Multiplexing and coordination of cortical modules appears to be a basic brain mechanism and provides flexibility to temporally bind spatially widespread brain regions at different frequencies (Buzsaki, 2006; Steriade, 2006).

#### **4.0 – Discussion**

The choice of reference in the computation of EEG coherence is important in quantitative EEG. Any signal contained in a single reference will be shared by all of the scalp EEG electrodes and depends on the location of the reference also called a “common reference”. Coherence is a measure of phase consistency or phase stability over time but coherence can be globally inflated when a large signal is present in the reference such as a Cz reference (Fein et al, 1988). However, inflation of coherence is not a serious problem as long as the same common reference is used for all subjects and for all groups and conditions (Zaveri et al, 2000). The differences in coherence are of equal importance to absolute values of coherence, just as they are with a correlation coefficient.

It is easy to understand why coherence is neurophysiologically invalid when using an average reference or a Laplacian since the summation of signals from all channels is “subtracted” or ‘added’ to the electrical potentials recorded at each electrode. In the present paper figure 1 shows the results of a validation test using sine wave signals mixed with noise where the common reference behaves as expected and linearly decreases as a function of declining signal-to-noise ratio. In contrast, the average reference and Laplacian fail to pass this simple validation test.

Coherence is fundamentally a statistical measure of phase stability and varies from 0 to 1, like a squared correlation coefficient. In contrast, instantaneous time domain measures of the duration of phase lock and phase shift provide a direct linkage to underlying neurophysiological processes such as the average duration of IPSPs and EPSPs. Phase reset is made up of the two elemental components of phase lock and phase shift and is less prone to artifact and to problems with volume conduction. The nucleus reticularis contains powerful GABAergic inhibitory neurons and pacemaker neurons which control the frequency and phase of cortico-thalamic loops and is responsible for phase shift and phase lock durations in the EEG (Buzsaki, 2006; Thatcher et al, 2008b; 2009a; 2009b). Phase lock duration is positively correlated with coherence and provides a more fundamental measure of network dynamics than does coherence. Phase shift duration is correlated with cognitive function and appears to be related to recruitment of neural resources, the longer the phase shift duration then the larger the number of recruited neurons that are then phase locked to temporally mediate a give set of functions (Thatcher et al, 2008b).

Cross-frequency phase lock and cross-frequency phase shift are also important and reflect basic neurophysiological processes related to a wide range of cognitive functions and clinical disorders. Recent studies indicate that cortico-thalamic and septo-hippocampal loop systems are cross-frequency phase locked as part of a dynamic of information processing. The nucleus reticularis and zona incerta as well as intracortical inhibitory neurons are the likely candidates that control the duration of cross-frequency phase shift and phase lock and act as master synchronizers of cortical resources.

Finally, 3-dimensional source coherence and phase reset provides a powerful measure of intracortical synchronization and coordination of large modules in the brain (Hagmann et al, 2006) Source correlations and source coherence are less prone to volume conduction and reveal a dynamic spatio-temporal multiplexing of cortical modules that are dependent on short and long distance connections (Thatcher et al, 1994; 2005; 2010; Hoechstetter et al, 2004).

#### **References**

Astolfi, L, Cincotti F, Mattia D, De Vico Fallani F, Salinari S, Marciani MG, Witte H, Babiloni F. (2010). Study of the time-varying cortical connectivity changes during the attempt of foot movements by spinal cord injured and healthy subjects. *Conf Proc IEEE Eng Med Biol Soc.* 2009;2009:2208-11.

Babiloni C, Frisoni GB, Vecchio F, Pievani M, Geroldi C, De Carli C, Ferri R, Vernieri F, Lizio R, Rossini PM. 2010. Global functional coupling of resting EEG rhythms is related to white-matter lesions along the cholinergic tracts in subjects with amnesic mild cognitive impairment. *J Alzheimers Dis.*, 19(3):859-871.

Breakspear, M. and Terry, J.R. (2002a). Detection and description of non-linear interdependence in normal multichannel human EEG data. *Clin. Neurophysiol.*, 113(5): 735-753.

Breakspear, M. and Terry, J.R. (2002b). Nonlinear interdependence in neural systems: motivation, theory and relevance. *Int. J. Neurosci.*, 112(10): 1263-1284.

Buzaski, G.B. (2006). *Rhythms of the Brain.* Oxford Univ. Press, New York.

Chavez, M., Le Van Quyen, M., Navarro, V., Baulac, M. and Martinerie, J. (2003). Spatio-temporal dynamics prior to neocortical seizures: amplitude versus phase couplings. *IEEE Trans. Biomed. Eng.* 50(5): 571-583.

Cosmelli, D., David, O., Lachaux, J.P., Martinerie, J., Garnero, L., Renault, B. and Varela, F. (2004). Waves of consciousness: ongoing cortical patterns during binocular rivalry. *Neuroimage*, 23(1): 128-140.

Damasio, A.R. (1989). Time-locked multiregional retroactivation: A systems-level proposal for the neural substrates of recall and recognition. *Cognition*, 33: 25-62.

De Vico Fallani F, Maglione A, Babiloni F, Mattia D, Astolfi L, Vecchiato G, De Rinaldis A, Salinari S, Pachou E, Micheloyannis S. 2010 Cortical Network Analysis in Patients Affected by Schizophrenia. *Brain Topogr.* 2010 Jan 22. [Epub ahead of print]

Eckhorn, R., Bauer, R. Jordan, W., Brosch, M., Jruse, W., Munk, W. and Reitboeck, H.J. (1988). Coherent oscillations: A mechanism of feature linking in the visual cortex? *Biol. Cybernetics.* 60: 121-130.

Essl, M. and Rappelsberger, P. (1998). EEG coherence and reference signals: experimental results and mathematical explanations. *Med. Biol. Eng. Comput.*, 36: 399-406.

Fein, G., Raz, J., Brown, F.F. and Merrin, E.L. (1988). Common reference coherence data are confounded by power and phase effects. *EEG Clin. Neurophysiol.*, 69: 581-584.

Feynman, R.P., Leighton, R.B. and Sands, M. (1964). *The Feynman Lectures on Physics*, vols. I and II. Reading, MA: Addison-Wesley.

Florin E, Gross J, Reck C, Maarouf M, Schnitzler A, Sturm V, Fink GR, Timmermann L. (2010). Causality between local field potentials of the subthalamic nucleus and electromyograms of forearm muscles in Parkinson's disease. *Eur J Neurosci.*, 31(3):491-498. Epub 2010 Jan 25.

Freeman W.J. and Rogers, L.J. (2002). Fine temporal resolution of analytic phase reveals episodic synchronization by state transitions in gamma EEGs. *J. Neurophysiol*, 87(2): 937-945.

Freeman, W.J., Burke, B.C. and Homes, M.D. (2003). Aperiodic phase-resetting in scalp EEG of beta-gamma-oscillations by state transitions at alpha-theta-rates. *Hum. Brain Mapp.*, 19: 248-272.

Freeman, W.J., Homes, M.D., West, G.A. and Vanhatlo, S. (2006). Fine spatiotemporal structure of phase in human intracranial EEG. *Clin Neurophysiol.* 117(6):1228-1243.

Foss., J. and Milton, J. (2000). Multistability in Recurrent Neural Loops Arising From Delay. *J. Neurophysiol.*, 85:975-985

Giannitrapani, D. The Electrophysiology of Intellectual Functions , Kargere, Press, New York, 1985.

Gray, C. M., Konig, P., Engel, A>K. and Singer, W. (1989). Oscillatory responses in cat visual cortex exhibit inter-columnar synchronization which reflects global stimulus properties. *Nature.* 338: 334-337.

Guevara,R., Velazquez, J.L.P., Nenadovic,V., Wennberg,R., Senjanovi'c, G. and Dominguez, L.G. (2005). Phase synchronization measurements using electroencephalographic recordings What can we really say about neuronal synchrony? *Neuroinformatics*, 3(4): 301–314.

Hagmann, P., Cammoun, L., Gigandet, X., Meuli, R., Honey, C.J., Wedeen, V.J., Sporns, O., 2008. Mapping the structural core of human cerebral cortex. *PLoS Biol.* 6, e159.

Hanlon, H. W., Thatcher, R. W. & Cline, M. J. (1999). Gender differences in the development of EEG coherence in normal children. *Developmental Neuropsychology*, 16 (3), 479-506.

Hjorth B. An on-line transformation of EEG scalp potentials into orthogonal source derivations. *Electroencephalogr Clin Neurophysiol.* 1975 Nov;39(5):526-530.

Hoechstetter K, Bornfleth H, Weckesser D, Ille N, Berg P, Scherg M. (2004). BESA source coherence: a new method to study cortical oscillatory coupling. *Brain Topogr*; 16: 233-238.

Jeanmonod, D., Magnin, M., Morel, A., Siegemund, M., Cancro, R., Lanz, M., Llina's, R., Ribary, U., Kronberg, E., Schulman, J., Zonenshayn, M., 2001. Thalamocortical dysrhythmia: II. Clinical and surgical aspects. *Thalamus Relat. Syst.* 1, 245–254.

Jeanmonod, D., Schulman, J., Cancro, R., Lanz, M., Morel, A., Magnin, M., Siegemund, M., Kronberg, E., Ribary, U., Llina's, R., 2003. Neuropsychiatric thalamocortical dysrhythmia: surgical implications. *Thalamus Relat. Syst.* 2, 103–113.

Jensen, O., Lisman, J., (2005). Hippocampal sequence-encoding driver by cortical multi-item working memory buffer. *Trends Neurosci.* 28, 67–72.

John, E.R. (1968), *Mechanisms of Memory*. Academic Press, New York.

John, E. R., Prichep, L. S. & Easton, P. (1987). Normative data banks and neurometrics: Basic concepts, methods and results of norm construction. In A. Remond (Ed.), *Handbook of electroencephalography and clinical neurophysiology: Vol. III. Computer analysis of the EEG and other neurophysiological signals* (pp. 449-495). Amsterdam: Elsevier.

John, E.R. The neurophysics of consciousness. *Brain Res. Rev.* 2002; 39(1):1-28.

John, E.R. (2005). From synchronous neural discharges to subjective awareness? *Progress in Brain Research*, Vol. 150: 143-171.

John, JP. (2009). Fronto-temporal dysfunction in schizophrenia: A selective review. *Indian J Psychiatry*. 2009 Jul-Sep;51(3):180-90.

Kahana, M.J. (2006). The cognitive correlates of human brain oscillations. *J. Neurosci.*, 26:1669-1672.

Kamiński, M. and Blinowska, K.J. (1991). A new method of the description of the information flow in the brain structures. *Biol.Cybern.* **65**, 203-210.

Kamiński, M., Blinowska, K.J., and Szelenberger, W. (1997). Topographic analysis of coherence and propagation of EEG activity during sleep wakefulness. *EEG and Clin. Neurophysiol.*, 102: 216-227.

Kirschfeld, K. (2005). The physical basis of alpha waves in the electroencephalogram and the origin of the "Berger effect"., *Biol. Cybern.*, 92(3):177-185.

Kislova OO, Rusalova MN. (2009). EEG coherence in humans: relationship with success in recognizing emotions in the voice. *Neurosci Behav Physiol*. 2009 Jul;39(6):545-52. Epub 2009 Jun 11.

Klimesch W., Schack, B., Schabus, M., Doppelmayr, M., Gruber, M. and Saunsgen, R. Phase-locked alpha and theta oscillations generate the P1-N1 complex and are related to memory performance. *Brain Res. Cogn.*, 2004, 19(3): 302-316.

Klinshov, V.V. and Nekorkin, V. I. (2008) Phase Reset of Complex Oscillations by a Pulsed Action, *Éksperimental'noi i Teoreticheskoi Fiziki*, Vol. 87, No. 2, 85–89.



Koles ZJ, Lind JC, Flor-Henry P. (2009). Gender Differences in Brain Functional Organization During Verbal and Spatial Cognitive Challenges. Brain Topogr. 2009 Nov 27. [Epub ahead of print]

Korzeniewska, M. Mańczak, M. Kamiński, K. Blinowska, S. Kasicki. 2003. Determination of information flow direction between brain structures by a modified Directed Transfer Function method (dDTF) *Journal of Neuroscience Methods*, **125**, 195-207.

Kumar S, Rao SL, Chandramouli BA, Pillai SV.(2009). Reduction of functional brain connectivity in mild traumatic brain injury during working memory. J Neurotrauma. 26(5):665-75.

Llina's, R.R., Ribary, U., Jeanmonod, D., Kronberg, E., Mitra, P.P., 1999. Thalamocortical dysrhythmia: a neurological and neuropsychiatric syndrome characterized by magnetoencephalography. *Proc. Natl. Acad. Sci. U. S. A.* 96, 15222– 15227.

Lopes Da Silva, F.H. (1995). Dynamic of Electrical Activity of the Brain, Networks, and and Modulating Systems. In: P. Nunez, ed., *Neocortical Dynamics and Human EEG Rhythms*, 249-271.

Malmivuo, J. and Plonsey, R. (1995). Bioelectrical magnetism: Principles and applications of bioelectric and biomagnetic fields. Oxford Univ. Press, New York.

Martin-Loeches, M, Munoz-Ruata, J., Martinez-Lebrusant, L., and Gomez-Jari, G. Electrophysiology and intelligence: the electrophysiology of intellectual functions in intellectual disability. *J. Intellect. Disabil. Res.*, 2001, 45(1): 63-75.

Marosi, E., Rodriguez, H., Harmony, T., Yanez, G., Rodriguez. M., Bernal, J., Fernandez, T., Silva, J., Reyes, A. and Guerrero, V. Broad band spectral parameters correlated with different I.Q. measurements. *Int J Neurosci.* 1999, 97(1-2):17-27.

McAlaster, R. (1992). Postnatal cerebral maturation in Down's syndrome children: a developmental EEG coherence study, *Int. J. Neurosci.*, 65(1-4): 221-2237.

McCartney, H., Johnson, A.D., Weil, Z.M. and Givens, B. (2004). Theta reset produces optimal conditions for long-term potentiation. *Hippocampus*, 14(6):684-697.

Monto, S. Palva S, Voipio J, Palva JM.. (2008) Very slow EEG fluctuations predict the dynamics of stimulus detection and oscillation amplitudes in humans. *J. Neurosci.* 28, 8268–8272

Netoff, T.I. and Schiff, S.J. (2002). Decreased neuronal synchronization during experimental seizures. *J. Neurosci.*, 22(16): 7297-7307.

Nolte, G., Bai, O., Wheaton, L., Mari, Z., Vorbach, S. and Hallet, M. (2004). Identifying

true brain interaction from EEG data using the imaginary part of coherency. *Clin. Neurophysiol.*, 115: 2292-2307.

Nunez, P. (1981). *Electrical Fields of the Brain*. Oxford University Press, Mass.

Nunez, P. (1994). *Neocortical Dynamics and Human EEG Rhythms*, Oxford University Press, Mass.

Orr, W.C. and Naitoh, P. The coherence spectrum: An extension of correlation analysis with applications to chronobiology. *Internat. J. of Chronobiology*, 1976, 3: 171-192.

Raichle, M.E. (2010). Two views of brain function. *Trends in Cognitive Sciences* (In press, 2010).

Pascual-Marqui RD, Koukkou M, Lehmann D, Kochi K. (2001). Functional localization and functional connectivity with LORETA comparison of normal controls and first episode drug naïve schizophrenics. *J Neurotherapy* 2001; 4(4): 35-37.

Pascual-Marqui: 2007. Coherence and phase synchronization: generalization to pairs of multivariate time series, and removal of zero-lag contributions. arXiv:0706.1776v3 [stat.ME] 12 July 2007. (<http://arxiv.org/pdf/0706.1776>).

Pikovsky, A., Rosenblum, M. and Kurths, J. (2003). *Synchronization: A universal concept in nonlinear sciences*. Cambridge Univ. Press, New York.

Rappelsberger, P. (1989). The reference problem and mapping of coherence: A simulation study. *Brain Topog.* 2(1/2): 63-72.

Riddle, C.N and Baker, S.N. (2005). Manipulation of peripheral neural feedback loops alters human corticomuscular coherence. *J Physiol.* 566(Pt 2): 625–639.

Rizzuto, D.S., Madsen, J.R., Bromfield, E.B., Schultz-Bonhage, A., Seelig, D., Aschenbrenner-Scheibe, R. and Kahana, M.J. (2003). Reset of human neocortical oscillations during a working memory task. *Proc Natl Acad Sci U S A.* 100(13):7931-7936.

Roelfsmema, P.R., Engel, A.K., Konig, P. and Singer, W. (1997). Visuomotor integration is associated with zero time-lag synchronization among cortical areas. *Nature*, 385(6612): 157-161.

Rogers, R.L. (1994). Magnetoencephalographic imagines of cognitive processes. In: R. Thatcher, M. Hallett, T. Zeffiro, E. John and M. Huerta (Eds.), *Functional Neuroimaging: Technical Foundations*, Academic Press: New York.

Rudrauf, D., Douiri, A., Kovach, C., Lachaux, J.P., Cosmelli, D., Chavez, A., Renault, B., Marttinerie, J. and Le Van Quyen, M. (2006). Frequency flows and the time-

frequency dynamics of multivariate phase synchronization in brain signals. *Neuroimage*, 31: 209-227.

Sauseng, P., Klimesch, W., Gruber, W., Doppelmayr, M., Stadler, W., Schabus, M., (2002). The interplay between theta and alpha oscillations in human electroencephalogram reflects the transfer of information between memory systems. *Neurosci. Lett.* 324, 121–124.

Sauseng, P, and Klimesch, W. (2008). What does phase information of oscillatory brain activity tell us about cognitive processes? *Neuroscience and Biobehavioral Reviews*, 32(5):1001-1013.

Sauseng, P., Klimesch, W., Gruber, W.R. and Birbaumer, N. (2008). Cross-frequency phase synchronization: A brain mechanism of memory matching and attention. *Neuroimage*, 40: 308-317

Schack, B., Vath, N., Petsche, H., Geissler, H.G., Möller, E., (2002). Phasecoupling of theta-gamma EEG rhythms during short-term memory processing. *Int. J. Psychophysiol.* 44, 143–163.

Schack, B., Klimesch, W., Sauseng, P., (2005). Phase synchronization between theta and upper alpha oscillations in a working memory task. *Int. J. Psychophysiol.* 57, 105–114.

Scherg, M. (1992). Functional imaging and localization of electromagnetic brain activity. *Brain Topogr.*, 5(2): 103-111.

Shaw, JC, Colter N, Resek G. (1983). EEG coherence, lateral preference and schizophrenia. *Psychol Med.*;13(2):299-306.

Shen, B., Nadkarni, M. and Zappulla, R.A. (1999). Spatial-spectral signature of human cortical synchrony, EEG and Clin. *Neurophysiology*, 110(1): 115-125.

Stam CJ, van der Made Y, Pijnenburg YAL, Scheltens Ph. (2002a). EEG synchronization in mild cognitive impairment and Alzheimer's disease. *Acta Neurol. Scand.* 106: 1–7.

Stam CJ, van Cappellen van Walsum AM, Pijnenburg YAL, Berendse, HW, de Munck JC, Scheltens Ph, van Dijk BW (2002b). Generalized synchronization of MEG recordings in Alzheimer's disease: Evidence for involvement of the gamma band. *J. Clin. Neurophysiol* 19: 562–574.

Stam, C.J. and de Bruin, E.A. (2004). Scale-free dynamics of global functional connectivity in the human brain. *Hum. Brain Map.* 22:97-109.

Steriade, M. (1995). Cellular substrates of Brain Rhythms" in: *Electroencephalography*,

ed. Niedermeyer and Lopes da Silva, Williams and Wilkins, Baltimore.

Steriade, M. (2006). Grouping of brain rhythms in corticothalamic systems. *Neuroscience* 137:1087–1106.

Suzuki, H. (1974). Phase relationships of alpha rhythm in man. *Jpn J Physiol.* 24(6):569-86.

Tallon-Baudry, C., Bertrand, O., and Fischer, C. (2001). Oscillatory synchrony between human extrastriate areas during visual short-term memory maintenance. *J. Neurosci.*, 21(20): RC177.

Tesche, C.D. and Karhu, J. (2000). Theta oscillations index human hippocampal activation during a working memory task. *Proc Natl Acad Sci U S A.* 18;97(2):919-924.

Thatcher, R.W. (1992). Cyclic cortical reorganization during early childhood. *Brain and Cognition*, 20: 24-50.

Thatcher RW. (1995). Tomographic electroencephalography /magnetocephalography: Dynamics of human neural network switching. *J. Neuroimag* 1995; 5: 35-45.

Thatcher, R.W. (1998). A predator-prey model of human cerebral development. In: K. Newell and P. Molenaar Editors, Dynamical Systems in Development, L. Erlbaum Assoc, New Jersey.

Thatcher, R.W., Krause, P and Hrybyk, M. (1986). Corticocortical Association Fibers and EEG Coherence: A Two Compartmental Model. Electroencephalog. Clinical Neurophysiol., 64: 123 – 143.

Thatcher, R.W., Walker, R.A. and Guidice, S. (1987). Human cerebral hemispheres develop at different rates and ages. Science, 236: 1110-1113.

Thatcher, R., Wang, B., Toro, C. and Hallett, M. (1994). Human Neural Network Dynamics Using Multimodal Registration of EEG, PET and MRI. In: R. Thatcher, M. Hallett, T. Zeffiro, E. John and M. Huerta (Eds.), Functional Neuroimaging: Technical Foundations, Academic Press: New York.

Thatcher, R.W. (2010). Validity and reliability of quantitative electroencephalography (qEEG). *J. of Neurotherapy* (In press, 2010).

Thatcher, R. W., Biver, C., McAlaster, R and Salazar, A.M. (1998). Biophysical linkage between MRI and EEG coherence in traumatic brain injury. NeuroImage, 8(4), 307-326.

Thatcher, R.W., North, D., and Biver, C. (2005). EEG and Intelligence: Univariate and Multivariate Comparisons Between EEG Coherence, EEG Phase Delay and Power.

Clinical Neurophysiology, 116(9):2129-2141.

Thatcher, R.W., Biver, C. J., and North, D. (2007). Spatial-temporal current source correlations and cortical connectivity, *Clin. EEG and Neuroscience*, 38(1): 35 – 48.

Thatcher, R.W., North, D., and Biver, C. 2008a. Development of cortical connectivity as measured by EEG coherence and phase. *Hum Brain Mapp.*, 29(12):1400-1415

Thatcher, R.W., North, D., and Biver, C. Intelligence and EEG phase reset: A two-compartmental model of phase shift and lock, *NeuroImage*, 42(4): 1639-1653, 2008b.

Thatcher, R.W., North, D., and Biver, C. 2009a. Self organized criticality and the development of EEG phase reset. *Hum Brain Mapp.*, 30(2):553-574.

Thatcher, R.W., North, D., Neurbrander, J., Biver, C.J., Cutler, S. and DeFina, P. Autism and EEG phase reset: Deficient GABA mediated inhibition in thalamo-cortical circuits. *Dev. Neuropsych.* 34(6), 780–800, 2009b.

Thatcher, R.W., North, D., and Biver, C. Diffusion Tensor Imaging ‘Modules’ Correlated with LORETA Electrical NeuroImaging ‘Modules’. (2010). *Open Medical Imaging Journal* (In press, 2010).

Tropini G, Chiang J, Wang Z, McKeown MJ. (2009). Partial directed coherence-based information flow in Parkinson's disease patients performing a visually-guided motor task. *Conf Proc IEEE Eng Med Biol Soc.*;2009:1873-1878.

Vaadia, E., Haalman, L., Abeles, M., Bergman, H., Prut, Y., Slovin, H. and Aertsen, A. (1995). Dynamics of neuronal interactions in monkey cortex in relation to behavior events. *Nature*, 373(6514): 515-518.

Varela, F.J. (1995). Resonant cell assemblies: a new approach to cognitive functions and neuronal locking. *Biol. Res.*, 28(1): 81-95.

Varela, F.J., Lachaux, J.-P., Rodriguez, E., and Martinerie, J. (2001). The brainweb: phase synchronization and large-scale integration. *Nat. Rev., Neurosci.*, 2(4): 229-239.

van Baal, G.C., Boomsma, D.I. and de Geus, E.J. (2001). Longitudinal genetic analysis of EEG coherence in young twins. *Behav. Genet.*, 31(6):637-651.

Van Beijsterveldt, C.E., Molenaar, P.C., de Geus, E.J. and Boomsma, D.I. (1998). Genetic and environmental influences on EEG coherence. *Behav. Genet.*, 28(6): 443-453.

Walter, D.O. (1968). Coherence as a measure of relationship between EEG records. *Electroencephalogr Clin Neurophysiol.* 24(3):282 - 292.

Walter, D.O. (1963). Spectral analysis for electroencephalograms: mathematical determination of neurophysiological relationships from records of limited duration. *Exp Neurol.* 8:155-181.

Zaveri, H.P, Duckrow RB, Spencer SS. (2000). The effect of a scalp reference signal on coherence measurements of intracranial electroencephalograms. *Clin Neurophysiol.m* 111(7):1293-1299.